



Strong Leadership, Connections & Commitment

Miami-Dade County has a strong record of environmental leadership and stewardship that dates back to the early 1990's. That rich history and local commitment in a community with obvious vulnerabilities to climate change has given Miami-Dade a voice on a national and international level. Miami-Dade County is shaping policy at the global table. We must continue to work at all these levels, from the international discussion to the individual and personal commitments.

Goals

- **Create the next generation of green leaders**
Work with the more than 100 GreenPrint partners to integrate sustainability into local, regional and national strategic decision-making, policies and operations



STRONG LEADERSHIP, CONNECTIONS & COMMITMENT

"We have a blueprint for staying green and sustainable... called *"GreenPrint"*. It's getting noticed....We are at the forefront of green initiatives, but we need to make sure our efforts stretch beyond the confines of County government by forming partnerships with businesses, industries and residents. Commissioners, I need your help in shaping these proposals and turning them into policy."

- Mayor Carlos Alvarez, State of the County, February 24, 2010

Strengths & Accomplishments...Opportunities & Actions

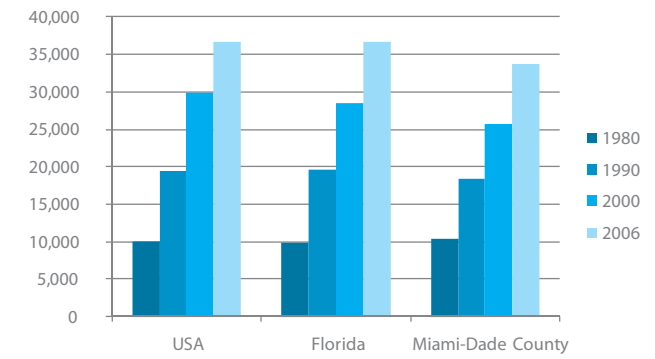
This goal area is unique to Miami-Dade County in comparison to other local government sustainability plans. It is here to reinforce the notion that this is not just a government plan, and it is not a plan for the bookshelf. This is an action-oriented, community-based, quality-of-life plan for a sustainable design for our future. It requires leadership to make tough decisions and change the status quo; connections to partners, because we are not alone in this and we do not have all the resources in the world; and commitment to persevere from generation to generation.

In order to create the next generation of green leaders, there must be willingness and a commitment to create interest, imagination, and innovation for investments in sustainability; craft a common language to communicate the importance of investments in sustainability to all segments of our rich and diverse community; become a role model for green government best practices; encourage and foster civic engagement and personal commitment; and incorporate sustainability into all levels of decision making by community leaders in all sectors.

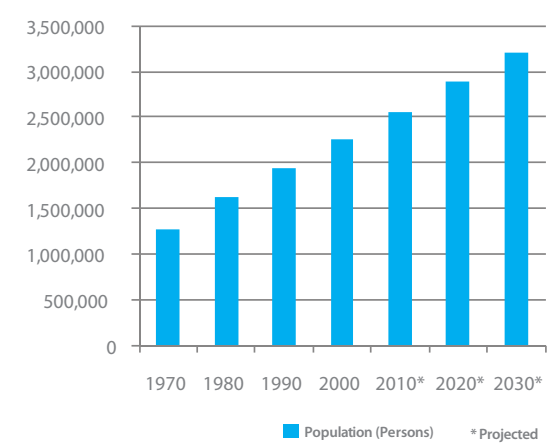
This is important because today we already face significant challenges. Miami-Dade County has a per-capita income falling further below the national average. Our unemployment rate continues to rise. We trail the state and the nation in the share of our residents with high-school diplomas. The Miami-Dade County Planning and Zoning Department continues to forecast population growth by 30,000 people per year. And while 49 percent of the population in the County is registered to vote and this number continues to steadily rise, the quality of life of our community as a whole could greatly improve with more participation in the public decision making process.

Rene Dubos was a French-American Pulitzer Prize winner credited with coining the phrase, "think globally, act locally" (Schendler n. pag.). In Southeast Florida we have inserted "work regionally" into that equation. Southeast Florida is already addressing climate issues beyond the borders of individual jurisdictions. The 5.6 million residents of our four counties (Broward, Miami-Dade, Monroe, and Palm Beach) exceed the population of 30 states and represent 30 percent of Florida's population. Commissioners representing each County announced a regional compact in October 2009 at the Southeast Florida Regional Climate Leadership Summit. The compact commitments include federal and state policy coordination on climate related issues, development of a Southeast Florida Regional Climate Change Action Plan, and annual participation in regional summits to mark progress. The development of a Regional Climate Action Plan builds on the individual work of each County to address climate change. This is leadership, connections and commitment in action.

Miami-Dade County Per Capita Personal Income (\$) 1980 - 2006



Population Growth



To make progress towards our strategies, initiatives must be critical, supported by our partners, and successful. Many of the following initiatives have their foundation in building upon existing relationships and developing new ones. A recent study of chief executives worldwide reinforced this notion: "Across the board, the CEOs we spoke to confirmed that partnerships and collaboration are now a critical element of their approach to sustainability issues." (UN Global Compact: Accenture CEO 2010).



- First hybrid Metrobuses placed into passenger service
- First fuel-efficient hybrid waste collection vehicle placed into service
- Became a National Oceanic and Atmospheric Administration (NOAA) case study and pilot program and hosted the "Roadmap for Adapting to Coastal Risks" workshop led by the Coastal Services Center in South Carolina
- Hosted the White House Council on Environmental Quality and the Interagency Climate Change Task Force Listening Session (one of six sessions nationwide)
- Received the "Most Outstanding Green Government" award by the U.S. Green Building Coalition South Florida Chapter
- Received the "Leadership Award for Process Innovation" by ICLEI Local Governments for Sustainability for the Southeast Florida Regional Climate Compact



Sustainability Timeline

- Expanded Office of Sustainability with the award of the Energy Efficiency and Conservation Block Grant
- Established goal of reducing County government's energy consumption by 20 percent by 2014
- Began the process of developing our community's sustainability plan, *GreenPrint*
- Established the Southeast Florida Regional Climate Change Compact
- Replaced 75,000 traffic signal bulbs with LED modules, saving \$2 million
- Purchased first biodiesel fuel blends for use in County fleet and equipment

Opened Solid Waste Resources Recovery Facility, one of the most technologically advanced waste-to-energy facilities in the world

Founding member of ICLEI, an international organization supporting climate protection and sustainability planning and initiatives for local governments

Environmentally Endangered Lands Program (EEL) approved by Miami-Dade voters

Urban CO₂ Reduction Plan adopted

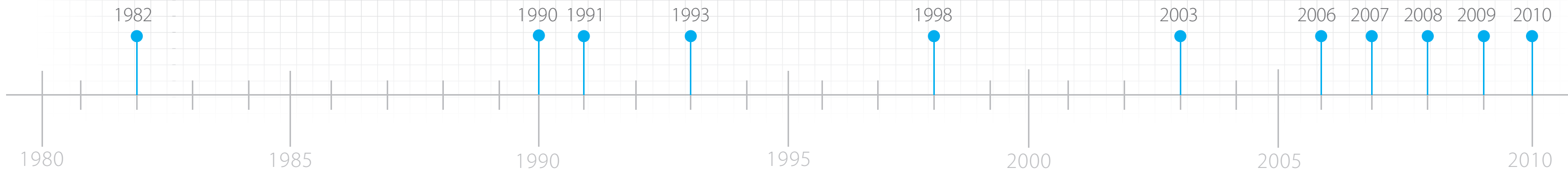
Initiated Energy Services Performance Contracting

• Created of the Office of Sustainability
• Joined Cool Counties, committed to reducing CO₂ emissions 80 percent by 2050
• Implemented a Single-Stream Recycling Program

• Joined the Chicago Climate Exchange
• Adopted the Sustainable Buildings Ordinance

• Miami-Dade Climate Change Advisory Task Force established by the Board of County Commissioners
• Adopted the Water Use Efficiency Plan

• Created internal Resources Conservation Committee
• Purchased first hybrid fleet vehicles



Strategies

- Strengthen regional and local community partnerships
- Integrate sustainability into all leadership systems
- Be green government role models
- Create ongoing outreach, education, and dialogue with the community about the implications of climate change and the benefits of sustainability

Leadership, Connections and Commitment Initiatives:

1. Strengthen regional and local community partnerships

- Implement the Southeast Florida Regional Climate Change Compact
- Codify the sustainability planning process and create a formal leadership structure for *GreenPrint* implementation
- Encourage all municipalities to adopt *GreenPrint*
- Pursue more public-private partnerships to implement policies identified in County plans that improve County services

2. Integrate sustainability into all leadership systems

- Continue to participate in and influence sustainability policy formulation and decision-making at the national and international level through partnerships, conferences, and legislation
- Integrate sustainability knowledge into existing leadership programs and new elected official orientations countywide

3. Be green government role models

- Integrate and prioritize climate change and sustainability in local government strategic planning, business planning and in fiscal decision making
- Develop an interagency working group to ensure implementation of the CDMP by tackling conflicts between different County plans and within the development process



U.S. Department of Commerce Under Secretary for Oceans and Atmosphere, Dr. Jane Lubchenco, and Miami-Dade County Mayor, Carlos Alvarez, at the Federal Interagency Climate Change Adaptation Task Force Public Meeting held June 23, 2010 in Miami-Dade County. The meeting provided an opportunity for White House officials to listen to local and regional ideas, questions and concerns about climate change adaptation, and to describe federal efforts already underway to plan for climate change adaptation.

- Work with local Board of Rules and Appeals and other stakeholders to maintain the Florida Energy Code and to better define and set forth responsibilities of each trade in order to improve compliance with and enforcement of the Code (Within the Florida Energy Code and 2010 Florida Statutes, Chapter 468, Part XII)
- Adopt existing draft County Ordinance (per Resolution R468-06) requiring water efficiency retrofits at point of home resale (prior to changing ownership) and later update the ordinance to require additional retrofits focusing on energy efficiency

4. Create ongoing outreach, education, and dialogue with the community about the implications of climate change and the benefits of sustainability

- Develop and implement ongoing community outreach about sustainability and climate change
- Estimate the Costs of Action vs. Inaction and communicate implications to key decision-makers



Miami-Dade County Clerk of the Courts, Harvey Ruvlin, and Miami-Dade County Commissioner Natacha Seijas, at the first ever Southeast Florida Regional Climate Leadership Summit on October 23, 2009.

“Our survey found widespread agreement among CEOs about what the next era of sustainability will look like: It is one where sustainability is not only a separate strategic initiative, but something fully integrated into the strategy and operations of a company. As one emerging economy CEO told us, ‘Currently, the burning issue is how to better incorporate sustainability into daily practice.’”

-UN Global Compact- Accenture CEO Study 2010

Sustainability and the implications of climate change bring a different managerial twist to any organization. Learning and communicating with each other as government entities, businesses and major institutions will help to facilitate this change. Eventually, it will be integrated into how we do business. Public Management magazine, a publication from ICMA, drove this home: “Educating residents about sustainability is important. When speaking to them, it may be good to refer to sustainability as being about local people, local places and local prosperity. To bankers, speak about living off the interest not the principle. To farmers, speak about not eating your seed corn. To the elderly, speak about their grandchildren. To veterans speak about our nation’s security. To scout groups, speak about leaving your campsite better than you found it... speak out” (Reid). We need to keep speaking.



The Mayor’s Sustainability Advisory Board is comprised of a diverse group of community experts from many different sectors. It was created to provide guidance in the development of Miami-Dade County’s community-wide *GreenPrint* Sustainability Plan.