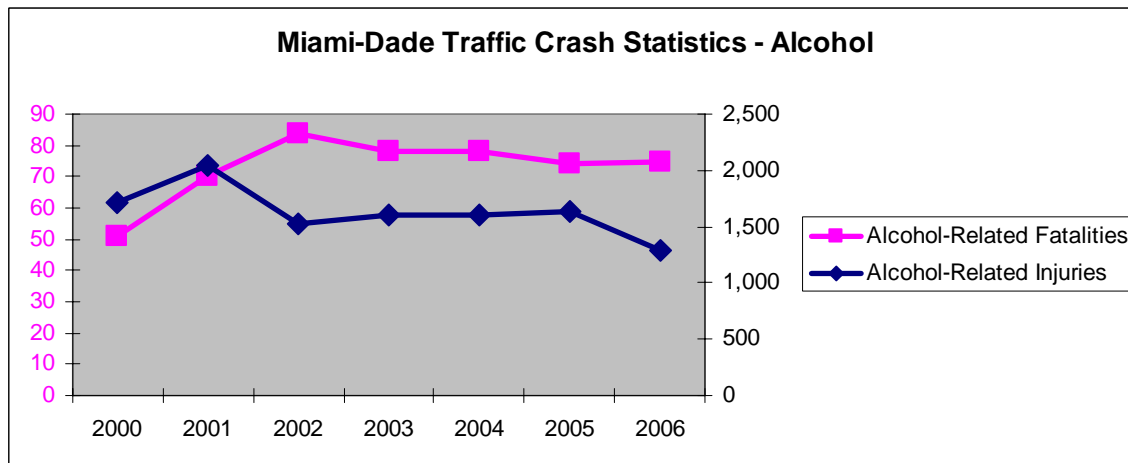
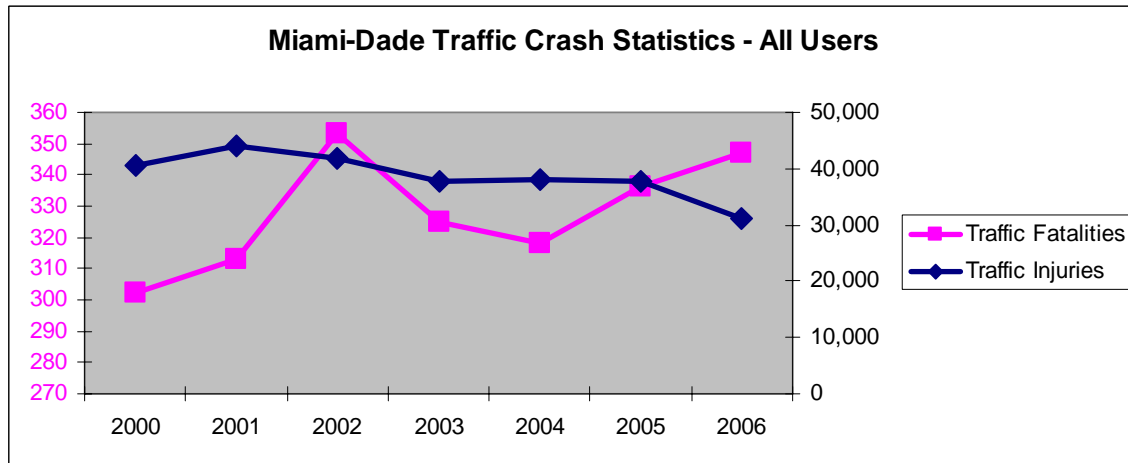


Current Traffic Crash Trends in Miami-Dade

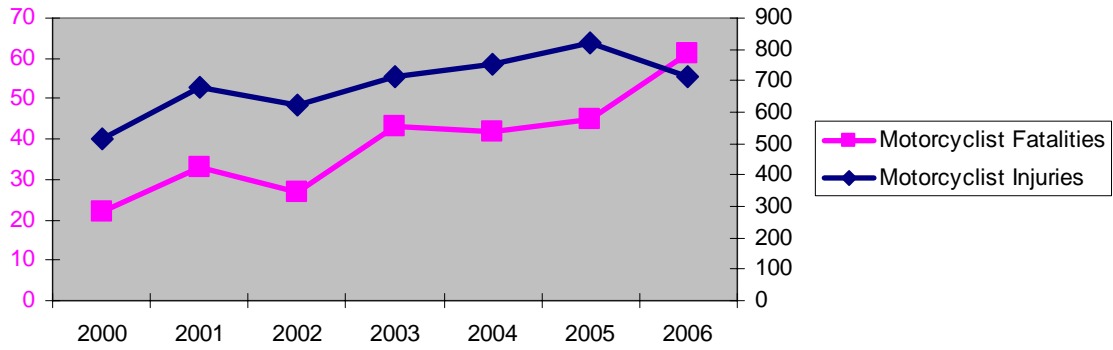
The Florida Department of Highway Safety and Motor Vehicles (DHSMV) collects, analyses and publishes information on traffic crashes in their annual “Crash Facts” report. The latest crash trends for Miami-Dade County are shown below.

Miami-Dade County Traffic Crash Statistics

	2000	2001	2002	2003	2004	2005	2006
Number of Crashes	51,132	54,519	49,922	45,731	46,166	48,537	42,582
Alcohol-Related Crashes	2,007	2,314	1,876	2,027	1,915	2,117	1,792
Traffic Fatalities	302	313	353	325	318	336	347
Alcohol-Related Fatalities	51	70	84	78	78	74	75
Traffic Injuries	40,714	43,954	41,699	37,676	37,955	37,879	31,030
Alcohol-Related Injuries	1,709	2,040	1,530	1,606	1,597	1,635	1,286
Vehicle and/or Property Damage Only	25,713	27,825	24,717	22,670	22,930	24,735	22,702
Motorcyclist Fatalities	22	33	27	43	42	45	61
Motorcyclist Injuries	516	680	622	715	753	818	712
Bicyclist Fatalities	6	10	17	11	6	8	8
Bicyclist Injuries	582	543	566	596	508	444	391
Pedestrian Fatalities	81	71	82	74	64	81	90
Pedestrian Injuries	1,643	1,717	1,571	1,473	1,405	1,484	1,329



Miami-Dade Traffic Crash Statistics - Motorcycles



Miami-Dade Traffic Crash Statistics - Pedestrians



Miami-Dade Traffic Crash Statistics - Bicyclist

