

FY 2009 - 10 Adopted Budget and Multi-Year Capital Plan

County Attorney's Office

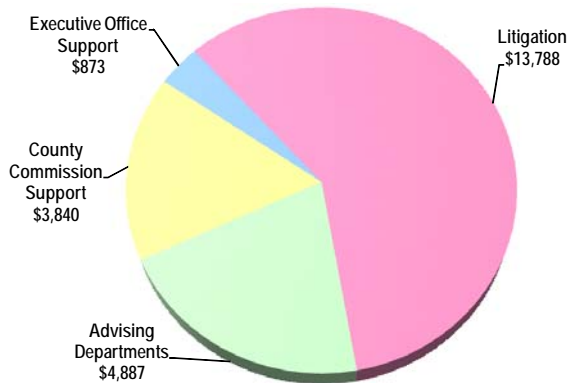
The County Attorney's Office (CAO) is established in the Miami-Dade County Home Rule Charter to "serve as legal counsel to the Board of County Commissioners (BCC), the County Manager, and all County departments, offices, and agencies, and perform such other legal duties as may be assigned." The County Attorney is appointed by and is directly responsible to the BCC. The CAO represents the BCC, the Mayor, the County Manager, and County departments in all civil legal matters arising in the discharge of official duties.

As part of the Policy Formulation strategic area, the CAO is responsible for the prosecution and the defense of all lawsuits brought by or against the County, legal advice to the BCC and its committees and subcommittees, the Mayor and the Public Health Trust, the representation of the County at administrative hearings, the drafting and review of ordinances and resolutions, approval of all contracts, bonds or written instruments as to form and legal sufficiency, and the rendering of legal opinions.

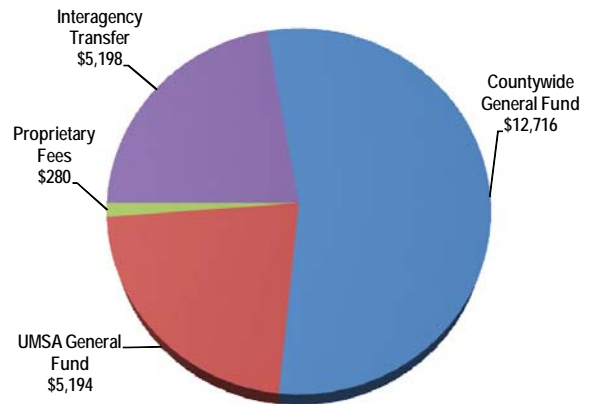
The CAO provides legal representation to the BCC, the Mayor, the Public Health Trust, the various County boards, the County Manager, the Community Councils, and all County departments and agencies.

FY 2009-10 Adopted Budget

Expenditures by Activity
(dollars in thousands)

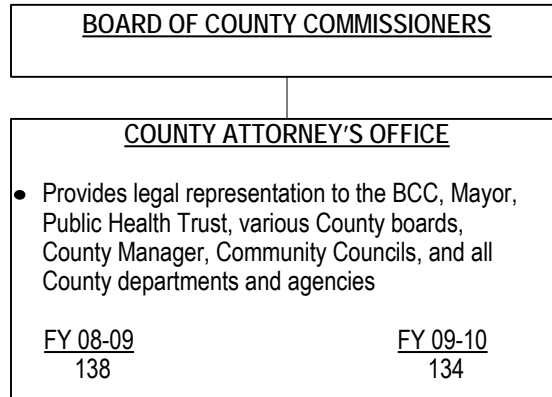


Revenues by Source
(dollars in thousands)



FY 2009 - 10 Adopted Budget and Multi-Year Capital Plan

TABLE OF ORGANIZATION



FINANCIAL SUMMARY

(dollars in thousands)	Actual FY 07-08	Budget FY 08-09	Adopted FY 09-10
Revenue Summary			
General Fund Countywide	12,719	14,559	12,716
General Fund UMSA	5,449	6,240	5,194
Reimbursements from Outside Agencies	250	250	280
Reimbursements from Departments	4,952	5,198	5,198
Total Revenues	23,370	26,247	23,388
Operating Expenditures Summary			
Salary	18,204	20,800	18,432
Fringe Benefits	4,072	4,228	4,004
Other Operating	941	1,082	857
Capital	153	137	95
Total Operating Expenditures	23,370	26,247	23,388

(dollars in thousands)	Total Funding		Total Positions	
Expenditure By Program	Budget FY 08-09	Adopted FY 09-10	Budget FY 08-09	Adopted FY 09-10
Strategic Area: Policy Formulation				
Advising Departments	5,512	4,887	30	28
County Commission Support	3,937	3,840	20	22
Executive Office Support	1,050	873	5	5
Litigation	15,748	13,788	83	79
Total Operating Expenditures	26,247	23,388	138	134

SELECTED ITEM HIGHLIGHTS AND DETAILS

Line Item Highlights	(dollars in thousands)				
	Actual FY 06-07	Actual FY 07-08	Budget FY 08-09	Actual FY 08-09	Budget FY 09-10
Travel	57	53	57	54	33
Transfers and Reimbursements					
<ul style="list-style-type: none"> • Public Health Trust - Extraordinary legal services 	0	300	300	300	300

FY 2009 - 10 Adopted Budget and Multi-Year Capital Plan

BUDGET ENHANCEMENTS OR REDUCTIONS AND ADDITIONAL COMMENTS

- The FY 2009-10 Adopted Budget includes \$5.478 million in reimbursements for legal services provided in excess of typical requirements from the Finance Department bond administration fund (\$450,000), the General Services Administration Self-Insurance Trust Fund (\$3.8 million), the Seaport Department (\$224,000), the Public Health Trust (\$300,000), the Building Better Communities Bond Interest Proceeds (\$424,000), the Children's Trust (\$150,000), and the South Florida Workforce (\$130,000)
- *Due to the economic downturn, the FY 2009-10 Adopted Budget reflects a reduction in expenditures including one Assistant County Attorney 2, one Assistant County Attorney 1, one Legal Secretary and one Paralegal Specialist*

Department Operational Unmet Needs

Description	(dollars in thousands)		Positions
	Startup Costs/ Non Recurring Costs	Recurring Costs	
Hire one Assistant County Attorney 2 and one Assistant County Attorney 1 to assist with the prosecution and the defense lawsuits brought by or against the County	\$0	\$533	2
Hire one Legal Secretary and one Paralegal Specialist to support the department's Attorneys	\$0	\$205	2
Total	\$0	\$738	4

