

FY 2010 - 11 Adopted Budget and Multi-Year Capital Plan

Library

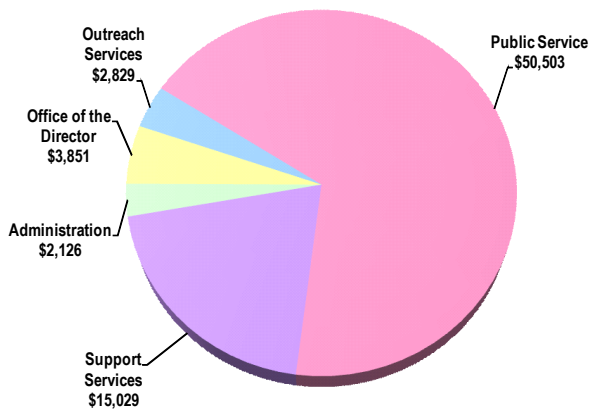
The Miami-Dade County Public Library System (Library or Library System) provides public library services reflecting the informational, educational, and recreational needs of our community.

As part of the Recreation and Culture strategic area, the Library System provides library services to one of the largest and most diverse populations in the United States. More than two million residents of the Miami-Dade County Library District enjoy access to a collection of nearly four million items in a wide variety of formats and languages and a state-of-the-art computer system and public computer workstations, including laptops, with full Internet access for public use. The Library System has a Main Library, 47 neighborhood branches, and four bookmobiles.

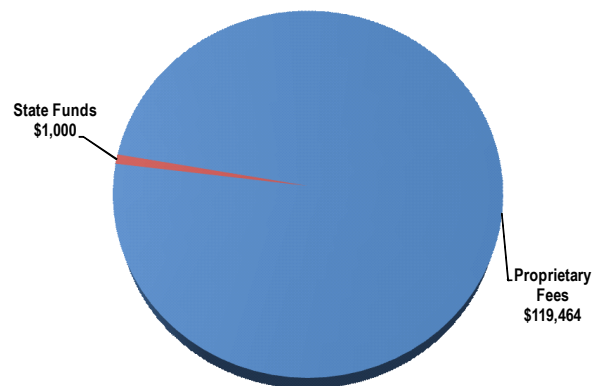
The Library System coordinates its many activities and functions with a variety of stakeholders, including schools, homeowners' associations, community councils, municipalities, various groups involved in fundraising and development activities for the benefit of the Library System, community-based organizations, and other local and neighborhood groups. In addition, the Department works in conjunction with other County departments such as General Services Administration, Enterprise Technology Services Department, and Park and Recreation in the implementation of the Library System's capital plan.

FY 2010-11 Adopted Budget

Expenditures by Activity
(dollars in thousands)



Revenues by Source
(dollars in thousands)



FY 2010 - 11 Adopted Budget and Multi-Year Capital Plan

TABLE OF ORGANIZATION

<p><u>OFFICE OF THE DIRECTOR</u></p> <ul style="list-style-type: none"> • Provides overall direction and coordination of departmental operations and management <table style="margin-left: auto; margin-right: auto; border: none;"> <tr> <td style="text-align: center; padding: 0 10px;"><u>FY 09-10</u></td> <td style="text-align: center; padding: 0 10px;"><u>FY 10-11</u></td> </tr> <tr> <td style="text-align: center; padding: 0 10px;">3</td> <td style="text-align: center; padding: 0 10px;">3</td> </tr> </table>	<u>FY 09-10</u>	<u>FY 10-11</u>	3	3
<u>FY 09-10</u>	<u>FY 10-11</u>			
3	3			
<p><u>ADMINISTRATION</u></p> <ul style="list-style-type: none"> • Oversees implementation of departmental policy and manages the departmental budget <table style="margin-left: auto; margin-right: auto; border: none;"> <tr> <td style="text-align: center; padding: 0 10px;"><u>FY 09-10</u></td> <td style="text-align: center; padding: 0 10px;"><u>FY 10-11</u></td> </tr> <tr> <td style="text-align: center; padding: 0 10px;">15</td> <td style="text-align: center; padding: 0 10px;">14</td> </tr> </table>	<u>FY 09-10</u>	<u>FY 10-11</u>	15	14
<u>FY 09-10</u>	<u>FY 10-11</u>			
15	14			
<p><u>SUPPORT SERVICES</u></p> <ul style="list-style-type: none"> • Processes financial transactions and personnel actions; oversees the Library's capital expansion plan; develops and prints educational and promotional materials for the Library System <table style="margin-left: auto; margin-right: auto; border: none;"> <tr> <td style="text-align: center; padding: 0 10px;"><u>FY 09-10</u></td> <td style="text-align: center; padding: 0 10px;"><u>FY 10-11</u></td> </tr> <tr> <td style="text-align: center; padding: 0 10px;">67</td> <td style="text-align: center; padding: 0 10px;">68</td> </tr> </table>	<u>FY 09-10</u>	<u>FY 10-11</u>	67	68
<u>FY 09-10</u>	<u>FY 10-11</u>			
67	68			
<p><u>OUTREACH SERVICES</u></p> <ul style="list-style-type: none"> • Conducts outreach to community organizations, municipalities, and local, state, and federal government agencies to determine service needs and seek assistance and cooperation to enable the Department to attain its goal of improving and enhancing services to the public <table style="margin-left: auto; margin-right: auto; border: none;"> <tr> <td style="text-align: center; padding: 0 10px;"><u>FY 09-10</u></td> <td style="text-align: center; padding: 0 10px;"><u>FY 10-11</u></td> </tr> <tr> <td style="text-align: center; padding: 0 10px;">30</td> <td style="text-align: center; padding: 0 10px;">30</td> </tr> </table>	<u>FY 09-10</u>	<u>FY 10-11</u>	30	30
<u>FY 09-10</u>	<u>FY 10-11</u>			
30	30			
<p><u>PUBLIC SERVICE</u></p> <ul style="list-style-type: none"> • Provides informational and lending services to users of branch and regional facilities, as well as special youth-related programs and events to encourage literacy, library usage, and life-long learning; formulates and administers the Collection Development Policy and Materials Budget Plan for the Library System; coordinates all library automation efforts and online services, including short- and long-term technical planning, e-government, web portal initiatives, network infrastructure, network security, and all central site and remote computer equipment and applications, for staff and the general public <table style="margin-left: auto; margin-right: auto; border: none;"> <tr> <td style="text-align: center; padding: 0 10px;"><u>FY 09-10</u></td> <td style="text-align: center; padding: 0 10px;"><u>FY 10-11</u></td> </tr> <tr> <td style="text-align: center; padding: 0 10px;">521</td> <td style="text-align: center; padding: 0 10px;">506</td> </tr> </table>	<u>FY 09-10</u>	<u>FY 10-11</u>	521	506
<u>FY 09-10</u>	<u>FY 10-11</u>			
521	506			

FY 2010 - 11 Adopted Budget and Multi-Year Capital Plan

FINANCIAL SUMMARY

(dollars in thousands)	Actual FY 08-09	Budget FY 09-10	Adopted FY 10-11
Revenue Summary			
Ad Valorem Fees	80,258	73,469	47,417
Carryover	70,029	72,113	70,709
Miscellaneous Revenues	2,477	1,466	1,338
State Grants	1,693	1,000	1,000
Total Revenues	154,457	148,048	120,464
Operating Expenditures Summary			
Salary	33,127	29,252	31,150
Fringe Benefits	10,879	9,431	10,270
Other Operating	34,076	41,992	28,068
Capital	1,266	6,735	4,850
Total Operating Expenditures	79,348	87,410	74,338
Non-Operating Expenditures Summary			
Reserve	0	60,638	34,363
Transfers	0	0	11,763
Total Non-Operating Expenditures	0	60,638	46,126

(dollars in thousands) Expenditure By Program	Total Funding		Total Positions	
	Budget FY 09-10	Adopted FY 10-11	Budget FY 09-10	Adopted FY 10-11
Strategic Area: Recreation and Culture				
Office of the Director	10,517	3,851	3	3
Administration	2,224	2,126	15	14
Support Services	20,759	15,029	67	68
Outreach Services	3,113	2,829	30	30
Public Service	50,797	50,503	521	506
Total Operating Expenditures	87,410	74,338	636	621

FY 2010 - 11 Adopted Budget and Multi-Year Capital Plan

ADOPTED FEE ADJUSTMENTS FOR SERVICES

Fee Adjustments	Current Fee	Adopted Fee	Dollar Impact
	FY 09-10	FY 10-11	FY 10-11
• Photocopies (Black & White)	0.20	0.25	\$15,000
• Computer Printing (Black & White)	0.20	0.25	\$20,000
• Computer Printing (Color)	1.05	1.25	\$10,000
• Photocopies (Color)	1.05	1.50	\$6,000
• Outside Taxing District	50.00	100.00	\$4,000
• Guest Card	0	5.00	\$500
• Interlibrary Loans	0	2.00	\$2,000
• Books by Mail	0	4.00	\$2,000
• S.M.A.R.T. Program Registration Fee	0	10.00	\$15,000
• Auditorium (Large)	100.00	250.00	\$10,000
• Meeting Rooms (Medium)	50.00	150.00	\$3,000
• Meeting Rooms (Small)	40.00	75.00	\$7,500
• DVD/Monitor	20.00	30.00	\$3,000
• Presentation Equipment	0	15.00	\$75
• Presentation Screen	0	15.00	\$75
• Individual Audiobooks CDs-Replacement Cost	0	10.00	\$500
• Fully Configured Laptop-Replacement Cost	2,000.00	1,500.00	\$-500
• Laptop Accessory-Replacement Cost	150.00	25.00	\$-500
• Adult American Sign Language Materials-Replacement Cost	0	25.00	\$125
• Children's Enlace Program-Replacement Cost	0	30.00	\$150
• Children's-Florida Authors Collection-Replacement Cost	0	40.00	\$2,000
• Children's-American Sign Language Materials-Replacement Cost	0	20.00	\$1,000
• Children's Literature Collection-Replacement Cost	0	40.00	\$2,000
• Fast Add-Replacement Cost	0	30.00	\$1,500
• Floating-Replacement Cost	0	30.00	\$1,500
• Florida Authors-Replacement Cost	0	300.00	\$1,500
• Foundation Collection-Replacement Cost	0	75.00	\$3,750
• Early Literacy Kits-Replacement Cost	0	150.00	\$750
• Literacy Criticism-Replacement Cost	0	75.00	\$3,750
• Maps-Replacement Cost	0	5.00	\$1,250
• Materials in Main Vault-Replacement Cost	0	300.00	\$1,500
• Parenting Collection-Replacement Cost	0	30.00	\$1,500
• Professional Collection-Replacement Cost	0	75.00	\$375
• Adult Materials-Late Fees	0.10	0.20	\$10,000
• High Demand-Late Fees	0.15	0.25	\$10,000
• Children's Material-Late Fees	0.05	0.10	\$10,000
• Young Adult Materials-Late Fees	0.05	0.15	\$7,500
• All Videos/DVDs (except Reference DVDs)-Late Fees	0.50	1.00	\$10,000
• Reference Videos/DVDs-Late Fees	0	1.00	\$500
• Fully Configured Laptop-Late Fees	35.00	20.00	\$-1,500
• Laptop Accessories-Late Fees	35.00	20.00	\$-1,500
• Audiobooks (any format)-Late Fees	0	0.10	\$500
• Permanent Art Collection-Late Fees	0	1.00	\$500
• Connections Mailing Bag-Late Fees	0	0.15	\$750
• Braille Material-Late Fees	0	0.05	\$250
• Connections Program Kit-Late Fees	0	0.15	\$300
• Closed Caption Decoder-Late Fees	0	0.15	\$750
• Early Literacy Kit-Late Fees	0	0.15	\$750

FY 2010 - 11 Adopted Budget and Multi-Year Capital Plan

Fee Adjustments	Current Fee	Adopted Fee	Dollar Impact
	FY 09-10	FY 10-11	FY 10-11
• Fast Add-Late Fees	0	0.10	\$500
• Federal Document-Late Fees	0	1.00	\$500
• 16 mm Film-Late Fees	0	0.50	\$250
• Adult Playaway-Late Fees	0	0.10	\$500
• Children's Playaway-Late Fees	0	0.10	\$500
• Jumpstart Kit-Late Fees	0	0.15	\$2,250
• Framed Art-Late Fees	0	0.15	\$2,250
• Periodicals-Circulating-Late Fees	0	0.10	\$500
• Periodicals Reference-Late Fees	0	1.00	\$2,000
• Picture Graphics-Late Fees	0	0.15	\$750
• Professional Collection-Late Fees	0	1.00	\$2,000
• 7 Day by Ratio-Late Fees	0	0.15	\$3,000
• Score-Late Fees	0	0.10	\$2,000
• Vertical Files-Late Fees	0	0.10	\$2,000

CAPITAL BUDGET SUMMARY

(dollars in thousands)	PRIOR	FY 10-11	FY 11-12	FY 12-13	FY 13-14	FY 14-15	FY 15-16	FUTURE	TOTAL
Revenue									
BBC GOB Future Series	0	0	1,965	0	0	0	0	38,226	40,191
BBC GOB Series 2005A	355	0	0	0	0	0	0	0	355
BBC GOB Series 2008B	284	0	0	0	0	0	0	0	284
BBC GOB Series 2008B-1	121	0	0	0	0	0	0	0	121
BBC GOB Series 2010B	0	569	0	0	0	0	0	0	569
Capital Asset Series 2007 Bond Proceeds	11,922	0	0	0	0	0	0	0	11,922
Miami-Dade Library Taxing District	12,406	14,055	2,961	0	0	0	0	0	29,422
Total:	25,088	14,624	4,926	0	0	0	0	38,226	82,864
Expenditures									
Strategic Area: Recreation And Culture									
Library Facilities - New	6,342	12,057	5,700	811	0	0	0	26,986	51,896
Library Facilities - Repairs and Renovations	6,873	7,475	3,919	1,461	0	0	0	11,240	30,968
Total:	13,215	19,532	9,619	2,272	0	0	0	38,226	82,864

CAPITAL HIGHLIGHTS AND OPERATIONAL IMPACTS

- In FY 2009-10, the Department completed the relocation and expansion of the Hispanic Branch Library in Little Havana, replacing the original 5,600 square foot facility with the new 12,000 square foot facility, which opened its doors in August 2010; the FY 2009-10 Adopted Budget included \$1.086 million (\$1.380 million annualized) in increased operating costs associated with the staffing and materials necessary to operate the facility
- The Department expects to complete the renovation of the Shenandoah Branch Library and open its doors to the public in the first quarter of FY 2010-11; the department expects no increase to its operating budget since existing staff and materials will be used to operate the facility
- In FY 2010-11, the Department will complete the Arcola Lakes Branch Library, which is expected to open its doors to the public in the third quarter of FY 2010-11; the FY 2010-11 Adopted Budget includes \$383,000 (\$766,000 annualized) in increased operating costs associated with the staffing and materials necessary to operate the facility

FY 2010 - 11 Adopted Budget and Multi-Year Capital Plan

- In FY 2010-11, the Department will complete renovations to the Miami Springs Branch Library and close the temporary site; the renovated facility is projected to open its doors to the public in the second quarter of FY 2010-11; the total project cost is projected to be \$918,000; the department expects no increase to its operating budget since existing staff and materials will be used to operate the facility
- In FY 2010-11, the Department will commence construction of the Northeast Regional Library, which is expected to open its doors to the public in the second quarter of FY 2012-13; total project cost is \$15.019 million; this project is funded through a combination of Library Taxing District funds and Building Better Communities General Obligation Bond (BBC GOB) proceed allocations, which may be adjusted as final bond capacity determinations are made; the projected annual operating impact is \$2.081 million
- The FY 2010-11 Adopted Budget includes \$1.510 million in funding to complete the renovation of the Little River Branch Library, which is expected to open its doors to the public in the fourth quarter of 2013-14; the projected annual operating impact is \$1.095 million

DIVISION: OFFICE OF THE DIRECTOR

The Office of the Director provides leadership, direction, administration, and coordination of operations.

- Directs and coordinates all departmental operations
- Provides strategic direction through policy development and planning
- Guides organizational development and performance excellence initiatives
- Formulates policy with input from the Library Advisory Board
- Solicits private sector sponsorship for Library events through comprehensive short- and long-term fundraising efforts

DIVISION HIGHLIGHTS AND BUDGET ENHANCEMENTS OR REDUCTIONS

- In an effort to help promote the 10th Annual Art of Storytelling International Festival, the Florida Marlins partnered with the Library System by providing a \$25,000 in-kind donation that included 30 radio spots during Spring Training, 23 radio spots during Regular Season games, and mention in its Community Connection Newsletter
- The Miami Dolphins sponsored the 2009 Summer Reading, Teen Read Week and Children's Bookmark programs with \$35,000 in cash, in-kind donations of \$41,500, for a total donation of \$76,500
- During FY 2010-11, the Department will update its strategic plan, which will run from FY 2011-12 through FY 2013-14; the Department expects to retain its Mission Statement and Five-Star Customer Service Vision Statement from the previous five-year plan

FY 2010 - 11 Adopted Budget and Multi-Year Capital Plan

DIVISION: ADMINISTRATION

The Administration Division leads all the day-to-day activities of the Library System.

- Manages operation of both Main and branch libraries
- Manages all electronic services
- Manages all outreach services
- Manages fiscal activity and oversees the department budget

Strategic Plan Outcome - Measures

- RC1-5: Coordination of existing cultural, recreational and library programs and services and comprehensive development of new experiences and opportunities (priority outcome)

Objectives	Measures			FY 08-09		FY 09-10		FY 10-11
				Target	Actual	Target	Actual	Target
Increase awareness of Library services and events and work collaboratively with other County departments	Library Five-Star Attitude Rating*	OC	↑	100%	93%	100%	96%	100%
	Library Five-Star Resources Rating*	OC	↑	100%	71%	100%	71%	100%
	Library Five-Star Expertise Rating*	OC	↑	100%	90%	100%	92%	100%
	Library Five-Star Empowerment Rating*	OC	↑	100%	88%	100%	88%	100%
	Library Five-Star Environment Rating*	OC	↑	100%	88%	100%	94%	100%

*Measures track patron satisfaction with staff attitude, available resources, staff expertise, employees' sense of empowerment, and the overall environment/ambiance of library branches

DIVISION HIGHLIGHTS AND BUDGET ENHANCEMENTS OR REDUCTIONS

- The Department's Adopted Budget includes \$2.192 million as an administrative reimbursement to the General Fund and a \$1.072 million contribution to the Countywide Emergency Contingency Reserve
- *The FY 2010-11 Adopted Budget eliminates one Library Branch Administrator position (\$109,000)*

DIVISION: SUPPORT SERVICES

The Administration and Support Services Division provides a range of administrative services to support Department operations.

- Publishes informational materials promoting library services
- Markets all library initiatives, programs, and services to citizens
- Manages the Library's capital expansion plan
- Manages procurement of commodities and services for the Department
- Manages all Library Building Better Communities General Obligation Bond projects

DIVISION HIGHLIGHTS AND BUDGET ENHANCEMENTS OR REDUCTIONS

- The FY 2010-11 Adopted Budget transfers one full-time Library Assistant 1 position from Public Service to Support Services
- *The FY 2010-11 Adopted Budget defers \$636,000 in maintenance projects and eliminates \$950,000 in security services*

FY 2010 - 11 Adopted Budget and Multi-Year Capital Plan

DIVISION: OUTREACH SERVICES

The Outreach Services Division conducts outreach to community organizations, municipalities, state, and federal government agencies to determine service needs and seek assistance and cooperation to enable the Department to attain its goal of improving and enhancing services to the public.

- Stages educational programs and exhibitions on a system-wide basis
- Provides informational and lending services to users with special needs
- Provides bookmobile services to the residents of Miami-Dade County who are underserved by the Library District

Strategic Plan Outcome - Measures

- RC1-3: More cultural, recreational and library programs and services available to address varied community interests (priority outcome)

Objectives	Measures			FY 08-09		FY 09-10		FY 10-11
				Target	Actual	Target	Actual	Target
Maintain and improve services reflecting the educational, informational, and recreational needs of the community	Users served by Connections-Homebound Program**	OP	↔	800	850	850	6,146	6,000
	Childcare facilities served by Jump Start Program	OP	↔	735	758	700	700	650
	Adult learners served by Project L.E.A.D. (Literacy for Every Adult in Dade)	OP	↔	150	433	178	200	175
	Students served by S.M.A.R.T. (Science, Math, and Reading Tutoring) Program	OP	↔	33,000	32,944	31,500	31,500	30,500
	Registered users served by Talking Books	OP	↔	8,700	9,114	10,200	9,000	8,500
	Bookmobile stops per week	OP	↔	60	48	60	48	48
	Annual attendance at library programs*	OP	↔	432,000	556,380	453,600	621,737	556,380

* FY 2008-09 Actual and FY 2009-10 Actual increases are due to patrons choosing free library services, such as borrowing DVDs, books, and check-outs of computers, over traditional forms of entertainment or recreation (e.g. movie theatres, private sector movie rentals, etc.); FY 2010-11 Target now assumes the new level of demand for Library services

** In FY 2009-10 Actual increase is attributed to a change in the measure; the Department is now reporting the number of services provided to registered users, which includes multiple services provided to the same registered user

DIVISION HIGHLIGHTS AND BUDGET ENHANCEMENTS OR REDUCTIONS

- Through its outreach efforts, the Library Department offers a variety of literacy activities aimed at children from birth through 18 years of age and their families, including Reading Ready Early Literacy Program, Annual Bookmark Contest, Summer Reading, National Library Week, Children's Book Week and Teen-Read-Week
- In May 2010, the Department held its 10th Annual Art of Storytelling International festival, highlighting the joys of reading and exposing children, teens, and families to the many ways in which storytelling is used in different countries throughout the world to enhance literacy
- In an effort to bring library services closer to the community, the Department launched its E-Newsletter feature in December 2009, which allows library patrons to sign up to receive the latest news and events that provide patrons with updates on programs and special events, volunteer opportunities, and book recommendations
- In FY 2009-10, the Department's Art Services Division presented 44 art exhibitions and public programs, including Cortando, Cociendo y Recordando, a site-specific installation by Erman; Gullah Geechee and the 7 Dreams, a project of Gary L. Moore that included two community discussions; Love and Respect for Self and Community with Florida International University's Center for Labor Studies; Plant Magic by Donna Torres and Helen Burgos; and Driftwood by Gean Moreno and Ernesto Oroza

FY 2010 - 11 Adopted Budget and Multi-Year Capital Plan

- In FY 2009-10, the Department established Reading Ready Early Literacy centers at the Allapattah, Lemon City, Naranja, Kendale Lakes, and Pinecrest branch libraries

DIVISION: PUBLIC SERVICE

The Public Service Division provides informational and lending services to users of branch and regional facilities, as well as special youth-related programs and events to encourage literacy, library usage, and life-long learning.

- Provides informational and lending services to users of all library branches and the Main Library, which serves as a regional resource center and U.S. government documents and patents depository
- Formulates and administers the Collection Development Policy and Materials Budget Plan for the Library System
- Provides technical support to Library operations in the areas of acquisition, material processing, bibliographic management, and cataloging
- Coordinates the Library's automation efforts and online services, including short- and long-term technical planning, e-government and web portal initiatives, network infrastructure and security, and all central site and remote computer equipment and applications for staff and public access

Strategic Plan Outcome - Measures

- RC1-4: Quality customer service at all recreational, cultural and library facilities (priority outcome)

Objectives	Measures			FY 08-09		FY 09-10		FY 10-11
				Target	Actual	Target	Actual	Target
Maintain and enhance the collection	Percentage of outdated library materials purged from the collection	EF	↑	5%	N/A	5%	5%	5%
	Percentage of library materials acquired within the last two years*	EF	↑	N/A	15%	18%	15%	15%

*FY 2010-11 Target reduced due to budgetary constraints

DIVISION HIGHLIGHTS AND BUDGET ENHANCEMENTS OR REDUCTIONS

- In FY 2010-11, the Department will continue to provide library services to underserved areas of the county through bookmobile stops; the Department has one bookmobile stationed in front of the Shenandoah Library as it undergoes major renovations
- In May 2010, the Department implemented the first phase of Polaris (\$1.3 million), its new Integrated Library System (ILS); new customer-friendly features include e-mail notification on saved searches, formatted booklists, improved request procedures, an option for patrons to keep a reading history, and easier searching; over the next two years, the Department will complete all remaining phases of the ILS implementation (\$5.0 million total project cost)
- In FY 2008-09, the Library Department experienced a significant increase in traffic and usage, reflecting a national trend of increased library usage attributed to the economic downturn; FY 2008-09 door count reached 7.89 million, an increase of over 1.0 million visits from FY 2007-08; patrons checked out nearly 9.0 million items, a 12 percent increase; program attendance increased by 26 percent; and informational assistance increased by 14 percent
- In FY 2009-10, the Department developed and implemented the Reading Ready Early Literacy Program for parents and caregivers of children from birth to five years old
- The FY 2010-11 Adopted Budget transfers one full-time Library Assistant 1 position from Public Service to Support Services
- The FY 2010-11 Adopted Budget includes the addition of ten full-time positions to support the new Arcola Lakes Branch Library, which is projected to open in the third quarter of FY 2010-11 (\$383,000; \$766,000 annualized)
- The FY 2010-11 Adopted Budget eliminates 24 full-time positions and 73 part-time positions (\$2.383 million); delays computer replacements (\$2.553 million); reduces library materials (\$1.5 million); and eliminates miscellaneous operating (\$1.2 million)

FY 2010 - 11 Adopted Budget and Multi-Year Capital Plan

BUDGET ENHANCEMENTS OR REDUCTIONS AND ADDITIONAL COMMENTS

- The FY 2010-11 Adopted Budget includes an operating contingency reserve of \$3.169 million and a projected end-of-year operating reserve of \$34.363 million
- The FY 2009-10 Adopted Budget provides \$5.976 million in Library District funds to the Cultural Affairs Department in order to support cultural grants; after the approval of the FY 2009-10 Adopted Budget, the Board of County Commissioners increased the transfer by \$1.5 million, totaling \$7.476 million at the end of the fiscal year; the FY 2010-11 Adopted Budget transfers funding for cultural programs from the Library District to the Countywide General Fund
- *The FY 2010-11 Adopted Budget assumes a Library Taxing District millage rate of 0.2840 mills and a tax roll of \$175.754 billion, which generates \$47.417 million in ad valorem revenue, a reduction of \$26.052 million from the \$73.469 million in ad valorem revenue budgeted in FY 2009-10; the Library also expects to receive \$1 million in state grants and \$1.338 million in miscellaneous revenues, a reduction of \$128,000*

Department Operational Unmet Needs

Description	(dollars in thousands)		Positions
	Startup Costs/ Non Recurring Costs	Recurring Costs	
Hire 11 full-time and 51 part-time positions to assist library patrons	\$0	\$1,238	11
Restore funding for event performers and supplies for various library events system-wide	\$0	\$233	0
Restore funding to the Department's Automation Services Division	\$0	\$2,884	0
Restoring funding for the purchase of replacement furniture and aging equipment	\$0	\$183	0
Restore funding support for the purchase of day-to-day maintenance materials for basic cosmetic repairs	\$0	\$892	0
Total	\$0	\$5,430	11

FY 2010-11 Adopted Budget and Multi-Year Capital Plan

Miami-Dade Library

1	Allapattah 1799 NW 35 St, Miami 33142	28	Miami Springs 700 S Royal Poinciana Blvd, Miami Springs 33166
2	Arcola Lakes 8240 NW 7 Ave Miami 33138		
3	California Club 850 Ives Dairy Rd, Miami 33179	29	Model City 2211 NW 54 St, Miami 33142
4	Civic Center Library Kiosk 1501 NW 12 Ave, Miami 33136	30	Naranja 14850 SW 280 St, Miami 33032
5	Coconut Grove 2875 Mcfarland Rd, Miami 33133	31	North Central 9590 NW 27 Ave, Miami 33147
6	Concord 3882 SW 112 Ave, Miami 33165	32	North Dade Regional 2455 NW 183 St, Miami 33056
7	Coral Gables 3443 Segovia St, Coral Gables 33134	33	North Shore 7501 Collins Ave, Miami Beach 33141
8	Coral Reef 9211 Coral Reef Dr, Miami 33157	34	Northeast 19200 W Country Club Dr, Aventura 33180
9	Country Walk 15433 SW 137 Ave, Miami 33177	35	Opa-Locka 780 Fisherman St, Opa-Locka 33054
10	Culmer/Overtown 350 NW 13 St, Miami 33136	36	Palm Springs North 17601 NW 78 Ave, Miami 33015
11	Doral 10785 NW 58 St, Doral 33178	37	Palmetto Bay 17641 Old Cutler Rd, Miami 33157
12	Edison Center 531 NW 62 St, Miami 33150	38	Pinecrest 5835 SW 111th St, Pinecrest 33156
13	Fairlawn 6376 SW 8 St, West Miami 33144	39	Shenandoah 2111 SW 19 St, Miami 33145
14	Golden Glades 100 NE 166 St, Miami 33162	40	South Dade Regional 10750 SW 211 St, Miami 33189
15	Hialeah Gardens 11300 NW 87 Ct, Hialeah Gardens	41	South Miami 6000 Sunset Dr, South Miami 33143
16	Hispanic 1398 SW 1 St, Miami 33018	42	South Shore 131 Alton Rd, Miami Beach 33139
17	Homestead 700 N Homestead Blvd, Homestead 33135	43	Sunny Isles 18070 Collins Ave, Sunny Isles Beach 33160
18	International Mall 10315 NW 12 St, Miami 33172	44	Sunset 10855 SW 72 St, Miami 33173
19	Kendale Lakes 15205 SW 88 St, Miami 33196	45	Tamiami 13250 SW 8 St, Miami 33184
20	Kendall 9101 SW 97 Ave, Miami 33030	46	Virrick Park 3255 Plaza St, Miami 33133
21	Key Biscayne 299 Crandon Blvd, Key Biscayne 33149	47	West Dade Regional 9445 Coral Way, Miami 33165
22	Lakes of The Meadow 4284 SW 152 Ave, Miami 33185	48	West Flagler 5050 W Flagler St, Miami 33134
23	Lemon City 430 NE 61 St, Miami 33137	49	West Kendall Regional 10201 Hammocks Blvd, Miami 33196
24	Little River 160 NE 79 St, Miami 33138		
25	Main Library 101 W Flagler St, Miami 33130		
26	Miami Beach 227 22 St, Miami Beach 33139		
27	Miami Lakes 6699 Windmill Gate Rd, Miami Lakes 33014		