

FY 2011-12 Adopted Budget and Multi-Year Capital Plan

Permitting, Environment and Regulatory Affairs

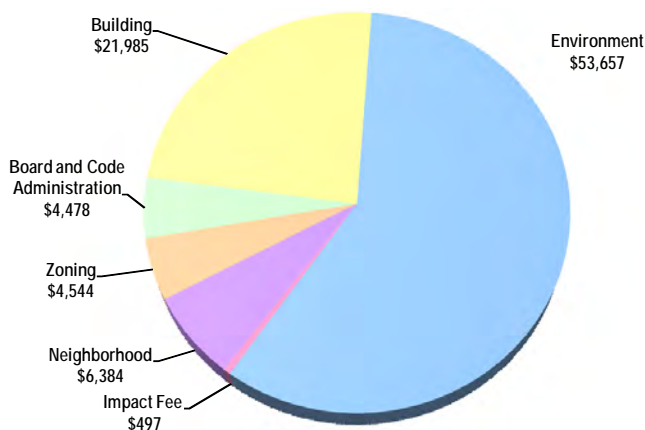
The Permitting, Environment and Regulatory Affairs Department (PERA) enforces codes and regulations established by the Federal government, the State of Florida and Miami-Dade County governing the construction, alteration, and maintenance of buildings and structures within the unincorporated areas of Miami-Dade County; administers the zoning regulations for unincorporated Miami-Dade County and those municipalities that have entered into service agreements with the County; and regulates activities that have a potential impact on environmental resources. PERA offers the public, in most instances, a "one-stop shop" for a variety of permit requirements.

As part of the Neighborhood and Infrastructure Strategic Area, PERA provides services related to contractor licensing, construction products evaluation and training, and education and certification of building code enforcement personnel countywide; reviews applications and issues building permits for the construction of new buildings and structures and for the alteration of existing ones; performs inspections as construction progresses to verify compliance with the applicable construction codes and regulations; investigates complaints, enforces the correction of building code violations related to new and existing buildings, enforces local regulations related to unsafe buildings and structures, and provides code compliance services to enhance the safety and aesthetics of the community, and to address nuisance abatement, zoning violations, and other maintenance regulations; provides administrative and technical support to boards and panels in the interest of built environment safety and provides guidance in the resolution of citizen complaints. In addition, the Department addresses today's community needs while protecting our environment for tomorrow through responsible governance, education, and conservation; protects, restores, and mitigates natural areas and monitors environmental resources; manages capital programs including beach renourishment as well as acquisition and protection of environmentally endangered lands; and prepares zoning recommendations, coordinates all concurrency management activities, reviews development plans for compliance with zoning regulations, issues certificates of use, administers impact fee programs, and provides technical support at zoning meetings of the Board of County Commissioners (BCC) and Community Zoning Appeals Board meetings.

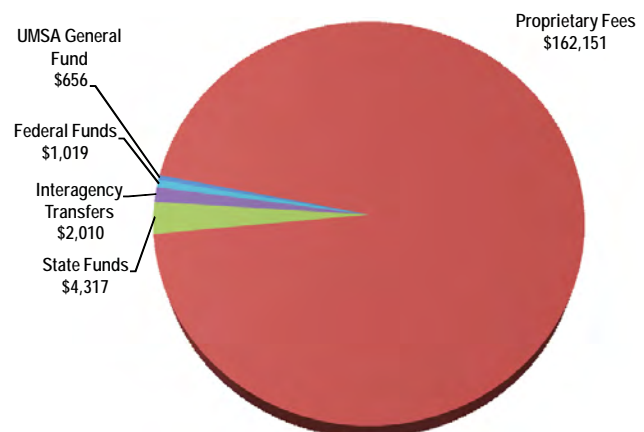
PERA's functions are closely related to and require coordination with other County departments, including Fire Rescue, Public Works and Waste Management Department (PWWM), and Water and Sewer (WASD). The Department works cooperatively with local, state, and federal agencies.

FY 2011-12 Adopted Budget

Expenditures by Activity
(dollars in thousands)

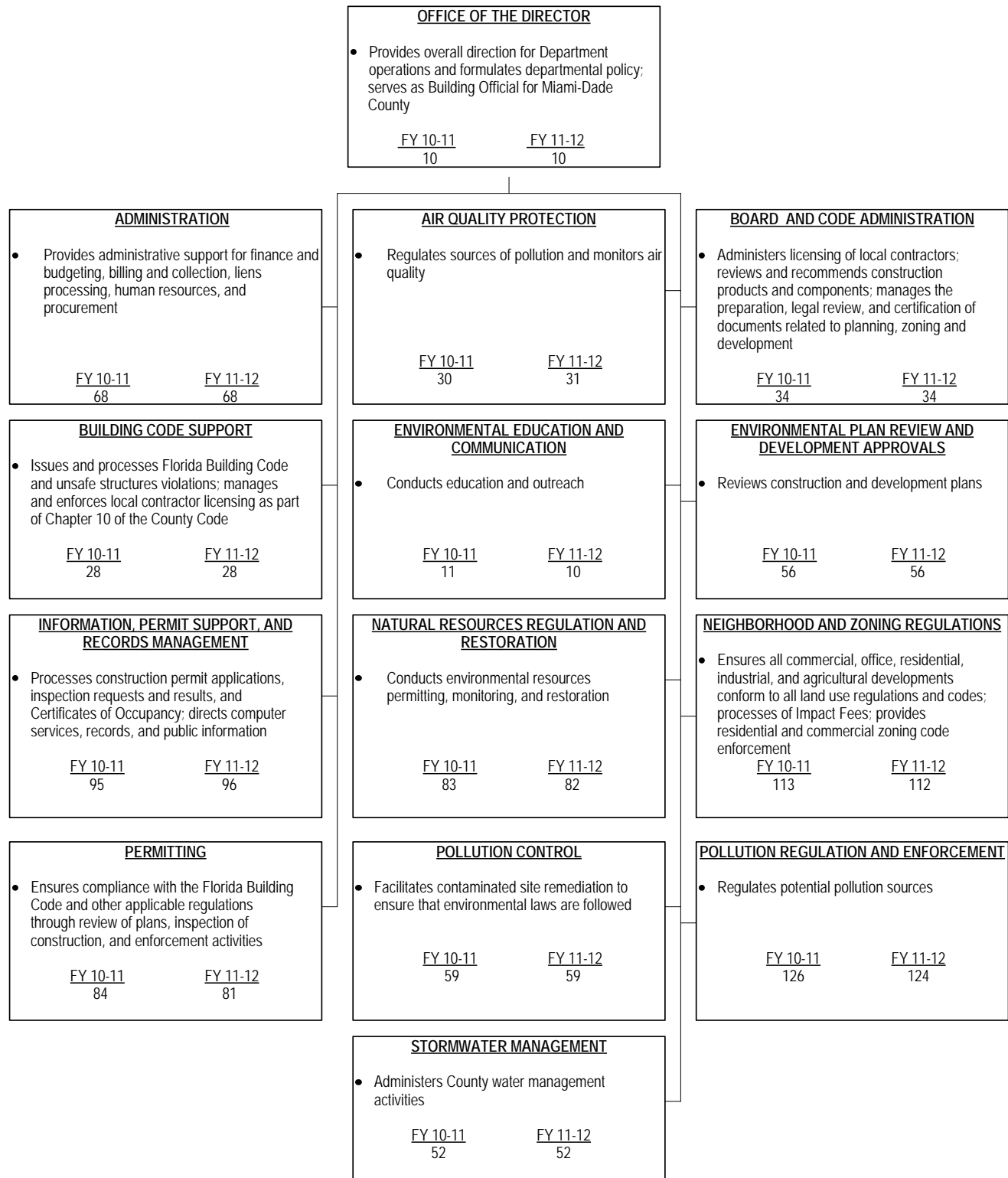


Revenues by Source
(dollars in thousands)



FY 2011-12 Adopted Budget and Multi-Year Capital Plan

TABLE OF ORGANIZATION



FY 2011-12 Adopted Budget and Multi-Year Capital Plan

FINANCIAL SUMMARY

(dollars in thousands)	Actual FY 08-09	Actual FY 09-10	Budget FY 10-11	Adopted FY 11-12
Revenue Summary				
General Fund Countywide	0	0	150	0
General Fund UMSA	9,840	5,257	2,991	656
Impact Fee Administration	0	0	318	631
Interagency Transfers	0	0	429	429
Fees and Charges	687	2,820	3,537	3,129
Foreclosure Registry	154	1,816	2,279	641
Stormwater Utility Fees (County)	31,517	31,125	32,150	31,310
Unsafe Structure Collections	2,043	1,960	1,964	1,638
Utility Service Fee	22,002	23,226	23,359	23,779
Zoning Revenue	0	0	5,299	8,455
Auto Tag Fees	1,917	1,637	1,750	1,729
Board Fees and Book Sales	0	222	254	64
Bond Proceeds	1,040	766	0	0
Building Administrative Fees	336	353	288	275
Carryover	62,935	64,573	49,115	46,703
Code Compliance Fees	0	1,986	1,553	1,476
Code Fines / Lien Collections	4,204	5,012	4,537	5,873
Contractor's Licensing and Enforcement Fees	0	1,674	1,504	1,150
Land Fees	901	787	961	800
Interest Income	3	28	0	0
Litigation Trust Fund	269	62	100	100
Miscellaneous Revenues	4,707	2,090	2,900	2,121
Operating Permit Fee	7,040	7,542	7,150	7,125
Other Revenues	1,437	747	617	615
Permitting Trades Fees	20,107	18,301	16,840	17,808
Plan Review Fee	7,034	7,701	6,594	6,950
State Grants	4,864	4,392	4,730	4,317
Federal Grants	1,420	1,184	1,020	1,019
Transfer from Capital Outlay Reserve	1,150	1,448	1,360	1,360
Total Revenues	185,607	186,709	173,749	170,153

Operating Expenditures

Summary

Salary	55,443	53,949	55,998	52,289
Fringe Benefits	17,200	14,909	16,677	11,874
Court Costs	18	25	58	49
Contractual Services	1,888	2,127	3,273	2,464
Other Operating	7,934	5,763	9,388	7,876
Charges for County Services	12,246	13,795	15,386	14,330
Grants to Outside Organizations	338	173	430	430
Capital	1,887	1,521	2,619	2,233
Total Operating Expenditures	96,954	92,262	103,829	91,545

Non-Operating Expenditures

Summary

Transfers	22,998	26,694	31,585	34,252
Distribution of Funds In Trust	0	0	0	0
Debt Service	7,645	7,616	7,634	7,619
Depreciation, Amortizations and Depletion	0	0	0	0
Reserve	0	0	30,701	36,737
Total Non-Operating Expenditures	30,643	34,310	69,920	78,608

(dollars in thousands)	Total Funding		Total Positions	
Expenditure By Program	Budget FY 10-11	Adopted FY 11-12	Budget FY 10-11	Adopted FY 11-12
Strategic Area: Neighborhood and Infrastructure				
Board and Code Administration	5,266	4,478	34	34
Building	27,001	21,985	213	211
Environment	58,323	53,657	485	482
Impact Fee	318	497	2	2
Neighborhood Zoning	7,247	6,384	66	66
	5,674	4,544	49	48
Total Operating Expenditures	103,829	91,545	849	843

FY 2011-12 Adopted Budget and Multi-Year Capital Plan

SELECTED ITEM HIGHLIGHTS AND DETAILS

Line Item Highlights	(dollars in thousands)				
	Actual FY 08-09	Actual FY 09-10	Budget FY 10-11	Actual FY 10-11	Budget FY 11-12
Advertising	102	31	180	51	95
Fuel	244	338	293	421	293
Overtime	333	364	338	418	321
Rent	6,744	7,147	8,216	7,638	8,006
Security Services	6	7	9	10	9
Temporary Services	101	72	220	155	178
Travel and Registration	68	32	145	82	143
Utilities	714	709	959	877	874

CAPITAL BUDGET SUMMARY

(dollars in thousands)	PRIOR	FY 11-12	FY 12-13	FY 13-14	FY 14-15	FY 15-16	FY 16-17	FUTURE	TOTAL
Revenue									
Army Corps of Engineers	6,100	3,500	0	0	0	3,500	3,500	0	16,600
Florida Department of Environmental Protection	12,833	500	500	500	500	500	500	6,750	22,583
Florida Inland Navigational District	455	505	350	0	0	0	0	0	1,310
State Beach Erosion Control Funds	10,218	2,344	500	500	500	2,250	2,250	500	19,062
Biscayne Bay Envir. Trust Fund	1,255	1,305	950	0	0	0	0	0	3,510
BBC GOB Future Financing	0	3,380	0	0	0	0	13,106	0	16,486
BBC GOB Series 2005A	25,111	0	0	0	0	0	0	0	25,111
BBC GOB Series 2008B	9,597	0	0	0	0	0	0	0	9,597
BBC GOB Series 2008B-1	1,981	0	0	0	0	0	0	0	1,981
BBC GOB Series 2011A	4,326	0	0	0	0	0	0	0	4,326
Future Financing	0	0	0	0	0	1,750	1,750	0	3,500
Capital Outlay Reserve	0	1,360	0	0	0	0	0	0	1,360
Departmental Trust Funds	18,034	1,000	0	0	0	0	0	1,785	20,819
Endangered Lands Voted Millage	91,751	0	0	0	0	0	0	0	91,751
Interest Earnings	45,540	500	750	750	1,000	1,000	1,000	15,000	65,540
Total:	227,201	14,394	3,050	1,750	2,000	9,000	22,106	24,035	303,536
Expenditures									
Strategic Area: Neighborhood and Infrastructure									
Beach Projects	30,438	9,224	500	500	500	7,500	7,500	500	56,662
Environmental Projects	1,710	1,810	1,300	0	0	0	0	0	4,820
Environmentally Endangered Lands Projects	141,388	5,300	4,300	4,300	4,300	4,300	17,406	59,400	240,694
Nuisance Control	0	1,360	0	0	0	0	0	0	1,360
Total:	173,536	17,694	6,100	4,800	4,800	11,800	24,906	59,900	303,536

FY 2011-12 Adopted Budget and Multi-Year Capital Plan

CAPITAL HIGHLIGHTS AND OPERATIONAL IMPACTS

- In FY 2011-12, unsafe structures inspections and demolitions will continue with funding from unsafe structures fines and fees and the Capital Outlay Reserve (\$1.15 million, nine positions); the Department anticipates the demolition of 105 unsafe structures
- In FY 2011-12, the Department will ensure that environmentally endangered lands are protected and continue to thrive as native habitats through the Environmentally Endangered Lands (EEL) Program by purchasing land (\$1 million), planning and designing native habitats (\$800,000), and maintaining land within the EEL Program (\$3.5 million); funding will be provided from departmental trust funds (\$1.431 million), interest earnings (\$2.369 million), state grants (\$500,000), and Endangered Lands voted millage (\$1 million)
- In FY 2011-12, the Permitting, Environment and Regulatory Affairs Department will maintain and improve beaches, which will enhance quality of life and increase tourism through the Miami-Dade County Beach Erosion and Renourishment Program (\$9.224 million), funded from State Beach Erosion Control Funds (\$2.344 million), Army Corps of Engineers (\$3.5 million) and Building Better Communities General Obligation Proceeds (\$3.380 million)
- The FY 2011-12 Adopted Capital Budget and Multi-Year Plan includes funding from the Capital Outlay Reserve to remove abandoned vehicles from private and public properties and to demolish or board-up abandoned buildings that facilitate potential criminal activity (\$210,000); the Department will continue to contract board-up services with Greater Miami Service Corps (GMSC)
- In FY 2011-12, the Department will continue restoring and stabilizing the wetlands, shoreline and islands in and adjacent to Biscayne Bay and its tributaries (\$1.810 million), funded from the Biscayne Bay Environmental Trust Fund (\$1.305 million) and Florida Inland Navigational District grant proceeds (\$505,000)

FY 2011-12 Adopted Budget and Multi-Year Capital Plan

DIVISION: NEIGHBORHOOD

The Neighborhood Regulation Division provides residential and commercial code enforcement to enhance the safety and aesthetics of the community through residential education and promotion of voluntary compliance; areas of oversight include nuisance abatement, zoning violations and other maintenance regulations.

Strategic Objectives - Measures

- NI4-1: Ensure buildings are safer

Objectives	Measures			FY 08-09	FY 09-10	FY 10-11	FY 10-11	FY 11-12
				Actual	Actual	Budget	Actual	Target
Improve response time for reviewing property maintenance and zoning complaints	Average calendar days from zoning complaint to first inspection	EF	↓	4	4	5	3	5
	Average calendar days from first zoning (Chapter 33) inspection to compliance with warning letter	EF	↓	23	26	25	57	25
	Average calendar days from first zoning (Chapter 33) inspection to compliance with Civil Violation Notice (CVN)	EF	↓	89	71	100	81	100
	Average calendar days from receipt of exterior property maintenance (Chapter 19) complaint to first inspection	EF	↓	4	4	5	6	5
	Average calendar days from property (Chapter 19) inspection to compliance with warning letter	EF	↓	42	31	35	37	35

DIVISION HIGHLIGHTS AND BUDGET ENHANCEMENTS OR REDUCTIONS

- The FY 2011-12 Adopted Budget includes the elimination of one Administrative Secretary position (\$75,000) from the Neighborhood and Zoning Division
- The FY 2011-12 Adopted Budget includes funding of \$429,000 from the Community Development Block Grant (CDBG) for code enforcement activities including zoning and exterior property maintenance

FY 2011-12 Adopted Budget and Multi-Year Capital Plan

DIVISION: BOARD AND CODE ADMINISTRATION

The Board and Code Administration Division provides administrative and clerical support for the Board of Rules and Appeals, the Construction Trades Qualifying Board, and the Unsafe Structures Board; provides technical information and assistance to 34 municipal building departments to ensure uniformity in the enforcement and interpretation of the Florida Building Code; and reviews and makes recommendations on construction products and components to be used throughout Miami-Dade County.

Strategic Objectives - Measures

- ED4-2: Create a business friendly environment

Objectives	Measures			FY 08-09	FY 09-10	FY 10-11	FY 10-11	FY 11-12
				Actual	Actual	Budget	Actual	Target
Ensure contractor license applications are processed in a timely manner	Percentage of licensing applications submitted and reviewed within ten business days	EF	↑	93%	93%	80%	96%	100%

- NI4-1: Ensure buildings are safer

Objectives	Measures			FY 08-09	FY 09-10	FY 10-11	FY 10-11	FY 11-12
				Actual	Actual	Budget	Actual	Target
Ensure the use of quality construction materials and that products perform in accordance with Notice of Acceptance	Percentage of manufacturers and laboratories audited for quality	EF	↑	95%	83%	80%	100%	100%
	Percentage of Certificate of Competency (CC) plants audited	EF	↑	96%	100%	80%	100%	100%

DIVISION HIGHLIGHTS AND BUDGET ENHANCEMENTS OR REDUCTIONS

- The Department will continue to actively participate in the State Legislative process to prevent the weakening of the Florida Building Code; additionally, the Department will continue monitoring legislative changes and building code regulations proposed by the Florida Building Commission to ensure protection of High Velocity Hurricane Zone provisions that safeguard the construction process

FY 2011-12 Adopted Budget and Multi-Year Capital Plan

DIVISION: BUILDING

The Building Division serves as Building Official for Miami-Dade County, enforces the Florida Building Code (FBC) and applicable regulations through the review of plans, inspection of construction, and other enforcement activities; processes violations of the Florida Building Code (FBC), Chapters 8 and 10 of the County Code, unsafe structures regulations, and directs all related enforcement activities; and capitalizes on technology to improve service, increase efficiency, and provide greater information access and exchange.

Strategic Objectives - Measures

- NI4-1: Ensure buildings are safer

Objectives	Measures			FY 08-09	FY 09-10	FY 10-11	FY 10-11	FY 11-12
				Actual	Actual	Budget	Actual	Target
Receive and process construction permit applications and provide support to inspections and plans processing	Permits issued	OP	↔	40,910	39,213	35,000	41,475	35,515
Ensure unsafe structures are repaired or demolished through appropriate unsafe structure enforcement action	Average number of calendar days for unsafe structure cases (commercial) processing time with no injunction	OC	↓	694	393	315	440	350
Ensure building compliance with the FBC and other codes through inspections, plans processing, enforcement, and educational outreach	Number of Building Code Workshops offered to the construction industry and general public	OP	↔	13	13	12	12	12
	Percentage of field inspections rejected	EF	↓	23%	24%	25%	23%	25%
	Average business days to process residential permit applications	EF	↓	18	24	24	25	24
	Average business days to process commercial permit applications	EF	↓	35	56	41	36	41

- NI4-2: Promote livable and beautiful neighborhoods

Objectives	Measures			FY 08-09	FY 09-10	FY 10-11	FY 10-11	FY 11-12
				Actual	Actual	Budget	Actual	Target
Improve Neighborhood Compliance	Percentage of invoices paid within 45 business days of receipt	EF	↑	99%	98%	85%	89%	85%
	Liens settled/collected	OP	↔	1,293	1,486	2,400	2,221	2,400
	Cases lienied*	OP	↔	2,964	5,192	2,700	7,972	5,200

* Increase in FY 2010-11 actual due to Building Support System software modification resulting in more notice of liens issued

DIVISION HIGHLIGHTS AND BUDGET ENHANCEMENTS OR REDUCTIONS

- The FY 2011-12 Adopted Budget includes the elimination of one Director Building Airport Division position (\$161,000) and one Administrative Secretary position (\$65,000) due to the completion of the construction of the North Terminal at Miami International Airport

FY 2011-12 Adopted Budget and Multi-Year Capital Plan

DIVISION: ENVIRONMENT

Then Environment Division manages all departmental information technology support and records; conducts education and outreach for residents and customers to increase awareness of environmental resources and regulations; develops applications for compliance with environmental requirements; administers County water management activities; facilitates contaminated site remediation to ensure that County, state, and federal environmental laws are followed; regulates potential pollution sources through inspections, compliance, and enforcement; and conducts environmental resources permitting, monitoring, and restoration.

Strategic Objectives - Measures

- GG2-2: Develop and retain excellent employees and leaders

Objectives	Measures			FY 08-09	FY 09-10	FY 10-11	FY 10-11	FY 11-12
				Actual	Actual	Budget	Actual	Target
Enhance professional development and employee expertise	Training hours per full-time equivalent	OP	↔	34	27	38	25	38

- NI2-2: Provide functional and well maintained drainage to minimize flooding

Objectives	Measures			FY 08-09	FY 09-10	FY 10-11	FY 10-11	FY 11-12
				Actual	Actual	Budget	Actual	Target
Minimize flooding by providing proper planning of the Stormwater Utility drainage system	Community Rating System score (1=Best, 9=Worst)	OC	↓	5	5	5	5	5
	Square miles of terrain modeling updated	OP	↔	3,025	3,000	2,400	3,000	2,400

- NI3-1: Maintain air quality

Objectives	Measures			FY 08-09	FY 09-10	FY 10-11	FY 10-11	FY 11-12
				Actual	Actual	Budget	Actual	Target
Ensure timely processing of air quality inspections and permits	Percentage of State air quality permits issued on time	EF	↑	100%	100%	100%	100%	100%
	Percentage of State air quality permit inspections completed on schedule	EF	↑	95%	100%	100%	100%	100%
	Percentage of Asbestos inspections completed on schedule	EF	↑	85%	87%	87%	91%	87%
	Percentage of County air quality permits issued on time	EF	↑	100%	99%	100%	98%	100%
Ensure support to Climate Change Advisory Task Force (CCATF)	Percentage of participation in CCATF Committee meetings	EF	↑	100%	100%	100%	100%	100%





FY 2011-12 Adopted Budget and Multi-Year Capital Plan

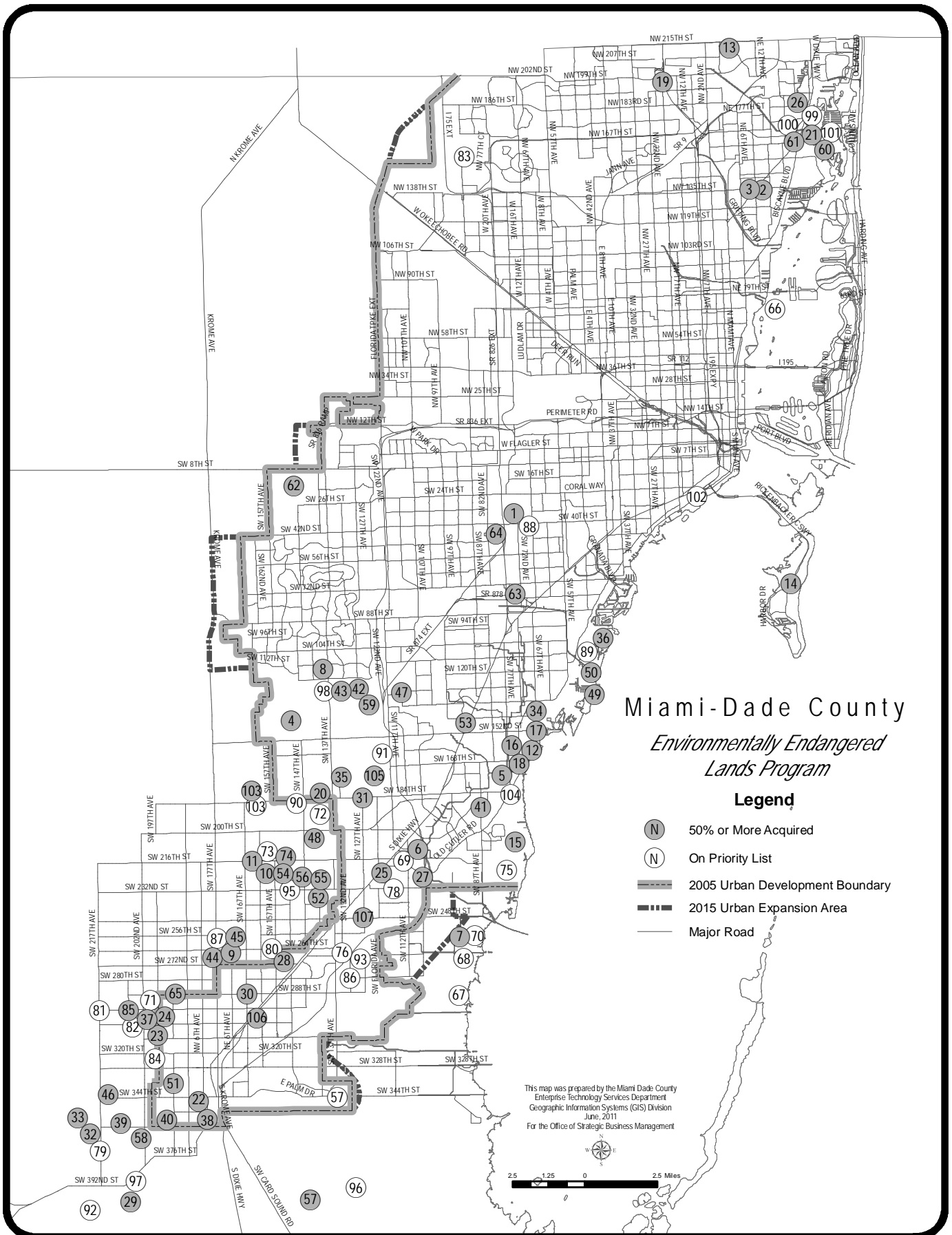
<ul style="list-style-type: none"> NI3-3: Protect groundwater and drinking water wellfield areas 								
Objectives	Measures			FY 08-09	FY 09-10	FY 10-11	FY 10-11	FY 11-12
				Actual	Actual	Budget	Actual	Target
Ensure, through efficient review of plans, that land use and development within Miami-Dade County is in accordance with the Miami-Dade County Environmental Protection Code (EPC)	Percentage of building permit plans reviewed within four to eight business days	EF	↑	97%	90%	100%	80%	100%
	Percentage of Wastewater Treatment Plants Operations reports reviewed on time	EF	↑	100%	100%	100%	100%	100%
Facilitate prompt resolution of citizen environmental complaints	Percentage of sanitary nuisance complaints responded to within 24 hours	EF	↑	95%	96%	92%	96%	92%
	Percentage of general environmental complaints responded to within 48 hours	EF	↑	92%	95%	90%	92%	90%
Minimize the impact of development on environmental resources	Percentage of Resource Protection Permit applications reviewed on time (Class I - VI Permits)	EF	↑	98%	99%	95%	99%	95%
	Percentage of wetland acres reviewed for unauthorized impacts	EF	↑	90%	88%	50%	64%	50%
Conduct long-term groundwater sampling to document the environmental health and status of the Biscayne Aquifer	Percentage of samples from Biscayne Bay surface water in compliance with County bacterial standard	OC	↑	100%	100%	95%	100%	95%
	Percentage of surface water monitoring samples collected on schedule	EF	↑	99%	99%	95%	99%	95%
Conduct long-term surface and groundwater sampling to document the environmental health and status of Biscayne Bay, its tributaries, and the Biscayne Aquifer	Percentage of contaminated site rehabilitation documents reviewed on-time	EF	↑	85%	89%	90%	93%	90%
	Percentage of wellfield monitoring samples collected on schedule	EF	↑	98%	99%	95%	98%	95%

FY 2011-12 Adopted Budget and Multi-Year Capital Plan

• NI3-6: Preserve and enhance natural areas								
Objectives	Measures			FY 08-09	FY 09-10	FY 10-11	FY 10-11	FY 11-12
				Actual	Actual	Budget	Actual	Target
Increase environmental education and outreach	Environmental educational events coordinated by the department	OP	↔	114	237	180	110	170
	Baynanza volunteers	IN	↔	7,749	7,640	7,000	5,909	7,000
Acquire environmentally endangered lands	Acres of Environmentally Endangered Lands acquired	OP	↔	1,425	1,445	100	50	160

DIVISION HIGHLIGHTS AND BUDGET ENHANCEMENTS OR REDUCTIONS

-  In FY 2011-12, the Department will continue to improve the quality of life for all Miami-Dade County residents by managing the annual "Baynanza" beach and park clean up event
- The FY 2011-12 Adopted Budget includes a Stormwater Utility transfer of \$18.434 million to the Public Works and Waste Management Department for secondary canal maintenance, drain cleaning, design and construction management of drainage capital projects, and street sweeping; and \$675,000 for survey crews to conduct surveys for planning, design, and construction of drainage infrastructure
- In FY 2011-12, the Department will continue to seek full delegation of the environmental permitting process from the South Florida Water Management District for wetlands and drainage permitting
- The FY 2011-12 Adopted Budget includes budgeted reimbursements of \$650,000 from the Miami-Dade Aviation Department for personnel and operating expenses; activities include the oversight of environmental aspects of construction activities, assessment and oversight of the cleanup of contaminated sites, and inspections of permitted facilities
-  In FY 2011-12, the Department will provide \$360,000 to the Sustainability, Planning and Economic Enhancement Department to pay for staff salary, fringes and operating expenses in order to coordinate and implement the County's Community-wide Sustainability Plan, "GreenPrint"
- *The FY 2011-12 Adopted Budget includes the elimination of one Environmental Code Enforcement Officer 1 position (\$65,000); there is no operational impact due to operational efficiencies*
- In FY 2011-12 the Parks, Recreation and Open Spaces Department will continue land management for the Environmentally Endangered Lands Program (\$3.5 million)
-  In FY 2010-11, the Department will provide funding (\$111,000) to the Sustainability, Planning and Economic Enhancement Department for Environmental Education Services and the Florida Yards and Neighborhoods Program
- *The FY 2011-12 Adopted Budget includes the elimination of one Administrative Officer 2 position (\$109,000); workload has been redistributed amongst remaining staff*
-  In FY 2011-12, the Department will continue to support a sustainable environment by offering free trees to plant in the community through the Adopt-a-Tree Program funded by donations and operating funds (\$208,000)
- In FY 2011-12, the Department will provide funding for Environment Protection and Education grant programs administered by the Office of Grants Coordination (\$430,000)
- *The FY 2011-12 Adopted Budget includes the elimination of one Mini Computer Operator 1 position (\$67,000)*



FY 2011-12 Adopted Budget and Multi-Year Capital Plan

Acquisition Projects: Environmentally Endangered Lands Program

Acquired Projects											
No	Site Name	Location	Type	Acres	Priority	No	Site Name	Location	Type	Acres	Priority
1	A. D. Barnes Park	3775 SW 74 Ave	Natural Areas	24	♦	54	Ross Hammock	SW 223 St & SW 157 Ave	Tropical Hammocks	19.2	♦
2	Arch Creek Addition	NE 135 St & US 1	Buffer	1.2	♦	55	Silver Palm Groves	SW 232 St & SW 142 Ave	Rockridge Pinelands	20.4	♦
3	Arch Creek Park	NE 135 St & US-1	Natural Areas	8.5	♦	56	Silver Palm Hammock	SW 228 St & SW 149 Ave	Tropical Hammocks	10	♦
4	Big George & Little George	SW 150 St & SW 152 Ave	Tropical Hammocks	20.1	♦	57	South Dade Wetlands	South Dade County	Wetlands	19,627	♦
5	Bill Sadowski Park	17555 SW 79 Ave	Natural Areas	23	♦	58	Sunny Palms (Navy Wells #42)	SW 368 St & SW 202 Ave	Rockridge Pinelands	40.8	♦
6	Black Creek Forest	SW 214 St & SW 112 Ave	Pineland	7	♦	59	Tamiami Complex Addition	SW 134 St & SW 122 Ave	Rockridge Pinelands	25.6	♦
7	Black Point Wetlands	SW 248 St & SW 112 Ave	Coastal Wetlands	78.9	♦	60	Terama Tract in Oleta Preserve	Oleta Preserve	Coastal Wetlands	29.7	♦
8	(Boystown) Camp Matecumbe	SW 112 St & SW 137 Ave	Rockridge Pinelands	76.7	♦	61	Oleta Tract C	NE 163 St & US-1	Coastal Wetlands	2.5	♦
9	Camp Owaissa Bauer	SW 264 St & SW 170 Ave	Natural Areas	80	♦	62	Tree Island Park	SW 10 St & SW 147 Ave	Wetlands	120	♦
10	Castellow Additions	SW 226 St & SW 157 Ave	Tropical Hammocks	34.9	♦	63	Trinity	SW 76 St & SW 74 Ave	Rockridge Pinelands	10	♦
11	Castellow Hammock Park	22301 SW 162 Ave	Natural Areas	55	♦	64	Tropical Park	7900 Bird Rd	Natural Areas	5	♦
12	Charles Deering Estate	16701 SW 72 Ave	Natural Areas	332	♦	65	West Biscayne	SW 288 St & SW 190 Ave	Rockridge Pinelands	15.1	♦
13	County Line Scrub	NE 215 St & NE 4 Ave	Xeric Coastal Scrub	15	♦	74	Chernoff Hammock	SW 218 St & SW 154 Ave	Tropical Hammocks	4.5	♦
14	Crandon Park	7200 Crandon Blvd	Natural Areas	444	♦	85	Northrop Pineland	SW 296 St & SW 207th Ave	Rockridge Pinelands	12.8	♦
15	Cutler Wetlands & Addition	SW 210 St & SW 85 Ave	Coastal Wetlands	448.5	♦	103	Wilkins Pierson	SW 184 St & SW 164 Ave	Rockridge Pinelands	10	♦
16	Deering Glade Parcel	SW 158 St & Old Cutler Rd	Buffer	9.7	♦	105	Metrozoo Pinelands	12400 SW 152 St	Rockridge Pinelands	142.4	♦
17	Deering North Addition	SW 152 St & SW 67 Ave	Coastal Wetlands	40.7	♦	106	Seminole Wayside Park Addition	SW 300 St & US-1	Rockridge Pinelands	4.3	♦
18	Deering South Addition	SW 168 St & SW 72 Ave	Pineland	32	♦	107	Andrew Dodge New Pines Preserve	SW 248 St & SW 127 Ave	Rockridge Pinelands	3.5	♦
19	Dolphin Center Addition	NW 196 St & NW 17 Ave	Xeric Coastal Scrub	3.9	♦	Unacquired Projects					
20	Eachus Pineland	SW 184 St & SW 142 Ave	Rockridge Pinelands	17.2	♦	No	Site Name	Location	Type	Acres	Priority
21	East & East East Greynolds Park	17530 W Dixie Hwy	Natural Areas	33	♦	66	Bird Key	NW 79 St & Biscayne Bay	Mangrove	37.5	A
22	Florida City	SW 344 St & SW 185 Ave	Rockridge Pinelands	23.5	♦	67	Biscayne Wetlands	SW 280 St & SW 107 Ave	Coastal Wetlands	864.1	A
23	Fuchs Hammock	SW 304 St & SW 198 Ave	Natural Areas	24	♦	68	Biscayne Wetlands North Addition	SW 270 St & SW 107 Ave	Coastal Wetlands	300	B
24	Fuchs Hammock Addition	SW 304 St & SW 198 Ave	Rockridge Pinelands	14.8	♦	69	Black Creek Forest	SW 216 St & SW 112 Ave	Pineland	45.5	A
25	Goulds	SW 224 St & SW 120 Ave	Rockridge Pinelands	37	♦	70	Black Point Wetlands	SW 248 St & SW 97 Ave	Coastal Wetlands	191.8	A
26	Greynolds Park	17530 W Dixie Hwy	Natural Areas	53	♦	71	Bowers Pineland	SW 296 St & SW 197 Ave	Rockridge Pinelands	9.8	A
27	Harden Hammock	SW 226 St & SW 107 Ave	Tropical Hammocks	12.4	♦	72	Calderon Pineland	SW 192 St & SW 140 Ave	Rockridge Pinelands	15.2	A
28	Hattie Bauer Hammock	SW 267 St & SW 157 Ave	Tropical Hammocks	14	♦	73	Castellow #31	SW 218 St & SW 157 Ave	Tropical Hammocks	14.1	A
29	Holiday Hammock	SW 400 St & SW 207 Ave	Tropical Hammocks	29.8	♦	75	Cutler Wetlands	SW 196 St & SW 232 St	Coastal Wetlands	798	A
30	Ingram	SW 288 St & SW 167 Ave	Rockridge Pinelands	9.9	♦	76	Dixie Heights Pineland	SW 268 St & SW 132 Ave	Rockridge Pinelands	29	B
31	Larry & Penny Thompson Park	SW 184 St & SW 127 Ave	Natural Areas	193	♦	57	South Dade Wetlands	South Dade County	Wetlands	15,371	A
32	Loveland Hammock	SW 360 St & SW 222 Ave	Tropical Hammocks	15.1	♦	78	Goulds Addition	SW 232 St & SW 117 Ave	Rockridge Pinelands	35.8	A
33	Lucille Hammock	SW 352 St & SW 222 Ave	Tropical Hammocks	20.8	♦	79	Hammock Island	SW 360 St & SW 217 Ave	Tropical Hammocks	64.7	B
34	Ludlam	SW 143 St & SW 67 Ave	Rockridge Pinelands	10.2	♦	80	Hattie Bauer Pineland	SW 266 St & SW 157 Ave	Rockridge Pinelands	5	A
35	Martinez (Richmond Complex)	SW 152 St & SW 130 Ave	Rockridge Pinelands	142	♦	81	Homestead General Airport Hammock	SW 296 St & SW 217 Ave	Tropical Hammocks	4	A
36	Matheson Hammock Park	SW 96 St & Old Cutler Rd	Natural Areas	381	♦	82	Kings Highway	SW 304 St & SW 202 Ave	Rockridge Pinelands	31.1	B
37	Meissner Hammock	SW 302 St & SW 212 Ave	Tropical Hammocks	10.3	♦	83	Maddens Hammock	NW 164 St & SW 87 Ave	Tropical Hammocks	15.6	B
38	Navy Wells #23	SW 352 St & SW 182 Ave	Rockridge Pinelands	19.9	♦	84	Navy Wells #2	SW 328 St & SW 197 Ave	Rockridge Pinelands	20	A
39	Navy Wells #39	SW 360 St & SW 210 Ave	Rockridge Pinelands	12.8	♦	86	Notre Dame Pineland	SW 280 St & SW 132 Ave	Rockridge Pinelands	46.8	B
40	Navy Wells Preserve	SW 356 St & SW 192 Ave	Natural Areas	239	♦	87	Owaissa Bauer Addition #2	SW 264 St & SW 175 Ave	Rockridge Pinelands	10	A
41	Ned Glenn Preserve (Whispering Pines)	SW 188 St & SW 87 Ave	Rockridge Pinelands	20	♦	88	Pino Pineland	SW 39 St & SW 69 Ave	Rockridge Pinelands	3.8	A
42	Nixon Smiley Addition (Tamiami #8)	SW 128 St & SW 127 Ave	Rockridge Pinelands	63	♦	89	R. Hardy Matheson Addition	Old Cutler Rd & SW 108 St	Coastal Wetlands	21.5	A
43	Nixon Smiley Pineland	SW 128 St & SW 133 Ave	Natural Areas	59	♦	90	Railroad Pineland	SW 184 St & SW 147 Ave	Rockridge Pinelands	18.2	B
44	Owaissa Bauer Addition #1	SW 264 St & SW 177 Ave	Rockridge Pinelands	9.4	♦	91	Richmond Complex	SW 152 St & SW 130 Ave	Rockridge Pinelands	210.8	A
45	Owaissa Bauer Addition #3	SW 262 St & SW 170 Ave	Tropical Hammocks	1.2	♦	92	Round Hammock	SW 408 St & SW 220 Ave	Tropical Hammocks	31.1	A
46	Palm Drive	SW 344 St & SW 212 Ave	Rockridge Pinelands	20	♦	93	School Board	SW 268 St & SW 129 Ave	Rockridge Pinelands	18.7	A
47	Pineshore Park	SW 128 St & SW 112 Ave	Natural Areas	7.8	♦	95	Silver Palm Addition	SW 232 St & SW 152 Ave	Rockridge Pinelands	20	A
48	Quail Roost	SW 200 St & SW 144 Ave	Rockridge Pinelands	48.5	♦	97	SW Island Hammock	SW 392 St & SW 207 Ave	Tropical Hammocks	12.4	A
49	R. Hardy Matheson Addition	Old Cutler Rd & SW 108 St	Coastal Wetlands	19.9	♦	98	Tamiami #15	SW 124 St & SW 137 Ave	Rockridge Pinelands	35	B
50	R. Hardy Matheson Preserve	SW 112 St & Old Cutler Rd	Natural Areas	692	♦	99	Oleta Tract A	NE 171 St & US-1	Coastal Wetlands	2.1	A
51	Rock Pit #39	SW 336 St & SW 192 Ave	Rockridge Pinelands	8.7	♦	100	Oleta Tract B	NE 165 St & US-1	Coastal Wetlands	3.5	A
52	Rock Pit #46	SW 232 St & SW 142 Ave	Rockridge Pinelands	5	♦	101	Oleta Tract D	NE 191 St & NE 24 Ave	Coastal Wetlands	7.4	A
53	Rockdale & Addition	SW 144 St & US-1	Rockridge Pinelands	37.1	♦	102	Vizzaya Hammock Addition	3300 South Miami Ave	Tropical Hammocks	2	A
						104	Cutler Wetlands North Addition Hammock	SW 184 St & Old Cutler Rd	Tropical Hammocks	37	B