

OUR STRUCTURE

This chapter discusses our governmental structure, our organizational structure, and our financial structure. Each plays a role in long-term planning and the annual allocation of resources.

GOVERNMENTAL STRUCTURE

Two-Tier Federation

The County has operated since 1957 under a unique metropolitan system of government known as a "two-tier federation." This was made possible when Florida voters approved a constitutional amendment in 1956 that allowed the people of the County to enact a home rule charter. At that time, the electors of Miami-Dade County were granted the power to revise and amend the Charter from time to time by countywide vote. The most recent amendment was in November 2010. The Miami-Dade County Charter may be viewed at: <http://www.miamidade.gov/CharterReview/library/10-11-02-charter.pdf>

The County has home rule powers, subject only to the limitations of the Constitution and general laws of the State. The County has, in effect, a County government with certain powers effective throughout the entire county, including 35 municipalities located within the county, and a municipal government for the unincorporated area of the county. Unlike a consolidated city-county, where the city and county governments merge into a single entity, these two entities remain separate. Instead there are two "tiers," or levels, of government: city and county. The County can take over particular activities of a city's operations if the services fall below minimum standards set by the Board of County Commissioners (BCC) of Miami-Dade County or with the consent of the governing body of a particular city. The County can also dissolve a city with fewer than 20 electors.

Of the county's total population, approximately 1,073,332 million or 43.5 percent live in the unincorporated area, the majority of which is heavily urbanized. For residents living in the Unincorporated Municipal Service Area (UMSA), the County fills the role of both tiers of government. Residents within UMSA pay a property tax for municipal-type services provided by the County such as police, parks, public works, and zoning. Residents of municipalities do not pay UMSA tax, but rather pay a property tax to the municipality in which they reside.

Governance

On January 23, 2007, the Miami-Dade County Charter was amended to create a Strong Mayor form of government, with further charter amendments approved on November 2, 2010. The Mayor is elected countywide to serve a four-year term and is limited to two terms in office. The Mayor, who is not a member of the BCC, serves as the elected head of County government. In this role, the Mayor is responsible for the management of all administrative departments and for carrying out policies adopted by the Commission. The Mayor has, within ten days of final adoption by the Board of County Commissioners (BCC), veto authority over any legislative, quasi-judicial, zoning, and master plan or land use decision of the BCC, including the budget or any particular component, and the right to appoint all department directors unless disapproved by a two-thirds majority of those Commissioners then in office at the next regularly scheduled meeting. Due to a result of the prior Mayor, Carlos A. Gimenez was elected last month to complete the current term which expires November 2012.

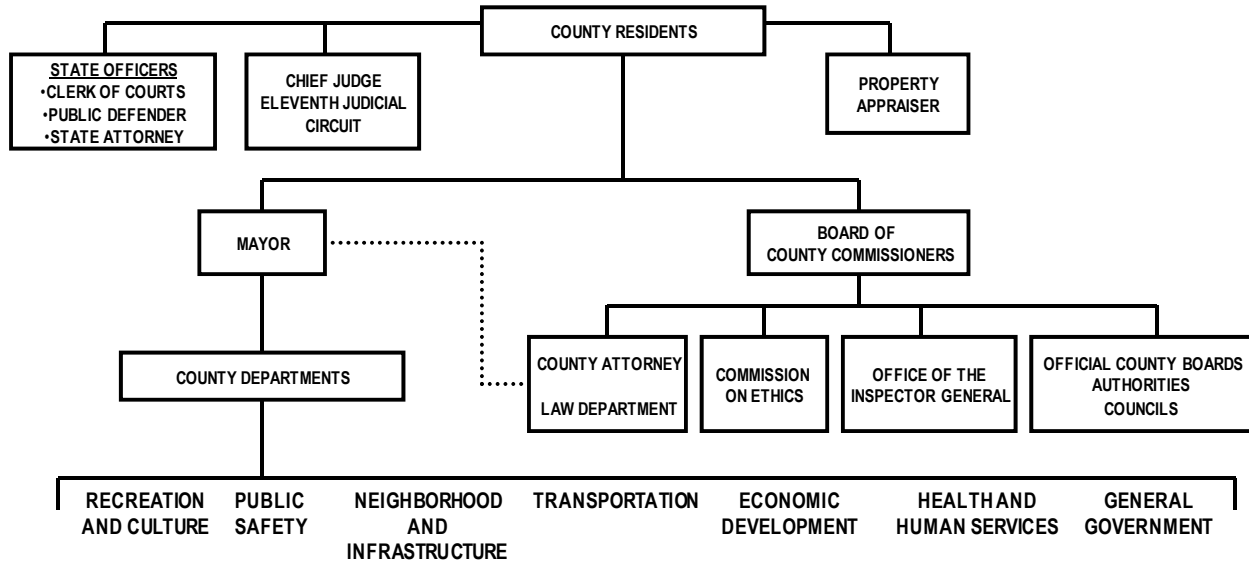
The BCC is the legislative body, consisting of 13 members elected from single-member districts. Members are elected to serve four-year terms (with no term limits) and elections of the membership are staggered. The full BCC

FY 2011-12 Proposed Budget and Multi-Year Capital Plan

chooses a Chairperson, who presides over the BCC, as well as appoints the members of its legislative committees. The BCC has a wide array of powers to enact legislation, create departments, and regulate businesses operating within the County. It also has the power to override the Mayor's veto with a two-thirds vote.

Florida's Constitution provides for five elected officials to oversee executive and administrative functions for each county: Sheriff, Supervisor of Elections, Tax Collector, Property Appraiser, and Clerk. Through the Home Rule Charter, the first three of these offices were reorganized and became subordinate County Departments. The most visible distinction between Miami-Dade and other Florida counties is the title of its law enforcement agency. It is the only county in Florida that does not have an elected sheriff, or an agency titled "Sheriff's Office." Instead, the equivalent agency is known as the Miami-Dade Police Department and its chief executive is known as the Director of the Miami-Dade Police Department.

On January 29, 2008, a charter amendment was approved to make the Property Appraiser an elected position. The Property Appraiser is elected to a four-year term, with no term limits. The Clerk of the Board is a separate, duly elected constitutional officer as mandated by Article V, Section 16 of the Constitution of the State of Florida. The Clerk is elected to a four-year term by the electorate of Miami-Dade County. In this capacity, the Clerk serves as the Clerk of the Board of County Commissioners, County Recorder, County Auditor, custodian of all County funds, and custodian of all records filed with the Court.



ORGANIZATIONAL STRUCTURE

On page five of this book, a more detailed Table of Organization is displayed illustrating the reporting relationships for the various entities of the County, including all of the various departments and entities included in the County's Adopted Budget.

Miami-Dade County departments and entities are divided into policy formation, six strategic service delivery areas, and general government functions.

- *Policy Formulation:* provides the leadership for the County as whole; the Office of the Mayor, the Board of County Commissioners, and the County Attorney

FY 2011-12 Proposed Budget and Multi-Year Capital Plan

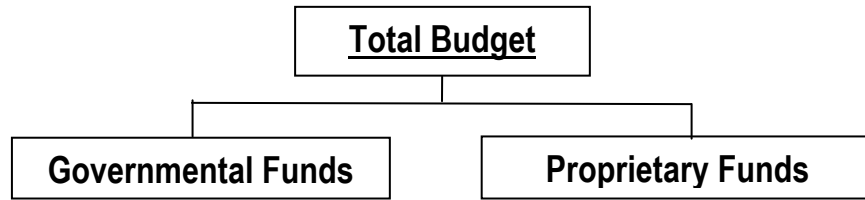
- *Public Safety:* provides comprehensive and humane programs for crime prevention, treatment and rehabilitation and improve public safety through the use community planning and the enforcement of quality life issues; Corrections and Rehabilitation, Emergency Management, Fire Rescue, Juvenile Services, Medical Examiner, and Police; funding for the County obligations and local requirements for the Eleventh Judicial Circuit (State Attorney, Public Defender, and Administrative Office of the Courts) and the Office of the Clerk is included in this strategic area
- *Transportation:* promotes innovative solutions to transportation challenges by maximizing the use of transportation systems on a neighborhood, county and regional basis; Aviation, Consumer Services, Office of the Citizens' Transportation Trust, Metropolitan Planning Organization, Port of Miami, and Transit
- *Recreation and Culture:* develops, promotes and preserves cultural, recreational, library and natural experiences and opportunities for residents and visitors; Cultural Affairs, Library, Park and Recreation, and Vizcaya Museum and Gardens
- *Neighborhood and Infrastructure:* provides efficient, consistent, and appropriate growth management and urban planning services and also promotes responsible stewardship of natural resources and provides timely and reliable public infrastructure services including road maintenance, animal care and control, stormwater, solid waste and wastewater management and a safe and clean water delivery system; Animal Services, Building, and Neighborhood Compliance, Environmental Resources Management, Planning and Zoning, Public Works, Solid Waste Management, and Water and Sewer
- *Health and Human Services:* improves the quality of life and promote maximum independence through the provision of health care, housing, and social and human services to those in need; Community Action Agency, Community Advocacy, Homeless Trust, Housing Finance Authority, Human Services, and the Public Housing Agency; the maintenance of effort funding for the Public Health Trust is also included in this strategic area
- *Economic Development:* supports activities that increase and diversify jobs and incomes while eliminating socio-economic disparities in underserved areas and lead the coordination of economic development activities, expand entrepreneurial opportunities and create a more business friendly environment in Miami-Dade County; the Office of Economic Development and International Trade, Housing and Community Development, and Small Business Development; funding for the Miami-Dade Economic Advocacy Trust is also included in this strategic area
- *General Government:* provides the internal support functions that ensure the successful implementation of the six other strategic areas; Agenda Coordination, Audit and Management Services, Capital Improvements, Elections, Enterprise Technology Services, Human Rights and Fair Employment Practices, Finance, General Services Administration, Government Information Center, Grants Coordination, Human Resources, Office of Management and Budget, Procurement Management, and Sustainability; funding to support the Commission on Ethics and Public Trust, the Inspector General, and Property Appraisal are also included in this strategic area

FINANCIAL STRUCTURE

The following details the Miami-Dade County Fund Structure, describing the various funds and providing information regarding appropriations, or spending authority, within those funds. A fund is a set of self-balancing accounts that are segregated for the purpose of carrying on specific activities or attaining certain objectives, as required by special regulations, restrictions, or limitations. Miami-Dade County's funds can be divided into three categories: governmental funds, proprietary funds, and fiduciary funds. Only governmental funds and

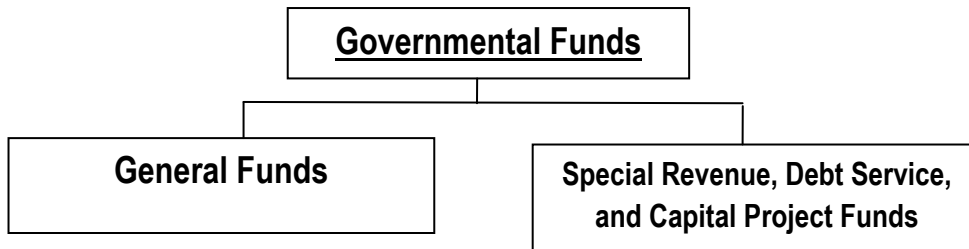
FY 2011-12 Proposed Budget and Multi-Year Capital Plan

proprietary funds are appropriated as part of the annual budget. The budget ordinance that is presented to the BCC in September for the two public budget hearings follows this fund structure.



Governmental Funds

Governmental funds account for most of the County's basic services. Taxes, intergovernmental revenues, charges for services, and proceeds from bond sales principally support the activities reported in these funds.



The General Fund is the County's primary operating fund. It is used to account for the financial resources of the general government, except those required to be accounted for in another fund. Within the general fund, the operating budget separates Countywide expenditures (for regional services) from UMSA expenditures (for municipal services). That separation ensures that residents pay only for the services they receive. Some services are easy to differentiate: health care, mass transit, correctional facilities operations and support, and elections, for example are all countywide services. Many departments, including Miami-Dade Police, Park and Recreation, Planning and Zoning, and Public Works, however, provide both regional and municipal services and their general fund subsidies are allocated between the countywide revenues and UMSA revenues as appropriate. Each department's allocation is reviewed annually.

Police services provided in the unincorporated area are similar to police services provided by municipal police departments. These services include uniform police patrols, general investigative services, school crossing guard program services, and community-based crime prevention programs. Criminal and other specialized investigative activities primarily serve the unincorporated area, but also provide support to municipalities on an as needed basis. Those costs are allocated between the Countywide and UMSA budgets based on relative workloads during the previous fiscal year. Countywide police functions are generally the sheriff's functions and include the crime laboratory, court services, civil process, warrants, public corruption investigations, and portions of the communications and records bureaus. The expenditures of overall support functions such as the director's office, the legal and professional compliance bureaus, and information technology are allocated in accordance with the overall department-wide allocation between Countywide and UMSA budgets. Non-reimbursed costs of police presence supporting municipal police departments at events of countywide

FY 2011-12 Proposed Budget and Multi-Year Capital Plan

significance are also considered countywide functions. The allocation of the police budget is 31 percent to the Countywide budget and 69 percent to the UMSA budget for FY 2011-12.

The Park and Recreation Department's expenditures are divided similarly. Community and neighborhood parks and community pools provide local services to the residents of the surrounding neighborhoods and are supported by the UMSA budget. Countywide park facilities and programs serve all county residents and include regional parks such as Amelia Earhart, Ives Estates, Tamiami, and Tropical parks, metropolitan parks, Miami-Dade Zoological Park and Gardens (Zoo Miami), cultural facilities, natural areas, and beaches. Administrative support and construction (planning, design, development, and maintenance) costs are allocated between the Countywide and UMSA budgets on the basis of the relative costs of direct services. Some countywide park facilities such as marinas, and tennis centers, generate revenues to support their operations and require little if any property tax support. As a result of this year's review of the cost allocation method and service reductions, countywide support in this fiscal year is 71 percent compared to 85 percent in FY 2010-11.

General Fund support to planning and administration functions within the Planning and Zoning Department is allocated based on proportions of workload that relates to the unincorporated area as compared to the overall county. Because most planning activities such as charrettes, development reviews, preparation of special planning studies, and support of community councils are local in nature, the costs are allocated to the unincorporated area budget. Costs associated with the review of Developments of Regional Impact, areawide economic forecasting and census related activities, however, are included in the countywide budget because of their countywide significance. In FY 2011-12, UMSA General Fund support of the Planning and Zoning Department will be 46 percent compared to 50 percent in the previous year.

The Public Works Department's unincorporated area budget provides funding for local right-of-way maintenance activities which include minor debris removal, pothole patching, paving, resurfacing, sidewalk repair, and landscape maintenance. Countywide Public Works Department responsibilities such as traffic signalization and signage, traffic engineering design, mosquito control, arterial road maintenance, and bridge operations are funded from Countywide funds. Several direct services are both Countywide and UMSA funded. These include right-of-way surveying and land acquisition, highway engineering, and right-of-way aesthetics and assets management. As in the case of the Park and Recreation Department, some Public Works services, such as causeways and special taxing districts, are self-supporting and require no property tax support. Administrative costs are allocated on the basis of the relative costs of direct services. Of the total recommended General Fund support, countywide support next fiscal year will be 76 percent compared to 75 percent in the previous year.

The cost of the County's central administration, which supports operating departments, is apportioned based on the ratio of countywide versus unincorporated area operating costs across the entire general fund. This allocation for FY 2011-13 is 73 percent to the Countywide budget and 27 percent to the UMSA budget, as compared to 75 percent and 25 percent respectively in FY 2010-11. In some cases, specific functions within a particular central administrative department are funded from either the countywide or unincorporated area budget depending on the population served while other functions may be funded differently. For example, the Enterprise Technology Services Department has administrative functions funded by Countywide and UMSA general fund however other services provided are funded through internal service charges such as telephone and radio services.

Revenue allocation is more clearly defined and usually based on statutory guidelines. Counties are authorized to collect certain revenues, as are municipalities. In accordance with state law and the Home Rule Charter, the

FY 2011-12 Proposed Budget and Multi-Year Capital Plan

unincorporated area realizes revenues comparable to those received by municipalities in Miami-Dade County. More detail on revenue allocations is provided.

There are three other governmental funds included in the budget:

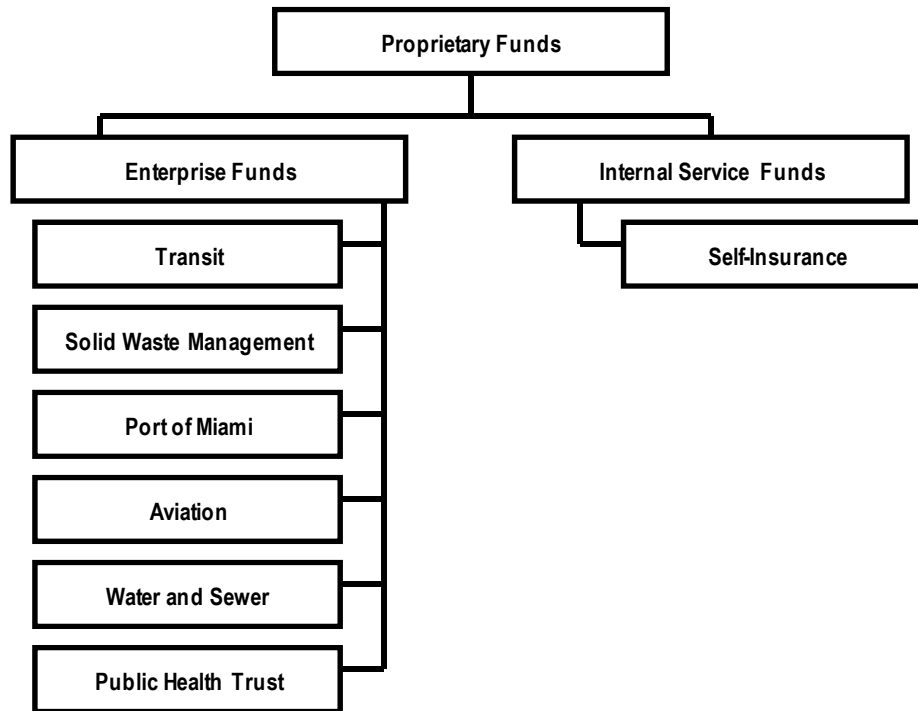
Special Revenue Funds: Special revenue funds are used to account for revenues from specific sources that are restricted by law or policy to finance specific activities.

Debt Service Funds: Debt service funds are used to account for the accumulation of resources for and the payment of principal and interest on long-term obligations.

Capital Project Funds: Capital project funds are used to account for financial resources used for the acquisition and/or construction of major capital facilities and infrastructure.

Proprietary Funds

Proprietary funds are those funds where the County charges a user fee in order to recover costs. The County's proprietary funds include enterprise funds and an internal service funds.



Enterprise funds are used to finance and account for the acquisition, operation, and maintenance of facilities and services that are intended to be entirely or predominantly self-supporting through the collection of charges from external customers. The following major enterprise funds are included in the County's financial statements:

FY 2011-12 Proposed Budget and Multi-Year Capital Plan

Miami-Dade Transit Agency: Operates the County's mass transit rail system, bus system, metro-mover system, and paratransit services.

Miami-Dade Solid Waste Management Department: Provides solid waste collection and recycling services to the unincorporated area of Miami-Dade County and some municipalities. Also, provides solid waste disposal services to 18 municipalities and operates a variety of facilities, including landfills, transfer stations, and neighborhood trash and recycling centers.

Miami-Dade Seaport Department: Operates the Dante B. Fascell Port of Miami-Dade County.

Miami-Dade Aviation Department: Operates and develops the activities of the Miami International Airport, three other general aviation airports, and one training airport.

Miami-Dade Water and Sewer Department: Maintains and operates the County's water distribution system and wastewater collection and treatment system.

Public Health Trust (PHT): The PHT was created by a County ordinance in 1973 to provide for an independent governing body responsible for the operation, governance, and maintenance of certain designated health facilities. These facilities include Jackson Memorial Hospital, a teaching hospital operating in association with the University of Miami School of Medicine, Jackson North Medical Center, Jackson South Community Hospital, and several primary care centers and clinics throughout Miami-Dade County.

Internal service funds are used to report any activity that provides goods and services to other funds, departments, or agencies of the County, on a reimbursement basis. The County has one internal service fund, the Self-Insurance Fund, which accounts for the County's insurance programs covering property, automobile, general liability and workers' compensation. It is also used for medical, dental, life, and disability insurance accounts for County employees. A large portion of the group medical insurance program is self-insured and is managed by a third-party administrator.

Fiduciary Funds

Fiduciary funds are used to report assets held in a trustee or agency capacity for others. The County currently has funds held in an agency capacity by the Clerk of the Circuit and County Court and the Tax Collector, as well as other funds placed in escrow pending distributions. These funds cannot be used to support the County's own programs, and therefore, are not required to be appropriated as part of the annual budget.

Clerk of Circuit and County Courts Agency Fund: Accounts for funds received, maintained and distributed by the Clerk of the Circuit and County Courts in his capacity as custodian to the State and County judicial systems.

Tax Collector Agency Fund: Accounts for the collection and distribution of ad valorem taxes and personal property taxes to the appropriate taxing districts. Also accounts for the collection of motor vehicle registration fees and sales of other State of Florida licenses, the proceeds of which are remitted to the State.

FY 2011-12 Proposed Budget and Multi-Year Capital Plan

Pension Trust Fund: Accounts for assets held by Northern Trust Bank for the benefit of employees of the Public Health Trust who participate in the Public Health Trust Defined Benefit Retirement Plan.

Other Agency Funds: Accounts for various funds placed in escrow pending timed distributions.