


# Memorandum



**Date:** September 20, 2012

**To:** Honorable Chairman Joe A. Martinez  
and Members, Board of County Commissioners

**From:** Carlos A. Gimenez  
Mayor 

**Subject:** Information for Second Budget Hearing – FY 2012-13 Proposed Budget

This memorandum accompanies the FY 2012-13 Budget Ordinances for your consideration at the Second Budget Hearing on September 20, 2012. This document provides information requested, details all adjustments necessary to the FY 2012-13 Proposed Budget and actions taken by the Board of County Commissioners (BCC) at the September 6, 2012 First Budget Hearing, as well as making recommendations for other adjustments. The total value of new allocations contained in this document is \$3.264 million.

During the First Budget Hearing on September 6, 2012, the BCC approved the following tentative millage rates: Countywide 4.7035, Unincorporated Municipal Services Area 1.9283, Fire Rescue Service District 2.4496, and Library System 0.1725 mills. At these millage rates, the Proposed Budget is funded and the adjustments included in this memorandum may be supported.

<b>Revenue Budget Recommendations</b> (Dollars in Thousands)					
	<u>CW</u>	<u>UMSA</u>	<u>Fire Rescue/ Library</u>	<u>Proprietary/ Other</u>	<u>Total</u>
<b>Revenue Adjustments</b>					
Early Learning Coalition Grant Funds	0	0	0	1,743	1,743
Lobbyist Trust Fund	0	0	0	10	10
General Fund Carryover - Office of Mayor- Unexpended FY 2011-12 Balance/Additional Sales Tax	373	766	0	0	1,139
General Fund Non-Departmental - Unallocated Community-based Organization (CBO) Funding	63	309	0	0	372
<b>Total Revenue Adjustments</b>	<b>\$436</b>	<b>\$1,075</b>	<b>\$0</b>	<b>\$1,753</b>	<b>\$3,264</b>
<b>Expenditure Budget Recommendations</b> (Dollars in Thousands)					
	<u>CW</u>	<u>UMSA</u>	<u>Fire Rescue/ Library</u>	<u>Proprietary/ Other</u>	<u>Total</u>
<b>Expenditure Adjustments</b>					
BCC/Office of Community Advocacy - Military Affairs Liaison	57	18	0	0	75
Commission on Ethics and Public Health Trust	10	0	0	10	20
Community Action and Human Services - Child Development	0	0	0	1,743	1,743
Cultural Affairs - Cultural Access Network Grants	100	0	0	0	100
Juvenile Services - Youth Commission	60	0	0	0	60
Parks, Recreation and Open Spaces -After School Programming	0	300	0	0	300
Parks, Recreation and Open Spaces - Landscaping Cycles	123	497	0	0	620
Regulatory and Economic Resources - Cooperative Extension	32	0	0	0	32
Non-Departmental - General Government CBOs	54	260	0	0	314
<b>Total Expenditure Adjustments</b>	<b>\$436</b>	<b>\$1,075</b>	<b>\$0</b>	<b>\$1,753</b>	<b>\$3,264</b>

## Revenues

The total value of the new allocations contained in this document is \$3.264 million: additional grant funding from the Early Learning Coalition (\$1.743 million) and additional carryover resulting from improved sales tax projections (\$641,000), additional lobbyist registration revenue (\$10,000) and savings in the Office of the Mayor (\$498,000). Unallocated funding for community-based organizations was also redistributed (\$372,000).

**Commission on Ethics and Public Trust**

The budget for the Commission on Ethics and Public Health Trust will be increased by \$20,000 (\$10,000 from Lobbyist Trust Fund and \$10,000 from the General Fund). A vacant unfunded position will be eliminated from the table of organization.

**Community Action and Human Services**

As part of the Memorandum of Information for the First Budget Hearing submitted to the Board of County Commissioners on September 6, 2012, the Board was advised that the funding for the Community Action and Human Services Department from the Early Learning Coalition (ELC) will be reduced \$3.263 million. Subsequently, the ELC informed the Department to expect a revised funding reduction of \$1.52 million, making the total funding allocation \$94.444 million for FY 2012-13. The restored funding (\$1.743 million) will reinstate six of the seven positions eliminated and restore 571 slots, increasing the total to 20,710 subsidized slots.

**Regulatory and Economic Resources (RER)**

Ensuring that all the resources available in the budget to support economic development activities are being used in the most effective way possible is a priority for this Administration. Continued analysis allows us to better align resources within the Regulatory and Economic Resources Department. At this time, it is recommended that a position within the Business Affairs Division currently assigned to provide support to the Film and Entertainment function be transferred to the Film and Entertainment section on a permanent basis. In addition, the Proposed Budget includes a vacant position intended to support Enterprise Zone activities. This position will be temporarily assigned to assist with the Wage Theft function until backlogged claims are resolved. Once the backlog has been addressed, the position will support the Enterprise Zone and Living Wage ordinance compliance activities. Furthermore, in May we submitted a plan to the BCC, pursuant to R-874-11, to increase monitoring and compliance amongst vendors relative to our various small business and wage requirements. Part of the plan engages project managers in this effort and a training session is scheduled for September 24, 2012 to roll this effort out countywide.

In the next few weeks, I intend to convene a working group of professionals from inside the County, as well as representatives from the community, to develop a set of recommendations concerning 1) the use of existing economic development resources (including the allocations of funding now used for memberships to the various chambers of commerce), and 2) the leveraging of our relationships with other economic development focused entities including the Beacon Council and the Greater Miami Convention and Visitors Bureau, as well as economic development corporations and chambers not currently supported by County funds. I am confident we can do a better job aligning our efforts and making resources available for game changing initiatives. In order to continue the successful "Where Worlds Meet" campaign, a partnership between the public and private sectors to promote Miami-Dade County as a business destination, an additional \$50,000 of port promotional funds will be allocated to the Greater Miami Visitors and Convention Bureau for FY 2012-13 (\$50,000 Port of Miami).

Support of the agricultural industry in South Miami-Dade County continues to be a priority and we have been advised that the State of Florida will be providing 60 percent funding to support the addition of a Tropical Fruit Extension Agent in Cooperative Extension. Therefore, funding will be included in the RER budget for the 40 percent match (\$32,000).

**Parks, Recreation and Open Spaces (PROS)**

Services to our children continue to be prioritized in our budget. This year's funding, received as part of the federal ARRA program to subsidize after school programs in our parks, ran out. The Parks Foundation has agreed to provide \$100,000 to restore these programs, and the PROS budget will be increased by \$300,000 to ensure the same level of service for our community.

Another important activity that had been reduced in the FY 2011-12 budget was landscape and median maintenance. My goal has always been to improve the level of service as the economy improved and additional revenues were available. Revised projections for sales tax collections will make it possible to restore three median cycles and two roadway maintenance cycles for a total of 15 and 9 cycles, respectively (\$620,000).

### **Community-based Organizations (CBOs) and Cultural Programs**

Attachment A reflects the community-based funding allocations monitored by the Department of Cultural Affairs. Funding has been included to restore the Cultural Access Network Grant program (\$100,000). Not-for-Profit organizations will be able to apply for grants to pay rental costs to use cultural facilities managed by the Department of Cultural Affairs. The program will be managed by the Department of Cultural Affairs.

Attachment B reflects the amended community-based organization allocations monitored by the Office of Management and Budget.

### **Juvenile Services**

The Youth Commission was created in December 10, 2010 as Section 2-2060 of the Code. The Commission is comprised of 26 members and five ex-officio appointments with a goal of providing young people with a vehicle to participate in the process of County Government. The Youth Commission has developed a budget for travel, event, and outreach expenses. The budget for the Juvenile Services Department will be increased by \$60,000 to support the Youth Commission activities.

At the September 6, 2012 meeting of the BCC, \$90,000 of Law Enforcement Trust Fund (LEFT) was allocated to support gang prevention initiatives in the Juvenile Services department, such as the Violence Intervention Program. As additional resources are required, further application of LETF will be considered.

### **Office of Community Advocacy**

Consistent with the fiscal impact statement that accompanied Ordinance 12-37 establishing the Military Affairs Board, the budget for the Office of Community Advocacy will be increased by \$75,000 in order to add a position to support the Military Affairs Board and our efforts relative to programs and projects for veterans.

## **CAPITAL BUDGET**

### **Animal Services**

Due to an increased demand for sheltering of abandoned animals and to reflect recommendations given by animal shelter professionals as it pertains to the design and development of a facility that will meet current expansion needs, the cost of the New Animal Shelter will increase by \$6.61 million to \$20.6 million and completion of the project is expected in the later part of FY 2014-15. The additional capital cost includes, but is not limited to, site work for a dog walk/exercise area, perimeter sidewalk, fencing, as well as landscape and irrigation, plumbing and HVAC improvements, roof replacement, and doors and impact windows. The increased costs will require a future borrowing and general fund subsidies to repay the debt over time.

### **Parks, Recreation and Open Spaces**

The Goulds Park - Building Better Communities Bond Program (Project 931100) will be completed in FY 2013-14. Future year funding (\$356,000) will be advanced to FY 2012-13 and the total budget is being increased by \$215,000 to a total of \$1.812 million. This project has been delayed for 18 months due to contractor issues and the subsequent bankruptcy of the bonding company. The additional funding is necessary to rework a portion of the project that was performed by the original contractor and to repair

and replace deterioration of equipment and the facility. Appropriation authority is available from revised projections for FY 2012-13 expenditures in other Building Better Communities General Obligation Bond projects. The additional expense will be funded with \$215,000 from various Quality Neighborhood Improvement Program projects in District 9 that were completed under budget.

Funding has been identified to design and construct a walking path at the Norman and Jean Reach Park that will connect park premises to the adjacent school. Savings in certain PROS projects funded in the Capital Outlay Reserve in FY 2011-12 will increase available uncommitted carryover by \$100,000. This funding will be matched by a contribution from the District 13 Office budget (\$70,000) and available District 13 QNIP funds (\$10,000). Matching funds are also being pursued from the Miami-Dade County School Board.

### **Public Works and Waste Management**

Due to safety and deteriorating road conditions, the Resurface Miami Avenue from N 87 Street to N 105 Street (Project 608500) will be accelerated to FY 2012-13 from FY 2015-16. The projection for available Road Impact fee revenues has improved since the release of the Proposed Budget and can be used to accelerate this project.

### **POSITION ADJUSTMENTS**

In some instances, the above recommendations and correction of errors will adjust the number of positions in the FY 2012-13 Proposed Budget. The Tables of Organization reflecting these adjustments are included in Attachment C. The adjustments included in this memorandum increase the total number of recommended positions by six to 25,902. This is 596 positions less than authorized in FY 2011-12, more than 490 of which are vacant.

Attachments

mayor13812

## GRANTS TO NON-PROFIT CULTURAL ORGANIZATIONS IN FY 2012-2013 THROUGH THE MIAMI-DADE COUNTY DEPARTMENT OF CULTURAL AFFAIRS

GRANTS PROGRAM	GRANTEE	PROGRAM / PROJECT	FY 2012-13 GRANT AWARD
<b>ARTS EDUCATION GRANTS AND PROGRAM INITIATIVES (ArtsEd)</b>			
ArtsEd	Arts for Learning/Miami, Inc.	General Programs and Operating Support	\$285,000
ArtsEd	Fantasy Theatre Factory, Inc.	Fiscal Agent for Arts Education Initiatives and "All Kids Included" Initiative for Children with Disabilities	\$262,000
<b>Sub-Total: FY 2012-13 Arts Education and Program Initiatives Grants:</b>			<b>\$547,000</b>
<b>CAPITAL DEVELOPMENT GRANTS PROGRAM (CAP)</b>			
CAP	Dave and Mary Alper Jewish Community Center, The	Sound, Lighting and Video Enhancement of Robert Russell Theater	\$15,796
CAP	Florida International University Board of Trustees fbo The Wolfsonian	Equipment to Enhance Wolfsonian Public Programs	\$5,000
CAP	Miami Children's Museum, Inc.	ADA, Environmental and Child-Friendly Bathroom Upgrades	\$24,068
CAP	Miami Light Project, Inc.	Light Box at Goldman Warehouse 2012-2013 Build-Out and Equipment	\$24,217
CAP	Miami Theater Center, Inc.	Film at Miami Theater Center / The PlayGround Theatre (TPGT)	\$15,136
CAP	New World Symphony, Inc.	2012-13 Audiovisual and Accessibility Equipment Upgrades	\$25,463
CAP	Olympia Center, Inc.	Essential Olympia Theater (Gusman Center for the Performing Arts) Equipment Upgrades	\$24,508
CAP	PAN, Performing Arts Network, A Guild of Performing Artists, Inc.	Rebuild PAN facility destroyed by fire	\$20,046
CAP	South Florida Art Center, Inc., dba ArtCenter/South Florida	Elevator repairs in 924 Lincoln Road	\$7,198
CAP	Village of Pinecrest (Pinecrest Gardens Banyan Bowl)	New House Seating for the Banyan Bowl	\$20,407
CAP	Vizcaya Museum and Gardens	Equipment Purchases to Strengthen Vizcaya's Horticultural & Cultural Programming	\$8,161
<b>Sub-Total: FY 2012-13 Capital Development Program Grants:</b>			<b>\$190,000</b>
<b>COMMUNITY GRANTS PROGRAM (CG)</b>			
CG	Community Grants Program	Quarterly Grants Program: Competitive application and review opportunities 4 times during each FY	\$462,000
<b>Sub-Total: FY 2012-13 Community Grants:</b>			<b>\$462,000</b>
<b>CULTURAL ADVANCEMENT GRANTS PROGRAM (ADV)</b>			
ADV	Artsouth, a Not-for-Profit Corporation	Annual Season - General Operating Support	\$41,000
ADV	Bakehouse Art Complex, Inc.	Annual Season - General Operating Support	\$82,000
ADV	Ballet Flamenco La Rosa, Inc.	Annual Season - General Operating Support	\$41,000
ADV	Bascomb Memorial Broadcasting Foundation, Inc. (WDNA-FM 88.9)	Annual Season - General Operating Support	\$82,000
ADV	Black Archives, History and Research Foundation of South Florida, Inc., The	Annual Season - General Operating Support	\$41,000
ADV	Centro Cultural Espanol de Cooperacion Iberoamericana, Inc.	Annual Season - General Operating Support	\$82,000
ADV	Chopin Foundation of the United States, Inc.	Annual Season - General Operating Support	\$41,000
ADV	City Theatre, Inc.	Annual Season - General Operating Support	\$82,000
ADV	Coral Gables Congregational Church, Inc.	Annual Season - General Operating Support	\$41,000
ADV	Dave and Mary Alper Jewish Community Center	Annual Season - General Operating Support	\$41,000
ADV	Deering Estate Foundation, Inc., The	Annual Season - General Operating Support	\$41,000
ADV	Fantasy Theatre Factory, Inc.	Fiscal Agent for the Travel/Consultants Technical Assistance Component of the Cultural Advancement program	\$90,000
ADV	Fundarte, Inc.	Annual Season - General Operating Support	\$41,000
ADV	GableStage, Inc.	Annual Season - General Operating Support	\$82,000
ADV	Jamaica Awareness, Inc.	Annual Season - General Operating Support	\$82,000
ADV	Miami Contemporary Dance Corp. dba Miami Contemporary Dance Company	Annual Season - General Operating Support	\$41,000
ADV	Miami Light Project, Inc.	Annual Season - General Operating Support	\$82,000
ADV	Miami Dade College, Department of Cultural Affairs	Annual Season - "MDC Live" General Operating Support	\$82,000
ADV	Miami Dade College, Florida Center for the Literary Arts	Annual Season - General Operating Support	\$82,000
ADV	Murray Dranoff Foundation, Inc., The	Annual Season - General Operating Support	\$41,000
ADV	New Theatre, Inc.	Annual Season - General Operating Support	\$82,000
ADV	Olympia Center, Inc.	Annual Season - General Operating Support (Gusman Center for the Performing Arts)	\$82,000
ADV	Rhythm Foundation, Inc., The	Annual Season - General Operating Support	\$82,000
ADV	Seraphic Fire, Inc.	Annual Season - General Operating Support	\$82,000
ADV	Sociedad Pro Arte Gratiel, Inc.	Annual Season - General Operating Support	\$41,000
ADV	Sunday Afternoons of Music, Inc.	Annual Season - General Operating Support	\$41,000

## GRANTS TO NON-PROFIT CULTURAL ORGANIZATIONS IN FY 2012-2013 THROUGH THE MIAMI-DADE COUNTY DEPARTMENT OF CULTURAL AFFAIRS

GRANTS PROGRAM	GRANTEE	PROGRAM / PROJECT	FY 2012-13 GRANT AWARD
ADV	Teatro Avante, Inc.	Annual Season - General Operating Support	\$82,000
ADV	Tigertail Productions, Inc.	Annual Season - General Operating Support	\$41,000
		<b>Sub-Total: FY 2012-13 Cultural Advancement Program Grants:</b>	<b>\$1,771,000</b>
<b>CULTURE SHOCK MIAMI PROGRAM COSTS</b>			
CS	Culture Shock Miami: Discount Student Tickets to the Arts Program	Programmatic Support	\$750,000
		<b>Sub-Total: FY 2012-13 Culture Shock Miami Program Costs:</b>	<b>\$750,000</b>
<b>DANCE MIAMI CHOREOGRAPHERS (DMC)</b>			
DMC	Rodolfo Cano	Choreographer Fellowship	\$10,000
DMC	Ilisa Rosal	Choreographer Fellowship	\$10,000
DMC	Augusto Soledade	Choreographer Fellowship	\$10,000
DMC	Dance Miami Choreographers' Fellowship Program	Programmatic costs	\$5,000
		<b>Sub-Total: FY 2012-13 Dance Miami Choreographers Program:</b>	<b>\$35,000</b>
<b>DEVELOPING ARTS IN NEIGHBORHOODS GRANTS PROGRAM (DAN)</b>			
DAN	Academia de las Luminarias de las Bellas Artes, Inc.	FY2012-2013 Program Activities	\$5,443
DAN	Alhambra Music Inc.	FY2012-2013 Program Activities	\$9,246
DAN	CACEC, Inc.	FY2012-2013 Program Activities	\$5,684
DAN	Civic Chorale of Greater Miami, Inc.	FY2012-2013 Program Activities	\$7,194
DAN	Community Arts And Culture, Inc.	FY2012-2013 Program Activities	\$10,454
DAN	Community Performing Arts Association Inc.	FY2012-2013 Program Activities	\$3,487
DAN	Community Theatre of Miami Lakes, Inc. d/b/a Main Street Players	FY2012-2013 Program Activities	\$10,669
DAN	Deco Echo Artists' Delegation, Inc. d/b/a Center for Folk and Community Art	FY2012-2013 Program Activities	\$8,689
DAN	Edge Zones, Inc.	FY2012-2013 Program Activities	\$7,043
DAN	Friends of the Japanese Garden, Inc.	FY2012-2013 Program Activities	\$7,348
DAN	Ground Up and Rising, Inc.	FY2012-2013 Program Activities	\$6,468
DAN	Homestead Community Concert Association Inc.	FY2012-2013 Program Activities	\$13,034
DAN	Kinad Inc.	FY2012-2013 Program Activities	\$8,335
DAN	L'Alliance Francaise de Miami, Inc.	FY2012-2013 Program Activities	\$9,834
DAN	Mad Cat Theatre Company Inc.	FY2012-2013 Program Activities	\$8,872
DAN	Marti Productions Inc.	FY2012-2013 Program Activities	\$5,684
DAN	Miami Piano Circle, Inc.	FY2012-2013 Program Activities	\$6,064
DAN	Miami Watercolor Society Inc.	FY2012-2013 Program Activities	\$10,037
DAN	Mz Goose, Inc.	FY2012-2013 Program Activities	\$7,505
DAN	North Miami Community Concert Band Inc.	FY2012-2013 Program Activities	\$9,634
DAN	Orchestra Miami Inc.	FY2012-2013 Program Activities	\$9,834
DAN	Red Chemistry Inc.	FY2012-2013 Program Activities	\$7,665
DAN	Siempre Flamenco Inc.	FY2012-2013 Program Activities	\$9,438
DAN	South Beach Chamber Ensemble Inc.	FY2012-2013 Program Activities	\$8,872
DAN	South Florida Bluegrass Association Inc.	FY2012-2013 Program Activities	\$11,109
DAN	South Florida Composers Alliance, Inc. f/a for Foundation for Emerging Technologies and Arts, Inc.	FY2012-2013 Program Activities	\$7,665
DAN	Teatro en Miami Corp.	FY2012-2013 Program Activities	\$10,037
DAN	Temple Israel of Greater Miami, Inc. f/a for Next@ 19th Street	FY2012-2013 Program Activities	\$6,608
DAN	The Arts at St. Johns, Inc.	FY2012-2013 Program Activities	\$12,280
DAN	The Cove/Rincon Corp.	FY2012-2013 Program Activities	\$9,000
DAN	The Miami Classical Guitar Society, Inc.	FY2012-2013 Program Activities	\$9,438
DAN	The Miami Foundation, Inc., f/a for Bas Fisher Invitational	FY2012-2013 Program Activities	\$6,608
DAN	The Unconservatory Inc.	FY2012-2013 Program Activities	\$7,665
DAN	Zoetic Stage	FY2012-2013 Program Activities	\$9,057
		<b>Sub-Total: FY 2012-13 Developing Arts in Neighborhoods Grants Program Grants:</b>	<b>\$286,000</b>



## GRANTS TO NON-PROFIT CULTURAL ORGANIZATIONS IN FY 2012-2013 THROUGH THE MIAMI-DADE COUNTY DEPARTMENT OF CULTURAL AFFAIRS

GRANTS PROGRAM	GRANTEE	PROGRAM / PROJECT	FY 2012-13 GRANT AWARD
<b>FESTIVALS AND SPECIAL EVENTS GRANTS PROGRAM (FEST)</b>			
FEST	Bayfront Park Management Trust	Downtown Miami New Year's Eve Celebration	\$32,839
FEST	Coconut Grove Arts and Historical Association, Inc.	Coconut Grove Arts Festival	\$67,976
FEST	Dade Heritage Trust, Inc.	Dade Heritage Days	\$40,592
FEST	Florida Dance Association, Inc.	Florida Dance Festival	\$29,570
FEST	Florida International University Board of Trustees, for the benefit of the School of Hospitality	South Beach Wine & Food Festival	\$72,124
FEST	Friends of the Miami-Dade Public Library, Inc.	The Art of Storytelling Festival	\$31,682
FEST	German American Social Club of Greater Miami, Inc.	Oktoberfest Miami	\$28,311
FEST	Infinito Art & Cultural Foundation, Inc.	Brazilian Film Festival of Miami	\$37,422
FEST	Junior Orange Bowl Committee, Inc.	Junior Orange Bowl Festival	\$61,507
FEST	Miami Bach Society, Inc., The	Tropical Baroque Music Festival	\$31,690
FEST	Miami-Broward One Carnival Host Committee, Inc.	Miami Carnival	\$47,525
FEST	Miami Dade College, Miami Book Fair International	Miami Book Fair International	\$72,124
FEST	Miami Dade College, Miami International Film Festival	Miami International Film Festival	\$71,324
FEST	Miami Gay and Lesbian Film Festival, Inc.	Miami Gay & Lesbian Film Festival	\$38,991
FEST	Miami Hispanic Ballet Corporation	International Ballet Festival of Miami	\$36,233
FEST	National Foundation for Advancement in the Arts, Inc.	ARTS Week	\$61,314
FEST	Patrons of Exceptional Artists, Inc.	Miami International Piano Festival - Discovery Series	\$36,321
FEST	University of Miami - Frost School of Music	Festival Miami	\$42,455
<b>HANNIBAL COX JR. CULTURAL GRANTS PROGRAM (HCJ)</b>			<b>\$840,000</b>
HCJ	Area Performance Gallery, Inc.	FY2012-2013 Program Activities	\$30,000
HCJ	Arts Ballet Theatre of Florida, Inc.	FY2012-2013 Program Activities	\$30,000
HCJ	Brazz Dance Theatre Incorporated	FY2012-2013 Program Activities	\$10,505
HCJ	Coral Gables Cinematheque, Inc.	FY2012-2013 Program Activities	\$30,000
HCJ	Creation Art Center Corporation	FY2012-2013 Program Activities	\$9,857
HCJ	Cuban Classical Ballet of Miami, Inc.	FY2012-2013 Program Activities	\$30,000
HCJ	Diaspora Vibe Cultural Arts Incubator, Inc.	FY2012-2013 Program Activities	\$16,010
HCJ	Florida International University Board of Trustees, for the benefit of the School of Music	FY2012-2013 Program Activities	\$30,000
HCJ	Friends of Chamber Music of Miami, Inc.	FY2012-2013 Program Activities	\$16,009
HCJ	Haitian Heritage Museum Corp.	FY2012-2013 Program Activities	\$23,184
HCJ	Hispanic-American Lyric Theatre, Inc.	FY2012-2013 Program Activities	\$12,072
HCJ	Karen Peterson and Dancers, Inc.	FY2012-2013 Program Activities	\$21,984
HCJ	Locust Projects, Inc.	FY2012-2013 Program Activities	\$30,000
HCJ	Marjory Stoneman Douglas Biscayne Nature Center, Inc.	FY2012-2013 Program Activities	\$30,000
HCJ	Miami Beach Film Society, Inc.	FY2012-2013 Program Activities	\$30,000
HCJ	Miami Beach Garden Conservancy, Inc.	FY2012-2013 Program Activities	\$30,000
HCJ	Miami Dade College - Department of Arts and Philosophy	FY2012-2013 Program Activities	\$13,989
HCJ	Miami Dade College Foundation, Inc. - New World School of the Arts	FY2012-2013 Program Activities	\$30,000
HCJ	Miami Gay Men's Chorus, Inc.	FY2012-2013 Program Activities	\$17,950
HCJ	Miami Lyric Opera, Inc.	FY2012-2013 Program Activities	\$21,542
HCJ	Michael-Ann Russell Jewish Community Center, Inc.	FY2012-2013 Program Activities	\$30,000
HCJ	Mystery Park Arts Company, Inc., d/b/a SoBe Institute of the Arts	FY2012-2013 Program Activities	\$21,050
HCJ	Saint Martha Composers Alliance, Inc.	FY2012-2013 Program Activities	\$15,928
HCJ	Saint Florida Concerts and Cultural Affairs, Inc.	FY2012-2013 Program Activities	\$19,488
HCJ	The Dance Now! Ensemble, Inc.	FY2012-2013 Program Activities	\$20,579
HCJ	The Florida Chamber Orchestra	FY2012-2013 Program Activities	\$9,012
HCJ	Viernes Culturales / Cultural Fridays, Inc.	FY2012-2013 Program Activities	\$10,841

## GRANTS TO NON-PROFIT CULTURAL ORGANIZATIONS IN FY 2012-2013 THROUGH THE MIAMI-DADE COUNTY DEPARTMENT OF CULTURAL AFFAIRS

GRANTS PROGRAM	GRANTEE	PROGRAM / PROJECT	FY 2012-13 GRANT AWARD
<b>INTERNATIONAL CULTURAL EXCHANGE GRANTS PROGRAM (ICE)</b>			<b>Sub-Total: FY 2012-13 Hannibal Cox Jr. Cultural Program Grants:</b>
ICE	Arts Ballet Theatre of Florida, Inc.	2013 International Ballet Concert (IBC)	\$19,130
ICE	Ballet Flamenco La Rosa, Inc.	Señorita Julia	\$25,507
ICE	Diaspora Vibe Cultural Arts Incubator, Inc.	International Cultural Arts Exchange Series	\$19,130
ICE	Edge Zones, Inc.	Art of Uncertainty	\$12,755
ICE	Friends of Miami-Dade Public Library, Inc.	The Art of Storytelling Festival - Madrid, Spain	\$19,130
ICE	Fundarte, Inc.	FUNDarte/Teatro el Publico	\$15,942
ICE	Karen Peterson and Dancers, Inc.	International Exchange / DanceForms	\$19,130
ICE	Miami Contemporary Dance Corporation, dba Miami Contemporary Dance Company	International Dance Exchange	\$25,507
ICE	Miami Light Project, Inc.	Puente Miami/Havana	\$12,755
ICE	New World Symphony, Inc.	NWS/Orquesta Filharmonica de Medillin	\$25,507
ICE	Teatro Avante, Inc.	Spain/USA International Cultural Exchange	N/A
ICE	Tigertail Productions, Inc.	2012 International Exchange Project	\$25,507
<b>MAJOR CULTURAL INSTITUTIONS GRANTS PROGRAM (MCI)</b>			<b>Sub-Total: FY 2012-13 International Cultural Exchange Program Grants:</b>
MCI	Actors' Playhouse Productions, Inc.	Operational Support for Actors' Playhouse	\$186,464
MCI	Florida International University Board of Trustees, for the benefit of the Patricia and Phillip Frost Art Museum	Operational Support for the Patricia and Phillip Frost Art Museum	\$122,876
MCI	Florida International University Board of Trustees, for the benefit of The Wolfsonian	Operational Support for the Wolfsonian-FIU	\$259,941
MCI	Florida Grand Opera, Inc.	Operational Support for the Florida Grand Opera	\$331,927
MCI	Friends of the Bass Museum, Inc.	Operational Support for the Bass Museum of Art	\$185,029
MCI	GableStage, Inc.	Transition to the Coconut Grove Playhouse / Programming Support	\$150,000
MCI	Jewish Museum of Florida, Inc.	Operational Support for the Jewish Museum	\$140,314
MCI	M Ensemble Company	Operational Support for the M Ensemble Company	\$87,000
MCI	Miami City Ballet, Inc.	Operational Support for the Miami City Ballet	\$285,253
MCI	Miami Symphony Orchestra/Orquesta Sinfonica de Miami, Inc., The	Operational Support for the Miami Symphony Orchestra	\$87,000
MCI	Museum of Contemporary Art, Inc. (MOCA)	Operational Support for the Museum of Contemporary Art	\$212,357
MCI	New World Symphony, Inc.	Operational Support for the New World Symphony	\$339,794
MCI	Performing Arts Center Trust, Inc., dba Adrienne Arsht Center for the Performing Arts of Miami-Dade County	Operational Support for the Adrienne Arsht Center for the Performing Arts of Miami-Dade County	\$321,836
MCI	South Florida Art Center, Inc., dba ArtCenter/South Florida	Operational Support for ArtCenter/South Florida	\$88,899
MCI	University of Miami, Lowe Art Museum	Operational Support for the Lowe Art Museum at UM	\$163,310
<b>SERVICE ORGANIZATIONS GRANTS PROGRAM (SERV)</b>			<b>Sub-Total: FY 2012-13 Major Cultural Institutions Program Grants:</b>
SERV	Arts & Business Council of Miami, Inc.	Annual Programs	\$75,000
SERV	Arts & Business Council of Miami, Inc.	Fiscal Agent for "Arts Help" Mini-Grants program & Dance Community Services	\$60,000
SERV	Diaspora Arts Coalition, Inc.	Annual Programs	\$30,000
SERV	Greater Miami Festivals and Events Association, Inc.	Annual Programs	\$25,000
SERV	LegalArt, Inc.	Annual Programs	\$35,000
SERV	Miami Light Project, Inc.	Fiscal Agent for Filmmaker's Workshop	\$25,000
SERV	Performing Arts Network (PAN)	Annual Programs	\$35,000
SERV	Sosyete Koukouy, Inc.	Fiscal Agent for Haitian Artists Network (HAN)	\$20,000
SERV	Sunshine Jazz Organization, Inc., The	Annual Programs	\$21,000
SERV	Theatre League of South Florida, Inc.	Annual Programs	\$40,000
<b>SUMMER ARTS &amp; SCIENCE CAMPS FOR KIDS GRANTS PROGRAM (SAS-C)</b>			<b>Sub-Total: FY 2012-13 Service Organizations Program Grants:</b>
SAS-C	Summer Arts & Science Camps for Kids Grants Program	Project grants to Organizations for Summer Arts and Science Camp Programs	\$450,000



## GRANTS TO NON-PROFIT CULTURAL ORGANIZATIONS IN FY 2012-2013 THROUGH THE MIAMI-DADE COUNTY DEPARTMENT OF CULTURAL AFFAIRS

GRANTS PROGRAM	GRANTEE	PROGRAM / PROJECT	FY 2012-13 GRANT AWARD
<b>TARGETED INITIATIVES GRANTS (TARG)</b>		<b>Sub-Total: FY 2012-13 Summer Arts &amp; Science Camps for Kids Program Grants:</b>	<b>\$450,000</b>
TARG	Arts & Business Council of Miami, Inc.	Fiscal Agent for "ArtBurstMiami"	\$65,000
TARG	The	Black Archives and Lyric Theater - Cultural Advancement Transition Plan	\$37,000
TARG	City of Hialeah Cultural Affairs Council	City of Hialeah Cultural Affairs Council programs	\$26,500
TARG	Cuban Museum, Inc.	Cuban Museum Transition Plan	\$37,000
TARG	Friends of the Miami-Dade Public Library, Inc.	A Compendium of Collections and Collecting in Miami: The Vasari Project	\$15,000
TARG	Greater Miami Festivals and Events Association, Inc.	Fiscal Agent for Cultural Publications	\$60,000
TARG	Haitian Cultural Arts Alliance, Inc.	Haitian Cultural Initiatives	\$22,500
TARG	Historical Association of Southern Florida, Inc.	Fiscal Agent for Cuban Pilots Association - Bay of Pigs Memorial at TMB	\$10,000
TARG	Homestead Center for the Arts	Annual Programs	\$20,000
TARG	Miami Foundation, Inc., The	Fiscal Agent for Independent Filmmakers' Services and Workshops	\$20,000
TARG	Rhythm Foundation, Inc., The	Fiscal Agent for Activities and Audience Development at Caleb Auditorium, African Heritage Cultural Arts Center and/or Miami-Dade County Auditorium	\$30,000
TARG	Theater League of South Florida, Inc.	Fiscal Agent for Playwright Development Program / Playwrights' Workshop Series	\$25,000
TARG	Tigertail Productions, Inc.	Fiscal Agent for Artist Access Grants Program	\$20,000
		<b>Sub-Total: FY 2012-13 Targeted Initiatives Grants:</b>	<b>\$388,000</b>
<b>YOUTH ARTS ENRICHMENT GRANTS PROGRAM (YEP)</b>			
YEP	Youth Arts Enrichment Grants Program	Project Grants to Organizations	\$450,000
		<b>Sub-Total: FY 2012-13 Youth Arts Enrichment Program Grants:</b>	<b>\$450,000</b>
<b>YOUTH ARTS MIAMI GRANTS PROGRAM (YAM)</b>			
YAM	AIMM Higher, Inc.	2012-2013 Program Activities	\$9,340
YAM	All Florida Youth Orchestra, Inc. (a/b/a Florida Youth Orchestra)	2012-2013 Program Activities	\$21,150
YAM	Alliance for Musical Arts Productions, Inc.	2012-2013 Program Activities	\$15,325
YAM	American Children's Orchestras for Peace, Inc.	2012-2013 Program Activities	\$23,185
YAM	Ars Flores Symphony Orchestra, Inc.	2012-2013 Program Activities	\$13,517
YAM	Ballet Etudes, Inc.	2012-2013 Program Activities	\$15,769
YAM	Diva Arts & Entertainment, Inc.	2012-2013 Program Activities	\$17,854
YAM	enFAMILIA, Inc.	2012-2013 Program Activities	\$33,919
YAM	Fantasy Theatre Factory, Inc.	2012-2013 Program Activities	\$77,000
YAM	Florida Film Institute, Inc.	2012-2013 Program Activities	\$22,000
YAM	Greater Miami Youth Symphony of Dade County, Florida, Inc.	2012-2013 Program Activities	\$77,000
YAM	Miami Children's Chorus, Inc.	2012-2013 Program Activities	\$77,000
YAM	Miami Music Project, Inc.	2012-2013 Program Activities	\$38,500
YAM	Miami Stage Company/Miami Children's Theater, Inc.	2012-2013 Program Activities	\$77,000
YAM	Miami Theater Center, Inc.	2012-2013 Program Activities	\$77,000
YAM	Miami Youth Ballet, Inc.	2012-2013 Program Activities	\$16,739
YAM	One Art, Inc.	2012-2013 Program Activities	\$19,393
YAM	Quant Productions, Inc.	2012-2013 Program Activities	\$5,840
YAM	The Roxy Theatre Group, Inc.	2012-2013 Program Activities	\$77,000
YAM	The South Florida Boys Choir, Incorporated	2012-2013 Program Activities	\$19,927
YAM	South Florida Youth Symphony	2012-2013 Program Activities	\$19,676
YAM	The Thomas Armour Youth Ballet, Inc.	2012-2013 Program Activities	\$77,000
YAM	Waltenstein Musical Organization, Inc.	2012-2013 Program Activities	\$18,866
		<b>Sub-Total: FY 2012-13 Youth Arts Miami Program Grants:</b>	<b>\$850,000</b>
		<b>Total FY 2012-13 Department of Cultural Affairs / Cultural Affairs Council Grants Recommendations:</b>	<b>\$11,157,000</b>
<b>COMMUNITY-BASED CULTURAL FACILITIES DIRECT ALLOCATIONS</b>			
	Fairchild Tropical Botanic Garden, Inc.	Operational Support for Fairchild Tropical Garden	\$376,000
	Miami Children's Museum, Inc.	Operational Support for Miami Children's Museum	\$635,000
	Zoological Society of Florida, Inc.	Operational Support for Zoo Miami	\$293,000

GRANTS TO NON-PROFIT CULTURAL ORGANIZATIONS IN FY 2012-2013 THROUGH THE MIAMI-DADE COUNTY DEPARTMENT OF CULTURAL AFFAIRS

GRANTS PROGRAM	GRANTEE	PROGRAM / PROJECT	FY 2012-13 GRANT AWARD
		<i>Sub-Total: FY 2012-13 Community-Based Cultural Facilities Direct Allocations:</i>	\$1,304,000
		<b>Grand Total: FY 2012-13 Funding to Cultural Organizations through the Department of Cultural Affairs:</b>	<b>\$12,461,000</b>

**FY 2012-13 PROPOSED FUNDING AVAILABLE FOR  
COMMUNITY-BASED ORGANIZATIONS**

ORGANIZATION NAME	PROGRAM NAME	CATEGORY	FY 2011-12 Adopted Funding	FY 2012-13 Proposed Funding
Abstinence Between Strong Teens International, Inc.	Closing the Gap	Children, Youth, & Families	\$ 24,395	\$ 24,395
Action Community Center, Inc.	Transportation Services for Elderly and Handicapped	Elder Needs	\$ 39,200	\$ 39,200
Adgam, Inc.	HIV/AIDS Prevention	Health	\$ 7,438	\$ 7,438
Adgam, Inc.	Substance Abuse Prevention & Intervention	Children, Youth, & Families	\$ 11,900	\$ 11,900
Adgam, Inc.	HIV/AIDS Risk Reduction	Health	\$ 13,388	\$ 13,388
Adgam, Inc.	Family Empowerment Program	Criminal Justice	\$ 56,525	\$ 56,525
Adults Mankind Organization, Inc.	RET Resource Room	Immigrants/New Entrants	\$ 4,463	\$ 4,463
Adults Mankind Organization, Inc.	Employment and Training Program	Workforce Development	\$ 44,625	\$ 44,625
Adults Mankind Organization, Inc.	Youth and Employment Training Program	Children, Youth, & Families	\$ 163,625	\$ 163,625
Alhambra Heights Residential Force Inc.	The Challenger After School Program	Children, Youth, & Families	\$ 14,875	\$ 14,875
Allapattah Community Action, Inc.	Homebound Meals	Elder Needs	\$ 42,500	\$ 42,500
Allapattah Community Action, Inc.	Congregate Meals	Elder Needs	\$ 51,000	\$ 51,000
Alliance for Aging, Inc.	Local Funding Match	Elder Needs	\$ 167,344	\$ 167,344
Alliance for Musical Arts Productions, Inc.	Musical Arts, Theater & Tutoring-MATT Afterschool Program	Children, Youth, & Families	\$ 5,950	\$ 5,950
Alternative Programs, Inc.	Alternatives to Incarceration	Police Grants	\$ 59,500	\$ 59,500
Alternative Programs, Inc.	Youth Crime Task Force	Police Grants	\$ 175,000	\$ 175,000
Alternative Programs, Inc.	Social Services for Alternatives to Incarceration	Police Grants	\$ 416,500	\$ 416,500
American Fraternity Inc.	Social Services for the Immigration Services	Immigrants/New Entrants	\$ 15,750	\$ 15,750
American Fraternity Inc.	Immigration Services	Immigrants/New Entrants	\$ 24,238	\$ 24,238
American International Relief, Inc.	Jason and Elisha Merillus Youth Academy (Tutoring) Program	Children, Youth, & Families	\$ 8,925	\$ 8,925
American Red Cross Greater Miami & The Keys	Emergency Services	Basic Needs	\$ 148,750	\$ 148,750
Americans for Immigrant Justice	Legal Assistance for Immigrants	Immigrants/New Entrants	\$ 38,119	\$ 38,119
Amigos Together For Kids, Inc. DBA Amigos For Kids	Amigos For Kids Out of School Program	Children, Youth, & Families	\$ 52,500	\$ 52,500
Art Works For Us, Inc.	Therapeutic Dance Programming	Children, Youth, & Families	\$ 5,250	\$ 5,250
Artz-N-The Hood, Inc.	Kidz @ Play Art Education Program	Children, Youth, & Families	\$ 11,900	\$ 11,900
Aspira of Florida, Inc.	Youth Sanctuary Program	Criminal Justice	\$ 24,395	\$ 24,395
Aspira of Florida, Inc.	Parent Child Literacy Intervention Program (PCLIP)	Children, Youth, & Families	\$ 38,675	\$ 38,675
Aspira of Florida, Inc.	Crime Prevention Program	Criminal Justice	\$ 44,625	\$ 44,625
Aspira of Florida, Inc.	Stay in School Program	Children, Youth, & Families	\$ 46,113	\$ 46,113
Aspira of Florida, Inc.	Academic Support	Children, Youth, & Families	\$ 47,600	\$ 47,600
Aspira of Florida, Inc.	Neighborhood Empowerment Program	Criminal Justice	\$ 50,575	\$ 50,575
Ayuda, Inc.	Parents Now -- Parenting Support Group	Children, Youth, & Families	\$ 24,395	\$ 24,395
Ayuda, Inc.	Elderly Advocacy and Support	Elder Needs	\$ 42,500	\$ 42,500
Ayuda, Inc.	Family Empowerment Program	Criminal Justice	\$ 56,525	\$ 56,525
Barry University, Inc.	Cross Training for Providers of Special Needs	Special Needs	\$ 20,825	\$ 20,825
Barry University, Inc.	Neighborhood Technical Assistance Program	Other	\$ 29,750	\$ 29,750
Barry University, Inc.	Cross Training for Providers of Elder Services	Elder Needs	\$ 59,500	\$ 59,500
Bayview Center for Mental Health, Inc.	Food Service and Word Processing Program	Children & Adults with Disabilities	\$ 17,850	\$ 17,850
Belafonte Tacolcy Center, Inc.	FAST (Families Against Suspension Termination) and Freedom School	Children, Youth, & Families	\$ 41,965	\$ 41,965
Bertha Abess Children's Center, Inc.	With It Project	Children & Adults with Disabilities	\$ 46,410	\$ -
Best Buddies International, Inc.	Friendship Program for Adults and Youth with Dev. Disabilities	Children & Adults with Disabilities	\$ 100,100	\$ 100,100
Beta Tau Zeta Royal Association, Inc.	ROYAL After School Tutoring	Children, Youth, & Families	\$ 45,850	\$ 45,850
Better Way of Miami	Workforce Development	Workforce Development	\$ 23,414	\$ 23,414
Big Brothers Big Sisters of Greater Miami	Big Expressions Group Mentoring Program	Children, Youth, & Families	\$ 38,675	\$ 38,675
Black Door Dance Ensemble, Inc.	African Dance Workshop	Children, Youth, & Families	\$ 2,433	\$ 2,433
Borinquen Health Care Center, Inc.	The Health Connection	Health	\$ 41,125	\$ 41,125
Boys & Girls Clubs of Miami Dade, Inc.	Out-of-School Programs	Children, Youth, & Families	\$ 139,650	\$ 139,650
Bunche Park Sports & Community Club, Inc.	Sports Programmatic Support	Children, Youth, & Families	\$ 4,200	\$ 4,200
CAMACOL Loan Fund, Inc.	Micro Loan Technical Assistance	Other	\$ 14,000	\$ 14,000
Camillus House, Inc.	Homeless Prevention Case Management	Special Needs	\$ 26,775	\$ 26,775
Camillus House, Inc.	Case Management Program for Women	Special Needs	\$ 51,408	\$ 51,408
Carrfour Supporting Housing, Inc.	Rivermont House	Other	\$ 11,900	\$ 11,900
Catholic Charities of the Archdiocese of Miami, Inc.	Positive Youth Development Program	Other	\$ 13,388	\$ 13,388
Catholic Charities of the Archdiocese of Miami, Inc.	Haitian Guardian Services	Immigrants/New Entrants	\$ 17,850	\$ 17,850
Catholic Charities of the Archdiocese of Miami, Inc.	Home Visiting Program	Health	\$ 22,313	\$ 22,313
Catholic Charities of the Archdiocese of Miami, Inc.	Transitional Shelter Program for Homeless Families	Children, Youth, & Families	\$ 23,800	\$ 23,800
Catholic Charities of the Archdiocese of Miami, Inc.	Children's Access to Health Care	Children, Youth, & Families	\$ 25,823	\$ 25,823
Catholic Charities of the Archdiocese of Miami, Inc.	Infants and Toddlers Enhancement Program	Children, Youth, & Families	\$ 29,750	\$ 29,750
Catholic Charities of the Archdiocese of Miami, Inc.	South Dade Child Care Center Preschool Inclusion Enhancement Program	Children, Youth, & Families	\$ 35,700	\$ 35,700
Catholic Charities of the Archdiocese of Miami, Inc.	Haitian Family Services	Children, Youth, & Families	\$ 41,650	\$ 41,650
Catholic Charities of the Archdiocese of Miami, Inc.	Services to the Elderly	Elder Needs	\$ 165,750	\$ 165,750
Catholic Hospice, Inc.	Caregiver Support Program	Special Needs	\$ 29,750	\$ 29,750
* Center For Haitian Studies	Operational Support	Immigrants/New Entrants	\$ -	\$ 50,000
Center For Independent Living of South Florida, Inc.	TREAD-Therapeutic Recreation & Exercise for Adults w/Disabilities	Children & Adults with Disabilities	\$ 5,250	\$ 5,250
Center For Independent Living of South Florida, Inc.	On a Roll	Children & Adults with Disabilities	\$ 14,875	\$ 14,875
Center For Independent Living of South Florida, Inc.	Living Skills Training	Children & Adults with Disabilities	\$ 29,066	\$ 29,066

**FY 2012-13 PROPOSED FUNDING AVAILABLE FOR  
COMMUNITY-BASED ORGANIZATIONS**

ORGANIZATION NAME	PROGRAM NAME	CATEGORY	FY 2011-12 Adopted Funding	FY 2012-13 Proposed Funding
Center For Independent Living of South Florida, Inc.	Community Awareness	Children & Adults with Disabilities	\$ 29,750	\$ 29,750
Center For Independent Living of South Florida, Inc.	ASL Interpreter Services	Children & Adults with Disabilities	\$ 52,500	\$ 52,500
Center For Independent Living of South Florida, Inc.	Workforce Development Program	Workforce Development	\$ 192,185	\$ 192,185
Center of Information and Orientation, Inc.	Domestic Violence Prevention Program	Special Needs	\$ 6,440	\$ 6,440
Centro Mater Child Care Services, Inc.	Learn and Grow Literacy Program Centro Mater After School Tutoring Program	Children, Youth, & Families	\$ 68,425	\$ 68,425
CHARLEE of Dade County, Inc.	Court Services for Foster Children	Children, Youth, & Families	\$ 75,110	\$ 75,110
Children's Home Society of Florida	Special Needs Childcare	Children, Youth, & Families	\$ 41,650	\$ 41,650
Citizen's Crime Watch of Miami-Dade County, Inc.	Crime Prevention/Neighborhood Watch II	Police Grants	53,550.00	\$ 53,550
Citizen's Crime Watch of Miami-Dade County, Inc.	Crime Prevention/Neighborhood Watch I	Police Grants	212,500.00	\$ 212,500
Citrus Health Network, Inc.	Kiva Safe Haven	Special Needs	\$ 11,900	\$ 11,900
Citrus Health Network, Inc.	Shaman Housing	Special Needs	\$ 11,900	\$ 11,900
City of Miami	City of Miami Homeless Assistance Program	Special Needs	\$ 11,900	\$ 11,900
City of North Miami Beach	Parks and Recreation Department Sports Program	Children, Youth, & Families	\$ 11,200	\$ 11,200
City of Opa Locka	Crime Prevention Program	Criminal Justice	\$ 41,650	\$ 41,650
City of South Miami	Elderly Services - South Miami Senior Meals	Elder Needs	\$ 18,400	\$ 18,400
City of South Miami	The Afterschool House (Tutoring)	Children, Youth, & Families	\$ 26,775	\$ 26,775
City of Sweetwater	Sweetwater Meeting Needs Program II	Children, Youth, & Families	\$ 14,875	\$ 14,875
City of Sweetwater	Sweetwater Meeting Needs Program I	Children, Youth, & Families	\$ 22,400	\$ 22,400
City of Sweetwater	Elderly Services - Sweetwater Elderly Services Program	Elder Needs	\$ 52,500	\$ 52,500
Coalition of Florida Farmworkers Organization, Inc. (COFFO)	Immigration Services	Immigrants/New Entrants	\$ 29,750	\$ 29,750
Coalition of Florida Farmworkers Organization, Inc. (COFFO)	Food Recovery and Distribution	Basic Needs	\$ 29,750	\$ 29,750
Coalition of Florida Farmworkers Organization, Inc. (COFFO)	Keeping Children Smart and Safe After School Program	Children, Youth, & Families	\$ 113,050	\$ 113,050
Coconut Grove Cares Inc.	After School and Summer Camp Program	Children, Youth, & Families	\$ 14,875	\$ 14,875
Colombian American Chamber of Commerce of Greater Miami, Inc.	Trade and Commerce Economic Development Activities	Chambers	\$ 19,523	\$ 19,523
Colombian American Service Association, Inc.	Immigrants & New Entrants	Immigrants/New Entrants	\$ 35,700	\$ 35,700
Colombian American Service Association, Inc.	Domestic Violence Immigrant, Counseling, Assistance, Referral, and Education (DV ICARE)	Immigrants/New Entrants	\$ 17,850	\$ 17,850
Colombian American Service Association, Inc.	ICARE	Immigrants/New Entrants	\$ 19,688	\$ 19,688
Communities In Schools of Miami, Inc.	Arts Enrichment Program	Children, Youth, & Families	\$ 4,200	\$ 4,200
Communities In Schools of Miami, Inc.	NFL Youth Education Town Center	Children, Youth, & Families	\$ 28,263	\$ 28,263
Communities United, Inc.	Seniors First Disaster Hurricane Preparedness Program	Elder Needs	\$ 85,000	\$ 85,000
Community Coalition, Inc.	Senior Link II & Adult Employment & Training Program	Workforce Development	\$ 74,375	\$ 74,375
Community Coalition, Inc.	Senior Link	Elder Needs	\$ 87,500	\$ 87,500
Community Committee for Developmental Handicaps, d/b/a CCDH Incorporated	Therapies for Children and Adults w/ Developmental Disabilities	Children & Adults with Disabilities	\$ 46,113	\$ 46,113
Community Committee for Developmental Handicaps, d/b/a CCDH Incorporated	In-home Support	Children & Adults with Disabilities	\$ 94,427	\$ 94,427
Community Committee for Developmental Handicaps, d/b/a CCDH Incorporated	Family Support and Educational Services	Children & Adults with Disabilities	\$ 110,075	\$ 110,075
Community Service Outreach	Soccer Program	Children, Youth, & Families	\$ 14,875	\$ 14,875
Concerned African Women, Inc.	Public Awareness	Children, Youth, & Families	\$ 16,800	\$ 16,800
Concerned African Women, Inc.	New Dimensions in Community Education	Children, Youth, & Families	\$ 44,625	\$ 44,625
Concerned African Women, Inc.	Family Empowerment Program	Criminal Justice	\$ 56,525	\$ 56,525
Concerned African Women, Inc.	Improving Community Control	Criminal Justice	\$ 122,500	\$ 122,500
Contractors Resource Center, Inc.	Contractors Technical Assistance Program	Other	\$ 36,750	\$ 36,750
Coral Estates Soccer Club, Inc.	Athletic Field Preparation Program	Children, Youth, & Families	\$ 4,200	\$ 4,200
Curley's House of Style Inc.	Hope Relief Food Bank	Basic Needs	\$ 25,286	\$ 25,286
Dade County Bar Association Legal Aid Society	South Dade Domestic Violence Legal Assistance Project	Basic Needs	\$ 38,675	\$ 38,675
De Hostos Senior Center, Inc.	Elderly Services - Congregate Meals	Elder Needs	\$ 55,250	\$ 55,250
De Hostos Senior Center, Inc.	Elderly Services - Homebound Meals	Elder Needs	\$ 63,750	\$ 63,750
De Hostos Senior Center, Inc.	Elderly Services - Activity Program	Elder Needs	\$ 75,000	\$ 75,000
Deering Estate Foundation, Inc.	Nature Trail Interpretive Signage Program	Children, Youth, & Families	\$ 2,800	\$ 2,800
Dominican American National Foundation, CDC	Academic and Vocational Program	Children, Youth, & Families	\$ 10,413	\$ 10,413
Dominican American National Foundation, CDC	Neighborhood Information and Referral Services Project	Basic Needs	\$ 10,413	\$ 10,413
Dominican American National Foundation, CDC	Martial Arts/After School Program	Children, Youth, & Families	\$ 19,600	\$ 19,600
Dominican American National Foundation, CDC	Computer Training	Children, Youth, & Families	\$ 23,800	\$ 23,800
Dominican American National Foundation, CDC	Child/Parent Literacy Program	Children, Youth, & Families	\$ 24,395	\$ 24,395
Dominican American National Foundation, CDC	Family Empowerment Crime Prevention	Criminal Justice	\$ 29,750	\$ 29,750
Douglas Gardens Community Mental Health Center of Miami Beach, Inc.	Aftercare Case Management	Special Needs	\$ 15,991	\$ 15,991
Drug Free Youth in Town (DFYIT) Inc.	DFYIT Clubs	Children, Youth, & Families	\$ 126,140	\$ 126,140
Easter Seals South Florida	Extended Day and Saturday Adult Day Care	Elder Needs	\$ 72,250	\$ 72,250
Easter Seals South Florida	Stay-in-School/Crime Prevention	Criminal Justice	\$ 44,625	\$ -
Economic Development of South Miami Dade, Inc.	Economic Development Contacts	Chambers	\$ 35,923	\$ 35,923
Eleventh Judicial Circuit of Florida Administrative Office of the Courts	Juvenile Drug Court	Children, Youth, & Families	\$ 87,500	\$ 87,500

**FY 2012-13 PROPOSED FUNDING AVAILABLE FOR  
COMMUNITY-BASED ORGANIZATIONS**

ORGANIZATION NAME	PROGRAM NAME	CATEGORY	FY 2011-12 Adopted Funding	FY 2012-13 Proposed Funding
Embrace Girls Foundation, Inc., The, d/b/a Embrace Foundation	Embrace Girl Power! After School Programs and Camps.	Children, Youth, & Families	\$ 5,950	\$ 5,950
Empower U, Inc.	HIV/AIDS Risk Reduction - Children, Youth, and Families	Health	\$ 14,875	\$ 14,875
Epilepsy Foundation of Florida	Epilepsy Services	Children & Adults with Disabilities	\$ 41,650	\$ 41,650
Fairchild Tropical Botanic Garden, Inc.	Horticulture and Facilities Maintenance Support	Other	\$ 98,398	\$ 98,398
Faithful Friend Center, Inc.	Food Distribution	Basic Needs	\$ 32,725	\$ 32,725
Family and Children Faith Coalition	Web-based Directory of Faith-based Social Services	Other	\$ 8,925	\$ 8,925
Family Counseling Services of Greater Miami, Inc.	Early Intervention/Prevention Program	Special Needs	\$ 26,775	\$ 26,775
Family Counseling Services of Greater Miami, Inc.	Neighborhood Empowerment Program	Criminal Justice	\$ 44,625	\$ 44,625
* Family Impressions, Inc.	Operational Support	Children, Youth, & Families	\$ -	\$ 50,000
Family Resource Center of South Florida, Inc.	Parent Education Program	Children, Youth, & Families	\$ 41,650	\$ 41,650
* Fann Ayisyen Nan Miyami, Inc.	Family Empowerment	Children, Youth, & Families	\$ 17,850	\$ 27,850
Fann Ayisyen Nan Miyami, Inc.	Legal Clinic	Basic Needs	\$ 29,750	\$ 29,750
Fann Ayisyen Nan Miyami, Inc.	Case Management for Families with Disabilities	Children & Adults with Disabilities	\$ 35,700	\$ 35,700
Fann Ayisyen Nan Miyami, Inc.	Case Management & Special Projects/Economic Development Programs	Children, Youth, & Families	\$ 98,000	\$ 98,000
Farah's Angels Day Care Center, Inc.	Early Childhood Education & Child Care	Children, Youth, & Families	\$ 22,400	\$ 22,400
Farm Share, Inc.	Countywide Food Distribution	Basic Needs	\$ 600,000	\$ 600,000
Feeding South Florida (F.K.A. Daily Bread Food Bank, Inc.)	Food = Strength	Basic Needs	\$ 17,850	\$ 17,850
Fifty Five Years and Up, Inc.	Home-Based Enhanced Nutrition Services/Elderly Meals	Elder Needs	\$ 142,250	\$ 142,250
Florida International University	Inter-American Conference of Mayors	Other	\$ 17,063	\$ 17,063
Florida Venture Foundation	Business Resource Center Program	Children, Youth, & Families	\$ 42,000	\$ 42,000
Florida Venture Foundation	Youth Build	Children, Youth, & Families	\$ 86,275	\$ 86,275
Foster Care Review, Inc.	Citizens Review Program	Children, Youth, & Families	\$ 28,000	\$ 28,000
Foundation of Community Assistance & Leadership, Inc.	FOCAL More Park FCAT Tutoring Program	Children, Youth, & Families	\$ 11,900	\$ 11,900
Foundation of Community Assistance & Leadership, Inc.	FOCAL More Park After School Program	Children, Youth, & Families	\$ 39,375	\$ 39,375
Friends of the Drug Court, Inc.	Miami-Dade Adult Drug Court	Children, Youth, & Families	\$ 28,000	\$ 28,000
GALATA, Inc.	American Dream Achievement Project	Immigrants/New Entrants	\$ 8,925	\$ 8,925
GALATA, Inc.	Senior Center: 60+ Bridging the Gap	Elder Needs	\$ 40,000	\$ 40,000
GALATA, Inc.	Youth LEAP	Children, Youth, & Families	\$ 50,575	\$ 50,575
GALATA, Inc.	Senior Transportation	Elder Needs	\$ 55,250	\$ 55,250
GALATA, Inc.	Adult Day Care	Elder Needs	\$ 63,750	\$ 63,750
Girl Scout Council of Tropical Florida, Inc.	Decisions for Your Life	Children, Youth, & Families	\$ 35,700	\$ 35,700
Girl Scout Council of Tropical Florida, Inc.	Girls Scout Academic Afterschool Program	Children, Youth, & Families	\$ 41,650	\$ 41,650
* Glory Temple Ministries	Operational Support	Children, Youth, & Families	\$ -	\$ 25,000
Good Hope Equestrian Training Center, Inc.	Cultural Enhancement & Rec. Activities for Children with Disabilities	Children & Adults with Disabilities	\$ 23,800	\$ 23,800
Guardianship Program of Dade County, Inc.	Legal Guardianship Services	Elder Needs	\$ 26,775	\$ 26,775
Gulf Coast Jewish Family Services, Inc.	Capable and Caring Parents	Children, Youth, & Families	\$ 41,650	\$ -
* Haitian American Alliance Youth Foundation, Inc.	Community Center Program	Children, Youth, & Families	\$ 98,000	\$ 108,000
Haitian American Citizenship and Voter Education Center, Inc.	Public Service - Reaching for the American Dream	Children, Youth, & Families	\$ 11,900	\$ -
Haitian American Youth of Tomorrow, Inc.	Civic Education and Academic Engagement for a Better Tomorrow	Children, Youth, & Families	\$ 14,000	\$ 14,000
Haitian Neighborhood Center Sant La, Inc.	Financial Literacy and Tax Preparation Services	Children, Youth, & Families	\$ 11,900	\$ 11,900
Haitian Neighborhood Center Sant La, Inc.	Information and Referral Services	Basic Needs	\$ 29,750	\$ 29,750
* Haitian Neighborhood Center Sant La, Inc.	Neighborhood Resource Center	Children, Youth, & Families	\$ 72,625	\$ 82,625
Harvest Fire International Outreach Ministries, Inc.	Harvest Fire Family Enrichment Center	Children, Youth, & Families	\$ 17,850	\$ 17,850
Health Council of South Florida, Inc.	Operational Support	Other	\$ 32,539	\$ 32,539
Hearing and Speech Center of Florida, Inc.	Development Training for Childcare Workers and Parents	Children, Youth, & Families	\$ 35,700	\$ 35,700
Hearing and Speech Center of Florida, Inc.	Therapy for All	Children & Adults with Disabilities	\$ 40,520	\$ 40,520
Helping Hands Youth Center, Inc.(HHYC)	HHYC Olinda/Partners Park Recreational Activities	Children, Youth, & Families	\$ 5,950	\$ 5,950
Helping Hands Youth Center, Inc.(HHYC)	Helping Hands Youth Center Recreational Activities	Children, Youth, & Families	\$ 14,875	\$ 14,875
Helping Hands Youth Center, Inc.(HHYC)	HHYC Liberty Square Recreational Activities	Children, Youth, & Families	\$ 61,250	\$ 61,250
Helping Hands Youth Center, Inc.(HHYC)	Olinda/Partners Parks Programmatic Support	Children, Youth, & Families	\$ 61,250	\$ 61,250
Here's Help	Substance Abuse Treatment Outpatient Expansion Program	Special Needs	\$ 48,790	\$ 48,790
Hispanic Coalition Corp.	Hispanic Coalition Social Service Program - Flagler Office	Children, Youth, & Families	\$ 14,875	\$ 14,875
Hispanic Coalition Corp.	Hispanic Coalition Social Service Program - Flagler Office	Children, Youth, & Families	\$ 35,700	\$ 35,700
Hispanic Coalition Corp.	Hispanic Coalition Social Service Program Kendall Office	Children, Youth, & Families	\$ 52,500	\$ 52,500
Holy Temple Human Services, Inc.	Early Intervention/Prevention Program	Elder Needs	\$ 62,900	\$ 62,900
Homestead Soup Kitchen, Inc.	Homestead Soup Kitchen	Basic Needs	\$ 8,925	\$ 8,925
* Hosanna Community	Operational Support	Children, Youth, & Families	\$ -	\$ 20,000
Human Services Coalition of Dade, Inc.	Basic Needs-Prosperity Campaign	Basic Needs	\$ 110,075	\$ 110,075
Inner City Youth of South Florida -- Youth Athletic League, Inc.	Project Hope Initiative	Children, Youth, & Families	\$ 125,000	\$ -
Institute for Child and Family Health, Inc.	Before and After School Program	Children, Youth, & Families	\$ 40,163	\$ 40,163
Institute for Child and Family Health, Inc.	Child Abuse and Neglect Prevention Services	Children, Youth, & Families	\$ 41,650	\$ 41,650
Institute for Child and Family Health, Inc.	Infant Mental Health Training	Children, Youth, & Families	\$ 47,600	\$ 47,600
Institute for Child and Family Health, Inc.	Family Empowerment Program	Criminal Justice	\$ 56,525	\$ 56,525
Institute for Child and Family Health, Inc.	Emancipation Program	Children, Youth, & Families	\$ 72,888	\$ 72,888

**FY 2012-13 PROPOSED FUNDING AVAILABLE FOR  
COMMUNITY-BASED ORGANIZATIONS**

ORGANIZATION NAME	PROGRAM NAME	CATEGORY	FY 2011-12 Adopted Funding	FY 2012-13 Proposed Funding
Institute for Child and Family Health, Inc.	Expansion of Outpatient Treatment Services for Children	Special Needs	\$ 75,119	\$ 75,119
Institute for Child and Family Health, Inc.	Youth Gang Resource Center	Criminal Justice	\$ 87,271	\$ 87,271
Institute for Child and Family Health, Inc.	SNAP-Stop Now and Plan	Criminal Justice	\$ 105,000	\$ 105,000
Institute for Child and Family Health, Inc.	Gang Unit Exit Strategy Services Program	Criminal Justice	\$ 122,095	\$ 122,095
Institute for Child and Family Health, Inc.	Serious Habitual Offender Sibling Program (SHOSib)	Criminal Justice	\$ 154,000	\$ 154,000
Institute for Child and Family Health, Inc.	Family Intervention Services-Functional Family Therapy	Criminal Justice	\$ 474,180	\$ 474,180
Institute for Child and Family Health, Inc.	Community Based Adaptation and Socialization Program	Immigrants/New Entrants	\$ 17,107	\$ -
Institute of Black Family Life, Inc.	Family Empowerment Program	Criminal Justice	\$ 29,453	\$ 29,453
Jewish Community Services of South Florida, Inc.	Homeless Outreach for Prevention and Employment	Special Needs	\$ 13,269	\$ 13,269
Jewish Community Services of South Florida, Inc.	Homeless Outreach Program for Employment (HOPE - Match Funds)	Special Needs	\$ 16,363	\$ 16,363
Jewish Community Services of South Florida, Inc.	Information, Access and Referral Services	Basic Needs	\$ 17,850	\$ 17,850
Jewish Community Services of South Florida, Inc.	Positive Youth Development	Other	\$ 19,338	\$ 19,338
Jewish Community Services of South Florida, Inc.	Elderly Services - Home Shopping Program/Hurricane Preparedness	Elder Needs	\$ 21,250	\$ 21,250
Jewish Community Services of South Florida, Inc.	Elderly Services - Sunny Isles Senior Services Program	Elder Needs	\$ 21,250	\$ 21,250
Jewish Community Services of South Florida, Inc.	Youth Academic and Support Services	Children, Youth, & Families	\$ 41,650	\$ 41,650
Jewish Community Services of South Florida, Inc.	Elderly Services - North Miami Beach Services / Senior Crime Prevention	Elder Needs	\$ 42,500	\$ 42,500
Jewish Community Services of South Florida, Inc.	Elderly Services - Emergency Home Repair	Elder Needs	\$ 59,415	\$ 59,415
Jewish Community Services of South Florida, Inc.	Elderly Services - In-Home Services for the Frail Elderly	Elder Needs	\$ 68,000	\$ 68,000
Jewish Community Services of South Florida, Inc.	Elderly Services - Emergency Home Delivered Meals Program	Elder Needs	\$ 76,500	\$ 76,500
Jewish Community Services of South Florida, Inc.	Miami Beach Senior Center - Adult Day Care Program and Center Based Enhanced Programming	Elder Needs	\$ 144,500	\$ 144,500
Jewish Community Services of South Florida, Inc.	Family Empowerment Program	Criminal Justice	\$ 56,525	\$ -
Josefa Perez de Castano Kidney Foundation, Inc.	Nutrition for Elderly Disabled Persons (Dialysis Patients) Program	Elder Needs	\$ 61,250	\$ 61,250
Junta Patriotica Cubana, Inc.	Community Outreach Conferences	Immigrants/New Entrants	\$ 14,000	\$ 14,000
KIDCO Child Care, Inc.	School Readiness and Academic Performance Improvement Services	Children, Youth, & Families	\$ 35,700	\$ 35,700
Kristi House, Inc.	Services to Adolescent Victims of Sexual Assault & their Families	Children, Youth, & Families	\$ 43,750	\$ 87,500
Latin America Foundation/	Hispanics and Seniors Education, Training and Orientation for a Better Community	Immigrants/New Entrants	\$ 36,663	\$ 70,000
Latin Chamber of Commerce (CAMACOL)	Hemispheric Conference sponsorship	Chambers	\$ 84,601	\$ 84,601
Latinos United in Action Center, Inc.	Computer and Online Resources for Empowerment (CORE)	Children, Youth, & Families	\$ 11,900	\$ 11,900
Latinos United in Action Center, Inc.	Citizenship, Internet & Intergenerational Empowerment Services for Seniors (CITIES)	Elder Needs	\$ 21,250	\$ 21,250
Legal Services of Greater Miami, Inc.	Self-Sufficiency Legal Project	Other	\$ 34,300	\$ 34,300
Legal Services of Greater Miami, Inc.	Basic Legal Needs Project	Basic Needs	\$ 38,675	\$ 38,675
Leisure City/ Modello Optimist Club of FL, Inc.	Youth Services Program	Children, Youth, & Families	\$ 26,775	\$ 26,775
Liga Contra el Cancer, Inc. (League Against Cancer)	Liga Contra el Cancer - patients cancer care services	Health	\$ 122,500	\$ 122,500
Lighthouse of God in Christ, Inc.	Lighthouse Community Lab Center for Tutoring	Children, Youth, & Families	\$ 17,325	\$ 17,325
Little Havana Activities & Nutrition Centers of Dade County, Inc.	District 6 Home Delivered Meals	Elder Needs	\$ 21,250	\$ 21,250
Little Havana Activities & Nutrition Centers of Dade County, Inc.	Congregate Meals District 5 for Seniors	Elder Needs	\$ 21,250	\$ 21,250
Little Havana Activities & Nutrition Centers of Dade County, Inc.	Exercise, Arts and Crafts (District 5) for Seniors	Elder Needs	\$ 21,250	\$ 21,250
Little Havana Activities & Nutrition Centers of Dade County, Inc.	Center Based Care Congregate Meals for Seniors	Elder Needs	\$ 38,250	\$ 38,250
Little Havana Activities & Nutrition Centers of Dade County, Inc.	Home Delivered Meals (District 11) for Seniors	Elder Needs	\$ 63,750	\$ 63,750
Little Havana Activities & Nutrition Centers of Dade County, Inc.	Center Based Care and Recreational Service for Seniors	Elder Needs	\$ 76,500	\$ 76,500
Little Havana Activities & Nutrition Centers of Dade County, Inc.	In-Home Services Home Delivered Meals for Seniors	Elder Needs	\$ 127,500	\$ 127,500
Little Havana Activities & Nutrition Centers of Dade County, Inc.	Elder Meals (Countywide) for Seniors	Elder Needs	\$ 134,938	\$ 134,938
Little River Scholars, Inc.	Little River Scholars Structured Recreational Activities	Children, Youth, & Families	\$ 14,000	\$ 14,000
LlirraFO, Inc. (d/b/a O'Farrill Learning Center)	FCAT Tutoring	Children, Youth, & Families	\$ 34,125	\$ 34,125
LlirraFO, Inc. (d/b/a O'Farrill Learning Center)	Pre-Reading & Pre-Writing	Children, Youth, & Families	\$ 68,425	\$ 68,425
Lutheran Services Florida, Inc.	Partners For Homes	Special Needs	\$ 7,438	\$ 7,438
Lutheran Services Florida, Inc.	New Beginnings	Basic Needs	\$ 22,908	\$ 22,908
Mahogany Youth Corporation	Teach a Child To Fish	Children, Youth, & Families	\$ 2,433	\$ 2,433
Marjory Stoneman Douglas Biscayne Nature Center, Inc.	Environmental Education Awareness Partnership	Children, Youth, & Families	\$ 2,800	\$ 2,800
Masada Home Care, Inc.	Emergency Home Based Services for Frail Elderly	Elder Needs	\$ 59,500	\$ 59,500
Miami Beach Latin Chamber of Commerce, Inc.	Visitor Information Center Activities at Lincoln Road	Chambers	\$ 13,016	\$ 13,016
Miami Behavioral Health Center, Inc.	Community-based Adaptation and Socialization	Immigrants/New Entrants	\$ 16,363	\$ 16,363
Miami Behavioral Health Center, Inc.	Wrap-around Services for Individual w/Co-occurring Substance Abuse and Mental Health Disorders	Special Needs	\$ 24,453	\$ 24,453
Miami Behavioral Health Center, Inc.	Early Intervention/Prevention Services for Children	Special Needs	\$ 53,550	\$ 53,550
* Miami Children's Initiative	Operational Support	Children, Youth, & Families	\$ -	\$ 10,000
Miami Northside Optimist Club, Inc.	Purchase of Supplies and Equipment	Children, Youth, & Families	\$ 14,000	\$ 14,000
Miami Police Athletic League, Inc.	After School Matters Program	Children, Youth, & Families	\$ 9,520	\$ 9,520
Miami-Dade Community Action, Inc.	Family and Child Empowerment Family Program (FACE)	Criminal Justice	\$ 70,000	\$ 70,000
Michael Ann Russell Jewish Community Center Inc.	The Quality of Life-Senior Wellness Program 1	Elder Needs	\$ 78,050	\$ 78,050
Mujeres Unidas en Justicia, Educacion Y Reform, Inc.	Network Service for Battered and Abused Spouses	Children, Youth, & Families	\$ 149,643	\$ 149,643
Multi-Ethnic Youth Group Association, Inc.	Generation of Adolescent Leaders (GOAL)	Children, Youth, & Families	\$ 72,100	\$ 72,100



**FY 2012-13 PROPOSED FUNDING AVAILABLE FOR  
COMMUNITY-BASED ORGANIZATIONS**

ORGANIZATION NAME	PROGRAM NAME	CATEGORY	FY 2011-12 Adopted Funding	FY 2012-13 Proposed Funding
NANAY, Inc.	Special Transport	Elder Needs	\$ 28,560	\$ 28,560
NANAY, Inc.	Early Intervention	Elder Needs	\$ 48,450	\$ 48,450
NANAY, Inc.	Center-Based Services	Elder Needs	\$ 59,500	\$ 59,500
National Council of Jewish Woman, Inc. Greater Miami Section (NCJW)	NCJW Domestic Abuse Education, Prevention, and Services Program	Special Needs	\$ 7,000	\$ 7,000
Neighbors and Neighbors Association, Inc.	Technical Support to Small Businesses	Other	\$ 49,000	\$ 49,000
New Hope Development Center	Project 33147 (Youth Development, Health Education, Life Skills Training)	Children, Youth, & Families	\$ 28,000	\$ 28,000
New Hope Development Center	Youth After School Program/ Summer Camp	Children, Youth, & Families	\$ 44,625	\$ 44,625
New Horizons Community Mental Health Center, Inc.	Community Resource Team Gladeview Neighborhood Resource Network (GNRN)	Other	\$ 22,313	\$ 22,313
New Horizons Community Mental Health Center, Inc.	Project CHANCE Family Empowerment Program	Criminal Justice	\$ 56,525	\$ 56,525
New Horizons Community Mental Health Center, Inc.	Neighborhood Family Services Elderly Program	Elder Needs	\$ 72,250	\$ 72,250
Non-Violence Project USA, Inc.(NVP)	Girls Voice/Boys Voice/ NVP Club	Children, Youth, & Families	\$ 102,638	\$ 102,638
North Miami Beach Little League, Inc.	Little League Baseball Program	Children, Youth, & Families	\$ 2,975	\$ 2,975
North Miami Beach Medical Center	Opa-Locka Medical Outreach	Health	\$ 11,900	\$ 11,900
North Miami Foundation for Senior Citizens' Services, Inc.	Home Delivered Meals for Seniors	Elder Needs	\$ 12,750	\$ 12,750
North Miami Foundation for Senior Citizens' Services, Inc.	Early Intervention Services for Seniors	Elder Needs	\$ 14,875	\$ 14,875
North Miami Foundation for Senior Citizens' Services, Inc.	Emergency Meals	Elder Needs	\$ 16,000	\$ 16,000
North Miami Foundation for Senior Citizens' Services, Inc.	Health & Wellness	Elder Needs	\$ 21,250	\$ 21,250
North Miami Foundation for Senior Citizens' Services, Inc.	Transportation	Elder Needs	\$ 21,250	\$ 21,250
North Miami Foundation for Senior Citizens' Services, Inc.	In-Home Services	Elder Needs	\$ 65,450	\$ 65,450
Omega Activity Center Foundation, Inc.	Lamplighters Program	Children, Youth, & Families	\$ 28,000	\$ 28,000
One Art Inc.	After School Program	Children, Youth, & Families	\$ 26,984	\$ 26,984
Optimist Club of Ives Estates, North Miami Beach, Inc.	Children's Sports Programs	Children, Youth, & Families	\$ 2,800	\$ 2,800
Optimist Club of Suniland, Inc.	Pop Warner Football and Cheerleading Program	Children, Youth, & Families	\$ 4,505	\$ 4,505
Overtown Community Optimist Club, Inc.	Overtown Community Optimist Club Sports Program	Children, Youth, & Families	\$ 5,950	\$ 5,950
Palmetto Raiders Youth Development Club, Inc.	After School Recreational Youth Football and Cheerleading Program	Children, Youth, & Families	\$ 4,200	\$ 4,200
Palmetto Raiders Youth Development Club, Inc.	After School Recreational Youth Football and Cheerleading Program	Children, Youth, & Families	\$ 5,950	\$ 5,950
Peace Be Still Youth Development Center, Inc.	After School Program	Children, Youth, & Families	\$ 41,650	\$ 41,650
Piag Museum, Inc.	Piag Museum on Wheels- District 11	Children, Youth, & Families	\$ 14,875	\$ 14,875
Police Benevolent Association	Police Reserve Program	Police Grants	5,950.00	\$ 5,950
Psycho-Social Rehabilitation Center, Inc. (dba Fellowship House)	Mentors Career Development Program	Special Needs	\$ 24,453	\$ 24,453
Rafael Hernandez Housing and Economic Development Corp.	Commercial Facade Program	Other	\$ 5,600	\$ 5,600
Read2Succeed	The Family Literacy Program	Children, Youth, & Families	\$ 39,375	\$ 39,375
ReCapturing Vision International, Inc.	ReCapturing the Vision - Youth Life Skills Training Program	Children, Youth, & Families	\$ 47,600	\$ 47,600
Regis House, Inc.	Healthy Outreach Program	Health	\$ 21,000	\$ 21,000
Regis House, Inc.	Melrose Community Mobilization and Outreach Program	Children, Youth, & Families	\$ 44,625	\$ 44,625
Regis House, Inc.	Family Empowerment Program	Criminal Justice	\$ 56,525	\$ 56,525
Regis House, Inc.	Adolescent Outpatient Program	Children, Youth, & Families	\$ 122,500	\$ 122,500
* Restoring Hope Community Development, Inc.	Operational Support	Other	\$ -	\$ 10,000
Richmond Heights Homeowners Association, Inc.	Diminishing Hunger and Poverty for Seniors	Elder Needs	\$ 14,875	\$ 14,875
Richmond Heights Homeowners Association, Inc.	Diminishing Hunger and Poverty	Basic Needs	\$ 28,000	\$ 28,000
Richmond Perrine Optimist Club, Inc.	Youth Programs	Children, Youth, & Families	\$ 2,800	\$ 2,800
Richmond Perrine Optimist Club, Inc.	Modello South Dade Neighborhood E.P.	Children, Youth, & Families	\$ 62,733	\$ 62,733
Richmond Perrine Optimist Club, Inc.	Community Suspension Program	Children, Youth, & Families	\$ 208,587	\$ 208,587
S.T.E.P.S. in the Right Direction, Inc.	Legal Services for Immigrants and New Entrants Project	Immigrants/New Entrants	\$ 7,438	\$ 7,438
S.T.E.P.S. in the Right Direction, Inc.	Elderly Caregiver Support Project	Elder Needs	\$ 21,250	\$ 21,250
S.T.E.P.S. in the Right Direction, Inc.	Elderly Emergency Minor Home Repairs Project	Elder Needs	\$ 29,750	\$ 29,750
Sembrando Flores	HIV/AIDS Prevention and Education	Health	\$ 5,950	\$ 5,950
Senior L.I.F.T. Center, Inc.	Senior Social Services	Elder Needs	\$ 140,000	\$ 140,000
SER-Jobs for Progress, Inc.	SAMS/ Stay-In-School Counseling Program	Criminal Justice	\$ 44,625	\$ 44,625
Shake-A-Leg-Miami, Inc.	Launching Summer Dreams	Children & Adults with Disabilities	\$ 28,000	\$ 28,000
Shed Group, Inc., The	Give & Gain	Children, Youth, & Families	\$ 8,925	\$ 8,925
* Sisters and Brothers Forever, Inc.	V. Elder Needs	Elder Needs	\$ 434,000	\$ 504,000
South Florida Baseball Dreamers Corp.	Youth Baseball Program	Children, Youth, & Families	\$ 2,503	\$ 2,503
* South Florida Haitian-American Chamber of Commerce	Operational Support	Chambers	\$ -	\$ 10,000
South Florida Hispanic Chamber of Commerce, Inc.	Minority Business and Education Enhancement Program	Chambers	\$ 13,016	\$ 13,016
South Florida Puerto Rican Chamber of Commerce, Inc.	Puerto Rican Chamber Business Services/Community Office	Chambers	\$ 41,129	\$ 41,129
South Florida Youth Symphony, Inc.	Summer Music Camp for South Dade County	Children, Youth, & Families	\$ 8,925	\$ 8,925
South Miami/Coral Gables Elk Lodge #1676	GATE Program	Children, Youth, & Families	\$ 140,000	\$ 140,000
Southwest Social Services Program, Inc.	Elderly Meals & Supportive Services Program	Elder Needs	\$ 242,250	\$ 242,250
Spanish-American Basic Education and Rehabilitation, Inc. (SABER)	Academic/Vocational and Recertification of Foreign Nurses Program	Immigrants/New Entrants	\$ 12,644	\$ -
Special Olympics Florida, Inc.	Competition Events Program	Children, Youth, & Families	\$ 5,250	\$ 5,250
Spinal Cord Living-Assistance Dev., Inc.	SCLAD Resource Center for Persons with Disabilities	Children & Adults with Disabilities	\$ 66,725	\$ 66,725
St Thomas University, Inc.	Immigration Legal Assistance	Immigrants/New Entrants	\$ 47,600	\$ 47,600

**FY 2012-13 PROPOSED FUNDING AVAILABLE FOR  
COMMUNITY-BASED ORGANIZATIONS**

ORGANIZATION NAME	PROGRAM NAME	CATEGORY	FY 2011-12 Adopted Funding	FY 2012-13 Proposed Funding
St. Alban's Day Nursery, Inc.	Early Literacy (Project Literacy)	Children, Youth, & Families	\$ 20,825	\$ 20,825
St. Alban's Day Nursery, Inc.	Infants and Toddlers (Early Start)	Children, Youth, & Families	\$ 28,000	\$ 28,000
St. Agnes Community Development Corporation	After School Tutorial and Summer Camp Program	Children, Youth, & Families	\$ 52,500	\$ 52,500
Stop Hunger, Inc.	Monthly Food Program	Basic Needs	\$ 109,900	\$ 109,900
Sunrise Community, Inc.	Senior Day Services	Children & Adults with Disabilities	\$ 5,243	\$ 5,243
Sunrise Community, Inc.	Senior Day Services	Elder Needs	\$ 241,000	\$ 241,000
Sweet Vine, Inc.	Outreach and Prevention Services Program for First Time Offenders	Children, Youth, & Families	\$ 5,950	\$ 5,950
Sweet Vine, Inc.	Sweet Vine Youth Center	Children, Youth, & Families	\$ 38,675	\$ 38,675
Switchboard of Miami, Inc.	Sweetwater Neighborhood Resource Network	Special Needs	\$ 22,313	\$ 22,313
Switchboard of Miami, Inc.	Gang Hotline	Criminal Justice	\$ 23,800	\$ 23,800
Switchboard of Miami, Inc.	Project Success	Special Needs	\$ 25,883	\$ 25,883
Switchboard of Miami, Inc.	The Teen Outreach Program	Children, Youth, & Families	\$ 38,675	\$ 38,675
Switchboard of Miami, Inc.	Family Empowerment Program	Criminal Justice	\$ 56,525	\$ 56,525
Switchboard of Miami, Inc.	HELPLINE and 2-1-1	Children, Youth, & Families	\$ 59,500	\$ 59,500
Switchboard of Miami, Inc.	Seniors Never Alone	Elder Needs	\$ 280,500	\$ 280,500
Tacoloy Economic Development Corporation, Inc.	Resident Support Services for Seniors	Elder Needs	\$ 25,500	\$ 25,500
Teen Job Corps	Teen Job Corps Program	Criminal Justice	\$ 14,875	\$ -
Teen Upward Bound, Inc. (TUB)	Learning and Fitness Program	Children, Youth, & Families	\$ 28,560	\$ 28,560
The Abriendo Puertas Governing Board of East Little Havana	One Stop Community Care and Resource Center	Children, Youth, & Families	\$ 39,375	\$ 39,375
The Abriendo Puertas Governing Board of East Little Havana	Safe Space, Safe Haven	Children, Youth, & Families	\$ 44,625	\$ 44,625
The Abriendo Puertas Governing Board of East Little Havana	"Reach to Teach" After School and Summer Program	Children, Youth, & Families	\$ 53,900	\$ 53,900
The Admit Program, Inc.	South Miami-Dade Expansion	Children, Youth, & Families	\$ 44,625	\$ -
The Advocate Program, Inc./ Advocate Program, Inc.	Paid Internship	Criminal Justice	\$ 11,200	\$ 11,200
The Advocate Program, Inc./ Advocate Program, Inc.	Professional Training Institute	Workforce Development	\$ 13,834	\$ 13,834
The Advocate Program, Inc./ Advocate Program, Inc.	Juvenile Justice Program	Criminal Justice	\$ 36,890	\$ 36,890
The Advocate Program, Inc./ Advocate Program, Inc.	Elder Services - Domestic Violence Awareness	Elder Needs	\$ 76,500	\$ 76,500
The Association for Development Of the Exceptional, Inc.	Academic/Vocational Program for Adults with Disabilities.	Children & Adults with Disabilities	\$ 69,650	\$ 69,650
The Association for Retarded Citizens, South Florida, Inc.	Project Find	Children & Adults with Disabilities	\$ 23,800	\$ 23,800
The Center for Positive Connections, Inc.	HIV/AIDS Psychosocial and Prevention Education Services	Health	\$ 7,438	\$ 7,438
The Dialysis Food Foundation of South Florida	Food Recovery and Distribution Program for Kidney Dialysis Patients 3	Basic Needs	\$ 14,875	\$ 14,875
The Dialysis Food Foundation of South Florida	Food Recovery and Distribution Program for Kidney Dialysis Patients 2	Basic Needs	\$ 19,338	\$ 19,338
The Dialysis Food Foundation of South Florida	Food Recovery and Distribution Program for Kidney Dialysis Patients 1	Basic Needs	\$ 26,775	\$ 26,775
The Family Christian Association of America Inc.	Positive Youth Development - Walking Tall Program	Children, Youth, & Families	\$ 80,500	\$ 80,500
The Foundation for Democracy in Africa, Inc. (Africando)	Africando-U.S. Africa Trade and Investment Symposium	Chambers	\$ 26,031	\$ 26,031
The Greater Goulds Optimist Club	Neighborhood Empower Program	Children, Youth, & Families	\$ 29,750	\$ 29,750
The Greater Goulds Optimist Club	Reading, Resistance, and Recreation	Children, Youth, & Families	\$ 35,700	\$ 35,700
The Historic Hampton House Community Trust, Inc.	Historic Hampton House Cultural Education, Restoration, & Renovation Assistance	Other	\$ 14,000	\$ 14,000
The JPM Centre at Miami Gardens Drive, Inc.	The JPM Centre Youth After School Enrichment Tutorial Programs Training	Children, Youth, & Families	\$ 11,900	\$ 11,900
The Liberty City Optimist Club of Florida, Inc.	Liberty City Optimist Youth Programs A	Children, Youth, & Families	\$ 49,700	\$ 49,700
The Miami Foundation (f/k/a Dade Community Foundation) for Connect Familias/The Miami Foundation	Community AIDS Partnership Grant Program	Health	\$ 85,750	\$ 85,750
The Miami Lighthouse for the Blind and Visually Impaired, Inc.	Elder Services	Elder Needs	\$ 72,250	\$ 72,250
The Miami-Dade Chamber of Commerce, Inc.	Economic Development Activities	Chambers	\$ 26,031	\$ 26,031
* The New Jerusalem Community Development Corporation	Amari & Amina Rites of Passage Program	Children, Youth, & Families	\$ 29,750	\$ 34,750
The Salvation Army- A Georgia Corporation	Men's Lodge Ex-Offenders Program-Detainee Program	Basic Needs	\$ 52,500	\$ 52,500
The Village South, Inc.	Sports Programming Support	Children, Youth, & Families	\$ 2,800	\$ 2,800
The Village South, Inc.	HIV/AIDS Risk Reduction - Boys Program	Health	\$ 19,338	\$ 19,338
The Village South, Inc.	Substance Abuse Prevention and Treatment Program	Health	\$ 25,603	\$ 25,603
The Village South, Inc.	Mental Health and Substance Abuse Treatment	Health	\$ 28,709	\$ 28,709
Theodore R. Gibson Memorial Fund, Inc. (dba Thelma Gibson Health Initiative)	HIV/AIDS Outreach	Health	\$ 5,058	\$ 5,058
Theodore R. Gibson Memorial Fund, Inc. (dba Thelma Gibson Health Initiative)	Health Promotion and Disease Risk Reduction	Health	\$ 7,438	\$ 7,438
Theodore R. Gibson Memorial Fund, Inc. (dba Thelma Gibson Health Initiative)	HIV/AIDS Substance Abuse and Hepatitis C Program	Health	\$ 11,900	\$ 11,900
Thurston Group, Inc.	DMCJ Criminal Justice Program Evaluation	Criminal Justice	\$ 17,069	\$ 17,069
Thurston Group, Inc.	DMCJ Criminal Justice Program Evaluation	Criminal Justice	\$ 119,151	\$ 119,151
Thurston Group, Inc.	YCTF - Program Evaluation	Criminal Justice	\$ 178,500	\$ 178,500
Transition, Inc.	Workforce Development for Ex-offenders	Workforce Development	\$ 65,837	\$ 65,837
Trauma Resolution Center, Inc. (a.k.a. Victim Services Center, Inc.)	Trauma Resolution Program - District 5	Police Grants	\$ 5,950.00	\$ 5,950
Trauma Resolution Center, Inc. (a.k.a. Victim Services Center, Inc.)	Trauma Resolution Program -District 11	Police Grants	\$ 8,925.00	\$ 8,925
Trauma Resolution Center, Inc. (a.k.a. Victim Services Center, Inc.)	Trauma Resolution Program	Police Grants	\$ 14,875.00	\$ 14,875
Trauma Resolution Center, Inc. (a.k.a. Victim Services Center, Inc.)	Programmatic Support	Police Grants	\$ 382,500.00	\$ 382,500

**FY 2012-13 PROPOSED FUNDING AVAILABLE FOR  
COMMUNITY-BASED ORGANIZATIONS**

ORGANIZATION NAME	PROGRAM NAME	CATEGORY	FY 2011-12 Adopted Funding	FY 2012-13 Proposed Funding
Trinity Church, Inc.	North Miami Neighborhood Network / Before and After School Program and Daycare Program	Basic Needs	\$ 102,638	\$ 102,638
Tropical Everglades Visitor Association, Inc.	Tropical Everglades Visitor Center	Children, Youth, & Families	\$ 11,200	\$ 11,200
Troy Foundation Inc.(DBA Troy Community Academy)	Positive Transition Program	Children, Youth, & Families	\$ 56,525	\$ 56,525
Troy Foundation Inc.(DBA Troy Community Academy)	Positive Action Through Collaboration Family Literacy Program	Criminal Justice	\$ 24,395	\$ 24,395
UNIDAD of Miami Beach Inc.	Unidad Senior Center Services	Elder Needs	\$ 12,750	\$ 12,750
Union Positiva, Inc.	HIV/AIDS Prevention Services	Health	\$ 26,250	\$ 26,250
United Home Care Services, Inc.	Developmentally Disabled In-Home Support Services	Children & Adults with Disabilities	\$ 47,600	\$ 47,600
United Home Care Services, Inc.	Frail Elderly In-Home Support Services	Elder Needs	\$ 127,500	\$ 127,500
University of Miami	Preventing Abuse Through Responsive Parenting (PARP)	Children, Youth, & Families	\$ 35,700	\$ 35,700
University of Miami	Home Based Parenting Services: Strengthening At-risk families	Children, Youth, & Families	\$ 41,650	\$ 41,650
University of Miami	Multidimensional Family Therapy for Juvenile Offenders	Criminal Justice	\$ 140,000	\$ 140,000
University of West Florida	Miami Dade Business Seminars and Counseling	Other	\$ 14,000	\$ 14,000
Urgent, Inc.	Rites of Passage Intergenerational Project	Children, Youth, & Families	\$ 5,950	\$ 5,950
Urgent, Inc.	Children, Youth, and Families - Risk Reduction (HIV/AIDS)	Children, Youth, & Families	\$ 24,395	\$ 24,395
Voices for Children Foundation, Inc.	Child Victim/Witness Advocacy -- Guardian Ad Litem Program	Special Needs	\$ 19,338	\$ 19,338
Voices for Children Foundation, Inc.	Direct Financial Services	Children, Youth, & Families	\$ 28,000	\$ 28,000
Voices for Children Foundation, Inc.	Young Adults Transitioning from Foster Care/Juvenile Justice	Basic Needs	\$ 37,188	\$ 37,188
We Care of South Dade, Inc.	Neighborhood Resource Network	Children, Youth, & Families	\$ 75,625	\$ 75,625
WeCount!, Inc.	Community Immigrant Worker Center	Immigrants/New Entrants	\$ 49,000	\$ 49,000
West Dade Community Services, Inc.	Food Program	Basic Needs	\$ 10,562	\$ 10,562
West Dade Community Services, Inc.	Senior, Youth, and Low Income Assistance	Basic Needs	\$ 20,825	\$ 20,825
West Dade Community Services, Inc.	Basic Needs	Basic Needs	\$ 29,875	\$ 29,875
West Dade Community Services, Inc.	Low Income Assistance	Basic Needs	\$ 85,750	\$ 85,750
Women's Shelter of Hope	Living in Fear Ends (LIFE)	Basic Needs	\$ 142,625	\$ 142,625
World Literacy Crusade of Florida	Children, Youth and Families- After School and Summer Camp Program	Criminal Justice	\$ 37,100	\$ 37,100
World Literacy Crusade of Florida	Girl Power Post Arrest Diversion	Children, Youth, & Families	\$ 105,000	\$ 105,000
Young Men's Christian Association of Greater Miami, Inc.	Early childhood program	Children, Youth, & Families	\$ 11,900	\$ 11,900
Young Men's Christian Association of Greater Miami, Inc.	Out of school program	Children, Youth, & Families	\$ 44,625	\$ 44,625
Youth Co-Op, Inc.	Academic Support Services, Stay-in-School	Criminal Justice	\$ 29,750	\$ 29,750
Youth Co-Op, Inc.	SAMS / Criminal Justice - Stay-in-School	Criminal Justice	\$ 44,090	\$ 44,090
Youth Co-Op, Inc.	Match Grant Program	Immigrants/New Entrants	\$ 49,000	\$ 49,000
Youth Co-Op, Inc.	Employment Training	Workforce Development	\$ 55,125	\$ 55,125
Youth Co-Op, Inc.	Family Empowerment Program	Criminal Justice	\$ 56,525	\$ 56,525
Youth of America Incorporated	YOA Crime Prevention and After School Programs (District 3)	Criminal Justice	\$ 11,900	\$ 11,900
Youth of America Incorporated	YOA Crime Prevention and After School Programs	Children, Youth, & Families	\$ 59,500	\$ 59,500
YWCA of Greater Miami	Enhanced After School Programs	Children, Youth, & Families	\$ 32,725	\$ 32,725
YWCA of Greater Miami	SAMS / Stay In School Program	Criminal Justice	\$ 44,230	\$ 44,230
YWCA of Greater Miami	Teen Pregnancy Youth Development	Children, Youth, & Families	\$ 44,625	\$ 44,625
YWCA of Greater Miami	Neighborhood Empowerment Program (NEP)	Basic Needs	\$ 50,575	\$ 50,575
			\$ 20,166,932	\$ 20,108,659

\* Represents District Allocations

**COUNTY COMMISSION**

Comprised of 13 single-member districts that reflect the diversity and unique demographics of one of the nation's largest metropolitan areas  
 Establishes regulations, laws, and fiscal policies that best serve the interests of our community and visitors  
 Oversees essential public services, including planning and zoning and fiscal administration, and ensures citizen participation and interaction at every level of local government  
 Develops framework for promulgating legislative and policy priorities to ensure accountability, transparency, and efficiency

FY 11-12  
113

FY 12-13  
103

**OFFICE OF COMMISSION AUDITOR**

Provides independent budgetary, audit, management, revenue forecasting, and fiscal analysis of Board policies, County services, and contracts  
 Provides objective and critical analysis of proposed legislation for Board consideration  
 Conducts research and policy analysis and assists in formulating and developing legislation

FY 11-12  
23

FY 12-13  
23

**OFFICE OF THE CHAIR**

Serves as chief presiding officer of the legislative and governing body of County government  
 Establishes Committee System  
 Appoints members to all Commission Committees and Subcommittees  
 Provides guidance/leadership to Commission Committees on legislative issues of countywide significance  
 Oversees the efficient and productive assignment and scheduling of legislation  
 Oversees process for appointing members to advisory boards, authorities, trusts, and committees  
 Coordinates Commission and Committee calendars  
 Presides over all Board of County Commissioners meetings  
 Oversees Commission Sergeants-at-Arms, Support, Employee Recognition, and Protocol staffs  
 Liaises and coordinates workplan with the Office of Intergovernmental Affairs  
 Liaises and coordinates workplan with the Office of Commission Auditor

FY 11-12  
4

FY 12-13  
4

**OFFICE OF INTERGOVERNMENTAL AFFAIRS**

Coordinates the County's intergovernmental relations at the local, state, and federal levels

FY 11-12  
7

FY 12-13  
7

**AGENDA COORDINATION**

Prepares County Commission, Committee, Subcommittee, and workshop agendas and coordinates meetings

FY 11-12  
4

FY 12-13  
4

**PROTOCOL**

Coordinates all protocol and employee recognition functions for the Office of the Chair and Members of the BCC  
 Coordinates Commission protocol, dignitary visits, Consular Corps, and Intergovernmental Visits and promotes the Sister Cities program

FY 11-12  
3

FY 12-13  
3

**BCC MEDIA**

Produces bi-annual Commission e-newsletter  
 Produces, coordinates, and schedules radio and TV programs, and events  
 Prepares media kits and informational/educational materials  
 Conducts necessary research for the Office of the Chair and members of the BCC

FY 11-12  
3

FY 12-13  
3

**SUPPORT STAFF SERVICES**

Provides support staff to the Chairman and BCC  
 Coordinates with Sergeants-at-Arms to maintain decorum at meetings and security for Commissioners

FY 11-12  
13

FY 12-13  
13

**OFFICE OF COMMUNITY ADVOCACY**

Promotes the expansion and replication of Community Relations Board (CRB) initiatives at the municipal level  
 Provides administrative support to the CRB, Asian Affairs Advisory Board, Black Affairs Advisory Board, Hispanic Affairs Advisory Board, and the Commission for Women

FY 11-12  
7

FY 12-13  
8

**COMMISSION ON ETHICS AND PUBLIC TRUST**

**OFFICE OF THE EXECUTIVE DIRECTOR**

Provides administrative support to the Ethics Commission; recommends legislative and policy initiatives that promote ethical government and accountability; reviews ethics opinions recommended by the legal unit; supervises and participates in ethics training programs for public officials, employees, and candidates for elected office

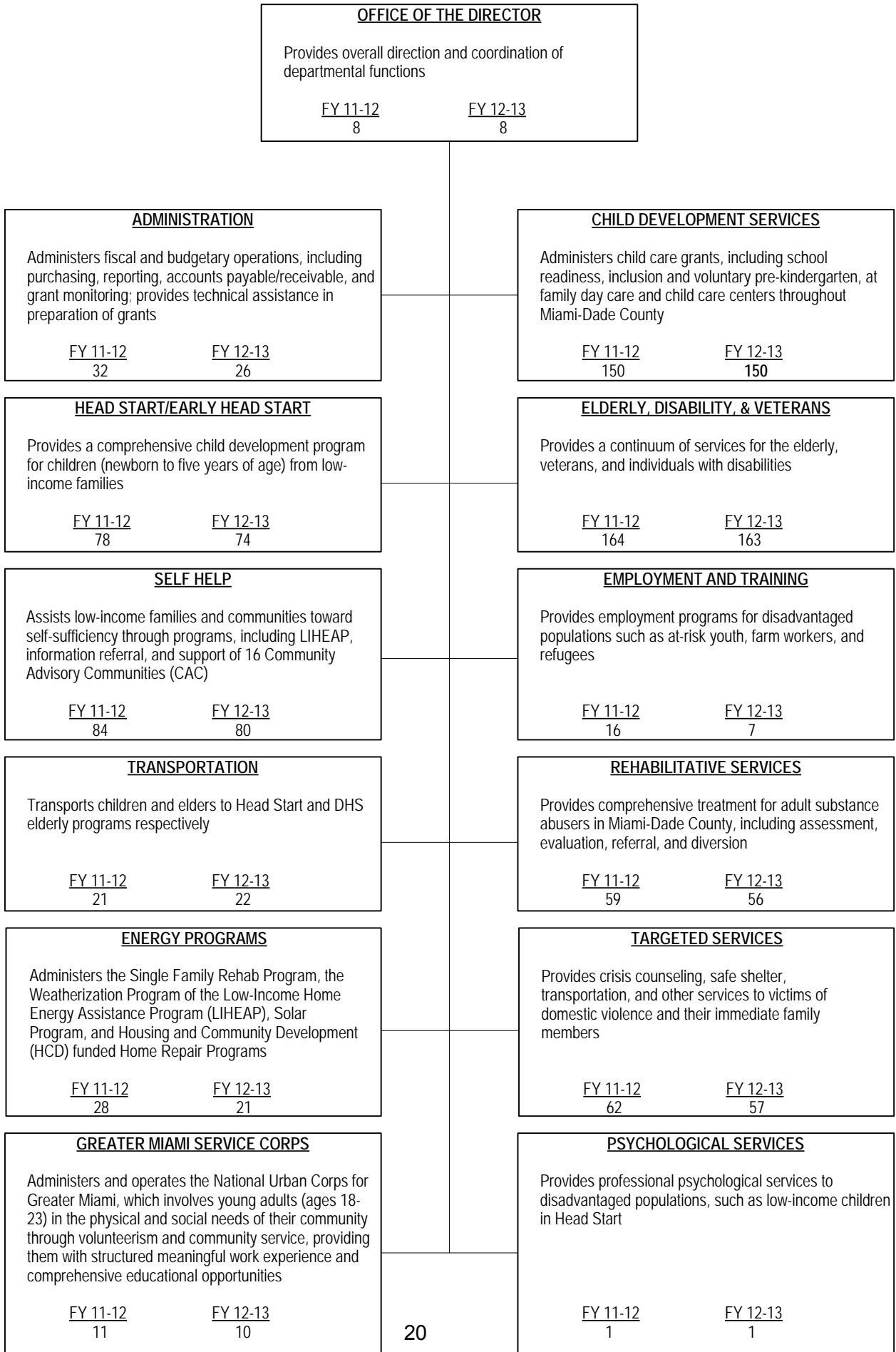
Provides training for government officials and personnel, candidates for office, students, and the business community regarding ordinances under the purview of the Ethics Commission and ethical practices in government

Responds to requests for advisory opinions and handles legal matters that may impact the operations of the Ethics Commission

Conducts investigations of official/employee misconduct in County and municipal governments

<u>FY 11-12</u>	<u>FY 12-13</u>
14	13

# COMMUNITY ACTION AND HUMAN SERVICES





**REGULATORY AND ECONOMIC RESOURCES**

**OFFICE OF THE DIRECTOR**  
 Provides overall direction for Department operations and formulates departmental policy  
 FY 11-12: 5      FY 12-13: 2

**ADMINISTRATIVE SERVICES AND FISCAL MANAGEMENT**  
 Provides administrative support for finance and budgeting, billing and collection, liens processing, human resources, management information services and procurement; conducts environmental education and outreach  
 FY 11-12: 20      FY 12-13: 17

**BUSINESS AFFAIRS**  
 Regulates various industries, including private for-hire transportation; provides education and training services to commercial growers, homeowners, families, and youths; promotes opportunities for small businesses and local workers on County contracts through enforcement of small business and workforce program goals, prompt payment policies, and responsible and living wage requirements; coordinates activities to increase international trade and promotes the County as a global gateway; coordinates film activities and permitting  
 FY 11-12: 145      FY 12-13: 142

**CONSTRUCTION, PERMITTING AND BUILDING CODE**  
 Serves as the Building Official for Miami-Dade County; issues and processes Florida Building Code and unsafe structures violations; manages and enforces local contractor licensing as part of Chapter 10 of the County Code; ensures compliance with the Florida Building Code and other applicable regulations through review of plans, inspection of construction, and enforcement activities; administers licensing of local contractors; reviews and recommends construction products and components; manages the preparation, legal review, and certification of documents related to planning, zoning and development; processes construction permit applications, inspection requests and results, and Certificates of Occupancy; directs records management, and public information; provides residential and commercial zoning code enforcement  
 FY 11-12: 311      FY 12-13: 314

**ENVIRONMENTAL RESOURCE MANAGEMENT**  
 Conducts environmental resources permitting, monitoring, and restoration; facilitates contaminated site remediation to ensure that environmental laws are followed; administers County Stormwater management activities; regulates sources of pollution and monitors air quality  
 FY 11-12: 481      FY 12-13: 408

**DEVELOPMENT SERVICES**  
 Maintains zoning data for properties in unincorporated Miami-Dade County; ensures all commercial, office, residential, industrial, and agricultural developments conform to all land use regulations and codes  
 FY 11-12: 62      FY 12-13: 64

**PLANNING**  
 Manages and administers the CDMP; prepares population projections and economic, demographic, and growth alternatives; Coordinates Sustainable Initiatives  
 FY 11-12: 36      FY 12-13: 32