

# FY 2014 - 15 Adopted Budget and Multi-Year Capital Plan

## County Attorney's Office

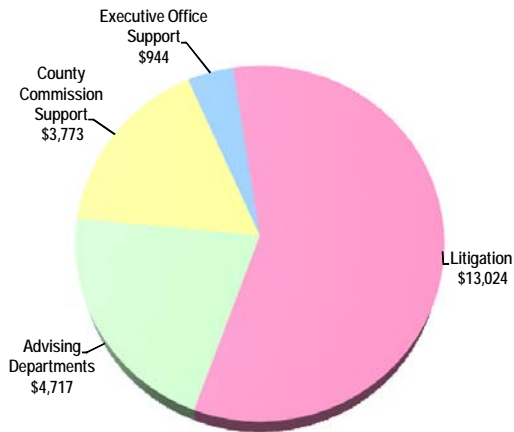
The County Attorney's Office (CAO) is established in the Miami-Dade County Home Rule Charter to "serve as legal counsel to the Board of County Commissioners (BCC) and all County departments, offices, and agencies, and perform such other legal duties as may be assigned." The County Attorney is appointed by and is directly responsible to the BCC. The CAO represents the County in all civil legal matters arising in the discharge of official duties.

As part of the Policy Formulation strategic area, the CAO is responsible for the prosecution and the defense of all lawsuits brought by or against the County; the provision of legal advice to the BCC and its committees and subcommittees, the Mayor and the Public Health Trust; the representation of the County at administrative hearings; the drafting and review of ordinances and resolutions; the approval of all contracts, bonds or written instruments as to form and legal sufficiency; and the rendering of legal opinions.

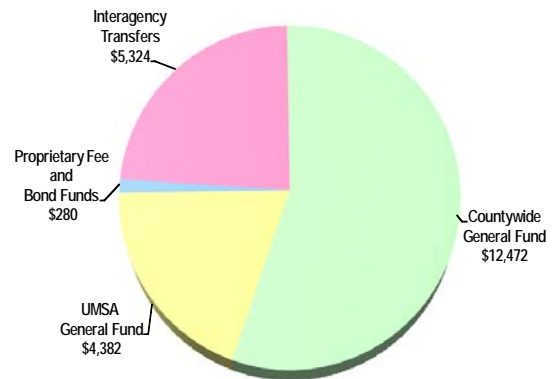
The CAO provides legal representation to the BCC, the Mayor, the Public Health Trust, the various County boards, and all County departments and agencies.

## FY 2014-15 Adopted Budget

### Expenditures by Activity (dollars in thousands)

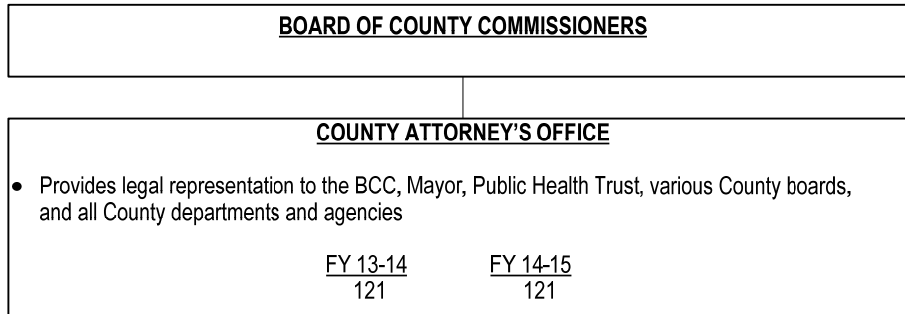


### Revenues by Source (dollars in thousands)



# FY 2014 - 15 Adopted Budget and Multi-Year Capital Plan

## TABLE OF ORGANIZATION



The Department's FY 2014-15 Table of Organization includes one part-time position totaling 0.5 FTE

## FINANCIAL SUMMARY

(dollars in thousands)	Actual FY 11-12	Actual FY 12-13	Budget FY 13-14	Adopted FY 14-15
<b>Revenue Summary</b>				
General Fund Countywide	12,087	11,409	12,395	12,472
General Fund UMSA	4,029	4,220	4,584	4,382
Reimbursements from Outside Agencies	280	283	280	280
Reimbursements from Departments	5,324	5,383	5,324	5,324
Total Revenues	21,720	21,295	22,583	22,458

<b>Operating Expenditures Summary</b>				
(dollars in thousands)	Actual FY 11-12	Actual FY 12-13	Budget FY 13-14	Adopted FY 14-15
Salary	17,847	17,540	17,645	17,507
Fringe Benefits	2,890	2,842	3,829	4,120
Court Costs	94	55	93	97
Contractual Services	0	0	0	11
Other Operating	766	703	834	584
Charges for County Services	72	104	100	88
Grants to Outside Organizations	0	0	0	0
Capital	51	51	82	51
Total Operating Expenditures	21,720	21,295	22,583	22,458

<b>Non-Operating Expenditures Summary</b>				
(dollars in thousands)	Actual FY 11-12	Actual FY 12-13	Budget FY 13-14	Adopted FY 14-15
Transfers	0	0	0	0
Distribution of Funds In Trust	0	0	0	0
Debt Service	0	0	0	0
Depreciation, Amortizations and Depletion	0	0	0	0
Reserve	0	0	0	0
Total Non-Operating Expenditures	0	0	0	0

(dollars in thousands) Expenditure By Program	Total Funding		Total Positions	
	Budget FY 13-14	Adopted FY 14-15	Budget FY 13-14	Adopted FY 14-15
<b>Strategic Area: Policy Formulation</b>				
Advising Departments	4,744	4,717	26	26
County Commission Support	3,796	3,773	21	21
Executive Office Support	949	944	5	5
Litigation	13,094	13,024	69	69
Total Operating Expenditures	22,583	22,458	121	121

## FY 2014 - 15 Adopted Budget and Multi-Year Capital Plan

---

### SELECTED ITEM HIGHLIGHTS AND DETAILS

Line Item Highlights	(dollars in thousands)				
	Actual FY 11-12	Actual FY 12-13	Budget FY 13-14	Actual FY 13-14	Budget FY 14-15
Advertising	0	0	0	0	0
Fuel	3	4	3	2	6
Overtime	0	0	0	0	0
Rent	0	0	0	0	0
Security Services	0	0	0	0	1
Temporary Services	0	0	0	0	0
Travel and Registration	49	48	49	52	40
Utilities	91	84	65	91	86

### ADDITIONAL INFORMATION

- The FY 2014-15 Adopted Budget includes \$5.604 million in reimbursements for legal services provided in excess of typical requirements from the Finance Department Bond Administration Fund (\$450,000), Internal Services Self-Insurance Trust Fund (\$3.8 million), Port of Miami (\$350,000), Public Health Trust (\$300,000), Building Better Communities General Obligation Bond Interest Proceeds (\$424,000), Children's Trust (\$150,000), and South Florida Workforce (\$130,000)

