

# FY 2014 - 15 Adopted Budget and Multi-Year Capital Plan

## Regulatory and Economic Resources

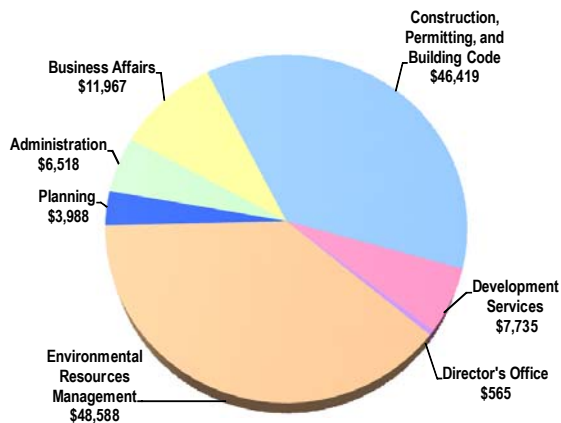
The Regulatory and Economic Resources (RER) Department enables sustainable economic development through smart regulatory strategies and business expansion initiatives. RER enforces codes and regulations established by the federal government, the State of Florida and Miami-Dade County governing the construction, alteration, and maintenance of buildings and structures within the unincorporated areas of Miami-Dade County; administers the zoning regulations for unincorporated Miami-Dade County and those municipalities that have entered into service agreements with the County; regulates activities that have a potential impact on environmental resources throughout the County; and enhances economic development within the County through land use planning, green initiatives, and a wide range of programs for business, job seekers, and consumers. RER offers the public, in most instances, a "one-stop shop" for a variety of permit requirements and economic related activities.

RER crosses two strategic areas, performing activities that are related to Neighborhood and Infrastructure as well as Economic Development. As part of the Neighborhood and Infrastructure Strategic Area, RER provides services related to contractor licensing, construction products evaluation, training, and education and certification of building code enforcement personnel countywide; reviews applications and issues building permits for the construction of new buildings and structures and for the alteration of existing ones; performs inspections as construction progresses to verify compliance with the applicable construction codes and regulations; investigates complaints, enforces the correction of building code violations related to new and existing buildings, enforces local regulations related to unsafe buildings and structures, and provides code compliance services; provides administrative and technical support to boards and panels. In addition, the Department oversees protection of our air, water, and soil resources, including protection of the Biscayne Aquifer our sole source of drinking water, responds to complaints regarding pollution, oversees clean-up of contaminated soil, protects, restores, and enhances natural areas and monitors environmental resources; manages capital programs, including beach renourishment, as well as acquisition and protection of environmentally endangered lands; prepares zoning recommendations, coordinates all concurrency management activities, reviews development plans for compliance with zoning regulations, issues certificates of use, administers impact fee programs, and provides technical support at zoning meetings of the Board of County Commissioners (BCC) and Community Zoning Appeals Board meetings.

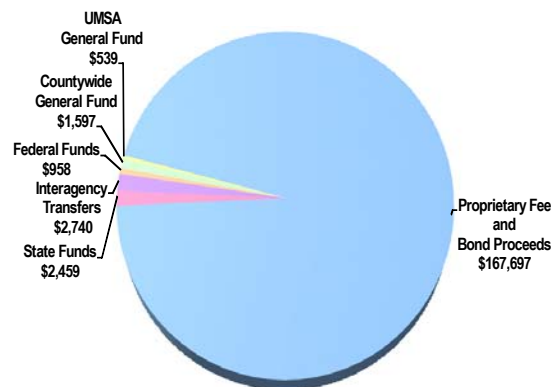
As part of its Economic Development Strategic Area, RER oversees the sustainable transformation of the County through green initiatives; administration and enforcement of growth management through the Comprehensive Development Master Plan (CDMP) and Historic Preservation ordinance; promotion of film and television related industries; economic growth through administration of local economic development programs including the Qualified Target Industry (QTI) and the Targeted Jobs Incentive Fund (TJIF) programs; and enforcement of consumer laws and licensing requirements that protect purchasers of goods and services. Other functions include international trade coordination, cooperative extension, passenger transportation regulation, and coordination with the county's agricultural industry. RER's functions are closely related to and require coordination with other County departments, including Fire Rescue, Public Works and Waste Management (PWWM), and Water and Sewer (WASD). The Department works cooperatively with local, state, and federal agencies as well as other community entities.

## FY 2014-15 Adopted Budget

**Expenditures by Activity**  
(dollars in thousands)

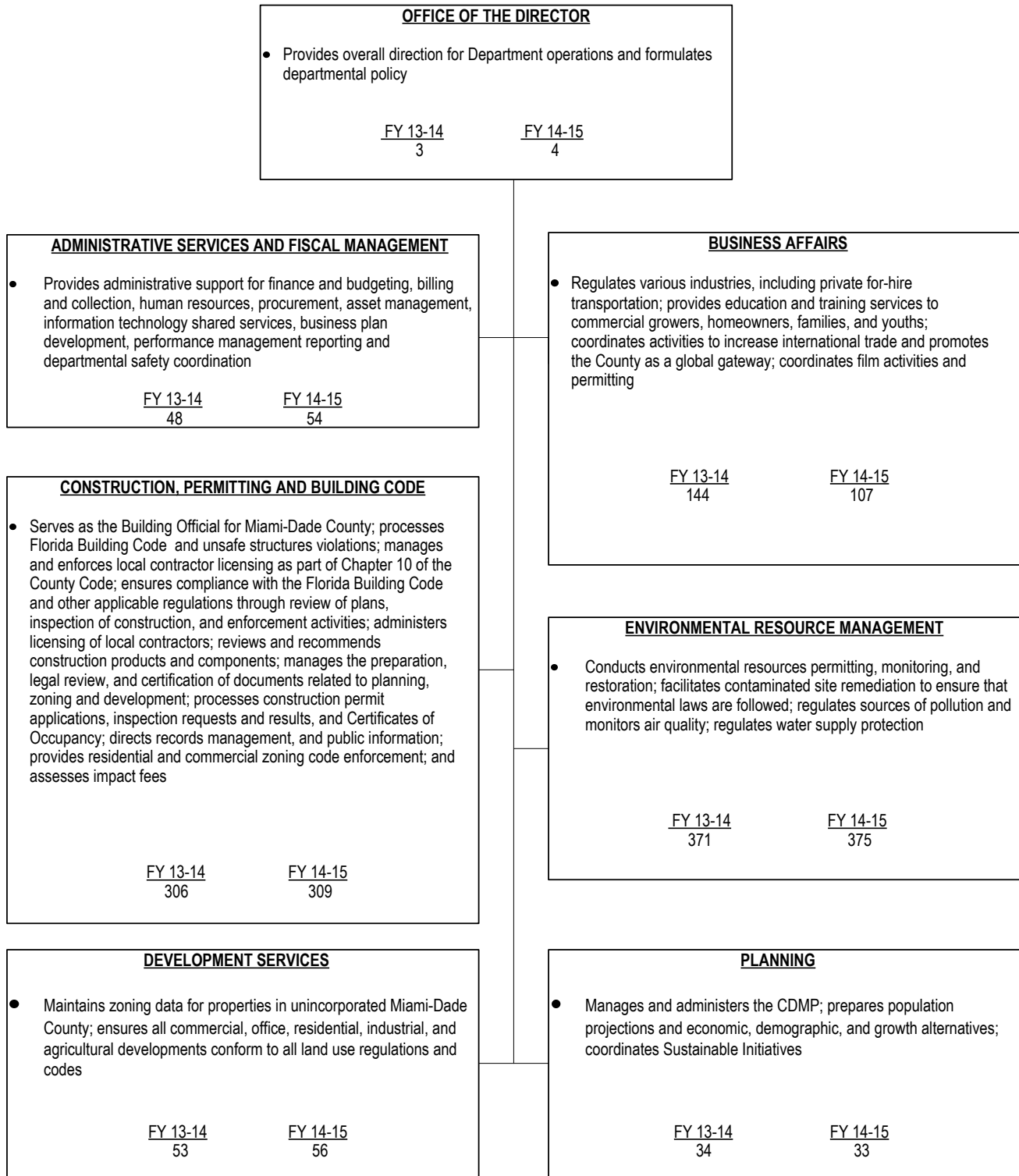


**Revenues by Source**  
(dollars in thousands)



# FY 2014 - 15 Adopted Budget and Multi-Year Capital Plan

## TABLE OF ORGANIZATION



The FY 2014-15 total number of full-time equivalent positions is 952.25

## FY 2014 - 15 Adopted Budget and Multi-Year Capital Plan

### FINANCIAL SUMMARY

| (dollars in thousands)                      | Actual<br>FY 11-12 | Actual<br>FY 12-13 | Budget<br>FY 13-14 | Adopted<br>FY 14-15 | (dollars in thousands)                                 | Total Funding      |                     | Total Positions    |                     |
|---|--------------------|--------------------|--------------------|---------------------|--|--------------------|---------------------|--------------------|---------------------|
|   |                    |                    |                    |                     | Expenditure By Program                                 | Budget<br>FY 13-14 | Adopted<br>FY 14-15 | Budget<br>FY 13-14 | Adopted<br>FY 14-15 |
| <b>Revenue Summary</b>                      |                    |                    |                    |                     | <b>Strategic Area: Neighborhood and Infrastructure</b> |                    |                     |                    |                     |
| General Fund Countywide                     | 3,134              | 3,006              | 2,872              | 1,597               | Administration   | 6,189              | 6,518               | 48                 | 54                  |
| General Fund UMSA                           | 1,185              | 1,157              | 1,263              | 539                 | Construction, Permitting, and                          | 38,512             | 46,419              | 306                | 309                 |
| Impact Fee Administration                   | 1,226              | 1,897              | 618                | 1,425               | Building Code  |                    |                     |                    |                     |
| Fees and Charges                            | 9,610              | 7,858              | 7,026              | 7,328               | Development Services                                   | 6,736              | 7,735               | 53                 | 56                  |
| Foreclosure Registry                        | 2,010              | 2,810              | 1,900              | 1,910               | Director's Office                                      | 504                | 565                 | 3                  | 4                   |
| Utility Service Fee                         | 25,141             | 25,284             | 24,175             | 24,979              | Environmental Resources                                | 44,920             | 48,588              | 371                | 375                 |
| Zoning Revenue                              | 7,319              | 7,777              | 6,768              | 7,173               | Management   |                    |                     |                    |                     |
| Auto Tag Fees                               | 1,665              | 1,711              | 1,600              | 1,600               | Planning   | 3,747              | 3,988               | 34                 | 33                  |
| Building Administrative Fees                | 283                | 488                | 308                | 269                 | <b>Strategic Area: Economic Development</b>            |                    |                     |                    |                     |
| Carryover                                   | 22,740             | 42,182             | 50,340             | 64,804              | Administration   | 231                | 0 0                 |                    | 0                   |
| Code Compliance Fees                        | 1,669              | 2,613              | 1,567              | 1,568               | Business Affairs                                       | 15,195             | 11,967              | 144                | 107                 |
| Code Fines / Lien Collections               | 7,908              | 7,728              | 7,049              | 7,422               | Director's Office                                      | 0                  | 0 0                 |                    | 0                   |
| Construction / Plat Fees                    | 0                  | 1,992              | 1,597              | 2,209               | Total Operating Expenditures                           | 116,034            | 125,780             | 959                | 938                 |
| Contract Monitoring Fees                    | 128                | 124                | 428                | 0                   |  |                    |                     |                    |                     |
| Contractor's Licensing and Enforcement Fees | 1,474              | 1,369              | 1,327              | 1,242               |  |                    |                     |                    |                     |
| Environmentally Endangered Land Fees        | 572                | 593                | 700                | 650                 |  |                    |                     |                    |                     |
| Local Business Tax Receipt                  | 471                | 471                | 471                | 471                 |  |                    |                     |                    |                     |
| Miscellaneous Revenues                      | 90                 | 245                | 200                | 197                 |  |                    |                     |                    |                     |
| Operating Permit Fee                        | 8,040              | 7,944              | 7,339              | 7,553               |  |                    |                     |                    |                     |
| Other Revenues                              | 1,451              | 846                | 1,051              | 2,013               |  |                    |                     |                    |                     |
| Permitting Trades Fees                      | 25,413             | 25,854             | 23,991             | 23,519              |  |                    |                     |                    |                     |
| Plan Review Fee                             | 8,291              | 8,753              | 7,220              | 7,885               |  |                    |                     |                    |                     |
| Planning Revenue                            | 1,054              | 935                | 640                | 690                 |  |                    |                     |                    |                     |
| Product Control Certification Fees          | 3,319              | 2,985              | 3,015              | 2,790               |  |                    |                     |                    |                     |
| State Grants                                | 4,145              | 2,891              | 3,356              | 2,459               |  |                    |                     |                    |                     |
| Federal Grants                              | 6,179              | 2,095              | 969                | 958                 |  |                    |                     |                    |                     |
| Airport Project Fees                        | 530                | 448                | 585                | 560                 |  |                    |                     |                    |                     |
| Transfer From Other Funds                   | 9,888              | 6,863              | 4,944              | 1,510               |  |                    |                     |                    |                     |
| Interagency Transfers                       | 649                | 1,210              | 1,234              | 670                 |  |                    |                     |                    |                     |
| <b>Total Revenues</b>                       | <b>155,584</b>     | <b>170,129</b>     | <b>164,553</b>     | <b>175,990</b>      |  |                    |                     |                    |                     |
| <b>Operating Expenditures Summary</b>       |                    |                    |                    |                     |  |                    |                     |                    |                     |
| Salary                                      | 65,926             | 60,581             | 64,282             | 63,739              |  |                    |                     |                    |                     |
| Fringe Benefits                             | 15,515             | 13,851             | 17,076             | 18,373              |  |                    |                     |                    |                     |
| Court Costs                                 | 13                 | 5                  | 60                 | 60                  |  |                    |                     |                    |                     |
| Contractual Services                        | 2,246              | 2,351              | 2,775              | 9,777               |  |                    |                     |                    |                     |
| Other Operating                             | 13,542             | 8,481              | 8,671              | 11,805              |  |                    |                     |                    |                     |
| Charges for County Services                 | 13,720             | 20,476             | 21,405             | 20,288              |  |                    |                     |                    |                     |
| Grants to Outside Organizations             | 177                | 430                | 430                | 430                 |  |                    |                     |                    |                     |
| Capital                                     | 1,969              | 897                | 1,335              | 1,308               |  |                    |                     |                    |                     |
| <b>Total Operating Expenditures</b>         | <b>113,108</b>     | <b>107,072</b>     | <b>116,034</b>     | <b>125,780</b>      |  |                    |                     |                    |                     |
| <b>Non-Operating Expenditures Summary</b>   |                    |                    |                    |                     |  |                    |                     |                    |                     |
| Transfers                                   | 294                | 0                  | 0                  | 0                   |  |                    |                     |                    |                     |
| Distribution of Funds In Trust              | 0                  | 0                  | 0                  | 0                   |  |                    |                     |                    |                     |
| Debt Service                                | 0                  | 0                  | 0                  | 0                   |  |                    |                     |                    |                     |
| Depreciation, Amortizations and Depletion   | 0                  | 0                  | 0                  | 0                   |  |                    |                     |                    |                     |
| Reserve                                     | 0                  | 0                  | 48,519             | 50,210              |  |                    |                     |                    |                     |
| <b>Total Non-Operating Expenditures</b>     | <b>294</b>         | <b>0</b>           | <b>48,519</b>      | <b>50,210</b>       |  |                    |                     |                    |                     |

## FY 2014 - 15 Adopted Budget and Multi-Year Capital Plan

### SELECTED ITEM HIGHLIGHTS AND DETAILS

| Line Item Highlights    | (dollars in thousands) |                    |                    |                    |                    |
|-------------------------|------------------------|--------------------|--------------------|--------------------|--------------------|
|                         | Actual<br>FY 11-12     | Actual<br>FY 12-13 | Budget<br>FY 13-14 | Actual<br>FY 13-14 | Budget<br>FY 14-15 |
| Advertising             | 269                    | 227                | 304                | 306                | 283                |
| Fuel                    | 418                    | 372                | 418                | 380                | 360                |
| Overtime                | 449                    | 440                | 520                | 428                | 525                |
| Rent                    | 9,338                  | 9,331              | 9,758              | 7,939              | 8,969              |
| Security Services       | 19                     | 16                 | 29                 | 17                 | 29                 |
| Temporary Services      | 113                    | 84                 | 167                | 269                | 177                |
| Travel and Registration | 120                    | 145                | 172                | 132                | 175                |
| Utilities               | 1,134                  | 1,055              | 1,156              | 964                | 1,113              |

#### **DIVISION: DIRECTOR'S OFFICE**

The Office of the Director is responsible for overseeing policies and procedures; providing long-term vision and overall direction and coordination for all divisions; and represents the interests of the Department at the local, national and international levels.

-

## FY 2014 - 15 Adopted Budget and Multi-Year Capital Plan

### **DIVISION: CONSTRUCTION, PERMITTING, AND BUILDING CODE**

The Construction, Permitting, and Building Code Division serves as the Building Official for Miami-Dade County, enforces the Florida Building Code (FBC) and other applicable construction regulations through the review of plans, inspection of construction, and other enforcement activities.

- Processes violations of the Florida Building Code (FBC), Chapters 8 and 10 of the County Code, unsafe structures regulations, and directs all enforcement activities
- Provides residential and commercial code enforcement to enhance the safety and aesthetics of the community through residential education and promotion of voluntary compliance
- Oversees nuisance abatement, zoning violations, and other maintenance regulations
- Provides administrative and clerical support for the Board of Rules and Appeals, the Construction Trades Qualifying Board, and the Unsafe Structures Board
- Provides technical information and assistance to 34 municipal building departments to ensure uniformity in the enforcement and interpretation of the Florida Building Code
- Reviews and makes recommendations on construction products and components to be used throughout Miami-Dade County
- Issues contractor licenses
- Receives and process construction permit applications
- Inspects structures to ensure building compliance with the FBC and issues permits
- Provides support to inspections and plans processing for building construction activities

### **Strategic Objectives - Measures**

- NI4-1: Ensure buildings are safer

| Objectives   | Measures  |    |   | FY 11-12 | FY 12-13 | FY 13-14 | FY 13-14 | FY 14-15 |
|--|---|----|---|----------|----------|----------|----------|----------|
|  |   |    |   | Actual   | Actual   | Budget   | Actual   | Target   |
| Receive and process construction permit applications and provide support to inspections and plans processing                         | Permits issued  | OP | ↔ | 45,180   | 49,527   | 40,000   | 46,524   | 45,000   |
| Ensure building compliance with the FBC and other codes through inspections, plans processing, enforcement, and educational outreach | Percentage of field inspections rejected                          | EF | ↓ | 20%      | 19%      | 25%      | 20%      | 25%      |
|  | Average business days to process residential permit applications* | EF | ↓ | 8        | 7        | 24       | 9        | 24       |
|  | Average business days to process commercial permit applications*  | EF | ↓ | 17       | 16       | 41       | 18       | 41       |

\*The Budget and Target reflect total days at each permit discipline added together. The Actuals reflect the number of days taken during simultaneous review. The measure will be adjusted next fiscal year to be exhibited properly

## FY 2014 - 15 Adopted Budget and Multi-Year Capital Plan

| Strategic Objectives - Measures   |   |    |   |          |          |          |          |          |
|---|---|----|---|----------|----------|----------|----------|----------|
| <ul style="list-style-type: none"> <li>NI4-1: Ensure buildings are safer</li> </ul> |   |    |   |          |          |          |          |          |
| Objectives  | Measures  |    |   | FY 11-12 | FY 12-13 | FY 13-14 | FY 13-14 | FY 14-15 |
|   |   |    |   | Actual   | Actual   | Budget   | Actual   | Target   |
| Improve response time for reviewing property maintenance and zoning complaints      | Average calendar days from zoning complaint to first inspection*  | EF | ↓ | 5        | 10       | 5        | 24       | 15       |
|   | Average calendar days from first zoning (Chapter 33) inspection to compliance with warning letter*              | EF | ↓ | 40       | 41       | 40       | 63       | 60       |
|   | Average calendar days from first zoning (Chapter 33) inspection to compliance with Civil Violation Notice (CVN) | EF | ↓ | 43       | 42       | 40       | 42       | 40       |
|   | Average calendar days from receipt of exterior property maintenance (Chapter 19) complaint to first inspection  | EF | ↓ | 5        | 8 5      |          | 5        | 10       |
|   | Average calendar days from property (Chapter 19) inspection to compliance with warning letter                   | EF | ↓ | 43       | 34       | 35       | 51       | 40       |

\*FY 2013-14 Actual and FY 2014-15 Target increased due to higher than expected attrition

### **DIVISION COMMENTS**

- The FY 2014-15 Adopted Budget includes funding from the Community Development Block Grant (CDBG) for code enforcement activities including zoning and exterior property maintenance (\$429,000)
- The FY 2014-15 Adopted Budget includes the addition of seven positions (\$675,000) for the Construction, Permitting and Building Code Division to meet the increased demand of building activities

## FY 2014 - 15 Adopted Budget and Multi-Year Capital Plan

### **DIVISION: ENVIRONMENTAL RESOURCES MANAGEMENT**

The Environmental Resource Management Division protects air, water, soils, and natural systems that are vital to human health and safety and provide habitat for unique plant and animal communities that occur nowhere else in the world.

- Oversees countywide environmental regulatory functions including monitoring air and water quality, endangered lands acquisition, restoration, and remediation of contaminated sites
- Manages, coordinates, and administers environmental education programs
- Enforces and regulates federal, state, and local laws to ensure prevention of costly contamination of water and air pollution, protect vulnerable drinking water supply, water infrastructure, and minimize flooding
- Investigates complaints received from the public
- Supports the Environmental Quality Control Board in review and action upon appeals or requests for variances

#### **Strategic Objectives - Measures**

- NI3-1: Maintain air quality

| Objectives  | Measures  |    |   | FY 11-12 | FY 12-13 | FY 13-14 | FY 13-14 | FY 14-15 |
|---|---|----|---|----------|----------|----------|----------|----------|
|   |   |    |   | Actual   | Actual   | Budget   | Actual   | Target   |
| Ensure timely processing of air quality inspections and permits | Percentage of State air quality permits issued on time  | EF | ↑ | 98%      | 100%     | 100%     | 100%     | 100%     |
|   | Percentage of County air quality permits issued on time | EF | ↑ | 99%      | 98%      | 100%     | 98%      | 100%     |

- NI3-3: Protect groundwater and drinking water wellfield areas

| Objectives  | Measures  |    |   | FY 11-12 | FY 12-13 | FY 13-14 | FY 13-14 | FY 14-15 |
|---|---|----|---|----------|----------|----------|----------|----------|
|   |   |    |   | Actual   | Actual   | Budget   | Actual   | Target   |
| Ensure, through efficient review of plans, that land use and development within Miami-Dade County is in accordance with the Miami-Dade County Environmental Protection Code (EPC) | Percentage of building permit plans reviewed within four to eight business days*              | EF | ↑ | 93%      | 97%      | 100%     | 86%      | 100%     |
| Facilitate prompt resolution of citizen environmental complaints  | Percentage of sanitary nuisance complaints responded to within 24 hours                       | EF | ↑ | 96%      | 95%      | 92%      | 94%      | 92%      |
| Minimize the impact of development on environmental resources   | Percentage of Resource Protection Permit applications reviewed on time (Class I - VI Permits) | EF | ↑ | 99%      | 95%      | 95%      | 99%      | 95%      |
|   | Percentage of wetland acres reviewed for unauthorized impacts                                 | EF | ↑ | 46%      | 48%      | 50%      | 50%      | 50%      |

\*Actual dropped due to higher than expected attrition

## FY 2014 - 15 Adopted Budget and Multi-Year Capital Plan

| Strategic Objectives - Measures   |  |    |   |          |          |          |          |          |
|---|--|----|---|----------|----------|----------|----------|----------|
| <ul style="list-style-type: none"> <li>NI3-1: Maintain air quality</li> </ul>   |  |    |   |          |          |          |          |          |
| Objectives  | Measures   |    |   | FY 11-12 | FY 12-13 | FY 13-14 | FY 13-14 | FY 14-15 |
|   |  |    |   | Actual   | Actual   | Budget   | Actual   | Target   |
| Conduct long-term groundwater sampling to document the environmental health and status of the Biscayne Aquifer  | Percentage of samples from Biscayne Bay surface water in compliance with County bacterial standard | OC | ↑ | 100%     | 100%     | 95%      | 100%     | 95%      |
|   | Percentage of surface water monitoring samples collected on schedule                               | EF | ↑ | 99%      | 99%      | 95%      | 99%      | 95%      |
| Conduct long-term surface and groundwater sampling to document the environmental health and status of Biscayne Bay, its tributaries, and the Biscayne Aquifer | Percentage of contaminated site rehabilitation documents reviewed on-time                          | EF | ↑ | 98%      | 96%      | 90%      | 97%      | 90%      |
|   | Percentage of wellfield monitoring samples collected on schedule                                   | EF | ↑ | 98%      | 100%     | 95%      | 99%      | 95%      |

### DIVISION COMMENTS

- ☛ The FY 2014-15 Adopted Budget includes the addition of five positions (\$329,000) in the Environmental Resources Management Division to assist with increased environmental protection and consent decree related activities
- ☛ The FY 2014-15 Adopted Budget includes budgeted reimbursements of \$560,000 from the Miami-Dade Aviation Department for personnel and operating expenses; activities include the oversight of environmental aspects of construction activities, assessment and oversight of the cleanup of contaminated sites, and inspections of permitted facilities
- ☛ In FY 2014-15, the Parks, Recreation and Open Spaces Department will continue land management for the Environmentally Endangered Lands (EEL) with funding support from the EEL Program (\$3.2 million)
- ☛ In FY 2014-15, the Environmental Resources Management Division will continue to support a sustainable environment by offering free trees to plant in the community through the Adopt-a-Tree Program funded by donations and operating funds (\$208,000)
- In FY 2014-15, the Environmental Resources Management Division will provide funding for Environment Protection and Education grant programs administered by the Office of Management and Budget's Grants Coordination Division (\$430,000)



## FY 2014 - 15 Adopted Budget and Multi-Year Capital Plan

### **DIVISION: PLANNING**

The Planning Division provides policies for sound growth management, historic preservation, urban planning, sustainability planning, and transportation development through the Comprehensive Development Master Plan (CDMP) and related activities.

- Conducts long and short range planning activities relating to the social, economic, physical development, and growth management of the County
- Administers and implements the County's CDMP and its policies
- Conducts studies promoting smart growth and sustainability principles
- Conducts demographic, economic, and geographic research
- Provides support to County departments, the Board of County Commissioners, and advisory committees and boards, and outside local agencies and governments
- Administers the Concurrency Management Program, Agricultural Practices Board and Historic Preservation Board
- Coordinates countywide historic preservation activities and implements the requirements of Miami-Dade County's Historic Preservation ordinance
- Conducts economic analysis to assist administration and BCC in evaluating policy options, and administers state and local economic incentives, including QTI (Qualified Target Industry), TJIF (County Targeted Jobs Incentive Fund), and Enterprise Zone programs

### **Strategic Objectives - Measures**

- GG6-2: Lead community sustainability efforts

| Objectives  | Measures  |    |   | FY 11-12 | FY 12-13 | FY 13-14 | FY 13-14 | FY 14-15 |
|---|---|----|---|----------|----------|----------|----------|----------|
|   |   |    |   | Actual   | Actual   | Budget   | Actual   | Target   |
| Coordinate internal County sustainability initiatives | Number of activities implemented to decrease county-wide energy consumption | OC | ↑ | N/A      | 22       | 20       | 29       | 20       |
|   | Number of GreenPrint initiatives in progress and completed                  | OC | ↑ | N/A      | 94       | 85       | 110      | 85       |

### **DIVISION COMMENTS**

- The FY 2014-15 Adopted Budget continues the Save Energy and Money Revolving Loan Fund (SEAM) established with a one-time investment from the General Fund in FY 2010-11 to fund energy and water efficiency projects; the fund will begin to repay the general fund with savings generated by the projects and will continue to be set aside in future years to fund additional projects
- *In FY 2014-15, as a part of the Department's on-going reorganization efforts, the Planning Division reflects a reduction of one position (\$63,000)*

## FY 2014 - 15 Adopted Budget and Multi-Year Capital Plan

### **DIVISION: DEVELOPMENT SERVICES**

The Development Services Division maintains zoning data and implements the zoning code for properties in unincorporated Miami-Dade County including the permitted uses.

- Reviews and evaluates zoning public hearing applications and land platting
- Prepares community-based development plans and implementing ordinances
- Provides technical assistance to developers and the public
- Provides support to various Boards and committees including the Development Impact Committee (DIC) Executive Council, Community Zoning Appeals Board, and the Board of County Commissioners

### **DIVISION COMMENTS**

- The FY 2014-15 Adopted Budget includes the addition of one position (\$63,000) in the Development Services Division to meet the demand of zoning hearing activities

### **DIVISION: ADMINISTRATION**

The Administration and Fiscal Management Division provides coordination of personnel, finance, budget, planning, procurement, information systems, and customer service functions department-wide.

- Prepares and monitors the Departments operating and capital budgets
- Coordinates the departmental business plan and performance management reports
- Oversees all revenue collection, billing, grant management, accounts payable financial reporting, procurement, capital and material inventory control, and fleet management
- Coordinates information technology shared services for all lines of functions for Department
- Manages all personnel functions including payroll, labor management, recruitment, compensation, personnel reporting, employee safety, emergency management, and performance evaluation
- Pursues opportunities for technology improvements to improve customer service, increase efficiency, and provide greater information access and exchange department wide

### **DIVISION COMMENTS**

- *The FY 2014-15 Adopted Budget includes the addition of three positions (\$226,000) in the Administration division to provide adequate fiscal oversight of revenue collections; and the reduction of one clerical position (\$43,000) as part of streamlining operations*

## FY 2014 - 15 Adopted Budget and Multi-Year Capital Plan

### **DIVISION: BUSINESS AFFAIRS**

The Business Affairs Division incorporates functions related to the cooperative extension, passenger for hire regulation, agricultural, consumer protection, economic development, international trade and film and entertainment activities.

- Administers the Florida Yards and Neighborhoods, 4-H Development and Purchase Development Rights programs
- Provides education and training in commercial crop agriculture and landscape maintenance including pesticide application, gardening and home lawn care
- Regulates the taxicab and limousine industries, chauffeurs and private/public ambulance providers, investigates consumer/passenger complaints, performs vehicle inspections, and conducts chauffeur training programs
- Licenses and regulates locksmith, towing, motor vehicle, moving, vehicle immobilization, motor vehicle title loan, water re-metering industries, registers telecommunication companies, and issues domestic partnership certificates
- Promotes international trade through various initiatives, including trade missions, local workshops, protocol support, and administration of the Sister City program
- Promotes the film and entertainment industry through various initiatives, including business attraction and industry development, policy formation efforts at the state and local levels, the issuing of film permits, and providing coordinating support between production companies and County Departments

### **Strategic Objectives - Measures**

- ED1-1: Reduce income disparity by increasing per capita income

| Objectives                                      | Measures                                 |    |   | FY 11-12 | FY 12-13 | FY 13-14 | FY 13-14 | FY 14-15 |
|---|--|----|---|----------|----------|----------|----------|----------|
|   |  |    |   | Actual   | Actual   | Budget   | Actual   | Target   |
| Identify opportunities for film industry growth | Business matchmaking meetings arranged   | OP | ↔ | 166      | 440      | 200      | 200      | 200      |
|   | Support provided during inbound missions | OP | ↔ | 9        | 12       | 6        | 6        | 6        |
|   | Film industry jobs created               | OC | ↑ | 16,128   | 13,712   | 16,000   | 11,685   | 11,200   |

- ED3-1: Attract and increase foreign direct investments and international trade from targeted countries

| Objectives                                     | Measures                                  |    |   | FY 11-12 | FY 12-13 | FY 13-14 | FY 13-14 | FY 14-15 |
|--|---|----|---|----------|----------|----------|----------|----------|
|  |   |    |   | Actual   | Actual   | Budget   | Actual   | Target   |
| Increase opportunities for international trade | Participants attending For-Hire Trainings | OP | ↔ | 3,467    | 3,756    | 3,400    | 3,876    | 3,800    |

- ED4-2: Create a business friendly environment

| Objectives                                  | Measures  |    |   | FY 11-12 | FY 12-13 | FY 13-14 | FY 13-14 | FY 14-15 |
|---|---|----|---|----------|----------|----------|----------|----------|
|   |   |    |   | Actual   | Actual   | Budget   | Actual   | Target   |
| For-hire services that meet the public need | Wait time at the For-Hire Vehicle Inspection Station (in minutes) | EF | ↓ | 19       | 12       | 18       | 17       | 18       |

### **DIVISION COMMENTS**

- The FY 2014-15 Adopted Budget includes support from the Greater Miami Convention and Visitors Bureau (\$175,000) towards economic development and film and entertainment activities
- The FY 2014-15 Adopted Budget includes \$261,000 from the Water and Sewer Department to support the Florida Yards and Neighborhoods Program and the Landscape Irrigation Water Conservation Project
- In FY 2013-14, as a part of the Department's on-going reorganization efforts, the Business Affairs Division reduced 32 positions with the transfer of all Small Business Development activities to the Internal Services Department (ISD)
- In FY 2014-15, as a part of the Department's on-going reorganization efforts, the Business Affairs Division reflects a reduction of three positions (\$386,000) related to Economic Development services

## FY 2014 - 15 Adopted Budget and Multi-Year Capital Plan

### ADDITIONAL INFORMATION

- In FY 2013-14, the Department will continue to review its staffing and organizational structure to identify opportunities for streamlining operations in the near-term and long-term; although there are position fluctuations within a division, the overall position count has not changed for the department except where noted

### CAPITAL BUDGET SUMMARY

| (dollars in thousands)                                 | PRIOR   | FY 14-15 | FY 15-16 | FY 16-17 | FY 17-18 | FY 18-19 | FY 19-20 | FUTURE | TOTAL   |
|--|---------|----------|----------|----------|----------|----------|----------|--------|---------|
| <b>Revenue</b>   |         |          |          |          |          |          |          |        |         |
| Army Corps of Engineers                                | 13,422  | 0        | 10,000   | 10,000   | 0        | 0        | 0 0      |        | 33,422  |
| Comm. Dev. Block Grant                                 | 90      | 90       | 0        | 0        | 0        | 0        | 0 0      |        | 180     |
| Florida Department of Environmental Protection         | 12,963  | 100      | 100      | 100      | 100      | 100      | 100      | 4,000  | 17,563  |
| Florida Inland Navigational District                   | 500     | 200      | 0        | 0        | 0        | 0        | 0 0      |        | 700     |
| State Beach Erosion Control Funds                      | 11,659  | 400      | 5,000    | 5,000    | 0        | 0        | 0 0      |        | 22,059  |
| Biscayne Bay Envir. Trust Fund                         | 1,250   | 1,250    | 0        | 0        | 0        | 0        | 0 0      |        | 2,500   |
| BBC GOB Financing                                      | 0       | 7,233    | 6,553    | 0        | 0        | 0        | 0 0      |        | 13,786  |
| BBC GOB Series 2005A                                   | 25,111  | 0        | 0        | 0        | 0        | 0        | 0 0      |        | 25,111  |
| BBC GOB Series 2008B                                   | 9,596   | 0        | 0        | 0        | 0        | 0        | 0 0      |        | 9,596   |
| BBC GOB Series 2008B-1                                 | 1,981   | 0        | 0        | 0        | 0        | 0        | 0 0      |        | 1,981   |
| BBC GOB Series 2011A                                   | 4,326   | 0        | 0        | 0        | 0        | 0        | 0 0      |        | 4,326   |
| BBC GOB Series 2013A                                   | 2,051   | 0        | 0        | 0        | 0        | 0        | 0 0      |        | 2,051   |
| BBC GOB Series 2014A                                   | 649     | 0        | 0        | 0        | 0        | 0        | 0 0      |        | 649     |
| Capital Outlay Reserve                                 | 0       | 1,010    | 0        | 0        | 0        | 0        | 0 0      |        | 1,010   |
| Departmental Trust Funds                               | 20,202  | 1,500    | 0        | 0        | 0        | 0        | 0        | 2,000  | 23,702  |
| Endangered Lands Voted Millage                         | 91,751  | 0        | 0        | 0        | 0        | 0        | 0 0      |        | 91,751  |
| Interest Earnings                                      | 45,878  | 200      | 200      | 200      | 200      | 200      | 200      | 6,000  | 53,078  |
| Total:   | 241,429 | 11,983   | 21,853   | 15,300   | 300      | 300      | 300      | 12,000 | 303,465 |
| <b>Expenditures</b>                                    |         |          |          |          |          |          |          |        |         |
| <b>Strategic Area: Neighborhood and Infrastructure</b> |         |          |          |          |          |          |          |        |         |
| Beach Projects   | 41,901  | 1,080    | 15,000   | 15,000   | 0        | 0        | 0 0      |        | 72,981  |
| Environmental Projects                                 | 1,750   | 1,450    | 0        | 0        | 0        | 0        | 0 0      |        | 3,200   |
| Environmentally Endangered Lands Projects              | 153,964 | 11,903   | 10,203   | 3,900    | 3,850    | 3,350    | 3,350    | 35,574 | 226,094 |
| Nuisance Control                                       | 0       | 1,010    | 0        | 0        | 0        | 0        | 0 0      |        | 1,010   |
| <b>Strategic Area: Recreation And Culture</b>          |         |          |          |          |          |          |          |        |         |
| Historic Preservation                                  | 90      | 90       | 0        | 0        | 0        | 0        | 0 0      |        | 180     |
| Total:   | 197,705 | 15,533   | 25,203   | 18,900   | 3,850    | 3,350    | 3,350    | 35,574 | 303,465 |

### CAPITAL HIGHLIGHTS AND OPERATIONAL IMPACTS

- The Department's FY 2014-15 Adopted Budget and Multi-year Capital Plan includes the continuation of unsafe structures inspections and demolitions funded from the Capital Outlay Reserve (COR) (\$800,000)
- In FY 2014-15, unsafe structures board-up will continue with funding from the COR to board-up abandoned buildings that facilitate potential criminal activity (\$200,000); the Department will continue to contract board-up services with Greater Miami Service Corps
- In FY 2014-15, the Department will ensure that environmentally endangered lands are protected and continue to thrive as native habitats through the Environmentally Endangered Lands (EEL) Program by purchasing land (\$8.053 million), planning and designing native habitats (\$650,000), and maintaining land within the EEL Program (\$3.2 million); funding will be provided from Building Better Communities General Obligation proceeds (\$6.553 million), EEL voted millage (\$2.3 million), interest earnings (\$1.45 million), departmental trust funds (\$1.5 million), and state grants (\$100,000)

## FY 2014 - 15 Adopted Budget and Multi-Year Capital Plan

- In FY 2014-15, the Department will maintain and improve beaches, which will enhance quality of life and increase tourism through the Miami-Dade County Beach Erosion and Renourishment Program (\$1.08 million), funded from State Beach Erosion Control Funds (\$400,000) and Building Better Communities General Obligation proceeds (\$680,000)
- In FY 2014-15, the Department will continue restoring and stabilizing the wetlands, shoreline, and islands in and adjacent to Biscayne Bay and its tributaries (\$1.45 million), funded from the Biscayne Bay Environmental Trust Fund (\$1.25 million) and Florida Inland Navigational District grant proceeds (\$200,000)

### **FUNDED CAPITAL PROJECTS**

(dollars in thousands)

#### **HISTORIC PRESERVATION FOR CDBG ELIGIBLE PROJECTS**

**PROJECT #: 434340**



DESCRIPTION: Restore local and national designated historic properties including Cauley Square, Minderman House, and the McFarlane Houses  
 LOCATION: Various Sites  
 Throughout Miami-Dade County

District Located: Countywide  
 District(s) Served: Countywide

| REVENUE SCHEDULE:          | PRIOR     | 2014-15   | 2015-16  | 2016-17  | 2017-18  | 2018-19  | 2019-20  | FUTURE   | TOTAL      |
|----------------------------|-----------|-----------|----------|----------|----------|----------|----------|----------|------------|
| Comm. Dev. Block Grant     | 90        | 90        | 0        | 0        | 0        | 0        | 0        | 0        | 180        |
| <b>TOTAL REVENUES:</b>     | <b>90</b> | <b>90</b> | <b>0</b> | <b>0</b> | <b>0</b> | <b>0</b> | <b>0</b> | <b>0</b> | <b>180</b> |
| EXPENDITURE SCHEDULE:      | PRIOR     | 2014-15   | 2015-16  | 2016-17  | 2017-18  | 2018-19  | 2019-20  | FUTURE   | TOTAL      |
| Construction               | 90        | 90        | 0        | 0        | 0        | 0        | 0        | 0        | 180        |
| <b>TOTAL EXPENDITURES:</b> | <b>90</b> | <b>90</b> | <b>0</b> | <b>0</b> | <b>0</b> | <b>0</b> | <b>0</b> | <b>0</b> | <b>180</b> |

#### **MIAMI-DADE COUNTY BEACH EROSION AND RENOURISHMENT**

**PROJECT #: 552590**



DESCRIPTION: Complete beach renourishment projects for eroded portions of Miami-Dade County beaches in cooperation with the U.S. Army Corps of Engineers  
 LOCATION: Miami-Dade County Beaches  
 Various Sites

District Located: 4, 5  
 District(s) Served: Countywide

| REVENUE SCHEDULE:                 | PRIOR         | 2014-15      | 2015-16       | 2016-17       | 2017-18  | 2018-19  | 2019-20  | FUTURE   | TOTAL         |
|-----------------------------------|---------------|--------------|---------------|---------------|----------|----------|----------|----------|---------------|
| Army Corps of Engineers           | 13,422        | 0            | 10,000        | 10,000        | 0        | 0        | 0        | 0        | 33,422        |
| State Beach Erosion Control Funds | 11,659        | 400          | 5,000         | 5,000         | 0        | 0        | 0        | 0        | 22,059        |
| BBC GOB Financing                 | 0             | 680          | 0             | 0             | 0        | 0        | 0        | 0        | 680           |
| BBC GOB Series 2005A              | 5,982         | 0            | 0             | 0             | 0        | 0        | 0        | 0        | 5,982         |
| BBC GOB Series 2008B              | 1,876         | 0            | 0             | 0             | 0        | 0        | 0        | 0        | 1,876         |
| BBC GOB Series 2008B-1            | 1,936         | 0            | 0             | 0             | 0        | 0        | 0        | 0        | 1,936         |
| BBC GOB Series 2011A              | 4,326         | 0            | 0             | 0             | 0        | 0        | 0        | 0        | 4,326         |
| BBC GOB Series 2013A              | 2,051         | 0            | 0             | 0             | 0        | 0        | 0        | 0        | 2,051         |
| BBC GOB Series 2014A              | 649           | 0            | 0             | 0             | 0        | 0        | 0        | 0        | 649           |
| <b>TOTAL REVENUES:</b>            | <b>41,901</b> | <b>1,080</b> | <b>15,000</b> | <b>15,000</b> | <b>0</b> | <b>0</b> | <b>0</b> | <b>0</b> | <b>72,981</b> |
| EXPENDITURE SCHEDULE:             | PRIOR         | 2014-15      | 2015-16       | 2016-17       | 2017-18  | 2018-19  | 2019-20  | FUTURE   | TOTAL         |
| Construction                      | 41,901        | 1,080        | 15,000        | 15,000        | 0        | 0        | 0        | 0        | 72,981        |
| <b>TOTAL EXPENDITURES:</b>        | <b>41,901</b> | <b>1,080</b> | <b>15,000</b> | <b>15,000</b> | <b>0</b> | <b>0</b> | <b>0</b> | <b>0</b> | <b>72,981</b> |

## FY 2014 - 15 Adopted Budget and Multi-Year Capital Plan

### ABANDONED VEHICLE REMOVAL IN THE UNINCORPORATED MUNICIPAL SERVICE AREA

**PROJECT #: 1003970**



DESCRIPTION: Remove abandoned vehicles from private and public properties  
 LOCATION: Unincorporated Miami-Dade County      District Located: Unincorporated Municipal Service Area  
 Unincorporated Miami-Dade County      District(s) Served: Unincorporated Municipal Service Area

| REVENUE SCHEDULE:          | PRIOR    | 2014-15   | 2015-16  | 2016-17  | 2017-18  | 2018-19  | 2019-20  | FUTURE   | TOTAL     |
|----------------------------|----------|-----------|----------|----------|----------|----------|----------|----------|-----------|
| Capital Outlay Reserve     | 0        | 10        | 0        | 0        | 0        | 0        | 0        | 0        | 10        |
| <b>TOTAL REVENUES:</b>     | <b>0</b> | <b>10</b> | <b>0</b> | <b>0</b> | <b>0</b> | <b>0</b> | <b>0</b> | <b>0</b> | <b>10</b> |
| EXPENDITURE SCHEDULE:      | PRIOR    | 2014-15   | 2015-16  | 2016-17  | 2017-18  | 2018-19  | 2019-20  | FUTURE   | TOTAL     |
| Project Administration     | 0        | 10        | 0        | 0        | 0        | 0        | 0        | 0        | 10        |
| <b>TOTAL EXPENDITURES:</b> | <b>0</b> | <b>10</b> | <b>0</b> | <b>0</b> | <b>0</b> | <b>0</b> | <b>0</b> | <b>0</b> | <b>10</b> |

### UNSAFE STRUCTURES BOARD-UP

**PROJECT #: 1008920**



DESCRIPTION: Brick-up abandoned buildings that facilitate unsafe environments  
 LOCATION: Unincorporated Miami-Dade County      District Located: Unincorporated Municipal Service Area  
 Unincorporated Miami-Dade County      District(s) Served: Unincorporated Municipal Service Area

| REVENUE SCHEDULE:          | PRIOR    | 2014-15    | 2015-16  | 2016-17  | 2017-18  | 2018-19  | 2019-20  | FUTURE   | TOTAL      |
|----------------------------|----------|------------|----------|----------|----------|----------|----------|----------|------------|
| Capital Outlay Reserve     | 0        | 200        | 0        | 0        | 0        | 0        | 0        | 0        | 200        |
| <b>TOTAL REVENUES:</b>     | <b>0</b> | <b>200</b> | <b>0</b> | <b>0</b> | <b>0</b> | <b>0</b> | <b>0</b> | <b>0</b> | <b>200</b> |
| EXPENDITURE SCHEDULE:      | PRIOR    | 2014-15    | 2015-16  | 2016-17  | 2017-18  | 2018-19  | 2019-20  | FUTURE   | TOTAL      |
| Construction Management    | 0        | 200        | 0        | 0        | 0        | 0        | 0        | 0        | 200        |
| <b>TOTAL EXPENDITURES:</b> | <b>0</b> | <b>200</b> | <b>0</b> | <b>0</b> | <b>0</b> | <b>0</b> | <b>0</b> | <b>0</b> | <b>200</b> |

### ENVIRONMENTALLY ENDANGERED LANDS PROGRAM

**PROJECT #: 5555621**



DESCRIPTION: Acquire and manage environmentally sensitive and endangered lands  
 LOCATION: Various Sites      District Located: Countywide  
 Various Sites      District(s) Served: Countywide

| REVENUE SCHEDULE:                              | PRIOR          | 2014-15       | 2015-16       | 2016-17      | 2017-18      | 2018-19      | 2019-20      | FUTURE        | TOTAL          |
|--|----------------|---------------|---------------|--------------|--------------|--------------|--------------|---------------|----------------|
| Florida Department of Environmental Protection | 12,963         | 100           | 100           | 100          | 100          | 100          | 100          | 4,000         | 17,563         |
| BBC GOB Financing                              | 0              | 6,553         | 6,553         | 0            | 0            | 0            | 0            | 0             | 13,106         |
| BBC GOB Series 2005A                           | 19,129         | 0             | 0             | 0            | 0            | 0            | 0            | 0             | 19,129         |
| BBC GOB Series 2008B                           | 7,720          | 0             | 0             | 0            | 0            | 0            | 0            | 0             | 7,720          |
| BBC GOB Series 2008B-1                         | 45             | 0             | 0             | 0            | 0            | 0            | 0            | 0             | 45             |
| Departmental Trust Funds                       | 20,202         | 1,500         | 0             | 0            | 0            | 0            | 0            | 2,000         | 23,702         |
| Endangered Lands Voted Millage                 | 91,751         | 0             | 0             | 0            | 0            | 0            | 0            | 0             | 91,751         |
| Interest Earnings                              | 45,878         | 200           | 200           | 200          | 200          | 200          | 200          | 6,000         | 53,078         |
| <b>TOTAL REVENUES:</b>                         | <b>197,688</b> | <b>8,353</b>  | <b>6,853</b>  | <b>300</b>   | <b>300</b>   | <b>300</b>   | <b>300</b>   | <b>12,000</b> | <b>226,094</b> |
| EXPENDITURE SCHEDULE:                          | PRIOR          | 2014-15       | 2015-16       | 2016-17      | 2017-18      | 2018-19      | 2019-20      | FUTURE        | TOTAL          |
| Land/Building Acquisition                      | 100,017        | 8,053         | 6,553         | 750          | 750          | 750          | 750          | 13,000        | 130,623        |
| Planning and Design                            | 13,854         | 650           | 650           | 650          | 600          | 600          | 600          | 9,000         | 26,604         |
| Capital Maintenance                            | 40,093         | 3,200         | 3,000         | 2,500        | 2,500        | 2,000        | 2,000        | 13,574        | 68,867         |
| <b>TOTAL EXPENDITURES:</b>                     | <b>153,964</b> | <b>11,903</b> | <b>10,203</b> | <b>3,900</b> | <b>3,850</b> | <b>3,350</b> | <b>3,350</b> | <b>35,574</b> | <b>226,094</b> |

## FY 2014 - 15 Adopted Budget and Multi-Year Capital Plan

### BISCAYNE BAY RESTORATION AND SHORELINE STABILIZATION

PROJECT #: 5555691

DESCRIPTION: Restore, enhance, and stabilize wetlands, shoreline, and islands in and adjacent to Biscayne Bay and its tributaries  
 LOCATION: Biscayne Bay and Tributaries District Located: 4, 5, 7, 8  
 Various Sites District(s) Served: 5, 7, 8

| REVENUE SCHEDULE:                    | PRIOR        | 2014-15      | 2015-16  | 2016-17  | 2017-18  | 2018-19  | 2019-20  | FUTURE   | TOTAL        |
|--------------------------------------|--------------|--------------|----------|----------|----------|----------|----------|----------|--------------|
| Florida Inland Navigational District | 500          | 200          | 0        | 0        | 0        | 0        | 0        | 0        | 700          |
| Biscayne Bay Envir. Trust Fund       | 1,250        | 1,250        | 0        | 0        | 0        | 0        | 0        | 0        | 2,500        |
| <b>TOTAL REVENUES:</b>               | <b>1,750</b> | <b>1,450</b> | <b>0</b> | <b>0</b> | <b>0</b> | <b>0</b> | <b>0</b> | <b>0</b> | <b>3,200</b> |
| EXPENDITURE SCHEDULE:                | PRIOR        | 2014-15      | 2015-16  | 2016-17  | 2017-18  | 2018-19  | 2019-20  | FUTURE   | TOTAL        |
| Construction                         | 1,750        | 1,450        | 0        | 0        | 0        | 0        | 0        | 0        | 3,200        |
| <b>TOTAL EXPENDITURES:</b>           | <b>1,750</b> | <b>1,450</b> | <b>0</b> | <b>0</b> | <b>0</b> | <b>0</b> | <b>0</b> | <b>0</b> | <b>3,200</b> |

### UNSAFE STRUCTURES DEMOLITION

PROJECT #: 10022210

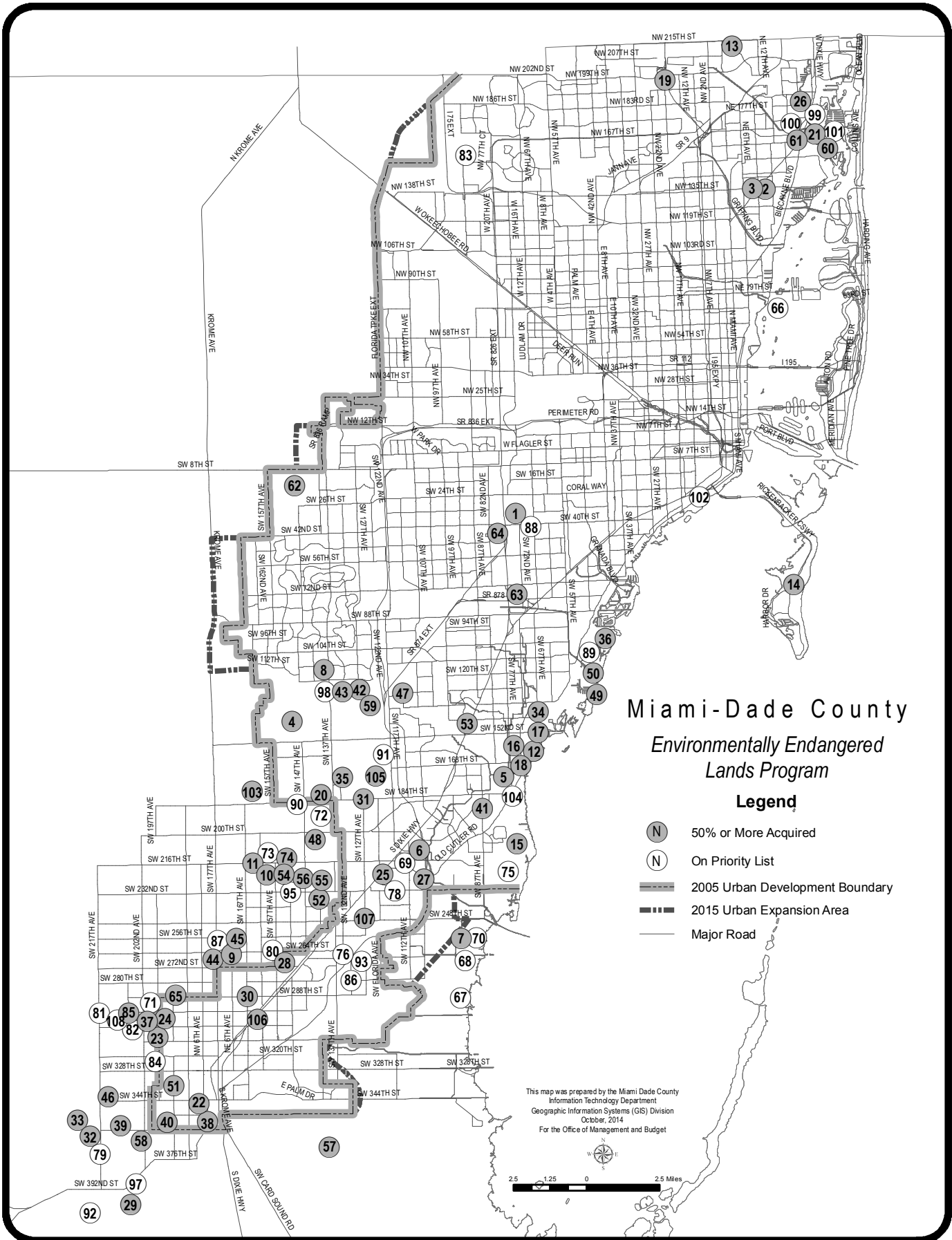
DESCRIPTION: Demolish abandoned buildings that create physical and health threats to the community  
 LOCATION: Unincorporated Miami-Dade County District Located: Unincorporated Municipal Service Area  
 Unincorporated Miami-Dade County District(s) Served: Unincorporated Municipal Service Area

| REVENUE SCHEDULE:          | PRIOR    | 2014-15    | 2015-16  | 2016-17  | 2017-18  | 2018-19  | 2019-20  | FUTURE   | TOTAL      |
|----------------------------|----------|------------|----------|----------|----------|----------|----------|----------|------------|
| Capital Outlay Reserve     | 0        | 800        | 0        | 0        | 0        | 0        | 0        | 0        | 800        |
| <b>TOTAL REVENUES:</b>     | <b>0</b> | <b>800</b> | <b>0</b> | <b>0</b> | <b>0</b> | <b>0</b> | <b>0</b> | <b>0</b> | <b>800</b> |
| EXPENDITURE SCHEDULE:      | PRIOR    | 2014-15    | 2015-16  | 2016-17  | 2017-18  | 2018-19  | 2019-20  | FUTURE   | TOTAL      |
| Construction Management    | 0        | 800        | 0        | 0        | 0        | 0        | 0        | 0        | 800        |
| <b>TOTAL EXPENDITURES:</b> | <b>0</b> | <b>800</b> | <b>0</b> | <b>0</b> | <b>0</b> | <b>0</b> | <b>0</b> | <b>0</b> | <b>800</b> |

### UNFUNDED CAPITAL PROJECTS

| PROJECT NAME                                      | LOCATION                  | (dollars in thousands)<br>ESTIMATED PROJECT COST |
|---|---------------------------|--|
| MIAMI-DADE COUNTY BEACH EROSION AND RENOURISHMENT | Miami-Dade County Beaches | 20,000   |
| <b>UNFUNDED TOTAL</b>                             |                           | <b>20,000</b>                                    |

# FY 2014-15 Adopted Budget and Multi-Year Capital Plan





# FY 2014-15 Adopted Budget and Multi-Year Capital Plan

## Acquisition Projects: Environmentally Endangered Lands Program

| Acquired Projects |                                       |                           |                     |       |          | Unacquired Projects        |  |                           |                     |        |          |
|-------------------|---------------------------------------|---------------------------|---------------------|-------|----------|----------------------------|--|---------------------------|---------------------|--------|----------|
| No                | Site Name                             | Location                  | Type                | Acres | Priority | No                         | Site Name                              | Location                  | Type                | Acres  | Priority |
| 1                 | A. D. Barnes Park                     | 3775 SW 74 Ave            | Natural Areas       | 24    | ♦        | 55                         | Silver Palm Groves                     | SW 232 St & SW 142 Ave    | Rockridge Pinelands | 20.4   | ♦        |
| 2                 | Arch Creek Addition                   | NE 135 St & US 1          | Buffer              | 1.2   | ♦        | 56                         | Silver Palm Hammock                    | SW 228 St & SW 149 Ave    | Tropical Hammocks   | 10     | ♦        |
| 3                 | Arch Creek Park                       | NE 135 St & US-1          | Natural Areas       | 8.5   | ♦        | 57                         | South Dade Wetlands                    | South Dade County         | Wetlands            | 19,982 | ♦        |
| 4                 | Big George & Little George            | SW 150 St & SW 152 Ave    | Tropical Hammocks   | 20.1  | ♦        | 58                         | Sunny Palms (Navy Wells #42)           | SW 368 St & SW 202 Ave    | Rockridge Pinelands | 40.8   | ♦        |
| 5                 | Bill Sadowski Park                    | 17555 SW 79 Ave           | Natural Areas       | 23    | ♦        | 59                         | Tamiami Complex Addition               | SW 134 St & SW 122 Ave    | Rockridge Pinelands | 25.6   | ♦        |
| 6                 | Black Creek Forest                    | SW 214 St & SW 112 Ave    | Pineland            | 7     | ♦        | 60                         | Terama Tract in Oleta Preserve         | Oleta Preserve            | Coastal Wetlands    | 29.7   | ♦        |
| 7                 | Black Point Wetlands                  | SW 248 St & SW 112 Ave    | Coastal Wetlands    | 78.9  | ♦        | 61                         | Oleta Tract C                          | NE 163 St & US-1          | Coastal Wetlands    | 2.5    | ♦        |
| 8                 | (Boystown) Camp Matecumbe             | SW 112 St & SW 137 Ave    | Rockridge Pinelands | 76.7  | ♦        | 62                         | Tree Island Park                       | SW 10 St & SW 147 Ave     | Wetlands            | 120    | ♦        |
| 9                 | Camp Owaissa Bauer                    | SW 264 St & SW 170 Ave    | Natural Areas       | 80    | ♦        | 63                         | Trinity                                | SW 76 St & SW 74 Ave      | Rockridge Pinelands | 10     | ♦        |
| 10                | Castellow Additions                   | SW 226 St & SW 157 Ave    | Tropical Hammocks   | 34.9  | ♦        | 64                         | Tropical Park                          | 7900 Bird Rd              | Natural Areas       | 5      | ♦        |
| 11                | Castellow Hammock Park                | 22301 SW 162 Ave          | Natural Areas       | 55    | ♦        | 65                         | West Biscayne                          | SW 288 St & SW 190 Ave    | Rockridge Pinelands | 15.1   | ♦        |
| 12                | Charles Deering Estate                | 16701 SW 72 Ave           | Natural Areas       | 332   | ♦        | 74                         | Chernoff Hammock                       | SW 218 St & SW 154 Ave    | Tropical Hammocks   | 4.5    | ♦        |
| 13                | County Line Scrub                     | NE 215 St & NE 4 Ave      | Xeric Coastal Scrub | 15    | ♦        | 85                         | Northrop Pineland                      | SW 296 St & SW 207th Ave  | Rockridge Pinelands | 12.8   | ♦        |
| 14                | Crandon Park                          | 7200 Crandon Blvd         | Natural Areas       | 444   | ♦        | 103                        | Wilkins Pierson                        | SW 184 St & SW 164 Ave    | Rockridge Pinelands | 10     | ♦        |
| 15                | Cutler Wetlands & Addition            | SW 210 St & SW 85 Ave     | Coastal Wetlands    | 453.5 | ♦        | 105                        | Metrozoo Pinelands                     | 12400 SW 152 St           | Rockridge Pinelands | 142.4  | ♦        |
| 16                | Deering Glade Parcel                  | SW 158 St & Old Cutler Rd | Buffer              | 9.7   | ♦        | 106                        | Seminole Wayside Park Addition         | SW 300 St & US-1          | Rockridge Pinelands | 4.3    | ♦        |
| 17                | Deering North Addition                | SW 152 St & SW 67 Ave     | Coastal Wetlands    | 40.7  | ♦        | 107                        | Andrew Dodge New Pines Preserve        | SW 248 St & SW 127 Ave    | Rockridge Pinelands | 3.5    | ♦        |
| 18                | Deering South Addition                | SW 168 St & SW 72 Ave     | Pineland            | 32    | ♦        | <b>Unacquired Projects</b> |  |                           |                     |        |          |
| 19                | Dolphin Center Addition               | NW 196 St & NW 17 Ave     | Xeric Coastal Scrub | 3.9   | ♦        | No                         | Site Name                              | Location                  | Type                | Acres  | Priority |
| 20                | Eachus Pineland                       | SW 184 St & SW 142 Ave    | Rockridge Pinelands | 17.2  | ♦        | 57                         | South Dade Wetlands                    | South Dade County         | Wetlands            | 15,016 | A        |
| 21                | East & East East Greynolds Park       | 17530 W Dixie Hwy         | Natural Areas       | 33    | ♦        | 66                         | Bird Key                               | NW 79 St & Biscayne Bay   | Mangrove            | 37.5   | A        |
| 22                | Florida City                          | SW 344 St & SW 185 Ave    | Rockridge Pinelands | 23.5  | ♦        | 67                         | Biscayne Wetlands                      | SW 280 St & SW 107 Ave    | Coastal Wetlands    | 864.1  | A        |
| 23                | Fuchs Hammock                         | SW 304 St & SW 198 Ave    | Natural Areas       | 24    | ♦        | 68                         | Biscayne Wetlands North Addition       | SW 270 St & SW 107 Ave    | Coastal Wetlands    | 300    | B        |
| 24                | Fuchs Hammock Addition                | SW 304 St & SW 198 Ave    | Rockridge Pinelands | 14.8  | ♦        | 69                         | Black Creek Forest                     | SW 216 St & SW 112 Ave    | Pineland            | 45.5   | A        |
| 25                | Goulds                                | SW 224 St & SW 120 Ave    | Rockridge Pinelands | 37    | ♦        | 70                         | Black Point Wetlands                   | SW 248 St & SW 97 Ave     | Coastal Wetlands    | 191.8  | A        |
| 26                | Greynolds Park                        | 17530 W Dixie Hwy         | Natural Areas       | 53    | ♦        | 71                         | Bowers Pineland                        | SW 296 St & SW 197 Ave    | Rockridge Pinelands | 9.8    | A        |
| 27                | Harden Hammock                        | SW 226 St & SW 107 Ave    | Tropical Hammocks   | 12.4  | ♦        | 72                         | Calderon Pineland                      | SW 192 St & SW 140 Ave    | Rockridge Pinelands | 15.2   | A        |
| 28                | Hattie Bauer Hammock                  | SW 267 St & SW 157 Ave    | Tropical Hammocks   | 14    | ♦        | 73                         | Castellow #31                          | SW 218 St & SW 157 Ave    | Tropical Hammocks   | 14.1   | A        |
| 29                | Holiday Hammock                       | SW 400 St & SW 207 Ave    | Tropical Hammocks   | 29.8  | ♦        | 75                         | Cutler Wetlands                        | SW 196 St & SW 232 St     | Coastal Wetlands    | 795    | A        |
| 30                | Ingram                                | SW 288 St & SW 167 Ave    | Rockridge Pinelands | 9.9   | ♦        | 76                         | Dixie Heights Pineland                 | SW 268 St & SW 132 Ave    | Rockridge Pinelands | 29     | B        |
| 31                | Larry & Penny Thompson Park           | SW 184 St & SW 127 Ave    | Natural Areas       | 193   | ♦        | 78                         | Goulds Addition                        | SW 232 St & SW 117 Ave    | Rockridge Pinelands | 35.8   | A        |
| 32                | Loveland Hammock                      | SW 360 St & SW 222 Ave    | Tropical Hammocks   | 15.1  | ♦        | 79                         | Hammock Island                         | SW 360 St & SW 217 Ave    | Tropical Hammocks   | 64.7   | B        |
| 33                | Lucille Hammock                       | SW 352 St & SW 222 Ave    | Tropical Hammocks   | 20.8  | ♦        | 80                         | Hattie Bauer Pineland                  | SW 266 St & SW 157 Ave    | Rockridge Pinelands | 5      | A        |
| 34                | Ludlam                                | SW 143 St & SW 67 Ave     | Rockridge Pinelands | 10.2  | ♦        | 81                         | Homestead General Airport Hammock      | SW 296 St & SW 217 Ave    | Tropical Hammocks   | 4      | A        |
| 35                | Martinez (Richmond Complex)           | SW 152 St & SW 130 Ave    | Rockridge Pinelands | 142   | ♦        | 82                         | Kings Highway                          | SW 304 St & SW 202 Ave    | Rockridge Pinelands | 31.1   | B        |
| 36                | Matheson Hammock Park                 | SW 96 St & Old Cutler Rd  | Natural Areas       | 381   | ♦        | 83                         | Maddens Hammock                        | NW 164 St & SW 87 Ave     | Tropical Hammocks   | 15.6   | B        |
| 37                | Meissner Hammock                      | SW 302 St & SW 212 Ave    | Tropical Hammocks   | 10.3  | ♦        | 84                         | Navy Wells #2                          | SW 328 St & SW 197 Ave    | Rockridge Pinelands | 20     | A        |
| 38                | Navy Wells #23                        | SW 352 St & SW 182 Ave    | Rockridge Pinelands | 19.9  | ♦        | 86                         | Notre Dame Pineland                    | SW 280 St & SW 132 Ave    | Rockridge Pinelands | 46.8   | B        |
| 39                | Navy Wells #39                        | SW 360 St & SW 210 Ave    | Rockridge Pinelands | 13.1  | ♦        | 87                         | Owaissa Bauer Addition #2              | SW 264 St & SW 175 Ave    | Rockridge Pinelands | 10     | A        |
| 40                | Navy Wells Preserve                   | SW 356 St & SW 192 Ave    | Natural Areas       | 239   | ♦        | 88                         | Pino Pineland                          | SW 39 St & SW 69 Ave      | Rockridge Pinelands | 3.8    | A        |
| 41                | Ned Glenn Preserve (Whispering Pines) | SW 188 St & SW 87 Ave     | Rockridge Pinelands | 20    | ♦        | 89                         | R. Hardy Matheson Addition             | Old Cutler Rd & SW 108 St | Coastal Wetlands    | 21.5   | A        |
| 42                | Nixon Smiley Addition (Tamiami #8)    | SW 128 St & SW 127 Ave    | Rockridge Pinelands | 63    | ♦        | 90                         | Railroad Pineland                      | SW 184 St & SW 147 Ave    | Rockridge Pinelands | 18.2   | B        |
| 43                | Nixon Smiley Pineland                 | SW 128 St & SW 133 Ave    | Natural Areas       | 59    | ♦        | 91                         | Richmond Complex                       | SW 152 St & SW 130 Ave    | Rockridge Pinelands | 210.8  | A        |
| 44                | Owaissa Bauer Addition #1             | SW 264 St & SW 177 Ave    | Rockridge Pinelands | 9.4   | ♦        | 92                         | Round Hammock                          | SW 408 St & SW 220 Ave    | Tropical Hammocks   | 31.1   | A        |
| 45                | Owaissa Bauer Addition #3             | SW 262 St & SW 170 Ave    | Tropical Hammocks   | 1.2   | ♦        | 93                         | School Board                           | SW 268 St & SW 129 Ave    | Rockridge Pinelands | 18.7   | A        |
| 46                | Palm Drive                            | SW 344 St & SW 212 Ave    | Rockridge Pinelands | 20    | ♦        | 95                         | Silver Palm Addition                   | SW 232 St & SW 152 Ave    | Rockridge Pinelands | 20     | A        |
| 47                | Pineshore Park                        | SW 128 St & SW 112 Ave    | Natural Areas       | 7.8   | ♦        | 97                         | SW Island Hammock                      | SW 392 St & SW 207 Ave    | Tropical Hammocks   | 12.4   | A        |
| 48                | Quail Roost                           | SW 200 St & SW 144 Ave    | Rockridge Pinelands | 48.5  | ♦        | 98                         | Tamiami #15                            | SW 124 St & SW 137 Ave    | Rockridge Pinelands | 35     | B        |
| 49                | R. Hardy Matheson Addition            | Old Cutler Rd & SW 108 St | Coastal Wetlands    | 19.9  | ♦        | 99                         | Oleta Tract A                          | NE 171 St & US-1          | Coastal Wetlands    | 2.1    | A        |
| 50                | R. Hardy Matheson Preserve            | SW 112 St & Old Cutler Rd | Natural Areas       | 692   | ♦        | 100                        | Oleta Tract B                          | NE 165 St & US-1          | Coastal Wetlands    | 3.5    | A        |
| 51                | Rock Pit #39                          | SW 336 St & SW 192 Ave    | Rockridge Pinelands | 8.7   | ♦        | 101                        | Oleta Tract D                          | NE 191 St & NE 24 Ave     | Coastal Wetlands    | 7.4    | A        |
| 52                | Rock Pit #46                          | SW 232 St & SW 142 Ave    | Rockridge Pinelands | 5     | ♦        | 102                        | Vizcaya Hammock Addition               | 3300 South Miami Ave      | Tropical Hammocks   | 2      | A        |
| 53                | Rockdale & Addition                   | SW 144 St & US-1          | Rockridge Pinelands | 37.1  | ♦        | 104                        | Cutler Wetlands North Addition Hammock | SW 184 St & Old Cutler Rd | Tropical Hammocks   | 37     | B        |
| 54                | Ross Hammock                          | SW 223 St & SW 157 Ave    | Tropical Hammocks   | 19.2  | ♦        | 108                        | Pine Ridge Sanctuary                   | SW 300 St & SW 211 Ave    | Rockridge Pinelands | 14     | A        |