

Memorandum



Date: September 18, 2014

To: Honorable Chairwoman Rebeca Sosa
and Members, Board of County Commissioners

From: Carlos A. Gimenez
Mayor

A handwritten signature in blue ink, likely belonging to Carlos A. Gimenez, the Mayor.

Subject: Information for Second Budget Hearing – FY 2014-15 Proposed Budget

This memorandum accompanies the FY 2014-15 Budget Ordinances for your consideration at the Second Budget Hearing on September 18, 2014. This document provides information requested and recommendations for other adjustments for Board consideration. The total of all changes approved at the first budget hearing and included in this memorandum is \$18.484 million and represents 0.41 percent of the total operating budget.

During the First Budget Hearing on September 4, 2014, the BCC approved the following tentative millage rates: Countywide 4.6669, Unincorporated Municipal Services Area 1.9283, Fire Rescue Service District 2.4207, and Library System 0.284 mills. These rates cannot be increased. At these millage rates, the Proposed Budget is funded and the adjustments included in this memorandum may be supported.

BUDGET ADJUSTMENTS

Corrections and Rehabilitation (MDCR) and Police (MDPD)

The proceeds of the sale of the Air Rescue Helicopters will net approximately \$14 million, after funding additional positions in MDPD and restoring the maintenance cycles for Parks, Recreation and Open Spaces. Although the most conservative application of this balance would be to create a sinking fund in the Capital Outlay Reserve to make debt service payments or prepay outstanding debt, as I originally recommended, at this time, I propose to use \$3.587 million to restore the Boot Camp program for one year. In the proposed budget, Boot Camp was eliminated and the positions used to reduce overtime needed to staff positions elsewhere. It is my recommendation that we add 22 sworn (lateral Corrections Officer Trainee classes in December and February), 21 non-sworn positions (one Correctional Technician class in January), and two administrative positions in order to support the Boot Camp operations. Not only does the Boot Camp program reduce future costs by reducing recidivism, adding additional sworn positions to MDCR will mitigate overtime in the future should attrition exceed projections. As well, should the same occur in MDPD, a Basic Law Enforcement class will also be held.

Finance

After further consideration, it is now recommended that 11 enforcement-related positions be restored in the Tax Collector Division of the Finance Department. In order to give the current employees an opportunity to compete with the private sector, we will expedite a Managed Competition process, facilitated by the Office of Management and Budget and the Internal Services Department, to ensure for the most efficient and effective provision of these services. The funding necessary to restore these positions for the period of time it would take to complete the solicitation process will come from improved collections of Tax Collector fees realized in the last few months (\$575,000).

Miami-Dade Transit

As previously discussed and written, the Proposed Budget assumes that the general fund Maintenance of Effort (MOE) to Miami-Dade Transit (MDT) is continued at the FY 2013-14 level. This requires the Board waive, for one year, the Code requirement that this MOE increase by 3.5 percent and an ordinance effectuating this waiver will be brought to the Board for consideration, as described on

September 4, 2014 “Information for the First Budget Hearing Memorandum.” This issue was presented to the Citizens Independent Transportation Trust (CITT) on August 21, 2014. Initially, the CITT did not support the proposed plan but after further discussion between CITT Staff and my administration, we believe that a consensus may be reached.

While the Five Year Financial Forecast includes the waiver of the MOE for FY 2014-15, it shows a restoration of the 3.5 percent increase in FY 2015-16 and an increase of 15.5 percent in FY 2016-17 and 13.8 percent in FY 2017-18 in order to maintain current service levels, despite increased debt service obligations that must be covered by surtax revenues.

A significant concern of the CITT; however, was that the waiver of the MOE was accompanied by a fare increase. Without the increased fare, MDT has identified the following service reductions:

- Providing the Saturday service schedule instead of the regular weekday service schedule on five holidays that historically have lower ridership (Martin Luther King, Jr. Day, Veteran’s Day, President’s Day, the Friday after Thanksgiving, and Christmas Eve); this would reduce service frequencies by up to 45 minutes from normal weekday service. In addition 22 routes, like route 95 Express will not operate on these days. In most cases alternative routes are available. (\$1.75 million).
- Delayed starts and earlier finishes on 25 routes throughout the County; this would impact approximately 650 daily boardings, riders would have to adjust trips by a maximum of 60 minutes (\$2.73 million, 15 positions).
- Reduced trip frequencies on 27 routes throughout the County; this would reduce service frequencies by a maximum of 30 minutes. In addition overcrowding may occur (\$3.12 million, 15 positions).

However, unbudgeted carryover in the PTP fund (Fund SP 402, Subfunds 402 and 403) has been identified that could be used to offset the fare increase for one year. It is recommended that this revenue be used for FY 2014-15 and that further efficiencies and potential personnel cost reductions that may be implemented through collective bargaining negotiations be identified to forestall a future fare increase until FY 2016-17. Attachment A is the revised implementing order that reflects the elimination of the fare increases.

Water and Sewer Department

At this time, I have decided to postpone the adjustments originally proposed to certain permitting and plans review fees for the Water and Sewer Department. As part of the overall reorganization study currently underway in WASD, an analysis of both the smaller scale plans review process, as well as the more comprehensive development review process, is being done. As this effort to streamline these processes has not been completed, I recommend that any fee adjustments – whether to recover cost or disincentivize rework – be postponed until a more complete recommendation may be developed. The fiscal impact of this delay is \$77,000 and can be absorbed by the department without impacting service. Attachment B is the revised implementing order that reflects the elimination of the fee increases.

Community-based Organizations (CBOs) - Cultural Programs

Attachment C reflects the community-based funding allocations monitored by the Department of Cultural Affairs. Contracts will only be executed with organizations that are in compliance with County funding requirements.

CAPITAL ADJUSTMENTS

Building Better Communities General Obligation Bond Program

Subsequent to the release of the FY 2014-15 Proposed Budget and Multi-year Capital Plan: Project #604960, Infrastructure Improvements in the Unincorporated Area – Commission District 13, was in

advertently omitted. In addition, cash flow revisions were made to reflect updated project schedules and expenditure forecasts for the following capital projects: Project #982610, Municipal Project – Cultural, Library, and Multicultural Educational Facilities; Project #931720, Kendall Indian Hammocks Park; Project #305410, Mental Health Diversion Facility; Project #962830, System Improvements Project; Project #844020, Culmer/Overtown Neighborhood Service Center Renovations; Project 988925, Economic Development Fund; Project #967090, Extension of Sewer System to Commercial and Industrial Corridors of the County as per BCC Resolution R-537-14; Project # 932740, Haulover Park; and Project # 934730, Lago Mar Park. (Attachment D).

Public Health Trust General Obligation Bond Program

The budget ordinance schedules at first reading combined the countywide debt service payments for the Building Better Communities Bond Program and the Public Health Trust General Obligation Bond Program. The schedules also did not include the expenditures for the Public Health Trust General Obligation Bond Program projects. A schedule specifically showing the estimated principal and interest payments (\$5.603 million) has now been included in the Debt Service Fund. Project expenditures for the bond program have been included in the revised Public Health Trust Capital Budget schedule (\$89.953 million in FY 2014-15; \$641 million all years).

Public Works and Waste Management

Subsequent to the release of the FY 2014-15 Proposed Budget and Multi-Year Capital Plan, the Causeway Bicycle Safety Project (Project #603900) was revised to reflect a \$1.736 million increase, funded by carryover causeway toll revenues, in the overall project to reflect a project site that had been inadvertently omitted.

POSITION ADJUSTMENTS

In some instances, the above recommendations will adjust the number of positions in the FY 2014-15 Proposed Budget, as reflected the tables of organization attached (Attachment E). The adjustments included in this memorandum and correction of errors increase the total number of recommended positions by ten to 25,255. This is 382 positions less than authorized in FY 2013-14.

Lastly, at the September 4, 2014 budget hearing, I informed the Board that should the collective bargaining units with which we have tentative agreements ratify the contracts and the Board approves, I would utilize the savings projected from health plan redesign to benefit the members of the affected units. While not all positions slated for elimination in the budget would be reinstated, I will restore positions that directly impact the delivery of service to the residents of Miami-Dade County. To date, five units have tentatively agreed to the health plan redesign (American Federation of State, County, and Municipal Employee (AFSCME) Locals 199 (General), 1542 (Aviation) and 3292 (Solid Waste) and Government Supervisors Association of Florida (GSAF) Supervisors and Professionals, Local 100, which have also overwhelmingly ratified the agreement.

The General Fund impact of the healthcare savings for AFSCME Local 199 and the GSAF units is estimated to be \$6.988 million. As a result with these savings, once the agreements are approved by the Board, a total of 113 positions and the following services would be restored.

1. Police Department – 42 civilian positions supporting background investigations, crime analysis and central records services
2. Community Information and Outreach – 12 positions to restore 311 hours to the FY 2013-14 schedule, as well as to keep the three outreach offices open
3. Park and Recreations and Open Spaces – 42 positions to restore non-contracted grounds, custodial, and field maintenance throughout the parks system
4. Public Works and Waste Management – 15 positions to restore five NEAT Teams, a Traffic Signal and Sign response crew, and a Customer Service Clerk in the Mosquito Control division

5. Community Action and Human Services – 2 positions to restore supervision of domestic violence protection and support services
6. Correction and Rehabilitation – 2 positions to support the Boot Camp program
7. Human Resources – 4 positions to support fair employment and human rights investigative services and processing, monitoring of worker's compensation claims, and payroll functions.

As negotiations continue, I will keep you informed of any changes that have the potential of reducing the number of positions being eliminated. Once collective bargaining agreements have been executed, a mid-year budget amendment will be presented to the Board in order to authorize the additional positions and adjust appropriation authority.

Attachments

mayor10014

I.O. No.: 4-133

Ordered: ~~9/19/2013~~9/18/2014

Effective: ~~10/1/2013~~10/1/2014

MIAMI-DADE COUNTY
IMPLEMENTING ORDER

SCHEDULE OF TRANSIT FARES RATES AND CHARGES

AUTHORITY:

Section 1.01, 2.02, ~~2-150~~ and 5.02 of the Miami-Dade County Home Rule Charter and Amendment ~~and Section 2.150 of the Code of Miami-Dade County-~~

SUPERSEDES:

This Implementing Order 4-133 revises the rates, fees, and charges previously approved ~~bysupersedes Resolution R-179-09 Ordinance 13-92~~ adopted ~~10/01/2013~~9-13, as it relates to those items specified in the attached fee schedule. Any items not expressly superseded herein remain in effect.

POLICY:

This Implementing Order establishes a schedule of fees for transit fares, rates and charges.

FEE SCHEDULE:

The fee schedule adopted by this Implementing Order is attached hereto and made a part hereof. The official fee schedule is also filed with and subject to the approval of the Board of County Commissioners and on file with the Clerk thereof. Fees that are charged by the Miami-Dade Transit Department shall be the same as those listed in the official fee schedule on file with the Clerk of the County Commission.

This Implementing Order is hereby submitted to the Board of County Commissioners of Miami-Dade County, Florida.

Approved by the County Attorney as
to form and legal sufficiency _____

**MIAMI-DADE TRANSIT (MDT)
SCHEDULE OF TRANSIT FARES, RATES AND CHARGES**

I. Cash Fares	Base Fare	Discount Fare ¹	Miami-Dade County Golden/Patriot Pass ²
A. Metrobus or Metrorail	\$2.25	\$1.10	Free
B. Metromover	Free	Free	Free
C. Transfer from bus to rail, or rail to bus **	\$0.60	\$0.30	Free
D. Transfer from bus to Metromover	Free	Free	Free
E. Transfer from Metromover to bus	\$2.25	\$1.10	Free
F. Transfer from Metrorail to Metromover	Free	Free	Free
G. Transfer from Metromover to Metrorail	\$2.25	\$1.10	Free
H. Metrobus Express/Special	\$2.65	\$1.30	Free
I. Metrobus Shuttle	\$0.25	\$0.10	Free
J. Parking fee-daily maximum*	\$4.50	\$4.50	\$4.50
K. Parking fee-special events and Non-transit patron daily maximum	\$10.00	N/A	Free
L. Juror Parking ³	Free	Free	Free
M. Full Fare Transfer Bus/Rail to Express Bus Transfer **	\$0.95	\$0.45	Free

* The Golden Passport and Patriot Passport holders are entitled to purchase a monthly parking permit. The discounted fare patrons must purchase a discount monthly pass in order for them to buy a monthly parking permit.

**Transfers are only available with the EASY Card. Free bus to bus transfer when using Easy Card.

II. Special Transportation Service Fares Rate Equal to \$3.50	
A. Minimum Per Trip	\$ 3.50

III. Prepaid Passes ⁴	
A. Monthly Transit Pass ⁵	\$112.50
B. Discount Transit Passes ⁶	\$ 56.25
C. Monthly Group Discount - 10% Corporate Discount ⁷	\$101.25
D. Monthly Group Discount - 15% Corporate Discount ⁷	\$ 95.65
E. Monthly College/Adult Education Pass ⁸	\$ 56.25
F. Monthly Parking Permit ⁹	\$ 11.25
G. Weekly Transit Pass ¹⁰	\$ 29.25
H. Discount Weekly Transit Pass ⁶	\$ 14.60
I. Daily Transit Pass	\$ 5.65
J. Daily Discount	\$ 2.80

IV. EASY Card	
A. EASY Card	\$2.00

~~VI.V.~~ MDT may establish other rates based on costs; promotional discounts may be authorized by the Miami-Dade Transit Director as limited by Section 2-150 (c) of the Miami-Dade County Code.

~~VII.VI.~~ All of the above rates, fares, and charges shall automatically be adjusted every three years, without the need for any further action by the Board of County Commissioners, in accordance with the average rate of the Consumer Price Index (CPI) for the preceding three years. Any adjustments in rates, fares, or charges made pursuant to this provision shall be rounded to the nearest five cent increment.

¹ Applicable at all times on Metrobus and on Metrorail when using the Monthly Discount Fare Permit. Those patrons entitled to reduced fares are: a) youths through grade 12 with proper student identification, b) persons with disabilities as defined by MDT rules and have a MDT Reduced Fare Permit, and c) seniors 65 and above who do not have a Golden Passport, but have a Medicare card (not Medicaid) or MDT Reduced Fare Permit or government-issued photo identification.

² Applicable at all times to permanent Miami-Dade County citizens who qualify for a Golden Passport or Patriot Passport who display a valid Pass. Replacement of a Pass costs \$5 for the first replacement, \$20 for the second replacement and \$50 for the third or more replacement. Fees are waived when a police report listing the Pass as stolen is submitted. Misuse of a Golden Passport or Patriot Pass will result in forfeiture of its use for one year.

³ As per Resolution No. R-365-13

⁴ MDT may issue other prepaid media with price and rules determined from other portions of this rate schedule.

⁵ Promotional discounts may be authorized by the Transit Agency Director as limited by Section 2-150(c) of the Miami-Dade County Code.

⁶ Available to any Medicare recipient (must show Medicare card at time of purchase), qualified people with disabilities and Miami-Dade youth in grades 1-12 (with a valid permit/ID).

⁷ As restricted by Ordinance 86-45.

⁸ ~~May be \$~~May be sold ~~only~~ in bulk quantities to participating colleges, universities, or vocational/technical education centers within for individual sale to full-time students only, as restricted by Ordinance 88-83.

⁹ Available only when purchased in combination with a monthly pass except for a Patriot Pass, Golden Passport and MDT employees who may purchase monthly parking permits without purchase of monthly pass.

¹⁰ When weekly passes sold to hotels as part of a promotional effort, hotels will be allowed to retain \$3 per weekly pass sold and \$ 1.50 per discount weekly pass sold.

¹¹ ~~Due to changes in the fare system, the Department will no longer utilize tokens.~~

I.O. No.: 4-110

Ordered: 09/19/2013 09/18/2014

Effective: 10/01/2013 10/01/2014

MIAMI-DADE COUNTY
IMPLEMENTING ORDER

SCHEDULE OF RATES, FEES AND CHARGES FOR MIAMI-DADE WATER AND SEWER
DEPARTMENT

AUTHORITY:

The Miami-Dade County Home Rule Charter, including among others, Sections 1.01 and 2.02A, and Chapters 2 and 32 of the Code of Miami-Dade County.

SUPERSEDES:

This Implementing Order (IO) supersedes IO 4-110 ordered September 19, 2013 and effective October 1, 2013. This IO ordered on September 18, 2014 and effective October 1, 2014.

POLICY:

This Implementing Order provides a schedule of rates, fees and charges for water and sewer service.

PROCEDURE:

The Director of the Miami-Dade Water and Sewer Department shall be responsible for the billing and collection of rates, fees and charges and the delivery of the required services pursuant to Chapter 2 and 32 of the Code of Miami-Dade County and this Implementing Order. Every year, or earlier, if need be, the Director shall review all rates, fees and charges in terms of cost and recommend necessary changes to the County Manager through this Implementing Order procedure.

RATES, FEES AND CHARGES SCHEDULE:

The schedule adopted by this Implementing Order is attached hereto and made a part hereof.

This Implementing Order is hereby submitted to the Board of County Commissioners of Miami-Dade County, Florida.

Approved by the County Attorney as
to form and legal sufficiency _____

**MIAMI-DADE WATER AND SEWER DEPARTMENT
SCHEDULE OF RATES**

RESIDENTIAL CUSTOMER

WATER	<u>Effective</u> <u>October 1, 2013</u>	<u>Proposed</u> <u>October 1, 2014</u>
Meter Charge:	Monthly Charge	
Meter Size		
5/8"	\$3.20	\$3.20
1"	\$10.16	<u>\$10.77</u>
1.5"	\$20.33	<u>\$21.55</u>
2"	\$32.51	<u>\$34.46</u>
3"	\$65.03	<u>\$68.93</u>
4"	\$101.61	<u>\$107.71</u>
6"	\$203.21	<u>\$215.40</u>
8"	\$325.14	<u>\$344.65</u>
10"	\$467.39	<u>\$495.43</u>
12"	\$873.82	<u>\$926.25</u>
14"	\$1,625.70	<u>\$1,723.24</u>
16"	\$2,235.34	<u>\$2,369.46</u>
Flow Rate All Usage:	Monthly Charge	
Usage per 100 cubic feet (ccf):		
0 to 5 ccf	\$0.3740	\$0.3740
6 to 9 ccf	\$2.5254	<u>\$2.7525</u>
10 to 17 ccf	\$3.1540	<u>\$3.3433</u>
18 ccf and over	\$4.1705	<u>\$5.5259</u>
Usage per 1,000 gallons:		
0 to 3,740 gallons	\$0.5000	\$0.5000
3,741 to 6,750 gallons	\$3.3762	<u>\$3.6798</u>
6,751 to 12,716 gallons	\$4.2166	<u>\$4.4696</u>
12,717 gallons and over	\$5.5756	<u>\$7.3876</u>

NOTE: 100 cubic feet (ccf) equals 748 gallons

Residential: a retail customer/account consisting of a single family residence or duplex being served by a common meter

**MIAMI-DADE WATER AND SEWER DEPARTMENT
SCHEDULE OF RATES**

RESIDENTIAL CUSTOMER

WATER	<u>Effective</u> <u>October 1, 2013</u>	<u>Proposed</u> <u>October 1, 2014</u>
Meter Charge:	Quarterly Charge	
Meter Size		
5/8"	\$9.60	\$9.60
1"	\$30.49	<u>\$32.31</u>
1.5"	\$60.98	<u>\$64.65</u>
2"	\$97.52	<u>\$103.38</u>
3"	\$195.08	<u>\$206.79</u>
4"	\$304.82	<u>\$323.13</u>
6"	\$609.64	<u>\$646.20</u>
8"	\$975.43	<u>\$1,033.95</u>
10"	\$1,402.17	<u>\$1,486.29</u>
12"	\$2,621.45	<u>\$2,778.75</u>
14"	\$4,877.11	<u>\$5,169.72</u>
16"	\$6,706.02	<u>\$7,108.38</u>
Flow Rate All Usage:	Quarterly Charge	
Usage per 100 cubic feet (ccf):		
0 to 15 ccf	\$0.3740	\$0.3740
16 to 27 ccf	\$2.5254	<u>\$2.7525</u>
28 to 51 ccf	\$3.1540	<u>\$3.3433</u>
52 ccf and over	\$4.1705	<u>\$5.5259</u>
Usage per 1,000 gallons:		
0 to 11,220 gallons	\$0.5000	\$0.5000
11,221 to 20,250 gallons	\$3.3762	<u>\$3.6798</u>
20,251 to 38,148 gallons	\$4.2166	<u>\$4.4696</u>
38,149 gallons and over	\$5.5756	<u>\$7.3876</u>

NOTE: 100 cubic feet (ccf) equals 748 gallons

Residential: a retail customer/account consisting of a single family residence or duplex being served by a common meter

**MIAMI-DADE WATER AND SEWER DEPARTMENT
SCHEDULE OF RATES**

MULTI-FAMILY DWELLINGS (MFD)

WATER	<u>Effective</u> <u>October 1, 2013</u>	<u>Proposed</u> <u>October 1, 2014</u>
Meter Charge:	Monthly Charge	
Meter Size		
5/8" to 16"	\$2.56	\$2.56
<i>Meter charge will be applied per unit</i>		
Flow Rate All Usage Per Unit:	Monthly Charge	
Usage per 100 cubic feet (ccf):		
0 to 4 ccf	\$0.3740	\$0.3740
5 to 7 ccf	\$2.5254	<u>\$2.7525</u>
8 to 14 ccf	\$3.1540	<u>\$3.3433</u>
15 ccf and over	\$4.1705	<u>\$5.5259</u>
Usage per 1,000 gallons:		
0 to 2,992 gallons	\$0.5000	\$0.5000
2,993 to 5,400 gallons	\$3.3762	<u>\$3.6798</u>
5,401 to 10,173 gallons	\$4.2166	<u>\$4.4696</u>
10,174 gallons and over	\$5.5756	<u>\$7.3876</u>

NOTE: 100 cubic feet (ccf) equals 748 gallons

Multi-family: a retail customer/account consisting of more than 2 residential customers served by a common meter(s)

**MIAMI-DADE WATER AND SEWER DEPARTMENT
SCHEDULE OF RATES**

MULTI-FAMILY DWELLINGS (MFD)

WATER	<u>Effective</u> <u>October 1, 2013</u>	<u>Proposed</u> <u>October 1, 2014</u>
Meter Charge:	Quarterly Charge	
Meter Size		
5/8" to 16"	\$7.68	\$7.68
<i>Meter charge will be applied per unit</i>		
Flow Rate All Usage Per Unit:	Quarterly Charge	
Usage per 100 cubic feet (ccf):		
0 to 12 ccf	\$0.3740	\$0.3740
13 to 21 ccf	\$2.5254	<u>\$2.7525</u>
22 to 42 ccf	\$3.1540	<u>\$3.3433</u>
43 ccf and over	\$4.1705	<u>\$5.5259</u>
Usage per 1,000 gallons:		
0 to 8,976 gallons	\$0.5000	\$0.5000
8,977 to 16,200 gallons	\$3.3762	<u>\$3.6798</u>
16,201 to 30,519 gallons	\$4.2166	<u>\$4.4696</u>
30,520 gallons and over	\$5.5756	<u>\$7.3876</u>

NOTE: 100 cubic feet (ccf) equals 748 gallons

Multi-family: a retail customer/account consisting of more than 2 residential customers served by a common meter(s)

**MIAMI-DADE WATER AND SEWER DEPARTMENT
SCHEDULE OF RATES**

NON-RESIDENTIAL CUSTOMERS

WATER	<u>Effective</u> <u>October 1, 2013</u>	<u>Proposed</u> <u>October 1, 2014</u>
Meter Charge:	Monthly Charge	
Meter Size 5/8"	\$3.20	\$3.20
Flow Rate All Usage:	Monthly Charge	
Usage per 100 cubic feet (ccf):		
0 to 5 ccf	\$0.3740	\$0.3740
6 to 9 ccf	\$2.5254	\$2.7525
10 to 17 ccf	\$3.1540	\$3.3433
18 ccf and over	\$4.1705	\$5.5259
Usage per 1,000 gallons:		
0 to 3,740 gallons	\$0.5000	\$0.5000
3,741 to 6,750 gallons	\$3.3762	\$3.6798
6,751 to 12,716 gallons	\$4.2166	\$4.4696
12,717 gallons and over	\$5.5756	\$7.3876
Meter Charge:	Monthly Charge	
Meter Size 1"	 \$10.16	 \$10.77
Flow Rate All Usage:	Monthly Charge	
Usage per 100 cubic feet (ccf):		
0 to 13 ccf	\$0.3740	\$0.3740
14 to 23 ccf	\$2.5254	\$2.7525
24 to 43 ccf	\$3.1540	\$3.3433
44 ccf and over	\$4.1705	\$5.5259
Usage per 1,000 gallons:		
0 to 9,350 gallons	\$0.5000	\$0.5000
9,351 to 16,875 gallons	\$3.3762	\$3.6798
16,876 to 31,790 gallons	\$4.2166	\$4.4696
31,791 gallons and over	\$5.5756	\$7.3876

NOTE: 100 cubic feet (ccf) equals 748 gallons

Non-Residential: a retail customer/account consisting of business, commercial, industrial, or any combination thereof or mixed-use building

**MIAMI-DADE WATER AND SEWER DEPARTMENT
SCHEDULE OF RATES**

NON-RESIDENTIAL CUSTOMERS

WATER	<u>Effective</u> <u>October 1, 2013</u>	<u>Proposed</u> <u>October 1, 2014</u>
Meter Charge:	Monthly Charge	
Meter Size		
1.5"	\$20.33	<u>\$21.55</u>
Flow Rate All Usage:	Monthly Charge	
Usage per 100 cubic feet (ccf):		
0 to 25 ccf	\$0.3740	\$0.3740
26 to 45 ccf	\$2.5254	<u>\$2.7525</u>
46 to 85 ccf	\$3.1540	<u>\$3.3433</u>
86 ccf and over	\$4.1705	<u>\$5.5259</u>
Usage per 1,000 gallons:		
0 to 18,700 gallons	\$0.5000	\$0.5000
18,701 to 33,750 gallons	\$3.3762	<u>\$3.6798</u>
33,751 to 63,580 gallons	\$4.2166	<u>\$4.4696</u>
63,581 gallons and over	\$5.5756	<u>\$7.3876</u>
Meter Charge:	Monthly Charge	
Meter Size		
2"	\$32.51	<u>\$34.46</u>
Flow Rate All Usage:	Monthly Charge	
Usage per 100 cubic feet (ccf):		
0 to 40 ccf	\$0.3740	\$0.3740
41 to 72 ccf	\$2.5254	<u>\$2.7525</u>
73 to 136 ccf	\$3.1540	<u>\$3.3433</u>
137 ccf and over	\$4.1705	<u>\$5.5259</u>
Usage per 1,000 gallons:		
0 to 29,920 gallons	\$0.5000	\$0.5000
29,921 to 54,000 gallons	\$3.3762	<u>\$3.6798</u>
54,001 to 101,728 gallons	\$4.2166	<u>\$4.4696</u>
101,729 gallons and over	\$5.5756	<u>\$7.3876</u>

NOTE: 100 cubic feet (ccf) equals 748 gallons

Non-Residential: a retail customer/account consisting of business, commercial, industrial, or any combination thereof or mixed-use building

**MIAMI-DADE WATER AND SEWER DEPARTMENT
SCHEDULE OF RATES**

NON-RESIDENTIAL CUSTOMERS

WATER	<u>Effective</u> <u>October 1, 2013</u>	<u>Proposed</u> <u>October 1, 2014</u>
Meter Charge:	Monthly Charge	
Meter Size		
3"	\$65.03	<u>\$68.93</u>
Flow Rate All Usage:	Monthly Charge	
Usage per 100 cubic feet (ccf):		
0 to 80 ccf	\$0.3740	\$0.3740
81 to 144 ccf	\$2.5254	<u>\$2.7525</u>
145 to 272 ccf	\$3.1540	<u>\$3.3433</u>
273 ccf and over	\$4.1705	<u>\$5.5259</u>
Usage per 1,000 gallons:		
0 to 59,840 gallons	\$0.5000	\$0.5000
59,841 to 108,000 gallons	\$3.3762	<u>\$3.6798</u>
108,001 to 203,456 gallons	\$4.2166	<u>\$4.4696</u>
203,457 gallons and over	\$5.5756	<u>\$7.3876</u>
Meter Charge:	Monthly Charge	
Meter Size		
4"	\$101.61	<u>\$107.71</u>
Flow Rate All Usage:	Monthly Charge	
Usage per 100 cubic feet (ccf):		
0 to 125 ccf	\$0.3740	\$0.3740
126 to 226 ccf	\$2.5254	<u>\$2.7525</u>
227 to 425 ccf	\$3.1540	<u>\$3.3433</u>
426 ccf and over	\$4.1705	<u>\$5.5259</u>
Usage per 1,000 gallons:		
0 to 93,500 gallons	\$0.5000	\$0.5000
93,501 to 168,750 gallons	\$3.3762	<u>\$3.6798</u>
168,751 to 317,900 gallons	\$4.2166	<u>\$4.4696</u>
317,901 gallons and over	\$5.5756	<u>\$7.3876</u>

NOTE: 100 cubic feet (ccf) equals 748 gallons

Non-Residential: a retail customer/account consisting of business, commercial, industrial, or any combination thereof or mixed-use building

**MIAMI-DADE WATER AND SEWER DEPARTMENT
SCHEDULE OF RATES**

NON-RESIDENTIAL CUSTOMERS

WATER	<u>Effective</u> <u>October 1, 2013</u>	<u>Proposed</u> <u>October 1, 2014</u>
Meter Charge:	Monthly Charge	
Meter Size		
6"	\$203.21	<u>\$215.40</u>
Flow Rate All Usage:	Monthly Charge	
Usage per 100 cubic feet (ccf):		
0 to 250 ccf	\$0.3740	\$0.3740
251 to 451 ccf	\$2.5254	<u>\$2.7525</u>
452 to 850 ccf	\$3.1540	<u>\$3.3433</u>
851 ccf and over	\$4.1705	<u>\$5.5259</u>
Usage per 1,000 gallons:		
0 to 187,000 gallons	\$0.5000	\$0.5000
187,001 to 337,500 gallons	\$3.3762	<u>\$3.6798</u>
337,501 to 635,800 gallons	\$4.2166	<u>\$4.4696</u>
635,801 gallons and over	\$5.5756	<u>\$7.3876</u>
Meter Charge:	Monthly Charge	
Meter Size		
8"	\$325.14	<u>\$344.65</u>
Flow Rate All Usage:	Monthly Charge	
Usage per 100 cubic feet (ccf):		
0 to 400 ccf	\$0.3740	\$0.3740
401 to 722 ccf	\$2.5254	<u>\$2.7525</u>
723 to 1,360 ccf	\$3.1540	<u>\$3.3433</u>
1,361 ccf and over	\$4.1705	<u>\$5.5259</u>
Usage per 1,000 gallons:		
0 to 299,200 gallons	\$0.5000	\$0.5000
299,201 to 540,000 gallons	\$3.3762	<u>\$3.6798</u>
540,001 to 1,017,280 gallons	\$4.2166	<u>\$4.4696</u>
1,017,281 gallons and over	\$5.5756	<u>\$7.3876</u>

NOTE: 100 cubic feet (ccf) equals 748 gallons

Non-Residential: a retail customer/account consisting of business, commercial, industrial, or any combination thereof or mixed-use building

**MIAMI-DADE WATER AND SEWER DEPARTMENT
SCHEDULE OF RATES**

NON-RESIDENTIAL CUSTOMERS

WATER	<u>Effective</u> <u>October 1, 2013</u>	<u>Proposed</u> <u>October 1, 2014</u>
Meter Charge:	Monthly Charge	
Meter Size		
10"	\$467.39	<u>\$495.43</u>
Flow Rate All Usage:	Monthly Charge	
Usage per 100 cubic feet (ccf):		
0 to 575 ccf	\$0.3740	\$0.3740
576 to 1,038 ccf	\$2.5254	<u>\$2.7525</u>
1,039 to 1,955 ccf	\$3.1540	<u>\$3.3433</u>
1,956 ccf and over	\$4.1705	<u>\$5.5259</u>
Usage per 1,000 gallons:		
0 to 430,100 gallons	\$0.5000	\$0.5000
430,101 to 776,250 gallons	\$3.3762	<u>\$3.6798</u>
776,251 to 1,462,340 gallons	\$4.2166	<u>\$4.4696</u>
1,462,341 gallons and over	\$5.5756	<u>\$7.3876</u>
Meter Charge:	Monthly Charge	
Meter Size		
12"	\$873.82	<u>\$926.25</u>
Flow Rate All Usage:	Monthly Charge	
Usage per 100 cubic feet (ccf):		
0 to 1,075 ccf	\$0.3740	\$0.3740
1,076 to 1,940 ccf	\$2.5254	<u>\$2.7525</u>
1,941 to 3,655 ccf	\$3.1540	<u>\$3.3433</u>
3,656 ccf and over	\$4.1705	<u>\$5.5259</u>
Usage per 1,000 gallons:		
0 to 804,100 gallons	\$0.5000	\$0.5000
804,101 to 1,451,250 gallons	\$3.3762	<u>\$3.6798</u>
1,451,251 to 2,733,940 gallons	\$4.2166	<u>\$4.4696</u>
2,733,941 gallons and over	\$5.5756	<u>\$7.3876</u>

NOTE: 100 cubic feet (ccf) equals 748 gallons

Non-Residential: a retail customer/account consisting of business, commercial, industrial, or any combination thereof or mixed-use building

**MIAMI-DADE WATER AND SEWER DEPARTMENT
SCHEDULE OF RATES**

NON-RESIDENTIAL CUSTOMERS

WATER	<u>Effective</u> <u>October 1, 2013</u>	<u>Proposed</u> <u>October 1, 2014</u>
Meter Charge:	Monthly Charge	
Meter Size		
14"	\$1,625.70	<u>\$1,723.24</u>
Flow Rate All Usage:	Monthly Charge	
Usage per 100 cubic feet (ccf):		
0 to 2,000 ccf	\$0.3740	\$0.3740
2,001 to 3,610 ccf	\$2.5254	<u>\$2.7525</u>
3,611 to 6,800 ccf	\$3.1540	<u>\$3.3433</u>
6,801 ccf and over	\$4.1705	<u>\$5.5259</u>
Usage per 1,000 gallons:		
0 to 1,496,000 gallons	\$0.5000	\$0.5000
1,496,001 to 2,700,000 gallons	\$3.3762	<u>\$3.6798</u>
2,700,001 to 5,086,400 gallons	\$4.2166	<u>\$4.4696</u>
5,086,401 gallons and over	\$5.5756	<u>\$7.3876</u>
Meter Charge:	Monthly Charge	
Meter Size		
16"	\$2,235.34	<u>\$2,369.46</u>
Flow Rate All Usage:	Monthly Charge	
Usage per 100 cubic feet (ccf):		
0 to 2,750 ccf	\$0.3740	\$0.3740
2,751 to 4,963 ccf	\$2.5254	<u>\$2.7525</u>
4,964 to 9,350 ccf	\$3.1540	<u>\$3.3433</u>
9,351 ccf and over	\$4.1705	<u>\$5.5259</u>
Usage per 1,000 gallons:		
0 to 2,057,000 gallons	\$0.5000	\$0.5000
2,057,001 to 3,712,500 gallons	\$3.3762	<u>\$3.6798</u>
3,712,501 to 6,993,800 gallons	\$4.2166	<u>\$4.4696</u>
6,993,801 gallons and over	\$5.5756	<u>\$7.3876</u>

NOTE: 100 cubic feet (ccf) equals 748 gallons

Non-Residential: a retail customer/account consisting of business, commercial, industrial, or any combination thereof or mixed-use building

**MIAMI-DADE WATER AND SEWER DEPARTMENT
SCHEDULE OF RATES**

NON-RESIDENTIAL CUSTOMERS

WATER	<u>Effective</u> <u>October 1, 2013</u>	<u>Proposed</u> <u>October 1, 2014</u>
Meter Charge:	Quarterly Charge	
Meter Size		
5/8"	\$9.60	\$9.60
Flow Rate All Usage:	Quarterly Charge	
Usage per 100 cubic feet (ccf):		
0 to 15 ccf	\$0.3740	\$0.3740
16 to 27 ccf	\$2.5254	\$2.7525
28 to 51 ccf	\$3.1540	\$3.3433
52 ccf and over	\$4.1705	\$5.5259
Usage per 1,000 gallons:		
0 to 11,220 gallons	\$0.5000	\$0.5000
11,221 to 20,250 gallons	\$3.3762	\$3.6798
20,251 to 38,148 gallons	\$4.2166	\$4.4696
38,149 gallons and over	\$5.5756	\$7.3876
Meter Charge:	Quarterly Charge	
Meter Size		
1"	\$30.49	\$32.31
Flow Rate All Usage:	Quarterly Charge	
Usage per 100 cubic feet (ccf):		
0 to 38 ccf	\$0.3740	\$0.3740
39 to 68 ccf	\$2.5254	\$2.7525
69 to 128 ccf	\$3.1540	\$3.3433
129 ccf and over	\$4.1705	\$5.5259
Usage per 1,000 gallons:		
0 to 28,050 gallons	\$0.5000	\$0.5000
28,051 to 50,625 gallons	\$3.3762	\$3.6798
50,626 to 95,370 gallons	\$4.2166	\$4.4696
95,371 gallons and over	\$5.5756	\$7.3876

NOTE: 100 cubic feet (ccf) equals 748 gallons

Non-Residential: a retail customer/account consisting of business, commercial, industrial, or any combination thereof or mixed-use building

**MIAMI-DADE WATER AND SEWER DEPARTMENT
SCHEDULE OF RATES**

NON-RESIDENTIAL CUSTOMERS

WATER	<u>Effective</u> <u>October 1, 2013</u>	<u>Proposed</u> <u>October 1, 2014</u>
Meter Charge:	Quarterly Charge	
Meter Size		
1.5"	\$60.98	<u>\$64.65</u>
Flow Rate All Usage:	Quarterly Charge	
Usage per 100 cubic feet (ccf):		
0 to 75 ccf	\$0.3740	\$0.3740
76 to 135 ccf	\$2.5254	<u>\$2.7525</u>
136 to 255 ccf	\$3.1540	<u>\$3.3433</u>
256 ccf and over	\$4.1705	<u>\$5.5259</u>
Usage per 1,000 gallons:		
0 to 56,100 gallons	\$0.5000	\$0.5000
56,101 to 101,250 gallons	\$3.3762	<u>\$3.6798</u>
101,251 to 190,740 gallons	\$4.2166	<u>\$4.4696</u>
190,741 gallons and over	\$5.5756	<u>\$7.3876</u>
Meter Charge:	Quarterly Charge	
Meter Size		
2"	\$97.52	<u>\$103.38</u>
Flow Rate All Usage:	Quarterly Charge	
Usage per 100 cubic feet (ccf):		
0 to 120 ccf	\$0.3740	\$0.3740
121 to 217 ccf	\$2.5254	<u>\$2.7525</u>
218 to 408 ccf	\$3.1540	<u>\$3.3433</u>
409 ccf and over	\$4.1705	<u>\$5.5259</u>
Usage per 1,000 gallons:		
0 to 89,760 gallons	\$0.5000	\$0.5000
89,761 to 162,000 gallons	\$3.3762	<u>\$3.6798</u>
162,001 to 305,184 gallons	\$4.2166	<u>\$4.4696</u>
305,185 gallons and over	\$5.5756	<u>\$7.3876</u>

NOTE: 100 cubic feet (ccf) equals 748 gallons

Non-Residential: a retail customer/account consisting of business, commercial, industrial, or any combination thereof or mixed-use building

**MIAMI-DADE WATER AND SEWER DEPARTMENT
SCHEDULE OF RATES**

NON-RESIDENTIAL CUSTOMERS

WATER	<u>Effective</u> <u>October 1, 2013</u>	<u>Proposed</u> <u>October 1, 2014</u>
Meter Charge:	Quarterly Charge	
Meter Size		
3"	<u>\$195.08</u>	<u>\$206.79</u>
Flow Rate All Usage:	Quarterly Charge	
Usage per 100 cubic feet (ccf):		
0 to 240 ccf	\$0.3740	\$0.3740
241 to 433 ccf	<u>\$2.5254</u>	<u>\$2.7525</u>
434 to 816 ccf	<u>\$3.1540</u>	<u>\$3.3433</u>
817 ccf and over	<u>\$4.1705</u>	<u>\$5.5259</u>
Usage per 1,000 gallons:		
0 to 179,520 gallons	\$0.5000	\$0.5000
179,521 to 324,000 gallons	<u>\$3.3762</u>	<u>\$3.6798</u>
324,001 to 610,368 gallons	<u>\$4.2166</u>	<u>\$4.4696</u>
610,369 gallons and over	<u>\$5.5756</u>	<u>\$7.3876</u>
Meter Charge:	Quarterly Charge	
Meter Size		
4"	<u>\$304.82</u>	<u>\$323.13</u>
Flow Rate All Usage:	Quarterly Charge	
Usage per 100 cubic feet (ccf):		
0 to 375 ccf	\$0.3740	\$0.3740
376 to 677 ccf	<u>\$2.5254</u>	<u>\$2.7525</u>
678 to 1,275 ccf	<u>\$3.1540</u>	<u>\$3.3433</u>
1,276 ccf and over	<u>\$4.1705</u>	<u>\$5.5259</u>
Usage per 1,000 gallons:		
0 to 280,500 gallons	\$0.5000	\$0.5000
280,501 to 506,250 gallons	<u>\$3.3762</u>	<u>\$3.6798</u>
506,251 to 953,700 gallons	<u>\$4.2166</u>	<u>\$4.4696</u>
953,701 gallons and over	<u>\$5.5756</u>	<u>\$7.3876</u>

NOTE: 100 cubic feet (ccf) equals 748 gallons

Non-Residential: a retail customer/account consisting of business, commercial, industrial, or any combination thereof or mixed-use building

**MIAMI-DADE WATER AND SEWER DEPARTMENT
SCHEDULE OF RATES**

NON-RESIDENTIAL CUSTOMERS

WATER	<u>Effective</u> <u>October 1, 2013</u>	<u>Proposed</u> <u>October 1, 2014</u>
Meter Charge:	Quarterly Charge	
Meter Size		
6"	\$609.64	<u>\$646.20</u>
Flow Rate All Usage:	Quarterly Charge	
Usage per 100 cubic feet (ccf):		
0 to 750 ccf	\$0.3740	\$0.3740
751 to 1,354 ccf	\$2.5254	<u>\$2.7525</u>
1,355 to 2,550 ccf	\$3.1540	<u>\$3.3433</u>
2,551 ccf and over	\$4.1705	<u>\$5.5259</u>
Usage per 1,000 gallons:		
0 to 561,000 gallons	\$0.5000	\$0.5000
561,001 to 1,012,500 gallons	\$3.3762	<u>\$3.6798</u>
1,012,501 to 1,907,400 gallons	\$4.2166	<u>\$4.4696</u>
1,907,401 gallons and over	\$5.5756	<u>\$7.3876</u>
Meter Charge:	Quarterly Charge	
Meter Size		
8"	\$975.43	<u>\$1,033.95</u>
Flow Rate All Usage:	Quarterly Charge	
Usage per 100 cubic feet (ccf):		
0 to 1,200 ccf	\$0.3740	\$0.3740
1,201 to 2,166 ccf	\$2.5254	<u>\$2.7525</u>
2,167 to 4,080 ccf	\$3.1540	<u>\$3.3433</u>
4,081 ccf and over	\$4.1705	<u>\$5.5259</u>
Usage per 1,000 gallons:		
0 to 897,600 gallons	\$0.5000	\$0.5000
897,601 to 1,620,000 gallons	\$3.3762	<u>\$3.6798</u>
1,620,001 to 3,051,840 gallons	\$4.2166	<u>\$4.4696</u>
3,051,841 gallons and over	\$5.5756	<u>\$7.3876</u>

NOTE: 100 cubic feet (ccf) equals 748 gallons

Non-Residential: a retail customer/account consisting of business, commercial, industrial, or any combination thereof or mixed-use building

**MIAMI-DADE WATER AND SEWER DEPARTMENT
SCHEDULE OF RATES**

NON-RESIDENTIAL CUSTOMERS

WATER	<u>Effective</u> <u>October 1, 2013</u>	<u>Proposed</u> <u>October 1, 2014</u>
Meter Charge:	Quarterly Charge	
Meter Size		
10"	\$1,402.17	<u>\$1,486.29</u>
Flow Rate All Usage:	Quarterly Charge	
Usage per 100 cubic feet (ccf):		
0 to 1,725 ccf	\$0.3740	\$0.3740
1,726 to 3,113 ccf	\$2.5254	<u>\$2.7525</u>
3,114 to 5,865 ccf	\$3.1540	<u>\$3.3433</u>
5,866 ccf and over	\$4.1705	<u>\$5.5259</u>
Usage per 1,000 gallons:		
0 to 1,290,300 gallons	\$0.5000	\$0.5000
1,290,301 to 2,328,750 gallons	\$3.3762	<u>\$3.6798</u>
2,328,751 to 4,387,020 gallons	\$4.2166	<u>\$4.4696</u>
4,387,021 gallons and over	\$5.5756	<u>\$7.3876</u>
Meter Charge:	Quarterly Charge	
Meter Size		
12"	\$2,621.45	<u>\$2,778.75</u>
Flow Rate All Usage:	Quarterly Charge	
Usage per 100 cubic feet (ccf):		
0 to 3,225 ccf	\$0.3740	\$0.3740
3,226 to 5,821 ccf	\$2.5254	<u>\$2.7525</u>
5,822 to 10,965 ccf	\$3.1540	<u>\$3.3433</u>
10,966 ccf and over	\$4.1705	<u>\$5.5259</u>
Usage per 1,000 gallons:		
0 to 2,412,300 gallons	\$0.5000	\$0.5000
2,412,301 to 4,353,750 gallons	\$3.3762	<u>\$3.6798</u>
4,353,751 to 8,201,820 gallons	\$4.2166	<u>\$4.4696</u>
8,201,821 gallons and over	\$5.5756	<u>\$7.3876</u>

NOTE: 100 cubic feet (ccf) equals 748 gallons

Non-Residential: a retail customer/account consisting of business, commercial, industrial, or any combination thereof or mixed-use building

**MIAMI-DADE WATER AND SEWER DEPARTMENT
SCHEDULE OF RATES**

NON-RESIDENTIAL CUSTOMERS

WATER	<u>Effective</u> <u>October 1, 2013</u>	<u>Proposed</u> <u>October 1, 2014</u>
Meter Charge:	Quarterly Charge	
Meter Size		
14"	\$4,877.11	<u>\$5,169.72</u>
Flow Rate All Usage:	Quarterly Charge	
Usage per 100 cubic feet (ccf):		
0 to 6,000 ccf	\$0.3740	\$0.3740
6,001 to 10,829 ccf	\$2.5254	<u>\$2.7525</u>
10,830 to 20,400 ccf	\$3.1540	<u>\$3.3433</u>
20,401 ccf and over	\$4.1705	<u>\$5.5259</u>
Usage per 1,000 gallons:		
0 to 4,488,000 gallons	\$0.5000	\$0.5000
4,488,001 to 8,100,000 gallons	\$3.3762	<u>\$3.6798</u>
8,100,001 to 15,259,200 gallons	\$4.2166	<u>\$4.4696</u>
15,259,201 gallons and over	\$5.5756	<u>\$7.3876</u>
Meter Charge:	Quarterly Charge	
Meter Size		
16"	\$6,706.02	<u>\$7,108.38</u>
Flow Rate All Usage:	Quarterly Charge	
Usage per 100 cubic feet (ccf):		
0 to 8,250 ccf	\$0.3740	\$0.3740
8,251 to 14,890 ccf	\$2.5254	<u>\$2.7525</u>
14,891 to 28,050 ccf	\$3.1540	<u>\$3.3433</u>
28,051 ccf and over	\$4.1705	<u>\$5.5259</u>
Usage per 1,000 gallons:		
0 to 6,171,000 gallons	\$0.5000	\$0.5000
6,171,001 to 11,137,500 gallons	\$3.3762	<u>\$3.6798</u>
11,137,501 to 20,981,400 gallons	\$4.2166	<u>\$4.4696</u>
20,981,401 gallons and over	\$5.5756	<u>\$7.3876</u>

NOTE: 100 cubic feet (ccf) equals 748 gallons

Non-Residential: a retail customer/account consisting of business, commercial, industrial, or any combination thereof or mixed-use building

**MIAMI-DADE WATER AND SEWER DEPARTMENT
SCHEDULE OF RATES**

RESIDENTIAL CUSTOMERS

WASTEWATER DISPOSAL

	<u>Effective</u> <u>October 1, 2013</u>	<u>Proposed</u> <u>October 1, 2014</u>
Base Facility Charge:	Monthly Charge	
<i>(Base Facility Charge is based on water meter size)</i>		
5/8"	\$3.25	\$3.25
1"	\$10.32	<u>\$10.94</u>
1.5"	\$20.64	<u>\$21.88</u>
2"	\$33.03	<u>\$35.01</u>
3"	\$66.04	<u>\$70.00</u>
4"	\$103.19	<u>\$109.38</u>
6"	\$206.39	<u>\$218.77</u>
8"	\$330.22	<u>\$350.03</u>
10"	\$474.69	<u>\$503.17</u>
12"	\$887.47	<u>\$940.72</u>
14"	\$1,651.10	<u>\$1,750.17</u>
16"	\$2,270.27	<u>\$2,406.49</u>

Flow Rate All Usage:

Monthly Charge

Usage per 100 cubic feet (ccf):

0 to 5 ccf	\$1.3838	\$1.3838
6 to 9 ccf	\$4.9672	<u>\$5.4168</u>
10 ccf and over	\$5.0256	<u>\$5.3271</u>

Usage per 1,000 gallons:

0 to 3,740 gallons	\$1.8500	\$1.8500
3,741 to 6,750 gallons	\$6.6406	<u>\$7.2417</u>
6,751 gallons and over	\$6.7187	<u>\$7.1218</u>

NOTE: 100 cubic feet (ccf) equals 748 gallons

Residential: a retail customer/account consisting of a single family residence or duplex being served by a common meter

**MIAMI-DADE WATER AND SEWER DEPARTMENT
SCHEDULE OF RATES**

RESIDENTIAL CUSTOMERS

WASTEWATER DISPOSAL

**Effective
October 1, 2013**

**Proposed
October 1, 2014**

Base Facility Charge:

Quarterly Charge

(Base Facility Charge is based on water meter size)

5/8"	\$9.75	\$9.75
1"	\$30.97	<u>\$32.82</u>
1.5"	\$61.92	<u>\$65.64</u>
2"	\$99.08	<u>\$105.03</u>
3"	\$198.13	<u>\$210.00</u>
4"	\$309.58	<u>\$328.14</u>
6"	\$619.16	<u>\$656.31</u>
8"	\$990.66	<u>\$1,050.09</u>
10"	\$1,424.08	<u>\$1,509.51</u>
12"	\$2,662.41	<u>\$2,822.16</u>
14"	\$4,953.31	<u>\$5,250.51</u>
16"	\$6,810.80	<u>\$7,219.47</u>

Flow Rate All Usage:

Quarterly Charge

Usage per 100 cubic feet (ccf):

0 to 15 ccf	\$1.3838	\$1.3838
16 to 27 ccf	\$4.9672	<u>\$5.4168</u>
28 ccf and over	\$5.0256	<u>\$5.3271</u>

Usage per 1,000 gallons:

0 to 11,220 gallons	\$1.8500	\$1.8500
11,221 to 20,250 gallons	\$6.6406	<u>\$7.2417</u>
20,251 gallons and over	\$6.7187	<u>\$7.1218</u>

NOTE: 100 cubic feet (ccf) equals 748 gallons

Residential: a retail customer/account consisting of a single family residence or duplex being served by a common meter

**MIAMI-DADE WATER AND SEWER DEPARTMENT
SCHEDULE OF RATES**

MULTI-FAMILY DWELLINGS (MFD)

WASTEWATER DISPOSAL

**Effective
October 1, 2013**

**Proposed
October 1, 2014**

Base Facility Charge:

Monthly Charge

(Base Facility Charge is based on water meter size)

5/8" to 16"

\$2.60

\$2.60

(Base Facility Charge will be applied per unit)

Flow Rate All Usage Per Unit:

Monthly Charge

Usage per 100 cubic feet (ccf):

0 to 4 ccf

\$1.3838

\$1.3838

5 to 7 ccf

~~\$4.9672~~

~~\$5.4168~~

8 ccf and over

~~\$5.0256~~

~~\$5.3271~~

Usage per 1,000 gallons:

0 to 2,992 gallons

\$1.8500

\$1.8500

2,993 to 5,400 gallons

~~\$6.6406~~

~~\$7.2417~~

5,401 gallons and over

~~\$6.7187~~

~~\$7.1218~~

NOTE: 100 cubic feet (ccf) equals 748 gallons

Multi-family: a retail customer/account consisting of more than 2 residential customers served by a common meter(s)

**MIAMI-DADE WATER AND SEWER DEPARTMENT
SCHEDULE OF RATES**

MULTI-FAMILY DWELLINGS (MFD)

WASTEWATER DISPOSAL

	<u>Effective</u> <u>October 1, 2013</u>	<u>Proposed</u> <u>October 1, 2014</u>
--	--------------------------------------------	-------------------------------------------

Base Facility Charge:

Quarterly Charge

(Base Facility Charge is based on water meter size)

5/8" to 16"

\$7.80

\$7.80

(Base Facility Charge will be applied per unit)

Flow Rate All Usage Per Unit:

Quarterly Charge

Usage per 100 cubic feet (ccf):

0 to 12 ccf

\$1.3838

\$1.3838

13 to 21 ccf

~~\$4.9672~~

\$5.4168

22 ccf and over

~~\$5.0256~~

\$5.3271

Usage per 1,000 gallons:

0 to 8,976 gallons

\$1.8500

\$1.8500

8,977 to 16,200 gallons

~~\$6.6406~~

\$7.2417

16,201 gallons and over

~~\$6.7187~~

\$7.1218

NOTE: 100 cubic feet (ccf) equals 748 gallons

Multi-family: a retail customer/account consisting of more than 2 residential customers served by a common meter(s)

**MIAMI-DADE WATER AND SEWER DEPARTMENT
SCHEDULE OF RATES**

NON-RESIDENTIAL CUSTOMER

WASTEWATER DISPOSAL

	<u>Effective</u> <u>October 1, 2013</u>	<u>Proposed</u> <u>October 1, 2014</u>
Base Facility Charge:	Monthly Charge	
<i>(Base Facility Charge is based on water meter size)</i>		
5/8"	\$3.25	\$3.25
1"	\$10.32	<u>\$10.94</u>
1.5"	\$20.64	<u>\$21.88</u>
2"	\$33.03	<u>\$35.01</u>
3"	\$66.04	<u>\$70.00</u>
4"	\$103.19	<u>\$109.38</u>
6"	\$206.39	<u>\$218.77</u>
8"	\$330.22	<u>\$350.03</u>
10"	\$474.69	<u>\$503.17</u>
12"	\$887.47	<u>\$940.72</u>
14"	\$1,651.10	<u>\$1,750.17</u>
16"	\$2,270.27	<u>\$2,406.49</u>

Flow Rate All Usage:

Monthly Charge

Usage per 100 cubic feet (ccf):

0 to 5 ccf	\$1.3838	\$1.3838
6 to 9 ccf	\$4.9672	<u>\$5.4168</u>
10 ccf and over	\$5.0256	<u>\$5.3271</u>

Usage per 1,000 gallons:

0 to 3,740 gallons	\$1.8500	\$1.8500
3,741 to 6,750 gallons	\$6.6406	<u>\$7.2417</u>
6,751 gallons and over	\$6.7187	<u>\$7.1218</u>

NOTE: 100 cubic feet (ccf) equals 748 gallons

Non-Residential: a retail customer/account consisting of business, commercial, industrial, or any combination thereof or mixed-use building

**MIAMI-DADE WATER AND SEWER DEPARTMENT
SCHEDULE OF RATES**

NON-RESIDENTIAL CUSTOMER

WASTEWATER DISPOSAL

**Effective
October 1, 2013**

**Proposed
October 1, 2014**

Base Facility Charge:

Quarterly Charge

(Base Facility Charge is based on water meter size)

5/8"	\$9.75	\$9.75
1"	\$30.97	<u>\$32.82</u>
1.5"	\$61.92	<u>\$65.64</u>
2"	\$99.08	<u>\$105.03</u>
3"	\$198.13	<u>\$210.00</u>
4"	\$309.58	<u>\$328.14</u>
6"	\$619.16	<u>\$656.31</u>
8"	\$990.66	<u>\$1,050.09</u>
10"	\$1,424.08	<u>\$1,509.51</u>
12"	\$2,662.41	<u>\$2,822.16</u>
14"	\$4,953.31	<u>\$5,250.51</u>
16"	\$6,810.80	<u>\$7,219.47</u>

Flow Rate All Usage:

Quarterly Charge

Usage per 100 cubic feet (ccf):

0 to 15 ccf	\$1.3838	\$1.3838
16 to 27 ccf	\$4.9672	<u>\$5.4168</u>
28 ccf and over	\$5.0256	<u>\$5.3271</u>

Usage per 1,000 gallons:

0 to 11,220 gallons	\$1.8500	\$1.8500
11,221 to 20,250 gallons	\$6.6406	<u>\$7.2417</u>
20,251 and over	\$6.7187	<u>\$7.1218</u>

NOTE: 100 cubic feet (ccf) equals 748 gallons

Non-Residential: a retail customer/account consisting of business, commercial, industrial, or any combination thereof or mixed-use building

**MIAMI-DADE WATER AND SEWER DEPARTMENT
SCHEDULE OF RATES**

WHOLESALE CUSTOMERS

	<u>Effective</u> <u>October 1, 2013</u>	<u>Proposed</u> <u>October 1, 2014</u>
WATER		
Wholesale Customers:		
Flow Rate Per 1,000 gallons	\$1.7142	<u>\$1.7816</u>
 WASTEWATER		
Rates for Wet Season (May 1 to October 31 Annually)		
Flow Rate Per 1,000 gallons	\$2.7589	<u>\$2.8800</u>
Rates for Dry Season (November 1 to April 30 Annually)		
Flow Rate Per 1,000 gallons	\$2.1458	<u>\$2.2400</u>

**MIAMI-DADE WATER AND SEWER DEPARTMENT
SCHEDULE OF RATES**

RESIDENTIAL, MULTI-FAMILY DWELLINGS AND NON-RESIDENTIAL CUSTOMERS

WATER

Effective
October 1, 2013

Proposed
October 1, 2014

Miami-Dade County (MDC) Water Conservation Surcharge:

(During South Florida Water Management District (SFWMD) water restrictions, flow usage rate of the fourth tier will be priced as follows):

Usage Flows Starting on 4th Rate Block per 100 cubic feet (ccf):

Permanent or Phase I of Water Restrictions Imposed by (SFWMD)	\$5.2132	<u>\$5.5259</u>
Phase II of Water Restrictions Imposed by (SFWMD)	\$6.2558	<u>\$6.6311</u>
Phase III of Water Restrictions Imposed by (SFWMD)	\$7.2985	<u>\$7.7363</u>
Phase IV of Water Restrictions Imposed by (SFWMD)	\$8.3411	<u>\$8.8415</u>

Usage Flows Starting on 4th Rate Block per 1,000 gallons (gal):

Permanent or Phase I of Water Restrictions Imposed by (SFWMD)	\$6.9695	<u>\$7.3876</u>
Phase II of Water Restrictions Imposed by (SFWMD)	\$8.3634	<u>\$8.8652</u>
Phase III of Water Restrictions Imposed by (SFWMD)	\$9.7573	<u>\$10.3427</u>
Phase IV of Water Restrictions Imposed by (SFWMD)	\$11.1512	<u>\$11.8202</u>

Miami Springs System Improvement Surcharge	22.58%	22.58%
--------------------------------------------	--------	--------

WASTEWATER

Miami Springs System Improvement Surcharge	45.27%	45.27%
--------------------------------------------	--------	--------

**MIAMI-DADE WATER AND SEWER DEPARTMENT
SCHEDULE OF WATER FEES AND CHARGES**

WATER		Effective October 1, 2013	Proposed October 1, 2014	
1. <u>Oversizing Credits</u>				
<u>Pipe Size</u>	<u>Credit Per Linear Foot</u>	<u>Credit Per Each Butterfly Valve</u>	<u>Credit Per Linear Foot</u>	<u>Credit Per Each Butterfly Valve</u>
8" to 12"	(\$9.00)	(\$470.00)	(\$9.00)	(\$470.00)
8" to 16"	(\$19.00)	(\$3,197.00)	(\$19.00)	(\$3,197.00)
8" to 20"	(\$31.00)	(\$7,415.00)	(\$31.00)	(\$7,415.00)
8" to 24"	(\$44.00)	(\$8,256.00)	(\$44.00)	(\$8,256.00)
8" to 30"	(\$81.00)	(\$19,722.00)	(\$81.00)	(\$19,722.00)
8" to 36"	(\$93.00)	(\$24,742.00)	(\$93.00)	(\$24,742.00)
12" to 16"	(\$11.00)	(\$2,728.00)	(\$11.00)	(\$2,728.00)
12" to 20"	(\$23.00)	(\$6,946.00)	(\$23.00)	(\$6,946.00)
12" to 24"	(\$36.00)	(\$7,787.00)	(\$36.00)	(\$7,787.00)
12" to 30"	(\$61.00)	(\$19,253.00)	(\$61.00)	(\$19,253.00)
12" to 36"	(\$84.00)	(\$24,273.00)	(\$84.00)	(\$24,273.00)
2. <u>Developer Payment/Credit for New Water Service Installation for Existing Property Use</u>				
<u>Pipe Size</u>				
1"		(\$1,800.00)		(\$1,800.00)
2"		(\$2,500.00)		(\$2,500.00)
3. <u>Water Allocation Certification</u>				
Initial Certification		\$90.00		\$90.00
Re-Certification		\$30.00		\$30.00
4. <u>Construction Connection Charge</u>				
<u>Pipe Size</u>		<u>Rate Per Front Foot</u>		<u>Rate Per Front Foot</u>
8"		\$30.00		\$30.00
12" (12-inch base size only)		\$35.00		\$35.00
16" (16-inch base size only)		\$42.00		\$42.00
5. <u>Service Installation Fees</u>				
<u>Service Size</u>				
1" (5/8" meter-twin off or second meter in existing dual box)		\$850.00		\$850.00
1" (single - 5/8" or 1" meter)		\$1,200.00		\$1,200.00
1" (dual - two 5/8" meters)		\$1,700.00		\$1,700.00
2" (single - 2" meter)		\$2,500.00		\$2,500.00
Greater than 2"		Actual Cost		Actual Cost

NOTE: The above fees will apply for all typical service installations. However, the Department reserves the right to charge its actual costs for a typical service installation.

**MIAMI-DADE WATER AND SEWER DEPARTMENT
SCHEDULE OF WATER FEES AND CHARGES**

WATER	<u>Effective</u> <u>October 1, 2013</u>	<u>Proposed</u> <u>October 1, 2014</u>
6. <u>Temporary Portable Meter Guarantee Deposit</u>		
<u>Meter Size</u>		
1"	\$1,500.00	\$1,500.00
2"	\$2,500.00	\$2,500.00
 NOTE: Resolution No. 3281 specifically excludes the above deposits from earning simple interest calculated on guarantee deposits for retail customers.		
 7. <u>Fire Protection Water Service Rates</u>		
	<u>Monthly</u>	<u>Quarterly</u>
<u>Size of Fire Line Connection</u>		
2"	\$2.25	\$6.75
3"	\$4.00	\$12.00
4"	\$7.00	\$21.00
6"	\$11.50	\$34.50
8"	\$15.00	\$45.00
10"	\$23.00	\$69.00
12"	\$30.00	\$90.00
 8. <u>Fire Hydrant Service Charge</u>		
Per month	\$0.80	\$0.80
Per quarter	\$2.40	\$2.40
 9. <u>Connection Charge Rate</u>		
Per average daily gallon	\$1.39	\$1.39
 10. <u>Basic Customer Service Fees</u>		
A. Deposit		
Residential-based on customer's credit analysis and payment history	\$0.00 to \$100.00	\$0.00 to \$100.00
Commercial - monthly	Amount based on 2.5 times the anticipated monthly billing with a minimum charge of \$50.00	Amount based on 2.5 times the anticipated monthly billing with a minimum charge of \$50.00
Commercial - quarterly	Amount based on 1.5 times the anticipated quarterly billing with a minimum charge of \$50.00	Amount based on 1.5 times the anticipated quarterly billing with a minimum charge of \$50.00
B. Charge for opening or transferring an account on billing system	\$10.00	\$10.00

**MIAMI-DADE WATER AND SEWER DEPARTMENT
SCHEDULE OF WATER FEES AND CHARGES**

WATER	<u>Effective</u> <u>October 1, 2013</u>	<u>Proposed</u> <u>October 1, 2014</u>
C. Additional charge if a field visit is required to connect the water meter or obtain a water meter reading.	\$35.00	\$35.00
11. Other Service Fees		
A. Office investigation of a delinquent account resulting from:		
Active meter violation	\$30.00	\$30.00
Returned payment (check, draft, or other order for the payment of money) (F.S. 2005 - 125.0105, 832.08(5)):		
If face value of payment does not exceed \$50.00	\$25.00	\$25.00
If face value of payment exceeds \$50.00 but does not exceed \$300.00	\$30.00	\$30.00
If face value of payment exceeds \$300.00	\$40.00	\$40.00
	(or 5% of the face amount of payment, whichever is greater)	(or 5% of the face amount of payment, whichever is greater)
B. Field attempt to collect a payment or deposit or to discontinue water service by cutting or locking service or removing meter and plugging service	\$20.00	\$20.00
C. Field attempt to reconnect a cut-off or locked service or to reinstall a meter	\$35.00	\$35.00
D. Field visits after initial attempt to read meter or to inspect backflow prevention device required due to denied access	\$50.00	\$50.00
E. Customer requested check read	\$12.50	\$12.50
F. Penalty for failure to provide a meter reading or a meter for inspection as required for floating (construction) meters	\$150.00	\$150.00
G. Customer-requested high bill investigation, which does not meet established criteria	\$20.00	\$20.00
H. Charges the Department incurs on behalf of the customer, which shall be passed on to the customer	\$5.00 (minimum charge)	\$5.00 (minimum charge)

**MIAMI-DADE WATER AND SEWER DEPARTMENT
SCHEDULE OF WATER FEES AND CHARGES**

WATER	<u>Effective</u> <u>October 1, 2013</u>	<u>Proposed</u> <u>October 1, 2014</u>
I. Field visit to inspect/verify repairs related to underground leak credits when repairs were not done by a licensed plumber	\$30.00	\$30.00
J. Field visit to check a meter reading or pool credit reading	\$12.50	\$12.50
K. Administrative Hearing	\$75.00	\$75.00
12. <u>Customer Requested Submeter Installation</u>		
To cover cost of field inspections, approvals and clerical expenses for establishing future billings	\$50.00	\$50.00
13. <u>Pipe Tapping Charges</u>		
<u>Tap Size</u>		
4"	\$520.00	\$520.00
6"	\$530.00	\$530.00
8"	\$600.00	\$600.00
12"	\$785.00	\$785.00
16"	\$1,555.00	\$1,555.00
20"	\$1,885.00	\$1,885.00
Overtime Charge	\$105.00	\$105.00
NOTE: There will be a \$205.00 charge if Department personnel arrive on a job site and are unable to perform the tapping operation because the contractor has not fulfilled its obligations specified in the Rules and Regulations. No materials shall be furnished by the Department for installation under the prices listed above.		
14. <u>Tailpiece Charge</u>		
<u>Tailpiece Size</u>		
3/4"	\$40.00	\$40.00
1"	\$75.00	\$75.00
2"	\$165.00	<u>\$180.00</u>
15. <u>Certified Meter Test Charge</u>		
<u>In-House Testing</u>		
5/8" and 1" Meters	\$50.00	\$50.00
1 1/2" and 2" Meters	\$85.00	\$85.00
<u>On-Site Testing</u>		
3" through 10" Meters	\$200.00	\$200.00
<u>Third Party Vendor Testing</u>		
5/8" and 1" Meters	\$90.00	\$90.00
1 1/2" and 2" Meters	\$160.00	\$160.00

**MIAMI-DADE WATER AND SEWER DEPARTMENT
SCHEDULE OF WATER FEES AND CHARGES**

WATER	<u>Effective</u> <u>October 1, 2013</u>	<u>Proposed</u> <u>October 1, 2014</u>
16. <u>Municipal Excise Tax on Water Bills</u>	As required by local ordinances, the Department will impose an excise tax on retail sales of water. Exempt from this tax are governmental agencies, houses of public worship and certain consulates.	As required by local ordinances, the Department will impose an excise tax on retail sales of water. Exempt from this tax are governmental agencies, houses of public worship and certain consulates.
17. <u>Permit Fee(s)</u>	As charged to the Department by various governmental agencies.	As charged to the Department by various governmental agencies.
18. <u>Premise Location Certificate</u>		
To obtain notification of any actual or potential lien amount attached to a premise location fee per premise address:		
<u>Water & Sewer</u>		
A. Regular premise location certificate	\$10.00	\$10.00
B. 24-hour premise location certificate	\$20.00	\$20.00
19. <u>Plans Review and Inspection Fees</u>		
Plans Review Fees entitles the applicant to an initial plans review, and one follow-up review <u>the first rework review, and one final review.</u>		
A. <u>Firelines/Services</u>	\$55.00	\$55.00
B. <u>Turbine and/or Fire Rated Meters</u>		<u>\$150.00</u>
C. <u>Water Main Extensions</u>		
Up to 500 ft.	\$300.00	\$300.00
501 ft. to 2,000 ft.	\$350.00	\$350.00
Greater than 2,000 ft.	\$450.00	<u>\$350.00</u>
		<u>plus \$0.18 per ft >2,000 ft</u>
D. 2nd Rework and Thereafter of Plans Review Items above A. B. and C.	\$106.59	\$106.59
Renewal of expired approval and revisions (One year or more after original approval)	Same as original fee	Same as original fee
<u>Special Request to Expedite Plans Review</u>		
1st Hour	\$190.00	\$190.00
Each Additional Hour	\$65.00	\$65.00
Revised Plans Review Processing Fee of \$1.25 per each additional minutes for reviews that take longer than 5 minutes.		
Single period, two-year extension of approval for qualifying projects pursuant to Ordinance # 11-60	\$79.00	\$79.00

Processing fees for the review and approval of plans for code compliance regarding water extension projects, including firelines.

**MIAMI-DADE WATER AND SEWER DEPARTMENT
SCHEDULE OF WATER FEES AND CHARGES**

WATER	<u>Effective</u> <u>October 1, 2013</u>	<u>Proposed</u> <u>October 1, 2014</u>
20. <u>Laboratory Fees for Drinking Water Tests</u>		
<u>Per Sample (Excludes Sample Collection)</u>		
Bacteriology (Membrane Filter)	\$15.00	\$15.00
Bacteriology (Membrane Filter) - After Hours		
Charge to Wholesale Customers	\$40.00	\$40.00
Color	\$10.00	\$10.00
Fluoride	\$20.00	\$20.00
Lead/Copper	\$50.00	\$50.00
Trihalomethanes	\$50.00	\$50.00
Water Quality Parameters	\$60.00	\$60.00
Volatile Organic Contaminants	\$75.00	\$75.00
Nitrate	\$10.00	\$10.00
Nitrite	\$10.00	\$10.00
Alkalinity	\$8.00	\$8.00
Chloride	\$8.00	\$8.00
Calcium	\$6.00	\$6.00
Hardness	\$8.00	\$8.00
Conductivity	\$4.00	\$4.00
Total Dissolved Solids (TDS)	\$6.00	\$6.00
Turbidity	\$8.00	\$8.00
Chlorine Residual	\$10.00	\$10.00
Ammonia - Nitrogen	\$10.00	\$10.00
Dissolved Oxygen	\$6.00	\$6.00
Total Phosphorous	\$10.00	\$10.00
Ortho Phosphate	\$10.00	\$10.00
pH	\$4.00	\$4.00
Sulfate	\$16.00	\$16.00
Total Organic Carbon	\$16.00	\$16.00
Marble	\$25.00	\$25.00
Sodium	\$18.00	\$18.00
<u>Sample Collection Fee</u>		
Per water sample	\$25.00	\$25.00
Fee charged for Department's laboratory sample collection services		
21. <u>Payment for Collection of Lead/Copper Water Test at Customer Tap</u>		
Payment for collection of sample	(\$25.00)	<u>(\$50.00)</u>
Payment by Department to customers in established pool of homes who participate in sample collection for compliance with EPA Lead and Copper Rule (LCR).		

**MIAMI-DADE WATER AND SEWER DEPARTMENT
SCHEDULE OF WATER FEES AND CHARGES**

WATER	<u>Effective October 1, 2013</u>	<u>Proposed October 1, 2014</u>
22. <u>Release of Easement Fees</u>		
A. Release of platted easement rights	\$250.00	\$250.00
B. Conditional consent letter for permission to use easement until required by Department	\$50.00	\$50.00
C. All other release requests	\$500.00	\$500.00
23. <u>Completion of Water and Sewer Verification Form Fees* (See Table 2)</u> <i>(See Section 24-43.1(5) of the Miami-Dade County Code)</i>		
<u>Water Only</u>		
A. Residential (R-A)	\$30.00	\$30.00
B. Multi-family residential (R-B)	\$75.00	\$75.00
C. Non-residential (NR)	\$75.00	\$75.00
<u>Water & Sewer</u>		
A. Residential (R-A)	\$60.00	\$60.00
B. Multi-family residential (R-B)	\$150.00	\$150.00
C. Non-residential (NR)	\$150.00	\$150.00
* Single period, two-year extension of approval for qualifying projects pursuant to Ordinance # 11-60	\$79.00	\$79.00
24. <u>Water and Sewer Ordinance Letter</u>		
<u>Water Only</u>		
A. Residential	\$30.00	\$30.00
B. Commercial	\$75.00	\$75.00
<u>Water & Sewer</u>		
A. Residential	\$60.00	\$60.00
B. Commercial	\$150.00	\$150.00
25. <u>Review and Release of Recorded Document Fees (Other Than Easements)</u> <i>(covenants, unities of title, service agreements, warranty deeds)</i>		
A. Water only	\$100.00	\$100.00
B. Water & Sewer	\$150.00	\$150.00
26. <u>Completion of Service Feasibility Questionnaire Fee</u>	\$25.00	\$25.00

**MIAMI-DADE WATER AND SEWER DEPARTMENT
SCHEDULE OF WATER FEES AND CHARGES**

WATER	<u>Effective</u> <u>October 1, 2013</u>	<u>Proposed</u> <u>October 1, 2014</u>
27. <u>Preparation of Service Agreement Fees *</u>		
<u>Water Only</u>		
Residential, multi-family and commercial use	\$100.00	\$100.00
<u>Water & Sewer</u>		
Residential, multi-family and commercial use	\$200.00	\$200.00
* Single period, two-year extension of approval for qualifying projects pursuant to Ordinance # 11-60	\$79.00	\$79.00
28. <u>Preparation of Letter of Availability Fees</u>		
A. Water only	\$50.00	\$50.00
B. Water & Sewer	\$100.00	\$100.00
29. <u>Other Recordable Legal Document Fees</u>		
A. <u>Preparation of covenant</u>		
1. Water only	\$25.00	\$25.00
2. Water & Sewer	\$50.00	\$50.00
B. <u>Preparation of unity of title</u>		
1. Water only	\$25.00	\$25.00
2. Water & Sewer	\$50.00	\$50.00
30. <u>Environmental Quality Control Board (EQCB)</u>		
<u>Letter Preparation Fees</u>		
A. Water only	\$35.00	\$35.00
B. Water & Sewer	\$70.00	\$70.00
31. <u>Review of Shop Drawings Fee</u>		
Per shop drawing	\$60.00	\$60.00
Fee charged for the review of shop drawings for Department compliance regarding water valve fittings and taps		

**MIAMI-DADE WATER AND SEWER DEPARTMENT
SCHEDULE OF WATER FEES AND CHARGES**

WATER	<u>Effective</u> <u>October 1, 2013</u>	<u>Proposed</u> <u>October 1, 2014</u>
32. <u>BlueLine Prints Requested From As-Builts Fee</u>		
Fee per blueline print	\$5.00	\$5.00
33. <u>Design and Construction Standard Specifications and Details Publication Fee</u>		
Per publication	\$50.00	\$50.00
34. <u>Verification of Underground Water and Sewer Infrastructure Horizontal Location Fee</u>		
Per 100 Linear Feet	\$50.00	\$50.00
Additional Linear Foot	\$0.50	\$0.50
(verification of horizontal location of underground infrastructure as shown on As-Builts)		
35. <u>Safety and Rescue Training Course Fees</u>		
<u>Water & Sewer</u>		
A. Confined space entry (24 hours)	\$450.00	\$450.00
B. Hazardous material technician and incident command class (40 hours)	\$550.00	\$550.00
C. Hazwoper training (40 hours)	\$550.00	\$550.00
D. Air monitoring (16 hours)	\$150.00	\$150.00
E. Excavation safety (Trenching & shoring, 16 hours)	\$250.00	\$250.00
F. Fall protection/scaffolding (16 hours)	\$250.00	\$250.00
G. Electrical safety (16 hours)	\$500.00	\$500.00
H. Respiratory protection (40 hours)	\$450.00	\$450.00
NOTE: The revenues from the above course fees are allocated to the water and wastewater funds.		
36. <u>Floating Meters Damaged/Cleaning Fees</u>		
<u>Meter Size</u>		
1"	\$72.00	\$72.00
2"	\$125.00	\$125.00
3"	\$140.00	\$140.00
37. <u>Floating Meters</u>		
Charge to read a floating meter in the field	\$50.00	\$50.00

**MIAMI-DADE WATER AND SEWER DEPARTMENT
SCHEDULE OF WATER FEES AND CHARGES**

WATER	<u>Effective</u> <u>October 1, 2013</u>	<u>Proposed</u> <u>October 1, 2014</u>
38. <u>Preparation of GIS Adhoc Maps and/or Data Fees</u>		
Per hour (minimum one hour)	\$65.00	\$65.00
Additional copies of the same map-per copy	\$25.00	\$25.00
39. <u>Florida Power and Light - Turkey Point</u>	57.22% of water retail step rates based on consumption (per agreement)	57.22% of water retail step rates based on consumption (per agreement)
40. <u>Detecto Meters</u>		
Per 100 cubic feet	\$4.1705	\$4.4208
Per 1,000 gallons	\$5.5756	<u>\$5.9101</u>
41. <u>Security Fees</u>		
A. Fee for Issuance of Initial Identification Card		
Per person	\$60.00	\$60.00
Fee charged for background check and processing costs for identification card and transponder issued to persons having access to Department facilities. (Consultants, Contractors, Non-Water and Sewer Department Staff)		
B. Fee for Issuance of Initial Identification Card		
Per person	\$20.00	\$20.00
Fee charged for processing costs for identification card issued to persons having access to Department facilities. (Consultants, Contractors, Non-Water and Sewer Department Staff)		
C. Fee for Renewal of Expired Identification Card (one year from date of issuance) (Consultants, Contractors, Non-Water and Sewer Department Staff)		
Per person	\$55.00	\$55.00
D. Fee for Replacement of Identification Card (card lost, stolen, etc.)		
Per person	\$15.00	\$15.00

**MIAMI-DADE WATER AND SEWER DEPARTMENT
SCHEDULE OF WATER FEES AND CHARGES**

WATER	<u>Effective October 1, 2013</u>	<u>Proposed October 1, 2014</u>
E. Fee for Renewal of Expired Personal Transponder (one year from date of issuance) (Consultants, Contractors, Non-Water and Sewer Department Staff)		
Per person	\$15.00	\$15.00
F. Fee for Replacement of Personal Transponder (transponder lost, stolen, etc.)		
Per person	\$15.00	\$15.00
G. Fee for Issuance of Initial Transponder for Vehicle or Equipment		
Per vehicle or piece of equipment	\$25.00	\$25.00
Fee charged for processing costs for issuance of vehicle or equipment transponder to access Department facilities (Consultants, Contractors, Non-Water and Sewer Department Staff)		
H. Fee for Renewal of Expired Transponder for Vehicle or Equipment (one year from date of issuance) (Consultants, Contractors, Non-Water and Sewer Department Staff)		
Per vehicle or piece of equipment	\$25.00	\$25.00
I. Fee for Replacement of Transponder for Vehicle or Equipment (transponder lost, stolen, etc.)		
Per vehicle or piece of equipment	\$25.00	\$25.00
42. <u>Subscription Fee to Access Customer Care and Billing System (CCB)</u>		
Fee per user	\$6,300.00	\$6,300.00
Annual fee charged to title and lien companies to provide access to the Department's Customer Care and Billing System (CCB) via the Internet for Premise Lien Certificates (PLC).		
43. <u>Cut For Non-Payment (CONP)</u>		
Third Attempt Water Meter Removal Charge	\$250.00	\$250.00
Fee charged to customers who intentionally blocked access to water meter on two previous attempts to collect or lock service for non-payment.		

**MIAMI-DADE WATER AND SEWER DEPARTMENT
SCHEDULE OF WATER FEES AND CHARGES**

WATER	<u>Effective</u> <u>October 1, 2013</u>	<u>Proposed</u> <u>October 1, 2014</u>
44. <u>Developer Repayment Fee</u>		
To cover administrative costs for collection and repayment of construction connection charges collected from connecting and/or abutting properties in behalf of developers who constructed the facilities.	2.5% of gross repayment	2.5% of gross repayment
45. <u>Unauthorized Usage of Water on Fire Lines</u>		
Daily penalty charge against fire line accounts for allowing unauthorized usage or waste of water.	\$100.00 per day	\$100.00 per day
46. <u>General & Administrative (G&A) Overhead (OH) Rate</u>		
Rate charged to offset general and administrative costs related to work performed by the Department due to request, damage (billable job orders) or contractual agreement.	10.6% of total cost	10.6% of total cost
47. <u>Pipeline Installation Contributions</u>		
<u>Pipe Size</u>	<u>Rate Per Linear Foot</u>	<u>Rate Per Linear Foot</u>
8"	\$42.00	\$42.00
12"	\$46.00	\$46.00
Contributory payments by developers of certain development projects as indicated by Section 2.04(2c) of the Rules and Regulations.		
48. <u>After-Hours Construction Inspections Activity Fees</u>		
Per hour rate charged for work outside the specified work hours - weekends, nights and holidays for contractors with special requirements or deadlines for construction.	\$90.00 per hour	\$90.00 per hour

**MIAMI-DADE WATER AND SEWER DEPARTMENT
SCHEDULE OF WATER FEES AND CHARGES**

WATER

Effective
October 1, 2013

Proposed
October 1, 2014

49. Water Meter Installation Fees

These fees are for the installation of the water meter(s) only. All new water services must be installed in accordance with the appropriate Water & Sewer Department Standard Detail, prior to the installation of the water meters.

The Department reserves the right to install the appropriate sized meter, if a service is deemed to be oversized for a specific premise, as long as an adequate amount of flow is provided.

Fee for installing initial water meter for new customer

Service Size (Section 45) :

3/4" or 5/8"	\$135.00	<u>\$145.00</u>
1"	\$190.00	<u>\$195.00</u>
2"	\$1,350.00	\$1,350.00
4" (with 2 - 2" meters)	\$2,665.00	\$2,665.00
4" Turbo	\$4,075.00	\$4,075.00
6" Turbo	\$6,145.00	\$6,145.00
6" x 4" Turbo	\$7,475.00	\$7,475.00
8" Turbo	\$9,380.00	\$9,380.00
8" x 4" Turbo	\$10,740.00	\$10,740.00
10" Turbo	\$11,770.00	\$11,770.00
10" x 4" Turbo	\$13,130.00	\$13,130.00

Note: All other sizes and/or configurations will be charged at actual cost.

50. Return Field Visit to Set Meter After Failed Meter Installation

Fee for return field visit to set meter after initial installation was not up to Department standards.

Service Size

5/8" to 1"	\$35.00	\$35.00
2" to 10"	\$55.00	\$55.00

51. Rental of Light Towers

\$505.00 per tower per day

\$505.00 per tower per day

**MIAMI-DADE WATER AND SEWER DEPARTMENT
SCHEDULE OF WATER FEES AND CHARGES**

WATER	<u>Effective</u> <u>October 1, 2013</u>	<u>Proposed</u> <u>October 1, 2014</u>
52. <u>Surcharge for After- Hours Initial Meter Installation</u>		
<u>Service Size:</u>		
3/4" to 1" Service	\$385.00	\$385.00
2" to 4" Service	\$675.00	\$675.00
6" to 10" Service	\$1,015.00	\$1,015.00
53. <u>Curb Stop Replacement for Initial Meter Installation</u>	\$165.00	\$165.00
54. <u>Backflow Preventer Initial Test and Non-Compliant Certification Fee</u>	\$75.00	<u>\$250.00</u>
<u>Charged to customers that fail to comply with the annually required backflow preventer testing; customer will receive two notices before a contractor is hired to perform testing and fee is charged.</u>		
55. <u>Construction Contract Documents</u>		
A. Contract Documents on a CD or DVD (cost per CD/DVD)	\$20.00	\$20.00
B. Contract Documents without Full-Sized Plan Sheets	\$25.00	\$25.00
C. Contract Documents with Engineer's Estimate up to \$500,000	\$25.00	\$25.00
D. Contract Documents for Projects bidding via Miscellaneous Construction Contracts (MCC) with Engineer's Estimate greater than \$500,000 but less than \$5 million.	\$40.00	\$40.00
E. Contract Documents for Projects not bidding via Miscellaneous Construction Contracts (MCC) with Engineer's Estimate, as follows:		
1. Greater than \$500,000, but up to \$5 million	\$50.00	\$50.00
2. Greater than \$5 million, but up to \$10 million	\$75.00	\$75.00
3. Greater than \$10 million, but up to \$20 million	\$100.00	\$100.00
4. Greater than \$20 million, but up to \$50 million	\$150.00	\$150.00
5. Greater than \$50 million, but up to \$100 million	\$250.00	\$250.00
6. Greater than or equal to \$100 million	\$350.00	\$350.00

**MIAMI-DADE WATER AND SEWER DEPARTMENT
SCHEDULE OF WASTEWATER FEES AND CHARGES**

WASTEWATER

**Effective
October 1, 2013**

**Proposed
October 1, 2014**

1. Oversizing Credits

A.	<u>Force Mains</u>	<u>Pipe Size</u>	<u>Credit Per Linear Foot</u>	<u>Credit Per Plug Valve</u>	<u>Credit Per Linear Foot</u>	<u>Credit Per Plug Valve</u>
		8" to 12"	(\$10.00)	(\$790.00)	(\$10.00)	(\$790.00)
		8" to 16"	(\$22.00)	(\$2,264.00)	(\$22.00)	(\$2,264.00)
		8" to 20"	(\$42.00)	(\$4,006.00)	(\$42.00)	(\$4,006.00)
		8" to 24"	(\$50.00)	(\$20,575.00)	(\$50.00)	(\$20,575.00)
		8" to 30"	(\$81.00)	(\$40,210.00)	(\$81.00)	(\$40,210.00)
		8" to 36"	(\$106.00)	(\$65,776.00)	(\$106.00)	(\$65,776.00)
		12" to 16"	(\$13.00)	(\$1,512.00)	(\$13.00)	(\$1,512.00)
		12" to 20"	(\$33.00)	(\$3,230.00)	(\$33.00)	(\$3,230.00)
		12" to 24"	(\$41.00)	(\$20,664.00)	(\$41.00)	(\$20,664.00)
		12" to 30"	(\$71.00)	(\$40,229.00)	(\$71.00)	(\$40,229.00)
		12" to 36"	(\$96.00)	(\$65,865.00)	(\$96.00)	(\$65,865.00)

**Credit Per Inch Diameter
Per Linear Foot**

**Credit Per Inch Diameter
Per Linear Foot**

B.	<u>Gravity Sewer Mains</u>	8" to 10"	(\$3.00)	8" to 10"	(\$3.00)
		8" to 12"	(\$7.00)	8" to 12"	(\$7.00)

2. <u>Developer Payment/Credit for New Sanitary Sewer Lateral Installation for Existing Property Use</u>	(\$5,000.00)	(\$5,000.00)
-----------------------------------------------------------------------------------------------------------------	--------------	--------------

3. Construction Connection Charge

<u>Pipelines</u>	<u>Pipe Size</u>	<u>Rate Per Front Foot</u>	<u>Rate Per Front Foot</u>
<u>Gravity Sewers</u>	8"	\$29.00	\$29.00
	10"	\$31.00	\$31.00
	12"	\$33.00	\$33.00
<u>Force Mains</u>	8"	\$32.00	\$32.00
	12"	\$38.00	\$38.00
	16"	\$49.00	\$49.00
<u>Pump Station</u>	As determined by the Department based on actual cost		As determined by the Department based on actual cost

4. Connection Charge Rate

Per average daily gallon	\$5.60	\$5.60
Per average daily gallon for customers utilizing a graywater disposal system	\$2.80	\$2.80

**MIAMI-DADE WATER AND SEWER DEPARTMENT
SCHEDULE OF WASTEWATER FEES AND CHARGES**

WASTEWATER	<u>Effective</u> <u>October 1, 2013</u>	<u>Proposed</u> <u>October 1, 2014</u>
5. <u>Basic Customer Service Fees</u>		
A. Residential - based on customer's credit analysis and payment history	\$0.00 to \$100.00	\$0.00 to \$100.00
Commercial - monthly	Amount based on 2.5 times the anticipated monthly billing with a minimum charge of \$50.00	Amount based on 2.5 times the anticipated monthly billing with a minimum charge of \$50.00
Commercial - quarterly	Amount based on 1.5 times the anticipated quarterly billing with a minimum charge of \$50.00	Amount based on 1.5 times the anticipated quarterly billing with a minimum charge of \$50.00
B. Administrative Hearing	\$75.00	\$75.00
6. <u>Septic Tank Disposal Fee</u>		
Charged to commercial tankers for unloading septic tank waste at wastewater treatment plants		
0 - 1,000 gallons - per truck	\$32.50	\$32.50
1,001 - 1,500 gallons - per truck	\$48.75	\$48.75
1,501 - 2,000 gallons - per truck	\$65.00	\$65.00
Over 2,000 gallons - per hundred gallons	\$3.25	\$3.25
7. <u>Grease Trap Disposal Fee</u>		
Charged to commercial tankers for unloading grease trap waste at wastewater treatment plants		
0 - 1,000 gallons - per truck	\$70.00	\$70.00
1,001 - 1,500 gallons - per truck	\$105.00	\$105.00
1,501 - 2,000 gallons - per truck	\$140.00	\$140.00
Over 2,000 gallons - per hundred gallons	\$7.00	\$7.00
8. <u>Combined Septic Tank and Grease Trap Disposal Fee</u>		
Charged to commercial tankers for unloading combined septic tank and grease trap waste at wastewater treatment plants		
0 - 1,000 gallons - per truck	\$42.00	\$42.00
1,001 - 1,500 gallons - per truck	\$63.00	\$63.00
1,501 - 2,000 gallons - per truck	\$84.00	\$84.00
Over 2,000 gallons - per hundred gallons	\$4.20	\$4.20
9. <u>Septic Tank Disposal Deposit</u>		
Per septic tank disposal account	\$2,000.00	\$2,000.00
10. <u>High Strength Sewage Surcharge</u>		
Per pound for portion of suspended solids in excess of a concentration of 200 milligrams per	\$0.14	\$0.14
Per pound for portion of biochemical oxygen demand in excess of a concentration of 200 milligrams per liter	\$0.19	\$0.19

**MIAMI-DADE WATER AND SEWER DEPARTMENT
SCHEDULE OF WASTEWATER FEES AND CHARGES**

WASTEWATER	<u>Effective</u> <u>October 1, 2013</u>	<u>Proposed</u> <u>October 1, 2014</u>
11. <u>Pump Station Maintenance Fee</u>		
Fee charged for maintenance of pump stations under contract with the Department		
Per month:	\$1,100.00	\$1,100.00
12. <u>Discharge Regulations Violations</u>		
Fine for failure to comply with discharge regulations	\$500.00	\$500.00
13. <u>Removal of Clean-Out Plug</u>	\$150.00	\$150.00
14. <u>Permit Fee(s)</u>	As charged to the Department by various governmental agencies	As charged to the Department by various governmental agencies
15. <u>Premise Location Certificate</u>		
To obtain notification of any actual or potential lien amount attached to a premise location		
Fee per service address:		
<u>Water & Sewer</u>		
A. Regular premise location certificate	\$10.00	\$10.00
B. 24-hour premise location certificate	\$20.00	\$20.00
16. <u>Plans Review and Inspection Fees</u>		
Processing fees for the review and approval of plans for code compliance regarding sewer extension projects, including sewer laterals, connections and pump stations. Plans Review Fees entitles the applicant to an initial plans review, the first rework review, and one final review.		
<u>A. Laterals/Connections</u>	\$55.00	\$55.00
<u>B. Sewer Main Extensions</u>		
Up to 500 ft.	\$300.00	\$300.00
501 ft. to 2,000 ft.	\$350.00	\$350.00
Greater than 2,000 ft.	\$450.00	\$350.00
		<u>plus \$0.18 per ft >2,000 ft</u>
<u>C. Pump Station</u>	\$800.00	\$800.00
<u>D. Sewer Meters</u>		<u>\$150.00</u>
<u>E. 2nd Rework and Thereafter of Plans Review Items</u>	\$106.59	<u>\$106.59</u>
above A. B. C. and D.		
<u>Renewal of expired approval and revisions</u>	Same as original fee	Same as original fee
(One year or more after approval)		
<u>Special Request to Expedite Plans Review</u>		
1st Hour	\$190.00	\$190.00
Each Additional Hour	\$65.00	\$65.00
Revised Plans Review Processing Fee of \$1.25 per each additional minute for reviews that take longer than 5 minutes.		
<u>Single period, two-year extension of approval for qualifying projects</u>	\$79.00	\$79.00
<u>pursuant to Ordinance # 11-60</u>		

**MIAMI-DADE WATER AND SEWER DEPARTMENT
SCHEDULE OF WASTEWATER FEES AND CHARGES**

WASTEWATER	<u>Effective</u> <u>October 1, 2013</u>	<u>Proposed</u> <u>October 1, 2014</u>
17. <u>Weed Control Fee</u>		
Per quarter	\$6.00	<u>\$25.00</u>
18. <u>Facilities with Excessive Infiltration Surcharge</u>	10%	10%
19. <u>Discharge of Sludge Charge</u>	\$40.00/ton	\$40.00/ton
20. <u>Telemetering Equipment Installation Fee</u>		
Fee charged for installation of telemetering equipment at developer installed pump stations Per pump station	\$7,550.00	\$7,550.00
21. <u>Marinas</u>	40% of retail rate	40% of retail rate
22. <u>Septage Truck Cleanout Charge</u>		
Per cleanout	\$25.00	<u>\$50.00</u>
23. <u>Release of Easement Fees</u>		
A. Release of platted easement rights	\$250.00	\$250.00
B. Conditional consent letter for permission to use easement until required by Department	\$50.00	\$50.00
C. All other release requests	\$500.00	\$500.00
24. <u>Completion of Application Form Fees</u>		
A. Utilities collection transmission capacity form	\$50.00	\$50.00
B. Industrial pre-treatment facility application form Sewer only	\$150.00	\$150.00
25. <u>Completion of Water and Sewer Verification Form Fees* (See Table 2)</u>		
<i>(See Section 24-43.1(5) of the Miami-Dade County Code)</i>		
<u>Sewer Only</u>		
A. Residential (R-A)	\$30.00	\$30.00
B. Multi-family residential (R-B)	\$75.00	\$75.00
C. Non-residential (NR)	\$75.00	\$75.00
<u>Water & Sewer</u>		
A. Residential (R-A)	\$60.00	\$60.00
B. Multi-family residential (R-B)	\$150.00	\$150.00
C. Non-residential (NR)	\$150.00	\$150.00
* Single period, two-year extension of approval for qualifying projects pursuant to Ordinance # 11-60	\$79.00	\$79.00

**MIAMI-DADE WATER AND SEWER DEPARTMENT
SCHEDULE OF WASTEWATER FEES AND CHARGES**

WASTEWATER	<u>Effective</u> <u>October 1, 2013</u>	<u>Proposed</u> <u>October 1, 2014</u>
26. <u>Ordinance Letter</u>		
<u>Wastewater Only</u>		
A. Residential	\$30.00	\$30.00
B. Commercial	\$75.00	\$75.00
<u>Water & Sewer</u>		
A. Residential	\$60.00	\$60.00
B. Commercial	\$150.00	\$150.00
27. <u>Review and Release of Recorded Document Fees (Other Than Easements)</u> <i>(Covenants, unities of title, service agreements, warranty deeds)</i>		
A. Sewer only	\$100.00	\$100.00
B. Water & Sewer	\$150.00	\$150.00
28. <u>Easement Consent Letter</u>		<u>\$50.00</u>
29. <u>Plat Application/Review Fee</u>		<u>\$100.00</u>
30. <u>Preparation of Service Agreement Fees *</u>		
<u>Sewer Only</u>		
Residential, multi-family and commercial use	\$100.00	\$100.00
<u>Water & Sewer</u>		
Residential, multi-family and commercial use	\$200.00	\$200.00
* No additional process fee will apply to obtain "verification forms" after execution of agreement		
* Single period, two-year extension of approval for qualifying projects pursuant to Ordinance # 11-60	\$79.00	\$79.00
31. <u>Preparation of Letter of Availability Fees</u>		
A. Sewer only	\$50.00	\$50.00
B. Water & Sewer	\$100.00	\$100.00
32. <u>Utilities Collection Transmission Capacity Letter</u>		<u>\$50.00</u>
33. <u>Other Recordable Legal Document Fees</u>		
A. Preparation of covenant		
1. Sewer only	\$25.00	\$25.00
2. Water & Sewer	\$50.00	\$50.00
B. Preparation of unity of title		
1. Sewer only	\$25.00	\$25.00
2. Water & Sewer	\$50.00	\$50.00
34. <u>Completion of Groundwater Discharge Form Fee</u>	\$50.00	\$50.00

**MIAMI-DADE WATER AND SEWER DEPARTMENT
SCHEDULE OF WASTEWATER FEES AND CHARGES**

WASTEWATER	<u>Effective</u> <u>October 1, 2013</u>	<u>Proposed</u> <u>October 1, 2014</u>
35. <u>Environmental Quality Control Board</u>		
<i>(EQCB) Letter Preparation Fees</i>		
A. Sewer only	\$35.00	\$35.00
B. Water & Sewer	\$70.00	\$70.00
36. <u>Customer Call-Out Fees</u>		
Fee for investigation and/or emergency response to sewer collection complaints (call-outs), fee charged only if Department is not responsible to correct complaint		
<u>Fee per call-out:</u>		
A. Regular working hours	\$125.00	\$125.00
B. Non-regular working hours	\$175.00	\$175.00
37. <u>Customer Initiated Closed Circuit Television Lateral Inspection Fee</u>		
Per inspection	\$250.00	\$250.00
38. <u>Review of Shop Drawings Fee</u>		
<u>Per shop drawing</u>	\$100.00	\$100.00
39. <u>Blueline Prints Requested From As-Builts Fee</u>		
Fee per blueline print	\$5.00	\$5.00
40. <u>Design and Construction Standard Specifications and Details Publication Fee</u>		
Per publication	\$50.00	\$50.00
41. <u>Verification of Underground Water and Sewer Infrastructure Horizontal Location Fee</u>		
Per 100 Linear Feet	\$50.00	\$50.00
Additional Linear Foot	\$0.50	\$0.50
(verification of horizontal location of underground infrastructure as shown on As-Builts)		

**MIAMI-DADE WATER AND SEWER DEPARTMENT
SCHEDULE OF WASTEWATER FEES AND CHARGES**

WASTEWATER	<u>Effective</u> <u>October 1, 2013</u>	<u>Proposed</u> <u>October 1, 2014</u>
<u>42. Safety and Rescue Training Course Fees</u>		
<u>Water & Sewer</u>		
A. Confined space entry (24 hours)	\$450.00	\$450.00
B. Hazardous material technician and incident command class (40 hours)	\$550.00	\$550.00
C. Hazwoper training (40 hours)	\$550.00	\$550.00
D. Air monitoring (16 hours)	\$150.00	\$150.00
E. Excavation safety (Trenching & shoring, 16 hours)	\$250.00	\$250.00
F. Fall protection/scaffolding (16 hours)	\$250.00	\$250.00
G. Electrical safety (16 hours)	\$500.00	\$500.00
H. Respiratory protection (40 hours)	\$450.00	\$450.00

NOTE: The revenues from the above course fees are allocated to the water and wastewater funds.

**MIAMI-DADE WATER AND SEWER DEPARTMENT
SCHEDULE OF WASTEWATER FEES AND CHARGES**

WASTEWATER	<u>Effective</u> <u>October 1, 2013</u>	<u>Proposed</u> <u>October 1, 2014</u>
43. <u>Laboratory Fees for Wastewater Tests</u>		
<i><u>Per Sample (Excludes Sample Collection)</u></i>		
Bacteriology (Membrane Filter)	\$15.00	\$15.00
Bacteriology (Membrane Filter) - After Hours Charge to Wholesale Customers	\$40.00	\$40.00
Nitrate	\$10.00	\$10.00
Nitrite	\$10.00	\$10.00
Alkalinity	\$8.00	\$8.00
Chloride	\$8.00	\$8.00
Conductivity	\$4.00	\$4.00
Total Dissolved Solids (TDS)	\$6.00	\$6.00
Chlorine Residual	\$10.00	\$10.00
Ammonia - Nitrogen	\$10.00	\$10.00
Dissolved Oxygen	\$6.00	\$6.00
Total Phosphorous	\$10.00	\$10.00
Ortho Phosphate	\$10.00	\$10.00
Biochemical Oxygen Demand	\$12.00	\$12.00
pH	\$4.00	\$4.00
Sulfate	\$16.00	\$16.00
Total Kjeldahl Nitrogen	\$14.00	\$14.00
Total Organic Carbon	\$16.00	\$16.00
Total Suspended Solids	\$6.00	\$6.00
Sodium	\$18.00	\$18.00
44. <u>Preparation of GIS Adhoc Maps and/or Data Fees</u>		
Per hour (minimum one hour)	\$65.00	\$65.00
Additional copies of the same map Per copy	\$25.00	\$25.00
45. <u>Billing Service Fee for Processing Stormwater Utility Fee for Municipalities</u>	Fee Determined by Agreement	Fee Determined by Agreement
46. <u>Billing Service Fee for Processing Sewer Billings for Coral Gables</u>	Fee Determined by Agreement	Fee Determined by Agreement

47. Graywater Disposal System

Customers who utilize an approved graywater disposal system and install a sub-meter to measure water entering the property which utilizes the graywater disposal system will not be charged wastewater disposal for usage measured on the sub-meter.

**MIAMI-DADE WATER AND SEWER DEPARTMENT
SCHEDULE OF WASTEWATER FEES AND CHARGES**

WASTEWATER	<u>Effective</u> <u>October 1, 2013</u>	<u>Proposed</u> <u>October 1, 2014</u>
48. <u>Security Fees</u>		
A. Fee for Issuance of Initial Identification Card		
Per person	\$60.00	\$60.00
Fee charged for background check and processing costs for identification card issued to persons having access to Department facilities. (Consultants, Contractors, Non-Water and Sewer Department staff)		
B. Fee for Issuance of Initial Identification Card		
Per person	\$20.00	\$20.00
Fee charged for processing costs for identification card issued to persons having access to Department facilities. (Consultants, Contractors, Non-Water and Sewer Department staff)		
C. Fee for Renewal of Expired Identification Card (one year from date of issuance) (Consultants, Contractors, Non-Water and Sewer Department staff)		
Per person	\$55.00	\$55.00
D. Fee for Replacement of Identification Card (card lost, stolen, etc.)		
Per person	\$15.00	\$15.00
E. Fee for Renewal of Expired Personal Transponder (one year from date of issuance) (Consultants, Contractors, Non-Water and Sewer Department staff)		
Per person	\$15.00	\$15.00
F. Fee for Replacement of Personal Transponder (transponder lost, stolen, etc.)		
Per person	\$15.00	\$15.00
G. Fee for Issuance of Initial Transponder for Vehicle or Equipment		
Per vehicle or piece of equipment	\$25.00	\$25.00
Fee charged for processing costs for issuance of vehicle or equipment transponder to access Department facilities (Consultants, Contractors, Non-Water and Sewer Department staff)		
H. Fee for Renewal of Expired Transponder for Vehicle or Equipment (one year from date of issuance) (Consultants, Contractors, Non-Water and Sewer Department staff)		
Per vehicle or piece of equipment	\$25.00	\$25.00
I. Fee for Replacement of Transponder for Vehicle or Equipment (transponder lost, stolen, etc.)		
Per vehicle or piece of equipment	\$25.00	\$25.00

**MIAMI-DADE WATER AND SEWER DEPARTMENT
SCHEDULE OF WASTEWATER FEES AND CHARGES**

WASTEWATER	<u>Effective</u> <u>October 1, 2013</u>	<u>Proposed</u> <u>October 1, 2014</u>
J. Fee for Issuance of Initial Identification Card and Personal Transponder for Septic Tank Company Employees		
Per septic tank company employee	\$35.00	\$35.00
Fee charged for processing costs for identification card and transponder issued to persons having access to septic tank unloading system at Central and South District Wastewater Treatment Facilities.		
K. Fee for Renewal of Expired Identification Card and Personal Transponder for Septic Tank Company Employees (one year from date of issuance)		
Per septic tank company employee	\$30.00	\$30.00
L. Fee for Replacement of Identification Card and Personal Transponder for Septic Tank Company Employees (card and transponder lost, stolen, etc.)		
Per septic tank company employee	\$30.00	\$30.00
M. Fee for Issuance of Initial Transponder for Septic Tank Vehicles		
Per septic tank vehicle	\$25.00	\$25.00
Fee charged for processing costs for issuance of septic tank vehicle transponder for access to septic tank unloading system at Central and South District Wastewater Treatment Facilities.		
N. Fee for Renewal of Expired Transponder for Septic Tank Vehicles (one year from date of issuance)		
Per septic tank vehicle	\$25.00	\$25.00
O. Fee for Replacement of Transponder for Septic Tank Vehicles (transponder lost, stolen, etc.)		
Per septic tank vehicle	\$25.00	\$25.00
49. <u>Subscription Fee to Access Customer Care and Billing System (CCB)</u>		
Fee per user	\$6,300.00	\$6,300.00
Annual fee charged to title and lien companies to provide access to the Department's Customer Care and Billing System (CCB) via the Internet for Premise Lien Certificates (PLC).		
50. <u>Cut For Non-Payment (CONP)</u>		
Third Attempt Water Meter Removal Charge	\$250.00	\$250.00
Fee charged to customers who intentionally blocked access to water meter on two previous attempts to collect or lock service for non-payment.		

**MIAMI-DADE WATER AND SEWER DEPARTMENT
SCHEDULE OF WASTEWATER FEES AND CHARGES**

WASTEWATER	<u>Effective</u> <u>October 1, 2013</u>	<u>Proposed</u> <u>October 1, 2014</u>
51. <u>After-Hours Construction Inspections Activity Fees</u>		
Per hour rate charged for work outside the specified work hours - weekends, nights and holidays for contractors with special requirements or deadlines for construction.	\$90.00 per hour	\$90.00 per hour
52. <u>Developer Repayment Fee</u>		
To cover administrative costs for collection and repayment of construction connection charges collected from connecting and/or abutting properties in behalf of developers who constructed the facilities.	2.5% of gross repayment	2.5% of gross repayment
53. <u>General & Administrative (G&A) Overhead (OH) Rate</u>		
Rate charged to offset general and administrative costs related to work performed by the Department due to request, damage (billable job orders) or contractual agreement.	10.6% of total cost	10.6% of total cost
54. <u>Rental of Light Towers</u>	\$505.00 per tower per day	\$505.00 per tower per day
55. <u>Sewer Force Main Pipe Tapping Charges</u>		
<u>Tap Size:</u>		
4"	\$650.00	\$650.00
6"	\$660.00	\$660.00
8"	\$730.00	\$730.00
12"	\$980.00	\$980.00
16"	\$1,750.00	\$1,750.00
20"	\$2,080.00	\$2,080.00
Overtime Charge	\$105.00	\$105.00
NOTE: There will be a \$205.00 charge if Department personnel arrive on a job site and are unable to perform the tapping operation because the contractor has not fulfilled its obligations specified in the Rules and Regulations. No materials shall be furnished by the Department for installation under the prices listed above.		
56. <u>Construction Contract Documents</u>		
A. Contract Documents on a CD or DVD (cost per CD/DVD)	\$20.00	\$20.00
B. Contract Documents without Full-Sized Plan Sheets	\$25.00	\$25.00
C. Contract Documents with Engineer's Estimate up to \$500,000	\$25.00	\$25.00
D. Contract Documents for Projects bidding via Miscellaneous Construction Contracts (MCC) with Engineer's Estimate greater than \$500,000 but less than \$5 million	\$40.00	\$40.00
E. Contract Documents for Projects not bidding via Miscellaneous Construction Contracts (MCC) with Engineer's Estimate, as follows:		
1. Greater than \$500,000, but up to \$5 million	\$50.00	\$50.00
2. Greater than \$5 million, but up to \$10 million	\$75.00	\$75.00
3. Greater than \$10 million, but up to \$20 million	\$100.00	\$100.00
4. Greater than \$20 million, but up to \$50 million	\$150.00	\$150.00
5. Greater than \$50 million, but up to \$100 million	\$250.00	\$250.00
6. Greater than or equal to \$100 million	\$350.00	\$350.00

MIAMI-DADE WATER AND SEWER DEPARTMENT				
Table 2				
No.	Types of Building Usages	Rating * See Section 24-43.1(5) of the Miami Dade Code		Verification Form Fee Listing
Residential Land Uses:				
1	Single Family Residences			R-A
2	Townhouse Residences			R-B
3	Apartments			R-B
4	Mobile Home Residences/Parks			R-A
5	Duplexes or Twin Home Residences			R-A
Commercial Land Uses:				
6	<u>Airport:</u> (a) Common Area/Concourse (b) Retail (c) Food Service			NR
7	Banquet Halls with kitchen			NR
8	Bars or Cocktail Lounges			NR
9	Barber Shops			NR
10	Beauty Shops			NR
11	Bowling Alleys			NR
12	<u>Car Washes:</u> (a) Manual Washing (b) Automated Washing with recycle system			NR
13	Coin Laundries			NR
14	Country Clubs with kitchen			NR
15	Dentist Offices			NR
16	Fitness Centers or Gyms			NR
17	Food Preparation Outlets (Bakeries, Meat Markets, Commissaries, etc.)			NR
18	Funeral Homes			NR
19	Gas Station / Convenience Store/ Mini-Mart (a) without Car Wash (b) with Single Automated Car Wash			NR
20	Hospitals			NR
21	Hotels and Motels			NR
22	House of Worship			NR
23	<u>Industrial:</u> (a) Warehouse/ Spec. Bldg. (b) Self-Service Storage Units (c) Industrial - Wet (d) Industrial - Dry			NR
*The basis of calculation for average daily rated gallonage is found in Section 24-43.1(5) of the Code of Miami-Dade County as currently in effect and as may be amended in the future. For usages not shown, the Department shall estimate daily gallonage.				

MIAMI-DADE WATER AND SEWER DEPARTMENT				
Table 2				
No.	Types of Building Usages	Rating * See Section 24-43.1(5) of the Miami Dade Code		Verification Form Fee Listing
24	Kennels			NR
25	Marinas			NR
26	Motor Vehicle Service Stations			NR
27	Nursing or Convalescent Homes			NR
28	Office Buildings			NR
29	Other Residential Facility/ Institution: (a) Congregate Living Facility (CLF) (b) Jail (c) Other			NR
30	Pet Grooming			NR
31	Physician Offices			NR
32	Public Park: (a) With toilets only (b) With toilets and showers			NR
33	Public Swimming Facilities			NR
34	Restaurants: (a) full service (b) fast food service (c) take-out service			NR
35	Retail			NR
36	Schools a) day care/nursery b) regular schools			NR DADE COUNTY SCHOOL BOARD IS EXEMPT
37	Shopping Center/ Mall: (Shell/ Common Area)			NR
38	Stadiums, Ballparks, Racetracks, Frontons, Auditoriums, Etc.			NR
39	Theaters a) Indoor b) Outdoor c) Drive-in			NR
40	Trailer or Tourist Park			NR
41	Veterinarian Offices			NR
*The basis of calculation for average daily rated gallonage is found in Section 24-43.1(5) of the Code of Miami-Dade County as currently in effect and as may be amended in the future. For usages not shown, the Department shall estimate daily gallonage.				

Note: gpd = gallons per day
 R-A = Residential
 NR = Non-residential

 gpcd = gallons per capita per day
 R-B = Multi-family Residential

GRANTS PROGRAM	GRANTEE	PROGRAM / PROJECT	FY 2014-15 GRANT
ARTS EDUCATION GRANTS AND PROGRAM INITIATIVES (ArtsEd)			
ArtsEd	Arts for Learning/Miami, Inc.	FY 2014-15 Program Activities	\$285,000
ArtsEd	Fantasy Theatre Factory, Inc.	Fiscal Agent for Arts Education Initiatives and "All Kids Included" Initiatives for Children with Disabilities	\$397,000
		Sub-Total: FY 2014-15 Arts Education and Program Initiatives Grants:	\$682,000
CAPITAL DEVELOPMENT GRANTS PROGRAM (CAP)			
CAP	Actors' Playhouse Productions, Inc.	Miracle Theatre Capital Projects for Actors' Playhouse	\$20,934
CAP	Arts Ballet Theatre of Florida, Inc.	Renovations to Arts Ballet Studios	\$5,624
CAP	Bakehouse Art Complex, Inc.	Equipment Upgrades for Shared Workshop Spaces and Addition of Metals Foundry at BAC	\$24,330
CAP	Dave and Mary Alper Jewish Community Center, Inc., The	Enhancements to the Alper JCC Robert Russell Theater	\$22,620
CAP	Deering Estate Foundation, Inc., The	Deering Estate Theatre Lab and Performance Space Upgrades - Phase 2	\$14,422
CAP	Florida International University Board of Trustees for the benefit of The Patricia and Phillip Frost Art Museum	Frost Art Museum Video Projector Equipment Re-fresh	\$9,923
CAP	Florida International University Board of Trustees for the benefit of The Wolfsonian	Improving the Visitor Experience through Interactive Technology at The Wolfsonian-FIU	\$9,588
CAP	Jorge M. Perez Art Museum of Miami-Dade County, Inc.	Assistive Listening Devices for Museum Tours at PAMM	\$14,022
CAP	South Florida Art Center, Inc. d/b/a ArtCenter/ South Florida	Technical equipment for public programs and print shop at Art Center/South Florida	\$5,044
CAP	Village of Pinecrest	New, Accessible Stage and Control Platform with Access for the Banyan Bowl at Pinecrest Gardens	\$23,493
		Sub-Total: FY 2014-15 Capital Development Program Grants:	\$150,000
COMMUNITY GRANTS PROGRAM (CG)			
CG	Community Grants Program	Quarterly Grants Program: Competitive application and review opportunities 4 times during each FY	\$525,000
		Sub-Total: FY 2014-15 Community Grants:	\$525,000
CULTURAL ADVANCEMENT GRANTS PROGRAM (ADV)			
ADV	Arts Ballet Theatre of Florida, Inc.	FY 2014-15 Season Activities	\$45,000
ADV	ArtSouth, A Not-For-Profit Corporation	FY 2014-15 Season Activities	\$45,000
ADV	Bakehouse Art Complex, Inc.	FY 2014-15 Season Activities	\$90,000
ADV	Ballet Flamenco La Rosa, Inc.	FY 2014-15 Season Activities	\$45,000
ADV	Bascomb Memorial Broadcasting Foundation	FY 2014-15 Season Activities	\$90,000
ADV	Black Archives History & Research Foundation of South Florida, Inc., The	FY 2014-15 Season Activities	\$45,000
ADV	Centro Cultural Español de Cooperacion Iberoamericana, Inc.	FY 2014-15 Season Activities	\$90,000
ADV	Chopin Foundation of the United States, Inc.	FY 2014-15 Season Activities	\$45,000
ADV	City Theatre, Inc.	FY 2014-15 Season Activities	\$90,000
ADV	Coral Gables Cinematheque, Inc.	FY 2014-15 Season Activities	\$90,000
ADV	Coral Gables Congregational Church (United Church of Christ), Inc.	FY 2014-15 Season Activities	\$45,000
ADV	Dave and Mary Alper Jewish Community Center, Inc., The	FY 2014-15 Season Activities	\$45,000
ADV	Deering Estate Foundation, Inc., The	FY 2014-15 Season Activities	\$45,000
ADV	Fantasy Theatre Factory, Inc.	Fiscal Agent for the Travel/Consultants Technical Assistance Component of the Cultural Advancement program	\$118,000
ADV	Fundarte, Inc.	FY 2014-15 Season Activities	\$45,000
ADV	GableStage, Inc.	FY 2014-15 Season Activities	\$90,000
ADV	Locust Projects, Inc.	FY 2014-15 Season Activities	\$45,000
ADV	Miami Beach Garden Conservancy, Inc.	FY 2014-15 Season Activities	\$45,000
ADV	Miami Contemporary Dance Corporation dba Miami Contemporary Dance Company	FY 2014-15 Season Activities	\$45,000
ADV	Miami Light Project, Inc.	FY 2014-15 Season Activities	\$90,000
ADV	Miami Dade College - Cultural Affairs Department	FY 2014-15 Season Activities	\$90,000
ADV	Miami Dade College - The Center for Literature and Theatre @ Miami Dade College	FY 2014-15 Season Activities	\$90,000
ADV	Murray Dranoff Foundation, Inc., The	FY 2014-15 Season Activities	\$45,000
ADV	New Theatre, Inc.	FY 2014-15 Season Activities	\$90,000
ADV	Olympia Center, Inc.	FY 2014-15 Season Activities	\$90,000
ADV	The Rhythm Foundation, Inc.	FY 2014-15 Season Activities	\$90,000
ADV	Seraphic Fire, Inc.	FY 2014-15 Season Activities	\$90,000
ADV	Sociedad Pro Arte Gratiell, Inc.	FY 2014-15 Season Activities	\$45,000
ADV	Teatro Avante, Inc.	FY 2014-15 Season Activities	\$90,000
ADV	Tigertail Productions, Inc.	FY 2014-15 Season Activities	\$45,000
		Sub-Total: FY 2014-15 Cultural Advancement Program Grants:	\$2,053,000
CULTURE SHOCK MIAMI PROGRAM COSTS			
CS	Culture Shock Miami: Discount Student Tickets to the Arts Program	Programmatic Support	\$720,000
		Sub-Total: FY 2014-15 Culture Shock Miami Program Costs:	\$720,000

GRANTS TO NON-PROFIT CULTURAL ORGANIZATIONS IN FY 2014-2015 THROUGH THE MIAMI-DADE COUNTY DEPARTMENT OF CULTURAL AFFAIRS

GRANTS PROGRAM	GRANTEE	PROGRAM / PROJECT	FY 2014-15 GRANT
DANCE MIAMI CHOREOGRAPHERS (DMC)			
DMC	Alexey Puig Taran	Choreographer Fellowship	\$10,000
DMC	Lorie Ilise Rosen	Choreographer Fellowship	\$10,000
DMC	Augusto Soledade	Choreographer Fellowship	\$10,000
DMC	Pioneer Winter	Choreographer Fellowship	\$10,000
DMC	Dance Miami Choreographers' Fellowship Program	Programmatic costs	\$5,000
		Sub-Total: FY 2014-15 Dance Miami Choreographers Program:	\$45,000
DEVELOPING ARTS IN NEIGHBORHOODS GRANTS PROGRAM (DAN)			
DAN	Academia de las Luminarias de las Bellas Artes, Inc.	FY 2014-2015 Program Activities	\$6,778
DAN	Alhambra Music, Inc.	FY 2014-2015 Program Activities	\$8,803
DAN	Arca Images, Inc.	FY 2014-2015 Program Activities	\$8,438
DAN	CAGEC, Inc.	FY 2014-2015 Program Activities	\$5,488
DAN	Civic Chorale of Greater Miami, Inc.	FY 2014-2015 Program Activities	\$7,747
DAN	Community Arts And Culture, Inc.	FY 2014-2015 Program Activities	\$9,011
DAN	Community Performing Arts Association, Inc.	FY 2014-2015 Program Activities	\$3,766
DAN	Community Theatre of Miami Lakes, Inc. d/b/a Main Street Players	FY 2014-2015 Program Activities	\$9,885
DAN	Deco Echo Artists' Delegation, Inc. d/b/a Center for Folk and Community Art	FY 2014-2015 Program Activities	\$7,034
DAN	Delou Africa, Inc.	FY 2014-2015 Program Activities	\$8,844
DAN	Fire Haus Projects, Inc., f/a for The Unconservatory, Inc.	FY 2014-2015 Program Activities	\$7,732
DAN	Friends of the Japanese Garden, Inc.	FY 2014-2015 Program Activities	\$8,048
DAN	Ground Up and Rising, Inc.	FY 2014-2015 Program Activities	\$9,266
DAN	Homestead Community Concert Association, Inc.	FY 2014-2015 Program Activities	\$8,997
DAN	Mad Cat Theatre Company, Inc.	FY 2014-2015 Program Activities	\$8,425
DAN	Miami Beach Arts Trust, Inc., f/a for Pioneer Winter Collective	FY 2014-2015 Program Activities	\$7,796
DAN	Marti Productions, Inc.	FY 2014-2015 Program Activities	\$6,898
DAN	Miami Piano Circle, Inc.	FY 2014-2015 Program Activities	\$7,034
DAN	Miami Watercolor Society, Incorporated	FY 2014-2015 Program Activities	\$11,227
DAN	Mz Goose, Inc.	FY 2014-2015 Program Activities	\$7,172
DAN	North Miami Community Concert Band, Inc.	FY 2014-2015 Program Activities	\$8,927
DAN	Red Chemistry, Inc.	FY 2014-2015 Program Activities	\$7,972
DAN	Siempre Flamenco, Inc.	FY 2014-2015 Program Activities	\$8,844
DAN	South Beach Chamber Ensemble, Inc.	FY 2014-2015 Program Activities	\$8,599
DAN	South Florida Bluegrass Association, Inc.	FY 2014-2015 Program Activities	\$6,966
DAN	South Florida Composers Alliance, Inc. f/a for Foundation for Emerging Technologies and Arts, Inc.	FY 2014-2015 Program Activities	\$4,086
DAN	South Florida Friends of Classical Music, Inc.	FY 2014-2015 Program Activities	\$8,125
DAN	Teatro en Miami Corp.	FY 2014-2015 Program Activities	\$7,747
DAN	The Arts at St. Johns, Inc.	FY 2014-2015 Program Activities	\$8,048
DAN	The Cove/Rincon Corp.	FY 2014-2015 Program Activities	\$6,283
DAN	The Miami Classical Guitar Society, Inc.	FY 2014-2015 Program Activities	\$7,383
DAN	The Miami Foundation, Inc., f/a for Bas Fisher Invitational	FY 2014-2015 Program Activities	\$8,631
		Sub-Total: FY 2014-15 Developing Arts in Neighborhoods Grants Program Grants:	\$250,000

GRANTS TO NON-PROFIT CULTURAL ORGANIZATIONS IN FY 2014-2015 THROUGH THE MIAMI-DADE COUNTY DEPARTMENT OF CULTURAL AFFAIRS

GRANTS PROGRAM	GRANTEE	PROGRAM / PROJECT	FY 2014-15 GRANT
FESTIVALS AND SPECIAL EVENTS GRANTS PROGRAM (FEST)			
FEST	Bayfront Park Management Trust	Downtown Miami New Year's Eve Celebration	\$38,610
FEST	Coconut Grove Arts and Historical Association, Inc.	Coconut Grove Arts Festival	\$75,893
FEST	Dade Heritage Trust, Inc.	Dade Heritage Days	\$47,761
FEST	Florida International University Board of Trustees, for the benefit of the School of Hospitality	South Beach Wine & Food Festival	\$77,481
FEST	German American Social Club of Greater Miami, Inc.	Oktoberfest Miami	\$35,821
FEST	Infinito Art & Cultural Foundation, Inc.	Brazilian Film Festival of Miami	\$32,489
FEST	Junior Orange Bowl Committee, Inc.	Junior Orange Bowl Festival	\$59,012
FEST	Miami Bach Society, Inc., The	Tropical Baroque Music Festival	\$33,971
FEST	Miami-Broward One Carnival Host Committee, Inc.	Miami Carnival	\$52,631
FEST	Miami Dade College, Miami Book Fair International	Miami Book Fair International	\$78,368
FEST	Miami Dade College, Miami International Film Festival	Miami International Film Festival	\$72,454
FEST	Miami Design Preservation League, Inc.	Art Deco Weekend Festival	\$52,657
FEST	Miami Gay and Lesbian Film Festival, Inc.	Miami Gay & Lesbian Film Festival	\$45,736
FEST	The Musical Arts Association of Miami, Inc.	Cleveland Orchestra - Miami Residency	\$73,325
FEST	National Foundation for Advancement in the Arts, Inc.	YoungArts ARTS Week	\$75,893
FEST	Patrons of Exceptional Artists, Inc.	Miami International Piano Festival - Discovery Series	\$32,726
FEST	University of Miami - Frost School of Music	Festival Miami	\$40,172
		Sub-Total: FY 2014-15 Festivals and Special Events Program Grants:	\$925,000
HANNIBAL COX JR. CULTURAL GRANTS PROGRAM (HCl)			
HCl	Area Performance Gallery, Inc. dba Area Stage Company	FY 2014-2015 Program Activities	\$40,000
HCl	Braz Dance Theater Incorporated dba Augusto Soledade Brazzdance	FY 2014-2015 Program Activities	\$17,474
HCl	Creation Art Center Corporation	FY 2014-2015 Program Activities	\$11,430
HCl	Cuban Classical Ballet of Miami, Inc.	FY 2014-2015 Program Activities	\$17,427
HCl	Diaspora Vibe Cultural Arts Incubator, Inc.	FY 2014-2015 Program Activities	\$16,721
HCl	Edge Zones, Inc.	FY 2014-2015 Program Activities	\$14,030
HCl	Florida International University Board of Trustees, for the benefit of the School of Music	FY 2014-2015 Program Activities	\$40,000
HCl	Friends of Chamber Music of Miami, Inc.	FY 2014-2015 Program Activities	\$19,689
HCl	Haitian Heritage Museum Corp.	FY 2014-2015 Program Activities	\$18,717
HCl	Hispanic-American Lyric Theatre, Inc.	FY 2014-2015 Program Activities	\$15,658
HCl	Karen Peterson and Dancers, Inc.	FY 2014-2015 Program Activities	\$15,211
HCl	Living Arts Trust, Inc. d/b/a O Cinema	FY 2014-2015 Program Activities	\$40,000
HCl	Marjory Stoneman Douglas Biscayne Nature Center, Inc.	FY 2014-2015 Program Activities	\$40,000
HCl	Miami Beach Film Society, Inc.	FY 2014-2015 Program Activities	\$40,000
HCl	Miami Dade College - Department of Arts and Philosophy	FY 2014-2015 Program Activities	\$13,666
HCl	Miami Dade College Foundation, Inc. - Lynn and Louis Wolfson II Florida Moving Image Archive	FY 2014-2015 Program Activities	\$40,000
HCl	Miami Dade College Foundation, Inc. - Museum of Art and Design	FY 2014-2015 Program Activities	\$40,000
HCl	Miami Dade College Foundation, Inc. - New World School of the Arts	FY 2014-2015 Program Activities	\$40,000
HCl	Miami Gay Men's Chorus, Inc.	FY 2014-2015 Program Activities	\$19,328
HCl	Miami Lyric Opera, Inc.	FY 2014-2015 Program Activities	\$23,585
HCl	Michael-Ann Russell Jewish Community Center, Inc.	FY 2014-2015 Program Activities	\$40,000
HCl	Mystery Park Arts Company, Inc., d/b/a SoBe Institute of the Arts	FY 2014-2015 Program Activities	\$40,000
HCl	Orchestra Miami, Inc.	FY 2014-2015 Program Activities	\$19,154
HCl	South Florida Composers Alliance, Inc.	FY 2014-2015 Program Activities	\$15,170
HCl	Saint Martha Concerts and Cultural Affairs, Inc.	FY 2014-2015 Program Activities	\$22,566
HCl	The Coral Gables Museum, Corp.	FY 2014-2015 Program Activities	\$40,000
HCl	The Dance Now! Ensemble, Inc.	FY 2014-2015 Program Activities	\$20,479
HCl	University of Miami - Bill Costford Cinema	FY 2014-2015 Program Activities	\$18,815
HCl	University of Wynwood, Inc.	FY 2014-2015 Program Activities	\$20,880
HCl	Zoetic Stage, Inc.	FY 2014-2015 Program Activities	\$40,000
		Sub-Total: FY 2014-15 Hannibal Cox Jr. Cultural Program Grants:	\$800,000

GRANTS TO NON-PROFIT CULTURAL ORGANIZATIONS IN FY 2014-2015 THROUGH THE MIAMI-DADE COUNTY DEPARTMENT OF CULTURAL AFFAIRS

GRANTS PROGRAM	GRANTEE	PROGRAM / PROJECT	FY 2014-15 GRANT
INTERNATIONAL CULTURAL EXCHANGE GRANTS PROGRAM (ICE)			
ICE	Arts Ballet Theatre of Florida, Inc.	FY 2014-15 International Cultural Exchange Project	\$18,000
ICE	Ballet Flamenco La Rosa, Inc.	FY 2014-15 International Cultural Exchange Project	\$24,000
ICE	Diaspora Vibe Cultural Arts Incubator, Inc.	FY 2014-15 International Cultural Exchange Project	\$18,000
ICE	Edge Zones, Inc.	FY 2014-15 International Cultural Exchange Project	\$18,000
ICE	El Ingenio, Inc.	FY 2014-15 International Cultural Exchange Project	\$12,000
ICE	Fundarte, Inc.	FY 2014-15 International Cultural Exchange Project	\$15,000
ICE	Karen Peterson and Dancers, Inc.	FY 2014-15 International Cultural Exchange Project	\$18,000
ICE	South Florida Art Center, Inc., dba ArtCenter/South Florida	FY 2014-15 International Cultural Exchange Project	\$18,000
ICE	Tigertail Productions, Inc.	FY 2014-15 International Cultural Exchange Project	\$24,000
		Sub-Total: FY 2014-15 International Cultural Exchange Program Grants:	\$165,000
MAJOR CULTURAL INSTITUTIONS GRANTS PROGRAM (MCI)			
MCI	Actors' Playhouse Productions, Inc.	FY 2014-15 Season Activities	\$220,037
MCI	Florida International University Board of Trustees, for the benefit of Jewish Museum of Florida, Inc.	FY 2014-15 Season Activities	\$161,386
MCI	Florida International University Board of Trustees, for the benefit of the Patricia and Phillip Frost Art Museum	FY 2014-15 Season Activities	\$159,205
MCI	Florida International University Board of Trustees, for the benefit of The Wolfsonian	FY 2014-15 Season Activities	\$281,536
MCI	Florida Grand Opera, Inc.	FY 2014-15 Season Activities	\$369,268
MCI	Friends of the Bass Museum, Inc.	FY 2014-15 Season Activities	\$252,199
MCI	GableStage, Inc.	FY 2014-15 Transition Activities	\$150,000
MCI	M Ensemble Company, Inc.	FY 2014-15 Season Activities	\$100,000
MCI	Miami City Ballet, Inc.	FY 2014-15 Season Activities	\$339,947
MCI	Miami Symphony Orchestra/Orquesta Sinfonica de Miami, Inc., The	FY 2014-15 Season Activities	\$100,000
MCI	New World Symphony, Inc.	FY 2014-15 Season Activities	\$408,708
MCI	Performing Arts Center Trust, Inc., dba Adrienne Arsht Center for the Performing Arts of Miami-Dade County	FY 2014-15 Season Activities	\$396,705
MCI	South Florida Art Center, Inc., dba ArtCenter/South Florida	FY 2014-15 Season Activities	\$121,196
MCI	University of Miami, Lowe Art Museum	FY 2014-15 Season Activities	\$189,813
		Sub-Total: FY 2014-15 Major Cultural Institutions Program Grants:	\$3,250,000
SERVICE ORGANIZATIONS GRANTS PROGRAM (SERV)			
SERV	Arts & Business Council of Miami, Inc.	Annual Programs	\$100,000
SERV	Arts & Business Council of Miami, Inc.	Fiscal Agent for "Arts Help, " Creative Capital programs, Dance Community Services, etc.	\$100,000
SERV	Cannonball Miami, Inc.	Annual Programs	\$35,000
SERV	Diaspora Arts Coalition, Inc.	Annual Programs	\$30,000
SERV	Greater Miami Festivals and Events Association, Inc.	Annual Programs	\$30,000
SERV	Miami Light Project, Inc.	MLP Technical Fellowship Program	\$25,000
SERV	Performing Arts Network (PAN)	Annual Programs	\$40,000
SERV	Sosyete Koukouy, Inc.	Fiscal Agent for Haitian Artists Network (HAN)	\$20,000
SERV	Sunshine Jazz Organization, Inc., The	Annual Programs	\$50,000
SERV	Theatre League of South Florida, Inc.	Annual Programs	\$50,000
		Sub-Total: FY 2014-15 Service Organizations Program Grants:	\$480,000
SUMMER ARTS & SCIENCE CAMPS FOR KIDS GRANTS PROGRAM (SAS-C)			
SAS-C	Summer Arts & Science Camps for Kids Grants Program	Project grants to Organizations for Summer Arts and Science Camp Programs: 2014-15 cycle grantees TBD	\$450,000
		Sub-Total: FY 2014-15 Summer Arts & Science Camps for Kids Program Grants:	\$450,000

GRANTS PROGRAM	GRANTEE	PROGRAM / PROJECT	FY 2014-15 GRANT
TARGETED INITIATIVES GRANTS (TARG)			
TARG	Arts & Business Council of Miami, Inc.	Fiscal Agent for "ArtBurstMiami"	\$85,000
TARG	Black Archives, History and Research Foundation of South Florida, Inc., The	Black Archives and Lyric Theater - Cultural Advancement Transition Plan	\$100,000
TARG	Cannonball Miami, Inc.	WaveMaker program	\$25,000
TARG	City of Hialeah Cultural Council	City of Hialeah Cultural Council programs	\$30,000
TARG	Cuban Museum, Inc.	Operating Transition Plan	\$40,000
TARG	Dance USA	2015 National Conference - Miami	\$25,000
TARG	DeVos Institute for Arts Management	DeVos Capacity Building Training	\$30,000
TARG	Friends of the Miami-Dade Public Library, Inc.	The Vasari Project	\$15,000
TARG	Greater Miami Festivals and Events Association, Inc.	Fiscal Agent for Cultural Marketing, Market Research and Strategic Partnerships	\$80,000
TARG	Haitian Cultural Arts Alliance, Inc.	Haitian Cultural Initiatives	\$25,000
TARG	Historical Association of Southern Florida, Inc.	Fiscal Agent for Cuban Pilots Association - Bay of Pigs Memorial at TMB	\$15,000
TARG	Homestead Center for the Arts	Annual Programs	\$30,000
TARG	Miami Foundation, Inc., The	Fiscal Agent for Open Lab - Independent Filmmakers' Services and Workshops	\$20,000
TARG	Miami Hispanic Ballet Corporation	International Ballet Festival of Miami 20th Anniversary	\$15,000
TARG	Museum of Contemporary Art and/or Institute of Contemporary Art	Operating Transition (pending demonstrated eligibility of organization(s))	\$100,000
TARG	National Performance Network, Inc.	Performing Americas Program - Cultural Exchange	\$10,000
TARG	Rhythm Foundation, Inc.	Fiscal Agent for Activities and Audience Development at Caleb Auditorium, African Heritage Cultural Arts Center and/or Miami-Dade County Auditorium	\$20,000
TARG	Theater League of South Florida, Inc.	Fiscal Agent for Playwright Development Program / Playwrights' Workshop Series	\$35,000
TARG	Tigertail Productions, Inc.	Fiscal Agent for Artist Access Grants Program	\$25,000
		Sub-Total: FY 2014-15 Targeted Initiatives Grants:	\$725,000
YOUTH ARTS ENRICHMENT GRANTS PROGRAM (YEP)			
YEP	Actors' Playhouse Productions, Inc.	All Kids Considered Year 2	\$9,838
YEP	Alhambra Music, Inc.	Community Orchestra Youth Outreach	\$9,644
YEP	Area Performance Gallery Inc. DBA Area Stage Company	Theatre for Young Minds	\$23,474
YEP	Arts Ballet Theatre of Florida, Inc	Arts Ballet goes to School 2014-2015	\$9,925
YEP	Bakehouse Art Complex, Inc.	Bakehouse Art Complex In-School Artist Residency Program	\$9,687
YEP	City Theatre, Inc.	City Theatre Educational Outreach Programming: Shorts 4 Kids	\$8,000
YEP	Coral Gables Congregational Church (United Church of Christ), Inc.	Creative Opus	\$25,000
YEP	Deco Echo Artists Delegation d/b/a Center for Folk and Community Art	"I Didn't Mean To Hurt You" - Abuse or Violence in Teenage Dating Relationships	\$9,392
YEP	Fairchild Tropical Botanic Garden, Inc.	The Art of Science at Fairchild	\$10,000
YEP	Florida Grand Opera, Inc.	Opera Lab	\$9,816
YEP	Friends of the Bass Museum, Inc.	IDEA@thebass Diversity Enhancement Partnerships	\$9,961
YEP	Friendship Circle of Miami, Inc.	Friendship Circle Expressive Arts Program	\$9,536
YEP	GableStage, Inc.	GableStage's 2014-2015 Educational Programming	\$10,000
YEP	Guitars over Guns, Inc.	Guitars Over Guns	\$25,000
YEP	Historical Association of Southern Florida, Inc.	Historic Site Visit Program	\$9,755
YEP	Jorge M. Perez Art Museum of Miami-Dade County, Inc.	PAMM After-School Studio Program	\$25,000
YEP	Karen Peterson and Dancers Inc	The 9th Talent Showcase	\$25,000
YEP	Locust Projects, Inc.	Little LAB (Locust Art Builders)	\$9,492
YEP	Miami Light Project, Inc.	Out of the Box Youth Outreach Program	\$10,000
YEP	Miami Short Film Festival, Inc.	Tomorrow's Filmmakers Today - MSFF Outreach Program	\$8,887
YEP	Michael-Ann Russell Jewish Community Center, Inc.	Alan & Diane Lieberman Children's Cultural Arts Series	\$9,666
YEP	National Foundation for Advancement in the Arts, Inc.	YoungArts Miami	\$9,507
YEP	New World Symphony, Inc.	New World Symphony's MusicLab	\$23,474
YEP	South Florida Art Center, Inc. d/b/a ArtCenter/ South Florida	Creative Care	\$9,774
YEP	St. Martha Concerts and Cultural Affairs, Inc.	St. Martha Music and Arts in the Schools	\$9,421
YEP	The Dance Now! Ensemble, Inc.	Dance NOW! 2014/15 Long Term Public Schools Residencies	\$23,474
YEP	The Dave and Mary Alper Jewish Community Center, Inc.	Pop Art! The Andy Warhol Studio	\$9,493
YEP	The Miami Children's Museum, Inc.	Sensory Saturday	\$9,867
YEP	The Miami Symphony Orchestra/Orquesta Sinfonica de Miami, Inc.	Meet MISO	\$9,443
YEP	The Motivational Edge, Inc.	Therapeutic Arts For Foster Youth (T.A.F.F.Y.)	\$23,474
YEP	The Murray Dranoff Foundation, Inc.	PIANO SLAM 7	\$10,000
YEP	The Musical Arts Association of Miami, Inc.	2014-2015 Cleveland Orchestra Miami Education Programs	\$10,000
YEP	Tigertail Productions, Inc.	Wordspeak	\$25,000
		Sub-Total: FY 2014-15 Youth Arts Enrichment Program Grants:	\$450,000

GRANTS TO NON-PROFIT CULTURAL ORGANIZATIONS IN FY 2014-2015 THROUGH THE MIAMI-DADE COUNTY DEPARTMENT OF CULTURAL AFFAIRS

GRANTS PROGRAM	GRANTEE	PROGRAM / PROJECT	FY 2014-15 GRANT
YOUTH ARTS MIAMI GRANTS PROGRAM (YAM)			
YAM	All Florida Youth Orchestra, Inc. (d/b/a Florida Youth Orchestra)	FY 2014-2015 Program Activities	\$25,000
YAM	Alliance for Musical Arts Productions, Inc.	FY 2014-2015 Program Activities	\$17,539
YAM	American Children's Orchestras for Peace, Inc.	FY 2014-2015 Program Activities	\$33,127
YAM	Ars Flores Symphony Orchestra, Inc.	FY 2014-2015 Program Activities	\$21,108
YAM	Ballet Etudes, Inc.	FY 2014-2015 Program Activities	\$17,873
YAM	Diva Arts & Entertainment, Inc.	FY 2014-2015 Program Activities	\$24,163
YAM	enFAMILIA, Inc.	FY 2014-2015 Program Activities	\$45,000
YAM	Fantasy Theatre Factory, Inc.	FY 2014-2015 Program Activities	\$90,000
YAM	Florida Film Institute, Inc.	FY 2014-2015 Program Activities	\$27,753
YAM	Greater Miami Youth Symphony of Dade County, Florida, Inc.	FY 2014-2015 Program Activities	\$90,000
YAM	Kinad Inc.	FY 2014-2015 Program Activities	\$17,644
YAM	Miami Children's Chorus, Inc.	FY 2014-2015 Program Activities	\$90,000
YAM	Miami Dance Project, Inc.	FY 2014-2015 Program Activities	\$33,679
YAM	Miami Momentum Dance Company, Inc.	FY 2014-2015 Program Activities	\$25,000
YAM	Miami Music Project, Inc.	FY 2014-2015 Program Activities	\$90,000
YAM	Miami Stage Company/Miami Children's Theater, Inc.	FY 2014-2015 Program Activities	\$90,000
YAM	Miami Theater Center, Inc.	FY 2014-2015 Program Activities	\$90,000
YAM	Miami Youth Ballet, Inc.	FY 2014-2015 Program Activities	\$22,209
YAM	The Roxy Theatre Group, Inc.	FY 2014-2015 Program Activities	\$90,000
YAM	The South Florida Boys Choir, Incorporated	FY 2014-2015 Program Activities	\$23,035
YAM	South Florida Youth Symphony, Inc.	FY 2014-2015 Program Activities	\$25,000
YAM	The Thomas Armour Youth Ballet, Inc.	FY 2014-2015 Program Activities	\$90,000
YAM	Walenstein Musical Organization, Inc.	FY 2014-2015 Program Activities	\$21,870
		Sub-Total: FY 2014-15 Youth Arts Miami Program Grants:	\$1,100,000
COMMUNITY-BASED CULTURAL FACILITIES DIRECT ALLOCATIONS			
		Total FY 2014-15 Department of Cultural Affairs / Cultural Affairs Council Grants Recommendations:	\$12,770,000
	Fairchild Tropical Botanic Garden, Inc.	Support for Fairchild Tropical Garden	\$376,000
	Miami Children's Museum, Inc.	Support for Miami Children's Museum	\$635,000
	Zoological Society of Florida, Inc.	Support for Zoo Miami	\$293,000
		Sub-Total: FY 2014-15 Community-Based Cultural Facilities Direct Allocations:	\$1,304,000
		Grand Total: FY 2014-15 Funding to Cultural Organizations through the Department of Cultural Affairs:	\$14,074,000

OMB Book Report:

STRATEGIC AREA: Public Safety
DEPARTMENT: Judicial Administration

***** FUNDED PROJECTS *****
 (dollars in thousands)

MENTAL HEALTH DIVERSION FACILITY - BUILDING BETTER COMMUNITIES BOND PROGRAM PROJECT # 305410

DESCRIPTION: Renovate mental health facility purchased from State of Florida

LOCATION: 2200 NW 7 Ave

City of Miami

DISTRICT LOCATED: 3

DISTRICT(s) SERVED: Countywide

ESTIMATED ANNUAL OPERATING IMPACT: \$17000000

REVENUE SCHEDULE:	PRIOR	2014-15	2015-16	2016-17	2017-18	2018-19	2019-20	FUTURE	Total:
BBC GOB Financing	0	306	1,187	4,285	9,894	5,590	0	0	21,262
BBC GOB Series 2005A	145	0	0	0	0	0	0	0	145
BBC GOB Series 2008B	223	0	0	0	0	0	0	0	223
BBC GOB Series 2008B-1	298	0	0	0	0	0	0	0	298
BBC GOB Series 2011A	36	0	0	0	0	0	0	0	36
BBC GOB Series 2013A	113	0	0	0	0	0	0	0	113
BBC GOB Series 2014A	23	0	0	0	0	0	0	0	23
TOTAL REVENUE:	838	306	1,187	4,285	9,894	5,590	0	0	22,100

EXPENDITURE SCHEDULE:	PRIOR	2014-15	2015-16	2016-17	2017-18	2018-19	2019-20	FUTURE	Total:
Land/Building Acquisition	145	0	0	0	0	0	0	0	145
Planning and Design	388	260	1,049	198	368	0	0	0	2,263
Construction	0	0	0	3,420	6,446	3,421	0	0	13,287
Furniture, Fixtures and Equipment	0	0	0	0	900	300	0	0	1,200
Technology Hardware/Software	0	0	0	0	1,000	1,228	0	0	2,228
Construction Management	0	20	33	317	410	256	0	0	1,036
Project Administration	305	26	105	350	770	385	0	0	1,941
TOTAL Milestone:	838	306	1,187	4,285	9,894	5,590	0	0	22,100

Judicial Administration Totals::	PRIOR	2014-15	2015-16	2016-17	2017-18	2018-19	2019-20	FUTURE	Total:
REVENUE:	838	306	1,187	4,285	9,894	5,590	0	0	22,100
EXPENDITURES:	838	306	1,187	4,285	9,894	5,590	0	0	22,100

OMB Book Report:

STRATEGIC AREA: Recreation and Culture

***** FUNDED PROJECTS *****

DEPARTMENT: Parks, Recreation and Open Spaces

(dollars in thousands)

KENDALL INDIAN HAMMOCKS PARK - BUILDING BETTER COMMUNITIES BOND PROGRAM PROJECT # 931720

DESCRIPTION: Construct park improvements including recreation center construction, athletic fields, dog park, vehicle and pedestrian circulation, and utilities upgrades

LOCATION: 11395 SW 79 St

Unincorporated Miami-Dade County

DISTRICT LOCATED: 10

ESTIMATED ANNUAL OPERATING IMPACT: \$15000

DISTRICT(S) SERVED: Countywide

REVENUE SCHEDULE:	PRIOR	2014-15	2015-16	2016-17	2017-18	2018-19	2019-20	FUTURE	Total:
BBC GOB Financing	0	500	892	0	0	0	0	0	1,392
BBC GOB Series 2005A	19	0	0	0	0	0	0	0	19
BBC GOB Series 2008B	41	0	0	0	0	0	0	0	41
BBC GOB Series 2014A	4,548	0	0	0	0	0	0	0	4,548
TOTAL REVENUE:	4,608	500	892	0	0	0	0	0	6,000

EXPENDITURE SCHEDULE:	PRIOR	2014-15	2015-16	2016-17	2017-18	2018-19	2019-20	FUTURE	Total:
Land/Building Acquisition	4,500	0	0	0	0	0	0	0	4,500
Planning and Design	60	500	0	0	0	0	0	0	560
Construction	48	0	892	0	0	0	0	0	940
TOTAL Milestone:	4,608	500	892	0	0	0	0	0	6,000

Parks, Recreation and Open Spaces Totals::	PRIOR	2014-15	2015-16	2016-17	2017-18	2018-19	2019-20	FUTURE	Total:
REVENUE:	4,608	500	892	0	0	0	0	0	6,000
EXPENDITURES:	4,608	500	892	0	0	0	0	0	6,000

OMB Book Report:

STRATEGIC AREA: Recreation and Culture
DEPARTMENT: Parks, Recreation and Open Spaces

***** FUNDED PROJECTS *****
 (dollars in thousands)

HAULOVER PARK - BUILDING BETTER COMMUNITIES BOND PROGRAM**PROJECT # 932740**

DESCRIPTION: Construct park improvements including building construction and renovation, vehicle and pedestrian circulation, beach area, development of the great lawn, landscaping, and jetty pier

LOCATION: 10801 Collins Ave
 Unincorporated Miami-Dade County

DISTRICT LOCATED: 4
DISTRICT(s) SERVED: Countywide

ESTIMATED ANNUAL OPERATING IMPACT: \$17000

REVENUE SCHEDULE:	PRIOR	2014-15	2015-16	2016-17	2017-18	2018-19	2019-20	FUTURE	Total:
BBC GOB Financing	0	1,681	500	605	1,415	2,986	6,000	0	13,187
BBC GOB Series 2005A	2,101	0	0	0	0	0	0	0	2,101
BBC GOB Series 2008B	2,053	0	0	0	0	0	0	0	2,053
BBC GOB Series 2008B-1	2,949	0	0	0	0	0	0	0	2,949
BBC GOB Series 2011A	404	0	0	0	0	0	0	0	404
BBC GOB Series 2013A	1,229	0	0	0	0	0	0	0	1,229
BBC GOB Series 2014A	1,077	0	0	0	0	0	0	0	1,077
TOTAL REVENUE:	9,813	1,681	500	605	1,415	2,986	6,000	0	23,000

EXPENDITURE SCHEDULE:	PRIOR	2014-15	2015-16	2016-17	2017-18	2018-19	2019-20	FUTURE	Total:
Planning and Design	859	125	500	583	930	0	0	0	2,997
Construction	8,740	1,556	0	0	463	2,986	6,000	0	19,745
Construction Management	10	0	0	0	0	0	0	0	10
Project Administration	204	0	0	22	22	0	0	0	248
TOTAL Milestone:	9,813	1,681	500	605	1,415	2,986	6,000	0	23,000

Parks, Recreation and Open Spaces Totals::	PRIOR	2014-15	2015-16	2016-17	2017-18	2018-19	2019-20	FUTURE	Total:
REVENUE:	9,813	1,681	500	605	1,415	2,986	6,000	0	23,000
EXPENDITURES:	9,813	1,681	500	605	1,415	2,986	6,000	0	23,000

OMB Book Report:

STRATEGIC AREA: Recreation and Culture
DEPARTMENT: Parks, Recreation and Open Spaces

***** FUNDED PROJECTS *****
 (dollars in thousands)

LAGO MAR PARK - BUILDING BETTER COMMUNITIES BOND PROGRAM**PROJECT # 934730**

DESCRIPTION: Construct local park improvements including building renovations, irrigation, pool renovation and expansion, and site improvements

LOCATION: SW 162 Ave and SW 80 St

Unincorporated Miami-Dade County

DISTRICT LOCATED: 11

ESTIMATED ANNUAL OPERATING IMPACT: \$123000

DISTRICT(s) SERVED: 11

REVENUE SCHEDULE:	PRIOR	2014-15	2015-16	2016-17	2017-18	2018-19	2019-20	FUTURE	Total:
BBC GOB Financing	0	0	118	576	0	0	0	0	694
BBC GOB Series 2005A	45	0	0	0	0	0	0	0	45
BBC GOB Series 2008B	63	0	0	0	0	0	0	0	63
BBC GOB Series 2008B-1	7	0	0	0	0	0	0	0	7
BBC GOB Series 2011A	191	0	0	0	0	0	0	0	191
TOTAL REVENUE:	306	0	118	576	0	0	0	0	1,000

EXPENDITURE SCHEDULE:	PRIOR	2014-15	2015-16	2016-17	2017-18	2018-19	2019-20	FUTURE	Total:
Planning and Design	72	0	0	0	0	0	0	0	72
Construction	191	0	118	576	0	0	0	0	885
Project Administration	43	0	0	0	0	0	0	0	43
TOTAL Milestone:	306	0	118	576	0	0	0	0	1,000

Parks, Recreation and Open Spaces Totals::	PRIOR	2014-15	2015-16	2016-17	2017-18	2018-19	2019-20	FUTURE	Total:
REVENUE:	306	0	118	576	0	0	0	0	1,000
EXPENDITURES:	306	0	118	576	0	0	0	0	1,000

OMB Book Report:

STRATEGIC AREA: Recreation and Culture
DEPARTMENT: Non-Departmental

***** FUNDED PROJECTS *****
 (dollars in thousands)

MUNICIPAL PROJECT - CULTURAL, LIBRARY, AND MULTICULTURAL EDUCATIONAL FACILITIES

PROJECT # 982610

DESCRIPTION: Provide GOB funding to municipalities supporting projects that improve cultural, library, and multicultural educational facilities

LOCATION: Various
 Throughout Miami-Dade County

DISTRICT LOCATED: Countywide
DISTRICT(s) SERVED: Countywide

ESTIMATED ANNUAL OPERATING IMPACT: \$0

REVENUE SCHEDULE:	PRIOR	2014-15	2015-16	2016-17	2017-18	2018-19	2019-20	FUTURE	Total:
BBC GOB Financing	0	3,140	19,789	9	0	0	0	0	22,938
BBC GOB Interest	300	0	0	0	0	0	0	0	300
BBC GOB Series 2005A	2,278	0	0	0	0	0	0	0	2,278
BBC GOB Series 2008B	741	0	0	0	0	0	0	0	741
BBC GOB Series 2008B-1	7,424	0	0	0	0	0	0	0	7,424
BBC GOB Series 2011A	4,341	0	0	0	0	0	0	0	4,341
BBC GOB Series 2013A	4,361	0	0	0	0	0	0	0	4,361
BBC GOB Series 2014A	2,263	0	0	0	0	0	0	0	2,263
TOTAL REVENUE:	21,708	3,140	19,789	9	0	0	0	0	44,646

EXPENDITURE SCHEDULE:	PRIOR	2014-15	2015-16	2016-17	2017-18	2018-19	2019-20	FUTURE	Total:
Planning and Design	953	0	0	0	0	0	0	0	953
Construction	20,721	3,140	19,789	9	0	0	0	0	43,659
Project Administration	34	0	0	0	0	0	0	0	34
TOTAL Milestone:	21,708	3,140	19,789	9	0	0	0	0	44,646

Non-Departmental Totals::	PRIOR	2014-15	2015-16	2016-17	2017-18	2018-19	2019-20	FUTURE	Total:
REVENUE:	21,708	3,140	19,789	9	0	0	0	0	44,646
EXPENDITURES:	21,708	3,140	19,789	9	0	0	0	0	44,646

OMB Book Report:

STRATEGIC AREA: Neighborhood and Infrastructure
DEPARTMENT: Public Works and Waste Management

***** FUNDED PROJECTS *****
 (dollars in thousands)

INFRASTRUCTURE IMPROVEMENTS IN THE UNINCORPORATED AREA - COMMISSION DISTRICT 13

PROJECT # 604960

DESCRIPTION: Construct improvements to infrastructure to include, but not limited to, sidewalks, resurfacing, and guardrails in Commission District 13

LOCATION: Commission District 13
 Unincorporated Miami-Dade County

DISTRICT LOCATED: 13

ESTIMATED ANNUAL OPERATING IMPACT: \$0

DISTRICT(s) SERVED: 13

REVENUE SCHEDULE:

	PRIOR	2014-15	2015-16	2016-17	2017-18	2018-19	2019-20	FUTURE	Total:
BBC GOB Financing	0	0	500	0	0	0	0	0	500

TOTAL REVENUE:

0	0	500	0	0	0	0	0	0	500
---	---	-----	---	---	---	---	---	---	-----

EXPENDITURE SCHEDULE:

	PRIOR	2014-15	2015-16	2016-17	2017-18	2018-19	2019-20	FUTURE	Total:
Construction	0	0	500	0	0	0	0	0	500

TOTAL Milestone:

0	0	500	0	0	0	0	0	0	500
---	---	-----	---	---	---	---	---	---	-----

Public Works and Waste Management Totals::

	PRIOR	2014-15	2015-16	2016-17	2017-18	2018-19	2019-20	FUTURE	Total:
REVENUE:	0	0	500	0	0	0	0	0	500
EXPENDITURES:	0	0	500	0	0	0	0	0	500

OMB Book Report:

STRATEGIC AREA: Neighborhood and Infrastructure
DEPARTMENT: Water and Sewer

***** FUNDED PROJECTS *****
 (dollars in thousands)

EXTENSION OF SEWER SYSTEM TO COMMERCIAL AND INDUSTRIAL CORRIDORS OF THE COUNTY AS PER BCC RESOLUTION R-537-14 - BUILDING BETTER COMMUNITIES BOND PROGRAM **PROJECT # 967090**

DESCRIPTION: Extend sewer service to developed commercial and industrial corridors in Miami-Dade County

LOCATION: Various Sites
 Throughout Miami-Dade County

DISTRICT LOCATED: Countywide
DISTRICT(s) SERVED: Countywide

ESTIMATED ANNUAL OPERATING IMPACT: \$0

REVENUE SCHEDULE:	PRIOR	2014-15	2015-16	2016-17	2017-18	2018-19	2019-20	FUTURE	Total:
BBC GOB Financing	0	0	1,400	5,905	39,340	43,471	35,884	0	126,000
TOTAL REVENUE:	0	0	1,400	5,905	39,340	43,471	35,884	0	126,000

EXPENDITURE SCHEDULE:	PRIOR	2014-15	2015-16	2016-17	2017-18	2018-19	2019-20	FUTURE	Total:
Planning and Design	0	0	1,400	5,905	0	0	0	0	7,305
Construction	0	0	0	0	39,340	43,471	35,884	0	118,695
TOTAL Milestone:	0	0	1,400	5,905	39,340	43,471	35,884	0	126,000

Water and Sewer Totals::	PRIOR	2014-15	2015-16	2016-17	2017-18	2018-19	2019-20	FUTURE	Total:
REVENUE:	0	0	1,400	5,905	39,340	43,471	35,884	0	126,000
EXPENDITURES:	0	0	1,400	5,905	39,340	43,471	35,884	0	126,000

OMB Book Report:

STRATEGIC AREA: Neighborhood and Infrastructure
DEPARTMENT: Water and Sewer

***** FUNDED PROJECTS *****
 (dollars in thousands)

SYSTEM IMPROVEMENTS PROJECT - GENERAL OBLIGATION BONDS (GOB)**PROJECT # 962830****DESCRIPTION:** Replace undersized water mains and install new fire hydrants**LOCATION:** Various Sites**DISTRICT LOCATED:** Systemwide**DISTRICT(s) SERVED:** Systemwide**ESTIMATED ANNUAL OPERATING IMPACT:** \$0

REVENUE SCHEDULE:	PRIOR	2014-15	2015-16	2016-17	2017-18	2018-19	2019-20	FUTURE	Total:
BBC GOB Financing	0	1,245	1,920	2,129	0	527	2,223	0	8,044
BBC GOB Series 2005A	709	0	0	0	0	0	0	0	709
BBC GOB Series 2008B	1,018	0	0	0	0	0	0	0	1,018
BBC GOB Series 2008B-1	2,222	0	0	0	0	0	0	0	2,222
BBC GOB Series 2011A	2,598	0	0	0	0	0	0	0	2,598
BBC GOB Series 2013A	221	0	0	0	0	0	0	0	221
BBC GOB Series 2014A	1,842	0	0	0	0	0	0	0	1,842
TOTAL REVENUE:	8,610	1,245	1,920	2,129	0	527	2,223	0	16,654

EXPENDITURE SCHEDULE:	PRIOR	2014-15	2015-16	2016-17	2017-18	2018-19	2019-20	FUTURE	Total:
Planning and Design	1,338	46	0	0	0	0	0	0	1,384
Construction	7,222	1,099	1,870	2,079	0	527	2,223	0	15,020
Project Administration	50	100	50	50	0	0	0	0	250
TOTAL Milestone:	8,610	1,245	1,920	2,129	0	527	2,223	0	16,654

Water and Sewer Totals::	PRIOR	2014-15	2015-16	2016-17	2017-18	2018-19	2019-20	FUTURE	Total:
REVENUE:	8,610	1,245	1,920	2,129	0	527	2,223	0	16,654
EXPENDITURES:	8,610	1,245	1,920	2,129	0	527	2,223	0	16,654

OMB Book Report:

STRATEGIC AREA: Health and Human Services
DEPARTMENT: Community Action and Human Services

***** FUNDED PROJECTS *****
 (dollars in thousands)

**CULMER/OVERTOWN NEIGHBORHOOD SERVICE CENTER RENOVATIONS - BUILDING BETTER PROJECT # 844020
 COMMUNITIES BOND PROGRAM**

DESCRIPTION: Renovate the structure of the existing 38,493 square foot Culmer/Overtown
 Neighborhood Service Center facility

LOCATION: 1600 NW 3 Ave
 City of Miami

DISTRICT LOCATED: 3

ESTIMATED ANNUAL OPERATING IMPACT: \$0

DISTRICT(s) SERVED: 3

REVENUE SCHEDULE:	PRIOR	2014-15	2015-16	2016-17	2017-18	2018-19	2019-20	FUTURE	Total:
BBC GOB Financing	0	454	2,180	4,756	0	0	0	0	7,390
BBC GOB Series 2005A	39	0	0	0	0	0	0	0	39
BBC GOB Series 2008B	2	0	0	0	0	0	0	0	2
BBC GOB Series 2008B-1	5	0	0	0	0	0	0	0	5
BBC GOB Series 2013A	32	0	0	0	0	0	0	0	32
BBC GOB Series 2014A	32	0	0	0	0	0	0	0	32
TOTAL REVENUE:	110	454	2,180	4,756	0	0	0	0	7,500

EXPENDITURE SCHEDULE:	PRIOR	2014-15	2015-16	2016-17	2017-18	2018-19	2019-20	FUTURE	Total:
Planning and Design	78	402	183	0	0	0	0	0	663
Construction	12	0	1,562	3,042	0	0	0	0	4,616
Furniture, Fixtures and Equipment	0	0	0	586	0	0	0	0	586
Technology Hardware/Software	0	0	0	693	0	0	0	0	693
Construction Management	0	0	177	177	0	0	0	0	354
Project Administration	10	52	263	263	0	0	0	0	588
TOTAL Milestone:	100	454	2,185	4,761	0	0	0	0	7,500

**Community Action and Human Services
 Totals::**

	PRIOR	2014-15	2015-16	2016-17	2017-18	2018-19	2019-20	FUTURE	Total:
REVENUE:	110	454	2,180	4,756	0	0	0	0	7,500
EXPENDITURES:	100	454	2,185	4,761	0	0	0	0	7,500

OMB Book Report:

STRATEGIC AREA: Economic Development
DEPARTMENT: Non-Departmental

***** FUNDED PROJECTS *****
 (dollars in thousands)

ECONOMIC DEVELOPMENT FUND - BUILDING BETTER COMMUNITIES BOND PROGRAM**PROJECT # 988925**

DESCRIPTION: Provide funding for a Countywide economic development fund

LOCATION: Countywide

Throughout Miami-Dade County

DISTRICT LOCATED: Countywide

DISTRICT(s) SERVED: Countywide

ESTIMATED ANNUAL OPERATING IMPACT: \$0

REVENUE SCHEDULE:	PRIOR	2014-15	2015-16	2016-17	2017-18	2018-19	2019-20	FUTURE	Total:
BBC GOB Financing	0	1,127	13,873	15,000	15,000	22,500	7,500	0	75,000
TOTAL REVENUE:	0	1,127	13,873	15,000	15,000	22,500	7,500	0	75,000

EXPENDITURE SCHEDULE:	PRIOR	2014-15	2015-16	2016-17	2017-18	2018-19	2019-20	FUTURE	Total:
Construction	0	1,127	13,873	15,000	15,000	22,500	7,500	0	75,000
TOTAL Milestone:	0	1,127	13,873	15,000	15,000	22,500	7,500	0	75,000

Non-Departmental Totals::	PRIOR	2014-15	2015-16	2016-17	2017-18	2018-19	2019-20	FUTURE	Total:
REVENUE:	0	1,127	13,873	15,000	15,000	22,500	7,500	0	75,000
EXPENDITURES:	0	1,127	13,873	15,000	15,000	22,500	7,500	0	75,000

Corrections and Rehabilitation

OFFICE OF THE DIRECTOR

- Formulates all departmental policies and provides overall direction and coordination of department activities relating to the booking, release, classification, and incarceration of individuals arrested in Miami-Dade County; oversees the Security and Internal Affairs Bureau, Medical Services, and the Legal Unit

FY 13-14
64

FY 14-15
61

CUSTODY SERVICES

- Provides for the care, custody, and control of inmates incarcerated within five detention facilities; responsible for all inmate intake, classification, and release functions

FY 13-14
2,059

FY 14-15
2123

MANAGEMENT SERVICES AND TRAINING

- Supports all administrative requirements of the Department, including budget and finance, personnel management, training, basic training academy, policy and planning, procurement, legislative coordination, and regulatory compliance

FY 13-14
143

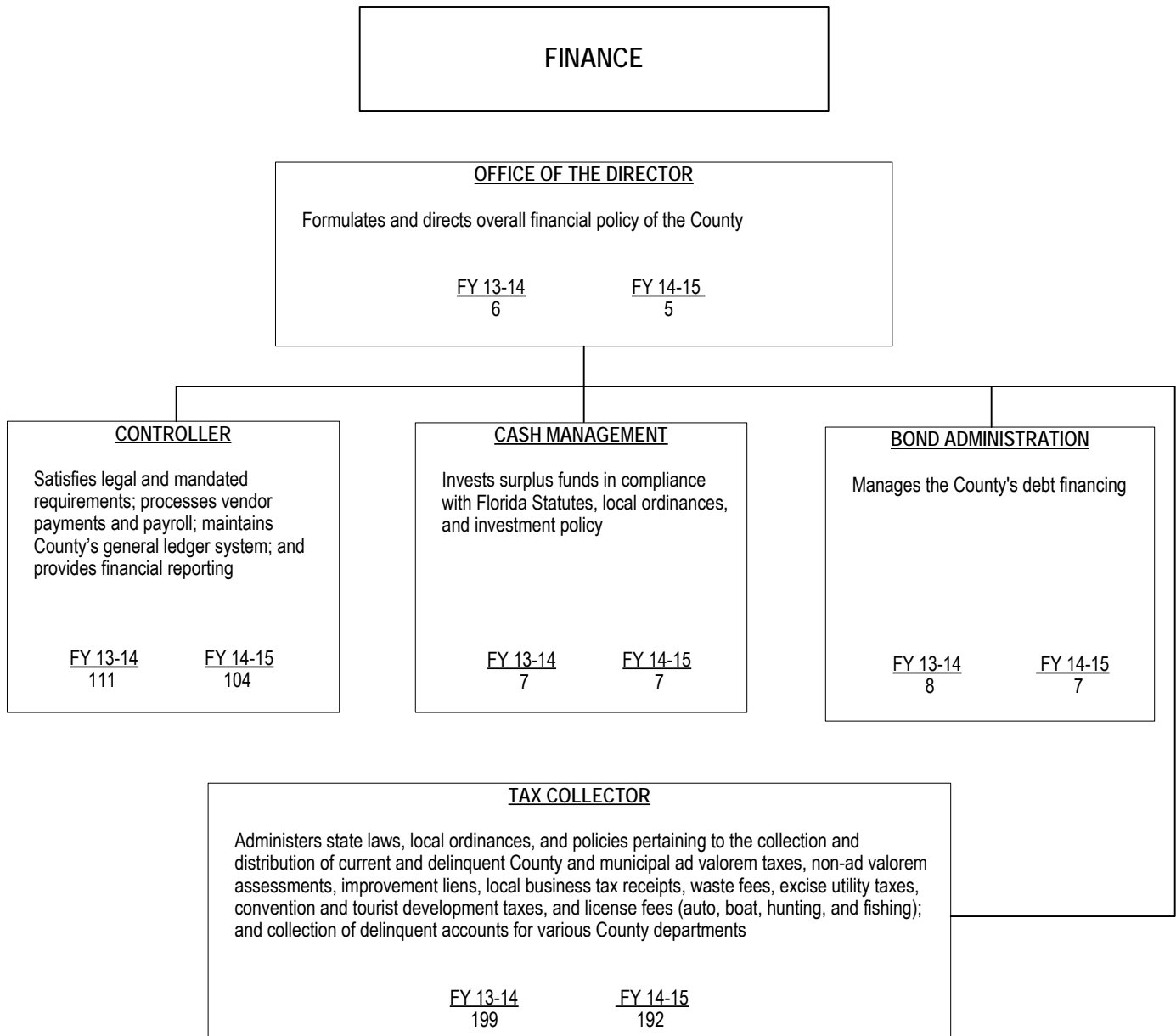
FY 14-15
127

SUPPORT SERVICES

- Includes the following units: Custody Support Services, Physical Plant Maintenance, Alternatives to Incarceration, and Inmate Programs; provides court services, inmate transportation and hospital services, food services, facilities management, information systems, pretrial release, materials management, monitored release (house arrest), construction management (capital projects) and community affairs services

FY 13-14
580

FY 14-15
554



The FY 2014-15 total number of full-time equivalent position is 328.8 FTEs.

PUBLIC HOUSING AND COMMUNITY DEVELOPMENT

OFFICE OF THE DIRECTOR

Provides direction, communication, and coordination of federal and local housing and community development programs to assist extremely low-to moderate-income families and the elderly and disabled; provides management supervision for agency divisions and offices including the Applicant Leasing Center; interacts with public and private stakeholders to ensure attainment of PHCD's goals and objectives

FY 13-14
6

FY 14-15
6

ASSET MANAGEMENT

Provides on-going rehabilitation of public housing vacant units for prospective residents, and rehabilitation of vacant units for residents with Reasonable Accommodations needs; provides technical maintenance support services to all regional sites as needed; responsible for the management and maintenance services of over 9,000 units encompassed in 105 Public Housing Developments; manages the capital asset inventory; provides relocation leasing, rent collection, evictions, policy reviews, and future developments; accepts all applications for Public Housing; interviews prospective residents, determines eligibility, assigns units and maintains waiting list of current applicants; maintains waiting list of residents approved for relocation and assigns units

FY 13-14
277

FY 14-15
253

FACILITIES AND DEVELOPMENT

Manages design and construction of capital improvement projects including rehabilitation of existing development sites (over 9,000 units), new affordable housing developments, including the Scott/ Carver HOPE VI re-development, GOB projects, and the infill housing program; prioritizes capital projects and ensures capital funds are obligated and expended within federal guidelines; administers developer activities such as environmental clearance, financial closing, U.S. HUD and local agency approvals, project schedules, design and plan reviews, construction and completion; develops contract documents for bidding to contractors and administers the design and construction process

FY 13-14
11

FY 14-15
11

ADMINISTRATION

Conducts audits for compliance with U.S. HUD and departmental regulations; oversees administrative functions, including human resources, technical services, procurement, Helen M. Sawyer Plaza Assisted Living Facility, Emergency Management Operations, and investigations regarding fair housing complaints; handles reasonable accommodation requests for tenants and applicants

FY 13-14
40

FY 14-15
39

CONTRACT ADMINISTRATION

Administers special Section 8 programs, including Moderate Rehabilitation, Shelter Plus Care, and Single Room Occupancy; monitors private contractors for the Housing Choice Voucher Program; oversees the County-owned Substantial Rehabilitation and Section 8 New Construction programs managed by private firms; accepts all applications for Section 8 New Construction, Section 8 Housing Choice Voucher, and Moderate Rehabilitation programs; interviews prospective residents, determines eligibility, and maintains waiting list of current applicants

FY 13-14
26

FY 14-15
29

HOUSING AND COMMUNITY DEVELOPMENT

Administers federal and state funded programs including the Community Development Block Grant (CDBG), the Home Investment Partnerships Program (HOME), the Emergency Solutions Grant (ESG), the Neighborhood Stabilization Program (NSP), Documentary Stamp Surtax (Surtax), and State Housing Initiatives Partnership (SHIP) funds designed to develop viable urban communities by providing decent housing, and a suitable living environment, principally for low-to-moderate income households

FY 13-14
33

FY 14-15
31

RESIDENT SERVICES, COMMUNITY PLANNING AND OUTREACH

Develops and implements annual competitive award process and subsequent recapture/reallocation of funding for CDBG, HOME, ESG, NSP, Surtax and SHIP programs; administers community planning functions including citizen participation, annual reporting requirements to U.S. HUD for funding programs, as well as submission of the 5-Year Consolidated Plan, Annual Action Plans, and Consolidated Annual Performance Evaluation Report (CAPER); assists public housing residents with attaining self-sufficiency through strategic partnerships with public and private service providers

FY 13-14
13

FY 14-15
12

FINANCE AND ACCOUNTING

Provides financial support to the Department and ensures that Federal and County requirements are met; oversees budgeting, accounting, financial reporting, accounts payable, Section 8 programs oversight, and revenue management; services loan portfolio of over 6,000 loans for affordable housing developments, rehabilitation and construction

FY 13-14
37

FY 14-15
35

The FY 2014-15 total number of full-time equivalent positions is 431