

FY 2018 - 19 Adopted Budget and Multi-Year Capital Plan

Seaport

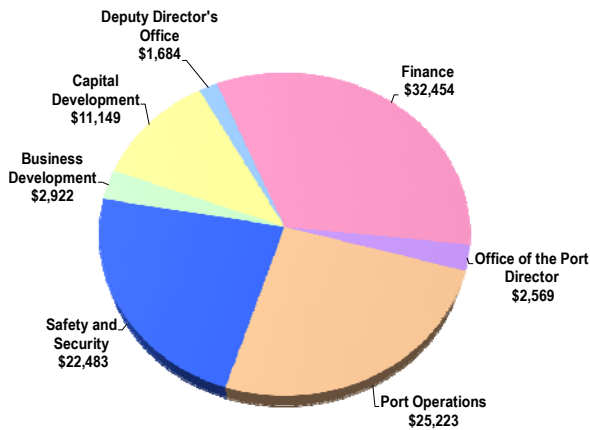
The Seaport Department manages and operates the Dante B. Fascell Port of Miami or PortMiami. PortMiami is the busiest passenger cruise port in the world and the 12th busiest cargo container port in the United States.

As part of the Transportation and the Economic Development strategic areas, Seaport is responsible for meeting the infrastructure needs of the cruise and cargo industries, managing the Port efficiently and effectively, and maintaining, renovating and expanding the Port's facilities. Seaport promotes cruise and cargo growth through infrastructure enhancements and throughput capacity improvements combined with an aggressive foreign and domestic marketing program.

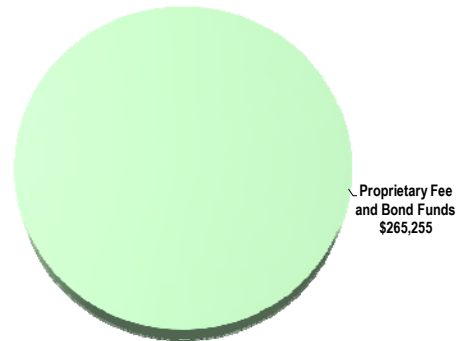
As the second largest economic engine in Miami-Dade County, PortMiami contributes \$41.4 billion annually to the local economy and supports more than 300,000 jobs in South Florida. Seaport works with the maritime, cruise, and cargo industries; truckers; freight forwarders; various federal and state agencies; the Miami-Dade Police and Fire Rescue departments; and all the ancillary service providers that support these customers.

FY 2018-19 Adopted Budget

Expenditures by Activity
(dollars in thousands)

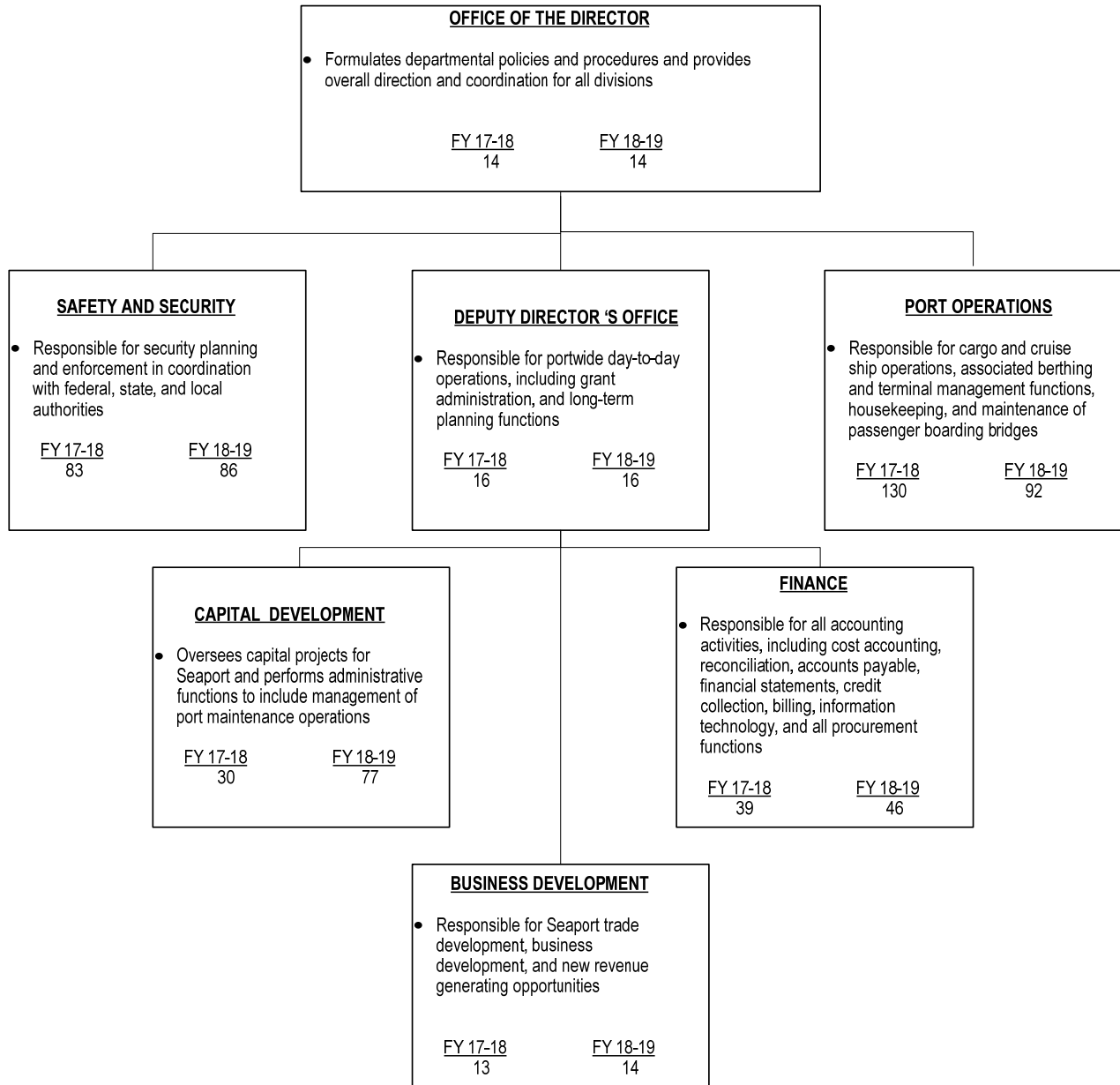


Revenues by Source
(dollars in thousands)



FY 2018 - 19 Adopted Budget and Multi-Year Capital Plan

TABLE OF ORGANIZATION



The FY 2018-19 total number of full-time equivalent positions is 437.4

FY 2018 - 19 Adopted Budget and Multi-Year Capital Plan

FINANCIAL SUMMARY

(dollars in thousands)	Actual FY 15-16	Actual FY 16-17	Budget FY 17-18	Adopted FY 18-19
Revenue Summary				
Carryover	48,700	67,117	80,419	79,161
FDOT Revenues	0	4,000	12,500	17,000
Proprietary Fees	147,822	150,858	153,881	169,094
Total Revenues	196,522	221,975	246,800	265,255
Operating Expenditures Summary				
Salary	21,363	23,088	22,888	24,971
Fringe Benefits	7,964	8,545	9,070	10,812
Court Costs	16	10	17	17
Contractual Services	16,464	16,965	17,567	18,904
Other Operating	9,044	10,755	12,310	14,216
Charges for County Services	19,809	22,302	24,398	27,750
Grants to Outside Organizations	0	0	0	0
Capital	549	557	1,580	1,814
Total Operating Expenditures	75,209	82,222	87,830	98,484
Non-Operating Expenditures Summary				
Transfers	-498	375	540	500
Distribution of Funds In Trust	0	0	0	0
Debt Service	54,694	57,222	77,833	82,493
Depreciation, Amortizations and Depletion	0	0	0	0
Reserve	0	0	80,597	83,778
Total Non-Operating Expenditures	54,196	57,597	158,970	166,771

(dollars in thousands)	Total Funding		Total Positions	
Expenditure By Program	Budget FY 17-18	Adopted FY 18-19	Budget FY 17-18	Adopted FY 18-19
Strategic Area: Transportation				
Office of the Port Director	2,555	2,569	14	14
Deputy Director's Office	1,760	1,684	16	16
Port Operations	29,115	25,223	130	92
Business Development	2,604	2,922	13	14
Capital Development	8,765	11,149	30	77
Finance	22,464	32,454	39	46
Safety and Security	20,567	22,483	83	86
Total Operating Expenditures	87,830	98,484	325	345

SELECTED ITEM HIGHLIGHTS AND DETAILS

Line Item Highlights	(dollars in thousands)				
	Actual FY 15-16	Actual FY 16-17	Budget FY 17-18	Actual FY 17-18	Budget FY 18-19
Advertising	445	445	348	307	447
Fuel	131	134	176	166	166
Overtime	1,213	1,537	1,354	1,617	1,725
Security Services	17,785	20,195	20,567	20,320	22,483
Temporary Employees	67	12	30	30	20
Travel and Registration	132	123	142	231	146
Utilities	4,725	4,890	4,981	4,856	5,113

ADOPTED FEE ADJUSTMENTS FOR SERVICES

Fee Adjustments	Current Fee FY 17-18	Adopted Fee FY 18-19	Dollar Impact FY 18-19
• Various Passenger Dockage and Wharfage rates	Various	Various	\$2,226,000
• Various Cargo Dockage and Wharfage rates	Various	Various	\$626,000
• Various Crane charges	Various	Various	\$371,000
• Various Terminal Rental charges	Various	Various	\$473,000
• Various Miscellaneous Charges	Various	Various	\$0

FY 2018 - 19 Adopted Budget and Multi-Year Capital Plan

DIVISION: OFFICE OF THE PORT DIRECTOR

The Office of the Port Director is responsible for overseeing the implementation of the Seaport 2035 Master Plan; overseeing policies and procedures; providing long-term vision and overall direction and coordination for all divisions; and representing the interests of the Seaport and the County at the local, national and international levels.

- Establishes departmental policy, directs overall management, provides long-term vision, and implements legislative policy and directives

Strategic Objectives - Measures

- ED3-1: Attract and increase foreign direct investments and international trade from targeted countries

Objectives	Measures			FY 15-16	FY 16-17	FY 17-18	FY 17-18	FY 18-19
				Actual	Actual	Budget	Actual	Target
Increase maritime revenue to the Port	Number of TEUs (Twenty Foot Equivalent) (in thousands)	OC	↑	1,028	1,024	1,060	1,080	1,080
Increase maritime revenue to the Port	Cruise passengers (in thousands)	OC	↑	4,980	5,340	5,390	5,500	6,500

DIVISION COMMENTS

- In November 2018, Royal Caribbean International cruise line will begin operations in the New Terminal A with an estimated 1.1 million passengers going through the terminal in FY 2018-19
- During FY 2018-19, Norwegian Bliss, the 3rd Breakaway Plus ship, will make 29 calls carrying more than 4,000 passengers annually to PortMiami

DIVISION: DEPUTY DIRECTOR'S OFFICE

The Office of the Deputy Port Director is responsible for day-to-day operations, including grant administration and planning functions.

- Provides management direction and administration of all departmental operations and personnel
- Guides organizational development and performance excellence initiatives
- Coordinates federal, state, and local legislative affairs
- Coordinates internal and external communication including public information programs and outreach

Strategic Objectives - Measures

- TP3-3: Continually modernize Seaport and airports

Objectives	Measures			FY 15-16	FY 16-17	FY 17-18	FY 17-18	FY 18-19
				Actual	Actual	Budget	Actual	Target
Efficiently manage Port properties	Property leases occupancy rate*	EF	↑	96%	95%	95%	95%	95%

*FY 2016-17 Actuals have been revised to reflect updated information

DIVISION COMMENTS

- PortMiami won the 2018 Porthole Cruise Magazine Award for the Best U.S. Port for the second consecutive year in a row in recognition for its customer service, quality of operations and all-around excellence
- The FY 2018-19 Adopted Budget includes a departmental reorganization that transfers one Seaport Strategic Initiative Manager position and three positions in Property Management to the Port Operations Division to provide efficient departmental management
- The FY 2018-19 Adopted Budget includes the addition of one Business Analyst Manager, one Seaport Asset Manager, one Chief of Planning and Development and one Administrative Officer 2 position; these four positions will enhance the Department's ability to analyze business trends, identify new customers and propose specific cargo rates to potential customers (\$470,000)

FY 2018 - 19 Adopted Budget and Multi-Year Capital Plan

DIVISION: PORT OPERATIONS

The Port Operations Division is responsible for cargo and cruise ship operations, and property management.

- Coordinates operations and berthing activities and terminal management functions
- Maintains passenger loading operations
- Coordinates PortMiami Crane Management, Inc.'s functions

Strategic Objectives - Measures

- ED3-1: Attract and increase foreign direct investments and international trade from targeted countries

Objectives	Measures			FY 15-16	FY 16-17	FY 17-18	FY 17-18	FY 18-19
				Actual	Actual	Budget	Actual	Target
Improve Port efficiency	Crane availability*	EF	↑	98.5%	99.5%	99%	99%	99%

*FY 2016-17 Actuals have been revised to reflect updated information

DIVISION COMMENTS

- The FY 2018-19 Adopted Budget includes a departmental reorganization that transfers 49 positions to the Capital Development Division to provide proper oversight of general Port maintenance as well as passenger boarding issues, which will remain with Port Operations
- The FY 2018-19 Adopted Budget includes a departmental reorganization that transfers three positions from the Deputy Director's Office to perform property management
- The FY 2018-19 Adopted Budget includes four additional Seaport Passenger Bridge and Conveyor Technicians (\$261,000), two Hydraulic Mechanics (\$104,000), one Construction Manager 1 (\$83,000), and the elimination of one vacant semi-skilled laborer position (\$35,000) to improve the Port's passenger embarking and debarking process
- The FY 2018-19 Adopted Budget includes the conversion of two Passenger Bridge Painter part-time positions into full-time positions for the management of the department's building construction projects (\$20,000)

DIVISION: BUSINESS DEVELOPMENT

The Business Development Division is responsible for business retention and development as well as long term planning for Seaport requirements, communications and outreach.

- Develops and negotiates short and long term agreements for on-Port business activities
- Plans and recommends future business and economic development
- Responsible for long term planning of Seaport activities

Strategic Objectives - Measures

- TP3-3: Continually modernize Seaport and airports

Objectives	Measures			FY 15-16	FY 16-17	FY 17-18	FY 17-18	FY 18-19
				Actual	Actual	Budget	Actual	Target
Improve new business initiatives	Advertising revenue generated*	OC	↑	\$314,670	\$208,000	\$315,000	\$360,000	\$200,000

*FY 2016-17 Actuals have been revised to reflect updated information

DIVISION COMMENTS

- The FY 2018-19 Adopted Budget includes a departmental reorganization that transfers one Strategic Initiative Manager position from the Deputy Director's office to assist in developing new revenue initiatives

FY 2018 - 19 Adopted Budget and Multi-Year Capital Plan

DIVISION: CAPITAL DEVELOPMENT

The Capital Development Division manages implementation of capital improvement programs.

- Coordinates Seaport design, engineering and construction management activities
- Coordinates environmental issues with various local, state, and federal agencies
- Performs the Port's property, facilities and equipment maintenance functions

Strategic Objectives - Measures

- TP3-3: Continually modernize Seaport and airports

Objectives	Measures			FY 15-16	FY 16-17	FY 17-18	FY 17-18	FY 18-19
				Actual	Actual	Budget	Actual	Target
Improve internal capacity to oversee capital improvements	Percentage of projects completed on time and within budget	EF	↑	95%	95%	95%	95%	98%

DIVISION COMMENTS

- The FY 2018-19 Adopted Budget includes a departmental reorganization that transfers one Administrative Officer 3 position and the Information Technology function (six positions) to the Finance Division
- The FY 2018-19 Adopted Budget includes a departmental reorganization that transfers 49 positions from the Port Operations Division to perform general port maintenance
- The FY 2018-19 Adopted Budget includes the elimination of one vacant Chief Architecture and Planning position (\$195,000) and the addition of six positions: one CADD technician, one CADD specialist, one Construction Manager 1, one Technical Operations Chief, one Administrative Officer 3, and one Maintenance Mechanic for various ongoing capital projects (\$489,000)

DIVISION: FINANCE

The Finance Division is responsible for accounting and budget activities, procurement, and contracts.

- Responsible for all accounting activities including cost accounting, reconciliations, grants accounting, accounts payable, financial reporting, credit/collections and billing
- Coordinates capital and operational budget activities
- Manages financial activities for gantry cranes
- Develops and implements financial strategies to enhance revenues and reduce expenditures
- Responsible for procurement, contracting, information technology and materials management functions of the Department

Strategic Objectives - Measures

- TP3-3: Continually modernize Seaport and airports

Objectives	Measures			FY 15-16	FY 16-17	FY 17-18	FY 17-18	FY 18-19
				Actual	Actual	Budget	Actual	Target
Provide efficient administrative support to the Port	Percentage of purchase requisitions completed*	OC	↑	95%	95%	95%	95%	95%

*FY 2016-17 Actuals have been revised to reflect updated information

DIVISION COMMENTS

- The FY 2018-19 Adopted Budget includes a departmental reorganization that transfers one Administrative Officer 3 position from Capital Development to perform analytical studies
- The FY 2018-19 Adopted Budget includes a departmental reorganization that transfers the Information Technology function, including six positions, from Capital Development Division

FY 2018 - 19 Adopted Budget and Multi-Year Capital Plan

DIVISION: SAFETY AND SECURITY

The Safety and Security Division is responsible for security planning and enforcement in coordination with federal, state, and local authorities.

- Manages all public safety and seaport security efforts, including protection of all PortMiami buildings and property
- Ensures adherence to the Facilities Security Plan (FSP) as mandated by the Maritime Transportation Security Act
- Coordinates with federal, state and local law enforcement partners

Strategic Objectives - Measures

- TP2-4: Ensure security at airports, seaport and on public transit

Objectives	Measures			FY 15-16	FY 16-17	FY 17-18	FY 17-18	FY 18-19
				Actual	Actual	Budget	Actual	Target
Ensure public safety and security at the Port	Number of Seaport Enforcement Officers	OP	↑	70	60	56	56	61

DIVISION COMMENTS

- In conjunction with Miami-Dade Police, the FY 2018-19 Adopted Budget includes the addition of Police Officers to handle additional workload due to added Port facilities (\$300,000)
- The FY 2018-19 Adopted Budget includes a departmental reorganization that eliminates one vacant Seaport Security Operations Supervisor (\$95,000) and adds one Clerk 4 position (\$70,000)
- The FY 2018-19 Adopted Budget includes the addition of three Seaport Enforcement Specialists to handle additional workload due to the new terminals (\$252,500)

ADDITIONAL INFORMATION

- The Seaport's Promotional Fund is budgeted at \$555,000 in FY 2018-19 and will be used for activities pursuant to Administrative Order 7-32 as applicable; these funds are not proposed as competitive grant funding but rather as allocations for limited programs that promote Port maritime activities; funding is provided for the following activities: Seatrade Cruise Global Exhibition and Conference (\$90,000), Greater Miami Convention and Visitors Bureau (\$75,000), American Association of Port Authorities (AAPA) Latin Ports Delegation Annual Congress (\$30,000), Cargo and Cruise Marketing Program (\$60,000), Florida International University (FIU) for the Inter-American Conference of Mayors (\$150,000), Latin Chamber of Commerce (CAMACOL) (\$50,000), Florida Customs Brokers and Forwarders Association (\$25,000), Florida Perishables Coalition (\$15,000), Africa Trade Director's Summit (\$25,000), and World Strategic Forum (\$35,000)
- In FY 2018-19, Seaport will continue its MOU with Audit and Management Services to conduct audits of various departmental operations and services (\$190,000), the Department of Transportation and Public Works to continue taxi cab inspection (\$100,000) and survey crews (\$145,000), the Department of Solid Waste Management for Mosquito control (\$50,000), the Human Resources Department for a compensation analysis (\$50,000), and the County Attorney's Office for legal services (\$750,000)
- The Port is planning a new terminal east of the current facilities tentatively called Terminal AA, with hopes to have an MOU by late December 2018
- In FY 2018-19, the new Terminal F is scheduled to start a new ship, MSC Cruises – Armonia, with 47 port calls, 235,000 passengers and \$4.1 million in revenue
- In FY 2018-19, the Department will continue its comprehensive cargo program that increases cargo traffic by providing various incentives based on volumes
- The U.S. Department of Transportation has awarded Miami-Dade County a \$7.0 million Infrastructure for Rebuilding America (INFRA) grant to replace two cargo terminal gates at PortMiami with new innovative truck gates

FY 2018 - 19 Adopted Budget and Multi-Year Capital Plan

Department Operational Unmet Needs			
Description	(dollars in thousands)		Positions
	Startup Costs/ Non Recurring Costs	Recurring Costs	
Purchase components required to upgrade sewer pumps, alarm systems, and air conditioning units	\$1,000	\$0	0
Purchase ground maintenance equipment to replace deteriorating aging equipment	\$750	\$0	0
Total	\$1,750	\$0	0



CAPITAL BUDGET SUMMARY

(dollars in thousands)	PRIOR	FY 18-19	FY 19-20	FY 20-21	FY 21-22	FY 22-23	FY 23-24	FUTURE	TOTAL
Revenue									
Army Corps of Engineers	0	400	156	0	0	0	0	0	556
FDOT Funds	7,028	16,588	12,429	6,325	0	0	0	0	42,370
Federal Transportation Grant	0	500	6,500	0	0	0	0	0	7,000
FEMA Reimbursements	0	10,000	0	0	0	0	0	0	10,000
Future Financing	0	207,148	147,625	163,113	129,157	81,700	18,226	132,509	879,478
Seaport Bonds/Loans	188,318	7,100	0	0	0	0	0	0	195,418
Tenant Financing	4,000	1,000	0	0	0	0	0	0	5,000
Total:	199,346	242,736	166,710	169,438	129,157	81,700	18,226	132,509	1,139,822
Expenditures									
Strategic Area: TP									
Cargo Facilities Improvements	24,713	42,909	28,309	39,054	2,597	0	0	0	137,582
Equipment Acquisition	8,047	13,174	20,187	0	0	0	10,000	0	51,408
Passenger Facilities Improvements	77,983	3,200	0	0	0	0	0	0	81,183
Port Facility Improvements	56,363	27,193	81,714	130,384	126,560	81,700	8,226	132,509	644,649
Terminal Improvements	32,240	156,260	36,500	0	0	0	0	0	225,000
Total:	199,346	242,736	166,710	169,438	129,157	81,700	18,226	132,509	1,139,822

CAPITAL HIGHLIGHTS AND OPERATIONAL IMPACTS

- The FY 2018-19 Adopted Budget and Multi-Year Capital Plan includes the purchase of 20 vehicles (\$324,000); over the next five years, the Department has budgeted \$488,000 to replace 42 vehicles as part of its fleet replacement plan; the County's fleet replacement plan is included under Non-Departmental project #2000000511
- New Terminal A includes infrastructure improvements which were completed during October 2018 (total project cost \$16.962 million; \$500,000 in FY 2018-19); the facility is being built by Royal Caribbean International and will generate \$9.5 million in additional annual rental revenue for the Port, which will be used for the payment of debt service and security costs
- In FY 2018-19, Seaport will continue to update and improve various port infrastructure projects (total project cost \$304.834 million; \$11.7 million in FY 2018-19); these improvements will add to the life span of various facilities and will generate minimal additional operating costs to the Department
- In FY 2018-19, the Department will continue to repair and upgrade both cargo and cruise bulkheads, expected to add at least 30 years of life to the Port (total project cost \$187.325 million; \$18.027 million in FY 2018-19); upon completion, the Department does not anticipate any operational impact resulting from this project
- The FY 2018-19 Adopted Budget and Multi-Year Capital Plan includes infrastructure funding for anticipated New Terminal AA (total Project cost \$16.6 million, \$2.3 million in FY 2018-19) for additional larger ships
- As a result of building a New Terminal B, the old Terminals B and C will be refurbished and recast as New Terminal C (total Project cost \$10 million in FY 2018-19)
- In April 2018, the Board of County Commissioners agreed to a Cruise Terminal Agreement between Miami-Dade County and Norwegian Cruise Lines (NCL) to fund up to \$100 million for a New Terminal B; in addition, the Port would loan up to \$115 million for NCL to build a garage and make other ancillary improvements; repayment of advanced amounts would be paid on a per passenger basis up to \$3.27 per passenger; completion is expected to be in FY 2019-20


FY 2018 - 19 Adopted Budget and Multi-Year Capital Plan

-  In anticipation of the Port's receiving larger ships, the Department will add up to four new post-panamax gantry cranes which will bring the total number of cranes at the Port to 17; the additional cranes will allow the Port to handle more than one million TEUs annually (total Project cost \$51.408 million total; \$13.174 million in FY 2018-19); it is anticipated that this project will have an annual operating impact of \$500,000 per crane, for a total operating impact of \$2 million beginning in FY 2018-19
-  In FY 2017-8, U.S. Department of Transportation awarded Miami-Dade County a \$7 million Infrastructure for Rebuilding America (INFRA) grant to replace two cargo terminal gates at PortMiami with new innovative automated truck gates; the INFRA grant program provides dedicated, discretionary funding for projects that address critical issues facing the nation's aging infrastructure

FUNDED CAPITAL PROJECTS

(dollars in thousands)


CARGO GATE - MODIFICATIONS

PROJECT #: 644010 

DESCRIPTION: Purchase and install security systems for new gateway as required
 LOCATION: Dante B. Fascell Port of Miami-Dade District Located: 5
 Port of Miami District(s) Served: Countywide

REVENUE SCHEDULE:	PRIOR	2018-19	2019-20	2020-21	2021-22	2022-23	2023-24	FUTURE	TOTAL
Federal Transportation Grant	0	500	6,500	0	0	0	0	0	7,000
Future Financing	0	500	3,931	0	0	0	0	0	4,431
Seaport Bonds/Loans	968	0	0	0	0	0	0	0	968
TOTAL REVENUES:	968	1,000	10,431	0	0	0	0	0	12,399
EXPENDITURE SCHEDULE:	PRIOR	2018-19	2019-20	2020-21	2021-22	2022-23	2023-24	FUTURE	TOTAL
Construction	968	1,000	10,431	0	0	0	0	0	12,399
TOTAL EXPENDITURES:	968	1,000	10,431	0	0	0	0	0	12,399

CHANNEL MODIFICATIONS

PROJECT #: 200000028 

DESCRIPTION: Improvements to Seaport channels as a result of the new terminal additions at the Port of Miami
 LOCATION: Dante B. Fascell Port of Miami-Dade District Located: 5
 City of Miami District(s) Served: Countywide

REVENUE SCHEDULE:	PRIOR	2018-19	2019-20	2020-21	2021-22	2022-23	2023-24	FUTURE	TOTAL
Army Corps of Engineers	0	400	156	0	0	0	0	0	556
Future Financing	0	400	2,044	5,000	5,000	5,000	5,000	0	22,444
TOTAL REVENUES:	0	800	2,200	5,000	5,000	5,000	5,000	0	23,000
EXPENDITURE SCHEDULE:	PRIOR	2018-19	2019-20	2020-21	2021-22	2022-23	2023-24	FUTURE	TOTAL
Construction	0	0	0	5,000	5,000	5,000	5,000	0	20,000
Planning and Design	0	800	2,200	0	0	0	0	0	3,000
TOTAL EXPENDITURES:	0	800	2,200	5,000	5,000	5,000	5,000	0	23,000

FY 2018 - 19 Adopted Budget and Multi-Year Capital Plan

CONSTRUCTION SUPERVISION

PROJECT #: 6430061

DESCRIPTION: Provide supervision of on-going construction projects at the Seaport
 LOCATION: Dante B. Fascell Port of Miami-Dade District Located: 5
 Port of Miami District(s) Served: Countywide

REVENUE SCHEDULE:	PRIOR	2018-19	2019-20	2020-21	2021-22	2022-23	2023-24	FUTURE	TOTAL
Future Financing	0	6,900	6,700	6,400	6,300	6,200	0	0	32,500
Seaport Bonds/Loans	27,403	0	0	0	0	0	0	0	27,403
TOTAL REVENUES:	27,403	6,900	6,700	6,400	6,300	6,200	0	0	59,903
EXPENDITURE SCHEDULE:	PRIOR	2018-19	2019-20	2020-21	2021-22	2022-23	2023-24	FUTURE	TOTAL
Construction	13,801	6,900	6,700	6,400	6,300	6,200	0	0	46,301
Planning and Design	13,602	0	0	0	0	0	0	0	13,602
TOTAL EXPENDITURES:	27,403	6,900	6,700	6,400	6,300	6,200	0	0	59,903

CONTAINER YARD - IMPROVEMENTS (SEABOARD)

PROJECT #: 644520

DESCRIPTION: Implement container yard improvements in the Seaport terminal area for drainage improvements
 LOCATION: Dante B. Fascell Port of Miami-Dade District Located: 5
 Port of Miami District(s) Served: Countywide

REVENUE SCHEDULE:	PRIOR	2018-19	2019-20	2020-21	2021-22	2022-23	2023-24	FUTURE	TOTAL
Future Financing	0	8,842	7,278	17,297	2,597	0	0	0	36,014
Seaport Bonds/Loans	18,534	0	0	0	0	0	0	0	18,534
Tenant Financing	4,000	1,000	0	0	0	0	0	0	5,000
TOTAL REVENUES:	22,534	9,842	7,278	17,297	2,597	0	0	0	59,548
EXPENDITURE SCHEDULE:	PRIOR	2018-19	2019-20	2020-21	2021-22	2022-23	2023-24	FUTURE	TOTAL
Construction	22,534	9,842	7,278	17,297	2,597	0	0	0	59,548
TOTAL EXPENDITURES:	22,534	9,842	7,278	17,297	2,597	0	0	0	59,548

CRUISE TERMINAL A - NEW

PROJECT #: 645200

DESCRIPTION: Design and construct infrastructure improvements for expanded business in conjunction with new agreement with Royal Caribbean Cruise Lines
 LOCATION: Dante B. Fascell Port of Miami-Dade District Located: 5
 Port of Miami District(s) Served: Countywide

REVENUE SCHEDULE:	PRIOR	2018-19	2019-20	2020-21	2021-22	2022-23	2023-24	FUTURE	TOTAL
Seaport Bonds/Loans	16,462	500	0	0	0	0	0	0	16,962
TOTAL REVENUES:	16,462	500	0	0	0	0	0	0	16,962
EXPENDITURE SCHEDULE:	PRIOR	2018-19	2019-20	2020-21	2021-22	2022-23	2023-24	FUTURE	TOTAL
Construction	16,462	500	0	0	0	0	0	0	16,962
TOTAL EXPENDITURES:	16,462	500	0	0	0	0	0	0	16,962

FY 2018 - 19 Adopted Budget and Multi-Year Capital Plan

CRUISE TERMINAL AA - IMPROVEMENTS

PROJECT #: 200000570

DESCRIPTION: Design and construct infrastructure improvements for expanded operations with Carnival Cruise Lines
 LOCATION: Dante B Fascell Miami-Dade Seaport District Located: 5
 Port of Miami District(s) Served: Countywide

REVENUE SCHEDULE:	PRIOR	2018-19	2019-20	2020-21	2021-22	2022-23	2023-24	FUTURE	TOTAL
Future Financing	0	2,300	7,300	6,870	0	0	0	0	16,470
Seaport Bonds/Loans	130	0	0	0	0	0	0	0	130
TOTAL REVENUES:	130	2,300	7,300	6,870	0	0	0	0	16,600

EXPENDITURE SCHEDULE:	PRIOR	2018-19	2019-20	2020-21	2021-22	2022-23	2023-24	FUTURE	TOTAL
Construction	130	2,300	7,300	6,870	0	0	0	0	16,600
TOTAL EXPENDITURES:	130	2,300	7,300	6,870	0	0	0	0	16,600

Estimated Annual Operating Impact will begin in FY 2018-19 in the amount of \$20,000

CRUISE TERMINAL B - NEW

PROJECT #: 200000571

DESCRIPTION: Construct a new Terminal B to accommodate Norwegian Cruise Line operations
 LOCATION: Dante B Fascell Port of Miami-Dade District Located: 5
 Port of Miami District(s) Served: Countywide

REVENUE SCHEDULE:	PRIOR	2018-19	2019-20	2020-21	2021-22	2022-23	2023-24	FUTURE	TOTAL
FDOT Funds	0	3,876	0	0	0	0	0	0	3,876
Future Financing	0	142,384	36,500	0	0	0	0	0	178,884
Seaport Bonds/Loans	32,240	0	0	0	0	0	0	0	32,240
TOTAL REVENUES:	32,240	146,260	36,500	0	0	0	0	0	215,000

EXPENDITURE SCHEDULE:	PRIOR	2018-19	2019-20	2020-21	2021-22	2022-23	2023-24	FUTURE	TOTAL
Construction	32,240	146,260	36,500	0	0	0	0	0	215,000
TOTAL EXPENDITURES:	32,240	146,260	36,500	0	0	0	0	0	215,000

CRUISE TERMINAL C

PROJECT #: 200000923

DESCRIPTION: Provide renovations to combine terminals B and C to accommodate various cruise lines
 LOCATION: Dante B Fascell Miami-Dade Seaport District Located: 5
 Port of Miami District(s) Served: TBD

REVENUE SCHEDULE:	PRIOR	2018-19	2019-20	2020-21	2021-22	2022-23	2023-24	FUTURE	TOTAL
Future Financing	0	10,000	0	0	0	0	0	0	10,000
TOTAL REVENUES:	0	10,000	0	0	0	0	0	0	10,000

EXPENDITURE SCHEDULE:	PRIOR	2018-19	2019-20	2020-21	2021-22	2022-23	2023-24	FUTURE	TOTAL
Construction	0	10,000	0	0	0	0	0	0	10,000
TOTAL EXPENDITURES:	0	10,000	0	0	0	0	0	0	10,000

FY 2018 - 19 Adopted Budget and Multi-Year Capital Plan

CRUISE TERMINAL F - UPGRADES

PROJECT #: 200000060

DESCRIPTION: Design, construct, and upgrade cruise terminal F for new cruise services
 LOCATION: Dante B. Fascell Port of Miami-Dade District Located: 5
 Port of Miami District(s) Served: Countywide

REVENUE SCHEDULE:	PRIOR	2018-19	2019-20	2020-21	2021-22	2022-23	2023-24	FUTURE	TOTAL
FDOT Funds	1,035	0	0	0	0	0	0	0	1,035
Seaport Bonds/Loans	43,887	1,600	0	0	0	0	0	0	45,487
TOTAL REVENUES:	44,922	1,600	0	0	0	0	0	0	46,522

EXPENDITURE SCHEDULE:	PRIOR	2018-19	2019-20	2020-21	2021-22	2022-23	2023-24	FUTURE	TOTAL
Construction	44,922	1,600	0	0	0	0	0	0	46,522
TOTAL EXPENDITURES:	44,922	1,600	0	0	0	0	0	0	46,522

CRUISE TERMINAL J - IMPROVEMENTS

PROJECT #: 642930

DESCRIPTION: Upgrade and remodel Terminal J to attract luxury cruise operations by replacing carpet, new elevators, and various terminal repair/upgrades
 LOCATION: Dante B. Fascell Port of Miami-Dade District Located: 5
 Port of Miami District(s) Served: Countywide

REVENUE SCHEDULE:	PRIOR	2018-19	2019-20	2020-21	2021-22	2022-23	2023-24	FUTURE	TOTAL
Future Financing	0	700	700	0	0	0	0	0	1,400
Seaport Bonds/Loans	2,080	0	0	0	0	0	0	0	2,080
TOTAL REVENUES:	2,080	700	700	0	0	0	0	0	3,480

EXPENDITURE SCHEDULE:	PRIOR	2018-19	2019-20	2020-21	2021-22	2022-23	2023-24	FUTURE	TOTAL
Construction	2,080	700	700	0	0	0	0	0	3,480
TOTAL EXPENDITURES:	2,080	700	700	0	0	0	0	0	3,480

CRUISE TERMINALS A AND AA - ROADWAYS

PROJECT #: 200000724

DESCRIPTION: Construct a new road to handle traffic for new terminals A and AA
 LOCATION: Dante B. Fascell Port of Miami-Dade District Located: 5
 Port of Miami District(s) Served: Countywide

REVENUE SCHEDULE:	PRIOR	2018-19	2019-20	2020-21	2021-22	2022-23	2023-24	FUTURE	TOTAL
Future Financing	0	1,753	0	0	5,000	0	0	10,000	16,753
Seaport Bonds/Loans	5,247	0	0	0	0	0	0	0	5,247
TOTAL REVENUES:	5,247	1,753	0	0	5,000	0	0	10,000	22,000

EXPENDITURE SCHEDULE:	PRIOR	2018-19	2019-20	2020-21	2021-22	2022-23	2023-24	FUTURE	TOTAL
Construction	5,247	1,753	0	0	5,000	0	0	10,000	22,000
TOTAL EXPENDITURES:	5,247	1,753	0	0	5,000	0	0	10,000	22,000

Estimated Annual Operating Impact will begin in FY 2018-19 in the amount of \$50,000 and includes 0 FTE(s)

FY 2018 - 19 Adopted Budget and Multi-Year Capital Plan

CRUISE TERMINALS D AND E - UPGRADES

PROJECT #: 200000061

DESCRIPTION: Upgrade terminals D and E for new Carnival Cruise Line services
 LOCATION: Dante B. Fascell Port of Miami-Dade District Located: 5
 Port of Miami District(s) Served: Countywide

REVENUE SCHEDULE:	PRIOR	2018-19	2019-20	2020-21	2021-22	2022-23	2023-24	FUTURE	TOTAL
FDOT Funds	1,715	0	0	0	0	0	0	0	1,715
Future Financing	0	1,100	0	0	0	0	0	0	1,100
Seaport Bonds/Loans	14,884	0	0	0	0	0	0	0	14,884
TOTAL REVENUES:	16,599	1,100	0	0	0	0	0	0	17,699
EXPENDITURE SCHEDULE:	PRIOR	2018-19	2019-20	2020-21	2021-22	2022-23	2023-24	FUTURE	TOTAL
Construction	16,599	1,100	0	0	0	0	0	0	17,699
TOTAL EXPENDITURES:	16,599	1,100	0	0	0	0	0	0	17,699

FEDERAL INSPECTION FACILITY

PROJECT #: 641540

DESCRIPTION: Build new facility for Immigration and Customs Enforcement Operations
 LOCATION: Dante B. Fascell Port of Miami-Dade District Located: 5
 Port of Miami District(s) Served: Countywide

REVENUE SCHEDULE:	PRIOR	2018-19	2019-20	2020-21	2021-22	2022-23	2023-24	FUTURE	TOTAL
Future Financing	0	526	8,000	8,000	0	0	0	0	16,526
Seaport Bonds/Loans	89	0	0	0	0	0	0	0	89
TOTAL REVENUES:	89	526	8,000	8,000	0	0	0	0	16,615
EXPENDITURE SCHEDULE:	PRIOR	2018-19	2019-20	2020-21	2021-22	2022-23	2023-24	FUTURE	TOTAL
Construction	89	526	8,000	8,000	0	0	0	0	16,615
TOTAL EXPENDITURES:	89	526	8,000	8,000	0	0	0	0	16,615

Estimated Annual Operating Impact will begin in FY 2020-21 in the amount of \$50,000 and includes 0 FTE(s)

GANTRY CRANES

PROJECT #: 200000131

DESCRIPTION: Purchase four (4) additional post panamax gantry cranes for increased traffic
 LOCATION: Dante B. Fascell Port of Miami-Dade District Located: 5
 Port of Miami District(s) Served: Countywide

REVENUE SCHEDULE:	PRIOR	2018-19	2019-20	2020-21	2021-22	2022-23	2023-24	FUTURE	TOTAL
FDOT Funds	2,625	6,587	10,329	0	0	0	0	0	19,541
Future Financing	0	6,587	9,858	0	0	0	10,000	0	26,445
Seaport Bonds/Loans	5,422	0	0	0	0	0	0	0	5,422
TOTAL REVENUES:	8,047	13,174	20,187	0	0	0	10,000	0	51,408
EXPENDITURE SCHEDULE:	PRIOR	2018-19	2019-20	2020-21	2021-22	2022-23	2023-24	FUTURE	TOTAL
Major Machinery and Equipment	8,047	13,174	20,187	0	0	0	10,000	0	51,408
TOTAL EXPENDITURES:	8,047	13,174	20,187	0	0	0	10,000	0	51,408

Estimated Annual Operating Impact will begin in FY 2018-19 in the amount of \$2,000,000 and includes 0 FTE(s)

FY 2018 - 19 Adopted Budget and Multi-Year Capital Plan

INFRASTRUCTURE IMPROVEMENTS

PROJECT #: 645430

DESCRIPTION: Provide infrastructure updates and improvements in various areas of the Port
 LOCATION: Dante B. Fascell Port of Miami-Dade District Located: 5
 Port of Miami District(s) Served: Countywide

REVENUE SCHEDULE:	PRIOR	2018-19	2019-20	2020-21	2021-22	2022-23	2023-24	FUTURE	TOTAL
FDOT Funds	1,653	0	0	2,300	0	0	0	0	3,953
Future Financing	0	11,700	15,500	70,500	70,500	10,500	0	113,590	292,290
Seaport Bonds/Loans	8,591	0	0	0	0	0	0	0	8,591
TOTAL REVENUES:	10,244	11,700	15,500	72,800	70,500	10,500	0	113,590	304,834
EXPENDITURE SCHEDULE:	PRIOR	2018-19	2019-20	2020-21	2021-22	2022-23	2023-24	FUTURE	TOTAL
Construction	10,244	11,700	15,500	72,800	70,500	10,500	0	113,590	304,834
TOTAL EXPENDITURES:	10,244	11,700	15,500	72,800	70,500	10,500	0	113,590	304,834

INLAND PORT DEVELOPMENT

PROJECT #: 200000572

DESCRIPTION: Continue Inland Port development of container storage and transfer staging areas
 LOCATION: Dante B Fascill Port of Miami-Dade District Located: 5
 Port of Miami District(s) Served: Countywide

REVENUE SCHEDULE:	PRIOR	2018-19	2019-20	2020-21	2021-22	2022-23	2023-24	FUTURE	TOTAL
FDOT Funds	0	100	100	0	0	0	0	0	200
Future Financing	0	140	9,900	0	9,760	0	0	0	19,800
TOTAL REVENUES:	0	240	10,000	0	9,760	0	0	0	20,000
EXPENDITURE SCHEDULE:	PRIOR	2018-19	2019-20	2020-21	2021-22	2022-23	2023-24	FUTURE	TOTAL
Construction	0	240	10,000	0	9,760	0	0	0	20,000
TOTAL EXPENDITURES:	0	240	10,000	0	9,760	0	0	0	20,000

NORTH BULKHEAD - REHABILITATION

PROJECT #: 644300

DESCRIPTION: Provide repairs and improvements to the north bulkhead terminal
 LOCATION: Dante B. Fascell Port of Miami-Dade District Located: 5
 Port of Miami District(s) Served: Countywide

REVENUE SCHEDULE:	PRIOR	2018-19	2019-20	2020-21	2021-22	2022-23	2023-24	FUTURE	TOTAL
Future Financing	0	960	30,000	30,000	30,000	60,000	0	0	150,960
Seaport Bonds/Loans	6,230	0	0	0	0	0	0	0	6,230
TOTAL REVENUES:	6,230	960	30,000	30,000	30,000	60,000	0	0	157,190
EXPENDITURE SCHEDULE:	PRIOR	2018-19	2019-20	2020-21	2021-22	2022-23	2023-24	FUTURE	TOTAL
Construction	6,230	960	30,000	30,000	30,000	60,000	0	0	157,190
TOTAL EXPENDITURES:	6,230	960	30,000	30,000	30,000	60,000	0	0	157,190

FY 2018 - 19 Adopted Budget and Multi-Year Capital Plan

SOUTH BULKHEAD - REHABILITATION

PROJECT #: 646300



DESCRIPTION: Provide repairs and improvements to Seaport's South bulkhead
 LOCATION: Dante B. Fascell Port of Miami-Dade District Located: 5
 Port of Miami District(s) Served: Countywide

REVENUE SCHEDULE:	PRIOR	2018-19	2019-20	2020-21	2021-22	2022-23	2023-24	FUTURE	TOTAL
FEMA Reimbursements	0	10,000	0	0	0	0	0	0	10,000
Future Financing	0	7,067	6,100	5,757	0	0	0	0	18,924
Seaport Bonds/Loans	1,211	0	0	0	0	0	0	0	1,211
TOTAL REVENUES:	1,211	17,067	6,100	5,757	0	0	0	0	30,135
EXPENDITURE SCHEDULE:	PRIOR	2018-19	2019-20	2020-21	2021-22	2022-23	2023-24	FUTURE	TOTAL
Construction	1,211	17,067	6,100	5,757	0	0	0	0	30,135
TOTAL EXPENDITURES:	1,211	17,067	6,100	5,757	0	0	0	0	30,135

SOUTH FLORIDA CONTAINER - TERMINAL IMPROVEMENTS

PROJECT #: 647150



DESCRIPTION: Improve South Florida Container Terminal drainage and add cargo yard projects
 LOCATION: Dante B. Fascell Port of Miami-Dade District Located: 5
 Port of Miami District(s) Served: Countywide

REVENUE SCHEDULE:	PRIOR	2018-19	2019-20	2020-21	2021-22	2022-23	2023-24	FUTURE	TOTAL
FDOT Funds	0	6,025	2,000	4,025	0	0	0	0	12,050
Future Financing	0	3,975	2,500	11,975	0	0	0	0	18,450
Seaport Bonds/Loans	0	5,000	0	0	0	0	0	0	5,000
TOTAL REVENUES:	0	15,000	4,500	16,000	0	0	0	0	35,500
EXPENDITURE SCHEDULE:	PRIOR	2018-19	2019-20	2020-21	2021-22	2022-23	2023-24	FUTURE	TOTAL
Construction	0	15,000	4,500	16,000	0	0	0	0	35,500
TOTAL EXPENDITURES:	0	15,000	4,500	16,000	0	0	0	0	35,500

VARIOUS FACILITY MOVES

PROJECT #: 6410330

DESCRIPTION: Movement of customer warehouses or other facilities as determined
 LOCATION: Dante B. Fascell Port of Miami-Dade District Located: 5
 Port of Miami District(s) Served: Countywide

REVENUE SCHEDULE:	PRIOR	2018-19	2019-20	2020-21	2021-22	2022-23	2023-24	FUTURE	TOTAL
Future Financing	0	0	0	0	0	0	3,226	0	3,226
TOTAL REVENUES:	0	0	0	0	0	0	3,226	0	3,226
EXPENDITURE SCHEDULE:	PRIOR	2018-19	2019-20	2020-21	2021-22	2022-23	2023-24	FUTURE	TOTAL
Construction	0	0	0	0	0	0	3,226	0	3,226
TOTAL EXPENDITURES:	0	0	0	0	0	0	3,226	0	3,226

FY 2018 - 19 Adopted Budget and Multi-Year Capital Plan

WATER & SEWER UPGRADES

PROJECT #: 647720

DESCRIPTION: Upgrade Miami-Dade Water and Sewer System for new services
 LOCATION: Dante B. Fascell Port of Miami-Dade District Located: 5
 Port of Miami District(s) Served: Countywide

REVENUE SCHEDULE:	PRIOR	2018-19	2019-20	2020-21	2021-22	2022-23	2023-24	FUTURE	TOTAL
Future Financing	0	1,314	1,314	1,314	0	0	0	8,919	12,861
Seaport Bonds/Loans	4,940	0	0	0	0	0	0	0	4,940
TOTAL REVENUES:	4,940	1,314	1,314	1,314	0	0	0	8,919	17,801

EXPENDITURE SCHEDULE:	PRIOR	2018-19	2019-20	2020-21	2021-22	2022-23	2023-24	FUTURE	TOTAL
Construction	4,940	1,314	1,314	1,314	0	0	0	8,919	17,801
TOTAL EXPENDITURES:	4,940	1,314	1,314	1,314	0	0	0	8,919	17,801

UNFUNDED CAPITAL PROJECTS

PROJECT NAME	LOCATION	(dollars in thousands) ESTIMATED PROJECT COST
CRUISE FERRY COMPLEX	Dante B. Fascell Port of Miami-Dade	20,000
CRUISE TERMINALS - CONCOURSES AND BERTHING MODIFICATIONS	Dante B. Fascell Port of Miami-Dade	15,000
GANTRY CRANES - RUBBER TIRE REPLACEMENT	Dante B. Fascell Port of Miami-Dade	10,000
NEW BERTH O - WEST NEW APRON	Dante B. Fascell Port of Miami-Dade	67,000
NEW TERMINALS	Dante B. Fascell Port of Miami-Dade	120,000
PARKING GARAGES	Dante B. Fascell Port of Miami-Dade	55,000
PASSENGER TERMINALS - MOBILE WALKWAYS	Dante B. Fascell Port of Miami-Dade	10,200
PORT OPERATIONS SITE	Dante B. Fascell Port of Miami-Dade	23,500
PORT ROADWAY - REALIGNMENT	Dante B. Fascell Port of Miami-Dade	25,000
PORT UTILITIES - EXPAND AND MODERNIZE	Dante B. Fascell Port of Miami-Dade	15,000
RAIL ROAD TRACK - EXTENSION	Dante B. Fascell Port of Miami-Dade	1,000
WATER SERVICE CAPACITY - EXPANSION	Dante B. Fascell Port of Miami-Dade	5,000
UNFUNDED TOTAL		366,700