

FY 2021 - 22 Proposed Budget and Multi-Year Capital Plan

Seaport

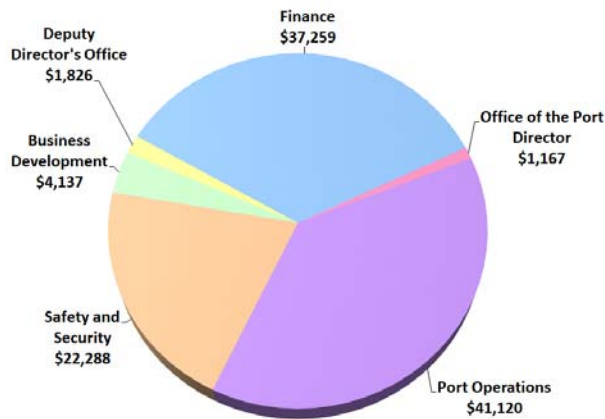
The Seaport Department manages and operates the Dante B. Fascell Port of Miami or PortMiami. PortMiami is the busiest passenger cruise port in the world and the 12th busiest cargo container port in the United States.

As part of the Economic Development strategic area, Seaport is responsible for meeting the infrastructure needs of the cruise and cargo industries, managing the Port efficiently and effectively and maintaining, renovating and expanding the Port's facilities. Seaport promotes cruise and cargo growth through infrastructure enhancements and throughput capacity improvements combined with an aggressive foreign and domestic marketing program.

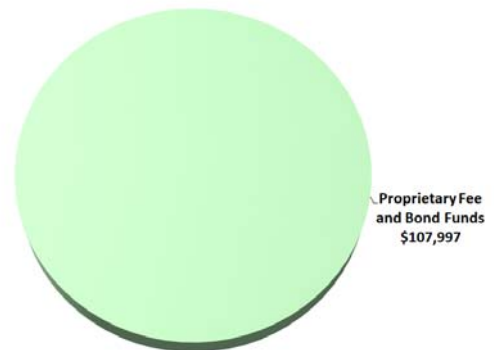
As the second largest economic engine in Miami-Dade County, PortMiami contributes \$43 billion annually to the local economy and supports more than 334,400 jobs in South Florida. Seaport works with the maritime, cruise and cargo industries; truckers; freight forwarders; various federal and state agencies; the Miami-Dade Police and Fire Rescue departments; and all the ancillary service providers that support these customers.

FY 2021-22 Proposed Operating Budget

Expenditures by Activity
(dollars in thousands)

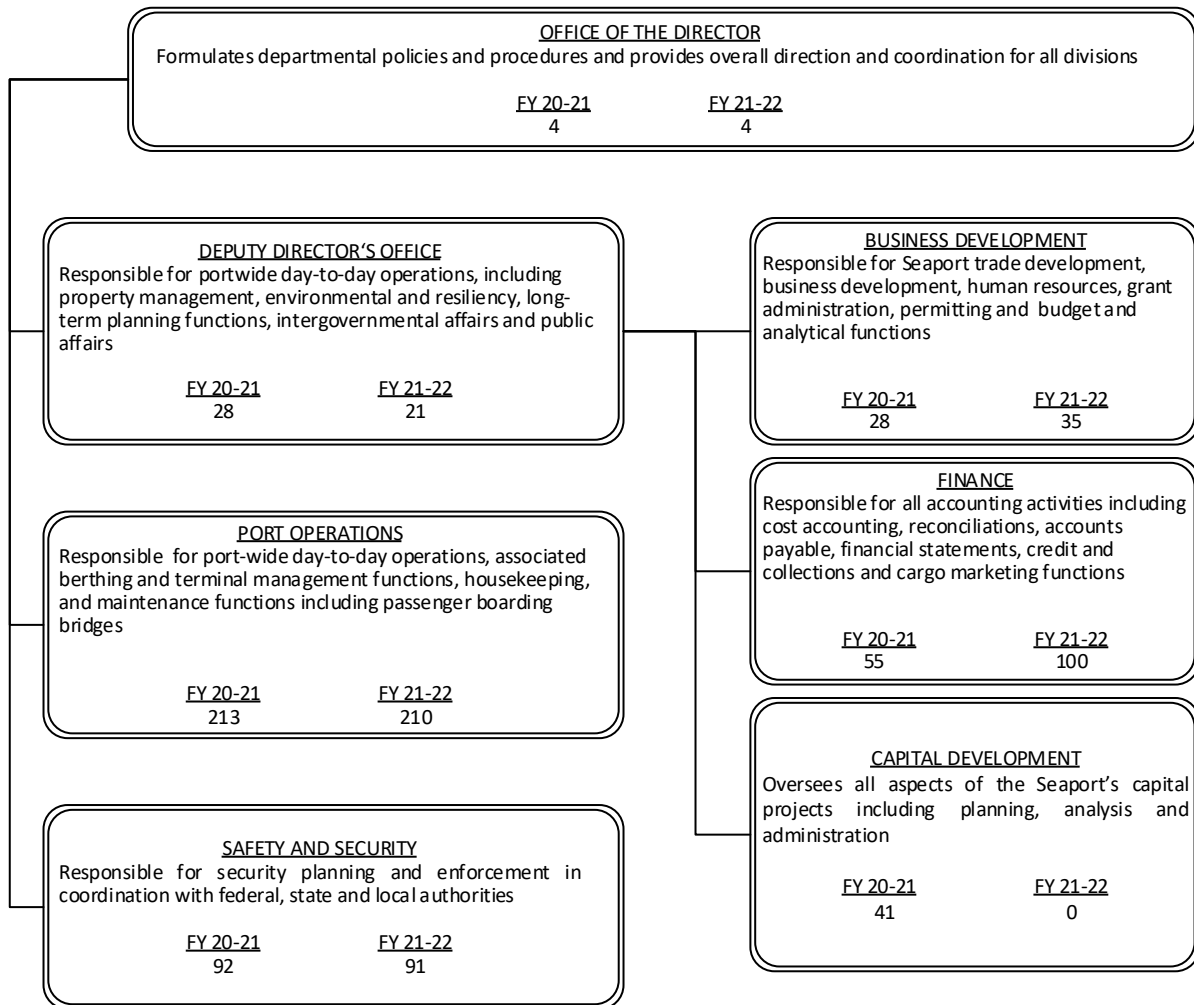


Revenues by Source
(dollars in thousands)



FY 2021 - 22 Proposed Budget and Multi-Year Capital Plan

TABLE OF ORGANIZATION



The FY 2021-22 total number of full-time equivalent positions is 562.6

FY 2021 - 22 Proposed Budget and Multi-Year Capital Plan

DIVISION: OFFICE OF THE PORT DIRECTOR

The Office of the Port Director is responsible for overseeing the implementation of the Seaport 2035 Master Plan; overseeing policies and procedures; providing long-term vision and overall direction and coordination for all divisions; and representing the interests of the Seaport and the County at the local, national and international levels.

- Establishes departmental policy, directs overall management, provides long-term vision and implements legislative policy and directives

Key Department Measures, Strategic Objectives, and Resiliency Drivers

Measures	SO	RD	Type	Good	FY 18-19	FY 19-20	FY 20-21	FY 20-21	FY 21-22
					Actual	Actual	Budget	Projection	Target
Number of TEUs (Twenty Foot Equivalent) (in thousands)	ED1-4	ES-3	OC	↑	1,120	1,067	1,150	1,192	1,216
Cruise passengers (in thousands)*	ED1-4	ES-3	OC	↑	6,824	3,477	5,400	0	3,800

* FY 2019-20 Actual and FY 2020-21 Projection reflect the impact of COVID 19

DIVISION: DEPUTY DIRECTOR'S OFFICE

The Office of the Deputy Port Director is responsible for day-to-day operations, including property management, environmental, resiliency, long-term planning functions, intergovernmental affairs and public affairs.

- Coordinates federal, state and local legislative affairs
- Coordinates internal and external communication including public information programs and outreach
- Guides organizational development and performance excellence initiatives
- Provides management direction and administration of all departmental operations and personnel

Key Department Measures, Strategic Objectives, and Resiliency Drivers

Measures	SO	RD	Type	Good	FY 18-19	FY 19-20	FY 20-21	FY 20-21	FY 21-22
					Actual	Actual	Budget	Projection	Target
Property leases occupancy rate*	ED1-5	ES-3	OC	↑	95%	85%	95%	85%	95%

*FY 2019-20 Actual and FY 2020-21 Projection reflect the impact of COVID 19

DIVISION COMMENTS

- The FY 2021-22 Proposed Budget includes a departmental reorganization that transfers seven positions to the Business Development Division to provide the coordination of internal and external customers' credentialing and permitting services

FY 2021 - 22 Proposed Budget and Multi-Year Capital Plan

DIVISION: PORT OPERATIONS

The Port Operations Division is responsible for port-wide day-to-day operations associated berthing and terminal management functions, housekeeping and maintenance functions including passenger boarding bridges.

- Coordinates PortMiami Crane Management, Inc.'s functions
- Coordinates operations and berthing activities and terminal management functions
- Maintains passenger loading operations

Key Department Measures, Strategic Objectives, and Resiliency Drivers

Measures	SO	RD	Type	Good	FY 18-19	FY 19-20	FY 20-21	FY 20-21	FY 21-22
					Actual	Actual	Budget	Projection	Target
Crane availability	ED1-5	ES-3	EF	↑	99%	99%	99%	99%	99%

DIVISION COMMENTS

- The FY 2021-22 Proposed Budget includes the transfer of three vacant Seaport Hydraulics Mechanic positions to the Finance Division for reporting functions

DIVISION: BUSINESS DEVELOPMENT

The Business Development Division is responsible for business retention and trade development as well as long term planning of Seaport requirements, grant administration, communications and outreach, human resources, permitting, budgeting and analytical functions.

- Develops and negotiates short and long term agreements for on-Port business activities
- Plans and recommends future business and economic development
- Responsible for long term planning of Seaport activities

Key Department Measures, Strategic Objectives, and Resiliency Drivers

Measures	SO	RD	Type	Good	FY 18-19	FY 19-20	FY 20-21	FY 20-21	FY 21-22
					Actual	Actual	Budget	Projection	Target
Advertising revenue generated*	ED1-5	ES-3	OC	↑	\$20,000	\$0	\$20,000	\$0	\$20,000

*FY 2019-20 Actual and FY 2020-21 Projection reflect the impact of COVID 19

DIVISION COMMENTS

- The FY 2021-22 Proposed Budget includes a departmental reorganization that transfers seven positions from the Deputy Director's Office to provide the coordination of internal and external customers' credentialing and permitting services

FY 2021 - 22 Proposed Budget and Multi-Year Capital Plan

DIVISION: CAPITAL DEVELOPMENT

The Capital Development Division manages implementation of capital improvement programs.

- Coordinates Seaport design, engineering and construction management activities
- Coordinates environmental issues with various local, state and federal agencies
- Performs the Port's property, facilities and equipment maintenance functions

Key Department Measures, Strategic Objectives, and Resiliency Drivers

Measures	SO	RD	Type	Good	FY 18-19	FY 19-20	FY 20-21	FY 20-21	FY 21-22
					Actual	Actual	Budget	Projection	Target
Percentage of projects completed on time and within budget	ED1-5	IE-3	EF	↑	95%	97%	98%	97%	99%

DIVISION COMMENTS

- The FY 2021-22 Proposed Budget includes a departmental reorganization that transfers forty-one positions to the Finance Division to provide overall support to the Department's Capital Improvement and Financial plan

DIVISION: FINANCE

The Finance Division is responsible for accounting and budget activities, procurement and contracts.

- Responsible for all accounting activities including cost accounting, reconciliations, grants accounting, accounts payable, financial reporting, credit/collections and billing
- Coordinates capital and operational budget activities
- Manages financial activities for gantry cranes
- Develops and implements financial strategies to enhance revenues and reduce expenditures
- Responsible for procurement, contracting, information technology and materials management functions of the Department

Key Department Measures, Strategic Objectives, and Resiliency Drivers

Measures	SO	RD	Type	Good	FY 18-19	FY 19-20	FY 20-21	FY 20-21	FY 21-22
					Actual	Actual	Budget	Projection	Target
Percentage of purchase requisitions completed	ED1-5	ES-3	OC	↑	95%	94%	95%	95%	95%

DIVISION COMMENTS

- The FY 2021-22 Proposed Budget includes a departmental reorganization that transfers forty-one positions from Capital Development to provide overall support to the Department's Capital Improvement and Financial Plan, three vacant Seaport Hydraulics Mechanic positions from the Port Operations Division for reporting functions and one Seaport Enforcement Specialist position from the Security and Safety Division as part of the departmental reorganization

FY 2021 - 22 Proposed Budget and Multi-Year Capital Plan

DIVISION: SAFETY AND SECURITY

The Safety and Security Division is responsible for security planning and enforcement in coordination with federal, state and local authorities.

- Coordinates with federal, state and local law enforcement partners
- Ensures adherence to the Facilities Security Plan (FSP) as mandated by the Maritime Transportation Security Act
- Manages all public safety and seaport security efforts, including protection of all PortMiami buildings and property

Key Department Measures, Strategic Objectives, and Resiliency Drivers

Measures	SO	RD	Type	Good	FY 18-19	FY 19-20	FY 20-21	FY 20-21	FY 21-22
					Actual	Actual	Budget	Projection	Target
Number of Seaport Enforcement Officers	PS3-3	ES-2	OP	↑	61	67	67	67	67

DIVISION COMMENTS

- The FY 2021-22 Proposed Budget includes the transfer of one Seaport Enforcement Specialist position to the Finance Division as part of the departmental reorganization

ADDITIONAL INFORMATION

- As a result of COVID-19 , Seaport is uncertain as to what the traffic levels will be in FY 2020-21; based on discussions with carriers it is assumed cruises will begin by summer and slowly return to a normal level of operations by the end of FY 2021-22; consequently, the Department is currently assuming approximately 3.8 million passengers for FY 2021-22; as the fiscal year progresses and actual performance is experienced, the Department's budget may need to be significantly adjusted
- The Seaport's Promotional Fund is budgeted at \$400,000 in FY 2021-22 and will be used for activities pursuant to Administrative Order 7-32 as applicable; these funds are not proposed as competitive grant funding but rather as allocations for limited programs that promote Port maritime activities in the Cargo and Cruise Marketing Programs
- In FY 2021-22, Seaport will continue its MOUs with Audit and Management Services to conduct audits of various departmental operations and services (\$190,000), the Department of Transportation and Public Works to continue taxi-cab inspection (\$100,000) and survey crews (\$145,000), the Department of Solid Waste Management for mosquito control (\$50,000), the Human Resources Department for compensation analyses (\$50,000), and the County Attorney's Office for legal services (\$1 million)

CAPITAL BUDGET HIGHLIGHTS AND OPERATIONAL IMPACTS

- ☛ Cargo upgrades included in the FY 2021-22 Proposed Budget and Multi-Year Capital Plan include an investment totaling \$149.460 million, \$24.113 million in FY 2021-22
- ☛ In FY 2021-22, the Department will continue to repair and upgrade the north bulkhead, expected to add at least 30 years of life to the Port (total project cost \$246.732 million; \$17.654 million in FY 2021-22)
- ☛ In anticipation of the Port receiving larger ships, the Department will add up to five new post-panamax gantry cranes which will bring the total number of cranes to 17; the additional cranes will allow the Port to handle more than one million TEUs annually (total project cost \$82.745 million; \$9.2 million in FY 2021-22); it is anticipated that this project will have an annual operating impact of \$500,000 per crane and require an additional eight FTE's beginning in FY 2022-23
- ☛ The Port will also be investing in a new Federal Inspection Facility (total project cost \$16.340 million, \$1.347 million in FY 2021-22); new Inspection and Fumigation facilities (total project cost \$59.9 million, \$2.2 million in FY 2021-22); a Shorepower Program (total project cost \$121 million, \$4.038 million in FY 2021-22); and the Brightline train which will allow passengers and employees to connect from Miami-Dade County's transit system to PortMiami (total project cost \$5.2 million)

FY 2021 - 22 Proposed Budget and Multi-Year Capital Plan

- The major thrust of the of Seaport's capital improvement plan includes various cruise terminal renovations (total project cost \$149.892 million, \$13.744 million in FY 2021-22); the expansion of Cruise Terminal F which will accommodate additional Carnival Cruise Line ships (total project cost \$165.974, \$70.242 million in FY 2021-22); the design and construction of the new Cruise Terminal V to support expanding Virgin Voyages operations (total project cost \$143.176 million, \$60.207 million in FY 2021-22); new cruise terminals AA and AAA to support the expanded operations of MSC Cruise Lines (total project cost \$124.694 million, \$48.496 million in FY 2021-22); the preparation of Berth 10 as a new future terminal (total project cost \$181.172 million, \$26.516 million in FY 2021-22); as a result of these port investments, it is anticipated that the Port will be able to handle over 10 million passengers by FY 2025-26

- The Department's FY 2021-22 Proposed Budget and Multi-Year Capital Plan includes the purchase of 13 vehicles (\$226,000) to replace its aging fleet; the fleet replacement plan will provide operational savings to the Department in the long-term as it will reduce maintenance costs, fuel consumption and overtime as a result of equipment failure; the County's fleet replacement plan is included under Non-Departmental project #2000000511

SELECTED ITEM HIGHLIGHTS AND DETAILS

Line Item Highlights	(dollars in thousands)				
	Actual FY 18-19	Actual FY 19-20	Budget FY 20-21	Projection FY 20-21	Proposed FY 21-22
Advertising	369	223	316	50	300
Fuel	160	134	155	46	156
Overtime	1,725	1,196	2,059	43	1,190
Rent	29	17	27	45	25
Security Services	21,746	21,766	23,770	20,845	22,225
Temporary Services	0	0	0	0	0
Travel and Registration	306	180	470	142	310
Utilities	4,914	5,841	7,359	6,064	8,243

FY 2021 - 22 Proposed Budget and Multi-Year Capital Plan

PROPOSED FEE ADJUSTMENTS FOR SERVICES

Fee Adjustments	Current Fee FY 20-21	Proposed Fee FY 21-22	Dollar Impact FY 21-22
• Various cargo dockage and wharfage rates	Various	Various	\$1,345,000
• Various crane charges	Various	Various	\$552,000
• Various passenger dockage and wharfage rates	Various	Various	\$1,863,000
• Various terminal rental charges	Various	Various	\$492,000
• Water use per ton	\$3.13	\$3.26	\$50,000

OPERATING FINANCIAL SUMMARY

(dollars in thousands)	Actual FY 18-19	Actual FY 19-20	Budget FY 20-21	Proposed FY 21-22	(dollars in thousands)	Total Funding Budget FY 20-21	Total Funding Proposed FY 21-22	Total Positions Budget FY 20-21	Total Positions Proposed FY 21-22
Revenue Summary					Expenditure By Program				
Carryover	112,192	124,000	115,000	83,776	Strategic Area: Economic Development				
FDOT Revenues	17,000	17,000	17,000	17,000	Office of the Port Director	1,333	1,167	4	4
Proprietary Fees	167,908	137,989	206,347	184,850	Deputy Director's Office	2,927	1,826	28	21
Total Revenues	297,100	278,989	338,347	285,626	Port Operations	59,202	41,120	213	210
Operating Expenditures Summary					Business Development	4,045	4,137	28	35
Salary	23,853	26,308	24,351	25,985	Capital Development	3,780	0	41	0
Fringe Benefits	10,129	10,911	10,661	12,052	Finance	23,844	37,259	55	100
Court Costs	10	6	12	12	Safety and Security	23,769	22,288	92	91
Contractual Services	15,459	17,102	20,574	16,721	Total Operating Expenditures	118,900	107,797	461	461
Other Operating	9,880	10,476	26,439	12,040					
Charges for County Services	26,649	28,122	29,417	29,979					
Grants to Outside Organizations	0	0	0	0					
Capital	9,432	-5,676	7,446	11,008					
Total Operating Expenditures	95,412	87,249	118,900	107,797					
Non-Operating Expenditures Summary									
Transfers	604	7,946	200	400					
Distribution of Funds In Trust	0	0	0	0					
Debt Service	76,540	69,923	86,037	70,703					
Depreciation, Amortizations and Depletion	0	0	0	0					
Reserve	124,544	0	133,210	106,726					
Total Non-Operating Expenditures	201,688	77,869	219,447	177,829					

FY 2021 - 22 Proposed Budget and Multi-Year Capital Plan

CAPITAL BUDGET SUMMARY

(dollars in thousands)	PRIOR	FY 21-22	FY 22-23	FY 23-24	FY 24-25	FY 25-26	FY 26-27	FUTURE	TOTAL
Revenue									
Army Corps of Engineers	0	4,300	0	0	0	0	0	0	4,300
FDOT Funds	27,728	17,886	22,301	15,000	8,500	0	0	0	91,415
Federal Transportation Grant	41,100	0	0	0	0	0	0	0	41,100
Future Financing	21,369	273,716	272,739	190,374	179,087	113,713	5,500	88,000	1,144,498
Seaport Bonds/Loans	448,466	27,996	215	0	0	0	0	0	476,677
Tenant Financing	0	4,000	7,000	6,500	0	0	0	0	17,500
US DOT	10,000	0	0	0	0	0	0	0	10,000
US Department of Homeland Security	1,488	948	354	0	0	0	0	0	2,790
Total:	550,152	328,846	302,609	211,874	187,587	113,713	5,500	88,000	1,788,281
Expenditures									
Strategic Area: ED									
Cargo Facilities Improvements	85,230	23,913	31,334	3,675	4,434	475	0	0	149,061
Environmental Projects	250	4,038	6,712	5,500	5,500	5,500	5,500	88,000	121,000
Equipment Acquisition	28,434	9,200	31,946	13,165	0	0	0	0	82,745
Facility Expansion	0	2,200	18,800	23,300	15,600	0	0	0	59,900
Facility Improvements	5,041	38,016	60,270	50,442	55,193	12,898	0	0	221,860
New Passenger Facilities	169,356	130,449	9,345	0	0	0	0	0	309,150
Passenger Facilities Improvements	1,760	5,579	5,289	0	0	0	0	0	12,628
Port Facility Improvements	142,168	111,642	134,113	115,792	106,860	94,840	0	0	705,415
Terminal Improvements	117,913	3,809	4,800	0	0	0	0	0	126,522
Total:	550,152	328,846	302,609	211,874	187,587	113,713	5,500	88,000	1,788,281

FUNDED CAPITAL PROJECTS

(dollars in thousands)

BRIGHTLINE

DESCRIPTION: Build a train station for passengers and employees at the Seaport
 LOCATION: Dante B. Fascell Port of Miami-Dade District Located: Port of Miami District(s) Served:

PROJECT #: 2000001320

5
 Countywide



REVENUE SCHEDULE:	PRIOR	2021-22	2022-23	2023-24	2024-25	2025-26	2026-27	FUTURE	TOTAL
Future Financing	0	0	169	2,124	2,742	165	0	0	5,200
TOTAL REVENUES:	0	0	169	2,124	2,742	165	0	0	5,200
EXPENDITURE SCHEDULE:	PRIOR	2021-22	2022-23	2023-24	2024-25	2025-26	2026-27	FUTURE	TOTAL
Construction	0	0	169	2,124	2,742	165	0	0	5,200
TOTAL EXPENDITURES:	0	0	169	2,124	2,742	165	0	0	5,200

Estimated Annual Operating Impact will begin in FY 2022-23 in the amount of \$50,000 and includes 0 FTE(s)

FY 2021 - 22 Proposed Budget and Multi-Year Capital Plan

CONSTRUCTION SUPERVISION

PROJECT #: 6430061

DESCRIPTION: Provide supervision of on-going construction projects at the Seaport
 LOCATION: Dante B. Fascell Port of Miami-Dade District Located: 5
 Port of Miami District(s) Served: Countywide



REVENUE SCHEDULE:	PRIOR	2021-22	2022-23	2023-24	2024-25	2025-26	2026-27	FUTURE	TOTAL
Future Financing	6,800	10,500	10,000	9,500	9,500	9,500	0	0	55,800
Seaport Bonds/Loans	6,619	0	0	0	0	0	0	0	6,619
TOTAL REVENUES:	13,419	10,500	10,000	9,500	9,500	9,500	0	0	62,419
EXPENDITURE SCHEDULE:	PRIOR	2021-22	2022-23	2023-24	2024-25	2025-26	2026-27	FUTURE	TOTAL
Construction	13,419	10,500	10,000	9,500	9,500	9,500	0	0	62,419
TOTAL EXPENDITURES:	13,419	10,500	10,000	9,500	9,500	9,500	0	0	62,419

CRUISE TERMINAL B - NEW

PROJECT #: 200000571

DESCRIPTION: Renovate Terminal B to accommodate Norwegian Cruise Line operations
 LOCATION: Dante B. Fascell Port of Miami-Dade District Located: 5
 Port of Miami District(s) Served: Countywide



REVENUE SCHEDULE:	PRIOR	2021-22	2022-23	2023-24	2024-25	2025-26	2026-27	FUTURE	TOTAL
Seaport Bonds/Loans	102,510	500	0	0	0	0	0	0	103,010
TOTAL REVENUES:	102,510	500	0	0	0	0	0	0	103,010
EXPENDITURE SCHEDULE:	PRIOR	2021-22	2022-23	2023-24	2024-25	2025-26	2026-27	FUTURE	TOTAL
Construction	102,510	500	0	0	0	0	0	0	103,010
TOTAL EXPENDITURES:	102,510	500	0	0	0	0	0	0	103,010

Estimated Annual Operating Impact will begin in FY 2021-22 in the amount of \$400,000 and includes 0 FTE(s)

CRUISE TERMINAL BERTH 10 - NEW

PROJECT #: 200001343

DESCRIPTION: Prepare Berth 10 for a new future terminal
 LOCATION: Dante B. Fascell Port of Miami-Dade District Located: 5
 Port of Miami District(s) Served: Countywide



REVENUE SCHEDULE:	PRIOR	2021-22	2022-23	2023-24	2024-25	2025-26	2026-27	FUTURE	TOTAL
Future Financing	0	26,516	52,020	47,859	46,777	3,898	0	0	177,070
Seaport Bonds/Loans	4,102	0	0	0	0	0	0	0	4,102
TOTAL REVENUES:	4,102	26,516	52,020	47,859	46,777	3,898	0	0	181,172
EXPENDITURE SCHEDULE:	PRIOR	2021-22	2022-23	2023-24	2024-25	2025-26	2026-27	FUTURE	TOTAL
Construction	3,434	26,516	52,020	47,859	46,777	3,898	0	0	180,504
Infrastructure Improvements	668	0	0	0	0	0	0	0	668
TOTAL EXPENDITURES:	4,102	26,516	52,020	47,859	46,777	3,898	0	0	181,172

FY 2021 - 22 Proposed Budget and Multi-Year Capital Plan

CRUISE TERMINAL C

PROJECT #: 200000923

DESCRIPTION: Provide renovations to combine terminals B and C to accommodate various cruise lines
 LOCATION: Dante B. Fascell Port of Miami-Dade District Located: 5
 Port of Miami District(s) Served: Countywide

REVENUE SCHEDULE:	PRIOR	2021-22	2022-23	2023-24	2024-25	2025-26	2026-27	FUTURE	TOTAL
FDOT Funds	10,476	1,000	2,400	0	0	0	0	0	13,876
Future Financing	509	2,309	2,400	0	0	0	0	0	5,218
Seaport Bonds/Loans	4,418	0	0	0	0	0	0	0	4,418
TOTAL REVENUES:	15,403	3,309	4,800	0	0	0	0	0	23,512
EXPENDITURE SCHEDULE:	PRIOR	2021-22	2022-23	2023-24	2024-25	2025-26	2026-27	FUTURE	TOTAL
Construction	15,403	3,309	4,800	0	0	0	0	0	23,512
TOTAL EXPENDITURES:	15,403	3,309	4,800	0	0	0	0	0	23,512

Estimated Annual Operating Impact will begin in FY 2021-22 in the amount of \$50,000 and includes 0 FTE(s)

CRUISE TERMINAL F - PHASE 2

PROJECT #: 200000979

DESCRIPTION: Expand Terminal F to accommodate additional Carnival Cruise Lines ships
 LOCATION: Dante B. Fascell Port of Miami-Dade District Located: 5
 Port of Miami District(s) Served: Countywide

REVENUE SCHEDULE:	PRIOR	2021-22	2022-23	2023-24	2024-25	2025-26	2026-27	FUTURE	TOTAL
Future Financing	0	64,741	9,149	0	0	0	0	0	73,890
Seaport Bonds/Loans	86,583	5,501	0	0	0	0	0	0	92,084
TOTAL REVENUES:	86,583	70,242	9,149	0	0	0	0	0	165,974
EXPENDITURE SCHEDULE:	PRIOR	2021-22	2022-23	2023-24	2024-25	2025-26	2026-27	FUTURE	TOTAL
Construction	0	64,741	9,149	0	0	0	0	0	73,890
Infrastructure Improvements	86,583	5,501	0	0	0	0	0	0	92,084
TOTAL EXPENDITURES:	86,583	70,242	9,149	0	0	0	0	0	165,974

Estimated Annual Operating Impact will begin in FY 2021-22 in the amount of \$200,000 and includes 2 FTE(s)

CRUISE TERMINAL J - IMPROVEMENTS

PROJECT #: 642930

DESCRIPTION: Upgrade and remodel Terminal J to attract luxury cruise operations by replacing carpet, installing new elevators and completing various terminal repair/upgrades
 LOCATION: Dante B. Fascell Port of Miami-Dade District Located: 5
 Port of Miami District(s) Served: Countywide

REVENUE SCHEDULE:	PRIOR	2021-22	2022-23	2023-24	2024-25	2025-26	2026-27	FUTURE	TOTAL
Future Financing	0	4,356	0	0	0	0	0	0	4,356
Seaport Bonds/Loans	6,386	0	0	0	0	0	0	0	6,386
TOTAL REVENUES:	6,386	4,356	0	0	0	0	0	0	10,742
EXPENDITURE SCHEDULE:	PRIOR	2021-22	2022-23	2023-24	2024-25	2025-26	2026-27	FUTURE	TOTAL
Construction	6,386	4,356	0	0	0	0	0	0	10,742
TOTAL EXPENDITURES:	6,386	4,356	0	0	0	0	0	0	10,742

FY 2021 - 22 Proposed Budget and Multi-Year Capital Plan

CRUISE TERMINAL V - NEW

PROJECT #: 200000978

DESCRIPTION: Design and construct a new cruise terminal to support expanding operations with Virgin Voyages
 LOCATION: Dante B. Fascell Port of Miami-Dade District Located: 5
 Port of Miami District(s) Served: Countywide

REVENUE SCHEDULE:	PRIOR	2021-22	2022-23	2023-24	2024-25	2025-26	2026-27	FUTURE	TOTAL
Future Financing	0	50,950	196	0	0	0	0	0	51,146
Seaport Bonds/Loans	82,773	9,257	0	0	0	0	0	0	92,030
TOTAL REVENUES:	82,773	60,207	196	0	0	0	0	0	143,176
EXPENDITURE SCHEDULE:	PRIOR	2021-22	2022-23	2023-24	2024-25	2025-26	2026-27	FUTURE	TOTAL
Construction	0	40,950	196	0	0	0	0	0	41,146
Furniture Fixtures and Equipment	0	10,000	0	0	0	0	0	0	10,000
Infrastructure Improvements	82,773	9,257	0	0	0	0	0	0	92,030
TOTAL EXPENDITURES:	82,773	60,207	196	0	0	0	0	0	143,176

Estimated Annual Operating Impact will begin in FY 2021-22 in the amount of \$300,000 and includes 4 FTE(s)

CRUISE TERMINALS A AND AA - ROADWAYS

PROJECT #: 200000724

DESCRIPTION: Construct a new road to handle increased Port traffic for new terminals A and AA
 LOCATION: Dante B. Fascell Port of Miami-Dade District Located: 5
 Port of Miami District(s) Served: Countywide

REVENUE SCHEDULE:	PRIOR	2021-22	2022-23	2023-24	2024-25	2025-26	2026-27	FUTURE	TOTAL
FDOT Funds	1,314	2,586	0	0	0	0	0	0	3,900
Future Financing	0	0	4,627	991	660	385	0	0	6,663
Seaport Bonds/Loans	19,369	2,586	0	0	0	0	0	0	21,955
TOTAL REVENUES:	20,683	5,172	4,627	991	660	385	0	0	32,518
EXPENDITURE SCHEDULE:	PRIOR	2021-22	2022-23	2023-24	2024-25	2025-26	2026-27	FUTURE	TOTAL
Construction	2,628	5,172	4,627	991	660	385	0	0	14,463
Infrastructure Improvements	18,055	0	0	0	0	0	0	0	18,055
TOTAL EXPENDITURES:	20,683	5,172	4,627	991	660	385	0	0	32,518

CRUISE TERMINALS AA AND AAA - NEW

PROJECT #: 200000570

DESCRIPTION: Design and construct new cruise terminals to support expanded operations of MSC Cruise Line
 LOCATION: Dante B. Fascell Port of Miami-Dade District Located: 5
 Port of Miami District(s) Served: Countywide

REVENUE SCHEDULE:	PRIOR	2021-22	2022-23	2023-24	2024-25	2025-26	2026-27	FUTURE	TOTAL
Future Financing	0	47,935	32,401	15,461	11,630	880	0	0	108,307
Seaport Bonds/Loans	15,826	561	0	0	0	0	0	0	16,387
TOTAL REVENUES:	15,826	48,496	32,401	15,461	11,630	880	0	0	124,694
EXPENDITURE SCHEDULE:	PRIOR	2021-22	2022-23	2023-24	2024-25	2025-26	2026-27	FUTURE	TOTAL
Construction	15,482	48,496	32,401	15,461	11,630	880	0	0	124,350
Infrastructure Improvements	344	0	0	0	0	0	0	0	344
TOTAL EXPENDITURES:	15,826	48,496	32,401	15,461	11,630	880	0	0	124,694

Estimated Annual Operating Impact will begin in FY 2024-25 in the amount of \$500,000 and includes 5 FTE(s)

FY 2021 - 22 Proposed Budget and Multi-Year Capital Plan

CRUISE TERMINALS D AND E - UPGRADES

PROJECT #: 200000061

DESCRIPTION: Upgrade terminals D and E for new Carnival Cruise Line services plus addition of Provisional Facility
 LOCATION: Dante B. Fascell Port of Miami-Dade District Located: 5
 Port of Miami District(s) Served: Countywide

REVENUE SCHEDULE:	PRIOR	2021-22	2022-23	2023-24	2024-25	2025-26	2026-27	FUTURE	TOTAL
Future Financing	730	5,579	5,289	0	0	0	0	0	11,598
Seaport Bonds/Loans	1,030	0	0	0	0	0	0	0	1,030
TOTAL REVENUES:	1,760	5,579	5,289	0	0	0	0	0	12,628
EXPENDITURE SCHEDULE:	PRIOR	2021-22	2022-23	2023-24	2024-25	2025-26	2026-27	FUTURE	TOTAL
Construction	1,760	5,579	5,289	0	0	0	0	0	12,628
TOTAL EXPENDITURES:	1,760	5,579	5,289	0	0	0	0	0	12,628

FEDERAL INSPECTION FACILITY

PROJECT #: 641540

DESCRIPTION: Build new Federal Inspection facility for Immigration and Customs Enforcement Operations
 LOCATION: Dante B. Fascell Port of Miami-Dade District Located: 5
 Port of Miami District(s) Served: Countywide

REVENUE SCHEDULE:	PRIOR	2021-22	2022-23	2023-24	2024-25	2025-26	2026-27	FUTURE	TOTAL
Future Financing	52	1,347	6,371	5,870	482	2,064	0	0	16,186
Seaport Bonds/Loans	174	0	0	0	0	0	0	0	174
TOTAL REVENUES:	226	1,347	6,371	5,870	482	2,064	0	0	16,360
EXPENDITURE SCHEDULE:	PRIOR	2021-22	2022-23	2023-24	2024-25	2025-26	2026-27	FUTURE	TOTAL
Construction	226	1,347	6,371	5,870	482	2,064	0	0	16,360
TOTAL EXPENDITURES:	226	1,347	6,371	5,870	482	2,064	0	0	16,360

Estimated Annual Operating Impact will begin in FY 2021-22 in the amount of \$50,000 and includes 0 FTE(s)

GANTRY CRANES

PROJECT #: 200000131

DESCRIPTION: Purchase five (5) post panamax gantry cranes for increased cargo traffic
 LOCATION: Dante B. Fascell Port of Miami-Dade District Located: 5
 Port of Miami District(s) Served: Countywide

REVENUE SCHEDULE:	PRIOR	2021-22	2022-23	2023-24	2024-25	2025-26	2026-27	FUTURE	TOTAL
FDOT Funds	15,938	5,000	6,371	0	0	0	0	0	27,309
Future Financing	3,900	0	25,575	13,165	0	0	0	0	42,640
Seaport Bonds/Loans	8,596	4,200	0	0	0	0	0	0	12,796
TOTAL REVENUES:	28,434	9,200	31,946	13,165	0	0	0	0	82,745
EXPENDITURE SCHEDULE:	PRIOR	2021-22	2022-23	2023-24	2024-25	2025-26	2026-27	FUTURE	TOTAL
Major Machinery and Equipment	28,434	9,200	31,946	13,165	0	0	0	0	82,745
TOTAL EXPENDITURES:	28,434	9,200	31,946	13,165	0	0	0	0	82,745

Estimated Annual Operating Impact will begin in FY 2022-23 in the amount of \$2,000,000 and includes 8 FTE(s)

FY 2021 - 22 Proposed Budget and Multi-Year Capital Plan

INFRASTRUCTURE IMPROVEMENTS - CARGO GATE MODIFICATIONS

PROJECT #: 644010

DESCRIPTION: Purchase and install security systems for new gateway as required
 LOCATION: Dante B. Fascell Port of Miami-Dade Port of Miami

District Located: 5
 District(s) Served: Countywide



REVENUE SCHEDULE:	PRIOR	2021-22	2022-23	2023-24	2024-25	2025-26	2026-27	FUTURE	TOTAL
Federal Transportation Grant	29,650	0	0	0	0	0	0	0	29,650
Future Financing	0	33	0	0	0	0	0	0	33
Seaport Bonds/Loans	19,842	0	0	0	0	0	0	0	19,842
TOTAL REVENUES:	49,492	33	0	0	0	0	0	0	49,525
EXPENDITURE SCHEDULE:	PRIOR	2021-22	2022-23	2023-24	2024-25	2025-26	2026-27	FUTURE	TOTAL
Construction	40,222	33	0	0	0	0	0	0	40,255
Major Machinery and Equipment	9,270	0	0	0	0	0	0	0	9,270
TOTAL EXPENDITURES:	49,492	33	0	0	0	0	0	0	49,525

INFRASTRUCTURE IMPROVEMENTS - CONTAINER YARD (SEABOARD)

PROJECT #: 644520

DESCRIPTION: Provide drainage improvements and various other improvements in the container yard area
 LOCATION: Dante B. Fascell Port of Miami-Dade Port of Miami

District Located: 5
 District(s) Served: Countywide



REVENUE SCHEDULE:	PRIOR	2021-22	2022-23	2023-24	2024-25	2025-26	2026-27	FUTURE	TOTAL
Future Financing	0	5,880	23,634	3,675	4,434	475	0	0	38,098
Seaport Bonds/Loans	10,147	0	0	0	0	0	0	0	10,147
Tenant Financing	0	4,000	0	0	0	0	0	0	4,000
TOTAL REVENUES:	10,147	9,880	23,634	3,675	4,434	475	0	0	52,245
EXPENDITURE SCHEDULE:	PRIOR	2021-22	2022-23	2023-24	2024-25	2025-26	2026-27	FUTURE	TOTAL
Construction	4,687	9,880	23,634	3,675	4,434	475	0	0	46,785
Major Machinery and Equipment	5,459	0	0	0	0	0	0	0	5,459
TOTAL EXPENDITURES:	10,147	9,880	23,634	3,675	4,434	475	0	0	52,245

INFRASTRUCTURE IMPROVEMENTS - CRUISE CAMPUS

PROJECT #: 200001290

DESCRIPTION: Infrastructure improvements including but not limited to road work and relocations for future buildings constructed by Royal Caribbean Cruise Line, Norwegian Cruise Line and Carnival Cruise Line
 LOCATION: Dante B. Fascell Port of Miami-Dade Port of Miami

District Located: 5
 District(s) Served: Countywide



REVENUE SCHEDULE:	PRIOR	2021-22	2022-23	2023-24	2024-25	2025-26	2026-27	FUTURE	TOTAL
Future Financing	0	11,500	0	0	0	0	0	0	11,500
TOTAL REVENUES:	0	11,500	0	0	0	0	0	0	11,500
EXPENDITURE SCHEDULE:	PRIOR	2021-22	2022-23	2023-24	2024-25	2025-26	2026-27	FUTURE	TOTAL
Construction	0	11,500	0	0	0	0	0	0	11,500
TOTAL EXPENDITURES:	0	11,500	0	0	0	0	0	0	11,500

FY 2021 - 22 Proposed Budget and Multi-Year Capital Plan

INFRASTRUCTURE IMPROVEMENTS - NORTH BULKHEAD REHABILITATION

PROJECT #: 644300

DESCRIPTION: Provide repairs and improvements to the north bulkhead terminal
 LOCATION: Dante B. Fascell Port of Miami-Dade
 Port of Miami

District Located: 5
 District(s) Served: Countywide



REVENUE SCHEDULE:	PRIOR	2021-22	2022-23	2023-24	2024-25	2025-26	2026-27	FUTURE	TOTAL
Future Financing	0	17,654	54,846	54,846	54,846	54,846	0	0	237,038
Seaport Bonds/Loans	9,694	0	0	0	0	0	0	0	9,694
TOTAL REVENUES:	9,694	17,654	54,846	54,846	54,846	54,846	0	0	246,732
EXPENDITURE SCHEDULE:	PRIOR	2021-22	2022-23	2023-24	2024-25	2025-26	2026-27	FUTURE	TOTAL
Construction	1,394	17,654	54,846	54,846	54,846	54,846	0	0	238,432
Infrastructure Improvements	8,300	0	0	0	0	0	0	0	8,300
TOTAL EXPENDITURES:	9,694	17,654	54,846	54,846	54,846	54,846	0	0	246,732

INFRASTRUCTURE IMPROVEMENTS - PASSENGER BOARDING BRIDGES

PROJECT #: 2000001344

DESCRIPTION: Purchase passenger boarding bridges for various terminals throughout the port
 LOCATION: Dante B. Fascell Port of Miami-Dade
 Port of Miami

District Located: 5
 District(s) Served: Countywide



REVENUE SCHEDULE:	PRIOR	2021-22	2022-23	2023-24	2024-25	2025-26	2026-27	FUTURE	TOTAL
Future Financing	0	0	8,250	2,583	8,416	9,000	0	0	28,249
Seaport Bonds/Loans	938	0	0	0	0	0	0	0	938
TOTAL REVENUES:	938	0	8,250	2,583	8,416	9,000	0	0	29,187
EXPENDITURE SCHEDULE:	PRIOR	2021-22	2022-23	2023-24	2024-25	2025-26	2026-27	FUTURE	TOTAL
Major Machinery and Equipment	938	0	8,250	2,583	8,416	9,000	0	0	29,187
TOTAL EXPENDITURES:	938	0	8,250	2,583	8,416	9,000	0	0	29,187

FY 2021 - 22 Proposed Budget and Multi-Year Capital Plan

INFRASTRUCTURE IMPROVEMENTS - PORT WIDE

PROJECT #: 645430

DESCRIPTION: Provide infrastructure improvements in various areas of the Port including drainage, wayfinding port beautification projects, etc.

LOCATION: Dante B. Fascell Port of Miami-Dade
Port of Miami

District Located: 5
District(s) Served: Countywide



REVENUE SCHEDULE:	PRIOR	2021-22	2022-23	2023-24	2024-25	2025-26	2026-27	FUTURE	TOTAL
Army Corps of Engineers	0	4,300	0	0	0	0	0	0	4,300
FDOT Funds	0	100	130	0	0	0	0	0	230
Federal Transportation Grant	11,450	0	0	0	0	0	0	0	11,450
Future Financing	8,934	8,500	25,000	27,000	27,000	27,000	0	0	123,434
Seaport Bonds/Loans	43,205	5,391	215	0	0	0	0	0	48,811
US DOT	10,000	0	0	0	0	0	0	0	10,000
US Department of Homeland Security	1,488	948	354	0	0	0	0	0	2,790
TOTAL REVENUES:	75,078	19,239	25,699	27,000	27,000	27,000	0	0	201,016
EXPENDITURE SCHEDULE:	PRIOR	2021-22	2022-23	2023-24	2024-25	2025-26	2026-27	FUTURE	TOTAL
Construction	56,597	12,800	25,000	27,000	27,000	27,000	0	0	175,397
Infrastructure Improvements	18,481	6,439	699	0	0	0	0	0	25,619
TOTAL EXPENDITURES:	75,078	19,239	25,699	27,000	27,000	27,000	0	0	201,016

INFRASTRUCTURE IMPROVEMENTS - SOUTH FLORIDA CONTAINER TERMINAL

PROJECT #: 647150

DESCRIPTION: Provide drainage improvements and various cargo yard projects in the South Florida Container Terminal

LOCATION: Dante B. Fascell Port of Miami-Dade
Port of Miami

District Located: 5
District(s) Served: Countywide



REVENUE SCHEDULE:	PRIOR	2021-22	2022-23	2023-24	2024-25	2025-26	2026-27	FUTURE	TOTAL
FDOT Funds	0	7,000	3,400	0	0	0	0	0	10,400
Future Financing	0	7,000	4,300	0	0	0	0	0	11,300
Seaport Bonds/Loans	25,591	0	0	0	0	0	0	0	25,591
TOTAL REVENUES:	25,591	14,000	7,700	0	0	0	0	0	47,291
EXPENDITURE SCHEDULE:	PRIOR	2021-22	2022-23	2023-24	2024-25	2025-26	2026-27	FUTURE	TOTAL
Construction	25,591	12,000	7,700	0	0	0	0	0	45,291
Planning and Design	0	2,000	0	0	0	0	0	0	2,000
TOTAL EXPENDITURES:	25,591	14,000	7,700	0	0	0	0	0	47,291

FY 2021 - 22 Proposed Budget and Multi-Year Capital Plan

INFRASTRUCTURE IMPROVEMENTS - WATER AND SEWER UPGRADES

PROJECT #: 647720

DESCRIPTION: Upgrade the Port's water and sewer system for new services
 LOCATION: Dante B. Fascell Port of Miami-Dade District Located: 5
 Port of Miami District(s) Served: Countywide

REVENUE SCHEDULE:	PRIOR	2021-22	2022-23	2023-24	2024-25	2025-26	2026-27	FUTURE	TOTAL
Future Financing	194	4,678	0	0	0	0	0	0	4,872
Seaport Bonds/Loans	462	0	0	0	0	0	0	0	462
TOTAL REVENUES:	656	4,678	0	0	0	0	0	0	5,334
EXPENDITURE SCHEDULE:	PRIOR	2021-22	2022-23	2023-24	2024-25	2025-26	2026-27	FUTURE	TOTAL
Construction	306	4,678	0	0	0	0	0	0	4,984
Infrastructure Improvements	350	0	0	0	0	0	0	0	350
TOTAL EXPENDITURES:	656	4,678	0	0	0	0	0	0	5,334

INLAND PORT DEVELOPMENT

PROJECT #: 200000572

DESCRIPTION: Continue Inland Port development of the container storage and transfer staging areas
 LOCATION: Dante B. Fascell Port of Miami-Dade District Located: 5
 Port of Miami District(s) Served: Countywide

REVENUE SCHEDULE:	PRIOR	2021-22	2022-23	2023-24	2024-25	2025-26	2026-27	FUTURE	TOTAL
FDOT Funds	0	200	0	0	0	0	0	0	200
Seaport Bonds/Loans	200	0	0	0	0	0	0	0	200
TOTAL REVENUES:	200	200	0	0	0	0	0	0	400
EXPENDITURE SCHEDULE:	PRIOR	2021-22	2022-23	2023-24	2024-25	2025-26	2026-27	FUTURE	TOTAL
Construction	200	200	0	0	0	0	0	0	400
TOTAL EXPENDITURES:	200	200	0	0	0	0	0	0	400

INSPECTION AND FUMIGATION FACILITIES

PROJECT #: 200001418

DESCRIPTION: Develop a state-of-the-art inspection and fumigation facility in conjunction with Miami-Dade Seaport
 LOCATION: Dante B. Fascell Port of Miami-Dade District Located: 5
 Port of Miami District(s) Served: Countywide

REVENUE SCHEDULE:	PRIOR	2021-22	2022-23	2023-24	2024-25	2025-26	2026-27	FUTURE	TOTAL
FDOT Funds	0	0	10,000	15,000	8,500	0	0	0	33,500
Future Financing	0	2,200	1,800	1,800	7,100	0	0	0	12,900
Tenant Financing	0	0	7,000	6,500	0	0	0	0	13,500
TOTAL REVENUES:	0	2,200	18,800	23,300	15,600	0	0	0	59,900
EXPENDITURE SCHEDULE:	PRIOR	2021-22	2022-23	2023-24	2024-25	2025-26	2026-27	FUTURE	TOTAL
Construction	0	0	18,800	23,300	15,600	0	0	0	57,700
Planning and Design	0	2,200	0	0	0	0	0	0	2,200
TOTAL EXPENDITURES:	0	2,200	18,800	23,300	15,600	0	0	0	59,900

FY 2021 - 22 Proposed Budget and Multi-Year Capital Plan

SHORE POWER AT THE PORT

PROJECT #: 2000001675

DESCRIPTION: Provide Shore Power to all cruise terminals
 LOCATION: Dante B. Fascell Port of Miami
 Port of Miami

District Located: 5
 District(s) Served: Countywide



REVENUE SCHEDULE:	PRIOR	2021-22	2022-23	2023-24	2024-25	2025-26	2026-27	FUTURE	TOTAL
FDOT Funds	0	2,000	0	0	0	0	0	0	2,000
Future Financing	250	2,038	6,712	5,500	5,500	5,500	5,500	88,000	119,000
TOTAL REVENUES:	250	4,038	6,712	5,500	5,500	5,500	5,500	88,000	121,000
EXPENDITURE SCHEDULE:	PRIOR	2021-22	2022-23	2023-24	2024-25	2025-26	2026-27	FUTURE	TOTAL
Construction	0	0	0	5,500	5,500	5,500	5,500	88,000	110,000
Planning and Design	250	4,038	6,712	0	0	0	0	0	11,000
TOTAL EXPENDITURES:	250	4,038	6,712	5,500	5,500	5,500	5,500	88,000	121,000

UNFUNDED CAPITAL PROJECTS

PROJECT NAME

LOCATION

**(dollars in thousands)
 ESTIMATED PROJECT COST**

CRUISE FERRY COMPLEX - NEW	Dante B. Fascell Port of Miami-Dade	20,000
CRUISE TERMINALS - CONCOURSES AND BERTHING MODIFICATIONS	Dante B. Fascell Port of Miami-Dade	15,000
GANTRY CRANES - RUBBER TIRE REPLACEMENT	Dante B. Fascell Port of Miami-Dade	10,000
NEW BERTH O - WEST NEW APRON	Dante B. Fascell Port of Miami-Dade	67,000
PARKING GARAGES - EXPANSION	Dante B. Fascell Port of Miami-Dade	55,000
PASSENGER TERMINALS - MOBILE WALKWAYS	Dante B. Fascell Port of Miami-Dade	10,200
PORT OPERATIONS SITE - NEW FACILITY	Dante B. Fascell Port of Miami-Dade	23,500
PORT ROADWAY - REALIGNMENT	Dante B. Fascell Port of Miami-Dade	25,000
	UNFUNDED TOTAL	225,700