



**BUILDING CODE COMPLIANCE OFFICE**  
METRO-DADE FLAGLER BUILDING  
140 WEST FLAGLER STREET, SUITE 1603  
MIAMI, FLORIDA 33130-1563  
(305) 375-2901 FAX (305) 375-2908

**CONTRACTOR LICENSING SECTION**  
(305) 375-2527 FAX (305) 375-2558

**CONTRACTOR ENFORCEMENT DIVISION**  
(305) 375-2966 FAX (305) 375-2908

**PRODUCT CONTROL DIVISION**  
(305) 375-2902 FAX (305) 372-6339

**PRODUCT CONTROL NOTICE OF ACCEPTANCE**

**United Steel Products Company**  
**703 Rogers Drive (P. O. Box 80)**  
**Montgomery, MN 56069**

Your application for Notice of Acceptance (NOA) of:

**Wood Connectors**

under Chapter 8 of the Code of Miami-Dade County governing the use of Alternate Materials and Types of Construction, and completely described herein, has been recommended for acceptance by the Miami-Dade County Building Code Compliance Office (BCCO) under the conditions specified herein.

This NOA shall not be valid after the expiration date stated below. BCCO reserves the right to secure this product or material at any time from a jobsite or manufacturer's plant for quality control testing. If this product or material fails to perform in the approved manner, BCCO may revoke, modify, or suspend the use of such product or material immediately. BCCO reserves the right to revoke this approval, if it is determined by BCCO that this product or material fails to meet the requirements of the South Florida Building Code.

The expense of such testing will be incurred by the manufacturer.

**ACCEPTANCE NO.: 02-0102.04**  
**EXPIRES: 02/15/2007**

Raul Rodriguez  
Chief Product Control Division

**THIS IS THE COVERSHEET, SEE ADDITIONAL PAGES FOR SPECIFIC AND GENERAL  
CONDITIONS  
BUILDING CODE & PRODUCT REVIEW COMMITTEE**

This application for Product Approval has been reviewed by the BCCO and approved by the Building Code and Product Review Committee to be used in Miami-Dade County, Florida under the conditions set forth above.

Francisco J. Quintana, R.A.  
Director  
Miami-Dade County  
Building Code Compliance Office

**APPROVED: 01/31/2002**

APPROVED: January 31, 2002

EXPIRES: February 15, 2007

**NOTICE OF ACCEPTANCE: SPECIFIC CONDITIONS**

**1. SCOPE**

**1.1** This **renews** Notice of Acceptance (NOA) No. **01-1015.01**, which was issued on November 8, 2001. It renews the approval of a wood connector, as described in Section 2 of this NOA, designed to comply with the South Florida Building Code (SFBC), 1994 Edition for Miami-Dade County, for the locations where the pressure requirements, as determined by SFBC Chapter 23, do not exceed the Design Pressure Rating values indicated in the approved drawings.

**2. PRODUCT DESCRIPTION**

**2.1** The **USP Wood Connectors** and its components shall be constructed in strict compliance with the following document: Drawing No **HDP2X-HDPY-HHP**, Sheets 1 of 1, titled "Wood Connectors," prepared by the manufacturer, dated 10/9/01, signed and sealed by Thomas Kolden, P.E., bearing the Miami-Dade County Product Control renewal stamp with the NOA number and expiration date by the Miami-Dade County Product Control Division. This document shall hereinafter be referred to as the approved drawings.

**3. LIMITATIONS**

**3.1** Allowable loads are for Southern Yellow Pine with a specific gravity of 0.55 and moisture content of 19% or less.  
**3.2** Allowable loads are based on testing per ASTM D1761 and calculations per National Design Specifications for wood construction 1991 Edition.

**4. INSTALLATION**

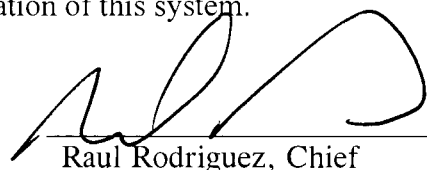
**4.1** This wood connector shall be installed in strict compliance with the approved drawings.

**5. LABELING**

**5.1** Each unit shall bear a permanent label with the manufacturer's name or logo, city, state and following statement: "Miami-Dade County Product Control Approved".

**6. BUILDING PERMIT REQUIREMENTS**

**6.1** Application for building permit shall be accompanied by copies of the following:  
**6.1.1** This Notice of Acceptance  
**6.1.2** Duplicate copies of the approved drawings, as identified in Section 2 of this Notice of Acceptance, clearly marked to show the components selected for the proposed installation.  
**6.1.3** Any other documents required by the Building Official or the South Florida Building Code (SFBC) in order to properly evaluate the installation of this system.



Raul Rodriguez, Chief  
Product Control Division

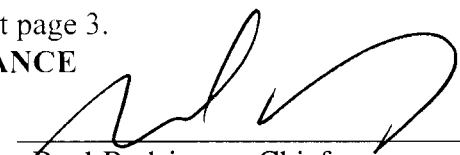
APPROVED: January 31, 2002

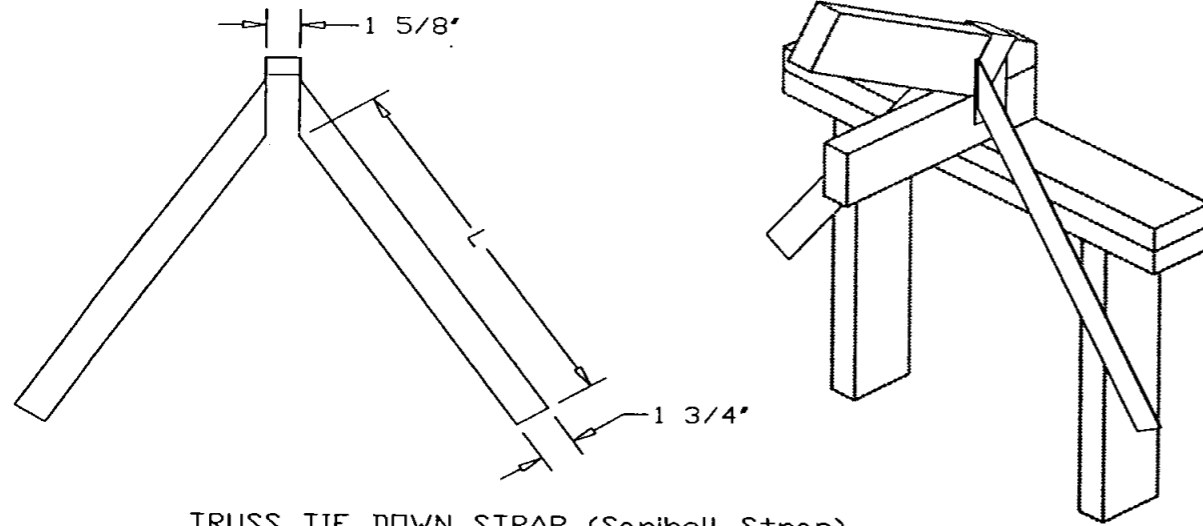
EXPIRES: February 15, 2007

**NOTICE OF ACCEPTANCE: STANDARD CONDITIONS**

1. Renewal of this Acceptance (approval) shall be considered after a renewal application has been filed and the original submitted documentation, including test supporting data, engineering documents, are no older than eight (8) years.
2. Any and all approved products shall be permanently labeled with the manufacturer's name, city, state, and the following statement: "Miami-Dade County Product Control Approved", or as specifically stated in the specific conditions of this Acceptance.
3. Renewals of Acceptance will not be considered if:
  - a) There has been a change in the South Florida Building Code affecting the evaluation of this product and the product is not in compliance with the code changes;
  - b) The product is no longer the same product (identical) as the one originally approved;
  - c) If the Acceptance holder has not complied with all the requirements of this acceptance, including the correct installation of the product;
  - d) The engineer who originally prepared, signed and sealed the required documentation initially submitted is no longer practicing the engineering profession.
4. Any revision or change in the materials, use, and/or manufacture of the product or process shall automatically be cause for termination of this Acceptance, unless prior written approval has been requested (through the filing of a revision application with appropriate fee) and granted by this office.
5. Any of the following shall also be grounds for removal of this Acceptance:
  - a) Unsatisfactory performance of this product or process.
  - b) Misuse of this Acceptance as an endorsement of any product, for sales, advertising or any other purpose.
6. The Notice of Acceptance number preceded by the words Miami-Dade County, Florida, and followed by the expiration date may be displayed in advertising literature. If any portion of the Notice of Acceptance is displayed, then it shall be done in its entirety.
7. A copy of this Acceptance as well as approved drawings and other documents, where it applies, shall be provided to the user by the manufacturer or its distributors and shall be available for inspection at the job site at all time. The engineer need not reseal the copies.
8. Failure to comply with any section of this Acceptance shall be cause for termination and removal of Acceptance.
9. This Notice of Acceptance consists of pages 1, 2 and this last page 3.

**END OF THIS ACCEPTANCE**

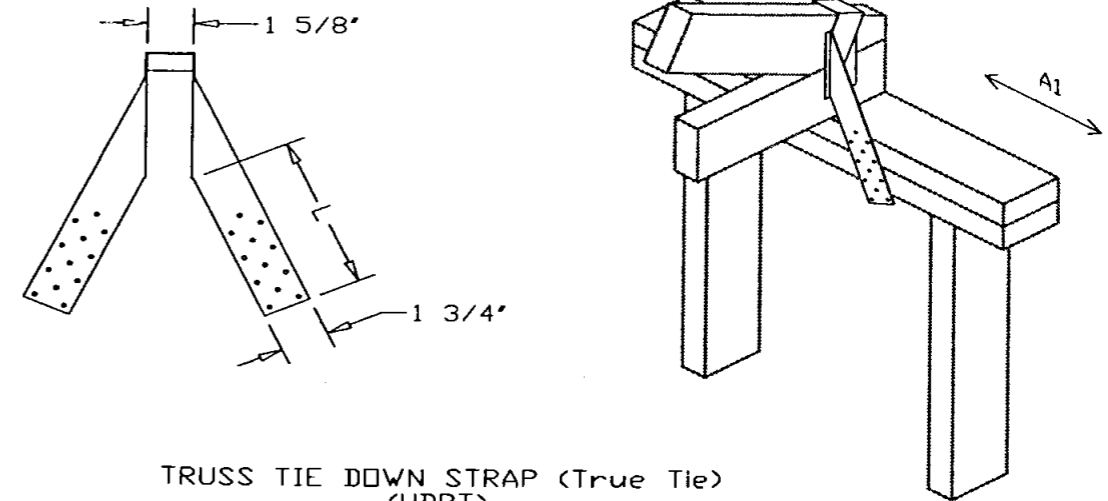
  
\_\_\_\_\_  
Raul Rodriguez, Chief  
Product Control Division



TRUSS TIE DOWN STRAP (Sanibell Strap)  
(HDP2X)

PRODUCT CODE	GAUGE	DIMENSIONS		
		L		
HDP2X	18	19"		
HDP2XD	18	18 1/4"		
ALTERNATE FASTENING SCHEDULE				
FASTENERS		UPLIFT 133%		
NAILS	NAILS			
	8d	10d	16d	
6	800	970	1160	
8	1065	1290	1545	
10	1335	1600	1600	
12	1600	1600	1600	

- NOTE: 1) FASTENERS ARE PLACED ON EACH SIDE OF TRUSS INTO THE TOP AND BOTTOM LAYER OF THE DOUBLE TOP PLATE MEMBER IN EQUAL QUANTITY.  
 2) FASTENERS SHALL NOT BE LESS THAN 1/4" FROM THE EDGE OF THE STRAP AND SPACED NOT LESS THAN 3/8" FROM THE EDGE OF THE FRAMING MEMBER.  
 3) MINIMUM NAIL PENETRATION IS 1 5/8" FOR 8d, 1 7/8" FOR 10d AND 2" FOR 16d.



TRUSS TIE DOWN STRAP (True Tie)  
(HDPT)

PRODUCT CODE	GAUGE	DIMENSION L	FASTENERS SCHEDULE	LATERAL
				A1
HDPT2	18	6 1/4"	6-10d	450
HDPTD	18	5 1/2"	6-10d	450
ALTERNATE FASTENING SCHEDULE				
FASTENERS		UPLIFT 133%		
NAILS	NAILS			
	8d	10d	16d	
6	800	800	800	
8	800	800	800	
10	800	800	800	
12	800	800	800	

- NOTE: 1) FASTENERS ARE PLACED ON EACH SIDE OF TRUSS INTO THE TOP AND BOTTOM LAYER OF THE DOUBLE TOP PLATE MEMBER IN EQUAL QUANTITY.  
 2) FASTENERS SHALL NOT BE LESS THAN 1/4" FROM THE EDGE OF THE STRAP AND SPACED NOT LESS THAN 3/8" FROM THE EDGE OF THE FRAMING MEMBER.  
 3) MINIMUM NAIL PENETRATION IS 1 5/8" FOR 8d, 1 7/8" FOR 10d AND 2" FOR 16d.

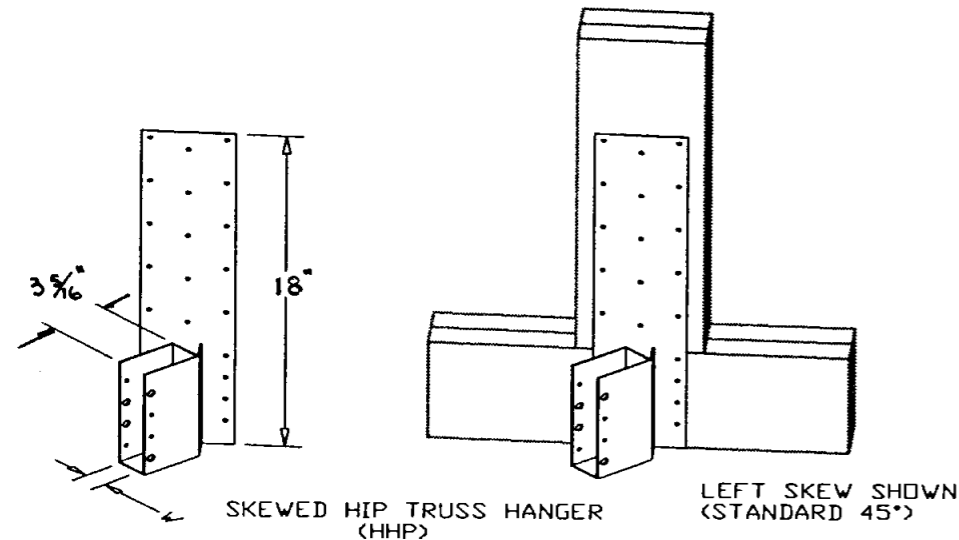
GENERAL NOTES

- 1) THE APPROVED PRODUCTS SHALL BE MADE OF STEEL CONFORMING TO ASTM A653 STRUCTURAL QUALITY GRADE 33 (MIN. YIELD 33 KSI) AND A MINIMUM GALVANIZED COATING OF G60 PER ASTM A924.
- 2) FASTENERS ARE COMMON WIRE NAILS UNLESS OTHERWISE NOTED
- 3) ALL INSTALLATIONS SHALL BE DONE IN ACCORDANCE WITH THE MANUFACTURERS INSTRUCTIONS, THIS NOTICE OF ACCEPTANCE AND THE APPLICABLE SECTIONS OF THE SOUTH FLORIDA BUILDING CODE.
- 4) ALLOWABLE LOADS ARE BASED ON THE NATIONAL DESIGN SPECIFICATIONS FOR WOOD CONSTRUCTION 1991 EDITION & 1993 ERRATA, FOR SOUTHERN PINE (SG=0.55 OR BETTER) AND TEST PERFORMED IN ACCORDANCE WITH ASTM D-1761
- 5) ALLOWABLE LOADS FOR WIND UPLIFT HAVE ALREADY BEEN INCREASED BY A DURATION LOAD OF 33% AND NO OTHER INCREASE IS ALLOWED.

PRODUCT RENEWED

ACCEPTANCE No. 02-0102.04  
 EXPIRATION DATE February 15, 2007

By \_\_\_\_\_  
 PRODUCT CONTROL DIVISION  
 BUILDING CODE COMPLIANCE OFFICE



SKewed HIP TRUSS HANGER  
(HHP)

LEFT SKEW SHOWN  
(STANDARD 45°)

PRODUCT CODE	GAUGE	DIMENSION W	FASTENERS		ALLOWABLE LOADS		
			HEADER	JOIST	DOWNWARD	UPLIFT 133%	
					10d	16d	16d
HHP 218	14	1 9/16	18	6	2200	2200	790
			9	6	1115	1325	790
HHP 318	14	2 9/16	18	6	2200	2200	790
			9	6	1115	1325	790
HHP 418	14	3 9/16	18	6	2200	2200	790
			9	6	1115	1325	790

MINIMUM HEADER THICKNESS 3-5/8"

<p>FOR OFFICE USE</p> <p>APPROVED AS COMPLYING WITH THE SOUTH FLORIDA BUILDING CODE          DATE <u>NOV 08 2001</u></p> <p>BY _____          PRODUCT CONTROL DIVISION          BUILDING CODE COMPLIANCE OFFICE          ACCEPTANCE NO. <u>01-1015.01</u></p>	<p>UNITED STEEL PRODUCTS CO          703 ROGERS DRIVE          MONTGOMERY MN 56069</p> <p>WOOD CONNECTORS</p> <p>DATE: <u>10/09/01</u>          DRAWING NUMBER: <u>HDP2X-HDPT-HHP</u>          SHEET NUMBER: <u>1 OF 1</u></p>	<p>THOMAS A. KOLDEN, P.E.          CIVIL NUMBER FL#50899</p> <p><i>Thomas A. Kolden</i>  <u>10.09.2001</u></p>
---	--	--