



**BUILDING CODE COMPLIANCE OFFICE (BCCO)  
PRODUCT CONTROL DIVISION**

**MIAMI-DADE COUNTY, FLORIDA  
METRO-DADE FLAGLER BUILDING  
140 WEST FLAGLER STREET, SUITE 1603  
MIAMI, FLORIDA 33130-1563  
(305) 375-2901 FAX (305) 375-2908**

**NOTICE OF ACCEPTANCE (NOA)**

---

**DAB Doors Inc.  
12195 N.W. 98<sup>th</sup> Avenue  
Hialeah Gardens, FL 33018**

**SCOPE:** This NOA is being issued under the applicable rules and regulations governing the use of construction materials. The documentation submitted has been reviewed by Miami-Dade County Product Control Division and accepted by the Board of Rules and Appeals (BORA) to be used in Miami Dade County and other areas where allowed by the Authority Having Jurisdiction (AHJ).

This NOA shall not be valid after the expiration date stated below. The Miami-Dade County Product Control Division (In Miami Dade County) and/or the AHJ (in areas other than Miami Dade County) reserve the right to have this product or material tested for quality assurance purposes. If this product or material fails to perform in the accepted manner, the manufacturer will incur the expense of such testing and the AHJ may immediately revoke, modify, or suspend the use of such product or material within their jurisdiction. BORA reserves the right to revoke this acceptance, if it is determined by Miami-Dade County Product Control Division that this product or material fails to meet the requirements of the applicable building code.

This product is approved as described herein, and has been designed to comply with the High Velocity Hurricane Zone of the Florida Building Code.

**DESCRIPTION: Sectional Garage Door 16'- 2" Wide.**

**APPROVAL DOCUMENT:** Drawing No. 01-19, titled "Sectional Residential Garage Door", dated 04/06/01 with last revision on 08/30/01, sheets 1 through 3 of 3, prepared by Al-Farooq Corporation, signed and sealed by H. Farooq, P.E., bearing the Miami-Dade County Product Control Renewal stamp with the Notice of Acceptance number and expiration date by the Miami-Dade County Product Control Division.

**MISSILE IMPACT RATING: Large and Small Missile Impact**

**LABELING:** Each unit shall bear a permanent label with the manufacturer's name or logo, city, state and following statement: "Miami-Dade County Product Control Approved", unless otherwise noted herein.

**RENEWAL** of this NOA shall be considered after a renewal application has been filed and there has been no change in the applicable building code negatively affecting the performance of this product.

**TERMINATION** of this NOA will occur after the expiration date or if there has been a revision or change in the materials, use, and/or manufacture of the product or process. Misuse of this NOA as an endorsement of any product, for sales, advertising or any other purposes shall automatically terminate this NOA. Failure to comply with any section of this NOA shall be cause for termination and removal of NOA.

**LIMITATION:** This approval requires the manufacturer to do testing of all coils used to fabricate door panels under this Notice of Acceptance. A minimum of 2 specimens shall be cut from each coil and tensile tested according to ASTM E-8 by a Dade County approved laboratory selected and paid by the manufacturer. Every 3 months, four times a year, the manufacturer shall mail to this office: a copy of the tested reports with confirmation that the specimen were selected from coils at the manufacturer production facilities. And a notarized statement from the manufacturer that only coils with yield strength of 39,000 psi or more shall be used to make door panels for Dade County under this Notice of Acceptance

**ADVERTISEMENT:** The NOA number preceded by the words Miami-Dade County, Florida, and followed by the expiration date may be displayed in advertising literature. If any portion of the NOA is displayed, then it shall be done in its entirety.

**INSPECTION:** A copy of this entire NOA shall be provided to the user by the manufacturer or its distributors and shall be available for inspection at the job site at the request of the Building Official.

This NOA revises NOA # 01-0626.01 consists of this page 1 as well as the approval document mentioned above. The submitted documentation was reviewed by **Candido F. Font PE.**



**NOA No 03-0402.01  
Expiration Date: October 04, 2006  
Approval Date: April 24, 2003  
Page 1**

**DAB Doors Inc.**

**NOTICE OF ACCEPTANCE: EVIDENCE SUBMITTED**  
**(For File ONLY. Not part of NOA)**

**A DRAWINGS**

1. Drawing prepared by Al-Farooq Corporation titled "Sectional Residential Garage Door", Drawing No. 01-19 dated 04/06/01 with latest revision on 08/30/01 Sheets 1 to 3 of 3 signed and sealed by Dr. Humayoun Farooq, PE.

**B TEST**

1. Test Report on Large Missile Impact Test and Cyclic Wind Pressure Test of "Sectional Residential Garage Door DAB 824" prepared by Hurricane Engineering and Testing Inc. Report #01-991 dated 03/27/01 signed and sealed by HM Medina, PE.
2. Test Report on Uniform Static Air Pressure & Forced Entry Resistance Test "Sectional Residential Garage Door DAB 824" prepared by Hurricane Engineering and Testing Inc., Report No. 01-984, dated 02/22/01, signed and sealed by HM Medina, PE.

**C CALCULATIONS**

1. Anchor Calculations dated 05/14/01, Sheets 1 through 6 prepared by Al-Farooq Corporation, signed and sealed by H. Farooq, PE

**D MATERIAL CERTIFICATION**

- 1 Tensile Test Report No. 01-T037, prepared by Hurricane Engineering & Testing dated 05/09/01, signed and sealed by HM Medina, PE.

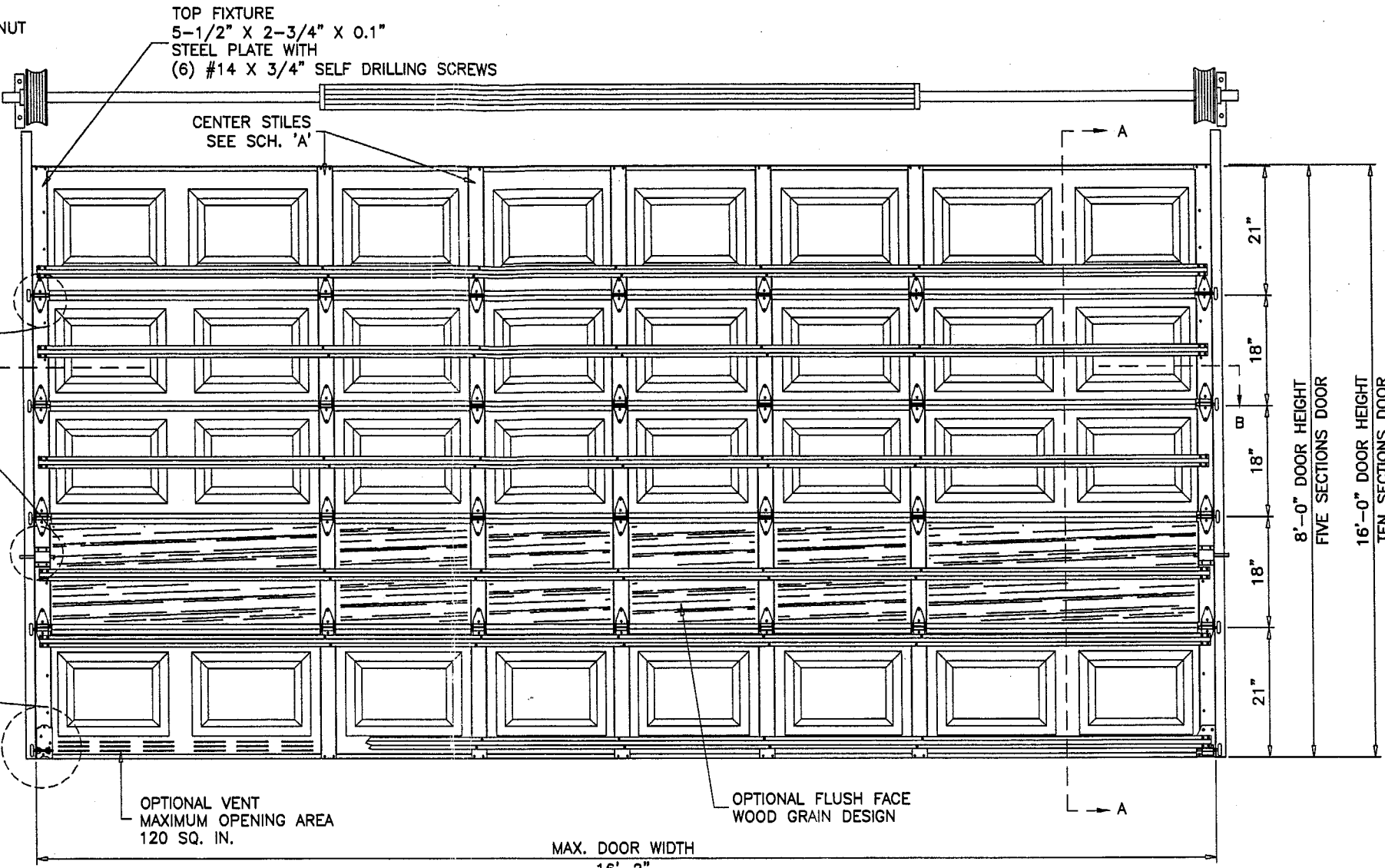
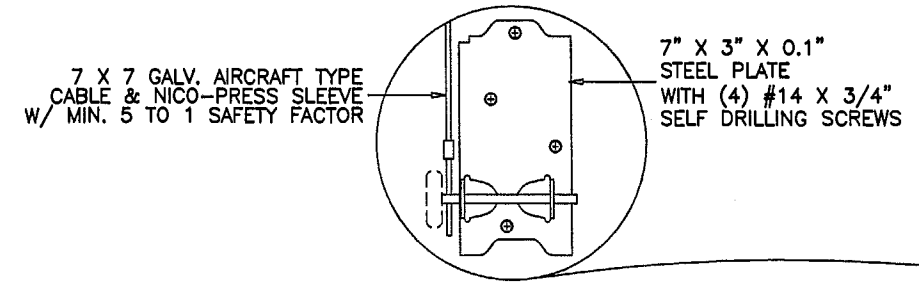
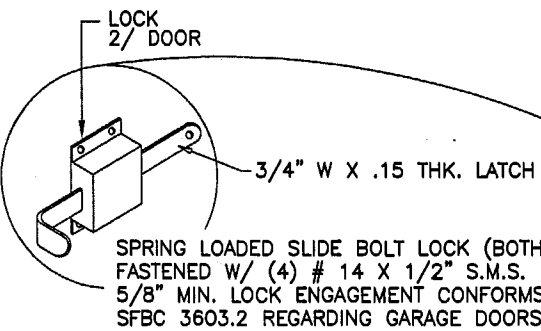
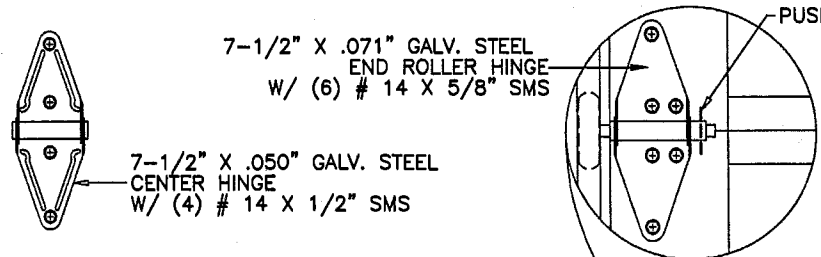
**E STATEMENTS**

- 1 Letter of Compliance by Al-Farooq Corporation, dated 05/14/01 signed & sealed by H. Farooq, PE.
- 2 Letter on Non Financial Interest by Al-Farooq Corporation, dated 05/14/01 signed & sealed by H. Farooq, PE
- 3 Letter of typing error issued by Al-Farooq Corporation, dated 03/25/03 and signed by H. Farooq, PE.

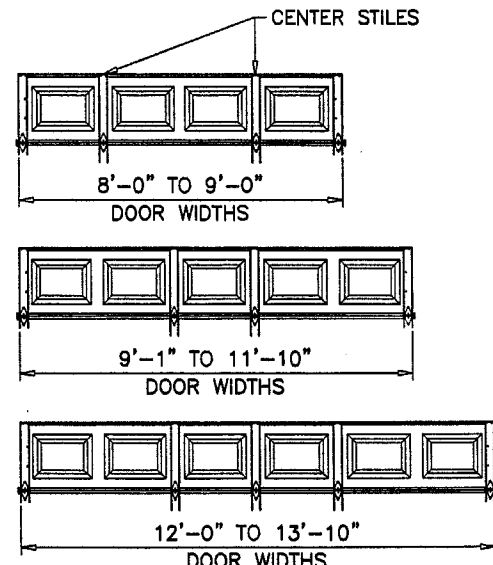
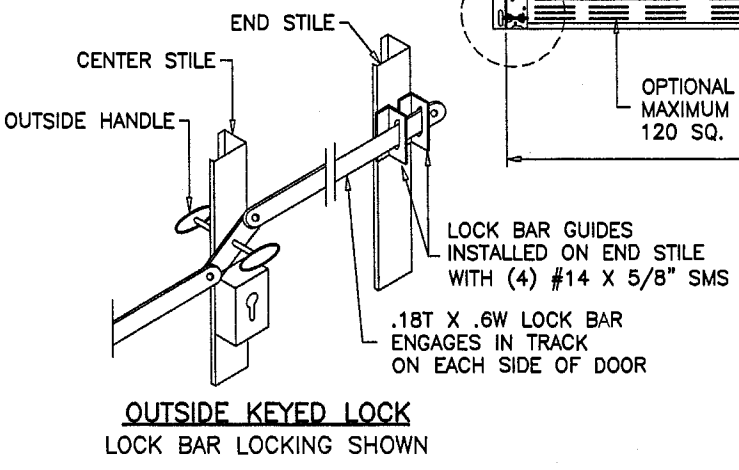


---

**Candido F. Font, PE.**  
**Senior Product Control Division**  
**NOA No 03-0402.01**  
**Expiration Date: October 04, 2006**  
**Approval Date: April 24, 2003**



DOOR HEIGHT	CONSISTS OF	
6'-6"	2 SECTIONS 18"	2 SECTIONS 21"
6'-9"	1 SECTION 18"	3 SECTIONS 21"
7'	4 SECTIONS 21"	-
7'-3"	-	-
7'-6"	5 SECTIONS 18"	-
7'-9"	4 SECTIONS 18"	1 SECTION 21"
8'	3 SECTIONS 18"	2 SECTIONS 21"
8'-3"	2 SECTIONS 18"	3 SECTIONS 21"
8'-6"	1 SECTION 18"	4 SECTIONS 21"
8'-9"	5 SECTIONS 21"	-
9'	6 SECTIONS 18"	-
9'-3"	5 SECTIONS 18"	1 SECTION 21"
9'-6"	4 SECTIONS 18"	2 SECTIONS 21"
9'-9"	3 SECTIONS 18"	3 SECTIONS 21"
10'	2 SECTIONS 18"	4 SECTIONS 21"
10'-3"	1 SECTION 18"	5 SECTIONS 21"
10'-6"	6 SECTIONS 21"	-
10'-9"	6 SECTIONS 18"	1 SECTION 21"
11'	5 SECTIONS 18"	2 SECTIONS 21"
11'-3"	4 SECTIONS 18"	3 SECTIONS 21"
11'-6"	3 SECTIONS 18"	4 SECTIONS 21"
11'-9"	2 SECTIONS 18"	5 SECTIONS 21"
12'	1 SECTIONS 18"	6 SECTIONS 21"
12'-3"	7 SECTIONS 21"	-
12'-6"	6 SECTIONS 18"	2 SECTIONS 21"
12'-9"	5 SECTIONS 18"	3 SECTIONS 21"
13'	4 SECTIONS 18"	4 SECTIONS 21"
13'-3"	3 SECTIONS 18"	5 SECTIONS 21"
13'-6"	2 SECTIONS 18"	6 SECTIONS 21"
13'-9"	1 SECTION 18"	7 SECTIONS 21"
14'	8 SECTIONS 21"	-
14'-3"	6 SECTIONS 18"	3 SECTIONS 21"
14'-6"	5 SECTIONS 18"	4 SECTIONS 21"
14'-9"	4 SECTIONS 18"	5 SECTIONS 21"
15'	3 SECTIONS 18"	6 SECTIONS 21"
15'-3"	2 SECTIONS 18"	7 SECTIONS 21"
15'-6"	1 SECTION 18"	8 SECTIONS 21"
15'-9"	9 SECTIONS 21"	-
16'	6 SECTIONS 18"	4 SECTIONS 21"



SCHEDULE 'A'

CENTER STILES CONFIGURATION	
DOOR WIDTHS	# OF CENTER STILES
8'-0" TO 9'-0"	2
9'-1" TO 11'-10"	2
12'-0" TO 13'-10"	3
14'-0" TO 15'-10"	4
15'-11" TO 16'-2"	5

14'-0" TO 15'-10"  
DOOR WIDTHS

15'-11" TO 16'-2"  
DOOR WIDTHS

INSIDE ELEVATION  
RAISED PANEL EMBOSSED DOOR

DAB DOOR MODEL 824  
MAX. SIZE 16'-2" WIDE X 16'-0" HIGH

DESIGN PRESSURE RATING = + 48.0 PSF  
- 52.0 PSF

GENERAL NOTES

- THIS STRUCTURE IS DESIGNED AS PER THE SOUTH FLORIDA BUILDING CODE 1994 EDITION FOR DADE COUNTY. ALSO FOR WIND LOADS AS PER ASCE 7-88 USING CORRESPONDING LOADS.
- ANCHORS SHALL BE AS LISTED, SPACED AS SHOWN ON DETAILS. ANCHOR EMBEDMENT TO BASE MATERIAL SHALL BE BEYOND WALL DRESSING OR STUCCO.
- ALL BOLTS, NUTS AND WASHERS SHALL BE ZINC PLATED CARBON STEEL.
- ANCHORING OR LOADING CONDITIONS OTHER THAN THOSE SHOWN IN THESE DETAILS ARE NOT PART OF THIS APPROVAL.

PRODUCT REVISED  
in accordance with the Florida  
Building Code  
Acceptance No. 03-0402.01  
Expiration Date 10/04/06

By: *[Signature]*  
Miami Dade Product Control  
Division

Engr: DR. HUMAYOUN FAROOQ  
STRUCTURES  
FLA. PE # 16557

SEP 04 2001

APPROVED AS COMPLYING WITH THE  
SOUTH FLORIDA BUILDING CODE  
DATE OCT 04 2001

BY: *[Signature]*

PRODUCT CONTROL DIVISION  
BUILDING CODE COMPLIANCE OFFICE  
ACCEPTANCE NO. 01-0626.01

**AL-FAROOQ CORPORATION**  
ENGINEERS, PLANNERS & PRODUCT DESIGN  
1235 SW 87 AVE  
MIAMI, FLORIDA 33174  
TEL. (305) 264-8100 FAX. (305) 262-6978

SECTIONAL RESIDENTIAL GARAGE DOOR  
**DAB DOORS INC.**  
12195 N.W. 98 TH. AVE.  
HIALEAH GARDENS, FL. 33018  
TEL. (305) 556 - 6624

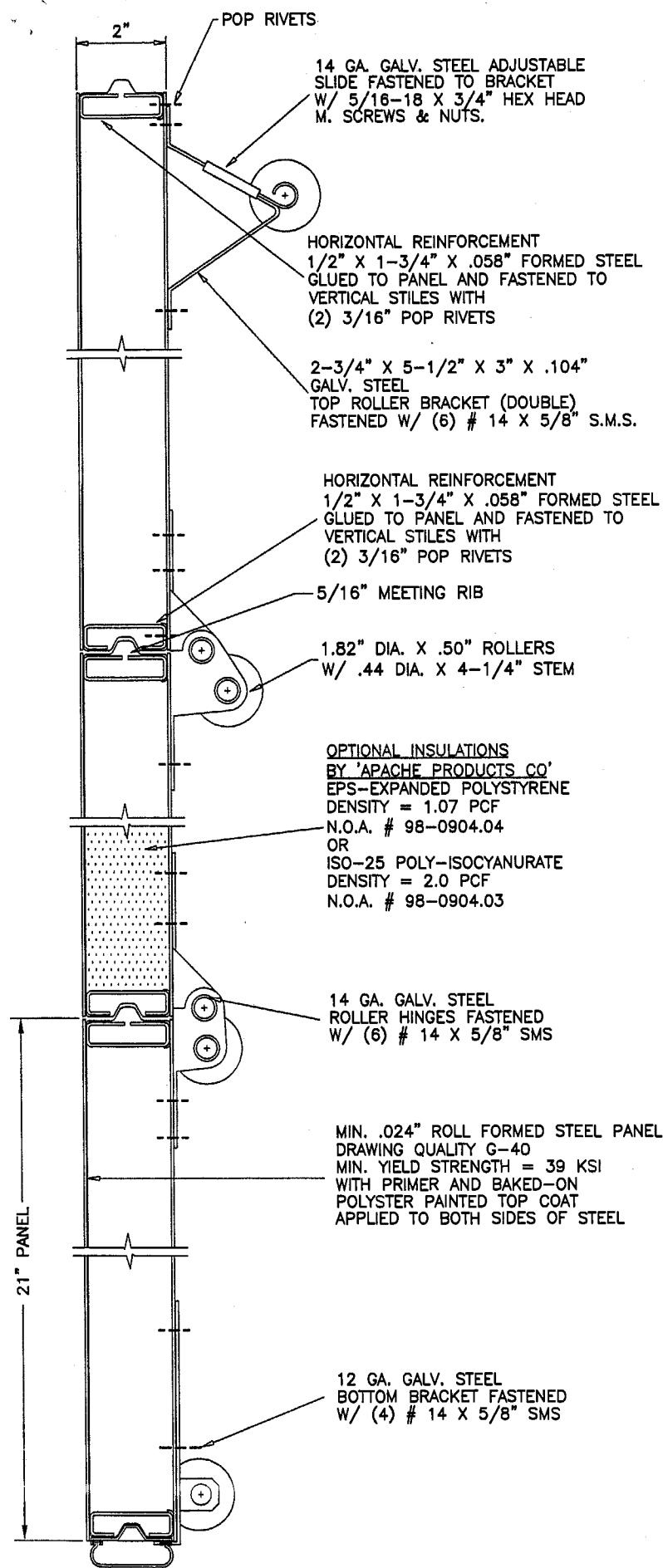
no.	date	description	REV. PER	BCCO	COMMENTS
A	08.30.01				

revisions:

date: 04-06-01  
scale: 1/2"=1'-0"  
dr. by: HAMID  
chk. by:

drawing no. **01-19**  
sheet 1 of 3

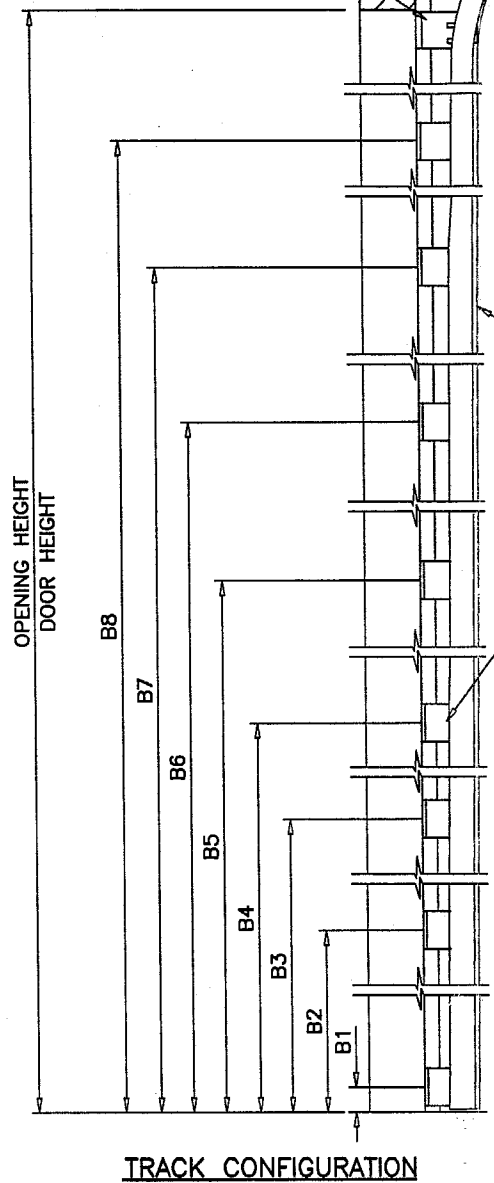
GARAGE/01-19DAB



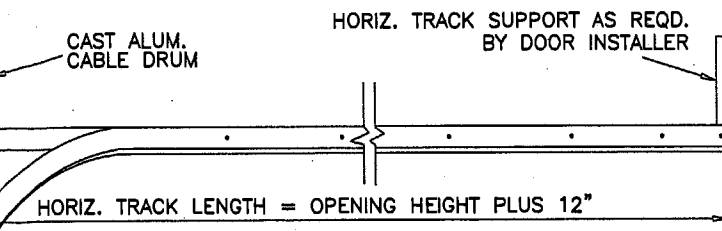
**SECTION A-A**  
SEE SHEET 2 FOR LOCATION OF REINFORCING TRUSSES

5/16" X 1-5/8" LAG SCREWS INTO WOOD OR 5/16" SLEEVE ANCHORS WITH 1-1/4" EMBED INTO MASONRY 3 PER BRACKET

2-1/2" X 4-1/4" X 13 GA. STEEL PLATES WELDED TO 1-1/2" X 1-1/2" X 14 GA. ANGLE FASTENED TO TRACK WITH (4) 1/4"-20 SS. BOLT & NUTS



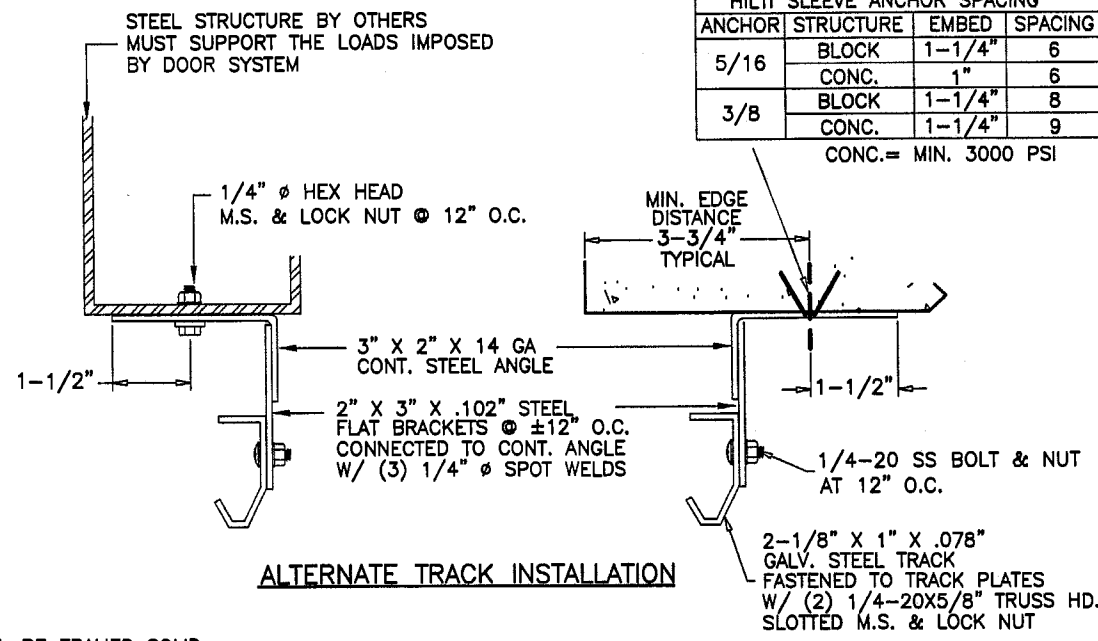
**TRACK CONFIGURATION**



DOOR HEIGHT	* SECTION HEIGHTS					BRACKET PLACEMENTS							
	1ST	2ND	3RD	4TH	5TH	B1	B2	B3	B4	B5	B6	B7	B8
6'-0"	18"	18"	18"	18"	N/A	1"	11-3/4"	23"	34"	45"	56"	67"	-
6'-6"	21"	18"	18"	21"	N/A	1"	11-3/4"	23"	34"	45"	56"	67"	-
7'-0"	21"	21"	21"	21"	N/A	1"	11-3/4"	23"	34"	45"	56"	67"	78-1/4"
7'-6"	18"	18"	18"	18"	18"	1"	11-3/4"	23"	34"	45"	56"	67"	78-1/4"
8'-0"	21"	18"	18"	18"	21"	1"	11-3/4"	23"	34"	45"	56"	67"	78-1/4"

\*-SECTIONS ARE NUMBERED STARTING AT THE BOTTOM FOR DOORS MORE THAN 8 FT. HIGH, USE ADDITIONAL TOP BRACKETS AT 10" O.C.

2" X 3-1/2" X 12 GA. TRACK BRACKETS 2-3/16" HIGH CONNECTED TO TRACK WITH ONE 1/4" BOLTS & NUTS.



**ALTERNATE TRACK INSTALLATION**

HILTI SLEEVE ANCHOR SPACING			
ANCHOR	STRUCTURE	EMBED	SPACING
5/16	BLOCK	1-1/4"	6
	CONC.	1"	6
3/8	BLOCK	1-1/4"	8
	CONC.	1-1/4"	9

CONC. = MIN. 3000 PSI

**WOOD FRAME BUILDINGS**

STUD WALLS OR DOOR OPENING SHALL BE FRAMED SOLID BY NOT LESS THAN (3) 2X6 PRESSURE TREATED GRADE 2 OR BETTER WOOD STUDS. STUD WALLS TO BE CONT. FROM FOOTING TO TIE BEAM.

**WOOD BUCK CONNECTION TO MASONRY**

TRACK SHALL BE SECURED WITH TRACK BRACKETS TO PRESSURE TREATED 2X6 WOOD JAMBS WHICH SHALL BE ANCHORED TO GROUTED REINFORCED MASONRY BLOCK WALL OR CONC. COLUMN W/ 1/4" TAPCONS WITH 1-3/4" EMBED AND A SPACING OF 8" O.C. OR 3/8" DIA. HILTI SLEEVE ANCHORS, 1-3/4" MIN. EMBED AND A SPACING OF 12" O.C. THE BLOCK WALL CELLS SHALL BE GROUT FILLED AND REINFORCED WITH FOUR # 5 BARS EXTENDING INTO FOOTING AND INTO TIE BEAMS, ALL BARS SHALL BE CONTINUOUS FROM TIE BEAMS TO FOOTING.

**PREPARATION OF JAMBS BY OTHERS**

Engr: DR. HUMAYOUN FAROOQ  
STRUCTURES  
FLA. PE # 16557

PRODUCT REVISED  
As complying with the Florida Building Code  
Acceptance No. 03-0402.01  
Expiration Date 10/04/06  
By: *[Signature]*  
Miami Dade Product Control Division

SEP 04 2001

APPROVED AS COMPLYING WITH THE SOUTH FLORIDA BUILDING CODE  
DATE OCT 04 2001

BY: *[Signature]*  
PRODUCT CONTROL DIVISION  
BUILDING CODE COMPLIANCE OFFICE  
ACCEPTANCE NO. 01-0626.01

**afsc**

**AL-FAROOQ CORPORATION**  
ENGINEERS, PLANNERS & PRODUCT DESIGN  
1235 SW 87 AVE  
MIAMI, FLORIDA 33174  
TEL. (305) 264-8100 FAX. (305) 262-6978  
GARAGE\01-19DAB

---

**SECTIONAL RESIDENTIAL GARAGE DOOR**

**DAB DOORS INC.**  
12195 N.W. 98 TH. AVE.  
HIALEAH GARDENS, FL. 33018  
TEL (305) 556 - 6624

---

no	date	description

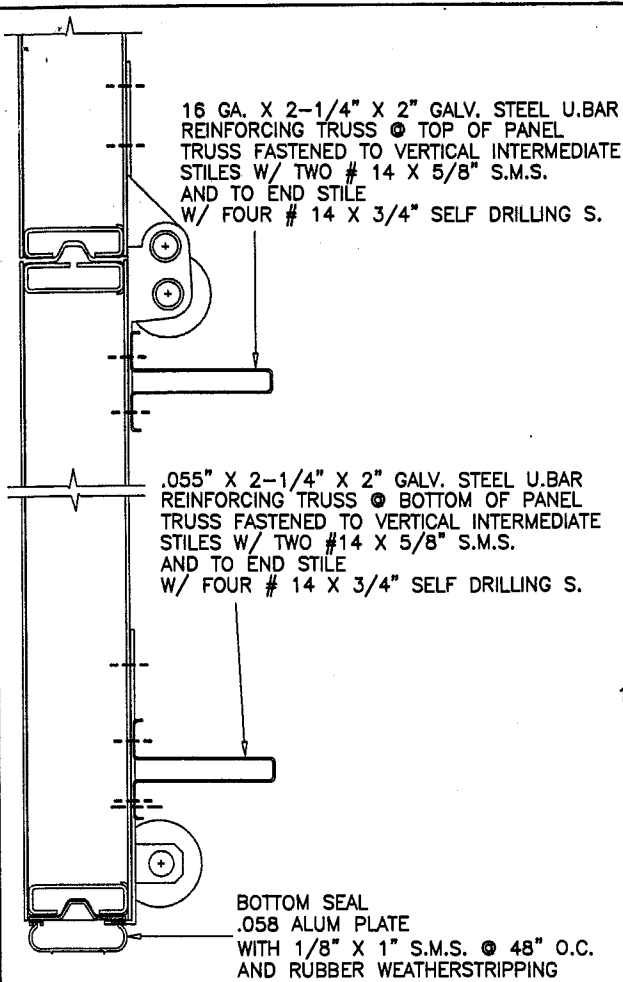
---

revisions: *[Signature]*

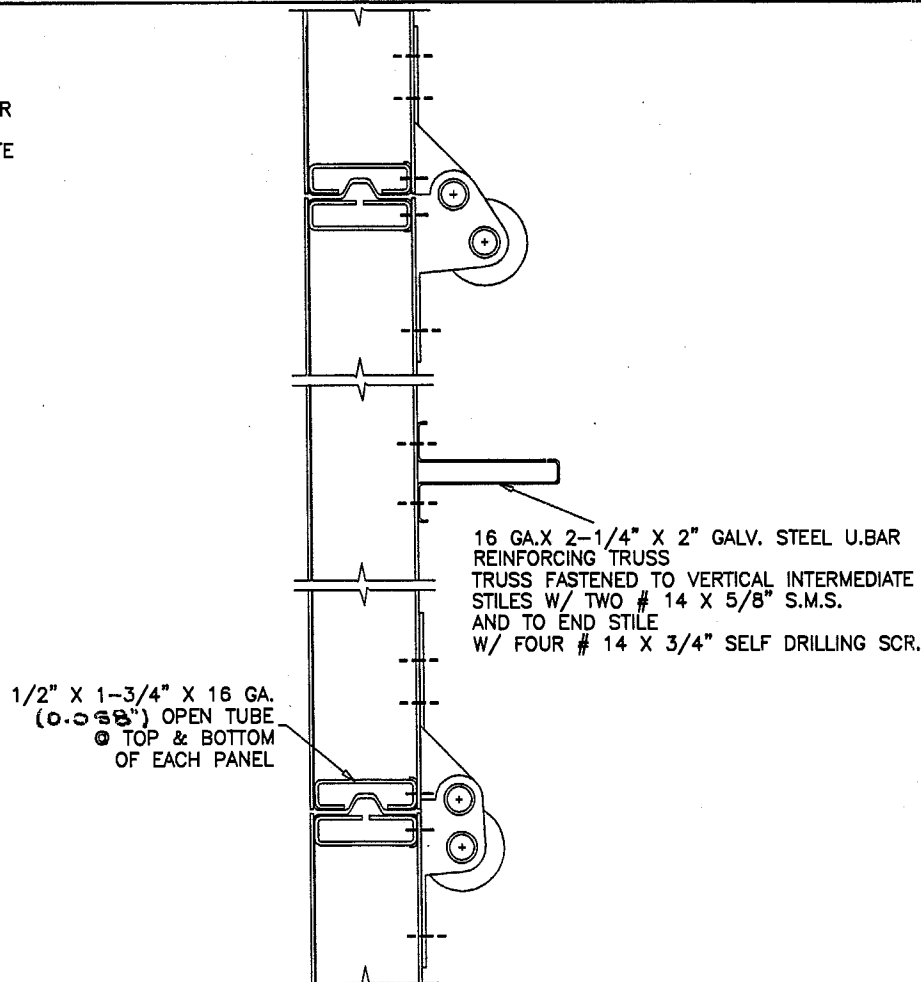
date: 04-06-01  
scale: -  
dr. by: HAMID  
chk. by:

---

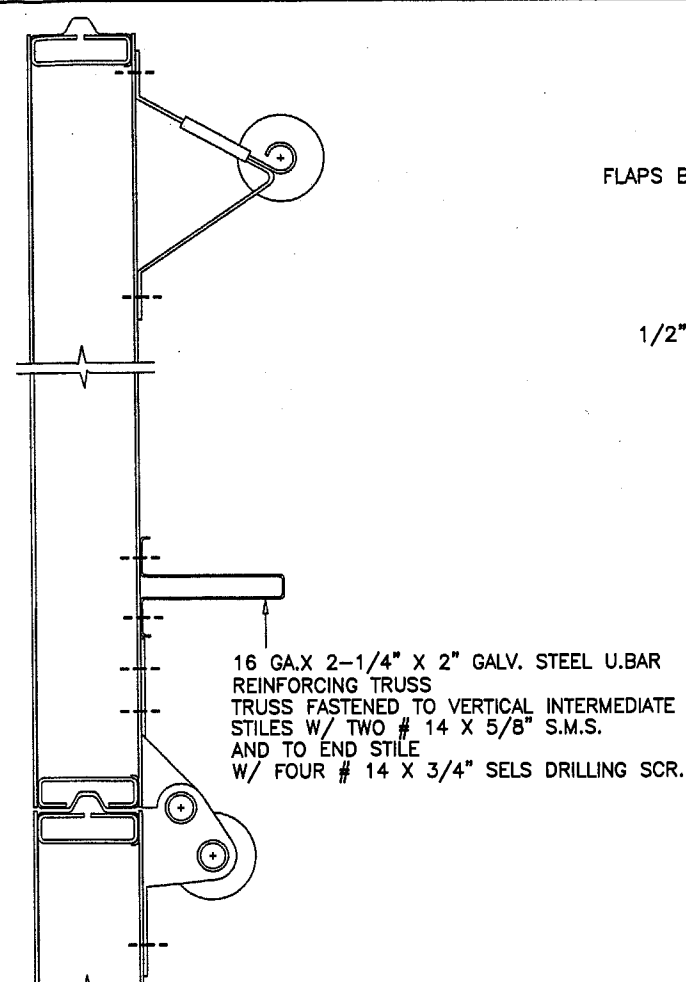
drawing no. **01-19**  
sheet 3 of 3



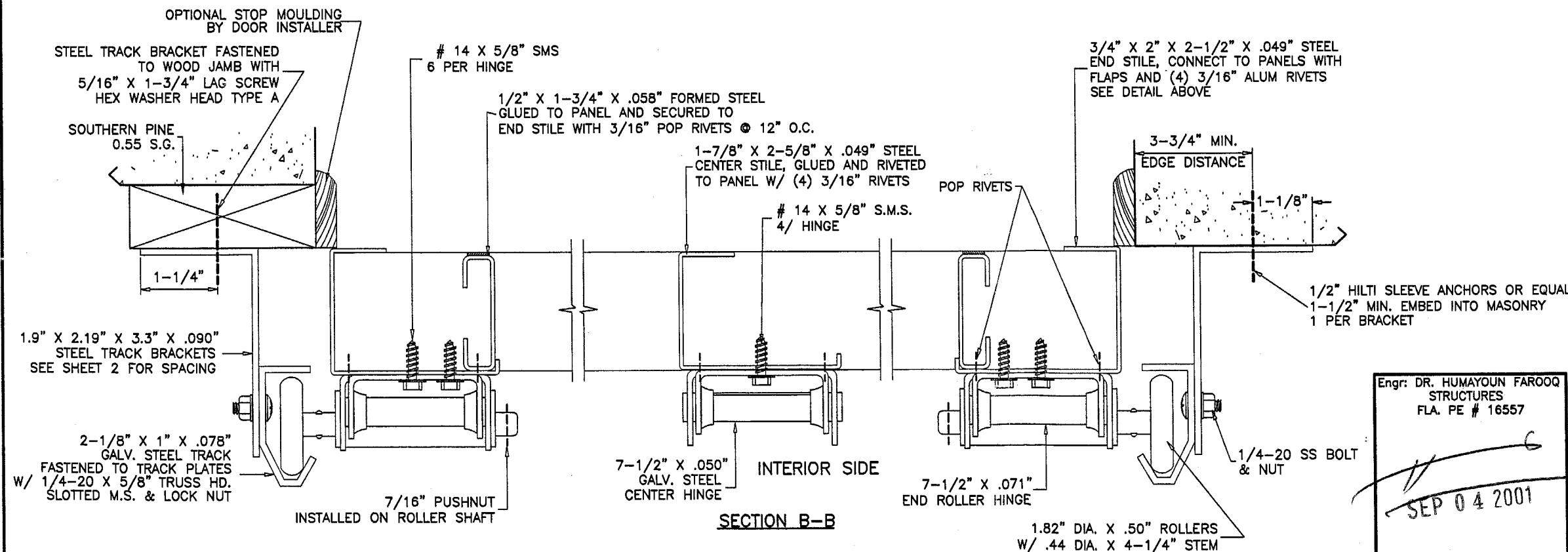
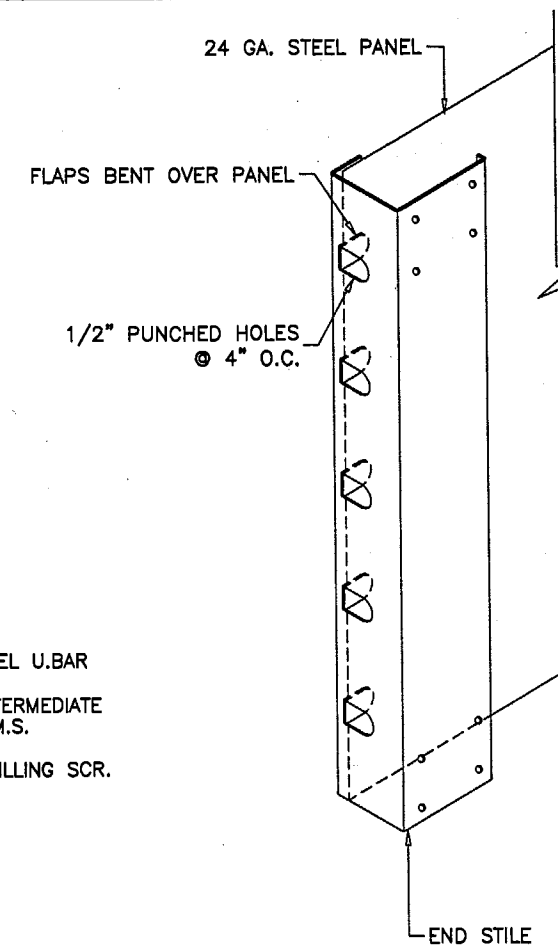
**1ST SECTION (BOTTOM)  
REINFORCING**



**INTERMEDIATE SECTIONS  
REINFORCING**



**TOP SECTION  
REINFORCING**



**SECTION B-B**

Engr. DR. HUMAYOUN FAROOQ  
STRUCTURES  
FLA. PE # 16557

SEP 04 2001

PRODUCT REVISED  
to comply with the Florida  
Building Code  
Amendment 03-0402.01  
Expiration Date 10/04/06  
By *[Signature]*  
Miami Code Product Control  
Division

APPROVED AS COMPLYING WITH THE  
SOUTH FLORIDA BUILDING CODE  
DATE OCT 04 2001  
BY *[Signature]*  
PRODUCT CONTROL DIVISION  
BUILDING CODE COMPLIANCE OFFICE  
ACCEPTANCE NO. 01-0626.01

**AL-FAROOQ CORPORATION**  
ENGINEERS, PLANNERS & PRODUCT DESIGN  
1235 SW 87 AVE  
MIAMI, FLORIDA 33174  
TEL. (305) 264-8100 FAX. (305) 262-6978  
GARAGE\01-19DAB

**DAB DOORS INC.**  
12195 N.W. 98 TH. AVE.  
HIALEAH GARDENS, FL. 33018  
TEL. (305) 556 - 6624

revisions:	no	date	by	description

date: 04-06-01  
scale: -  
dr. by: HAMID  
chk. by:

drawing no. **01-19**  
sheet 2 of 3