



**BUILDING CODE COMPLIANCE OFFICE (BCCO)
PRODUCT CONTROL DIVISION**

**MIAMI-DADE COUNTY, FLORIDA
METRO-DADE FLAGLER BUILDING
140 WEST FLAGLER STREET, SUITE 1603
MIAMI, FLORIDA 33130-1563
(305) 375-2901 FAX (305) 375-2908**

NOTICE OF ACCEPTANCE (NOA)

**Croci North America
6360 Topaz Ct.
Fort Myers, Fl. 33966**

SCOPE:

This NOA is being issued under the applicable rules and regulations governing the use of construction materials. The documentation submitted has been reviewed by Miami-Dade County Product Control Division and accepted by the Board of Rules and Appeals (BORA) to be used in Miami Dade County and other areas where allowed by the Authority Having Jurisdiction (AHJ).

This NOA shall not be valid after the expiration date stated below. The Miami-Dade County Product Control Division (In Miami Dade County) and/or the AHJ (in areas other than Miami Dade County) reserve the right to have this product or material tested for quality assurance purposes. If this product or material fails to perform in the accepted manner, the manufacturer will incur the expense of such testing and the AHJ may immediately revoke, modify, or suspend the use of such product or material within their jurisdiction. BORA reserves the right to revoke this acceptance, if it is determined by Miami-Dade County Product Control Division that this product or material fails to meet the requirements of the applicable building code.

This product is approved as described herein, and has been designed to comply with the High Velocity Hurricane Zone of the Florida Building Code.

DESCRIPTION: ES 55

APPROVAL DOCUMENT: Drawing No. 08-049, titled "Es 55 Extruded Aluminum Roll-up Shutter", prepared by EngCo, Inc. dated 02/26/08 sheets 1 through 14 of 14 with no revisions, signed and sealed on 03/14/08 by Pedro De Figueiredo P.E., bearing the Miami-Dade County Product Control Approval stamp with the Notice of Acceptance number and Approval date by the Miami-Dade County Product Control Division.

MISSILE IMPACT RATING: Large and Small Missile Impact

LABELING: Each unit shall bear a permanent label with the manufacturer's name or logo, city, state and the following statement: "Miami-Dade County Product Control Approved", unless otherwise noted herein.

RENEWAL of this NOA shall be considered after a renewal application has been filed and there has been no change in the applicable building code negatively affecting the performance of this product.

TERMINATION of this NOA will occur after the expiration date or if there has been a revision or change in the materials, use, and/or manufacture of the product or process. Misuse of this NOA as an endorsement of any product, for sales, advertising or any other purposes shall automatically terminate this NOA. Failure to comply with any section of this NOA shall be cause for termination and removal of NOA.

ADVERTISEMENT: The NOA number preceded by the words Miami-Dade County, Florida, and followed by the expiration date may be displayed in advertising literature. If any portion of the NOA is displayed, then it shall be done in its entirety.

INSPECTION: A copy of this entire NOA shall be provided to the user by the manufacturer or its distributors and shall be available for inspection at the job site at the request of the Building Official.

This NOA consists of this page, evidence page E1 and approval document mentioned above.

The submitted documentation was reviewed by **Mohammed Iqbal Shaikh, P.E.**

*MuX
06/09/08*



**NOA No. 08-0324.13
Expiration Date: July 03,2013
Approval Date: July 03,2008
Page 1**

Croci North America

NOTICE OF ACCEPTANCE: EVIDENCE SUBMITTED

A. DRAWINGS

Drawing No. 08-049, titled "ES 55 Extruded Aluminum Roll-up Shutter", prepared by EngCo, Inc. dated 02/26/08 sheets 1 through 14 of 14 with no revisions, signed and sealed on 03/14/08 by Pedro De Figueiredo P.E

B. TESTS

1. Fenestration Testing Laboratory, Inc. Test Report # 5448 dated 12/17/07 for testing standard TAS 201, TAS 202 and TAS 203 signed and sealed by Carlos S. Rionda, P. E.
2. National Certified Testing Laboratories Test Report # 210-2963-1 dated 12/21/03 for Testing standard TAS 201, TAS 202 and TAS 203, signed and sealed by Gerald J. Ferrara, P.E.
3. Construction Testing Corporation Test Report #05-011 dated 05/31/05 For testing Standard TAS 202, signed and sealed by Yamil G. Kuri, P.E.
4. Fenestration Testing Laboratory, Inc. Test Report # 5611 dated 05/03/08 for testing standard TAS 201, and TAS 203 signed and sealed by Carlos S. Rionda, P. E.

C. CALCULATIONS

1. Structural Calculations and design for Slat, Track Anchorage, Header, Mullion, Storm Bars and analysis of test results prepared by EngCo, Inc. dated 03/07/08 signed and sealed by Pedro De Figueiredo P.E.

D. MATERIAL CERTIFICATIONS

None

E. STATEMENTS

1. Code Compliance and no financial interest letter by EngCo Inc .signed and sealed on March 07, 2008 by Pedro De Figueiredo, P.E.
2. Code Compliance letter for the tests performed by National Certified Laboratories, signed and sealed by Gerald J. Ferrara, P.E.

F. QUALITY ASSURANCE

1. Miami-Dade County Building Code Compliance Office.



Mohammed Iqbal Shaikh, P. E.
Senior Building Code Compliance Specialist
NOA No. 08-0324.13
Expiration Date: July 03, 2013
Approval Date: July 03, 2008

GENERAL NOTES:

1- DEFINITION: THIS PRODUCT IS A ROLL-UP TYPE SHUTTER, DESIGNED, CONSTRUCTED AND ERECTED TO EASILY ENCLOSE AN AREA, PROVIDING PROTECTION FROM HIGH VELOCITY HURRICANE FORCE WINDS WITHIN THE ALLOWABLE DESIGNED PRESSURES AND LIMITATIONS STATED IN THIS APPROVAL.

2- CODE: THIS PRODUCT HAS BEEN TESTED UNDER THE TAS 201, 202 AND 203 (LARGE & SMALL MISSILE) STANDARDS AND DESIGNED IN ACCORDANCE WITH THE FLORIDA BUILDING CODE, 2007 EDITION INCLUDING THE HVHZ (HIGH VELOCITY HURRICANE ZONES).

3- POSTING: A LEGIBLE DECAL SHALL BE PLACED AT A READILY VISIBLE LOCATION STATING THE FOLLOWING:

"CROCI NORTH AMERICA
FORT MYERS, FLORIDA
MIAMI-DADE COUNTY PRODUCT APPROVED"

4- LOADS: THE DESIGNED LOAD MUST BE CALCULATED BY A PROFESSIONAL ARCHITECT OR ENGINEER FOR EACH SPECIFIC PROJECT. THE CALCULATED DESIGNED PRESSURE MUST NOT EXCEED THE ALLOWABLE PRESSURES FOR EACH SHUTTER COMPONENT TO BE USED.

5- MATERIAL: ALL EXTRUDED ALUMINUM SHAPES SHALL BE MADE OF 6063-T6 OR AS NOTED.

6- FASTENERS: ASSEMBLY SCREWS AND ANCHORS SHALL BE AS SPECIFIED IN THE CURRENT SET OF DRAWINGS. INSTALLATION AND LOADS AS PER THIS APPROVAL. NO 33 1/3% INCREASE IN ALLOWABLE STRESS HAS BEEN USED IN THE DESIGN OF THIS PRODUCT. ANCHORS INTO WOOD WERE DESIGNED WITH 1.6 LOAD DURATION. (Kd= .85)

7- MULTIPLE SPAN SHUTTERS: MULTIPLE SPAN COMPONENTS SUCH AS STORM BARS, MULLIONS AND HEADERS, TO BE DESIGNED AS PER THIS SET OF DRAWINGS.

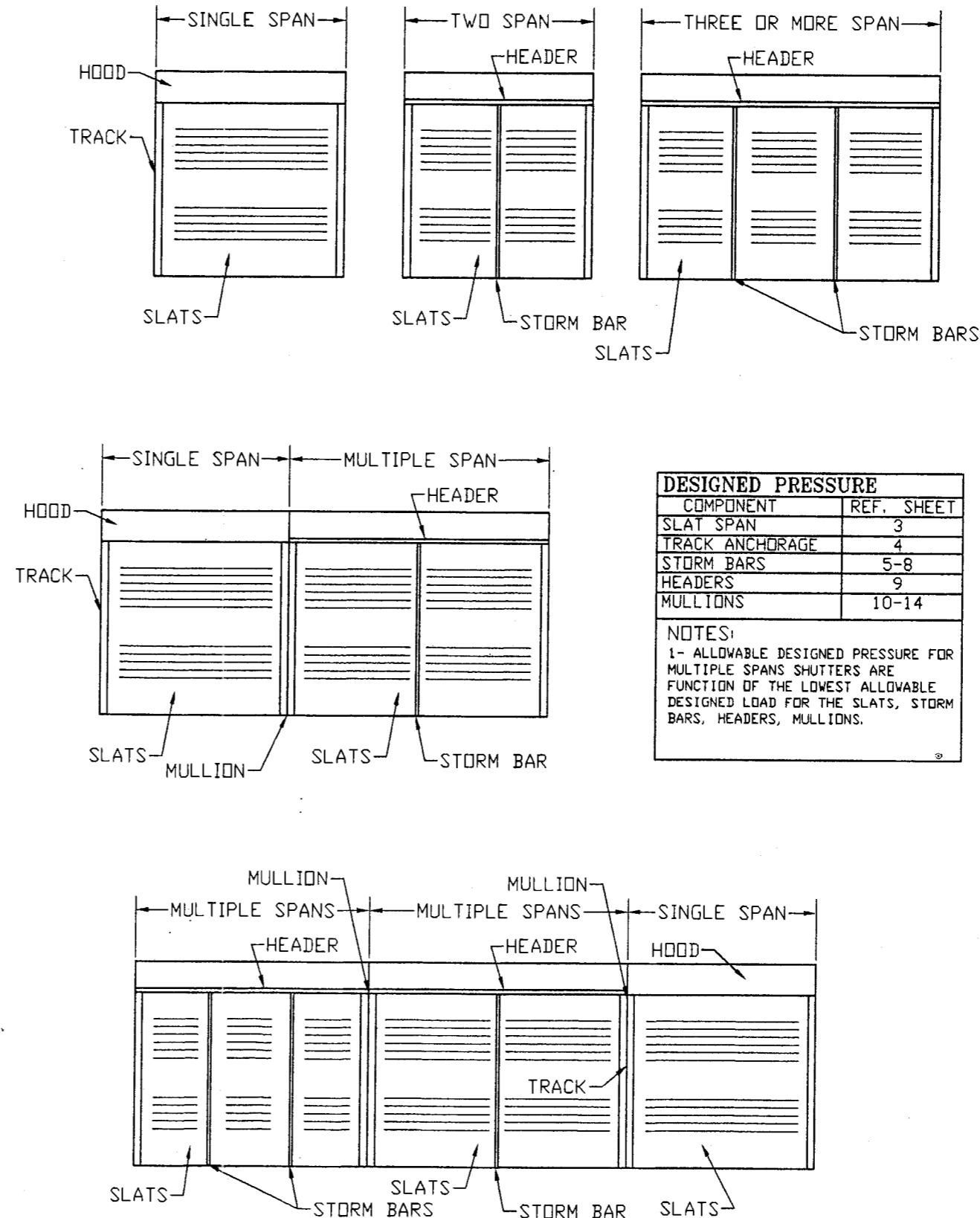
8- USE: IT SHALL BE THE RESPONSIBILITY OF THE CONTRACTOR, ARCHITECT OR ENGINEER OF RECORD TO VERIFY THE FOLLOWING:

8.1- THE STABILITY OF THE STRUCTURE WHERE THE SHUTTER IS TO BE ATTACHED INSURING PROPER ANCHORAGE.

8.2- THE SITE SPECIFIC PROJECT CRITERIA, SUCH AS BUT NOT LIMITED TO, WIND LOADS, LOCAL CODE REQUIREMENTS, DESIGNED PRESSURES ETC.

8.3- THAT THIS APPROVAL IS ADEQUATE TO THE SPECIFIC PROJECT.

TYPICAL SHUTTER CONFIGURATIONS



DESIGNED PRESSURE	
COMPONENT	REF. SHEET
SLAT SPAN	3
TRACK ANCHORAGE	4
STORM BARS	5-8
HEADERS	9
MULLIONS	10-14

NOTES:
1- ALLOWABLE DESIGNED PRESSURE FOR MULTIPLE SPANS SHUTTERS ARE FUNCTION OF THE LOWEST ALLOWABLE DESIGNED LOAD FOR THE SLATS, STORM BARS, HEADERS, MULLIONS.

Manufacturer:
CROCI
North America
6360 TOPAZ COURT
FORT MYERS, FL 33966
Tel.: (239) 278-3066
Fax: (239) 278-5977
EMAIL: INFO@CROCIUSA.COM

PRODUCT:
ES 55
EXTRUDED ALUMINUM
ROLL-UP SHUTTER

Engineering:
EngCo Inc.
CA 8116
6971 W. Sunrise Blvd. 104
Plantation, FL 33313
ENGCO@AOL.COM



MAR 14 2008
Engineer Seal
Pedro De Figueiredo, PE 52609

DRAFTING:
PK DRAFTING & MORE

MIAMI-DADE BCCD:

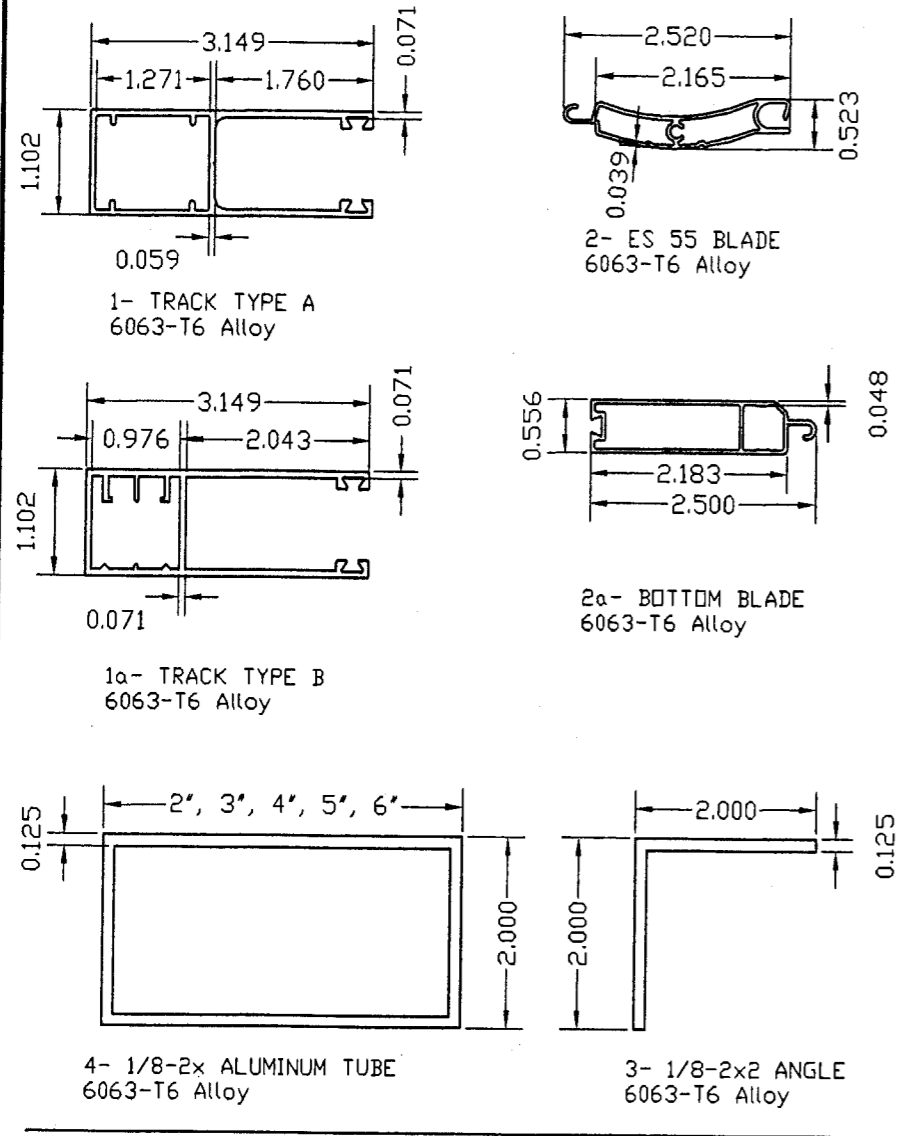
Approved for construction with the
plans by:
07/03/08
08-0324-13
Pedro De Figueiredo, PE
by *M. Figueiredo*

Date: 02/26/08
Scale: NA
Design by: PPMF

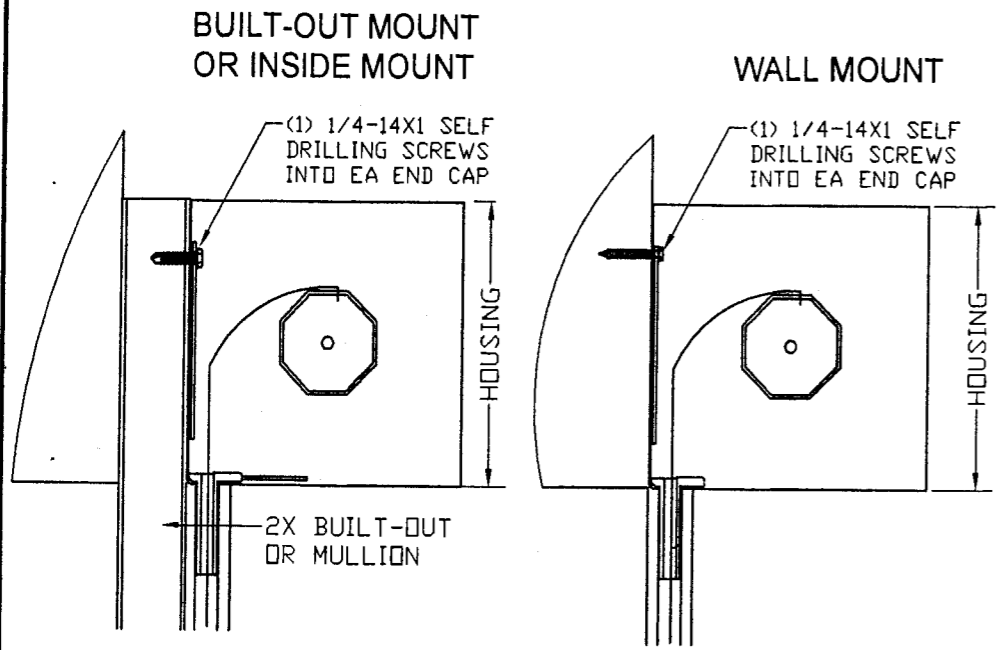
Drawing Number
08-049

Sheet
1 of 14

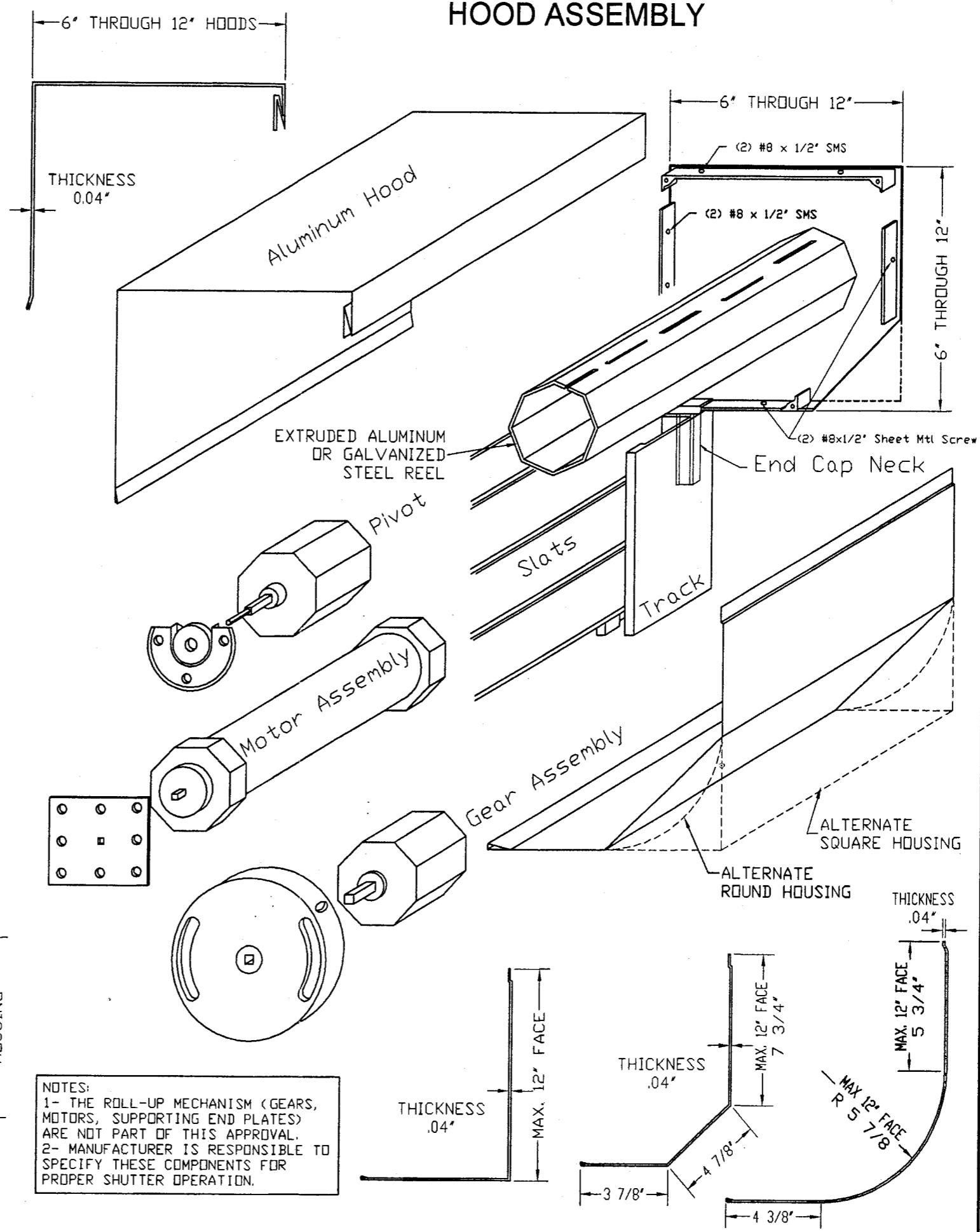
BASIC SHUTTER COMPONENTS



HOOD ANCHORAGE



HOOD ASSEMBLY



NOTES:
1- THE ROLL-UP MECHANISM (GEARS, MOTORS, SUPPORTING END PLATES) ARE NOT PART OF THIS APPROVAL.
2- MANUFACTURER IS RESPONSIBLE TO SPECIFY THESE COMPONENTS FOR PROPER SHUTTER OPERATION.

Manufacturer:
CROCI
North America
6360 TOPAZ COURT
FORT MYERS, FL 33966
Tel.: (239) 278-3066
Fax: (239) 278-5977
EMAIL: INFO@CROCIUSA.COM

PRODUCT:
ES 55
EXTRUDED ALUMINUM
ROLL-UP SHUTTER

Engineering:
EngCo Inc.
CA 8116
6971 W. Sunrise Blvd. 104
Plantation, FL 33313
ENGCO@AOL.COM

MAR 14 2008
Engineer Seal
Pedro De Figueiredo, PE 52609

DRAFTING:
PK DRAFTING & MORE

MIAMI-DADE BCCD:
Approved as complying with the
Florida Building Code
Date 07/03/08
NOA# 08-0324-13
Miami Dade Product Control
Division
By *[Signature]*

Date: 02/26/08
Scale: NA
Design by: PPMF

Drawing Number
08-049

Sheet
2 of 14

TABLE 1 - SLATS SPAN X DESIGN LOAD

POSITIVE & NEGATIVE LOADS (PSF)
X
MAXIMUM SLAT SPAN (IN)

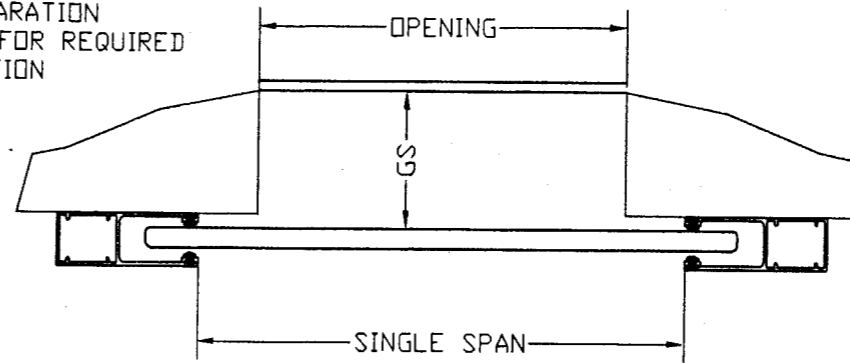
Pd PSF	1 SPAN	2 SPAN	3 SPAN
100	46	46	46
95	47	47	47
90	48	48	48
85	48	48	48
80	49	49	49
75	51	51	51
70	52	52	52
65	53	53	53
60	54	54	54
55	56	56	56
50	58	58	58
45	60	60	60
40	62	62	62
35	64	64	64

Pd= Design load in Psf
SPAN= Slat span in inches

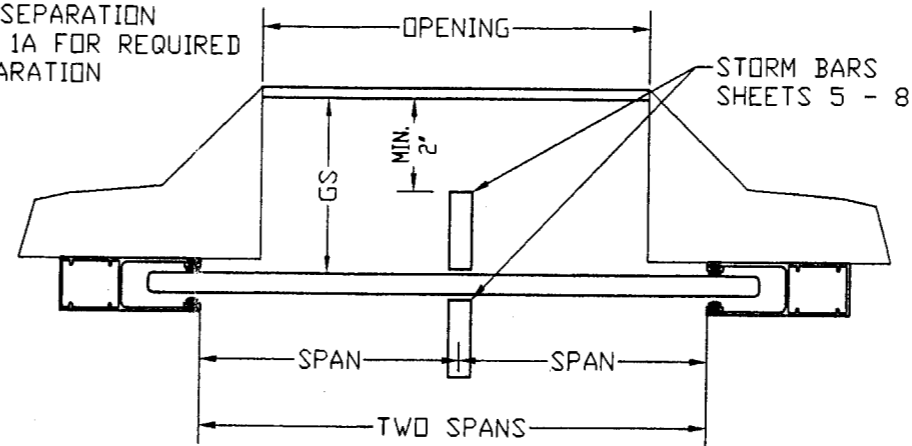
TABLE 1A - GLASS SEPARATION

SHUTTER SPAN	UNIT ELEVATION	
	<=30 FEET	>30 FEET
> 48"	3"	3"
<=48"	2 5/8"	2 5/8"

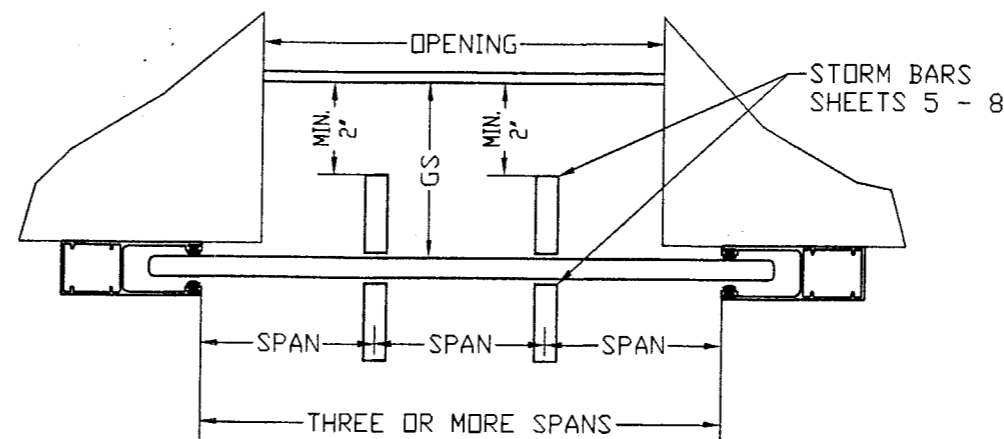
GS: GLASS SEPARATION
SEE TABLE 1A FOR REQUIRED
GLASS SEPARATION



GS: GLASS SEPARATION
SEE TABLE 1A FOR REQUIRED
GLASS SEPARATION



GS: GLASS SEPARATION
SEE TABLE 1A FOR REQUIRED
GLASS SEPARATION



Manufacturer:
CROCI
North America
6360 TOPAZ COURT
FORT MYERS, FL 33966
Tel.: (239) 278-3066
Fax: (239) 278-5977
EMAIL: INFO@CROCIUSA.COM

PRODUCT:
ES 55
EXTRUDED ALUMINUM
ROLL-UP SHUTTER

Engineering:
EngCo Inc.
CA 8116
6971 W. Sunrise Blvd. 104
Plantation, FL 33313
ENGCO@AOL.COM

[Signature]
MAR 14 2008

Engineer Seal
Pedro De Figueiredo, PE 52609

DRAFTING:
PK DRAFTING & MORE

MIAMI-DADE BCCD

Approved in con. with the
Florida Building Code
Date: 07/03/08
NO. 08-0324-13
Miami Dade Product Control
Division
By: *[Signature]*

Date: 02/26/08
Scale: NA
Design by: PPMF

Drawing Number
08-049

Sheet
3 of 14

TRACK ANCHORAGE OPTIONS

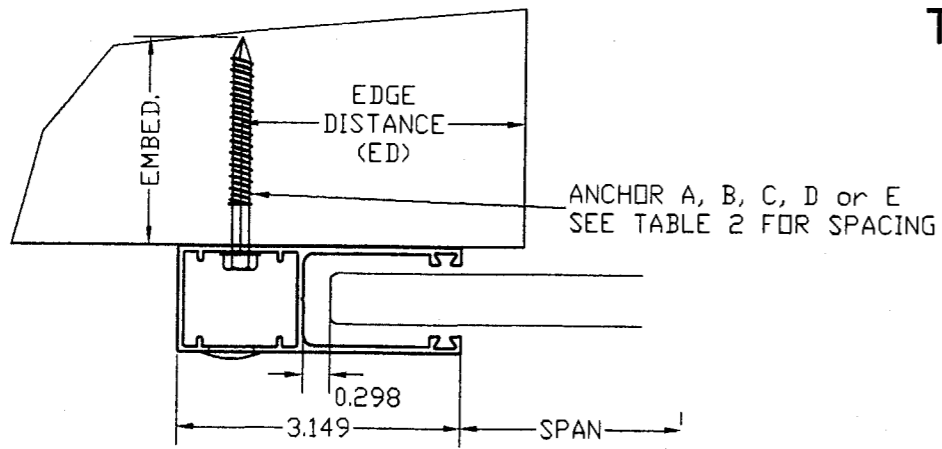


TABLE 2 - WALL MOUNT TRACK ANCHORAGE SPACING

Pd	SLAT SPAN (inches)																																		
	64in				58in				54in				51in				48in				46in														
	A	B	C	D	E	A	B	C	D	E	A	B	C	D	E	A	B	C	D	E	A	B	C	D	E	A	B	C	D	E					
35	6	6	6	6	6	6	6	6	6	6	6	6	6	6	6	6	6	6	6	6	6	6	6	6	6	6	6	6	6	6	6	6	6	6	6
50	6	5	6	6	6	6	5	6	6	6	6	5	6	6	6	6	5	6	6	6	6	5	6	6	6	6	5	6	6	6	6	5	6	6	6
60	-	-	-	-	-	6	4	6	6	6	6	4	6	6	6	6	5	6	6	6	6	5	6	6	6	6	5	6	6	6	6	5	6	6	6
75	-	-	-	-	-	-	-	-	-	-	6	3	6	5	6	6	4	6	5	6	6	4	6	6	6	6	4	6	6	6	6	4	6	6	6
90	-	-	-	-	-	-	-	-	-	-	6	3	6	4	6	6	3	6	5	6	6	3	6	6	6	6	3	6	6	6	6	5	6	6	6
100	-	-	-	-	-	-	-	-	-	-	6	3	6	4	6	6	3	6	4	6	6	3	6	6	6	6	4	6	6	6	6	4	6	6	6

Pd= Design load in Psf // SPAN= Slat span in inches
Anchor spacing in inches on center

ANCHOR SCHEDULE

TYPE	DESCRIPTION	MANUFACTURER	EMBEDMENT	ED	BASE MATERIAL
A	1/4" TAPCON	ITW	1 3/4"	3"	3000 psi CONCRETE
B	1/4" TAPCON	ITW	1"	3"	HOLLOW BLOCK
C	5/16" TAPCON	ITW	2 1/4"	4"	GF BLOCK
D	5/16" TAPCON	ITW	1 3/4"	4"	HOLLOW BLOCK
E	1/4" TAPCON/ LAGS	ITW	1 3/4"	1"	WOOD (SG) = .55

NOTE: 1- ED - EDGE DISTANCE
2- EMBEDMENT IS BEYOND THE WALL DRESSING

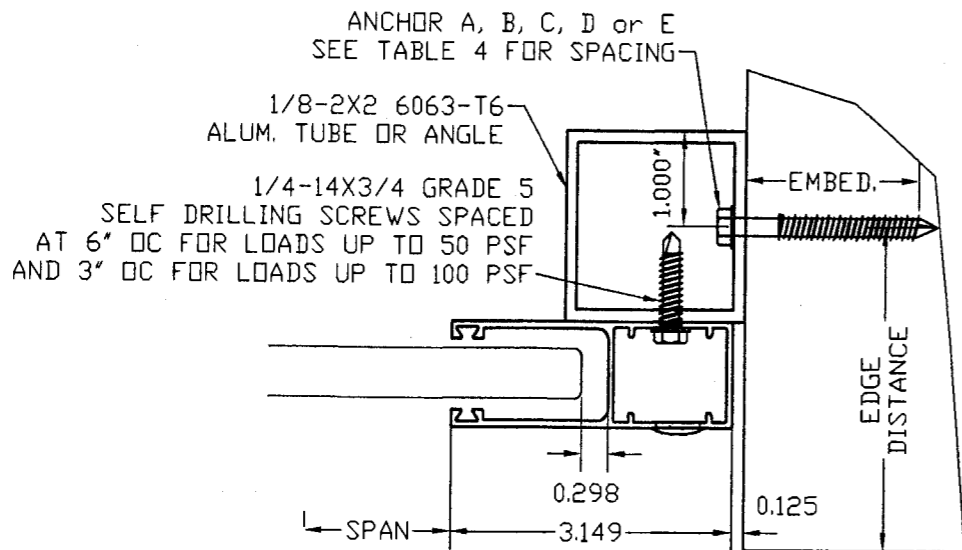


TABLE 3 - BUILT-OUT MOUNT TRACK ANCHORAGE SPACING

Pd	SLAT SPAN (inches)																																		
	64in				58in				54in				51in				48in				46in														
	A	B	C	D	E	A	B	C	D	E	A	B	C	D	E	A	B	C	D	E	A	B	C	D	E	A	B	C	D	E					
35	6	6	6	6	6	6	6	6	6	6	6	6	6	6	6	6	6	6	6	6	6	6	6	6	6	6	6	6	6	6	6	6	6	6	6
50	6	6	6	6	6	6	6	6	6	6	6	6	6	6	6	6	6	6	6	6	6	6	6	6	6	6	6	6	6	6	6	6	6	6	6
60	-	-	-	-	-	6	6	6	6	6	6	6	6	6	6	6	6	6	6	6	6	6	6	6	6	6	6	6	6	6	6	6	6	6	6
75	-	-	-	-	-	-	-	-	-	-	6	5	6	6	6	6	6	6	6	6	6	6	6	6	6	6	6	6	6	6	6	6	6	6	6
90	-	-	-	-	-	-	-	-	-	-	6	5	6	6	6	6	5	6	6	6	6	5	6	6	6	6	5	6	6	6	6	6	6	6	6
100	-	-	-	-	-	-	-	-	-	-	6	4	6	6	6	6	4	6	6	6	6	5	6	6	6	6	5	6	6	6	6	6	6	6	6

Pd= Design load in Psf // SPAN= Slat span in inches
Anchor spacing in inches on center

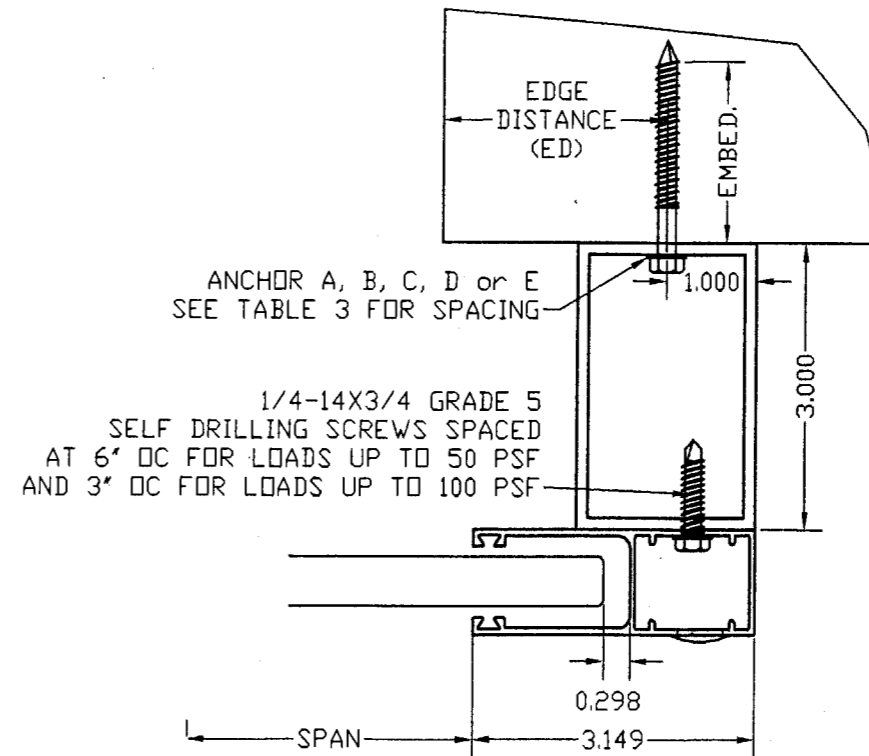


TABLE 4 - INSET MOUNT TRACK ANCHORAGE SPACING

Pd	SLAT SPAN (inches)																																		
	64in				58in				54in				51in				48in				46in														
	A	B	C	D	E	A	B	C	D	E	A	B	C	D	E	A	B	C	D	E	A	B	C	D	E	A	B	C	D	E					
35	6	6	6	6	6	6	6	6	6	6	6	6	6	6	6	6	6	6	6	6	6	6	6	6	6	6	6	6	6	6	6	6	6	6	6
50	6	5	6	6	6	6	5	6	6	6	6	6	6	6	6	6	6	6	6	6	6	6	6	6	6	6	6	6	6	6	6	6	6	6	6
60	-	-	-	-	-	6	4	6	6	6	6	5	6	6	6	6	5	6	6	6	6	5	6	6	6	6	5	6	6	6	6	4	6	6	6
75	-	-	-	-	-	-	-	-	-	-	6	4	6	6	6	6	4	6	6	6	6	4	6	6	6	6	4	6	6	6	6	4	6	6	6
90	-	-	-	-	-	-	-	-	-	-	6	3	6	5	6	6	3	6	5	6	6	3	6	5	6	6	4	6	6	6	6	4	6	6	6
100	-	-	-	-	-	-	-	-	-	-	6	3	6	5	6	6	3	6	5	6	6	3	6	5	6	6	3	6	5	6	6	5	6	6	6

Pd= Design load in Psf // SPAN= Slat span in inches
Anchor spacing in inches on center

Manufacturer:
CROCI
North America
6360 TOPAZ COURT
FORT MYERS, FL 33966
Tel.: (239) 278-3066
Fax: (239) 278-5977
EMAIL: INFO@CROCIUSA.COM

PRODUCT:
ES 55
EXTRUDED ALUMINUM
ROLL-UP SHUTTER

Engineering:
EngCo Inc.
CA 8116
6971 W. Sunrise Blvd. 104
Plantation, FL 33313
ENGCO@AOL.COM

MAR 14 2008
Engineer Seal
Pedro De Figueiredo, PE 52609

DRAFTING:
PK DRAFTING & MORE

MIAMI-DADE BCCD

Approved as complying with the
Florida Building Code
Date: 07/03/08
NOA# 08-0324-13
Miami Dade Product Control
Division
By: *[Signature]*

Date: 02/26/08
Scale: NA
Design by: PPMF

Drawing Number
08-049

Sheet
4 of 14

STORM BARS SELECTION TABLES ALLOWABLE DESIGN LOAD - Pd (Psf)

2x2 STORM BAR - 2 SPANS

SLAT	STORM BAR HEIGHT				
Span	36	48	60	72	84
46	100	71	46	31	--
48	90	69	44	30	--
51	75	65	41	--	--
54	60	60	39	--	--
58	50	50	36	--	--
64	35	35	33	--	--

2x2 STORM BAR - 3+ SPANS

SLAT	STORM BAR HEIGHT				
Span	36	48	60	72	84
46	100	81	52	35	--
48	90	78	50	35	--
51	75	74	46	--	--
54	60	60	45	--	--
58	50	50	41	--	--
64	35	35	35	--	--

2x3 STORM BAR - 2 SPANS

SLAT	STORM BAR HEIGHT				
Span	48	60	72	84	96
46	100	82	56	41	31
48	90	78	54	39	30
51	75	74	50	37	--
54	60	60	48	35	--
58	50	50	45	33	--
64	35	35	35	30	--

2x3 STORM BAR - 3+ SPANS

SLAT	STORM BAR HEIGHT				
Span	48	60	72	84	96
46	100	93	64	46	35
48	90	88	61	45	34
51	75	75	57	42	32
54	60	60	55	40	30
58	50	50	50	37	--
64	35	35	35	34	--

2x4 STORM BAR - 2 SPANS

SLAT	STORM BAR HEIGHT				
Span	72	84	96	108	120
46	86	62	47	37	--
48	82	60	46	35	--
51	75	56	42	34	--
54	60	53	40	31	--
58	50	50	38	30	--
64	35	35	34	--	--

2x4 STORM BAR - 3+ SPANS

SLAT	STORM BAR HEIGHT				
Span	72	84	96	108	120
46	97	71	54	42	31
48	90	68	52	40	30
51	75	64	48	38	--
54	60	60	45	35	--
58	50	50	43	34	--
64	35	35	35	30	--

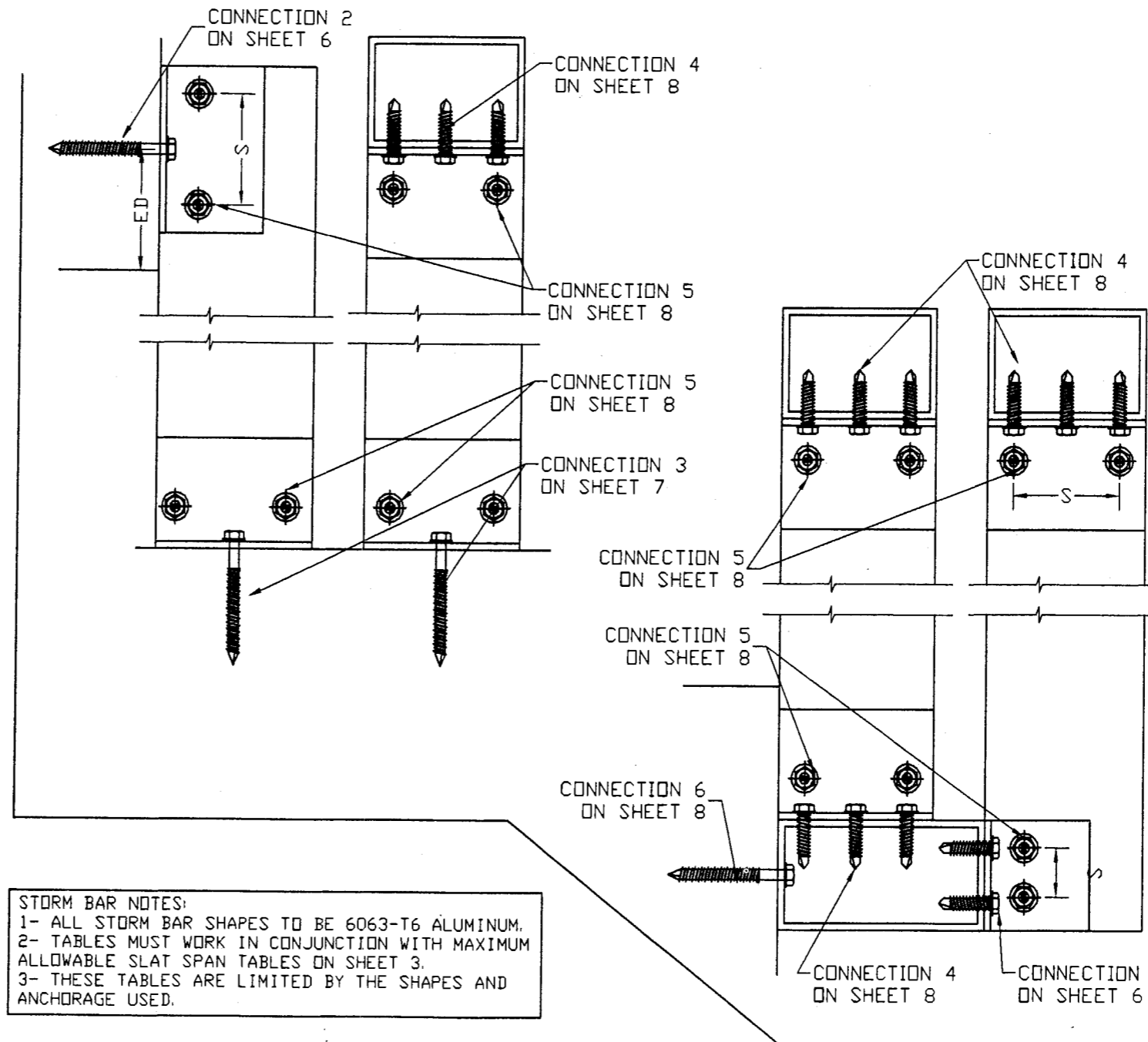
2x5 STORM BAR - 2 SPANS

SLAT	STORM BAR HEIGHT				
Span	72	84	96	108	120
46	100	87	66	52	42
48	90	83	63	50	40
51	75	75	59	46	38
54	60	60	56	44	35
58	50	50	50	41	33
64	35	35	35	35	30

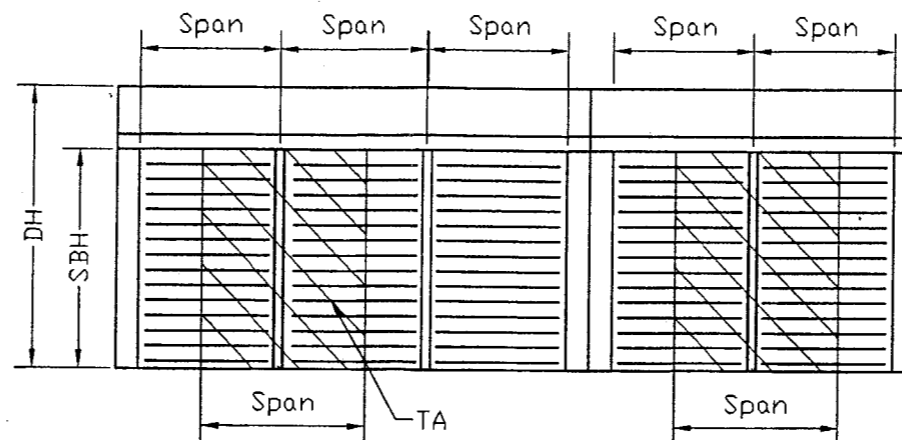
2x5 STORM BAR - 3+ SPANS

SLAT	STORM BAR HEIGHT				
Span	72	84	96	108	120
46	100	99	75	59	47
48	90	90	72	56	45
51	75	75	67	53	43
54	60	60	60	50	40
58	50	50	50	46	37
64	35	35	35	35	34

STORM BARS MOUNTING OPTIONS



STORM BAR NOTES:
 1- ALL STORM BAR SHAPES TO BE 6063-T6 ALUMINUM.
 2- TABLES MUST WORK IN CONJUNCTION WITH MAXIMUM ALLOWABLE SLAT SPAN TABLES ON SHEET 3.
 3- THESE TABLES ARE LIMITED BY THE SHAPES AND ANCHORAGE USED.



DH - DOOR HEIGHT
 SBH - STORM BAR HEIGHT
 TA - STORM BAR TRIBUTARY AREA

Manufacturer:
CROCI
 North America
 6360 TOPAZ COURT
 FORT MYERS, FL 33966
 Tel.: (239) 278-3066
 Fax: (239) 278-5977
 EMAIL: INFO@CROCIUSA.COM

PRODUCT:
ES 55
 EXTRUDED ALUMINUM
 ROLL-UP SHUTTER

Engineering:
EngCo Inc.
 CA 8116
 6971 W. Sunrise Blvd. 104
 Plantation, FL 33313
 ENGCO@AOL.COM

MAR 14 2008

Engineer Seal
 Pedro De Figueiredo, PE 52609

DRAFTING:
PK DRAFTING & MORE

MIAMI-DADE BCCD

Approved as complying with the
 Florida Building Code
 Date: 02/03/08
 No. 08-0524-13
 Miami-Dade Product Control
 Division
 By: *M. Khob*

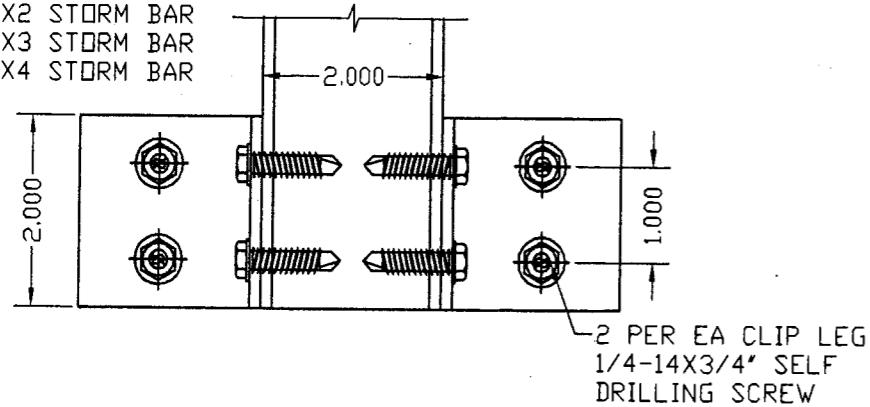
Date: 02/26/08
 Scale: NA
 Design by: PPMF

Drawing Number
08-049

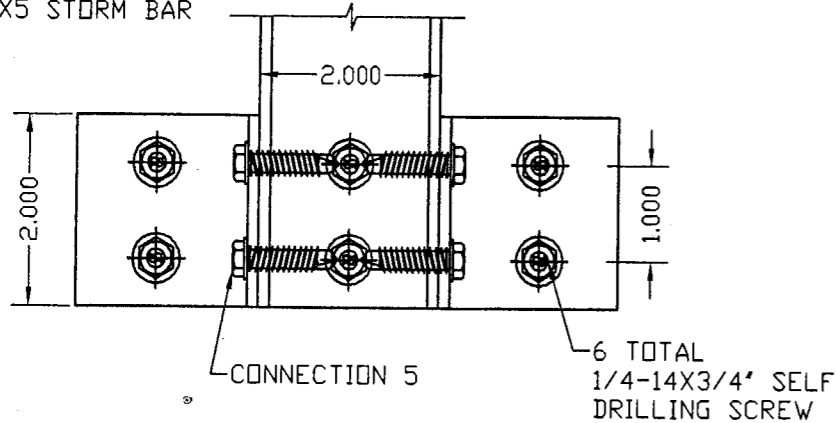
Sheet
5 of 14

**CONNECTION 1
STORM BARS ANCHORAGE
WALL MOUNTED TO ALUMINUM TUBE**

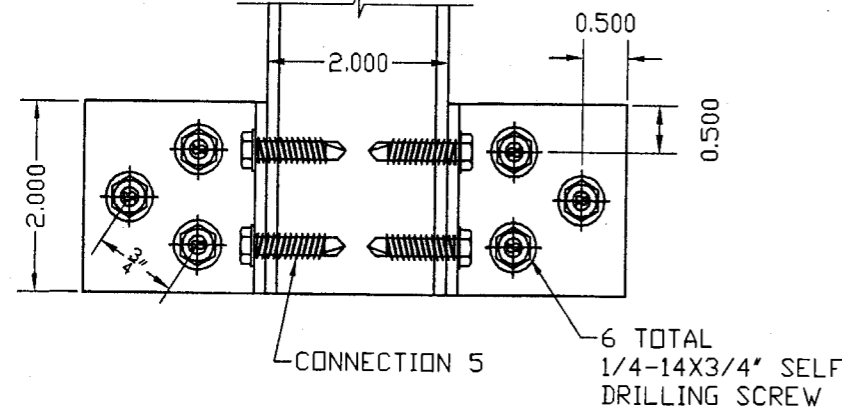
TYPICAL FOR
2X2 STORM BAR
2X3 STORM BAR
2X4 STORM BAR



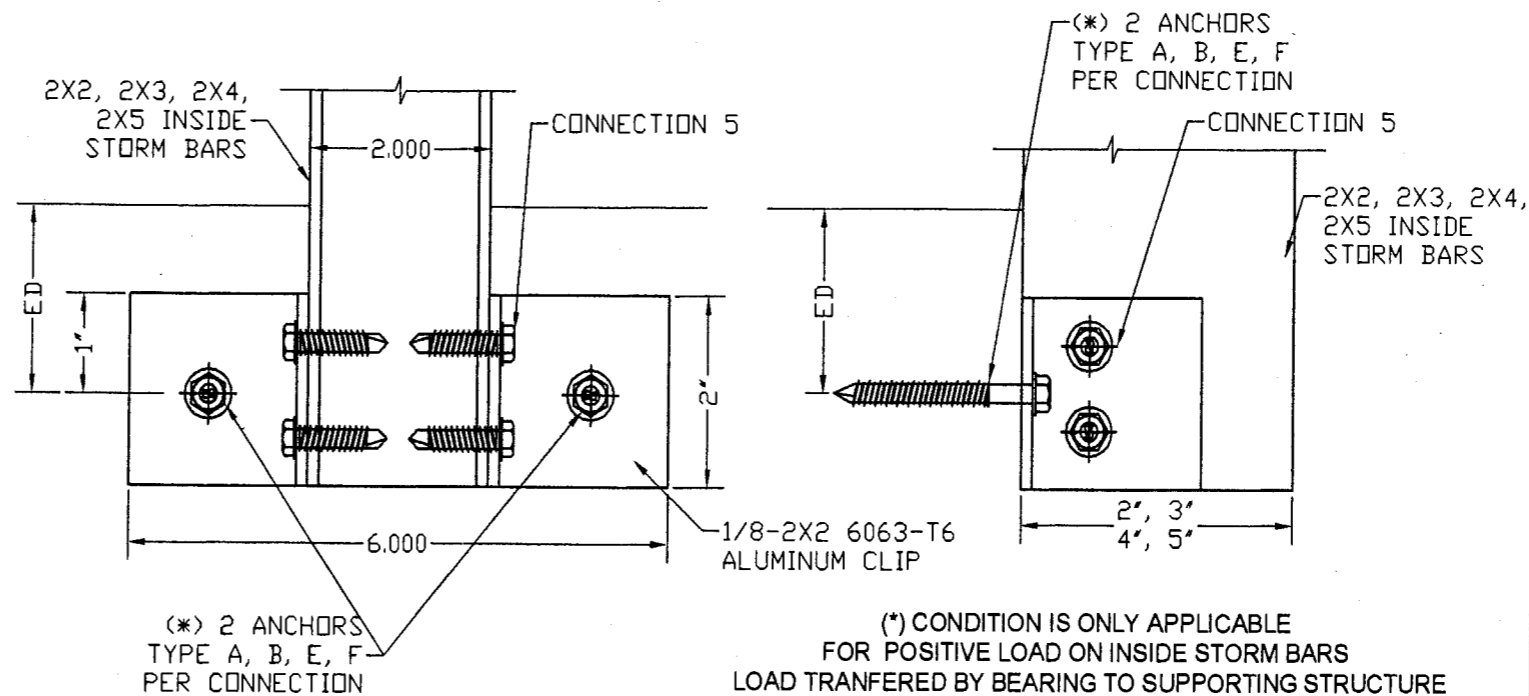
TYPICAL FOR
2X5 STORM BAR



OPTIONAL CONNECTION
FOR 2X5 STORM BAR



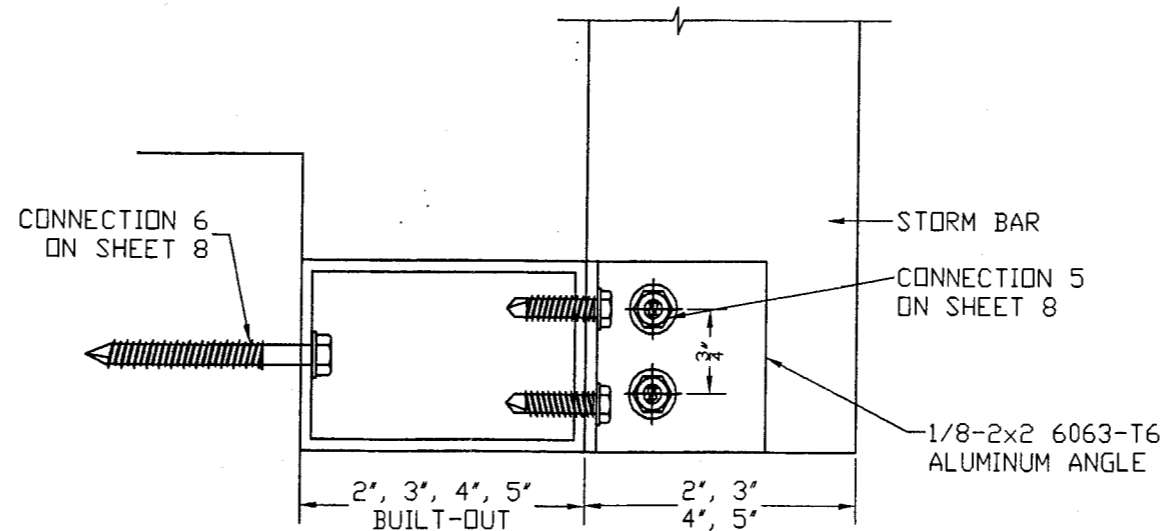
**CONNECTION 2
STORM BARS ANCHORAGE
TO WALL**



ANCHOR SCHEDULE

TYPE	DESCRIPTION	MANUFACTURER	EMBEDMENT	ED	BASE MATERIAL
A	1/4" TAPCON	ITW	1 3/4"	2 1/2"	3192 psi CONCRETE
B	1/4" TAPCON	ITW	1 1/4"	2 1/2"	HOLLOW BLOCK
E	1/4" TAPCON	ITW	1 3/4"	1"	WOOD (SG>= 55)
F	1/4-20 CALKIN	POWERS	7/8"	3"	3000 psi CONCRETE

ED - EDGE DISTANCE



Manufacturer:
CROCI
North America
6360 TOPAZ COURT
FORT MYERS, FL 33966
Tel.: (239) 278-3066
Fax: (239) 278-5977
EMAIL: INFO@CROCIUSA.COM

PRODUCT:
ES 55
EXTRUDED ALUMINUM
ROLL-UP SHUTTER

Engineering:
EngCo Inc.
CA 8116
6971 W. Sunrise Blvd. 104
Plantation, FL 33313
ENGCO@AOL.COM

[Signature]
MAR 14 2008

Engineer Seal
Pedro De Figueiredo, PE 52609

DRAFTING:
PK DRAFTING & MORE

MIAMI-DADE BCCD:

Approved as complying with the
Florida Building Code
Date: 02/23/08
NOA#: 08-0324-13
Miami Dade Product Control
Division
By: *[Signature]*

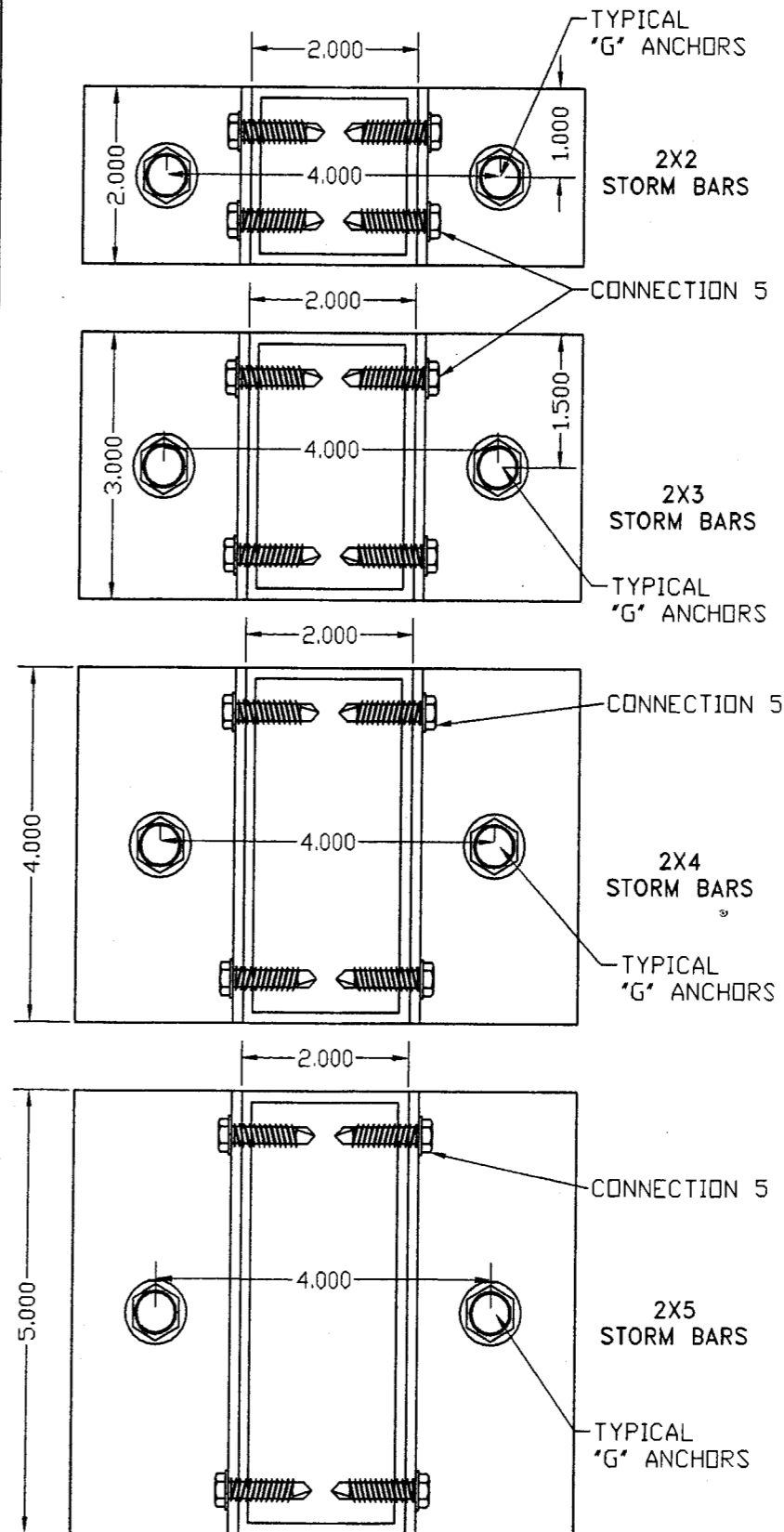
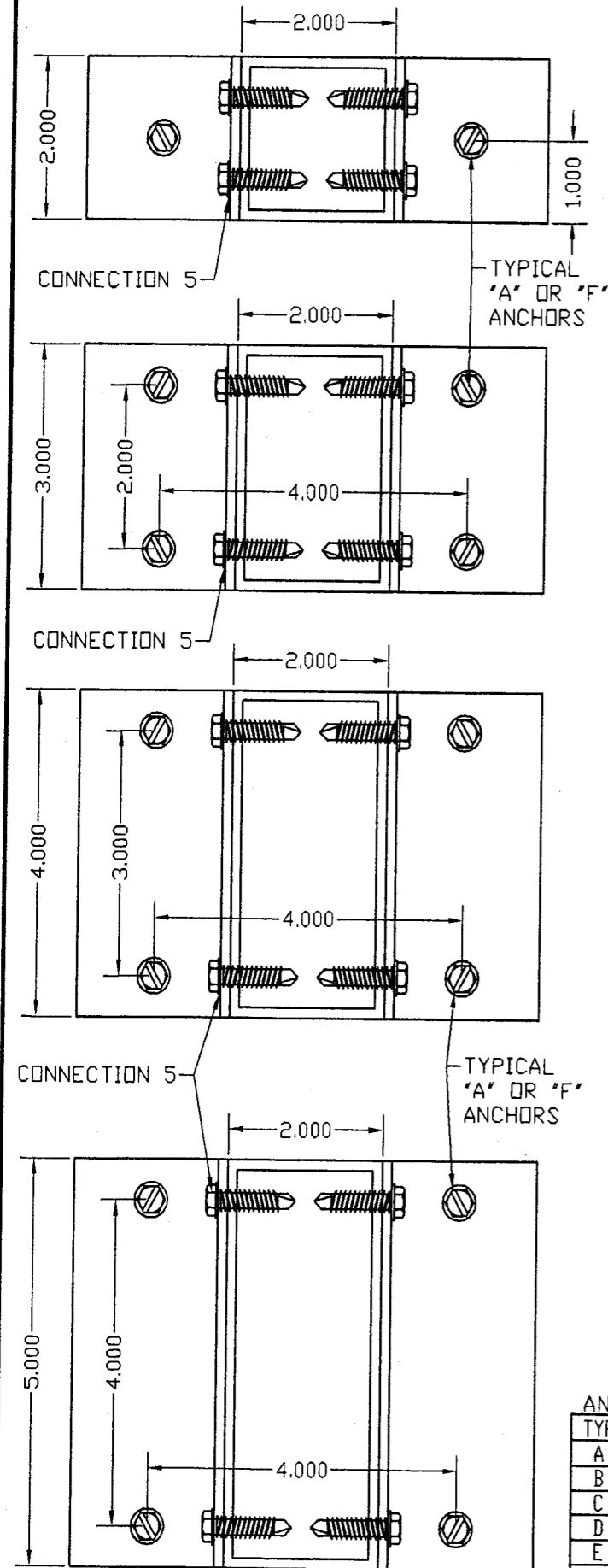
Date: 02/26/08
Scale: NA
Design by: PPMF

Drawing Number
08-049

Sheet
6 of 14

**CONNECTION 3
STORM BARS ANCHORAGE
FLOOR/CEILING MOUNTED TO CONCRETE**

TYPE 'G' ANCHORS APPLICABLE FOR ALL CASES
MUST NOT EXCEED STORM BAR DESIGNED LOAD



		MAXIMUM ALLOWABLE DESIGN PRESSURE (PSF)										
		TYPE 'A' ANCHORS					TYPE 'F' ANCHORS					
BAR	SLAT	STORM BAR HEIGHT					SLAT	STORM BAR HEIGHT				
	Span	36	48	60	72	84		Span	36	48	60	72
2	46	71	53	42	35	30	46	64	48	38	32	--
	48	68	51	40	34	--	48	62	46	37	31	--
	51	64	48	38	32	--	51	58	43	35	--	--
X	54	60	45	36	30	--	54	55	41	33	--	--
	58	50	42	33	--	--	58	51	38	30	--	--
2	64	35	35	30	--	--	64	46	34	--	--	--

BAR	SLAT	STORM BAR HEIGHT					SLAT	STORM BAR HEIGHT				
	Span	48	60	72	84	96		Span	48	60	72	84
2	46	71	57	47	40	35	46	77	62	51	44	38
	48	68	54	45	39	34	48	74	59	49	42	37
	51	64	51	43	36	32	51	70	56	46	40	35
X	54	60	48	40	34	30	54	60	52	44	37	33
	58	50	45	37	32	--	58	50	49	41	35	30
3	64	35	35	34	--	--	64	35	35	35	31	--

BAR	SLAT	STORM BAR HEIGHT					SLAT	STORM BAR HEIGHT				
	Span	72	84	96	108	120		Span	72	84	96	108
2	46	80	68	60	53	48	46	72	62	54	48	43
	48	76	65	57	51	46	48	69	59	52	46	41
	51	72	61	54	48	43	51	65	56	49	43	39
X	54	60	58	51	45	40	54	60	53	46	41	37
	58	50	50	47	50	38	58	50	49	43	38	34
4	64	35	35	35	35	--	64	35	35	35	34	31

BAR	SLAT	STORM BAR HEIGHT					SLAT	STORM BAR HEIGHT				
	Span	72	84	96	108	120		Span	72	84	96	108
2	46	85	73	64	56	51	46	77	66	58	51	46
	48	81	70	61	54	49	48	74	63	55	49	44
	51	75	66	57	51	46	51	70	60	52	46	42
X	54	60	60	54	48	43	54	60	56	49	44	39
	58	50	50	50	45	40	58	50	50	46	41	36
5	64	35	35	35	35	35	64	35	35	35	35	33

ANCHOR SCHEDULE

TYPE	DESCRIPTION	MANUFACTURER	EMBEDMENT	ED	BASE MATERIAL
A	1/4" TAPCON	ITW	1 3/4"	2 1/2"	3192 psi CONCRETE
B	1/4" TAPCON	ITW	1 1/4"	2 1/2"	HOLLOW BLOCK
C	5/16" TAPCON	ITW	2 1/4"	4"	GF BLOCK
D	5/16" TAPCON	ITW	1 3/4"	4"	HOLLOW BLOCK
E	1/4" TAPCON	ITW	1 3/4"	1"	PT WOOD (SG) = .55
F	1/4-20 CALKIN	POWERS	7/8"	3"	3000 psi CONCRETE
G	3/8" WEDGE BOLTS	POWERS	2 1/2"	4"	3000 psi CONCRETE

ED - EDGE DISTANCE

Manufacturer:
CROCI
North America
6360 TOPAZ COURT
FORT MYERS, FL 33966
Tel.: (239) 278-3066
Fax: (239) 278-5977
EMAIL: INFO@CROCIUSA.COM

PRODUCT:
ES 55
EXTRUDED ALUMINUM
ROLL-UP SHUTTER

Engineering:
EngCo Inc.
CA 8116
6971 W. Sunrise Blvd. 104
Plantation, FL 33313
ENGCO@AOL.COM

MAR 14 2008

Engineer Seal
Pedro De Figueiredo, PE 52609

DRAFTING:
PK DRAFTING & MORE

MIAMI-DADE BCCD:

Approved as complying with the
Florida Building Code
Date: 07/03/08
NO. 08-0324-13
Miami-Dade Product Control
Division
By: *M. Khalil*

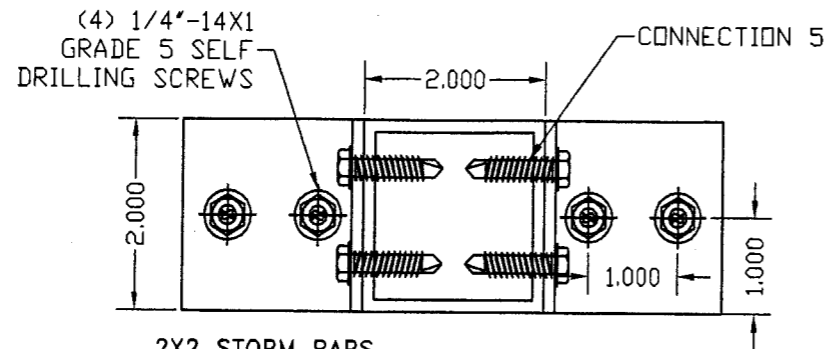
Date: 02/26/08
Scale: NA
Design by: PPMF

Drawing Number
08-049

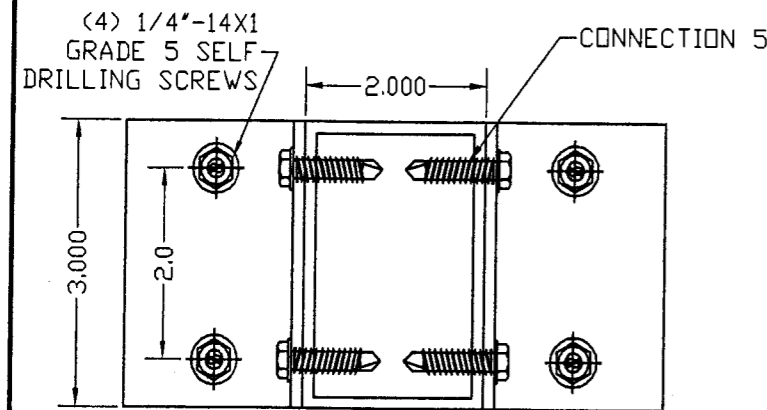
Sheet
7 of 14

CONNECTION 5

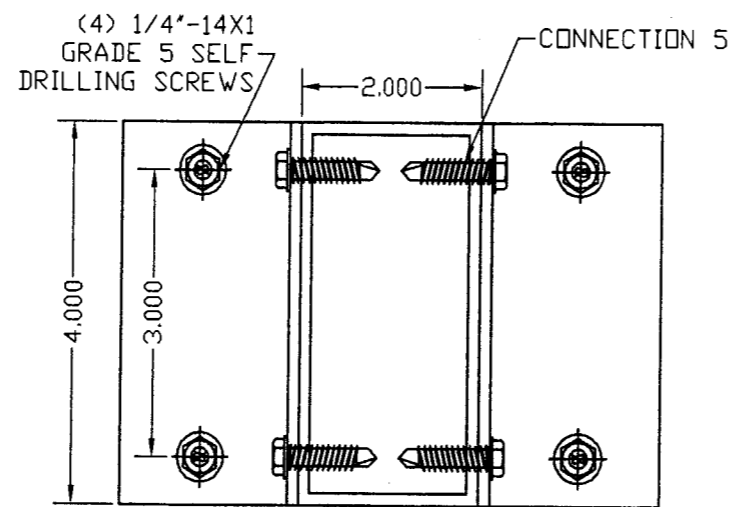
CONNECTION 4
STORM BARS ANCHORAGE FLOOR/CEILING
TO BUILT-OUT TUBE OR HEADER



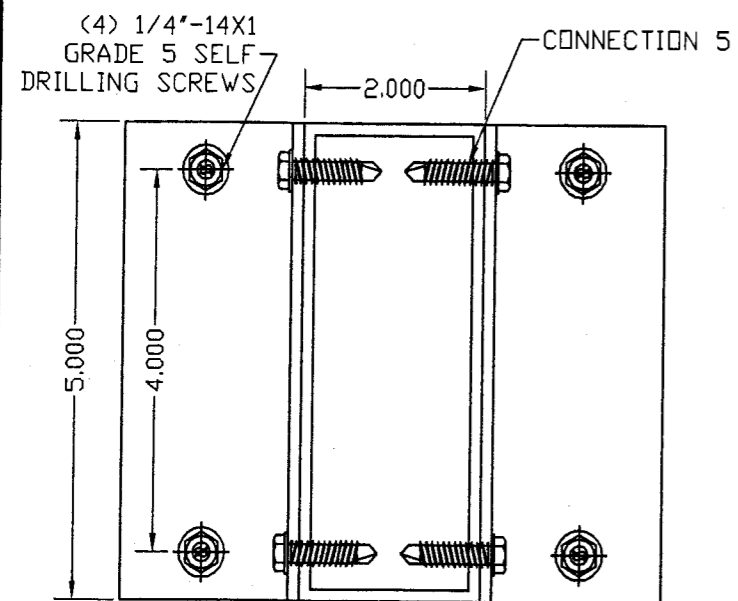
2X2 STORM BARS
ACCEPTABLE FOR ALL CASES
MUST NOT EXCEED STORM BAR DESIGNED LOAD



2X3 STORM BARS
ACCEPTABLE FOR ALL CASES
MUST NOT EXCEED STORM BAR DESIGNED LOAD



2X4 STORM BARS
ACCEPTABLE FOR ALL CASES
MUST NOT EXCEED STORM BAR DESIGNED LOAD



2X5 STORM BARS
ACCEPTABLE FOR ALL CASES
MUST NOT EXCEED STORM BAR DESIGNED LOAD

CONNECTION 6
MINIMUM NUMBER OF ANCHORS
TO SECURE BUILT-OUT TO WALL

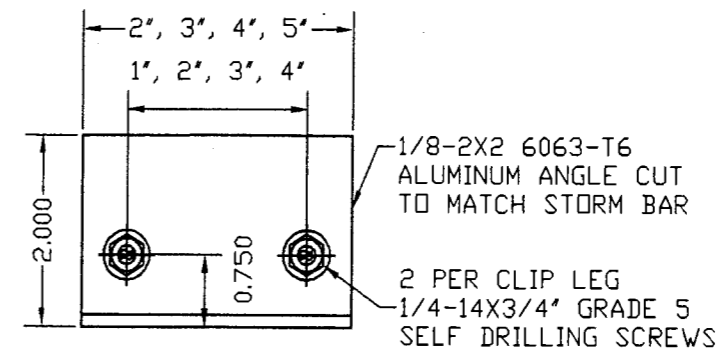
STORM BARS	ANCHOR TYPE			
	A	B	E	D
2x2	2	4	2	3
2x3	2	5	2	4
2x4	3	7	3	5
2x5	3	8	3	6

	ANCHOR TYPE			
	A	B	E	D
S	3.0	3.0	2.0	3.75
ED	2.5	2.5	1.0	4.0

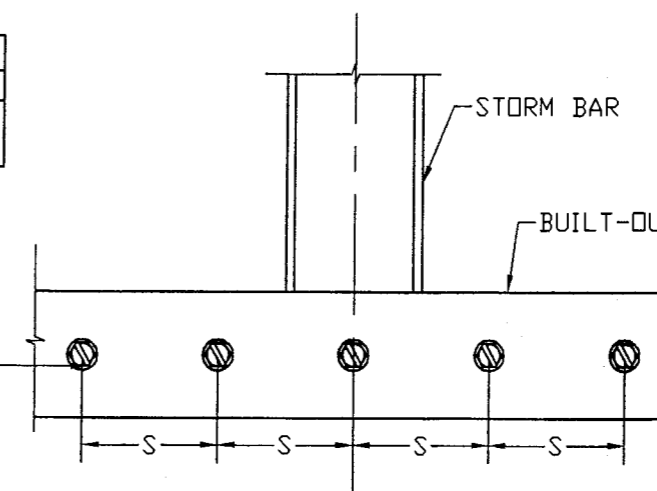
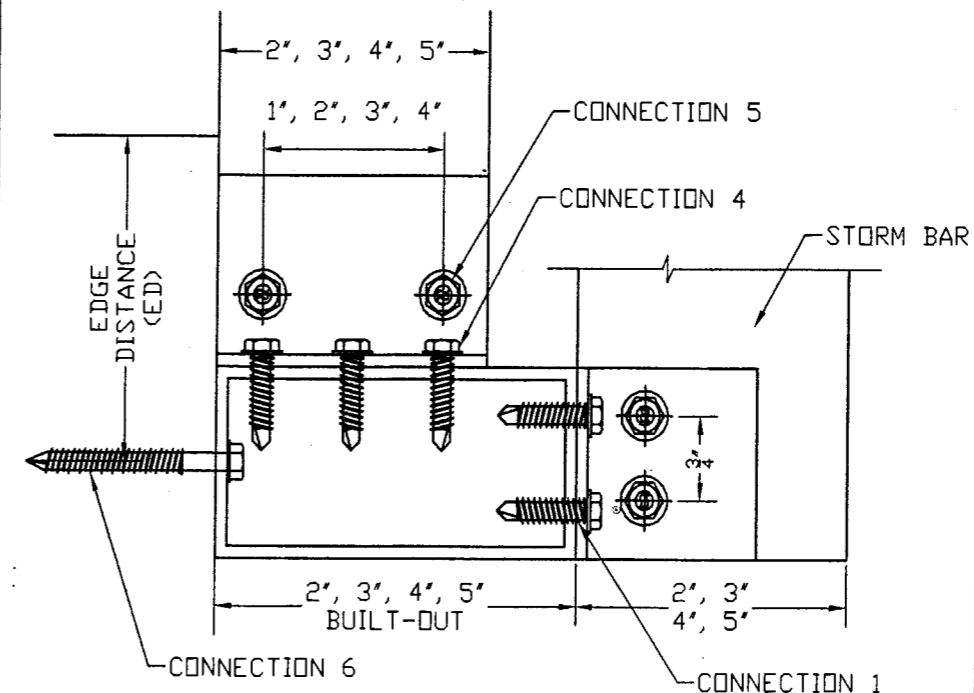
S - ANCHOR SPACING
ED - EDGE DISTANCE

QUANTITY OF ANCHORS FROM TABLE
ARE TO BE EQUALLY DIVIDED
FROM CENTER LINE OF STORM BAR

CONNECTION 5
CLIP ANCHORED TO STORM BAR



CONNECTION 6
BUILT-OUT WALL ANCHORAGE



Manufacturer:
CROCI
North America
6360 TOPAZ COURT
FORT MYERS, FL 33966
Tel.: (239) 278-3066
Fax: (239) 278-5977
EMAIL: INFO@CROCIUSA.COM

PRODUCT:
ES 55
EXTRUDED ALUMINUM
ROLL-UP SHUTTER

Engineering:
EngCo Inc.
CA 8116
6971 W. Sunrise Blvd. 104
Plantation, FL 33313
ENGCO@AOL.COM

MAR 14 2008

Engineer Seal
Pedro De Figueiredo, PE 52609

DRAFTING:
PK DRAFTING & MORE

MIAMI-DADE BCCD

Approved as complying with the
Florida Building Code
Date: 07/03/08
NOAR: 08-0324-13
Miami-Dade Product Control
Division
By: *M. Khair*

Date: 02/26/08
Scale: NA
Design by: PPMF

Drawing Number
08-049

Sheet
8 of 14

HEADER SELECTION TABLES

ALLOWABLE DESIGN LOAD - Pd (Psf)

MAXIMUM DESIGN PRESSURE FOR 2X3 HEADER - 2 SPANS

SLAT	STORM BAR HEIGHT					
TT	36	48	60	72	84	96
92	88	66	53	44	38	33
96	81	61	49	40	35	30
102	72	54	43	36	31	--
108	64	48	38	32	--	--
116	55	41	33	--	--	--
128	45	34	--	--	--	--

MAXIMUM DESIGN PRESSURE FOR 2X3 HEADER - 3+ SPANS

SLAT	STORM BAR HEIGHT					
TT	36	48	60	72	84	96
108	82	61	49	41	35	30
120	66	50	40	33	--	--
126	60	45	36	30	--	--
138	49	37	--	--	--	--
144	41	31	--	--	--	--
153	32	--	--	--	--	--

MAXIMUM DESIGN PRESSURE FOR 2X4 HEADER - 2 SPANS

SLAT	STORM BAR HEIGHT					
TT	48	60	72	84	96	108
92	100	81	67	57	50	45
96	90	74	62	53	46	41
102	75	65	54	47	41	36
108	60	58	49	42	36	32
116	50	50	42	36	31	--
128	35	35	34	--	--	--

MAXIMUM DESIGN PRESSURE FOR 2X4 HEADER - 3+ SPANS

SLAT	STORM BAR HEIGHT					
TT	48	60	72	84	96	108
108	94	75	62	53	47	41
120	76	60	50	43	38	33
138	57	46	38	32	--	--
144	52	42	35	30	--	--
153	46	37	31	--	--	--
162	39	31	--	--	--	--

MAXIMUM DESIGN PRESSURE FOR 2X5 HEADER - 2 SPANS

SLAT	STORM BAR HEIGHT					
TT	60	72	84	96	108	120
92	100	94	80	70	62	56
96	90	86	74	65	57	52
102	75	75	65	57	51	46
108	60	60	58	51	45	41
116	50	50	50	44	39	35
128	35	35	35	35	32	--

MAXIMUM DESIGN PRESSURE FOR 2X5 HEADER - 3+ SPANS

SLAT	STORM BAR HEIGHT					
TT	60	72	84	96	108	120
120	85	70	60	53	47	42
138	64	53	45	40	35	32
144	59	49	42	36	32	--
153	52	43	37	32	--	--
162	46	38	33	--	--	--
174	40	33	--	--	--	--

MAXIMUM DESIGN PRESSURE FOR 2X6 HEADER - 2 SPANS

SLAT	STORM BAR HEIGHT					
TT	60	72	84	96	108	120
92	100	100	100	93	83	75
96	90	90	90	86	76	69
102	75	75	75	75	67	61
108	60	60	60	60	60	54
116	50	50	50	50	50	47
128	35	35	35	35	35	35

MAXIMUM DESIGN PRESSURE FOR 2X6 HEADER - 3+ SPANS

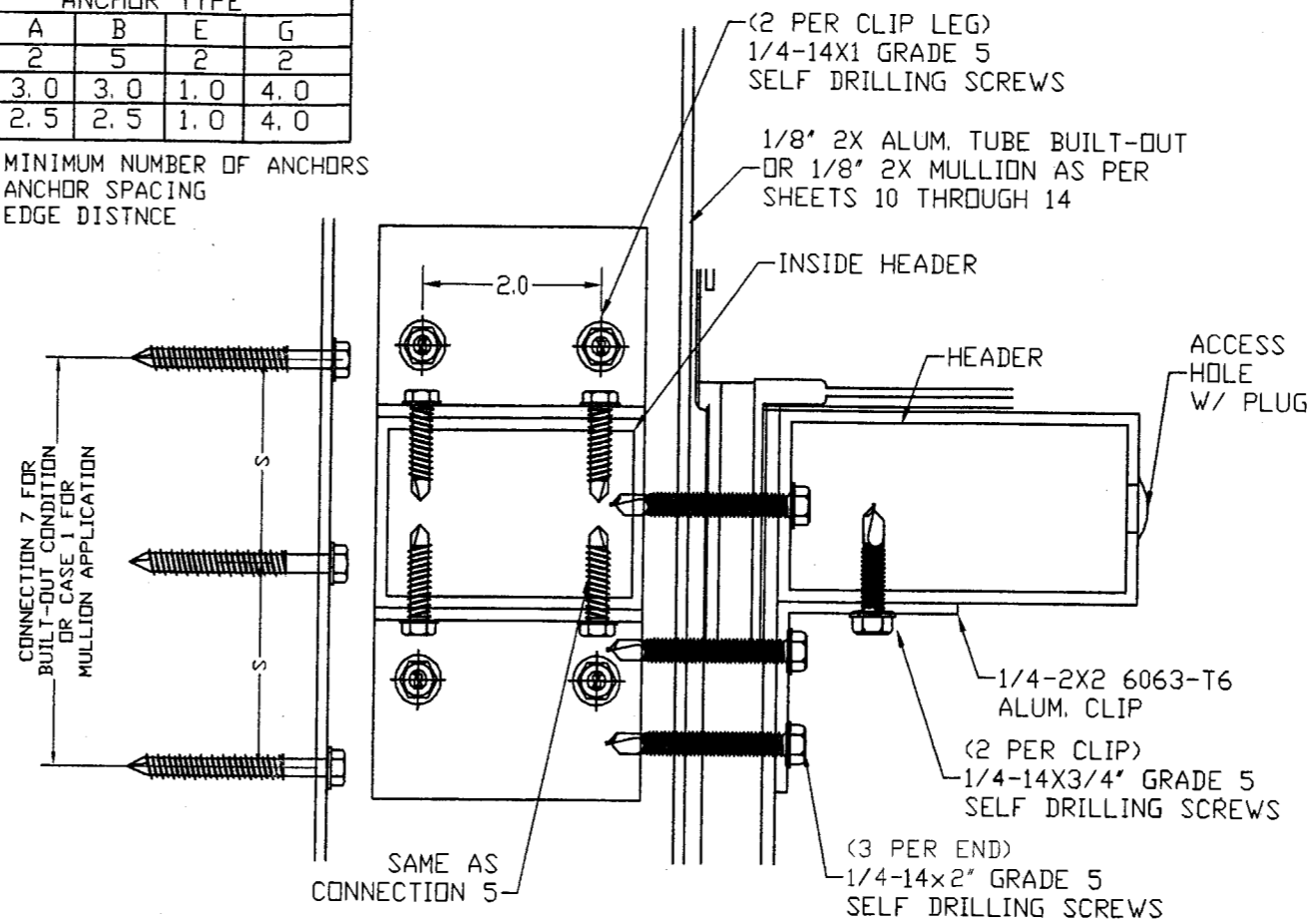
SLAT	STORM BAR HEIGHT					
TT	60	72	84	96	108	120
138	85	71	60	53	47	42
144	78	65	56	49	43	39
153	69	57	49	43	38	34
162	60	51	44	38	34	30
174	50	44	38	33	--	--
192	35	35	31	--	--	--

CONNECTION 7
MINIMUM NUMBER OF ANCHORS TO SECURE BUILT-OUT TO WALL AT HEADER CONNECTION

n	ANCHOR TYPE			
	A	B	E	G
n	2	5	2	2
S	3.0	3.0	1.0	4.0
ED	2.5	2.5	1.0	4.0

n - MINIMUM NUMBER OF ANCHORS
S - ANCHOR SPACING
ED - EDGE DISTANCE

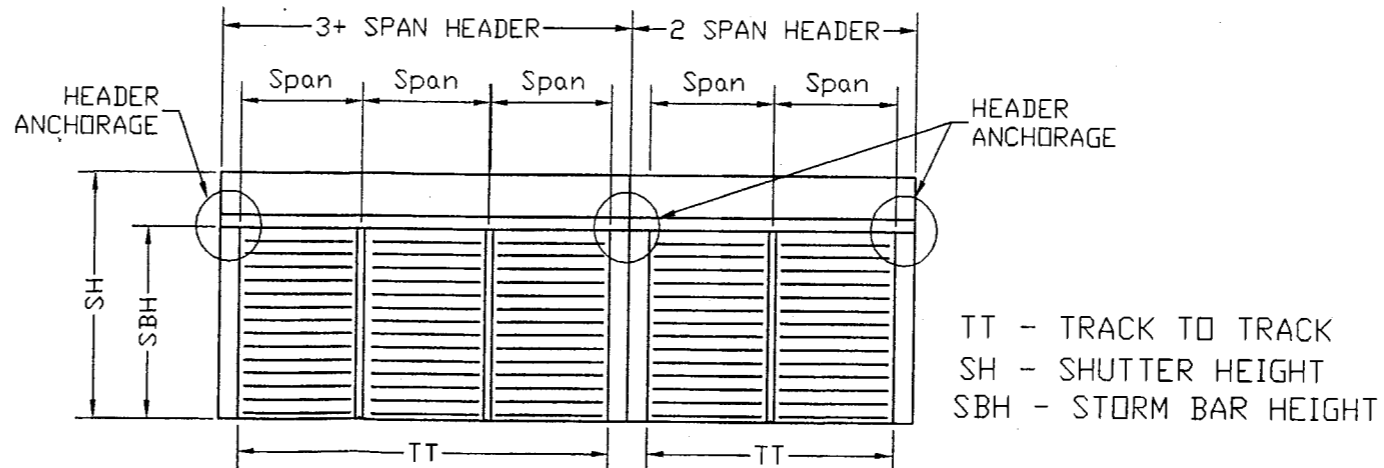
HEADER MOUNT



ANCHOR SCHEDULE

TYPE	DESCRIPTION	MANUFACTURER	EMBEDMENT	ED	BASE MATERIAL
A	1/4" TAPCON	ITW	1 3/4"	2 1/2"	3192 psi CONCRETE
B	1/4" TAPCON	ITW	1 1/4"	2 1/2"	HOLLOW BLOCK
C	5/16" TAPCON	ITW	2 1/4"	4"	GF BLOCK
D	5/16" TAPCON	ITW	1 3/4"	4"	HOLLOW BLOCK
E	1/4" TAPCON	ITW	1 3/4"	1"	PT WOOD (SG) = 55
F	1/4-20 CALKIN	POWERS	7/8"	3"	3000 psi CONCRETE
G	3/8" WEDGE BOLTS	POWERS	2 1/2"	4"	3000 psi CONCRETE

ED - EDGE DISTANCE



TT - TRACK TO TRACK
SH - SHUTTER HEIGHT
SBH - STORM BAR HEIGHT

Manufacturer:

C R O C I

North America

6360 TOPAZ COURT

FORT MYERS, FL 33966

Tel.: (239) 278-3066

Fax: (239) 278-5977

EMAIL: INFO@CROCIUSA.COM

PRODUCT:

ES 55

EXTRUDED ALUMINUM
ROLL-UP SHUTTER

Engineering:

EngCo Inc.

CA 8116

6971 W. Sunrise Blvd. 104

Plantation, FL 33313

ENGCO@AOL.COM

MAR 1 2008

Engineer Seal

Pedro De Figueiredo, PE 52609

DRAFTING:

PK DRAFTING & MORE

MIAMI-DADE BCCD:

Approved as complying with the

Florida Building Code

Date: 02/03/08

Rev: 08-0324-13

1/2" Miami-Dade Product Council

Division

By: *M. Khar*

Date: 02/26/08

Scale: NA

Design by: PPMF

Drawing Number

08-049

Sheet

9 of 14

MULLION SELECTION TABLES

ALLOWABLE DESIGN LOAD - Pd (Psf)

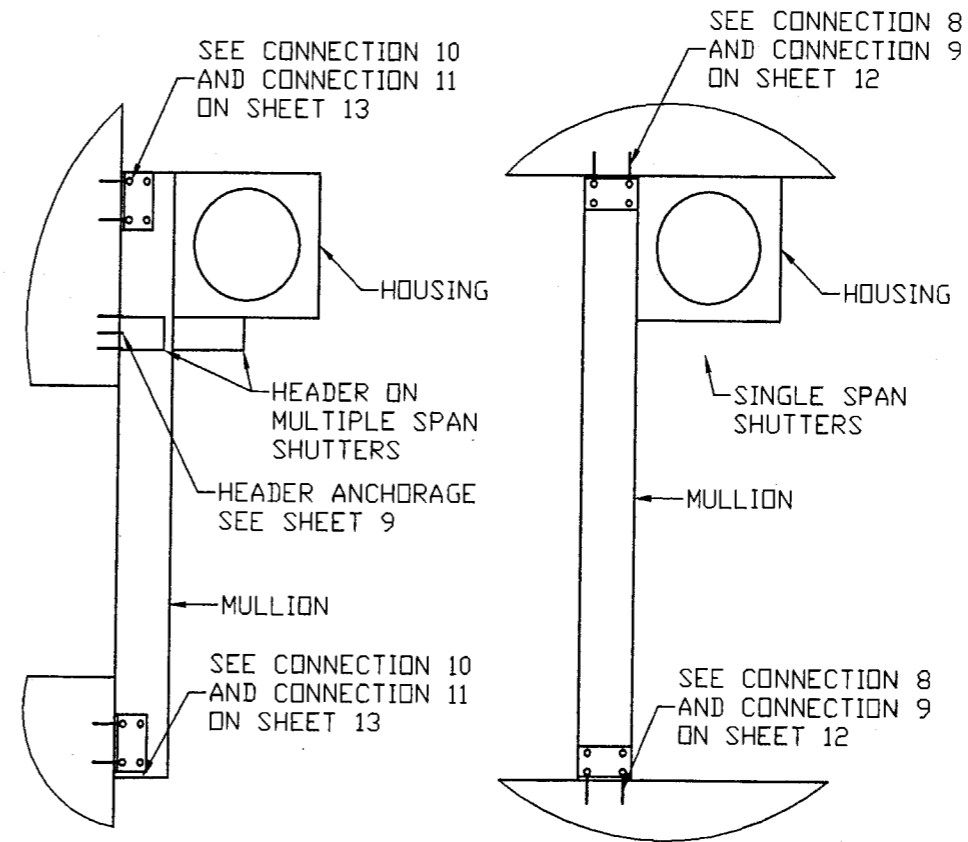
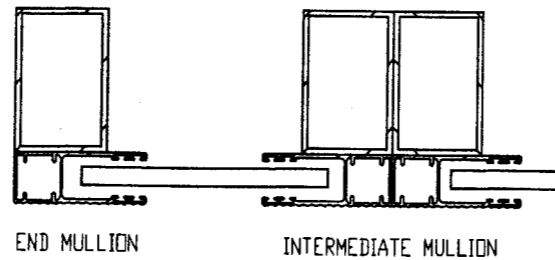
CASE 1:

SINGLE SPAN SHUTTERS AND MULTIPLE SPAN SHUTTERS
WITH HEADER ANCHORED TO WALL

2x2 MULLION

SLAT SPAN	MULLION HEIGHT						
	48	60	72	84	96	108	120
46	100	68	39	--	--	--	--
48	90	65	38	--	--	--	--
51	75	61	36	--	--	--	--
54	60	58	34	--	--	--	--
58	50	50	31	--	--	--	--
64	35	35	--	--	--	--	--

LOADS ARE LIMITED BY THE SLAT SPAN TABLE ON SHEET 3



2x3 MULLION

SLAT SPAN	MULLION HEIGHT						
	48	60	72	84	96	108	120
46	100	100	100	66	44	31	--
48	90	90	90	63	43	30	--
51	75	75	75	60	40	--	--
54	60	60	60	56	38	--	--
58	50	50	50	50	35	--	--
64	35	35	35	35	32	--	--

LOADS ARE LIMITED BY THE SLAT SPAN TABLE ON SHEET 3

2x4 MULLION

SLAT SPAN	MULLION HEIGHT						
	48	60	72	84	96	108	120
46	100	100	100	100	90	63	46
48	90	90	90	90	86	61	44
51	75	75	75	75	75	57	42
54	60	60	60	60	60	54	39
58	50	50	50	50	50	50	37
64	35	35	35	35	35	35	33

LOADS ARE LIMITED BY THE SLAT SPAN TABLE ON SHEET 3

2x5 MULLION

SLAT SPAN	MULLION HEIGHT						
	48	60	72	84	96	108	120
46	100	100	100	100	100	100	80
48	90	90	90	90	90	90	77
51	75	75	75	75	75	75	73
54	60	60	60	60	60	60	60
58	50	50	50	50	50	50	50
64	35	35	35	35	35	35	35

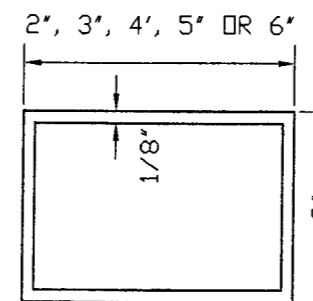
LOADS ARE LIMITED BY THE SLAT SPAN TABLE ON SHEET 3

2x6 MULLION

SLAT SPAN	MULLION HEIGHT						
	48	60	72	84	96	108	120
46	100	100	100	100	100	100	100
48	90	90	90	90	90	90	90
51	75	75	75	75	75	75	75
54	60	60	60	60	60	60	60
58	50	50	50	50	50	50	50
64	35	35	35	35	35	35	35

LOADS ARE LIMITED BY THE SLAT SPAN TABLE ON SHEET 3

SHAPES:
1/8-2X2 6063-T6
1/8-2X3 6063-T6
1/8-2X4 6063-T6
1/8-2X5 6063-T6
1/8-2X6 6063-T6



Manufacturer:
CROCI
North America
6360 TOPAZ COURT
FORT MYERS, FL 33966
Tel.: (239) 278-3066
Fax: (239) 278-5977
EMAIL: INFO@CROCIUSA.COM

PRODUCT:
ES 55
EXTRUDED ALUMINUM
ROLL-UP SHUTTER

Engineering:
EngCo Inc.
CA 8116
6971 W. Sunrise Blvd. 104
Plantation, FL 33313
ENGCO@AOL.COM

MAR 1 2008

Engineer Seal
Pedro De Figueiredo, PE 52609

DRAFTING:
PK DRAFTING & MORE

MIAMI-DADE BCCD

Approved as complying with the
Florida Building Code
Date: 07/03/08
Project: 08-0324-13
Miami-Dade Product Control
Division
By: *M. Pharis*

Date: 02/26/08
Scale: NA
Design by: PPMF

Drawing Number
08-049

Sheet
10 of 14

MULLION SELECTION TABLES

ALLOWABLE DESIGN LOAD - Pd (Psf)

2x2 MULLION

SLAT SPAN	MULLION HEIGHT						
	48	60	72	84	96	108	120
46	67	40	--	--	--	--	--
48	64	38	--	--	--	--	--
51	60	36	--	--	--	--	--
54	57	34	--	--	--	--	--
58	50	32	--	--	--	--	--
64	35	--	--	--	--	--	--

LOADS ARE LIMITED BY THE SLAT SPAN TABLE ON SHEET 3

2x3 MULLION

SLAT SPAN	MULLION HEIGHT						
	48	60	72	84	96	108	120
46	100	89	67	45	32	--	--
48	90	85	64	43	31	--	--
51	75	75	60	41	--	--	--
54	60	60	57	38	--	--	--
58	50	50	50	36	--	--	--
64	35	35	35	32	--	--	--

LOADS ARE LIMITED BY THE SLAT SPAN TABLE ON SHEET 3

2x5 MULLION

SLAT SPAN	MULLION HEIGHT						
	48	60	72	84	96	108	120
46	100	89	74	64	56	50	45
48	90	85	71	61	54	48	43
51	75	75	67	58	51	45	41
54	60	60	60	55	48	43	38
58	50	50	50	50	44	40	36
64	35	35	35	35	35	35	32

LOADS ARE LIMITED BY THE SLAT SPAN TABLE ON SHEET 3

2x4 MULLION

SLAT SPAN	MULLION HEIGHT						
	48	60	72	84	96	108	120
46	100	89	74	64	56	47	36
48	90	85	71	61	54	45	35
51	75	75	67	58	51	42	32
54	60	60	60	55	48	40	31
58	50	50	50	50	44	37	--
64	35	35	35	35	35	34	--

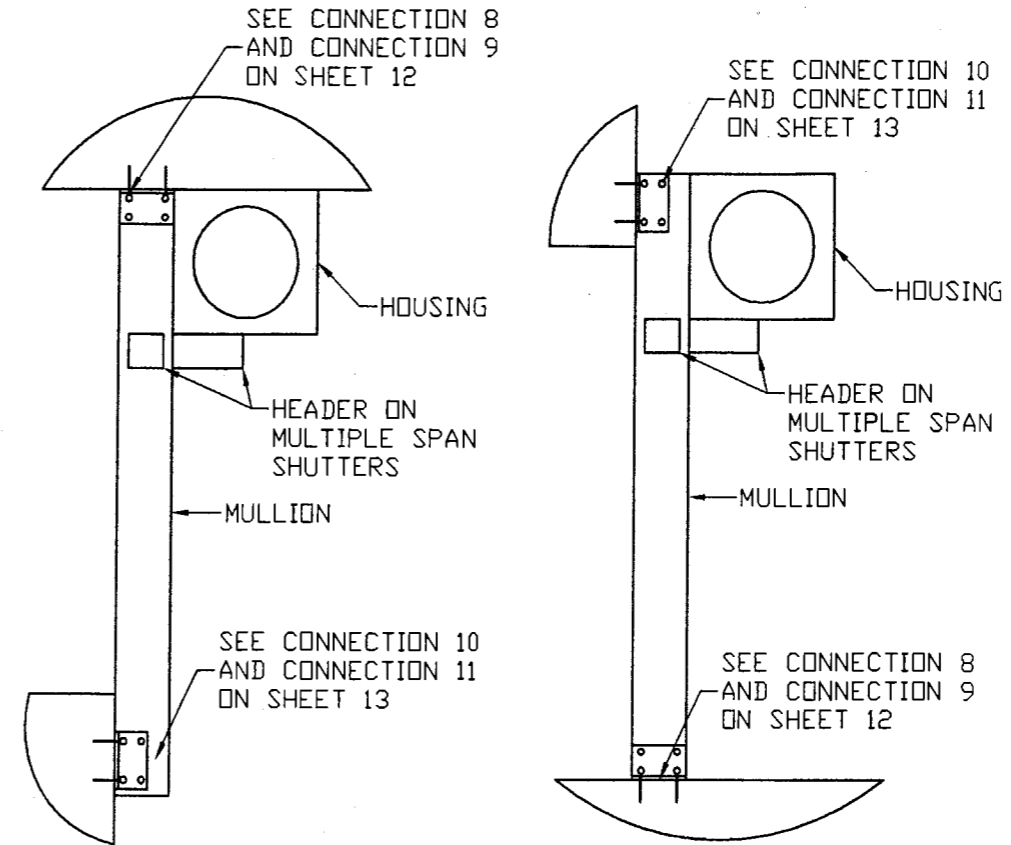
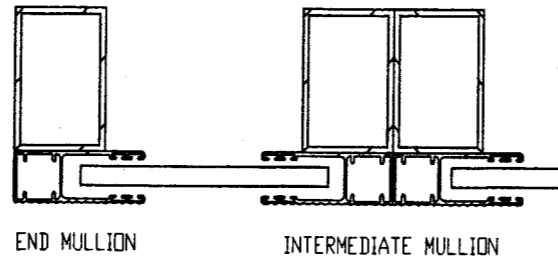
LOADS ARE LIMITED BY THE SLAT SPAN TABLE ON SHEET 3

2x6 MULLION

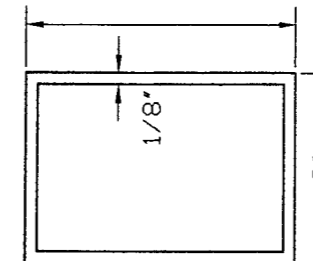
SLAT SPAN	MULLION HEIGHT						
	48	60	72	84	96	108	120
46	100	89	74	64	56	50	45
48	90	85	71	61	54	48	43
51	75	75	67	58	51	45	41
54	60	60	60	55	48	43	38
58	50	50	50	50	44	40	36
64	35	35	35	35	35	35	32

LOADS ARE LIMITED BY THE SLAT SPAN TABLE ON SHEET 3

CASE 2: MULTIPLE SPAN SHUTTERS WITH HEADER ANCHORED TO MULLION



2', 3', 4', 5' OR 6'



- SHAPES:
 1/8-2X2 6063-T6
 1/8-2X3 6063-T6
 1/8-2X4 6063-T6
 1/8-2X5 6063-T6
 1/8-2X6 6063-T6

Manufacturer:
CROCI
 North America
 6360 TOPAZ COURT
 FORT MYERS, FL 33966
 Tel.: (239) 278-3066
 Fax: (239) 278-5977
 EMAIL: INFO@CROCIUSA.COM

PRODUCT:
ES 55
 EXTRUDED ALUMINUM
 ROLL-UP SHUTTER

Engineering:
EngCo Inc.
 CA 8116
 6971 W. Sunrise Blvd. 104
 Plantation, FL 33313
 ENGCO@AOL.COM

MAR 14 2008

Engineer Seal
 Pedro De Figueiredo, PE 52609

DRAFTING:
PK DRAFTING & MORE

MIAMI-DADE BCCD:

Approved as complying with the
 Florida Building Code
 Date: 02/26/08
 NOAH 08-2024-13
 Miami Dade Product Control
 Division
 By: *M. Mark*

Date: 02/26/08
 Scale: NA
 Design by: PPMF

Drawing Number
08-049

Sheet
11 of 14

MULLION BARS ANCHORAGE

Manufacturer:
CROCI
 North America
 6360 TOPAZ COURT
 FORT MYERS, FL 33966
 Tel.: (239) 278-3066
 Fax: (239) 278-5977
 EMAIL: INFO@CROCIUSA.COM

PRODUCT:
ES 55
 EXTRUDED ALUMINUM
 ROLL-UP SHUTTER

Engineering:
EngCo Inc.
 CA 8116
 6971 W. Sunrise Blvd. 104
 Plantation, FL 33313
 ENGCO@AOL.COM

[Signature]
MAR 14 2008

Engineer Seal
 Pedro De Figueiredo, PE 52609

DRAFTING:
PK DRAFTING & MORE

MIAMI-DADE BCCD:

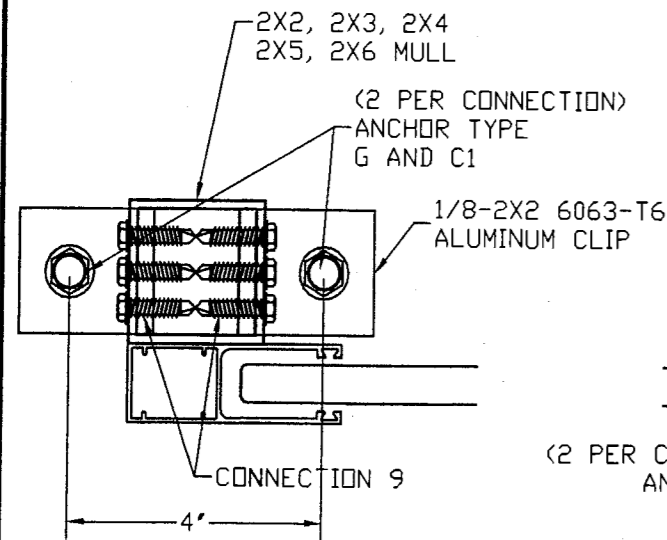
Approved in compliance with the
 Florida Building Code
 Date: 07/03/08
 NOAR: 08-0324-13
 Miami Dade Product Control
 Division
 By: *[Signature]*

Date: 02/26/08
 Scale: NA
 Design by: PPMF

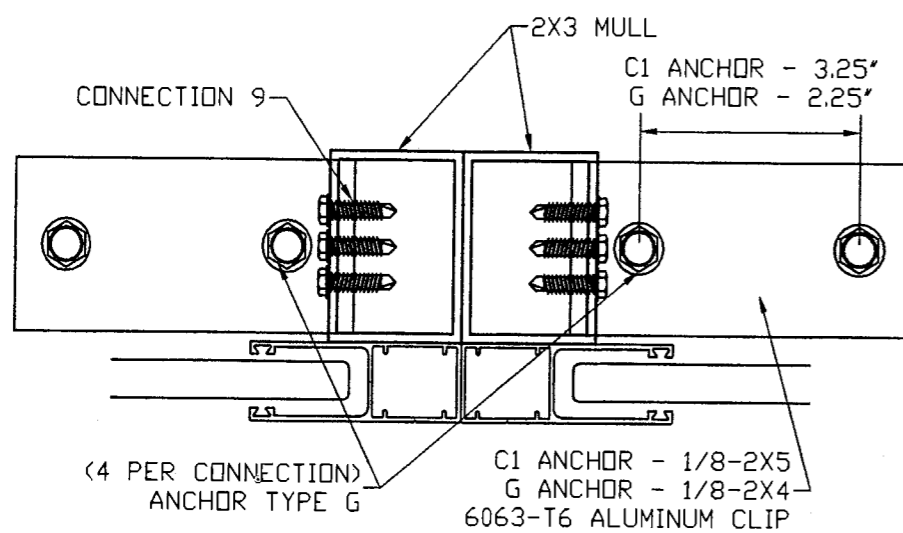
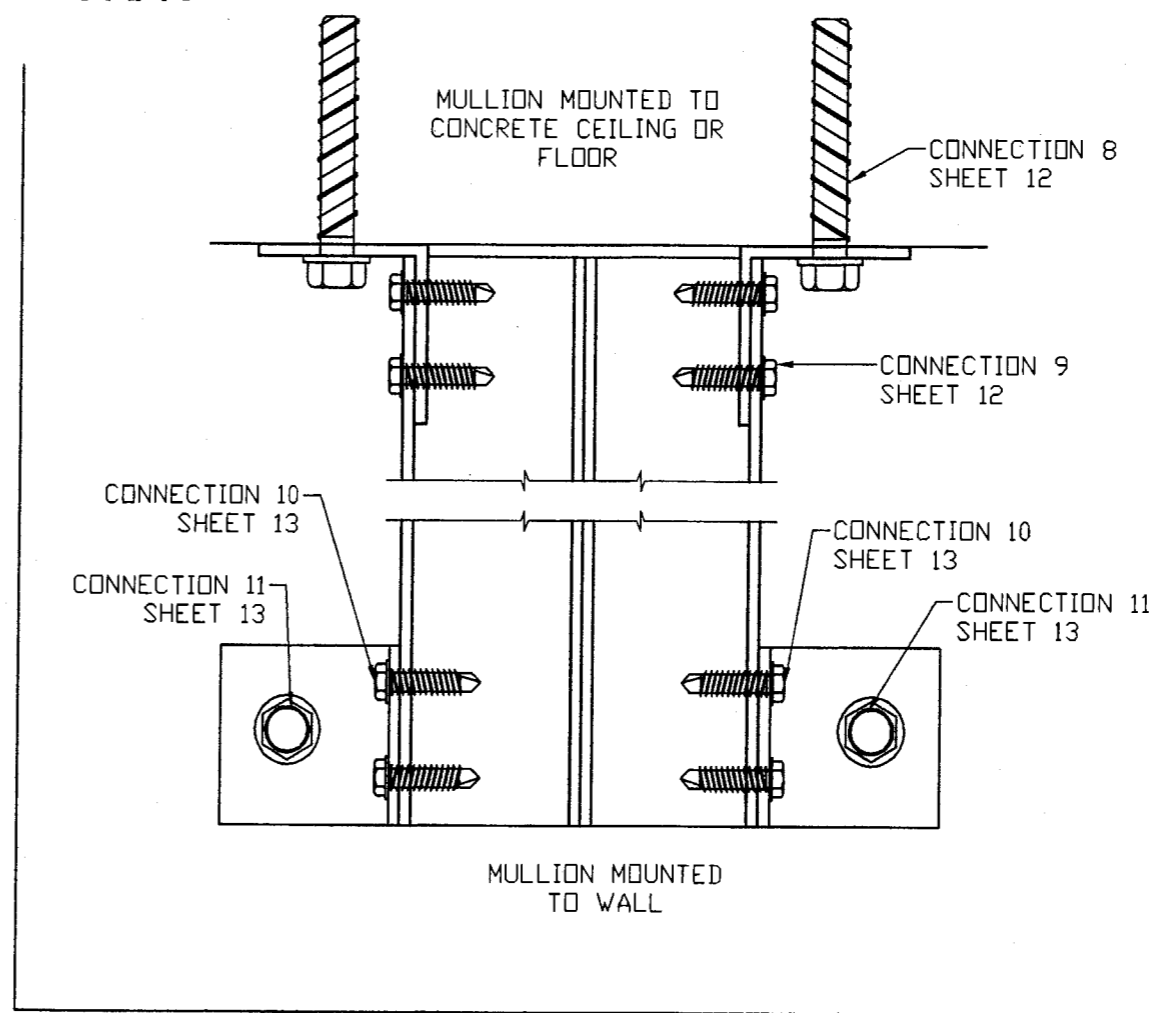
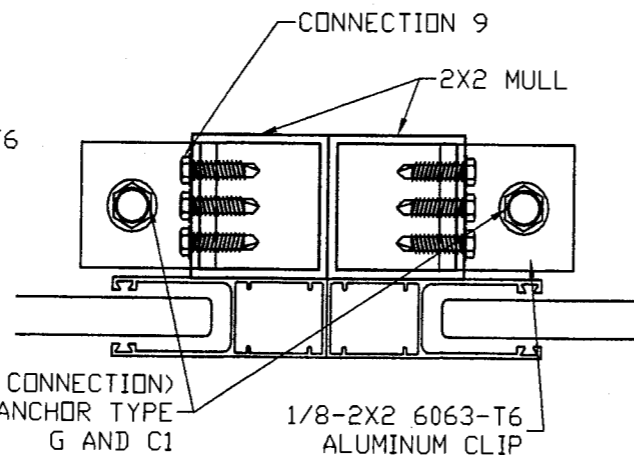
Drawing Number
08-049

Sheet
12 of 14

CONNECTION 8 FLOOR/CEILING MOUNTED TO CONCRETE

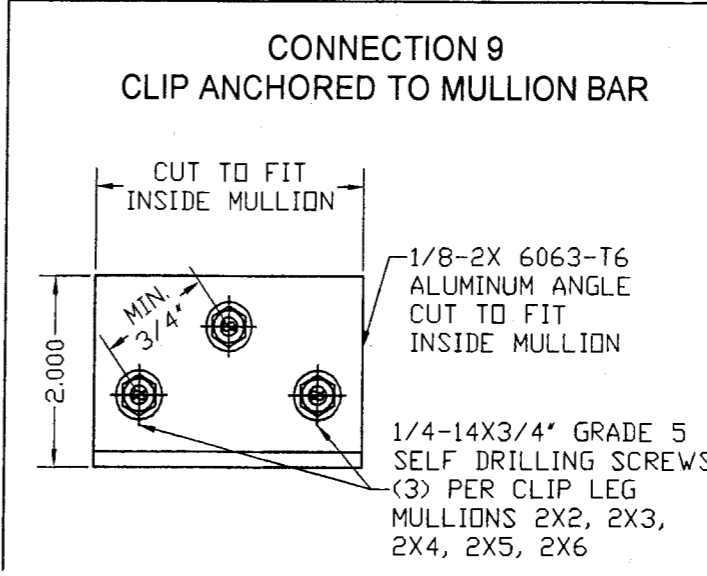
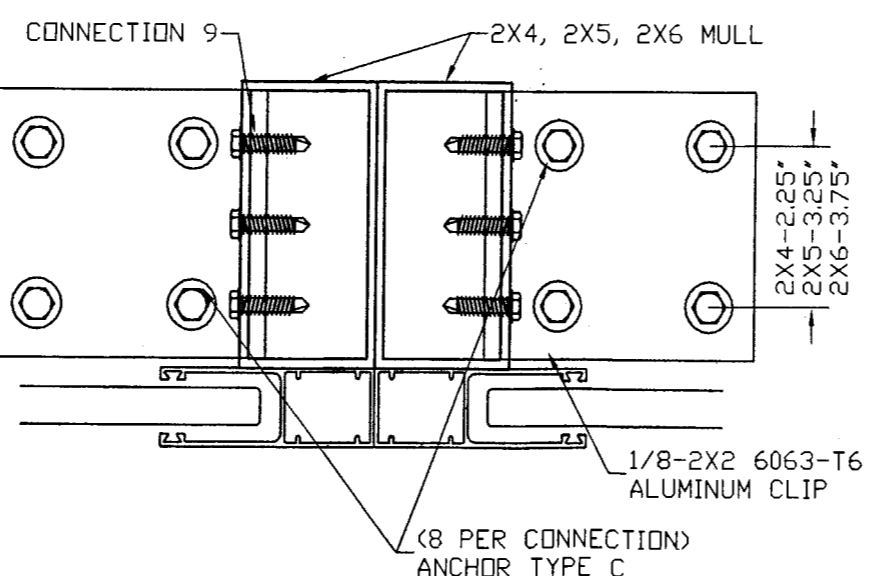
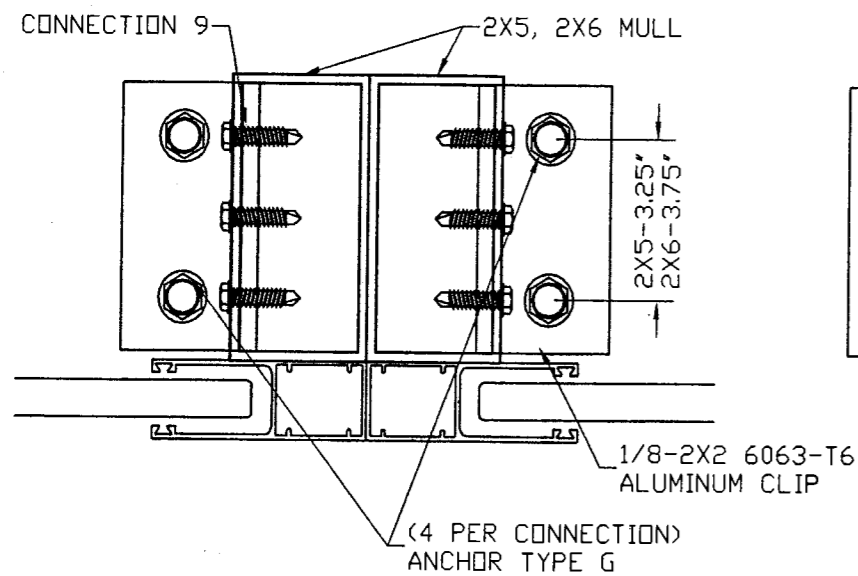


CONNECTION 8
 APPLICABLE ONLY FOR
 ANCHORS G AND C1



ANCHOR SCHEDULE					
TYPE	DESCRIPTION	MANUFACTURER	EMBEDMENT	ED	BASE MATERIAL
C1	5/16" TAPCON	ITW	2 1/4"	3 1/8"	2899 psi CONCRETE
G	3/8" WEDGE BOLTS	POWERS	2 1/2"	4"	3000 psi CONCRETE

NOTES: 1- ED - EDGE DISTANCE
 2- EMBEDMENT DIMENSION ARE TAKEN BEYOND THE WALL DRESSING



**CONNECTION 11
MULLION BARS ANCHORED TO WALL**

SINGLE MULLION
CONNECTION 11 SELECTION

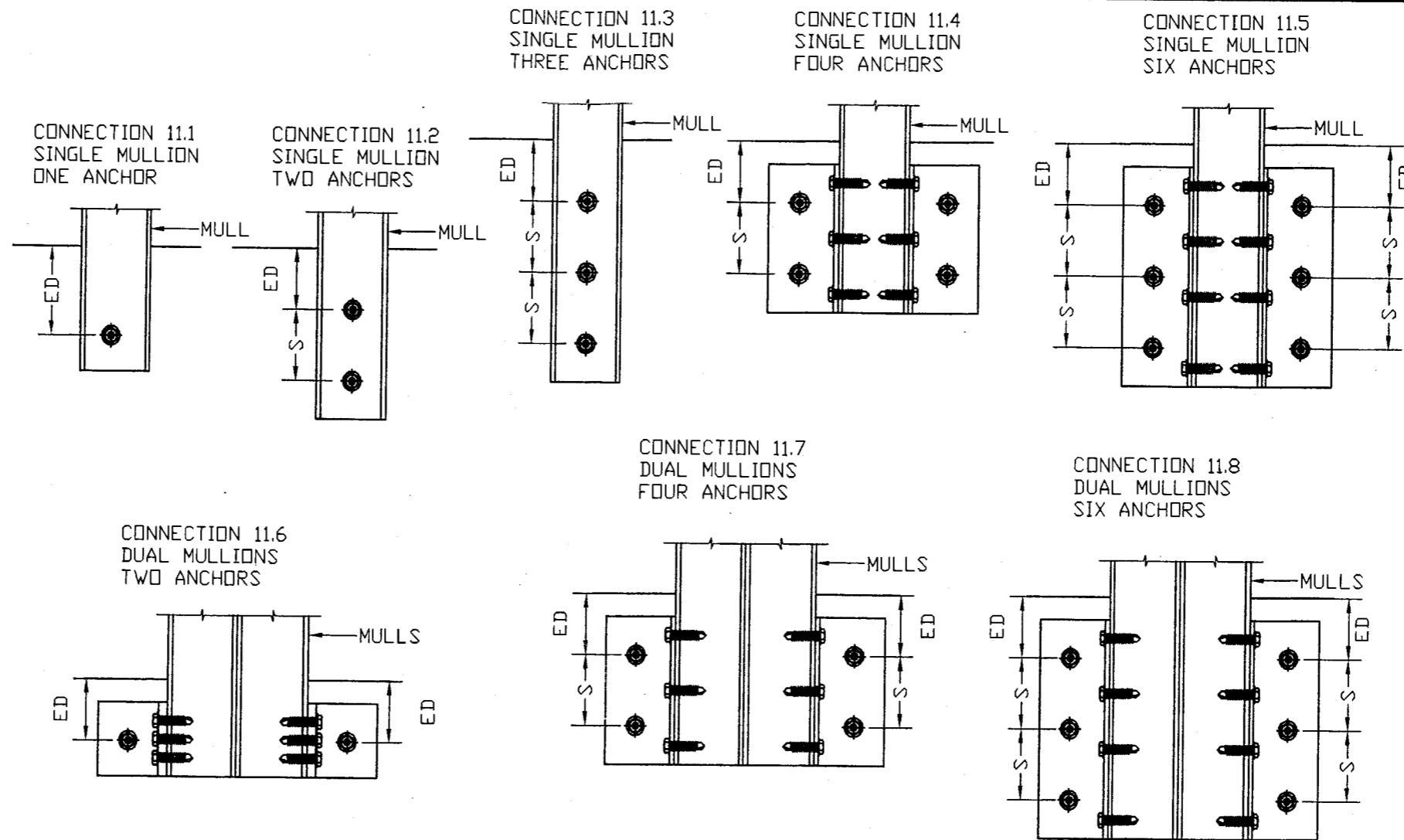
MULLION TYPE	TYPE OF ANCHORS			
	A	B	C/C1/G	E
2x2	11.2	11.4	11.1	11.2
2x3	11.2	11.5	11.2	11.2
2x4	11.3	11.5	11.2	11.2
2x5	11.3	----	11.2	11.2
2x6	11.3	----	11.2	11.3

DUAL MULLIONS
CONNECTION 11 SELECTION

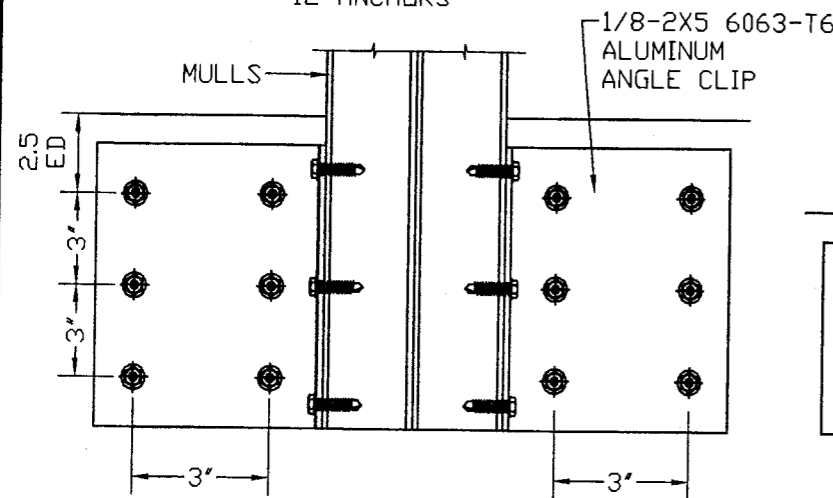
MULLION TYPE	TYPE OF ANCHORS			
	A	B	C/C1/G	E
2x2	11.7	11.9	11.6	11.6
2x3	11.7	11.10	11.7	11.7
2x4	11.8	11.10	11.7	11.7
2x5	11.8	----	11.7	11.7
2x6	11.8	----	11.7	11.7

	ANCHOR TYPE			
	A/B	E	C/C1	G
S	3.0	2.0	3.75	4.0
ED	2.5	1.0	4.00	4.0

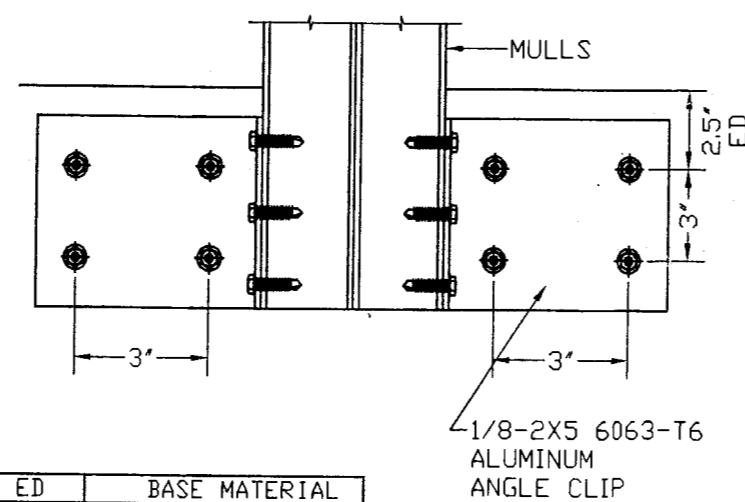
S - ANCHOR SPACING
ED - EDGE DISTANCE



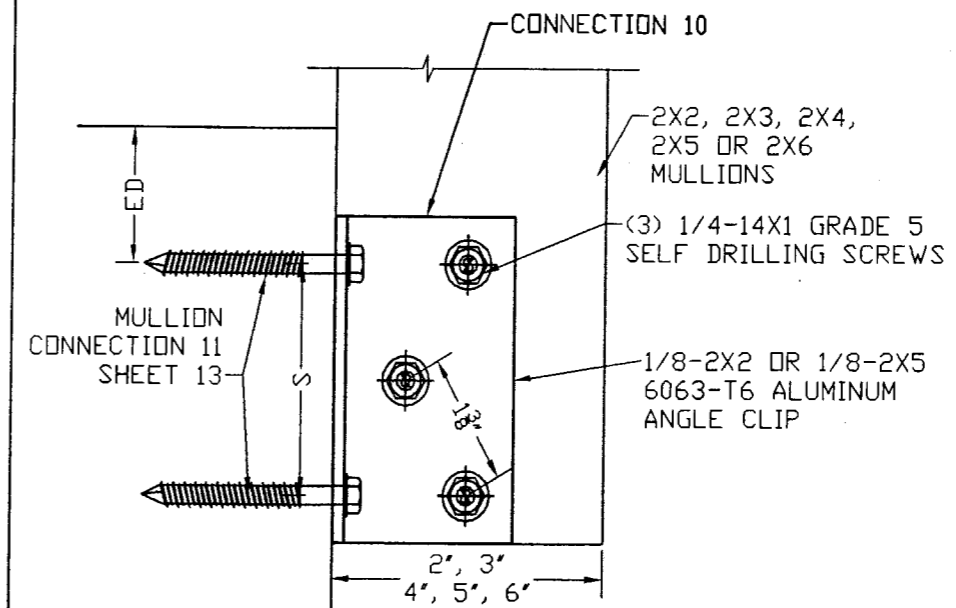
CONNECTION 11.10
DUAL MULLIONS
12 ANCHORS



CONNECTION 11.9
DUAL MULLIONS
EIGHT ANCHORS



CONNECTION 10
CLIP ANCHORED TO MULLION BAR



ANCHOR SCHEDULE

TYPE	DESCRIPTION	MANUFACTURER	EMBEDMENT	ED	BASE MATERIAL
A	1/4" TAPCON	ITW	1 3/4"	2 1/2"	3192 psi CONCRETE
B	1/4" TAPCON	ITW	1 1/4"	2 1/2"	HOLLOW BLOCK
C	5/16" TAPCON	ITW	2 1/4"	4"	GF BLOCK
C1	5/16" TAPCON	ITW	2 1/4"	3 1/8"	2899 psi CONCRETE
E	1/4" TAPCON	ITW	1 3/4"	1"	PT WOOD (<SG>= .55)
G	3/8" WEDGE BOLTS	POWERS	2 1/2"	4"	3000 psi CONCRETE

Manufacturer:
CROCI
North America
6360 TOPAZ COURT
FORT MYERS, FL 33966
Tel.: (239) 278-3066
Fax: (239) 278-5977
EMAIL: INFO@CROCIUSA.COM

PRODUCT:
ES 55
EXTRUDED ALUMINUM
ROLL-UP SHUTTER

Engineering:
EngCo Inc.
CA 8116
6971 W. Sunrise Blvd. 104
Plantation, FL 33313
ENGCO@AOL.COM

MAR 14 2008

Engineer Seal
Pedro De Figueiredo, PE 52609

DRAFTING:
PK DRAFTING & MORE

MIAMI-DADE BCCD:

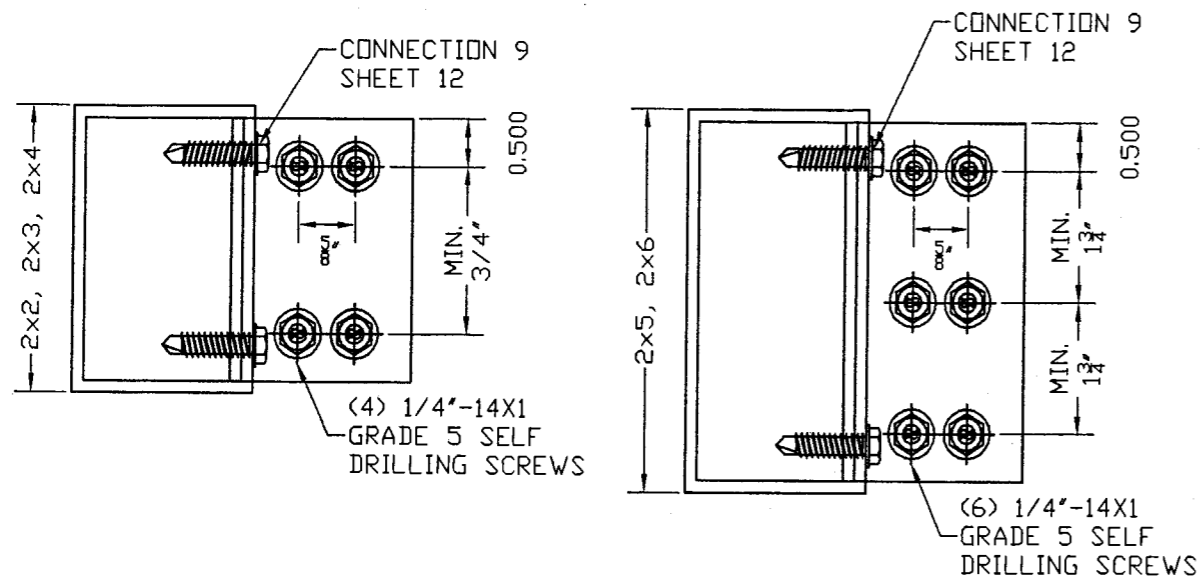
Approved as complying with the
Florida Building Code
Date: 02/26/08
07/03/08
08-0324-13
Miami Dade Product Control
Division
By: *[Signature]*

Date: 02/26/08
Scale: NA
Design by: PPMF

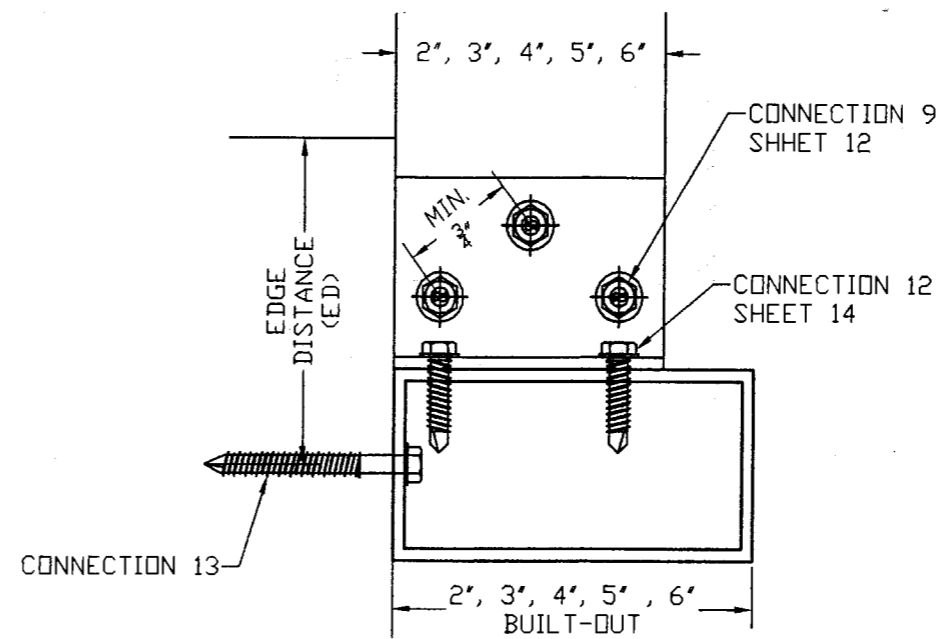
Drawing Number
08-049

Sheet
13 of 14

**CONNECTION 12
MULLION BARS ANCHORAGE FLOOR/CEILING
TO BUILT-OUT TUBE**



**CONNECTION 13
BUILT-OUT WALL ANCHORAGE
SUPPORTING MULLIONS**



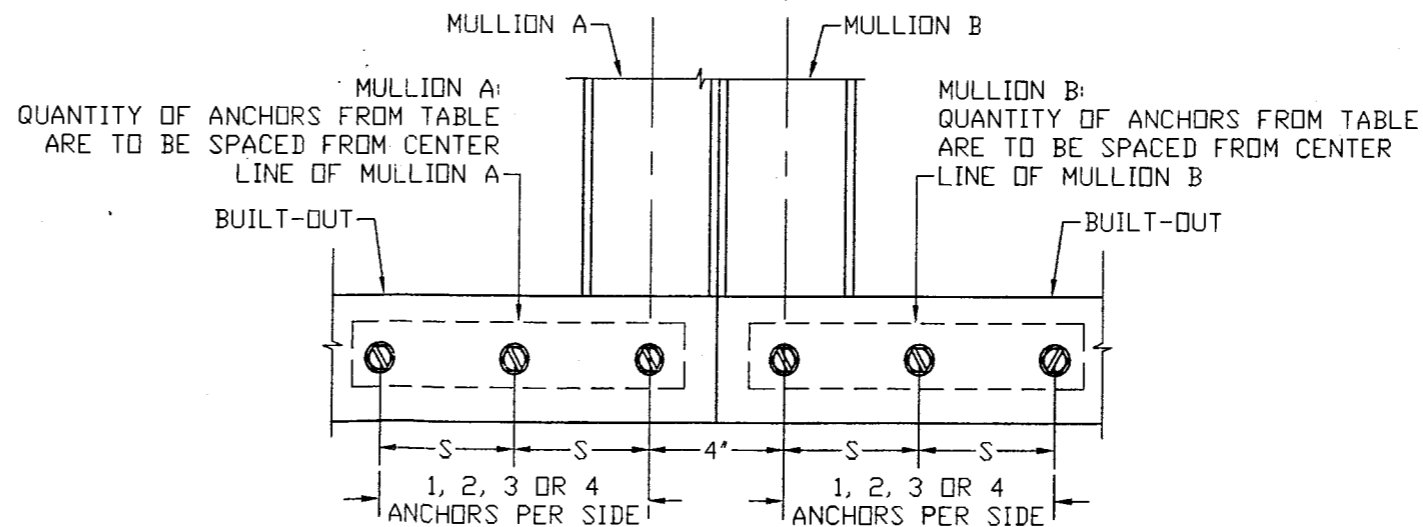
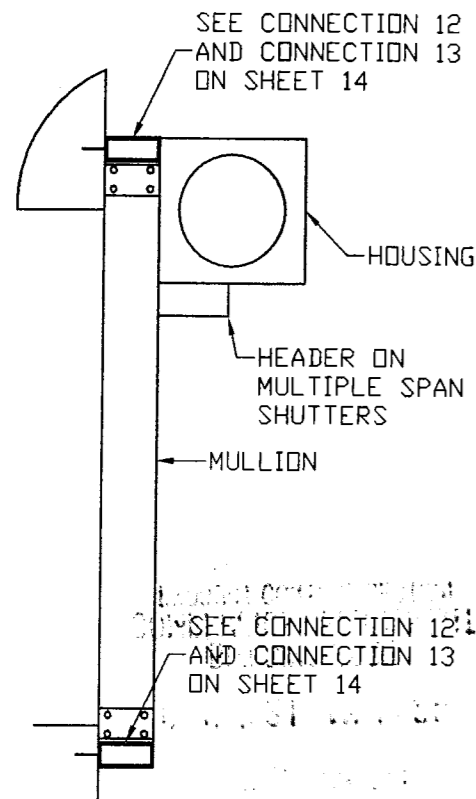
ANCHOR SCHEDULE

TYPE	DESCRIPTION	MANUFACTURER	EMBEDMENT	ED	BASE MATERIAL
A	1/4" TAPCON	ITW	1 3/4"	2 1/2"	3192 psi CONCRETE
B	1/4" TAPCON	ITW	1 1/4"	2 1/2"	HOLLOW BLOCK
C	5/16" TAPCON	ITW	2 1/4"	4"	GF BLOCK
C1	5/16" TAPCON	ITW	2 1/4"	3 1/8"	2899 psi CONCRETE
E	1/4" TAPCON	ITW	1 3/4"	1"	WOOD (SG) = 55
G	3/8" WEDGE BOLTS	POWERS	2 1/2"	4"	3000 psi CONCRETE

NOTES: 1- ED - EDGE DISTANCE
2- EMBEDMENT DIMENSION ARE TAKEN BEYOND THE WALL DRESSING

MINIMUM NUMBER OF
ANCHORS PER BUILT-OUT

MULLION BARS	ANCHOR TYPE			
	A/E	B	C1/C	G
2x2	3	7	2	2
2x3	4	12	3	2
2x4	4	12	3	3
2x5	4	-	4	3
2x6	5	-	4	3
S	3	3	3.75	4



Manufacturer:
CROCI
North America
6360 TOPAZ COURT
FORT MYERS, FL 33966
Tel.: (239) 278-3066
Fax: (239) 278-5977
EMAIL: INFO@CROCIUSA.COM

PRODUCT:
ES 55
EXTRUDED ALUMINUM
ROLL-UP SHUTTER

Engineering:
EngCo Inc.
CA 8116
6971 W. Sunrise Blvd. 104
Plantation, FL 33313
ENGCO@AOL.COM

MAR 14 2008

Engineer Seal
Pedro De Figueiredo, PE 52609

DRAFTING:
PK DRAFTING & MORE

MIAMI-DADE BCCD

07/03/08
DB-0324-13
Division Product Control
By *[Signature]*

Date: 02/26/08
Scale: NA
Design by: PPMF

Drawing Number
08-049

Sheet
14 of 14