



MIAMI-DADE COUNTY
BUILDING CODE COMPLIANCE OFFICE (BCCO)
PRODUCT CONTROL DIVISION

MIAMI-DADE COUNTY, FLORIDA
METRO-DADE FLAGLER BUILDING
140 WEST FLAGLER STREET, SUITE 1603
MIAMI, FLORIDA 33130-1563
 (305) 375-2901 FAX (305) 372-6339

NOTICE OF ACCEPTANCE (NOA)

www.miamidade.gov/buildingcode

ES Windows LLC
10653 NE Quaybridge Ct.
Miami, FL 33138

SCOPE:

This NOA is being issued under the applicable rules and regulations governing the use of construction materials. The documentation submitted has been reviewed by Miami-Dade County Product Control Division and accepted by the Board of Rules and Appeals (BORA) to be used in Miami Dade County and other areas where allowed by the Authority Having Jurisdiction (AHJ).

This NOA shall not be valid after the expiration date stated below. The Miami-Dade County Product Control Division (In Miami Dade County) and/or the AHJ (in areas other than Miami Dade County) reserve the right to have this product or material tested for quality assurance purposes. If this product or material fails to perform in the accepted manner, the manufacturer will incur the expense of such testing and the AHJ may immediately revoke, modify, or suspend the use of such product or material within their jurisdiction. BORA reserves the right to revoke this acceptance, if it is determined by Miami-Dade County Product Control Division that this product or material fails to meet the requirements of the applicable building code. This product is approved as described herein, and has been designed to comply with the Florida Building Code, including the High Velocity Hurricane Zone.

DESCRIPTION: Series 8000 Aluminum Window Wall System – L. M. I.

APPROVAL DOCUMENT: Drawing No. **W07-60**, titled "Series 8000 Alum. Window Wall System (L.M.I.)", sheets 1 through 12 of 12, dated 08/03/07 with revision A dated 09/03/08, prepared by Al-Farooq Corporation, signed and sealed by Humayoun Farooq, P.E., bearing the Miami-Dade County Product Control Revision stamp with the Notice of Acceptance number and expiration date by the Miami-Dade County Product Control Division.

MISSILE IMPACT RATING: Large and Small Missile Impact Resistant

LABELING: Each unit shall bear a permanent label with the manufacturer's name or logo, city, state and following statement: "Miami-Dade County Product Control Approved", unless otherwise noted herein.

RENEWAL of this NOA shall be considered after a renewal application has been filed and there has been no change in the applicable building code negatively affecting the performance of this product.

TERMINATION of this NOA will occur after the expiration date or if there has been a revision or change in the materials, use, and/or manufacture of the product or process. Misuse of this NOA as an endorsement of any product, for sales, advertising or any other purposes shall automatically terminate this NOA. Failure to comply with any section of this NOA shall be cause for termination and removal of NOA.

ADVERTISEMENT: The NOA number preceded by the words Miami-Dade County, Florida, and followed by the expiration date may be displayed in advertising literature. If any portion of the NOA is displayed, then it shall be done in its entirety.

INSPECTION: A copy of this entire NOA shall be provided to the user by the manufacturer or its distributors and shall be available for inspection at the job site at the request of the Building Official. This NOA revises NOA # **08-0204.06** and consists of this page 1 and evidence pages E-1 and E-2, as well as approval document mentioned above.

The submitted documentation was reviewed by **Manuel Perez, P.E.**



NOA No. 08-1114.16
Expiration Date: April 03, 2013
Approval Date: March 18, 2009
 Page 1

NOTICE OF ACCEPTANCE: EVIDENCE SUBMITTED

A. DRAWINGS

1. Manufacturer's die drawings and sections.
2. Drawing No **W07-60**, titled "Series 8000 Alum. Window Wall System (L.M.I.)", sheets 1 through 12 of 12, dated 08/03/07 with revision A dated 09/03/08, prepared by Al-Farooq Corporation, signed and sealed by Humayoun Farooq, P.E.

B. TESTS

1. Test reports on:
 - 1) Air Infiltration Test, per FBC, TAS 202-94
 - 2) Uniform Static Air Pressure Test, Loading per FBC TAS 202-94
 - 3) Water Resistance Test, per FBC, TAS 202-94
 - 4) Large Missile Impact Test per FBC, TAS 201-94
 - 5) Cyclic Wind Pressure Loading per FBC, TAS 203-94along with marked-up drawings and installation diagram of an aluminum window wall system, prepared by Fenestration Testing Laboratory, Inc., Test Report No. **FTL-5447**, dated 12/19/07, signed and sealed by Michael R. Wenzel, P.E.
(Submitted under previous NOA # 08-0204.06)

C. CALCULATIONS

1. Anchor verification calculations and structural analysis, complying with FBC-2004 and FBC 2007, prepared by Al-Farooq Corporation, dated 09/02/08, signed and sealed by Humayoun Farooq, P. E.
Complies with ASTM E1300-02/04

D. QUALITY ASSURANCE

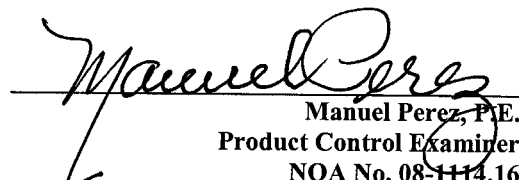
1. Miami Dade Building Code Compliance Office (BCCO).

E. MATERIAL CERTIFICATIONS

1. Notice of Acceptance No. **07-1116.04** issued to E.I. DuPont DeNemours & Co., Inc. for their "**DuPont Sentry Glass ® Plus**" dated 01/03/08, expiring on 01/14/12.
2. Notice of Acceptance No. **05-1208.02** issued to E.I. DuPont DeNemours & Co., Inc. for their "**DuPont Butacite PVB, Interlayer**" dated 01/05/06, expiring on 12/11/10.

F. STATEMENTS

1. Statement letter of conformance, dated September 02, 2008, signed and sealed by Humayoun Farooq, P. E.
2. Statement letter of no financial interest, dated September 02, 2008, signed and sealed by Humayoun Farooq, P.E.


Manuel Perez, P.E.
Product Control Examiner
NOA No. 08-1114.16
Expiration Date: April 03, 2013
Approval Date: March 18, 2009

ES Windows LLC

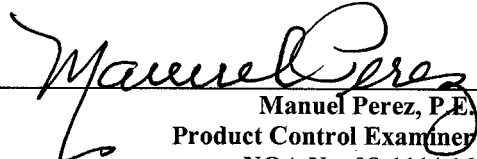
NOTICE OF ACCEPTANCE: EVIDENCE SUBMITTED

F. STATEMENTS (CONTIUNED)

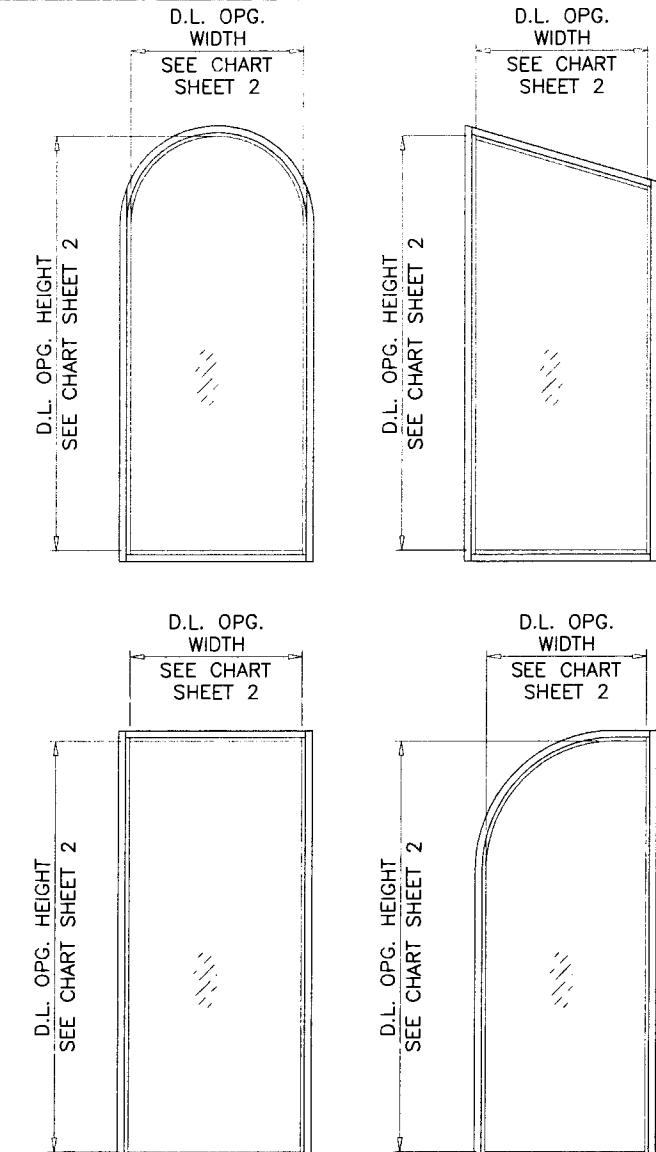
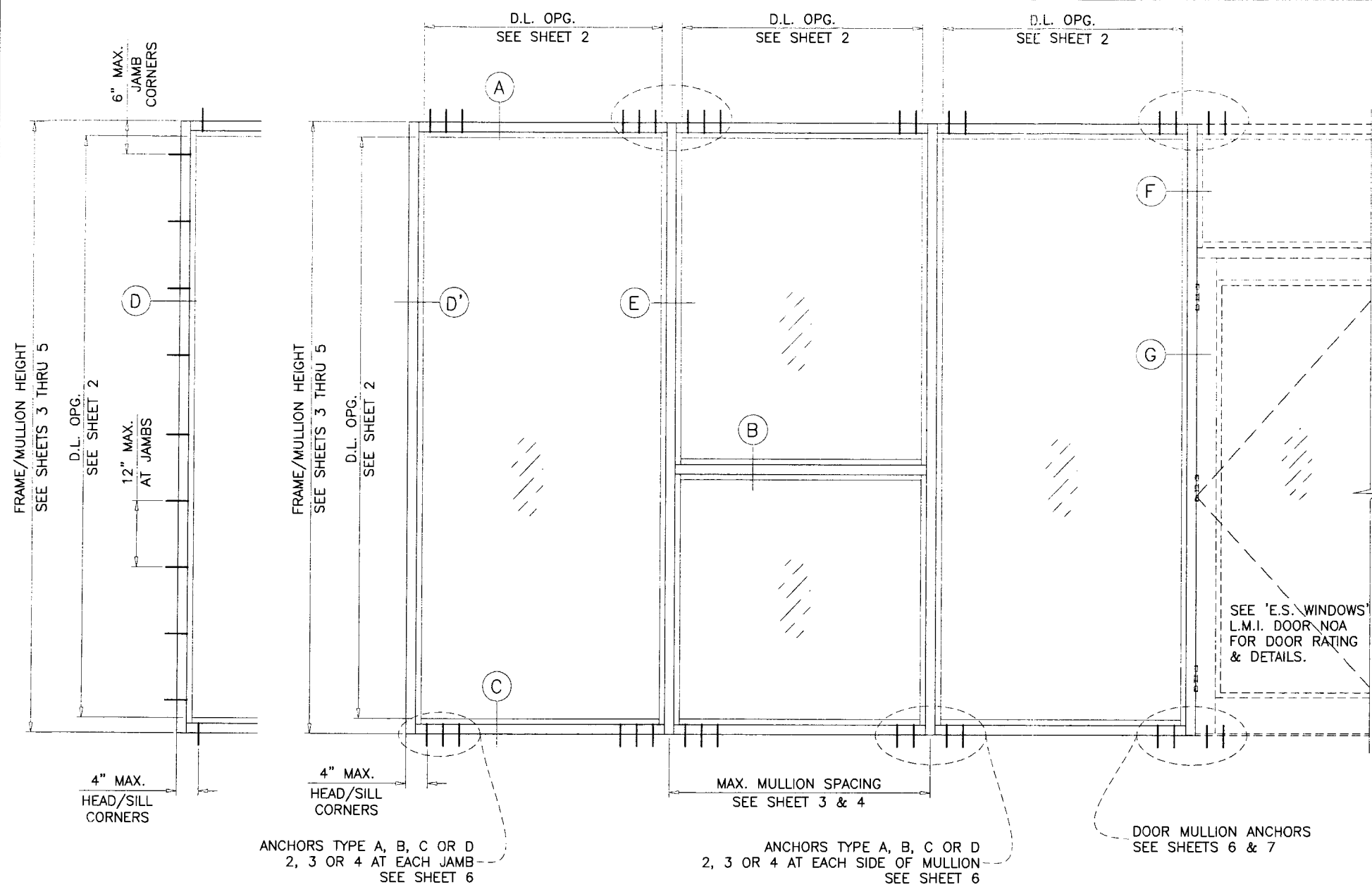
3. Laboratory compliance letter for Test Report No. **FTL-5447**, issued by Fenestration Testing Laboratory, Inc., dated December 19, 2007, signed and sealed by Michael R. Wenzel, P.E.
(Submitted under previous NOA # 08-0204.06)

G. OTHERS

1. Notice of Acceptance No. **08-0204.06**, issued to ES Windows LLC for their "Series 8000 Aluminum Window Wall System-L.M.I.", approved on 04/03/08 and expiring on 04/03/13.


Manuel Perez, P.E.
Product Control Examiner

NOA No. 08-1114.16
Expiration Date: April 03, 2013
Approval Date: March 18, 2009



TYPICAL ELEVATION

ALLOWABLE LOADS FOR ALTERNATE SHAPES AS SHOWN ABOVE OR SIMILAR CAN BE VERIFIED BY INSCRIBING PICTURE WINDOW SHAPE WITHIN SQUARE OR RECTANGLE AS SHOWN IN DOTTED LINES AND OBTAINING ALLOWABLE LOADS FROM THOSE SHAPES. SINGLE LITES MAY BE INSTALLED VERTICALLY AS SHOWN ABOVE OR HORIZONTALLY.

SERIES 8000 ALUMINUM WINDOW WALL SYSTEM

THIS SYSTEM IS RATED FOR LARGE MISSILE IMPACT SHUTTERS ARE NOT REQUIRED.

CODE REQUIREMENTS FOR SAFEGUARDS MUST BE OBSERVED.

THIS PRODUCT HAS BEEN DESIGNED AND TESTED TO COMPLY WITH THE REQUIREMENTS OF THE FLORIDA BUILDING CODE 2004/2007 EDITION INCLUDING HIGH VELOCITY HURRICANE ZONE (HVHZ).

WOOD BUCKS BY OTHERS, MUST BE ANCHORED PROPERLY TO TRANSFER LOADS TO THE STRUCTURE.

ANCHORS SHALL BE AS LISTED, SPACED AS SHOWN ON DETAILS, ANCHORS EMBEDMENT TO BASE MATERIAL SHALL BE BEYOND WALL DRESSING OR STUCCO.

ANCHORING OR LOADING CONDITIONS NOT SHOWN IN THESE DETAILS ARE NOT PART OF THIS APPROVAL.

A LOAD DURATION INCREASE IS USED IN DESIGN OF ANCHORS INTO WOOD ONLY.

MATERIALS INCLUDING BUT NOT LIMITED TO STEEL/METAL SCREWS, THAT COME INTO CONTACT WITH OTHER DISSIMILAR MATERIALS SHALL MEET THE REQUIREMENTS OF 2004/2007 FLORIDA BLDG. CODE SECTION 2003.8.4.

INSTRUCTIONS:

USE CHARTS AS FOLLOWS.

- STEP 1** DETERMINE DESIGN WIND LOAD REQUIREMENT BASED ON WIND VELOCITY, BLDG. HEIGHT, WIND ZONE USING APPLICABLE ASCE 7 STANDARD.
- STEP 2** SEE CHARTS ON SHEET 2 FOR DESIGN LOAD CAPACITY OF DESIRED GLASS SIZE.
- STEP 3** CHECK MULLION CAPACITY FOR A GIVEN SPACING AND HEIGHT USING CHARTS ON SHEETS 3 THRU 7 THE CAPACITY SHOULD EXCEED THE DESIGN LOAD.
- STEP 4** USING CHARTS ON SHEETS 6 & 7 SELECT ANCHOR OPTION WITH DESIGN RATING MORE THAN DESIGN LOAD SPECIFIED IN STEP 1 ABOVE.
- STEP 5** THE LOWEST VALUE RESULTING FROM STEPS 2, 3 AND 4 SHALL APPLY TO ENTIRE SYSTEM.

PRODUCT COMPLIES WITH REQUIREMENTS OF ANSI Z97.1.

**LAMINATED GLASS
LARGE MISSILE IMPACT**

Engr: DR. HUMAYOUN FAROOQ
STRUCTURES
FLA. PE # 18557
C.A.N. 3538

NOV 05 2008

PRODUCT REVISED
as complying with the Florida Building Code
Acceptance No 08-114.16
Expiration Date 04/03/2013
By *Wahneel Perez*
Miami/Dade Product Control Division

af c

AL-FAROOQ CORPORATION
ENGINEERS & PRODUCT DEVELOPMENT
1235 S.W. 87 AVE
MIAMI, FLORIDA 33174
TEL. (305) 264-8100 FAX. (305) 262-6978

STORE W07-60ES

SERIES 8000 ALUM WINDOW WALL SYSTEM (L.M.I.)

E.S. WINDOWS, LLC
5220 N.W. 72 AVE. BAY #4
MIAMI, FL. 33166
TEL. (305) 640-9857 FAX. (305) 593-2074

revisions:	no	date	by	description
	A	08.03.08		DOOR MULLION ADDED

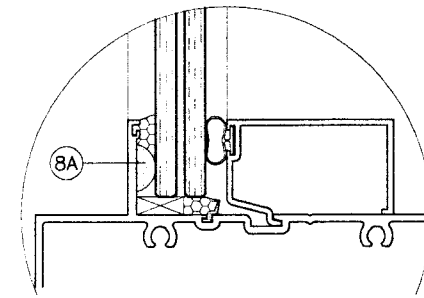
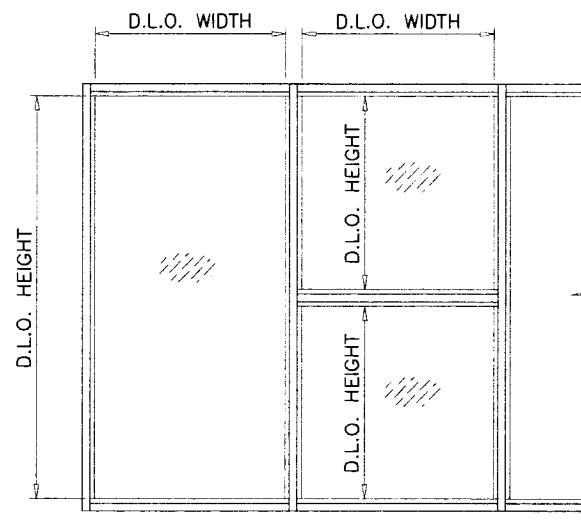
date: 08-03-07
scale: 1/2" = 1'-0"
dr. by: HAMID
chk. by:

drawing no.
W07-60

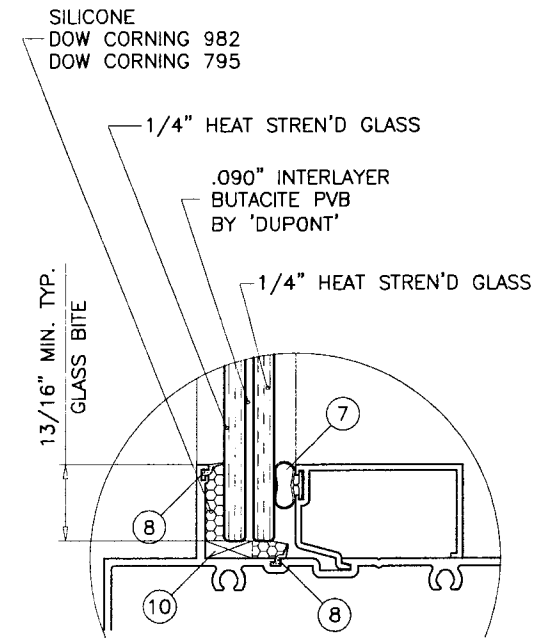
sheet 1 of 12

GLASS LOAD CAPACITY - PSF			
NOMINAL DIMS.		GLASS TYPE 'A'	GLASS TYPE 'B'
D.L.O. WIDTH	D.L.O. HEIGHT	EXT.(+)/INT.(-)	EXT.(+)/INT.(-)
28"	84-1/2"	80.0	130.0
32"		80.0	130.0
36"		80.0	130.0
40"		80.0	130.0
44-1/4"		80.0	130.0
48"		80.0	130.0
52"		80.0	130.0
56-1/4"		80.0	130.0
28"	90-1/2"	80.0	130.0
32"		80.0	130.0
36"		80.0	130.0
40"		80.0	130.0
44-1/4"		80.0	130.0
48"		80.0	130.0
52"		80.0	130.0
28"	96-1/2"	80.0	130.0
32"		80.0	130.0
36"		80.0	130.0
40"		80.0	130.0
44-1/4"		80.0	130.0
48"		80.0	130.0
52"		80.0	127.2
28"	102-1/2"	80.0	130.0
32"		80.0	130.0
36"		80.0	130.0
40"		80.0	130.0
44-1/4"		80.0	130.0
48"		80.0	128.9
52"		80.0	127.2
28"	108-1/2"	80.0	130.0
32"		80.0	130.0
36"		80.0	130.0
40"		80.0	130.0
44-1/4"		80.0	130.0
48"		80.0	128.9
52"		80.0	127.2
28"	114-1/2"	80.0	130.0
32"		80.0	130.0
36"		80.0	130.0
40"		80.0	130.0
44-1/4"		80.0	130.0
48"		80.0	128.9
52"		80.0	127.2

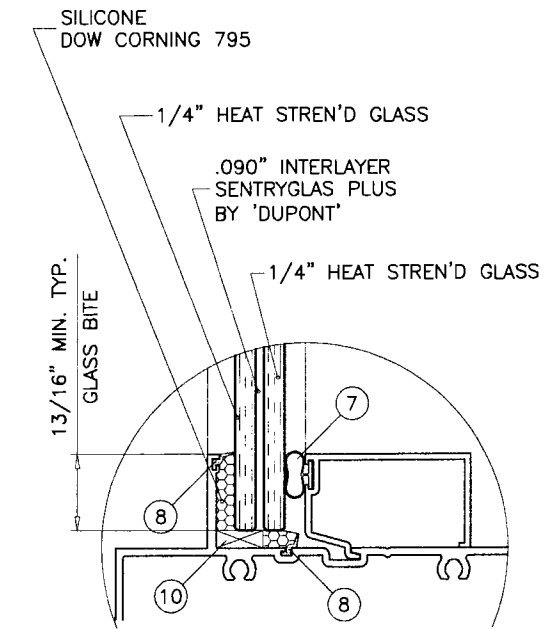
NOTE:
GLASS CAPACITIES ON THIS SHEET ARE
BASED ON ASTM E1300-02/04 (3 SEC. GUSTS).



ALTERNATE BUTTON BUMPER (8A)
IN LIEU OF VINYL SPACER (8)



GLASS TYPE 'A'



GLASS TYPE 'B'

GLAZING OPTIONS

GLASS

Engr: DR. HUMAYOUN FAROOQ
STRUCTURES
FLA. PE # 16557
C.A.N. 3538

NOV 05 2008

PRODUCT REVISED
as complying with the Florida
Building Code
Acceptance No 08-114.16
Expiration Date 04/03/2013
By *Masoud*
Miami Dade Product Control
Division

af c
AL-FAROOQ CORPORATION
ENGINEERS & PRODUCT DEVELOPMENT
1235 S.W. 87 AVE
MIAMI, FLORIDA 33174
TEL. (305) 264-8100 FAX. (305) 262-6978
STORE W07-60ES

SERIES 8000 ALUM WINDOW WALL SYSTEM (L.M.I.)
E.S. WINDOWS, LLC
5220 N.W. 72 AVE. BAY #4
MIAMI, FL. 33166
TEL. (305) 640-9857 FAX. (305) 593-2074

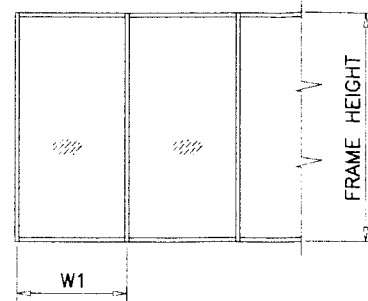
no	date	by	description
A	10/03/08		GLAZING DETAIL ADDED

date: 08-03-07
scale: 1/2" = 1'-0"
dr. by: HAMID
chk. by:

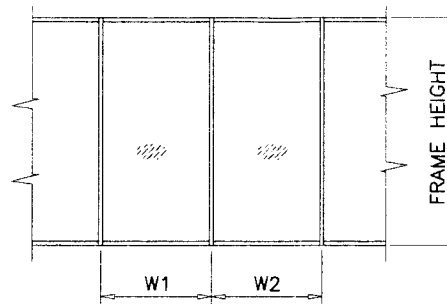
drawing no.
W07-60
sheet 2 of 12

MULLION LOAD CAPACITY - PSF						UNANCHORED JAMB OPTIONS
MULLIONS WITHOUT INTERMEDIATE HORIZONTALS						
NOMINAL DIMS.		JAMB 'J1'	JAMB 'J1'	JAMB 'J2'	JAMB 'J3'	MULL OPTIONS
WIDTH (W)	FRAME HEIGHT	MULL 'M1'	MULL 'M2'	MULL 'M3'	MULL 'M4'	
		EXT. (+) INT. (-)	EXT. (+) INT. (-)	EXT. (+) INT. (-)	EXT. (+) INT. (-)	
30"	86-1/2"	130.0	130.0	130.0	130.0	
36"		130.0	130.0	130.0	130.0	
42"		130.0	130.0	130.0	130.0	
48"		130.0	130.0	130.0	130.0	
54"		130.0	130.0	130.0	130.0	
60"		130.0	130.0	130.0	130.0	
30"	90"	130.0	130.0	130.0	130.0	
36"		130.0	130.0	130.0	130.0	
42"		130.0	130.0	130.0	130.0	
48"		130.0	130.0	130.0	130.0	
54"		121.7	130.0	130.0	130.0	
60"		113.7	130.0	130.0	130.0	
30"	96"	130.0	130.0	130.0	130.0	
36"		130.0	130.0	130.0	130.0	
42"		119.9	130.0	130.0	130.0	
48"		107.5	130.0	130.0	130.0	
54"		98.4	130.0	127.9	130.0	
60"		91.5	130.0	118.4	130.0	
30"	98-1/2"	130.0	130.0	130.0	130.0	
36"		126.4	130.0	130.0	130.0	
42"		110.5	130.0	130.0	130.0	
48"		99.0	130.0	130.0	130.0	
54"		90.5	130.0	120.8	130.0	
58"		85.9	130.0	114.4	130.0	
30"	102"	130.0	130.0	130.0	130.0	
36"		113.4	130.0	130.0	130.0	
42"		99.0	130.0	130.0	130.0	
48"		88.6	130.0	123.2	130.0	
54"		80.7	129.9	111.8	130.0	
56"		78.6	126.4	108.7	129.9	
30"	108"	112.4	130.0	130.0	130.0	
36"		95.0	130.0	130.0	130.0	
42"		82.8	130.0	122.5	130.0	
48"		73.8	118.8	108.9	130.0	
53"		68.1	109.6	100.2	119.7	
30"		110-1/2"	104.8	130.0	130.0	130.0
36"	88.5		130.0	130.0	130.0	
42"	77.1		123.9	116.8	130.0	
48"	68.7		110.5	103.7	124.0	
52"	64.3		103.4	96.9	115.8	
30"	114"		95.3	130.0	130.0	130.0
36"		80.4	129.3	126.1	130.0	
42"		69.9	112.5	109.4	130.0	
48"		62.3	100.1	97.1	116.0	
50"		60.1	96.7	93.7	112.0	
30"		120"	81.5	130.0	130.0	130.0
36"	68.6		110.4	113.5	130.0	
42"	59.6		95.9	98.3	117.5	
48"	53.0		85.2	87.1	104.1	

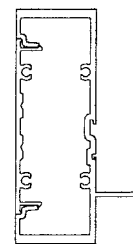
NOTE:
INTERPOLATION BETWEEN WIDTHS ALLOWED.



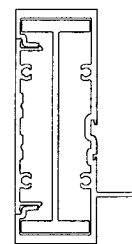
WIDTH (W) = W1
AT FRAME JAMB



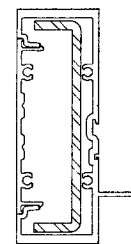
WIDTH (W) = $\frac{W1 + W2}{2}$
AT FRAME MULLION



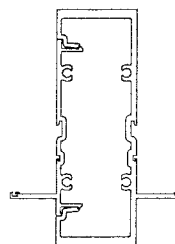
JAMB 'J1'



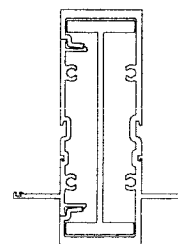
JAMB 'J2'



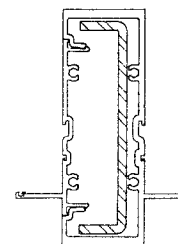
JAMB 'J3'



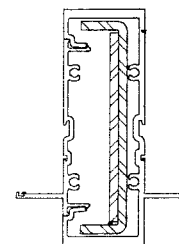
MULLION 'M1'



MULLION 'M2'



MULLION 'M3'



MULLION 'M4'

MULLIONS

Engr: DR. HUMAYOUN FAROOQ
STRUCTURES
FLA. PE # 16557
C.A.N. 3538

NOV 05 2008

PRODUCT REVISED
as complying with the Florida
Building Code
Acceptance No. 08-114-16
Expiration Date 04/03/2013
By: *Manuel Pen*
Miami Trade Product Control
Division

af c
AL-FAROOQ CORPORATION
ENGINEERS & PRODUCT DEVELOPMENT
1235 S.W. 87 AVE
MIAMI, FLORIDA 33174
TEL. (305) 264-8100 FAX. (305) 262-6978
STORE/W07-60ES

SERIES 8000 ALUM WINDOW WALL SYSTEM (L.M.I.)
E.S. WINDOWS, LLC
5220 N.W. 72 AVE. BAY #4
MIAMI, FL. 33166
TEL. (305) 640-9857 FAX. (305) 593-2074

revisions:	no	date	by	description
	A	09.03.08		NO CHANGE THIS SHEET

date: 08-03-07
scale: 1
dr. by: HAMID
chk. by:

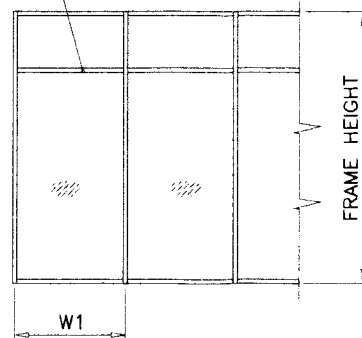
drawing no.
W07-60
sheet 3 of 12

MULLION LOAD CAPACITY - PSF
MULLIONS WITH INTERMEDIATE HORIZONTALS

NOMINAL DIMS.		JAMB 'J1'	JAMB 'J1'	JAMB 'J2'	JAMB 'J3'	JAMB 'J3'	UNANCHORED JAMB OPTIONS
WIDTH (W)	FRAME HEIGHT	MULL 'M1'	MULL 'M2'	MULL 'M3'	MULL 'M4'	MULL 'M4'	MULL OPTIONS
		EXT. (+) INT. (-)	EXT. (+) INT. (-)	EXT. (+) INT. (-)	EXT. (+) INT. (-)	EXT. (+) INT. (-)	
30"	78"	130.0	130.0	130.0	130.0	130.0	
36"		130.0	130.0	130.0	130.0	130.0	
42"		130.0	130.0	130.0	130.0	130.0	
48"		130.0	130.0	130.0	130.0	130.0	
54"		130.0	130.0	130.0	130.0	130.0	
60"		130.0	130.0	130.0	130.0	130.0	
30"	86-1/2"	130.0	130.0	130.0	130.0	130.0	
36"		130.0	130.0	130.0	130.0	130.0	
42"		130.0	130.0	130.0	130.0	130.0	
48"		130.0	130.0	130.0	130.0	130.0	
54"		118.1	130.0	130.0	130.0	130.0	
60"		106.3	130.0	127.2	130.0	130.0	
30"	90"	130.0	130.0	130.0	130.0	130.0	
36"		130.0	130.0	130.0	130.0	130.0	
42"		130.0	130.0	130.0	130.0	130.0	
48"		118.0	130.0	130.0	130.0	130.0	
54"		104.9	130.0	130.0	130.0	130.0	
60"		94.4	130.0	117.5	130.0	130.0	
30"	96"	130.0	130.0	130.0	130.0	130.0	
36"		129.6	130.0	130.0	130.0	130.0	
42"		111.1	130.0	130.0	130.0	130.0	
48"		97.2	130.0	129.0	130.0	130.0	
54"		86.4	130.0	114.7	130.0	130.0	
60"		77.8	125.1	103.2	123.4	130.0	
30"	98-1/2"	130.0	130.0	130.0	130.0	130.0	
36"		120.0	130.0	130.0	130.0	130.0	
42"		102.8	130.0	130.0	130.0	130.0	
48"		90.0	130.0	122.6	130.0	130.0	
54"		80.0	128.7	109.0	130.0	130.0	
58"		74.5	119.8	101.4	121.2	130.0	
30"	102"	129.7	130.0	130.0	130.0	130.0	
36"		108.1	130.0	130.0	130.0	130.0	
42"		92.6	130.0	130.0	130.0	130.0	
48"		81.0	130.0	114.3	130.0	130.0	
54"		72.0	115.9	101.6	121.4	130.0	
56"		69.5	111.7	98.0	117.1	130.0	
30"	108"	109.2	130.0	130.0	130.0	130.0	
36"		91.0	130.0	130.0	130.0	130.0	
42"		78.0	125.5	116.5	130.0	130.0	
48"		68.3	109.8	102.0	121.9	130.0	
53"		61.8	99.5	92.3	110.4	130.0	
30"		110-1/2"	102.0	130.0	130.0	130.0	130.0
36"	85.0		130.0	129.9	130.0	130.0	
42"	72.8		117.2	111.3	130.0	130.0	
48"	63.7		102.5	97.4	116.4	130.0	
52"	58.8		94.6	89.9	107.4	130.0	
30"	114"		92.9	130.0	130.0	130.0	130.0
36"		77.4	124.5	122.0	130.0	130.0	
42"		66.3	106.7	104.6	125.0	130.0	
48"		58.0	93.4	91.5	109.4	130.0	
50"		55.7	89.6	87.8	105.0	130.0	
30"		120"	79.6	128.1	130.0	130.0	130.0
36"	66.4		106.7	110.1	130.0	130.0	
42"	56.9		91.5	94.4	112.8	130.0	
48"	49.8		80.1	82.6	98.7	130.0	

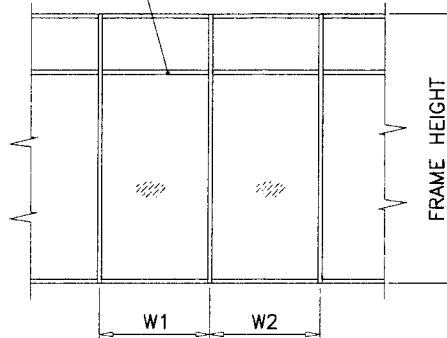
NOTE:
INTERPOLATION BETWEEN WIDTHS ALLOWED.

INTERMEDIATE HORIZONTALS

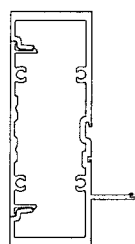


WIDTH (W) = W1
AT FRAME JAMB

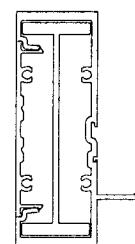
INTERMEDIATE HORIZONTALS



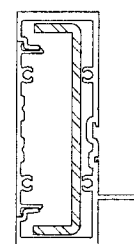
WIDTH (W) = $\frac{W1 + W2}{2}$
AT FRAME MULLION



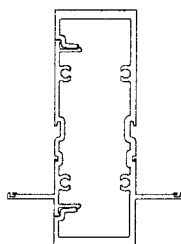
JAMB 'J1'



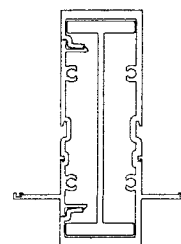
JAMB 'J2'



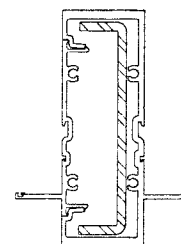
JAMB 'J3'



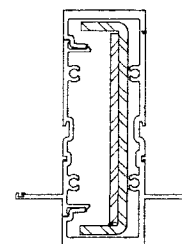
MULLION 'M1'



MULLION 'M2'



MULLION 'M3'



MULLION 'M4'

MULLIONS

Engr: DR. HUMAYGUN FAROOQ
STRUCTURES
FLA. PE # 16557
C.A.N. 3538

NOV 05 2008

PRODUCT REVISED
as complying with the Florida
Building Code
Acceptance No 08-1114-16
Expiration Date 04/03/2013
By *Manuel Perez*
Miami Dade Product Control
Division

AL-FAROOQ CORPORATION
ENGINEERS & PRODUCT DEVELOPMENT
1235 S.W. 87 AVE
MIAMI, FLORIDA 33174
TEL. (305) 264-8100 FAX. (305) 262-6978

STORE W07-60ES

SERIES 8000 ALUM WINDOW WALL SYSTEM (L.M.I.)
E.S. WINDOWS, LLC
5220 N.W. 72 AVE. BAY #4
MIAMI, FL. 33166
TEL. (305) 640-9857 FAX. (305) 593-2074

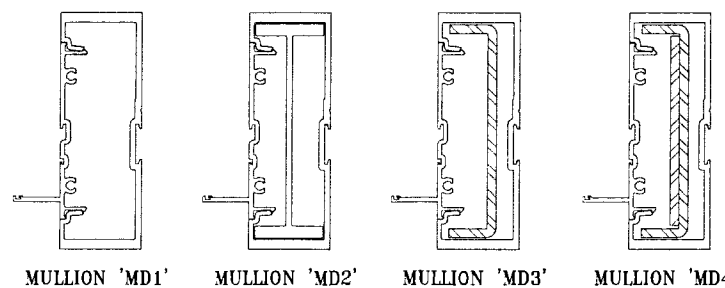
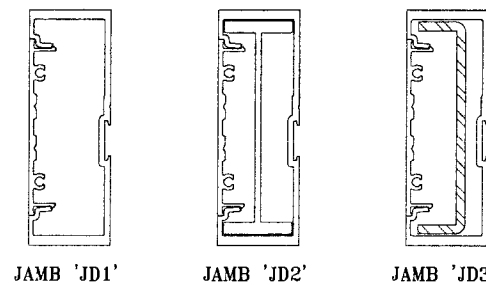
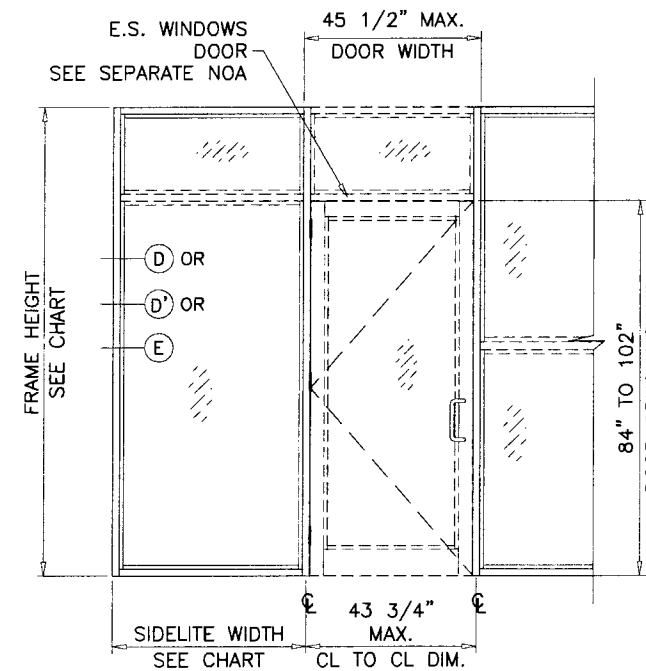
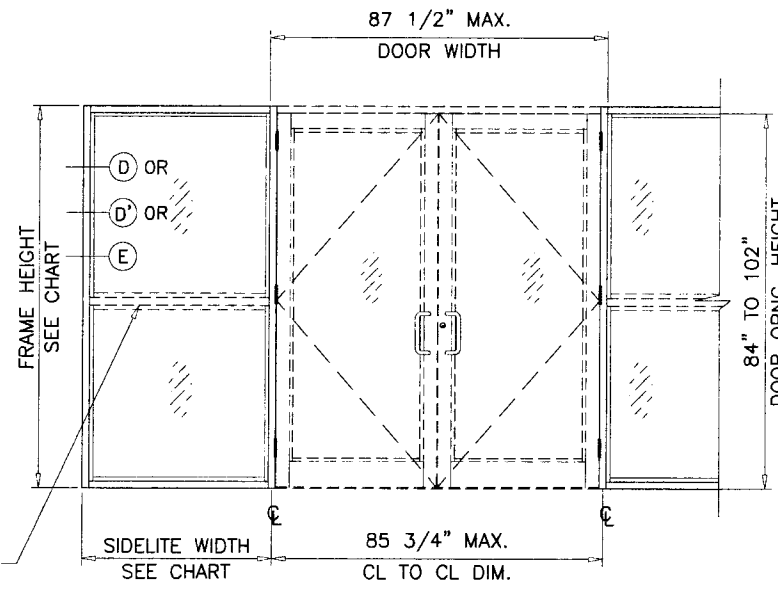
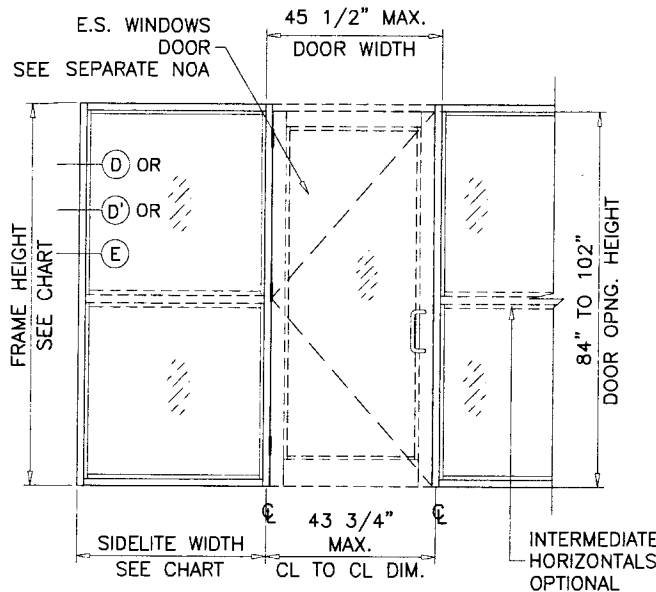
no.	date	description
A	09.03.08	NO CHANGE THIS SHEET

date: 08-03-07
scale: -
dr. by: HAMID
chk. by:

drawing no.
W07-60
sheet 4 of 12

DOOR MULLION LOAD CAPACITY-PSF					
SIDELITE WIDTH INCHES	FRAME HEIGHT INCHES	JAMB 'JD1'	JAMB 'JD1'	JAMB 'JD2'	JAMB 'JD3'
		MULL 'MD1'	MULL 'MD2'	MULL 'MD3'	MULL 'MD4'
		EXT. (+) INT. (-)	EXT. (+) INT. (-)	EXT. (+) INT. (-)	EXT. (+) INT. (-)
32	86-1/2	120.0	120.0	120.0	120.0
36		120.0	120.0	120.0	120.0
42		120.0	120.0	120.0	120.0
48		120.0	120.0	120.0	120.0
54		120.0	120.0	120.0	120.0
60		119.4	120.0	120.0	120.0
32	98-1/2	109.5	120.0	120.0	120.0
36		104.2	120.0	120.0	120.0
42		97.2	120.0	120.0	120.0
48		91.1	120.0	120.0	120.0
54		85.7	120.0	116.6	120.0
32	110-1/2	77.6	120.0	118.4	120.0
36		73.8	114.4	112.7	120.0
42		68.8	106.7	105.1	120.0
48		64.5	100.0	98.5	117.7

DOOR MULLION LOAD CAPACITY-PSF					
SIDELITE WIDTH INCHES	FRAME HEIGHT INCHES	JAMB 'JD1'	JAMB 'JD1'	JAMB 'JD2'	JAMB 'JD3'
		MULL 'MD1'	MULL 'MD2'	MULL 'MD3'	MULL 'MD4'
		EXT. (+) INT. (-)	EXT. (+) INT. (-)	EXT. (+) INT. (-)	EXT. (+) INT. (-)
32	98-1/2	90.0	90.0	90.0	90.0
36		90.0	90.0	90.0	90.0
42		90.0	90.0	90.0	90.0
48		90.0	90.0	90.0	90.0
54		85.7	90.0	90.0	90.0
32	110-1/2	77.6	90.0	90.0	90.0
36		73.8	90.0	90.0	90.0
42		68.8	90.0	90.0	90.0
48		64.5	90.0	90.0	90.0
32	114	70.6	90.0	90.0	90.0
36		67.2	90.0	90.0	90.0
42		62.7	90.0	90.0	90.0
48	58.7	90.0	90.0	90.0	
32	120	60.6	90.0	90.0	90.0
36		57.6	89.4	90.0	90.0
42		53.8	83.3	89.1	90.0
48		50.4	78.1	83.5	90.0



DOOR-WINDOW WALL TRANSITION MULLION

Engr: DR. HUMAYOON FAROOQ
STRUCTURES
FLA. PE # 16557
C.A.N. 3538

NOV 05 2008

PRODUCT REVISED
as complying with the Florida
Building Code
Acceptance No 08-1114.16
Expiration Date 04/03/2013
By *Manuel Perez*
Miami/Dade Product Control
Division

af c
AL-FAROOQ CORPORATION
ENGINEERS & PRODUCT DEVELOPMENT
1235 S.W. 87 AVE
MIAMI, FLORIDA 33174
TEL. (305) 264-8100 FAX. (305) 262-6978
STORE W07-60ES

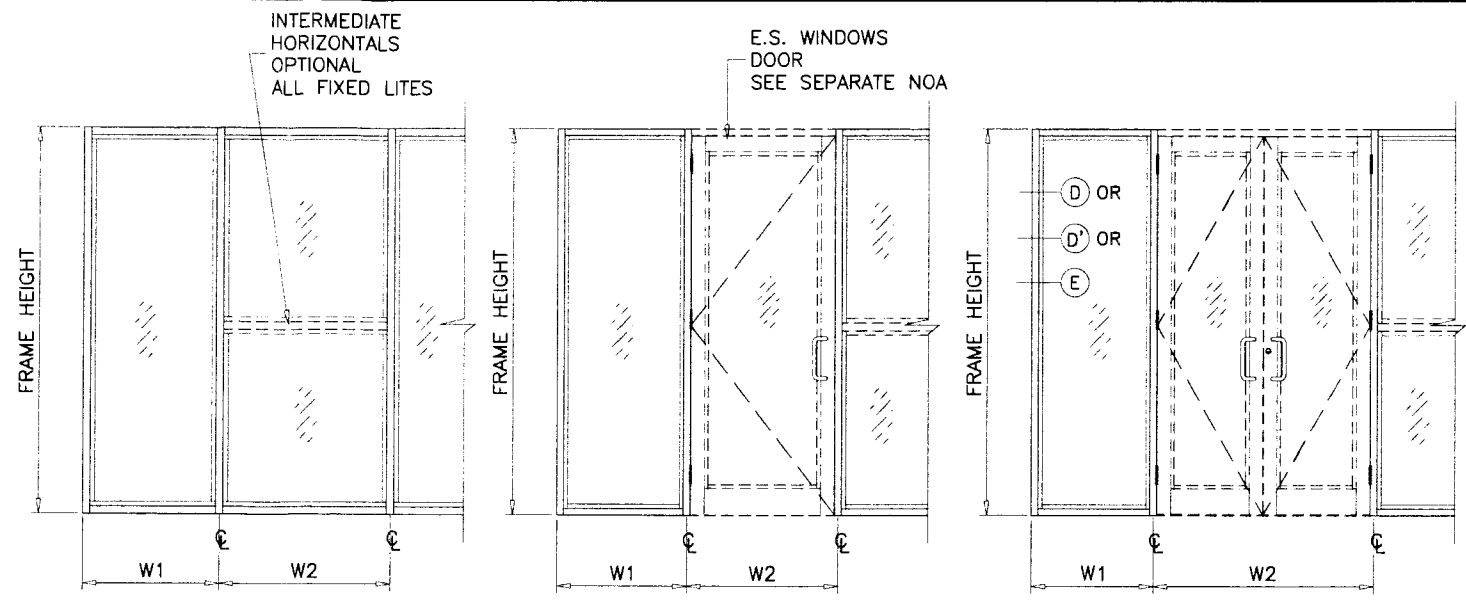
SERIES 8000 ALUM WINDOW WALL SYSTEM (L.M.I.)
E.S. WINDOWS, LLC
5220 N.W. 72 AVE. BAY #4
MIAMI, FL. 33166
TEL. (305) 640-9857 FAX. (305) 593-2074

no	date	description
A	09.03.08	DOOR MULLION ADDED

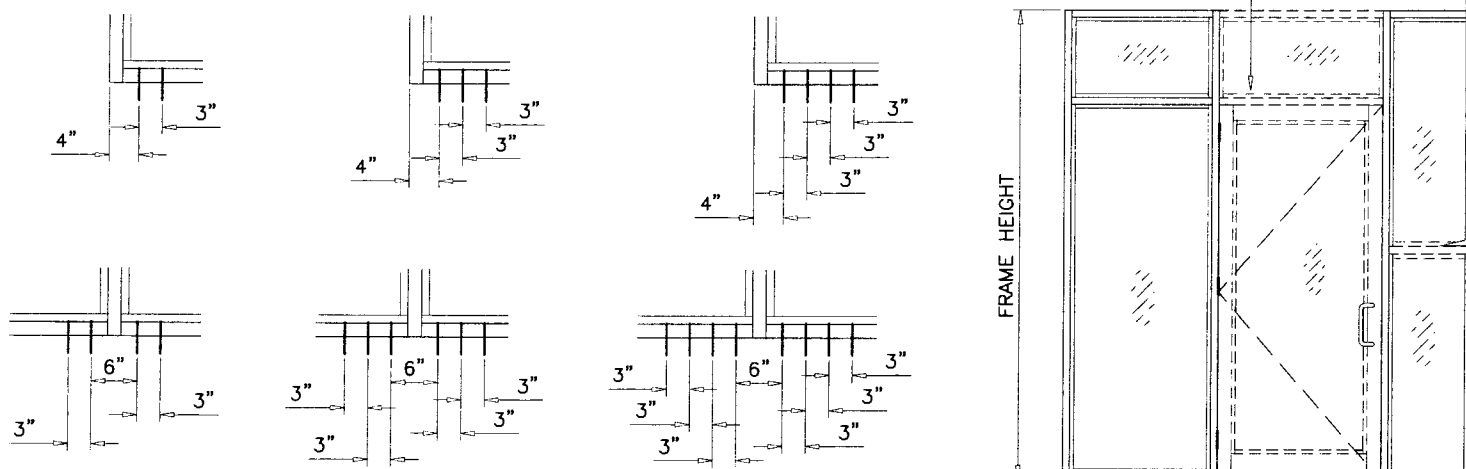
date: 08-03-07
scale: -
dr. by: HAMID
chk. by:

drawing no.
W07-60
sheet 5 of 12

ANCHOR LOAD CAPACITY - PSF EXT.(+) & INT.(-)											
NOMINAL DIMS.		ANCHORS TYPE 'A'			ANCHORS TYPE 'B' & 'D'			ANCHORS TYPE 'C'			
WIDTH (W)	FRAME HEIGHT	A2	A3	A4	B2/D2	B3/D3	B4/D4	C2	C3	C4	
30"	72"	130.0	130.0	130.0	130.0	130.0	130.0	130.0	130.0	130.0	
36"		108.4	130.0	130.0	130.0	130.0	130.0	130.0	130.0	130.0	
42"		93.0	130.0	130.0	122.3	130.0	130.0	130.0	130.0	130.0	
48"		81.3	122.0	130.0	107.0	130.0	130.0	123.3	130.0	130.0	
54"		72.3	108.4	130.0	95.1	130.0	130.0	109.6	130.0	130.0	
60"		65.1	97.6	130.0	85.6	128.4	130.0	98.7	130.0	130.0	
30"	78"	120.1	130.0	130.0	130.0	130.0	130.0	130.0	130.0	130.0	
36"		100.1	130.0	130.0	130.0	130.0	130.0	130.0	130.0	130.0	
42"		85.8	128.7	130.0	112.9	130.0	130.0	130.0	130.0	130.0	
48"		75.1	112.6	130.0	98.8	130.0	130.0	113.8	130.0	130.0	
54"		66.7	100.1	130.0	87.8	130.0	130.0	101.2	130.0	130.0	
60"		60.1	90.1	120.1	79.0	118.5	130.0	91.1	130.0	130.0	
30"	86-1/2"	108.3	130.0	130.0	130.0	130.0	130.0	130.0	130.0	130.0	
36"		90.3	130.0	130.0	118.8	130.0	130.0	130.0	130.0	130.0	
42"		77.4	116.1	130.0	101.8	130.0	130.0	117.3	130.0	130.0	
48"		67.7	101.5	130.0	89.1	130.0	130.0	102.7	130.0	130.0	
54"		60.2	90.3	120.4	79.2	118.8	130.0	91.3	130.0	130.0	
60"		54.2	81.2	108.3	71.3	106.9	130.0	82.1	123.2	130.0	
30"	90"	104.1	130.0	130.0	130.0	130.0	130.0	130.0	130.0	130.0	
36"		86.8	130.0	130.0	114.1	130.0	130.0	130.0	130.0	130.0	
42"		74.4	111.5	130.0	97.8	130.0	130.0	112.8	130.0	130.0	
48"		65.1	97.6	130.0	85.6	128.4	130.0	98.7	130.0	130.0	
54"		57.8	86.8	115.7	76.1	114.1	130.0	87.7	130.0	130.0	
60"		52.1	78.1	104.1	68.5	102.7	130.0	78.9	118.4	130.0	
30"	96"	97.6	130.0	130.0	128.4	130.0	130.0	130.0	130.0	130.0	
36"		81.3	122.0	130.0	107.0	130.0	130.0	123.3	130.0	130.0	
42"		69.7	104.6	130.0	91.7	130.0	130.0	105.7	130.0	130.0	
48"		61.0	91.5	122.0	80.3	120.4	130.0	92.5	130.0	130.0	
54"		54.2	81.3	108.4	71.3	107.0	130.0	82.2	123.3	130.0	
60"		48.8	73.2	97.6	64.2	96.3	128.4	74.0	111.0	130.0	
30"	98-1/2"	95.1	130.0	130.0	125.1	130.0	130.0	130.0	130.0	130.0	
36"		79.3	118.9	130.0	104.3	130.0	130.0	120.2	130.0	130.0	
42"		67.9	101.9	130.0	89.4	130.0	130.0	103.0	130.0	130.0	
48"		59.5	89.2	118.9	78.2	117.3	130.0	90.2	130.0	130.0	
54"		52.8	79.3	105.7	69.5	104.3	130.0	80.1	120.2	130.0	
30"		102"	91.9	130.0	130.0	120.8	130.0	130.0	130.0	130.0	130.0
36"	76.5		114.8	130.0	100.7	130.0	130.0	116.1	130.0	130.0	
42"	65.6		98.4	130.0	86.3	129.5	130.0	99.5	130.0	130.0	
48"	57.4		86.1	114.8	75.5	113.3	130.0	87.1	130.0	130.0	
54"	51.0		76.5	102.1	67.1	100.7	130.0	77.4	116.1	130.0	
30"	108"		86.8	130.0	130.0	114.1	130.0	130.0	130.0	130.0	130.0
36"		72.3	108.4	130.0	95.1	130.0	130.0	109.6	130.0	130.0	
42"		62.0	93.0	123.9	81.5	122.3	130.0	94.0	130.0	130.0	
48"		54.2	81.3	108.4	71.3	107.0	130.0	82.2	123.3	130.0	
30"		110-1/2"	84.8	127.2	130.0	111.6	130.0	130.0	128.6	130.0	130.0
36"			70.7	106.0	130.0	93.0	130.0	130.0	107.1	130.0	130.0
42"	60.6		90.8	121.1	79.7	119.5	130.0	91.8	130.0	130.0	
48"	53.0		79.5	106.0	69.7	104.6	130.0	80.4	120.5	130.0	
30"	114"		82.2	123.3	130.0	108.1	130.0	130.0	124.6	130.0	130.0
36"			68.5	102.7	130.0	90.1	130.0	130.0	103.9	130.0	130.0
42"		58.7	88.1	117.4	77.2	115.8	130.0	89.0	130.0	130.0	
48"		51.4	77.1	102.7	67.6	101.4	130.0	77.9	116.8	130.0	
30"		120"	78.1	117.1	130.0	102.7	130.0	130.0	118.4	130.0	130.0
36"			65.1	97.6	130.0	85.6	128.4	130.0	98.7	130.0	130.0
42"	55.8		83.7	111.5	73.4	110.1	130.0	84.6	126.9	130.0	
48"	48.8		73.2	97.6	64.2	96.3	128.4	74.0	111.0	130.0	



WIDTH (W) = $\frac{W1 + W2}{2}$ WIDTH (W) = $\frac{W1 + W2}{2}$ WIDTH (W) = $\frac{W1}{2} + \frac{W2}{4}$



A2, B2, C2 A3, B3, C3 A4, B4, C4

- ANCHORS TYPES: SEE SHEET 8 FOR DESCRIPTION
- A2 = (2) ANCHORS TYPE 'A' AT EACH SIDE OF JAMB AND MULLION
 - B2 = (2) ANCHORS TYPE 'B' AT EACH SIDE OF JAMB AND MULLION
 - C2 = (2) ANCHORS TYPE 'C' AT EACH SIDE OF JAMB AND MULLION
 - D2 = (2) ANCHORS TYPE 'D' AT EACH SIDE OF JAMB AND MULLION
 - A3 = (3) ANCHORS TYPE 'A' AT EACH SIDE OF JAMB AND MULLION
 - B3 = (3) ANCHORS TYPE 'B' AT EACH SIDE OF JAMB AND MULLION
 - C3 = (3) ANCHORS TYPE 'C' AT EACH SIDE OF JAMB AND MULLION
 - D3 = (3) ANCHORS TYPE 'D' AT EACH SIDE OF JAMB AND MULLION
 - A4 = (4) ANCHORS TYPE 'A' AT EACH SIDE OF JAMB AND MULLION
 - B4 = (4) ANCHORS TYPE 'B' AT EACH SIDE OF JAMB AND MULLION
 - C4 = (4) ANCHORS TYPE 'C' AT EACH SIDE OF JAMB AND MULLION
 - D4 = (4) ANCHORS TYPE 'D' AT EACH SIDE OF JAMB AND MULLION

ALL OTHER ANCHORS TO BE SPACED AS PER ELEVATION.

NOTE: INTERPOLATION BETWEEN WIDTHS OR HEIGHTS ALLOWED.

ANCHORS

Engr: DR. HUMAYOUN FAROOQ
STRUCTURES
FLA. PE # 18557
C.A.N. 3538

NOV 05 2008

PRODUCT REVISED
as complying with the Florida
Building Code
Acceptance No 08-1114.16
Expiration Date 04/03/2013
By: *Mamad Peraz*
Miami Made Product Control
Division

afC
AL-FAROOQ CORPORATION
ENGINEERS & PRODUCT DEVELOPMENT
1235 S.W. 87 AVE
MIAMI, FLORIDA 33174
TEL. (305) 264-8100 FAX. (305) 262-6978
STORE W07-60ES

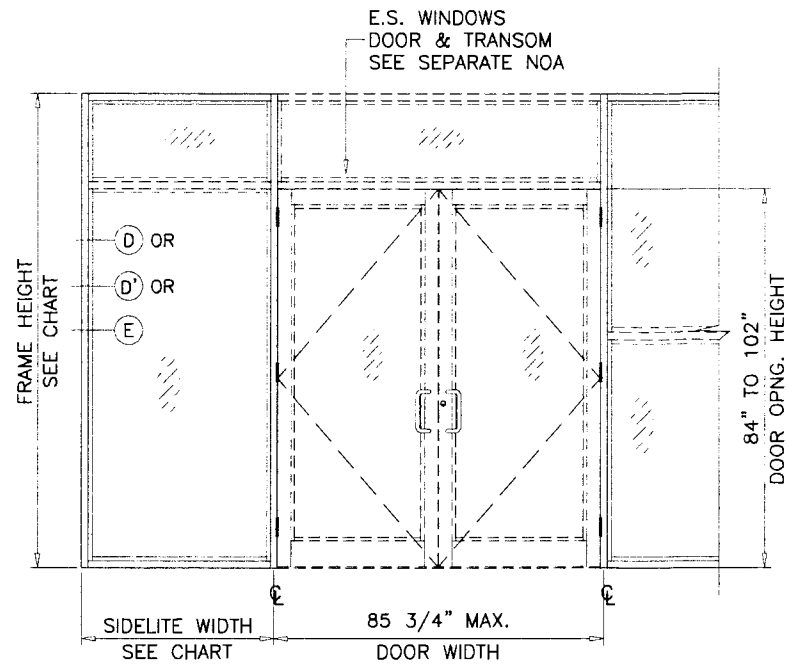
SERIES 8000 ALUM WINDOW WALL SYSTEM (L.M.I.)
E.S. WINDOWS, LLC
5220 N.W. 72 AVE. BAY #4
MIAMI, FL. 33166
TEL. (305) 640-9857 FAX. (305) 593-2074

no	date	description
A	09.03.08	NO CHANGE THIS SHEET

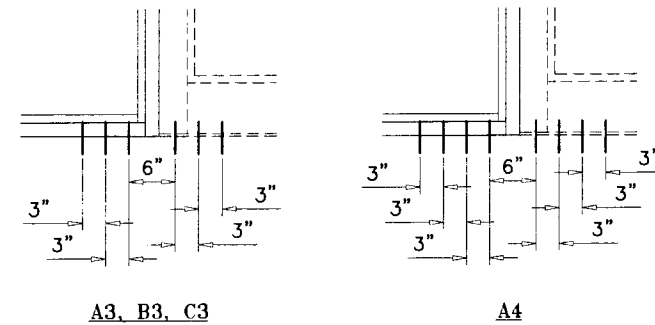
revisions:
date: 08-03-07
scale: -
dr. by: HAMID
chk. by:

drawing no.
W07-60
sheet 6 of 12

DOOR MULLION LOAD CAPACITY-PSF					
SIDELITE WIDTH INCHES	FRAME HEIGHT INCHES	JAMB 'JD1'	JAMB 'JD1'	JAMB 'JD2'	JAMB 'JD3'
		MULL 'MD1'	MULL 'MD2'	MULL 'MD3'	MULL 'MD4'
		EXT. (+) INT. (-)	EXT. (+) INT. (-)	EXT. (+) INT. (-)	EXT. (+) INT. (-)
30	96	90.0	90.0	90.0	90.0
36		90.0	90.0	90.0	90.0
42		90.0	90.0	90.0	90.0
48		90.0	90.0	90.0	90.0
54		85.4	90.0	90.0	90.0
60		81.0	90.0	90.0	90.0
30	102	86.3	90.0	90.0	90.0
36		80.9	90.0	90.0	90.0
42		76.2	90.0	90.0	90.0
48		71.9	90.0	90.0	90.0
54		68.2	90.0	90.0	90.0
30	108	69.6	90.0	90.0	90.0
36		65.4	90.0	90.0	90.0
42		61.7	90.0	90.0	90.0
48		58.5	90.0	88.3	90.0
30	114	57.2	88.7	90.0	90.0
36		53.9	83.6	85.3	90.0
42		51.0	79.0	80.7	90.0
48		48.3	74.9	76.6	90.0
30	120	47.8	74.1	78.7	90.0
36		45.1	69.9	74.4	88.9
42		42.7	66.2	70.5	84.2
48		40.5	62.8	67.0	80.1



ANCHOR LOAD CAPACITY - PSF EXT.(+) & INT.(-)					
NOMINAL DIMS.		ANCHORS TYPE 'A'		ANCHORS TYPE 'B' & 'D'	ANCHORS TYPE 'C'
WIDTH (W)	FRAME HEIGHT	A3	A4	B3/D3	C3
30	96	79.6	90.0	90.0	90.0
36		75.5	90.0	90.0	90.0
42		71.8	90.0	90.0	90.0
48		68.4	90.0	90.0	90.0
54		65.4	86.0	86.0	90.0
60		62.6	82.3	82.3	90.0
30	102	76.4	90.0	90.0	90.0
36		72.4	90.0	90.0	90.0
42		68.8	90.0	90.0	90.0
48		65.5	86.2	86.2	90.0
54		62.5	82.3	82.3	90.0
30	108	73.5	90.0	90.0	90.0
36		69.6	90.0	90.0	90.0
42		66.0	86.9	86.9	90.0
48		62.9	82.7	82.7	90.0
30	114	70.8	90.0	90.0	90.0
36		67.0	88.1	88.1	90.0
42		63.5	83.6	83.6	90.0
48		60.4	79.5	79.5	90.0
30	120	68.3	89.9	89.9	90.0
36		64.5	84.9	84.9	90.0
42		61.2	80.5	80.5	90.0
48		58.1	76.5	76.5	88.1



ANCHORS TYPES: SEE SHEET 8 FOR DESCRIPTION

A3 = (3) ANCHORS TYPE 'A' AT EACH SIDE OF DOOR MULLION
 B3 = (3) ANCHORS TYPE 'B' AT EACH SIDE OF DOOR MULLION
 C3 = (3) ANCHORS TYPE 'C' AT EACH SIDE OF DOOR MULLION
 D3 = (3) ANCHORS TYPE 'D' AT EACH SIDE OF DOOR MULLION

A4 = (4) ANCHORS TYPE 'A' AT EACH SIDE OF DOOR MULLION

ALL OTHER ANCHORS TO BE SPACED AS PER ELEVATION.

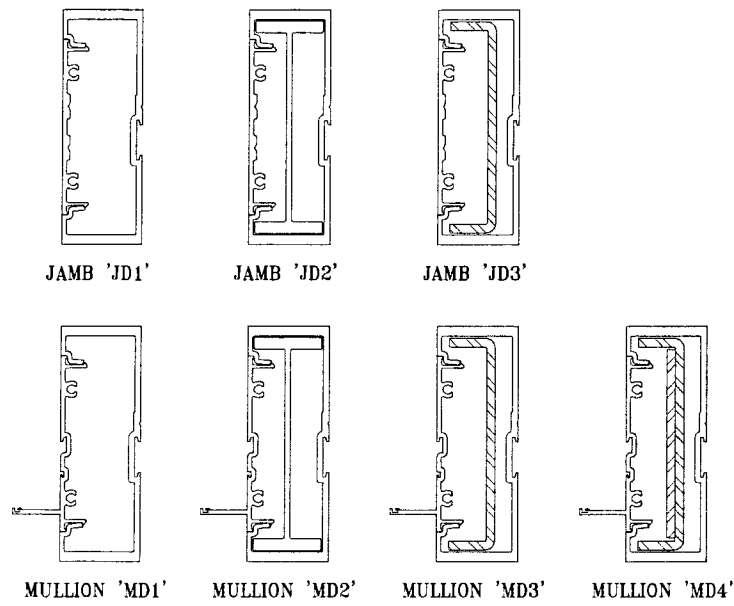
TRANSITION MULLION ANCHORS

Engr. DR. HUMAYOON FAROOQ
 STRUCTURES
 FLA. PE # 16557
 C.A.N. 3538

NOV 05 2008

PRODUCT REVISED
 as complying with the Florida
 Building Code
 Acceptance No 08-1114.16
 Expiration Date 04/03/2013

By *Manuel Lopez*
 Miami/Dade Product Control
 Division



**DOOR-WINDOW WALL
 TRANSITION MULLION**

af c

AL-FAROOQ CORPORATION
 ENGINEERS & PRODUCT DEVELOPMENT
 1235 S.W. 87 AVE
 MIAMI, FLORIDA 33174
 TEL. (305) 264-8100 FAX. (305) 262-6978
 STORE W07-60ES

SERIES 8000 ALUM WINDOW WALL SYSTEM (L.M.I.)

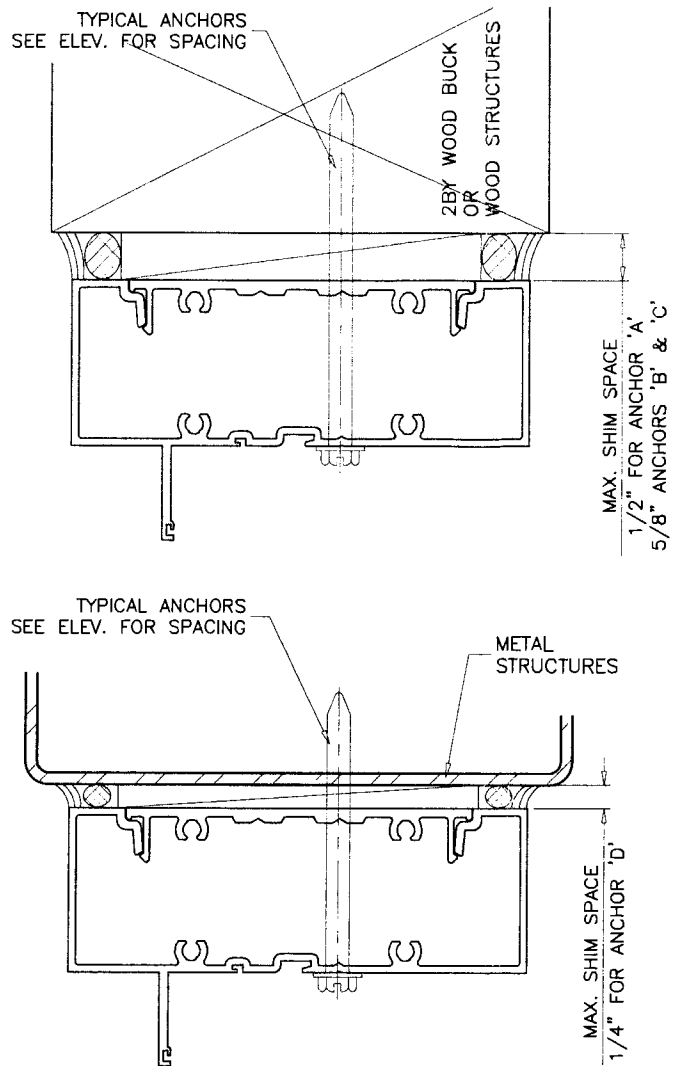
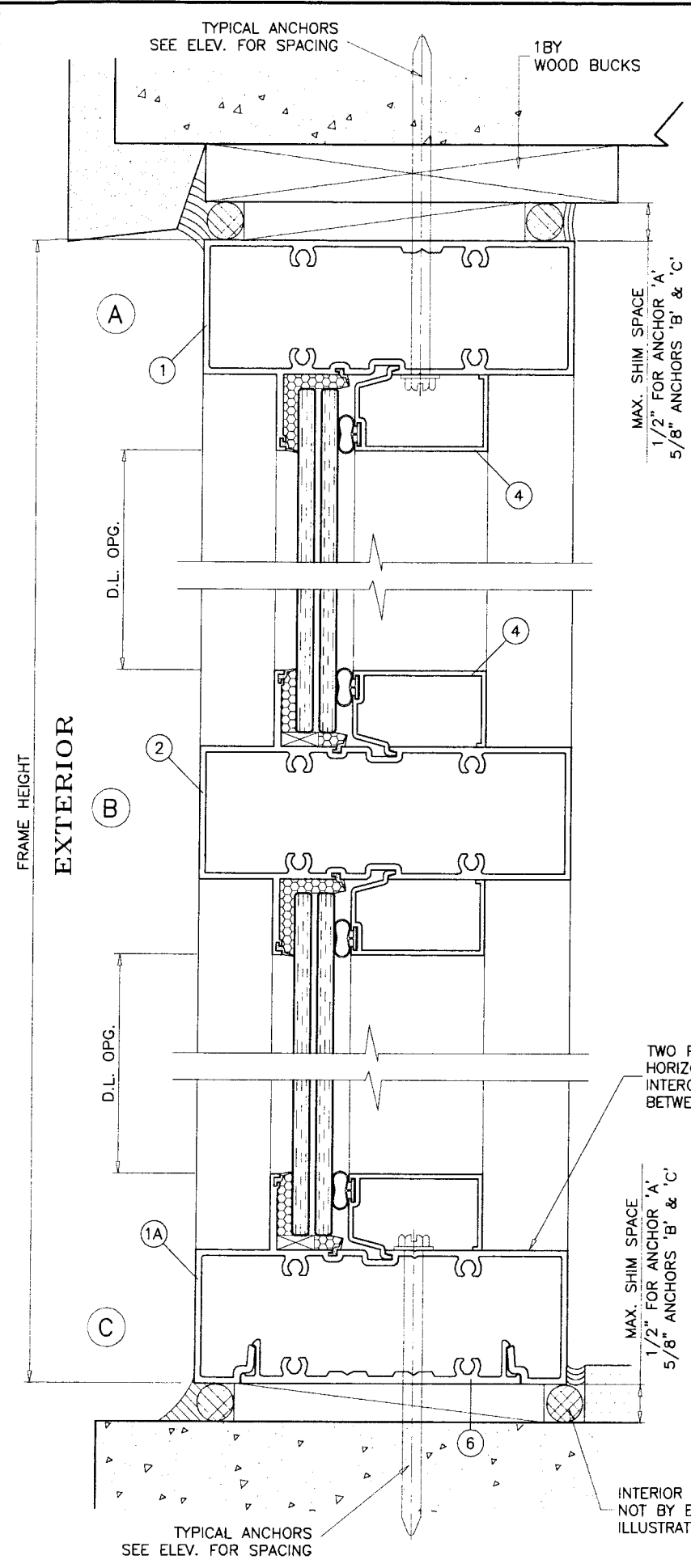
E.S. WINDOWS, LLC
 5220 N.W. 72 AVE. BAY #4
 MIAMI, FL. 33166
 TEL. (305) 640-9857 FAX. (305) 593-2074

revisions:	no	date	description
	A	109.03.08	DOOR MULLION ADDED

date: 08-03-07
 scale: -
 dr. by: HAMID
 chk. by:

drawing no.
W07-60

sheet 7 of 12



TYPICAL ANCHORS: SEE ELEV. FOR SPACING

TYPE 'A'
1/4" DIA ULTRACON BY 'ELCO'
 INTO 2BY WOOD BUCKS OR WOOD STRUCTURES WITH 1-3/8" MIN. PENETRATION INTO WOOD
 THRU 1BY WOOD BUCKS INTO CONCRETE WITH 1-1/4" MIN. EMBED INTO CONCRETE
 DIRECTLY INTO CONCRETE WITH 1-1/4" MIN. EMBED INTO CONC.

ANCHOR EDGE DISTANCES
 INTO CONCRETE AND MASONRY = 2-1/2" MIN.
 INTO WOOD STRUCTURE = 1" MIN.

TYPE 'B'
1/4" DIA HILTI KWIK CON II BY 'HILTI'
 INTO 2BY WOOD BUCKS OR WOOD STRUCTURES WITH 1-1/2" MIN. PENETRATION INTO WOOD
 THRU 1BY WOOD BUCKS INTO CONCRETE WITH 1-1/4" MIN. EMBED INTO CONCRETE
 DIRECTLY INTO CONCRETE WITH 1-1/4" MIN. EMBED INTO CONC.

ANCHOR EDGE DISTANCES
 INTO CONCRETE AND MASONRY = 3" MIN.
 INTO WOOD STRUCTURE = 1" MIN.

TYPE 'C'
5/16" DIA ULTRACON BY 'ELCO'
 INTO 2BY WOOD BUCKS OR WOOD STRUCTURES WITH 1-1/2" MIN. PENETRATION INTO WOOD
 THRU 1BY WOOD BUCKS INTO CONCRETE WITH 1-1/4" MIN. EMBED INTO CONCRETE
 DIRECTLY INTO CONCRETE WITH 1-1/4" MIN. EMBED INTO CONC.

ANCHOR EDGE DISTANCES
 INTO CONCRETE AND MASONRY = 3" MIN.
 INTO WOOD STRUCTURE = 1" MIN.

TYPE 'D'
#14 SMS OR SELF DRILLING SCREWS ST/ST
 INTO METAL STRUCTURES
 STEEL : 12 GA. MIN. (Fy = 36 KSI MIN.)
 ALUMINUM : 1/8" THK. MIN. (6063-T5 MIN.)
 (STEEL IN CONTACT WITH ALUMINUM TO BE PLATED OR PAINTED)

ANCHOR EDGE DISTANCES
 INTO METAL STRUCTURE = 1/2" MIN.

SEALANTS:

ALL FRAME CORNERS, JOINTS, MULLION SEAMS AND PERIMETER OF GLAZING BEAD TO FRAME SEALED WITH SILICONE SEALANT.

WOOD BUCKS AND METAL STRUCTURES NOT BY E.S. WDW. MUST SUPPORT LOADS IMPOSED BY GLAZING SYSTEM AND TRANSFER THEM TO THE BUILDING STRUCTURE.

Engr: DR. HUMAYOON FAROOQ
 STRUCTURES
 FLA. PE # 16557
 C.A.N. 3538

PRODUCT REVISED
 as complying with the Florida Building Code
 Acceptance No 08-1114.16
 Expiration Date 04/03/2013

NOV 05 2008

By *Mauro Lopez*
 Miami Dade Product Control Division

af c

AL-FAROOQ CORPORATION
 ENGINEERS & PRODUCT DEVELOPMENT
 1235 S.W. 87 AVE
 MIAMI, FLORIDA 33174
 TEL. (305) 264-8100 FAX. (305) 262-6978
 STORE W07-60ES

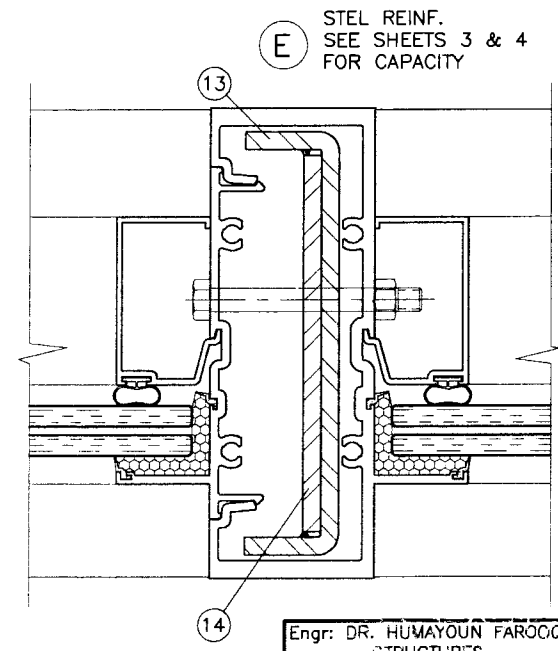
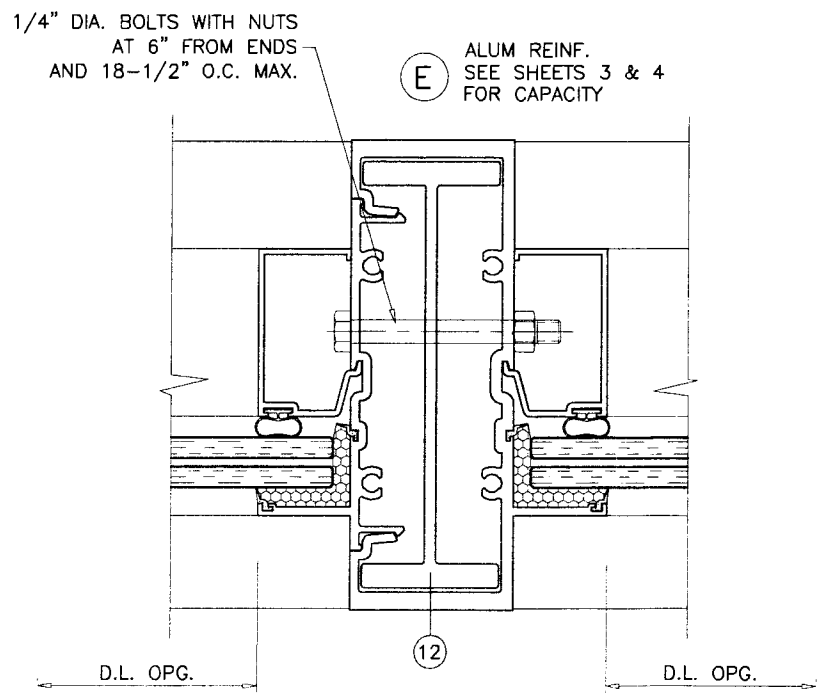
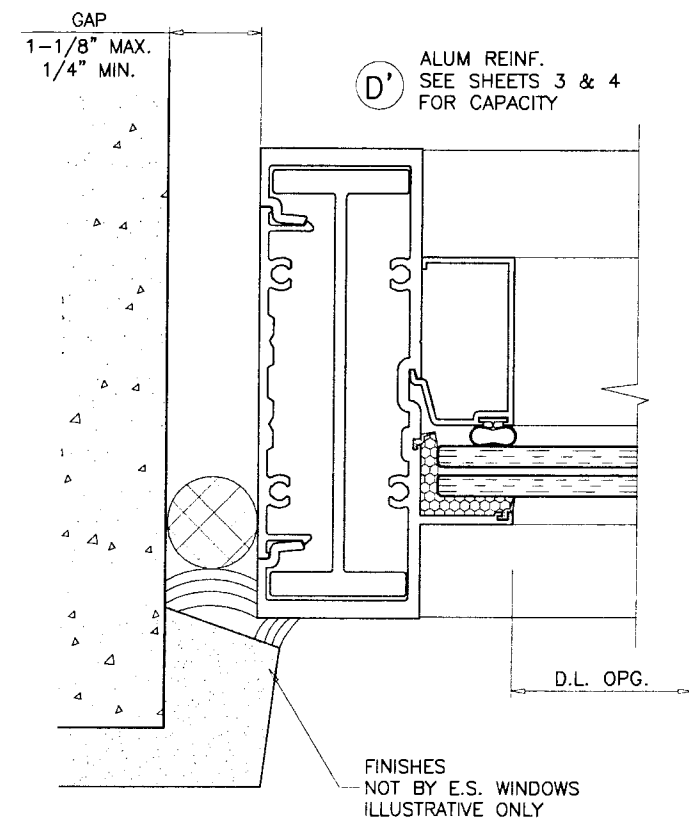
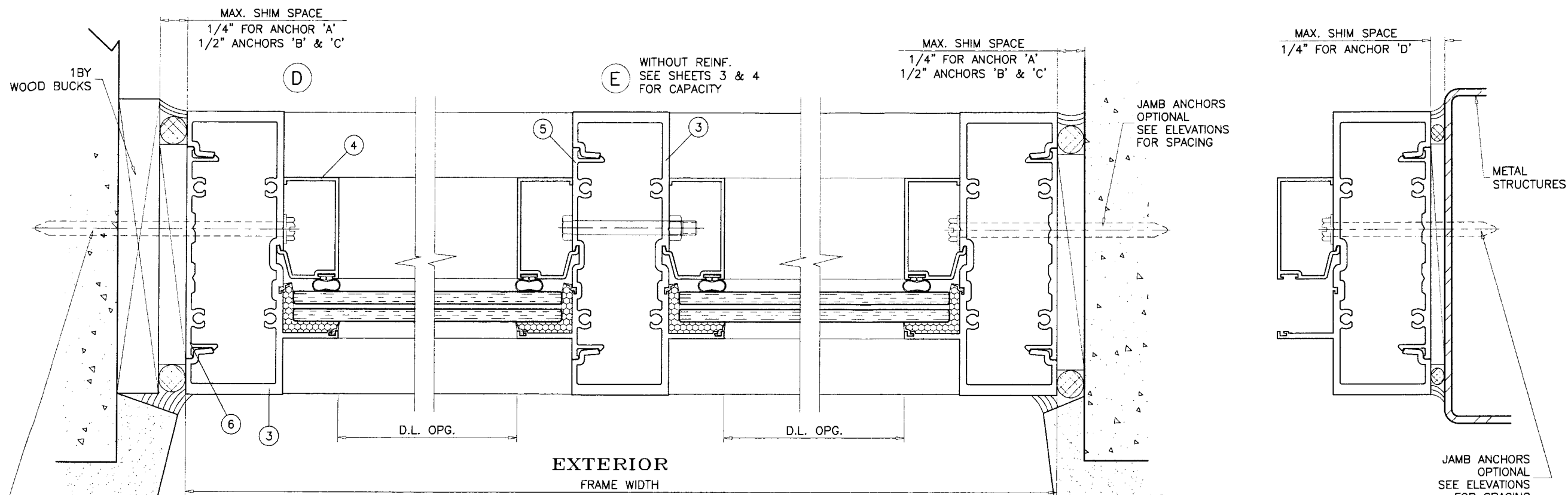
SERIES 8000 ALUM WINDOW WALL SYSTEM (L.M.I.)

E.S. WINDOWS, LLC
 5220 N.W. 72 AVE. BAY #4
 MIAMI, FL. 33166
 TEL. (305) 640-9857 FAX. (305) 593-2074

no	date	description
A	09.03.08	NO CHANGE THIS SHEET

date: 08-03-07
 scale: 1/2" = 1"
 dr. by: HAMID
 chk. by:

drawing no. **W07-60**
 sheet 8 of 12



Engr: DR. HUMAYOUN FAROOQ
STRUCTURES
FLA. PC # 16557
C.A.N. 3538

PRODUCT REVISED
as complying with the Florida
Building Code
Acceptance No 08-1114.16
Expiration Date 04/03/2013

By *Muhammad*
Miami Dade Product Control
Division

NOV 05 2008

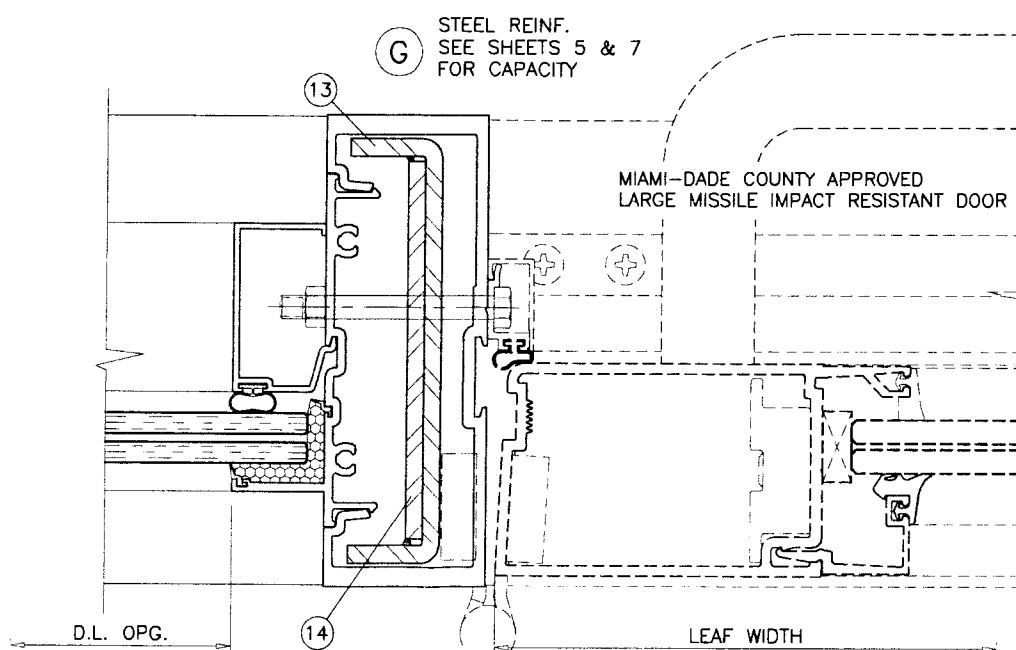
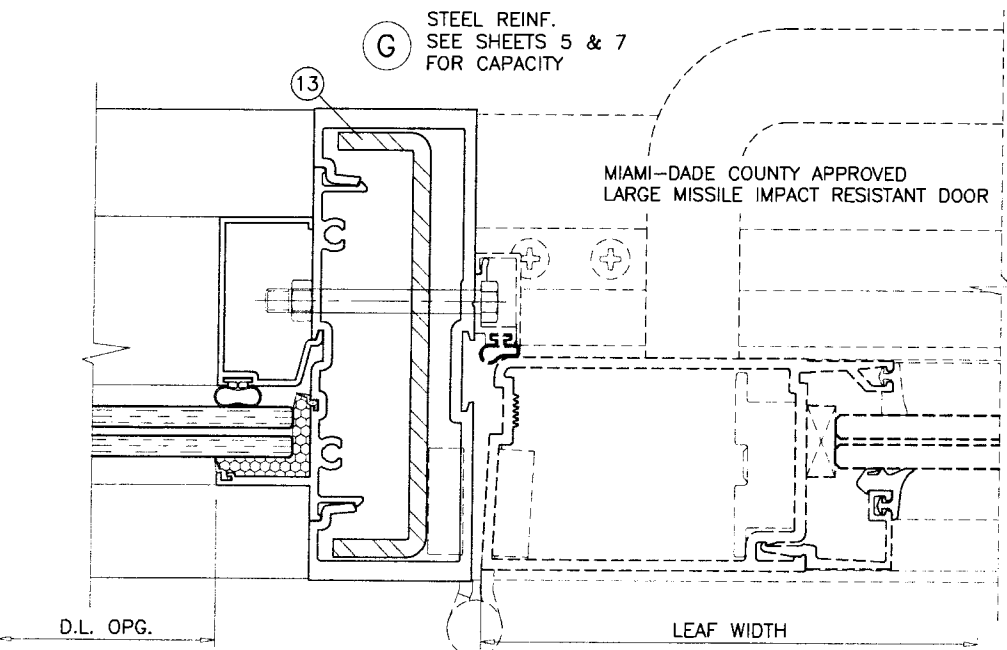
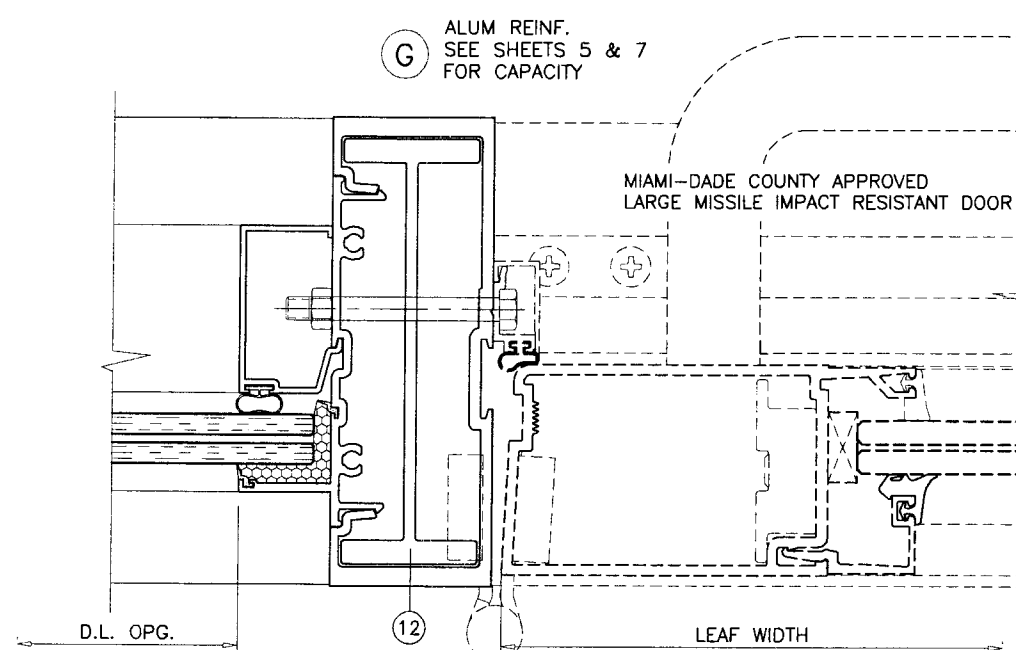
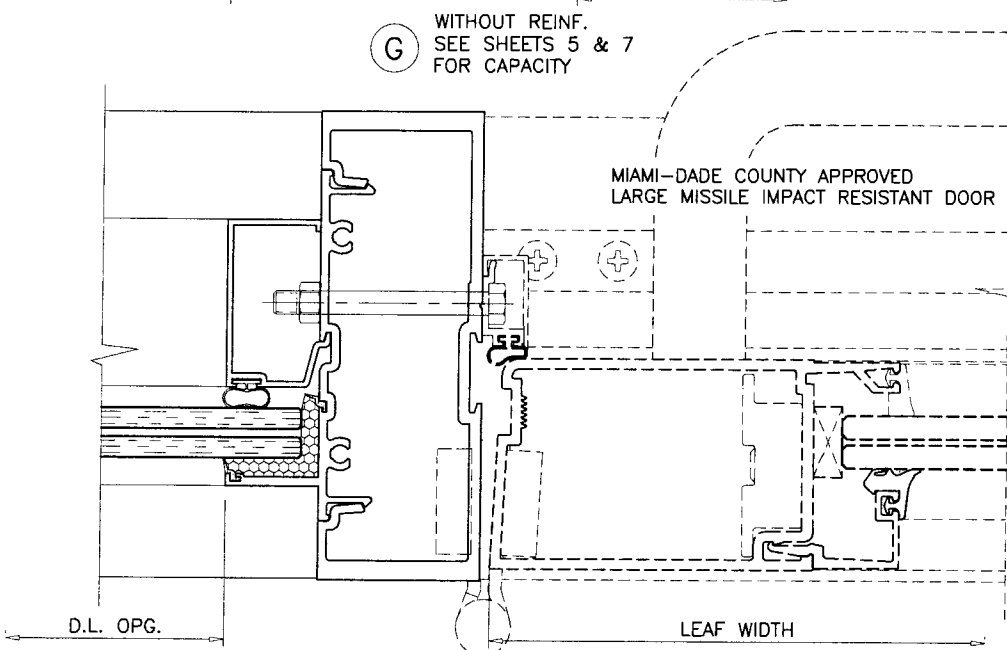
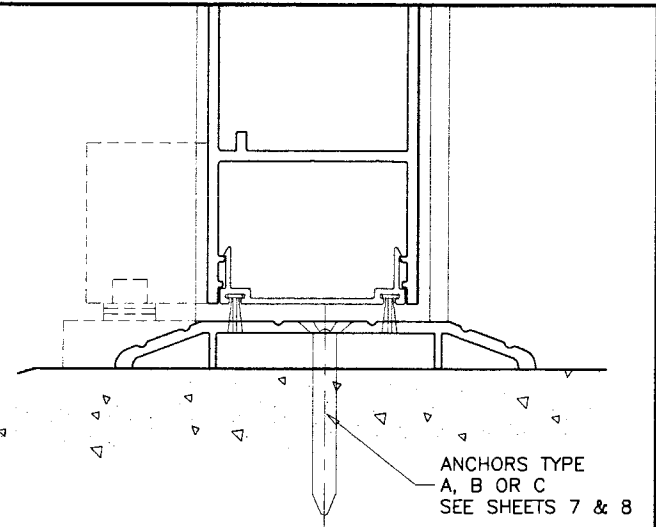
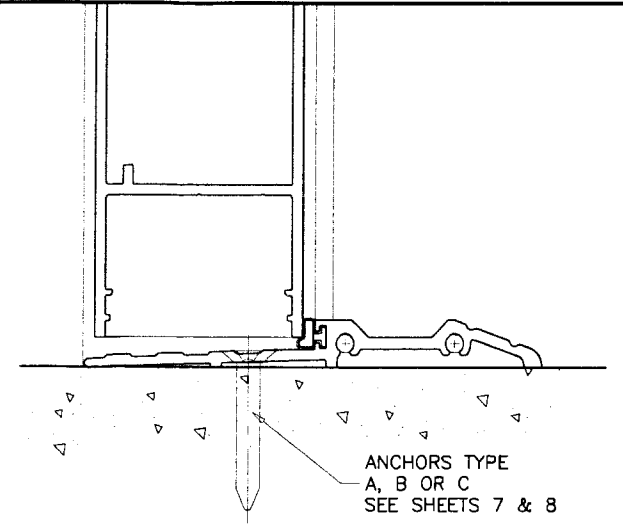
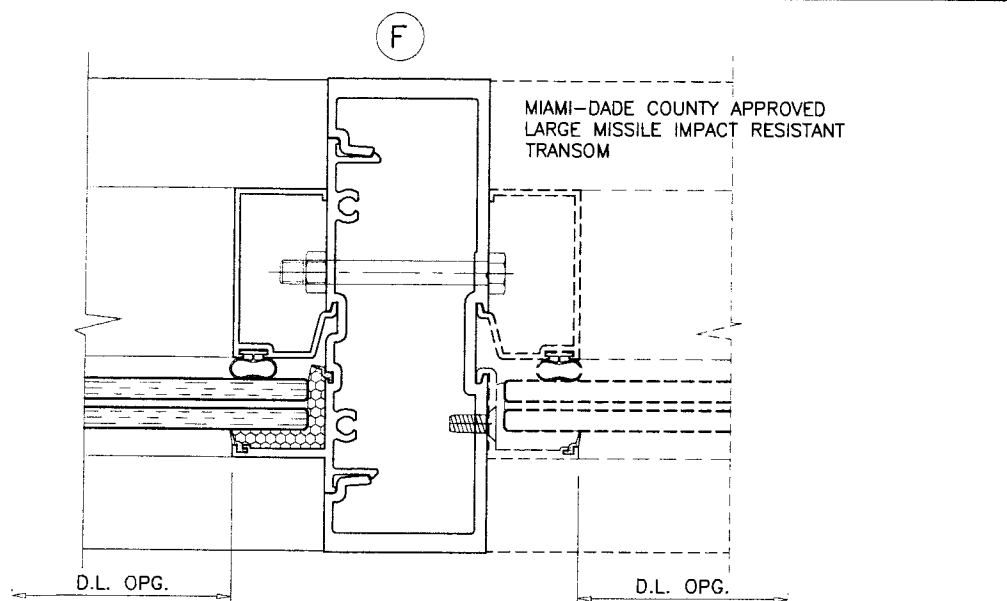
afc
AL-FAROOQ CORPORATION
ENGINEERS & PRODUCT DEVELOPMENT
1235 S.W. 87 AVE
MIAMI, FLORIDA 33174
TEL (305) 264-8100 FAX (305) 262-6978
STORE/W07-60ES

SERIES 8000 ALUM WINDOW WALL SYSTEM (L.M.I.)
E.S. WINDOWS, LLC
5220 N.W. 72 AVE. BAY #4
MIAMI, FL. 33166
TEL. (305) 640-9857 FAX. (305) 593-2074

no	date	description	by
A	09.03.08	NO CHANGE THIS SHEET	

date: 08-03-07
scale: 1/2" = 1"
dr. by: HAMID
chk. by:

drawing no.
W07-60
sheet 9 of 12



SEE SEPARATE NOA FOR DESIGN LOAD
CAPACITY OF DOORS AND DOOR ANCHORS.
LOWER VALUES FROM DOORS NOA
OR STOREFRONT SYSTEM CAPACITY CHARTS
WILL APPLY TO ENTIRE SYSTEM.

PRODUCT REVISED
as complying with the Florida
Building Code
Acceptance No 08-1114-16
Expiration Date 04/03/2013
By Manuel Pera
Miami Dade Product Control
Division

Engr: DR. HUMAYOUN FAROOQ
STRUCTURES
FLA. PE # 16557
C.A.N. 3538

NOV 05 2008

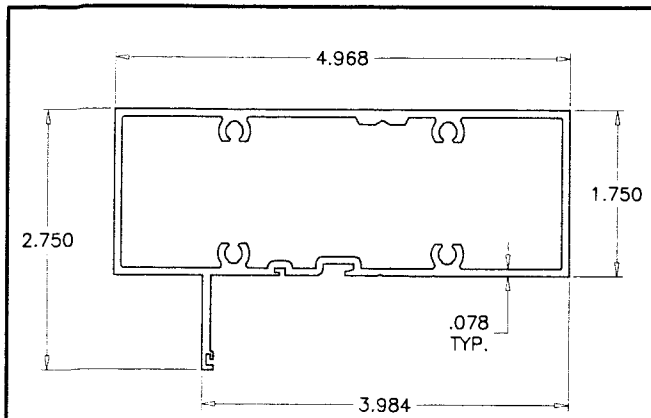
af c
AL-FAROOQ CORPORATION
ENGINEERS & PRODUCT DEVELOPMENT
1235 S.W. 87 AVE
MIAMI, FLORIDA 33174
TEL. (305) 264-8100 FAX. (305) 262-6978
STORE W07-60ES

SERIES 8000 ALUM WINDOW WALL SYSTEM (L.M.I.)
E.S. WINDOWS, LLC
5220 N.W. 72 AVE. BAY #4
MIAMI, FL. 33166
TEL. (305) 640-9857 FAX. (305) 593-2074

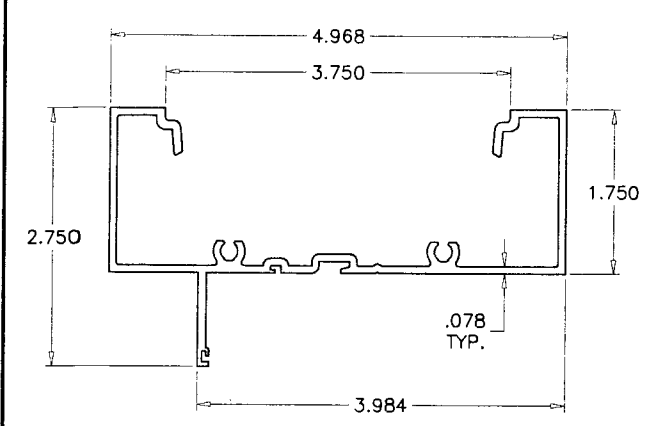
no	date	by	description
A	09.03.08		DOOR MULLION ADDED

date: 08-03-07
scale: 1/2" = 1"
dr. by: HAMID
chk. by:

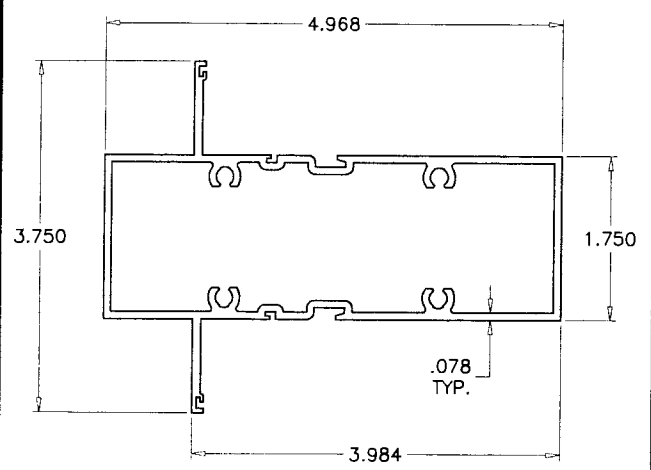
drawing no.
W07-60
sheet 10 of 12



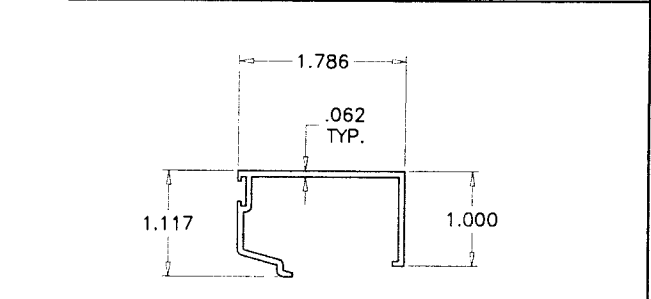
① HOLLOW FRAME HEAD/SILL



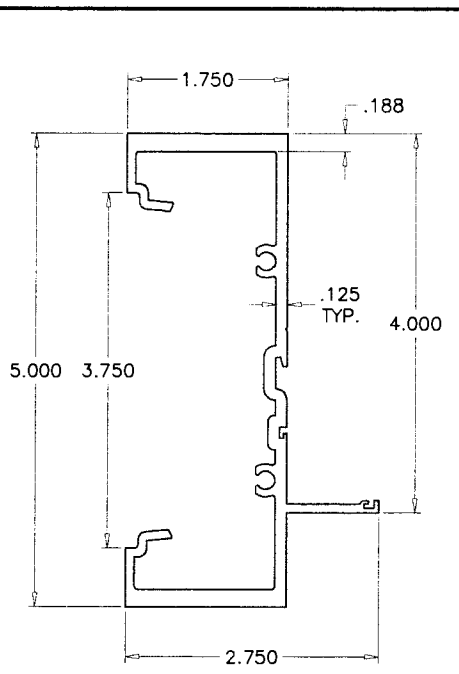
①A OPEN BACK FRAME HEAD/SILL



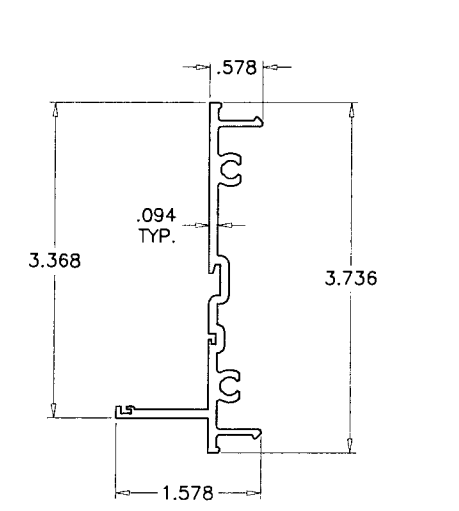
② INTERMEDIATE HORIZONTAL



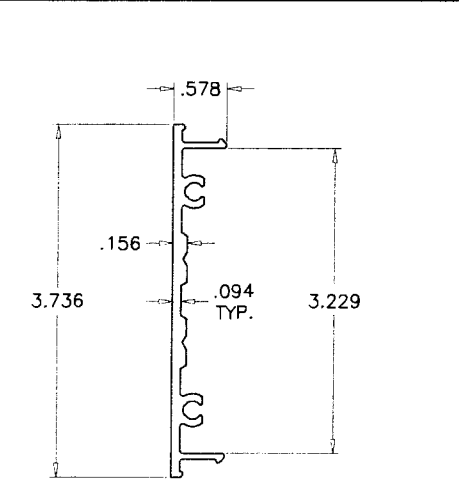
④ GLASS STOP



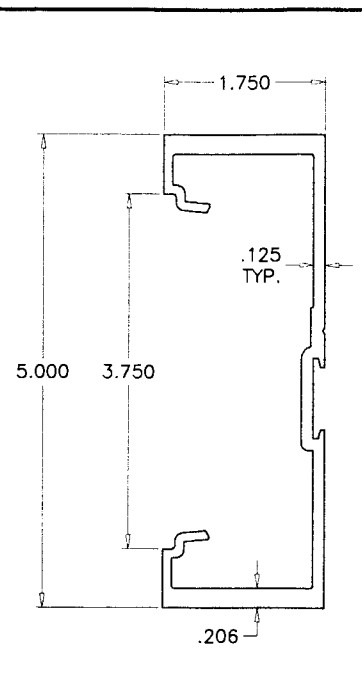
③ FRAME JAMB/MULLION



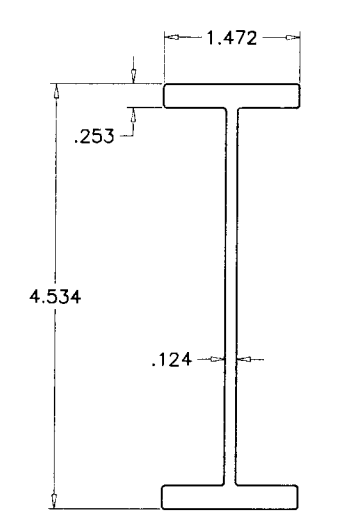
⑤ MULLION SNAP-IN MATE



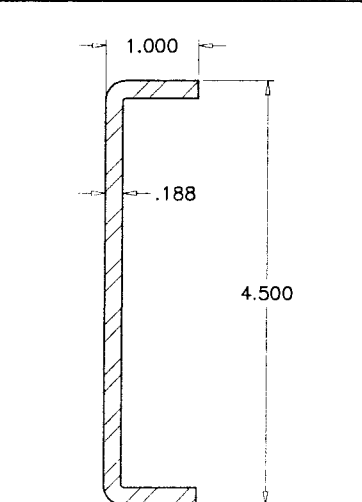
⑥ SHEAR CLIP



③A DOOR MULLION



⑫ STIFFENER



⑬ STEEL REINFORCING
36 KSI MIN.

ITEM NO.	PART NUMBER	QUANTITY	DESCRIPTION	MATERIAL	MANF./SUPPLIER/REMARKS
1	ES8005	AS REQD.	HOLLOW FRAME HEAD/SILL	6005-T5	-
1A	ES8007	AS REQD.	OPEN BACK FRAME HEAD/SILL	6063-T6	-
2	ES8004	AS REQD.	INTERMEDIATE HORIZONTAL	6063-T6	-
3	ES8001	AS REQD.	FRAME JAMB/MULLION	6005-T5	-
3A	-	AS REQD.	DOOR MULLION	6005-T5	-
4	ES8006	AS REQD.	GLASS STOP	6063-T5	-
5	ES8002	AS REQD.	MULLION SNAP-IN MATE	6005-T5	-
6	ES8003	AS REQD.	SHEAR CLIP	6005-T5	-
7	-	AS REQD.	INTERIOR BULB GASKET	VINYL	-
8	ES8009	AS REQD.	SPACER/SILICONE STOP	VINYL	-
8A	-	AS REQD.	BUTTON BUMPER	SILICONE	-
9	-	-	-	-	-
10	-	AS REQD.	SETTING BLOCK AT 1/4" POINTS	NEOPRENE	3/16" X 1/2" X 2" LONG
11	#12 X 1-1/2"	4/ CORNER	ASSEMBLY SCREWS PHSMS	STEEL	-
12	-	AS REQD.	MULLION STIFFENER	STEEL	-
13	-	AS REQD.	MULLION REINFORCING CHANNEL	STEEL	-
14	-	AS REQD.	MULLION REINFORCING BAR	STEEL	-

Engr: DR. HUMAYOUN FAROOQ
STRUCTURES
FLA. PE # 16557
C.A.N. 3538

NOV 05 2008

PRODUCT REVISED
as complying with the Florida
Building Code
Acceptance No 08-114-16
Expiration Date 04/03/2013
By *Maamun Raza*
Miami Dade Product Control
Division

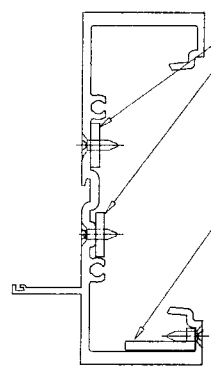
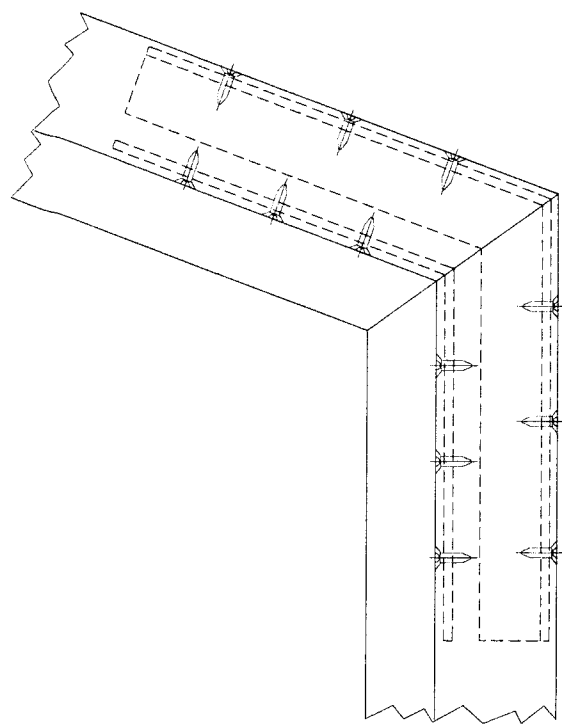
af c
AL-FAROOQ CORPORATION
ENGINEERS & PRODUCT DEVELOPMENT
1235 S.W. 87 AVE
MIAMI, FLORIDA 33174
TEL. (305) 264-8100 FAX. (305) 262-6978
STORE W07-60ES

SERIES 8000 ALUM WINDOW WALL SYSTEM (L.M.I.)
E.S. WINDOWS, LLC
5220 N.W. 72 AVE. BAY #4
MIAMI, FL. 33166
TEL. (305) 640-9857 FAX. (305) 593-2074

no.	date	description
A	09/03/08	by description NO CHANGE THIS SHEET

date: 08-03-07
scale: 1/2" = 1"
dr. by: HAMID
chk. by:

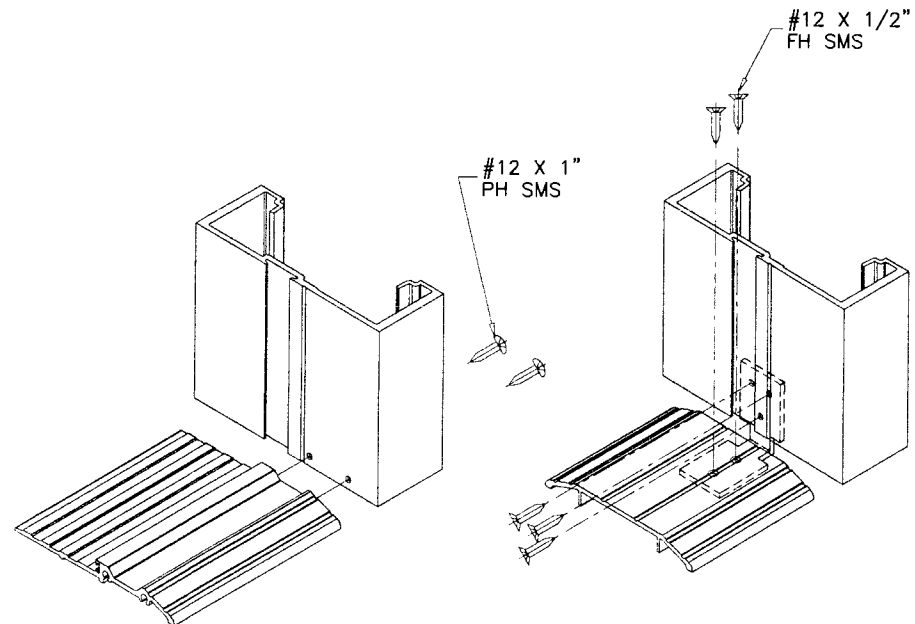
drawing no.
W07-60
sheet 11 of 12



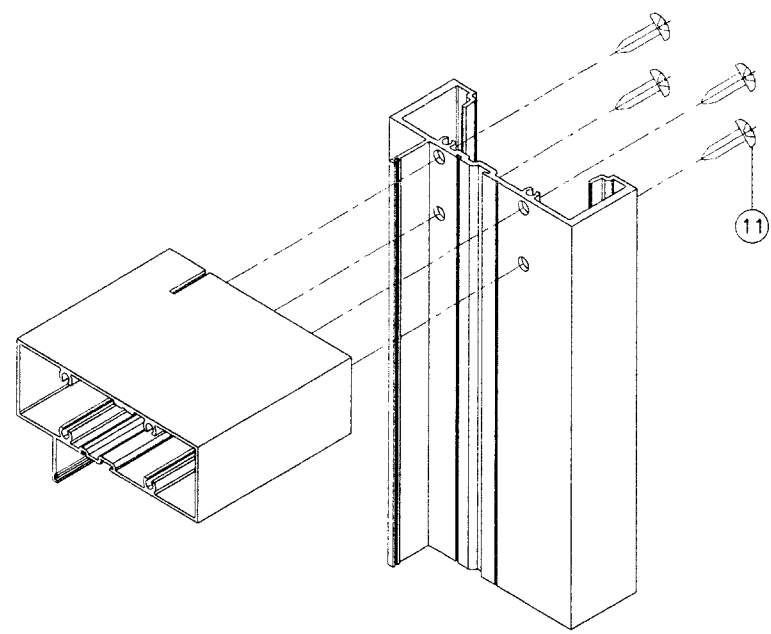
5/8" X 1/8"
ALUM PLATE
BENT TO MATCH JOINT
SECURED WITH #8 SMS
(3) PER SIDE OF JOINT

5/16 X 1 X 1/8"
ALUM ANGLE
BENT TO MATCH JOINT
SECURED WITH #8 SMS
(3) PER SIDE OF JOINT

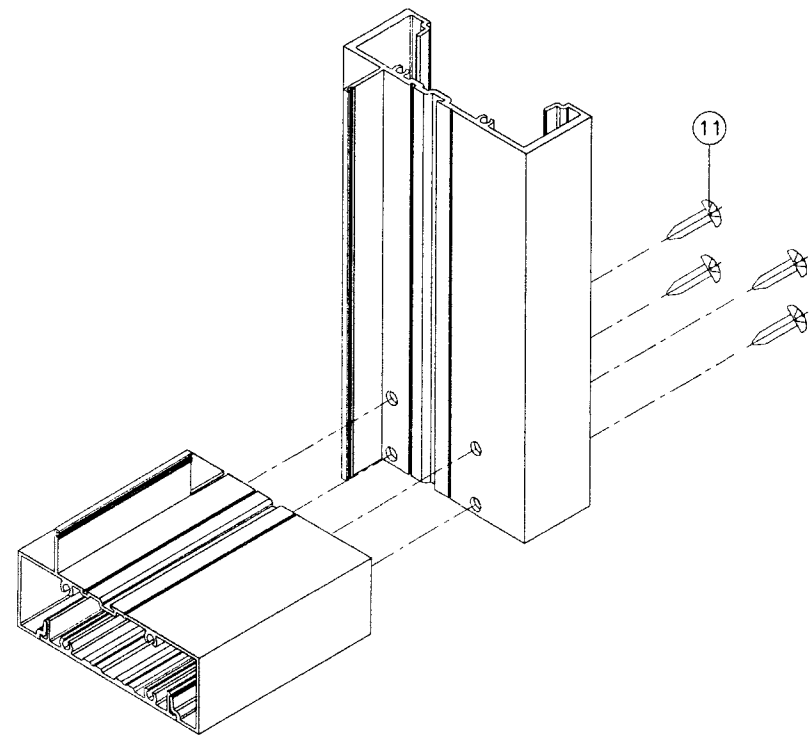
CIRCULAR OR ANGLED CORNERS



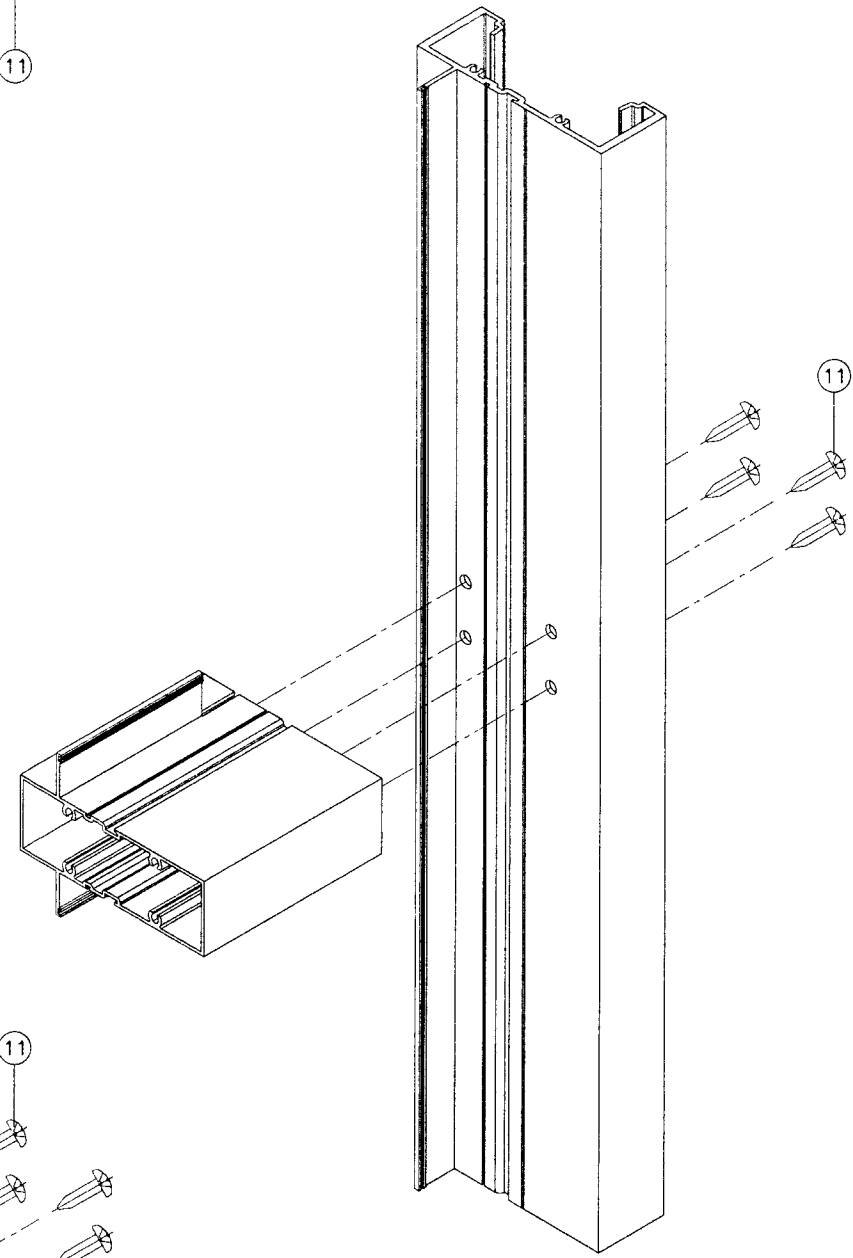
DOOR MULLION CORNER



RECT. OR SQUARE CORNERS



HORIZONTAL CORNER



Engr: DR. HUMAYOUN FAROOQ
STRUCTURES
FLA. PE # 16557
C.A.N. 3538

NOV 05 2008

PRODUCT REVISED
as complying with the Florida
Building Code
Acceptance No 08-1114.16
Expiration Date 04/03/2013
By *Manuel Perez*
Miami Trade Product Control
Division

afc

AL-FAROOQ CORPORATION
ENGINEERS & PRODUCT DEVELOPMENT
1235 S.W. 87 AVE
MIAMI, FLORIDA 33174
TEL. (305) 264-8100 FAX. (305) 262-6978
STORE W07-60ES

SERIES 8000 ALUM WINDOW WALL SYSTEM (L.M.I.)

E.S. WINDOWS, LLC
5220 N.W. 72 AVE. BAY #4
MIAMI, FL. 33166
TEL. (305) 640-9857 FAX. (305) 593-2074

revisions:	no	date	by	description
	A	09.03.08		NO CHANGE THIS SHEET

date: 08-03-07
scale: -
dr. by: HAMID
chk. by:

drawing no.
W07-60

sheet 12 of 12