



**BUILDING CODE COMPLIANCE OFFICE (BCCO)
PRODUCT CONTROL DIVISION**

**MIAMI-DADE COUNTY, FLORIDA
METRO-DADE FLAGLER BUILDING
140 WEST FLAGLER STREET, SUITE 1603
MIAMI, FLORIDA 33130-1563
(305) 375-2901 FAX (305) 375-2908**

NOTICE OF ACCEPTANCE (NOA)

**Signature Doors, Inc.
401 Juniata Street
Altoona, PA 16602**

SCOPE:

This NOA is being issued under the applicable rules and regulations governing the use of construction materials. The documentation submitted has been reviewed by Miami-Dade County Product Control Division and accepted by the Board of Rules and Appeals (BORA) to be used in Miami Dade County and other areas where allowed by the Authority Having Jurisdiction (AHJ).

This NOA shall not be valid after the expiration date stated below. The Miami-Dade County Product Control Division (In Miami Dade County) and/or the AHJ (in areas other than Miami Dade County) reserve the right to have this product or material tested for quality assurance purposes. If this product or material fails to perform in the accepted manner, the manufacturer will incur the expense of such testing and the AHJ may immediately revoke, modify, or suspend the use of such product or material within their jurisdiction. BORA reserves the right to revoke this acceptance, if it is determined by Miami-Dade County Product Control Division that this product or material fails to meet the requirements of the applicable building code.

This product is approved as described herein, and has been designed to comply with the Florida Building Code, including the High Velocity Hurricane Zone.

DESCRIPTION: 8 Foot Wood Panel Inswing Impact Doors

APPROVAL DOCUMENT: Drawing No. 1257, titled "8 Foot Wood Panel Inswing Impact Doors", sheets 1 through 10 of 10, prepared by Warren W. Schaefer, P. E., dated 11/25/03, revised 11/17/08, bearing the Miami-Dade County Product Control Approval stamp with the Notice of Acceptance number and approval date by the Miami-Dade County Product Control Division.

MISSILE IMPACT RATING: Large Impact Test

LABELING: Each unit shall bear a permanent label with the manufacturer's name or logo, city, state and following statement: "Miami-Dade County Product Control Approved", unless otherwise noted herein.

RENEWAL of this NOA shall be considered after a renewal application has been filed and there has been no change in the applicable building code negatively affecting the performance of this product.

TERMINATION of this NOA will occur after the expiration date or if there has been a revision or change in the materials, use, and/or manufacture of the product or process. Misuse of this NOA as an endorsement of any product, for sales, advertising or any other purposes shall automatically terminate this NOA. Failure to comply with any section of this NOA shall be cause for termination and removal of NOA.

ADVERTISEMENT: The NOA number preceded by the words Miami-Dade County, Florida, and followed by the expiration date may be displayed in advertising literature. If any portion of the NOA is displayed, then it shall be done in its entirety.

INSPECTION: A copy of this entire NOA shall be provided to the user by the manufacturer or its distributors and shall be available for inspection at the job site at the request of the Building Official.

This NOA **revises and renews** NOA # 04-0211.08 and consists of this page 1 and evidence pages E-1 and E-2, as well as approval document mentioned above.

The submitted documentation was reviewed by **Fitz A. Harris, P.E.**



Fitz A. Harris
3/3/09

**NOA No 08-1202.09
Expiration Date: April 22, 2014
Approval Date: March 25, 2009
Page 1**

NOTICE OF ACCEPTANCE: EVIDENCE SUBMITTED

A. DRAWINGS

1. Manufacturer's die drawings and sections.
2. Drawing No. **1257**, titled "8 Foot Wood Panel Inswing Impact Doors", sheets 1 through 10 of 10, prepared by W.W. Schaefer Engineering & Consulting, P.A., dated 11/25/03, revised on 11/17/08 signed and sealed by Warren Schaefer, P.E.

B. TESTS

1. Test reports on
 - 1) Air Infiltration Test, per FBC, TAS 202-94
 - 2) Uniform Static Air Pressure Test, Loading per FBC, TAS 202-94
 - 3) Large Missile Impact Test per FBC, TAS 201-94
 - 4) Cyclic Wind Pressure Loading per FBC, TAS 203-94along with marked-up drawings and installation diagram of an inswing wood door, prepared by Hurricane Test Laboratory, Inc., Test Report No. **HTL- 0243-1013-03**, Specimen # 1, dated October 6, 2003, signed and sealed by Vinu J. Abraham, P. E.
2. Test reports on
 - 1) Air Infiltration Test, per FBC, TAS 202-94
 - 2) Uniform Static Air Pressure Test, Loading per FBC, TAS 02-94
 - 3) Large Missile Impact Test per FBC, TAS 201-94
 - 4) Cyclic Wind Pressure Loading per FBC, TAS 203-94
 - 5) Forced Entry Test, per FBC 2411.3.2.1(b) and TAS 202-94along with marked-up drawings and installation diagram of an inswing wood door, prepared by Hurricane Test Laboratory, Inc., Test Report No. **HTL- 0243-1013-03**, Specimen # 2, dated October 7, 2003, signed and sealed by Vinu J. Abraham, P. E.
3. Test reports on
 - 1) Air Infiltration Test, per FBC, TAS 202-94
 - 2) Uniform Static Air Pressure Test, Loading per FBC, TAS 02-94
 - 3) Large Missile Impact Test per FBC, TAS 201-94
 - 4) Cyclic Wind Pressure Loading per FBC, TAS 203-94
 - 5) Forced Entry Test, per FBC 2411.3.2.1(b) and TAS 202-94along with marked-up drawings and installation diagram of an inswing wood door, prepared by Hurricane Test Laboratory, Inc., Test Report No. **HTL - 0243-1013-03**, Specimen # 4, dated October 8, 2003, signed and sealed by Vinu J. Abraham, P. E.


Fitz A. Harris, P.E.

Product Control Examiner
NOA No 08-1202.09
Expiration Date: April 22, 2014
Approval Date: March 25, 2009

Signature Door, Inc.

NOTICE OF ACCEPTANCE: EVIDENCE SUBMITTED

4. Test reports on
- 1) Air Infiltration Test, per FBC, TAS 202-94
 - 2) Uniform Static Air Pressure Test, Loading per FBC, TAS 202-94
 - 3) Water Resistance Test, per FBC, TAS 202-94
 - 4) Large Missile Impact Test per FBC, TAS 201-94
 - 5) Cyclic Wind Pressure Loading per FBC, TAS 203-94
 - 6) Forced Entry Test, per FBC 2411.3.2.1(b) and TAS 202-94
- along with marked-up drawings and installation diagram of an inswing wood door, prepared by Hurricane Test Laboratory, Inc., Test Report No. **HTL - 0243-1013-03**, Specimen # 6, dated October 21, 2003, signed and sealed by Vinu J. Abraham, P. E.

C. CALCULATIONS

1. Anchor Calculations and ASTM-E1300-98 analysis, dated 01/20/04, revised on 03/20/07, prepared by W.W. Schaefer Engineering & Consulting, P.A., signed and sealed by Warren Schaefer, P.E.

D. QUALITY ASSURANCE

1. Miami Dade County Building Code Compliance Office.

E. MATERIAL CERTIFICATIONS

None

F. STATEMENTS

1. Statement letter of conformance, dated November 17, 2008, signed and sealed by Warren W. Schaefer, P. E.
2. Statement letter of no financial interest, dated November 17, 2008, signed and sealed by Warren W. Schaefer, P. E.

G. OTHER

1. Letter from the consultant stating that the product is in compliance with the 2007 Florida Building Code (FBC).



Fitz A. Harris, P.E.
Product Control Examiner
NOA No 08-1202.09
Expiration Date: April 22, 2014
Approval Date: March 25, 2009

GENERAL NOTES:

1. THESE DOOR SYSTEMS HAVE BEEN TESTED, ANALYZED & APPROVED FOR DESIGN PRESSURES NOT TO EXCEED THOSE SHOWN IN THE "ALLOWABLE DESIGN PRESSURE TABLE(S)".
2. OPENINGS, BUCKING & BUCKING FASTENERS MUST BE PROPERLY DESIGNED & INSTALLED TO TRANSFER WIND LOADS TO THE STRUCTURE.
3. ALL HARDWARE & FASTENERS SHALL BE IN ACCORDANCE WITH THESE DRAWINGS & SHALL NOT VARY UNLESS SPECIFICALLY MENTIONED ON THE DRAWINGS. SPECIFIED ANCHOR EMBED TO BASE MATERIAL SHALL BE BEYOND WALL FINISH OR STUCCO.
4. THE DETAILS & SPECIFICATIONS SHOWN HEREIN REPRESENT THE PRODUCTS TESTED & PROPOSED FOR WATER, AIR, IMPACT, CYCLIC & UNIFORM STATIC AIR PRESSURE TESTING IN CONFORMANCE WITH THE FLORIDA BUILDING CODE PROTOCOLS TAS-201, 202 & 203 FOR LARGE MISSILE IMPACT DOORS.
5. THESE DOOR SYSTEMS HAVE BEEN DESIGNED IN ACCORDANCE WITH AND MEET THE REQUIREMENTS OF THE FLORIDA BUILDING CODE (FBC) INCLUDING HIGH VELOCITY HURRICANE ZONES (HVHZ).
6. IMPACT SHUTTERS ARE NOT REQUIRED WITH THESE DOORS.
7. ALL ANCHORS SECURING DOOR FRAME TO PRESSURE TREATED BUCKS OR WOOD FRAMING SHALL BE CAPABLE OF RESISTING CORROSION CAUSED BY THE PRESSURE TREATING CHEMICALS IN THE WOOD.
8. DETERMINE THE POSITIVE & NEGATIVE DESIGN LOADS TO USE WHEN REFERENCING THESE DOCUMENTS IN ACCORDANCE WITH THE GOVERNING CODE AND GOVERNING WIND VELOCITY. FOR WIND LOAD CALCULATIONS IN ACCORDANCE WITH THE FLORIDA BUILDING CODE, A DIRECTIONALITY FACTOR OF $K_d = 0.85$ MAY BE APPLIED WHEN USED IN CONJUNCTION WITH LOAD COMBINATIONS SPECIFIED IN SECTION 2.0 OF THE ASCE 7 STANDARD.
9. NO INCREASE IN ALLOWABLE STRESS HAS BEEN USED IN THE CERTIFICATION OF THIS PRODUCT. WIND LOAD DURATION FACTOR $C_d = 1.6$ WAS USED FOR WOOD SCREW ANALYSIS ONLY.
10. MATERIALS, INCLUDING BUT NOT LIMITED TO STEEL SCREWS, THAT COME INTO CONTACT WITH OTHER DISSIMILAR MATERIALS SHALL MEET THE REQUIREMENTS OF FLORIDA BUILDING CODE CHAPTER 20.
11. ALL WOOD MEMBERS OF DOORS THAT MAY POSSIBLY COME INTO CONTACT WITH MASONRY OR CONCRETE SUBSTRATES, ARE SUBJECT TO MOISTURE &/OR ARE SUBJECT TO THE OUTSIDE ENVIRONMENT SHALL BE OF AN APPROVED DURABLE SPECIES OR BE TREATED IN AN APPROVED METHOD WITH AN APPROVED PRESERVATIVE PER FBC SECTION 2326.

HINGE REQUIREMENTS	
DOOR HEIGHT	# HINGES REQ'D
6'-8"	3
TALLER THAN 6'-8"	(1) 4

(1) 3 HINGES REQUIRED WITH ALL HEIGHTS OF DOUBLE HALF ROUND & SINGLE QUARTER ROUND DOORS

NOTE: DOORS MAY BE FULLY GLAZED AS SHOWN, PARTIALLY PANELED OR FULLY PANELED. SEE SHEET 4 ELEVATION FOR PANELED DOORS.

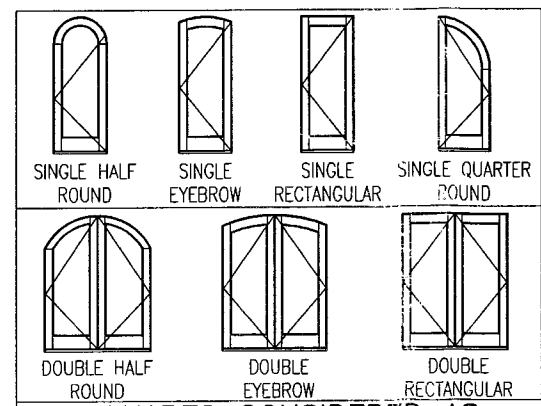
ALLOWABLE DESIGN PRESSURE
SEE LOAD TABLE ON SHEET 8

FASTENERS THROUGH STRIKE PLATE INTO SUBSTRATE WITH BUMPER SILL (5 NO. 10 SMS WHEN INTO WOOD; (3) 3/16" CONCRETE SCREWS WHEN INTO CONCRETE). WHEN ADA SILL IS USED, THERE IS NO STRIKE PLATE AND ALL ANCHORS RUN THROUGH SILL ONLY INTO SUBSTRATE.

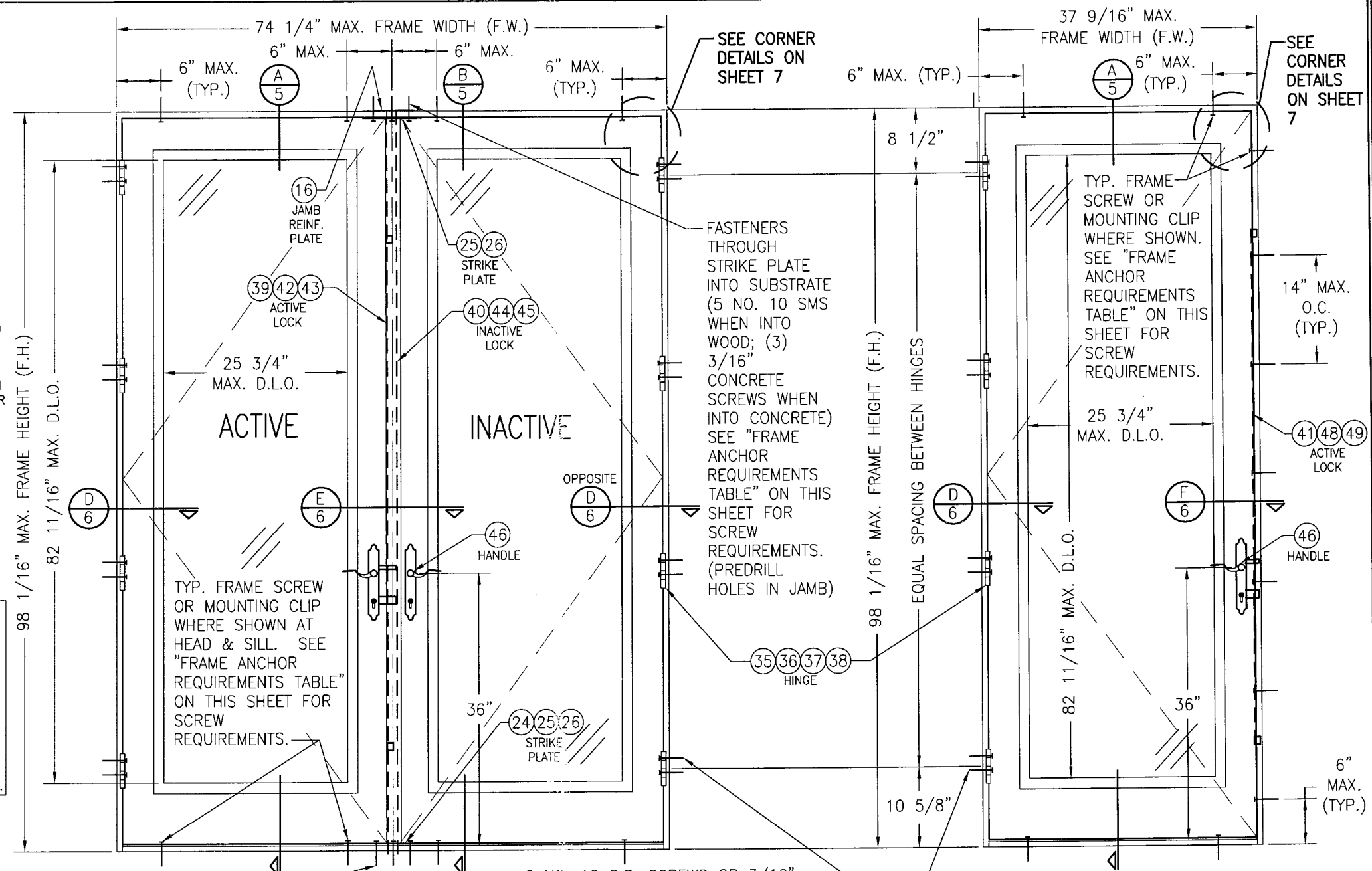
FRAME ANCHOR REQUIREMENTS TABLE

OPENING TYPE (SUBSTRATE)	FRAME/CLIP TO OPENING FASTENER TYPE	MINIMUM EMBED	MINIMUM EDGE DIST.
FRAME SCREWS			
MIN. 2X WOOD FRAME OR BUCK (MIN. GR. 3 & G=0.55)	NO. 10 SMS OR WOOD SCREW	1 3/8"	3/4"
C-90 CMU/2500 PSI CONCRETE	(1) 3/16" CONCRETE SCREW	1 1/4"	2"
INSTALLATION CLIP SCREWS			
MIN. 2X4 WOOD FRAME OR BUCK (MIN. GR. 3 & G=0.55)	NO. 8 X 1 1/2" SMS	1 3/8"	1/2"

(1) CONCRETE SCREWS SHALL BE ELCO ULTRACONS, ITW RAMSET/RED HEAD TAPCONS, HILTI KWIK-CON II OR POWERS RAWL TAPPER (HARDENED STEEL OR S.S.).



SHAPES CONSIDERED AS PART OF THIS APPROVAL



INTERIOR ELEVATION DOUBLE INSWING DOOR
SCALE: 3/4"=1'-0"

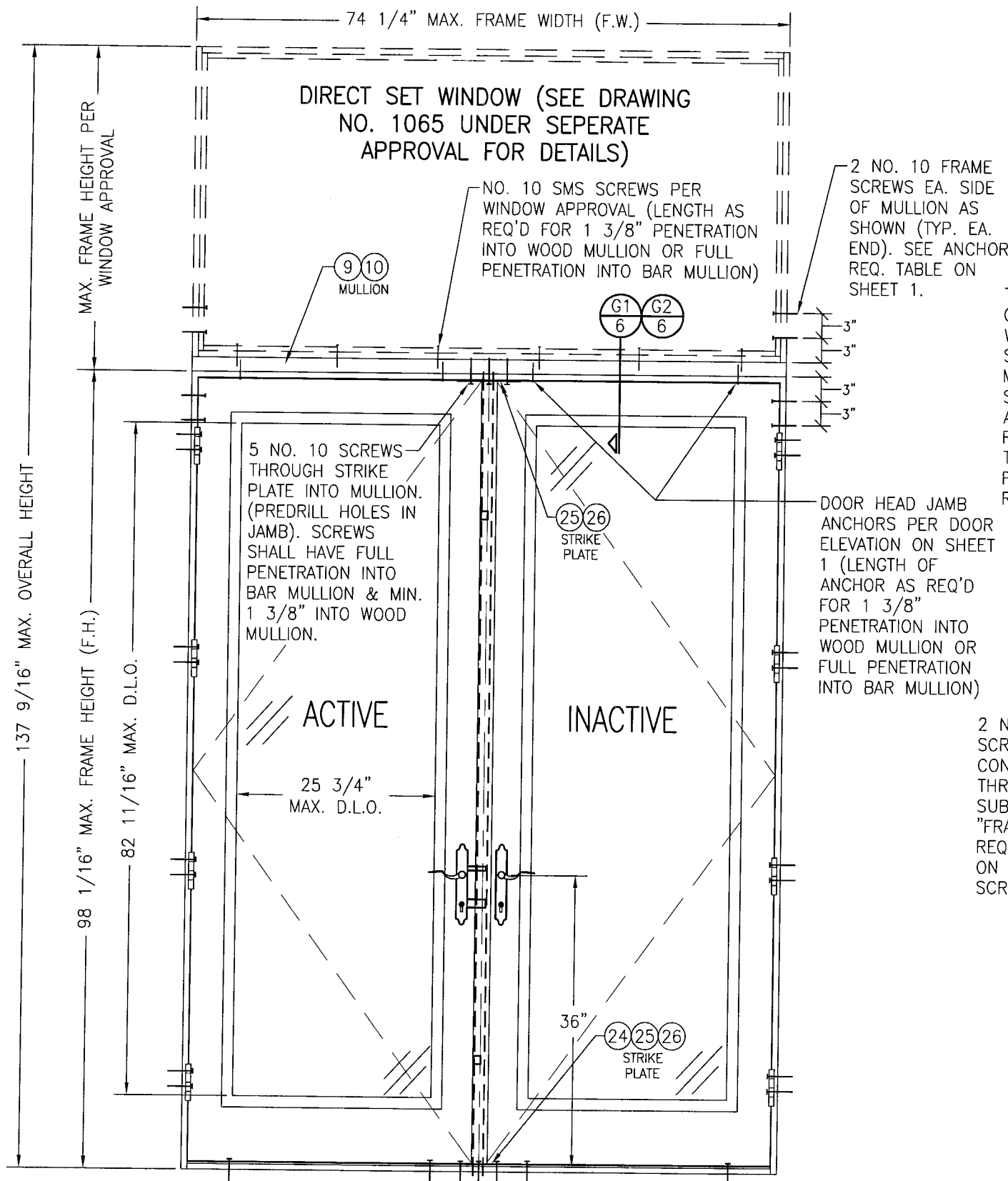
2 NO. 10 S.S. SCREWS OR 3/16" CONCRETE SCREWS THROUGH HINGE & JAMB INTO SUBSTRATE (2 PER HINGE). SEE "FRAME ANCHOR REQUIREMENTS TABLE" FOR SCREW REQUIREMENTS.

INTERIOR ELEVATION SINGLE INSWING DOOR
SCALE: 3/4"=1'-0"

NOTE: SINGLE DOOR SHOWN HAS THE 3-POINT LOCK SYSTEMS. AN ALTERNATE LOCK MAY BE A SINGLE POINT BALDWIN 6021 MORTISE LOCK. IF THE MORTISE LOCK IS USED, ALLOWABLE DESIGN PRESSURE SHALL BE THE LESSER OF +/-60 PSF. OR THE LOADS IN THE LOAD TABLES.

PRODUCT REVISED as complying with the Florida Building Code
Acceptance No. **08-1202-09**
Expiration Date **4-22-2014**
By *Dick Harris*
Miami-Dade Product Control Division

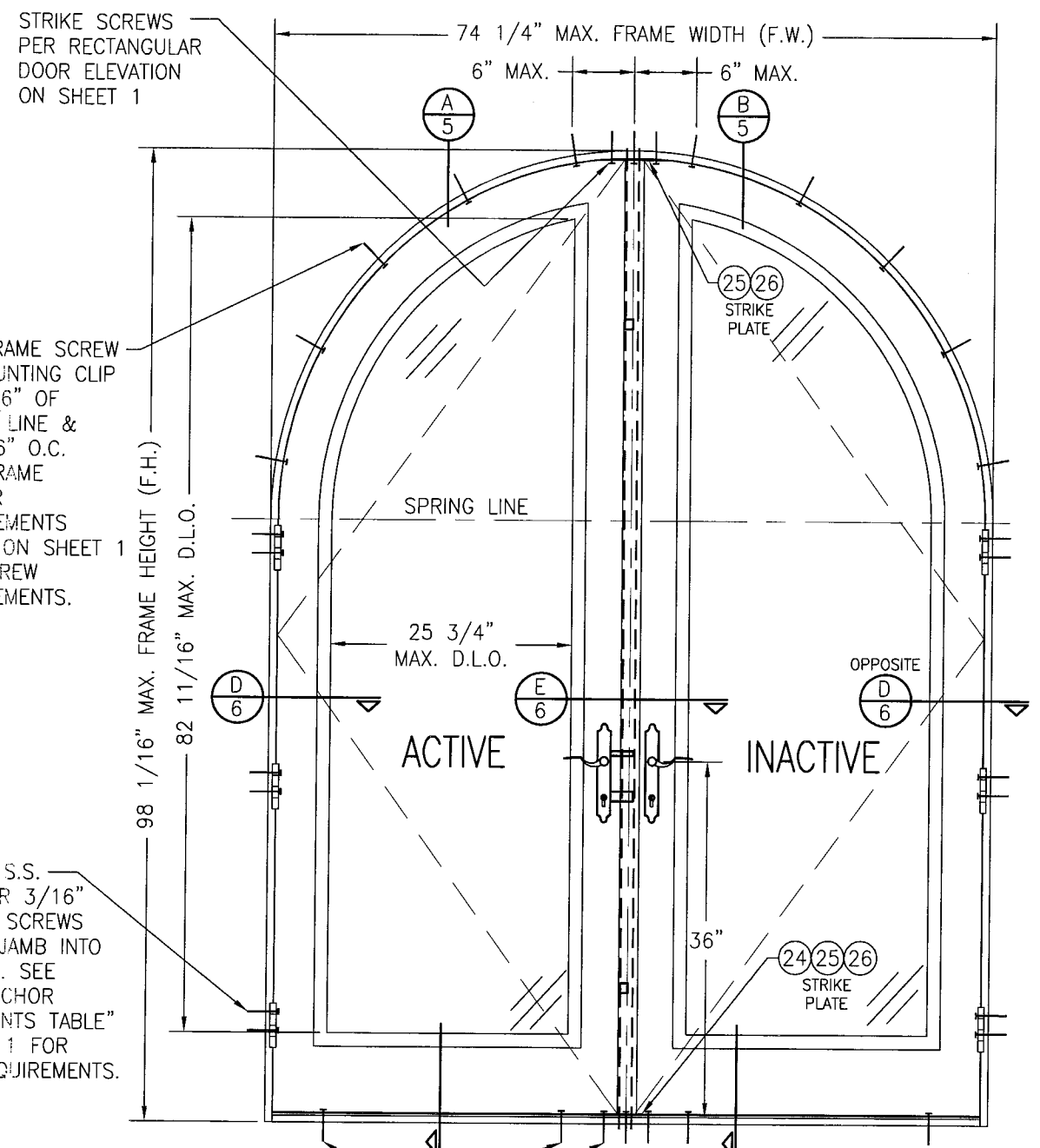
DRAWN BY: K.P.S.	CHECKED BY: W.W.S.
PLOT: 1=16	DATE: 11/25/03
DATE: 11/17/08	
BY: WRM	
REVISION DESCRIPTION	
NO. 1	UPDATE FOR RENEWAL
8 FOOT WOOD INSWING IMPACT DOORS	
MANUFACTURER	
SIGNATURE DOOR INC. 401 JUNIATA STREET ALTOONA, PA 16602 814-949-2770	
CONSULTANTS	
W. W. SCHAEFER ENGINEERING & CONSULTING, P.A. 8895 N. MILITARY TRAIL, SUITE C-204 PALM BEACH GARDENS, FL 33410 PHONE: 561-775-4902 FAX: 561-775-4903	
CERTIFICATION	
NOV 17 2008 WARREN W. SCHAEFER, P.E. P.E. NO. 44135	
DRAWING NO. 1257	REV. A
SHEET NO. 1 OF 10	



**INTERIOR ELEVATION
DOUBLE DOOR WITH TRANSOM**
SCALE: 3/4"=1'-0"

SEE DOUBLE DOOR ELEVATION ON SHEET 1 FOR DETAIL NOT SHOWN

SILL AND STRIKE
PLATE ANCHORS
PER ELEVATION ON
SHEET 1



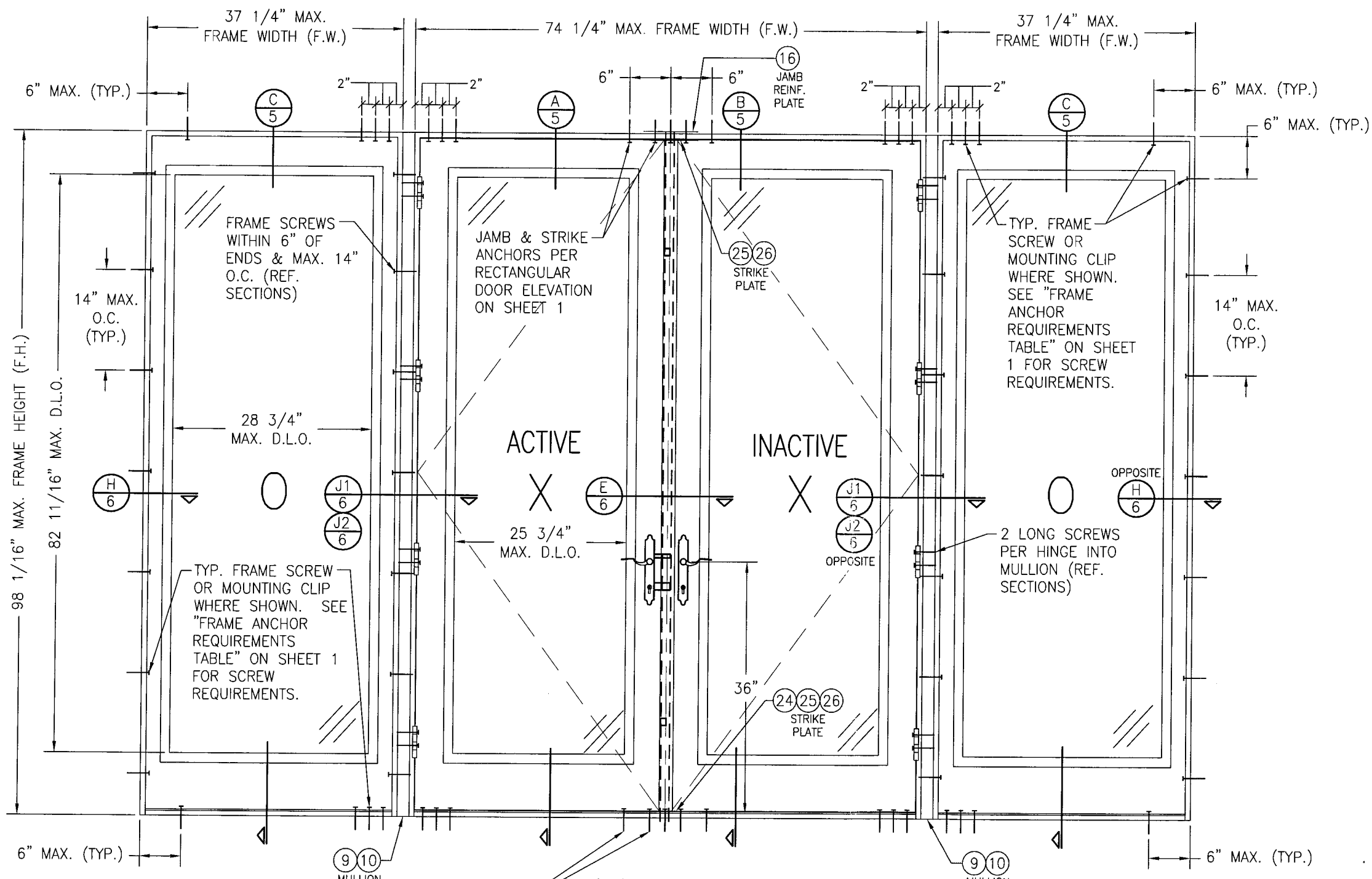
**INTERIOR ELEVATION
DOUBLE HALF ROUND DOOR**
SCALE: 3/4"=1'-0"

SEE DOUBLE DOOR ELEVATION ON SHEET 1 FOR DETAIL NOT SHOWN

NOTE: DOORS MAY BE FULLY
GLAZED AS SHOWN, PARTIALLY
PANELED OR FULLY PANELED.
SEE SHEET 4 ELEVATION FOR
PANELED DOORS.

PRODUCT REVISED
as complying with the Florida
Building Code
Acceptance No. 08-1202-09
Expiration Date 4-22-2016
By *Steve Harris*
Miami Code Product Control
Division

DRAWN BY: K.P.S.		CHECKED BY: W.W.S.	
PLOT: 1-16		DATE: 11/25/03	
NO.	REVISION	DESCRIPTION	DATE
DRAWING TITLE 8 FOOT WOOD INSURING IMPACT DOORS			
CONSULTANTS W. W. SCHAEFER ENGINEERING & CONSULTING, P.A.		MANUFACTURER SIGNATURE DOOR INC.	
8895 N. MILITARY TRAIL, SUITE C-204 PALM BEACH GARDENS, FL 33410 PHONE: 561-775-4902 FAX: 561-775-4903		401 JUNIATA STREET ALTOONA, PA 16602 814-949-2770	
CERTIFICATION NOV 17 2008		WARREN W. SCHAEFER, P.E. P.E. NO. 44135	
DRAWING NO. 1257		REV. A	
SHEET NO. 2 OF 10			



**INTERIOR ELEVATION
MULTIPLE OPERABLE/FIXABLE UNIT**

SCALE: 3/4"=1'-0"

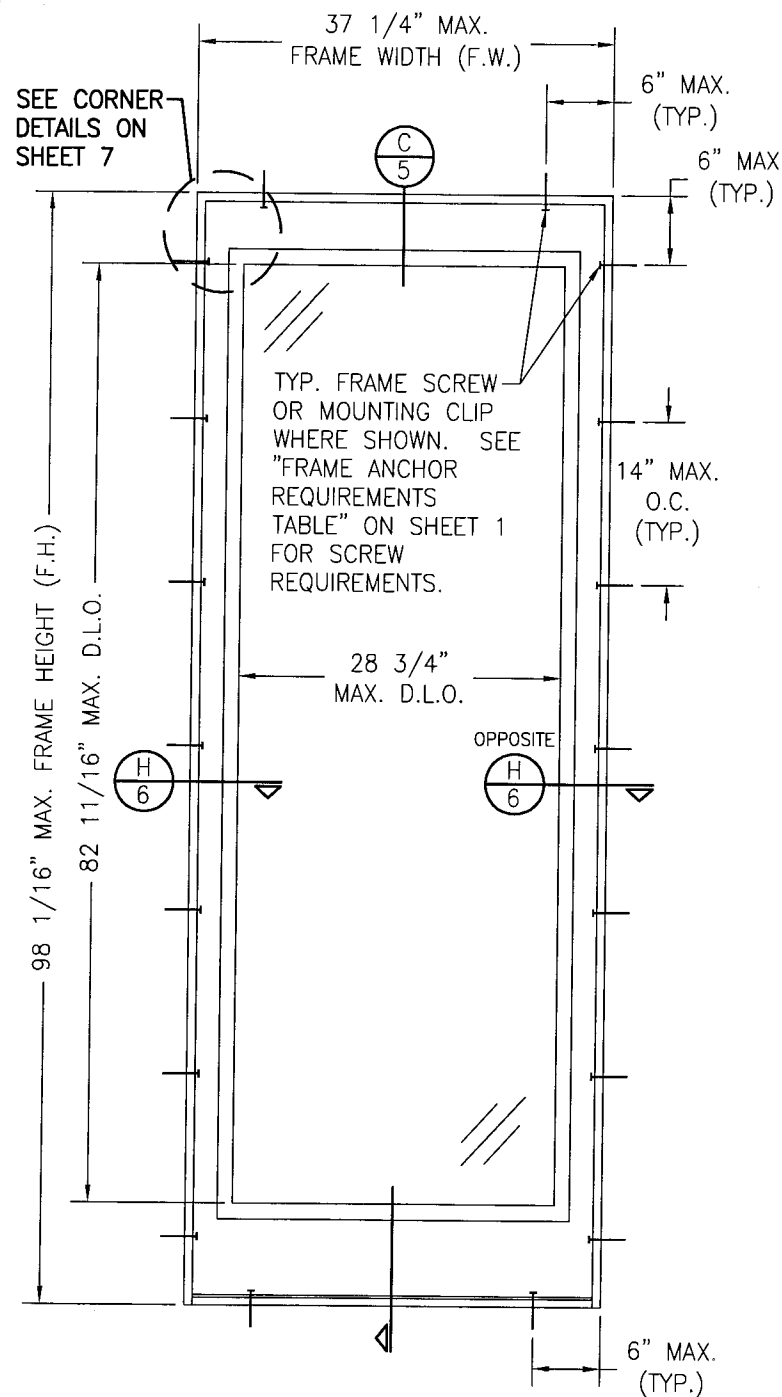
NOTE: (FOR ANY DETAIL NOT SHOWN, SEE ELEVATION ON SHEET 1)
 OXO DOOR SHOWN. ALL OTHER 4-PANEL CONFIGURATIONS
 OF SINGLE/DOUBLE DOORS & SIDELIGHTS ALSO APPLY.

NOTE: DOORS MAY BE FULLY
 GLAZED AS SHOWN, PARTIALLY
 PANELED OR FULLY PANELED.
 SEE SHEET 4 ELEVATION FOR
 PANELED DOORS.

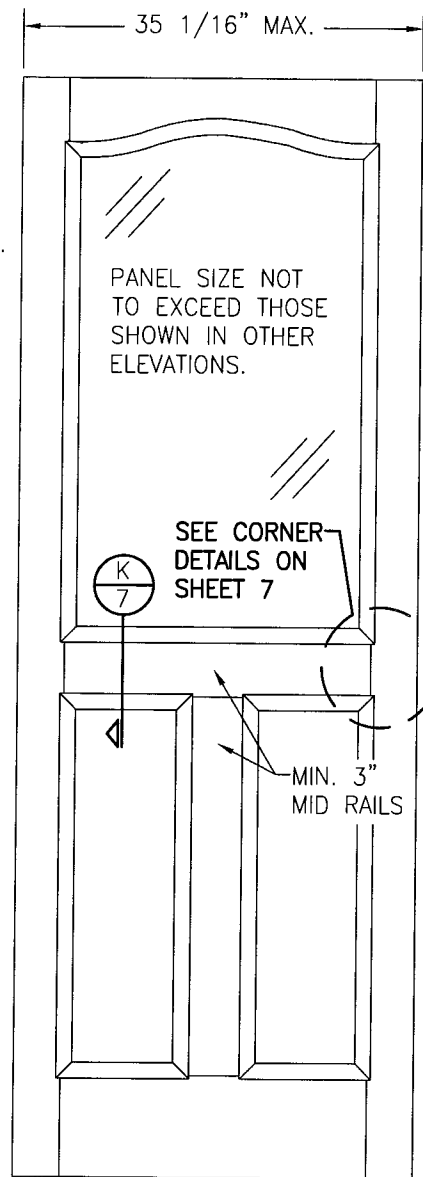
SILL AND STRIKE
 PLATE ANCHORS
 PER ELEVATION ON
 SHEET 1

PRODUCT REVISED
 as complying with the Florida
 Building Code
 Acceptance No 08-1202-09
 Expiration Date 4-22-2014
 By John Harris
 Miami Dade Product Control
 Division

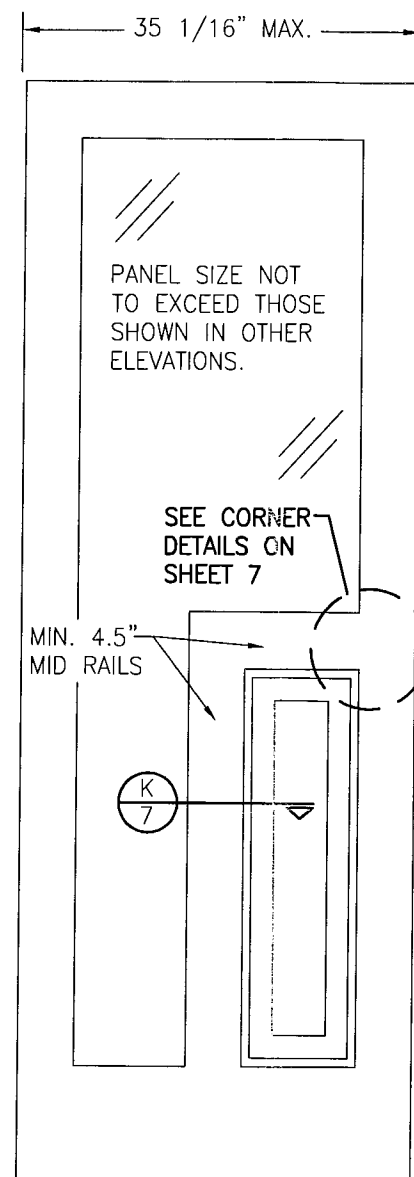
DRAWN BY: K.P.S.		CHECKED BY: W.W.S.	
PLOT: 1=16		DATE: 11/25/03	
DATE	BY	REVISION DESCRIPTION	NO.
DRAWING TITLE 8 FOOT WOOD INSWING IMPACT DOORS			
CONSULTANTS W. W. SCHAEFER ENGINEERING & CONSULTING, P.A.		MANUFACTURER SIGNATURE DOOR INC.	
8895 N. MILITARY TRAIL; SUITE C-204 PALM BEACH GARDENS, FL 33410 PHONE: 561-775-4902 FAX: 561-775-4903		401 JUNIATA STREET ALTOONA, PA 16602 814-949-2770	
CERTIFICATION	NOV 17 2008	WARREN W. SCHAEFER, P.E. P.E. NO. 44135	
DRAWING NO.	REV.		
1257	A		
SHEET NO. 3 OF 10			



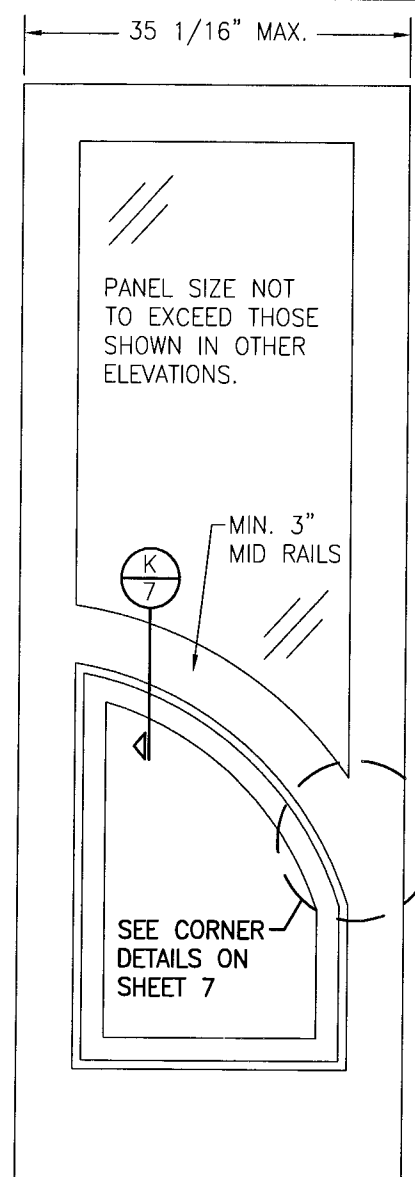
**INTERIOR ELEVATION
SINGLE FIXED PANEL**
SCALE: 3/4"=1'-0"



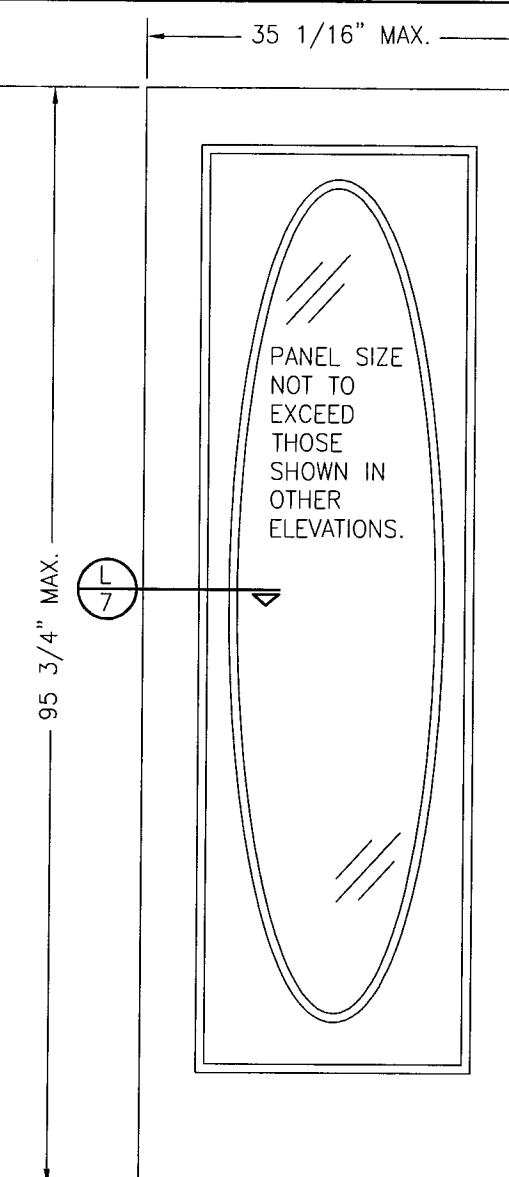
**INTERIOR ELEVATION SOLID
RAISED PANEL WITH
STANDARD MID RAILS**
SCALE: 3/4"=1'-0"



**INTERIOR ELEVATION SOLID
RAISED PANEL WITH
CORNERED MID RAILS**
SCALE: 3/4"=1'-0"



**INTERIOR ELEVATION
SOLID RAISED PANEL WITH
ARCHED/SHAPED MID RAILS**
SCALE: 3/4"=1'-0"



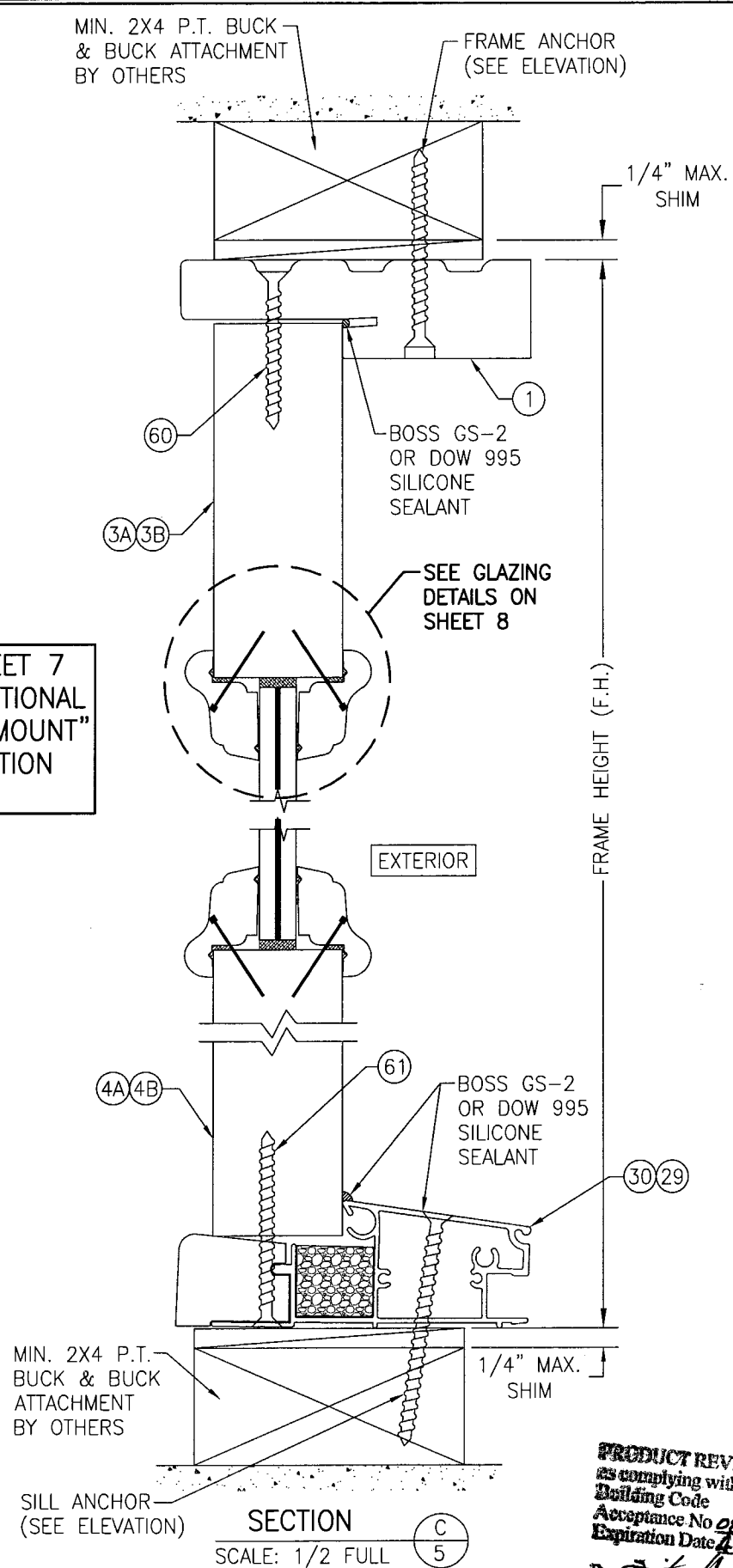
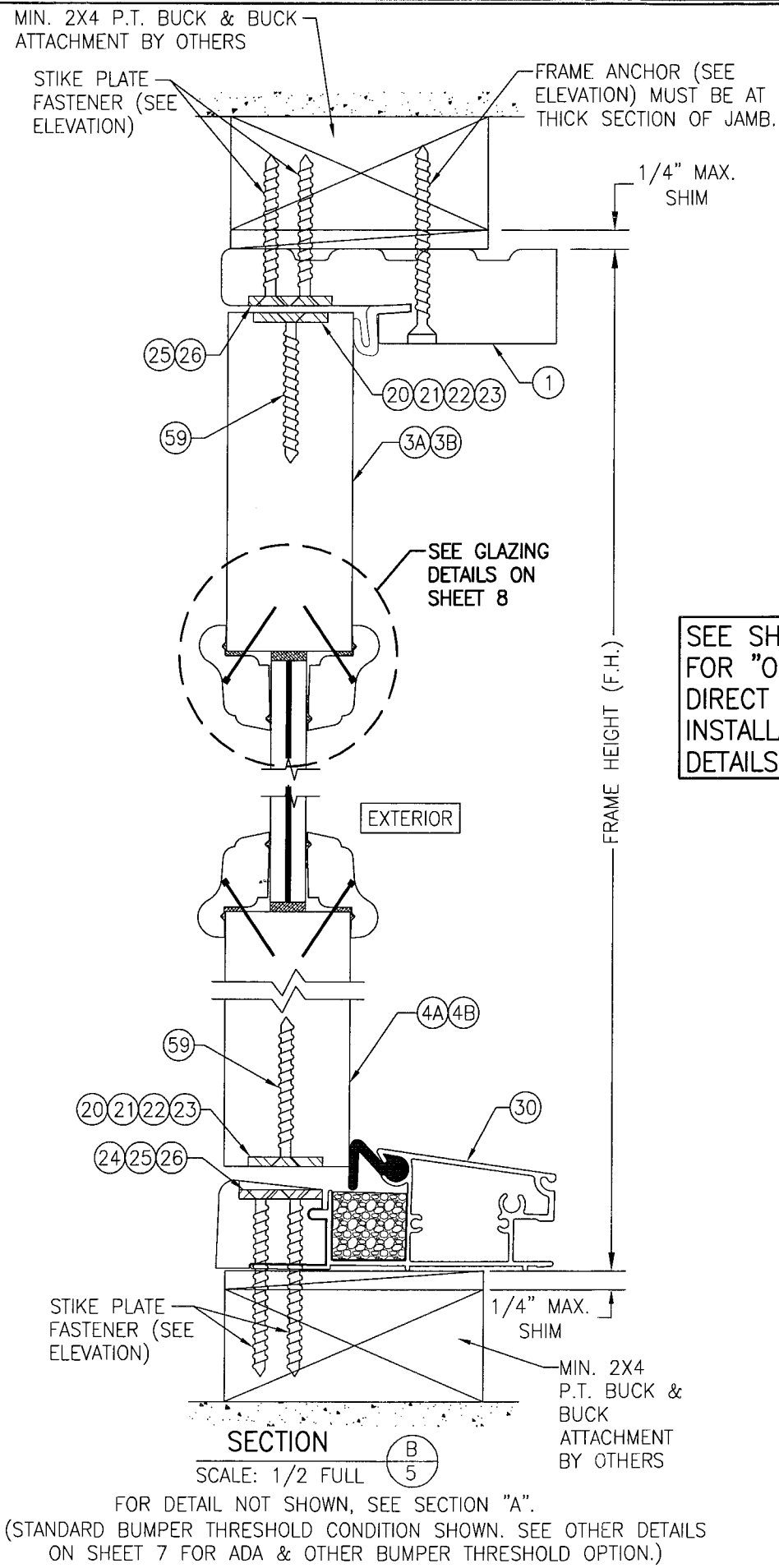
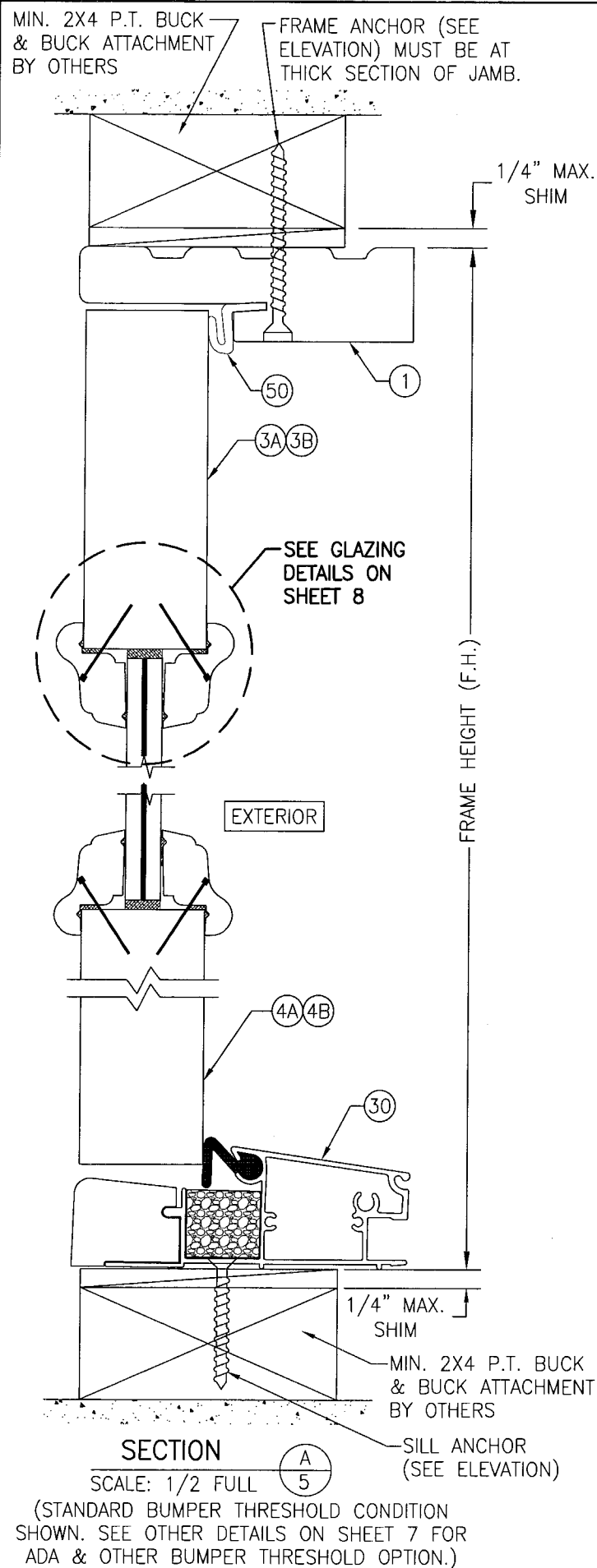
**INTERIOR ELEVATION
RAISED PANEL WITH GLASS
GLAZED TO PANEL**
SCALE: 3/4"=1'-0"

- 1) TOP & MID RAILS MAY BE OF ANY CONFIGURATION PROVIDING THE SMALLEST CROSS SECTION OF RAILS IS EQUAL TO OR LARGER THAN THAT DETAILED IN DRAWINGS.
- 2) MULTIPLE MID RAIL (BOTH HORIZONTAL & VERTICAL) MAY BE USED WITH THESE PANELS.
- 3) PARTIAL PANEL CONDITION IS SHOWN ABOVE. FULL PANEL DOORS AND OTHER PANEL CONFIGURATIONS ARE ALSO PART OF THIS APPROVAL AND ARE SIMILAR IN CONSTRUCTION TO THAT SHOWN ABOVE.
- 4) PANEL ONLY IS SHOWN. FOR INSTALLATION INTO FRAME, SEE OTHER ELEVATIONS.

- 1) DAY LIGHT OPENING IN PANEL DOOR MAY BE OF ANY CONFIGURATION.
- 2) FULL LIGHT & OVAL CONDITION IS SHOWN. PARTIAL LIGHT & OTHER LIGHT CONFIGURATIONS ARE ALSO APPLICABLE PROVIDING PANEL CONDITIONS ARE WITHIN WHAT IS SPECIFIED IN THESE DRAWINGS.
- 3) PANEL ONLY IS SHOWN. FOR INSTALLATION INTO FRAME, SEE OTHER ELEVATIONS.

PRODUCT REVISED
as complying with the Florida
Building Code
Acceptance No. 02-1202-09
Expiration Date 4-22-2014
By *John Harris*
Miami Dade Product Control
Division

DRAWN BY: K.P.S.	CHECKED BY: W.W.S.
PLOT: 1=16	DATE: 11/25/03
NO.	REVISION DESCRIPTION
BY	DATE
DRAWING TITLE 8 FOOT WOOD INSWING IMPACT DOORS	
CONSULTANTS W. W. SCHAEFER ENGINEERING & CONSULTING, P.A. 8895 N. MILITARY TRAIL, SUITE C-204 PALM BEACH GARDENS, FL 33410 PHONE: 561-775-4902 FAX: 561-775-4903	
MANUFACTURER SIGNATURE DOOR INC. 401 JUNIATA STREET ALTOONA, PA 16602 814-949-2770	
CERTIFICATION NOV 17 2008 WARREN W. SCHAEFER, P.E. P.E. NO. 44135	
DRAWING NO. 1257	REV. A
SHEET NO. 4 OF 10	

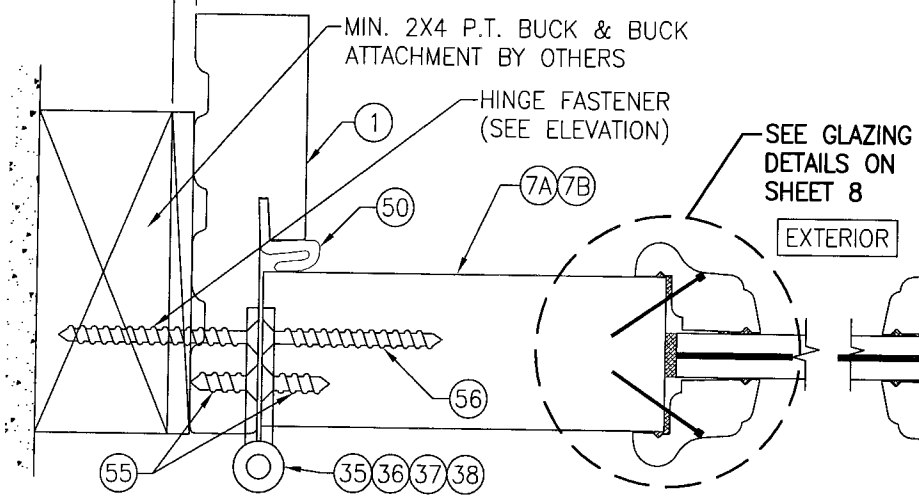


SEE SHEET 7 FOR "OPTIONAL DIRECT MOUNT" INSTALLATION DETAILS.

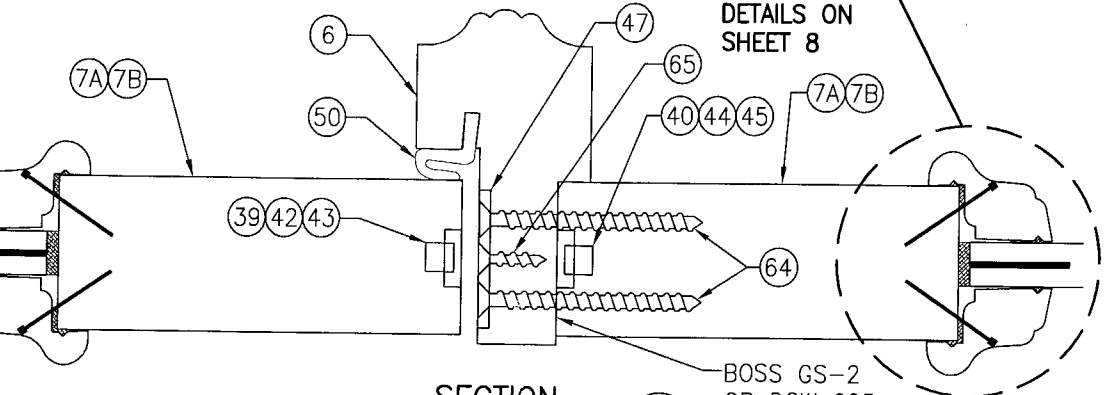
DRAWN BY: K.P.S.	CHECKED BY: W.W.S.
PLOT: 1=2	DATE: 11/25/03
DATE	BY
REVISION DESCRIPTION	
NO.	
DRAWING TITLE 8 FOOT WOOD INSWING IMPACT DOORS	
MANUFACTURER SIGNATURE DOOR INC. 401 JUNIATA STREET ALTOONA, PA 16602 814-949-2770	
CONSULTANTS W. W. SCHAEFER ENGINEERING & CONSULTING, P.A. 8895 N. MILITARY TRAIL, SUITE C-204 PALM BEACH GARDENS, FL 33410 PHONE: 561-775-4902 FAX: 561-775-4903	
CERTIFICATION	NOV 17 2008
WARREN W. SCHAEFER, P.E. P.E. NO. 44135	
DRAWING NO. 1257	REV. A
SHEET NO. 5 OF 10	

1/4" MAX. SHIM
FRAME WIDTH (F.W.)

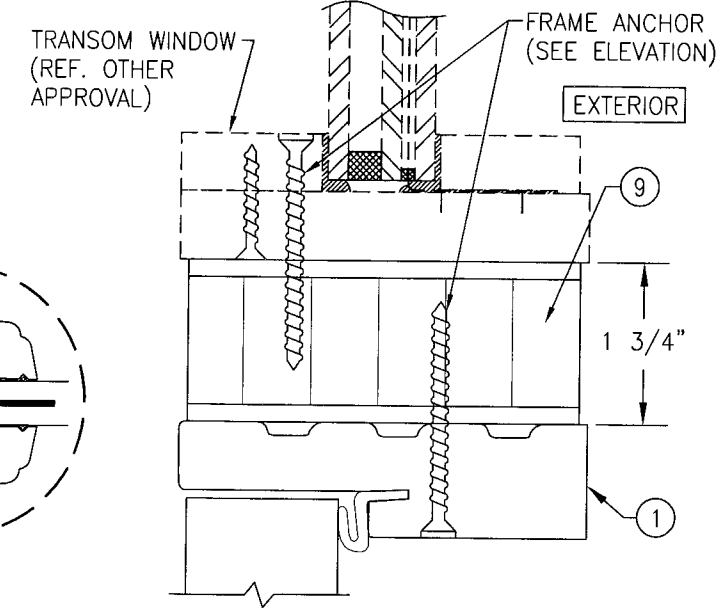
SEE SHEET 7 FOR "OPTIONAL DIRECT MOUNT" INSTALLATION DETAILS.



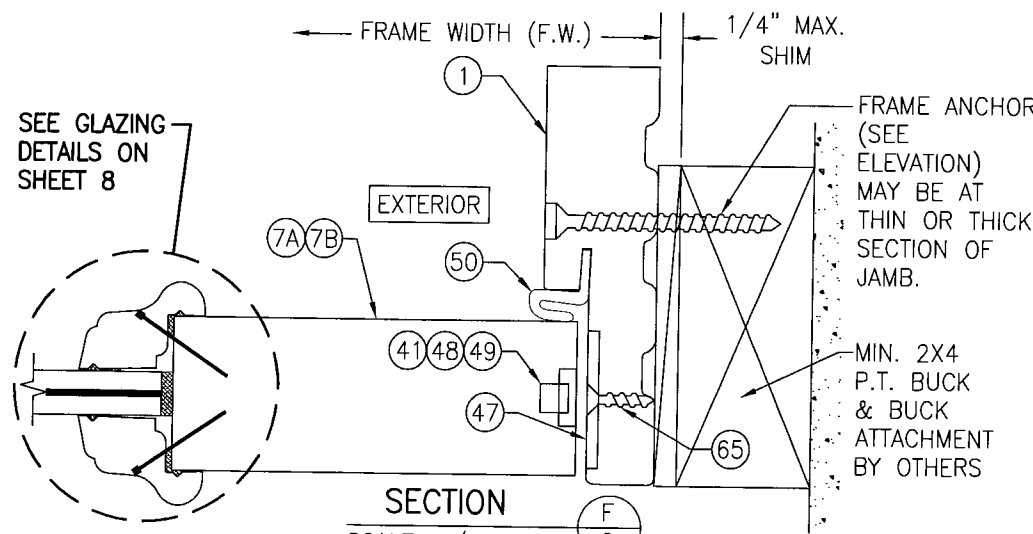
SECTION D
SCALE: 1/2 FULL



SECTION E
SCALE: 1/2 FULL

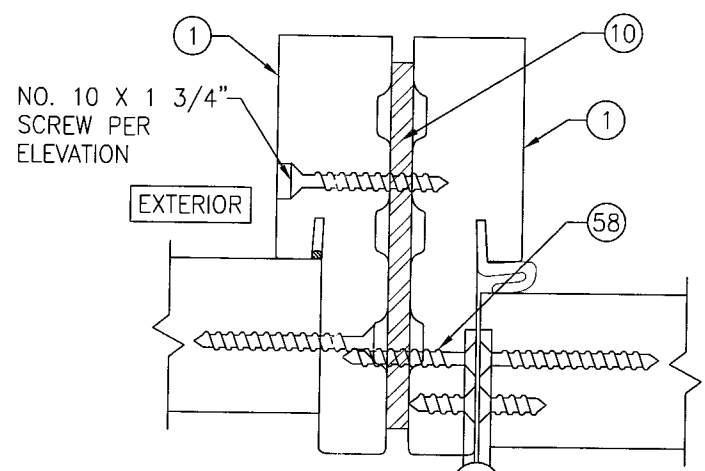


SECTION G1
SCALE: 1/2 FULL
FOR DETAIL NOT SHOWN, SEE OTHER SECTIONS

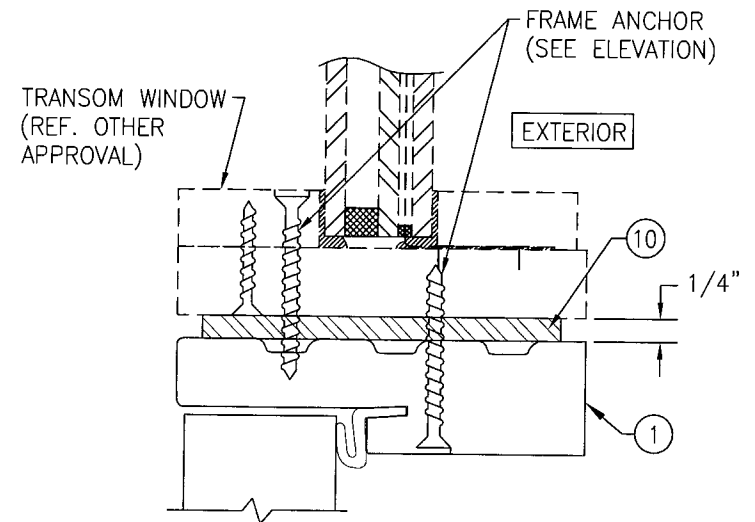


SECTION F
SCALE: 1/2 FULL

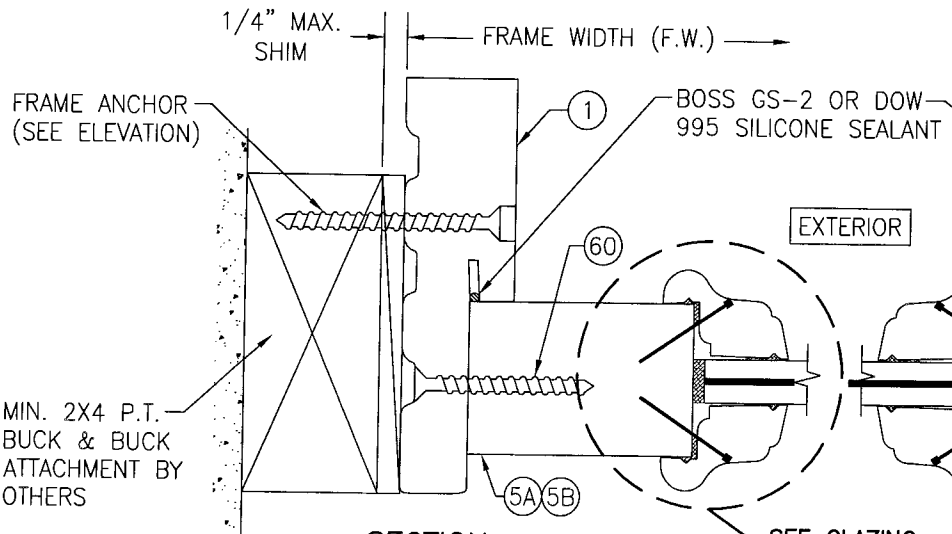
NOTE: SHOWN WITH MULTI-POINT LOCK HARDWARE. SINGLE POINT MORTISE LOCK ALSO MAY BE USED AT SINGLE DOORS PER SHEET 1.



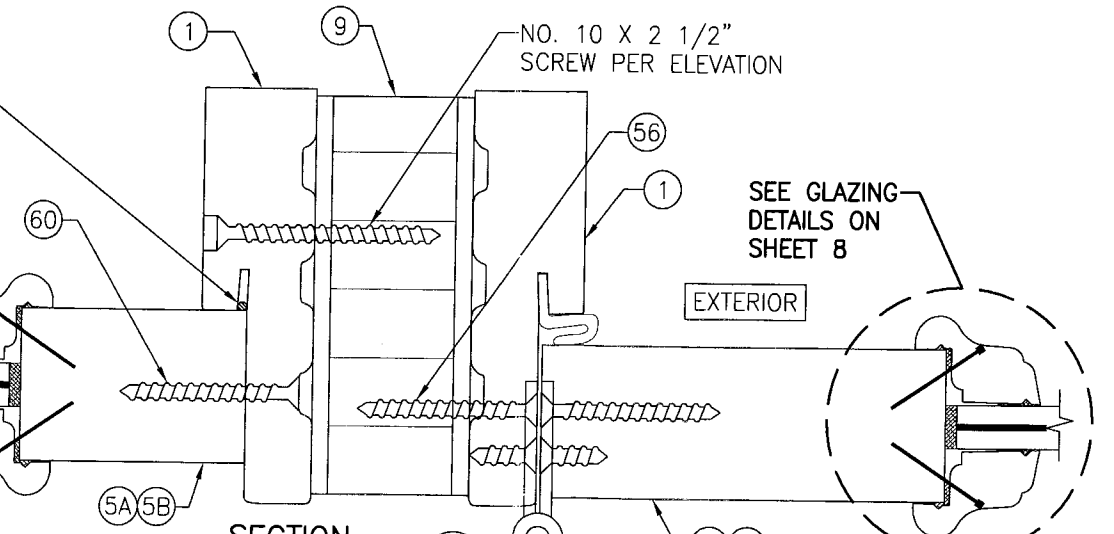
SECTION J2
SCALE: 1/2 FULL
FOR DETAIL NOT SHOWN, SEE OTHER SECTIONS



SECTION G2
SCALE: 1/2 FULL
FOR DETAIL NOT SHOWN, SEE OTHER SECTIONS



SECTION H
SCALE: 1/2 FULL

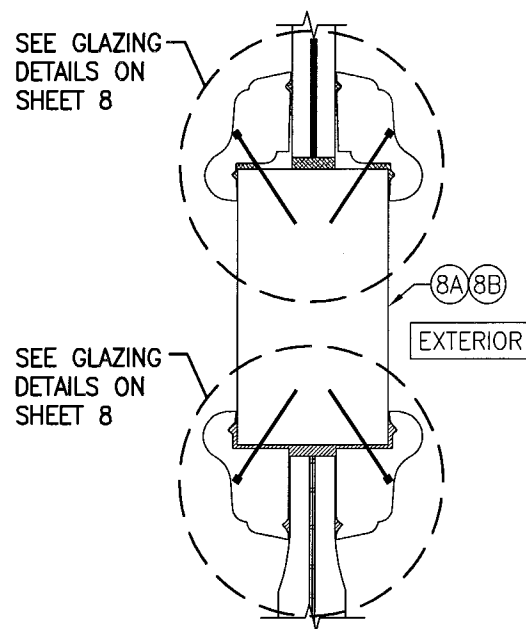


SECTION J1
SCALE: 1/2 FULL
FOR DETAIL NOT SHOWN, SEE OTHER SECTIONS

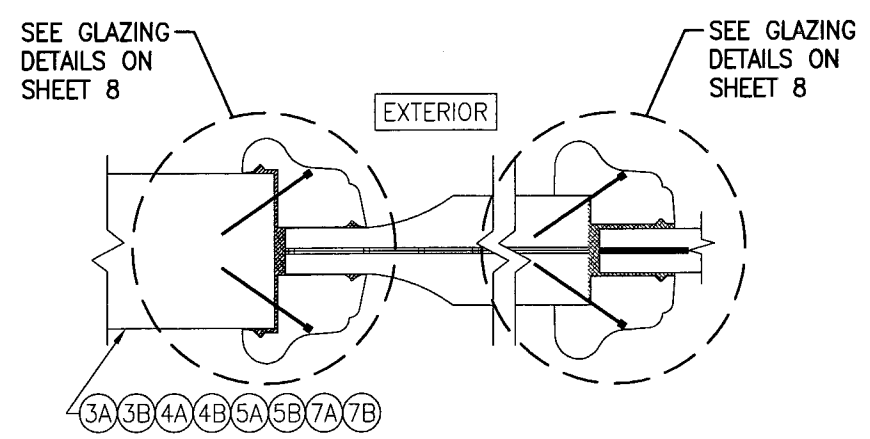
PRODUCT REVISED as complying with the Florida Building Code Acceptance No 08-1202-09 Expiration Date 4-22-2014

By *John Harris* Miami Product Control Division

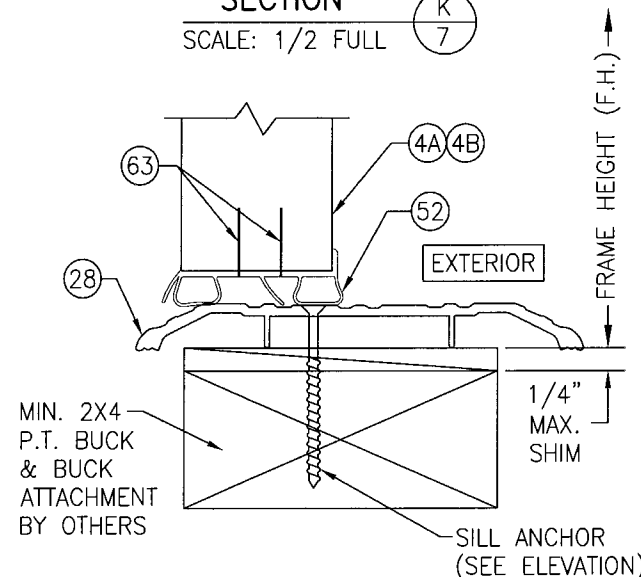
DRAWN BY: K.P.S.	CHECKED BY: W.W.S.
PLOT: 1=2	DATE: 11/25/03
NO.	REVISION DESCRIPTION
BY	DATE
DRAWING TITLE 8 FOOT WOOD INSWING IMPACT DOORS	
MANUFACTURER SIGNATURE DOOR INC. 401 JUNIATA STREET ALTOONA, PA 16602 814-949-2770	
CONSULTANTS W. W. SCHAEFER ENGINEERING & CONSULTING, P.A. 8895 N. MILITARY TRAIL, SUITE C-204 PALM BEACH GARDENS, FL 33410 PHONE: 561-775-4902 FAX: 561-775-4903	
CERTIFICATION	NOV 17 2008 WARREN W. SCHAEFER, P.E. P.E. NO. 44133
DRAWING NO. 1257	REV. A
SHEET NO. 6 OF 10	



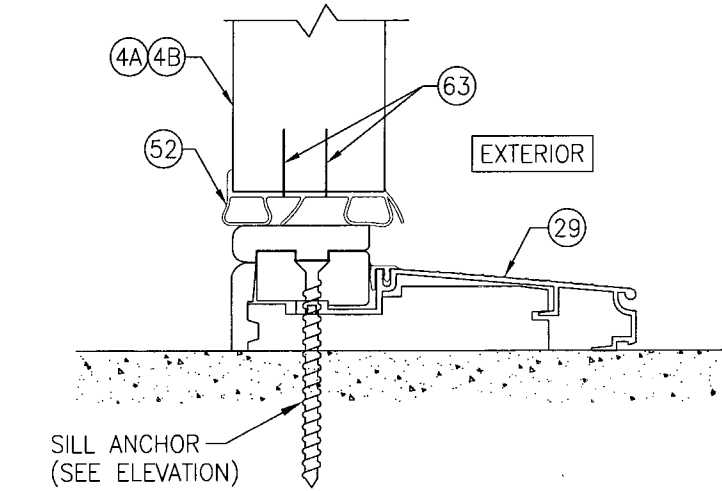
SECTION K
SCALE: 1/2 FULL



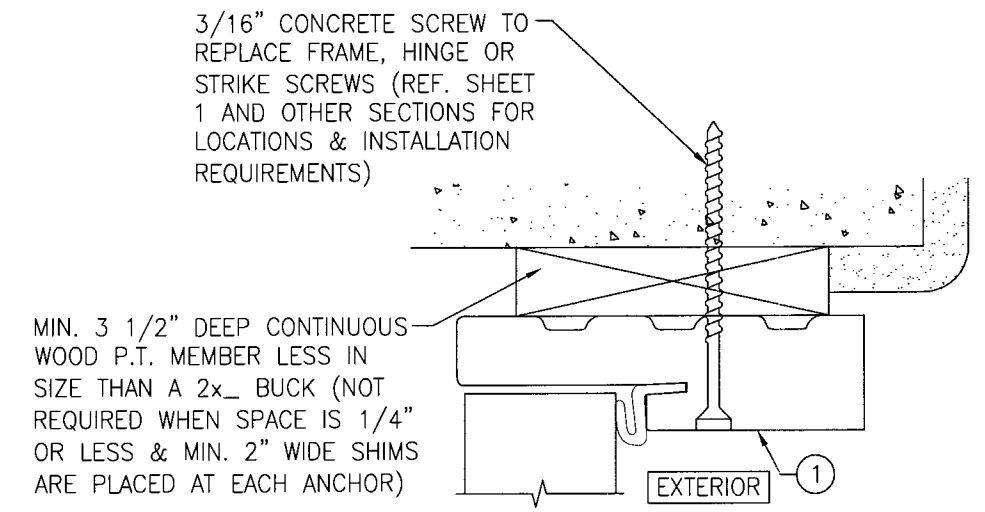
SECTION L
SCALE: 1/2 FULL



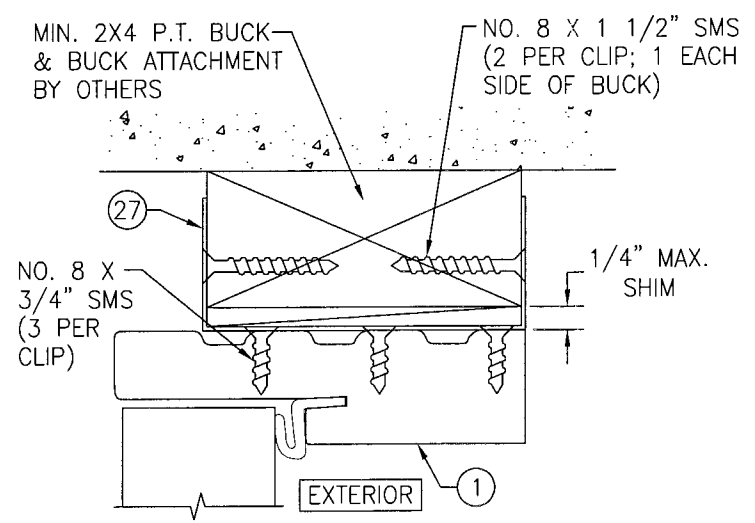
OPTIONAL ADA THRESHOLD DETAIL
FOR DETAIL NOT SHOWN, SEE OTHER SECTIONS



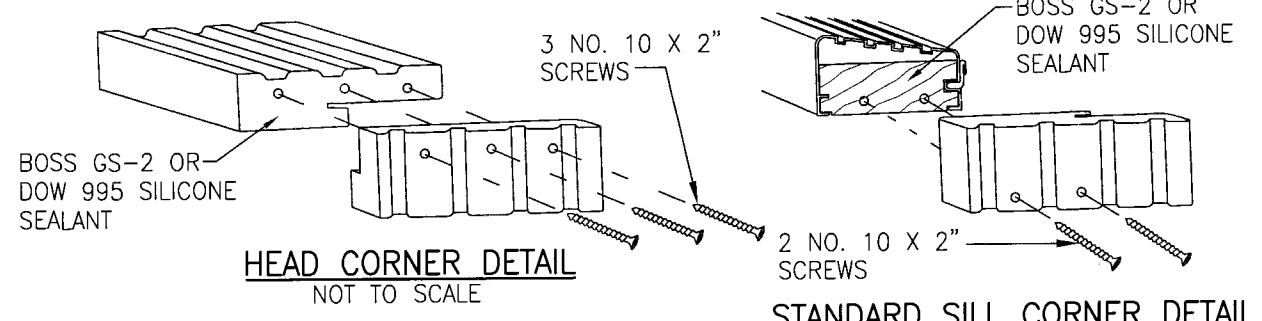
OPTIONAL BUMPER THRESHOLD DETAIL
FOR DETAIL NOT SHOWN, SEE OTHER SECTIONS



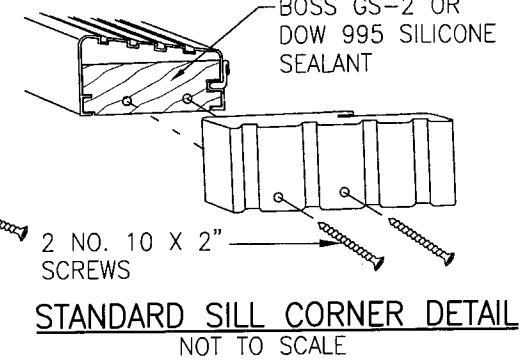
OPTIONAL DIRECT MOUNT DETAIL
FOR DETAIL NOT SHOWN, SEE OTHER SECTIONS
(HEAD SECTION SHOWN, SIDES AND SILL SIMILAR)



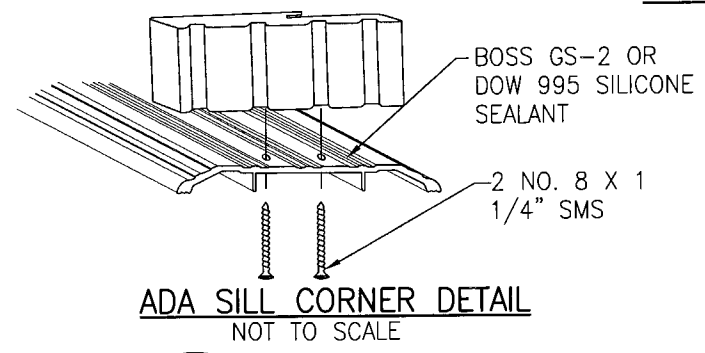
OPTIONAL CLIP MOUNT DETAIL
FOR DETAIL NOT SHOWN, SEE OTHER SECTIONS
(HEAD SECTION SHOWN, SIDES AND SILL SIMILAR)



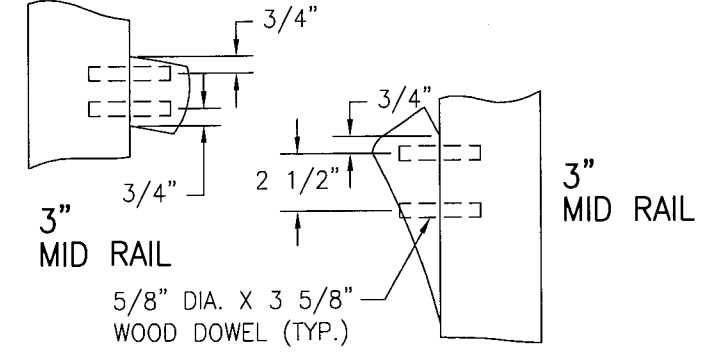
HEAD CORNER DETAIL
NOT TO SCALE



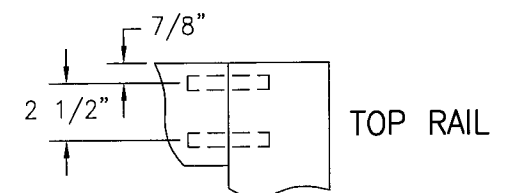
STANDARD SILL CORNER DETAIL
NOT TO SCALE



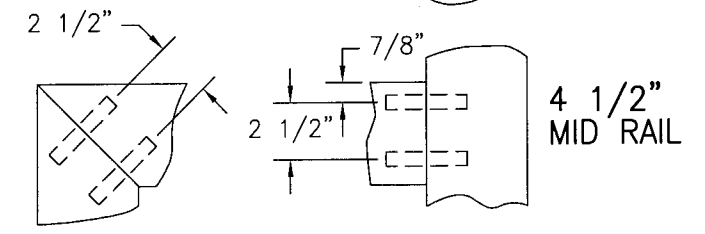
ADA SILL CORNER DETAIL
NOT TO SCALE



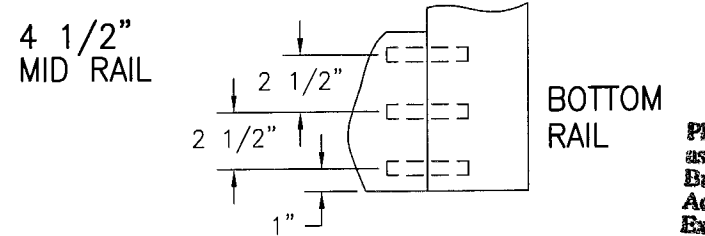
3" MID RAIL



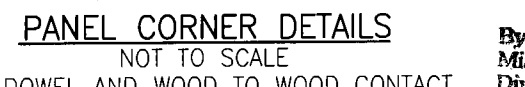
TOP RAIL



4 1/2" MID RAIL



4 1/2" MID RAIL



BOTTOM RAIL

PANEL CORNER DETAILS
NOT TO SCALE

ALL DOWEL AND WOOD TO WOOD CONTACT SURFACES ARE FULLY GLUED WITH WOOD ADHESIVE BY JOWAT ADHESIVES, KORLOCK GT 42-300A OR TITEBOND II BY WEATHERPROOF.

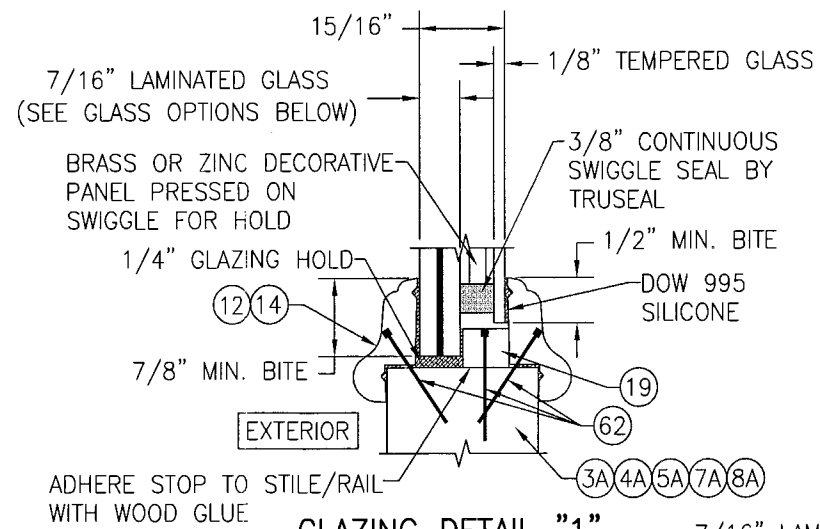
DRAWN BY: K.P.S.	CHECKED BY: W.W.S.
PLOT: 1=2	DATE: 11/25/03
DATE	
BY	
REVISION DESCRIPTION	
NO.	
DRAWING TITLE 8 FOOT WOOD INSWING IMPACT DOORS	
MANUFACTURER SIGNATURE DOOR INC. 401 JUNIATA STREET ALTOONA, PA 16602 814-949-2770	
CONSULTANTS W. W. SCHAEFER ENGINEERING & CONSULTING, P.A. 8895 N. MILITARY TRAIL, SUITE C-204 PALM BEACH GARDENS, FL 33410 PHONE: 561-775-4902 FAX: 561-775-4903	
CERTIFICATION NOV 17 2008 WARREN W. SCHAEFER, P.E. P.E. NO. 44135	
<p>PRODUCT REVISED as complying with the Florida Building Code Acceptance No 08-1202-09 Expiration Date 4-22-2014</p> <p>By <i>Stacy Harris</i> Miami Dade Product Control Division</p>	
DRAWING NO. 1257	REV. A
SHEET NO. 7 OF 10	

**ALLOWABLE DESIGN PRESSURE
(ALL GLASS OPTIONS)**

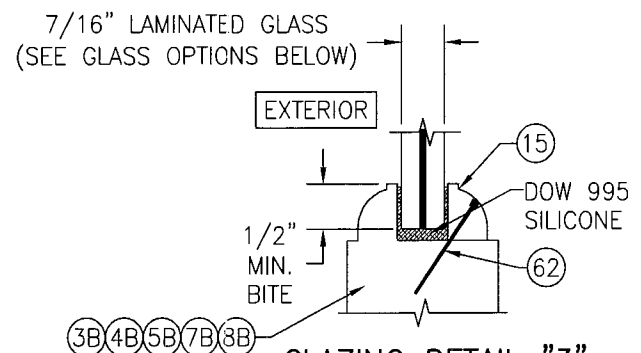
(1) +65/-80 PSF
(ALL DOOR SIZES)

NOTE: WHEN A SINGLE POINT MORTISE LOCK IS USED, THE ALLOWABLE DESIGN PRESSURE SHALL BE LIMITED TO THE LESSER OF +/-60 PSF OR THE APPLICABLE LOAD IN THE LOAD TABLE.

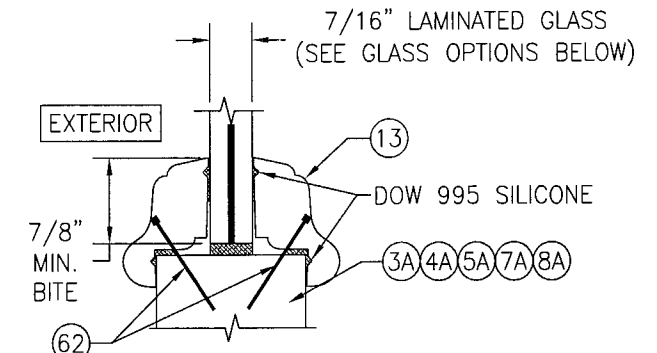
(1) POSITIVE PRESSURE NOTE: THESE DOORS ARE NOT APPROVED FOR WATER INFILTRATION RESISTANCE UNLESS THE UNITS ARE INSTALLED IN A NON-HABITABLE AREA WHERE THE UNIT AND THE AREA ARE DESIGNED TO ACCEPT WATER INFILTRATION. OTHERWISE, THE DOORS MUST BE INSTALLED ONLY AT LOCATIONS PROTECTED BY A CANOPY OR OVERHANG SUCH THAT THE ANGLE BETWEEN THE EDGE OF THE CANOPY OR OVERHANG TO SILL IS LESS THAN 45 DEGREES.



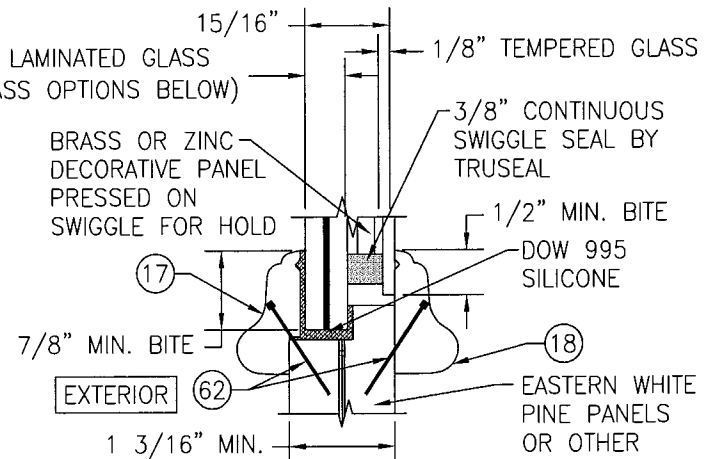
GLAZING DETAIL "1"
SCALE: 1/2 FULL



GLAZING DETAIL "3"
SCALE: 1/2 FULL



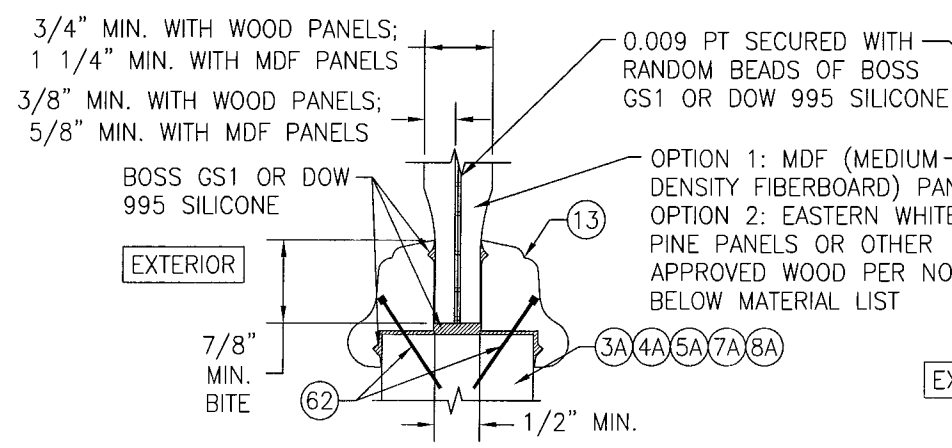
GLAZING DETAIL "2"
SCALE: 1/2 FULL



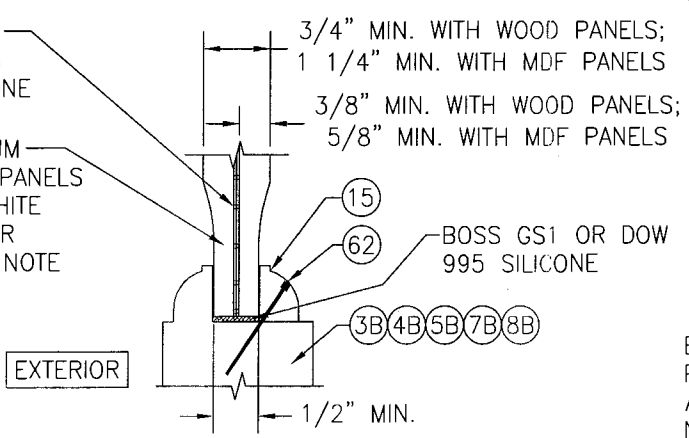
GLAZING DETAIL "4"
SCALE: 1/2 FULL

LAMINATED GLASS OPTIONS

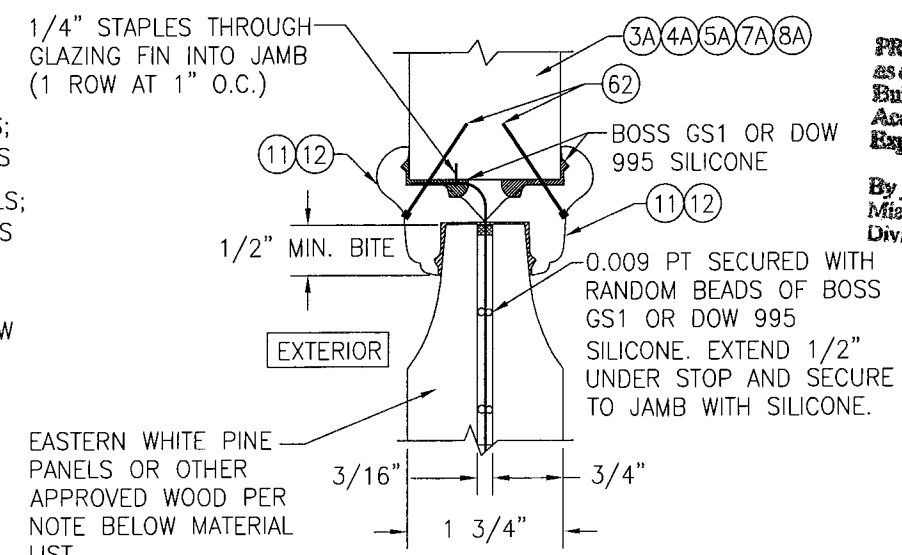
- OPTION 1: 7/16" THICK GLASSLAM SAFETY PLUS II LAMINATED GLASS (3/16" AN/0.1" POLYURETHANE POLYMER/3/16" AN)
- OPTION 2: 7/16" THICK OLDCASTLE STORMGLASS LAMINATED GLASS (3/16" AN/0.075" STORMGLASS/3/16" AN)
- OPTION 3: 7/16" THICK SENTRY GLASS PLUS LAMINATED GLASS (3/16" AN/0.09" SGP/3/16" AN)



GLAZING DETAIL "6"
SCALE: 1/2 FULL



GLAZING DETAIL "7"
SCALE: 1/2 FULL

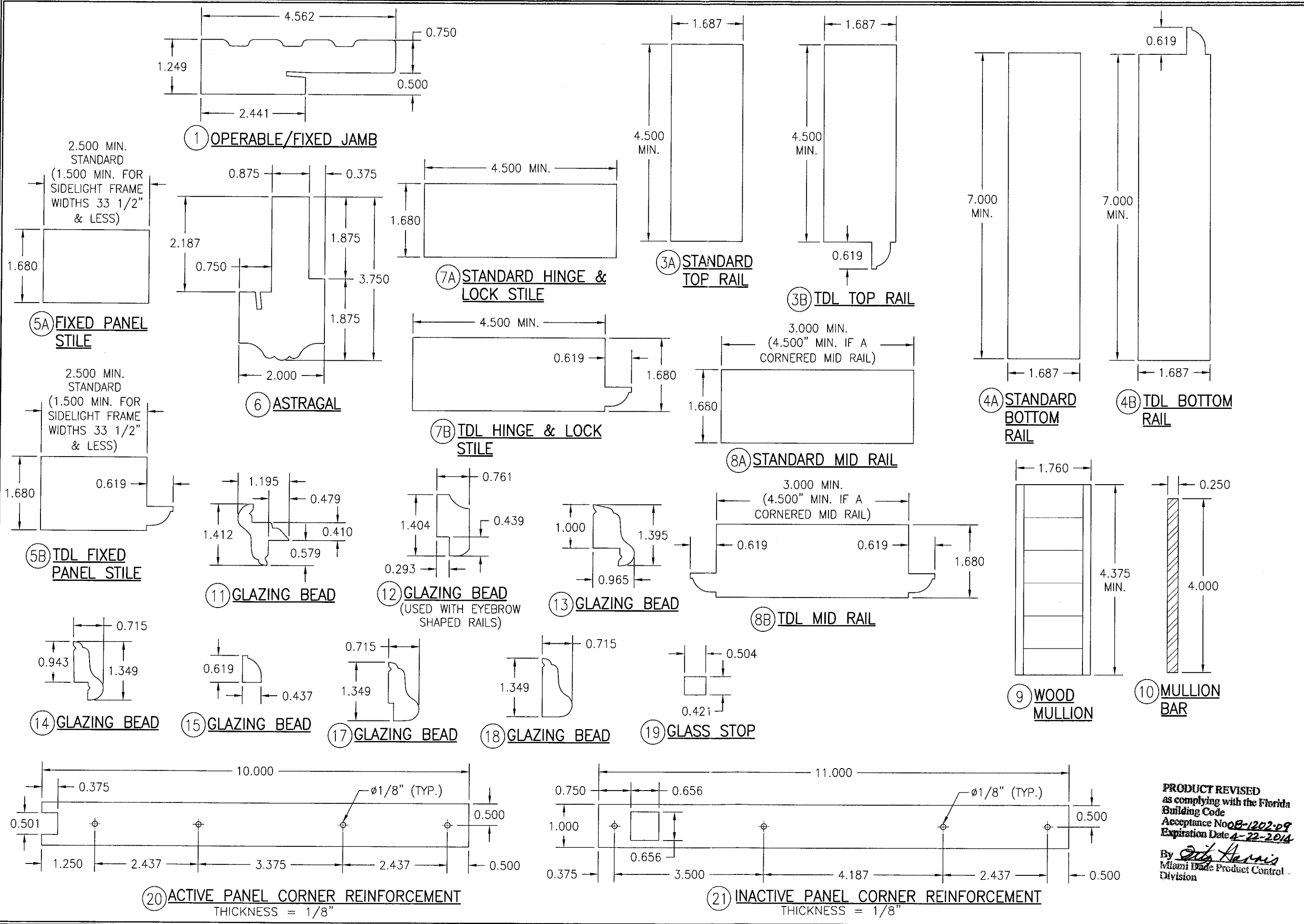


GLAZING DETAIL "8"

PRODUCT REVISED
as complying with the Florida Building Code
Acceptance No **08-1202-09**
Expiration Date **4-22-2014**

By *Steve Harris*
Miami Dade Product Control Division

DRAWN BY: K.P.S.	CHECKED BY: W.W.S.
PLOT: 1=2	DATE: 11/25/03
DATE	
BY	
REVISION DESCRIPTION	
NO.	
DRAWING TITLE 8 FOOT WOOD INSWING IMPACT DOORS	
MANUFACTURER SIGNATURE DOOR INC. 401 JUNIATA STREET ALTOONA, PA 16602 814-949-2770	
CONSULTANTS W. W. SCHAEFER ENGINEERING & CONSULTING, P.A. 8895 N. MILITARY TRAIL, SUITE C-204 PALM BEACH GARDENS, FL 33410 PHONE: 561-775-4902 FAX: 561-775-4903	
CERTIFICATION NOV 17 2008 WARREN W. SCHAEFER, P.E. P.E. NO. 44135	
DRAWING NO. 1257	REV. A
SHEET NO. 8 OF 10	



DRAWN BY:	K.P.S.	CHECKED BY:	W.W.S.
PLOT:	1=2	DATE:	11/25/03
NO.		DATE	
BY			
REVISION DESCRIPTION			

DRAWING TITLE: 8 FOOT WOOD INSWING IMPACT DOORS

MANUFACTURER: SIGNATURE DOOR INC. 401 JUNIATA STREET ALTOONA, PA 16602 814-949-2770

CONSULTANTS: W. W. SCHAEFER ENGINEERING & CONSULTING, P.A. 8895 N. MILITARY TRAIL, SUITE C-204 PALM BEACH GARDENS, FL 33410 PHONE: 561-775-4902 FAX: 561-775-4903

PRODUCT REVISED as complying with the Florida Building Code Acceptance No 08-1202-09 Expiration Date 4-22-2014

By *W. W. Schaefer* P.E. Miami Door Product Control Division

CERTIFICATION: NOV 17 2008

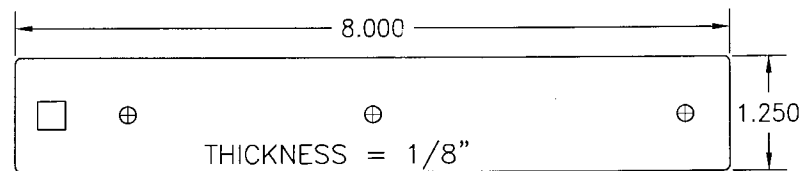
W. W. SCHAEFER, P.E. P.E. NO. 44135

DRAWING NO.	1257	REV.	A
SHEET NO.	9	OF	10

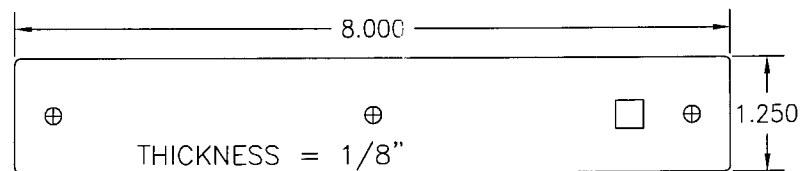
ITEM #	ITEM DESCRIPTION	MANUFACTURER/NOTES
PARTS		
1	OPERABLE/FIXED JAMB	* WOOD (LAMINATED WITH CURVED JAMBS)
3A	TOP RAIL	LVL OR LAMINATED RED OAK CORE (PINE VENEER)
3B	TDL TOP RAIL	LVL OR LAMINATED RED OAK CORE (PINE VENEER)
4A	BOTTOM RAIL	LVL OR LAMINATED RED OAK CORE (PINE VENEER)
4B	TDL BOTTOM RAIL	LVL OR LAMINATED RED OAK CORE (PINE VENEER)
5A	FIXED STILE	LVL OR LAMINATED RED OAK CORE (PINE VENEER)
5B	TDL FIXED STILE	LVL OR LAMINATED RED OAK CORE (PINE VENEER)
6	ASTRAGAL	* WOOD
7A	OPERABLE STILE	LVL OR LAMINATED RED OAK CORE (PINE VENEER)
7B	TDL OPERABLE STILE	LVL OR LAMINATED RED OAK CORE (PINE VENEER)
8A	MID-RAIL	LVL OR LAMINATED RED OAK CORE (PINE VENEER)
8B	TDL MID-RAIL	LVL OR LAMINATED RED OAK CORE (PINE VENEER)
9	WOOD MULLION	LVL OR LAMINATED RED OAK CORE (PINE VENEER)
10	MULLION BAR	A36 STEEL
11	GLAZING BEAD	* WOOD
12	GLAZING BEAD	* WOOD
13	GLAZING BEAD	* WOOD
14	GLAZING BEAD	* WOOD
15	GLAZING BEAD	* WOOD
16	JAMB REINF. PLATE (.044" X 4.00" X 8.00")	GALVANIZED STEEL (NOT REQ'D WITH CURVED JAMBS)
17	GLAZING BEAD	* WOOD
18	GLAZING BEAD	* WOOD
19	GLASS STOP	* WOOD
20	ACTIVE PANEL CORNER REINFORCEMENT	STAINLESS STEEL - TO BE USED WITH ANY OF THE LOCK SYSTEMS
21	INACTIVE PANEL CORNER REINFORCEMENT	STAINLESS STEEL - TO BE USED WITH ANY OF THE LOCK SYSTEMS
22	ACTIVE PANEL CORNER REINFORCEMENT	BRASS OR STAINLESS STEEL - TO BE ONLY USED WITH FUHR LOCKS (ITEMS 36B & 37B)
23	INACTIVE PANEL CORNER REINFORCEMENT	BRASS OR STAINLESS STEEL - TO BE ONLY USED WITH FUHR LOCKS (ITEMS 36B & 37B)
24	SILL STRIKE PLATE	STAINLESS STEEL - TO BE USED WITH ANY OF THE LOCK SYSTEMS
25	HEAD STRIKE PLATE	STAINLESS STEEL - TO BE USED WITH ANY OF THE LOCK SYSTEMS
26	HEAD & SILL STRIKE PLATE	BRASS OR STAINLESS STEEL - TO BE ONLY USED WITH FUHR LOCKS (ITEMS 36B & 37B)
27	MOUNTING CLIP	18 GA. GALVANIZED STEEL
28	ADA THRESHOLD	HAGAR 401-S
29	INSWING THRESHOLD	IMPERIAL 5QCW
30	INSWING HYDOSILL THRESHOLD (BUMPER)	SCHEGEL SERIES 5000
31	-	-
32	-	-
HARDWARE		
35	4" X 4" BUTT HINGE	PENROD MH40AUPC (STEEL)
36	4" X 4" BALL BEARING HINGE	PENROD MH40BBTP (BRASS)
37	4" X 4" BALL BEARING HINGE	BALDWIN 1041 (BRASS)
38	4" X 4" BALL BEARING HINGE	PENROD MH40BBPC (STEEL)
39	5-POINT ACTIVE PANEL LOCK SYS.	HOPPE HLS9000 ROUND BOLT/SHOOTBOLT
40	2-POINT INACTIVE PANEL LOCK SYS.	HOPPE HLS9000 SHOOTBOLT
41	3-POINT ACTIVE PANEL LOCK SYS.	HOPPE HLS9000 ROUND BOLT
42	5-POINT ACTIVE PANEL LOCK SYS.	GU RHINO
43	5-POINT ACTIVE PANEL LOCK SYS.	FUHR
44	2-POINT INACTIVE PANEL LOCK SYS.	GU EUROPA
45	2-POINT INACTIVE PANEL LOCK SYS.	FUHR
46	HANDLE	AS REQ'D TO FIT LOCK SYSTEM
47	LOCK STRIKE PLATE	AS SUPPLIED WITH LOCK SYSTEM
48	3-POINT ACTIVE PANEL LOCK SYS.	GU RHINO
49	3-POINT ACTIVE PANEL LOCK SYS.	FUHR
SEALS AND SEALANTS		
50	WEATHER SEAL	HOLM INDUSTRIES JF65814
51	-	-
52	DOOR SWEEP	IMPERIAL FBS30B/FBS36B
53	WEATHER SEAL	HOLM INDUSTRIES NO. JF87

* WOOD USED WITH TEST UNITS WAS GRADE 2 EASTERN WHITE PINE. WOOD SPECIES TO BE APPLICABLE WITH THESE WINDOWS IS MIN. GRADE 2 MAHOGANY, SOUTHERN PINE, PONDEROSA PINE, OAK, CHERRY, MAPLE, DOUGLAS FIR, TEAK, CYPRUS & ANY OTHER GRADE 2 WOOD STRONGER THAN EASTERN PINE.

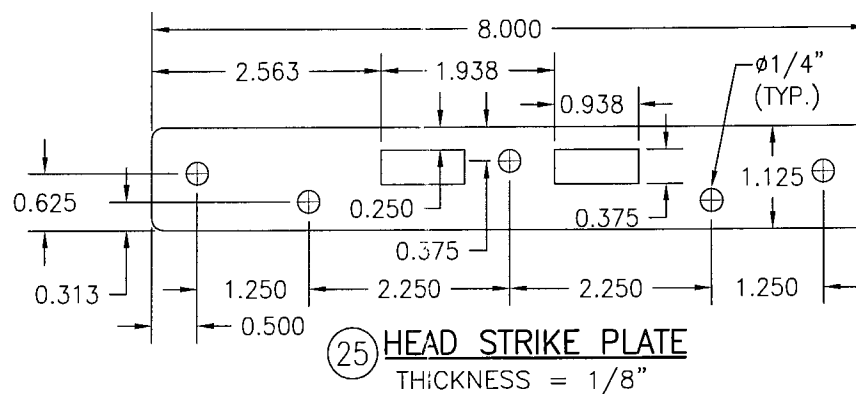
ITEM #	ITEM DESCRIPTION	MANUFACTURER/NOTES
MISC. FASTENERS		
55	NO. 9 X 3/4" SMS	2 PER HINGE LEAF INTO JAMB & STILE
56	NO. 10 X 2" SMS	2 PER HINGE LEAF INTO STILE & WOOD MULLION
58	NO. 10 X 1 1/2" SMS	2 PER HINGE LEAF INTO STEEL MULLION
59	NO. 10 X 2" SMS	4 PER DOOR REINFORCEMENT PLATE
60	NO. 10 X 2" SMS	6" FROM CORNERS & 16" MAX O.C.
61	NO. 10 X 2" SMS	6" FROM CORNERS & MID SPAN ON SILL
62	1 3/16" BRAD NAIL	1" FROM CORNERS & 8" O.C.
63	1/2" X 3/4" STAPLE	3/4" FROM CORNERS & 6" O.C. STAGGERED
64	NO. 10 X 2 1/2" SMS	3" FROM ENDS & 22" O.C. THRU ASTRAGAL
65	NO. 6 X 3/4" SCREW	2 PER STRIKE PLATE



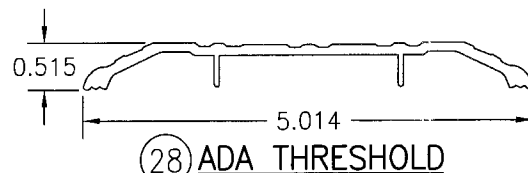
22 ACTIVE PANEL CORNER REINFORCEMENT



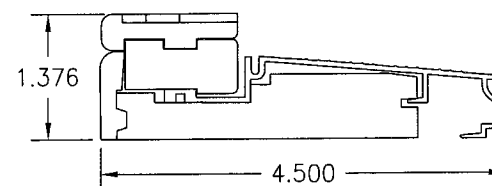
23 INACTIVE PANEL CORNER REINFORCEMENT



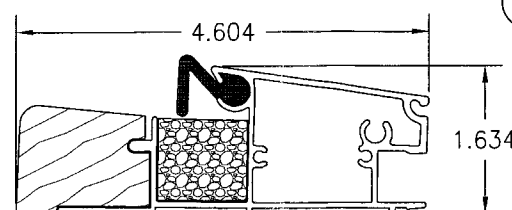
25 HEAD STRIKE PLATE
THICKNESS = 1/8"



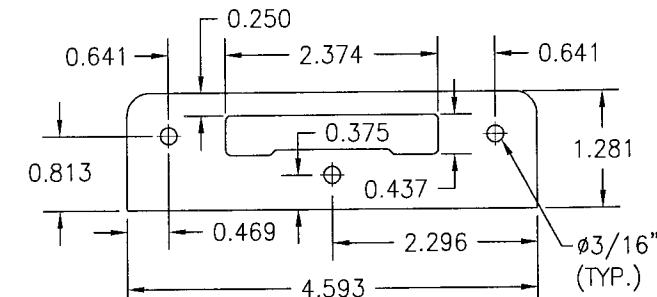
28 ADA THRESHOLD



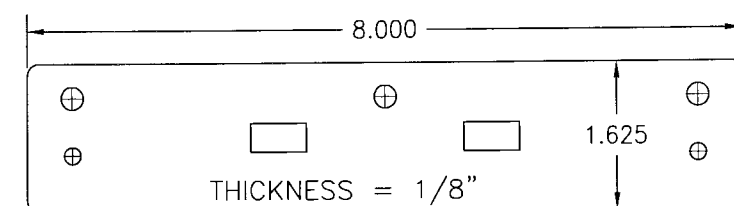
29 INSWING THRESHOLD



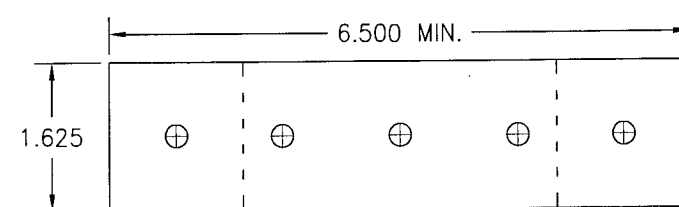
30 INSWING HYDOSILL THRESHOLD



24 SILL STRIKE PLATE
THICKNESS = 3/32"



26 HEAD & SILL STRIKE PLATE



27 MOUNTING CLIP
THICKNESS = 0.044"

PRODUCT REVISED
as complying with the Florida
Building Code
Acceptance No 08-1202-09
Expiration Date 4-22-2014

By *Dee Harris*
Miami Dade Product Control
Division

NO.	REVISION DESCRIPTION	DATE	BY
1			
2			

DRAWING TITLE: 8 FOOT WOOD INSWING IMPACT DOORS
MANUFACTURER: SIGNATURE DOOR INC.
401 JUNIATA STREET
ALTOONA, PA 16602
814-949-2770

CONSULTANTS: W. W. SCHAEFER ENGINEERING & CONSULTING, P.A.
8895 N. MILITARY TRAIL, SUITE C-204
PALM BEACH GARDENS, FL 33410
PHONE: 561-775-4902 FAX: 561-775-4903

CERTIFICATION: NOV 17 2008
WARREN W. SCHAEFER, P.E.
P.E. NO. 44135

DRAWING NO. 1257
SHEET NO. 10 OF 10