



BUILDING CODE COMPLIANCE OFFICE (BCCO)
PRODUCT CONTROL DIVISION

MIAMI-DADE COUNTY, FLORIDA
METRO-DADE FLAGLER BUILDING
140 WEST FLAGLER STREET, SUITE 1603
MIAMI, FLORIDA 33130-1563
(305) 375-2901 FAX (305) 375-2908
www.miamidade.gov/buildingcode

NOTICE OF ACCEPTANCE (NOA)

E.S. Windows, LLC
10653 N.E. Quaybridge Ct.
Miami, FL 33138

SCOPE:

This NOA is being issued under the applicable rules and regulations governing the use of construction materials. The documentation submitted has been reviewed by Miami-Dade County Product Control Division and accepted by the Board of Rules and Appeals (BORA) to be used in Miami Dade County and other areas where allowed by the Authority Having Jurisdiction (AHJ).

This NOA shall not be valid after the expiration date stated below. The Miami-Dade County Product Control Division (In Miami Dade County) and/or the AHJ (in areas other than Miami Dade County) reserve the right to have this product or material tested for quality assurance purposes. If this product or material fails to perform in the accepted manner, the manufacturer will incur the expense of such testing and the AHJ may immediately revoke, modify, or suspend the use of such product or material within their jurisdiction. BORA reserves the right to revoke this acceptance, if it is determined by Miami-Dade County Product Control Division that this product or material fails to meet the requirements of the applicable building code.

This product is approved as described herein, and has been designed to comply with the Florida Building Code, including the High Velocity Hurricane Zone.

DESCRIPTION: Series 4000 Aluminum Sliding Glass Door –LMI

APPROVAL DOCUMENT: Drawing No. W03-100, titled "Series-4000 Aluminum Sliding Patio Door (LMI), sheets 1 through 8 of 8, prepared by Al-Farooq Corporation, dated 11/08/03 and last revised on Jan 30, 2009, signed and sealed by Dr. Humayoun Farooq, P.E., bearing the Miami-Dade County Product Control Revision stamp with the Notice of Acceptance number and expiration date by the Miami-Dade County Product Control Division.

MISSILE IMPACT RATING: Large and Small Missile Impact Resistant

Limitation: 1. Exterior (positive) design pressure are limited to +70 PSF w / 2-1/2" sill & +80 PSF w/ 3-1/4" sill

LABELING: Each unit shall bear a permanent label with the manufacturer's name or logo, city, state and following statement: "Miami-Dade County Product Control Approved", unless otherwise noted herein.

RENEWAL of this NOA shall be considered after a renewal application has been filed and there has been no change in the applicable building code negatively affecting the performance of this product.

TERMINATION of this NOA will occur after the expiration date or if there has been a revision or change in the materials, use, and/or manufacture of the product or process. Misuse of this NOA as an endorsement of any product, for sales, advertising or any other purposes shall automatically terminate this NOA. Failure to comply with any section of this NOA shall be cause for termination and removal of NOA.

ADVERTISEMENT: The NOA number preceded by the words Miami-Dade County, Florida, and followed by the expiration date may be displayed in advertising literature. If any portion of the NOA is displayed, then it shall be done in its entirety.

INSPECTION: A copy of this entire NOA shall be provided to the user by the manufacturer or its distributors and shall be available for inspection at the job site at the request of the Building Official.

This NOA revises & renews NOA # 08-0477.03 consists of this page 1 and evidence page E-1, as well as approval document mentioned above.

The submitted documentation was reviewed by **Ishaq I. Chanda, P. E.**



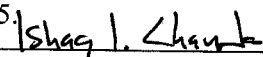
NOA No 09-0210.07
Expiration Date: March 18, 2014
Approval Date: April 01, 2009
Page 1

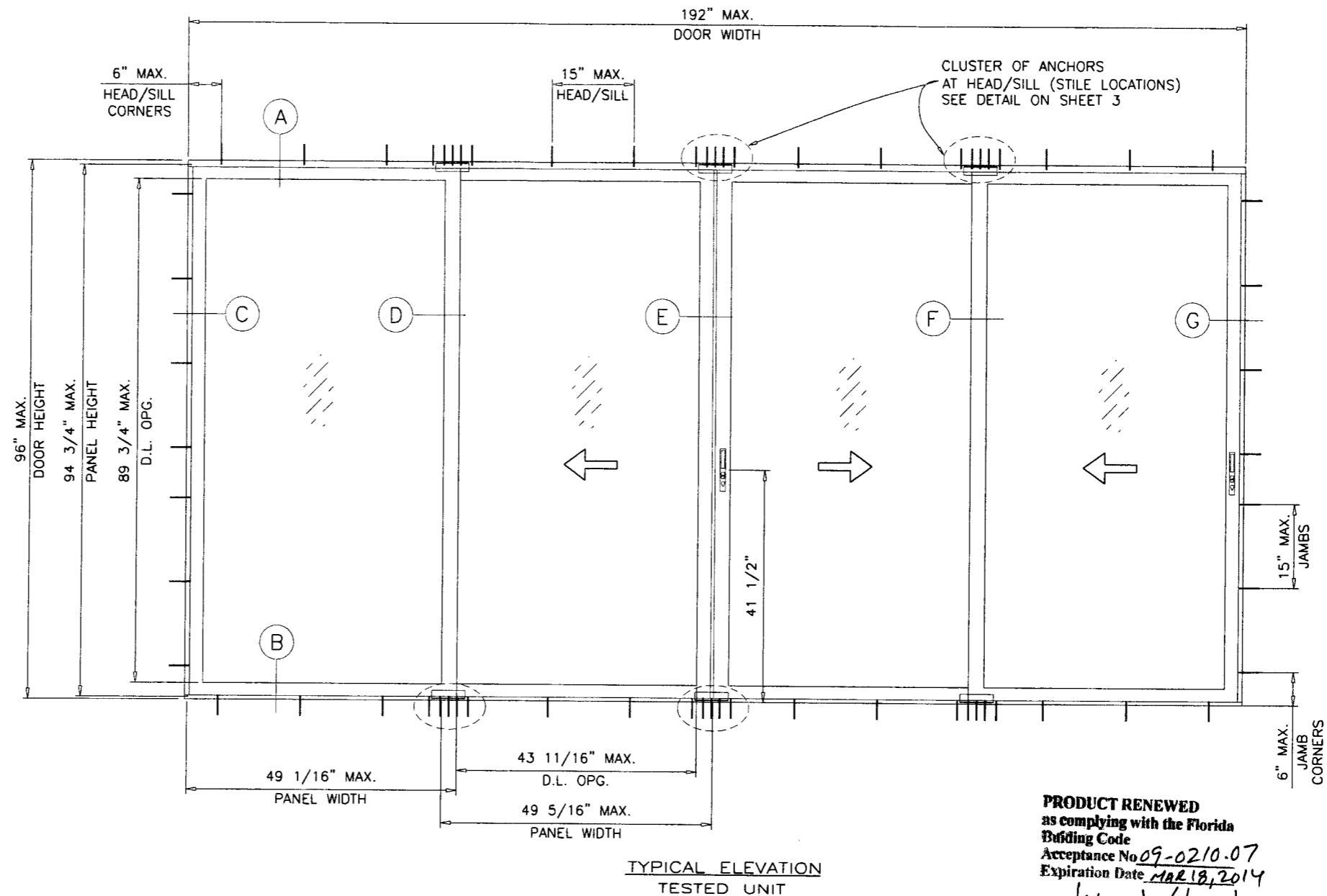
3/12/09

E.S. Windows

NOTICE OF ACCEPTANCE: EVIDENCE SUBMITTED

- A. DRAWINGS** (transferred from file # **08-0477.03**)
1. Manufacturer's die drawings and sections.
Drawing No. **W03-100**, titled "Series-4000 Aluminum Sliding Patio Door (LMI), sheets 1 through 8 of 8, prepared by Al-Farooq Corporation, dated 11/08/03 and last revised on Jan 30, 2009, signed and sealed by Dr. Humayoun Farooq, P.E.
- B. TESTS** (transferred from file # **08-0477.03**)
1. Test reports on 1) Air Infiltration Test, per FBC, TAS 202-94
2) Uniform Static Air Pressure Test, Loading per FBC, TAS 202-94
3) Water Resistance Test, per FBC, TAS 202-94
4) Large Missile Impact Test per FBC, TAS 201-94
5) Cyclic Wind Pressure Loading per FBC, TAS 203-94
6) Forced Entry Test, per FBC 2411 3.2.1 and TAS 202-94
- Along with marked-up drawings and installation diagram of an Aluminum Sliding Glass Door, prepared by Fenestration Testing Laboratory, Inc., Test Report No(s). **FTL-3908**, dated 10/09/03, **FTL-3909**, dated 09/26/03, **FTL-3910**, dated 09/30/03 and **FTL-4287**, dated 09/22/04, signed and sealed by Joseph Chan, P.E. and Test Report No. **FTL-4287**, dated 09/22/04, signed and sealed by Edmundo Largaespada, P.E.
2. Additional test No. **FTL-5471**, dated 01/24/08, per TAS 201/203-94, issued by Fenestration Testing Lab, signed & sealed by Michael Wenzel, P.E.
- C. CALCULATIONS**
1. Anchor verification calculation dated 01-19-09, complying w/ FBC 2007, prepared by Al-Farooq Corporation, signed and sealed by Dr. Humayoun Farooq, P.E.
 2. Calculations, and structural analysis, prepared by Al-Farooq Corporation, dated 04/16/08, signed and sealed by Dr. Humayoun Farooq, P.E.(file # **08-0477.03**)
 3. Glazing complies with ASTM E-1300-02 & -04.
- D. QUALITY ASSURANCE**
1. Miami Dade Building Code Compliance Office (BCCO).
- E. MATERIAL CERTIFICATIONS**
1. Notice of Acceptance No. **01-1204.01** issued to "E.I. DuPont DeNemours" for "Sentry Glass ® Plus" dated 01/17/02, expiring on 01/14/07.
 2. Notice of Acceptance No. **07-1116.04** issued to E.I. DuPont De Nemours & CO., Inc. for "DuPont SentryGlas ® Plus", expiring on 01/14/2012.
- F. STATEMENTS**
1. Statement letter of compliance w/FBC-2007, dated Jan 19, 2009, signed by Dr. Humayoun Farooq, P.E.
 2. Statement letter of compliance and of no financial interest, dated 01/19/09, signed and sealed by Dr. Humayoun Farooq, P.E.
 3. Statement of Lab compliance, part of above test reports.
- G. OTHER**
1. This NOA revises & renews NOA # **08-0477.03**, expiring March 18, 2014.
 2. Previous related NOA(s) are NOA# 06-0606.02 and 04-1117.05.


Ishaq I. Chanda, P. E.
Product Control Examiner
NOA No 09-0210.07
Expiration Date: March 18, 2014
Approval Date: April 01, 2009



TYPICAL ELEVATION
TESTED UNIT

PRODUCT RENEWED
as complying with the Florida
Building Code
Acceptance No 09-0210-07
Expiration Date MAR 18, 2014
By Chang I. Chanda
Miami Dade Product Control
Division

SERIES-4000 ALUM SLIDING GLASS DOOR

DESIGN LOAD RATING FOR DOORS TO BE AS PER CHARTS SHOWN ON SHEETS 2 AND 3.

THIS PRODUCT HAS BEEN DESIGNED AND TESTED TO COMPLY WITH THE REQUIREMENTS OF THE FLORIDA BUILDING CODE 2004/2007 EDITION INCLUDING HIGH VELOCITY HURRICANE ZONE (HVHZ).

WOOD BUCKS BY OTHERS, MUST BE ANCHORED PROPERLY TO TRANSFER LOADS TO THE STRUCTURE.

ANCHORS SHALL BE AS LISTED, SPACED AS SHOWN ON DETAILS, ANCHORS EMBEDMENT TO BASE MATERIAL SHALL BE BEYOND WALL DRESSING OR STUCCO. ANCHORING OR LOADING CONDITIONS NOT SHOWN IN THESE DETAILS ARE NOT PART OF THIS APPROVAL.

A LOAD DURATION INCREASE IS USED IN DESIGN OF ANCHORS INTO WOOD ONLY.

MATERIALS INCLUDING BUT NOT LIMITED TO STEEL/METAL SCREWS, THAT COME INTO CONTACT WITH OTHER DISSIMILAR MATERIALS SHALL MEET THE REQUIREMENTS OF 2004/2007 FLORIDA BLDG. CODE SECTION 2003.8.4.

DOORS GLAZED WITH LAMINATED GLASS RATED FOR LARGE & SMALL MISSILE IMPACT AND REQUIRE NO SHUTTERS.

Engr: DR. HUMAYOUL FAROOQ
STRUCTURE'S
FLA. PE # 16557
C.A.N. 3538

[Signature]
JAN 30 2009

afc
AL-FAROOQ CORPORATION
ENGINEERS & PRODUCT DEVELOPMENT
1235 S.W. 87 AVE
MIAMI, FLORIDA 33174
TEL. (305) 264-8100 FAX. (305) 262-6978
COMP-ANL\W03-100ES

SERIES-4000 ALUM SLIDING GLASS DOOR (L.M.I.)
E.S. WINDOWS, LLC
5220 N.W. 72 AVE. BAY #4
MIAMI, FL. 33166
TEL. (305) 249-0840 FAX. (305) 249-0842

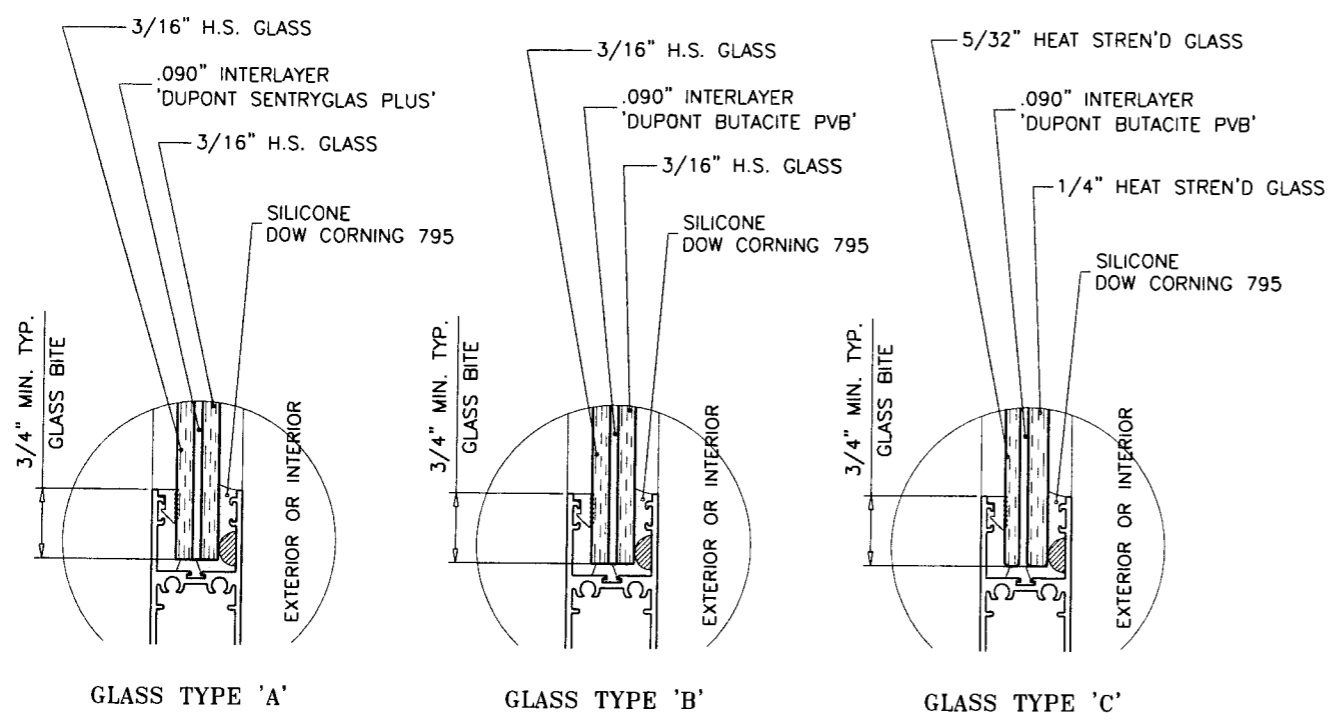
no	date	by	description
B	11.02.04	NOTE REV.	UPDATED FOR 2004 FBC
C	05.17.06	REV. PER BCCO COMMENTS	GLASS TYPE C ADDED
D	09.14.06	REV. PER BCCO COMMENTS	GLASS TYPE C ADDED
E	02.15.08	REV. PER BCCO COMMENTS	GLASS TYPE C ADDED
F	01.21.09	REV. PER BCCO COMMENTS	GLASS TYPE C ADDED

date: 11-08-03
scale: 1/2"=1'-0"
dr. by: HAM/D
chk. by:
drawing no.
W03-100
sheet 1 of 8

SEE SHEET 3 FOR XO OR XX DOORS WITH HEAVY REINFORCING

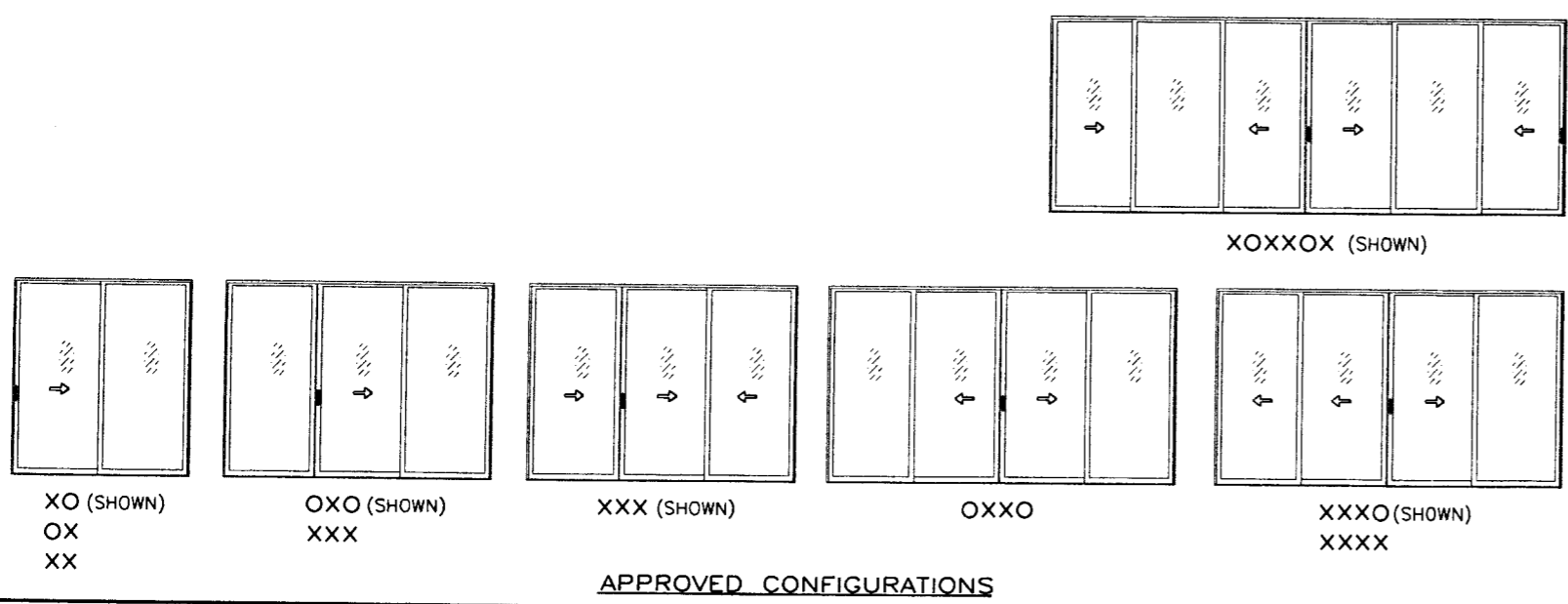
DESIGN LOAD CAPACITY - PSF (ALL CONFIGURATIONS SHOWN ON THIS SHEET) GLASS TYPES 'A', 'B' OR 'C'							
PANEL WIDTH NOMINAL INCHES	DOOR HEIGHT INCHES	NO REINFOR'G		MEDIUM REINFOR'G		HEAVY REINF'G	
		EXT. (+)	INT. (-)	EXT. (+)	INT. (-)	EXT. (+)	INT. (-)
30	80	70.0	80.0	70.0	80.0	70.0	80.0
36		70.0	80.0	70.0	80.0	70.0	80.0
42		-	-	70.0	80.0	70.0	80.0
48		-	-	-	-	70.0	80.0
54		-	-	-	-	70.0	80.0
30	96	-	-	70.0	80.0	70.0	80.0
36		-	-	70.0	80.0	70.0	80.0
42		-	-	-	-	70.0	80.0
48		-	-	-	-	70.0	80.0

USE SCHEDULE 'A' (SHEET 3) FOR ANCHORS
 ON ALL SIZES THIS CHART.



SERIES-4000 ALUM SLIDING GLASS DOOR (L.M.I.)
E.S. WINDOWS, LLC
 5220 N.W. 72 AVE. BAY #4
 MIAMI, FL. 33166
 TEL. (305) 249-0840 FAX. (305) 249-0842

PRODUCT RENEWED
 as complying with the Florida
 Building Code
 Acceptance No. 09-0210.07
 Expiration Date MAR 18, 2014
 By Ishaq I. Chaudhry
 Miami Dade Product Control
 Division



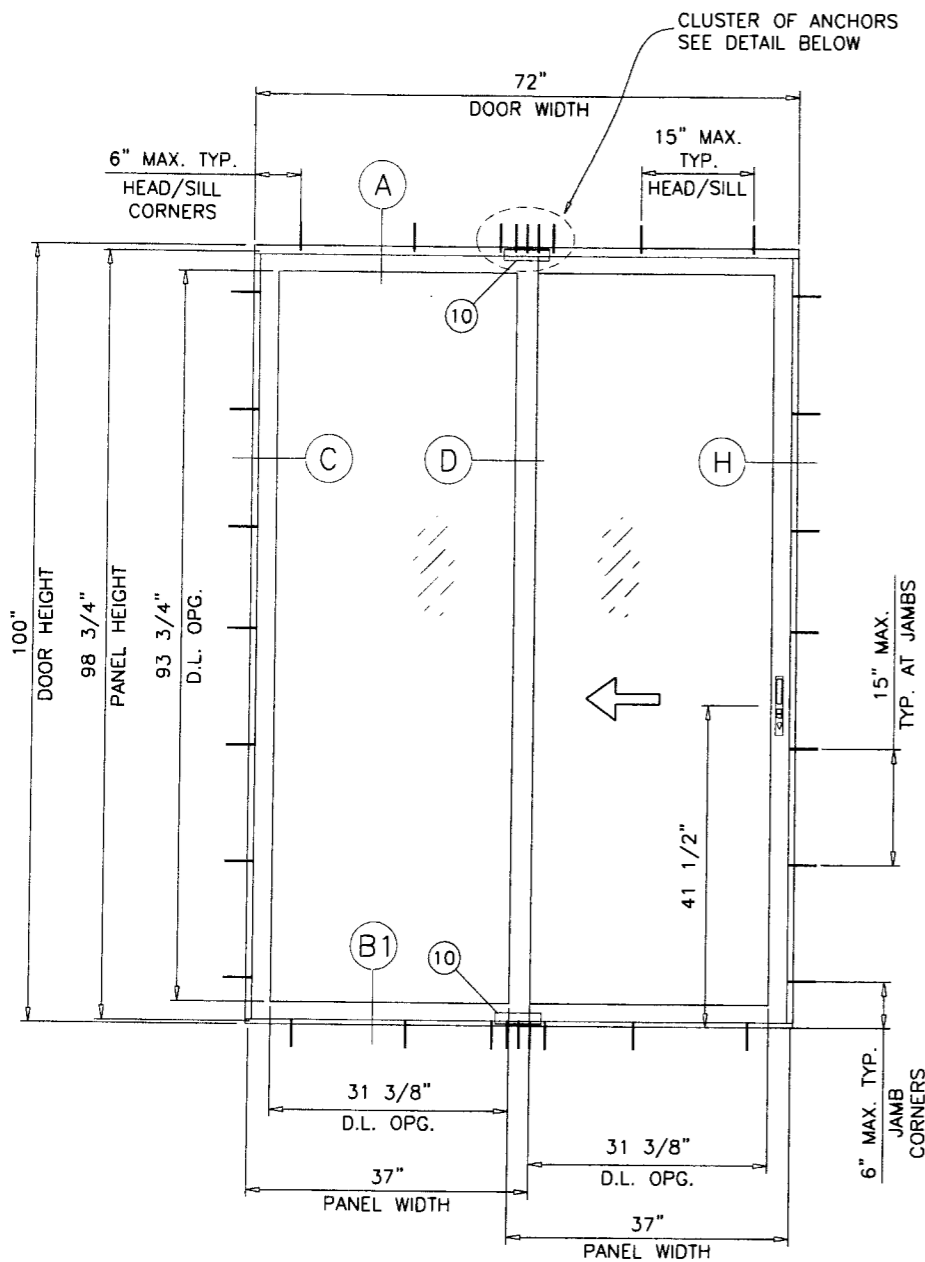
NOTE:
 GLASS CAPACITIES ON THIS SHEET ARE
 BASED ON ASTM E1300-02/04 (3 SEC. GUSTS)
 AND FLORIDA BUILDING COMMISSION
 DECLARATORY STATEMENT DCA05-DEC-219

Engr: DR. HUMAYOON FAROOQ
 STRUCTURES
 FLA. PE # 16557
 C.A.N. 3538

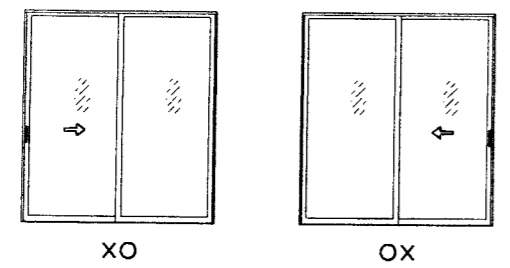
[Signature]
 JAN 30 2009

no.	date	by	description
B	11.02.04		SHEET ADDED
C	05.17.06		UPDATED FOR 2004 FBC
D	09.14.06		REV. PER BCCO COMMENTS
E	02.15.08		GLASS TYPE C ADDED
F	01.21.09		UPDATED FOR 2007 FBC

date: 11-08-03
 scale: 1/2"=1'-0"
 dr. by: HAMID
 chk. by:
 drawing no. **W03-100**
 sheet 2 of 8



TYPICAL ELEVATION

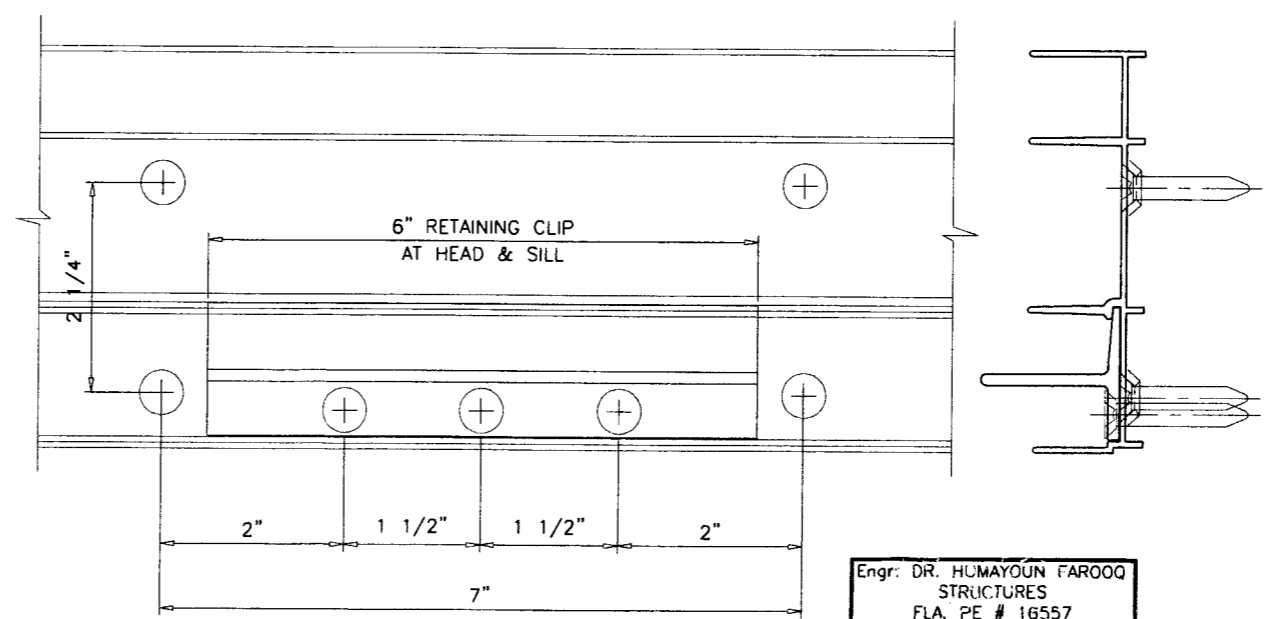


APPROVED CONFIGURATIONS

SEE SHEET 2 FOR DOORS WITH MEDIUM OR NO REINFORCING

DESIGN LOAD CAPACITY - PSF (OX OR XO ONLY) GLASS TYPES 'A' OR 'B'					
PANEL WIDTH NOMINAL INCHES	DOOR HEIGHT INCHES	HEAVY REINF'G (SEE DETAIL SHEET 5)			
		SCHEDULE 'A'		SCHEDULE 'B'	
		EXT. (+)	INT. (-)	EXT. (+)	INT. (-)
30 36 42 45	80	80.0	103.0	80.0	103.0
		80.0	103.0	80.0	103.0
		80.0	103.0	80.0	103.0
		80.0	103.0	80.0	103.0
30 36	96	80.0	103.0	80.0	103.0
		80.0	99.9	80.0	103.0
30 36	100	80.0	103.0	80.0	103.0
		80.0	95.0	80.0	103.0

THE SHOWN EXT. (+) LOADS REQUIRE
3-1/4" SILL HEIGHT (DTL. B1 ON SHEET 4).
REDUCE EXT. (+) LOAD CAPACITY TO
+70.0 PSF IF 2-1/2" SILL HEIGHT IS USED
INT. (-) LOADS REMAIN UNCHANGED.



DETAIL CLUSTER OF ANCHORS AT STILE ENDS

ANCHOR CHART			
SUBSTRATE		SCHEDULE 'A'	SCHEDULE 'B'
WOOD	HEAD	1/4" ANCHORS	5/16" ANCHORS
	SILL	1/4" ANCHORS	1/4" ANCHORS
	JAMB	1/4" ANCHORS	1/4" ANCHORS
CONCRETE	HEAD	1/4" ANCHORS	5/16" ANCHORS
	SILL	1/4" ANCHORS	1/4" ANCHORS
BLOCK	JAMB	1/4" ANCHORS	1/4" ANCHORS

NOTE: ALL CLIP ANCHORS = 1/4" DIA. (ITEM #10)
MULLION ANCHORS = #12 SMS (NO SHIM SPACE)

NOTE:
GLASS CAPACITIES ON THIS SHEET ARE
BASED ON ASTM E1300-02/04 (3 SEC. GUSTS)
AND FLORIDA BUILDING COMMISSION
DECLARATORY STATEMENT DCA05-DEC-219

Engr. DR. HUMAYOUN FAROOQ
STRUCTURES
FLA. PE # 16557
C.A.N. 3538

JAN 30 2009

af c
AL-FAROOQ CORPORATION
ENGINEERS & PRODUCT DEVELOPMENT
1235 S.W. 87 AVE
MIAMI, FLORIDA 33174
TEL. (305) 264-8100 FAX. (305) 262-6978
COMP-ANL\W03-100ES

SERIES-4000 ALUM SLIDING GLASS DOOR (L.M.I.)
E.S. WINDOWS, LLC
5220 N.W. 72 AVE. BAY #4
MIAMI, FL. 33166
TEL. (305) 249-0840 FAX. (305) 249-0842

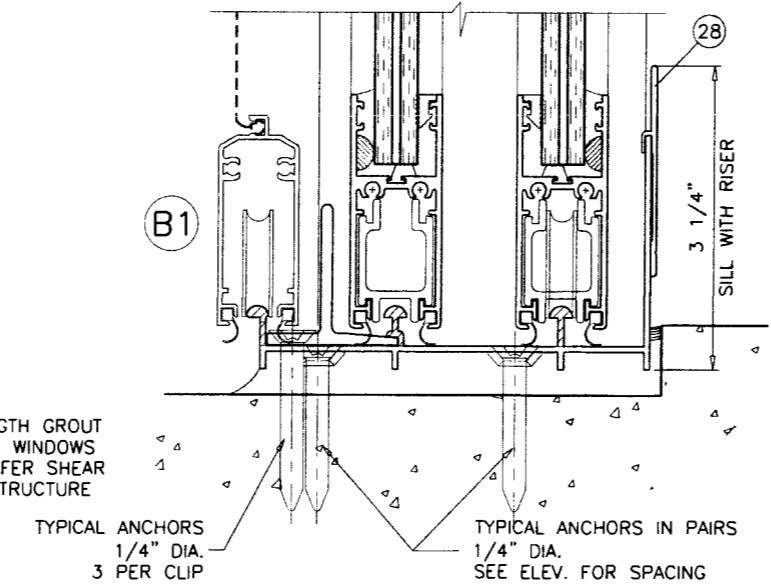
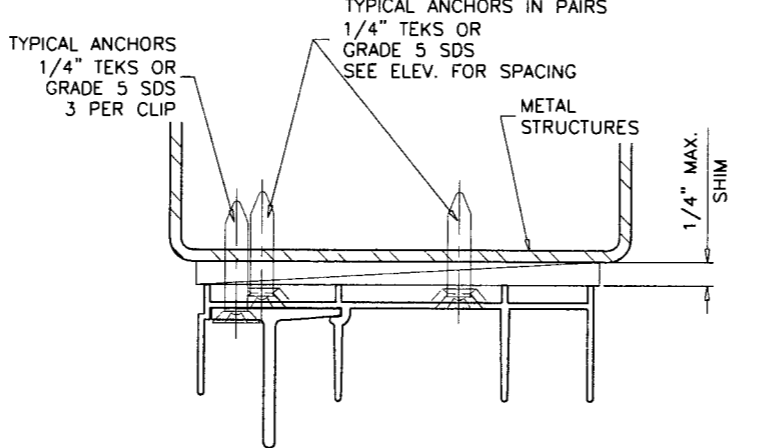
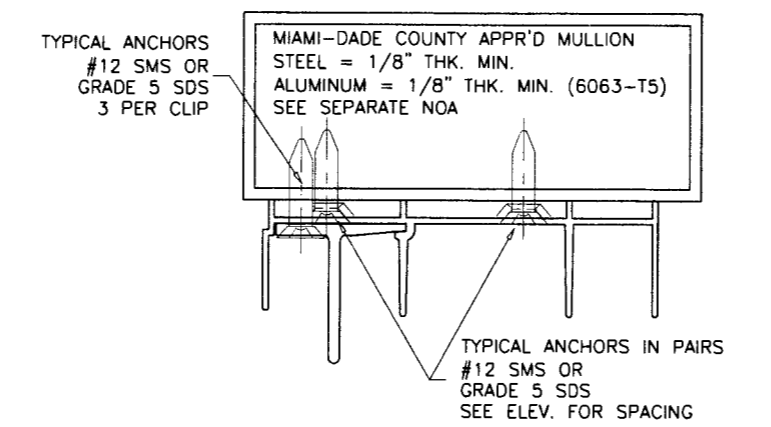
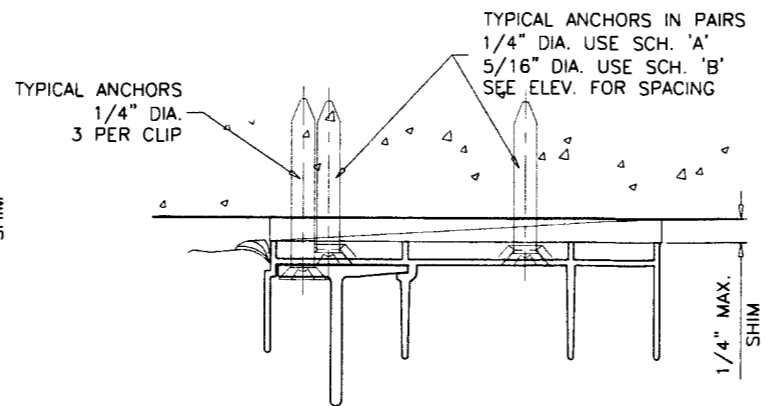
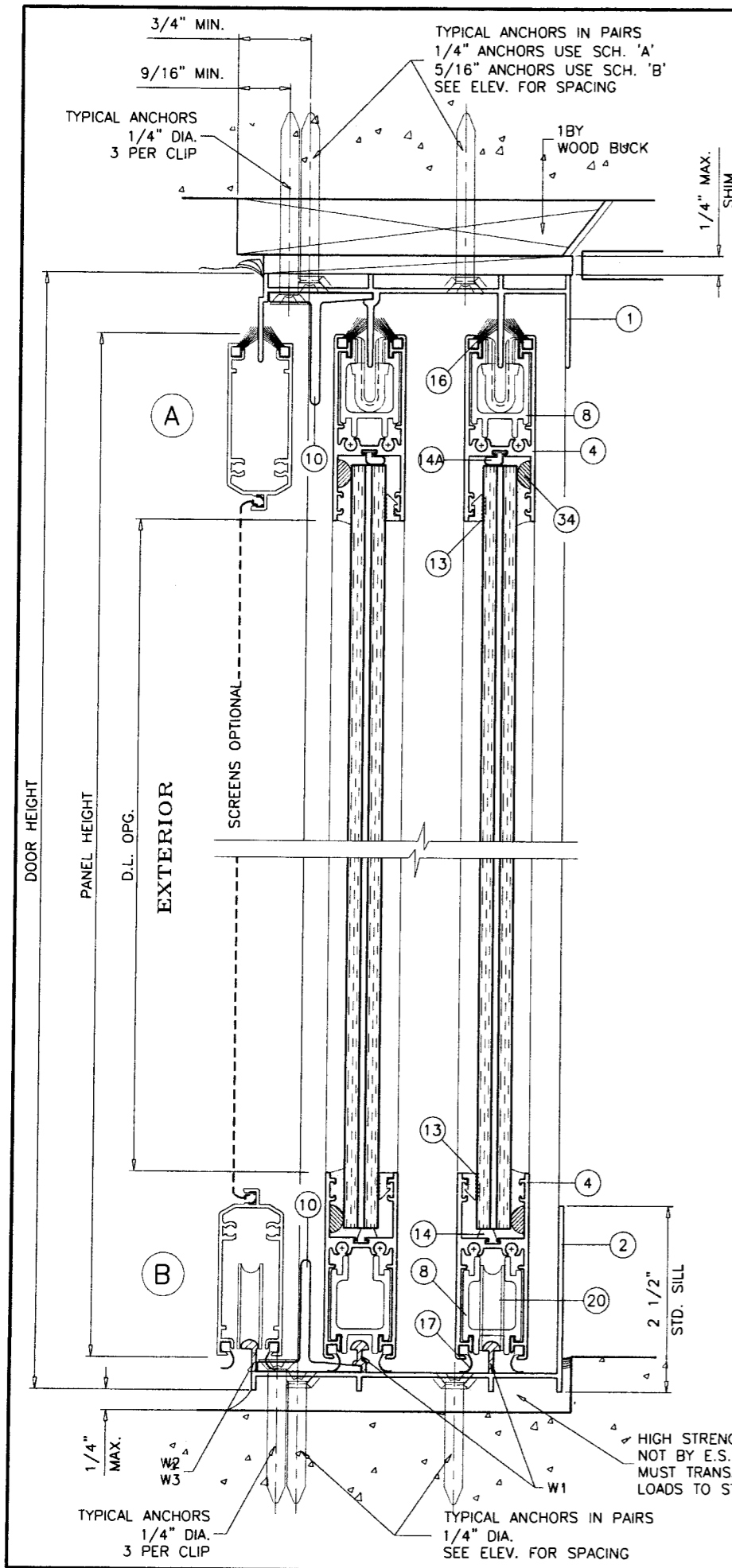
PRODUCT RENEWED
as complying with the Florida
Building Code
Acceptance No. 09-0210.14
Expiration Date Mar 18, 2014
By Ishaq I. Chaudhry
Miami Dade Product Control
Division

REVISIONS:

no	date	by	description
B	11.02.04		SHEET ADDED
C	05.17.06		UPDATED FOR 2004 FBC
D	09.14.06		REV. PER BCCO COMMENTS
E	02.15.08		CHART REV.
F	01.21.09		UPDATED FOR 2007 FBC

date: 11-08-03
scale: 1/2" = 1'-0"
dr. by: HAMID
chk. by:

drawing no.
W03-100
sheet 3 of 8



WOOD BUCKS AND METAL STRUCTURE NOT BY E.S. WINDOWS
MUST SUSTAIN LOADS IMPOSED BY GLAZING SYSTEM
AND TRANSFER THEM TO THE BUILDING STRUCTURE.

TYPICAL ANCHORS: SEE ELEV. FOR SPACING
1/4" OR 5/16" DIA. ULTRACONS BY 'ELCO' (Fu=177 KSI, Fy=155 KSI)
 INTO 2BY WOOD BUCKS OR WOOD STRUCTURES
 1-1/2" MIN. PENETRATION INTO WOOD
 THRU 1BY BUCKS INTO CONC. OR MASONRY
 1-1/4" MIN. EMBED INTO CONC. OR MASONRY
 DIRECTLY INTO CONC. OR MASONRY
 1-1/4" MIN. EMBED INTO CONC. OR MASONRY
1/4" DIA. TEKS OR SELF DRILLING SCREWS (GRADE 5 CRS)
 INTO METAL STRUCTURES
 STEEL : 12 GA. MIN. (Fy = 36 KSI MIN.)
 ALUMINUM : 1/8" THK. MIN. (6063-T5 MIN.)
 (STEEL IN CONTACT WITH ALUMINUM TO BE PLATED OR PAINTED)

#12 SMS OR SELF DRILLING SCREWS
 INTO MIAMI-DADE COUNTY APPROVED MULLIONS (MIN. THK. = 1/8")
 (NO SHIM SPACE)

MIN. EDGE DISTANCES
 INTO CONCRETE AND MASONRY = 2-1/2" MIN.
 INTO WOOD STRUCTURE = SEE DETAIL (A)
 INTO METAL STRUCTURE = 3/4" MIN.

CONCRETE f'c = 3000 PSI MIN.
 MASONRY f'm = 1500 PSI MIN.

SEALANT:
 ALL JOINTS AND FRAME CONNECTIONS SEALED WITH
 WHITE/ALUMINUM COLORED SILICONE.

WEEPHOLES:
 W1 = 1-3/4" WEEP NOTCH AT EACH END
 W2 = 3/4" WEEP NOTCH AT EACH END
 W3 = 3" X 1/4" WEEP HOLES AT 2" FROM EACH END

PRODUCT RENEWED
 as complying with the Florida
 Building Code
 Acceptance No. 09-0210-07
 Expiration Date MAR 18, 2014
 By Shaq L. Chandra
 Miami Dade Product Control
 Division

Engr: DR. HUMAYOON FAROOQ
 STRUCTURES
 FLA. PE # 16557
 C.A.N. 3538

[Signature]
 JAN 30 2009

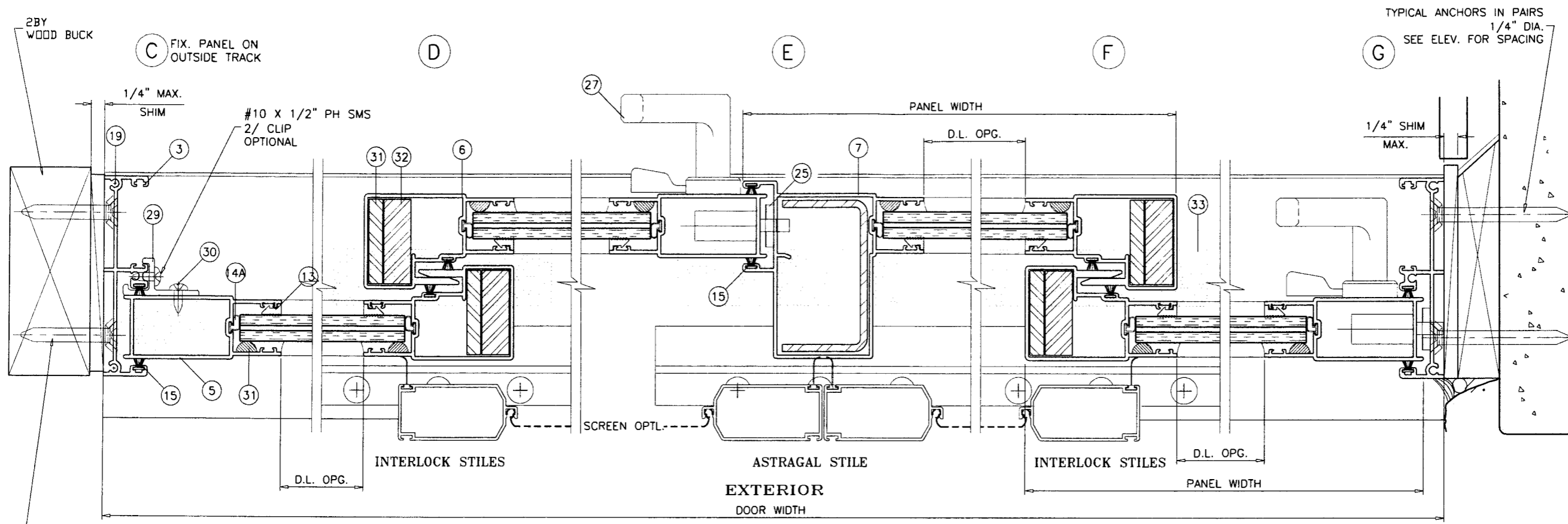
af c
AL-FAROOQ CORPORATION
 ENGINEERS & PRODUCT DEVELOPMENT
 1235 S.W. 87 AVE
 MIAMI, FLORIDA 33174
 TEL. (305) 262-6978
 FAX. (305) 264-8100
 COMP-ANL\W03-100ES

SERIES-4000 ALUM SLIDING GLASS DOOR (L.M.I.)
E.S. WINDOWS, LLC
 5220 N.W. 72 AVE. BAY #4
 MIAMI, FL. 33166
 TEL. (305) 249-0840
 FAX. (305) 249-0842

no	date	by	description
B	11.02.04	SILL DTL. REV.	
C	05.17.06	UPDATED FOR 2004 FBC	
D	09.14.06	REV. PER BCCO COMMENTS	
E	02.15.08	NO CHANGE THIS SHEET	
F	01.21.09	UPDATED FOR 2007 FBC	

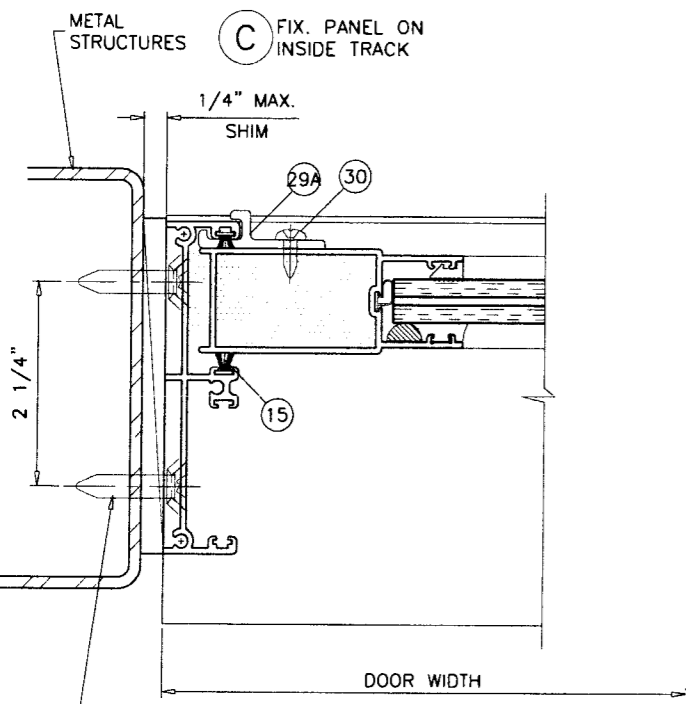
date: 11-08-03
 scale: 1/2" = 1"
 dr. by: HAMID
 chk. by:

drawing no.
W03-100
 sheet 4 of 8

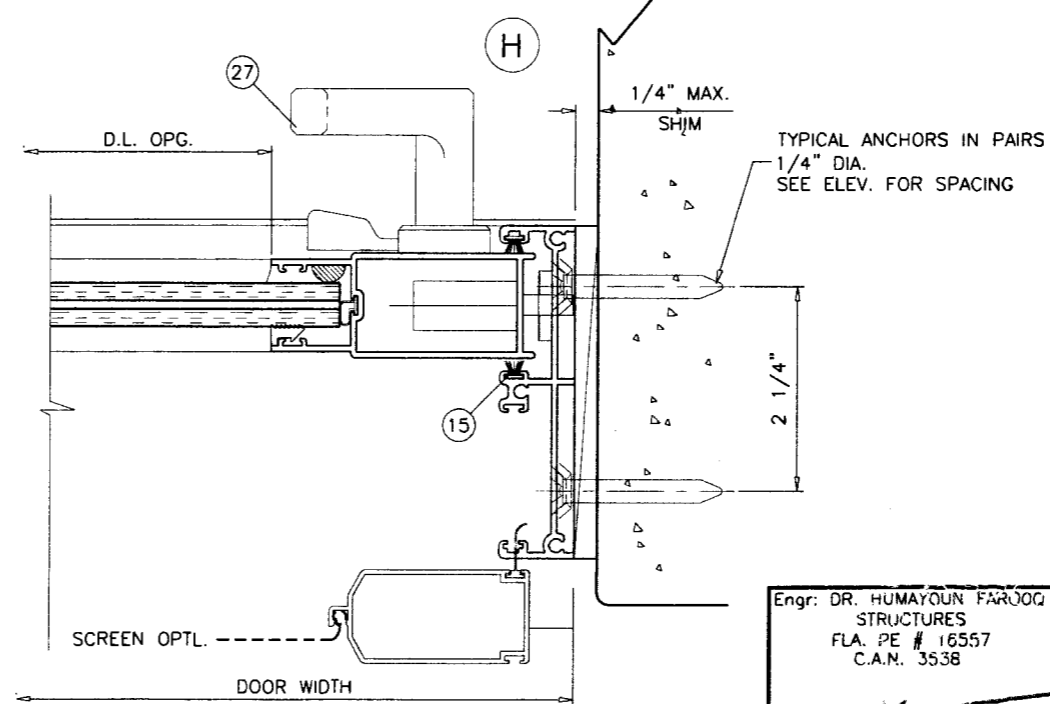


TYPICAL ANCHORS IN PAIRS
1/4" DIA.
SEE ELEV. FOR SPACING

**HEAVY REINFORCING
AT INTERLOCK & ASTRAGAL STILES**



TYPICAL ANCHORS IN PAIRS
1/4" DIA.
SEE ELEV. FOR SPACING



Engr. DR. HUMAYOUN FAROOQ
STRUCTURES
FLA. PE # 16557
C.A.N. 3538

JAN 30 2009

PRODUCT RENEWED
as complying with the Florida
Building Code
Acceptance No 09-0210-07
Expiration Date MAR 19, 2014
By Shag. Chaudhary
Miami Dade Product Control
Division

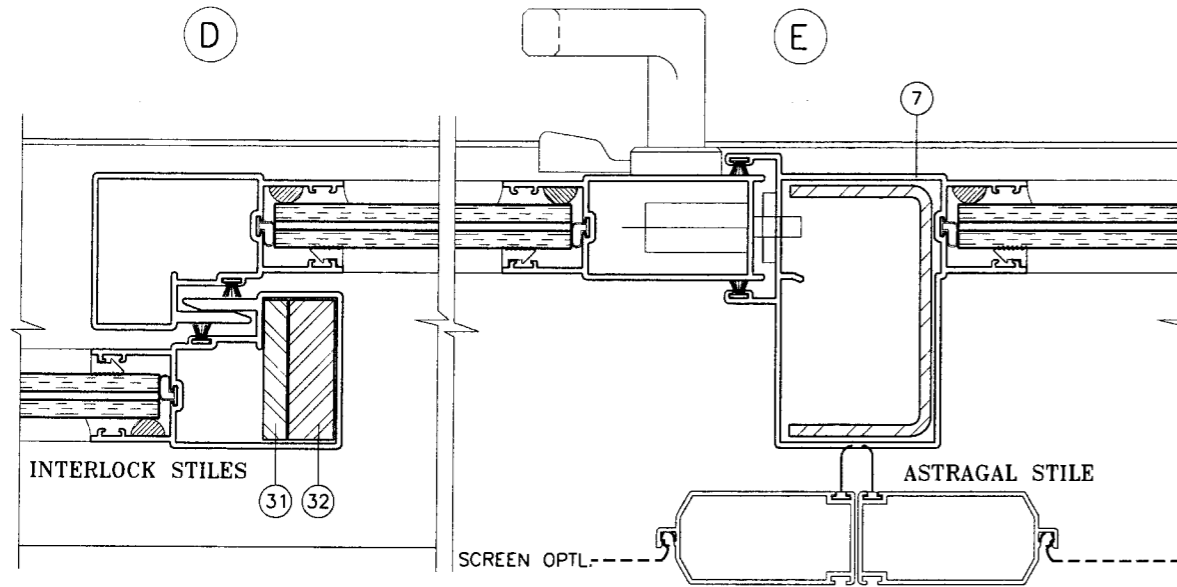
af c
AL-FAROOQ CORPORATION
ENGINEERS & PRODUCT DEVELOPMENT
1235 S.W. 87 AVE
MIAMI, FLORIDA 33174
TEL. (305) 264-8100 FAX. (305) 262-6978
COMP-ANL\W03-100ES

SERIES-4000 ALUM SLIDING GLASS DOOR (L.M.I.)
E.S. WINDOWS, LLC
5220 N.W. 72 AVE. BAY #4
MIAMI, FL. 33166
TEL. (305) 249-0840 FAX. (305) 249-0842

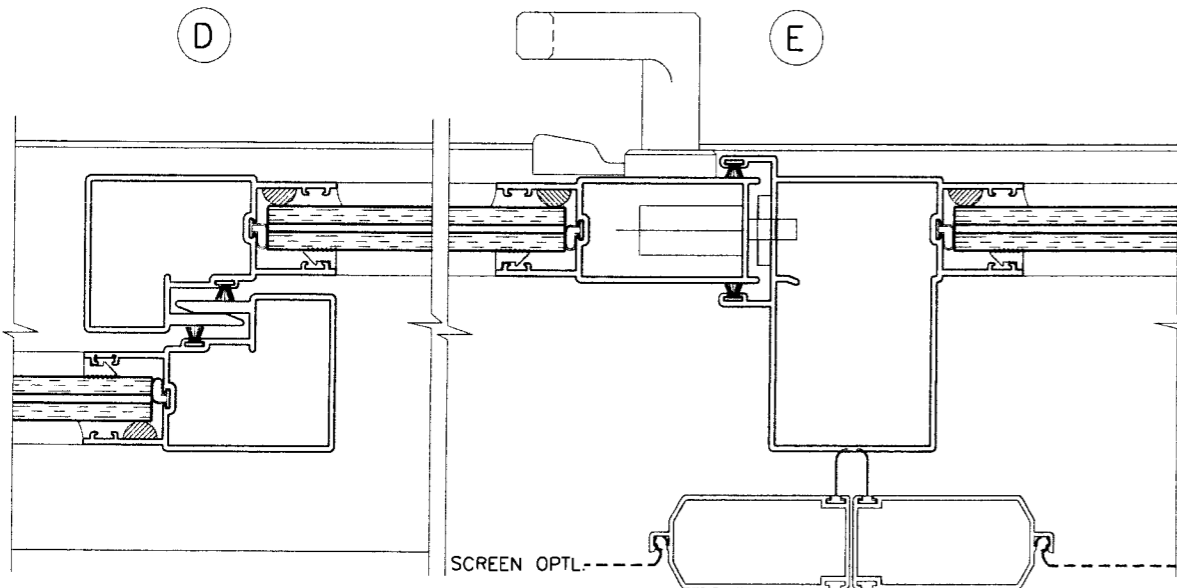
no	date	description
B	11.02.04	JAMB DTL. ADDED
C	05.17.06	UPDATED FOR 2004 FBC
D	09.14.06	REV. PER BCCO COMMENTS
E	02.15.08	DTL. ADDED
F	01.21.09	UPDATED FOR 2007 FBC

date: 11-08-03
scale: 1/2" = 1"
dr. by: HAMID
chk. by:

drawing no.
W03-100
sheet 5 of 8



MEDIUM REINFORCING
AT EXT. INTERLOCK & ASTRAGAL STILES



NO REINFORCING

ITEM #	PART #	QUANTITY	DESCRIPTION	MATERIAL	MANF./SUPPLIER/REMARKS
1	ES-4001-1	1	FRAME HEAD	6063-T6	-
2	ES-4002-1	1	STD. FRAME SILL	6063-T6	-
2A	-	1	HI-RISE FRAME SILL	6063-T6	-
3	ES-4003-1	1	FRAME JAMB	6063-T6	-
4	ES-4004-1	2/ PANEL	TOP AND BOTTOM RAIL	6063-T5	-
5	ES-4005-1	AS REQD.	LOCK STILE	6063-T5	-
6	ES-4006-1	AS REQD.	INTERLOCK	6063-T5	-
7	ES-4007-1	AS REQD.	FEMALE ASTRAGAL	6063-T5	-
8	ES-4008	AS REQD.	TOP & BOTTOM RAIL STIFFENER	6063-T6	-
9	ES-4009	2/ PANEL	PANEL GUIDE (TOP ONLY)	CELCON	NOT SHOWN
10	ES-4010	2/ PANEL	RETAINER CLIP, 6" LONG	6063-T6	-
13	ES-4013	AS REQD.	GLAZING WEDGE	-	-
14	ES-4014	AS REQD.	BOTTOM RAIL GLASS STOP	NEOPRENE	-
14A	ES-4019	AS REQD.	SILICONE STOP	NEOPRENE	-
15	W23241NK	AS REQD.	STILE & JAMB W'STRIPPING	-	GLASS PANELS, ULTRAFAB
16	Q26647DK	AS REQD.	TOP RAIL W'STRIPPING	-	GLASS PANELS, ULTRAFAB
17	ES-4015	AS REQD.	BOTTOM RAIL W'STRIPPING	VINYL	GLASS PANELS
19	#10X1-1/4" PH SMS	8/ PANEL	PANEL ASSY SCREWS	-	GLASS PANELS
19A	#10X1" FH SMS	2/ CORNER	FRAME ASSY SCREWS	-	-
20	TA-35-1935-4281	2/ MOV. PANEL	GLASS PANEL ROLLER ASSY.	ST. STEEL	1-1/4" O.D. WHEELS
21	#10X1-1/4" PH SMS	1/ ROLLER	ROLLER INST. SCREWS	-	GLASS PANELS ONLY
23	2300-10SS	1/ MOV. PANEL	MORTISE LOCK	ST. STEEL	-
24	-	2/ LOCK	LOCK INSTALLATION SCREW	-	#6-32 X 1/2" FH MS, ST. STEEL
25	537	1/ LOCK	LOCK STRIKE PLATE	PLATED STEEL	-
26	#10 PH SMS	2/ LOCK	STRIKE PLATE MOUNT. SCREW	-	NOT SHOWN
27	#623Z	1/ LOCK	INTERIOR AND EXTERIOR PULL	-	(3) #6-32 X 1/2" FH MS, ST. STEEL
28	ES4028	AS REQD.	SILL RISER	6063-T5	-
29	ES-4017	2/ PANEL	FIXED PANEL CLIP (OUTSIDE PANEL)	6063-T5	-
29A	ES-4020	2/ PANEL	FIXED PANEL CLIP (INSIDE PANEL)	6063-T5	FOR OXO DOORS
30	#10X1/2" PH SMS	2/ CLIP	FIXED PANEL CLIP FASTENER	-	-
31	-	AS REQD.	1/4" X 1-1/2" REINFORCING BAR	STEEL	-
32	-	AS REQD.	1/2" X 1-1/2" REINFORCING BAR	STEEL	-
33	P38024FK	AS REQD.	3" LONG SELF ADHESIVE PILE PAD	WOOL	AT HEAD AND SILL
34	-	2/ SIDE	BUMPON	NEOPRENE	-

PRODUCT RENEWED
as complying with the Florida
Building Code
Acceptance No 09-0210.07
Expiration Date MAR 19, 2014
By Ishaq I. Chande
Miami Dade Product Control
Division

Engr: DR. HUMAYOUN FAROOQ
STRUCTURES
FLA. PE # 18557
C.A.N. 3538

JAN 30 2009

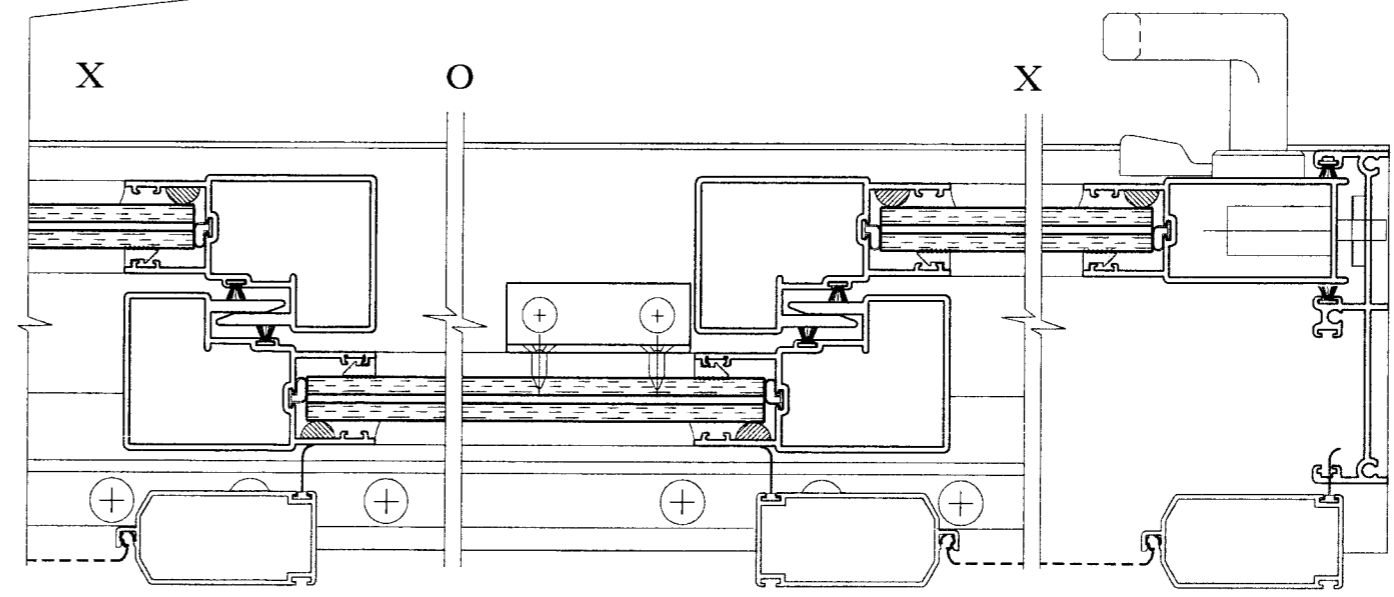
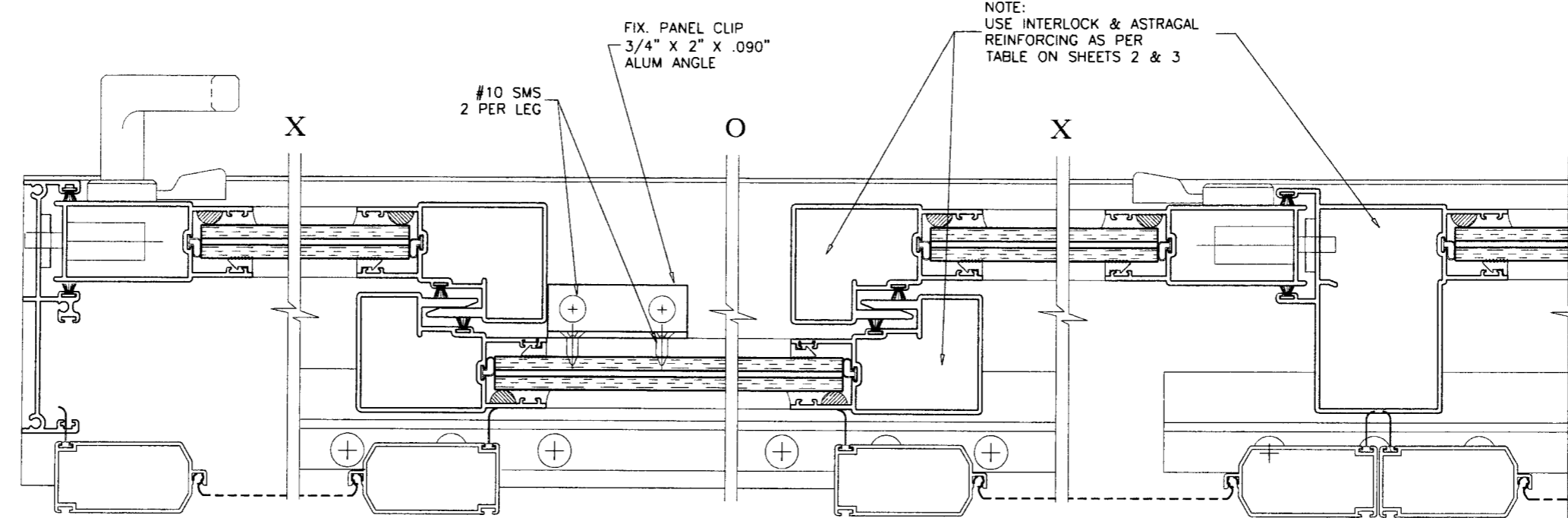
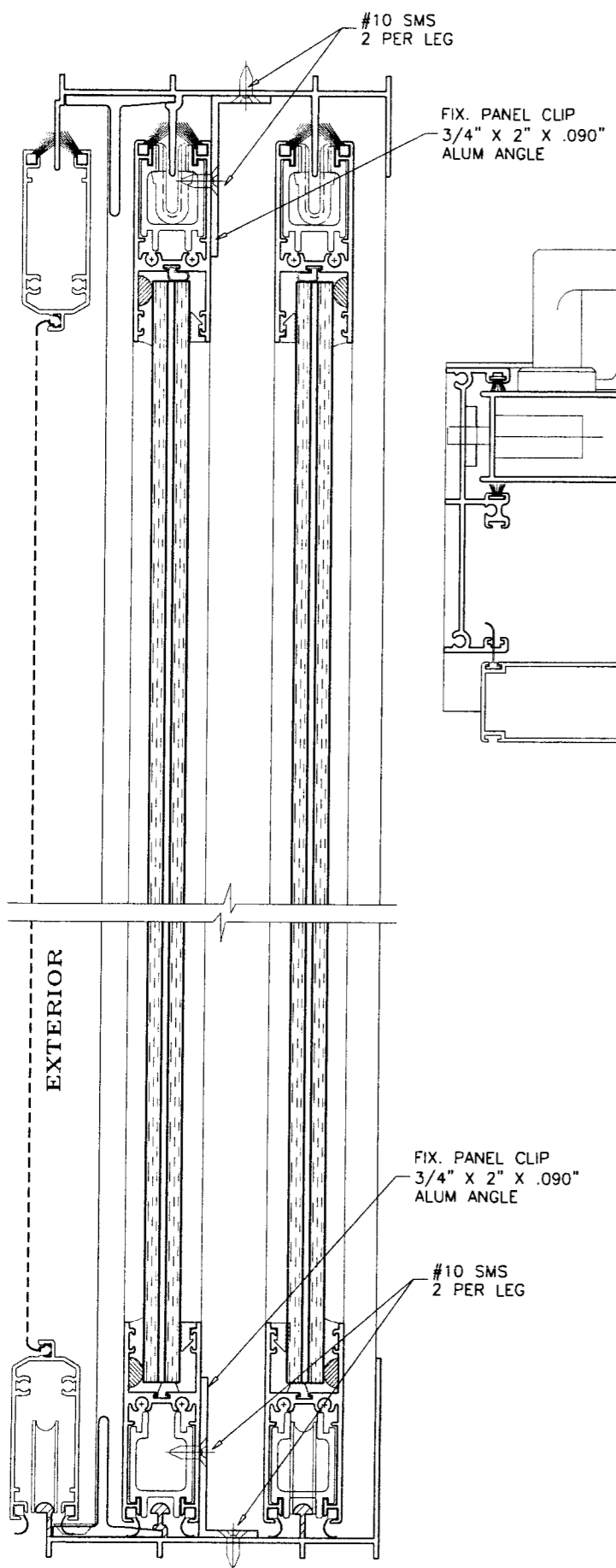
AL-FAROOQ CORPORATION
ENGINEERS & PRODUCT DEVELOPMENT
1235 S.W. 87 AVE
MIAMI, FLORIDA 33174
TEL. (305) 264-8100 FAX. (305) 262-6978
COMP-ANL\W03-100ES

SERIES-4000 ALUM SLIDING GLASS DOOR (L.M.I.)

E.S. WINDOWS, LLC
5220 N.W. 72 AVE. BAY #4
MIAMI, FL. 33166
TEL. (305) 249-0840 FAX. (305) 249-0842

no	date	description
B	11.02.04	HI-RISE SILL ADDED
C	05.17.06	NO CHANGE THIS SHEET
D	09.14.06	REV. PER BCCO COMMENTS
E	02.15.08	BILL OF MATERIALS REV.
F	01.21.09	UPDATED FOR 2007 FBC

date: 11-08-03	scale: 1/2" = 1"	dr. by: HAMID	chk. by:
drawing no. W03-100		sheet 6 of 8	



NOTE:
USE INTERLOCK & ASTRAGAL
REINFORCING AS PER
TABLE ON SHEETS 2 & 3

XOXXOX CONFIGURATION

PRODUCT RENEWED
as complying with the Florida
Building Code
Acceptance No. 09-0210.07
Expiration Date MAR 18, 2014
By Khang I. Chande
Miami-Dade Product Control
Division

Engr. DR. HUMAYCUM FAROOQ
STRUCTURES
FLA. PE # 16557
C.A.N. 3538

[Signature]
JAN 30 2009

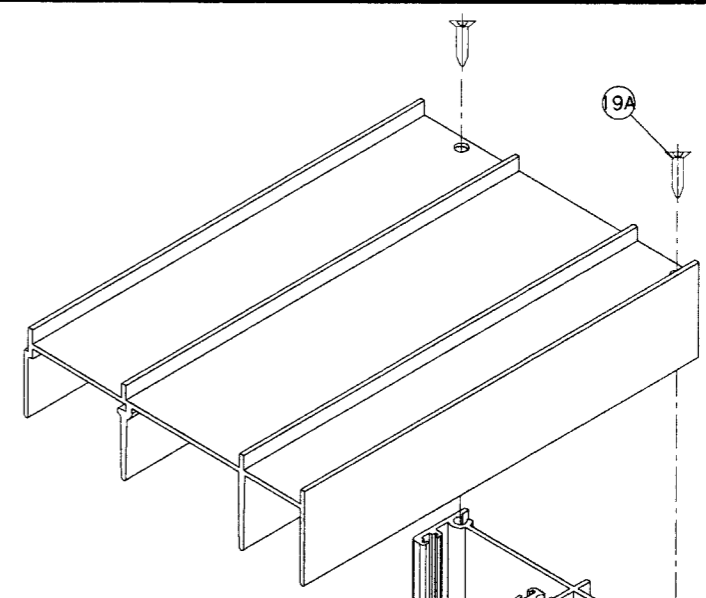
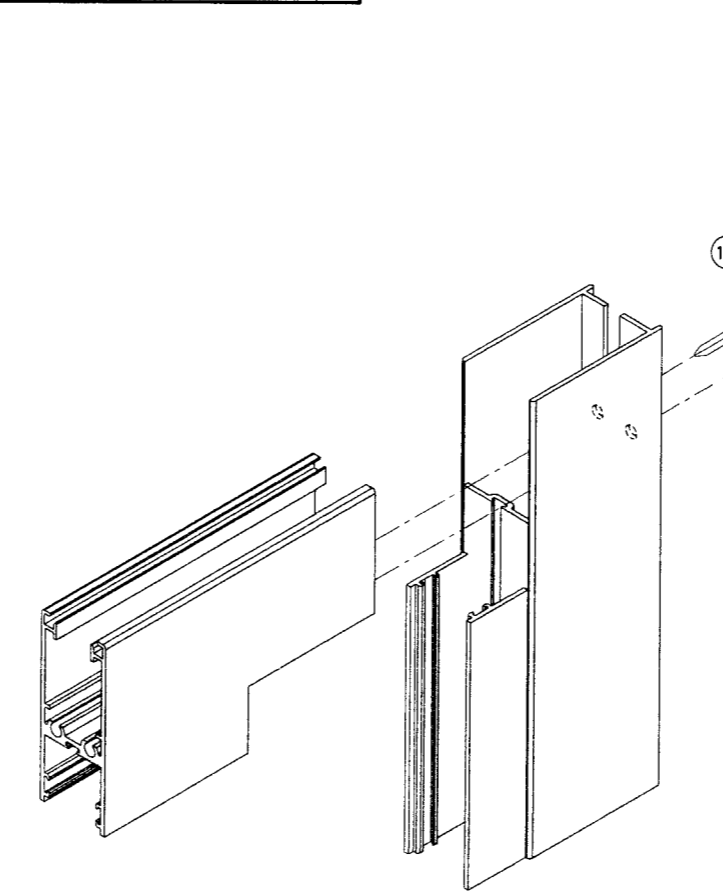
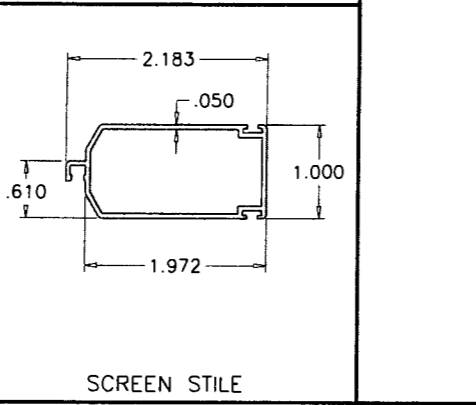
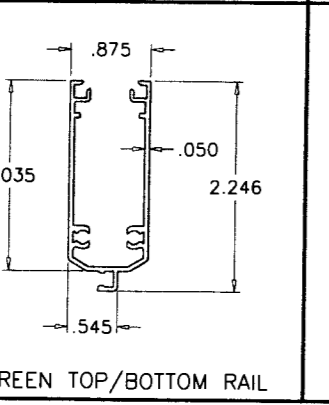
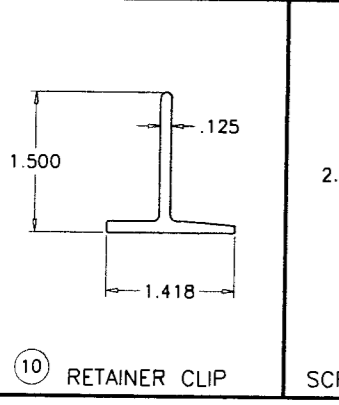
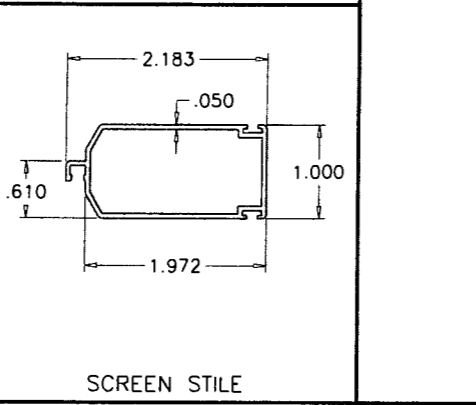
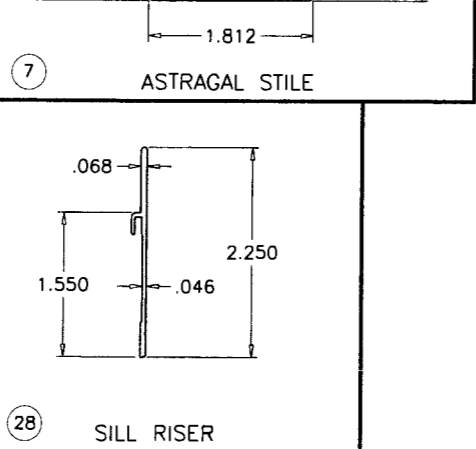
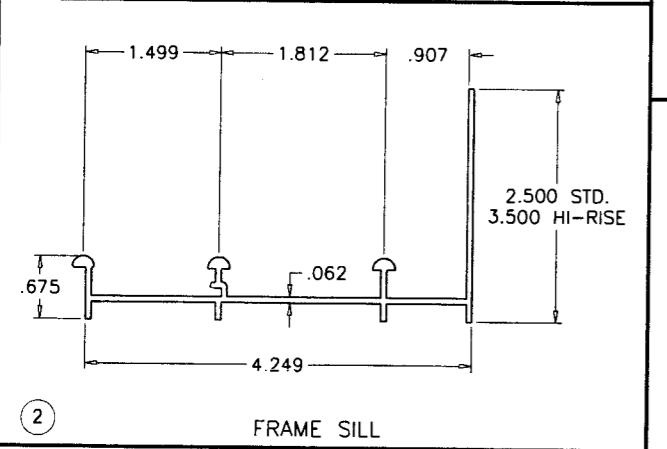
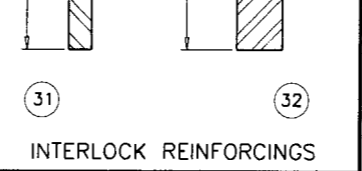
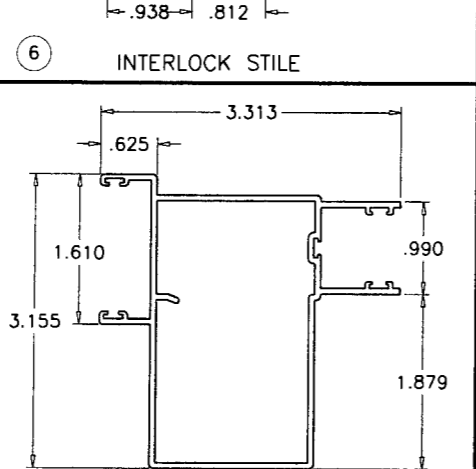
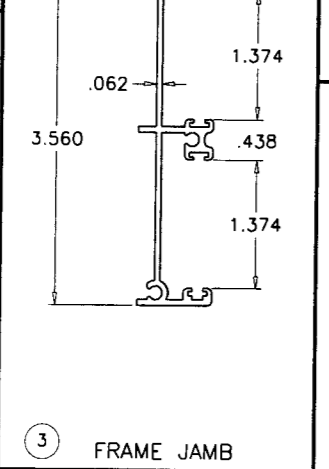
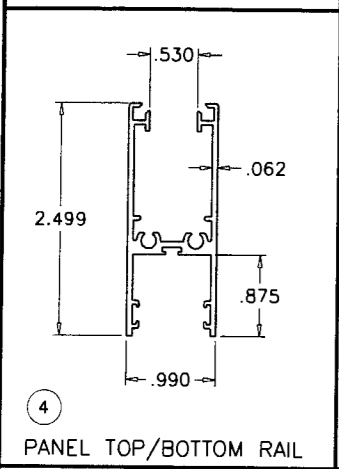
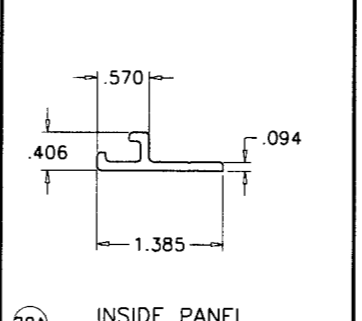
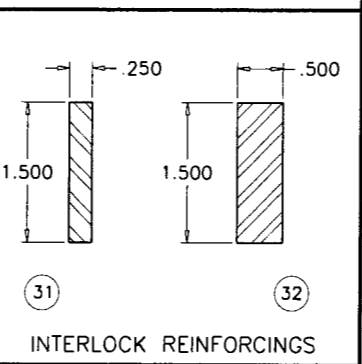
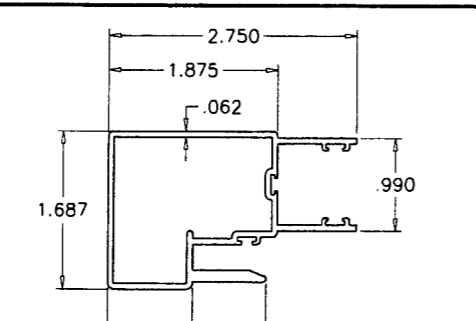
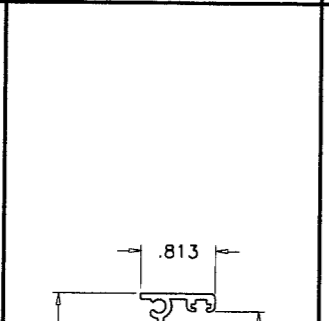
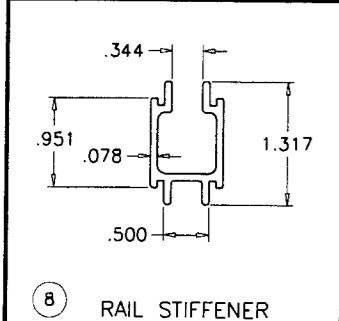
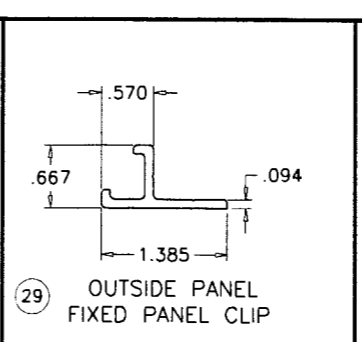
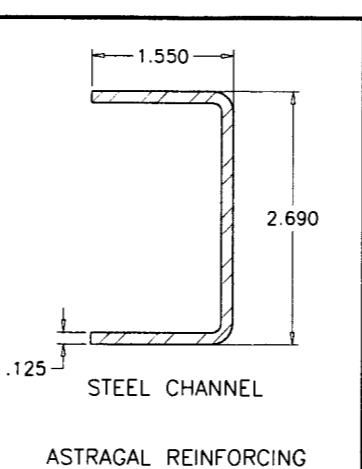
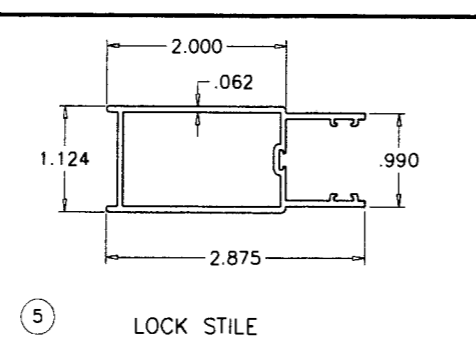
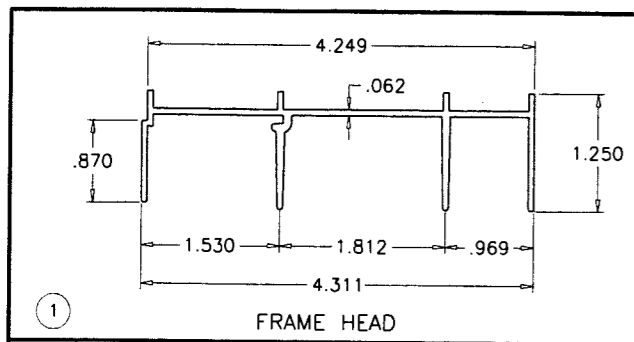
afc
AL-FAROOQ CORPORATION
ENGINEERS & PRODUCT DEVELOPMENT
1235 S.W. 87 AVE
MIAMI, FLORIDA 33174
TEL. (305) 264-8100 FAX. (305) 262-6978
COMP-ANL \ W03-100ES

SERIES-4000 ALUM SLIDING GLASS DOOR (L.M.I.)
E.S. WINDOWS, LLC
5220 N.W. 72 AVE. BAY #4
MIAMI, FL. 33166
TEL. (305) 249-0840 FAX. (305) 249-0842

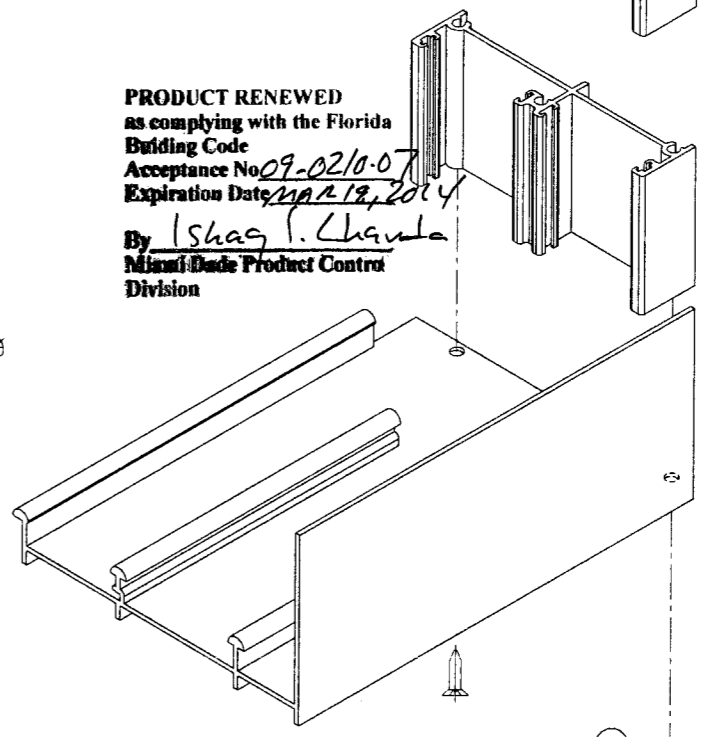
revisions:		no	date	by	description
D	09.14.06				REV. PER BCCO COMMENTS
E	02.15.08				NO CHANGE THIS SHEET
F	01.21.09				NO CHANGE THIS SHEET

date: 11-08-03
scale: 1/2" = 1"
dr. by: HAMID
chk. by:

drawing no.
W03-100
sheet 7 of 8



FRAME TOP CORNER



FRAME BOTTOM CORNER

PRODUCT RENEWED
as complying with the Florida
Building Code
Acceptance No. 09-0210-07
Expiration Date: MAR 18, 2014
By: Ishaq S. Chaudhry
Miami-Dade Product Control
Division

Engr: DR. HUMAYOON FAROOQ
STRUCTURES
FLA. PE # 16557
C.A.N. 3538

JAN 30 2009

af c
AL-FAROOQ CORPORATION
ENGINEERS & PRODUCT DEVELOPMENT
1235 S.W. 87 AVE
MIAMI, FLORIDA 33174
TEL. (305) 264-8100 FAX. (305) 262-6978
COMP-ANL\W03-100ES

SERIES-4000 ALUM SLIDING GLASS DOOR (L.M.I.)
E.S. WINDOWS, LLC
5220 N.W. 72 AVE. BAY #4
MIAMI, FL. 33166
TEL. (305) 249-0840 FAX. (305) 249-0842

no	date	by	description
B	11.02.04		HI-RISE SILL ADDED
C	05.17.06		NO CHANGE THIS SHEET
D	09.14.06		REV. PER BECCO COMMENTS
E	02.15.08		CLIP ADDED
F	01.21.09		NO CHANGE THIS SHEET

date: 11-08-03
scale: 1/2" = 1"
dr. by: HAMID
chk. by:
drawing no.
W03-100
sheet 8 of 8