



BUILDING CODE COMPLIANCE OFFICE (BCCO)  
PRODUCT CONTROL DIVISION

MIAMI-DADE COUNTY, FLORIDA  
METRO-DADE FLAGLER BUILDING  
140 WEST FLAGLER STREET, SUITE 1603  
MIAMI, FLORIDA 33130-1563  
(305) 375-2901 FAX (305) 375-2908  
www.miamidade.gov/buildingcode

## NOTICE OF ACCEPTANCE (NOA)

**International Impact Building Products, LLC**  
5900 Australian avenue, suite # 300  
West palm Beach, FL 33407

**SCOPE:**

This NOA is being issued under the applicable rules and regulations governing the use of construction materials. The documentation submitted has been reviewed by Miami-Dade County Product Control Division and accepted by the Board of Rules and Appeals (BORA) to be used in Miami Dade County and other areas where allowed by the Authority Having Jurisdiction (AHJ).

This NOA shall not be valid after the expiration date stated below. The Miami-Dade County Product Control Division (In Miami Dade County) and/or the AHJ (in areas other than Miami Dade County) reserve the right to have this product or material tested for quality assurance purposes. If this product or material fails to perform in the accepted manner, the manufacturer will incur the expense of such testing and the AHJ may immediately revoke, modify, or suspend the use of such product or material within their jurisdiction. BORA reserves the right to revoke this acceptance, if it is determined by Miami-Dade County Product Control Division that this product or material fails to meet the requirements of the applicable building code.

This product is approved as described herein, and has been designed to comply with the Florida Building Code, including the High Velocity Hurricane Zone.

**DESCRIPTION: Series "Titan 50" Aluminum Sliding Glass Door ( Reinforced) w/ 90 & 135 degree corners & pockets**

**APPROVAL DOCUMENT:** Drawing No. **T50-LMI**, titled "Series Titan 50 Sliding Glass Door", sheets 1 through 11 of 11 dated 05/21/10, prepared by C. W. Engineering, LLC, signed and sealed by Charles Williams, P.E., bearing the Miami-Dade County Product Control Approval stamp with the Notice of Acceptance number and approval date by the Miami-Dade County Product Control Division.

**MISSILE IMPACT RATING: Large Missile Impact Resistant**  
**Limitations:**

1. See Design Pressure Vs reinforced door sizes in sheet 2. Lower design pressure of combination of reinforcements used shall control.
2. See cluster of anchors required at interlock, astragal and corners in sheet 2.

**LABELING:** Each unit shall bear a permanent label with the manufacturer's name or logo, city, state and following statement: "Miami-Dade County Product Control Approved", unless otherwise noted herein.

**RENEWAL** of this NOA shall be considered after a renewal application has been filed and there has been no change in the applicable building code negatively affecting the performance of this product.

**TERMINATION** of this NOA will occur after the expiration date or if there has been a revision or change in the materials, use, and/or manufacture of the product or process. Misuse of this NOA as an endorsement of any product, for sales, advertising or any other purposes shall automatically terminate this NOA. Failure to comply with any section of this NOA shall be cause for termination and removal of NOA.

**ADVERTISEMENT:** The NOA number preceded by the words Miami-Dade County, Florida, and followed by the expiration date may be displayed in advertising literature. If any portion of the NOA is displayed, then it shall be done in its entirety.

**INSPECTION:** A copy of this entire NOA shall be provided to the user by the manufacturer or its distributors and shall be available for inspection at the job site at the request of the Building Official.

This NOA consists of this page 1 and evidence page E-1, as well as approval document mentioned above. The submitted documentation was reviewed by **Ishaq I. Chanda, P. E.**



NOA No 09-1215.01  
Expiration Date: June 09, 2015  
Approval Date: June 09, 2010  
Page 1

5/27/10

**International Impact Building Products, LLC**

**NOTICE OF ACCEPTANCE: EVIDENCE SUBMITTED**

**A. DRAWINGS**

1. Manufacturer's die drawings and sections.
2. Drawing No. **T50-LMI**, titled "Series Titan 50 Sliding Glass Door", sheets 1 through 11 of 11 dated 05/21/10, prepared by C. W. Engineering, LLC, signed & sealed by Charles Williams, P.E.

**B. TESTS**

1. Test reports on
  - 1) Air Infiltration Test, per FBC, TAS 202-94
  - 2) Uniform Static Air Pressure Test, Loading per FBC, TAS 202-94
  - 3) Water Resistance Test, per FBC, TAS 202-94
  - 4) Large Missile Impact Test per FBC, TAS 201-94
  - 5) Small Missile Impact Test per FBC, TAS 201-94
  - 6) Cyclic Wind Pressure Loading per FBC, TAS 203-94
  - 7) Forced Entry Test, per FBC 2411 3.2.1 and TAS 202-94

Along with marked-up drawings and installation diagram of an Aluminum Sliding Glass Door, prepared by Hurricane Testing Laboratory, Inc., Test Report No(s). **HTL-0171-0513-09** dated 09/23/09, signed and sealed by Vinu Abraham, P.E.

Note: This test report has been revised from originally issue to clarify impact locations, signed & sealed by Vinu Abraham, P.E.

2. Test report No. **HTL-0171-0513-09 (sp #1)** per TAS 202-94, issued by Hurricane Testing Lab, signed & sealed by Vinu Abraham, P.E.
3. Additional test report No(s) **HTL-0171-0713-07 (specimen 4, #5, 5A & 5B)** dated 08/01/08, per TAS 202-94, 201/203-94 (LMI/SMI), issued by Hurricane Testing Lab, signed & sealed by Vinu Abraham, P.E.

**C. CALCULATIONS**

1. Anchor verification calculations and structural analysis, prepared by C. W. Engineering, dated 11/16/09 and last revised on 04/08/10, signed and sealed by Charles Williams, P.E.
2. Glazing complies with ASTM E-1300-02 & -04.

**D. QUALITY ASSURANCE**

1. Miami Dade Building Code Compliance Office (BCCO).

**E. MATERIAL CERTIFICATIONS**

1. Notice of Acceptance No. **09-0312.03** issued to E.I. DuPont DeNemours for "SentryGlas Interlayer", expiring on 11-14-2012.

**F. STATEMENTS**

1. Statement letter of conformance and "No financial interest", both dated 11/16/09, signed and sealed by Charles William, P.E.
2. Laboratory compliance, as a part of above test reports.
3. Statement letter dated 04/09/09, issued by Plaza Doors of all assets sold to Impact Building Products, signed by Roy Elwell, president Plaza Door.
4. Statement letter dated 04/09/09, issued by Impact Building Products of all assets purchased from Plaza Doors, signed by Michael Fry, Managing Partner, International Impact Building Products.

**G. OTHER**

1. Test proposal dated 04/14/09 approved by BCCO.

*Ishaq I. Chanda*

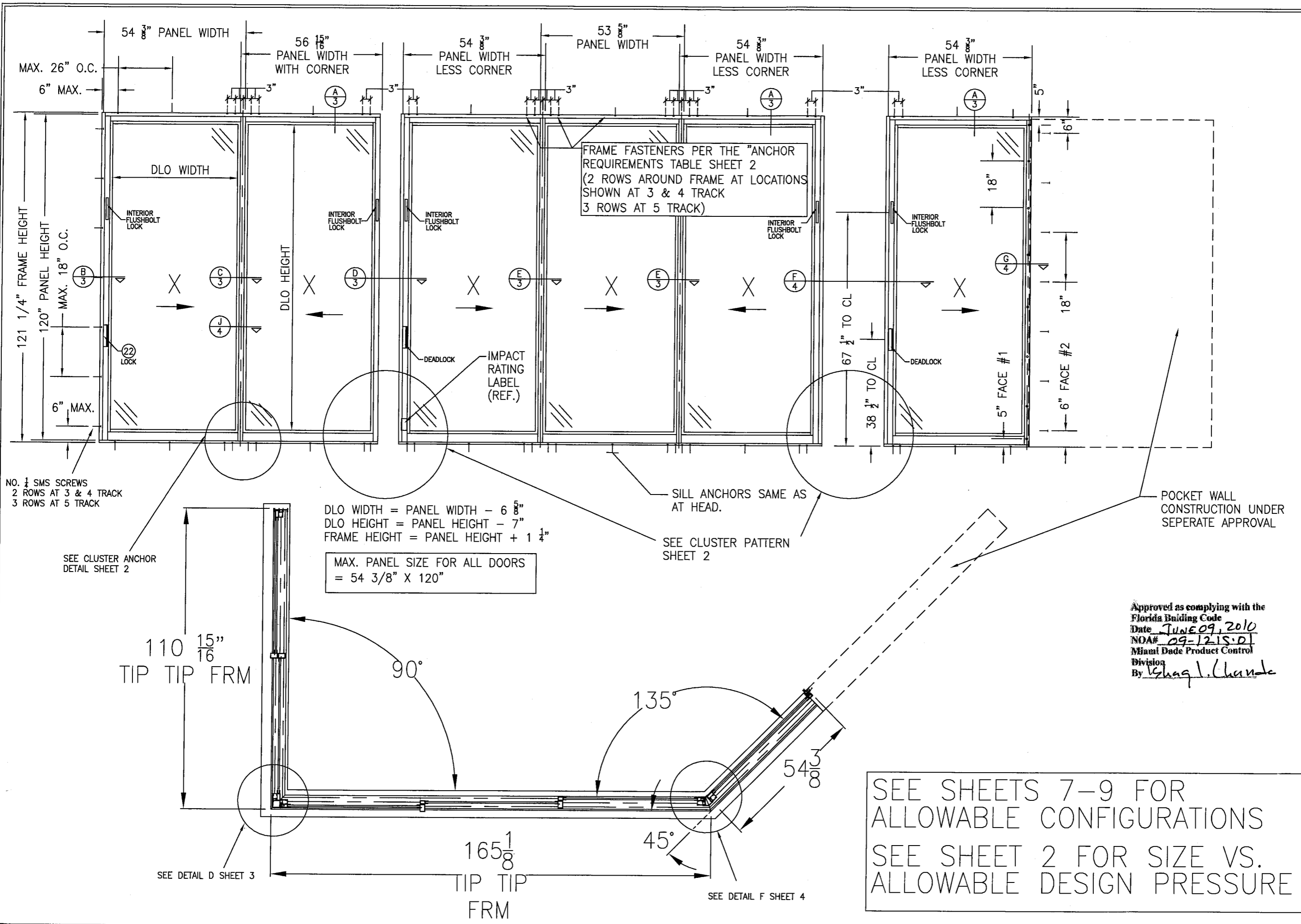
**Ishaq I. Chanda, P. E.**

**Product Control Examiner**

**NOA No 09-1215.01**

**Expiration Date: June 09, 2015**

**Approval Date: June 09, 2010**



NO. 1/4 SMS SCREWS  
 2 ROWS AT 3 & 4 TRACK  
 3 ROWS AT 5 TRACK

SEE CLUSTER ANCHOR  
 DETAIL SHEET 2

DLO WIDTH = PANEL WIDTH - 6 5/8"  
 DLO HEIGHT = PANEL HEIGHT - 7"  
 FRAME HEIGHT = PANEL HEIGHT + 1 1/4"

MAX. PANEL SIZE FOR ALL DOORS  
 = 54 3/8" X 120"

SILL ANCHORS SAME AS  
 AT HEAD.

SEE CLUSTER PATTERN  
 SHEET 2

POCKET WALL  
 CONSTRUCTION UNDER  
 SEPERATE APPROVAL

Approved as complying with the  
 Florida Building Code  
 Date JUNE 09, 2010  
 NOA# 09-1215-D1  
 Miami Dade Product Control  
 Division  
 By Shaq I. Chande

110 15/16"  
 TIP TIP FRM

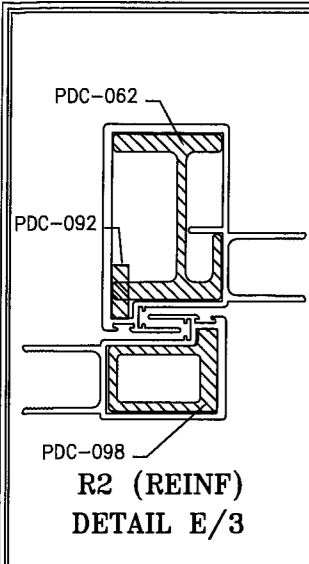
SEE DETAIL D SHEET 3

165 1/8"  
 TIP TIP  
 FRM

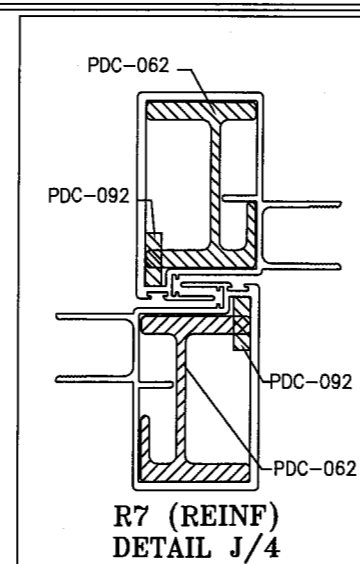
SEE DETAIL F SHEET 4

SEE SHEETS 7-9 FOR  
 ALLOWABLE CONFIGURATIONS  
 SEE SHEET 2 FOR SIZE VS.  
 ALLOWABLE DESIGN PRESSURE

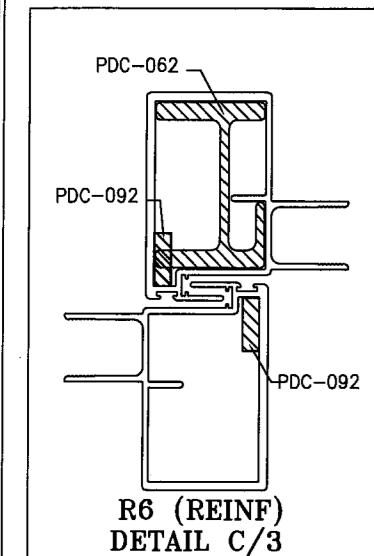
DRAWN BY: R.L.R.		CHECKED BY: R.L.R.	
PLOT: 1-32		DATE: 8-08-09	
NO.	REVISION DESCRIPTION	DATE	BY
1	UPDATED PER MDAD COMMENTS	3-30-10	R.L.R.
2	UPDATED PER MDAD COMMENTS	5-12-10	R.L.R.
3	UPDATED PER MDAD COMMENTS	5-19-10	R.L.R.
DRAWING TITLE PLAZA TITAN 50 LMI SLIDING GLASS DOORS			
CONSULTANTS CW Engineering, LLC 22893 Ashley Inn Terrace Ashburn, VA 20148 PHONE:(703) 726-1670 FAX:(703) 842-8216			
MANUFACTURER INFL. IMPACT BUILDING PRODUCTS, LLC. HOME OF THE PLAZA DOOR 5900 AUSTRALIAN AVE. SUITE 300 WEST PALM BEACH, FL 33407 561-578-5450			
CERTIFICATION <i>Charles Williams</i> 5/20/2010 CHARLES WILLIAMS, P.E. P.E. NO. 50367		DRAWING NO. T50-LMI	
		REV. A	
SHEET NO. 1 OF 11			



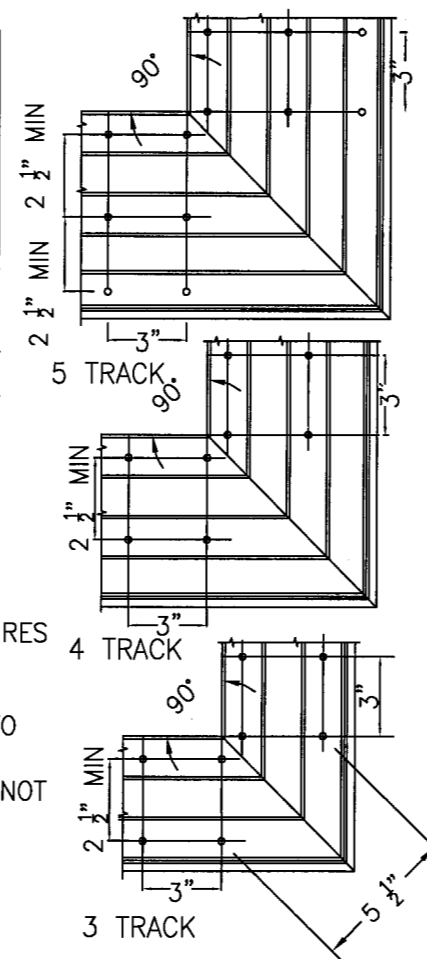
R2 COMBINATION DESIGN LOAD CAPACITY						
DOOR HEIGHT INCHES	84	90	96	102	108	
PANEL WIDTH NOMINAL INCHES	(+)(-)	(+)(-)	(+)(-)	(+)(-)	(+)(-)	(+)(-)
	PSF	PSF	PSF	PSF	PSF	PSF
36	50.0	50.0	50.0	41.0	32.0	
42	50.0	50.0	47.0	36.0	32.0	
48	50.0	48.0	42.0	32.0	NA	
50.5	50.0	46.0	41.0	31.0	NA	
53	50.0	41.0	38.0	NA	NA	
56	50.0	41.0	38.0	NA	NA	
60	50.0	41.0	38.0	NA	NA	



R7 COMBINATION DESIGN LOAD CAPACITY								
DOOR HEIGHT INCHES	84	90	96	102	108	114	120	
PANEL WIDTH NOMINAL INCHES	(+)(-)	(+)(-)	(+)(-)	(+)(-)	(+)(-)	(+)(-)	(+)(-)	(+)(-)
	PSF	PSF	PSF	PSF	PSF	PSF	PSF	PSF
36	50.0	50.0	50.0	50.0	50.0	50.0	46.0	
42	50.0	50.0	50.0	50.0	50.0	44.0	40.0	
48	50.0	50.0	50.0	50.0	50.0	40.0	36.0	
50.5	50.0	50.0	50.0	50.0	49.0	38.0	34.0	
53	50.0	50.0	50.0	50.0	45.0	36.0	NA	
56	50.0	50.0	50.0	50.0	45.0	NA	NA	
60	50.0	50.0	50.0	48.0	NA	NA	NA	



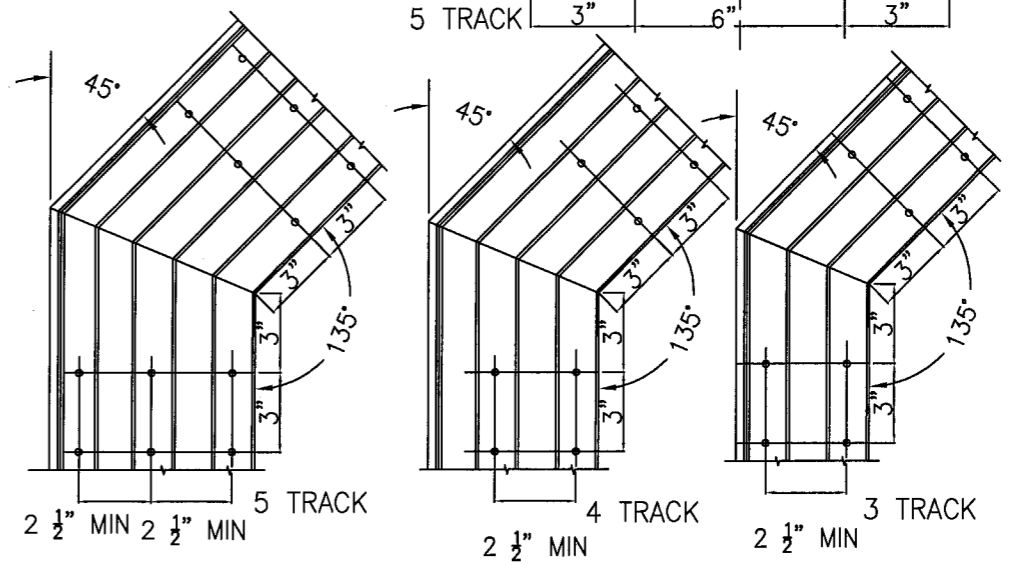
R6 COMBINATION DESIGN LOAD CAPACITY								
DOOR HEIGHT INCHES	84	90	96	102	108	114	120	
PANEL WIDTH NOMINAL INCHES	(+)(-)	(+)(-)	(+)(-)	(+)(-)	(+)(-)	(+)(-)	(+)(-)	(+)(-)
	PSF	PSF	PSF	PSF	PSF	PSF	PSF	PSF
36	50.0	50.0	50.0	50.0	50.0	40.0	35.0	
42	50.0	50.0	50.0	49.0	44.0	34.0	31.0	
48	50.0	50.0	50.0	44.0	39.0	30.0	NA	
50.5	50.0	50.0	50.0	42.0	37.0	NA	NA	
53	50.0	50.0	49.0	36.0	34.0	NA	NA	
56	50.0	50.0	49.0	36.0	NA	NA	NA	
60	50.0	50.0	49.0	36.0	NA	NA	NA	



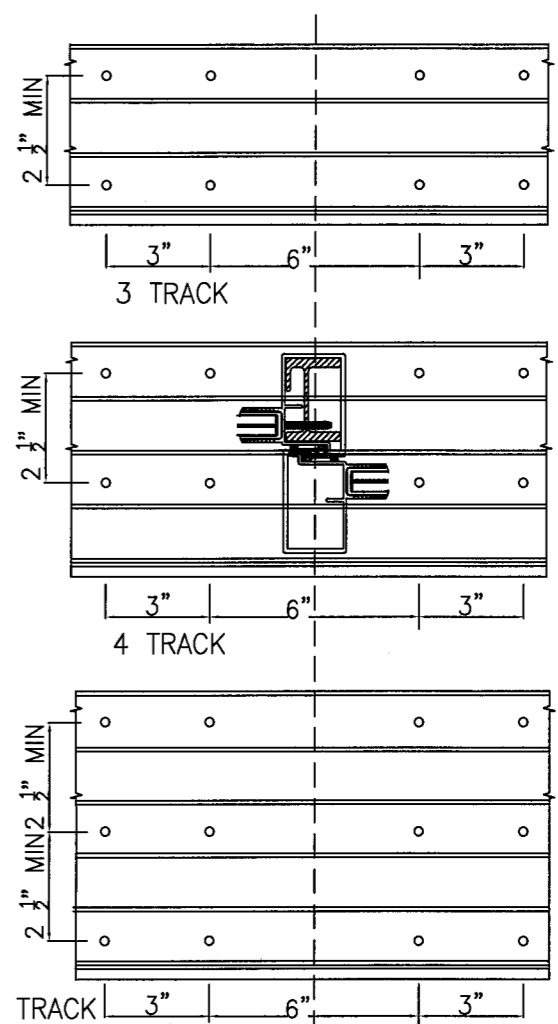
NOTE:  
LOWER DESIGN PRESSURE OF THE ABOVE TABLE SHALL CONTROL THE REINFORCEMENT USED

Approved as complying with the Florida Building Code  
Date JUNE 09, 2010  
NOA# 09-12-15-01  
Miami Dade Product Control  
Division  
By Shag I. Ehand

(HEAD/SILL)  
TYPICAL CLUSTER ANCHORS AT CORNER CONDITIONS



(HEAD/SILL)  
TYPICAL CLUSTER ANCHORS AT INTERMEDIATE VERTICALS

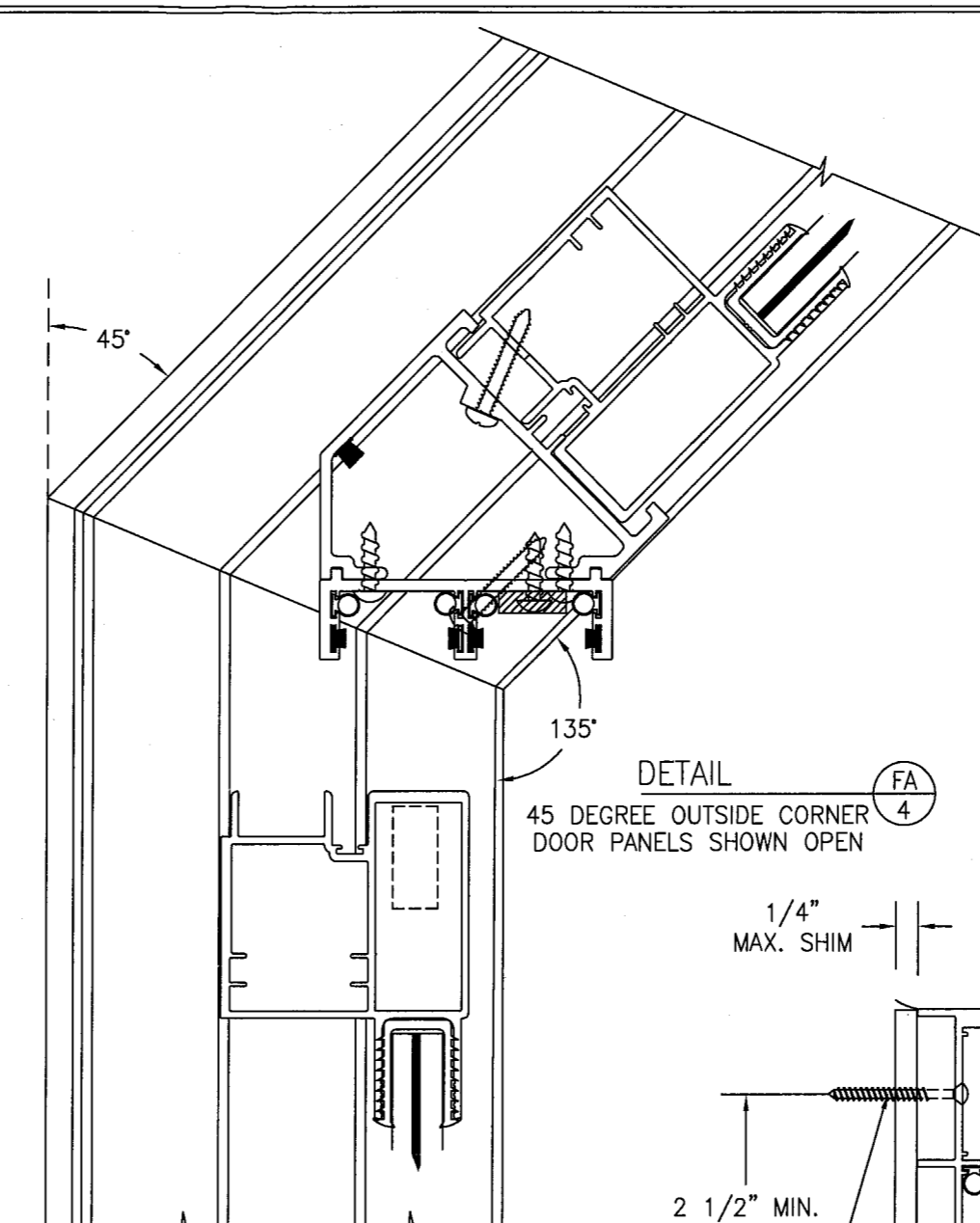
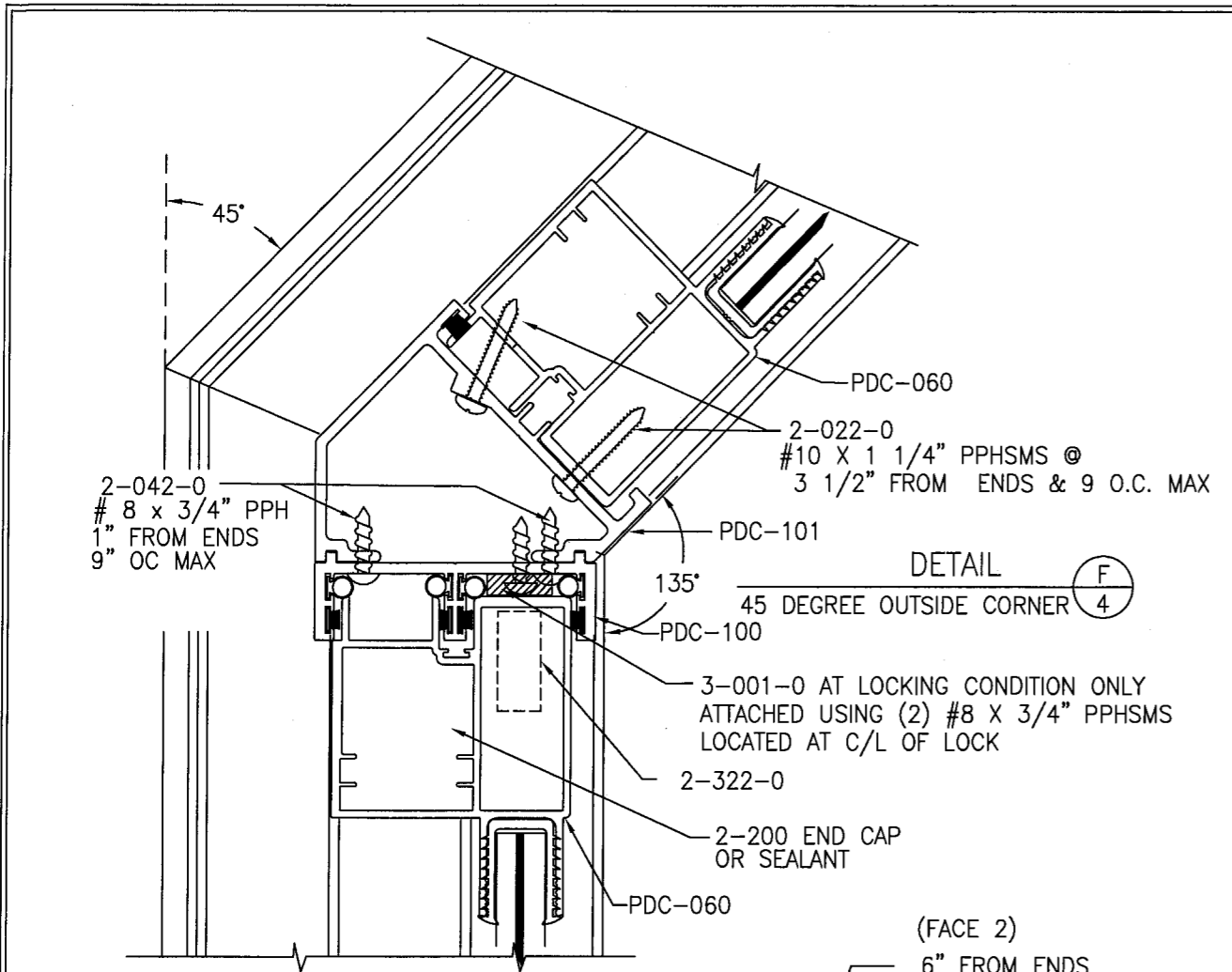


1. THESE DOOR SYSTEMS HAVE BEEN TESTED, ANALYZED AND APPROVED FOR DESIGN PRESSURES NOT TO EXCEED THOSE SHOWN IN THE "ALLOWABLE DESIGN LOADS" TABLE(S). MULTIPLE COMBINATIONS ARE NOT ALLOWED.
2. BUCKING, OPENINGS & BUCKING FASTENERS MUST BE PROPERLY DESIGNED & INSTALLED TO TRANSFER WIND LOADS TO THE STRUCTURE.
3. ALL HARDWARE & FASTENERS SHALL BE IN ACCORDANCE WITH THESE DRAWINGS & SHALL NOT VARY UNLESS SPECIFICALLY MENTIONED ON THE DRAWINGS.
4. THESE DOOR SYSTEMS HAVE BEEN DESIGNED IN ACCORDANCE WITH THE 2007 FLORIDA BUILDING CODE (FBC) INCLUDING HVHZ.
5. IMPACT SHUTTERS ARE NOT REQUIRED WITH THESE DOORS.
6. ALL ANCHORS SHALL BE INSTALLED AS SPECIFIED ON THESE DRAWINGS. SPECIFIED EMBEDMENT TO BASE MATERIAL SHALL BE BEYOND WALL FINISH OR STUCCO.
7. ALL FRAME ANCHORS SECURING DOOR FRAME TO PRESSURE TREATED BUCKS OR WOOD FRAMING SHALL BE CAPABLE OF RESISTING CORROSION CAUSED BY THE PRESSURE TREATING CHEMICALS IN THE WOOD.
8. MATERIALS, INCLUDING BUT NOT LIMITED TO STEEL SCREWS, THAT COME INTO CONTACT WITH OTHER DISSIMILAR MATERIALS SHALL MEET THE REQUIREMENTS OF 2007 FLORIDA BUILDING CODE SECTION 2003.8.4.
9. DETERMINE THE POSITIVE & NEGATIVE DESIGN LOADS TO USE WHEN REFERENCING THESE DOCUMENTS IN ACCORDANCE WITH THE GOVERNING CODE & GOVERNING WIND VELOCITY. FOR WIND LOAD CALCULATIONS IN ACCORDANCE WITH THE 2007 FLORIDA BUILDING CODE, A DIRECTIONALITY FACTOR OF  $K_d = 0.85$  MAY BE USED IN CONJUNCTION WITH LOAD COMBINATIONS OF ASCE-7S SECTIONS 2.3 & 2.4.
10. NO INCREASE IN ALLOWABLE STRESS HAS BEEN USED IN THE DESIGN OF THIS PRODUCT. WIND LOAD DURATION FACTOR  $C_d = 1.6$  WAS USED FOR WOOD SCREW DESIGN.

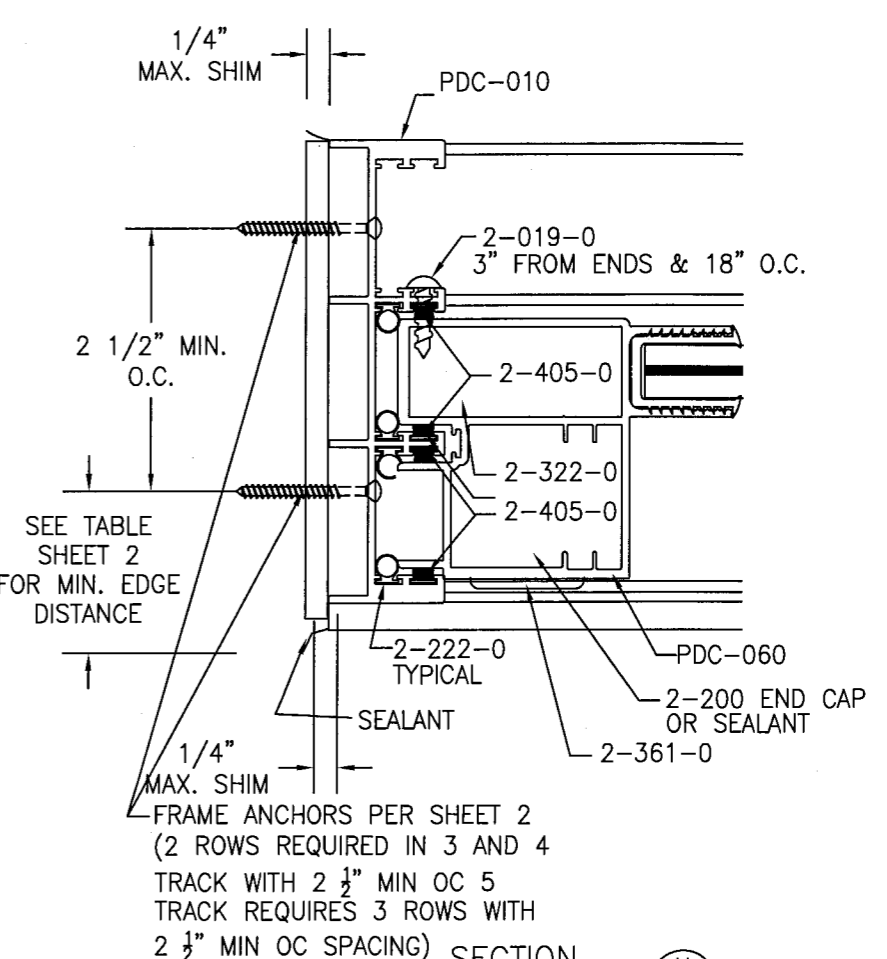
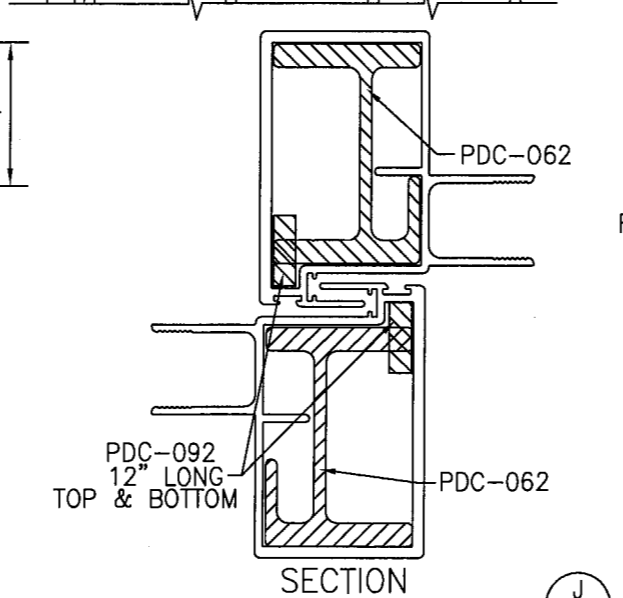
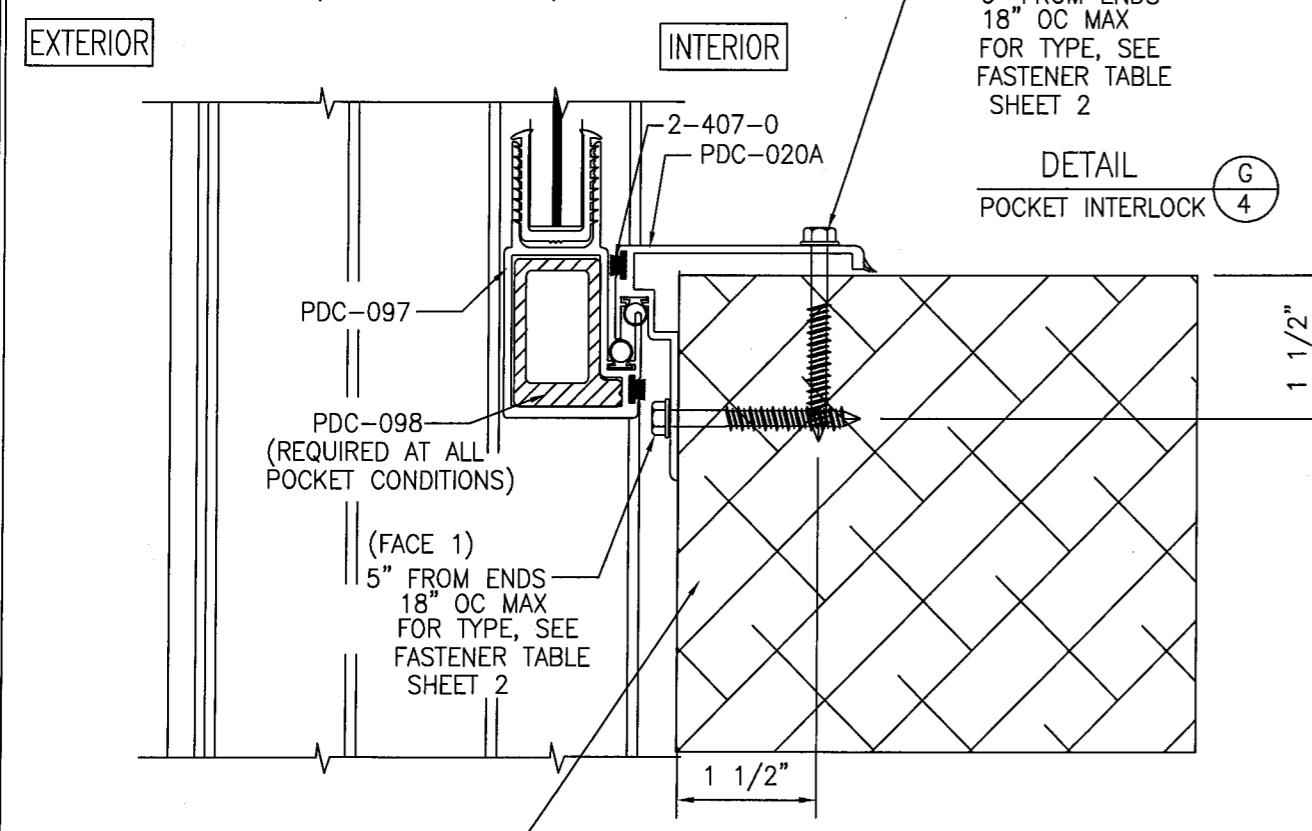
FRAME ANCHOR REQUIREMENTS TABLE					
FRAME SHEAR SCREWS			AT POCKET		
OPENING TYPE (SUBSTRATE)	FRAME/CLIP/NAIL FIN TO OPENING FASTENER TYPE	MINIMUM EMBED	MINIMUM EDGE DIST.	MINIMUM EMBED	MINIMUM EDGE DIST.
2X_ WOOD FRAME OR BUCK MIN. (MIN GR. 5)	NO. 14 SMS OR WOOD SCREW	1 1/4"	3/4"	1 1/4"	1 1/2"
MIN. 16 GA. 33 KSI METAL STUD	1/4"-20 GR5 SELF TAP/DRILLING SCREW	FULL	1/2"	FULL	1 1/2"
3000 PSI CONCRETE	1/4" TAPPER GR5 PERMA -SEAL BY POWERS	1 1/2"	1 1/2"	1 1/2"	1 1/2"
C-90 CMU GROUT FILLED BLOCK	1/4" TAPPER GR5 PERMA -SEAL BY POWERS	2"	1 3/4"	2"	1 1/2"

DRAWN BY: R.L.R.		CHECKED BY: R.L.R.	
PLT: 1=32		DATE: 8-08-09	
NO.	REVISION DESCRIPTION	DATE	BY
1	UPDATED REIN. COMBO REFS	10-6-09	RLR
2	UPDATED PER MIDAD COMMENTS	3-30-10	RLR
3	UPDATED PER MIDAD COMMENTS	5-11-10	RLR
4	UPDATED PER MIDAD COMMENTS	5-19-10	RLR
DRAWING TITLE PLAZA TITAN 50 LMI SLIDING GLASS DOORS			
CONSULTANTS CW Engineering, LLC 22693 Ashley Inn Terrace Ashburn, VA 20148 PHONE:(703) 726-1670 FAX:(703) 842-8216			
MANUFACTURER INTL. IMPACT BUILDING PRODUCTS, LLC. HOME OF THE PLAZA DOOR 5900 AUSTRALIAN AVE. WEST PALM BEACH, FL 33407 561-578-5450			
CERTIFICATION <i>Charles Williams</i> 5/21/2010		REV. A	
DRAWING NO. T50-LMI		SHEET NO. 2 OF 11	





Approved as complying with the Florida Building Code  
 Date: JUNE 09, 2010  
 NOA# 09-1715.0  
 Miami Dade Product Control Division  
 By: J. Shag. L. L. L.



POCKET WALL CONSTRUCTION UNDER SEPEARATE PRODUCT APPROVAL

ALTERNATE DUAL REINFORCED DEEP INTERLOCK SEE R7 DP TABLE

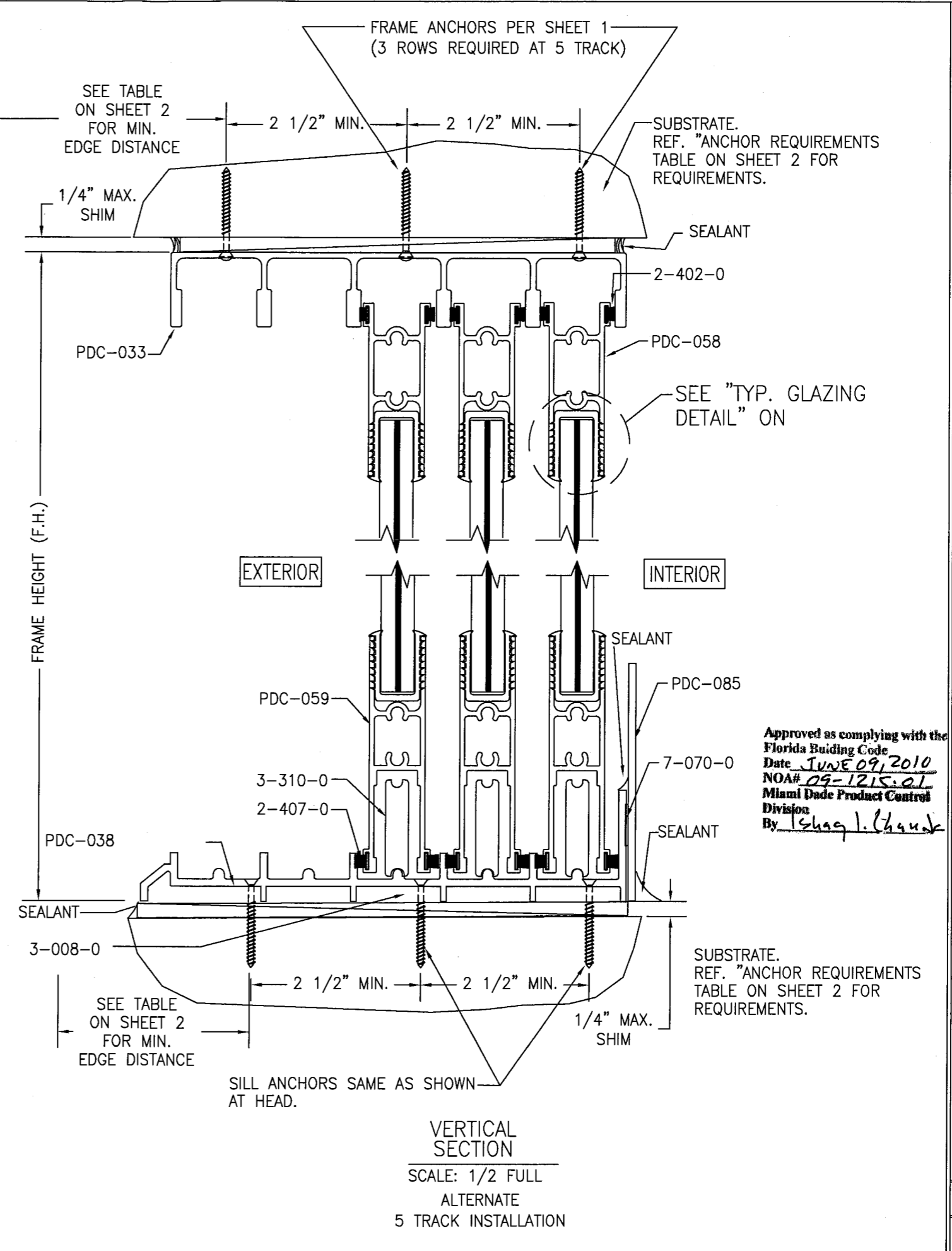
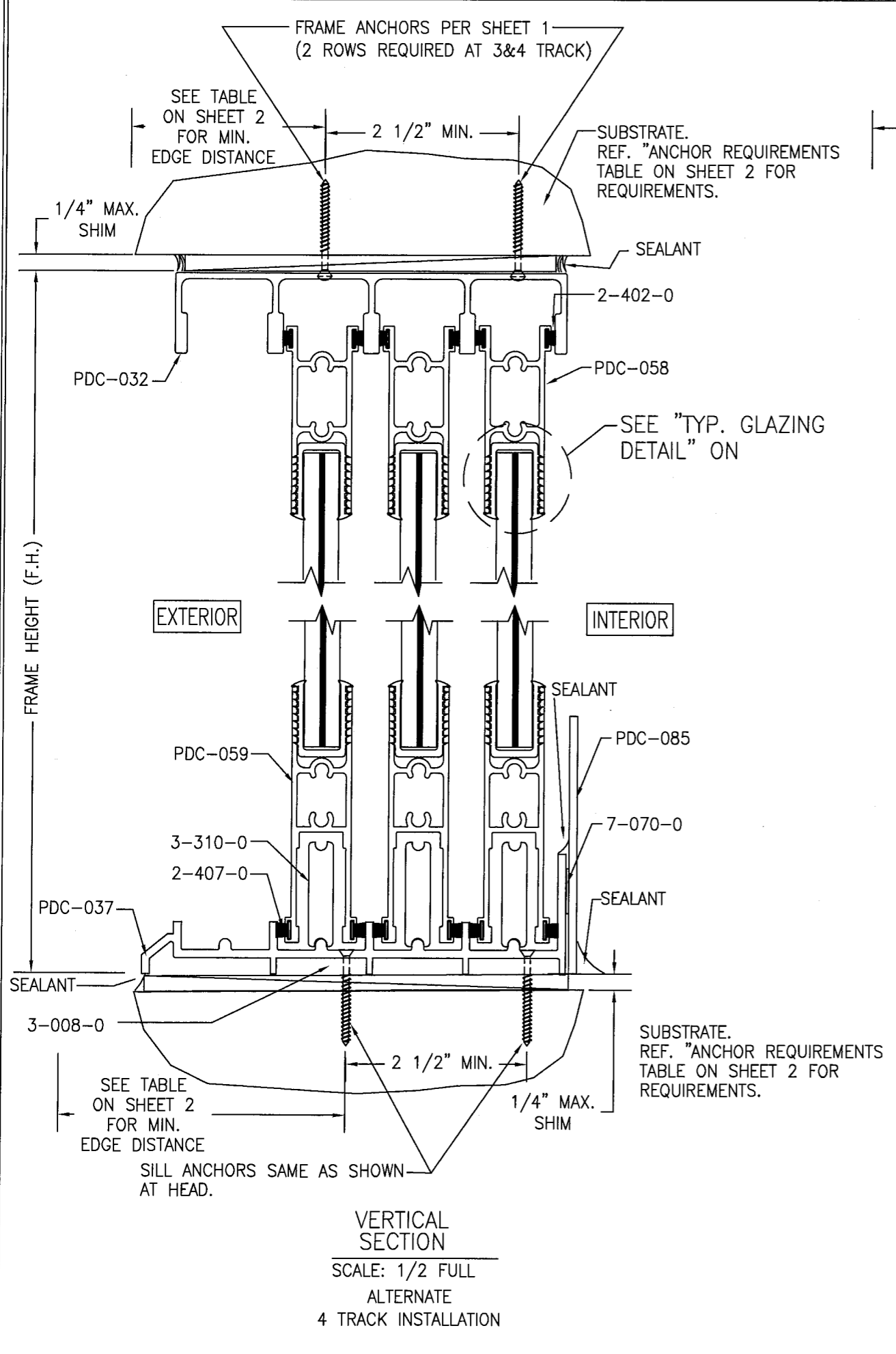
TYPICAL JAMB AT FIXED CONDITION ONLY

NO.	REVISION DESCRIPTION	BY	DATE	CHECKED BY:
1	MDAD CORRECTIONS	RLR	3-30-10	R.L.R.
2	MDAD CORRECTIONS	RLR	5-11-10	R.L.R.

DRAWING TITLE: PLAZA TITAN 50 LMI SLIDING GLASS DOORS  
 MANUFACTURER: INTL. IMPACT BUILDING PRODUCTS, LLC.  
 HOME OF THE PLAZA DOOR  
 5900 AUSTRALIAN AVE. SUITE 300  
 WEST PALM BEACH, FL 33407  
 561-578-5450

CONSULTANTS: CW Engineering, LLC  
 22693 Ashley Inn Terrace  
 Ashburn, VA 20148  
 PHONE: (703) 726-1670 FAX: (703) 842-8216

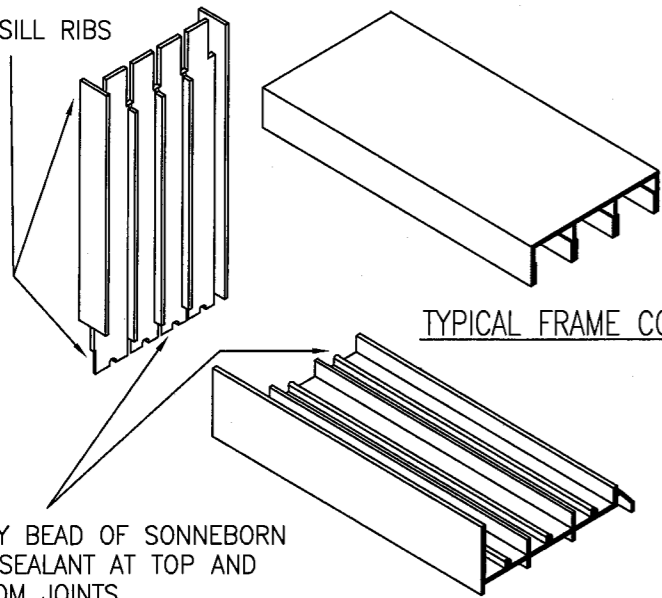
CERTIFICATION: Charles Williams 5/21/2010  
 CHARLES WILLIAMS, P.E.  
 P.E. NO. 50367



Approved as complying with the Florida Building Code  
Date JUNE 09, 2010  
NOA# 09-1215-01  
Miami Dade Product Control Division  
By Ishag I. Chank

DRAWN BY: R.L.R.		CHECKED BY: R.L.R.	
PLOT: 1-32		DATE: 9-3-09	
DATE	BY	REVISION DESCRIPTION	NO.
3-30-10	RLR	MDAD CORRECTIONS	1
5-11-10	RLR	MDAD CORRECTIONS	2
DRAWING TITLE PLAZA TITAN 50 LMI SLIDING GLASS DOORS			
CONSULTANTS CW Engineering, LLC			
MANUFACTURER INTL. IMPACT BUILDING PRODUCTS, LLC. HOME OF THE PLAZA DOOR 5900 AUSTRALIAN AVE. SUITE 300 WEST PALM BEACH, FL 33407 561-578-5450			
CERTIFICATION <i>[Signature]</i> 5/21/2010 CHARLES WILLIAMS, P.E. P.E. NO. 50367			
DRAWING NO. T50-LMI		REV. A	
SHEET NO. 5 OF 11			

JAMB NOTCHED TO RECEIVE HEADER AND SILL RIBS



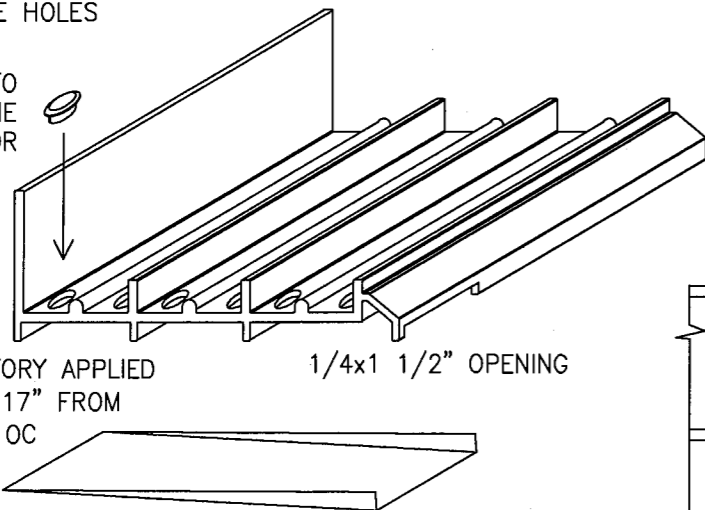
TYPICAL FRAME CORNER

TYP. FRAME CORNER DETAIL  
SCALE=N.T.S.

APPLY BEAD OF SONNEBORN NP1 SEALANT AT TOP AND BOTTOM JOINTS

SILL TRACK WEEP HOLES CLUSTER OF (6) SIX (2 ROWS UNDER EA DOOR PANEL) LOCATED AT 28" MAX APART TWO 3/8" HOLES ARE BELOW EACH PANEL (2 PER TRACK) HOLES INTERIOR OF EACH PANEL ARE PLUGGED WITH A BUTTON CAP TO CLOSE HOLES

PLUGS IF REQUIRED TO BE USED ONLY ON THE INTERIOR SIDE OF DOOR

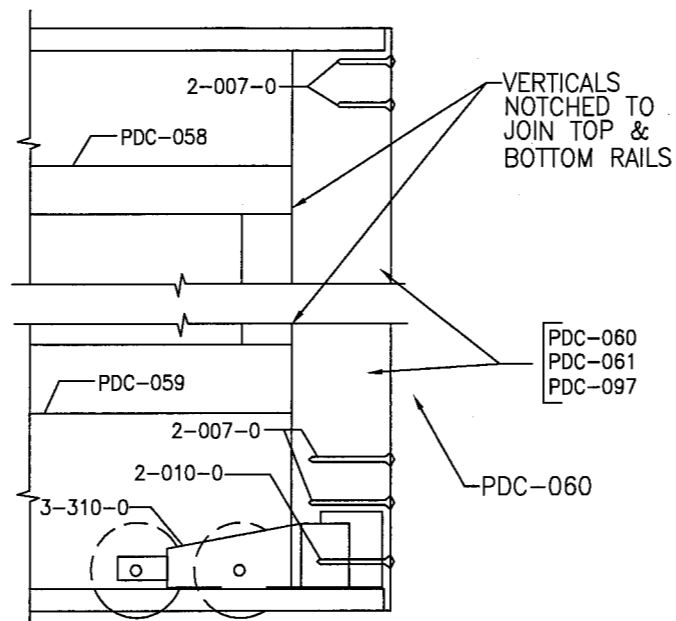


1 1/2" X 1/4" FACTORY APPLIED DRAIN PAN LOCATED 17" FROM ENDS AND MAX. 28" OC

1/4x1 1/2" OPENING

TRACK DRAINAGE: 3/8" DIA. WEEP HOLES 17" FROM EACH END & 28" O.C. MAX AT EA. TRACK RUN PLUS 1/4" X 1 1/2" SLOT IN VERTICAL LEG AT EA. WEEP HOLE LOCATION FOR DRAINAGE TO PAN & EXIT.

TYP. SILL PAN (FACTORY) ASSEMBLY  
SCALE=N.T.S.



TYP. DOOR PANEL CORNER DETAIL  
SCALE=N.T.S.

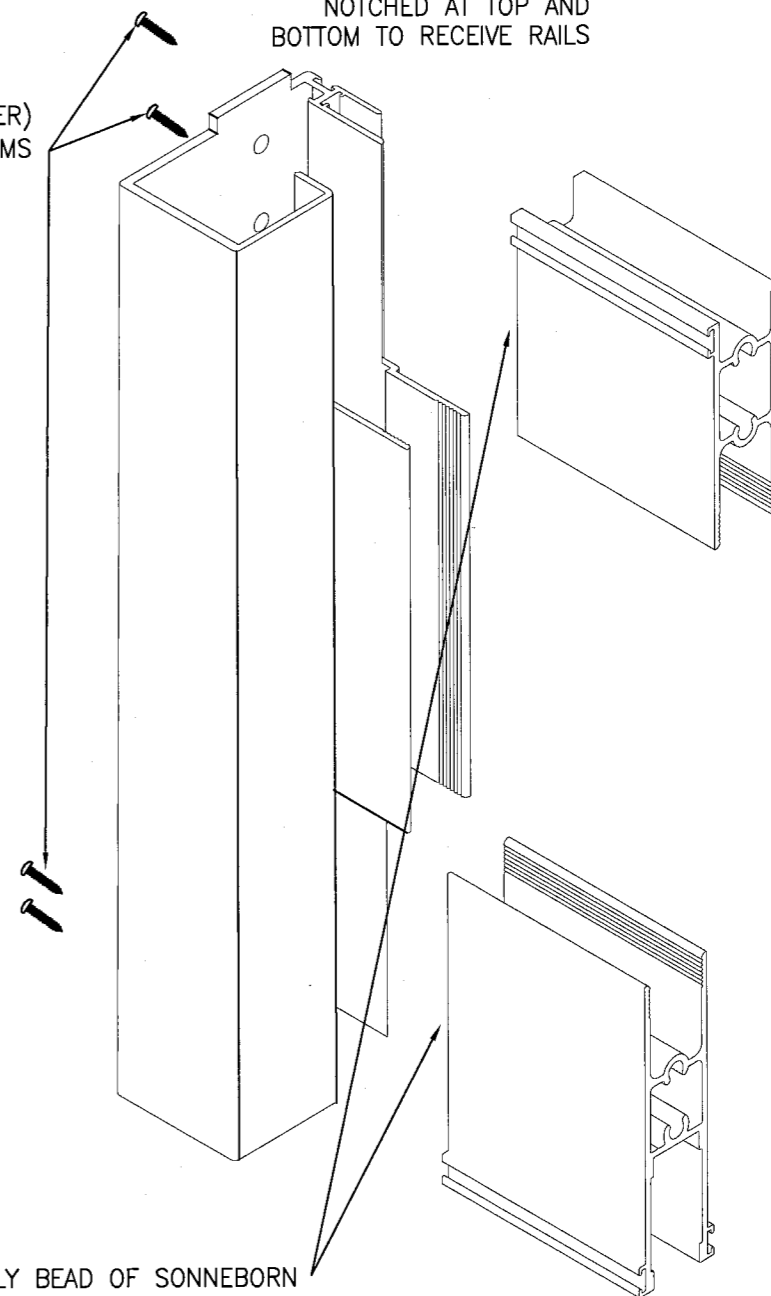
VERTICALS NOTCHED TO JOIN TOP & BOTTOM RAILS

PDC-060  
PDC-061  
PDC-097

PDC-060

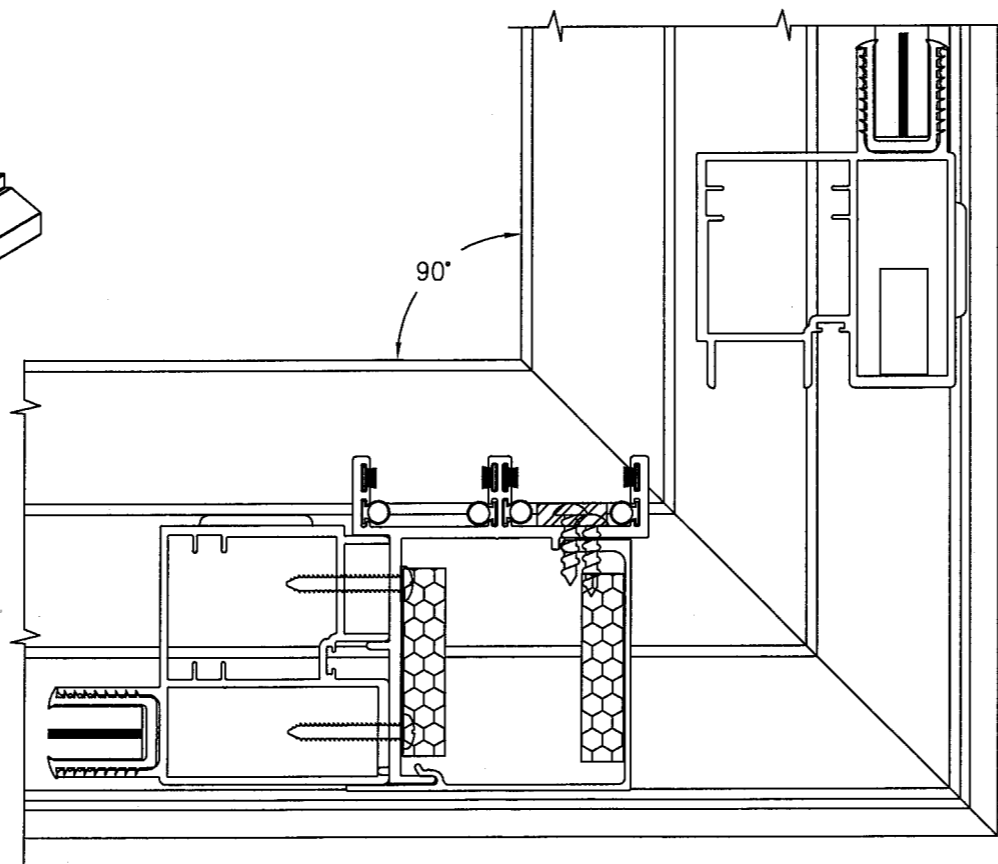
(2 PER CORNER)  
#14 X 1 1/4" SSPH SMS

VERTICAL STILES FACTORY NOTCHED AT TOP AND BOTTOM TO RECEIVE RAILS



APPLY BEAD OF SONNEBORN NP1 SEALANT AT TOP AND BOTTOM JOINTS

TYP. DOOR PANEL CORNER ASSEMBLY  
SCALE=N.T.S.



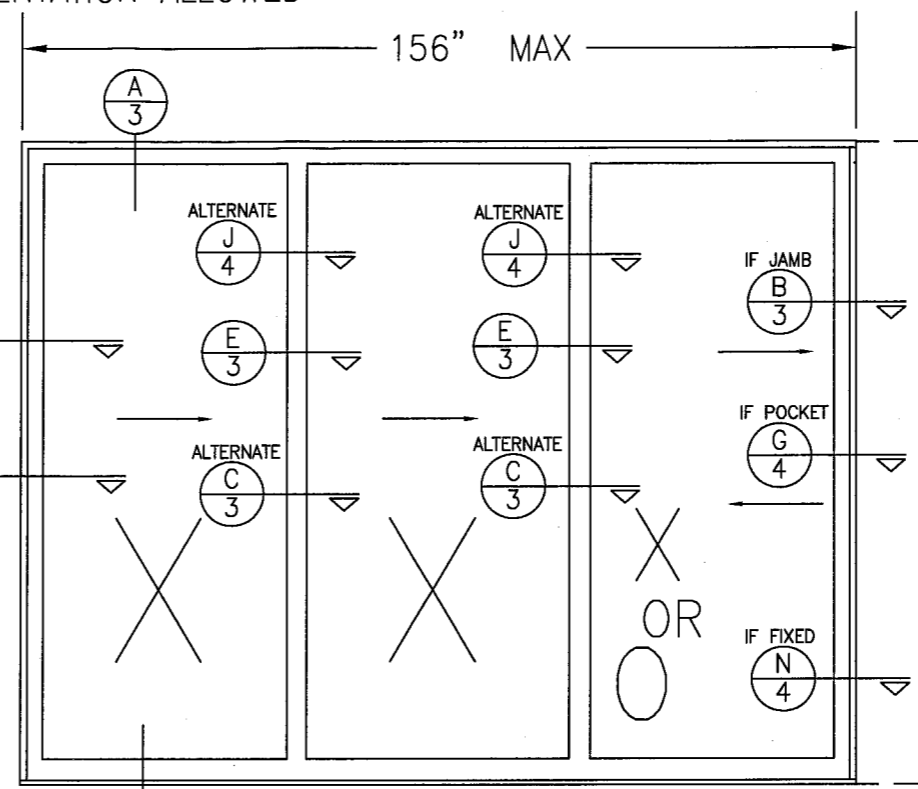
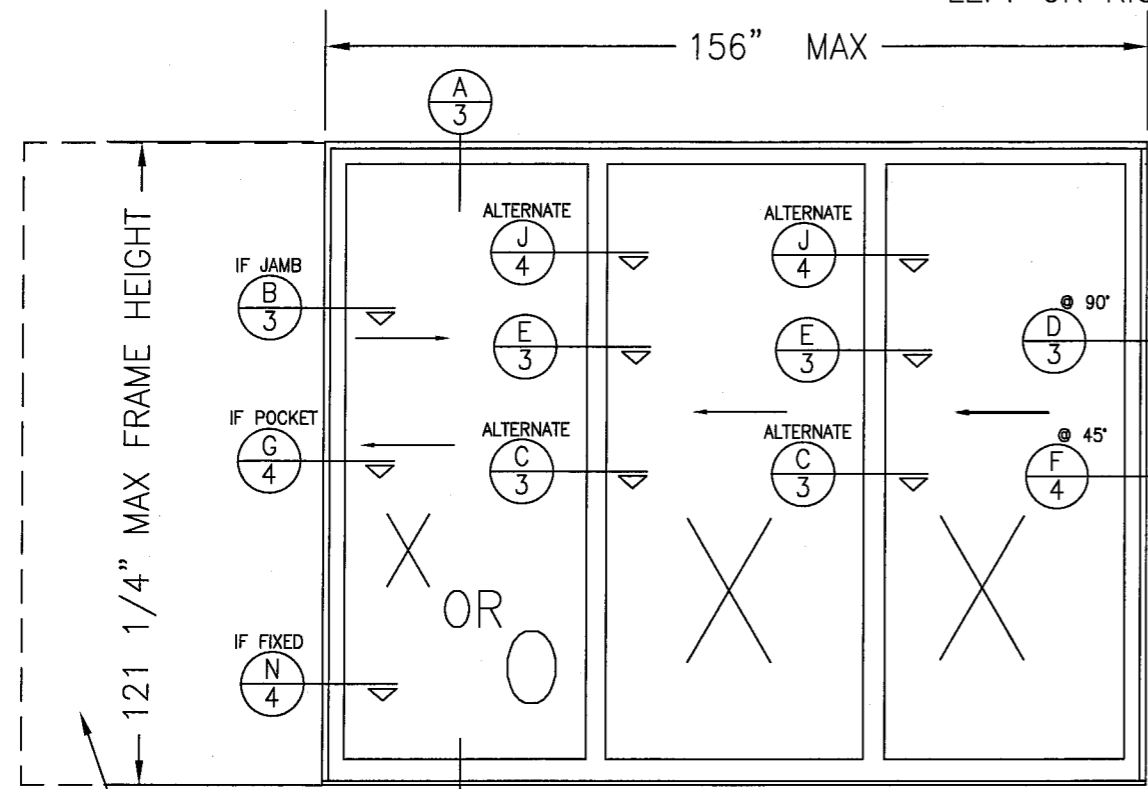
SECTION  
90 DEGREE CORNER (DA) 6  
DOOR PANELS SHOWN OPEN

Approved as complying with the Florida Building Code  
Date JUNE 09, 2010  
NOAH 09-1215-01  
Miami Dade Product Control  
Division  
By Isaac L. Gaudin

DRAWN BY: R.L.R.		CHECKED BY: R.L.R.	
PLOT: 1-32		DATE: 9-3-09	
NO.	REVISION DESCRIPTION	BY	DATE
1	MDAD CORRECTIONS	RLR	3-30-10
2	MDAD CORRECTIONS	RLR	5-11-10
DRAWING TITLE PLAZA TITAN 50 LMI SLIDING GLASS DOORS			
CONSULTANTS CW Engineering, LLC		MANUFACTURER INTL. IMPACT BUILDING PRODUCTS, LLC.	
22693 Ashley Inn Terrace Ashburn, VA 20148 PHONE:(703) 726-1670 FAX:(703) 842-8216		HOME OF THE PLAZA DOOR 5900 AUSTRALIAN AVE. SUITE 300 WEST PALM BEACH, FL 33407 561-578-5450	
CERTIFICATION <i>Charles Williams</i> 5/21/2010		P.E. NO. 50367 CHARLES WILLIAMS, P.E.	
DRAWING NO. T50-LMI		REV. A	
SHEET NO. 6 OF 11			



LEFT OR RIGHT ORIENTATION ALLOWED



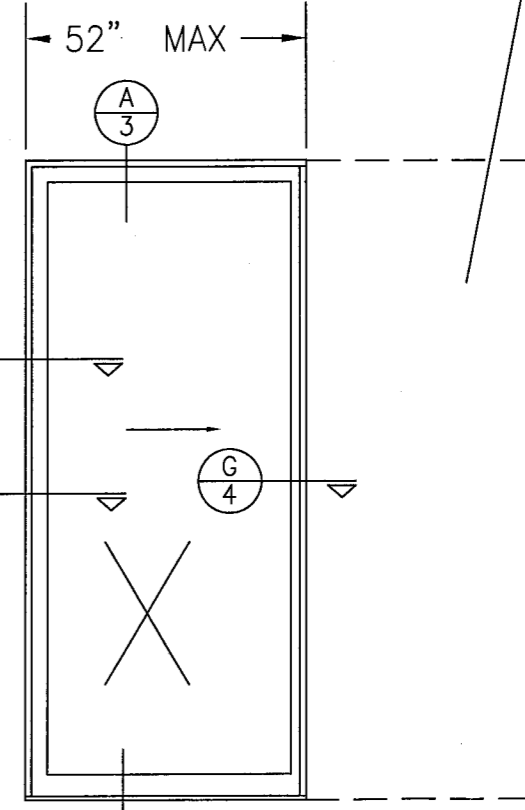
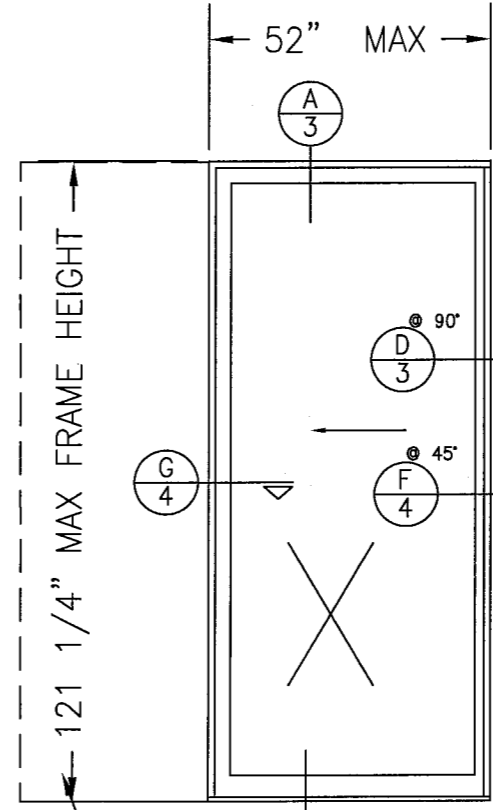
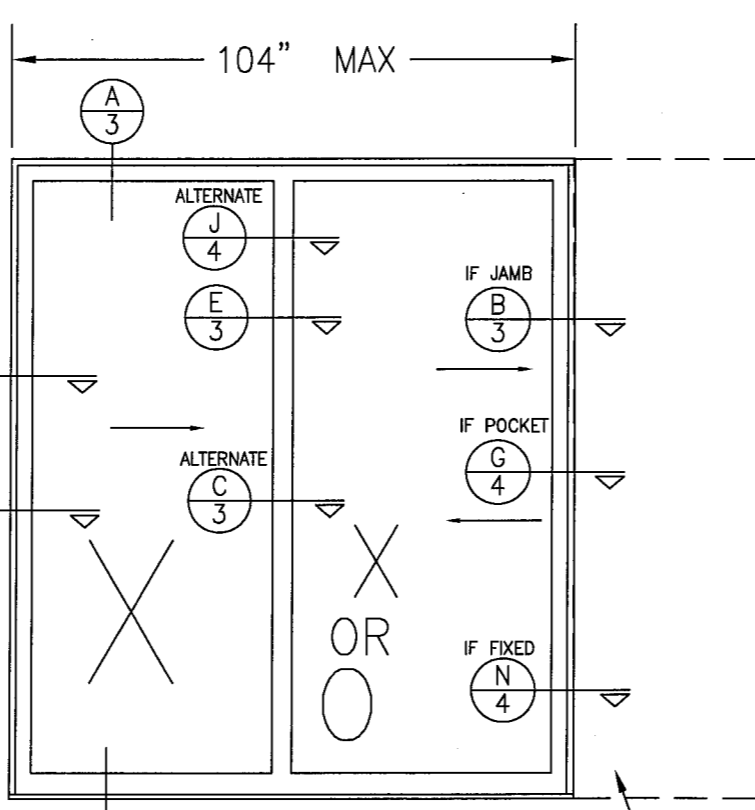
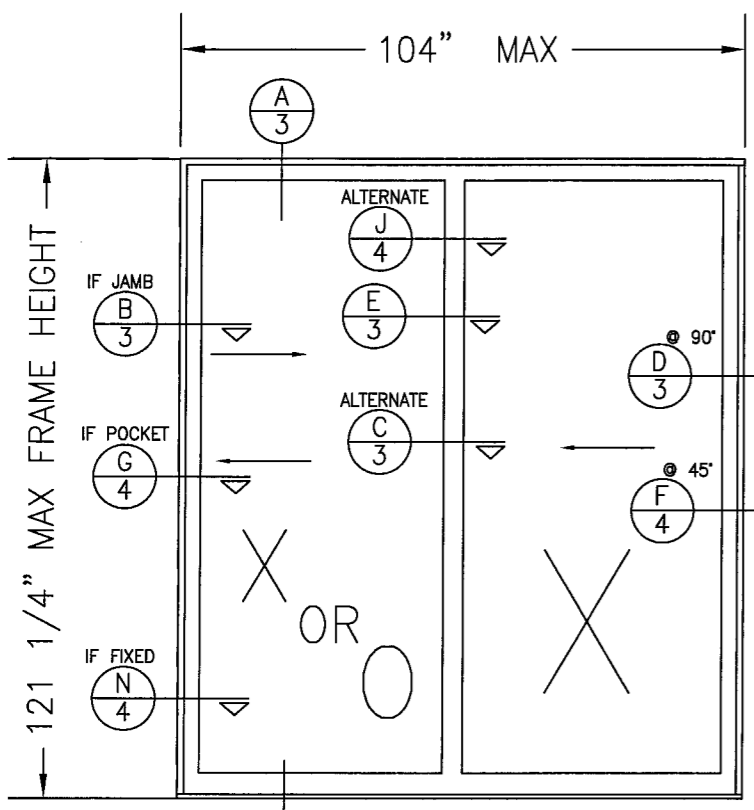
Approved as complying with the Florida Building Code  
 Date JUNE 09, 2010  
 NOA# 09-1715-01  
 Miami Dade Product Control  
 Division  
 By [Signature]

POCKET WALL CONSTRUCTION UNDER SEPERATE APPROVAL

6 PANEL  
 OXX - 45° OR 90° - XXO  
 PXXX - 45° OR 90° - XXXP  
 XXX - 45° OR 90° - XXO

OXX - 45° OR 90° - XXXP  
 PXXX - 45° OR 90° - XXO  
 PXXX - 45° OR 90° - XXX

POCKET WALL CONSTRUCTION UNDER SEPERATE APPROVAL



POCKET WALL CONSTRUCTION UNDER SEPERATE APPROVAL

4 PANEL  
 XX - 45° OR 90° - XX  
 PXX - 45° OR 90° - XXP  
 XX - 45° OR 90° - XO  
 PXX - 45° OR 90° - XO

POCKET WALL CONSTRUCTION UNDER SEPERATE APPROVAL

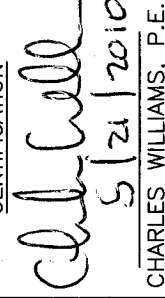
2 PANEL  
 PX - 45° OR 90° - XP

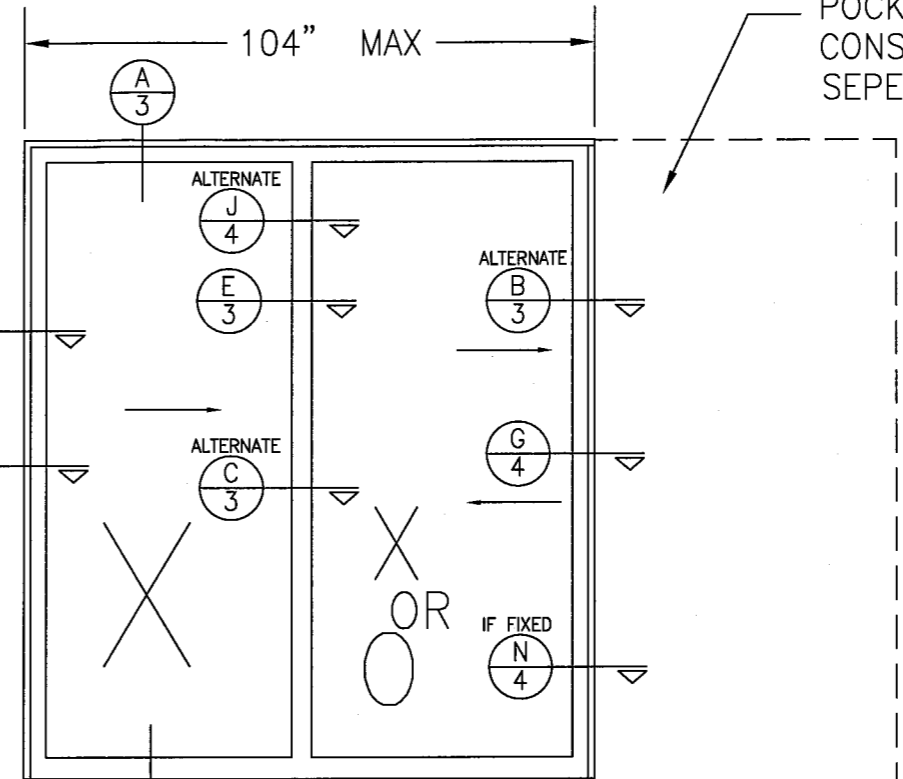
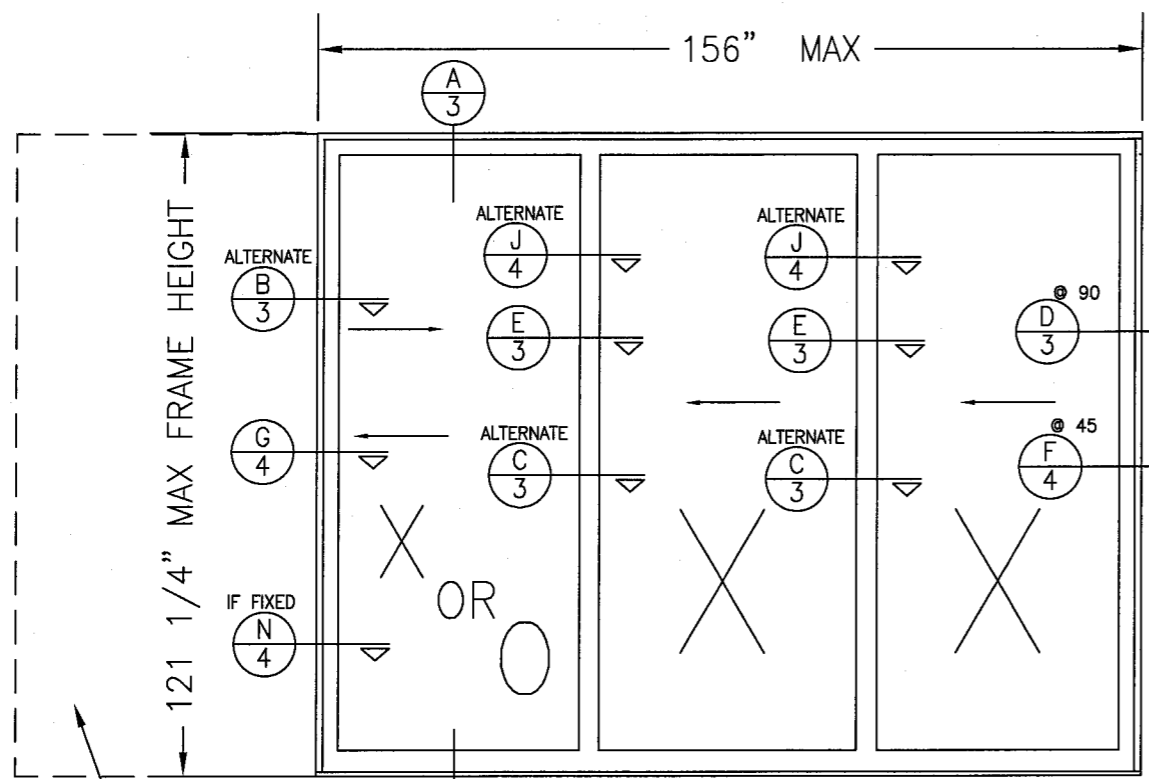
NO.	REVISION DESCRIPTION	BY	DATE
1	PER MIDAD COMMENTS	RLR	3-30-10
2			

DRAWING TITLE: PLAZA TITAN 50 LMI SLIDING GLASS DOORS  
 CONSULTANTS: CW Engineering, LLC  
 22693 Ashley Inn Terrace  
 Ashburn, VA 20148  
 PHONE: (703) 726-1670 FAX: (703) 842-8216  
 MANUFACTURER: INTL. IMPACT BUILDING PRODUCTS, LLC.  
 HOME OF THE PLAZA DOOR  
 59070 AUSTRALIAN AVE. SUITE 300  
 WEST PALM BEACH, FL 33407  
 561-578-5450

CERTIFICATION  
  
 5/21/2010  
 CHARLES WILLIAMS, P.E.  
 P.E. NO. 50367

DRAWING NO. 150-LMI  
 SHEET NO. 7 OF 11  
 REV. A

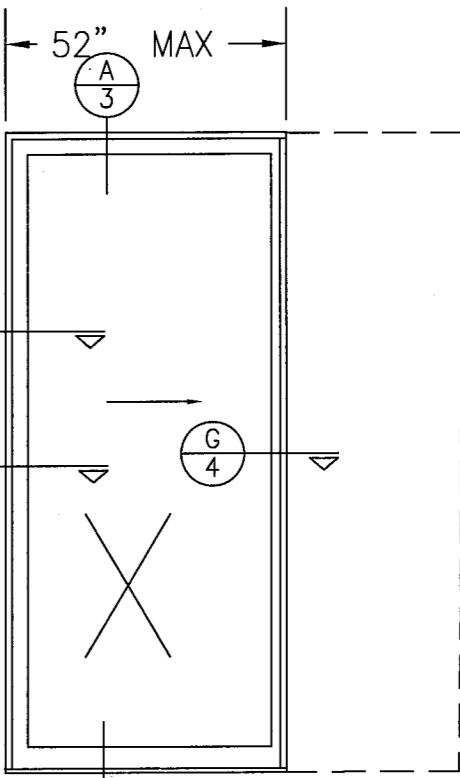
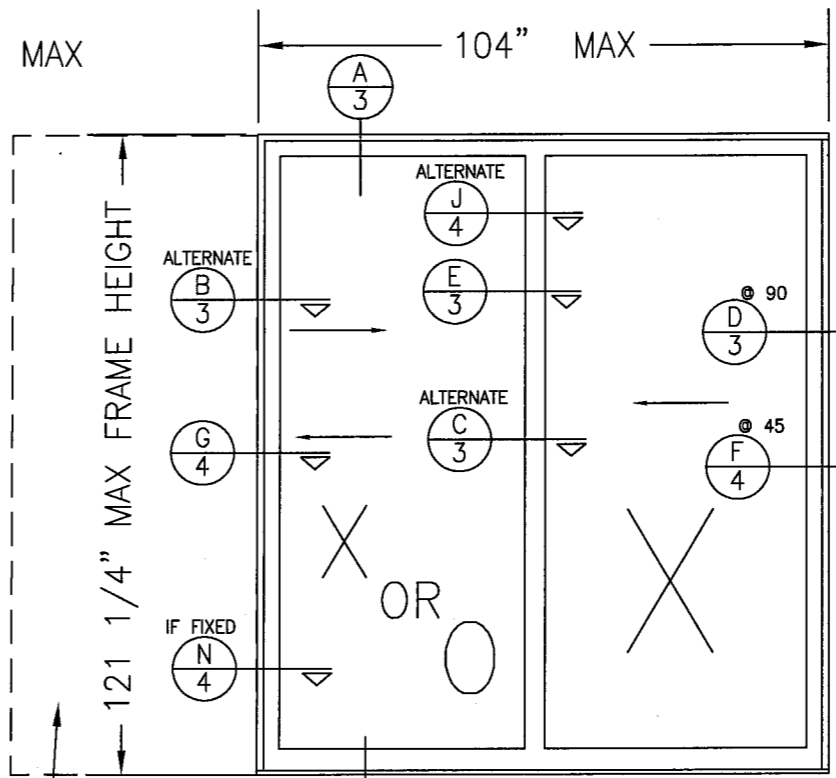
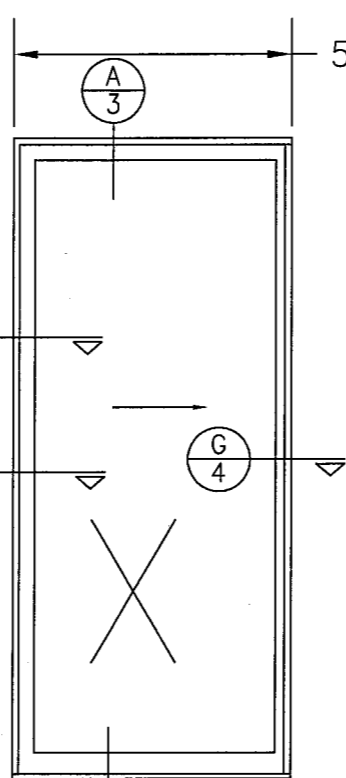
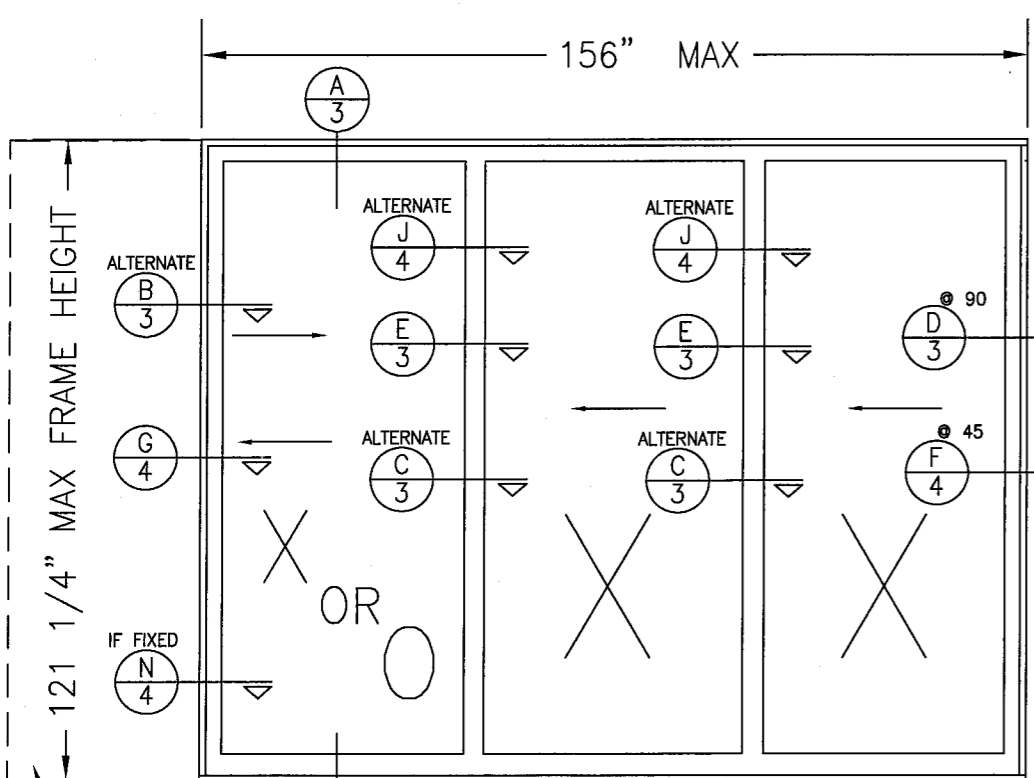
DRAWN BY: R.L.R.	CHECKED BY: R.L.R.
PLOT: 1-32	DATE: 8-08-09
NO.	DATE
1	3-30-10
REVISION DESCRIPTION	BY
1 PER MDAD COMMENTS	RLR
2	
Approved as complying with the Florida Building Code Date <u>JUNE 09, 2010</u> NOA# <u>09-1215-01</u> Miami Dade Product Control Division By <u>Shay L. Chan</u>	
PLAZA TITAN 50 LMI SLIDING GLASS DOORS MANUFACTURER INTL. IMPACT BUILDING PRODUCTS, LLC. HOME OF THE PLAZA DOOR 5900 AUSTRALIAN AVE. SUITE 300 WEST PALM BEACH, FL 33407 561-578-5450	
CONSULTANTS CW Engineering, LLC 22693 Ashley Inn Terrace Ashburn, VA 20148 PHONE:(703) 726-1670 FAX:(703) 842-8216	
CERTIFICATION  5/21/2010 CHARLES WILLIAMS, P.E. P.E. NO. 50367	
DRAWING NO. T50-LMI	
REV. A	
SHEET NO. 8 OF 11	



POCKET WALL  
CONSTRUCTION UNDER  
SEPERATE APPROVAL

POCKET WALL  
CONSTRUCTION UNDER  
SEPERATE APPROVAL

- 5 PANEL
- |                        |                         |                        |
|------------------------|-------------------------|------------------------|
| XXX - 45° OR 90° - XO  | PXXX - 45° OR 90° - XO  | OXX - 45° OR 90° - XO  |
| XXX - 45° OR 90° - XXP | PXXX - 45° OR 90° - XXP | OXX - 45° OR 90° - XXP |
| XXX - 45° OR 90° - XX  | PXXX - 45° OR 90° - XX  | OXX - 45° OR 90° - XX  |



POCKET WALL  
CONSTRUCTION UNDER  
SEPERATE APPROVAL

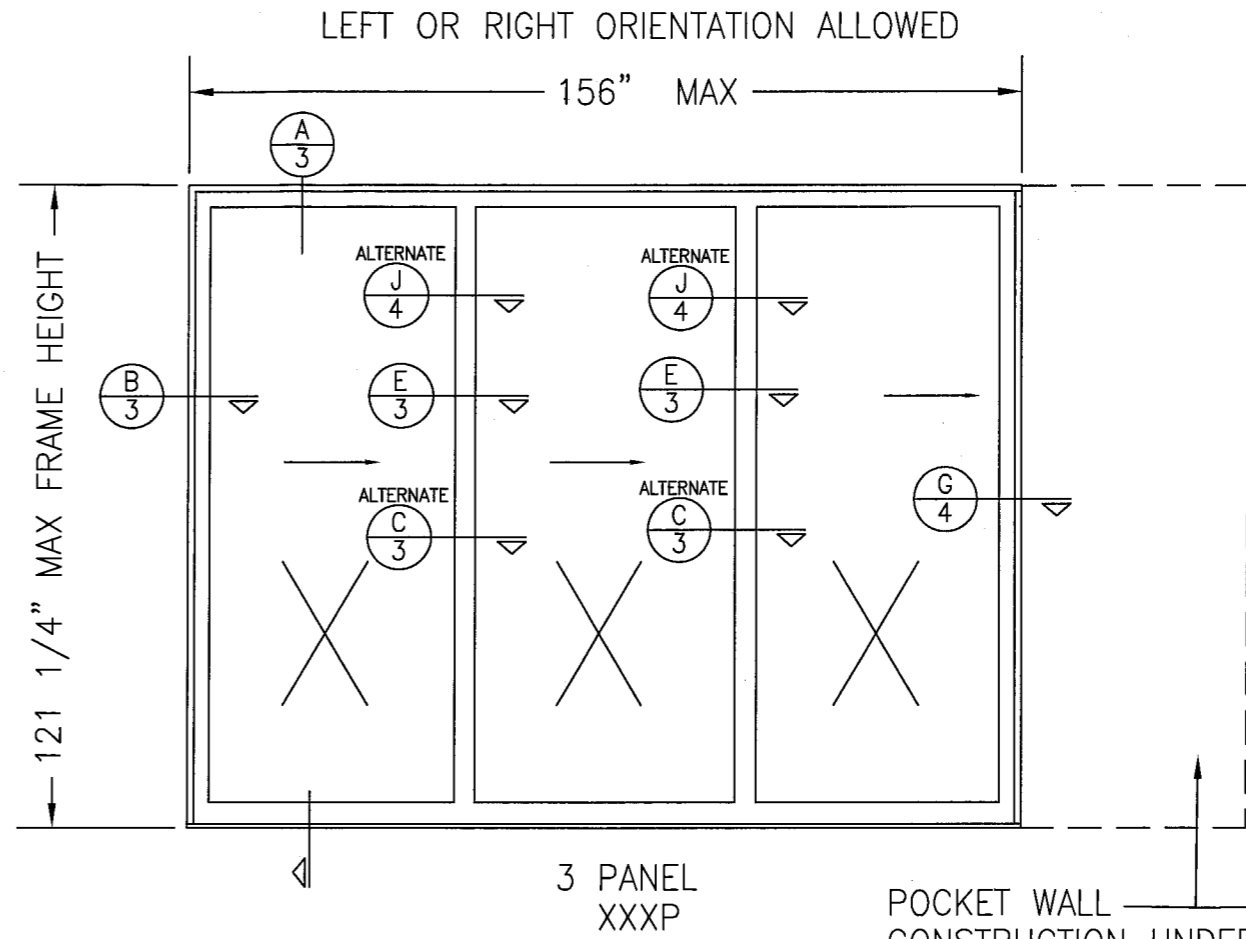
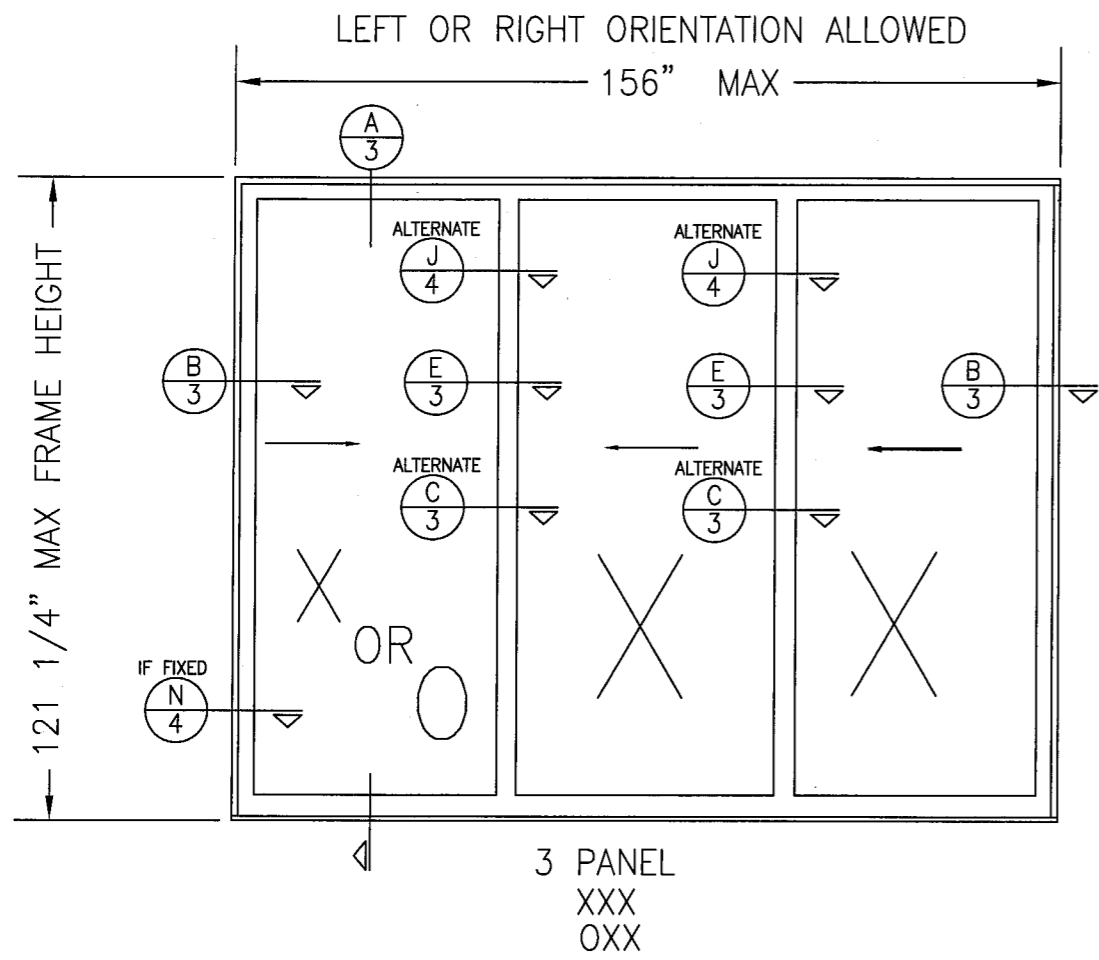
- 4 PANEL
- |                        |
|------------------------|
| XXX - 45° OR 90° - XP  |
| PXXX - 45° OR 90° - XP |
| OXX - 45° OR 90° - XP  |

POCKET WALL  
CONSTRUCTION UNDER  
SEPERATE APPROVAL

- 3 PANEL
- |                       |
|-----------------------|
| XX - 45° OR 90° - XP  |
| PXX - 45° OR 90° - XP |
| OX - 45° OR 90° - XP  |

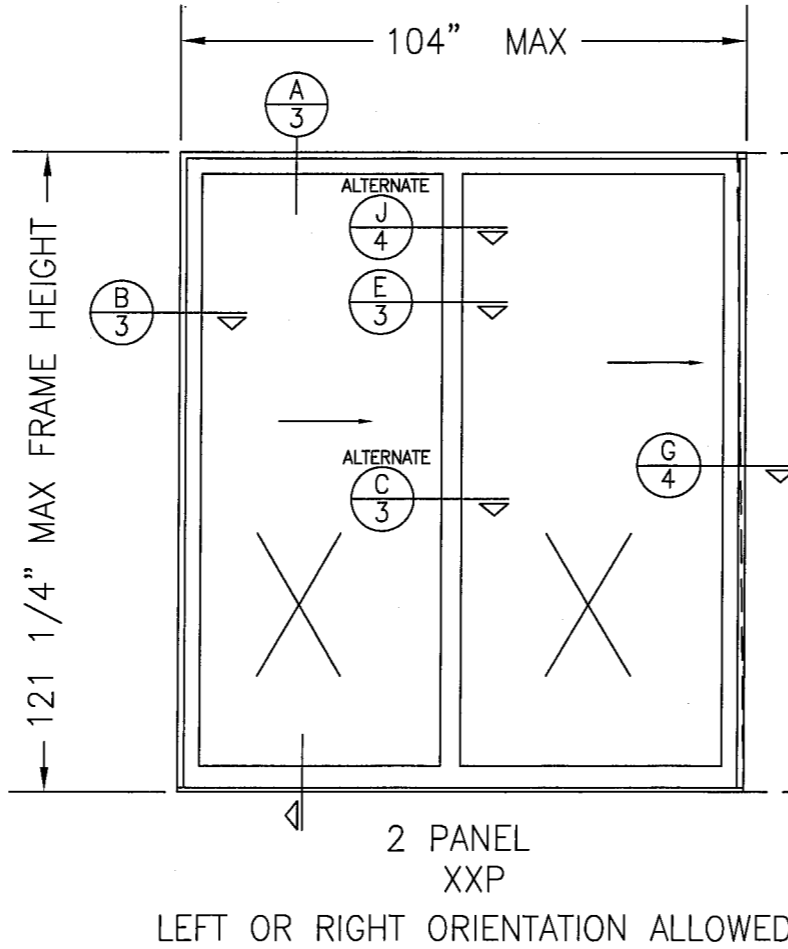
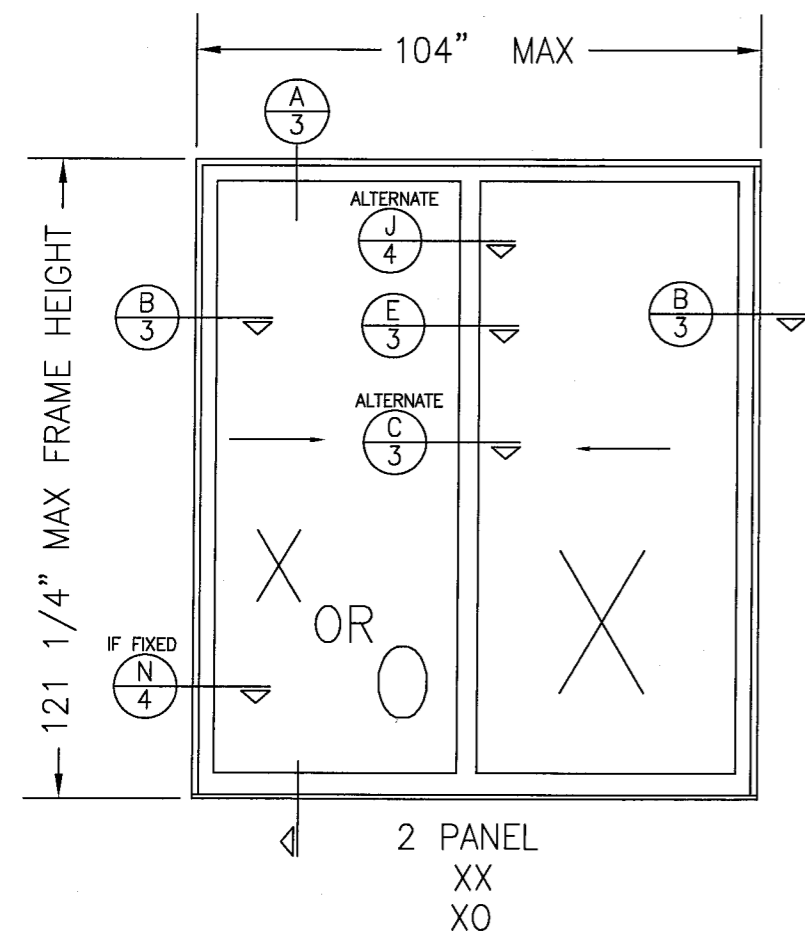
LEFT OR RIGHT ORIENTATION ALLOWED

LEFT OR RIGHT ORIENTATION ALLOWED

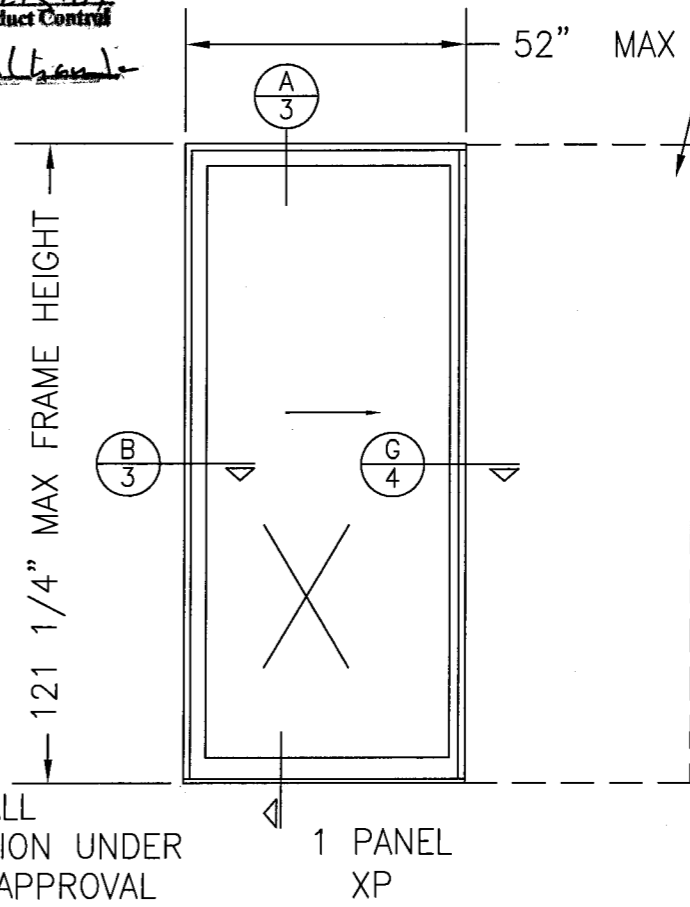


POCKET WALL  
CONSTRUCTION UNDER  
SEPERATE APPROVAL

Approved as complying with the  
Florida Building Code  
Date JUNE 09, 2010  
NOAH 09-1715-01  
Miami Dade Product Control  
Division  
By [Signature]



POCKET WALL  
CONSTRUCTION UNDER  
SEPERATE APPROVAL



DRAWN BY: R.L.R.		CHECKED BY: R.L.R.	
PLOT: 1=32		DATE: 8-08-09	
NO.	REVISION DESCRIPTION	BY	DATE
1	PER MDAD COMMENTS	RLR	3-30-10
DRAWING TITLE PLAZA TITAN 50 LMI SLIDING GLASS DOORS			
CONSULTANTS CW Engineering, LLC 22693 Ashley Inn Terrace Ashburn, VA 20148 PHONE:(703) 726-1670 FAX:(703) 842-8216		MANUFACTURER INTL. IMPACT BUILDING PRODUCTS, LLC. HOME OF THE PLAZA DOOR 59070 AUSTRALIAN AVE. SUITE 300 WEST PALM BEACH, FL 33407 561-578-5450	
CERTIFICATION <u>[Signature]</u> 5/21/2010 CHARLES WILLIAMS, P.E. P.E. NO. 50367		DRAWING NO. 150-LMI	
SHEET NO. 9 OF 11		REV. A	

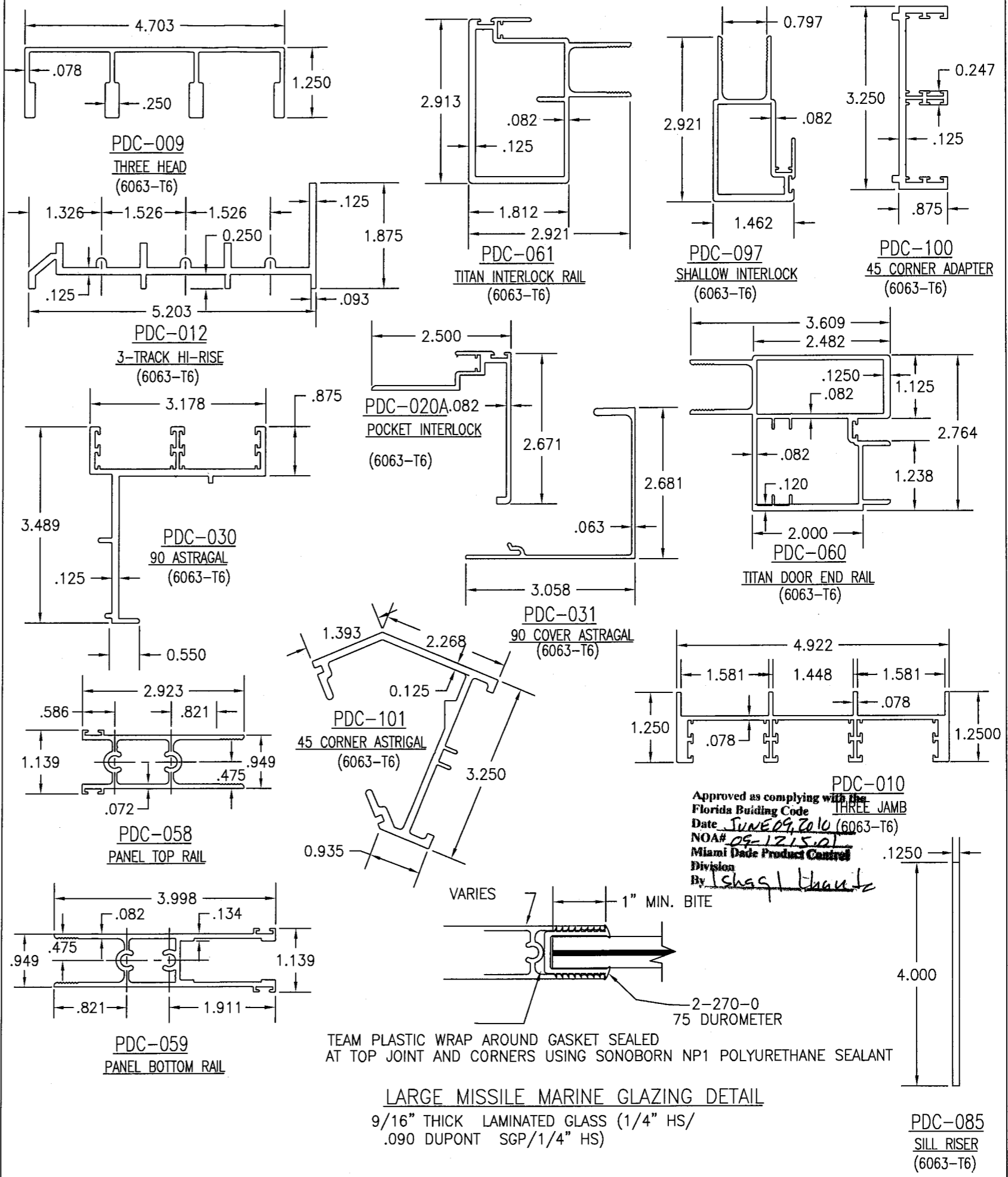
**PART NO. DESCRIPTION MATERIAL LIST LOCATION**

**HARDWARE**  
 3-310-0 ADJUSTABLE ROLLER ASSEMBLY (IIBP) 2 @ EACH ROLLING PANEL.  
 2-322-0 DEADLOCK - #1847-02 SS ADAMS RITE LOCKING RAIL OF MEETING PANELS.  
 2-361-0 LOCK ESCUTCHEON - IIBP LOCKING RAIL OF MEETING PANELS.  
 2-376-0 FLUSH BOLT - #3917PLZ BY TRIMCO LOCKING RAIL OF MEETING PANELS.  
 2-500-0 DOOR PULL - #AM2806 ADAMS RITE LOCKING RAIL OF MEETING PANELS.  
 3-001-0 LOCK KEEPER - SS IIBP MEETING RAIL.  
 2-750-0 TOP ROD GUIDE TOP OF END RAILS FOR LOCK ROD SUPPORT

**ACCESSORIES**  
 3-008-0 TRACK DRAIN PAN - IIBP SILL TRACK  
 3-009-0 H.P. WEATHER TAB - IIBP TOP OF INTERLOCK RAILS - EXTERIOR  
 7-070-0 3M 4905 VHB TAPE 3/4" WIDE FULL LENGTH SILL  
 2-200-0 TITAN ENDRAIL CAP (IIBP) END RAIL TOPS  
 2-202-0 TITAN ITERLOCK CAP (IIBP) INTERLOCK TOPS

**FASTENERS**  
 2-007-0 NO. 14 X 1 1/4" SMS PH 2 PER DOOR PANEL CORNER  
 2-010-0 NO. 12 X 2 1/2" PPH SS SMS 1 PER DOOR ROLLER  
 2-019-0 NO. 8 X 1 1/2" SMS PH 3" FROM ENDS & 18" OC  
 2-022-0 NO. 10 X 1 1/4" SMS FH VARIES - SEE DETAILS  
 2-025-0 NO. 10-24 X 1/4" PFH UC SMS 2 PER FLUSHBOLT  
 2-027-0 NO. 10-24 X 1 1/4" MS TYPE "F" FH 9" FROM EACH END ONLY  
 2-038-0 NO. 8-32 X 1 1/2" MS 2 PER DEADLOCK  
 2-040-0 NO. 8 X 1" SMS FH 9" FROM EACH END ONLY  
 2-042-0 NO. 8 X 3/4" SMS PH VARIES - SEE DETAILS  
 2-067-0 NO. 6-32 X 1/4 FHMS 2 PER DEADLOCK  
 2-071-0 NO. 8 X 1 1/2" PFH SS PLASTITE SCREW 2 PER ESCUTCHEON

**EXTRUSIONS**  
 PDC-009 3-HEAD HEAD TRAK  
 PDC-010 3-JAMB FRAME JAMB  
 PDC-012 3-TRACK HI-RISE SILL TRACK  
 PDC-020A POCKET INTERLOCK POCKET CONDITION TO STRUCTURE  
 PDC-030 90 DEGREE CORNER ASTRIGAL PANEL AT 90  
 PDC-031 90 DEGREE CORNER COVER PANEL AT 90  
 PDC-058 PANEL TOP RAIL ALL PANELS  
 PDC-059 3 1/2" PANEL BOTTOM RAIL ALL PANELS  
 PDC-060 TITAN DOOR SIDE RAIL MEETING/LOCKING RAILS  
 PDC-061 TITAN INTERLOCK RAIL PANEL INTERLOCK RAILS  
 PDC-085 4" HI-RISE ADAPTER SILL TRACK  
 PDC-100 45 DEGREE CORNER ADAPTER PANEL AT 45 (ext or 135 int)  
 PDC-101 45 DEGREE CORNER ASTRIGAL PANEL AT 45 (ext or 135 int)

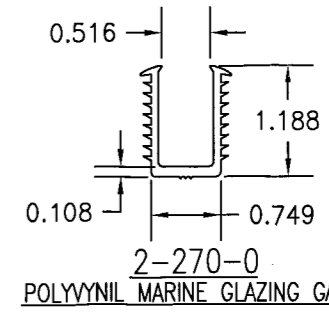
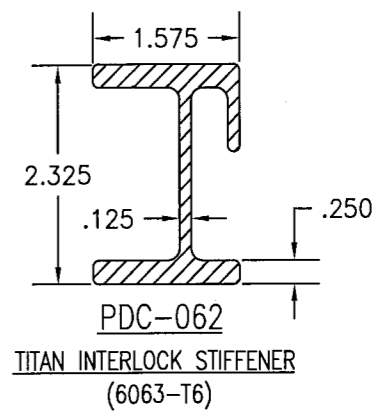
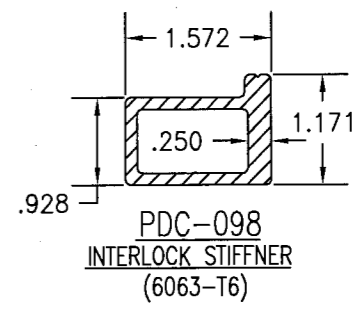
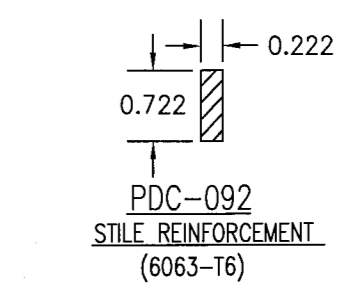
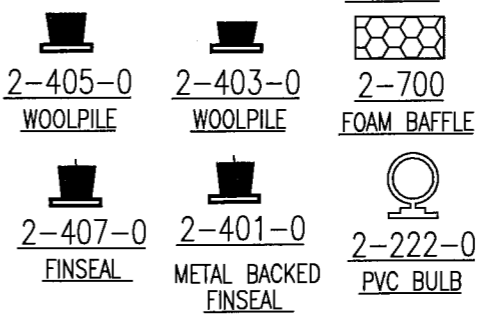
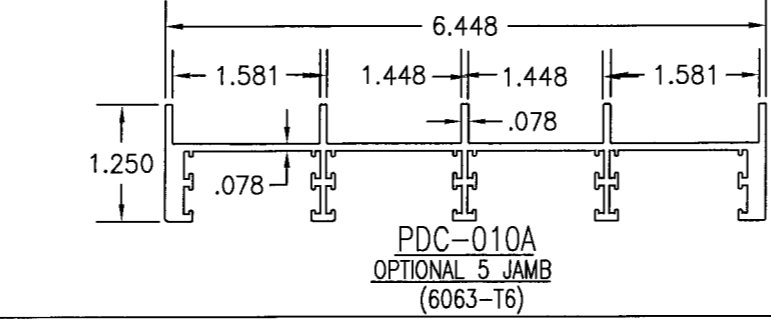
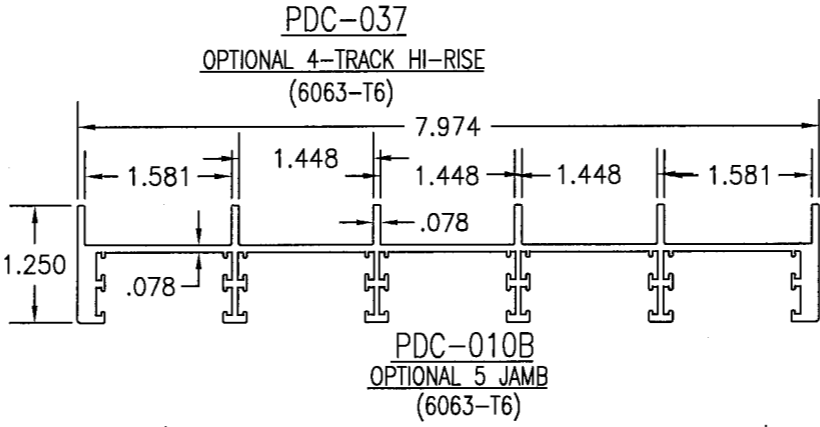
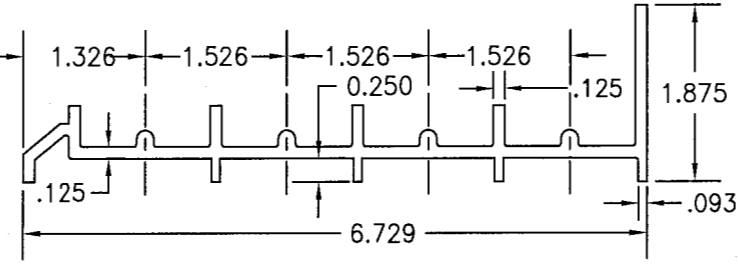
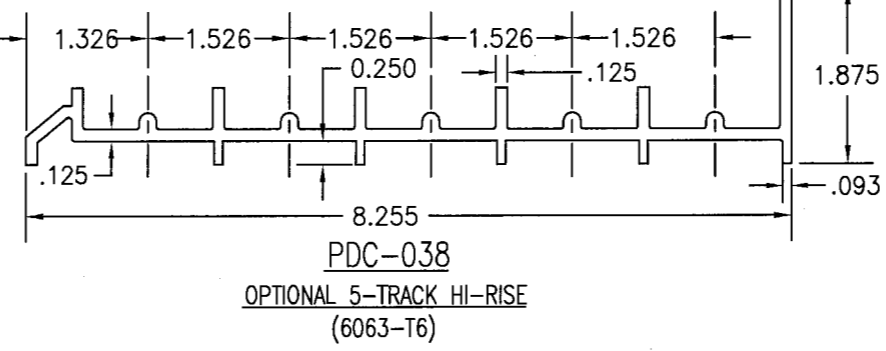
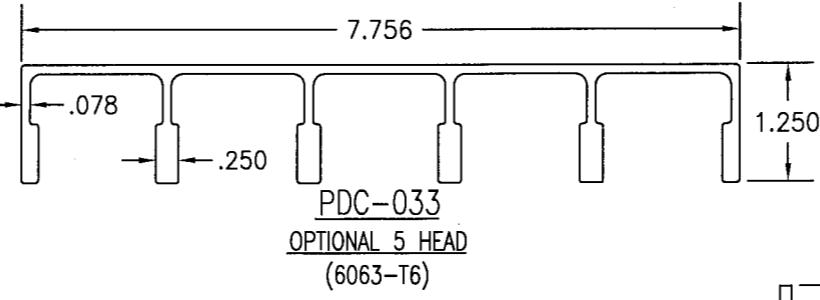
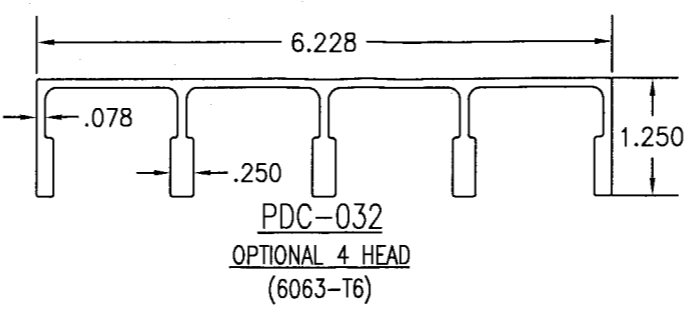


DRAWN BY: R.L.R.		CHECKED BY: R.L.R.	
PLOT: 1=32		DATE: 9=3=09	
DATE	BY	REVISION DESCRIPTION	NO.
7-29-09	RLR	MISC CORRECTIONS	1
8-17-09	RLR	POST DRAFT CORRECTIONS	2
8-18-09	RLR	MISC CORRECTIONS	3
3-30-10	RLR	MDAD CORRECTIONS	4
5-11-10	RLR	MDAD CORRECTIONS	5
5-19-10	RLR	MDAD CORRECTIONS	6
DRAWING TITLE: PLAZA TITAN 50 LMI SLIDING GLASS DOORS			
CONSULTANTS: CW Engineering, LLC			
MANUFACTURER: INTL. IMPACT BUILDING PRODUCTS, LLC. HOME OF THE PLAZA DOOR 5900 AUSTRALIAN AVE. SUITE 300 WEST PALM BEACH, FL 33407 561-578-5450			
CERTIFICATION: <u>Charles Williams</u> 5/21/2010 CHARLES WILLIAMS, P.E. P.E. NO. 50367			
DRAWING NO. T50-LMI		REV. A	
SHEET NO. 10 OF 11			

PART NO.	DESCRIPTION	MATERIAL LIST	LOCATION
<b>WEATHERSTRIPPING &amp; VINYL</b>			
2-405-0	SCHLEGAL .270 WIDE POLY-BOND WOOLPILE #PB-8425-2211-0		FRAME JAMBS
2-402-0	SCHLEGAL .270 WIDE POLY-BOND WOOLPILE #PB-7525-6011-6		MEETING STILES
2-407-0	SCHLEGAL .270 WIDE POLY-BOND FINSEAL #PB-7531-6011-2		INSIDE AND OUTSIDE OF EACH DOOR PANEL TOP RAIL AGAINST FRAME HEAD SECTION.
2-700-0	H-O PRODUCTS RETICULATED FOAM 30 PPI OPEN CELL POLYETHER POLYURETHANE FOAM		EACH DOOR PANEL BOTTOM RAILS, INTERLOCK RAILS AND POCKET INTERLOCKS
2-401-0	SCHLEGAL .270 WIDE METAL BACKED FINSEAL #PB-7531-6012-2		WIND BAFFLE AT TOP AND BOTTOM 45 & 90
2-222-0	CENTRAL PLASTICS CO. PVC BULB (EV-277)		3" AT TOP & BOTOM INTERLOCK RAILS & MEETING STILES
2-270-0	CENTRAL PLASTICS CO. PVC (X-1842)		INTERLOCK RAILS, FRAME JAMBS, MEETING RAILS
2-403-0	SCHLEGAL .270 WIDE POLY-BOND WOOLPILE #PB-7527-6011-6		9/16" GLAZING VINYL.
			USED AT TOP ROD SUPPORT

<b>REINFORCEMENTS</b>			
PDC-062	TITAN INTERLOCK STIFFENER (FULL LENGTH OF STILE - 9")		PANEL INTERLOCK RAILS @ PDC-061
PDC-092	STILE REINFORCEMENT (12" LONG)		STILE END REINFORCEMENT @ TOP & BOTTOM OF PDC-061 INTERLOCKS WHEN PDC-062 IS USED ONLY NOT REQUIRED WHEN PDC-099 IS USED.
PDC-098	TITAN INTERLOCK STIFFENER (FULL LENGTH OF STILE)		PANEL INTERLOCK RAILS @ PDC-097

<b>OPTIONAL EXTRUSIONS</b>			
PDC-032	4-HEAD		HEAD TRAK
PDC-033	5-HEAD		HEAD TRAK
PDC-037	4-TRACK		SILL TRACK
PDC-038	5-TRACK		SILL TRACK
PDC-010A	4-JAMB		FRAME JAMB
PDC-010B	5-JAMB		FRAME JAMB



Approved as complying with the Florida Building Code  
 Date JUNE 09, 2010  
 NOA# 09-1215-01  
 Miami Dade Product Control  
 Division  
 By Greg L. Hank

DRAWN BY: R.L.R.	CHECKED BY: R.L.R.
DATE: 3-30-10	DATE: 9-3-09
PLOT: 1-32	
NO.	REVISION DESCRIPTION
1	MDAD CORRECTIONS
2	MDAD CORRECTIONS
3	MDAD CORRECTIONS

DRAWING TITLE: PLAZA TITAN 50 LMI SLIDING GLASS DOORS

MANUFACTURER: INTL. IMPACT BUILDING PRODUCTS, LLC.  
 HOME OF THE PLAZA DOOR  
 5900 AUSTRALIAN AVE. SUITE 300  
 WEST PALM BEACH, FL 33407  
 561-578-5450

CONSULTANTS: CW Engineering, LLC  
 22693 Ashley Inn Terrace  
 Ashburn, VA 20148  
 PHONE: (703) 726-1670 FAX: (703) 842-8216

CERTIFICATION: Charles Williams 6/21/2010  
 CHARLES WILLIAMS, P.E.  
 P.E. NO. 50367

DRAWING NO. T50-LMI  
 SHEET NO. 11 OF 11