



MIAMI-DADE COUNTY
BUILDING CODE COMPLIANCE OFFICE (BCCO)
PRODUCT CONTROL DIVISION

MIAMI-DADE COUNTY, FLORIDA
METRO-DADE FLAGLER BUILDING
140 WEST FLAGLER STREET, SUITE 1603
MIAMI, FLORIDA 33130-1563
(305) 375-2901 FAX (305) 375-2908
www.miamidade.gov/buildingcode

NOTICE OF ACCEPTANCE (NOA)

International Impact Building Products, LLC
5900 Australian avenue, suite # 300
West palm Beach, FL 33407

SCOPE:

This NOA is being issued under the applicable rules and regulations governing the use of construction materials. The documentation submitted has been reviewed by Miami-Dade County Product Control Division and accepted by the Board of Rules and Appeals (BORA) to be used in Miami Dade County and other areas where allowed by the Authority Having Jurisdiction (AHJ).

This NOA shall not be valid after the expiration date stated below. The Miami-Dade County Product Control Division (In Miami Dade County) and/or the AHJ (in areas other than Miami Dade County) reserve the right to have this product or material tested for quality assurance purposes. If this product or material fails to perform in the accepted manner, the manufacturer will incur the expense of such testing and the AHJ may immediately revoke, modify, or suspend the use of such product or material within their jurisdiction. BORA reserves the right to revoke this acceptance, if it is determined by Miami-Dade County Product Control Division that this product or material fails to meet the requirements of the applicable building code.

This product is approved as described herein, and has been designed to comply with the Florida Building Code, including the High Velocity Hurricane Zone.

DESCRIPTION: Series "Titan 50" Aluminum Sliding Glass Door (Reinforced) w/ 90 & 135 degree corners & pockets

APPROVAL DOCUMENT: Drawing No. **T50-SMI**, titled "Series Titan 50 SMI Sliding Glass Doors", sheets 1 through 11 of 11 dated 05/21/10, prepared by C. W. Engineering, LLC, signed and sealed by Charles Williams, P.E., bearing the Miami-Dade County Product Control Approval stamp with the Notice of Acceptance number and approval date by the Miami-Dade County Product Control Division.

MISSILE IMPACT RATING: Small Missile Impact Resistant

Limitations:

1. See Design Pressure Vs reinforced door sizes in sheet 2. Lower design pressure of combination of reinforcements used shall control.
2. See cluster of anchors required at interlock, astragal and corners in sheet 2.

LABELING: Each unit shall bear a permanent label with the manufacturer's name or logo, city, state and following statement: "Miami-Dade County Product Control Approved", unless otherwise noted herein.

RENEWAL of this NOA shall be considered after a renewal application has been filed and there has been no change in the applicable building code negatively affecting the performance of this product.

TERMINATION of this NOA will occur after the expiration date or if there has been a revision or change in the materials, use, and/or manufacture of the product or process. Misuse of this NOA as an endorsement of any product, for sales, advertising or any other purposes shall automatically terminate this NOA. Failure to comply with any section of this NOA shall be cause for termination and removal of NOA.

ADVERTISEMENT: The NOA number preceded by the words Miami-Dade County, Florida, and followed by the expiration date may be displayed in advertising literature. If any portion of the NOA is displayed, then it shall be done in its entirety.

INSPECTION: A copy of this entire NOA shall be provided to the user by the manufacturer or its distributors and shall be available for inspection at the job site at the request of the Building Official.

This NOA consists of this page 1 and evidence page E-1, as well as approval document mentioned above. The submitted documentation was reviewed by **Ishaq I. Chanda, P. E.**



6/16/10

NOA No 09-1215.02
Expiration Date: July 07, 2015
Approval Date: July 07, 2010
Page 1

International Impact Building Products, LLC

NOTICE OF ACCEPTANCE: EVIDENCE SUBMITTED

A. DRAWINGS

1. Manufacturer's die drawings and sections.
2. Drawing No. **T50-SMI**, titled "Series Titan 50 SMI Sliding Glass Doors", sheets 1 through 11 of 11 dated 05/21/10, prepared by C. W. Engineering, signed & sealed by Charles Williams, P.E.

B. TESTS

1. Test reports on
 - 1) Air Infiltration Test, per FBC, TAS 202-94
 - 2) Uniform Static Air Pressure Test, Loading per FBC, TAS 202-94
 - 3) Water Resistance Test, per FBC, TAS 202-94
 - 4) Small Missile Impact Test per FBC, TAS 201-94
 - 5) Large Missile Impact Test per FBC, TAS 201-94
 - 6) Cyclic Wind Pressure Loading per FBC, TAS 203-94
 - 7) Forced Entry Test, per FBC 2411 3.2.1 and TAS 202-94

Along with marked-up drawings and installation diagram of an Aluminum Sliding Glass Door, prepared by Hurricane Testing Laboratory, Inc., Test Report No(s). **HTL-0171-0513-09** dated 09/23/09, signed and sealed by Vinu Abraham, P.E.

Note: This test report has been revised from originally issue to clarify impact locations, signed & sealed by Vinu Abraham, P.E.

2. Test report No. **HTL-0171-0513-09 (sp #1)** per TAS 202-94, issued by Hurricane Testing Lab, signed & sealed by Vinu Abraham, P.E.
3. Additional test report No(s) **HTL-0171-0713-07 (specimen 4, #5, 5A & 5B)** dated 08/01/08, per TAS 202-94, 201/203-94 (SMI/LMI), issued by Hurricane Testing Lab, signed & sealed by Vinu Abraham, P.E.

C. CALCULATIONS

1. Anchor verification calculations and structural analysis, prepared by C. W. Engineering, dated 11/16/09 and last revised on 04/08/10, signed and sealed by Charles Williams, P.E.
2. Glazing complies with ASTM E-1300-02 & -04.

D. QUALITY ASSURANCE

1. Miami Dade Building Code Compliance Office (BCCO).

E. MATERIAL CERTIFICATIONS

1. Notice of Acceptance No. **05-1208.02** issued to E.I. DuPont DeNemours for "DuPont's Butacite PVB Interlayer", expiring on 12-11-2010.

F. STATEMENTS

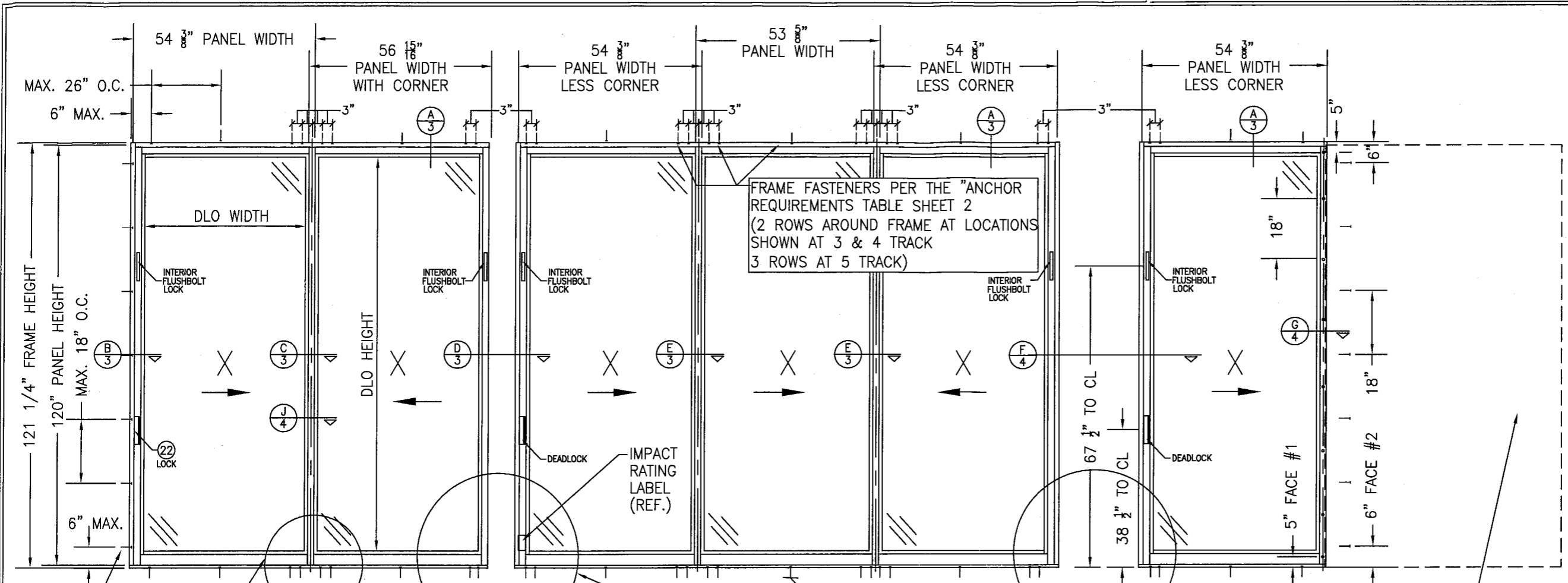
1. Statement letter of conformance and "No financial interest", both dated 11/16/09, signed and sealed by Charles William, P.E.
2. Laboratory compliance, as a part of above test reports.
3. Statement letter dated 04/09/09, issued by Plaza Doors of all assets sold to Impact Building Products, signed by Roy Elwell, president Plaza Door.
4. Statement letter dated 04/09/09, issued by Impact Building Products of all assets purchased from Plaza Doors, signed by Michael Fry, Managing Partner, International Impact Building Products.

G. OTHER

1. Test proposal dated 04/14/09 approved by BCCO.

Ishaq I. Chanda

Ishaq I. Chanda, P. E.
Product Control Examiner
NOA No 09-1215.02
Expiration Date: July 07, 2015
Approval Date: July 07, 2010



NO. 1/4 SMS SCREWS
 2 ROWS AT 3 & 4 TRACK
 3 ROWS AT 5 TRACK

SEE CLUSTER ANCHOR
 DETAIL SHEET 2

DLO WIDTH = PANEL WIDTH - 6 5/8"
 DLO HEIGHT = PANEL HEIGHT - 7"
 FRAME HEIGHT = PANEL HEIGHT + 1 1/4"

MAX. PANEL SIZE FOR ALL DOORS
 = 54 3/8" X 120"

SILL ANCHORS SAME AS
 AT HEAD.

SEE CLUSTER PATTERN
 SHEET 2

POCKET WALL
 CONSTRUCTION UNDER
 SEPERATE APPROVAL

110 15/16"
 TIP TIP FRM

SEE DETAIL D SHEET 3

165 1/8"
 TIP TIP
 FRM

SEE DETAIL F SHEET 4

Approved as complying with the
 Florida Building Code
 Date July 07, 2010
 NOAH# 09-1215-02
 Miami Dade Product Control
 Division
 By [Signature]

SEE SHEETS 7-9 FOR
 ALLOWABLE CONFIGURATIONS
 SEE SHEET 2 FOR SIZE VS.
 ALLOWABLE DESIGN PRESSURE

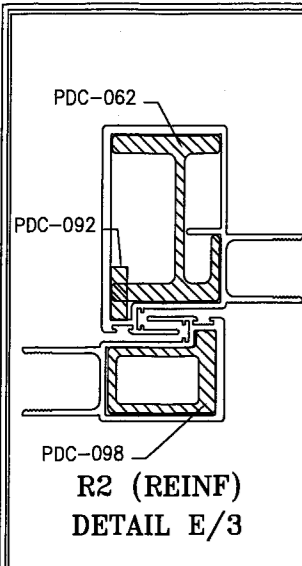
DRAWN BY: R.L.R.		CHECKED BY: R.L.R.	
PLOT: 1=32		DATE: 8-08-09	
NO.	REVISION DESCRIPTION	BY	DATE
1	UPDATED PER MDA COMMENTS	RLR	3-30-10
2	UPDATED PER MDA COMMENTS	RLR	5-12-10
3	UPDATED PER MDA COMMENTS	RLR	5-19-10

DRAWING TITLE
 PLAZA TITAN 50 SMI SLIDING GLASS DOORS

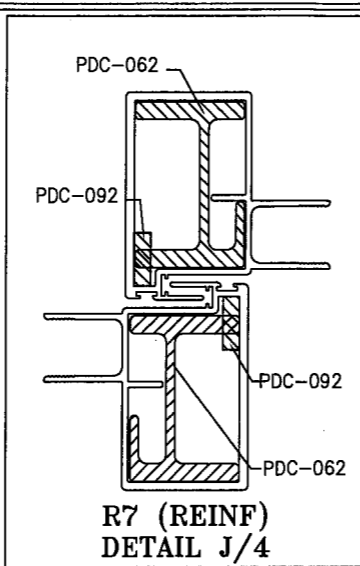
MANUFACTURER
 INTL. IMPACT BUILDING PRODUCTS, LLC.
 HOME OF THE PLAZA DOOR
 5900 AUSTRALIAN AVE. SUITE 300
 WEST PALM BEACH, FL 33407
 561-578-5450

CONSULTANTS
 CW Engineering, LLC
 22693 Ashley Inn Terrace
 Ashburn, VA 20148
 PHONE: (703) 726-1670 FAX: (703) 842-8216

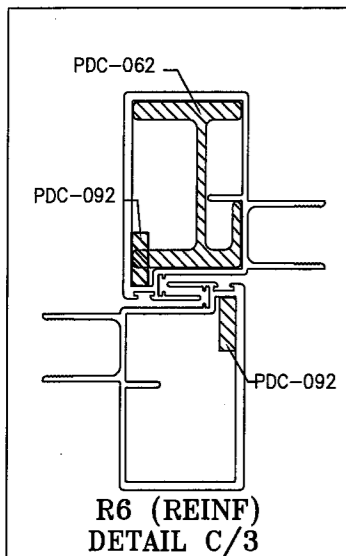
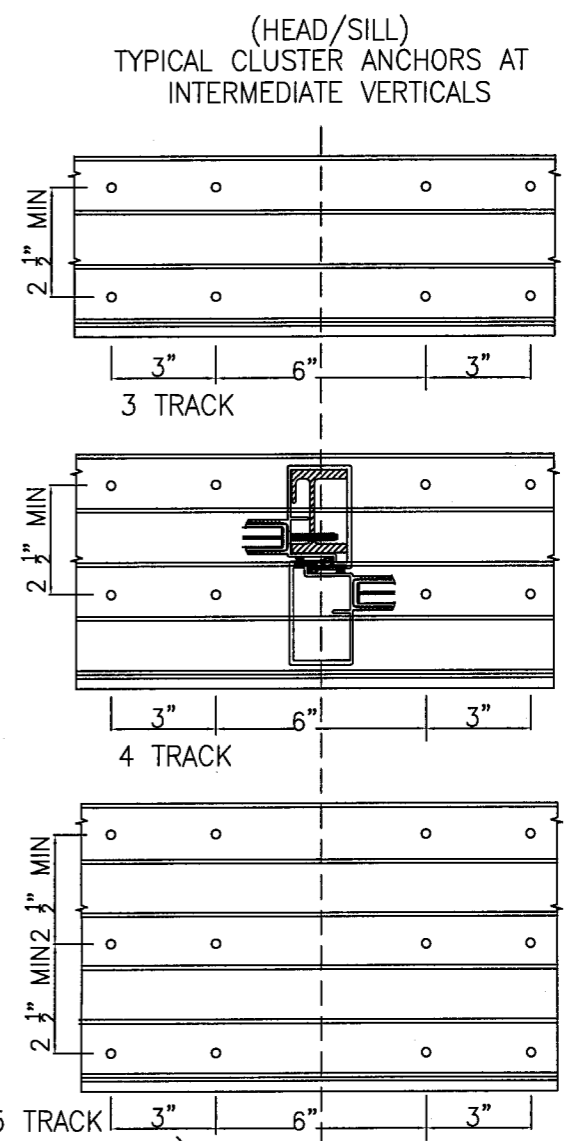
CERTIFICATION
[Signature]
 5/21/2010
 CHARLES WILLIAMS, P.E.
 P.E. NO. 50367



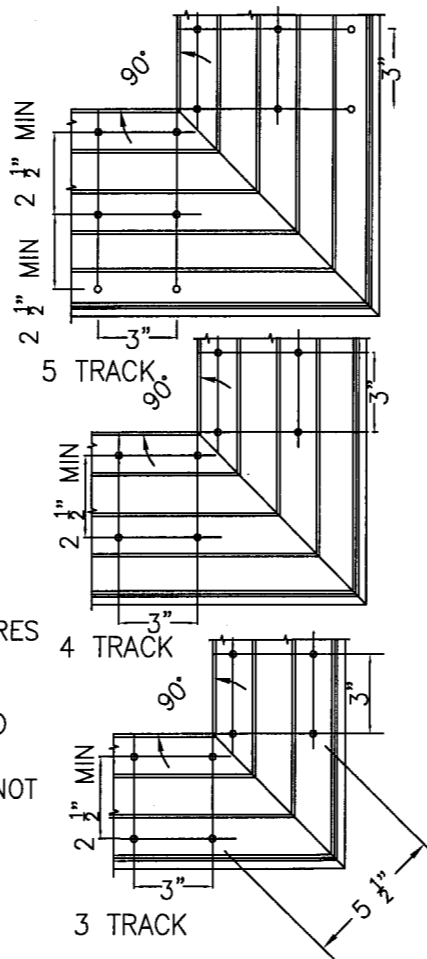
R2 COMBINATION DESIGN LOAD CAPACITY					
DOOR HEIGHT INCHES	84	90	96	102	108
PANEL WIDTH NOMINAL INCHES	(+)(-)	(+)(-)	(+)(-)	(+)(-)	(+)(-)
	PSF	PSF	PSF	PSF	PSF
36	50.0	50.0	50.0	41.0	32.0
42	50.0	50.0	47.0	36.0	32.0
48	50.0	48.0	42.0	32.0	NA
50.5	50.0	46.0	41.0	31.0	NA
53	50.0	41.0	38.0	NA	NA
56	50.0	41.0	38.0	NA	NA
60	50.0	41.0	38.0	NA	NA



R7 COMBINATION DESIGN LOAD CAPACITY							
DOOR HEIGHT INCHES	84	90	96	102	108	114	120
PANEL WIDTH NOMINAL INCHES	(+)(-)	(+)(-)	(+)(-)	(+)(-)	(+)(-)	(+)(-)	(+)(-)
	PSF	PSF	PSF	PSF	PSF	PSF	PSF
36	50.0	50.0	50.0	50.0	50.0	50.0	46.0
42	50.0	50.0	50.0	50.0	50.0	44.0	40.0
48	50.0	50.0	50.0	50.0	50.0	40.0	36.0
50.5	50.0	50.0	50.0	50.0	49.0	38.0	34.0
53	50.0	50.0	50.0	50.0	45.0	36.0	NA
56	50.0	50.0	50.0	50.0	45.0	NA	NA
60	50.0	50.0	50.0	48.0	NA	NA	NA



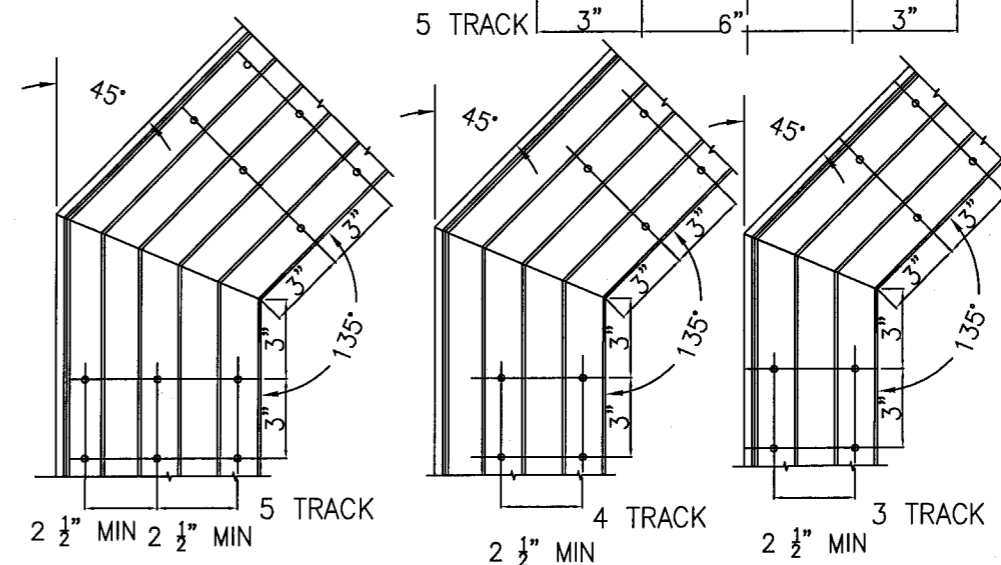
R6 COMBINATION DESIGN LOAD CAPACITY							
DOOR HEIGHT INCHES	84	90	96	102	108	114	120
PANEL WIDTH NOMINAL INCHES	(+)(-)	(+)(-)	(+)(-)	(+)(-)	(+)(-)	(+)(-)	(+)(-)
	PSF	PSF	PSF	PSF	PSF	PSF	PSF
36	50.0	50.0	50.0	50.0	50.0	40.0	35.0
42	50.0	50.0	50.0	49.0	44.0	34.0	31.0
48	50.0	50.0	50.0	44.0	39.0	30.0	NA
50.5	50.0	50.0	50.0	42.0	37.0	NA	NA
53	50.0	50.0	49.0	36.0	34.0	NA	NA
56	50.0	50.0	49.0	36.0	NA	NA	NA
60	50.0	50.0	49.0	36.0	NA	NA	NA



NOTE:
LOWER DESIGN PRESSURE
OF THE ABOVE TABLE SHALL
CONTROL THE REINFORCEMENT USED

Approved as complying with the
Florida Building Code
Date July 07, 2010
NOA# 09-1215-02
Miami Dade Product Control
Division
By Shaq I. / hand

(HEAD/SILL)
TYPICAL CLUSTER ANCHORS AT
CORNER CONDITIONS



1. THESE DOOR SYSTEMS HAVE BEEN TESTED, ANALYZED AND APPROVED FOR DESIGN PRESSURES NOT TO EXCEED THOSE SHOWN IN THE "ALLOWABLE DESIGN LOADS" TABLE(S). MULTIPLE COMBINATIONS ARE NOT ALLOWED.
2. BUCKING, OPENINGS & BUCKING FASTENERS MUST BE PROPERLY DESIGNED & INSTALLED TO TRANSFER WIND LOADS TO THE STRUCTURE.
3. ALL HARDWARE & FASTENERS SHALL BE IN ACCORDANCE WITH THESE DRAWINGS & SHALL NOT VARY UNLESS SPECIFICALLY MENTIONED ON THE DRAWINGS.
4. THESE DOOR SYSTEMS HAVE BEEN DESIGNED IN ACCORDANCE WITH THE 2007 FLORIDA BUILDING CODE (FBC) INCLUDING HVHZ.
5. IMPACT SHUTTERS ARE NOT REQUIRED WITH THESE DOORS.
6. ALL ANCHORS SHALL BE INSTALLED AS SPECIFIED ON THESE DRAWINGS. SPECIFIED EMBEDMENT TO BASE MATERIAL SHALL BE BEYOND WALL FINISH OR STUCCO.
7. ALL FRAME ANCHORS SECURING DOOR FRAME TO PRESSURE TREATED BUCKS OR WOOD FRAMING SHALL BE CAPABLE OF RESISTING CORROSION CAUSED BY THE PRESSURE TREATING CHEMICALS IN THE WOOD.
8. MATERIALS, INCLUDING BUT NOT LIMITED TO STEEL SCREWS, THAT COME INTO CONTACT WITH OTHER DISSIMILAR MATERIALS SHALL MEET THE REQUIREMENTS OF 2007 FLORIDA BUILDING CODE SECTION 2003.8.4.
9. DETERMINE THE POSITIVE & NEGATIVE DESIGN LOADS TO USE WHEN REFERENCING THESE DOCUMENTS IN ACCORDANCE WITH THE GOVERNING CODE & GOVERNING WIND VELOCITY. FOR WIND LOAD CALCULATIONS IN ACCORDANCE WITH THE 2007 FLORIDA BUILDING CODE, A DIRECTIONALITY FACTOR OF $K_d = 0.85$ MAY BE USED IN CONJUNCTION WITH LOAD COMBINATIONS OF ASCE-7S SECTIONS 2.3 & 2.4
10. NO INCREASE IN ALLOWABLE STRESS HAS BEEN USED IN THE DESIGN OF THIS PRODUCT. WIND LOAD DURATION FACTOR $C_d = 1.6$ WAS USED FOR WOOD SCREW DESIGN.

FRAME ANCHOR REQUIREMENTS TABLE					
FRAME SHEAR SCREWS			AT POCKET		
OPENING TYPE (SUBSTRATE)	FRAME/CLIP/NAIL FIN TO OPENING FASTENER TYPE	MINIMUM EMBED	MINIMUM EDGE DIST.	MINIMUM EMBED	MINIMUM EDGE DIST.
2X_ WOOD FRAME OR BUCK MIN. (MIN GR. 5)	NO. 14 SMS OR WOOD SCREW <u>GR5</u> <u>6/16x10</u>	1 1/4"	3/4"	1 1/4"	1 1/2"
MIN. 16 GA. 33 KSI METAL STUD	1/4-20 GR5 SELF TAP/DRILLING SCREW	FULL	1/2"	FULL	1 1/2"
3000 PSI CONCRETE	1/4" TAPPER GR5 PERMA -SEAL BY POWERS	1 1/2"	1 1/2"	1 1/2"	1 1/2"
C-90 CMU GROUT FILLED BLOCK	1/4" TAPPER GR5 PERMA -SEAL BY POWERS	2"	1 3/4"	2"	1 1/2"

DRAWN BY: R.L.R.	CHECKED BY: R.L.R.		
PLOT: 1-32	DATE: 8-08-09		
NO.	REVISION DESCRIPTION	DATE	BY
1	UPDATED REIN. COMBO REFS	10-6-08	R.L.R.
2	UPDATED PER MDO COMMENTS	3-30-10	R.L.R.
3	UPDATED PER MDO COMMENTS	5-11-10	R.L.R.
4	UPDATED PER MDO COMMENTS	5-19-10	R.L.R.

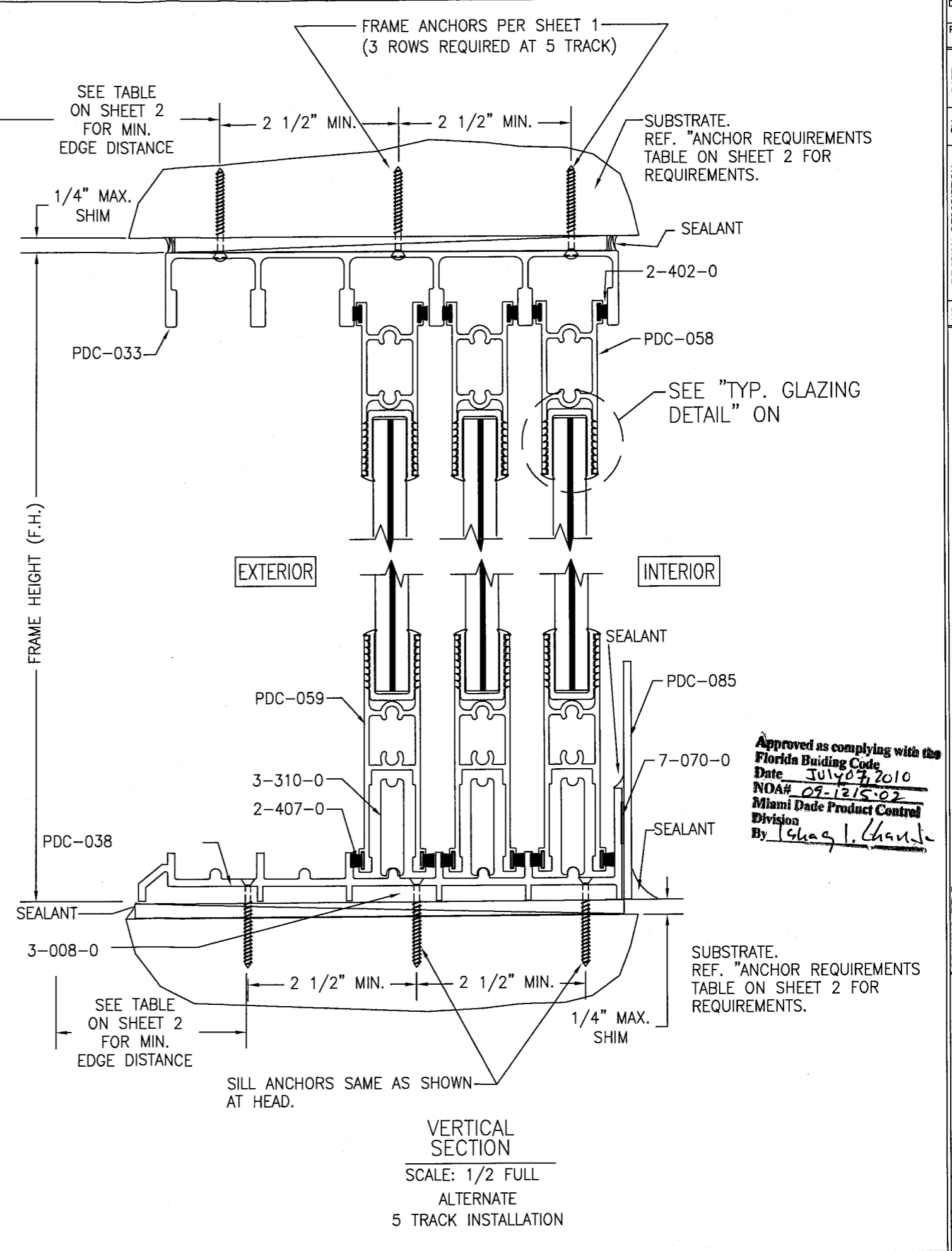
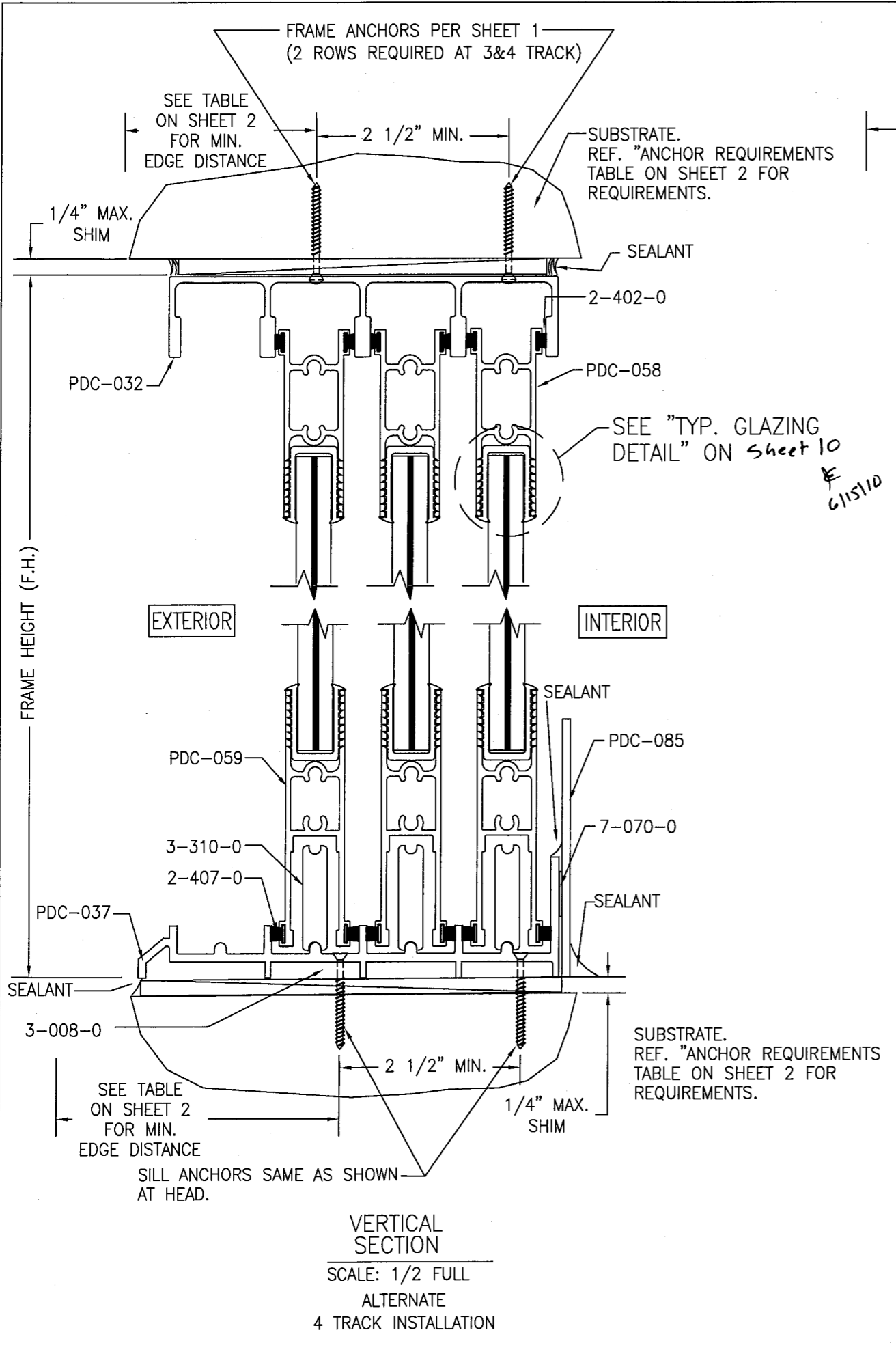
DRAWING TITLE: PLAZA TITAN 50 SMI SLIDING GLASS DOORS

CONSULTANTS: CW Engineering, LLC
22693 Ashley Inn Terrace
Ashburn, VA 20148
PHONE: (703) 728-1670 FAX: (703) 842-8216

MANUFACTURER: INTL. IMPACT BUILDING PRODUCTS, LLC.
HOME OF THE PLAZA DOOR
5900 AUSTRALIAN AVE. SUITE 300
WEST PALM BEACH, FL 33407
561-578-5450

CERTIFICATION: *Charles Williams*
S 121210
CHARLES WILLIAMS, P.E.
P.E. NO. 50367

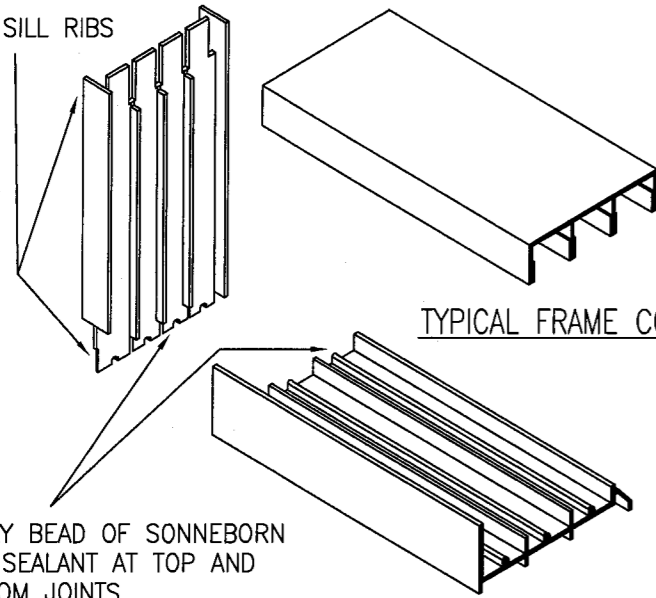
DRAWING NO. T50-SMI
REV. A
SHEET NO. 2 OF 11



Approved as complying with the
Florida Building Code
Date July 07, 2010
NOA# 09-1215-02
Miami Dade Product Control
Division
By Thas I. Chan

DRAWN BY: R.L.R.		CHECKED BY: R.L.R.	
PLOT: 1-32		DATE: 9-3-09	
REVISION	DESCRIPTION	DATE	BY
1	MDAD CORRECTIONS	3-30-10	RLR
2	MDAD CORRECTIONS	5-11-10	RLR
DRAWING TITLE PLAZA TITAN 50 SMI SLIDING GLASS DOORS			
MANUFACTURER INTL. IMPACT BUILDING PRODUCTS, LLC. HOME OF THE PLAZA DOOR 5900 AUSTRALIAN AVE. SUITE 300 WEST PALM BEACH, FL 33407 561-578-5450			
CONSULTANTS CW Engineering, LLC 22693 Ashley Inn Terrace Ashburn, VA 20148 PHONE:(703) 726-1670 FAX:(703) 842-8216			
CERTIFICATION <u>Charles Williams</u> 5/21/2010 CHARLES WILLIAMS, P.E. P.E. NO. 50367			
DRAWING NO. T50-SMI		REV. A	
SHEET NO. 5 OF 11			

JAMB NOTCHED TO RECEIVE HEADER AND SILL RIBS



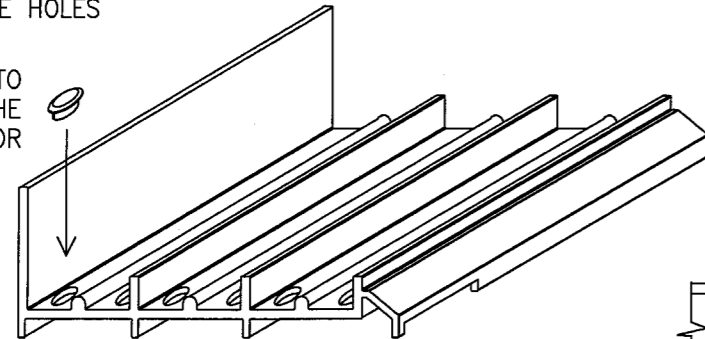
TYPICAL FRAME CORNER

APPLY BEAD OF SONNEBORN NP1 SEALANT AT TOP AND BOTTOM JOINTS

TYP. FRAME CORNER DETAIL
SCALE=N.T.S.

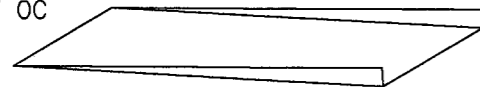
SILL TRACK WEEP HOLES CLUSTER OF (6) SIX (2 ROWS UNDER EA DOOR PANEL) LOCATED AT 28" MAX APART TWO 3/8" HOLES ARE BELOW EACH PANEL (2 PER TRACK) HOLES INTERIOR OF EACH PANEL ARE PLUGGED WITH A BUTTON CAP TO CLOSE HOLES

PLUGS IF REQUIRED TO BE USED ONLY ON THE INTERIOR SIDE OF DOOR



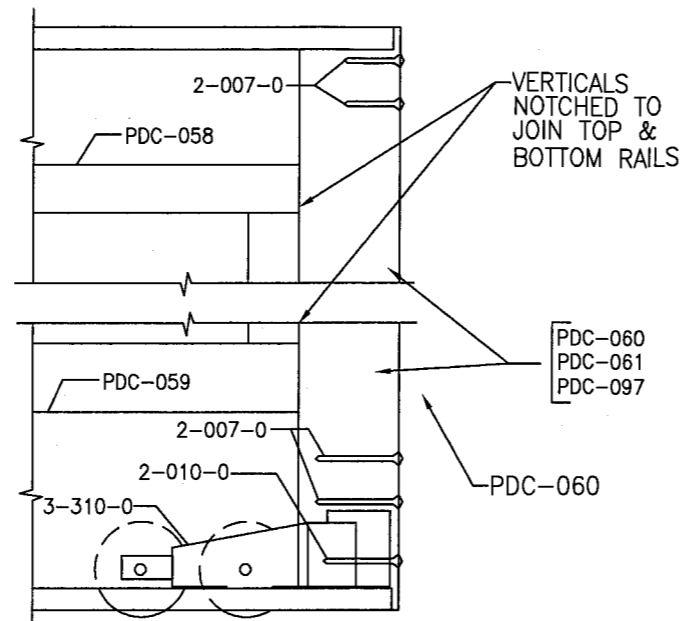
1 1/2" X 1/4" FACTORY APPLIED DRAIN PAN LOCATED 17" FROM ENDS AND MAX. 28" OC

1/4x1 1/2" OPENING



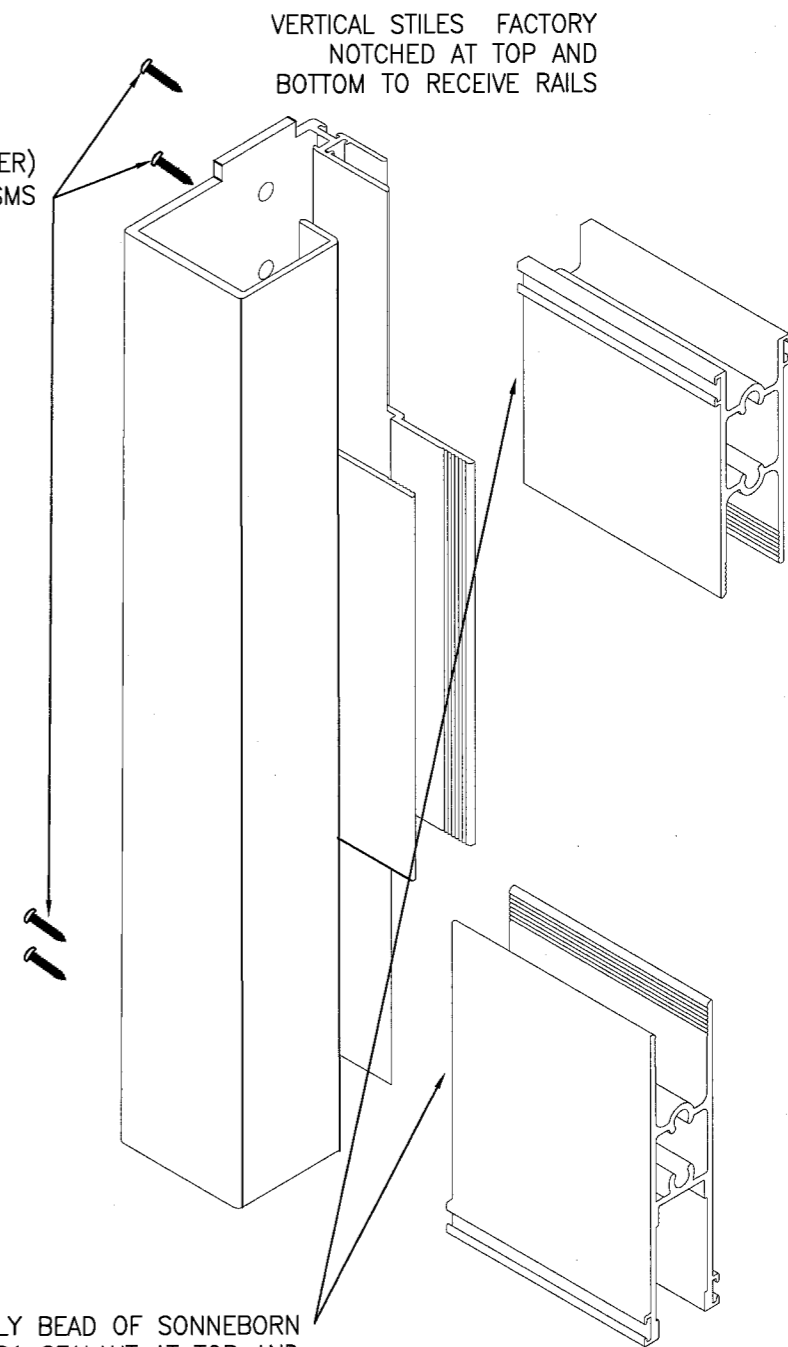
TRACK DRAINAGE: 3/8" DIA. WEEP HOLES 17" FROM EACH END & 28" O.C. MAX AT EA. TRACK RUN PLUS 1/4" X 1 1/2" SLOT IN VERTICAL LEG AT EA. WEEP HOLE LOCATION FOR DRAINAGE TO PAN & EXIT.

TYP. SILL PAN (FACTORY) ASSEMBLY
SCALE=N.T.S.



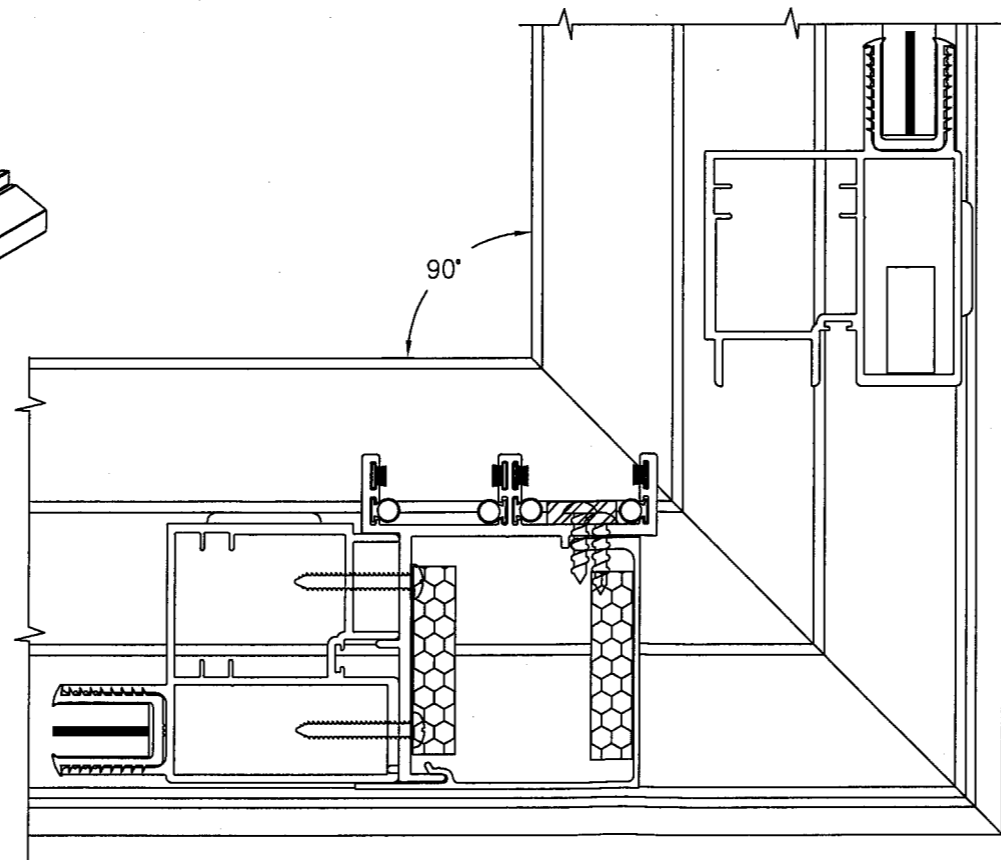
TYP. DOOR PANEL CORNER DETAIL
SCALE=N.T.S.

(2 PER CORNER)
#14 X 1 1/4" SSPH SMS



APPLY BEAD OF SONNEBORN NP1 SEALANT AT TOP AND BOTTOM JOINTS

TYP. DOOR PANEL CORNER ASSEMBLY
SCALE=N.T.S.



SECTION
90 DEGREE CORNER (DA) 6
DOOR PANELS SHOWN OPEN

VERTICAL STILES FACTORY NOTCHED AT TOP AND BOTTOM TO RECEIVE RAILS

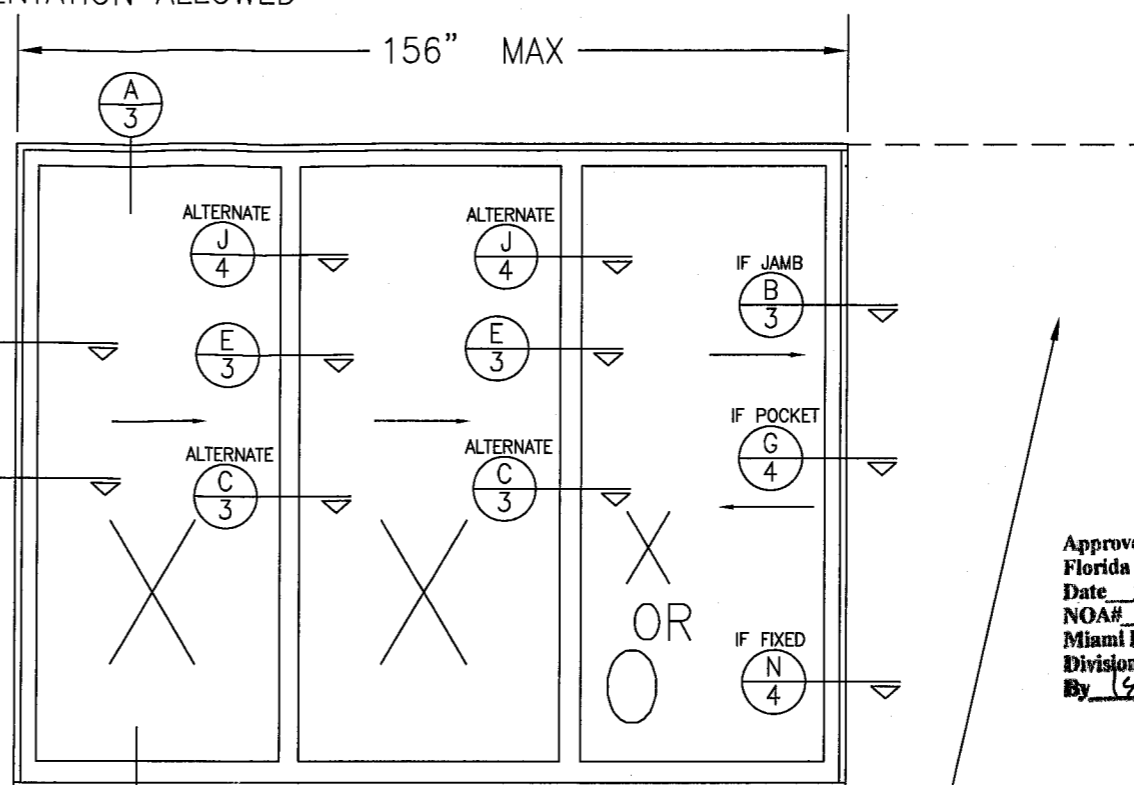
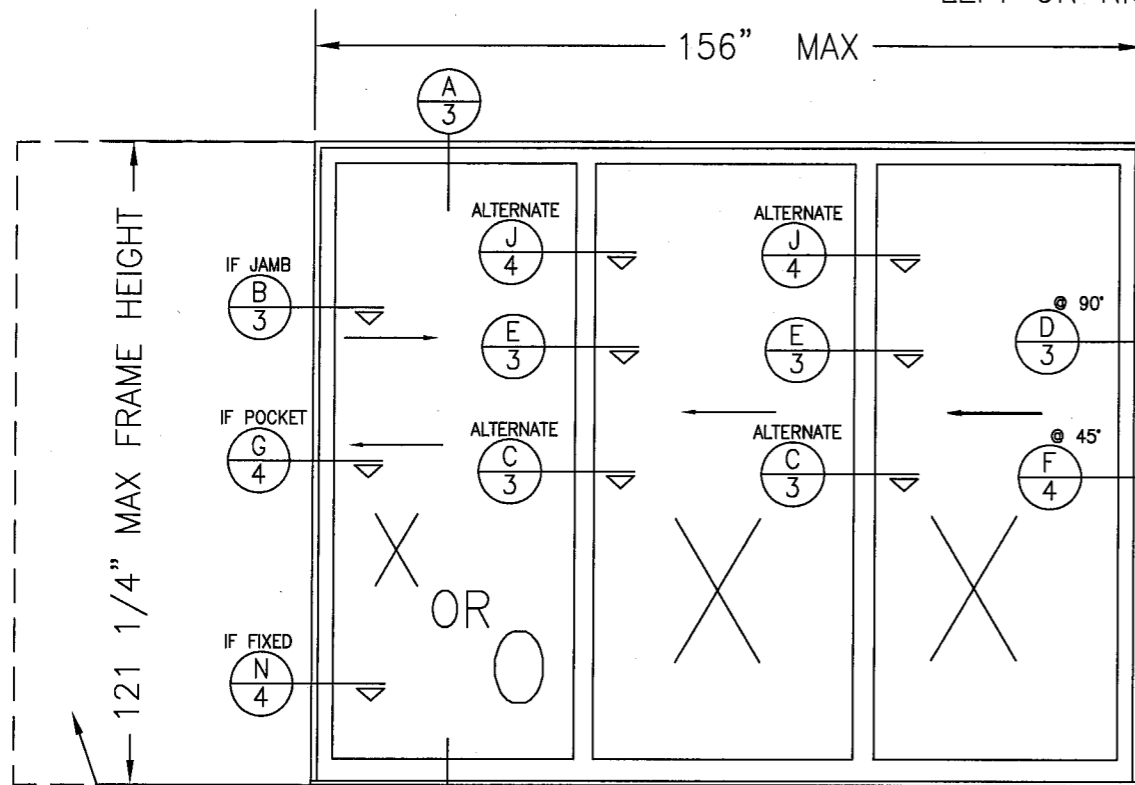
DRAWN BY: R.L.R.	CHECKED BY: R.L.R.
PLOT: 1=32	DATE: 9-3-09
DATE 3-30-10	DATE 5-11-10
BY RLR	BY RLR
REVISION DESCRIPTION	
NO. 1	MDAD CORRECTIONS
2	MDAD CORRECTIONS

DRAWING TITLE	PLAZA TITAN 50 SMI SLIDING GLASS DOORS
MANUFACTURER	INTL. IMPACT BUILDING PRODUCTS, LLC. HOME OF THE PLAZA DOOR 5900 AUSTRALIAN AVE. SUITE 300 WEST PALM BEACH, FL 33407 561-578-5450
CONSULTANTS	CW Engineering, LLC 22603 Ashley Inn Terrace Ashburn, VA 20148 PHONE: (703) 726-1670 FAX: (703) 842-8216

Approved as complying with the Florida Building Code
Date 3/14/07, 2010
NOA# 09-1215-02
Miami Dade Product Control Division
By: [Signature]

CERTIFICATION	[Signature]
DRAWING NO.	T50-SMI
REV.	A
SHEET NO.	6 OF 11

LEFT OR RIGHT ORIENTATION ALLOWED



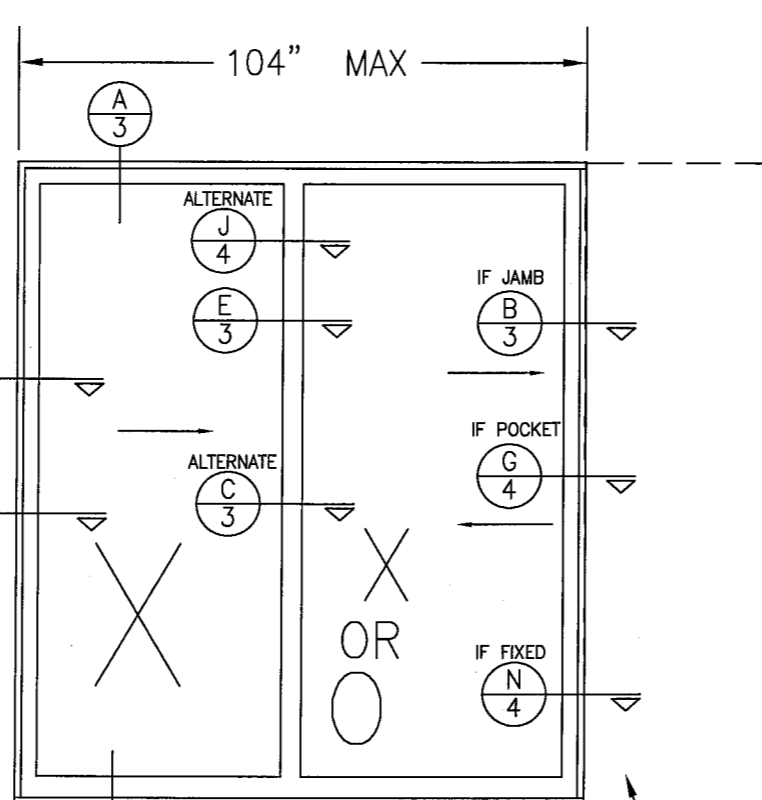
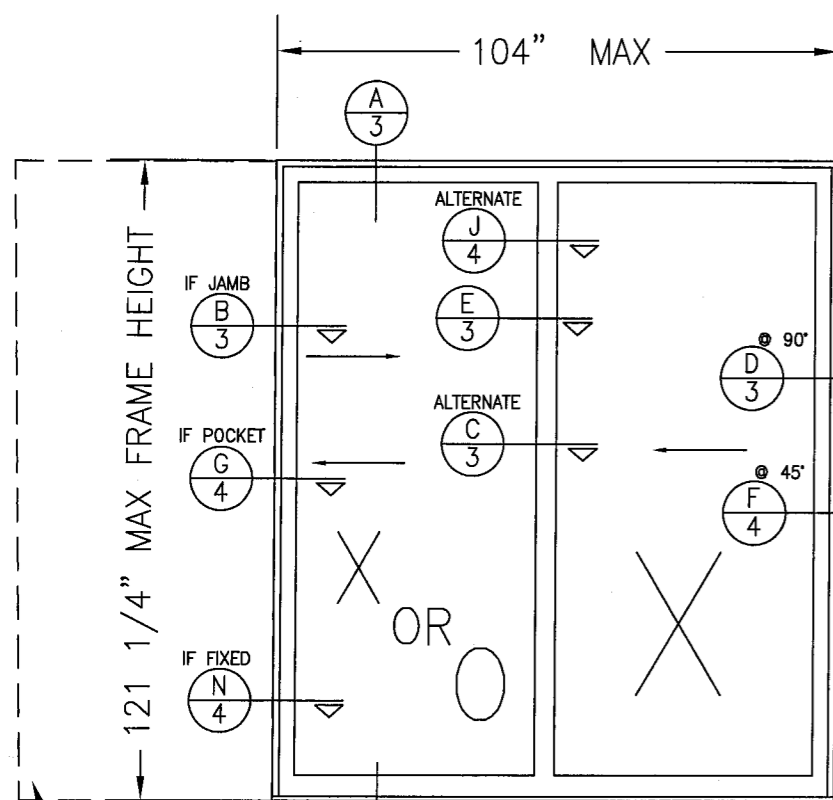
POCKET WALL
CONSTRUCTION UNDER
SEPERATE APPROVAL

6 PANEL
OXX - 45° OR 90° - XXO
PXXX - 45° OR 90° - XXXP
XXX - 45° OR 90° - XXO

OXX - 45° OR 90° - XXXP
PXXX - 45° OR 90° - XXO
PXXX - 45° OR 90° - XXX

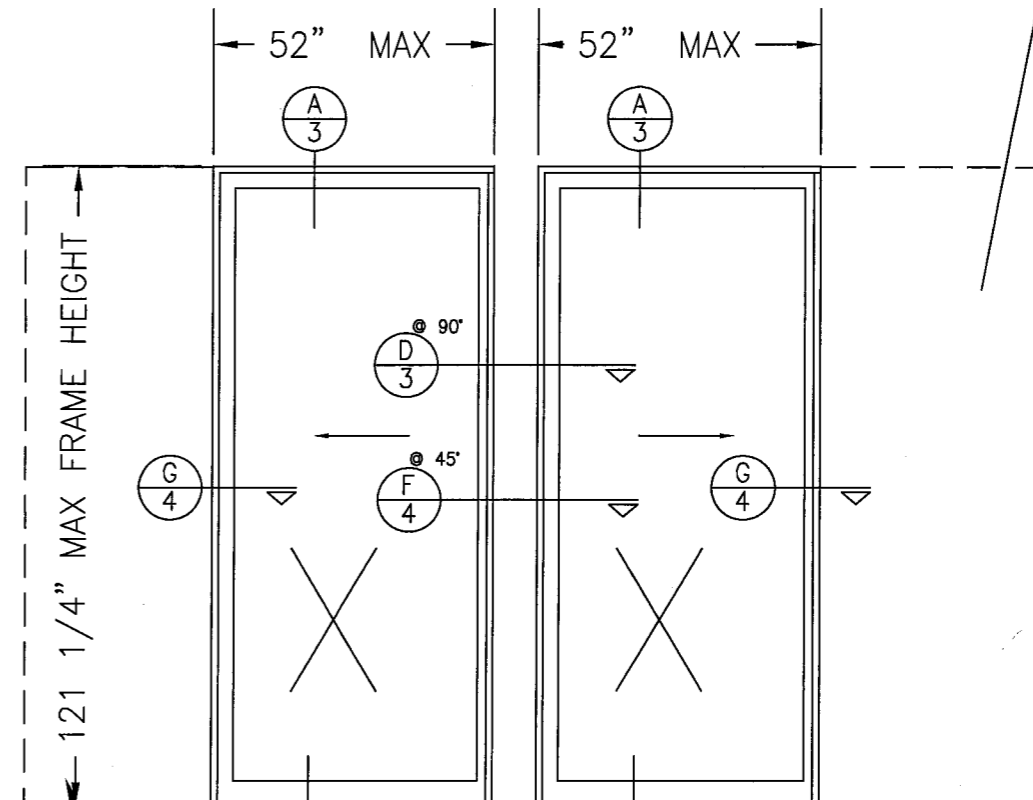
POCKET WALL
CONSTRUCTION UNDER
SEPERATE APPROVAL

Approved as complying with the
Florida Buiding Code
Date July 07, 2010
NOA# 09-121502
Miami Dade Product Control
Division
By Greg L. Chandler



POCKET WALL
CONSTRUCTION UNDER
SEPERATE APPROVAL

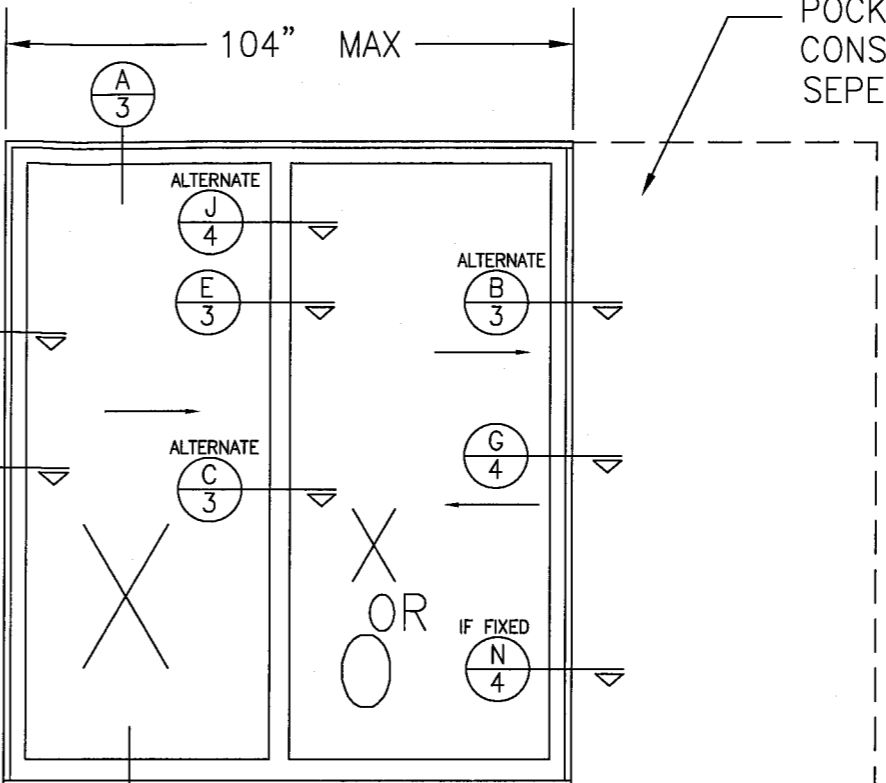
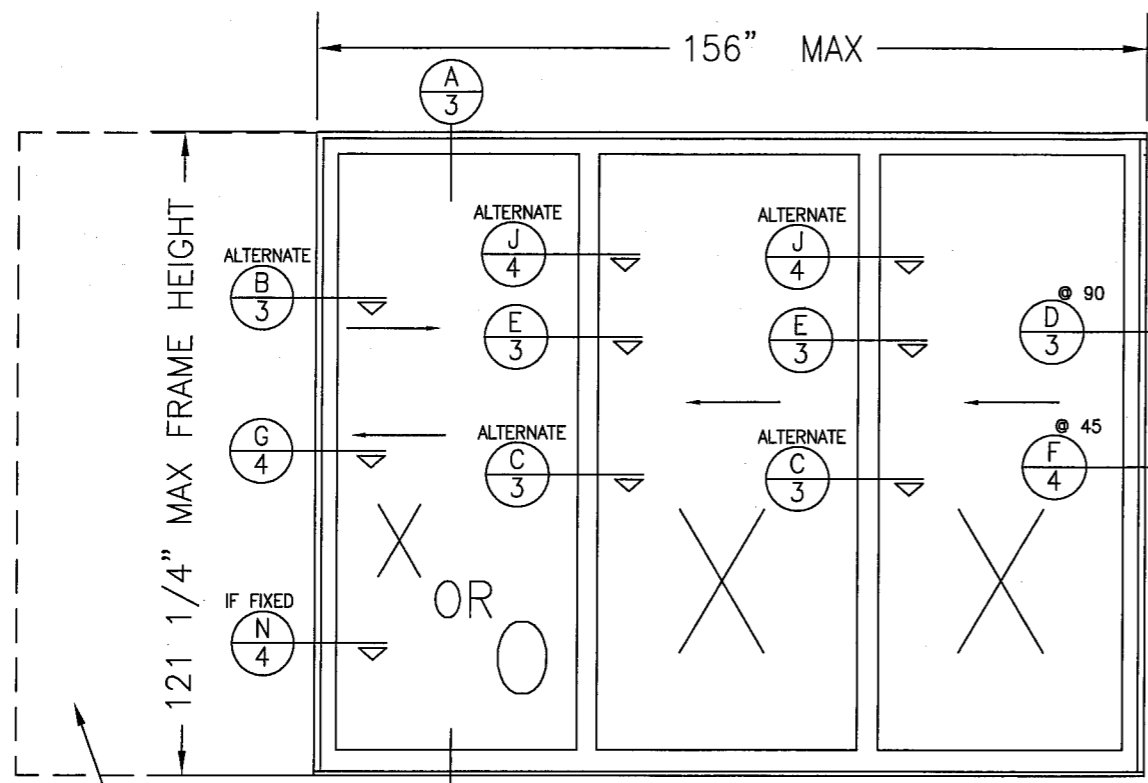
4 PANEL
XX - 45° OR 90° - XX
PXX - 45° OR 90° - XXP
XX - 45° OR 90° - XO
PXX - 45° OR 90° - XX
PXX - 45° OR 90° - XO



POCKET WALL
CONSTRUCTION UNDER
SEPERATE APPROVAL

2 PANEL
PX - 45° OR 90° - XP

DRAWN BY: R.L.R.	CHECKED BY: R.L.R.
PLOT: 1=32	DATE: 8-08-09
DATE 3-30-10	
BY RLR	
REVISION DESCRIPTION	COMMENTS
NO. 1	PER MDAD
NO. 2	
DRAWING TITLE PLAZA TITAN 50 SMI SLIDING GLASS DOORS	
MANUFACTURER INTL. IMPACT BUILDING PRODUCTS, LLC. HOME OF THE PLAZA DOOR 590'0 AUSTRALIAN AVE. SUITE 300 WEST PALM BEACH, FL 33407 561-578-5450	
CONSULTANTS CW Engineering, LLC 22893 Ashley Inn Terrace Ashburn, VA 20148 PHONE:(703) 726-1670 FAX:(703) 842-8216	
CERTIFICATION <i>Charles Williams</i> 5/21/2010 CHARLES WILLIAMS, P.E. P.E. NO. 50367	
DRAWING NO. T50-SMI	REV. A
SHEET NO. 7 OF 11	

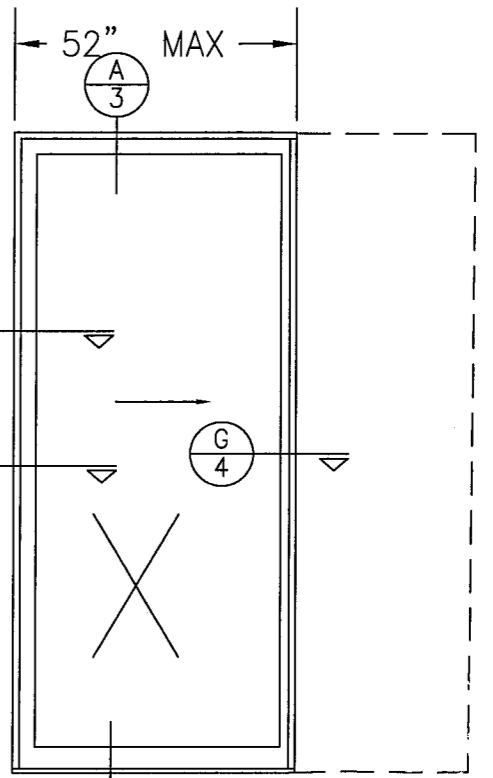
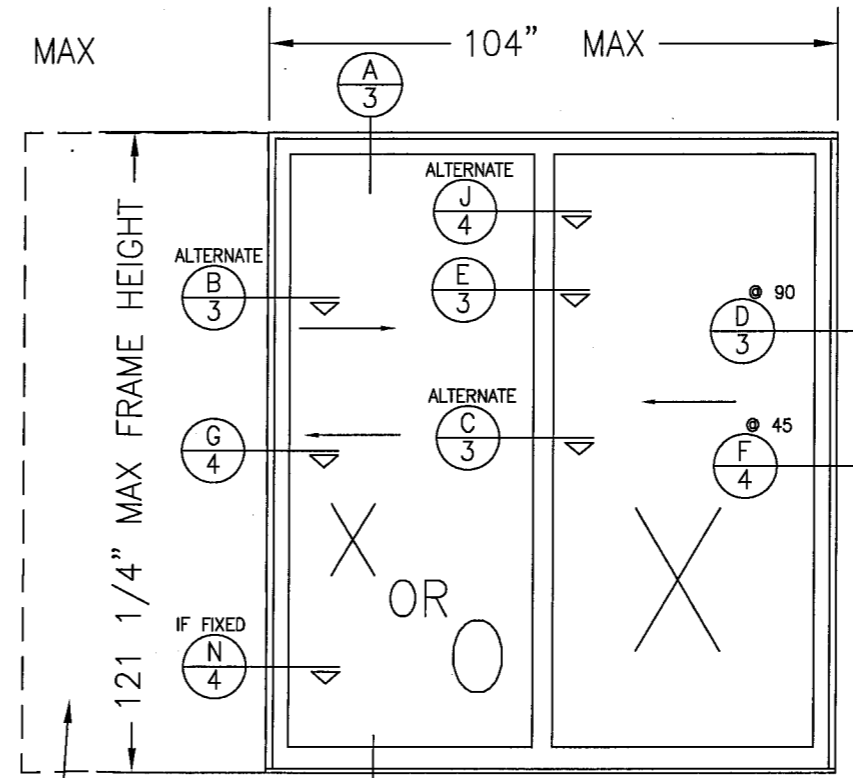
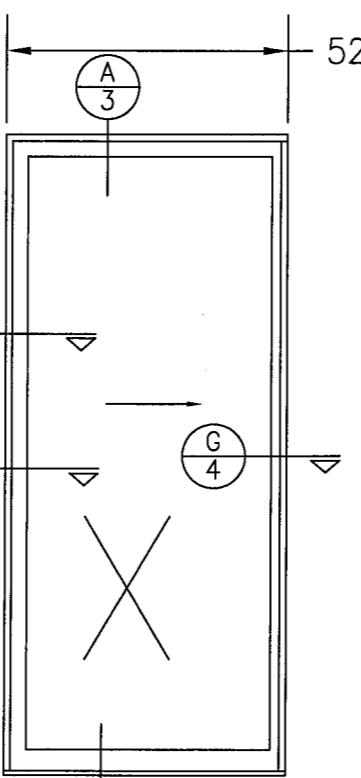
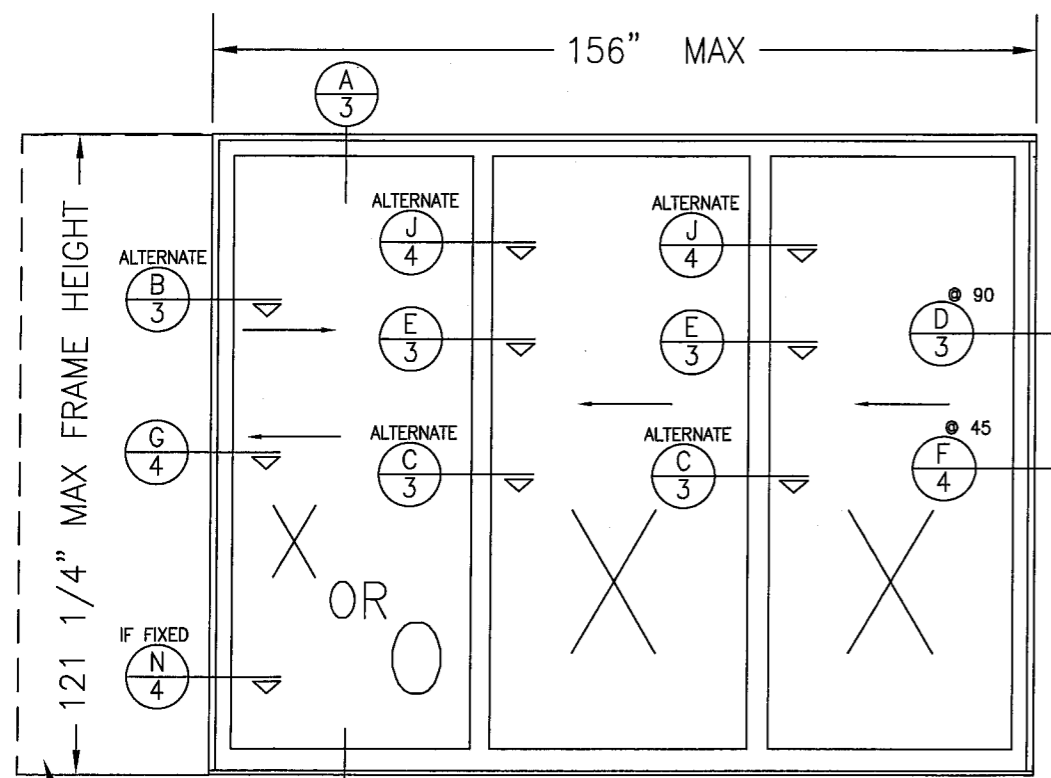


POCKET WALL
CONSTRUCTION UNDER
SEPERATE APPROVAL

POCKET WALL
CONSTRUCTION UNDER
SEPERATE APPROVAL

5 PANEL
 XXX - 45° OR 90° - XO PXXX - 45° OR 90° - XO OXX - 45° OR 90° - XO
 XXX - 45° OR 90° - XXP PXXX - 45° OR 90° - XXP OXX - 45° OR 90° - XXP
 XXX - 45° OR 90° - XX PXXX - 45° OR 90° - XX OXX - 45° OR 90° - XX

Approved as complying with the
Florida Building Code
Date July 27, 2010
NOA# 09-1215.02
Miami Dade Product Control
Division
By Isaac I. Gaudin



POCKET WALL
CONSTRUCTION UNDER
SEPERATE APPROVAL

4 PANEL
 XXX - 45° OR 90° - XP
 PXXX - 45° OR 90° - XP
 OXX - 45° OR 90° - XP

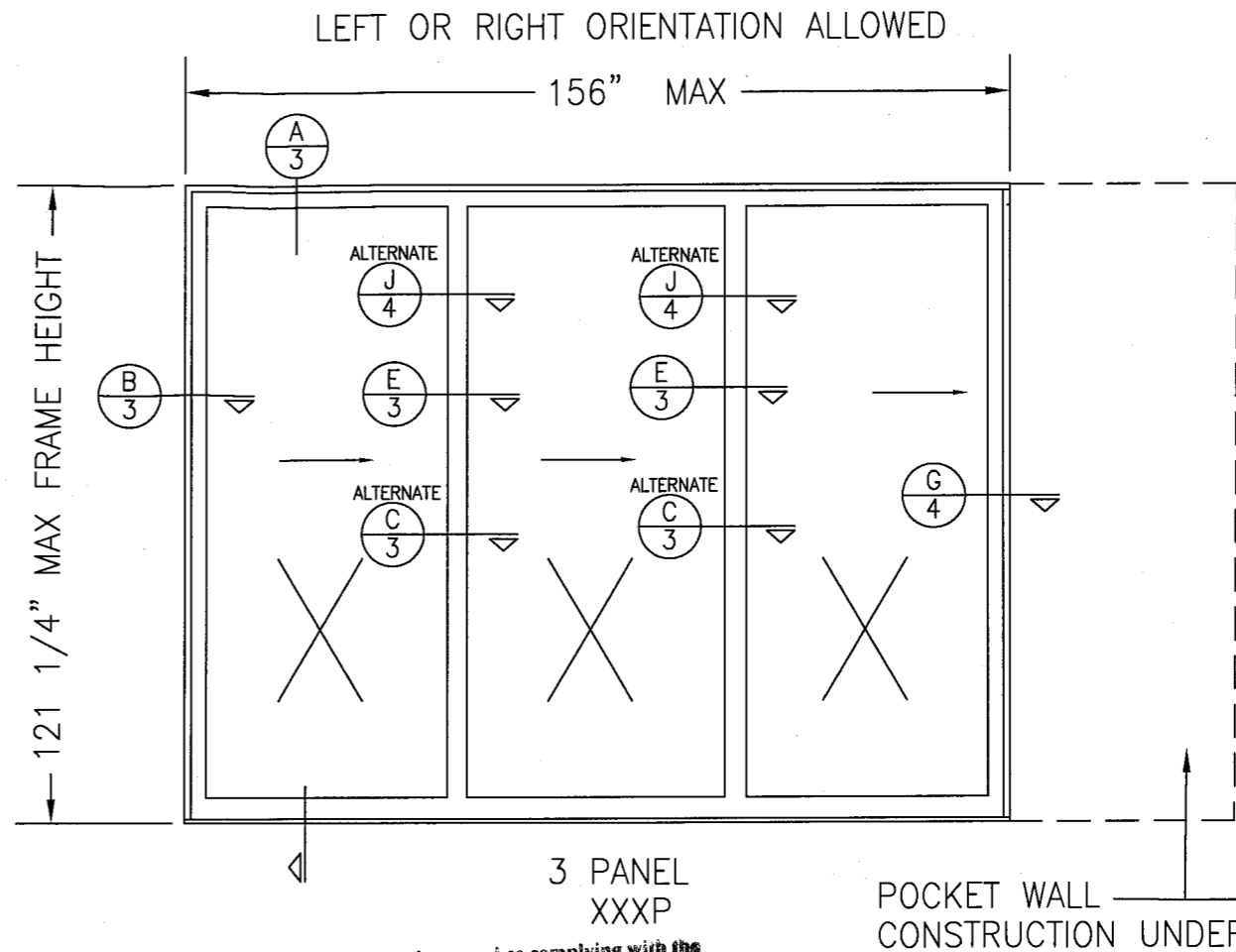
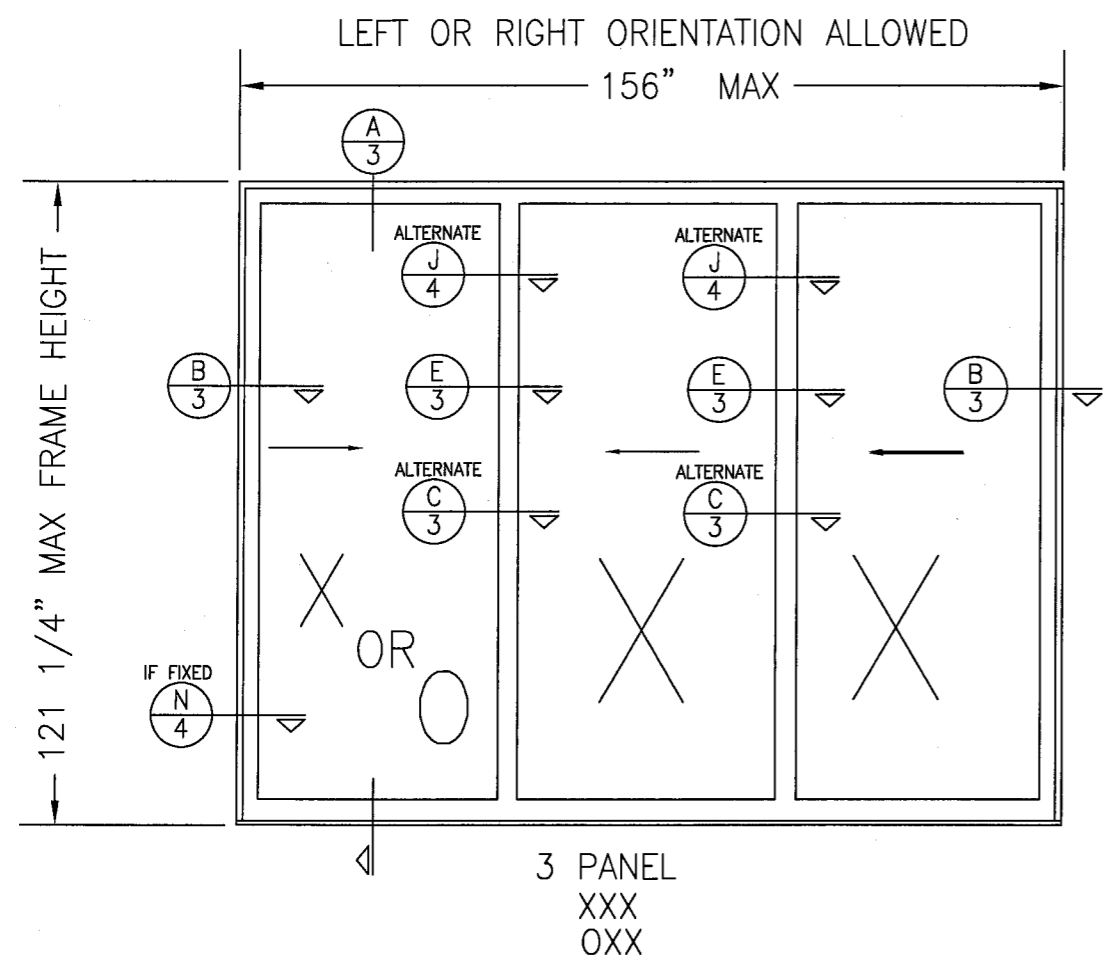
POCKET WALL
CONSTRUCTION UNDER
SEPERATE APPROVAL

3 PANEL
 XX - 45° OR 90° - XP
 PXX - 45° OR 90° - XP
 OX - 45° OR 90° - XP

LEFT OR RIGHT ORIENTATION ALLOWED

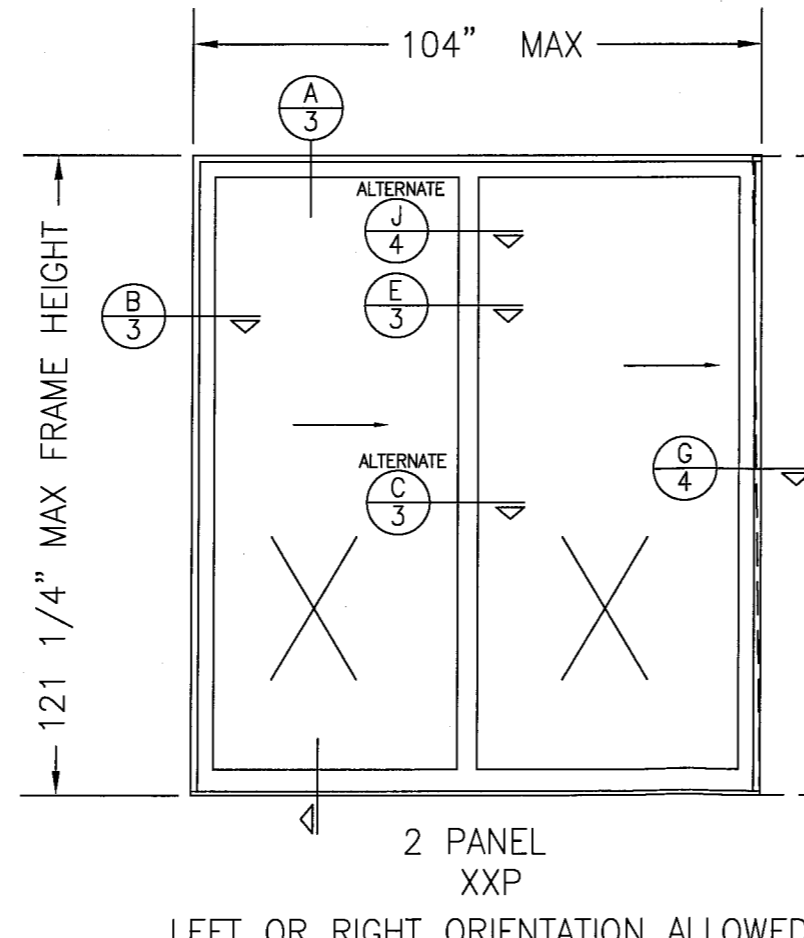
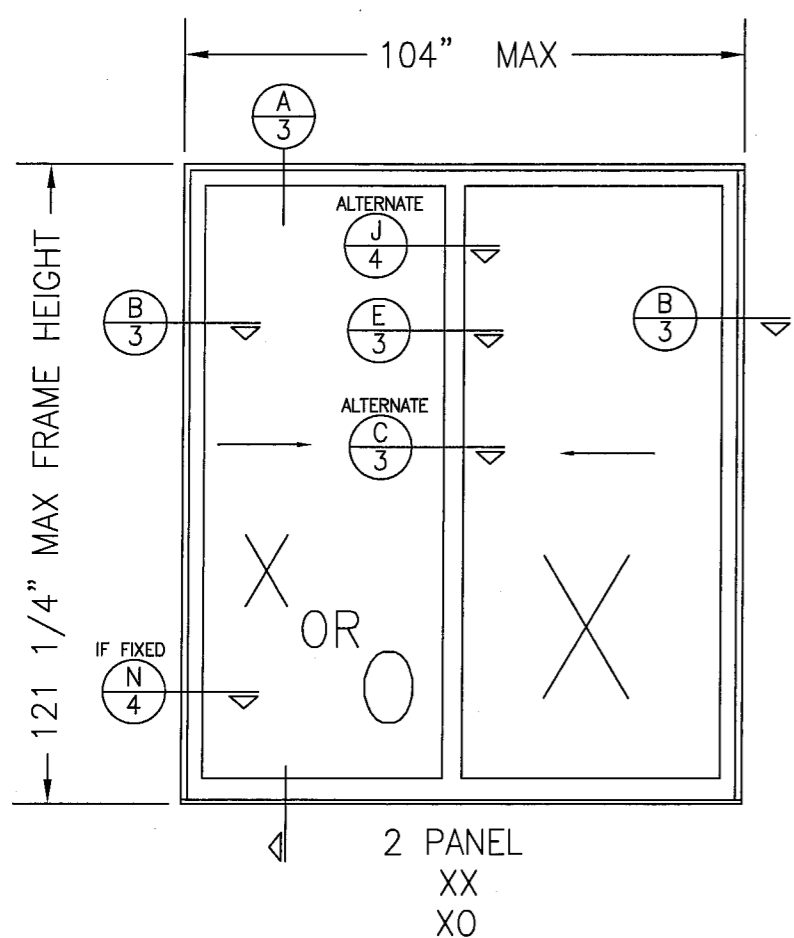
LEFT OR RIGHT ORIENTATION ALLOWED

DRAWN BY: R.L.R.		CHECKED BY: R.L.R.	
PLOT: 1=32		DATE: 8-08-09	
NO.	REVISION DESCRIPTION	BY	DATE
1	PER MDAD COMMENTS	RLR	3-30-10
2			
DRAWING TITLE PLAZA TITAN 50 SMI SLIDING GLASS DOORS			
CONSULTANTS CW Engineering, LLC 22893 Ashley Inn Terrace Ashburn, VA 20148 PHONE:(703) 726-1670 FAX:(703) 842-8216			
MANUFACTURER INTL. IMPACT BUILDING PRODUCTS, LLC. HOME OF THE PLAZA DOOR 5900 AUSTRALIAN AVE. SUITE 300 WEST PALM BEACH, FL 33407 561-578-5450			
CERTIFICATION <i>Charles Williams</i> 5/21/2010		CHARLES WILLIAMS, P.E. P.E. NO. 50367	
DRAWING NO. T50-SMI		REV. A	
SHEET NO. 8 OF 11			

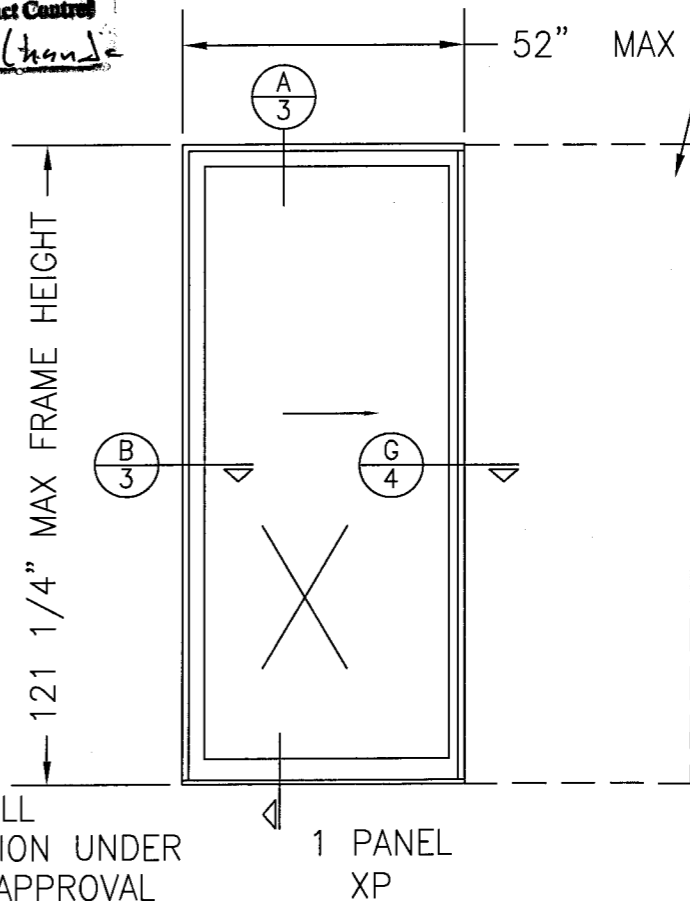


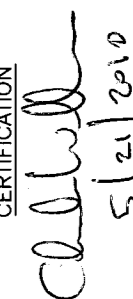
Approved as complying with the
Florida Building Code
Date July 07, 2010
NOA# 05-1215-02
Miami Dade Product Control
Division
By Chag 1. (hand)

POCKET WALL
CONSTRUCTION UNDER
SEPERATE APPROVAL



POCKET WALL
CONSTRUCTION UNDER
SEPERATE APPROVAL



DRAWING BY: R.L.R.		CHECKED BY: R.L.R.	
PLOT: 1=32		DATE: 8-08-09	
NO.	REVISION DESCRIPTION	BY	DATE
1	PER MDA COMMENTS	RLR	3-30-10
DRAWING TITLE: PLAZA TITAN 50 SMI SLIDING GLASS DOORS			
CONSULTANTS: CW Engineering, LLC		MANUFACTURER: INTL. IMPACT BUILDING PRODUCTS, LLC.	
22893 Ashley Inn Terrace Ashburn, VA 20148 PHONE: (703) 726-1670 FAX: (703) 842-8216		HOME OF THE PLAZA DOOR, SUITE 300 59070 AUSTRALIAN AVE. WEST PALM BEACH, FL 33407 561-578-5450	
CERTIFICATION	 5/21/2010 CHARLES WILLIAMS, P.E. P.E. NO. 50367		
DRAWING NO. T50-SMI	REV. A	SHEET NO. 9 OF 11	

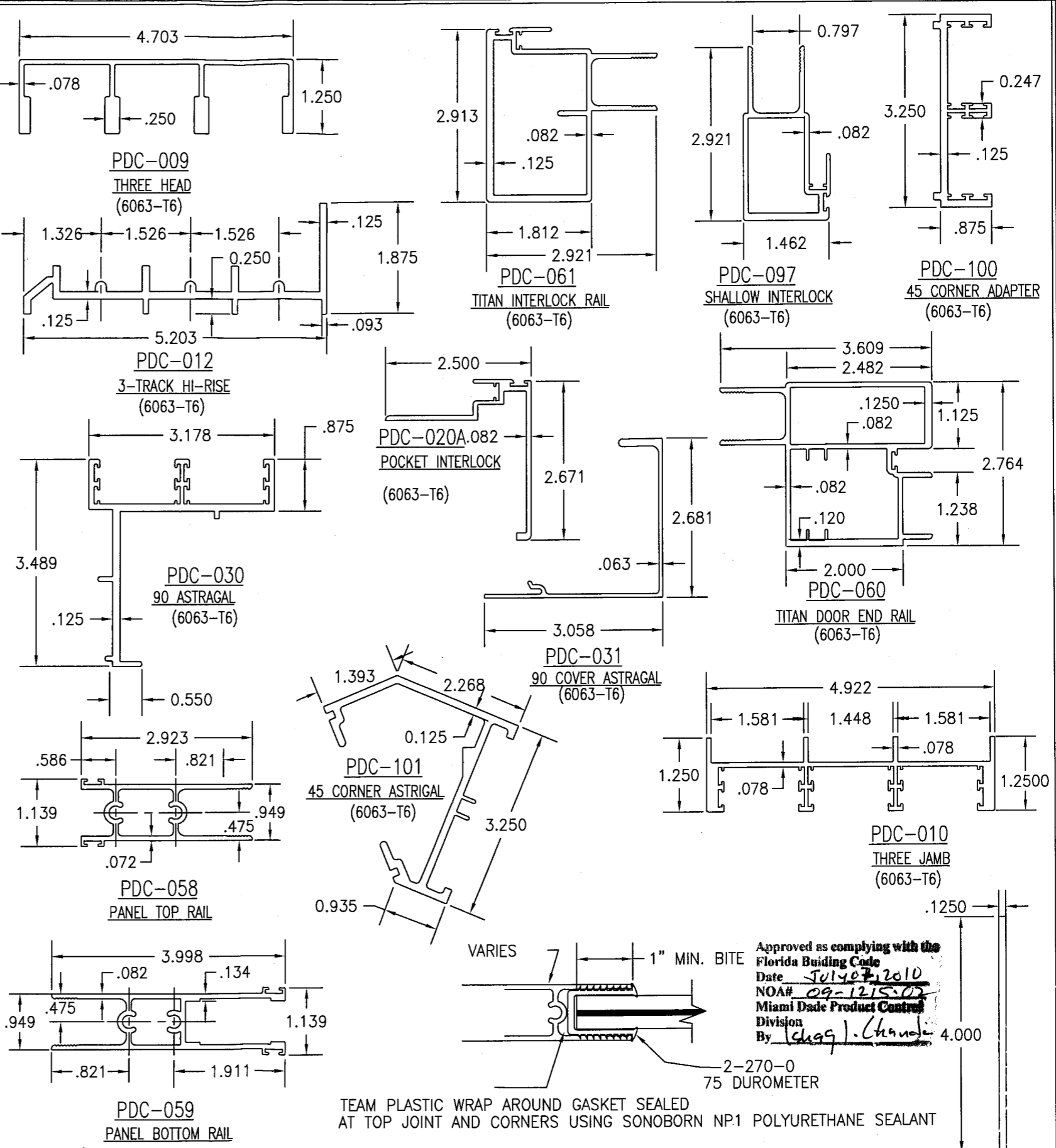
PART NO. DESCRIPTION MATERIAL LIST LOCATION

HARDWARE
 3-310-0 ADJUSTABLE ROLLER ASSEMBLY (IIBP) 2 @ EACH ROLLING PANEL.
 2-322-0 DEADLOCK - #1847-02 SS ADAMS RITE LOCKING RAIL OF MEETING PANELS.
 2-361-0 LOCK ESCUTCHEON - IIBP LOCKING RAIL OF MEETING PANELS.
 2-376-0 FLUSH BOLT - #3917PLZ BY TRIMCO LOCKING RAIL OF MEETING PANELS.
 2-500-0 DOOR PULL - #AM2806 ADAMS RITE LOCKING RAIL OF MEETING PANELS.
 3-001-0 LOCK KEEPER - SS IIBP MEETING RAIL.
 2-750-0 TOP ROD GUIDE TOP OF END RAILS FOR LOCK ROD SUPPORT

ACCESSORIES
 3-008-0 TRACK DRAIN PAN - IIBP SILL TRACK
 3-009-0 H.P. WEATHER TAB - IIBP TOP OF INTERLOCK RAILS - EXTERIOR
 7-070-0 3M 4905 VHB TAPE 3/4" WIDE FULL LENGTH SILL
 2-200-0 TITAN ENDRAIL CAP (IIBP) END RAIL TOPS
 2-202-0 TITAN INTERLOCK CAP (IIBP) INTERLOCK TOPS

FASTENERS
 2-007-0 NO. 14 X 1 1/4" SMS PH 2 PER DOOR PANEL CORNER
 2-010-0 NO. 12 X 2 1/2" PPH SS SMS 1 PER DOOR ROLLER
 2-019-0 NO. 8 X 1/2" SMS PH 3" FROM ENDS & 18" OC
 2-022-0 NO. 10 X 1 1/4" SMS FH VARIES - SEE DETAILS
 2-025-0 NO. 10-24 X 1/4" PFH UC SMS 2 PER FLUSHBOLT
 2-027-0 NO. 10-24 X 1 1/4" MS TYPE "F" FH 9" FROM EACH END ONLY
 2-038-0 NO. 8-32 X 1 1/2" MS 2 PER DEADLOCK
 2-040-0 NO. 8 X 1" SMS FH 9" FROM EACH END ONLY
 2-042-0 NO. 8 X 3/4" SMS PH VARIES - SEE DETAILS
 2-067-0 NO. 6-32 X 1/4 FHMS 2 PER DEADLOCK
 2-071-0 NO. 8 X 1 1/2" PFH SS PLASTITE SCREW 2 PER ESCUTCHEON

EXTRUSIONS
 PDC-009 3-HEAD HEAD TRAK
 PDC-010 3-JAMB FRAME JAMB
 PDC-012 3-TRACK HI-RISE SILL TRACK
 PDC-020A POCKET INTERLOCK POCKET CONDITION TO STRUCTURE
 PDC-030 90 DEGREE CORNER ASTRIGAL PANEL AT 90
 PDC-031 90 DEGREE CORNER COVER PANEL AT 90
 PDC-058 PANEL TOP RAIL ALL PANELS
 PDC-059 3 1/2" PANEL BOTTOM RAIL ALL PANELS
 PDC-060 TITAN DOOR SIDE RAIL MEETING/LOCKING RAILS
 PDC-061 TITAN INTERLOCK RAIL PANEL INTERLOCK RAILS
 PDC-085 4" HI-RISE ADAPTER SILL TRACK
 PDC-100 45 DEGREE CORNER ADAPTER PANEL AT 45 (ext) or (135 int)
 PDC-101 45 DEGREE CORNER ASTRIGAL PANEL AT 45 (ext) or (135 int)



Approved as complying with the Florida Building Code
 Date July 27, 2010
 NOA# 09-1215-02
 Miami Dade Product Control
 Division
 By Chas. Williams

TEAM PLASTIC WRAP AROUND GASKET SEALED AT TOP JOINT AND CORNERS USING SONOBORN NP1 POLYURETHANE SEALANT

SMALL MISSILE GLAZING DETAIL
 9/16" THICK LAMINATED GLASS (1/4" HS/
 .060 DUPONT BUTACITE PVB / 1/4" HS)

4.000

PDC-085
SILL RISER
(6063-T6)

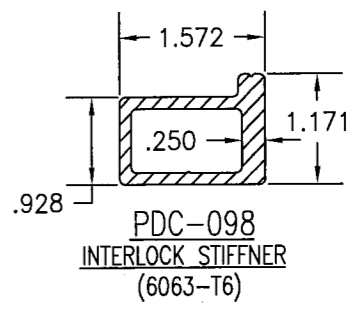
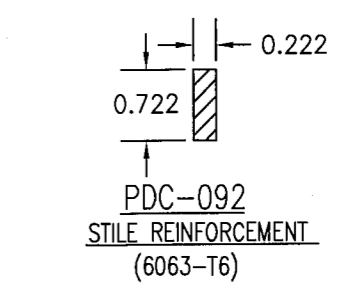
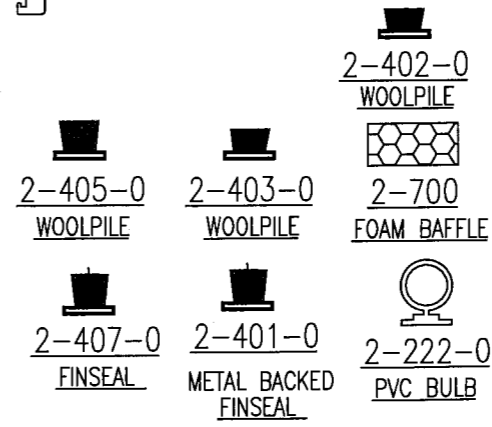
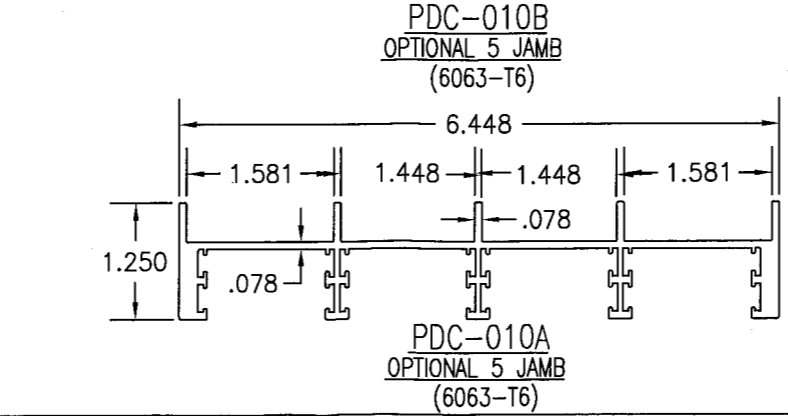
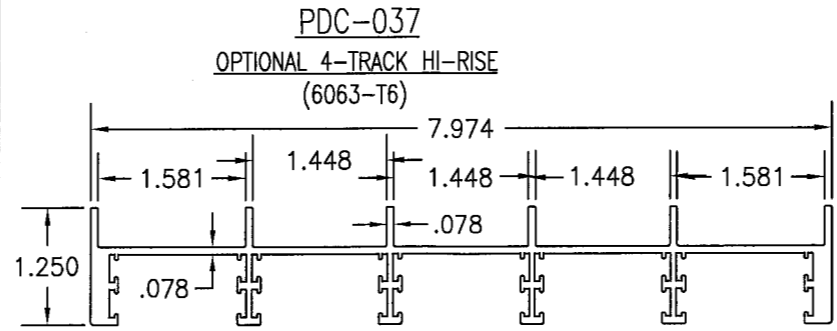
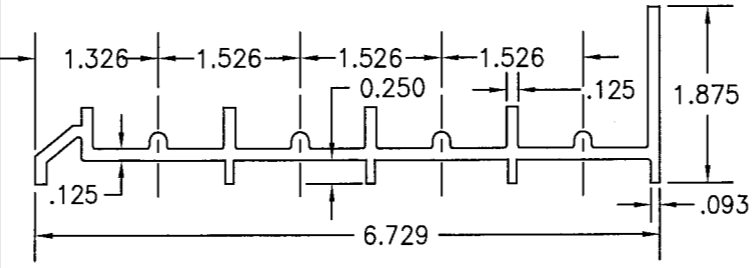
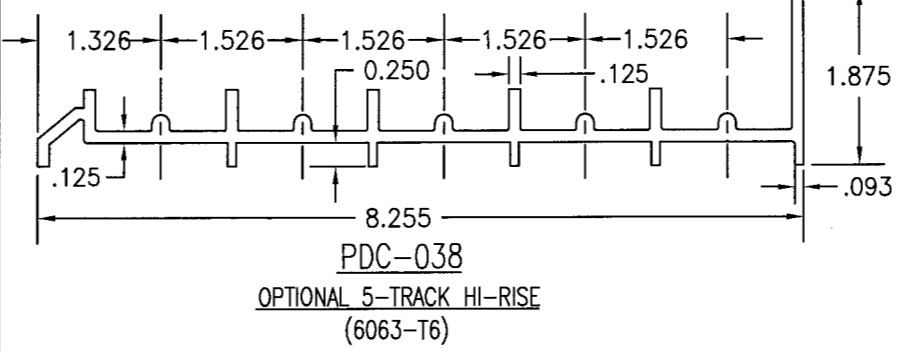
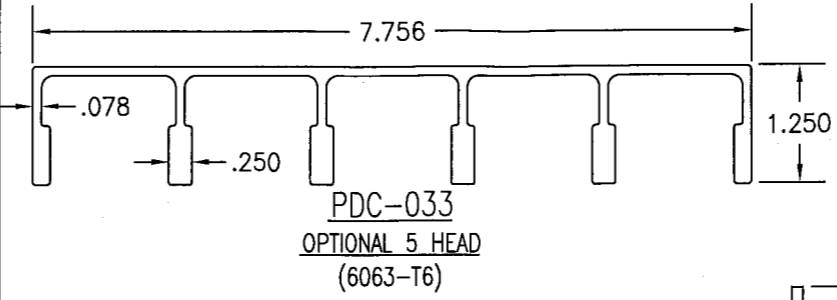
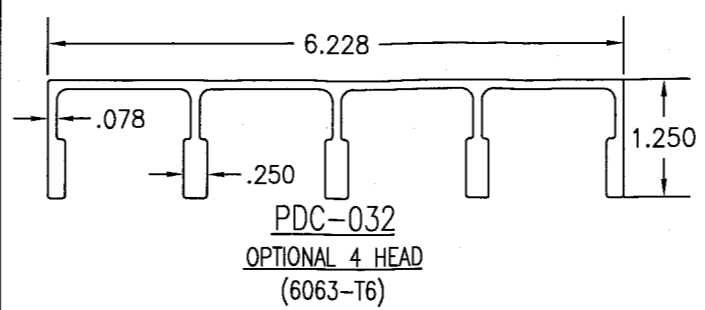
DRAWN BY: R.L.R.		CHECKED BY: R.L.R.	
PLOT: 1-32		DATE: 9-3-09	
NO.	REVISION DESCRIPTION	BY	DATE
1	MISC CORRECTIONS	RLR	7-29-09
2	POST DRAFT CORRECTIONS	RLR	8-17-09
3	MISC CORRECTIONS	RLR	8-18-09
4	MDAD CORRECTIONS	RLR	3-30-10
5	MDAD CORRECTIONS	RLR	5-11-10
6	MDAD CORRECTIONS	RLR	5-19-10
DRAWING TITLE: PLAZA TITAN 50 SMI SLIDING GLASS DOORS			
CONSULTANTS: CW Engineering, LLC			
MANUFACTURER: INTL. IMPACT BUILDING PRODUCTS, LLC. HOME OF THE PLAZA DOOR 5900 AUSTRALIAN AVE. SUITE 300 WEST PALM BEACH, FL 33407 561-578-5450			
22693 Ashley Inn Terrace Ashburn, VA 20148 PHONE: (703) 726-1670 FAX: (703) 842-8216			
CERTIFICATION: <u>Chas Williams</u> 5/21/2010 CHARLES WILLIAMS, P.E. P.E. NO. 50367			
DRAWING NO. T50-SMI		REV. A	
SHEET NO. 10		OF 11	

6/15/10

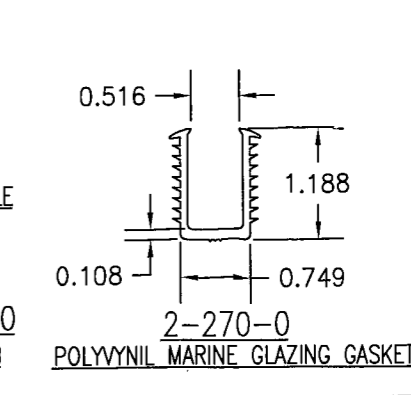
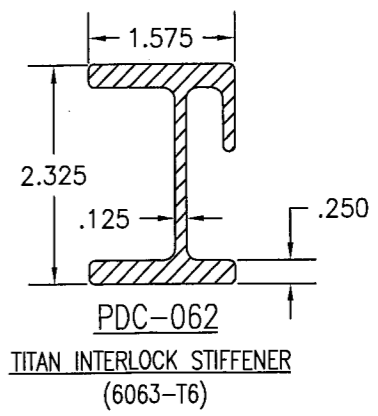
PART NO.	DESCRIPTION	MATERIAL LIST	LOCATION
WEATHERSTRIPPING & VINYL			
2-405-0	SCHLEGAL .270 WIDE POLY-BOND WOOLPILE #PB-8425-2211-0		FRAME JAMBS
2-402-0	SCHLEGAL .270 WIDE POLY-BOND WOOLPILE #PB-7525-6011-6		MEETING STILES
2-407-0	SCHLEGAL .270 WIDE POLY-BOND FINSEAL #PB-7531-6011-2		INSIDE AND OUTSIDE OF EACH DOOR PANEL TOP RAIL AGAINST FRAME HEAD SECTION.
2-700-0	H-O PRODUCTS RETICULATED FOAM 30 PPI OPEN CELL POLYETHER POLYURETHANE FOAM		EACH DOOR PANEL BOTTOM RAILS, INTERLOCK RAILS AND POCKET INTERLOCKS
2-401-0	SCHLEGAL .270 WIDE METAL BACKED FINSEAL #PB-7531-6012-2		WIND BAFFLE AT TOP AND BOTTOM 45 & 90
2-222-0	CENTRAL PLASTICS CO. PVC BULB (EV-277)		3" AT TOP & BOTOM INTERLOCK RAILS & MEETING STILES
2-270-0	CENTRAL PLASTICS CO. PVC (X-1842)		INTERLOCK RAILS, FRAME JAMBS, MEETING RAILS
2-403-0	SCHLEGAL .270 WIDE POLY-BOND WOOLPILE #PB-7527-6011-6		9/16" GLAZING VINYL.
			USED AT TOP ROD SUPPORT

REINFORCEMENTS			
PDC-062	TITAN INTERLOCK STIFFENER (FULL LENGTH OF STILE - 9")		PANEL INTERLOCK RAILS @ PDC-061
PDC-092	STILE REINFORCEMENT (12" LONG)		STILE END REINFORCEMENT @ TOP & BOTTOM OF PDC-061 INTERLOCKS WHEN PDC-062 IS USED ONLY NOT REQUIRED WHEN PDC-099 IS USED.
PDC-098	TITAN INTERLOCK STIFFENER (FULL LENGTH OF STILE)		PANEL INTERLOCK RAILS @ PDC-097

OPTIONAL EXTRUSIONS			
PDC-032	4-HEAD		HEAD TRAK
PDC-033	5-HEAD		HEAD TRAK
PDC-037	4-TRACK		SILL TRACK
PDC-038	5-TRACK		SILL TRACK
PDC-010A	4-JAMB		FRAME JAMB
PDC-010B	5-JAMB		FRAME JAMB



Approved as complying with the Florida Building Code
 Date July 07, 2010
 NOA# 09-1215.02
 Miami Dade Product Control
 Division
 By Shag L. Gault



DRAWN BY: R.L.R.	CHECKED BY: R.L.R.
PLOT: 1-32	DATE: 9-3-09
BY: RLR	DATE: 3-30-10
DESCRIPTION: MDAD CORRECTIONS	DATE: 5-11-10
NO. 1	DATE: 5-19-10
2	
3	

DRAWING TITLE: PLAZA TITAN 50 SMI SLIDING GLASS DOORS

MANUFACTURER: INTL. IMPACT BUILDING PRODUCTS, LLC.
 HOME OF THE PLAZA DOOR
 5900 AUSTRALIAN AVE. SUITE 300
 WEST PALM BEACH, FL 33407
 561-578-5450

CONSULTANTS: CW Engineering, LLC
 22693 Ashley Inn Terrace
 Ashburn, VA 20148
 PHONE: (703) 726-1670 FAX: (703) 842-8216

CERTIFICATION: Charles Williams 5/21/2010
 CHARLES WILLIAMS, P.E.
 P.E. NO. 50367

DRAWING NO. T50-SMI
 REV. A
 SHEET NO. 11 OF 11