



BUILDING CODE COMPLIANCE OFFICE (BCCO)
PRODUCT CONTROL DIVISION

MIAMI-DADE COUNTY, FLORIDA
METRO-DADE FLAGLER BUILDING
140 WEST FLAGLER STREET, SUITE 1603
MIAMI, FLORIDA 33130-1563
(305) 375-2901 FAX (305) 372-6339

www.miamidade.gov/buildingcode

NOTICE OF ACCEPTANCE (NOA)

Jeld-Wen, Inc.
3737 Lakeport Blvd.
Klamath Falls, OR 97601

SCOPE:

This NOA is being issued under the applicable rules and regulations governing the use of construction materials. The documentation submitted has been reviewed by Miami-Dade County Product Control Division and accepted by the Board of Rules and Appeals (BORA) to be used in Miami Dade County and other areas where allowed by the Authority Having Jurisdiction (AHJ).

This NOA shall not be valid after the expiration date stated below. The Miami-Dade County Product Control Division (In Miami Dade County) and/or the AHJ (in areas other than Miami Dade County) reserve the right to have this product or material tested for quality assurance purposes. If this product or material fails to perform in the accepted manner, the manufacturer will incur the expense of such testing and the AHJ may immediately revoke, modify, or suspend the use of such product or material within their jurisdiction. BORA reserves the right to revoke this acceptance, if it is determined by Miami-Dade County Product Control Division that this product or material fails to meet the requirements of the applicable building code.

This product is approved as described herein, and has been designed to comply with the Florida Building Code, including the High Velocity Hurricane Zone.

DESCRIPTION: Clipped Aluminum Tube Mullion – L.M.I. & S.M.I.

APPROVAL DOCUMENT: Drawing No. **10-JWN-0001**, titled "Clipped Aluminum Tube Mullion", sheets 1 through 6 of 6, dated 03/09/10, with last revision dated 08/10/10, prepared by Engineering Express, signed and sealed by Frank L. Bennardo, P.E., bearing the Miami-Dade County Product Control Approval stamp with the Notice of Acceptance number and approval date by the Miami-Dade County Product Control Division.

MISSILE IMPACT RATING: Large and Small Missile Impact Resistant

LABELING: Each unit shall bear a permanent label with the manufacturer's name:

Jeld-Wen, Inc.
355 Center Court
Venice, Florida 34285

and the following statement: "**Miami-Dade County Product Control Approved**".

RENEWAL of this NOA shall be considered after a renewal application has been filed and there has been no change in the applicable building code negatively affecting the performance of this product.

TERMINATION of this NOA will occur after the expiration date or if there has been a revision or change in the materials, use, and/or manufacture of the product or process. Misuse of this NOA as an endorsement of any product, for sales, advertising or any other purposes shall automatically terminate this NOA. Failure to comply with any section of this NOA shall be cause for termination and removal of NOA.

ADVERTISEMENT: The NOA number preceded by the words Miami-Dade County, Florida, and followed by the expiration date may be displayed in advertising literature. If any portion of the NOA is displayed, then it shall be done in its entirety.

INSPECTION: A copy of this entire NOA shall be provided to the user by the manufacturer or its distributors and shall be available for inspection at the job site at the request of the Building Official.

This NOA consists of this page 1 and evidence page E-1, as well as approval document mentioned above. The submitted documentation was reviewed by **Carlos M. Utrera, P.E.**

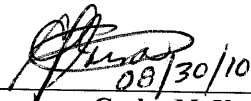


[Signature]
08/30/10

NOA No. 10-0406.03
Expiration Date: September 22, 2015
Approval Date: September 22, 2010
Page 1

NOTICE OF ACCEPTANCE: EVIDENCE SUBMITTED

- A. DRAWINGS**
1. Manufacturer's die drawings and sections.
 2. Drawing No. **10-JWN-0001**, titled "Clipped Aluminum Tube Mullion", sheets 1 through 6 of 6, dated 03/09/10, with last revision dated 08/10/10, prepared by Engineering Express, signed and sealed by Frank L. Bennardo, P.E.
- B. TESTS**
1. Test reports on 1) Uniform Static Air Pressure Test, Loading per FBC TAS 202-94
2) Large Missile Impact Test per FBC, TAS 201-94
3) Cyclic Wind Pressure Loading per FBC, TAS 203-94
along with marked-up drawings and installation diagram of Jeld-Wen Premium Atlantic Vinyl Fixed Windows (8300) mullied together with aluminum tube mullion, prepared by National Certified Testing Laboratories, Test Report No. **NCTL-210-3383-2**, dated 10/22/07, signed and sealed by Gerard J. Ferrara, P.E.
 2. Test reports on 1) Uniform Static Air Pressure Test, Loading per FBC TAS 202-94
2) Large Missile Impact Test per FBC, TAS 201-94
3) Cyclic Wind Pressure Loading per FBC, TAS 203-94
along with marked-up drawings and installation diagram of Jeld-Wen Premium Atlantic Vinyl Fixed Windows (8300) mullied together with aluminum tube mullion, prepared by National Certified Testing Laboratories, Test Report No. **NCTL-210-3383-2A**, dated 06/28/10, signed and sealed by Gerard J. Ferrara, P.E.
- C. CALCULATIONS**
1. Anchor verification calculations and structural analysis, complying with FBC-2007, prepared by Engineering Express, dated 03/30/10, signed and sealed by Frank L. Bennardo, P.E.
- D. QUALITY ASSURANCE**
1. Miami Dade Building Code Compliance Office (BCCO)
- E. MATERIAL CERTIFICATIONS**
1. None.
- F. STATEMENTS**
1. Statement letter of 2007 FBC conformance, issued by Engineering Express, dated March 25, 2010, signed and sealed by Frank L. Bennardo, P.E.
 2. Statement letter of no financial interest, issued by Engineering Express, dated March 25, 2010, signed and sealed by Frank L. Bennardo, P.E.



Carlos M. Utrera, P.E.
Product Control Examiner
NOA No. 10-0406.03

Expiration Date: September 22, 2015
Approval Date: September 22, 2010

CLIPPED ALUMINUM TUBE MULLION

LARGE AND SMALL MISSILE IMPACT RESISTANT

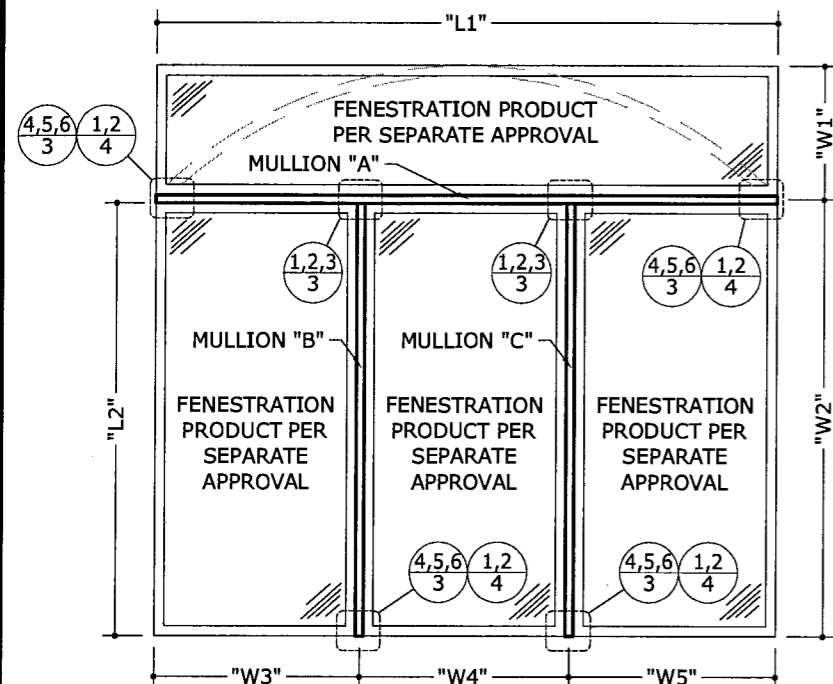
FRANK L. BENNARDO, P.E.
PE0046549

08/16/2010

ENGINEERING EXPRESS

160 SW 12th AVENUE, #106
DEERFIELD BEACH, FL 33442
PH: (954) 354-0660 FAX: (954) 354-0443
WWW.ENGEXP.COM

CERT. OF AUTH. #9885
A FRANK L. BENNARDO, P.E., INC. INNOVATION

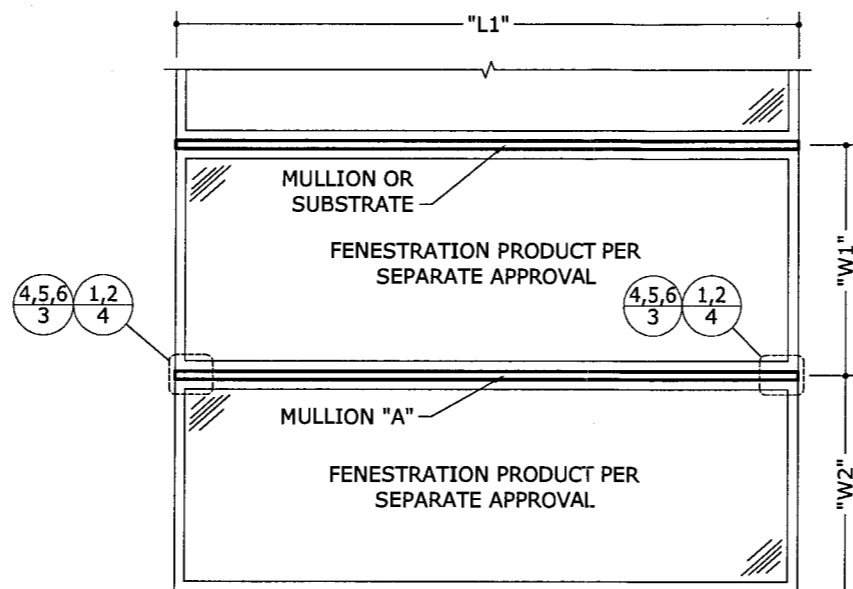


NOTES:

- NUMBER OF FENESTRATION PRODUCTS UNDERNEATH TRANSOM MAY BE UNLIMITED, PROVIDED THAT MULLION LIMITATIONS NOTED HEREIN ARE NOT EXCEEDED.
- ANCHORAGE OF FENESTRATION PRODUCTS TO MULLIONS SHALL BE PER SEPARATE APPROVAL.
- ALLOWABLE DESIGN PRESSURES SHALL BE DETERMINED FROM DESIGN SCHEDULES.
- MULLION SPANS AND TRIBUTARY WIDTHS SHALL BE DETERMINED AS FOLLOWS:
 - MULLION "A":
 - MULLION SPAN = L1
 - TRIBUTARY WIDTH = $(W1 + W2) / 2$
 - MULLION "B":
 - MULLION SPAN = L2
 - TRIBUTARY WIDTH = $(W3 + W4) / 2$
 - MULLION "C":
 - MULLION SPAN = L2
 - TRIBUTARY WIDTH = $(W4 + W5) / 2$

1 MULLIONED FENESTRATION PRODUCTS WITH TRANSOM
1 N.T.S. EXTERIOR ELEV.

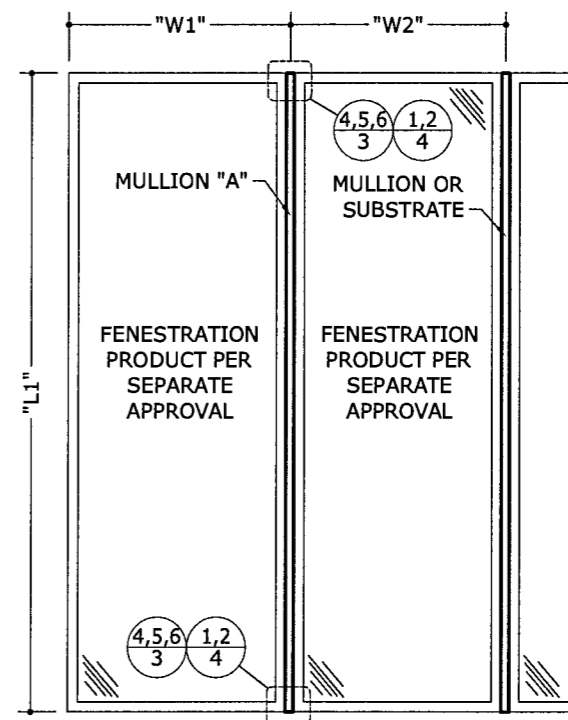
NOTE: MULLION DESIGNATIONS (MULLION 'A', MULLION 'B' AND MULLION 'C') PROVIDED IN DETAILS 1/1, 2/1, AND 3/1 ARE PROVIDED ONLY TO ILLUSTRATE THE DETERMINATION OF MULLION SPANS AND TRIBUTARY WIDTHS. ALL MULLIONS SHOWN IN THE ABOVE REFERENCED DETAILS MAY BE ANY MULLION APPROVED HEREIN.



NOTES:

- UNLIMITED NUMBER OF FENESTRATION PRODUCTS MAY BE MULLIONED TOGETHER AS SHOWN, PROVIDED THAT MULLION LIMITATIONS NOTED HEREIN ARE NOT EXCEEDED.
- ANCHORAGE OF FENESTRATION PRODUCTS TO MULLIONS SHALL BE PER SEPARATE APPROVAL.
- ALLOWABLE DESIGN PRESSURES SHALL BE DETERMINED FROM DESIGN SCHEDULES.
- MULLION SPANS AND TRIBUTARY WIDTHS SHALL BE DETERMINED AS FOLLOWS:
 - MULLION "A":
 - MULLION SPAN = L1
 - TRIBUTARY WIDTH = $(W1 + W2) / 2$

2 FENESTRATION PRODUCTS MULLIONED VERTICALLY
1 N.T.S. EXTERIOR ELEV.



NOTES:

- UNLIMITED NUMBER OF FENESTRATION PRODUCTS MAY BE MULLIONED TOGETHER AS SHOWN, PROVIDED THAT MULLION LIMITATIONS NOTED HEREIN ARE NOT EXCEEDED.
- ANCHORAGE OF FENESTRATION PRODUCTS TO MULLIONS SHALL BE PER SEPARATE APPROVAL.
- ALLOWABLE DESIGN PRESSURES SHALL BE DETERMINED FROM DESIGN SCHEDULES.
- MULLION SPANS AND TRIBUTARY WIDTHS SHALL BE DETERMINED AS FOLLOWS:
 - MULLION "A":
 - MULLION SPAN = L1
 - TRIBUTARY WIDTH = $(W1 + W2) / 2$

3 FENESTRATION PRODUCTS MULLIONED HORIZONTALLY
1 N.T.S. EXTERIOR ELEV.

GENERAL NOTES

- THE SYSTEM DESCRIBED HEREIN HAS BEEN DESIGNED AND TESTED IN ACCORDANCE WITH THE 2007 FLORIDA BUILDING CODE, FOR USE WITHIN AND OUTSIDE THE HIGH VELOCITY HURRICANE ZONE, PER TAS 201 / 202 / 203 AND THE 2005 ALUMINUM DESIGN MANUAL.
- NO 33-1/3% INCREASE IN ALLOWABLE STRESS HAS BEEN USED IN THE DESIGN OF THIS SYSTEM. WIND LOAD DURATION FACTOR Cd=1.6 HAS BEEN USED FOR WOOD ANCHOR DESIGN.
- POSITIVE AND NEGATIVE DESIGN PRESSURES CALCULATED FOR USE WITH THIS SYSTEM SHALL BE DETERMINED BY OTHERS ON A JOB-SPECIFIC BASIS IN ACCORDANCE WITH THE GOVERNING CODE.
- THE SYSTEM DETAILED HEREIN IS GENERIC AND DOES NOT PROVIDE INFORMATION FOR A SPECIFIC SITE. FOR SITE CONDITIONS DIFFERENT FROM THE CONDITIONS DETAILED HEREIN, A LICENSED ENGINEER OR REGISTERED ARCHITECT SHALL PREPARE SITE SPECIFIC DOCUMENTS FOR USE IN CONJUNCTION WITH THIS DOCUMENT.
- PERMIT HOLDER SHALL VERIFY THE ADEQUACY OF THE EXISTING STRUCTURE TO WITHSTAND SUPERIMPOSED LOADS. WOOD BUCKS (BY OTHERS) SHALL BE ANCHORED PROPERLY TO TRANSFER LOADS TO THE EXISTING STRUCTURE.
- ALL EXTRUSIONS SHALL BE 6063-T6 ALUMINUM ALLOY, UNLESS NOTED OTHERWISE.

- ALL FENESTRATION PRODUCTS TO BE USED WITH THESE MULLIONS SHALL MEET ALL APPLICABLE CODE REQUIREMENTS, e.g. WIND LOAD RESISTANCE, AIR & WATER INFILTRATION, FORCED ENTRY, SAFEGUARDS, ETC.
- TOP & BOTTOM DETAILS SHOWN MAY BE INTERCHANGED AS FIELD CONDITIONS DICTATE. MULLIONS MAY BE MOUNTED VERTICALLY OR HORIZONTALLY AS APPLICABLE.
- ANCHORS SHALL BE INSTALLED IN ACCORDANCE WITH MANUFACTURERS' RECOMMENDATIONS.
- WOOD HOST STRUCTURE SHALL BE "SOUTHERN PINE" G=0.55 OR GREATER DENSITY.
- MINIMUM ANCHOR EMBEDMENT SHALL BE AS NOTED IN HEREIN. MINIMUM EMBEDMENT AND EDGE DISTANCE EXCLUDES STUCCO, FOAM, BRICK, AND OTHER WALL FINISHES.
- MULLIONS SHOWN HEREIN ARE LARGE MISSILE IMPACT RESISTANT. VERIFY IMPACT RESISTANCE OF FENESTRATION PRODUCTS TO BE USED WITH THESE MULLIONS.
- MULLIONS SHOWN HEREIN MAY BE USED IN LARGE MISSILE IMPACT, SMALL MISSILE IMPACT, AND NON-IMPACT APPLICATIONS.
- ALL STEEL IN CONTACT WITH ALUMINUM SHALL BE PAINTED OR PLATED.

Approved as complying with the Florida Building Code
Date 09/22/2010
NOA# 10-0906.03
Miami Dade Product Control Division
By [Signature]

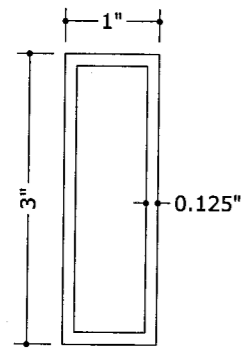
DRWN	CHKD	DATE
KL	FLB	03/09/10
	FLB	08/10/10

REMARKS
INIT ISSUE
REV. PER BCCO COMMENT

10-JWN-0001
SCALE: 1/8" = 1'-0"
PAGE DESCRIPTION:

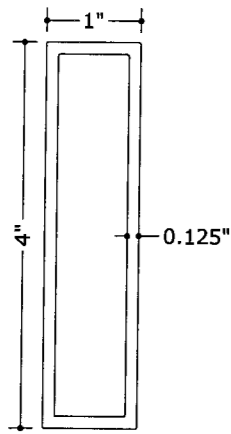
F:\01 Project Files\Jeld-Wen (JWN)\2010\10-JWN-0001 Clipped Tube Mull (NOA)\10-JWN-0001_01c Clipped Alum Tube Mull (NOA).dwg

08/16/2010 - 5:44pm keithl



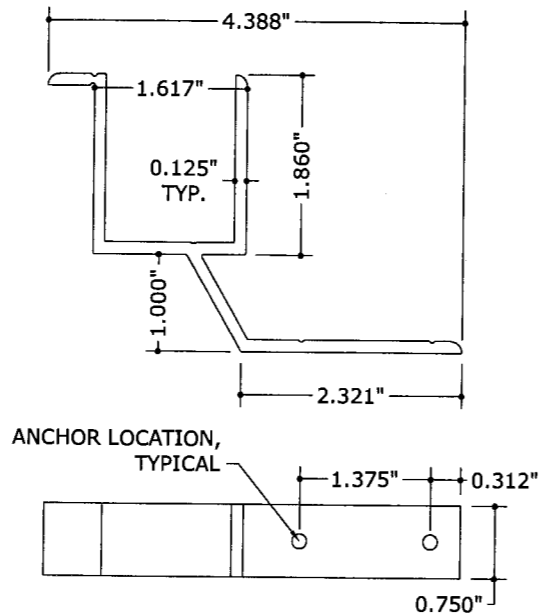
$I_x = 0.95 \text{ in}^4$
 $S_x = 0.63 \text{ in}^4$

1 1"x3" MULLION
6" = 1'-0" 6063-T6 ALUM.



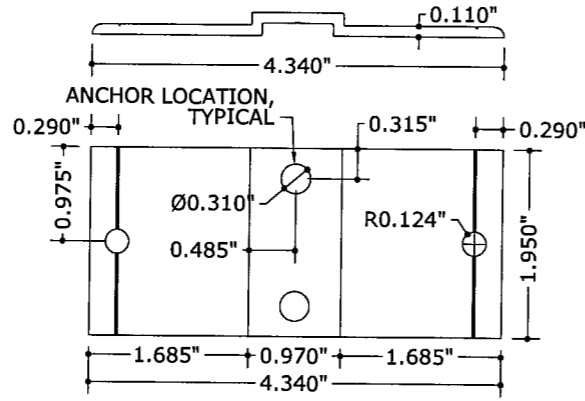
$I_x = 2.04 \text{ in}^4$
 $S_x = 1.02 \text{ in}^4$

2 1"x4" MULLION
6" = 1'-0" 6063-T6 ALUM.



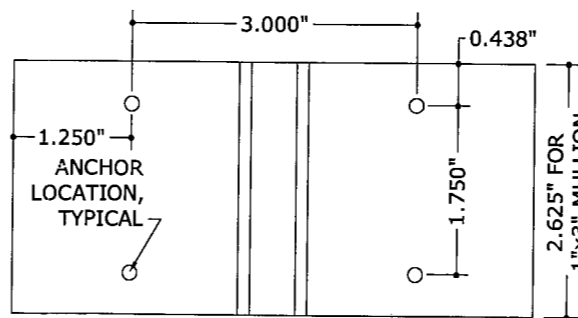
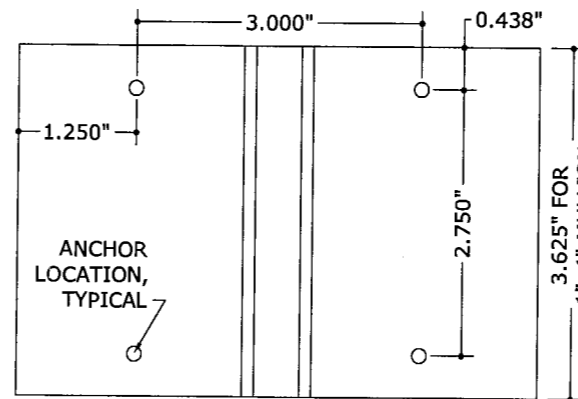
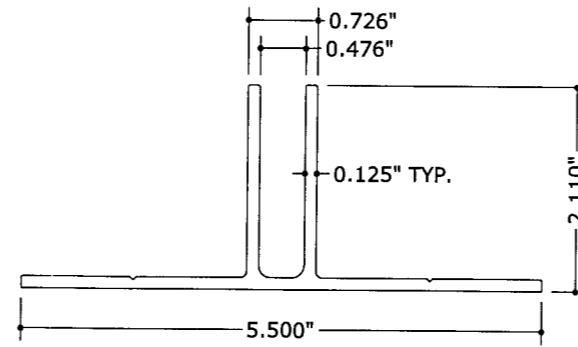
NOTE: 'GOAL-POST' CLIP SHALL NOT BE USED FOR ANCHORAGE TO CONCRETE OR HOLLOW CONCRETE BLOCK.

3 'GOAL-POST' CLIP
6" = 1'-0" 6063-T6 ALUM.

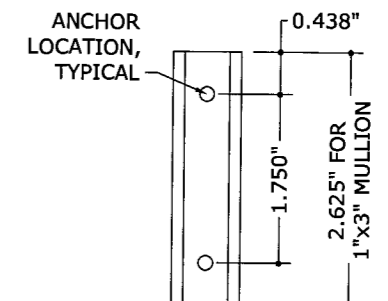
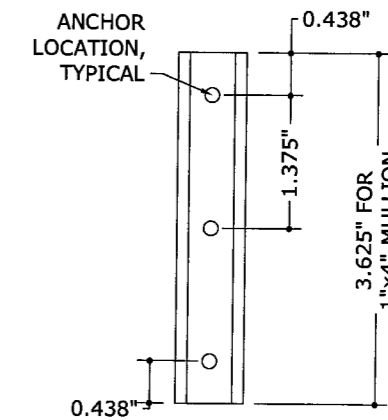
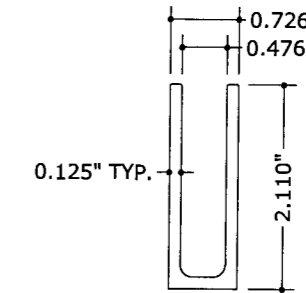


NOTE: 'GOAL-POST' CLIP SHALL NOT BE USED FOR ANCHORAGE TO CONCRETE OR HOLLOW CONCRETE BLOCK.

4 'GOAL-POST' CLIP PLATE
6" = 1'-0" 6063-T6 ALUM.



5 T-CLIP
6" = 1'-0" 6063-T6 ALUM.



6 C-CLIP
6" = 1'-0" 6063-T6 ALUM.

Approved as complying with the
Florida Building Code
Date 08/22/2010
NOA# 10-0406.03
Miami Dade Product Control
Division
By *[Signature]*

FRANK L. BENNARDO, P.E.
PE0046549
08/16/2010
ENGINEERING EXPRESS
160 SW 12th AVENUE, #106
DEERFIELD BEACH, FL 33442
Ph: (954) 354-0660 Fax: (954) 354-0443
WWW.ENGEXP.COM
CERT. OF AUTH. #9885
A FRANK L. BENNARDO, P.E., INC. INNOVATION

JELD-WEN
355 CENTER COURT
VENICE, FL 34285
PHONE: (941) 497 - 1984
CLIPPED ALUMINUM TUBE MULLION
LARGE MISSILE IMPACT RESISTANT
MIAMI-DADE NOTICE OF ACCEPTANCE

REMARKS	DRWN	CHKD	DATE
INIT ISSUE	KL	FLB	09/09/10
REV. PER BCCO COMMENT	KL	FLB	08/10/10

10-JWN-0001

SCALE: 1/16" = 1'-0"

PAGE DESCRIPTION:

08/16/2010

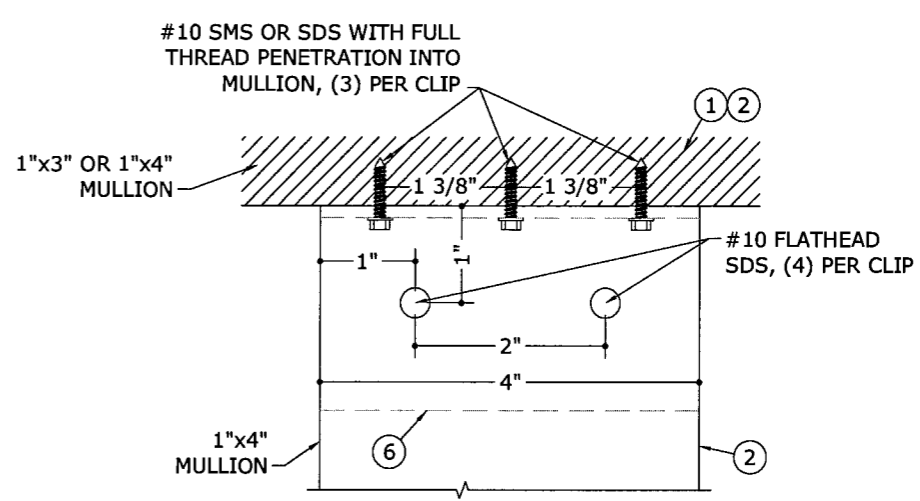
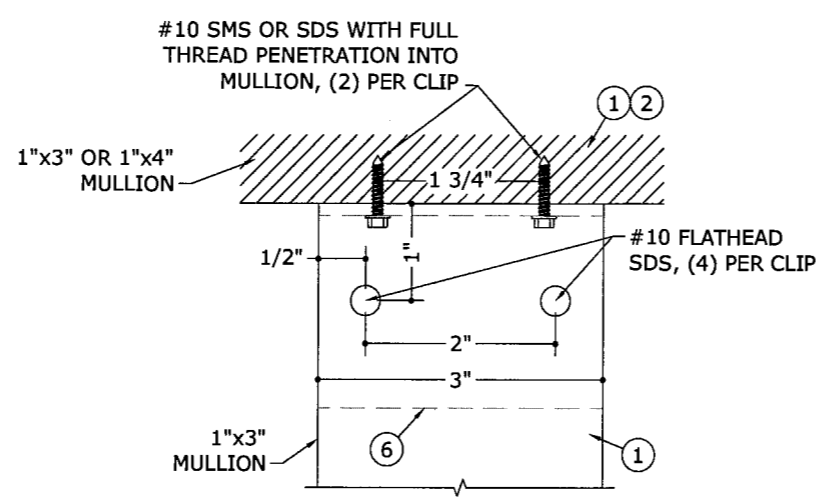
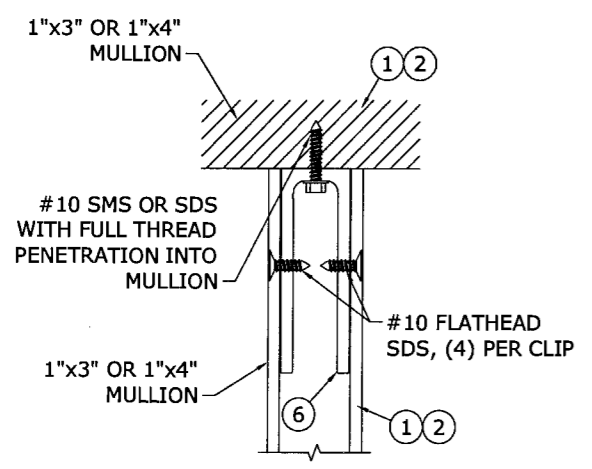
ENGINEERING EXPRESS
160 SW 12th AVENUE, #106
DEERFIELD BEACH, FL 33442
Ph: (954) 354-0660 Fax: (954) 354-0443
WWW.ENGEXP.COM
CERT OF AUTH #9885
A FRANK L. BENNARDO, P.E., INC. INNOVATION

JELDWEN
355 CENTER COURT
VENICE, FL 34285
PHONE: (941) 497 - 1984
CLIPPED ALUMINUM TUBE MULLION
LARGE MISSILE IMPACT RESISTANT
MIAMI-DADE NOTICE OF ACCEPTANCE

REMARKS	DATE	DRWN	CHKD
INIT ISSUE	03/09/10	KL	FLB
REV. PER BCCO COMMENT	08/10/10	KL	FLB

10-JWN-0001
SCALE: 01
PAGE DESCRIPTION:

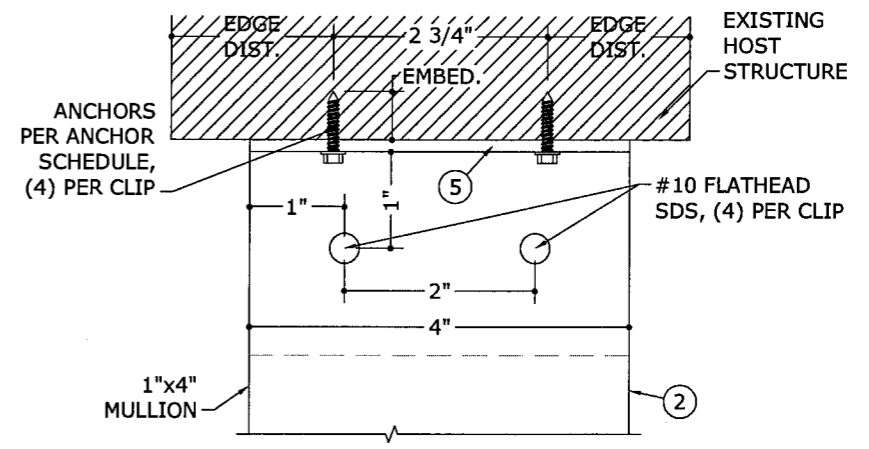
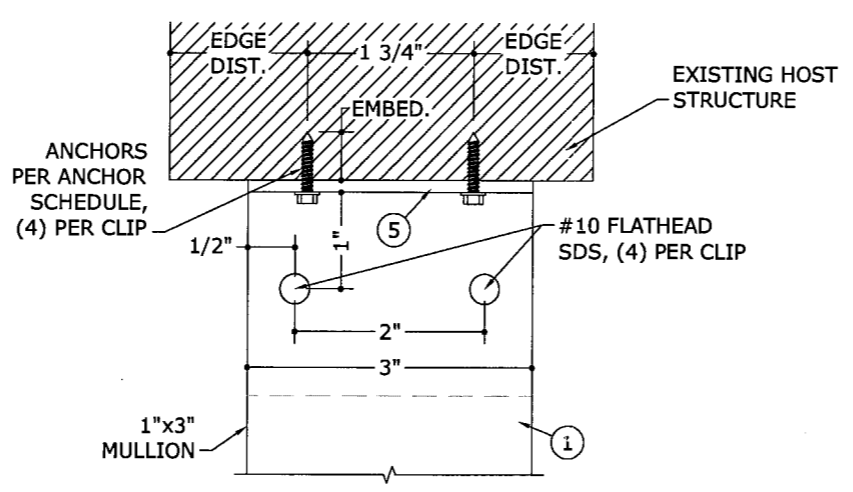
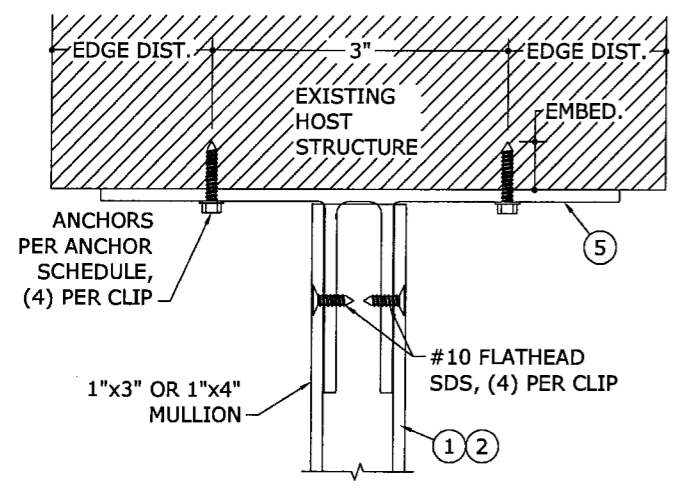
3



1
3
TYPICAL ATTACHMENT AT MULLION INTERSECTION W/ C-CLIP
N.T.S. VERT SECTION

2
3
1"X3" MULLION ATTACHMENT AT MULLION INTERSECTION W/ C-CLIP
N.T.S. SIDE ELEV.

3
3
1"X4" MULLION ATTACHMENT AT MULLION INTERSECTION W/ C-CLIP
N.T.S. SIDE ELEV.



4
3
TYPICAL ATTACHMENT WITH T-CLIP
N.T.S. SECTION

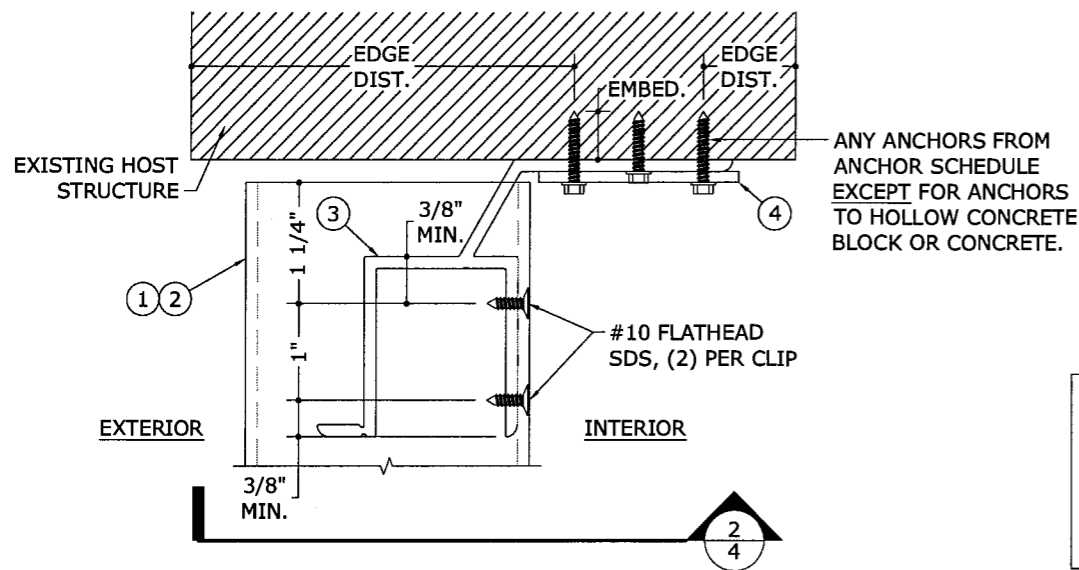
5
3
1"X3" MULLION ATTACHMENT WITH T-CLIP
N.T.S. SIDE ELEV.

6
3
1"X4" MULLION ATTACHMENT WITH T-CLIP
N.T.S. SIDE ELEV.

Approved as complying with the Florida Building Code
Date 07/22/2010
NOA# 10-0406.03
Miami Dade Product Control
By [Signature]

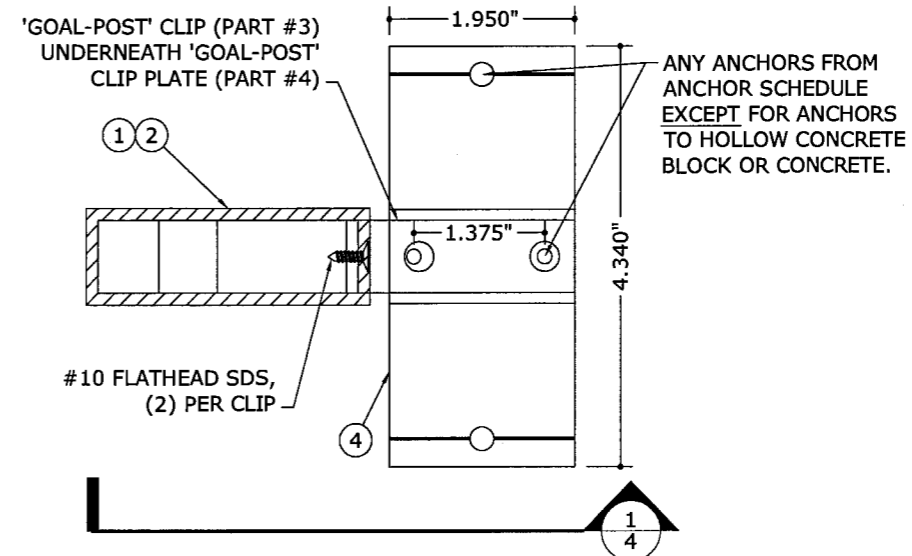
F:\01 Project Files\Jeld-Wen (JWN)\2010\10-JWN-0001 Clipped Alum Tube Mull (NOA).dwg
08/16/2010 - 5:44pm keithl

F:\01 Project Files\Jeld-Wen (JWN)\2010\10-JWN-0001 Clipped Tube Mull (NOA)\10-JWN-0001_01c Clipped Alum Tube Mull (NOA).dwg 08/16/2010 - 5:44pm keithl



1
4 TYPICAL ATTACHMENT WITH 'GOAL-POST' CLIP
N.T.S. SIDE ELEV.

NOTE: 'GOAL-POST' CLIP AND CLIP PLATE SHALL NOT BE USED WITH 3/16" TAPCONS FOR ANCHORAGE TO CONCRETE OR HOLLOW CONCRETE BLOCK. MAY BE USED ONLY FOR ANCHORAGE TO WOOD, ALUMINUM, OR STEEL.



2
4 TYPICAL ATTACHMENT WITH 'GOAL-POST' CLIP
N.T.S. SECTION

ANCHOR SCHEDULE:

TO HOLLOW BLOCK OR 3192 PSI MIN CONCRETE HOST STRUCTURE:

- 3/16" ITW TAPCONS THRU 1X OR 2X WOOD BUCKS OR DIRECTLY INTO MASONRY/ CONCRETE WITH 1-1/4" MIN EMBED.

TO WOOD BUCK OR HOST STRUCTURE (G=0.55 MIN WOOD):

- #10 WOOD SCREWS WITH 1-1/2" MIN. THREAD PENETRATION.

TO 1/8" MINIMUM 6063-T5 ALUMINUM OR STEEL HOST STRUCTURE:

- #10 316 STAINLESS STEEL SHEET METAL SCREWS OR SELF DRILLING SCREWS WITH FULL THREAD PENETRATION THROUGH HOST STRUCTURE.

ANCHOR NOTES:

1. ANCHORS SHALL BE INSTALLED IN ACCORDANCE WITH MANUFACTURERS' RECOMMENDATIONS.
2. ENSURE MINIMUM 2-5/8" EDGE DISTANCE FOR ALL ANCHORS TO CONCRETE & TO HOLLOW BLOCK.
3. WHERE ANCHORS FASTEN TO NARROW FACE OF STUD FRAMING, ANCHOR SHALL BE LOCATED IN CENTER OF NOMINAL 2x (MIN) WOOD STUD (i.e. 3/4" EDGE DISTANCE IS ACCEPTABLE FOR ANCHORS TO WOOD FRAMING).
4. ANCHORS TO STEEL OR ALUMINUM SHALL HAVE A MINIMUM EDGE DISTANCE OF 1/2".
5. WOOD HOST STRUCTURE SHALL BE "SOUTHERN PINE" G=0.55 OR GREATER DENSITY.
6. ANCHOR REQUIREMENTS AS SHOWN HEREIN, INCLUDING MINIMUM EMBEDMENT AND EDGE DISTANCE, EXCLUDES STUCCO, FOAM, BRICK, AND OTHER WALL FINISHES. FOR SITE CONDITIONS DIFFERENT FROM THE CONDITIONS DETAILED HEREIN WITHIN THE HVHZ, A ONE-TIME SITE-SPECIFIC NOTICE OF ACCEPTANCE SHALL BE APPLIED FOR AND SECURED FROM THE MIAMI-DADE BUILDING CODE COMPLIANCE OFFICE PRODUCT CONTROL DIVISION. FOR SITE CONDITIONS DIFFERENT FROM THE CONDITIONS DETAILED HEREIN OUTSIDE THE HVHZ, THE BUILDING OFFICIAL MAY REQUIRE A ONE-TIME SITE-SPECIFIC NOTICE OF ACCEPTANCE BE OBTAINED, OR THAT SITE SPECIFIC DOCUMENTS BE PREPARED, SIGNED, DATED AND SEALED BY A LICENSED ENGINEER OR REGISTERED ARCHITECT, WHICH DETAIL AND JUSTIFY THE DEVIATION.
7. WHERE EXISTING STRUCTURE IS WOOD FRAMING, EXISTING CONDITIONS MAY VARY. FIELD VERIFY THAT FASTENERS ARE INTO ADEQUATE WOOD FRAMING MEMBERS, NOT INTO PLYWOOD.
8. PRESSURE TREATED WOOD BUCKS (BY OTHERS) SHALL BE ANCHORED PROPERLY TO TRANSFER LOADS TO THE EXISTING STRUCTURE.
9. ANCHORS TO CONCRETE AND HOLLOW CONCRETE BLOCK MAY NOT BE USED IN CONJUNCTION WITH 'GOAL-POST' CLIP AND CLIP PLATE.

Approved as complying with the Florida Building Code
Date 09/22/2010
NOA# 10-0406-03
Miami Dade Product Control
By *[Signature]*

FRANK L. BENNARDO, P.E.
PE0046549
08/16/2010
ENGINEERING EXPRESS
160 SW 12th AVENUE, # 106
DEERFIELD BEACH, FL 33442
PH: (954) 354-0660 FAX: (954) 354-0443
WWW.ENGGEXP.COM
CERT OF AUTH #9885
A FRANK L. BENNARDO, P.E., INC. INNOVATION

JELDWEN
355 CENTER COURT
VENICE, FL 34285
PHONE: (941) 497 - 1984
CLIPPED ALUMINUM TUBE MULLION
LARGE MISSILE IMPACT RESISTANT
MIAMI-DADE NOTICE OF ACCEPTANCE

REMARKS	DRWN	CHKD	DATE
INIT ISSUE	KL	FLB	03/09/10
REV. PER BCCO COMMENT	KL	FLB	08/10/10

10-JWN-0001
SCALE: 1/4"
PAGE DESCRIPTION:
4


DESIGN SCHEDULE: 1"x3" MULLION WITH 'T-CLIP' OR 'C-CLIP'

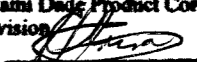
MULLION SPAN	TRIBUTARY WIDTH											
	18"	21"	24"	27"	30"	33"	36"	39"	42"	45"	48"	53"
106"	27.5	23.6	20.6	18.3	16.5	15.0	13.8	12.7	11.8	11.0	10.3	
100"	32.8	28.1	24.6	21.8	19.7	17.9	16.4	15.1	14.0	13.1	12.3	11.1
96"	37.0	31.7	27.8	24.7	22.2	20.2	18.5	17.1	15.9	14.8	13.9	12.6
90"	44.9	38.5	33.7	30.0	27.0	24.5	22.5	20.7	19.3	18.0	16.9	15.3
86"	51.5	44.1	38.6	34.3	30.9	28.1	25.8	23.8	22.1	20.6	19.3	17.5
84"	55.3	47.4	41.5	36.8	33.2	30.1	27.6	25.5	23.7	22.1	20.7	18.8
80"	64.0	54.8	48.0	42.7	38.4	34.9	32.0	29.5	27.4	25.6	24.0	21.7
78"	69.0	59.2	51.8	46.0	41.4	37.7	34.5	31.9	29.6	27.6	25.9	23.4
76"	74.6	64.0	56.0	49.7	44.8	40.7	37.3	34.4	32.0	29.8	28.0	25.3
72"	75.0	75.0	65.8	58.5	52.7	47.9	43.9	40.5	37.6	35.1	32.9	29.8
66"	75.0	75.0	75.0	75.0	68.4	62.1	57.0	52.6	48.8	45.6	42.7	38.7
60"	75.0	75.0	75.0	75.0	75.0	75.0	75.0	70.0	65.0	60.7	56.9	51.5
54"	75.0	75.0	75.0	75.0	75.0	75.0	75.0	75.0	75.0	72.6	68.1	61.7
50.6"	75.0	75.0	75.0	75.0	75.0	75.0	75.0	75.0	75.0	75.0	72.7	65.8
48"	75.0	75.0	75.0	75.0	75.0	75.0	75.0	75.0	75.0	75.0	75.0	69.4
42"	75.0	75.0	75.0	75.0	75.0	75.0	75.0	75.0	75.0	75.0	75.0	75.0
38.4"	75.0	75.0	75.0	75.0	75.0	75.0	75.0	75.0	75.0	75.0	75.0	75.0
36"	75.0	75.0	75.0	75.0	75.0	75.0	75.0	75.0	75.0	75.0	75.0	75.0
30"	75.0	75.0	75.0	75.0	75.0	75.0	75.0	75.0	75.0	75.0	75.0	75.0
24"	75.0	75.0	75.0	75.0	75.0	75.0	75.0	75.0	75.0	75.0	75.0	75.0

DESIGN SCHEDULE: 1"x3" MULLION WITH 'GOAL-POST' CLIP

MULLION SPAN	TRIBUTARY WIDTH											
	18"	21"	24"	27"	30"	33"	36"	39"	42"	45"	48"	53"
106"	27.5	23.6	20.6	18.3	16.5	15.0	13.8	12.7	11.8	11.0	10.3	
100"	32.8	28.1	24.6	21.8	19.7	17.9	16.4	15.1	14.0	13.1	12.3	11.1
96"	37.0	31.7	27.8	24.7	22.2	20.2	18.5	17.1	15.9	14.8	13.9	12.6
90"	44.9	38.5	33.7	30.0	27.0	24.5	22.5	20.7	19.3	18.0	16.9	15.3
86"	51.5	44.1	38.6	34.3	30.9	28.1	25.8	23.8	22.1	20.6	19.3	17.5
84"	55.3	47.4	41.5	36.8	33.2	30.1	27.6	25.5	23.7	22.1	20.7	18.8
80"	64.0	54.8	48.0	42.7	38.4	34.9	32.0	29.5	27.4	25.6	24.0	21.7
78"	66.0	56.6	49.5	44.0	39.6	36.0	33.0	30.5	28.3	26.4	24.8	22.4
76"	67.8	58.1	50.8	45.2	40.7	37.0	33.9	31.3	29.0	27.1	25.4	23.0
72"	71.5	61.3	53.7	47.7	42.9	39.0	35.8	33.0	30.7	28.6	26.8	24.3
66"	75.0	66.9	58.5	52.0	46.8	42.6	39.0	36.0	33.4	31.2	29.3	26.5
60"	75.0	73.6	64.4	57.2	51.5	46.8	42.9	39.6	36.8	34.3	32.2	29.2
54"	75.0	75.0	71.5	63.6	57.2	52.0	47.7	44.0	40.9	38.2	35.8	32.4
50.6"	75.0	75.0	75.0	67.9	61.1	55.5	50.9	47.0	43.6	40.7	38.2	34.6
48"	75.0	75.0	75.0	71.5	64.4	58.5	53.7	49.5	46.0	42.9	40.2	36.4
42"	75.0	75.0	75.0	75.0	73.6	66.9	61.3	56.6	52.6	49.1	46.0	41.6
38.4"	75.0	75.0	75.0	75.0	75.0	73.2	67.1	61.9	57.5	53.7	50.3	45.6
36"	75.0	75.0	75.0	75.0	75.0	75.0	71.5	66.0	61.3	57.2	53.7	48.6
30"	75.0	75.0	75.0	75.0	75.0	75.0	75.0	75.0	73.6	68.7	64.4	58.3
24"	75.0	75.0	75.0	75.0	75.0	75.0	75.0	75.0	75.0	75.0	75.0	72.9

DESIGN SCHEDULE NOTES:

- DESIGN SCHEDULES PROVIDE MAXIMUM ALLOWABLE POSITIVE (+) AND NEGATIVE (-) DESIGN PRESSURES FOR USE WITH MULLION SYSTEM IN POUNDS PER SQUARE FOOT (PSF).
- FOR DETERMINATION OF MULLION SPANS AND TRIBUTARY WIDTHS, SEE ELEVATIONS ON SHEET 1.
- FOR INSTALLATIONS UTILIZING MORE THAN ONE TYPE OF CLIP PER MULLION, USE THE LESSER ALLOWABLE DESIGN PRESSURE.
- 'GOAL-POST' CLIP MAY NOT BE USED FOR INSTALLATIONS TO CONCRETE OR HOLLOW CONCRETE BLOCK.
-  DENOTES CONDITIONS NOT ACCEPTABLE FOR USE.

Approved as complying with the Florida Building Code
 Date: 09/16/2010
 NOA# 10-1406.03
 Miami Dade Product Control
 Division
 By: 

FRANK L. BENNARDO, P.E.
 #PE0046549
 08/16/2010
ENGINEERING EXPRESS
 160 SW 12th AVENUE, #106
 DEERFIELD BEACH, FL 33442
 Ph: (954) 354-0660 Fax: (954) 354-0443
 WWW.ENGEXP.COM
 CERT. OF AUTH. #9885
 A FRANK L. BENNARDO, P.E., INC. INNOVATION

JELDWEN
 355 CENTER COURT
 VENICE, FL 34285
 PHONE: (941) 497 - 1984
 CLIPPED ALUMINUM TUBE MULLION
 LARGE MISSILE IMPACT RESISTANT
 MIAMI-DADE NOTICE OF ACCEPTANCE

REMARKS	INIT	ISSUE	REV	PER	BCCO	COMMENT	DATE	
							KL	FLB
							03/09/10	08/10/10

10-JWN-0001
 SCALE: 1/8" = 1'-0"
 PAGE DESCRIPTION:
 5

F:\01 Project Files\Jeld-Wen (JWN)\2010\10-JWN-0001 Clipped Tube Mull (NOA)\10-JWN-0001_Clippped Alum Tube Mull (NOA).dwg
 08/16/2010 - 5:44pm
 keith


DESIGN SCHEDULE: 1"x4" MULLION WITH 'T-CLIP' OR 'C-CLIP'

MULLION SPAN	TRIBUTARY WIDTH											
	18"	21"	24"	27"	30"	33"	36"	39"	42"	45"	48"	53"
106"	59.0	50.5	44.2	39.3	35.4	32.2	29.5	27.2	25.3	23.6	22.1	20.0
100"	70.2	60.2	52.7	46.8	42.1	38.3	35.1	32.4	30.1	28.1	26.3	23.9
96"	75.0	68.0	59.5	52.9	47.6	43.3	39.7	36.6	34.0	31.8	29.8	27.0
90"	75.0	75.0	72.3	64.2	57.8	52.6	48.2	44.5	41.3	38.5	36.1	32.7
86"	75.0	75.0	75.0	73.6	66.3	60.2	55.2	51.0	47.3	44.2	41.4	37.5
84"	75.0	75.0	75.0	75.0	71.1	64.6	59.3	54.7	50.8	47.4	44.4	40.2
80"	75.0	75.0	75.0	75.0	75.0	74.8	68.6	63.3	58.8	54.9	51.4	46.6
78"	75.0	75.0	75.0	75.0	75.0	75.0	73.7	68.0	63.2	59.0	55.3	50.1
76"	75.0	75.0	75.0	75.0	75.0	75.0	75.0	71.9	66.7	62.3	58.4	52.9
72"	75.0	75.0	75.0	75.0	75.0	75.0	75.0	75.0	74.5	69.6	65.2	59.1
66"	75.0	75.0	75.0	75.0	75.0	75.0	75.0	75.0	75.0	75.0	71.2	64.4
60"	75.0	75.0	75.0	75.0	75.0	75.0	75.0	75.0	75.0	75.0	75.0	70.9
54"	75.0	75.0	75.0	75.0	75.0	75.0	75.0	75.0	75.0	75.0	75.0	75.0
50.6"	75.0	75.0	75.0	75.0	75.0	75.0	75.0	75.0	75.0	75.0	75.0	75.0
48"	75.0	75.0	75.0	75.0	75.0	75.0	75.0	75.0	75.0	75.0	75.0	75.0
42"	75.0	75.0	75.0	75.0	75.0	75.0	75.0	75.0	75.0	75.0	75.0	75.0
38.4"	75.0	75.0	75.0	75.0	75.0	75.0	75.0	75.0	75.0	75.0	75.0	75.0
36"	75.0	75.0	75.0	75.0	75.0	75.0	75.0	75.0	75.0	75.0	75.0	75.0
30"	75.0	75.0	75.0	75.0	75.0	75.0	75.0	75.0	75.0	75.0	75.0	75.0
24"	75.0	75.0	75.0	75.0	75.0	75.0	75.0	75.0	75.0	75.0	75.0	75.0

DESIGN SCHEDULE: 1"x4" MULLION WITH 'GOAL-POST' CLIP

MULLION SPAN	TRIBUTARY WIDTH											
	18"	21"	24"	27"	30"	33"	36"	39"	42"	45"	48"	53"
106"	48.6	41.6	36.4	32.4	29.2	26.5	24.3	22.4	20.8	19.4	18.2	16.5
100"	51.5	44.1	38.6	34.3	30.9	28.1	25.8	23.8	22.1	20.6	19.3	17.5
96"	53.7	46.0	40.2	35.8	32.2	29.3	26.8	24.8	23.0	21.5	20.1	18.2
90"	57.2	49.1	42.9	38.2	34.3	31.2	28.6	26.4	24.5	22.9	21.5	19.4
86"	59.9	51.3	44.9	39.9	35.9	32.7	29.9	27.6	25.7	24.0	22.5	20.3
84"	61.3	52.6	46.0	40.9	36.8	33.4	30.7	28.3	26.3	24.5	23.0	20.8
80"	64.4	55.2	48.3	42.9	38.6	35.1	32.2	29.7	27.6	25.8	24.1	21.9
78"	66.0	56.6	49.5	44.0	39.6	36.0	33.0	30.5	28.3	26.4	24.8	22.4
76"	67.8	58.1	50.8	45.2	40.7	37.0	33.9	31.3	29.0	27.1	25.4	23.0
72"	71.5	61.3	53.7	47.7	42.9	39.0	35.8	33.0	30.7	28.6	26.8	24.3
66"	75.0	66.9	58.5	52.0	46.8	42.6	39.0	36.0	33.4	31.2	29.3	26.5
60"	75.0	73.6	64.4	57.2	51.5	46.8	42.9	39.6	36.8	34.3	32.2	29.2
54"	75.0	75.0	71.5	63.6	57.2	52.0	47.7	44.0	40.9	38.2	35.8	32.4
50.6"	75.0	75.0	75.0	67.9	61.1	55.5	50.9	47.0	43.6	40.7	38.2	34.6
48"	75.0	75.0	75.0	71.5	64.4	58.5	53.7	49.5	46.0	42.9	40.2	36.4
42"	75.0	75.0	75.0	75.0	73.6	66.9	61.3	56.6	52.6	49.1	46.0	41.6
38.4"	75.0	75.0	75.0	75.0	75.0	73.2	67.1	61.9	57.5	53.7	50.3	45.6
36"	75.0	75.0	75.0	75.0	75.0	75.0	71.5	66.0	61.3	57.2	53.7	48.6
30"	75.0	75.0	75.0	75.0	75.0	75.0	75.0	75.0	73.6	68.7	64.4	58.3
24"	75.0	75.0	75.0	75.0	75.0	75.0	75.0	75.0	75.0	75.0	75.0	72.9

DESIGN SCHEDULE NOTES:

- DESIGN SCHEDULES PROVIDE MAXIMUM ALLOWABLE POSITIVE (+) AND NEGATIVE (-) DESIGN PRESSURES FOR USE WITH MULLION SYSTEM IN POUNDS PER SQUARE FOOT (PSF).
- FOR DETERMINATION OF MULLION SPANS AND TRIBUTARY WIDTHS, SEE ELEVATIONS ON SHEET 1.
- FOR INSTALLATIONS UTILIZING MORE THAN ONE TYPE OF CLIP PER MULLION, USE THE LESSER ALLOWABLE DESIGN PRESSURE.
- 'GOAL-POST' CLIP MAY NOT BE USED FOR INSTALLATIONS TO CONCRETE OR HOLLOW CONCRETE BLOCK.
-  DENOTES CONDITIONS NOT ACCEPTABLE FOR USE.

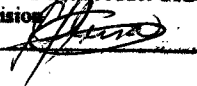
FRANK L. BENNARDO, P.E.
PE0046549

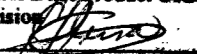
08/16/2010

ENGINEERING EXPRESS®
160 SW 12th AVENUE, # 106
DEERFIELD BEACH, FL 33442
Ph: (954) 354-0660 Fax: (954) 354-0443
WWW.ENGEXP.COM
CERT OF AUTH #8885
A FRANK L. BENNARDO, P.E., INC. INNOVATION

JELDWEN
355 CENTER COURT
VENICE, FL 34285
PHONE: (941) 497 - 1984
CLIPPED ALUMINUM TUBE MULLION
LARGE MISSILE IMPACT RESISTANT
MIAMI-DADE NOTICE OF ACCEPTANCE

REMARKS	DRWN	CHKD	DATE	FLB	
				KL	FLB
INIT ISSUE			03/09/10		
REV. PER BCCO COMMENT			08/10/10		

10-JWN-0001
SCALE: 1/8" = 1'-0"
PAGE DESCRIPTION:
By 

Approved as complying with the
Florida Building Code
Date 09/22/2010
NOA# 10-1406-03
Miami Dade Product Control
Division
By 

F:\01 Project Files\Jeld-Wen (JWN)\2010\10-JWN-0001 Clipped Tube Mull (NOA)\10-JWN-0001_01c Clipped Alum Tube Mull (NOA).dwg 08/16/2010 - 5:44pm Keith