



DEPARTMENT OF PERMITTING, ENVIRONMENT, AND REGULATORY
AFFAIRS (PERA)
BOARD AND CODE ADMINISTRATION DIVISION

MIAMI-DADE COUNTY, FLORIDA
PRODUCT CONTROL SECTION
11805 SW 26 Street, Room 208
Miami, Florida 33175-2474
T (786) 315-2590 F (786) 315-2599

NOTICE OF ACCEPTANCE (NOA)

www.miamidade.gov/pera/

Signature Door, Inc.
401 Juniata Street
Altoona, PA 16602

SCOPE:

This NOA is being issued under the applicable rules and regulations governing the use of construction materials. The documentation submitted has been reviewed and accepted by Miami-Dade County PERA-Product Control Section to be used in Miami-Dade County and other areas where allowed by the Authority Having Jurisdiction (AHJ).

This NOA shall not be valid after the expiration date stated below. The Miami-Dade County Product Control Section (In Miami-Dade County) and/ or the AHJ (in areas other than Miami-Dade County) reserve the right to have this product or material tested for quality assurance purposes. If this product or material fails to perform in the accepted manner, the manufacturer will incur the expense of such testing and the AHJ may immediately revoke, modify, or suspend the use of such product or material within their jurisdiction. PERA reserves the right to revoke this acceptance, if it is determined by Miami-Dade County Product Control Section that this product or material fails to meet the requirements of the applicable building code.

This product is approved as described herein, and has been designed to comply with the Florida Building Code, including the High Velocity Hurricane Zone.

DESCRIPTION: Series "IMPACT" 10'0" Glazed Inswing Wood Door - L.M.I.

APPROVAL DOCUMENT: Drawing No. 1315, "10 Foot Wood Inswing Impact Doors", sheets 1 through 11 of 11, dated 06/24/2004, with the latest revision "C1" dated 10/24/2011, prepared by W. W. Schaefer Engineering & Consulting, P. A., signed and sealed by Warren W. Schaefer, P. E., bearing the Miami-Dade County Product Control Revision stamp with the Notice of Acceptance number and Expiration date by the Miami-Dade County Product Control Section.

MISSILE IMPACT RATING: Large and Small Missile Impact Resistant.

LABELING: Each unit shall bear a permanent label with the manufacturer's name or logo, city, state, model/ series and following statement: "Miami-Dade County Product Control Approved" unless otherwise noted herein.

RENEWAL of this NOA shall be considered after a renewal application has been filed and there has been no change in the applicable building code negatively affecting the performance of this product.

TERMINATION of this NOA will occur after the expiration date or if there has been a revision or change in the materials, use, and/or manufacture of the product or process. Misuse of this NOA as an endorsement of any product, for sales, advertising or any other purposes shall automatically terminate this NOA. Failure to comply with any section of this NOA shall be cause for termination and removal of NOA.

ADVERTISEMENT: The NOA number preceded by the words Miami-Dade County, Florida; and followed by the expiration date may be displayed in advertising literature. If any portion of the NOA is displayed, then it shall be done in its entirety.

INSPECTION: A copy of this entire NOA shall be provided to the user by the manufacturer or its distributors and shall be available for inspection at the job site at the request of the Building Official.

This NOA revises NOA No. 09-1014.11 and consists of this page 1, evidence pages E-1 and E-2, as well as approval document mentioned above.

The submitted documentation was reviewed by **Jaime D. Gascon, P. E.**



J. Gascon
1/6/12

NOA No. 11-1028.06
Expiration Date: February 17, 2015
Approval Date: January 12, 2012
Page 1

NOTICE OF ACCEPTANCE: EVIDENCE SUBMITTED

A. DRAWINGS

1. Manufacturer's die drawings and sections.
(Submitted under previous NOA No. 04-0907.03)
2. Drawing No. 1315 "10 Foot Wood Inswing Impact Doors", sheets 1 through 11 of 11, dated 06/24/2004, with the latest revision "C1" dated 10/24/2011, prepared by W. W. Schaefer Engineering & Consulting, P. A., signed and sealed by Warren W. Schaefer, P. E.

B. TESTS

1. Test reports on:
 - 1) Air Infiltration Test, per FBC, TAS 202-94
 - 2) Uniform Static Air Pressure Test, Loading per FBC TAS 202-94
 - 3) Water Resistance Test, per FBC, TAS 202-94
 - 4) Large Missile Impact Test per FBC, TAS 201-94
 - 5) Cyclic Wind Pressure Loading per FBC, TAS 203-94
 - 6) Forced Entry Test, per FBC 2411.3.2.1, TAS 202-94along with marked-up drawings and installation diagram of inswing wood doors, prepared by Hurricane Test Laboratory, LLC, Test Reports No.'s **HTL-0243-0319-04** (specimen no. 4), **HTL-0243-1013-03** (specimen no. 8), **HTL-0243-1201-04** (specimen # 2) and **HTL-0243-0516-04** (specimens no.'s 4 and 7), dated 10/22 to 24/2003, 03/17 to 05/26 and 12/06 to 16/2004, all signed and sealed by Vinu J. Abraham, P. E.
(Submitted under NOA No. 04-0907.03)

C. CALCULATIONS

1. Anchor verification calculations and structural analysis, complying with FBC-2007, prepared by W. W. Schaefer Engineering & Consulting, P.A., dated 10/05/2009, signed and sealed by Warren W. Schaefer, P. E.
(Submitted under previous NOA No. 09-1014.11)
2. **Glazing complies with ASTM E1300-98/ 04**

D. QUALITY ASSURANCE

1. Miami-Dade Department of Permitting, Environment, and Regulatory Affairs (PERA).

E. MATERIAL CERTIFICATIONS

1. Notice of Acceptance No. **08-0709.04** issued to Glasslam N.G.I., Inc. for their "Safety-Plus II Laminated Glass" dated 09/11/2008, expiring on 08/07/2013.
(Submitted under previous NOA No. 09-1014.11)



Jaime D. Gascon, P. E.
Product Control Section Supervisor
NOA No. 11-1028.06
Expiration Date: February 17, 2015
Approval Date: January 12, 2012

Signature Door, Inc.

NOTICE OF ACCEPTANCE: EVIDENCE SUBMITTED

E. MATERIAL CERTIFICATIONS (CONTINUED)

2. Notice of Acceptance No. **08-1118.07** issued to Oldcastle Glass Inc. for their "StormGlass Glass Interlayer", dated 03/05/2009, expiring on 12/11/2013.
(Submitted under previous NOA No. 09-1014.11)

F. STATEMENTS

1. Statement letter of conformance and compliance with the FBC-2007 and FBC-2010, dated 10/24/2011, signed and sealed by Warren W. Schaefer, P. E.
2. Statement letter of no financial interest and independence, dated 10/24/2011, signed and sealed by Warren W. Schaefer, P. E.
3. Statement letter of no financial interest and conformance, dated 10/05/2009, signed and sealed by Warren W. Schaefer, P. E.
(Submitted under previous NOA No. 09-1014.11)
4. Laboratory compliance letters for Test Reports No.'s **HTL-0243-0319-04**, **HTL-0243-0516-04**, **HTL-0243-1201-04** and **HTL-0243-1013-03**, issued by Hurricane Test Laboratory, LLC, dated 10/22 to 24/2003, 03/17 to 05/26 and 12/06 to 16/2004, all signed and sealed by Vinu J. Abraham, P. E.
(Submitted under NOA No. 04-0907.03)
5. Proposal No. **03-0248** issued by Product Control, dated May 03, 2003, signed by Jaime D. Gascon, P. E.
(Submitted under NOA No. 04-0907.03)

G. OTHERS

1. Notice of Acceptance No. **09-1014.11**, issued to Signature Door, Inc. for their Series "IMPACT 10'-0" Glazed Inswing Wood Door-L.M.I.", approved on 03/03/2010 and expiring on 02/17/2015.



Jaime D. Gascon, P. E.
Product Control Section Supervisor
NOA No. 11-1028.06
Expiration Date: February 17, 2015
Approval Date: January 12, 2012

GENERAL NOTES:

1. THESE DOOR SYSTEMS HAVE BEEN TESTED, ANALYZED & APPROVED FOR DESIGN PRESSURES NOT TO EXCEED THOSE SHOWN IN THE "ALLOWABLE DESIGN PRESSURE TABLE(S)".
2. OPENINGS, BUCKING & BUCKING FASTENERS MUST BE PROPERLY DESIGNED & INSTALLED TO TRANSFER WIND LOADS TO THE STRUCTURE.
3. ALL HARDWARE & FASTENERS SHALL BE IN ACCORDANCE WITH THESE DRAWINGS & SHALL NOT VARY UNLESS SPECIFICALLY MENTIONED ON THE DRAWINGS. SPECIFIED ANCHOR EMBED TO BASE MATERIAL SHALL BE BEYOND WALL FINISH OR STUCCO.
4. THE DETAILS & SPECIFICATIONS SHOWN HEREIN REPRESENT THE PRODUCTS TESTED & PROPOSED FOR WATER, AIR, IMPACT, CYCLIC & UNIFORM STATIC AIR PRESSURE TESTING IN CONFORMANCE WITH THE FLORIDA BUILDING CODE PROTOCOLS TAS-201, 202 & 203 FOR LARGE MISSILE IMPACT DOORS.
5. THESE DOOR SYSTEMS HAVE BEEN DESIGNED IN ACCORDANCE WITH AND MEET THE REQUIREMENTS OF THE FLORIDA BUILDING CODE (FBC) INCLUDING HIGH VELOCITY HURRICANE ZONES (HVHZ).
6. IMPACT SHUTTERS ARE NOT REQUIRED WITH THESE DOORS.
7. ALL ANCHORS SECURING DOOR FRAME TO PRESSURE TREATED BUCKS OR WOOD FRAMING SHALL BE CAPABLE OF RESISTING CORROSION CAUSED BY THE PRESSURE TREATING CHEMICALS IN THE WOOD.
8. DETERMINE THE POSITIVE & NEGATIVE DESIGN LOADS TO USE WHEN REFERENCING THESE DOCUMENTS IN ACCORDANCE WITH THE GOVERNING CODE AND GOVERNING WIND VELOCITY. FOR WIND LOAD CALCULATIONS IN ACCORDANCE WITH THE FLORIDA BUILDING CODE, A DIRECTIONALITY FACTOR OF $K_d = 0.85$ MAY BE APPLIED PER THE ASCE-7 STANDARD.
9. NO INCREASE IN ALLOWABLE STRESS HAS BEEN USED IN THE CERTIFICATION OF THIS PRODUCT. WIND LOAD DURATION FACTOR $C_d = 1.6$ WAS USED FOR WOOD SCREW ANALYSIS ONLY.
10. MATERIALS, INCLUDING BUT NOT LIMITED TO STEEL SCREWS, THAT COME INTO CONTACT WITH OTHER DISSIMILAR MATERIALS SHALL MEET THE REQUIREMENTS OF FLORIDA BUILDING CODE CHAPTER 20.
11. ALL WOOD MEMBERS OF DOORS THAT MAY POSSIBLY COME INTO CONTACT WITH MASONRY OR CONCRETE SUBSTRATES, ARE SUBJECT TO MOISTURE &/OR ARE SUBJECT TO THE OUTSIDE ENVIRONMENT SHALL BE OF AN APPROVED DURABLE SPECIES OR BE TREATED IN AN APPROVED METHOD WITH AN APPROVED PRESERVATIVE PER FBC SECTION 2326.

POSITIVE PRESSURE NOTE: THESE DOORS ARE NOT APPROVED FOR WATER INFILTRATION RESISTANCE UNLESS THE UNITS ARE INSTALLED IN A NON-HABITABLE AREA WHERE THE UNIT AND THE AREA ARE DESIGNED TO ACCEPT WATER INFILTRATION. OTHERWISE, THE DOORS MUST BE INSTALLED ONLY AT LOCATIONS PROTECTED BY A CANOPY OR OVERHANG SUCH THAT THE ANGLE BETWEEN THE EDGE OF THE CANOPY OR OVERHANG TO SILL IS LESS THAN 45 DEGREES.

ALLOWABLE DESIGN PRESSURE (DOUBLE DOORS)

MAXIMUM FRAME WIDTH (IN.)	MAXIMUM FRAME HEIGHT (IN.)	DESIGN PRESSURE	
		POSITIVE (PSF)	NEGATIVE (PSF)
98.75	121.75	50.0	50.0
	110	55.3	55.3
	98	62.1	62.1
93	121.75	53.1	53.1
	110	58.8	58.8
	98	65.0	66.0
87	121.75	56.8	56.8
	110	62.8	62.8
	98	65.0	70.5
81	121.75	61.0	61.0
	110	65.0	67.5
	98	65.0	75.7
74.25	121.75	65.0	66.5
	110	65.0	73.6
	98	65.0	80.0
68	121.75	65.0	72.6
	110	65.0	80.0
62	121.75	65.0	79.6

ALLOWABLE DESIGN PRESSURE (SINGLE DOORS)

MAXIMUM FRAME WIDTH (IN.)	MAXIMUM FRAME HEIGHT (IN.)	DESIGN PRESSURE	
		POSITIVE (PSF)	NEGATIVE (PSF)
49.75	121.75	50.0	50.0
	110	55.3	55.3
	98	60.4	60.4
47	121.75	52.9	52.9
	110	58.6	58.6
	98	63.2	63.9
44	121.75	56.5	56.5
	110	62.6	62.6
	98	65.0	68.3
41	121.75	60.7	60.7
	110	65.0	67.2
	98	65.0	73.3
37.5	121.75	65.0	66.3
	110	65.0	73.4
	98	65.0	80.0
35	121.75	65.0	71.1
	110	65.0	78.7
31	121.75	65.0	80.0

ALLOWABLE DESIGN PRESSURE (TRANSOM MULLION)

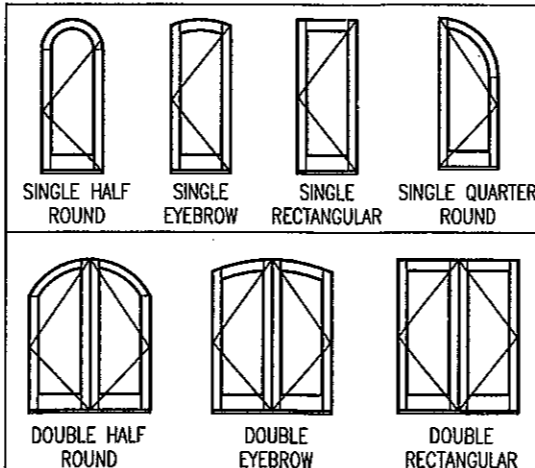
MAXIMUM FRAME WIDTH (IN.)	MAXIMUM OVERALL HEIGHT (IN.)	DESIGN PRESSURE	
		POSITIVE (PSF)	NEGATIVE (PSF)
98.75	173.75	50.0	50.0
	162	53.6	53.6
	150	57.9	57.9
	138	63.0	63.0
	126	65.0	68.9
	114	65.0	76.2
93	173.75	53.1	53.1
	162	56.9	56.9
	150	61.5	61.5
	138	65.0	66.8
	126	65.0	73.2
	114	65.0	80.0
87	173.75	56.8	56.8
	162	60.9	60.9
	150	65.0	65.7
	138	65.0	71.5
	126	65.0	78.3
	114	65.0	80.0
81	173.75	61.0	61.0
	162	65.0	65.4
	150	65.0	70.6
	138	65.0	76.7
	126	65.0	80.0
	114	65.0	80.0
74.25	173.75	65.0	66.5
	162	65.0	71.3
	150	65.0	77.0
138	65.0	80.0	

ALLOWABLE DESIGN PRESSURE (VERTICAL MULLION)
AS CONTROLLED BY DOOR PRESSURE TABLES

FRAME ANCHOR REQUIREMENTS TABLE

OPENING TYPE (SUBSTRATE)	FRAME/HINGE/STRIKE/CLIP TO OPENING FASTENER TYPE	MINIMUM EMBED	MINIMUM EDGE DIST.
FRAME SCREWS			
MIN. 2X4 WOOD FRAME OR BUCK (MIN. GR. 3 & G=0.55)	NO. 10 SMS OR WOOD SCREW	1 1/4"	3/4"
MIN. C-90 CMU	(1) 1/4" CONCRETE SCREW	1 1/4"	2"
MIN. 2500 PSI CONCRETE	(1) 1/4" CONCRETE SCREW	1 1/2"	2"
HINGE SCREWS			
MIN. 2X4 WOOD FRAME OR BUCK (MIN. GR. 3 & G=0.55)	NO. 12 SMS OR WOOD SCREW	1 1/4"	3/4"
MIN. C-90 CMU	(1) 1/4" CONCRETE SCREW	1 1/4"	2"
MIN. 2500 PSI CONCRETE	(1) 1/4" CONCRETE SCREW	1 1/2"	2"
STRIKE SCREWS			
MIN. 2X4 WOOD FRAME OR BUCK (MIN. GR. 3 & G=0.55)	NO. 10 SMS OR WOOD SCREW	1 1/4"	3/4"
MIN. C-90 CMU	(1) 3/16" CONCRETE SCREW	1 1/4"	2"
MIN. 2500 PSI CONCRETE	(1) 3/16" CONCRETE SCREW	1 1/2"	2"
MOUNTING CLIP SCREWS			
MIN. 2X4 WOOD FRAME OR BUCK (MIN. GR. 3 & G=0.55)	NO. 8 SMS SCREW	1 3/8"	1/2"

(1) CONCRETE SCREWS SHALL BE ELCO ULTRACONS, ITW RAMSET/RED HEAD TAPCONS OR HILTI KWIK-CON II (HARDENED STEEL OR S.S.).



SHAPES CONSIDERED AS PART OF THIS APPROVAL

HINGE REQUIREMENTS

MAXIMUM DOOR FRAME HEIGHT	# HINGES REQUIRED	
	PANEL WIDTH 36" & LESS	PANEL WIDTH GREATER THAN 36"
82"	3	3
98"	(1) 4	(1) 4
122"	4	(1) 5

(1) ONE LESS HINGE IS REQUIRED WITH DOUBLE HALF ROUND & SINGLE QUARTER ROUND DOORS.

PRODUCT REVISED as complying with the Florida Building Code
Acceptance No. **11-1028.06**
Expiration Date **02/17/2015**
By *[Signature]*
Miami Dade Product Control

NOTE:
WITH MULLED UNITS, ALLOWABLE PRESSURE FOR THE OVERALL UNIT SHALL BE THE LESSER OF THE ALLOWABLE PRESSURE FOR THE INDIVIDUAL DOORS AND MULLION.



THESE DRAWINGS ARE APPLICABLE ONLY TO THE PRODUCT SPECIFIED. THEY MAY NOT BE USED FOR THE ASSEMBLY AND/OR INSTALLATION OF ANY OTHER PRODUCT NOR MAY THEY BE USED FOR NATIONAL AND/OR LOCAL APPROVAL OF ANY PRODUCT NOT PRODUCED BY THE MANUFACTURER STATED ON THESE DRAWINGS.

DRAWN BY: K.P.S.	CHECKED BY: W.W.S.						
PLOT: 1=16	DATE: 06/28/04						
NO.	DATE	BY	DESCRIPTION	NO.	DATE	BY	DESCRIPTION
A1			REDUCED JAMB ANCHOR	B1	10/06/09		UPDATE TO CURRENT STANDARDS
A2			SPACING TO 14"	C1	10/24/11		UPDATE CONSULTANTS ADDRESS
A3			ADDED LOAD TABLES				
A4			TO SHEET 11				

10 FOOT WOOD INSWING IMPACT DOORS

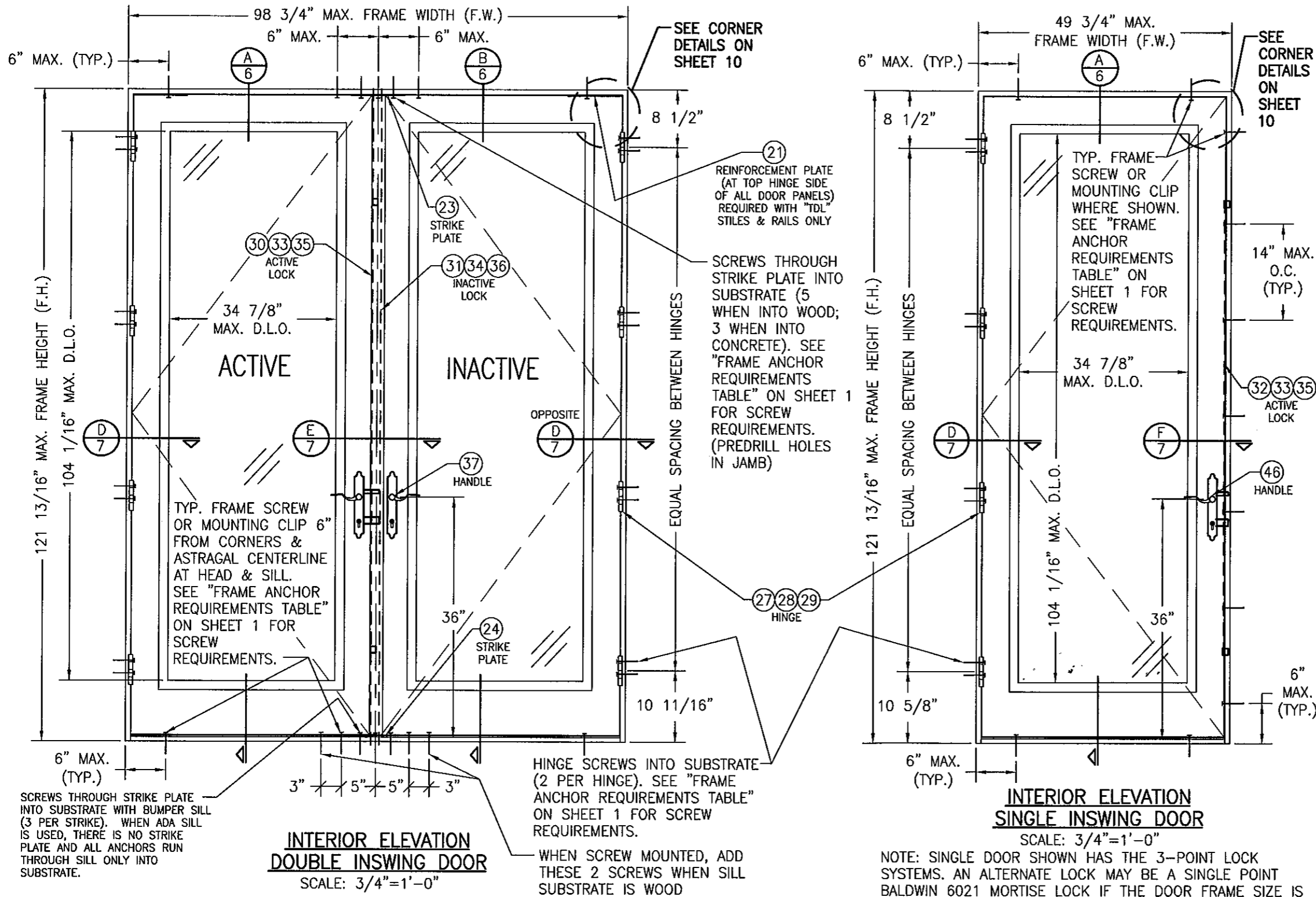
MANUFACTURER
SIGNATURE DOOR INC.
401 JUNIATA STREET
ALTOONA, PA 16602
814-949-2770

CONSULTANTS
W. SCHAEFER ENGINEERING & CONSULTING, P.A. (CA 6809)
7480 150TH COURT NORTH
PALM BEACH GARDENS, FL 33418
PHONE: 561-744-3424

CERTIFICATION
OCT 24 2011
WARREN W. SCHAEFER, P.E.
P.E. NO. 44135

DRAWING NO. **1315** REV. **C**
SHEET NO. **1** OF **11**

DRAWN BY: K.P.S.	CHECKED BY: W.W.S.
PLOT: 1-16	DATE: 06/28/04
NO.	DATE
REVISION DESCRIPTION	BY



**INTERIOR ELEVATION
DOUBLE INSWING DOOR**
SCALE: 3/4"=1'-0"

**INTERIOR ELEVATION
SINGLE INSWING DOOR**
SCALE: 3/4"=1'-0"

NOTE: SINGLE DOOR SHOWN HAS THE 3-POINT LOCK SYSTEMS. AN ALTERNATE LOCK MAY BE A SINGLE POINT BALDWIN 6021 MORTISE LOCK IF THE DOOR FRAME SIZE IS 37 9/16" X 97 5/16" OR LESS.

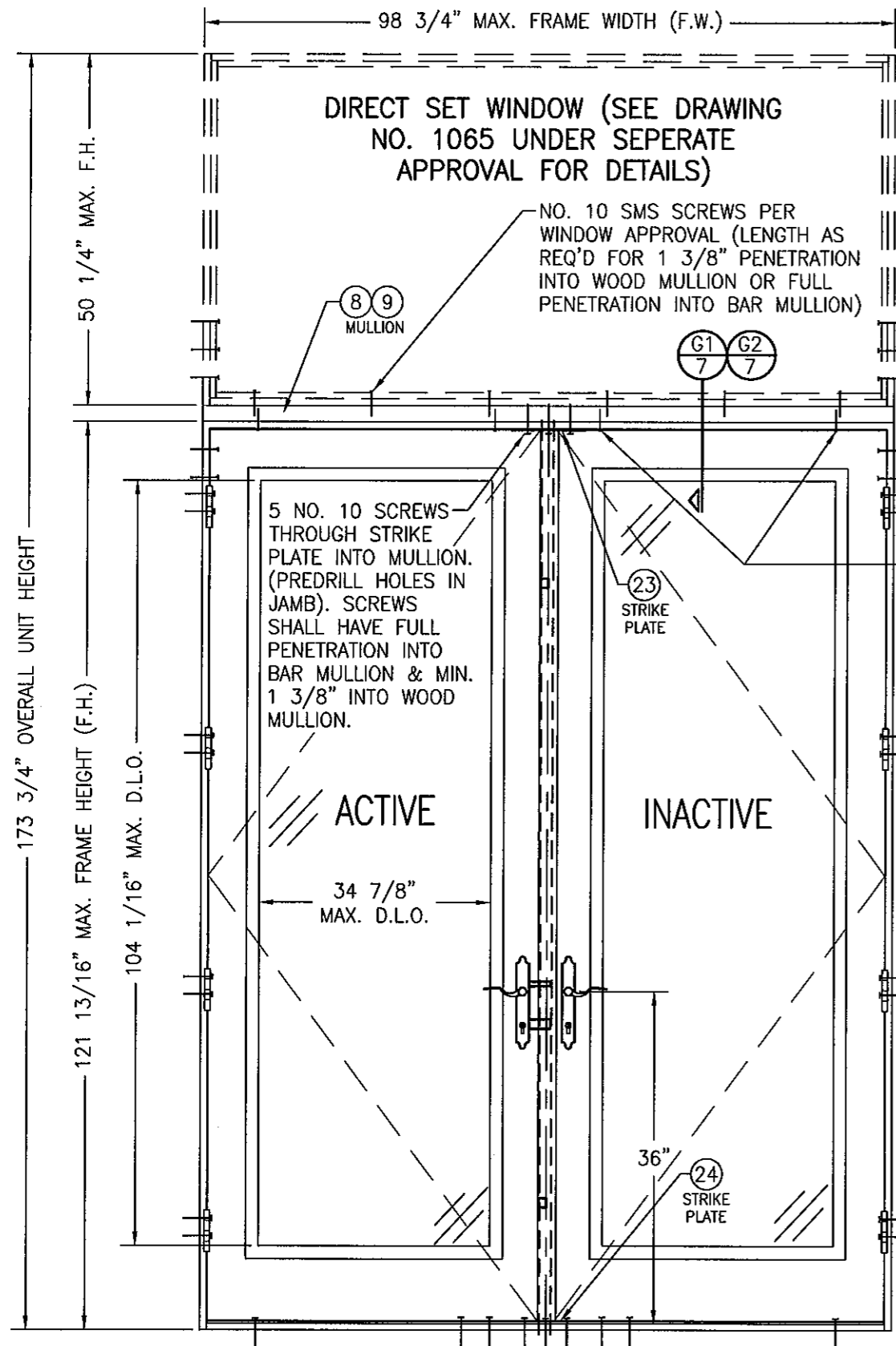
NOTE: DOORS MAY BE FULLY GLAZED AS SHOWN, PARTIALLY PANELED OR FULLY PANELED. SEE SHEET 4 ELEVATION FOR PANELED DOORS.

PRODUCT REVISED
as complying with the Florida
Building Code
Acceptance No. **11-1928.06**
Expiration Date **02/17/2015**
By *[Signature]*
Miami Dade Product Control



DRAWING TITLE	10 FOOT WOOD INSWING IMPACT DOORS
CONSULTANTS	W. W. SCHAEFER ENGINEERING & CONSULTING, P.A. (CA 6809) 7480 150TH COURT NORTH PALM BEACH GARDENS, FL 33418 PHONE: 561-744-3424
MANUFACTURER	SIGNATURE DOOR INC. 401 JUNIATA STREET ALTOONA, PA 16602 814-949-2770

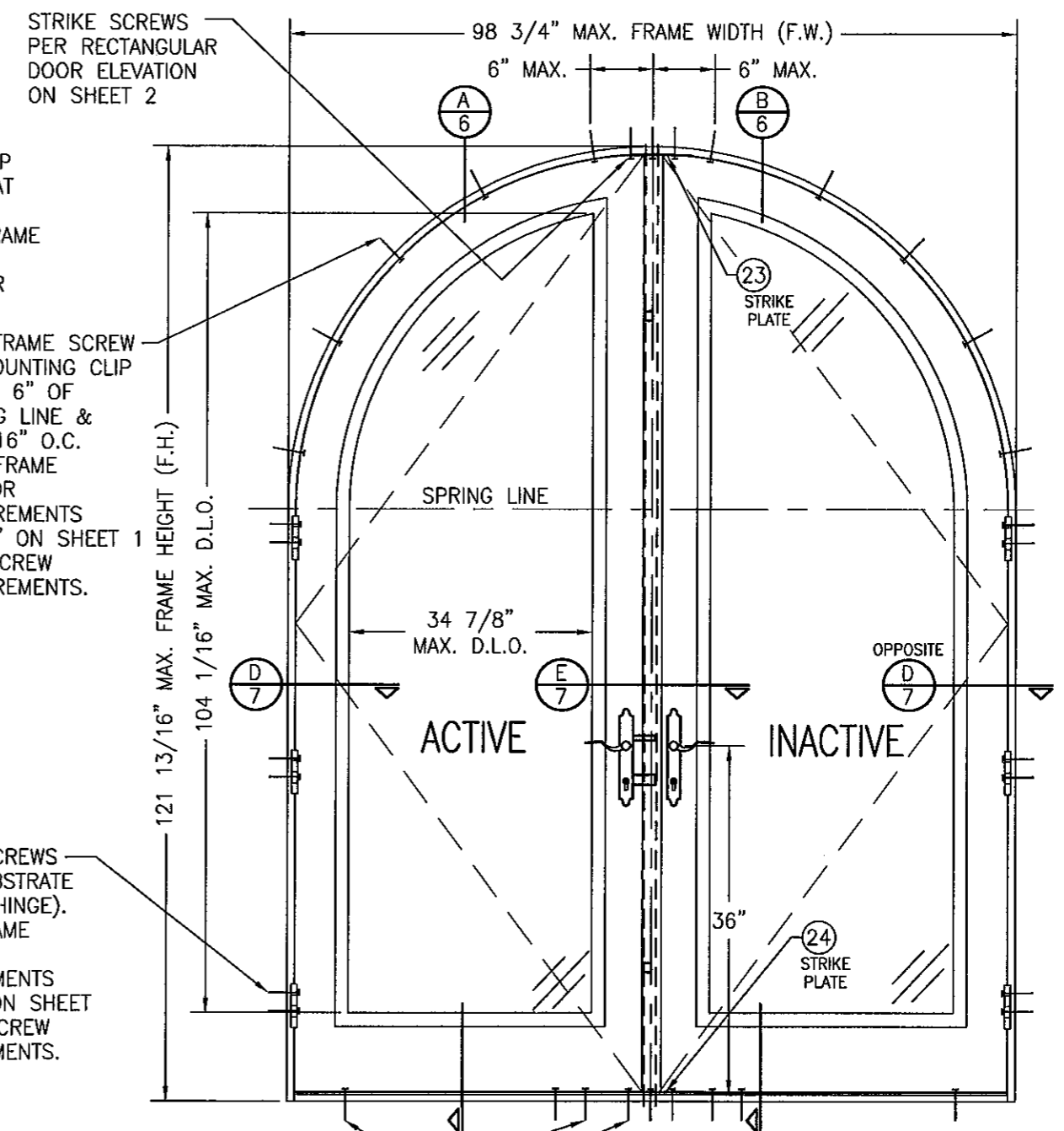
CERTIFICATION	<i>[Signature]</i> WARREN W. SCHAEFER, P.E. P.E. NO. 44135
DRAWING NO.	1315
REV.	C
SHEET NO.	2 OF 11



**INTERIOR ELEVATION
DOUBLE DOOR WITH TRANSOM**
SCALE: 3/4"=1'-0"

SEE DOUBLE DOOR ELEVATION ON SHEET 2 FOR DETAIL NOT SHOWN

SILL AND STRIKE PLATE ANCHORS PER ELEVATION ON SHEET 2

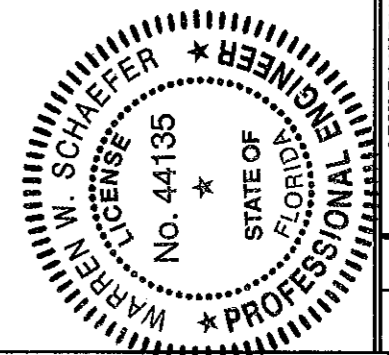


**INTERIOR ELEVATION
DOUBLE HALF ROUND DOOR**
SCALE: 3/4"=1'-0"

SEE DOUBLE DOOR ELEVATION ON SHEET 2 FOR DETAIL NOT SHOWN

PRODUCT REVISED as complying with the Florida Building Code
Acceptance No. 11-1028.06
Expiration Date 02/17/2016
By *[Signature]*
Miami Dade Product Control

NOTE: DOORS MAY BE FULLY GLAZED AS SHOWN, PARTIALLY PANELED OR FULLY PANELED. SEE SHEET 5 ELEVATION FOR PANELED DOORS.



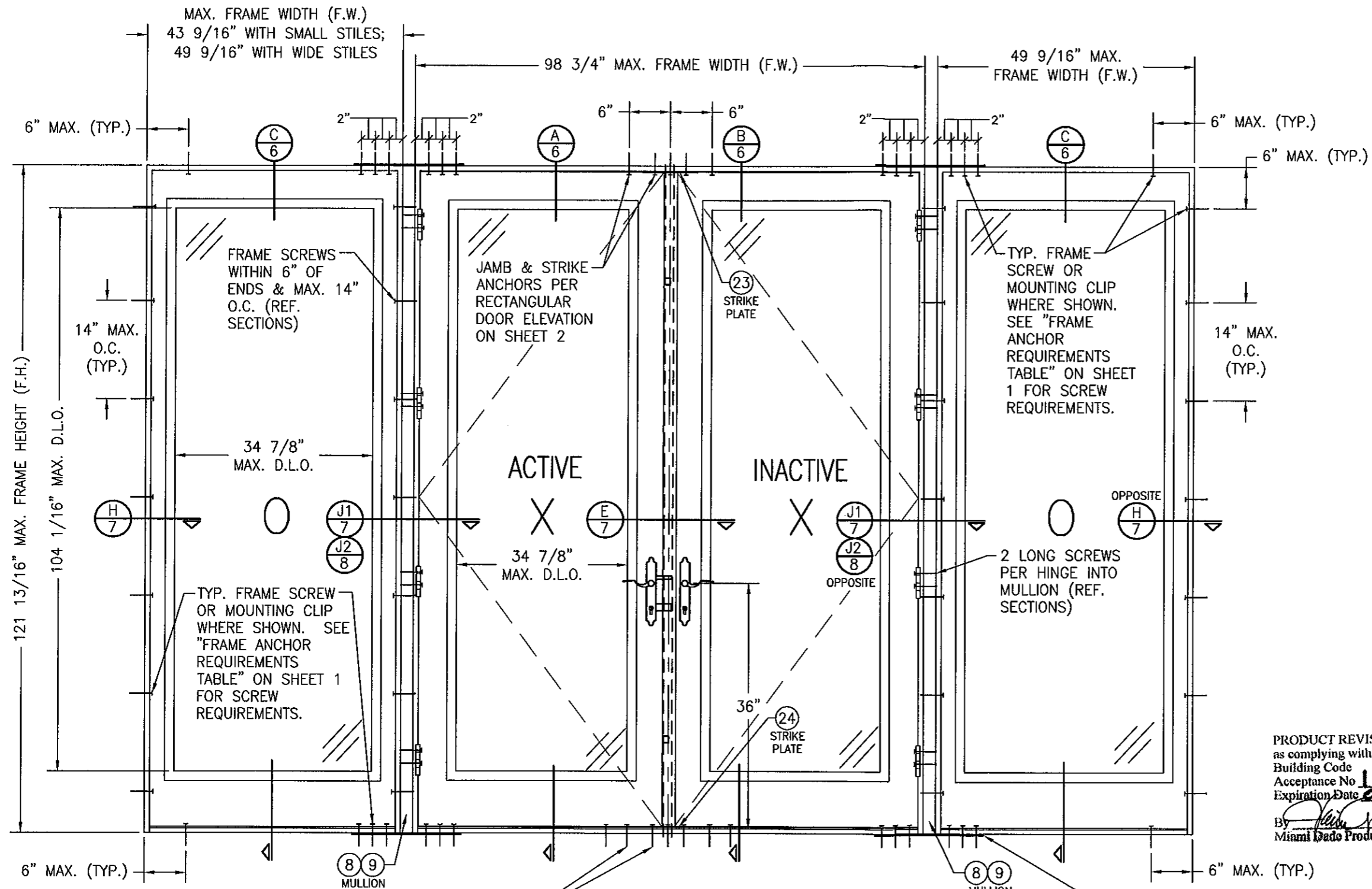
DRAWN BY:	K.P.S.	CHECKED BY:	W.W.S.
PLOT:	1-16	DATE:	06/28/04
NO.		REVISION DESCRIPTION	
DATE		BY	

10 FOOT WOOD INSWING IMPACT DOORS

CONSULTANTS
W. W. SCHAEFER ENGINEERING & CONSULTING, P.A. (CA 6809)
7480 150TH COURT NORTH
PALM BEACH GARDENS, FL 33418
PHONE: 561-744-3424

MANUFACTURER
SIGNATURE DOOR INC.
401 JUNIATA STREET
ALTOONA, PA 16602
814-949-2770

CERTIFICATION	OCT 24 2011	WARREN W. SCHAEFER, P.E. P.E. NO. 44135
DRAWING NO.	1315	REV. C
SHEET NO.	3 OF 11	



PRODUCT REVISED
as complying with the Florida
Building Code
Acceptance No. **11-1028.06**
Expiration Date **02/17/2016**
By *[Signature]*
Miami Dade Product Control

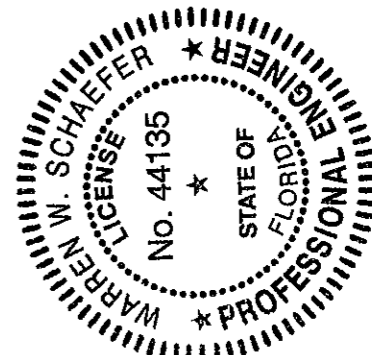
**INTERIOR ELEVATION
MULTIPLE OPERABLE/FIXED UNIT**

SCALE: 3/4"=1'-0"

(FOR ANY DETAIL NOT SHOWN, SEE ELEVATION ON SHEET 2)
NOTE: OXXO DOOR SHOWN. ALL OTHER 4-PANEL CONFIGURATIONS
OF SINGLE/DOUBLE DOORS & SIDELIGHTS ALSO APPLY.

NOTE: DOORS MAY BE FULLY
GLAZED AS SHOWN, PARTIALLY
PANELED OR FULLY PANELED.
SEE SHEET 5 ELEVATION FOR
PANELED DOORS.

26
REINFORCEMENT PLATE FASTENED TO
WOOD MULLION WITH 2 NO. 10 X 2"
SMS EACH END OR TO STEEL BAR
MULLION WITH 2 NO. 10 X 1" SMS
SCREWS THREADED INTO BAR END.
(REQUIRED ONLY WITH OPERABLE TO
OPERABLE MULLED CONDITION. NOT
REQUIRED WITH SIDELIGHT
CONDITION.)



DRAWN BY: K.P.S.	CHECKED BY: W.W.S.
PLOT: 1-16	DATE: 06/28/04
NO.	REVISION DESCRIPTION
DATE	BY

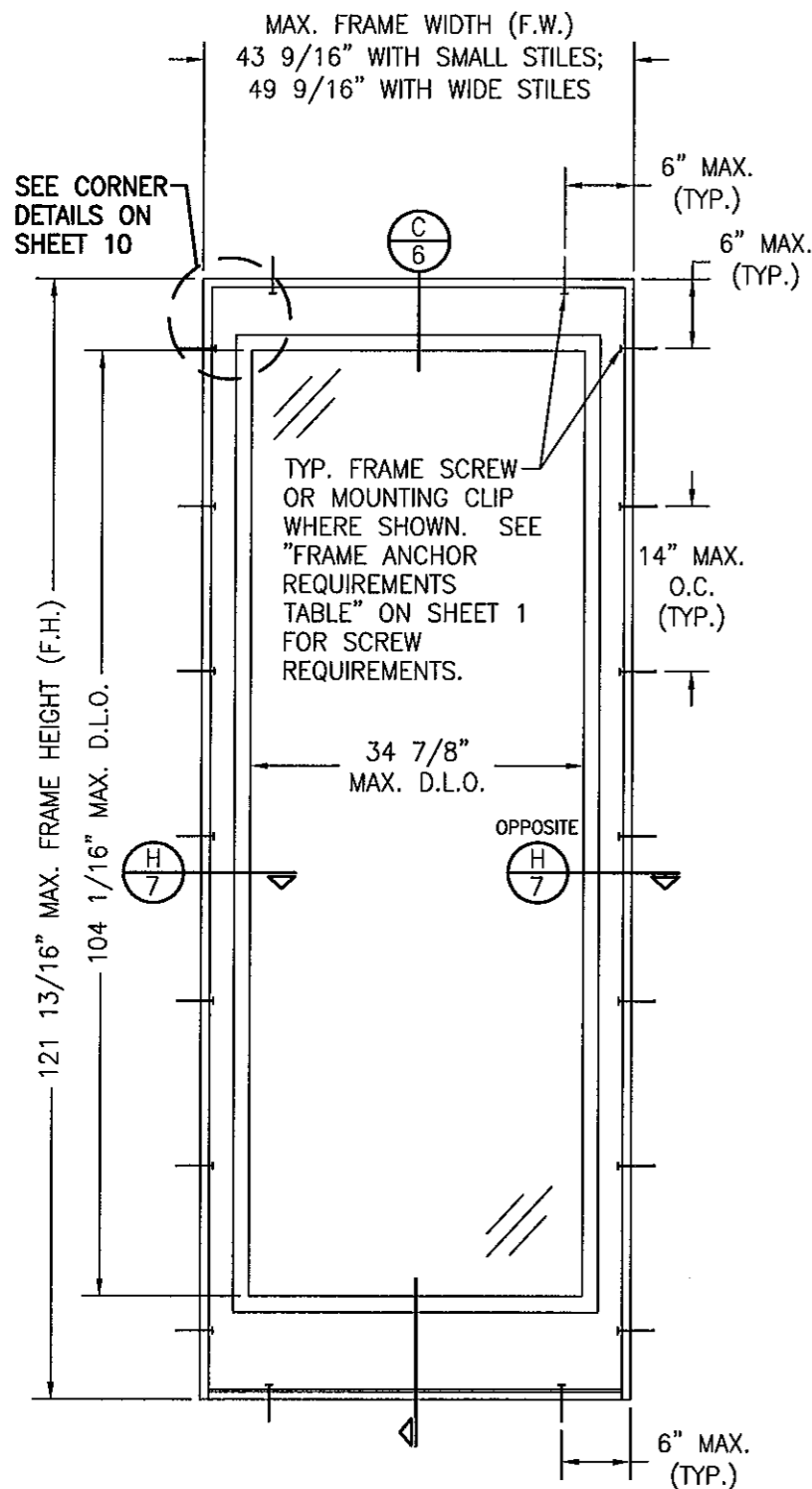
DRAWING TITLE: **10 FOOT WOOD INSWING IMPACT DOORS**

MANUFACTURER:
SIGNATURE DOOR INC.
401 JUNIATA STREET
ALTOONA, PA 16602
814-949-2770

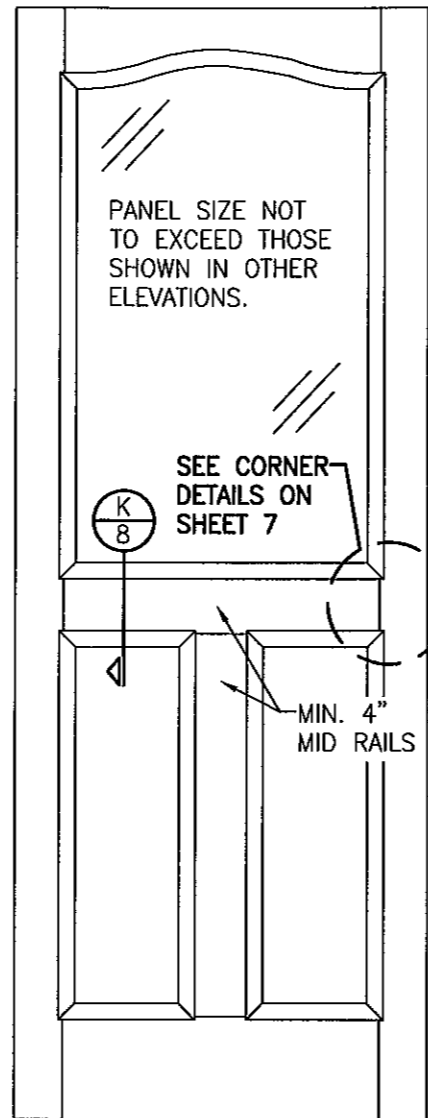
CONSULTANTS:
**W. SCHAEFER ENGINEERING
& CONSULTING, P.A. (CA 6809)**
7480 150TH COURT NORTH
PALM BEACH GARDENS, FL 33418
PHONE: 561-744-3424

CERTIFICATION
OCT 4 2011
WARREN W. SCHAEFER, P.E.
P.E. NO. 44135

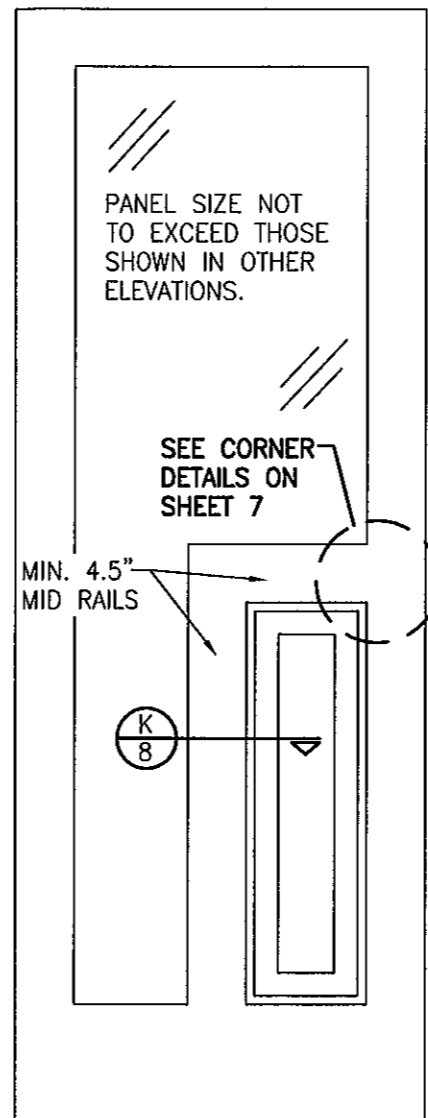
DRAWING NO. 1315	REV. C
SHEET NO. 4 OF 11	



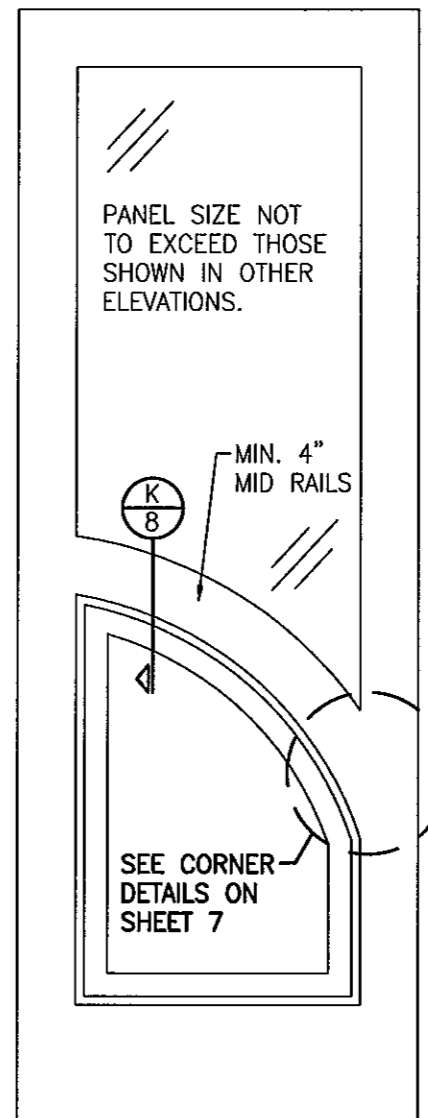
**INTERIOR ELEVATION
SINGLE FIXED PANEL**
SCALE: 3/4"=1'-0"



**INTERIOR ELEVATION SOLID
RAISED PANEL WITH
STANDARD MID RAILS**
SCALE: 3/4"=1'-0"



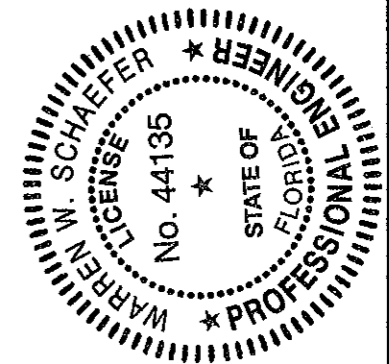
**INTERIOR ELEVATION SOLID
RAISED PANEL WITH
CORNERED MID RAILS**
SCALE: 3/4"=1'-0"



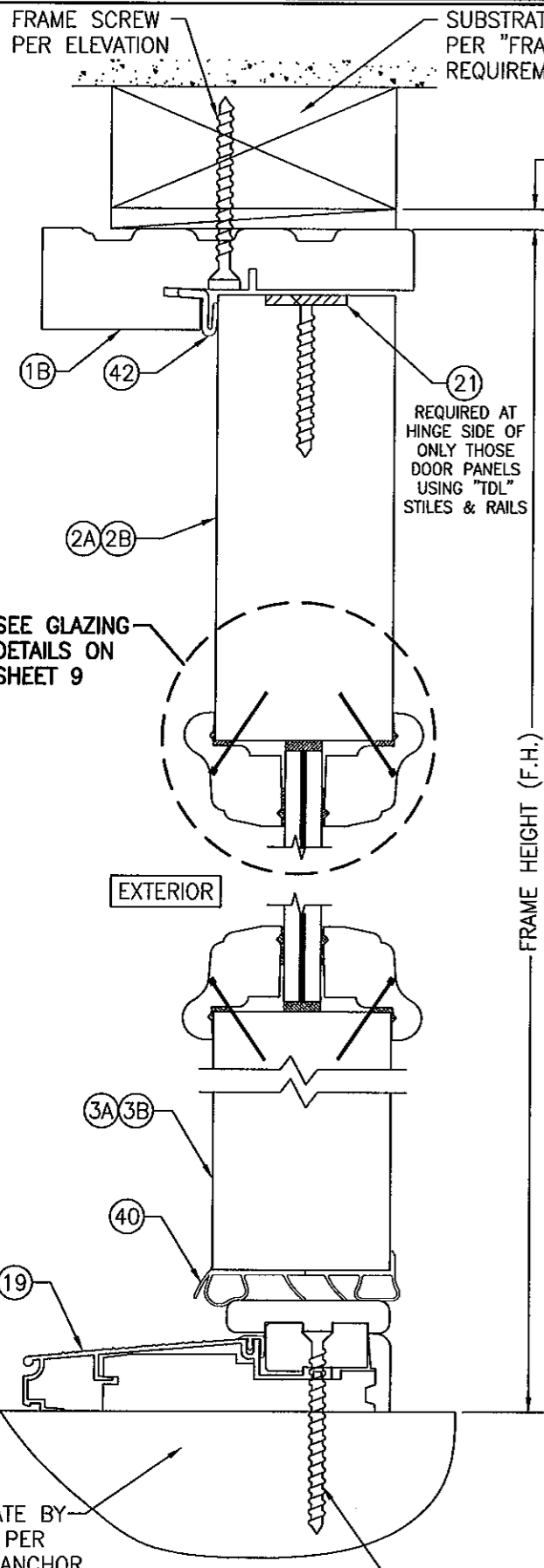
**INTERIOR ELEVATION
SOLID RAISED PANEL WITH
ARCHED/SHAPED MID RAILS**
SCALE: 3/4"=1'-0"

- 1) TOP & MID RAILS MAY BE OF ANY CONFIGURATION PROVIDING THE SMALLEST CROSS SECTION OF RAILS IS EQUAL TO OR LARGER THAN THAT DETAILED IN DRAWINGS.
- 2) MULTIPLE MID RAIL (BOTH HORIZONTAL & VERTICAL) MAY BE USED WITH THESE PANELS.
- 3) PARTIAL PANEL CONDITION IS SHOWN ABOVE. FULL PANEL DOORS AND OTHER PANEL CONFIGURATIONS ARE ALSO PART OF THIS APPROVAL AND ARE SIMILAR IN CONSTRUCTION TO THAT SHOWN ABOVE.
- 4) PANEL ONLY IS SHOWN. FOR INSTALLATION INTO FRAME, SEE OTHER ELEVATIONS.

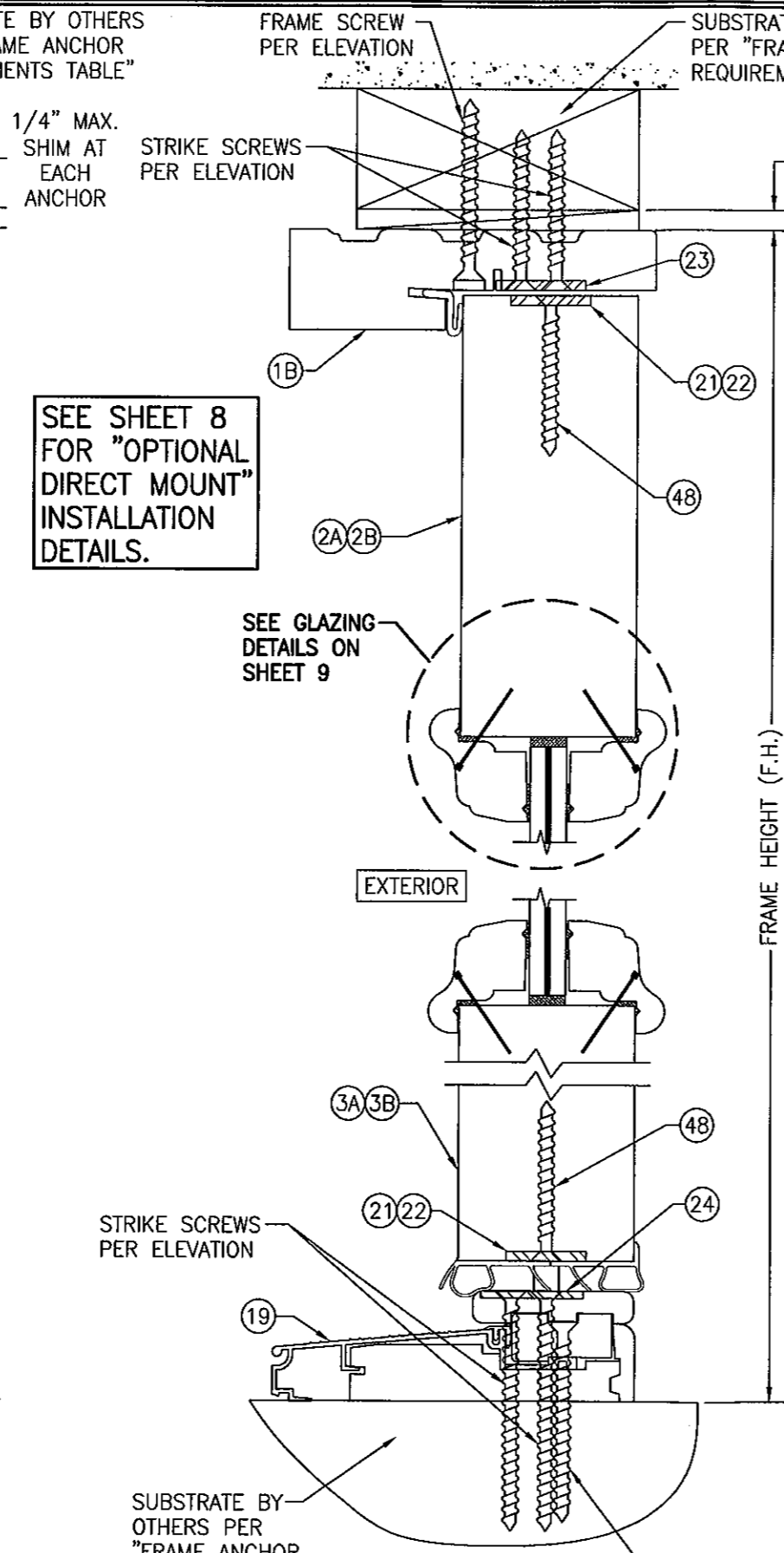
PRODUCT REVISED
as complying with the Florida
Building Code
Acceptance No. **11-1028.06**
Expiration Date **02/17/2015**
By *[Signature]*
Miami Dade Product Control



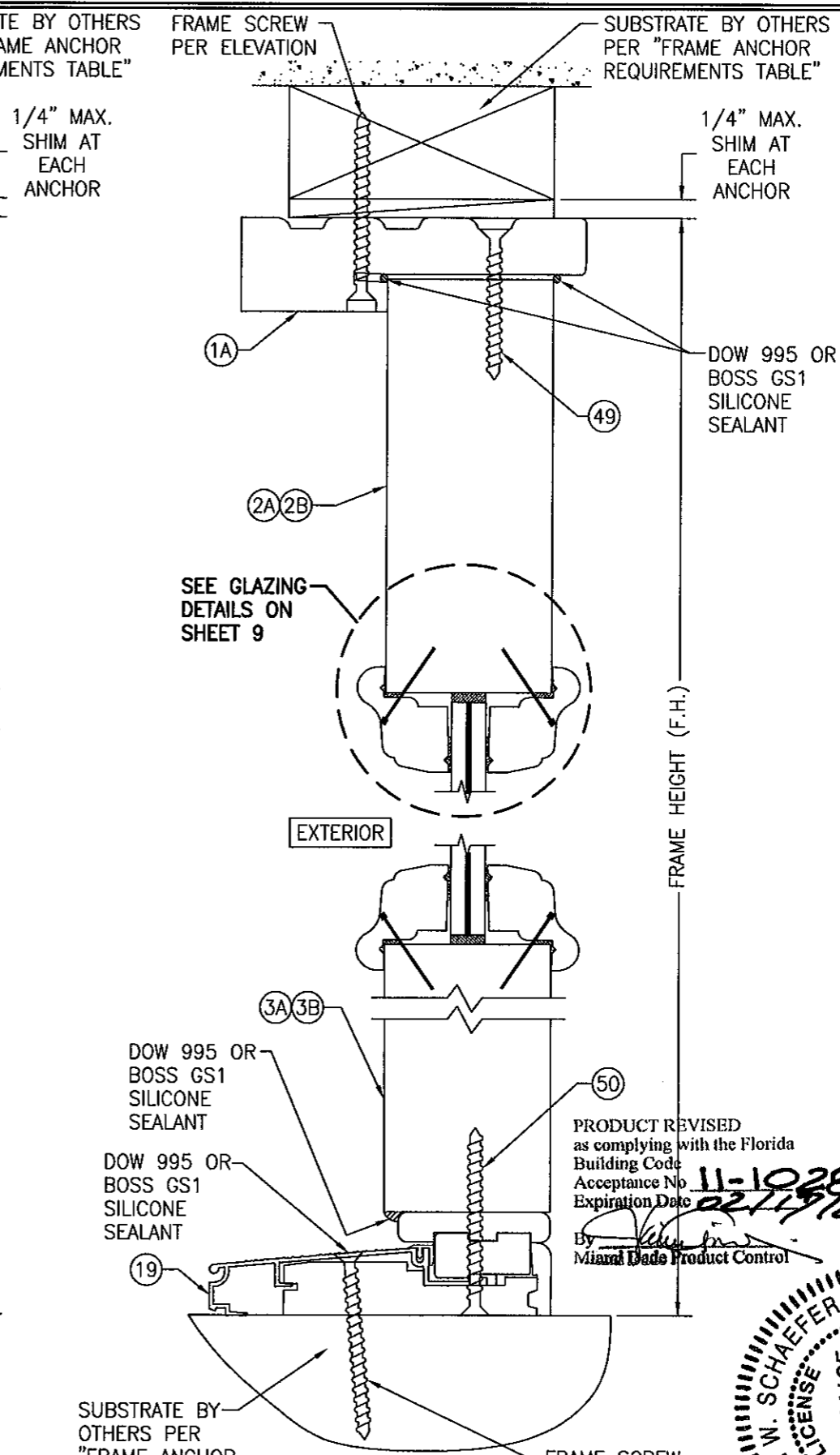
DRAWN BY: K.P.S.	CHECKED BY: W.W.S.
PLOT: 1-16	DATE: 06/28/04
DATE	BY
REVISION DESCRIPTION	NO.
DRAWING TITLE 10 FOOT WOOD INSWING IMPACT DOORS	
CONSULTANTS W. W. SCHAEFER ENGINEERING & CONSULTING, P.A. (CA 6809)	MANUFACTURER SIGNATURE DOOR INC.
7480 150TH COURT NORTH PALM BEACH GARDENS, FL 33418 PHONE: 561-744-3424	401 JUNIATA STREET ALTOONA, PA 16602 814-949-2770
CERTIFICATION <i>[Signature]</i> OCT 24 2011 WARREN M. SCHAEFER P.E. REG. NO. 44135	DRAWING NO. 1315
	REV. C
	SHEET NO. 5 OF 11



SECTION A
SCALE: 1/2 FULL
SUBSTRATE BY OTHERS PER "FRAME ANCHOR REQUIREMENTS TABLE"
FRAME SCREW PER ELEVATION
(STANDARD BUMPER THRESHOLD CONDITION SHOWN. SEE OTHER DETAILS ON SHEET 8 FOR ADA THRESHOLD OPTION.)



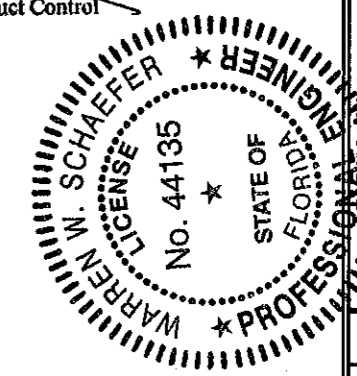
SECTION B
SCALE: 1/2 FULL
SUBSTRATE BY OTHERS PER "FRAME ANCHOR REQUIREMENTS TABLE"
FRAME SCREW PER ELEVATION
FOR DETAIL NOT SHOWN, SEE SECTION "A".



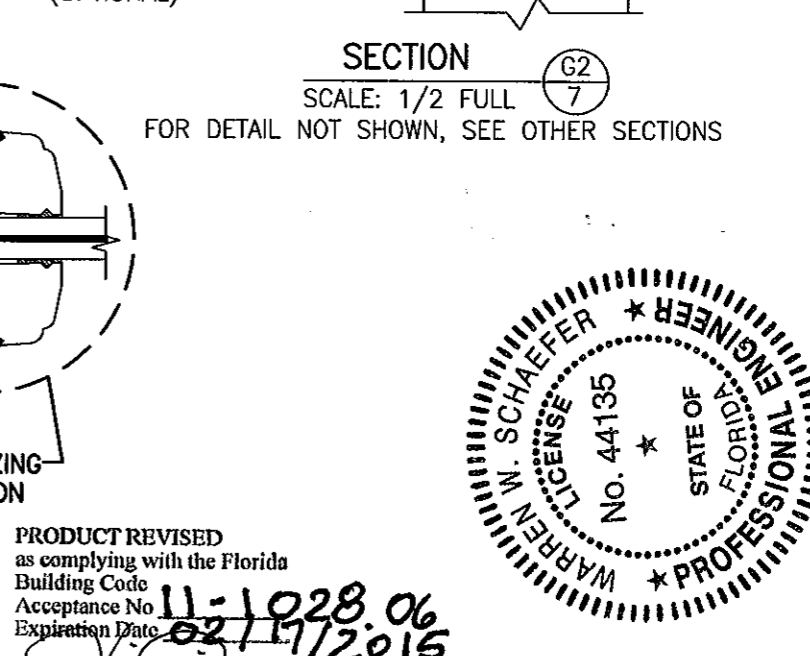
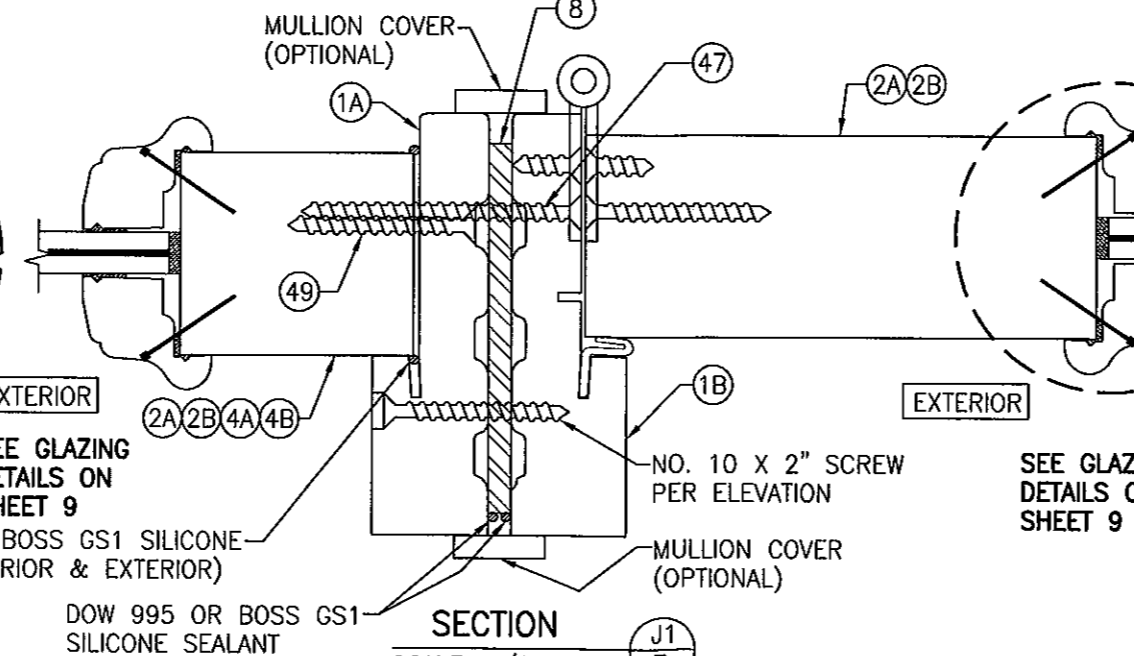
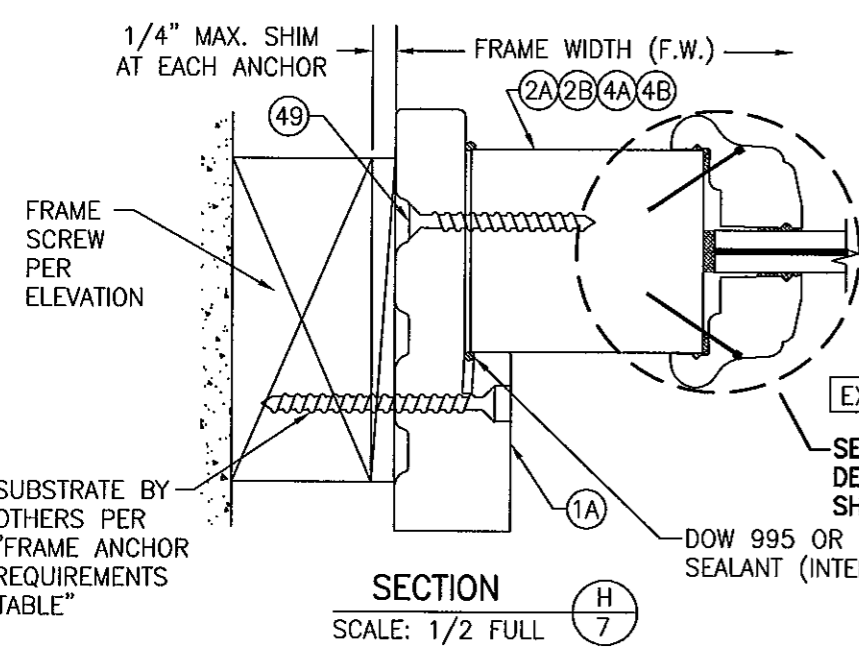
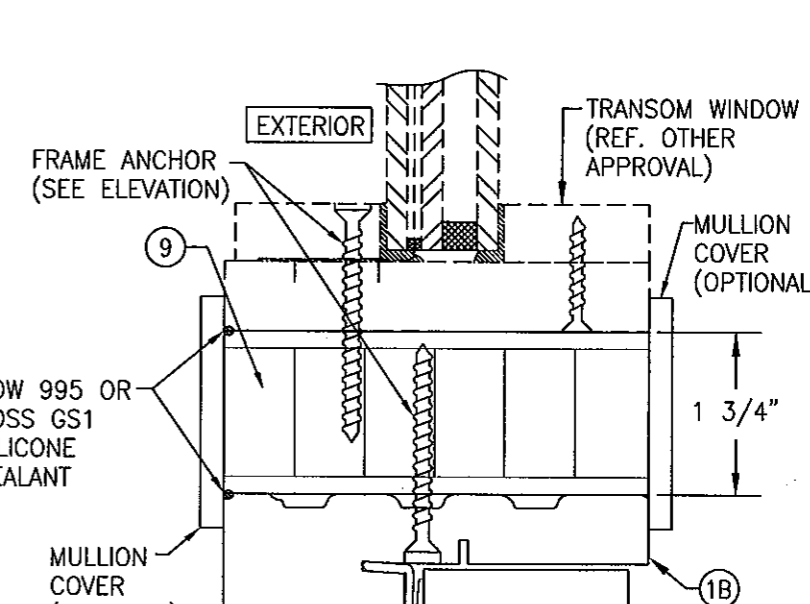
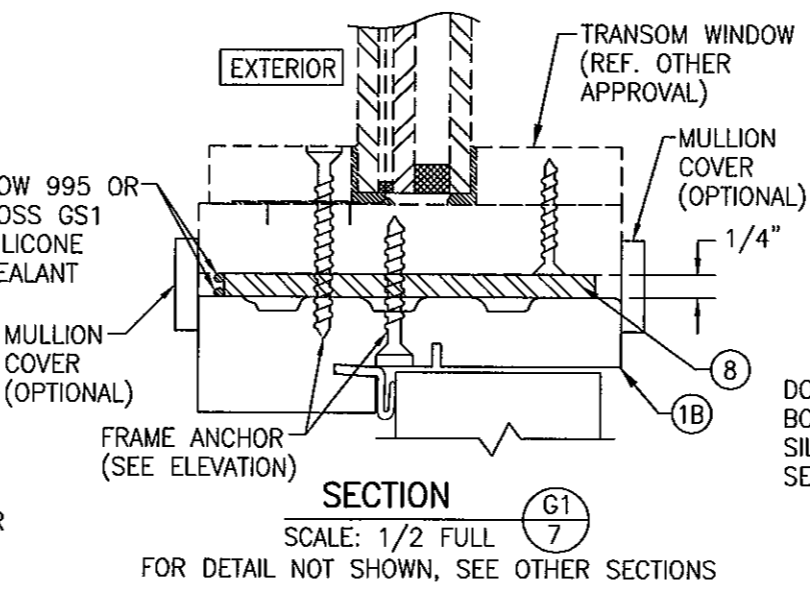
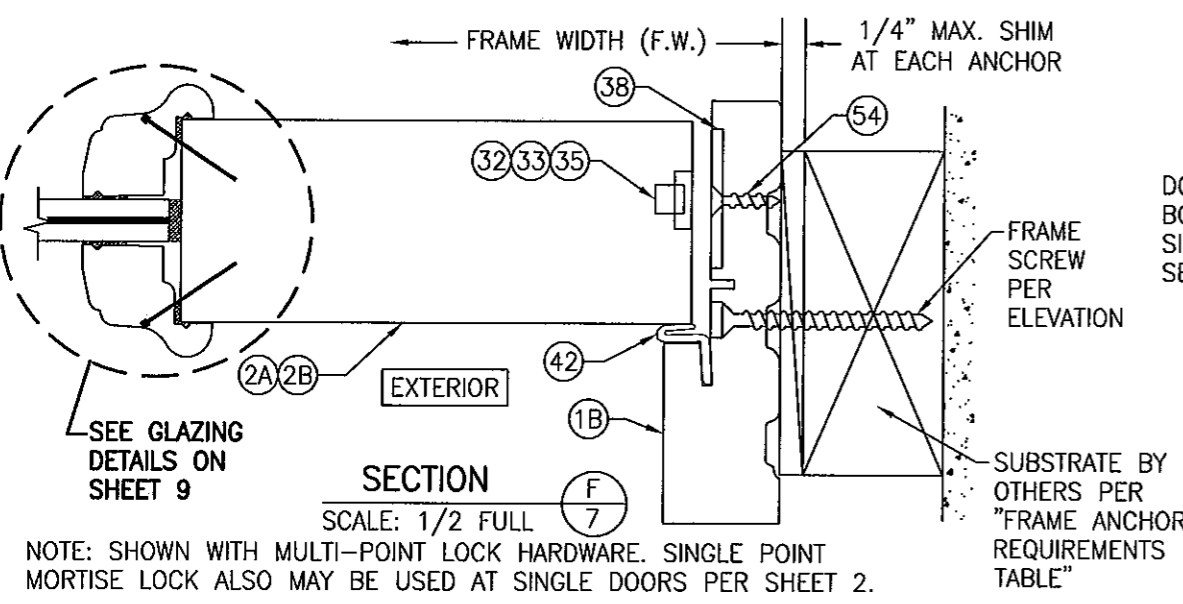
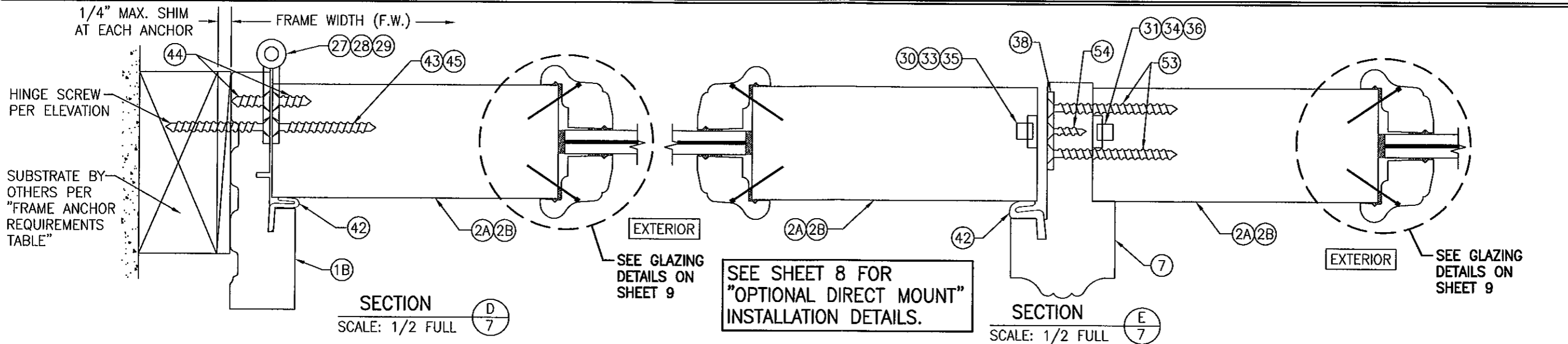
SECTION C
SCALE: 1/2 FULL
SUBSTRATE BY OTHERS PER "FRAME ANCHOR REQUIREMENTS TABLE"
FRAME SCREW PER ELEVATION

SEE SHEET 8 FOR "OPTIONAL DIRECT MOUNT" INSTALLATION DETAILS.

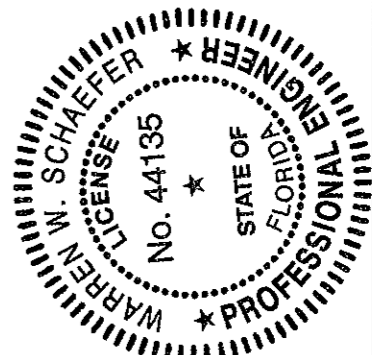
PRODUCT REVISED as complying with the Florida Building Code
Acceptance No. 11-1028.06
Expiration Date 02/17/2015
By: [Signature]
Miami Dade Product Control



DRAWN BY: K.P.S.	CHECKED BY: W.W.S.
PLOT: 1=2	DATE: 06/28/04
NO.	REVISION DESCRIPTION
BY	DATE
DRAWING TITLE 10 FOOT WOOD INSWING IMPACT DOORS	
MANUFACTURER SIGNATURE DOOR INC. 401 JUNIATA STREET ALTOONA, PA 16602 814-949-2770	
CONSULTANTS W. SCHAEFER ENGINEERING & CONSULTING, P.A. (CA 6809) 7480 150TH COURT NORTH PALM BEACH GARDENS, FL 33418 PHONE: 561-744-3424	
OCT 24 2011 WARREN W. SCHAEFER, P.E. P.E. NO. 44135	
DRAWING NO. 1315	REV. C
SHEET NO. 6 OF 11	



PRODUCT REVISED
as complying with the Florida
Building Code
Acceptance No. 11-1028.06
Expiration Date 02/17/2016
By *[Signature]*
Miami Dade Product Control



DRAWN BY: K.P.S.	CHECKED BY: W.W.S.
PLOT: 1=2	DATE: 06/29/04
NO.	REVISION DESCRIPTION
DATE	BY

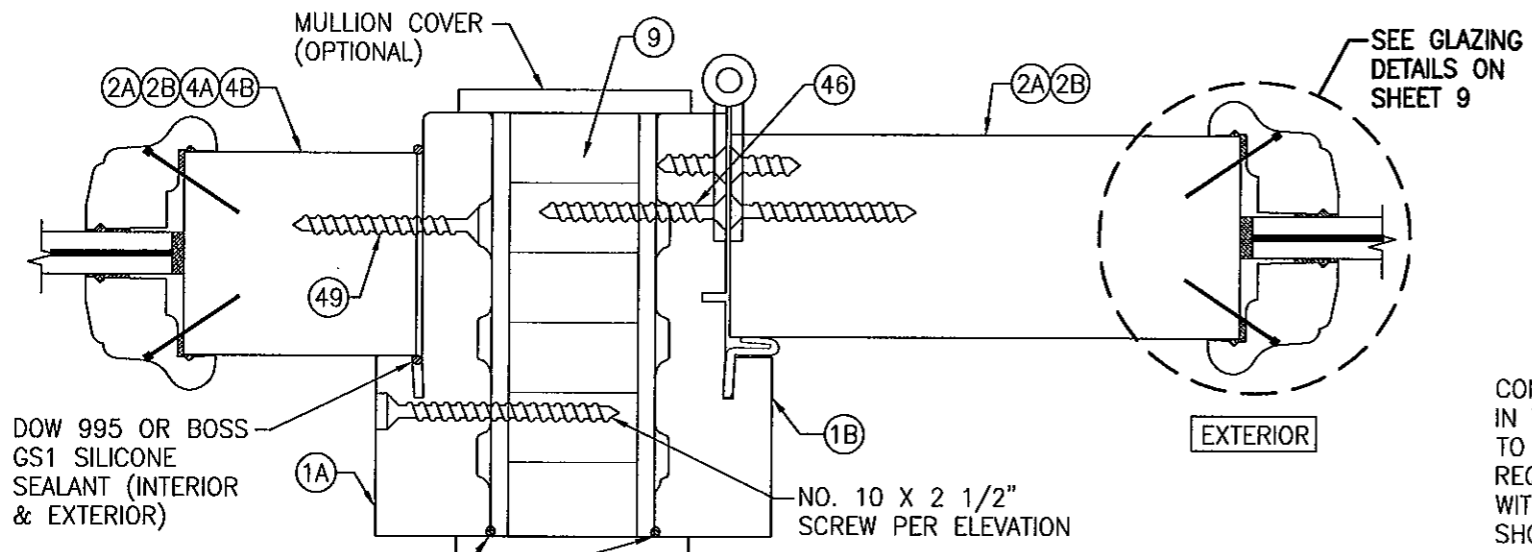
DRAWING TITLE: 10 FOOT WOOD INSURING IMPACT DOORS

MANUFACTURER: SIGNATURE DOOR INC.
401 JUNIATA STREET
ALTOONA, PA 16602
814-949-2770

CONSULTANTS: W. W. SCHAEFER ENGINEERING & CONSULTING, P.A. (CA 6809)
7480 150TH COURT NORTH
PALM BEACH GARDENS, FL 33418
PHONE: 561-744-3424

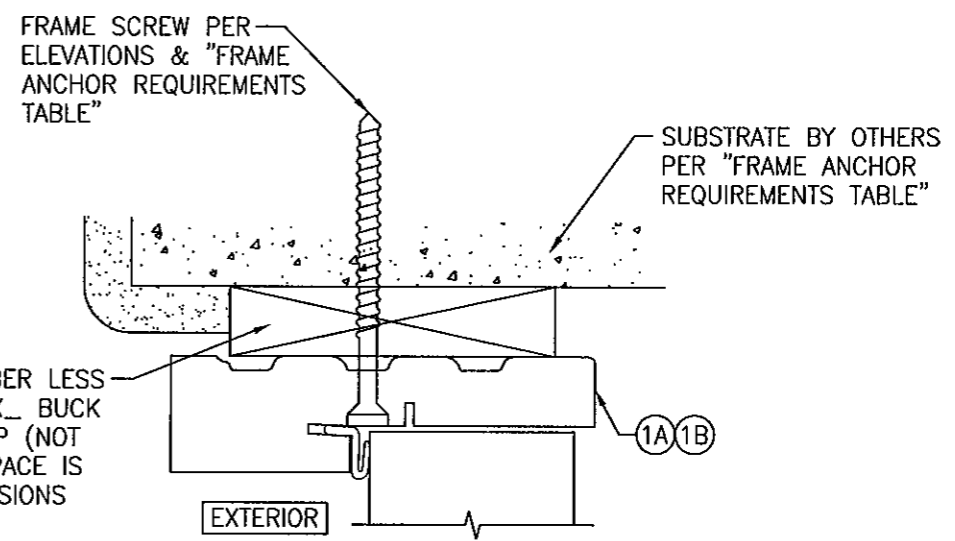
CERTIFICATION: *[Signature]*
OCT 24 2011
WARREN W. SCHAEFER, P.E.
P.E. NO. 44135

DRAWING NO. 1315
REV. C
SHEET NO. 7 OF 11

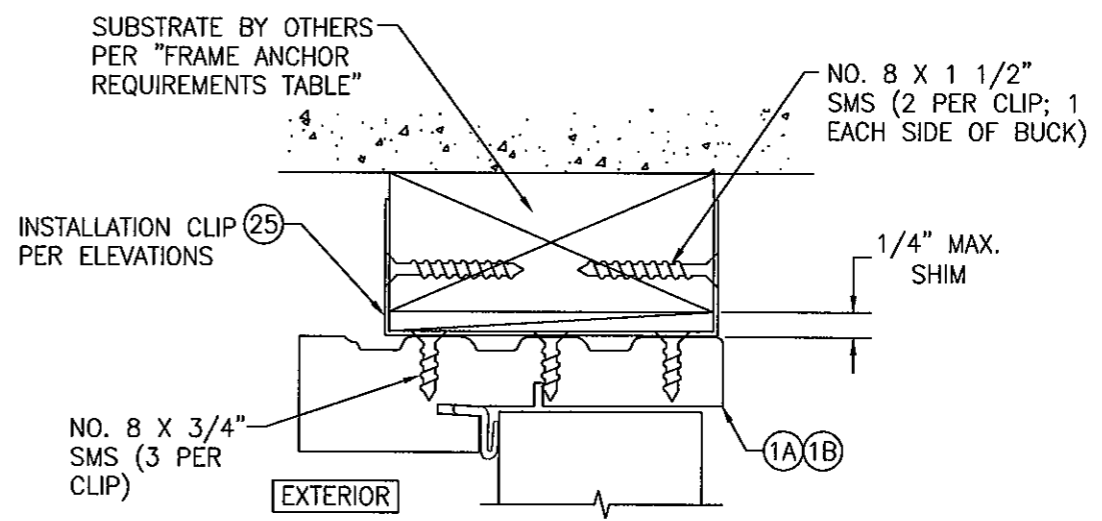


SECTION J2
SCALE: 1/2 FULL
FOR DETAIL NOT SHOWN, SEE OTHER SECTIONS

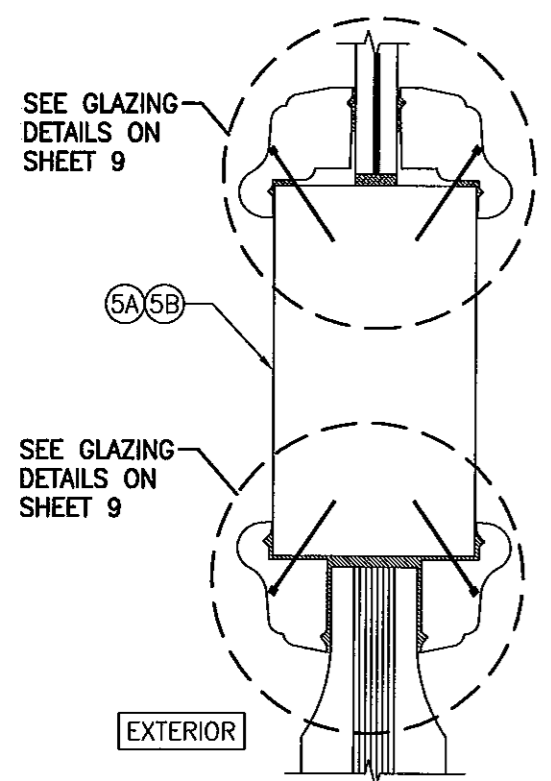
CONTINUOUS WOOD MEMBER LESS IN THICKNESS THAN A 2X BUCK TO BE MIN. 3 1/2" DEEP (NOT REQUIRED WHEN SHIM SPACE IS WITHIN ALLOWABLE DIMENSIONS SHOWN IN SECTIONS).



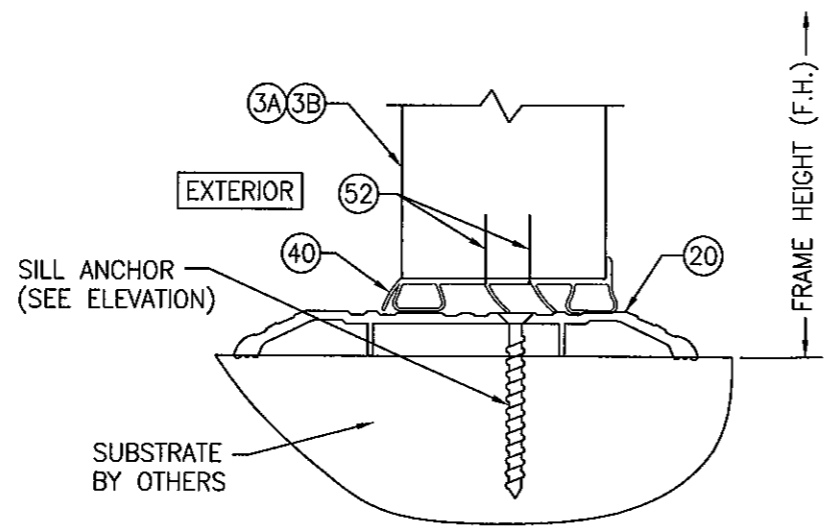
OPTIONAL DIRECT MOUNT DETAIL TO SUBSTRATE WITH SPACER
FOR DETAIL NOT SHOWN, SEE OTHER SECTIONS (HEAD SECTION SHOWN, SIDES AND SILL SIMILAR)



OPTIONAL CLIP MOUNT DETAIL
FOR DETAIL NOT SHOWN, SEE OTHER SECTIONS (HEAD SECTION SHOWN, SIDES AND SILL SIMILAR)

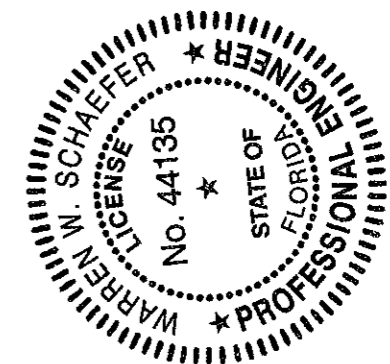


SECTION K
SCALE: 1/2 FULL

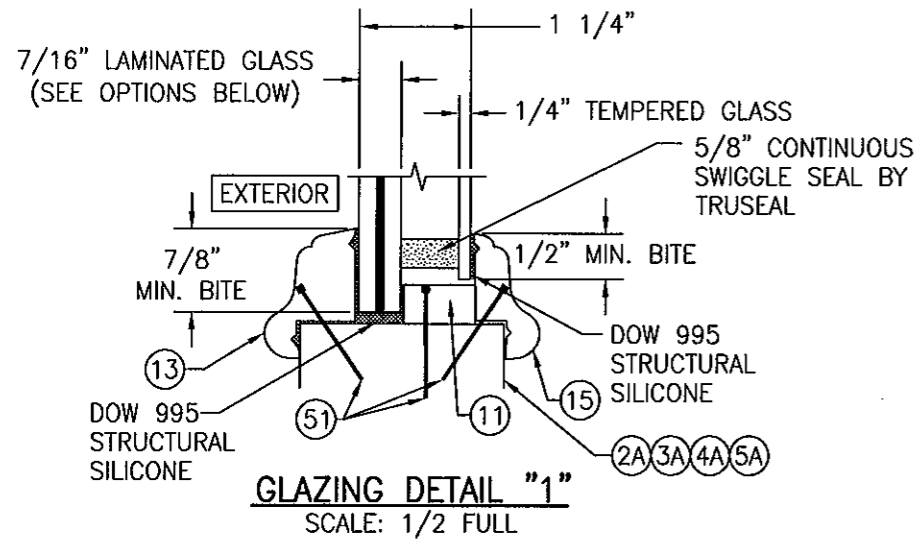


OPTIONAL ADA THRESHOLD DETAIL
FOR DETAIL NOT SHOWN, SEE OTHER SECTIONS

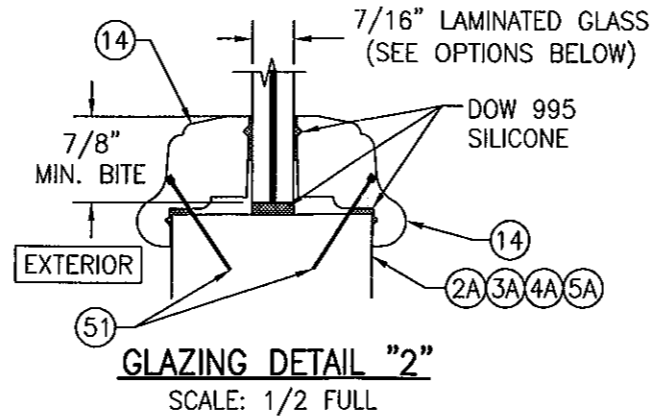
PRODUCT REVISED as complying with the Florida Building Code
Acceptance No. 11-1028-06
Expiration Date 02/17/2015
By *[Signature]*
Miami Dade Product Control



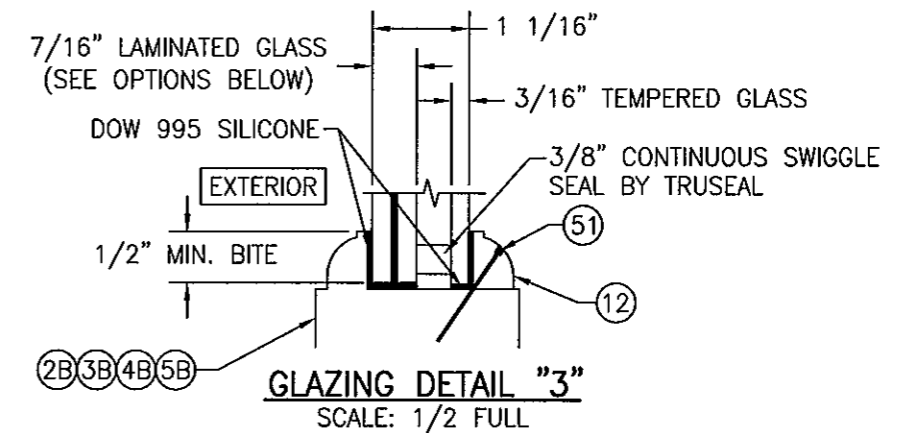
DRAWN BY: K.P.S.		CHECKED BY: W.W.S.	
PLOT: 1=2		DATE: 08/28/04	
NO.	REVISION	DESCRIPTION	DATE
10 FOOT WOOD INSURING IMPACT DOORS			
CONSULTANTS		MANUFACTURER	
W. W. SCHAEFER ENGINEERING & CONSULTING, P.A. (CA 6809)		SIGNATURE DOOR INC.	
7480 150TH COURT NORTH PALM BEACH GARDENS, FL 33418 PHONE: 561-744-3424		401 JUNIATA STREET ALTOONA, PA 16602 814-949-2770	
CERTIFICATION		OCT 24 2011	
WARREN W. SCHAEFER, P.E.		P.E. NO. 44135	
DRAWING NO.	REV.	SHEET NO.	
1315	C	8 OF 11	



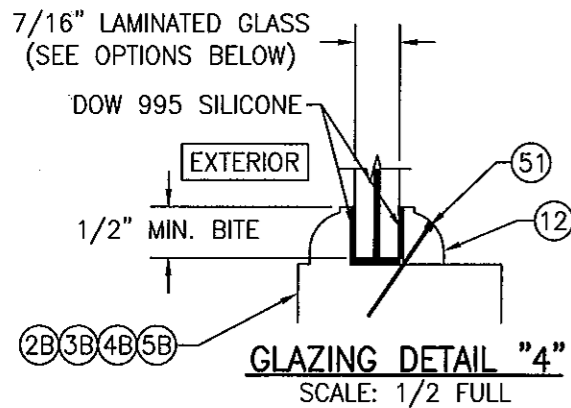
GLASS OPTION: 1) 7/16" THICK GLASSLAM SAFETY PLUS II LAMINATED OUTER GLASS (3/16" AN/0.10" POLYURETHANE POLYMER/3/16" AN); 3/16" TEMPERED SINGLE PANE INNER GLASS
 2) 7/16" THICK OLDCASTLE STORMGLASS LAMINATED OUTER GLASS (3/16" AN/0.075" STORMGLASS/3/16" AN); 3/16" TEMPERED SINGLE PANE INNER GLASS



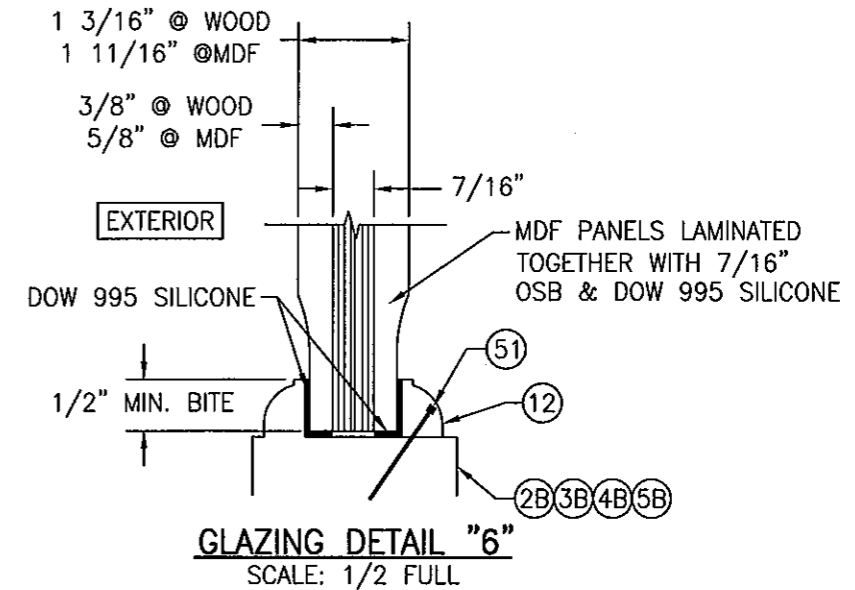
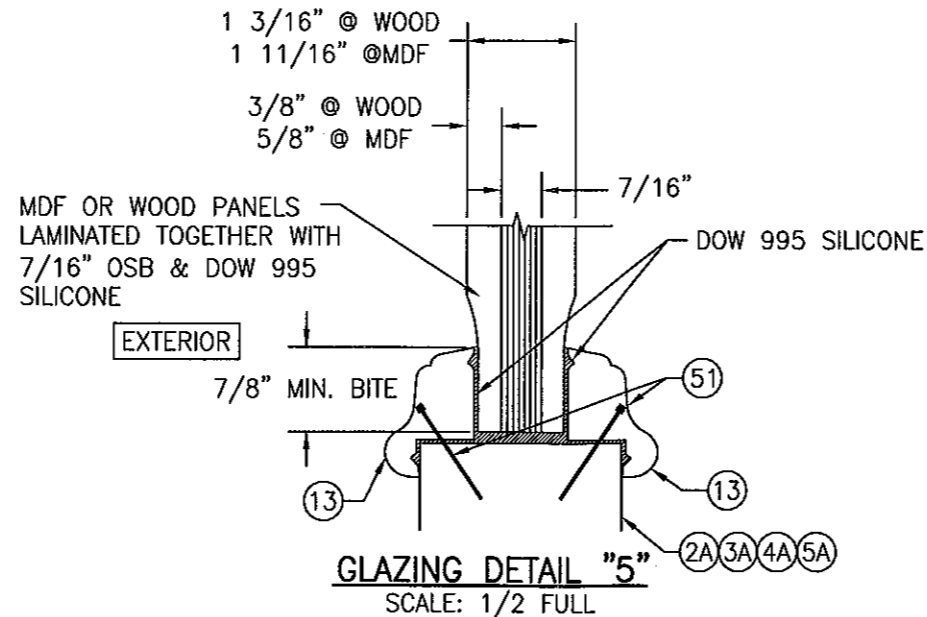
GLASS OPTION: 1) 7/16" THICK GLASSLAM SAFETY PLUS II LAMINATED GLASS (3/16" AN/0.10" POLYURETHANE POLYMER/3/16" AN)
 2) 7/16" THICK OLDCASTLE STORMGLASS LAMINATED GLASS (3/16" AN/0.075" STORMGLASS/3/16" AN)



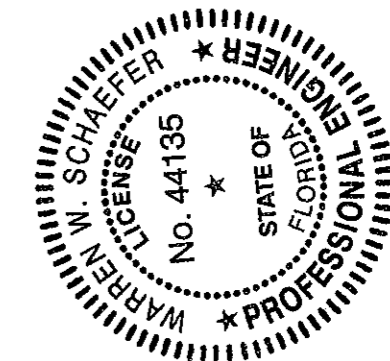
GLASS OPTION: 1) 7/16" THICK GLASSLAM SAFETY PLUS II LAMINATED OUTER GLASS (3/16" AN/0.10" POLYURETHANE POLYMER/3/16" AN); 3/16" TEMPERED SINGLE PANE INNER GLASS
 2) 7/16" THICK OLDCASTLE STORMGLASS LAMINATED OUTER GLASS (3/16" AN/0.075" STORMGLASS/3/16" AN); 3/16" TEMPERED SINGLE PANE INNER GLASS



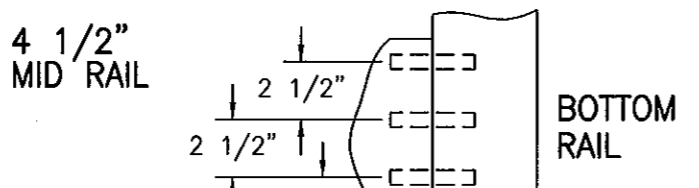
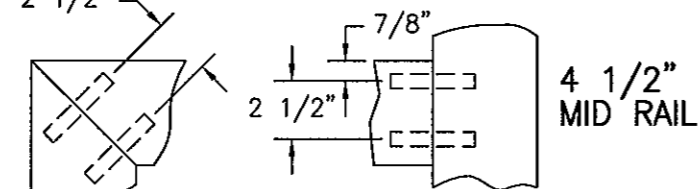
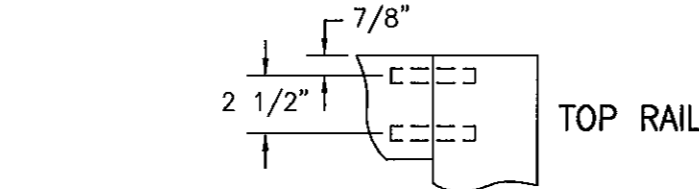
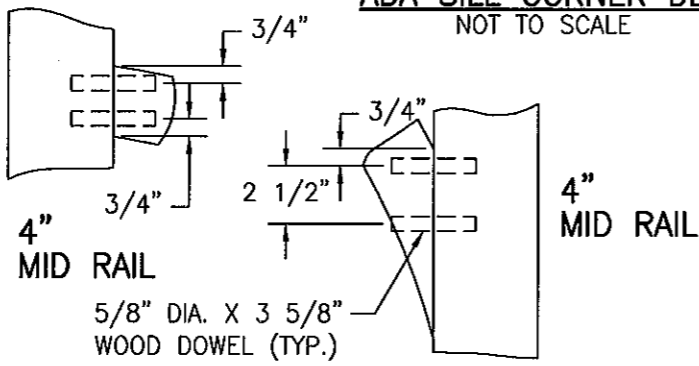
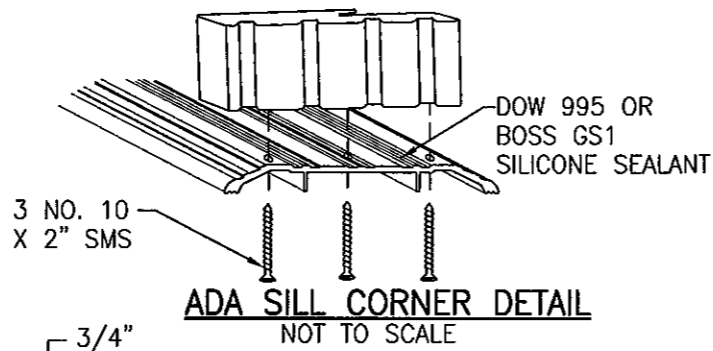
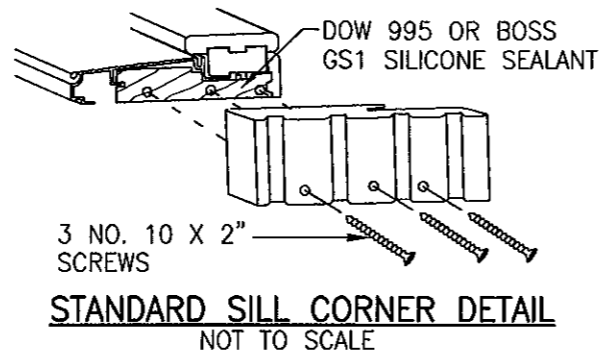
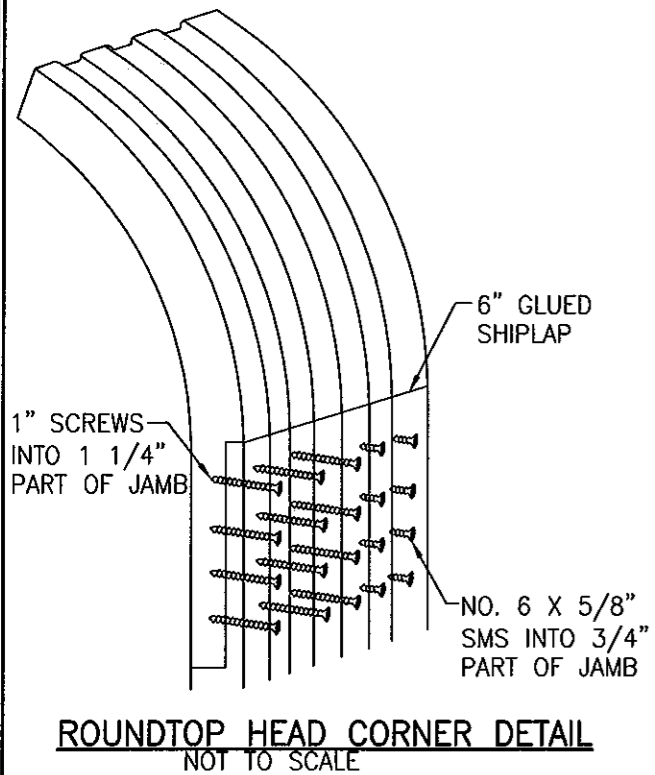
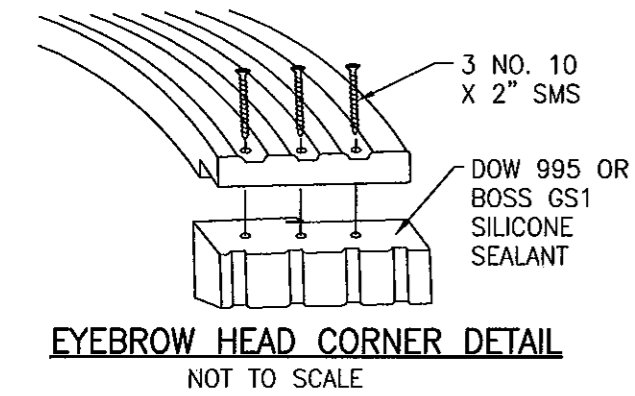
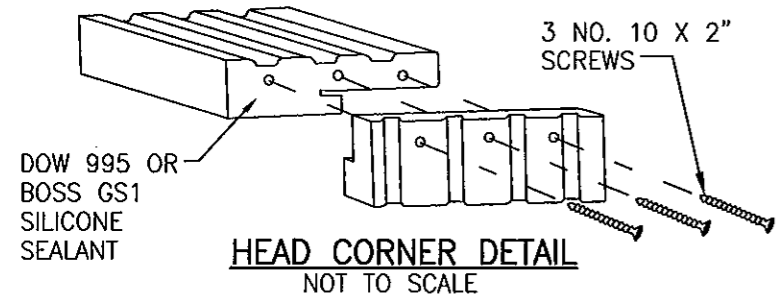
GLASS OPTION: 1) 7/16" THICK GLASSLAM SAFETY PLUS II LAMINATED GLASS (3/16" AN/0.10" POLYURETHANE POLYMER/3/16" AN)
 2) 7/16" THICK OLDCASTLE STORMGLASS LAMINATED GLASS (3/16" AN/0.075" STORMGLASS/3/16" AN)



PRODUCT REVISED as complying with the Florida Building Code
 Acceptance No. 11-1028.06
 Expiration Date 02/17/2015
 By *[Signature]*
 Miami Dade Product Control

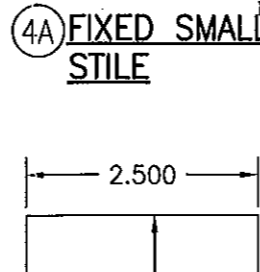
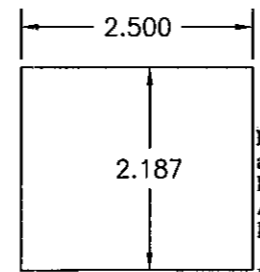
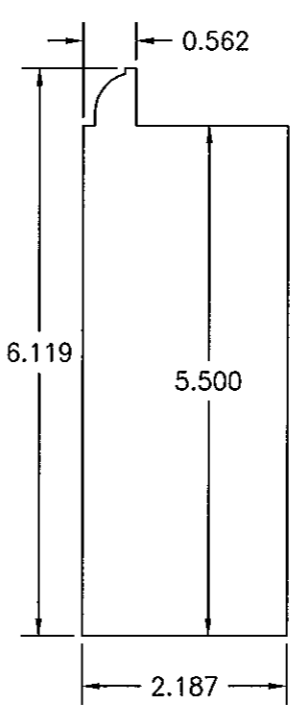
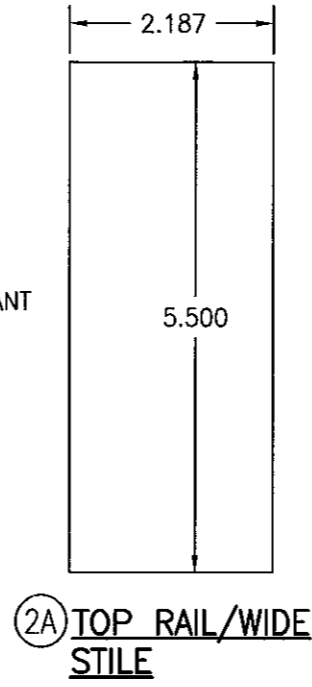
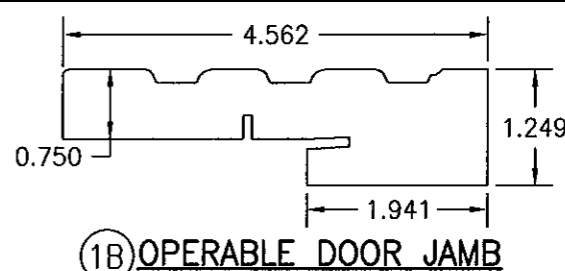
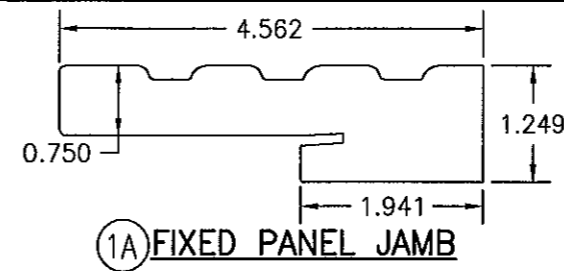


DRAWN BY: K.P.S.	CHECKED BY: W.W.S.
PLOT: 1-2	DATE: 06/28/04
DATE	
BY	
REVISION DESCRIPTION	
NO.	
DRAWING TITLE 10 FOOT WOOD INSURING IMPACT DOORS	
MANUFACTURER SIGNATURE DOOR INC. 401 JUNIATA STREET ALTOONA, PA 16602 814-949-2770	
CONSULTANTS W. W. SCHAEFER ENGINEERING & CONSULTING, P.A. (CA 6809) 7480 150TH COURT NORTH PALM BEACH GARDENS, FL 33418 PHONE: 561-744-3424	
CERTIFICATION	OCT 24 2011 WARREN W. SCHAEFER, P.E. P.E. NO. 44135
DRAWING NO. 1315	REV. C
SHEET NO. 9 OF 11	

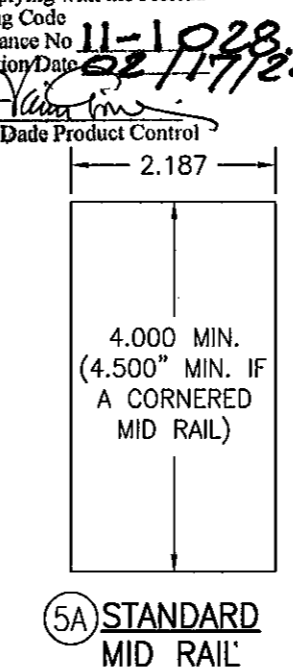
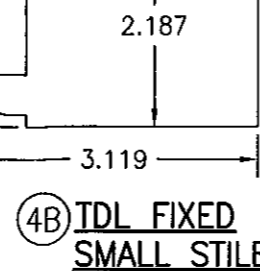
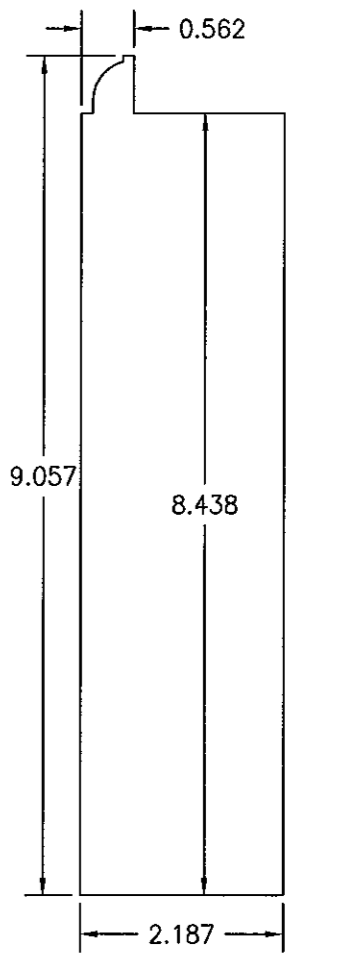
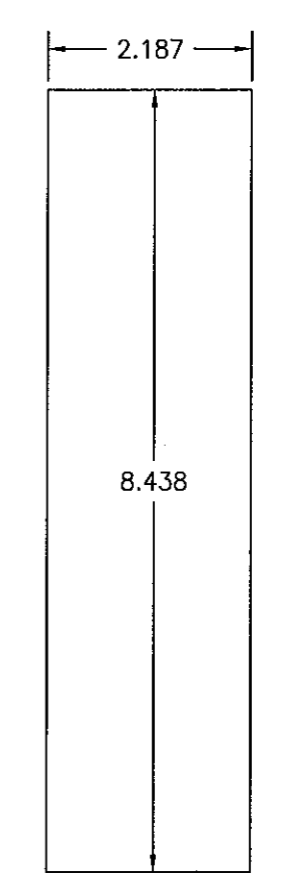


PANEL CORNER DETAILS NOT TO SCALE

ALL DOWEL AND WOOD TO WOOD CONTACT SURFACES ARE FULLY GLUED WITH WOOD ADHESIVE BY KORLOCK GT 42-300A OR TITEBOND II BY WEATHERPROOF.



PRODUCT REVISED as complying with the Florida Building Code Acceptance No. 11-1028-06 Expiration Date 02/17/2015 By Warren W. Schaefer, P.E. Miami Dade Product Control

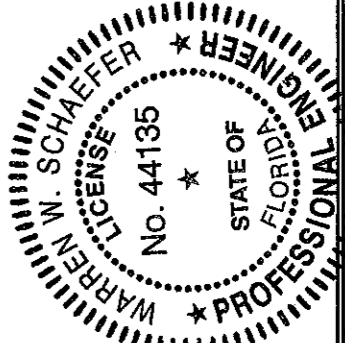


DRAWN BY:	K.P.S.	CHECKED BY:	W.W.S.
PLOT:	1=2	DATE:	06/28/04
NO.		REVISION DESCRIPTION	
BY		DATE	

DRAWING TITLE: 10 FOOT WOOD INSWING IMPACT DOORS

CONSULTANTS: W. W. SCHAEFER ENGINEERING & CONSULTING, P.A. (CA 6809)
7480 150TH COURT NORTH, PALM BEACH GARDENS, FL 33418
PHONE: 561-744-3424

MANUFACTURER: SIGNATURE DOOR INC.
401 JUNIATA STREET
ALTOONA, PA 16602
814-949-2770

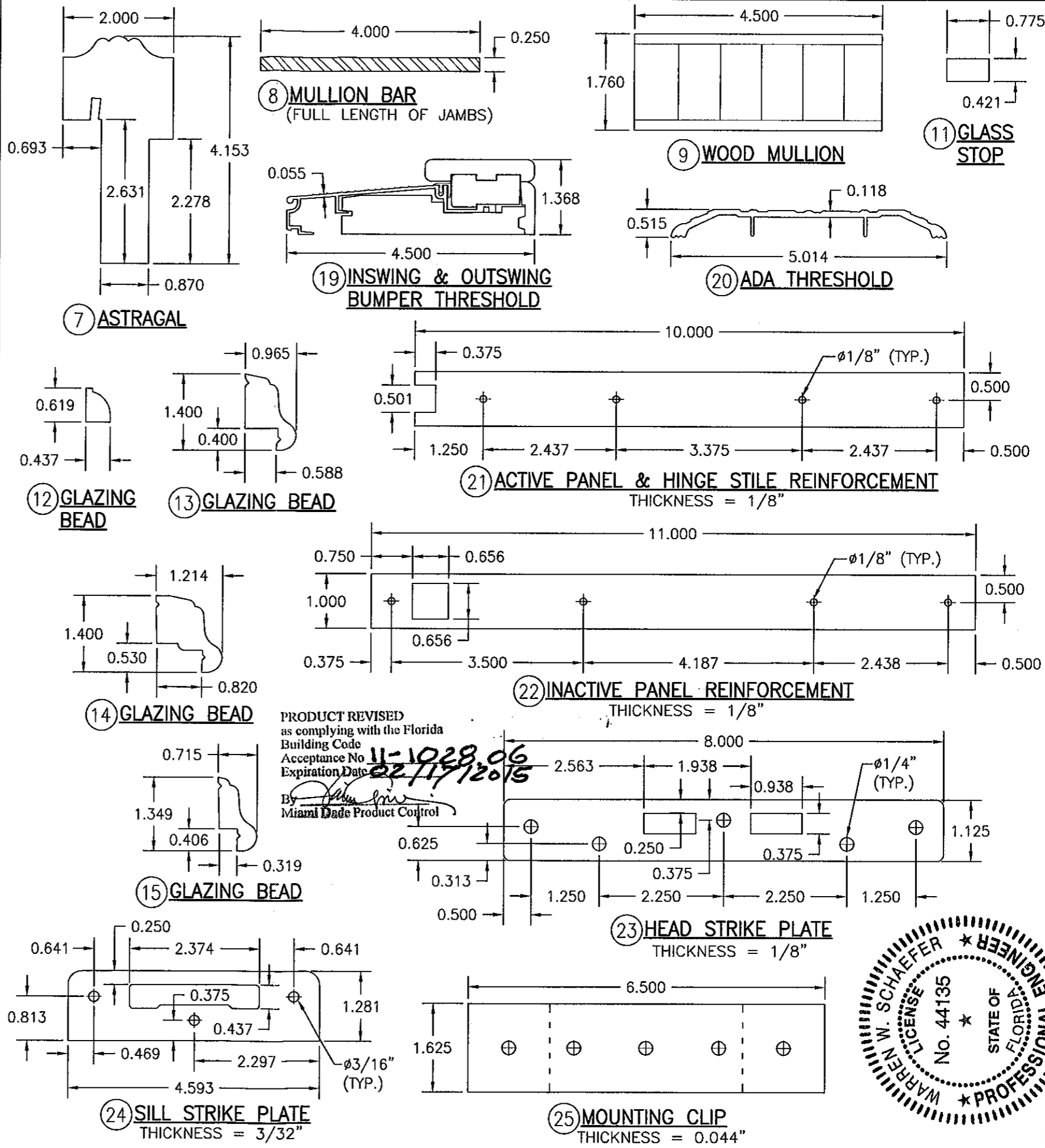


DATE: OCT 24 2011
WARREN W. SCHAEFER, P.E.
P.E. NO. 44135

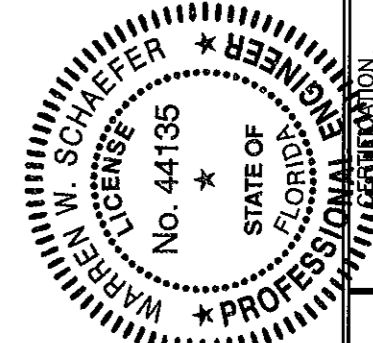
DRAWING NO.	1315	REV.	C
SHEET NO.	10	OF	11

ITEM #	ITEM DESCRIPTION	MANUFACTURER/NOTES
PARTS		
1A	FIXED PANEL JAMB	* WOOD (LAMINATED WITH CURVED JAMB)
1B	OPERABLE DOOR JAMB	* WOOD (LAMINATED WITH CURVED JAMB)
2A	TOP RAIL/WIDE STILE	LAMINATED RED OAK CORE (PINE VENEER)
2B	TDL TOP RAIL/WIDE STILE	LAMINATED RED OAK CORE (PINE VENEER)
3A	BOTTOM RAIL	LAMINATED RED OAK CORE (PINE VENEER)
3B	TDL BOTTOM RAIL	LAMINATED RED OAK CORE (PINE VENEER)
4A	FIXED SMALL STILE	LAMINATED RED OAK CORE (PINE VENEER)
4B	TDL FIXED SMALL STILE	LAMINATED RED OAK CORE (PINE VENEER)
5A	STANDARD MID RAIL	LAMINATED RED OAK CORE (PINE VENEER)
5B	TDL MID RAIL	LAMINATED RED OAK CORE (PINE VENEER) OR 3-PIECE EASTERN PINE CORE (PINE VENEER)
7	ASTRAGAL	* WOOD
8	MULLION BAR	A36 STEEL
9	WOOD MULLION	LVL OR LAMINATED RED OAK CORE (PINE VENEER)
11	GLASS STOP	* WOOD
12	GLAZING BEAD	* WOOD
13	GLAZING BEAD	* WOOD
14	GLAZING BEAD	* WOOD
15	GLAZING BEAD	* WOOD
19	INSWING & OUTSWING BUMPER THRESHOLD	IMPERIAL 5QCW
20	ADA THRESHOLD	HAGAR 401-S
21	ACTIVE PANEL & HINGE STILE REINF.	STAINLESS STEEL
22	INACTIVE PANEL REINFORCEMENT	STAINLESS STEEL
23	HEAD STRIKE PLATE	STAINLESS STEEL
24	SILL STRIKE PLATE	STAINLESS STEEL
25	MOUNTING CLIP	MIN. 33 KSI GALVANIZED STEEL
26	JAMB REINF. PLATE (.044" X 4.00" X 16.00")	MIN. 33 KSI GALVANIZED STEEL
HARDWARE		
27	4.5" X 4.5" BALL BEARING HINGE	BALDWIN 1046.003 (BRASS)
28	4.5" X 4.5" BALL BEARING HINGE	PENROD MH4.5BBTPSQ-SQBB (STEEL)
29	4.5" X 4.5" BALL BEARING HINGE	PENROD MH4.5BBTPSQ-SQSB (BRASS)
30	5-POINT ACTIVE PANEL LOCK SYS.	HOPPE HLS9000 ROUND BOLT/SHOOT BOLT
31	2-POINT INACTIVE PANEL LOCK SYS.	HOPPE HLS9000 SHOOT BOLT
32	3-POINT ACTIVE PANEL LOCK SYS.	HOPPE HLS9000 ROUND BOLT
33	5-POINT ACTIVE PANEL LOCK SYS. (3-POINT AT SINGLE DOOR)	GU RHINO
34	2-POINT INACTIVE PANEL LOCK SYS.	GU EUROPA
35	5-POINT ACTIVE PANEL LOCK SYS. (3-POINT AT SINGLE DOOR)	KFV 7370-S. BOLT
36	2-POINT INACTIVE PANEL LOCK SYS.	KFV 7000
37	HANDLE	AS REQ'D TO FIT LOCK SYSTEM
38	LOCK STRIKE PLATE	AS SUPPLIED WITH LOCK SYSTEM
SEALS AND SEALANTS		
40	DOOR SWEEP	IMPERIAL FBS30B/FBS36B
42	WEATHER SEAL	HOLM INDUSTRIES JF65814
MISC. FASTENERS		
43	NO. 10 X 2" SMS	2 PER HINGE LEAF INTO PANEL W/BRASS HINGES
44	NO. 10 X 3/4" SMS	2 PER HINGE LEAF INTO JAMB & PANEL
45	NO. 12 X 2" SMS	2 PER HINGE LEAF INTO PANEL W/STEEL HINGES
46	NO. 12 X 2" SMS	2 PER HINGE LEAF INTO WOOD MULLION
47	NO. 12 X 3" SMS	2 PER HINGE LEAF INTO STEEL MULLION/SIDELIGHT
48	NO. 10 X 2" SMS	4 PER DOOR REINFORCEMENT PLATE
49	NO. 10 X 2" SMS	6" FROM CORNERS & 16" MAX O.C.
50	NO. 10 X 2 1/2" SMS	6" FROM CORNERS & MID SPAN ON SILL
51	1 3/16" BRAD NAIL	1" FROM CORNERS & 8" O.C.
52	3/4" STAPLE	3/4" FROM CORNERS & 6" O.C. STAGGERED
53	NO. 10 X 2 1/2" SMS	3" FROM ENDS & 22" O.C. THRU ASTRAGAL
54	NO. 6 X 3/4" SCREW	2 PER STRIKE PLATE

NOTE: WOOD USED IN TESTING WAS EASTERN WHITE PINE WITH A SPECIFIC GRAVITY OF G = 0.36 AND A MODULUS OF ELASTICITY OF E = 1,200,000 PSI. OTHER WOOD SPECIES APPLICABLE FOR USE WITH THIS PRODUCT ARE THOSE WITH A SPECIFIC GRAVITY OF 0.36 AND MODULUS OF ELASTICITY OF 1,200,000 PSI OR GREATER. ALL WOOD IS MINIMUM GRADE 2 MILLED BY SIGNATURE DOOR INC. TO SELECT.



PRODUCT REVISED as complying with the Florida Building Code Acceptance No. 11-1028-06 Expiration Date 02/17/2015 By [Signature] Miami Dade Product Control



DRAWN BY: K.P.S.	CHECKED BY: W.W.S.
PLOT: 1-2	DATE: 06/28/04
REVISION DESCRIPTION	DATE
NO.	

10 FOOT WOOD INSWING IMPACT DOORS

MANUFACTURER: SIGNATURE DOOR INC. 401 JUNIATA STREET ALTOONA, PA 16602 814-949-2770

CONSULTANTS: W. W. SCHAEFER ENGINEERING & CONSULTING, P.A. (CA 6809) 7480 150TH COURT NORTH PALM BEACH GARDENS, FL 33418 PHONE: 561-744-3424

DRAWING NO. 1315 REV. C SHEET NO. 11 OF 11

DATE: OCT 24 2011