



DEPARTMENT OF PERMITTING, ENVIRONMENT, AND REGULATORY
AFFAIRS (PERA)
BOARD AND CODE ADMINISTRATION DIVISION

MIAMI-DADE COUNTY
PRODUCT CONTROL SECTION
11805 SW 26 Street, Room 208
Miami, Florida 33175-2474
T (786) 315-2590 F (786) 315-2599

NOTICE OF ACCEPTANCE (NOA)

www.miamidade.gov/pera

SIW Impact Windows, LLC
975 S. Congress Avenue, # 102
Delray Beach, FL 33445

SCOPE:

This NOA is being issued under the applicable rules and regulations governing the use of construction materials. The documentation submitted has been reviewed and accepted by Miami-Dade County PERA - Product Control Section to be used in Miami Dade County and other areas where allowed by the Authority Having Jurisdiction (AHJ).

This NOA shall not be valid after the expiration date stated below. The Miami-Dade County Product Control Section (In Miami Dade County) and/or the AHJ (in areas other than Miami Dade County) reserve the right to have this product or material tested for quality assurance purposes. If this product or material fails to perform in the accepted manner, the manufacturer will incur the expense of such testing and the AHJ may immediately revoke, modify, or suspend the use of such product or material within their jurisdiction. PERA reserves the right to revoke this acceptance, if it is determined by Miami-Dade County Product Control Section that this product or material fails to meet the requirements of the applicable building code.

This product is approved as described herein, and has been designed to comply with the Florida Building Code, including the High Velocity Hurricane Zone.

DESCRIPTION: Clipped, Extruded Aluminum Tube Mullion – L.M.I.

APPROVAL DOCUMENT: Drawing No. **M07-04**, titled "Aluminum Tube Mullions", sheets 1 through 7 of 7, dated 10/01/07, with revision C dated 12/06/11, prepared by Al-Farooq Corporation, signed and sealed by Javad Ahmad, P.E., bearing the Miami-Dade County Product Control Revision stamp with the Notice of Acceptance number and expiration date by the Miami-Dade County Product Control Section.

MISSILE IMPACT RATING: Large and Small Missile Impact Resistant

LABELING: Each unit shall bear a permanent label with the manufacturer's name or logo, city, state, model/series, and following statement: "Miami-Dade County Product Control Approved", unless otherwise noted herein.

RENEWAL of this NOA shall be considered after a renewal application has been filed and there has been no change in the applicable building code negatively affecting the performance of this product.

TERMINATION of this NOA will occur after the expiration date or if there has been a revision or change in the materials, use, and/or manufacture of the product or process. Misuse of this NOA as an endorsement of any product, for sales, advertising or any other purposes shall automatically terminate this NOA. Failure to comply with any section of this NOA shall be cause for termination and removal of NOA.

ADVERTISEMENT: The NOA number preceded by the words Miami-Dade County, Florida, and followed by the expiration date may be displayed in advertising literature. If any portion of the NOA is displayed, then it shall be done in its entirety.

INSPECTION: A copy of this entire NOA shall be provided to the user by the manufacturer or its distributors and shall be available for inspection at the job site at the request of the Building Official. This NOA **revises and renews** NOA # **10-1004.01** and consists of this page 1 and evidence pages E-1 and E-2, as well as approval document mentioned above.

The submitted documentation was reviewed by **Manuel Perez, P.E.**



Handwritten signature and date: MP 4/16/12

NOA No. 12-0221.09
Expiration Date: November 21, 2017
Approval Date: April 26, 2012
Page 1

SIW Impact Windows, LLC.

NOTICE OF ACCEPTANCE: EVIDENCE SUBMITTED

A. DRAWINGS

1. Manufacturer's die drawings and sections.
2. Drawing No. **W07-04**, titled "Aluminum Tube Mullions", sheets 1 through 7 of 7, dated 10/01/07, with revision C dated 12/06/11, prepared by Al-Farooq Corporation, signed and sealed by Javad Ahmad, P.E.

B. TESTS

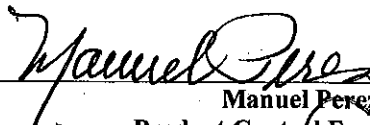
1. Test reports on: 1) Large Missile Impact Test per FBC, TAS 201-94
2) Cyclic Wind Pressure Loading per FBC, TAS 203-94
along with marked-up drawings and installation diagram of series 100 mulled single hung windows, prepared by Hurricane Engineering & Testing, Inc., Test Report No. **HETI-07-4107**, dated 03/26/07, signed and sealed by Rafael E. Droz-Seda, P.E.
(Submitted under previous NOA#07-1016.06)
2. Test reports on: 1) Air Infiltration Test, per FBC, TAS 202-94
2) Uniform Static Air Pressure Test, Loading per FBC TAS 202-94
3) Water Resistance Test, per FBC, TAS 202-94
4) Forced Entry Test, per SFBC 3603.2 (b)
along with marked-up drawings and installation diagram of series 100 mulled single hung windows, prepared by Hurricane Engineering & Testing, Inc., Test Report No. **HETI-07-4108**, dated 03/26/07, signed and sealed by Rafael E. Droz-Seda, P.E.
(Submitted under previous NOA#07-1016.06)
3. Test reports on: 1) Large Missile Impact Test per FBC, TAS 201-94
2) Cyclic Wind Pressure Loading per FBC, TAS 203-94
along with marked-up drawings and installation diagram of series 100 mulled fixed windows, prepared by Hurricane Engineering & Testing, Inc., Test Report No. **HETI-07-4115**, dated 04/09/07, signed and sealed by Rafael E. Droz-Seda, P.E.
(Submitted under previous NOA#07-1016.06)

C. CALCULATIONS

1. Anchor verification calculations and structural analysis, complying with FBC-2007, prepared by Al-Farooq Corporation, dated 08/13/09 and revised on 09/14/10, signed and sealed by Javad Ahmad, P.E.
(Submitted under previous NOA#10-1004.01)

D. QUALITY ASSURANCE

1. Miami-Dade Department of Permitting, Environment, and Regulatory Affairs (PERA)


Manuel Perez, P.E.
Product Control Examiner
NOA No. 12-0221.09
Expiration Date: November 21, 2017
Approval Date: April 26, 2012

SIW Impact Windows, LLC.

NOTICE OF ACCEPTANCE: EVIDENCE SUBMITTED

E. MATERIAL CERTIFICATIONS

1. None.

F. STATEMENTS

1. Statement letter of conformance, complying with FBC-2010, and of no financial interest, dated December 05, 2011, prepared by Al-Farooq Corporation, signed and sealed by Javad Ahmad, P.E.

G. OTHER

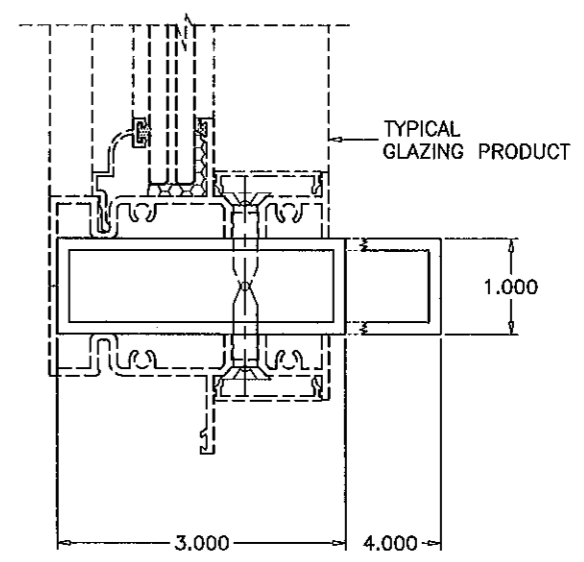
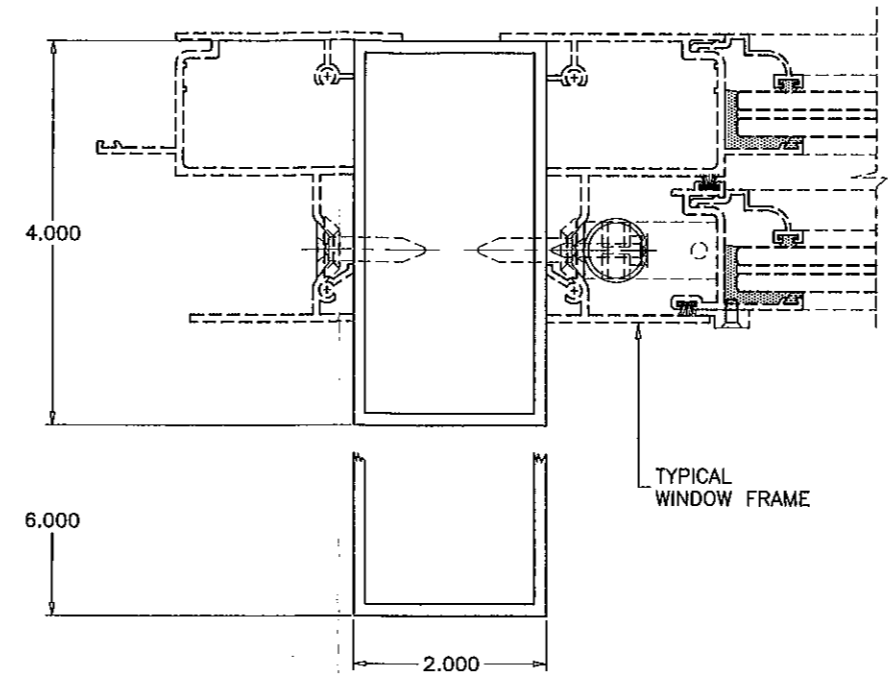
1. Notice of Acceptance No. **10-1004.01**, issued to SIW Impact Windows, LLC for their Clipped Aluminum Tube Mullion – L.M.I., approved on 11/11/10 and expiring on 11/21/12.


Manuel Perez, P.E.

Product Control Examiner
NOA No. 12-0221.09

Expiration Date: November 21, 2017

Approval Date: April 26, 2012



MULLIONS CONTAINING TYPICAL GLAZING PRODUCTS
HORIZONTAL OR VERTICAL

SEE WINDOW OR DOOR APPROVAL FOR FASTENERS SIZES AND SPACING

MULLION SYSTEM IS RATED FOR LARGE MISSILE IMPACT. AND CAN BE USED WITH ALL MIAMI-DADE COUNTY APPROVED IMPACT AND NON-IMPACT RESISTANT PRODUCTS.

RECTANGULAR ALUMINUM TUBE MULLIONS
USING MULLION PROPERTIES ONLY

NOTES:

THIS PRODUCT HAS BEEN DESIGNED AND TESTED TO COMPLY WITH THE REQUIREMENTS OF THE FLORIDA BUILDING CODE 2010 EDITION INCLUDING HIGH VELOCITY HURRICANE ZONE (HVHZ).

ALL GLAZING PRODUCTS USED WITH THESE MULLIONS MUST MEET THE APPLICABLE BUILDING CODE REQUIREMENTS I.E: WIND LOAD, WATER INFILTRATION, FORCED ENTRY RESISTANCE, SAFEGUARDS ETC.

WOOD BUCKS BY OTHERS, MUST BE ANCHORED PROPERLY TO TRANSFER LOADS TO THE STRUCTURE.

ANCHORS SHALL BE AS LISTED, SPACED AS SHOWN ON DETAILS, EMBEDMENT TO BASE MATERIAL SHALL BE BEYOND WALL COVERING (STUCCO, TILE ETC.).

ANCHORING CONDITIONS OTHER THAN THOSE SHOWN IN THESE DETAILS ARE NOT PART OF THIS APPROVAL.

A LOAD DURATION INCREASE IS USED IN DESIGN OF ANCHORS INTO WOOD ONLY.

MATERIALS INCLUDING BUT NOT LIMITED TO STEEL/METAL SCREWS, THAT COME INTO CONTACT WITH OTHER DISSIMILAR MATERIALS SHALL MEET THE REQUIREMENTS OF 2010 FLORIDA BLDG. CODE SECTION 2003.8.4.

INSTRUCTIONS:

USE CHARTS AND GRAPHS AS FOLLOWS.

- STEP 1** DETERMINE DESIGN LOAD REQUIRED PER ASCE 7 FOR PARTICULAR OPENING.
- STEP 2** USE MIAMI-DADE COUNTY APPROVED GLAZING PRODUCTS MEETING ABOVE LOAD REQUIREMENTS.
- STEP 3** USE CONNECTION TO MULLION AS PER PRODUCT APPROVAL.
- STEP 4** USING CHARTS ON SHEET 3 SELECT MULLION SIZE WITH DESIGN RATING MORE THAN DESIGN LOAD SPECIFIED IN STEP 1 ABOVE.
- STEP 5** USING ANCHOR TYPES ON SHEET 5 THRU 7 AND ANCHOR CHARTS ON SHEET 4, SELECT ANCHOR TYPE WITH DESIGN RATING MORE THAN THE DESIGN LOADS SPECIFIED IN STEP 1 ABOVE.

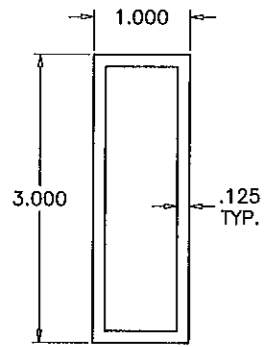
Engr: JAVAD AHMAD
 CIVIL
 FLA. PE # 70592
 C.A.N. 3538
 DEC 9 2011

PRODUCT REVISED
 as complying with the Florida Building Code
 Acceptance No 12-0221-09
 Expiration Date Nov 21 2017
 By *Manuel Lopez*
 Miami Dade Product Control

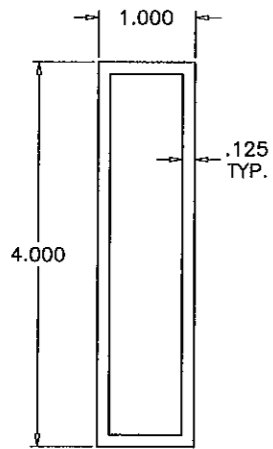
ALUMINUM TUBE MULLIONS
SIW IMPACT WINDOWS, LLC.
 975 S. CONGRESS AVE. #102
 DELRAY BEACH, FL. 33445
 TEL. (561) 274-9392 FAX. (561) 274-9262

revisions:	
no	description
A	08.17.09 UPDATED FOR 2007 FBC
B	09.29.10 NO CHANGE THIS SHEET
C	12.06.11 UPDATED TO 2010 FBC

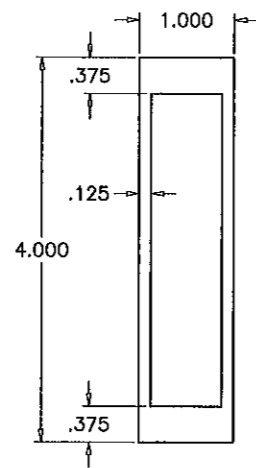
date: 10-01-07	scale: 1/2" = 1"	dr. by: HAMID	chk. by:
drawing no. M07-04		sheet 1 of 7	



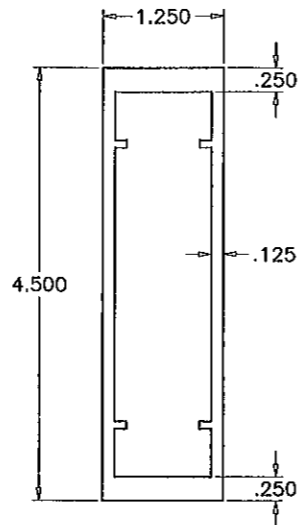
1 X 3
STD. MULLION
6063-T6



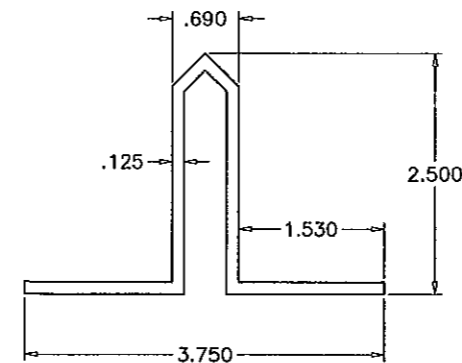
1 X 4
STD. MULLION
6063-T6



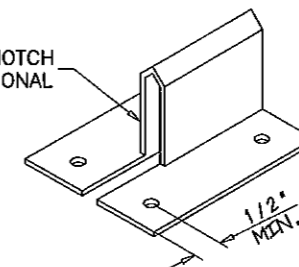
1 X 4
CUSTOM MULLION
6063-T6



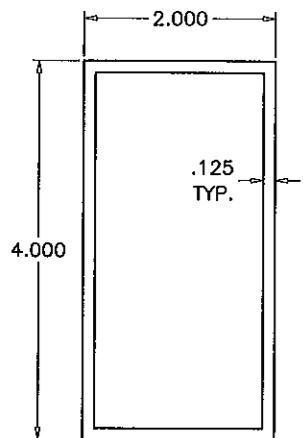
1-1/4 X 4-1/2
CUSTOM MULLION
6063-T6



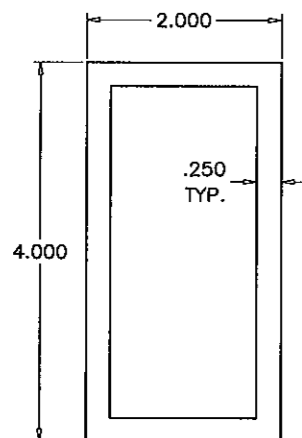
NOTCH
OPTIONAL



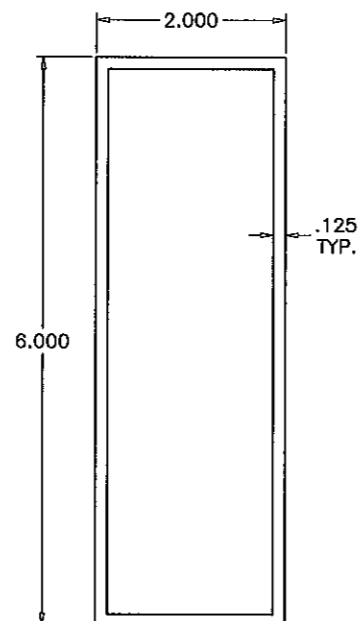
MULLION CLIP (6063-T6)
(ALT. TO ANGLES)
CLIP LENGTHS MUST BE CUT TO FIT SNUG
INTO 1BY TUBE MULLIONS.



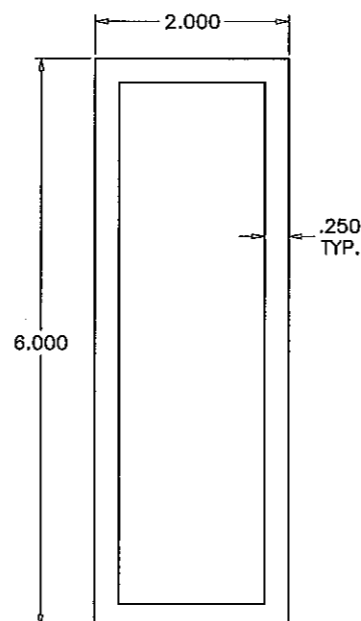
2 X 4
STD. MULLION
6063-T6



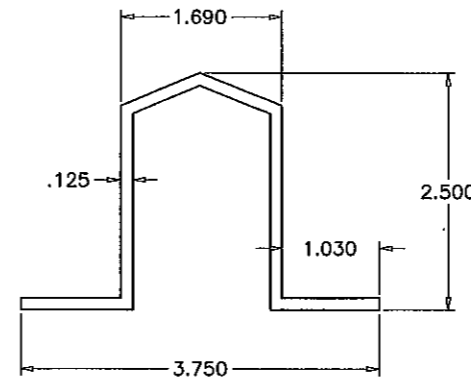
2 X 4
HEAVY MULLION
6063-T6



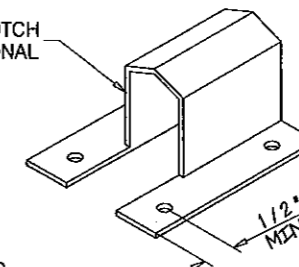
2 X 6
STD. MULLION
6063-T6



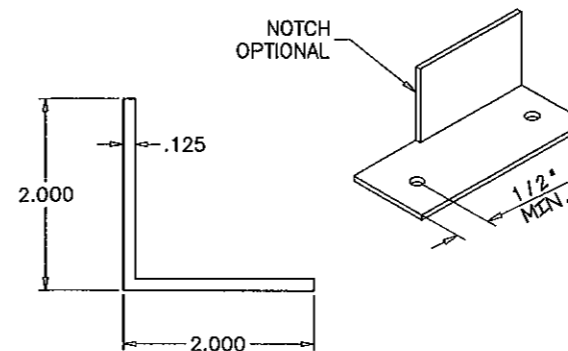
2 X 6
HEAVY MULLION
6063-T6



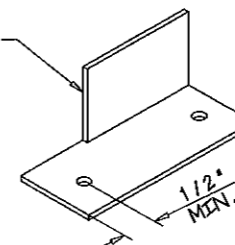
NOTCH
OPTIONAL



MULLION CLIP (6063-T6)
(ALT. TO ANGLES)
CLIP LENGTHS MUST BE CUT TO FIT SNUG
INTO 2BY TUBE MULLIONS.



NOTCH
OPTIONAL



ANGLE CLIP
6063-T6

Engr: JAVAD AHMAD
CIVIL
FLA. PE # 70592
C.A.N. 3538

DEC 06 2011

PRODUCT REVISED
as complying with the Florida
Building Code
Acceptance No 12-0221-09
Expiration Date NOV. 21, 2017

By *Manuel Perez*
Miami Dade Product Control

af c
AL-FAROOQ CORPORATION
ENGINEERS & PRODUCT DEVELOPMENT
12355 S.W. 87 AVE
MIAMI, FLORIDA 33174
TEL. (305) 264-8100 FAX. (305) 262-6978
MULLION\M07-04SIW

ALUMINUM TUBE MULLIONS
SIW IMPACT WINDOWS, LLC.
975 S. CONGRESS AVE. #102
DELRAY BEACH, FL. 33445
TEL (561) 274-9392 FAX (561) 274-9262

no	date	description
A	08.17.09	UPDATED FOR 2007 FBC
B	09.29.10	NO CHANGE THIS SHEET
C	12.06.11	NO CHANGE THIS SHEET

date: 10-01-07
scale: 1/2" = 1"
dr. by: HAMID
chk. by:

drawing no.
M07-04
sheet 2 of 7

DESIGN LOAD CAPACITY - PSF					
WINDOW DIMS.		ANCHORS TYPE			
WIDTH (W)	MULL SPAN	A	B	C	D
19-1/8"	38-3/8"	130.0	130.0	130.0	130.0
26-1/2"		130.0	130.0	130.0	130.0
30"		130.0	130.0	130.0	130.0
37"		120.5	130.0	130.0	130.0
42"		106.1	130.0	128.7	130.0
48"		92.9	130.0	112.6	130.0
54"		82.6	130.0	100.1	130.0
60"		74.3	120.1	90.1	130.0
66"		67.5	109.2	81.9	130.0
72"		61.9	100.1	75.0	130.0
19-1/8"	50-5/8"	130.0	130.0	130.0	130.0
26-1/2"		127.5	130.0	130.0	130.0
30"		112.6	130.0	130.0	130.0
37"		91.3	130.0	110.7	130.0
42"		80.5	130.0	97.5	130.0
48"		70.4	113.8	85.3	130.0
54"		62.6	101.1	75.9	130.0
60"		56.3	91.0	68.3	130.0
66"		51.2	82.7	62.1	124.1
72"		46.9	75.9	56.9	113.8
19-1/8"	63"	130.0	130.0	130.0	130.0
26-1/2"		102.5	130.0	124.2	130.0
30"		90.5	130.0	109.7	130.0
37"		73.4	118.6	89.0	130.0
42"		64.7	104.5	78.4	130.0
48"		56.6	91.4	68.6	130.0
54"		50.3	81.3	61.0	121.9
60"		45.3	73.1	54.9	109.7
66"		41.1	66.5	49.9	99.7
72"		37.7	61.0	45.7	91.4
19-1/8"	74-1/4"	120.5	130.0	130.0	130.0
26-1/2"		86.9	130.0	105.4	130.0
30"		76.8	124.1	93.1	130.0
37"		62.3	100.6	75.5	130.0
42"		54.9	88.7	66.5	130.0
48"		48.0	77.6	58.2	116.4
54"		42.7	69.0	51.7	103.4
60"		38.4	62.1	46.5	93.1
66"		34.9	56.4	42.3	84.6
72"		32.0	51.7	38.8	77.6

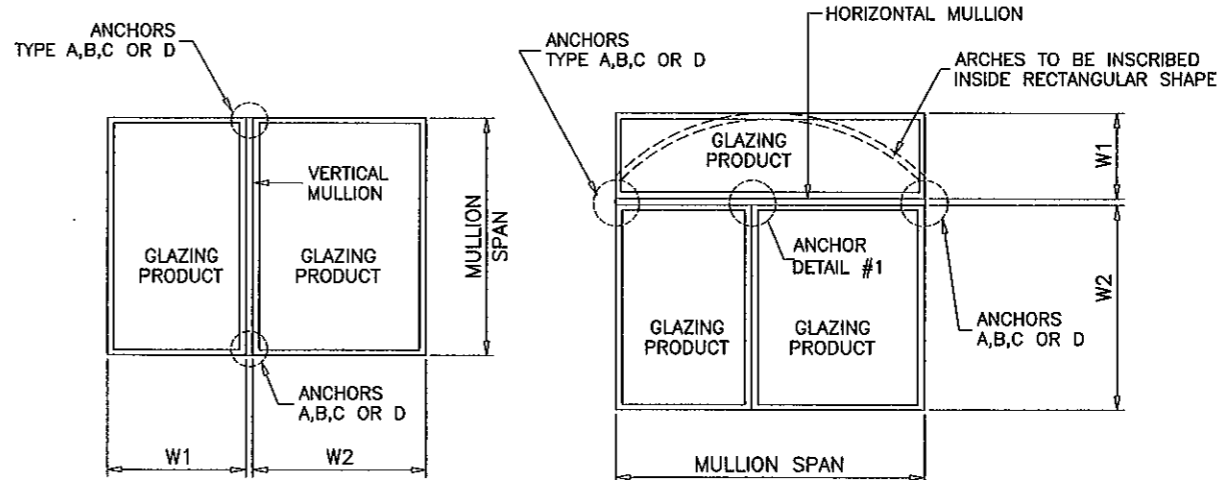
DESIGN LOAD CAPACITY - PSF					
WINDOW DIMS.		ANCHORS TYPE			
WIDTH (W)	MULL SPAN	A	B	C	D
19-1/8"	78"	114.7	130.0	130.0	130.0
26-1/2"		82.8	130.0	100.3	130.0
30"		73.1	118.2	88.6	130.0
37"		59.3	95.8	71.9	130.0
42"		52.2	84.4	63.3	126.6
48"		45.7	73.8	55.4	110.8
54"		40.6	65.6	49.2	98.5
60"		36.6	59.1	44.3	88.6
66"		33.2	53.7	40.3	80.6
72"		30.5	49.2	36.9	73.8
19-1/8"	84"	106.5	130.0	129.1	130.0
26-1/2"		76.9	124.2	93.2	130.0
30"		67.9	109.7	82.3	130.0
37"		55.0	89.0	66.7	130.0
42"		48.5	78.4	58.8	117.6
48"		42.4	68.6	51.4	102.9
54"		37.7	61.0	45.7	91.4
60"		33.9	54.9	41.1	82.3
66"		30.9	49.9	37.4	74.8
72"		28.3	45.7	34.3	68.6
19-1/8"	96"	93.2	130.0	112.9	130.0
26-1/2"		67.2	108.7	81.5	130.0
30"		59.4	96.0	72.0	130.0
37"		48.2	77.8	58.4	116.8
42"		42.4	68.6	51.4	102.9
48"		37.1	60.0	45.0	90.0
54"		33.0	53.3	40.0	80.0
60"		29.7	48.0	36.0	72.0
66"		27.0	43.6	32.7	65.5
72"		24.8	40.0	30.0	60.0
19-1/8"	108"	82.8	133.9	100.4	130.0
26-1/2"		59.8	96.6	72.5	130.0
30"		52.8	85.3	64.0	128.0
37"		42.8	69.2	51.9	103.8
42"		37.7	61.0	45.7	91.4
48"		33.0	53.3	40.0	80.0
54"		29.3	47.4	35.6	71.1
60"		26.4	42.7	32.0	64.0
66"		24.0	38.8	29.1	58.2
72"		22.0	35.6	26.7	53.3

DESIGN LOAD CAPACITY - PSF					
WINDOW DIMS.		ANCHORS TYPE			
WIDTH (W)	MULL SPAN	A	B	C	D
19-1/8"	120"	74.5	120.5	90.4	130.0
26-1/2"		53.8	86.9	65.2	130.0
30"		47.5	76.8	57.6	115.2
37"		38.5	62.3	46.7	93.4
42"		33.9	54.9	41.1	82.3
48"		29.7	48.0	36.0	72.0
54"		26.4	42.7	32.0	64.0
60"		23.8	38.4	28.8	57.6
66"		21.6	34.9	26.2	52.4
72"		-	32.0	24.0	48.0
19-1/8"	132"	67.8	109.5	82.1	130.0
26-1/2"		48.9	79.0	59.3	118.6
30"		43.2	69.8	52.4	104.7
37"		35.0	56.6	42.5	84.9
42"		30.9	49.9	37.4	74.8
48"		27.0	43.6	32.7	65.5
54"		24.0	38.8	29.1	58.2
60"		21.6	34.9	26.2	52.4
66"		-	31.7	23.8	47.6
72"		-	29.1	21.8	43.6
19-1/8"	144"	62.1	100.4	75.3	130.0
26-1/2"		44.8	72.5	54.3	108.7
30"		39.6	64.0	48.0	96.0
37"		32.1	51.9	38.9	77.8
42"		28.3	45.7	34.3	68.6
48"		24.8	40.0	30.0	60.0
54"		22.0	35.6	26.7	53.3

ALL LOADS ARE EXT.(+)/INT.(-).

NOTE:
 ANY ANCHOR CONDITION SHOWN HEREIN MAY COVER LOCATIONS AT HEAD, SILL OR JAMB ENDS.
 FOR ANCHORS DESCRIPTION SEE SHEETS 5 THRU 7.
 (INTERPOLATION BETWEEN WIDTHS OR SPANS ALLOWED)

ANCHORS



TYPICAL MULLION ARRANGEMENTS

$$\text{WIDTH (W)} = \frac{W1 + W2}{2}$$

Engr: JAVAD AHMAD
 CIVIL
 FLA. PE # 70592
 O.A.N. 3538
 DEC 06 2011

PRODUCT REVISED
 as complying with the Florida
 Building Code
 Acceptance No 12-0221.09
 Expiration Date NOV. 21, 2017
 By: *Manuel Perez*
 Miami Dade Product Control

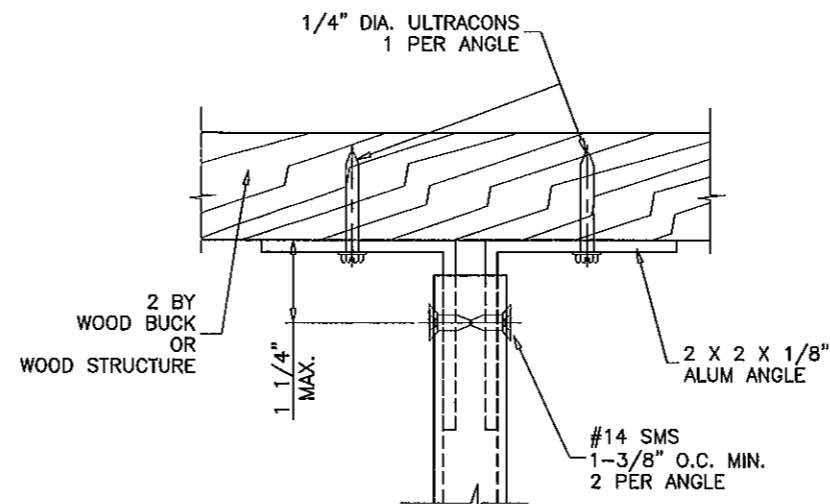
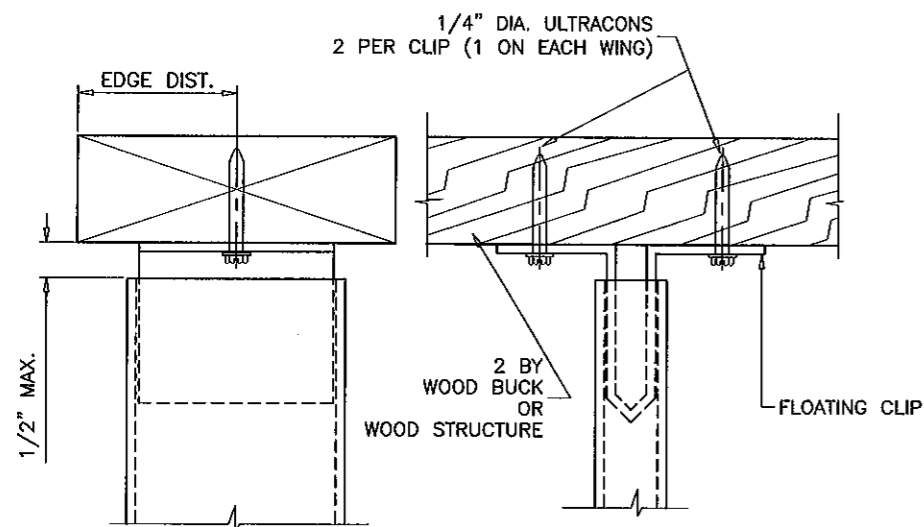
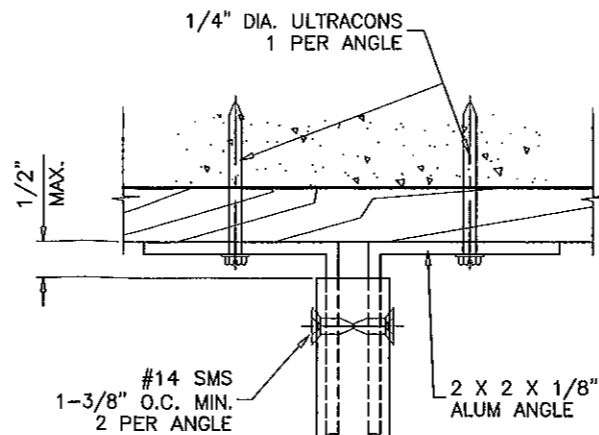
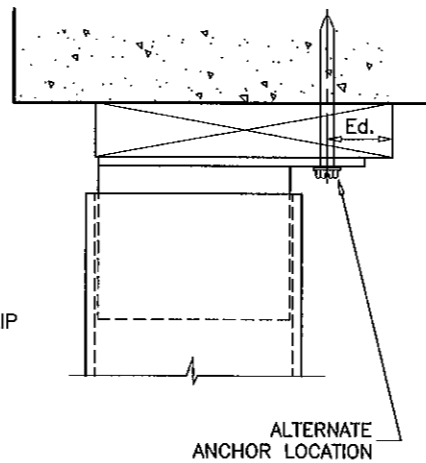
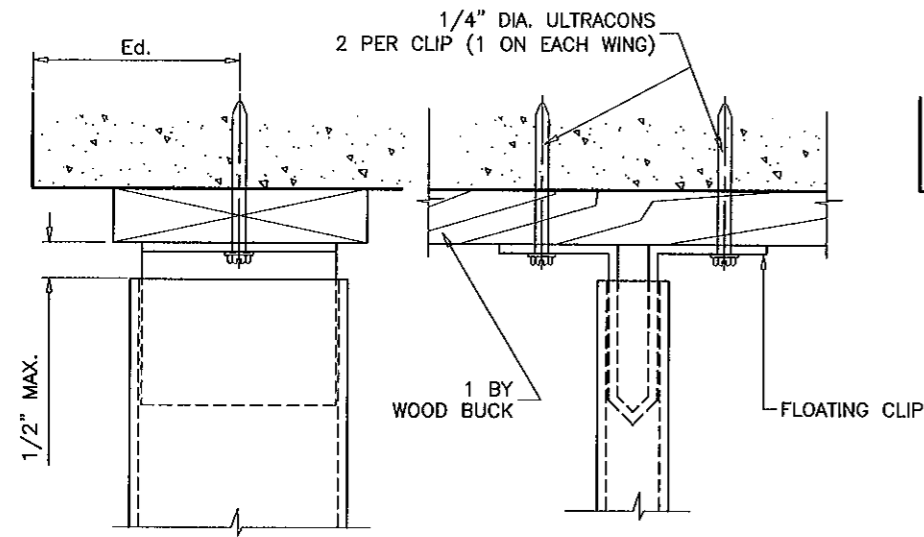
afC
AL-FAROOQ CORPORATION
 ENGINEERS & PRODUCT DEVELOPMENT
 1235 S.W. 87 AVE
 MIAMI, FLORIDA 33174
 TEL: (305) 264-8100 FAX: (305) 262-6978
 MULLION\M07-04SIW

ALUMINUM TUBE MULLIONS
SIW IMPACT WINDOWS, LLC.
 975 S. CONGRESS AVE. #102
 DELRAY BEACH, FL. 33445
 TEL (561) 274-9392 FAX (561) 274-9262

NO	DATE	DESCRIPTION
A	08.17.09	UPDATED FOR 2007 FBC
B	09.28.10	NO CHANGE THIS SHEET
C	12.06.11	NO CHANGE THIS SHEET

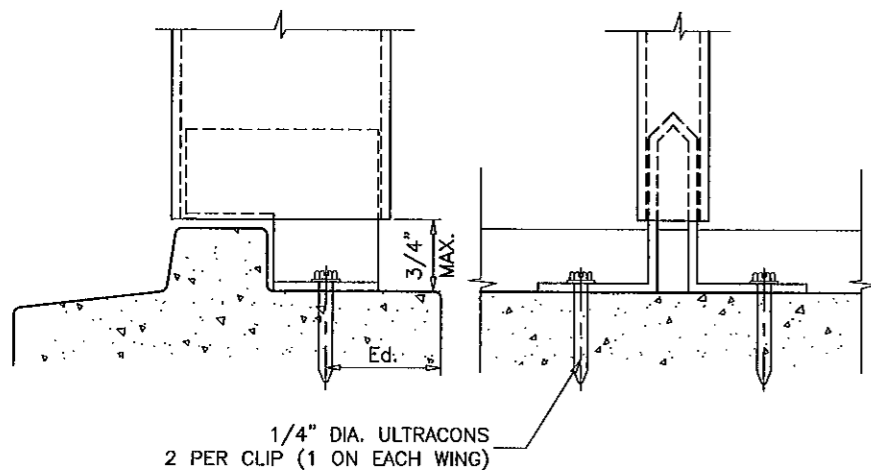
date: 10-01-07
 scale: 1/2" = 1"
 dr. by: HAMID
 chk. by:

drawing no.
M07-04
 sheet 4 of 7



1/4" DIA. ULTRACONS BY 'ELCO'		
ULTRACONS MAY BE HEX OR FLAT HEAD		
SUBSTRATE	Ed. = MIN. EDGE DIST.	MIN. EMBEDMENT
WOOD	1"	1-3/8"
BLOCK	2-1/2"	1-1/4"
CONCRETE	2-1/2"	1-1/2"

ALL CLIPS AND ANGLES TO FIT SNUG INTO TUBE MULLIONS. CLIPS OR ANGLES CONNECTED DIRECTLY TO MASONRY TO BE PROTECTED WITH ALKALI-RESISTANT COATINGS, SUCH AS BITUMINOUS PAINT OR WATER-WHITE METHACRYLATE LACQUER.



ANCHORS TYPE 'A'

Engr: JAVAD AHMAD
CIVIL
FLA. PE # 70592
C.A.N. 3538

J.A.

PRODUCT REVISED
as complying with the Florida
Building Code
Acceptance No 12-0221.09
Expiration Date NOV. 21, 2017

By *Manuel*
Miami Dade Product Control

DEC 9 2011

afc
AL-FAROOQ CORPORATION
ENGINEERS & PRODUCT DEVELOPMENT
1235 S.W. 87 AVE
MIAMI, FLORIDA 33174
TEL. (305) 264-8100 FAX. (305) 262-6978
MULLION\M07-04SIW

ALUMINUM TUBE MULLIONS
SIW IMPACT WINDOWS, LLC.
975 S. CONGRESS AVE. #102
DELRAY BEACH, FL. 33445
TEL. (561) 274-9392 FAX. (561) 274-9262

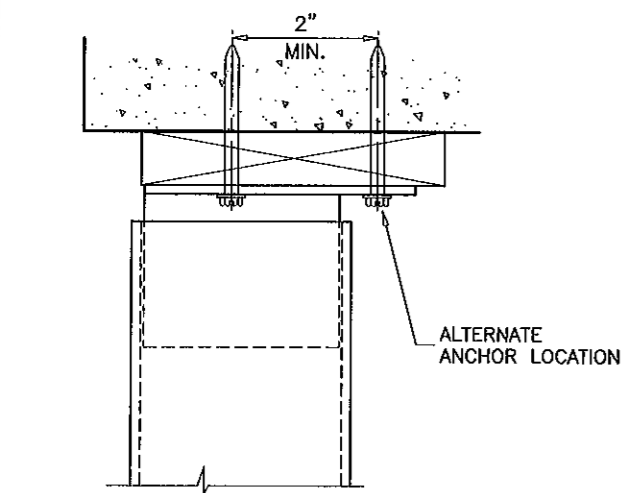
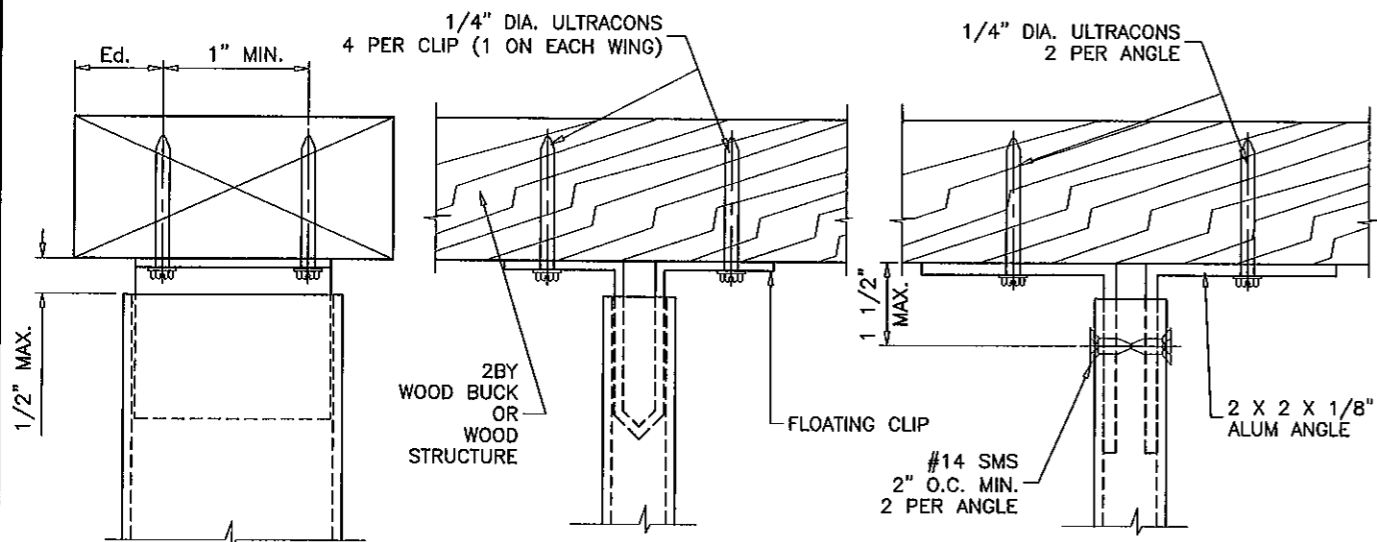
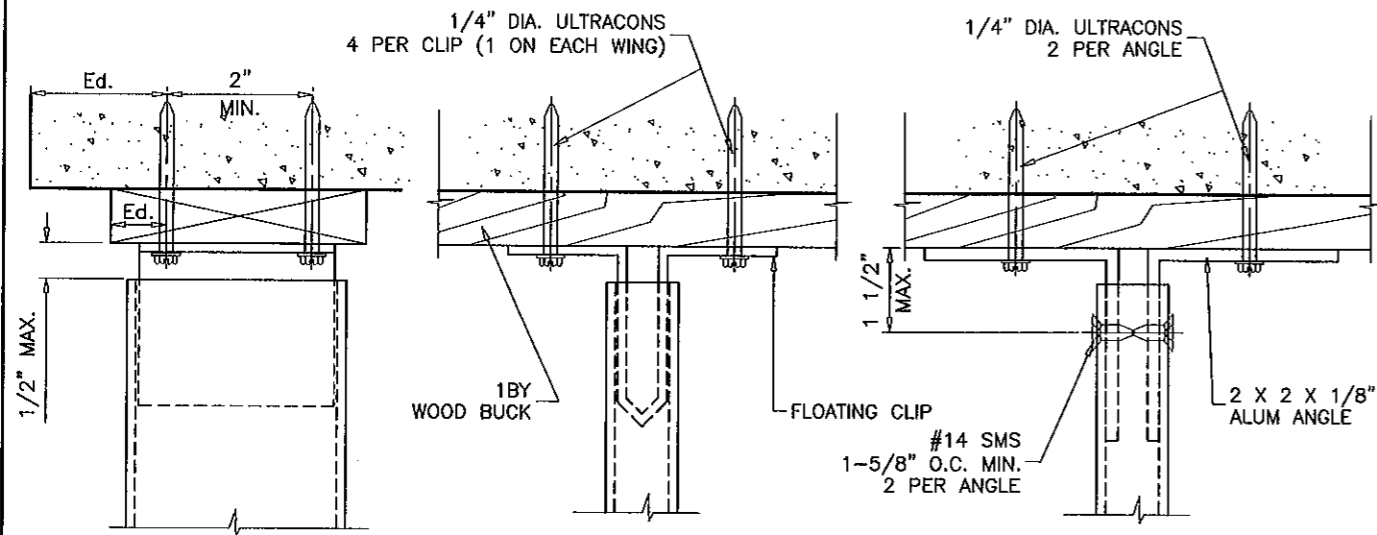
NO.	DATE	DESCRIPTION
A	08.17.09	UPDATED FOR 2007 FBC
B	09.29.10	DETAIL REMOVED
C	12.06.11	NO CHANGE THIS SHEET

revisions:

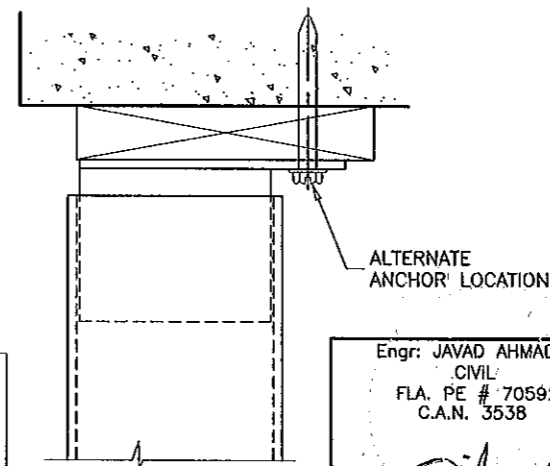
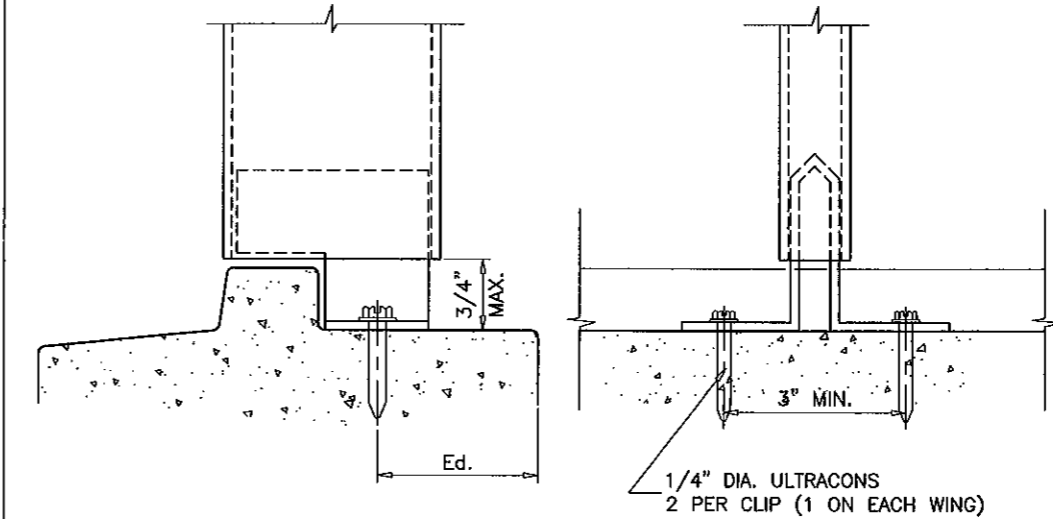
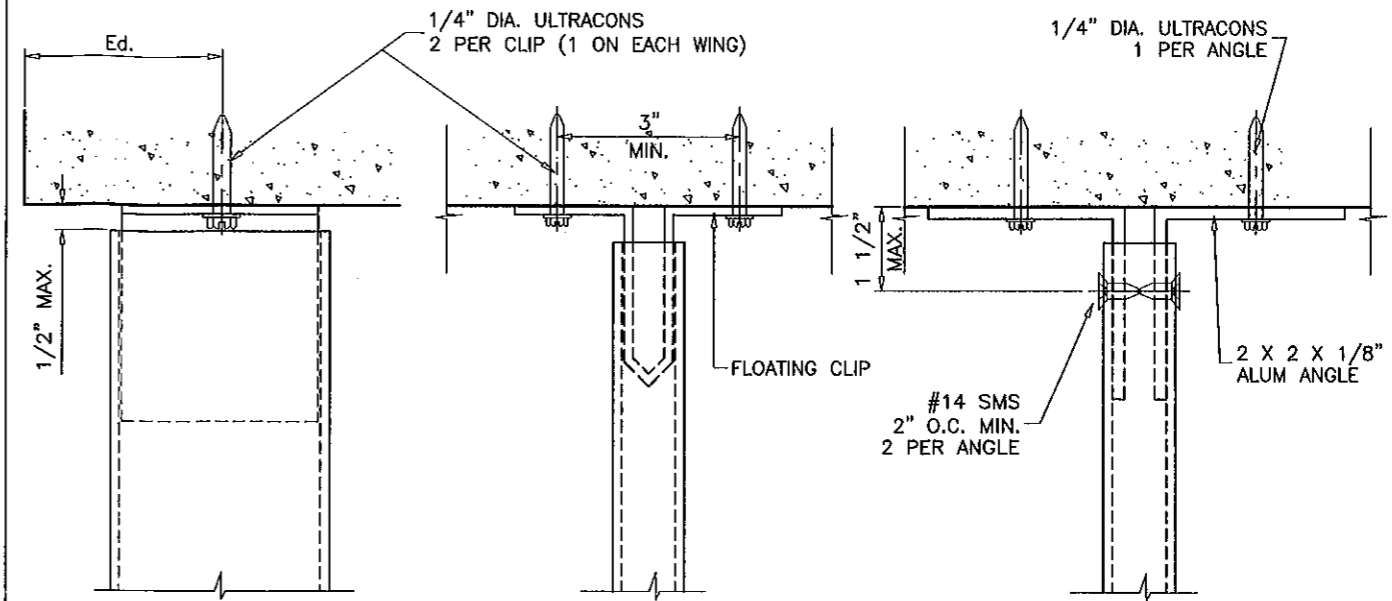
date: 10-01-07
scale: 3/8" = 1"
dr. by: HAMID
chk. by:

drawing no.
M07-04

sheet 5 of 7



ANCHORS TYPE 'B'



ANCHORS TYPE 'C'

1/4" DIA. ULTRACONS BY 'ELCO'
ULTRACONS MAY BE HEX OR FLAT HEAD

SUBSTRATE	Ed. = MIN. EDGE DIST.	MIN. EMBEDMENT
WOOD	1"	1-3/8"
BLOCK	2-1/2"	1-1/4"
CONCRETE	2-1/2"	1-1/2"

ALL CLIPS AND ANGLES TO FIT SNUG INTO TUBE MULLIONS.
CLIPS OR ANGLES CONNECTED DIRECTLY TO MASONRY TO BE PROTECTED
WITH ALKALI-RESISTANT COATINGS, SUCH AS BITUMINOUS PAINT OR
WATER-WHITE METHACRYLATE LACQUER.

Engr: JAVAD AHMAD
CIVIL
FLA. PE # 70592
C.A.N. 3538

PRODUCT REVISED
as complying with the Florida
Building Code
Acceptance No 12-0221.09
Expiration Date Nov. 21, 2017
By *Manuel Perez*
Miami Dade Product Control

DEC 08 2011

af c
AL-FAROOQ CORPORATION
ENGINEERS & PRODUCT DEVELOPMENT
1235 S.W. 87 AVE
MIAMI, FLORIDA 33174
TEL. (305) 264-8100 FAX. (305) 262-6978
MULLION M07-04SIW

ALUMINUM TUBE MULLIONS
SIW IMPACT WINDOWS, LLC.
975 S. CONGRESS AVE. #102
DELRAY BEACH, FL. 33445
TEL (561) 274-9392 FAX. (561) 274-9262

revisions:

no	date	description
A	08.17.09	UPDATED FOR 2007 FBC
B	09.29.10	NO CHANGE THIS SHEET
C	12.06.11	NO CHANGE THIS SHEET

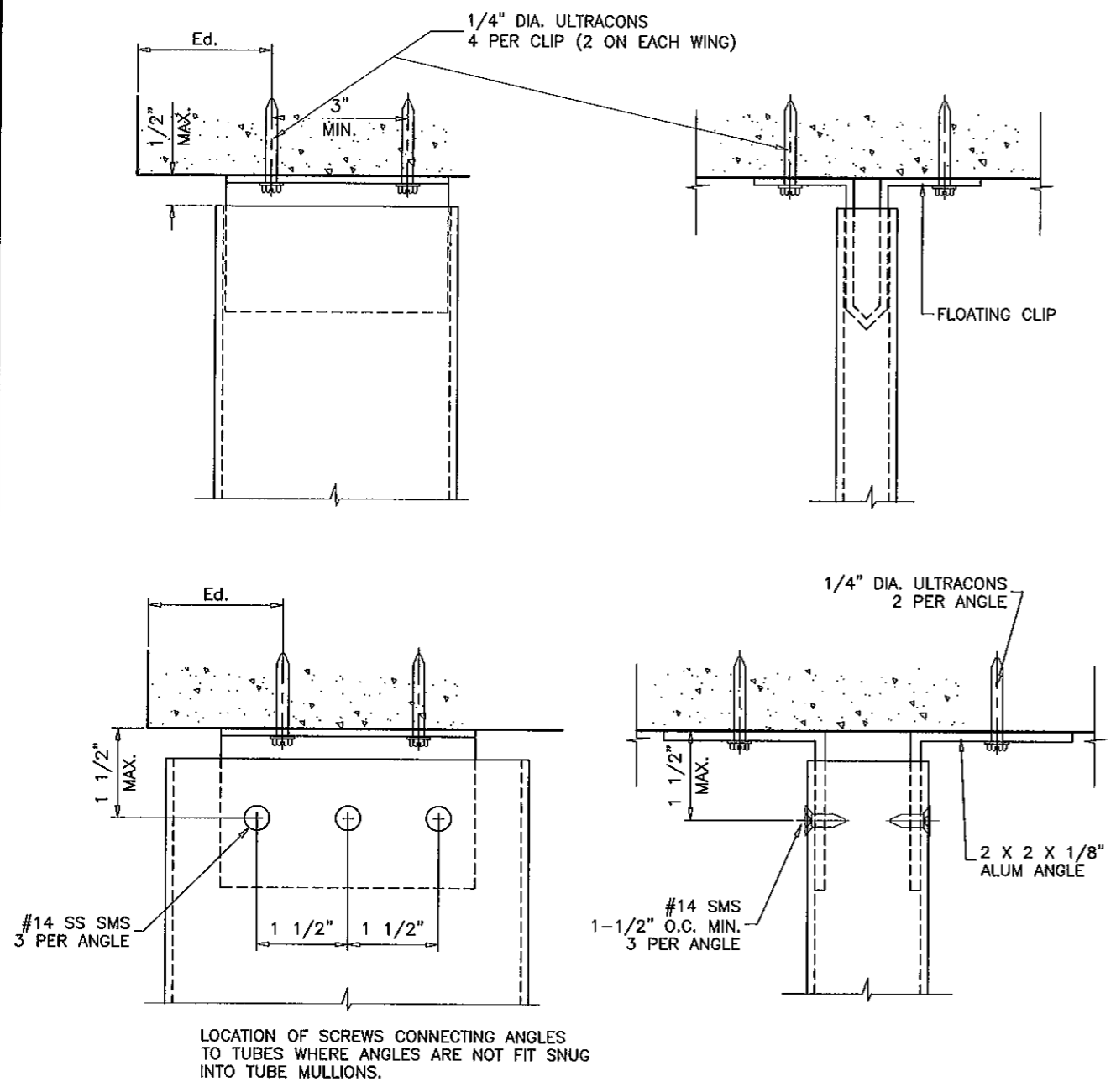
date: 10-01-07
scale: 3/8" = 1"
dr. by: HAMID
chk. by:

drawing no.
M07-04
sheet 6 of 7

revisions:

no.	date	by	description
A	08.17.09		UPDATED FOR 2007 FBC
B	09.29.10		SCREW ADDED
C	12.06.11		NO CHANGE THIS SHEET

date:	10-01-07
scale:	3/8" = 1"
dr. by:	HAMID
chk. by:	

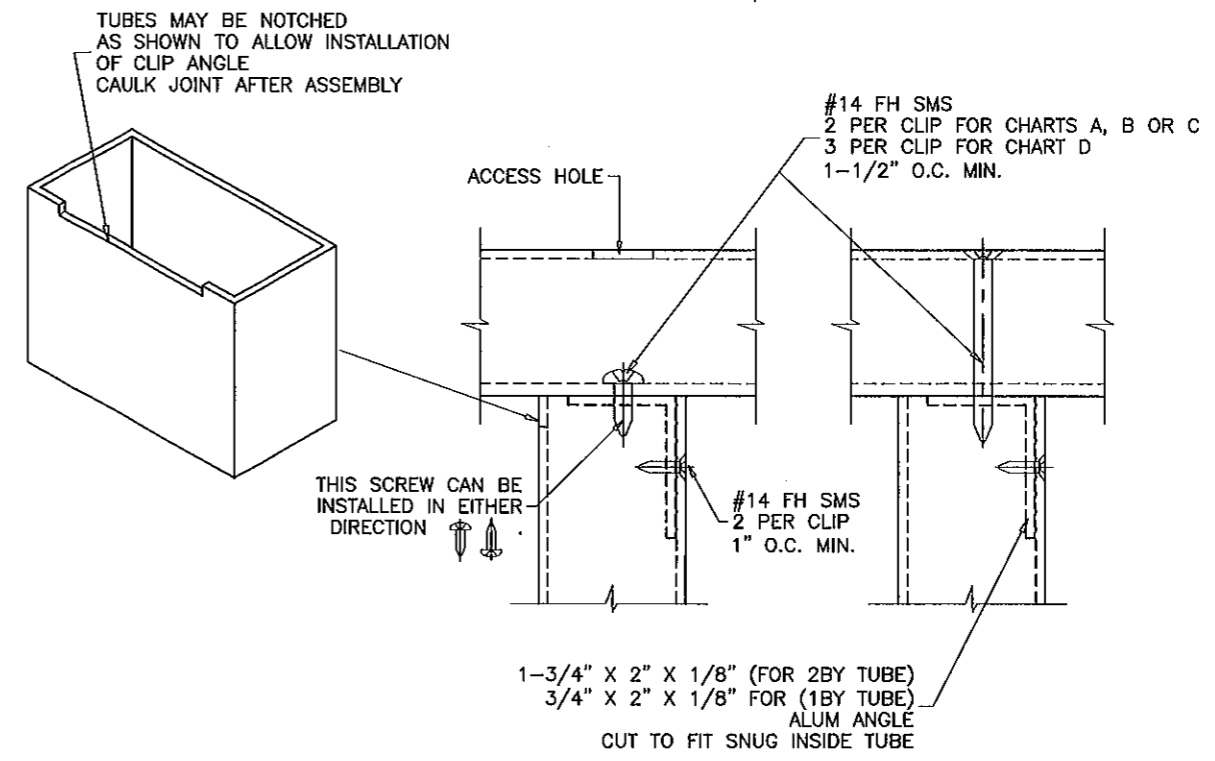


ANCHORS TYPE 'D'

1/4" DIA. ULTRACONS BY 'ELCO'
 ULTRACONS MAY BE HEX OR FLAT HEAD

SUBSTRATE	Ed. = MIN. EDGE DIST.	MIN. EMBEDMENT
WOOD	1"	1-3/8"
BLOCK	2-1/2"	1-1/4"
CONCRETE	2-1/2"	1-1/2"

ALL CLIPS AND ANGLES TO FIT SNUG INTO TUBE MULLIONS. CLIPS OR ANGLES CONNECTED DIRECTLY TO MASONRY TO BE PROTECTED WITH ALKALI-RESISTANT COATINGS, SUCH AS BITUMINOUS PAINT OR WATER-WHITE METHACRYLATE LACQUER.



ANCHORS DETAIL #1
 METAL TO METAL CONNECTION

Engr: JAVAD AHMAD
 CIVIL
 FLA. PE # 70592
 C.A.N. 3538

DEC 08 2011

PRODUCT REVISED
 as complying with the Florida
 Building Code
 Acceptance No 12-0221.09
 Expiration Date NOV. 21, 2017

By *Muhammad Jaz*
 Miami Dade Product Control