



DEPARTMENT OF REGULATORY AND ECONOMIC RESOURCES (RER)  
BOARD AND CODE ADMINISTRATION DIVISION

MIAMI-DADE COUNTY  
PRODUCT CONTROL SECTION

11805 SW 26 Street, Room 208

Miami, Florida 33175-2474

T (786) 315-2590 F (786) 315-2599

[www.miamidade.gov/economy](http://www.miamidade.gov/economy)

## NOTICE OF ACCEPTANCE (NOA)

**CertainTeed Corporation**  
**1400 Union Meeting Road**  
**Blue Bell, PA. 19422**

### SCOPE:

This NOA is being issued under the applicable rules and regulations governing the use of construction materials. The documentation submitted has been reviewed and accepted by Miami-Dade County RER - Product Control Section to be used in Miami Dade County and other areas where allowed by the Authority Having Jurisdiction (AHJ).

This NOA shall not be valid after the expiration date stated below. The Miami-Dade County Product Control Section (In Miami Dade County) and/or the AHJ (in areas other than Miami Dade County) reserve the right to have this product or material tested for quality assurance purposes. If this product or material fails to perform in the accepted manner, the manufacturer will incur the expense of such testing and the AHJ may immediately revoke, modify, or suspend the use of such product or material within their jurisdiction. RER reserves the right to revoke this acceptance, if it is determined by Miami-Dade County Product Control Section that this product or material fails to meet the requirements of the applicable building code.

This product is approved as described herein, and has been designed to comply with the Florida Building Code including the High Velocity Hurricane Zone of the Florida Building Code.

### DESCRIPTION: Roof Edge Termination Systems

**LABELING:** Each unit shall bear a permanent label with the manufacturer's name or logo, city, state and following statement: "Miami-Dade County Product Control Approved", unless otherwise noted herein.

**RENEWAL** of this NOA shall be considered after a renewal application has been filed and there has been no change in the applicable building code negatively affecting the performance of this product.

**TERMINATION** of this NOA will occur after the expiration date or if there has been a revision or change in the materials, use, and/or manufacture of the product or process. Misuse of this NOA as an endorsement of any product, for sales, advertising or any other purposes shall automatically terminate this NOA. Failure to comply with any section of this NOA shall be cause for termination and removal of NOA.

**ADVERTISEMENT:** The NOA number preceded by the words Miami-Dade County, Florida, and followed by the expiration date may be displayed in advertising literature. If any portion of the NOA is displayed, then it shall be done in its entirety.

**INSPECTION:** A copy of this entire NOA shall be provided to the user by the manufacturer or its distributors and shall be available for inspection at the job site at the request of the Building Official.

This renews NOA# 12-0516.09 and consists of pages 1 through 10.  
The submitted documentation was reviewed by Alex Tigera.



NOA No.: 12-0516.09  
Expiration Date: 10/18/17  
Approval Date: 09/13/12  
Page 1 of 10

## ROOFING COMPONENT APPROVAL

**Category:** Roofing  
**Sub-Category:** Termination Components  
**Materials** Steel

### SCOPE:

This approves “**Roof Edge Termination Systems**” as described in this Notice of Acceptance. Designed to comply with the Florida Building Code, High Velocity Hurricane Zone for the locations where the pressure requirements, as determined by applicable building code do not exceed the design pressure values listed herein

### TRADE NAMES OF PRODUCTS MANUFACTURED OR LABELED BY APPLICANT:

TABLE 1

<u>Product Name</u>	<u>Dimensions</u>	<u>Test Specification</u>	<u>Product Description</u>
FlintEdge Coping	Maximum length 10’ 16” wide cap 6.0” face leg, 4.0” back leg	TAS 111 (C)	Decorative metal coping cap with galvanized steel anchor/support clips.
FlintEdge Coping + (60” Clip Spacing)	Maximum length 10’ 16” or 24” wide cap 6.0” face leg, 4.0” back leg	TAS 111 (C)	Decorative metal coping cap with galvanized steel anchor/support clips.
FlintEdge Coping + (40” Clip Spacing)	Maximum length 10’ 16” or 32.75” wide cap 6.0” or 10.0” face leg, 4.0” back leg	TAS 111 (C)	Decorative metal coping cap with galvanized steel anchor/support clips.
FlintEdge Fascia ET	Maximum length 10’ Maximum face width 6.75”	TAS 111 (B)	Decorative metal fascia with continuous extruded aluminum bar.
FlintEdge Fascia ET with Extender	Maximum length 10’ Maximum face width 12.75”	TAS 111 (B)	Decorative metal fascia with continuous extruded aluminum bar with 24ga. galvanized steel extender.
FlintEdge Fascia GG	Maximum length 10’. Maximum face width 8.25”	TAS 111 (B)	Decorative metal fascia with continuous galvanized steel cleat.
FlintEdge Fascia GS	Maximum length 10’ Maximum face width 12.0”	TAS 111 (B)	Decorative metal fascia with continuous galvanized steel water dam.

**MANUFACTURING LOCATION:**

1. Ashville, N.C.

**EVIDENCE SUBMITTED:**

<u>Test Agency</u>	<u>Test Identifier</u>	<u>Description</u>	<u>Date</u>
Underwriters Laboratories	05CA52277		08/09/06
	10CA19486		04/29/10
	09NK05724		05/30/09
	09NK15606		02/10/10



## INSTALLATION:

<u>Product Name</u>	<u>Test Specification</u>	<u>Product Description</u>
<b>FlintEdge Coping</b>	TAS 111 (C)	Decorative metal coping cap with galvanized steel anchor/support clips.
Permasnap coping (parapet wall coping) – Maximum length 10'. 16" wide cap, 6.0" face leg, 4.0" back leg, 20ga. galvanized steel hold down clip spaced 5'0" o.c. Installed with four 1.25" stainless steel hex head screws.		
.050" aluminum coping cap – <b>Rated: Outward 80 psf Upward 137 psf</b> 24ga. galvanized steel coping cap - <b>Rated: Outward 60 psf Upward 72 psf</b>		
<b>FlintEdge Coping + (60" Clip Spacing)</b>	TAS 111 (C)	Decorative metal coping cap with galvanized steel anchor/support clips.
Permasnap Plus coping (parapet wall coping) - Maximum length 10'. Cap width listed below, 6.0" face leg, 4.0" back leg, 16ga. galvanized steel hold down clips at spaced 60" o.c. Installed with four 1.25" stainless steel hex head screws.		
16" wide - .050" aluminum coping cap – <b>Rated: Outward 80 psf Upward 170 psf</b> 16" wide - 24ga. galvanized steel coping cap - <b>Rated: Outward 95 psf Upward 148 psf</b> 24" wide - .050" aluminum coping cap – <b>Rated: Outward 55 psf Upward 83 psf</b> 24" wide - 24ga. galvanized steel coping cap - <b>Rated: Outward 54 psf Upward 79 psf</b>		
<b>FlintEdge Coping + (40" Clip Spacing)</b>	TAS 111 (C)	Decorative metal coping cap with galvanized steel anchor/support cleats
Permasnap Plus coping (parapet wall coping) - Maximum length 10'. Cap width listed below, face leg length listed below, 4.0" back leg, 16ga. galvanized steel hold down cleat spaced 40" o.c. Installed with four 1.25" stainless steel hex head screws.		
16" - .050" aluminum coping cap – <b>Rated: Outward 183 psf Upward 268 psf</b> 16" - 24ga. galvanized steel coping cap - <b>Rated: Outward 98 psf Upward 138 psf</b> 32.75" wide - .050" aluminum coping cap – <b>Rated: Outward 24 psf Upward 112 psf</b> 32.75" wide - 24ga. galvanized steel coping cap - <b>Rated: Outward 86 psf Upward 98 psf</b>		
<b>FlintEdge Fascia ET</b>	TAS 111 (B)	Decorative metal fascia with continuous extruded aluminum bar
Extrude TerminEdge (edge flashing) - Maximum length 10'. Maximum face width listed below, 0.070" or 0.080" in 6061-T6 extruded aluminum retainer bar with snap-on fascia cover. Installed with 1.25" stainless steel hex head screws 12" o.c.		
3.75" face, .040" aluminum fascia, 0.070" extruded retainer – <b>Rated: 275 psf</b> 3.75" face, 24ga galvanized steel fascia, 0.070" extruded retainer – <b>Rated: 237 psf</b> 6.75" face, .040" aluminum fascia, 0.070" extruded retainer – <b>Rated: 202 psf</b> 6.75" face, 24ga galvanized steel fascia, 0.070" extruded retainer – <b>Rated: 255 psf</b> 8.25" face, .040" aluminum fascia, 0.080" extruded retainer – <b>Rated: 184 psf</b> 8.25" face, 24ga galvanized steel fascia, 0.080" extruded retainer – <b>Rated: 334 psf</b>		

**FlintEdge Fascia ET with Extender**

TAS 111 (B)

Decorative metal fascia with continuous extruded aluminum bar with 24ga. galvanized steel extender.

Extruded TerminEdge Custom Sizes (edge flashing) - Maximum length 10'. Maximum face width 12.75". 0.070" in 6061-T6 extruded aluminum retainer bar with a 24ga. galvanized steel extender clip and a snap-on fascia cover. Installed with 1.25" stainless steel hex head screws 12" o.c.

.040" aluminum fascia – **Rated: 128 psf**

24ga galvanized steel fascia – **Rated: 164 psf**

**FlintEdge Fascia GG**

TAS 111 (B)

Decorative metal fascia with continuous galvanized steel cleat.

TerminEdge (edge flashing) - Maximum length 10'. Maximum face width 8.25". 20ga. galvanized steel cleat with snap-on fascia cover. Installed with 1.25" stainless steel hex head screws 12" o.c.

.040" aluminum fascia – **Rated: 205 psf**

24ga galvanized steel fascia – **Rated: 222 psf**

**FlintEdge Fascia GS**

TAS 111 (B)

Decorative metal fascia with continuous galvanized steel water dam.

Safeguard® (gravel stop) - Maximum length 10'. Maximum face width 10.00". 24 ga. galvanized steel continuous retainer. Maximum 24ga. galvanized steel water dam with compression clamp and fascia cover. Installed with 1.5" ring shank nails 12" o.c.

.050" aluminum fascia – **Rated: 164 psf**

24ga galvanized steel fascia – **Rated: 144 psf**

**FlintEdge Fascia GS**

TAS 111 (B)

Decorative metal fascia with continuous galvanized steel water dam.

Safeguard® (gravel stop) - Maximum length 10'. Face width listed below. 20 ga. galvanized steel continuous retainer. Maximum 24ga. galvanized steel water dam with compression clamp and fascia cover. Installed with 1.5" ring shank nails 12" o.c.

6.00" face, .050" aluminum fascia – **Rated: 211 psf**

6.00" face, 24ga galvanized steel fascia – **Rated: 94 psf**

12.00" face, .050" aluminum fascia – **Rated: 151 psf**

12.00" face, 24ga galvanized steel fascia – **Rated: 166 psf**

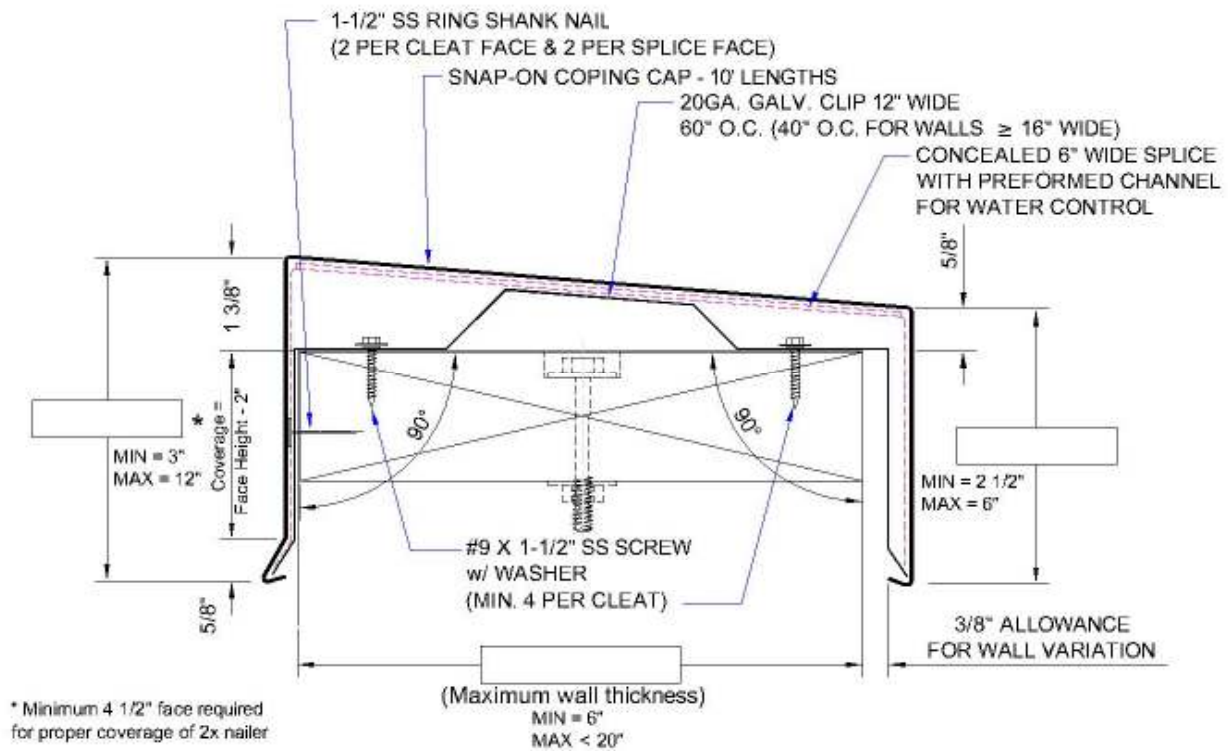


## **LIMITATIONS:**

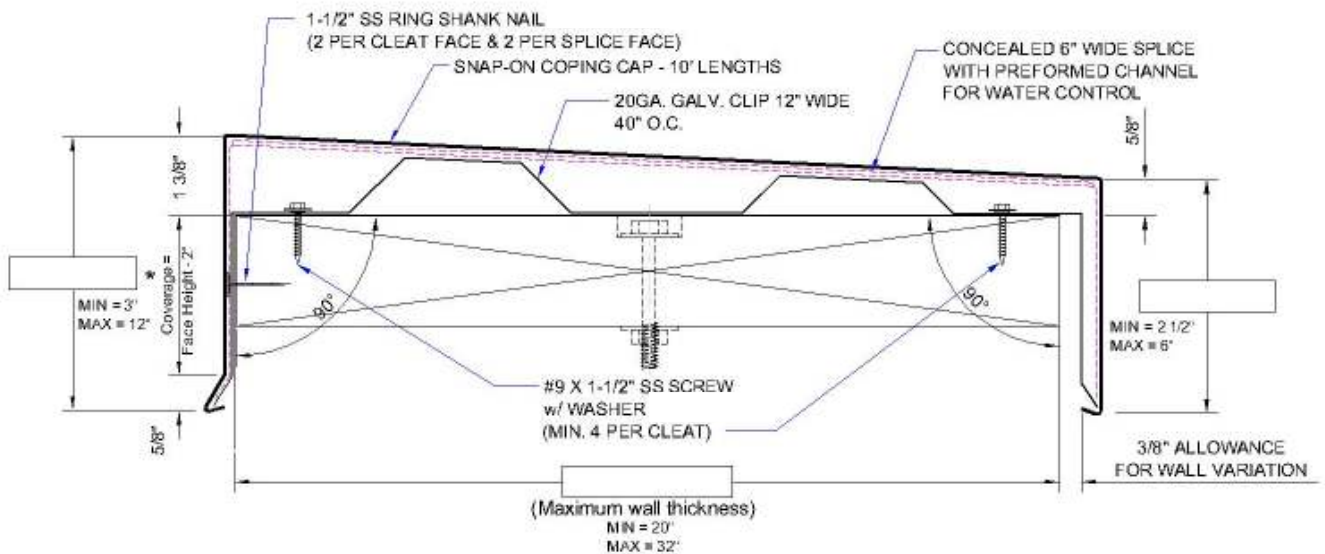
1. All products listed herein shall be installed in accordance with the requirements set forth in RAS 111.
2. Maximum dimensions shall be as outlined in Detail Drawings herein.
3. All products listed herein shall be installed in conjunction with CertainTeed Corporation's required accessories including but not limited to: miters, splice caps, splice plates, corners, end caps, pier caps, etc.
4. Downspout scuppers and spill out scuppers shall be fabricated and installed in accordance with RAS 111.
5. If required, install water cut-off as recommended by the membrane manufacturer and under the anchor bar.
6. Contractor shall check as-built conditions and verify roof edge details for accuracy to fit as built conditions prior to installation. Installer shall comply with CertainTeed Corporation's published installation requirements.
7. Fasteners shall be CertainTeed Corporation's approved fasteners and shall comply with the requirements of the Florida Building Code – High Velocity Hurricane Zone section.
8. Fasteners shall provide a minimum pull out resistance of 240lbf (109 kg) into the substrate being fastened into. When tested in accordance with TAS 105.
9. No exposed fasteners shall be permitted.
10. All fasteners shall be of compatible materials.
11. Finishes shall be natural aluminum mill finish, or pre-coated Kynar 500. All coatings shall be in compliance with the Florida Building Code (FBC).
12. The maximum design pressures listed here in are applicable to the perimeter areas of the roof. Increased design pressures for corner areas, in compliance with applicable building code may be met through rational analysis by increasing the number of attachment points in these areas. The maximum fastener spacing noted in the "Systems Description" section of this approval shall not be exceeded. All rational analysis computations shall be prepared, signed and sealed by a Florida Registered Professional Engineer, Registered Architect, or Registered Roof Consultant.
13. All products listed herein shall have a quality assurance audit in accordance with the Florida Building Code and Rule 9N-3 of the Florida Administrative Code.



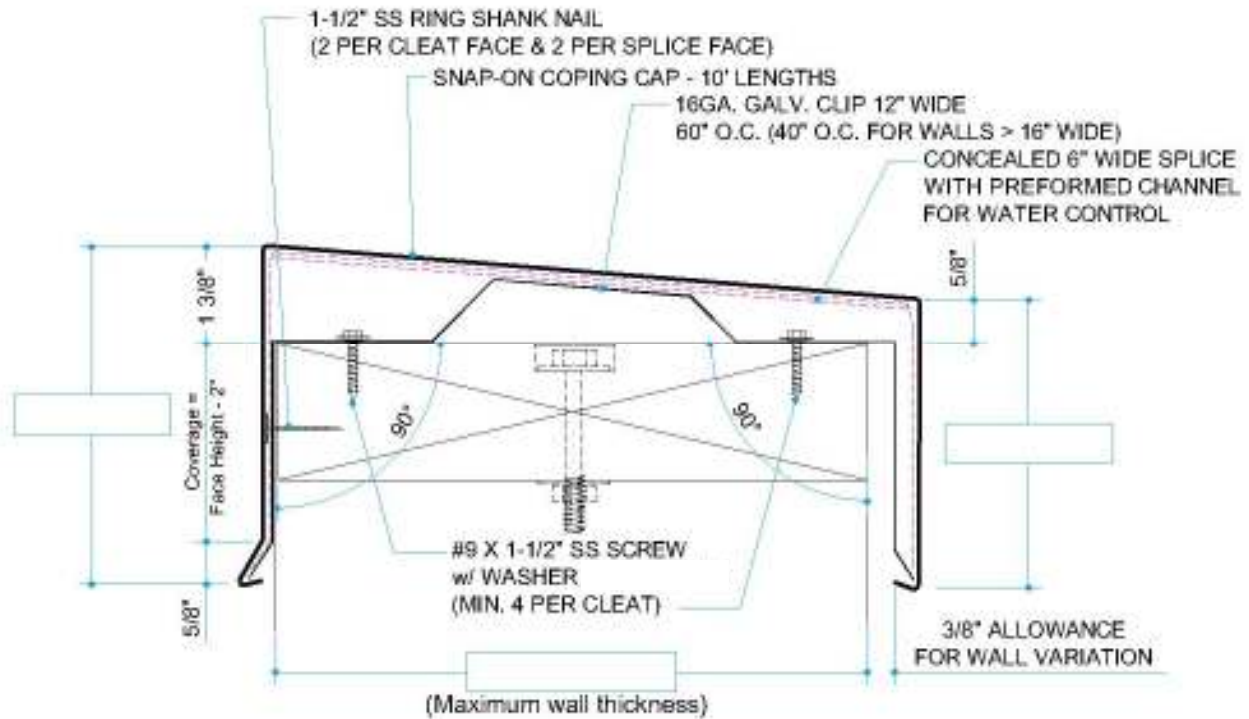
## FlintEdge Coping Detail (6" ≤ Wall ≤ 20")



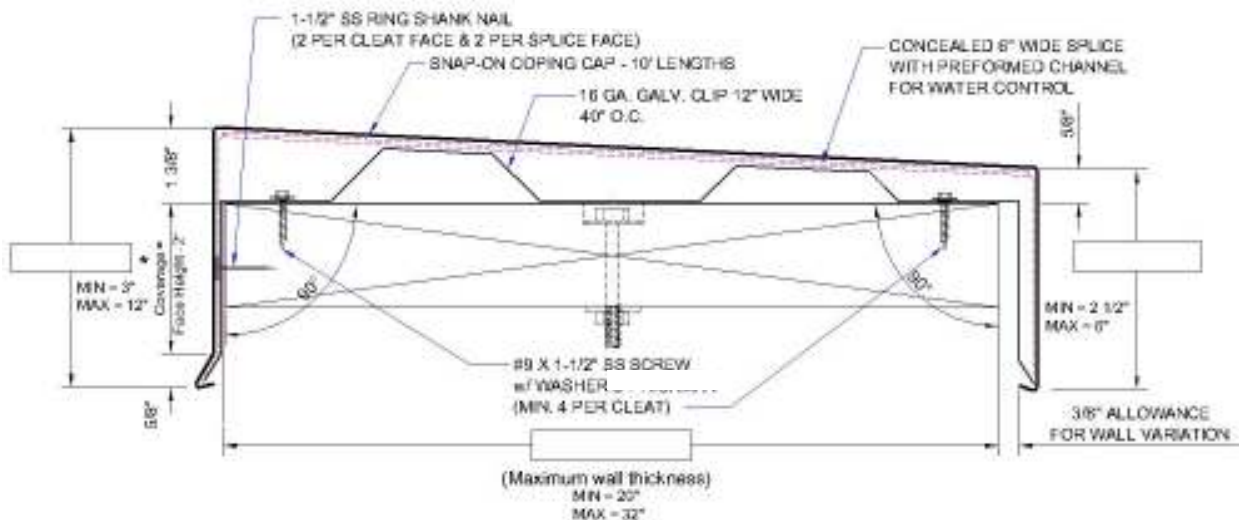
## FlintEdge Coping Detail (20" ≤ Wall ≤ 32")



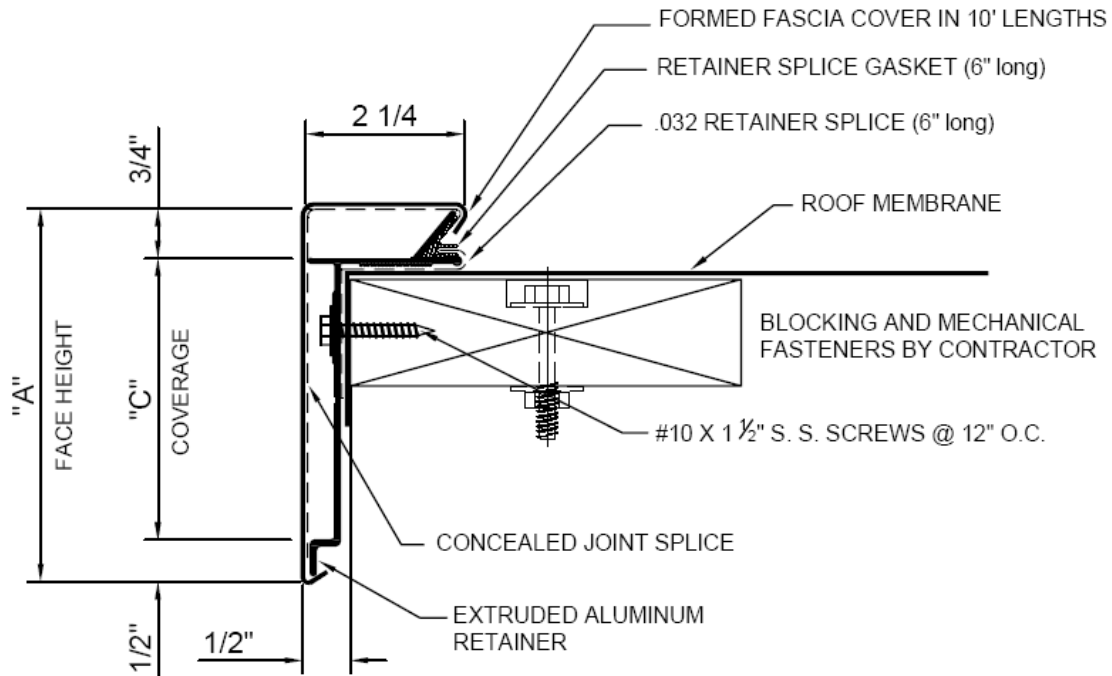
## FlintEdge Coping + Detail (6" ≤ Wall ≤ 20")



## FlintEdge Coping + Detail (20" ≤ Wall ≤ 32")

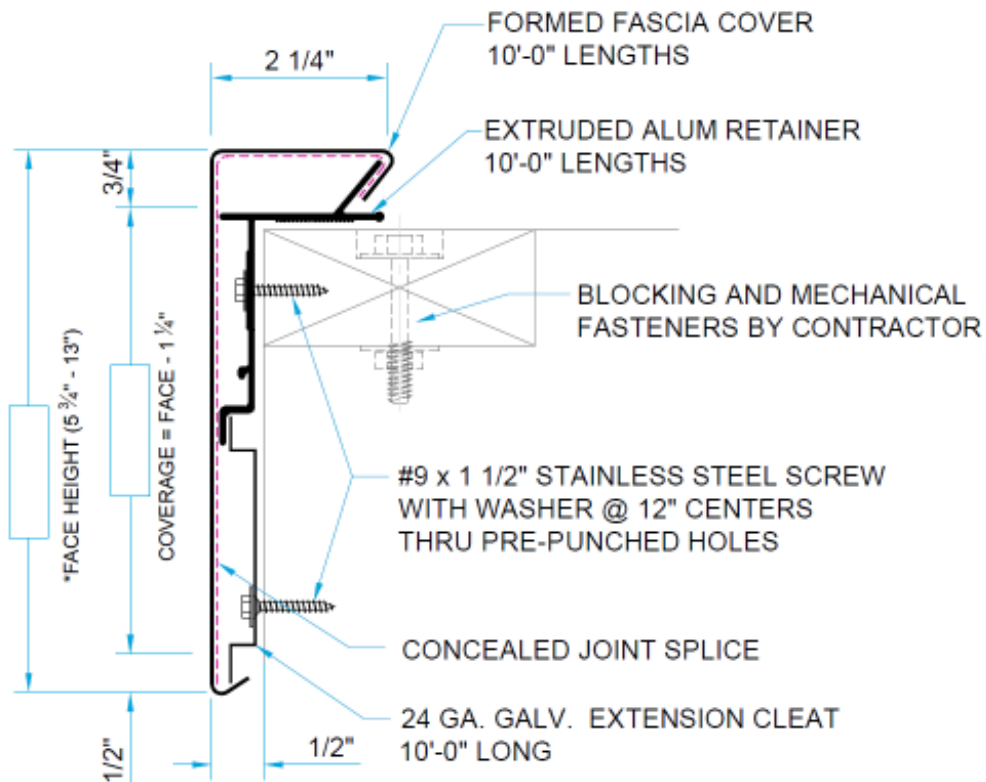


## FlintEdge Fascia ET Detail

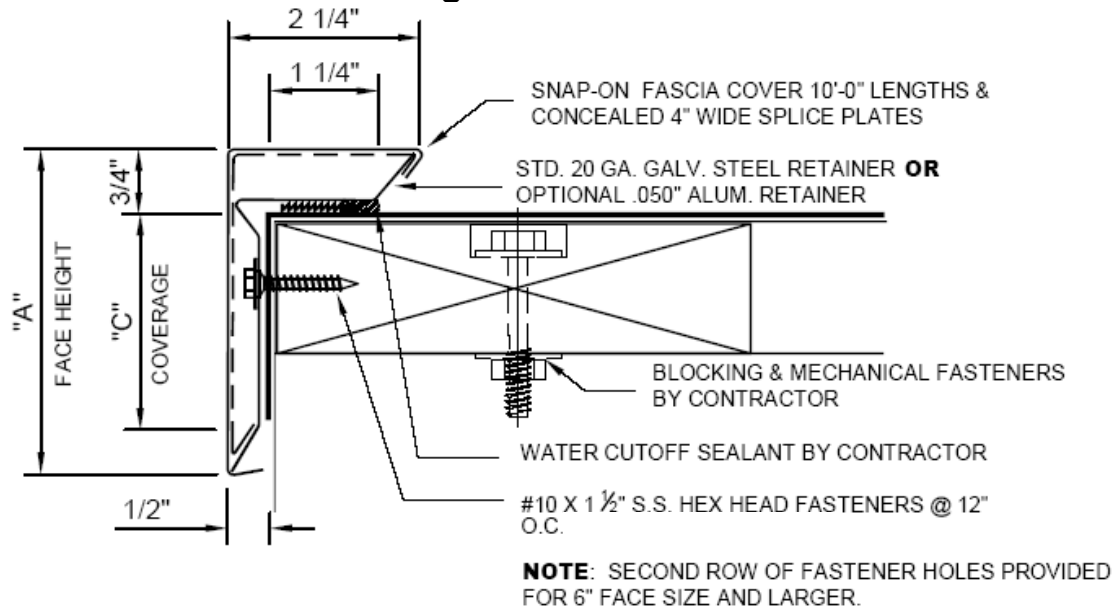


Note: Coordinate Installation with Membrane MFR.

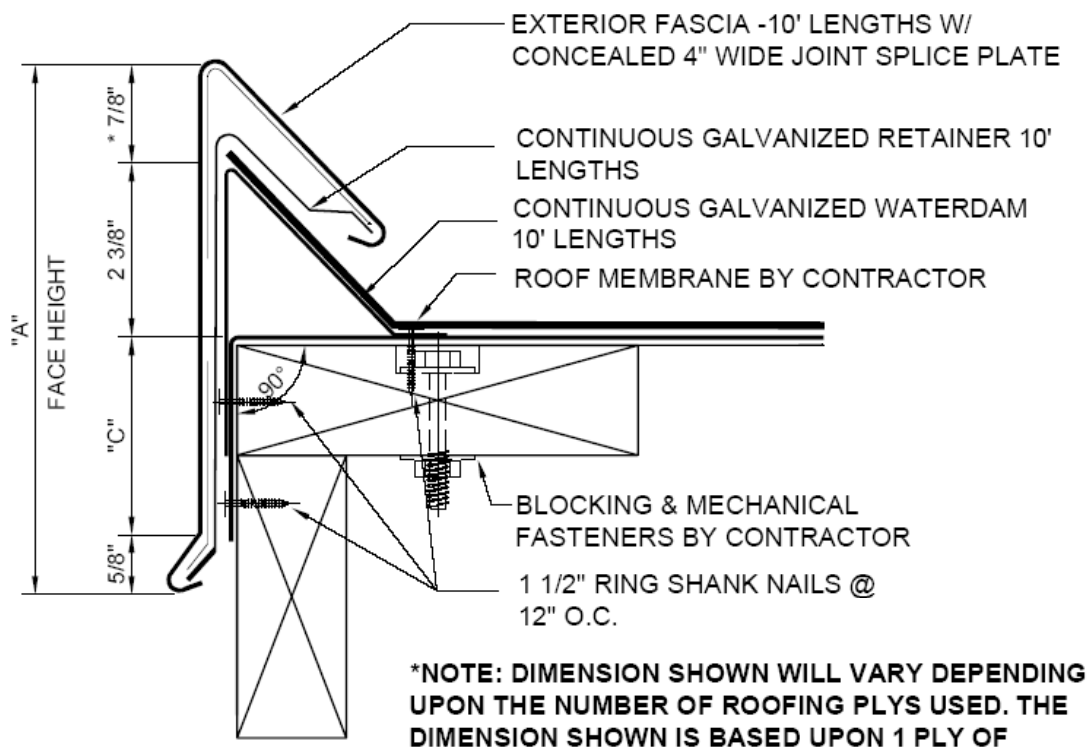
## FlintEdge Fascia ET with Extender Detail



## FlintEdge Fascia GG Detail



## FlintEdge Fascia GS Detail



**END OF THIS ACCEPTANCE**