



DEPARTMENT OF REGULATORY AND ECONOMIC RESOURCES (RER)
BOARD AND CODE ADMINISTRATION DIVISION

MIAMI-DADE COUNTY
PRODUCT CONTROL SECTION

11805 SW 26 Street, Room 208

Miami, Florida 33175-2474

www.miamidade.gov/economy

NOTICE OF ACCEPTANCE (NOA)

Super Sky Products Enterprises, LLC
10301 North Enterprise Drive
Mequon, Wisconsin 53092

SCOPE:

This NOA is being issued under the applicable rules and regulations governing the use of construction materials. The documentation submitted has been reviewed and accepted by Miami-Dade County RER-Product Control Section to be used in Miami Dade County and other areas where allowed by the Authority Having Jurisdiction (AHJ).

This NOA shall not be valid after the expiration date stated below. The Miami-Dade County Product Control Section (In Miami Dade County) and/or the AHJ (in areas other than Miami Dade County) reserve the right to have this product or material tested for quality assurance purposes. If this product or material fails to perform in the accepted manner, the manufacturer will incur the expense of such testing and the AHJ may immediately revoke, modify, or suspend the use of such product or material within their jurisdiction. RER reserves the right to revoke this acceptance, if it is determined by Miami-Dade County Product Control Section that this product or material fails to meet the requirements of the applicable building code.

This product is approved as described herein, and has been designed to comply with the High Velocity Hurricane Zone of the Florida Building Code.

DESCRIPTION: Standard Tubular Aluminum Skylight System with Insulated Glass – L.M.I.

APPROVAL DOCUMENT: Drawing No. 2002-0246, titled “Super Sky’s Standard Tubular Skylight Glazing System”, sheets A1 through A4 of 4 and B1 through B6 of 6, prepared by David S. Barron, P.E., signed and sealed by David S. Barron, P.E on November 15, 2005, bearing the Miami-Dade County Product Control Renewal stamp with the Notice of Acceptance number and the expiration date by the Miami-Dade County Product Control Section.

MISSILE IMPACT RATING: Large and Small Missile Impact Resistant

LABELING: Each unit shall bear a permanent label with the manufacturer's name or logo, city, state, model/series and the following statement: "Miami-Dade County Product Control Approved", unless otherwise noted herein.

RENEWAL of this NOA shall be considered after a renewal application has been filed and there has been no change in the applicable building code negatively affecting the performance of this product.

TERMINATION of this NOA will occur after the expiration date or if there has been a revision or change in the materials, use, and/or manufacture of the product or process. Misuse of this NOA as an endorsement of any product, for sales, advertising or any other purposes shall automatically terminate this NOA. Failure to comply with any section of this NOA shall be cause for termination and removal of NOA.

ADVERTISEMENT: The NOA number preceded by the words Miami-Dade County, Florida, and followed by the expiration date may be displayed in advertising literature. If any portion of the NOA is displayed, then it shall be done in its entirety.

INSPECTION: A copy of this entire NOA shall be provided to the user by the manufacturer or its distributors and shall be available for inspection at the job site at the request of the Building Official.

This NOA **renews NOA # 11-0811.04** and consists of this page 1, evidence submitted page E-1 as well as approval document mentioned above.

The submitted documentation was reviewed by **Jaime D. Gascon, P.E.**



J. Gascon
12/14/12

NOA No. 12-1023.06
Expiration Date: 11/18/2017
Approval Date: 12/27/2012
Page 1

Super Sky Products Enterprises, LLC

NOTICE OF ACCEPTANCE: EVIDENCE SUBMITTED

A. DRAWINGS

1. *Drawing No. 2002-0246, titled "Super Sky's Standard Tubular Skylight Glazing System", sheets A1 through A4 of 4 and B1 through B6 of 6, prepared by David S. Barron, P.E., signed and sealed by David S. Barron, P.E on November 15, 2005.*

B. TESTS

1. *Test report on Large Missile Impact Test, Cyclic Load Test and Uniform Static air Pressure Test on Super Sky's Skylight Systems, prepared by Hurricane Test Laboratory, Inc., Report No. 0161-0207-99, dated 02/16/99, signed and sealed by Timothy S. Marshall, P.E. (Submitted under NOA 99-0610.02.)*
2. *Test report on Large Missile Impact Test, Cyclic Load Test and Uniform Static air Pressure Test on Super Sky's Skylight Systems, prepared by Hurricane Test Laboratory, Inc., Report Nos. 0161-0409-05 & 0161-1023-04, dated September 13, 2005, signed and sealed by Vinu J. Abraham, P.E. (Submitted under NOA 05-1208.05.)*

C. CALCULATIONS

1. *Calculation titled "Super Sky Products, Inc. Mock-up-Dade County Product Approval TAS-201, TAS-202, TAS-203, Large Missile Test", dated November 11, 2005, sheets 1 through 21 of 21, prepared by David S. Barron, P.E., signed and sealed by David S. Barron, P.E. (Submitted under NOA 05-1208.05.)*

D. QUALITY ASSURANCE

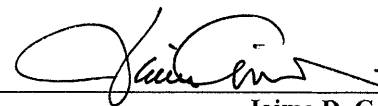
1. *By Miami-Dade County Department of Regulatory and Economic Resources.*

E. MATERIAL CERTIFICATIONS

1. *Mill Certified Test Report issued by Viracon, dated 03/10/99, with the glass strength analysis by Jeffrey D. Granato. (Submitted under NOA 99-0610.02.)*
2. *The Die Drawing Numbers D1 through D9 of 9, by Super Sky Products, Inc. (Submitted under NOA 99-0610.02.)*

F. OTHERS

1. *Letter of Compliance with the Florida Building Code, 2010 Edition, issued by Mr. David S. Barron, P.E., dated September 27, 2012, signed and sealed by Mr. David S. Barron, P.E.*
2. *Letter of Compliance with the Florida Building Code, 2010 Edition, issued by Mr. David S. Barron, P.E., dated February 10, 2012, signed and sealed by Mr. David S. Barron, P.E. (Submitted under NOA 11-0811.04.)*

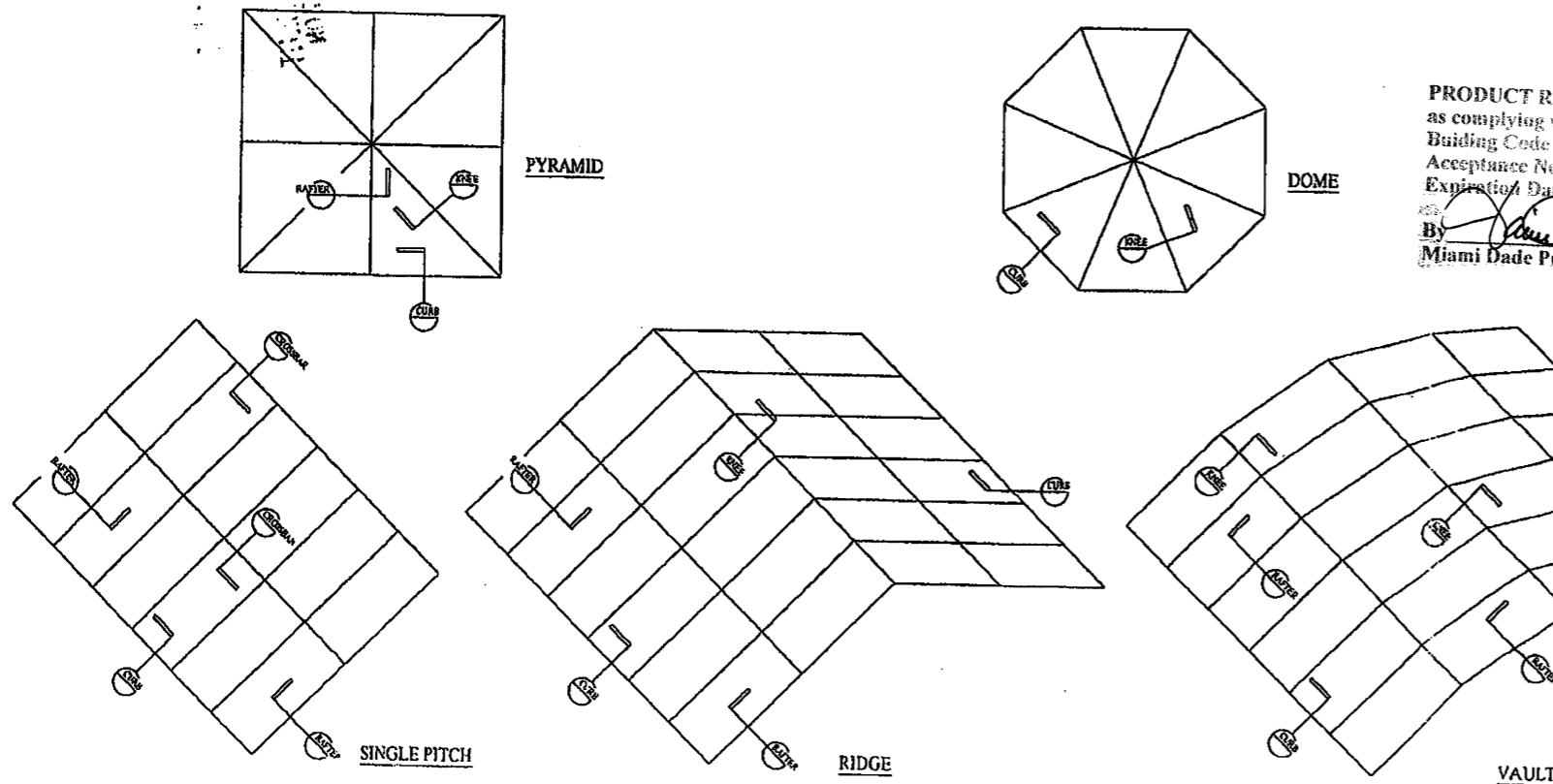


Jaime D. Gascon, P.E.
Product Control Section Supervisor
NOA No. 12-1023.06
Expiration Date: 11/18/2017
Approval Date: 12/27/2012

SUPER SKY'S STANDARD TUBULAR SKYLIGHT SYSTEM

- SYSTEM DESCRIPTION:** SUPER SKY'S STANDARD TUBULAR SKYLIGHT GLAZING SYSTEM CONSISTS OF AN EXTRUDED ALUMINUM STRUCTURAL FRAME (6005-T5), CUSTOM ENGINEERED TO SUIT A PARTICULAR PROJECT. THE EXTRUDED FRAME IS CONNECTED TOGETHER USING ALUMINUM CHANNEL CLIPS, ANCHOR PLATES, AND GUSSET PLATES, AS SHOWN ON DRAWINGS A1-A4. THE GLASS IS ATTACHED TO THE FRAME USING ALUMINUM RETAINERS (6005-T5), AND 1/4"-20 STAINLESS STEEL TORX HEAD SCREWS 6" O.C. THE SCREWS ENGAGE THE SERRATIONS IN THE ALUMINUM EXTRUSIONS BELOW. EPDM GASKETS ARE USED ON THE INTERIOR (1/8" X 1/2") AND EXTERIOR (1/4" X 3/8") TO CUSHION THE GLASS, AND A FULL SILICONE WEATHER SEAL AND SNAP-ON CAPS ARE APPLIED TO PREVENT AIR AND WATER INFILTRATION.
- SKYLIGHT TYPES:** SINCE ALMOST ALL SKYLIGHTS BUILT USING SUPER SKY'S STANDARD TUBULAR GLAZING SYSTEM ARE CUSTOM DESIGNED FOR A PARTICULAR BUILDING, VIRTUALLY NONE OF THEM ARE EXACTLY THE SAME. IN RECOGNITION OF THIS FACT, THE TEST SPECIMENS AS SHOWN ON SHEETS A1-A4 WERE DEVELOPED SO AS TO TEST THE FOUR STANDARD DETAILS USED ON MOST SKYLIGHT PROJECTS (CURB, RAFTER, CROSSBAR, AND KNEE). THE DESIGN PRESSURE, GLASS TYPE, AND GLASS SIZES WERE ALSO SELECTED TO SUIT THE MOST POSSIBLE SKYLIGHT PROJECTS.

EXAMPLES OF THESE SKYLIGHTS ARE SHOWN BELOW.



SUPER SKY'S STANDARD TUBULAR SKYLIGHT GLAZING SYSTEM

PRODUCT APPROVAL TESTING PER TAS-201, TAS-202, TAS-203

STANDARD DETAILS TESTED:

- CURB (SEE DETAIL 1/A3)
- RAFTER (SEE DETAIL 3/A3)
- CROSSBAR (SEE DETAIL 1/A3)
- KNEE [HIP] (SEE DETAIL 2/A3)

PLEASE SEE DRAWINGS A1-A4 FOR COMPLETE SPECIFICATIONS OF THE MOCK-UPS TESTED.

GENERAL NOTES:

- THIS SYSTEM IS APPROVED FOR: DESIGN PRESSURES UP TO +80/-90PSF.
- GLASS TYPE TESTED: 1 1/16" IGU CONSISTING OF: 1/4" CLEAR HEAT STRENGTHENED OUTER LITE, 1/2" AIR SPACE, 9/16" CLEAR LAMINATED INNER LITE, CONSISTING OF: 1/4" CLEAR HEAT STRENGTHENED GLASS, .077" VS-02 PVB INTERLAYER BY SOLUTIA 1/4" CLEAR HEAT STRENGTHENED GLASS.
- LARGE MISSILE IMPACT TESTED. THIS GLASS PRODUCT IS APPROVED FOR USE FROM GRADE UP TO 30', OR HIGHER IF DESIRED.
- APPROVED UP TO A MAXIMUM LITE SIZE OF 30 SQ. FT.
- THE ALUMINUM EXTRUSIONS TESTED WERE SIZED PER STRUCTURAL CALCULATIONS TO SUIT THE SPANS AND DESIGN PRESSURE TESTED.
- ALUMINUM CONTACTING MATERIALS NOT CONSIDERED COMPATIBLE SHALL BE PROTECTED PER SECTION 2003.8.4.2 OF THE FLORIDA BUILDING CODE.
- THIS APPROVAL IS LIMITED TO THE MAXIMUM AREA OF THE 1 1/16" INSULATED GLASS, THE FULLY ASSEMBLED GLAZING DETAILS SYSTEM TO THE SUPPORTING RAFTERS AND THE MAXIMUM DESIGN PRESSURE SHOWN ON THESE DRAWINGS.
- THE STRUCTURAL ADEQUACY OF THE SUPPORTING STRUCTURAL MEMBERS, (CURBS, RAFTERS, PURLINS, AND ALL OTHER FRAMING MEMBERS) IS NOT PART OF THIS APPROVAL AND IT SHALL BE REVIEWED BY THE STRUCTURAL PLANS EXAMINER OF THE CORRESPONDING BUILDING DEPARTMENT.

PRODUCT RENEWED as complying with the Florida Building Code Acceptance No. 12-1025-06 Expiration Date 11/18/2012 By *Heather A. Miller* Miami Dade Product Control

PRODUCT REVISED as complying with the Florida Building Code

Acceptance No. 11-0811-04 Expiration Date 11/18/2012 By *Heather A. Miller* Miami Dade Product Control

PRODUCT RENEWED as complying with the Florida Building Code

Acceptance No. 07-0810-02 Expiration Date 11/18/2012 By *Heather A. Miller* Miami Dade Product Control

DADE COUNTY USE

PRODUCT REVISED as complying with the Florida Building Code Acceptance No. 05-1208-05 Expiration Date 11/18/2007 By *Heather A. Miller* Miami Dade Product Control

ENGINEER STAMP

David S. Barron
11-15-05

DAVID S. BARRON
21 DARTMOUTH DRIVE
GREENSBURG, PA 15601
LICENCE #36374

27520

20020246A_1-7-05_-D1



SUPER SKY PRODUCTS ENTERPRISES, LLC
1001 N. ENTERPRISE DR.
MEQUON, WISCONSIN 53072
312-210-2000

CURRENT NOA # 02-1009.05
LARGE MISSILE

REVISION

NEW GLASS TYPE 01/07/05 JB
REVISION TO CURRENT NOA 02-1009.05
EXP. 12-24-07

PROJECT
MOCK-UP -
DADE COUNTY
PRODUCT APPROVAL

DADE COUNTY, FL
ENGINEER
DAVID S. BARRON

MEQUON, WI
TEST LABORATORY
HURRICANE TEST LAB

RIVIERA BEACH, FL

DATE
JB 01/07/05

APPROVAL
1 (DP)

PROJECT NO.
2002-0246

A1
OF 4



SUPER SKY PRODUCTS ENTERPRISES, LLC
1801 N. ENTERPRISE DR.
MEQUON, WISCONSIN 53151
262-40-2800

REVISION

PROJECT
MOCK-UP -
DADE COUNTY
PRODUCT APPROVAL
DADE COUNTY, FL
ENGINEER
DAVID S. BARRON

MEQUON, WI
TEST LABORATORY

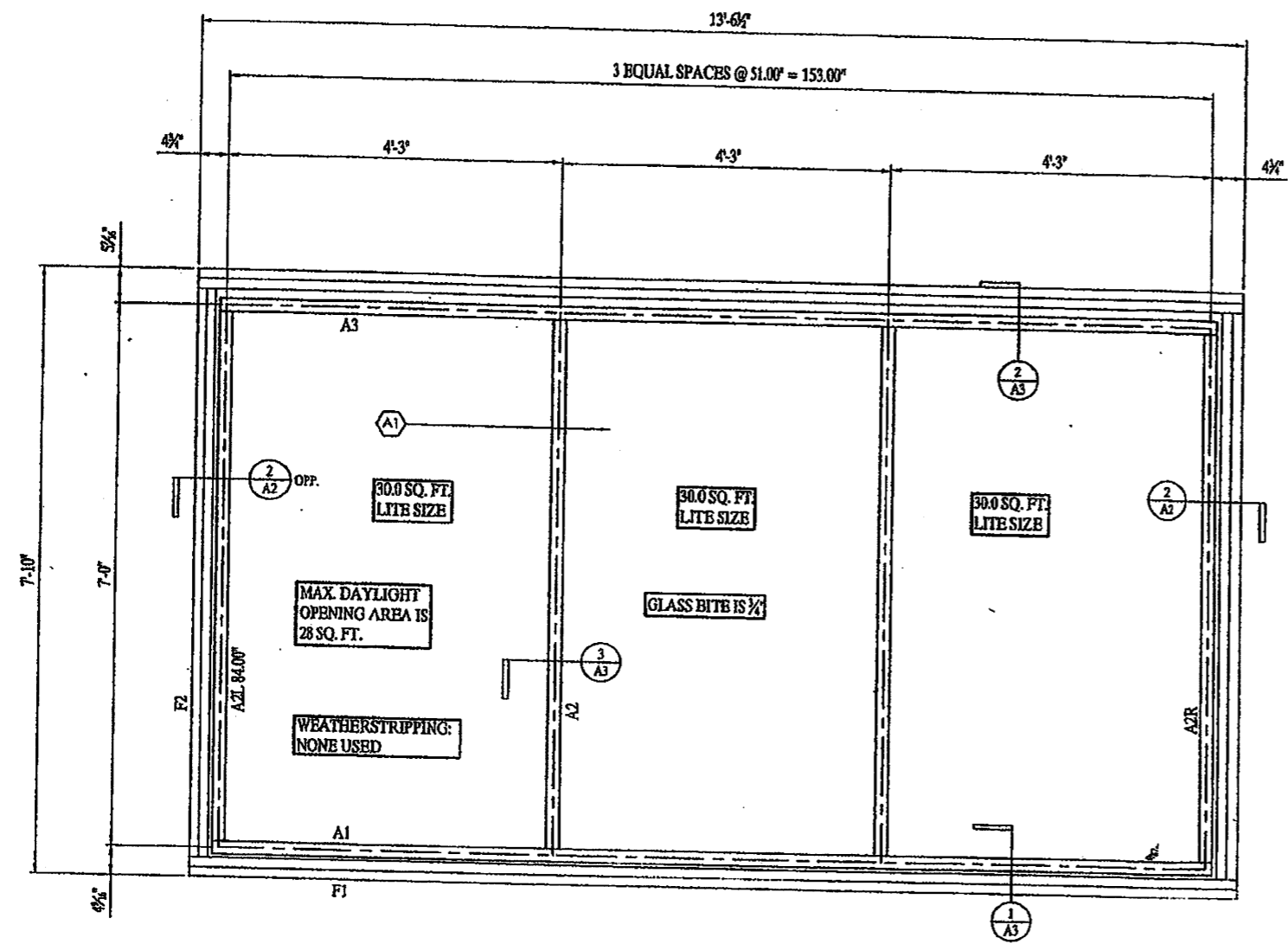
RIVIERA BEACH, FL
TITLE
ELEVATION
END RAFTER SECTION

DATE
01/07/05

SCALE
AS NOTED 1(DP)

PROJECT NO.
2002-0246

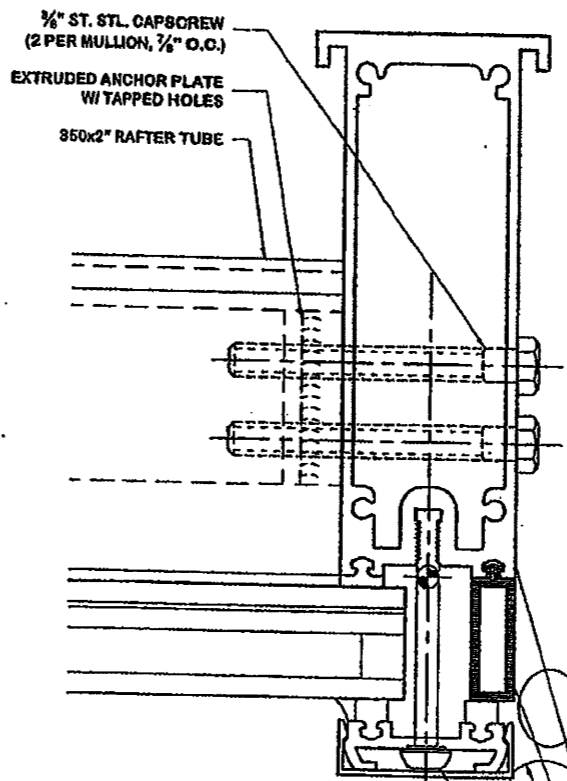
A2
OF 4



1
A2 ELEVATION (1 REQ'D)
SCALE: 1" = 1'-0"

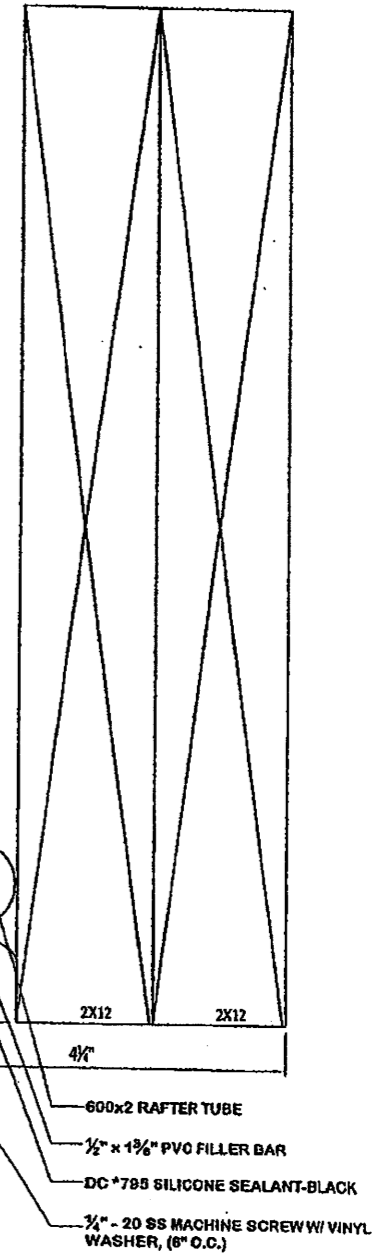
PRODUCT RENEWED
as complying with the Florida
Building Code
Acceptance No. 12-1023.06
Expiration Date 11/18/2017
By *Helmut A. Mehn*
Miami Dade Product Control

PRODUCT RENEWED
as complying with the Florida
Building Code
Acceptance No. 07-0810.02
Expiration Date 11/18/2012
By *Helmut A. Mehn*
Miami Dade Product Control



PRODUCT REVISED
as complying with the Florida
Building Code
Acceptance No. 11-0811.04
Expiration Date 11/18/2012
By *Helmut A. Mehn*
Miami Dade Product Control

2
A2 END RAFTER SECTION
SCALE: FULL



DADE COUNTY USE	ENGINEER STAMP
PRODUCT REVISED as complying with the Florida Building Code Acceptance No. 05-1208.05 Expiration Date 11/18/2007 By <i>Helmut A. Mehn</i> Miami Dade Product Control	<i>David S. Barron</i> 11-15-05

DAVID S. BARRON
21 DARTMOUTH DRIVE
GREENSBURG, PA 15601
LICENCE #36374

CURTAIN FOR
20020246A_1-7-05_-D1.dwg



SUPER SKY PRODUCTS ENTERPRISES, LLC
 1601 N. ENTERPRISE DR.
 KESHUWA, WISCONSIN 53022
 262-441-5500

REVISION

PROJECT
 MOCK-UP -
 DADE COUNTY
 PRODUCT APPROVAL

DADE COUNTY, FL
ENGINEER
 DAVID S. BARRON

MEQUON, WI
 TEST LABORATORY

RIVIERA BEACH, FL
TITLE
 KNEE, SILL
 AND RAFTER SECTIONS

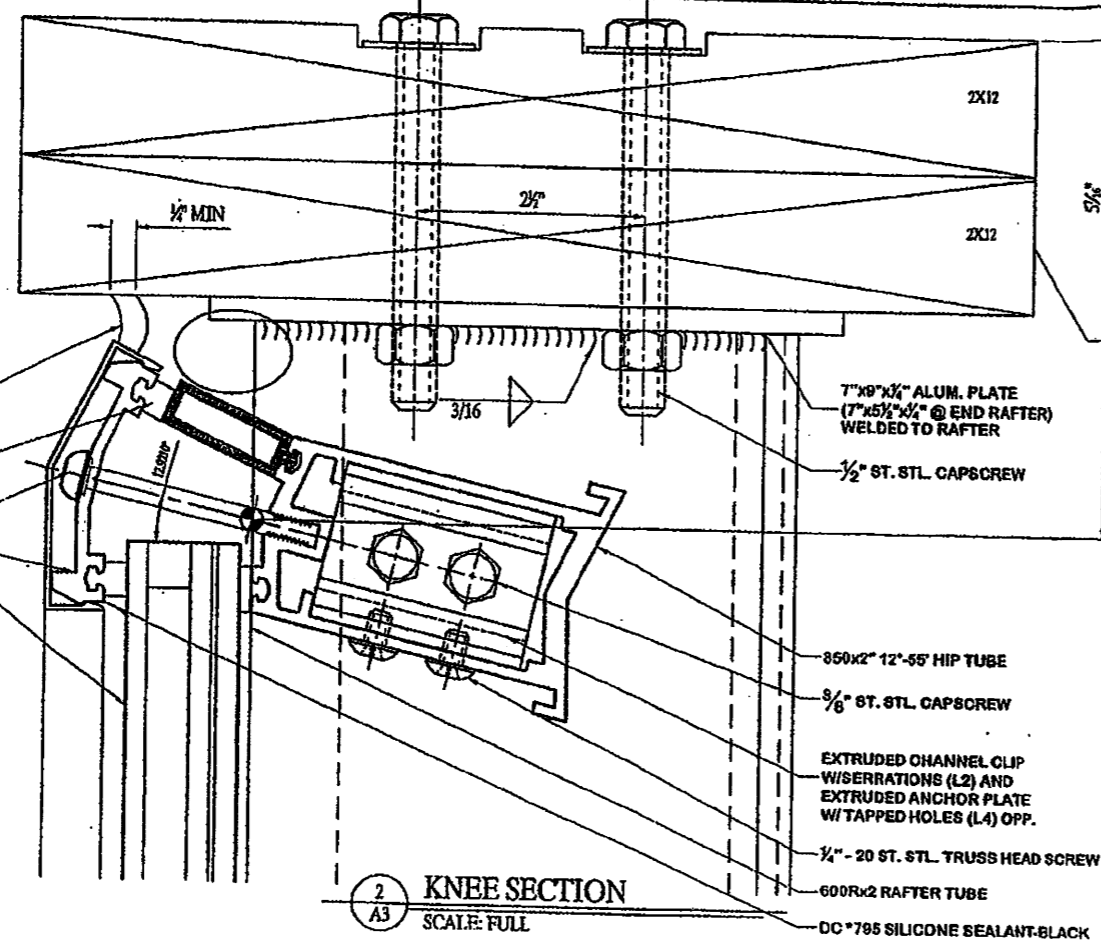
DATE
 06/29/04

SCALE
 FULL 1 (DP)

PROJECT NO.
 2002-0246

A3
 OF 4

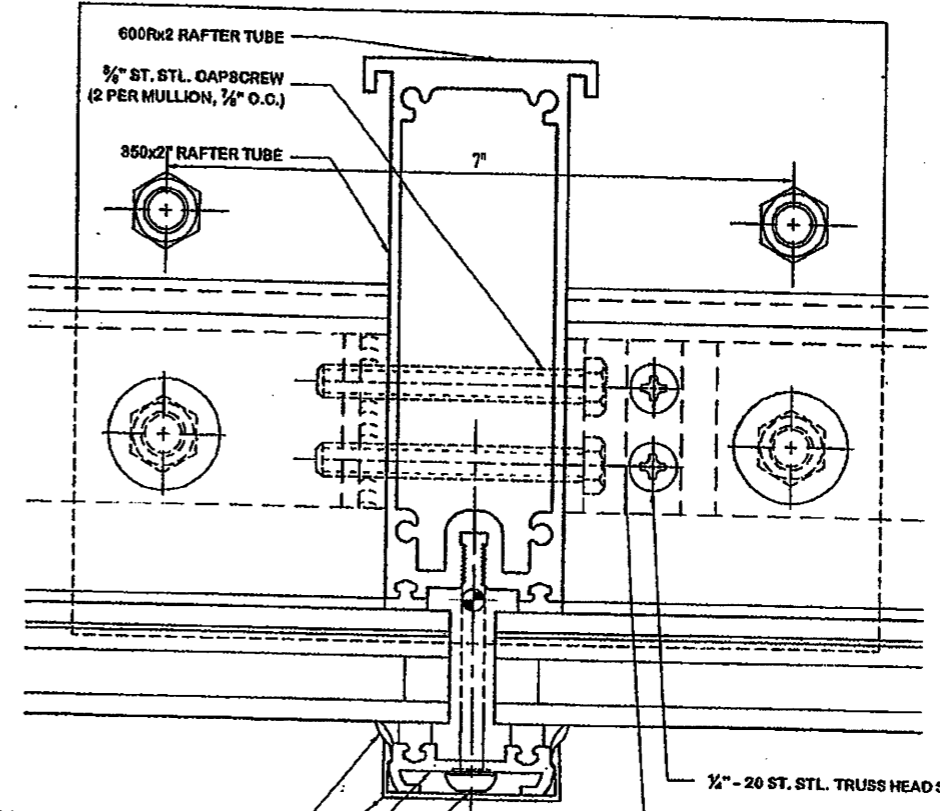
SHOP NOTE
 COUNTERBORE WOOD
 SO BOLT HEADS DON'T
 STICK OUT



2 KNEE SECTION
 A3 SCALE: FULL

- DC *785 SILICONE SEALANT-BLACK W/ BACKER ROD
- 1/4" x 1/2" EPDM GLAZING STRIP
- 1/4" - 20 ST. STL. MACHINE SCREW W/ VINYL WASHER, (6" O.C.)
- 12'-55" HIP CAP AND RETAINER
- 1 1/8" LAMINATED GLASS

- WOOD FRAME SUPPLIED BY SUPER SKY
- 7"x9"x1/4" ALUM. PLATE (7"x5 1/2"x1/4" @ END RAFTER) WELDED TO RAFTER
- 1/2" ST. STL. CAPSCREW
- 850x2" 12'-55" HIP TUBE
- 5/8" ST. STL. CAPSCREW
- EXTRUDED CHANNEL CLIP W/ SERRATIONS (L2) AND EXTRUDED ANCHOR PLATE W/ TAPPED HOLES (L4) OPP.
- 1/4" - 20 ST. STL. TRUSS HEAD SCREW
- 600Rx2 RAFTER TUBE
- DC *795 SILICONE SEALANT-BLACK



3 RAFTER SECTION
 A3 SCALE: FULL

- DC *795 SILICONE SEALANT-BLACK
- 2" SNAP-ON CAP
- 2" SNAP-ON CAP RETAINER
- 1/4" - 20 ST. STL. MACHINE SCREW W/ VINYL WASHER, (6" O.C.)

- EXTRUDED CHANNEL CLIP W/ SERRATIONS (L2) AND EXTRUDED ANCHOR PLATE W/ TAPPED HOLES (L4) OPP.
- 1/2" - 20 ST. STL. TRUSS HEAD SCREW

PRODUCT RENEWED
 as complying with the Florida Building Code
 Acceptance No 12-1023.06
 Expiration Date 11/18/2017

PRODUCT RENEWED
 as complying with the Florida Building Code
 Acceptance No 07-0810.02
 Expiration Date 11/18/2012

WOOD FRAME SUPPLIED BY SUPER SKY

ERECTION NOTE: Δ
 SEAL BOLT PENETRATIONS THROUGH FLASHING TO PREVENT ANY WATER FROM DRIPPING OUT OF SILL FLASHING.

1 CURB/SILL SECTION
 A3 SCALE: FULL

- 1 1/8" LAMINATED GLASS
- 1/4" x 1/2" EPDM GLAZING STRIP
- DC *785 SILICONE SEALANT-BLACK
- 2" SNAP-ON CAP AND RETAINER
- (2) 1/8" THICK EXTRUDED SETTING BLOCK
- 1/8" ALUM. GLASS STOP 4" LONG @ 1/4" PTS. (2 PER LITE)
- 1/4" - 20 ST. STL. MACHINE SCREW W/ VINYL WASHER, (6" O.C.)
- 1/2" x 1/4" PVC FILLER BAR
- DC *795 SILICONE SEALANT-BLACK W/ BACKER ROD
- .080" ALUM. FLASHING W/ WELDED ENDS (SET IN SEALANT)

- 1/4" - 20 ST. STL. TRUSS HEAD SCREW
- 1 1/4" ACCESS HOLE W/ ALUMINUM COVER (SET IN SEALANT)
- 1 1/4" ACCESS HOLE
- 350x2" RAFTER TUBE
- 7"x9"x1/4" ALUM. PLATE (7"x5 1/2"x1/4" @ END RAFTER) WELDED TO RAFTER
- 1/2" ST. STL. CAPSCREW

PRODUCT REVISED
 as complying with the Florida Building Code
 Acceptance No 11-0811.04
 Expiration Date 11/18/2012

By *Healy A. Miller*
 Miami Dade Product Control Division

DADE COUNTY USE

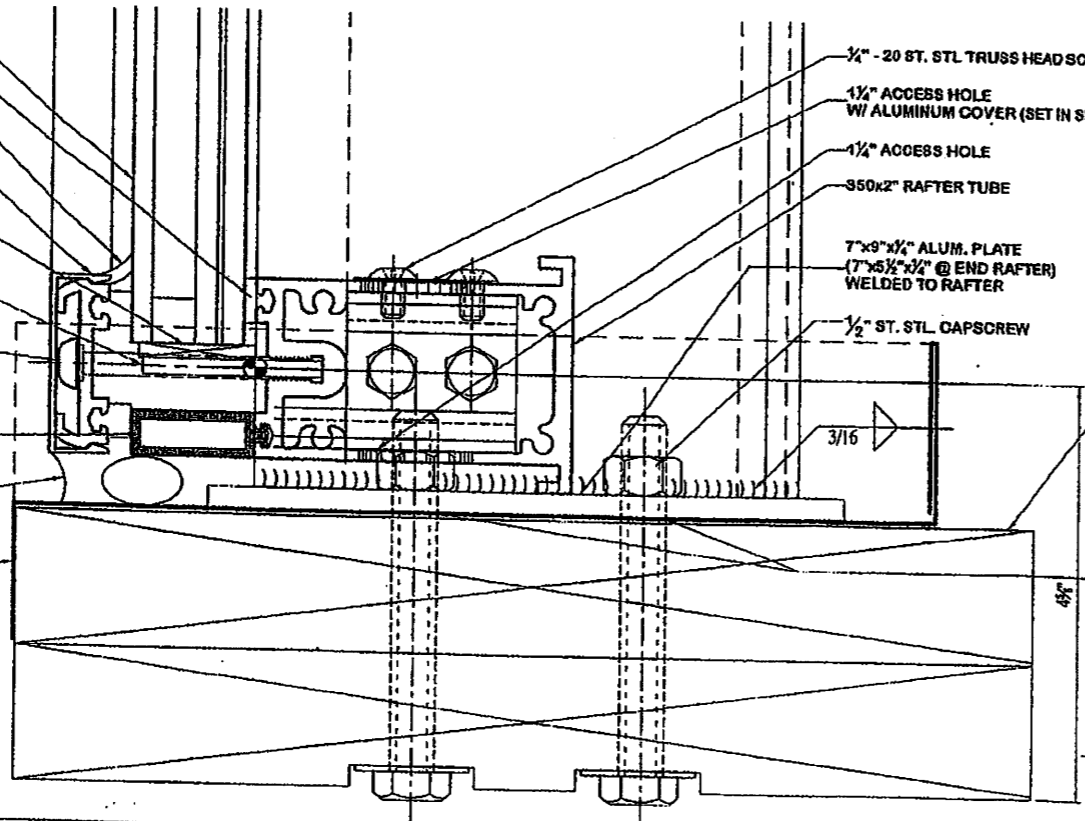
ENGINEER STAMP

David S. Barron
 11-15-05

DAVID S. BARRON
 21 DARTMOUTH DRIVE
 GREENSBURG, PA 15601
 LICENCE #36374

CAD FILE:
 20020246A_1-7-05_-D1.dwg

SHOP NOTE
 COUNTERBORE WOOD
 SO BOLT HEADS DON'T
 STICK OUT





SUPER SKY PRODUCTS ENTERPRISES, LLC
1201 N. ENTERPRISE DR.
MEQUON, WISCONSIN 53075
262-340-2200

REVISION

PRODUCT RENEWED
as complying with the Florida
Building Code
Acceptance No. 12-1023.06
Expiration Date 11/18/2012
By *Helmut A. Hahn*
Miami Dade Product Control

PRODUCT REVISED
as complying with the Florida
Building Code
Acceptance No 11-0811.04
Expiration Date 11/18/2012
By *Helmut A. Hahn*
Miami Dade Product Control

PRODUCT RENEWED
as complying with the Florida
Building Code
Acceptance No 07-0810.02
Expiration Date 11/18/2012
By *Helmut A. Hahn*
Miami Dade Product Control
Division

PROJECT
MOCK-UP -
DADE COUNTY
PRODUCT APPROVAL
DADE COUNTY, FL
ENGINEER
DAVID S. BARRON

MEQUON, WI
TEST LABORATORY
RIVIERA BEACH, FL
TITLE
EXTRUSIONS

DRAWN BY
JB 06/29/04
SCALE
FULL 1 (DP)
PROJECT NO.
2002-0246

A4
OF 4

SUMMARY OF PROPERTIES

CENTRE OF MASS [1.31252, 0.04688, 0]
SURFACE AREA 3.25287 INCH**2
MOMENT ABOUT X AXIS 1.95402 INCH**4
MOMENT ABOUT Y AXIS 18.8859 INCH**4
POLAR MOMENT 18.8699 INCH**4
PRINCIPAL AXES ROTATION ANGLE = 90°-0°
RADI OF GYRATION:
POLAR 2.40871 INCH
X AXIS 0.781089 INCH
Y AXIS 2.27857 INCH

WEIGHT PER LINEAR FOOT 3.605278 LBS
ALUMINUM ALLOT 6005-T6

600 RAFTER TUBE

SCALE: FULL

DADE COUNTY USE

PRODUCT REVISED
as complying with the Florida
Building Code
Acceptance No 05-1208.05
Expiration Date 11/18/2007
By *Helmut A. Hahn*
Miami Dade Product Control
Division

ENGINEER STAMP

David S. Barron
11-15-05

DAVID S. BARRON
21 DARTMOUTH DRIVE
GREENSBURG, PA 15601
LICENCE #36374

20020246A_1-7-05_-D1.dwg

SUMMARY OF PROPERTIES

CENTRE OF MASS [-1.35908, 0.807898, 0]
SURFACE AREA 1.67688 INCH**2
MOMENT ABOUT X AXIS 0.126744 INCH**4
MOMENT ABOUT Y AXIS 10.8294 INCH**4
POLAR MOMENT 10.9581 INCH**4
PRINCIPAL AXES ROTATION ANGLE = 88°-23°
RADI OF GYRATION:
POLAR 2.56833 INCH
X AXIS 0.277084 INCH
Y AXIS 2.54127 INCH

WEIGHT PER LINEAR FOOT 1.961850 LBS
ALUMINUM ALLOT 6005-T6

**1/8" x 5/8" x 4" LONG
SILICONE SETTING BLOCK**

SCALE: FULL

HARDNESS.....(SHORE A) 80 + 5 DUROMETER
COLOR.....BLACK

600 VARIABLE CURB

SCALE: FULL

1/2" x 1 3/8" RIGID PVC FILLER BAR

SCALE: FULL

RIGID PVC #820 W. .095" MIN WALL

1/8" x 1/2" EPDM GLAZING STRIP

SCALE: FULL

HARDNESS.....(SHORE A) 50 + 5 DUROMETER
TENSILE STRENGTH.....800 PSI (MIN)
ELONGATION.....300% (MIN)
TEAR, DIE 8, PSI.....65 (MIN)
COLOR.....BLACK

1/4" x 3/8" EPDM GLAZING STRIP

SCALE: FULL

HARDNESS.....(SHORE A) 60 + 5 DUROMETER
TENSILE STRENGTH.....800 PSI (MIN)
ELONGATION.....300% (MIN)
TEAR, DIE 8, PSI.....65 (MIN)
COLOR.....BLACK

SUMMARY OF PROPERTIES

CENTRE OF MASS [.87, 0.67416, 0]
SURFACE AREA 1.0184 INCH**2
MOMENT ABOUT X AXIS 0.229661 INCH**4
MOMENT ABOUT Y AXIS 0.408868 INCH**4
POLAR MOMENT 0.886529 INCH**4
PRINCIPAL AXES ROTATION ANGLE = 0°-0°
RADI OF GYRATION:
POLAR 0.790589 INCH
X AXIS 0.47488 INCH
Y AXIS 0.632072 INCH

WEIGHT PER LINEAR FOOT 1.191528 LBS
ALUMINUM ALLOT 6005-T6

CHANNEL CLIP

SCALE: FULL

SUMMARY OF PROPERTIES

CENTRE OF MASS [0.866, 0.208789, 0]
SURFACE AREA 0.686642 INCH**2
MOMENT ABOUT X AXIS 0.0118661 INCH**4
MOMENT ABOUT Y AXIS 0.110198 INCH**4
POLAR MOMENT 0.122066 INCH**4
PRINCIPAL AXES ROTATION ANGLE = 0°-0°
RADI OF GYRATION:
POLAR 0.488218 INCH
X AXIS 0.186642 INCH
Y AXIS 0.41687 INCH

WEIGHT PER LINEAR FOOT 0.748701 LB
ALUMINUM ALLOT 6005-T6

ANCHOR PLATE

SCALE: FULL

RAFTER CAP & RETAINER

SCALE: FULL

350 RAFTER TUBE

SCALE: FULL

SUMMARY OF PROPERTIES

CENTRE OF MASS [1.81246, 1.7169, 0]
SURFACE AREA 2.12843 INCH**2
MOMENT ABOUT X AXIS 1.2925 INCH**4
MOMENT ABOUT Y AXIS 3.52933 INCH**4
POLAR MOMENT 4.82184 INCH**4
PRINCIPAL AXES ROTATION ANGLE = -90°-0°
RADI OF GYRATION:
POLAR 1.50681 INCH
X AXIS 0.780183 INCH
Y AXIS 1.28922 INCH

WEIGHT PER LINEAR FOOT 2.484413 LBS
ALUMINUM ALLOT 6005-T6

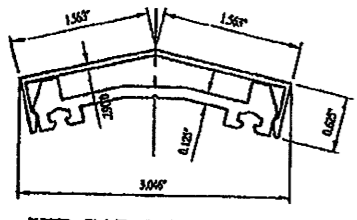
SUMMARY OF PROPERTIES

CENTRE OF MASS [1.31244, 1.80283, 0]
AREA 2.07765 INCH**2
MOMENT ABOUT X AXIS 1.29674 INCH**4
MOMENT ABOUT Y AXIS 3.84853 INCH**4
PRINCIPAL AXES ROTATION ANGLE = 90°-0°
RADI OF GYRATION:
X AXIS 3.85895 INCH
Y AXIS 2.78855 INCH

WEIGHT PER LINEAR FOOT 2.43108 LBS
ALUMINUM ALLOT 6005-T6

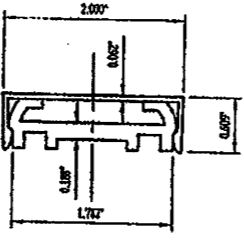
350 HIP TUBE

SCALE: FULL



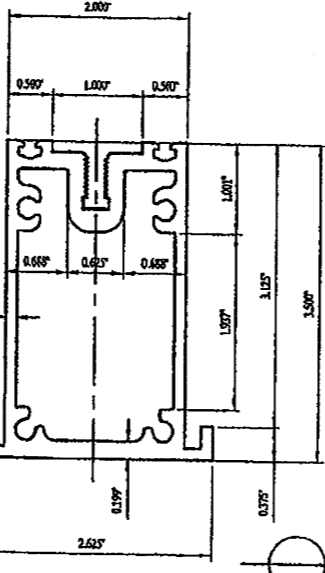
HIP CAP & RETAINER

SCALE: FULL



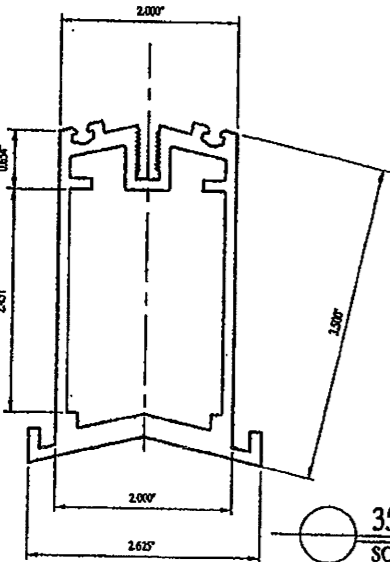
RAFTER CAP & RETAINER

SCALE: FULL



350 RAFTER TUBE

SCALE: FULL



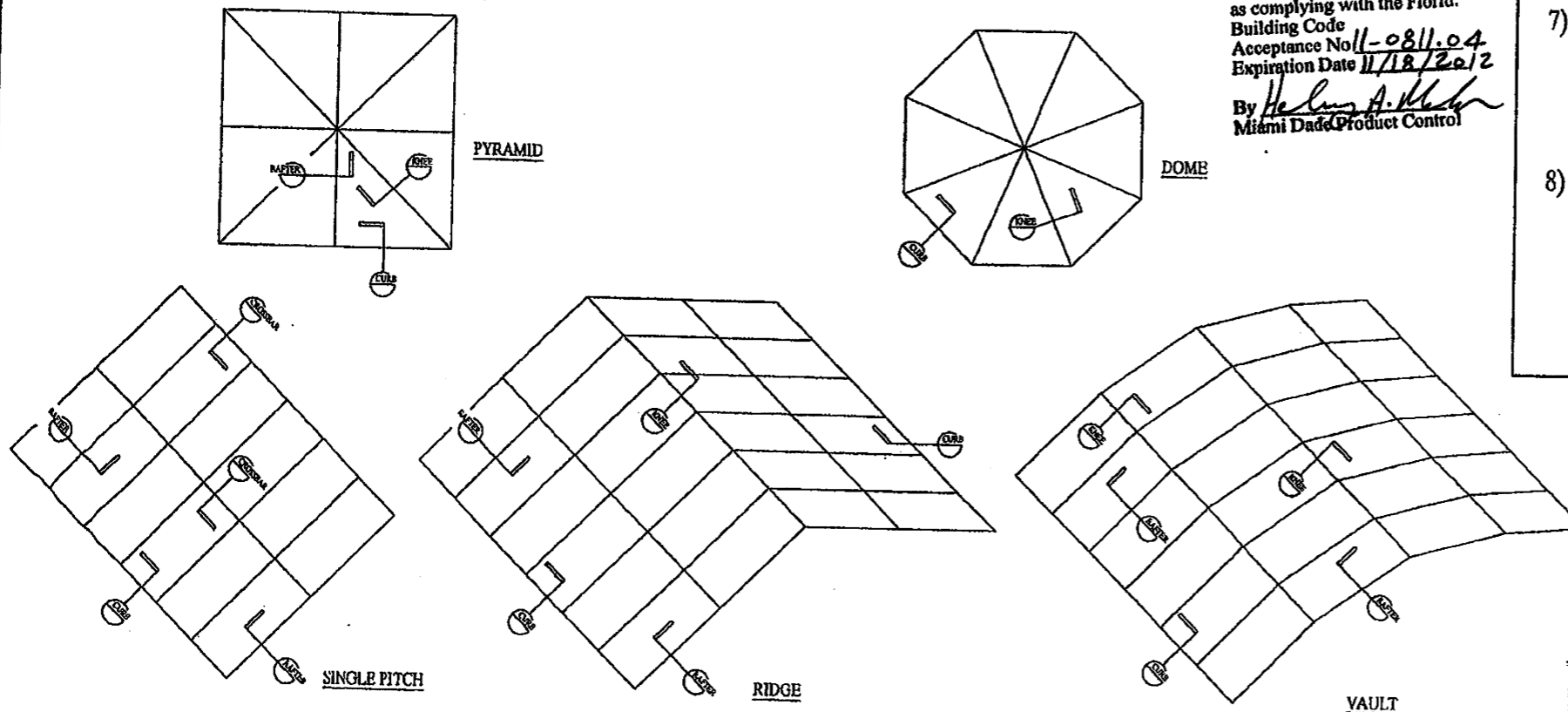
350 HIP TUBE

SCALE: FULL

SUPER SKY'S STANDARD TUBULAR SKYLIGHT SYSTEM

- SYSTEM DESCRIPTION:** SUPER SKY'S STANDARD TUBULAR SKYLIGHT GLAZING SYSTEM CONSISTS OF AN EXTRUDED ALUMINUM STRUCTURAL FRAME (6005-T5), CUSTOM ENGINEERED TO SUIT A PARTICULAR PROJECT. THE EXTRUDED FRAME IS CONNECTED TOGETHER USING ALUMINUM CHANNEL CLIPS, ANCHOR PLATES, AND GUSSET PLATES, AS SHOWN ON DRAWINGS B1-B5. THE GLASS IS ATTACHED TO THE FRAME USING ALUMINUM RETAINERS (6005-T5), AND 1/4"-20 STAINLESS STEEL TORX HEAD SCREWS 6" O.C. THE SCREWS ENGAGE THE SERRATIONS IN THE ALUMINUM EXTRUSIONS BELOW. EPDM GASKETS ARE USED ON THE INTERIOR (1/8" X 1/2") AND EXTERIOR (1/4" X 3/8") TO CUSHION THE GLASS, AND A FULL SILICONE WEATHER SEAL AND SNAP-ON CAPS ARE APPLIED TO PREVENT AIR AND WATER INFILTRATION.
- SKYLIGHT TYPES:** SINCE ALMOST ALL SKYLIGHTS BUILT USING SUPER SKY'S STANDARD TUBULAR GLAZING SYSTEM ARE CUSTOM DESIGNED FOR A PARTICULAR BUILDING, VIRTUALLY NONE OF THEM ARE EXACTLY THE SAME. IN RECOGNITION OF THIS FACT, THE TEST SPECIMENS AS SHOWN ON SHEETS B1-B5 WERE DEVELOPED SO AS TO TEST THE FOUR STANDARD DETAILS USED ON MOST SKYLIGHT PROJECTS (CURB, RAFTER, CROSSBAR, AND KNEE). THE DESIGN PRESSURE, GLASS TYPE, AND GLASS SIZES WERE ALSO SELECTED TO SUIT THE MOST POSSIBLE SKYLIGHT PROJECTS.

EXAMPLES OF THESE SKYLIGHTS ARE SHOWN BELOW.



SUPER SKY'S STANDARD TUBULAR SKYLIGHT GLAZING SYSTEM

PRODUCT APPROVAL TESTING PER TAS-201, TAS-202, TAS-203

STANDARD DETAILS TESTED:

- CURB (SEE DETAIL 1/B3)
- RAFTER (SEE DETAIL 3/B3)
- CROSSBAR (SEE DETAIL 2/B3)
- KNEE [HIP] (SEE DETAIL 1/B4)

PLEASE SEE DRAWINGS B1-B5 FOR COMPLETE SPECIFICATIONS OF THE MOCK-UPS TESTED.

PRODUCT REVISED as complying with the Florida Building Code
 Acceptance No. 11-0811.04
 Expiration Date 11/18/2012
 By Heather A. Walker
 Miami Dade Product Control

GENERAL NOTES:

- THIS SYSTEM IS APPROVED FOR: DESIGN PRESSURES UP TO +/- 80 PSF.
- GLASS TYPE TESTED: 1 1/16" IGU WITH 1/4" HEAT STRENGTHENED OUTER LITE, 1/2" AIR SPACE, 3/16" CLEAR SENTRY GLASS PLUS LAMINATED INNER LITE BY VIRACON, INC. CONSISTING OF:
 1/4" CLEAR HEAT STRENGTHENED GLASS,
 .090" SENTRY GLASS PLUS INTERLAYER MIAMI DADE COUNTY PRODUCT CONTROL, APPROVAL NO. 98-0608.03
 1/4" CLEAR HEAT STRENGTHENED GLASS.
- LARGE MISSILE IMPACT TESTED. THIS GLASS PRODUCT IS APPROVED FOR USE FROM GRADE UP TO 30', OR HIGHER IF DESIRED.
- APPROVED UP TO A MAXIMUM LITE SIZE OF 30 SQ. FT.
- THE ALUMINUM EXTRUSIONS TESTED WERE SIZED PER STRUCTURAL CALCULATIONS TO SUIT THE SPANS AND DESIGN PRESSURE TESTED.
- ALUMINUM CONTACTING MATERIALS NOT CONSIDERED COMPATIBLE SHALL BE PROTECTED PER SECTION 2003.8.4.2 OF THE FLORIDA BUILDING CODE.
- THIS APPROVAL IS LIMITED TO THE MAXIMUM AREA OF THE 1 1/16" INSULATED GLASS, THE FULLY ASSEMBLED GLAZING DETAILS SYSTEM TO THE SUPPORTING RAFTERS AND THE MAXIMUM DESIGN PRESSURE SHOWN ON THESE DRAWINGS.
- THE STRUCTURAL ADEQUACY OF THE SUPPORTING STRUCTURAL MEMBERS, (CURBS, RAFTERS, PURLINS, AND ALL OTHER FRAMING MEMBERS) IS NOT PART OF THIS APPROVAL AND IT SHALL BE REVIEWED BY THE STRUCTURAL PLANS EXAMINER OF THE CORRESPONDING BUILDING DEPARTMENT.

PRODUCT RENEWED as complying with the Florida Building Code
 Acceptance No. 07-0810.02
 Expiration Date 11/18/2012
 By Heather A. Walker
 Miami Dade Product Control

PRODUCT RENEWED as complying with the Florida Building Code
 Acceptance No. 12-1023.06
 Expiration Date 11/18/2017
 By Heather A. Walker
 Miami Dade Product Control

DADE COUNTY USE

PRODUCT REVISED as complying with the Florida Building Code
 Acceptance No. 05-1208.05
 Expiration Date 11/18/2007
 By Heather A. Walker
 Miami Dade Product Control

ENGINEER STAMP

DAVID S. BARRON
 21 DARTMOUTH DRIVE
 GREENSBURG, PA 15601
 LICENSE #36374

27232
 20020246B-D1



SUPER SKY PRODUCTS ENTERPRISES, LLC

1801 N. ENTERPRISE DR.
 MEQUON, WISCONSIN 53099
 26-00-300

CURRENT NOA #02-1009.05
 LARGE MISSILE

REVISION

NEW GLASS TYPE 08/03/04 TK
 REVISION TO CURRENT NOA 02-1009.05
 EXP. 11-18-07

PROJECT
 MOCK-UP - DADE COUNTY PRODUCT APPROVAL
 DADE COUNTY, FL
 ENGINEER
 DAVID S. BARRON

MEQUON, WI
 TEST LABORATORY
 HURRICANE TEST LAB

RIVIERA BEACH, FL

DATE 06/29/04

SCALE 1 (DP)

PROJECT# 2002-0246

B1
 OF 6



SUPER SKY PRODUCTS ENTERPRISES, LLC
 1001 N. ENTERPRISE DR.
 MEQUON, WISCONSIN 53092
 414.340.3000

PRODUCT RENEWED
 as complying with the Florida Building Code
 Acceptance No **12-1023.06**
 Expiration Date **11/18/2017**
 By *Healy A. Walker*
 Miami Dade Product Control

PRODUCT REVISED
 as complying with the Florida Building Code
 Acceptance No **11-0811.04**
 Expiration Date **11/18/2012**
 By *Healy A. Walker*
 Miami Dade Product Control

PRODUCT RENEWED
 as complying with the Florida Building Code
 Acceptance No **07-0810.02**
 Expiration Date **11/18/2012**
 By *Healy A. Walker*
 Miami Dade Product Control Division

DADE COUNTY USE
PRODUCT REVISED
 as complying with the Florida Building Code
 Acceptance No **05-1208.05**
 Expiration Date **11/18/2007**
 By *Healy A. Walker*
 Miami Dade Product Control Division

PROJECT
 MOCK-UP -
 DADE COUNTY
 PRODUCT APPROVAL
 DADE COUNTY, FL
ENGINEER
 DAVID S. BARRON

MEQUON, WI
 TEST LABORATORY

RIVIERA BEACH, FL
TITLE
 ELEVATION &
 THRU SECTION

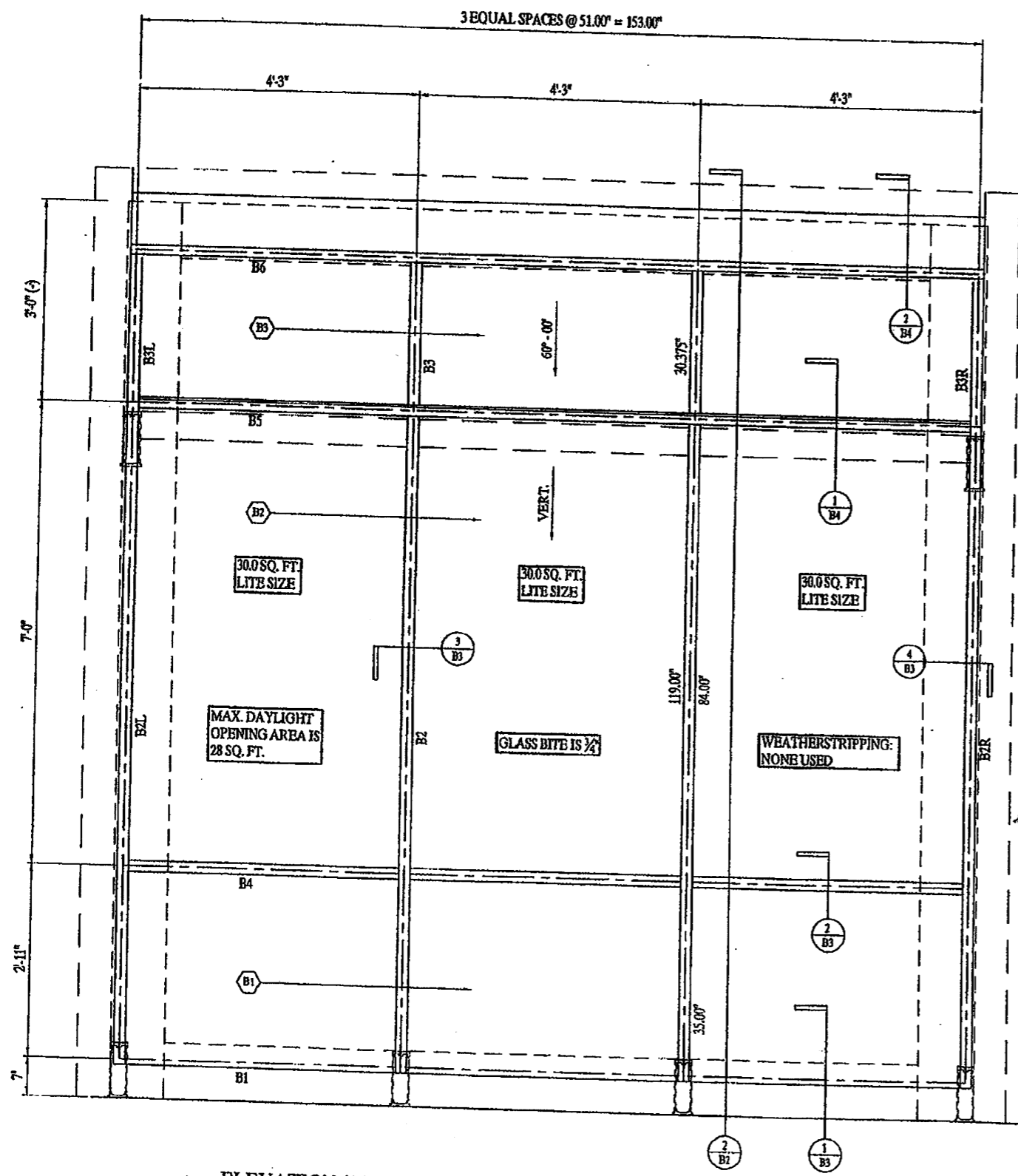
ENGINEER STAMP
David S. Barron
 11-15-05

DATE	06/29/04
SCALE	1" = 1'-0"
APPROVAL	1 (DP)
PROJECT NO.	2002-0246

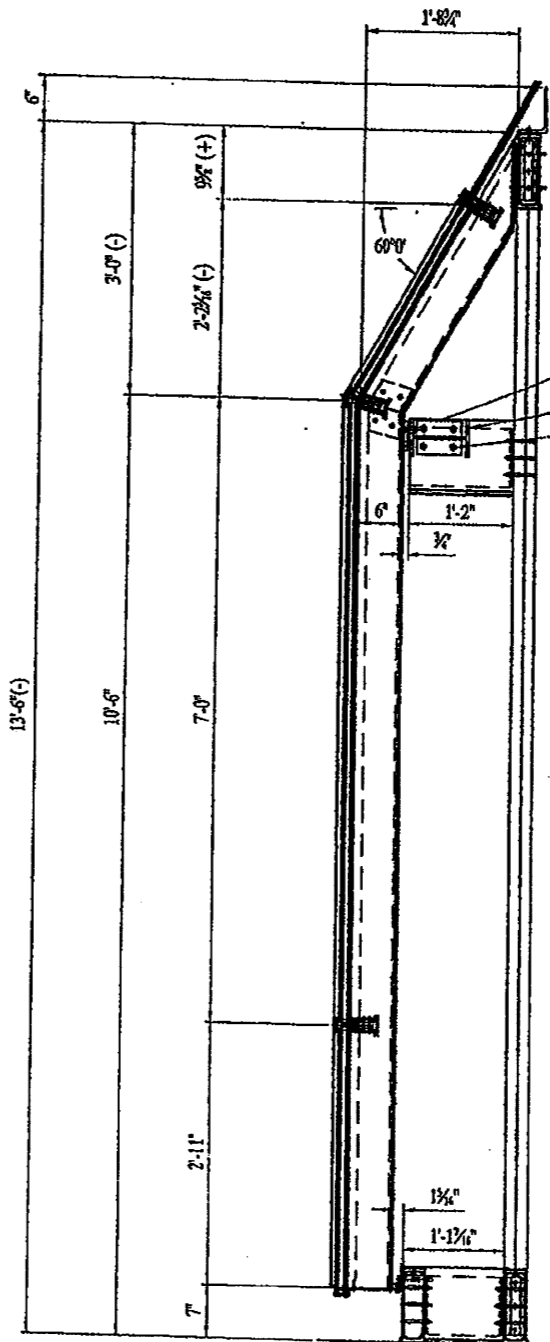
DAVID S. BARRON
 21 DARTMOUTH DRIVE
 GREENSBURG, PA 15601
 LICENSE #36374

20020246B-D1.dwg

B2
 OF 6

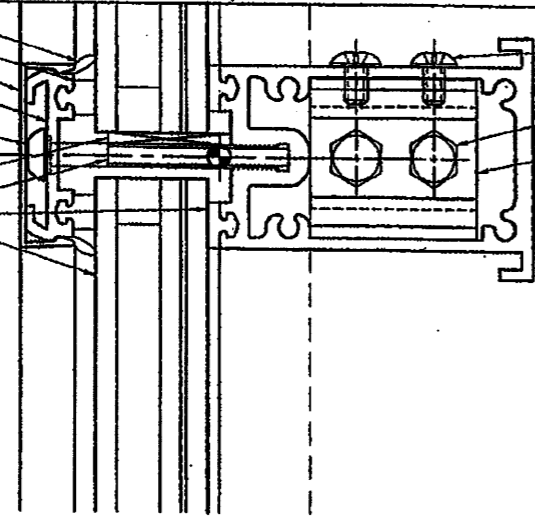


1
B2
 ELEVATION (1 REQ'D)
 SCALE: 1" = 1'-0"



2
B2
 THRU SECTION
 SCALE: 1" = 1'-0"

DC #795 SILICONE SEALANT - BLACK
 1/2"x3/4" EPDM GLAZING STRIP
 2" S.O. CAP
 2" S.O. CAP RETAINER
 1/2" - 20 ST. STL. MACHINE SCREW
 W/VINYL WASHER, (6" O.C.)
 1/2" THICK EXTRUDED SETTING BLOCK
 3/16" ALUMINUM GLASS STOP - 4" LONG
 1/2"x3/4" EPDM GLAZING STRIP
 1 1/8" INSULATED GLASS



1/2" - 20 ST. STL. TRUSS HEAD SCREW
 1/2" DIA. ST. STL. CAPSCREW (H10)
 EXTRUDED CHANNEL CLIP
 W/SERRATIONS (L2) AND EXTRUDED
 ANCHOR PLATE (L4) OPP.
 850x2" RAFTER TUBE
 600x2" RAFTER TUBE

1/2" ST. STL. CAPSCREW
 (2) PER MULLION, (1/2" O.C.)
 EXTRUDED CHANNEL CLIP
 W/SERRATIONS (L2) AND EXTRUDED
 ANCHOR PLATE (L4) OPP.

850x2" RAFTER TUBE

PLYWOOD SIDE
 CLOUSERS AND
 ATTACHMENTS
 BY TEST LAB

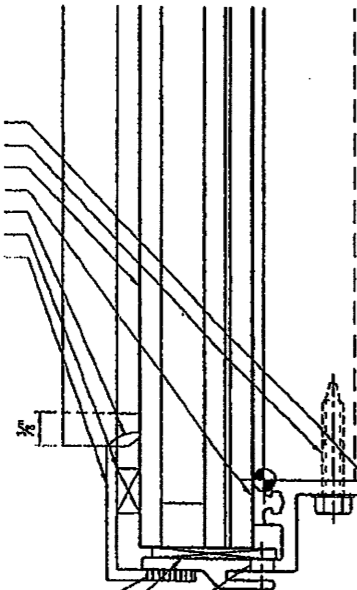
PRODUCT REVISED
 as complying with the Florida
 Building Code
 Acceptance No 11-0811-04
 Expiration Date 11/18/2012
 By Helmut A. Heber
 Miami Dade Product Control

PRODUCT RENEWED
 as complying with the Florida
 Building Code
 Acceptance No 12-1023-66
 Expiration Date 11/18/2017
 By David S. Barron
 Miami Dade Product Control

PRODUCT RENEWED
 as complying with the Florida
 Building Code
 Acceptance No 07-0810-02
 Expiration Date 11/18/2012
 By Helmut A. Heber
 Miami Dade Product Control
 Division

2 CROSSBAR SECTION
 B3 SCALE: FULL

600 VARIABLE CURB
 #14 ST. STL. SHEET METAL SCREW
 1 1/8" INSULATED GLASS
 1/2"x3/4" EPDM GLAZING STRIP
 DC #795 SILICONE SEALANT - BLACK
 (2) 1/2" THICK EXTRUDED SETTING BLOCK
 1/2"x1"x1 1/2" ANGLE



2"x8"x3/16" ALUM. PLATE
 8061-T6

1000 RAFTER TUBE
 3" WIDE SUPPORT
 (NOT PART OF PRODUCT
 APPROVAL)

1/2" THICK EXTRUDED SETTING BLOCK
 1/4" WEEP HOLE @ EACH MULLION

1/2" 6" O.C.

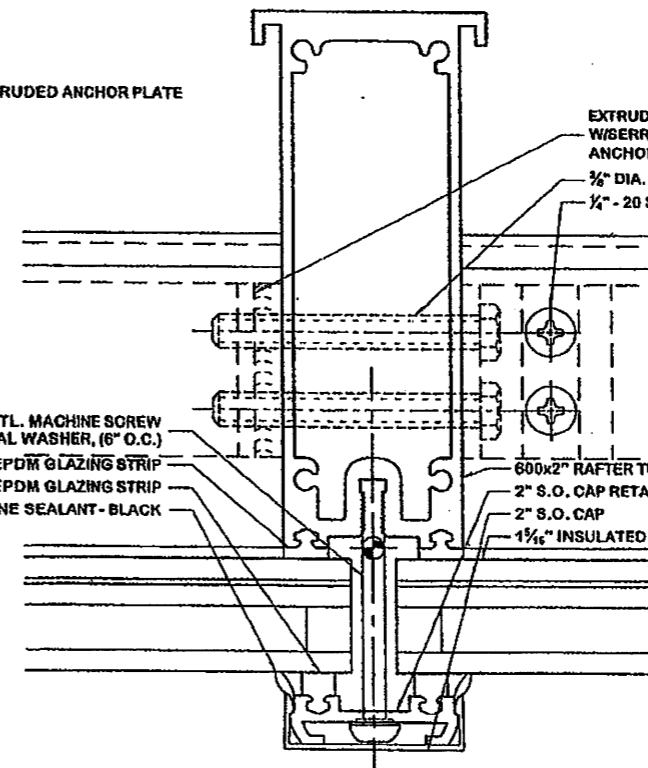
VARIABLE CURB BASE
 1/2" ST. STL. CAPSCREW
 (2) PER PLATE, (6" O.C.)
 WEEP HOLE @ EACH RAFTER
 SEALANT

3/8" DIA. ST. STL. FLATHEAD

1000T FRONT

1 CURB/SILL SECTION
 B3 SCALE: FULL

4 VERTICAL END RAFTER
 B3 SCALE: FULL



1/2" - 20 ST. STL. MACHINE SCREW
 W/VINYL WASHER, (6" O.C.)
 1/2"x3/4" EPDM GLAZING STRIP
 1/2"x3/4" EPDM GLAZING STRIP
 DC #795 SILICONE SEALANT - BLACK

EXTRUDED CHANNEL CLIP
 W/SERRATIONS (L2) AND EXTRUDED
 ANCHOR PLATE (L4) OPP.
 1/2" DIA. ST. STL. CAPSCREW (H10)
 1/2" - 20 ST. STL. TRUSS HEAD SCREW

600x2" RAFTER TUBE
 2" S.O. CAP RETAINER
 2" S.O. CAP
 1 1/8" INSULATED GLASS

3 VERTICAL RAFTER
 B3 SCALE: FULL

DAVID S. BARRON
 21 DARTMOUTH DRIVE
 GREENSBURG, PA 15601
 LICENCE #36374

DADE COUNTY USE
 PRODUCT REVISED
 as complying with the Florida
 Building Code
 Acceptance No 05-1208-05
 Expiration Date 11/18/2007
 By Helmut A. Heber
 Miami Dade Product Control
 Division

ENGINEER STAMP

David S. Barron
 11-15-05



SUPER SKY PRODUCTS
 ENTERPRISES, LLC
 8801 N. ENTERPRISE DR.
 MEQUON, WISCONSIN 53001
 262-542-2000

REVISION

PROJECT
 MOCK-UP -
 DADE COUNTY
 PRODUCT APPROVAL
 DADE COUNTY, FL
 ENGINEER
 DAVID S. BARRON

MEQUON, WI
 TEST LABORATORY

RIVIERA BEACH, FL

TITLE
 SECTION
 DETAILS

DATE
 TK 06/29/04

SCALE
 FULL 1 (DP)

PROJECT NO
 2002-0246

B3
 OF 6

20020246B-D1.dwg



SUPER SKY ENTERPRISES, LLC
1801 N. ENTERPRISE DR.
MEQUON, WISCONSIN 53092
262-32-2000

REVISION
PRODUCT RENEWED
as complying with the Florida
Building Code
Acceptance No. **12-1023.06**
Expiration Date **11/18/2017**
By *Healy A. Healy*
Miami Dade Product Control

PRODUCT REVISED
as complying with the Florida
Building Code
Acceptance No. **11-0811.04**
Expiration Date **11/18/2012**
By *Healy A. Healy*
Miami Dade Product Control

PROJECT
MOCK-UP -
DADE COUNTY
PRODUCT APPROVAL
DADE COUNTY, FL
ENGINEER
DAVID S. BARRON

MEQUON, WI
TEST LABORATORY
RIVIERA BEACH, FL
TITLE
SECTION
DETAILS

DADE COUNTY USE
PRODUCT REVISED
as complying with the Florida
Building Code
Acceptance No. **05-1208.05**
Expiration Date **11/18/2007**
By *Healy A. Healy*
Miami Dade Product Control
Division

ENGINEER STAMP
David S. Barron
11-15-05

DAVID S. BARRON
21 DARTMOUTH DRIVE
GREENSBURG, PA 15601
LICENSE #36374

20020246B-D1.dwg

B4
OF 6

- 1/2" - 20 ST. STL. TRUSS HEAD SCREW
- 1 1/4" INSULATED GLASS
- 1/2" x 1/2" EPDM GLAZING STRIP
- 1/2" x 3/4" EPDM GLAZING STRIP
- 1/2" THICK EXTRUDED SETTING BLOCK
- 1/2" ALUMINUM GLASS STOP
4" LONG
- 1/2" - 20 ST. STL. MACHINE SCREW
W/VINAL WASHER (6" O.C.)
- 12"-55" HIP CAP
- 12"-55" HIP CAP RETAINER

- DC #795 SILICON SEALANT - BLACK
- 350x2" 12"-55" HIP RAFTER TUBE
- 1/2" DIA. ST. STL. CAPSCREW
- EXTRUDED CHANNEL CLIP
W/SERRATIONS (L2) AND EXTRUDED
ANCHOR PLATE (L4) OPP.
- 1/2" x 7" ALUMINUM GUSSET PLATE
- 1/2" - 20 ST. STL. TRUSS HEAD SCREW
- 600x2" RAFTER TUBE
- 1 1/4" INSULATED GLASS

1 KNEE SECTION
SCALE: FULL

- 600x2" RAFTER TUBE
- 1/2" x 3/4" PVC FILLER BAR
- 2" S.O. CAP
- 2" S.O. CAP RETAINER
- 1/2" - 20 ST. STL. MACHINE SCREW
W/VINAL WASHER (6" O.C.)
- 1/2" THICK EXTRUDED SETTING BLOCK
- 1/2" ALUMINUM GLASS STOP 4" LONG
- 1/2" x 1/2" EPDM GLAZING STRIP
- 1/2" x 3/4" EPDM GLAZING STRIP
- DC #795 SILICON SEALANT - BLACK
- 1 1/4" INSULATED GLASS

- 350x2" RAFTER TUBE
- 1/2" DIA. ST. STL. CAPSCREW
- 1/2" - 20 ST. STL. TRUSS HEAD SCREW
- EXTRUDED CHANNEL CLIP
W/SERRATIONS (L2) AND EXTRUDED
ANCHOR PLATE (L4) OPP.

**GLASS EDGE SEALING
DETAIL BELOW CROSSBAR
CAP RETAINER**

**CROSSBAR/RAFTER
CAP RETAINER DETAIL**

- 6"x4"x1/2" ALUMINUM
ANGLE
(NOT PART OF PRODUCT
APPROVAL)
- 1/2" ST. STL.
SAPSCREW, 12" O.C.

- 1/2" x 4" x 8" REC BAR
- 1/2" ST. STL. SAPSCREW
(2) @ 6" O.C.
- 6"x6" ALUMINUM
I-BEAM SUPPORT
(NOT PART OF
PRODUCT APPROVAL)

- EXTRUDED CHANNEL CLIP
W/SERRATIONS (L2) AND EXTRUDED
ANCHOR PLATE (L4) OPP.
- 1/2" x 7" ALUMINUM GUSSET PLATE
- 1/2" - 20 ST. STL. TRUSS HEAD SCREW

- 1/2" ST. STL. CAPSCREW
TAPPED INTO BOTTOM
OF 1000 RAFTER

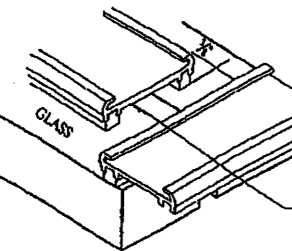
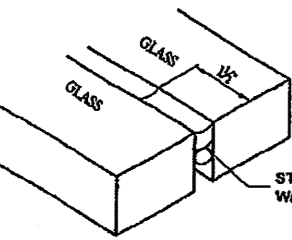
- EXTRUDED CHANNEL CLIP
W/SERRATIONS (L2)
- 1/2" x 12" x 8" REC BAR
- 1/2" x 8" x 8.5" REC BAR
- 1/2" ST. STL. CAPSCREW
(2) @ 6" O.C.

- 1000 RAFTER TUBE 3"
WIDE SUPPORT
(NOT PART OF
PRODUCT APPROVAL)

PRODUCT RENEWED
as complying with the Florida
Building Code
Acceptance No. **07-0810.02**
Expiration Date **11/18/2012**
By *Healy A. Healy*
Miami Dade Product Control
Division

2 HEAD SECTION
SCALE: FULL

5 CONNECTION DETAIL
SCALE: FULL





SUPER SKY PRODUCTS ENTERPRISES, LLC

1801 N. ENTERPRISE DR. MEQUON, WISCONSIN 53092 262-242-3000

REVISION

PRODUCT RENEWED as complying with the Florida Building Code Acceptance No 12-1023.06 Expiration Date 11/18/2017

PROJECT MOCK-UP - DADE COUNTY PRODUCT APPROVAL DADE COUNTY, FL ENGINEER DAVID S. BARRON

MEQUON, WI TEST LABORATORY

RIVIERA BEACH, FL TITLE EXTRUSIONS

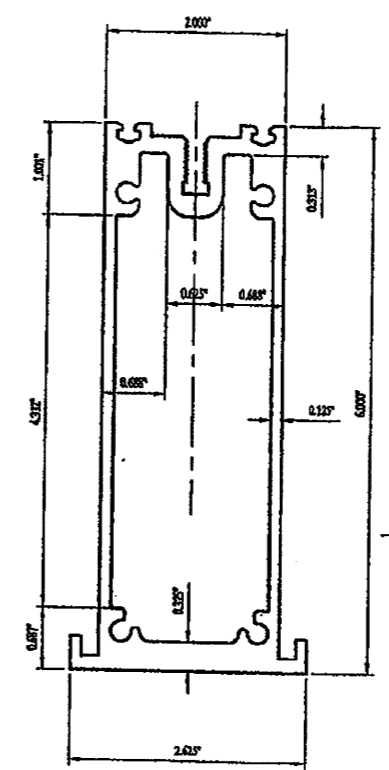
DATE 06/29/04

SCALE FULL 1 (DP)

FLOOR NO 2002-0246

B5 OF 6

SUMMARY OF PROPERTIES
CENTRE OF MASS [1.81252, 3.04838, 0]
SURFACE AREA 3.25287 INCH **2
MOMENT ABOUT X AXIS 1.95402 INCH **4
MOMENT ABOUT Y AXIS 16.8669 INCH **4
POLAR MOMENT 18.8669 INCH **4
PRINCIPAL AXES ROTATION ANGLE = 90°-0°
RADI OF GYRATION:
POLAR 2.40871 INCH
X AXIS 0.781089 INCH
Y AXIS 2.27657 INCH
WEIGHT PER LINEAR FOOT 3.805278 LBS
ALUMINUM ALLOT 6005-T6

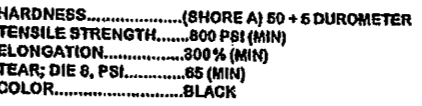


600 RAFTER TUBE
SCALE: FULL

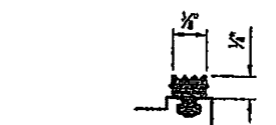
PRODUCT REVISED as complying with the Florida: Building Code Acceptance No 11-0811.04 Expiration Date 11/18/2012
By *Heather A. Nelson*
Miami Dade Product Control

PRODUCT RENEWED as complying with the Florida Building Code Acceptance No 07-0810.02 Expiration Date 11/18/2012
By *Heather A. Nelson*
Miami Dade Product Control Division

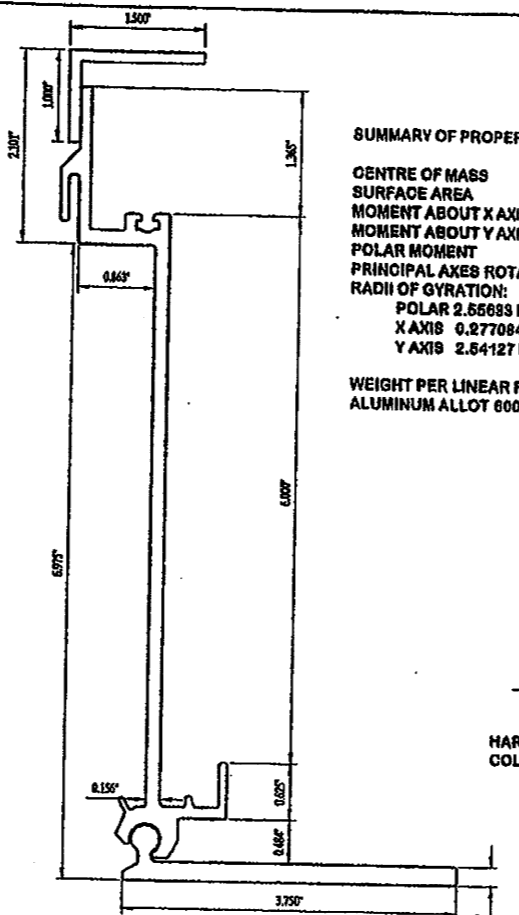
1/8" x 1/2" EPDM GLAZING STRIP
SCALE: FULL
HARDNESS.....(SHORE A) 50 + 5 DUROMETER
TENSILE STRENGTH.....800 PSI (MIN)
ELONGATION.....300% (MIN)
TEAR; DIE B, PSI.....65 (MIN)
COLOR.....BLACK



1/4" x 3/8" EPDM GLAZING STRIP
SCALE: FULL
HARDNESS.....(SHORE A) 50 + 5 DUROMETER
TENSILE STRENGTH.....800 PSI (MIN)
ELONGATION.....300% (MIN)
TEAR; DIE B, PSI.....65 (MIN)
COLOR.....BLACK

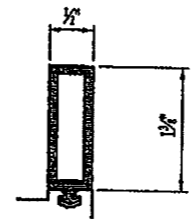


SUMMARY OF PROPERTIES
CENTRE OF MASS [-1.35908, 0.607306, 0]
SURFACE AREA 1.87888 INCH **2
MOMENT ABOUT X AXIS 0.128744 INCH **4
MOMENT ABOUT Y AXIS 10.8294 INCH **4
POLAR MOMENT 10.8581 INCH **4
PRINCIPAL AXES ROTATION ANGLE = 86°-23'
RADI OF GYRATION:
POLAR 2.56893 INCH
X AXIS 0.277084 INCH
Y AXIS 2.54127 INCH
WEIGHT PER LINEAR FOOT 1.961850 LBS
ALUMINUM ALLOT 6005-T6

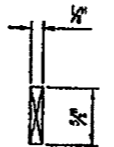


600 VARIABLE CURB
SCALE: FULL

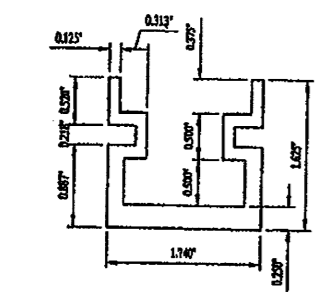
1/2" x 1 3/8" RIGID PVC FILLER BAR
SCALE: FULL
RIGID PVC *820 W/ .095" MIN WALL



1/8" x 5/8" x 4" LONG SILICONE SETTING BLOCK
SCALE: FULL
HARDNESS.....(SHORE A) 50 + 5 DUROMETER
COLOR.....BLACK

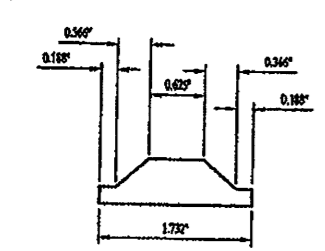


SUMMARY OF PROPERTIES
CENTRE OF MASS [0.87, 0.87416, 0]
SURFACE AREA 1.0184 INCH **2
MOMENT ABOUT X AXIS 0.229681 INCH **4
MOMENT ABOUT Y AXIS 0.408868 INCH **4
POLAR MOMENT 0.686528 INCH **4
PRINCIPAL AXES ROTATION ANGLE = 0°-0°
RADI OF GYRATION:
POLAR 0.790988 INCH
X AXIS 0.47488 INCH
Y AXIS 0.632072 INCH
WEIGHT PER LINEAR FOOT 1.101528 LBS
ALUMINUM ALLOT 6005-T6



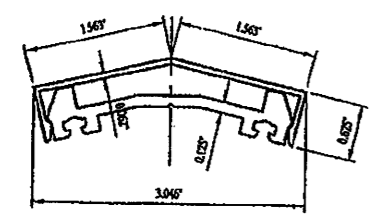
CHANNEL CLIP
SCALE: FULL

SUMMARY OF PROPERTIES
CENTRE OF MASS [0.866, 0.208789, 0]
SURFACE AREA 0.835642 INCH **2
MOMENT ABOUT X AXIS 0.0118681 INCH **4
MOMENT ABOUT Y AXIS 0.110188 INCH **4
POLAR MOMENT 0.122086 INCH **4
PRINCIPAL AXES ROTATION ANGLE = 0°-0°
RADI OF GYRATION:
POLAR 0.459218 INCH
X AXIS 0.186642 INCH
Y AXIS 0.41697 INCH
WEIGHT PER LINEAR FOOT 0.743701 LBS
ALUMINUM ALLOT 6005-T6



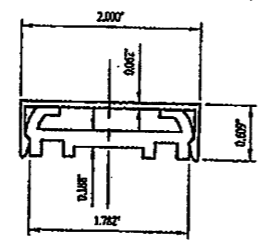
ANCHOR PLATE
SCALE: FULL

SUMMARY OF PROPERTIES
CENTRE OF MASS [1.81244, 1.7168, 0]
SURFACE AREA 2.12843 INCH **2
MOMENT ABOUT X AXIS 1.2925 INCH **4
MOMENT ABOUT Y AXIS 3.5293 INCH **4
POLAR MOMENT 4.82184 INCH **4
PRINCIPAL AXES ROTATION ANGLE = 90°-0°
RADI OF GYRATION:
POLAR 1.50691 INCH
X AXIS 0.780183 INCH
Y AXIS 1.28922 INCH
WEIGHT PER LINEAR FOOT 2.484413 LBS
ALUMINUM ALLOT 6005-T6



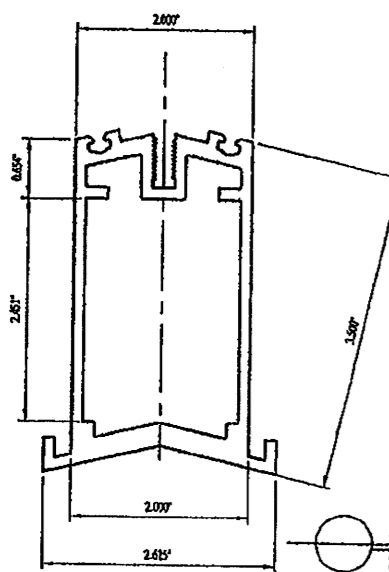
HIP CAP & RETAINER
SCALE: FULL

SUMMARY OF PROPERTIES
CENTRE OF MASS [1.81244, 1.7168, 0]
SURFACE AREA 2.12843 INCH **2
MOMENT ABOUT X AXIS 1.2925 INCH **4
MOMENT ABOUT Y AXIS 3.5293 INCH **4
POLAR MOMENT 4.82184 INCH **4
PRINCIPAL AXES ROTATION ANGLE = 90°-0°
RADI OF GYRATION:
POLAR 1.50691 INCH
X AXIS 0.780183 INCH
Y AXIS 1.28922 INCH
WEIGHT PER LINEAR FOOT 2.484413 LBS
ALUMINUM ALLOT 6005-T6



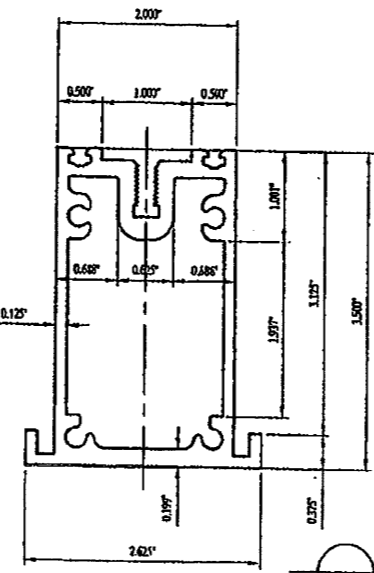
RAFTER CAP & RETAINER
SCALE: FULL

SUMMARY OF PROPERTIES
CENTRE OF MASS [1.81244, 1.7168, 0]
SURFACE AREA 2.12843 INCH **2
MOMENT ABOUT X AXIS 1.2925 INCH **4
MOMENT ABOUT Y AXIS 3.5293 INCH **4
POLAR MOMENT 4.82184 INCH **4
PRINCIPAL AXES ROTATION ANGLE = 90°-0°
RADI OF GYRATION:
POLAR 1.50691 INCH
X AXIS 0.780183 INCH
Y AXIS 1.28922 INCH
WEIGHT PER LINEAR FOOT 2.484413 LBS
ALUMINUM ALLOT 6005-T6



350 HIP TUBE
SCALE: FULL

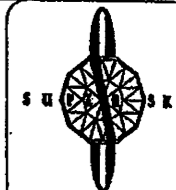
SUMMARY OF PROPERTIES
CENTRE OF MASS [1.81244, 1.7168, 0]
SURFACE AREA 2.12843 INCH **2
MOMENT ABOUT X AXIS 1.2925 INCH **4
MOMENT ABOUT Y AXIS 3.5293 INCH **4
POLAR MOMENT 4.82184 INCH **4
PRINCIPAL AXES ROTATION ANGLE = 90°-0°
RADI OF GYRATION:
POLAR 1.50691 INCH
X AXIS 0.780183 INCH
Y AXIS 1.28922 INCH
WEIGHT PER LINEAR FOOT 2.484413 LBS
ALUMINUM ALLOT 6005-T6



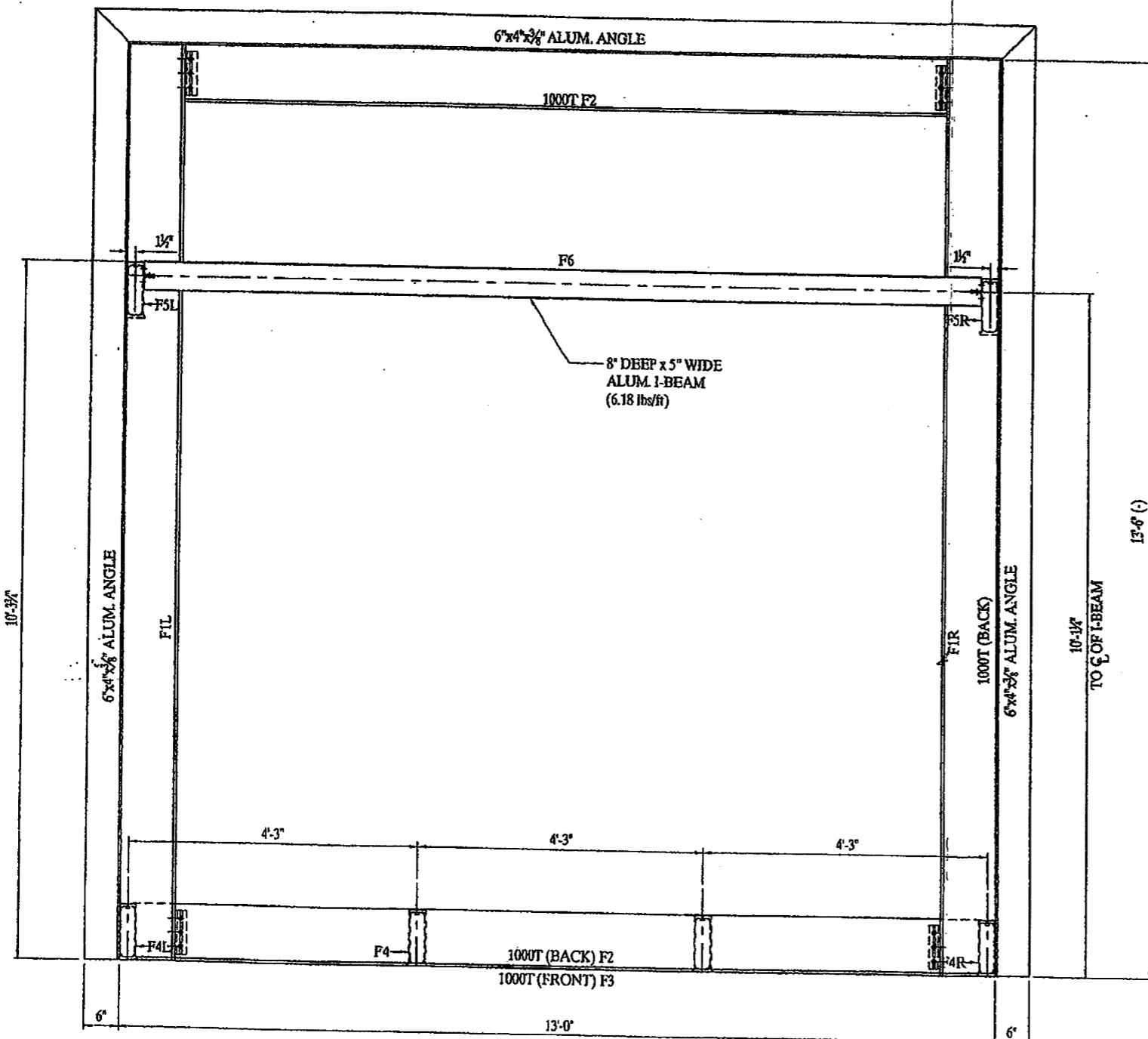
350 RAFTER TUBE
SCALE: FULL

DAVID S. BARRON
21 DARTMOUTH DRIVE
GREENSBURG, PA 15601
LICENCE #36374

20020246B-D1.dwg



SUPER SKY PRODUCTS
ENTERPRISES, LLC
10014 ENTERPRISE DR.
MILWAUKEE, WISCONSIN 53017
262-262-2110



1
B6 SUPPORT FRAME DETAIL
SCALE: 1" = 1'-0"

Note: Framing on this page
not part of Product Approval.

PRODUCT RENEWED
as complying with the Florida
Building Code
Acceptance No 12-1023-06
Expiration Date 11/18/2017
By *[Signature]*
Miami Dade Product Control
Division

PRODUCT RENEWED
as complying with the Florida
Building Code
Acceptance No 07-0810-02
Expiration Date 11/18/2012
By *[Signature]*
Miami Dade Product Control
Division

PRODUCT REVISED
as complying with the Florida
Building Code
Acceptance No 11-0811-04
Expiration Date 11/18/2012
By *[Signature]*
Miami Dade Product Control
Division

DADE COUNTY USE
PRODUCT REVISED
as complying with the Florida
Building Code
Acceptance No 05-1208-05
Expiration Date 11/18/2007
By *[Signature]*
Miami Dade Product Control
Division

ENGINEER STAMP
[Signature]
11-15-05

DAVID S. BARRON
21 DARTMOUTH DRIVE
GREENSBURG, PA 15601
LICENCE #36374

20020246B-D1.dwg

REVISION

PROJECT
MOCK-UP -
DADE COUNTY
PRODUCT APPROVAL
DADE COUNTY, FL
ENGINEER
DAVID S. BARRON

MEQUON, WI
TEST LABORATORY
RIVIERA BEACH, FL
TITLE
SUPPORT FRAME
DETAIL

DATE
TK 06/29/04

SCALE
1" = 1'-0" 1 (DP)

PROJECT NO
2002-0246

B6
OF 6