



DEPARTMENT OF REGULATORY AND ECONOMIC RESOURCES (RER)
BOARD AND CODE ADMINISTRATION DIVISION

NOTICE OF ACCEPTANCE (NOA)

MIAMI-DADE COUNTY, FLORIDA
PRODUCT CONTROL SECTION

11805 SW 26 Street, Room 208
T (786) 315-2590 F (786) 315-2599

www.miamidade.gov/economy

Lawson Industries, Inc.
8501 NW 90th Street
Medley, FL 33166

SCOPE:

This NOA is being issued under the applicable rules and regulations governing the use of construction materials. The documentation submitted has been reviewed and accepted by Miami-Dade County RER-Product Control Section to be used in Miami-Dade County and other areas where allowed by the Authority Having Jurisdiction (AHJ).

This NOA shall not be valid after the expiration date stated below. The Miami-Dade County Product Control Section (In Miami-Dade County) and/or the AHJ (in areas other than Miami-Dade County) reserve the right to have this product or material tested for quality assurance purposes. If this product or material fails to perform in the accepted manner, the manufacturer will incur the expense of such testing and the AHJ may immediately revoke, modify, or suspend the use of such product or material within their jurisdiction. RER reserves the right to revoke this acceptance, if it is determined by Miami-Dade County Product Control Section that this product or material fails to meet the requirements of the applicable building code. This product is approved as described herein, and has been designed to comply with the Florida Building Code, including the High Velocity Hurricane Zone.

DESCRIPTION: Series "SDG-9200" Aluminum Sliding Glass Door – L.M.I.

APPROVAL DOCUMENT: Drawing No. **L9200-1201**, titled "Series SGD-9200 Aluminum Sliding Glass Door (LMI)", sheets 1 through 14 of 14, prepared by manufacture, dated 09/25/12, with the latest revision "A", dated 01/15/13, signed and sealed by Thomas J. Soto, P. E., bearing the Miami-Dade County Product Control Section Renewal stamp with the Notice of Acceptance number and Expiration date by the Miami-Dade County Product Control Section.

MISSILE IMPACT RATING: Large and Small Missile Impact Resistant

LABELING: Each unit shall bear a permanent label with the manufacturer's name or logo, city, state, model/series, and following statement: "Miami-Dade County Product Control Approved", unless otherwise noted herein.

REVISION of this NOA shall be considered after a renewal application has been filed and there has been no change in the applicable building code negatively affecting the performance of this product.

TERMINATION of this NOA will occur after the expiration date or if there has been a revision or change in the materials, use, and/or manufacture of the product or process. Misuse of this NOA as an endorsement of any product, for sales, advertising or any other purposes shall automatically terminate this NOA. Failure to comply with any section of this NOA shall be cause for termination and removal of NOA.

ADVERTISEMENT: The NOA number preceded by the words Miami-Dade County, Florida, and followed by the expiration date may be displayed in advertising literature. If any portion of the NOA is displayed, then it shall be done in its entirety.

INSPECTION: A copy of this entire NOA shall be provided to the user by the manufacturer or its distributors and shall be available for inspection at the job site at the request of the Building Official.

This NOA **renews and revises** NOA's No.'s **12-0127.06** and **12-0127.24** and consists of this page 1 and evidence pages E-1, E-2, E-3 and E-4, as well as approval document mentioned above.

The submitted documentation was reviewed by **Jaime D. Gascon, P. E.**



J. Gascon
1/22/13

NOA No. 12-1204.12
Expiration Date: February 13, 2018
Approval Date: January 31, 2013
Page 1

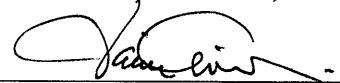
NOTICE OF ACCEPTANCE: EVIDENCE SUBMITTED

A. DRAWINGS

1. Manufacturer's die drawings and sections.
2. Drawing No. **L9200-1201**, titled "Series SGD-9200 Aluminum Sliding Glass Door (LMI)", sheets 1 through 14 of 14, prepared by manufacture, dated 09/25/12, with the latest revision "A", dated 01/15/13, signed and sealed by Thomas J. Soto, P. E.

B. TESTS

1. Test reports on: 1) Uniform Static Air Pressure Test, Loading per FBC, TAS 202-94 along with marked-up drawings and installation diagram of an Aluminum SGD, prepared by Hurricane Engineering & Testing, Inc., Test Reports No.'s **HETI-11-3269**, dated 05/16/11, **HETI-11-3292**, dated 10/20/11, **HETI-11-3274**, dated 10/20/11, **HETI-11-3329**, dated 01/16/12, **HETI-12-4040**, dated 10/12/12, **HETI-12-4051**, dated 06/13/12, **HETI-12-4053** and **HETI-12-4064**, dated 09/24/12, all signed and sealed by Rafael E. Droz-Seda, P. E.
2. Test reports on: 1) Large Missile Impact Test per FBC, TAS 201-94
2) Cyclic Wind Pressure Loading per FBC, TAS 203-94 along with marked-up drawings and installation diagram of an Aluminum Sliding Glass Door, prepared by Hurricane Engineering & Testing, Inc., Test Reports No.'s **HETI-11-3270**, dated 05/16/11, **HETI-11-3275**, dated 10/20/11, **HETI-11-3307**, dated 10/03/11, **HETI-11-3314**, dated 10/20/11, **HETI-11-3330**, dated 01/16/12, **HETI-12-4052**, dated 07/10/12, **HETI-12-4054** and **HETI-12-4065**, dated 09/24/12, all signed and sealed by Rafael E. Droz-Seda, P. E.
3. Test reports on: 1) Uniform Static Air Pressure Test, Loading per FBC, TAS 202-94
2) Large Missile Impact Test per FBC, TAS 201-94
3) Cyclic Wind Pressure Loading per FBC, TAS 203-94 along with marked-up drawings and installation diagram of an Aluminum Sliding Glass Door, prepared by Hurricane Engineering & Testing, Inc., Test Report No. **HETI-12-4041**, dated 10/12/12, signed and sealed by Rafael E. Droz-Seda, P. E.
4. Test reports on: 1) Air Infiltration Test, per FBC, TAS 202-94
2) Uniform Static Air Pressure Test, Loading per FBC, TAS 202-94
3) Water Resistance Test, per FBC, TAS 202-94
4) Large Missile Impact Test per FBC, TAS 201-94
5) Cyclic Wind Pressure Loading per FBC, TAS 203-94
6) Forced Entry Test, Type "C" sliding door, Grade 10, per FBC 2411.3.2.1, TAS 202-94 and per ASTM F 842-04 along with marked-up drawings and installation diagram of an Aluminum Sliding Glass Door, prepared by Hurricane Engineering & Testing, Inc., Test Report No. **HETI-11-3313**, dated 10/20/11, signed and sealed by Rafael E. Droz-Seda, P. E.



Jaime D. Gascon, P. E.

Product Control Section Supervisor

NOA No. 12-1204.12

Expiration Date: February 13, 2018

Approval Date: January 31, 2013

NOTICE OF ACCEPTANCE: EVIDENCE SUBMITTED

B. TESTS (CONTINUED)

5. Test reports on: 1) Air Infiltration Test, per FBC, TAS 202-94
2) Uniform Static Air Pressure Test, Loading per FBC, TAS 202-94
3) Water Resistance Test, per FBC, TAS 202-94
along with marked-up drawings and installation diagram of an Aluminum Sliding Glass Door, prepared by Hurricane Engineering & Testing, Inc., Test Reports No.'s **HETI-11-3291**, dated 07/15/11 and **HETI-11-3292**, dated 10/20/11, both signed and sealed by Rafael E. Droz-Seda, P. E.
6. Test reports on: 1) Air Infiltration Test, per FBC, TAS 202-94
2) Uniform Static Air Pressure Test, Loading per FBC, TAS 202-94
3) Water Resistance Test, per FBC, TAS 202-94
4) Large Missile Impact Test per FBC, TAS 201-94
5) Cyclic Wind Pressure Loading per FBC, TAS 203-94
6) Forced Entry Test, Type "C" sliding door, Grade 10, per FBC 2411.3.2.1, TAS 202-94 and per ASTM F 842-04
along with marked-up drawings and installation diagram of an Aluminum Sliding Glass Door, prepared by Fenestration Testing Laboratory, Inc., Test Reports No.'s **FTL-3078**, dated 01/10/02, signed and sealed by Luis Figueredo, P.E.; **FTL-3525** and **FTL-3572**, dated 09/09/02, both signed and sealed by Joseph C. Chan, P. E.; **FTL-3424**, dated 04/18/02, **FTL-3425**, dated 04/29/02, **FTL-3426**, dated 04/26/02, **FTL-3492**, dated 06/20/02, **FTL-3493**, dated 06/24/02 and **FTL-3516**, dated 07/12/02, all signed and sealed by James G. Worth, P. E.
(Submitted under previous NOA No. 02-1126.04)

C. CALCULATIONS

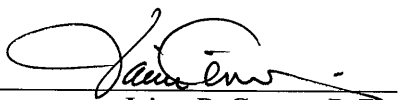
1. Anchor verification calculations and structural analysis, complying with **FBC-2010**, prepared by manufacture, dated 10/12/12, with the latest revision, dated 01/15/13, signed and sealed by Thomas J. Soto, P. E.
2. **Glazing complies with ASTM E1300-04**

D. QUALITY ASSURANCE

1. Miami-Dade Department of Regulatory and Economic Resources (RER).

E. MATERIAL CERTIFICATIONS

1. Notice of Acceptance No. **11-0624.01** issued to **E.I. DuPont DeNemours & Co., Inc.** for their "**DuPont Butacite® PVB Interlayer**" dated 09/08/11, expiring on 12/11/16.



Jaime D. Gascon, P. E.

Product Control Section Supervisor

NOA No. 12-1204.12

Expiration Date: February 13, 2018

Approval Date: January 31, 2013

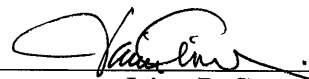
NOTICE OF ACCEPTANCE: EVIDENCE SUBMITTED

E. MATERIAL CERTIFICATIONS (CONTINUED)

2. Notice of Acceptance No. **11-0624.02** issued to **E.I. DuPont DeNemours & Co., Inc.** for their **"DuPont SentryGlas® Interlayer"** dated 08/25/11, expiring on 01/14/17.
3. Notice of Acceptance No. **11-1102.09** issued to **Solutia, Inc.** for their **"Saflex CP – Saflex and Saflex HP Composites Glass Interlayers with PET Core"** dated 06/14/12, expiring on 12/11/13.
4. Notice of Acceptance No. **11-1102.10** issued to **Solutia, Inc.** for their **"Saflex HP Clear or Color Glass Interlayers"** dated 06/14/12, expiring on 04/14/13.
5. Notice of Acceptance No. **11-1102.11** issued to **Solutia, Inc.** for their **"Saflex Clear and Color Glass Interlayers"** dated 06/14/12, expiring on 05/21/16.

F. STATEMENTS

1. Statement letters of no financial interest, independence, conformance and complying with **FBC-2010**, issued by manufacture, dated 12/03/12, signed and sealed by Thomas J. Soto, P. E.
2. Laboratory addendum letter for Test Reports No.'s **HETI-11-3269, HETI-11-3270, HETI-11-3271, HETI-11-3272, HETI-11-3274, HETI-11-3275, HETI-11-3291, HETI-11-3292, HETI-11-3307, HETI-11-3313, HETI-11-3314, HETI-11-3329, HETI-11-3330, HETI-12-4040, HETI-12-4041, HETI-12-4051, HETI-12-4052, HETI-12-4053, HETI-12-4054, HETI-12-4064** and **HETI-12-4065**, dated 01/15/13, issued by Hurricane Engineering & Testing, Inc., signed and sealed by Rafael E. Droz-Seda, P. E.
3. Laboratory compliance letters for Test Reports No.'s **HETI-11-3269**, dated 05/16/11, **HETI-11-3270**, dated 05/16/11, **HETI-11-3271**, dated 10/20/11, **HETI-11-3272**, dated 10/20/11, **HETI-11-3274**, dated 10/20/11, **HETI-11-3275**, dated 10/20/11, **HETI-11-3291**, dated 07/15/11, **HETI-11-3292**, dated 10/20/11, **HETI-11-3307**, dated 10/03/11, **HETI-11-3313**, dated 10/20/11, **HETI-11-3314**, dated 10/20/11, **HETI-11-3329**, dated 01/16/12, **HETI-11-3330**, dated 01/16/12, **HETI-12-4040**, dated 10/12/12, **HETI-12-4041**, dated 10/12/12, **HETI-12-4051**, dated 06/13/12, **HETI-12-4052**, dated 07/10/12, **HETI-12-4053**, dated 09/24/12, **HETI-12-4054**, dated 09/24/12, **HETI-12-4064**, dated 09/24/12, and **HETI-12-4065**, dated 09/24/12, all issued by Hurricane Engineering & Testing, Inc., all signed and sealed by Rafael E. Droz-Seda, P. E.
4. Proposal issued by Product Control, dated 03/13/08, signed by Ishaq Chanda, P. E.



Jaime D. Gascon, P. E.

Product Control Section Supervisor

NOA No. 12-1204.12

Expiration Date: February 13, 2018

Approval Date: January 31, 2013

Lawson Industries, Inc.

NOTICE OF ACCEPTANCE: EVIDENCE SUBMITTED

F. STATEMENTS (CONTINUED)

5. Laboratory compliance letters issued by Fenestration Testing Laboratory, Inc., for Test Reports No.'s **FTL-3078**, dated 01/10/02, signed and sealed by Luis Figueredo, P.E.
(Submitted under previous NOA No. 02-1126.04)
6. Laboratory compliance letters issued by Fenestration Testing Laboratory, Inc., for Test Reports No.'s **FTL-3525** and **FTL-3572**, dated 09/09/02, both signed and sealed by Joseph C. Chan, P. E.
(Submitted under previous NOA No. 02-1126.04)
7. Laboratory compliance letters issued by Fenestration Testing Laboratory, Inc., for Test Reports No.'s **FTL-3424**, dated 04/18/02, **FTL-3425**, dated 04/29/02, **FTL-3426**, dated 04/26/02, **FTL-3492**, dated 06/20/02, **FTL-3493**, dated 06/24/02 and **FTL-3516**, dated 07/12/02, all signed and sealed by James G. Worth, P. E.
(Submitted under previous NOA No. 02-1126.04)

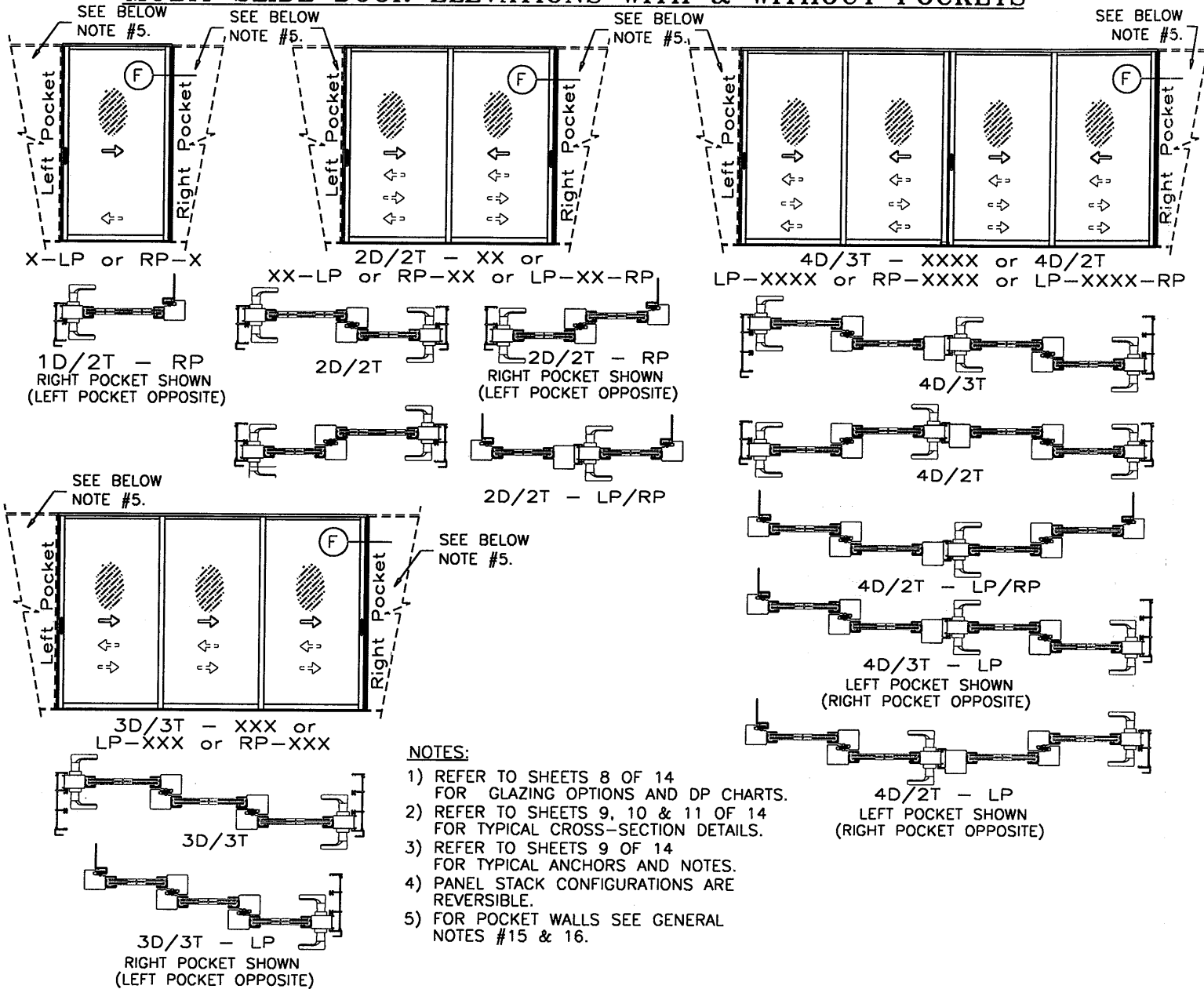
G. OTHERS

1. Notice of Acceptance No. **12-0127.06**, issued to Lawson Industries, Inc. for their Series "**SGD-9200 Aluminum Sliding Glass Door – L.M.I.**", approved on 04/12/12 and expiring on 06/13/13.
2. Notice of Acceptance No. **12-0127.24**, issued to Lawson Industries, Inc. for their Series "**SGD-9200 Aluminum Sliding Glass Door – L.M.I.**", approved on 04/12/12 and expiring on 02/13/13.



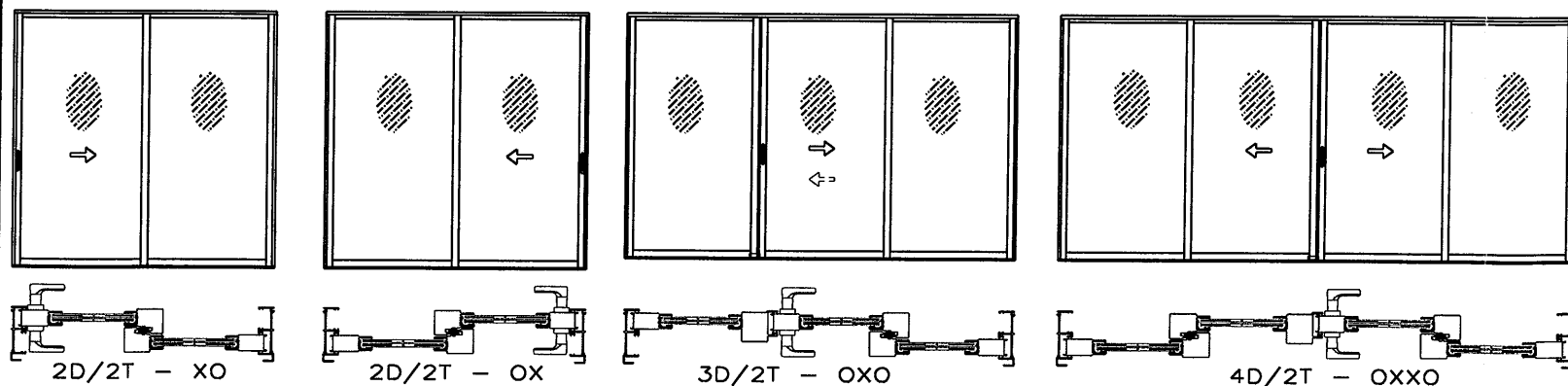
Jaime D. Gascon, P. E.
Product Control Section Supervisor
NOA No. 12-1204.12
Expiration Date: February 13, 2018
Approval Date: January 31, 2013

MULTI-SLIDE DOOR ELEVATIONS WITH & WITHOUT POCKETS



NOTES:

- 1) REFER TO SHEETS 8 OF 14 FOR GLAZING OPTIONS AND DP CHARTS.
- 2) REFER TO SHEETS 9, 10 & 11 OF 14 FOR TYPICAL CROSS-SECTION DETAILS.
- 3) REFER TO SHEETS 9 OF 14 FOR TYPICAL ANCHORS AND NOTES.
- 4) PANEL STACK CONFIGURATIONS ARE REVERSIBLE.
- 5) FOR POCKET WALLS SEE GENERAL NOTES #15 & 16.



NOTES:

- 1) REFER TO SHEETS 2 OF 14 FOR GLAZING OPTIONS AND DP CHARTS.
- 2) REFER TO SHEETS 3 & 4 OF 14 FOR TYPICAL CROSS-SECTION DETAILS.
- 3) REFER TO SHEETS 3 OF 14 FOR TYPICAL ANCHORS AND NOTES.

NOTES:

- 1) REFER TO SHEETS 5 OF 14 FOR GLAZING OPTIONS AND DP CHARTS.
- 2) REFER TO SHEETS 6 & 7 OF 14 FOR TYPICAL CROSS-SECTION DETAILS.
- 3) REFER TO SHEETS 6 OF 14 FOR TYPICAL ANCHORS AND NOTES.

SERIES: SGD-9200 IMPACT SLIDING GLASS DOOR

General Notes:

- 1.) THIS DOOR SYSTEM IS DESIGNED AND TESTED TO COMPLY W/ THE REQUIREMENTS OF THE 2010 FLORIDA BUILDING CODE INCLUDING HIGH VELOCITY HURRICANE ZONE VELOCITY (HVHZ) AND ASTM 1300-04. THIS PRODUCT IS IMPACT RESISTANT. (SHUTTERS NOT REQUIRED)
- 2.) WOOD BUCKS SHALL BE INSTALLED AND ANCHORED SO THAT THE BUILDING RESISTS THE SUPERIMPOSED LOADS IN ACCORDANCE WITH THE REQUIREMENTS OF 2010 F.B.C. & TO BE REVIEWED BY BUILDING OFFICIAL.
- 3.) ANCHORS SHOWN ABOVE ARE AS PER TEST UNITS. ANCHORS ON ALL DOOR SIZES ARE NOT TO EXCEED THESE MAXIMUM SPACINGS ON CENTER (O.C.) AND AS TABULATED ON SHEETS 2, 5, & 8 OF 14.
- 4.) ANCHOR CONDITIONS NOT DESCRIBED IN THESE DRAWING'S ARE TO BE ENGINEERED ON A SITE SPECIFIC BASIS, UNDER A SEPARATE APPROVAL AND TO BE REVIEWED BY BUILDING OFFICIAL.
- 5.) A LOAD DURATION INCREASE IN ALLOWABLE STRESS IS USED IN DESIGN OF ANCHORS INTO WOOD ONLY.
- 6.) DOORS ARE QUALIFIED FOR USE WITH SINGLE GLAZE H.S. LAMINATED GLASS TYPES TABULATED HEREIN (SEE SHEETS # 2, 5, & 8).
- 7.) FOR OPTIONAL FRAME INSTALLATION DETAILS SEE SHEETS 3, 4, 6, 7, 9, 10, & 11 OF 14.
- 8.) EXT. & INT. FALSE COLONIAL MUNTINS ARE OPTIONAL & AND TO BE APPLIED W/ SILICONE.
- 9.) WOOD BUCKS IN CONTACT WITH CONCRETE MUST BE PRESSURE TREATED AND ANCHORED (BY OTHERS), PRIOR TO DOOR INSTALLATION. WOOD BUCKS TO BE ANCHORED IN COMPLIANCE WITH THE 2010 FBC CHAPTER 24.
- 10.) APPROVAL APPLIES TO TWO TRACK AND THREE TRACK DOORS WITH FIXED PANELS, ALL MOVING PANELS, INCLUDING WITH OR WITHOUT (LH-RH) POCKETS.
- 11.) MULLING DOORS WITH OTHER TYPES OF MIAMI-DADE COUNTY APPROVED PRODUCTS USING A MIAMI-DADE COUNTY APPROVED MULLION IN BETWEEN ARE ACCEPTABLE BUT THE LOWER DESIGN PRESSURE FROM THE DOORS OR MULLION APPROVAL WILL APPLY TO THE ENTIRE MULLED SYSTEM.
- 12.) FOR METAL ATTACHMENT DETAILS & NOTES SEE SHEETS # 3, 4, 6, 7, 9, 10, & 11 OF 14.
- 13.) ALL METAL/STEEL IN CONTACT WITH ALUMINUM OR OTHER DISSIMILAR MATERIALS TO BE PAINTED OR PLATED AND SHALL MEET THE 2010 FLORIDA BLDG. CODE.
- 14.) POCKET DOOR CONFIGURATIONS ARE AS SHOWN ON SHEET 8 OF 14, REFER TO SHEET 11 OF 14 FOR ADDITIONAL DETAILS.
- 15.) POCKET WALLS ARE NOT PART OF THIS APPROVAL.
- 16.) POCKET WALLS SHALL BE UNDER SEPARATE APPROVAL AND TO BE REVIEWED BY THE ENGINEER OF RECORD (EOR).

LAMINATED GLASS LARGE MISSILE IMPACT

DOORS GLAZED WITH LAMINATED GLASS RATED FOR LARGE MISSILE IMPACT AND REQUIRE NO SHUTTERS.

PRODUCT RENEWED
as complying with the Florida
Building Code
Acceptance No. 12-1204.12
Expiration Date 02/13/2018
By *[Signature]*
Miami Dade Product Control

8501 N.W. 90 ST.
MEDLEY, FLORIDA 33166
PH No. (305) 696-8660

LAWSON
INDUSTRIES, INC.

MANUFACTURER OF QUALITY ALUMINUM WINDOWS AND GLASS DOORS

SGD-9200 ALUMINUM SLIDING GLASS DOOR (L.M.I.)
APPROVED ELEVATIONS, CONFIGURATIONS AND GENERAL NOTES

Revision Notes:
A. Revises NOA 12-0127.24 & 12-0127.06
& to include Multi-Slide door panels w/ or
w/o pockets and to Comply w/ 2010 FBC

Date Drawn: 09/25/12
Date Revised:

Drawn By: N. ERAZO
Revised By:

Revision Level:

Scale:

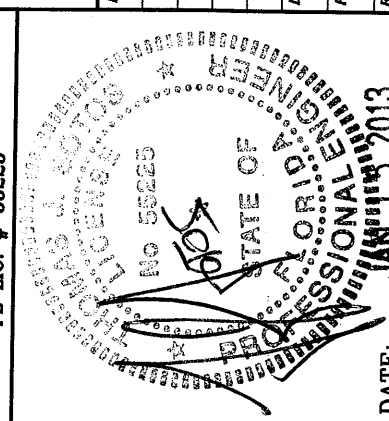
Product Reference Number:

Drawing Number:

Sheet: 1 OF 14

Revision #:

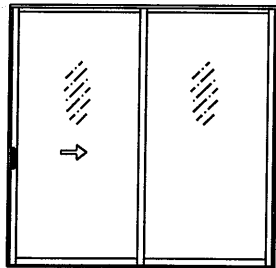
THOMAS J. SOTOS
PROFESSIONAL ENGINEER
FL LIC. # 55225



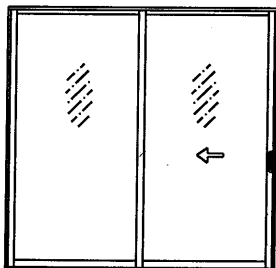
DATE:

DESIGN LOAD CAPACITY - PSF (STD. 2 1/4" SILL)									
NOMINAL DOOR SIZES WIDTH FT./IN.	HEIGHT FT./IN.	GLASS TYPE 'A'		GLASS TYPE 'B'		GLASS TYPE 'C'		GLASS TYPE 'D'	
		EXT. (+)	INT. (-)	EXT. (+)	INT. (-)	EXT. (+)	INT. (-)	EXT. (+)	INT. (-)
5/0 (NO STEEL)	6/8	56.7	95.0	56.7	65.0	56.7	85.0	56.7	75.0
6/0 (NO STEEL)	6/8	56.7	95.0	56.7	65.0	56.7	85.0	56.7	75.0
8/0 (WITH STEEL)	6/8	56.7	85.0	56.7	70.0	56.7	78.8	56.7	68.8
8/0 (WITH STEEL)	8/0	56.7	65.0	56.7	65.0	X	X	X	X

DESIGN LOAD CAPACITY - PSF (WITH 3" SILL RISER)									
NOMINAL DOOR SIZES WIDTH FT./IN.	HEIGHT FT./IN.	GLASS TYPE 'A'		GLASS TYPE 'B'		GLASS TYPE 'C'		GLASS TYPE 'D'	
		EXT. (+)	INT. (-)	EXT. (+)	INT. (-)	EXT. (+)	INT. (-)	EXT. (+)	INT. (-)
5/0 (NO STEEL)	6/8	76.7	95.0	65.0	65.0	76.7	85.0	75.0	75.0
6/0 (NO STEEL)	6/8	76.7	95.0	65.0	65.0	76.7	85.0	75.0	75.0
8/0 (WITH STEEL)	6/8	76.7	85.0	70.0	70.0	76.7	78.8	68.8	68.8
8/0 (WITH STEEL)	8/0	65.0	65.0	65.0	65.0	X	X	X	X



XO



OX

APPROVED CONFIGURATIONS

(FOR PANEL STACK CONFIGURATIONS SEE SHEET 1.)

NOTES:

- 1) REFER TO SHEETS 3 & 4 OF 14 FOR TYPICAL CROSS-SECTION DETAILS.
- 2) REFER TO SHEETS 3 OF 14 FOR TYPICAL ANCHORS AND NOTES.

MAX. D.L.O.:

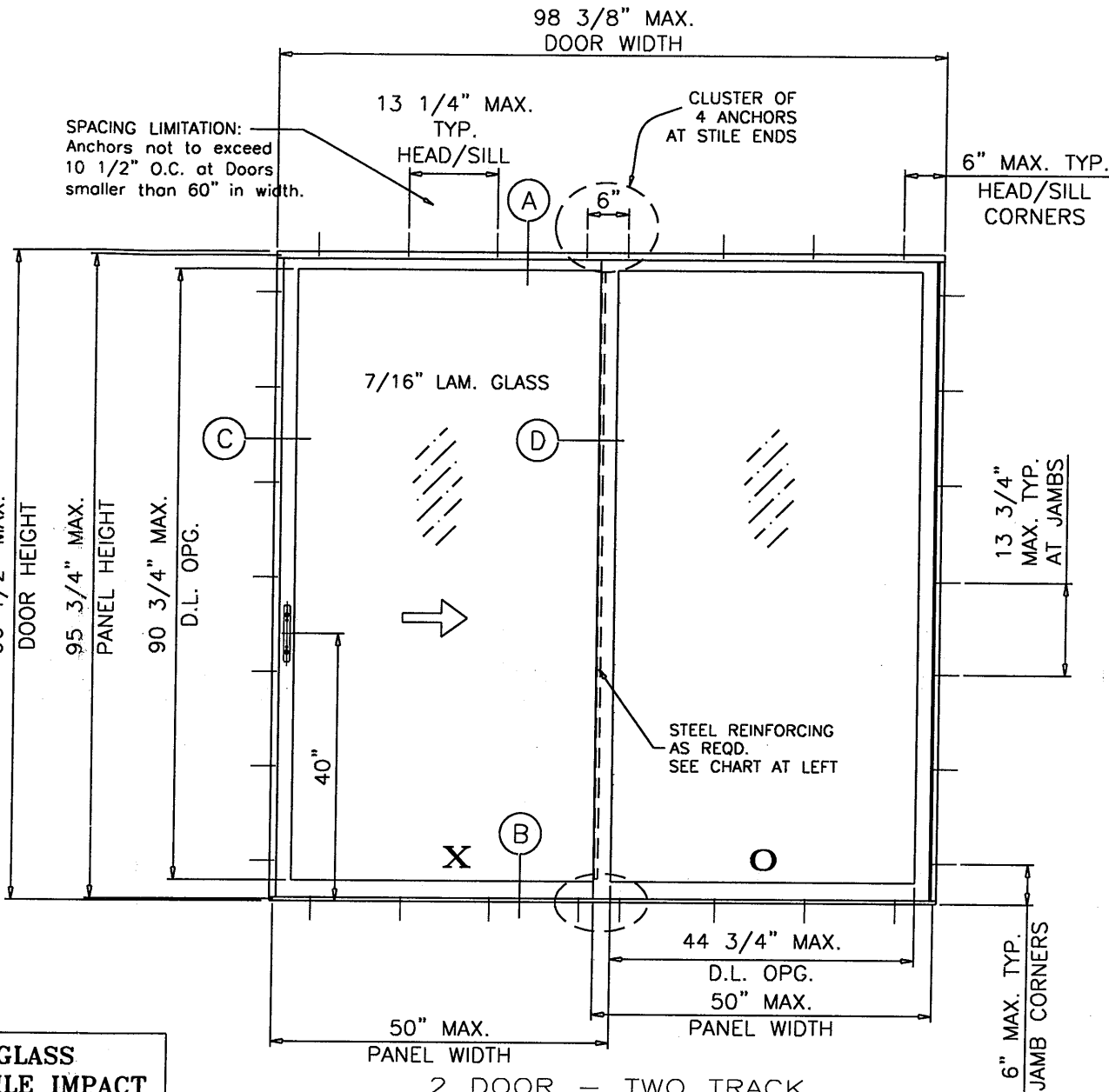
6/0 X 6/8 = 32-3/4" X 74-3/4"

8/0 X 6/8 = 44-3/4" X 74-3/4"

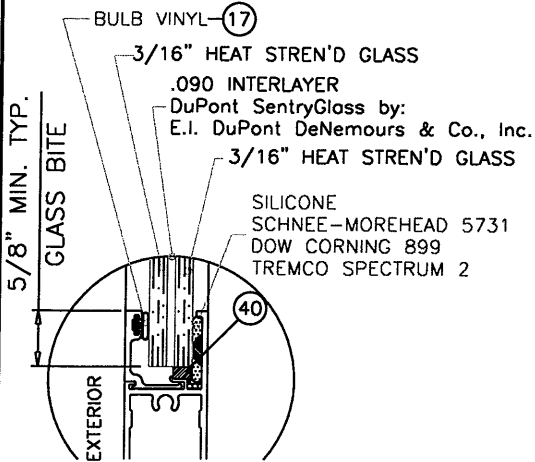
8/0 X 8/0 = 44-3/4" X 90-3/4"

LAMINATED GLASS
LARGE MISSILE IMPACT

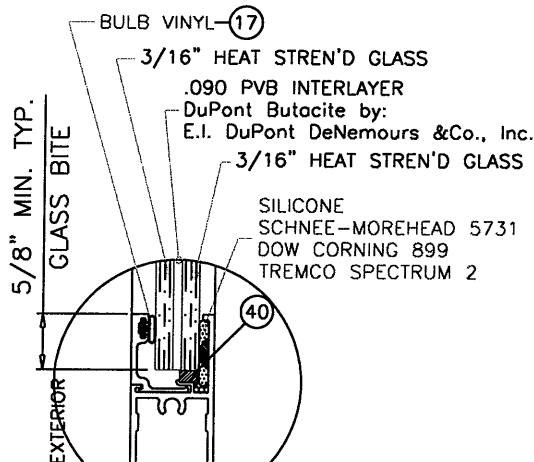
DOORS GLAZED WITH LAMINATED GLASS RATED FOR
LARGE MISSILE IMPACT AND REQUIRE NO SHUTTERS.



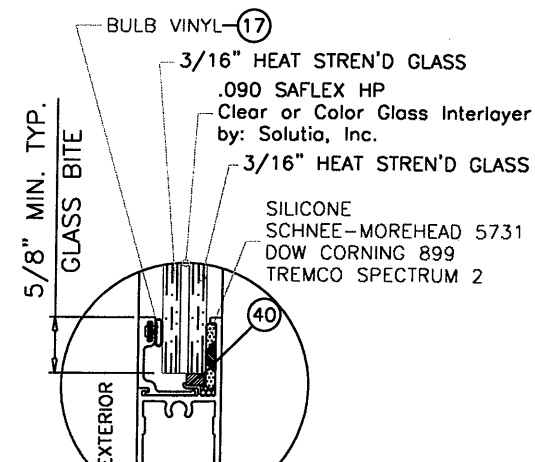
2 DOOR - TWO TRACK
"XO" TYPICAL ELEVATION
TESTED UNIT



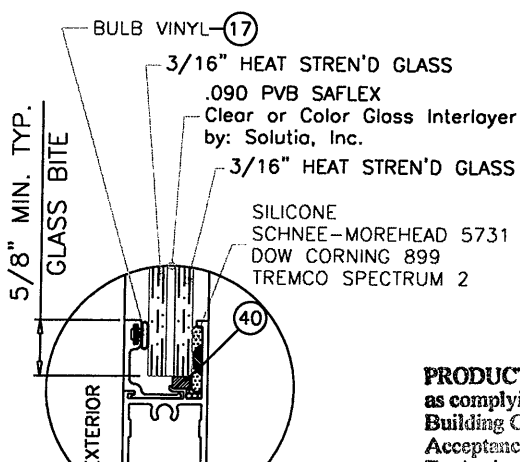
GLASS TYPE 'A'



GLASS TYPE 'B'



GLASS TYPE 'C'



GLASS TYPE 'D'

GLAZING DETAILS

PRODUCT RENEWED
as complying with the Florida
Building Code
Acceptance No. 12-1204.12
Expiration Date 02/13/2018
By: [Signature]
Miami Dade Product Control

LAWSON
INDUSTRIES, INC.

8501 N.W. 90 ST.
MEDLEY, FLORIDA 33166
PH No. (305) 696-8660

MANUFACTURER OF QUALITY ALUMINUM WINDOWS AND GLASS DOORS

SGD-9200 ALUMINUM SLIDING GLASS DOOR (L.M.I.)

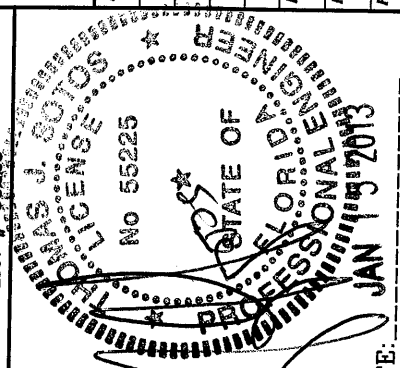
APPROVED ELEVATIONS, GENERAL NOTES, GLAZING DETAILS & DP LOAD CHARTS

Revision Notes:
A. Revises NOA 12-0127.24 & 12-0127.06
& to include Multi-Slide door panels w/ or
w/o pockets and to Comply w/ 2010 FBC

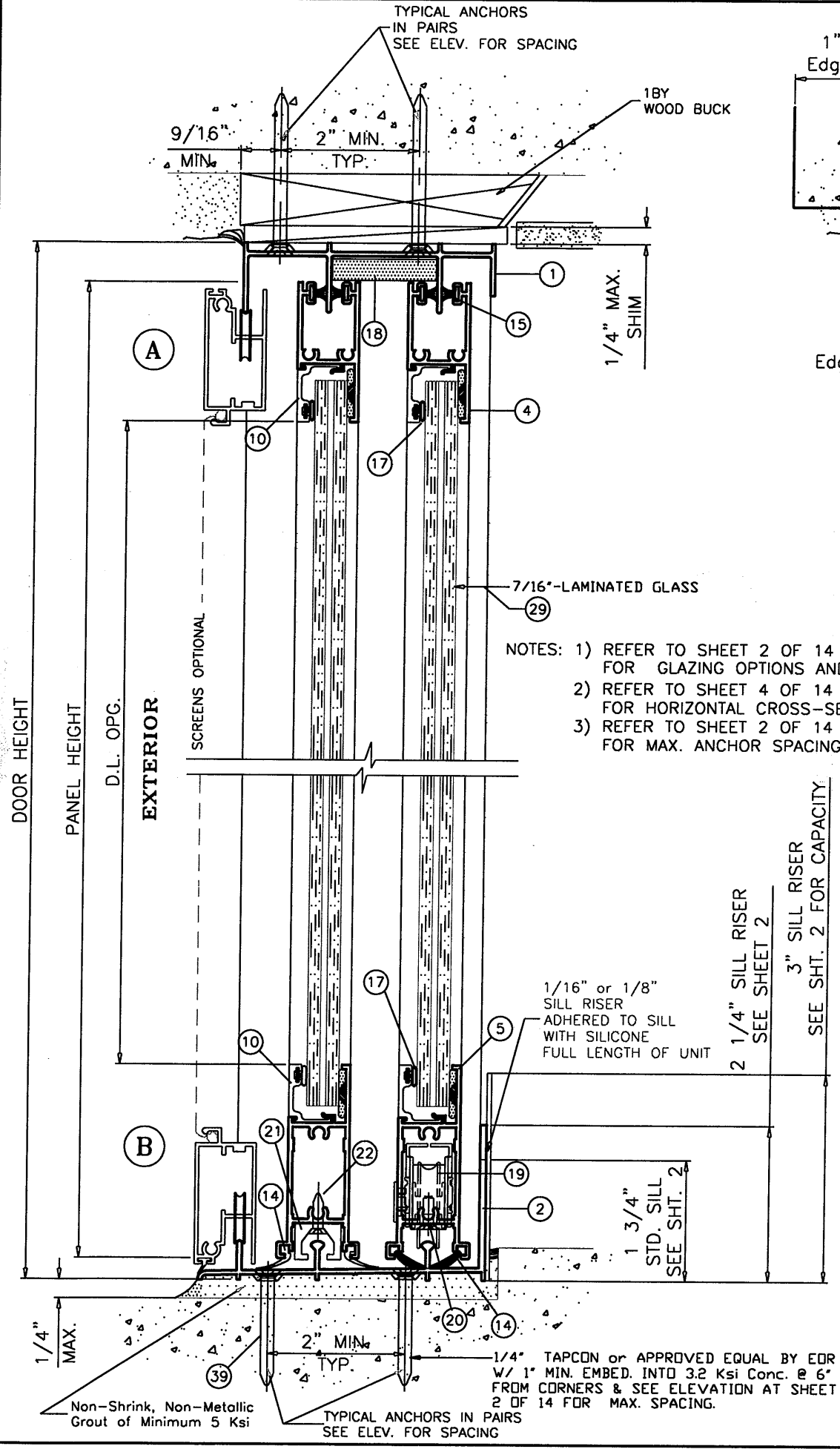
Drawn By: N. ERAZO
Date Drawn: 09/25/12
Revised By:
Date Revised:

Revision Level:
Scale:

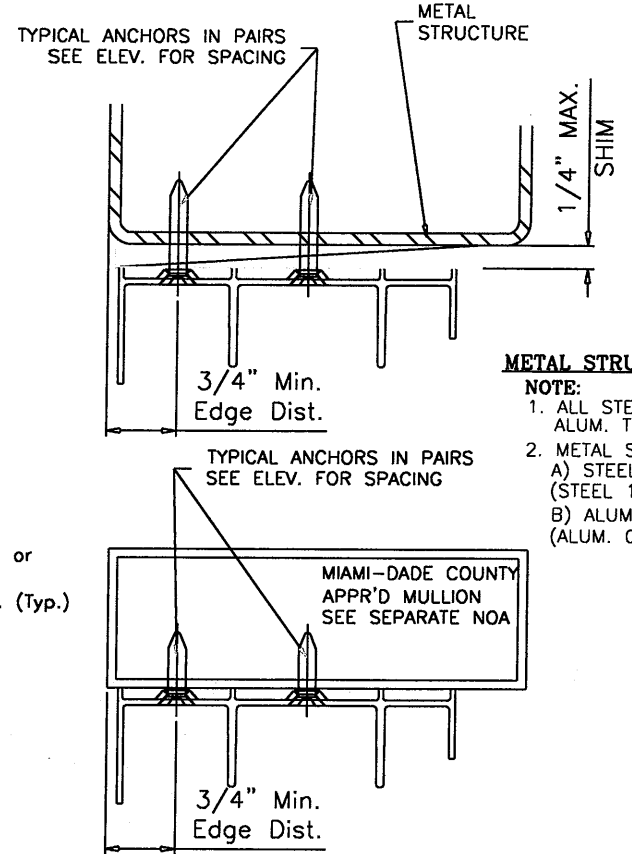
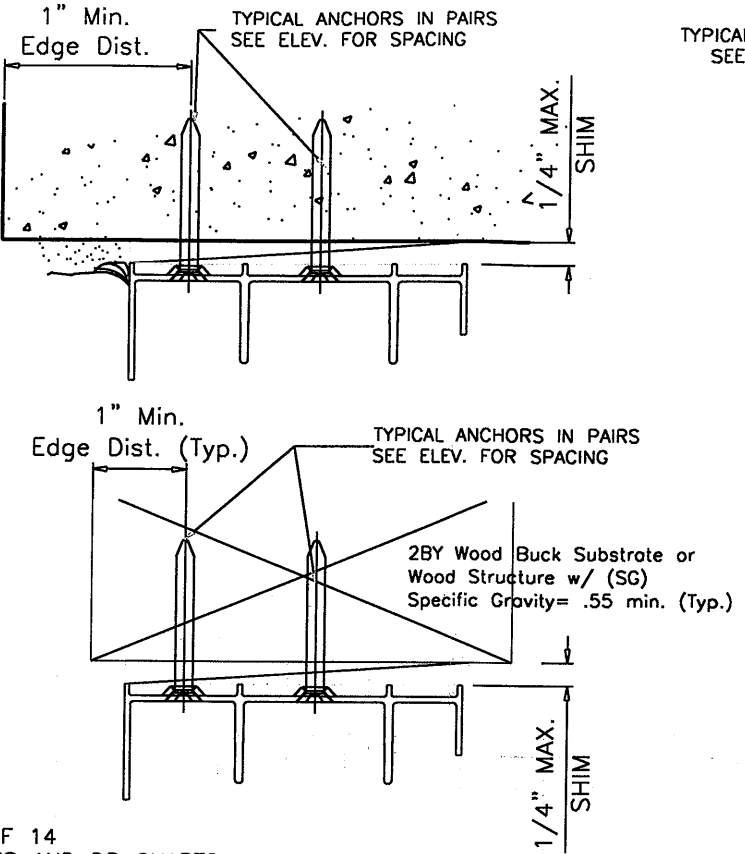
THOMAS J. SOTOS
PROFESSIONAL ENGINEER
FL LIC. # 55225



DATE: _____



- NOTES: 1) REFER TO SHEET 2 OF 14 FOR GLAZING OPTIONS AND DP CHARTS.
2) REFER TO SHEET 4 OF 14 FOR HORIZONTAL CROSS-SECTION DETAILS.
3) REFER TO SHEET 2 OF 14 FOR MAX. ANCHOR SPACINGS.



METAL STRUCTURE ATTACHMENT DETAILS
NOTE:
1. ALL STEEL IN CONTACT WITH ALUM. TO BE PAINTED OR PLATED.
2. METAL STRUCTURES:
A) STEEL : Fy = 36 KSI MIN. (STEEL 12 GA. MIN. THICK = 0.105")
B) ALUMINUM : 6063-T5 MIN. (ALUM. 0.078" MIN. THICK)

WOOD BUCKS AND METAL STRUCTURES NOT BY LAWSON IND. MUST SUPPORT LOADS IMPOSED BY GLAZING SYSTEM AND TRANSFER THEM TO THE BUILDING STRUCTURE.

TYPICAL ANCHORS: SEE ELEV. AT SHEET 8 FOR SPACING

ANCHOR TYPE CHART IN CONC. or MASONRY (min.)					
ANCHOR OPTIONS	HEAD-SILL	JAMB	Embedment	Edge Dist.	Concrete
ELCO ULTRACON	1/4"	1/4"	1 3/4"	1"	2.85 Ksi
BUILDEX	1/4"	-	1 3/4"	4"	3.2 Ksi
BUILDEX	-	3/16"	1 3/4"	3"	3.2 Ksi
ANCHOR TYPE CHART IN 2X WOOD BUCK (min.)					
ANCHOR OPTIONS	HEAD-SILL	JAMB	Embedment	Edge Dist.	2x Wood
ELCO ULTRACON	1/4"	1/4"	1 1/4"	1"	.55 SG
BUILDEX	1/4"	1/4"	1 1/4"	1"	.55 SG
S.M.S. (Into 2X)	#12	#12	1 1/4"	1"	.55 SG

1/4" DRILLFLEX SELF DRILLING SCREWS
INTO METAL STRUCTURES
STEEL : 12 GA. MIN. (Fy = 36 KSI MIN.)
ALUMINUM : 1/8" THK. MIN. (6063-T5 MIN.)
(STEEL IN CONTACT WITH ALUMINUM TO BE PLATED OR PAINTED)
#10 SMS
INTO APPROVED MULLIONS (NO SHIM SPACE)
TYPICAL EDGE DISTANCE
(1/4") INTO CONCRETE AND MASONRY = 1" MIN. (ELCO ULTRACON)
(1/4") INTO CONCRETE AND MASONRY = 4" MIN. (ITW BUILDEX)
(3/16") INTO CONCRETE AND MASONRY = 3" MIN. (ITW BUILDEX)
INTO WOOD STRUCTURE = 1" MIN.
INTO METAL STRUCTURE = 3/4" MIN.
SEALANTS:
FRAME AND VENT CORNERS AND INSTALLATION SCREWS AT SILL SEALED WITH WHITE/ALUMINUM COLORED SEALANT.

PRODUCT RENEWED
as complying with the Florida
Building Code
Acceptance No. 12-1204.12
Expiration Date 02/13/2018
By [Signature]
Miami Dade Product Control

8501 N.W. 90 ST.
MEDLEY, FLORIDA 33166
PH No. (305) 696-8660

LAWSON INDUSTRIES, INC.

MANUFACTURER OF QUALITY ALUMINUM WINDOWS AND GLASS DOORS

SGD-9200 ALUMINUM SLIDING GLASS DOOR (L.M.I.)

2 TRACK VERTICAL CROSS SECTIONS, DETAILS & ANCHOR NOTES

Product Reference Number: L9200-1102

Sheet: 3 OF 14

Revision #:

Revision Note: NOA 12-0127.24 & 12-0127.06
A. Revises
& to include Multi-Slide door panels w/ or w/o pockets and to Comply w/ 2010 FBC

Date Drawn: 09/25/12
Date Revised:

Drawn By: N. ERAZO
Revised By:

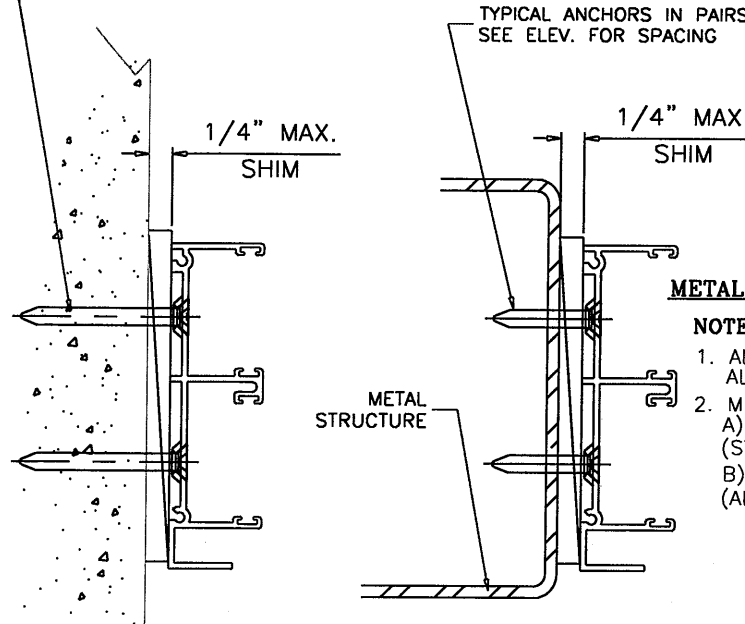
Revision Level:

THOMAS J. SOTOS
PROFESSIONAL ENGINEER
FL LIC. # 55225

STATE OF FLORIDA
PROFESSIONAL ENGINEER
JAN 10 2013

DATE:

TYPICAL ANCHORS IN PAIRS
SEE ELEV. FOR SPACING

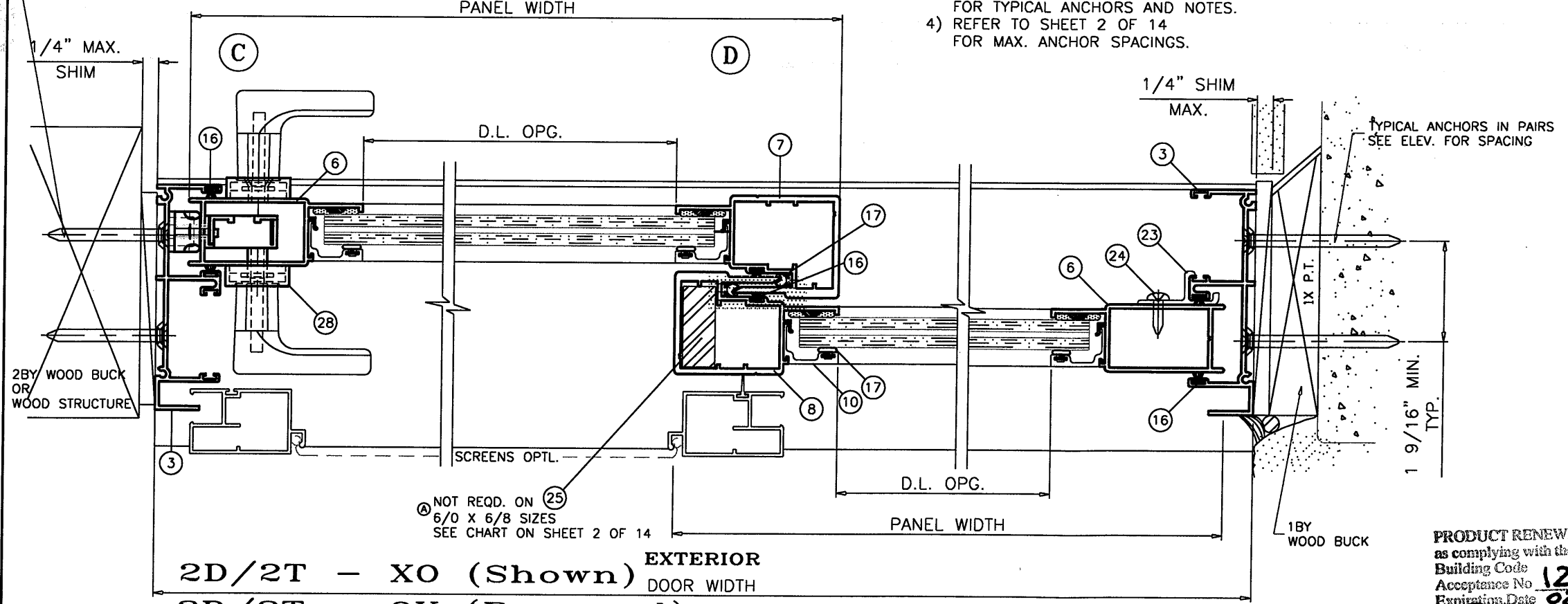


METAL STRUCTURE ATTACHMENT DETAIL

- NOTE:**
1. ALL STEEL IN CONTACT WITH ALUM. TO BE PAINTED OR PLATED.
 2. METAL STRUCTURES:
A) STEEL : $F_y = 36$ KSI MIN.
(STEEL 12 GA. MIN. THICK = 0.105")
B) ALUMINUM : 6063-T5 MIN.
(ALUM. 0.078" MIN. THICK)

- NOTES:**
- 1) REFER TO SHEET 2 OF 14 FOR GLAZING OPTIONS AND DP CHARTS.
 - 2) REFER TO SHEET 3 OF 14 FOR VERTICAL CROSS-SECTION DETAILS.
 - 3) REFER TO SHEET 3 OF 14 FOR TYPICAL ANCHORS AND NOTES.
 - 4) REFER TO SHEET 2 OF 14 FOR MAX. ANCHOR SPACINGS.

TYPICAL ANCHORS IN PAIRS
SEE ELEV. FOR SPACING



2D/2T - XO (Shown) EXTERIOR
2D/2T - OX (Reversed) DOOR WIDTH

PRODUCT RENEWED
as complying with the Florida
Building Code
Acceptance No. 12-1204.12
Expiration Date 02/13/2018
By *[Signature]*
Miami Dade Product Control

LAWSON
INDUSTRIES, INC.

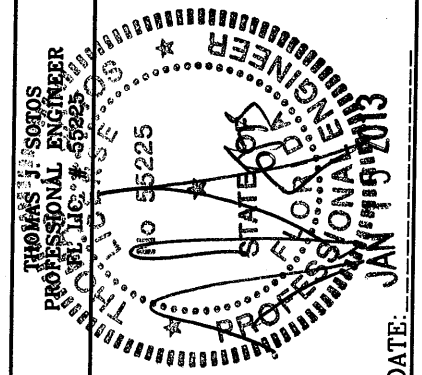
8501 N.W. 90 ST.
MEDLEY, FLORIDA 33166
PH No. (305) 696-8660

MANUFACTURER OF QUALITY ALUMINUM WINDOWS AND GLASS DOORS

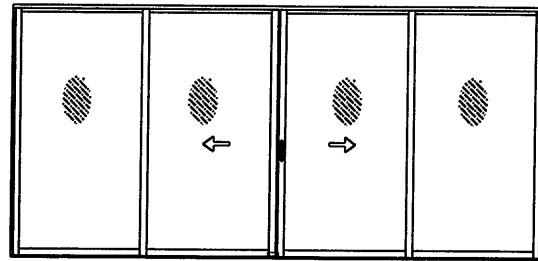
SGD-9200 ALUMINUM SLIDING GLASS DOOR (L.M.I.)

TWO DOOR HORIZONTAL CROSS SECTION, INSTALLATION DETAILS & NOTES

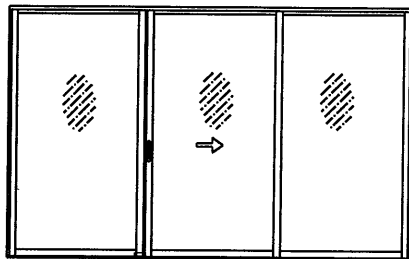
Revision Notes: A. Revises NOA 12-0127.24 & 12-0127.06 & to include Multi-Slide door panels w/ or w/o pockets and to Comply w/ 2010 FBC		Date Drawn: 09/25/12	Sheet: 4 OF 14
Drawn By: N. ERAZO	Date Revised:	Revision Level:	Revision #:



NOTE: TWO TRACK FRAME DOOR CONFIGURATIONS OF MORE THAN FOUR PANELS USING STILE COMBINATIONS SHOWN IN THESE DETAILS MAY ALSO BE APPROVED (EXAMPLE OXXO).



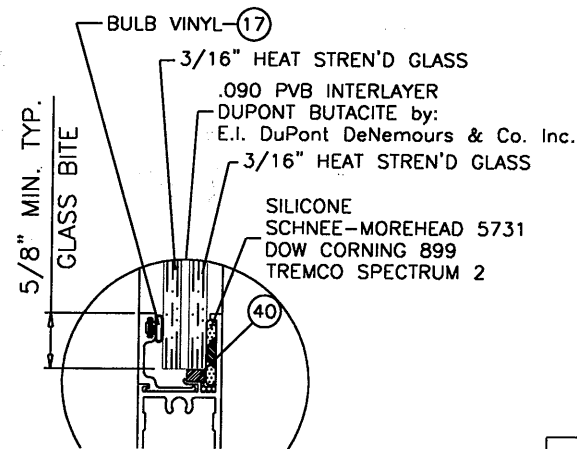
OXXO



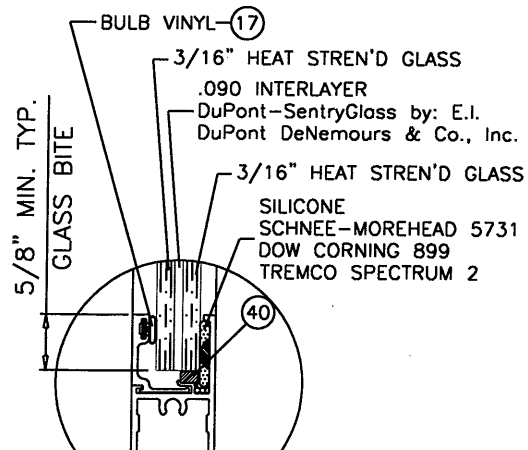
OXO

APPROVED CONFIGURATIONS

(FOR PANEL STACK CONFIGURATIONS SEE SHEET 1.)

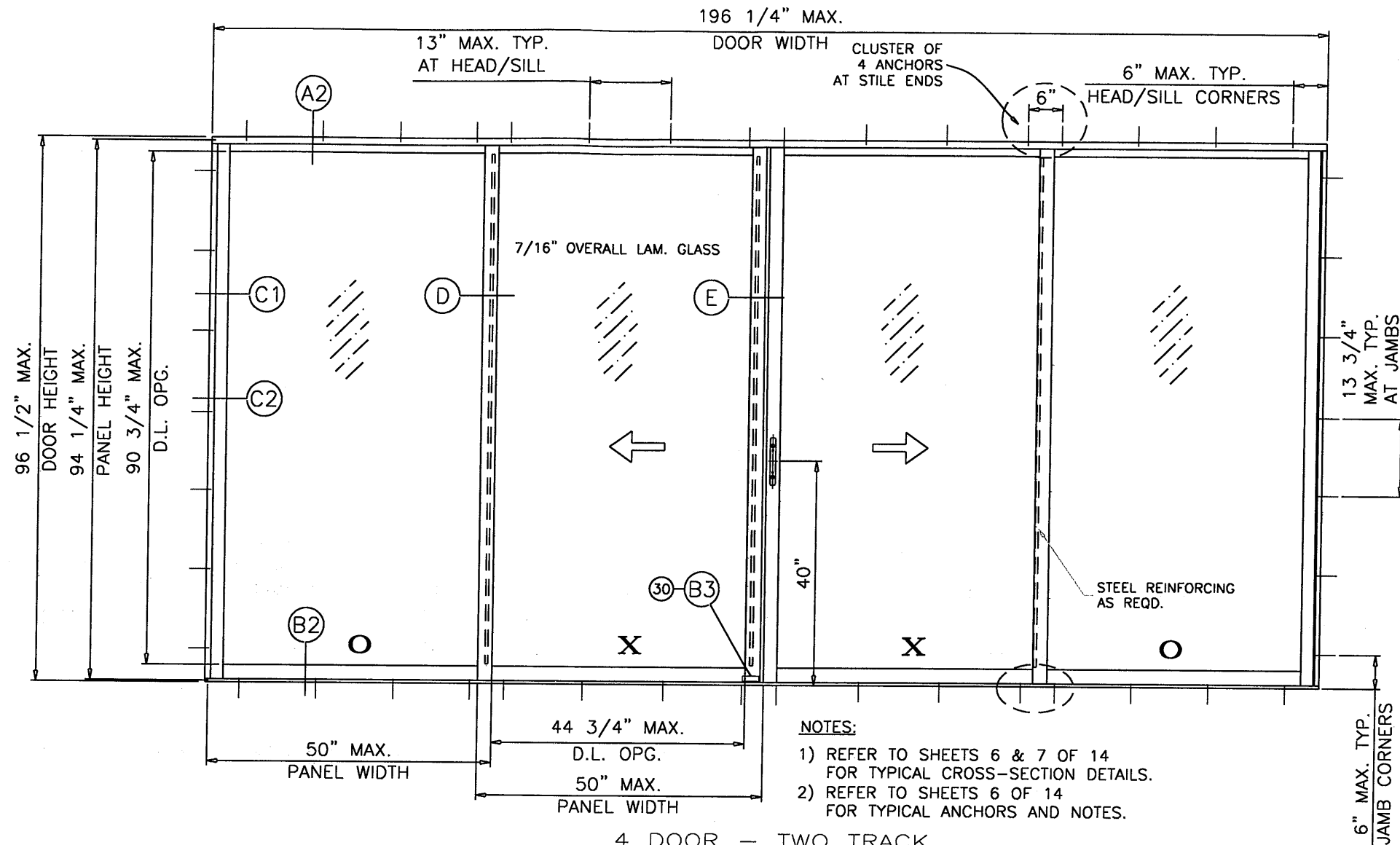


GLASS TYPE 'B'



GLASS TYPE 'A'

GLAZING DETAILS



NOTES:

- 1) REFER TO SHEETS 6 & 7 OF 14 FOR TYPICAL CROSS-SECTION DETAILS.
- 2) REFER TO SHEETS 6 OF 14 FOR TYPICAL ANCHORS AND NOTES.

4 DOOR - TWO TRACK
"OXXO" TYPICAL ELEVATION
TESTED UNIT

LAMINATED GLASS
LARGE MISSILE IMPACT

DOORS GLAZED WITH LAMINATED GLASS RATED FOR
LARGE MISSILE IMPACT AND REQUIRE NO SHUTTERS.

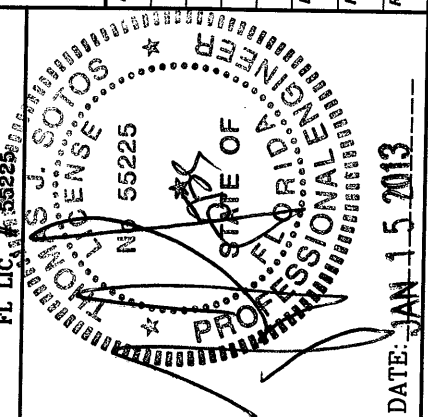
DESIGN LOAD CAPACITY - PSF GLASS TYPES 'A' OR 'B'							
PANEL WIDTH NOMINAL FT./IN.	DOOR HEIGHT FT./IN.	STANDARD SILL		2-1/4" RISER		3" RISER	
		EXT. (+)	INT. (-)	EXT. (+)	INT. (-)	EXT. (+)	INT. (-)
2/6	6/8	40.7	60.0	56.7	60.0	60.0	60.0
3/0		40.7	60.0	56.7	60.0	60.0	60.0
3/6		40.7	60.0	56.7	60.0	60.0	60.0
4/0		40.7	60.0	56.7	60.0	60.0	60.0
4/6		40.7	60.0	56.7	60.0	60.0	60.0
4/11		40.7	60.0	56.7	60.0	60.0	60.0
2/6	8/0	40.7	60.0	56.7	60.0	60.0	60.0
3/0		40.7	60.0	56.7	60.0	60.0	60.0
3/6		40.7	60.0	56.7	60.0	60.0	60.0
4/0		40.7	60.0	56.7	60.0	60.0	60.0

PANEL MAX. D.L.O.:

3/0 X 6/8 = 32-3/4" X 74-3/4"
4/0 X 6/8 = 44-3/4" X 74-3/4"
4/11 X 6/8 = 55-3/4" X 74-3/4"
3/0 X 8/0 = 32-3/4" X 90-3/4"
4/0 X 8/0 = 44-3/4" X 90-3/4"

PRODUCT RENEWED
as complying with the Florida
Building Code
Acceptance No. 12-1204.12
Expiration Date 02/13/2018
By: [Signature]
Miami Dade Product Control

THOMAS J. SOTOS
PROFESSIONAL ENGINEER
FL LIC. # 55225



Revision Notes:
A. Revises NOA 12-0127.24 & 12-0127.06
& to include Multi-Slide door panels w/ or
w/o pockets and to Comply w/ 2010 FBC

Drawn By: N. ERAZO
Date Drawn: 08/25/12
Revised By:
Date Revised:
Revision Level:
Scale:

LAWSON
INDUSTRIES, INC.

MANUFACTURER OF QUALITY ALUMINUM WINDOWS AND GLASS DOORS

SGD-9200 ALUMINUM SLIDING GLASS DOOR (L.M.I.)
APPROVED ELEVATIONS, GENERAL NOTES, GLAZING DETAILS & DP LOAD CHARTS

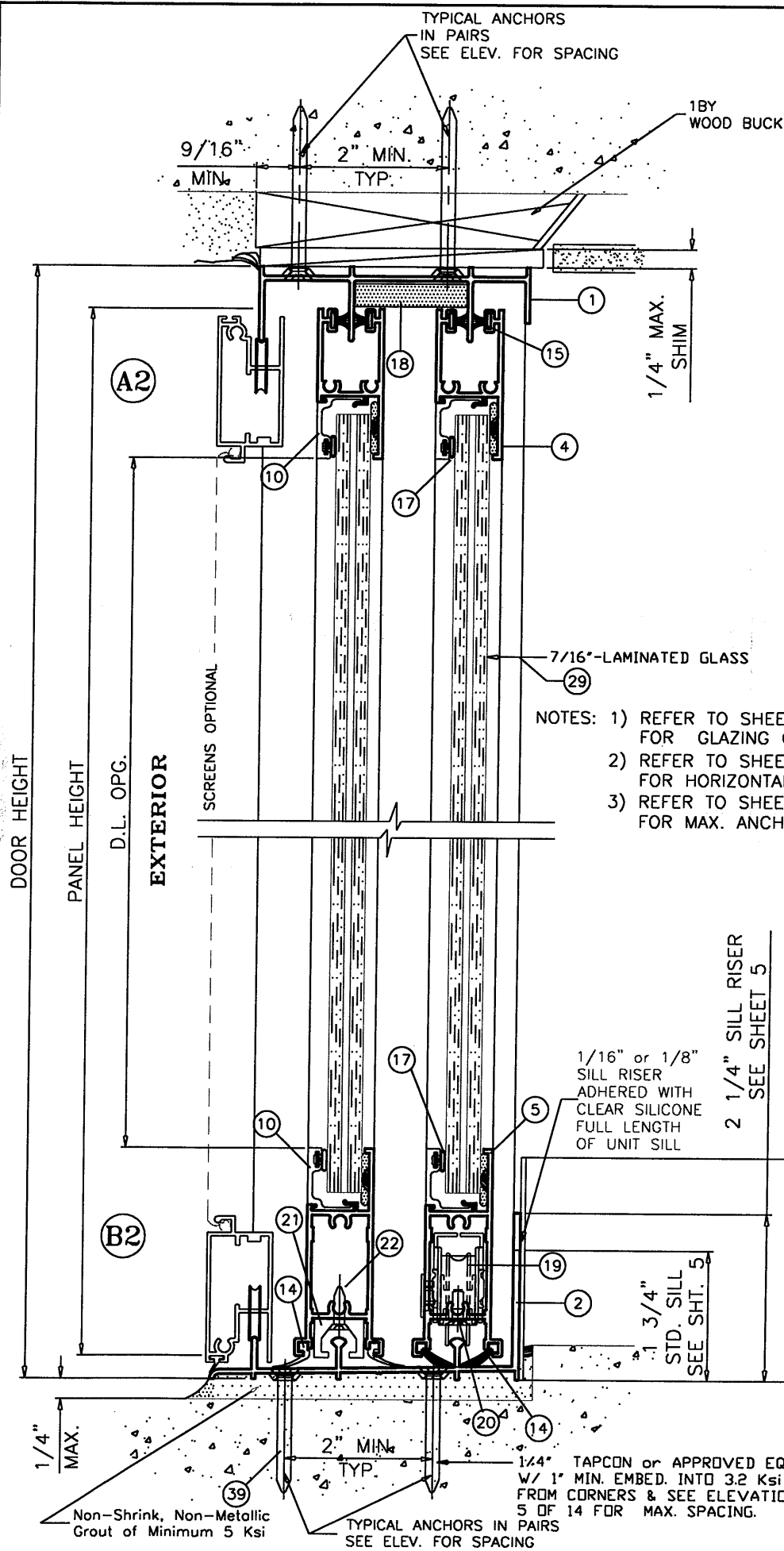
8501 N.W. 90 ST.
MEDLEY, FLORIDA 33166
PH No. (305) 696-8660

Product Reference Number:

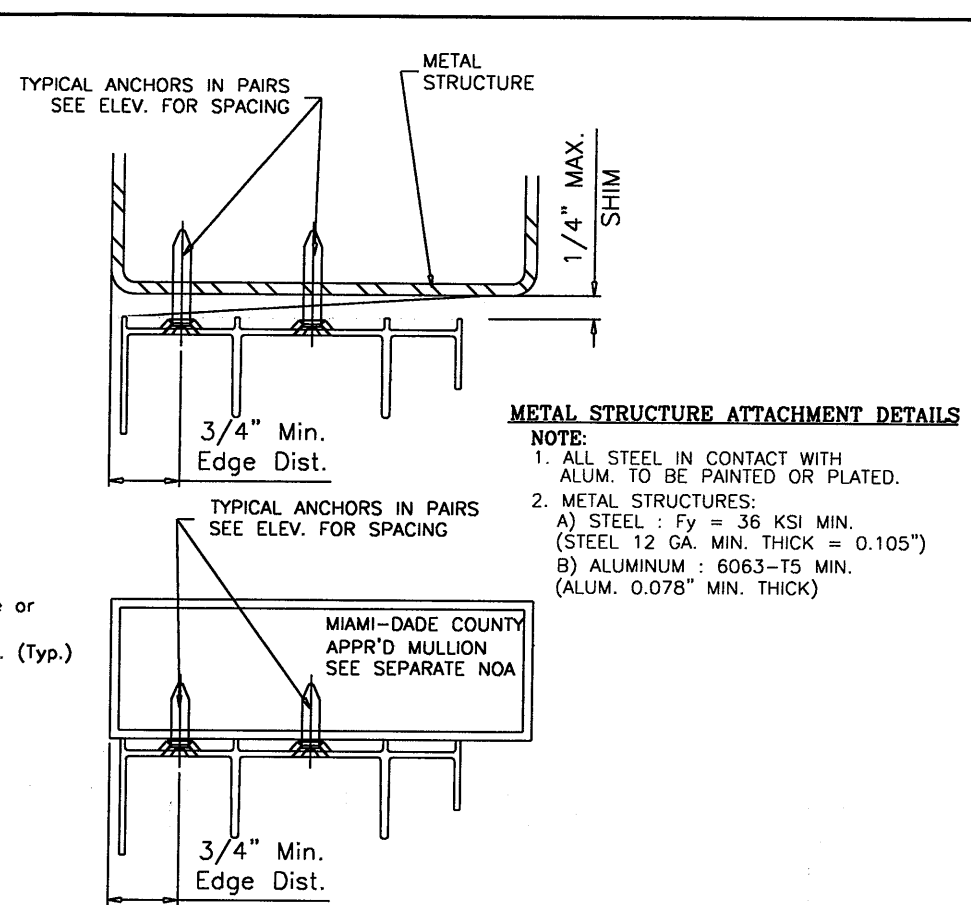
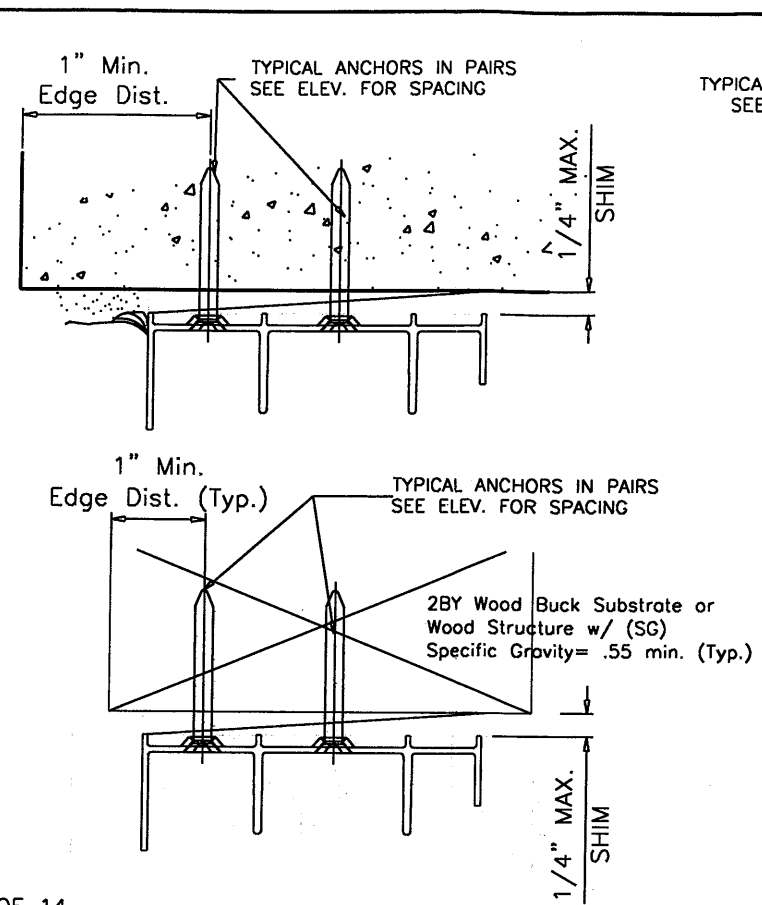
L9200-1201

Sheet: 5 OF 14

Revision #:



- NOTES: 1) REFER TO SHEET 5 OF 14 FOR GLAZING OPTIONS AND DP CHARTS.
 2) REFER TO SHEET 7 OF 14 FOR HORIZONTAL CROSS-SECTION DETAILS.
 3) REFER TO SHEET 5 OF 14 FOR MAX. ANCHOR SPACINGS.



METAL STRUCTURE ATTACHMENT DETAILS
NOTE:
 1. ALL STEEL IN CONTACT WITH ALUM. TO BE PAINTED OR PLATED.
 2. METAL STRUCTURES:
 A) STEEL : $F_y = 36$ KSI MIN. (STEEL 12 GA. MIN. THICK = 0.105")
 B) ALUMINUM : 6063-T5 MIN. (ALUM. 0.078" MIN. THICK)

WOOD BUCKS AND METAL STRUCTURES NOT BY LAWSON IND. MUST SUPPORT LOADS IMPOSED BY GLAZING SYSTEM AND TRANSFER THEM TO THE BUILDING STRUCTURE.

TYPICAL ANCHORS: SEE ELEV. AT SHEET 8 FOR SPACING

ANCHOR TYPE CHART IN CONC. or MASONRY (min.)					
ANCHOR OPTIONS	HEAD-SILL	JAMB	Embedment	Edge Dist.	Concrete
ELCO ULTRACON	1/4"	1/4"	1 3/4"	1"	2.85 Ksi
BUILDEX	1/4"	-	1 3/4"	4"	3.2 Ksi
BUILDEX	-	3/16"	1 3/4"	3"	3.2 Ksi
ANCHOR TYPE CHART IN 2X WOOD BUCK (min.)					
ANCHOR OPTIONS	HEAD-SILL	JAMB	Embedment	Edge Dist.	2x Wood
ELCO ULTRACON	1/4"	1/4"	1 1/4"	1"	.55 SG
BUILDEX	1/4"	1/4"	1 1/4"	1"	.55 SG
S.M.S. (Into 2X)	#12	#12	1 1/4"	1"	.55 SG

1/4" DRILLFLEX SELF DRILLING SCREWS
 INTO METAL STRUCTURES
 STEEL : 12 GA. MIN. ($F_y = 36$ KSI MIN.)
 ALUMINUM : 1/8" THK. MIN. (6063-T5 MIN.)
 (STEEL IN CONTACT WITH ALUMINUM TO BE PLATED OR PAINTED)
#10 SMS
 INTO APPROVED MULLIONS (NO SHIM SPACE)
TYPICAL EDGE DISTANCE
 (1/4") INTO CONCRETE AND MASONRY = 1" MIN. (ELCO ULTRACON)
 (1/4") INTO CONCRETE AND MASONRY = 4" MIN. (ITW BUILDEX)
 (3/16") INTO CONCRETE AND MASONRY = 3" MIN. (ITW BUILDEX)
 INTO WOOD STRUCTURE = 1" MIN.
 INTO METAL STRUCTURE = 3/4" MIN.
SEALANTS:
 FRAME AND VENT CORNERS AND INSTALLATION SCREWS AT SILL SEALED WITH WHITE/ALUMINUM COLORED SEALANT.

8501 N.W. 90 ST.
 MEDLEY, FLORIDA 33166
 PH No. (305) 696-8660

LAWSON INDUSTRIES, INC.

MANUFACTURER OF QUALITY ALUMINUM WINDOWS AND GLASS DOORS

SGD-9200 ALUMINUM SLIDING GLASS DOOR (L.M.I.)

TWO TRACK VERTICAL CROSS SECTIONS, DETAILS & ANCHOR NOTES

Revision: 12-0127.06
 A. Revises 12-0127.24 & 12-0127.06
 & to include Multi-Slide door panels w/ or w/o pockets and to Comply w/ 2010 FBC

Drawn By: N. ERAZO
 Date Drawn: 09/25/12

Revised By:
 Date Revised:

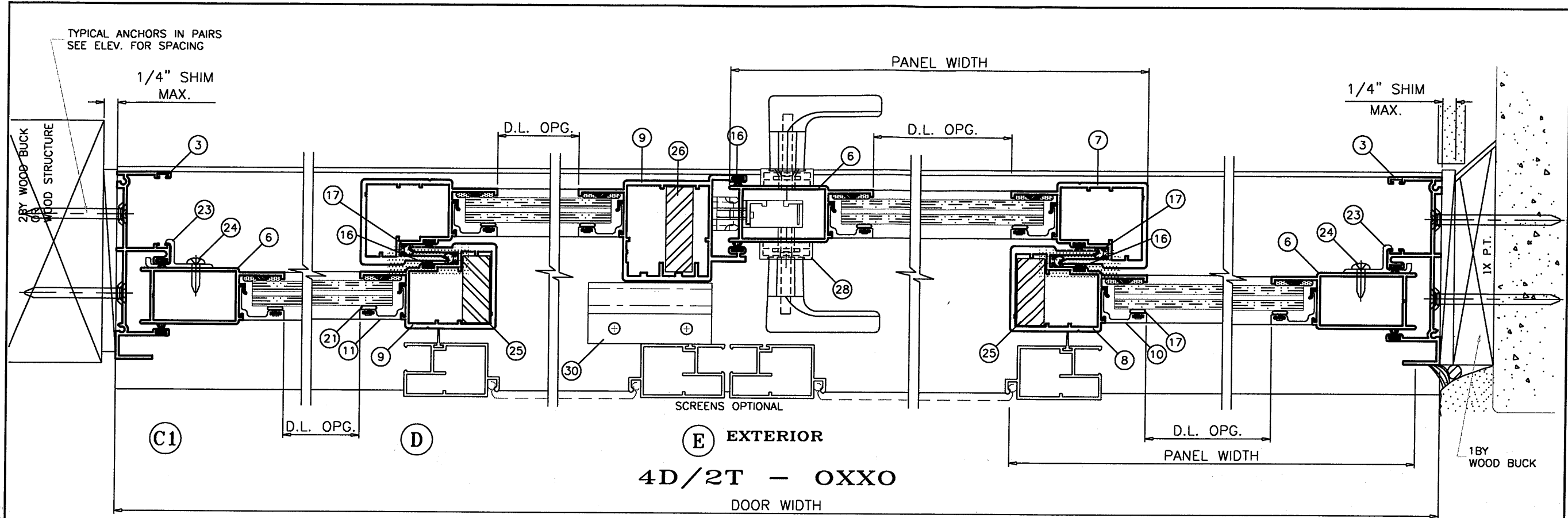
Revision Level:
 Scale:

Product Reference Number: L9200-1101
 Sheet: 6 OF 14
 Revision #:

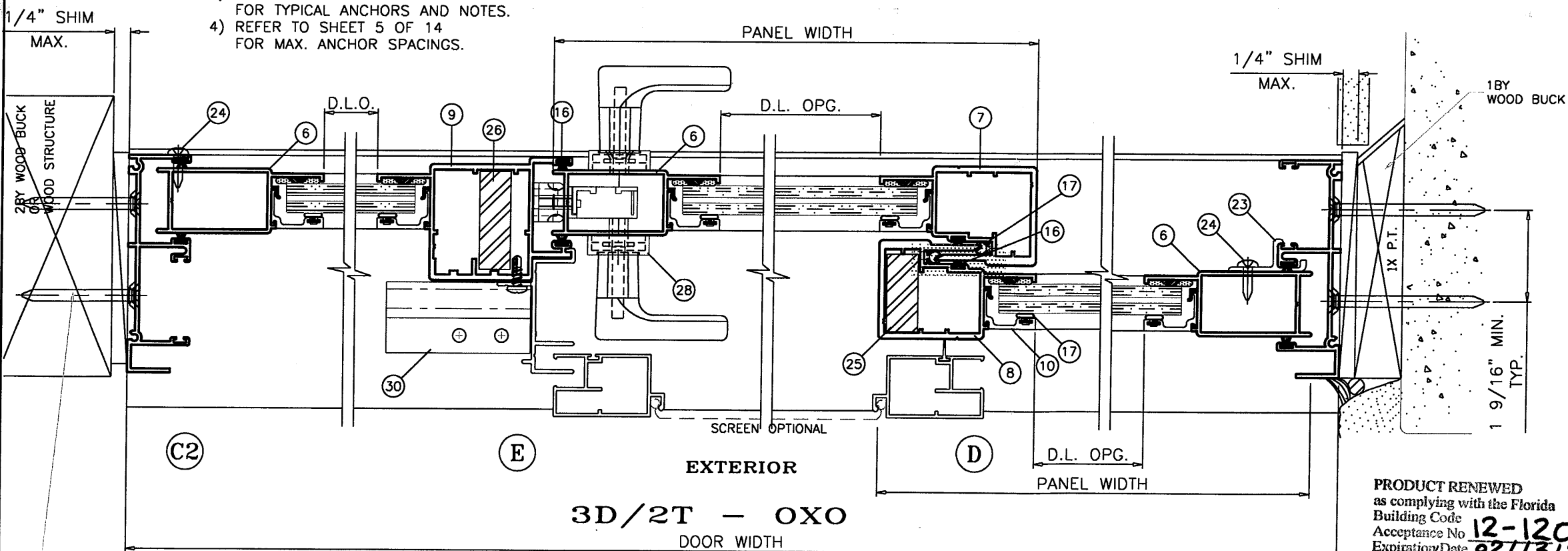
THOMAS J. SOTOS
 PROFESSIONAL ENGINEER
 FL No. 55225

12-12-04
 02/13/2013

DATE: JAN 15 2013

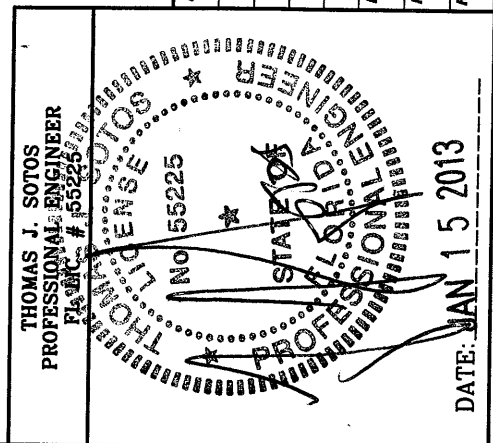


- NOTES: 1) REFER TO SHEET 5 OF 14 FOR GLAZING OPTIONS AND DP CHARTS.
 2) REFER TO SHEET 6 OF 14 FOR VERTICAL CROSS-SECTION DETAILS.
 3) REFER TO SHEET 6 OF 14 FOR TYPICAL ANCHORS AND NOTES.
 4) REFER TO SHEET 5 OF 14 FOR MAX. ANCHOR SPACINGS.



TYPICAL ANCHORS IN PAIRS
SEE ELEV. FOR SPACING

PRODUCT RENEWED
as complying with the Florida
Building Code
Acceptance No. 12-1204.12
Expiration Date 02/13/2018
By *[Signature]*
Miami Dade Product Control



Revision Notes: A. Revises NOA 12-0127.24 & 12-0127.06 & to include Multi-Slide door panels w/ or w/o pockets and to Comply w/ 2010 FBC	
Drawn By: N. ERAZO	Date Drawn: 09/25/12
Revised By:	Date Revised:
Revision Level:	Scale:

LAWSON
INDUSTRIES, INC.

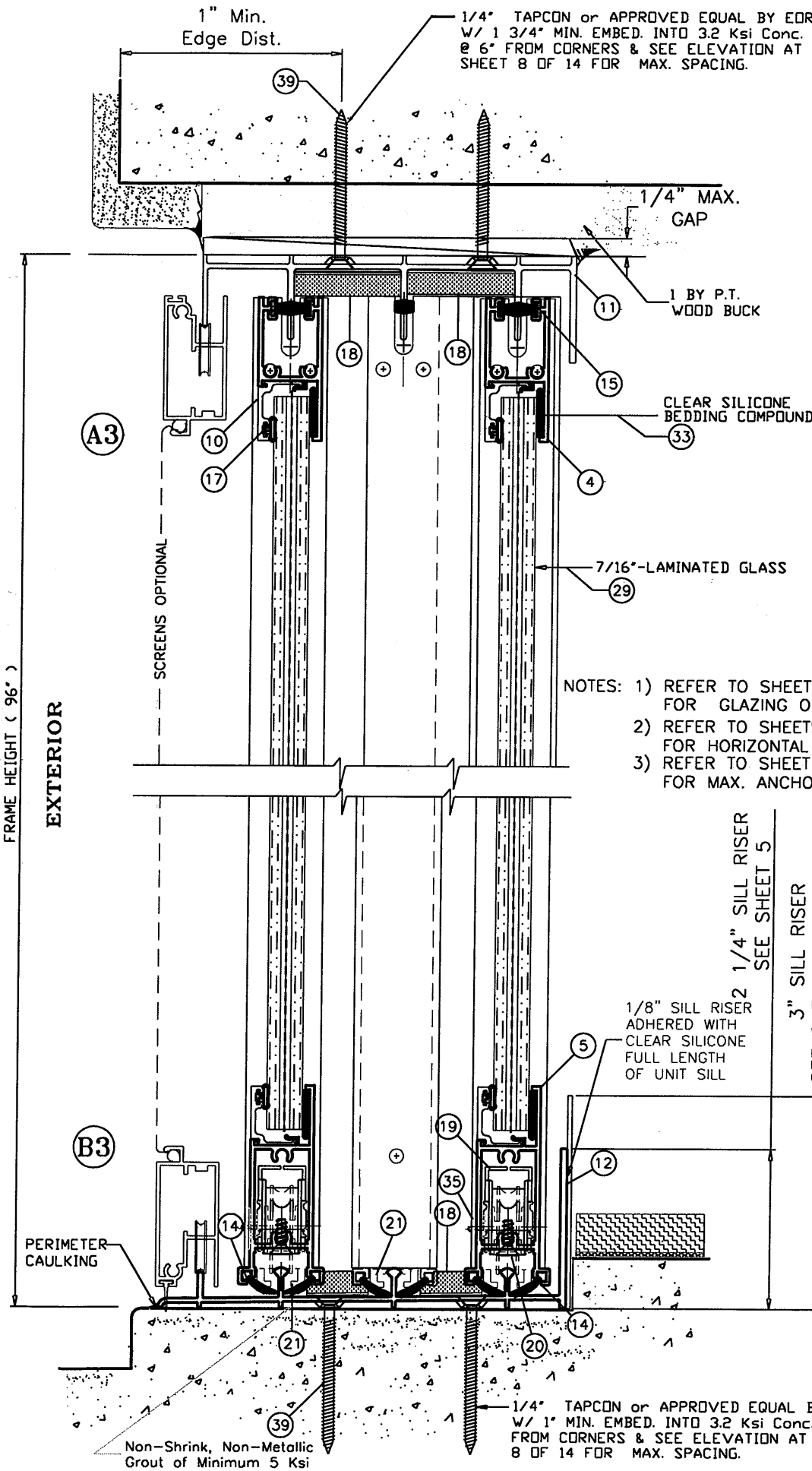
8501 N.W. 90 ST.
MEDLEY, FLORIDA 33166
PH No. (305) 696-8660

MANUFACTURER OF QUALITY ALUMINUM WINDOWS AND GLASS DOORS
 SGD-9200 ALUMINUM SLIDING GLASS DOOR (L.M.I.)
 THREE DOOR AND FOUR DOOR HORIZONTAL CROSS SECTIONS & NOTES

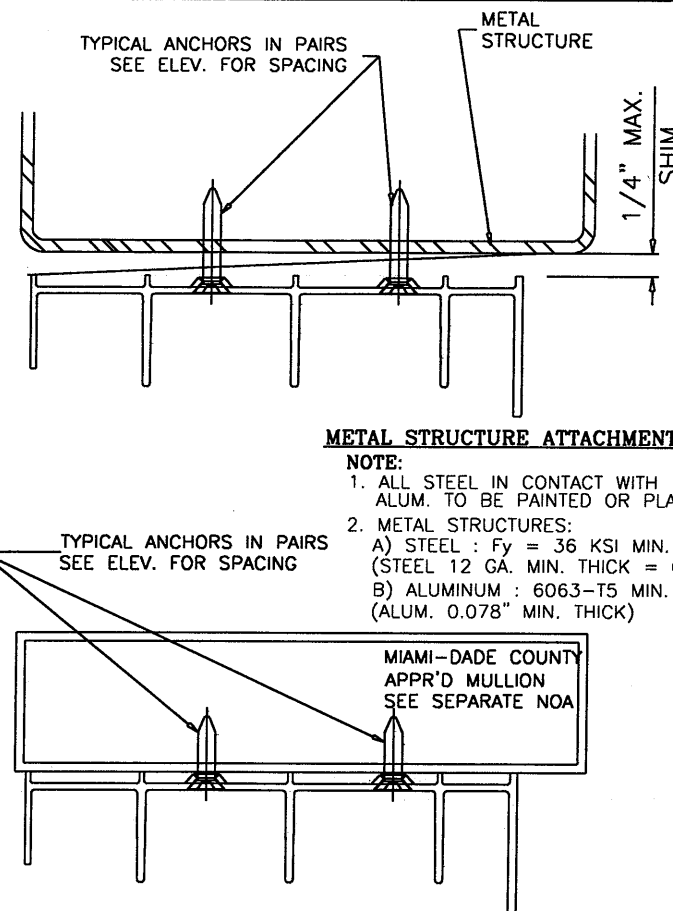
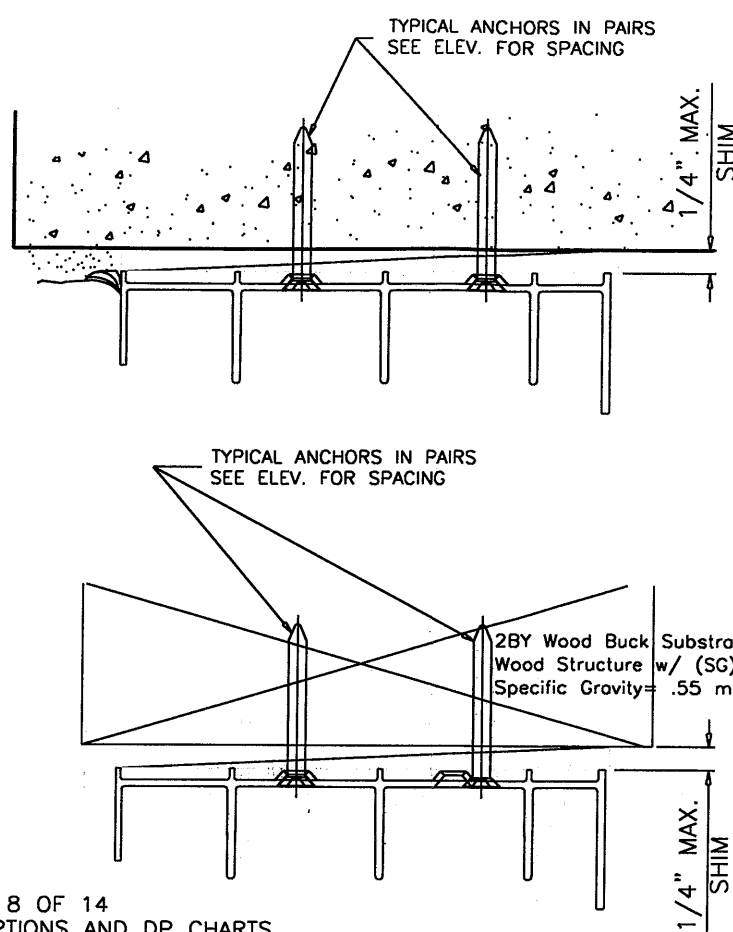
Product Reference Number: 19200-1201 Sheet: 7 OF 14 Revision #: 7

FRAME HEIGHT (96")

EXTERIOR



- NOTES: 1) REFER TO SHEET 8 OF 14 FOR GLAZING OPTIONS AND DP CHARTS.
2) REFER TO SHEETS 10 & 11 OF 14 FOR HORIZONTAL CROSS-SECTION DETAILS.
3) REFER TO SHEET 8 OF 14 FOR MAX. ANCHOR SPACINGS.



METAL STRUCTURE ATTACHMENT DETAILS

NOTE:

- ALL STEEL IN CONTACT WITH ALUM. TO BE PAINTED OR PLATED.
- METAL STRUCTURES:
A) STEEL : $F_y = 36$ KSI MIN. (STEEL 12 GA. MIN. THICK = 0.105")
B) ALUMINUM : 6063-T5 MIN. (ALUM. 0.078" MIN. THICK)

MIAMI-DADE COUNTY APPR'D MULLION SEE SEPARATE NOA

WOOD BUCKS AND METAL STRUCTURES NOT BY LAWSON IND. MUST SUPPORT LOADS IMPOSED BY GLAZING SYSTEM AND TRANSFER THEM TO THE BUILDING STRUCTURE.

TYPICAL ANCHORS: SEE ELEV. AT SHEET 8 FOR SPACING

ANCHOR TYPE CHART IN CONC. or MASONRY (min.)					
ANCHOR OPTIONS	HEAD-SILL	JAMB	Embedment	Edge Dist.	Concrete
ELCO ULTRACON	1/4"	1/4"	1 3/4"	1"	2.85 Ksi
BUILDEX	1/4"	-	1 3/4"	4"	3.2 Ksi
BUILDEX	-	3/16"	1 3/4"	3"	3.2 Ksi
ANCHOR TYPE CHART IN 2X WOOD BUCK (min.)					
ANCHOR OPTIONS	HEAD-SILL	JAMB	Embedment	Edge Dist.	2x Wood
ELCO ULTRACON	1/4"	1/4"	1 1/4"	1"	.55 SG
BUILDEX	1/4"	1/4"	1 1/4"	1"	.55 SG
S.M.S. (Into 2X)	#12	#12	1 1/4"	1"	.55 SG

PRODUCT RENEWED as complying with the Florida Building Code Acceptance No. 12-1204-12 Expiration Date 02/13/2018 By [Signature] Miami Dade Product Control

1/4" DRILLFLEX SELF DRILLING SCREWS

INTO METAL STRUCTURES

STEEL : 12 GA. MIN. ($F_y = 36$ KSI MIN.)

ALUMINUM : 1/8" THK. MIN. (6063-T5 MIN.)

(STEEL IN CONTACT WITH ALUMINUM TO BE PLATED OR PAINTED)

#10 SMS

INTO APPROVED MULLIONS (NO SHIM SPACE)

TYPICAL EDGE DISTANCE

(1/4") INTO CONCRETE AND MASONRY = 1" MIN. (ELCO ULTRACON)

(1/4") INTO CONCRETE AND MASONRY = 4" MIN. (ITW BUILDEX)

(3/16") INTO CONCRETE AND MASONRY = 3" MIN. (ITW BUILDEX)

INTO WOOD STRUCTURE = 1" MIN.

INTO METAL STRUCTURE = 3/4" MIN.

SEALANTS:

FRAME AND VENT CORNERS AND INSTALLATION SCREWS AT SILL SEALED WITH WHITE/ALUMINUM COLORED SEALANT.

TYPICAL ANCHORS 2 PER CLIP

LAWSON
INDUSTRIES, INC.

8501 N.W. 90 ST.
MEDLEY, FLORIDA 33166
PH No. (305) 696-8860

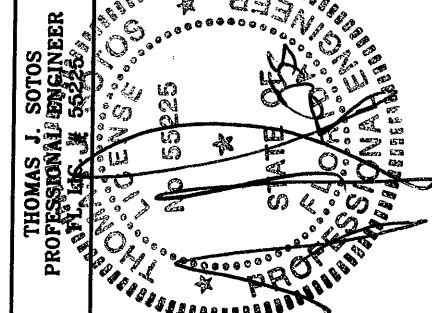
MANUFACTURER OF QUALITY ALUMINUM WINDOWS AND GLASS DOORS

SGD-9200 ALUMINUM SLIDING GLASS DOOR (L.M.I.)

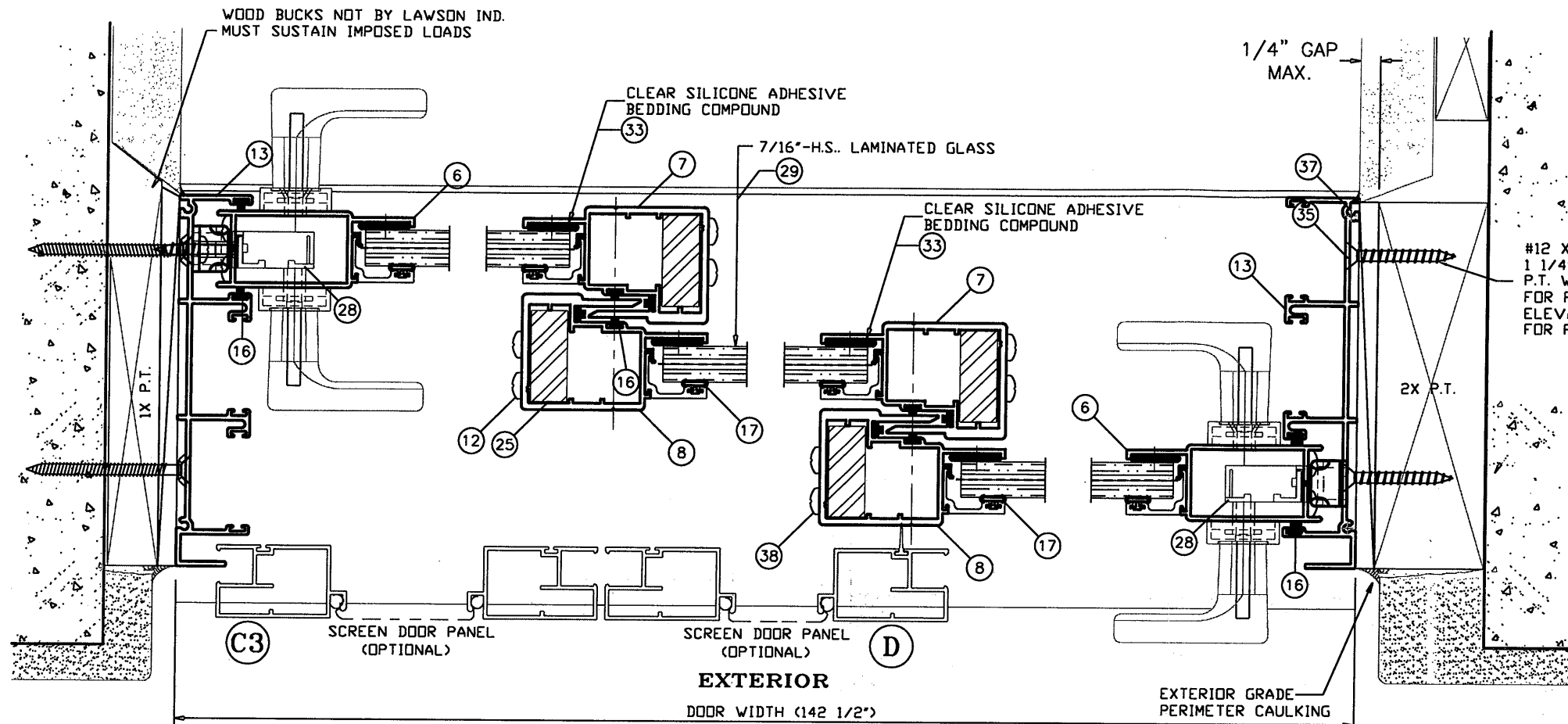
THREE TRACK VERTICAL CROSS SECTIONS, DETAILS & ANCHOR NOTES

Revision Notes: 12-0127.24 & 12-0127.06
A. Revises N/A 12-0127.24 & 12-0127.06
& to include Multi-Slide door panels w/ or w/o pockets and to Comply w/ 2010 FBC

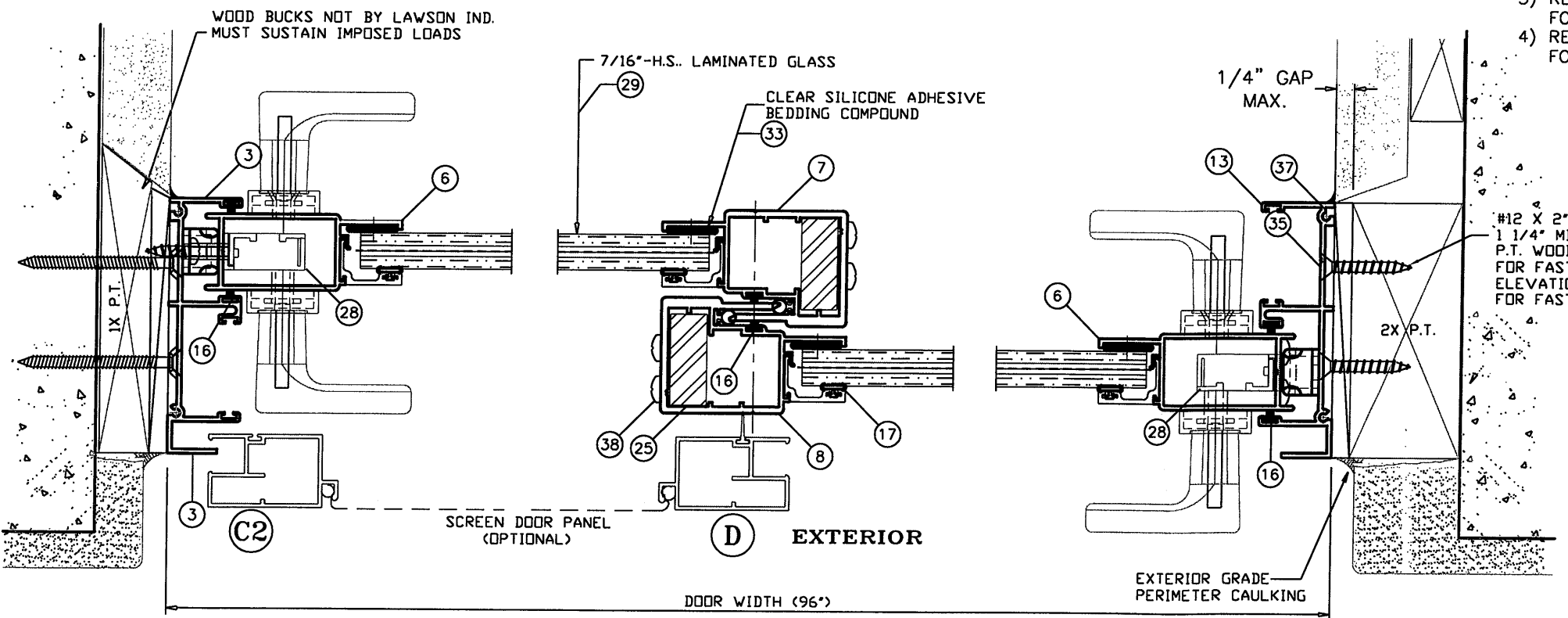
Drawn By: N. ERAZO
Revised By:
Revision Level:
Date Drawn: 09/25/12
Date Revised:
Scale:



DATE JAN 15 2013

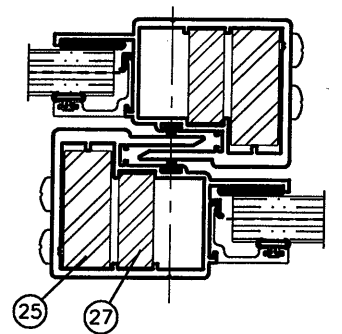


3D/3T - XXX

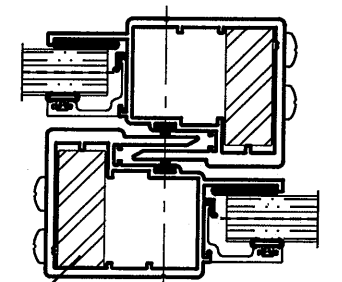


2D/2T - XX

#12 X 2" F.H./PHI.-S.M.S. W/
1 1/4" MIN. EMBED. INTO 2X
P.T. WOOD BUCK (SEE SHEET #9
FOR FASTENER NOTES AND
ELEVATION AT SHEET # 8 FOR
FOR FASTENER SPACING)



2 STEEL BARS REQD. ON
SIZES AS LISTED IN DP
CHART W/ PRESSURES
SHOWN ON SHEET 8 OF 14



1 STEEL BAR REQD. ON
SIZES AS LISTED IN DP
CHART W/ PRESSURES
SHOWN ON SHEET 8 OF 14

- NOTES: 1) REFER TO SHEET 8 OF 14
FOR GLAZING OPTIONS AND DP CHARTS.
2) REFER TO SHEET 9 OF 14
FOR VERTICAL CROSS-SECTION DETAILS.
3) REFER TO SHEET 9 OF 14
FOR TYPICAL ANCHORS AND NOTES.
4) REFER TO SHEET 8 OF 14
FOR MAX. ANCHOR SPACINGS.

#12 X 2" F.H./PHI.-S.M.S. W/
1 1/4" MIN. EMBED. INTO 2X
P.T. WOOD BUCK (SEE SHEET #9
FOR FASTENER NOTES AND
ELEVATION AT SHEET # 8 FOR
FOR FASTENER SPACING)

PRODUCT RENEWED
as complying with the Florida
Building Code
Acceptance No. 12-1204.12
Expiration Date 02/13/2018
By *[Signature]*
Miami Dade Product Control

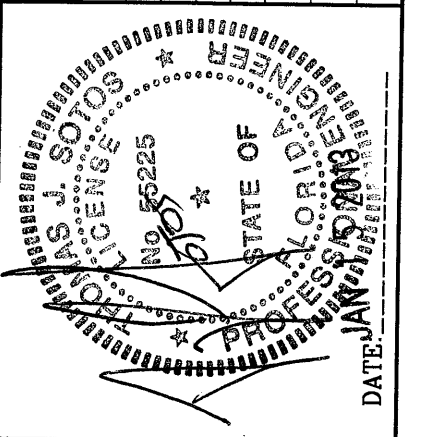
LAWSON
INDUSTRIES, INC.

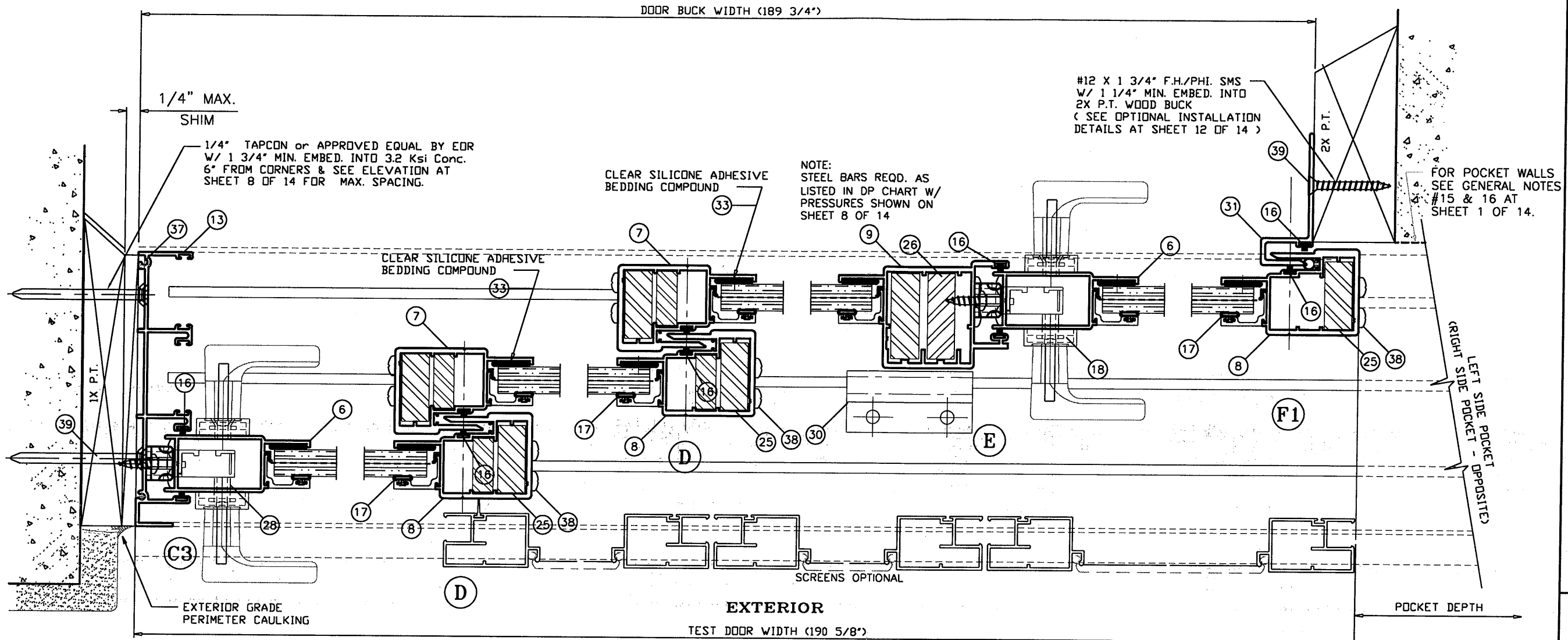
8501 N.W. 90 ST.
MEDLEY, FLORIDA 33166
PH No. (305) 696-8660

MANUFACTURER OF QUALITY ALUMINUM WINDOWS AND GLASS DOORS
SGD-9200 ALUMINUM SLIDING GLASS DOOR (L.M.I.)
TWO DOOR AND THREE DOOR HORIZONTAL CROSS SECTIONS AND NOTES

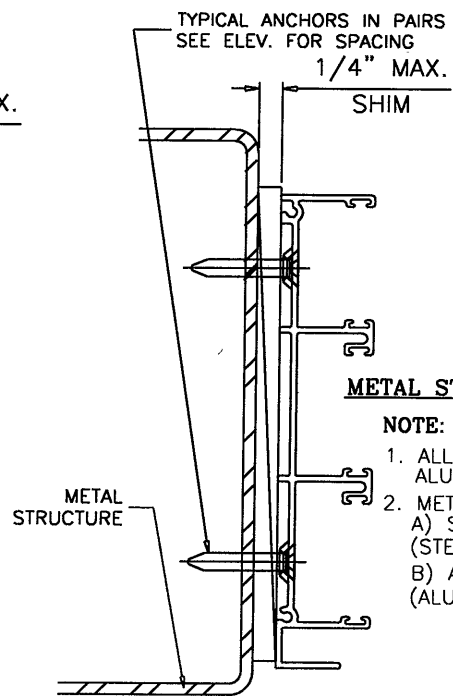
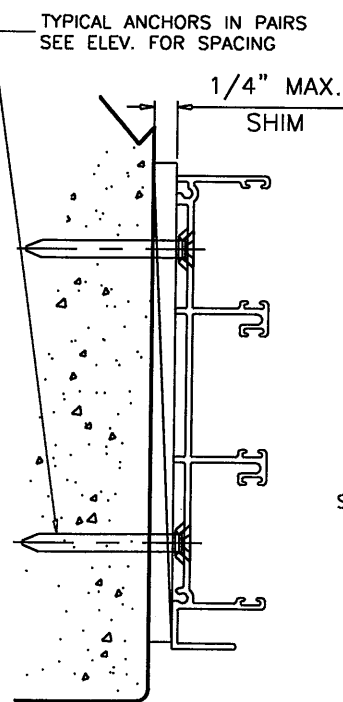
Revision Notes: A. Revises NOA 12-0127.24 & 12-0127.06 & to include Multi-Slide door panels w/ or w/o pockets and to Comply w/ 2010 FBC	Date Drawn: 09/25/12	Scale:
Drawn By: N. ERAZO	Date Revised:	
Revised By:	Revision Level:	

THOMAS J. SOTOS
PROFESSIONAL ENGINEER
FL LIC. # 55225



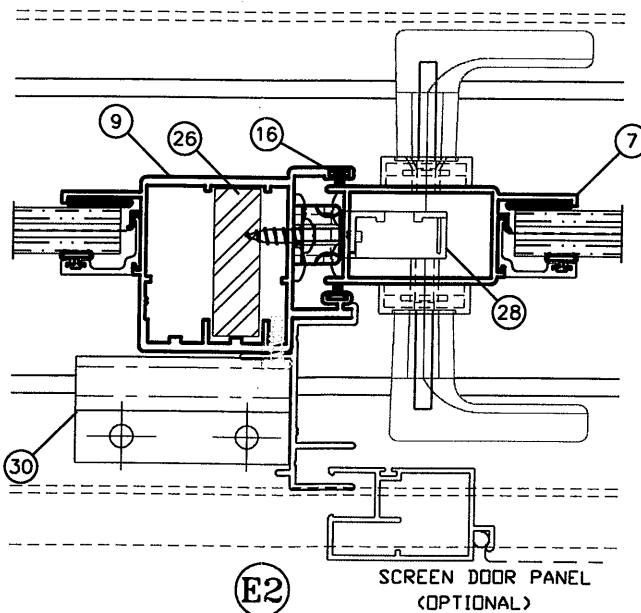


4D/3T - XXXXP



METAL STRUCTURE ATTACHMENT DETAIL

- NOTE:**
1. ALL STEEL IN CONTACT WITH ALUM. TO BE PAINTED OR PLATED.
 2. METAL STRUCTURES:
 - A) STEEL : Fy = 36 KSI MIN. (STEEL 12 GA. MIN. THICK - 0.105")
 - B) ALUMINUM : 6063-T5 MIN. (ALUM. 0.078" MIN. THICK)



- NOTES:**
- 1) REFER TO SHEET 8 OF 14 FOR GLAZING OPTIONS AND DP CHARTS.
 - 2) REFER TO SHEET 9 OF 14 FOR VERTICAL CROSS-SECTION DETAILS.
 - 3) REFER TO SHEET 9 OF 14 FOR TYPICAL ANCHORS AND NOTES.
 - 4) REFER TO SHEET 8 OF 14 FOR MAX. ANCHOR SPACINGS.

PRODUCT RENEWED
 as complying with the Florida Building Code
 Acceptance No. **12-1204.12**
 Expiration Date **02/13/2018**
 By *[Signature]*
 Miami Dade Product Control

LAWSON INDUSTRIES, INC.

8501 N.W. 90 ST.
 MEDLEY, FLORIDA 33166
 PH No. (305) 696-8660

MANUFACTURER OF QUALITY ALUMINUM WINDOWS AND GLASS DOORS

SGD-9200 ALUMINUM SLIDING GLASS DOOR (L.M.I.)

FOUR DOOR HORIZONTAL CROSS SECTIONS, DETAILS & NOTES

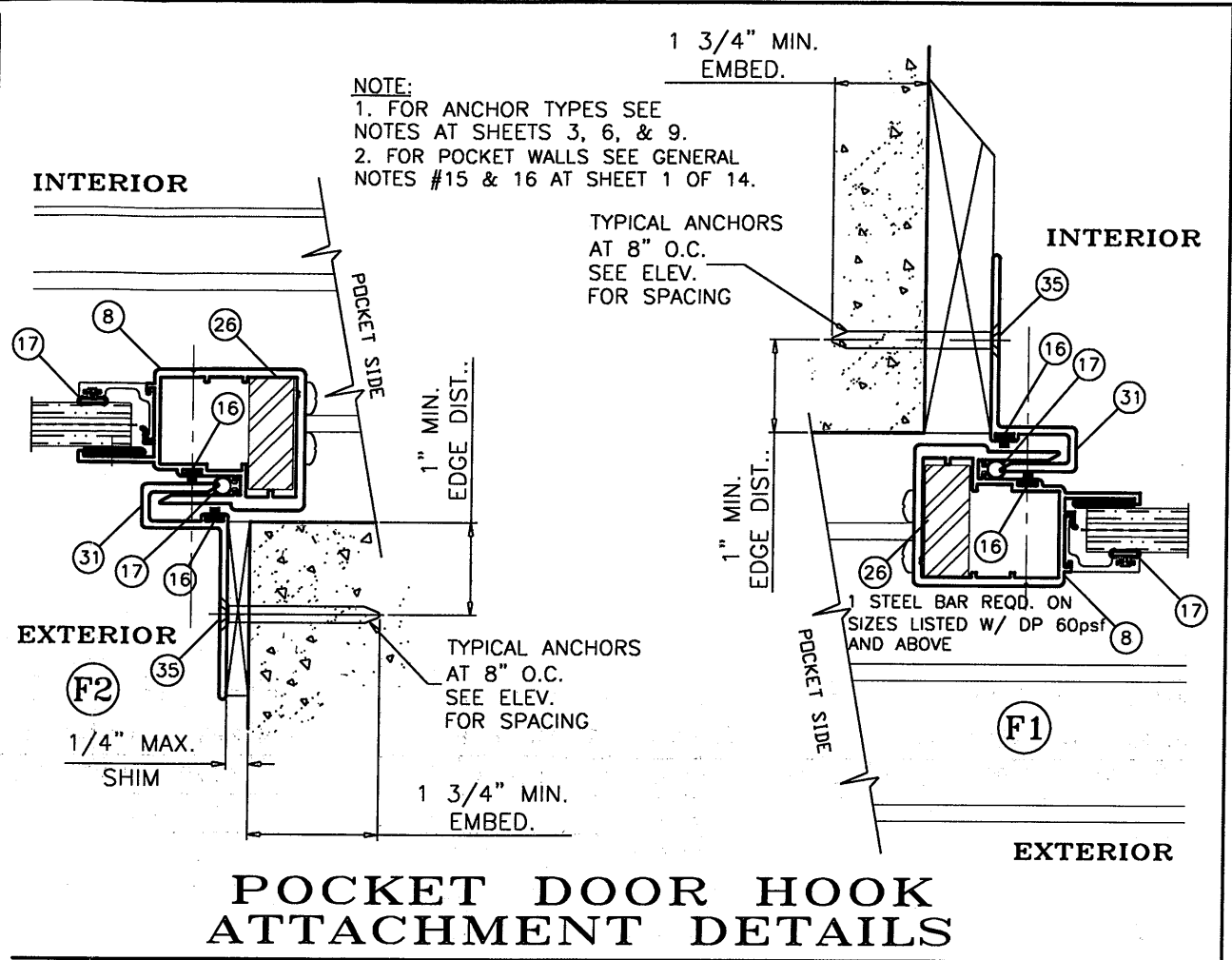
Revision Notes: A. Revises NOA 12-0127.24 & 12-0127.06 & to include Multi-Slide door panels w/ or w/o pockets and to Comply w/ 2010 FBC		Date Drawn: 08/25/12	Date Revised:	Scale:
Drawn By: N. ERAZO	Revised By:			
Revision Level:				

THOMAS J. SOTOS
 PROFESSIONAL ENGINEER
 FL LIC. # 55225

STATE OF FLORIDA
PROFESSIONAL ENGINEER
JANUARY 2018

DATE: _____

SGD-9200 BILL OF MATERIALS - 2 & 3 TRACK FRAME				
ITEM #	PART #	QTY.	DESCRIPTION	REMARKS
1	L-9211	1	2 TRACK FRAME HEAD	6063-T6 ALUMINUM
1.2	L-9211	1	2 TRACK FRAME HEAD (Multi-Slide)	6063-T6 ALUMINUM
2	L-9206	1	2 TRACK FRAME SILL	6063-T5 ALUMINUM
3	L-9212	2	2 TRACK FRAME JAMB	6063-T5 ALUMINUM
4	L-9204	1 X PANEL	PANEL TOP RAIL	6063-T5 ALUMINUM
5	L-9205	1 X PANEL	PANEL BOTTOM RAIL	6063-T5 ALUMINUM
6	L-9201	1	PANEL LOCK STILE	6063-T6 ALUMINUM
7	L-9202	1	PANEL INTERIOR INTERLOCK	6063-T6 ALUMINUM
8	L-9203	1	PANEL EXTERIOR INTERLOCK	6063-T6 ALUMINUM
9	L-9207	1	PANEL ASTRAGAL	6063-T6 ALUMINUM
10	L-9209	AS REQ'D.	ALUMINUM GLAZING BEAD	6063-T5 ALUMINUM
11	L-9214	1	3 TRACK FRAME HEAD	6063-T6 ALUMINUM
12	L-9208	1	3 TRACK FRAME SILL	6063-T5 ALUMINUM
13	L-9213	2	3 TRACK FRAME JAMB	6063-T5 ALUMINUM
14	PWS-016	AS REQ'D.	BOTTOM RAIL WTS'P	ULTRAFAB #QB6757DK
15	PWS-009	AS REQ'D.	PANEL TOP RAIL WTS'P	.187"x.310" (7830-6001-1)
16	PWS-003	AS REQ'D.	FIN SEAL WEATHERSTRIP	.187"x.210" (7820-6001-9)
17	VWS-004	AS REQ'D.	BULB VINYL (FPVC)	1/4" O.D.
18	L-9016	2	SELF ADHESIVE PILE PAD	13/16" X 1 1/2"
19	HC-046	2	MVG. PANEL TANDEM ROLLER	2 X EA. MVG. BOT. RAIL
20	FS-003	2	ROLLER ATTACHMENT SCREW	#8 X 1/2" F.H./PHIL.
21	AR-008	2X PANEL	PANEL "C" TRACK CLIP	6063-T6 ALUMINUM
22	FS-042	AS REQD.	"C" TRACK ATTACHMENT SCREW	#10 X 1" SMS F.H./PHIL.
23	L-9018	1 X ANCHOR	FIXED PANEL JAMB CLIP	6063-T5 ALUMINUM
24	FS-011	1 X CLIP	FIXED PANEL CLIP SCREW	#10 X 5/8" PH/PHIL.
25	AR-020	*	INTERLOCK STEEL REINFORCEMENT	1/2" X 1 1/4" (36 KSI)
26	AR-021	*	ASTRAGAL STEEL REINFORCEMENT	1/2" X 1 1/2" (36 KSI)
27	AR-024	*	INTERLOCK STEEL REINFORCEMENT	3/8" X 1" (36 KSI)
28	HC-047	1	MORTISE LOCK HARDWARE	W/ HANDLES & KEEPER
29	*	1 x Panel	7/16" Laminated H.S. Glass	See Glazing Details
30	L-9022	*	ASTRAGAL PANEL SILL CLIP	6063-T5 ALUMINUM
31	L-9215	1	POCKET JAMB HOOK	6063-T6 ALUMINUM
32	SM-5731	*	NEUTRAL CURE SILICONE	Schnee-Morehead 5731
33	DC-899	AS REQ'D.	NEUTRAL CURE SILICONE	Dow Corning 899
34	*	*	NEUTRAL CURE SILICONE	Tremco Spectrem 2
35	HC-045	2	NYLON PLUG (.480" HOLE)	RIGID PVC
36	HC-043	2X PANEL	NYLON TOP GUIDE	RIGID PVC
37	FS-005	AS REQ'D.	FRAME ASSEMBLY SCREWS	#8 X 1/2" P.H. PHILLIPS
38	FS-013	AS REQ'D.	PANEL ASSEMBLY SCREWS	#10 X 1" P.H. PHILLIPS
39	FS-014	AS REQD.	INSTALLATION SCREWS	#12 X 1 3/4" F.H./PHIL.
40	PL 75.6020	AS REQ'D.	GLAZING SETTING BLOCK	SOFT PVC 1/8" x 1/8" x 2"L.
41	*	-	SCREEN PANEL	*
42	SM-5504	AS REQ'D.	JOINT SEALANT	Schnee-Morehead 5504
43	*	*	PERIMETER CAULKING	OSI POLYSEAMSEAL
44	*	1	PRODUCT LABEL	*



Flexible Vinyl (FPVC) Composition - Team Plastics, Inc.		
*1. FPVC Black: Compound No. 7200-75		
PHYSICAL		ASTM NO.
Durometer Hardness "A", 10 sec	75	D-2240
Specific Gravity	1.45	D-792
Tensile Strength, PSI	1640	D-638
Ultimate Elongation, %	340.0	D-638
Modulus @ 100% Elongation, PSI	765.0	D-638
Impact Brittleness,	-31.0	D-746
*2. FPVC White: Compound No. 7267-75		
PHYSICAL		ASTM NO.
Durometer Hardness "A", 10 sec	75	D-2240
Specific Gravity	1.45	D-792
Tensile Strength, PSI	1640	D-638
Ultimate Elongation, %	325.0	D-638
Modulus @ 100% Elongation, PSI	765.0	D-638
Impact Brittleness,	-30.0	D-746

PRODUCT RENEWED
as complying with the Florida
Building Code
Acceptance No. 12-1204.12
Expiration Date 02/13/2018
By *[Signature]*
Miami Dade Product Control

8501 N.W. 90 ST.
MEDLEY, FLORIDA 33166
PH No. (305) 696-8660

LAWSON INDUSTRIES, INC.

MANUFACTURER OF QUALITY ALUMINUM WINDOWS AND GLASS DOORS

SGD-9200 ALUMINUM SLIDING GLASS DOOR (L.M.I.)

BILL OF MATERIALS, POCKET JAMB HOOK INSTALLATION DETAILS

Revision #: 12 OF 14
Sheet: 12 OF 14
Drawing Number: L9200-1201
Product Reference Number:

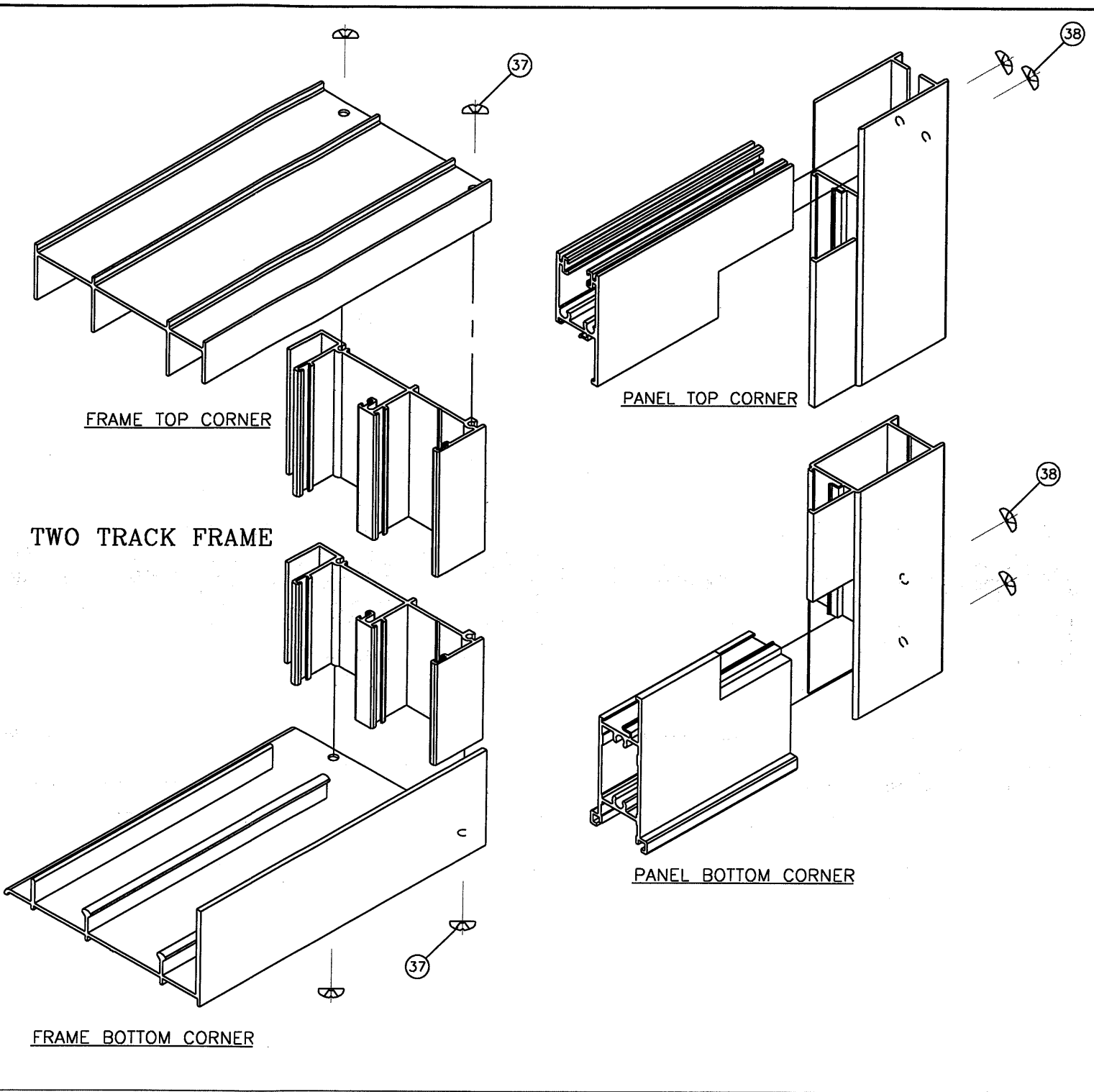
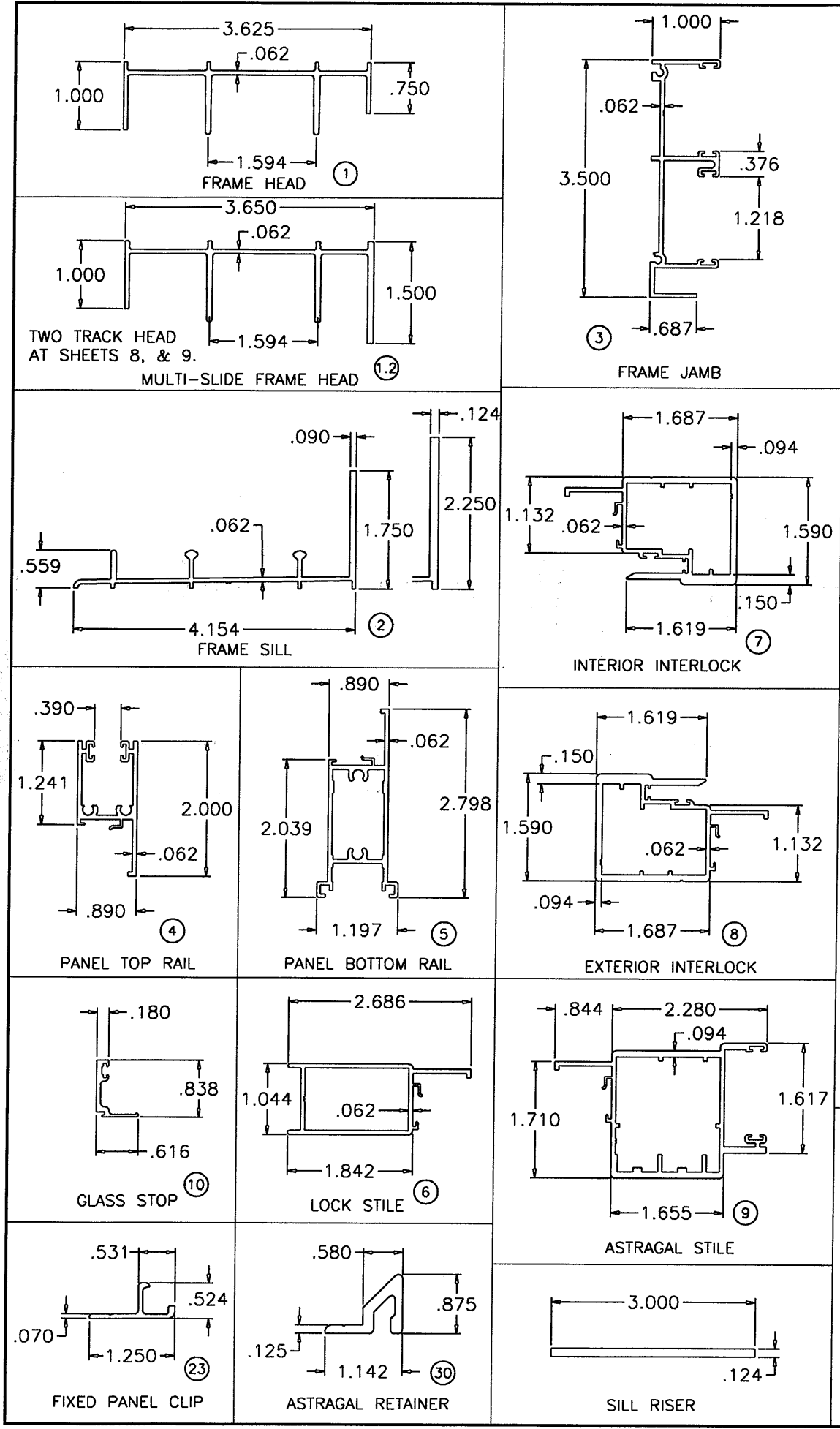
Revision Notes:
A. Revises NOA 12-0127.24 & 12-0127.06
& to include Multi-Slide door panels w/ or w/o pockets and to Comply w/ 2010 FBC

Date Drawn: 09/25/12
Date Revised:
Scale:

Drawn By: N. ERAZO
Revised By:
Revision Level:

THOMAS J. SOTOS
PROFESSIONAL ENGINEER
FL LIC. # 55225

DATE JAN 15 2013



PRODUCT RENEWED
as complying with the Florida
Building Code
Acceptance No. 12-1204.12
Expiration Date 02/13/2018
By *[Signature]*
Miami Dade Product Control

THOMAS J. SOTOS
PROFESSIONAL ENGINEER
FL LIC. # 55225

DATE JAN 15 2013

STATE OF FLORIDA
PROFESSIONAL ENGINEER

Revision Notes:
A. Revises NOA 12-0127.24 & 12-0127.06
& to include Multi-Slide door panels w/ or
w/o pockets and to Comply w/ 2010 FBC

Drawn By: N. ERAZO
Revised By:
Revision Level:

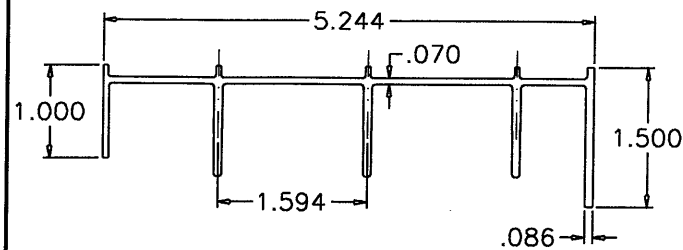
Date Drawn: 09/25/12
Date Revised:

Scale:

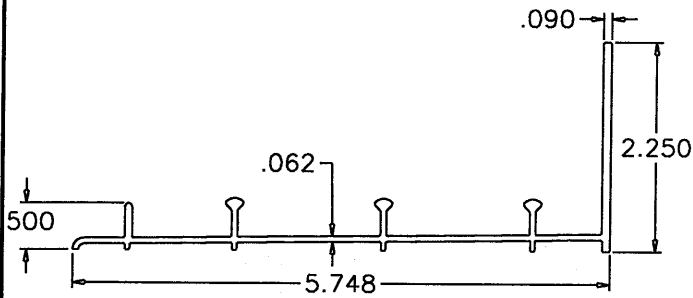
Product Reference Number: L9200-1201
Drawing Number: L9200-1201
Sheet: 13 OF 14
Revision #:

LAWSON INDUSTRIES, INC.
MANUFACTURER OF QUALITY ALUMINUM WINDOWS AND GLASS DOORS
SGD-9200 ALUMINUM SLIDING GLASS DOOR (L.M.I.)
EXTRUSION DETAILS & FRAME AND PANEL CORNER ASSEMBLY DETAILS

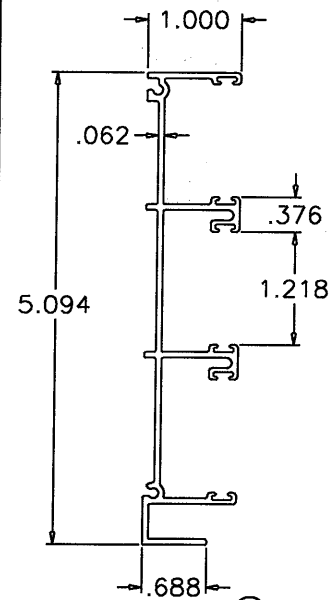
8501 N.W. 90 ST.
MEDLEY, FLORIDA 33166
PH No. (305) 696-8660



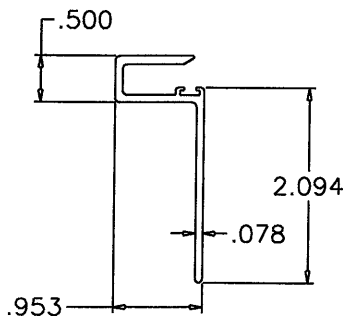
FRAME HEAD (11)



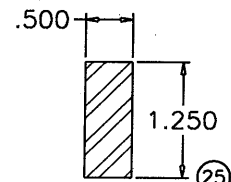
FRAME SILL (12)



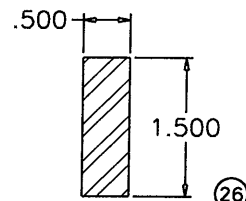
FRAME JAMB (13)



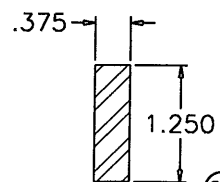
Pocket "P" Hook (31)



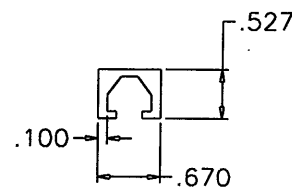
INTERLOCK REINFORCING (25)



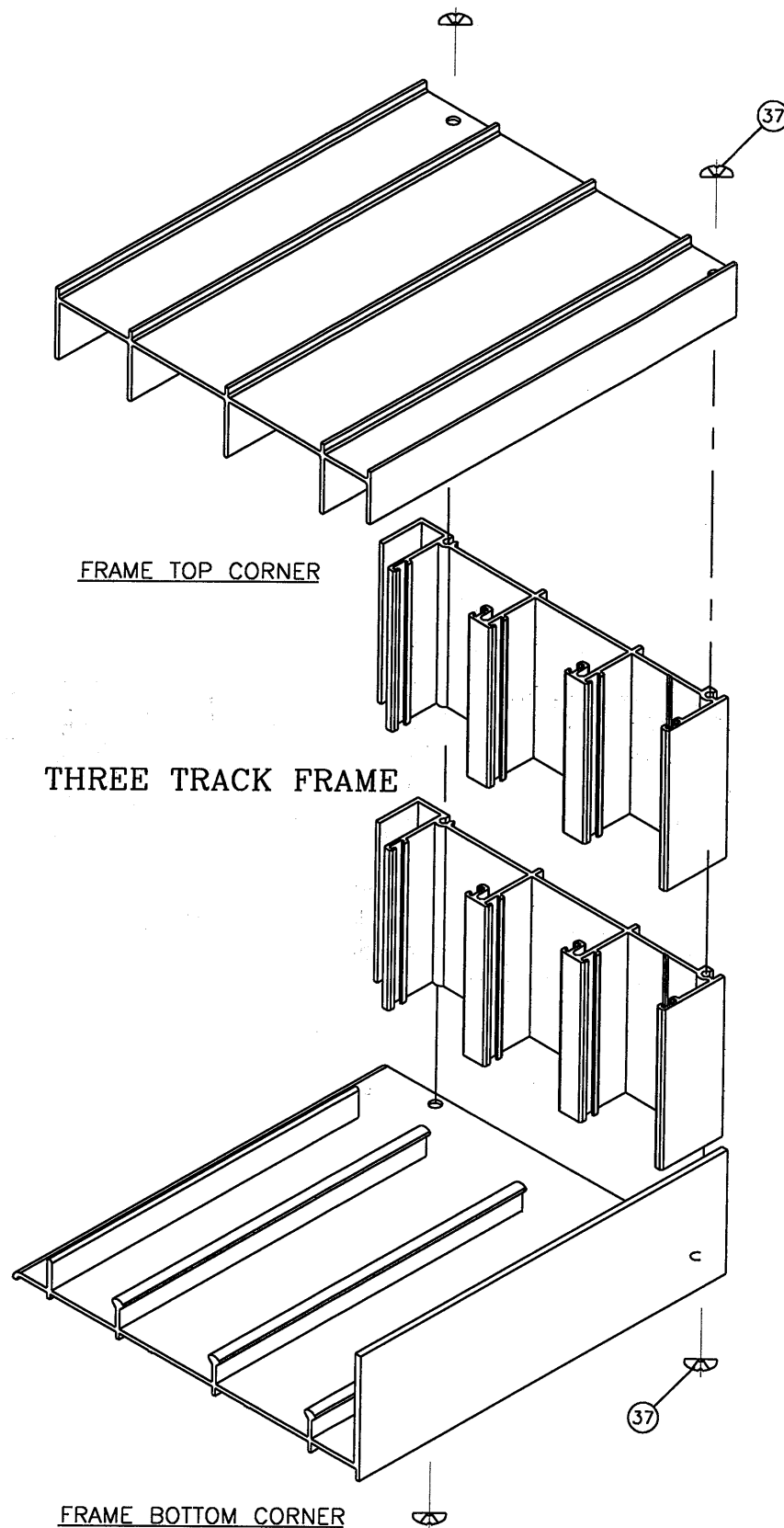
ASTRAGAL REINFORCING (26)



INTERLOCK REINFORCING (27)



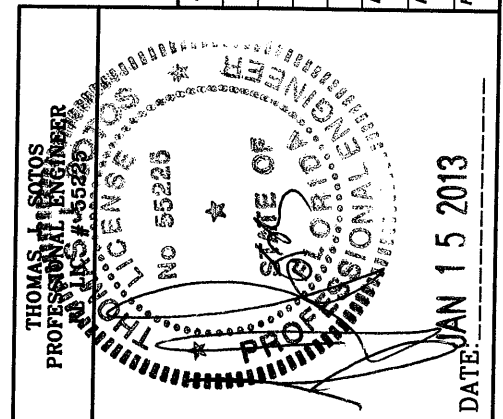
"C" CLIP (21)



THREE TRACK FRAME

FRAME BOTTOM CORNER

PRODUCT RENEWED
as complying with the Florida
Building Code
Acceptance No. 12-1204.12
Expiration Date 02/13/2018
By *[Signature]*
Miami Dade Product Control



Revision Notes: A. Revises NOA 12-0127.24 & 12-0127.06 & to include Multi-Slide door panels w/ or w/o pockets and to Comply w/ 2010 FBC			
Drawn By:	N. ERAZO	Date Drawn:	09/25/12
Revised By:		Date Revised:	
Revision Level:		Scale:	

LAWSON
INDUSTRIES, INC.

8501 N.W. 90 ST.
MEDLEY, FLORIDA 33166
PH No. (305) 696-8660

MANUFACTURER OF QUALITY ALUMINUM WINDOWS AND GLASS DOORS

SGD-9200 ALUMINUM SLIDING GLASS DOOR (L.M.I.)
EXTRUSION DETAILS, REINFORCEMENTS & FRAME CORNER ASSEMBLY DETAILS

Product Reference Number:

L9200-1201

Sheet: 14 OF 14

Revision #: