



MIAMI-DADE COUNTY
 PRODUCT CONTROL SECTION
 11805 SW 26 Street, Room 208
 Miami, Florida 33175-2474
 T (786) 315-2590 F (786) 315-2599
www.miamidade.gov/economy

DEPARTMENT OF REGULATORY AND ECONOMIC RESOURCES (RER)
 BOARD AND CODE ADMINISTRATION DIVISION
NOTICE OF ACCEPTANCE (NOA)

International Impact Building Products, LLC
5900 Australian Avenue, Suite #300
West Palm Beach, FL 33407

SCOPE:

This NOA is being issued under the applicable rules and regulations governing the use of construction materials. The documentation submitted has been reviewed and accepted by Miami-Dade County RER - Product Control Section to be used in Miami Dade County and other areas where allowed by the Authority Having Jurisdiction (AHJ).

This NOA shall not be valid after the expiration date stated below. The Miami-Dade County Product Control Section (In Miami Dade County) and/or the AHJ (in areas other than Miami Dade County) reserve the right to have this product or material tested for quality assurance purposes. If this product or material fails to perform in the accepted manner, the manufacturer will incur the expense of such testing and the AHJ may immediately revoke, modify, or suspend the use of such product or material within their jurisdiction. RER reserves the right to revoke this acceptance, if it is determined by Miami-Dade County Product Control Section that this product or material fails to meet the requirements of the applicable building code.

This product is approved as described herein, and has been designed to comply with the Florida Building Code, including the High Velocity Hurricane Zone.

DESCRIPTION: Series "Titan 90" Aluminum Sliding Glass Door w/ reinforcements-Impact

APPROVAL DOCUMENT: Drawing No. W11-47 Rev C, titled "Series Titan 90 Alum Sliding Glass Door (L.M.I.)", sheets 1 through 7 of 7, prepared by AL-Farooq Corporation, dated 08/22/11 and last revised on AUG 12, 2014, signed and sealed by Javad Ahmad, P.E., bearing the Miami-Dade County Product Control Revision stamp with the Notice of Acceptance number and expiration date by the Miami-Dade County Product Control Section.

MISSILE IMPACT RATING: Large and Small Missile Impact Resistant

Limitations:

1. The frame area of alternate size unit shall not exceed the frame area of the tested approved unit per FBC 2411.3.2.4 (i) (1).

LABELING: Each unit shall bear a permanent label with the manufacturer's name or logo, city, state and series and following statement: "Miami-Dade County Product Control Approved", noted herein.

RENEWAL of this NOA shall be considered after a renewal application has been filed and there has been no change in the applicable building code negatively affecting the performance of this product.

TERMINATION of this NOA will occur after the expiration date or if there has been a revision or change in the materials, use, and/or manufacture of the product or process. Misuse of this NOA as an endorsement of any product, for sales, advertising or any other purposes shall automatically terminate this NOA. Failure to comply with any section of this NOA shall be cause for termination and removal of NOA.

ADVERTISEMENT: The NOA number preceded by the words Miami-Dade County, Florida, and followed by the expiration date may be displayed in advertising literature. If any portion of the NOA is displayed, then it shall be done in its entirety.

INSPECTION: A copy of this entire NOA shall be provided to the user by the manufacturer or its distributors and shall be available for inspection at the job site at the request of the Building Official. This NOA revises & renews NOA # 11-0923.01 and consists of this page 1 and evidence pages E-1, as well as approval document mentioned above.

The submitted documentation was reviewed by Ishaq I. Chanda, P.E.



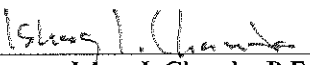
8/21/14

NOA No. 14-0624.22
 Expiration Date: July 01, 2019
 Approval Date: August 21, 2014
 Page 1

International Impact Building Products, LLC

NOTICE OF ACCEPTANCE: EVIDENCE SUBMITTED

- A. DRAWINGS** (submitted under files #11-0923.01/# 09-0127.14)
1. Manufacturer's die drawings and sections.
 2. Drawing No. **W11-47 Rev C**, titled "Series Titan 90 Alum Sliding Glass Door (L.M.I.)", sheets 1 through 7 of 7, prepared by AL-Farooq Corporation, dated 08/22/11 and last revised on AUG 12, 2014, signed and sealed by Javad Ahmad, P.E.
- B. TESTS** (submitted under files #11-0923.01/# 09-0127.14)
1. Test reports on 1) Air Infiltration Test, per TAS 202-94
 - 2) Uniform Static Air Pressure Test, Loading per TAS 202-94
 - 3) Water Resistance Test, per TAS 202-94.
 - 4) Forced Entry Test per FBC 2411.3.2.1 and TAS202-94.
 - 5) Large Missile Impact Test, per TAS 201-94
 - 6) Cyclic Wind Pressure Loading, per TAS 203-94
- Along with marked-up drawings and installation diagram of an aluminum sliding glass door, prepared by Hurricane Testing Laboratories, Test Report No. **HTL-0171-0713.07**, dated 08-01-2008, signed and sealed by Vinu Abraham, P.E.
2. Additional OXO sliding Glass Door test report No. HTL-0171-106-07, dated 03-16-07 per TAS 201, 202 and 203-94, signed and sealed by Vinu Abraham, P.E., issued to Plaza Door Co (Now known as International Impact Products, LLC).
- C. CALCULATIONS** (submitted under files #11-0923.01)
1. Anchor verification calculations and structural analysis, complying with FBC-2007, prepared by Al Farooq Corporation, dated 09/20/11 and last revised on OCT25, 2011, signed and sealed by Javad Ahmad, P.E.
 2. Glazing complies w/ ASTM E-1300-02, -04 & -09.
- D. QUALITY ASSURANCE**
1. Miami Dade Department of Regulatory and Economic Resources (RER).
- E. MATERIAL CERTIFICATIONS**
1. Notice of Acceptance No. **11-0624.02** issued to E.I. DuPont DeNemours & Co., Inc. for the "DuPont Sentry Glass interlayer®", expiring on 01/14/17.
- F. STATEMENTS**
1. Statement letter dated 06/24/14, compliance to FBC2014 (5th edition) and No financial interest, prepared by Al Farooq Corporation, signed and sealed by Javad Ahmad, P.E.
 2. Statement letter dated 11/16/11 compliance to FBC2010, prepared by Al Farooq Corporation, signed and sealed by Javad Ahmad, P.E. (submitted under files #11-0923.01)
 3. Statement letter dated 04/09/09, issued by Plaza Doors of all assets sold to Impact Building Products, signed by Roy Elwell, president Plaza Door (original in file # 09-0127.14)
 4. Statement letter dated 04/09/09, issued by Impact Building Products of all assets purchased from Plaza Doors, signed by Michael Fry, Managing Partner, International Impact Building Products (original in file #09-0127.14)
 5. Laboratory compliance, as a part of above test reports.
- G. OTHER**
1. This NOA revises & renews NOA # 11-0923.01, expiring 07/01/18.
 2. Bill of Sales Assignment and Loan Purchase agreement between National City Bank and International Impact Building Products.


Ishaq I. Chanda, P.E.
Product Control Examiner
NOA No. 14-0624.22
Expiration Date: July 01, 2019
Approval Date: August 21, 2014

DESIGN LOAD CAPACITY - PSF			
AVG. PANEL WIDTH INCHES	PANEL HEIGHT INCHES	EXT.(+)	INT.(-)
36	96	90.0	90.0
42		90.0	90.0
48		90.0	90.0
52		90.0	90.0
54		86.7	86.7
60	78.0	78.0	
36	102	90.0	90.0
42		90.0	90.0
48		90.0	90.0
52		90.0	90.0
54		86.7	86.7
60	78.0	78.0	
36	108	90.0	90.0
42		90.0	90.0
48		90.0	90.0
52		90.0	90.0
54		86.7	86.7
36	114	90.0	90.0
42		90.0	90.0
48		90.0	90.0
52		90.0	90.0
54		86.7	86.7
36	120	90.0	90.0
42		90.0	90.0
48		90.0	90.0
52		90.0	90.0
54		86.7	86.7

DOOR HEIGHT AND WIDTH SIZE MUST COMPLY WITH EGRESS REQUIREMENTS PER FBC.

THESE DOORS ARE RATED FOR LARGE & SMALL MISSILE IMPACT. SHUTTERS ARE NOT REQUIRED.

SERIES 'TITAN 90' ALUMINUM SLIDING GLASS DOOR

DESIGN LOAD RATING FOR DOORS TO BE AS PER CHART SHOWN ABOVE.

THIS PRODUCT HAS BEEN DESIGNED AND TESTED TO COMPLY WITH THE REQUIREMENTS OF THE FLORIDA BUILDING CODE INCLUDING HIGH VELOCITY HURRICANE ZONE (HVHZ).

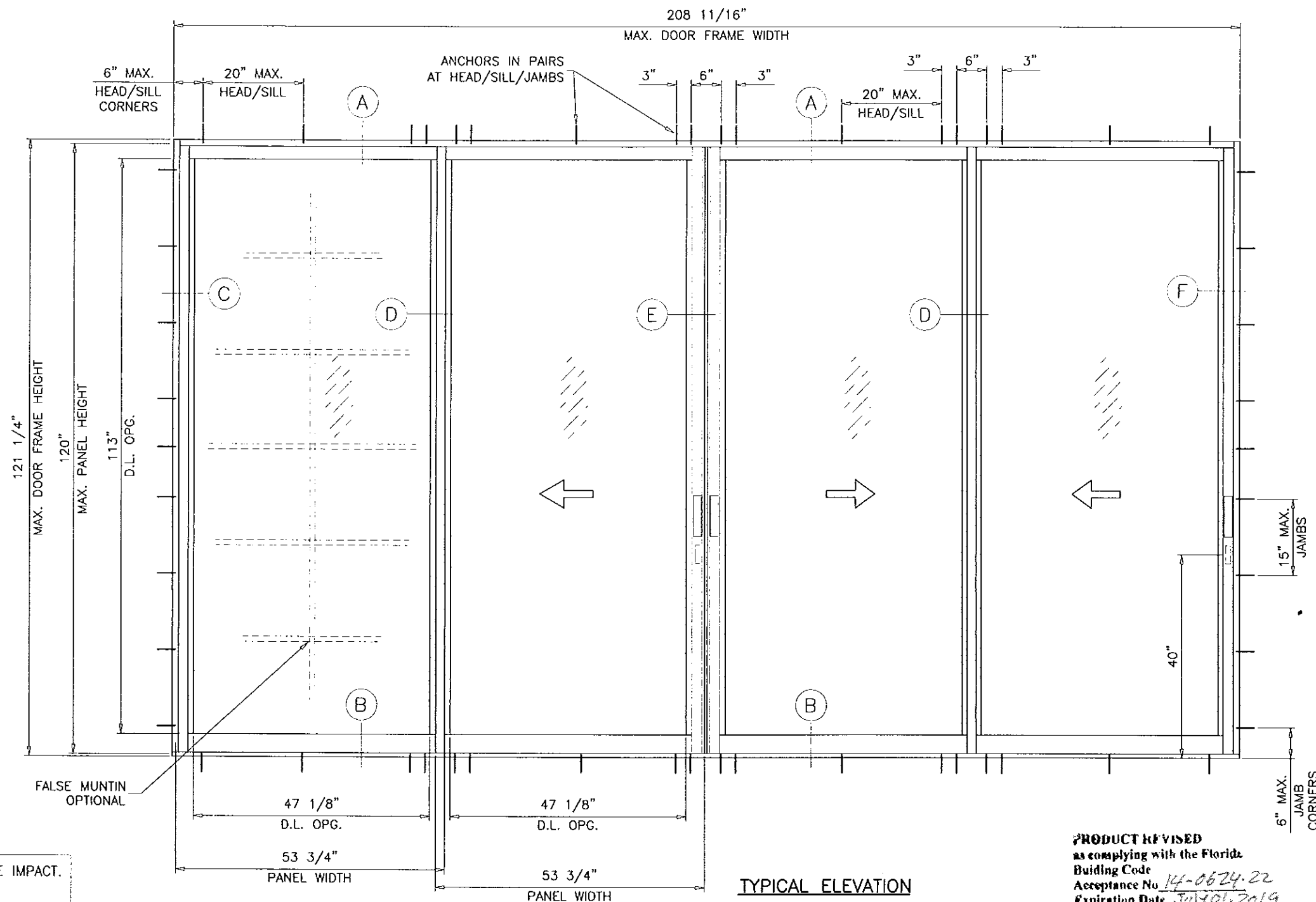
1BY OR 2BY WOOD BUCKS BY OTHERS, MUST BE ANCHORED PROPERLY TO TRANSFER LOADS TO THE STRUCTURE.

ANCHORS SHALL BE AS LISTED, SPACED AS SHOWN ON DETAILS, ANCHORS EMBEDMENT TO BASE MATERIAL SHALL BE BEYOND WALL DRESSING OR STUCCO.

ANCHORING OR LOADING CONDITIONS NOT SHOWN IN THESE DETAILS ARE NOT PART OF THIS APPROVAL.

A LOAD DURATION INCREASE IS USED IN DESIGN OF ANCHORS INTO WOOD ONLY.

MATERIALS INCLUDING BUT NOT LIMITED TO STEEL/METAL SCREWS, THAT COME INTO CONTACT WITH OTHER DISSIMILAR MATERIALS SHALL MEET THE REQUIREMENTS OF THE FLORIDA BLDG. CODE.



DAYLITE OPENINGS:
D.L.O. HEIGHT = PANEL HEIGHT - 7.000"
D.L.O. WIDTH = PANEL WIDTH - 6.625"
DOOR FRAME HEIGHT = PANEL HEIGHT + 1.250"

PRODUCT REVISED
as complying with the Florida Building Code
Acceptance No. 14-0624-22
Expiration Date July 01, 2019
By: [Signature]
Miami Dade Product Control

**LAMINATED GLASS
LARGE MISSILE IMPACT**

Engr: JAVAD AHMAD
CIVIL
FLA. PE # 70592
C.A.N. 3538
AUG 12 2014

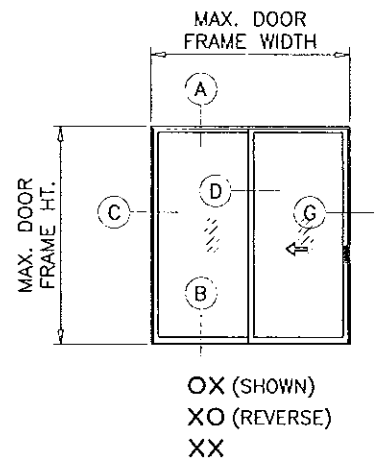
NOTE:
GLASS CAPACITIES ON THIS SHEET ARE BASED ON ASTM E1300-09 (3 SEC. GUSTS) AND FLORIDA BUILDING COMMISSION DECLARATORY STATEMENT DCA05-DEC-219

AL-FAROOQ CORPORATION
ENGINEERS & PRODUCT DEVELOPMENT
1235 S.W. 87 AVE
MIAMI, FLORIDA 33174
TEL. (305) 264-8100 FAX. (305) 262-6978
COMP-ANL W11-47PD

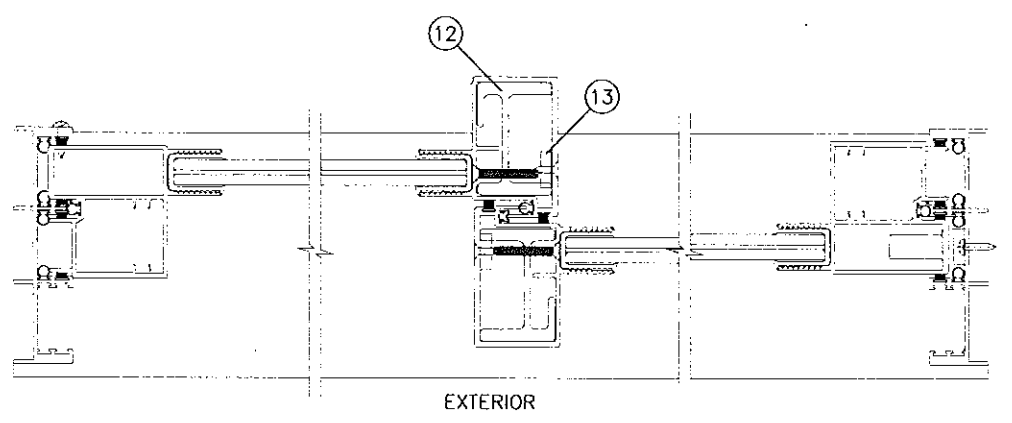
SERIES 'TITAN 90' ALUM SLIDING GLASS DOOR (L.M.I.)
INTERNATIONAL IMPACT BUILDING PRODUCTS, LLC
d/b/o PLAZA DOOR
5900 AUSTRALIAN AVE. SUITE #3
WEST PALM BEACH, FL 33407
TEL. (561) 578-5450 FAX. (561) 578-5460

no	date	description
A	10.24.11	REV. PER INC COMMENTS
B	06.23.14	UPDATED TO 2014 FBC
C	08.12.14	REV. PER PER COMMENTS

date: 08-22-11
scale: 1/2" = 1'-0"
dr. by: HAMID
chk. by:
drawing no. W11-47
sheet 1 of 7

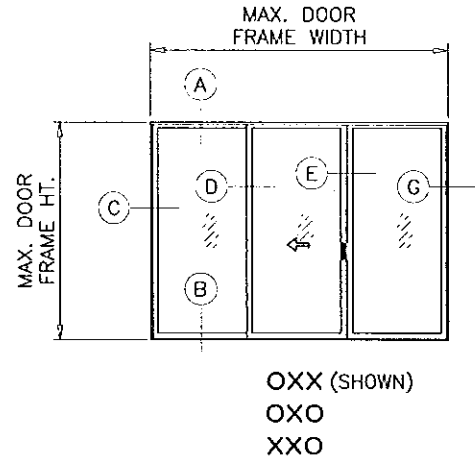


OX (SHOWN)
XO (REVERSE)
XX

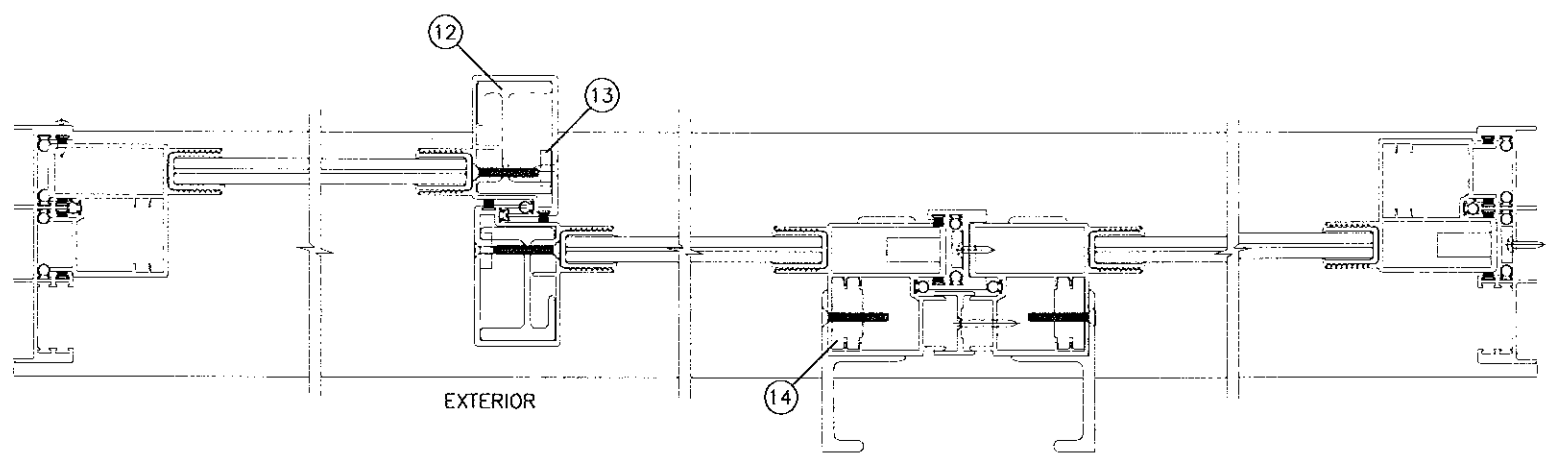


EXTERIOR

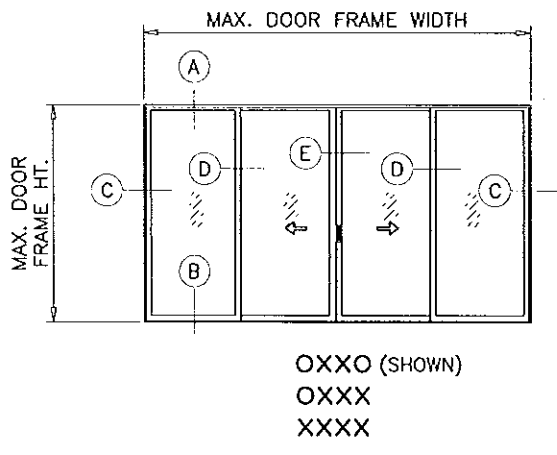
NOTE:
CONFIGURATIONS SHOWN FOR ILLUSTRATION PURPOSE ONLY
(SEE APPLICABLE ANCHOR INSTALLATIONS IN SHEETS 4 & 5)



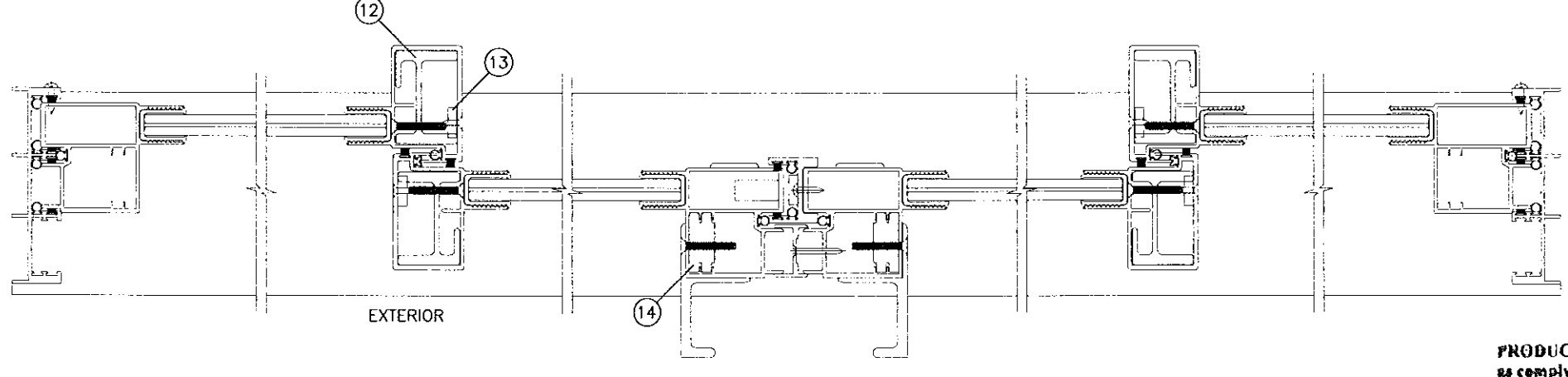
OXX (SHOWN)
OXO
XXO



EXTERIOR



OXXO (SHOWN)
OXXX
XXXX



EXTERIOR

PRODUCT REVISED
as complying with the Florida
Building Code
Acceptance No 14-0624-22
Expiration Date 7/1/19
By Ishant L. Khanna
Miami Dade Product Control

APPROVED CONFIGURATIONS

Engr: JAVAD AHMAD
CIVIL
FLA. PE # 70592
C.A.N. 3538

AUG 12 2014

afc
AL-FAROOQ CORPORATION
ENGINEERS & PRODUCT DEVELOPMENT
1235 S.W. 87 AVE
MIAMI, FLORIDA 33174
TEL (305) 264-8100 FAX (305) 262-6978
COMP-ANL\W11-47PD

SERIES TITAN 90' ALUM SLIDING GLASS DOOR (L.M.I.)
INTERNATIONAL IMPACT BUILDING PRODUCTS, LLC
d/b/a PLAZA DOOR
5900 AUSTRALIAN AVE, SUITE #3
WEST PALM BEACH, FL 33407
TEL. (561) 578-5450 FAX. (561) 578-5460

no.	date	by	description
A	10.24.11		REV. PER BNC COMMENTS
B	06.23.14		NO CHANGE THIS SHEET
C	08.12.14		REV. PER PER COMMENTS

date: 08-22-11
scale: -
dr. by: HAMID
chk. by:

drawing no.
W11-47
sheet 2 of 7

BILL OF MATERIALS (B.O.M.)

ITEM	PART #	QUANTITY	DESCRIPTION	MATERIAL	MANF./SUPPLIER/REMARKS
1	PDC-009	1	FRAME HEAD	6063-T6	-
2	PDC-012	1	FRAME SILL	6063-T6	-
3	PDC-010	2	FRAME JAMB	6063-T6	-
4	PDC-058	1/ PANEL	PANEL TOP RAIL	6063-T6	-
5	PDC-059	1/ PANEL	PANEL BOTTOM RAIL	6063-T6	-
6	PDC-060	1/ PANEL	JAMB/LOCK STILE	6063-T6	-
7	PDC-061	1/ PANEL	INTERLOCK STILE	6063-T6	-
8	PDC-002	AS REQD.	ASTRAGAL STILE	6063-T6	-
10	PDC-022	AS REQD.	SCREEN ASTRAGAL	6063-T6	-
11	PDC-041	AS REQD.	HAND RAIL	6063-T6	-
12	PDC-062	1/ PANEL	INTERLOCK STILE REINFORCEMENT, LENGTH = PANEL HT. - 18"	6063-T6	-
13	PDC-092	2/ PANEL	INTERLOCK REINFORCEMENT, 12" LONG	6063-T6	-
14	PDC-093	1/ PANEL	STILE REINFORCEMENT, LENGTH = PANEL HT. - 18"	6063-T6	-
15	PDC-085	1	HI-RISE ADAPTER	6063-T6	-
16	2-270-0	AS REQD.	GLAZING GASKET (X-1842)	FLEXIBLE PVC	CENTRAL PLASTICS
17	3-310-0	2/ MOV. PANEL	ADJUSTABLE ROLLER ASSEMBLY ALUMINUM HOUSING, DELRIN TIRE, ST. STEEL BEARING	-	IIBP
18	2-322-0	-	DEADLOCK #1847-02 SS	-	ADAMS RITE
19	2-351-0	-	LOCK ESCUTCHEON #4430	-	ADAMS RITE
20	3-001-0	-	LOCK KEEPER	-	IIBP
21	3-008-0	-	TRACK RAIN PAN	-	IIBP
22	3-009-0	-	H.P. WEATHER TAB	-	IIBP
23	2-400-0	AS REQD.	.270 WIDE POLY-BOND FINSEAL #PB-8425-2211-0	-	SCHLEGAL
24	2-402-0	AS REQD.	.270 WIDE POLY-BOND WOOLPILE #PB-7525-6011-6	-	SCHLEGAL
25	2-407-0	AS REQD.	.270 WIDE POLY-BOND FINSEAL #PB-7531-6011-2	-	SCHLEGAL
26	2-222-0	AS REQD.	BULB W'STRIPPING (EV-277)	-	CENTRAL PLASTICS
27	2-025-0	-	#10-24 X 1/4" PFH UC SMS	-	AT 2" FROM ENDS & 14" O.C.
30	2-010-0	-	#12 X 1-1/4" PPH SS SMS	-	1 PER DOOR ROLLER
31	2-040-0	-	#8 X 1" FH SMS	-	2 PER 12" REINF. BAR
32	2-007-0	-	#14 X 1-1/4" PH SMS	-	2 PER DOOR PANEL CORNERS
33	2-019-0	-	#8 X 1/2" PH SMS	-	AT 3" FROM ENDS & 18" O.C.
34	2-069-0	-	#8 X 1-1/4" SMS	-	AT 3" FROM ENDS & 18" O.C.
35	2-027-0	-	#10 X 1-1/4" MS TYPE F FH	-	AT 6" FROM ENDS & 12" O.C.
36	2-042-0	-	#8 X 3/4" PH SMS	-	AT 6" FROM ENDS & 18" O.C.
39	2-027-0	1	#10 X 1-1/4" MS TYPE F FH	-	(1) AT 9" FROM BOTTOM

afC
AL-FAROOQ CORPORATION
 ENGINEERS & PRODUCT DEVELOPMENT
 1235 S.W. 87 AVE
 MIAMI, FLORIDA 33174
 TEL. (305) 264-8100 FAX. (305) 262-6978
 COMP-ANL\W11-47PD

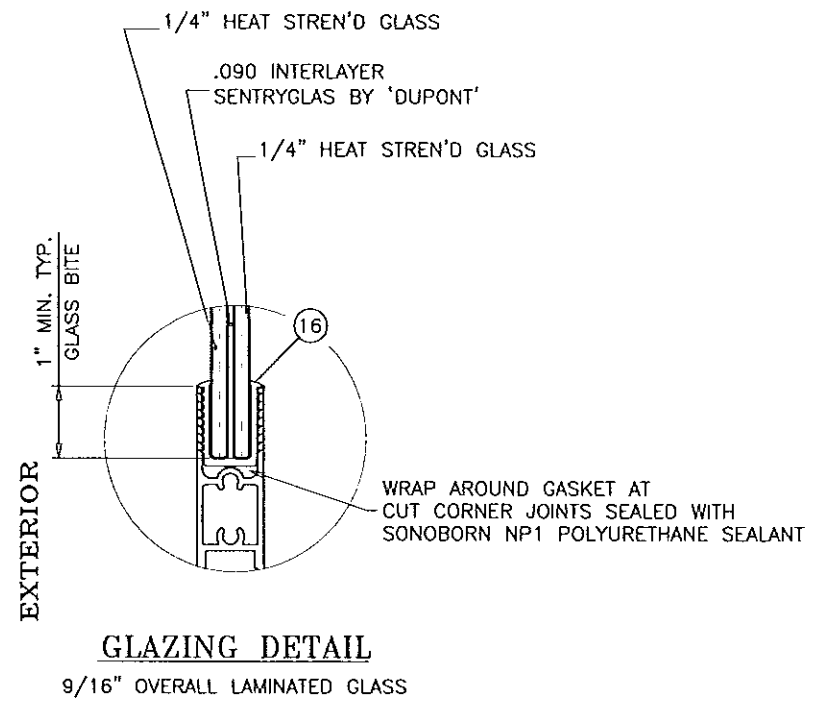
SERIES 'TITAN 90' ALUM SLIDING GLASS DOOR (L.M.I.)
 INTERNATIONAL IMPACT BUILDING PRODUCTS, LLC
 d/b/a PLAZA DOOR
 5900 AUSTRALIAN AVE. SUITE #3
 WEST PALM BEACH, FL 33407
 TEL. (561) 578-5450 FAX. (561) 578-5460

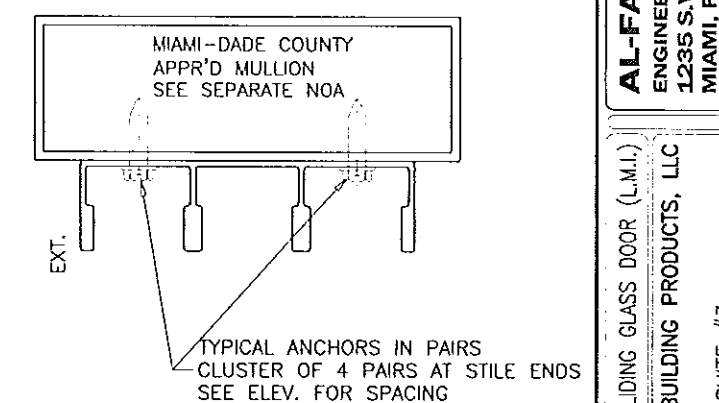
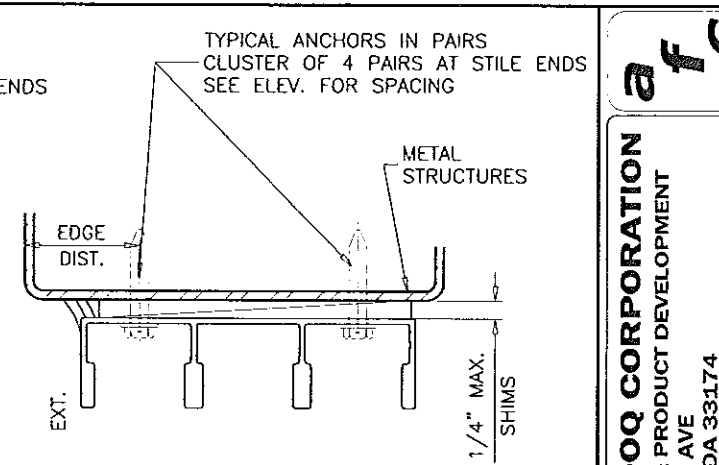
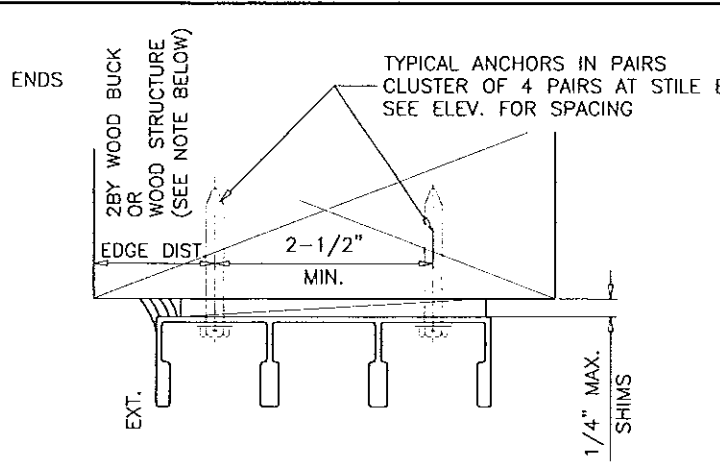
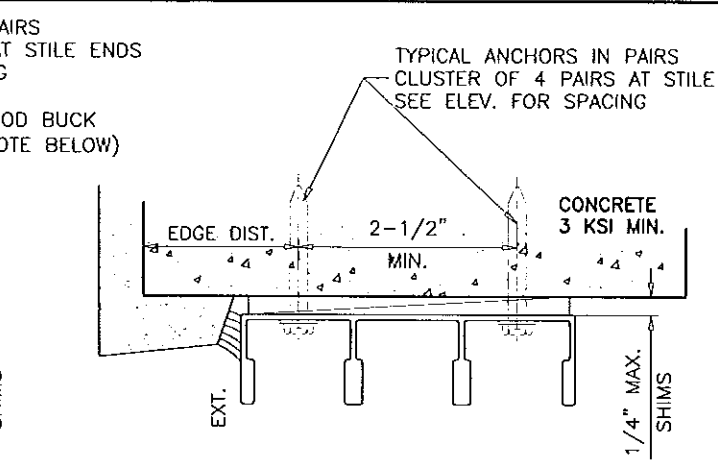
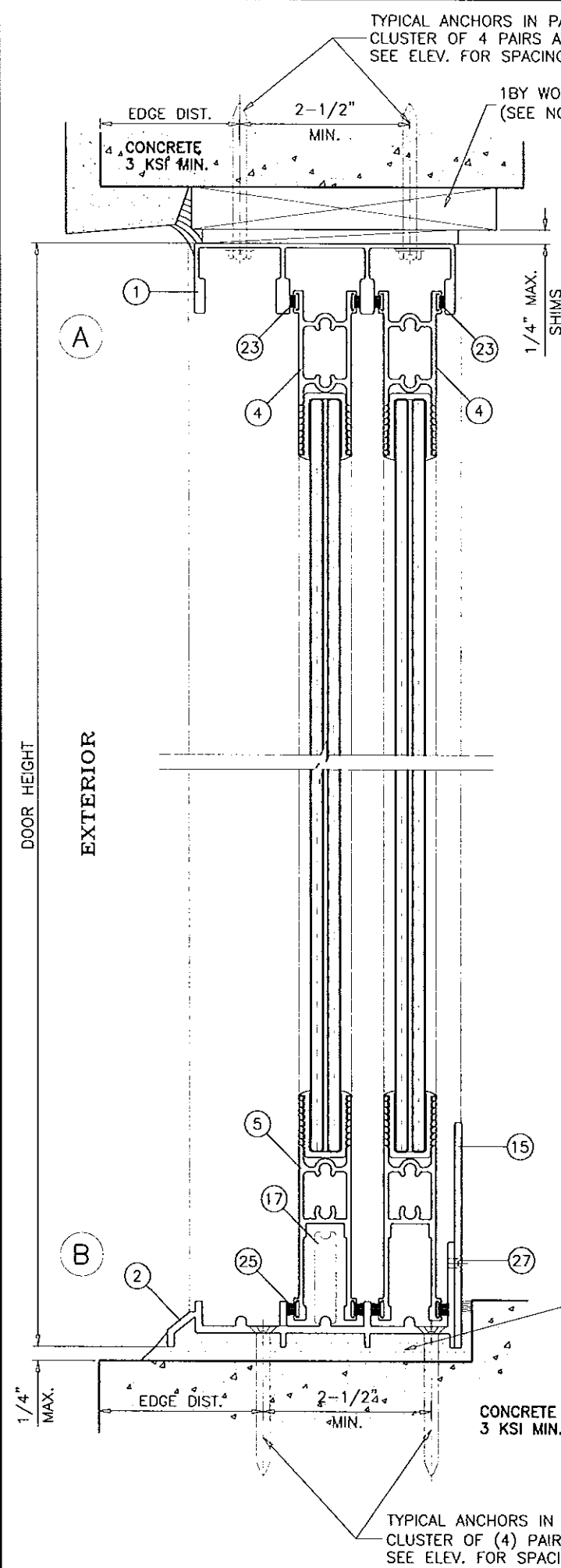
no.	date	description
A	10.24.11	REV. PER BNC COMMENTS
B	06.23.14	NO CHANGE THIS SHEET
C	08.12.14	REV. PER PER COMMENTS

date: 08-22-11
 scale: 3/8" = 1"
 dr. by: HAMID
 chk. by:
 drawing no. W11-47
 sheet 3 of 7

PRODUCT REVISED
 as complying with the Florida
 Building Code
 Acceptance No. 14-0674.22
 Expiration Date 7/1/19
 By Isaac J. Hamid
 Miami Dade Product Control

Engr: JAVAD AHMAD
 CIVIL
 FLA. PE # 70592
 C.A.N. 3538
 AUG 18 2014





1BY OR 2BY WOOD BUCKS AND METAL STRUCTURE NOT BY PLAZA DOOR MUST SUSTAIN LOADS IMPOSED BY GLAZING SYSTEM AND TRANSFER THEM TO THE BUILDING STRUCTURE.

TYPICAL ANCHORS: SEE ELEV. FOR SPACING

1/4" DIA. ULTRACON BY 'ELCO' ($F_u=177$ KSI, $F_y=155$ KSI)
 INTO 2BY WOOD BUCKS OR WOOD STRUCTURES
 1-1/2" MIN. PENETRATION INTO WOOD (HEAD)
 2-3/4" MIN. ANCHOR LENGTH INTO WOOD (JAMBS)

THRU 1BY BUCKS INTO CONC. OR MASONRY
 1-1/4" MIN. EMBED INTO CONCRETE (HEAD/SILL)
 2-3/4" MIN. ANCHOR LENGTH INTO CONC. OR MASONRY (JAMBS)

DIRECTLY INTO CONC. OR MASONRY
 1-1/4" MIN. EMBED INTO CONCRETE (HEAD/SILL)
 2-3/4" MIN. ANCHOR LENGTH INTO CONC. OR MASONRY (JAMBS)

1/4" DIA. SELF DRILLING SCREWS (GRADE 5 CRS)
 INTO MIAMI-DADE COUNTY APPROVED MULLIONS (MIN. THK. = 1/8")
 INTO METAL STRUCTURES
 STEEL : 1/8" THK. MIN. ($F_y = 36$ KSI MIN.)
 ALUMINUM : 1/8" THK. MIN. (6063-T5 MIN.)
 (STEEL IN CONTACT WITH ALUMINUM TO BE PLATED OR PAINTED)

TYPICAL EDGE DISTANCE
 INTO CONCRETE AND MASONRY = 2-1/2" MIN.
 INTO WOOD STRUCTURE = 1" MIN.
 INTO METAL STRUCTURE = 3/4" MIN.

WOOD AT HEAD, SILL OR JAMBS SG = 0.55 MIN.
 CONCRETE AT HEAD, SILL OR JAMBS $f'_c = 3000$ PSI MIN.
 C-90 HOLLOW/FILLED BLOCK AT JAMBS $f'_m = 2000$ PSI MIN.

POURED & HARDENED HIGH STRENGTH GROUT $f'_c = 5000$ PSI MIN. NOT BY PLAZA DOOR MUST TRANSFER SHEAR LOADS TO STRUCTURE

PRODUCT REVISED
 as complying with the Florida Building Code
 Acceptance No. 14-0624-22
 Expiration Date 7/1/19
 By: [Signature]
 Miami Dade Product Control

Engr: JAVAD AHMAD
 CIVIL
 FLA. PE # 70592
 C.A.N. 3538
 AUG 12 2014

AL-FAROOQ CORPORATION
 ENGINEERS & PRODUCT DEVELOPMENT
 1235 S.W. 87 AVE
 MIAMI, FLORIDA 33174
 TEL. (305) 264-8100 FAX. (305) 262-6978
 COMP-ANL W11-47PD

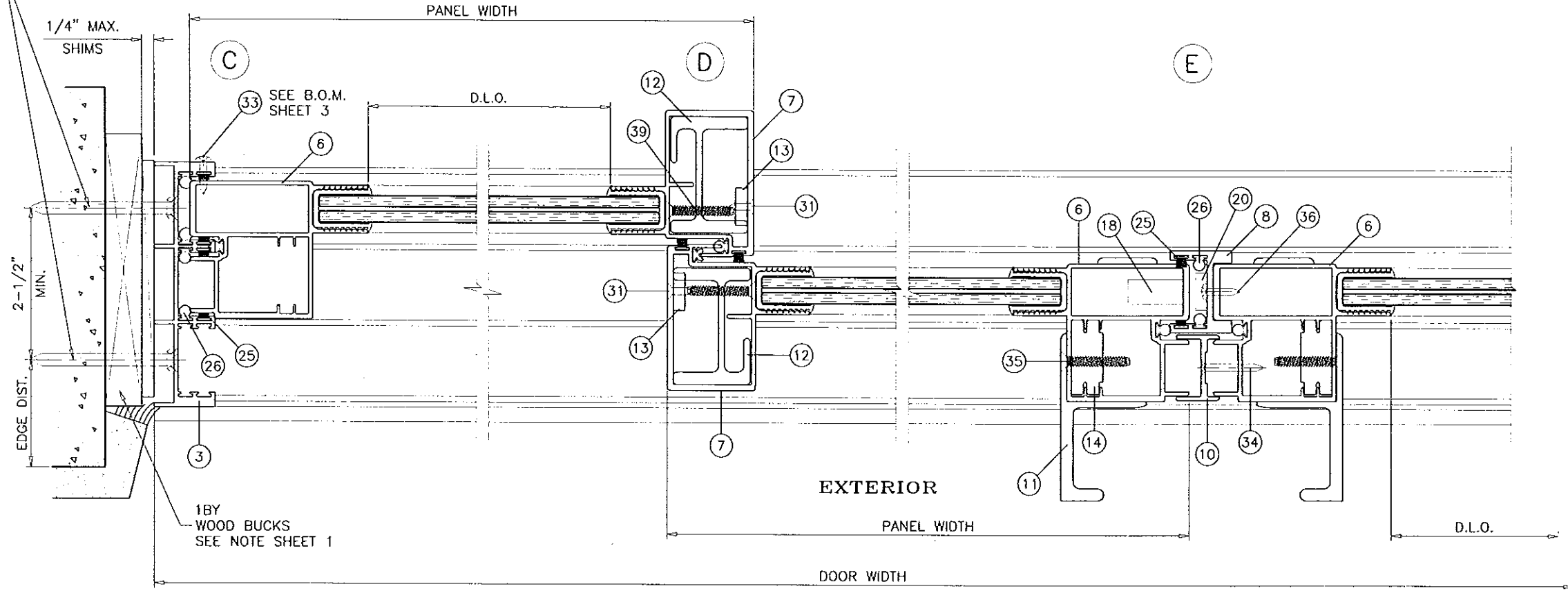
SERIES 'TITAN 90' ALUM SLIDING GLASS DOOR (L.M.I.)
 INTERNATIONAL IMPACT BUILDING PRODUCTS, LLC
 d/b/a PLAZA DOOR
 5900 AUSTRALIAN AVE. SUITE #3
 WEST PALM BEACH, FL 33407
 TEL. (561) 578-5450 FAX. (561) 578-5460

NO.	DATE	BY	DESCRIPTION
A	10.24.11	REV. PER BNC COMMENTS	
B	06.23.14	UPDATED TO 2014 FBC	
C	08.12.14	NO CHANGE THIS SHEET	

date: 08-22-11
 scale: 3/8" = 1"
 dr. by: HAMID
 chk. by:

drawing no. W11-47
 sheet 4 of 7

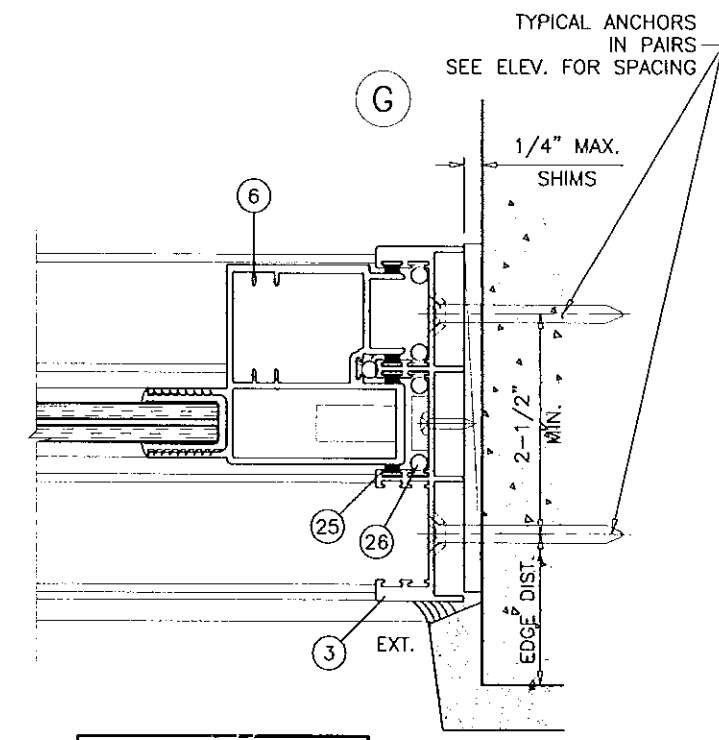
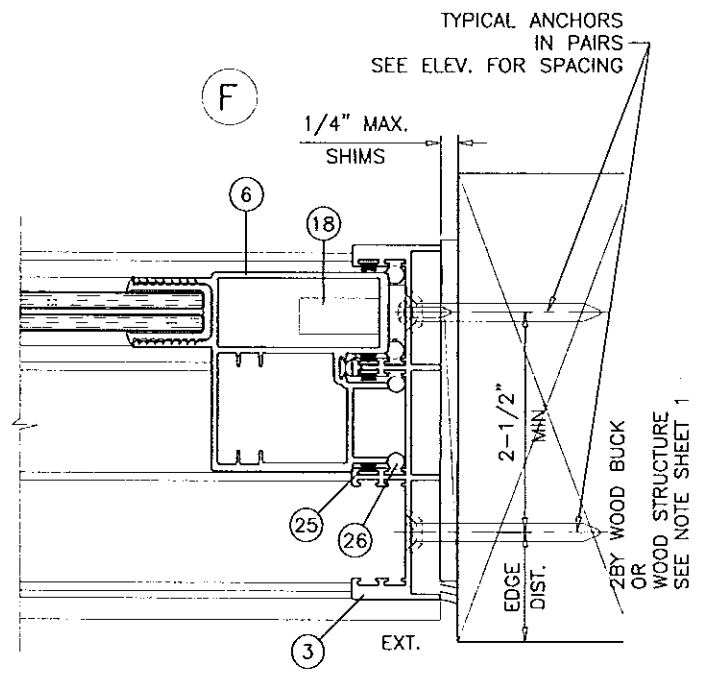
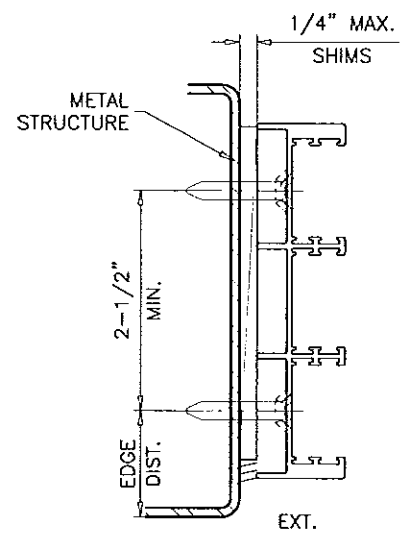
TYPICAL ANCHORS
IN PAIRS
SEE ELEV. FOR SPACING



EXTERIOR

DOOR WIDTH

PRODUCT REVISED
as complying with the Florida
Building Code
Acceptance No. 14-0624.27
Expiration Date 7/1/19
By: [Signature]
Product Control



Engr: JAVAD AHMAD
CIVIL
FLA. PE # 70592
C.A.N. 3538

AUG 12 2014

af c
AL-FAROOQ CORPORATION
ENGINEERS & PRODUCT DEVELOPMENT
1235 S.W. 87 AVE
MIAMI, FLORIDA 33174
TEL. (305) 264-8100 FAX. (305) 262-6978
COMP-ANL\W11-47PD

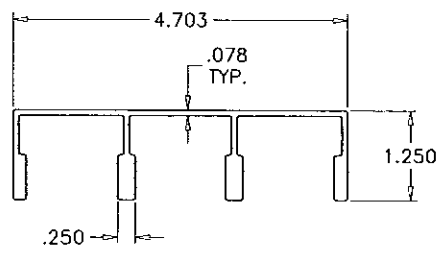
SERIES 'TITAN 90' ALUM SLIDING GLASS DOOR (L.M.I.)
INTERNATIONAL IMPACT BUILDING PRODUCTS, LLC
d/b/g PLAZA DOOR
5900 AUSTRALIAN AVE. SUITE #3
WEST PALM BEACH, FL 33407
TEL. (561) 578-5450 FAX. (561) 578-5460

no	date	by	description
A	10.24.11	REV. PER BNC COMMENTS	
B	06.23.14	UPDATED TO 2014 FBC	
C	08.12.14	REV. PER PER COMMENTS	

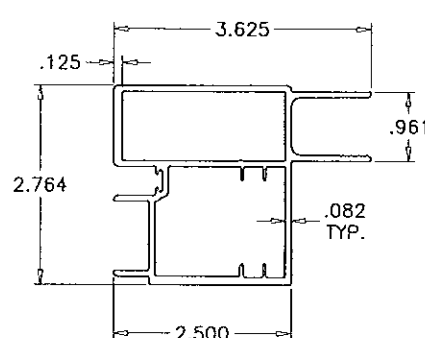
date:	08-22-11
scale:	3/8" = 1"
dr. by:	HAMID
chk. by:	

drawing no.
W11-47

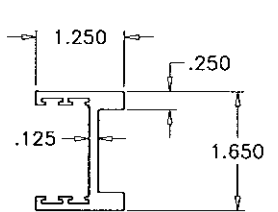
sheet 5 of 7



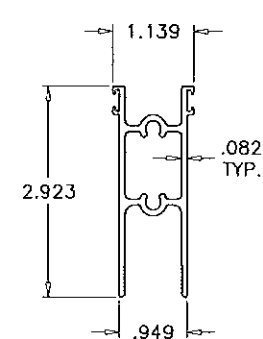
① FRAME HEAD



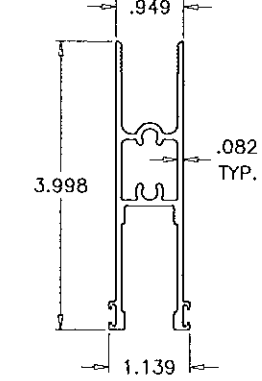
⑥ JAMB/LOCK STILE



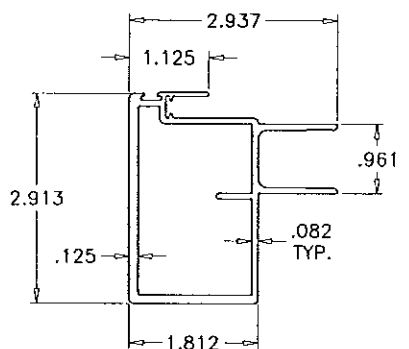
⑧ ASTRAGAL STILE



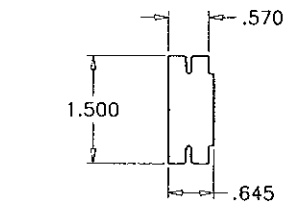
④ PANEL TOP RAIL



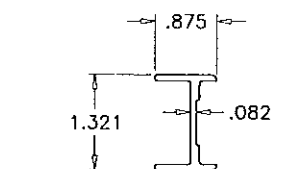
⑤ PANEL BOTTOM RAIL



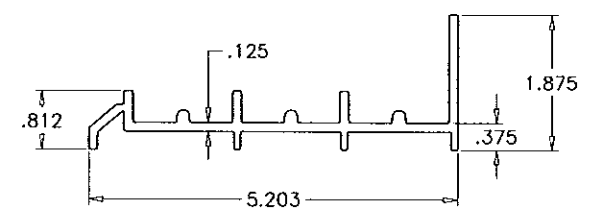
⑦ INTERLOCK STILE



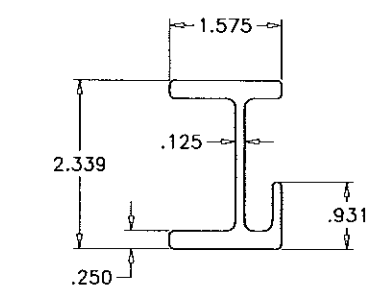
⑭ STILE REINFORCEMENT



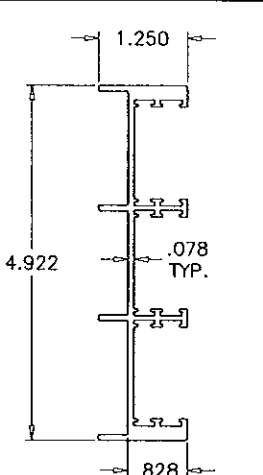
⑩ SCREEN ASTRAGAL



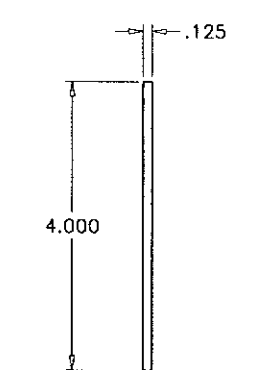
② FRAME SILL



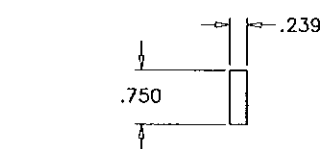
⑫ INTERLOCK STILE STIFFENER



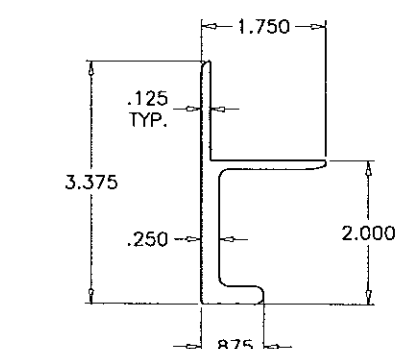
③ FRAME JAMB



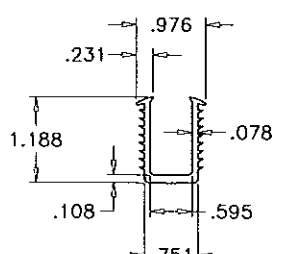
⑮ HI-RISE ADAPTER



⑬ INTERLOCK REINFORCEMENT



⑪ HAND RAIL



⑯ GLAZING GASKET

HARDNESS = 75 SHORE A
 TENSILE STRENGTH (100% STRAIN) = 800 PSI
 TENSILE STRENGTH (BREAK) = 1900 PSI
 ELONGATION AT BREAK = 380%
 TEAR STRENGTH = 250 LBF/IN
 SPECIFIC GRAVITY = 1.27

GLAZING GASKET
 PVC MATERIAL BY 'POLYONE'
 EXTRUDED BY 'CENTRAL PLASTICS'

Engr: JAVAD AHMAD
 CIVIL
 FLA. PE # 70592
 C.A.N. 3538

[Signature]

AUG 12 2014

PRODUCT REVISED
 as complying with the Florida
 Building Code
 Acceptance No. 14-0624-22
 Expiration Date 7/1/19

By *[Signature]*
 Daniel Dade Product Control

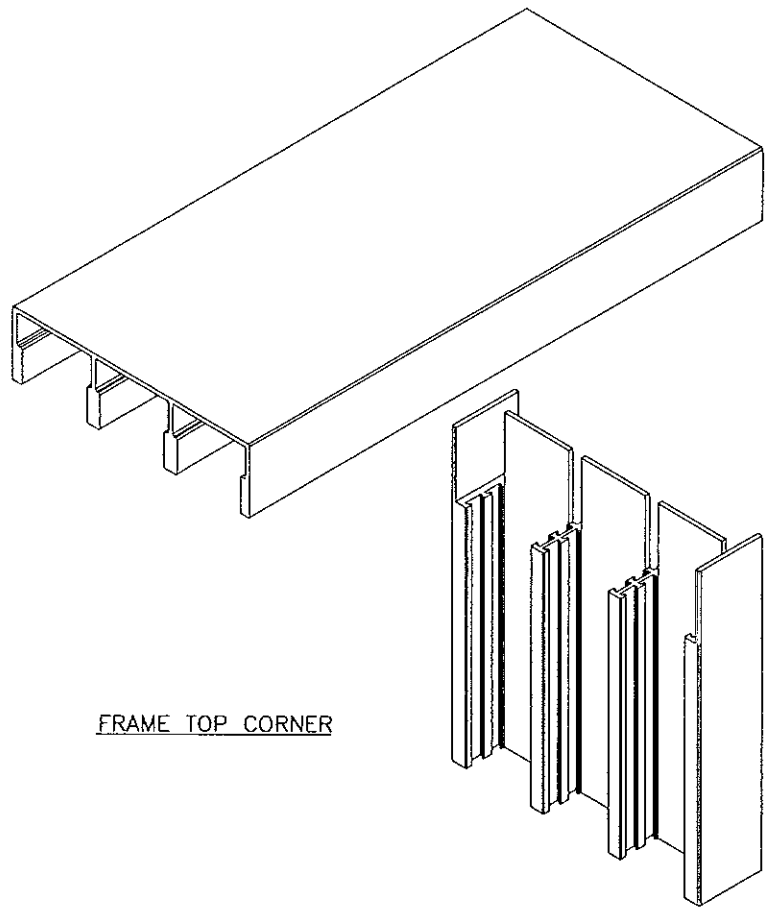
af c
AL-FAROOQ CORPORATION
 ENGINEERS & PRODUCT DEVELOPMENT
 1235 S.W. 87 AVE
 MIAMI, FLORIDA 33174
 TEL. (305) 264-8100 FAX. (305) 262-6978
 COMP-ANL\W11-47PD

SERIES 'TITAN 90' ALUM SLIDING GLASS DOOR (L.M.I.)
 INTERNATIONAL IMPACT BUILDING PRODUCTS, LLC
 d/b/a PLAZA DOOR
 5900 AUSTRALIAN AVE. SUITE #3
 WEST PALM BEACH, FL 33407
 TEL. (561) 578-5450 FAX. (561) 578-5460

no.	date	by	description
A	10.24.11	REV. PER BNC COMMENTS	
B	06.23.14	NO CHANGE THIS SHEET	
C	08.12.14	NO CHANGE THIS SHEET	

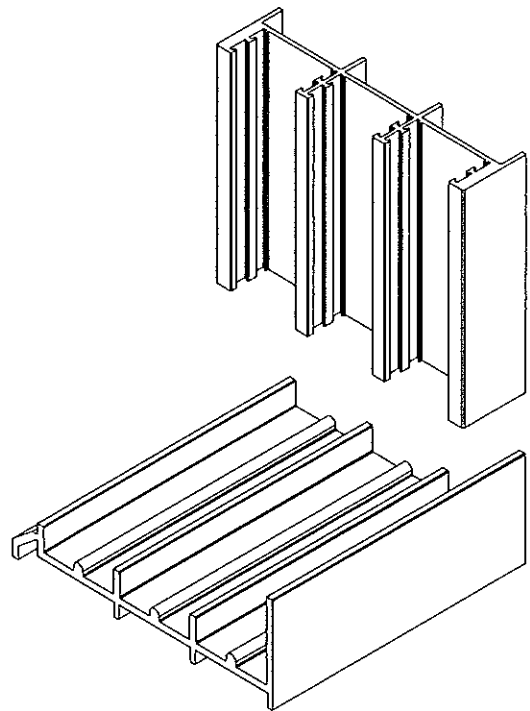
date: 08-22-11
 scale: 3/8" = 1"
 dr. by: HAMID
 chk. by:

drawing no.
W11-47
 sheet 6 of 7

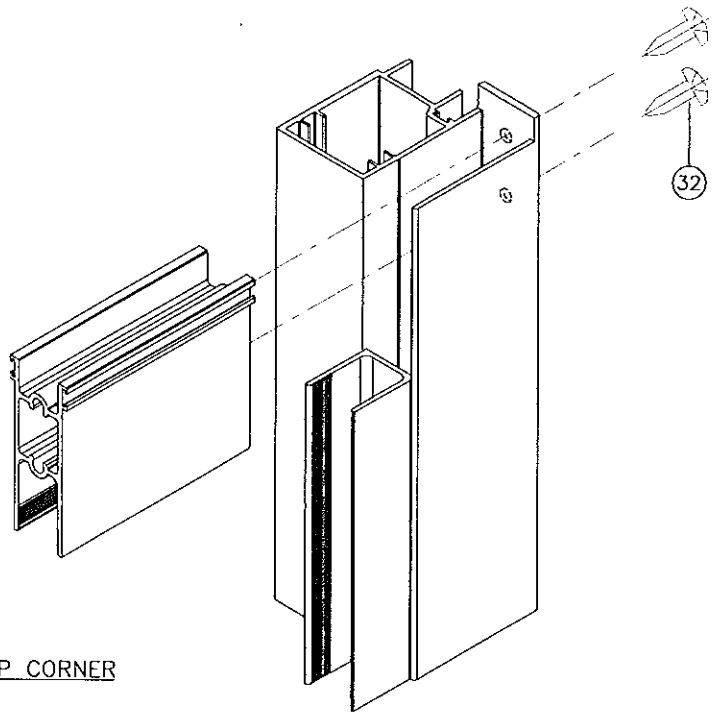


FRAME TOP CORNER

JAMB NOTCHED TO RECIEVE HEADER AND SILL RIBS
APPLY BEAD OF SONNEBORN NP1 SEALANT
AT TOP AND BOTTOM JOINTS

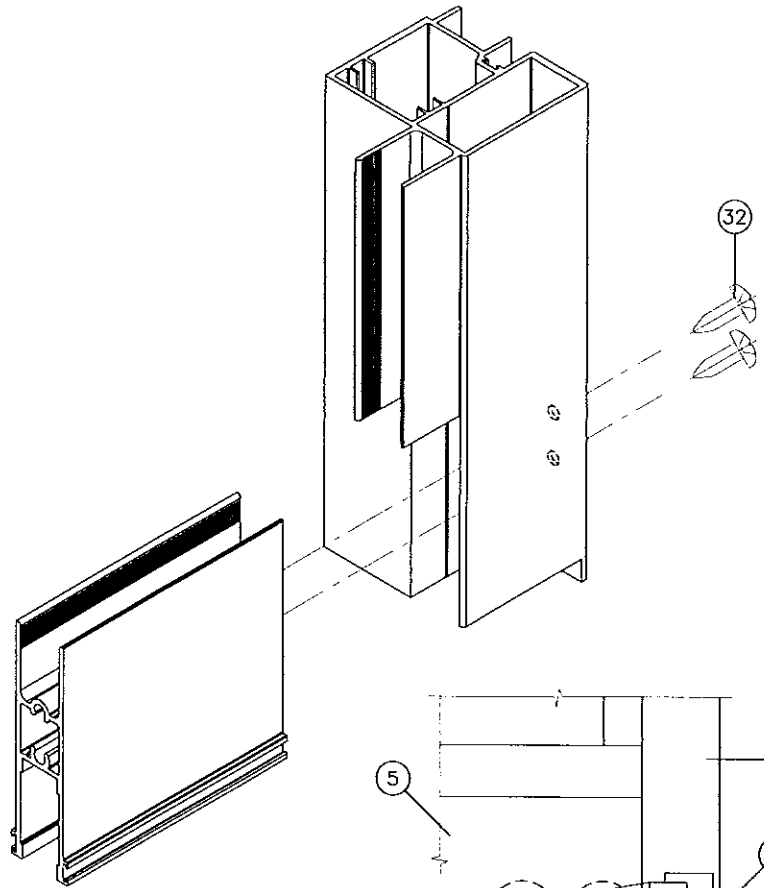


FRAME BOTTOM CORNER

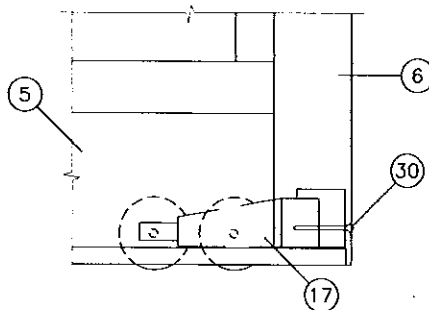


PANEL TOP CORNER

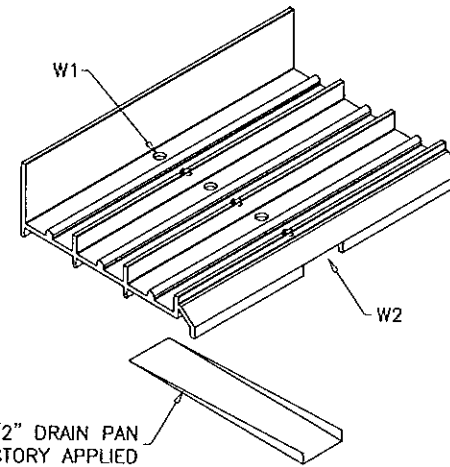
APPLY BEAD OF SONNEBORN NP1 SEALANT
AT TOP AND BOTTOM JOINTS



PANEL BOTTOM CORNER



ROLLER FASTENER DETAIL



1/4" X 1-1/2" DRAIN PAN
FACTORY APPLIED

WEEPHOLES:

W1 = CLUSTER OF SIX 3/8" WEEP HOLES AT 17" FROM
EACH END AND 21" O.C.

W2 = 1/4" X 1-1/2" OPENING FOR DRAIN PAN AT 17" FROM
EACH END AND 21" O.C.

Engr: JAVAD AHMAD
CIVIL
FLA. PE # 70592
C.A.N. 3538

AUG 12 2014

PRODUCT REVISED
to comply with the Florida
Building Code
Acceptance No. 14-0624.22
Expiration Date July 21, 2019
By: [Signature]
Javad Ahmad Product Control

af c
AL-FAROOQ CORPORATION
ENGINEERS & PRODUCT DEVELOPMENT
1235 S.W. 87 AVE
MIAMI, FLORIDA 33174
TEL (305) 264-8100 FAX (305) 262-6978

SERIES 'TITAN 90' ALUM SLIDING GLASS DOOR (L.M.I.)
INTERNATIONAL IMPACT BUILDING PRODUCTS, LLC
d/b/a PLAZA DOOR
5900 AUSTRALIAN AVE. SUITE #3
WEST PALM BEACH, FL 33407
TEL (561) 578-5450 FAX (561) 578-5460

no.	date	by	description
A	10.24.11	REV.	PER BNC COMMENTS
B	06.23.14	NO CHANGE	THIS SHEET
C	08.12.14	NO CHANGE	THIS SHEET

date: 08-22-11
scale: 3/8" = 1"
dr. by: HAMID
chk. by:

drawing no.
W11-47
sheet 7 of 7

COMP-ANL W11-47PD