



DEPARTMENT OF REGULATORY AND ECONOMIC RESOURCES (RER)  
BOARD AND CODE ADMINISTRATION DIVISION

**NOTICE OF ACCEPTANCE (NOA)**

MIAMI-DADE COUNTY  
PRODUCT CONTROL SECTION  
11805 SW 26 Street, Room 208  
Miami, Florida 33175-2474  
T (786) 315-2590 F (786) 315-2599  
[www.miamidade.gov/economy](http://www.miamidade.gov/economy)

**DAB Door Company, Inc.**  
12195 NW 98<sup>th</sup> Avenue  
Hialeah Gardens, FL 33018

**SCOPE:**

This NOA is being issued under the applicable rules and regulations governing the use of construction materials. The documentation submitted has been reviewed and accepted by Miami-Dade County RER-Product Control Section to be used in Miami Dade County and other areas where allowed by the Authority Having Jurisdiction (AHJ).

This NOA shall not be valid after the expiration date stated below. The Miami-Dade County Product Control Section (In Miami Dade County) and/or the AHJ (in areas other than Miami Dade County) reserve the right to have this product or material tested for quality assurance purposes. If this product or material fails to perform in the accepted manner, the manufacturer will incur the expense of such testing and the AHJ may immediately revoke, modify, or suspend the use of such product or material within their jurisdiction. RER reserves the right to revoke this acceptance, if it is determined by Miami-Dade County Product Control Section that this product or material fails to meet the requirements of the applicable building code.

This product is approved as described herein, and has been designed to comply with the Florida Building Code, including the High Velocity Hurricane Zone.

**DESCRIPTION: Steel Roll-up Door up to 14'-0" Wide**

**APPROVAL DOCUMENT:** Drawing No. 97-30, titled "Rolling Type Garage Door", sheets 1 and 2 of 2, dated 07/30/1997, with revision I dated 08/08/2014, prepared by Al-Farooq Corporation, signed and sealed by Javad Ahmad, P.E., bearing the Miami-Dade County Product Control revision stamp with the Notice of Acceptance number and expiration date by the Miami-Dade County Product Control Section.

**MISSILE IMPACT RATING: Large and Small Missile Impact Resistant**

**LABELING:** A permanent label with the manufacturer's name or logo, manufacturing address, model number, the positive and negative design pressure rating, indicate impact rated if applicable, installation instruction drawing reference number, approval number (NOA), the applicable test standards, and the statement reading 'Miami-Dade County Product Control Approved' is to be located on the door's side track, bottom angle, or inner surface of a panel.

**LIMITATION: This door has not been tested for air infiltration.**

**RENEWAL** of this NOA shall be considered after a renewal application has been filed and there has been no change in the applicable building code negatively affecting the performance of this product.

**TERMINATION** of this NOA will occur after the expiration date or if there has been a revision or change in the materials, use, and/or manufacture of the product or process. Misuse of this NOA as an endorsement of any product, for sales, advertising or any other purposes shall automatically terminate this NOA. Failure to comply with any section of this NOA shall be cause for termination and removal of NOA.

**ADVERTISEMENT:** The NOA number preceded by the words Miami-Dade County, Florida, and followed by the expiration date may be displayed in advertising literature. If any portion of the NOA is displayed, then it shall be done in its entirety.

**INSPECTION:** A copy of this entire NOA shall be provided to the user by the manufacturer or its distributors and shall be available for inspection at the job site at the request of the Building Official.

This NOA revises and renews NOA # 12-0110.10 and consists of this page 1 and evidence page E-1, as well as approval document mentioned above.

The submitted documentation was reviewed by Carlos M. Utrera, P.E.



*[Signature]*  
12/22/2014

NOA No. 14-1014.14  
Expiration Date: January 22, 2020  
Approval Date: December 31, 2014  
Page 1

**NOTICE OF ACCEPTANCE: EVIDENCE SUBMITTED**

**A. DRAWINGS**

1. Drawing No. 97-30, titled "Rolling Type Garage Door", sheets 1 and 2 of 2, dated 07/30/1997, with revision I dated 08/08/2014, prepared by Al-Farooq Corporation, signed and sealed by Javad Ahmad, P.E.

**B. TESTS "Submitted under NOA # 09-1210.03"**

1. Test reports on 1) Uniform Static Air Pressure Test, Loading per FBC, TAS 202-94  
2) Forced Entry Test, per SFBC 3603.2,  
Along with marked-up drawings and installation diagram of a Roll-up Garage Door, prepared by Hurricane Engineering & Testing, Inc., Test Report No. HETI-09-2637, dated 11/09/2009, signed and sealed by Candido F. Font, P.E.
2. Test reports on 1) Large Missile Impact Test per FBC, TAS 201-94  
2) Cyclic Wind Pressure Loading per FBC, TAS 203-94  
Along with marked-up drawings and installation diagram of a Roll-up Garage Door, prepared by Hurricane Engineering & Testing, Inc., Test Report No. HETI-09-2638, dated 11/09/2009, signed and sealed by Candido F. Font, P.E.
3. Test report on Tensile Test of 20 Gage Galvanized Steel per ASTM E 8-01, prepared by Hurricane Engineering & Testing, Inc, Test Report No. HETI-09-T140, dated on 11/09/2009, signed and sealed by Candido F. Font, P.E.

**C. CALCULATIONS**

1. Structural and anchor calculations prepared by Al-Farooq Corporation, dated 08/07/2014, signed and sealed by Javad Ahmad, P.E.
2. Calculations of 14' Rolling Steel Door, prepared by Al-Farooq Corporation, dated 10/17/2008, signed and sealed by Humayoun Farooq, P.E. "Submitted under NOA # 08-1106.06"

**D. QUALITY ASSURANCE**

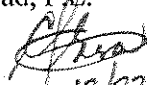
1. Miami-Dade Department of Regulatory and Economic Resources (RER)

**E. MATERIAL CERTIFICATIONS**

1. None.

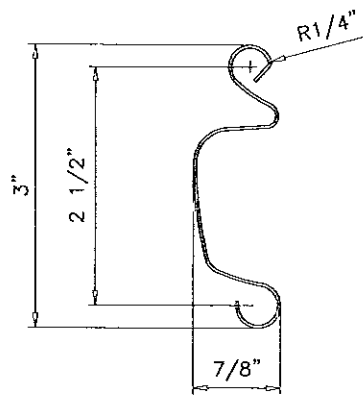
**F. STATEMENTS**

1. Statement letter of code conformance to the 5<sup>th</sup> edition (2014) FBC and no financial interest issued by Al-Farooq Corporation, dated 08/07/2014, signed and sealed by Javad Ahmad, P.E.  
  
"Submitted under NOA # 12-0110.10"
2. Statement letter of code conformance to 2010 FBC and no financial interest, prepared by Al-Farooq Corporation, dated 10/27/2011, signed and sealed by Javad Ahmad, P.E.

  
12/22/2014

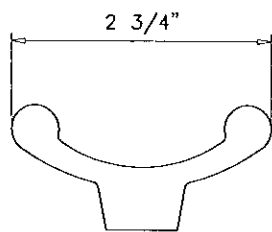
Carlos M. Utrera, P.E.  
Product Control Examiner  
NOA No. 14-1014.14

Expiration Date: January 22, 2020  
Approval Date: December 31, 2014

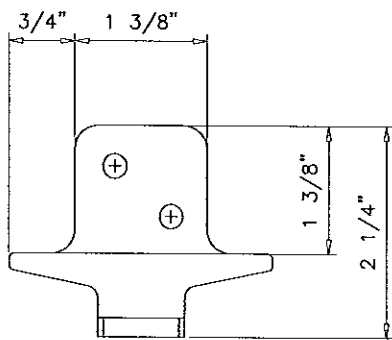
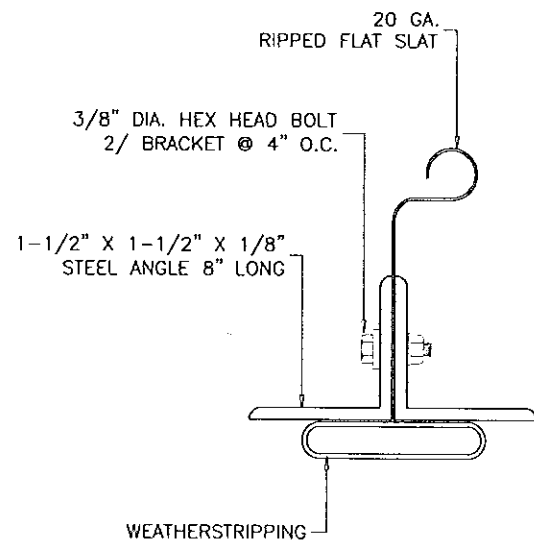


**SLAT**

20 GA. COLD FORMED STEEL (ASTM A446)  
MIN. YIELD STRENGTH OF 50000 PSI  
GALVANIZED ACCORDING TO ASTM A-525  
WITH A COATING DESIGNATION OF G-90  
EXTERIOR AND INTERIOR

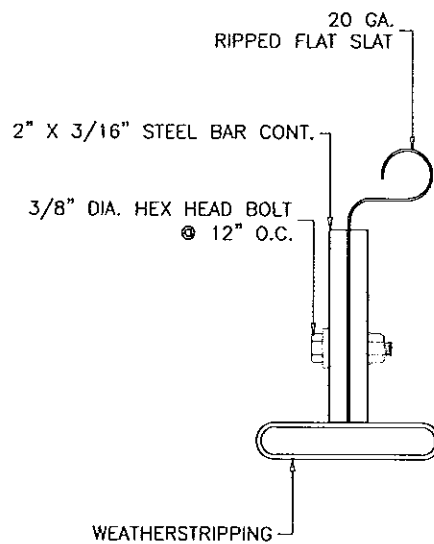


**END BRACKET DETAIL**

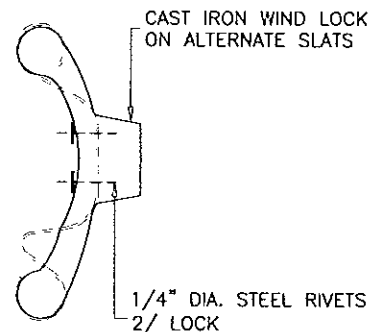


**WIND LOCK**

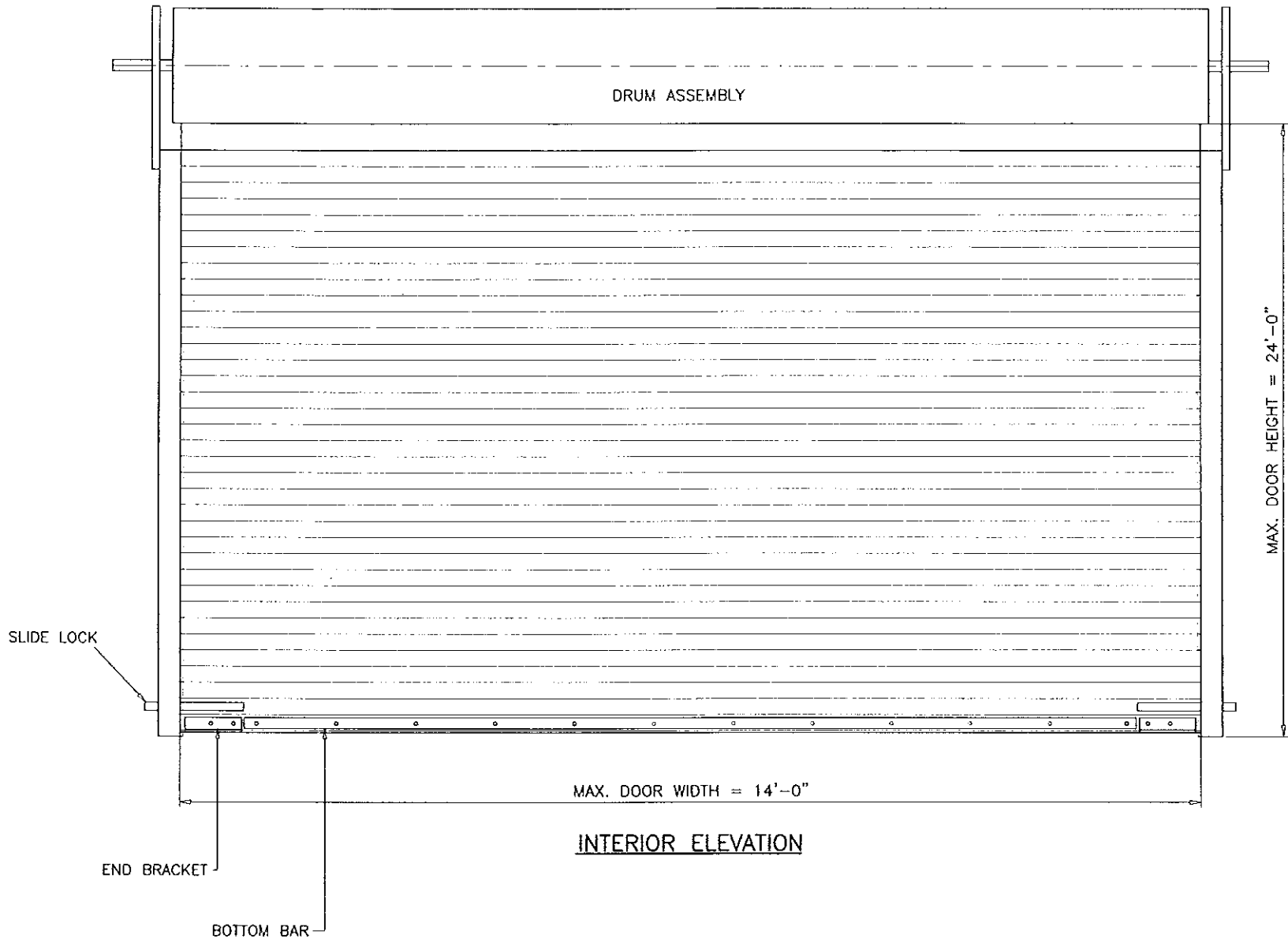
MALLEABLE IRON  
WITH A GALVANIZED FINISH



**BOTTOM BAR DETAIL**



**WIND LOCK DETAIL**



**GENERAL NOTES**

1. THIS PRODUCT HAS BEEN DESIGNED AND TESTED TO COMPLY WITH THE REQUIREMENTS OF THE FLORIDA BUILDING CODE (FBC) FIFTH EDITION (2014) INCLUDING HIGH VELOCITY HURRICANE ZONE (HVHZ).
2. ANCHORS SHALL BE AS LISTED, SPACED AS SHOWN ON DETAILS. ANCHOR EMBEDMENT TO BASE MATERIAL SHALL BE BEYOND WALL DRESSING OR STUCCO.
3. GUIDE AND WALL ANGLES SHALL CONFORM TO ASTM A-36.
4. ALL BOLTS, NUTS AND WASHERS SHALL BE ZINC PLATED CARBON STEEL.
5. ANCHORING OR LOADING CONDITIONS OTHER THAN THOSE SHOWN IN THESE DETAILS ARE NOT PART OF THIS APPROVAL.
6. SLIDE BOLT (1/4" THICK LATCH) IS INSTALLED AT EACH END BOTTOM, AND SHALL BE ENGAGED DURING HURRICANE WINDS.
7. ALL WELDING TO CONFORM TO AWS LATEST REGULATIONS AND F.B.C. USE E70XX ELECTRODES AND 3/16" FILLET SIZE.

DOOR TESTED IN ACCORDANCE WITH THE REQUIREMENTS OF FLORIDA BUILDING CODE, TAS-202, TAS-201 & TAS-203 FOR HVHZ.

MAXIMUM DESIGN LOAD RATING = + 60.0 PSF  
(FOR SIZES SHOWN OR SMALLER) - 60.0 PSF

THIS PRODUCT IS RATED FOR LARGE MISSILE IMPACT

Engr: JAVAD AHMAD  
CIVIL  
FLA. PE # 70592  
C.A.N. 3538

AUG 18 2014

**PRODUCT REVISED**  
as complying with the Florida  
Building Code  
Acceptance No. 14-1014, 14  
Expiration Date 01/22/2020  
By: *[Signature]*  
Miami Dade Product Control

**AL-FAROOQ CORPORATION**  
ENGINEERS & PRODUCT DEVELOPMENT  
1235 S.W. 87 AVE  
MIAMI, FLORIDA 33174  
TEL. (305) 264-8100 FAX. (305) 262-6978  
GARAGE\97-30DAB

ROLLING TYPE GARAGE DOOR  
**DAB DOORS INC.**  
12195 N.W. 98 TH. AVE.  
HIALEAH GARDENS, FL. 33018  
TEL. (305) 556 - 6624

no	date	by	description
F	07.26.02	H	BLK ANCH. AD. IMPACT REV.
G	10.29.08	H	UPDATED FOR 2007 FBC
H	10.13.11	H	UPDATED TO 2010 FBC
I	06.08.14	I	UPDATED TO 2014 FBC

date: 07-30-97  
scale: 1/2" = 1'-0"  
dr. by: HAMID  
chk. by:

drawing no.  
**97-30**  
sheet 1 of 2

MAXIMUM DOOR WIDTH	BOLT SPACING-INCHES	
	UPTO 50 PSF	UPTO 60 PSF
10 FT.	12	12
12 FT.	12	11
14 FT.	12	9

MAXIMUM DOOR WIDTH	ANCHOR SPACING-INCHES		
	UPTO 40 PSF	UPTO 50 PSF	UPTO 60 PSF
10 FT.	12	12	8
12 FT.	12	7	5
14 FT.	8-1/2	5-1/2	4

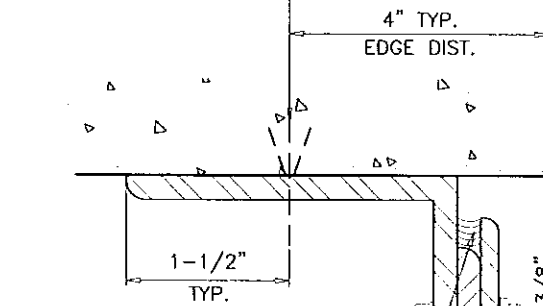
1/2" DIA. MACHINE BOLTS  
TAPPED IN 1/4" MIN. STEEL

MAXIMUM DOOR WIDTH	WELD LENGTH INCHES
8-10 FT.	1"
12 FT.	1"
14 FT.	1-1/4"

SCHEDULE 'A'

MAXIMUM DOOR WIDTH	SLIP INCHES
8-10 FT.	1/4"
12 FT.	3/8"
14 FT.	5/8"

1/2" DIA. KWIK BOLT II  
2-1/4" MIN. EMBED.  
4" MIN. EDGE DIST.  
IN 3000 PSI CONC.

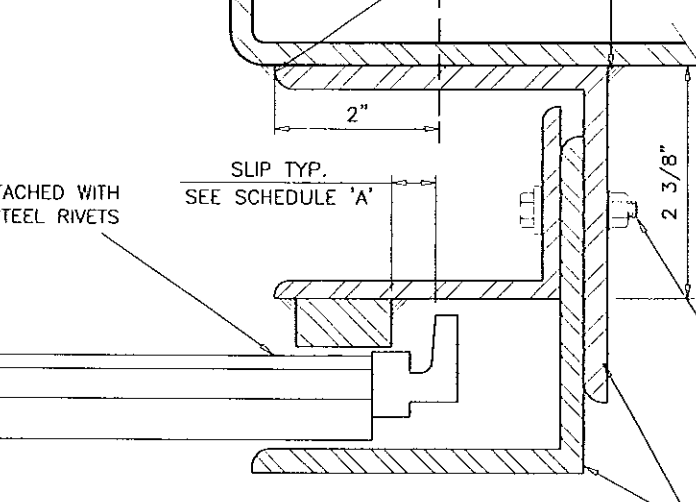


(4) 1/2" X 1-1/2" HH BOLTS  
2" O.C. AT TOP OF TRACK  
ADDITIONAL

3/8" X 1-1/2" HEX HEAD BOLT  
@ 12" O.C. TYP. ALTERNATE  
3/16" X 2" WELDS AT 12" O.C.

'Z' GUIDE DETAIL  
CONC. WALL

EXISTING STEEL



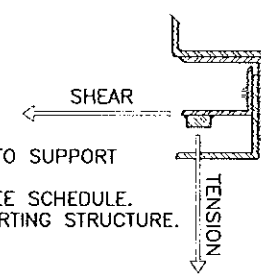
WELD OPTION:  
GUIDE ANGLE SECURED TO  
MIN. 1/4" THICK STEEL STRUCTURE  
WITH 3/16" WELD @ 12" O.C.

3/8" X 1-1/2" HEX HEAD BOLT  
@ 12" O.C. TYP. AND FOUR ADDL.  
1/2" X 1-1/2" H.H. BOLTS  
@ 2" O.C. AT TOP OF TRACK

3-1/2" X 3-1/2" X 1/4"  
STEEL ANGLE

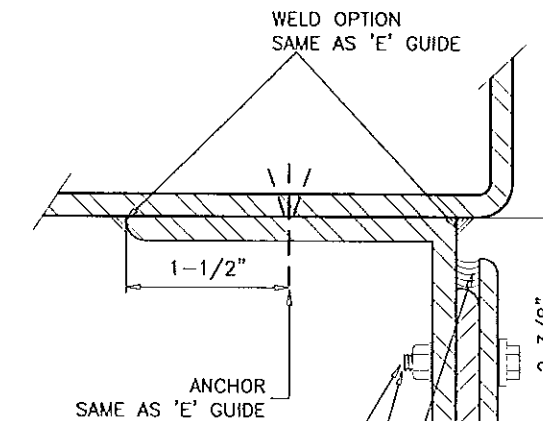
'E' GUIDE DETAIL  
STEEL STRUCTURE

GUIDE DETAILS CAN BE USED  
IN ANY COMBINATIONS.



SUPPORTING STRUCTURE MUST BE DESIGNED TO SUPPORT  
SHEAR & TENSION FORCES AT EACH JAMB.  
FOR DESIGN VALUES OF SHEAR & TENSION SEE SCHEDULE.  
ARCH./ENGR. TO VERIFY ADEQUACY OF SUPPORTING STRUCTURE.

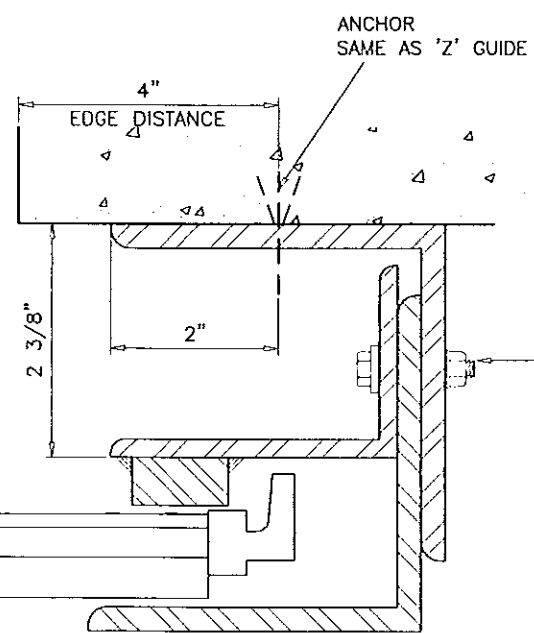
FORCES ON GUIDE/FT.		
MAXIMUM DOOR WIDTH	TENSION	SHEAR
10 FT.	320	744
12 FT.	380	1254
14 FT.	440	1419



(4) 1/2" X 1-1/2" HH BOLTS  
2" O.C. AT TOP OF TRACK  
ADDITIONAL

3/8" X 1-1/2" HEX HEAD BOLT  
@ 12" O.C. TYP. ALTERNATE  
3/16" X 2" WELDS AT 12" O.C.

'Z' GUIDE DETAIL  
STEEL STRUCTURE



3/8" X 1-1/2" HEX HEAD BOLT  
@ 12" O.C. TYP. AND FOUR ADDL.  
1/2" X 1-1/2" H.H. BOLTS  
@ 2" O.C. AT TOP OF TRACK

'E' GUIDE DETAIL  
CONC. WALL

Engr: JAVAD AHMAD  
CIVIL  
FLA. PE # 70592  
C.A.N. 3538  
AUG 18 2014

PRODUCT REVISED  
as complying with the Florida  
Building Code  
Acceptance No 14-1014-14  
Expiration Date 01/22/2020  
By *[Signature]*  
Miami Dade Product Control

**af c**  
**AL-FAROOQ CORPORATION**  
ENGINEERS & PRODUCT DEVELOPMENT  
1235 S.W. 87 AVE  
MIAMI, FLORIDA 33174  
TEL (305) 264-8100 FAX (305) 262-6978  
GARAGE 97-30DAB

ROLLING TYPE GARAGE DOOR  
**DAB DOORS INC.**  
12195 N.W. 98 TH. AVE.  
HIALEAH GARDENS, FL. 33018  
TEL (305) 566 - 6624

revisions:	no.	date	by	description
	G	10.29.08		UPDATED FOR 2007 FBC
	H	10.13.11		NO CHANGE THIS SHEET
	I	08.08.14		NO CHANGE THIS SHEET

date: 07-30-97  
scale: 1/2" = 1"  
dr. by: HAMID  
chk. by:

drawing no.  
**97-30**

sheet 2 of 2