



DEPARTMENT OF REGULATORY AND ECONOMIC RESOURCES (RER)
BOARD AND CODE ADMINISTRATION DIVISION

NOTICE OF ACCEPTANCE (NOA)

MIAMI-DADE COUNTY
PRODUCT CONTROL SECTION
11805 SW 26 Street, Room 208
T (786) 315-2590 F (786) 315-2599
www.miamidade.gov/economy

Eco Window Systems, LLC
9114 NW 106 Street
Medley, FL 33178

SCOPE:

This NOA is being issued under the applicable rules and regulations governing the use of construction materials. The documentation submitted has been reviewed and accepted by Miami-Dade County RER - Product Control Section to be used in Miami Dade County and other areas where allowed by the Authority Having Jurisdiction (AHJ).

This NOA shall not be valid after the expiration date stated below. The Miami-Dade County Product Control Section (In Miami Dade County) and/or the AHJ (in areas other than Miami Dade County) reserve the right to have this product or material tested for quality assurance purposes. If this product or material fails to perform in the accepted manner, the manufacturer will incur the expense of such testing and the AHJ may immediately revoke, modify, or suspend the use of such product or material within their jurisdiction. RER reserves the right to revoke this acceptance, if it is determined by Miami-Dade County Product Control Section that this product or material fails to meet the requirements of the applicable building code.

This product is approved as described herein, and has been designed to comply with the Florida Building Code, including the High Velocity Hurricane Zone.

DESCRIPTION: Series "Eco-Guard 200" Aluminum Horizontal Rolling Window – L.M.I.

APPROVAL DOCUMENT: Drawing No. W09-12, titled "Eco-Guard Series-200 Alum. Horiz. Rolling Wdw. (L.M.I.)" sheets 1 through 7 of 7, dated 02/24/09, with revision E dated 07/15/15, prepared by Al-Farooq Corporation, signed and sealed by Javad Ahmad, P.E., bearing the Miami-Dade County Product Control Revision stamp with the Notice of Acceptance number and expiration date by the Miami-Dade County Product Control Section.

MISSILE IMPACT RATING: Large and Small Missile Impact Resistant

LABELING: Each unit shall bear a permanent label with the manufacturer's name or logo, city, state, model/series, and following statement: "Miami-Dade County Product Control Approved", unless otherwise noted herein.

RENEWAL of this NOA shall be considered after a renewal application has been filed and there has been no change in the applicable building code negatively affecting the performance of this product.

TERMINATION of this NOA will occur after the expiration date or if there has been a revision or change in the materials, use, and/or manufacture of the product or process. Misuse of this NOA as an endorsement of any product, for sales, advertising or any other purposes shall automatically terminate this NOA. Failure to comply with any section of this NOA shall be cause for termination and removal of NOA.

ADVERTISEMENT: The NOA number preceded by the words Miami-Dade County, Florida, and followed by the expiration date may be displayed in advertising literature. If any portion of the NOA is displayed, then it shall be done in its entirety.

INSPECTION: A copy of this entire NOA shall be provided to the user by the manufacturer or its distributors and shall be available for inspection at the job site at the request of the Building Official.

This NOA revises NOA# 14-0317.01 and consists of this page 1 and evidence pages E-1, E-2 and E-3, as well as approval document mentioned above.

The submitted documentation was reviewed by **Manuel Perez, P.E.**



MP
8/24/15

NOA No. 15-0728.05
Expiration Date: May 27, 2019
Approval Date: September 03, 2015
Page 1

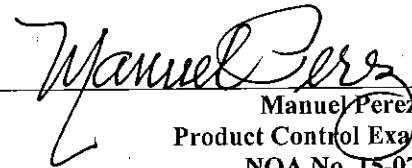
NOTICE OF ACCEPTANCE: EVIDENCE SUBMITTED

A. DRAWINGS

1. Manufacturer's die drawings and sections.
(Submitted under NOA#09-0312.08)
2. Drawing No **W09-12**, titled "Eco-Guard Series-200 Alum. Horiz. Rolling Wdw. (L.M.I.)", sheets 1 through 7 of 7, dated 02/24/09, with revision E dated 07/15/15, prepared by Al-Farooq Corporation, signed and sealed by Javad Ahmad, P.E.

B. TESTS

1. Test reports on: 1) Uniform Static Air Pressure Test, Loading per FBC, TAS 202-94
2) Large Missile Impact Test per FBC, TAS 201-94
3) Cyclic Wind Pressure Loading per FBC, TAS 203-94
4) Forced Entry Test, per FBC 2411.3.2.1, and TAS 202-94
along with marked-up drawings and installation diagram of an aluminum single hung window, prepared by Fenestration Testing Laboratory, Inc., Test Report No. **FTL-7635**, dated 12/09/14, signed and sealed by Marlin D. Brinson, P.E.
(Submitted under previous NOA#14-0317.01)
2. Test reports on: 1) Air Infiltration Test, per FBC, TAS 202-94
2) Uniform Static Air Pressure Test, Loading per FBC TAS 202-94
3) Water Resistance Test, per FBC, TAS 202-94
4) Forced Entry Test, per FBC 2411 3.2.1, TAS 202-94
along with marked-up drawings and installation diagram of a XOX aluminum horizontal sliding window, prepared by Hurricane Engineering & Testing, Inc., Test Report No. **HETI-08-2226A**, dated 01/15/09, signed and sealed by Candido F. Font, P.E.
(Submitted under NOA#09-0312.08)
3. Test reports on: 1) Large Missile Impact Test per FBC, TAS 201-94
2) Cyclic Wind Pressure Loading per FBC, TAS 203-94
along with marked-up drawings and installation diagram of a XOX aluminum horizontal sliding window, prepared by Hurricane Engineering & Testing, Inc., Test Report No. **HETI-08-2226B**, dated 01/15/09, signed and sealed by Candido F. Font, P.E.
(Submitted under NOA#09-0312.08)
4. Test reports on: 1) Uniform Static Air Pressure Test, Loading per FBC TAS 202-94
along with marked-up drawings and installation diagram of a XOX aluminum horizontal sliding window, prepared by Hurricane Engineering & Testing, Inc., Test Report No. **HETI-08-2227**, dated 01/15/09, signed and sealed by Candido F. Font, P.E.
(Submitted under NOA#09-0312.08)




Manuel Perez, P.E.
Product Control Examiner
NOA No. IS-0728.05

Expiration Date: May 27, 2019
Approval Date: September 03, 2015

NOTICE OF ACCEPTANCE: EVIDENCE SUBMITTED

B. TESTS (CONTINUED)

5. Test reports on: 1) Air Infiltration Test, per FBC, TAS 202-94
2) Uniform Static Air Pressure Test, Loading per FBC TAS 202-94
3) Water Resistance Test, per FBC, TAS 202-94
4) Forced Entry Test, per FBC 2411 3.2.1, TAS 202-94
along with marked-up drawings and installation diagram of a XOX aluminum horizontal sliding window, prepared by Hurricane Engineering & Testing, Inc., Test Report No. **HETI-08-2228A**, dated 01/15/09, signed and sealed by Candido F. Font, P.E.
(Submitted under NOA#09-0312.08)
6. Test reports on: 1) Large Missile Impact Test per FBC, TAS 201-94
2) Cyclic Wind Pressure Loading per FBC, TAS 203-94
along with marked-up drawings and installation diagram of a XOX aluminum horizontal sliding window, prepared by Hurricane Engineering & Testing, Inc., Test Report No. **HETI-08-2228B**, dated 01/15/09, signed and sealed by Candido F. Font, P.E.
(Submitted under NOA#09-0312.08)
7. Test reports on: 1) Large Missile Impact Test per FBC, TAS 201-94
2) Cyclic Wind Pressure Loading per FBC, TAS 203-94
along with marked-up drawings and installation diagram of a XOX aluminum horizontal sliding window, prepared by Hurricane Engineering & Testing, Inc., Test Report No. **HETI-08-2229**, dated 01/15/09, signed and sealed by Candido F. Font, P.E.
(Submitted under NOA#09-0312.08)
8. Test reports on: 1) Large Missile Impact Test per FBC, TAS 201-94
2) Cyclic Wind Pressure Loading per FBC, TAS 203-94
along with marked-up drawings and installation diagram of a XOX aluminum horizontal sliding window, prepared by Hurricane Engineering & Testing, Inc., Test Report No. **HETI-08-2230A**, dated 01/15/09, signed and sealed by Candido F. Font, P.E.
(Submitted under NOA#09-0312.08)
9. Test reports on: 1) Large Missile Impact Test per FBC, TAS 201-94
2) Cyclic Wind Pressure Loading per FBC, TAS 203-94
along with marked-up drawings and installation diagram of a XOX aluminum horizontal sliding window, prepared by Hurricane Engineering & Testing, Inc., Test Report No. **HETI-08-2230B**, dated 01/15/09, signed and sealed by Candido F. Font, P.E.
(Submitted under NOA#09-0312.08)


Manuel Perez, P.E.
Product Control Examiner
NOA No. 15-0728.05
Expiration Date: May 27, 2019
Approval Date: September 03, 2015

Eco Window Systems, LLC.

NOTICE OF ACCEPTANCE: EVIDENCE SUBMITTED

C. CALCULATIONS

1. Anchor verification calculations and structural analysis, complying with **FBC 5th Edition (2014)**, dated 07/08/15, prepared by Al-Farooq Corporation, signed and sealed by Javad Ahmad, P.E.
2. Glazing complies with **ASTM E1300-09**

D. QUALITY ASSURANCE

1. Miami-Dade Department of Regulatory and Economic Resources (RER)

E. MATERIAL CERTIFICATIONS

1. Notice of Acceptance No. **14-0916.10** issued to **Kuraray America, Inc.** for their "**Butacite® PVB Glass Interlayer**" dated 04/25/15, expiring on 12/11/16.
2. Notice of Acceptance No. **14-0916.11** issued to **Kuraray America, Inc.** for their "**SentryGlas® (Clear and White) Glass Interlayers**" dated 06/25/15, expiring on 07/04/18.

F. STATEMENTS

1. Statement letter of conformance, complying with **FBC 5th Edition (2014)**, and of no financial interest, July 8, 2015, signed and sealed by Javad Ahmad, P.E.

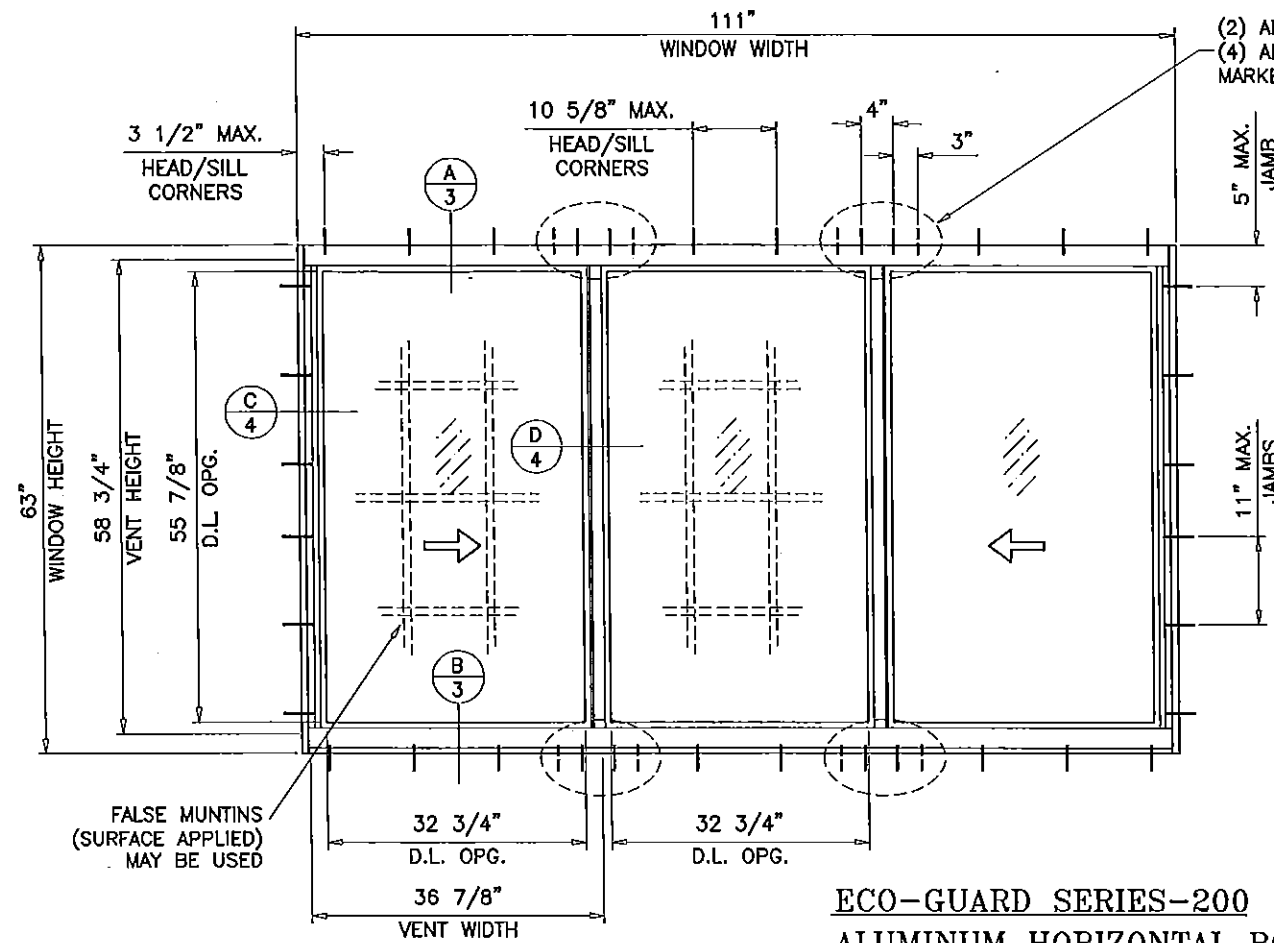
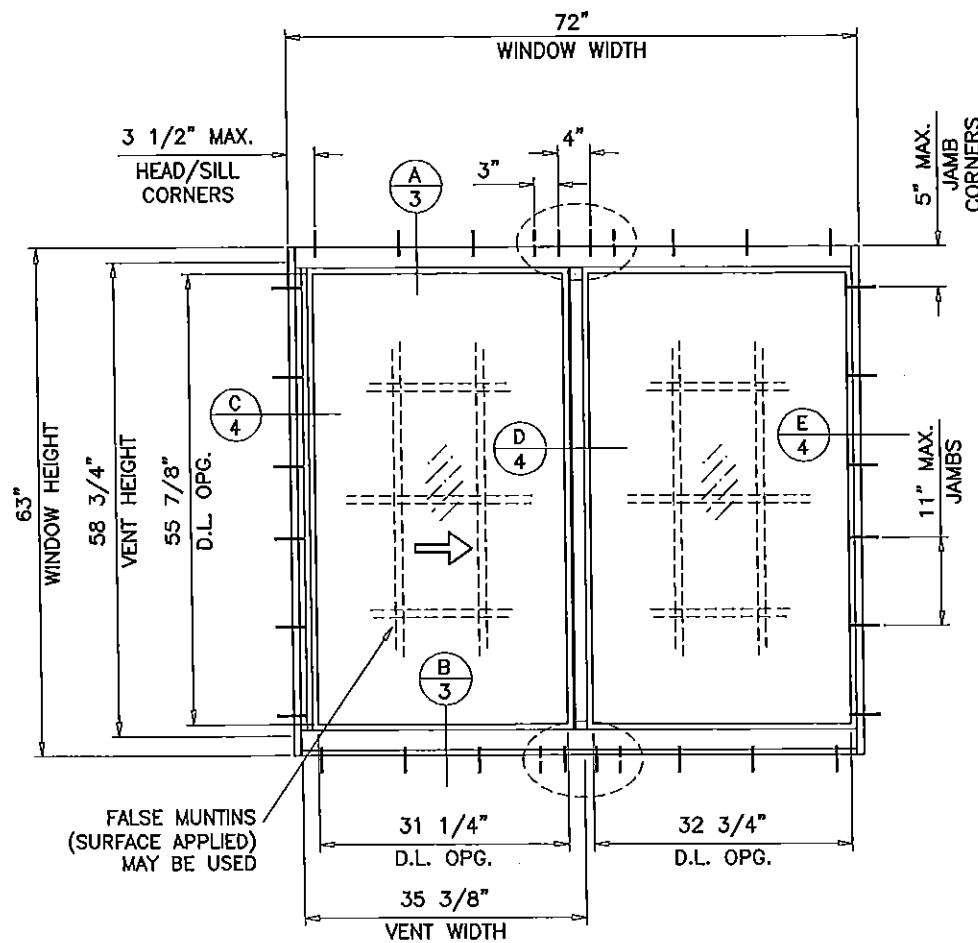
G. OTHER

1. Notice of Acceptance No. **143-0317.01**, issued to Eco Window Systems, LLC for their Series "Eco-Guard 200" Aluminum Horizontal Rolling Window – L.M.I.", approved on 04/10/14 and expiring on 05/27/14.



Manuel Perez, P.E.
Product Control Examiner
NOA No. 15-0728.05

Expiration Date: May 27, 2019
Approval Date: September 03, 2015



TYPICAL ELEVATIONS

**ECO-GUARD SERIES-200
ALUMINUM HORIZONTAL ROLLING WINDOW**

DESIGN LOAD RATINGS FOR THESE WINDOWS TO BE AS PER CHARTS SHOWN ON SHEETS 2.

APPROVAL APPLIES TO SINGLE UNITS OR SIDE BY SIDE COMBINATIONS OF H.R./H.R. OR HORIZONTAL ROLLING WITH OTHER WINDOW TYPES IN MODULES OF TWO OR MORE WINDOWS USING MIAMI-DADE COUNTY APPROVED MULLIONS IN BETWEEN. LOWER DESIGN PRESSURE FROM WINDOWS OR MULLION APPROVAL WILL APPLY TO ENTIRE SYSTEM.

THIS PRODUCT HAS BEEN DESIGNED AND TESTED TO COMPLY WITH THE REQUIREMENTS OF THE FLORIDA BUILDING CODE INCLUDING HIGH VELOCITY HURRICANE ZONE (HVHZ).

WOOD BUCKS BY OTHERS, MUST BE ANCHORED PROPERLY TO TRANSFER LOADS TO THE STRUCTURE.

ANCHORS SHALL BE AS LISTED, SPACED AS SHOWN ON DETAILS, ANCHORS EMBEDMENT TO BASE MATERIAL SHALL BE BEYOND WALL DRESSING OR STUCCO. ANCHORING OR LOADING CONDITIONS NOT SHOWN IN THESE DETAILS ARE NOT PART OF THIS APPROVAL.

A LOAD DURATION INCREASE IS USED IN DESIGN OF ANCHORS INTO WOOD ONLY.

ALL SHIMS TO BE HIGH IMPACT, NON-METALLIC AND NON-COMPRESSIBLE.

MATERIALS INCLUDING BUT NOT LIMITED TO STEEL/METAL SCREWS, THAT COME INTO CONTACT WITH OTHER DISSIMILAR MATERIALS SHALL MEET THE REQUIREMENTS OF THE FLORIDA BUILDING CODE.

Engr: JAVAD AHMAD
CML
FLA. PE # 70592
C.A.N. 3538

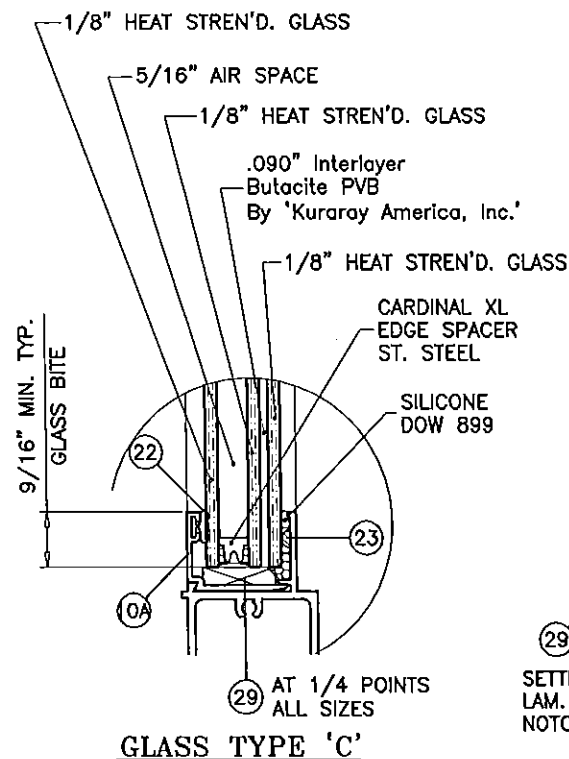
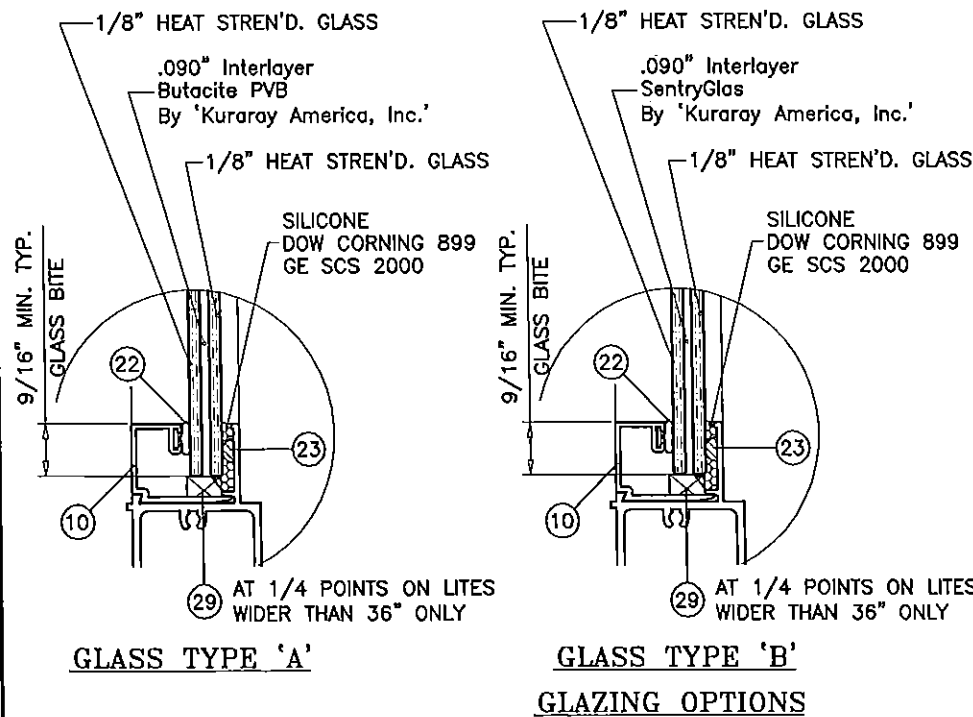
PRODUCT REVISED
as complying with the Florida
Building Code
Acceptance No 15-0728.05
Expiration Date 12/21/2019

By *Manuel Guez*
Miami Dade Product Control

20 2015

THESE WINDOWS ARE RATED FOR LARGE & SMALL MISSILE IMPACT. SHUTTERS ARE NOT REQUIRED.

TO QUALIFY FOR SMALL MISSILE IMPACT RATING EXTERIOR PLY OF GLASS TYPE 'C' MUST BE TEMPERED.



af c
AL-FAROOQ CORPORATION
ENGINEERS & PRODUCT DEVELOPMENT
1235 S.W. 87 AVE
MIAMI, FLORIDA 33174
TEL. (305) 264-8100 FAX. (305) 262-6978
COMP-ANL W09-12ECO

ECO-GUARD SERIES-200 ALUM HORIZ ROLLING WDW. (L.M.L.)
ECO WINDOW SYSTEMS, LLC.
9114 N.W. 106 STREET
MEDLEY, FL. 33178
TEL. (305) 885-5299 FAX (305) 885-5902

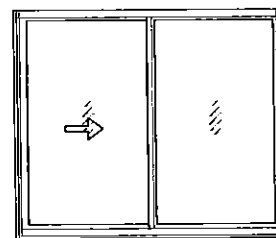
NO	DATE	DESCRIPTION
A	04.17.09	NO CHANGE THIS SHEET
B	01.31.12	UPDATED TO 2010 FBC
C	01.11.13	MANUF. ADDRESS REV.
D	02.12.14	GLASS OPTION ADDED
E	07.15.15	UPDATED TO 2014 FBC

date: 02-24-09
scale: 1/2" = 1'-0"
dr. by: HAMID
chk. by:
drawing no. **W09-12**
sheet 1 of 7

DESIGN LOAD CAPACITY - PSF (XO, OX OR XX SIZES)								
WINDOW DIMS. WIDTH HEIGHT		A	W/O REINF.		WITH REINF.			
			GLASS TYPE 'A'		GLASS TYPE 'B'		GLASS TYPE 'C'	
			EXT.(+)	INT.(-)	EXT.(+)	INT.(-)	EXT.(+)	INT.(-)
26-1/2"	26" (3)	4	70.0	80.0	80.0	90.0	70.0	80.0
37"		4	70.0	80.0	80.0	90.0	70.0	80.0
53-1/8"		6	70.0	80.0	80.0	90.0	70.0	80.0
74"		8	70.0	80.0	80.0	90.0	70.0	80.0
26-1/2"	38-3/8" (4)	4	70.0	80.0	80.0	90.0	70.0	80.0
37"		4	70.0	80.0	80.0	90.0	70.0	80.0
53-1/8"		6	70.0	80.0	80.0	90.0	70.0	80.0
74"	8	70.0	80.0	80.0	90.0	70.0	80.0	
26-1/2"	50-5/8" (5)	4	70.0	80.0	80.0	90.0	70.0	80.0
37"		4	70.0	80.0	80.0	90.0	70.0	80.0
53-1/8"		6	70.0	80.0	80.0	90.0	70.0	80.0
74"		8	70.0	80.0	80.0	90.0	70.0	80.0
26-1/2"	63" (6)	4	70.0	80.0	80.0	90.0	70.0	80.0
37"		4	68.9	77.5	80.0	90.0	70.0	80.0
53-1/8"		6	70.0	70.0	80.0	90.0	70.0	80.0
74"		8	70.0	70.0	80.0	80.4*	70.0	80.0
24"	24" (3)	4	70.0	80.0	80.0	90.0	70.0	80.0
36"		4	70.0	80.0	80.0	90.0	70.0	80.0
48"		6	70.0	80.0	80.0	90.0	70.0	80.0
60"		6	70.0	80.0	80.0	90.0	70.0	80.0
72"		8	70.0	80.0	80.0	90.0	70.0	80.0
24"	36" (4)	4	70.0	80.0	80.0	90.0	70.0	80.0
36"		4	70.0	80.0	80.0	90.0	70.0	80.0
48"		6	70.0	80.0	80.0	90.0	70.0	80.0
60"		6	70.0	80.0	80.0	90.0	70.0	80.0
72"		8	70.0	80.0	80.0	90.0	70.0	80.0
24"	48" (5)	4	70.0	80.0	80.0	90.0	70.0	80.0
36"		4	70.0	80.0	80.0	90.0	70.0	80.0
48"		6	70.0	80.0	80.0	90.0	70.0	80.0
60"		6	70.0	80.0	80.0	90.0	70.0	80.0
72"		8	70.0	80.0	80.0	90.0	70.0	80.0
24"	60" (6)	4	70.0	80.0	80.0	90.0	70.0	80.0
36"		4	70.0	80.0	80.0	90.0	70.0	80.0
48"		6	70.0	70.0	80.0	90.0	70.0	80.0
60"		6	70.0	70.0	80.0	90.0	70.0	80.0
72"		8	70.0	70.0	80.0	87.6*	70.0	80.0

A = NO. OF ANCHORS PER HEAD & SILL
() = NO. OF ANCHORS PER JAMB

* MAX. LOAD FOR THESE SIZES IS -90.0 PSF WITH (4) ANCHORS AT MTG. STILE ENDS



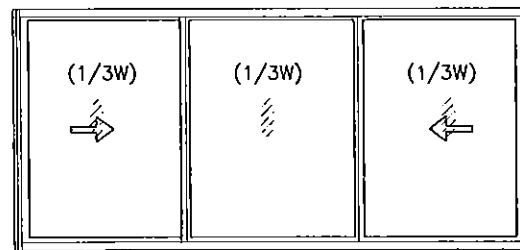
LEFT AND RIGHT VENTS TO BE OF EQUAL GLASS DLO WIDTHS

'XO OR OX'

DESIGN LOAD CAPACITY - PSF (XOX SIZES)								
WINDOW DIMS. WIDTH HEIGHT		A	W/O REINF.		WITH REINF.			
			GLASS TYPE 'A'		GLASS TYPE 'B'		GLASS TYPE 'C'	
			EXT.(+)	INT.(-)	EXT.(+)	INT.(-)	EXT.(+)	INT.(-)
74"	26" (3)	9	70.0	80.0	80.0	90.0	70.0	80.0
106-1/4"		12	70.0	80.0	80.0	90.0	70.0	80.0
111"		12	70.0	80.0	80.0	90.0	70.0	80.0
74"	38-3/8" (4)	9	70.0	80.0	80.0	90.0	70.0	80.0
106-1/4"		12	70.0	80.0	80.0	90.0	70.0	80.0
111"		12	70.0	80.0	80.0	90.0	70.0	80.0
74"	50-5/8" (5)	9	70.0	80.0	80.0	90.0	70.0	80.0
106-1/4"		12	70.0	80.0	80.0	90.0	70.0	80.0
111"		12	70.0	80.0	80.0	90.0	70.0	80.0
74"	63" (6)	9	70.0	70.0	80.0	90.0	70.0	80.0
106-1/4"		12	70.0	70.0	80.0	82.6*	70.0	80.0
111"		12	70.0	70.0	80.0	80.4*	70.0	80.0
72"	24" (3)	9	70.0	80.0	80.0	90.0	70.0	80.0
84"		9	70.0	80.0	80.0	90.0	70.0	80.0
96"		12	70.0	80.0	80.0	90.0	70.0	80.0
108"		12	70.0	80.0	80.0	90.0	70.0	80.0
72"	36" (4)	9	70.0	80.0	80.0	90.0	70.0	80.0
84"		9	70.0	80.0	80.0	90.0	70.0	80.0
96"		12	70.0	80.0	80.0	90.0	70.0	80.0
108"		12	70.0	80.0	80.0	90.0	70.0	80.0
72"	48" (5)	9	70.0	80.0	80.0	90.0	70.0	80.0
84"		9	70.0	80.0	80.0	90.0	70.0	80.0
96"		12	70.0	80.0	80.0	90.0	70.0	80.0
108"		12	70.0	80.0	80.0	90.0	70.0	80.0
72"	60" (6)	9	70.0	70.0	80.0	90.0	70.0	80.0
84"		9	70.0	70.0	80.0	90.0	70.0	80.0
96"		12	70.0	70.0	80.0	90.0*	70.0	80.0
108"		12	70.0	70.0	80.0	87.6*	70.0	80.0

A = NO. OF ANCHORS PER HEAD & SILL
() = NO. OF ANCHORS PER JAMB

* MAX. LOAD FOR THESE SIZES IS -90.0 PSF WITH (4) ANCHORS AT MTG. STILE ENDS



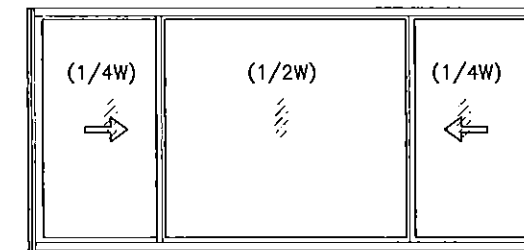
OPERATING VENTS TO BE 1/3 OF THE WINDOW WIDTH

'XOX'

ALL EXTERIOR(+) LOADS SHOWN ON THIS SHEET ARE FOR WINDOWS WITH ADD-ON RISER AT FRAME SILL FOR STD. SILL (NO RISER) LIMIT EXT.(+) LOADS TO 67.0 PSF SEE SHEET 3 FOR DETAIL.

DESIGN LOAD CAPACITY - PSF (XOX SIZES)								
WINDOW DIMS. WIDTH HEIGHT		A	W/O REINF.		WITH REINF.			
			GLASS TYPE 'A'		GLASS TYPE 'B'		GLASS TYPE 'C'	
			EXT.(+)	INT.(-)	EXT.(+)	INT.(-)	EXT.(+)	INT.(-)
74"	26" (3)	9	70.0	80.0	80.0	90.0	70.0	80.0
106-1/4"		12	70.0	80.0	80.0	90.0	70.0	80.0
111"		12	70.0	80.0	80.0	90.0	70.0	80.0
74"	38-3/8" (4)	9	70.0	80.0	80.0	90.0	70.0	80.0
106-1/4"		12	-	-	80.0	90.0	70.0	80.0
111"		12	-	-	80.0	90.0	70.0	80.0
74"	50-5/8" (5)	9	70.0	80.0	80.0	90.0	70.0	80.0
106-1/4"		12	-	-	80.0	90.0	70.0	80.0
111"		12	-	-	80.0	90.0	70.0	80.0
74"	63" (6)	9	70.0	70.0	80.0	90.0	70.0	80.0
106-1/4"		12	70.0	70.0	80.0	90.0	70.0	80.0
111"		12	70.0	70.0	80.0	90.0	70.0	80.0
72"	24" (3)	9	70.0	80.0	80.0	90.0	70.0	80.0
84"		9	70.0	80.0	80.0	90.0	70.0	80.0
96"		12	70.0	80.0	80.0	90.0	70.0	80.0
108"	12	70.0	80.0	80.0	90.0	70.0	80.0	
72"	36" (4)	9	70.0	80.0	80.0	90.0	70.0	80.0
84"		9	70.0	80.0	80.0	90.0	70.0	80.0
96"		12	70.0	80.0	80.0	90.0	70.0	80.0
108"	12	70.0	80.0	80.0	90.0	70.0	80.0	
72"	48" (5)	9	70.0	80.0	80.0	90.0	70.0	80.0
84"		9	70.0	70.0	80.0	90.0	70.0	80.0
96"		12	70.0	70.0	80.0	90.0	70.0	80.0
72"	60" (6)	9	70.0	70.0	80.0	90.0	70.0	80.0
84"		9	70.0	70.0	80.0	90.0	70.0	80.0
96"		12	70.0	70.0	80.0	90.0	70.0	80.0

A = NO. OF ANCHORS PER HEAD & SILL
() = NO. OF ANCHORS PER JAMB



OPERATING VENTS TO BE 1/4 OF THE WINDOW WIDTH

'XOX'

NOTE:
GLASS CAPACITIES ON THIS SHEET ARE BASED ON ASTM E1300-09 (3 SEC. GUSTS) AND FLORIDA BUILDING COMMISSION DECLARATORY STATEMENT DCA05-DEC-219

Engr: JAVAD AHMAD
CML
FLA. PE # 70592
C.A.N. 3538

PRODUCT REVISED
as complying with the Florida
Building Code
Acceptance No. 15-0728.05
Expiration Date May 27, 2015
By: *Manuel Perez*
Miami Dade Product Control

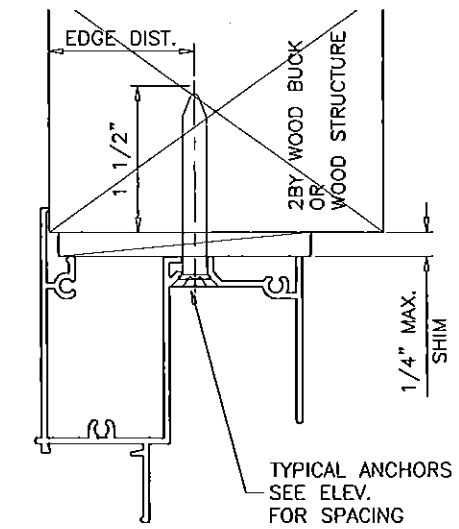
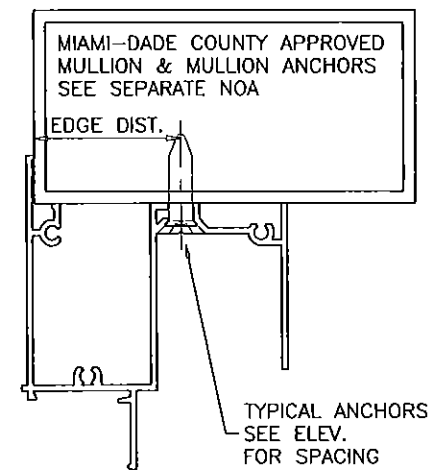
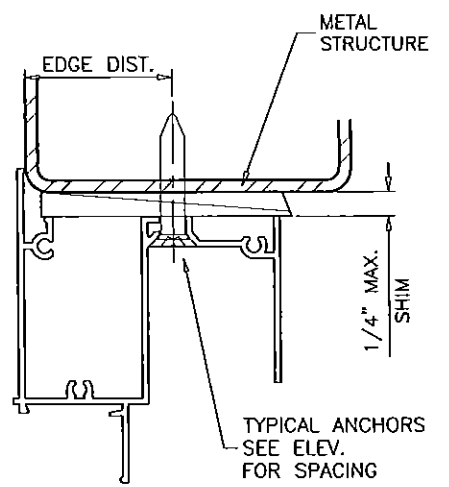
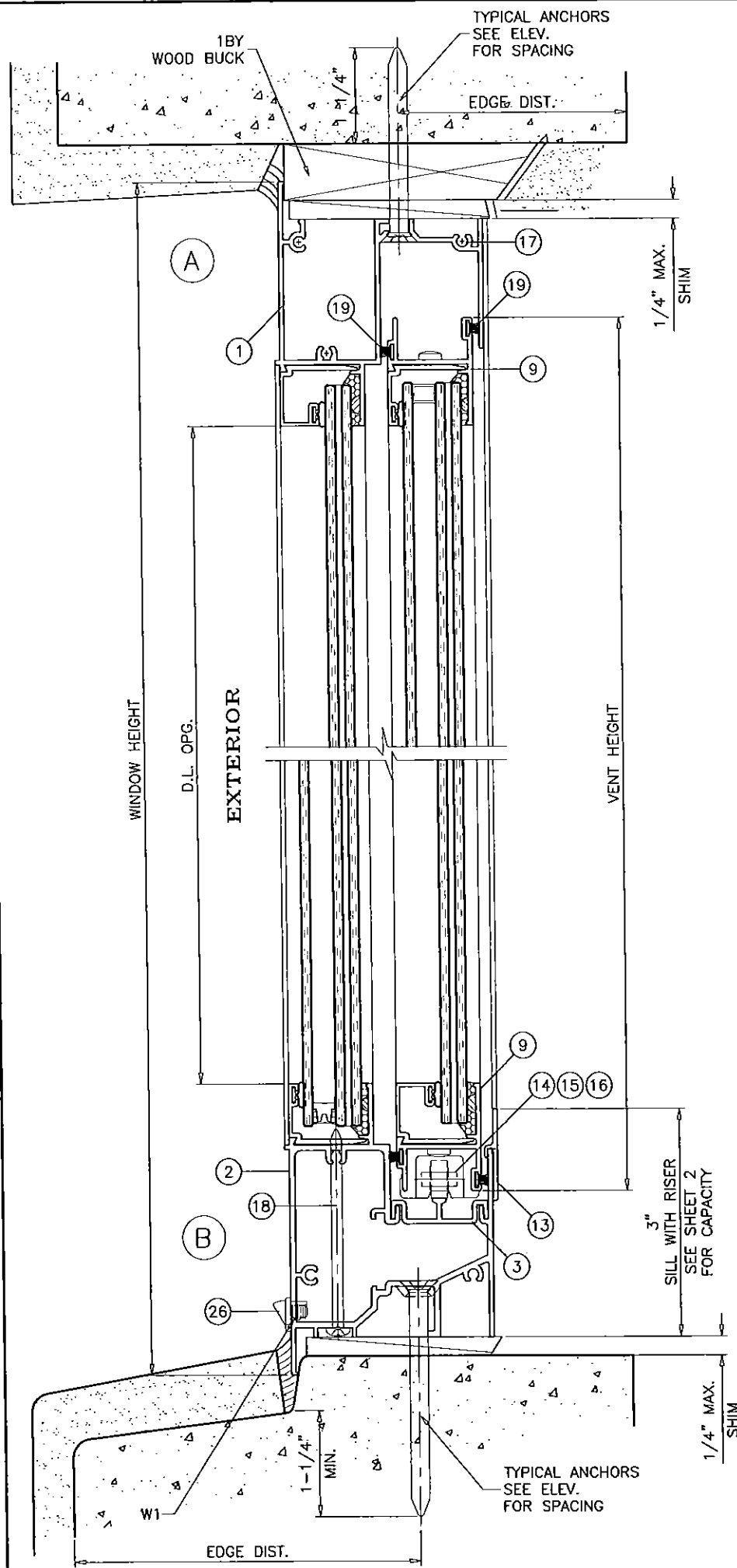
afC
AL-FAROOQ CORPORATION
ENGINEERS & PRODUCT DEVELOPMENT
1235 S.W. 87 AVE
MIAMI, FLORIDA 33174
TEL (305) 264-8100 FAX (305) 262-6978
COMP-ANL\W09-12ECO

ECO-GUARD SERIES-200 ALUM HORIZ. ROLLING WDW. (L.M.I.)
ECO WINDOW SYSTEMS, LLC.
9114 N.W. 106 STREET
MEDLEY, FL. 33178
TEL (305) 885-5299 FAX (305) 885-5902

NO	DATE	DESCRIPTION
A	04.17.09	NO CHANGE THIS SHEET
B	01.31.12	UPDATED TO 2010 FBC
C	01.11.13	MANUF. ADDRESS REV.
D	02.12.14	GLASS OPTION ADDED
E	07.15.15	UPDATED TO 2014 FBC

date: 02-24-09
scale: -
dr. by: HAMID
chk. by:

drawing no.
W09-12
sheet 2 of 7



WOOD BUCKS AND METAL STRUCTURE NOT BY ECO WDW. MUST SUSTAIN LOADS IMPOSED BY GLAZING SYSTEM AND TRANSFER THEM TO THE BUILDING STRUCTURE.

WEEPHOLES:

W1 = 3/8" X 2-1/4" WEEPHOLES AT EACH END AND 37" O.C. MAX.

SEALANT:

ALL JOINTS AND FRAME CONNECTIONS SEALED WITH JOINT SEALER.

TYPICAL ANCHORS: SEE ELEV. FOR SPACING

1/4" DIA. ULTRACON BY 'ELCO' (Fu=177 KSI, Fy=155 KSI) INTO 2BY WOOD BUCKS OR WOOD STRUCTURES 1-1/2" MIN. PENETRATION INTO WOOD (HEAD/SILL/JAMBS)

THRU 1BY BUCKS INTO CONC. OR MASONRY 1-1/4" MIN. EMBED INTO CONCRETE (HEAD/SILL) 1-1/4" MIN. EMBED INTO CONC. OR MASONRY (JAMBS)

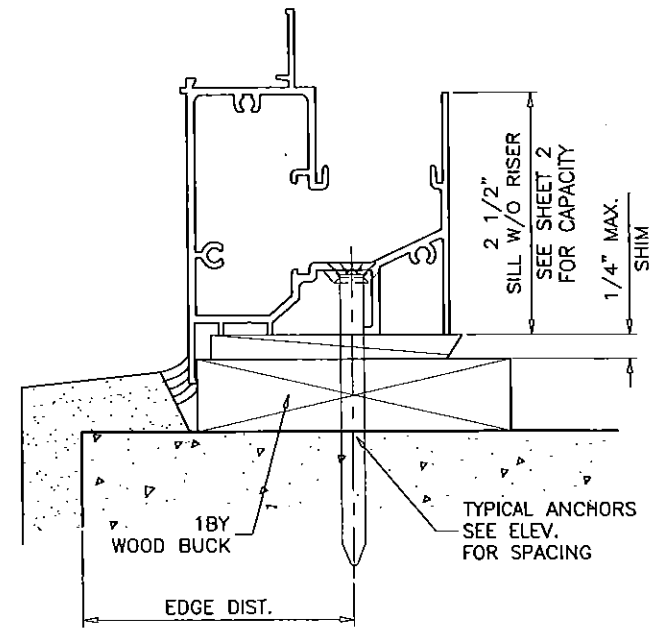
DIRECTLY INTO CONC. OR MASONRY 1-1/4" MIN. EMBED INTO CONCRETE (HEAD/SILL) 1-1/4" MIN. EMBED INTO CONC. OR MASONRY (JAMBS)

#14 SMS OR SELF DRILLING SCREWS (GRADE 2 CRS) INTO MIAMI-DADE COUNTY APPROVED MULLIONS (MIN. THK. = 1/8") INTO METAL STRUCTURES STEEL : 1/8" THK. MIN. (Fy = 36 KSI MIN.) ALUMINUM : 1/8" THK. MIN. (6063-T5 MIN.) (STEEL IN CONTACT WITH ALUMINUM TO BE PLATED OR PAINTED)

TYPICAL EDGE DISTANCE

INTO CONCRETE AND MASONRY = 2-1/2" MIN. INTO WOOD STRUCTURE = 1" MIN. INTO METAL STRUCTURE = 3/4" MIN.

WOOD AT HEAD, SILL OR JAMBS SG = 0.55 MIN. CONCRETE AT HEAD, SILL OR JAMBS f'c = 3000 PSI MIN. C-90 HOLLOW/FILLED NORMAL WEIGHT CMU AT JAMBS f'm = 2000 PSI MIN.



Engr: JAVAD AHMAD
CIVIL
FLA. PE # 70592
C.A.N. 3538
JUL 20 2015

PRODUCT REVISED as complying with the Florida Building Code
Acceptance No. 15-0728.05
Expiration Date 11/21/2019
By Manuel Perez
Miami/Dade Product Control

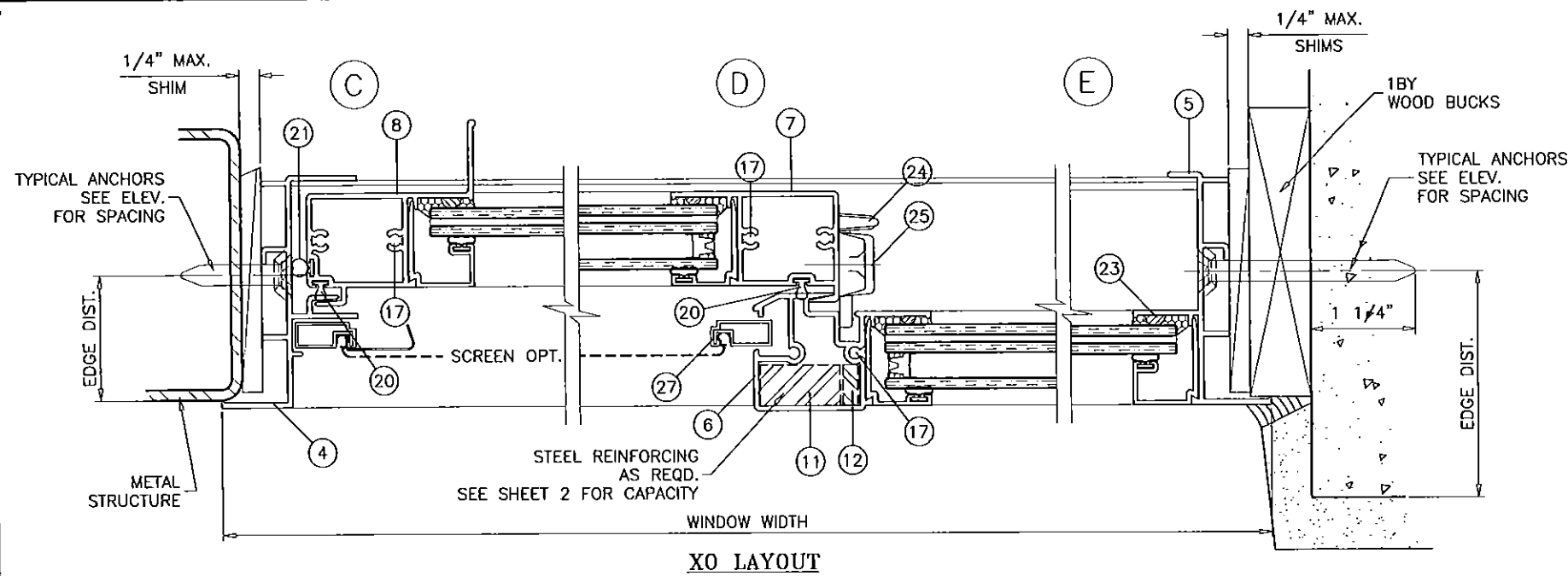
af c
AL-FAROOQ CORPORATION
ENGINEERS & PRODUCT DEVELOPMENT
1235 S.W. 87 AVE
MIAMI, FLORIDA 33174
TEL. (305) 264-8100 FAX. (305) 262-6978
COMP-ANL\W09-12ECO

ECO-GUARD SERIES-200 ALUM. HORIZ. ROLLING WDW. (L.M.I.)
ECO WINDOW SYSTEMS, LLC.
9114 N.W. 106 STREET
MEDLEY, FL. 33178
TEL. (305) 885-5299 FAX (305) 885-5902

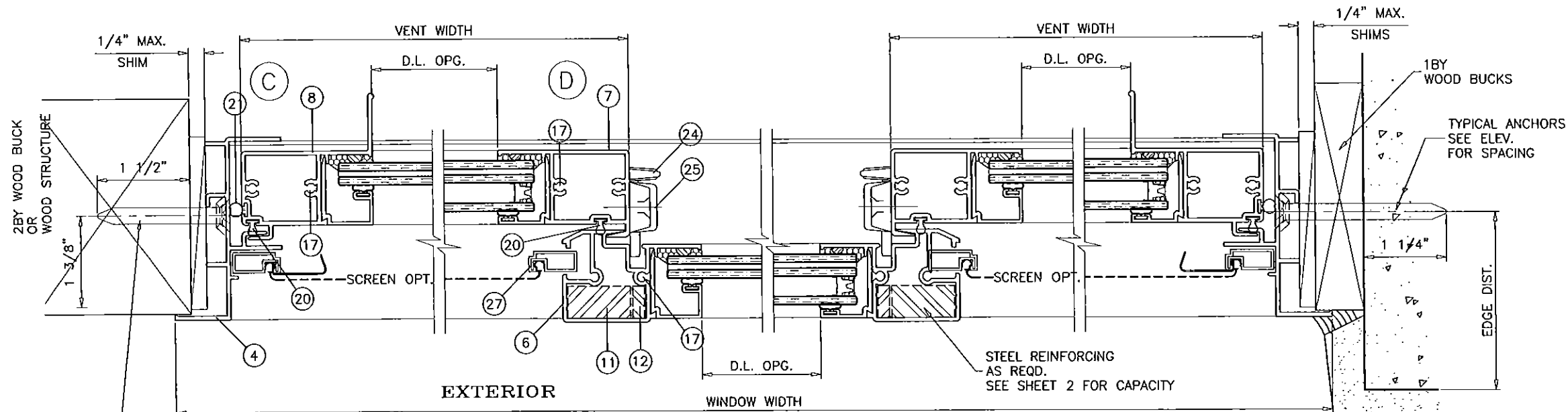
no	date	by	description
A	04.17.09		NO CHANGE THIS SHEET
B	01.31.12		UPDATED TO 2010 FBC
C	01.11.13		MANUF. ADDRESS REV.
D	02.12.14		GLASS OPTION ADDED
E	07.15.15		UPDATED TO 2014 FBC

date: 02-24-09
scale: 1/2" = 1"
dr. by: HAMID
chk. by:

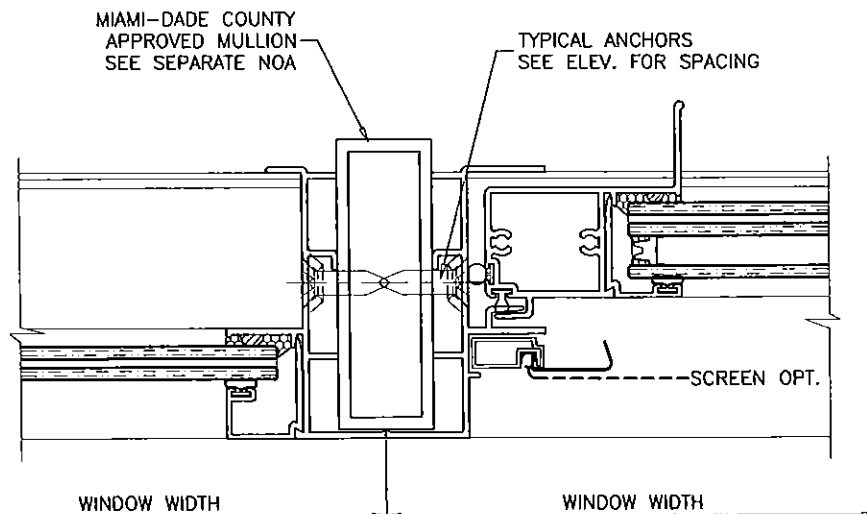
drawing no.
W09-12
sheet 3 of 7



XO LAYOUT



XOX LAYOUT



Engr: JAVAD AHMAD
 CIVIL
 FLA. PE # 70592
 C.A.N. 3538

JUL 20 2015

PRODUCT REVISED
 as complying with the Florida
 Building Code
 Acceptance No. 15-0728.05
 Expiration Date May 27, 2019

By *Manuel Perez*
 Miami Dade Product Control

afc
AL-FAROOQ CORPORATION
 ENGINEERS & PRODUCT DEVELOPMENT
 1235 S.W. 87 AVE
 MIAMI, FLORIDA 33174
 TEL. (305) 264-8100 FAX. (305) 262-6978
 COMP-ANL\W09-12ECO

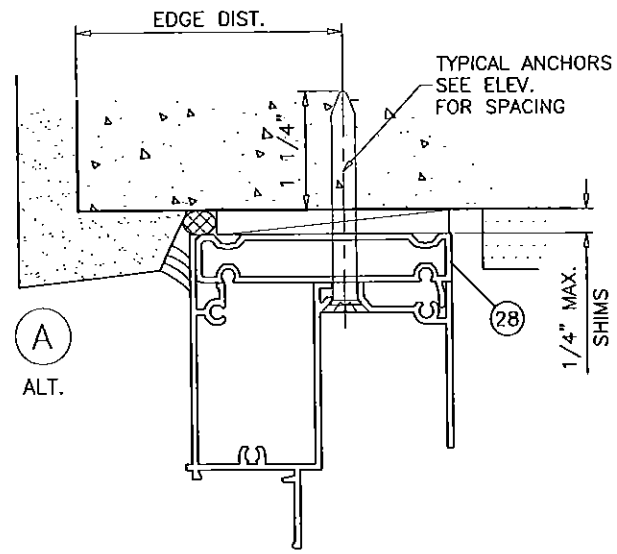
ECO-GUARD SERIES-200 ALUM HORZ. ROLLING WDW. (L.M.I.)
ECO WINDOW SYSTEMS, LLC.
 9114 N.W. 106 STREET
 MEDLEY, FL 33178
 TEL. (305) 885-5299 FAX (305) 885-5902

REVISIONS:

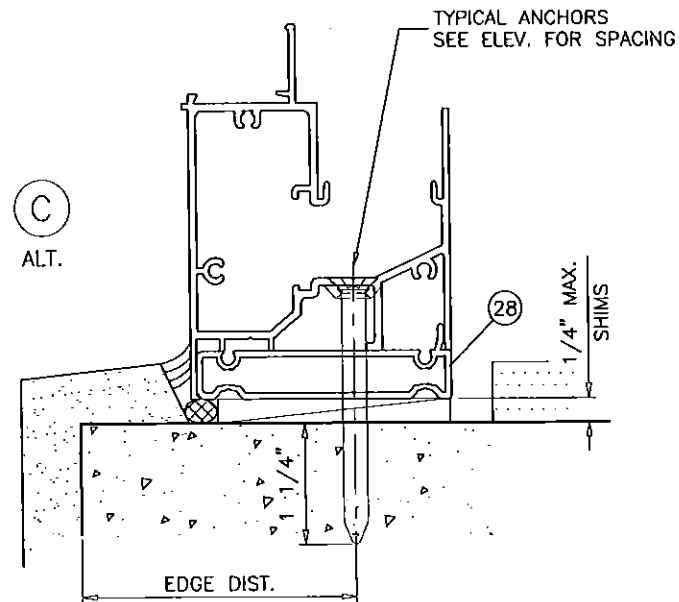
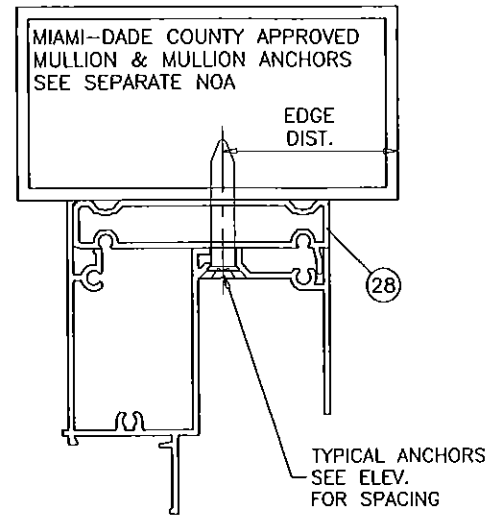
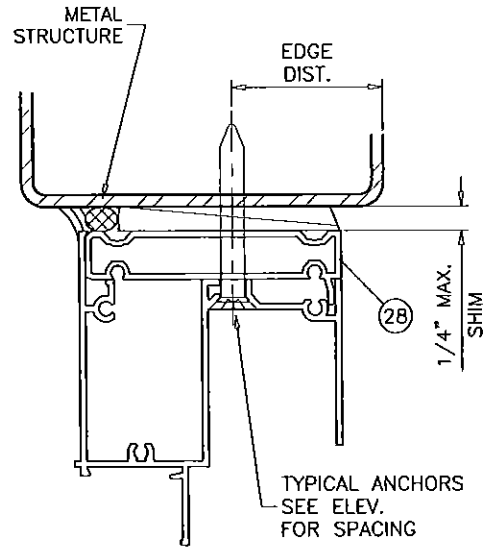
no	date	description
A	04.17.09	REV. PER BECCO COMMENTS
B	01.31.12	NO CHANGE THIS SHEET
C	01.11.13	MANUF. ADDRESS REV.
D	02.12.14	GLASS OPTION ADDED
E	07.15.15	UPDATED TO 2014 FBC

date: 02-24-09
 scale: 1/2" = 1"
 dr. by: HAMID
 chk. by:

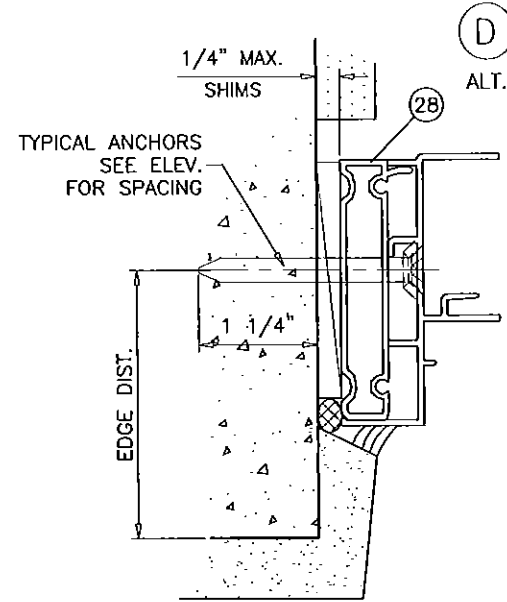
drawing no.
W09-12
 sheet 4 of 7



A
ALT.



C
ALT.



D
ALT.

INSTALLATION DETAILS WITH FLUSH FRAME ADAPTER

Engr: JAVAD AHMAD
CIVIL
FLA. PE # 70592
C.A.N. 3538

JUL 20 2015

PRODUCT REVISED
as complying with the Florida
Building Code
Acceptance No 15-0723.05
Expiration Date May 21, 2019
By *Manuel Sires*
Miami Dade Product Control

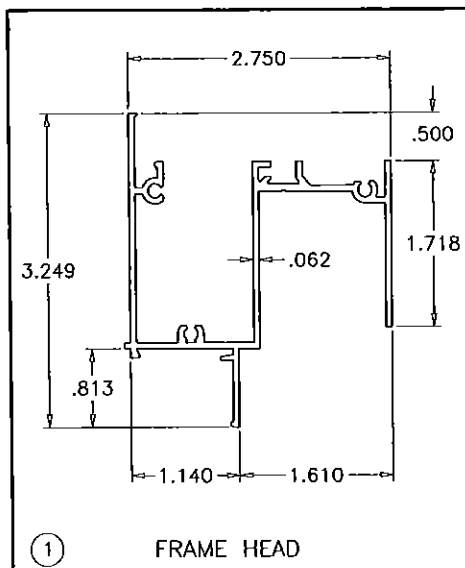
a f c
AL-FAROOQ CORPORATION
ENGINEERS & PRODUCT DEVELOPMENT
1235 S.W. 87 AVE
MIAMI, FLORIDA 33174
TEL. (305) 264-8100 FAX (305) 262-6978
COMP-ANL\W09-12ECO

ECO-GUARD SERIES-200 ALUM HORIZ. ROLLING WDW. (L.M.I.)
ECO WINDOW SYSTEMS, LLC.
9114 N.W. 106 STREET
MEDLEY, FL 33178
TEL. (305) 885-5299 FAX (305) 885-5902

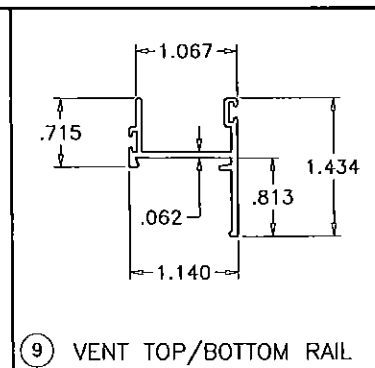
no	date	by	description
A	04.17.08		NO CHANGE THIS SHEET
B	01.31.12		NO CHANGE THIS SHEET
C	01.11.13		MANUF. ADDRESS REV.
D	02.12.14		NO CHANGE THIS SHEET
E	07.15.15		UPDATED TO 2014 FBC

date: 02-24-09
scale: 1/2" = 1"
dr. by: HAMID
chk. by:

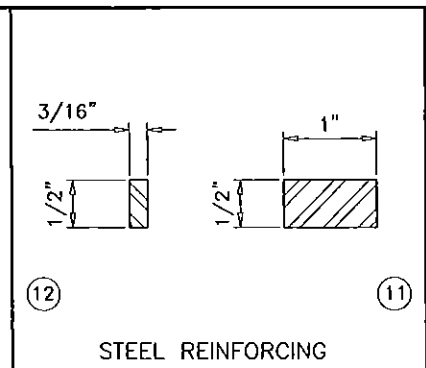
drawing no.
W09-12
sheet 5 of 7



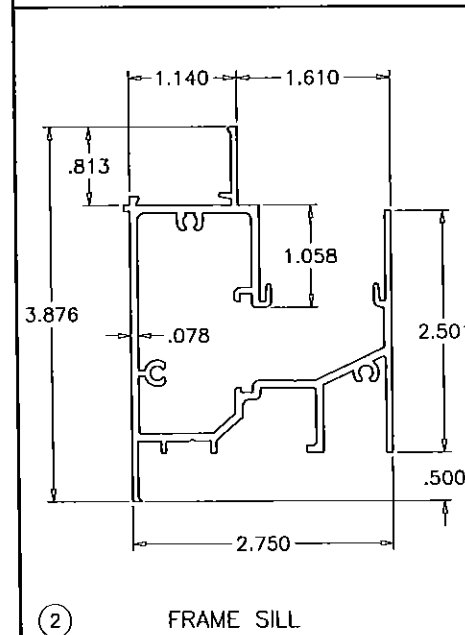
1 FRAME HEAD



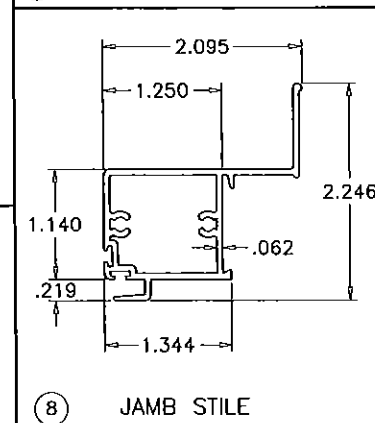
9 VENT TOP/BOTTOM RAIL



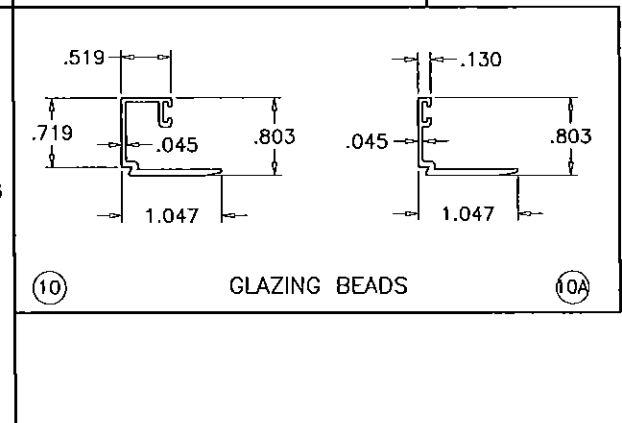
STEEL REINFORCING



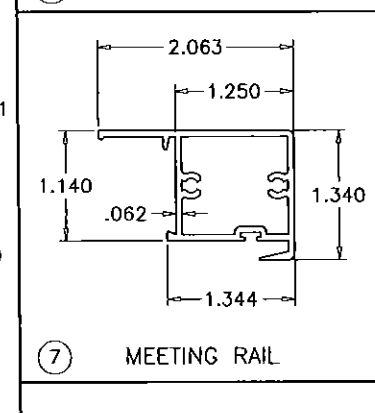
2 FRAME SILL



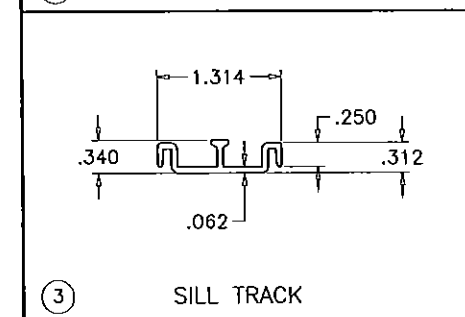
8 JAMB STILE



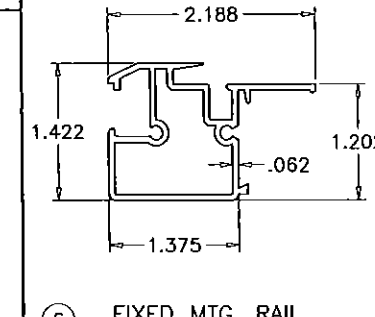
10 GLAZING BEADS



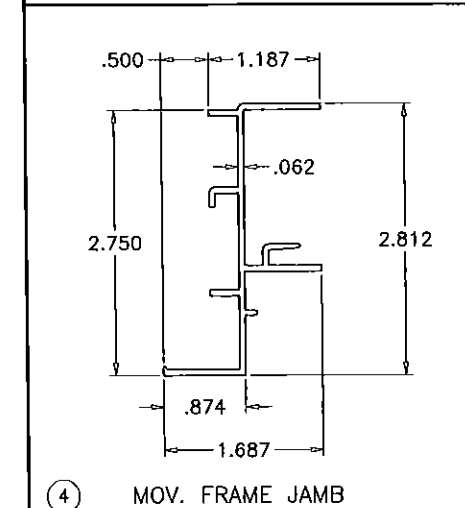
7 MEETING RAIL



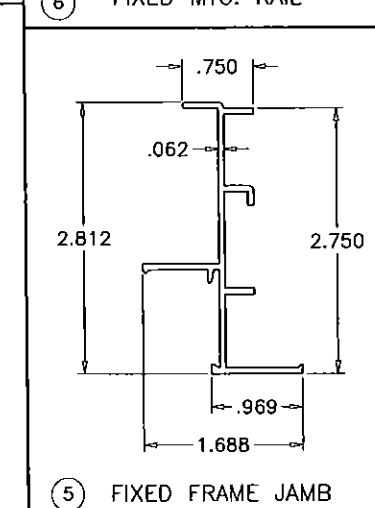
3 SILL TRACK



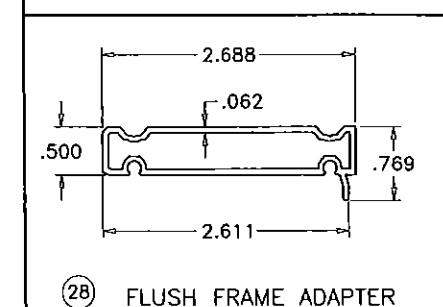
6 FIXED MTG. RAIL



4 MOV. FRAME JAMB



5 FIXED FRAME JAMB



28 FLUSH FRAME ADAPTER

ITEM	PART #	QUANTITY	DESCRIPTION	MATERIAL	MANF./SUPPLIER/REMARKS
1	FY201	1	FRAME HEAD	6063-T6	--
2	FY202	1	FRAME SILL	6063-T6	--
3	FY203	1	SILL TRACK INSERT	6063-T6	--
4	FY205	AS REQD.	MOV. FRAME JAMB	6063-T6	--
5	FY101	AS REQD.	FIXED FRAME JAMB	6063-T6	--
6	FY104	1/ VENT	FIXED MTG. RAIL	6063-T6	--
7	FY105	1/ VENT	VENT INTERLOCK	6063-T6	--
8	FY206	1/ VENT	JAMB STILE	6063-T6	--
9	FY107	2/ VENT	TOP AND BOTTOM RAIL	6063-T6	--
10	FY108	AS REQD.	GLAZING BEAD (LAM. GLASS)	6063-T6	--
10A	FY110	AS REQD.	GLAZING BEAD (INSUL. LAM. GLASS)	6063-T6	--
11	--	AS REQD.	REINFORCING BAR	STEEL	--
12	--	AS REQD.	REINFORCING BAR	STEEL	--
13	FY204	AS RTEQD.	ADD-ON SILL RISER	6063-T6	USE AS REQD.
14	FY208	4/ VENT	ROLLER HOUSING & GUIDE	CELCON	--
15	FY209	2/ VENT	ROLLER	BRASS	--
16	FY210	2/ VENT	ROLLER PIN	ST. STEEL	--
17	#8 X 1"	AS REQD.	FRAME/VENT ASSEMBLY SCREWS	CRS	P.H. SMS
18	#8 X 3"	2/ VENT	FIX. RAIL SILL SCREWS (SILL END)	CRS	P.H. SMS
19	W23181	AS REQD.	FIN SEAL W'STRIPPING	--	ULTRAFAB
20	Q300T190	AS REQD.	BULB SEAL	Q-LON	SCHLEGEL
21	E207	AS REQD.	BULB SEAL	SANTOPRENE	ULTRAFAB, DUROMETER 65±5
22	E203	AS REQD.	GLAZING BEAD BULB	SANTOPRENE	ULTRAFAB, DUROMETER 65±5
23	FLB-50	AS REQD.	GLASS SPACER	SILICONE	FRANK LOWE
24	SL203P	2/ VENT	SWEEP LATCH	--	SULLIVAN & ASSOC.
25	#8 X 1/8"	2/ LATCH	LATCH INST. SCREW	ST. STEEL	OH SMS
26	WA2L	2/ WDW.	WEEP VALVE	--	PREFERRED ENG. PRODUCTS
27	--	1/ VENT	5/16" BOX SCREEN	--	OPTIONAL
28	FY120	--	FLUSH FRAME ADAPTER	6063-T6	OPTIONAL
29	--	2/ LITE	SETTING BLOCK	EPDM	DUROMETER 80±5 SHORE A

Engr: JAVAD AHMAD
 CIVIL
 FLA. PE # 70592
 C.A.N. 3538
 JUL 20 2015

PRODUCT REVISED
 as complying with the Florida
 Building Code
 Acceptance No 15-0728.05
 Expiration Date May 27, 2019
 By Manuel Perez
 Miami Dade Product Control

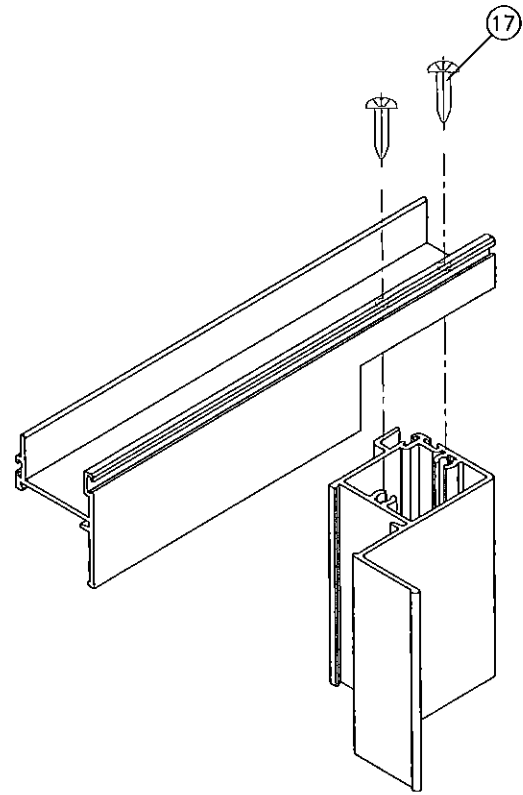
afC
AL-FAROOQ CORPORATION
 ENGINEERS & PRODUCT DEVELOPMENT
 1235 S.W. 87 AVE
 MIAMI, FLORIDA 33174
 TEL (305) 262-6978
 FAX (305) 262-6978
 COMP-ANL\W09-12ECO

ECO-GUARD SERIES-200 ALUM HORIZ. ROLLING WDW. (L.M.I.)
ECO WINDOW SYSTEMS, LLC.
 9114 N.W. 106 STREET
 MEDLEY, FL 33178
 TEL (305) 885-5299 FAX (305) 885-5902

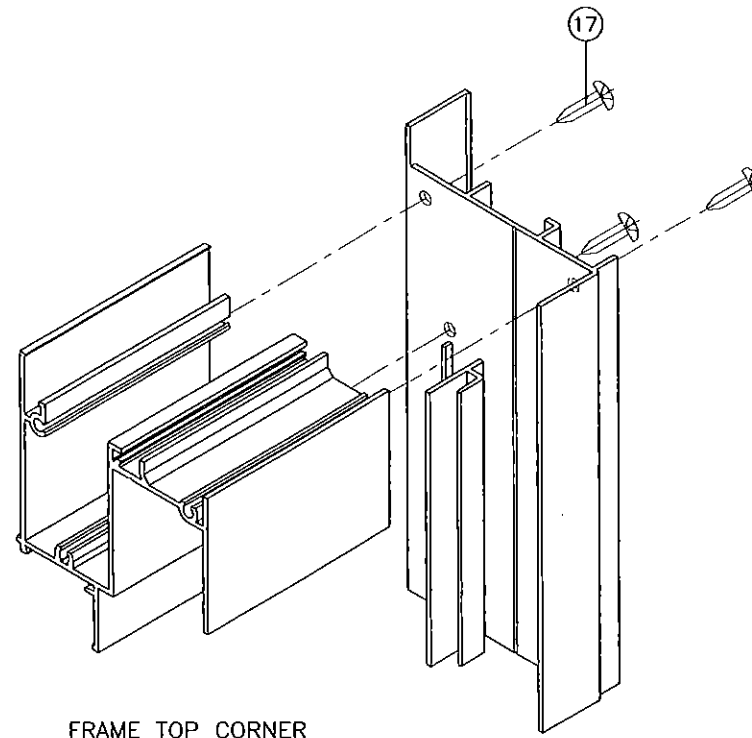
no	date	by	description
A	04.17.09		REV. PER BECCO COMMENTS
B	01.31.12		UPDATED TO 2010 FBC
C	01.11.13		MANUF. ADDRESS REV.
D	02.12.14		GLASS OPTION ADDED
E	07.15.15		UPDATED TO 2014 FBC

date: 02-24-09
 scale: 1/2" = 1"
 dr. by: HAMID
 chk. by:

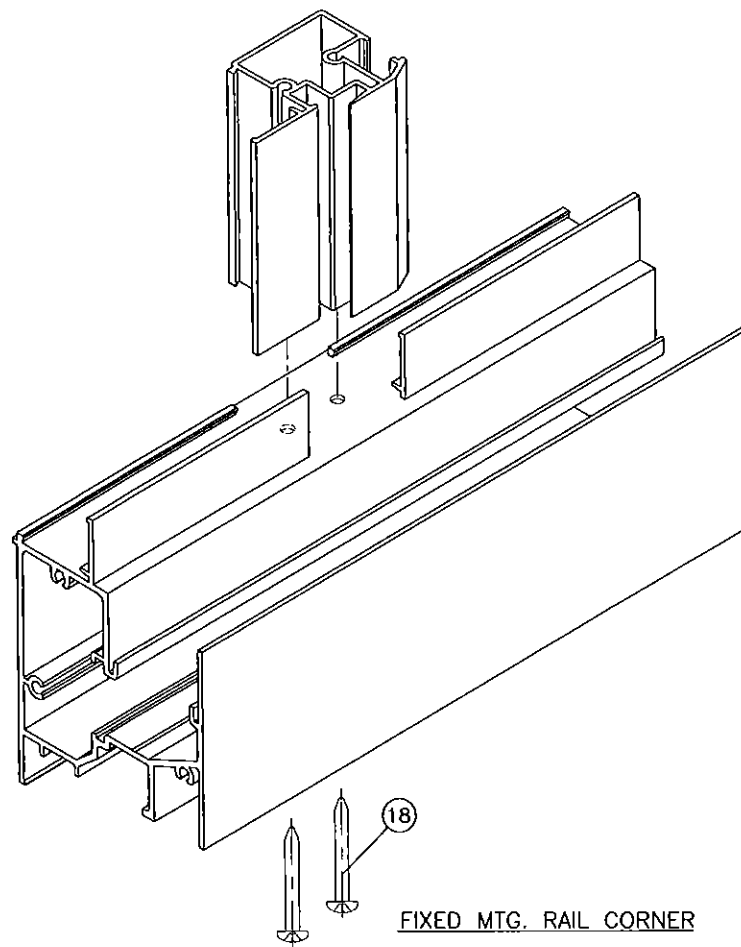
drawing no.
W09-12
 sheet 6 of 7



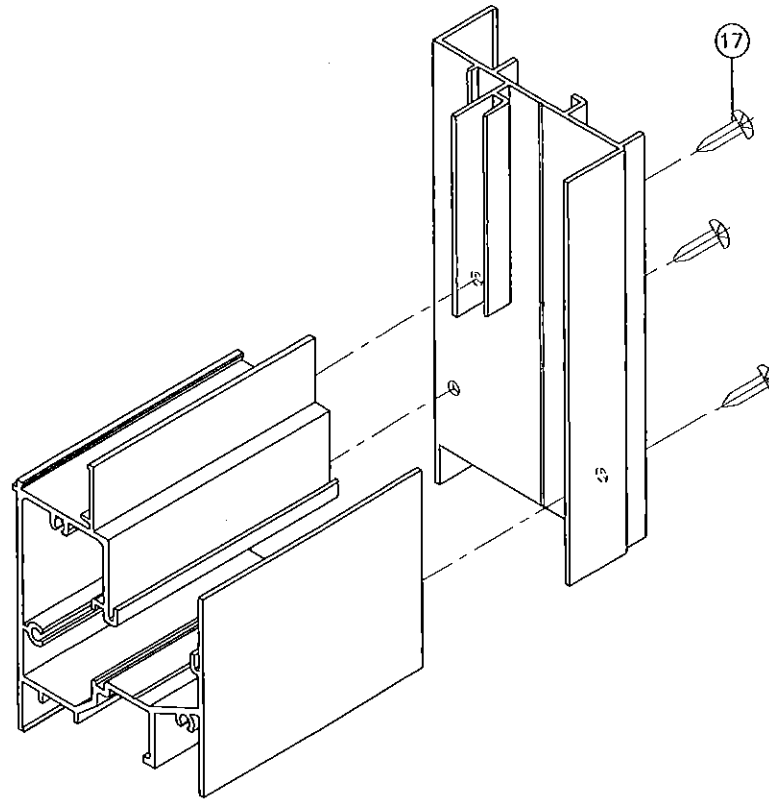
VENT TOP/BOTTOM CORNERS



FRAME TOP CORNER



FIXED MTG. RAIL CORNER



FRAME BOTTOM CORNER

Engr: JAVAD AHMAD
 CIVIL
 FLA. RE # 70592
 C.A.N. 3538

JAVAD AHMAD
 JUL 20 2015

PRODUCT REVISED
 as complying with the Florida
 Building Code
 Acceptance No. **15-0728.05**
 Expiration Date **May 27, 2019**

By *Manuel Perez*
 Miami Dade Product Control



AL-FAROOQ CORPORATION
 ENGINEERS & PRODUCT DEVELOPMENT
 1235 S.W. 87 AVE
 MIAMI, FLORIDA 33174
 TEL. (305) 264-8100 FAX. (305) 262-6978

COMP-ANL\W09-12ECO

ECO-GUARD SERIES-200 ALUM. HORIZ. ROLLING WDW. (L.M.I.)
ECO WINDOW SYSTEMS, LLC.
 9114 N.W. 106 STREET
 MEDLEY, FL. 33178
 TEL. (305) 885-5299 FAX (305) 885-5902

no.	date	by	description
A	04.17.09		NO CHANGE THIS SHEET
B	01.31.12		NO CHANGE THIS SHEET
C	01.11.13		MANUF. ADDRESS REV.
D	02.12.14		NO CHANGE THIS SHEET
E	07.15.15		NO CHANGE THIS SHEET

date: 02-24-09
 scale: 1/2" = 1"
 dr. by: HAMID
 chk. by:

drawing no.
W09-12

sheet 7 of 7