



DEPARTMENT OF REGULATORY AND ECONOMIC RESOURCES (RER)
BOARD AND CODE ADMINISTRATION DIVISION
NOTICE OF ACCEPTANCE (NOA)

MIAMI-DADE COUNTY
PRODUCT CONTROL SECTION
11805 SW 26 Street, Room 208
Miami, Florida 33175-2474
T (786) 315-2590 F (786) 315-2599
www.miamidade.gov/economy

Detex Corporation
302 Detex Drive
New Braunfels, TX 78130

SCOPE:

This NOA is being issued under the applicable rules and regulations governing the use of construction materials. The documentation submitted has been reviewed and accepted by Miami-Dade County RER -Product Control Section to be used in Miami Dade County and other areas where allowed by the Authority Having Jurisdiction (AHJ).

This NOA shall not be valid after the expiration date stated below. The Miami-Dade County Product Control Section (In Miami Dade County) and/or the AHJ (in areas other than Miami Dade County) reserve the right to have this product or material tested for quality assurance purposes. If this product or material fails to perform in the accepted manner, the manufacturer will incur the expense of such testing and the AHJ may immediately revoke, modify, or suspend the use of such product or material within their jurisdiction. RER reserves the right to revoke this acceptance, if it is determined by Miami-Dade County Product Control Section that this product or material fails to meet the requirements of the applicable building code.

This product is approved as described herein, and has been designed to comply with the Florida Building Code, including the High Velocity Hurricane Zone.

DESCRIPTION: Detex Series "H-10, FH 10, H-40 & FH-40" Single Rim Panic Exit Devices and HV40 & FHV40 Rim Panic Exit w/ Removable (Yale M-200 or Detex H-90R) mullions-Impact (Component Approval)

APPROVAL DOCUMENT: Drawing No. **13-045 (OLD 12-025)**, titled "Advantex Series RIM Panic Exit Hardware" sheets 1 through 9 of 9, prepared by Building Drops, Inc., dated 16/17/13 and last revised on 10-01-2018, signed and sealed by Hermes F. Norero, P.E., bearing the Miami-Dade County Product Control Revision stamp with the Notice of Acceptance number and expiration date by the Miami-Dade County Product Control Section.

MISSILE IMPACT RATING: Large and Small Missile Impact

Limitations:

1. See Single Rim Panic Exit (Component Approval) Design Pressure Ratings (DP) for series **H10, FH 10, H40 & FH40** in **16ga** Single doors (w/steel stiffeners) in sheets **1** thru **6**.
2. See Rim Panic Exit (Component Approval) Design Pressure Ratings (DP) for series **HV40 & FHV40** (Single or double **16 ga** door (w/steel stiffeners)) & w/ Yale M-200 or Detex H90R mullion) in sheets **7** thru **9**.
3. Lower DP ratings of Rim Panic Exit Component Approval or Door System shall control the entire assembly. See door system qualifications, reinforcements and additional limitations in sheets **1, 3, 5** and **7** of the approval Dwgs.
4. Electrical and Fire ratings are not part of this approval.

LABELING: Each unit shall bear a permanent label with the manufacturer's name or logo, city, state and series and following statement: "Miami-Dade County Product Control Approved", noted herein.

RENEWAL of this NOA shall be considered after a renewal application has been filed and there has been no change in the applicable building code negatively affecting the performance of this product.

TERMINATION of this NOA will occur after the expiration date or if there has been a revision or change in the materials, use, and/or manufacture of the product or process. Misuse of this NOA as an endorsement of any product, for sales, advertising or any other purposes shall automatically terminate this NOA. Failure to comply with any section of this NOA shall be cause for termination and removal of NOA.

ADVERTISEMENT: The NOA number preceded by the words Miami-Dade County, Florida, and followed by the expiration date may be displayed in advertising literature. If any portion of the NOA is displayed, then it shall be done in its entirety.

INSPECTION: A copy of this entire NOA shall be provided to the user by the manufacturer or its distributors and shall be available for inspection at the job site at the request of the Building Official.

This NOA **revises & renews** NOA # **15-0415.08** consists of this page 1 and evidence pages E-1 & E-2, as well as approval document mentioned above.

The submitted documentation was reviewed by **Ishaq I. Chanda, P.E.**



NOA No. 15-0731.03
Expiration Date: April 07, 2021
Approval Date: December 06, 2018
Page 1

4
11/28/18

NOTICE OF ACCEPTANCE: EVIDENCE SUBMITTED

1. Evidence submitted under previous approvals

A. DRAWINGS

1. Manufacturer's parts drawings and sections.
2. Drawing No. **13-045 (OLD 12-025)**, titled "Advantex Series RIM Panic Exit Hardware" sheets 1 through 9 of 9, prepared by Tilteco, Inc., dated 11/25/13, signed and sealed by Walter A. Tillit Jr., P.E.

B. TESTS ((Submitted under files #15-0415.08 /#13-0717.13/ #12-0209.11/ 10-0303.02)

1. Reference Test reports on: 1) Air Infiltration Test, per FBC, TAS 202-94
2) Uniform Static Air Pressure Test, Loading per FBC TAS 202-94
3) Water Resistance Test, per FBC, TAS 202-94
4) Large Missile Impact Test per FBC, TAS 201-94
5) Cyclic Wind Pressure Loading per FBC, TAS 203-94
6) Forced Entry Test, per FBC 2411 3.2.1, TAS 202-94

Along with installation diagrams of Panic exit devices w/ Detex H90R removable mullion w/ revised marked-up drawings, prepared by Architectural Testing, Test Report No(s). **C-2828.01-450-18**, dated 03-14-13 and revised on 09/27/13 and **C-3375.01-450-18**, dated 03-20-13 and revised on 09/26/13, both signed and sealed by Vinu J. Abraham, P.E.

2. Test reports on: 1) Air Infiltration Test, per FBC, TAS 202-94
2) Uniform Static Air Pressure Test, Loading per FBC TAS 202-94
3) Water Resistance Test, per FBC, TAS 202-94
4) Large Missile Impact Test per FBC, TAS 201-94
5) Cyclic Wind Pressure Loading per FBC, TAS 203-94
6) Forced Entry Test, per FBC 2411 3.2.1, TAS 202-94

Along with installation diagrams of Panic exit devices, prepared by Hurricane Test Laboratory, LLC. Test Report No. **HTL-0345-0203-04**, dated 02-11 thru 21-2004, signed and sealed by Vinu J. Abraham, P.E. (Submitted under files # **12-0209.11/ 10-0303.02**)

C. CALCULATIONS

1. Anchor verification & Mullion structural & comparative calculation per FBC 2010, dated 07/10/13, 10/11/13 and 11/21/13, prepared by Tilteco, Inc, all signed and sealed by Walter A. Tillie Jr., P.E.(Submitted under files #**13-0717.13**).

D. QUALITY ASSURANCE

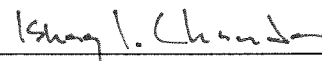
1. Miami Dade Department of Regulatory and Economic Resources (RER).

E. MATERIAL CERTIFICATIONS

1. None.

F. STATEMENTS

1. Statement letter of conformance to FBC 2010 and 1-year renewal, dated 06/23/15 issued by Tilteco Inc., signed and sealed by Walter A. Tilliet Jr., P.E.
2. Statement letter dated 04/21/15, issued by National Certified Lab for Detex upcoming verification test, signed by Chris Bennett.
3. Lab compliance as part of the above referenced test report.



Ishaq I. Chanda, P.E.
Product Control Examiner
NOA No. 15-0731.03

Expiration Date: April 07, 2021
Approval Date: December 06, 2018

NOTICE OF ACCEPTANCE: EVIDENCE SUBMITTED

G. OTHER

1. This NOA **renews** NOA # **13-0717.13**, expired on April 07, 2015.
2. Detex H90R & Yale M-200 removable mullion catalogs & brochures.
3. Detex Test proposal dated 05/08/15, approved by RER.

2. New Evidence submitted

A. DRAWINGS

1. Drawing No. **13-045 (OLD 12-025)**, titled "Advantex Series RIM Panic Exit Hardware" sheets 1 through 9 of 9, prepared by Building Drops, Inc., dated 16/17/13 and last revised on 10-01-2018, signed and sealed by Hermes F. Norero, P.E.

B. TESTS

1. Test reports on:
 - 1) Air Infiltration Test, per FBC, TAS 202-94
 - 2) Uniform Static Air Pressure Test, Loading per FBC TAS 202-94
 - 3) Water Resistance Test, per FBC, TAS 202-94
 - 4) Large Missile Impact Test per FBC, TAS 201-94
 - 5) Cyclic Wind Pressure Loading per FBC, TAS 203-94

Along with installation diagrams of HV40 Rim Panic exit devices w/ Yale M-200 & Detex H90R removable mullion w/mark-up drawings, prepared by National Certified Testing lab, Test Report No(s). **NCTL-210-416.01**, dated 06/15/16, signed and sealed by Gerald J. Ferrara, P.E.

(Note: This test report has an addendum letter dated FEB 09, 2018, issued by NCTL)

C. CALCULATIONS

1. Anchor verification, Mullion structural & comparative analysis calculation, dated 07/22/2016 and last revised on 10/04/18, prepared by Building Drops, Inc, signed and sealed by Hermes F. Norero, P.E.

G. QUALITY ASSURANCE

1. Miami Dade Department of Regulatory and Economic Resources (RER).

H. MATERIAL CERTIFICATIONS

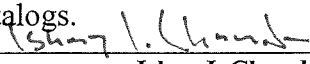
1. None.

F. STATEMENTS

1. Statement letter of product compliance to FBC 2017 (**6th Edition**) & "No Financial interest" dated 11/28/18, issued by Building Drops, Inc, all signed and sealed by Hermes F. Norero, P.E.
2. Statement letter of product compliance to FBC 2014 (**5th Edition**) & "No Financial interest" dated 04/18/16, issued by Building Drops, Inc, signed and sealed by Hermes F. Norero, P.E.
3. Notification of Successor Engineer for manufacturer's NOA document per **Section 61G15-27.001** of the Florida Administrative Code, that the successor engineer is assuming full professional and legal responsibility for all engineering documents pertaining to this NOA, dated 04/18/16, signed and sealed by Hermes F. Norero, P.E.

G. OTHER

1. This NOA **revises & renews** NOA # **15-0415.08**, expiring 04/07/21.
2. Test proposals, dated 15-18-1, approved by RER.
3. Yale M-200 removable mullion technical publications and catalogs.



Ishaq I. Chanda, P.E.
Product Control Examiner
NOA No. 15-0731.03
Expiration Date: April 07, 2021
Approval Date: December 06, 2018

GENERAL NOTES FOR ADVANTEX H10 & FH10* SERIES (WIDE) & ADVANTEX H40 & FH40* SERIES (NARROW) RIM DEVICE SINGLE DOOR APPLICATION:

1. ADVANTEX RIM PANIC EXIT HARDWARE, SHOWN ON THIS PRODUCT APPROVAL DOCUMENT (P.A.D.) HAS BEEN VERIFIED FOR COMPLIANCE IN ACCORDANCE WITH THE 2017 FLORIDA BUILDING CODE. ADVANTEX RIM PANIC EXIT HARDWARE MAY BE INSTALLED WITHIN HIGH VELOCITY HURRICANE ZONES.

DESIGN WIND LOADS SHALL BE DETERMINED AS PER SECTION 1620 OF THE ABOVE MENTIONED CODE, USING ASCE 7-10 AND SHALL NOT EXCEED THE MAXIMUM (A.S.D.) DESIGN PRESSURE INDICATED ON NOTE 2.

IN ORDER TO VERIFY THE ABOVE CONDITION, ULTIMATE DESIGN WIND LOADS DETERMINED PER ASCE 7-10 SHALL BE FIRST REDUCED TO A.S.D. DESIGN WIND LOADS BY MULTIPLYING THEM BY 0.6 IN ORDER TO COMPARE THESE W/ MAX. (A.S.D) DESIGN PRESSURE RATINGS INDICATED ON NOTE 2.

IN ORDER TO VERIFY THAT ANCHORS ON THIS P.A.D., AS TESTED, WERE NOT OVERSTRESSED, A 33% INCREASE IN ALLOWABLE STRESS FOR WIND LOADS WAS NOT USED IN THEIR ANALYSIS. THIS PRODUCT'S ADEQUACY FOR IMPACT AND CYCLIC RESISTANCE HAS BEEN VERIFIED IN ACCORDANCE WITH SECTION 1626 OF THE ABOVE MENTIONED CODE AS PER PROTOCOLS TAS-201, TAS-202, TAS-203, PER HURRICANE TEST LABORATORY REPORT NCTL-210-4016-01 AND AS PER SUBMITTED STRUCTURAL CALCULATIONS, PERFORMED AS PER SECTION 1616 OF THE FLORIDA BUILDING CODE.

2. MAX. A.S.D. DESIGN PRESSURE RATING SINGLE DOORS:

POSITIVE	+70 PSF.
NEGATIVE	-70 PSF.

3. EGRESS REQUIREMENTS AND THE USAGE OG ADVANTEX RIM PANIC EXIT HARDWARE IS OUTSIDE THE SCOPE OF THIS APPROVAL.

4. ALL REINFORCEMENTS TO BE SPOT WELDED OR BETTER BY DOOR MANUFACTURER.

5. ALL DIMENSIONS SHALL BE IN ACCORDANCE WITH MANUFACTURER'S STANDARD INSTALLATION INSTRUCTIONS.

6. ADVANTEX PANIC EXIT DEVICE H10 AND H40 SERIES RIM CAN BE SUPPLIED WITH THE FOLLOWING ELECTRIFIED OPTIONS: (NOT PART OF THIS APPROVAL) EA, ED, EE, EI, EM, ER, ES, EX, W, CD, HD & LD. PERFORMANCE OF ELECTRIFIED OPTION NOT PART OF THIS APPROVAL, BUT SHALL BE CERTIFIED BY AN INDEPENDENT TESTING AGENCY.

7. ADVANTEX PANIC EXIT DEVICE H10 AND H40 SERIES RIM CAN BE SUPPLIED WITH THE FOLLOWING TRIM DESIGNATIONS:
01C, 01CN, 01W, 01D, 01DN, 02C, 02CN, 02D, 02DN, 02Z, 02WP, 03W, 03WS, 03C, 03CN, 03Z, 08D, 08DN, 09D, 09DN, 14D, 14DN.

8. (a) THIS P.A.D. PREPARED BY THIS ENGINEER IS GENERIC AND DOES NOT PROVIDE INFORMATION FOR A SITE SPECIFIC PROJECT; i.e. WHERE THE SITE CONDITIONS DEViate FROM THE P.A.D.

(b) CONTRACTOR TO BE RESPONSIBLE FOR THE SELECTION, PURCHASE AND INSTALLATION INCLUDING LIFE SAFETY OF THIS PRODUCT, BASED ON THIS P.A.D., PROVIDED HE/SHE DOES NOT DEViate FROM THE CONDITIONS DETAILED ON THIS DOCUMENT. CONSTRUCTION SAFETY AT SITE IS THE CONTRACTOR'S RESPONSIBILITY.

(c) THIS P.A.D. WILL BE CONSIDERED INVALID IF ALTERED BY ANY MEANS.

(d) SITE SPECIFIC PROJECTS SHALL BE PREPARED BY A FLORIDA REGISTERED ENGINEER OR ARCHITECT WHICH WILL BECOME THE ENGINEER OF RECORD (E.O.R.) FOR THE PROJECT AND WHO WILL BE RESPONSIBLE FOR THE PROPER USE OF THE P.A.D. ENGINEER OF RECORD, ACTING AS DELEGATED ENGINEER TO THE P.A.D. ENGINEER, SHALL SUBMIT TO THIS LATTER THE SITE SPECIFIC DRAWINGS FOR REVIEW.

(e) ORIGINAL P.A.D. SHALL BEAR THE DATE AND ORIGINAL SEAL AND SIGNATURE OF THE PROFESSIONAL ENGINEER OF RECORD THAT PREPARED IT.

9. PANIC DEVICE'S MANUFACTURER LABEL SHALL BE PLACED ON A READILY VISIBLE LOCATION. ONE LABEL SHALL BE PLACED FOR EVERY UNIT. LABEL SHALL READ AS FOLLOWS:

DETEx CORPORATION or Detex company logo
NEW BRAUNFELS, TEXAS 78130
MIAMI-DADE COUNTY PRODUCT CONTROL APPROVED.


BILL OF MATERIAL FOR ADVANTEX H10 & FH10* SERIES (WIDE) & ADVANTEX H40 & FH40* SERIES (NARROW) RIM DEVICE SINGLE DOOR APPLICATION

ITEM	DESCRIPTION	COMMENTS	QTY PER DOOR	MATERIAL
1	MIAMI-DADE COUNTY APPROVED SINGLE DOOR & FRAME		1	
2	DETEX ADVANTEX H10 & FH10 SERIES	WIDE	1	302 & 304 S.S., 16 & 13 GAGE CRS METAL AND ALUM. 6063-T5 ALLOY AND TEMPER.
	DETEX ADVANTEX H40 & FH40 SERIES	NARROW		
3	MOUNTING PLATE, 10 SERIES	WIDE	1	13 GAGE CRS METAL
	MOUNTING PLATE, 40 SERIES	NARROW		
4	ENDCAP BRACKET		1	13 GAGE CRS METAL
5	ENDCAP		1	14 GAGE 304 OR 316 S.S.
6	OUTSIDE TRIM (SEE GENERAL NOTE 7)	OPTIONAL	A/R	DA(N)=BRASS FORMING LS(N)=BRASS FORMING TA(N)=BRASS FORMING WS(N)=BRASS FORMING CH(N)=13 GAGE 304 S.S. PO=13 GAGE 304 S.S. PR(N)=0.16" THICK 5052-H32 ALUM. AT(N)=16 GAGE CRS METAL WG=16 GAGE 304 S.S. BR(N)=ZINC DIE CASTING MC(N)=ZINC DIE CASTING LM(N)=ZINC DIE CASTING
7	CHASSIS COVER, H10 SERIES	WIDE	1	17 GA. 304 S.S.
	CHASSIS COVER, H40 SERIES	NARROW		
8	SURFACE STRIKE		1	S.S. 302 INVESTMENT CAST (FY=30KSI)
9	1/4-20 P.H.P.M.S.	WIDE	10	
	1/4-20 P.H.P.M.S.	NARROW	8	
10	10-32 F.H.P.U.C.M.S.		2	
11	10-24 F.H.P.U.C.M.S.		1	
12	6-32 F.H.P.U.C.M.S.		4	
13	1/4-20 P.H.P.M.S.		2	
14	HINGE		3	
19	DADE COUNTY N.O.A LABEL (GENERAL NOTE #9)		1	
20	1.75"x7" FRAME STRIKE REINFORCEMENT		1	12 GA. MIN. STEEL
21	3/4" MIN. THROW LATCHBOLT		1	S.S. 304 OR 316 POWDERED METAL (FY=47KSI)

LIMITATIONS:
1. THIS PANIC DEVICE IS APPROVED TO BE EQUAL ALTERNATIVE HARDWARE TO BE USED IN SINGLE STEEL COMMERCIAL DOORS MADE WITH 16 GA. STEEL FRAME AND 16 GA. (.053" MIN.) STEEL DOOR (MIN. Fy = 38 ksi), HOLDING CURRENT NOA. THE LOWEST DESIGN PRESSURE RATING OF THE DOORS OR THE COMPONENT SHALL GOVERN.

2. THE DOORS SHALL MEET FOLLOWING SPECIFICATIONS:
2.1 DOOR SLAB MUST NOT BE WIDER THAN 48" AND HIGHER THAN 83.5". THE DOOR SHALL BE 1 3/4" MIN. OVERALL THICKNESS, FILLED WITH FBC APPROVED FOAM CORE AND 22 GA. STEEL STIFFNESS (SEE DETAIL SHEET 2).
2.2 DOOR SLAB TO BE REINFORCED WITH 22 GA. (.75" LONG X 0.812" DEEP) VERTICAL STIFFENERS, SPACED 6" APART MAX. AND WELDED TO 22 GA. LINER, SPOT WELDED AT 5" O.C.
2.3 7 GA. STEEL HINGE PLATE REINFORCEMENT AT HINGE STILE AND AT THE FRAME.
2.4 FULL-WIDTH C-CHANNEL, 18 GA. AT BOTTOM, 16 GA. AT TOP.
2.5 MIN. 12 GA. STEEL REINFORCEMENT AT STRIKE PLATE.
2.6 MIN. 12 GA. STEEL "U" CHANNEL AT LOCK STILE.

3.0 ELECTRICAL INSTALLATION & FIRE RATINGS ARE NOT PART OF THIS APPROVAL AND SUCH INSTALLATION MUST BE REVIEWED BY APPLICABLE BUILDING AUTHORITY.



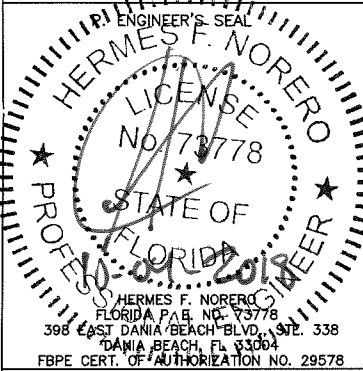
BUILDING DROPS, INC.
398 E. DANIA BEACH BLVD., #338
DANIA BEACH, FL 33004
PH: 954.399.8478 FX: 954.744.4738

UNDERWRITER'S LABORATORIES - UL10C, UBC 7-2 (1997)
ANSI/BHMA A156.3 GRADE 1 EXIT DEVICE FOR INFORMATION ONLY.
(NOT PART OF THE APPROVAL)

ELECTRIFIED ABBREVIATIONS MEANING:
EA = ELECTRONIC EXIT ALARM MODEL
ED = ELECTRONIC DOGGING MODEL
EE = DELAY EGRESS
EI = ELECTRONIC INTEGRATION
EM = DELAY EGRESS WITH MAGNETIC LOCKING
ER = ELECTRONIC LOCK/UNLOCK
ES = ELECTRONIC LATCH RETRACTION
EX = ELECTRONIC SIGNAL SWITCH
W = WEATHERIZED
CD = CYLINDER DOGGING
HD = HEX DOGGING
LD = LESS DOGGING


TYPE TRIM ABBREVIATIONS MEANING:
DA = DAYTONA
LS = LAGUNA SEGA
TA = TALLADEGA
WS = WILLOW SPRINGS
CH = CHARLOTTE
PO = POCONO
PR = PORTLAND
AT = ATLANTA
WG = WATKINS GLEN
BR = BRISTOL
MC = MONTE CARLO
LM = LA MANS
*(N) SUFFIX SIGNIFIES NARROW TRIM DEVICE
F PREFIX SIGNIFIES FIRE RATE RIM PANIC DEVICES

FASTENERS ABBREVIATIONS MEANING:
P.H.P.M.S. = PAN HEAD PHILLIPS MACHINE SCREW
F.H.P.U.C.M.S. = FLAT HEAD PHILLIPS UNDERCUT MACHINE SCREW
F.H.P.M.S. = FLAT HEAD PHILLIPS MACHINE SCREW
S.H.C.S. = SOCKET HEAD CAP SCREW



HERMES F. NORERO
FLORIDA P.E. NO. 72778
398 EAST DANIA BEACH BLVD., STE. 338
DANIA BEACH, FL 33004
FBPE CERT. OF AUTHORIZATION NO. 29578

MIAMI-DADE COUNTY

PRODUCT REVIEWED
as complying with the Florida Building Code
Acceptance No. 15-0731-03
Expiration Date APR 07, 2021

Miami Door Product Control

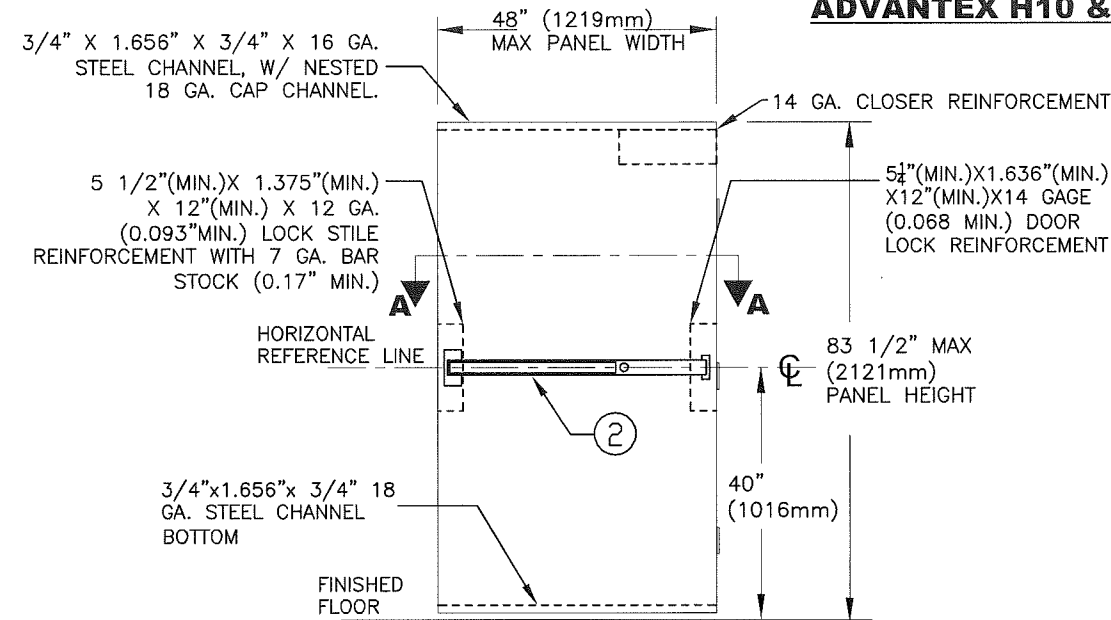
DETEx CORPORATION
302 DETEX DRIVE
NEW BRAUNFELS, TX 78130

DATE: 06/17/13
DRAWN BY: A.G.

SHEET TITLE:
ADVANTEX SERIES RIM PANIC EXIT HARDWARE

DRAWING NUMBER: 13-045
REVISION: OLD 12-025
SHEET 1 of 9

**ADVANTEX H10 & FH10* SERIES (WIDE) & ADVANTEX H40 & FH40* SERIES (NARROW) RIM DEVICE
INSTALLATION FOR HURRICANE CODE. SINGLE DOOR APPLICATION**

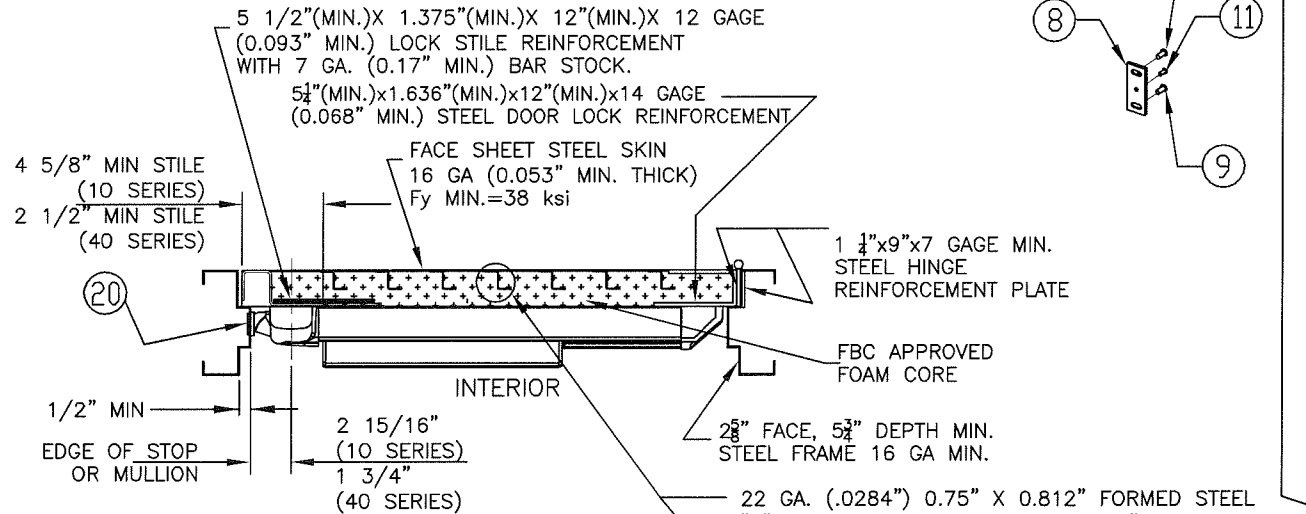


INTERIOR ELEVATION

N.T.S.

MAX. A.S.D. DESIGN PRESSURE RATING SINGLE DOORS:

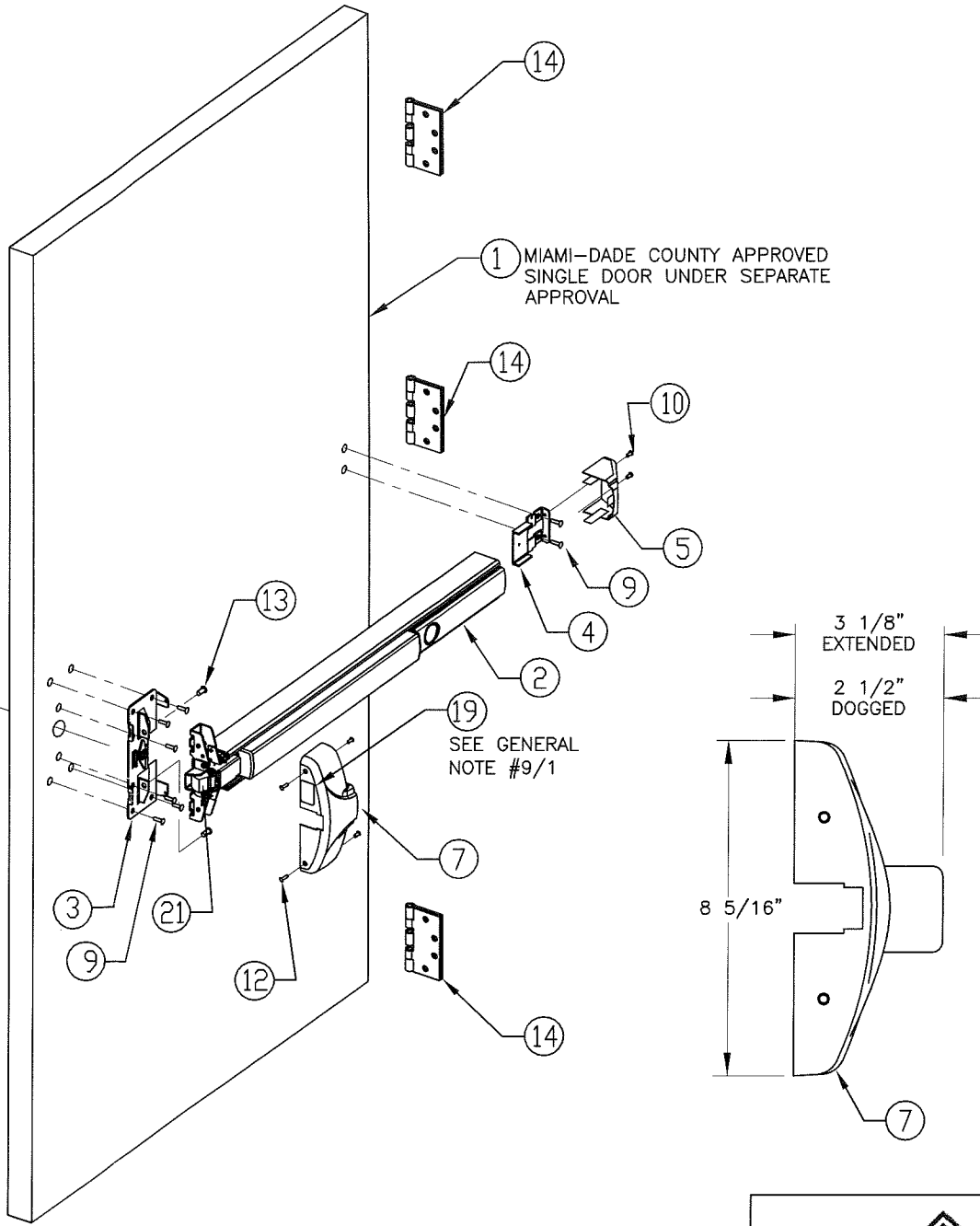
POSITIVE	+70 PSF.
NEGATIVE	-70 PSF.



SECTION A-A

N.T.S.

SEE GENERAL NOTE 7



ASSEMBLY (ISOMETRIC)

N.T.S.

WIDE STILE 10 SERIES SHOWN

UNDERWRITER'S LABORATORIES - UL10C, UBC 7-2 (1997)
ANSI/BHMA A156.3 GRADE 1 EXIT DEVICE FOR INFORMATION ONLY.
(NOT PART OF THE APPROVAL)

ELECTRIFIED ABBREVIATIONS MEANING:

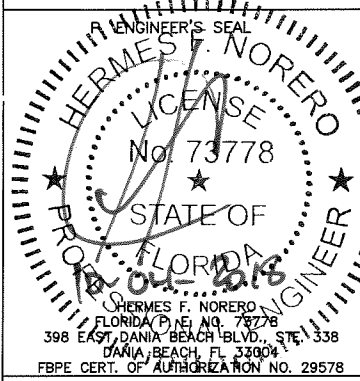
EA = ELECTRONIC EXIT ALARM MODEL
ED = ELECTRONIC DOGGING MODEL
EE = DELAY EGRESS
EI = ELECTRONIC INTEGRATION
EM = DELAY EGRESS WITH MAGNETIC LOCKING
ER = ELECTRONIC LOCK/UNLOCK
ES = ELECTRONIC LATCH RETRACTION
EX = ELECTRONIC SIGNAL SWITCH
W = WEATHERIZED
CD = CYLINDER DOGGING
HD = HEX DOGGING
LD = LESS DOGGING

TYPE TRIM ABBREVIATIONS MEANING:

DA = DAYTONA
LS = LAGUNA SEGA
TA = TALLADEGA
WS = WILLOW SPRINGS
CH = CHARLOTTE
PO = POCONO
PR = PORTLAND
AT = ATLANTA
WG = WATKINS GLEN
BR = BRISTOL
MC = MONTE CARLO
LM = LA MANS
(N) SUFFIX SIGNIFIES NARROW TRIM DEVICE
F PREFIX SIGNIFIES FIRE RATE RIM PANIC DEVICES

FASTENERS ABBREVIATIONS MEANING:

P.H.P.M.S. = PAN HEAD PHILLIPS MACHINE SCREW
F.H.P.U.C.M.S. = FLAT HEAD PHILLIPS UNDERCUT MACHINE SCREW
F.H.P.M.S. = FLAT HEAD PHILLIPS MACHINE SCREW
S.H.C.S. = SOCKET HEAD CAP SCREW



MIAMI-DADE COUNTY

PRODUCT REVISED
as complying with the Florida Building Code
Acceptance No. 15-0731-03
Expiration Date 5/7/21
By: [Signature]
Miami Beach Product Control



BUILDING DROPS, INC.
398 E. DANIA BEACH BLVD., #338
DANIA BEACH, FL 33004
PH: 954.399.8478 FX: 954.744.4738

DETEX CORPORATION

302 DETEX DRIVE
NEW BRAUNFELS, TX 78130

DATE: 06/17/13 DRAWN BY: A.G.

SHEET TITLE:

ADVANTEX SERIES RIM PANIC EXIT HARDWARE

DRAWING NUMBER: REVISION: SHEET

13-045 OLD 12-025 2 of 9

GENERAL NOTES FOR ADVANTEX H10 & FH10* SERIES (WIDE) AND ADVANTEX H40 & FH40* SERIES (NARROW) RIM DEVICE W/ YALE OR DETEX MULLIONS. DOUBLE DOOR APPLICATION:

1. ADVANTEX RIM PANIC EXIT HARDWARE, SHOWN ON THIS PRODUCT APPROVAL DOCUMENT (P.A.D.) HAS BEEN VERIFIED FOR COMPLIANCE IN ACCORDANCE WITH THE 2017 FLORIDA BUILDING CODE. ADVANTEX RIM PANIC EXIT HARDWARE MAY BE INSTALLED WITHIN HIGH VELOCITY HURRICANE ZONES.

DESIGN WIND LOADS SHALL BE DETERMINED AS PER SECTION 1620 OF THE ABOVE MENTIONED CODE, USING ASCE 7-10 AND SHALL NOT EXCEED THE MAXIMUM (A.S.D.) DESIGN PRESSURE INDICATED ON NOTE 2.

IN ORDER TO VERIFY THE ABOVE CONDITION, ULTIMATE DESIGN WIND LOADS DETERMINED PER ASCE 7-10 SHALL BE FIRST REDUCED TO A.S.D. DESIGN WIND LOADS BY MULTIPLYING THEM BY 0.6 IN ORDER TO COMPARE THESE W/ MAX. (A.S.D) DESIGN PRESSURE RATINGS INDICATED ON NOTE 2.

IN ORDER TO VERIFY THAT ANCHORS ON THIS P.A.D., AS TESTED, WERE NOT OVERSTRESSED, A 33% INCREASE IN ALLOWABLE STRESS FOR WIND LOADS WAS NOT USED IN THEIR ANALYSIS. THIS PRODUCT'S ADEQUACY FOR IMPACT AND CYCLIC RESISTANCE HAS BEEN VERIFIED IN ACCORDANCE WITH SECTION 1626 OF THE ABOVE MENTIONED CODE AS PER PROTOCOLS TAS-201, TAS-202, TAS-203, PER HURRICANE TEST LABORATORY REPORT NCTL-210-4016-01 AND AS PER SUBMITTED STRUCTURAL CALCULATIONS, PERFORMED AS PER SECTION 1616 OF THE FLORIDA BUILDING CODE.

2. MAX. A.S.D. DESIGN PRESSURE RATING DUBLE DOORS
W/ YALE SERIES M-200 OR DETEX H90R MULLIONS:

POSITIVE	+70 PSF.
NEGATIVE	-70 PSF.

3. EGRESS REQUIREMENTS AND USAGE OF ADVANTEX RIM PANIC EXIT HARDWARE IS OUTSIDE THE SCOPE OF THIS APPROVAL.

4. ALL REINFORCEMENTS TO BE SPOT WELDED OR BETTER BY DOOR MANUFACTURER.

5. ALL DIMENSIONS SHALL BE IN ACCORDANCE WITH MANUFACTURER'S STANDARD INSTALLATION INSTRUCTIONS.

6. ADVANTEX PANIC EXIT DEVICE H10 AND H40 SERIES RIM CAN BE SUPPLIED WITH THE FOLLOWING ELECTRIFIED OPTIONS: (NOT PART OF THIS APPROVAL) EA, ED, EE, EI, EM, ER, ES, EX, W, CD, HD & LD. PERFORMANCE OF ELECTRIFIED OPTION NOT PART OF THIS APPROVAL, BUT SHALL BE CERTIFIED BY AN INDEPENDENT TESTING AGENCY.

7. ADVANTEX PANIC EXIT DEVICE H10 AND H40 SERIES RIM CAN BE SUPPLIED WITH THE FOLLOWING TRIM DESIGNATIONS:
01C, 01CN, 01W, 01D, 01DN, 02C, 02CN, 02D, 02DN, 02Z, 02WP, 03W, 03WS, 03C, 03CN, 03Z, 08D, 08DN, 09D, 09DN, 14D, 14DN.

8. (a) THIS P.A.D. PREPARED BY THIS ENGINEER IS GENERIC AND DOES NOT PROVIDE INFORMATION FOR A SITE SPECIFIC PROJECT; i.e. WHERE THE SITE CONDITIONS DEViate FROM THE P.A.D.

(b) CONTRACTOR TO BE RESPONSIBLE FOR THE SELECTION, PURCHASE AND INSTALLATION INCLUDING LIFE SAFETY OF THIS PRODUCT, BASED ON THIS P.A.D., PROVIDED HE/SHE DOES NOT DEVIATE FROM THE CONDITIONS DETAILED ON THIS DOCUMENT. CONSTRUCTION SAFETY AT SITE IS THE CONTRACTOR'S RESPONSIBILITY.

(c) THIS P.A.D. WILL BE CONSIDERED INVALID IF ALTERED BY ANY MEANS.

(d) SITE SPECIFIC PROJECTS SHALL BE PREPARED BY A FLORIDA REGISTERED ENGINEER OR ARCHITECT WHICH WILL BECOME THE ENGINEER OF RECORD (E.O.R.) FOR THE PROJECT AND WHO WILL BE RESPONSIBLE FOR THE PROPER USE OF THE P.A.D. ENGINEER OF RECORD, ACTING AS DELEGATED ENGINEER TO THE P.A.D. ENGINEER, SHALL SUBMIT TO THIS LATTER THE SITE SPECIFIC DRAWINGS FOR REVIEW.

(e) ORIGINAL P.A.D. SHALL BEAR THE DATE AND ORIGINAL SEAL AND SIGNATURE OF THE PROFESSIONAL ENGINEER OF RECORD THAT PREPARED IT.

9. PANIC DEVICE'S MANUFACTURER LABEL SHALL BE PLACED ON A READILY VISIBLE LOCATION. ONE LABEL SHALL BE PLACED FOR EVERY UNIT. LABEL SHALL READ AS FOLLOWS:

DETEX CORPORATION or Detex company logo
NEW BRAUNFELS, TEXAS 78130
MIAMI-DADE COUNTY PRODUCT CONTROL APPROVED.

BILL OF MATERIAL FOR ADVANTEX H10 & FH10* SERIES (WIDE) AND ADVANTEX H40 & FH40* SERIES (NARROW) RIM DEVICE W/ YALE OR DETEX MULLIONS. DOUBLE DOOR APPLICATION

ITEM	DESCRIPTION	COMMENTS	QTY PER DOOR	MATERIAL
1	MIAMI-DADE COUNTY APPROVED DOUBLE DOOR & FRAME			
2	DETEX ADVANTEX H10 & FH10 SERIES	WIDE	1	302 & 304 S.S., 16 & 13 GAGE CRS METAL AND ALUM. 6063-T5 ALLOY AND TEMPER.
	DETEX ADVANTEX H40 & FH40 SERIES	NARROW		
3	MOUNTING PLATE, H10 SERIES	WIDE	1	13 GAGE CRS METAL
	MOUNTING PLATE, H40 SERIES	NARROW		
4	ENDCAP BRACKET		1	13 GAGE CRS METAL
5	ENDCAP		1	14 GAGE 304 OR 316 S.S.
6	OUTSIDE TRIM (SEE GENERAL NOTE 7)	OPTIONAL	A/R	DA(N)=BRASS FORMING LS(N)=BRASS FORMING TA(N)=BRASS FORMING WS(N)=BRASS FORMING CH(N)=13 GAGE 304 S.S. PO=13 GAGE 304 S.S. PR(N)=0.16" THICK 5052-H32 ALUM. AT(N)=16 GAGE CRS METAL WG=16 GAGE 304 S.S. BR(N)=ZINC DIE CASTING MC(N)=ZINC DIE CASTING LM(N)=ZINC DIE CASTING
7	CHASSIS COVER, H10 SERIES	WIDE	1	17 GA. 304 S.S.
	CHASSIS COVER, H40 SERIES	NARROW		
8	SURFACE STRIKE		1	S.S. 302 INVESTMENT CAST (FY=30KSI)
9	1/4-20 P.H.P.M.S.	WIDE	10	
	1/4-20 P.H.P.M.S.	NARROW	8	
10	10-32 F.H.P.U.C.M.S.		2	
11	10-24 F.H.P.U.C.M.S.		1	
12	6-32 F.H.P.U.C.M.S.		4	
13	1/4-20 P.H.P.M.S.		2	
14	HINGE		3	
15	2"(MIN.) x 3"(MIN.) x 1/4" (MIN.) THICK x 7'-0" LONG STEEL YALE SERIES M-200 MULLION.		1	ASTM A-500 GRADE B, W/ FY(MIN.)=46 KSI & FU(MIN.)=58 KSI
15A	2"(MIN.) x 3"(MIN.) x 1/4"(MIN.) THICK x 7'-0" LONG STEEL DETEX H90R MULLION.		1	ASTM A-500 GRADE B, W/ FY(MIN.)=46 KSI & FU(MIN.)=58 KSI
16	(4) 1/4-20 x 5/8 FHMS FOR YALE M-200 MULLION OR (6) 5/16-18 x 5/8 FHMS FOR DETEX H90R MULLION.	SEE DESCRIPTION		STEEL
17	3/8" Ø HILTI KWIK BOLT 3 CS, MIN. 1 5/8" EMBEDMENT		2	ANCHORED TO MIN. 3000 psi CONCRETE
17A	3/8" Ø POWERS STEEL DROPIN OR SMART DI+, MIN. 1-9/16 EMBEDMENT		2	ANCHORED TO MIN. 3000 psi CONCRETE
18	3/8"-16 S.H.C.S.		2	STEEL
19	DADE COUNTY N.O.A LABEL (GENERAL NOTE #9)		1	
21	3/4" MIN. THROW LATCHBOLT		1	S.S. 304 OR 316 POWDERED METAL (FY=47KSI)
22	14 GA. (.068") X 14" REINFORCING PLATE		1	14 GA. MIN. STEEL

LIMITATIONS:

1. THIS PANIC DEVICE IS APPROVED TO BE EQUAL ALTERNATIVE HARDWARE TO BE USED WITH DOUBLE (W/YALE M-200 OR DETEX H90R MULLIONS) STEEL COMMERCIAL DOOR MADE WITH 16 GA. STEEL FRAME AND 16 GA. (.053" MIN.) STEEL DOOR (MIN. Fy = 38 ksi), HOLDING CURRENT NOA. THE LOWEST DESIGN PRESSURE RATING OF THE DOORS OR THE COMPONENT SHALL GOVERN.

2. THE DOORS SHALL MEET FOLLOWING SPECIFICATIONS:

2.1 DOOR SLAB MUST NOT BE WIDER THAN 48" AND HIGHER THAN 83.5". THE DOOR SHALL BE 1 3/4" MIN. OVERALL THICKNESS, FILLED WITH FBC APPROVED FOAM CORE AND 22 GA. STEEL STIFFNESS (SEE DETAIL SHEET 4).
2.2 DOOR SLAB TO BE REINFORCED WITH 22 GA. (.75" LONG X 0.812" DEEP) VERTICAL STIFFENERS, SPACED 6" APART MAX. AND WELDED TO 22 GA. LINER, SPOT WELDED AT 5" O.C.

2.3 7 GA. STEEL HINGE PLATE REINFORCEMENT AT HINGE STILE AND AT THE FRAME.

2.4 FULL-WIDTH C-CHANNEL, 18 GA. AT BOTTOM, 16 GA. AT TOP.

2.5 MIN. 12 GA. STEEL REINFORCEMENT AT STRIKE PLATE.

2.6 MIN. 12 GA. STEEL "U" CHANNEL AT LOCK STILE.

3.0 ELECTRICAL INSTALLATION & FIRE RATINGS ARE NOT PART OF THIS APPROVAL AND SUCH INSTALLATION MUST BE REVIEWED BY APPLICABLE BUILDING AUTHORITY.



BUILDING DROPS, INC.
398 E. DANIA BEACH BLVD., #338
DANIA BEACH, FL 33004
PH: 954.399.8478 FX: 954.744.4738

UNDERWRITER'S LABORATORIES - UL10C, UBC 7-2 (1997)
ANSI/BHMA A156.3 GRADE 1 EXIT DEVICE FOR INFORMATION ONLY.
(NOT PART OF THE APPROVAL)

ELECTRIFIED ABBREVIATIONS MEANING:

EA = ELECTRONIC EXIT ALARM MODEL
ED = ELECTRONIC DOGGING MODEL
EE = DELAY EGRESS
EI = ELECTRONIC INTEGRATION
EM = DELAY EGRESS WITH MAGNETIC LOCKING
ER = ELECTRONIC LOCK/UNLOCK
ES = ELECTRONIC LATCH RETRACTION
EX = ELECTRONIC SIGNAL SWITCH
W = WEATHERIZED
CD = CYLINDER DOGGING
HD = HEX DOGGING
LD = LESS DOGGING

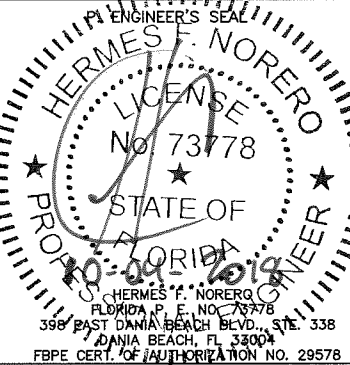
TYPE TRIM ABBREVIATIONS MEANING:

DA = DAYTONA
LS = LAGUNA SEGA
TA = TALLADEGA
WS = WILLOW SPRINGS
CH = CHARLOTTE
PO = POCONO
PR = PORTLAND
AT = ATLANTA
WG = WATKINS GLEN
BR = BRISTOL
MC = MONTE CARLO
LM = LA MANS

*(N) SUFFIX SIGNIFIES NARROW TRIM DEVICE
F PREFIX SIGNIFIES FIRE RATE RIM PANIC DEVICES

FASTENERS ABBREVIATIONS MEANING:

P.H.P.M.S. = PAN HEAD PHILLIPS MACHINE SCREW
F.H.P.U.C.M.S. = FLAT HEAD PHILLIPS UNDERCUT MACHINE SCREW
F.H.P.M.S. = FLAT HEAD PHILLIPS MACHINE SCREW
S.H.C.S. = SOCKET HEAD CAP SCREW



MIAMI-DADE COUNTY

PRODUCT REVIEWED

as complying with the Florida Building Code
Acceptance No. 15-0731-03
Expiration Date 9/7/21

Hermes F. Norero
Professional Engineer

DETEX CORPORATION

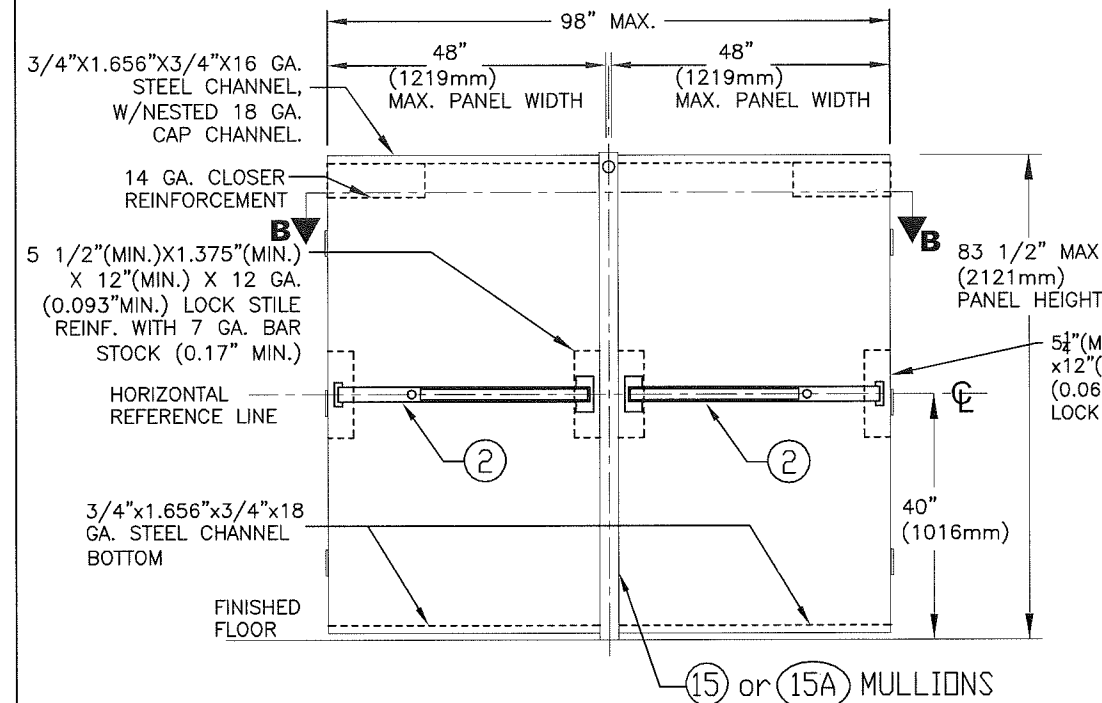
302 DETEX DRIVE
NEW BRAUNFELS, TX 78130

DATE: 06/17/13 DRAWN BY: A.G.

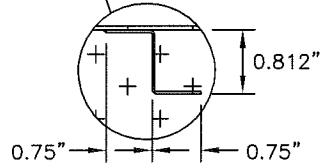
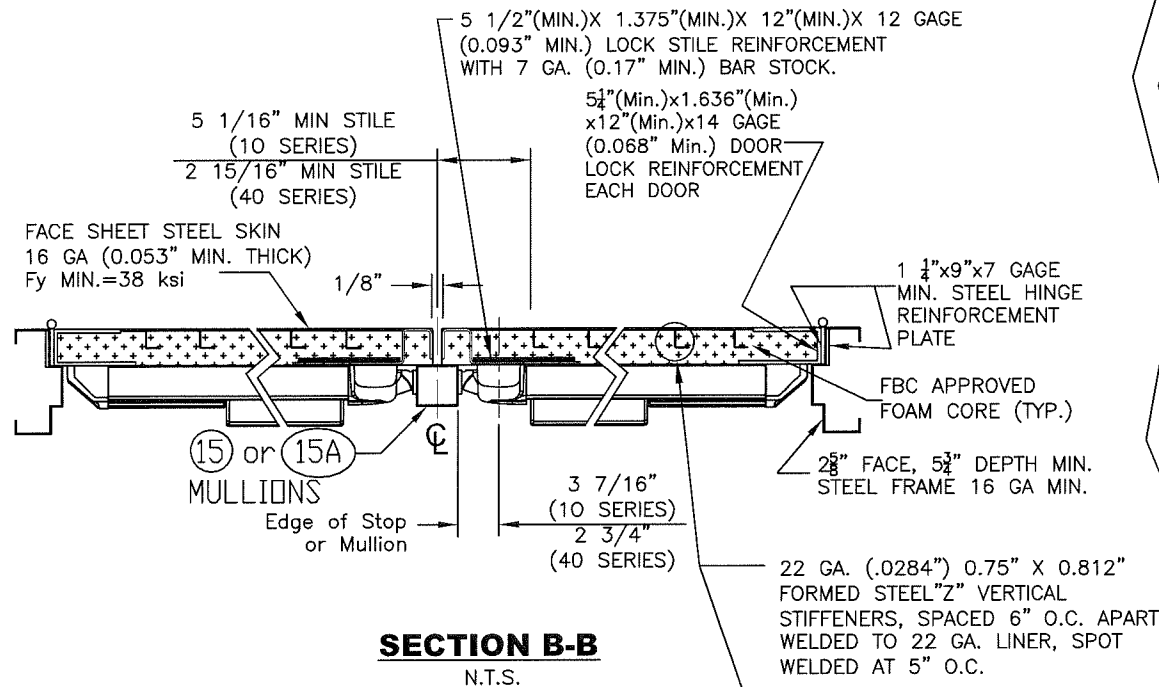
SHEET TITLE:
ADVANTEX SERIES RIM PANIC EXIT HARDWARE

DRAWING NUMBER: 13-045 REVISION: OLD 12-025 SHEET 3 of 9

**ADVANTEK H10 & FH10* SERIES (WIDE) AND ADVANTEK H40 & FH40* SERIES (NARROW) RIM
DEVICE INSTALLATION FOR HURRICANE CODE. DOUBLE DOOR APPLICATION W/ YALE OR DETEX MULLIONS**

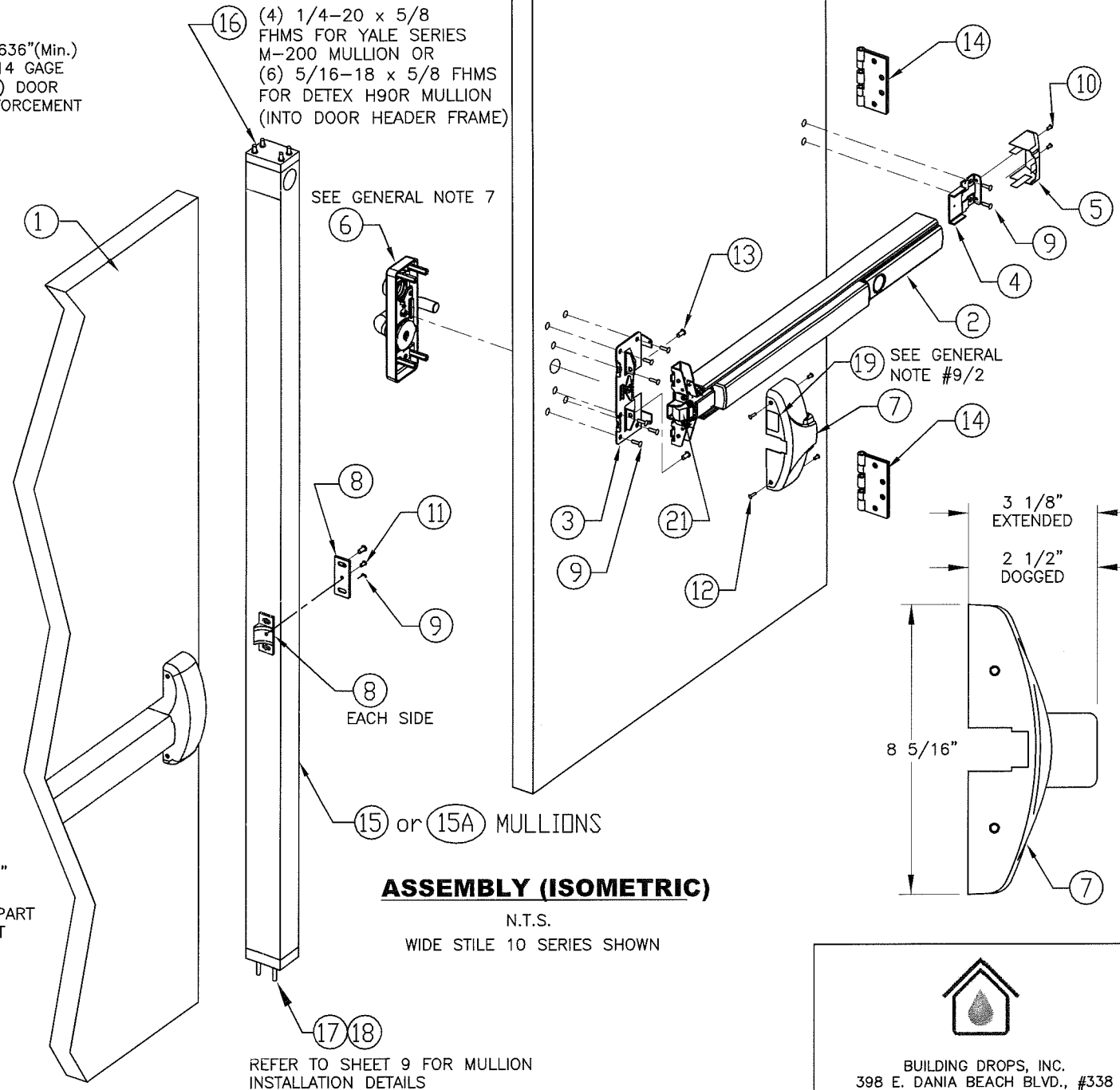


INTERIOR ELEVATION
N.T.S.



MAX. A.S.D. DESIGN PRESSURE RATING DOUBLE DOORS
W/ YALE SERIES M-200 OR DETEX H90R MULLIONS:

POSITIVE	+70 PSF.
NEGATIVE	-70 PSF.



UNDERWRITER'S LABORATORIES - UL10C, UBC 7-2 (1997)
ANSI/BHMA A156.3 GRADE 1 EXIT DEVICE FOR INFORMATION ONLY.
(NOT PART OF THE APPROVAL)

ELECTRIFIED ABBREVIATIONS MEANING:

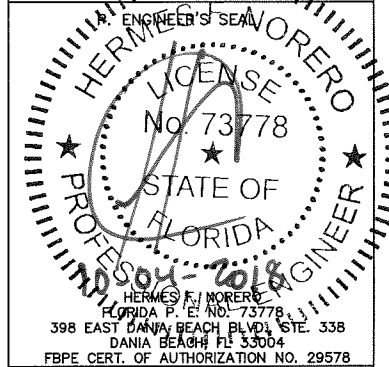
EA = ELECTRONIC EXIT ALARM MODEL
ED = ELECTRONIC DOGGING MODEL
EE = DELAY EGRESS
EI = ELECTRONIC INTEGRATION
EM = DELAY EGRESS WITH MAGNETIC LOCKING
ER = ELECTRONIC LOCK/UNLOCK
ES = ELECTRONIC LATCH RETRACTION
EX = ELECTRONIC SIGNAL SWITCH
W = WEATHERIZED
CD = CYLINDER DOGGING
HD = HEX DOGGING
LD = LESS DOGGING

TYPE TRIM ABBREVIATIONS MEANING:

DA = DAYTONA
LS = LAGUNA SEGA
TA = TALLADEGA
WS = WILLOW SPRINGS
CH = CHARLOTTE
PO = POCONO
PR = PORTLAND
AT = ATLANTA
WG = WATKINS GLEN
BR = BRISTOL
MC = MONTE CARLO
LM = LA MANA
(M) SUFFIX SIGNIFIES NARROW TRIM DEVICES
F PREFIX SIGNIFIES FIRE RATE RIM PANIC DEVICES

FASTENERS ABBREVIATIONS MEANING:

P.H.P.M.S. = PAN HEAD PHILLIPS MACHINE SCREW
F.H.P.U.C.M.S. = FLAT HEAD PHILLIPS UNDERCUT MACHINE SCREW
F.H.P.M.S. = FLAT HEAD PHILLIPS MACHINE SCREW
S.H.C.S. = SOCKET HEAD CAP SCREW



MIAMI-DADE COUNTY

PRODUCT REVIEWED
in compliance with the Florida Building Code
Acceptance No. 150731-03
Expiration Date 4/17/21
Hermes F. Norero
Miami-Dade Product Control

DETEX CORPORATION

302 DETEX DRIVE
NEW BRAUNFELS, TX 78130

DATE: 06/17/13
DRAWN BY: A.G.

SHEET TITLE:
ADVANTEK SERIES RIM PANIC
EXIT HARDWARE

DRAWING NUMBER: 13-045
REVISION: OLD 12-025
SHEET 4 of 9



GENERAL NOTES FOR VALUE SERIES HV40 & FHV40* RIM DEVICE. SINGLE DOOR APPLICATION:

1. VALUE SERIES RIM PANIC EXIT HARDWARE, SHOWN ON THIS PRODUCT APPROVAL DOCUMENT (P.A.D.) HAS BEEN VERIFIED FOR COMPLIANCE IN ACCORDANCE WITH THE 2017 FLORIDA BUILDING CODE. VALUE SERIES RIM PANIC EXIT HARDWARE MAY BE INSTALLED WITHIN HIGH VELOCITY HURRICANE ZONES.

DESIGN WIND LOADS SHALL BE DETERMINED AS PER SECTION 1620 OF THE ABOVE MENTIONED CODE, USING ASCE 7-10 AND SHALL NOT EXCEED THE MAXIMUM (A.S.D.) DESIGN PRESSURE INDICATED ON NOTE 2.

IN ORDER TO VERIFY THE ABOVE CONDITION, ULTIMATE DESIGN WIND LOADS DETERMINED PER ASCE 7-10 SHALL BE FIRST REDUCED TO A.S.D. DESIGN WIND LOADS BY MULTIPLYING THEM BY 0.6 IN ORDER TO COMPARE THESE W/ MAX. (A.S.D) DESIGN PRESSURE RATINGS INDICATED ON NOTE 2.

IN ORDER TO VERIFY THAT ANCHORS ON THIS P.A.D., AS TESTED, WERE NOT OVERSTRESSED, A 33% INCREASE IN ALLOWABLE STRESS FOR WIND LOADS WAS NOT USED IN THEIR ANALYSIS. THIS PRODUCT'S ADEQUACY FOR IMPACT AND CYCLIC RESISTANCE HAS BEEN VERIFIED IN ACCORDANCE WITH SECTION 1626 OF THE ABOVE MENTIONED CODE AS PER PROTOCOLS TAS-201, TAS-202, TAS-203, PER HURRICANE TEST LABORATORY REPORT NCTL-210-4016-01 AND AS PER SUBMITTED STRUCTURAL CALCULATIONS, PERFORMED AS PER SECTION 1616 OF THE FLORIDA BUILDING CODE.

2. MAX. A.S.D. DESIGN PRESSURE RATING SINGLE DOORS:

POSITIVE	+70 PSF.
NEGATIVE	-70 PSF.

3. EGRESS REQUIREMENTS AND USAGE OF ADVANTEX RIM PANIC EXIT HARDWARE IS OUTSIDE THE SCOPE OF THIS APPROVAL.

4. ALL REINFORCEMENTS TO BE SPOT WELDED OR BETTER BY DOOR MANUFACTURER.

5. ALL DIMENSIONS SHALL BE IN ACCORDANCE WITH MANUFACTURER'S STANDARD INSTALLATION INSTRUCTIONS.

6. VALUE SERIES RIM PANIC EXIT CAN BE SUPPLIED WITH THE FOLLOWING ELECTRIFIED OPTIONS: (NOT PART OF THIS APPROVAL) EB, ED, EE, EH, EI, EM, ER, ES, EX
PERFORMANCE OF ELECTRIFIED OPTION NOT PART OF THIS APPROVAL, BUT SHALL BE CERTIFIED BY AN INDEPENDENT TESTING AGENCY.

7. VALUE SERIES RIM PANIC EXIT DEVICE CAN BE SUPPLIED WITH THE FOLLOWING TRIM DESIGNATIONS: 01A, 01AN, 01P, 01PN 02WP, 02A, 02AN, 03A, 03AN, 03P, 03PN, 03WS, 08BN, 09BN, 14BN.

8. (a) THIS P.A.D. PREPARED BY THIS ENGINEER IS GENERIC AND DOES NOT PROVIDE INFORMATION FOR A SITE SPECIFIC PROJECT; i.e. WHERE THE SITE CONDITIONS DEVIATE FROM THE P.A.D.

(b) CONTRACTOR TO BE RESPONSIBLE FOR THE SELECTION, PURCHASE AND INSTALLATION INCLUDING LIFE SAFETY OF THIS PRODUCT, BASED ON THIS P.A.D., PROVIDED HE/SHE DOES NOT DEVIATE FROM THE CONDITIONS DETAILED ON THIS DOCUMENT. CONSTRUCTION SAFETY AT SITE IS THE CONTRACTOR'S RESPONSIBILITY.

(c) THIS P.A.D. WILL BE CONSIDERED INVALID IF ALTERED BY ANY MEANS.

(d) SITE SPECIFIC PROJECTS SHALL BE PREPARED BY A FLORIDA REGISTERED ENGINEER OR ARCHITECT WHICH WILL BECOME THE ENGINEER OF RECORD (E.O.R.) FOR THE PROJECT AND WHO WILL BE RESPONSIBLE FOR THE PROPER USE OF THE P.A.D. ENGINEER OF RECORD, ACTING AS DELEGATED ENGINEER TO THE P.A.D. ENGINEER, SHALL SUBMIT TO THIS LATTER THE SITE SPECIFIC DRAWINGS FOR REVIEW.

(e) ORIGINAL P.A.D. SHALL BEAR THE DATE AND ORIGINAL SEAL AND SIGNATURE OF THE PROFESSIONAL ENGINEER OF RECORD THAT PREPARED IT.

9. PANIC DEVICE'S MANUFACTURER LABEL SHALL BE PLACED ON A READILY VISIBLE LOCATION. ONE LABEL SHALL BE PLACED FOR EVERY UNIT. LABEL SHALL READ AS FOLLOWS:

DETEX CORPORATION or Detex company logo
NEW BRAUNFELS, TEXAS 78130
MIAMI-DADE COUNTY PRODUCT CONTROL APPROVED.

BILL OF MATERIAL FOR VALUE SERIES HV40 & FHV40* RIM DEVICE. SINGLE DOOR APPLICATION

ITEM	DESCRIPTION	COMMENTS	QTY PER DOOR	MATERIAL
1	MIAMI DADE COUNTY APPROVED SINGLE DOOR & FRAME		1	
2	DETEX HV40 & FHV40 VALUE SERIES		1	302 & 304 S.S., 16 & 13 GAGE CRS METAL AND ALUM. 6063-T5 ALLOY AND TEMPER.
3	MOUNTING PLATE (NARROW)		1	13 GAGE CRS METAL
4	ENDCAP BRACKET		1	13 GAGE CRS METAL
5	ENDCAP		1	ABS PLASTIC
6	OUTSIDE TRIM (SEE GENERAL NOTE 7)	OPTIONAL	A/R	DAN=BRASS FORMING LSN=BRASS FORMING TAN=BRASS FORMING WS=BRASS FORMING WSN=BRASS FORMING CHN=13 GAGE 304 S.S. PR=0.16" THICK 5052-H32 ALUM. PRN=0.16" THICK 5052-H32 ALUM. AT=16 GAGE CRS METAL ATN=16 GAGE CRS METAL BRN=ZINC DIE CASTING MCN=ZINC DIE CASTING LMN=ZINC DIE CASTING
7	CHASSIS COVER		1	ABS PLASTIC
8	SURFACE STRIKE		1	S.S. 302 INVESTMENT CAST (FY=30KSI)
9	1/4-20 P.H.P.M.S.		9	
11	10-24 F.H.P.U.C.M.S.		2	
12	6-32 F.H.P.U.C.M.S.		6	
13	1/4-20 P.H.P.M.S.		2	
14	HINGE		3	
19	DADE COUNTY N.O.A LABEL (GENERAL NOTE #9)		1	
20	1.75"x7" FRAME STRIKE REINFORCEMENT			12 GA. MIN. STEEL
21	3/4" MIN. THROW LATCHBOLT		1	S.S. 304 OR 316 POWDERED METAL (FY=47KSI)

LIMITATIONS:

1. THIS PANIC DEVICE IS APPROVED TO BE EQUAL ALTERNATIVE HARDWARE TO BE USED WITH SINGLE STEEL COMMERCIAL DOOR MADE WITH 16 GA. STEEL FRAME AND 16 GA. (.053" MIN.) STEEL DOOR (MIN. Fy = 38 ksi), HOLDING CURRENT NOA. THE LOWEST DESIGN PRESSURE RATING OF THE DOORS OR THE COMPONENT SHALL GOVERN.

2. THE DOORS SHALL MEET FOLLOWING SPECIFICATIONS:

2.1 DOOR SLAB MUST NOT BE WIDER THAN 48" AND HIGHER THAN 83.5". THE DOOR SHALL BE 1 3/4" MIN. OVERALL THICKNESS, FILLED WITH FBC APPROVED FOAM CORE AND 22 GA. STEEL STIFFNESS (SEE DETAIL SHEET 6).

2.2 DOOR SLAB TO BE REINFORCED WITH 22 GA. (.75" LONG X 0.812" DEEP) VERTICAL STIFFENERS, SPACED 6" APART MAX. AND WELDED TO 22 GA. LINER, SPOT WELDED AT 5" O.C.

2.3 7 GA. STEEL HINGE PLATE REINFORCEMENT AT HINGE STILE AND AT THE FRAME.

2.4 FULL-WIDTH C-CHANNEL, 18 GA. AT BOTTOM, 16 GA. AT TOP.

2.5 MIN. 12 GA. STEEL REINFORCEMENT AT STRIKE PLATE.

2.6 MIN. 12 GA. STEEL "U" CHANNEL AT LOCK STILE.

3.0 ELECTRICAL INSTALLATION & FIRE RATINGS ARE NOT PART OF THIS APPROVAL AND SUCH INSTALLATION MUST BE REVIEWED BY APPLICABLE BUILDING AUTHORITY.

UNDERWRITER'S LABORATORIES - UL10C, UBC 7-2 (1997)
ANSI/BHMA A156.3 GRADE 1 EXIT DEVICE FOR INFORMATION ONLY.

(NOT PART OF THE APPROVAL)
ELECTRIFIED ABBREVIATIONS MEANING:

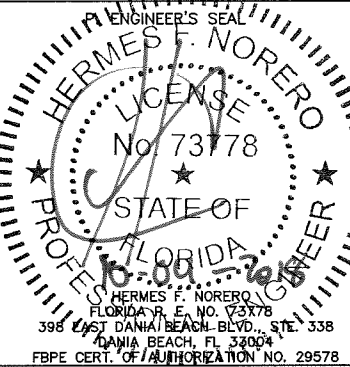
EB = ELECTRONIC EXIT ALARM MODEL
ED = ELECTRONIC DOGGING MODEL
EE = DELAY EGRESS
EI = ELECTRONIC INTEGRATION
EM = DELAY EGRESS WITH MAGNETIC LOCKING
ER = ELECTRONIC LOCK/UNLOCK
ES = ELECTRONIC LATCH RETRACTION
EX = ELECTRONIC SIGNAL SWITCH
W = WEATHERIZED
CD = CYLINDER DOGGING
HD = HEX DOGGING
LD = LESS DOGGING

TYPE TRIM ABBREVIATIONS MEANING:

DAN = DAYTONA NARROW
LSN = LAGUNA SEGA NARROW
TAN = TALLADEGA NARROW
WS = WILLOW SPRINGS
WSN = WILLOW SPRINGS NARROW
CHN = CHARLOTTE NARROW
PR = PORTLAND
PRN = PORTLAND NARROW
AT = ATLANTA
ATN = ATLANTA NARROW
BRN = BRISTOL NARROW
MCN = MONTE CARLO NARROW
LMN = LA MANIS NARROW
* PREFIX SIGNIFIES FIRE RATE RIM PANIC DEVICES

FASTENERS ABBREVIATIONS MEANING:

P.H.P.M.S. = PAN HEAD PHILLIPS MACHINE SCREW
F.H.P.U.C.M.S. = FLAT HEAD PHILLIPS UNDERCUT MACHINE SCREW
F.H.P.M.S. = FLAT HEAD PHILLIPS MACHINE SCREW
S.H.C.S. = SOCKET HEAD CAP SCREW



MIAMI-DADE COUNTY

PRODUCT REVIEWED
as complying with the Florida
Building Code
Acceptance No. 15-0731-03
Expiration Date 4/17/21
By: Ishag I. Khan
Miami-Dade Product Control



BUILDING DROPS, INC.
398 E. DANIA BEACH BLVD., #338
DANIA BEACH, FL 33004
PH: 954.399.8478 FX: 954.744.4738

DETEX CORPORATION

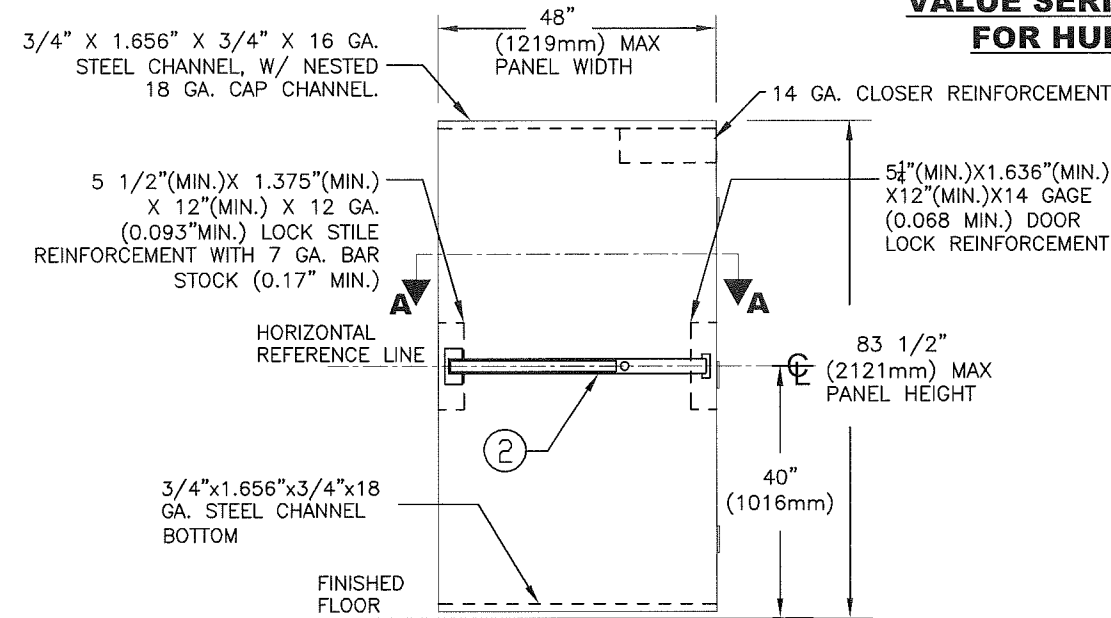
302 DETEX DRIVE
NEW BRAUNFELS, TX 78130

DATE: 06/17/13 DRAWN BY: A.G.

SHEET TITLE:
VALUE SERIES SERIES RIM PANIC EXIT HARDWARE

DRAWING NUMBER: 13-045 REVISION: OLD 12-025 SHEET 5 of 9

**VALUE SERIES HV40 & FHV40* RIM DEVICE INSTALLATION
FOR HURRICANE CODE. SINGLE DOOR APPLICATION**

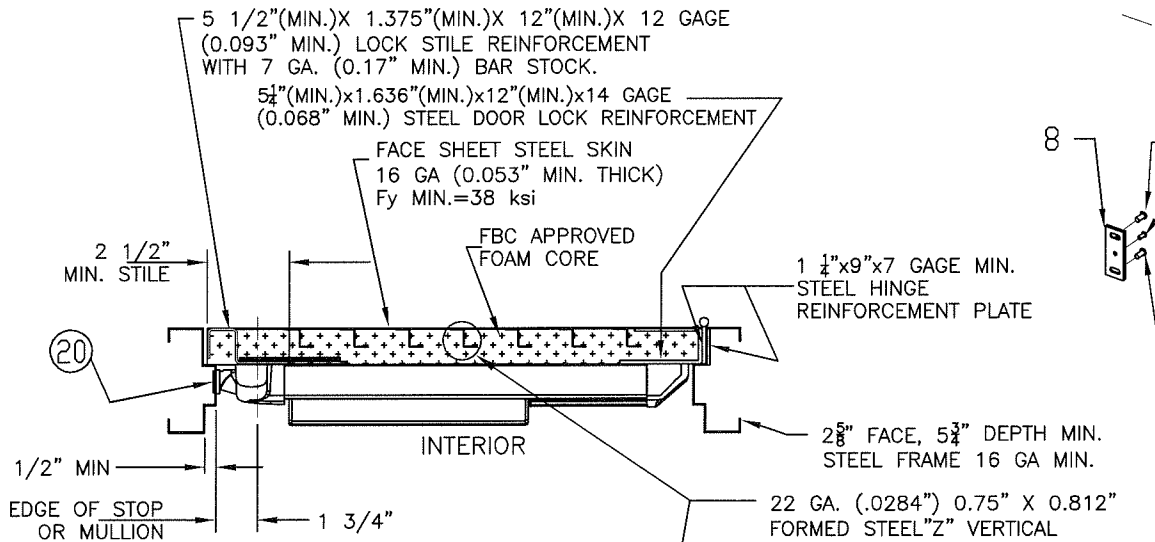


INTERIOR ELEVATION

N.T.S.

MAX. A.S.D. DESIGN PRESSURE RATING SINGLE DOORS:

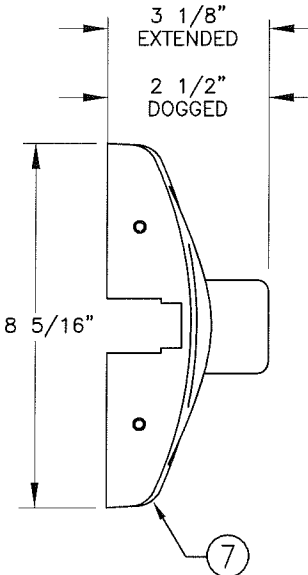
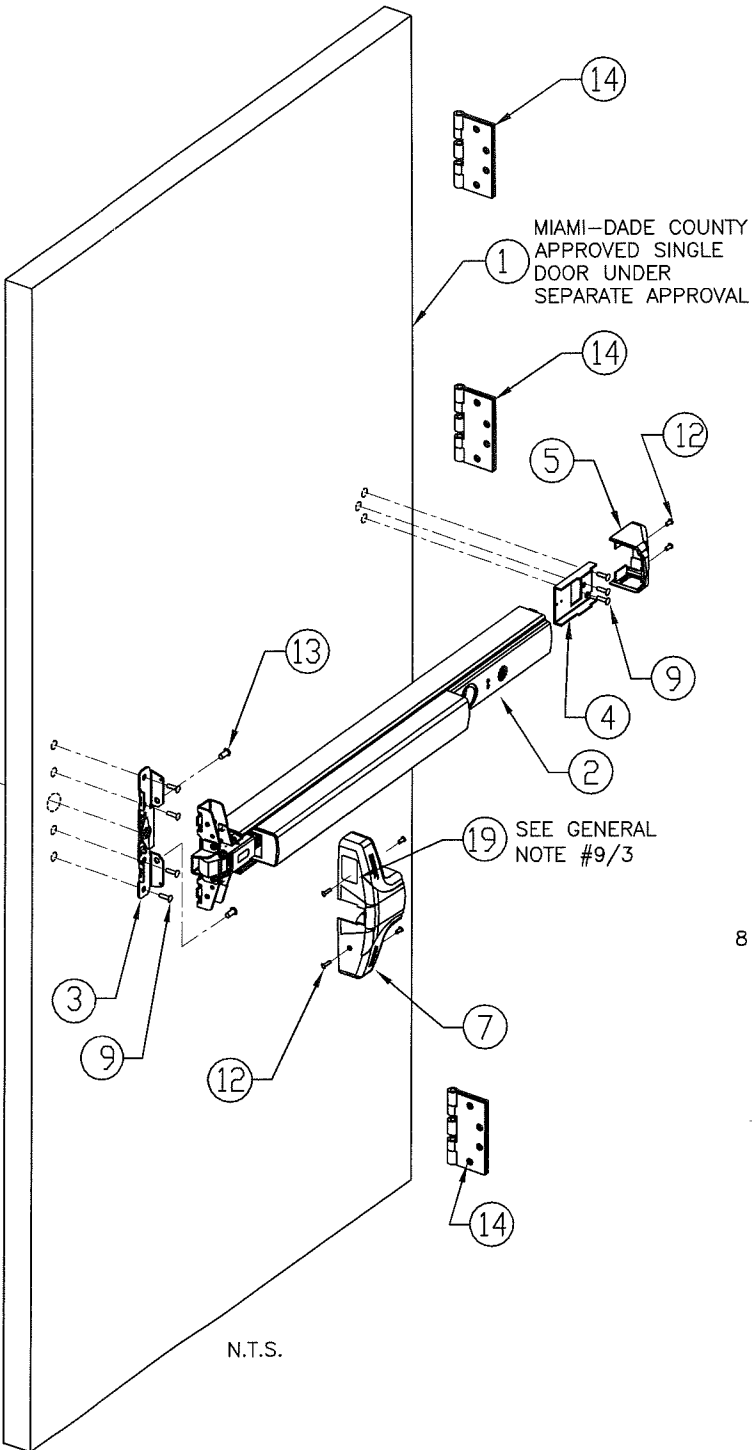
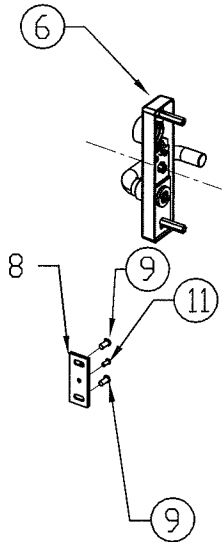
POSITIVE	+70 PSF.
NEGATIVE	-70 PSF.



SECTION A-A

N.T.S.

SEE GENERAL NOTE 7



BUILDING DROPS, INC.
398 E. DANIA BEACH BLVD., #338
DANIA BEACH, FL 33004
PH: 954.399.8478 FX: 954.744.4738

UNDERWRITER'S LABORATORIES - UL10C, UBC 7-2 (1997)
ANSI/BHMA A156.3 GRADE 1 EXIT DEVICE FOR INFORMATION ONLY.
(NOT PART OF THE APPROVAL)
ELECTRIFIED ABBREVIATIONS MEANING:

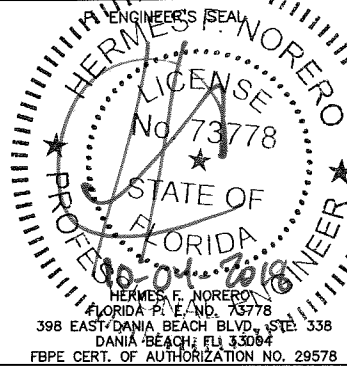
EB = ELECTRONIC EXIT ALARM MODEL
ED = ELECTRONIC DOGGING MODEL
EE = DELAY EGRESS
EI = ELECTRONIC INTEGRATION
EM = DELAY EGRESS WITH MAGNETIC LOCKING
ER = ELECTRONIC LOCK/UNLOCK
ES = ELECTRONIC LATCH RETRACTION
EX = ELECTRONIC SIGNAL SWITCH
W = WEATHERIZED
CD = CYLINDER DOGGING
HD = HEX DOGGING
LD = LESS DOGGING

TYPE TRIM ABBREVIATIONS MEANING:

DAN = DAYTONA NARROW
LSN = LAGUNA SEGA NARROW
TAN = TALLADEGA NARROW
WS = WILLOW SPRINGS
WSN = WILLOW SPRINGS NARROW
CHN = CHARLOTTE
PR = PORTLAND
PRN = PORTLAND NARROW
AT = ATLANTA
ATN = ATLANTA NARROW
BRN = BRISTOL NARROW
MCN = MONTE CARLO NARROW
LMN = LA MANA NARROW
* - PREFIX SIGNIFIES FIRE RATE RIM PANIC DEVICES

FASTENERS ABBREVIATIONS MEANING:

P.H.P.M.S. = PAN HEAD PHILLIPS MACHINE SCREW
F.H.P.U.C.M.S. = FLAT HEAD PHILLIPS UNDERCUT MACHINE SCREW
F.H.P.M.S. = FLAT HEAD PHILLIPS MACHINE SCREW
S.H.C.S. = SOCKET HEAD CAP SCREW



MIAMI-DADE COUNTY

PRODUCT REVISED
as complying with the Florida
Building Code
Acceptance No. 15-0731.03
Expiration Date 4/17/21
Michael R. Product Control

DETEX CORPORATION

302 DETEX DRIVE
NEW BRAUNFELS, TX 78130

DATE: 06/17/13 DRAWN BY: A.G.

SHEET TITLE:

VALUE SERIES RIM PANIC
EXIT HARDWARE

DRAWING NUMBER: REVISION: SHEET

13-045 OLD 12-025 6 of 9

GENERAL NOTES FOR VALUE SERIES HV40 & FHV40* RIM DEVICE. DOUBLE DOOR APPLICATION
W/ YALE OR DETEX MULLIONS:

1. VALUE SERIES RIM PANIC EXIT HARDWARE, SHOWN ON THIS PRODUCT APPROVAL DOCUMENT (P.A.D.) HAS BEEN VERIFIED FOR COMPLIANCE IN ACCORDANCE WITH THE 2017 FLORIDA BUILDING CODE. VALUE SERIES RIM PANIC EXIT HARDWARE MAY BE INSTALLED WITHIN HIGH VELOCITY HURRICANE ZONES.

DESIGN WIND LOADS SHALL BE DETERMINED AS PER SECTION 1620 OF THE ABOVE MENTIONED CODE, USING ASCE 7-10 AND SHALL NOT EXCEED THE MAXIMUM (A.S.D.) DESIGN PRESSURE INDICATED ON NOTE 2.
IN ORDER TO VERIFY THE ABOVE CONDITION, ULTIMATE DESIGN WIND LOADS DETERMINED PER ASCE 7-10 SHALL BE FIRST REDUCED TO A.S.D. DESIGN WIND LOADS BY MULTIPLYING THEM BY 0.6 IN ORDER TO COMPARE THESE W/ MAX. (A.S.D) DESIGN PRESSURE RATINGS INDICATED ON NOTE 2.

IN ORDER TO VERIFY THAT ANCHORS ON THIS P.A.D., AS TESTED, WERE NOT OVERSTRESSED, A 33% INCREASE IN ALLOWABLE STRESS FOR WIND LOADS WAS NOT USED IN THEIR ANALYSIS.
THIS PRODUCT'S ADEQUACY FOR IMPACT AND CYCLIC RESISTANCE HAS BEEN VERIFIED IN ACCORDANCE WITH SECTION 1626 OF THE ABOVE MENTIONED CODE AS PER PROTOCOLS TAS-201, TAS-202, TAS-203, PER HURRICANE TEST LABORATORY REPORT NCTL-210-4016-01 AND AS PER SUBMITTED STRUCTURAL CALCULATIONS, PERFORMED AS PER SECTION 1616 OF THE FLORIDA BUILDING CODE.

MAX. A.S.D. DESIGN PRESSURE RATING DOUBLE DOORS:
W/ YALE SERIES M-200 OR DETEX H90R MULLIONS:

POSITIVE	+70 PSF.
NEGATIVE	-70 PSF.

3. EGRESS REQUIREMENTS AND USAGE OF ADVANTEX RIM PANIC EXIT HARDWARE IS OUTSIDE THE SCOPE OF THIS APPROVAL.
4. ALL REINFORCEMENTS TO BE SPOT WELDED OR BETTER BY DOOR MANUFACTURER.
5. ALL DIMENSIONS SHALL BE IN ACCORDANCE WITH MANUFACTURER'S STANDARD INSTALLATION INSTRUCTIONS.
6. VALUE SERIES PANIC EXIT DEVICE HV10 AND HV40 SERIES RIM CAN BE SUPPLIED WITH THE FOLLOWING ELECTRIFIED OPTIONS: (NOT PART OF THIS APPROVAL)
EB, ED, EE, EH, EI, EM, ER, ES, EX
PERFORMANCE OF ELECTRIFIED OPTION NOT PART OF THIS APPROVAL, BUT SHALL BE CERTIFIED BY AN INDEPENDENT TESTING AGENCY.
7. VALUE SERIES PANIC EXIT DEVICE HV10 AND HV40 SERIES RIM CAN BE SUPPLIED WITH THE FOLLOWING TRIM DESIGNATIONS:
01A, 01AN, 01P, 01PN 02WP, 02A, 02AN, 03A, 03AN, 03P, 03PN, 03WS, 08BN, 09BN, 14BN.
8. (a) THIS P.A.D. PREPARED BY THIS ENGINEER IS GENERIC AND DOES NOT PROVIDE INFORMATION FOR A SITE SPECIFIC PROJECT; i.e. WHERE THE SITE CONDITIONS DEViate FROM THE P.A.D.

(b) CONTRACTOR TO BE RESPONSIBLE FOR THE SELECTION, PURCHASE AND INSTALLATION INCLUDING LIFE SAFETY OF THIS PRODUCT, BASED ON THIS P.A.D., PROVIDED HE/SHE DOES NOT DEVIATE FROM THE CONDITIONS DETAILED ON THIS DOCUMENT. CONSTRUCTION SAFETY AT SITE IS THE CONTRACTOR'S RESPONSIBILITY.

(c) THIS P.A.D. WILL BE CONSIDERED INVALID IF ALTERED BY ANY MEANS.

(d) SITE SPECIFIC PROJECTS SHALL BE PREPARED BY A FLORIDA REGISTERED ENGINEER OR ARCHITECT WHICH WILL BECOME THE ENGINEER OF RECORD (E.O.R.) FOR THE PROJECT AND WHO WILL BE RESPONSIBLE FOR THE PROPER USE OF THE P.A.D. ENGINEER OF RECORD, ACTING AS DELEGATED ENGINEER TO THE P.A.D. ENGINEER, SHALL SUBMIT TO THIS LATTER THE SITE SPECIFIC DRAWINGS FOR REVIEW.

(e) ORIGINAL P.A.D. SHALL BEAR THE DATE AND ORIGINAL SEAL AND SIGNATURE OF THE PROFESSIONAL ENGINEER OF RECORD THAT PREPARED IT.

9. PANIC DEVICE'S MANUFACTURER LABEL SHALL BE PLACED ON A READILY VISIBLE LOCATION. ONE LABEL SHALL BE PLACED FOR EVERY UNIT. LABEL SHALL READ AS FOLLOWS:

DETEX CORPORATION or Detex company logo
NEW BRAUNFELS, TEXAS 78130
MIAMI-DADE COUNTY PRODUCT CONTROL APPROVED.

BILL OF MATERIAL FOR VALUE SERIES HV40 & FHV40* RIM DEVICE.
DOUBLE DOOR APPLICATION W/ YALE OR DETEX MULLIONS.

ITEM	DESCRIPTION	COMMENTS	QTY PER DOOR	MATERIAL
1	MIAMI DADE COUNTY APPROVED DOUBLE DOOR & FRAME		1	
2	DETEX HV40 & FHV40 VALUE SERIES		1	302 & 304 S.S., 16 & 13 GAGE CRS METAL AND ALUM. 6063-T5 ALLOY AND TEMPER.
3	MOUNTING PLATE (NARROW)		1	13 GAGE CRS METAL
4	ENDCAP BRACKET		1	13 GAGE CRS METAL
5	ENDCAP		1	ABS PLASTIC
6	OUTSIDE TRIM (SEE GENERAL NOTE 7)	OPTIONAL	A/R	DAN=BRASS FORMING LSN=BRASS FORMING TAN=BRASS FORMING WS=BRASS FORMING WSN=BRASS FORMING CHN=13 GAGE 304 S.S. PR=0.16" THICK 5052-H32 ALUM. PRN=0.16" THICK 5052-H32 ALUM. AT=16 GAGE CRS METAL ATN=16 GAGE CRS METAL BRN=ZINC DIE CASTING MCN=ZINC DIE CASTING LMN=ZINC DIE CASTING
7	CHASSIS COVER		1	ABS PLASTIC
8	SURFACE STRIKE		1	S.S. 302 INVESTMENT CAST (FY=30KSI)
9	1/4-20 P.H.P.M.S.		9	
11	10-24 F.H.P.U.C.M.S.		2	
12	6-32 F.H.P.U.C.M.S.		6	
13	1/4-20 P.H.P.M.S.		2	
14	HINGE		3	
15	2"(MIN.) x 3"(MIN.) x 1/4" (MIN.) THICK x 7'-0" LONG STEEL YALE SERIES M-200 MULLION.		1	ASTM A-500 GRADE B, W/ FY(MIN.)=46 KSI & FU(MIN.)=58 KSI
15A	2"(MIN.) x 3"(MIN.) x 1/4" MIN.) THICK x 7'-0" LONG STEEL DETEX H90R MULLION.		1	ASTM A-500 GRADE B, W/ FY(MIN.)=46 KSI & FU(MIN.)=58 KSI
16	(4) 1/4-20 x 5/8 FHMS FOR YALE M-200 MULLION OR (6) 5/16-18 x 5/8 FHMS FOR DETEX H90R MULLION.	SEE DESCRIPTION		STEEL
17	3/8" Ø HILTI KWIK BOLT 3 CS, MIN. 1 5/8" EMBEDMENT		2	ANCHORED TO MIN. 3000 psi CONCRETE
17A	3/8" Ø POWERS STEEL DROPIN OR SMART DI+, MIN. 1-9/16" EMBEDMENT		2	ANCHORED TO MIN. 3000 psi CONCRETE
18	3/8"-16 S.H.C.S.		2	STEEL
19	DADE COUNTY N.O.A LABEL (GENERAL NOTE #9)		1	
21	3/4" MIN. THROW LATCHBOLT		1	S.S. 304 OR 316 POWDERED METAL (FY=47KSI)
22	14 GA. (.068") X 14" REINFORCING PLATE		1	14 GA. MIN. STEEL

LIMITATIONS:

1. THIS PANIC DEVICE IS APPROVED TO BE EQUAL ALTERNATIVE HARDWARE TO BE USED WITH DOUBLE (W/YALE M-200 OR DETEX H90R MULLIONS) STEEL COMMERCIAL DOOR MADE WITH 16 GA. STEEL FRAME AND 16 GA. (.053" MIN.) STEEL DOOR (MIN. Fy = 38 ksi), HOLDING CURRENT NOA. THE LOWEST DESIGN PRESSURE RATING OF THE DOORS OR THE COMPONENT SHALL GOVERN.
2. THE DOORS SHALL MEET FOLLOWING SPECIFICATIONS:
- 2.1 DOOR SLAB MUST NOT BE WIDER THAN 48" AND HIGHER THAN 83.5". THE DOOR SHALL BE 1 3/4" MIN. OVERALL THICKNESS, FILLED WITH FBC APPROVED FOAM CORE AND 22 GA. STEEL STIFFNESS (SEE DETAIL SHEET 8).
- 2.2 DOOR SLAB TO BE REINFORCED WITH 22 GA. (.75" LONG X 0.812" DEEP) VERTICAL STIFFENERS, SPACED 6" APART MAX. AND WELDED TO 22 GA. LINER, SPOT WELDED AT 5" O.C.
- 2.3 7 GA. STEEL HINGE PLATE REINFORCEMENT AT HINGE STILE AND AT THE FRAME.
- 2.4 FULL-WIDTH C-CHANNEL, 18 GA. AT BOTTOM, 16 GA. AT TOP.
- 2.5 MIN. 12 GA. STEEL REINFORCEMENT AT STRIKE PLATE.
- 2.6 MIN. 12 GA. STEEL "U" CHANNEL AT LOCK STILE.
- 3.0 ELECTRICAL INSTALLATION & FIRE RATINGS ARE NOT PART OF THIS APPROVAL AND SUCH INSTALLATION MUST BE REVIEWED BY APPLICABLE BUILDING AUTHORITY.



BUILDING DROPS, INC.
398 E. DANIA BEACH BLVD., #338
DANIA BEACH, FL 33004
PH: 954.399.8478 FX: 954.744.4738

UNDERWRITER'S LABORATORIES - UL10C, UBC 7-2 (1997)
ANSI/BHMA A156.3 GRADE 1 EXIT DEVICE FOR INFORMATION ONLY.

(NOT PART OF THE APPROVAL)
ELECTRIFIED ABBREVIATIONS MEANING:

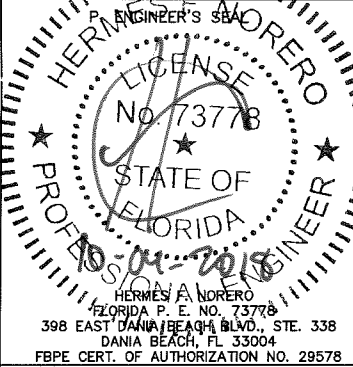
EB = ELECTRONIC EXIT ALARM MODEL
ED = ELECTRONIC DOGGING MODEL
EE = DELAY EGRESS
EI = ELECTRONIC INTEGRATION
EM = DELAY EGRESS WITH MAGNETIC LOCKING
ER = ELECTRONIC LOCK/UNLOCK
ES = ELECTRONIC LATCH RETRACTION
EX = ELECTRONIC SIGNAL SWITCH
W = WEATHERIZED
CD = CYLINDER DOGGING
HD = HEX DOGGING
LD = LESS DOGGING

TYPE TRIM ABBREVIATIONS MEANING:

DAN = DAYTONA NARROW
LSN = LAGUNA SEGA NARROW
TAN = TALLADEGA NARROW
WS = WILLOW SPRINGS
WSN = WILLOW SPRINGS NARROW
CHN = CHARLOTTE NARROW
PR = PORTLAND
PRN = PORTLAND NARROW
AT = ATLANTA
ATN = ATLANTA NARROW
BRN = BRISTOL NARROW
MCN = MONTE CARLO NARROW
LMN = LA MANS NARROW
*** PREFIX SIGNIFIES FIRE RATE RIM PANIC DEVICES

FASTENERS ABBREVIATIONS MEANING:

P.H.P.M.S. = PAN HEAD PHILLIPS MACHINE SCREW
F.H.P.U.C.M.S. = FLAT HEAD PHILLIPS UNDERCUT MACHINE SCREW
F.H.P.M.S. = FLAT HEAD PHILLIPS MACHINE SCREW
S.H.C.S. = SOCKET HEAD CAP SCREW



MIAMI-DADE COUNTY

PRODUCT REVIEWED

as complying with the Florida
Building Code
Acceptance No. 15-0731-03
Expiration Date 4/7/21

Hermes A. Norero
Professional Engineer

DETEX CORPORATION

302 DETEX DRIVE
NEW BRAUNFELS, TX 78130

DATE: 06/17/13 DRAWN BY: A.G.

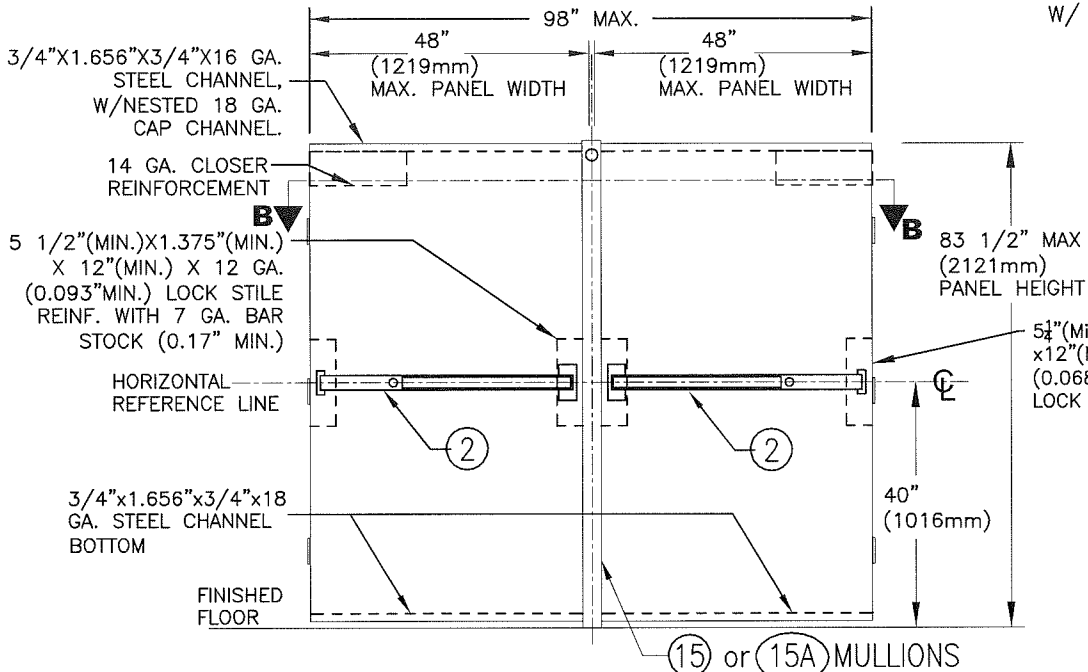
SHEET TITLE:
VALUE SERIES SERIES RIM PANIC EXIT HARDWARE

DRAWING NUMBER: 13-045 REVISION: OLD 12-025 SHEET 7 of 9

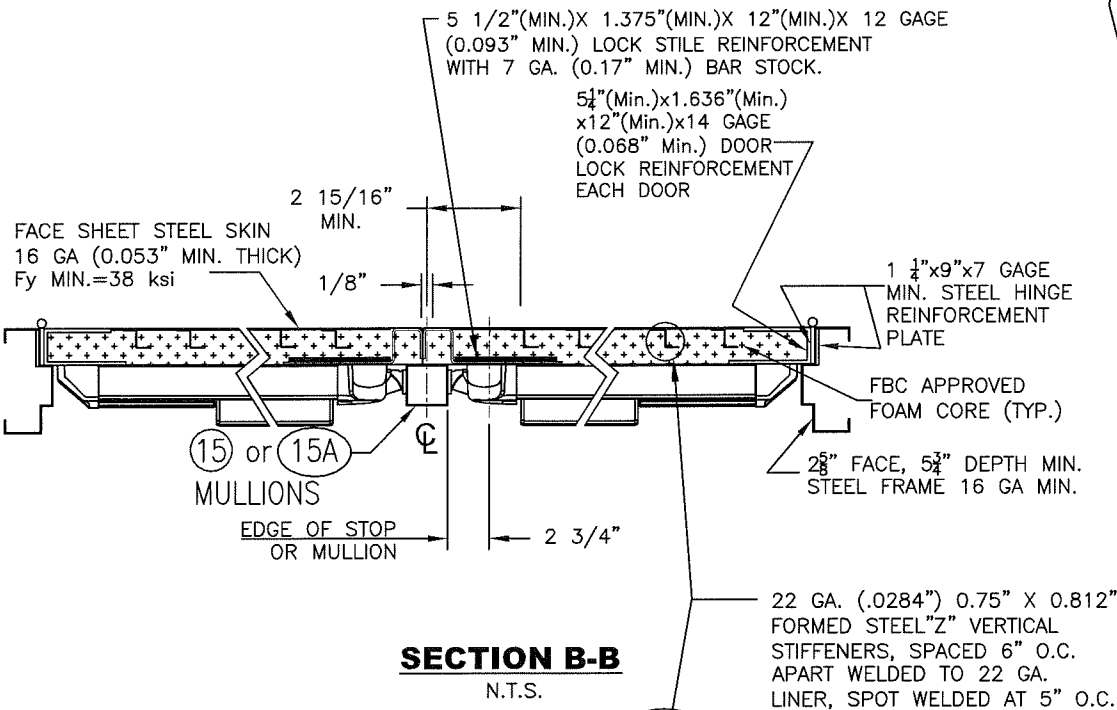
**VALUE SERIES HV40 & FHV40* RIM DEVICE INSTALLATION FOR
HURRICANE CODE. DOUBLE DOOR APPLICATION W/ YALE OR DETEX MULLIONS**

MAX. A.S.D. DESIGN PRESSURE RATING DOUBLE DOORS:
W/ YALE SERIES M-200 OR DETEX H90R MULLIONS:

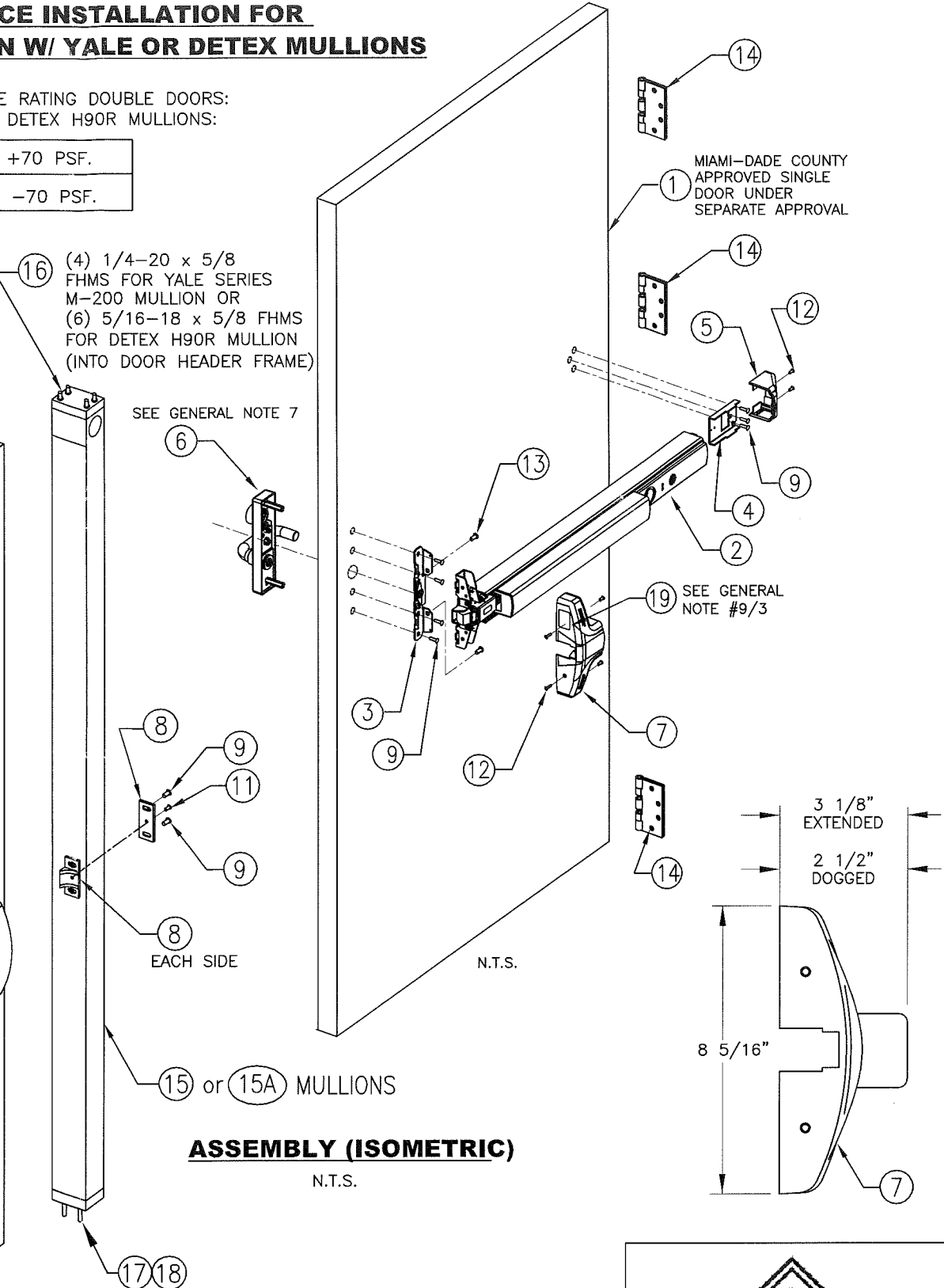
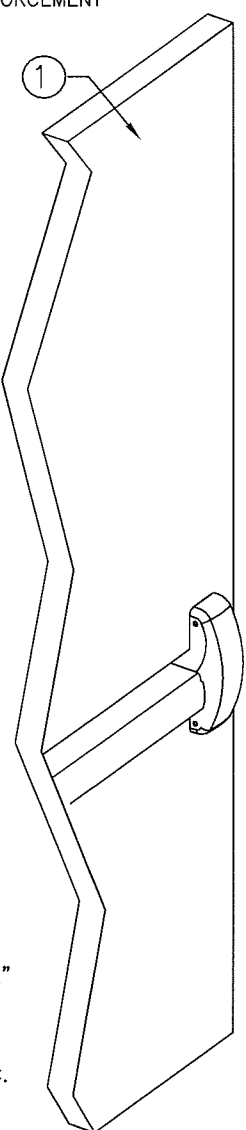
POSITIVE	+70 PSF.
NEGATIVE	-70 PSF.



INTERIOR ELEVATION
N.T.S.



SECTION B-B
N.T.S.



ASSEMBLY (ISOMETRIC)
N.T.S.

UNDERWRITER'S LABORATORIES - UL10C, UBC 7-2 (1997)
ANSI/BHMA A156.3 GRADE 1 EXIT DEVICE FOR INFORMATION ONLY.
(NOT PART OF THE APPROVAL)
ELECTRIFIED ABBREVIATIONS MEANING:

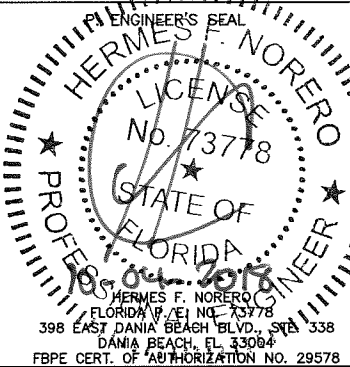
EB = ELECTRONIC EXIT ALARM MODEL
ED = ELECTRONIC DOGGING MODEL
EE = DELAY EGRESS
EI = ELECTRONIC INTEGRATION
EM = DELAY EGRESS WITH MAGNETIC LOCKING
ER = ELECTRONIC LOCK/UNLOCK
ES = ELECTRONIC LATCH RETRACTION
EX = ELECTRONIC SIGNAL SWITCH
W = WEATHERIZED
CD = CYLINDER DOGGING
HD = HEX DOGGING
LD = LESS DOGGING

TYPE TRIM ABBREVIATIONS MEANING:

DAN = DAYTONA NARROW
LSN = LAGUNA SEGA NARROW
TAN = TALLADEGA NARROW
WS = WILLOW SPRINGS
WSN = WILLOW SPRINGS NARROW
CHN = CHARLOTTE
PR = PORTLAND
PRN = PORTLAND NARROW
AT = ATLANTA
ATN = ATLANTA NARROW
BRN = BRISTOL NARROW
MCN = MONTE CARLO NARROW
LMN = LA MANA NARROW
F PREFIX SIGNIFIES FIRE RATE RIM PANIC DEVICES

FASTENERS ABBREVIATIONS MEANING:

P.H.P.M.S. = PAN HEAD PHILLIPS MACHINE SCREW
F.H.P.U.C.M.S. = FLAT HEAD PHILLIPS UNDERCUT MACHINE SCREW
F.H.P.M.S. = FLAT HEAD PHILLIPS MACHINE SCREW
S.H.C.S. = SOCKET HEAD CAP SCREW



MIAMI-DADE COUNTY

PRODUCT REVIEWED
as complying with the Florida
Building Code
Acceptance No. 15-0731.03
Expiration Date 4/7/21
J. Sherry
Building Product Control

DETEX CORPORATION
302 DETEX DRIVE
NEW BRAUNFELS, TX 78130

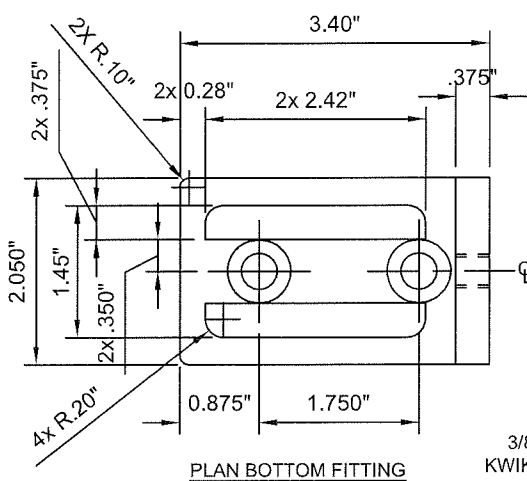
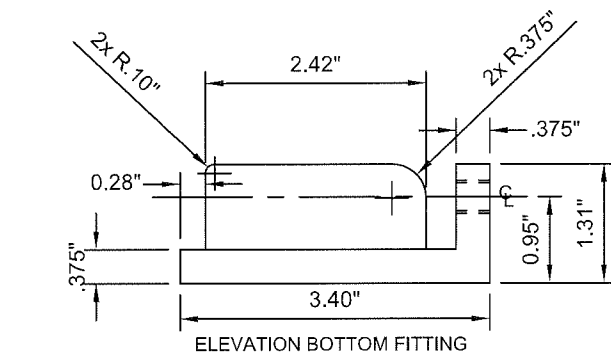
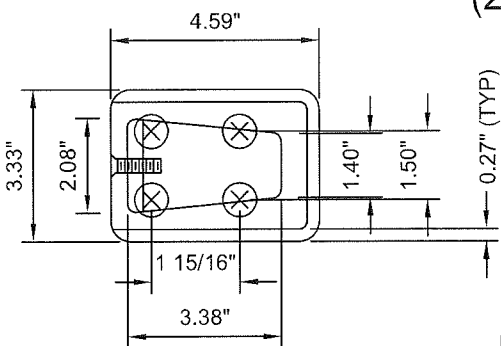
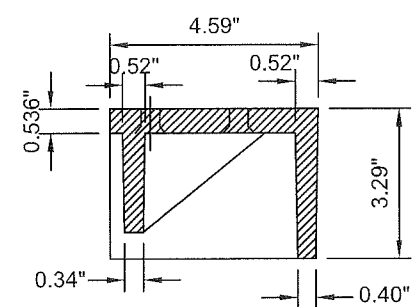
DATE: 06/17/13
DRAWN BY: A.G.

SHEET TITLE:
VALUE SERIES RIM PANIC
EXIT HARDWARE

DRAWING NUMBER: 13-045
REVISION: OLD 12-025
SHEET 8 of 9



BUILDING DROPS, INC.
398 E. DANIA BEACH BLVD., #338
DANIA BEACH, FL 33004
PH: 954.399.8478 FX: 954.744.4738



TOP FITTING
(YALE P/N 98-0283)
IRON CASTING TO
65-45-12, PRIMED

(4) 16 INTO DOOR HEADER
FRAME
1/4" Ø-20 x 5/8" FH
MS ZINC PLATED

NOTCH ONLY AT TOP OF MULLION
1 3/4" HEIGHT x 1 3/8" WIDE TO
FIT TOP FITTING

(2) 16 14 GA. (.068") X 1-3/4" X 14" FORMED
STEEL REINFORCING PLATE
CENTERED AT MULLION.

5/8" 1 15/16" FRAME

EXT FACE

(4) 16 TOP FITTING

(15) PRIMED & PAINTED

SECTION AT TOP FITTING

EXT FACE

(15) (2) 16

BOTTOM FITTING
(1) 1/4" Ø-20 x 1 1/4" SS RH MS
ZINC PLATED

1.625" EMBEDMENT

3" EDGE
DIST. 1.75" O.C.

(2) 17

SECTION AT BOTTOM FITTING

2 PIECES

1/4" Ø-20 x 1 1/4" SS RH MS
ZINC PLATED

BOTTOM FITTING
(YALE P/N 98-0284)
IRON CASTING TO
65-45-12, PRIMED

(15) YALE M200 (REMOVABLE MULLION)

2.75 1 (TYP)
3.25 2
2 5/16 1 23/64

TOP FITTING
WROUGHT CARBON STEEL
ASTM A-216, GRADE B, ZINC PLATED (0.5 MIL)
PER ANSI B117 OR EQUIVALENT
STRENGTH STAINLESS STEEL

1/4" 1/4" 2.0" 3.0"

SECTION B - DETEX H90R
A-500
GRADE B

1/4" 1/4" 2.0" 3.0"

SECTION A - YALE M200
A-500
GRADE B

1-1/4" 1-1/2" 2-1/2" 3/4" 2-1/6" 3/8"

BOTTOM FITTING
(P/N 106091)
STAINLESS STEEL

3/8" DIA. POWERS SMART DI+ OR 3/8" DIA. POWERS STEEL
DROPIN, INTERNALLY THREADED CONCRETE ANCHORS,
W/ 1-9/16" EMBEDMENT
INTO 3KSI CONCRETE,
@ 3.0" O.C. W/ MIN. 3 1/2" EDGE DISTANCE,
W/ (2) 3/8"-16 S.H.C.S. MACHINE SCREWS FROM BOTTOM
FITTING AND BASE PLATE TO DROPIN ANCHORS (#17A)

(15A) DETEX H90R (REMOVABLE MULLION)

SPACER

TOP FITTING

(6) INTO DOOR
HEADER FRAME

(16)

(15A) PRIMED & PAINTED

(17A) 2 PIECES

EXT FACE

(16) (22) FRAME

STEEL FILLER
(P/N 106074)

TOP FITTING
(P/N 106079)

SECTION AT TOP FITTING

3/8-16 S.H.C.S.
(P/N 106072-9)

3/8-16 S.H.C.S.
(P/N 106072-7)

15A

BOTTOM FITTING
(P/N 106091)

BASE PLATE
(P/N 106093)

1-9/16" EMBEDMENT

1-1/4" 3" O.C. 3/8-16 F.H.S.H.C.S.
(P/N 106094-5)

3.5" EDGE
DIST.

(2) 17A

SECTION AT BOTTOM FITTING

4.54 2.04 .845" 1.250" .695"

BASE PLATE
(P/N 106093)
STAINLESS STEEL



BUILDING DROPS, INC.
398 E. DANIA BEACH BLVD., #338
DANIA BEACH, FL 33004
PH: 954.399.8478 FX: 954.744.4738

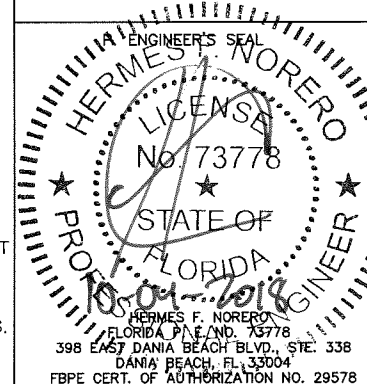
UNDERWRITER'S LABORATORIES - UL10C,
UBC 7-2 (1997)
ANSI/BHMA A156.3 GRADE 1 EXIT DEVICE
FOR INFORMATION ONLY.
(NOT PART OF THE APPROVAL)

ELECTRIFIED ABBREVIATIONS MEANING:

EA = ELECTRONIC EXIT ALARM MODEL
ED = ELECTRONIC DOGGING MODEL
EE = DELAY EGRESS
EI = ELECTRONIC INTEGRATION
EM = DELAY EGRESS WITH MAGNETIC LOCKING
ER = ELECTRONIC LOCK/UNLOCK
ES = ELECTRONIC LATCH RETRACTION
EX = ELECTRONIC SIGNAL SWITCH
W = WEATHERIZED
CD = CYLINDER DOGGING
HD = HEX DOGGING
LD = LESS DOGGING

FASTENERS ABBREVIATIONS MEANING:

P.H.P.M.S. = PAN HEAD PHILLIPS MACHINE
SCREW
F.H.P.U.C.M.S. = FLAT HEAD PHILLIPS
UNDERCUT MACHINE SCREW
F.H.P.M.S. = FLAT HEAD PHILLIPS MACHINE
SCREW
S.H.C.S. = SOCKET HEAD CAP SCREW



MIAMI-DADE COUNTY

PRODUCT REVIEWED
in compliance with the Florida
Building Code
Acceptance No. 15-0731-03
Expiration Date 4/7/21
Building Drops Product Control

DETEX CORPORATION
302 DETEX DRIVE
NEW BRAUNFELS, TX 78130

DATE: 11-8-13 DRAWN BY: A.G.

SHEET TITLE:
ADVANTEX SERIES RIM PANIC
EXIT HARDWARE

DRAWING NUMBER: 13-045 REVISION: OLD 12-025 SHEET 9 of 9