



DEPARTMENT OF REGULATORY AND ECONOMIC RESOURCES (RER)  
 BOARD AND CODE ADMINISTRATION DIVISION  
**NOTICE OF ACCEPTANCE (NOA)**

MIAMI-DADE COUNTY  
 PRODUCT CONTROL SECTION  
 11805 SW 26 Street, Room 208  
 Miami, Florida 33175-2474  
 T (786) 315-2590 F (786) 315-2599  
[www.miamidade.gov/economy](http://www.miamidade.gov/economy)

**JB Garage Door, Inc.**  
 12195 NW 98<sup>th</sup> Avenue  
 Hialeah Gardens, FL 33018

**SCOPE:** This NOA is being issued under the applicable rules and regulations governing the use of construction materials. The documentation submitted has been reviewed and accepted by Miami-Dade County RER-Product Control Section to be used in Miami Dade County and other areas where allowed by the Authority Having Jurisdiction (AHJ). This NOA shall not be valid after the expiration date stated below. The Miami-Dade County Product Control Section (In Miami Dade County) and/or the AHJ (in areas other than Miami Dade County) reserve the right to have this product or material tested for quality assurance purposes. If this product or material fails to perform in the accepted manner, the manufacturer will incur the expense of such testing and the AHJ may immediately revoke, modify, or suspend the use of such product or material within their jurisdiction. RER reserves the right to revoke this acceptance, if it is determined by Miami-Dade County Product Control Section that this product or material fails to meet the requirements of the applicable building code.

This product is approved as described herein, and has been designed to comply with the Florida Building Code, including the High Velocity Hurricane Zone.

**DESCRIPTION: Models 724/720 Steel Sectional Garage Door up to 10'-4" Wide x 18'High (DP +60.0, -67.0 PSF)**

**APPROVAL DOCUMENT:** Drawing No. 95-17, titled "Steel Overhead Garage Door", dated 04/20/1995, with last revision I dated 07/21/2014, sheets 1 through 5 of 5, prepared by Al-Farooq Corporation, signed and sealed by Javad Ahmad, P.E., bearing the Miami-Dade County Product Control renewal stamp with the Notice of Acceptance number and expiration date by the Miami-Dade County Product Control Section.

**MISSILE IMPACT RATING: Large and Small Missile Impact Resistant**

**LABELING:** A permanent label with the manufacturer's name or logo, manufacturing address, model number, the positive and negative design pressure rating, indicate impact rated if applicable, installation instruction drawing reference number, approval number (NOA), the applicable test standards, and the statement reading 'Miami-Dade County Product Control Approved' is to be located on the door's side track, bottom angle, or inner surface of a panel.

**LIMITATION: This door has not been tested for air infiltration.**

**RENEWAL** of this NOA shall be considered after a renewal application has been filed and there has been no change in the applicable building code negatively affecting the performance of this product.

**TERMINATION** of this NOA will occur after the expiration date or if there has been a revision or change in the materials, use, and/or manufacture of the product or process. Misuse of this NOA as an endorsement of any product, for sales, advertising or any other purposes shall automatically terminate this NOA. Failure to comply with any section of this NOA shall be cause for termination and removal of NOA.

**ADVERTISEMENT:** The NOA number preceded by the words Miami-Dade County, Florida, and followed by the expiration date may be displayed in advertising literature. If any portion of the NOA is displayed, then it shall be done in its entirety.

**INSPECTION:** A copy of this entire NOA shall be provided to the user by the manufacturer or its distributors and shall be available for inspection at the job site at the request of the Building Official.

This NOA renews NOA # 14-1014.07 and consists of this page 1 and evidence pages E-1 and E-2, as well as approval document mentioned above.

The submitted documentation was reviewed by **Carlos M. Utrera, P.E.**



*[Signature]*  
 10/07/2015

NOA No. 15-0812.16  
 Expiration Date: April 4, 2021  
 Approval Date: October 15, 2015  
 Page 1

**NOTICE OF ACCEPTANCE: EVIDENCE SUBMITTED**

**A. DRAWINGS “Submitted under NOA # 14-1014.07”**

1. Drawing No. **95-17**, titled “Steel Overhead Garage Door”, dated 04/20/1995, with last revision I dated 07/21/2014, sheets 1 through 5 of 5, prepared by Al-Farooq Corporation, signed and sealed by Javad Ahmad, P.E.

**B. TESTS “Submitted under NOA # 09-0212.10”**

1. Test Report on Tensile Test per ASTM E-8 of “Sectional Residential Door (skin)”, prepared by Hurricane Engineering & Testing Inc, Report No. **HETI 08-T180**, dated 12/23/2008, signed and sealed by Candido F. Font, P.E.

**“Submitted under NOA # 06-0705.09”**

2. Test report on Uniform Static Air Pressure Test per FBC, TAS 202 & Forced Entry Resistance Test per SFBC, Section 3603.2 of Series 724 Garage Door, prepared by Hurricane Engineering & Testing Inc., Report No. **HETI-05-1494**, dated 12/16/2005, signed and sealed by Rafael E. Droz-Seda, P.E.
3. Test report on Large Missile Impact Test per FBC, TAS 201 and Cyclic Wind Pressure Test per FBC, TAS 203 of Series 724 Garage Door, prepared by Hurricane Engineering & Testing Inc., Report No. **HETI-05-1495**, dated 12/16/2005, signed and sealed by Rafael E. Droz-Seda, P.E.

**“Submitted under NOA # 99-1203.01”**


4. Test report on Salt Spray (Corrosion) Test per ASTM B 117 of a painted G-40 steel panels, prepared by Celotex Corporation, Test Report No. **258592**, dated 08/17/1998, signed by W. A. Jackson, P.E.

**C. CALCULATIONS “Submitted under NOA # 14-1014.07”**

1. Anchoring verification calculations prepared by Al-Farooq Corporation, dated 09/23/2014, signed and sealed by Javad Ahmad, P.E.

**“Submitted under NOA # 09-0212.10”**

2. Anchoring verification calculations prepared by Al-Farooq Corporation, complying with F.B.C 2007, dated 01/21/2009, signed and sealed by Humayoun Farooq, P.E.

  
10/07/2015

---

Carlos M. Utrera, P.E.  
Product Control Examiner  
NOA No. 15-0812.16  
Expiration Date: April 4, 2021  
Approval Date: October 15, 2015

**NOTICE OF ACCEPTANCE: EVIDENCE SUBMITTED**

**D. QUALITY ASSURANCE**

1. Miami-Dade Department of Regulatory and Economic Resources (RER)

**E. MATERIAL CERTIFICATIONS**

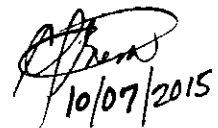
1. Notice of Acceptance No. **14-0311.08**, issued to Insulfoam, LLC, for their Insulfoam Expanded Polystyrene Insulation, approved on 08/14/2014 and expiring on 11/29/2017.
2. Notice of Acceptance No. **11-0926.07** issued to Dyplast Products, LLC, for their Expanded Polystyrene Block Type Insulation, approved on 11/10/2011 and expiring on 01/11/2017.
3. Notice of Acceptance No. **11-0926.06** issued to Dyplast Products, LLC, for their Dyplast ISO-C1 Polyisocyanurate Insulation, approved on 11/10/2011 and expiring on 01/11/2017.
4. Notice of Acceptance No. **10-1129.04**, issued to Cellofoam North America Inc, for their Expanded Polystyrene Block Insulation, approved on 02/24/2011 and expiring on 02/24/2016.

**F. STATEMENTS *"Submitted under NOA # 14-1014.07"***

1. Statement letter of code conformance to the 5<sup>th</sup> edition (2014) FBC and no financial interest issued by Al-Farooq Corporation, dated 09/23/2014, signed and sealed by Javad Ahmad, P.E.

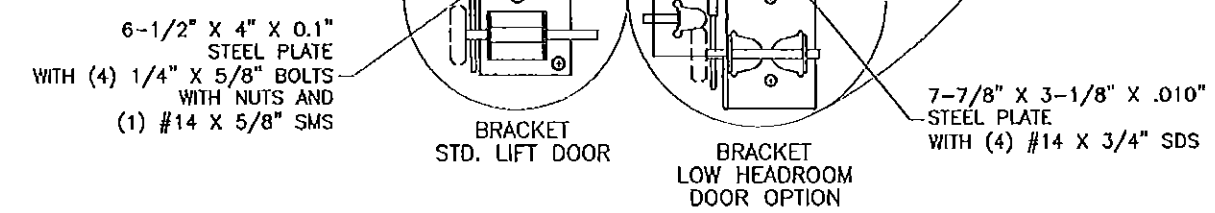
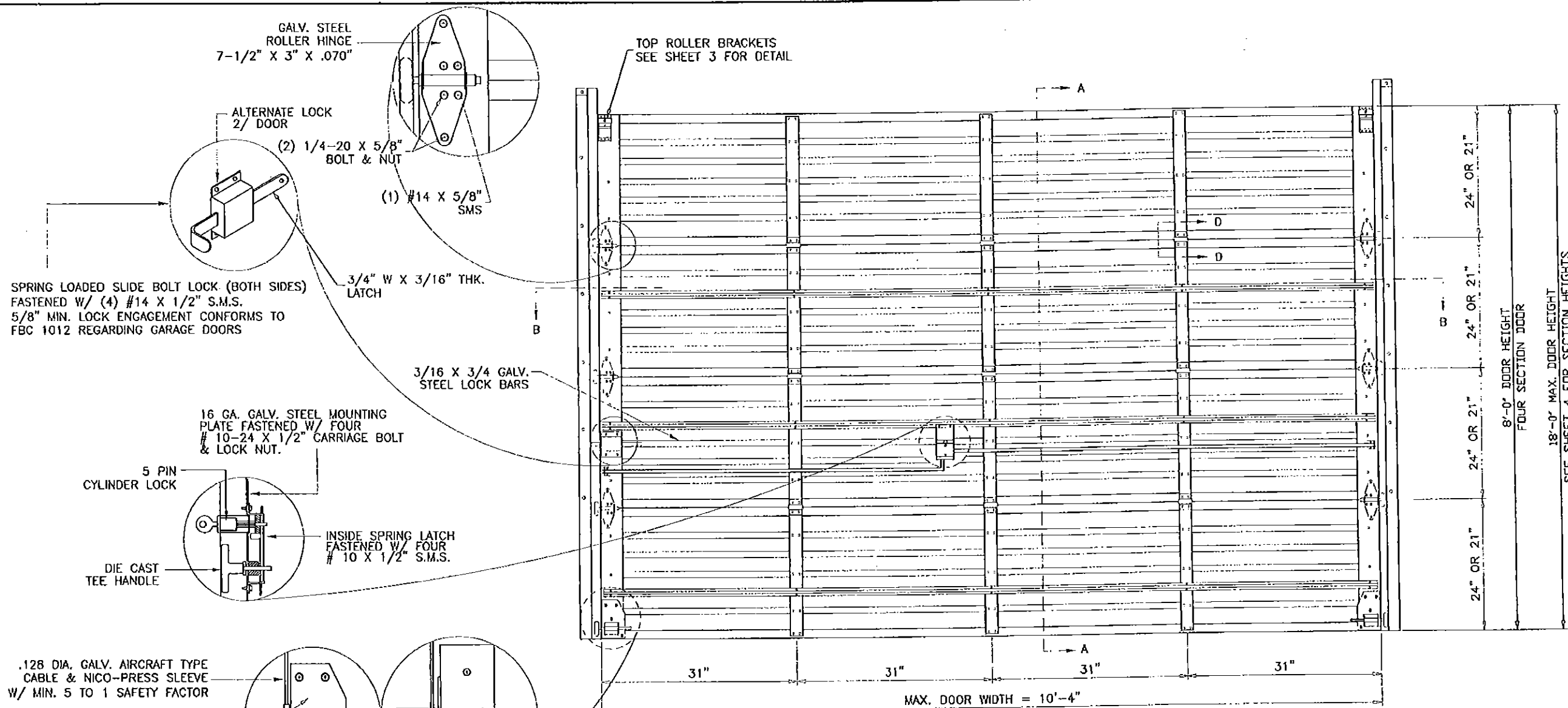
***"Submitted under NOA # 12-0113.04"***

2. Statement letter of code conformance to 2010 FBC and no financial interest, issued by Al-Farooq Corporation, dated 11/21/2011, signed and sealed by Javad Ahmad, P.E.



---

Carlos M. Utrera, P.E.  
Product Control Examiner  
NOA No. 15-0812.16  
Expiration Date: April 4, 2021  
Approval Date: October 15, 2015



SPRING LOADED SLIDE BOLT LOCK (BOTH SIDES)  
FASTENED W/ (4) #14 X 1/2" S.M.S.  
5/8" MIN. LOCK ENGAGEMENT CONFORMS TO  
FBC 1012 REGARDING GARAGE DOORS

GALV. STEEL  
ROLLER HINGE  
7-1/2" X 3" X .070"

TOP ROLLER BRACKETS  
SEE SHEET 3 FOR DETAIL

ALTERNATE LOCK  
2/ DOOR

(2) 1/4-20 X 5/8"  
BOLT & NUT

(1) #14 X 5/8"  
S.M.S.

3/4" W X 3/16" THK.  
LATCH

3/16 X 3/4 GALV.  
STEEL LOCK BARS

16 GA. GALV. STEEL MOUNTING  
PLATE FASTENED W/ FOUR  
# 10-24 X 1/2" CARRIAGE BOLT  
& LOCK NUT.

5 PIN  
CYLINDER LOCK

INSIDE SPRING LATCH  
FASTENED W/ FOUR  
# 10 X 1/2" S.M.S.

DIE CAST  
TEE HANDLE

.128 DIA. GALV. AIRCRAFT TYPE  
CABLE & NICO-PRESS SLEEVE  
W/ MIN. 5 TO 1 SAFETY FACTOR

6-1/2" X 4" X 0.1"  
STEEL PLATE  
WITH (4) 1/4" X 5/8" BOLTS  
WITH NUTS AND  
(1) #14 X 5/8" S.M.S.

BRACKET  
STD. LIFT DOOR

BRACKET  
LOW HEADROOM  
DOOR OPTION

7-7/8" X 3-1/8" X .010"  
STEEL PLATE  
WITH (4) #14 X 3/4" SDS

INSIDE ELEVATION

J.B. DOOR MODELS: 10'-4"W X 18'H MAX	
MODEL	DESCRIPTION
724	24 GA. ROLL FORMED STEEL DOOR
720	20 GA. ROLL FORMED STEEL DOOR

NOTE: MODEL 724 TESTED.

THIS PRODUCT IS RATED FOR LARGE MISSILE IMPACT

MAXIMUM DESIGN LOAD RATING = + 60.0 PSF  
(FOR SIZES SHOWN OR SMALLER) - 67.0 PSF

GENERAL NOTES

1. THIS PRODUCT HAS BEEN DESIGNED AND TESTED TO COMPLY WITH THE REQUIREMENTS OF THE FLORIDA BUILDING CODE (FBC) FIFTH EDITION (2014) INCLUDING HIGH VELOCITY HURRICANE ZONE (HVHZ).
2. ANCHORS SHALL BE AS LISTED, SPACED AS SHOWN ON DETAILS. ANCHOR EMBEDMENT TO BASE MATERIAL SHALL BE BEYOND WALL DRESSING OR STUCCO.
3. ALL BOLTS, NUTS AND WASHERS SHALL BE ZINC PLATED CARBON STEEL.
4. ANCHORING OR LOADING CONDITIONS OTHER THAN THOSE SHOWN IN THESE DETAILS ARE NOT PART OF THIS APPROVAL.
5. A LOAD DURATION INCREASE IS USED IN DESIGN OF ANCHORS INTO WOOD ONLY.

PRODUCT RENEWED  
as complying with the Florida  
Building Code  
Acceptance No 15-0812-16  
Expiration Date 04/04/2021  
By *[Signature]*  
Miami Dade Product Control

Engr: JAVAD AHMAD  
CIVIL  
FLA. PE # 70592  
C.A.N. 3538  
*[Signature]*  
SEP 22 2014

PRODUCT REVISED  
as complying with the Florida  
Building Code  
Acceptance No 14-1014-07  
Expiration Date 04/04/2016  
By *[Signature]*  
Miami Dade Product Control

**a f c**  
**AL-FAROOQ CORPORATION**  
ENGINEERS & PRODUCT DEVELOPMENT  
1235 S.W. 87 AVE  
MIAMI, FLORIDA 33174  
TEL (305) 264-8100 FAX (305) 262-6978  
GARAGE 95-171B

STEEL OVERHEAD GARAGE DOOR  
**J.B. GARAGE DOORS INC.**  
12195 N.W. 98 TH. AVE.  
HIALEAH GARDENS, FL. 33016  
TEL. (305) 558 - 1688

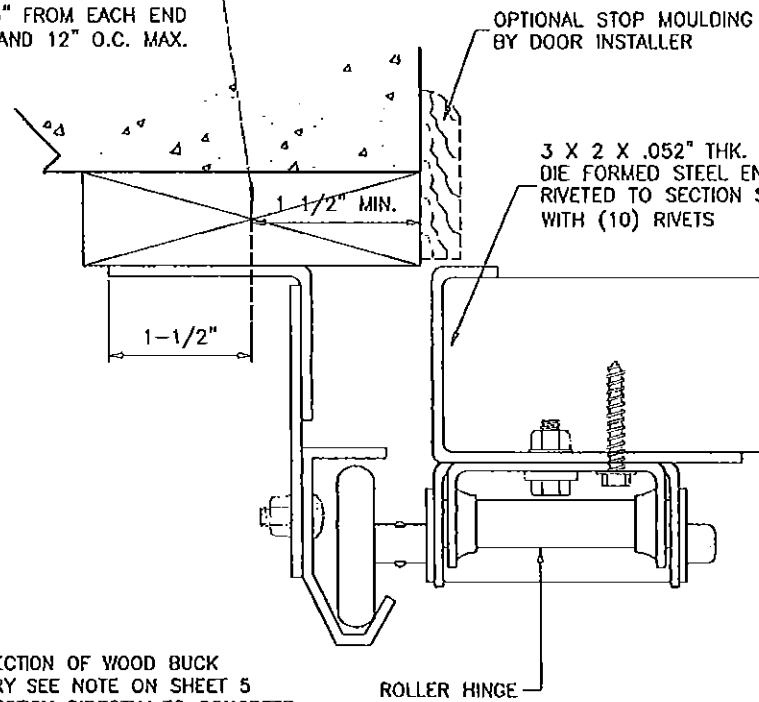
NO	DATE	DESCRIPTION
E	04-17-06	UPDATED FOR NEW TEST
F	11-02-06	REV. PER BCCO COMMENTS
G	01-02-09	UPDATED FOR 2007 FBC
H	11-21-11	UPDATED TO 2010 FBC
I	07-21-14	UPDATED TO 2014 FBC

revisions:

date: 04-20-95  
scale: NONE  
dr. by: HAMID  
chk. by:

drawing no.  
95-17  
sheet 1 of 5

1-1/4" X 2-1/2" X 14 GA.  
GALV. STEEL CONT. ANGLE  
FASTENED TO WOOD JAMBS  
W/ 5/16 X 1-5/8" LAG SCREWS  
(FULLY THREADED)  
HEX WASHER HEAD TYPE A  
AT 3" FROM EACH END  
AND 12" O.C. MAX.



OPTIONAL STOP MOULDING  
BY DOOR INSTALLER

3 X 2 X .052" THK.  
DIE FORMED STEEL END STILE  
RIVETED TO SECTION SKIN  
WITH (10) RIVETS

1/4-20 X 5/8" HEX HEAD  
M.S. & LOCK NUT 4/ HINGE

1/4" X 5/8" S.M.S.  
2/ HINGE

STEEL STRUCTURE BY OTHERS  
MUST SUPPORT THE LOADS IMPOSED  
BY DOOR SYSTEM

2-1/2" X 3-7/8" X 12 GA.  
GALV. STEEL TRACK PLATES @  
12" O.C. SPOT WELDED TO 14  
GA. ANGLE

1.82" DIA. X .50" ROLLERS  
W/ .43 DIA. X 4" STEM

1" X 2" X 14 GA. GALV. STEEL  
TRACK FASTENED TO TRACK PLATES  
W/ (2) 1/4-20 X 5/8" TRUSS HD.  
SLOTTED M.S. & LOCK NUT

(4) 1/4 X 5/8"  
BOLTS WITH NUTS

2-3/4" X 2-1/4" X 14 GA.  
GALV. STEEL CENTER HINGE

ROLLER HINGE

FOR CONNECTION OF WOOD BUCK  
TO MASONRY SEE NOTE ON SHEET 5  
FOR CONNECTION DIRECTLY TO CONCRETE  
SEE ALTERNATE DETAIL SHEET 5  
CONNECTION TO METAL BUILDING TO BE  
ENGINEERED ON JOB TO JOB BASIS.

INTERIOR SIDE

SECTION B-B

PRODUCT RENEWED  
as complying with the Florida  
Building Code  
Acceptance No 15-0812-16  
Expiration Date 04/04/2021  
By *[Signature]*  
Miami Dade Product Control

Engr: JAVAD AHMAD  
CIVIL  
FLA. PE # 70592  
C.A.N. 3538  
SEP 22 2014

PRODUCT REVISED  
as complying with the Florida  
Building Code  
Acceptance No 14-1014-07  
Expiration Date 04/04/2016  
By *[Signature]*  
Miami Dade Product Control

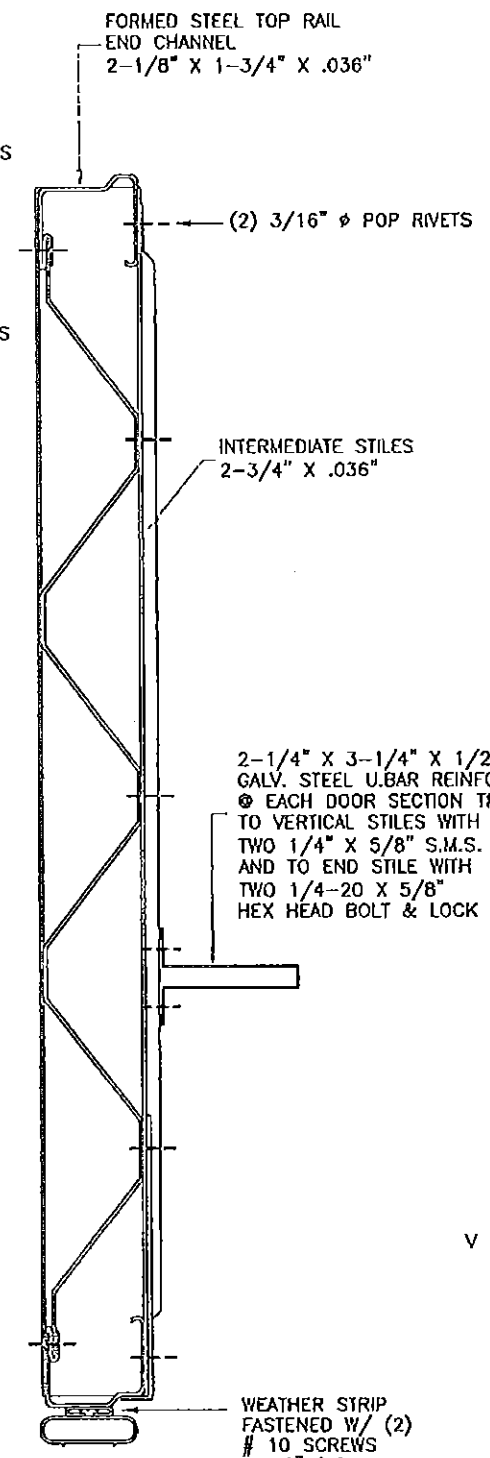
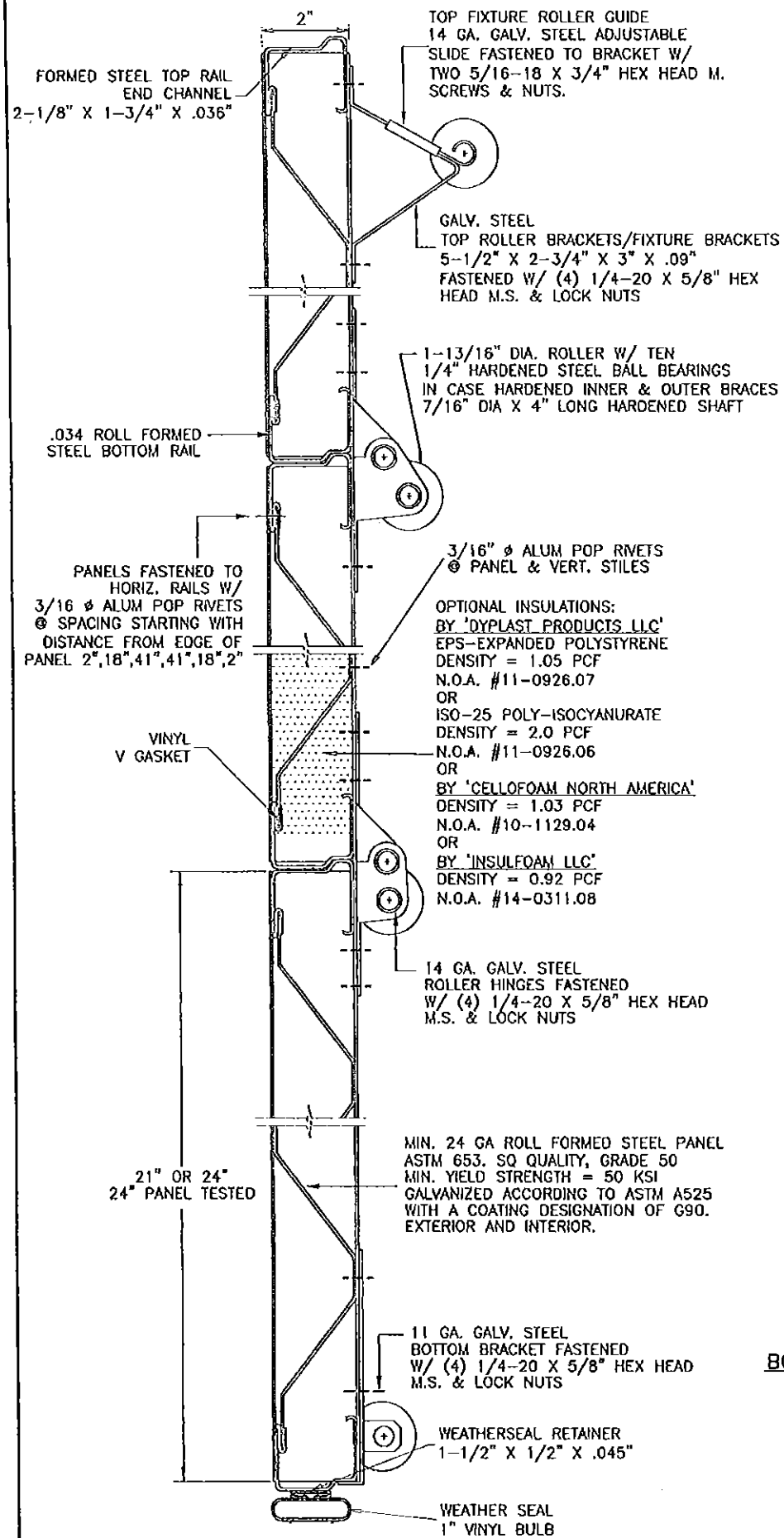
**AL-FAROOQ CORPORATION**  
ENGINEERS & PRODUCT DEVELOPMENT  
1235 S.W. 87 AVE  
MIAMI, FLORIDA 33174  
TEL (305) 264-8100 FAX (305) 262-6978  
GARAGE 95-17JB

STEEL OVERHEAD GARAGE DOOR  
J.B. GARAGE DOORS INC.  
12195 N.W. 98 TH. AVE.  
HIALEAH GARDENS, FL. 33016  
TEL (305) 558 - 1658

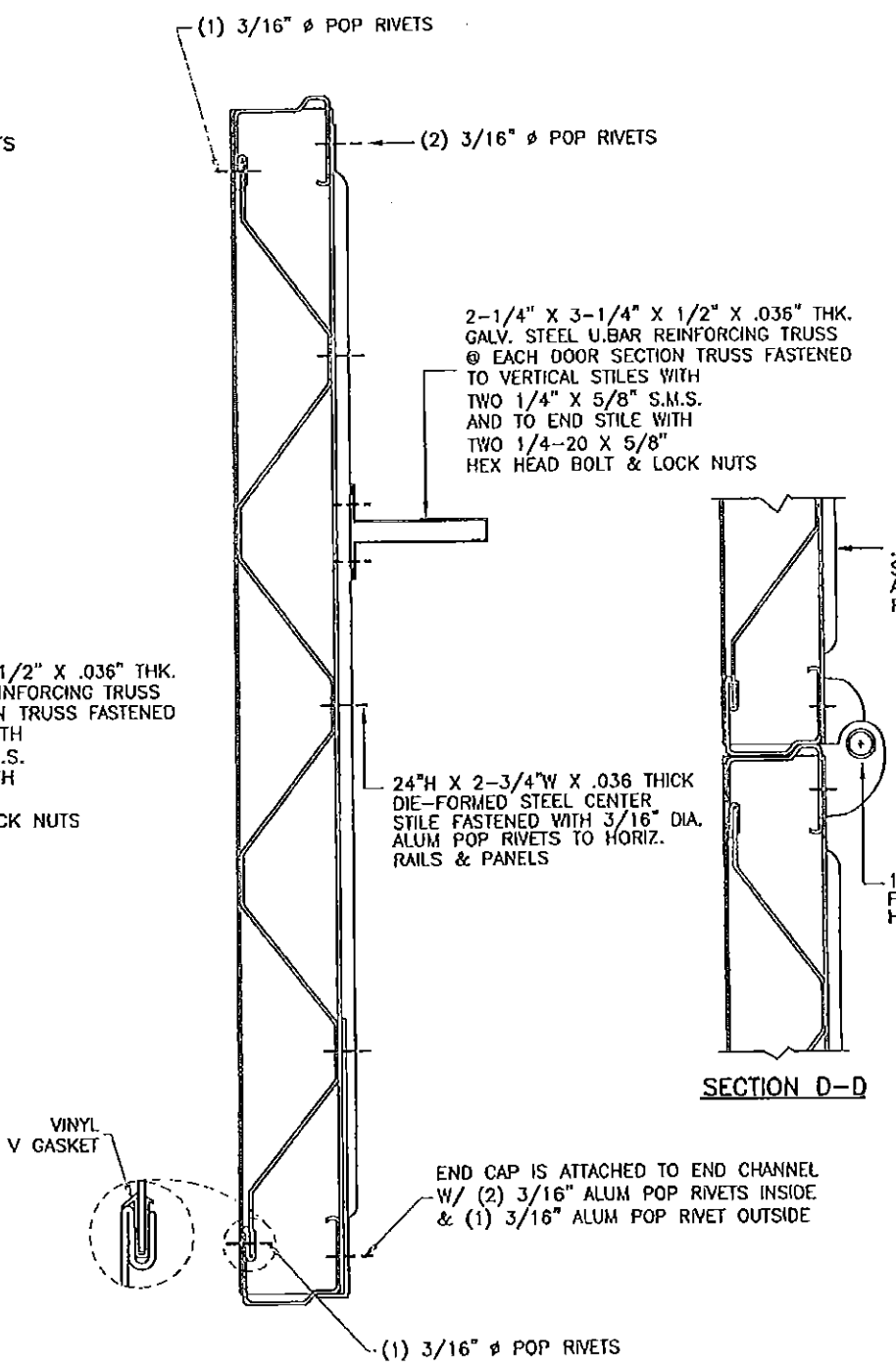
NO	DATE	BY	DESCRIPTION
E	04.17.06		UPDATED FOR NEW TEST
F	11.02.06		REV. PER BCCO COMMENTS
G	01.02.09		UPDATED FOR 2007 FBC
H	11.21.11		NO CHANGE THIS SHEET
I	07.21.14		NO CHANGE THIS SHEET

date: 04-20-95  
scale: NONE  
dr. by: HAMID  
chk. by:

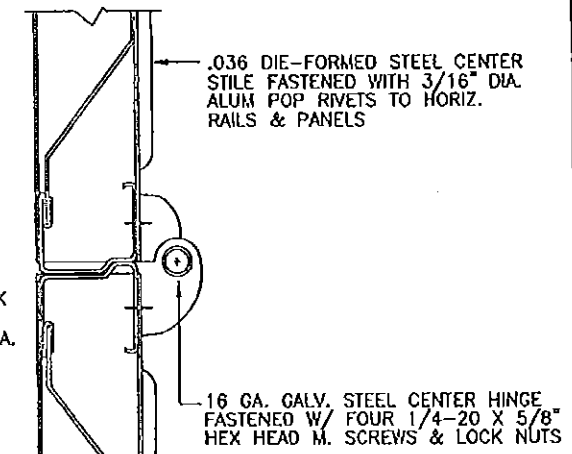
drawing no.  
95-17  
sheet 2 of 5



**BOTTOM PANEL**



**ALL INTERMEDIATE PANELS**  
TOP PANEL HAS NO REINFORCING TRUSS



**SECTION D-D**

SEE SECTIONS AT RIGHT FOR LOCATION OF REINFORCING TRUSSES

Engr: JAVAD AHMAD  
 CIVIL  
 FLA. PE # 70592  
 C.A.N. 3538

SEP 2 2014

**PRODUCT RENEWED**  
 as complying with the Florida Building Code  
 Acceptance No 15-0812.16  
 Expiration Date 04/04/2021

By *[Signature]*  
 Miami Trade Product Control

**PRODUCT REVISED**  
 as complying with the Florida Building Code  
 Acceptance No 14-1014.07  
 Expiration Date 04/04/2016

By *[Signature]*  
 Miami Trade Product Control

**af c**

**AL-FAROOQ CORPORATION**  
 ENGINEERS & PRODUCT DEVELOPMENT  
 1235 S.W. 87 AVE  
 MIAMI, FLORIDA 33174  
 TEL (305) 264-8100 FAX (305) 262-6978  
 GARAGE 95-171B

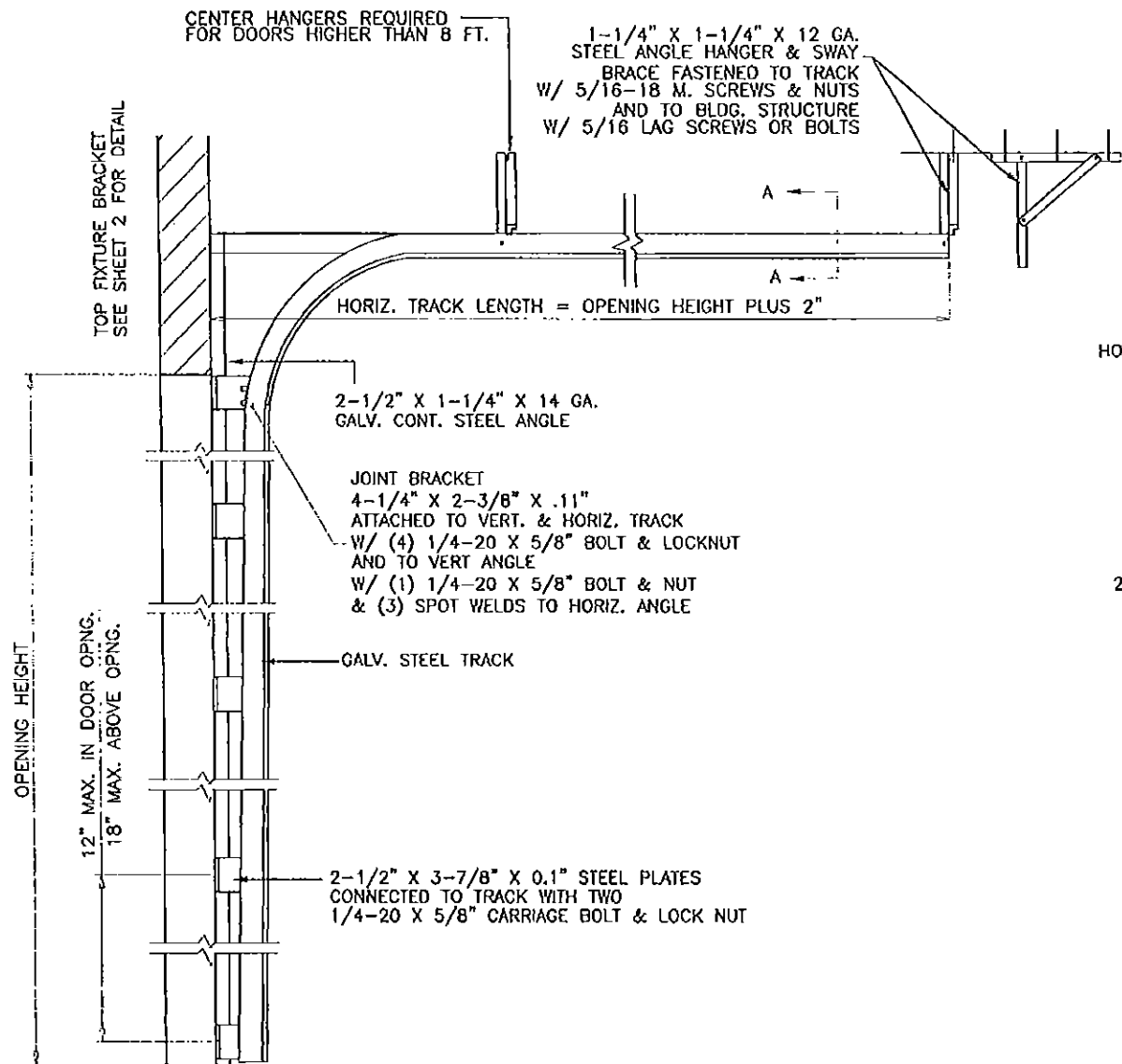
STEEL OVERHEAD GARAGE DOOR

**J.B. GARAGE DOORS INC.**  
 12195 N.W. 98 TH. AVE.  
 HIALEAH GARDENS, FL. 33016  
 TEL (305) 558 - 1858

NO.	DATE	BY	DESCRIPTION
E	04-17-06		NO CHANGE THIS SHEET
F	11-02-06		REV. PER BECC COMMENTS
G	01-02-09		UPDATED FOR 2007 FBC
H	11-21-11		NO CHANGE THIS SHEET
I	07-21-14		UPDATED TO 2014 FBC

date: 04-20-95  
 scale: NONE  
 dr. by: HAMID  
 chk. by:

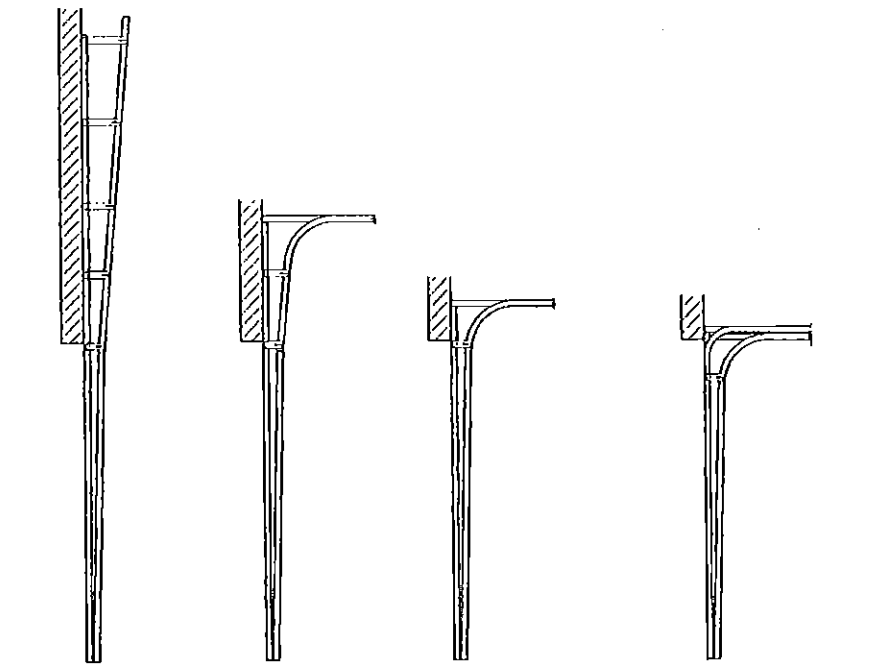
drawing no.  
**95-17**  
 sheet 3 of 5



2 X 2 X 1/8" HORIZ. ANGLE  
SPOT WELDED TO HORIZ. TRACK  
WITH TWO WELDS AT 1-1/2" APART  
FIRST AT 3" O.C.  
REST AT 9" O.C.  
HORIZ. ANGLE FASTENED TO CONT. ANGLE  
W/ 3/8-16 X 3/4" BOLT & NUT  
AND TO FLAG BRACKET ANGLE WITH  
(2) 1/4-20 X 5/8" BOLT & NUT

VERTICAL TRACK  
2-1/8" X 1" X .080"

SECTION A-A



VERTICAL LIFT    HIGH LIFT    STANDARD LIFT    LOW HEADROOM  
AVAILABLE TRACK OPTIONS

DOOR TRACK AS VIEWED  
FROM CENTER OF OPENING

DOOR HEIGHT	NO. OF TRUSSES	SECTION HEIGHTS *								
		1ST	2ND	3RD	4TH	5TH	6TH	7TH	8TH	9TH
7'-0"	3	21"	21"	21"	21"	N/A	N/A	N/A	N/A	N/A
8'-0"	3	24"	24"	24"	24"	N/A	N/A	N/A	N/A	N/A
9'-0"	4	24"	21"	21"	21"	21"	N/A	N/A	N/A	N/A
10'-0"	4	24"	24"	24"	24"	24"	N/A	N/A	N/A	N/A
11'-0"	5	24"	24"	21"	21"	21"	21"	N/A	N/A	N/A
12'-0"	5	24"	24"	24"	24"	24"	24"	N/A	N/A	N/A
13'-0"	6	24"	24"	24"	21"	21"	21"	21"	N/A	N/A
14'-0"	6	24"	24"	24"	24"	24"	24"	24"	N/A	N/A
15'-0"	7	24"	24"	24"	24"	21"	21"	21"	21"	N/A
16'-0"	7	24"	24"	24"	24"	24"	24"	24"	24"	N/A
17'-0"	8	24"	24"	24"	24"	24"	21"	21"	21"	21"
18'-0"	8	24"	24"	24"	24"	24"	24"	24"	24"	24"

\*-SECTIONS ARE NUMBERED STARTING AT THE BOTTOM

PRODUCT RENEWED  
as complying with the Florida  
Building Code  
Acceptance No 15-0812-16  
Expiration Date 04/04/2021  
By *[Signature]*  
Miami Dade Product Control

Engr: JAVAD AHMAD  
CIVIL  
FLA. PE # 70592  
C.A.N. 3538  
*[Signature]*  
SEP 23 2014

PRODUCT REVISED  
as complying with the Florida  
Building Code  
Acceptance No 14-1014-07  
Expiration Date 04/04/2016  
By *[Signature]*  
Miami Dade Product Control

**afc**  
**AL-FAROOQ CORPORATION**  
ENGINEERS & PRODUCT DEVELOPMENT  
1235 S.W. 87 AVE  
MIAMI, FLORIDA 33174  
TEL (305) 264-8100    FAX (305) 262-6978  
GARAGE 95-17JB

STEEL OVERHEAD GARAGE DOOR  
**J.B. GARAGE DOORS INC.**  
12195 N.W. 98 TH. AVE.  
HIALEAH GARDENS, FL. 33016  
TEL (305) 558 - 1658

NO	DATE	DESCRIPTION
E	04.17.06	NO CHANGE THIS SHEET
F	11.02.06	REV. PER BCCO COMMENTS
G	01.02.09	UPDATED FOR 2007 FBC
H	11.21.11	NO CHANGE THIS SHEET
I	07.21.14	NO CHANGE THIS SHEET

date: 04-20-95  
scale: NONE  
dr. by: HAMID  
chk. by:

drawing no.  
**95-17**  
sheet 4 of 5

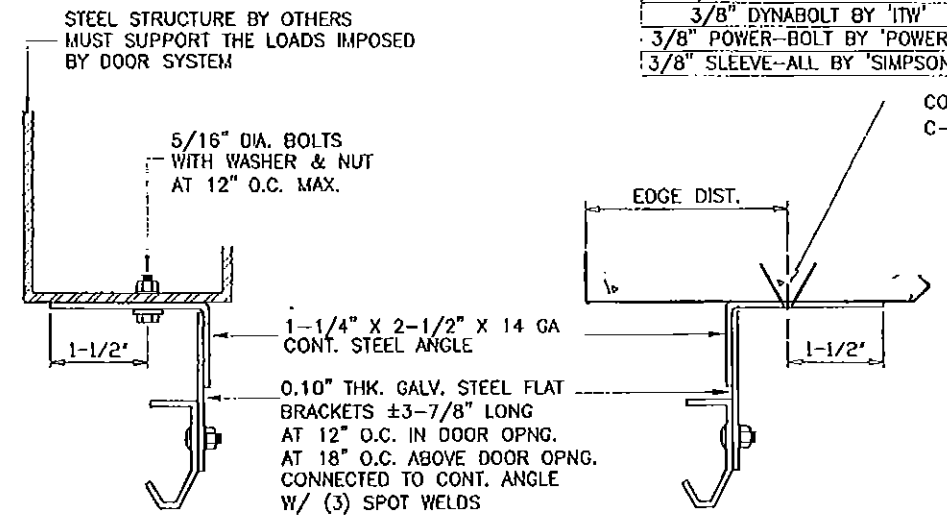
NO.	DATE	BY	DESCRIPTION
E	04.17.06		NO CHANGE THIS SHEET
F	11.02.06		REV. PER BCCD COMMENTS
G	01.02.09		UPDATED FOR 2007 FEC
H	11.21.11		NO CHANGE THIS SHEET
I	07.21.14		UPDATED TO 2014 FEC

date: 04-20-95  
 scale: NONE  
 dr. by: HAMID  
 chk. by:

drawing no.  
**95-17**

sheet 5 of 5

ANCHORS	ANCHOR SPACING			
	STRUCTURE	EMBED	SPACING	EDGE DIST.
3/8" HLC SLEEVE BY 'HILTI'	CONC.	1-1/4"	8-1/2"	2-1/2"
3/8" CONFLX BY 'ELCO'	FILLED BLOCK	2"	8-1/2"	3-3/4"
3/8" DYNABOLT BY 'ITW'	CONC.	1-1/2"	8-1/2"	2-1/2"
3/8" POWER-BOLT BY 'POWERS'	CONC.	2"	8-1/2"	1-7/8"
3/8" SLEEVE-ALL BY 'SIMPSONS'	CONC.	1-1/2"	8-1/2"	2-1/2"



**TRACK INSTALLATION**

**WOOD FRAME BUILDINGS**

STUD WALLS OR DOOR OPENING (NOT BY J.B. DOORS) SHALL BE FRAMED SOLID BY NOT LESS THAN (3) 2X6 PRESSURE TREATED GRADE 2 SYP OR BETTER WOOD STUDS.  
 STUD WALLS TO BE CONT. FROM FOOTING TO TIE BEAM. ENGINEER OF RECORD TO VERIFY ADEQUACY OF THE SUPPORTING STRUCTURE.

**WOOD BUCK CONNECTION TO MASONRY**

TRACK SHALL BE SECURED WITH CONT. STEEL ANGLE TO PRESSURE TREATED 2X6 SYP WOOD JAMBS WHICH SHALL BE ANCHORED TO GROUTED REINFORCED MASONRY BLOCK WALL OR CONC. COLUMN WITH

1/4" ULTRACON BY 'ELCO' WITH SPACING OF 10" O.C. INTO GROUT FILLED BLOCK WALL, WITH 2-1/4" MIN. EMBED 11" O.C. INTO 3000 PSI CONCRETE, WITH 1-3/4" MIN. EMBED 2-1/2" MIN. EDGE DISTANCE

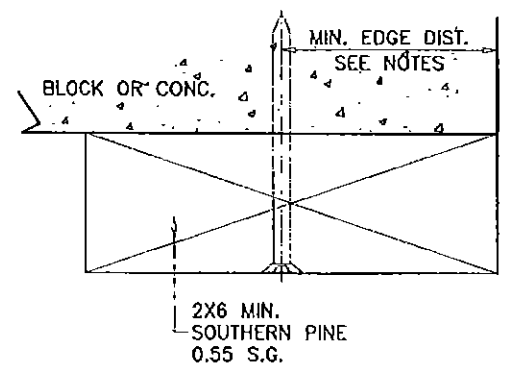
1/4" TAPPER BY 'POWERS' WITH SPACING OF 7" O.C. INTO GROUT FILLED BLOCK WALL, WITH 1-1/2" MIN. EMBED 8" O.C. INTO 3000 PSI CONCRETE, WITH 1-3/4" MIN. EMBED 3" MIN. EDGE DISTANCE

3/8" CONFLX BY 'ELCO' OR 3/8" LDT BY 'ITW' WITH SPACING OF 18" O.C. INTO 3000 PSI CONCRETE, WITH 2-1/2" MIN. EMBED 3" MIN. EDGE DISTANCE

3/8" HLC SLEEVE BY 'HILTI' WITH SPACING OF 11" O.C. INTO 3000 PSI CONCRETE, WITH 1-1/4" MIN. EMBED AND 2-1/2" MIN. EDGE DISTANCE

THE BLOCK WALL CELLS SHALL BE GROUT FILLED AND REINFORCED WITH FOUR # 5 BARS EXTENDING INTO FOOTING AND INTO TIE BEAMS ALL BARS SHALL BE CONTINUOUS FROM TIE BEAMS TO FOOTING.

**PREPARATION OF JAMBS BY OTHERS**



**PRODUCT RENEWED**  
 as complying with the Florida Building Code  
 Acceptance No 15-0812.16  
 Expiration Date 04/04/2021  
 By *[Signature]*  
 Miami Dade Product Control

Engr: JAVAD AHMAD  
 CIVIL  
 FLA. PE # 70592  
 C.A.N. 3538  
 SEP 22 2014

**PRODUCT REVISED**  
 as complying with the Florida Building Code  
 Acceptance No 14-1014.07  
 Expiration Date 04/04/2016  
 By *[Signature]*  
 Miami Dade Product Control