



DEPARTMENT OF REGULATORY AND ECONOMIC RESOURCES (RER)  
BOARD AND CODE ADMINISTRATION DIVISION

MIAMI-DADE COUNTY  
PRODUCT CONTROL SECTION  
11805 SW 26 Street, Room 208  
Miami, Florida 33175-2474  
T (786) 315-2590 F (786) 315-2599

[www.miamidade.gov/economy](http://www.miamidade.gov/economy)

## NOTICE OF ACCEPTANCE (NOA)

**Briscoe Shutters, Inc.**  
2841 Shoreview Drive  
Naples, Florida 34112

### SCOPE:

This NOA is being issued under the applicable rules and regulations governing the use of construction materials. The documentation submitted has been reviewed and accepted by Miami-Dade County RER- Product Control Section to be used in Miami Dade County and other areas where allowed by the Authority Having Jurisdiction (AHJ).

This NOA shall not be valid after the expiration date stated below. The Miami-Dade County Product Control Section (In Miami Dade County) and/or the AHJ (in areas other than Miami Dade County) reserve the right to have this product or material tested for quality assurance purposes. If this product or material fails to perform in the accepted manner, the manufacturer will incur the expense of such testing and the AHJ may immediately revoke, modify, or suspend the use of such product or material within their jurisdiction. RER reserves the right to revoke this acceptance, if it is determined by Miami-Dade County Product Control Section that this product or material fails to meet the requirements of the applicable building code.

This product is approved as described herein, and has been designed to comply with the High Velocity Hurricane Zone of the Florida Building Code.

### DESCRIPTION: Aluminum Bahama Shutter

**APPROVAL DOCUMENT:** Drawing No. 26-0282, titled "Bahama Shutter System and Bahama over Colonial Shutter System", sheets 1 through 10 of 10, prepared by Michael Trapasso, P.E., dated January 18, 2016, signed and sealed by Michael Trapasso, P.E., bearing the Miami-Dade County Product Control Revision stamp with the Notice of Acceptance number and the expiration date by the Miami-Dade County Product Control Section.

### MISSILE IMPACT RATING: Large and Small Missile Impact Resistant

**LABELING:** Each unit shall bear a permanent label with the manufacturer's name or logo, city, state, the following statement: "Miami-Dade County Product Control Approved", and NOA number, per TAS-201, TAS-202, and TAS-203, unless otherwise noted herein.

**RENEWAL** of this NOA shall be considered after a renewal application has been filed and there has been no change in the applicable building code negatively affecting the performance of this product.

**TERMINATION** of this NOA will occur after the expiration date or if there has been a revision or change in the materials, use, and/or manufacture of the product or process. Misuse of this NOA as an endorsement of any product, for sales, advertising or any other purposes shall automatically terminate this NOA. Failure to comply with any section of this NOA shall be cause for termination and removal of NOA.

**ADVERTISEMENT:** The NOA number preceded by the words Miami-Dade County, Florida, and followed by the expiration date may be displayed in advertising literature. If any portion of the NOA is displayed, then it shall be done in its entirety.

**INSPECTION:** A copy of this entire NOA shall be provided to the user by the manufacturer or its distributors and shall be available for inspection at the job site at the request of the Building Official.

This NOA revises & renews NOA # 12-0906.05 and consists of this page 1, evidence submitted pages E-1, E-2, & E-3 as well as approval document mentioned above.

The submitted documentation was reviewed by **Helmy A. Makar, P.E., M.S.**



*Helmy A. Makar*  
01/19/2017

NOA No. 16-0201.20  
Expiration Date: 11/28/2022  
Approval Date: 01/19/2017

**Briscoe Shutters, Inc.**

**NOTICE OF ACCEPTANCE: EVIDENCE SUBMITTED**

**1. EVIDENCE SUBMITTED UNDER PREVIOUS APPROVAL # 02-0722.05**

**A. DRAWINGS**

1. *Drawing No. 26-0282 titled "Bahama Shutter Master Plan", sheets 1 through 10 of 10, dated May 10, 2002, prepared by Arthur C. Quinnell, P.E, signed and sealed by Arthur C. Quinnell, P.E.*

**B. TESTS**

1. *Test report on Large Missile Impact Test, Cyclic Wind Pressure Test and Uniform Static Air Pressure Test of Double Bahama shutters, prepared by Hurricane Test laboratory, Report No. 0288-1218.01, specimen #1, dated December 10-11, 2001, signed and sealed by Vinu J. Abraham, P.E.*
2. *Test report on Large Missile Impact Test, Cyclic Wind Pressure Test and Uniform Static Air Pressure Test of Double Bahama over Colonial Shutters w/ four leaf assembly, prepared by Hurricane Test laboratory, Report No. 0288-1218.01, specimen #2, dated December 13-14, 2001, signed and sealed by Vinu J. Abraham, P.E.*

**C. CALCULATIONS**

1. *Anchor analysis prepared by Briscoe shutter, Inc., signed and sealed by Arthur C. Quinnell, P.E.*

**D. MATERIAL CERTIFICATIONS**

1. *Mill Certified Inspection Report with chemical composition and mechanical properties for aluminum alloy 6063-T52.*

**2. EVIDENCE SUBMITTED UNDER PREVIOUS APPROVAL #07-0713.06**

**A. DRAWINGS**

1. *None.*

**B. TEST**

1. *None.*

**C. CALCULATIONS**

1. *None.*

**D. QUALITY ASSURANCE**

1. *By Miami-Dade County Building Code Compliance Office.*

**E. MATERIAL CERTIFICATION**

1. *None.*



Helmy A. Makar, P.E., M.S.  
Product Control Section Supervisor  
NOA No. 16-0201.20  
Expiration Date: 11/28/2022  
Approval Date: 01/19/2017

**Briscoe Shutters, Inc.**

**NOTICE OF ACCEPTANCE: EVIDENCE SUBMITTED**

**3. EVIDENCE SUBMITTED UNDER PREVIOUS APPROVAL # 09-0122.07**

**A. DRAWINGS**

1. *Drawing No. 26-0282, titled " Bahama Shutter System and Bahama over Colonial Shutter System ", sheets 1 through 11 of 11, prepared by Michael Trapasso, P.E., dated August 17, 2009, signed and sealed by Michael Trapasso, P.E.*

**B. TESTS**

1. *Test report on Uniform Static Air Pressure Test of Bahama shutter System and Bahama over Colonial Shutter System, prepared by Hurricane Test laboratory, LLC Report No. 0288-0611-07, specimen #1, dated May 05, 2008, signed and sealed by Vinu J. Abraham, P.E.*
2. *Test report on Large Missile Impact Test and Cyclic Wind Pressure Test of Bahama shutter System and Bahama over Colonial Shutter System, prepared by Hurricane Test laboratory, Report No. 0288-0611-07, specimen #1A, dated May 05, 2008, signed and sealed by Vinu J. Abraham, P.E.*
3. *Test report on Large Missile Impact Test, Cyclic Wind Pressure Test, and Uniform Static Air Pressure Test of Bahama shutter System and Bahama over Colonial Shutter System, prepared by Hurricane Test laboratory, Report No. 0288-0314-08, specimen #2, dated May 05, 2008, signed and sealed by Vinu J. Abraham, P.E.*
4. *Test report on Large Missile Impact Test, Cyclic Wind Pressure Test, and Uniform Static Air Pressure Test of Bahama shutter System and Bahama over Colonial Shutter System, prepared by Hurricane Test laboratory, Report No. 0288-0314-08, specimen #3, dated May 05, 2008, signed and sealed by Vinu J. Abraham, P.E.*

**C. CALCULATIONS**

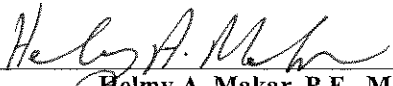
1. *Anchor analysis prepared by Briscoe shutter, Inc., signed and sealed by Michael Trapasso, P.E.*

**D. QUALITY ASSURANCE**

1. *By Miami-Dade County Building Code Compliance Office.*

**E. MATERIAL CERTIFICATION**

1. *Mill Certified Inspection Report with chemical composition and mechanical properties for aluminum alloy 6063-T52.*

  
\_\_\_\_\_  
Helmy A. Makar, P.E., M.S.  
Product Control Section Supervisor  
NOA No. 16-0201.20  
Expiration Date: 11/28/2022  
Approval Date: 01/19/2017

**Briscoe Shutters, Inc.**

**NOTICE OF ACCEPTANCE: EVIDENCE SUBMITTED**

**4. EVIDENCE SUBMITTED UNDER PREVIOUS APPROVAL # 12-0906.05**

**A. DRAWINGS**

1. *Drawing No. 26-0282, titled "Bahama Shutter System and Bahama over Colonial Shutter System", sheets 1 through 10 of 10, prepared by Michael Trapasso, P.E., dated September 01, 2012, signed and sealed by Michael Trapasso, P.E.*

**B. TESTS**

1. *None.*

**C. CALCULATIONS**

1. *Revision analysis prepared by Briscoe shutter, Inc., dated September 05, 2012, signed and sealed by Michael Trapasso, P.E.*

**D. QUALITY ASSURANCE**

1. *By Miami-Dade County Department of Regulatory and Economic Resources.*

**E. MATERIAL CERTIFICATION**

1. *None.*

**5. NEW EVIDENCE SUBMITTED**

**A. DRAWINGS**

1. *Drawing No. 26-0282, titled "Bahama Shutter System and Bahama over Colonial Shutter System", sheets 1 through 10 of 10, prepared by Michael Trapasso, P.E., dated January 18, 2016, signed and sealed by Michael Trapasso, P.E.*

**B. TESTS**

1. *None.*

**C. CALCULATIONS**

1. *None.*

**D. QUALITY ASSURANCE**

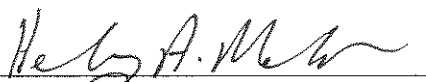
1. *By Miami-Dade County Department of Regulatory and Economic Resources.*

**E. MATERIAL CERTIFICATION**

1. *None.*

**F. STATEMENTS**

1. *Florida Building Code, 2014 Edition compliance letter, issued by Michael Trapasso, P.E., dated January 19, 2016, signed and sealed by Michael Trapasso, P.E.*

  
\_\_\_\_\_  
Helmy A. Makar, P.E., M.S.

Product Control Section Supervisor

NOA No. 16-0201.20

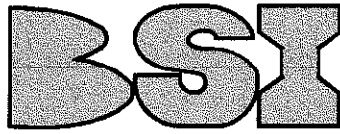
Expiration Date: 11/28/2022

Approval Date: 01/19/2017

BAHAMA SHUTTER SYSTEM and  
BAHAMA over COLONIAL SHUTTER SYSTEM

MICHAEL TRAPASSO  
PROFESSIONAL ENGINEER #62482

Maximum Design Pressures  
Bahama & Colonial Shutters  
+ 84.7 psf & - 113.3 psf  
Bahama Over Colonial Shutter  
+ 77 psf & - 77 psf



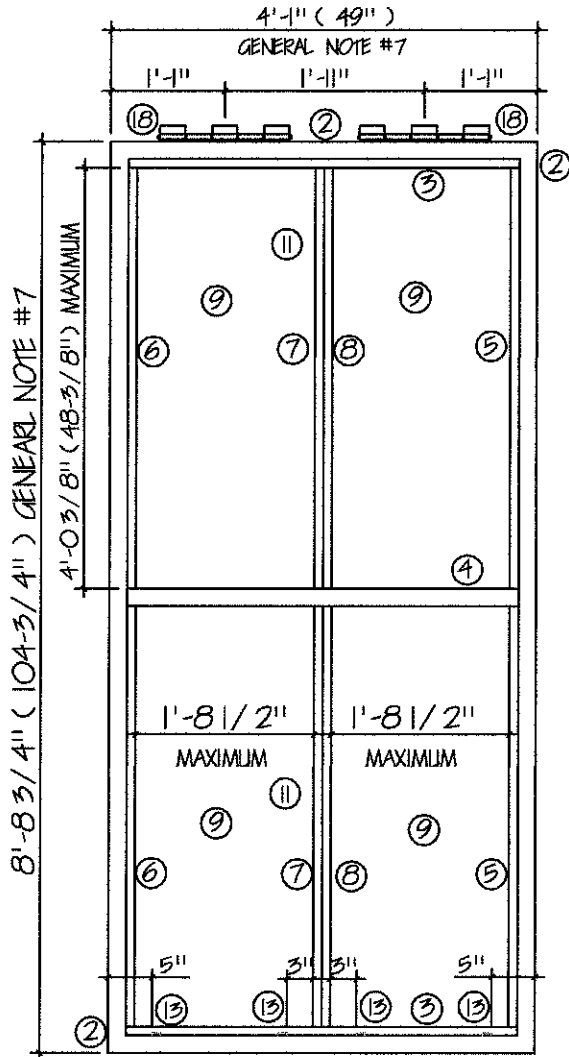
BRISCOE SHUTTERS INC.  
2841 Shoreview Drive  
Naples FL 34112  
www.bsishutters.com  
Office: 239-774-2025  
Fax: 239-774-9483

4/19/16  
3609 COTTAGE CLUB LANE  
NAPLES, FLORIDA 34105

PRODUCT REVISED  
as complying with the Florida  
Building Code  
Acceptance No 16-0201-20  
Expiration Date 11/28/2022  
By *Michael Trapasso*  
Miami Dade Product Control

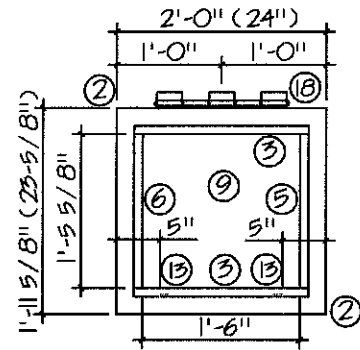
Glass Separation Sheet 9  
Patent No: US 6,996,934 B2  
US 7,131,480 B2

DRAWING NO. 26-0282 SHEET NO. 1 of 10  
DATE: 01/18/16



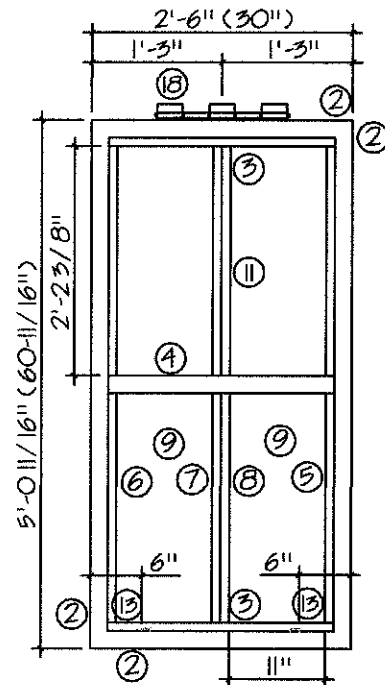
TEST SHUTTER #1 - DESIGN PRESSURE + 79.2 psf & - 90.2 psf  
BUILD OUT FRAME; 8' 6-1/2" (w) x 9' 0-3/4" (h)  
ONE BAHAMA & ONE COLONIAL SHUTTER LEAFS;  
EACH LEAF @ 4'-0" (w) x 8' 8-3/4" (h)

TEST SHUTTER #1A & #1B - DESIGN PRESSURE + 79.2 psf & - 90.2 psf  
BUILD OUT FRAME; 8' 6-1/2" (w) x 9' 0-3/4" (h)  
EACH BUILD OUT FRAME AT 4' 4-1/16" (w) x 9' 0-3/4" (h)  
BAHAMA SHUTTER LEAF 1A & COLONIAL SHUTTER LEAF 1B  
EACH LEAF @ 4'-1" (w) x 8' 8-3/4" (h)



TEST SHUTTER #2 - DESIGN PRESSURE + 84.7 psf & - 113.3 psf  
BUILD OUT FRAME; 2'-4" (w) x 2' 3-5/8" (h)  
BAHAMA LEAF; 2'-0" (w) x 1' 11-5/8" (h)

TEST SHUTTER #3 - DESIGN PRESSURE + 82.5 psf & - 108.9 psf  
BUILD OUT FRAME; 2' 8-1/2" (w) x 5' 4-11/16" (h)  
BAHAMA LEAF; 2'-6" (w) x 5' 0-11/16" (h)

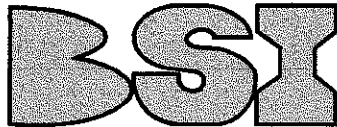


GENERAL NOTES SHEET 10: TEST STANDARDS, WIND SPEED CONVERSIONS, WIND LOADS - COMPONENTS & CLADDING,  
ADJUSTMENT FACTOR FOR BUILDINGS HEIGHT & EXPOSURE, SHUTTER LEAF SIZES, FASTENER CALCULATIONS & LOCATIONS

BAHAMA SHUTTER SYSTEM and  
BAHAMA over COLONIAL SHUTTER SYSTEM

MICHAEL TRAPASSO  
PROFESSIONAL ENGINEER #62482

Maximum Design Pressures  
Bahama & Colonial Shutters  
+ 84.7 psf & -113.3 psf  
Bahama Over Colonial Shutter  
+ 77 psf & -77 psf



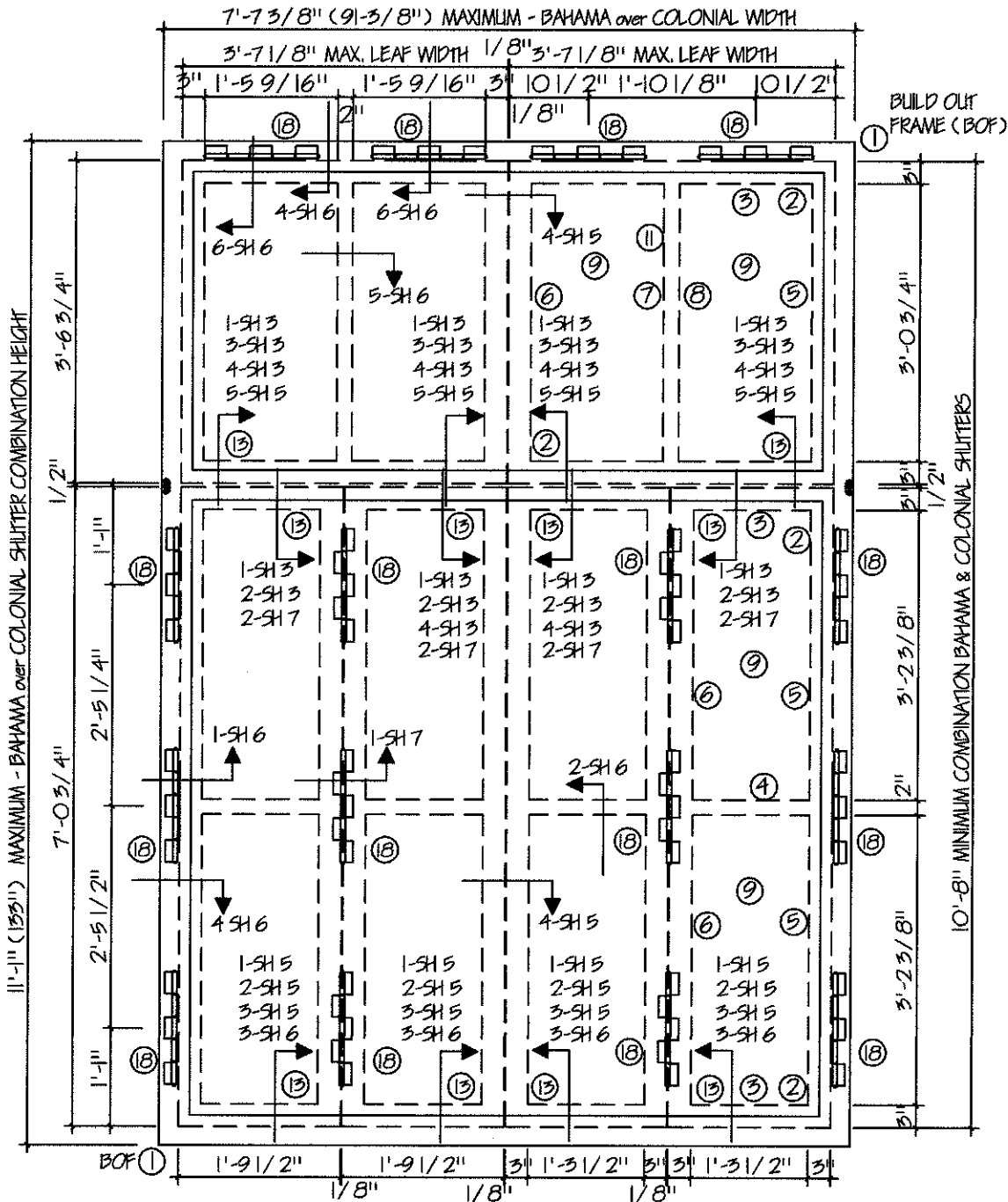
BRISCOE SHUTTERS INC.  
2841 Shoreview Drive  
Naples FL 34112  
www.bsishutters.com  
Office: 239-774-2025  
Fax: 239-774-9483

*Michael Trapasso*  
1/19/16  
3609 COTTAGE CLUB LANE  
NAPLES, FLORIDA 34105

PRODUCT REVISED  
as complying with the Florida  
Building Code  
Acceptance No 16-0291.20  
Expiration Date 11/28/2022  
By *Heidi A. Miller*  
Miami Dade Product Control

Glass Separation Sheet 9  
Patent No: US 6,996,934 B2  
US 7,131,480 B2

DRAWING NO. 26-0282	SHEET NO. 2 of 10
DATE: 01/18/16	



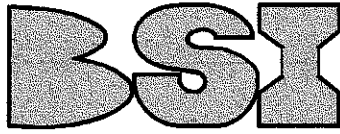
BAHAMA over COLONIAL SHUTTER SYSTEM - DESIGN PRESSURE: + 77 psf & -77 psf

GENERAL NOTES SHEET 10: TEST STANDARDS, WIND SPEED CONVERSIONS, WIND LOADS - COMPONENTS & CLADDING, ADJUSTMENT FACTOR FOR BUILDINGS HEIGHT & EXPOSURE, SHUTTER LEAF SIZES, FASTENER CALCULATIONS & LOCATIONS

**BAHAMA SHUTTER SYSTEM and  
BAHAMA over COLONIAL SHUTTER SYSTEM**

**MICHAEL TRAPASSO**  
PROFESSIONAL ENGINEER #62482

Maximum Design Pressures  
Bahama & Colonial Shutters  
+ 84.7 psf & - 113.3 psf  
Bahama Over Colonial Shutter  
+ 77 psf & - 77 psf



**BRISCOE SHUTTERS INC.**  
2841 Shoreview Drive  
Naples FL 34112  
www.bsishutters.com  
Office: 239-774-2025  
Fax: 239-774-9483

*Michael Trapasso*  
1/19/16

3609 COTTAGE CLUB LANE  
NAPLES, FLORIDA 34105

PRODUCT REVISED  
as complying with the Florida  
Building Code  
Acceptance No. 16-0201-20  
Expiration Date 11/28/2022  
*Hubert Miller*  
Miami Design Product Control

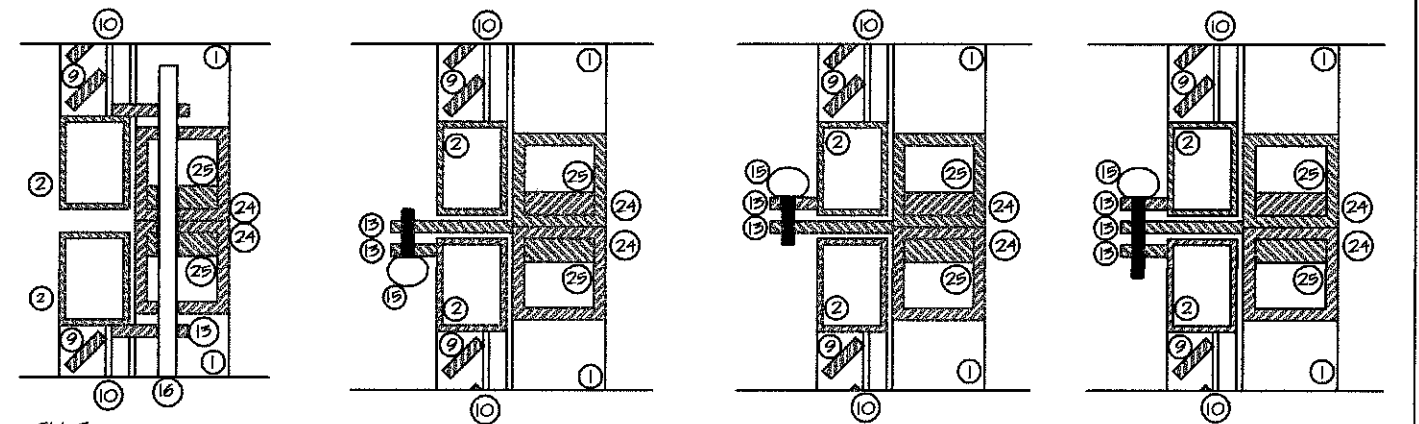
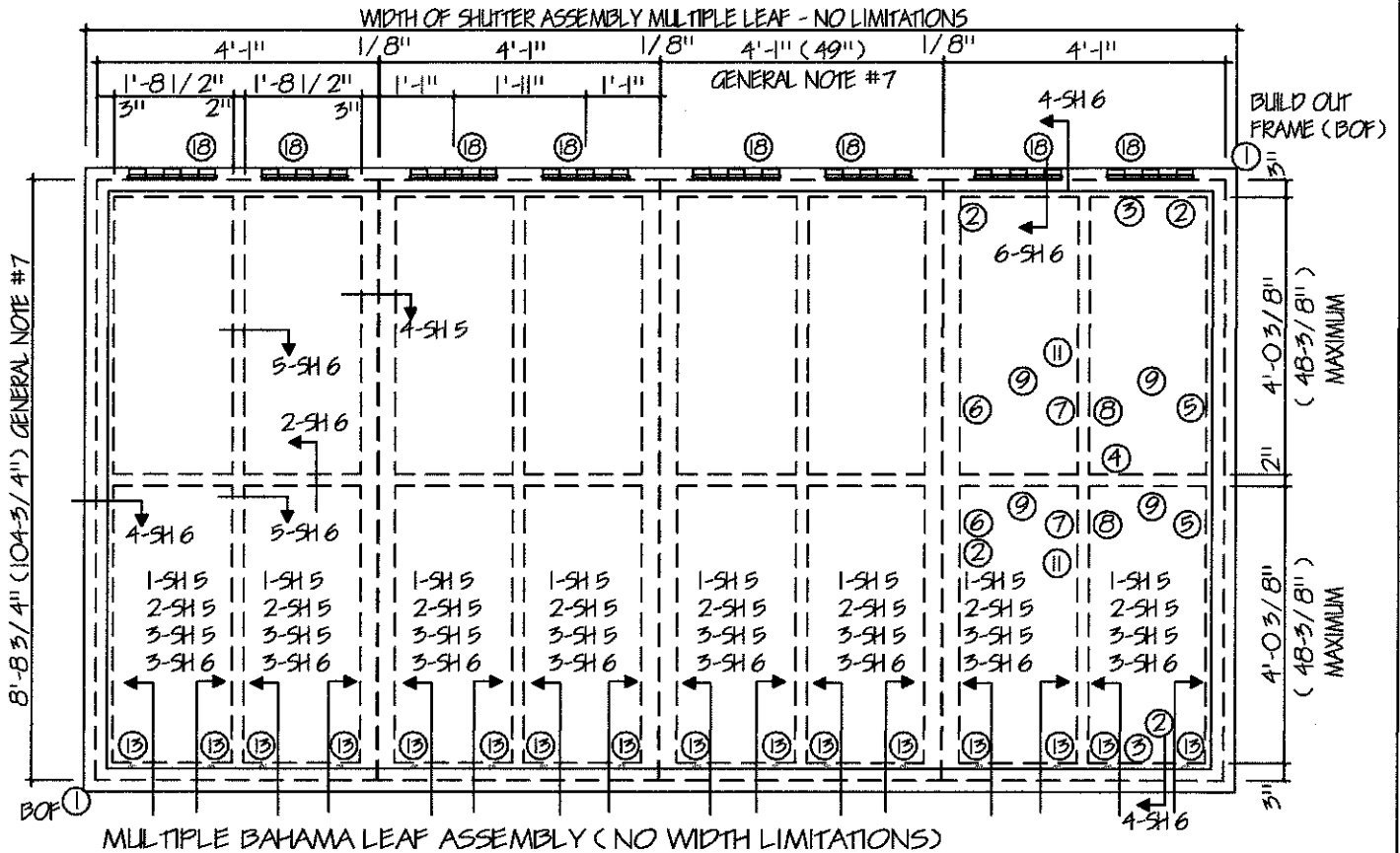
Glass Separation Sheet 9

Patent No: US 6,996,934 B2  
US 7,131,480 B2

DRAWING NO.  
26-0282

SHEET NO.  
3 of 10

DATE: 01/18/16



1 - SH 3 SECTION @ INSIDE CLOSURE ROD @ HORIZONTAL MULLION BAHAMA over COLONIAL  
2 - SH 3 SECTION @ OUTSIDE CLOSURE HORIZONTAL MULLION BAHAMA over COLONIAL  
3 - SH 3 SECTION @ OUTSIDE CLOSURE HORIZONTAL MULLION BAHAMA over COLONIAL  
4 - SH 3 SECTION @ OUTSIDE CLOSURE HORIZONTAL MULLION BAHAMA over COLONIAL

GENERAL NOTES SHEET 10: TEST STANDARDS, WIND SPEED CONVERSIONS, WIND LOADS - COMPONENTS & CLADDING, ADJUSTMENT FACTOR FOR BUILDINGS HEIGHT & EXPOSURE, SHUTTER LEAF SIZES, FASTENER CALCULATIONS & LOCATIONS

**BAHAMA SHUTTER SYSTEM and  
BAHAMA over COLONIAL SHUTTER SYSTEM**

**MICHAEL TRAPASSO**  
PROFESSIONAL ENGINEER #62482

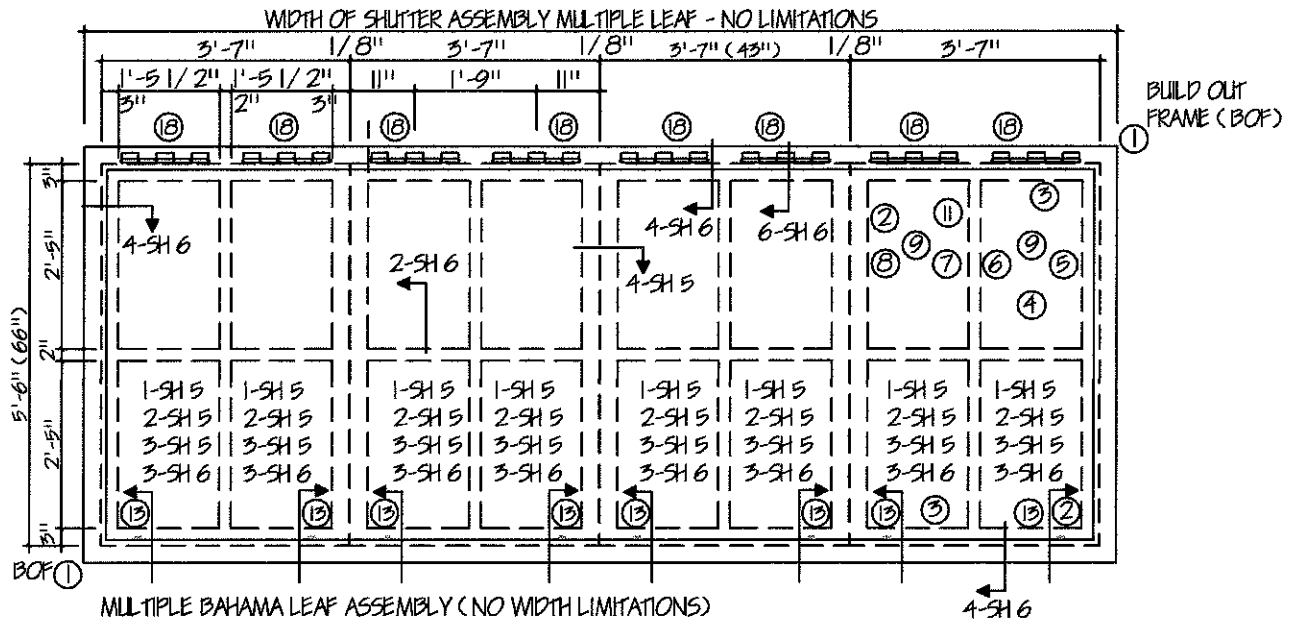
PRODUCT REVISED  
as complying with the Florida  
Building Code  
Acceptance No 16-0201-20  
Expiration Date 11/28/2022  
By *Hebert, M. M.*  
Miami Trade Product Control

Maximum Design Pressures  
Bahama & Colonial Shutters  
+ 84.7 psf & - 113.3 psf  
Bahama Over Colonial Shutter  
+ 77 psf & - 77 psf




Class Separation Sheet 9  
Patent No: US 6,996,934 B2  
US 7,131,480 B2

DRAWING NO. 26-0282  
SHEET NO. 4 of 10  
DATE: 01/18/16



**HINGE ASSEMBLY**

- 1 BAHAMA SHUTTER, 4'-1" (49") (w)  
HINGES - 2 SETS OF 5 LEAF HINGES AT THE TOP PER SHUTTER, (3 LEAFS AT THE BUILD OUT FRAME & 2 LEAFS AT THE SHUTTER, WITH 3 SCREWS PER LEAF)
- 2 BAHAMA SHUTTER, 3'-7" (43") (w)  
HINGES - 1 SET, 7 LEAF HINGE AT THE TOP PER SHUTTER, (4 LEAFS AT THE BUILD OUT FRAME & 3 LEAFS AT THE SHUTTER, WITH 3 SCREWS PER LEAF)
- 3 BAHAMA SHUTTER, 2'-6" (30") (w)  
HINGES - 1 SET OF 5 LEAF HINGES AT THE TOP PER SHUTTER, (3 LEAFS AT THE BUILD OUT FRAME & 2 LEAFS AT THE SHUTTER, WITH 3 SCREWS PER LEAF)

**HOLD CLOSE TABS**

- 1 BAHAMA SHUTTER, 4'-1" (w) x 8' 8-3/4" (h) - 4 TABS, 2 @ 5" IN FROM OUTSIDE EDGE JAMBS & 2 @ 3" EACH SIDE OF CENTER LINE
- 2 BAHAMA SHUTTER, 3'-7" (w) x 6'-0" (h) - 2 TABS, 5" TO 6" IN FROM OUTSIDE EDGE JAMBS

**SHUTTER LEAF TOLERANCES:** ANY COMBINATION OF WIDTH x HEIGHT NOT TO EXCEED 35.64 SQ FT PER LEAF IS ALLOWED WITHIN THE DESIGN PRESSURE

**BAHAMA SHUTTER SYSTEM ASSEMBLY:**

BAHAMA LEAF; WIDTH 4'-1" (49"), HEIGHT 8' 8-3/4" (103-3/4"), GENERAL NOTE #7

**BAHAMA over COLONIAL SHUTTER SYSTEM ASSEMBLY:**

- COMBINED BAHAMA & COLONIAL; BOF WIDTH 7' 7-3/8" (91-3/8"), HEIGHT 11'-1" (133") GENERAL NOTE #7
- MAXIMUM BAHAMA LEAF; WIDTH 3' 7-1/8" (43-1/8"), MAXIMUM COMBINED HEIGHT - BAHAMA HEIGHT PLUS COLONIAL HEIGHT NOT TO EXCEED 10'-8" (128"), GENERAL NOTE #7
- MAXIMUM COLONIAL LEAF; WIDTH 1' 9-1/2" (21-1/2"), MAXIMUM COMBINED HEIGHT - BAHAMA HEIGHT PLUS COLONIAL HEIGHT NOT TO EXCEED 10'-8" (128"), GENERAL NOTE #7

**COLONIAL SHUTTER SYSTEM ASSEMBLY:**

- COLONIAL LEAF; WIDTH 2'-2" (26"), HEIGHT 10'-8" (128"), GENERAL NOTE #7
- COLONIAL LEAF; WIDTH 4'-1" (49"), HEIGHT 8' 8-3/4" (103-3/4"), GENERAL NOTE #7

GENERAL NOTES SHEET 10: TEST STANDARDS, WIND SPEED CONVERSIONS, WIND LOADS - COMPONENTS & CLADDING, ADJUSTMENT FACTOR FOR BUILDINGS HEIGHT & EXPOSURE, SHUTTER LEAF SIZES, FASTENER CALCULATIONS & LOCATIONS

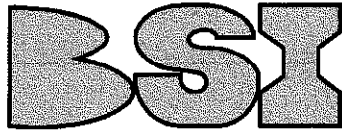


BAHAMA SHUTTER SYSTEM and  
BAHAMA over COLONIAL SHUTTER SYSTEM

MICHAEL TRAPASSO  
PROFESSIONAL ENGINEER #62482

PRODUCT REVISED  
as complying with the Florida  
Building Code  
Acceptance No 16-0201-20  
Expiration Date 11/28/2022  
By *Michael Trapasso*  
Minimal Daily Product Control

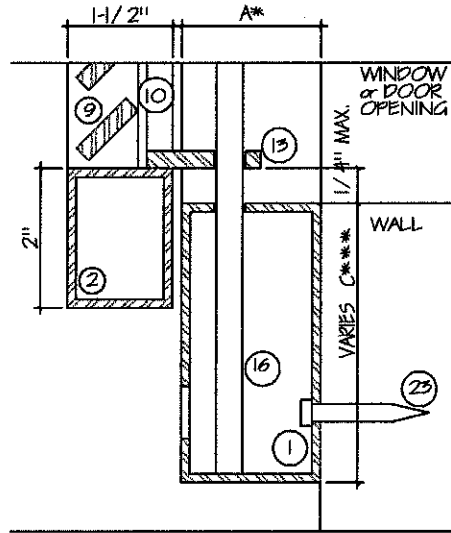
Maximum Design Pressures  
Bahama & Colonial Shutters  
+ 84.7 psf & - 113.3 psf  
Bahama Over Colonial Shutter  
+ 77 psf & - 77 psf



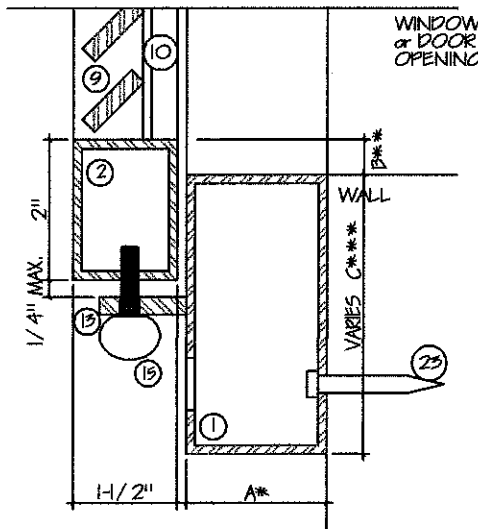
BRISCOE SHUTTERS INC.  
2841 Shoreview Drive  
Naples FL 34112  
www.bsisshutters.com  
Office: 239-774-2025  
Fax: 239-774-9483

*Michael Trapasso*  
1/19/16  
3609 COTTAGE CLUB LANE  
NAPLES, FLORIDA 34105

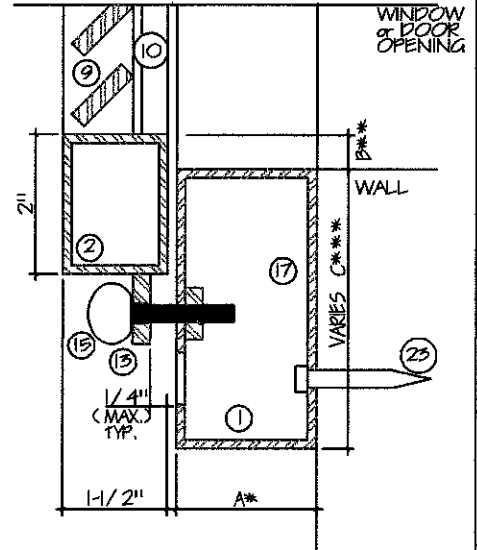
DRAWING NO. 26-0282	SHEET NO. 5 of 10
DATE: 01/18/16	



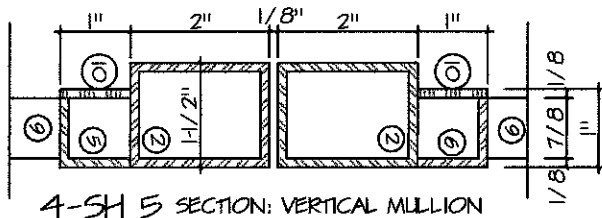
1-SH 5 SECTION: INSIDE CLOSURE  
ROD @ SILL or HEAD



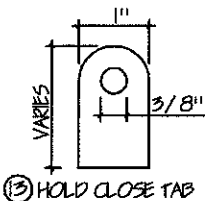
2-SH 5 SECTION: SILL or HEAD  
OUTSIDE CLOSURE - VERTICAL  
THUMBSCREW



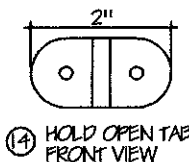
3-SH 5 SECTION: SILL or HEAD  
OUTSIDE CLOSURE  
HORIZONTAL - THUMBSCREW



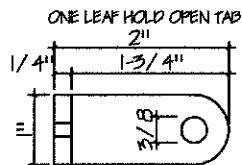
4-SH 5 SECTION: VERTICAL MULLION



13 HOLD CLOSE TAB

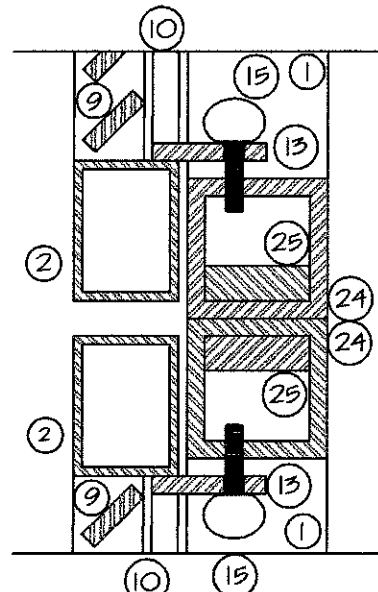


14 HOLD OPEN TAB  
FRONT VIEW



GENERAL NOTE:  
ADD 2-1/2" TO LENGTH  
FOR EACH ADDITIONAL  
SHUTTER LEAF / SIDE

14 HOLD OPEN TAB  
SIDE VIEW



5-SH 5 SECTION: INSIDE CLOSURE  
THUMBSCREWS @ HORIZONTAL  
MULLION

NOTES:

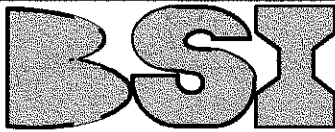
- A\* DEPTH OF BUILD OUT FRAME (1) - REFER TO SHEET 9 "MINIMUM GLASS SEPARATION"
- B\*\*\* DIMENSION VARIES: SLAT SPACING TO ACCOMMODATE FULL SLAT (1/4" x 1" FLAT BAR @ 45 DEGREE) IN SLAT WELD GUIDES (5) & (6)
- C\*\*\* WIDTH VARIES MINIMUM 3"

GENERAL NOTES SHEET 10: TEST STANDARDS, WIND LOADS CONVERSIONS, WIND LOADS - COMPONENTS & CLADDING, ADJUSTMENT FACTOR FOR BUILDINGS HEIGHT & EXPOSURE, SHUTTER LEAF SIZES, FASTENER CALCULATIONS & LOCATIONS

BAHAMA SHUTTER SYSTEM and  
BAHAMA over COLONIAL SHUTTER SYSTEM

MICHAEL TRAPASSO  
PROFESSIONAL ENGINEER #62482

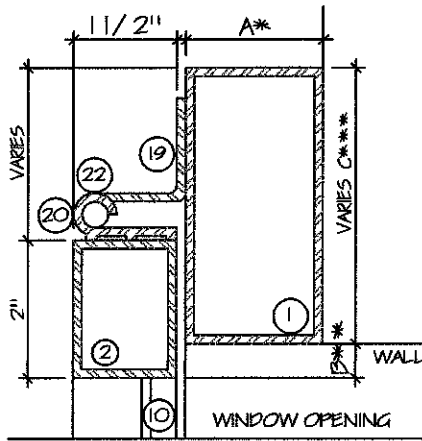
Maximum Design Pressures  
Bahama & Colonial Shutters  
+ 84.7 psf & - 113.3 psf  
Bahama Over Colonial Shutter  
+ 77 psf & - 77 psf



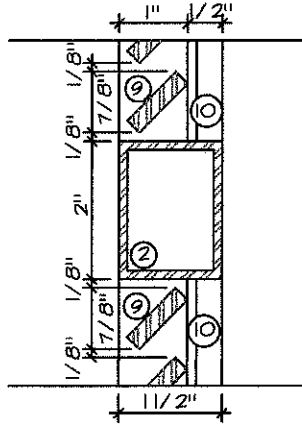
BRISCOE SHUTTERS INC.  
2841 Shoreview Drive  
Naples FL 34112  
www.bsishutters.com  
Office: 239-774-2025  
Fax: 239-774-9483

PRODUCT REVISED  
as complying with the Florida  
Building Code  
Acceptance No 16-0201.20  
Expiration Date 11/30/2022  
By *Michael Trapasso*  
Miami Date Product Control

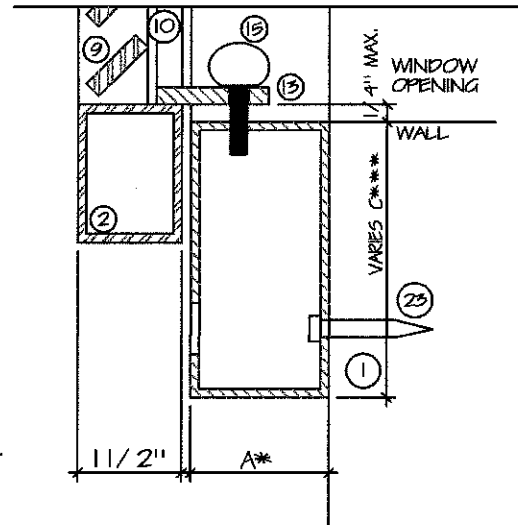
DRAWING NO. 26-0282	SHEET NO. 6 of 10
DATE: 01/18/16	



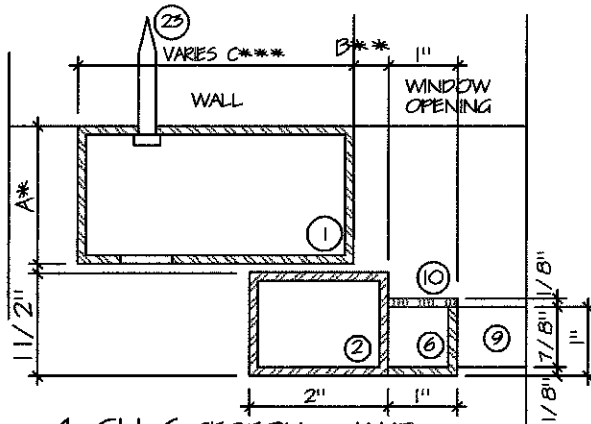
1-SH 6 SECTION @ HINGE HEAD or JAMB



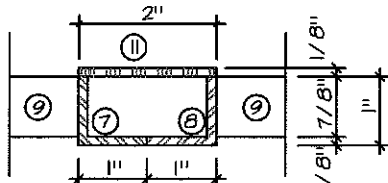
2-SH 6 SECTION @ HORIZONTAL MULLION FRAME



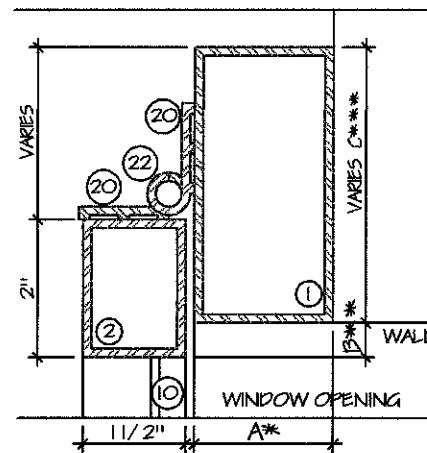
3-SH 6 SECTION @ SILL or HEAD INSIDE CLOSURE THUMBSCREW



4-SH 6 SECTION @ JAMB



5-SH 6 SECTION @ VERTICAL CENTER MULLION



6-SH 6 SECTION @ HINGE HEAD or JAMB

NOTES:

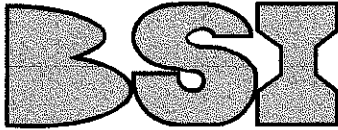
- A\* DEPTH OF BUILD OUT FRAME ① = REFER TO SHEET 9 "MINIMUM GLASS SEPARATION"
- B\*\*\* DIMENSION VARIES; SLAT SPACING TO ACCOMMODATE FULL SLAT (1/4 x 1 Flat Bar @ 45-Degree) IN SLAT WELD GUIDES ⑤ & ⑥
- C\*\*\* WIDTH VARIES MINIMUM 3"

GENERAL NOTES SHEET 10: TEST STANDARDS, WIND SPEED CONVERSIONS, WIND LOADS - COMPONENTS & CLADDING, ADJUSTMENT FACTOR FOR BUILDINGS HEIGHT & EXPOSURE, SHUTTER LEAF SIZES, FASTENER SCHEDULES & LOCATIONS

**BAHAMA SHUTTER SYSTEM and BAHAMA over COLONIAL SHUTTER SYSTEM**

**MICHAEL TRAPASSO**  
PROFESSIONAL ENGINEER #62482

Maximum Design Pressures  
Bahama & Colonial Shutters  
+ 84.7 psf & - 113.3 psf  
Bahama Over Colonial Shutter  
+ 77 psf & - 77 psf



**BRISCOE SHUTTERS INC.**  
2841 Shoreview Drive  
Naples FL 34112  
www.bsishutters.com  
Office: 239-774-2025  
Fax: 239-774-9483

*Michael Trapasso*  
4/19/16

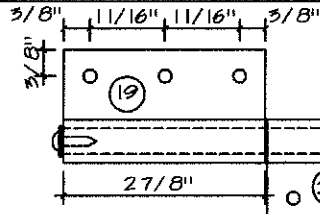
3609 COTTAGE CLUB LANE  
NAPLES, FLORIDA 34105

PRODUCT REVISED  
as complying with the Florida  
Building Code  
Acceptance No. 16-0201-20  
Expiration Date 11/28/2022  
By *Michael Trapasso*  
Product Control

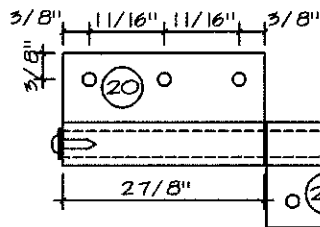
DRAWING NO.  
26-0282

SHEET NO.  
7 of 10

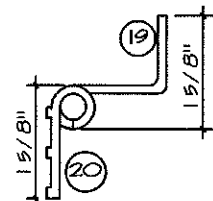
DATE: 01/18/16



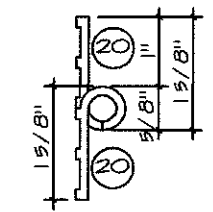
HINGE LAYOUT SHUTTER FRAME (2) TO BUILD OUT FRAME (1)



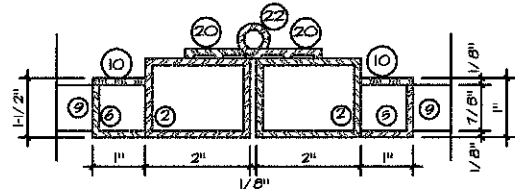
HINGE LAYOUT SHUTTER FRAME (2) TO SHUTTER FRAME (2)



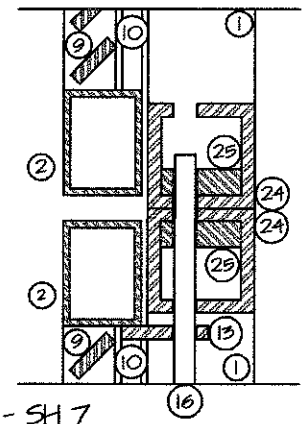
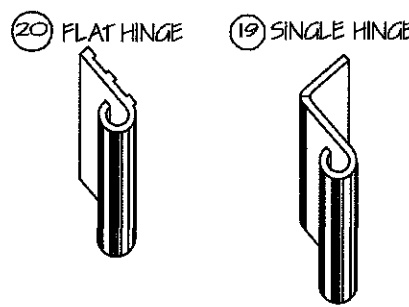
END VIEW



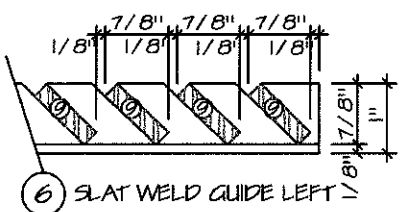
END VIEW



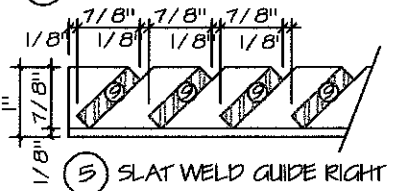
1-SH 7 SECTION: HINGE @ VERTICAL JAMBS



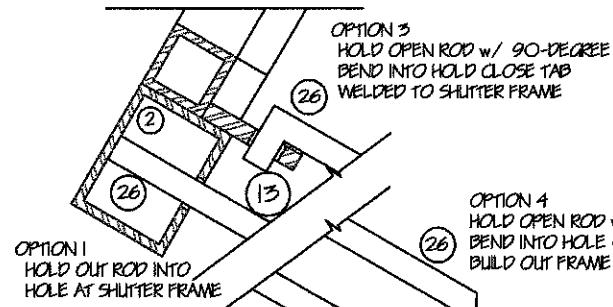
2-SH 7 SECTION @ INSIDE CLOSURE ROD @ HORIZONTAL MULLION BAHAMA over COLONIAL



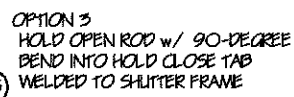
(6) SLAT WELD GUIDE LEFT



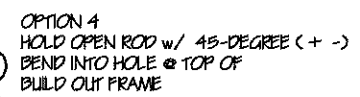
(5) SLAT WELD GUIDE RIGHT



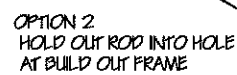
OPTION 1 HOLD OUT ROD INTO HOLE AT SHUTTER FRAME



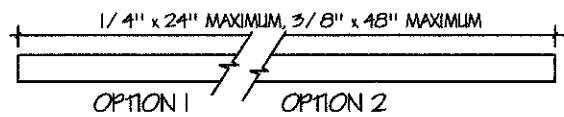
OPTION 3 HOLD OPEN ROD w/ 90-DEGREE BEND INTO HOLD CLOSE TAB WELDED TO SHUTTER FRAME



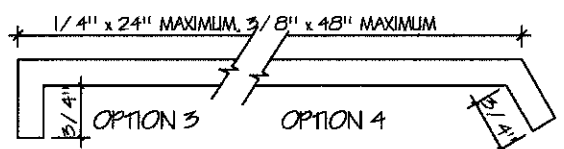
OPTION 4 HOLD OPEN ROD w/ 45-DEGREE (+) BEND INTO HOLE @ TOP OF BUILD OUT FRAME



OPTION 2 HOLD OUT ROD INTO HOLE AT BUILD OUT FRAME

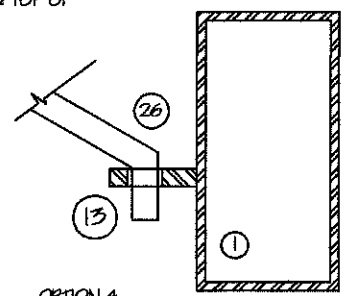


OPTION 1



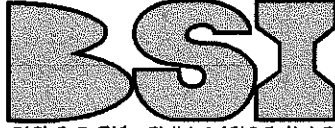
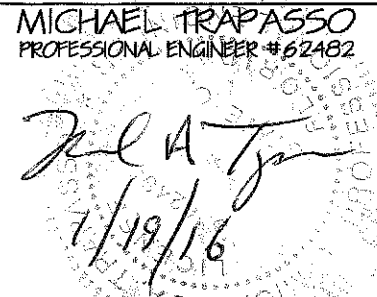
OPTION 3

(26) BAHAMA HOLD OPEN ROD



OPTION 4 HOLD OPEN ROD w/ 45-DEGREE (+) BEND INTO HOLE @ HOLD CLOSE TAB WELDED TO BUILD OUT FRAME

SECTION @ BAHAMA HOLD OPEN ROD LOCATIONS

<b>BAHAMA SHUTTER SYSTEM and BAHAMA over COLONIAL SHUTTER SYSTEM</b>		<b>MICHAEL TRAPASSO</b> PROFESSIONAL ENGINEER #62482	PRODUCT REVISED as complying with the Florida Building Code Acceptance No 16-020120 Expiration Date 11/28/2022 By <i>Michael Trapasso</i> Mutual Design Product Control					
Maximum Design Pressures Bahama & Colonial Shutters + 84.7 psf & -113.3 psf Bahama Over Colonial Shutter + 77 psf & -77 psf	 <b>BRISCOE SHUTTERS INC.</b> 2841 Shoreview Drive Naples FL 34112 www.bsishutters.com Office: 239-774-2025 Fax: 239-774-9485	 <i>Michael Trapasso</i> 7/19/16 3609 COFFAGE CLUB LANE NAPLES, FLORIDA 34105	<table border="1" style="width:100%; border-collapse: collapse;"> <tr> <td style="width: 50%;">DRAWING NO. 26-0282</td> <td style="width: 50%;">SHEET NO. 8 of 10</td> </tr> <tr> <td colspan="2">DATE: 01/18/16</td> </tr> </table>		DRAWING NO. 26-0282	SHEET NO. 8 of 10	DATE: 01/18/16	
DRAWING NO. 26-0282	SHEET NO. 8 of 10							
DATE: 01/18/16								
Glass Separation Sheet 9								
Patent No: US 6,996,934 B2 US 7,131,480 B2								

**DESCRIPTION OF MATERIAL**

Item#	DESCRIPTION OF MATERIAL	SIZE	TYPE	MATERIAL GRADE
1	BUILD OUT FRAME	A* x C*** x 1/8"	TUBE	ALUMINUM 6063-T52
2	SHUTTER FRAME	1 1/2" x 2" x 1/8"	TUBE	ALUMINUM 6063-T52
3	SPACER	1" x 1" x 1/8"	TUBE	ALUMINUM 6063-T52
4	HORIZONTAL MULLION	1 1/2" x 2" x 1/8"	TUBE	ALUMINUM 6063-T52
5	SLAT WELD GUIDE RIGHT	1" x 1" x 1/8"	ANGLE	ALUMINUM 6063-T52
6	SLAT WELD GUIDE LEFT	1" x 1" x 1/8"	ANGLE	ALUMINUM 6063-T52
7	VERTICAL MULLION RIGHT	1" x 1" x 1/8"	ANGLE	ALUMINUM 6063-T52
8	VERTICAL MULLION LEFT	1" x 1" x 1/8"	ANGLE	ALUMINUM 6063-T52
9	SLATS	1/4" x 1"	FLAT BAR	ALUMINUM 6063-T52
10	JAMB WELD GUIDE COVER	1" x 1/8"	FLAT BAR	ALUMINUM 6063-T52
11	VERTICAL MULLION BACK COVER	1/8" x 2"	FLAT BAR	ALUMINUM 6063-T52
12				
13	HOLD CLOSE TAB	1/4" x 1" x Varies	FLAT BAR	ALUMINUM 6063-T52
14	HOLD OPEN TAB	1/4" x 1" x Varies	FLAT BAR	ALUMINUM 6063-T52
15-15*	SHUTTER CLOSURE THUMBSCREW	1/4" x 1" or *1 1/2"	THUMBSCREW	STAINLESS STEEL
16	INSIDE CLOSURE ROD	3/8" x VARIES PER SHUTTER	ROD	ALUMINUM 6063-T52
17				
18	<b>HINGE ASSEMBLY</b>			
19	SINGLE HINGE	3/16" x 2-7/8" x 1-5/8"		ALUMINUM 6061-T6
20	FLAT HINGE	3/16" x 2-7/8" x 1-5/8"		ALUMINUM 6061-T6
21	HINGE SCREWS	#10 x 1" 3 AT EACH HINGE LEAF		HEX SELF-DRILLING
22	HINGE PIN	3/8" DIAMETER	ROD	ALUMINUM 6063-T52
23	<b>BUILD OUT FRAME FASTENERS</b>			
	CONCRETE BLOCK HOLLOW	1/4 x MIN EMBED 1 1/4"	S.S. CONC. SCREW	ELCO IND. or EQUAL
	CONCRETE BLOCK; CONC. FILL	1/4 x MIN EMBED 1 1/4"	S.S. CONC. SCREW	ELCO IND. or EQUAL
	WOOD FRAMING	1/4" x MIN. EMBED 1 1/4"	LAG BOLT or SS CONC. SCREW	ELCO IND. or EQUAL
	WOOD FRAMING	5/16" x MIN. EMBED 1 1/4"	LAG BOLT or SS CONC. SCREW	ZINC, SS or EQUAL
	METAL FRAMING	12-24 x MIN. EMBED 1"	TEK SCREW	TEK SELF-DRILLING
24	HORIZONTAL MULLION	2" x 2" x 1/4"	TUBE	ALUMINUM 6061-T6
25	HORIZONTAL MULLION STIFFENER	1/2" x 1-1/2"	FLAT BAR	ALUMINUM 6061-T6
26	HOLD OUT ROD	1/4 x 24" MAXIMUM, 3/8" x 48" MAXIMUM	ROD	ALUMINUM 6063-T52

**ASSEMBLY METHOD:**

**SHUTTER FRAME**

- 1A SHUTTER FRAME CORNER CONSTRUCTION, AT EACH PANEL CORNER, THE ADJOINING STILE / RAIL ENDS ARE MITER CUT, BUTTED AND WELDED TOGETHER USING TWO (2) 1/4" x 2-13/16" FILET WELDS - ONE PER FACE, EACH FACE WELD IS GROUND DOWN SMOOTH
- 1B INTERMEDIATE RAIL END CONSTRUCTION, AT EACH INTERMEDIATE RAIL END, THE RAIL IS SQUARE CUT, BUTTED AND WELDED TO THE ADJACENT PANEL FRAME MEMBER USING TWO (2) 1/4" x 2" FILET WELDS - ONE PER FACE, EACH FACE WELD IS GROUND DOWN SMOOTH
- 1C SLAT WELD GUIDES WELDED TO THE SHUTTER FRAME JAMBS ON THE INSIDE AT 6" O/C, TOP AND BOTTOM
- 1D VERTICAL MULLION WELD GUIDE: ONE RIGHT WELD GUIDE AND ONE LEFT WELD GUIDE WELDED TOGETHER ON THE INSIDE AT 6" O/C, THIS MEMBER IS WELDED TO THE HEAD, MULLIONS, AND SILL
- 1E SLANTED SLAT CONSTRUCTION, ALL SLATS ARE SQUARE CUT AND WELDED AT EACH END TO THE ADJACENT PANEL STILE MEMBER USING ONE (1) 1/4" x 1" FILET WELD

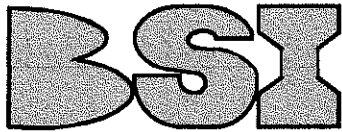
**BUILD OUT FRAME**

- 2A BUILD OUT FRAME CONSTRUCTION, AT EACH CORNER THE ADJOINING STILE / RAIL ENDS ARE MITER CUT, BUTTED AND WELDED TOGETHER USING TWO (2) 1/4" x 4-1/4" (1 x 3) OR TWO (2) 1/4" x 5 11/16" (1 x 4) FILER WELDS - ONE PER FACE. EACH FACE WELD IS GROUND DOWN SMOOTH

**BAHAMA SHUTTER SYSTEM and  
BAHAMA over COLONIAL SHUTTER SYSTEM**

**MICHAEL TRAPASSO**  
PROFESSIONAL ENGINEER #62482

Maximum Design Pressures  
Bahama & Colonial Shutters  
+ 84.7 psf & -113.3 psf  
Bahama Over Colonial Shutter  
+ 77 psf & -77 psf



**BRISCOE SHUTTERS INC.**  
2841 Shoreview Drive  
Naples Fl 34112  
www.bsishutters.com  
Office: 239-774-2025  
Fax: 239-774-9483

PRODUCT REVISED  
as complying with the Florida  
Building Code  
Acceptance No. 16-0201.20  
Expiration Date 11/28/2022  
By: *Michael Trapasso*  
Seal Date: Product Control

DRAWING NO. 26-0282 SHEET NO. 9 of 10  
DATE: 01/18/16

Glass Separation Sheet 9

Patent No: US 6,996,934 B2  
US 7,131,480 B2

**EXAMPLE**

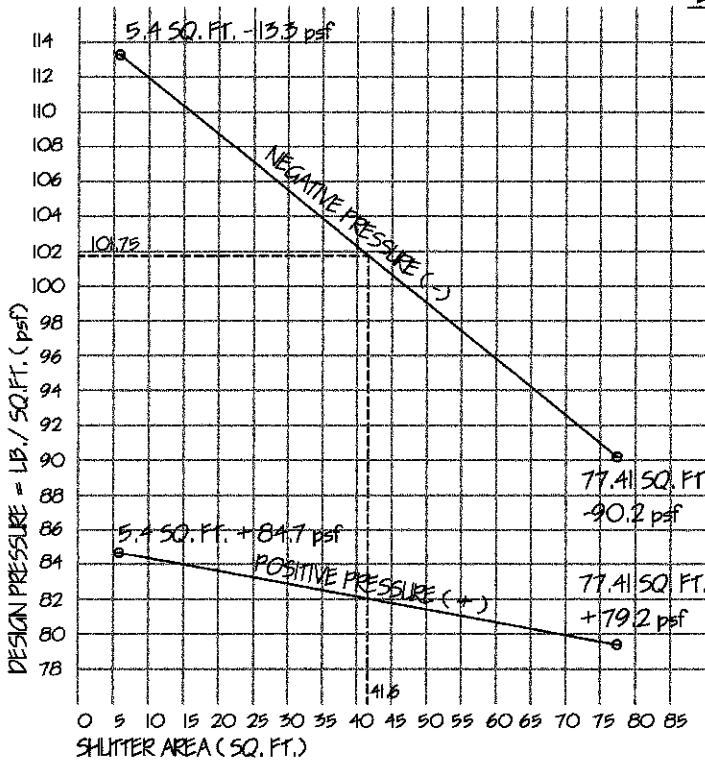
A 41.6 sq. ft. shutter has a  
negative 101.75 psf  
design pressure.

41.6 sq. ft. x 101.75 psf  
= 4,232.8 lb. design load.

BSI HURRICANE SHUTTER SYSTEMS HAS A BUILD OUT FRAME (BOF) ① THAT ATTACHES TO THE BUILDING (INSIDE CLEAR OPENING IS 1/4" LARGER THEN BUILDING OPENING), DEPTH OF BOF IS GOVERNED BY THE GLASS SEPARATION, SHUTTERS ARE FACTORY ASSEMBLED TO THE BOF THEN DISASSEMBLED FOR SHIPPING & INSTALLATION

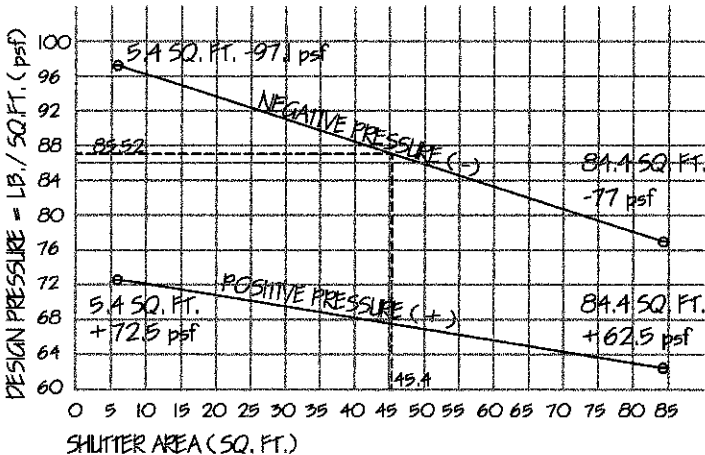
BUILD OUT FRAME DEPTH IS GOVERNED BY THE GLASS SEPARATION FURTHEST OUTWARD GLASS SURFACE TO BACK OF SHUTTER SLATS

DISTANCE FROM FACE OF BUILDING TO FURTHEST OUTWARD GLASS SURFACE, MINUS (-) MINIMUM GLASS SEPARATION = DEPTH OF BUILD OUT FRAME (MINIMUM DEPTH 1")



DESIGN PRESSURE CHART FOR FASTENER LOAD  
CALCULATIONS BAHAMA & COLONIAL SHUTTER SYSTEMS

MINIMUM GLASS SEPARATION BACK OF SLATS TO GLASS			
SHUTTER SIZE	MAX. SQ. FT.	TYPE OF SHUTTER	SEPARATION
24" x 23.625"	3.94 sq ft	BAHAMA or COLONIAL	2-1/4"
to 30" x 60.6875"	12.64 sq ft		
30.01" x 60.7 to 49" x 104.75" & 26" x 128"	12.65 sq ft to 35.64 sq ft & 21.11 sq ft	BAHAMA or COLONIAL	2-3/4"
ALL SIZES	84.4 sq ft	BAHAMA over COLONIAL	3-1/4"



DESIGN PRESSURE CHART FOR FASTENER LOAD  
CALCULATIONS BAHAMA over COLONIAL SHUTTER SYSTEM

ANY COMBINATION OF WIDTH x HEIGHT NOT TO EXCEED 35.64 sq ft PER LEAF IS ALLOWABLE WITHIN THE DESIGN PRESSURE, GENERAL NOTE #7, SHEET 10

**EXAMPLE**

A 45.4 sq. ft. shutter has a  
negative 85.2 psf  
design pressure.

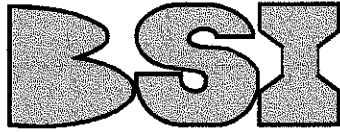
45.4 sq. ft. x 85.2 psf  
= 3,868.08 lb. design load.

GENERAL NOTES SHEET 10: TEST STANDARDS, WIND SPEED CONVERSIONS, WIND LOADS - COMPONENTS & CLADDING, ADJUSTMENT FACTOR FOR BUILDINGS HEIGHT & EXPOSURE, SHUTTER LEAF SIZES, FASTENER CALCULATIONS & LOCATIONS

**BAHAMA SHUTTER SYSTEM and  
BAHAMA over COLONIAL SHUTTER SYSTEM**

**MICHAEL TRAPASSO**  
PROFESSIONAL ENGINEER #62482

Maximum Design Pressures  
Bahama & Colonial Shutters  
+ 84.7 psf & - 113.3 psf  
Bahama Over Colonial Shutter  
+ 77 psf & - 77 psf



**BRISCOE SHUTTERS INC.**  
2841 Shoreview Drive  
Naples FL 34112  
www.bsishutters.com  
Office: 239-774-2025  
Fax: 239-774-9483

*Michael Trapasso*  
1/19/16  
3609 COTTAGE CLUB LANE  
NAPLES, FLORIDA 34105

PRODUCT REVISED  
as complying with the Florida  
Building Code  
Acceptance No 16-0201-20  
Expiration Date 11/28/2022  
By *Michael Trapasso*  
Michael Trapasso Product Control

Glass Separation Sheet 9  
Patent No: US 6,996,934 B2  
US 7,131,480 B2

DRAWING NO. 26-0282	SHEET NO. 10 of 10
DATE: 01/18/16	

**GENERAL NOTES:**

- 1 THIS PRODUCT IS DESIGNED & TESTED IN ACCORDANCE WITH THE FLORIDA BUILDING CODE 5th EDITION (2014) BUILDING & RESIDENTIAL; FOR USE WITHIN AND OUTSIDE THE HIGH VELOCITY HURRICANE ZONE, TEST STANDARDS: TAS 201, 202, 203
- 2 THIS PRODUCT IS DESIGNED & TESTED IN ACCORDANCE WITH THE FLORIDA BUILDING CODE 5th EDITION (2014) BUILDING CHAPTER 16 - STRUCTURAL DESIGN & CHAPTER 24 - GLASS & GLAZING
- 3 THIS PRODUCT IS DESIGNED & TESTED IN ACCORDANCE WITH THE FLORIDA BUILDING CODE 5th EDITION (2014) RESIDENTIAL CHAPTER 44 HIGH-VELOCITY HURRICANE ZONES
- 4 ASCE 7-10, CHAPTER 30 (pg. 346) WIND LOADS - COMPONENTS AND CLADDING - METHOD 1, NET DESIGN WIND PRESSURES, Pnet 30 (psf) (Exposure B at h = 30 ft.) NOTE: FOR EFFECTIVE AREAS BETWEEN THE THOSE GIVEN ABOVE THE LOAD MAY BE INTERPOLATED, OTHERWISE USE THE LOAD ASSOCIATED WITH THE LOWEST EFFECTIVE AREA
- 5 ASCE 7-10, CHAPTER 30 (pg. 347), MINIMUM DESIGN LOADS - COMPONENTS IN CLADDING METHOD 1, ADJUSTMENT FACTOR FOR BUILDING HEIGHT AND EXPOSURE B, C, & D
- 6 FASTENER CALCULATIONS & LOCATIONS:  

$$\text{WIDTH} \times \text{HEIGHT} \times \text{DESIGN PRESSURE (6a)} / \text{FASTENER STRENGTH (6b)} = \text{TOTAL NUMBER OF FASTENERS REQUIRED PER OPENING (6c)}$$
  - 6a DESIGN PRESSURE REQUIRED BUILDING DATA: WIND VELOCITY (MPH), IMPORTANCE FACTOR, EXPOSURE CATEGORY, INTERNAL PRESSURE COEFFICIENT +, -, MEAN ROOF HEIGHT, BUILDING WIDTH, BUILDING LENGTH, & ROOF SLOPE (x/12)
  - 6b FASTENER STRENGTH, ALLOWABLE LOADS EQUAL TO 25% OF THE AVERAGE ULTIMATE LABORATORY TEST VALUES, ELCO CONSTRUCTION PRODUCTS AGGRE-GATOR FASTENERS 300 SERIES STAINLESS STEEL (HEX HEAD - 1/4 x 4 MAX.), CRETE-FLEX 554 MASONRY SCREWS (HEX HEAD - 1/4 x 4 MAX.), ELCO ULTRACON CONCRETE & MASONRY ANCHORS (HEX HEAD - 1/4 x 6 MAX. OR HEX HEAD - 5/16 x 6 MAX.) OR FLORIDA FASTENERS DIRECT, LLC BLUE TAP SCREW ANCHORS - 1/4 DIAMETER HEX HEAD x 1-1/4" to 6" LONG OR EQUAL
  - 6c FASTENER SPACING AND LOCATIONS: MAJORITY OF FASTENERS AT PRESSURE POINTS (HINGES, HOLD CLOSE TABS OR BRACKETS) BALANCE ON SIDES (BAHAMA) OR TOP & BOTTOM (COLONIAL) OF THE BUILD OUT FRAME, IN ACCORDANCE WITH MANUFACTURES HURRICANE SHUTTER SHOP DRAWINGS FOR EACH SIZE AND/ OR OPENING

ANCHOR INSTALLATION SHALL BE MADE IN ACCORDANCE WITH ANCHOR MANUFACTURES PUBLISHED INSTALLATION INSTRUCTIONS AND THEIR APPROVED NOA
- 7 ANY COMBINATION OF WIDTH x HEIGHT NOT TO EXCEED 35.64 SQUARE FEET PER SHUTTER LEAF IS ALLOWABLE WITHIN THE DESIGN PRESSURE
- 8 BSI HURRICANE SHUTTER SYSTEMS HAS A BUILD OUT FRAME (BOF) (1) THAT ATTACHES TO THE BUILDING (INSIDE CLEAR OPENING IS 1/4" LARGER THEN BUILDING OPENING), DEPTH OF THE BOF IS GOVERNED BY THE GLASS SEPARATION, SHUTTERS ARE FACTORY ASSEMBLED TO THE BOF THEN DISASSEMBLED FOR SHIPPING & INSTALLATION
- 9 FOR THE PURPOSE OF THE TESTING REQUIRED IN TAS 202 SECTION 5.2, DESIGN PRESSURE CALCULATED IN ACCORDANCE WITH ASCE 7-10 ARE PERMITTED TO BE MULTIPLIED BY 0.6