



DEPARTMENT OF REGULATORY AND ECONOMIC RESOURCES (RER)
BOARD AND CODE ADMINISTRATION DIVISION

MIAMI-DADE COUNTY
PRODUCT CONTROL SECTION

11805 SW 26 Street, Room 208
T (786) 315-2590 F (786) 315-2599

www.miamidade.gov/economy

NOTICE OF ACCEPTANCE (NOA)

Labrador & Fundora Corp.

dba V & V Windows

2355 W 4th Avenue

Hialeah, FL 33010

SCOPE:

This NOA is being issued under the applicable rules and regulations governing the use of construction materials. The documentation submitted has been reviewed and accepted by Miami-Dade County RER-Product Control Section to be used in Miami-Dade County and other areas where allowed by the Authority Having Jurisdiction (AHJ).

This NOA shall not be valid after the expiration date stated below. The Miami-Dade County Product Control Section (In Miami-Dade County) and/ or the AHJ (in areas other than Miami-Dade County) reserve the right to have this product or material tested for quality assurance purposes. If this product or material fails to perform in the accepted manner, the manufacturer will incur the expense of such testing and the AHJ may immediately revoke, modify, or suspend the use of such product or material within their jurisdiction. RER reserves the right to revoke this acceptance, if it is determined by Miami-Dade County Product Control Section that this product or material fails to meet the requirements of the applicable building code.

This product is approved as described herein, and has been designed to comply with the Florida Building Code, including the High Velocity Hurricane Zone.

DESCRIPTION: Series "1000" Aluminum Fixed Window - N.I.

APPROVAL DOCUMENT: Drawing No. **W07-98**, titled "Series 1000 Alum. Fixed Window (N.I.)", sheets 1 through 3 of 3, dated 11/19/07, with revision C dated 09/25/17, prepared by Al-Farooq Corporation, signed and sealed by Javad Ahmad, P.E., bearing the Miami-Dade County Product Control Revision stamp with the Notice of Acceptance number and expiration date by the Miami-Dade County Product Control Section.

MISSILE IMPACT RATING: None.

LABELING: Each unit shall bear a permanent label with the manufacturer's name or logo, city, state, series, and following statement: "Miami-Dade County Product Control Approved", unless otherwise noted herein.

RENEWAL of this NOA shall be considered after a renewal application has been filed and there has been no change in the applicable building code negatively affecting the performance of this product.

TERMINATION of this NOA will occur after the expiration date or if there has been a revision or change in the materials, use, and/ or manufacture of the product or process. Misuse of this NOA as an endorsement of any product, for sales, advertising or any other purposes shall automatically terminate this NOA. Failure to comply with any section of this NOA shall be cause for termination and removal of NOA.

ADVERTISEMENT: The NOA number preceded by the words Miami-Dade County, Florida, and followed by the expiration date may be displayed in advertising literature. If any portion of the NOA is displayed, then it shall be done in its entirety.

INSPECTION: A copy of this entire NOA shall be provided to the user by the manufacturer or its distributors and shall be available for inspection at the job site at the request of the Building Official.

This NOA **revises and renews** NOA No. **15-0209.07** and consists of this page 1 and evidence pages E-1 and E-2, as well as approval document mentioned above.

The submitted documentation was reviewed by **Manuel Perez, P. E.**



MP
12/04/17

NOA No. 17-1011.03
Expiration Date: February 07, 2023
Approval Date: December 07, 2017
Page 1

NOTICE OF ACCEPTANCE: EVIDENCE SUBMITTED

1. EVIDENCE SUBMITTED UNDER PREVIOUS NOA's

A. DRAWINGS

1. Manufacturer's die drawings and sections.
(Submitted under NOA No. 07-1130.07)
2. Drawing No. **W07-98**, titled "Series 1000 Alum. Fixed Window (N.I.)", sheets 1 through 3 of 3, dated 11/19/07, with revision dated 08/04/15, prepared by Al-Farooq Corporation, signed and sealed by Javad Ahmad, P.E.

B. TESTS

1. Test reports on:
 - 1) Air Infiltration Test, per FBC, TAS 202-94
 - 2) Uniform Static Air Pressure Test, Loading per FBC, TAS 202-94
 - 3) Water Resistance Test, per FBC, TAS 202-94along with marked-up drawings and installation diagram of a series 1000 fixed non-impact window, prepared by American Test Lab of South Florida, Inc., Test Report No. **ATLSF-0709.01-07**, dated 10/12/07, signed and sealed by William R. Mehner, P.E. and by Henry Hattem, P.E.
(Submitted under NOA No. 07-1130.07)

C. CALCULATIONS

1. Anchor verification calculations and structural analysis, complying with **FBC 5th Edition (2014)**, dated 01/21/15 and 07/31/15, prepared by Al-Farooq Corporation, signed and sealed by Javad Ahmad, P.E.
2. Glazing complies with **ASTM E1300-09**

D. QUALITY ASSURANCE

1. Miami-Dade Department of Regulatory and Economic Resources (RER).

E. MATERIAL CERTIFICATIONS

1. None.

F. STATEMENTS

1. Statement letter of conformance, complying with **FBC 5th Edition (2014)**, and of no financial interest, dated 01/21/15, issued by Al-Farooq Corporation, signed and sealed by Javad Ahmad, P.E.
2. Laboratory compliance letter for Test Report No. **ATLSF-0709.01-07**, dated 10/12/07, signed and sealed by William R. Mehner, P.E. and Henry Hattem, P.E.
(Submitted under NOA No. 07-1130.07)

G. OTHERS

1. Notice of Acceptance No. **12-1113.07**, issued to Labrador & Fundora Corp. dba V & V Windows, for their Series "1000" Aluminum Fixed Window – N.I., approved on 01/24/13 and expiring on 02/07/18.


Manuel Perez, P.E.
Product Control Examiner

NOA No. 17-1011.03
Expiration Date: February 07, 2023
Approval Date: December 07, 2017

NOTICE OF ACCEPTANCE: EVIDENCE SUBMITTED

2. NEW EVIDENCE SUBMITTED

A. DRAWINGS

1. Drawing No. **W07-98**, titled "Series 1000 Alum. Fixed Window (N.I.)", sheets 1 through 3 of 3, dated 11/19/07, with revision C dated 09/25/17, prepared by Al-Farooq Corporation, signed and sealed by Javad Ahmad, P.E.

B. TESTS

1. None

C. CALCULATIONS

1. None.

D. QUALITY ASSURANCE

1. Miami-Dade Department of Regulatory and Economic Resources (RER)

E. MATERIAL CERTIFICATIONS

1. None.

F. STATEMENTS

1. Statement letter of conformance, complying with **FBC 5th Edition (2014)**, with **FBC 6th Edition (2017)**, and of no financial interest, dated September 07, 2017, prepared by Al-Farooq Corporation, signed and sealed by Javad Ahmad, P.E.

G. OTHERS

1. Notice of Acceptance No. **15-0209.07**, issued to Labrador & Fundora Corp. dba V & V Windows, for their Series "1000" Aluminum Fixed Window - N.I., approved on 08/13/15 and expiring on 02/07/18.



Manuel Pérez, P.E.
Product Control Examiner
NOA No. 17-1011.03

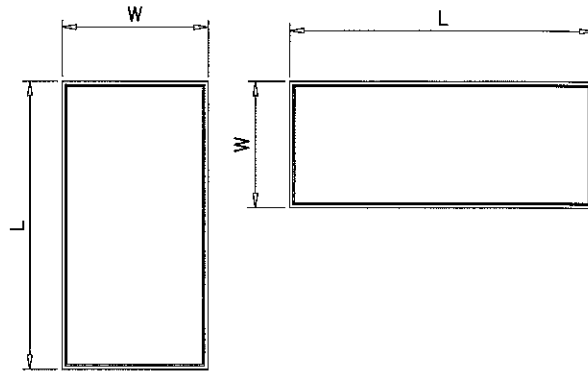
Expiration Date: February 07, 2023

Approval Date: December 07, 2017

DESIGN LOAD CAPACITY - PSF			
WINDOW DIMS.		1/4" TEMP. GLASS	
WIDTH	LENGTH	EXT.(+)	INT.(-)
30"	60"	100.0	120.0
33"		100.0	117.9
36"		100.0	112.0
39"		100.0	107.2
42"		100.0	103.4
45"		100.0	100.3
48"		96.7	96.7
51"		91.0	91.0
54"		85.9	85.9
57"		81.4	81.4
60"		77.3	77.3
63"		77.3	77.3
66"	77.3	77.3	
69"	77.3	77.3	
30"	63"	100.0	120.0
33"		100.0	115.8
36"		100.0	109.7
39"		100.0	104.8
42"		100.0	100.8
45"		97.5	97.5
48"		95.0	95.0
51"		91.0	91.0
54"		85.9	85.9
57"		81.4	81.4
60"		77.3	77.3
63"		73.7	73.7
66"	73.7	73.7	
30"	69"	100.0	120.0
33"		100.0	112.4
36"		100.0	106.0
39"		100.0	100.9
42"		96.6	96.6
45"		93.0	93.0
48"		90.1	90.1
51"		87.8	87.8
54"		85.8	85.8
57"		81.4	81.4
60"		77.3	77.3
30"		72"	100.0
33"	100.0		110.9
36"	100.0		104.5
39"	99.2		99.2
42"	94.8		94.8
45"	91.2		91.2
48"	88.2		88.2
51"	85.7		85.7
54"	83.6		83.6
57"	81.4		81.4

DESIGN LOAD CAPACITY - PSF				
WINDOW DIMS.		1/4" TEMP. GLASS		
WIDTH	LENGTH	EXT.(+)	INT.(-)	
30"	75"	100.0	117.6	
33"		100.0	109.6	
36"		100.0	103.1	
39"		97.8	97.8	
42"		93.3	93.3	
45"		89.6	89.6	
48"		86.4	86.4	
51"		83.8	83.8	
54"		81.6	81.6	
57"		79.8	79.8	
30"		78"	100.0	116.4
33"			100.0	108.4
36"	100.0		101.9	
39"	96.5		96.5	
42"	91.9		91.9	
45"	88.1		88.1	
48"	84.9		84.9	
51"	82.2		82.2	
54"	79.9		79.9	
30"	81"		100.0	115.4
33"			100.0	107.4
36"			100.0	100.8
39"		95.3	95.3	
42"		90.7	90.7	
45"		86.8	86.8	
48"		83.5	83.5	
51"		80.7	80.7	
30"		84"	100.0	114.5
33"			100.0	106.4
36"			99.8	99.8
39"			94.2	94.2
42"	89.6		89.6	
45"	85.6		85.6	
48"	82.3		82.3	
51"	79.4		79.4	
30"	87"		100.0	113.6
33"			100.0	105.5
36"			98.8	98.8
39"			93.3	93.3
42"		88.6	88.6	
45"		84.6	84.6	
48"		81.2	81.2	
30"		90"	100.0	112.9
33"			100.0	104.7
36"			98.0	98.0
39"			92.4	92.4
42"			87.6	87.6
45"	83.6		83.6	

DESIGN LOAD CAPACITY - PSF			
WINDOW DIMS.		1/4" TEMP. GLASS	
WIDTH	LENGTH	EXT.(+)	INT.(-)
30"	93"	100.0	112.1
33"		100.0	103.9
36"		97.2	97.2
39"		91.5	91.5
42"		86.8	86.8
45"		82.7	82.7
30"	96"	100.0	111.5
33"		100.0	103.2
36"		96.5	96.5
39"		90.8	90.8
42"		86.0	86.0



NOTE:
WIDTH AND LENGTH DIMENSIONS CAN BE ORIENTED
VERTICALLY OR HORIZONTALLY AS SHOWN ABOVE.

SERIES 1000 ALUMINUM FIXED WINDOW

APPROVAL APPLIES TO SINGLE UNITS OR SIDE BY SIDE
COMBINATIONS OF FIXED/FIXED OR FIXED WITH OTHER
MIAMI-DADE COUNTY APPR'D WINDOWS USING MIAMI-DADE COUNTY
APPROVED MULLIONS IN BETWEEN.
LOWER DESIGN PRESSURE FROM WINDOWS OR MULLION APPROVAL
WILL APPLY TO ENTIRE SYSTEM.

DESIGN LOAD RATING FOR THESE WINDOWS TO BE AS PER CHARTS
SHOWN ABOVE.

THIS PRODUCT HAS BEEN DESIGNED AND TESTED TO COMPLY WITH THE
REQUIREMENTS OF THE 2014 (5TH EDITION)/2017 (6TH EDITION) FLORIDA
BUILDING CODE INCLUDING HIGH VELOCITY HURRICANE ZONE (HVHZ).

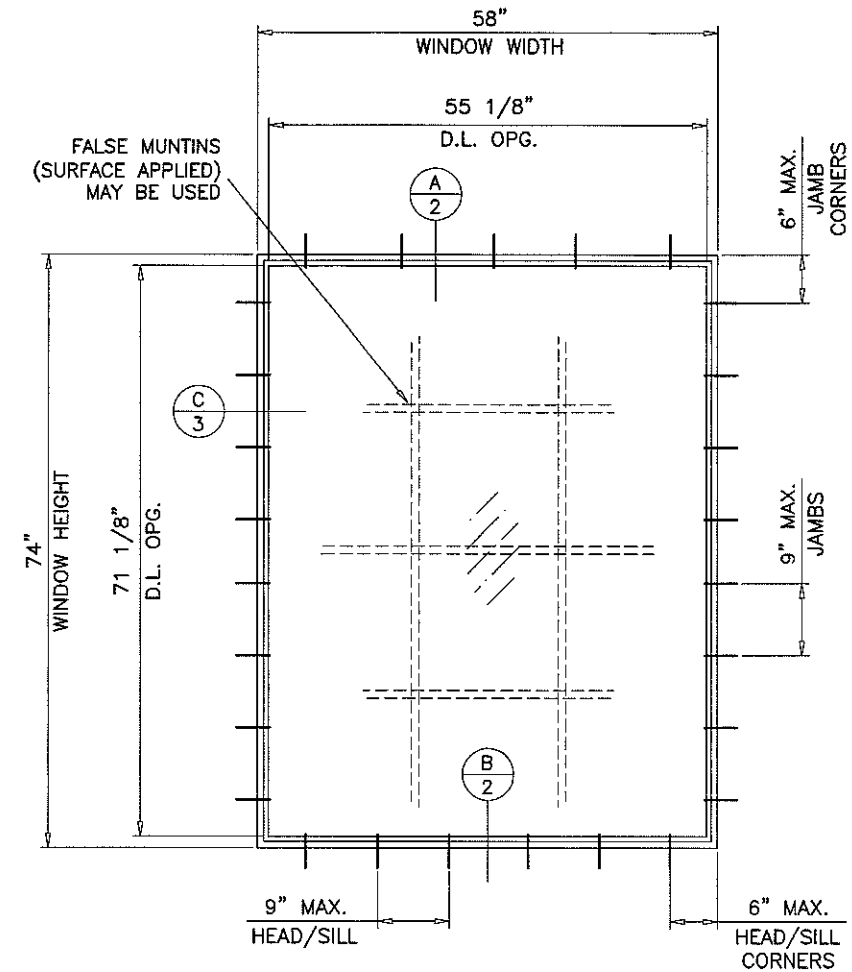
1BY OR 2BY WOOD BUCKS & BUCK FASTENERS BY OTHERS, MUST BE
DESIGNED AND INSTALLED ADEQUATELY TO TRANSFER APPLIED PRODUCT LOADS
TO THE BUILDING STRUCTURE.

ANCHORS SHALL BE CORROSION RESISTANT, SPACED AS SHOWN ON DETAILS
AND INSTALLED PER MANUF'S INSTRUCTIONS. SPECIFIED EMBEDMENT TO BASE
MATERIAL SHALL BE BEYOND WALL DRESSING OR STUCCO.

A LOAD DURATION INCREASE IS USED IN DESIGN OF ANCHORS INTO WOOD ONLY.
ALL SHIMS TO BE HIGH IMPACT, NON-METALLIC AND NON-COMPRESSIBLE.

MATERIALS INCLUDING BUT NOT LIMITED TO STEEL/METAL SCREWS, THAT
COME INTO CONTACT WITH OTHER DISSIMILAR MATERIALS SHALL MEET THE
REQUIREMENTS OF THE 2014/2017 FLORIDA BLDG. CODE & ADOPTED STANDARDS.

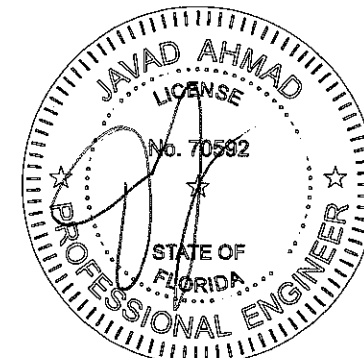
THIS PRODUCT APPROVAL IS GENERIC AND DOES NOT PROVIDE INFORMATION
FOR A SITE SPECIFIC PROJECT, I.E. LIFE SAFETY OF THIS PRODUCT, ADEQUACY
OF STRUCTURE RECEIVING THIS PRODUCT AND SEALING AROUND OPENING FOR
WATER INFILTRATION RESISTANCE ETC.
CONDITIONS NOT SHOWN IN THIS DRAWING ARE TO BE ANALYZED SEPARATELY,
AND TO BE REVIEWED BY BUILDING OFFICIAL.



TYPICAL ELEVATION
TESTED UNIT

WINDOWS NOT RATED FOR IMPACT.
INSTALLATION OF THIS PRODUCT IN THE HVHZ AREA REQUIRES THE
USE OF APPROVED SHUTTERS OR EXTERNAL PROTECTION DEVICES
COMPLYING WITH HVHZ REQUIREMENTS.
INSTALLATION OF THIS SYSTEM OUTSIDE THE HVHZ AREA SHALL MEET
THE APPLICABLE REQUIREMENTS FOR WIND BORNE DEBRIS PROTECTION.

PRODUCT REVISED
as complying with the Florida
Building Code
Acceptance No. 17-1011.03
Expiration Date Feb 1, 2013
By: *Manuel P...*
Miami Dade Product Control

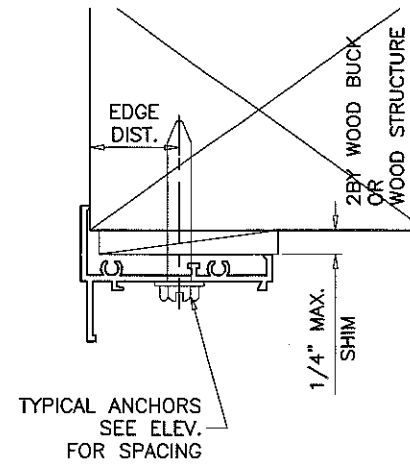
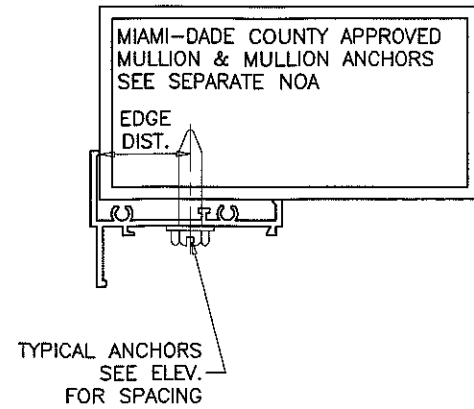
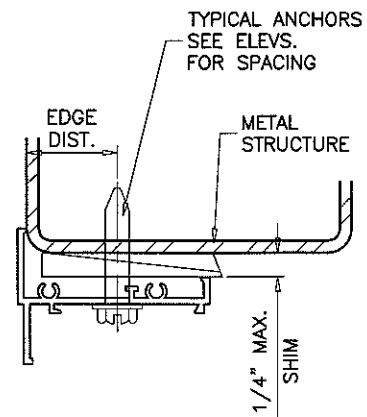
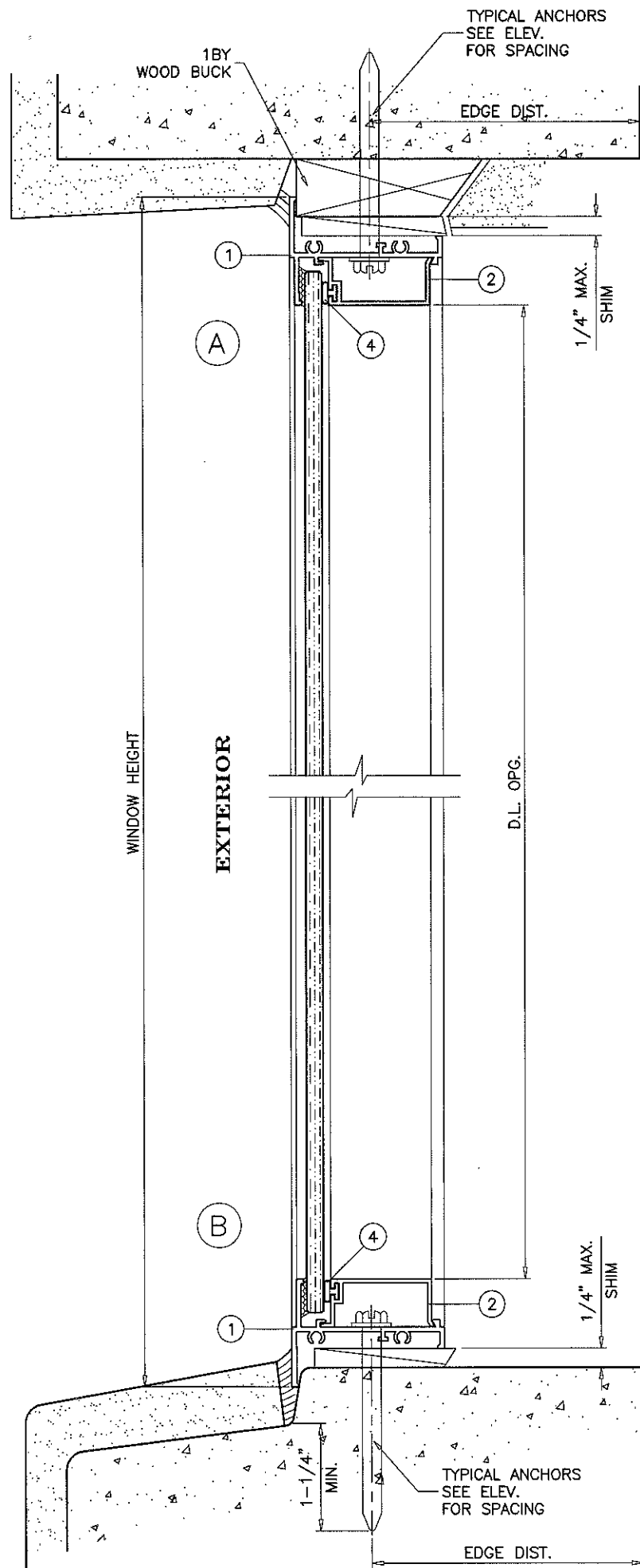


af c
AL-FAROOQ CORPORATION
ENGINEERS & PRODUCT DEVELOPMENT
9360 SUNSET DRIVE, SUITE 220 (C.A.N. 3538)
MIAMI, FLORIDA 33173 TEL. (305) 262-6978
TEL. (305) 264-8100 FAX. (305) 262-6978
COMP-ANL W07-98W

SERIES 1000 ALUM FIXED WINDOW (N.I.)
Labrador & Fundora Corp.
dbq-V & V Windows
2355 West 4th Ave.
Hialeah, FL 33010
TEL. (305) 888-4151 FAX. (305) 888-1042

NO	DATE	DESCRIPTION
A	02.10.12	UPDATED TO 2010 FBC
B	01.22.15	UPDATED TO 2014 FBC
C	09.25.17	UPDATED TO 2017 FBC

date: 11-19-07
scale: 1/2" = 1'-0"
dr. by: TARIQ
chk. by:
drawing no.
W07-98
sheet 1 of 3



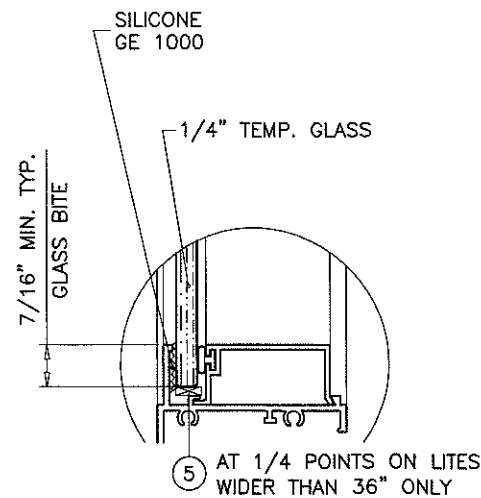
WOOD BUCKS AND METAL STRUCTURE NOT BY LABRADOR & FUNDORA CORP. dba-V & V WINDOWS MUST SUSTAIN LOADS IMPOSED BY GLAZING SYSTEM AND TRANSFER THEM TO THE BUILDING STRUCTURE.

TYPICAL ANCHORS: SEE ELEV. FOR SPACING
 1/4" DIA. ULTRACON BY 'ELCO' (Fu=177 KSI, Fy=155 KSI)
 INTO 2BY WOOD BUCKS OR WOOD STRUCTURES
 1-1/2" MIN. PENETRATION INTO WOOD (HEAD/SILL/JAMBS)
 THRU 1BY BUCKS INTO CONC. OR BLOCKS
 1-1/4" MIN. EMBED INTO CONCRETE (HEAD/SILL/JAMBS)
 1-1/4" MIN. EMBED INTO BLOCKS (JAMBS)
 DIRECTLY INTO CONCRETE OR BLOCKS
 1-1/4" MIN. EMBED INTO CONCRETE (HEAD/SILL/JAMBS)
 1-1/4" MIN. EMBED INTO BLOCKS (JAMBS)

#14 SMS OR SELF DRILLING SCREWS (GRADE 2 CRS)
 INTO MIAMI-DADE COUNTY APPROVED MULLIONS OR
 INTO METAL STRUCTURES (HEAD/SILL/JAMBS)
 (3) THREADS MIN. PENETRATION BEYOND SUBSTRATE
 ALUMINUM: 1/8" THK. MIN. (6063-T5 MIN.)
 STEEL: 1/8" THK. MIN. (Fy = 36 KSI MIN.)
 (STEEL IN CONTACT WITH ALUMINUM TO BE PLATED OR PAINTED)

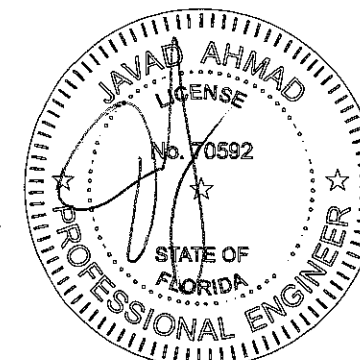
TYPICAL EDGE DISTANCE
 INTO CONCRETE AND MASONRY = 2-1/2" MIN.
 INTO WOOD STRUCTURE = 1" MIN.
 INTO METAL STRUCTURE = 3/4" MIN.
 WOOD AT HEAD, SILL OR JAMBS SG = 0.55 MIN.
 CONCRETE AT HEAD, SILL OR JAMBS f'c = 3000 PSI MIN.
 C-90 HOLLOW/FILLED BLOCK AT JAMBS f'm = 2000 PSI MIN.

SEALANTS:
 ALL JOINTS AND FRAME CONNECTIONS SEALED WITH ACRYLIC CAULK UN1993 BY 'SCHNEE MOREHEAD'.



GLAZING DETAIL

PRODUCT REVISED
 as complying with the Florida
 Building Code
 Acceptance No. 17-1011.03
 Expiration Date Feb. 7, 2023
 By Manuel Ferrer
 Miami Dade Product Control



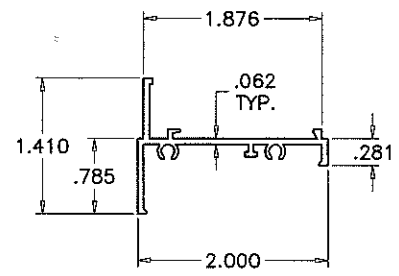
af c
AL-FAROOQ CORPORATION
 ENGINEERS & PRODUCT DEVELOPMENT
 9360 SUNSET DRIVE, SUITE 220 (C.A.N. 3538)
 MIAMI, FLORIDA 33173
 TEL. (305) 264-8100 FAX. (305) 262-6978
 COMP-ANL W07-98W

SERIES 1000 ALUM FIXED WINDOW (N.I.)
 Labrador & Fundora Corp.
 dba-V & V Windows
 2355 West 4th Ave.
 Hialeah, FL 33010
 TEL. (305) 888-4151 FAX. (305) 888-1042

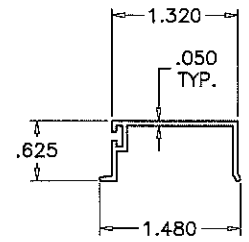
no	date	by	description
A	02.10.12		NO CHANGE THIS SHEET
B	01.22.15		UPDATED TO 2014 FBC
C	09.25.17		UPDATED TO 2017 FBC

revisions:
 date: 11-19-07
 scale: 1/2" = 1"
 dr. by: TARIQ
 chk. by:

drawing no.
W07-98
 sheet 2 of 3

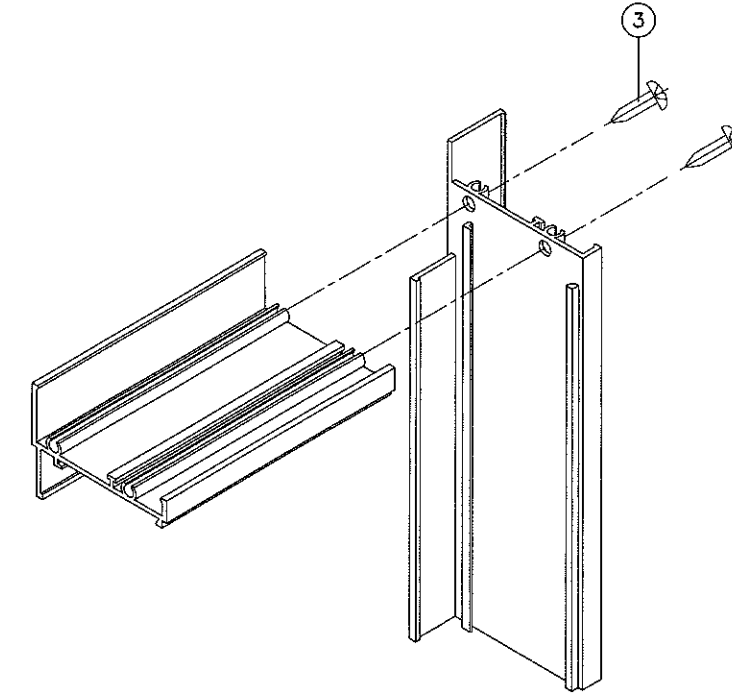
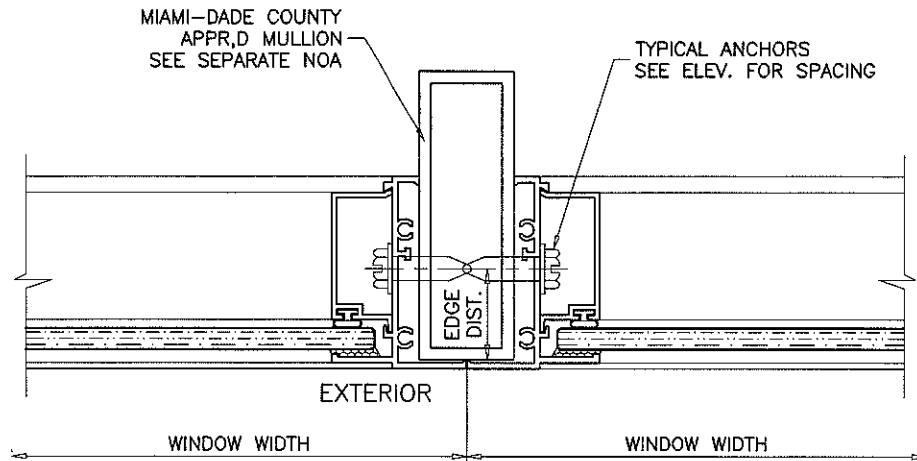


① WINDOW FRAME

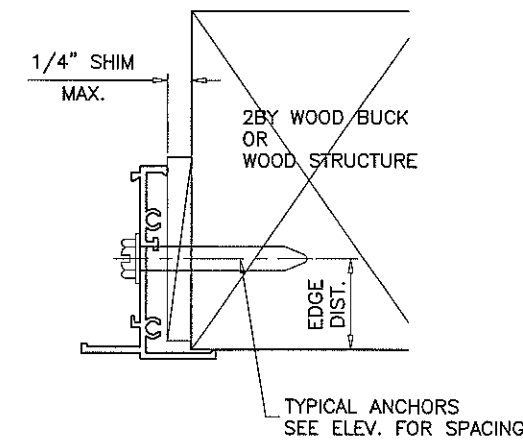
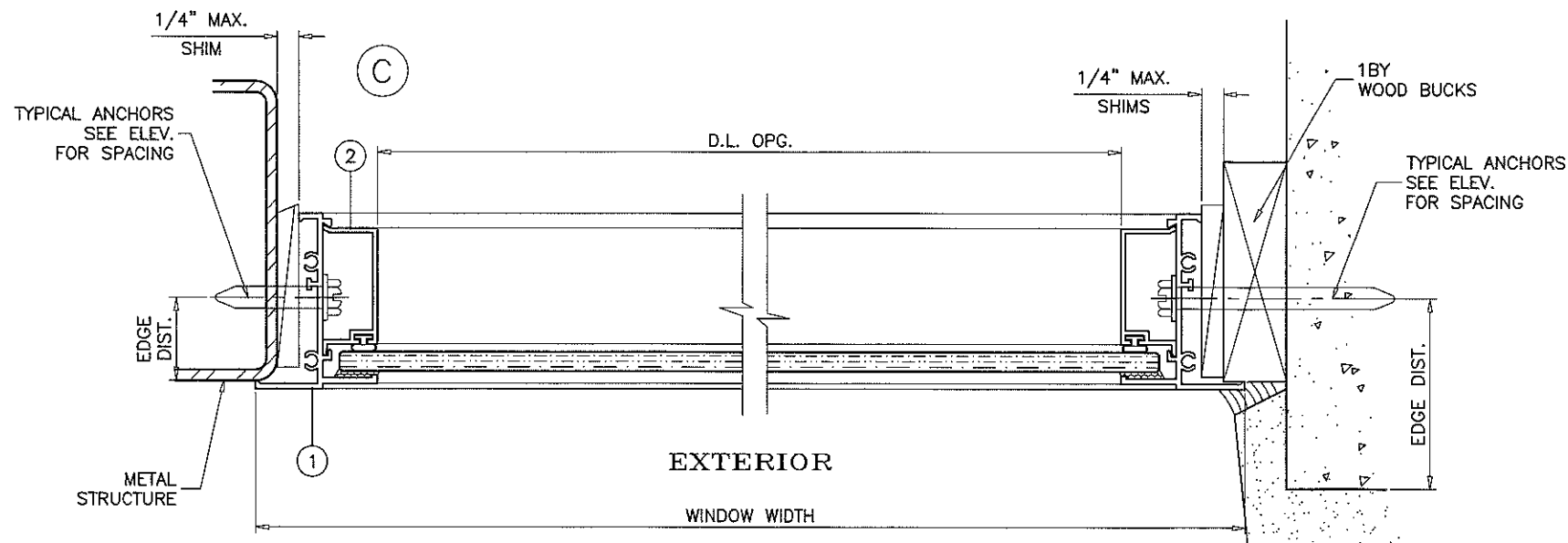


② GLAZING STOP

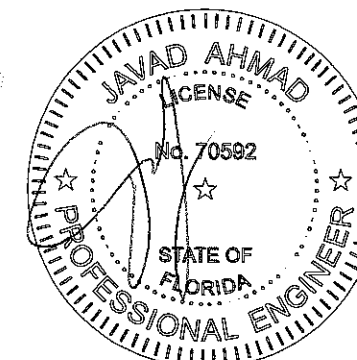
ITEM	PART #	QUANTITY	DESCRIPTION	MATERIAL	MANF./SUPPLIER/REMARKS
1	BA4263	4	WINDOW FRAME	6063-T5	-
2	BA4262	4	GLAZING STOP	6063-T5	-
3	#8 X 1"	2/ CORNER	FRAME ASSEMBLY SCREWS	-	PH SMS
4	-	AS REQD.	GLAZING GASKET	VINYL	-
5	-	AS REQD.	SETTING BLOCKS	EPDM	DUROMETER 80±5 SHORE A



TYPICAL CORNER CONSTRUCTION



PRODUCT REVISED
 as complying with the Florida
 Building Code
 Acceptance No. 17-1041.03
 Expiration Date FEB-11-2023
 By: *Manuel B...*
 Miami Dade Product Control



af c
AL-FAROOQ CORPORATION
 ENGINEERS & PRODUCT DEVELOPMENT
 9360 SUNSET DRIVE, SUITE 220 (C.A.N. 3538)
 MIAMI, FLORIDA 33173
 TEL. (305) 264-8100 FAX. (305) 262-6978
 COMP-ANL W07-98VV

SERIES 1000 ALUM FIXED WINDOW (N.I.)
 Labrador & Fundora Corp.
 dba-V & V Windows
 2355 West 4th Ave.
 Hialeah, FL 33010
 TEL. (305) 888-4151 FAX. (305) 888-1042

Revisions:

no	date	by	description
A	02.10.12		NO CHANGE THIS SHEET
B	01.22.15		UPDATED TO 2014 FBC
C	09.25.17		UPDATED TO 2017 FBC

date: 11-19-07
 scale: 1/2" = 1"
 dr. by: TARIQ
 chk. by:

drawing no.
W07-98
 sheet 3 of 3