



DEPARTMENT OF REGULATORY AND ECONOMIC RESOURCES (RER)
BOARD AND CODE ADMINISTRATION DIVISION

MIAMI-DADE COUNTY, FLORIDA
PRODUCT CONTROL SECTION
11805 SW 26 Street, Room 208
T (786) 315-2590 F (786) 315-2599

NOTICE OF ACCEPTANCE (NOA)

www.miamidade.gov/economy

Continental Glass Systems, LLC
325 West 74 Place
Hialeah, FL 33014

SCOPE:

This NOA is being issued under the applicable rules and regulations governing the use of construction materials. The documentation submitted has been reviewed and accepted by Miami-Dade County RER-Product Control Section to be used in Miami-Dade County and other areas where allowed by the Authority Having Jurisdiction (AHJ).

This NOA shall not be valid after the expiration date stated below. The Miami-Dade County Product Control Section (In Miami-Dade County) and/or the AHJ (in areas other than Miami-Dade County) reserve the right to have this product or material tested for quality assurance purposes. If this product or material fails to perform in the accepted manner, the manufacturer will incur the expense of such testing and the AHJ may immediately revoke, modify, or suspend the use of such product or material within their jurisdiction. RER reserves the right to revoke this acceptance, if it is determined by Miami-Dade County Product Control Section that this product or material fails to meet the requirements of the applicable building code.

This product is approved as described herein, and has been designed to comply with the Florida Building Code, including the High Velocity Hurricane Zone.

DESCRIPTION: Series "2600" Aluminum Sliding Glass Door – L.M.I.

APPROVAL DOCUMENT: Drawing No. **S.G.D-2600-LM**, titled "Series 2600 Sliding Glass Door Large Missile", sheets 1 through 8 of 8, dated 07/02/15 with revision "2" dated 10/18/17, prepared by manufacturer, signed and sealed by Hermes Norero, P. E., bearing the Miami-Dade County Product Control Section Revision stamp with the Notice of Acceptance number and Expiration date by the Miami-Dade County Product Control Section.

MISSILE IMPACT RATING: Large and Small Missile Impact Resistant

LABELING: Each unit shall bear a permanent label with the manufacturer's name or logo, city, state, model/ series, and following statement: "Miami-Dade County Product Control Approved", unless otherwise noted herein.

RENEWAL of this NOA shall be considered after a renewal application has been filed and there has been no change in the applicable building code negatively affecting the performance of this product.

TERMINATION of this NOA will occur after the expiration date or if there has been a revision or change in the materials, use, and/or manufacture of the product or process. Misuse of this NOA as an endorsement of any product, for sales, advertising or any other purposes shall automatically terminate this NOA. Failure to comply with any section of this NOA shall be cause for termination and removal of NOA.

ADVERTISEMENT: The NOA number preceded by the words Miami-Dade County, Florida, and followed by the expiration date may be displayed in advertising literature. If any portion of the NOA is displayed, then it shall be done in its entirety.

INSPECTION: A copy of this entire NOA shall be provided to the user by the manufacturer or its distributors and shall be available for inspection at the job site at the request of the Building Official.

This NOA **revises** and **renews** NOA No. **15-0827.16** and consists of this page 1 and evidence pages E-1, E-2 and E-3, as well as approval document mentioned above.

The submitted documentation was reviewed by **Jorge M. Plasencia, P. E.**



J 12/19/2017

NOA No. 17-1108.04
Expiration Date: December 13, 2022
Approval Date: December 28, 2017
Page 1

NOTICE OF ACCEPTANCE: EVIDENCE SUBMITTED

1. EVIDENCE SUBMITTED UNDER PREVIOUS NOA'S

A. DRAWINGS

1. Manufacturer's die drawings and sections.
2. Drawing No. **S.G.D-2600-LM**, titled "Series 2600 Sliding Glass Door Large Missile", sheets 1 through 8 of 8, dated 07/02/15 with revision "1" dated 07/02/15, prepared by manufacturer, signed and sealed by Hermes Norero, P. E.

B. TESTS

1. Test reports on:
 - 1) Air Infiltration Test, per FBC, TAS 202-94
 - 2) Uniform Static Air Pressure Test, Loading per FBC, TAS 202-94
 - 3) Water Resistance Test, per FBC, TAS 202-94
 - 4) Large Missile Impact Test per FBC, TAS 201-94
 - 5) Small Missile Impact Test per FBC, TAS 201-94
 - 6) Cyclic Wind Pressure Loading per FBC, TAS 203-94
 - 7) Forced Entry Test, per FBC 2411.3.2.1, and TAS 202-94
 - 8) ASTM F 842-04 Standard Test Methods for Measuring the Forced Entry Resistance of Sliding Door Assemblies, Excluding Glazing Impact, Type "A", grade 10, L4 - Passed
 - 9) ASTM E 987-88 (2001) Standard Test Methods for Deglazing Force of Fenestration Products - Passedalong with marked-up drawings and installation diagram of a Sliding Glass Door, prepared by Fenestration Testing Laboratory, Inc., Test Report No. **FTL-6799**, dated 02/29/12, signed and sealed by Marlin D. Brinson, P. E.
(Submitted under NOA# 12-0702.02)

C. CALCULATIONS


1. Anchor verification calculations and structural analysis, complying with **FBC-2014**, prepared, signed, sealed and dated 07/20/16 by Hermes Norero, P. E.
2. **Glazing complies with ASTM E1300-09**

D. QUALITY ASSURANCE

1. Miami-Dade Department of Regulatory and Economic Resources (RER).

E. MATERIAL CERTIFICATIONS

1. Notice of Acceptance No. **14-0916.11** issued to **Kuraray America, Inc.** for their "**SentryGlas® (Clear and White) Interlayer**" dated 06/25/15, expiring on 07/04/18.



Jorge M. Plasencia, P. E.
Product Control Unit Supervisor
NOA No. 17-1108.04
Expiration Date: December 13, 2022
Approval Date: December 28, 2017

Continental Glass Systems, LLC

NOTICE OF ACCEPTANCE: EVIDENCE SUBMITTED

E. MATERIAL CERTIFICATIONS (CONTINUED)


2. Dow Corning Corp. Construction Industry System Laboratory Report – **Sealant Adhesion**, dated 08/03/09 certifying testing/ evaluation of Dow Corning 790 and 795 Silicone Building Sealant and application recommendations for this specific job, prepared by Kevin Dunphy, Dow Corning Field Specialist.
(Submitted under NOA# 12-0702.02)

F. STATEMENTS

1. Statement letter of conformance, complying with **FBC-2014, 5th edition**, issued, prepared, signed, sealed and dated 07/18/15 by Hermes F. Norero, P. E.
2. Statement letter of no financial interest, issued, prepared, signed, sealed and dated 07/18/15 by Hermes F. Norero, P. E.
3. Letter of *Adoption of as his Own, the Work of another Engineer* per Section 61G15-27 of the FBPE, dated 07/19/15 signed and sealed by Hermes F. Norero, P. E.
4. Laboratory compliance letter for Test Report No. **FTL-6799**, issued by Fenestration Testing Laboratory, Inc., dated 02/29/12, signed and sealed by Marlin D. Brinson, P. E.
(Submitted under NOA# 12-0702.02)
5. Proposal No. **11-1506** issued by Product Control, dated 12/01/11, signed by Manuel Perez, P. E.
(Submitted under NOA# 12-0702.02)
6. Letter from manufacturer requesting name change from Continental Glass System, Inc. to **Continental Glass System, LLC**, dated April 4, 2016, signed by Samir Moussa, COO.
7. Assignment Agreement dated April 21, 2015 between **Continental Glass System, Inc.** a Florida Corporation (Assignor) and **Continental Glass System, LLC** a Delaware Limited Liability Company (Assignee) signed by Shlomo Epstein, (Assignor) and Samir Moussa (Assignee) and Paul L. Rudy III for Graham Architectural Products Corporation (the “Purchase Agreement”).

G. OTHERS

1. Notice of Acceptance No. **12-0702.02**, issued to Continental Glass Systems, Inc. for their Series “2600 Aluminum Sliding Glass Door – L.M.I., approved on 12/13/12 and expiring on 12/13/17.



Jorge M. Plasencia, P. E.
Product Control Unit Supervisor
NOA No. 17-1108.04
Expiration Date: December 13, 2022
Approval Date: December 28, 2017

NOTICE OF ACCEPTANCE: EVIDENCE SUBMITTED

2. NEW EVIDENCE SUBMITTED

A. DRAWINGS

1. Drawing No. **S.G.D-2600-LM**, titled "Series 2600 Sliding Glass Door Large Missile", sheets 1 through 8 of 8, dated 07/02/15 with revision "2" dated 10/18/17, prepared by manufacturer, signed and sealed by Hermes Norero, P. E.

B. TESTS

1. None.

C. CALCULATIONS

1. None.

D. QUALITY ASSURANCE

1. Miami-Dade Department of Regulatory and Economic Resources (RER).

E. MATERIAL CERTIFICATIONS


1. None.

F. STATEMENTS

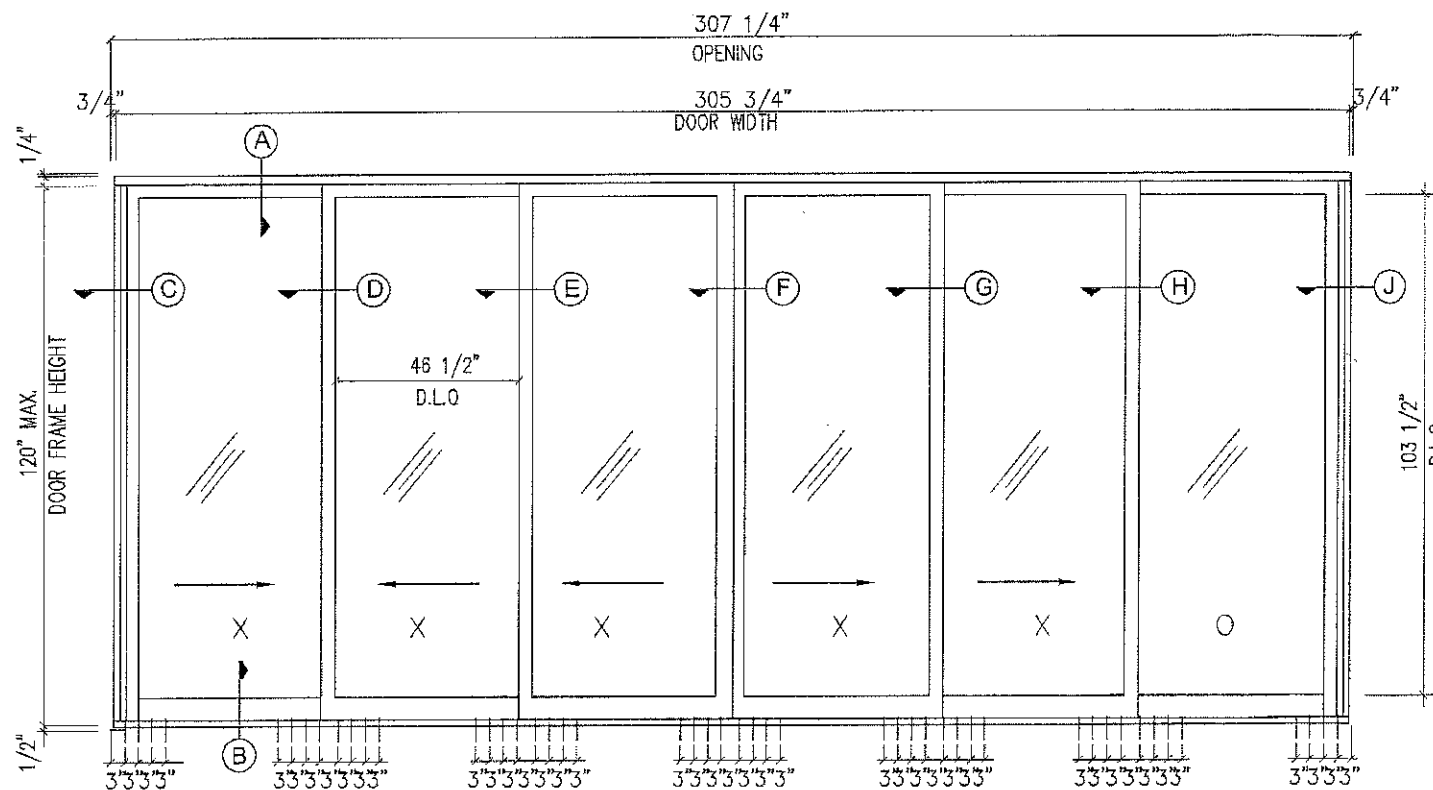
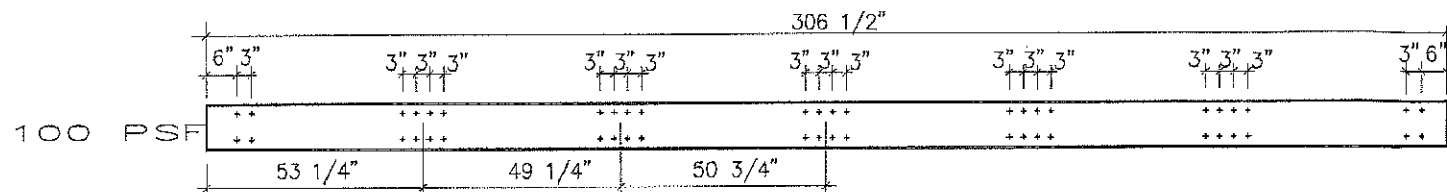
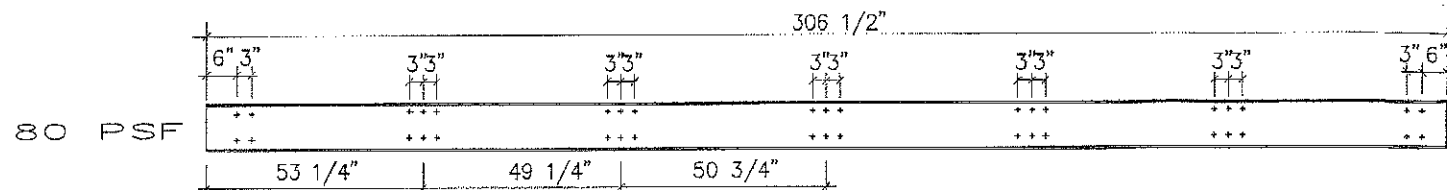
1. Statement letter of conformance to **FBC 6th Edition (2017)**, and of no financial interest issued, prepared, signed, sealed and dated 10/24/17 by Hermes F. Norero, P. E.

G. OTHERS

1. This NOA revises and renews NOA #15-0827.16, expiring on 12/13/17.



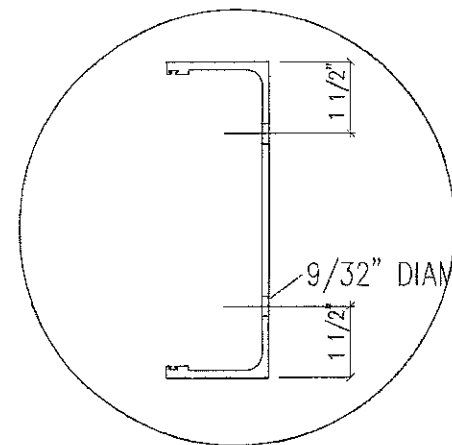
Jorge M. Plasencia, P. E.
Product Control Unit Supervisor
NOA No. 17-1108.04
Expiration Date: December 13, 2022
Approval Date: December 28, 2017



DOORS ELEVATION / EXTERIOR VIEW

DESIGN LOAD CAPACITY (P.S.F.)		SILL HEIGHT
POSITIVE	NEGATIVE	
100	100	4"
80	80	2 1/2"

RECEPTOR

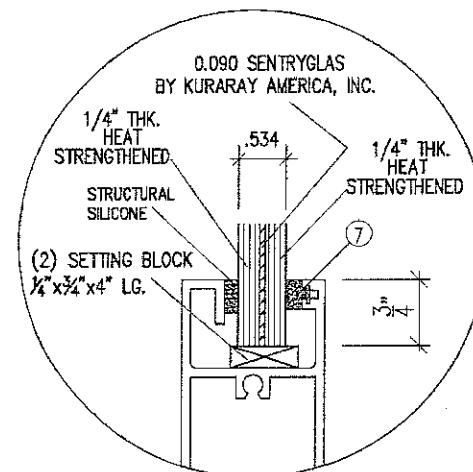


LARGE MISSILE IMPACT

SERIES 2600 ALUMINUM SLIDING GLASS DOOR.

NOTES:

1. THIS SLIDING GLASS DOOR SYSTEM IS DESIGNED AND TESTED TO COMPLY WITH THE REQUIREMENTS OF THE 6TH EDITION (2017) FLORIDA BUILDING CODE (FBC) CHAPTERS 16 AND 24, UNDER THE SPECIFIC CONDITION SHOWN ON THIS DRAWING. REF. FTL No.6799
2. ALL EXTRUSIONS ARE ALUMINUM, 6005-T5, 6005A-T5, 6005A-T61 & 6105-T5 WITH A MINIMUM Fy OF 25.000 P.S.I. U.O.N.
3. LARGE MISSILE IMPACT: INSTALLATION UP TO 30 FT ABOVE GRADE WILL NOT REQUIRE A HURRICANE PROTECTION SYSTEM.
4. ALL ANCHORS ARE 5/16" ELCO ULTRACONS WITH 1 3/4" MIN. EMBEDMENT INTO MINIMUM 3515 PSI CONCRETE OR BETTER.
5. SHIMS. USE HARD PLASTIC.
6. APPROVED STRUCTURAL SILICONE:
 - A) 795 DOW CORNING
 - B) 983 DOW CORNING
7. APPROVED PERIMETER SEALANT:
 - A) 795 DOW CORNING
 - B) 790 DOW CORNING
8. NOTE: MAXIMUM FRAME AREA SHALL NOT EXCEED 382 SQ. FT.



GLAZING DETAIL

Continental Glass Systems LLC.
325 West 74 Place
Hialeah Florida, 33014
Phone 305-231-1101 Fax 305-231-1103

Series 2600
Sliding Glass Door
LARGE MISSILE

Revision	
No	Date
1	07.02.15
2	10.18.17

Date	07.02.15
Scale	
Design by	G. S.
Drawing by	T. S.
Checked by	G. S.
Drawing No.	S.G.D-2600-1M
Sheet	1 of 8

APPROVED

PRODUCT REVISED
as complying with the Florida Building Code
NOA-No. **17-1108.04**
Expiration Date **12/13/2022**

By *[Signature]*
Miami-Dade Product Control

ELEVATION

HERMÉS NORERO
LICENSED PROFESSIONAL ENGINEER
No. 73778
STATE OF FLORIDA
2-7-0201

HERMÉS F. NORERO, P.E.
P.O. BOX 473278
200 S. DAMIAN BEACH BLVD., #200
MIAMI BEACH, FL 33104
FBC# CERT. # 29676

HEAD RECEIVER

5/16 ϕ ELCO ULTRACONS
1 3/4" MIN. EMBEDMENT TYP.

CONCRETE (3515 PSI)
OR BETTER

4 19/32"

2" MIN.
EDGE DISTANCE

1/4" MAX.

1

2

3

4

5

6

A

3/4" MIN.
1/4" MIN.

EXTERIOR

DOOR HEIGHT
120"

7

8

9

10

11

12

B

4.000

HARD PLASTIC SHIMS
TYP.

3/8" MAX.
1/4" MIN.

PERIMETER SEAL DOW CORNING
TYPICAL WITH BACKER ROD

5/16 ϕ x 4" ELCO ULTRACONS
1 3/4" MIN. EMBEDMENT TYP.

DESIGN LOAD=100 PSF

Revision	
No	Date

Date: 07.02.15
Scale:
Design by: G. S.
Drawing by: T. S.
Checked by: G. S.
Drawing No.:
S.G.D-2500-LM
Sheet 2 of 8

APPROVED

PRODUCT REVISED
as complying with the Florida
Building Code
NOA-No. 17-1108.04
Expiration Date 12/13/2022

By _____
Miami-Dade Product Control

HERMES NORERO
LICENSE
No. 73778
STATE OF
FLORIDA
PROFESSIONAL ENGINEER

Continental Glass Systems LLC.
325 West 74 Place
Hialeah Florida, 33014
Phone 305-231-1101 Fax 305-231-1103

Series 2600
Sliding Glass Door
LARGE MISSILE

HEAD RECEPTOR

5/16 Ø ELCO ULTRACONS
1 3/4" MIN. EMBEDMENT TYP.

CONCRETE (3515 PSI)
OR BETTER

4 19/32"

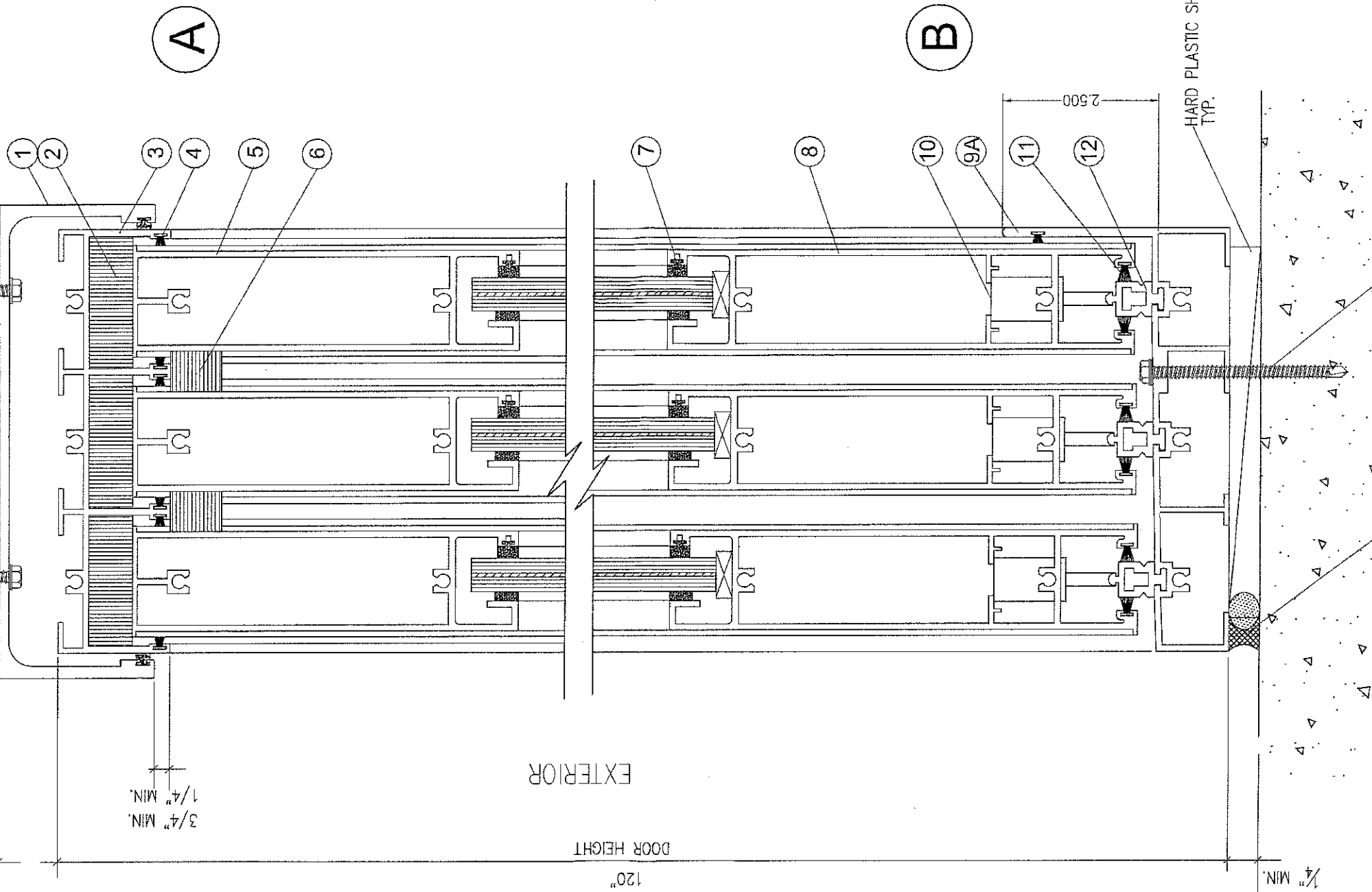
2" MIN.
EDGE DISTANCE

1/4" MAX.

3/4" MIN.
1/4" MIN.

EXTERIOR

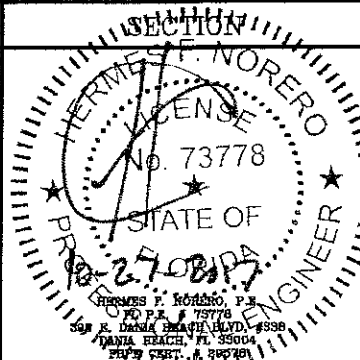
120"
DOOR HEIGHT



APPROVED

PRODUCT REVISED
as complying with the Florida
Building Code
NOA-No. **17-1108.04**
Expiration Date **12/13/2022**

By *[Signature]*
Miami-Dade Product Control



Revision	
No	Date

Date 07.02.15
Scale
Design by G. S.
Drawing by T. S.
Checked by G. S.
Drawing No.
S.G.D-2800-LM
Sheet 3 of 8

Series 2600
Sliding Glass Door
LARGE MISSILE

Continental Glass Systems LLC.
325 West 74 Place
Hialeah Florida, 33014

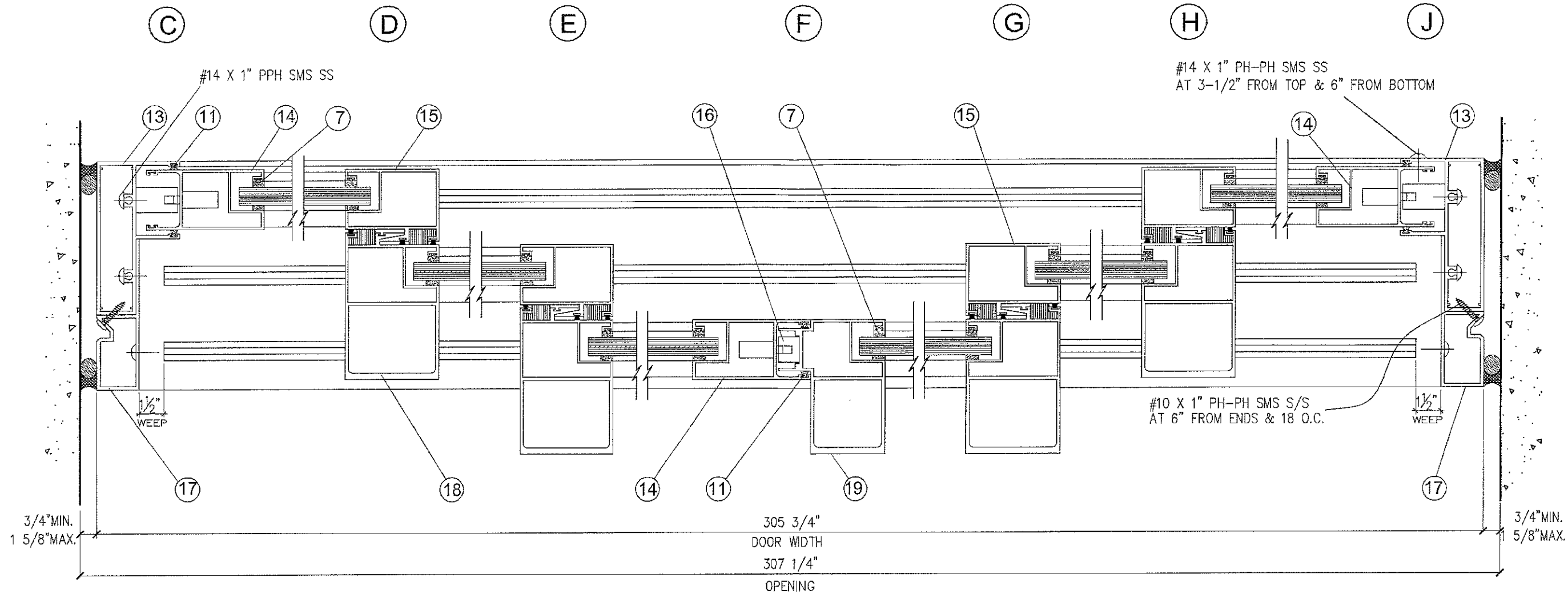
Phone 305-231-1101 Fax 305-231-1103

DESIGN LOAD=80 PSF

PERIMETER SEAL DOW CORNING
TYPICAL WITH BACKER ROD

5/16 Ø x 4" ELCO ULTRACONS
1 3/4" MIN. EMBEDMENT
TYP.

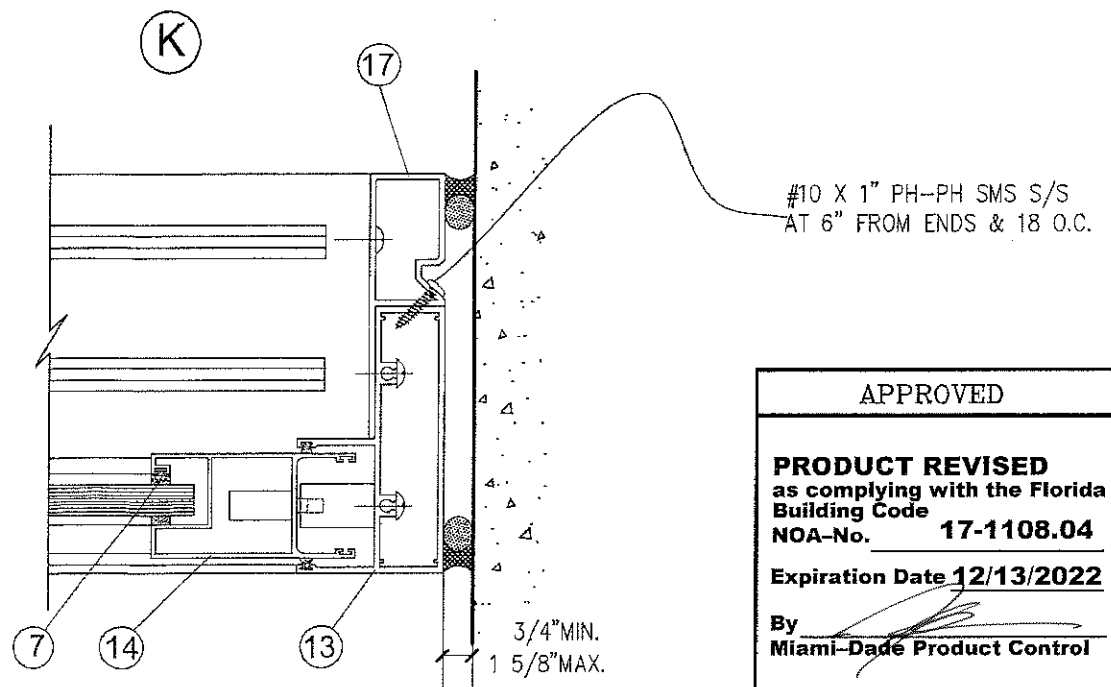
HARD PLASTIC SHIMS
TYP.



305 3/4"
DOOR WIDTH
307 1/4"
OPENING

EXTERIOR

NOTES:
1. BACKER ROD DIAMETER EQUALS SEALANT WIDTH x 120%
2. SEALANT WIDTH TO DEPTH RATIO SHALL BE 2:1 FOR WIDTHS UP TO 1". USE 1/2" DEPTH FOR WIDTHS GREATER THAN 1".



3/4" MIN.
1 5/8" MAX.

Continental Glass Systems LLC.
325 West 74 Place
Hialeah Florida, 33014
Phone 305-231-1101 Fax 305-231-1103

Series 2600
Sliding Glass Door
LARGE MISSILE

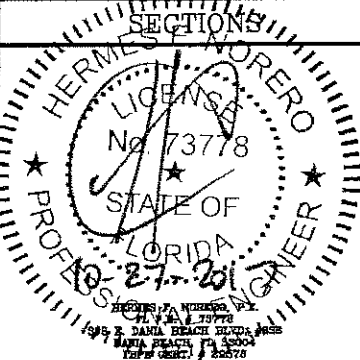
Revision	
No	Date

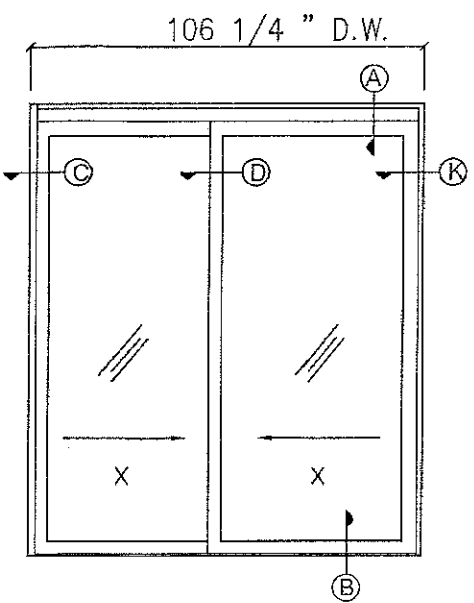
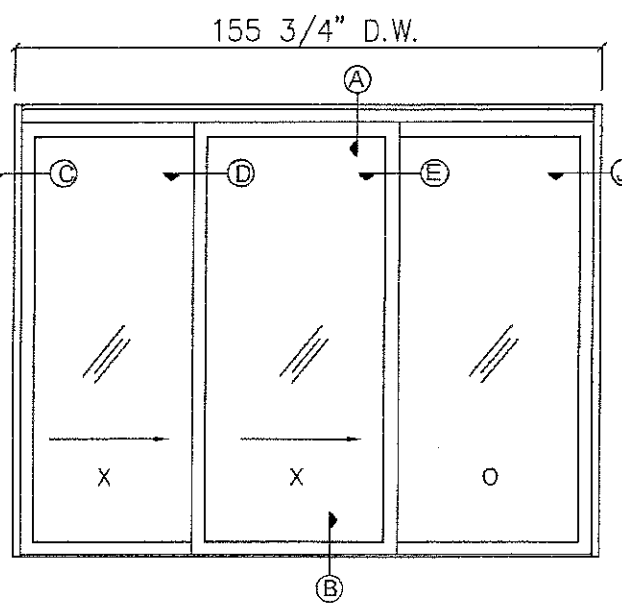
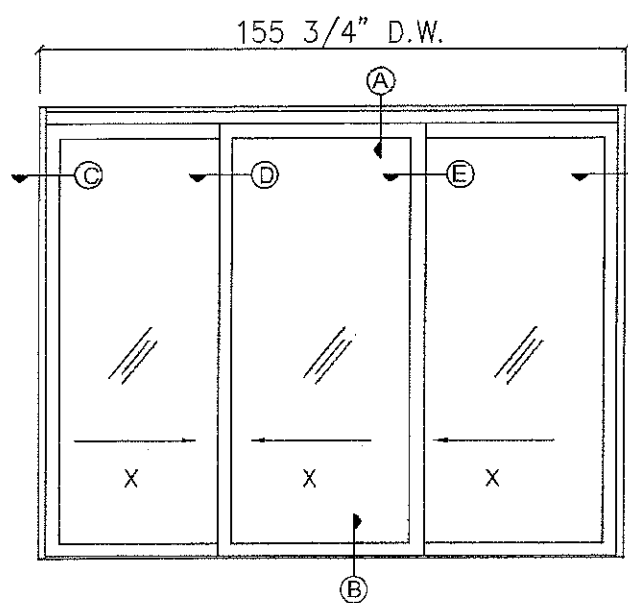
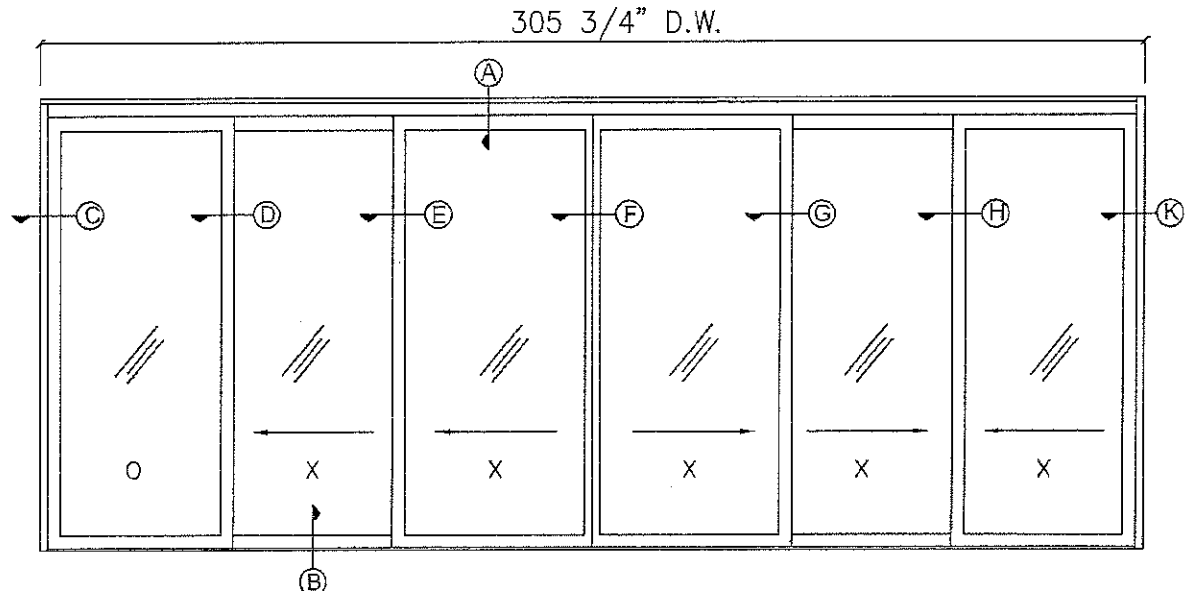
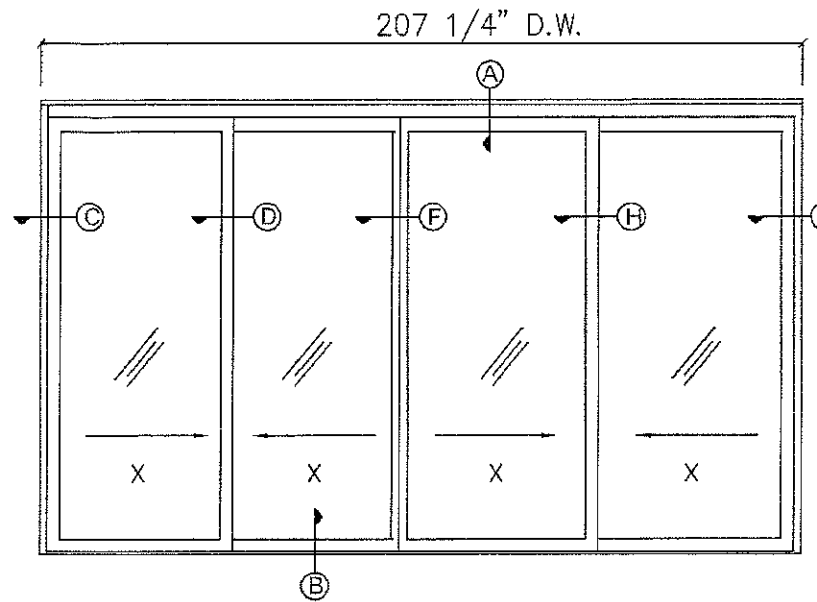
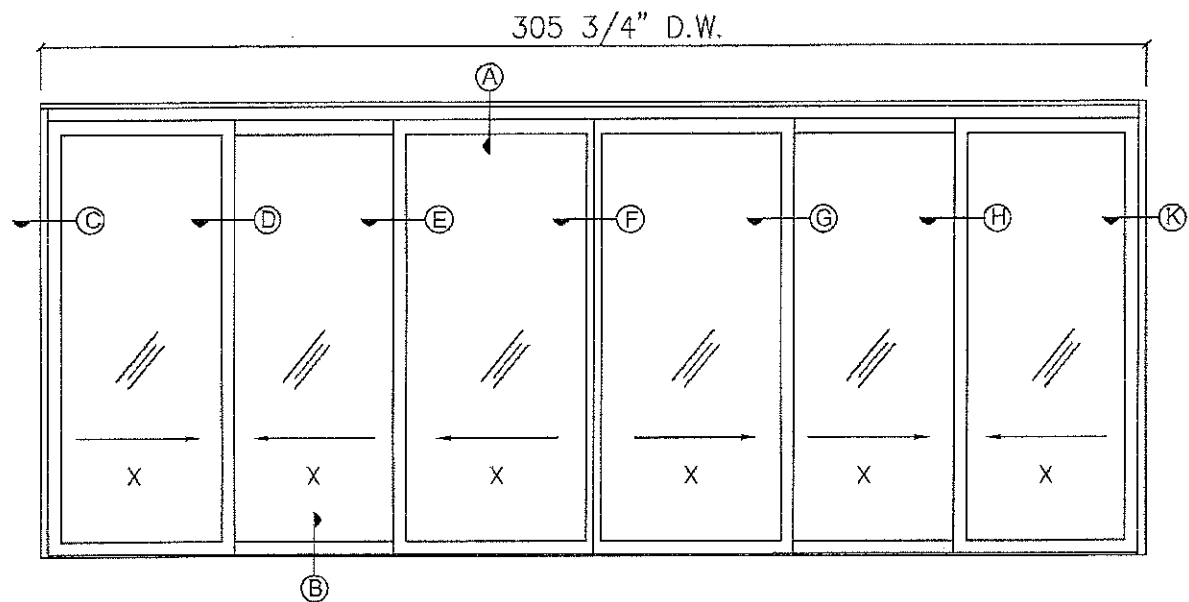
Date 07.02.15
Scale
Design by G. S.
Drawing by T. S.
Checked by G. S.
Drawing No. S.G.D-2600-LM
Sheet 4 of 8

APPROVED

PRODUCT REVISED
as complying with the Florida Building Code
NOA-No. 17-1108.04
Expiration Date 12/13/2022

By *[Signature]*
Miami-Dade Product Control





Continental Glass Systems LLC.
 325 West 74 Place
 Hialeah Florida, 33014
 Phone 305-231-1101 Fax 305-231-1103

Series 2600
 Sliding Glass Door
 LARGE MISSILE

Revision	
No	Date

Sheet 5 of 8

APPROVED

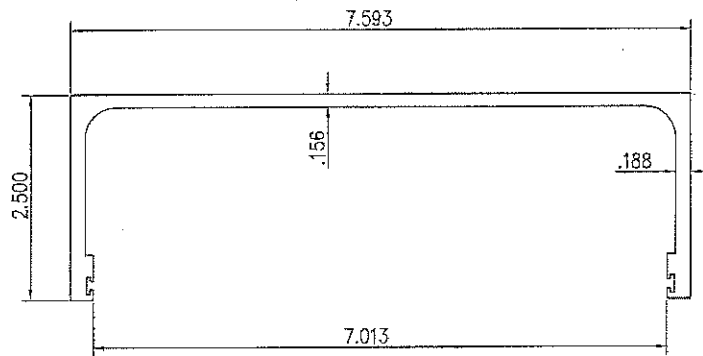
PRODUCT REVISED
 as complying with the Florida Building Code
 NOA-No. **17-1108.04**
 Expiration Date **12/13/2022**

By *[Signature]*
 Miami-Dade Product Control

ELEVATION

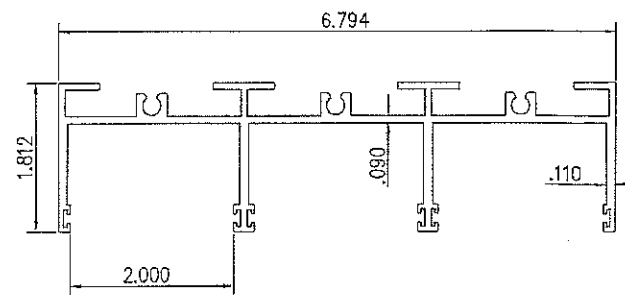
HERMES PERERO, P.E.
 No. 73778
 STATE OF FLORIDA
 PROFESSIONAL ENGINEER

HEAD RECEPTOR



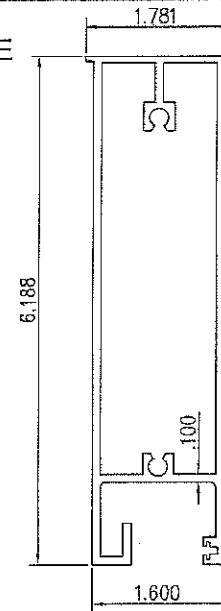
① 2000-46

HEAD



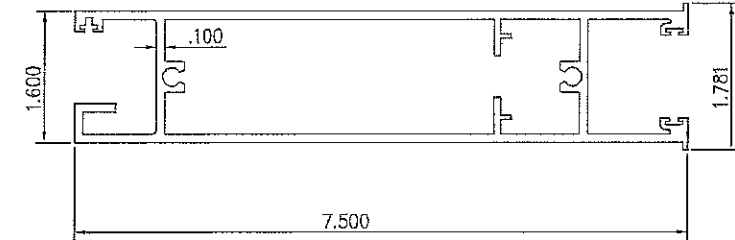
③ 2000-29

TOP PANEL STILE



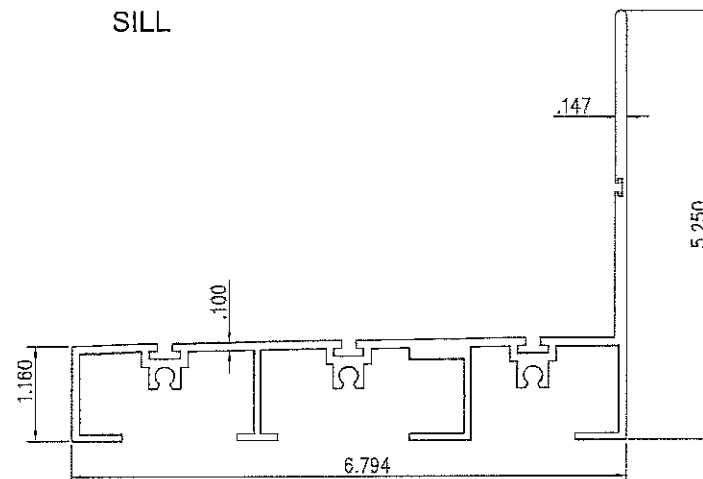
⑤ 2000-42

BOTTOM PANEL STILE



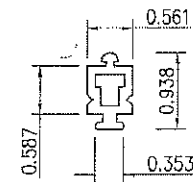
⑧ 2000-41

SILL



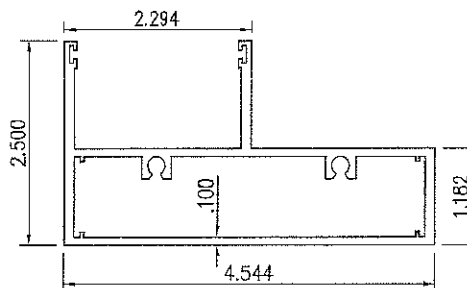
⑨ 2000-35

SILLTRACK



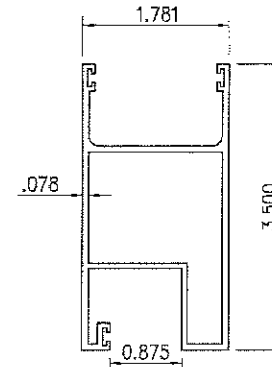
⑫ 2000-05

JAMB



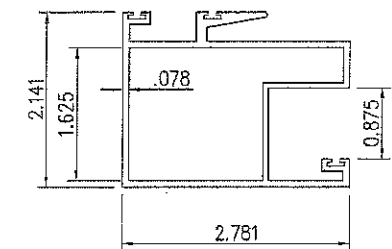
⑬ 2000-04

LOCK STILE



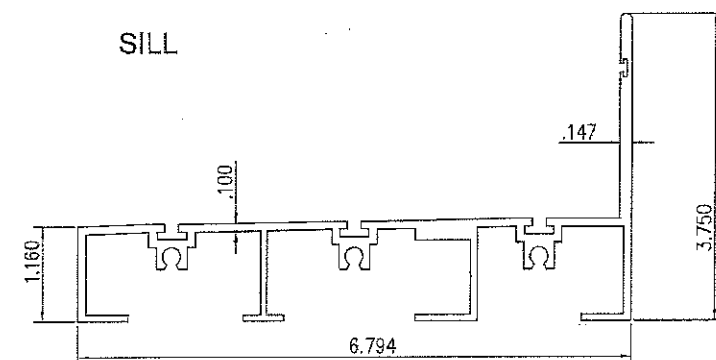
⑭ 2000-10

INTERLOCK



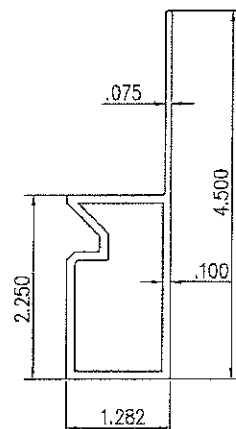
⑮ 2000-11

SILL



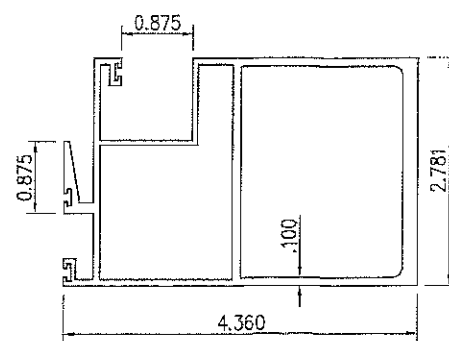
⑨A 2000-45

JAMB ADAPTER



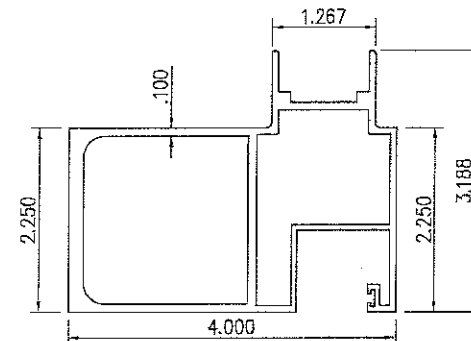
⑰ 2000-31

HEAVY INTERLOCK



⑱ 2000-12

HEAVY ASTRAGAL



⑲ 2000-14

Continental Glass Systems LLC.
325 West 74 Place
Hialeah Florida, 33014
Phone 305-231-1101 Fax 305-231-1103

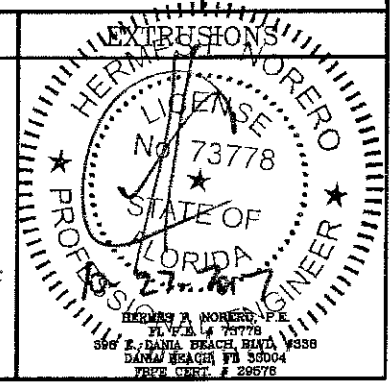
Series 2600
Sliding Glass Door
LARGE MISSILE

No	Date	By	Description

Date 07.02.15
Scale
Design by G. S.
Drawing by T. S.
Checked by G. S.
Drawing No. S.G.D-2600-LM
Sheet 6 of 8

APPROVED

PRODUCT REVISED
as complying with the Florida
Building Code
NOA-No. 17-1108.04
Expiration Date 12/13/2022
By Miami-Dade Product Control



HERMES A. MORERO, P.E.
FL. REG. NO. 73778
506 E. DANIA BEACH BLVD #338
DANIA BEACH, FL 33004
PHONE 904.228.5778

SLIDING GLASS DOOR	ITEM NUMBER	PART NUMBER	PART NAME	REMARKS	ALLOY & TEMPER	
	1	2000-46	HEAD RECEPTOR			6005A-T61
	2	P 10009 AFK	HEAD PAD		ULTRAFAB	
	3	2000-29	HEAD		FRAME	6105-T5
	4		FIN-SEAL .370 x .187		ULTRAFAB	
	5	2000-42	TOP PANEL STILE		PANEL	6005A-T5
	6	P 7509 AFK	INTERLOCK PAD		ULTRAFAB	
	7	CGS-01	GLASS SPACING		PROTOTYPE PLASTIC EXTRUSION	
	8	2000-41	BOTTOM PANEL STILE		PANEL	6005-T5
	9	2000-35	SILL		FRAME	6105-T5
	10	AR-50A	WHEEL		DOOR & WINDOW HARDWARE	
	11		FIN-SEAL .250 x .187		ULTRAFAB	
	12	2000-05	SILL TRACK		FRAME	6105-T5
	13	2000-04	JAMB	I=3.51 in ⁴	FRAME	6105-T5
	14	2000-10	LOCK STILE	I=0.51 in ⁴	PANEL	6105-T5
	15	2000-11	INSIDE INTERLOCK	I=0.59 in ⁴	PANEL	6105-T5
	16		KEEPER		DOOR & WINDOW HARDWARE	
	17	2000-31	JAMB ADAPTER		FRAME	6105-T5
	18	2000-12	HEAVY INTERLOCK	I=4.59 in ⁴	PANEL	6105-T5
19	2000-14	HEAVY ASTRAGAL	I=3.47 in ⁴	PANEL	6105-T5	
9A	2000-45	SILL		FRAME	6105-T5	

Continental Glass Systems LLC.
325 West 74 Place
Hialeah Florida, 33014
Phone 305-231-1101 Fax 305-231-1103


Series 2600
Sliding Glass Door
LARGE MISSILE

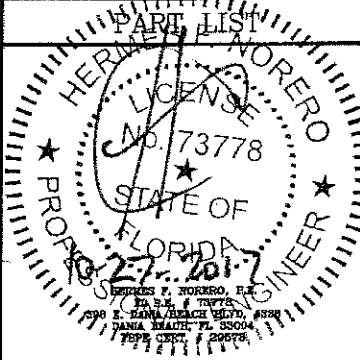
Revision		No	Date	By	Description

Date 07.02.15
Scale
Design by G. S.
Drawing by T. S.
Checked by G. S.
Drawing No. S.G.D-2600-LM
Sheet 7 of 8

APPROVED

PRODUCT REVISED
as complying with the Florida
Building Code
NOA-No. **17-1108.04**
Expiration Date **12/13/2022**

By 
Miami-Dade Product Control



TWO (2) #14 X 1"
PH-PH SMS S/S

TWO (2) #14 X 1"
PH-PH SMS S/S

THREE (3) #14 X 1"
PH-PH SMS S/S

#10 X 1" PH-PH SMS S/S
AT 6" FROM ENDS & 18" O.C.

THREE (3) #14 X 1"
PH-PH SMS S/S

THREE (3) #14 X 1"
PH-PH SMS S/S

#10 X 1" PH-PH SMS S/S
AT 6" FROM ENDS & 18" O.C.

THREE (3) #14 X 1"
PH-PH SMS S/S

Continental Glass Systems LLC.
325 West 74 Place
Hialeah Florida, 33014
Phone 305-231-1101 Fax 305-231-1103

Series 2600
Sliding Glass Door
LARGE MISSILE

Revision	
No	Description

Date 07.02.16
Scale
Design by G. S.
Drawing by T. S.
Checked by G. S.
Drawing No.
S.G.D-2600-LM
Sheet 8 of 8

APPROVED
PRODUCT REVISED
as complying with the Florida
Building Code
NOA-No. 17-1108.04
Expiration Date 12/13/2022
By *[Signature]*
Miami-Data Product Control

CONSTRUCTION DETAILS
HERMES J. NOBRO
LICENSE
No 73778
STATE OF
FLORIDA
PROFESSIONAL ENGINEER
[Signature]
HERMES J. NOBRO, P.E.
2515 A W 77TH
500 E DANIA BEACH BLVD. #202
DANIA BEACH, FL 33004
ESPE 2387-14 20078