



DEPARTMENT OF REGULATORY AND ECONOMIC RESOURCES (RER)
BOARD AND CODE ADMINISTRATION DIVISION

NOTICE OF ACCEPTANCE (NOA)

MIAMI-DADE COUNTY
PRODUCT CONTROL SECTION
11805 SW 26 Street, Room 208
Miami, Florida 33175-2474
T (786) 315-2590 F (786) 315-2599
www.miamidade.gov/economy

Gordon Sales, Inc.
5023 Hazel Jones Road
Bossier City, LA 71111

SCOPE: This NOA is being issued under the applicable rules and regulations governing the use of construction materials. The documentation submitted has been reviewed and accepted by Miami-Dade County RER-Product Control Section to be used in Miami Dade County and other areas where allowed by the Authority Having Jurisdiction (AHJ).

This NOA shall not be valid after the expiration date stated below. The Miami-Dade County Product Control Section (In Miami Dade County) and/or the AHJ (in areas other than Miami Dade County) reserve the right to have this product or material tested for quality assurance purposes. If this product or material fails to perform in the accepted manner, the manufacturer will incur the expense of such testing and the AHJ may immediately revoke, modify, or suspend the use of such product or material within their jurisdiction. RER reserves the right to revoke this acceptance, if it is determined by Miami-Dade County Product Control Section that this product or material fails to meet the requirements of the applicable building code. This product is approved as described herein, and has been designed to comply with the Florida Building Code, including the High Velocity Hurricane Zone.

DESCRIPTION: Soffit-Shield Aluminum and Steel Siding and Soffit System

APPROVAL DOCUMENT: Drawing No. **P0702745S**, titled "Soffit Shield System and Gordon Soffit System", sheets 1 through 3 of 3, dated 09/11/2007, with last revision S dated 07/17/2018, prepared by Gordon Sales, Inc., signed and sealed by Robert J. McCloy, P.E., bearing the Miami-Dade County Product Control renewal stamp with the Notice of Acceptance number and expiration date by the Miami-Dade County Product Control Section.

MISSILE IMPACT RATING: Large and Small Missile Impact Resistant

LABELING: Each panel shall be permanently marked with a number or marking and the packaging shall include the manufacturer's name, city and state, model number or name, Miami-Dade County NOA number and test standards per FBC 1709.10.2 and 1709.10.3.

RENEWAL of this NOA shall be considered after a renewal application has been filed and there has been no change in the applicable building code negatively affecting the performance of this product.

TERMINATION of this NOA will occur after the expiration date or if there has been a revision or change in the materials, use, and/or manufacture of the product or process. Misuse of this NOA as an endorsement of any product, for sales, advertising or any other purposes shall automatically terminate this NOA. Failure to comply with any section of this NOA shall be cause for termination and removal of NOA.

ADVERTISEMENT: The NOA number preceded by the words Miami-Dade County, Florida, and followed by the expiration date may be displayed in advertising literature. If any portion of the NOA is displayed, then it shall be done in its entirety.

INSPECTION: A copy of this entire NOA shall be provided to the user by the manufacturer or its distributors and shall be available for inspection at the job site at the request of the Building Official.

This NOA **renews NOA #13-0813.24** and consists of this page 1 and evidence pages E-1 and E-2, as well as approval document mentioned above.

The submitted documentation was reviewed by **Carlos M. Utrera, P.E.**



[Handwritten Signature]
08/16/2018

NOA No. 18-0604.05
Expiration Date: August 14, 2023
Approval Date: August 23, 2018
Page 1

NOTICE OF ACCEPTANCE: EVIDENCE SUBMITTED

1. **Evidence submitted under previous NOA's**
- A. **DRAWINGS "Submitted under NOA # 08-0505.07"**
 1. Drawing No. **P0702745R**, titled "Soffit Shield System", sheets 1 through 3 of 3, dated 09/11/2007, with last revision R dated 07/10/2008, prepared by Gordon Sales, Inc., signed and sealed by Robert J. McCloy, P.E.
- B. **TESTS "Submitted under NOA # 08-0505.07"**
 1. Test reports on
 - 1) Air Infiltration Test, per FBC, TAS 202-94
 - 2) Uniform Static Air Pressure Test, Loading per FBC TAS 202-94
 - 3) Water Resistance Test, per FBC, TAS 202-94
 - 4) Large Missile Impact Test per FBC, TAS 201-94
 - 5) Cyclic Wind Pressure Loading per FBC, TAS 203-94along with marked-up drawings and installation diagram of Soffit Shield Panels, prepared by Construction Research Laboratory, Inc., Test Report No. **7228**, dated 04/21/2008, signed and sealed by Nariman S. Balsara, P.E.
- C. **CALCULATIONS "Submitted under NOA # 08-0505.07"**
 1. Structural calculations of the Aluminum Soffit Shield System, prepared by Design Engineering & Construction, Inc, dated 07/10/2008, signed and sealed by Robert J. McCloy, P.E.
- D. **QUALITY ASSURANCE**
 1. Miami-Dade Department of Regulatory and Economic Resources (RER)
- E. **MATERIAL CERTIFICATIONS "Submitted under NOA # 08-0505.07"**
 1. Test report on metallurgical test per ASTM A653 of the Steel Backer Panel, prepared by Nucor Sheet Mill Group, dated 02/22/2008, signed by Shane Beasley.
 2. Test report prepared by Commonwealth Aluminum Metals, LLC, on chemical composition and mechanical properties per ASTM B209 and B557, dated 03/05/2008 and 03/21/2008 and certified by V. Outerbridge and J. Fulkerson respectively.
- F. **STATEMENTS "Submitted under NOA # 13-0813.24"**
 1. Statement letter of code conformance to 2010 FBC issued by Design Engineering & Consulting, Inc., dated 11/21/2013, signed and sealed by Robert J. McCloy, P.E.

"Submitted under NOA # 08-0505.07"

 2. Statement letter of no financial interest issued by Design Engineering & Consulting, Inc., dated 06/12/2008, signed and sealed by Robert J. McCloy, P.E.
 3. Laboratory compliance statement issued by Construction Research Laboratory, Inc. for Test Report No. **7228**, dated 04/21/2008, signed and sealed by Nariman S. Balsara, P.E.



Carlos M. Utrera, P.E.
Product Control Examiner
NOA No. 18-0604.05

Expiration Date: August 14, 2023
Approval Date: August 23, 2018

NOTICE OF ACCEPTANCE: EVIDENCE SUBMITTED

2. New evidence submitted

A. DRAWINGS

1. Drawing No. **P0702745S**, titled "Soffit Shield System and Gordon Soffit System", sheets 1 through 3 of 3, dated 09/11/2007, with last revision S dated 07/17/2018, prepared by Gordon Sales, Inc., signed and sealed by Robert J. McCloy, P.E.

B. TESTS

1. None.

C. CALCULATIONS

1. None.

D. QUALITY ASSURANCE

1. Miami-Dade Department of Regulatory and Economic Resources (RER)

E. MATERIAL CERTIFICATIONS

1. None.

F. STATEMENTS

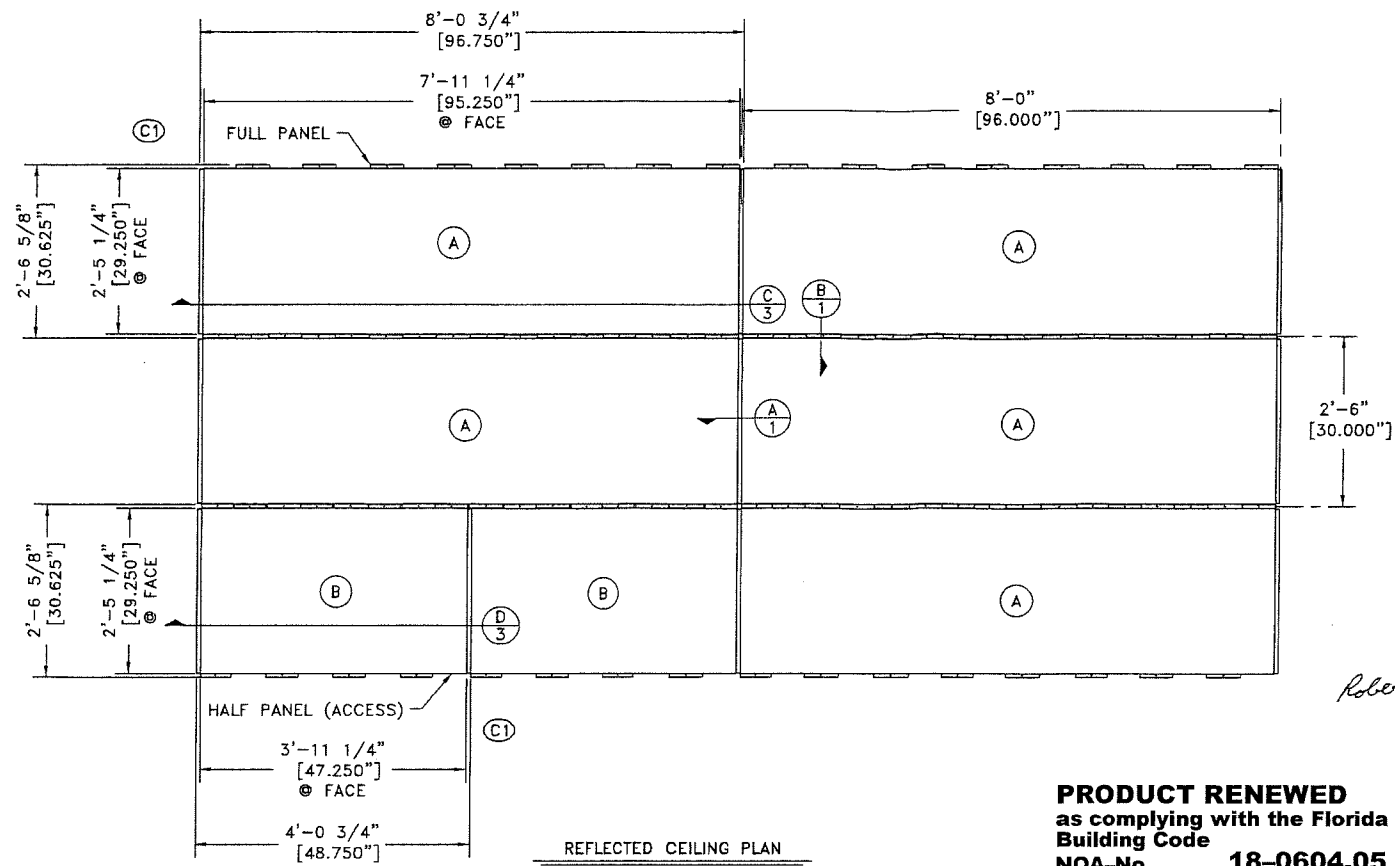
1. Statement letter of code conformance to the 6th edition (2017) FBC issued by Design Engineering & Consulting, Inc., dated 05/08/2018, signed and sealed by Robert J. McCloy, P.E.



Carlos M. Utrera, P.E.
Product Control Examiner
NOA No. 18-0604.05
Expiration Date: August 14, 2023
Approval Date: August 23, 2018

LEGEND

- COMPONENT IDENTIFIER
- PANEL IDENTIFIER
- NOTE REFERENCE
- REVISION REFERENCE
- × ATTACHMENT TO STRUCTURE LOCATION
- ⊙ SECTION LETTER IDENTIFIER
- DIRECTION OF VIEW
- ⊙ SHEET LOCATION OF DETAIL
- ⊙ ELEVATION LETTER IDENTIFIER
- DIRECTION OF VIEW
- ⊙ SHEET LOCATION OF DETAIL



LARGE MISSILE IMPACT (TAS 201)
 THE SPECIMEN WAS IMPACTED WITH A 9lb. SOUTHERN PINE 2 X 4 TRAVELING AT 50 fps AT NINE LOCATIONS SHOWN ON THE IMPACT LOCATION SKETCH

CYCLED PRESSURE (TAS 203)
 THE SPECIMEN WAS SUBJECTED TO CYCLED STATIC PRESSURE STRUCTURAL LOADS WITH EACH CYCLE BEING ONE TO THREE SECONDS IN DURATION, AS FOLLOWS.

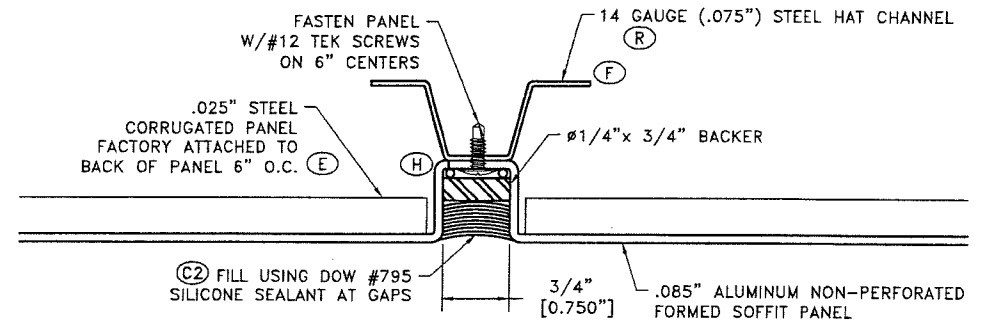
PANELS

POSITIVE LOADS (+125 psf DL)

- 600 @ 0 to 0.5p = 0 to +62.5 psf
- 70 @ 0 to 0.6p = 0 to +75.0 psf
- 1 @ 0 to 1.3p = 0 to +162.5 psf

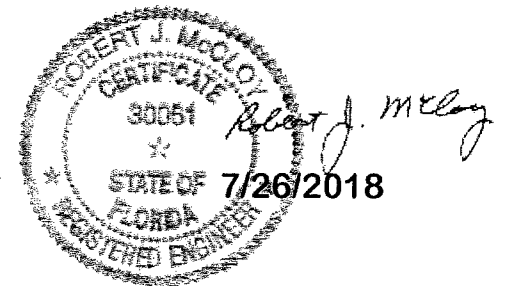
NEGATIVE LOADS (-125 psf DL)

- 600 @ 0 to 0.5p = 0 to -62.5 psf
- 70 @ 0 to 0.6p = 0 to -75.0 psf
- 1 @ 0 to 1.3p = 0 to -162.5 psf

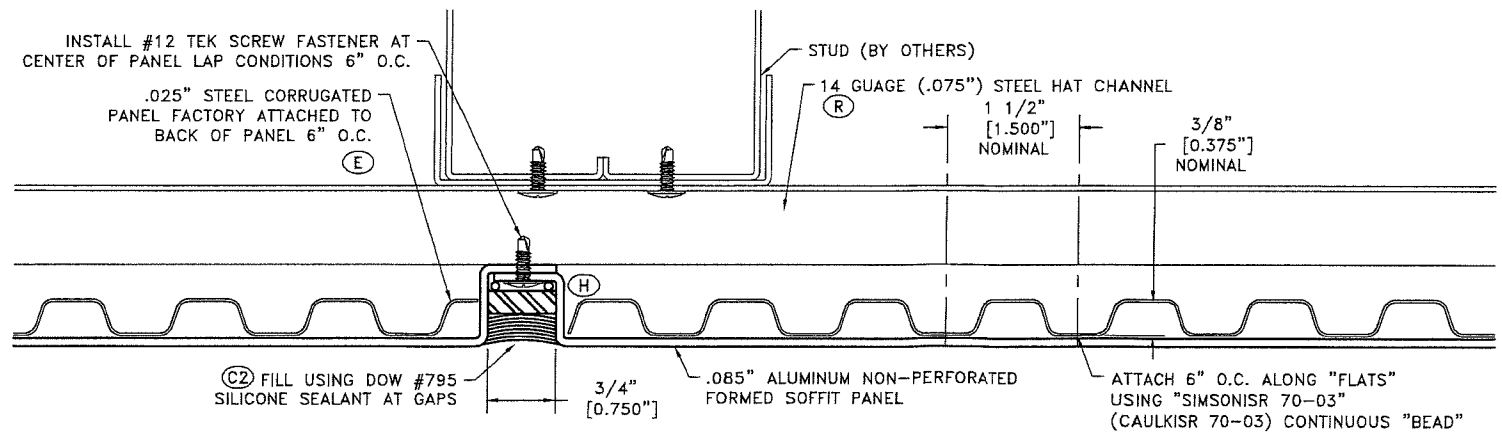


B TYPICAL INTERLOCK REVEAL
 SCALE: FULL

Digitally signed by
 Robert J. McCloy
 DN: cn=Robert J. McCloy, o=Engineered Glazing Systems, ou=Structural Engineer, email=Bob@egsbob.tc, c=US
 Date: 2018.07.26 12:29:59 -04'00'



PRODUCT RENEWED
 as complying with the Florida Building Code
 NOA-No. **18-0604.05**
 Expiration Date **08/14/2023**
 By *[Signature]*
Miami-Dade Product Control



A TYPICAL LAP REVEAL
 SCALE: FULL

GENERAL NOTES:

1. ABBREVIATIONS:
 VIF = VERIFY IN FIELD
 UNO = UNLESS NOTED OTHERWISE
 TYP = TYPICAL
 REF = REFERENCE
 OD = OUTSIDE DIMENSION/DIAMETER
 ID = INSIDE DIMENSION/DIAMETER
2. FRACTIONAL DIMENSIONS REPRESENTED TO 1/8"
 DECIMAL DIMENSIONS REPRESENTED TO .001"
3. ANY HANGER LOCATIONS ARE SUGGESTED, REFER TO ASTM C635-00 & C636-96 AND APPROPRIATE SEISMIC CODES FOR HANGER REQUIREMENTS
4. NON-SYMMETRICAL COMPONENTS MAY BE SUPPLIED WITH AN ADDITIONAL COMPONENT MARK IDENTIFIER NEAR THE END OF THE PART. THIS ADDITIONAL MARK INDICATES THE ADJACENT COMPONENT THAT SHOULD BE CONNECTED TO THE IDENTIFIED END OF SAID COMPONENT AS AN AID FOR PART ORIENTATION.

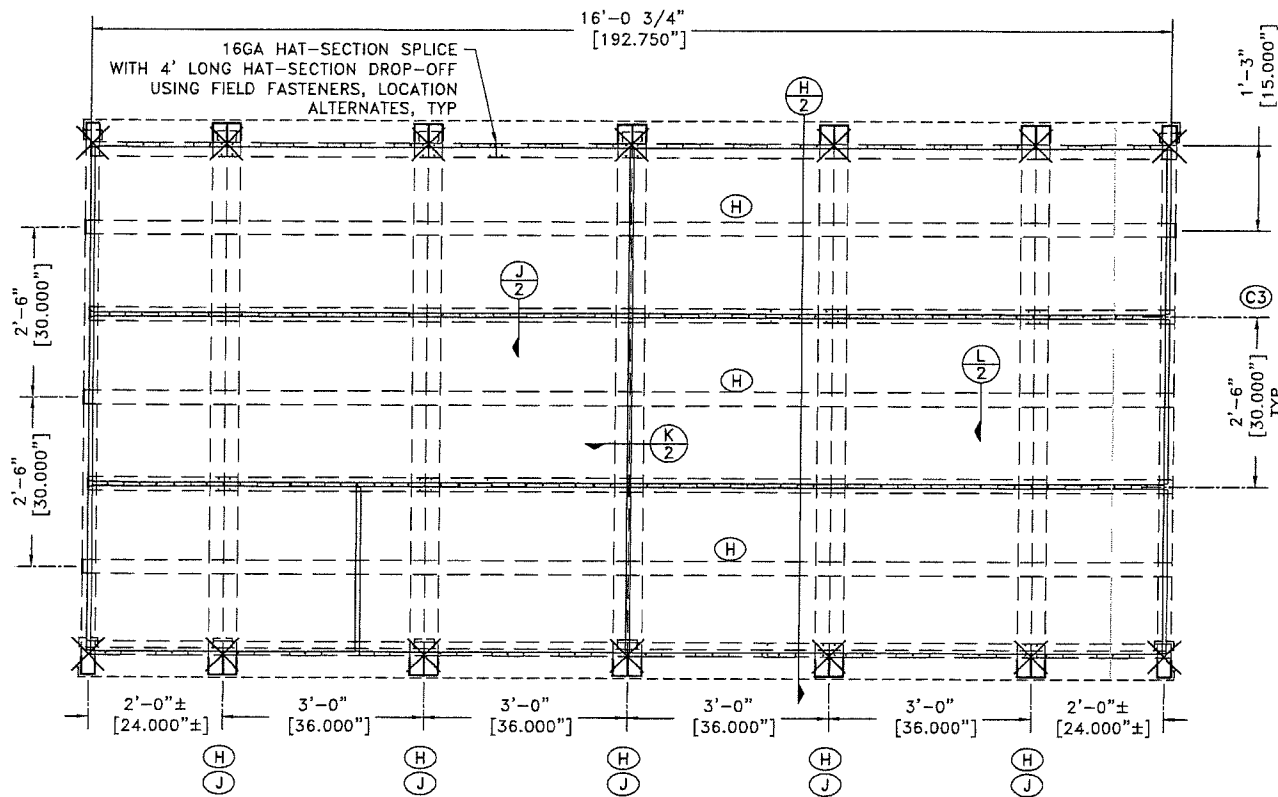
REV	REV DATE	DWN	CKD	CKD DATE	REVISION DESCRIPTION
S	07/17/18	DVA			REMOVED DISCLAIMER. UPDATED TITLE BLOCK
R	7/10/08	TJS			CHANGED .056 STEEL HAT CHANNEL TO 14 GAUGE (.075") STEEL HAT CHANNEL
Q	7/1/08	TJS			ADD AND DELETE NOTES PER CUSTOMER MARKUPS
P	3/17/08	TJS			ADDED TO THE NEW DETAIL N
N	2/29/08	TJS			REVISED DETAIL A AND REMOVED DETAIL G
M	2/29/08	TJS			CHANGE DETAIL M AND ADDED DETAIL N
L	2/25/08	TJS			CHANGE DETAIL M TO MATCH DETAIL H
K	2/19/08	TJS			CHANGED BACKER ROD TO BACKER BLOCK ON DETAIL A,B AND J, AND ADDED SEALANT WHERE NEEDED
J	2/12/08	TJS			ADDED STEEL VERTICAL TRAC TO FRAME PLUS ADDED TWO MORE VERTICAL STUDS AND MOVED STUDS 3'-0" ON CENTER INSTEAD OF 4'-0" ON CENTER
H	01/30/08	TJS			ADDED STUDS TO BACK OF PROFILE/DOUBLED THE MIDDLE STUDS
G	01/03/08	TJS			1 AREA REQUIRED WAS 2 AREAS/ CHANGED SALES ORDER # FROM 44814 TO 45652
F	12/11/07	LJL			UPDATED FRAMING PER MOCKUP AS-BUILT
E	10/27/07	JEL			24 GA STEEL WAS .063" ALUMINUM
D	10/19/07	JEL			2 AREAS REQUIRED WAS 3 AREAS
C4	10/16/07	LJL			3 AREAS REQUIRED WAS 1 AREA
C3	10/16/07	LJL			CHANGED DIMENSIONS TO BEAMS FROM OD TO ID
C2	10/15/07	LJL			REMOVED "IF DESIRED" FROM CAULKING NOTES
C1	10/15/07	LJL			MOVED DETAILED PANELS INTO INSTALLED LOCATIONS
B	10/08/07	JEL			REVISED PER MARK-UPS
A	10/04/07	JEL			ADDED SHEET 2 - FRAMING PLAN

GORDON SALES, INC.
 5023 HAZEL JONES ROAD, BOSSIER CITY, LA 71111
 800.747.8954
 800.877.8746 FAX
 SALES@GORDON-INC.COM
 GORDON-INC.COM

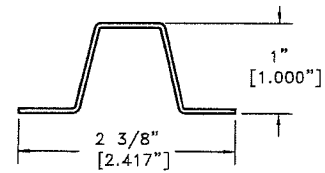
SALES CODE	JOB NAME	REV	REV DATE	DWN	CKD	CKD DATE	REVISION DESCRIPTION		
SALES DIE #	CUSTOMER	COMP DATE	DRAWN BY	APRVD BY	REL DATE	DRAWING SCALE	PLOTTED SCALE	SOFTWARE USED	REVISION
ARCHITECT	SHEET TITLE	9/11/07	LJL	RRR	07/19/18	3/4" = 1'-0"	1:2	AutoCAD	S
		SHEET		SALES ORDER	PATH & DRAWING NUMBER				
		1 of 3		46114	H:\DWG\LAYOUTS\PANELS\GORDON SOFFIT & FASCIA SYSTEM - 45852				

SOFFIT SHIELD SYSTEM

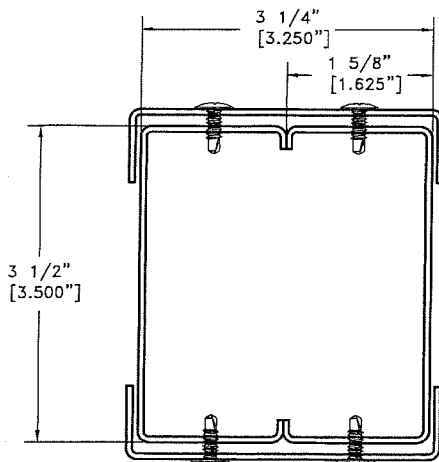
P0702745S



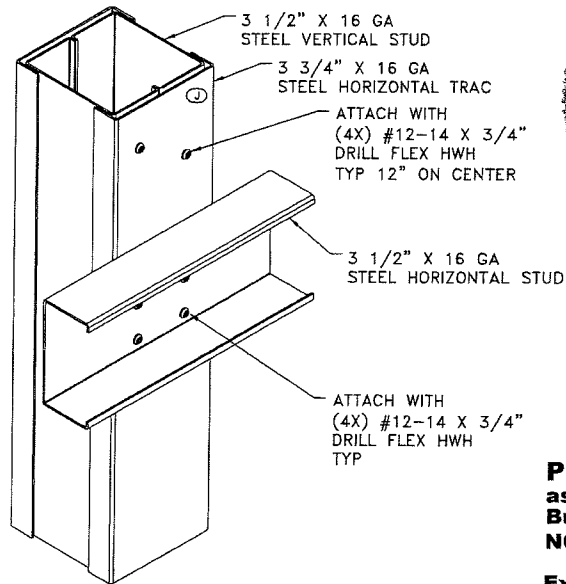
FRAMING PLAN (FACTORY ASSEMBLED)
1 AREAS REQUIRED



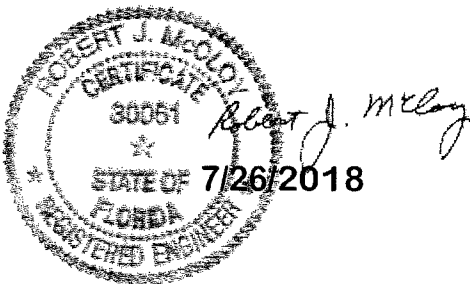
14 GAUGE (.075") STEEL HAT-SECTION
SCALE: FULL



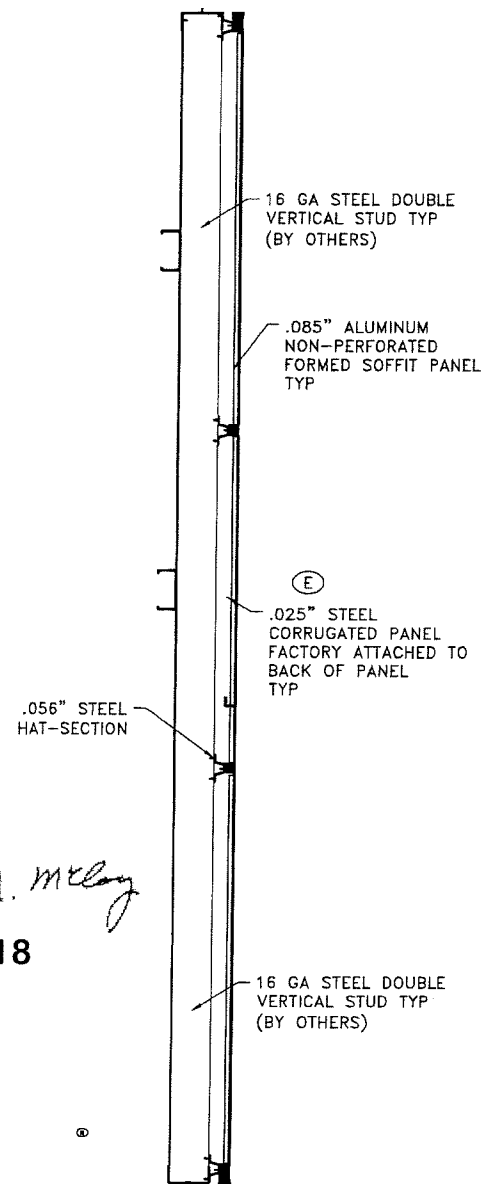
16 GA STEEL STUD (BY OTHERS)
SCALE: FULL



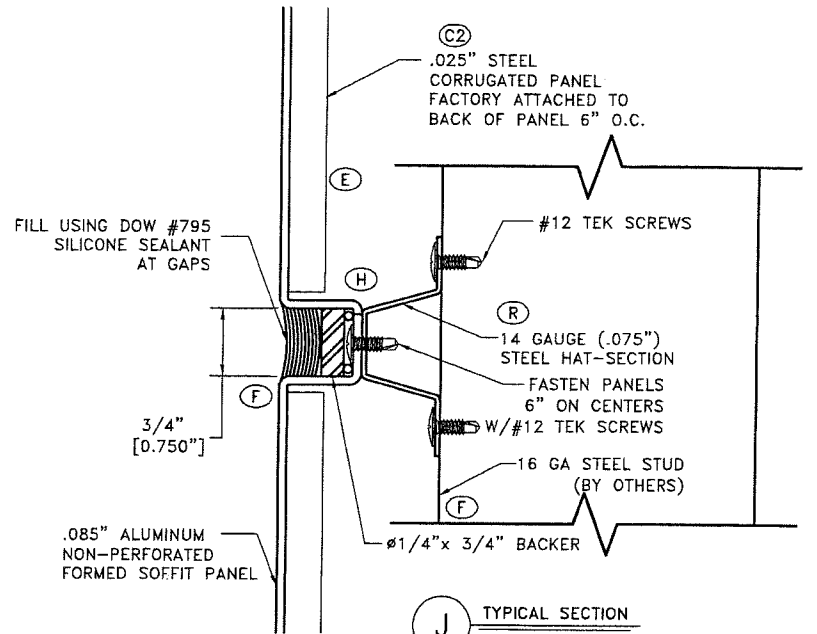
L TYPICAL CONNECTION FOR BEHIND STUDS (BY OTHERS)
NOT TO SCALE



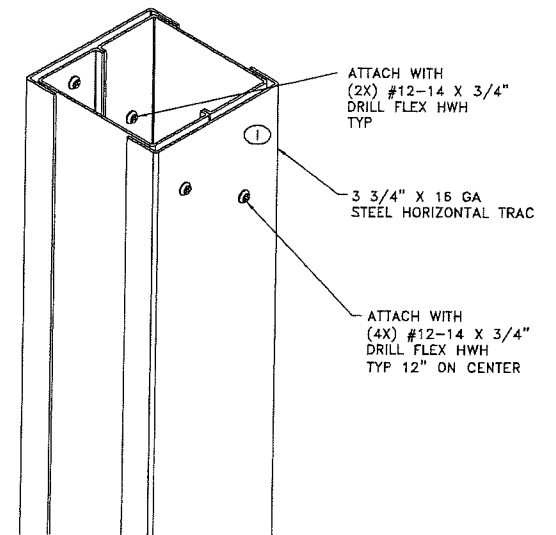
PRODUCT RENEWED
as complying with the Florida
Building Code
NOA-No. **18-0604.05**
Expiration Date **08/14/2023**
By *[Signature]*
Miami-Dade Product Control



H TYPICAL SECTION
SCALE: 1 1/2" = 1'-0"



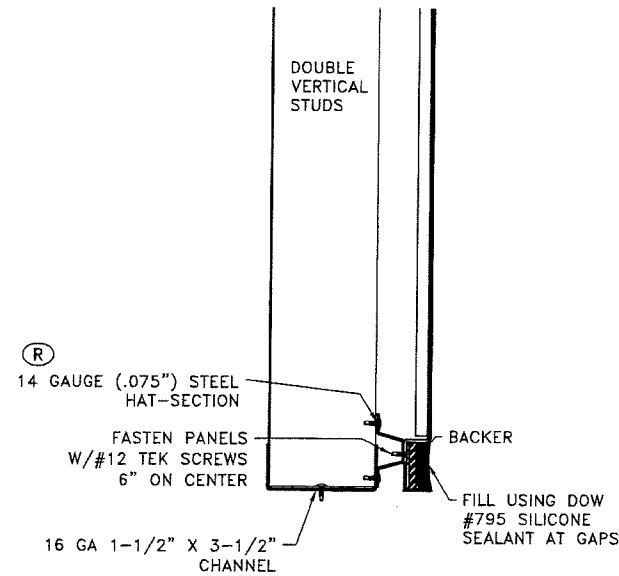
J TYPICAL SECTION
SCALE: FULL



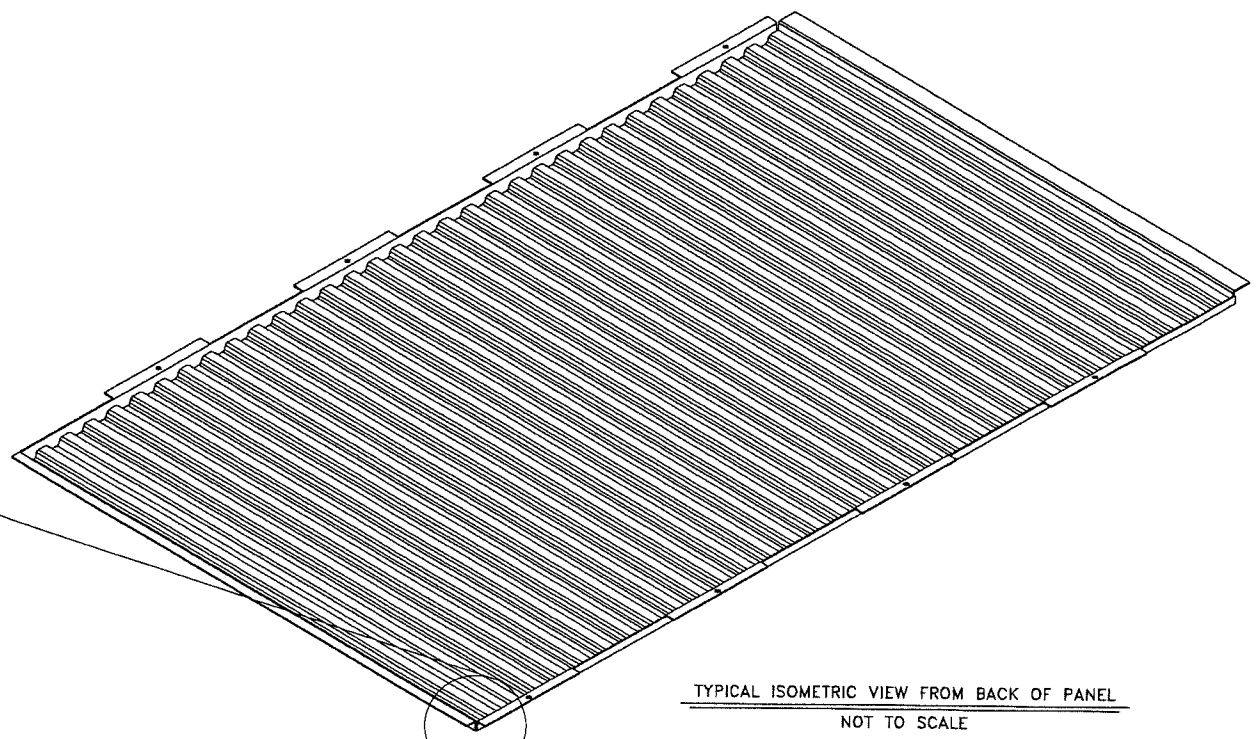
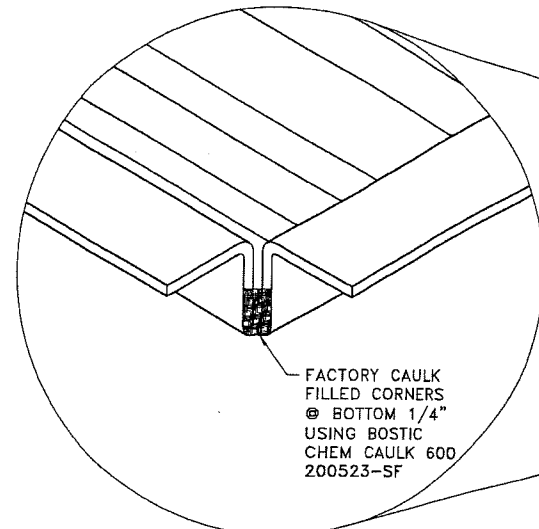
TYPICAL CONNECTION AT TUBE STEEL
NOT TO SCALE

GORDON
SALES, INC.
5023 HAZEL JONES ROAD, BOSSIER CITY, LA 71111
800.747.8954
800.877.8746 FAX
SALES@GORDON-INC.COM
GORDON-INC.COM

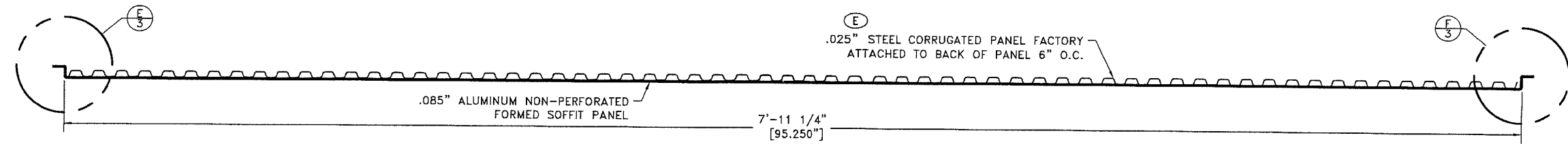
SALES CODE	JOB NAME	SEE SHEET 1 FOR NOTE & REVISION DESCRIPTIONS							
SALES DIE #	CUSTOMER	COMP DATE	DRAWN BY	APRVD BY	REL DATE	DRAWING SCALE	PLOTTED SCALE	SOFTWARE USED	REVISION
	GORDON	9/11/07	LJL	RRR	07/19/18	3/4" = 1'-0"	1:2	AutoCAD	S
ARCHITECT	SHEET TITLE	SHEET	SALES ORDER	PATH & DRAWING NUMBER					
	GORDON SOFFIT SYSTEM	2 OF 3	46114	H:\DWG\LAYOUTS\PANELS\GORDON SOFFIT & FASCIA SYSTEM 45852					
			P0702745S						



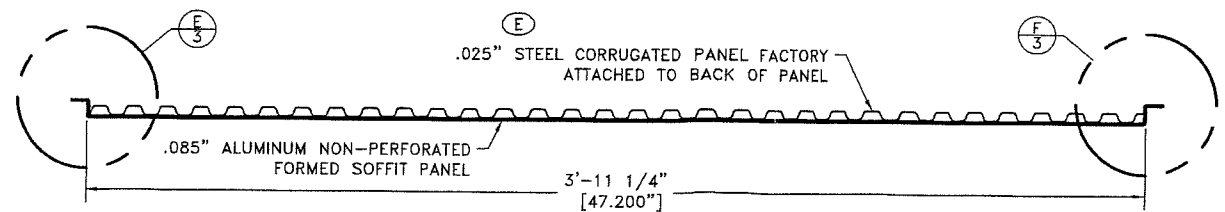
M BASE DETAIL
SCALE: 1:3



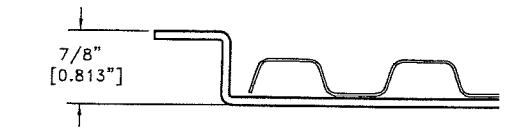
TYPICAL ISOMETRIC VIEW FROM BACK OF PANEL
NOT TO SCALE



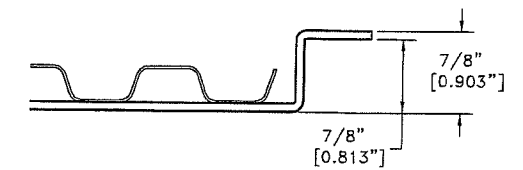
C TYPICAL SECTION THROUGH FULL PANEL A
SCALE: 3" = 1'-0"



D TYPICAL SECTION THROUGH HALF PANEL B
SCALE: 3" = 1'-0"

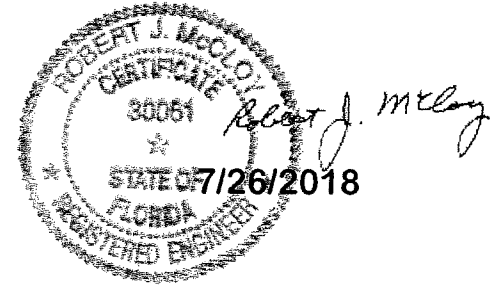


E PANEL FLANGE DETAIL
SCALE: FULL



F PANEL FLANGE DETAIL
SCALE: FULL

PRODUCT RENEWED
as complying with the Florida
Building Code
NOA-No. **18-0604.05**
Expiration Date **08/14/2023**
By *[Signature]*
Miami-Dade Product Control



GORDON SALES, INC.	5023 HAZEL JONES ROAD, BOSSIER CITY, LA 71111	SALES CODE	JOB NAME	SEE SHEET 1 FOR NOTE & REVISION DESCRIPTIONS							
	800.747.8954 800.877.8746 FAX SALES@GORDON-INC.COM GORDON-INC.COM	SALES DIE #	CUSTOMER GORDON	COMP DATE 9/11/07	DRAWN BY LJL	APRVD BY RRR	REL DATE 07/19/18	DRAWING SCALE 3/4" = 1'-0"	PLOTTED SCALE 1:2	SOFTWARE USED AutoCAD	REVISION S
		ARCHITECT	SHEET TITLE SECTIONS & DETAILS	SHEET 3 OF 3	SALES ORDER 46114	PATH & DRAWING NUMBER H:\DWG\LAYOUTS\ PANELS\GORDON SOFFIT & FASCIA SYSTEM - 45652				P0702745S	