



DEPARTMENT OF REGULATORY AND ECONOMIC RESOURCES (RER)
BOARD AND CODE ADMINISTRATION DIVISION

NOTICE OF ACCEPTANCE (NOA)

MIAMI-DADE COUNTY
PRODUCT CONTROL SECTION

11805 SW 26 Street, Room 208
T (786) 315-2590 F (786) 315-2599

www.miamidade.gov/economy

WinDoor, Inc.

7500 Amsterdam Drive

Orlando, FL 32832

SCOPE:

This NOA is being issued under the applicable rules and regulations governing the use of construction materials. The documentation submitted has been reviewed and accepted by Miami-Dade County RER - Product Control Section to be used in Miami Dade County and other areas where allowed by the Authority Having Jurisdiction (AHJ).

This NOA shall not be valid after the expiration date stated below. The Miami-Dade County Product Control Section (In Miami-Dade County) and/or the AHJ (in areas other than Miami-Dade County) reserve the right to have this product or material tested for quality assurance purposes. If this product or material fails to perform in the accepted manner, the manufacturer will incur the expense of such testing and the AHJ may immediately revoke, modify, or suspend the use of such product or material within their jurisdiction. RER reserves the right to revoke this acceptance, if it is determined by Miami-Dade County Product Control Section that this product or material fails to meet the requirements of the applicable building code.

This product is approved as described herein, and has been designed to comply with the Florida Building Code, including the High Velocity Hurricane Zone.-

DESCRIPTION: Series "4070" Aluminum Horizontal Rolling Window - L.M.I.

APPROVAL DOCUMENT: Drawing No. **08-01969**, titled "4070 Horizontal Rolling Window – XO, XO & OX", sheets 1 through 15 of 15, dated 03/22/13, with revision **C** dated 12/04/17, prepared by manufacturer, signed and sealed by Luis R. Lomas, P.E., bearing the Miami-Dade County Product Control Renewal stamp with the Notice of Acceptance number and expiration date by the Miami-Dade County Product Control Section.

MISSILE IMPACT RATING: Large and Small Missile Impact Resistant

LABELING: Each unit shall bear a permanent label with the manufacturer's name or logo, city, state, series, and following statement: "Miami-Dade County Product Control Approved", unless otherwise noted herein.

RENEWAL of this NOA shall be considered after a renewal application has been filed and there has been no change in the applicable building code negatively affecting the performance of this product.

TERMINATION of this NOA will occur after the expiration date or if there has been a revision or change in the materials, use, and/or manufacture of the product or process. Misuse of this NOA as an endorsement of any product, for sales, advertising or any other purposes shall automatically terminate this NOA. Failure to comply with any section of this NOA shall be cause for termination and removal of NOA.

ADVERTISEMENT: The NOA number preceded by the words Miami-Dade County, Florida, and followed by the expiration date may be displayed in advertising literature. If any portion of the NOA is displayed, then it shall be done in its entirety.

INSPECTION: A copy of this entire NOA shall be provided to the user by the manufacturer or its distributors and shall be available for inspection at the job site at the request of the Building Official.

This NOA **renews** NOA No. **17-1219.17** and consists of this page 1 and evidence pages E-1 and E-2, as well as approval document mentioned above.

The submitted documentation was reviewed by **Sifang Zhao, P.E.**



S. Z.
01/17/2019

NOA No. 18-1120.02
Expiration Date: January 23, 2024
Approval Date: January 17, 2019
Page 1

NOTICE OF ACCEPTANCE: EVIDENCE SUBMITTED

1. EVIDENCE SUBMITTED UNDER PREVIOUS NOAs

A. DRAWINGS

1. Manufacturer's die drawings and sections. *(Submitted under NOA No. 13-0624.04)*
2. Drawing No. **08-01969**, titled "4070 Horizontal Rolling Window – XOX, XO & OX", sheets 1 through 15 of 15, dated 03/22/13, with revision **B** dated 07/14/15, prepared by manufacturer, signed and sealed by Luis R. Lomas, P.E.

B. TESTS

1. Test reports on:
 - 1) Air Infiltration Test, per FBC, TAS 202-94
 - 2) Uniform Static Air Pressure Test, Loading per FBC, TAS 202-94
 - 3) Water Resistance Test, per FBC, TAS 202-94
 - 4) Forced Entry Test, per FBC 2411.3.2.1, and TAS 202-94
 - 5) Large Missile Impact Test per FBC, TAS 201-94
 - 6) Cyclic Wind Pressure Loading per FBC, TAS 203-94along with marked-up drawings and installation diagram of a series 4070 aluminum horizontal rolling window, prepared by National Certified Testing Laboratories, Inc. Test Report No. **NCTL-210-3848-24**, dated 03/14/13, and revised on 10/23/13, signed and sealed by Gerard J. Ferrara, P.E. *(Submitted under NOA No. 13-0624.04)*

C. CALCULATIONS

1. Anchor verification, complying with **FBC 6th edition (2017)**, dated 12/04/17, prepared, signed and sealed by Luis R. Lomas, P.E.
2. Glazing complies with **ASTM E1300-04/09**

D. QUALITY ASSURANCE

1. Miami-Dade Department of Regulatory and Economic Resources (RER).

E. MATERIAL CERTIFICATIONS

1. NOA No. **17-1114.14** issued to **Kuraray America, Inc.** for their "**Kuraray Trosifol® Ultraclear, clear and color PVB Interlayer**" dated 01/18/18, expiring on 07/08/19.
2. NOA No. **17-0808.02** issued to **Kuraray America, Inc.** for their "**SentryGlas® (Clear and White) Glass Interlayers**" dated 12/28/17, expiring on 07/04/23.

F. STATEMENTS

1. Statement letter of conformance, complying with **FBC 6th Edition (2017)**, and of no financial interest, dated 11/29/2017, issued, signed and sealed by Luis R. Lomas, P.E.
2. Laboratory addendum letter dated 10/23/13 and Laboratory compliance letter dated 03/14/13 for Test Report No. **NCTL-210-3848-24**, issued by National Certified Testing Laboratories, Inc., signed and sealed by Gerard J. Ferrara, P.E. *(Submitted under NOA No. 13-0624.04)*



Sifang Zhao, P.E.
Product Control Examiner
NOA No. 18-1120.02

Expiration Date: January 23, 2024
Approval Date: January 17, 2019

NOTICE OF ACCEPTANCE: EVIDENCE SUBMITTED

G. OTHERS

1. Notice of Acceptance No. **15-0723.08**, issued to WinDoor, Inc. for their Series “4070” Aluminum Horizontal Rolling Window - L.M.I. approved on 08/25/2016 and expiring on 01/23/19.

2. NEW EVIDENCE SUBMITTED

A. DRAWINGS

1. None.

B. TESTS

1. None.

C. CALCULATIONS

1. None.

D. QUALITY ASSURANCE

1. Miami-Dade Department of Regulatory and Economic Resources (RER).

E. MATERIAL CERTIFICATIONS

1. None.

F. STATEMENTS

1. Statement letter of conformance, complying with **FBC 6th Edition (2017)**, and of no financial interest, dated 11/09/2018, issued, signed and sealed by A. Lynn Miller, P.E.

G. OTHERS

1. Notice of Acceptance No. **17-1219.17**, issued to WinDoor, Inc. for their Series “4070” Aluminum Horizontal Rolling Window - L.M.I. approved on 03/08/2018 and expiring on 01/23/19.



Sifang Zhao, P.E.

Product Control Examiner

NOA No. 18-1120.02

Expiration Date: January 23, 2024

Approval Date: January 17, 2019


REVISIONS			
REV	DESCRIPTION	DATE	APPROVED
C	REVISED PER NEW REQUIREMENTS	11/29/17	R.L.

NOTES:

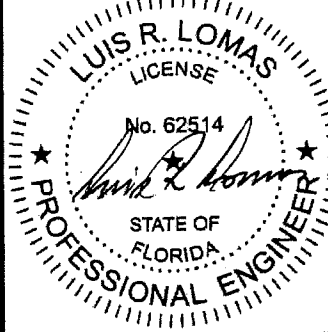
1. THE PRODUCT SHOWN HEREIN IS DESIGNED AND MANUFACTURED TO COMPLY WITH REQUIREMENTS OF THE FLORIDA BUILDING CODE 6th. EDITION (2017) INCLUDING THE HVHZ.
2. WOOD FRAMING AND MASONRY OPENING TO BE DESIGNED AND ANCHORED TO PROPERLY TRANSFER ALL LOADS TO STRUCTURE. FRAMING AND MASONRY OPENING IS THE RESPONSIBILITY OF THE ARCHITECT OR ENGINEER OF RECORD.
3. 1X BUCK OVER MASONRY/CONCRETE IS OPTIONAL.
4. WHERE SHIM OR BUCK THICKNESS IS LESS THAN 1-1/2" WINDOW UNITS MUST BE ANCHORED THROUGH THE FRAME IN ACCORDANCE WITH MANUFACTURER'S PUBLISHED INSTALLATION INSTRUCTIONS. ANCHORS SHALL BE SECURELY FASTENED DIRECTLY INTO MASONRY, CONCRETE OR OTHER STRUCTURAL SUBSTRATE MATERIAL.
5. WHERE WOOD BUCK THICKNESS IS 1-1/2" OR GREATER, BUCK SHALL BE SECURELY FASTENED TO MASONRY, CONCRETE OR OTHER STRUCTURAL SUBSTRATE. WINDOW UNITS MAY BE ANCHORED THROUGH FRAME TO SECURED WOOD BUCK IN ACCORDANCE WITH MANUFACTURER'S PUBLISHED INSTALLATION INSTRUCTIONS.
6. WHERE 1X BUCK IS NOT USED DISSIMILAR MATERIALS MUST BE SEPARATED WITH APPROVED COATING OR MEMBRANE. SELECTION OF COATING OR MEMBRANE IS THE RESPONSIBILITY OF THE ARCHITECT OR ENGINEER OF RECORD.
7. BUCKS SHALL EXTEND BEYOND WINDOW INTERIOR FACE SO THAT FULL FRAME SUPPORT IS PROVIDED.
8. SHIM AS REQUIRED AT EACH INSTALLATION ANCHOR WITH LOAD BEARING SHIM. SHIM WHERE SPACE OF 1/16" OR GREATER OCCURS. MAXIMUM ALLOWABLE SHIM STACK TO BE 1/4".
9. SHIMS SHALL BE MADE FROM MATERIALS CAPABLE OF SUSTAINING APPLICABLE LOADS, LOCATED AND APPLIED IN A THICKNESS CAPABLE OF SUSTAINING APPLICABLE LOADS.
10. WIND LOAD DURATION FACTOR Cd=1.6 WAS USED FOR WOOD ANCHOR CALCULATIONS.
11. FRAME MATERIAL: ALUMINUM 6063-T6.
12. UNITS MUST BE GLAZED PER ASTM E1300-04/09, SEE SHEET 8 FOR GLASS DETAILS.
13. APPROVED IMPACT PROTECTIVE SYSTEM IS NOT REQUIRED FOR THIS PRODUCT IN WIND BORNE DEBRIS REGIONS.
14. FOR ANCHORING INTO WOOD FRAMING OR 2X BUCK USE #14 WOOD SCREWS WITH SUFFICIENT LENGTH TO ACHIEVE A 1 7/16" MINIMUM EMBEDMENT INTO SUBSTRATE WITH 1" MINIMUM EDGE DISTANCE. LOCATE ANCHORS AS SHOWN IN ELEVATIONS AND INSTALLATION DETAILS.

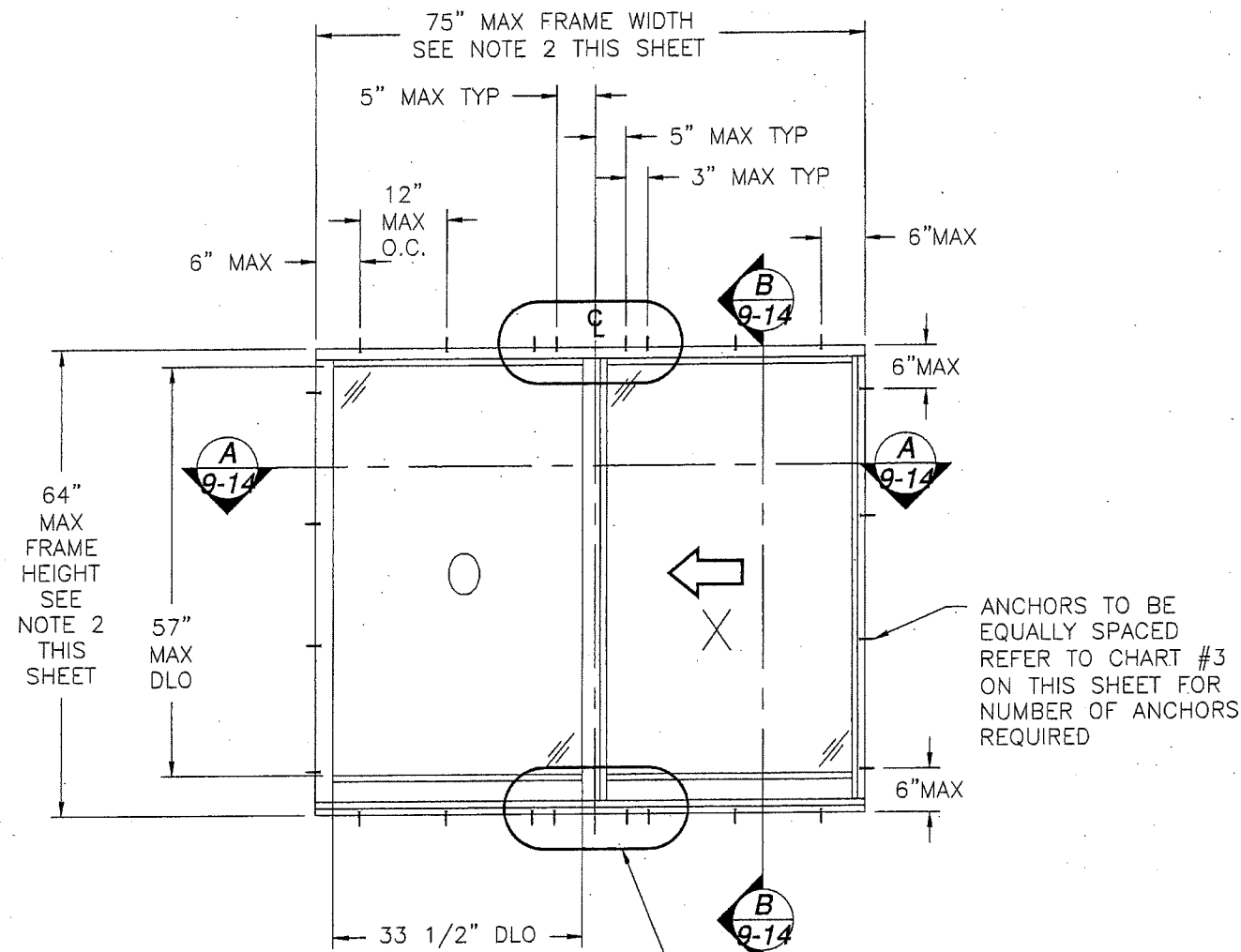
15. FOR ANCHORING INTO MASONRY/CONCRETE USE 1/4" ELCO CRETE-FLEX SS4 WITH SUFFICIENT LENGTH TO ACHIEVE A 1 1/4" MINIMUM EMBEDMENT INTO SUBSTRATE WITH 2 1/2" MINIMUM EDGE DISTANCE. LOCATE ANCHORS AS SHOWN IN ELEVATIONS AND INSTALLATION DETAILS.
16. FOR ANCHORING INTO METAL STRUCTURE USE GRADE 5 #14 SMS OR SELF DRILLING SCREWS WITH SUFFICIENT LENGTH TO ACHIEVE 3 THREADS MINIMUM BEYOND STRUCTURE INTERIOR WALL. LOCATE ANCHORS AS SHOWN IN ELEVATIONS AND INSTALLATION DETAILS.
17. ALL FASTENERS TO BE CORROSION RESISTANT.
18. INSTALLATION ANCHORS SHALL BE INSTALLED IN ACCORDANCE WITH ANCHOR MANUFACTURER'S INSTALLATION INSTRUCTIONS AND ANCHORS SHALL NOT BE USED IN SUBSTRATES WITH STRENGTHS LESS THAN THE MINIMUM STRENGTH SPECIFIED BELOW:
 - A. WOOD - MINIMUM SPECIFIC GRAVITY OF G=0.42
 - B. CONCRETE - MINIMUM COMPRESSIVE STRENGTH OF 3,350 PSI.
 - C. MASONRY - STRENGTH CONFORMANCE TO ASTM C-90, WITH Fm= 2,000 PSI. MINIMUM.
 - D. METAL STRUCTURE: STEEL 18GA, 33KSI OR ALUMINUM 6063-T5 1/8" THICK MINIMUM.
19. APPROVED CONFIGURATIONS: OX, XO, XOX.

TABLE OF CONTENTS	
SHEET NO.	DESCRIPTION
1	NOTES
2 - 7	ELEVATIONS AND ANCHORING
8 - 10	B.O.M, GLAZING DETAILS AND CROSS SECTIONS
11 -14	INSTALLATION DETAILS
15	COMPONENTS

PRODUCT RENEWED as complying with the Florida Building Code NOA-No. 18-1120.02 Expiration Date Jan 23, 2024 By  Miami-Dade Product Control	WinDoor INCORPORATED		7500 AMSTERDAM DRIVE ORLANDO, FL 32832 Phone: 407.481.8400 Fax: 407.481.0505 www.windoorinc.com	
	4070 HORIZONTAL ROLLING WINDOW XOX, XO & OX NOTES			
	DRAWN: V.L.	DWG NO. 08-01969	REV C	
	SCALE NTS	DATE 3/22/2013	SHEET 1 OF 15	

SIGNED: 02/19/2018





4070 HORIZONTAL ROLLING WINDOW
XO EQUAL LITE
 EXTERIOR VIEW

FOR METAL AND MASONRY/CONCRETE INSTALLATION

DESIGN PRESSURE RATING	IMPACT RATING
±80.0PSF	LARGE AND SMALL MISSILE IMPACT

MISSILE LEVEL D, WIND ZONE 4, AND HVHZ
 WITH GLASS A & B
 SEE CHARTS 1 AND 3

FOR WOOD INSTALLATION

DESIGN PRESSURE RATING	IMPACT RATING
±63.1PSF	LARGE AND SMALL MISSILE IMPACT

MISSILE LEVEL D, WIND ZONE 4, AND HVHZ
 WITH GLASS A & B
 SEE CHARTS 2 AND 3

- WEEP HOLES:
- ONE WEEP SLOT LOCATED 9" FROM EACH END ON SILL FRAME.
 - DIMENSIONS SHOWN DO NOT INCLUDE FLANGE. FOR UNITS WITH FLANGE FRAME ADD 1-1/4" TO OVERALL DIMENSIONS.

REVISIONS			
REV	DESCRIPTION	DATE	APPROVED
C	REVISED PER NEW REQUIREMENTS	11/29/17	R.L.

CHART #1
 FOR METAL, AND MASONRY/CONCRETE INSTALLATION

Maximum design pressure (psf)										
Frame Height (in)	Frame Width (in)									
	36.00		48.00		60.00		72.00		75.00	
	Pos	Neg	Pos	Neg	Pos	Neg	Pos	Neg	Pos	Neg
30.0	80.0	90.0	80.0	90.0	80.0	90.0	80.0	90.0	80.0	90.0
36.0	80.0	90.0	80.0	90.0	80.0	90.0	80.0	90.0	80.0	90.0
42.0	80.0	90.0	80.0	90.0	80.0	90.0	80.0	90.0	80.0	90.0
48.0	80.0	90.0	80.0	90.0	80.0	90.0	80.0	90.0	80.0	90.0
54.0	80.0	90.0	80.0	90.0	80.0	90.0	80.0	90.0	80.0	90.0
60.0	80.0	90.0	80.0	90.0	80.0	90.0	80.0	89.8	80.0	87.8
64.0	80.0	90.0	80.0	90.0	80.0	90.0	80.0	82.0	80.0	80.0

CHART #2
 FOR WOOD INSTALLATION

Maximum design pressure (psf)										
Frame Height (in)	Frame Width (in)									
	36.00		48.00		60.00		72.00		75.00	
	Pos	Neg	Pos	Neg	Pos	Neg	Pos	Neg	Pos	Neg
30.0	80.0	90.0	80.0	90.0	80.0	90.0	80.0	85.0	79.4	79.4
36.0	80.0	90.0	80.0	90.0	80.0	90.0	80.0	82.7	76.3	76.3
42.0	80.0	90.0	80.0	90.0	80.0	90.0	80.0	82.7	76.2	76.2
48.0	80.0	90.0	80.0	90.0	80.0	90.0	80.0	82.7	76.2	76.2
54.0	80.0	90.0	80.0	90.0	80.0	90.0	80.0	82.7	76.2	76.2
60.0	80.0	90.0	80.0	90.0	79.4	79.4	70.9	70.9	69.3	69.3
64.0	80.0	90.0	80.0	85.8	72.9	72.9	64.7	64.7	63.1	63.1

CHART #3

Number of anchor locations required															
Frame Height (in)	Frame width (in)														
	36.00			48.00			60.00			72.00			75.00		
	H&S	Jamb	Mull H&S	H&S	Jamb	Mull H&S	H&S	Jamb	Mull H&S	H&S	Jamb	Mull H&S	H&S	Jamb	Mull H&S
30.00	1	3	4	1	3	4	2	3	4	2	3	4	2	3	4
36.00	1	3	4	1	3	4	2	3	4	2	3	4	2	3	4
42.00	1	3	4	1	3	4	2	3	4	2	3	4	2	3	4
48.00	1	4	4	1	4	4	2	4	4	2	4	4	2	4	4
54.00	1	4	4	1	4	4	2	4	4	2	4	4	2	4	4
60.00	1	4	4	1	4	4	2	4	4	2	4	4	2	4	4
64.00	1	4	4	1	4	4	2	4	4	2	4	4	2	4	4

SIGNED: 02/19/2018

PRODUCT RENEWED as complying with the Florida Building Code NOA-No. 18-1120.02 Expiration Date Jan 23, 2024 By <i>[Signature]</i> Miami-Dade Product Control	WinDoor INCORPORATED 7500 AMSTERDAM DRIVE ORLANDO, FL 32832 Phone: 407.481.8400 Fax: 407.481.0505 www.windoorinc.com			
	4070 HORIZONTAL ROLLING WINDOW XO, XO & OX OX, OX ELEVATION			
	DRAWN: V.L. SCALE NTS	DWG NO. 08-01969 DATE 3/22/2013		REV C SHEET 2 OF 15

REVISIONS			
REV	DESCRIPTION	DATE	APPROVED
C	REVISED PER NEW REQUIREMENTS	11/29/17	R.L.

CHART #4
FOR METAL AND MASONRY/CONCRETE INSTALLATION

Maximum design pressure (psf)										
Frame Height (in)	Frame Width (in)									
	36.00		48.00		60.00		72.00		75.00	
	Pos	Neg	Pos	Neg	Pos	Neg	Pos	Neg	Pos	Neg
42.0	90.0	150.0	90.0	150.0	90.0	150.0	90.0	150.0	90.0	150.0
48.0	90.0	150.0	90.0	150.0	90.0	150.0	90.0	150.0	90.0	150.0
54.0	90.0	150.0	90.0	150.0	90.0	150.0	90.0	150.0	90.0	150.0
60.0	90.0	150.0	90.0	150.0	90.0	150.0	90.0	150.0	90.0	150.0
66.0	90.0	150.0	90.0	150.0	90.0	150.0	90.0	150.0	90.0	150.0
72.0	90.0	150.0	90.0	150.0	90.0	150.0	90.0	138.6	90.0	134.9
74.0	90.0	150.0	90.0	150.0	90.0	150.0	90.0	133.6	90.0	130.0

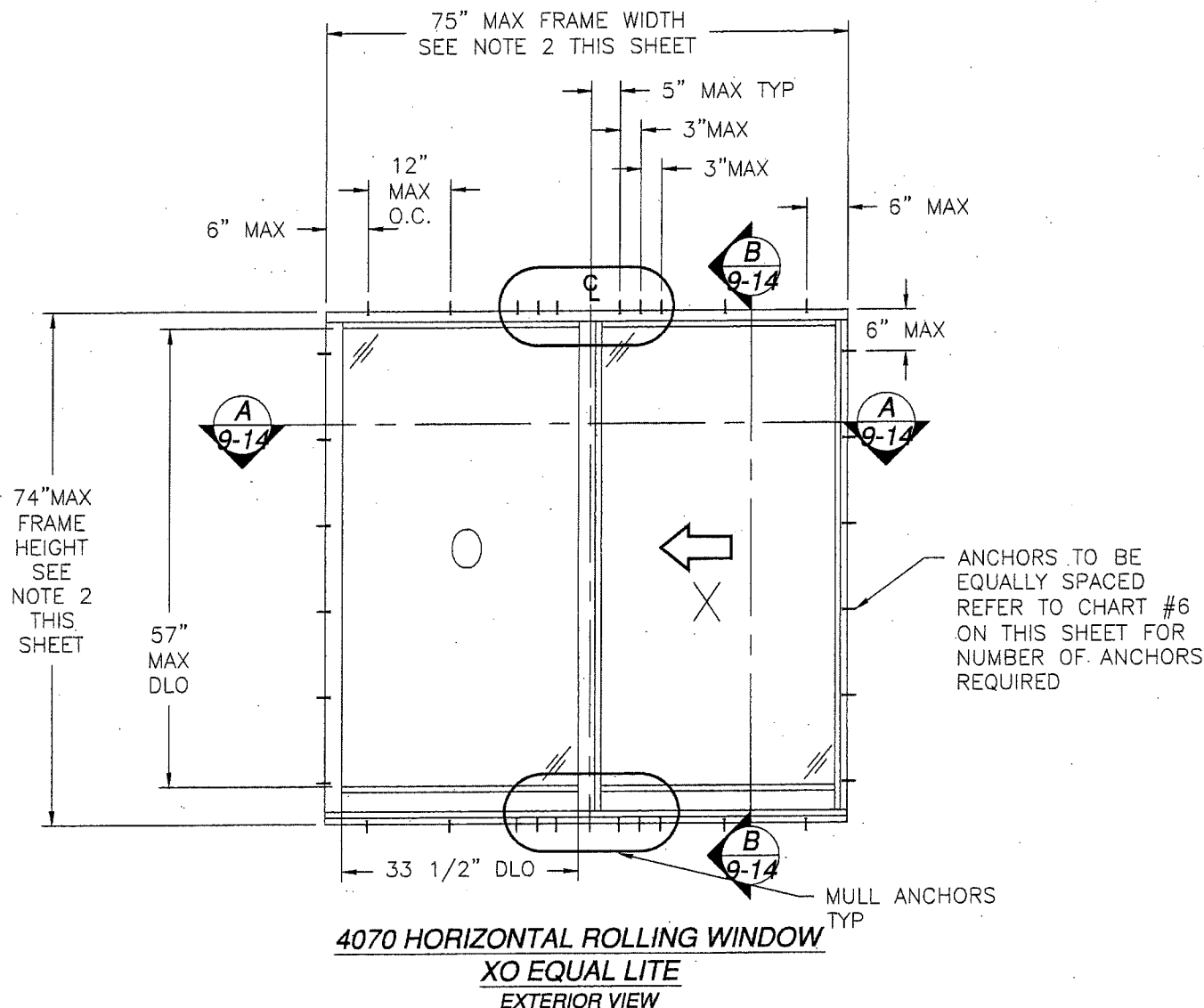
CHART #5
FOR WOOD INSTALLATION

Maximum design pressure (psf)										
Frame Height (in)	Frame Width (in)									
	36.00		48.00		60.00		72.00		75.00	
	Pos	Neg	Pos	Neg	Pos	Neg	Pos	Neg	Pos	Neg
42.0	90.0	150.0	90.0	93.0	90.0	119.0	90.0	124.0	90.0	114.3
48.0	90.0	150.0	90.0	93.0	90.0	108.2	90.0	99.2	90.0	97.7
54.0	90.0	132.3	90.0	93.0	90.0	91.6	90.0	103.3	90.0	101.3
60.0	90.0	116.7	90.0	93.0	90.0	99.2	88.6	88.6	86.6	86.6
66.0	90.0	104.4	90.0	93.0	87.5	87.5	90.0	93.0	90.0	90.7
72.0	90.0	94.5	90.0	93.0	90.0	94.0	82.7	82.7	80.5	80.5
74.0	90.0	91.6	90.0	90.0	90.0	90.8	79.7	79.7	76.2	76.2

CHART #6

Number of anchor locations required															
Frame Height (in)	Frame width (in)														
	36.00			48.00			60.00			72.00			75.00		
	H&S	Jamb	Mull H&S	H&S	Jamb	Mull H&S	H&S	Jamb	Mull H&S	H&S	Jamb	Mull H&S	H&S	Jamb	Mull H&S
42.00	1	3	4	1	3	4	2	3	4	3	3	4	3	3	4
48.00	1	4	4	1	4	4	2	4	4	3	4	4	3	4	4
54.00	1	4	4	1	4	4	2	4	4	3	5	5	3	5	5
60.00	1	5	4	1	5	4	2	5	5	3	5	5	3	5	5
66.00	1	5	4	1	5	5	2	5	5	3	6	6	3	6	6
72.00	1	5	4	1	5	5	2	6	6	2	6	6	3	6	6
74.00	1	5	4	1	5	5	2	6	6	2	6	6	2	6	6

SIGNED: 02/19/2018



FOR METAL AND MASONRY/CONCRETE INSTALLATION

DESIGN PRESSURE RATING	IMPACT RATING
+90.0/-130.0PSF	LARGE AND SMALL MISSILE IMPACT

MISSILE LEVEL D, WIND ZONE 4, AND HVHZ
WITH GLASS C & D
SEE CHARTS 4 AND 6

FOR WOOD INSTALLATION

DESIGN PRESSURE RATING	IMPACT RATING
±76.2PSF	LARGE AND SMALL MISSILE IMPACT

MISSILE LEVEL D, WIND ZONE 4, AND HVHZ
WITH GLASS C & D
SEE CHARTS 5 AND 6

WEEP HOLES:

- ONE WEEP SLOT LOCATED 9" FROM EACH END ON SILL FRAME.
- DIMENSIONS SHOWN DO NOT INCLUDE FLANGE. FOR UNITS WITH FLANGE FRAME ADD 1-1/4" TO OVERALL DIMENSIONS.

PRODUCT RENEWED
as complying with the Florida
Building Code
NOA-No. **18-1120.02**

Expiration Date **Jan 23, 2024**

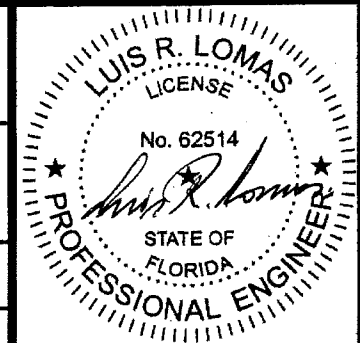
By *[Signature]*
Miami-Dade Product Control

WinDoor
INCORPORATED

7500 AMSTERDAM DRIVE
ORLANDO, FL 32832
Phone: 407.481.8400
Fax: 407.481.0505
www.windoorinc.com

4070 HORIZONTAL ROLLING WINDOW
XOX, XO & OX
OX, OX ELEVATION

DRAWN:	DWG NO.	REV
V.L.	08-01969	C
SCALE NTS	DATE 3/22/2013	SHEET 3 OF 15



REVISIONS			
REV	DESCRIPTION	DATE	APPROVED
C	REVISED PER NEW REQUIREMENTS	11/29/17	R.L.

CHART #7
FOR METAL, AND MASONRY/CONCRETE INSTALLATION

Maximum design pressure capacity chart (psf)										
Frame Height (in)	Unit width (in)									
	54.00		72.00		90.00		108.00		112.00	
	18.00		24.00		30.00		36.00		37.33	
	Pos	Neg	Pos	Neg	Pos	Neg	Pos	Neg	Pos	Neg
30.0	80.0	90.0	80.0	90.0	80.0	90.0	80.0	90.0	80.0	90.0
36.0	80.0	90.0	80.0	90.0	80.0	90.0	80.0	90.0	80.0	90.0
42.0	80.0	90.0	80.0	90.0	80.0	90.0	80.0	90.0	80.0	90.0
48.0	80.0	90.0	80.0	90.0	80.0	90.0	80.0	90.0	80.0	90.0
54.0	80.0	90.0	80.0	90.0	80.0	90.0	80.0	90.0	80.0	90.0
60.0	80.0	90.0	80.0	90.0	80.0	90.0	80.0	89.5	80.0	87.7
64.0	80.0	90.0	80.0	90.0	80.0	90.0	80.0	81.8	80.0	80.0

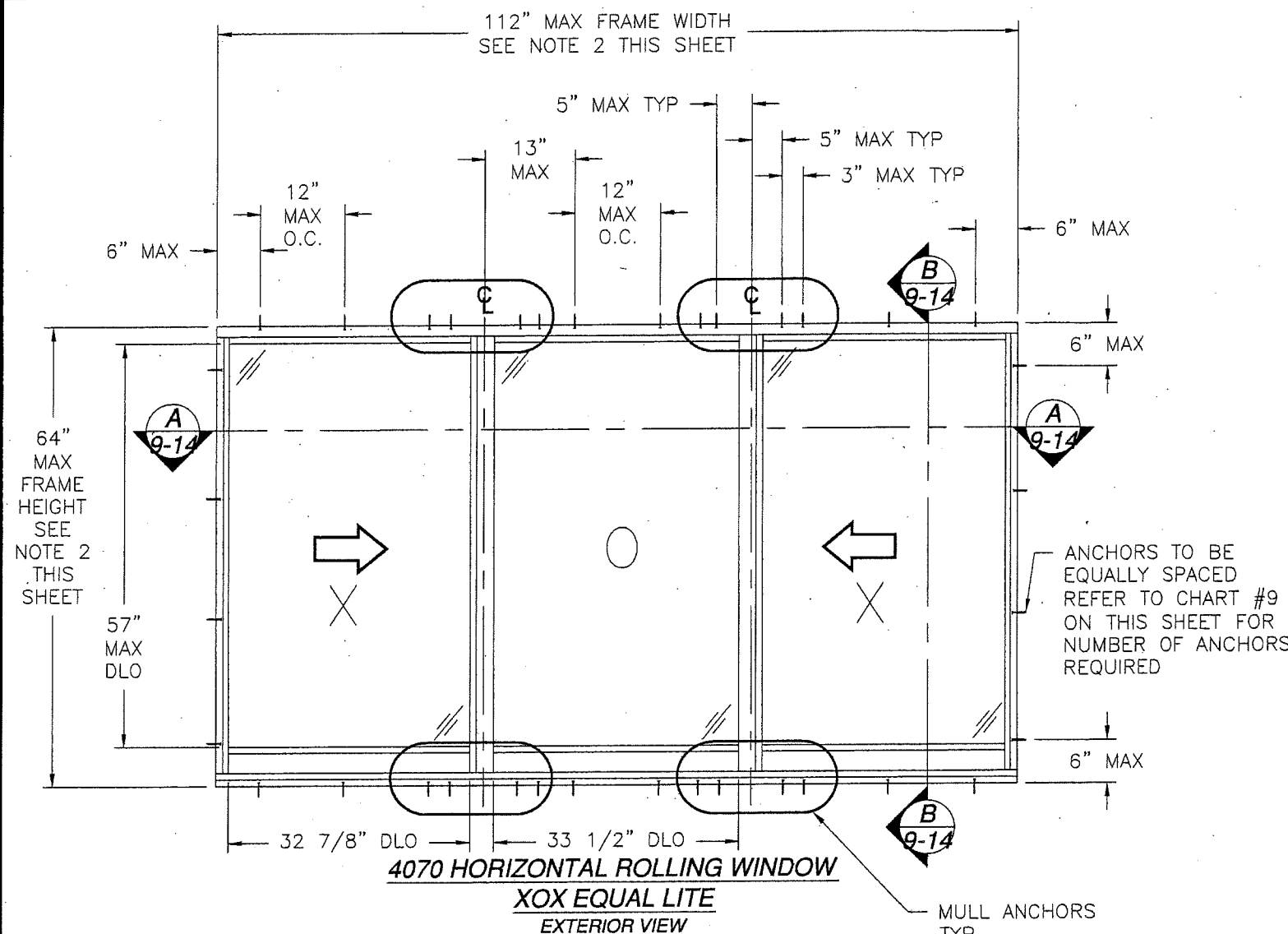
CHART #8
FOR WOOD INSTALLATION

Maximum design pressure (psf)										
Frame Height (in)	Frame Width (in)									
	54.00		72.00		90.00		108.00		112.00	
	Pos	Neg	Pos	Neg	Pos	Neg	Pos	Neg	Pos	Neg
30.0	80.0	90.0	80.0	90.0	80.0	90.0	80.0	85.0	80.0	80.0
36.0	80.0	90.0	80.0	90.0	80.0	90.0	80.0	82.7	77.0	77.0
42.0	80.0	90.0	80.0	90.0	80.0	90.0	80.0	82.7	76.9	76.9
48.0	80.0	90.0	80.0	90.0	80.0	90.0	80.0	82.7	76.9	76.9
54.0	80.0	90.0	80.0	90.0	80.0	90.0	80.0	82.7	76.9	76.9
60.0	80.0	90.0	80.0	90.0	79.4	79.4	70.9	70.9	69.4	69.4
64.0	80.0	90.0	80.0	85.8	72.9	72.9	64.7	64.7	63.3	63.3

CHART #9
Number of anchor locations required

Frame Height (in)	Frame width (in)														
	54.00			72.00			90.00			108.00			112.00		
	H&S	Jamb	Mull H&S	H&S	Jamb	Mull H&S	H&S	Jamb	Mull H&S	H&S	Jamb	Mull H&S	H&S	Jamb	Mull H&S
30.00	1	3	4	1	3	4	2	3	4	2	3	4	2	3	4
36.00	1	3	4	1	3	4	2	3	4	2	3	4	2	3	4
42.00	1	3	4	1	3	4	2	3	4	2	3	4	2	3	4
48.00	1	4	4	1	4	4	2	4	4	2	4	4	2	4	4
54.00	1	4	4	1	4	4	2	4	4	2	4	4	2	4	4
60.00	1	4	4	1	4	4	2	4	4	2	4	4	2	4	4
64.00	1	4	4	1	4	4	2	4	4	2	4	4	2	4	4

SIGNED: 02/19/2018



FOR METAL, AND MASONRY/CONCRETE INSTALLATION

DESIGN PRESSURE RATING	IMPACT RATING
±80.0PSF	LARGE AND SMALL MISSILE IMPACT

MISSILE LEVEL D, WIND ZONE 4, AND HVHZ
WITH GLASS A & B
SEE CHARTS 7 AND 9

FOR WOOD INSTALLATION

DESIGN PRESSURE RATING	IMPACT RATING
±63.3PSF	LARGE AND SMALL MISSILE IMPACT

MISSILE LEVEL D, WIND ZONE 4, AND HVHZ
WITH GLASS A & B
SEE CHARTS 8 AND 9

WEEP HOLES:

- ONE WEEP SLOT LOCATED 9" FROM EACH END ON SILL FRAME.
- DIMENSIONS SHOWN DO NOT INCLUDE FLANGE. FOR UNITS WITH FLANGE FRAME ADD 1-1/4" TO OVERALL DIMENSIONS.

PRODUCT RENEWED
as complying with the Florida
Building Code
NOA-No. 18-1120.02

Expiration Date Jan 23, 2024

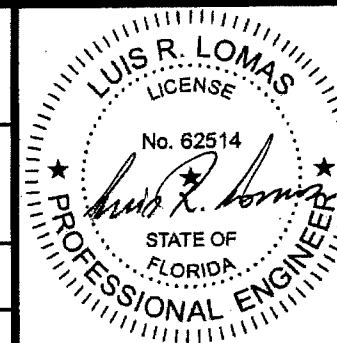
By 
Miami-Dade Product Control

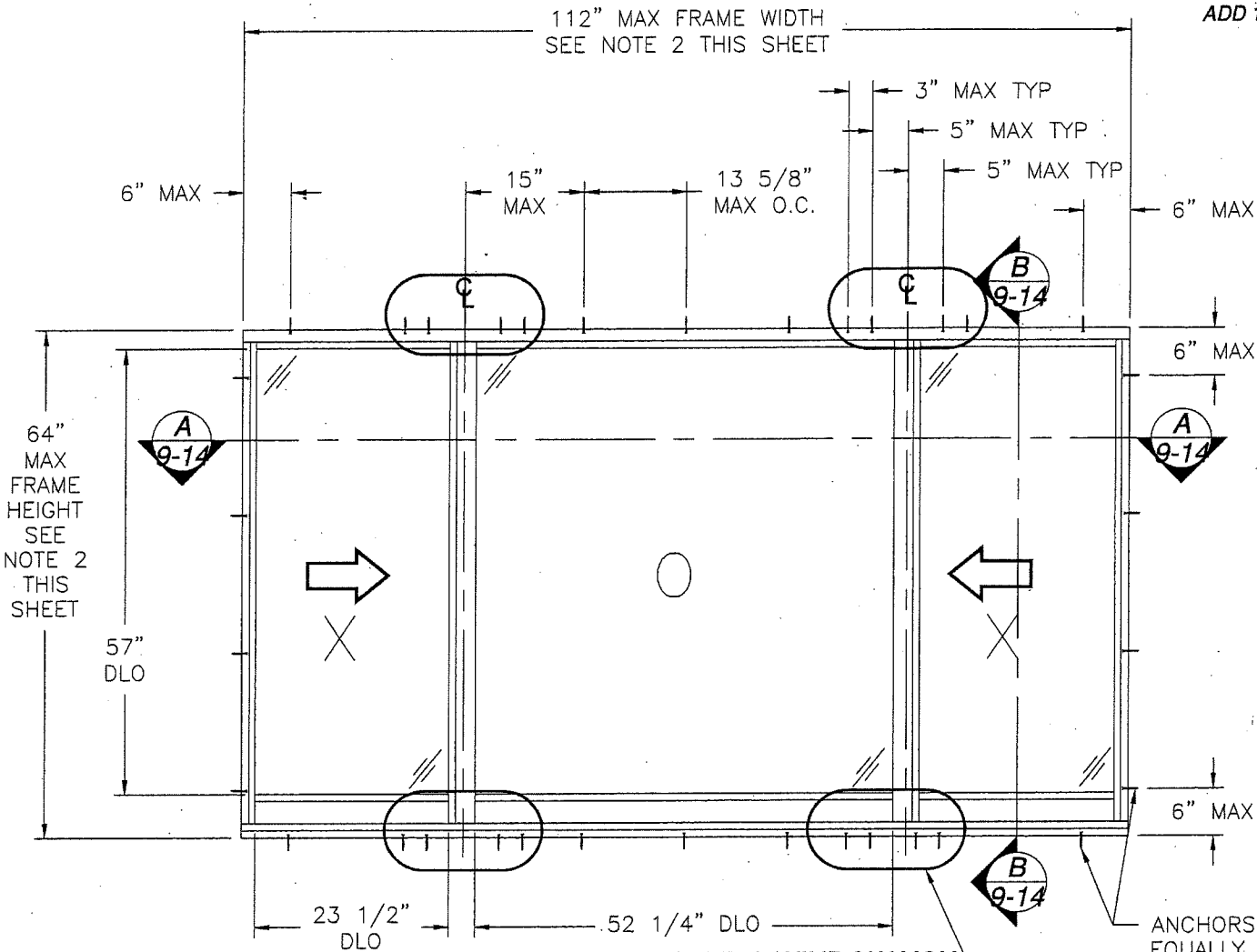
WinDoor
INCORPORATED

7500 AMSTERDAM DRIVE
ORLANDO, FL 32832
Phone: 407.481.8400
Fax: 407.481.0505
www.windoorinc.com

4070 HORIZONTAL ROLLING WINDOW
XOX, XO & OX
XOX (1/3-1/3-1/3) ELEVATION

DRAWN:	DWG NO.	REV
V.L.	08-01969	C
SCALE NTS	DATE 3/22/2013	SHEET 4 OF 15





4070 HORIZONTAL ROLLING WINDOW XOX
EXTERIOR VIEW

FOR METAL AND MASONRY/CONCRETE INSTALLATION

DESIGN PRESSURE RATING	IMPACT RATING
±80.0PSF	LARGE AND SMALL MISSILE IMPACT

MISSILE LEVEL D, WIND ZONE 4, AND HVHZ
WITH GLASS A & B
SEE CHARTS 10 AND 12

FOR WOOD INSTALLATION

DESIGN PRESSURE RATING	IMPACT RATING
±51.2PSF	LARGE AND SMALL MISSILE IMPACT

MISSILE LEVEL D, WIND ZONE 4, AND HVHZ
WITH GLASS A & B
SEE CHARTS 11 AND 12

WEEP HOLES:

- ONE WEEP SLOT LOCATED 9" FROM EACH END ON SILL FRAME.
- DIMENSIONS SHOWN DO NOT INCLUDE FLANGE. FOR UNITS WITH FLANGE FRAME ADD 1-1/4" TO OVERALL DIMENSIONS.

ANCHORS TO BE EQUALLY SPACED
REFER TO CHART #12
ON THIS SHEET FOR
NUMBER OF ANCHORS
REQUIRED

MULLION ANCHORS
TYP

REVISIONS

REV	DESCRIPTION	DATE	APPROVED
C	REVISED PER NEW REQUIREMENTS	11/29/17	R.L.

CHART #10
FOR METAL AND MASONRY/CONCRETE INSTALLATION

Maximum design pressure capacity chart (psf)										
Frame Height (in)	Unit width (in)									
	54.00		72.00		90.00		108.00		112.00	
	Pos	Neg	Pos	Neg	Pos	Neg	Pos	Neg	Pos	Neg
30.0	80.0	90.0	80.0	90.0	80.0	90.0	80.0	90.0	80.0	90.0
36.0	80.0	90.0	80.0	90.0	80.0	90.0	80.0	90.0	80.0	90.0
42.0	80.0	90.0	80.0	90.0	80.0	90.0	80.0	90.0	80.0	90.0
48.0	80.0	90.0	80.0	90.0	80.0	90.0	80.0	90.0	80.0	90.0
54.0	80.0	90.0	80.0	90.0	80.0	90.0	80.0	90.0	80.0	90.0
60.0	80.0	90.0	80.0	90.0	80.0	90.0	80.0	90.0	80.0	88.7
64.0	80.0	90.0	80.0	90.0	80.0	89.5	80.0	81.3	80.0	80.0

Total
Side
Center

CHART #11
FOR WOOD INSTALLATION

Maximum design pressure (psf)										
Frame Height (in)	Frame Width (in)									
	54.00		72.00		90.00		108.00		112.00	
	Pos	Neg	Pos	Neg	Pos	Neg	Pos	Neg	Pos	Neg
30.0	80.0	90.0	80.0	85.0	59.5	59.5	68.7	68.7	65.3	65.3
36.0	80.0	90.0	80.0	82.7	55.1	55.1	62.0	62.0	58.7	58.7
42.0	80.0	90.0	80.0	82.7	53.1	53.1	58.0	58.0	54.7	54.7
48.0	80.0	90.0	80.0	82.7	52.9	52.9	55.8	55.8	52.3	52.3
54.0	80.0	90.0	80.0	82.7	52.9	52.9	55.1	55.1	51.3	51.3
60.0	80.0	90.0	80.0	82.7	52.9	52.9	55.1	55.1	51.2	51.2
64.0	80.0	90.0	80.0	81.0	52.9	52.9	55.1	55.1	51.2	51.2

CHART #12

Number of anchors required																				
Frame Height (in)	Frame width (in)																			
	54.00				72.00				90.00				108.00				112.00			
	H&S unit 1&3	Jamb	Mull H&S	H&S unit 2	H&S unit 1&3	Jamb	Mull H&S	H&S unit 2	H&S unit 1&3	Jamb	Mull H&S	H&S unit 2	H&S unit 1&3	Jamb	Mull H&S	H&S unit 2	H&S unit 1&3	Jamb	Mull H&S	H&S unit 2
30.00	1	3	4	1	1	3	4	2	1	3	4	2	1	3	4	3	1	3	4	3
36.00	1	3	4	1	1	3	4	2	1	3	4	2	1	3	4	3	1	3	4	3
42.00	1	3	4	1	1	3	4	2	1	3	4	2	1	3	4	3	1	3	4	3
48.00	1	4	4	1	1	4	4	2	1	4	4	2	1	4	4	3	1	4	4	3
54.00	1	4	4	1	1	4	4	2	1	4	4	2	1	4	4	3	1	4	4	3
60.00	1	4	4	1	1	4	4	2	1	4	4	2	1	4	4	3	1	4	4	3
64.00	1	4	4	1	1	4	4	2	1	4	4	2	1	4	4	3	1	4	4	3

SIGNED: 02/19/2018

PRODUCT RENEWED
as complying with the Florida
Building Code
NOA-No. **18-1120.02**

Expiration Date **Jan 23, 2024**

By *[Signature]*
Miami-Dade Product Control

WinDoor
INCORPORATED

7500 AMSTERDAM DRIVE
ORLANDO, FL 32832

Phone: 407.481.8400
Fax: 407.481.0505

www.windoorinc.com

4070 HORIZONTAL ROLLING WINDOW
XOX, XO & OX
XOX (1/4-1/2-1/4) ELEVATION

DRAWN:
V.L.

DWG NO.

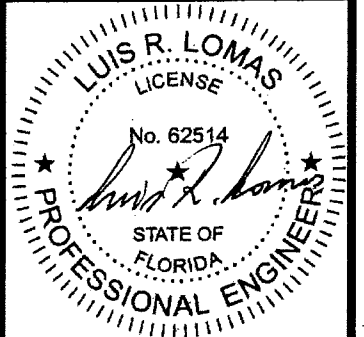
08-01969

REV
C

SCALE NTS

DATE 3/22/2013

SHEET 5 OF 15



REVISIONS

REV	DESCRIPTION	DATE	APPROVED
C	REVISED PER NEW REQUIREMENTS	11/29/17	R.L.

WEEP HOLES:

- ONE WEEP SLOT LOCATED 9" FROM EACH END ON SILL FRAME.
- DIMENSIONS SHOWN DO NOT INCLUDE FLANGE. FOR UNITS WITH FLANGE FRAME ADD 1-1/4" TO OVERALL DIMENSIONS.

CHART #13
FOR METAL AND MASONRY/CONCRETE INSTALLATION

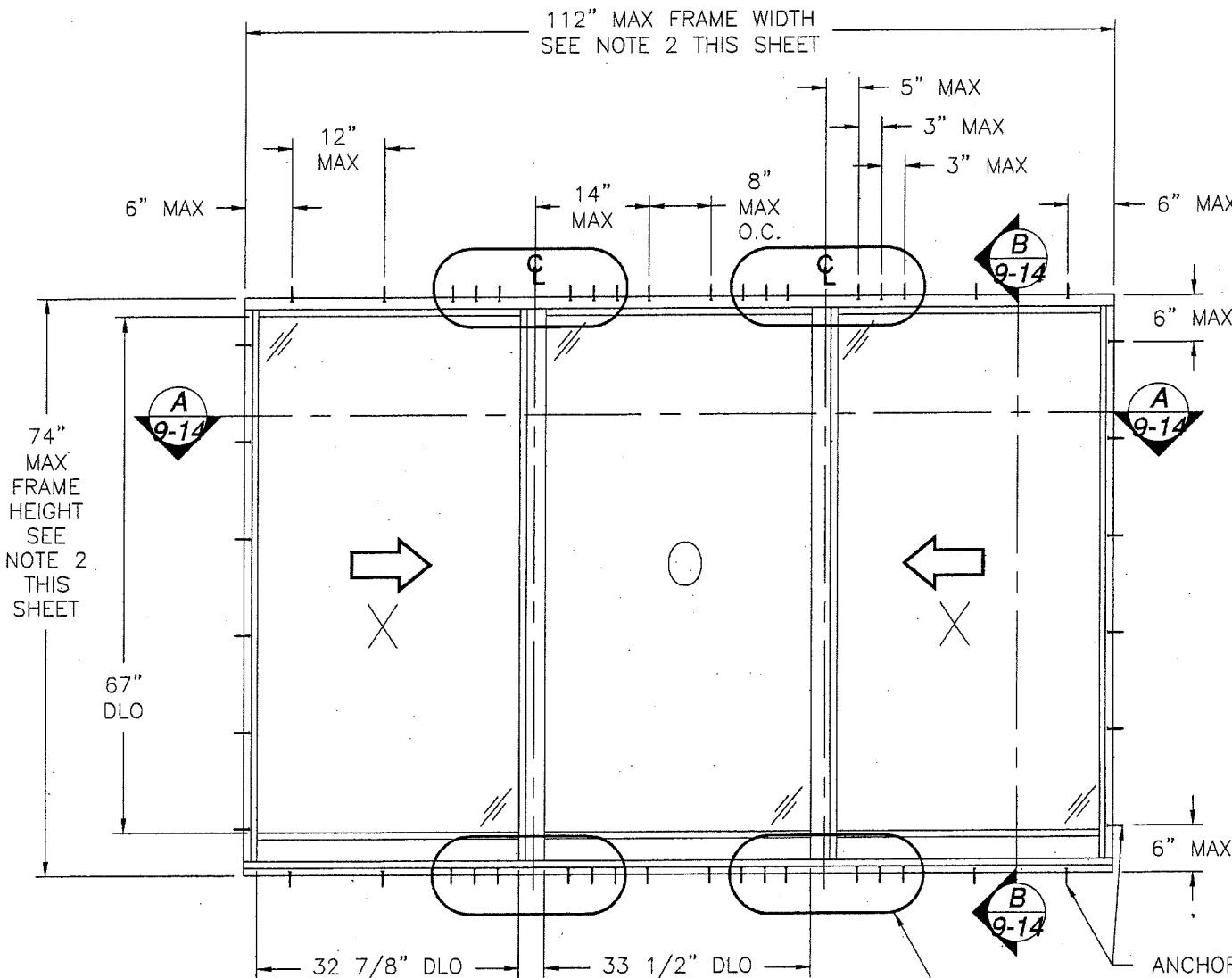
Maximum design pressure capacity chart (psf)										
Frame Height (in)	Unit width (in)									
	54.00		72.00		90.00		108.00		112.00	
	18.00		24.00		30.00		36.00		37.33	
	Pos	Neg	Pos	Neg	Pos	Neg	Pos	Neg	Pos	Neg
42.0	90.0	150.0	90.0	150.0	90.0	150.0	90.0	150.0	90.0	150.0
48.0	90.0	150.0	90.0	150.0	90.0	150.0	90.0	150.0	90.0	150.0
54.0	90.0	150.0	90.0	150.0	90.0	150.0	90.0	150.0	90.0	150.0
60.0	90.0	150.0	90.0	150.0	90.0	150.0	90.0	150.0	90.0	150.0
66.0	90.0	150.0	90.0	150.0	90.0	150.0	90.0	150.0	90.0	150.0
72.0	90.0	150.0	90.0	150.0	90.0	150.0	90.0	138.1	90.0	134.9
74.0	90.0	150.0	90.0	150.0	90.0	150.0	90.0	133.2	90.0	130.0

CHART #14
FOR WOOD INSTALLATION

Maximum design pressure (psf)										
Frame Height (in)	Frame Width (in)									
	54.00		72.00		90.00		108.00		112.00	
	Pos	Neg	Pos	Neg	Pos	Neg	Pos	Neg	Pos	Neg
42.0	90.0	150.0	90.0	93.0	90.0	119.0	90.0	124.0	90.0	115.3
48.0	90.0	150.0	90.0	93.0	90.0	108.2	90.0	99.2	90.0	97.8
54.0	90.0	132.3	90.0	93.0	90.0	91.6	90.0	103.3	90.0	101.5
60.0	90.0	116.7	90.0	93.0	90.0	99.2	88.6	88.6	86.8	86.8
66.0	90.0	104.4	90.0	93.0	87.5	87.5	90.0	93.0	90.0	90.9
72.0	90.0	94.5	90.0	93.0	90.0	94.0	82.7	82.7	80.7	80.7
74.0	90.0	91.6	90.0	90.0	90.0	90.8	79.7	79.7	76.9	76.9

CHART #15

Number of anchor locations required															
Frame Height (in)	Frame width (in)														
	54.00			72.00			90.00			108.00			112.00		
	H&S	Jamb	Mull H&S	H&S	Jamb	Mull H&S	H&S	Jamb	Mull H&S	H&S	Jamb	Mull H&S	H&S	Jamb	Mull H&S
42.00	1	3	4	1	3	4	2	3	4	3	3	4	3	3	4
48.00	1	4	4	1	4	4	2	4	4	3	4	4	3	4	4
54.00	1	4	4	1	4	4	2	4	4	3	5	5	3	5	5
60.00	1	5	4	1	5	4	2	5	5	3	5	5	3	5	5
66.00	1	5	4	1	5	5	2	5	5	3	6	6	3	6	6
72.00	1	5	4	1	5	5	2	6	6	2	6	6	3	6	6
74.00	1	5	4	1	5	5	2	6	6	2	6	6	2	6	6



4070 HORIZONTAL ROLLING WINDOW
XOX EQUAL LITE
EXTERIOR VIEW

MULLION ANCHORS TYP

ANCHORS TO BE EQUALLY SPACED
REFER TO CHART #15
ON THIS SHEET FOR
NUMBER OF ANCHORS
REQUIRED

FOR METAL AND MASONRY/CONCRETE INSTALLATION

DESIGN PRESSURE RATING	IMPACT RATING
+90.0/-130.0PSF	LARGE AND SMALL MISSILE IMPACT

MISSILE LEVEL D, WIND ZONE 4, AND HVHZ
WITH GLASS C & D
SEE CHARTS 13 AND 15

FOR WOOD INSTALLATION

DESIGN PRESSURE RATING	IMPACT RATING
±76.9PSF	LARGE AND SMALL MISSILE IMPACT

MISSILE LEVEL D, WIND ZONE 4, AND HVHZ
WITH GLASS C & D
SEE CHARTS 14 AND 15

SIGNED: 02/19/2018

PRODUCT RENEWED
as complying with the Florida
Building Code
NOA-No. 18-1120.02
Expiration Date Jan 23, 2024

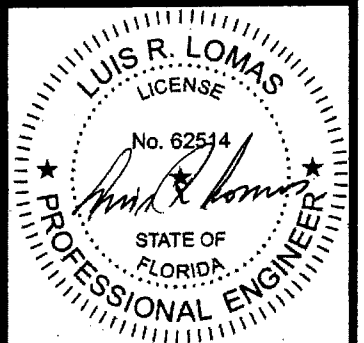
By 
Miami-Dade Product Control

WinDoor
INCORPORATED

7500 AMSTERDAM DRIVE
ORLANDO, FL 32832
Phone: 407.481.8400
Fax: 407.481.0505
www.windoorinc.com

4070 HORIZONTAL ROLLING WINDOW
XOX, XO & OX
XOX (1/3-1/3-1/3) ELEVATION

DRAWN: V.L.	DWG NO. 08-01969	REV C
SCALE NTS	DATE 3/22/2013	SHEET 6 OF 15



REVISIONS

REV	DESCRIPTION	DATE	APPROVED
C	REVISED PER NEW REQUIREMENTS	11/29/17	R.L.

WEEP HOLES:

- ONE WEEP SLOT LOCATED 9" FROM EACH END ON SILL FRAME.
- DIMENSIONS SHOWN DO NOT INCLUDE FLANGE. FOR UNITS WITH FLANGE FRAME ADD 1-1/4" TO OVERALL DIMENSIONS.

CHART #16
FOR METAL AND MASONRY/CONCRETE INSTALLATION

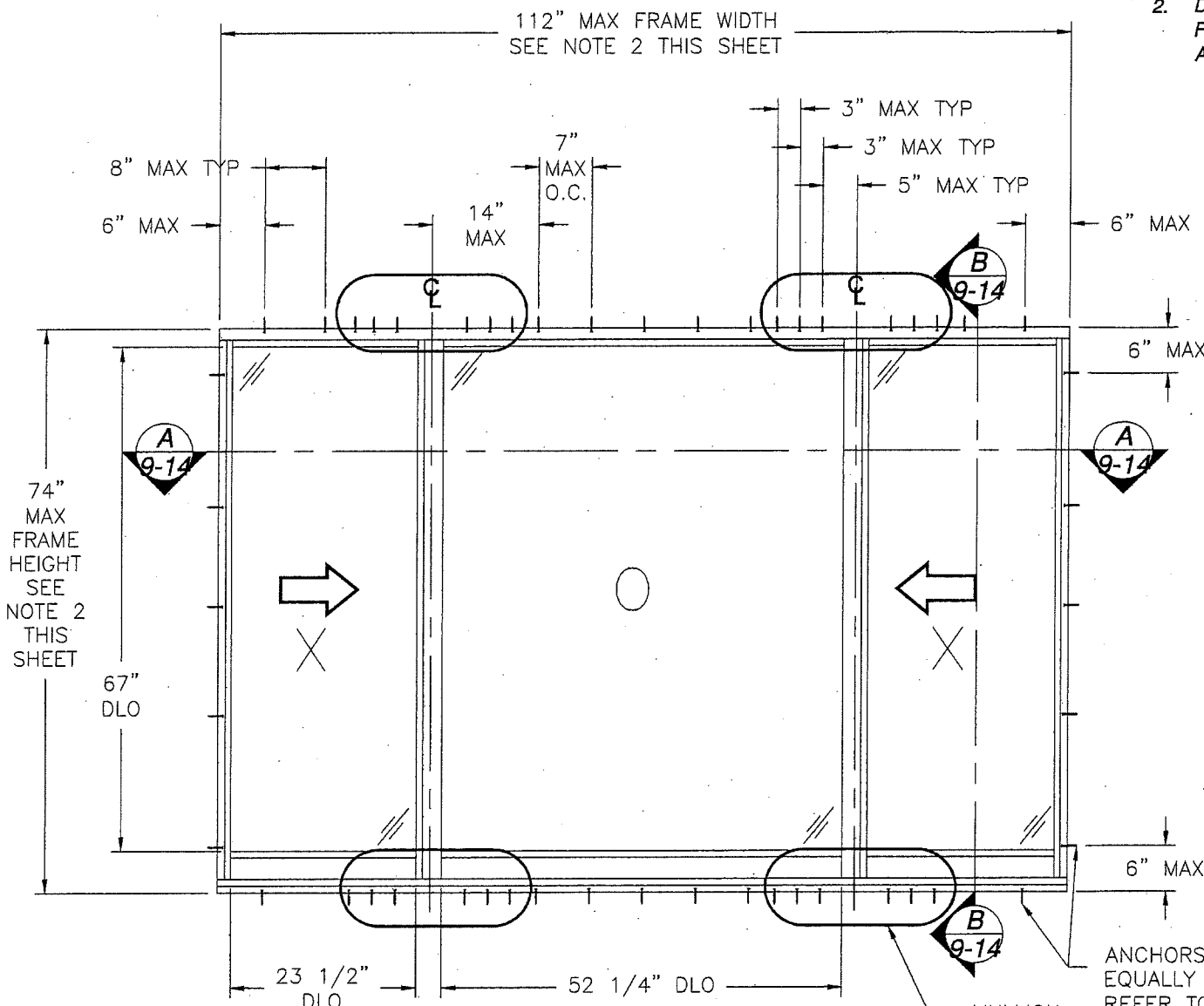
Maximum design pressure capacity chart (psf)										
Frame Height (in)	Unit width (in)									
	54.00		72.00		90.00		108.00		112.00	
	Pos	Neg	Pos	Neg	Pos	Neg	Pos	Neg	Pos	Neg
42.0	90.0	150.0	90.0	150.0	90.0	150.0	90.0	150.0	90.0	150.0
48.0	90.0	150.0	90.0	150.0	90.0	150.0	90.0	150.0	90.0	150.0
54.0	90.0	150.0	90.0	150.0	90.0	150.0	90.0	150.0	90.0	150.0
60.0	90.0	150.0	90.0	150.0	90.0	150.0	90.0	150.0	90.0	150.0
66.0	90.0	150.0	90.0	150.0	90.0	150.0	90.0	150.0	90.0	150.0
72.0	90.0	150.0	90.0	150.0	90.0	150.0	90.0	138.0	90.0	135.3
74.0	90.0	150.0	90.0	150.0	90.0	148.4	90.0	132.6	90.0	130.0

CHART #17
FOR WOOD INSTALLATION

Maximum design pressure (psf)										
Frame Height (in)	Frame Width (in)									
	54.00		72.00		90.00		108.00		112.00	
	Pos	Neg	Pos	Neg	Pos	Neg	Pos	Neg	Pos	Neg
42.0	90.0	150.0	90.0	124.0	90.0	105.8	90.0	98.6	90.0	91.1
48.0	90.0	150.0	90.0	120.2	90.0	105.8	90.0	93.0	87.2	87.2
54.0	90.0	150.0	90.0	101.7	90.0	90.1	90.0	91.9	85.5	85.5
60.0	90.0	150.0	88.2	88.2	90.0	96.2	88.2	88.2	85.4	85.4
66.0	90.0	150.0	90.0	97.3	90.0	100.8	90.0	91.2	85.4	85.4
72.0	90.0	150.0	87.0	87.0	89.4	89.4	80.2	80.2	78.6	78.6
74.0	90.0	150.0	84.1	84.1	86.2	86.2	77.0	77.0	75.5	75.5

CHART #18

Number of anchors required																				
Frame Height (in)	Frame width (in)																			
	54.00				72.00				90.00				108.00				112.00			
	H&S unit 1&3	Jamb	Mull H&S	H&S unit 2	H&S unit 1&3	Jamb	Mull H&S	H&S unit 2	H&S unit 1&3	Jamb	Mull H&S	H&S unit 2	H&S unit 1&3	Jamb	Mull H&S	H&S unit 2	H&S unit 1&3	Jamb	Mull H&S	H&S unit 2
42.00	1	3	4	2	1	3	4	3	1	3	4	4	2	3	4	5	2	3	4	5
48.00	1	4	4	2	1	4	4	3	1	4	4	4	2	4	4	5	2	4	4	5
54.00	1	4	4	2	1	4	4	3	1	4	4	4	2	4	5	5	2	4	5	5
60.00	1	5	4	2	1	5	4	3	1	5	5	4	2	5	5	5	2	5	5	5
66.00	1	5	4	2	1	5	5	3	1	5	6	4	2	5	6	5	2	5	6	5
72.00	1	5	4	2	1	5	5	3	1	5	6	4	2	5	6	5	2	5	6	5
74.00	1	5	5	2	1	5	5	3	1	5	6	4	2	5	6	5	2	5	6	5



4070 HORIZONTAL ROLLING WINDOW XOX
EXTERIOR VIEW STRAP INSTALLATION

ANCHORS TO BE EQUALLY SPACED
REFER TO CHART #18
ON THIS SHEET FOR
NUMBER OF ANCHORS
REQUIRED

FOR METAL AND MASONRY/CONCRETE INSTALLATION

DESIGN PRESSURE RATING	IMPACT RATING
+90.0/-130.0PSF	LARGE AND SMALL MISSILE IMPACT

MISSILE LEVEL D, WIND ZONE 4, AND HVHZ
WITH GLASS C & D
SEE CHARTS 16 AND 18

FOR WOOD INSTALLATION

DESIGN PRESSURE RATING	IMPACT RATING
±75.5PSF	LARGE AND SMALL MISSILE IMPACT

MISSILE LEVEL D, WIND ZONE 4, AND HVHZ
WITH GLASS C & D
SEE CHARTS 17 AND 18

PRODUCT RENEWED
as complying with the Florida
Building Code
NOA-No. 18-1120.02

Expiration Date Jan 23, 2024

By
Miami-Dade Product Control

WinDoor
INCORPORATED

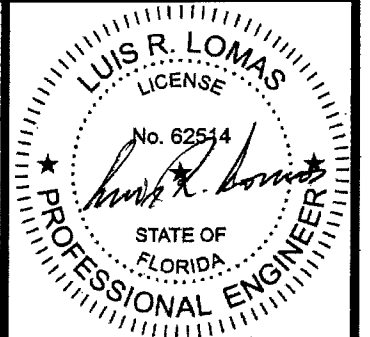
7500 AMSTERDAM DRIVE
ORLANDO, FL 32832

Phone: 407.481.8400
Fax: 407.481.0505
www.windoorinc.com

4070 HORIZONTAL ROLLING WINDOW
XOX, XO & OX
XOX (1/4-1/2-1/4) ELEVATION

DRAWN: V.L.	DWG NO. 08-01969	REV C
SCALE NTS	DATE 3/22/2013	SHEET 7 OF 15

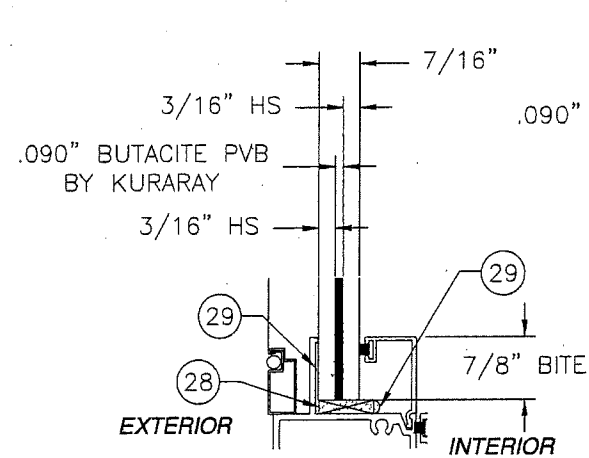
SIGNED: 02/19/2018



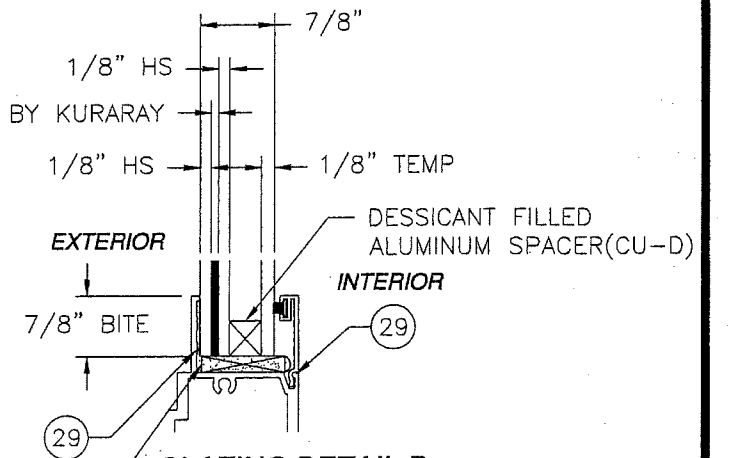
ITEM NO.:	PART NUMBER	DESCRIPTION	MANUFACTURER	MATERIAL
1	FS-06614	FRAME HEAD EQUAL LEG	KEYMARK	ALUMINUM 6063-T6
2	FS-07760	FRAME SILL PAN	KEYMARK	ALUMINUM 6063-T6
3	FS-07427	FRAME JAMB EQUAL LEG	KEYMARK	ALUMINUM 6063-T6
4	FS-07422	SILL TANK	KEYMARK	ALUMINUM 6063-T6
5	S-52726	SILL TRACK	KEYMARK	ALUMINUM 6063-T6
6	FS-06618	SASH TOP RAIL	KEYMARK	ALUMINUM 6063-T6
7	FH-07425	SASH BOTTOM RAIL	KEYMARK	ALUMINUM 6063-T6
8	FH-07418	SASH LOCK STILE	KEYMARK	ALUMINUM 6063-T6
9	FH-06615	FIXED MEETING STILE	KEYMARK	ALUMINUM 6063-T6
10	FH-06671	FRAME FILLER	KEYMARK	ALUMINUM 6063-T6
11	FH-06616	SASH INTERLOCK	KEYMARK	ALUMINUM 6063-T6
12	FS-06667	7/16" GLASS STOP	KEYMARK	ALUMINUM 6063-T6
13	FS-06619	15/16" GLASS STOP	KEYMARK	ALUMINUM 6063-T6
14	H4000-BL-SL202	SASH LOCK		
15	V-470-SS-ROHOU	ROLLER/HOUSING ASSEMBLY		
16	TP1104	GLASS STOP VINYL	TEAM PLASTICS	
17	W0600-BL-0500R	.187x.150 ULTRAFAB WEATHERSTRIP	ULTRAFAB	
18	121998	.187x.200 ULTRAFAB WEATHERSTRIP	ULTRAFAB	
19	122002	.187x.240 ULTRAFAB WEATHERSTRIP	ULTRAFAB	
20	122003	.187x.350 ULTRAFAB WEATHERSTRIP	ULTRAFAB	
21	W4000-BL-SCE42	1.3X1.75X.375 CLOSED CELL FOAM PAD	FRANK LOWE	NEOPRENE 45-55 DURO
22	131096	#6X3/4" FH SMS		
23	131014	#8X1" PH SMS		
24	S4000-XX-150	SCREEN HEAD, JAMB & SILL		
25	S10010-BL2200R	SCREEN SPLINE		
26	SBV-XX-0600Z	SCREEN CLOTH		
27	54080-ML-FB11	SCREEN CORNER KEY		
28	121104	GLASS SHIM	FRANK LOWE	DUROMETER 80
29	SIKA 552	SILICONE SEALANT	SIKA	
30	FS-07847	CLIP	KEYMARK	ALUMINUM 6063-T6
31	FS-07492	FIXED MEETING RAIL REINFORCEMENT	KEYMARK	ALUMINUM 6005-T6
32	FS-07493	SASH MEETING RAIL REINFORCEMENT	KEYMARK	ALUMINUM 6005-T6
33	FS-07418	FRAME HEAD FLANGE	KEYMARK	ALUMINUM 6063-T6
34	FS-07759	FRAME HEAD SILL PAN FLANGE	KEYMARK	ALUMINUM 6063-T6
35	FS-07428	FRAME HEAD JAMB FLANGE	KEYMARK	ALUMINUM 6063-T6
36	TP990	SPACER SYSTEM (SEE NOTE BELOW)	HELIMA	ALUMINUM AW-3000

SPACER MATERIAL: TENSILE ULTIMATE STRENGTH, FTU=17KSI
TENSILE YIELD STRENGTH, FTY=12KSI

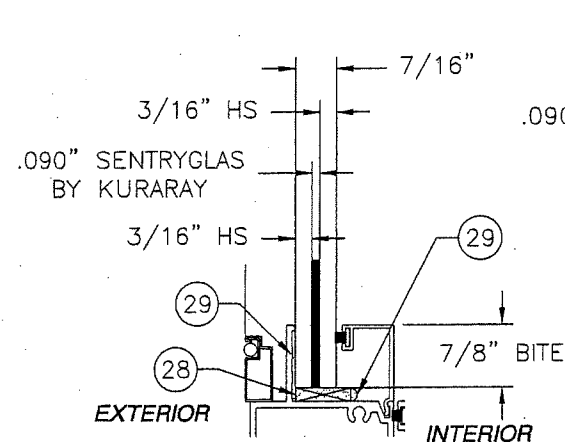
REVISIONS			
REV	DESCRIPTION	DATE	APPROVED
C	REVISED PER NEW REQUIREMENTS	11/29/17	R.L.



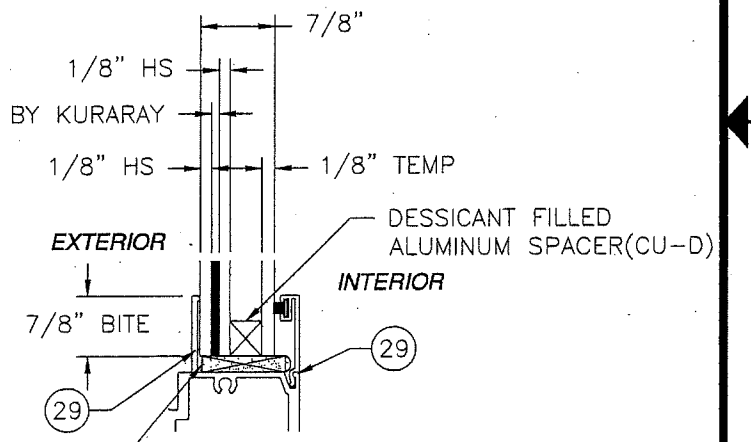
GLAZING DETAIL A



GLAZING DETAIL B



GLAZING DETAIL C



GLAZING DETAIL D

PRODUCT RENEWED
as complying with the Florida
Building Code
NOA-No. **18-1120.02**
Expiration Date **Jan 23, 2024**
By *[Signature]*
Miami-Dade Product Control

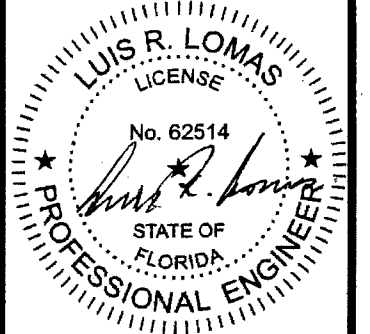
WinDoor
INCORPORATED

7500 AMSTERDAM DRIVE
ORLANDO, FL 32832
Phone: 407.481.8400
Fax: 407.481.0505
www.windoorinc.com

4070 HORIZONTAL ROLLING WINDOW
XOX, XO & OX
B.O.M. & GLAZING DETAILS

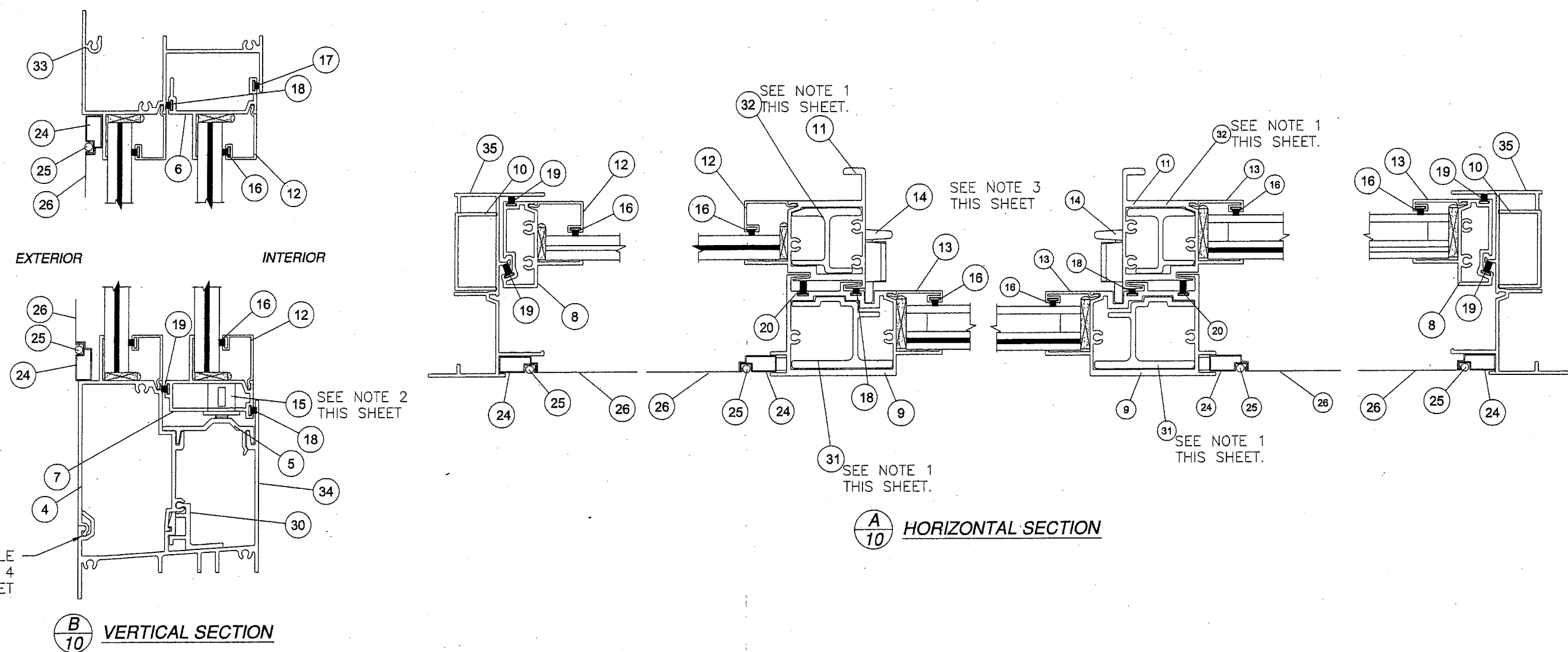
DRAWN: V.L. DWG NO. 08-01969 REV C
SCALE NTS DATE 3/22/2013 SHEET 8 OF 15

SIGNED: 02/19/2018



REVISIONS			
REV	DESCRIPTION	DATE	APPROVED
C	REVISED PER NEW REQUIREMENTS	11/29/17	R.L.

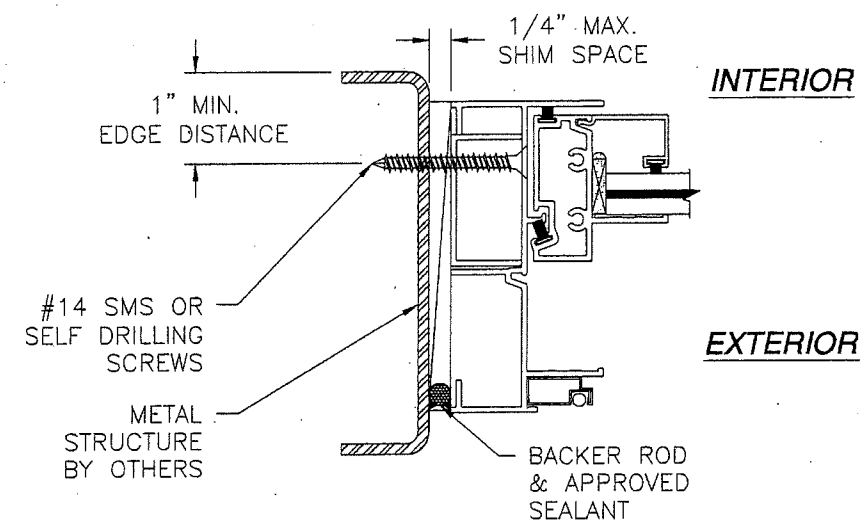
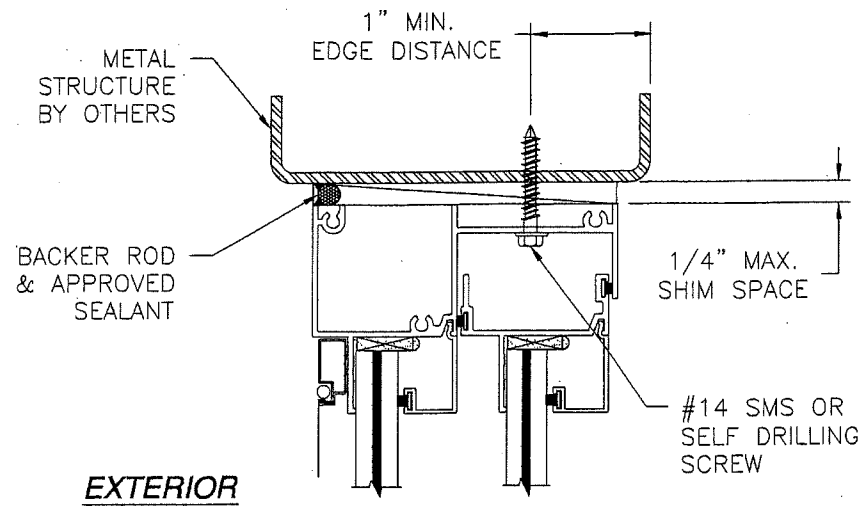
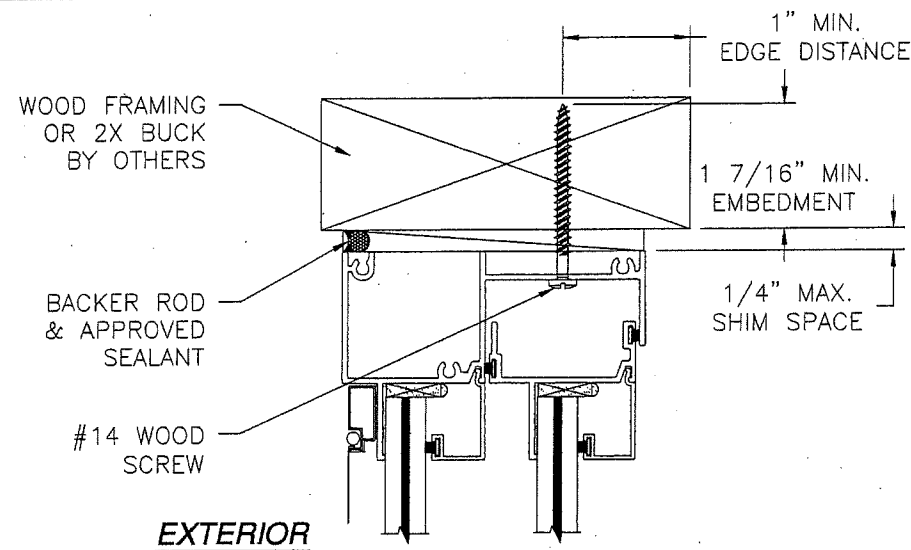
FOR ILLUSTRATION PURPOSES ONLY
FOR INSTALLATION DETAILS REFER TO SHEETS 13 AND 14



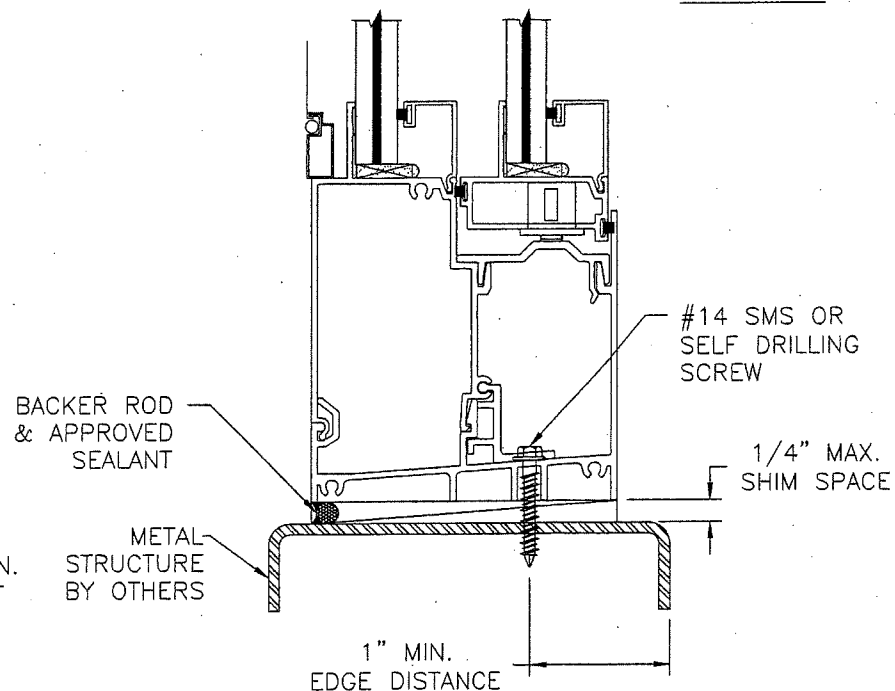
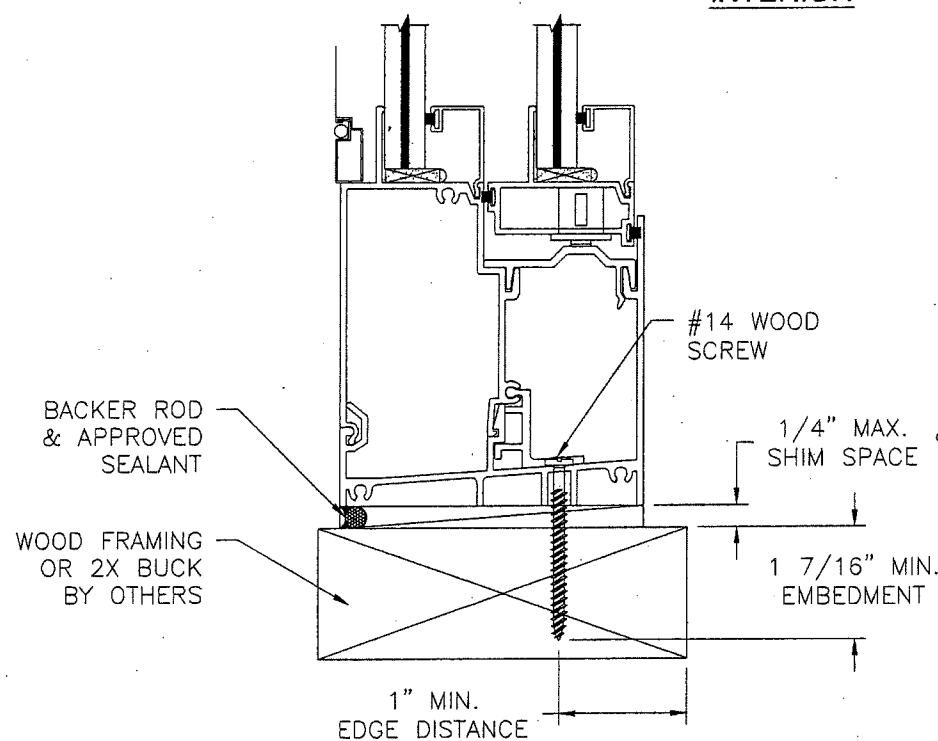
- NOTES:
- ITEMS #31 AND #32 ARE INSTALLED IN UNITS WITH GLASS C AND D ONLY.
 - LOCATE ITEM #15 ONE AT EACH END OF ACTIVE SASH BOTTOM RAIL.
 - LOCATE ITEM #14 (2) AT 12" FROM, HEAD AND SILL.
 - WEEPS ARE LOCATED AT 9" FROM EACH CORNER AT BOTTOM RAIL.

PRODUCT RENEWED as complying with the Florida Building Code NOA-No. 18-1120.02 Expiration Date Jan 23, 2024 By <i>[Signature]</i> Miami-Dade Product Control	WinDoor INCORPORATED 7500 AMSTERDAM DRIVE ORLANDO, FL 32832 Phone: 407.481.8400 Fax: 407.481.0505 www.windoorinc.com		SIGNED: 02/19/2018 	
	4070 HORIZONTAL ROLLING WINDOW XOX, XO & OX FLANGE CROSS SECTIONS			
	DRAWN: V.L.	DWG NO. 08-01969		REV C
	SCALE NTS	DATE 3/22/2013		SHEET 10 OF 15

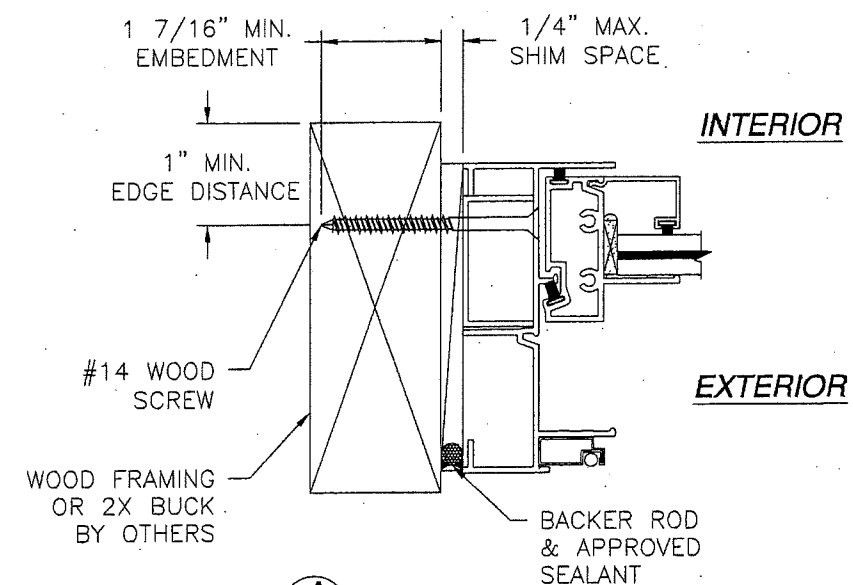
REVISIONS			
REV	DESCRIPTION	DATE	APPROVED
C	REVISED PER NEW REQUIREMENTS	11/29/17	R.L.



A
11 JAMB INSTALLATION DETAIL
METAL STRUCTURE INSTALLATION



B
11 VERTICAL CROSS SECTION
METAL STRUCTURE INSTALLATION




A
11 JAMB INSTALLATION DETAIL
WOOD FRAMING OR 2X BUCK INSTALLATION

B
11 VERTICAL CROSS SECTION
WOOD FRAMING OR 2X BUCK INSTALLATION

SIGNED: 02/19/2018

- NOTES:
1. INTERIOR AND EXTERIOR FINISHES, BY OTHERS, NOT SHOWN FOR CLARITY.
 2. SEALANT JOINT BY OTHERS TO BE DESIGNED IN ACCORDANCE WITH ASTM E2112
 3. PERIMETER TO BE SEALED WITH SILICONE.

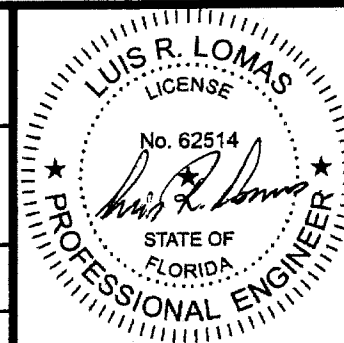
PRODUCT RENEWED
as complying with the Florida
Building Code
NOA-No. 18-1120.02
Expiration Date Jan 23, 2024
By 
Miami-Dade Product Control

WinDoor
INCORPORATED

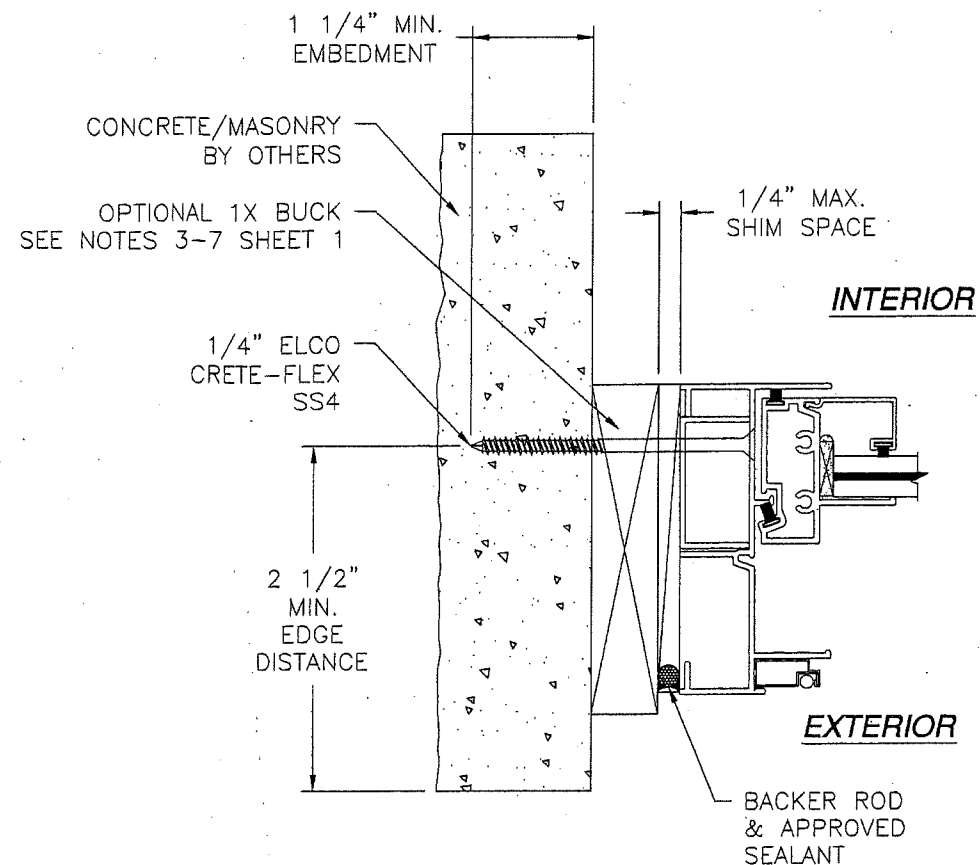
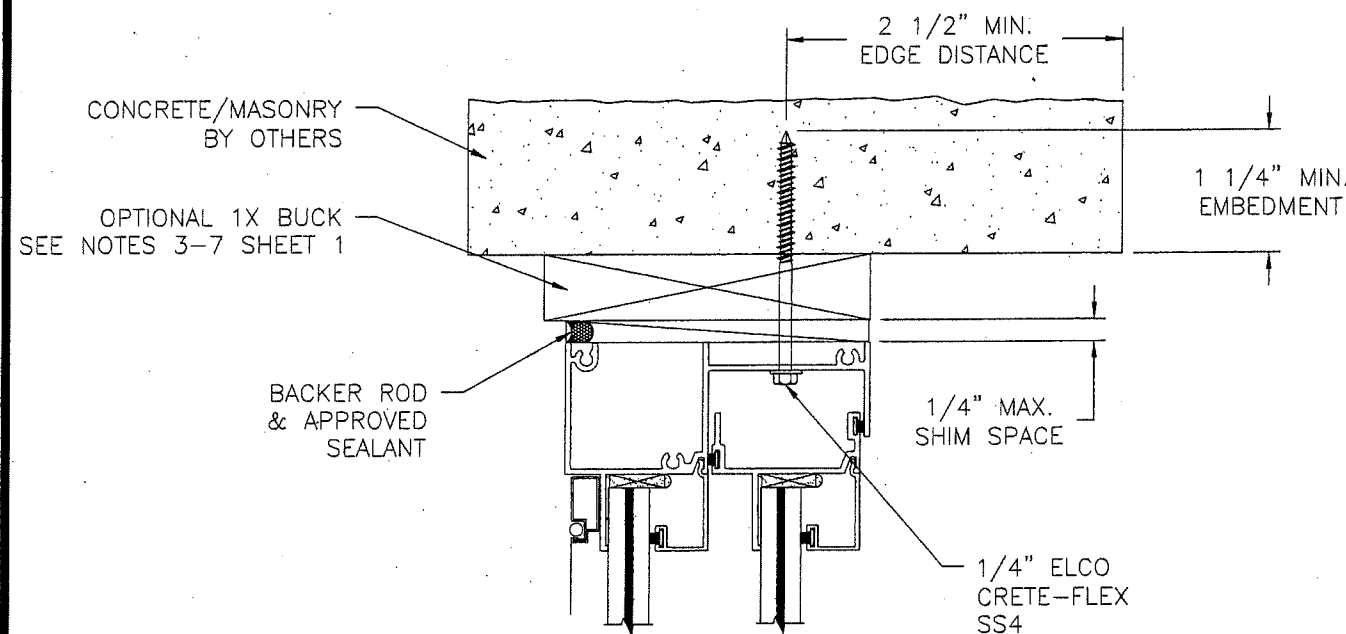
7500 AMSTERDAM DRIVE
ORLANDO, FL 32832
Phone: 407.481.8400
Fax: 407.481.0505
www.windoorinc.com

4070 HORIZONTAL ROLLING WINDOW
XOX, XO & OX
FLUSH INSTALLATION DETAILS

DRAWN: V.L.	DWG NO. 08-01969	REV C
SCALE NTS	DATE 3/22/2013	SHEET 11 OF 15

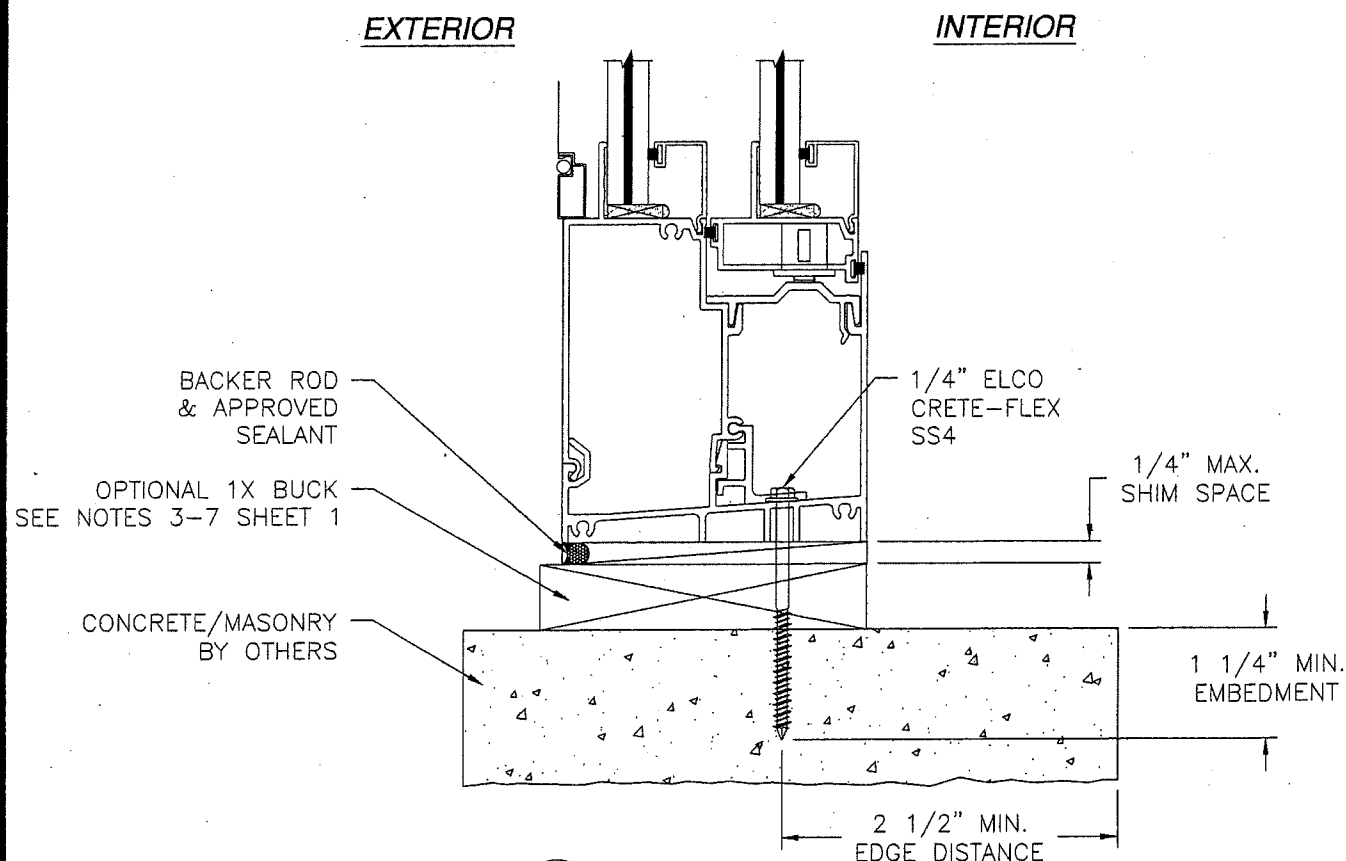


REVISIONS			
REV	DESCRIPTION	DATE	APPROVED
C	REVISED PER NEW REQUIREMENTS	11/29/17	R.L.



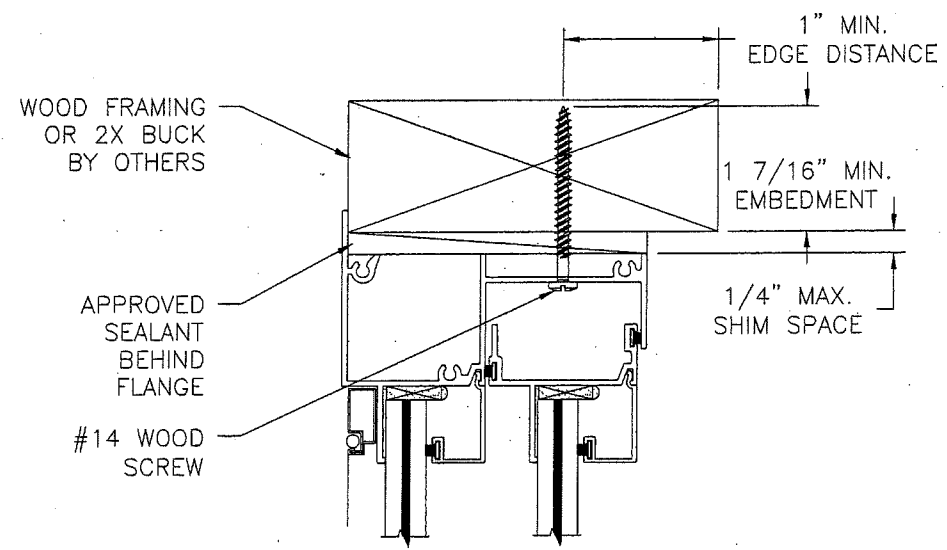
A
12 JAMB INSTALLATION DETAIL
CONCRETE/MASONRY INSTALLATION

- NOTES:
1. INTERIOR AND EXTERIOR FINISHES, BY OTHERS, NOT SHOWN FOR CLARITY.
 2. SEALANT JOINT BY OTHERS TO BE DESIGNED IN ACCORDANCE WITH ASTM E2112.
 3. PERIMETER TO BE SEALED WITH SILICONE.

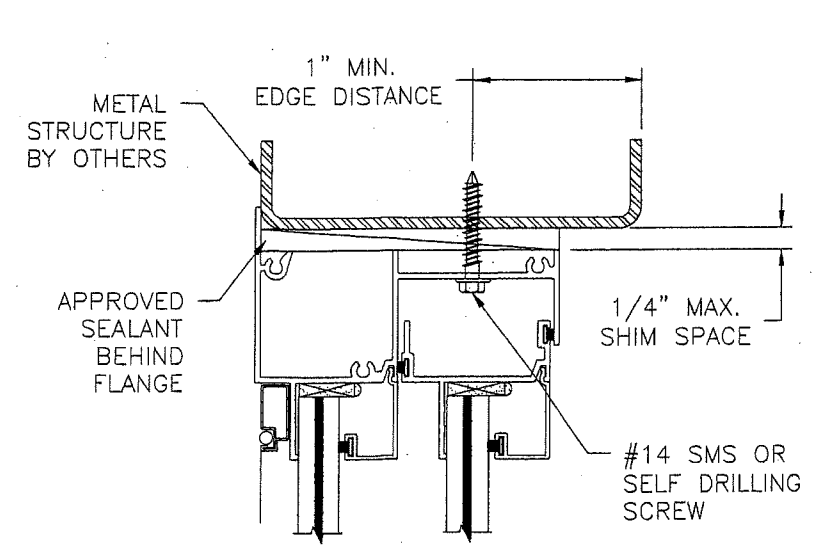


B
12 VERTICAL CROSS SECTION
CONCRETE/MASONRY INSTALLATION

PRODUCT RENEWED as complying with the Florida Building Code NOA-No. 18-1120.02 Expiration Date Jan 23, 2024 By <i>[Signature]</i> Miami-Dade Product Control	WinDoor INCORPORATED		7500 AMSTERDAM DRIVE ORLANDO, FL 32832 Phone: 407.481.8400 Fax: 407.481.0505 www.windoorinc.com		SIGNED: 02/19/2018 LUIS R. LOMAS LICENSE No. 62514 STATE OF FLORIDA PROFESSIONAL ENGINEER
	4070 HORIZONTAL ROLLING WINDOW XOX, XO & OX FLUSH INSTALLATION DETAILS				
	DRAWN: V.L.	DWG NO. 08-01969	REV C		
	SCALE NTS	DATE 3/22/2013	SHEET 12 OF 15		

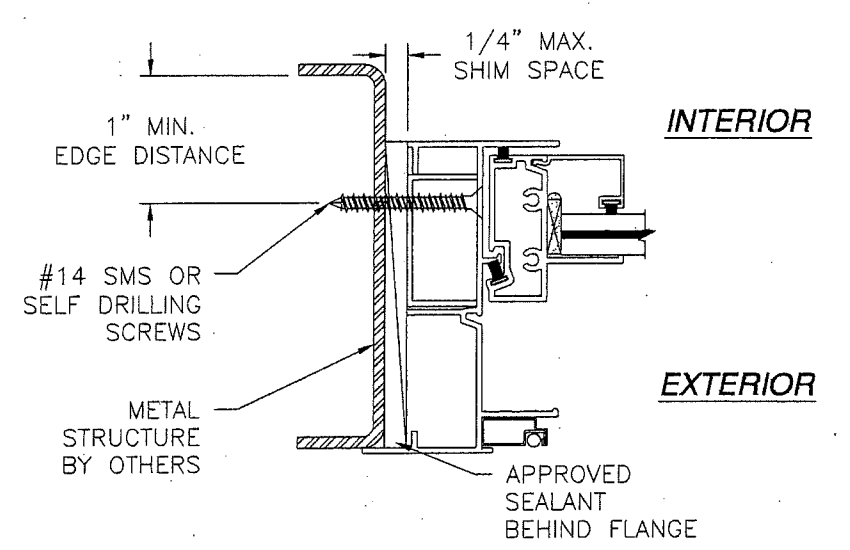


B
13 **VERTICAL CROSS SECTION**
WOOD FRAMING OR 2X BUCK INSTALLATION

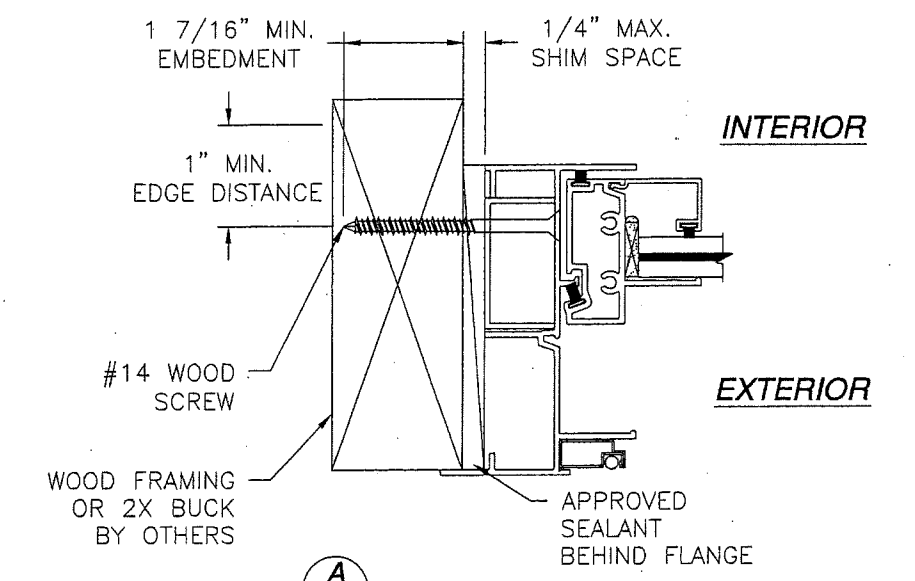


B
13 **VERTICAL CROSS SECTION**
METAL STRUCTURE INSTALLATION

REVISIONS			
REV	DESCRIPTION	DATE	APPROVED
C	REVISED PER NEW REQUIREMENTS	11/29/17	R.L.



A
13 **JAMB INSTALLATION DETAIL**
METAL STRUCTURE INSTALLATION



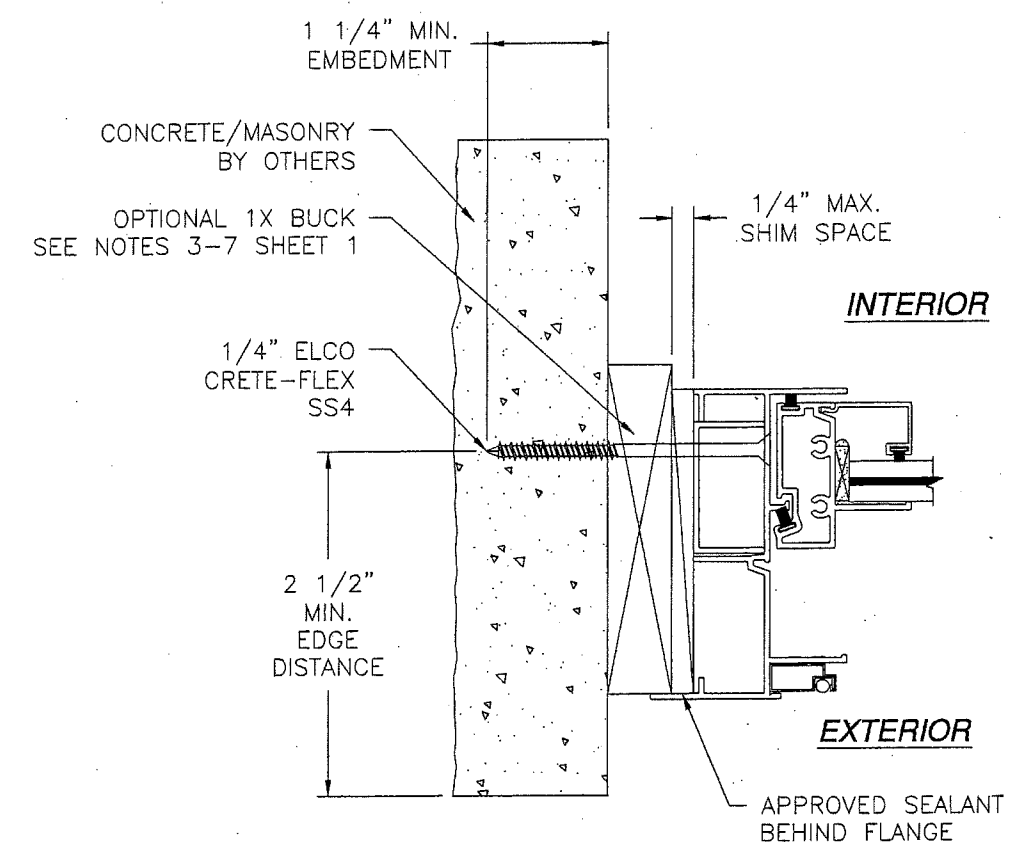
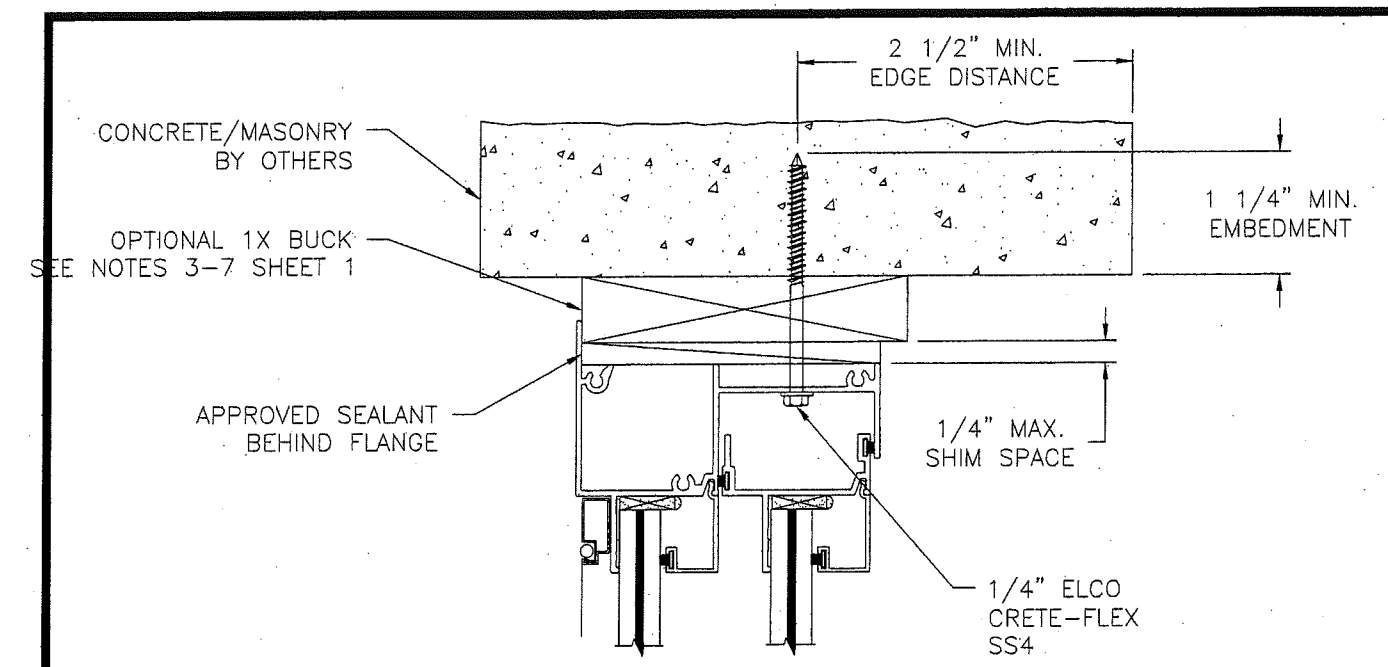
A
13 **JAMB INSTALLATION DETAIL**
WOOD FRAMING OR 2X BUCK INSTALLATION

SIGNED: 02/19/2018

- NOTES:
1. INTERIOR AND EXTERIOR FINISHES, BY OTHERS, NOT SHOWN FOR CLARITY.
 2. SEALANT JOINT BY OTHERS TO BE DESIGNED IN ACCORDANCE WITH ASTM E2112
 3. PERIMETER TO BE SEALED WITH SILICONE.

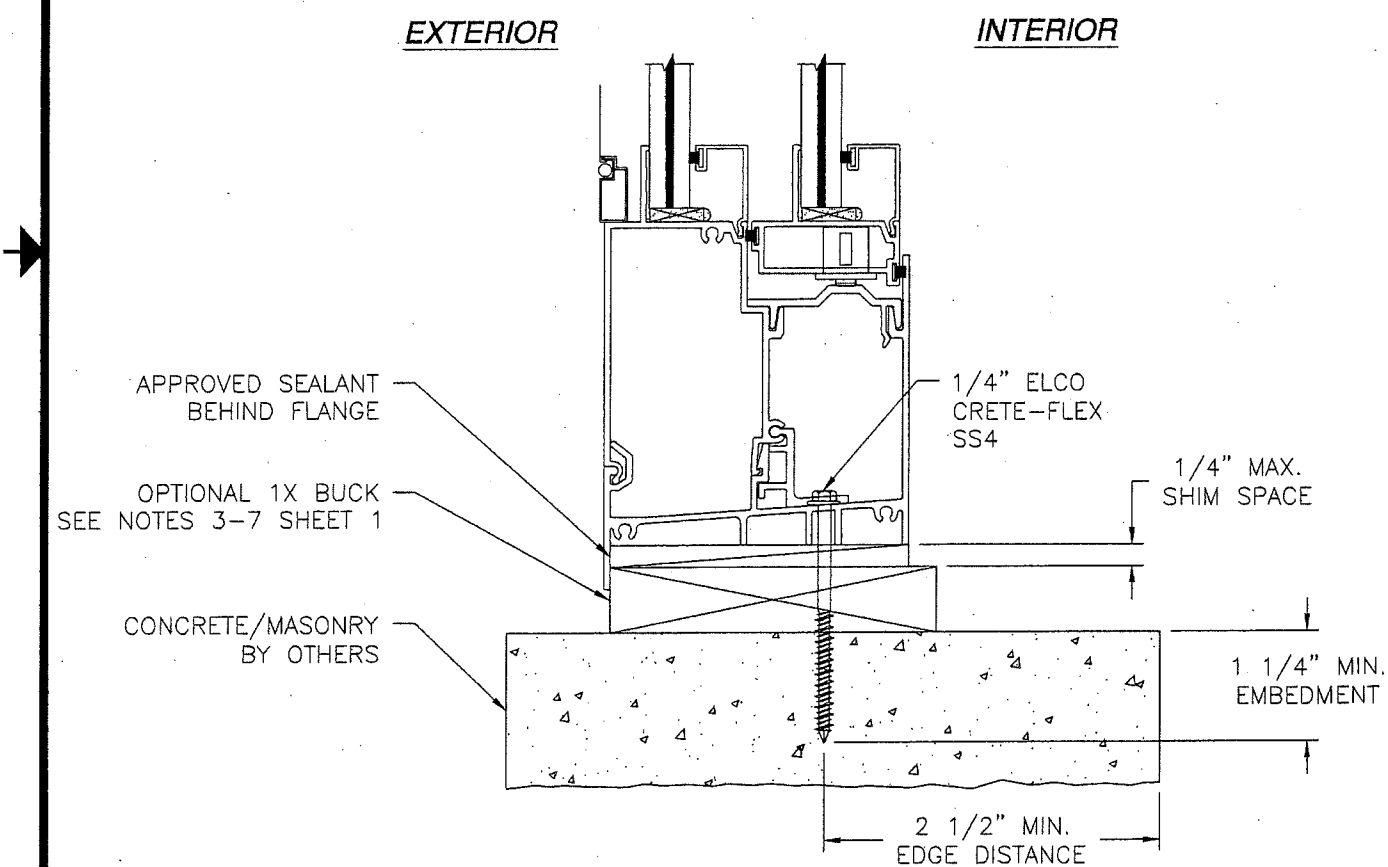
PRODUCT RENEWED as complying with the Florida Building Code NOA-No. 18-1120.02 Expiration Date Jan 23, 2024 By <i>[Signature]</i> Miami-Dade Product Control	WinDoor INCORPORATED 7500 AMSTERDAM DRIVE ORLANDO, FL 32832 Phone: 407.481.8400 Fax: 407.481.0505 www.windoorinc.com			
	4070 HORIZONTAL ROLLING WINDOW XOx, XO & OX FLANGE INSTALLATION DETAILS			
	DRAWN: V.L. SCALE NTS	DWG NO. 08-01969 DATE 3/22/2013		REV C SHEET 13 OF 15

REVISIONS			
REV	DESCRIPTION	DATE	APPROVED
C	REVISED PER NEW REQUIREMENTS	11/29/17	R.L.



A
14 JAMB INSTALLATION DETAIL
CONCRETE/MASONRY INSTALLATION

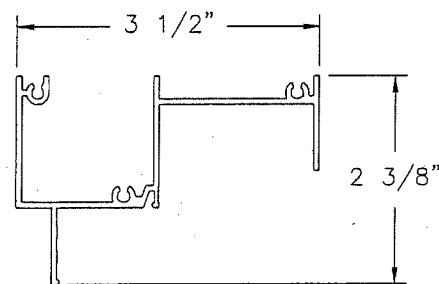
- NOTES:
1. INTERIOR AND EXTERIOR FINISHES, BY OTHERS, NOT SHOWN FOR CLARITY.
 2. SEALANT JOINT BY OTHERS TO BE DESIGNED IN ACCORDANCE WITH ASTM E2112.
 3. PERIMETER TO BE SEALED WITH SILICONE.



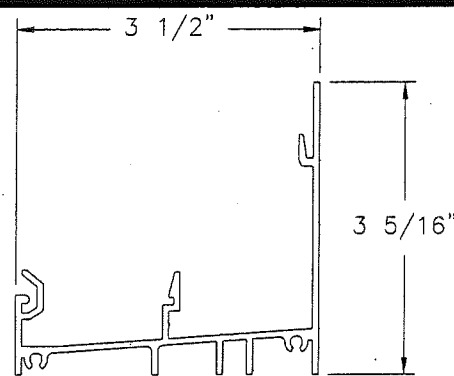
B
14 VERTICAL CROSS SECTION
CONCRETE/MASONRY INSTALLATION

PRODUCT RENEWED as complying with the Florida Building Code NOA-No. 18-1120.02 Expiration Date Jan 23, 2024 By <i>[Signature]</i> Miami-Dade Product Control	WinDoor INCORPORATED		7500 AMSTERDAM DRIVE ORLANDO, FL 32832 Phone: 407.481.8400 Fax: 407.481.0505 www.windoorinc.com	SIGNED: 02/19/2018
	4070 HORIZONTAL ROLLING WINDOW XOX, XO & OX FLANGE INSTALLATION DETAILS			
	DRAWN: V.L.	DWG NO. 08-01969	REV C	
	SCALE NTS	DATE 3/22/2013	SHEET 14 OF 15	

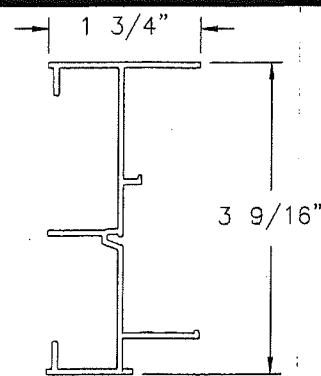
REVISIONS			
REV	DESCRIPTION	DATE	APPROVED
C	REVISED PER NEW REQUIREMENTS	11/29/17	R.L.



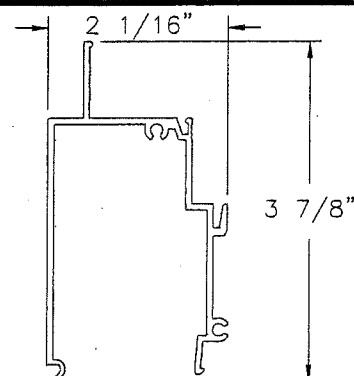
① **FRAME HEAD EQUAL LEG**
ALUMINUM 6063-T6 .062" THICK



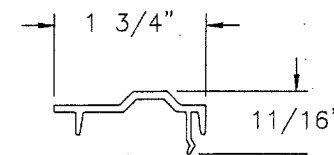
② **FRAME SILL PAN**
ALUMINUM 6063-T6 .070" THICK



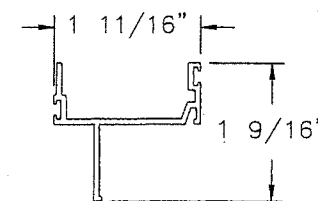
③ **FRAME JAMB EQUAL LEG**
ALUMINUM 6063-T6 .062" THICK



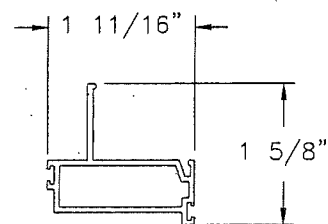
④ **SILL TANK**
ALUMINUM 6063-T6 .070" THICK



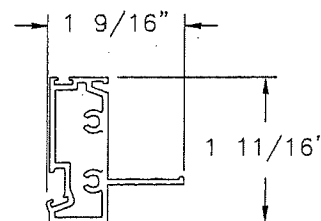
⑤ **SILL TRACK**
ALUMINUM 6063-T6 .070" THICK



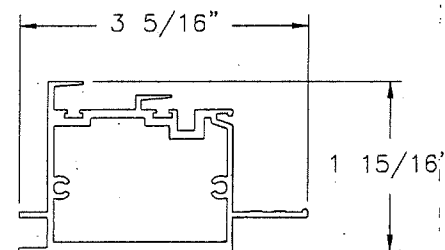
⑥ **SASH TOP RAIL**
ALUMINUM 6063-T6 .070" THICK



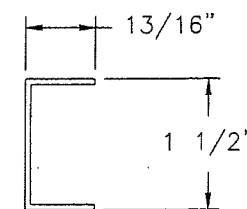
⑦ **SASH BOTTOM RAIL**
ALUMINUM 6063-T6 .062" THICK



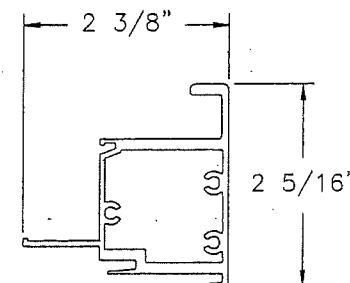
⑧ **SASH LOCK STILE**
ALUMINUM 6063-T6 .062" THICK



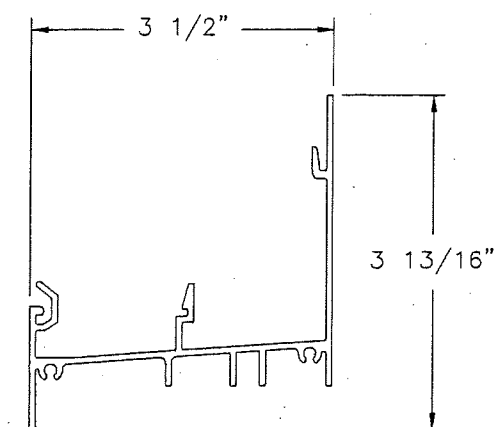
⑨ **FIXED MEETING STILE**
ALUMINUM 6063-T6 .062" THICK



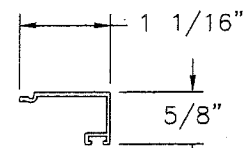
⑩ **FRAME FILLER**
ALUMINUM 6063-T6 .062" THICK



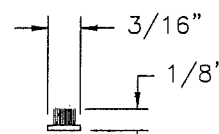
⑪ **SASH INTERLOCK**
ALUMINUM 6063-T6 .062" THICK



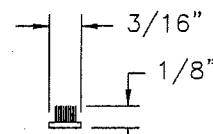
③④ **FRAME SILL PAN FLANGE**
ALUMINUM 6063-T6 .070" THICK



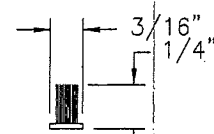
⑫ **7/16" GLASS STOP**
ALUMINUM 6063-T6 .050" THICK



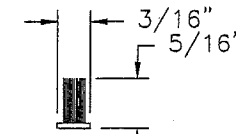
⑰ **WEATHERSTRIP PLASTIC**



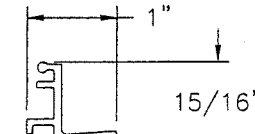
⑱ **WEATHERSTRIP PLASTIC**



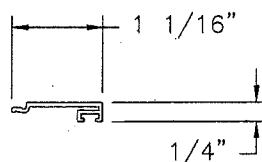
⑲ **WEATHERSTRIP PLASTIC**



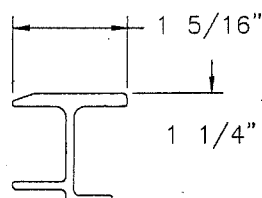
⑳ **WEATHERSTRIP PLASTIC**



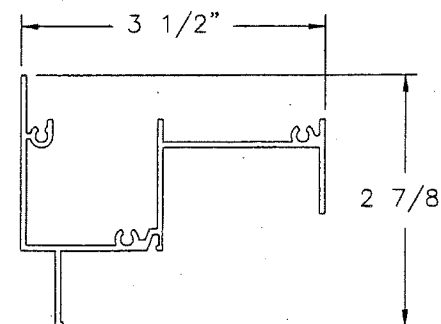
⑳ **CLIP**
ALUMINUM 6063-T6 .080" THICK



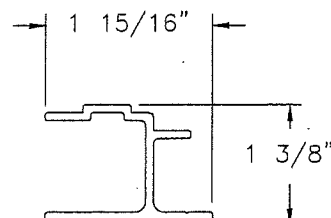
⑬ **15/16" GLASS STOP**
ALUMINUM 6063-T5 .050" THICK



③② **REINFORCEMENT**
ALUMINUM 6005-T6 .090" THICK



③③ **FRAME HEAD FLANGE**
ALUMINUM 6063-T6 .062" THICK



③① **REINFORCEMENT**
ALUMINUM 6005-T6 .090" THICK

SIGNED: 02/19/2018

PRODUCT RENEWED
as complying with the Florida
Building Code
NOA-No. **18-1120.02**

Expiration Date **Jan 23, 2024**

By *[Signature]*
Miami-Dade Product Control

WinDoor
INCORPORATED

7500 AMSTERDAM DRIVE
ORLANDO, FL 32832
Phone: 407.481.8400
Fax: 407.481.0505
www.windoorinc.com

4070 HORIZONTAL ROLLING WINDOW
XOX, XO & OX
COMPONENTS

DRAWN:
V.L.

DWG NO.

08-01969

REV
C

SCALE NTS

DATE 3/22/2013

SHEET 15 OF 15

