



DEPARTMENT OF REGULATORY AND ECONOMIC RESOURCES (RER)
BOARD AND CODE ADMINISTRATION DIVISION

MIAMI-DADE COUNTY
PRODUCT CONTROL SECTION
11805 SW 26 Street, Room 208
Miami, Florida 33175-2474
T (786) 315-2590 F (786) 315-2599

NOTICE OF ACCEPTANCE (NOA)

www.miamidade.gov/economy

Butler Manufacturing,
A Division of BlueScope Buildings North America, Inc.
13500 Botts Road
Grandview, Missouri 64030

SCOPE:

This NOA is being issued under the applicable rules and regulations governing the use of construction materials. The documentation submitted has been reviewed and accepted by Miami-Dade County RER- Product Control Section to be used in Miami Dade County and other areas where allowed by the Authority Having Jurisdiction (AHJ).

This NOA shall not be valid after the expiration date stated below. The Miami-Dade County Product Control Section (In Miami Dade County) and/or the AHJ (in areas other than Miami Dade County) reserve the right to have this product or material tested for quality assurance purposes. If this product or material fails to perform in the accepted manner, the manufacturer will incur the expense of such testing and the AHJ may immediately revoke, modify, or suspend the use of such product or material within their jurisdiction. RER reserves the right to revoke this acceptance, if it is determined by Miami-Dade County Product Control Section that this product or material fails to meet the requirements of the applicable building code.

This product is approved as described herein, and has been designed to comply with the High Velocity Hurricane Zone of the Florida Building Code.

DESCRIPTION: "Butlerib II" 0.0235" (min.) Galvalume Steel Structural Roof Panel

APPROVAL DOCUMENT: Drawing No. B, titled "Butlerib II", sheets 1 through 5 of 5, prepared by Butler Manufacturing, a Division of BlueScope Buildings North America, Inc., signed and sealed by Russell L. Benton, P.E. on September 27, 2017, bearing the Miami-Dade County Product Control Renewal stamp with the Notice of Acceptance number and the expiration date by the Miami-Dade County Product Control Section.

MISSILE IMPACT RATING: Large and Small Missile Impact Resistant

LABELING: Each panel shall bear a permanent label with the manufacturer's name or logo, city, state and the following statement: "Miami-Dade County Product Control Approved", unless otherwise noted herein.

RENEWAL of this NOA shall be considered after a renewal application has been filed and there has been no change in the applicable building code negatively affecting the performance of this product.

TERMINATION of this NOA will occur after the expiration date or if there has been a revision or change in the materials, use, and/or manufacture of the product or process. Misuse of this NOA as an endorsement of any product, for sales, advertising or any other purposes shall automatically terminate this NOA. Failure to comply with any section of this NOA shall be cause for termination and removal of NOA.

ADVERTISEMENT: The NOA number preceded by the words Miami-Dade County, Florida, and followed by the expiration date may be displayed in advertising literature. If any portion of the NOA is displayed, then it shall be done in its entirety.

INSPECTION: A copy of this entire NOA shall be provided to the user by the manufacturer or its distributors and shall be available for inspection at the job site at the request of the Building Official.

This NOA **renews** NOA #17-0803.41 and consists of this page 1, evidence submitted pages E-1, E-2, E-3, & E-4 as well as approval document mentioned above.

The submitted documentation was reviewed by **Helmy A. Makar, P.E., M.S.**



Helmy A. Makar
01/31/2019

NOA No. 18-1205.03
Expiration Date: 02/24/2024
Approval Date: 01/31/2019
Page 1

Butler Manufacturing,
A Division of BlueScope Buildings North America, Inc.

NOTICE OF ACCEPTANCE: EVIDENCE SUBMITTED

1. EVIDENCE SUBMITTED UNDER PREVIOUS APPROVAL #99-0816.09

A. DRAWINGS

1. *Drawing No. B, sheets 1 through 5 of 5, prepared by Suresh C. Satsangi, P.E., dated November 9, 1999, signed and sealed by Suresh C. Satsangi, P.E.*

B. TESTS

1. *Test report on Large Missile Impact and Uplift Resistance per UL 580 Class 90 on Butlerib II Roof Panel, prepared by Hurricane Test Laboratory, Inc., Report No. 0063-0315-99, dated 07/23/1999, signed and sealed by Vinu J. Abraham, P.E.*
2. *Test report on Accelerated Weathering Testing of Coating 2000 hours per ASTM G26-96, prepared by Celotex, Report No. 520223, dated 08/02/99, signed and sealed by R. C. Miller, P.E.*
3. *Test report on Salt Spray Testing of Coating 1000 hours per ASTM B117-95, prepared by Celotex, Report No. 520223, dated 08/02/99, signed and sealed by R. C. Miller, P.E.*
4. *Susceptibility to leakage test in accordance with Miami-Dade County Protocol PA 114 Appendix G, prepared by Celotex, Report No. 520223-2, dated 08/03/99, signed and sealed by R. C. Miller, P.E.*

C. CALCULATIONS

1. *Calculations titled "Butlerib II Roof System - Panels", 7 pages, prepared by Suresh C. Satsangi, P.E., signed and sealed by Suresh C. Satsangi, P.E.*
2. *Calculations titled "Butlerib II Wind Load Design for Roof", dated 07/28/99, 7 pages, prepared, signed & sealed by Suresh C. Satsangi, P.E.*
3. *Calculations titled "Butlerib II Wind Load Design for Roof", dated 12/21/99, 8 pages, prepared, signed and sealed by Suresh C. Satsangi, P.E.*

D. MATERIAL CERTIFICATIONS

1. *Mill Certified Test Report issued by National Steel, dated 02/12/99, with chemical composition and mechanical properties of galvalume steel.*
2. *Tensile Test on specimen #1 of Test #0063-0315-99, Report # 9CM-777, prepared by QC Metallurgical, Inc., dated 04/23/99, signed & sealed by Frank Grate, P.E.*

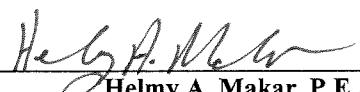
2. EVIDENCE SUBMITTED UNDER PREVIOUS APPROVAL #00-0503.03

A. DRAWINGS

1. *Drawing No. B, sheets 1 through 5 of 5, prepared by Suresh C. Satsangi, P.E., dated November 9, 1999, last revision #1 dated April 27, 2000, signed and sealed by Suresh C. Satsangi, P.E.*

B. TESTS

1. *None.*



Helmy A. Makar, P.E., M.S.
Product Control Section Supervisor
NOA No. 18-1205.03
Expiration Date: 02/24/2024
Approval Date: 01/31/2019

Butler Manufacturing,
A Division of BlueScope Buildings North America, Inc.

NOTICE OF ACCEPTANCE: EVIDENCE SUBMITTED

C. CALCULATIONS

1. *Calculations titled "Butlerib II Wind Load Design for Roof", dated 01/14/00, 8 page, prepared by Suresh C. Satsangi, P.E., signed & sealed by Suresh C. Satsangi, P.E.*
2. *Calculations titled "Butlerib II Wind Load Design for Roof", dated 08/15/00, 8 page, prepared by Suresh C. Satsangi, P.E., signed & sealed by Suresh C. Satsangi, P.E.*

D. MATERIAL CERTIFICATIONS

1. *None.*

3. EVIDENCE SUBMITTED UNDER PREVIOUS APPROVAL # 03-0128.01

A. DRAWINGS

1. *Drawing No. B, titled "Butlerib II", sheets 1 through 5 of 5, prepared by Butler Manufacturing Comp., signed & sealed by John E. Lamb, P.E. on 04/30, 2003.*

B. TESTS

1. *None.*

C. CALCULATIONS

1. *None.*

D. MATERIAL CERTIFICATIONS

1. *None.*

4. EVIDENCE SUBMITTED UNDER PREVIOUS APPROVAL # 08-0208.03

A. DRAWINGS

1. *None.*

B. TESTS

1. *None.*

C. CALCULATIONS

1. *None.*

D. QUALITY ASSURANCE

1. *By Miami-Dade County Building Code Compliance Office.*

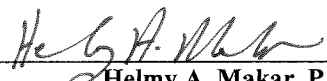
E. MATERIAL CERTIFICATIONS

1. *None.*

5. EVIDENCE SUBMITTED UNDER PREVIOUS APPROVAL # 09-0107.07

A. DRAWINGS

1. *Drawing No. B, titled "Butlerib II", sheets 1 through 5 of 5, prepared by Butler Manufacturing Company, last revision #4 dated 12/08/08, signed & sealed by Russell L. Benton, P.E. on 12/10/08*



Helmy A. Makar, P.E., M.S.
Product Control Section Supervisor
NOA No. 18-1205.03
Expiration Date: 02/24/2024
Approval Date: 01/31/2019

Butler Manufacturing,
A Division of BlueScope Buildings North America, Inc.

NOTICE OF ACCEPTANCE: EVIDENCE SUBMITTED

B. TESTS

1. *Test report on Uniform Static Uplift Pressure per ASTM E-1592 on Butlerib II Roof Panel, prepared by Hurricane Test Laboratory, Inc., Report No. 0063-0904-08, dated December 15, 2008, signed and sealed by Vinu J. Abraham, P.E.*

C. CALCULATIONS

1. *None.*

D. QUALITY ASSURANCE

1. *By Miami-Dade County Building Code Compliance Office.*

E. MATERIAL CERTIFICATIONS

1. *None.*

6. EVIDENCE SUBMITTED UNDER PREVIOUS APPROVAL # 10-0901.19

A. DRAWINGS

1. *Drawing No. B, titled "Butlerib II", sheets 1 through 5 of 5, prepared by Butler Manufacturing, a Division of BlueScope Buildings North America, Inc., signed and sealed by Russell L. Benton, P.E. on January 24, 2011.*

B. TESTS

1. *None.*

C. CALCULATIONS

1. *None.*

D. QUALITY ASSURANCE

1. *By Miami-Dade County Building and Neighborhood Compliance Department.*

E. MATERIAL CERTIFICATIONS

1. *None.*

7. EVIDENCE SUBMITTED UNDER PREVIOUS APPROVAL # 14-0221.05

A. DRAWINGS


1. *Drawing No. B, titled "Butlerib II", sheets 1 through 5 of 5, prepared by Butler Manufacturing, a Division of BlueScope Buildings North America, Inc., signed and sealed by Russell L. Benton, P.E. on 02/13/14.*

B. TESTS

1. *None.*

C. CALCULATIONS

1. *None.*

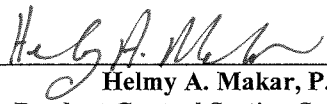


Helmy A. Makar, P.E., M.S.
Product Control Section Supervisor
NOA No. 18-1205.03
Expiration Date: 02/24/2024
Approval Date: 01/31/2019

Butler Manufacturing,
A Division of BlueScope Buildings North America, Inc.

NOTICE OF ACCEPTANCE: EVIDENCE SUBMITTED

- D. QUALITY ASSURANCE**
1. *By Miami-Dade County Department of Regulatory and Economic Resources.*
- E. MATERIAL CERTIFICATIONS**
1. *None.*
- 8. EVIDENCE SUBMITTED UNDER PREVIOUS APPROVAL # 17-0803.41**
- A. DRAWINGS**
1. *Drawing No. B, titled "Butlerib II", sheets 1 through 5 of 5, prepared by Butler Manufacturing, a Division of BlueScope Buildings North America, Inc., signed and sealed by Russell L. Benton, P.E. on September 27, 2017.*
- B. TESTS**
1. *None.*
- C. CALCULATIONS**
1. *None.*
- D. QUALITY ASSURANCE**
1. *By Miami-Dade County Department of Regulatory and Economic Resources.*
- E. MATERIAL CERTIFICATIONS**
1. *None.*
- 9. NEW EVIDENCE SUBMITTED**
- A. DRAWINGS**
1. *None.*
- B. TESTS**
1. *None.*
- C. CALCULATIONS**
1. *None.*
- D. QUALITY ASSURANCE**
1. *By Miami-Dade County Department of Regulatory and Economic Resources.*
- E. MATERIAL CERTIFICATIONS**
1. *None.*
- F. STATEMENTS**
1. *FBC, 2017 Edition, compliance letter issued by Blue Scope Buildings, signed and sealed by Russell L. Benton, P.E. on 11/27/18.*



Helmy A. Makar, P.E., M.S.
Product Control Section Supervisor
NOA No. 18-1205.03
Expiration Date: 02/24/2024
Approval Date: 01/31/2019

REVISION NUMBER 5
CHANGE 2010 TO 2017 IN NOTE 1
DATE 07/14/17
DWY CHKO
BSN MHT

REVISION NUMBER 4
REVISE NOTE 1 FOR FBC TO BE 2010.
DATE 02/13/14
DWY CHKO
BSN RLB

REVISION NUMBER 3
REVISE NOTE 1 FROM 2001 TO 2007.
WAS NOT UPDATED IN REVISION 1.
DATE 01/13/11
DWY CHKO
BSN RLB

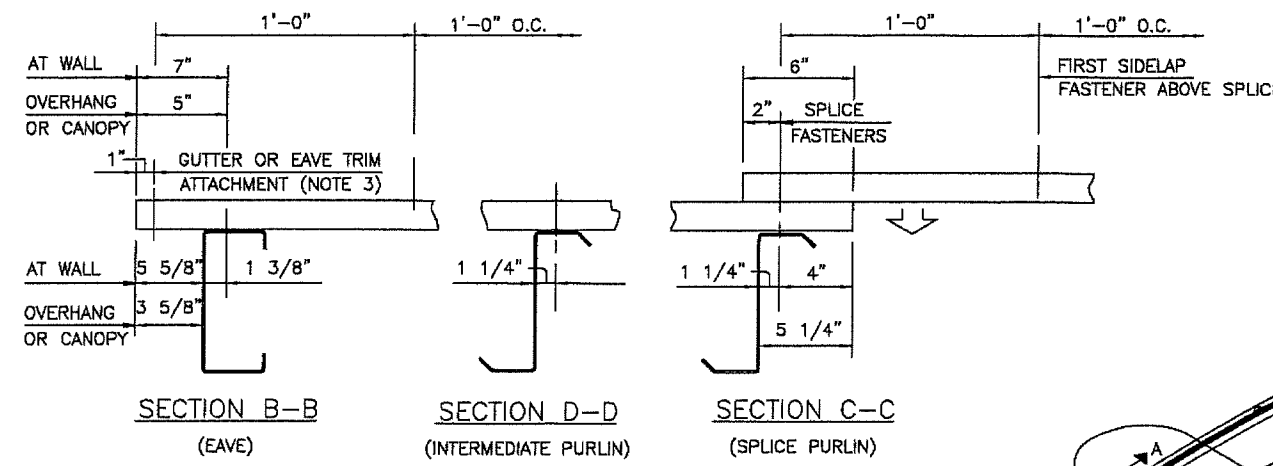
REVISION NUMBER 2
CHANGED DESCRIPTION FOR PANEL TO
PANEL SELF-DRILLING SCREW IN
REFERENCE SCHEDULE #14 X 7/8" X 1/4" SDS.
MIN PT SDS. WAS #14 X 1/4" SDS.
DATE 09/21/10
DWY CHKO
RHE BSN

REVISION NUMBER 1
REVISE TO BINA TITLE BLOCK AND
NUMBER TO P-081389.
DATE 07/01/10
DWY CHKO
BSN RLB

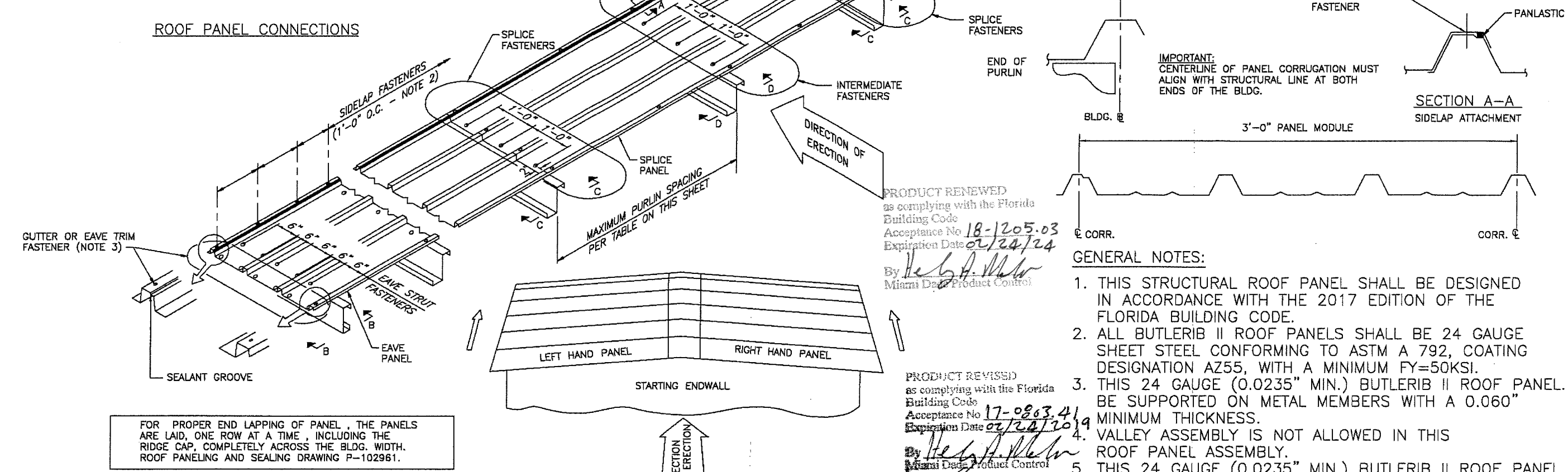
Russell L Benton, PE#51155

9/27/17

Russell Benton



ROOF PANEL CONNECTIONS



PRODUCT RENEWED
as complying with the Florida
Building Code
Acceptance No 18-1205.03
Expiration Date 02/24/24
By *Heidi A. Miller*
Miami Data Product Control

PRODUCT REVISED
as complying with the Florida
Building Code
Acceptance No 17-0803.419
Expiration Date 02/24/2019
By *Heidi A. Miller*
Miami Data Product Control

- INSTALLATION NOTES:
1. PANELS ARE INSTALLED WITH SEALANT GROOVE FORWARD TOWARD THE DIRECTION OF ERECTION, WITH THE SEALANT GROOVE CONTINUOUS FROM EAVE TO EAVE. LOOKING AT STARTING ENDWALL FROM OUTSIDE OF BUILDING THIS MAKES LEFT HAND PANELS ON LEFT SIDE OF BUILDING AND RIGHT HAND PANELS ON RIGHT SIDE OF BUILDING. SEE DIRECTION OF ERECTION DETAIL AND DWG P-102961.
 2. LOCATE SIDELAP FASTENERS 1'-0" ON CENTER. SEE IMPORTANT SIDELAP FASTENER LOCATIONS NOTE.
 3. THE INTERIOR EAVE STRUT STRUCTURAL FASTENERS ARE THE SAME SPACING AS THE INTERMEDIATE PURLINS. INTERIOR EAVE STRUTS ARE LOCATED BETWEEN BUILDING AND WX, CANOPY OR OVERHANG.

PURLIN SPACING		
ROOF ZONE	MAXIMUM PURLIN SPACING	MAX. UPLIFT PRESSURE
FIELD (INTERIOR)	3'-6"	55.2 PSF
EDGE	2'-6"	95.4 PSF
CORNER	2'-2"	142.2 PSF

FASTENER SCHEDULE		
LOCATION	PART NO.	DESCRIPTION
PANEL TO STRUCTURAL	097196	3/8" X 1" SCRUBOLT
PANEL TO PANEL	097357	1/4-14 X 7/8" MINI PT SDS.

IMPORTANT - SIDELAP FASTENER LOCATIONS:
IT IS EXTREMELY IMPORTANT TO FIELD LOCATE SIDELAP FASTENERS STARTING AT THE LOW END OF BR11 ROOF PANELS AS FOLLOWS, OTHERWISE IT COULD CREATE A FASTENER SHORTAGE.

EAVE PANEL WITH GUTTER OR EAVE TRIM: START SIDELAP FASTENERS 1'-0" ABOVE GUTTER OR EAVE TRIM ATTACHMENT HOLES.

EAVE PANEL WITH UNTRIMMED EAVE:
PUNCHED PANELS: INSTALL LOCK-RIVET IN FACTORY PUNCHED HOLE AT LOW END OF EAVE PANEL. START SIDELAP FASTENERS 1'-0" FROM LOCK-RIVET LOCATION.
UNPUNCHED PANELS: START SIDELAP FASTENERS 1" FROM LOW END OF EAVE PANEL.

SPLICE PANEL: START SIDELAP FASTENERS 1'-0" ABOVE SPLICE FASTENERS.

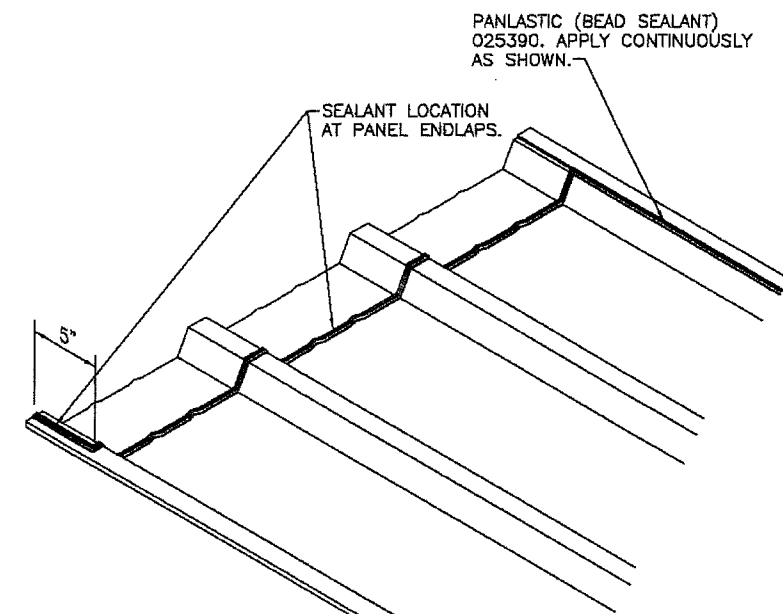
RIDGE PANEL: INSTALL ONE SIDELAP FASTENER 6" ABOVE SPLICE FASTENERS.

- GENERAL NOTES:
1. THIS STRUCTURAL ROOF PANEL SHALL BE DESIGNED IN ACCORDANCE WITH THE 2017 EDITION OF THE FLORIDA BUILDING CODE.
 2. ALL BUTLERIB II ROOF PANELS SHALL BE 24 GAUGE SHEET STEEL CONFORMING TO ASTM A 792, COATING DESIGNATION AZ55, WITH A MINIMUM FY=50KSI.
 3. THIS 24 GAUGE (0.0235" MIN.) BUTLERIB II ROOF PANEL. BE SUPPORTED ON METAL MEMBERS WITH A 0.060" MINIMUM THICKNESS.
 4. VALLEY ASSEMBLY IS NOT ALLOWED IN THIS ROOF PANEL ASSEMBLY.
 5. THIS 24 GAUGE (0.0235" MIN.) BUTLERIB II ROOF PANEL SHALL BE USED FOR ROOF CONSTRUCTION. EVERY ROOF PROJECT SHALL BE CONSTRUCTED USING THE SAME DETAILS SHOWN ON THESE APPROVED DRAWINGS, INCLUDING:
 - DETAILS OF ALL PANEL CHARACTERISTICS AND SECTIONS WITH DIMENSIONS AND THICKNESS.
 - ASSEMBLY DETAILS INCLUDING ALL CONNECTIONS AND FASTENER DIAGRAMS WITH SIZE AND LOCATION.
 - PANEL'S MAXIMUM SPAN AND PRESSURE FOR THE ROOF'S FIELD, PERIMETER, AND CORNER ZONES BASED ON THE PANEL'S ALLOWABLES SHOWN ON THIS SHEET.

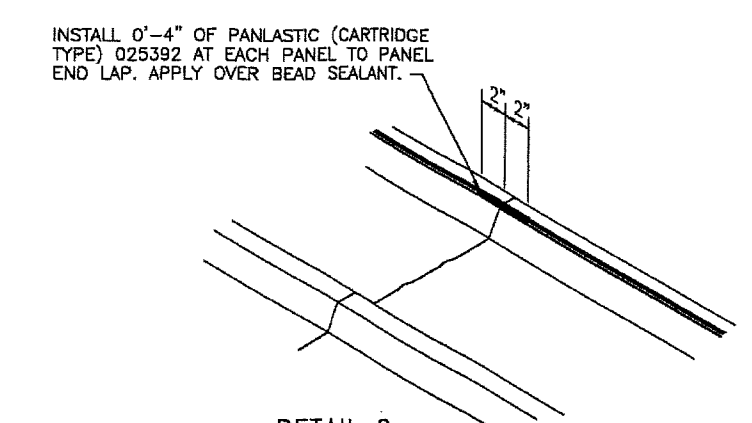
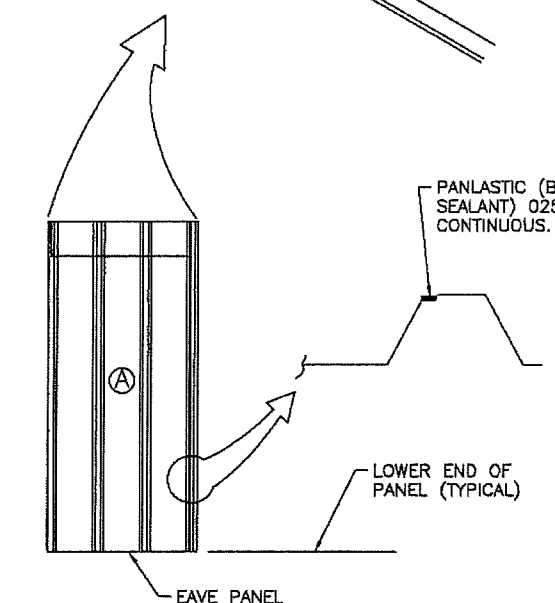
BUTLER
Butler Manufacturing
a division of BlueScope Buildings North America, Inc.
1540 GENESSEE ST.
KANSAS CITY, MO. 64102

BUTLERIB II PANEL INSTALLATION DADE COUNTY FLORIDA			
DRAWN BY JRS	CHECKED BY MHT	GROUP NUMBER: 04-030-06	
FIRST RELEASE DATE 01/21/10	REVISION DATE 07/14/17	B	P-081389 05

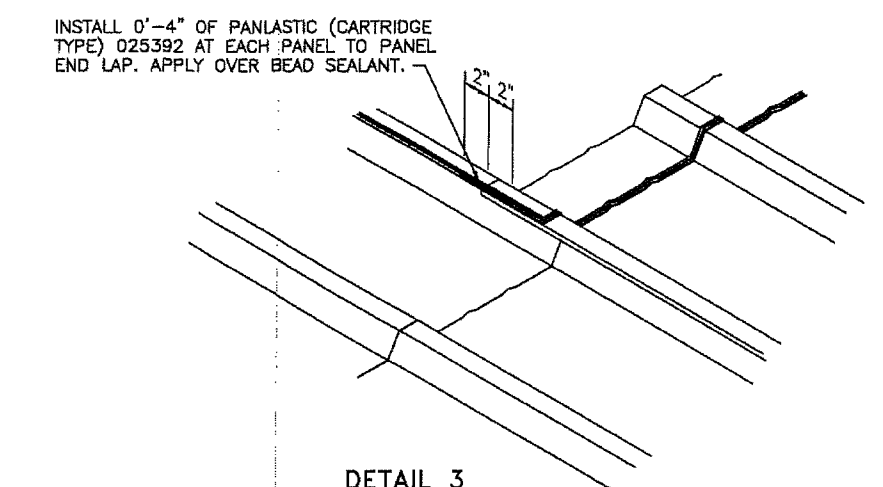
REVISION NUMBER 1
 REUSE TO BINA TITLE BLOCK AND
 NUMBER TO P-081390.
 DWG BY CHKD BY
 BSN RLB ADD BUTLER LOGO.



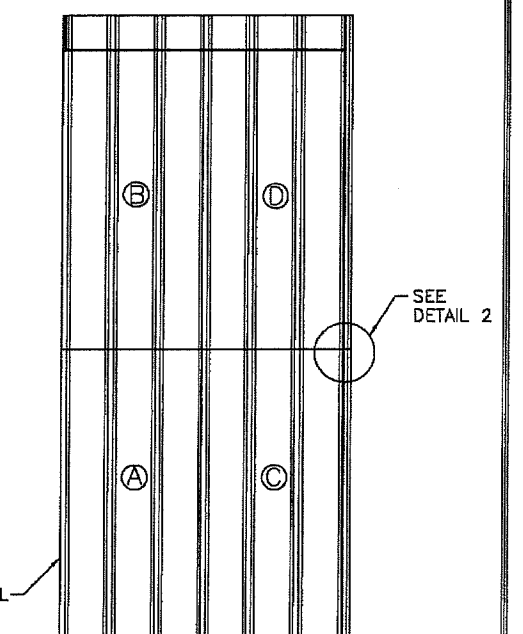
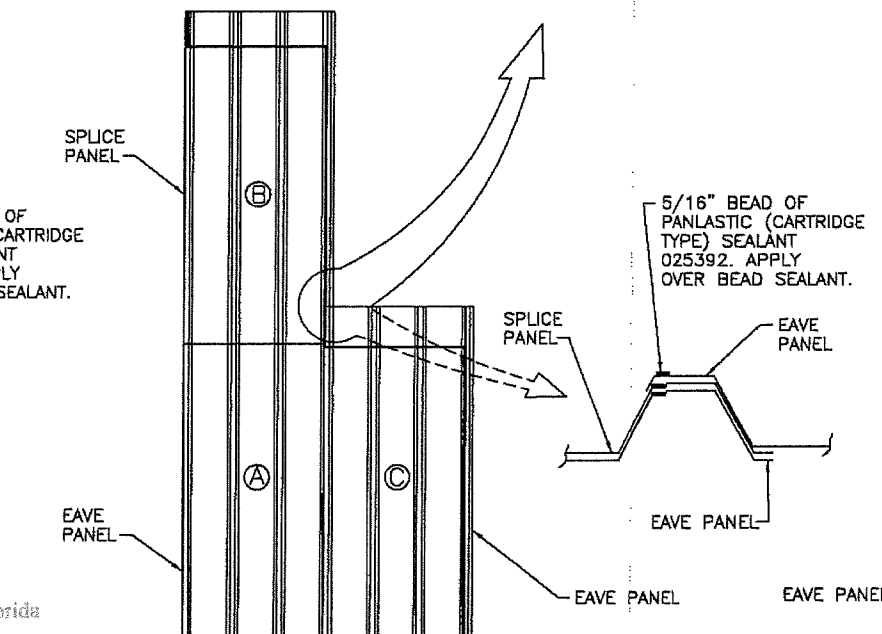
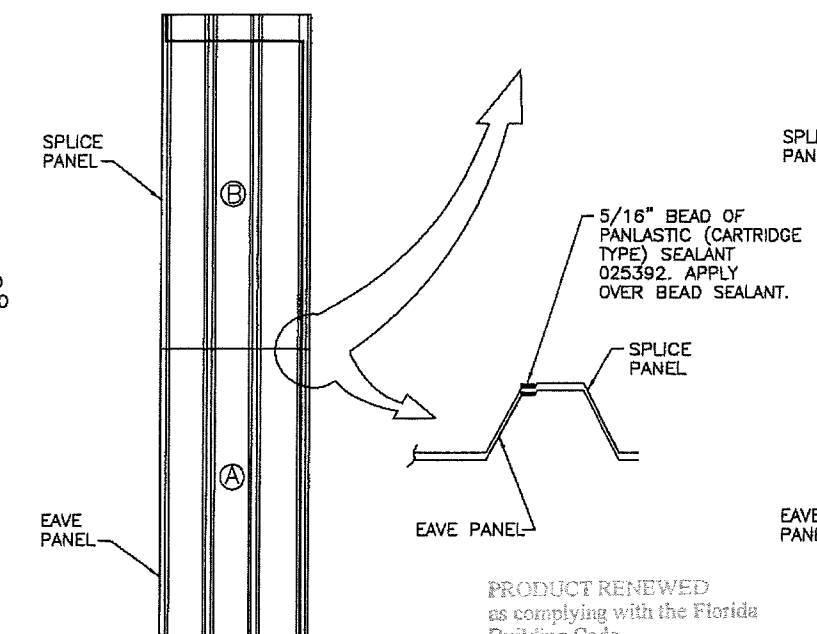
DETAIL 1



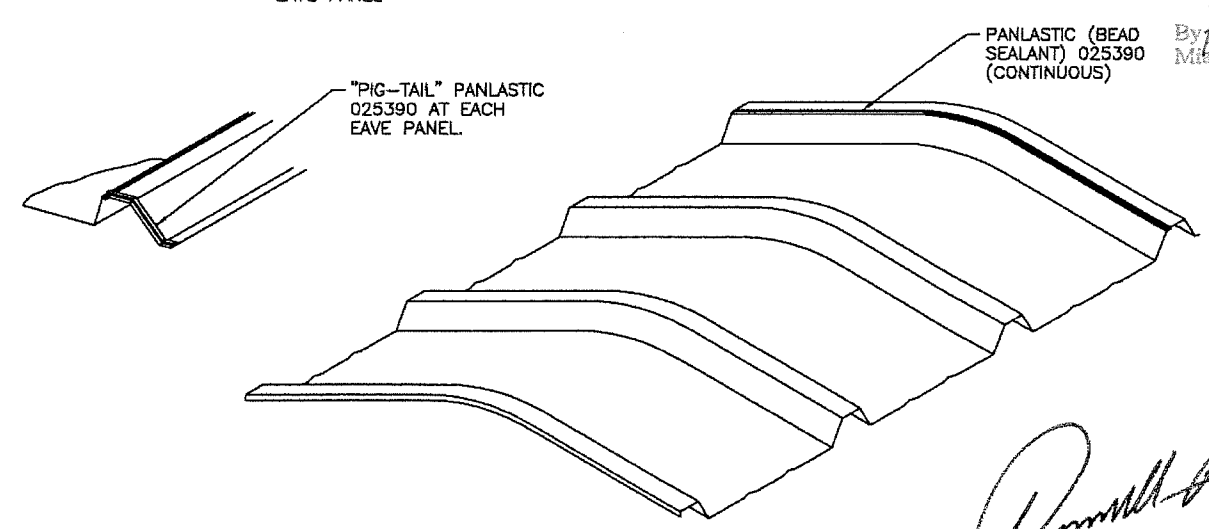
DETAIL 2



DETAIL 3



PRODUCT RENEWED
 as complying with the Florida
 Building Code
 Acceptance No 18-1205.03
 Expiration Date 02/24/24
 By *H. G. A. M. Jr.*
 Miami Dade Product Control



PANLASTIC APPLICATION TO
 RIDGE PANEL

WARNING
 Panels with protective coatings are slippery, proceed with caution wipe clean if necessary.

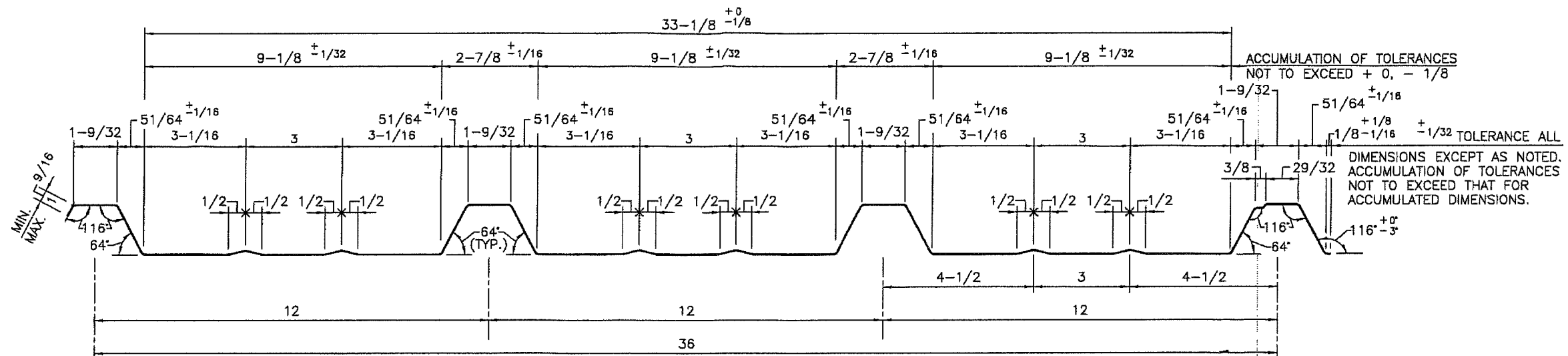
PRODUCT REVISED
 as complying with the Florida
 Building Code
 Acceptance No 17-0803.41
 Expiration Date 02/24/2019
 By *H. G. A. M. Jr.*
 Miami Dade Product Control

Russell L. Benton
 9/27/17
 Russell L Benton, PE#51155

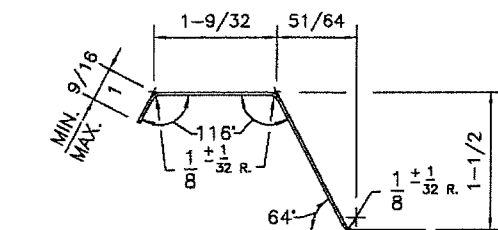
CAUTION
 PANELS MUST BE CLEAN, DRY, AND FREE OF OIL BEFORE APPLYING THE PANLASTIC. AT TEMPERATURES BELOW 40° F THE PANLASTIC IS MORE RESISTANT TO COMPRESSION. SPECIAL CARE SHOULD BE TAKEN TO ASSURE THAT THE PANELS ARE CLOSELY NESTED.

APPLICATION OF PANLASTIC
 INSTALL PANLASTIC TO THE IN-PLACE PANEL AS SHOWN---PAPER BACKING TO THE "UP" SIDE.
 RUN THE FINGERS LIGHTLY OVER THE PAPER BACKING TO ADHERE THE PANLASTIC TO THE PANEL.
 REMOVE THE PAPER BACKING BEFORE INSTALLING THE OVERLAPPING PANEL OR APPLYING THE GUN GRADE SEALANT AT THE 4 LAP CONDITION. STRIP THE PAPER BY STARTING AT ONE END AND PULL BACK---NOT UP.
 ALIGN THE OVERLAPPING PANEL AS CLOSELY AS POSSIBLE TO FINAL POSITION BEFORE LETTING IT TOUCH THE PANLASTIC ON THE PREVIOUSLY INSTALLED PANEL.

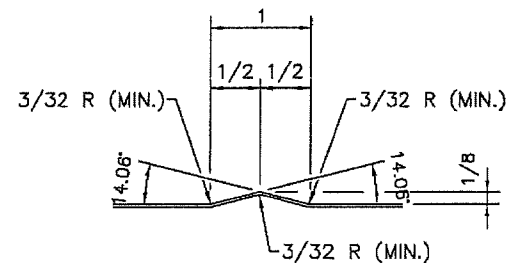
BUTLER Butler Manufacturing a division of BlueScope Building North America, Inc. 1540 GENESSEE ST. KANSAS CITY, MO. 64102		BUTLERIB II ROOF PANELING AND SEALING DADE COUNTY FLORIDA	
DRAWN BY JRS	CHECKED BY MJH	GROUP NUMBER: 04-030-06	
FIRST RELEASE DATE 01/21/10	REVISION DATE 07/01/10	B	P-081390 01



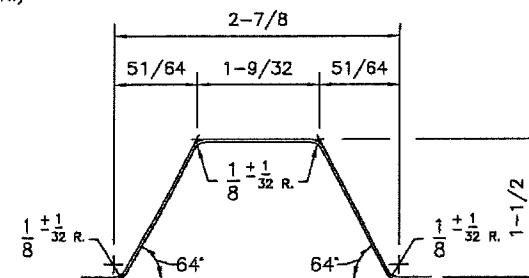
CROSS SECTION
(0.0235" MIN.)



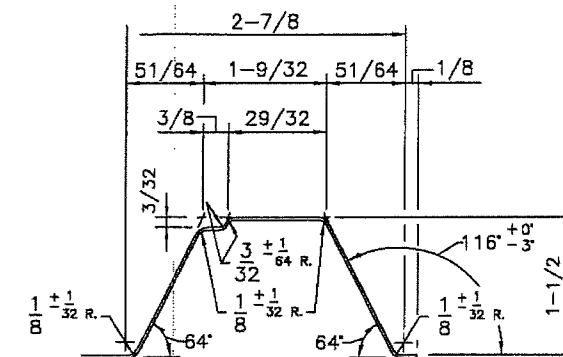
END CORRUGATION
(WITHOUT RETURN & SEALANT GROOVE)



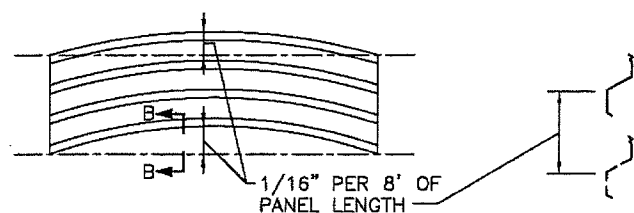
TYPICAL BEAD



TYPICAL INTERIOR CORRUGATION

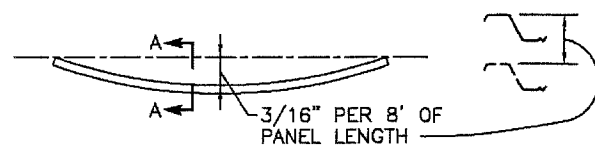


END CORRUGATION



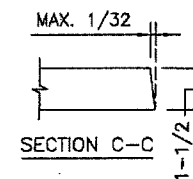
ALLOWABLE EDGE CAMBER-EITHER DIRECTION

FOR PANELS WITH OUTSIDE CORRUGATIONS,
CAMBERED IN OPPOSITE DIRECTIONS, THE TOTAL
IS NOT TO EXCEED 1/16" PER 8' PANEL LENGTH.

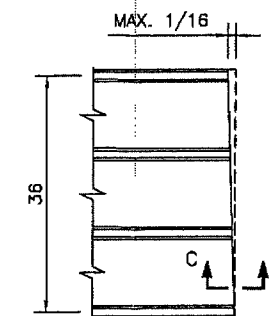


ALLOWABLE BOW-EITHER DIRECTION

SECTION A-A



SECTION C-C



SQUARENESS TOLERANCE

PRODUCT RENEWED
as complying with the Florida
Building Code
Acceptance No 18-1205.03
Expiration Date 02/24/24
By *H. G. A. M.*
Miami Dade Product Control

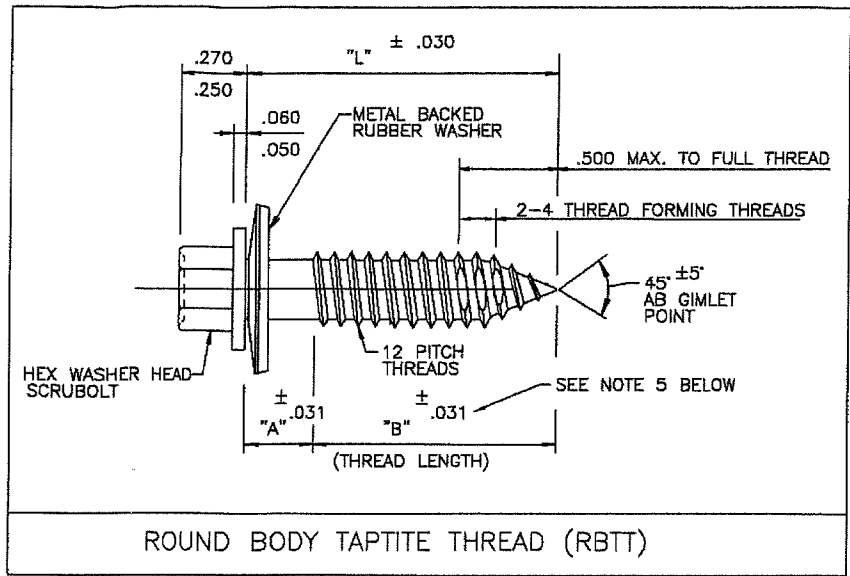
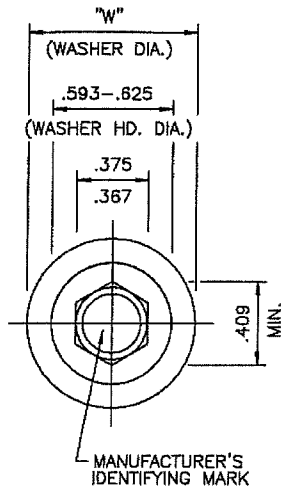
Russell L. Benton
9/27/17

Russell L. Benton, PE#51155

PRODUCT REVISED
as complying with the Florida
Building Code
Acceptance No 17-0803.41
Expiration Date 02/24/2019
By *H. G. A. M.*
Miami Dade Product Control

BUTLER
Butler Manufacturing
a division of BlueScope Buildings North America, Inc.
1540 GENESSEE ST.
KANSAS CITY, MO. 64102

BUTLERIB II ROOF PANEL DADE COUNTY FLORIDA			
DRAWN BY	CHECKED BY	GROUP NUMBER: 04-030-08	
JRS	MJH		
FIRST RELEASE DATE	REVISION DATE		
01/21/10	07/01/10		
		B	P-081391 01



ASSEMBLY		SCRUBOLT WITHOUT WASHER						METAL BACKED RUBBER WASHER		
		SCRUBOLT PART NO.	MATERIAL	NOMINAL SIZE (SEE NOTE 6)	"L"	"A"	"B"	WASHER PART NO.	"W"	WASHER DWG. NO.
095984	0.031	095304	SS NOTE 1	11/32" X 7/8"	.875"	SEE NOTE 4	.875"	097436	.729	095016
096932	0.038	096930	ST. NOTE 2	3/8" X 1 1/4"	1.25"	SEE NOTE 4	1.250"	095154	.729	095016
097104	0.039	097103	SS NOTE 1	11/32" X 1 1/4"	1.25"	SEE NOTE 4	1.250"	097436	.729	095016
097196	0.039	097195	ST. NOTE 2	3/8" X 1"	1.00"	SEE NOTE 4	1.00"	095154	.729	095016
097222	0.055	097221	ST. NOTE 2	3/8" X 2"	2.00"	.187"	1.813"	095154	.729	095016
097264	0.074	096931	ST. NOTE 2	3/8" X 2 3/4"	2.75"	.750"	2.00"	095154	.729	095016
097270	0.060	097268	ST. NOTE 2	3/8" X 2 1/4"	2.25"	.250"	2.00"	095154	.729	095016
097271	0.086	097269	ST. NOTE 2	3/8" X 3 1/2"	3.50"	.500"	3.00"	095154	.729	095016
097292	0.125	097291	ST. NOTE 2	3/8" X 5"	5.00"	2.000"	3.00"	095154	.729	095016
097298	0.145	097297	ST. NOTE 2	3/8" X 6"	6.00"	3.000"	3.00"	095154	.729	095016

SEE NOTE 5

MATERIALS:

- 410 STAINLESS WITH CLEAR CHROMATE, MS-06-03
- CARBON STEEL WITH YELLOW CHROMATE - MS-06-03
- WASHER SPEC. AND DIMENSIONS - SEE DWG 095016

SCRUBOLT WITH FULL THREADS:

- FULL THREAD TO WITHIN 1 THREAD OF HEAD AND SHANK JUNCTURE.
- 3" THREAD LENGTH
HAS A ± .050 TOLERANCE
- DIAMETER OF 3/8" SCRUBOLT IS .367±.003
DIAMETER OF 11/32" SCRUBOLT IS .345±.003

PRODUCT RENEWED
as complying with the Florida
Building Code
Acceptance No 18-1205.03
Expiration Date 02/24/24
By He G. A. M. for
Miami Dade Product Control

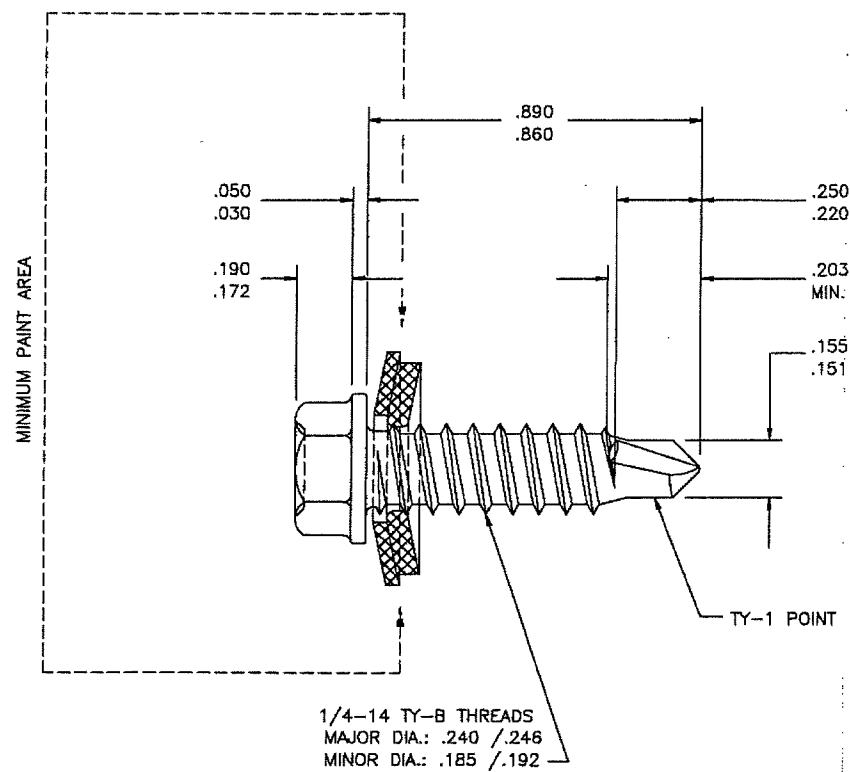
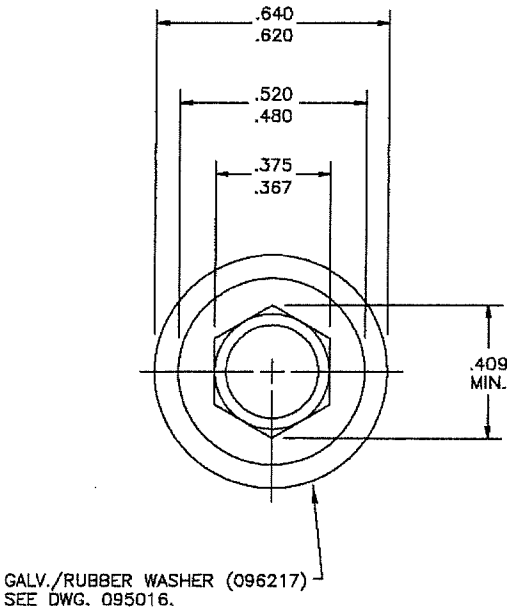
PRODUCT REVISED
as complying with the Florida
Building Code
Acceptance No 17-0803.41
Expiration Date 02/24/2019
By He G. A. M. for
Miami Dade Product Control

Russell L Benton
9/22/17
Russell L Benton, PE#51155

BUTLER
Butler Manufacturing
a division of BlueScope Building North America, Inc.
1540 GENESSEE ST.
KANSAS CITY, MO. 64102

BUTLERIB II HEX HEAD SCRUBOLTS DADE COUNTY FLORIDA			
DRAWN BY	CHECKED BY	GROUP NUMBER: 04-030-06	
JRS	MJH		
FIRST RELEASE DATE	REVISION DATE		
01/21/10	07/14/17		
		B	P-081392 02

REVISION NUMBER 1		REVISION NUMBER 2	
DATE	07/01/10	DATE	07/14/17
BY	BSN	BY	BSN
CHKD	RLB	CHKD	MJH
REVISED TO: BINA TITLE BLOCK AND INSTRUCTIONS		CHANGE TO: 197 TO MS-08-03 AND 197 TO MS-08-05 IN MATERIAL NOTE	
CHANGE BR II TO BUTLERB IN TITLE BLOCK		23/21	
ADD BUTLER LOGO.			



MATERIAL: SELF-DRILL SCREW - CARBON STEEL WITH CLEAR CHROMATE - MS-06-02
WASHER - GALV./RUBBER - MS-06-05
PAINT - 1.0 MIL MINIMUM DFT - S-W POLANE OR APPROVED EQUAL

097357 - 1/4-14 X 7/8" MINI-POINT CARBON SDS WITH 3/8" IHW
THIS FASTENER IS FOR PANEL TO PANEL CONNECTIONS

PRODUCT RENEWED
as complying with the Florida
Building Code
Acceptance No 18-1205.03
Expiration Date 02/24/24
By *Heidi A. Miller*
Miami Dade Product Control

PRODUCT REVISED
as complying with the Florida
Building Code
Acceptance No 17-9803.41
Expiration Date 02/24/2019
By *Heidi A. Miller*
Miami Dade Product Control

Russell L Benton
9/27/17
Russell L Benton, PE#51155

		BUTLERIB II SELF DRILLING SCREW (MINI POINT) DADE COUNTY FLORIDA	
		GROUP NUMBER: 04-030-08	
DRAWN BY JRS	CHECKED BY MJH	B	P-081393
FIRST RELEASE DATE 01/21/10	REVISION DATE 07/14/17		
			02