



DEPARTMENT OF REGULATORY AND ECONOMIC RESOURCES (RER)
BOARD AND CODE ADMINISTRATION DIVISION
NOTICE OF ACCEPTANCE (NOA)

MIAMI-DADE COUNTY
PRODUCT CONTROL SECTION
11805 SW 26 Street, Room 208
Miami, Florida 33175-2474
T (786) 315-2590 F (786) 315-2599
www.miamidade.gov/economy

PCI Industries Inc d/b/a Pottorff
5101 Blue Mound Road
Fort Worth, TX 76106

SCOPE:

This NOA is being issued under the applicable rules and regulations governing the use of construction materials. The documentation submitted has been reviewed and accepted by Miami-Dade County RER-Product Control Section to be used in Miami Dade County and other areas where allowed by the Authority Having Jurisdiction (AHJ).

This NOA shall not be valid after the expiration date stated below. The Miami-Dade County Product Control Section (In Miami Dade County) and/or the AHJ (in areas other than Miami Dade County) reserve the right to have this product or material tested for quality assurance purposes. If this product or material fails to perform in the accepted manner, the manufacturer will incur the expense of such testing and the AHJ may immediately revoke, modify, or suspend the use of such product or material within their jurisdiction. RER reserves the right to revoke this acceptance, if it is determined by Miami-Dade County Product Control Section that this product or material fails to meet the requirements of the applicable building code.

This product is approved as described herein, and has been designed to comply with the Florida Building Code, including the High Velocity Hurricane Zone.

DESCRIPTION: Model EFD-637-MD Aluminum Louver

APPROVAL DOCUMENT: Drawing No. **EFD-637-MD-NOA**, titled "EFD-637-MD", sheets 1 through 15 of 15, dated 12/17/2010, with revision 3 dated 01/08/2019, prepared by PCI Industries Inc d/b/a Pottorff, signed and sealed by Wayne K. Helmila, P.E., bearing the Miami-Dade County Product Control revision stamp with the Notice of Acceptance number and expiration date by the Miami-Dade County Product Control Section.

MISSILE IMPACT RATING: Large and Small Missile Impact Resistant

LABELING: Each unit shall bear a permanent label with the manufacturer's name or logo, city, state, model/series, and following statement: "Miami-Dade County Product Control Approved", unless otherwise noted herein.

RENEWAL of this NOA shall be considered after a renewal application has been filed and there has been no change in the applicable building code negatively affecting the performance of this product.

TERMINATION of this NOA will occur after the expiration date or if there has been a revision or change in the materials, use, and/or manufacture of the product or process. Misuse of this NOA as an endorsement of any product, for sales, advertising or any other purposes shall automatically terminate this NOA. Failure to comply with any section of this NOA shall be cause for termination and removal of NOA.

ADVERTISEMENT: The NOA number preceded by the words Miami-Dade County, Florida, and followed by the expiration date may be displayed in advertising literature. If any portion of the NOA is displayed, then it shall be done in its entirety.

INSPECTION: A copy of this entire NOA shall be provided to the user by the manufacturer or its distributors and shall be available for inspection at the job site at the request of the Building Official.

This NOA **renews and revises** NOA # **11-1117.21** and consists of this page 1 and evidence pages E-1 and E-2, as well as approval document mentioned above.

The submitted documentation was reviewed by **Carlos M. Utrera, P.E.**



[Signature]
01/24/2019

NOA No. 18-1211.08
Expiration Date: February 19, 2024
Approval Date: January 31, 2019
Page 1

NOTICE OF ACCEPTANCE: EVIDENCE SUBMITTED

1. Evidence submitted under previous NOAs

A. DRAWINGS “Submitted under NOA # 11-0429.03”

1. Drawing No. **DC-C1, G1, E1 to E6, D1 to D5** and **B1** and **B2**, titled “EFD-637-MD”, sheets 1 through 15 of 15, dated 12/17/2010, with revision 1 dated 06/09/2011, prepared by PCI Industries Inc d/b/a Pottorff, signed and sealed by L. David Rice, P.E.

B. TESTS “Submitted under NOA # 11-0429.03”

1. Test reports on 1) Uniform Static Air Pressure Test, Loading per FBC, TAS 202-94
2) Large Missile Impact Test per FBC, TAS 201-94
3) Cyclic Wind Pressure Loading per FBC, TAS 203-94
along with installation diagram of a Model EFD-637-MD Aluminum Louver, prepared by Architectural Testing, Inc, Test Report No. **A1622.01-801-18**, dated 12/03/2010, signed and sealed by Joseph A. Reed, P.E.

“Submitted under NOA # 03-0925.05”

2. Test report on Large Missile Impact Test per PA 201, Test, Cyclic Wind Pressure Test per PA 203, Test and Uniform Static Air Pressure Test per PA 202 of “Model 637-EDT-HD Louver”, prepared by Architectural Testing Inc, Report No. **01-40871.01**, dated 09/11/2002, signed and sealed by A. N. Reeves, P.E.
3. Clarification letter issued by Architectural Testing Inc, on 05/27/2003, signed by J. A. Reed, P.E.

C. CALCULATIONS “Submitted under NOA # 11-0429.03”

1. EFD-637-MD Louver calculations prepared by Rice Engineering, dated 04/21/2011, signed and sealed by L. David Rice, P.E.

D. QUALITY ASSURANCE

1. Miami-Dade Department of Regulatory and Economic Resources (RER)

E. MATERIAL CERTIFICATIONS

1. None.

F. STATEMENTS

1. Statement letter of code conformance to 2010 FBC issued by Rice Engineering, dated 11/13/2013, signed and sealed by L. David Rice, P.E.

“Submitted under NOA # 11-0429.03”

2. No financial interest letter issued by Rice Engineering, dated 03/30/2011, signed and sealed by L. David Rice, P.E.


01/24/2019

Carlos M. Utrera, P.E.

Product Control Examiner

NOA No. 18-1211.08

Expiration Date: February 19, 2024

Approval Date: January 31, 2019

NOTICE OF ACCEPTANCE: EVIDENCE SUBMITTED

2. New evidence submitted

A. DRAWINGS

1. Drawing No. **EFD-637-MD-NOA**, titled "EFD-637-MD", sheets 1 through 15 of 15, dated 12/17/2010, with revision 3 dated 01/08/2019, prepared by PCI Industries Inc d/b/a Pottorff, signed and sealed by Wayne K. Helmila, P.E.

B. TESTS

1. None.

C. CALCULATIONS

1. EFD-637-MD louver calculations prepared by Rice Engineering, dated 01/09/2019, signed and sealed by Wayne K. Helmila, P.E.

D. QUALITY ASSURANCE

1. Miami-Dade Department of Regulatory and Economic Resources (RER)

E. MATERIAL CERTIFICATIONS

1. None.

F. STATEMENTS

1. Statement letter of code conformance to the 6th edition (2017) FBC issued by Rice Engineering, dated 01/09/2019, signed and sealed by Wayne K. Helmila, P.E.
2. Statement letter of no financial interest issued by Rice Engineering, dated 01/09/2019, signed and sealed by Wayne K. Helmila, P.E.



01/24/2019

Carlos M. Utrera, P.E.
Product Control Examiner
NOA No. 18-1211.08
Expiration Date: February 19, 2024
Approval Date: January 31, 2019

1. THIS NOA DRAWING INCLUDES INSTALLATION DETAILS TO ATTAIN MAXIMUM DESIGN PRESSURES OF 150 PSF AS TESTED IN ACCORDANCE TO TAS 201, TAS 202, AND TAS 203.
2. ALL VARIATIONS ARE LARGE MISSILE IMPACT RESISTANT.
3. UNITS OF MEASURE ARE FRACTIONAL INCHES UNLESS OTHERWISE SPECIFIED.
4. IT IS ASSUMED THAT THE LOUVER SYSTEMS DO NOT SUPPORT ANY LOADS TRANSFERRED FROM THE BUILDING CONDITION.
5. IT IS ASSUMED THAT THE BUILDING CONDITIONS ARE ADEQUATELY DESIGNED TO SUPPORT LOADS IMPARTED BY THE LOUVER SYSTEM.
6. TO PREVENT GALVANIC CORROSION, ELECTROCHEMICALLY DISSIMILAR MATERIALS IN CONTACT WITH ONE ANOTHER SHALL BE PROTECTED BY PAINT, GASKETING OR OTHER MEANS PER THE FLORIDA BUILDING CODE.
7. THIS LOUVER IS TO BE INSTALLED IN A LOCATION WHERE THE ROOM BEHIND THE LOUVER IS DESIGNED TO DRAIN WATER PENETRATING INTO THE ROOM, AND THE ROOM WILL HOUSE WATER RESISTANT/WATER PROOF EQUIPMENT, COMPONENTS, OR SUPPLIES.
8. OTHER BUILDING CONDITIONS THAN THOSE DENOTED CAN BE UTILIZED IF ANALYZED AND APPROVED BY A PROFESSIONAL ENGINEER.
9. MULTI-SECTION WIDE AND HIGH LOUVER SYSTEMS ARE ALLOWABLE PROVIDED THE INDIVIDUAL SECTIONS ARE SUPPORTED PER THE DETAILS ON THIS DRAWING AND A SUITABLE SUPPORT STRUCTURE IS ANALYZED AND APPROVED BY A PROFESSIONAL ENGINEER.

TABLE 2	
MULTIPLE SECTION SIZE LIMITATIONS (MAX DESIGN PRESSURE: 150 PSF)	
LOUVER SYSTEM CONFIGURATION:	NOTE:
SINGLE SECTION WIDE - UNLIMITED HEIGHT	SEE SHEET 4
SINGLE SECTION HIGH - UNLIMITED WIDTH	SEE SHEET 6
MULTI-SECTION WIDE - MULTI-SECTION HIGH	SEE NOTE 9

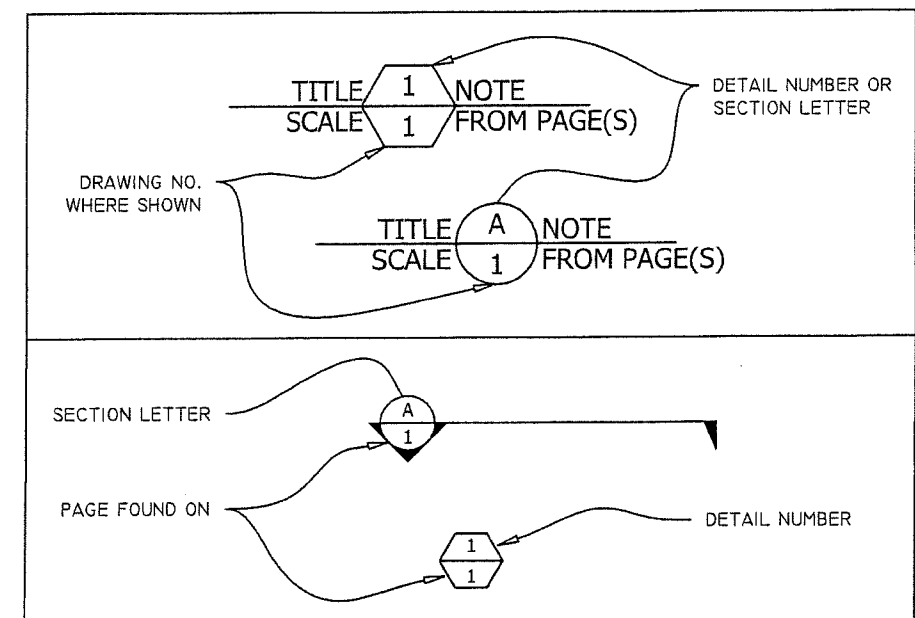
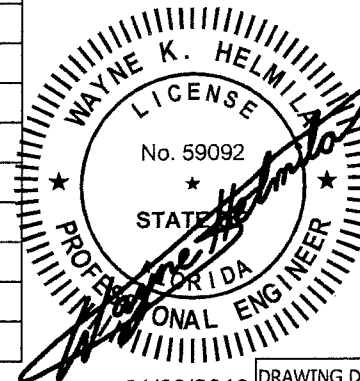


TABLE 4					
ANCHOR SCHEDULE					
SUBSTRATE	LOCATION	ANCHOR TYPE	MIN. EMBEDMENT	MIN. EDGE DIST.	SPACING
CONCRETE ($f'_c \geq 4000$ PSI, CRACKED)	JAMBS (SHEAR CONNECTION)	3/8" X 3 3/4" HILTI KWIK-BOLT TZ EXPANSION ANCHOR (F-9)	2 5/16"	3 1/2"	14"
	JAMBS (TENSION CONNECTION)	3/8" X 3 3/4" HILTI KWIK-BOLT TZ EXPANSION ANCHOR (F-9)	2 5/16"	3"	14"
	MULLIONS (SHEAR CONNECTION)	5/8" X 6" HILTI KWIK-BOLT TZ EXPANSION ANCHOR (F-14)	4 7/16"	5 1/2"	6"
	MULLIONS (TENSION CONNECTION)	5/8" X 6" HILTI KWIK-BOLT TZ EXPANSION ANCHOR (F-14)	4 7/16"	3 1/2"	6 3/4"
CONCRETE ($f'_c \geq 4000$ PSI, UNCRACKED)	JAMBS (SHEAR CONNECTION)	3/8" X 3 3/4" HILTI KWIK-BOLT 3 EXPANSION ANCHOR (F-5)	2 5/16"	3 1/2"	14"
	JAMBS (TENSION CONNECTION)	3/8" X 3 3/4" HILTI KWIK-BOLT 3 EXPANSION ANCHOR (F-5)	2 5/16"	3"	14"
	MULLIONS (SHEAR CONNECTION)	5/8" X 6" HILTI KWIK-BOLT 3 EXPANSION ANCHOR (F-15)	4 7/16"	5 1/2"	6"
	MULLIONS (TENSION CONNECTION)	5/8" X 6" HILTI KWIK-BOLT 3 EXPANSION ANCHOR (F-15)	4 7/16"	3 1/2"	6 3/4"
STEEL (MIN. 1/8" THICK, $F_y \geq 36$ KSI)	JAMBS	1/4-14 X 1" SELF-DRILLING SCREW (F-4)	1/8"	1 1/4"	14"
	MULLIONS	1/4-14 X 1" SELF-DRILLING SCREW (F-4)	1/8"	1/2"	3/4"
WOOD (S.G. ≥ 0.42)	JAMBS	3/8" X 2 1/2" LAG BOLT W/ FLAT WASHER (F-6)	2"	1 1/2"	1 1/2"
	MULLIONS	5/8" X 5" LAG BOLT W/ FLAT WASHER (F-13)	3 3/4"	2 1/2"	2 1/2"



PRODUCT REVISED
as complying with the Florida
Building Code
NOA-No. 18-1211.08
Expiration Date 02/19/2024
By [Signature]
Miami-Dade Product Control

RICE
ENGINEERING
105 School Creek Trail
Luxemburg, WI 54217
Phone: (920) 617-1042
Fax: (920) 617-1100
www.rice-inc.com

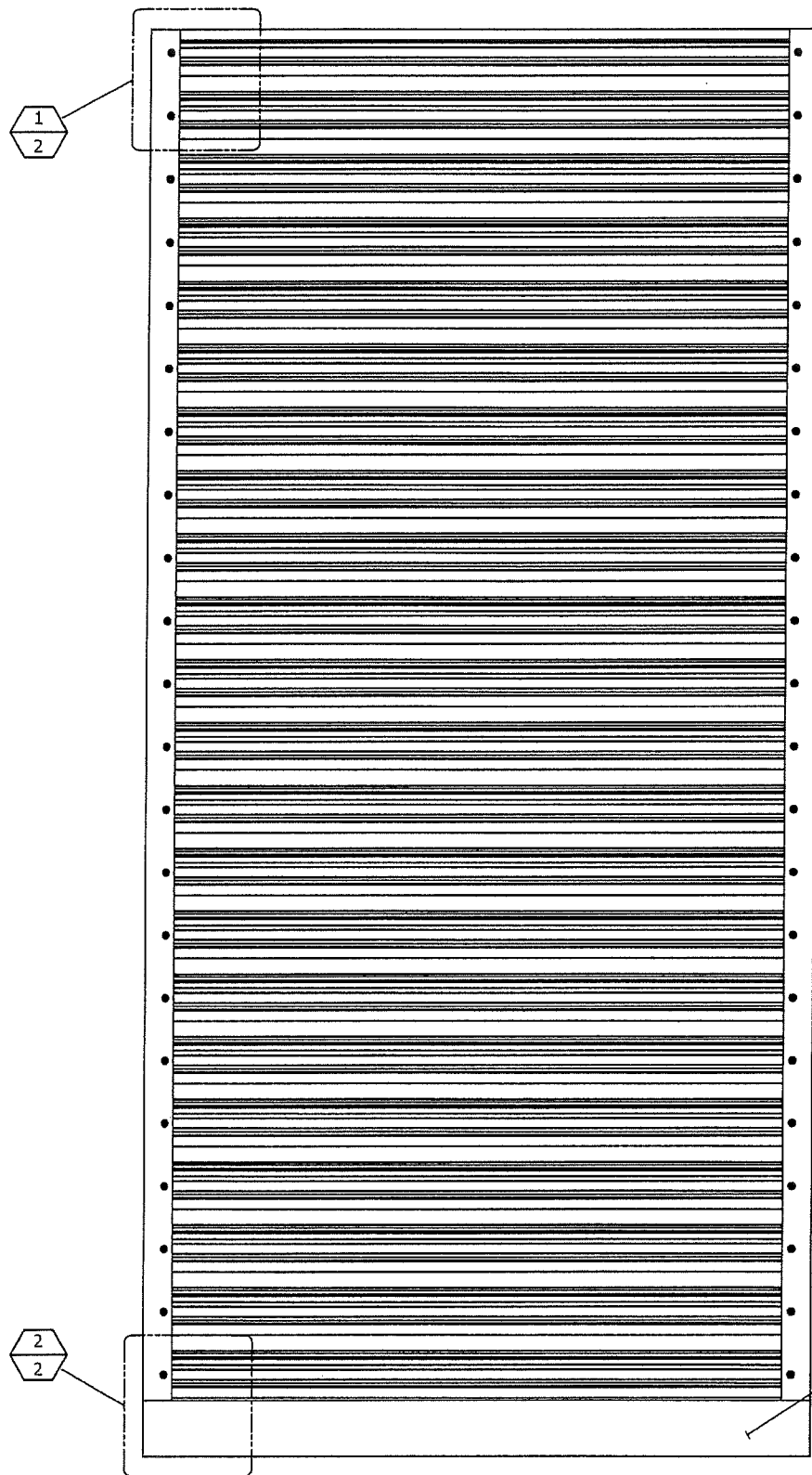
Florida Firm No: F-01000005061
Certificate of Authorization: #9090
Wayne K. Helmila
Registration No: 59092

01/09/2019 COA: 9090	DRAWING DESC.: COVER PAGE					
	PROJECT: EFD-637-MD					
	LOCATION:					
BUSINESS AS POTTERFF ®	ARCHITECT:					
	CUSTOMER:					
	DATE: 12/17/2010		DWN BY: TB	POTTERFF ORDER NO.	CUSTOMER P.O. NO.	DRAWING NO. EFD-637-MD-NOA
	SCALE: N/A		SHEET: 01 of 15			

FILE:			
3	MADE CHG'S PER 1/8/19 EMAIL	1/8/19	NW
2	UPDATED FOR NOA RENEWAL	11/20/18	NW
1	MADE CHG'S PER 6/7/11 LETTER	6/9/11	NW
REV. NO.	DESCRIPTION	DATE	DRAWN BY

5101 Blue Mound Road
Fort Worth, Texas 76106
Phone: 817-509-2300
Fax: 817-831-3110

PCI INDUSTRIES DOING BUSINESS AS
POTTORFF®



INTERIOR ELEVATION

FILE:			
3	MADE CHG'S PER 1/8/19 EMAIL	1/8/19	NW
2	UPDATED FOR NOA RENEWAL	11/20/18	NW
1	MADE CHG'S PER 6/7/11 LETTER	6/9/11	NW
REV. NO.	DESCRIPTION	DATE	DRAWN BY

ENGRAVED LABEL DETAIL

PCI Industries Inc DBA
POTTORFF
Ft. Worth TX
SO# 123456

Miami Dade County
Product Control
Approved

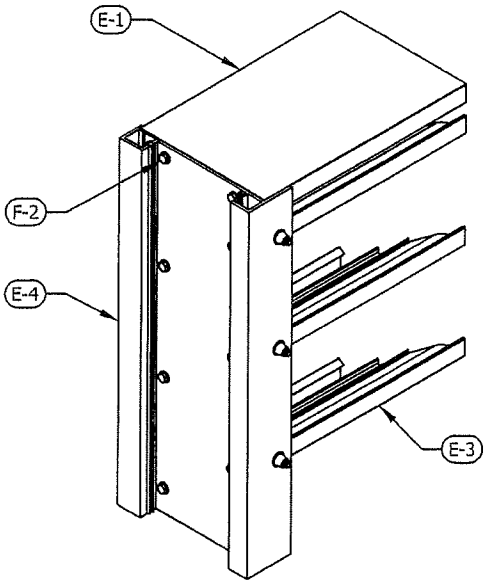
5101 Blue Mound Road
Fort Worth, Texas 76106
Phone: 817-509-2300
Fax: 817-831-3110

PRODUCT REVISED
as complying with the Florida
Building Code
NOA-No. **18-1211.08**

Expiration Date **02/19/2024**

By *[Signature]*
Miami-Dade Product Control

PCI INDUSTRIES DOING BUSINESS AS
POTTORFF®

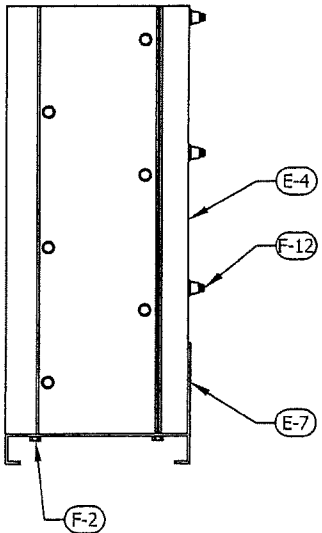


TOP CORNER

1	GENERAL ASSEMBLY
2	2

1' 0" = 1' 0"

IN FLANGED CONFIGURATIONS:
E-2 WILL BE USED IN PLACE OF E-1
E-5 WILL BE USED IN PLACE OF E-4

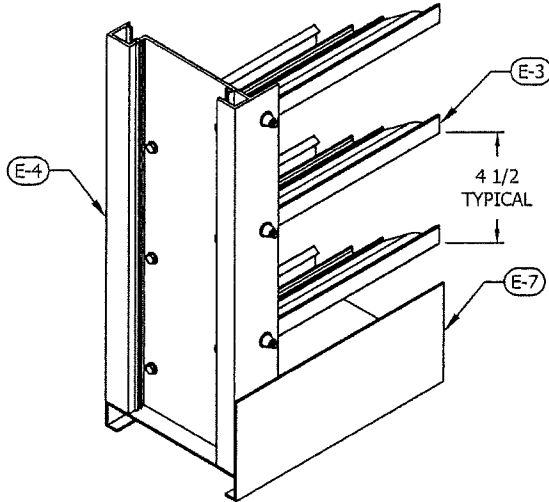


BTM CORNER

2	GENERAL ASSEMBLY
2	2

1' 0" = 1' 0"

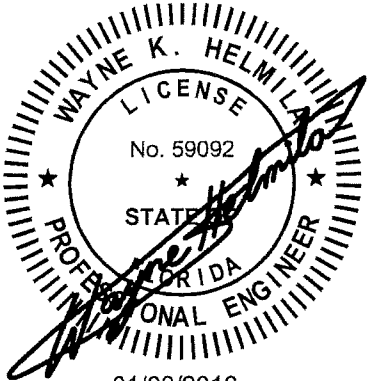
IN FLANGED CONFIGURATIONS:
E-5 WILL BE USED IN PLACE OF E-4
E-8 WILL BE USED IN PLACE OF E-7



RICE
ENGINEERING

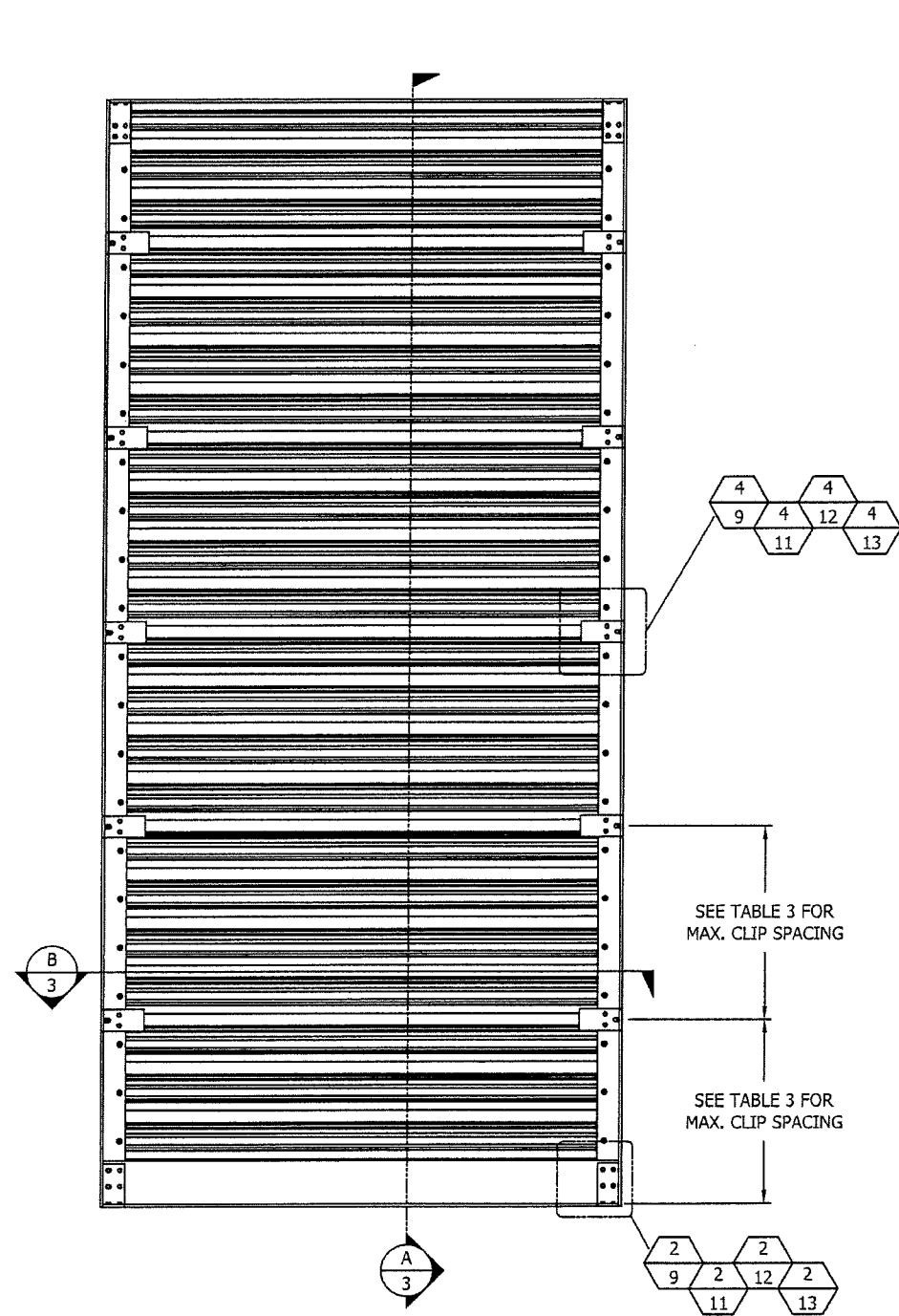
105 School Creek Trail
Luxemburg, WI 54217
Phone: (920) 617-1042
Fax: (920) 617-1100
www.rice-inc.com

Florida Firm No: F-01000005061
Certificate of Authorization: #9090
Wayne K. Helmila
Registration No: 59092

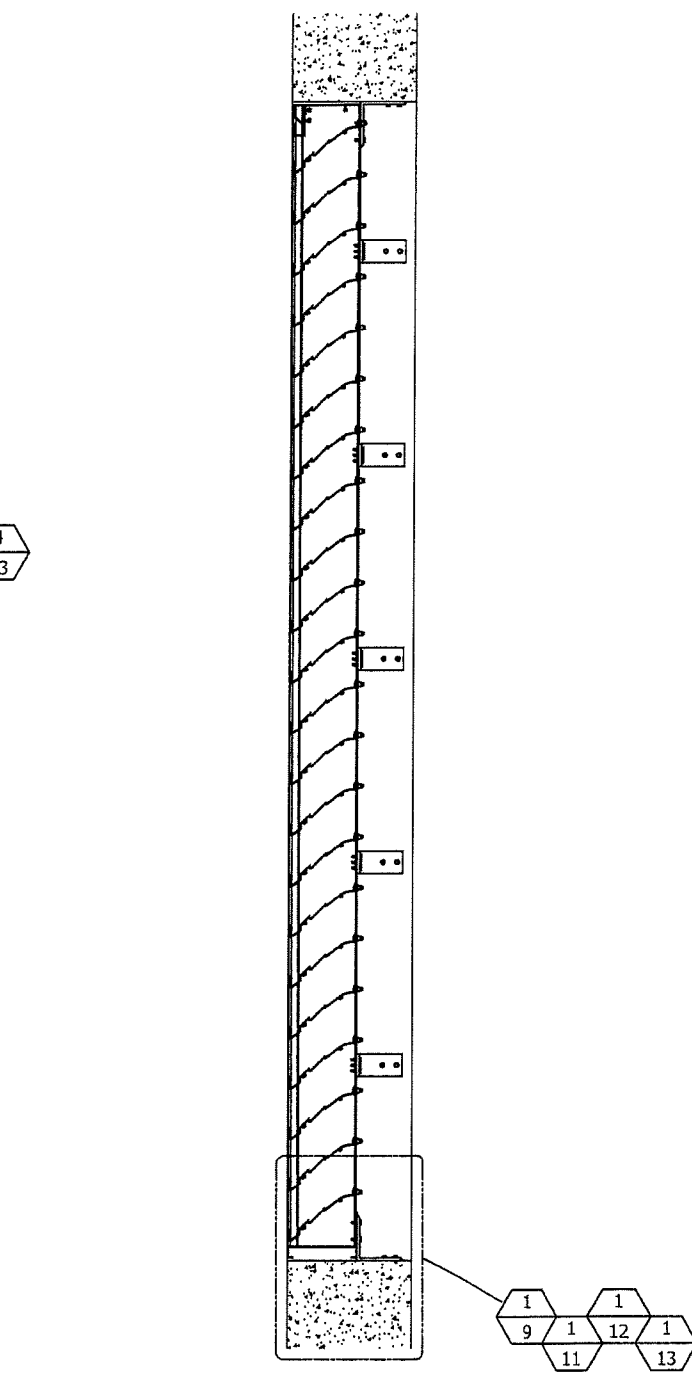


01/09/2019
COA: 9090

DRAWING DESC.: GENERAL LOUVER ASSEMBLY				
PROJECT: EFD-637-MD				
LOCATION:				
ARCHITECT:				
CUSTOMER:				
DATE: 12/17/2010	DWN BY: TB	POTTORFF ORDER NO.	CUSTOMER P.O. NO.	DRAWING NO.
SCALE: 1" = 1' 0"	SHEET: 02 of 15			EFD-637-MD NOA

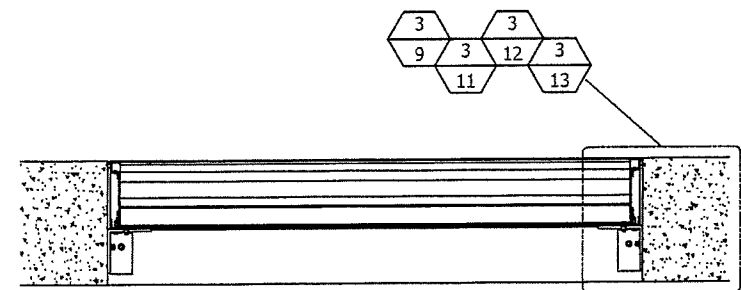


SINGLE SECTION
INTERIOR ELEVATION
(CONCRETE CONDITION SHOWN FOR REFERENCE ONLY)

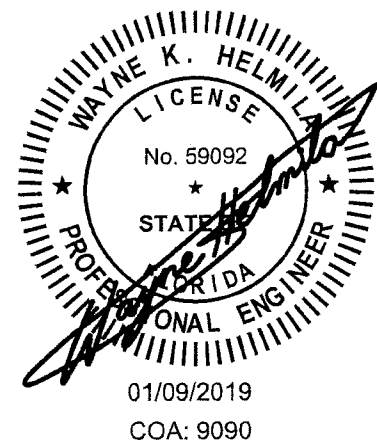


SINGLE SECTION HIGH
3/4"=1' A 3 150 PSF RATED
3, 6

TABLE 3			
VERTICAL JAMB CLIP ANGLE SPACING			
BUILDING CONDITION - MAXIMUM CLIP ANGLE SPACING (INCH)			
MAX DESIGN PRESSURE	STEEL	4000 PSI CONCRETE (PRE-CAST OR CAST IN PLACE)	WOOD BLOCK
150 PSF	14.0	14.0	14.0



SINGLE SECTION WIDE
3/4"=1' B 3 150 PSF RATED
3, 4



RICE
ENGINEERING

105 School Creek Trail
Luxemburg, WI 54217
Phone: (920) 617-1042
Fax: (920) 617-1100
www.rice-inc.com

Florida Firm No: F-01000005061
Certificate of Authorization: #9090
Wayne K. Helmila
Registration No: 59092

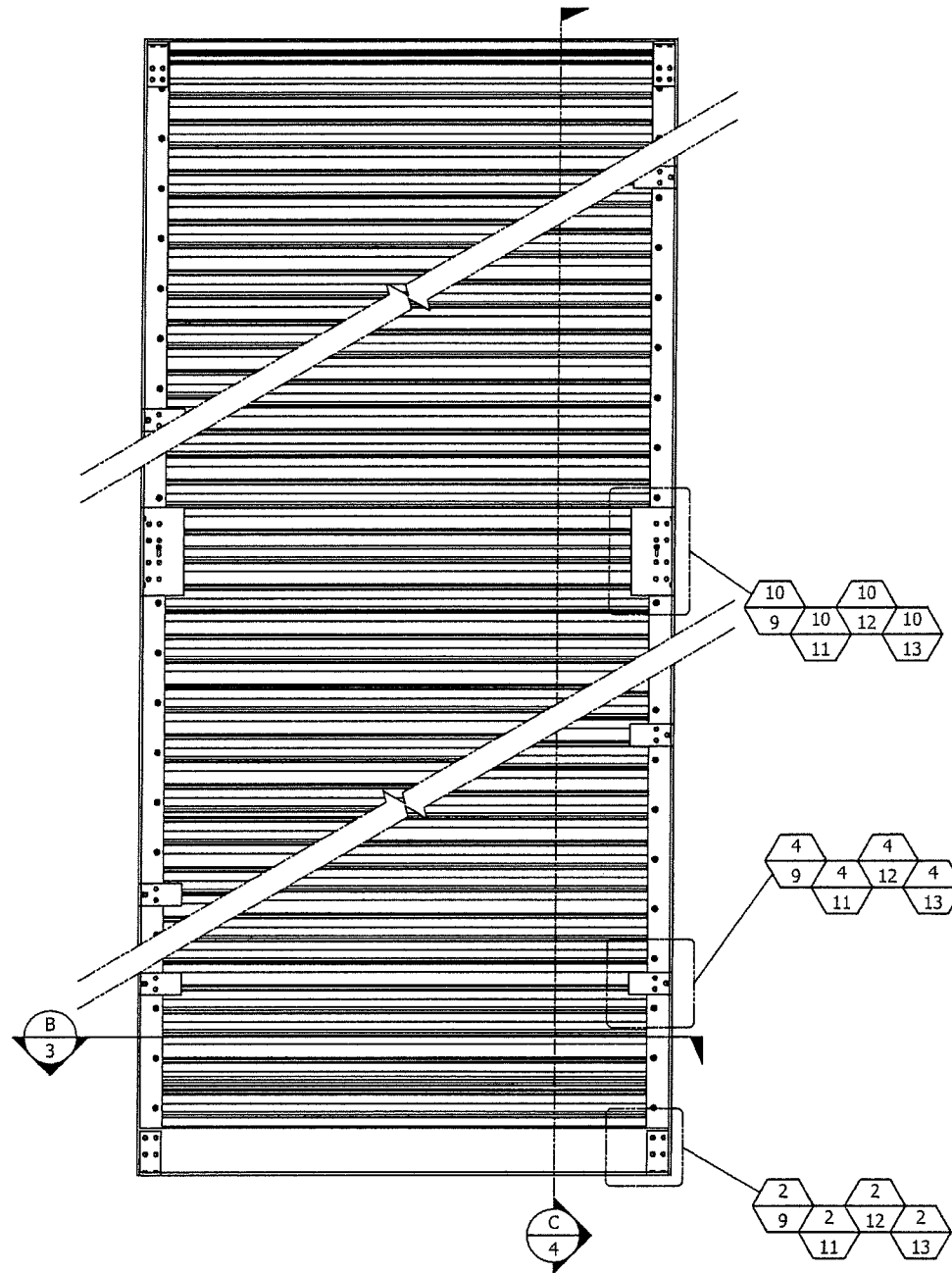
PRODUCT REVISED
as complying with the Florida
Building Code
NOA-No. **18-1211.08**
Expiration Date **02/19/2024**
By *[Signature]*
Miami-Dade Product Control

FILE:			
3	MADE CHG'S PER 1/8/19 EMAIL	1/8/19	NW
2	UPDATED FOR NOA RENEWAL	11/20/18	NW
1	MADE CHG'S PER 6/7/11 LETTER	6/9/11	NW
REV. NO.	DESCRIPTION	DATE	DRAWN BY

5101 Blue Mound Road
Fort Worth, Texas 76106
Phone: 817-509-2300
Fax: 817-831-3110

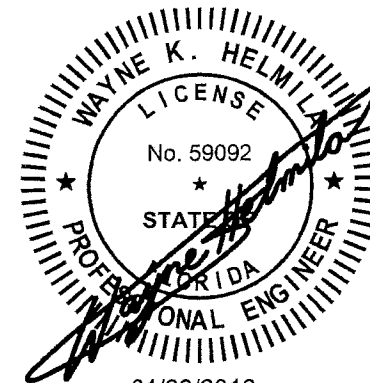
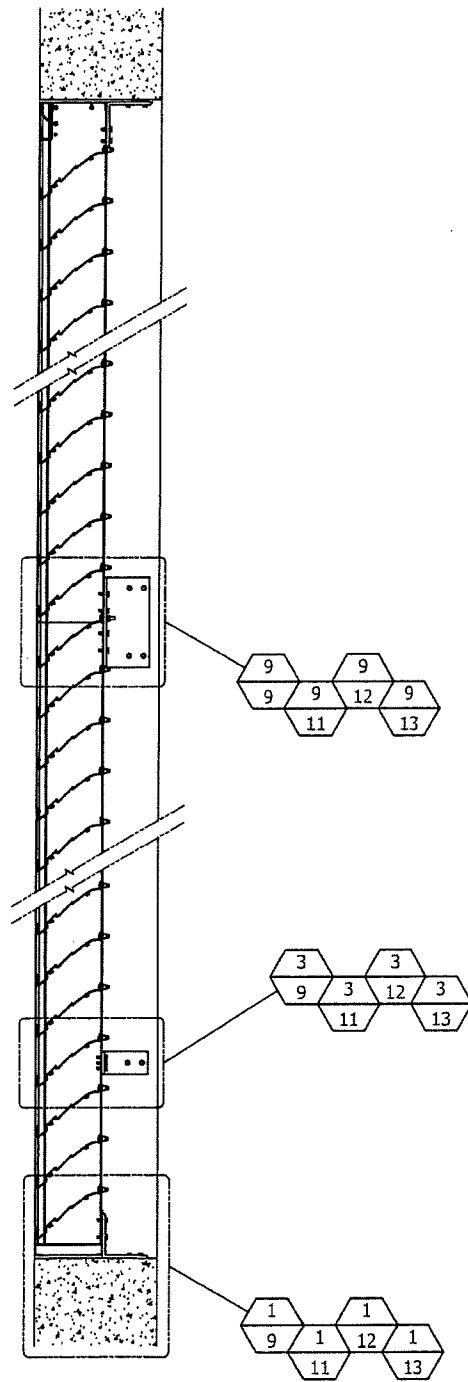
PCI INDUSTRIES DOING BUSINESS AS
POTTORFF®

DRAWING DESC.: SINGLE SECTION WIDE - SINGLE SECTION HIGH				
PROJECT: EFD-637-MD				
LOCATION:				
ARCHITECT:				
CUSTOMER:				
DATE: 12/17/2010	DWN BY: TB	POTTORFF ORDER NO.	CUSTOMER P.O. NO.	DRAWING NO.
SCALE: 3/4" = 1' 0"	SHEET: 03 of 15			EFD-637-MD NOA



UNLIMITED SECTIONS HIGH
INTERIOR ELEVATION
(CONCRETE CONDITION SHOWN FOR REFERENCE ONLY)

UNLIMITED SECTIONS HIGH
3/4"=1' C 4



01/09/2019
COA: 9090

PRODUCT REVISED
as complying with the Florida
Building Code
NOA-No. **18-1211.08**
Expiration Date **02/19/2024**
By *[Signature]*
Miami-Dade Product Control

RICE
ENGINEERING
105 School Creek Trail
Luxemburg, WI 54217
Phone: (920) 617-1042
Fax: (920) 617-1100
www.rice-inc.com
Florida Firm No: F-01000005061
Certificate of Authorization: #9090
Wayne K. Helmila
Registration No: 59092


FILE:			
3	MADE CHG'S PER 1/8/19 EMAIL	1/8/19	NW
2	UPDATED FOR NOA RENEWAL	11/20/18	NW
1	MADE CHG'S PER 6/7/11 LETTER	6/9/11	NW
REV. NO.	DESCRIPTION	DATE	DRAWN BY

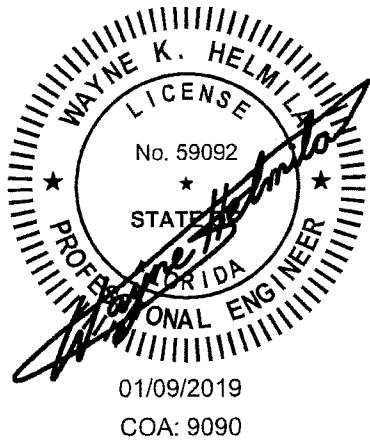
5101 Blue Mound Road
Fort Worth, Texas 76106
Phone: 817-509-2300
Fax: 817-831-3110

PCI INDUSTRIES DOING BUSINESS AS
POTTORFF®

DRAWING DESC.: SINGLE SECTION WIDE - UNLIMITED HIGH				
PROJECT: EFD-637-MD				
LOCATION:				
ARCHITECT:				
CUSTOMER:				
DATE: 12/17/2010	DWN BY: TB	POTTORFF ORDER NO.	CUSTOMER P.O. NO.	DRAWING NO.
SCALE: 3/4" = 1' 0"	SHEET: 04 of 15			EFD-637-MD NOA

INTENTIONALLY LEFT BLANK

PRODUCT REVISED
as complying with the Florida
Building Code
NOA-No. **18-1211.08**
Expiration Date **02/19/2024**
By 
Miami-Dade Product Control



RICE
ENGINEERING
105 School Creek Trail
Luxemburg, WI 54217
Phone: (920) 617-1042
Fax: (920) 617-1100
www.rice-inc.com

Florida Firm No: F-01000005061
Certificate of Authorization: #9090
Wayne K. Helmila
Registration No: 59092

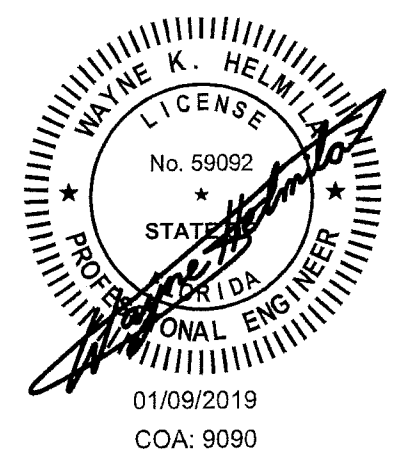
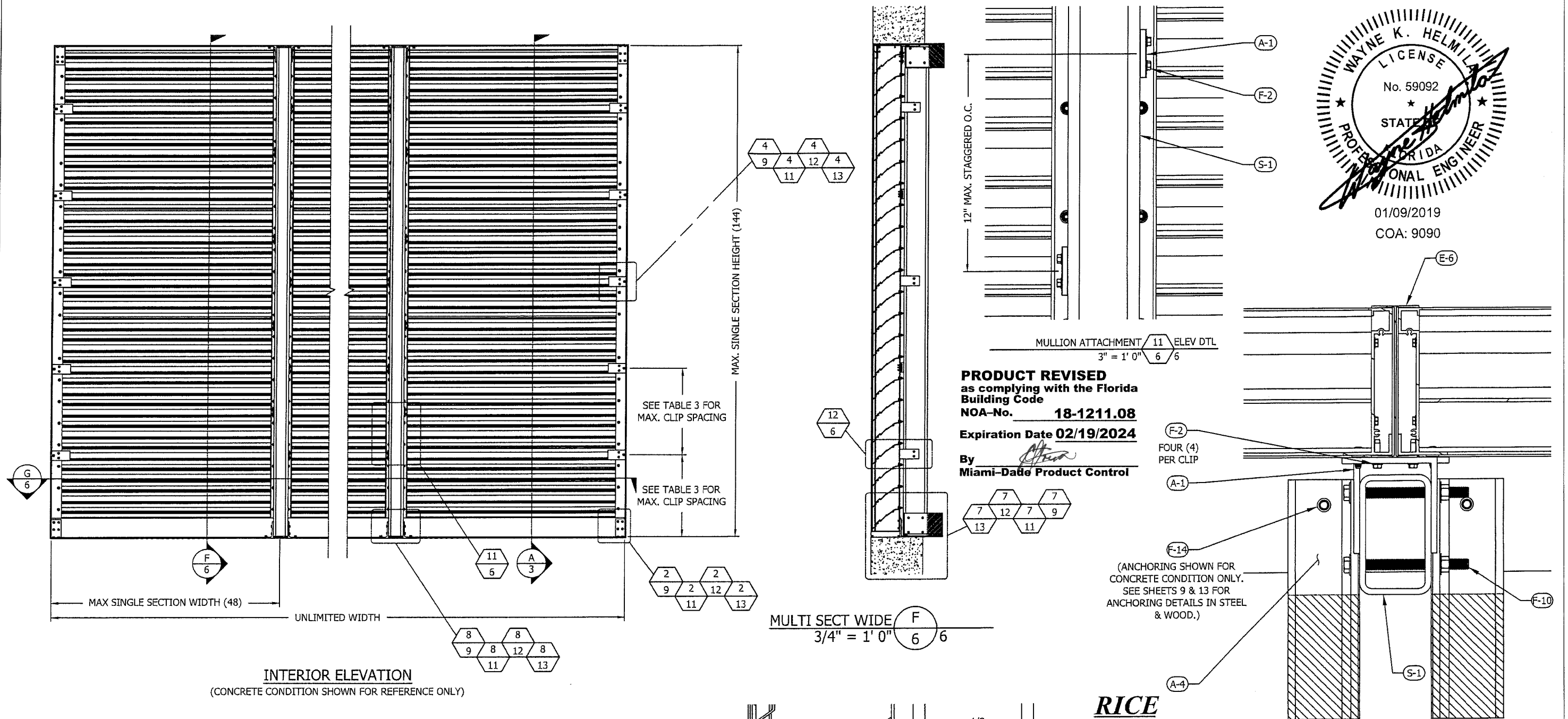
FILE:

3	MADE CHG'S PER 1/8/19 EMAIL	1/8/19	NW
2	UPDATED FOR NOA RENEWAL	11/20/18	NW
1	MADE CHG'S PER 6/7/11 LETTER	6/9/11	NW
REV. NO.	DESCRIPTION	DATE	DRAWN BY

5101 Blue Mound Road
Fort Worth, Texas 76106
Phone: 817-509-2300
Fax: 817-831-3110

PCI INDUSTRIES DOING BUSINESS AS
POTTORFF®

DRAWING DESC.: INTENTIONALLY LEFT BLANK				
PROJECT: EFD-637-MD				
LOCATION:				
ARCHITECT:				
CUSTOMER:				
DATE: 12/17/2010	DWN BY: TB	POTTORFF ORDER NO.	CUSTOMER P.O. NO.	DRAWING NO.
SCALE: AS NOTED	SHEET: 05 of 15			EFD-637-MD NOA



MULTIPLE SECTIONS WIDE G
3/4" = 1' 0" 6 6

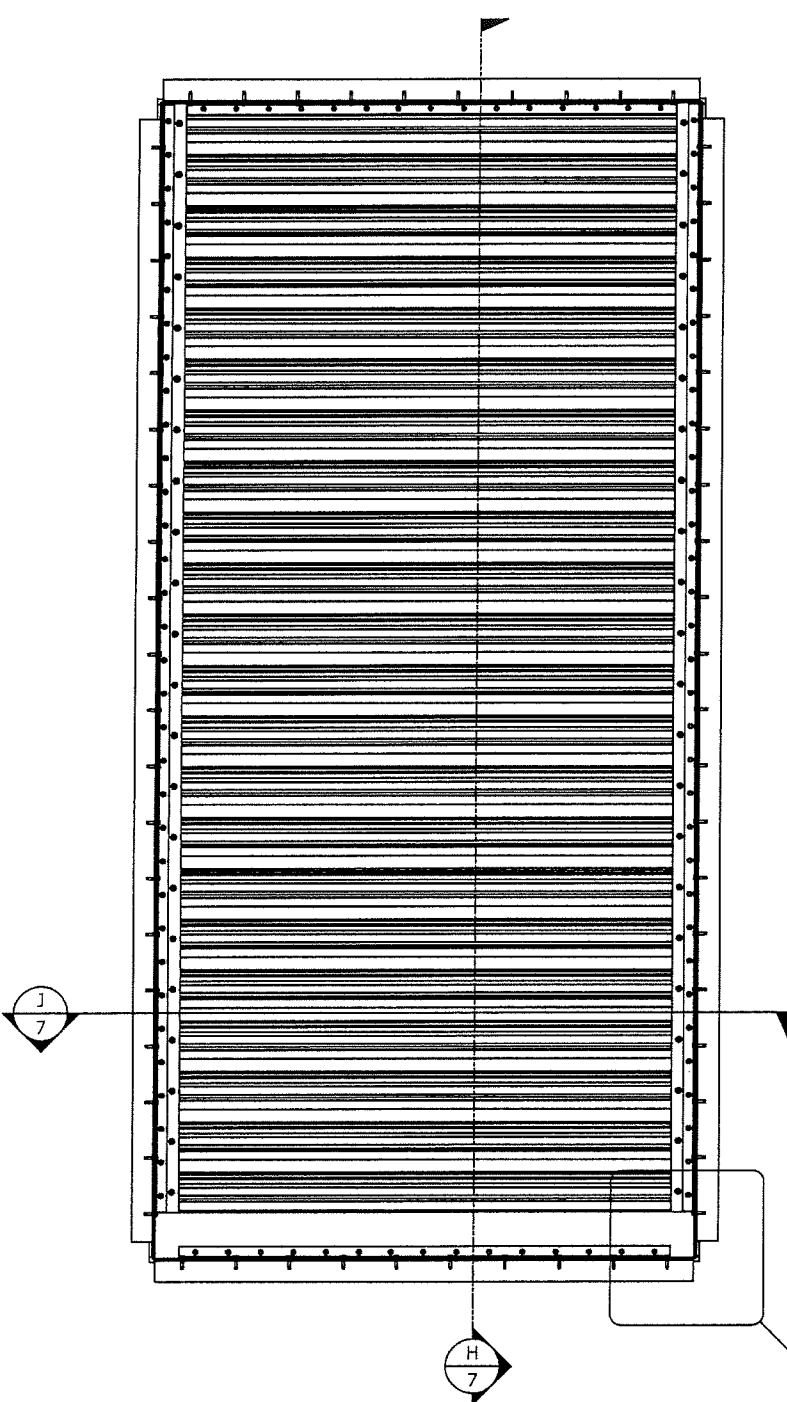
NOTE: UNITS REQUIRE AN EXPANDED ALUMINUM SCREEN WITH SCREEN FRAME (E-13) INSTALLED BEHIND THE BLADES.

FILE:			
3	MADE CHG'S PER 1/8/19 EMAIL	1/8/19	NW
2	UPDATED FOR NOA RENEWAL	11/20/18	NW
1	MADE CHG'S PER 6/7/11 LETTER	6/9/11	NW
REV. NO.	DESCRIPTION	DATE	DRAWN BY

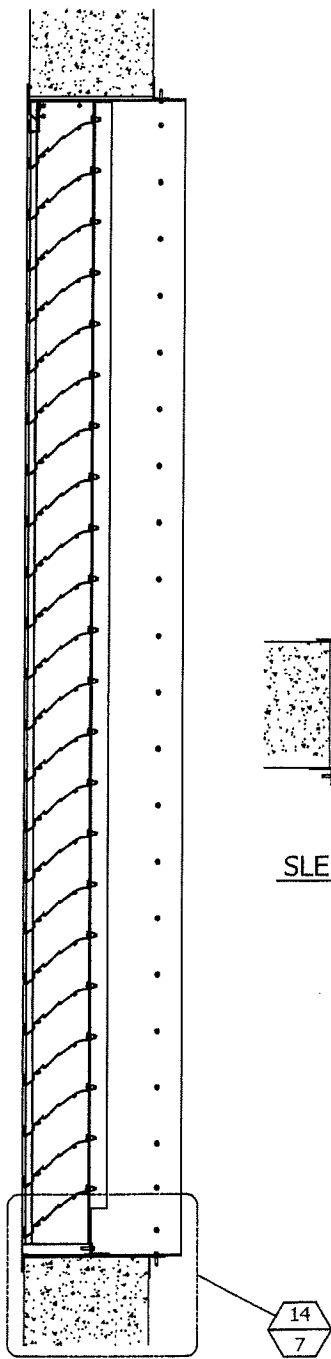
5101 Blue Mound Road
Fort Worth, Texas 76106
Phone: 817-509-2300
Fax: 817-831-3110

PCI INDUSTRIES DOING BUSINESS AS
POTTORFF®

DRAWING DESC.: UNLIMITED SECTIONS WIDE - SINGLE SECTION HIGH				
PROJECT: EFD-637-MD				
LOCATION:				
ARCHITECT:				
CUSTOMER:				
DATE: 12/17/2010	DWN BY: TB	POTTORFF ORDER NO.	CUSTOMER P.O. NO.	DRAWING NO.
SCALE: AS NOTED	SHEET: 06 of 15			EFD-637-MD NOA



INTERIOR ELEVATION
(CONCRETE CONDITION SHOWN FOR REFERENCE ONLY)

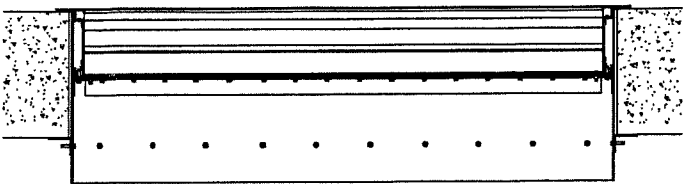


SLEEVE ATTACHMENT $\frac{H}{7}$
 $\frac{3}{4}'' = 1'$

RICE
ENGINEERING

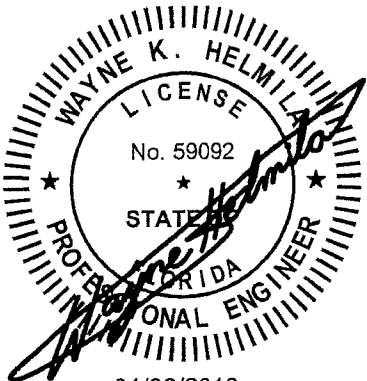
105 School Creek Trail
Luxemburg, WI 54217
Phone: (920) 617-1042
Fax: (920) 617-1100
www.rice-inc.com

Florida Firm No: F-01000005061
Certificate of Authorization: #9090
Wayne K. Helmila
Registration No: 59092



SLEEVE ATTACHMENT $\frac{J}{7}$
 $\frac{3}{4}'' = 1'$

PRODUCT REVISED
as complying with the Florida
Building Code
NOA-No. **18-1211.08**
Expiration Date **02/19/2024**
By *[Signature]*
Miami-Dade Product Control



01/09/2019
COA: 9090

NOTE:
1) SLEEVED OPTION AVAILABLE FOR SINGLE SECTION LOUVERS ONLY
2) NO MECHANICAL FASTENING TO BUILDING CONDITION REQUIRED FOR SLEEVE

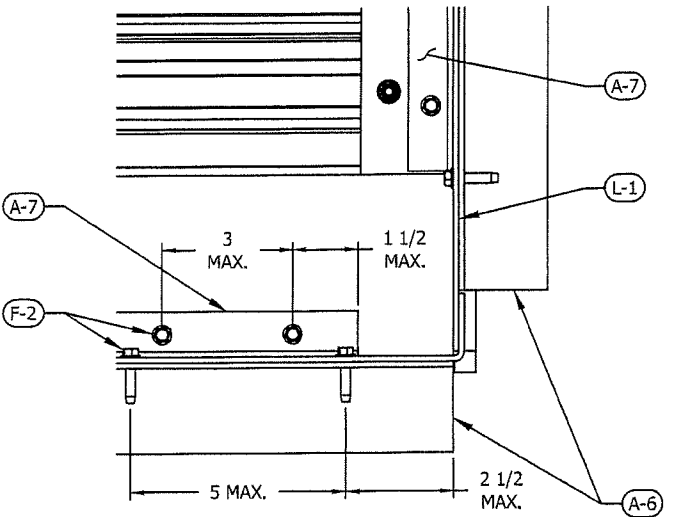
FILE:

REV. NO.	DESCRIPTION	DATE	DRAWN BY
3	MADE CHG'S PER 1/8/19 EMAIL	1/8/19	NW
2	UPDATED FOR NOA RENEWAL	11/20/18	NW
1	MADE CHG'S PER 6/7/11 LETTER	6/9/11	NW

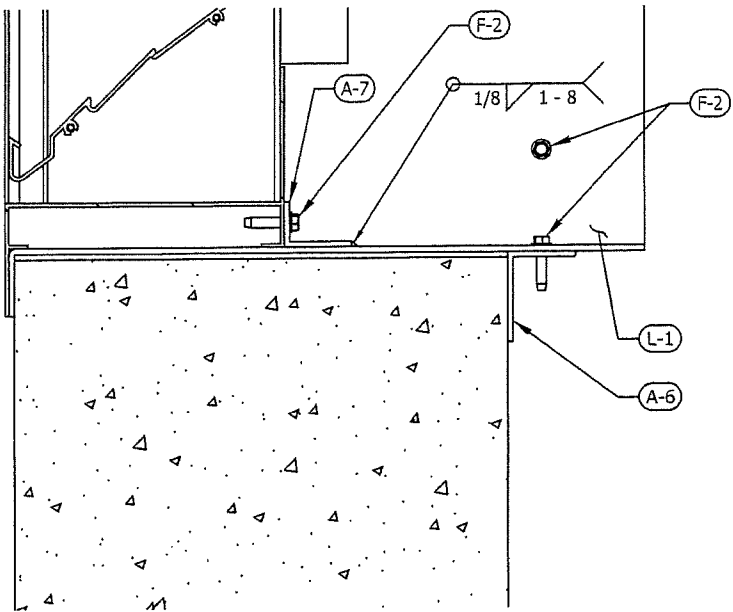
5101 Blue Mound Road
Fort Worth, Texas 76106
Phone: 817-509-2300
Fax: 817-831-3110

PCI INDUSTRIES DOING BUSINESS AS

POTTORFF®

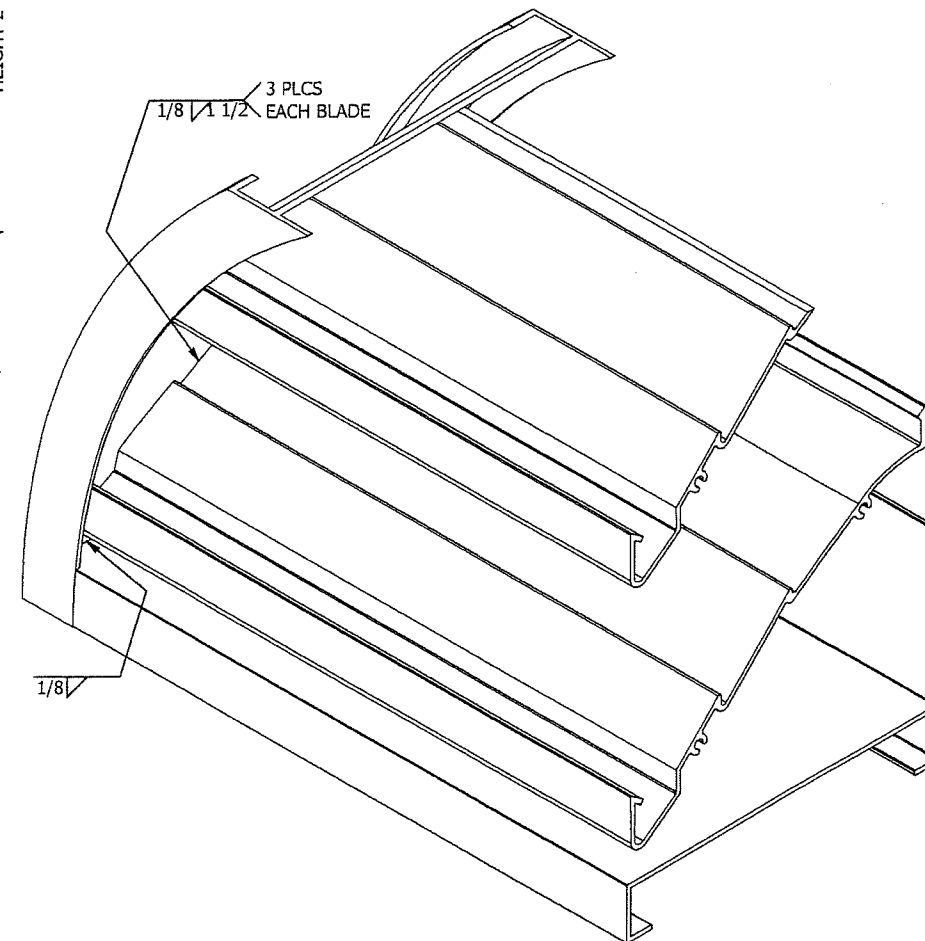
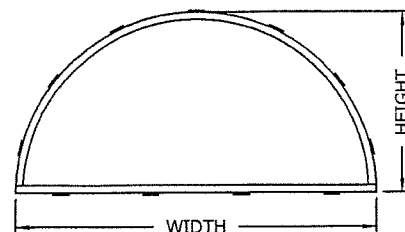
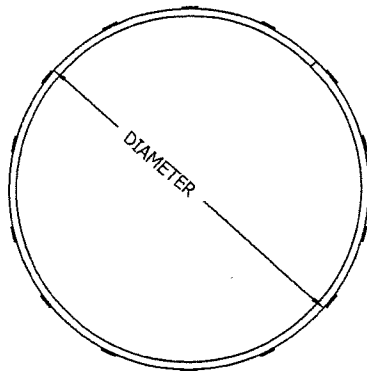
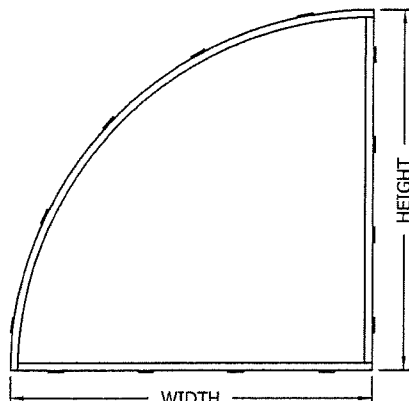
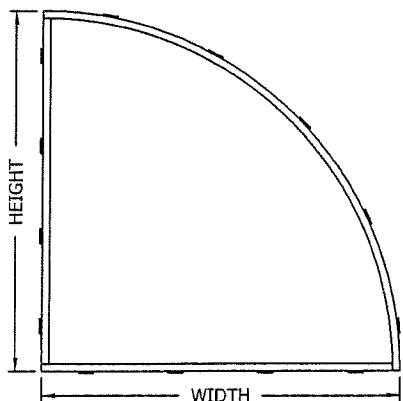
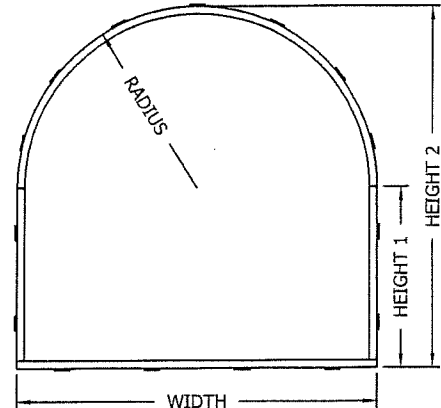
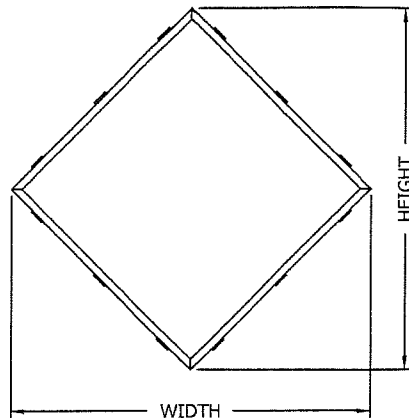
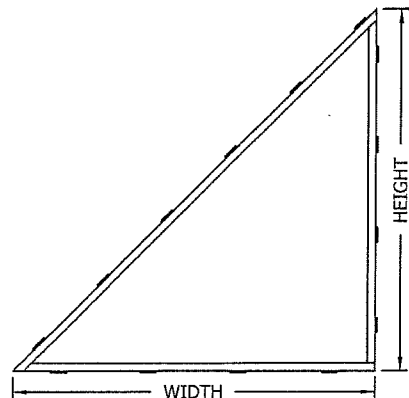
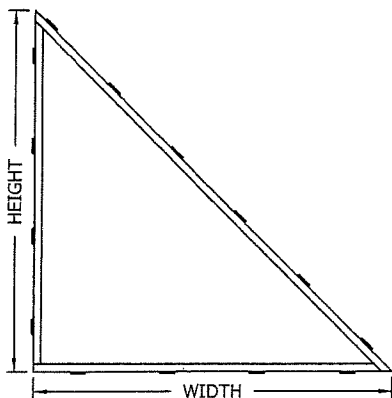
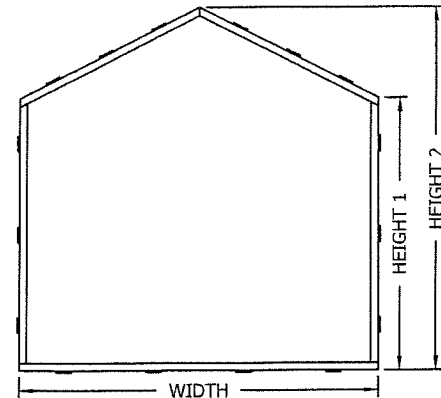
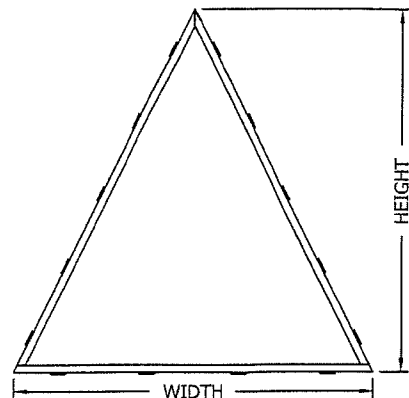
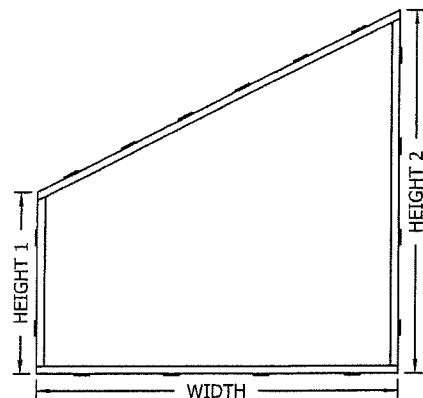
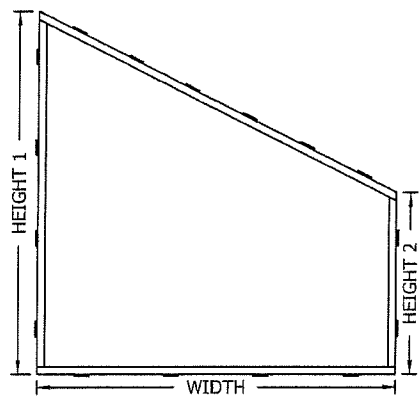


SLEEVE ELEV DTL $\frac{13}{7}$ **SLEEVE ATTACHMENT DTL**
 $\frac{3}{4}'' = 1'$



SLEEVE SECT DTL $\frac{14}{7}$ **SLEEVE ATTACHMENT DTL**
 $\frac{3}{4}'' = 1'$

DRAWING DESC.: SLEEVED LOUVER DETAILS				
PROJECT: EFD-637-MD				
LOCATION:				
ARCHITECT:				
CUSTOMER:				
DATE: 12/17/2010	DWN BY: TB	POTTORFF ORDER NO.	CUSTOMER P.O. NO.	DRAWING NO. EFD-637-MD NOA
SCALE: 3/4" = 1' 0"	SHEET: 07 of 15			



PRODUCT REVISED
as complying with the Florida
Building Code
NOA-No. **18-1211.08**

Expiration Date **02/19/2024**

By 
Miami-Dade Product Control

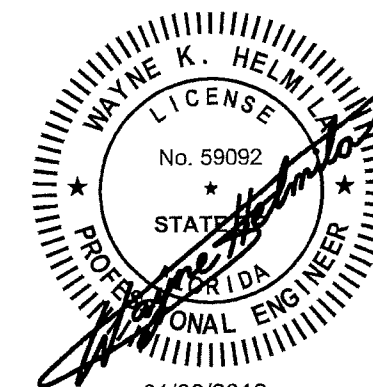
NOTE:
1) SHAPED LOUVER DIMENSIONS NOT TO EXCEED MAX SINGLE SECTION SIZES
2) SHAPED SECTIONS REQUIRE 1/2" x 1/16"-THICK STAINLESS STEEL MESH SCREEN (E-14) MOUNTED IN PLACE OF THE EXPANDED ALUMINUM SCREEN (E-13)
3) CLIP ANGLES TO BE INSTALLED AROUND ENTIRE PERIMETER OF SHAPED LOUVER; SEE TABLE 3 ON SHEET 3 FOR MAX CLIP SPACING

FILE:

REV. NO.	DESCRIPTION	DATE	DRAWN BY
3	MADE CHG'S PER 1/8/19 EMAIL	1/8/19	NW
2	UPDATED FOR NOA RENEWAL	11/20/18	NW
1	MADE CHG'S PER 6/7/11 LETTER	6/9/11	NW

5101 Blue Mound Road
Fort Worth, Texas 76106
Phone: 817-509-2300
Fax: 817-831-3110

PCI INDUSTRIES DOING BUSINESS AS
POTTORFF®



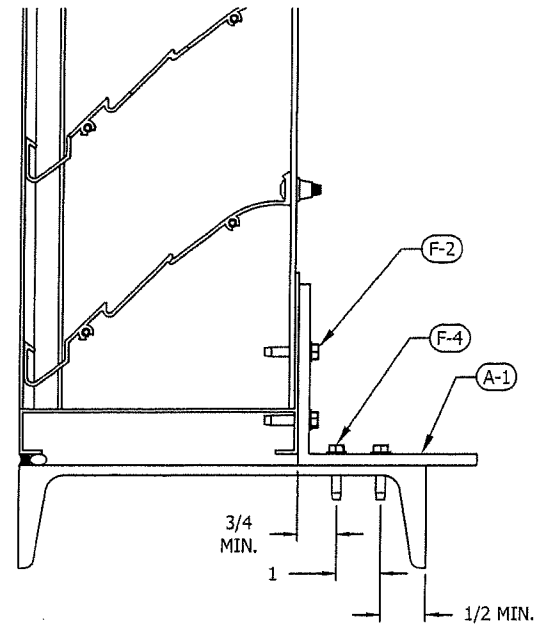
01/09/2019
COA: 9090

RICE
ENGINEERING

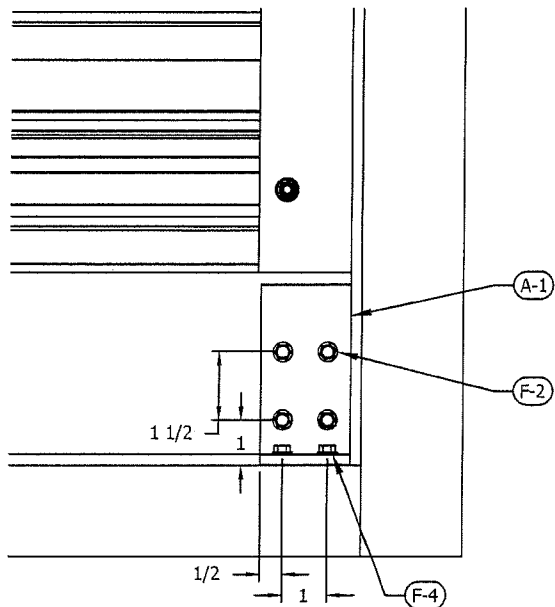
105 School Creek Trail
Luxemburg, WI 54217
Phone: (920) 617-1042
Fax: (920) 617-1100
www.rice-inc.com

Florida Firm No: F-01000005061
Certificate of Authorization: #9090
Wayne K. Helmila
Registration No: 59092

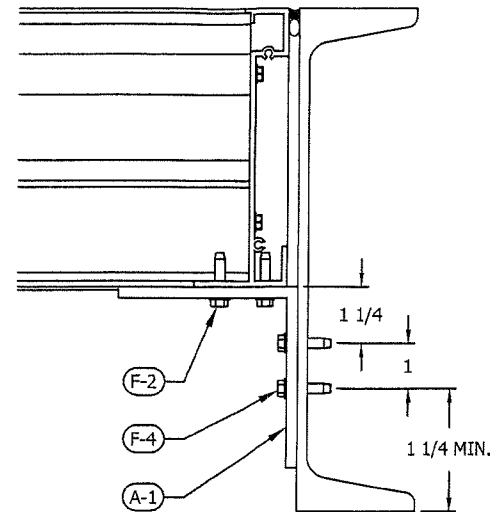
DRAWING DESC.: SHAPED LOUVER DETAILS				
PROJECT: EFD-637-MD				
LOCATION:				
ARCHITECT:				
CUSTOMER:				
DATE: 12/17/2010	DWN BY: TB	POTTORFF ORDER NO.	CUSTOMER P.O. NO.	DRAWING NO.
SCALE: 3/4" = 1' 0"	SHEET: 08 of 15			EFD-637-MD NOA



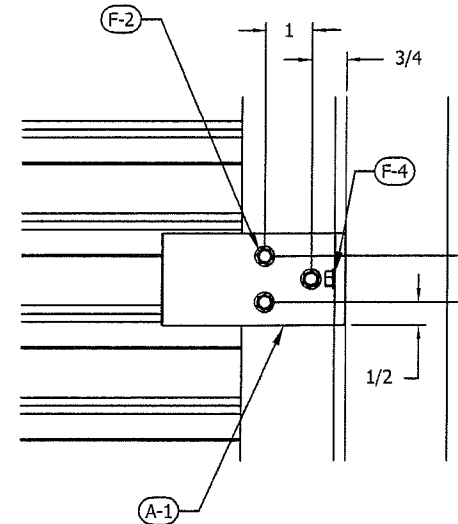
TOP & BTM SECT DTL 1 STEEL CONDITION
3" = 1' 0" 9/3, 4



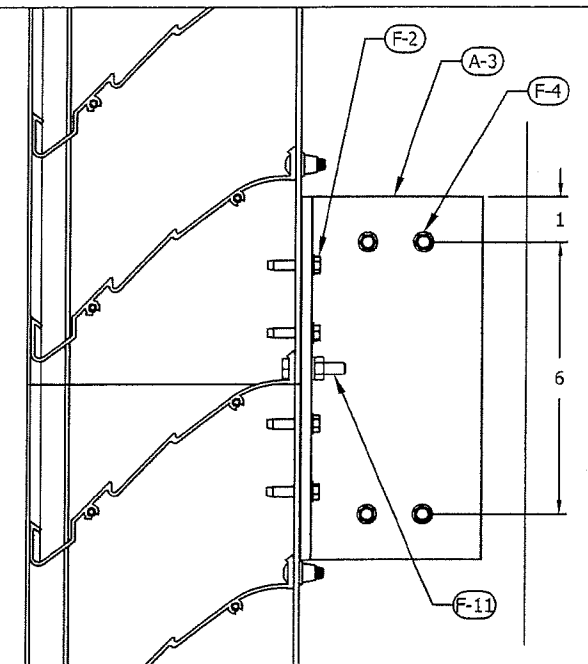
TOP & BTM ELEV DTL 2 STEEL CONDITION
3" = 1' 0" 9/3, 4, 6



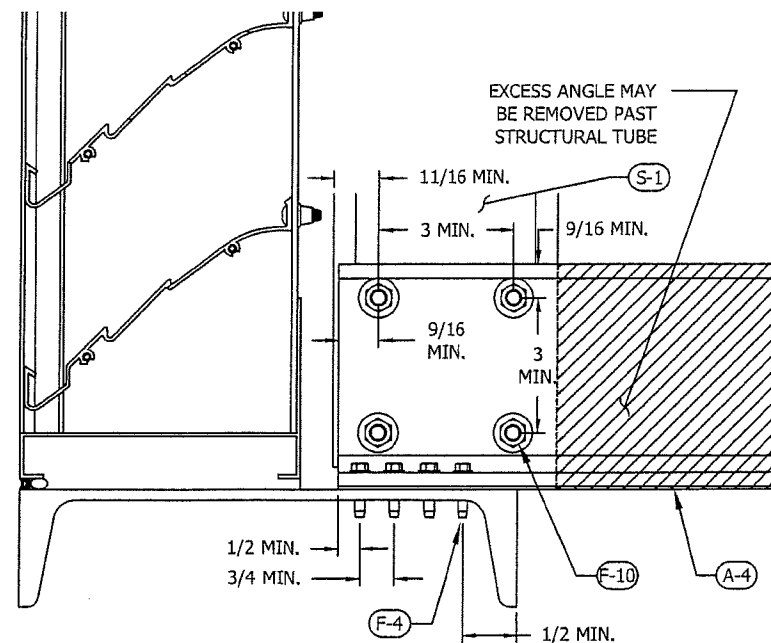
JAMB SECT DTL 3 STEEL CONDITION
3" = 1' 0" 9/3



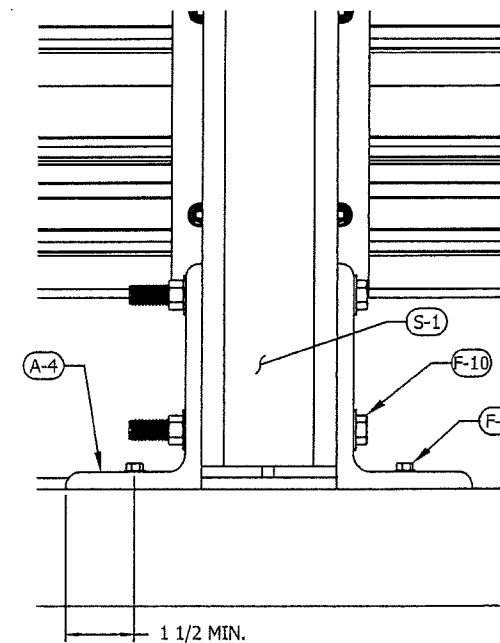
JAMB ELEV DTL 4 STEEL CONDITION
3" = 1' 0" 9/3, 4, 6



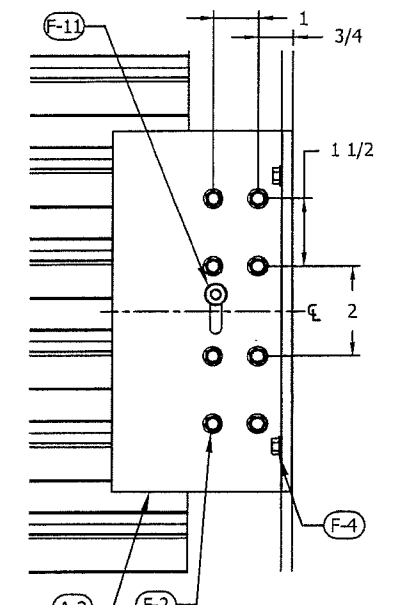
SPLICE SECT DTL 9 STEEL CONDITION
3" = 1' 0" 9/4



MULLION SECT DTL 7 STEEL CONDITION
3" = 1' 0" 9/6



MULLION ELEV DTL 8 STEEL CONDITION
3" = 1' 0" 9/6



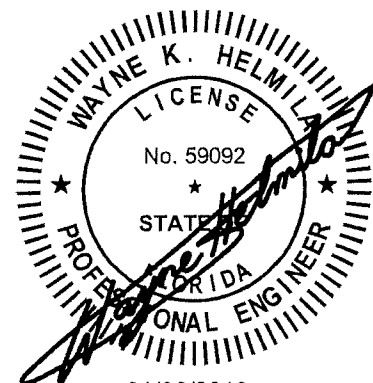
SPLICE ELEV DTL 10 STEEL CONDITION
3" = 1' 0" 9/4

PRODUCT REVISED
as complying with the Florida
Building Code

NOA-No. 18-1211.08

Expiration Date 02/19/2024

By *[Signature]*
Miami-Dade Product Control



01/09/2019
COA: 9090

RICE
ENGINEERING

105 School Creek Trail
Luxemburg, WI 54217
Phone: (920) 617-1042
Fax: (920) 617-1100
www.rice-inc.com

Florida Firm No: F-01000005061
Certificate of Authorization: #9090
Wayne K. Helmila
Registration No: 59092

NOTE:
1) INSTALLER TO PROVIDE GASKET MATERIAL FOR DISSIMILAR METAL SEPARATION

FILE:


REV. NO.	DESCRIPTION	DATE	DRAWN BY
3	MADE CHG'S PER 1/8/19 EMAIL	1/8/19	NW
2	UPDATED FOR NOA RENEWAL	11/20/18	NW
1	MADE CHG'S PER 6/7/11 LETTER	6/9/11	NW

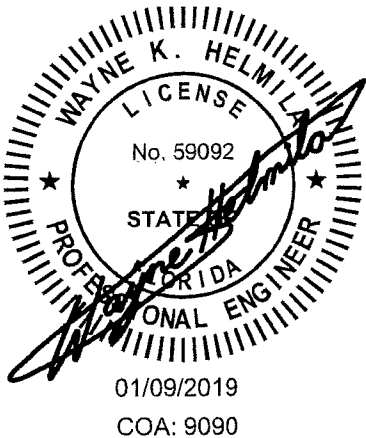
5101 Blue Mound Road
Fort Worth, Texas 76106
Phone: 817-509-2300
Fax: 817-831-3110

PCI INDUSTRIES DOING BUSINESS AS
POTTORFF®

DRAWING DESC.: ATTACHMENT DETAILS, STEEL CONDITION				
PROJECT: EFD-637-MD				
LOCATION:				
ARCHITECT:				
CUSTOMER:				
DATE: 12/17/2010	DWN BY: TB	POTTORFF ORDER NO.	CUSTOMER P.O. NO.	DRAWING NO. EFD-637-MD NOA
SCALE: 3/4" = 1' 0"	SHEET: 09 of 15			

INTENTIONALLY LEFT BLANK

PRODUCT REVISED
as complying with the Florida
Building Code
NOA-No. 18-1211.08
Expiration Date 02/19/2024
By 
Miami-Dade Product Control



RICE
ENGINEERING
105 School Creek Trail
Luxemburg, WI 54217
Phone: (920) 617-1042
Fax: (920) 617-1100
www.rice-inc.com
Florida Firm No: F-01000005061
Certificate of Authorization: #9090
Wayne K. Helmila
Registration No: 59092

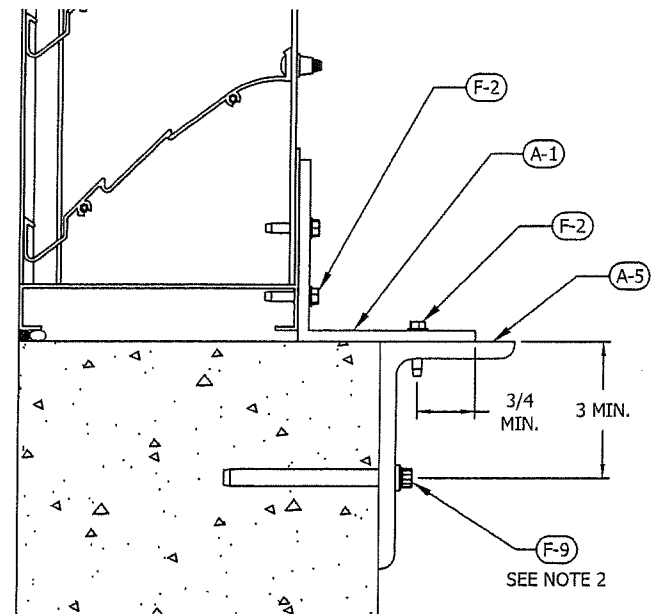
FILE:

REV. NO.	DESCRIPTION	DATE	DRAWN BY
3	MADE CHG'S PER 1/8/19 EMAIL	1/8/19	NW
2	UPDATED FOR NOA RENEWAL	11/20/18	NW
1	MADE CHG'S PER 6/7/11 LETTER	6/9/11	NW

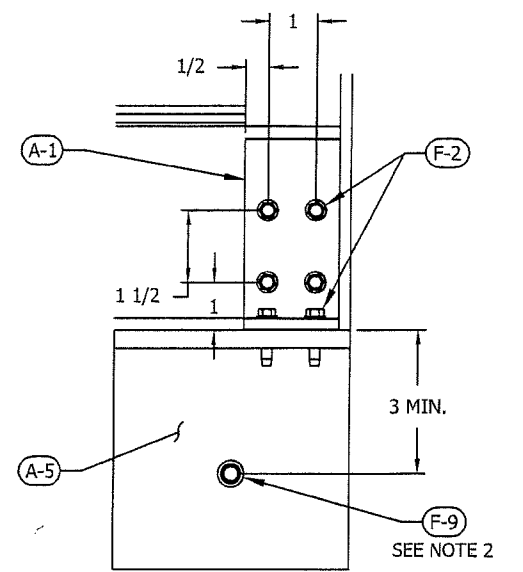
5101 Blue Mound Road
Fort Worth, Texas 76106
Phone: 817-509-2300
Fax: 817-831-3110

PCI INDUSTRIES DOING BUSINESS AS
POTTORFF®

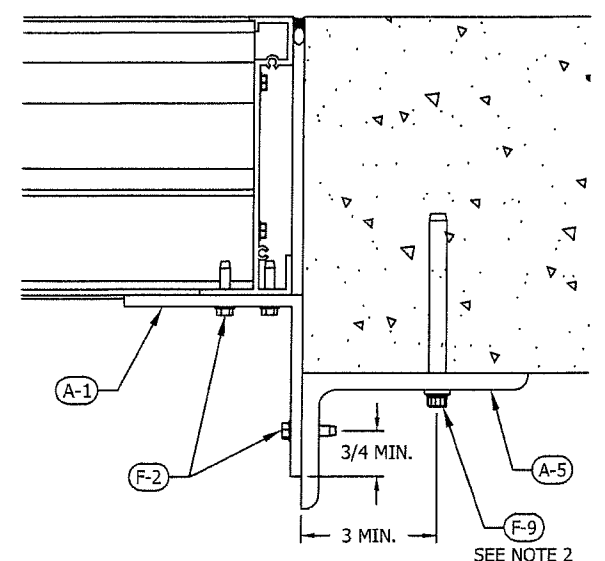
DRAWING DESC.: INTENTIONALLY LEFT BLANK				
PROJECT: EFD-637-MD				
LOCATION:				
ARCHITECT:				
CUSTOMER:				
DATE: 12/17/2010	DWN BY: TB	POTTORFF ORDER NO.	CUSTOMER P.O. NO.	DRAWING NO.
SCALE: 3/4" = 1' 0"	SHEET: 10 of 15			EFD-637-MD NOA



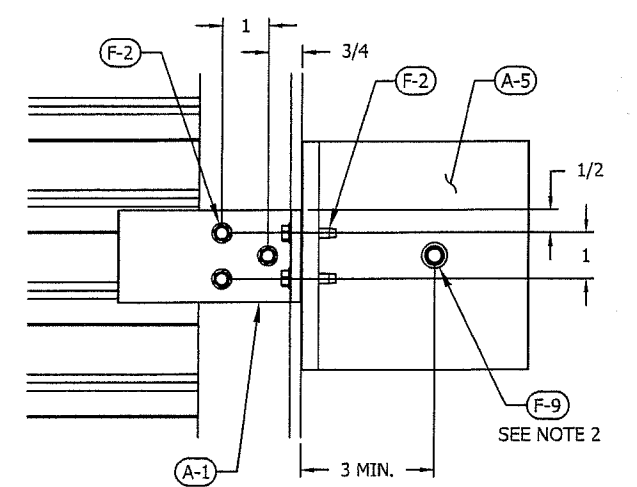
TOP & BTM SECT DTL 1 CONCRETE (TENS. CONN)
3" = 1' 0" 11 3, 4



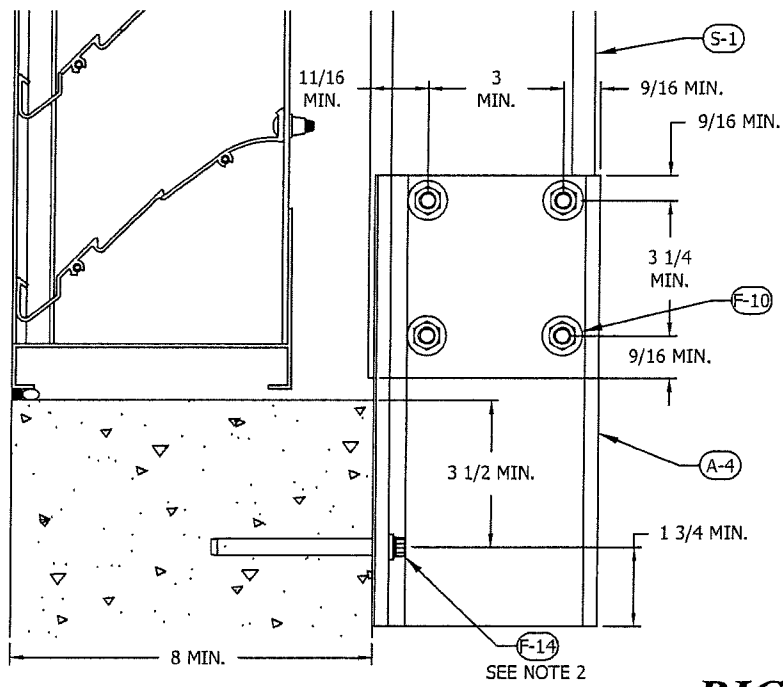
TOP & BTM ELEV DTL 2 CONCRETE (TENS. CONN)
3" = 1' 0" 11 3, 4, 6



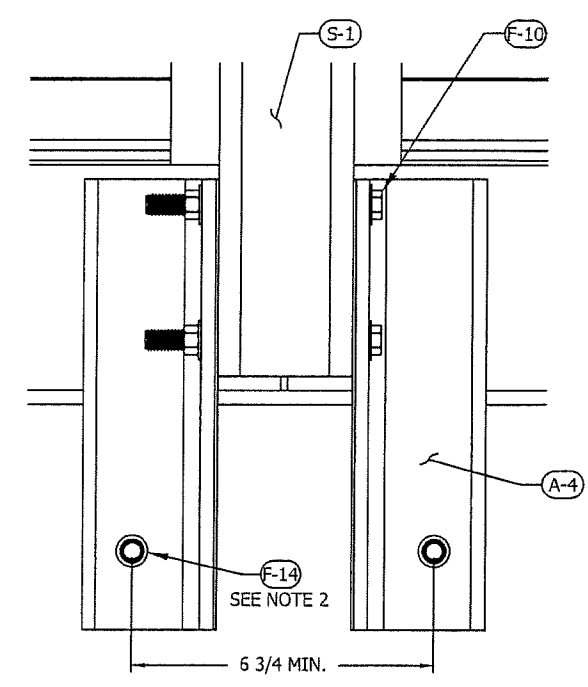
JAMB SECT DTL 3 CONCRETE (TENS. CONN)
3" = 1' 0" 11 3



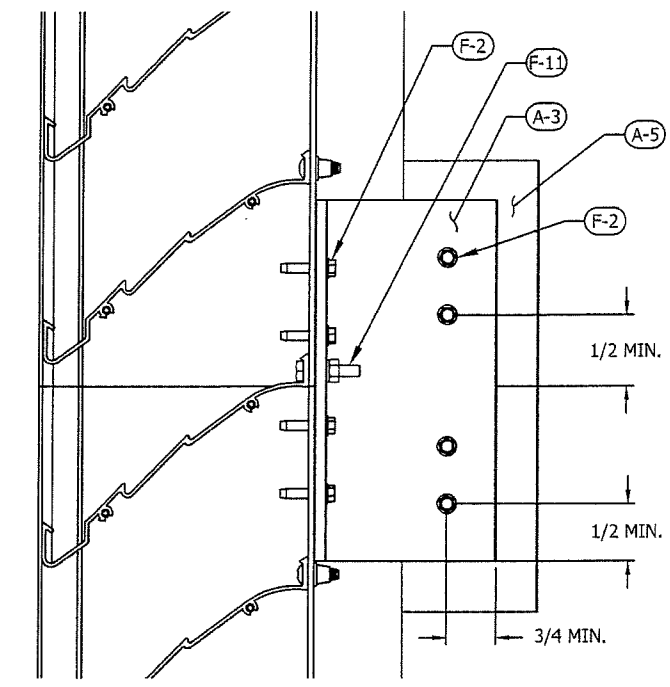
JAMB ELEV DTL 4 CONCRETE (TENS. CONN)
3" = 1' 0" 11 3, 4, 6



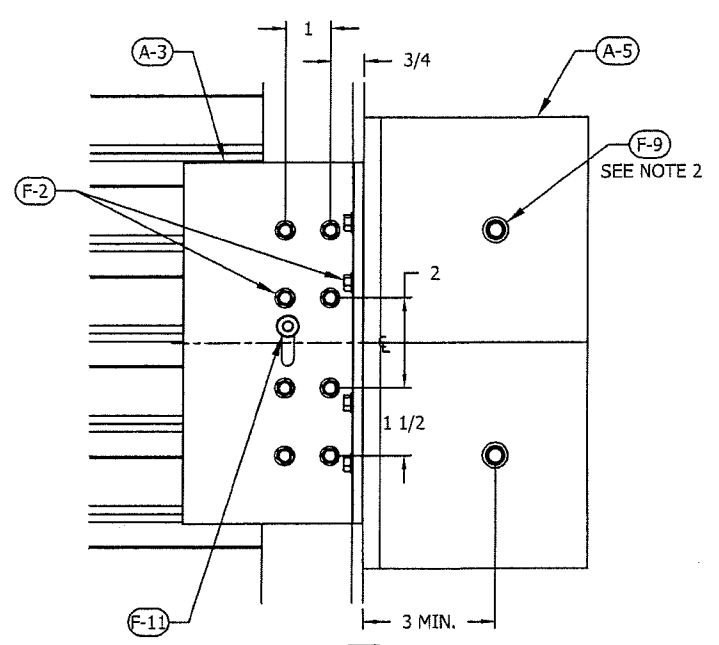
MULLION SECT DTL 7 CONCRETE (TENS. CONN)
3" = 1' 0" 11 6



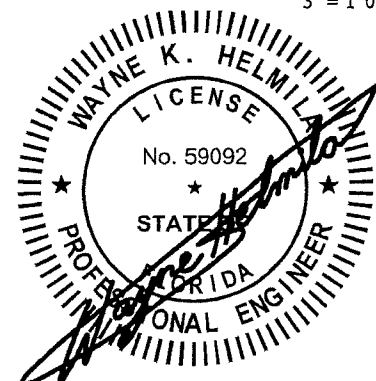
MULLION ELEV DTL 8 CONCRETE (TENS. CONN)
3" = 1' 0" 11 6



SPLICE SECT DTL 9 CONCRETE (TENS. CONN)
3" = 1' 0" 11 4



SPLICE ELEV DTL 10 CONCRETE (TENS. CONN)
3" = 1' 0" 11 4



PRODUCT REVISED
as complying with the Florida
Building Code
NOA-No. **18-1211.08**
Expiration Date **02/19/2024**
By *[Signature]*
Miami-Dade Product Control

RICE
ENGINEERING
105 School Creek Trail
Luxemburg, WI 54217
Phone: (920) 617-1042
Fax: (920) 617-1100
www.rice-inc.com
Florida Firm No: F-01000005061
Certificate of Authorization: #9090
Wayne K. Helmila
Registration No: 59092

NOTE:
1) INSTALLER TO PROVIDE GASKET MATERIAL FOR DISSIMILAR METAL SEPARATION
2) FOR ANCHORS INSTALLED IN A CONCRETE MEMBER WHERE ANALYSIS INDICATES
NO CRACKING AT SERVICE LOAD LEVELS, HILTI KWIK BOLT 3 (F-5, F-15) MAY BE
USED AS AN ALTERNATIVE TO KWIK BOLT TZ (F-9, F-14); SEE ANCHOR SCHEDULE ON
SHEET 1

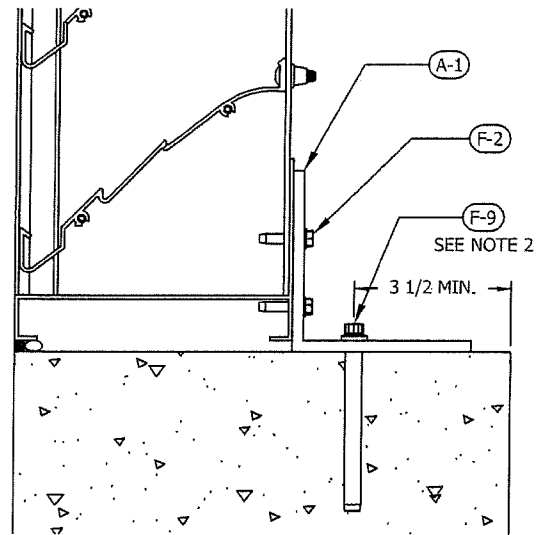
REV. NO.	DESCRIPTION	DATE	DRAWN BY
3	MADE CHG'S PER 1/8/19 EMAIL	1/8/19	NW
2	UPDATED FOR NOA RENEWAL	11/20/18	NW
1	MADE CHG'S PER 6/7/11 LETTER	6/9/11	NW

5101 Blue Mound Road
Fort Worth, Texas 76106
Phone: 817-509-2300
Fax: 817-831-3110

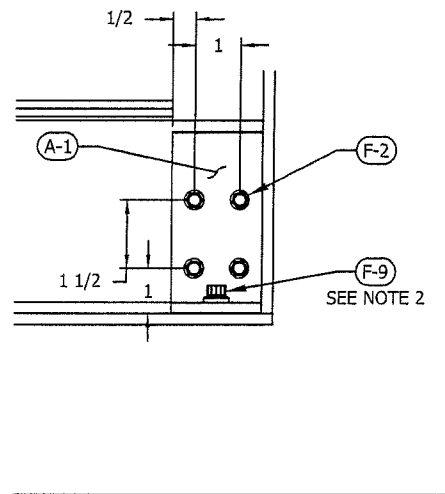
PCI INDUSTRIES DOING BUSINESS AS
POTTORFF®

DRAWING DESC.: ATTACHMENT DETAILS, CONCRETE CONDITION, TENSION CONNECTION				
PROJECT: EFD-637-MD				
LOCATION:				
ARCHITECT:				
CUSTOMER:				
DATE: 12/17/2010	DWN BY: TB	POTTORFF ORDER NO.	CUSTOMER P.O. NO.	DRAWING NO. EFD-637-MD NOA
SCALE: 3/4" = 1' 0"	SHEET: 11 of 15			

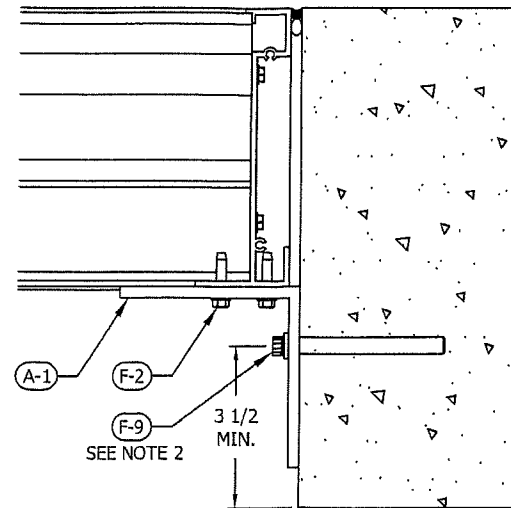
01/09/2019
COA: 9090



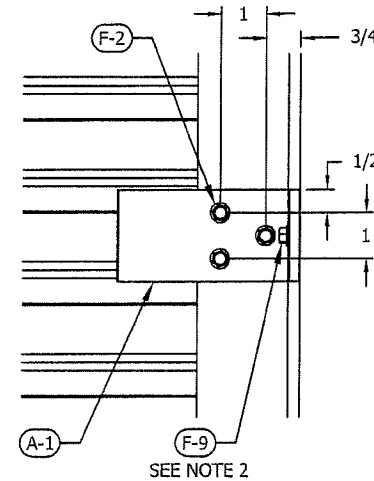
TOP & BTM SECT DTL 1 CONCRETE (SHEAR CONN)
3" = 1' 0" 12/3, 4



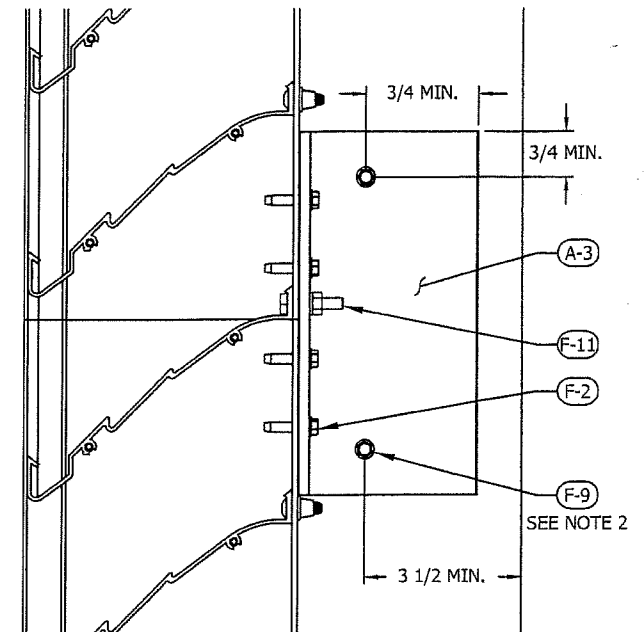
TOP & BTM ELEV DTL 2 CONCRETE (SHEAR CONN)
3" = 1' 0" 12/3, 4, 6



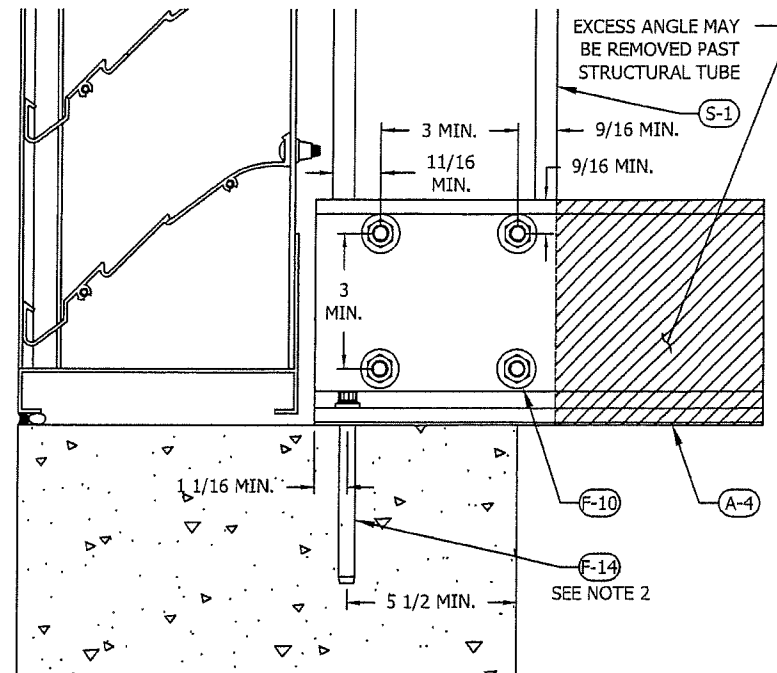
JAMB SECT DTL 3 CONCRETE (SHEAR CONN)
3" = 1' 0" 12/3



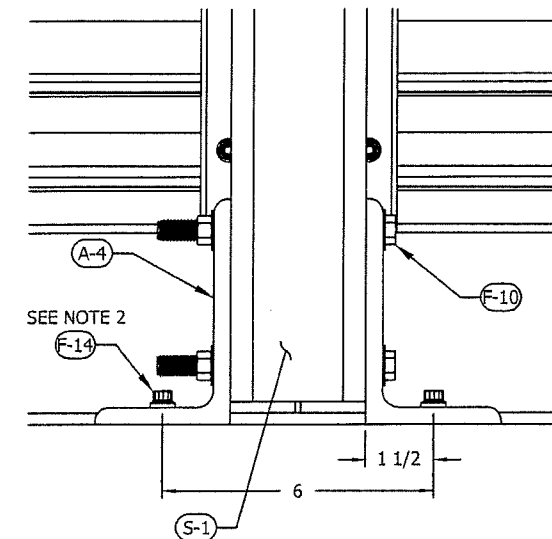
JAMB ELEV DTL 4 CONCRETE (SHEAR CONN)
3" = 1' 0" 12/3, 4, 6



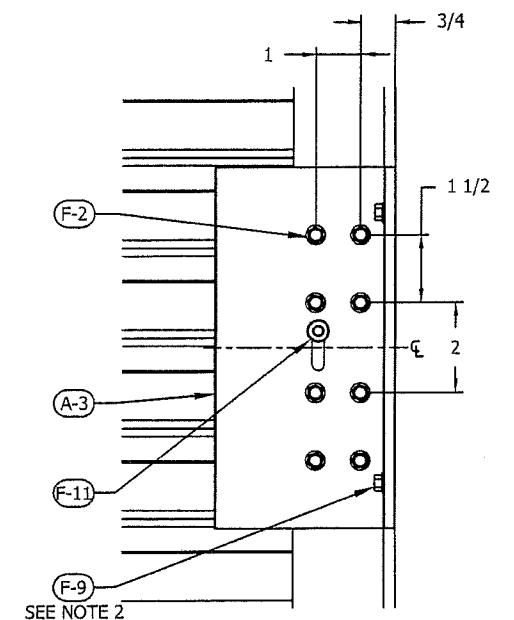
SPLICE SECT DTL 9 CONCRETE (SHEAR CONN)
3" = 1' 0" 12/4



MULLION SECT DTL 7 CONCRETE (SHEAR CONN)
3" = 1' 0" 12/6



MULLION ELEV DTL 8 CONCRETE (SHEAR CONN)
3" = 1' 0" 12/6



SPLICE ELEV DTL 10 CONCRETE (SHEAR CONN)
3" = 1' 0" 12/4

PRODUCT REVISED
as complying with the Florida
Building Code
NOA-No. **18-1211.08**
Expiration Date **02/19/2024**
By *[Signature]*
Miami-Dade Product Control

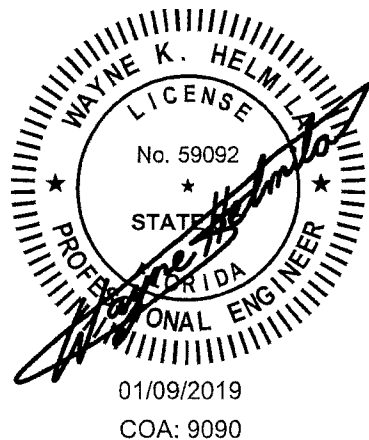
RICE
ENGINEERING

105 School Creek Trail
Luxemburg, WI 54217
Phone: (920) 617-1042
Fax: (920) 617-1100
www.rice-inc.com

Florida Firm No: F-01000005061
Certificate of Authorization: #9090
Wayne K. Helmila
Registration No: 59092

NOTE:
1) INSTALLER TO PROVIDE GASKET MATERIAL FOR DISSIMILAR METAL SEPARATION
2) FOR ANCHORS INSTALLED IN A CONCRETE MEMBER WHERE ANALYSIS INDICATES
NO CRACKING AT SERVICE LOAD LEVELS, HILTI KWIK BOLT 3 (F-5, F-15) MAY BE
USED AS AN ALTERNATIVE TO KWIK BOLT TZ (F-9, F-14); SEE ANCHOR SCHEDULE ON
SHEET 1

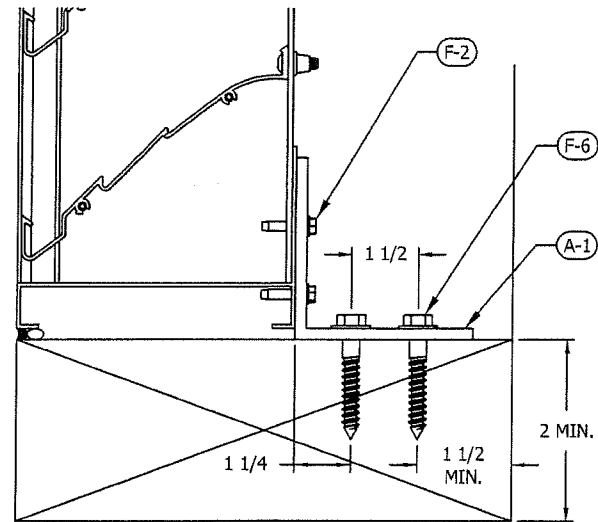
DRAWING DESC.: ATTACHMENT DETAILS, CONCRETE CONDITION, SHEAR CONNECTION				
PROJECT: EFD-637-MD				
LOCATION:				
ARCHITECT:				
CUSTOMER:				
DATE: 12/17/2010	DWN BY: TB	POTTORFF ORDER NO.	CUSTOMER P.O. NO.	DRAWING NO.
SCALE: 3/4" = 1' 0"	SHEET: 12 of 15			EFD-637-MD NOA



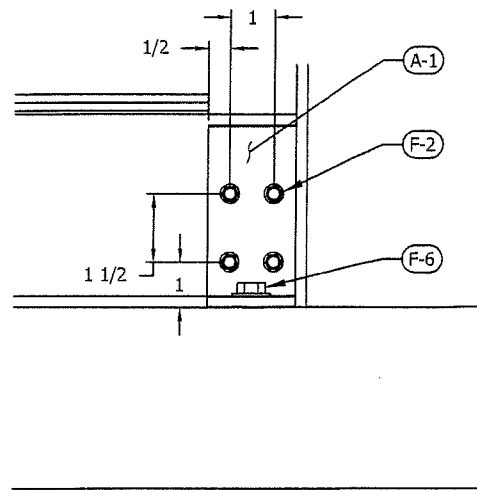
FILE:			
3	MADE CHG'S PER 1/8/19 EMAIL	1/8/19	NW
2	UPDATED FOR NOA RENEWAL	11/20/18	NW
1	MADE CHG'S PER 6/7/11 LETTER	6/9/11	NW
REV. NO.	DESCRIPTION	DATE	DRAWN BY

5101 Blue Mound Road
Fort Worth, Texas 76106
Phone: 817-509-2300
Fax: 817-831-3110

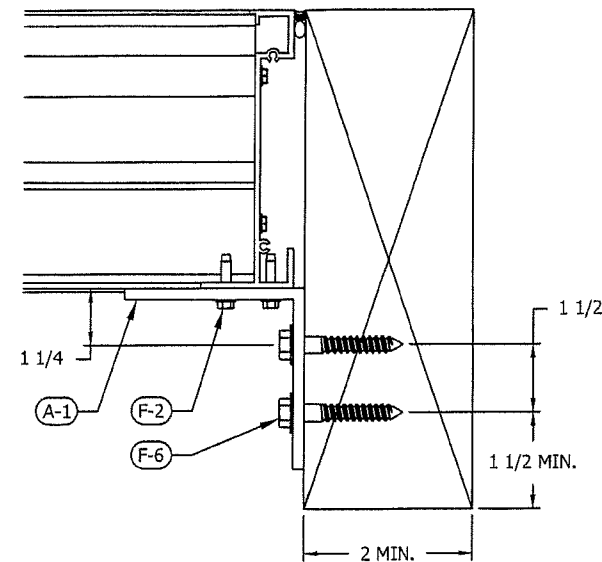
PCI INDUSTRIES DOING BUSINESS AS
POTTORFF®



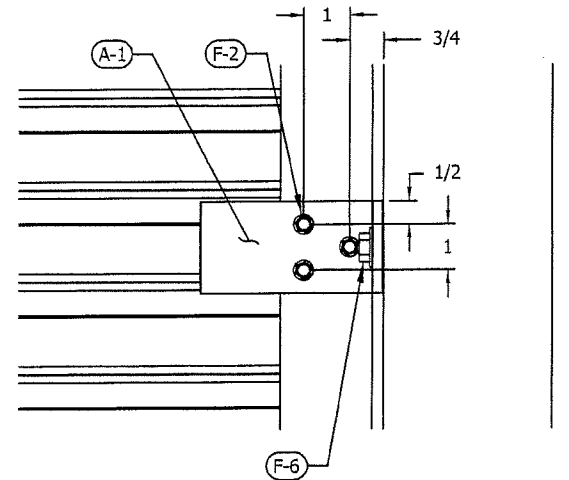
TOP & BTM SECT DTL 1 WOOD COND.
3" = 1' 0" 13 3, 4



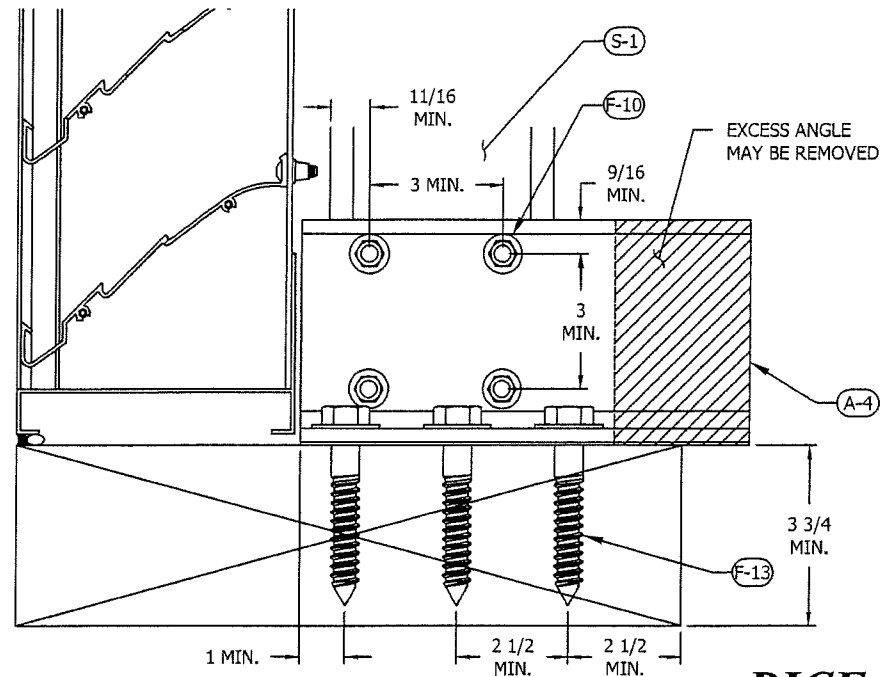
TOP & BTM ELEV DTL 2 WOOD COND.
3" = 1' 0" 13 3, 4, 6



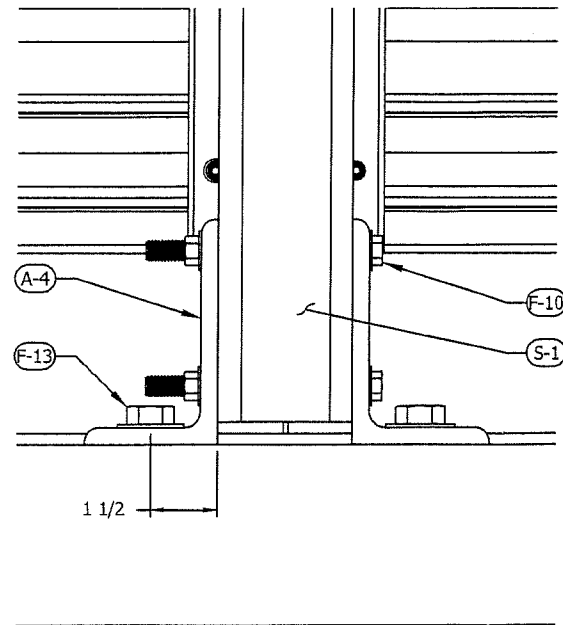
JAMB SECT DTL 3 WOOD COND.
3" = 1' 0" 13 3



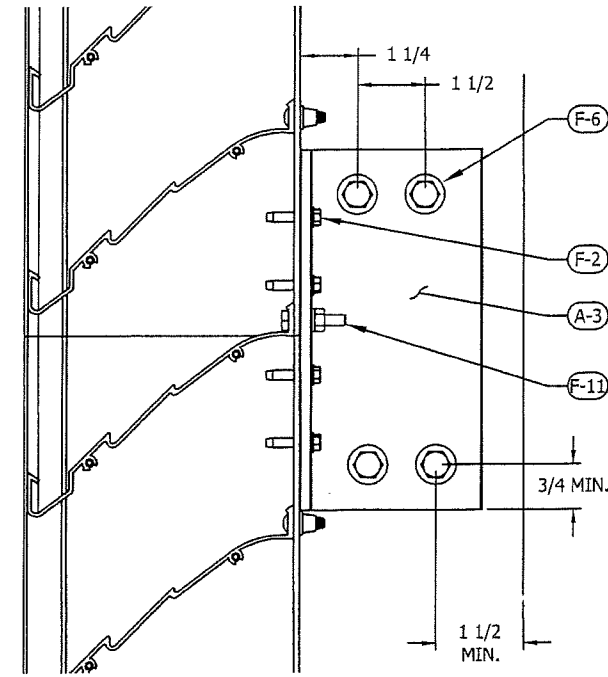
JAMB ELEV DTL 4 WOOD COND.
3" = 1' 0" 13 3, 4, 6



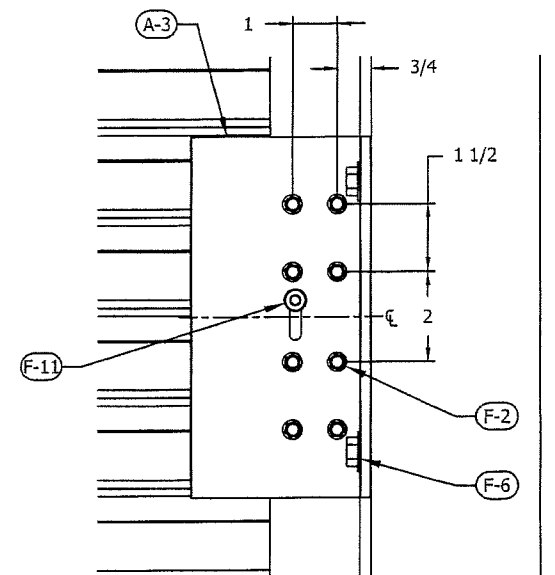
MULLION SECT DTL 7 WOOD COND.
3" = 1' 0" 13 6



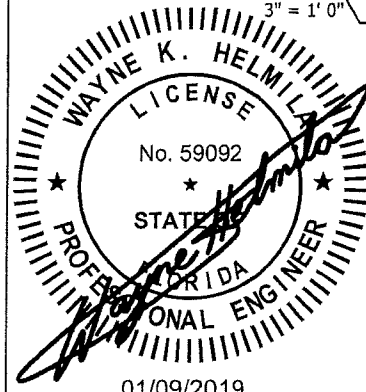
MULLION ELEV DTL 8 WOOD COND.
3" = 1' 0" 13 6



SPLICE SECT DTL 9 WOOD COND.
3" = 1' 0" 13 4



SPLICE ELEV DTL 10 WOOD COND.
3" = 1' 0" 13 4



01/09/2019
COA: 9090

RICE
ENGINEERING

105 School Creek Trail
Luxemburg, WI 54217
Phone: (920) 617-1042
Fax: (920) 617-1100
www.rice-inc.com

Florida Firm No: F-01000005061
Certificate of Authorization: #9090
Wayne K. Helmila
Registration No: 59092

PRODUCT REVISED
as complying with the Florida
Building Code
NOA-No. **18-1211.08**

Expiration Date **02/19/2024**

By *[Signature]*
Miami-Dade Product Control

NOTE:
1) INSTALLER TO PROVIDE GASKET MATERIAL FOR DISSIMILAR METAL SEPARATION

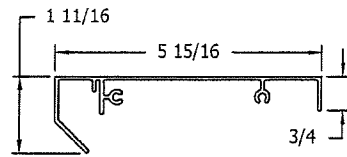
REV. NO.	DESCRIPTION	DATE	DRAWN BY
3	MADE CHG'S PER 1/8/19 EMAIL	1/8/19	NW
2	UPDATED FOR NOA RENEWAL	11/20/18	NW
1	MADE CHG'S PER 6/7/11 LETTER	6/9/11	NW

5101 Blue Mound Road
Fort Worth, Texas 76106
Phone: 817-509-2300
Fax: 817-831-3110

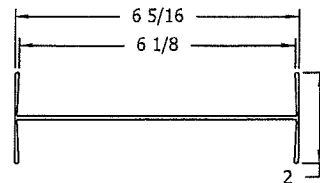
PCI INDUSTRIES DOING BUSINESS AS
POTTORFF®

DRAWING DESC.: ATTACHMENT DETAILS, WOOD CONDITION				
PROJECT: EFD-637-MD				
LOCATION:				
ARCHITECT:				
CUSTOMER:				
DATE: 12/17/2010	DWN BY: TB	POTTORFF ORDER NO.	CUSTOMER P.O. NO.	DRAWING NO.
SCALE: 3/4" = 1' 0"	SHEET: 13 of 15			EFD-637-MD NOA

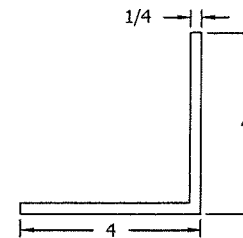
PART #: E-1
PART NAME: LOUVER HEAD
MATERIAL: 0.081" THICK 6063-T5
EXTRUDED ALUMINUM
SCALE: 3" = 1'-0"



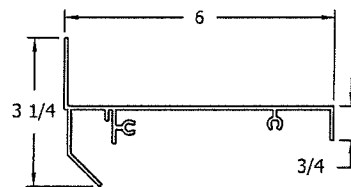
PART #: E-6
PART NAME: I-MULLION
MATERIAL: 0.078" THICK 6063-T5
EXTRUDED ALUMINUM
SCALE: 3" = 1'-0"



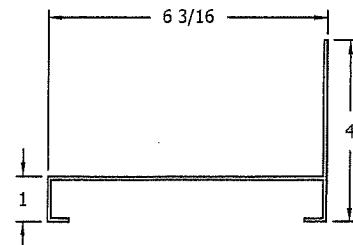
PART #: A-3
PART NAME: SPLICE ANGLE
MATERIAL: 4" x 4" x 1/4" x 8"L 6061-T6
EXTRUDED ALUMINUM
SCALE: 3" = 1'-0"



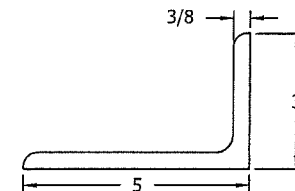
PART #: E-2
PART NAME: LOUVER HEAD, FLANGED
MATERIAL: 0.081" THICK 6063-T5
EXTRUDED ALUMINUM
SCALE: 3" = 1'-0"



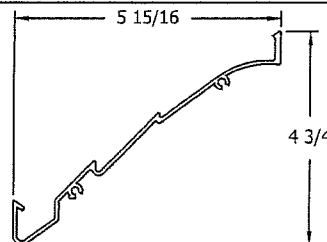
PART #: E-7
PART NAME: LOUVER SILL
MATERIAL: 0.081" THICK 6063-T5
EXTRUDED ALUMINUM
SCALE: 3" = 1'-0"



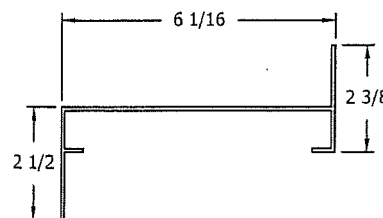
PART #: A-4
PART NAME: STRUCTURAL ANGLE, LONG
MATERIAL: 5" x 3" x 3/8" x 10"L 6061-T6
EXTRUDED ALUMINUM
SCALE: 3" = 1'-0"



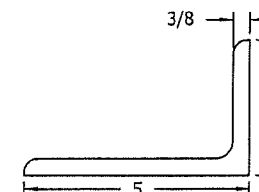
PART #: E-3
PART NAME: LOUVER BLADE
MATERIAL: 0.125" THICK 6063-T5
EXTRUDED ALUMINUM
SCALE: 3" = 1'-0"



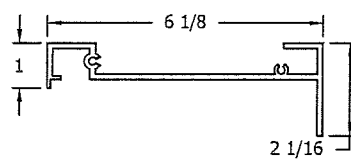
PART #: E-8
PART NAME: LOUVER SILL, FLANGED
MATERIAL: 0.081" THICK 6063-T5
EXTRUDED ALUMINUM
SCALE: 3" = 1'-0"



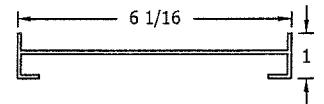
PART #: A-5
PART NAME: STRUCTURAL ANGLE, SHORT
MATERIAL: 5" x 3" x 3/8" x 5"L 6061-T6
EXTRUDED ALUMINUM
SCALE: 3" = 1'-0"



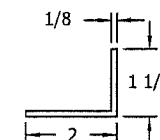
PART #: E-4
PART NAME: LOUVER JAMB
MATERIAL: 0.125" THICK 6063-T5
EXTRUDED ALUMINUM
SCALE: 3" = 1'-0"



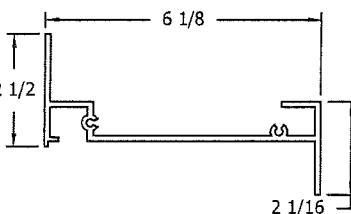
PART #: E-12
PART NAME: ROLLFRAME EXTRUSION
MATERIAL: 0.081" THICK 6063-T5
EXTRUDED ALUMINUM
SCALE: 3" = 1'-0"



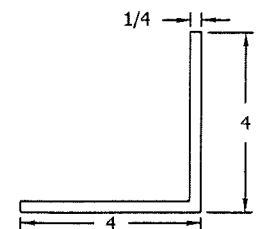
PART #: A-6
PART NAME: RETAINING ANGLE
MATERIAL: 2" x 1-1/2" x 1/8" 6063-T5
EXTRUDED ALUMINUM
SCALE: 3" = 1'-0"



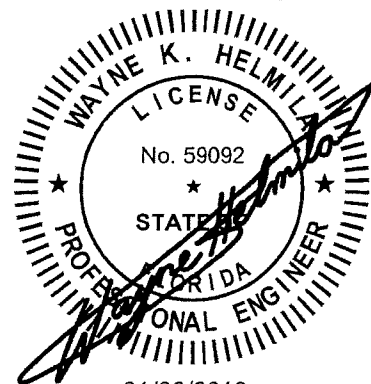
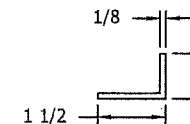
PART #: E-5
PART NAME: LOUVER JAMB, FLANGED
MATERIAL: 0.125" THICK 6063-T5
EXTRUDED ALUMINUM
SCALE: 3" = 1'-0"



PART #: A-1
PART NAME: CLIP ANGLE
MATERIAL: 4" x 4" x 1/4" x 2"L 6061-T6
EXTRUDED ALUMINUM
SCALE: 3" = 1'-0"



PART #: A-7
PART NAME: SLEEVE ANGLE
MATERIAL: 1-1/2" x 1" x 1/8" 6063-T5
EXTRUDED ALUMINUM
SCALE: 3" = 1'-0"



01/09/2019
COA: 9090

FILE:

REV. NO.	DESCRIPTION	DATE	DRAWN BY
3	MADE CHG'S PER 1/8/19 EMAIL	1/8/19	NW
2	UPDATED FOR NOA RENEWAL	11/20/18	NW
1	MADE CHG'S PER 6/7/11 LETTER	6/9/11	NW

5101 Blue Mound Road
Fort Worth, Texas 76106
Phone: 817-509-2300
Fax: 817-831-3110

PRODUCT REVISED
as complying with the Florida
Building Code
NOA-No. **18-1211.08**

Expiration Date **02/19/2024**

By *[Signature]*
Miami-Dade Product Control

PCI INDUSTRIES DOING BUSINESS AS
POTTORFF®

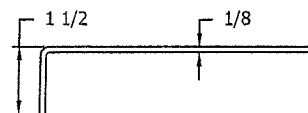
DRAWING DESC.: BILL OF MATERIALS				
PROJECT: EFD-637-MD				
LOCATION:				
ARCHITECT:				
CUSTOMER:				
DATE: 12/17/2010	DWN BY: TB	POTTORFF ORDER NO.	CUSTOMER P.O. NO.	DRAWING NO. EFD-637-MD NOA
SCALE: 3" = 1' 0"	SHEET: 14 of 15			

RICE
ENGINEERING

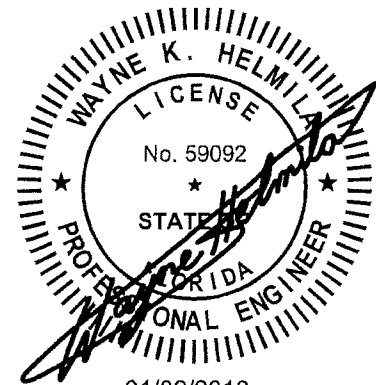
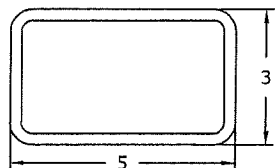
105 School Creek Trail
Luxemburg, WI 54217
Phone: (920) 617-1042
Fax: (920) 617-1100
www.rice-inc.com

Florida Firm No: F-01000005061
Certificate of Authorization: #9090
Wayne K. Helmila
Registration No: 59092

PART #: L-1
PART NAME: SLEEVE
MATERIAL: 0.125" THICK 5052-H32
SHEET ALUMINUM
SCALE: 3" = 1'-0"



PART #: S-1
PART NAME: TUBE SUPPORT
MATERIAL: 5" x 3" x 1/4" ASTM A36
STRUCTURAL TUBE STEEL
SCALE: 3" = 1'-0"



01/09/2019
COA: 9090

RICE
ENGINEERING

105 School Creek Trail
Luxemburg, WI 54217
Phone: (920) 617-1042
Fax: (920) 617-1100
www.rice-inc.com

Florida Firm No: F-01000005061
Certificate of Authorization: #9090
Wayne K. Helmila
Registration No: 59092

PRODUCT REVISED
as complying with the Florida
Building Code

NOA-No. **18-1211.08**

Expiration Date **02/19/2024**

By 
Miami-Dade Product Control

NOTE:
1) ALL INSTALLATION FASTENERS AND ANCHORS SHALL BE OF CORROSION-
RESISTANT STEEL (STAINLESS, HOT-DIP GALVANIZED, OR ZINC-PLATED)

FILE:

REV. NO.	DESCRIPTION	DATE	DRAWN BY
3	MADE CHG'S PER 1/8/19 EMAIL	1/8/19	NW
2	UPDATED FOR NOA RENEWAL	11/20/18	NW
1	MADE CHG'S PER 6/7/11 LETTER	6/9/11	NW

5101 Blue Mound Road
Fort Worth, Texas 76106
Phone: 817-509-2300
Fax: 817-831-3110

PCI INDUSTRIES DOING BUSINESS AS

POTTORFF®

MISCELLANEOUS FASTENERS

PART #	DESCRIPTION
F-1	#10-24 X 3/4" LONG, HWH, 410 SST, 'F' POINT MACHINE SCREW
F-2	#12-14 X 1" LONG, HWH, 410 SST, SELF-DRILLING TEK MACHINE SCREW
F-3	NOT USED
F-4	1/4-14 X 1" LONG SELF-DRILLING TEK MACHINE SCREW
F-5	3/8" X 3 3/4" HILTI KWIK-BOLT 3 EXPANSION ANCHOR
F-6	3/8" X 2 1/2" LAG BOLT W/ FLAT WASHER
F-7	NOT USED
F-8	NOT USED
F-9	3/8" X 3 3/4" HILTI KWIK-BOLT TZ EXPANSION ANCHOR
F-10	3/8-16 X 5" LONG, 18-8 SST, HEX BOLT, NUT, AND TWO (2) FLAT WASHERS
F-11	1/4-20 X 1 1/4" LONG, 18-8 SST, HEX BOLT, NUT, AND TWO (2) FLAT WASHERS
F-12	1/4" HUCK MAGNA GRIP LOCK BOLT AND COLLAR, ALUMINUM
F-13	5/8" X 5" LAG BOLT W/ FLAT WASHER
F-14	5/8" X 6" HILTI KWIK-BOLT TZ EXPANSION ANCHOR
F-15	5/8" X 6" HILTI KWIK-BOLT 3 EXPANSION ANCHOR

INSTALLATION NOTES

PART #	DESCRIPTION
I-1	SEALANT AND BACKER ROD PROVIDED BY INSTALLER (TYP)
I-2	SHIM AS REQUIRED TO MAKE LEVEL AND PLUMB. PROVIDED BY INSTALLER (TYP)

SCREEN & FRAME

PART #	DESCRIPTION
E-13	SCREEN FRAME, 0.065" THICK, 6063-T5 EXTRUDED ALUMINUM W/ 1/2" X 0.050" EXPANDED ALUMINUM BIRD SCREEN
E-14	SCREEN FRAME, 0.065" THICK, 6063-T5 EXTRUDED ALUMINUM W/ 1/2" x 0.063" S.S. MESH BIRD SCREEN

DRAWING DESC.: BILL OF MATERIALS

PROJECT: EFD-637-MD

LOCATION:

ARCHITECT:

CUSTOMER:

DATE: 12/17/2010

DWN BY: TB

POTTORFF
ORDER NO.

CUSTOMER
P.O. NO.

DRAWING NO.

SCALE: 3" = 1' 0"

SHEET: 15 of 15

EFD-637-MD NOA