



DEPARTMENT OF REGULATORY AND ECONOMIC RESOURCES (RER)
BOARD AND CODE ADMINISTRATION DIVISION

MIAMI-DADE COUNTY
PRODUCT CONTROL SECTION
11805 SW 26 Street, Room 208
Miami, Florida 33175-2474
T (786) 315-2590 F (786) 315-2599

NOTICE OF ACCEPTANCE (NOA)

www.miamidade.gov/economy

Pura Vista LTD
Pendewey Stoney Lane, Bodmin
Cornwall, England, PL31 2QX

SCOPE:

This NOA is being issued under the applicable rules and regulations governing the use of construction materials. The documentation submitted has been reviewed and accepted by Miami-Dade County RER-Product Control Section to be used in Miami Dade County and other areas where allowed by the Authority Having Jurisdiction (AHJ).

This NOA shall not be valid after the expiration date stated below. The Miami-Dade County Product Control Section (In Miami Dade County) and/or the AHJ (in areas other than Miami Dade County) reserve the right to have this product or material tested for quality assurance purposes. If this product or material fails to perform in the accepted manner, the manufacturer will incur the expense of such testing and the AHJ may immediately revoke, modify, or suspend the use of such product or material within their jurisdiction. RER reserves the right to revoke this acceptance, if it is determined by Miami-Dade County Product Control Section that this product or material fails to meet the requirements of the applicable building code.

This product is approved as described herein, and has been designed to comply with the High Velocity Hurricane Zone of the Florida Building Code.

DESCRIPTION: Straight Postless Glass Railing System

APPROVAL DOCUMENT: Drawing No. AD18-33, titled "Megagrip Top Mount Glass Railing System", sheets 1 through 6 of 6, prepared by MCY Engineering, Inc., dated January 25, 2019, signed and sealed by Yiping Wang, P.E., on January 25, 2019, bearing the Miami-Dade County Product Control Approval stamp with the Notice of Acceptance number and the approval date by the Miami-Dade County Product Control Section.

MISSILE IMPACT RATING: Large and Small Missile Impact Resistant

LABELING: Each unit shall bear a permanent label with the manufacturer's name or logo, city, state and the following statement: "Miami-Dade County Product Control Approved", unless otherwise noted herein.

RENEWAL of this NOA shall be considered after a renewal application has been filed and there has been no change in the applicable building code negatively affecting the performance of this product.

TERMINATION of this NOA will occur after the expiration date or if there has been a revision or change in the materials, use, and/or manufacture of the product or process. Misuse of this NOA as an endorsement of any product, for sales, advertising or any other purposes shall automatically terminate this NOA. Failure to comply with any section of this NOA shall be cause for termination and removal of NOA.

ADVERTISEMENT: The NOA number preceded by the words Miami-Dade County, Florida, and followed by the expiration date may be displayed in advertising literature. If any portion of the NOA is displayed, then it shall be done in its entirety.

INSPECTION: A copy of this entire NOA shall be provided to the user by the manufacturer or its distributors and shall be available for inspection at the job site at the request of the Building Official. The structural adequacy of the supporting structures is not part of this approval & shall be reviewed by the corresponding Building Dept.

This NOA consists of this page 1, evidence submitted page E-1 as well as approval document mentioned above. The submitted documentation was reviewed by **Helmy A. Makar, P.E., M.S.**



Helmy A. Makar
08/29/2019

NOA No. 19-0116.01
Expiration Date: 08/29/2024
Approval Date: 08/29/2019
Page 1

NOTICE OF ACCEPTANCE: EVIDENCE SUBMITTED

A. DRAWINGS

1. *Drawing No. AD18-33, titled "Megagrip Top Mount Glass Railing System", sheets 1 through 6 of 6, prepared by MCY Engineering, Inc., dated January 25, 2019, signed and sealed by Yiping Wang, P.E., on January 25, 2019.*

B. TESTS

1. *Test Report No. FTL-18846, by FTL, dated August 24, 2018, signed and sealed by Idalmis Ortega, P.E., testing Straight Postless Glass Railing for concentrated and distributed loads per FBC 1618.4.6, Impacts per ANSI Z97.1, Large and Small Missile Impact TAS 201-94, Static Wind Load per TAS 202-94.*

C. CALCULATIONS

1. *Calculation titled "Series Glass Railing System - Large and Small Missile Impact", 23 sheets, dated January 25, 2019, prepared by MCY Engineering, Inc., signed and sealed by Yiping Wang, P.E.*

D. QUALITY ASSURANCE

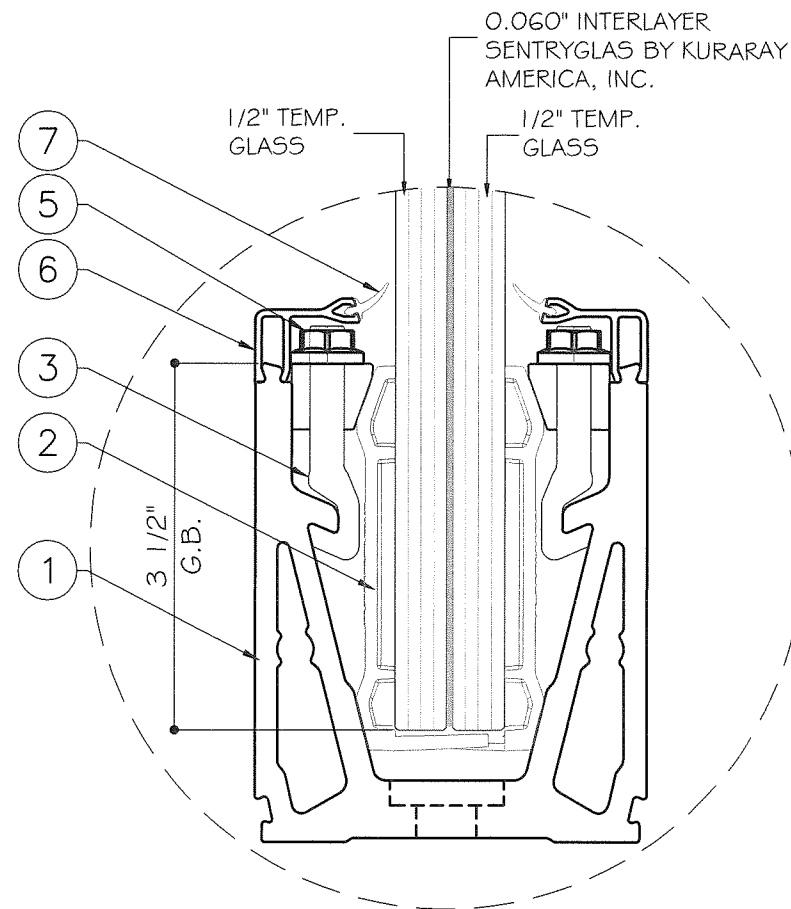
1. *By Miami-Dade County Department of Regulatory and Economic Resources (RER).*

E. MATERIAL CERTIFICATIONS

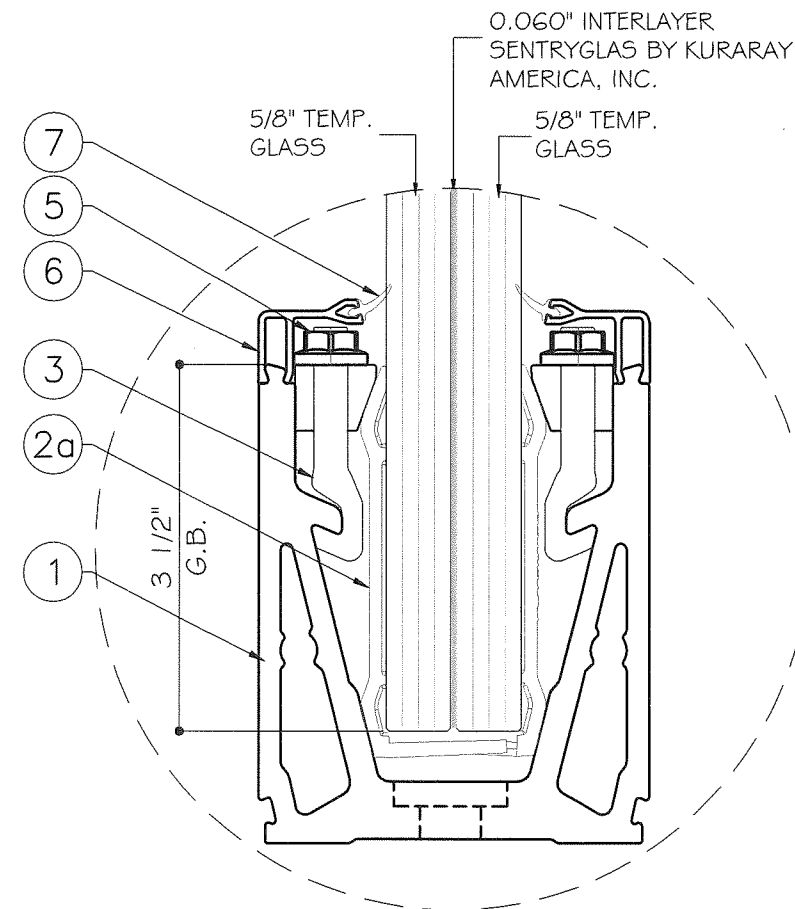
1. *None.*



Helmy A. Makar, P.E., M.S.
Product Control Section Supervisor
NOA No. 19-0116.01
Expiration Date: 08/29/2024
Approval Date: 08/29/2019



GLASS TYPE 'G1'
1 1/2" NOMINAL OVERALL
LAMINATED GLASS



GLASS TYPE 'G2'
5/16" NOMINAL OVERALL
LAMINATED GLASS

MEGAGRIP TOP MOUNT GLASS RAILING SYSTEM

- THIS PRODUCT HAS BEEN DESIGNED AND TESTED TO COMPLY WITH THE REQUIREMENTS OF THE 6TH EDITION FLORIDA BUILDING CODE (2017) INCLUDING HIGH VELOCITY HURRICANE ZONE (HVHZ).
- PRODUCT IS RATED FOR LARGE AND SMALL MISSILE IMPACT.
- ANCHORS SHALL BE AS LISTED, SPACED AS SHOWN ON DETAILS. ANCHORS EMBEDMENT TO BASE MATERIAL SHALL BE BEYOND WALL DRESSING OR STUCCO.
- ANCHORING OR LOADING CONDITIONS NOT SHOWN IN THESE DETAILS ARE NOT PART OF THIS APPROVAL.
- METAL STRUCTURES NOT BY PURE VISTA MUST SUPPORT LOADS IMPOSED BY RAILING SYSTEM AND TRANSFER THEM TO THE BUILDING STRUCTURE.

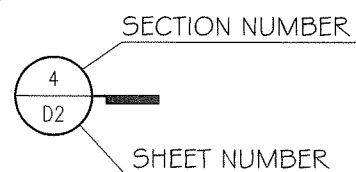
- MATERIALS INCLUDING BUT NOT LIMITED TO STEEL/METAL SCREWS THAT COME INTO CONTACT WITH OTHER DISSIMILAR MATERIALS SHALL MEET THE REQUIREMENTS OF THE 6TH EDITION FLORIDA BUILDING CODE (2017) SECTION AS APPLICABLE.
- THE DESIGN LOADS SHOWN IN THIS DOCUMENT ARE ALLOWABLE DESIGN LOADS. ULTIMATE DESIGN LOAD OBTAINED FROM ASCE 7-10, MULTIPLY BY 0.6, SHALL BE LESS THAN OR EQUAL TO MAX. ALLOWABLE DESIGN LOAD IN THIS DOCUMENT.

TESTED WITH ANSI Z97.1

LARGE AND SMALL MISSILE IMPACT

ABBREVIATIONS AND SYMBOLS

D.L.O. - DAYLITE OPENING
LG. - LONG
O.C. - ON CENTER
TEMP. - TEMPERED
THK. - THICKNESS
W/ - WITH
W/O - WITHOUT
E.D. - EDGE DISTANCE



NOTE:
GLASS COMPLIES WITH ASTM E1300-09
(3 SEC. GUSTS).

MIAMI-DADE COUNTY
Approved as complying with the
Florida Building Code
Date 08/29/2019
NOA# 19-0116-01
Miami Date Product Control
By: [Signature]

YIPING WANG, P.E.
FLORIDA REGISTRATION
FL #55983
C.A.N. 28677
JAN 25 2019
[Signature]

MEGAGRIP TOP MOUNT GLASS RAILING SYSTEM (L.M.I.&S.M.I.)
PURE VISTA ARCHITECTURAL GLASS SOLUTIONS
PENDEWEY, STONY LANE, BODMIN
CORNWALL, ENGLAND, PL31 2QX

COVER

DATE 01/25/2019
SCALE
DRAWN
PROJECT

DRAWING NO.
AD18-33

1 OF 6

MCY ENGINEERING, INC.

GLAZING CONSULTANTS

8501 SW 124 Ave, Ste. 205 P: 786.360.2786
MIAMI, FL 33183 P: 305.271.0117

www.MCYEngineering.com mcy@mcyengineering.com

REVISIONS

NO. DATE DESCRIPTION

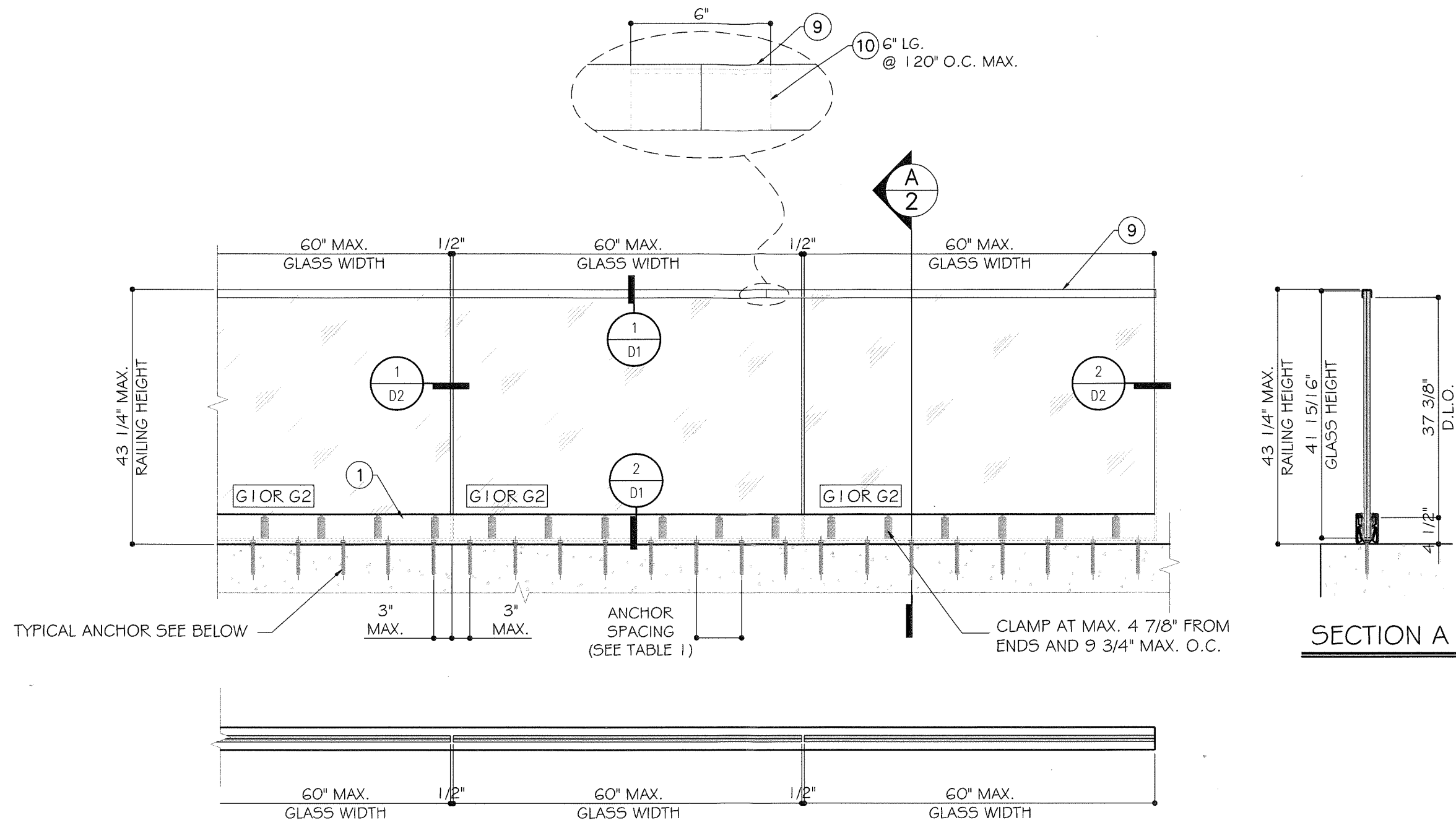


TABLE 1

ALLOWABLE DESIGN LOAD					
(FOR SIZES SHOWN ABOVE OR SMALLER) AS PERMITTED BY FBC.					
GLASS TYPE	ANCHOR INFORMATION			CONCRETE STRENGTH (f _c)	ALLOWABLE DESIGN LOAD
	TYPE	E.D. MIN. (IN)	SPACING (IN)		
G1	A	3-1/2"	7-3/4"	3000	50
G2	A	3-1/2"	7-3/4"	3000	72.7
	A	3-1/2"	7-3/4"	4000	82.7
	B	4-1/2"	7-3/4"	4000	93.7
	B	6"	6-1/2"	4000	125

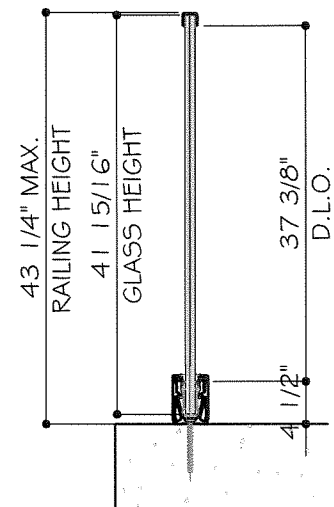
TYPICAL EXTERIOR ELEVATIONS

TYPICAL ANCHOR

*SEE TABLE 1 FOR ANCHOR TYPE VS. EDGE DISTANCE, SPACING, CONCRETE STRENGTH AND DESIGN LOAD.

TYPE A: 1/2" SCREW-BOLT+ BY DEWALT WITH 4-1/4" MIN. EMBEDMENT INTO 3KSI OR 4KSI CONCRETE.

TYPE B: 5/8" SCREW-BOLT+ BY DEWALT WITH 5" MIN. EMBEDMENT INTO 4KSI CONCRETE.



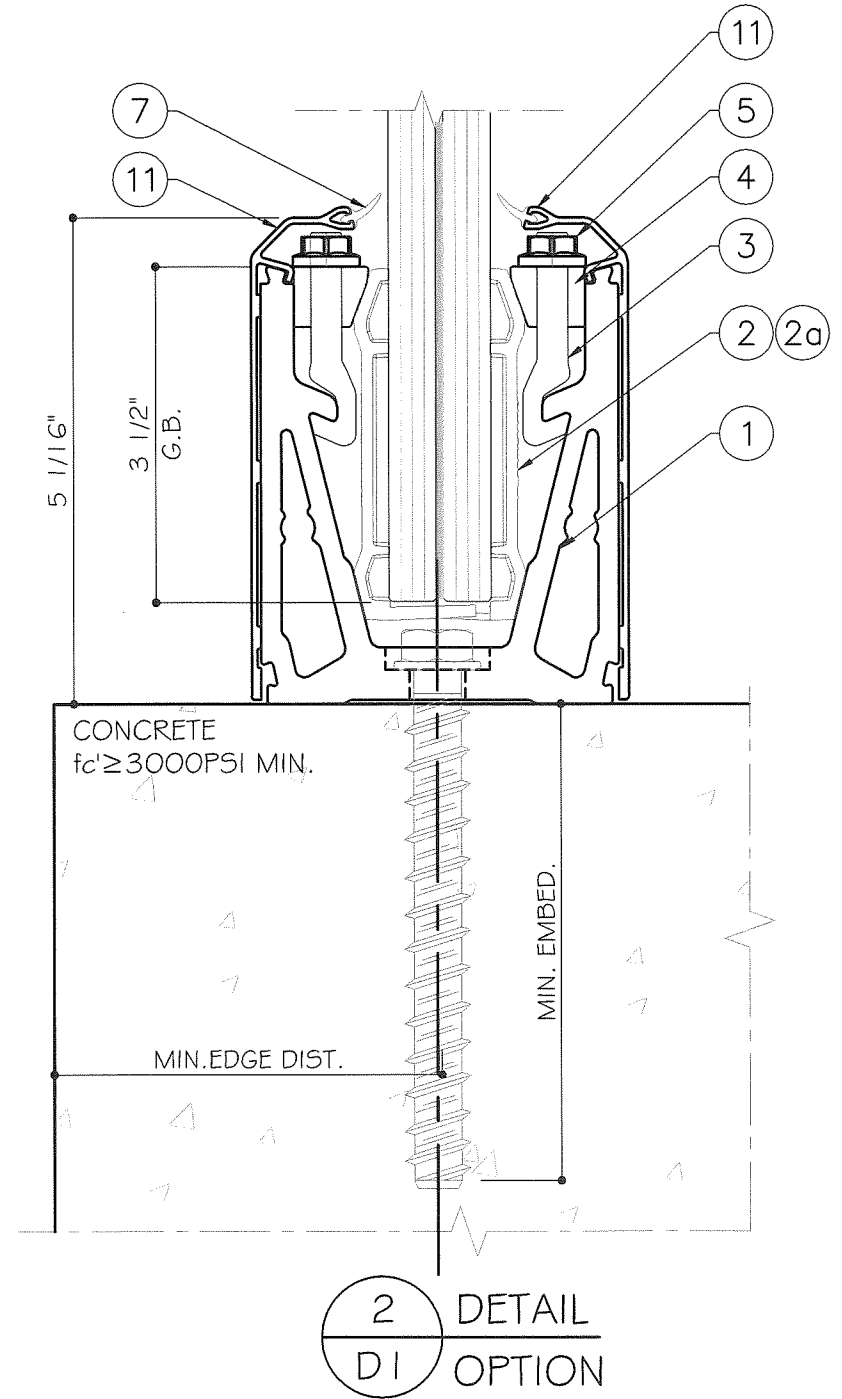
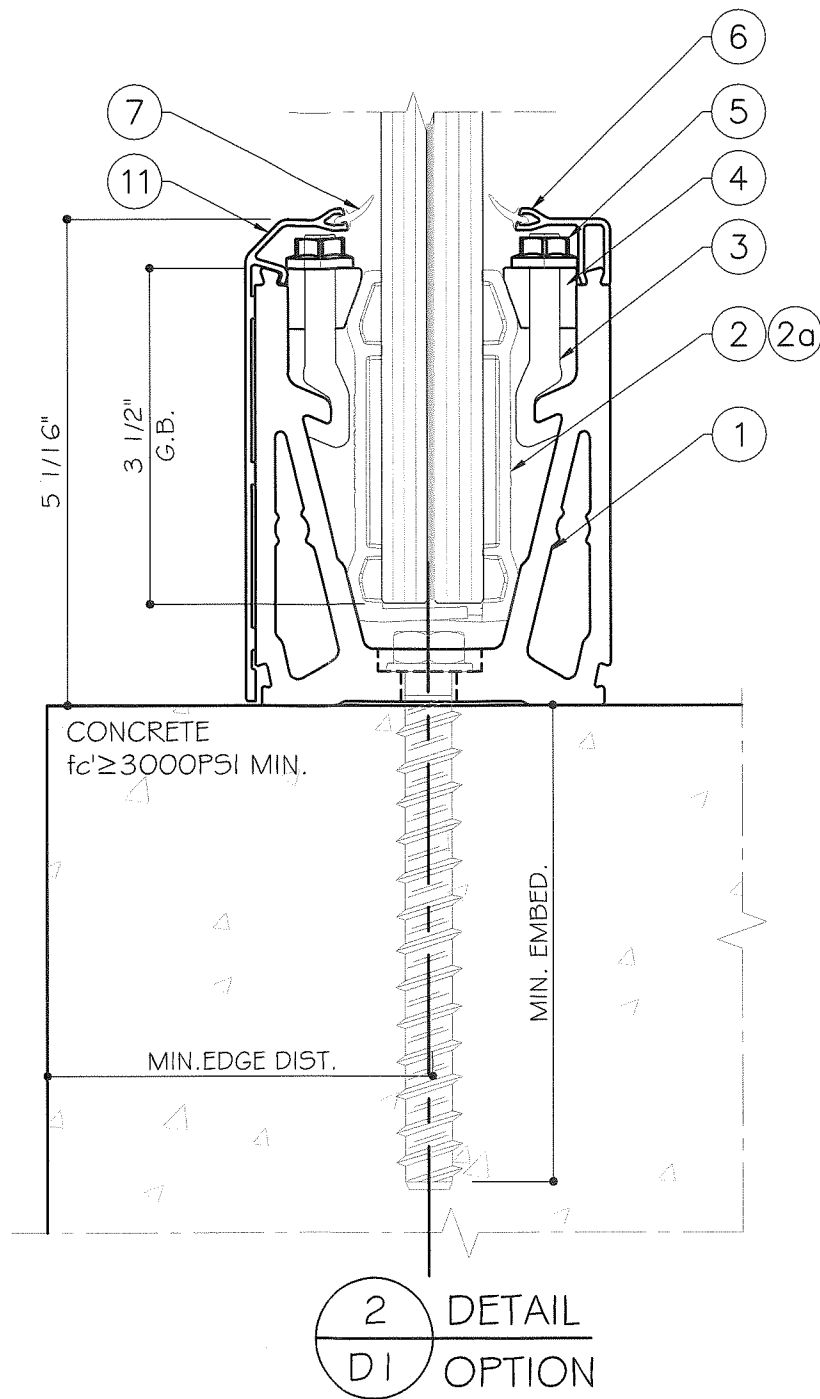
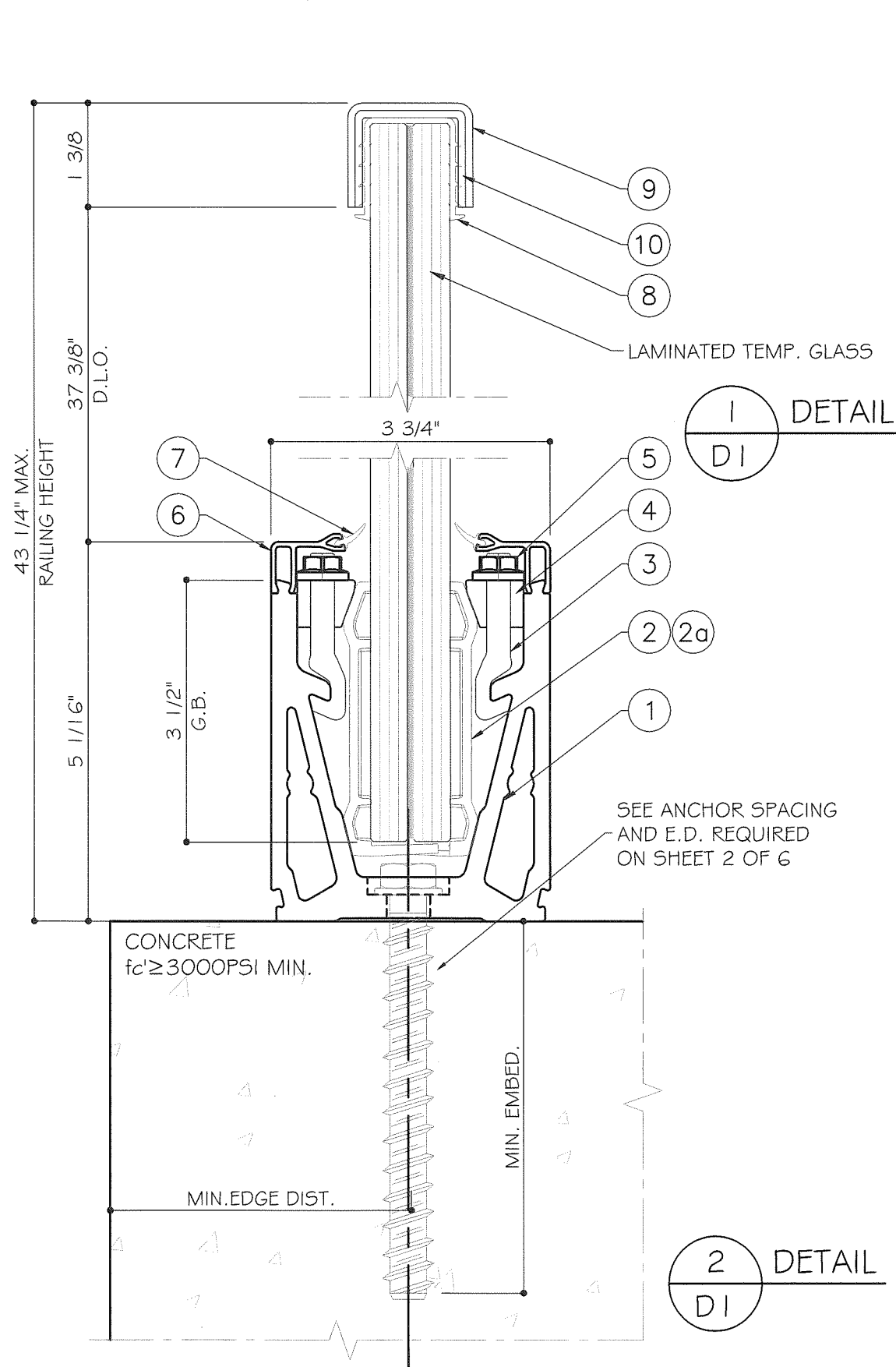
SECTION A

MIAMI-DADE COUNTY Approved as complying with the Florida Building Code Date 08/29/2019 NOA# 19-0116-01 Miami Dade Product Control <i>[Signature]</i>		YIPING WANG, P.E. FLORIDA REGISTRATION FL #55983 C.A.N. 28677 <i>[Signature]</i>	
DATE 01/25/2019 SCALE DRAWN PROJECT		E1 DRAWING NO. AD18-33 2 OF 6	

REVISIONS	DESCRIPTION
NO.	DATE

MCY ENGINEERING, INC.
 GLAZING CONSULTANTS
 8501 SW 124 Ave. Ste. 205 P: 786.360.2786
 MIAMI, FL 33183 P: 306.271.0117
 www.MCYEngineering.com mcy@mcyengineering.com

MEGAGRIP TOP MOUNT GLASS RAILING SYSTEM (L.M.I.&S.M.I.)
PURE VISTA ARCHITECTURAL GLASS SOLUTIONS
 PENDEWEY, STONY LANE, BODMIN
 CORNWALL, ENGLAND, PL31 2QX



MIAMI-DADE COUNTY

Approved as complying with the
Florida Building Code
Date 08/29/2019
NOA# 19-0116-01
Miami Dade Product Control
By *[Signature]*

JAN 25 2019

YIPING WANG, P.E.
FLORIDA REGISTRATION
FL #55983
C.A.N. 28677

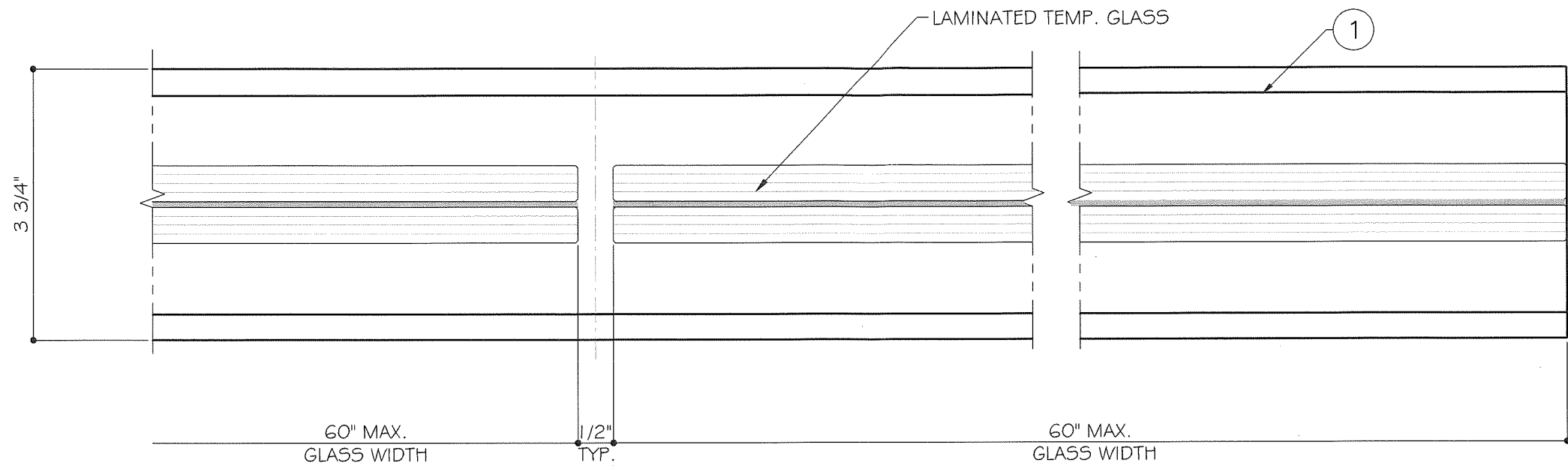
STATE OF
FLORIDA
PROFESSIONAL ENGINEER

REVISIONS	DESCRIPTION
NO DATE	

MCY ENGINEERING, INC.
GLAZING CONSULTANTS
8501 SW 124 Ave. Ste. 205 P: 786.360.2786
MIAMI, FL 33183 P: 305.271.0117
www.MCYEngineering.com mcy@mcycyengineering.com

MEGAGRIP TOP MOUNT GLASS RAILING SYSTEM (L.M.I.&S.M.I.)
PURE VISTA ARCHITECTURAL GLASS SOLUTIONS
PENDEWEY, STONY LANE, BODMIN
CORNWALL, ENGLAND, PL31 2QX

D1
DATE 01/25/2019
SCALE
DRAWN
PROJECT
DRAWING NO. AD18-33
3 OF 6



1
D2
DETAIL

2
D2
DETAIL

MIAMI-DADE COUNTY

Approved as complying with the
Florida Building Code
Date 08/29/2019
NOA# 19-0116-01
Miami Dade Product Control

By Kelly A. Mohr

JAN 25 2019

YIPING WANG, P.E.
FLORIDA REGISTRATION
EL #55983
C.A.N. 28677

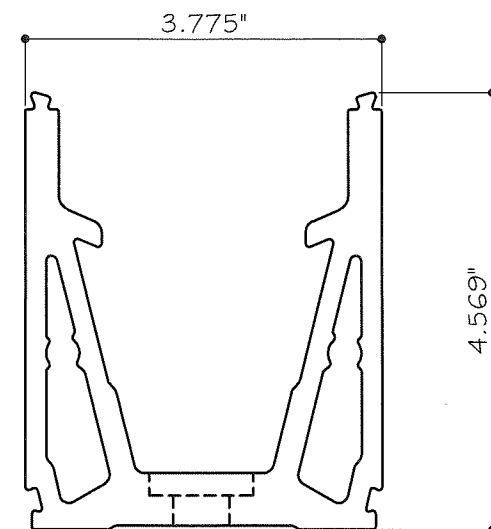
STATE OF FLORIDA
PROFESSIONAL ENGINEER

REVISIONS	
NO	DATE

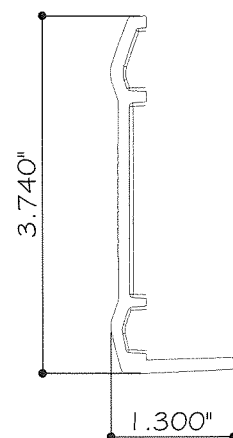
MCY ENGINEERING, INC.
GLAZING CONSULTANTS
8501 SW 124 Ave. Ste. 205 P: 786.360.2786
MIAMI, FL 33183 P: 305.271.0117
www.MCYEngineering.com mcy@mcyengineering.com

MEGAGRIP TOP MOUNT GLASS RAILING SYSTEM (L.M.I.&S.M.I.)
PURE VISTA ARCHITECTURAL GLASS SOLUTIONS
PENDEWEY, STONY LANE, BODMIN
CORNWALL, ENGLAND, PL31 2QX

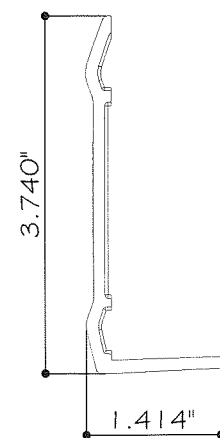
D2	
DATE	01/25/2019
SCALE	
DRAWN	
PROJECT	
DRAWING NO. AD18-33	
4 OF 6	



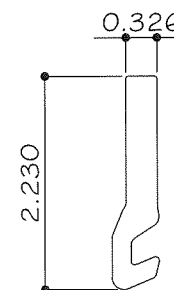
1 MEGA GRIP CHANNEL
MGC-010 6063-T6



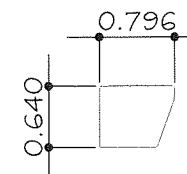
2 1 INCH GLASS CLAMP
ZMGB-0025 ACETAL



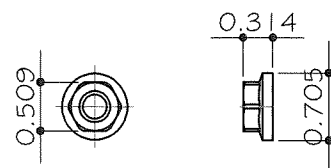
2a 1 1/4 INCH GLASS CLAMP
ZMGB-0033 ACETAL



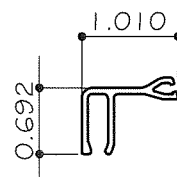
3 MEGA HOOK
ZMGB-0002 CAST 316
STAINLESS STEEL



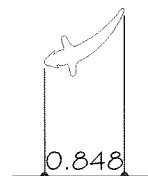
4 MEGA CLAMP BAR
ZMGB-0001 ACETAL



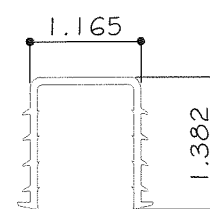
5 MEGA M8 FLANGE NUT
ZMGB-0003 A4 GRADE
STAINLESS STEEL



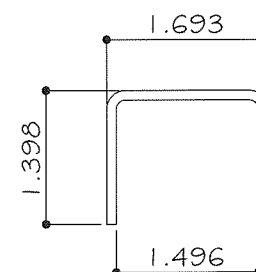
6 MEGA GRIP TOP BEAD
MGA-020 6063-T6



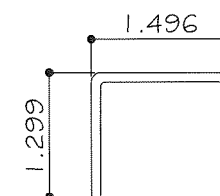
7 MEGA GRIP GASKET
MGA-001 NYLON+TPE



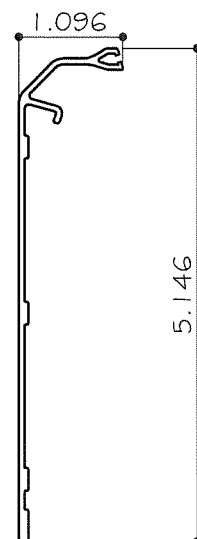
8 HANDRAIL GASKET LINER
PVC



9 HANDRAIL
BRUSHED STAINLESS STEEL



10 HANDRAIL JOINER
STAINLESS STEEL



11 MEGA GRIP SIDE CLADDING
MGA-010 6063-T6

MIAMI-DADE COUNTY

Approved as complying with the
Florida Building Code
Date 08/29/2019
NOA# 19-0116-01
Miami Dade Product Control

JAN 25 2019

YIPING WANG, P.E.
FLORIDA REGISTRATION
FL #55983
C.A.N. 28677

[illegible]

MCY ENGINEERING, INC.

GLAZING CONSULTANTS

8501 SW 124 Ave. Ste. 205 P: 786.360.2786

MIAMI, FL 33183
P: 305.271.0117
F: 786.360.2780
SW 124 Ave. Ste. 205
MIAMI, FL 33183

www.MCYEngineering.com mcy@mcysengineering.com

MEGAGRIP TOP MOUNT GLASS RAILING SYSTEM (L.M.I.&S.M.I.)

PURE VISTA ARCHITECTURAL GLASS SOLUTIONS

LAKEVIEWES CIVIC SERVICES
PENDEWEY, STONY LANE, BODMIN
CORNWALL, ENGLAND, PL31 2QX

PARTS

DATE	01/25/2019
SCALE	
DRAWN	
PROJECT	

DRAWING NO.
AD18-33

5 OF 6

BILL OF MATERIALS				
ITEM #	PROFILE	DESCRIPTION	MATERIAL	MANUFACTURER/REMARKS
1	MGC-010	MEGA GRIP CHANNEL	ALUM. 6063-T6	PURE VISTA
2	ZMGB-0025	1 INCH MEGAGRIP GLASS CLAMP	ACETAL	PURE VISTA
2a	ZMGB-0033	1 1/4 INCH MEGAGRIP GLASS CLAMP	ACETAL	PURE VISTA
3	ZMGB-0002	MEGA HOOK	CAST 316 STAINLESS STEEL	PURE VISTA
4	ZMGB-0001	MEGA CLAMP BAR	ACETAL	PURE VISTA
5	ZMGB-0003	MEGA M8 FLANGE NUT	A4 GRADE STAINLESS STEEL	PURE VISTA
6	MGA-020	MEGA GRIP TOP BEAD	ALUM. 6063-T6	PURE VISTA
7	MGA-001	MEGA GRIP GASKET	NYLON+TPE	PURE VISTA
8	-	HANDRAIL GASKET LINER	PVC	PURE VISTA
9	-	HANDRAIL	BRUSHED STAINLESS STEEL	PURE VISTA
10	-	HANDRAIL JOINER	STAINLESS STEEL	PURE VISTA
11	MGA-010	MEGA GRIP SIDE CLADDING	ALUM. 6063-T6	PURE VISTA

MEGA GRIP TOP MOUNT GLASS RAILING SYSTEM (L.M.I.&S.M.I.)

PURE VISTA ARCHITECTURAL GLASS SOLUTIONS

PENDEWEY, STONY LANE,BODMIN

CORNWALL,ENGLAND,PL31 2QX

MECY ENGINEERING, INC.

GLAZING CONSULTANTS

8501 SW 124Ave.Ste.205

MIAMI, FL 33183

P: 786.360.2786

P: 305.271.0117

www.MCYEngineering.com

mcy@mcycengineering.com

REVISIONS

NO	DATE	DESCRIPTION

MIAMI-DADE COUNTY

Approved as complying with the

Florida Building Code

Date 08/29/2019

NOA# 19-0116-01

Miami Dade Product Control

By Kelly A. Miller

JAN 25 2019

YIPING WANG, P.E.

FLORIDA REGISTRATION

FL #55983

CAN-28677

NO. 55983

STATE OF FLORIDA

PROFESSIONAL ENGINEER

BOM

DATE	01/25/2019
SCALE	
DRAWN	
PROJECT	

DRAWING NO.

AD18-33

6 OF 6