



DEPARTMENT OF REGULATORY AND ECONOMIC RESOURCES (RER)
BOARD AND CODE ADMINISTRATION DIVISION

MIAMI-DADE COUNTY
PRODUCT CONTROL SECTION
11805 SW 26 Street, Room 208
Miami, Florida 33175-2474
T (786) 315-2590 F (786) 315-2599

www.miamidade.gov/economy

NOTICE OF ACCEPTANCE (NOA)

Best Rolling Doors, Inc.
9780 NW 79th Avenue
Hialeah Gardens, FL 33016

SCOPE: This NOA is being issued under the applicable rules and regulations governing the use of construction materials. The documentation submitted has been reviewed and accepted by Miami-Dade County RER -Product Control Section to be used in Miami Dade County and other areas where allowed by the Authority Having Jurisdiction (AHJ).

This NOA shall not be valid after the expiration date stated below. The Miami-Dade County Product Control Section (In Miami Dade County) and/or the AHJ (in areas other than Miami Dade County) reserve the right to have this product or material tested for quality assurance purposes. If this product or material fails to perform in the accepted manner, the manufacturer will incur the expense of such testing and the AHJ may immediately revoke, modify, or suspend the use of such product or material within their jurisdiction. RER reserves the right to revoke this acceptance, if it is determined by Miami-Dade County Product Control Section that this product or material fails to meet the requirements of the applicable building code.

This product is approved as described herein, and has been designed to comply with the High Velocity Hurricane Zone of the Florida Building Code.

DESCRIPTION: Model S10-6565 30'-4 1/2" Wide Steel Roll-up Door

APPROVAL DOCUMENT: Drawing No. 17-4669b, titled "Model S10-6565 Steel Roll-Up Doors", sheets 1 through 4 of 4, dated August 16, 2017, prepared by Best Rolling Door, Inc, signed and sealed by Frank L. Bennardo, P.E., on February 14, 2019, bearing the Miami-Dade County Product Control revision stamp with the Notice of Acceptance number and the expiration date by the Miami-Dade County Product Control Section.

MISSILE IMPACT RATING: Large and Small Missile Impact Resistant

LABELING: A permanent label with the manufacturer's name or logo, manufacturing address, model number, the positive and negative design pressure rating, indicate impact rated, installation instruction drawing reference number, approval number (NOA), the applicable test standards, and the statement reading 'Miami-Dade County Product Control Approved' is to be located on the door's side track, bottom angle, or inner surface of a panel.

RENEWAL of this NOA shall be considered after a renewal application has been filed and there has been no change in the applicable building code negatively affecting the performance of this product.

TERMINATION of this NOA will occur after the expiration date or if there has been a revision or change in the materials, use, and/or manufacture of the product or process. Misuse of this NOA as an endorsement of any product, for sales, advertising or any other purposes shall automatically terminate this NOA. Failure to comply with any section of this NOA shall be cause for termination and removal of NOA.

LIMITATION: Roll-up mechanism is not part of this approval.

ADVERTISEMENT: The NOA number preceded by the words Miami-Dade County, Florida, and followed by the expiration date may be displayed in advertising literature. If any portion of the NOA is displayed, then it shall be done in its entirety.

INSPECTION: A copy of this entire NOA shall be provided to the user by the manufacturer or its distributors and shall be available for inspection at the job site at the request of the Building Official.

This NOA revises NOA #17-1031.07 and consists of this page 1, evidence submitted pages E-1, E-2 & E-3, as well as approval document mentioned above.

The submitted documentation was reviewed by **Helmy A. Makar, P.E., M.S.**



Helmy A. Makar
04/25/19

NOA No. 19-0318.04
Expiration Date: 01/27/2020
Approval Date: 04/25/2019

NOTICE OF ACCEPTANCE: EVIDENCE SUBMITTED

A. DRAWINGS

1. *Drawing No. 6565_2009, titled "Model S10-6565", sheets 1 through 3 of 3, dated 04/06/2009, prepared by Best Rolling Door, Inc, signed and sealed by Joseph H. Dixon, Jr., P.E.*

B. TESTS "Submitted under NOA # 09-1103.05"

1. *Test reports on 1) Uniform Static Air Pressure Test, Loading per FBC, TAS 202-94
2) Large Missile Impact Test per FBC, TAS 201-94
3) Cyclic Wind Pressure Loading per FBC, TAS 203-94
4) Tensile Test per ASTM A370-05,
Along with marked-up drawings and installation diagram of Model S10-6565 Steel Garage Doors, prepared by Fenestration Testing Laboratory, Inc., Test Report No. FTL # 5589, dated 01/13/2009, signed and sealed by Michael R. Wenzel, P.E.*

C. CALCULATIONS "Submitted under NOA # 09-1103.05"

1. *Calculations for attachment of "C" channel guide to steel or concrete jamb, dated 07/23/2009, prepared, signed and sealed by Joseph H. Dixon, Jr., P.E.*

D. QUALITY ASSURANCE

1. *Miami-Dade Department of Permitting, Environment, and Regulatory Affairs (PERA)*

E. MATERIAL CERTIFICATIONS

1. *Notice of Acceptance No. 11-0926.07, issued to Dyplast Products, LLC, for their Expanded Polystyrene Block Type Insulation, approved on 11/10/2011 and expiring on 01/11/17.*

F. STATEMENTS


1. *Statement letter of code conformance to 2010 FBC, dated 01/03/2012, signed and sealed by Joseph H. Dixon, Jr., P.E.*

"Submitted under NOA # 09-1103.05"
2. *Statement letter of no financial interest, dated 10/16/2009, signed and sealed by Joseph H. Dixon, Jr., P.E.*

2. EVIDENCE SUBMITTED UNDER PREVIOUS APPROVAL #14-1006.06

A. DRAWINGS

1. *Drawing No. 6565_2009, titled "Model S10-6565", sheets 1 through 3 of 3, last revision dated February 25, 2015, prepared by Best Rolling Door, Inc, signed and sealed by Joseph H. Dixon, Jr., P.E., on March 20, 2015.*



Helmy A. Makar, P.E., M.S.
Product Control Section Supervisor
NOA No. 19-0318.04
Expiration Date: 01/27/2020
Approval Date: 04/25/2019

NOTICE OF ACCEPTANCE: EVIDENCE SUBMITTED

B. TESTS

1. *None.*

C. CALCULATIONS “Submitted under NOA # 09-1103.05”

1. *Calculations for attachment of “C” channel guide to steel or concrete jamb, dated 02/15/2015, prepared, signed and sealed by Joseph H. Dixon, Jr., P.E.*

D. QUALITY ASSURANCE

1. *By Miami-Dade County Department of Regulatory and Economic Resources (RER).*

E. MATERIAL CERTIFICATIONS

1. *None.*

F. STATEMENTS

1. *Statement letter of code conformance to 2014 FBC, dated 03/20/2015, signed and sealed by Joseph H. Dixon, Jr., P.E.*

2. EVIDENCE SUBMITTED UNDER PREVIOUS APPROVAL #17-1031.07

A. DRAWINGS

1. *Drawing No. 6565_2009, titled “Model S10-6565”, sheets 1 through 3 of 3, last revision dated February 25, 2015, prepared by Best Rolling Door, Inc, signed and sealed by Joseph H. Dixon, Jr., P.E., on March 20, 2015.*

B. TESTS

1. *None.*

C. CALCULATIONS “Submitted under NOA # 09-1103.05”

1. *None.*

D. QUALITY ASSURANCE

1. *By Miami-Dade County Department of Regulatory and Economic Resources (RER).*

E. MATERIAL CERTIFICATIONS

1. *None.*

F. STATEMENTS

1. *Statement letter of code conformance to 2017 FBC, dated 10/24/2017, signed and sealed by Frank L. Bennardo, P.E.*



Helmy A. Makar, P.E., M.S.
Product Control Section Supervisor
NOA No. 19-0318.04
Expiration Date: 01/27/2020
Approval Date: 04/25/2019

NOTICE OF ACCEPTANCE: EVIDENCE SUBMITTED

3. NEW EVIDENCE SUBMITTED

A. DRAWINGS

1. *Drawing No. 17-4669b, titled "Model S10-6565 Steel Roll-Up Doors", sheets 1 through 4 of 4, dated August 16, 2017, prepared by Best Rolling Door, Inc, signed and sealed by Frank L. Bennardo, P.E., on February 14, 2019.*

B. TESTS

1. *None.*

C. CALCULATIONS "Submitted under NOA # 09-1103.05"

1. *None.*

D. QUALITY ASSURANCE

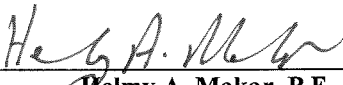
1. *By Miami-Dade County Department of Regulatory and Economic Resources (RER).*

E. MATERIAL CERTIFICATIONS

1. *None.*

F. STATEMENTS

1. *Statement letter of code conformance to 2017 FBC, dated 10/24/2017, signed and sealed by Frank L. Bennardo, P.E.*



Helmy A. Makar, P.E., M.S.
Product Control Section Supervisor
NOA No. 19-0318.04
Expiration Date: 01/27/2020
Approval Date: 04/25/2019

STEEL ROLL-UP DOORS

MODEL S10-6565

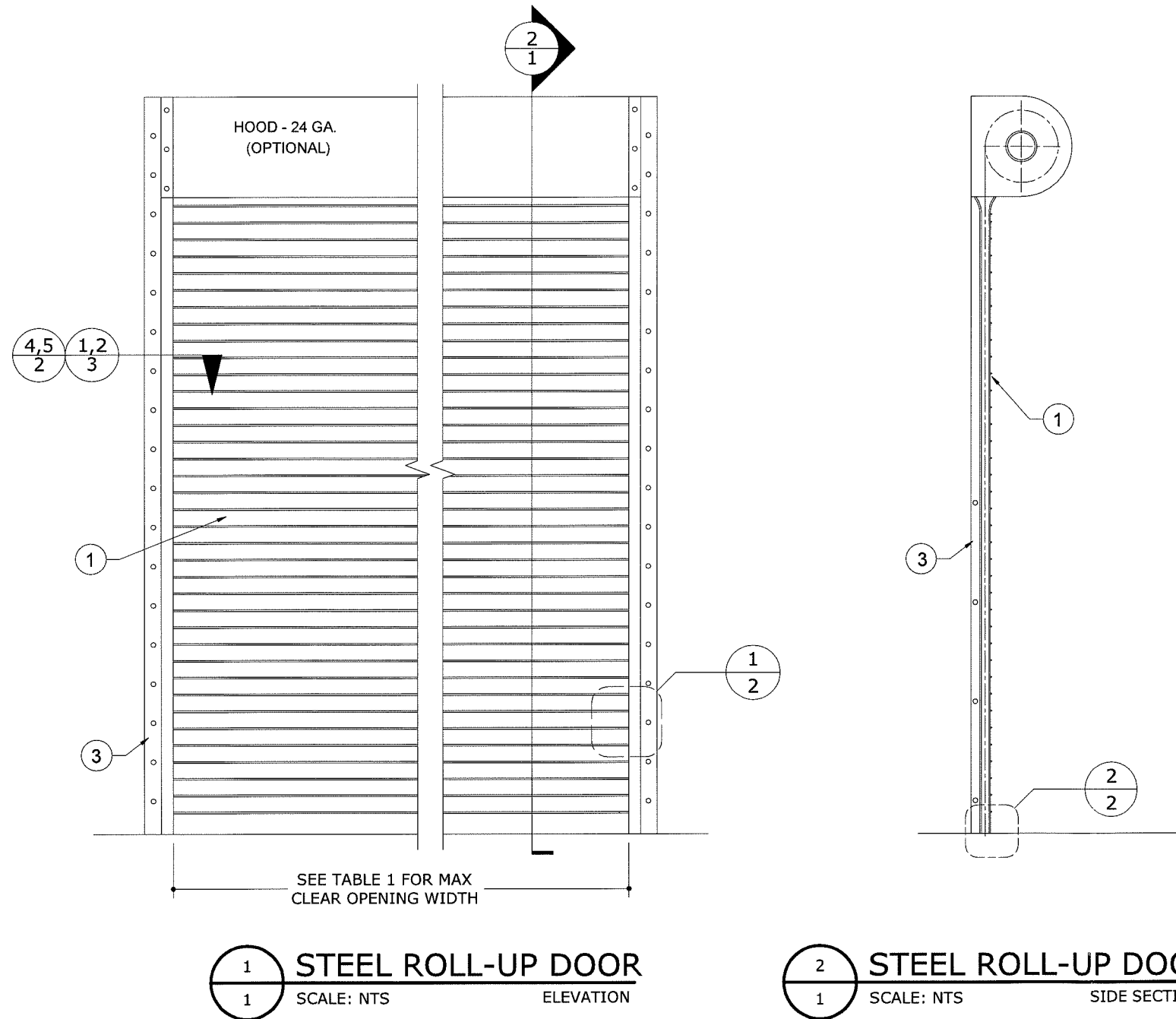


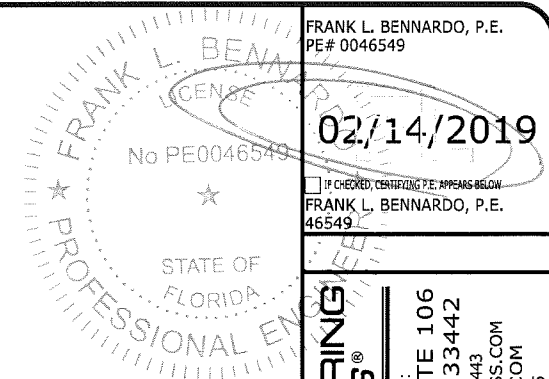
TABLE 1: MAXIMUM ALLOWABLE PRESSURE AND CLEAR OPENING WIDTH

MODEL #	MAXIMUM CLEAR OPENING WIDTH	MAXIMUM ALLOWABLE PRESSURE
S10-6565	30'-4 1/2"	+65psf / -65psf

GENERAL NOTES:

1. THE SYSTEM DESCRIBED HEREIN HAS BEEN DESIGNED AND TESTED IN ACCORDANCE WITH THE FLORIDA BUILDING CODE SIXTH EDITION (2017) FOR USE INSIDE AND OUTSIDE THE HIGH VELOCITY HURRICANE ZONE, PER TAS 201, 202, AND 203 STANDARDS.
2. POSITIVE AND NEGATIVE DESIGN PRESSURES CALCULATED FOR USE WITH THIS SYSTEM SHALL BE DETERMINED PER SEPARATE ENGINEERING IN ACCORDANCE WITH THE GOVERNING CODE. PRESSURE REQUIREMENTS AS DETERMINED IN ACCORDANCE WITH ASCE 7 AND CHAPTER 1609 OF THE FLORIDA BUILDING CODE SHALL BE LESS THAN OR EQUAL TO THE POSITIVE OR NEGATIVE DESIGN PRESSURE CAPACITY VALUES LISTED HEREIN (TABLE 1) FOR ANY ASSEMBLY AS SHOWN.
3. ALLOWABLE DESIGN PRESSURES NOTED HEREIN ARE BASED ON MAXIMUM TESTED PRESSURES DIVIDED BY A 1.5 SAFETY FACTOR.
4. THE SYSTEM DETAILED HEREIN IS GENERIC AND DOES NOT PROVIDE INFORMATION FOR A SPECIFIC SITE. FOR SITE CONDITIONS DIFFERENT FROM THE CONDITIONS DETAILED HEREIN, A LICENSED ENGINEER OR REGISTERED ARCHITECT SHALL PREPARE SITE SPECIFIC DOCUMENTS FOR USE IN CONJUNCTION WITH THIS DOCUMENT. THESE INSTALLATION INSTRUCTIONS ARE PART OF A PRODUCT APPROVAL EVALUATION AND SHALL ONLY BE USED IN CONJUNCTION WITH THE EVALUATION REPORT SUBMITTED FOR THE SAME PRODUCT APPROVAL.
5. SLATS TO BE A.S.T.M. A-653 GR 50 STRUCTURAL QUALITY STEEL WITH MIN. Fy = 50 KSI AND G-90 GALVANIZING PER A.S.T.M. A-653, OR A.I.S.I. 304 SERIES STAINLESS STEEL MANUFACTURED WITH A MINIMUM YIELD STRENGTH OF Fy = 50 KSI.
6. WINDLOCKS SHALL BE 11 GA PLATED STEEL, A.S.T.M. A-1011
7. ALL ASSEMBLY BOLTS TO BE S.A.E. GRADE 2 CADMIUM PLATED OR GALVANIZED STEEL.
8. ALL RIVETS TO BE A.I.S.I. 1035 STEEL, CADMIUM PLATED, STAINLESS STEEL OR ZINC PLATED W/ Fy= 37,000 PSI.
9. INSULATION MATERIAL SHALL BE EPS-EXPANDED POLYSTYRENE INSULATION MANUFACTURED BY DYPLAST PRODUCTS LLC COMPANY, MIAMI-DADE COUNTY NOTICE OF ACCEPTANCE # 16-1129.05 OR LATEST VERSION.
10. DOOR MAY BE INSTALLED ON THE INSIDE OR OUTSIDE OF AN EXTERIOR WALL DOOR IMPACTED ON BOTH SIDES.
11. GUIDE DETAILS CAN BE USED IN ANY COMBINATION.
12. ROLL-UP MECHANISM AND HOOD ASSEMBLY ARE NOT PART OF THIS APPROVAL.
13. THIS DOCUMENT CONTAINS INFORMATION RELEVANT TO THE NECESSARY STRUCTURAL REQUIREMENTS OF THE SYSTEM INSTALLATION. COMPONENTS AND FASTENERS NOT REFERENCED WHICH ARE PART OF THE INTERNAL FABRICATION OF THE SPECIFIED SYSTEMS OR ASSEMBLIES SHALL BE PER MANUFACTURER PUBLISHED SPECIFICATIONS.
14. PERMIT HOLDER SHALL VERIFY THE ADEQUACY OF THE EXISTING STRUCTURE TO WITHSTAND SUPERIMPOSED LOADS OUTLINED HEREIN.
15. EACH DOOR ASSEMBLY SHALL BEAR A PERMANENT LABEL ON FACING THE EXTERIOR WITH THE FOLLOWING MINIMUM INFORMATION:
16. CONTRACTOR SHALL BE RESPONSIBLE TO INSULATE DISSIMILAR MATERIALS TO PREVENT ELECTROLYSIS.
17. WATERPROOFING IS NOT PART OF THIS CERTIFICATION AND SHALL BE CERTIFIED BY OTHERS.

PRODUCT REVISED
 as complying with the Florida
 Building Code
 Acceptance No 19-0318.04
 Expiration Date 01/27/2020
 By *[Signature]*
 Miami Dade Product Control



ENGINEERING EXPRESS
 CORPORATE OFFICE:
 160 SW 12th AVE, SUITE 106
 DEERFIELD BEACH, FL 33442
 P: (954) 354-0660 F: (954) 354-0443
 E: HELLO@ENGINEERINGEXPRESS.COM
 ENGINEERINGEXPRESS.COM
 CERT OF AUTH #9885

BEST ROLLING DOORS, INC.
 9770 N.W. 79TH AVENUE
 HIALEAH GARDENS, FL
 (305) 698-3550
 S10-6565 STEEL ROLL-UP DOORS
 FLORIDA BUILDING CODE
 MIAMI-DADE NOTICE OF ACCEPTANCE

REMARKS	DRWN	CHKD	DATE
INIT ISSUE	RWN	FLB	08/16/17

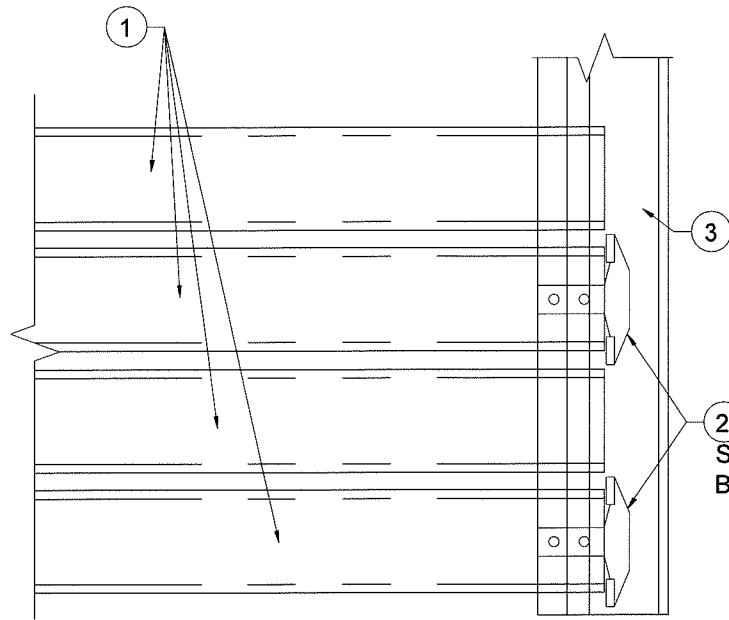
THIS DOCUMENT IS THE PROPERTY OF ENGINEERING EXPRESS AND SHALL NOT BE REPRODUCED IN WHOLE OR PART WITHOUT WRITTEN CONSENT OF ENGINEERING EXPRESS. ALTERATIONS, ADDITIONS, OR OTHER MARKINGS TO THIS DOCUMENT ARE NOT PERMITTED AND INVALIDATE OUR CERTIFICATION.

COPYRIGHT ENGINEERING EXPRESS®

17-4669b
 SCALE: NTS UNLESS NOTED
 1 OF 4

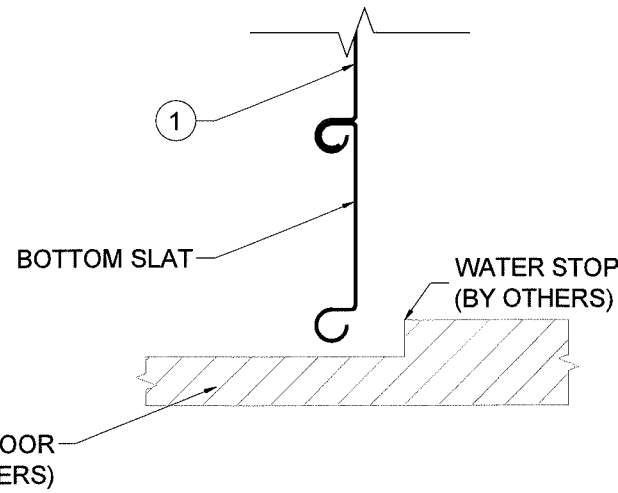
V:\projects\17-4669 Multiple Products - Updates for 2017 Florida Bldg Code\WP\2017 FBC Update\NOA Submittal\17-4669b_b S10-6565 Door (NOA).dwg

02/14/2019 - 10:14am rickn



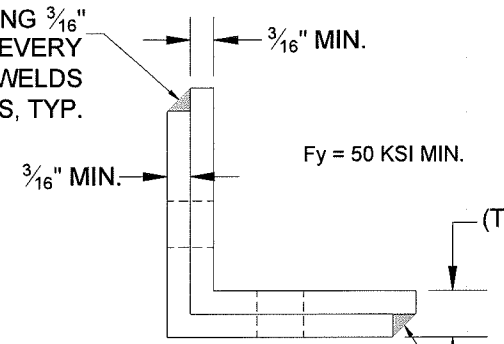
1 SLAT TO CHANNEL
2 SCALE: NTS SECTION

2 EVERY OTHER SLAT, INCLUDING BOTTOM SLAT



2 BOTTOM SLAT
2 SCALE: NTS SECTION

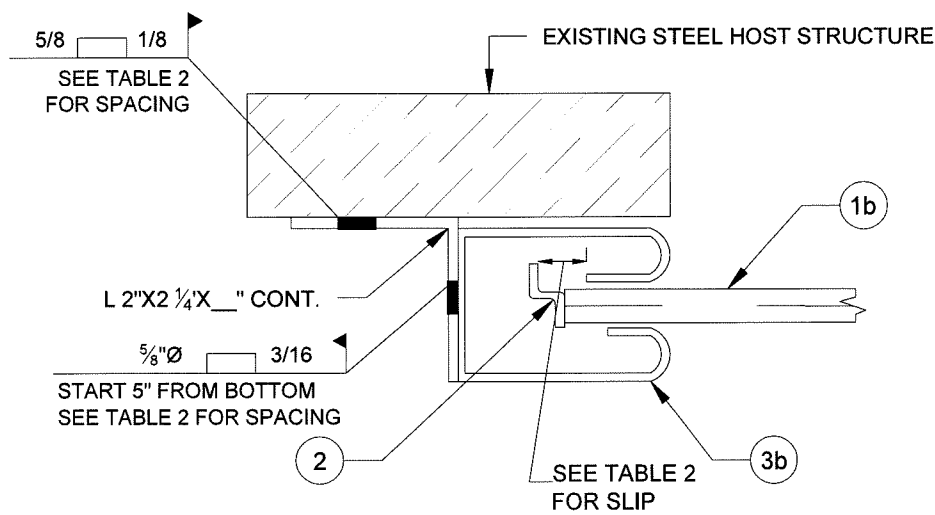
PROVIDE 1" LONG 3/16" FILLET WELDS EVERY 16" O.C.. START WELDS AT 1" FROM ENDS, TYP.



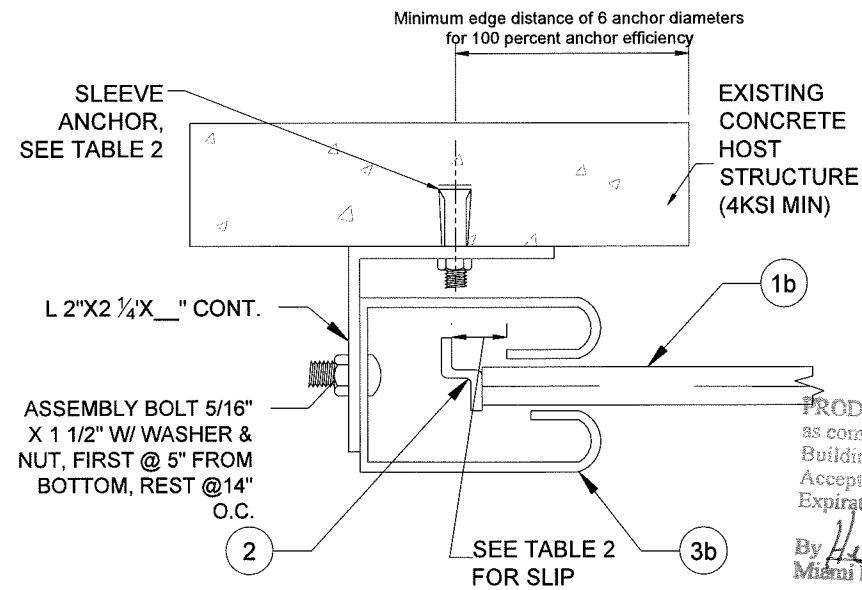
THE STACKED DOUBLE ANGLE OPTION SHOWN IN THIS DETAIL MAY BE USED IN LIEU OF THE SINGLE ANGLES LISTED IN TABLE 2. TOTAL THICKNESS (T) SHALL MATCH OR EXCEED THE MINIMUM THICKNESS LISTED IN TABLE

PROVIDE 1" LONG 3/16" FILLET WELDS EVERY 16" O.C.. START WELDS AT 1" FROM ENDS, TYP.

3 WALL ANGLE STACKING OPTION
2 SCALE: NTS SECTION



4 CHANNEL JAMB TO STEEL 1 (MODEL S10-6565)
2 SCALE: NTS SECTION



5 CHANNEL JAMB TO CONCRETE 1 (MODEL S10-6565)
2 SCALE: NTS SECTION

FRANK L. BENNARDO, P.E.
PE# 0046549

02/14/2019

IF CHECKED, CERTIFYING P.E. APPEARS BELOW
FRANK L. BENNARDO, P.E.
46549

FRANK L. BENNARDO
LICENSED PROFESSIONAL ENGINEER
No PE0046549
STATE OF FLORIDA

ENGINEERING EXPRESS

CORPORATE OFFICE:
160 SW 12th AVE, SUITE 106
DEERFIELD BEACH, FL 33442
P: (954) 354-0660 F: (954) 354-0443
E: HELLO@ENGINEERINGEXPRESS.COM
ENGINEERINGEXPRESS.COM
CERT OF AUTH #9885

BEST ROLLING DOORS, INC.

9770 N.W. 79TH AVENUE
HIALEAH GARDENS, FL
(305) 698-3550

S10-6565 STEEL ROLL-UP DOORS
FLORIDA BUILDING CODE
MIAMI-DADE NOTICE OF ACCEPTANCE

DRWN	CHKD	DATE
RWN	FLB	08/16/17

REMARKS
INIT ISSUE

THIS DOCUMENT IS THE PROPERTY OF ENGINEERING EXPRESS AND SHALL NOT BE REPRODUCED IN WHOLE OR PART WITHOUT WRITTEN CONSENT OF ENGINEERING EXPRESS. ALTERATIONS, ADDITIONS, OR OTHER MARKINGS TO THIS DOCUMENT ARE NOT PERMITTED AND INVALIDATE OUR CERTIFICATION.

PRODUCT REVISED
as complying with the Florida Building Code
Acceptance No 19-0318.04
Expiration Date 01/27/2020
By *[Signature]*
Miami Dade Product Control

COPYRIGHT ENGINEERING EXPRESS

17-4669b

SCALE: NTS UNLESS NOTED

OF 4

2

JAMB CONNECTIONS

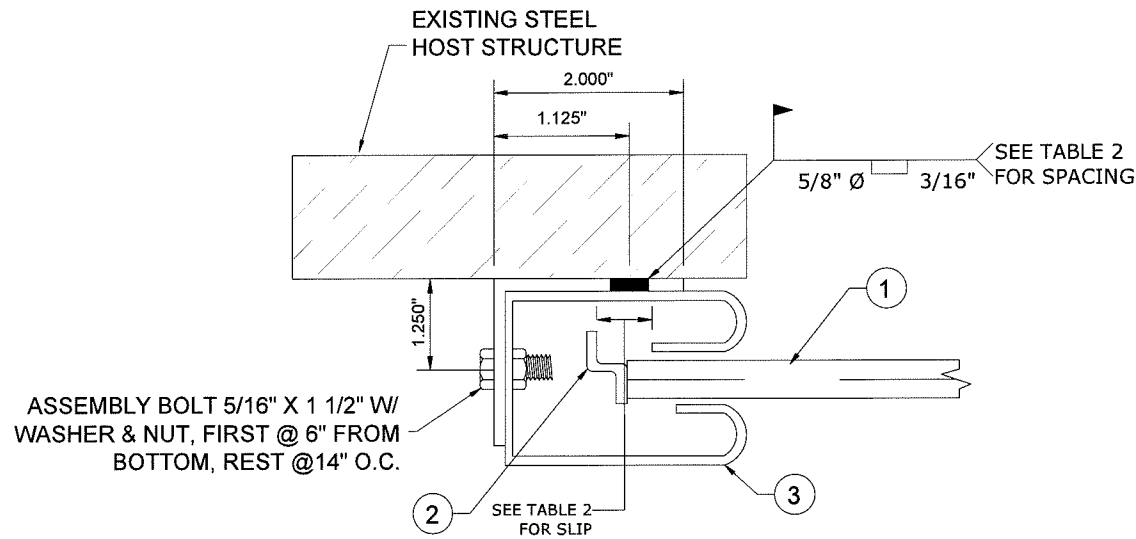
MODEL #S10-6565

FRANK L. BENNARDO, P.E.
PE# 0046549

02/14/2019

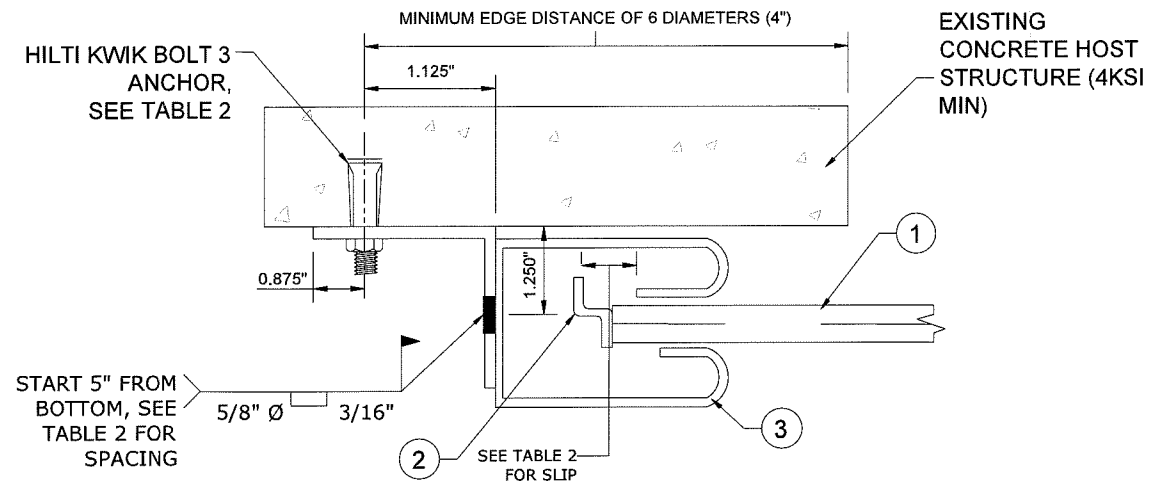
No PE0046549

STATE OF FLORIDA
PROFESSIONAL ENGINEER



**CHANNEL JAMB TO STEEL 2
(MODEL S10-6565)**

SCALE: NTS SECTION

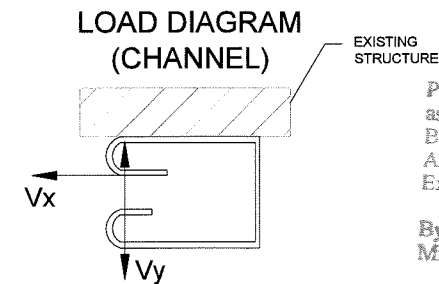


**CHANNEL JAMB TO CONCRETE 2
(MODEL S10-6565)**

SCALE: NTS SECTION

TABLE 2: MODEL #S10-6565 JAMB CONNECTIONS

DOOR OPENING WIDTH	SLIP EACH END	ANCHORS TO CONCRETE JAMB fc= 4000 psi		FIELD WELD TO STEEL JAMB Based on a minimum wall angle thickness: 3/16"		WALL ANGLE THICKNESS Gr50 Fy = 50 ksi	
		WALL ANGLE TO JAMB		CHANNEL GUIDE		CHANNEL GUIDE	
		HILTI Kwik Bolt 3		PLUG WELD WALL ANGLE TO JAMB	PLUG WELD CHANNEL TO WALL ANGLE	E-GUIDE STEEL JAMB	Z-GUIDE CONCRETE JAMB
dia. x embedment x spacing							
30'- 4-1/2"	1.50	5/8" x 4" @ 6-1/2" o.c.		5/8" dia. x 3/16" @ 6-1/2" o.c.	5/8" dia. x 3/16" @ 10" o.c.	3/8"	3/8"
25'- 0"	1.50	5/8" x 4" @ 9-1/2" o.c.		5/8" dia. x 3/16" @ 8" o.c.	5/8" dia. x 3/16" @ 12" o.c.	5/16"	5/16"
20'- 0"	1.50	5/8" x 4" @ 13-1/2" o.c.		5/8" dia. x 3/16" @ 12" o.c.	5/8" dia. x 3/16" @ 14" o.c.	1/4"	1/4"
16'- 0"	1.00	5/8" x 4" @ 16" o.c.		5/8" dia. x 3/16" @ 14" o.c.	5/8" dia. x 3/16" @ 14" o.c.	1/4"	1/4"
14'- 0"	0.75	5/8" x 4" @ 16" o.c.		5/8" dia. x 3/16" @ 14" o.c.	5/8" dia. x 3/16" @ 14" o.c.	3/16"	3/16"
12'- 0"	0.50	5/8" x 4" @ 16" o.c.		5/8" dia. x 3/16" @ 14" o.c.	5/8" dia. x 3/16" @ 14" o.c.	3/16"	3/16"
8'- 0"	0.25	5/8" x 4" @ 16" o.c.		5/8" dia. x 3/16" @ 14" o.c.	5/8" dia. x 3/16" @ 14" o.c.	3/16"	3/16"
4'- 0"	0.50	5/8" x 4" @ 16" o.c.		5/8" dia. x 3/16" @ 14" o.c.	5/8" dia. x 3/16" @ 14" o.c.	3/16"	3/16"



PRODUCT REVISED
as complying with the Florida
Building Code
Acceptance No 19-0318.04
Expiration Date 01/27/2020
By *Heidi A. Miller*
Miami Design Product Control

TABLE 3: MODEL #S10-6565 JAMB REACTIONS

Design Wind Load (psf)	Opening Width	Design Slip	Vx (lb/ft)	Vy (lb/ft)
+50 / -50	12'-0"	1/2"	1213	302
	16'-0"	1"	1459	402
	20'-0"	1 1/2"	1739	502
	25'-0"	1 1/2"	2501	627
+55 / -55	30'- 4 1/2"	1 1/2"	3389	761
	12'-0"	1/2"	1362	332
	16'-0"	1"	1620	442
	20'-0"	1 1/2"	1923	552
+60 / -60	25'-0"	1 1/2"	2758	690
	30'- 4 1/2"	1 1/2"	3732	838
	12'-0"	1/2"	1510	362
	16'-0"	1"	1782	483
+65 / -65	20'-0"	1 1/2"	2106	603
	25'-0"	1 1/2"	3014	752
	30'- 4 1/2"	1 1/2"	4075	914
	12'-0"	1/2"	1659	393
	16'-0"	1"	1943	523
	20'-0"	1 1/2"	2290	653
	25'-0"	1 1/2"	3271	815
	30'- 4 1/2"	1 1/2"	4418	990

BEST ROLLING DOORS, INC.

9770 N.W. 79TH AVENUE
HIALEAH GARDENS, FL
(305) 698-3550

S10-6565 STEEL ROLL-UP DOORS
FLORIDA BUILDING CODE
MIAMI-DADE NOTICE OF ACCEPTANCE

DRWN	CHKD	DATE
RWN	FLB	08/16/17

REMARKS
INIT ISSUE

THIS DOCUMENT IS THE PROPERTY OF ENGINEERING EXPRESS
AND SHALL NOT BE REPRODUCED IN WHOLE OR PART WITHOUT
WRITTEN CONSENT OF ENGINEERING EXPRESS. ALTERATIONS,
ADDITIONS, OR OTHER MARKINGS TO THIS DOCUMENT ARE NOT
PERMITTED AND INVALIDATE OUR CERTIFICATION.

17-4669b

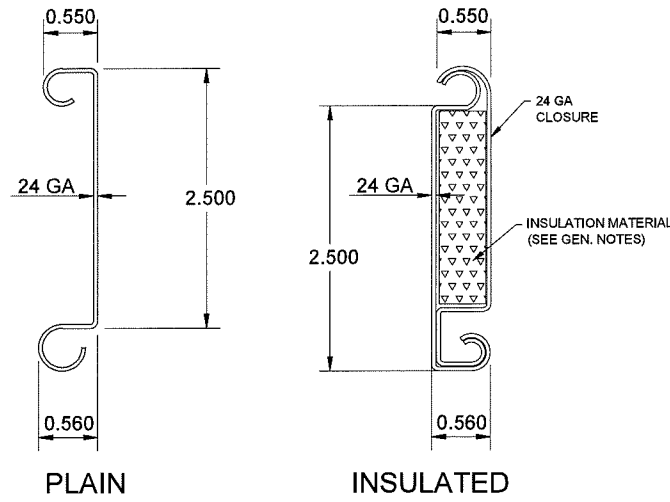
SCALE: NTS UNLESS NOTED

3

V:\projects\17-4669 Multiple Products - Updates for 2017 Florida Bldg Code\WP\2017 FBC Update\NOA Submittal\17-4669b_b_S10-6565 Door (NOA).dwg 02/14/2019 - 10:14am rickn

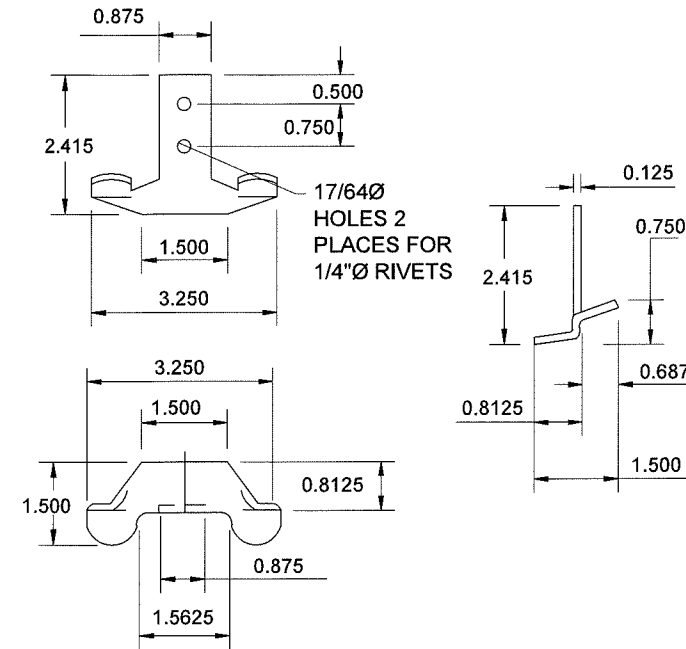
SYSTEM COMPONENTS

S10-6565

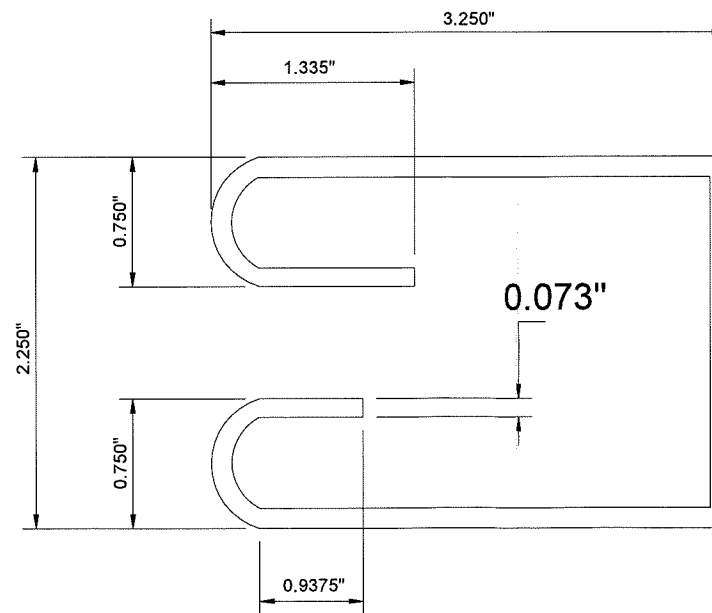


1 FLAT SLAT (Model S10-6565)
SCALE: NTS STEEL*

***SLAT STEEL NOTE:**
SLAT TO BE A.S.T.M. A-653 GR 50 STRUCTURAL QUALITY STEEL WITH MIN. FY = 50 KSI AND G-90 GALVANIZING PER A.S.T.M. A-653, OR A.I.S.I. 304 SERIES STAINLESS STEEL MANUFACTURED WITH A MINIMUM YIELD STRENGTH OF FY = 50 KSI.



2 WINDLOCK
SCALE: NTS STEEL (ASTM A-1011)



3 CHANNEL GUIDE (Model S10-6565)
SCALE: NTS STEEL (Fy=30KSI MIN.)

FRANK L. BENNARDO, P.E.
PE# 0046549

02/14/2019

No PE0046549

STATE OF FLORIDA

PROFESSIONAL ENGINEER

ENGINEERING EXPRESS

CORPORATE OFFICE:
160 SW 12th AVE, SUITE 106
DEERFIELD BEACH, FL 33442
P: (954) 354-0660 F: (954) 354-0443
E: HELLO@ENGINEERINGEXPRESS.COM
ENGINEERINGEXPRESS.COM
CERT OF AUTH #9885

BEST ROLLING DOORS, INC.

9770 N.W. 79TH AVENUE
HIALEAH GARDENS, FL
(305) 698-3550

S10-6565 STEEL ROLL-UP DOORS
FLORIDA BUILDING CODE
MIAMI-DADE NOTICE OF ACCEPTANCE

REMARKS	DRWN	CHKD	DATE
INIT ISSUE	RWN	FLB	08/16/17

THIS DOCUMENT IS THE PROPERTY OF ENGINEERING EXPRESS AND SHALL NOT BE REPRODUCED IN WHOLE OR PART WITHOUT WRITTEN CONSENT OF ENGINEERING EXPRESS. ALTERATIONS, ADDITIONS, OR OTHER MARKINGS TO THIS DOCUMENT ARE NOT PERMITTED AND INVALIDATE OUR CERTIFICATION.

PRODUCT REVISED
as complying with the Florida
Building Code
Acceptance No **19-0318.04**
Expiration Date **01/27/2020**

By *Heidi A. Ma...*
Miami Dade Product Control

COPYRIGHT ENGINEERING EXPRESS®

17-4669b

SCALE: NTS UNLESS NOTED

4