



MIAMI-DADE COUNTY, FLORIDA  
PRODUCT CONTROL SECTION

11805 SW 26 Street, Room 208  
Miami, Florida 33175-2474

DEPARTMENT OF REGULATORY AND ECONOMIC RESOURCES (RER)

**NOTICE OF ACCEPTANCE (NOA)**

[www.miamidade.gov/building](http://www.miamidade.gov/building)

**PGT Industries, Inc.**  
**1070 Technology Drive**  
**North Venice, FL 34275**

**SCOPE:**

This NOA is being issued under the applicable rules and regulations governing the use of construction materials. The documentation submitted has been reviewed and accepted by Miami-Dade County RER - Product Control Section to be used in Miami Dade County and other areas where allowed by the Authority Having Jurisdiction (AHJ).

This NOA shall not be valid after the expiration date stated below. The Miami-Dade County Product Control Section (In Miami-Dade County) and/or the AHJ (in areas other than Miami-Dade County) reserve the right to have this product or material tested for quality assurance purposes. If this product or material fails to perform in the accepted manner, the manufacturer will incur the expense of such testing and the AHJ may immediately revoke, modify, or suspend the use of such product or material within their jurisdiction. RER reserves the right to revoke this acceptance if it is determined by Miami-Dade County Product Control Section that this product or material fails to meet the requirements of the applicable building code.

This product is approved as described herein and has been designed to comply with the Florida Building Code, including the High Velocity Hurricane Zone.

**DESCRIPTION: Series "AW-740" Aluminum Awning Window - L.M.I.**

**APPROVAL DOCUMENT:** Drawing No. MD-AW740LM, titled "Awning Window Details - LM & SM", sheets 1 through 11 of 11, dated 08/08/12, with revision D dated 03/13/20, prepared by manufacturer, signed and sealed by Anthony Lynn Miller, P.E., bearing the Miami-Dade County Product Control Revision stamp with the Notice of Acceptance number and expiration date by the Miami-Dade County Product Control Section.

**MISSILE IMPACT RATING: Large and Small Missile Impact Resistant**

**LABELING:** Each unit shall bear a permanent label with the manufacturer's name or logo, city, state, model/series, and following statement: "Miami-Dade County Product Control Approved", unless otherwise noted herein.

**RENEWAL** of this NOA shall be considered after a renewal application has been filed and there has been no change in the applicable building code negatively affecting the performance of this product.

**TERMINATION** of this NOA will occur after the expiration date or if there has been a revision or change in the materials, use, and/or manufacture of the product or process. Misuse of this NOA as an endorsement of any product, for sales, advertising or any other purposes shall automatically terminate this NOA. Failure to comply with any section of this NOA shall be cause for termination and removal of NOA.

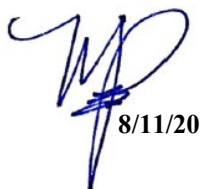
**ADVERTISEMENT:** The NOA number preceded by the words Miami-Dade County, Florida, and followed by the expiration date may be displayed in advertising literature. If any portion of the NOA is displayed, then it shall be done in its entirety.

**INSPECTION:** A copy of this entire NOA shall be provided to the user by the manufacturer or its distributors and shall be available for inspection at the job site at the request of the Building Official.

This NOA **revises** NOA No. 17-0614.20 and consists of this page 1 and evidence pages E-1, E-2, E-3 and E-4, as well as approval document mentioned above.

The submitted documentation was reviewed by **Manuel Perez, P.E.**



  
8/11/20

NOA No. 20-0402.07  
Expiration Date: April 11, 2023  
Approval Date: August 20, 2020  
Page 1

**NOTICE OF ACCEPTANCE: EVIDENCE SUBMITTED**

**1. EVIDENCE SUBMITTED UNDER PREVIOUS NOA's**

**A. DRAWINGS**


1. Manufacturer's die drawings and sections.  
*(Submitted under NOA No. 12-1218.07)*
2. Drawing No. **MD-AW740LM**, titled "Awning Window Details – LM & SM", sheets 1 through 11 of 11, dated 08/08/12, with revision C dated 05/25/17, signed and sealed by Anthony Lynn Miller, P.E.  
*(Submitted under NOA No. 17-0614.20)*

**B. TESTS**

1. Test reports on: 1) Uniform Static Air Pressure Test, Loading per FBC, TAS 202-94  
2) Large Missile Impact Test per FBC, TAS 201-94  
3) Cyclic Wind Pressure Loading per FBC, TAS 203-94  
along with marked-up drawings and installation diagram of a PVC sliding glass door, a PVC fixed window and an aluminum sliding glass door, using: Kodispac 4SG TPS spacer system, Duraseal® spacer system, Super Spacer® NXT™ spacer system and XL Edge™ spacer system at insulated glass, prepared by Fenestration Testing Laboratory, Inc., Test Reports No. **FTL-8717**, **FTL-8968** and **FTL-8970**, dated 11/16/15, 06/07/16 and 06/02/16 respectively, all signed and sealed by Idalmis Ortega, P.E.  
*(Submitted under previous NOA No. 16-0714.23)*
2. Test reports on: 1) Air Infiltration Test, per FBC, TAS 202-94  
2) Uniform Static Air Pressure Test, Loading per FBC, TAS 202-94  
3) Water Resistance Test, per FBC, TAS 202-94  
4) Forced Entry Test, per FBC 2411.3.2.1, and TAS 202-94  
5) Large Missile Impact Test per FBC, TAS 201-94  
6) Cyclic Wind Pressure Loading per FBC, TAS 203-94  
along with marked-up drawings and installation diagram of a series CA740P aluminum projected (awning) window, prepared by Fenestration Testing Laboratory, Inc. Test Report No. **FTL-7061**, dated 10/03/12, signed and sealed by Marlin D. Brinson, P.E.  
*(Submitted under NOA No. 12-1218.07)*

**C. CALCULATIONS**

1. Anchor verification calculations and structural analysis, complying with **FBC 5<sup>th</sup> Edition (2014)** and **FBC 6<sup>th</sup> Edition (2017)**, dated 06/09/17, prepared by manufacturer, signed and sealed by Anthony Lynn Miller, P.E.  
*(Submitted under NOA No. 17-0614.20)*
2. Glazing complies with **ASTM E1300-04**

  
Manuel Perez, P.E.  
Product Control Examiner  
NOA No. 20-0402.07  
Expiration Date: April 11, 2023  
Approval Date: August 20, 2020

**PGT Industries, Inc.**

**NOTICE OF ACCEPTANCE: EVIDENCE SUBMITTED**

**1. EVIDENCE SUBMITTED UNDER PREVIOUS NOA's (CONTINUED)**

**D. QUALITY ASSURANCE**

1. Miami-Dade Department of Regulatory and Economic Resources (RER).

**E. MATERIAL CERTIFICATIONS**


1. Notice of Acceptance No. **16-1117.01** issued to **Kuraray America, Inc.** for their "Trosifol® Ultraclear, Clear and Color PVB Glass Interlayers" dated 01/19/17, expiring on 07/08/19.
2. Notice of Acceptance No. **14-0916.11** issued to **Kuraray America, Inc.** for their "Kuraray SentryGlas® (Clear and White) Glass Interlayers" dated 06/25/15, expiring on 07/04/18.

**F. STATEMENTS**

1. Statement letter of conformance, complying with **FBC 5<sup>th</sup> Edition (2014)** and with **FBC 6<sup>th</sup> Edition (2017)**, dated August 29, 2017, issued by manufacturer, signed and sealed by Anthony Lynn Miller, P.E.  
*(Submitted under NOA No. 17-0614.20)*
2. Statement letter of no financial interest, dated June 9, 2015, issued by manufacturer, signed and sealed by Anthony Lynn Miller, P.E.  
*(Submitted under NOA No. 17-0614.20)*
3. Proposal No. **16-0125** issued by the Product Control Section, dated March 09, 2016, signed by Ishaq Chanda, P.E.  
*(Submitted under NOA No. 16-0714.23)*

**G. OTHERS**

1. Notice of Acceptance No. **16-0714.23**, issued to PGT Industries, Inc. for their Series "AW-740" Aluminum Awning Window - L.M.I. approved on 09/08/16 and expiring on 04/11/18.

  
Manuel Pérez, P.E.  
Product Control Examiner  
NOA No. 20-0402.07  
Expiration Date: April 11, 2023  
Approval Date: August 20, 2020

**NOTICE OF ACCEPTANCE: EVIDENCE SUBMITTED**

**2. NEW EVIDENCE SUBMITTED**

**A. DRAWINGS**

1. Drawing No. **MD-AW740LM**, titled “Awning Window Details – LM & SM”, sheets 1 through 11 of 11, dated 08/08/12, with revision D dated 03/13/20, signed and sealed by Anthony Lynn Miller, P.E.

**B. TESTS**

1. Test reports on: 1) Air Infiltration Test, per FBC, TAS 202-94  
2) Uniform Static Air Pressure Test, Loading per FBC, TAS 202-94  
3) Water Resistance Test, per FBC, TAS 202-94  
4) Large Missile Impact Test per FBC, TAS 201-94  
5) Cyclic Wind Pressure Loading per FBC, TAS 203-94  
6) Forced Entry Test, per ASTM F588 and TAS 202-94  
along with marked-up drawings and installation diagram of all PGT Industries, Inc. representative units listed below and tested to qualify **Dowsil 791** and **Dowsil 983** silicones, prepared by Fenestration Testing Laboratory, Inc., Test Reports No.: **FTL-7897**, PGT PW5520 PVC Fixed Window (unit 6 in proposal), dated 09/03/14  
**FTL-20-2107.1**, PGT SGD780 Aluminum Sliding Glass Door (unit 7 in proposal)  
**FTL-20-2107.2**, PGT CA740 Alum. Outswing Casement Window (unit 8 in proposal)  
**FTL-20-2107.3**, PGT PW7620A Aluminum Fixed Window (unit 9 in proposal) and  
**FTL-20-2107.4**, PGT PW7620A Aluminum Fixed Window (unit 10 in proposal)  
dated 07/13/20, all signed and sealed by Idalmis Ortega, P.E

**C. CALCULATIONS**

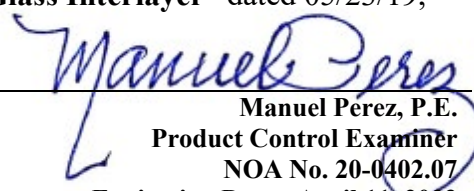
1. Anchor verification calculations and structural analysis, complying with **FBC 6<sup>th</sup> Edition (2017)**, prepared by manufacturer, dated 06/09/17 and revised and updated to the **FBC 7<sup>th</sup> Edition (2020)** on 03/25/20, signed and sealed by Anthony Lynn Miller, P.E.

**D. QUALITY ASSURANCE**

1. Miami-Dade Department of Regulatory and Economic Resources (RER)

**E. MATERIAL CERTIFICATIONS**

1. Notice of Acceptance No. **19-0305.02** issued to **Kuraray America, Inc.** for their “**Trosifol® Ultraclear, Clear and Color PVB Glass Interlayers**” dated 05/09/19, expiring on 07/08/24.
2. Notice of Acceptance No. **18-0725.11** issued to **Kuraray America, Inc.** for their “**Kuraray SentryGlas® Xtra™ (SGX™) Clear Glass Interlayer**” dated 05/23/19, expiring on 05/23/24.

  
Manuel Perez, P.E.  
Product Control Examiner  
NOA No. 20-0402.07  
Expiration Date: April 11, 2023  
Approval Date: August 20, 2020

**PGT Industries, Inc.**

**NOTICE OF ACCEPTANCE: EVIDENCE SUBMITTED**


**2. NEW EVIDENCE SUBMITTED (CONTINUED)**

**F. STATEMENTS**

1. Statement letter of conformance, complying with **FBC 6<sup>th</sup> Edition (2017)** and the **FBC 7<sup>th</sup> Edition (2020)**, dated March 10, 2020, issued by manufacturer, signed and sealed by Anthony Lynn Miller, P.E.
2. Statement letter of no financial interest, dated March 10, 2020, issued by manufacturer, signed and sealed by Anthony Lynn Miller, P.E.
3. Proposal No. **19-1155 TP** issued by the Product Control Section, dated January 10, 2020, signed by Ishaq Chanda, P.E.

**G. OTHERS**

1. Notice of Acceptance No. **17-0614.20**, issued to PGT Industries, Inc. for their Series "AW-740" Aluminum Awning Window - L.M.I. approved on 09/05/17 and expiring on 04/11/23.

  
Manuel Pérez, P.E.  
Product Control Examiner  
NOA No. 20-0402.07  
Expiration Date: April 11, 2023  
Approval Date: August 20, 2020



1) THIS PRODUCT HAS BEEN DESIGNED & TESTED TO COMPLY WITH THE REQUIREMENTS OF THE FLORIDA BUILDING CODE, INCLUDING THE HIGH VELOCITY HURRICANE ZONE (HVHZ). FOR INSULATED GLASS INSTALLATIONS ABOVE 30' IN THE HVHZ, THE OUTBOARD LITE (CAP) MUST TEMPERED.

2) SHUTTERS ARE NOT REQUIRED WHEN USED IN WIND-BORNE DEBRIS REGIONS.

3) FOR MASONRY APPLICATIONS IN MIAMI-DADE COUNTY, USE ONLY MIAMI-DADE COUNTY APPROVED MASONRY ANCHORS. MATERIALS USED FOR ANCHOR EVALUATIONS WERE SOUTHERN PINE, ASTM C90 CONCRETE MASONRY UNITS AND CONCRETE WITH MIN. KSI PER ANCHOR TYPE, SEE TABLE 3. SHEET 4.

4) ALL WOOD BUCKS LESS THAN 1-1/2" THICK ARE TO BE CONSIDERED 1X INSTALLATIONS. 1X WOOD BUCKS ARE OPTIONAL IF UNIT IS INSTALLED DIRECTLY TO SUBSTRATE. WOOD BUCKS DEPICTED AS 2X ARE 1-1/2" THICK OR GREATER. 1X AND 2X BUCKS (WHEN USED) SHALL BE DESIGNED TO PROPERLY TRANSFER LOADS TO THE STRUCTURE. WOOD BUCK DESIGN AND INSTALLATION IS THE RESPONSIBILITY OF THE ENGINEER OR ARCHITECT OF RECORD.

5) ANCHOR EMBEDMENT TO BASE MATERIAL SHALL BE BEYOND WALL DRESSING OR STUCCO. USE ANCHORS OF SUFFICIENT EMBEDMENT AS SPECIFIED ON TABLE 3, SHEET 4. NARROW JOINT SEALANT IS USED ON ALL FOUR CORNERS OF THE FRAME. INSTALLATION ANCHORS SHOULD BE SEALED. OVERALL SEALING/FLASHING STRATEGY FOR WATER RESISTANCE OF INSTALLATION SHALL BE DONE BY OTHERS AND IS BEYOND THE SCOPE OF THESE INSTRUCTIONS.

6) SHIMS ARE REQUIRED AT EACH ANCHOR LOCATION WHERE THE PRODUCT IS NOT FLUSH TO THE SUBSTRATE. USE SHIMS CAPABLE OF TRANSFERRING APPLIED LOADS. WOOD BUCKS, BY OTHERS, MUST BE SUFFICIENTLY ANCHORED TO RESIST LOADS IMPOSED ON THEM BY THE WINDOW.

7) DESIGN PRESSURES:

**A. NEGATIVE DESIGN LOADS BASED ON STRUCTURAL TEST PRESSURE, FRAME ANALYSIS AND GLASS PER ASTM E1300.**

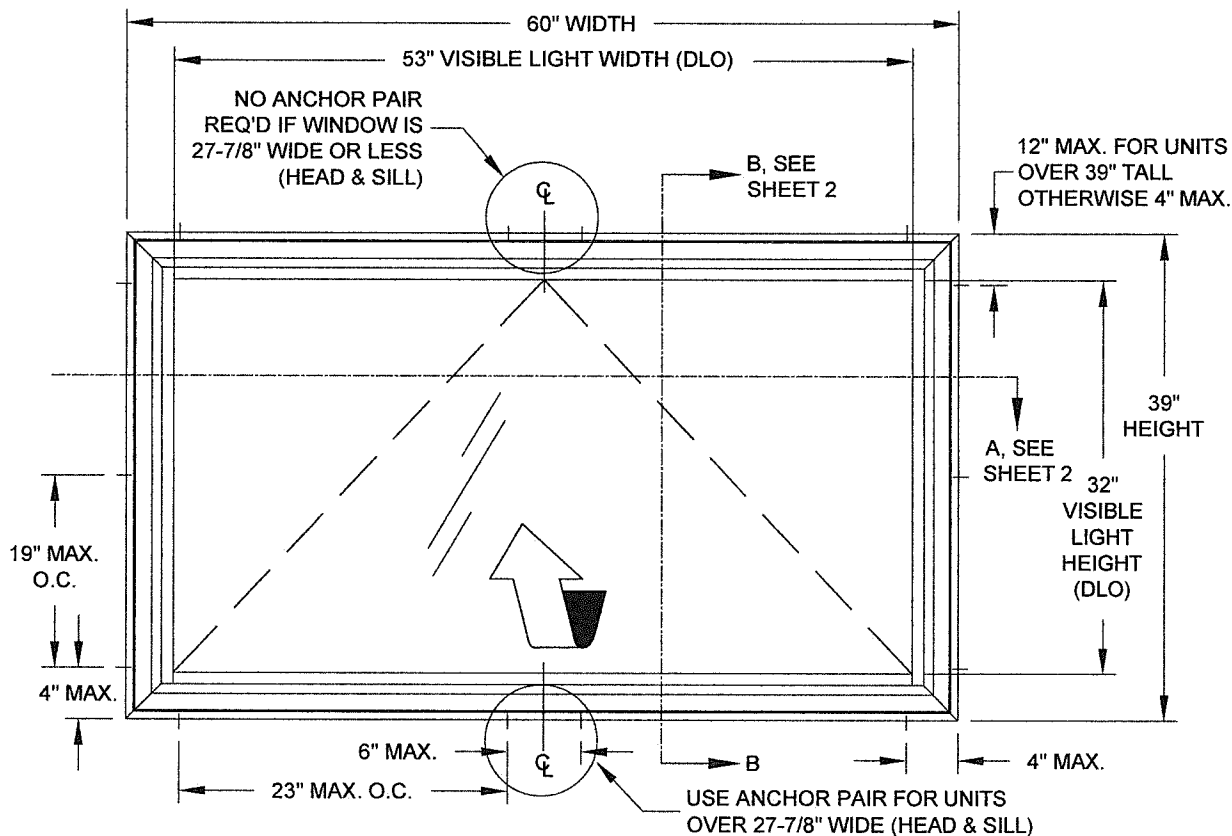
**B. POSITIVE DESIGN LOADS BASED ON WATER TEST PRESSURE, STRUCTURAL TEST PRESSURE, FRAME ANALYSIS AND GLASS PER ASTM E1300.**

C. DESIGN LOADS ARE BASED ON ALLOWABLE STRESS DESIGN, ASD.

8) THE ANCHORAGE METHODS SHOWN HAVE BEEN DESIGNED TO RESIST THE WINDLOADS CORRESPONDING TO THE REQUIRED DESIGN PRESSURE. THE 33-1/3% STRESS INCREASE HAS NOT BEEN USED IN THE DESIGN OF THIS PRODUCT. THE 1.6 LOAD DURATION FACTOR WAS USED FOR THE EVALUATION OF ANCHORS INTO WOOD. ANCHORS THAT COME INTO CONTACT WITH OTHER DISSIMILAR MATERIALS SHALL MEET THE REQUIREMENTS OF THE FLORIDA BUILDING CODE FOR CORROSION RESISTANCE.

9) REFERENCES: TEST REPORTS FTL-7061, 3579, 3580, 3724;  
DEWALT ULTRACON+ NOA; ELCO ULTRACON NOA;  
DEWALT/ELCO CRETEFLEX NOA; ANSI/AF&PA NDS FOR  
WOOD CONSTRUCTION AND ADM ALUMINUM DESIGN  
MANUAL.

|                           |  |
|---------------------------|--|
| DESIGN PRESSURE RATING    | IMPACT RATING  |
| VARIES,<br>SEE SHEETS 5-9 | RATED FOR LARGE & SMALL<br>MISSILE IMPACT RESISTANCE |



### TYP. ELEVATION OF AWNING WINDOW

|                            |     |
|----------------------------|-----|
| GENERAL NOTES.....         | 1   |
| ELEVATION.....             | 1   |
| GLAZING DETAILS.....       | 1   |
| INSTALLATION.....          | 2   |
| ASSEMBLY TUBE DETAILS..... | 3   |
| ANCHOR SPECIFICATIONS..... | 4   |
| ANCHOR QUANTITIES.....     | 4   |
| DESIGN PRESSURES.....      | 5-9 |
| ASSEMBLY DETAILS/BOM.....  | 10  |
| EXTRUSIONS/SPACER.....     | 11  |

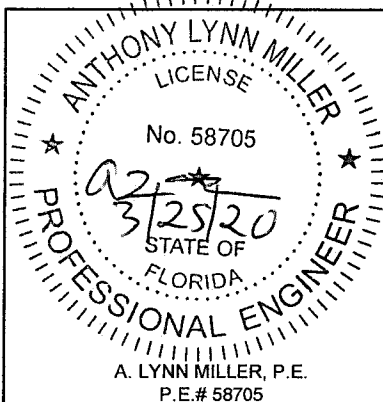
TABLE 1:

| Glass Types |  | Sheet # |
|-------------|--|---------|
| 1           | 5/16" Lami (1/8" An - .090" PVB - 1/8" An)                           | 5       |
| 2           | 7/16" Lami (3/16" An - .090" SG - 3/16" An)                          | 6       |
| 3           | 7/8" Lami. IG (1/8" An - 7/16" Air - 1/8" An - .090" PVB - 1/8" An)  | 7       |
| 4           | 7/8" Lami. IG (1/8" T - 7/16" Air - 1/8" An - .090" PVB - 1/8" An)   | 8       |
| 5           | 7/8" Lami. IG (3/16" An - 1/4" Air - 3/16" An - .090" SG - 3/16" An) | 9       |
| 6           | 7/8" Lami. IG (3/16" T - 1/4" Air - 3/16" An - .090" SG - 3/16" An)  | 9       |

"PVB"= TROSIFOL<sup>®</sup> PVB BY KURARAY AMERICA, INC.  
 "SG"= SENTRYGLAS<sup>®</sup> BY KURARAY AMERICA, INC.

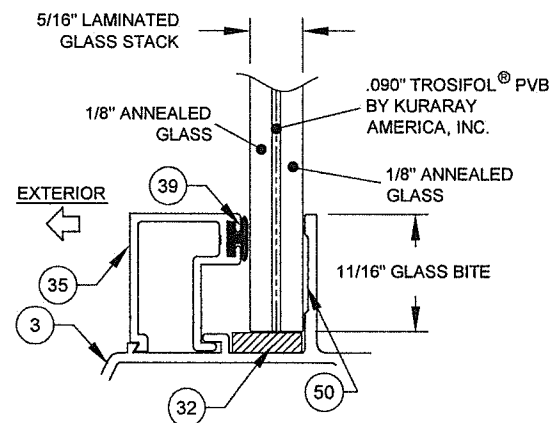
**CODES / STANDARDS USED:**

- 2020 FLORIDA BUILDING CODE (FBC), 7TH EDITION
- 2017 FLORIDA BUILDING CODE (FBC), 6TH EDITION
- ASTM E1300-04
- ANSI/AF&PA NDS-2018 FOR WOOD CONSTRUCTION
- ALUMINUM DESIGN MANUAL, ADM-2015
- AISI S100-16
- AISC 360-16

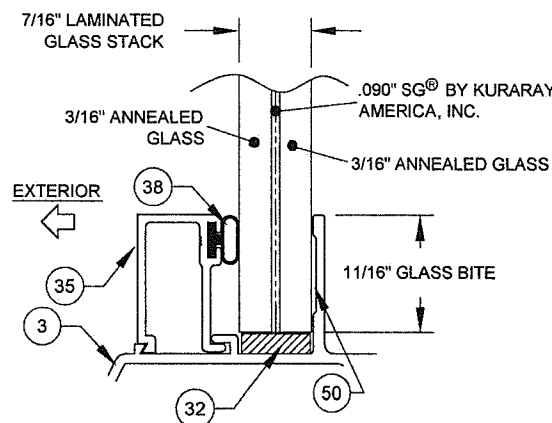


1070 TECHNOLOGY DRIVE  
N. VENICE, FL 34275  
(941) 480-1600

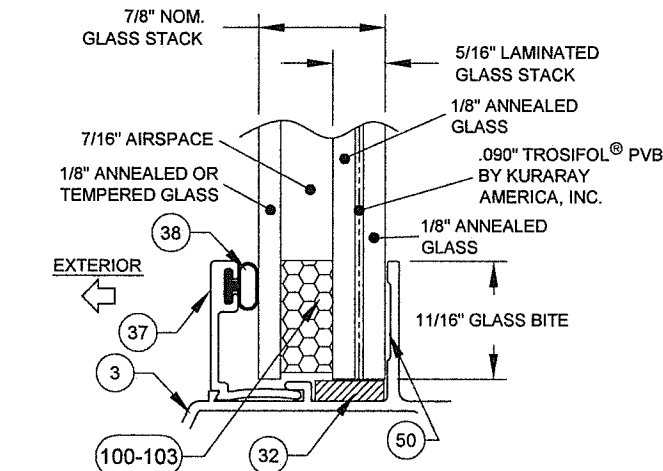
REGISTRATION #29296



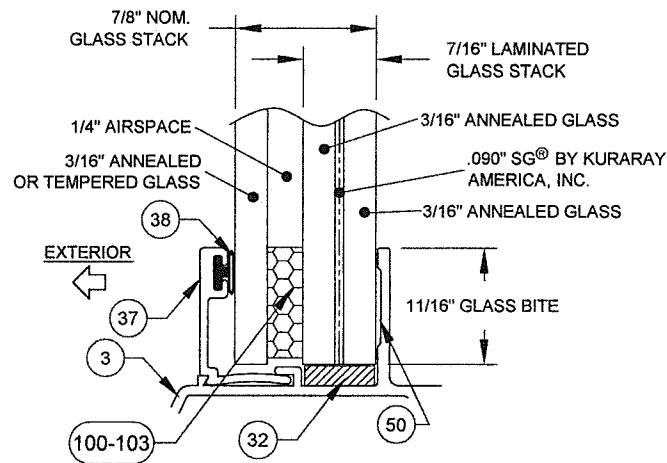
## GLASS TYPE 1



## GLASS TYPE 2



### GLASS TYPES 3 & 4



## GLASS TYPES 5 & 6

**PRODUCT REVISED**  
as complying with the Florida  
Building Code

NOA-No. 20-0402.07

**Expiration Date: 04/11/2023**

By: Manuel Perez  
Miami-Dade Product Control

|             |          |
|-------------|----------|
| Revised By: | Date:    |
| JR          | 03/13/20 |

|             |       |
|-------------|-------|
| Revised By: | Date: |
|-------------|-------|

Revision  
UPDATED ANCHORAGE  
PER FBC 2020.

Revision

*Description:*  
**GENERAL NOTES & ELEVATION**

Title: **AWNING WINDOW DETAILS - LM & SM**

Date: 08/08/12

Series/Model: **AW-740**

Scale:  
NTS

Sheet:  
1 OF 11

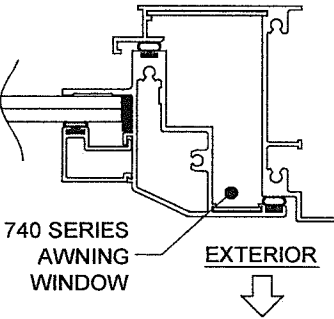
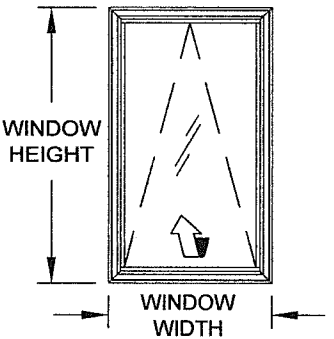
Drawing No.  
MD-AW740LM

|      |   |
|------|---|
| Rev: | D |
|------|---|

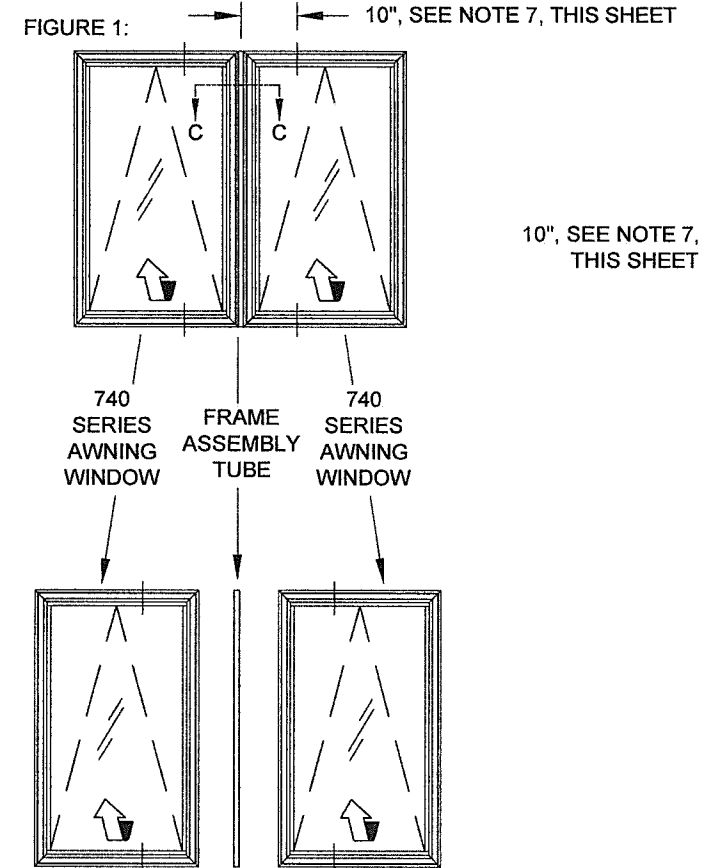




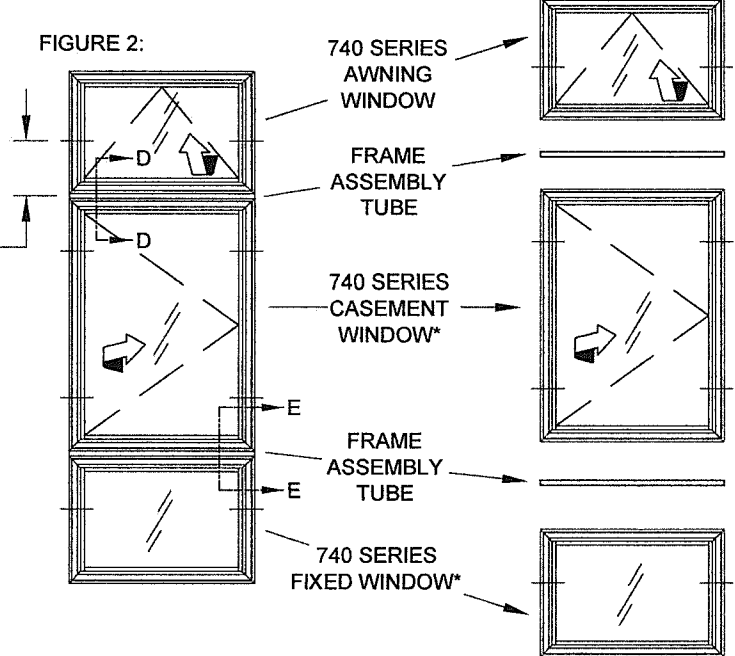
AWNING (X)



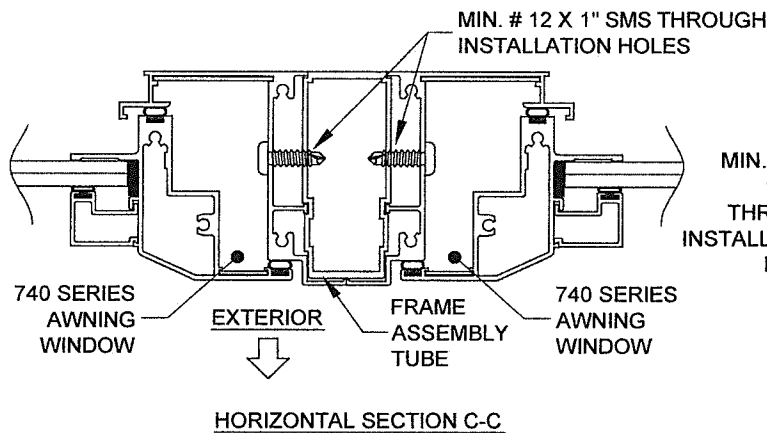
AWNING / AWNING (XX)



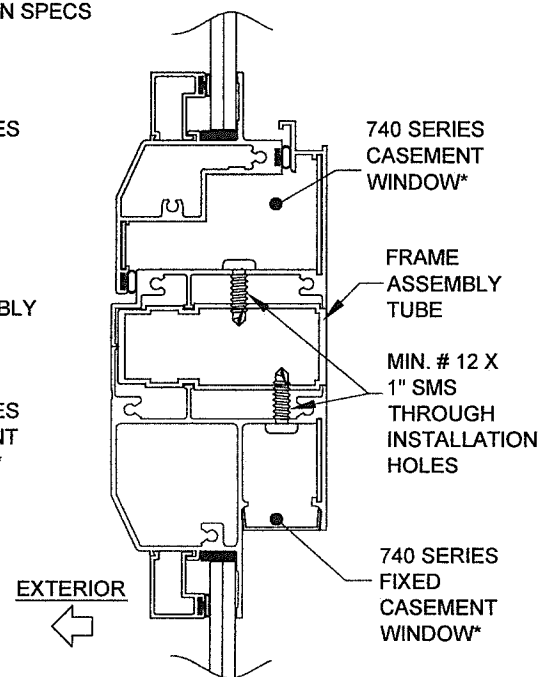
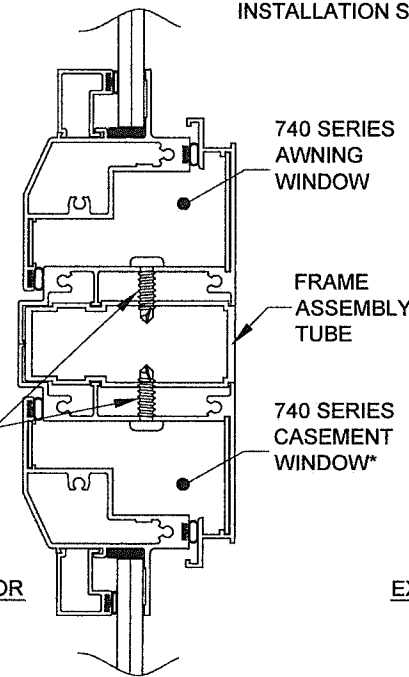
AWNING / CASEMENT / FIXED CASEMENT (XXO)



\*SEE PRODUCT'S NOA FOR INSTALLATION SPECS



MIN. # 12 X 1" SMS THROUGH INSTALLATION HOLES



FOR SINGLE UNITS:

- 1) DETERMINE YOUR WINDOW SIZE AND GLASS.
- 2) KNOWING YOUR ANCHOR TYPE AND SUBSTRATE, DETERMINE YOUR ANCHOR GROUP FROM TABLE 3, SHEET 4.
- 3) FROM SHEETS 5-9, FIND THE SHEET FOR YOUR GLASS TYPE. FIND THE PRODUCT'S DESIGN PRESSURE FROM THE TABLE LABELED "DESIGN PRESSURE (PSF) FOR SINGLE WINDOWS, ALL ANCHOR GROUPS".
- 4) DIMENSIONS SHOWN ARE WINDOW. FOR SIZES NOT SHOWN, ROUND UP TO THE NEXT AVAILABLE WIDTH OR HEIGHT DIMENSION SHOWN ON THE TABLES.
- 5) USING THE TABLE LABELED "WINDOW ANCHORS REQUIRED" (TABLE 2, SHEET 4), DETERMINE THE NUMBER OF ANCHORS NEEDED IN THE HEAD, SILL AND JAMBS OF YOUR WINDOW.
- 6) INSTALL AS PER THE INSTRUCTIONS ON SHEET 2.

FOR EACH WINDOW IN A VERTICALLY OR HORIZONTALLY COMBINED ASSEMBLY:

- 1) DETERMINE EACH INDIVIDUAL WINDOW TYPE, SIZE AND GLASS MAKEUP, SEE FIGURES 1 & 2, THIS SHEET. DETERMINE YOUR ANCHOR GROUP FROM TABLE 3, SHEET 4.
- 2) FROM SHEETS 5-9, FIND THE SHEET FOR YOUR GLASS TYPE.
- 3) FIND THE DESIGN PRESSURE FROM THE TABLES LABELED "DESIGN PRESSURE (PSF) FOR WINDOWS ATTACHED TO A VERTICAL FRAME ASSEMBLY TUBE" OR "DESIGN PRESSURE (PSF) FOR WINDOWS ATTACHED TO A HORIZONTAL FRAME ASSEMBLY TUBE", DEPENDING ON WHICH WAY THE FRAME ASSEMBLY TUBE IS ORIENTATED. THIS MUST BE DONE FOR EACH WINDOW IN THE ASSEMBLY, AND THE LOWEST DESIGN PRESSURE APPLIES TO THE ENTIRE ASSEMBLY. DIMENSIONS SHOWN ARE WINDOW. FOR SIZES NOT SHOWN, ROUND UP TO THE NEXT AVAILABLE WIDTH OR HEIGHT DIMENSION SHOWN ON THE TABLES.
- 4) USING THE TABLE LABELED "WINDOW ANCHORS REQUIRED" (TABLE 2, SHEET 4), DETERMINE THE NUMBER OF ANCHORS NEEDED IN THE HEAD, SILL AND JAMBS OF YOUR WINDOW.
- 5) INSTALL AS PER THE INSTRUCTIONS ON SHEETS 2-3. NOTE THAT ADDITIONAL ANCHORS THROUGH THE WINDOW FRAME INTO THE SUBSTRATE MAY BE REQUIRED (SEE SHEET 2), AND THAT MIN. # 12 X 1" ANCHORS ARE TO BE USED THROUGH THE FRAME INTO THE FRAME ASSEMBLY TUBE (SEE DETAILS ON THIS SHEET).

FRAME ASSEMBLY TUBE NOTES:

- 1) DIMENSIONS SHOWN ARE WINDOW DIMENSIONS FOR EACH INDIVIDUAL WINDOW. FOR SIZES NOT SHOWN, ROUND UP TO THE NEXT AVAILABLE WIDTH OR HEIGHT DIMENSION SHOWN ON THE TABLES.
- 2) ANY 740-SERIES PRODUCT (CASEMENT, AWNING OR FIXED CASEMENT) MAY BE ATTACHED TO THE FRAME ASSEMBLY TUBE. FOR ALL WINDOWS, USE THE WINDOW'S NOA FOR ANCHORAGE, SIZE AND DESIGN PRESSURE LIMITATIONS.
- 3) ALL WINDOWS IN THE COMBINATION UNIT MUST BE ABLE TO INDIVIDUALLY COMPLY WITH THE REQUIREMENTS OF THEIR RESPECTIVE NOA.
- 4) FRAME ASSEMBLY TUBE TO BE FASTENED TO WINDOW, AS SHOW IN DETAILS, WITH MIN. #12 X 1" SHEET METAL SCREWS. USE THE SAME SPACING AND QUANTITY AS THE OPPOSITE FRAME MEMBER.
- 5) THE FRAME ASSEMBLY TUBE MAY NOT EXCEED 62" IN LENGTH (AS USED IN A 63" FLANGED WINDOW) OR BE USED IN TEE OR CROSS CONFIGURATIONS.
- 6) THE FRAME ASSEMBLY TUBE IS NOT REQUIRED TO BE CLIPPED TO THE SUBSTRATE. ALL EXTERIOR JOINTS TO BE SEALED BY INSTALLER.
- 7) FOR ALL COMBINATION UNITS, ADDITIONAL INSTALLATION ANCHORS MAY NEED TO BE INSTALLED THROUGH THE WINDOW FRAMES AT 10" MAX. FROM EACH SIDE OF THE FRAME ASSEMBLY TUBE CENTERLINE. SEE TABLE BELOW:

| Additional Anchors Required on each Side of the Frame Assembly Tube (FAT) |               |             |          |
|---|---------------|-------------|----------|
| Vert. FAT   | Window Width  | Anchor Type |          |
|   |               | A           | B, C & D |
|   | 17" - 25.9"   | 1           | 0        |
| Horiz. FAT  | Window Height | Anchor Type |          |
|   |               | A           | B, C & D |
|   | 17" - 25.9"   | 1           | 0        |
|   | 26"+          | 1           | 1        |

**PRODUCT REVISED**  
as complying with the Florida Building Code  
**NOA-No. 20-0402.07**  
**Expiration Date: 04/11/2023**  
By: *Manuel Perez*  
Miami-Dade Product Control

|  |                |                        |                |
|--|----------------|------------------------|----------------|
| Revised By: J ROSOWSKI   | Date: 03/13/20 | Revision: NO CHANGES.  | Rev: D         |
| Drawn By: J ROSOWSKI   | Date: 08/08/12 |                        |                |
| Description: FRAME ASSEMBLY TUBE DETAILS                       |                | Drawing No. MD-AW740LM |                |
| Title: AWNING WINDOW DETAILS - LM & SM                         |                | Scale: NTS             | Sheet: 3 OF 11 |
| Series/Model: AW-740   |                |                        |                |
| 1070 TECHNOLOGY DRIVE<br>N. VENICE, FL 34275<br>(941) 480-1600 |                | REGISTRATION #29296    |                |

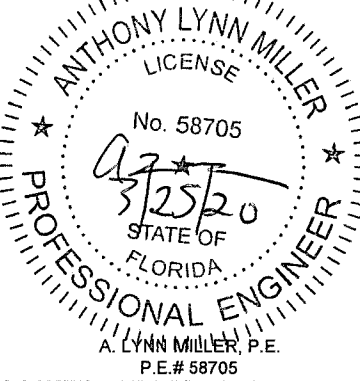




TABLE 2:

| Window Anchors Required |           |           |                   |   |   |   |              |    |   |   |              |    |   |   |              |    |   |   |              |    |   |   |              |    |   |   |              |    |   |   |              |    |   |   |              |    |   |   |     |   |   |  |
|-------------------------|-----------|-----------|-------------------|---|---|---|--------------|----|---|---|--------------|----|---|---|--------------|----|---|---|--------------|----|---|---|--------------|----|---|---|--------------|----|---|---|--------------|----|---|---|--------------|----|---|---|-----|---|---|--|
|                         |           |           | Window Width (in) |   |   |   |              |    |   |   |              |    |   |   |              |    |   |   |              |    |   |   |              |    |   |   |              |    |   |   |              |    |   |   |              |    |   |   |     |   |   |  |
|                         |           |           | under 23"         |   |   |   | 25-15/16"    |    |   |   | 27-7/8"      |    |   |   | 30-3/4"      |    |   |   | 32"          |    |   |   | 34"          |    |   |   | 37"          |    |   |   | 46"          |    |   |   | 53-1/8"      |    |   |   | 60" |   |   |  |
|                         |           |           | Anchor Group      |   |   |   | Anchor Group |    |   |   | Anchor Group |    |   |   | Anchor Group |    |   |   | Anchor Group |    |   |   | Anchor Group |    |   |   | Anchor Group |    |   |   | Anchor Group |    |   |   | Anchor Group |    |   |   |     |   |   |  |
|                         |           |           | A                 | B | C | D | A            | B  | C | D | A            | B  | C | D | A            | B  | C | D | A            | B  | C | D | A            | B  | C | D | A            | B  | C | D | A            | B  | C | D |              |    |   |   |     |   |   |  |
| Window Height (in)      | under 23" | Jamb      | 2                 | 2 | 2 | 2 | 2            | 2  | 2 | 2 | 2            | 2  | 2 | 2 | 2            | 2  | 2 | 2 | 2            | 2  | 2 | 2 | 2            | 2  | 2 | 2 | 2            | 2  | 2 | 2 | 2            | 2  | 2 | 2 |              |    |   |   |     |   |   |  |
|                         |           | Head/Sill | 2                 | 2 | 2 | 2 | 2            | 4  | 2 | 2 | 2            | 4  | 2 | 2 | 2            | 4  | 4 | 4 | 4            | 4  | 4 | 4 | 4            | 4  | 6 | 4 | 4            | 4  | 4 | 6 | 4            | 4  | 4 | 8 | 6            | 4  | 4 | 8 | 6   | 6 | 4 |  |
|                         | 25-15/16" | Jamb      | 3                 | 2 | 2 | 2 | 2            | 3  | 2 | 2 | 2            | 3  | 2 | 2 | 2            | 3  | 2 | 2 | 2            | 3  | 2 | 2 | 2            | 3  | 2 | 2 | 2            | 3  | 2 | 2 | 2            | 3  | 2 | 2 | 2            | 3  | 2 | 2 | 2   |   |   |  |
|                         |           | Head/Sill | 2                 | 2 | 2 | 2 | 2            | 4  | 2 | 2 | 2            | 4  | 2 | 2 | 2            | 4  | 4 | 4 | 4            | 4  | 4 | 4 | 4            | 6  | 4 | 4 | 4            | 8  | 4 | 4 | 4            | 8  | 6 | 4 | 4            | 10 | 6 | 6 | 4   |   |   |  |
|                         | 39"       | Jamb      | 5                 | 3 | 3 | 2 | 2            | 5  | 3 | 3 | 2            | 5  | 4 | 3 | 2            | 6  | 4 | 3 | 2            | 6  | 4 | 3 | 2            | 6  | 4 | 3 | 2            | 6  | 4 | 3 | 2            | 5  | 4 | 3 | 2            | 5  | 3 | 3 | 2   |   |   |  |
|                         |           | Head/Sill | 2                 | 2 | 2 | 2 | 2            | 4  | 2 | 2 | 2            | 4  | 2 | 2 | 2            | 4  | 4 | 4 | 4            | 4  | 4 | 4 | 4            | 6  | 4 | 4 | 4            | 8  | 6 | 4 | 4            | 10 | 6 | 6 | 4            | 10 | 8 | 6 | 4   |   |   |  |
|                         | 50-5/8"   | Jamb      | 7                 | 4 | 4 | 4 | 4            | 7  | 5 | 4 | 4            | 8  | 5 | 4 | 4            | 8  | 5 | 5 | 4            | 9  | 6 | 5 | 4            | 9  | 6 | 5 | 4            | 9  | 6 | 5 | 4            |    |   |   |              |    |   |   |     |   |   |  |
|                         |           | Head/Sill | 2                 | 2 | 2 | 2 | 2            | 4  | 2 | 2 | 2            | 4  | 2 | 2 | 2            | 4  | 4 | 4 | 4            | 4  | 4 | 4 | 4            | 6  | 4 | 4 | 4            | 6  | 4 | 4 | 4            | 8  | 6 | 4 | 4            |    |   |   |     |   |   |  |
|                         | 60"       | Jamb      | 8                 | 5 | 5 | 4 | 4            | 9  | 6 | 5 | 4            | 10 | 6 | 5 | 4            | 10 | 7 | 6 | 4            | 10 | 7 | 6 | 4            | 10 | 7 | 6 | 4            | 10 | 7 | 6 | 4            |    |   |   |              |    |   |   |     |   |   |  |
|                         |           | Head/Sill | 2                 | 2 | 2 | 2 | 2            | 4  | 2 | 2 | 2            | 4  | 2 | 2 | 2            | 4  | 4 | 4 | 4            | 4  | 4 | 4 | 4            | 6  | 4 | 4 | 4            | 6  | 4 | 4 | 4            |    |   |   |              |    |   |   |     |   |   |  |
|                         | 63"       | Jamb      | 9                 | 6 | 5 | 4 | 4            | 10 | 6 | 5 | 4            | 10 | 7 | 6 | 4            | 11 | 7 | 6 | 4            | 11 | 7 | 6 | 4            | 11 | 7 | 6 | 4            | 11 | 7 | 6 | 4            |    |   |   |              |    |   |   |     |   |   |  |
|                         |           | Head/Sill | 2                 | 2 | 2 | 2 | 2            | 4  | 2 | 2 | 2            | 4  | 2 | 2 | 2            | 4  | 4 | 4 | 4            | 4  | 4 | 4 | 4            | 4  | 4 | 4 | 4            | 4  | 6 | 4 | 4            | 4  |   |   |              |    |   |   |     |   |   |  |
|                         | 67"       | Jamb      | 10                | 6 | 5 | 4 | 4            | 10 | 7 | 6 | 4            | 11 | 7 | 6 | 4            | 11 | 7 | 6 | 4            | 11 | 7 | 6 | 4            | 11 | 7 | 6 | 4            |    |   |   |              |    |   |   |              |    |   |   |     |   |   |  |
|                         |           | Head/Sill | 2                 | 2 | 2 | 2 | 2            | 4  | 2 | 2 | 2            | 4  | 2 | 2 | 2            | 4  | 4 | 4 | 4            | 4  | 4 | 4 | 4            | 4  | 4 | 4 | 4            | 4  | 6 | 4 | 4            | 4  |   |   |              |    |   |   |     |   |   |  |
|                         | 72"       | Jamb      | 10                | 7 | 6 | 5 | 5            | 11 | 7 | 6 | 5            | 12 | 8 | 6 | 5            | 12 | 8 | 7 | 5            | 12 | 8 | 7 | 5            |    |   |   |              |    |   |   |              |    |   |   |              |    |   |   |     |   |   |  |
|                         |           | Head/Sill | 2                 | 2 | 2 | 2 | 2            | 4  | 2 | 2 | 2            | 4  | 2 | 2 | 2            | 4  | 4 | 4 | 4            | 4  | 4 | 4 | 4            |    |   |   |              |    |   |   |              |    |   |   |              |    |   |   |     |   |   |  |
| 76"                     | Jamb      | 11        | 7                 | 6 | 5 | 5 | 12           | 8  | 7 | 5 | 13           | 8  | 7 | 5 | 13           | 8  | 7 | 5 |              |    |   |   |              |    |   |   |              |    |   |   |              |    |   |   |              |    |   |   |     |   |   |  |
|                         | Head/Sill | 2         | 2                 | 2 | 2 | 2 | 4            | 2  | 2 | 2 | 4            | 2  | 2 | 2 | 4            | 4  | 4 | 4 |              |    |   |   |              |    |   |   |              |    |   |   |              |    |   |   |              |    |   |   |     |   |   |  |
| 84"                     | Jamb      | 12        | 8                 | 7 | 5 | 5 | 14           | 9  | 7 | 5 | 14           | 9  | 8 | 5 |              |    |   |   |              |    |   |   |              |    |   |   |              |    |   |   |              |    |   |   |              |    |   |   |     |   |   |  |
|                         | Head/Sill | 2         | 2                 | 2 | 2 | 2 | 4            | 2  | 2 | 2 | 4            | 2  | 2 | 2 |              |    |   |   |              |    |   |   |              |    |   |   |              |    |   |   |              |    |   |   |              |    |   |   |     |   |   |  |

USE THIS TABLE FOR ALL WINDOWS PER THE ELEVATIONS ON SHEET 1. DIMENSIONS SHOWN ARE WINDOW TIP-TO-TIP. FOR SIZES NOT SHOWN, ROUND UP TO THE NEXT AVAILABLE WIDTH OR HEIGHT DIMENSION SHOWN ON THE TABLE.

TABLE 3:

| Group | Anchor   | Substrate         | Min. Edge Distance | Min. O.C. Distance | Min. Embedment | Anchor Plate Required? |
|-------|--|-------------------|--------------------|--------------------|----------------|------------------------|
| A     | #12 steel SMS (G5) or #14 steel SMS (G5) or #14 410 SS SMS                   | S. Pine           | 5/8"               | 1"                 | 1-3/8"         | No                     |
|       |  | 6063-T5 Alum.     | 3/8"               | 5/8"               | .063"          | No                     |
|       |  | A36 Steel         | 3/8"               | 5/8"               | .050"          | No                     |
|       |  | A653 Stud, Gr. 33 | 3/8"               | 5/8"               | .045", 20 Ga.  | No                     |
|       | 1/4" steel Ultracon+   | 3k Concrete       | 1"                 | 3"                 | 1-3/4"         | No                     |
|       |  | Hollow Block      | 1"                 | 3"                 | 1-1/4"         | No                     |
| B     | 1/4" steel Ultracon  | S. Pine           | 1"                 | 1"                 | 1-3/8"         | No                     |
|       |  | 2.85k Concrete    | 2-1/2"             | 4"                 | 1-3/8"         | No                     |
|       |  | Hollow Block      | 1"                 | 6"                 | 1-1/4"         | No                     |
|       |  | Hollow Block      | 2-1/2"             | 5"                 | 1-1/4"         | No                     |
| C     | 1/4" steel Ultracon  | Hollow Block      | 1"                 | 6"                 | 1-1/4"         | Yes                    |
|       | 1/4" steel Ultracon+   | 3k Concrete       | 1"                 | 4"                 | 1-3/8"         | Yes                    |
|       |  | Hollow Block      | 1"                 | 3"                 | 1-1/4"         | Yes                    |
|       | 1/4" 410 SS CreteFlex  | 3.35k Concrete    | 1"                 | 5"                 | 1-3/4"         | No                     |
|       |  | Hollow Block      | 2-1/2"             | 5"                 | 1-1/4"         | No                     |
| D     | #12 steel SMS (G5) or #12 410 SS SMS or #14 steel SMS (G5) or #14 410 SS SMS | S. Pine           | 5/8"               | 1"                 | 1-3/8"         | Yes                    |
|       |  | 6063-T5 Alum.     | 3/8"               | 5/8"               | .0713"         | Yes                    |
|       |  | A36 Steel         | 3/8"               | 5/8"               | .050"          | Yes                    |
|       |  | A653 Stud, Gr. 33 | 3/8"               | 5/8"               | .045", 18 Ga.  | Yes                    |
|       | 1/4" steel Ultracon  | 2.85k Concrete    | 1"                 | 4"                 | 1-3/4"         | Yes                    |
|       |  | 2.85k Concrete    | 2-1/2"             | 4"                 | 1-3/8"         | Yes                    |
|       |  | Hollow Block      | 2-1/2"             | 5"                 | 1-1/4"         | Yes                    |
|       |  | Filled Block      | 2-1/2"             | 4"                 | 1-3/4"         | Yes                    |
|       |  | 3.35k Concrete    | 1"                 | 6"                 | 1-3/4"         | Yes                    |
|       | 1/4" 410 SS CreteFlex  | 3.35k Concrete    | 2-1/2"             | 6"                 | 1"             | Yes                    |
|       |  | Hollow Block      | 2-1/2"             | 6"                 | 1-1/4"         | Yes                    |
|       | 5/16" steel Ultracon   | 3.5k Concrete     | 1-1/4"             | 5"                 | 1-3/4"         | No                     |
|       |  | Hollow Block      | 3-1/8"             | 5"                 | 1-1/4"         | No                     |
|       |  | Filled Block      | 2-1/2"             | 5"                 | 1-3/4"         | No                     |
|       | 1/4" steel Ultracon+   | 3k Concrete       | 1-5/16"            | 4"                 | 1-3/8"         | Yes                    |
|       |  | Hollow Block      | 1-3/4"             | 3"                 | 1-1/4"         | Yes                    |
|       |  | S. Pine           | 1"                 | 1"                 | 1-3/8"         | Yes                    |

- 1) WHERE SUBSTRATE CONDITIONS REQUIRE ANCHORAGE FROM MORE THAN ONE OF THE ANCHOR GROUPS ABOVE, CHOOSE THE ANCHOR GROUP OF THE LOWEST LETTER FOR ALL SUBSEQUENT TABLES IN THIS APPROVAL.
- 2) ANCHOR MUST EXTEND A MINIMUM OF 3 THREADS BEYOND ANY METAL SUBSTRATE.
- 3) ANCHORS MAY BE HEXHEAD, PANHEAD OR FLATHEAD.
- 4) FOR STEEL STUDS, MIN. FU = 45 KSI, MIN FY = 33 KSI.

EXAMPLE 1: FOR WINDOW COMBINATION SHOWN BELOW; 7/16" ANNEALED LAMINATED GLASS, 1/4" MASONRY ANCHORS INTO CONCRETE, +70/-70 PSF DP REQUIRED

AWNING ANCHORS:

- A) FROM TABLE 9, ANCHORS C & D ALLOW A DP OF +70/-90.
- B) FOR THE JAMB, FROM TABLE 3, ANCHORS IN GROUP C HAVE THE ANCHOR AND SUBSTRATE DESIRED AND DOES NOT REQUIRE THE ANCHOR PLATE IF USING THE CRETEFLEX ANCHOR.
- C) FROM TABLE 2, 6 ANCHORS ARE REQUIRED IN EACH JAMB.
- C) SIMILARLY, 2 ANCHORS ARE REQUIRED IN THE HEAD & SILL.
- D) DISTRIBUTE ANCHORS FOLLOWING GUIDELINES FROM ELEVATION ON SHEET 1.
- E) PER RULES ON SHEETS 2 & 3, INSTALL 1 ADDITIONAL ANCHOR ON THE FRAME ASSEMBLY TUBE SIDE OF THE AWNING (HEAD & SILL).

FIXED CASEMENT ANCHORS:

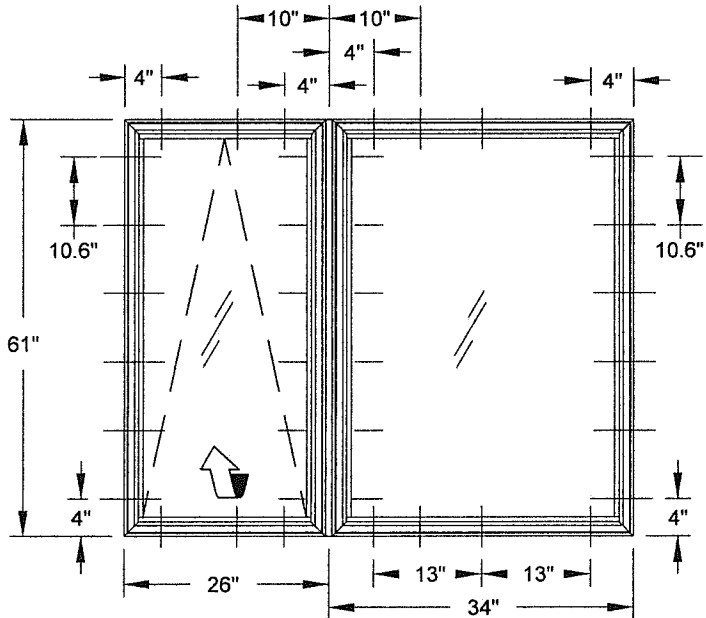
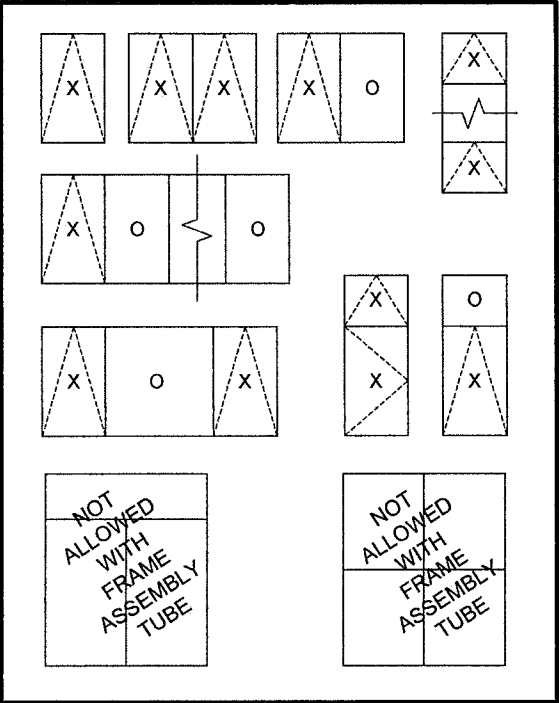
- A) FROM TABLE 9, A 34" X 61" FIXED CASEMENT WINDOW HAS A DESIGN PRESSURE EXCEEDING THE REQUIREMENT OF +70/-70 USING ANCHORS C OR D.
- B) FOR THE JAMB, FROM TABLE 3, ANCHOR TYPE C HAS THE ANCHOR AND SUBSTRATE DESIRED AND DOES NOT REQUIRE THE ANCHOR PLATE IF USING THE CRETEFLEX ANCHOR.
- C) FROM TABLE 2A, 6 ANCHORS ARE REQUIRED IN EACH JAMB.
- D) SIMILARLY, 3 ANCHORS ARE REQUIRED IN THE HEAD & SILL.
- E) DISTRIBUTE ANCHORS FOLLOWING GUIDELINES FROM ELEVATION ON SHEET 1.

| Material                      | Min. F <sub>y</sub> | Min. F <sub>u</sub> |
|-------------------------------|---------------------|---------------------|
| Steel Screw                   | 92 ksi              | 120 ksi             |
| 410 Screw                     | 90 ksi              | 110 ksi             |
| Elco UltraCon®                | 155 ksi             | 177 ksi             |
| 1/4" DeWalt UltraCon+®        | 148 ksi             | 164 ksi             |
| 410 SS DeWalt/Elco CreteFlex® | 127.4 ksi           | 189.7 ksi           |
| 6063-T5 Aluminum              | 16 ksi              | 22 ksi              |
| A36 Steel                     | 36 ksi              | 58 ksi              |
| Gr. 33 Steel Stud             | 33 ksi              | 45 ksi              |

TABLE 4:

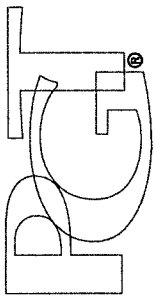
| Head Snubber Locations |                                       |
|------------------------|---------------------------------------|
| Glass Type:            |                                       |
| PVB (Types 1, 3 & 4)   | SG (Types 2, 5 & 6)                   |
| None Required          | 20" max. from each end & 20" max O.C. |

SAMPLE CONFIGURATIONS:



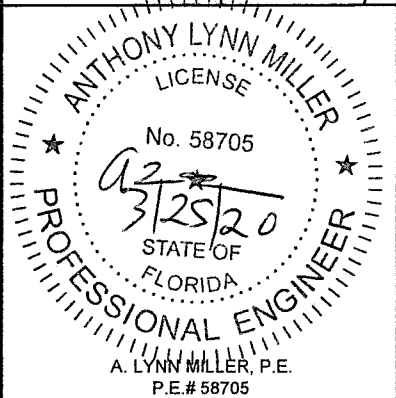
**PRODUCT REVISED**  
as complying with the Florida  
Building Code  
**NOA-No. 20-0402.07**  
**Expiration Date: 04/11/2023**  
By: *Manuel Perez*  
**Miami-Dade Product Control**

| Revision: | Date:    | Revised By: | Drawn By:  | Description: | Title:           | Series/Model:                   | Scale: | Sheet:  | Drawing No. | Rev. |
|-----------|----------|-------------|------------|--------------|------------------|---------------------------------|--------|---------|-------------|------|
|           | 03/13/20 | J ROSOWSKI  | J ROSOWSKI |              | MAT. PROP. TABLE | ANCHOR TYPE AND QUANTITY        | NTS    | 4 OF 11 | MD-AW740LM  | D    |
|           | 08/08/12 |             |            |              |                  | AWNING WINDOW DETAILS - LM & SM |        |         |             |      |
|           |          |             |            |              |                  | AW-740                          |        |         |             |      |



1070 TECHNOLOGY DRIVE  
N. VENICE, FL 34275  
(941) 480-1600

REGISTRATION #29296



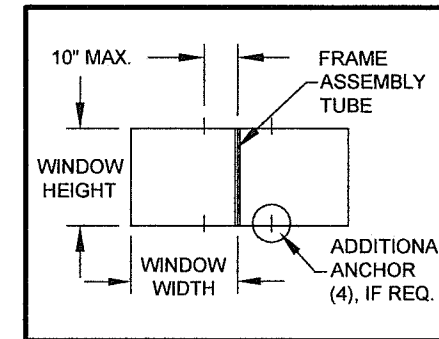
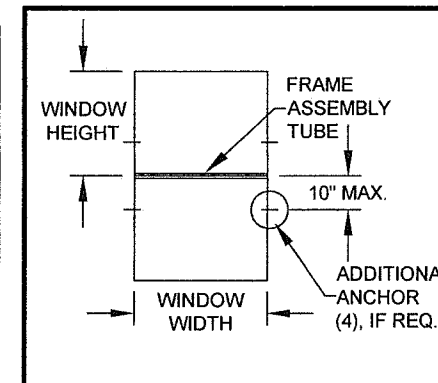
| <div style="border: 1px solid black; width: 40px; height: 40px; margin: 0 auto;"></div> |           | Design Pressure (psf) for Single Windows, All Anchor Groups |            |            |            |            |            |            |            |            |            |
|---|-----------|---|------------|------------|------------|------------|------------|------------|------------|------------|------------|
|   |           | Window Width  |            |            |            |            |            |            |            |            |            |
|   |           | under 23"   | 25-15/16"  | 27-7/8"    | 30-3/4"    | 32"        | 34"        | 37"        | 46"        | 53-1/8"    | 60"        |
| Window Height   | under 23" | +70/- 90  | +70/- 90   | +70/- 90   | +70/- 90   | +70/- 90   | +70/- 90   | +70/- 90   | +70/- 90   | +70/- 90   | +70/- 90   |
|   | 25-15/16" | +70/- 90  | +70/- 90   | +70/- 90   | +70/- 90   | +70/- 90   | +70/- 90   | +70/- 90   | +70/- 90   | +70/- 90   | +70/- 90   |
|   | 39"       | +70/- 90  | +70/- 90   | +70/- 90   | +70/- 90   | +70/- 90   | +70/- 90   | +70/- 90   | +70/- 90   | +70/- 81.1 | +70/- 71.2 |
|   | 50-5/8"   | +70/- 90  | +70/- 90   | +70/- 90   | +70/- 90   | +70/- 90   | +70/- 90   | +70/- 89.2 | +70/- 77.9 |            |            |
|   | 60"       | +70/- 90  | +70/- 90   | +70/- 90   | +70/- 86.5 | +70/- 83.7 | +70/- 79.6 | +70/- 74.3 |            |            |            |
|   | 63"       | +70/- 90  | +70/- 90   | +70/- 90   | +70/- 82.3 | +70/- 79.4 | +70/- 75.6 | +70/- 70.1 |            |            |            |
|   | 67"       | +70/- 90  | +70/- 90   | +70/- 83.5 | +70/- 76.3 | +70/- 73.4 | +/- 69.4   |            |            |            |            |
|   | 72"       | +70/- 90  | +70/- 87.2 | +70/- 77.4 | +/- 69.3   | +/- 65.4   |            |            |            |            |            |
|   | 76"       | +70/- 90  | +70/- 84.6 | +70/- 75.2 | +/- 65     |            |            |            |            |            |            |
| 84"   | +70/- 90  | +70/- 80.4  | +70/- 70.8 |            |            |            |            |            |            |            |            |

1) 5/16" LAMI (1/8 AN - .090" PVB - 1/8 AN)

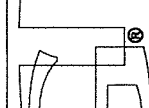
A diagram of a rectangular window. To the left of the window, there are two horizontal lines with arrows pointing towards each other, labeled "WINDOW HEIGHT". Below the window, there are two horizontal lines with arrows pointing towards each other, labeled "WINDOW WIDTH".

**PRODUCT REVISED**  
as complying with the Florida  
Building Code  
NOA-No. 20-0402.07  
Expiration Date: 04/11/2023  
By: Manuel Perez  
Miami-Dade Product Control

|               |           | Design Pressure (psf) for Windows Attached to a Vertical Frame Assembly Tube |           |           |           |              |           |         |              |           |         |              |           |              |           |              |           |              |           |              |              |           |           |
|---------------|-----------|--|-----------|-----------|-----------|--------------|-----------|---------|--------------|-----------|---------|--------------|-----------|--------------|-----------|--------------|-----------|--------------|-----------|--------------|--------------|-----------|-----------|
|               |           | Window Width   |           |           |           |              |           |         |              |           |         |              |           |              |           |              |           |              |           |              |              |           |           |
|               |           | under 23"  |           |           |           | 25-15/16"    |           |         | 27-7/8"      |           |         | 30-3/4"      |           | 32"          |           | 34"          |           | 37"          |           | 46"          |              | 53-1/8"   | 60"       |
|               |           | Anchor Group   |           |           |           | Anchor Group |           |         | Anchor Group |           |         | Anchor Group |           | Anchor Group |           | Anchor Group |           | Anchor Group |           | Anchor Group | Anchor Group |           |           |
|               |           | A  | B         | C         | D         | A            | B         | C & D   | A            | B         | C & D   | A            | B, C & D  | A            | B, C & D  | A            | B, C & D  | A            | B, C & D  | A            | B, C & D     | All       | All       |
| Window Height | under 23" | +70/-90  | +70/-90   | +70/-90   | +70/-90   | +70/-90      | +70/-90   | +70/-90 | +70/-90      | +70/-90   | +70/-90 | +70/-90      | +70/-90   | +70/-90      | +70/-90   | +70/-90      | +70/-90   | +70/-90      | +70/-90   | +70/-90      | +70/-90      | +70/-90   | +70/-90   |
|               | 25-15/16" | +70/-90  | +70/-90   | +70/-90   | +70/-90   | +70/-90      | +70/-90   | +70/-90 | +70/-90      | +70/-90   | +70/-90 | +70/-90      | +70/-90   | +70/-90      | +70/-90   | +70/-90      | +70/-90   | +70/-90      | +70/-90   | +70/-90      | +70/-90      | +70/-90   | +70/-90   |
|               | 39"       | +70/-90  | +70/-75.2 | +70/-89.9 | +70/-90   | +70/-83.1    | +70/-90   | +70/-90 | +70/-77.4    | +70/-90   | +70/-90 | +70/-90      | +70/-90   | +70/-90      | +70/-90   | +70/-90      | +70/-90   | +70/-87.4    | +70/-90   | +70/-90      | +70/-90      | +70/-81.1 | +70/-71.2 |
|               | 50-5/8"   | +70/-72.3  | +/-57.9   | +/-69.3   | +70/-90   | +/-64        | +70/-90   | +70/-90 | +/-59.6      | +70/-90   | +70/-90 | +70/-81      | +70/-90   | +70/-77.9    | +70/-90   | +70/-73.3    | +70/-90   | +/-67.3      | +70/-89.2 | +/-54.2      | +70/-77.9    |           |           |
|               | 60"       | +/-61  | +/-48.9   | +/-58.5   | +70/-90   | +/-54        | +70/-86.6 | +70/-90 | +/-50.3      | +70/-80.6 | +70/-90 | +/-68.4      | +70/-86.5 | +/-65.7      | +70/-83.7 | +/-61.8      | +70/-79.6 | +/-56.8      | +70/-74.3 |              |              |           |           |
|               | 63"       | +/-58.1  | +/-46.5   | +/-55.7   | +70/-88.7 | +/-51.5      | +70/-82.5 | +70/-90 | +/-47.9      | +70/-76.8 | +70/-90 | +/-65.1      | +70/-82.3 | +/-62.6      | +70/-79.4 | +/-58.9      | +70/-75.6 | +/-54.1      | +70/-70.1 |              |              |           |           |

[illegible]

**NOTES:**  
1) SEE SHEET 4 FOR ADDITIONAL SAMPLE CONFIGURATIONS.  
2) SEE SHEET 4 FOR SNUBBER REQUIREMENTS.

|   |  |                     |
|---|--|---------------------|
|  | 1070 TECHNOLOGY DRIVE<br>N. VENICE, FL 34275<br>(941) 480-1600 | REGISTRATION #29296 |
|---|--|---------------------|

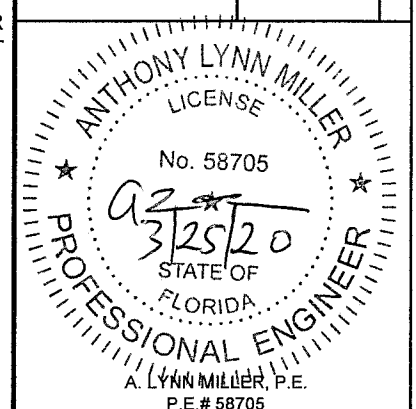
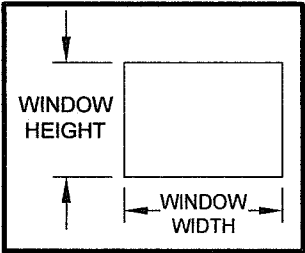




TABLE 8:

| Design Pressure (psf) for Single Windows, All Anchor Groups |              |           |          |          |          |          |            |          |          |            |
|---|--------------|-----------|----------|----------|----------|----------|------------|----------|----------|------------|
| Window Height   | Window Width |           |          |          |          |          |            |          |          |            |
|   | under 23"    | 25-15/16" | 27-7/8"  | 30-3/4"  | 32"      | 34"      | 37"        | 46"      | 53-1/8"  | 60"        |
|   | under 23"    | +90/-130  | +90/-130 | +90/-130 | +90/-130 | +90/-130 | +90/-130   | +90/-130 | +90/-130 | +90/-130   |
| 25-15/16"   | +90/-130     | +90/-130  | +90/-130 | +90/-130 | +90/-130 | +90/-130 | +90/-130   | +90/-130 | +90/-130 | +90/-130   |
| 39"   | +90/-130     | +90/-130  | +90/-130 | +90/-130 | +90/-130 | +90/-130 | +90/-130   | +90/-130 | +90/-130 | +90/-128.8 |
| 50-5/8"   | +90/-130     | +90/-130  | +90/-130 | +90/-130 | +90/-130 | +90/-130 | +90/-130   | +90/-130 |          |            |
| 60"   | +90/-130     | +90/-130  | +90/-130 | +90/-130 | +90/-130 | +90/-130 | +90/-130   |          |          |            |
| 63"   | +90/-130     | +90/-130  | +90/-130 | +90/-130 | +90/-130 | +90/-130 | +90/-129.6 |          |          |            |
| 67"   | +90/-130     | +90/-130  | +90/-130 | +90/-130 | +90/-130 | +90/-130 |            |          |          |            |
| 72"   | +90/-130     | +90/-130  | +90/-130 | +90/-130 | +90/-130 |          |            |          |          |            |
| 76"   | +90/-130     | +90/-130  | +90/-130 | +90/-130 |          |          |            |          |          |            |
| 84"   | +90/-130     | +90/-130  | +90/-130 |          |          |          |            |          |          |            |



FOR GLASS TYPES:  
2) 7/16" LAMI (3/16" AN - .090" SG - 3/16" AN)

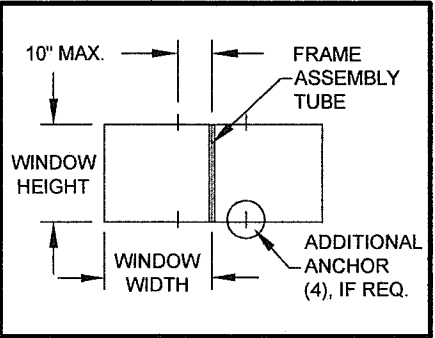
"SG"= SENTRYGLAS®BY KURARAY AMERICA, INC.

SEE SHEETS 1 & 4 FOR WINDOW ANCHOR LOCATIONS AND QUANTITIES.

**PRODUCT REVISED**  
as complying with the Florida Building Code  
NOA-No. **20-0402.07**  
Expiration Date: **04/11/2023**  
By: *Manuel Perez*  
Miami-Dade Product Control

TABLE 9:

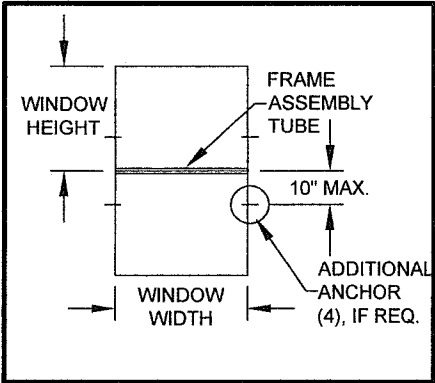
|               |           | Design Pressure (psf) for Windows Attached to a Vertical Frame Assembly Tube |           |           |           |              |           |         |              |           |         |              |          |              |           |              |           |              |           |         |              |              |              |         |
|---------------|-----------|--|-----------|-----------|-----------|--------------|-----------|---------|--------------|-----------|---------|--------------|----------|--------------|-----------|--------------|-----------|--------------|-----------|---------|--------------|--------------|--------------|---------|
|               |           | Window Width   |           |           |           |              |           |         |              |           |         |              |          |              |           |              |           |              |           |         |              |              |              |         |
|               |           | under 23"  |           |           |           | 25-15/16"    |           |         | 27-7/8"      |           |         | 30-3/4"      |          | 32"          |           | 34"          |           | 37"          |           |         | 46"          | 53-1/8"      | 60"          |         |
|               |           | Anchor Group   |           |           |           | Anchor Group |           |         | Anchor Group |           |         | Anchor Group |          | Anchor Group |           | Anchor Group |           | Anchor Group |           |         | Anchor Group | Anchor Group | Anchor Group |         |
|               |           | A  | B         | C         | D         | A            | B         | C & D   | A            | B         | C & D   | A            | B, C & D | A            | B, C & D  | A            | B, C & D  | A            | B         | C & D   | All          | All          | All          |         |
| Window Height | under 23" | +70/-90  | +70/-90   | +70/-90   | +70/-90   | +70/-90      | +70/-90   | +70/-90 | +70/-90      | +70/-90   | +70/-90 | +70/-90      | +70/-90  | +70/-90      | +70/-90   | +70/-90      | +70/-90   | +70/-90      | +70/-90   | +70/-90 | +70/-90      | +70/-90      | +70/-90      | +70/-90 |
|               | 25-15/16" | +70/-90  | +70/-90   | +70/-90   | +70/-90   | +70/-90      | +70/-90   | +70/-90 | +70/-90      | +70/-90   | +70/-90 | +70/-90      | +70/-90  | +70/-90      | +70/-90   | +70/-90      | +70/-90   | +70/-90      | +70/-90   | +70/-90 | +70/-90      | +70/-90      | +70/-90      | +70/-90 |
|               | 39"       | +70/-90  | +70/-75.2 | +70/-89.9 | +70/-90   | +70/-90      | +70/-90   | +70/-90 | +70/-90      | +70/-90   | +70/-90 | +70/-90      | +70/-90  | +70/-90      | +70/-90   | +70/-90      | +70/-90   | +70/-90      | +70/-90   | +70/-90 | +70/-90      | +70/-90      | +70/-90      | +70/-90 |
|               | 50-5/8"   | +70/-72.3  | +/-57.9   | +/-69.3   | +70/-90   | +70/-90      | +70/-90   | +70/-90 | +70/-90      | +70/-89.4 | +70/-90 | +70/-90      | +70/-81  | +70/-90      | +70/-77.9 | +70/-90      | +70/-73.3 | +70/-90      | +70/-89.8 | +70/-90 | +70/-90      | +70/-90      | +70/-90      | +70/-90 |
|               | 60"       | +/-61  | +/-48.9   | +/-58.5   | +70/-90   | +70/-81.1    | +70/-86.6 | +70/-90 | +70/-75.5    | +70/-80.6 | +70/-90 | +/-68.4      | +70/-90  | +/-65.7      | +70/-90   | +/-61.8      | +70/-90   | +70/-75.8    | +70/-90   | +70/-90 |              |              |              |         |
|               | 63"       | +/-58.1  | +/-46.5   | +/-55.7   | +70/-88.7 | +70/-77.2    | +70/-82.5 | +70/-90 | +70/-71.9    | +70/-76.8 | +70/-90 | +/-65.1      | +70/-90  | +/-62.6      | +70/-90   | +/-58.9      | +70/-90   | +70/-72.2    | +70/-86.7 | +70/-90 |              |              |              |         |



SEE SHEETS 1 & 4 FOR WINDOW ANCHOR LOCATIONS AND QUANTITIES. SEE SHEET 3 FOR ANY ADDITIONAL ANCHORS REQUIRED FOR THE FRAME ASSEMBLY TUBE.

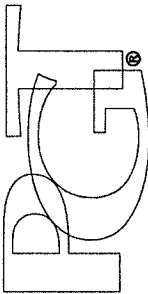
TABLE 10:

|               |           | Design Pressure (psf) for Windows Attached to a Horizontal Frame Assembly Tube |              |              |              |              |              |           |         |              |           |         |              |         |           |         |              |           |         |         |              |           |           |         |
|---------------|-----------|--|--------------|--------------|--------------|--------------|--------------|-----------|---------|--------------|-----------|---------|--------------|---------|-----------|---------|--------------|-----------|---------|---------|--------------|-----------|-----------|---------|
|               |           | Window Width   |              |              |              |              |              |           |         |              |           |         |              |         |           |         |              |           |         |         |              |           |           |         |
|               |           | under 23"  | 25-15/16"    | 27-7/8"      | 30-3/4"      | 32"          | 34"          |           |         | 37"          |           |         | 46"          |         |           |         | 53-1/8"      |           |         |         | 60"          |           |           |         |
|               |           | Anchor Group   | Anchor Group | Anchor Group | Anchor Group | Anchor Group | Anchor Group |           |         | Anchor Group |           |         | Anchor Group |         |           |         | Anchor Group |           |         |         | Anchor Group |           |           |         |
|               |           | All  | All          | All          | All          | All          | A            | B         | C & D   | A            | B         | C & D   | A            | B       | C         | D       | A            | B         | C       | D       | A            | B         | C         | D       |
| Window Height | under 23" | +70/-90  | +70/-90      | +70/-90      | +70/-90      | +70/-90      | +70/-90      | +70/-86.2 | +70/-90 | +70/-90      | +70/-79.2 | +70/-90 | +70/-79.5    | +/-63.7 | +70/-76.3 | +70/-90 | +/-68.9      | +/-55.2   | +/-66   | +70/-90 | +/-61        | +/-48.9   | +/-58.5   | +70/-90 |
|               | 25-15/16" | +70/-90  | +70/-90      | +70/-90      | +70/-90      | +70/-90      | +70/-90      | +70/-90   | +70/-90 | +70/-90      | +70/-90   | +70/-90 | +70/-88.1    | +70/-90 | +70/-90   | +70/-90 | +70/-76.3    | +70/-90   | +70/-90 | +70/-90 | +/-67.5      | +70/-86.6 | +70/-90   | +70/-90 |
|               | 39"       | +70/-90  | +70/-90      | +70/-90      | +70/-90      | +70/-90      | +70/-90      | +70/-90   | +70/-90 | +70/-90      | +70/-90   | +70/-90 | +70/-82      | +70/-90 | +70/-90   | +70/-90 | +70/-71      | +70/-81.3 | +70/-90 | +70/-90 | +/-62.9      | +70/-72   | +70/-86.2 | +70/-90 |
|               | 50-5/8"   | +70/-90  | +70/-90      | +70/-90      | +70/-90      | +70/-90      | +70/-90      | +70/-90   | +70/-90 | +70/-90      | +70/-90   | +70/-90 | +70/-90      | +70/-90 | +70/-90   | +70/-90 |              |           |         |         |              |           |           |         |
|               | 60"       | +70/-90  | +70/-90      | +70/-90      | +70/-90      | +70/-90      | +70/-90      | +70/-90   | +70/-90 | +70/-90      | +70/-90   | +70/-90 |              |         |           |         |              |           |         |         |              |           |           |         |
|               | 63"       | +70/-90  | +70/-90      | +70/-90      | +70/-90      | +70/-90      | +70/-90      | +70/-90   | +70/-90 | +70/-90      | +70/-90   | +70/-90 |              |         |           |         |              |           |         |         |              |           |           |         |
|               | 67"       | +70/-90  | +70/-90      | +70/-90      | +70/-90      | +70/-90      | +70/-90      | +70/-90   | +70/-90 |              |           |         |              |         |           |         |              |           |         |         |              |           |           |         |
|               | 72"       | +70/-90  | +70/-90      | +70/-90      | +70/-90      | +70/-90      |              |           |         |              |           |         |              |         |           |         |              |           |         |         |              |           |           |         |
| 76"           | +70/-90   | +70/-90  | +70/-90      | +70/-90      | +70/-90      |              |              |           |         |              |           |         |              |         |           |         |              |           |         |         |              |           |           |         |
| 84"           | +70/-90   | +70/-90  | +70/-90      |              |              |              |              |           |         |              |           |         |              |         |           |         |              |           |         |         |              |           |           |         |



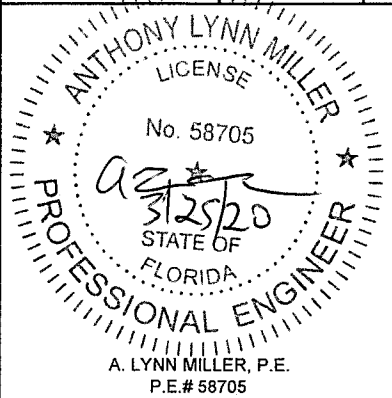
SEE SHEETS 1 & 4 FOR WINDOW ANCHOR LOCATIONS AND QUANTITIES. SEE SHEET 3 FOR ANY ADDITIONAL ANCHORS REQUIRED FOR THE FRAME ASSEMBLY TUBE.

| Revision:   | Date:    | Revised By: | Drawn By:  | Description:                      | Title:                          | Series/Model: | Scale: | Sheet:  | Rev: |
|-------------|----------|-------------|------------|-----------------------------------|---------------------------------|---------------|--------|---------|------|
| NO CHANGES. | 03/13/20 | J ROSOWSKI  | J ROSOWSKI | DESIGN PRESSURES PER GLAZING TYPE | AWNING WINDOW DETAILS - LM & SM | AW-740        | NTS    | 6 OF 11 | D    |



1070 TECHNOLOGY DRIVE  
N. VENICE, FL 34275  
(941) 480-1600

REGISTRATION #29296



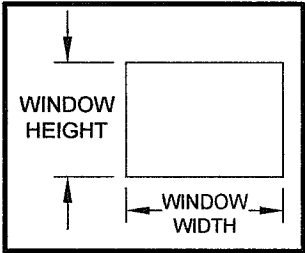
NOTES:  
1) SEE SHEET 4 FOR ADDITIONAL SAMPLE CONFIGURATIONS.  
2) SEE SHEET 4 FOR SNUBBER REQUIREMENTS.

TABLE 11:

| Design Pressure (psf) for Single Windows, All Anchor Groups |              |            |            |            |            |            |           |          |           |           |
|---|--------------|------------|------------|------------|------------|------------|-----------|----------|-----------|-----------|
| Window Height   | Window Width |            |            |            |            |            |           |          |           |           |
|   | under 23"    | 25-15/16"  | 27-7/8"    | 30-3/4"    | 32"        | 34"        | 37"       | 46"      | 53-1/8"   | 60"       |
|   | under 23"    | +70/- 90   | +70/- 90   | +70/- 90   | +70/- 90   | +70/- 90   | +70/- 90  | +70/- 90 | +70/- 90  | +70/- 90  |
| 25-15/16"   | +70/- 90     | +70/- 90   | +70/- 90   | +70/- 90   | +70/- 90   | +70/- 90   | +70/- 90  | +70/- 90 | +70/- 90  | +70/- 90  |
| 39"   | +70/- 90     | +70/- 90   | +70/- 90   | +70/- 90   | +70/- 90   | +70/- 90   | +70/- 90  | +70/- 90 | +70/-83.2 | +70/-73.1 |
| 50-5/8"   | +70/- 90     | +70/- 90   | +70/- 90   | +70/- 90   | +70/- 90   | +70/- 90   | +70/- 90  | +70/-80  |           |           |
| 60"   | +70/- 90     | +70/- 90   | +70/- 90   | +70/-88.8  | +70/-85.8  | +70/-81.7  | +70/-76.2 |          |           |           |
| 63"   | +70/- 90     | +70/- 90   | +70/- 90   | +70/-84.4  | +70/-81.5  | +70/-77.5  | +70/-71.9 |          |           |           |
| 67"   | +70/- 90     | +70/- 90   | +70/-85.6  | +70/-78.3  | +70/- 75.3 | +70/- 71.2 |           |          |           |           |
| 72"   | +70/- 90     | +70/-89.5  | +70/- 79.4 | +70/- 71.1 | +/- 67.1   |            |           |          |           |           |
| 76"   | +70/- 90     | +70/-86.8  | +70/- 77.2 | +/- 66.6   |            |            |           |          |           |           |
| 84"   | +70/- 90     | +70/- 82.5 | +70/- 72.7 |            |            |            |           |          |           |           |

FOR GLASS TYPES:  
3) 7/8" LAMI. IG: (1/8" AN - 7/16" AIR - 1/8" AN - .090" PVB - 1/8" AN)

"PVB"= TROSIFOL® PVB BY KURARAY AMERICA, INC.

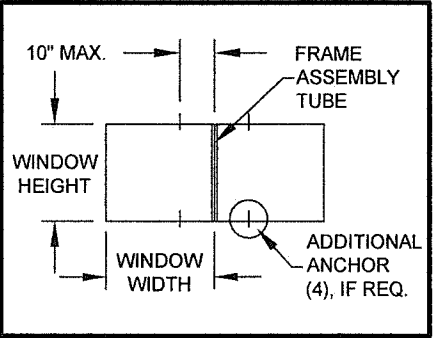


SEE SHEETS 1 & 4 FOR WINDOW ANCHOR LOCATIONS AND QUANTITIES.

**PRODUCT REVISED**  
as complying with the Florida Building Code  
NOA-No. **20-0402.07**  
Expiration Date: **04/11/2023**  
By: *Manuel Perez*  
Miami-Dade Product Control

TABLE 12:

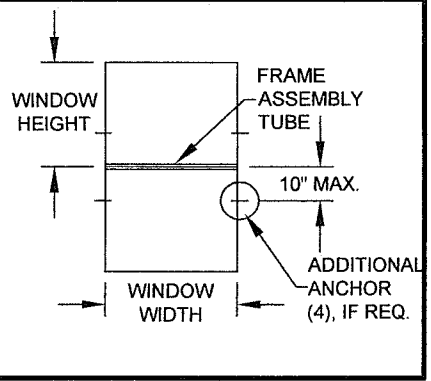
|               |           | Design Pressure (psf) for Windows Attached to a Vertical Frame Assembly Tube |           |           |         |              |           |         |              |           |         |              |           |              |           |              |           |              |           |              |          |              |           |              |           |
|---------------|-----------|--|-----------|-----------|---------|--------------|-----------|---------|--------------|-----------|---------|--------------|-----------|--------------|-----------|--------------|-----------|--------------|-----------|--------------|----------|--------------|-----------|--------------|-----------|
|               |           | Window Width   |           |           |         |              |           |         |              |           |         |              |           |              |           |              |           |              |           |              |          |              |           |              |           |
|               |           | under 23"  |           |           |         | 25-15/16"    |           |         | 27-7/8"      |           |         | 30-3/4"      |           | 32"          |           | 34"          |           | 37"          |           | 46"          |          | 53-1/8"      |           | 60"          |           |
|               |           | Anchor Group   |           |           |         | Anchor Group |           |         | Anchor Group |           |         | Anchor Group |           | Anchor Group |           | Anchor Group |           | Anchor Group |           | Anchor Group |          | Anchor Group |           | Anchor Group |           |
|               |           | A  | B         | C         | D       | A            | B         | C & D   | A            | B         | C & D   | A            | B, C & D  | A            | B, C & D  | A            | B, C & D  | A            | B, C & D  | A            | B, C & D | A            | B, C & D  | A            | B, C & D  |
| Window Height | under 23" | +70/-90  | +70/-90   | +70/-90   | +70/-90 | +70/-90      | +70/-90   | +70/-90 | +70/-90      | +70/-90   | +70/-90 | +70/-90      | +70/-90   | +70/-90      | +70/-90   | +70/-90      | +70/-90   | +70/-90      | +70/-90   | +70/-90      | +70/-90  | +70/-90      | +70/-90   | +70/-90      | +70/-90   |
|               | 25-15/16" | +70/-90  | +70/-90   | +70/-90   | +70/-90 | +70/-90      | +70/-90   | +70/-90 | +70/-90      | +70/-90   | +70/-90 | +70/-90      | +70/-90   | +70/-90      | +70/-90   | +70/-90      | +70/-90   | +70/-90      | +70/-90   | +70/-90      | +70/-90  | +70/-90      | +70/-90   | +70/-90      | +70/-90   |
|               | 39"       | +70/-90  | +70/-75.2 | +70/-89.9 | +70/-90 | +70/-83.1    | +70/-90   | +70/-90 | +70/-77.4    | +70/-90   | +70/-90 | +70/-90      | +70/-90   | +70/-90      | +70/-90   | +70/-90      | +70/-90   | +70/-87.4    | +70/-90   | +70/-90      | +70/-90  | +70/-81.2    | +70/-83.2 | +70/-71.9    | +70/-73.1 |
|               | 50-5/8"   | +70/-72.3  | +/-57.9   | +/-69.3   | +70/-90 | +/-64        | +70/-90   | +70/-90 | +/-59.6      | +70/-90   | +70/-90 | +70/-81      | +70/-90   | +70/-77.9    | +70/-90   | +70/-73.3    | +70/-90   | +/-67.3      | +70/-90   | +/-54.2      | +70/-80  |              |           |              |           |
|               | 60"       | +/-61  | +/-48.9   | +/-58.5   | +70/-90 | +/-54        | +70/-86.6 | +70/-90 | +/-50.3      | +70/-80.6 | +70/-90 | +/-68.4      | +70/-88.8 | +/-65.7      | +70/-85.8 | +/-61.8      | +70/-81.7 | +/-56.8      | +70/-76.2 |              |          |              |           |              |           |
| 63"           | +/-58.1   | +/-46.5  | +/-55.7   | +70/-88.7 | +/-51.5 | +70/-82.5    | +70/-90   | +/-47.9 | +70/-76.8    | +70/-90   | +/-65.1 | +70/-84.4    | +/-62.6   | +70/-81.5    | +/-58.9   | +70/-77.5    | +/-54.1   | +70/-71.9    |           |              |          |              |           |              |           |



SEE SHEETS 1 & 4 FOR WINDOW ANCHOR LOCATIONS AND QUANTITIES. SEE SHEET 3 FOR ANY ADDITIONAL ANCHORS REQUIRED FOR THE FRAME ASSEMBLY TUBE.

TABLE 13:

|               |           | Design Pressure (psf) for Windows Attached to a Horizontal Frame Assembly Tube |              |              |              |              |              |           |           |              |           |           |              |           |           |         |              |         |           |           |              |           |         |           |
|---------------|-----------|--|--------------|--------------|--------------|--------------|--------------|-----------|-----------|--------------|-----------|-----------|--------------|-----------|-----------|---------|--------------|---------|-----------|-----------|--------------|-----------|---------|-----------|
|               |           | Window Width   |              |              |              |              |              |           |           |              |           |           |              |           |           |         |              |         |           |           |              |           |         |           |
|               |           | under 23"  | 25-15/16"    | 27-7/8"      | 30-3/4"      | 32"          | 34"          |           |           | 37"          |           |           | 46"          |           |           |         | 53-1/8"      |         |           |           | 60"          |           |         |           |
|               |           | Anchor Group   | Anchor Group | Anchor Group | Anchor Group | Anchor Group | Anchor Group |           |           | Anchor Group |           |           | Anchor Group |           |           |         | Anchor Group |         |           |           | Anchor Group |           |         |           |
|               |           | All  | All          | All          | All          | All          | A            | B         | C & D     | A            | B         | C & D     | A            | B         | C         | D       | A            | B       | C         | D         | A            | B         | C       | D         |
| Window Height | under 23" | +70/-90  | +70/-90      | +70/-90      | +70/-90      | +70/-90      | +70/-90      | +70/-86.2 | +70/-90   | +70/-90      | +70/-79.2 | +70/-90   | +70/-79.5    | +/-63.7   | +70/-76.3 | +70/-90 | +/-68.9      | +/-55.2 | +/-66     | +70/-90   | +/-61        | +/-48.9   | +/-58.5 | +70/-90   |
|               | 25-15/16" | +70/-90  | +70/-90      | +70/-90      | +70/-90      | +70/-90      | +70/-90      | +70/-90   | +70/-90   | +70/-87.6    | +70/-90   | +70/-90   | +70/-70.5    | +70/-90   | +70/-90   | +70/-90 | +/-61        | +70/-90 | +70/-90   | +70/-90   | +/-54        | +70/-86.6 | +70/-90 | +70/-90   |
|               | 39"       | +70/-90  | +70/-90      | +70/-90      | +70/-90      | +70/-90      | +70/-90      | +70/-90   | +70/-90   | +70/-87.4    | +70/-90   | +70/-90   | +70/-70.3    | +70/-75.1 | +70/-89.9 | +70/-90 | +/-50.7      | +/-65.1 | +70/-77.8 | +70/-83.2 | +/-44.9      | +/-57.6   | +/-68.9 | +70/-73.1 |
|               | 50-5/8"   | +70/-90  | +70/-90      | +70/-90      | +70/-90      | +70/-90      | +70/-85.5    | +70/-90   | +70/-90   | +70/-89.8    | +70/-90   | +70/-90   | +/-63.2      | +70/-80   | +70/-80   | +70/-80 |              |         |           |           |              |           |         |           |
|               | 60"       | +70/-90  | +70/-90      | +70/-90      | +70/-88.8    | +70/-85.8    | +70/-81.7    | +70/-81.7 | +70/-81.7 | +70/-75.8    | +70/-76.2 | +70/-76.2 |              |           |           |         |              |         |           |           |              |           |         |           |
|               | 63"       | +70/-90  | +70/-90      | +70/-90      | +70/-84.4    | +70/-81.5    | +70/-77.5    | +70/-77.5 | +70/-77.5 | +70/-71.9    | +70/-71.9 | +70/-71.9 |              |           |           |         |              |         |           |           |              |           |         |           |
|               | 67"       | +70/-90  | +70/-90      | +70/-85.6    | +70/-78.3    | +70/-75.3    | +70/-71.2    | +70/-71.2 | +70/-71.2 |              |           |           |              |           |           |         |              |         |           |           |              |           |         |           |
|               | 72"       | +70/-90  | +70/-89.5    | +70/-79.4    | +70/-71.1    | +/-67.1      |              |           |           |              |           |           |              |           |           |         |              |         |           |           |              |           |         |           |
|               | 76"       | +70/-90  | +70/-86.8    | +70/-77.2    | +/-66.6      |              |              |           |           |              |           |           |              |           |           |         |              |         |           |           |              |           |         |           |
| 84"           | +70/-90   | +70/-82.5  | +70/-72.7    |              |              |              |              |           |           |              |           |           |              |           |           |         |              |         |           |           |              |           |         |           |



SEE SHEETS 1 & 4 FOR WINDOW ANCHOR LOCATIONS AND QUANTITIES. SEE SHEET 3 FOR ANY ADDITIONAL ANCHORS REQUIRED FOR THE FRAME ASSEMBLY TUBE.

NOTES:  
1) SEE SHEET 4 FOR ADDITIONAL SAMPLE CONFIGURATIONS.  
2) SEE SHEET 4 FOR SNUBBER REQUIREMENTS.

Revision: NO CHANGES.

Date: 03/13/2020

Revised By: J ROSOWSKI

Drawn By: J ROSOWSKI

Description: DESIGN PRESSURES PER GLAZING TYPE

Title: AWNING WINDOW DETAILS - LM & SM

Series/Model: AW-740

Scale: NTS

Sheet: 7 OF 11

Drawing No. MD-AW740LM

Rev: D

ANTHONY LYNN MILLER  
LICENSE  
No. 58705  
3/25/20  
STATE OF FLORIDA  
PROFESSIONAL ENGINEER  
A. LYNN MILLER, P.E.  
P.E.# 58705

REGISTRATION #29296

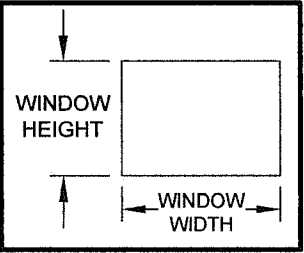


TABLE 14:

| Design Pressure (psf) for Single Windows, All Anchor Groups |              |           |           |         |           |           |           |           |         |           |
|---|--------------|-----------|-----------|---------|-----------|-----------|-----------|-----------|---------|-----------|
| Window Height   | Window Width |           |           |         |           |           |           |           |         |           |
|   | under 23"    | 25-15/16" | 27-7/8"   | 30-3/4" | 32"       | 34"       | 37"       | 46"       | 53-1/8" | 60"       |
|   | under 23"    | +70/-90   | +70/-90   | +70/-90 | +70/-90   | +70/-90   | +70/-90   | +70/-90   | +70/-90 | +70/-90   |
| 25-15/16"   | +70/-90      | +70/-90   | +70/-90   | +70/-90 | +70/-90   | +70/-90   | +70/-90   | +70/-90   | +70/-90 | +70/-90   |
| 39"   | +70/-90      | +70/-90   | +70/-90   | +70/-90 | +70/-90   | +70/-90   | +70/-90   | +70/-90   | +70/-90 | +70/-81.2 |
| 50-5/8"   | +70/-90      | +70/-90   | +70/-90   | +70/-90 | +70/-90   | +70/-90   | +70/-90   | +70/-88.8 |         |           |
| 60"   | +70/-90      | +70/-90   | +70/-90   | +70/-90 | +70/-90   | +70/-90   | +70/-84.6 |           |         |           |
| 63"   | +70/-90      | +70/-90   | +70/-90   | +70/-90 | +70/-90   | +70/-86.1 | +70/-79.9 |           |         |           |
| 67"   | +70/-90      | +70/-90   | +70/-90   | +70/-87 | +70/-83.6 | +70/-79.1 |           |           |         |           |
| 72"   | +70/-90      | +70/-90   | +70/-88.2 | +70/-79 | +70/-74.6 |           |           |           |         |           |
| 76"   | +70/-90      | +70/-90   | +70/-85.8 | +70/-74 |           |           |           |           |         |           |
| 84"   | +70/-90      | +70/-90   | +70/-80.8 |         |           |           |           |           |         |           |

FOR GLASS TYPES:  
4) 7/8" LAMI. IG: (1/8" T - 7/16" AIR - 1/8" AN - .090" PVB - 1/8" AN)

"PVB"= TROSIFOL® PVB BY KURARAY AMERICA, INC.

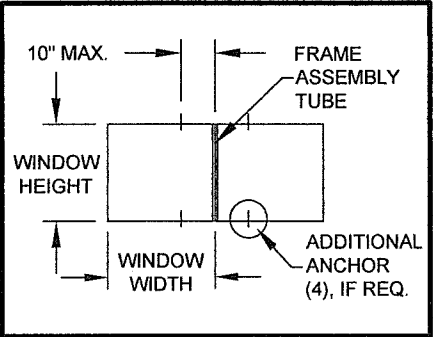


SEE SHEETS 1  
& 4 FOR  
WINDOW  
ANCHOR  
LOCATIONS  
AND  
QUANTITIES.

PRODUCT REVISED  
as complying with the Florida  
Building Code  
NOA-No. 20-0402.07  
Expiration Date: 04/11/2023  
By: Manuel Perez  
Miami-Dade Product Control

TABLE 15:

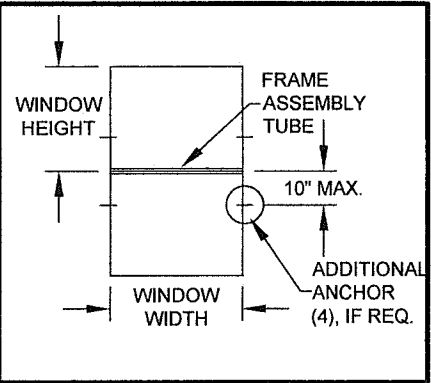
|               |           | Design Pressure (psf) for Windows Attached to a Vertical Frame Assembly Tube |           |           |         |              |           |         |              |           |         |              |          |              |          |              |          |              |           |              |           |           |              |           |              |           |  |
|---------------|-----------|--|-----------|-----------|---------|--------------|-----------|---------|--------------|-----------|---------|--------------|----------|--------------|----------|--------------|----------|--------------|-----------|--------------|-----------|-----------|--------------|-----------|--------------|-----------|--|
|               |           | Window Width   |           |           |         |              |           |         |              |           |         |              |          |              |          |              |          |              |           |              |           |           |              |           |              |           |  |
|               |           | under 23"  |           |           |         | 25-15/16"    |           |         | 27-7/8"      |           |         | 30-3/4"      |          | 32"          |          | 34"          |          | 37"          |           | 46"          |           |           | 53-1/8"      |           | 60"          |           |  |
|               |           | Anchor Group   |           |           |         | Anchor Group |           |         | Anchor Group |           |         | Anchor Group |          | Anchor Group |          | Anchor Group |          | Anchor Group |           | Anchor Group |           |           | Anchor Group |           | Anchor Group |           |  |
|               |           | A  | B         | C         | D       | A            | B         | C & D   | A            | B         | C & D   | A            | B, C & D | A            | B, C & D | A            | B, C & D | A            | B, C & D  | A            | B         | C & D     | A            | B, C & D  | All          |           |  |
| Window Height | under 23" | +70/-90  | +70/-90   | +70/-90   | +70/-90 | +70/-90      | +70/-90   | +70/-90 | +70/-90      | +70/-90   | +70/-90 | +70/-90      | +70/-90  | +70/-90      | +70/-90  | +70/-90      | +70/-90  | +70/-90      | +70/-90   | +70/-90      | +70/-90   | +70/-90   | +70/-90      | +70/-90   | +70/-90      |           |  |
|               | 25-15/16" | +70/-90  | +70/-90   | +70/-90   | +70/-90 | +70/-90      | +70/-90   | +70/-90 | +70/-90      | +70/-90   | +70/-90 | +70/-90      | +70/-90  | +70/-90      | +70/-90  | +70/-90      | +70/-90  | +70/-90      | +70/-90   | +70/-90      | +70/-90   | +70/-90   | +70/-90      | +70/-90   | +70/-90      |           |  |
|               | 39"       | +70/-90  | +70/-75.2 | +70/-89.9 | +70/-90 | +70/-83.1    | +70/-90   | +70/-90 | +70/-77.4    | +70/-90   | +70/-90 | +70/-90      | +70/-90  | +70/-90      | +70/-90  | +70/-90      | +70/-90  | +70/-87.4    | +70/-90   | +70/-90      | +70/-90   | +70/-90   | +70/-90      | +70/-81.2 | +70/-90      | +70/-81.2 |  |
|               | 50-5/8"   | +70/-72.3  | +/-57.9   | +/-69.3   | +70/-90 | +/-64        | +70/-90   | +70/-90 | +/-59.6      | +70/-90   | +70/-90 | +70/-81      | +70/-90  | +70/-77.9    | +70/-90  | +70/-73.3    | +70/-90  | +/-67.3      | +70/-90   | +70/-72.2    | +70/-86.8 | +70/-88.8 |              |           |              |           |  |
|               | 60"       | +/-61  | +/-48.9   | +/-58.5   | +70/-90 | +/-54        | +70/-86.6 | +70/-90 | +/-50.3      | +70/-80.6 | +70/-90 | +/-68.4      | +70/-90  | +/-65.7      | +70/-90  | +/-61.8      | +70/-90  | +/-56.8      | +70/-84.6 |              |           |           |              |           |              |           |  |
| 63"           | +/-58.1   | +/-46.5  | +/-55.7   | +70/-88.7 | +/-51.5 | +70/-82.5    | +70/-90   | +/-47.9 | +70/-76.8    | +70/-90   | +/-65.1 | +70/-90      | +/-62.6  | +70/-90      | +/-58.9  | +70/-86.1    | +/-54.1  | +70/-79.9    |           |              |           |           |              |           |              |           |  |



SEE SHEETS 1 & 4 FOR WINDOW  
ANCHOR LOCATIONS AND QUANTITIES.  
SEE SHEET 3 FOR ANY ADDITIONAL  
ANCHORS REQUIRED FOR THE FRAME  
ASSEMBLY TUBE.

TABLE 16:

|               |           | Design Pressure (psf) for Windows Attached to a Horizontal Frame Assembly Tube |              |              |              |              |              |           |           |              |           |           |              |           |           |           |              |         |           |         |              |           |         |           |
|---------------|-----------|--|--------------|--------------|--------------|--------------|--------------|-----------|-----------|--------------|-----------|-----------|--------------|-----------|-----------|-----------|--------------|---------|-----------|---------|--------------|-----------|---------|-----------|
|               |           | Window Width   |              |              |              |              |              |           |           |              |           |           |              |           |           |           |              |         |           |         |              |           |         |           |
|               |           | under 23"  | 25-15/16"    | 27-7/8"      | 30-3/4"      | 32"          | 34"          |           |           | 37"          |           |           | 46"          |           |           |           | 53-1/8"      |         |           |         | 60"          |           |         |           |
|               |           | Anchor Group   | Anchor Group | Anchor Group | Anchor Group | Anchor Group | Anchor Group |           |           | Anchor Group |           |           | Anchor Group |           |           |           | Anchor Group |         |           |         | Anchor Group |           |         |           |
|               |           | All  | All          | All          | All          | All          | A            | B         | C & D     | A            | B         | C & D     | A            | B         | C         | D         | A            | B       | C         | D       | A            | B         | C       | D         |
| Window Height | under 23" | +70/-90  | +70/-90      | +70/-90      | +70/-90      | +70/-90      | +70/-86.2    | +70/-90   | +70/-90   | +70/-79.2    | +70/-90   | +70/-79.5 | +/-63.7      | +70/-76.3 | +70/-90   | +/-68.9   | +/-55.2      | +/-66   | +70/-90   | +/-61   | +/-48.9      | +/-58.5   | +70/-90 |           |
|               | 25-15/16" | +70/-90  | +70/-90      | +70/-90      | +70/-90      | +70/-90      | +70/-90      | +70/-90   | +70/-90   | +70/-87.6    | +70/-90   | +70/-90   | +70/-70.5    | +70/-90   | +70/-90   | +70/-90   | +/-61        | +70/-90 | +70/-90   | +70/-90 | +/-54        | +70/-86.6 | +70/-90 | +70/-90   |
|               | 39"       | +70/-90  | +70/-90      | +70/-90      | +70/-90      | +70/-90      | +70/-90      | +70/-90   | +70/-90   | +70/-87.4    | +70/-90   | +70/-90   | +70/-70.3    | +70/-75.1 | +70/-89.9 | +70/-90   | +/-60.9      | +/-65.1 | +70/-77.8 | +70/-90 | +/-44.9      | +/-57.6   | +/-68.9 | +70/-81.2 |
|               | 50-5/8"   | +70/-90  | +70/-90      | +70/-90      | +70/-90      | +70/-90      | +70/-85.5    | +70/-90   | +70/-90   | +70/-89.8    | +70/-90   | +70/-90   | +70/-72.2    | +70/-86.8 | +70/-88.8 | +70/-88.8 |              |         |           |         |              |           |         |           |
|               | 60"       | +70/-90  | +70/-90      | +70/-90      | +70/-90      | +70/-87.6    | +70/-90      | +70/-90   | +70/-90   | +70/-84.6    | +70/-84.6 | +70/-84.6 |              |           |           |           |              |         |           |         |              |           |         |           |
|               | 63"       | +70/-90  | +70/-90      | +70/-90      | +70/-90      | +70/-90      | +70/-86.1    | +70/-86.1 | +70/-86.1 | +70/-79.9    | +70/-79.9 | +70/-79.9 |              |           |           |           |              |         |           |         |              |           |         |           |
|               | 67"       | +70/-90  | +70/-90      | +70/-90      | +70/-87      | +70/-83.6    | +70/-79.1    | +70/-79.1 | +70/-79.1 |              |           |           |              |           |           |           |              |         |           |         |              |           |         |           |
|               | 72"       | +70/-90  | +70/-90      | +70/-88.2    | +70/-79      | +70/-74.6    |              |           |           |              |           |           |              |           |           |           |              |         |           |         |              |           |         |           |
|               | 76"       | +70/-90  | +70/-90      | +70/-85.8    | +70/-74      |              |              |           |           |              |           |           |              |           |           |           |              |         |           |         |              |           |         |           |
| 84"           | +70/-90   | +70/-90  | +70/-80.8    |              |              |              |              |           |           |              |           |           |              |           |           |           |              |         |           |         |              |           |         |           |



SEE SHEETS 1 & 4 FOR WINDOW ANCHOR  
LOCATIONS AND QUANTITIES. SEE SHEET  
3 FOR ANY ADDITIONAL ANCHORS  
REQUIRED FOR THE FRAME ASSEMBLY  
TUBE.

NOTES:  
1) SEE SHEET 4 FOR ADDITIONAL SAMPLE CONFIGURATIONS.  
2) SEE SHEET 4 FOR SNUBBER REQUIREMENTS.

Revised By: J ROSOWSKI  
Date: 03/13/20  
Revision: NO CHANGES.

Drawn By: J ROSOWSKI  
Date: 08/08/12

Description: DESIGN PRESSURES PER GLAZING TYPE

Title: AWNING WINDOW DETAILS - LM & SM

Series/Model: AW-740

Scale: NTS

Sheet: 8 OF 11

Drawing No. MD-AW740LM

Rev: D

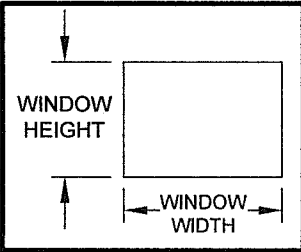
TABLE 17:

| Design Pressure (psf) for Single Windows, All Anchor Groups |              |           |          |          |          |          |          |          |          |          |          |
|---|--------------|-----------|----------|----------|----------|----------|----------|----------|----------|----------|----------|
| Window Height   | Window Width |           |          |          |          |          |          |          |          |          |          |
|   | under 23"    | 25-15/16" | 27-7/8"  | 30-3/4"  | 32"      | 34"      | 37"      | 46"      | 53-1/8"  | 60"      |          |
|   |              |           |          |          |          |          |          |          |          |          |          |
| under 23"   | +90/-130     | +90/-130  | +90/-130 | +90/-130 | +90/-130 | +90/-130 | +90/-130 | +90/-130 | +90/-130 | +90/-130 | +90/-130 |
| 25-15/16"   | +90/-130     | +90/-130  | +90/-130 | +90/-130 | +90/-130 | +90/-130 | +90/-130 | +90/-130 | +90/-130 | +90/-130 | +90/-130 |
| 39"   | +90/-130     | +90/-130  | +90/-130 | +90/-130 | +90/-130 | +90/-130 | +90/-130 | +90/-130 | +90/-130 | +90/-130 | +90/-130 |
| 50-5/8"   | +90/-130     | +90/-130  | +90/-130 | +90/-130 | +90/-130 | +90/-130 | +90/-130 | +90/-130 | +90/-130 |          |          |
| 60"   | +90/-130     | +90/-130  | +90/-130 | +90/-130 | +90/-130 | +90/-130 | +90/-130 | +90/-130 |          |          |          |
| 63"   | +90/-130     | +90/-130  | +90/-130 | +90/-130 | +90/-130 | +90/-130 | +90/-130 |          |          |          |          |
| 67"   | +90/-130     | +90/-130  | +90/-130 | +90/-130 | +90/-130 | +90/-130 |          |          |          |          |          |
| 72"   | +90/-130     | +90/-130  | +90/-130 | +90/-130 | +90/-130 |          |          |          |          |          |          |
| 76"   | +90/-130     | +90/-130  | +90/-130 | +90/-130 |          |          |          |          |          |          |          |
| 84"   | +90/-130     | +90/-130  | +90/-130 |          |          |          |          |          |          |          |          |

FOR GLASS TYPES:

- 5) 7/8" LAMI. IG: (3/16" AN - 1/4" AIR - 3/16" AN - .090" SG - 3/16" AN)  
6) 7/8" LAMI. IG: (3/16" T - 1/4" AIR - 3/16" AN - .090" SG - 3/16" AN)

"SG"= SENTRYGLAS® BY KURARAY AMERICA, INC.

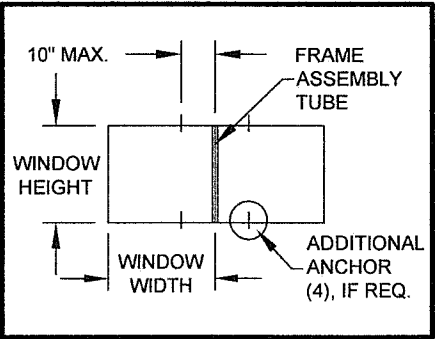


SEE SHEETS 1  
& 4 FOR  
WINDOW  
ANCHOR  
LOCATIONS  
AND  
QUANTITIES.

**PRODUCT REVISED**  
as complying with the Florida  
Building Code  
NOA-No. **20-0402.07**  
Expiration Date: **04/11/2023**  
By: *Manuel Perez*  
Miami-Dade Product Control

TABLE 18:

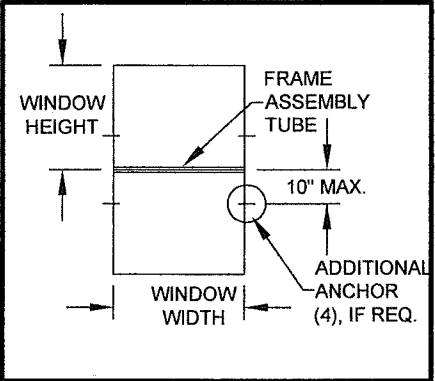
|               |           | Design Pressure (psf) for Windows Attached to a Vertical Frame Assembly Tube |           |           |           |              |           |         |              |           |         |              |          |              |          |              |          |              |           |         |              |              |              |  |
|---------------|-----------|--|-----------|-----------|-----------|--------------|-----------|---------|--------------|-----------|---------|--------------|----------|--------------|----------|--------------|----------|--------------|-----------|---------|--------------|--------------|--------------|--|
|               |           | Window Width   |           |           |           |              |           |         |              |           |         |              |          |              |          |              |          |              |           |         |              |              |              |  |
|               |           | under 23"  |           |           |           | 25-15/16"    |           |         | 27-7/8"      |           |         | 30-3/4"      |          | 32"          |          | 34"          |          | 37"          |           |         | 46"          | 53-1/8"      | 60"          |  |
|               |           | Anchor Group   |           |           |           | Anchor Group |           |         | Anchor Group |           |         | Anchor Group |          | Anchor Group |          | Anchor Group |          | Anchor Group |           |         | Anchor Group | Anchor Group | Anchor Group |  |
|               |           | A  | B         | C         | D         | A            | B         | C & D   | A            | B         | C & D   | A            | B, C & D | A            | B, C & D | A            | B, C & D | A            | B         | C & D   | All          | All          | All          |  |
| Window Height | under 23" | +70/-90  | +70/-90   | +70/-90   | +70/-90   | +70/-90      | +70/-90   | +70/-90 | +70/-90      | +70/-90   | +70/-90 | +70/-90      | +70/-90  | +70/-90      | +70/-90  | +70/-90      | +70/-90  | +70/-90      | +70/-90   | +70/-90 | +70/-90      | +70/-90      | +70/-90      |  |
|               | 25-15/16" | +70/-90  | +70/-90   | +70/-90   | +70/-90   | +70/-90      | +70/-90   | +70/-90 | +70/-90      | +70/-90   | +70/-90 | +70/-90      | +70/-90  | +70/-90      | +70/-90  | +70/-90      | +70/-90  | +70/-90      | +70/-90   | +70/-90 | +70/-90      | +70/-90      | +70/-90      |  |
|               | 39"       | +70/-90  | +70/-75.2 | +70/-89.9 | +70/-90   | +70/-90      | +70/-90   | +70/-90 | +70/-90      | +70/-90   | +70/-90 | +70/-90      | +70/-90  | +70/-90      | +70/-90  | +70/-90      | +70/-90  | +70/-90      | +70/-90   | +70/-90 | +70/-90      | +70/-90      | +70/-90      |  |
|               | 50-5/8"   | +70/-72.3  | +/-57.9   | +/-69.3   | +70/-90   | +70/-90      | +70/-90   | +70/-90 | +70/-89.4    | +70/-90   | +70/-90 | +70/-81      | +70/-90  | +70/-77.9    | +70/-90  | +70/-73.3    | +70/-90  | +70/-89.8    | +70/-90   | +70/-90 | +70/-90      | +70/-90      |              |  |
|               | 60"       | +/-61  | +/-48.9   | +/-58.5   | +70/-90   | +70/-81.1    | +70/-86.6 | +70/-90 | +70/-75.5    | +70/-80.6 | +70/-90 | +/-68.4      | +70/-90  | +/-65.7      | +70/-90  | +/-61.8      | +70/-90  | +70/-75.8    | +70/-90   | +70/-90 |              |              |              |  |
|               | 63"       | +/-58.1  | +/-46.5   | +/-55.7   | +70/-88.7 | +70/-77.2    | +70/-82.5 | +70/-90 | +70/-71.9    | +70/-76.8 | +70/-90 | +/-65.1      | +70/-90  | +/-62.6      | +70/-90  | +/-58.9      | +70/-90  | +70/-72.2    | +70/-86.7 | +70/-90 |              |              |              |  |



SEE SHEETS 1 & 4 FOR WINDOW  
ANCHOR LOCATIONS AND QUANTITIES.  
SEE SHEET 3 FOR ANY ADDITIONAL  
ANCHORS REQUIRED FOR THE FRAME  
ASSEMBLY TUBE.

TABLE 19:

| Design Pressure (psf) for Windows Attached to a Horizontal Frame Assembly Tube |              |              |              |              |              |              |           |         |              |           |         |              |         |           |         |              |           |         |         |              |           |           |         |
|--|--------------|--------------|--------------|--------------|--------------|--------------|-----------|---------|--------------|-----------|---------|--------------|---------|-----------|---------|--------------|-----------|---------|---------|--------------|-----------|-----------|---------|
| Window Height  | Window Width |              |              |              |              |              |           |         |              |           |         |              |         |           |         |              |           |         |         |              |           |           |         |
|  | under 23"    | 25-15/16"    | 27-7/8"      | 30-3/4"      | 32"          | 34"          |           |         | 37"          |           |         | 46"          |         |           |         | 53-1/8"      |           |         |         | 60"          |           |           |         |
|  | Anchor Group | Anchor Group | Anchor Group | Anchor Group | Anchor Group | Anchor Group |           |         | Anchor Group |           |         | Anchor Group |         |           |         | Anchor Group |           |         |         | Anchor Group |           |           |         |
|  | All          | All          | All          | All          | All          | A            | B         | C & D   | A            | B         | C & D   | A            | B       | C         | D       | A            | B         | C       | D       | A            | B         | C         | D       |
| under 23"  | +70/-90      | +70/-90      | +70/-90      | +70/-90      | +70/-90      | +70/-90      | +70/-86.2 | +70/-90 | +70/-90      | +70/-79.2 | +70/-90 | +70/-79.5    | +/-63.7 | +70/-76.3 | +70/-90 | +/-68.9      | +/-55.2   | +/-66   | +70/-90 | +/-61        | +/-48.9   | +/-58.5   | +70/-90 |
| 25-15/16"  | +70/-90      | +70/-90      | +70/-90      | +70/-90      | +70/-90      | +70/-90      | +70/-90   | +70/-90 | +70/-90      | +70/-90   | +70/-90 | +70/-88.1    | +70/-90 | +70/-90   | +70/-90 | +70/-76.3    | +70/-90   | +70/-90 | +70/-90 | +/-57.5      | +70/-86.6 | +70/-90   | +70/-90 |
| 39"  | +70/-90      | +70/-90      | +70/-90      | +70/-90      | +70/-90      | +70/-90      | +70/-90   | +70/-90 | +70/-90      | +70/-90   | +70/-90 | +70/-82      | +70/-90 | +70/-90   | +70/-90 | +70/-71      | +70/-81.3 | +70/-90 | +70/-90 | +/-62.9      | +70/-72   | +70/-86.2 | +70/-90 |
| 50-5/8"  | +70/-90      | +70/-90      | +70/-90      | +70/-90      | +70/-90      | +70/-90      | +70/-90   | +70/-90 | +70/-90      | +70/-90   | +70/-90 | +70/-90      | +70/-90 | +70/-90   | +70/-90 |              |           |         |         |              |           |           |         |
| 60"  | +70/-90      | +70/-90      | +70/-90      | +70/-90      | +70/-90      | +70/-90      | +70/-90   | +70/-90 | +70/-90      | +70/-90   | +70/-90 |              |         |           |         |              |           |         |         |              |           |           |         |
| 63"  | +70/-90      | +70/-90      | +70/-90      | +70/-90      | +70/-90      | +70/-90      | +70/-90   | +70/-90 | +70/-90      | +70/-90   | +70/-90 |              |         |           |         |              |           |         |         |              |           |           |         |
| 67"  | +70/-90      | +70/-90      | +70/-90      | +70/-90      | +70/-90      | +70/-90      | +70/-90   | +70/-90 |              |           |         |              |         |           |         |              |           |         |         |              |           |           |         |
| 72"  | +70/-90      | +70/-90      | +70/-90      | +70/-90      | +70/-90      |              |           |         |              |           |         |              |         |           |         |              |           |         |         |              |           |           |         |
| 76"  | +70/-90      | +70/-90      | +70/-90      | +70/-90      |              |              |           |         |              |           |         |              |         |           |         |              |           |         |         |              |           |           |         |
| 84"  | +70/-90      | +70/-90      | +70/-90      |              |              |              |           |         |              |           |         |              |         |           |         |              |           |         |         |              |           |           |         |



SEE SHEETS 1 & 4 FOR WINDOW ANCHOR  
LOCATIONS AND QUANTITIES. SEE SHEET  
3 FOR ANY ADDITIONAL ANCHORS  
REQUIRED FOR THE FRAME ASSEMBLY  
TUBE.

NOTES:  
1) SEE SHEET 4 FOR ADDITIONAL SAMPLE CONFIGURATIONS.  
2) SEE SHEET 4 FOR SNUBBER REQUIREMENTS.

Revision: NO CHANGES.  
Date: 03/13/20  
Revised By: J ROSOWSKI  
Drawn By: J ROSOWSKI  
Description: DESIGN PRESSURES PER GLAZING TYPE  
Title: AWNING WINDOW DETAILS - LM & SM  
Series/Model: AW-740  
Scale: NTS  
Sheet: 9 OF 11  
Drawing No. MD-AW740LM  
Rev: D

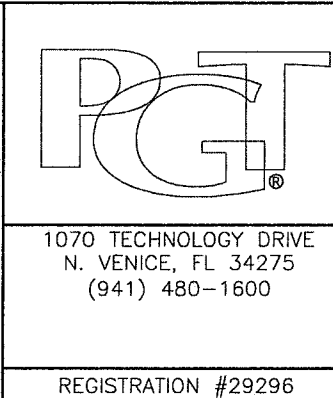
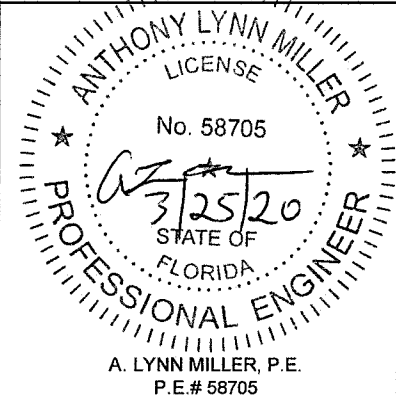
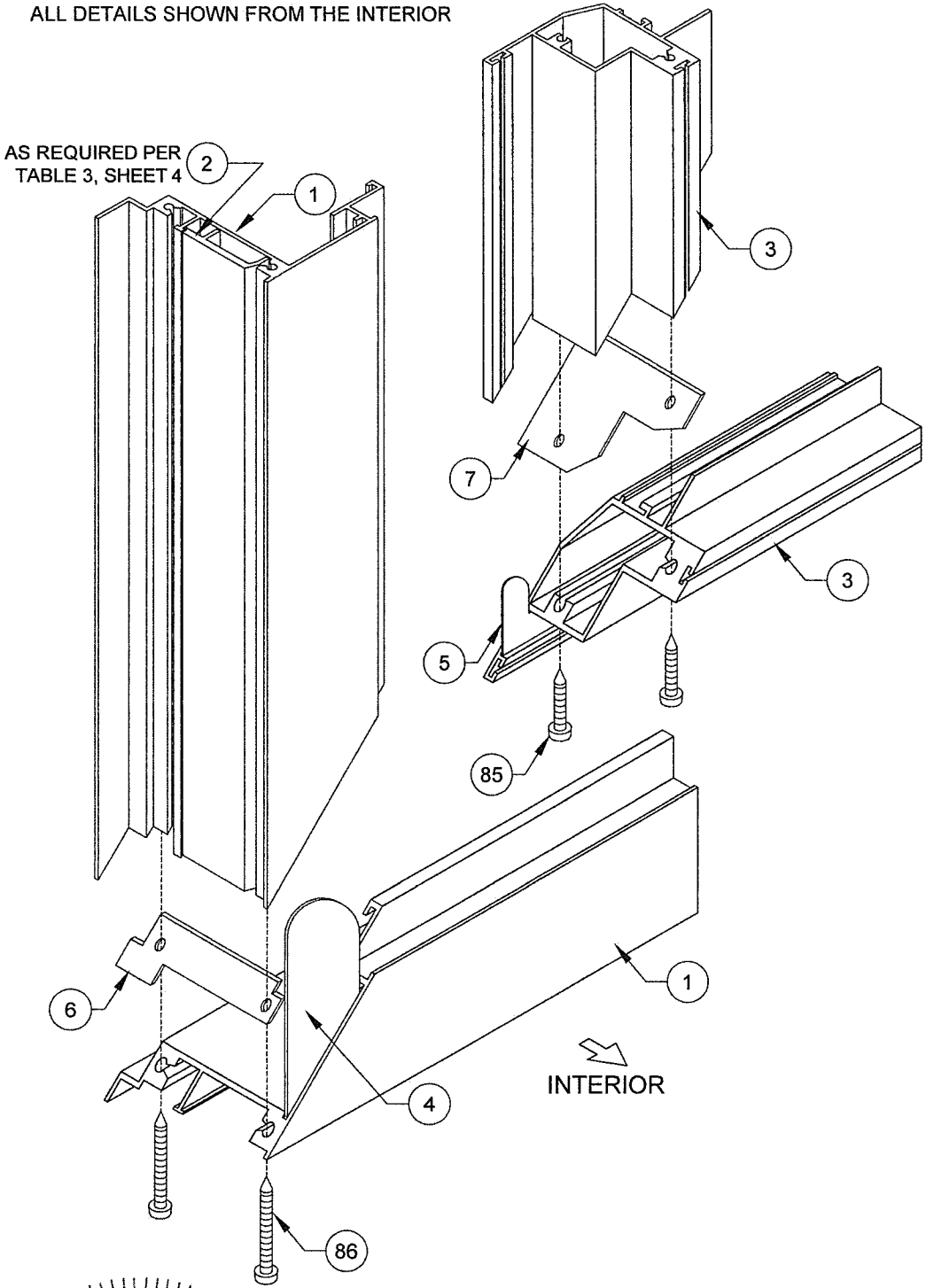
1070 TECHNOLOGY DRIVE  
N. VENICE, FL 34275  
(941) 480-1600  
REGISTRATION #29296

ANTHONY LYNN MILLER  
LICENSE  
No. 58705  
3/25/20  
STATE OF  
FLORIDA  
PROFESSIONAL ENGINEER  
A. LYNN MILLER, P.E.  
P.E.# 58705



TABLE 20:

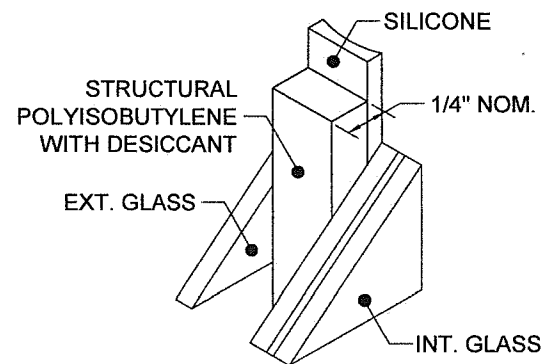
| Item | Dwg. # | Description                           | Mat.            |
|------|--------|---------------------------------------|-----------------|
| 1    | 7002   | Main Frame Head, Sill & Jamb          | 6063-T6 Alum.   |
| 2    | 7071   | Anchor Plate                          | 6063-T6 Alum.   |
| 3    | 7003   | Sash Top, Bottom & Side Rail          | 6063-T6 Alum.   |
| 4    | 7008   | Frame Corner Key                      | Steel           |
| 5    | 7009   | Sash Corner Key                       | Steel           |
| 6    | 7078   | Frame Gasket                          | Vinyl Foam      |
| 7    | 7072   | Sash Corner Gasket                    | Vinyl Foam      |
| 8    | 7070   | Bulb Weatherstrip .187" x .275"       | Flex PVC 70     |
| 10   | 7024   | Maxim Multi-Point Lock                | Steel           |
| 11   | 7026   | Lock Support Plate                    | Steel           |
| 12   | 7014   | Multi-Lock Keeper                     | Steel           |
| 13   | 7013   | Tie Bar Guide                         | Nylon           |
| 14   | 7015   | Tie Bar Assembly                      | Steel or SS     |
| 16   | 7029   | Maxim Projected Operator              | Steel           |
| 17   | 7030   | Operator Gasket                       | Vinyl Foam      |
| 18   | 7031   | Operator Backing Plate                | Steel           |
| 19   | 7051   | Operator Spacer Block                 | Nylon           |
| 21   | 7034   | Operator Track & Slider               | Steel           |
| 22   | 7023   | Projected Hinge, Manuf. by Truth      | Steel           |
| 24   |        | Snubber, Anti-blowout Clip            | Steel           |
| 32   | 1713   | Setting Block 5/32" x 3/16" x 1-1/4"  | EPDM            |
| 33   | 1714   | Setting Block 5/32" x 7/16" x 1-1/4"  | EPDM            |
| 35   | 7036   | Bead B                                | 6063-T6 Alum.   |
| 36   | 7042   | Bead C                                | 6063-T6 Alum.   |
| 37   | 7059   | Bead D                                | 6063-T6 Alum.   |
| 38   | 1224   | Vinyl Bulb Wstp (Thick)               | Flex PVC 70     |
| 39   | 1225   | Vinyl Bulb Wstp (Thin)                | Flex PVC 70     |
| 50   |        | Dow 791, 899 or 983 Backbedding       | Silicone        |
| 60   | 7006   | Screen Frame                          | 3105-H14 Alum.  |
| 61   | 7040   | Screen Corner Key                     | Polypropolene   |
| 62   |        | Screen Cloth                          | Fiberglass      |
| 63   | 1635   | Screen Spline                         | EM. PVC         |
| 64   | 320    | Casement Screen Spring                | Stainless Steel |
| 70   | 134    | Add-on Flange                         | 6063-T6 Alum.   |
| 71   | 7004   | Frame Assy Tube                       | 6063-T6 Alum.   |
| 72   |        | Maxim Pivot Slider Assembly           | Steel           |
| 80   |        | #8-32 x 1/2" Ph. Pn. Mach. Scr Type B | Stainless Steel |
| 81   | 1157   | #8 x 1/2" Ph. Pn. SMS                 | Stainless Steel |
| 82   |        | #8 x 5/8" Fl. Ph. SMS                 | Stainless Steel |
| 83   |        | #8 x 7/8" F.H. Ph. SMS                | Stainless Steel |
| 84   |        | #8 x 1" Fl. Ph. TEK                   | Stainless Steel |
| 85   |        | #8 x 1" Quad Pn SMS                   | Stainless Steel |
| 86   |        | #8 X 1-1/2" Quad Pn SMS               | Stainless Steel |
| 87   |        | #10 x 1/2" Ph. Pn./ TEK               | Stainless Steel |
| 89   |        | #10-24 x 9/16" Ph. Pn. TYPE F         | Stainless Steel |
| 90   |        | #12 x 1" Ph. Pn. TEK                  | Stainless Steel |



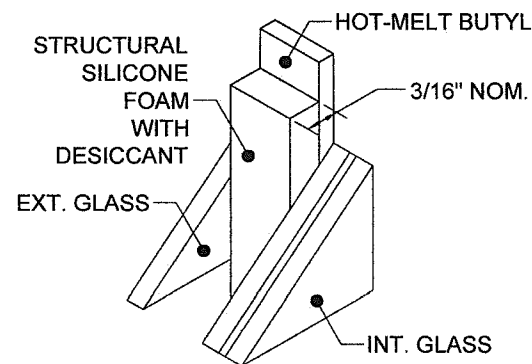
|             |          |                    |
|-------------|----------|--------------------|
| Revised By: | Date:    | Revision           |
| JR          | 03/13/20 | ADDED BACKBEDDING. |
| Revised By: | Date:    | Revision           |

|   |               |                         |                           |
|---|---------------|-------------------------|---------------------------|
| Description:<br>BOM AND CORNER VIEW       |               | Drawn By:<br>J ROSOWSKI |                           |
| Title:<br>AWNING WINDOW DETAILS - LM & SM |               | Date:<br>08/08/12       |                           |
| Series/Model:<br>AW-740                   | Scale:<br>NTS | Sheet:<br>10 OF 11      | Drawing No.<br>MD-AW740LM |
|   |               |                         | Rev:<br>D                 |

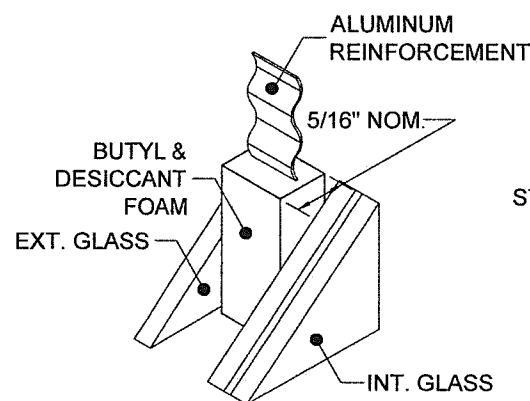
|   |  |
|---|--|
| <b>PRODUCT REVISED</b><br>as complying with the Florida<br>Building Code<br>NOA-No. 20-0402.07<br>Expiration Date: 04/11/2023<br>By: <i>Manuel Torres</i><br>Miami-Dade Product Control |  |
|---|--|



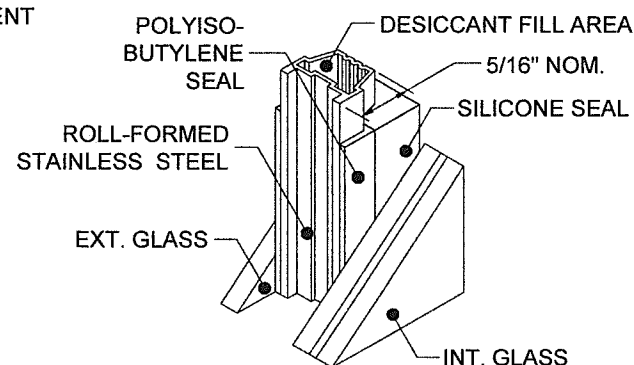
100 **KODISPACE**  
**4SG TPS**



101 **SUPER**  
**SPACER® NXT™**



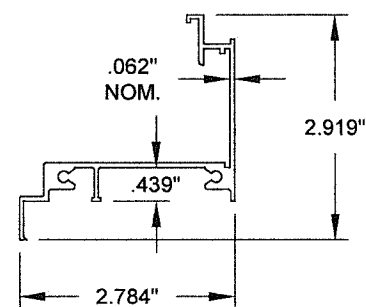
102 **DURASEAL®**  
**SPACER**



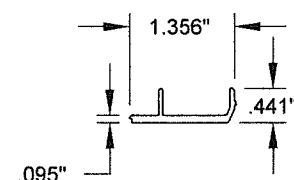
103 **XL EDGE™**  
**SPACER**

| Part # | Description                                 | Material                     |
|--------|---|------------------------------|
| 100    | Kommerling 4SG TPS Spacer System            | See this Sheet for Materials |
| 101    | Quanex Super Spacer NXT with Hot Melt Butyl |                              |
| 102    | Quanex Duraseal Spacer                      |                              |
| 103    | Cardinal XL Edge Spacer                     |                              |

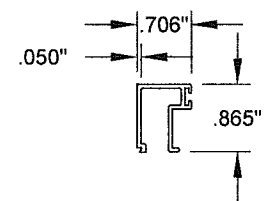
REFERENCE TEST REPORTS: FTL-8717, 8968 & 8970



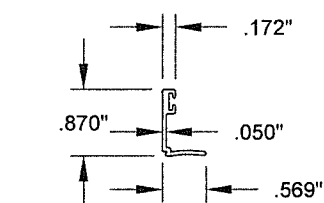
1 **FRAME HEAD,**  
**SILL & JAMB**  
#7002, 6063-T6



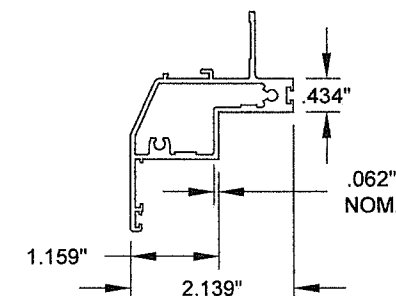
2 **ANCHOR PLATE**  
#7071, 6063-T6



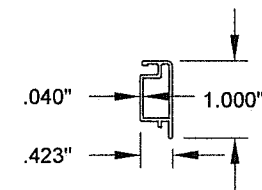
35 **BEAD B**  
#7036, 6063-T6



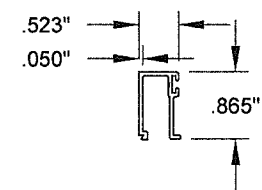
37 **BEAD D**  
#7059, 6063-T6



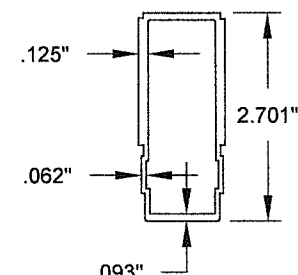
3 **SASH TOP,**  
**BOTTOM & SIDE**  
#7003, 6063-T6



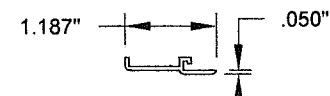
60 **FIXED**  
**SCREEN FRAME**  
#7006, 3105-H14



36 **BEAD C**  
#7042, 6063-T6

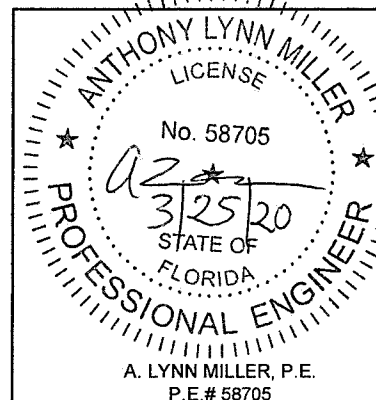


71 **FRAME**  
**ASSEMBLY TUBE**  
#7004, 6063-T6



70 **ADDON FLANGE**  
#134, 6063-T6

**PRODUCT REVISED**  
as complying with the Florida  
Building Code  
NOA-No. **20-0402.07**  
Expiration Date: **04/11/2023**  
By: *Manuel Perez*  
Miami-Dade Product Control



**PGT**  
1070 TECHNOLOGY DRIVE  
N. VENICE, FL 34275  
(941) 480-1600

REGISTRATION #29296

|             |          |             |
|-------------|----------|-------------|
| Revised By: | Date:    | Revision    |
| JR          | 03/13/20 | NO CHANGES. |
| Revised By: | Date:    | Revision    |

Description:  
**EXTRUSIONS & SPACERS**

Title:  
**AWNING WINDOW DETAILS - LM & SM**

Series/Model:  
**AW-740**

Scale:  
**NTS**

Sheet:  
**11 OF 11**

Drawing No.  
**MD-AW740LM**

Rev:  
**D**

Drawn By:  
**J ROSOWSKI**

Date:  
**08/08/12**