



MIAMI-DADE COUNTY  
PRODUCT CONTROL SECTION

11805 SW 26 Street, Room 208  
Miami, FL 33175

T (786) 315-2590 F (786) 315-2599

DEPARTMENT OF REGULATORY AND ECONOMIC RESOURCES (RER)  
BOARD AND CODE ADMINISTRATION DIVISION

[www.miamidade.gov/economy](http://www.miamidade.gov/economy)

**NOTICE OF ACCEPTANCE (NOA)**

**WinDoor, Inc.**  
**7500 Amsterdam Drive**  
**Orlando, FL 32832**

**SCOPE:**

This NOA is being issued under the applicable rules and regulations governing the use of construction materials. The documentation submitted has been reviewed and accepted by Miami-Dade County RER - Product Control Section to be used in Miami Dade County and other areas where allowed by the Authority Having Jurisdiction (AHJ).

This NOA shall not be valid after the expiration date stated below. The Miami-Dade County Product Control Section (In Miami-Dade County) and/or the AHJ (in areas other than Miami-Dade County) reserve the right to have this product or material tested for quality assurance purposes. If this product or material fails to perform in the accepted manner, the manufacturer will incur the expense of such testing and the AHJ may immediately revoke, modify, or suspend the use of such product or material within their jurisdiction. RER reserves the right to revoke this acceptance, if it is determined by Miami-Dade County Product Control Section that this product or material fails to meet the requirements of the applicable building code.

This product is approved as described herein, and has been designed to comply with the Florida Building Code, including the High Velocity Hurricane Zone.

**DESCRIPTION: Series "238 Designer" Aluminum Fixed Window – L.M.I.**

**APPROVAL DOCUMENT:** Drawing No. MD-PW238D, titled "238 Designer Fixed Window", sheets 1 through 8 of 8, dated 05/12/20, with revision A dated 05/12/20, prepared by manufacturer, signed and sealed by Anthony Lynn Miller, P.E., bearing the Miami-Dade County Product Control Approval stamp with the Notice of Acceptance number and approval date by the Miami-Dade County Product Control Section.

**MISSILE IMPACT RATING: Large and Small Missile Impact Resistant**

**LABELING:** Each unit shall bear a permanent label with the manufacturer's name or logo, city, state, model/series, and following statement: "Miami-Dade County Product Control Approved", unless otherwise noted herein.

**RENEWAL** of this NOA shall be considered after a renewal application has been filed and there has been no change in the applicable building code negatively affecting the performance of this product.

**TERMINATION** of this NOA will occur after the expiration date or if there has been a revision or change in the materials, use, and/or manufacture of the product or process. Misuse of this NOA as an endorsement of any product, for sales, advertising or any other purposes shall automatically terminate this NOA. Failure to comply with any section of this NOA shall be cause for termination and removal of NOA.

**ADVERTISEMENT:** The NOA number preceded by the words Miami-Dade County, Florida, and followed by the expiration date may be displayed in advertising literature. If any portion of the NOA is displayed, then it shall be done in its entirety.

**INSPECTION:** A copy of this entire NOA shall be provided to the user by the manufacturer or its distributors and shall be available for inspection at the job site at the request of the Building Official.

This NOA **revised 18-1001.16** and consists of this page 1 and evidence page E-1 and E-2, as well as approval document mentioned above.

The submitted documentation was reviewed by **Sifang Zhao, P.E.**



*S.Z.*  
10/28/2020

NOA No. 20-0519.13  
Expiration Date: October 20, 2023  
Approval Date: October 28, 2020  
Page 1

**NOTICE OF ACCEPTANCE: EVIDENCE SUBMITTED**

**A. DRAWINGS**

1. Manufacturer's die drawings and sections
2. Drawing No. MD-PW238D, titled "238 Designer Fixed Window", sheets 1 through 8 of 8, dated 05/12/20, with revision A dated 05/12/20, prepared by manufacturer, signed and sealed by Anthony Lynn Miller, P.E.

**B. TESTS**

1. Test reports on: 1) Air Infiltration Test, per FBC, TAS 202-94  
2) Uniform Static Air Pressure Test, Loading per FBC, TAS 202-94  
3) Water Resistance Test, per FBC, TAS 202-94  
4) Large Missile Impact Test per FBC, TAS 201-94  
5) Cyclic Wind Pressure Loading per FBC, TAS 203-94

along with marked-up drawings and installation diagram of all PGT Industries, Inc. CGI Windows and Doors, Inc., representative units listed below and tested to qualify **Dowsil 791** and **Dowsil 983** silicones, per Proposal #**19-1155TP**, prepared by Fenestration Testing Laboratory, Inc., Test Reports No.:

**CGI Windows and Doors Inc. test specimens:**

- FTL-20-2108.1**, CGI SH360 Aluminum Single Hung Window (unit 1 in proposal)  
**FTL-20-2108.2**, CGI CA238 Alum. Outswing Casement Window (unit 2 in proposal)  
**FTL-20-2108.3**, CGI SGD560 Aluminum Sliding Glass Door (unit 3 in proposal)  
**FTL-20-2108.4**, CGI PW410 Aluminum Fixed Window (unit 4 in proposal) and  
**FTL-20-2108.5**, CGI SH360 Aluminum Single Hung Window (unit 5 in proposal)  
all dated 08/24/20 and signed and sealed by Idalmis Ortega, P.E

**C. CALCULATIONS**

1. Anchor verification calculations and structural analysis, complying with **FBC 7<sup>th</sup> Edition (2020)**, dated 05/12/20, prepared by manufacturer, signed and sealed by Anthony Lynn Miller, P.E.
2. Glazing complies with **ASTM E1300-04, -09, -12 and -16**.

**D. QUALITY ASSURANCE**

1. Miami-Dade Department of Regulatory and Economic Resources (RER).

**E. MATERIAL CERTIFICATIONS (See NOA #20-0519.05)**

1. NOA No. **19-0305.02** issued to **Kuraray America, Inc.** for their "**Trosifol® Ultraclear, Clear and Color PVB Glass Interlayers**" dated 05/09/19, expiring on 07/08/24.
2. NOA No. **21-0216.01** issued to **Eastman Chemical Company (MA)** for their "**Saflex Clear and Color Glass Interlayers**" dated 04/29/21, expiring on 05/21/26.



---

Sifang Zhao, P.E.  
Product Control Examiner  
NOA No. 20-0519.13  
Expiration Date: October 20, 2023  
Approval Date: October 28, 2020

NOTICE OF ACCEPTANCE: EVIDENCE SUBMITTED

**F. STATEMENTS**

1. Notification of Successor Engineer per the Florida Administrative Code Section 61G15-27.001, notifying original engineer that the successor engineer is assuming full professional and legal responsibility for all engineering documents pertaining to this NOA, dated 06/12/20, signed and sealed by A. Lynn Miller, P.E.
2. Statement letter of conformance, of complying with **FBC 6<sup>th</sup> Edition (2017)**, and **FBC 7<sup>th</sup> Edition (2020)** dated 05/12/2021, issued by manufacturer, signed and sealed by Anthony Lynn Miller, P.E.
3. Statement letter of no financial interest dated 05/12/2021, issued by manufacturer, signed and sealed by Anthony Lynn Miller, P.E.

**G. OTHERS**

1. Private labeling agreement between WinDoor, Inc. and CGI Windows and Doors, Inc. document in conformance of RER guideline dated 09/12/2018.  
*(Submitted under NOA #18-1001.16)*
2. Notice of Acceptance No. **18-1001.16**, issued to WinDoor, Inc. for their Series “238 Designer” Aluminum Fixed Window - L.M.I., approved on 12/13/2018 and expiring on 10/20/23.
3. Notice of Acceptance No. **20-0519.05**, issued to CGI Windows and Doors, Inc. for their Series “238 Designer” Aluminum Fixed Window - L.M.I., approved on 09/24/2020 and expiring on 10/20/23.

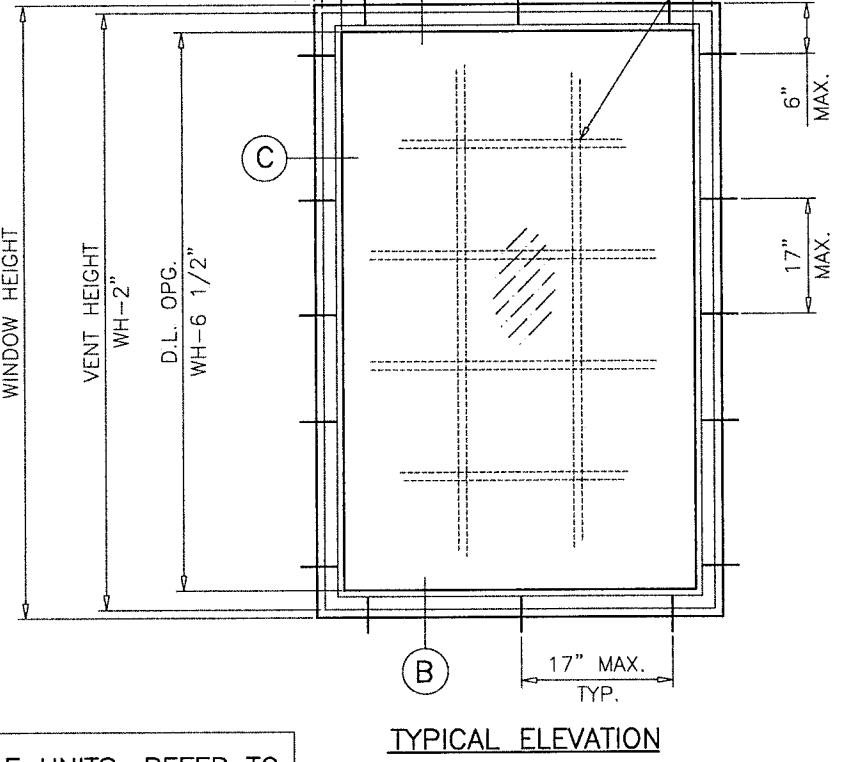
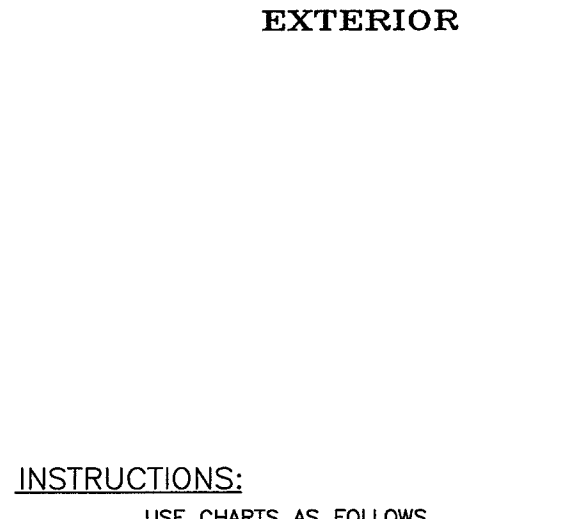
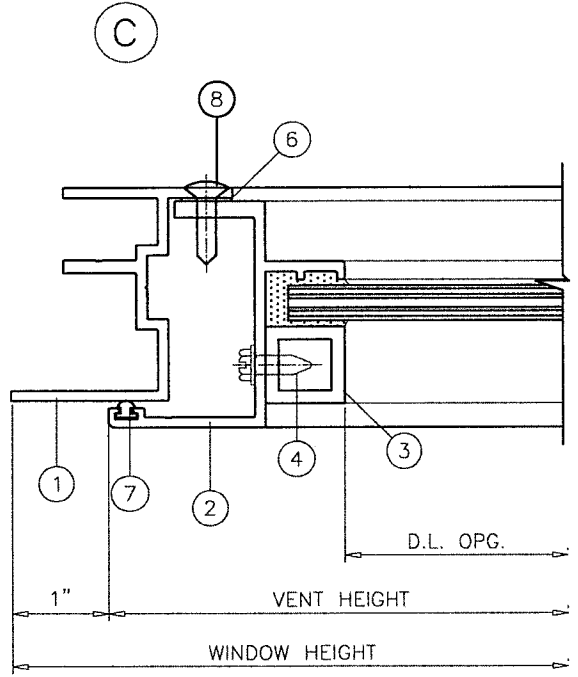
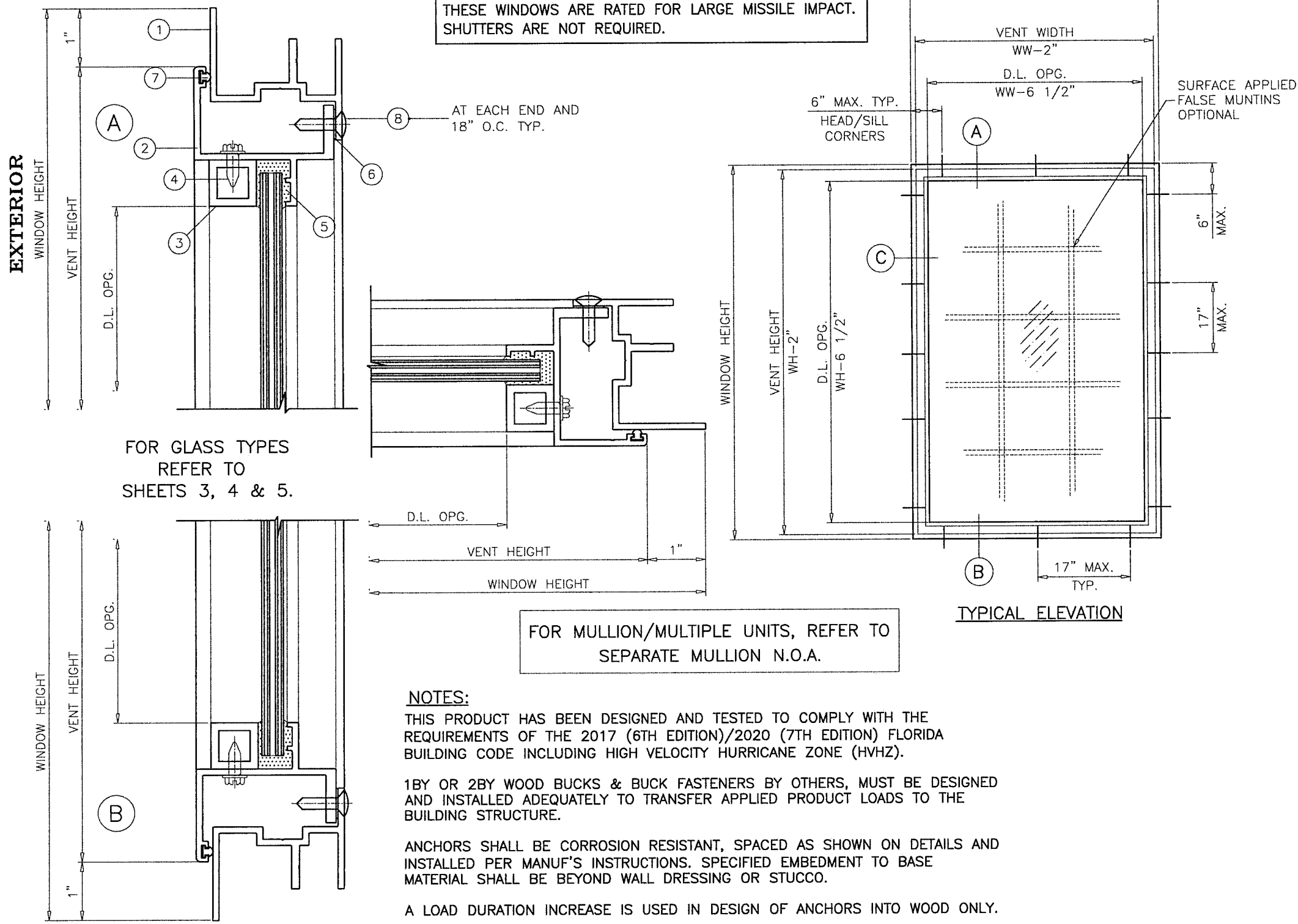


---

Sifang Zhao, P.E.  
Product Control Examiner  
NOA No. 20-0528.08  
Expiration Date: October 26, 2023  
Approval Date: November 26, 2020

**GENERAL WINDOW SECTIONS**

THESE WINDOWS ARE RATED FOR LARGE MISSILE IMPACT. SHUTTERS ARE NOT REQUIRED.



**INSTRUCTIONS:**

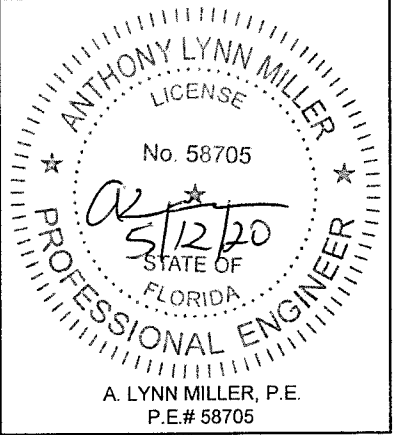
USE CHARTS AS FOLLOWS.

- STEP 1** DETERMINE DESIGN WIND LOAD REQUIREMENT BASED ON WIND VELOCITY, BLDG. HEIGHT, WIND ZONE USING APPLICABLE ASCE 7 STANDARD.
- STEP 2** SEE CHARTS ON SHEETS 3 THRU 5 FOR DESIGN LOAD CAPACITY OF DESIRED GLASS SIZE BASED ON APPLICABLE WIND DURATION.
- STEP 3** USING CHART ON SHEET 7 SELECT ANCHOR OPTION WITH DESIGN RATING MORE THAN DESIGN LOAD SPECIFIED IN STEP 1 ABOVE.
- STEP 4** THE LOWEST VALUE RESULTING FROM STEPS 2 AND 3 SHALL APPLY TO ENTIRE SYSTEM.

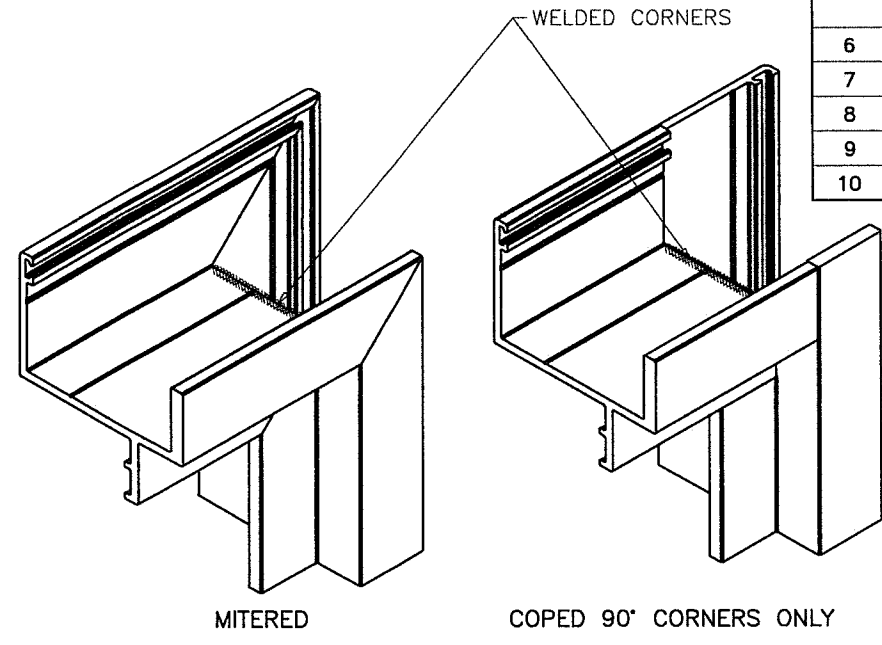
**PRODUCT REVISED**  
 as complying with the Florida Building Code  
 NOA-No. 20-0519.13  
 Expiration Date 10/20/2023  
 By *[Signature]*  
 Miami-Dade Product Control

Revision: A) UPDATED TO FBC 2020.  
 AK - 05/12/20

PREPARED BY A. LYNN MILLER 1070 TECHNOLOGY DRIVE N. VENICE, FL 34275 (941) 480-1600	REGISTRATION #29296	Date	05/12/20
	ELEVATION, INSTRUCTIONS, NOTES		
<b>WINDOOR</b> INCORPORATED 7500 AMSTERDAM DRIVE ORLANDO, FL 32832 (407) 481-8400	238 DESIGNER FIXED WINDOW	Drawn By	AGK
		DWG No.	MD-PW238D
Series		Scale	1 OF 8
Desc.		Sheet	NTS

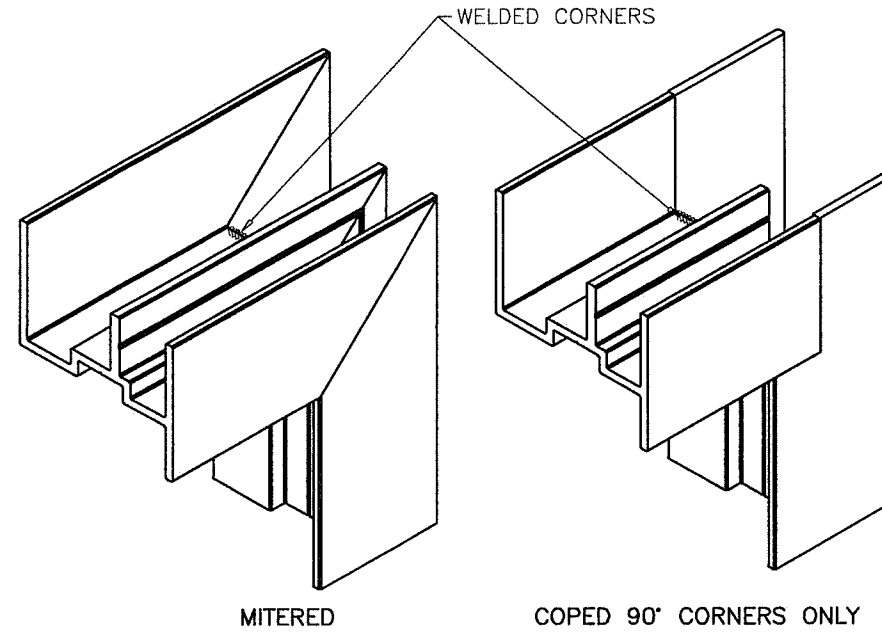


ITEM	PART #	QUANTITY	DESCRIPTION	MATERIAL	MANF./SUPPLIER/REMARKS
1	CGI-386	4	FRAME	6063-T6	INDALEX OR EQUIV.
2	CGI-387	4	VENT	6063-T6	INDALEX OR EQUIV.
2A	CGI-387IG	4	VENT (INSUL GLASS)	6063-T6	INDALEX OR EQUIV.
3	CGI-	4	GLAZING BEAD	6063-T5	INDALEX OR EQUIV.
4	-	AS REQD.	GLAZING BEAD SCREWS @ 6" FROM ENDS & 20" O.C. MAX.	-	#12 X 5/8" SMS
5	-	-	GLAZING COMPOUND	SILICONE	GE-1200 DOW 791, DOW 983
6	-	4	1/2" X .090" SINGLE FACED GLAZING TAPE	FOAM	-
7	Q200 X190	AS REQD.	VENT WEATHERSTRIPPING	-	SCHLEGEL Q-LON
8	-	AS REQD.	VENT SCREWS @ 17" O.C. TYP.	-	#10 X 1" SS SMS
9	-	2/ CORNER	FRAME AND VENT ASSEMBLY SCREWS	-	#10 X 1-1/4" SS SMS
10	-	2/ LITE	SETTING BLOCK	EPDM	DUROMETER 80±5 SHORE A

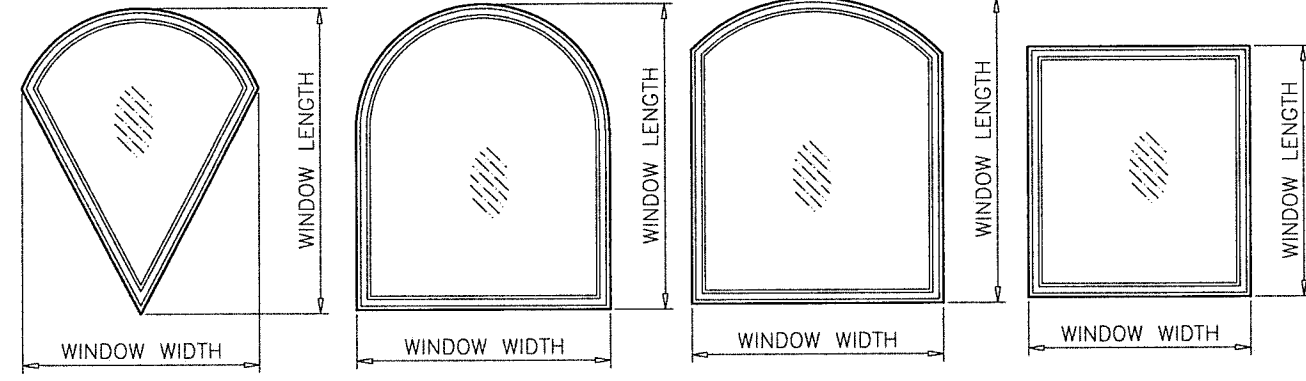


VENT CORNER

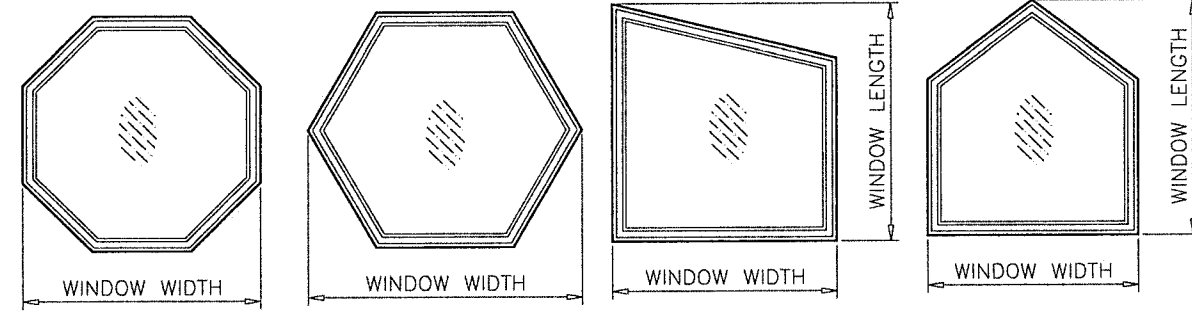
ALL FRAME AND VENT CORNERS TO BE SEALED WITH GE SILPRUF OR EQUIV.



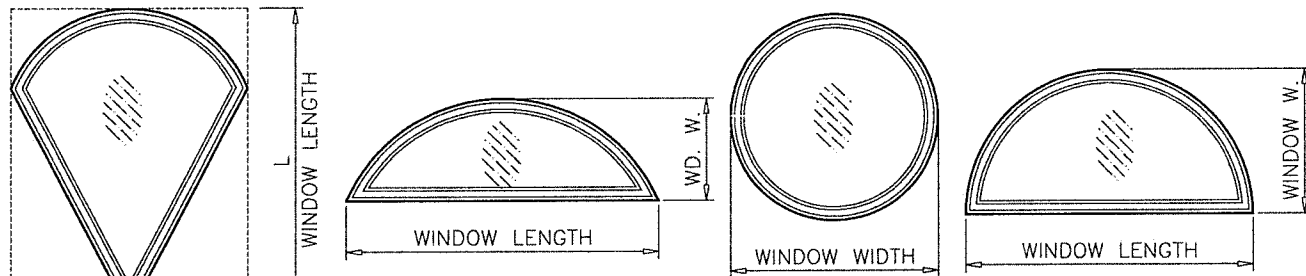
FRAME CORNER



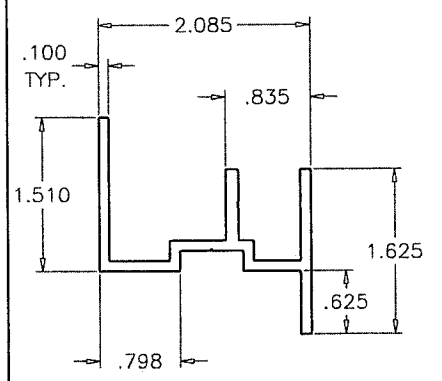
PARTIAL CIRCLE      TUMBSTONE      ARCH TOP      SQUARE OR RECTANGLE



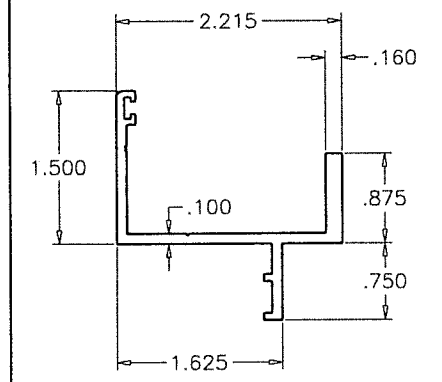
OCTAGON      HEXAGON      TRAPEZOID      PENTAGON



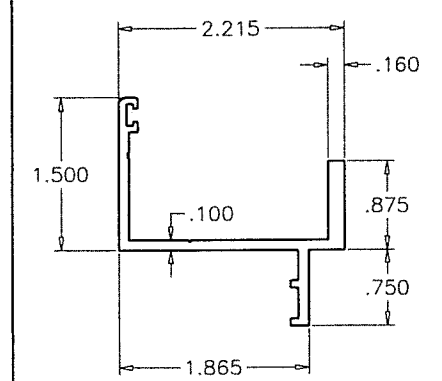
ELLIPSE      FULL CIRCLE      HALF CIRCLE



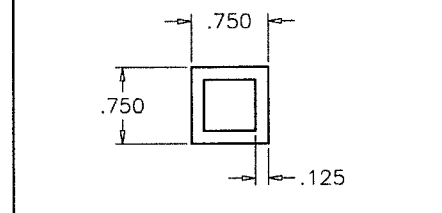
FRAME



VENT



VENT (INSUL GLASS)

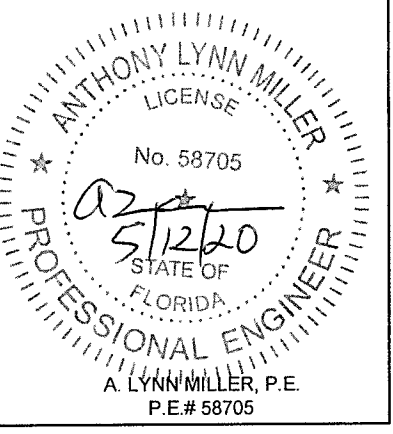


GLAZING STOP

**PRODUCT REVISED**  
as complying with the Florida Building Code  
NOA-No. 20-0519.13  
Expiration Date 10/20/2023  
By *[Signature]*  
Miami-Dade Product Control

Revision: A) ADDED BACKBEDDING.  
AK -05/12/20

<b>WINDOOR®</b> INCORPORATED 7500 AMSTERDAM DRIVE ORLANDO, FL 32832 (407) 481-8400	PREPARED BY A. LYNN MILLER 1070 TECHNOLOGY DRIVE N. VENICE, FL 34275 (941) 480-1600	REGISTRATION #29296 05/12/20	A
	CONFIGURATIONS, BOM, CORNERS	AGK	Rev.
	238 DESIGNER FIXED WINDOW	MD-PW238D	No.
	PW238D	NTS 2 OF 8	DWG
Series Desc. Title	Scale	Sheet	Drawn By

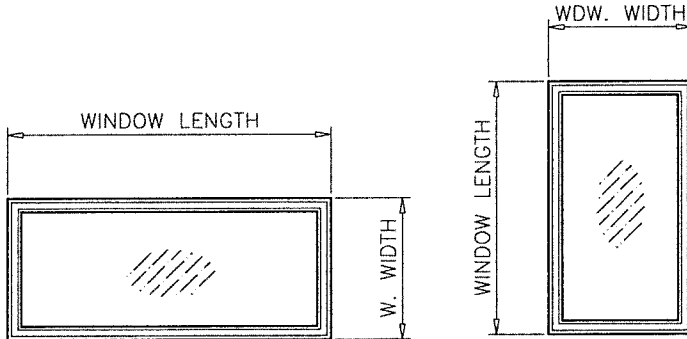
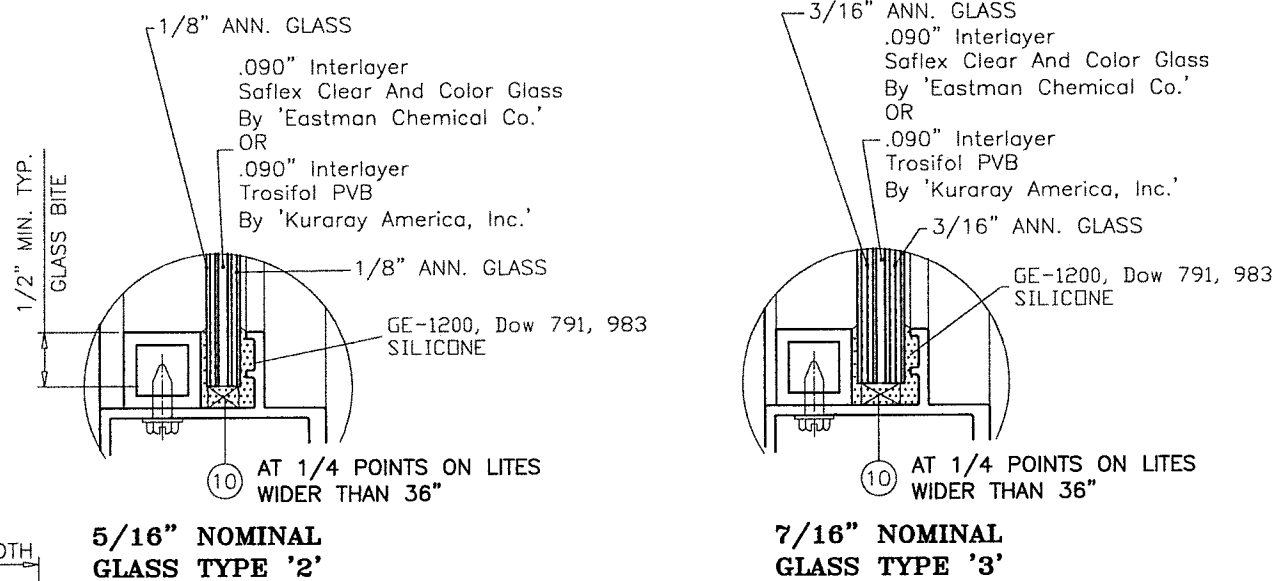


VERIFY LOAD CAPACITY OF WINDOW BY INSCRIBING SHAPE OF WINDOW WITHIN A RECTANGULAR OR SQUARE SHAPE AND USING THOSE DIMENSIONS TO CONSULT CHARTS ON SHEETS 3, 4 & 5 FOR GLASS AND SHEET 7 FOR ANCHORS AS ON SAMPLE ABOVE.

PERFORMANCE VALUES OF IMPACT RESISTANT WINDOWS NO SHUTTERS REQUIRED REFER TO SHEETS 6 AND 7 FOR INSTALLATION DETAILS					
WINDOW DIMS.		GLASS TYPE '2'		GLASS TYPE '3'	
WIDTH	HEIGHT	EXT. (+)	1NT. (-)	EXT. (+)	1NT. (-)
24"	36"	110.0	180.0	110.0	180.0
30"		110.0	144.0	110.0	144.0
36"		110.0	120.0	110.0	120.0
42"		110.0	120.0	110.0	120.0
48"		101.4	101.4	110.0	120.0
54"		84.8	84.8	110.0	120.0
60"	74.7	74.7	110.0	114.3	
24"	42"	110.0	166.4	110.0	168.0
30"		110.0	142.5	110.0	144.0
36"		110.0	120.0	110.0	120.0
42"		102.9	102.9	102.9	102.9
48"		85.0	85.0	102.9	102.9
54"		75.1	75.1	102.9	102.9
60"	66.4	66.4	90.0	90.0	
24"	48"	110.0	153.1	110.0	160.0
30"		110.0	117.6	110.0	120.0
36"		101.4	101.4	110.0	120.0
42"		85.0	85.0	102.9	102.9
48"		75.5	75.5	90.0	90.0
54"		68.4	68.4	90.0	90.0
60"	63.6	63.6	90.0	90.0	
24"	54"	110.0	134.8	110.0	154.3
30"		99.4	99.4	110.0	120.0
36"		84.8	84.8	110.0	120.0
42"		75.1	75.1	102.9	102.9
48"		68.4	68.4	90.0	90.0
54"		65.8	65.8	80.0	80.0
60"	59.0	59.0	80.0	80.0	
24"	60"	110.0	119.4	110.0	120.0
30"		87.8	87.8	110.0	120.0
36"		74.7	74.7	110.0	114.3
42"		66.4	66.4	90.0	90.0
48"		63.6	63.6	90.0	90.0
54"		59.0	59.0	80.0	80.0
24"	66"	110.0	112.5	110.0	120.0
30"		82.1	82.1	110.0	120.0
36"		66.6	66.6	90.0	90.0
42"		58.1	58.1	90.0	90.0
48"		56.1	56.1	90.0	90.0
24"	72"	105.4	105.4	110.0	120.0
30"		74.0	74.0	110.0	120.0
36"		59.2	59.2	90.0	90.0
42"		51.2	51.2	90.0	90.0
48"		49.8	49.8	83.9	83.9

PERFORMANCE VALUES OF IMPACT RESISTANT WINDOWS NO SHUTTERS REQUIRED REFER TO SHEETS 6 AND 7 FOR INSTALLATION DETAILS					
WINDOW DIMS.		GLASS TYPE '2'		GLASS TYPE '3'	
WIDTH	HEIGHT	EXT. (+)	1NT. (-)	EXT. (+)	1NT. (-)
24"	78"	97.5	97.5	110.0	120.0
30"		67.2	67.2	90.0	90.0
36"		50.8	50.8	90.0	90.0
42"		46.1	46.1	86.1	86.1
24"	84"	103.0	103.0	110.0	120.0
30"		63.0	63.0	90.0	90.0
36"		47.3	47.3	90.0	90.0
24"	96"	87.5	87.5	110.0	120.0
30"		56.3	56.3	90.0	90.0
36"		41.6	41.6	90.0	90.0
24"	108"	69.6	69.6	90.0	90.0
30"		53.5	53.5	90.0	90.0
24"	120"	58.8	58.8	90.0	90.0

PERFORMANCE VALUES OF IMPACT RESISTANT WINDOWS NO SHUTTERS REQUIRED REFER TO SHEETS 6 AND 7 FOR INSTALLATION DETAILS					
WINDOW DIMS.		GLASS TYPE '2'		GLASS TYPE '3'	
WIDTH	HEIGHT	EXT. (+)	1NT. (-)	EXT. (+)	1NT. (-)
19-1/8"	26"	110.0	210.0	110.0	210.0
26-1/2"		110.0	166.2	110.0	166.2
37"		110.0	166.2	110.0	166.2
53-1/8"		110.0	120.0	110.0	120.0
19-1/8"	38-3/8"	110.0	200.6	110.0	200.6
26-1/2"		110.0	163.0	110.0	163.0
37"		110.0	116.8	110.0	116.8
53-1/8"		81.9	81.9	110.0	112.6
19-1/8"	50-5/8"	110.0	185.7	110.0	185.7
26-1/2"		110.0	125.2	110.0	147.2
37"		92.1	92.1	110.0	116.8
53-1/8"		66.6	66.6	85.3	85.3
19-1/8"	63"	110.0	177.5	110.0	177.5
26-1/2"		98.1	98.1	110.0	120.0
37"		68.6	68.6	110.0	110.2
53-1/8"		56.6	56.6	81.3	81.3
19-1/8"	74-1/4"	110.0	120.0	110.0	120.0
26-1/2"		85.2	85.2	110.0	120.0
37"		55.4	55.4	90.0	90.0



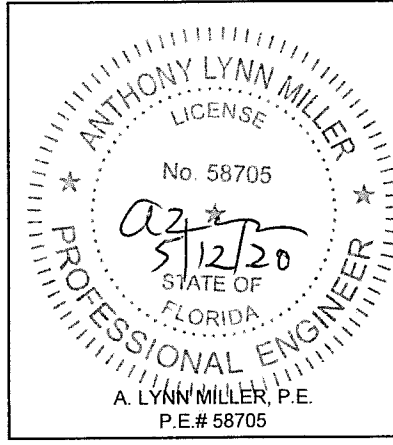
**NOTE:**  
WIDTH AND LENGTH DIMENSIONS CAN BE ORIENTED VERTICALLY OR HORIZONTALLY AS SHOWN.

**NOTE:**  
GLASS CAPACITIES ON THIS SHEET ARE BASED ON ASTM E1300-09 (3 SEC. GUSTS)

**PRODUCT REVISED**  
as complying with the Florida Building Code  
NOA-No. 20-0519.13  
Expiration Date 10/20/2023  
By *[Signature]*  
Miami-Dade Product Control

Revision: A) NO CHANGES THIS SHEET.  
AK - 03/27/20

<b>WINDOOR®</b> INCORPORATED 7500 AMSTERDAM DRIVE ORLANDO, FL 32832 (407) 481-8400	DESIGN PRESSURE TABLES 238 DESIGNER FIXED WINDOW PW238D	No. 3 OF 8 Sheet	No. MD-PW238D Rev. A
		By AGK Drawn	Date 05/12/20
		REGISTRATION #29296	Title
		PREPARED BY A. LYNN MILLER 1070 TECHNOLOGY DRIVE N. VENICE, FL 34275 (941) 480-1600	No. 0512/20 Date



**PERFORMANCE VALUES OF IMPACT RESISTANT WINDOWS**  
NO SHUTTERS REQUIRED  
REFER TO SHEETS 6 AND 7 FOR INSTALLATION DETAILS

WINDOW DIMS.		GLASS TYPE '6'	
WIDTH	HEIGHT	EXT. (+)	1NT. (-)
24"	36"	110.0	195.8
30"		110.0	156.6
36"		110.0	130.5
42"		110.0	120.0
48"		110.0	120.0
54"		110.0	120.0
60"	110.0	120.0	
24"	42"	110.0	193.6
30"		110.0	156.6
36"		110.0	120.0
42"		96.9	111.9
48"		96.9	111.9
54"		96.9	111.9
60"	90.0	90.0	
24"	48"	110.0	184.4
30"		110.0	120.0
36"		110.0	120.0
42"		96.9	111.9
48"		84.8	97.9
54"		90.0	90.0
60"	90.0	90.0	
24"	54"	110.0	177.8
30"		110.0	120.0
36"		110.0	120.0
42"		96.9	111.9
48"		90.0	90.0
54"		80.0	80.0
60"	80.0	80.0	
24"	60"	110.0	120.0
30"		110.0	120.0
36"		110.0	120.0
42"		90.0	90.0
48"		90.0	90.0
54"		80.0	80.0
60"		70.0	70.0
63"		70.0	70.0
66"		70.0	70.0
69"		70.0	70.0
72"		70.0	70.0
75"		70.0	70.0
78"	70.0	70.0	
81"	70.0	70.0	
84"	50.0	50.0	
87"	50.0	50.0	

**PERFORMANCE VALUES OF IMPACT RESISTANT WINDOWS**  
NO SHUTTERS REQUIRED  
REFER TO SHEETS 6 AND 7 FOR INSTALLATION DETAILS

WINDOW DIMS.		GLASS TYPE '6'	
WIDTH	HEIGHT	EXT. (+)	1NT. (-)
24"	66"	110.0	120.0
30"		110.0	120.0
36"		90.0	90.0
42"		90.0	90.0
48"		90.0	90.0
54"		70.0	70.0
57"		70.0	70.0
60"		70.0	70.0
63"		68.6	68.6
66"		65.5	65.5
69"		65.5	65.5
72"		65.5	65.5
75"	50.0	50.0	
78"	50.0	50.0	
81"	50.0	50.0	
84"	50.0	50.0	
87"	50.0	50.0	
24"	72"	110.0	120.0
30"		110.0	120.0
36"		90.0	90.0
42"		90.0	90.0
48"		90.0	90.0
51"		70.0	70.0
54"		70.0	70.0
57"		70.0	70.0
60"		70.0	70.0
63"		68.6	68.6
66"		65.5	65.5
69"		50.0	50.0
72"	50.0	50.0	
75"	50.0	50.0	
78"	50.0	50.0	
81"	50.0	50.0	
84"	50.0	50.0	
87"	50.0	50.0	
24"	78"	110.0	120.0
30"		90.0	90.0
36"		90.0	90.0
42"		90.0	90.0
45"		70.0	70.0
48"		70.0	70.0
51"		70.0	70.0
54"		70.0	70.0
57"		70.0	70.0
60"		70.0	70.0
63"		50.0	50.0
66"		50.0	50.0
69"	50.0	50.0	
72"	50.0	50.0	
75"	50.0	50.0	
78"	50.0	50.0	
81"	50.0	50.0	

**PERFORMANCE VALUES OF IMPACT RESISTANT WINDOWS**  
NO SHUTTERS REQUIRED  
REFER TO SHEETS 6 AND 7 FOR INSTALLATION DETAILS

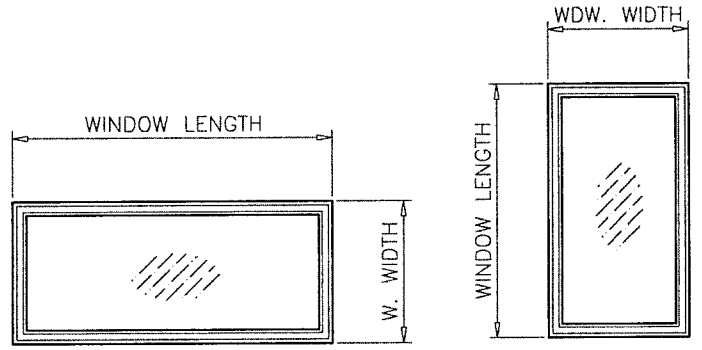
WINDOW DIMS.		GLASS TYPE '6'	
WIDTH	HEIGHT	EXT. (+)	1NT. (-)
24"	84"	110.0	120.0
30"		90.0	90.0
36"		90.0	90.0
42"		70.0	70.0
45"		70.0	70.0
48"		70.0	70.0
51"		70.0	70.0
54"		70.0	70.0
57"		70.0	70.0
60"		50.0	50.0
63"		50.0	50.0
66"		50.0	50.0
69"	50.0	50.0	
72"	50.0	50.0	
75"	50.0	50.0	
24"	96"	110.0	120.0
30"		90.0	90.0
36"		90.0	90.0
42"		70.0	70.0
45"		70.0	70.0
48"		70.0	70.0
51"		70.0	70.0
54"		50.0	50.0
57"		50.0	50.0
60"		50.0	50.0
63"		50.0	50.0
66"		50.0	50.0
69"	50.0	50.0	
72"	50.0	50.0	
75"	50.0	50.0	
78"	50.0	50.0	
81"	50.0	50.0	
84"	50.0	50.0	
87"	50.0	50.0	
24"	108"	90.0	90.0
30"		90.0	90.0
33"		70.0	70.0
36"		70.0	70.0
39"		70.0	70.0
42"		70.0	70.0
45"		70.0	70.0
48"		50.0	50.0
51"		50.0	50.0
54"		50.0	50.0
57"		50.0	50.0
60"		50.0	50.0
24"	120"	90.0	90.0
30"		70.0	70.0
33"		70.0	70.0
36"		70.0	70.0
39"		70.0	70.0
42"		50.0	50.0
45"		50.0	50.0
48"		50.0	50.0
51"		50.0	50.0
54"		50.0	50.0

**PERFORMANCE VALUES OF IMPACT RESISTANT WINDOWS**  
NO SHUTTERS REQUIRED  
REFER TO SHEETS 6 AND 7 FOR INSTALLATION DETAILS

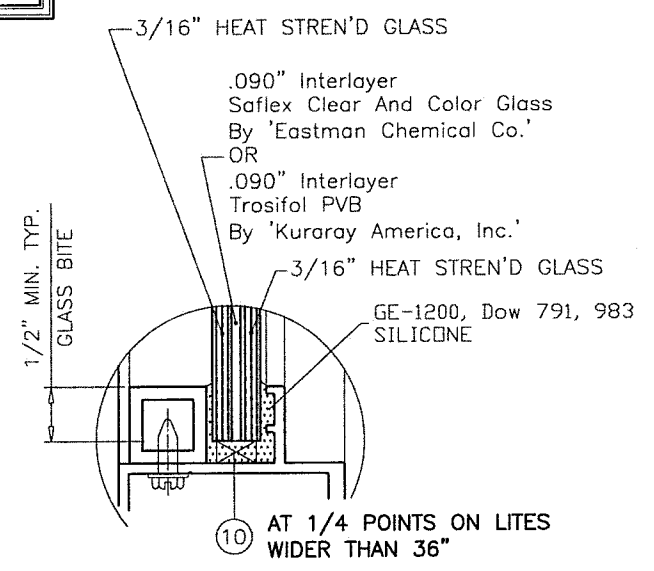
WINDOW DIMS.		GLASS TYPE '6'	
WIDTH	HEIGHT	EXT. (+)	1NT. (-)
24"	132"	70.0	70.0
30"		70.0	70.0
33"		70.0	70.0
36"		70.0	70.0
39"		50.0	50.0
42"		50.0	50.0
45"		50.0	50.0
48"		50.0	50.0
24"	144"	70.0	70.0
30"		70.0	70.0
33"		70.0	70.0
36"		50.0	50.0
39"		50.0	50.0
42"		50.0	50.0
45"		50.0	50.0
48"		50.0	50.0
24"	156"	70.0	70.0
30"		70.0	70.0
33"		50.0	50.0
36"		50.0	50.0
39"		50.0	50.0

**PERFORMANCE VALUES OF IMPACT RESISTANT WINDOWS**  
NO SHUTTERS REQUIRED  
REFER TO SHEETS 5 AND 6 FOR INSTALLATION DETAILS

WINDOW DIMS.		GLASS TYPE '6'	
WIDTH	HEIGHT	EXT. (+)	1NT. (-)
19-1/8"	26"	110.0	210.0
26-1/2"		110.0	180.7
37"		110.0	180.7
53-1/8"		110.0	120.0
19-1/8"	38-3/8"	110.0	210.0
26-1/2"		110.0	177.3
37"		110.0	120.0
53-1/8"		110.0	120.0
19-1/8"	50-5/8"	110.0	210.0
26-1/2"		110.0	169.7
37"		110.0	120.0
53-1/8"		85.3	85.3
19-1/8"	63"	110.0	204.6
26-1/2"		110.0	120.0
37"		110.0	120.0
53-1/8"		81.3	81.3
19-1/8"	74-1/4"	110.0	120.0
26-1/2"		110.0	120.0
37"		90.0	90.0
53-1/8"		70.0	70.0



**NOTE:**  
WIDTH AND LENGTH DIMENSIONS CAN BE ORIENTED VERTICALLY OR HORIZONTALLY AS SHOWN.



**7/16" NOMINAL GLASS TYPE '6'**

**NOTE:**  
GLASS CAPACITIES ON THIS SHEET ARE BASED ON ASTM E1300-09 (3 SEC. GUSTS)

**PRODUCT REVISED**  
as complying with the Florida Building Code  
NOA-No. 20-0519.13  
Expiration Date 10/20/2023  
By *[Signature]*  
Miami-Dade Product Control

Revision: A) NO CHANGES THIS SHEET.  
AK - 03/27/20

PREPARED BY A. LYNN MILLER 1070 TECHNOLOGY DRIVE N. VENICE, FL 34275 (941) 480-1600	REGISTRATION #29296	Date	05/12/20	Rev	A
	DESIGN PRESSURE TABLES	Drawn By	AGK	DWG No.	MD-PW238D
<b>WINDOOR</b> INCORPORATED 7500 AMSTERDAM DRIVE ORLANDO, FL 32832 (407) 481-8400	238 DESIGNER FIXED WINDOW	Sheet	4 OF 8	Scale	NTS
		Series	PW238D		

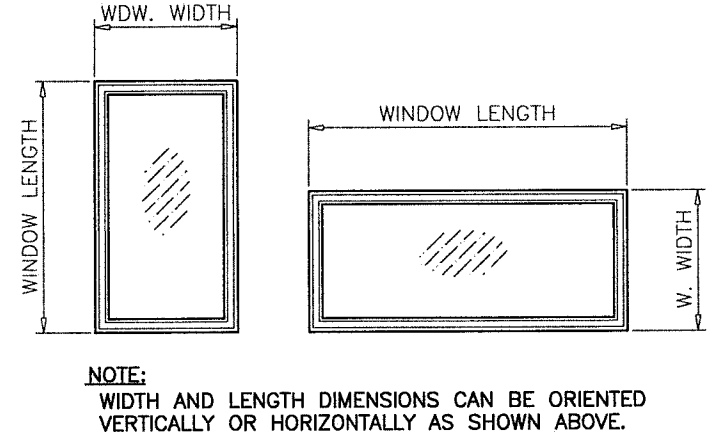
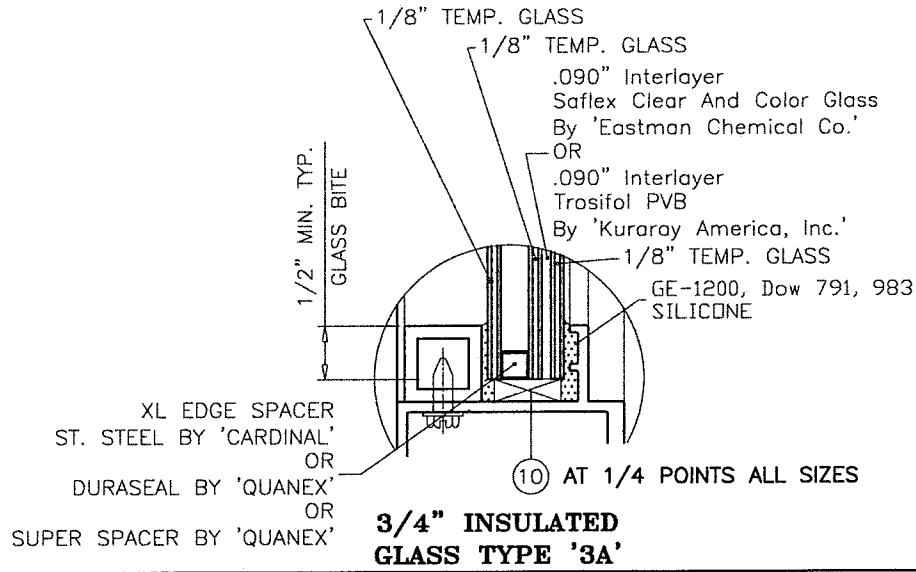
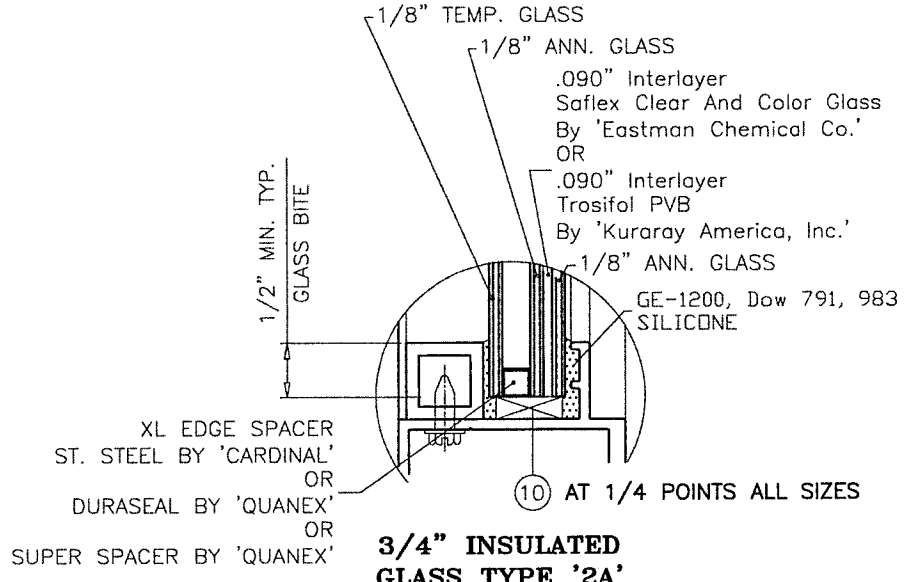
ANTHONY LYNN MILLER  
LICENSE  
No. 58705  
5/12/20  
STATE OF FLORIDA  
PROFESSIONAL ENGINEER  
A. LYNN MILLER, P.E.  
P.E.# 58705



PERFORMANCE VALUES OF IMPACT RESISTANT WINDOWS					
NO SHUTTERS REQUIRED					
REFER TO SHEETS 6 AND 7 FOR INSTALLATION DETAILS					
WINDOW DIMS.		GLASS TYPE '2A'		GLASS TYPE '3A'	
WIDTH	HEIGHT	EXT. (+)	INT. (-)	EXT. (+)	INT. (-)
24"	36"	110.0	180.0	110.0	195.8
30"		110.0	144.0	110.0	156.6
36"		110.0	120.0	110.0	130.5
42"		110.0	120.0	110.0	120.0
48"		107.7	107.7	110.0	120.0
54"		90.1	90.1	110.0	120.0
60"	79.3	79.3	110.0	120.0	
24"	42"	110.0	168.0	110.0	193.6
30"		110.0	144.0	110.0	156.6
36"		110.0	120.0	110.0	120.0
42"		102.9	102.9	96.9	111.9
48"		90.3	90.3	96.9	111.9
54"		79.8	79.8	96.9	111.9
60"	70.5	70.5	90.0	90.0	
24"	48"	110.0	160.0	110.0	184.4
30"		110.0	120.0	110.0	120.0
36"		107.7	107.7	110.0	120.0
42"		90.3	90.3	96.9	111.9
48"		80.2	80.2	84.8	97.9
54"		72.7	72.7	90.0	90.0
60"	67.6	67.6	90.0	90.0	
24"	54"	110.0	143.3	110.0	177.8
30"		105.6	105.6	110.0	120.0
36"		90.1	90.1	110.0	120.0
42"		79.8	79.8	96.9	111.9
48"		72.7	72.7	90.0	90.0
54"		69.9	69.9	80.0	80.0
60"	62.7	62.7	80.0	80.0	
24"	60"	110.0	120.0	110.0	120.0
30"		93.3	93.3	110.0	120.0
36"		79.3	79.3	110.0	120.0
42"		70.5	70.5	90.0	90.0
48"		67.6	67.6	90.0	90.0
54"		62.7	62.7	80.0	80.0
24"	66"	110.0	119.5	110.0	120.0
30"		87.2	87.2	110.0	120.0
36"		70.7	70.7	90.0	90.0
42"		61.7	61.7	90.0	90.0
48"		59.6	59.6	90.0	90.0
54"		62.7	62.7	80.0	80.0
24"	72"	110.0	111.9	110.0	120.0
30"		78.6	78.6	110.0	120.0
36"		62.9	62.9	90.0	90.0
42"		54.4	54.4	90.0	90.0
48"		52.9	52.9	90.0	90.0

PERFORMANCE VALUES OF IMPACT RESISTANT WINDOWS					
NO SHUTTERS REQUIRED					
REFER TO SHEETS 6 AND 7 FOR INSTALLATION DETAILS					
WINDOW DIMS.		GLASS TYPE '2A'		GLASS TYPE '3A'	
WIDTH	HEIGHT	EXT. (+)	INT. (-)	EXT. (+)	INT. (-)
24"	78"	103.6	103.6	110.0	120.0
30"		71.4	71.4	90.0	90.0
36"		54.0	54.0	90.0	90.0
42"		48.9	48.9	90.0	90.0
24"	84"	109.4	109.4	110.0	120.0
30"		67.0	67.0	90.0	90.0
36"		50.2	50.2	90.0	90.0
24"	96"	92.9	92.9	110.0	120.0
30"		59.8	59.8	90.0	90.0
36"		44.2	44.2	90.0	90.0
24"		108"	74.0	74.0	90.0
30"	56.8		56.8	90.0	90.0
24"	120"	62.5	62.5	90.0	90.0

PERFORMANCE VALUES OF IMPACT RESISTANT WINDOWS					
NO SHUTTERS REQUIRED					
REFER TO SHEETS 6 AND 7 FOR INSTALLATION DETAILS					
WINDOW DIMS.		GLASS TYPE '2A'		GLASS TYPE '3A'	
WIDTH	HEIGHT	EXT. (+)	INT. (-)	EXT. (+)	INT. (-)
19-1/8"	26"	110.0	210.0	110.0	210.0
26-1/2"		110.0	166.2	110.0	180.7
37"		110.0	166.2	110.0	180.7
53-1/8"		110.0	120.0	110.0	120.0
19-1/8"	38-3/8"	110.0	200.6	110.0	210.0
26-1/2"		110.0	163.0	110.0	177.3
37"		110.0	116.8	110.0	120.0
53-1/8"		87.0	87.0	110.0	120.0
19-1/8"	50-5/8"	110.0	185.7	110.0	210.0
26-1/2"		110.0	133.0	110.0	169.7
37"		97.9	97.9	110.0	120.0
53-1/8"		70.8	70.8	85.3	85.3
19-1/8"	63"	110.0	177.5	110.0	204.6
26-1/2"		104.3	104.3	110.0	120.0
37"		72.9	72.9	110.0	120.0
53-1/8"		60.1	60.1	81.3	81.3
19-1/8"	74-1/4"	110.0	120.0	110.0	120.0
26-1/2"		90.5	90.5	110.0	120.0
37"		58.8	58.8	90.0	90.0



NOTE:  
GLASS CAPACITIES ON THIS SHEET ARE  
BASED ON ASTM E1300-09 (3 SEC. GUSTS)

**PRODUCT REVISED**  
as complying with the Florida  
Building Code  
NOA-No. 20-0519.13  
Expiration Date 10/20/2023  
By *[Signature]*  
Miami-Dade Product Control

Revision: A) NO CHANGES THIS SHEET.  
AK - 03/27/20

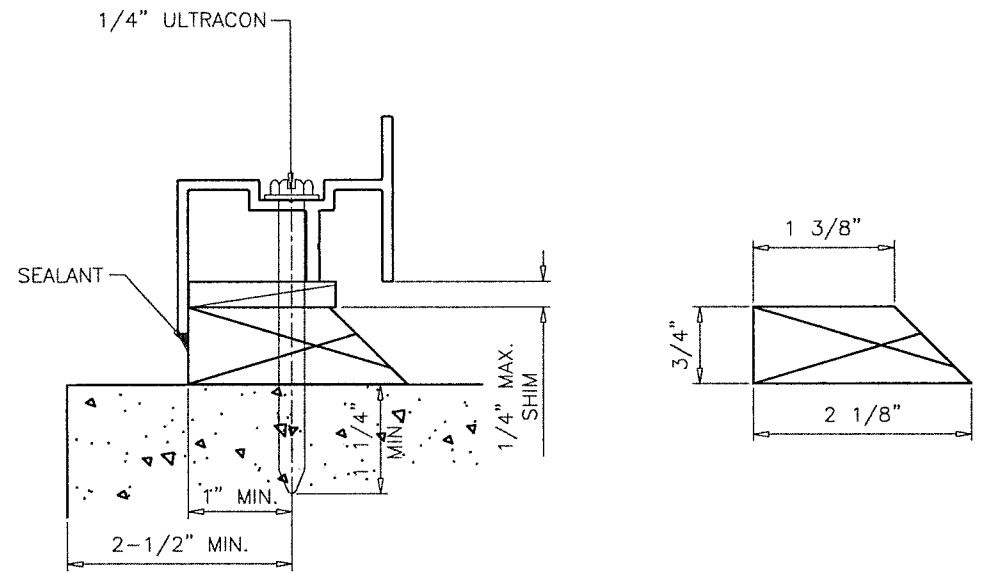
PREPARED BY A. LYNN MILLER 1070 TECHNOLOGY DRIVE N. VENICE, FL 34275 (941) 480-1600	REGISTRATION #29296	Date	05/12/20	AGK	MD-PW238D	A
		By				
<b>WINDOOR</b> INCORPORATED 7500 AMSTERDAM DRIVE ORLANDO, FL 32832 (407) 481-8400	DESIGN PRESSURE TABLES	238 DESIGNER FIXED WINDOW		PW238D	5 OF 8	NTS
		PW238D				

ANTHONY LYNN MILLER  
LICENSE  
No. 58705  
5/12/20  
STATE OF FLORIDA  
PROFESSIONAL ENGINEER  
A. LYNN MILLER, P.E.  
P.E.# 58705



**INSTALLATION CONDITIONS (APPLIES TO ALL FOUR SIDES)**

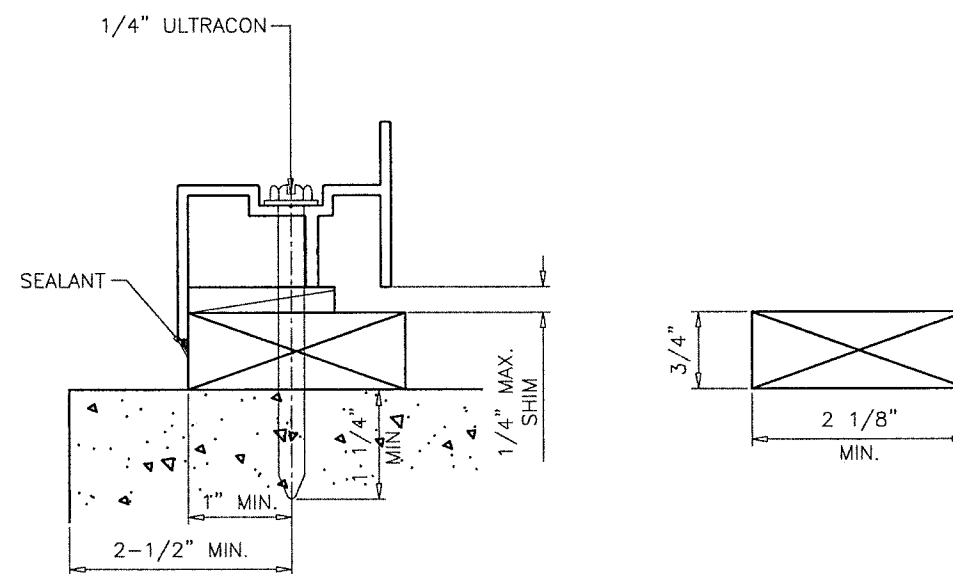
FOR ANCHOR PERFORMANCE VALUES SEE SHEET 6



**INSTALLATION TYPE '1'**

**WOOD BUCK TYPE '1'**  
MATERIAL: PRESSURE TREATED

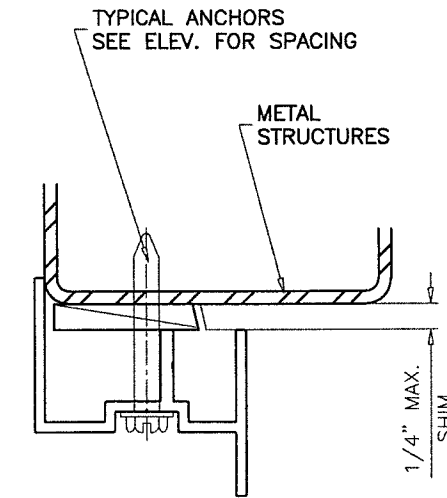
TYPICAL INSTALLATION DETAIL  
ON ALL FOUR SIDES/USING WOOD



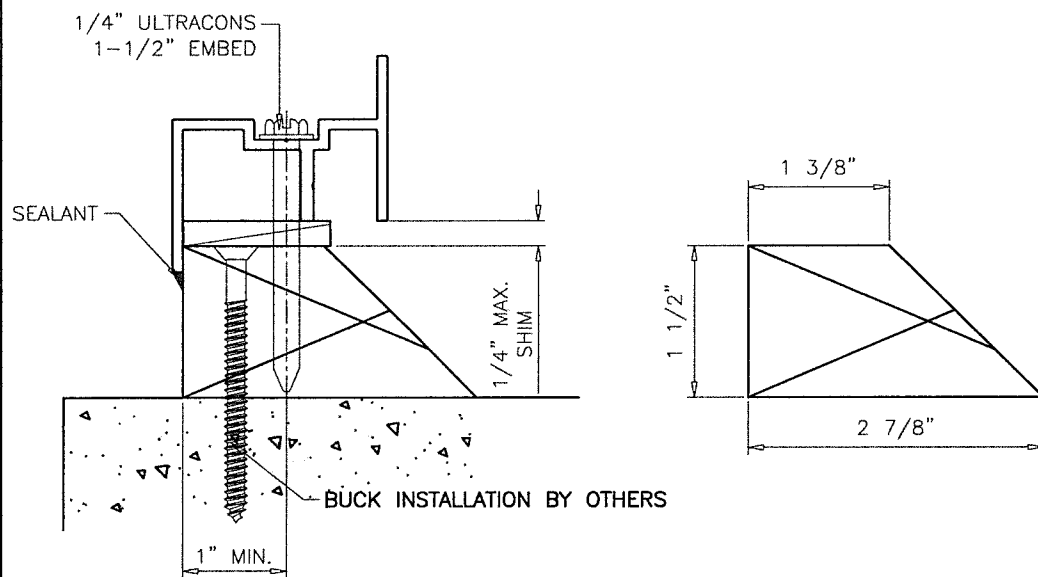
**INSTALLATION TYPE '2'**

**WOOD BUCK TYPE '2'**  
MATERIAL: PRESSURE TREATED

TYPICAL INSTALLATION DETAIL  
ON ALL FOUR SIDES/USING WOOD



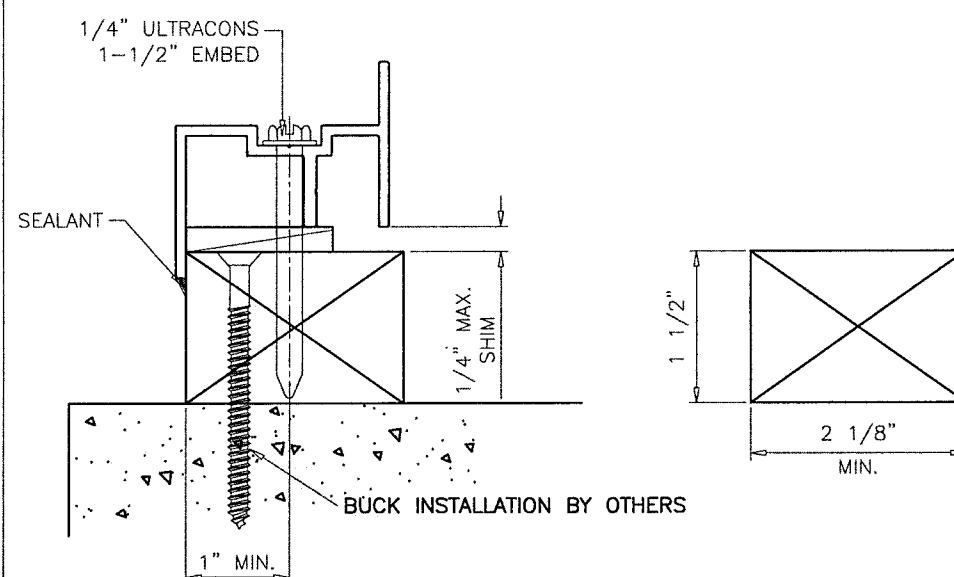
ATTACHMENT TO  
METAL STRUCTURES



**INSTALLATION TYPE '3'**

**WOOD BUCK TYPE '3'**  
MATERIAL: PRESSURE TREATED

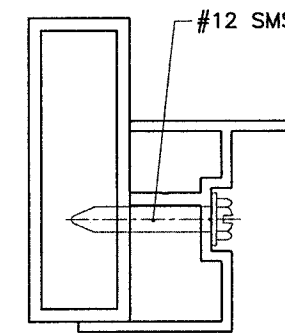
TYPICAL INSTALLATION DETAIL  
ON ALL FOUR SIDES/USING WOOD



**INSTALLATION TYPE '4'**

**WOOD BUCK TYPE '4'**  
MATERIAL: PRESSURE TREATED

TYPICAL INSTALLATION DETAIL  
ON ALL FOUR SIDES/USING WOOD



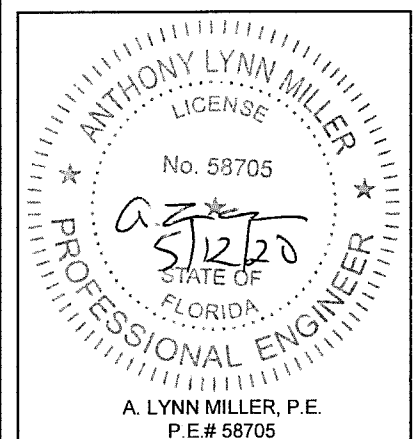
ATTACHMENT TO  
APPROVED MULLIONS

WOOD BUCKS NOT BY WINDOOR INC. MUST SUSTAIN LOADS IMPOSED BY GLAZING SYSTEM AND TRANSFER THEM TO THE BUILDING STRUCTURE.

**PRODUCT REVISED**  
as complying with the Florida  
Building Code  
NOA-No. 20-0519.13  
Expiration Date 10/20/2023  
By *[Signature]*  
Miami-Dade Product Control

Revision: A) NO CHANGES THIS SHEET.  
AK - 03/27/20

PREPARED BY A. LYNN MILLER 1070 TECHNOLOGY DRIVE N. VENICE, FL 34275 (941) 480-1600	REGISTRATION #29296	Date	05/12/20	Rev.	A
		Drawn By	AGK	DWG No.	MD-PW238D
<b>WINDOOR</b> INCORPORATED 7500 AMSTERDAM DRIVE ORLANDO, FL 32832 (407) 481-8400	INSTALLATION DETAILS	Scale	NTS	Sheet	6 OF 8
	238 DESIGNER FIXED WINDOW	Series	PW238D	Desc.	



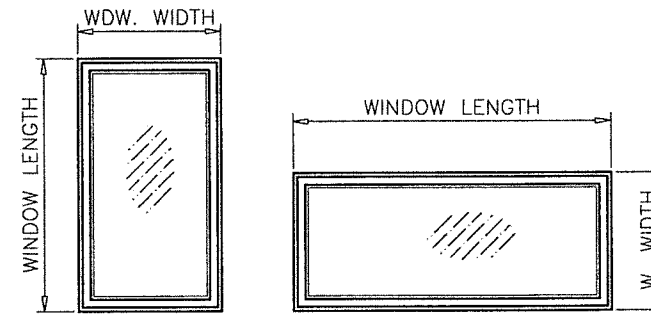
PERFORMANCE VALUES OF INSTALLATION ANCHORS REFER TO SHEET 6 FOR DETAILS		
WINDOW DIMS.		EXT. (+) INT. (-)
WIDTH	HEIGHT	
24"	36"	210.0
30"		210.0
36"		210.0
42"		210.0
48"		210.0
54"		210.0
60"		190.5
63"		177.8
66"		208.3
69"		196.1
72"		185.2
75"		175.4
78"	166.7	
81"	190.5	
84"	181.8	
87"	173.9	
90"	166.7	
24"	42"	210.0
30"		210.0
36"		210.0
42"		210.0
48"		210.0
54"		207.8
60"		175.8
63"		163.3
66"		190.5
69"		178.6
72"		168.1
75"		158.7
78"	150.4	
81"	171.4	
84"	163.3	
87"	155.8	
90"	149.1	
24"	48"	210.0
30"		210.0
36"		210.0
42"		210.0
48"		210.0
54"		200.0
60"		166.7
63"		153.8
66"		178.6
69"		166.7
72"		156.3
75"		147.1
78"	138.9	
81"	157.9	
84"	150.0	
87"	142.9	
90"	136.4	

PERFORMANCE VALUES OF INSTALLATION ANCHORS REFER TO SHEET 6 FOR DETAILS		
WINDOW DIMS.		EXT. (+) INT. (-)
WIDTH	HEIGHT	
24"	54"	210.0
30"		210.0
36"		210.0
42"		207.8
48"		200.0
54"		197.5
60"		161.6
63"		148.1
66"		170.9
69"		158.7
72"		148.1
75"		138.9
78"	130.7	
81"	148.1	
84"	140.4	
87"	133.3	
90"	127.0	
24"	60"	210.0
30"		210.0
36"		190.5
42"		175.8
48"		166.7
54"		161.6
60"		160.0
63"		145.5
66"		160.0
69"		153.8
72"		142.9
75"		133.3
78"	125.0	
81"	141.2	
84"	133.3	
87"	126.3	
90"	120.0	
24"	66"	210.0
30"		210.0
36"		208.3
42"		190.5
48"		178.6
54"		170.9
60"		160.0
63"		145.1
66"		165.3
69"		151.5
72"		139.9
75"		129.9
78"	121.2	
81"	136.4	
84"	128.3	
87"	121.2	
90"	114.8	

PERFORMANCE VALUES OF INSTALLATION ANCHORS REFER TO SHEET 6 FOR DETAILS		
WINDOW DIMS.		EXT. (+) INT. (-)
WIDTH	HEIGHT	
24"	72"	210.0
30"		210.0
36"		185.2
42"		168.1
48"		156.3
54"		148.1
60"		142.9
63"		141.1
66"		139.9
69"		139.1
72"		138.9
75"		128.2
78"	119.0	
81"	133.3	
84"	125.0	
87"	117.6	
90"	111.1	
24"	78"	210.0
30"		190.5
36"		166.7
42"		150.4
48"		138.9
54"		130.7
60"		125.0
63"		122.9
66"		121.2
69"		119.9
72"		119.0
75"		118.5
78"	118.3	
81"	118.3	
84"	118.3	
87"	115.4	
90"	110.0	
24"	84"	210.0
30"		208.7
36"		181.8
42"		163.3
48"		150.0
54"		140.4
60"		133.3
63"		130.6
66"		128.3
69"		126.5
72"		125.0
75"		123.9
78"	118.3	
81"	122.6	
84"	122.6	
87"	122.6	
90"	122.6	
24"	96"	210.0
30"		177.8
36"		153.8
42"		137.1
48"		125.0
54"		115.9
60"		109.1
63"		106.3
66"		103.9
69"		101.8
72"		100.0

PERFORMANCE VALUES OF INSTALLATION ANCHORS REFER TO SHEET 6 FOR DETAILS		
WINDOW DIMS.		EXT. (+) INT. (-)
WIDTH	HEIGHT	
24"	108"	210.0
30"		180.6
36"		155.6
42"		137.9
48"		125.0
54"		115.2
60"	107.7	
63"	104.6	
24"	120"	210.0
30"		182.9
36"		156.9
42"		138.5
48"		125.0
54"		114.7
24"	132"	210.0
30"		184.6
36"		157.9
42"		139.0
48"		125.0
54"		114.7
24"	144"	210.0
30"		167.4
36"		142.9
42"		125.4
48"		112.5
54"		112.5
24"	156"	208.3
30"		170.2
36"		144.9
42"		127.0
48"		127.0
54"		127.0

PERFORMANCE VALUES OF INSTALLATION ANCHORS REFER TO SHEET 6 FOR DETAILS		
WINDOW DIMS.		EXT. (+) INT. (-)
WIDTH	HEIGHT	
19-1/8"	26"	210.0
26-1/2"		210.0
37"		210.0
53-1/8"	38-3/8"	210.0
19-1/8"		210.0
26-1/2"		210.0
37"	210.0	
53-1/8"	50-5/8"	210.0
19-1/8"		210.0
26-1/2"		210.0
37"	210.0	
53-1/8"	63"	204.5
19-1/8"		210.0
26-1/2"		210.0
37"	174.9	
53-1/8"	74-1/4"	148.8
19-1/8"		210.0
26-1/2"		210.0
37"	174.5	
53-1/8"	142.1	



**NOTE:**  
WIDTH AND LENGTH DIMENSIONS CAN BE ORIENTED VERTICALLY OR HORIZONTALLY AS SHOWN ABOVE.

1/4" DIA. ULTRACON BY 'ELCO' (Fu=177 KSI, Fy=155 KSI)  
 INTO 2BY WOOD BUCKS OR WOOD STRUCTURES  
 1-1/2" MIN. PENETRATION INTO WOOD  
 THRU 1BY BUCKS INTO CONC. OR MASONRY  
 1-1/4" MIN. EMBED INTO CONC. OR MASONRY  
 DIRECTLY INTO CONC. OR MASONRY  
 1-1/4" MIN. EMBED INTO CONC. OR MASONRY  
 1/4" DIA. ULTRACON+ BY 'DEWALT' (Fu=164 KSI, Fy=148 KSI)  
 INTO 2BY WOOD BUCKS OR WOOD STRUCTURES  
 1-1/2" MIN. PENETRATION INTO WOOD  
 THRU 1BY BUCKS INTO CONC. OR MASONRY  
 1-1/4" MIN. EMBED INTO CONC. OR MASONRY  
 DIRECTLY INTO CONC. OR MASONRY  
 1-1/4" MIN. EMBED INTO CONC. OR MASONRY  
 #14 SMS OR SELF DRILLING SCREWS (GRADE 2 CRS)  
 INTO METAL STRUCTURES  
 STEEL : 12 GA. MIN. (Fy = 36 KSI MIN.)  
 ALUMINUM : 1/8" THK. MIN. (6063-T5 MIN.)  
 (STEEL IN CONTACT WITH ALUMINUM TO BE PLATED OR PAINTED)  
 #12 SMS OR SELF DRILLING SCREWS (GRADE 2 CRS)  
 INTO MIAMI-DADE COUNTY APPROVED MULLIONS (MIN. THK. = 1/8")  
 (NO SHIM SPACE)  
 TYPICAL EDGE DISTANCE  
 INTO CONCRETE AND MASONRY = 2-1/2" MIN.  
 INTO WOOD STRUCTURE = 1" MIN.  
 INTO METAL STRUCTURE = 3/4" MIN.  
 WOOD AT HEAD, SILL OR JAMBS SG = 0.55 MIN.  
 CONCRETE AT HEAD, SILL OR JAMBS f'c = 3000 PSI MIN.  
 C-90 HOLLOW/FILLED BLOCK AT JAMBS f'm = 2000 PSI MIN.

**PRODUCT REVISED**  
 as complying with the Florida  
 Building Code  
 NOA-No. 20-0519.13  
 Expiration Date 10/20/2023  
 By *[Signature]*  
 Miami-Dade Product Control

Revision: A) ADDED ULTRACON+.  
 AK - 03/27/20

PREPARED BY A. LYNN MILLER 1070 TECHNOLOGY DRIVE N. VENICE, FL 34275 (941) 480-1600	REGISTRATION #29296	Date	05/12/20	AGK	MD-PW238D	A
		By				
WINDOOR® INCORPORATED 7500 AMSTERDAM DRIVE ORLANDO, FL 32832 (407) 481-8400	ANCHOR TABLES	238 DESIGNER FIXED WINDOW	PW238D	NTS	7 OF 8	Sheet

ANTHONY LYNN MILLER  
 LICENSE  
 No. 58705  
 5/12/20  
 STATE OF  
 FLORIDA  
 PROFESSIONAL ENGINEER  
 A. LYNN MILLER, P.E.  
 P.E.# 58705

PERFORMANCE VALUES OF ALUMINUM BUCK INSTALLATION ANCHORS			
WINDOW DIMS.		ANCHORS AT 17" O.C.	ANCHORS AT 10" O.C.
WIDTH	HEIGHT	EXT. (+) INT. (-)	EXT. (+) INT. (-)
24"	36"	207.8	210.0
30"		189.9	210.0
36"		184.7	210.0
42"		138.5	184.7
48"		147.7	184.7
54"		123.1	184.7
60"		105.5	158.3
63"		98.5	172.4
66"		115.4	161.6
69"		108.6	152.1
72"		102.6	143.6
75"		97.2	155.5
78"	92.3	147.7	
81"	105.5	140.7	
84"	100.7	151.1	
87"	96.3	144.5	
90"	92.3	138.5	
24"	42"	166.2	210.0
30"		147.7	197.0
36"		138.5	184.7
42"		135.7	180.9
48"		135.7	175.9
54"		115.1	172.7
60"		97.4	146.1
63"		90.4	158.3
66"		105.5	147.7
69"		98.9	138.5
72"		93.1	130.4
75"		87.9	140.7
78"	83.3	133.3	
81"	95.0	126.6	
84"	90.4	135.7	
87"	86.3	129.5	
90"	82.6	123.9	
24"	48"	184.7	210.0
30"		161.2	201.5
36"		147.7	184.7
42"		135.7	175.9
48"		138.5	173.1
54"		110.8	166.2
60"		92.3	138.5
63"		85.2	149.2
66"		98.9	138.5
69"		92.3	129.3
72"		86.6	121.2
75"		81.5	130.4
78"	76.9	123.1	
81"	87.5	116.6	
84"	83.1	124.7	
87"	79.1	118.7	
90"	75.5	113.3	

PERFORMANCE VALUES OF ALUMINUM BUCK INSTALLATION ANCHORS			
WINDOW DIMS.		ANCHORS AT 17" O.C.	ANCHORS AT 10" O.C.
WIDTH	HEIGHT	EXT. (+) INT. (-)	EXT. (+) INT. (-)
24"	54"	158.3	210.0
30"		136.4	204.6
36"		123.1	184.7
42"		115.1	172.7
48"		110.8	166.2
54"		109.4	164.1
60"		89.5	134.3
63"		82.1	143.6
66"		94.7	132.6
69"		87.9	123.1
72"		82.1	114.9
75"		76.9	123.1
78"	72.4	115.9	
81"	82.1	109.4	
84"	77.8	116.6	
87"	73.9	110.8	
90"	70.3	105.5	
24"	60"	138.5	207.8
30"		118.2	177.3
36"		105.5	158.3
42"		97.4	146.1
48"		92.3	138.5
54"		89.5	134.3
60"		88.6	133.0
63"		80.6	133.0
66"		88.6	129.3
69"		85.2	119.3
72"		79.1	110.8
75"		73.9	118.2
78"	69.3	110.8	
81"	78.2	104.3	
84"	73.9	110.8	
87"	70.0	105.0	
90"	66.5	99.7	
24"	66"	153.9	210.0
30"		130.4	182.5
36"		115.4	161.6
42"		105.5	147.7
48"		98.9	138.5
54"		94.7	132.6
60"		88.6	129.3
63"		80.4	128.5
66"		91.6	128.2
69"		83.9	117.5
72"		77.5	108.5
75"		71.9	115.1
78"	67.2	107.4	
81"	75.5	100.7	
84"	71.1	106.7	
87"	67.2	100.7	
90"	63.6	95.4	

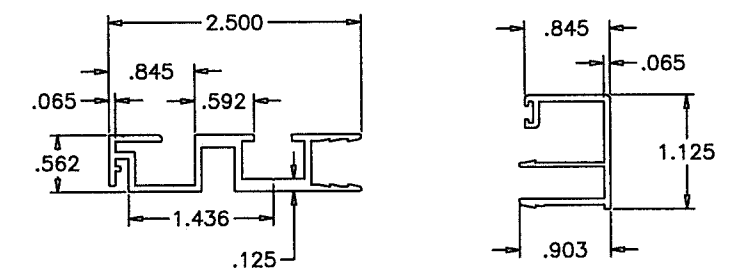
PERFORMANCE VALUES OF ALUMINUM BUCK INSTALLATION ANCHORS			
WINDOW DIMS.		ANCHORS AT 17" O.C.	ANCHORS AT 10" O.C.
WIDTH	HEIGHT	EXT. (+) INT. (-)	EXT. (+) INT. (-)
24"	72"	138.5	193.9
30"		116.6	163.3
36"		102.6	143.6
42"		93.1	130.4
48"		86.6	121.2
54"		82.1	114.9
60"		79.1	110.8
63"		78.2	109.4
66"		77.5	108.5
69"		77.1	107.9
72"		76.9	107.7
75"		71.0	107.7
78"	66.0	105.5	
81"	73.9	98.5	
84"	69.3	103.9	
87"	65.2	97.8	
90"	61.6	92.3	
24"	78"	125.9	201.5
30"		105.5	168.8
36"		92.3	147.7
42"		83.3	133.3
48"		76.9	123.1
54"		72.4	115.9
60"		69.3	110.8
63"		68.1	108.9
66"		67.2	107.4
69"		66.4	106.3
72"		66.0	105.5
75"		65.7	105.1
78"	65.6	104.9	
81"	65.6	97.4	
84"	65.6	102.3	
87"	63.9	95.9	
90"	61.6	92.3	
24"	84"	138.5	207.8
30"		115.6	173.4
36"		100.7	151.1
42"		90.4	135.7
48"		83.1	124.7
54"		77.8	116.6
60"		73.9	110.8
63"		72.4	108.5
66"		71.1	106.7
69"		70.1	105.1
72"		69.3	103.9
75"		68.6	102.9
78"	65.6	102.3	
81"	67.9	97.3	
84"	67.9	97.3	
87"	67.9	97.3	
90"	67.9	97.3	
24"	96"	118.7	197.9
30"		98.5	164.1
36"		85.2	142.1
42"		76.0	126.6
48"		69.3	115.4
54"		64.2	107.1
60"		60.4	100.7
63"		58.9	98.2
66"		57.6	95.9
69"		56.4	94.0
72"		55.4	92.3

PERFORMANCE VALUES OF ALUMINUM BUCK INSTALLATION ANCHORS			
WINDOW DIMS.		ANCHORS AT 17" O.C.	ANCHORS AT 10" O.C.
WIDTH	HEIGHT	EXT. (+) INT. (-)	EXT. (+) INT. (-)
24"	108"	121.2	190.4
30"		100.1	157.3
36"		86.2	135.4
42"		76.4	120.1
48"		69.3	108.8
54"		63.8	100.3
60"	59.7	93.8	
63"	57.9	91.0	
24"	120"	123.1	184.7
30"		101.3	152.0
36"		86.9	130.4
42"		76.7	115.1
48"		69.3	103.9
54"		63.5	95.3
24"	132"	124.7	180.1
30"		102.3	147.7
36"		87.5	126.4
42"		77.0	111.2
48"		69.3	100.0
54"		63.5	95.3
24"	144"	113.3	188.9
30"		92.8	154.6
36"		79.1	131.9
42"		69.5	115.8
48"		62.3	103.9
54"		56.5	97.4
24"	156"	115.4	184.7
30"		94.3	150.9
36"		80.3	128.5
42"		70.3	112.6

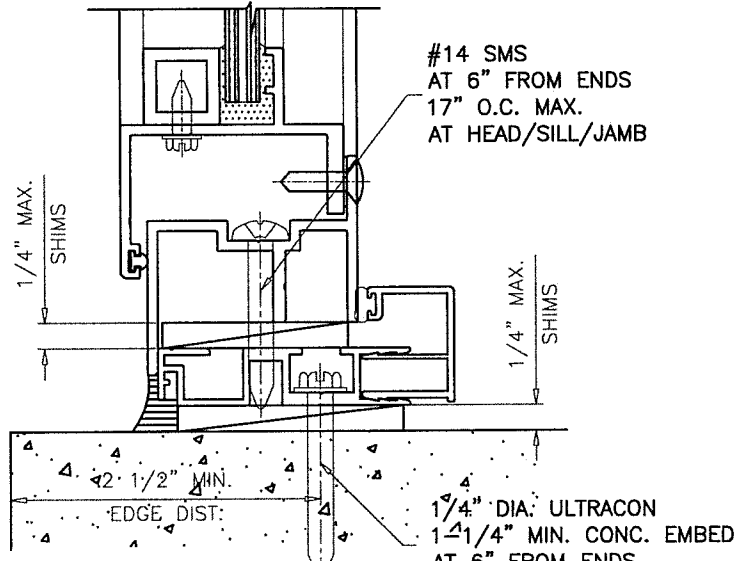
PERFORMANCE VALUES OF ALUMINUM BUCK INSTALLATION ANCHORS			
WINDOW DIMS.		ANCHORS AT 17" O.C.	ANCHORS AT 10" O.C.
WIDTH	HEIGHT	EXT. (+) INT. (-)	EXT. (+) INT. (-)
19-1/8"	26"	210.0	210.0
26-1/2"		210.0	210.0
37"		191.8	210.0
53-1/8"	38-3/8"	152.9	210.0
19-1/8"		210.0	210.0
26-1/2"		179.7	210.0
37"	162.7	210.0	
53-1/8"	50-5/8"	122.5	183.8
19-1/8"		203.2	210.0
26-1/2"		161.1	201.4
37"	134.2	167.8	
53-1/8"	63"	113.3	155.6
19-1/8"		156.1	210.0
26-1/2"		121.0	210.0
37"	96.9	169.6	
53-1/8"	74-1/4"	82.4	144.2
19-1/8"		161.2	210.0
26-1/2"		123.4	197.4
37"	96.7	154.7	
53-1/8"		78.7	126.0

### ALUMINUM BUCK FRAMING DETAILS

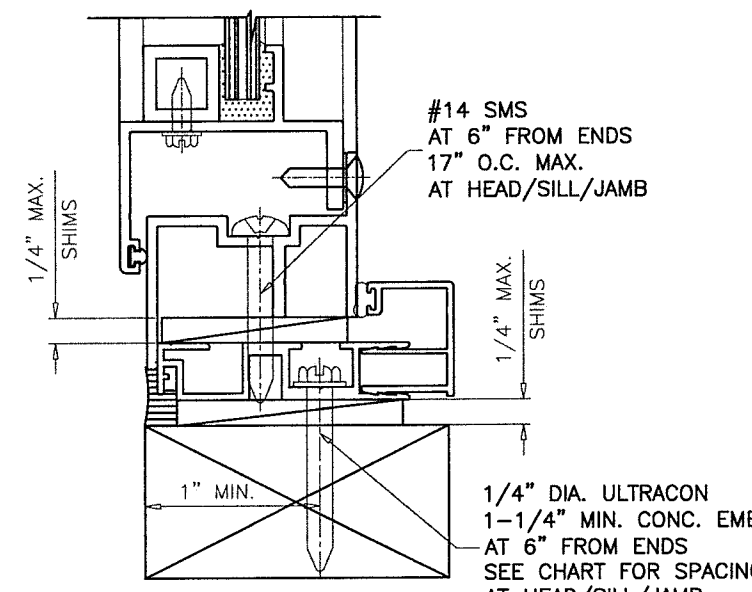
REFER TO SHEETS 3 THRU 6 FOR WINDOW CAPACITIES  
USE LOWER APPLICABLE VALUES.



ALUMINUM BUCK 6063-T6      OPTIONAL COVER 6063-T6



INSTALLATION TYPE '5'



INSTALLATION TYPE '6'

2BY WOOD BUCK OR WOOD STRUCTURES  
TYPICAL INSTALLATION DETAIL  
ON ALL FOUR SIDES/USING ALUMINUM BUCK SYSTEM

**PRODUCT REVISED**  
as complying with the Florida  
Building Code  
NOA-No. 20-0519.13  
Expiration Date 10/20/2023  
By *[Signature]*  
Miami-Dade Product Control

Revision: A) NO CHANGES THIS SHEET.  
AK - 03/27/20

<b>WINDOOR</b> INCORPORATED 7500 AMSTERDAM DRIVE ORLANDO, FL 32832 (407) 481-8400	PREPARED BY A. LYNN MILLER 1070 TECHNOLOGY DRIVE N. VENICE, FL 34275 (941) 480-1600	REGISTRATION #29296 05/12/20	Rev. A
	ALUMINUM BUCK	AGK	MD-PW238D
	238 DESIGNER FIXED WINDOW	NTS	8 OF 8
	PW238D	Scale	Sheet

ANTHONY LYNN MILLER  
 LICENSE  
 No. 58705  
 5/12/20  
 STATE OF  
 FLORIDA  
 PROFESSIONAL ENGINEER  
 A. LYNN MILLER, P.E.  
 P.E.# 58705