



DEPARTMENT OF REGULATORY AND ECONOMIC RESOURCES (RER)
BOARD AND CODE ADMINISTRATION DIVISION

NOTICE OF ACCEPTANCE (NOA)

MIAMI-DADE COUNTY
PRODUCT CONTROL SECTION

11805 SW 26 Street, Room 208
T (786) 315-2590 F (786) 315-2599

www.miamidade.gov/economy

WinDoor, Inc.

104 Triple Diamond Blvd.

Orlando, FL 34275

SCOPE:

This NOA is being issued under the applicable rules and regulations governing the use of construction materials. The documentation submitted has been reviewed and accepted by Miami-Dade County RER - Product Control Section to be used in Miami Dade County and other areas where allowed by the Authority Having Jurisdiction (AHJ).

This NOA shall not be valid after the expiration date stated below. The Miami-Dade County Product Control Section (In Miami Dade County) and/or the AHJ (in areas other than Miami Dade County) reserve the right to have this product or material tested for quality assurance purposes. If this product or material fails to perform in the accepted manner, the manufacturer will incur the expense of such testing and the AHJ may immediately revoke, modify, or suspend the use of such product or material within their jurisdiction. RER reserves the right to revoke this acceptance, if it is determined by Miami-Dade County Product Control Section that this product or material fails to meet the requirements of the applicable building code.

This product is approved as described herein and has been designed to comply with the Florida Building Code, including the High Velocity Hurricane Zone.

DESCRIPTION: Series "HR 375" Aluminum Horizontal Rolling Window – L.M.I.

APPROVAL DOCUMENT: Drawing No. 375 LMNOA-1 Rev A (former 18-96D) titled "Series-375 Alum. Horiz. Rolling Wdw. (L.M.I)", sheets 1 through 18 of 18, dated 06/03/20, prepared by manufacturer, signed and sealed by Lynn Miller, P.E., bearing the Miami-Dade County Product Control Revision stamp with the Notice of Acceptance number and expiration date by the Miami-Dade County Product Control Section.

MISSILE IMPACT RATING: Large and Small Missile Impact Resistant.

LABELING: Each unit shall bear a permanent label with the manufacturer's name or logo, city, state, model/series, and following statement: "Miami-Dade County Product Control Approved", unless otherwise noted herein.

RENEWAL of this NOA shall be considered after a renewal application has been filed and there has been no change in the applicable building code negatively affecting the performance of this product.

TERMINATION of this NOA will occur after the expiration date or if there has been a revision or change in the materials, use, and/or manufacture of the product or process. Misuse of this NOA as an endorsement of any product, for sales, advertising or any other purposes shall automatically terminate this NOA. Failure to comply with any section of this NOA shall be cause for termination and removal of NOA.

ADVERTISEMENT: The NOA number preceded by the words Miami-Dade County, Florida, and followed by the expiration date may be displayed in advertising literature. If any portion of the NOA is displayed, then it shall be done in its entirety.

INSPECTION: A copy of this entire NOA shall be provided to the user by the manufacturer or its distributors and shall be available for inspection at the job site at the request of the Building Official.

This NOA revises # 18-1001.11 (18-1001.07 PVT) consists of this page 1 and evidence pages E-1, E-2 and E-3 and, as well as approval document mentioned above.

The submitted documentation was reviewed by **Ishaq I. Chanda, P.E.**



Ishaq I. Chanda

NOA No. 20-0610.12
Expiration Date: June 10, 2024
Approval Date: November 19, 2020
Page 1

NOTICE OF ACCEPTANCE: EVIDENCE SUBMITTED

1. EVIDENCE SUBMITTED UNDER PREVIOUS NOA(s)

A. DRAWINGS

1. Manufacturer's die drawings and sections (*See NOA #18-1001.07*)
2. Drawing No **18-96D**, titled "Series-375 Alum. Horiz. Rolling Wdw. (L.M.I./S.M.I.)", sheets 1 through 6, 6.1, 7, 8, 8.1, 9 and 10 through 16 of 16, dated 02/27/09, prepared by Al-Farooq Corporation, signed and sealed by Javad Ahmad, P.E.

B. TESTS (*See NOA #18-1001.07*)

C. CALCULATIONS (*See NOA #18-1001.07*)

D. QUALITY ASSURANCE

1. Miami-Dade Department of Regulatory and Economic Resources (RER).

E. MATERIAL CERTIFICATIONS (*See NOA #18-1001.07*)

F. STATEMENTS (*See NOA #18-1001.07*)

G. OTHERS

1. Private labeling agreement between WinDoor, Inc. and CGI Windows and Doors, Inc. document in conformance of RER guideline dated 09/12/2018.

2. NEW EVIDENCE SUBMITTED

A. DRAWINGS

1. Drawing No. **375 LMNOA-1 Rev A** (former **18-96D**) titled "Series-375 Alum. Horiz. Rolling Wdw. (L.M.I.)", sheets 1 through 18 of 18, dated 06/03/20, prepared by manufacturer, signed and sealed by Lynn Miller, P.E.

B. TESTS

1. Test reports on: 1) Air Infiltration Test, per FBC, TAS 202-94
2) Uniform Static Air Pressure Test, Loading per FBC, TAS 202-94
3) Water Resistance Test, per FBC, TAS 202-94
4) Large Missile Impact Test per FBC, TAS 201-94
5) Cyclic Wind Pressure Loading per FBC, TAS 203-94

along with marked-up drawings and installation diagram of all PGT Industries, Inc., CGI Windows and Doors, Inc. and WinDoor, Inc. representative units listed below and tested to qualify **Dowsil 791** and **Dowsil 983** silicones, per Proposal **#19-1155TP**, prepared by Fenestration Testing Laboratory, Inc., Test Reports No.:

Ishaq I. Chanda

Ishaq I. Chanda, P.E.
Product Control Unit Supervisor
NOA No. 20-0610.12
Expiration Date: June 10, 2024
Approval Date: November 19, 2020

NOTICE OF ACCEPTANCE: EVIDENCE SUBMITTED

B. TESTS (continue):

WinDoor, Inc. test specimens:

FTL-20-2078.1, WinDoor PW3000 Aluminum Fixed Lite (unit 11 in proposal)
FTL-20-2078.2, WinDoor HR9470 Thermally Broken Alum. Horiz. Roller (unit 12)
FTL-20-2078.3, WinDoor SGD8100 Alum. Sliding Glass Door (unit 13 in proposal)
FTL-20-2078.4, WinDoor HR9470 Thermally Broken Alum. Horiz. Roller (unit 14)
FTL-20-2078.5, WinDoor PW9020 Alum. Fixed Lite (unit 15 in proposal) and
FTL-20-2078.6, WinDoor PW9020 Alum. Fixed Lite (unit 16 in proposal)
all dated 09/24/20 and signed and sealed by Idalmis Ortega, P.E.

PGT Industries, Inc. test specimens:

FTL-7897, PGT PW5520 PVC Fixed Window (unit 6 in proposal), dated 09/03/14
FTL-20-2107.1, PGT SGD780 Aluminum Sliding Glass Door (unit 7 in proposal) **FTL-20-2107.2**, PGT CA740 Alum. Outswing Casement Window (unit 8 in proposal) **FTL-20-2107.3**, PGT PW7620A Aluminum Fixed Window (unit 9 in proposal) and **FTL-20-2107.4**, PGT PW7620A Aluminum Fixed Window (unit 10 in proposal)
all dated 07/13/20 and signed and sealed by Idalmis Ortega, P.E.

CGI Windows and Doors Inc. test specimens:

FTL-20-2108.1, CGI SH360 Aluminum Single Hung Window (unit 1 in proposal) **FTL-20-2108.2**, CGI CA238 Alum. Outswing Casement Window (unit 2 in proposal) **FTL-20-2108.3**, CGI SGD560 Aluminum Sliding Glass Door (unit 3 in proposal) **FTL-20-2108.4**, CGI PW410 Aluminum Fixed Window (unit 4 in proposal) and **FTL-20-2108.5**, CGI SH360 Aluminum Single Hung Window (unit 5 in proposal)
all dated 08/24/20 and signed and sealed by Idalmis Ortega, P.E.

C. CALCULATIONS

1. Anchor verification calculations and structural analysis, complying with **FBC 7th Edition (2020)**, dated 03/26/20 and revised on 06/03/20, prepared by manufacturer, signed and sealed by Anthony Lynn Miller, P.E.
2. Glazing complies with **ASTM E1300-04, -09, -12 and -16**.

D. QUALITY ASSURANCE

1. Miami Dade Department of Regulatory and Economic Resources (RER).

E. MATERIAL CERTIFICATIONS

1. Notice of Acceptance No. **17-0808.02** issued to **Kuraray America, Inc.** for their “**SentryGlas® (Clear and White) Glass Interlayers**”, expiring on 07/04/23.
2. Notice of Acceptance No. **18-0301.06** issued to Eastman Chemical Company (MA) (Former Solutia, Inc.) for the “**Saflex CP - Saflex and Saflex HP Composite Glass Interlayers w/ PET Core**”, expiring on 12/11/23.

Ishaq I. Chanda

Ishaq I. Chanda, P.E.
Product Control Unit Supervisor
NOA No. 20-0610.12
Expiration Date: June 10, 2024
Approval Date: November 19, 2020

NOTICE OF ACCEPTANCE: EVIDENCE SUBMITTED

F. STATEMENTS

1. Statement letters of conformance to FBC 2020(7th Edition), dated 03/26/20, prepared, signed & sealed by Lynn Miller, P. E.
2. Notification of Successor Engineer per the Florida Administrative Code Section 61G15-27.001, notifying original engineer that the successor engineer is assuming full professional and legal responsibility for all engineering documents pertaining to this NOA, dated 06/03/20, signed and sealed by A. Lynn Miller, P.E.
3. Private Label Agreement dated 07/17/20 between Windoors, Inc. and CGI Windows and Doors, signed by Dean M. Ruark, P.E., V.P. Eng., on behalf of respective companies.

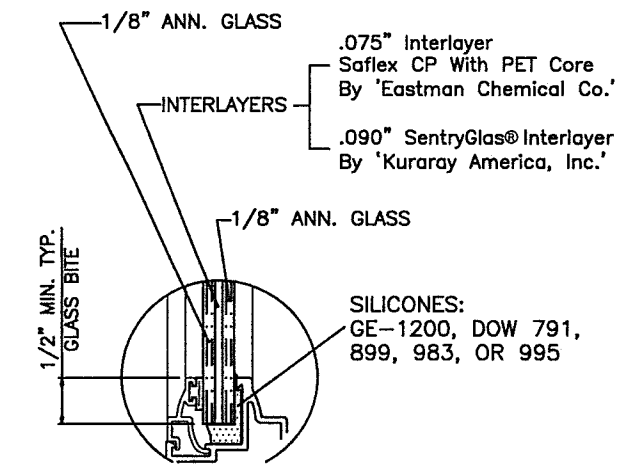
G. OTHER

1. This NOA revises NOA No. # 18-1001.11 (18-1001.07 PVT), updates to FBC 2020, expiring 10/06/24.
2. Additional associated reference file #20-1006.07(LMI).
3. RER Test proposals #19-1155 dated 01/10/20 approved by Ishaq I. Chanda, P.E.

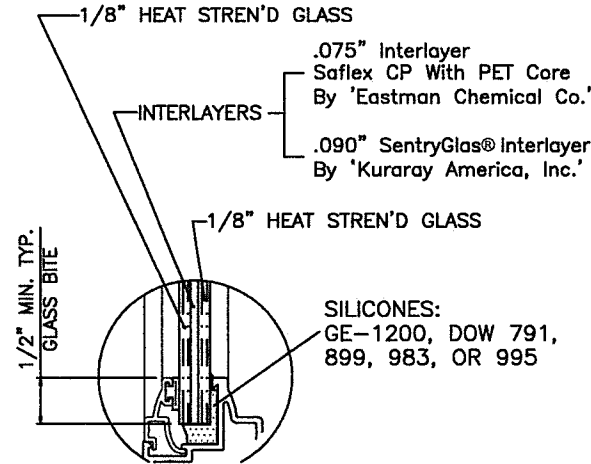
Ishaq I. Chanda

Ishaq I. Chanda, P.E.
Product Control Unit Supervisor
NOA No. 20-0610.12
Expiration Date: June 10, 2024
Approval Date: November 19, 2020

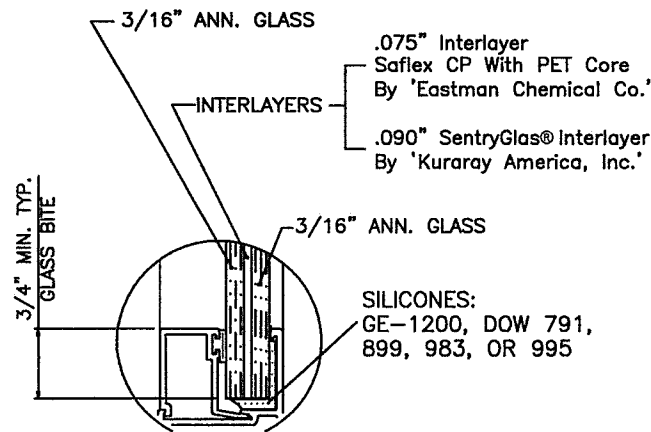
GLASS TYPES



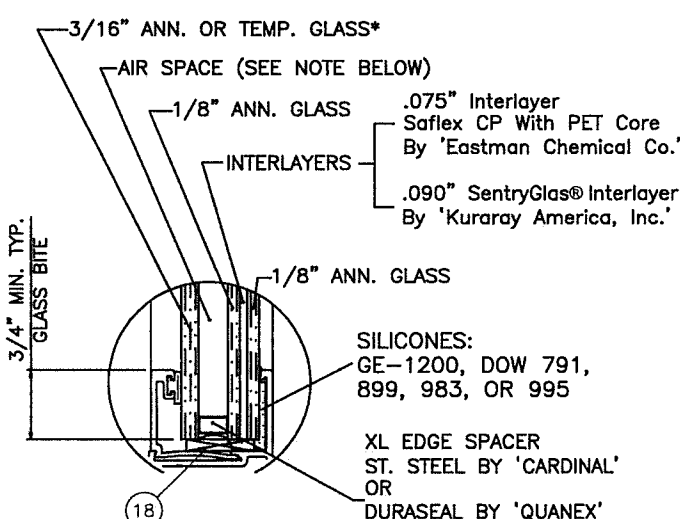
5/16" NOMINAL
GLASS TYPE '1'



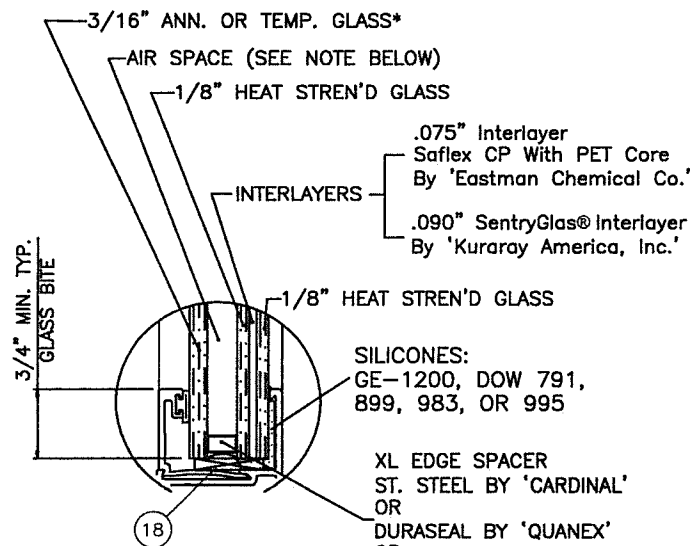
5/16" NOMINAL
GLASS TYPE '2'



7/16" NOMINAL
GLASS TYPE '3'



13/16" INSULATED
GLASS TYPE '4'



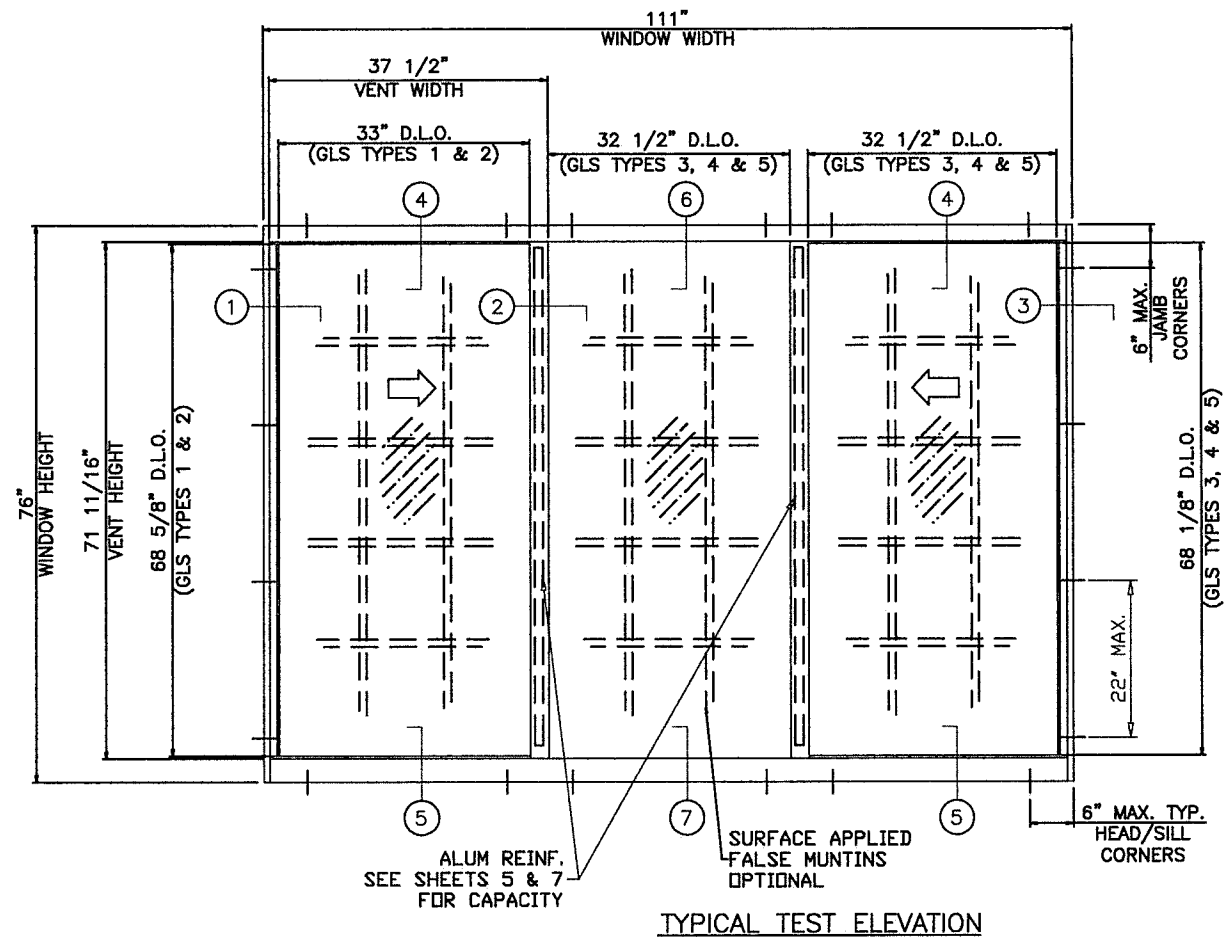
13/16" INSULATED
GLASS TYPE '5'

* FOR INSULATED GLASS INSTALLATIONS ABOVE 30' IN THE HVHZ, OR FOR SAFETY GLAZING APPLICATIONS PER THE FBC, THE OUTBOARD LITE (CAP) MUST BE TEMPERED.

INSTRUCTIONS FOR USING CAPACITY CHARTS:

- STEP 1** DETERMINE THE REQUIRED DESIGN PRESSURES FOR A GIVEN WINDOW OPENING.
- STEP 2** DETERMINE THE CAPACITY OF THE WINDOW SIZE/CONFIGURATION/GLASS TYPE FROM CHARTS ON SHEETS 5 AND 8. FOR INSTALLATION ANCHOR TYPES SEE SHEETS 6 & 9. EXTRA ANCHORS AT HEAD & SILL ARE SHOWN ON SHEETS 6, 7, 9 & 10.
- STEP 3** IF ALUMINUM BUCKS ARE USED, VERIFY THE BUCK INSTALLATION CAPACITY FROM SHEETS 16 & 17.
- STEP 4** FOR UNCLIPPED MULLED WINDOWS DETERMINE MULLION CAPACITY FOR 1X4 TUBE FROM CHARTS ON SHEET 14.
- STEP 5** FOR MULLION ANCHOR CAPACITY SEE CHART ON SHEET 15.

THE LOWEST SELECTED VALUE APPLY TO THE INSTALLATION AND MUST EQUAL OR EXCEED THE REQUIRED DESIGN PRESSURES OBTAINED FROM STEP 1.



THESE WINDOWS ARE RATED FOR LARGE MISSILE IMPACT.
SHUTTERS ARE NOT REQUIRED.

SERIES 375 'ESTATE' ALUMINUM HORIZONTAL ROLLER WINDOW LARGE & SMALL MISSILE

NOTES:

THIS PRODUCT HAS BEEN DESIGNED AND TESTED TO COMPLY WITH THE REQUIREMENTS OF THE 2017 (6TH EDITION)/2020 (7TH EDITION) FLORIDA BUILDING CODE INCLUDING HIGH VELOCITY HURRICANE ZONE (HVHZ).

1BY OR 2BY WOOD BUCKS & BUCK FASTENERS BY OTHERS, MUST BE DESIGNED AND INSTALLED ADEQUATELY TO TRANSFER APPLIED PRODUCT LOADS TO THE BUILDING STRUCTURE.

ANCHORS SHALL BE CORROSION RESISTANT, SPACED AS SHOWN ON DETAILS AND INSTALLED PER MANUF'S INSTRUCTIONS. SPECIFIED EMBEDMENT TO BASE MATERIAL SHALL BE BEYOND WALL DRESSING OR STUCCO.

A LOAD DURATION INCREASE IS USED IN DESIGN OF ANCHORS INTO WOOD ONLY.

ALL SHIMS TO BE HIGH IMPACT, NON-METALLIC AND NON-COMPRESSIBLE.

MATERIALS INCLUDING BUT NOT LIMITED TO STEEL/METAL SCREWS, THAT COME INTO CONTACT WITH OTHER DISSIMILAR MATERIALS SHALL MEET THE REQUIREMENTS OF THE 2017/2020 FLORIDA BUILDING CODE & ADOPTED STANDARDS.

THIS PRODUCT APPROVAL IS GENERIC AND DOES NOT PROVIDE INFORMATION FOR A SITE SPECIFIC PROJECT, i.e. LIFE SAFETY OF THIS PRODUCT, ADEQUACY OF STRUCTURE RECEIVING THIS PRODUCT AND SEALING AROUND OPENING FOR WATER INFILTRATION RESISTANCE ETC. CONDITIONS NOT SHOWN IN THIS DRAWING ARE TO BE ANALYZED SEPARATELY, AND TO BE REVIEWED BY BUILDING OFFICIAL.

PRODUCT REVISED
as complying with the Florida
Building Code
NOA-No. 20-0610.12

Expiration Date 06/10/2024

By *Isaac L. Chanda*
Miami-Dade Product Control

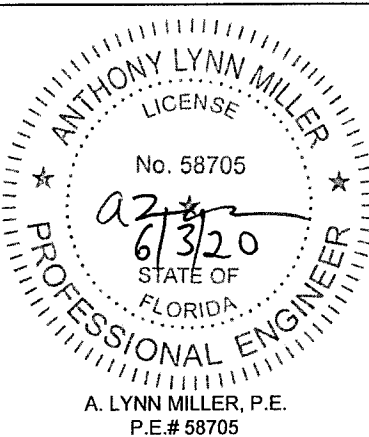
REVISION: REVISED FOR 2020 FBC,
ADDED ANCHOR & BACK-
BEDDING TYPE & REFOR-
MATTED - JR - 5/29/20

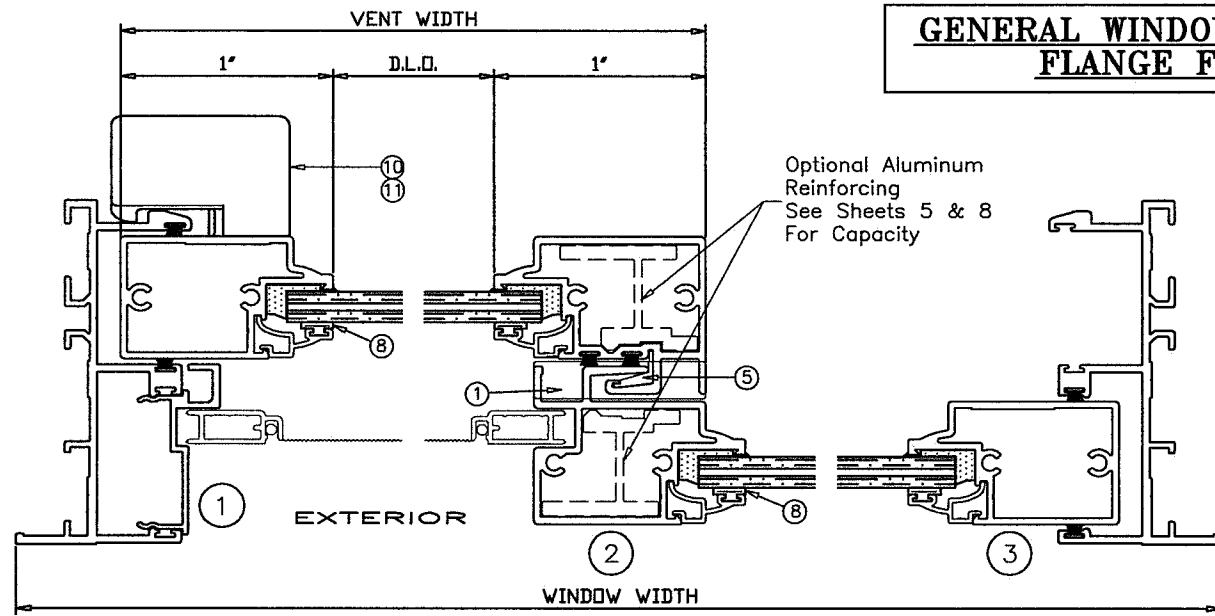
PREPARED BY A. LYNN MILLER
1070 TECHNOLOGY DRIVE
N. VENICE, FL 34275
(941) 480-1600

REGISTRATION #29296

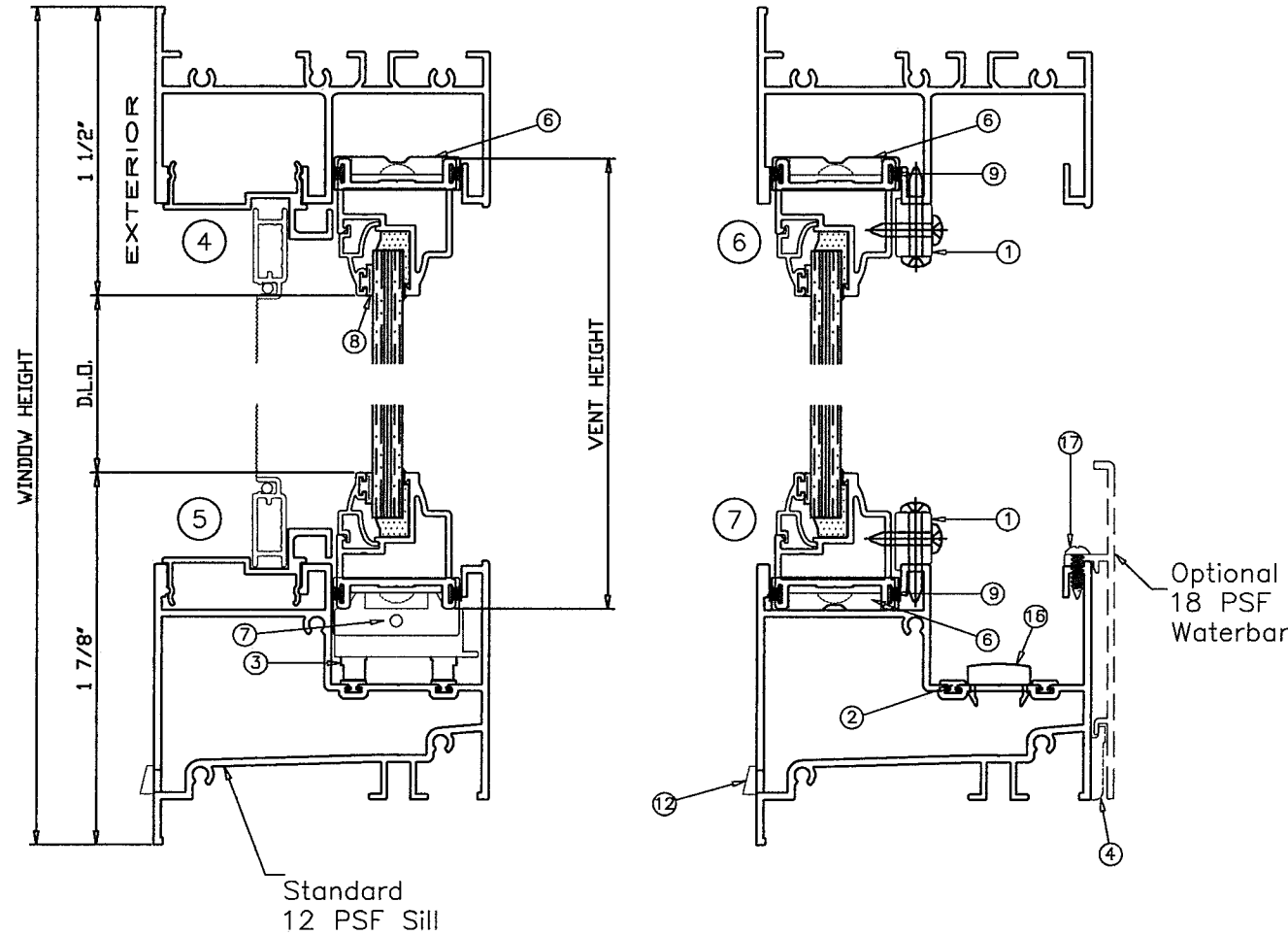
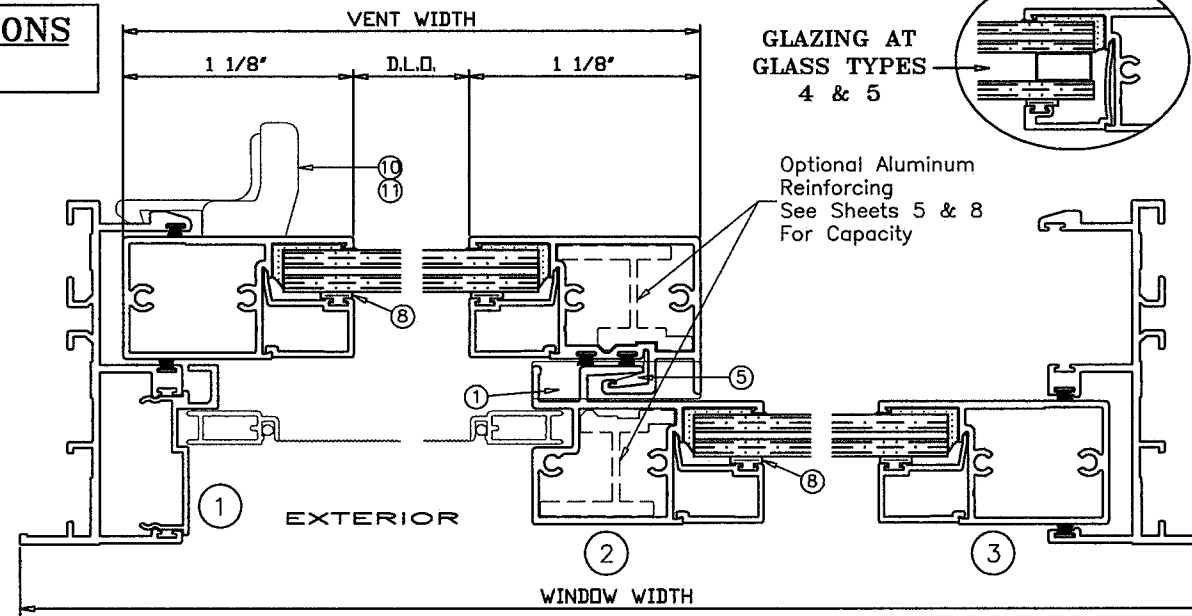
WinDoor®
INCORPORATED
104 TRIPLE DIAMOND BLVD.
N. VENICE, FL 34275
(407) 481-8400

Rev.	Date	By	No.	Scale	Sheet	Series
A	05/29/20	J ROSOWSKI	375LMNOA-1	1 OF 18	NTS	HR375 "ESTATE"
GEN. NOTES AND ELEVATIONS						

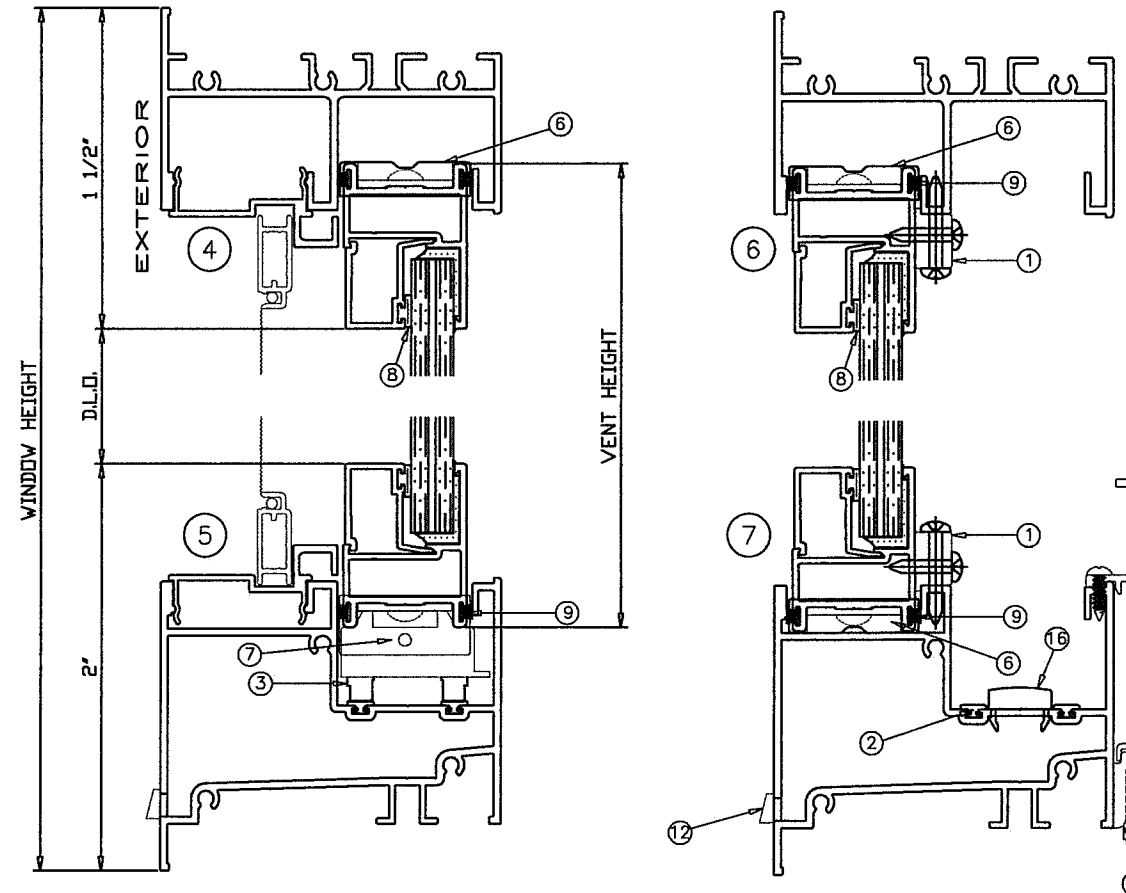




GENERAL WINDOW SECTIONS FLANGE FRAME



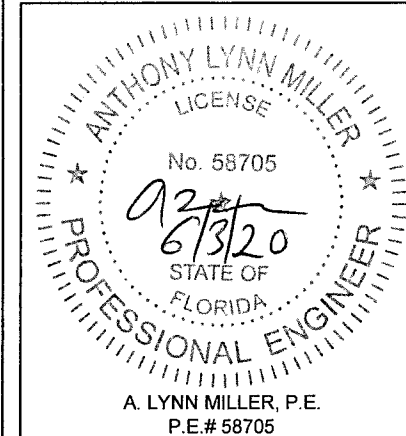
GLASS TYPES
1 & 2

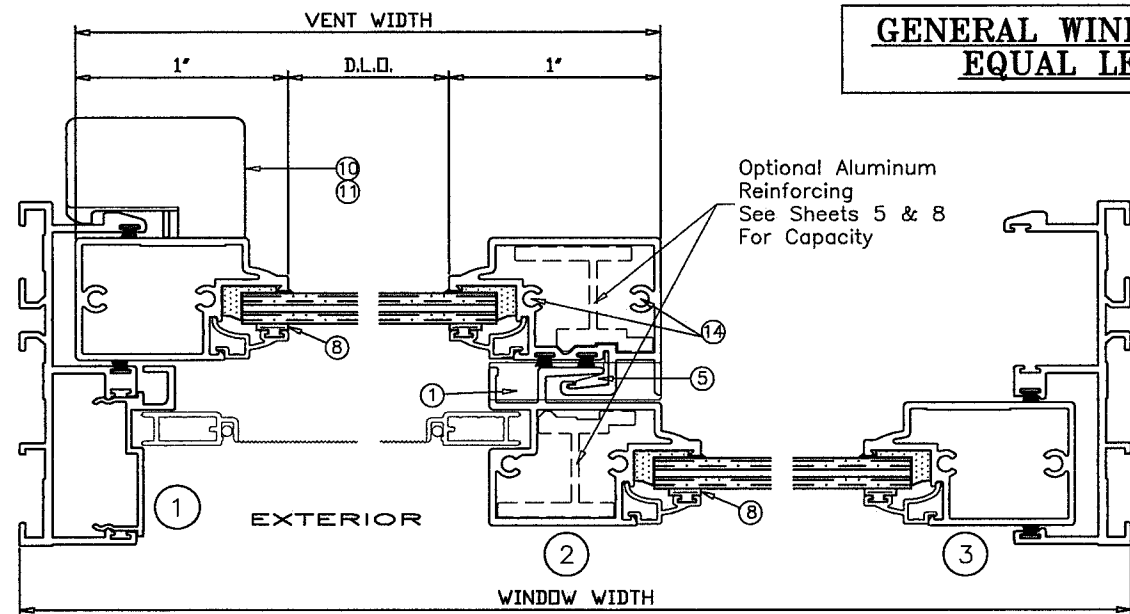


GLASS TYPES
3, 4, & 5

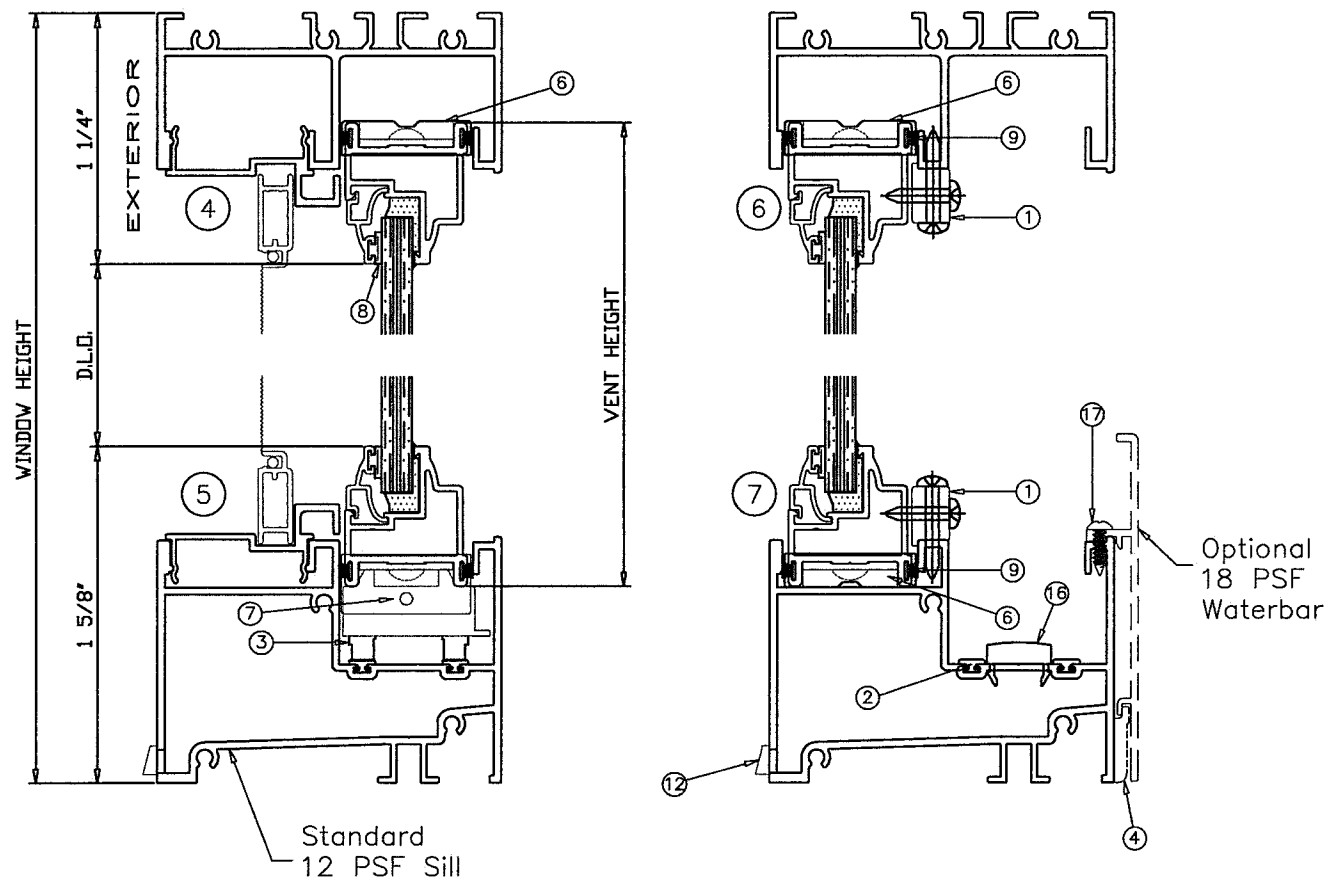
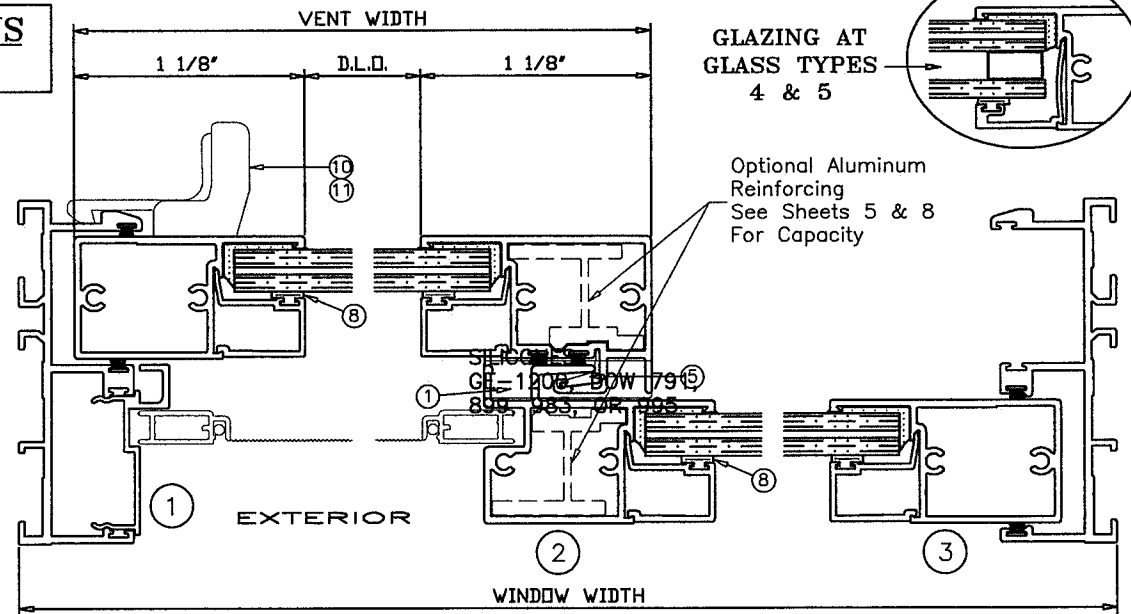
PRODUCT REVISED
as complying with the Florida
Building Code
NOA-No. 20-0610.12
Expiration Date 06/10/2024
By *Shag I. Chande*
Miami-Dade Product Control

<div>WINDOOR®</div> <div>INCORPORATED</div> <div>104 TRIPLE DIAMOND BLVD. N. VENICE, FL 34275 (407) 481-8400</div>	REGISTRATION #29296		05/29/20		Rev. A
	375 ALUM. HORIZONTAL ROLLER WDW. - LMI		J ROSOWSKI		
	CROSS SECTIONS, FLANGE FRAMES		2 OF 18		
	HR375 "ESTATE"		NTS		
Drawings	Title	Scale	Sheet	DWG No.	375LMNOA-1

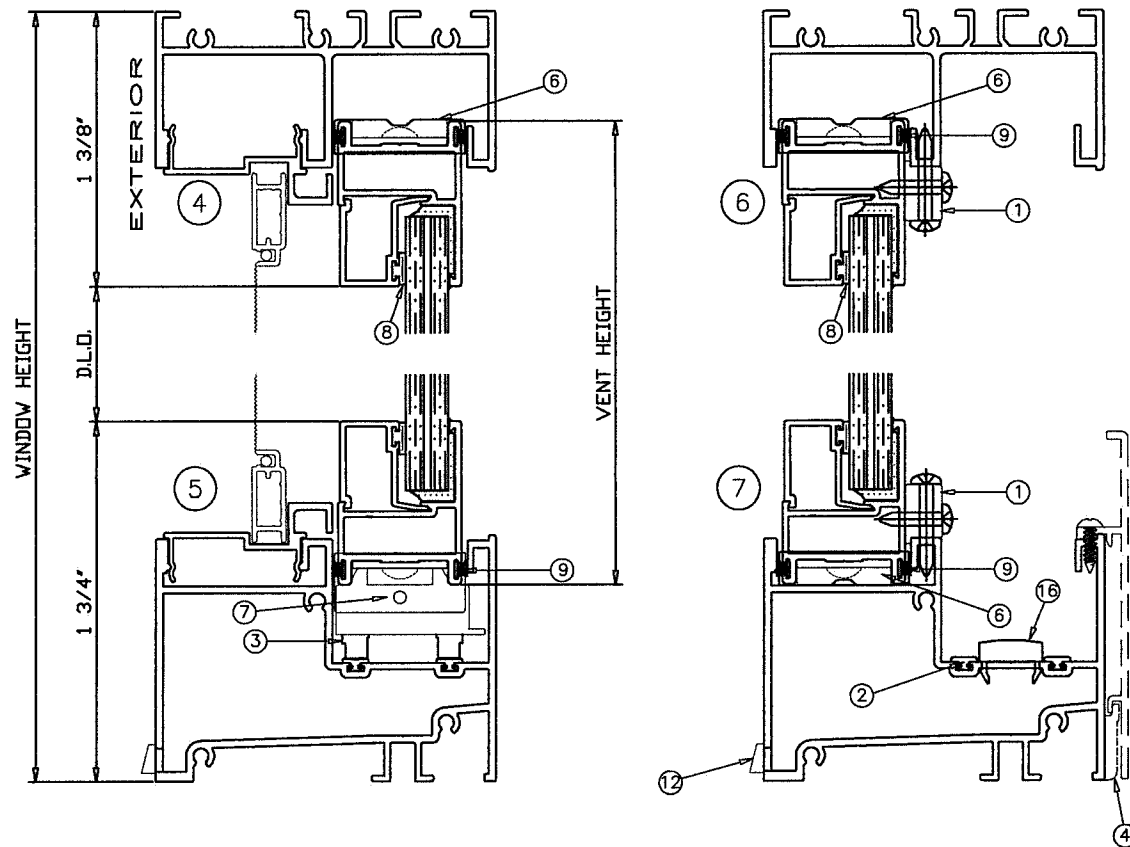




GENERAL WINDOW SECTIONS EQUAL LEG FRAME



GLASS TYPES
1 & 2



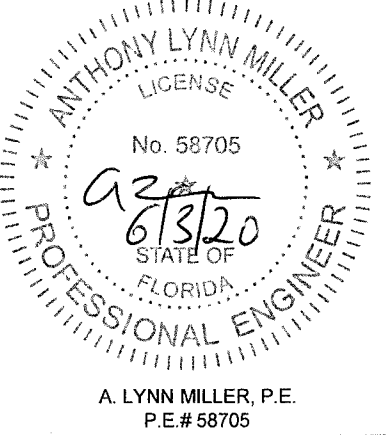
GLASS TYPES
3, 4, & 5

PRODUCT REVISED
as complying with the Florida
Building Code
NOA-No. 20-0610.12
Expiration Date 06/10/2024
By *Isaac I. Chandra*
Miami-Dade Product Control

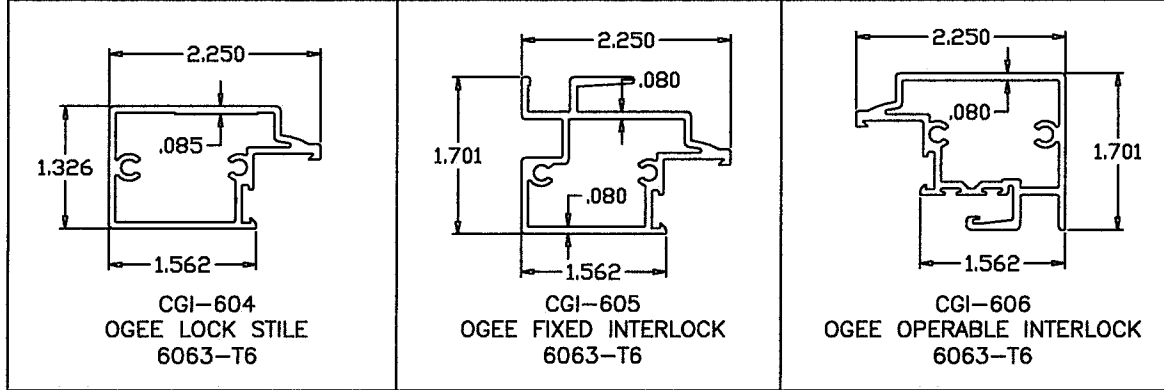
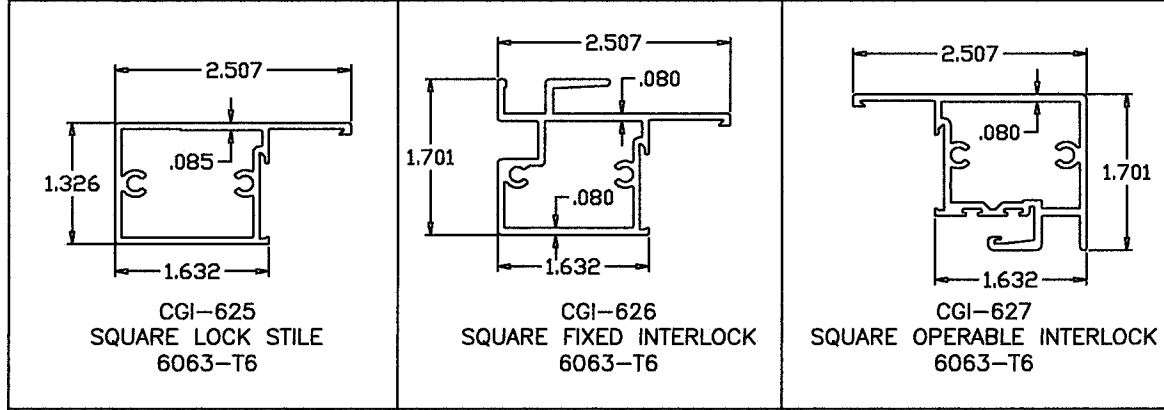
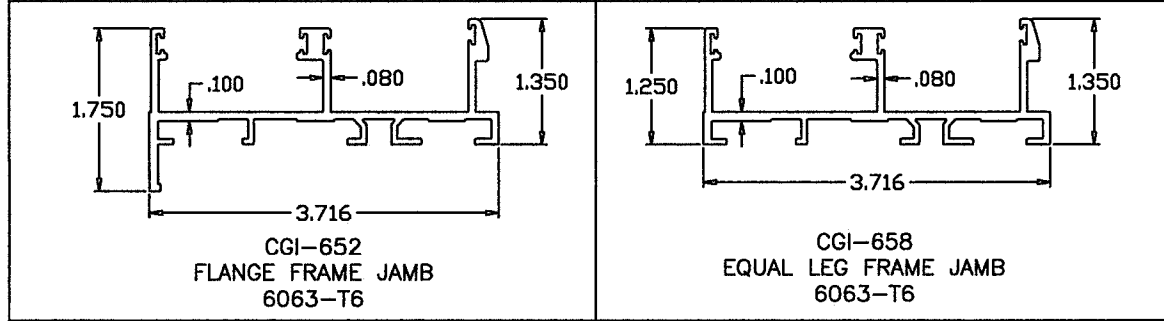
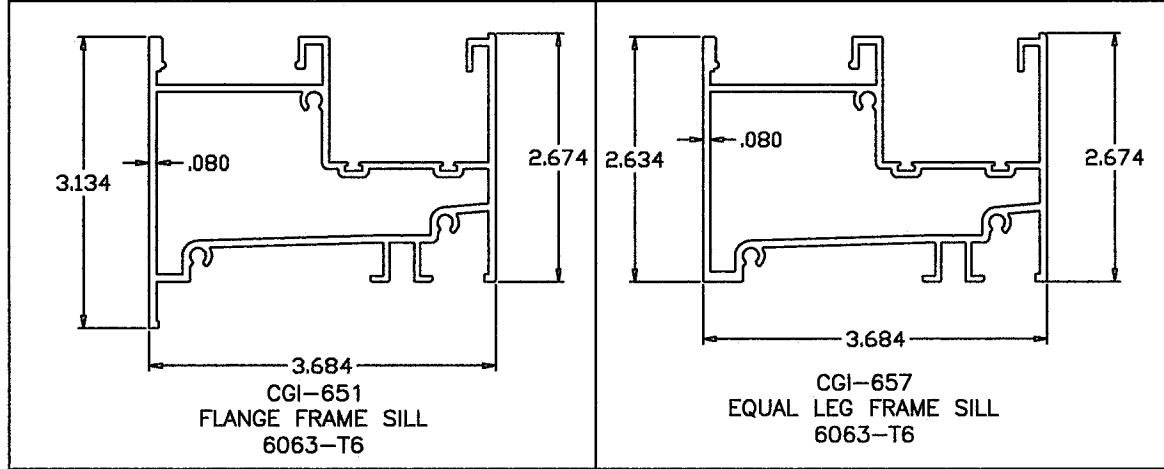
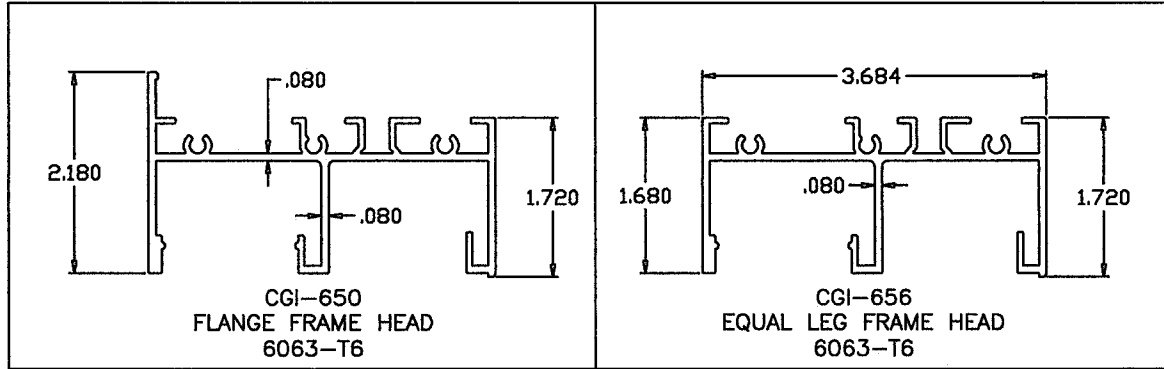
PREPARED BY A. LYNN MILLER
1070 TECHNOLOGY DRIVE
N. VENICE, FL 34275
(941) 480-1600

WINDOOR®
INCORPORATED
104 TRIPLE DIAMOND BLVD.
N. VENICE, FL 34275
(407) 481-8400

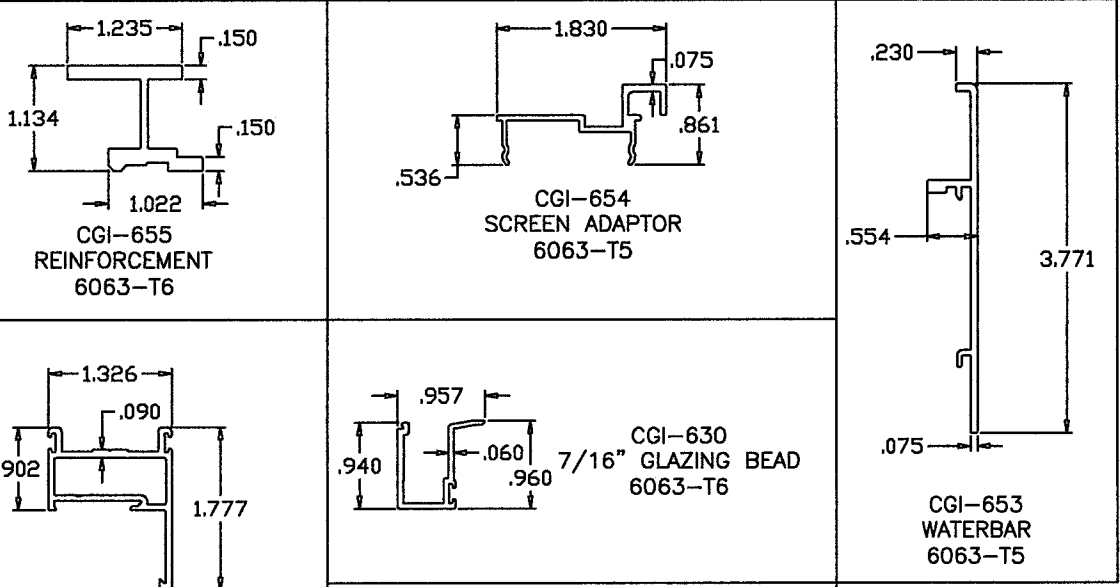
REGISTRATION #29296	Date	05/29/20
375 ALUM. HORIZONTAL ROLLER WDW. - LMI	Drawn By	J ROSOWSKI
CROSS SECTIONS, EQUAL LEG FRAMES	No.	375LMNOA-1
HR375 "ESTATE"	DWG	3 OF 18
	Sheet	NTS
	Scale	
	Series	A



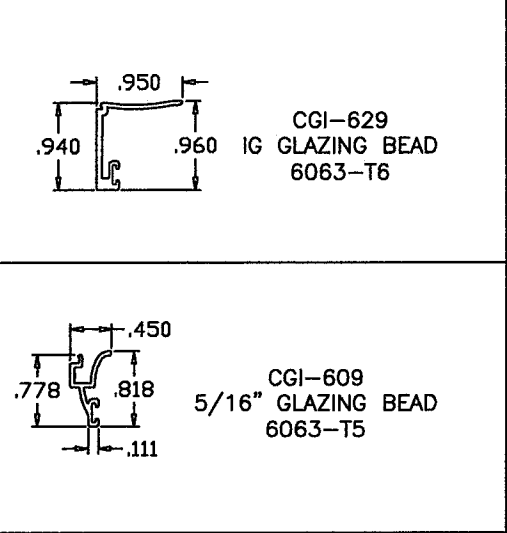
A. LYNN MILLER, P.E.
P.E.# 58705



ITEM	PART #	QUANTITY	DESCRIPTION	MATERIAL	MANF./SUPPLIER	REMARKS
1	CGI-614C	2	TIE DOWN BLOCK	ZINC	CUSTOM CASTING	w/ (2) #10 x 3/4" FH SMS into vent & (3) #8 x 1" FH SMS into frame
2	CGI-684	2	ROLLER TRACK INSERT	PVC	CGI EXTRUSION	Continuous at frame sill
3	CGI-680	AS REQD.	QUAD ROLLER	NYLON	CUSTOM CASTING	Attached to CGI-685 (vent bottom clip) w/ (1) #8 x 1/2" FH SMS
4	CGI-683	3	WATERBAR CLIP	NYLON	CUSTOM CASTING	w/ (1) #10 x 3/4" FH SMS
5	CGI-612P	1/ INTRLK	INTERLOCK SNUBBER	PVC	CGI EXTRUSION	Continuous at interlock
6	CGI-681	2/ OPER 4/ FXD	VENT END CLIP	NYLON	CUSTOM CASTING	Attached w/ vent assembly screws
7	CGI-685	2	OPERABLE VENT BOTTOM CLIP	NYLON	CUSTOM CASTING	Attached w/ vent assembly screws
8	CGI-382V	AS REQD.	VINYL BULB	PVC	CGI EXTRUSION	
9	W2301NG	AS REQD.	WOOL PILE WITH CENTER SOFT FIN (GRAY)	PILE	ULTRAFAB/SCHLEGEL	
10	CGI-615C & 616C	1	EGRESS LOCK AND PULL	ZINC	CUSTOM CASTING	w/ (2) #8 x 5/8" FH SMS
11	CGI-682	1	SELF CLOSING LOCK	ZINC	CUSTOM CASTING	w/ (2) #8 x 5/8" FH SMS
12	HI-FLO WEEPER	3 OR 4	WEEP HOLE COVER	NYLON	PEP	
13	-	3/ CORNER	FRAME ASSEMBLY SCREWS	S/S	VARIES	#10 x 1 1/4" PH SMS
14	-	2/ CORNER	VENT ASSEMBLY SCREWS	S/S	VARIES	#10 x 1 1/4" PH SMS
15	GE-2000	AS REQD.	LOW MODULUS SEALANT	SILICONE	GENERAL ELECTRIC	AT FRAME JOINTS
16	CGI-686	AS REQD.	ACCESS HOLE COVER (w/DRAIN PROVISION)	NYLON	CUSTOM CASTING	Minimum 1 at each Sill install. screw
17	-	AS REQD.	WATERBAR SCREWS AT 25" O.C. MAX.	S/S	VARIES	#6 X 1/4" PH SMS
18	-	2/ LITE	SETTING BLOCK	EPDM	VARIES	DUROMETER 85±5 SHORE A



PRODUCT REVISED
as complying with the Florida
Building Code
NOA-No. 20-0610.12
Expiration Date 06/10/2024
By Ishaq I. Chandra
Miami-Dade Product Control



MATERIAL PROPERTIES:		
Material	Min. F _y	Min. F _u
1/4" Teks or Self-Drilling Steel Screw, Gr 5	92 ksi	120 ksi
1/4" Hilti Kwik-Con II	157 ksi	163 ksi
1/4" Elco UltraCon	155 ksi	177 ksi
1/4" DeWalt UltraCon+	148 ksi	164 ksi
6063-T5 Aluminum	16 ksi	22 ksi
A36 Steel	36 ksi	58 ksi
Gr. 33 Steel Stud	33 ksi	45 ksi

Revision:

PREPARED BY A. LYNN MILLER
1070 TECHNOLOGY DRIVE
N. VENICE, FL 34275
(941) 480-1600

REGISTRATION #29296

05/29/20

By J ROSOWSKI

Drawn

375LMNOA-1

Rev. A

4 OF 18

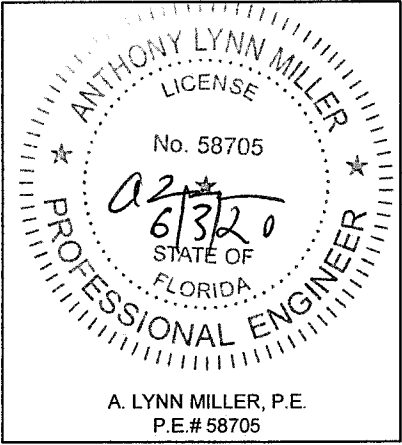
NTS

HR375 "ESTATE"

EXTRUSIONS AND BOM

375 ALUM. HORIZONTAL ROLLER WDW. - LMI

WINDOOR®
INCORPORATED
104 TRIPLE DIAMOND BLVD.
N. VENICE, FL 34275
(407) 481-8400



WINDOW DIMS.			INTERLOCKS WITHOUT REINFORCING						INTERLOCKS WITH REINFORCING					
WIDTH		HEIGHT	GLASS TYPE 1		GLASS TYPE 4		GLASS TYPES 2, 3 & 5		GLASS TYPE 2		GLASS TYPE 3		GLASS TYPE 5	
2 PANEL	3 PANEL		EXT.(+)	INT.(-)	EXT.(+)	INT.(-)	EXT.(+)	INT.(-)	EXT.(+)	INT.(-)	EXT.(+)	INT.(-)	EXT.(+)	INT.(-)
36"	54"	36"	120.0	150.0	120.0	150.0	120.0	150.0	120.0	150.0	120.0	150.0	120.0	150.0
42"	63"		120.0	150.0	120.0	150.0	120.0	150.0	120.0	150.0	120.0	150.0	120.0	150.0
48"	72"		120.0	150.0	120.0	150.0	120.0	150.0	120.0	150.0	120.0	150.0	120.0	150.0
54"	81"		120.0	150.0	120.0	150.0	120.0	150.0	120.0	150.0	120.0	150.0	120.0	150.0
60"	90"		120.0	150.0	120.0	150.0	120.0	150.0	120.0	150.0	120.0	150.0	120.0	150.0
66"	99"		120.0	150.0	120.0	150.0	120.0	150.0	120.0	150.0	120.0	150.0	120.0	150.0
72"	108"		120.0	145.2	120.0	150.0	120.0	150.0	120.0	150.0	120.0	150.0	120.0	150.0
78"	117"		120.0	130.6	120.0	145.7	120.0	150.0	120.0	150.0	120.0	150.0	120.0	150.0
84"	126"		118.3	118.3	120.0	131.9	120.0	150.0	120.0	150.0	120.0	150.0	120.0	150.0
36"	54"	48"	120.0	150.0	120.0	150.0	120.0	150.0	120.0	150.0	120.0	150.0	120.0	150.0
42"	63"		120.0	135.1	120.0	135.1	120.0	150.0	120.0	150.0	120.0	150.0	120.0	150.0
48"	72"		120.0	123.1	120.0	123.1	120.0	150.0	120.0	150.0	120.0	150.0	120.0	150.0
54"	81"		114.2	114.2	114.2	114.2	120.0	150.0	120.0	150.0	120.0	150.0	120.0	150.0
60"	90"		107.4	107.4	107.4	107.4	120.0	150.0	120.0	150.0	120.0	150.0	120.0	150.0
66"	99"		102.3	102.3	102.3	102.3	120.0	150.0	120.0	150.0	120.0	150.0	120.0	150.0
72"	108"		98.5	98.5	98.5	98.5	120.0	147.7	120.0	150.0	120.0	150.0	120.0	150.0
78"	117"		85.0	85.0	85.0	85.0	100.0	100.0	120.0	120.0	120.0	120.0	120.0	120.0
84"	126"		83.9	83.9	85.0	85.0	100.0	100.0	120.0	120.0	120.0	120.0	120.0	120.0
36"	54"	54"	120.0	131.3	120.0	131.3	120.0	150.0	120.0	150.0	120.0	150.0	120.0	150.0
42"	63"		116.4	116.4	116.4	116.4	120.0	150.0	120.0	150.0	120.0	150.0	120.0	150.0
48"	72"		105.5	105.5	105.5	105.5	120.0	150.0	120.0	150.0	120.0	150.0	120.0	150.0
54"	81"		97.3	97.3	97.3	97.3	120.0	145.9	120.0	150.0	120.0	150.0	120.0	150.0
60"	90"		90.9	90.9	90.9	90.9	120.0	136.4	120.0	150.0	120.0	150.0	120.0	150.0
66"	99"		86.0	86.0	86.0	86.0	120.0	128.9	120.0	150.0	120.0	150.0	120.0	150.0
72"	108"		82.1	82.1	82.1	82.1	100.0	100.0	120.0	120.0	120.0	120.0	120.0	120.0
78"	117"		78.6	78.6	79.1	79.1	100.0	100.0	120.0	120.0	120.0	120.0	120.0	120.0
84"	126"		74.6	74.6	76.7	76.7	100.0	100.0	120.0	120.0	120.0	120.0	120.0	120.0
36"	54"	60"	115.9	115.9	115.9	115.9	120.0	150.0	120.0	150.0	120.0	150.0	120.0	150.0
42"	63"		102.3	102.3	102.3	102.3	120.0	150.0	120.0	150.0	120.0	150.0	120.0	150.0
48"	72"		92.3	92.3	92.3	92.3	120.0	138.5	120.0	150.0	120.0	150.0	120.0	150.0
54"	81"		84.7	84.7	84.7	84.7	120.0	127.1	120.0	150.0	120.0	150.0	120.0	150.0
60"	90"		78.8	78.8	78.8	78.8	118.2	118.2	120.0	150.0	120.0	150.0	120.0	150.0
66"	99"		74.1	74.1	74.1	74.1	100.0	100.0	120.0	120.0	120.0	120.0	120.0	120.0
72"	108"		70.4	70.4	70.4	70.4	100.0	100.0	120.0	120.0	120.0	120.0	120.0	120.0
78"	117"		67.3	67.3	67.3	67.3	100.0	100.0	120.0	120.0	117.7	117.7	120.0	120.0
84"	126"		64.9	64.9	64.9	64.9	97.4	97.4	120.0	120.0	110.6	110.6	120.0	120.0
36"	54"	66"	103.7	103.7	103.7	103.7	120.0	150.0	120.0	150.0	120.0	150.0	120.0	150.0
42"	63"		91.3	91.3	91.3	91.3	120.0	136.9	120.0	150.0	120.0	150.0	120.0	150.0
48"	72"		82.1	82.1	82.1	82.1	120.0	123.1	120.0	150.0	120.0	150.0	120.0	150.0
54"	81"		75.0	75.0	75.0	75.0	112.6	112.6	120.0	150.0	120.0	150.0	120.0	150.0
60"	90"		69.5	69.5	69.5	69.5	100.0	100.0	120.0	120.0	120.0	120.0	120.0	120.0
66"	99"		65.1	65.1	65.1	65.1	97.7	97.7	120.0	120.0	120.0	120.0	120.0	120.0
72"	108"		61.6	61.6	61.6	61.6	92.3	92.3	120.0	120.0	116.7	116.7	120.0	120.0
78"	117"		58.7	58.7	58.7	58.7	88.0	88.0	117.3	117.3	107.3	107.3	117.3	117.3
84"	126"		56.3	56.3	56.3	56.3	84.4	84.4	112.6	112.6	100.9	100.9	112.6	112.6
36"	54"	72"	93.8	93.8	93.8	93.8	120.0	140.7	120.0	150.0	120.0	150.0	120.0	150.0
42"	63"		82.4	82.4	82.4	82.4	120.0	123.5	120.0	150.0	120.0	150.0	120.0	150.0
48"	72"		73.9	73.9	73.9	73.9	110.8	110.8	120.0	147.7	120.0	147.7	120.0	147.7
54"	81"		67.3	67.3	67.3	67.3	100.0	100.0	120.0	120.0	120.0	120.0	120.0	120.0
60"	90"		62.2	62.2	62.2	62.2	93.3	93.3	120.0	120.0	120.0	120.0	120.0	120.0
66"	99"		58.1	58.1	58.1	58.1	87.1	87.1	116.2	116.2	116.2	116.2	116.2	116.2
72"	108"		54.7	54.7	54.7	54.7	82.1	82.1	109.4	109.4	107.5	107.5	109.4	109.4
78"	117"		52.0	52.0	52.0	52.0	77.9	77.9	103.9	103.9	98.2	98.2	103.9	103.9
36"	54"	76"	88.2	88.2	88.2	88.2	120.0	132.3	120.0	150.0	120.0	150.0	120.0	150.0
42"	63"		77.3	77.3	77.3	77.3	116.0	116.0	120.0	150.0	120.0	150.0	120.0	150.0
48"	72"		69.3	69.3	69.3	69.3	100.0	100.0	120.0	120.0	120.0	120.0	120.0	120.0
54"	81"		63.0	63.0	63.0	63.0	94.6	94.6	120.0	120.0	120.0	120.0	120.0	120.0
60"	90"		58.1	58.1	58.1	58.1	87.2	87.2	116.3	116.3	116.3	116.3	116.3	116.3
66"	99"		54.2	54.2	54.2	54.2	81.3	81.3	108.4	108.4	108.4	108.4	108.4	108.4
72"	108"		50.8	50.8	50.9	50.9	76.4	76.4	101.7	101.7	101.9	101.9	101.9	101.9

WINDOW DIMS.			INTERLOCKS WITHOUT REINFORCING						INTERLOCKS WITH REINFORCING					
			GLASS TYPE 1		GLASS TYPE 4		GLASS TYPES 2, 3 & 5		GLASS TYPE 2		GLASS TYPE 3		GLASS TYPE 5	
WIDTH		HEIGHT	EXT.(+)	INT.(−)	EXT.(+)	INT.(−)	EXT.(+)	INT.(−)	EXT.(+)	INT.(−)	EXT.(+)	INT.(−)	EXT.(+)	INT.(−)
2 PANEL	3 PANEL		EXT.(+)	INT.(−)	EXT.(+)	INT.(−)	EXT.(+)	INT.(−)	EXT.(+)	INT.(−)	EXT.(+)	INT.(−)	EXT.(+)	INT.(−)
26−1/2"	39−3/4"	38−3/8"	120.0	150.0	120.0	150.0	120.0	150.0	120.0	150.0	120.0	150.0	120.0	150.0
37"	55−1/2"		120.0	150.0	120.0	150.0	120.0	150.0	120.0	150.0	120.0	150.0	120.0	150.0
53−1/8"	79−11/16"		120.0	150.0	120.0	150.0	120.0	150.0	120.0	150.0	120.0	150.0	120.0	150.0
74"	111"		120.0	131.8	120.0	144.7	120.0	150.0	120.0	150.0	120.0	150.0	120.0	150.0
79−1/2"	119−1/4"		120.0	120.2	120.0	134.1	120.0	150.0	120.0	150.0	120.0	150.0	120.0	150.0
106−1/4"	159−3/8"		80.7	80.7	85.0	85.0	100.0	100.0	120.0	120.0	120.0	120.0	120.0	120.0
26−1/2"	39−3/4"	50−5/8"	120.0	150.0	120.0	150.0	120.0	150.0	120.0	150.0	120.0	150.0	120.0	150.0
37"	55−1/2"		120.0	139.0	120.0	139.0	120.0	150.0	120.0	150.0	120.0	150.0	120.0	150.0
53−1/8"	79−11/16"		107.2	107.2	107.2	107.2	120.0	150.0	120.0	150.0	120.0	150.0	120.0	150.0
74"	111"		85.0	85.0	85.0	85.0	100.0	100.0	120.0	120.0	120.0	120.0	120.0	120.0
79−1/2"	119−1/4"		83.2	83.2	85.0	85.0	100.0	100.0	120.0	120.0	120.0	120.0	120.0	120.0
106−1/4"	159−3/8"		66.0	66.0	73.6	73.6	100.0	100.0	120.0	120.0	107.6	107.6	120.0	120.0
26−1/2"	39−3/4"	63"	120.0	142.4	120.0	142.4	120.0	150.0	120.0	150.0	120.0	150.0	120.0	150.0
37"	55−1/2"		107.0	107.0	107.0	107.0	120.0	150.0	120.0	150.0	120.0	150.0	120.0	150.0
53−1/8"	79−11/16"		80.5	80.5	80.5	80.5	120.0	120.8	120.0	150.0	120.0	150.0	120.0	150.0
74"	111"		64.6	64.6	64.6	64.6	96.9	96.9	120.0	120.0	118.3	118.3	120.0	120.0
79−1/2"	119−1/4"		62.1	62.1	62.1	62.1	93.1	93.1	120.0	120.0	110.4	110.4	120.0	120.0
26−1/2"	39−3/4"		72"	120.0	122.8	120.0	122.8	120.0	150.0	120.0	150.0	120.0	150.0	120.0
37"	55−1/2"	91.6		91.6	91.6	91.6	120.0	137.5	120.0	150.0	120.0	150.0	120.0	150.0
53−1/8"	79−11/16"	68.2		68.2	68.2	68.2	100.0	100.0	120.0	120.0	120.0	120.0	120.0	120.0
74"	111"	53.7		53.7	53.7	53.7	80.6	80.6	107.5	107.5	103.9	103.9	107.5	107.5
26−1/2"	39−3/4"	76"	115.7	115.7	115.7	115.7	120.0	150.0	120.0	150.0	120.0	150.0	120.0	150.0
37"	55−1/2"		86.1	86.1	86.1	86.1	120.0	129.2	120.0	150.0	120.0	150.0	120.0	150.0
53−1/8"	79−11/16"		63.9	63.9	63.9	63.9	95.8	95.8	120.0	120.0	120.0	120.0	120.0	120.0
74"	111"		50.0	50.0	50.0	50.0	75.0	75.0	100.0	100.0	98.8	98.8	100.0	100.0

WINDOW DIMS.			1/4" SHIM SPACE			3/8" SHIM SPACE			1/2" SHIM SPACE		
			ANCHORS TYPE:			ANCHORS TYPE:			ANCHORS TYPE:		
			'A'	'B'	'C'	'A'	'B'	'C'	'A'	'B'	'C'
WIDTH		HEIGHT	EXT.(+)	EXT.(+)	EXT.(+)	EXT.(+)	EXT.(+)	EXT.(+)	EXT.(+)	EXT.(+)	EXT.(+)
2 PANEL	3 PANEL		INT.(-)	INT.(-)	INT.(-)	INT.(-)	INT.(-)	INT.(-)	INT.(-)	INT.(-)	INT.(-)
36"	54"	36"	150.0	150.0	150.0	150.0	150.0	150.0	150.0	150.0	150.0
42"	63"		150.0	150.0	150.0	150.0	150.0	150.0	118.9	150.0	150.0
48"	72"		150.0	150.0	150.0	134.0	150.0	150.0	104.0	150.0	150.0
54"	81"		143.4	150.0	150.0	119.1	150.0	150.0	92.4	150.0	150.0
60"	90"		129.1	150.0	150.0	107.2	150.0	150.0	83.2	150.0	150.0
66"	99"		117.3	150.0	150.0	97.5	150.0	150.0	75.6	150.0	150.0
72"	108"		117.3	150.0	150.0	89.3	150.0	150.0	69.3	138.7	150.0
78"	117"		99.3	150.0	150.0	82.5	150.0	150.0	64.0	128.0	150.0
84"	126"	48"	92.2	150.0	150.0	76.6	150.0	150.0	59.4	118.9	148.6
36"	54"		150.0	150.0	150.0	134.0	150.0	150.0	104.0	150.0	150.0
42"	63"		138.3	150.0	150.0	114.9	150.0	150.0	104.0	150.0	150.0
48"	72"		121.0	150.0	150.0	100.5	150.0	150.0	78.0	150.0	150.0
54"	81"		107.6	150.0	150.0	89.3	150.0	150.0	69.3	138.7	150.0
60"	90"		96.8	150.0	150.0	80.4	150.0	150.0	62.4	124.8	150.0
66"	99"		88.0	150.0	150.0	73.1	146.2	150.0	56.7	113.5	141.8
72"	108"		80.7	150.0	150.0	67.0	134.0	150.0	52.0	104.0	130.0
78"	117"	54"	74.5	148.9	150.0	61.8	123.7	150.0	48.0	96.0	120.0
84"	126"		69.1	138.3	150.0	57.4	114.9	143.6	44.6	89.1	111.4
36"	54"		143.4	150.0	150.0	119.1	150.0	150.0	92.4	150.0	150.0
42"	63"		122.9	150.0	150.0	102.1	150.0	150.0	79.2	150.0	150.0
48"	72"		107.6	150.0	150.0	89.3	150.0	150.0	69.3	138.7	150.0
54"	81"		95.6	150.0	150.0	79.4	150.0	150.0	61.6	123.3	150.0
60"	90"		86.0	150.0	150.0	71.5	142.9	150.0	55.5	110.9	135.7
66"	99"		78.2	150.0	150.0	65.0	129.9	150.0	50.4	100.8	126.1
72"	108"	60"	71.7	150.0	150.0	59.6	119.1	148.9	50.4	92.4	115.6
78"	117"		66.2	132.4	150.0	59.6	109.9	137.4	42.7	85.3	106.7
84"	126"		61.5	122.9	150.0	51.0	102.1	127.6	39.6	79.2	99.0
36"	54"		129.1	150.0	150.0	107.2	150.0	150.0	83.2	150.0	150.0
42"	63"		110.6	150.0	150.0	91.9	150.0	150.0	71.3	142.6	150.0
48"	72"		96.8	150.0	150.0	80.4	150.0	150.0	62.4	124.8	150.0
54"	81"		86.0	150.0	150.0	71.5	142.9	150.0	55.5	110.9	138.7
60"	90"		77.4	150.0	150.0	64.3	128.6	150.0	49.9	99.8	124.8
66"	99"	66"	70.4	140.8	150.0	58.5	116.9	146.2	45.4	90.8	113.5
72"	108"		64.5	129.1	150.0	53.6	107.2	134.0	41.6	83.2	104.0
78"	117"		59.6	119.1	148.9	49.5	99.0	123.7	38.4	76.8	96.0
84"	126"		55.3	110.6	138.3	45.9	91.9	114.9	35.7	71.3	89.1
36"	54"		117.3	150.0	150.0	97.5	150.0	150.0	75.6	150.0	150.0
42"	63"		100.6	150.0	150.0	83.5	150.0	150.0	64.8	129.7	150.0
48"	72"		88.0	150.0	150.0	73.1	146.2	150.0	56.7	113.5	141.8
54"	81"		78.2	150.0	150.0	65.0	129.9	150.0	50.4	100.8	126.1
60"	90"	72"	70.4	140.8	150.0	58.5	116.9	146.2	45.4	90.8	113.5
66"	99"		64.0	128.0	150.0	53.2	106.3	132.9	41.3	82.5	103.1
72"	108"		58.7	117.3	146.7	48.7	97.5	121.8	37.8	75.6	94.5
78"	117"		53.8	107.6	134.4	44.7	89.3	111.7	34.7	69.3	86.7
84"	126"		49.6	99.3	124.1	41.2	82.5	103.1	32.0	64.0	80.0
36"	54"		101.9	99.3	150.0	84.6	150.0	150.0	65.7	131.4	150.0
42"	63"		87.3	150.0	150.0	72.5	145.1	150.0	56.3	112.6	140.8
48"	72"		76.4	150.0	150.0	63.5	126.9	150.0	49.3	98.5	123.2
54"	81"	76"	67.9	135.9	150.0	56.4	112.8	141.1	43.8	87.6	109.5
60"	90"		61.1	122.3	150.0	50.8	101.6	126.9	39.4	78.8	98.5
66"	99"		55.8	111.2	138.9	46.2	92.3	115.4	35.8	71.7	89.6
72"	108"		50.9	101.9	127.4	42.3	84.6	105.8	32.8	65.7	82.1

All values shown are Design PSF (Pounds per Square Foot)

ANCHOR CAPACITY EQUAL PANELS

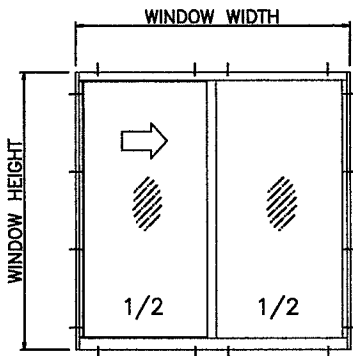
PRODUCT REVISED
as complying with the Florida
Building Code
NOA-No. 20-0610.12

Expiration Date 06/10/2024

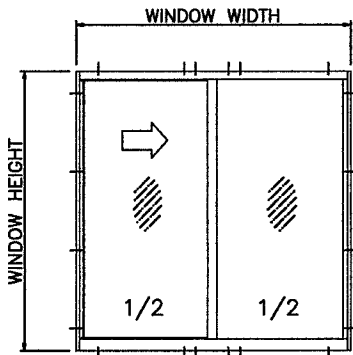
By Ishaq I. Chande
Miami-Dade Product Control

JAMB ANCHOR SPACING
20" MAX. FOR SHIMS UP TO 1/4".
10" MAX. FOR SHIMS GREATER
THAN 1/4" TO 1/2".

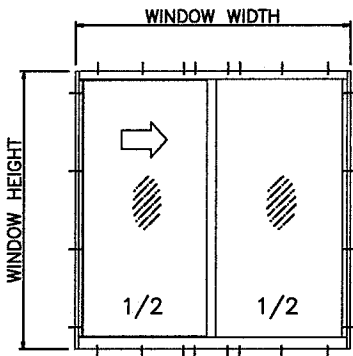
ALL VALUES SHOWN ARE DESIGN PSF
VALUES FOR EXT.(+) LOADS SHOWN
ARE FOR SILL WITH WATERBAR
ADAPTER. FOR WINDOWS WITHOUT
WATERBAR ADAPTER LIMIT EXT.(+)
LOADS TO 80.0 PSF



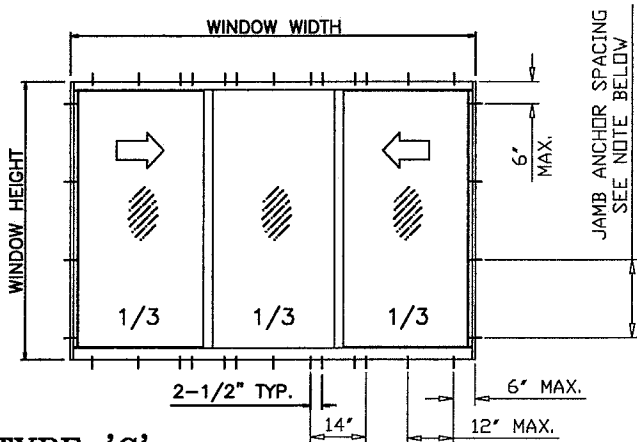
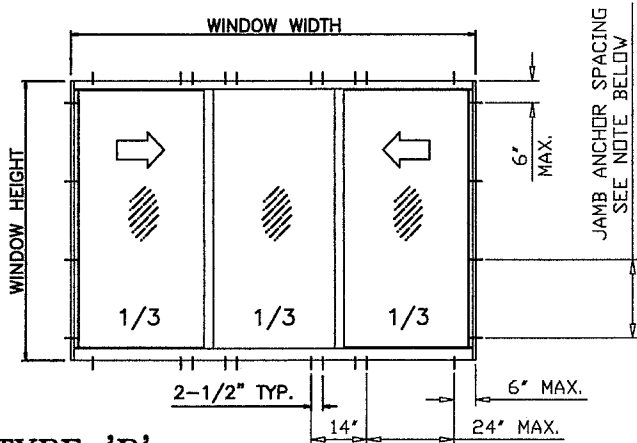
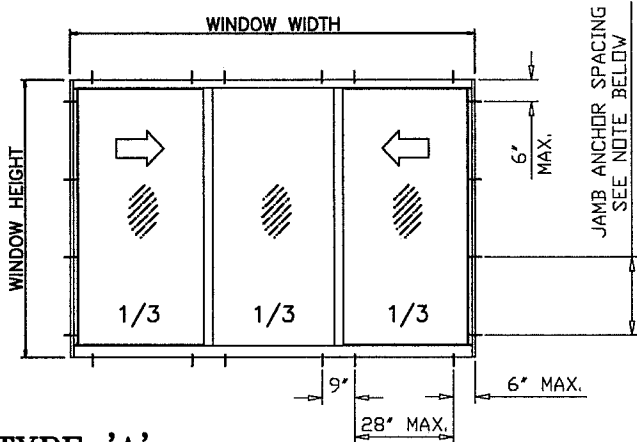
ANCHORS TYPE 'A'
2 ANCHORS AT MTG. STILE ENDS
28" MAX. SPACING BETWEEN ANCHORS
LIMIT MAX. DESIGN LOADS TO 55 PSF



ANCHORS TYPE 'B'
4 ANCHORS AT MTG. STILE ENDS
24" MAX. SPACING BETWEEN ANCHORS
LIMIT MAX. DESIGN LOADS TO 100 PSF



ANCHORS TYPE 'C'
4 ANCHORS AT MTG. STILE ENDS
12" MAX. SPACING BETWEEN ANCHORS
LIMIT MAX. DESIGN LOADS TO 150 PSF



Revision:

PREPARED BY A. LYNN MILLER
1070 TECHNOLOGY DRIVE
N. VENICE, FL 34275
(941) 480-1600

WinDoor®
INCORPORATED
104 TRIPLE DIAMOND BLVD.
N. VENICE, FL 34275
(407) 481-8400

REGISTRATION #29296

Date 05/29/20

By J ROSOWSKI

DWG No. 375LMNOA-1

6 OF 18

Sheet

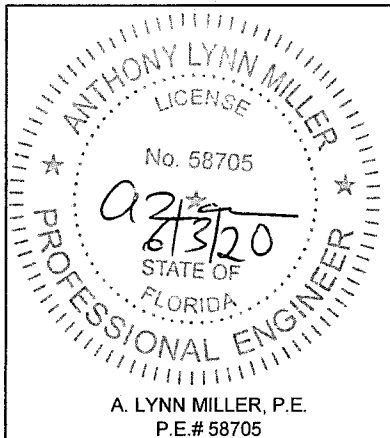
NTS

Scale

HR375 "ESTATE"

Design

Title



A. LYNN MILLER, P.E.
P.E.# 58705

WINDOW DIMS.			1/4" SHIM SPACE			3/8" SHIM SPACE			1/2" SHIM SPACE		
			ANCHORS TYPE:			ANCHORS TYPE:			ANCHORS TYPE:		
			'A'	'B'	'C'	'A'	'B'	'C'	'A'	'B'	'C'
2 PANEL	3 PANEL	HEIGHT	EXT.(+)	EXT.(+)	EXT.(+)	EXT.(+)	EXT.(+)	EXT.(+)	EXT.(+)	EXT.(+)	EXT.(+)
26-1/2"	39-3/4"	38-3/8"	INT.(-)	INT.(-)	INT.(-)	INT.(-)	INT.(-)	INT.(-)	INT.(-)	INT.(-)	INT.(-)
37"	55-1/2"		150.0	150.0	150.0	150.0	150.0	150.0	150.0	150.0	150.0
53-1/8"	79-11/16"		150.0	150.0	150.0	150.0	150.0	150.0	126.6	150.0	150.0
74"	111"		136.7	150.0	150.0	113.6	150.0	150.0	88.1	150.0	150.0
79-1/2"	119-1/4"		98.2	150.0	150.0	81.5	150.0	150.0	63.3	126.6	150.0
106-1/4"	159-3/8"	50-5/8"	91.2	150.0	150.0	75.7	150.0	150.0	58.8	117.8	147.3
26-1/2"	39-3/4"			136.7	150.0	56.8	150.0	142.0	44.1	88.2	110.2
37"	55-1/2"		150.0	150.0	150.0	150.0	150.0	150.0	131.5	150.0	150.0
53-1/8"	79-11/16"		148.8	150.0	150.0	123.6	150.0	150.0	95.9	150.0	150.0
74"	111"		103.7	150.0	150.0	86.1	150.0	150.0	66.8	133.6	150.0
79-1/2"	119-1/4"	63"	74.4	148.8	150.0	61.8	123.6	150.0	48.0	95.9	119.9
26-1/2"	39-3/4"		69.1	138.5	150.0	57.4	115.1	143.8	44.6	89.3	111.6
37"	55-1/2"		51.8	103.7	129.6	43.0	86.1	107.6	33.4	66.8	83.5
53-1/8"	79-11/16"		150.0	150.0	150.0	136.1	150.0	150.0	105.7	150.0	150.0
74"	111"		119.6	150.0	150.0	99.3	150.0	150.0	77.1	150.0	150.0
79-1/2"	119-1/4"	72"	83.3	150.0	150.0	69.2	138.4	150.0	53.7	107.4	134.2
26-1/2"	39-3/4"		59.6	119.5	149.5	49.7	99.3	124.2	38.5	107.4	96.4
37"	55-1/2"		55.5	111.3	139.2	46.1	92.5	115.6	35.8	71.8	89.7
53-1/8"	79-11/16"		143.4	150.0	150.0	119.1	150.0	150.0	92.4	150.0	150.0
74"	111"		104.8	150.0	150.0	86.9	150.0	150.0	67.5	134.9	150.0
79-1/2"	119-1/4"	78"	72.9	145.8	150.0	60.5	121.1	150.0	47.0	94.0	117.5
26-1/2"	39-3/4"		52.3	104.6	130.8	43.5	86.9	108.6	33.7	67.5	84.3
37"	55-1/2"		135.0	150.0	150.0	112.8	150.0	150.0	87.6	150.0	150.0
53-1/8"	79-11/16"		99.1	150.0	150.0	82.3	150.0	150.0	63.9	127.8	150.0
74"	111"		69.0	138.1	150.0	57.3	114.7	143.4	44.5	89.0	111.3
			49.6	99.1	123.9	41.2	82.3	102.9	32.0	63.0	79.9

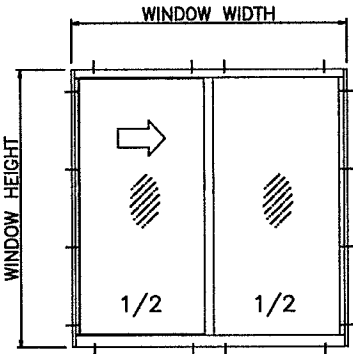
All values shown are Design PSF (Pounds per Square Foot)

JAMB ANCHOR SPACING
20" MAX. FOR SHIMS UP TO 1/4".
10" MAX. FOR SHIMS GREATER
THAN 1/4" TO 1/2".

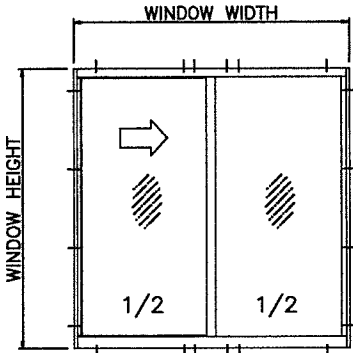
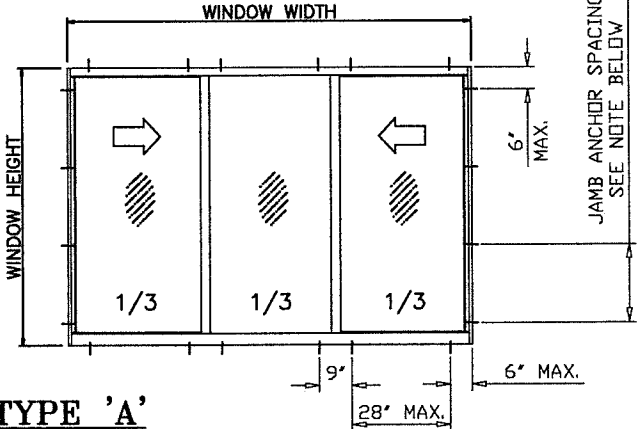
ALL VALUES SHOWN ARE DESIGN PSF
VALUES FOR EXT.(+) LOADS SHOWN
ARE FOR SILL WITH WATERBAR
ADAPTER. FOR WINDOWS WITHOUT
WATERBAR ADAPTER LIMIT EXT.(+)
LOADS TO 80.0 PSF

ANCHOR CAPACITY
EQUAL PANELS

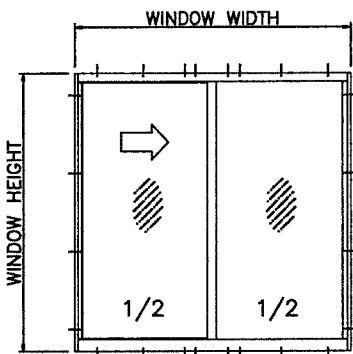
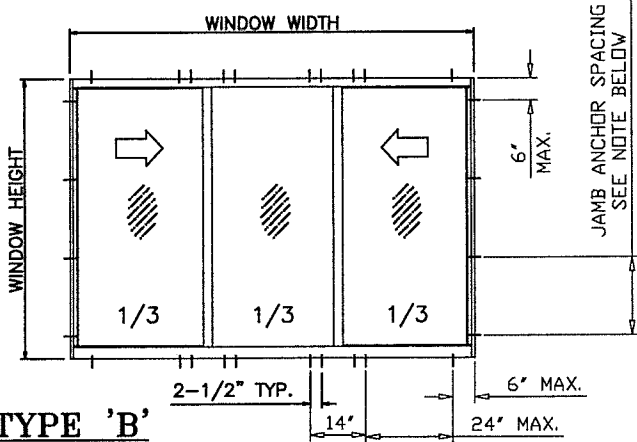
PRODUCT REVISED
as complying with the Florida
Building Code
NOA-No. 20-0610.12
Expiration Date 06/10/2024
By Ishag I. Chank
Miami-Dade Product Control



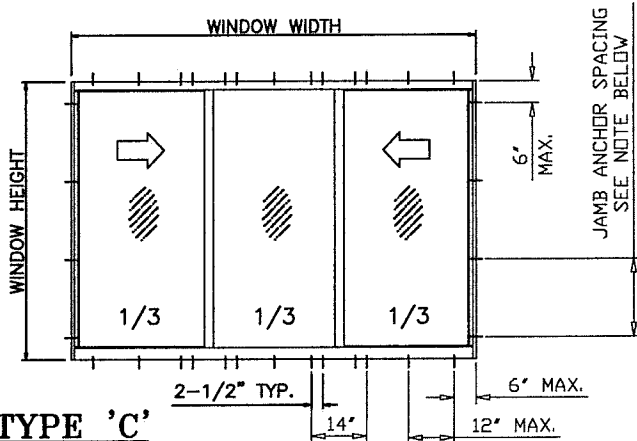
ANCHORS TYPE 'A'
2 ANCHORS AT MTG. STILE ENDS
28" MAX. SPACING BETWEEN ANCHORS
LIMIT MAX. DESIGN LOADS TO 55 PSF



ANCHORS TYPE 'B'
4 ANCHORS AT MTG. STILE ENDS
24" MAX. SPACING BETWEEN ANCHORS
LIMIT MAX. DESIGN LOADS TO 100 PSF



ANCHORS TYPE 'C'
4 ANCHORS AT MTG. STILE ENDS
12" MAX. SPACING BETWEEN ANCHORS
LIMIT MAX. DESIGN LOADS TO 150 PSF



PREPARED BY A. LYNN MILLER 1070 TECHNOLOGY DRIVE N. VENICE, FL 34275 (941) 480-1600			REGISTRATION #29296			05/29/20			J ROSOWSKI			375LMNOA-1			A		
WINDOOR® INCORPORATED 104 TRIPLE DIAMOND BLVD. N. VENICE, FL 34275 (407) 481-8400			375 ALUM. HORIZONTAL ROLLER WDW. - LMI			Date			By			Dwg No.			7 OF 18		
DESIGN PRESSURE 3			NTS			Scale			Sheet			HR375 "ESTATE"			Rev.		

ANTHONY LYNN MILLER LICENSE No. 58705 6/23/20 STATE OF FLORIDA PROFESSIONAL ENGINEER			A. LYNN MILLER, P.E. P.E.# 58705		
--	--	--	-------------------------------------	--	--

WINDOW DIMS.			INTERLOCKS WITHOUT REINFORCING						INTERLOCKS WITH REINFORCING					
			GLASS TYPE 1		GLASS TYPE 4		GLASS TYPES 2, 3 & 5		GLASS TYPE 2		GLASS TYPE 3		GLASS TYPE 5	
			EXT.(+)	INT.(-)	EXT.(+)	INT.(-)	EXT.(+)	INT.(-)	EXT.(+)	INT.(-)	EXT.(+)	INT.(-)	EXT.(+)	INT.(-)
2 PANEL	3 PANEL	HEIGHT												
36"	48"	36"	120.0	150.0	120.0	150.0	120.0	150.0	120.0	150.0	120.0	150.0	120.0	150.0
42"	56"		120.0	150.0	120.0	150.0	120.0	150.0	120.0	150.0	120.0	150.0	120.0	150.0
48"	64"		120.0	150.0	120.0	150.0	120.0	150.0	120.0	150.0	120.0	150.0	120.0	150.0
54"	72"		120.0	150.0	120.0	150.0	120.0	150.0	120.0	150.0	120.0	150.0	120.0	150.0
60"	80"		120.0	135.3	120.0	150.0	120.0	150.0	120.0	150.0	120.0	150.0	120.0	150.0
66"	88"		118.4	118.4	120.0	132.0	120.0	150.0	120.0	150.0	120.0	150.0	120.0	150.0
72"	96"		104.5	104.5	116.6	116.6	120.0	150.0	120.0	150.0	120.0	150.0	120.0	150.0
78"	104"		85.0	85.0	85.0	85.0	100.0	100.0	120.0	120.0	120.0	120.0	120.0	120.0
84"	112"		83.8	83.8	85.0	85.0	100.0	100.0	120.0	120.0	120.0	120.0	120.0	120.0
96"	128"	48"	71.9	71.9	80.2	80.2	100.0	100.0	120.0	120.0	120.0	120.0	120.0	120.0
108"	144"		61.5	61.5	68.6	68.6	100.0	100.0	120.0	120.0	120.0	120.0	120.0	120.0
36"	48"		120.0	150.0	120.0	150.0	120.0	150.0	120.0	150.0	120.0	150.0	120.0	150.0
42"	56"		120.0	130.6	120.0	139.4	120.0	150.0	120.0	150.0	120.0	150.0	120.0	150.0
48"	64"		116.1	116.1	120.0	127.9	120.0	150.0	120.0	150.0	120.0	150.0	120.0	150.0
54"	72"		105.6	105.6	117.7	117.7	120.0	150.0	120.0	150.0	120.0	150.0	120.0	150.0
60"	80"		85.0	85.0	85.0	85.0	100.0	100.0	120.0	120.0	120.0	120.0	120.0	120.0
66"	88"		83.9	83.9	85.0	85.0	100.0	100.0	120.0	120.0	120.0	120.0	120.0	120.0
72"	96"		77.6	77.6	85.0	85.0	100.0	100.0	120.0	120.0	120.0	120.0	120.0	120.0
78"	104"	54"	72.4	72.4	80.8	80.8	100.0	100.0	120.0	120.0	118.4	118.4	120.0	120.0
84"	112"		67.5	67.5	75.3	75.3	100.0	100.0	120.0	120.0	110.4	110.4	120.0	120.0
36"	48"		120.0	134.3	120.0	134.3	120.0	150.0	120.0	150.0	120.0	150.0	120.0	150.0
42"	56"		111.5	111.5	119.7	119.7	120.0	150.0	120.0	150.0	120.0	150.0	120.0	150.0
48"	64"		97.5	97.5	108.7	108.7	120.0	150.0	120.0	150.0	120.0	150.0	120.0	150.0
54"	72"		85.0	85.0	85.0	85.0	100.0	100.0	120.0	120.0	120.0	120.0	120.0	120.0
60"	80"		80.1	80.1	85.0	85.0	100.0	100.0	120.0	120.0	120.0	120.0	120.0	120.0
66"	88"		74.7	74.7	83.3	83.3	100.0	100.0	120.0	120.0	120.0	120.0	120.0	120.0
72"	96"		70.0	70.0	78.1	78.1	100.0	100.0	120.0	120.0	114.5	114.5	120.0	120.0
78"	104"	60"	65.6	65.6	73.2	73.2	100.0	100.0	120.0	120.0	107.9	107.9	120.0	120.0
36"	48"		118.2	118.2	118.2	118.2	120.0	150.0	120.0	150.0	120.0	150.0	120.0	150.0
42"	56"		98.7	98.7	104.8	104.8	120.0	150.0	120.0	150.0	120.0	150.0	120.0	150.0
48"	64"		84.0	84.0	85.0	85.0	100.0	100.0	120.0	120.0	120.0	120.0	120.0	120.0
54"	72"		76.9	76.9	85.0	85.0	100.0	100.0	120.0	120.0	120.0	120.0	120.0	120.0
60"	80"		70.5	70.5	78.6	78.6	100.0	100.0	120.0	120.0	120.0	120.0	120.0	120.0
66"	88"		66.4	66.4	74.1	74.1	100.0	100.0	120.0	120.0	110.6	110.6	120.0	120.0
36"	48"		105.5	105.5	105.5	105.5	120.0	150.0	120.0	150.0	120.0	150.0	120.0	150.0
42"	56"		85.0	85.0	85.0	85.0	100.0	100.0	120.0	120.0	120.0	120.0	120.0	120.0
48"	64"	66"	77.5	77.5	84.2	84.2	100.0	100.0	120.0	120.0	120.0	120.0	120.0	120.0
54"	72"		68.3	68.3	76.2	76.2	100.0	100.0	120.0	120.0	120.0	120.0	120.0	120.0
60"	80"		62.3	62.3	69.5	69.5	100.0	100.0	120.0	120.0	110.2	110.2	120.0	120.0
36"	48"		95.3	95.3	95.3	95.3	120.0	143.0	120.0	150.0	120.0	150.0	120.0	150.0
42"	56"		80.1	80.1	84.0	84.0	100.0	100.0	120.0	120.0	120.0	120.0	120.0	120.0
48"	64"		69.4	69.4	75.6	75.6	100.0	100.0	120.0	120.0	120.0	120.0	120.0	120.0
54"	72"		60.8	60.8	67.8	67.8	100.0	100.0	120.0	120.0	116.7	116.7	120.0	120.0
36"	48"		85.0	85.0	85.0	85.0	100.0	100.0	120.0	120.0	120.0	120.0	120.0	120.0
42"	56"		78.7	78.7	78.7	78.7	100.0	100.0	120.0	120.0	120.0	120.0	120.0	120.0
48"	64"	72"	65.0	65.0	70.7	70.7	100.0	100.0	120.0	120.0	120.0	120.0	120.0	120.0
54"	72"		56.6	56.6	63.1	63.1	96.9	96.9	113.1	113.1	112.0	112.0	120.0	120.0
36"	48"		120.0	134.3	120.0	134.3	120.0	150.0	120.0	150.0	120.0	150.0	120.0	150.0
42"	56"		111.5	111.5	119.7	119.7	120.0	150.0	120.0	150.0	120.0	150.0	120.0	150.0
48"	64"		97.5	97.5	108.7	108.7	120.0	150.0	120.0	150.0	120.0	150.0	120.0	150.0
54"	72"		85.0	85.0	85.0	85.0	100.0	100.0	120.0	120.0	120.0	120.0	120.0	120.0
60"	80"		80.1	80.1	85.0	85.0	100.0	100.0	120.0	120.0	120.0	120.0	120.0	120.0
66"	88"		74.7	74.7	83.3	83.3	100.0	100.0	120.0	120.0	120.0	120.0	120.0	120.0
72"	96"		70.0	70.0	78.1	78.1	100.0	100.0	120.0	120.0	114.5	114.5	120.0	120.0
78"	104"	76"	65.6	65.6	73.2	73.2	100.0	100.0	120.0	120.0	107.9	107.9	120.0	120.0
36"	48"		118.2	118.2	118.2	118.2	120.0	150.0	120.0	150.0	120.0	150.0	120.0	150.0
42"	56"		98.7	98.7	104.8	104.8	120.0	150.0	120.0	150.0	120.0	150.0	120.0	150.0
48"	64"		84.0	84.0	85.0	85.0	100.0	100.0	120.0	120.0	120.0	120.0	120.0	120.0
54"	72"		76.9	76.9	85.0	85.0	100.0	100.0	120.0	120.0	120.0	120.0	120.0	120.0
60"	80"		70.5	70.5	78.6	78.6	100.0	100.0	120.0	120.0	120.0	120.0	120.0	120.0
66"	88"		66.4	66.4	74.1	74.1	100.0	100.0	120.0	120.0	110.6	110.6	120.0	120.0
72"	96"		62.3	62.3	69.5	69.5	100.0	100.0	120.0	120.0	110.2	110.2	120.0	120.0
78"	104"		62.3	62.3	69.5	69.5	100.0	100.0	120.0	120.0	110.2	110.2	120.0	120.0
36"	48"	84"	95.3	95.3	95.3	95.3	120.0	143.0	120.0	150.0	120.0	150.0	120.0	150.0
42"	56"		80.1	80.1	84.0	84.0	100.0	100.0	120.0	120.0	120.0	120.0	120.0	120.0
48"	64"		69.4	69.4	75.6	75.6	100.0	100.0	120.0	120.0	120.0	120.0	120.0	120.0
54"	72"		60.8	60.8	67.8	67.8	100.0	100.0	120.0	120.0	116.7	116.7	120.0	120.0
60"	80"		85.0	85.0	85.0	85.0	100.0	100.0	120.0	120.0	120.0	120.0	120.0	120.0
66"	88"		78.7	78.7	78.7	78.7	100.0	100.0	120.0	120.0	120.0	120.0	120.0	120.0
72"	96"		65.0	65.0	70.7	70.7	100.0	100.0	120.0	120.0	120.0	120.0	120.0	120.0
78"	104"		56.6	56.6	63.1	63.1	96.9	96.9	113.1	113.1	112.0	112.0	120.0	120.0
84"	112"		67.5	67.5	75.3	75.3	100.0	100.0	120.0	120.0	110.4	110.4	120.0	120.0

All values shown are Design PSF (Pounds per Square Foot)

NOTE:
GLASS CAPACITIES ON THIS SHEET ARE
BASED ON ASTM E1300-09 (3 SEC. GUSTS)
AND FLORIDA BUILDING COMMISSION
DECLARATORY STATEMENT DCA05-DEC-219

VALUES FOR EXTERIOR LOADS(+) SHOWN ARE
FOR SILL WITH WATERBAR ADAPTER
FOR WINDOWS WITHOUT WATERBAR ADAPTER
LIMIT EXTERIOR(+) LOADS TO 80.0 PSF

MAXIMUM VENT SIZE IS 18.7 SQ. FT.
AND MAXIMUM VENT HEIGHT IS 71 11/16"

GLAZING/REINFORCEMENT
PERFORMANCE VALUES
UNEQUAL PANELS

WINDOW DIMS.			INTERLOCKS WITHOUT REINFORCING						INTERLOCKS WITH REINFORCING					
			GLASS TYPE 1		GLASS TYPE 4		GLASS TYPES 2, 3 & 5		GLASS TYPE 2		GLASS TYPE 3		GLASS TYPE 5	
WIDTH		HEIGHT	EXT.(+)	INT.(−)	EXT.(+)	INT.(−)	EXT.(+)	INT.(−)	EXT.(+)	INT.(−)	EXT.(+)	INT.(−)	EXT.(+)	INT.(−)
2 PANEL	3 PANEL		EXT.(+)	INT.(−)	EXT.(+)	INT.(−)	EXT.(+)	INT.(−)	EXT.(+)	INT.(−)	EXT.(+)	INT.(−)	EXT.(+)	INT.(−)
26−1/2"	35−5/16"	38−3/8"	120.0	150.0	120.0	150.0	120.0	150.0	120.0	150.0	120.0	150.0	120.0	150.0
37"	49−5/16"		120.0	150.0	120.0	150.0	120.0	150.0	120.0	150.0	120.0	150.0	120.0	150.0
53−1/8"	71"		120.0	147.2	120.0	150.0	120.0	150.0	120.0	150.0	120.0	150.0	120.0	150.0
74"	99"		85.0	85.0	85.0	85.0	100.0	100.0	120.0	120.0	120.0	120.0	120.0	120.0
79−1/2"	106"		84.6	84.6	85.0	85.0	100.0	100.0	120.0	120.0	120.0	120.0	120.0	120.0
106−1/4"	142"		58.8	58.8	65.5	65.5	100.0	100.0	117.5	117.5	111.0	111.0	120.0	120.0
26−1/2"	35−5/16"	50−5/8"	120.0	150.0	120.0	150.0	120.0	150.0	120.0	150.0	120.0	150.0	120.0	150.0
37"	49−5/16"		120.0	142.5	120.0	142.5	120.0	150.0	120.0	150.0	120.0	150.0	120.0	150.0
53−1/8"	71"		98.8	98.8	110.2	110.2	120.0	150.0	120.0	150.0	120.0	150.0	120.0	150.0
74"	99"		72.0	72.0	80.3	80.3	100.0	100.0	120.0	120.0	119.0	119.0	120.0	120.0
79−1/2"	106"		68.2	68.2	76.1	76.1	100.0	100.0	120.0	120.0	111.7	111.7	120.0	120.0
26−1/2"	35−5/16"		63"	120.0	144.3	120.0	144.3	120.0	150.0	120.0	150.0	120.0	150.0	120.0
37"	49−5/16"	109.1		109.1	109.1	109.1	120.0	150.0	120.0	150.0	120.0	150.0	120.0	150.0
53−1/8"	71"	73.4		73.4	81.9	81.9	100.0	100.0	120.0	120.0	120.0	120.0	120.0	120.0
26−1/2"	35−5/16"	72"	120.0	124.2	120.0	124.2	120.0	150.0	120.0	150.0	120.0	150.0	120.0	150.0
37"	49−5/16"		93.2	93.2	93.2	93.2	120.0	139.7	120.0	150.0	120.0	150.0	120.0	150.0
53−1/8"	71"		61.6	61.6	68.7	68.7	100.0	100.0	120.0	120.0	119.4	119.4	120.0	120.0
26−1/2"	35−5/16"	76"	117.0	117.0	117.0	117.0	120.0	150.0	120.0	150.0	120.0	150.0	120.0	150.0
37"	49−5/16"		85.0	85.0	85.0	85.0	100.0	100.0	120.0	120.0	120.0	120.0	120.0	120.0
53−1/8"	71"		57.4	57.4	64.0	64.0	97.9	97.9	114.7	114.7	114.7	114.7	120.0	120.0

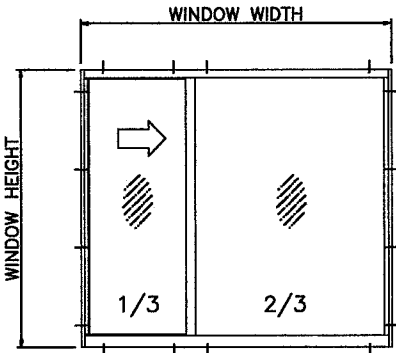
WINDOW DIMS.			1/4" SHIM SPACE			3/8" SHIM SPACE			1/2" SHIM SPACE		
			ANCHORS TYPE:			ANCHORS TYPE:			ANCHORS TYPE:		
			'A'	'B'	'C'	'A'	'B'	'C'	'A'	'B'	'C'
WIDTH		HEIGHT	EXT.(+)	EXT.(+)	EXT.(+)	EXT.(+)	EXT.(+)	EXT.(+)	EXT.(+)	EXT.(+)	EXT.(+)
2 PANEL	3 PANEL		INT.(-)	INT.(-)	INT.(-)	INT.(-)	INT.(-)	INT.(-)	INT.(-)	INT.(-)	INT.(-)
36"	48"	36"	150.0	150.0	150.0	150.0	150.0	150.0	138.7	150.0	150.0
42"	56"		150.0	150.0	150.0	150.0	150.0	150.0	118.9	150.0	150.0
48"	64"		150.0	150.0	150.0	134.0	150.0	150.0	104.0	150.0	150.0
54"	72"		143.4	150.0	150.0	119.1	150.0	150.0	92.4	150.0	150.0
60"	80"		129.1	150.0	150.0	107.2	150.0	150.0	83.2	150.0	150.0
66"	88"		117.3	150.0	150.0	95.5	150.0	150.0	75.6	150.0	150.0
72"	96"		107.6	150.0	150.0	89.3	150.0	150.0	69.3	138.7	150.0
78"	104"		99.3	150.0	150.0	82.5	150.0	150.0	64.0	128.0	150.0
84"	112"		92.2	150.0	150.0	76.6	150.0	150.0	59.4	118.9	148.6
96"	128"		80.7	150.0	150.0	67.0	134.0	150.0	52.0	104.0	130.0
108"	144"		71.7	143.4	150.0	59.6	119.1	148.9	46.2	92.4	115.6
36"	48"	48"	150.0	150.0	150.0	134.0	150.0	150.0	104.0	150.0	150.0
42"	56"		138.3	150.0	150.0	114.9	150.0	150.0	89.1	150.0	150.0
48"	64"		121.0	150.0	150.0	100.5	150.0	150.0	78.0	150.0	150.0
54"	72"		107.6	150.0	150.0	89.3	150.0	150.0	69.3	138.7	150.0
60"	80"		96.8	150.0	150.0	80.4	150.0	150.0	62.4	124.8	150.0
66"	88"		80.7	150.0	150.0	67.0	134.0	150.0	52.0	104.0	130.0
72"	96"		74.5	148.9	150.0	61.8	123.7	150.0	48.0	96.0	120.0
78"	104"		69.1	138.3	150.0	57.4	114.9	143.6	44.6	89.1	111.4
36"	48"	54"	143.4	150.0	150.0	119.1	150.0	150.0	44.6	150.0	150.0
42"	56"		122.9	150.0	150.0	102.1	150.0	150.0	79.2	150.0	150.0
48"	64"		107.6	150.0	150.0	89.3	150.0	150.0	69.3	150.0	150.0
54"	72"		95.6	150.0	150.0	79.4	150.0	150.0	61.6	123.3	150.0
60"	80"		86.0	150.0	150.0	71.5	142.9	150.0	55.5	110.9	138.7
66"	88"		78.2	150.0	150.0	65.0	129.9	150.0	50.4	100.8	126.1
72"	96"		71.7	143.4	150.0	59.6	119.1	148.9	46.2	92.4	115.6
78"	104"		66.2	132.4	150.0	55.0	109.9	137.4	42.7	85.3	106.7
36"	48"	60"	129.1	150.0	150.0	107.2	150.0	150.0	83.2	150.0	150.0
42"	56"		110.6	150.0	150.0	91.9	150.0	150.0	71.3	142.6	150.0
48"	64"		95.8	150.0	150.0	80.4	150.0	150.0	62.4	124.8	150.0
54"	72"		86.0	150.0	150.0	71.5	142.9	150.0	55.5	110.9	138.7
60"	80"		77.4	150.0	150.0	64.3	128.6	150.0	49.9	99.8	124.8
66"	88"		70.4	140.8	150.0	58.5	116.9	146.2	45.4	90.8	113.5
36"	48"	66"	117.3	150.0	150.0	97.5	150.0	150.0	75.6	150.0	150.0
42"	56"		100.6	150.0	150.0	83.5	150.0	150.0	64.8	129.7	150.0
48"	64"		88.0	150.0	150.0	73.1	146.2	150.0	56.7	113.5	141.8
54"	72"		78.2	150.0	150.0	65.0	129.9	150.0	50.4	100.8	126.1
60"	80"		70.4	140.8	150.0	58.5	116.9	146.2	45.4	90.8	113.5
36"	48"	72"	107.6	150.0	150.0	89.3	150.0	150.0	69.3	138.7	150.0
42"	56"		92.2	150.0	150.0	76.6	150.0	150.0	59.4	118.9	148.6
48"	64"		80.7	150.0	150.0	67.0	134.0	150.0	52.0	104.0	130.0
54"	72"		71.7	143.4	150.0	59.6	119.1	148.9	46.2	92.4	115.6
36"	48"	76"	101.9	150.0	150.0	84.6	150.0	150.0	65.7	131.4	150.0
42"	56"		87.3	150.0	150.0	72.5	145.1	150.0	56.3	112.6	140.8
48"	64"		76.4	150.0	150.0	63.5	126.9	150.0	49.3	96.5	123.2
54"	72"		67.9	135.9	150.0	56.4	112.8	141.1	43.8	87.6	109.5

All values shown are Design PSF (Pounds per Square Foot)

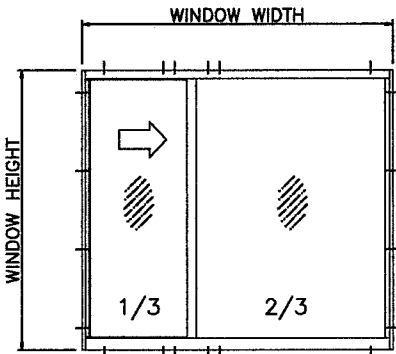
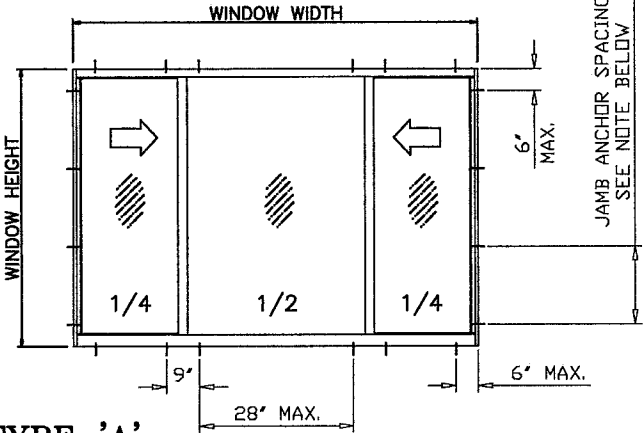
ALL VALUES SHOWN ARE DESIGN PSF
VALUES FOR EXT.(+) LOADS SHOWN ARE FOR
SILL WITH WATERBAR ADAPTER.
FOR WINDOWS WITHOUT WATERBAR ADAPTER
LIMIT EXT.(+) LOADS TO 80.0 PSF

JAMB ANCHOR SPACING
20" MAX. FOR SHIMS UP TO 1/4".
10" MAX. FOR SHIMS GREATER THAN 1/4" TO 1/2".

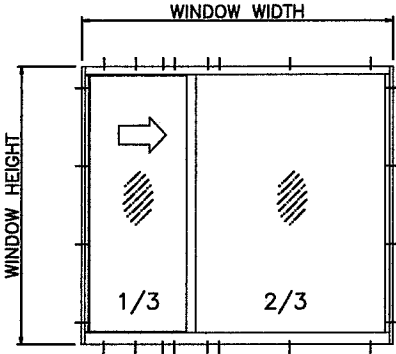
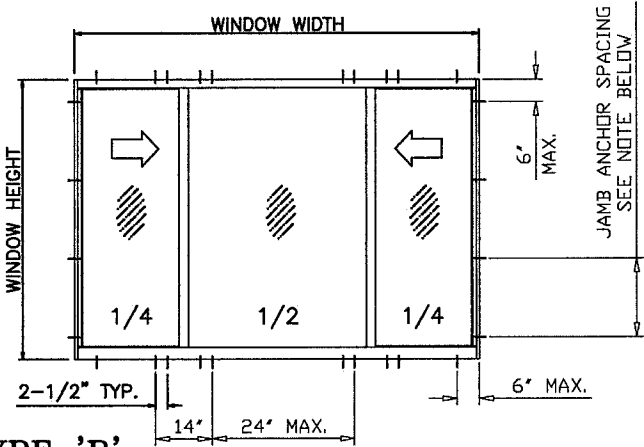
ANCHOR CAPACITY
UNEQUAL PANELS



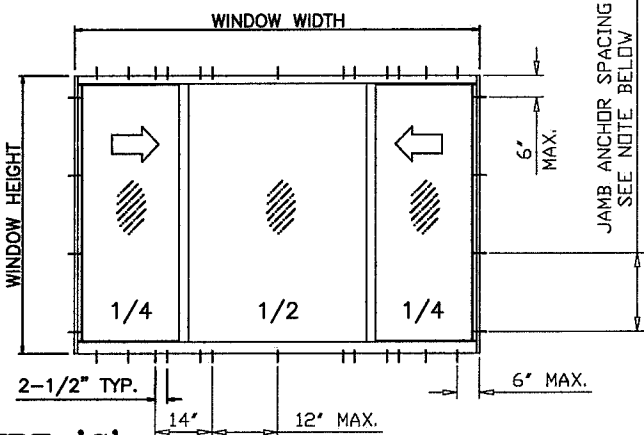
ANCHORS TYPE 'A'
2 ANCHORS AT MTG. STILE ENDS
28" MAX. SPACING BETWEEN ANCHORS
LIMIT MAX. DESIGN LOADS TO 55 PSF



ANCHORS TYPE 'B'
4 ANCHORS AT MTG. STILE ENDS
24" MAX. SPACING BETWEEN ANCHORS
LIMIT MAX. DESIGN LOADS TO 100 PSF



ANCHORS TYPE 'C'
4 ANCHORS AT MTG. STILE ENDS
12" MAX. SPACING BETWEEN ANCHORS
LIMIT MAX. DESIGN LOADS TO 150 PSF

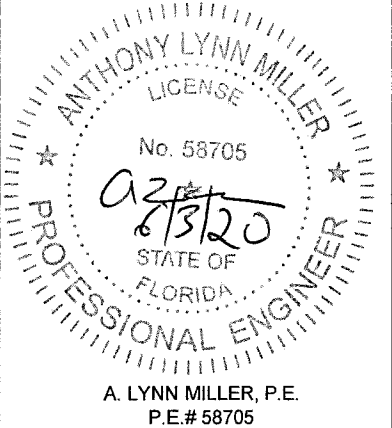


Revision:

PREPARED BY A. LYNN MILLER
1070 TECHNOLOGY DRIVE
N. VENICE, FL 34275
(941) 480-1600

WINDOOR®
INCORPORATED
104 TRIPLE DIAMOND BLVD.
N. VENICE, FL 34275
(407) 481-8400

375 ALUM. HORIZONTAL ROLLER WDW. - LMI		Date	05/29/20
DESIGN PRESSURE 5		Drawn By	J ROSOWSKI
Series	HR375 "ESTATE"	Scale	NTS
		Sheet	9 OF 18
		DWG No.	375LMNOA-1
		Rev.	A



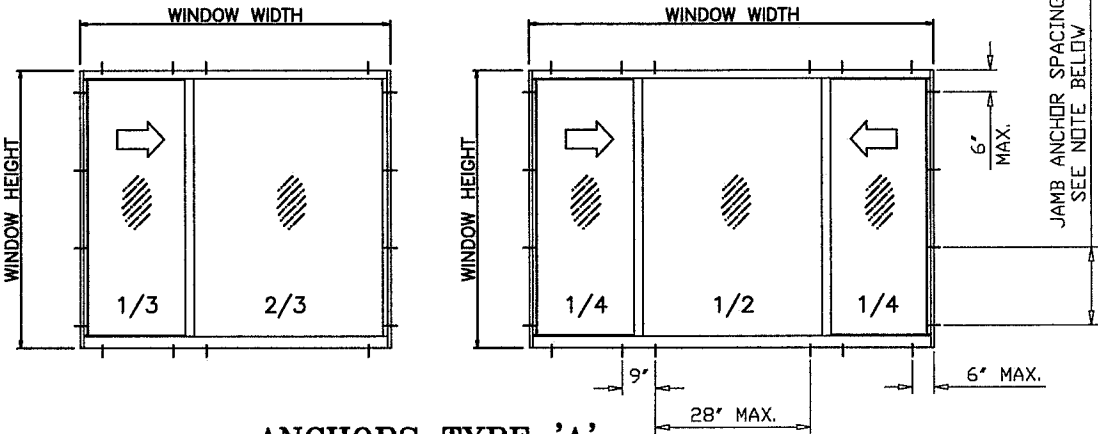
WINDOW DIMS.		1/4" SHIM SPACE			3/8" SHIM SPACE			1/2" SHIM SPACE		
		ANCHORS TYPE:			ANCHORS TYPE:			ANCHORS TYPE:		
		'A'	'B'	'C'	'A'	'B'	'C'	'A'	'B'	'C'
WIDTH		HEIGHT								
2 PANEL	3 PANEL									
26-1/2"	35-5/16"	38-3/8"	EXT.(+)	EXT.(+)	EXT.(+)	EXT.(+)	EXT.(+)	EXT.(+)	EXT.(+)	EXT.(+)
37"	49-5/16"		INT.(-)	INT.(-)	INT.(-)	INT.(-)	INT.(-)	INT.(-)	INT.(-)	INT.(-)
53-1/8"	71"		150.0	150.0	150.0	150.0	150.0	150.0	150.0	150.0
74"	99"		150.0	150.0	150.0	150.0	150.0	150.0	150.0	150.0
79-1/2"	106"		150.0	150.0	150.0	150.0	150.0	150.0	150.0	150.0
106-1/4"	142"	50-5/8"	136.4	150.0	150.0	113.3	150.0	150.0	87.9	150.0
26-1/2"	35-5/16"		97.8	150.0	150.0	81.3	150.0	150.0	63.1	126.1
37"	49-5/16"		97.8	150.0	150.0	75.9	150.0	150.0	58.9	117.8
53-1/8"	71"		68.2	136.4	150.0	56.7	113.3	141.6	44.0	87.9
74"	99"		150.0	150.0	150.0	150.0	150.0	150.0	134.0	150.0
79-1/2"	106"	63"	148.8	150.0	150.0	123.6	150.0	150.0	96.0	150.0
26-1/2"	35-5/16"		103.4	150.0	150.0	85.9	150.0	150.0	66.7	133.3
37"	49-5/16"		74.2	148.3	150.0	61.8	150.0	150.0	47.8	95.6
53-1/8"	71"		69.3	138.5	150.0	57.5	115.1	143.8	44.7	89.3
79-1/2"	106"		150.0	150.0	150.0	138.7	150.0	150.0	107.7	150.0
26-1/2"	35-5/16"	72"	150.0	150.0	150.0	99.3	150.0	150.0	77.1	150.0
37"	49-5/16"		63.1	150.0	150.0	69.0	138.0	150.0	53.6	107.1
53-1/8"	71"		146.1	150.0	150.0	121.4	150.0	150.0	94.2	150.0
79-1/2"	106"		104.6	150.0	150.0	86.9	150.0	150.0	67.5	134.9
106-1/4"	142"		104.6	145.4	150.0	60.4	120.8	150.0	46.9	93.7
26-1/2"	35-5/16"	78"	138.4	150.0	150.0	115.0	150.0	150.0	89.3	150.0
37"	49-5/16"		99.1	150.0	150.0	82.3	150.0	150.0	63.9	127.8
53-1/8"	71"		68.9	137.8	150.0	57.2	114.4	143.0	44.4	88.8
79-1/2"	106"		150.0	150.0	150.0	150.0	150.0	150.0	150.0	150.0
106-1/4"	142"		150.0	150.0	150.0	150.0	150.0	150.0	150.0	150.0

All values shown are Design PSF (Pounds per Square Foot)

ALL VALUES SHOWN ARE DESIGN PSF
VALUES FOR EXT.(+) LOADS SHOWN ARE FOR
SILL WITH WATERBAR ADAPTER.
FOR WINDOWS WITHOUT WATERBAR ADAPTER
LIMIT EXT.(+) LOADS TO 80.0 PSF

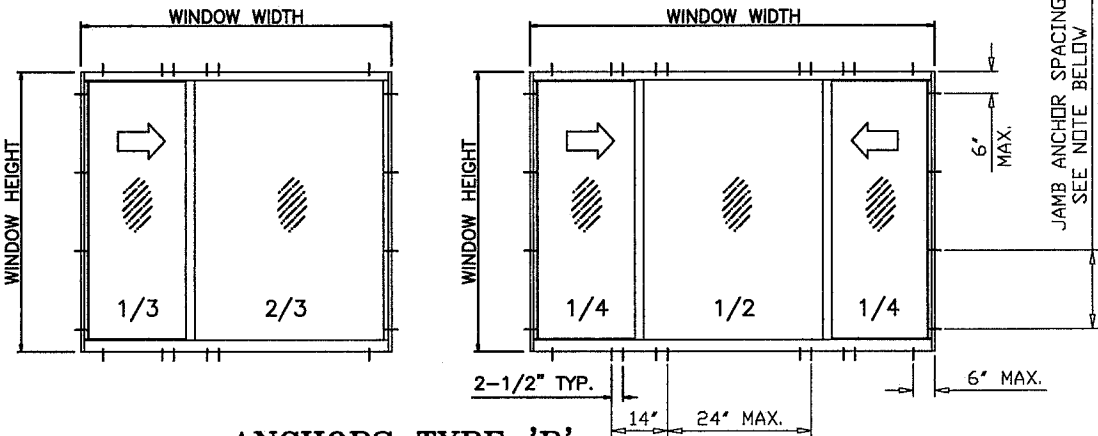
JAMB ANCHOR SPACING
20" MAX. FOR SHIMS UP TO 1/4".
10" MAX. FOR SHIMS GREATER THAN 1/4" TO 1/2".

ANCHOR CAPACITY
UNEQUAL PANELS



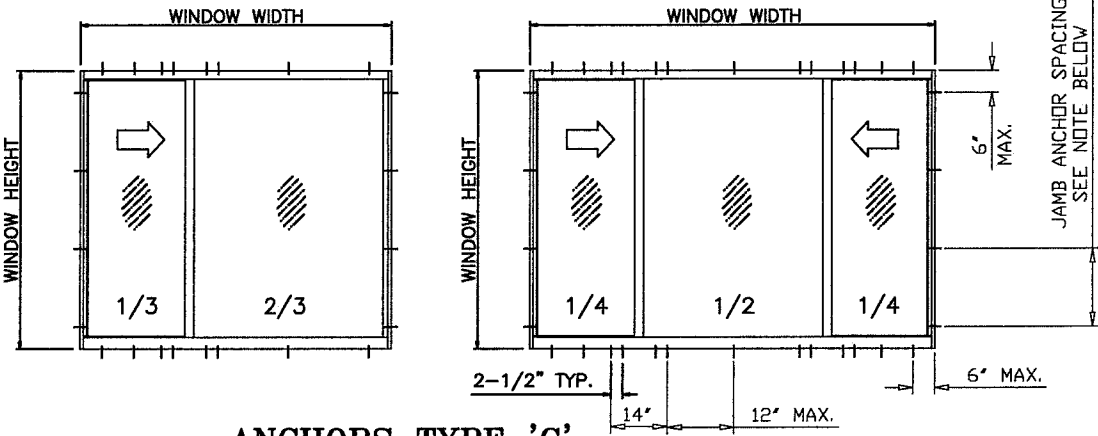
ANCHORS TYPE 'A'

2 ANCHORS AT MTG. STILE ENDS
28" MAX. SPACING BETWEEN ANCHORS
LIMIT MAX. DESIGN LOADS TO 55 PSF



ANCHORS TYPE 'B'

4 ANCHORS AT MTG. STILE ENDS
24" MAX. SPACING BETWEEN ANCHORS
LIMIT MAX. DESIGN LOADS TO 100 PSF

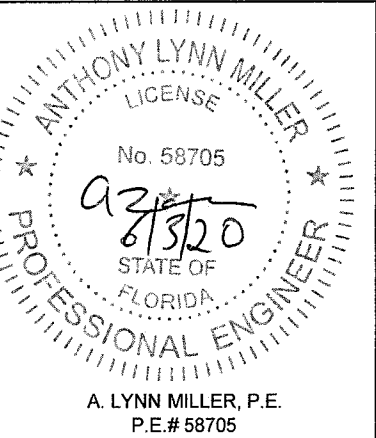


ANCHORS TYPE 'C'

4 ANCHORS AT MTG. STILE ENDS
12" MAX. SPACING BETWEEN ANCHORS
LIMIT MAX. DESIGN LOADS TO 150 PSF

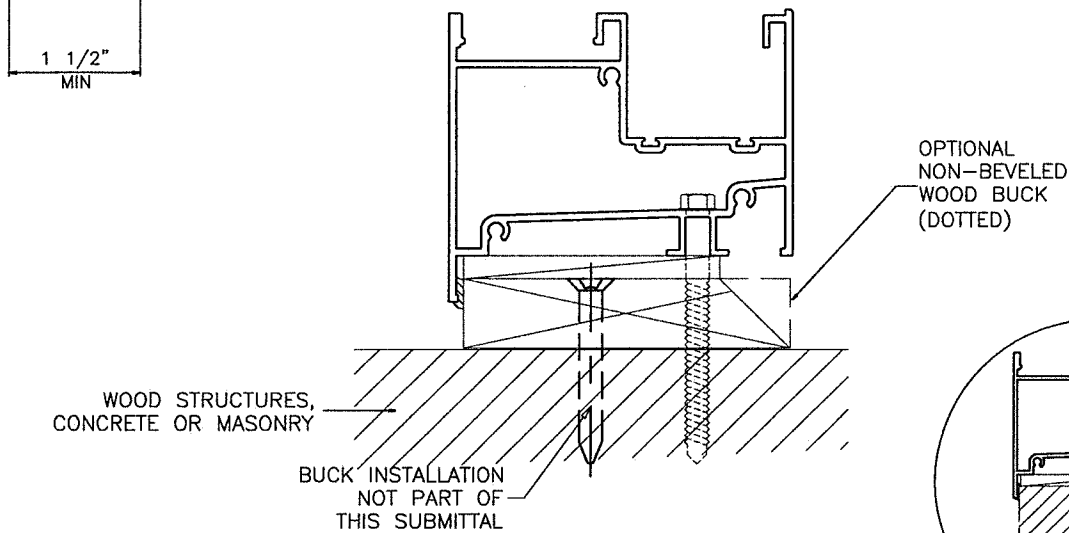
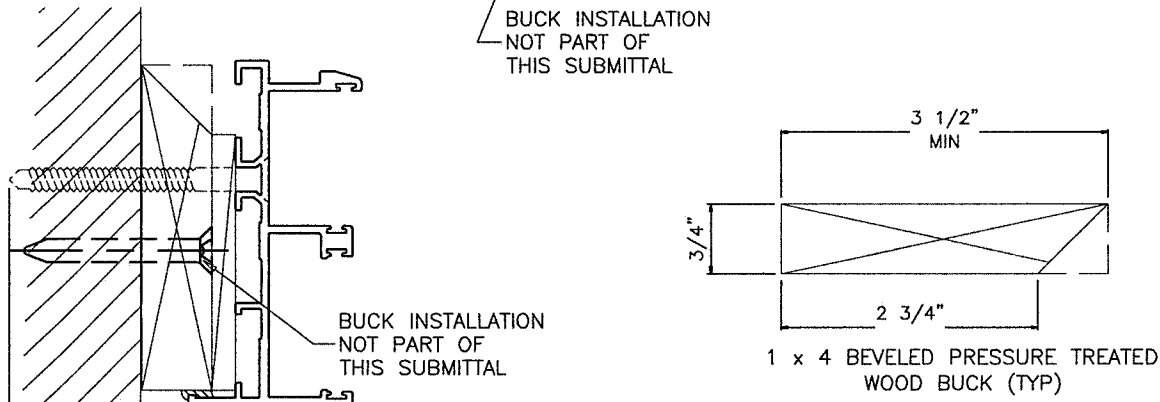
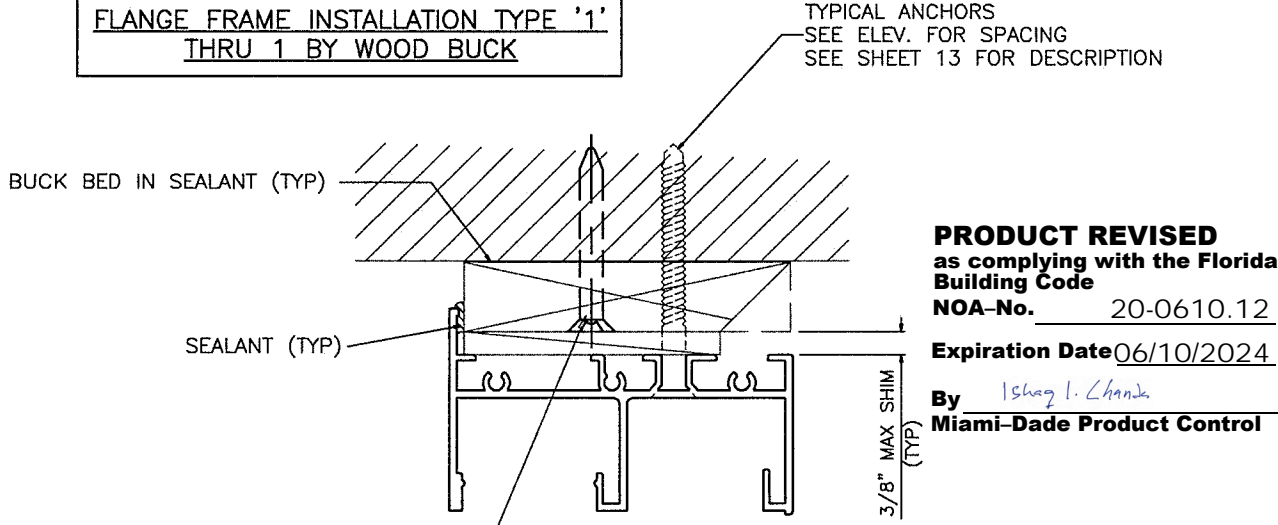
PRODUCT REVISED
as complying with the Florida
Building Code
NOA-No. 20-0610.12
Expiration Date 06/10/2024
By Ishag I. Chande
Miami-Dade Product Control

PREPARED BY A. LYNN MILLER 1070 TECHNOLOGY DRIVE N. VENICE, FL 34275 (941) 480-1600	REGISTRATION #29296	Date	05/29/20	By	J ROSOWSKI	No.	375LMNOA-1	Rev.	A
WINDOOR® INCORPORATED 104 TRIPLE DIAMOND BLVD. N. VENICE, FL 34275 (407) 481-8400	375 ALUM. HORIZONTAL ROLLER WDW. - LMI	Title	DESIGN PRESSURE 6	Scale	NTS	Sheet	10 OF 18	DWC	A

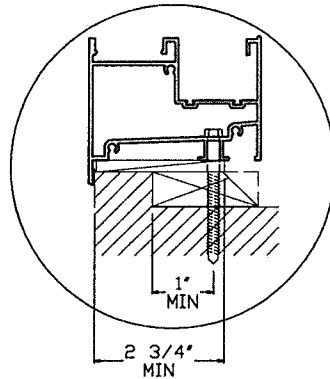
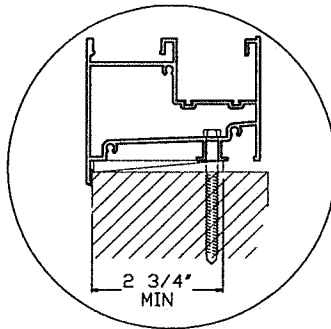


INSTALLATION CONDITIONS FLANGE FRAME

FLANGE FRAME INSTALLATION TYPE '1'
THRU 1 BY WOOD BUCK

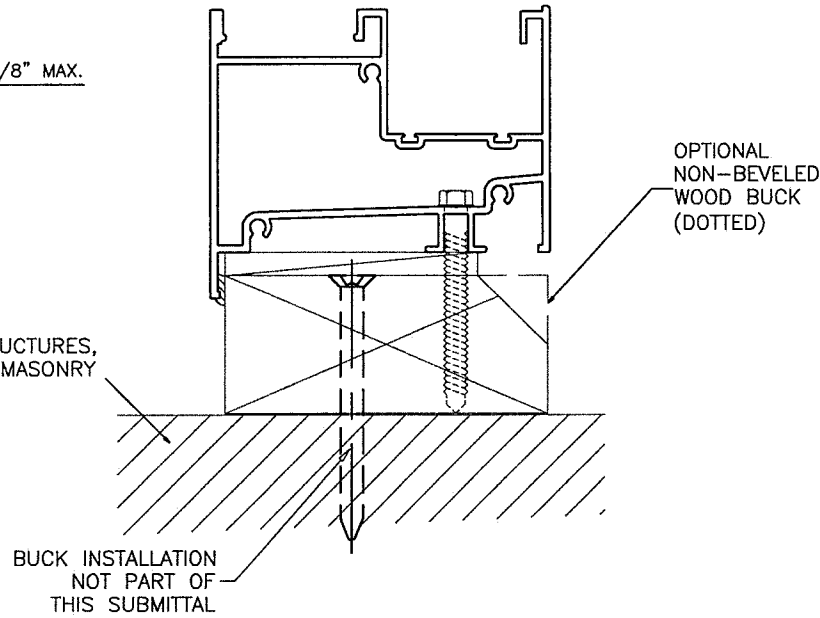
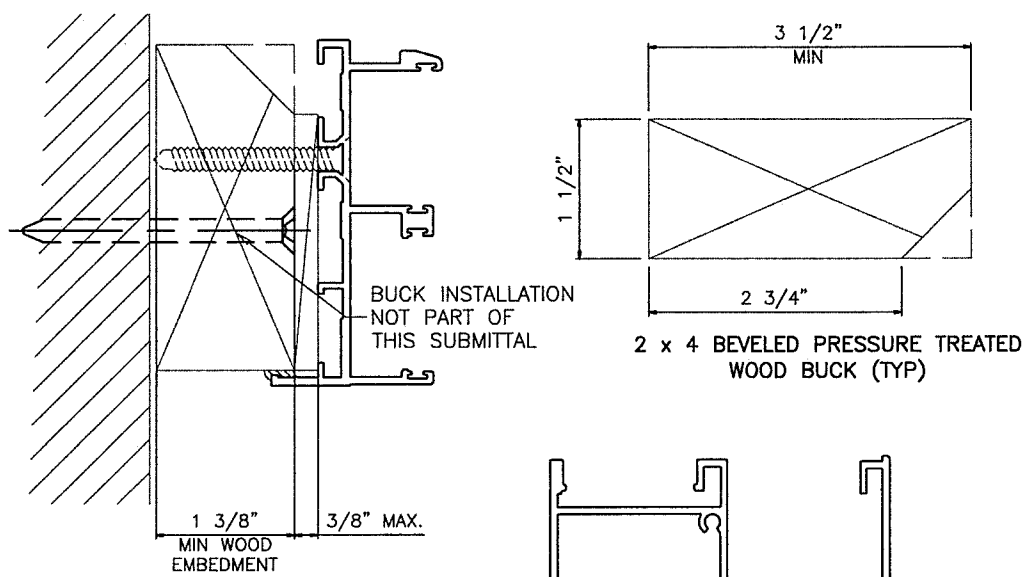
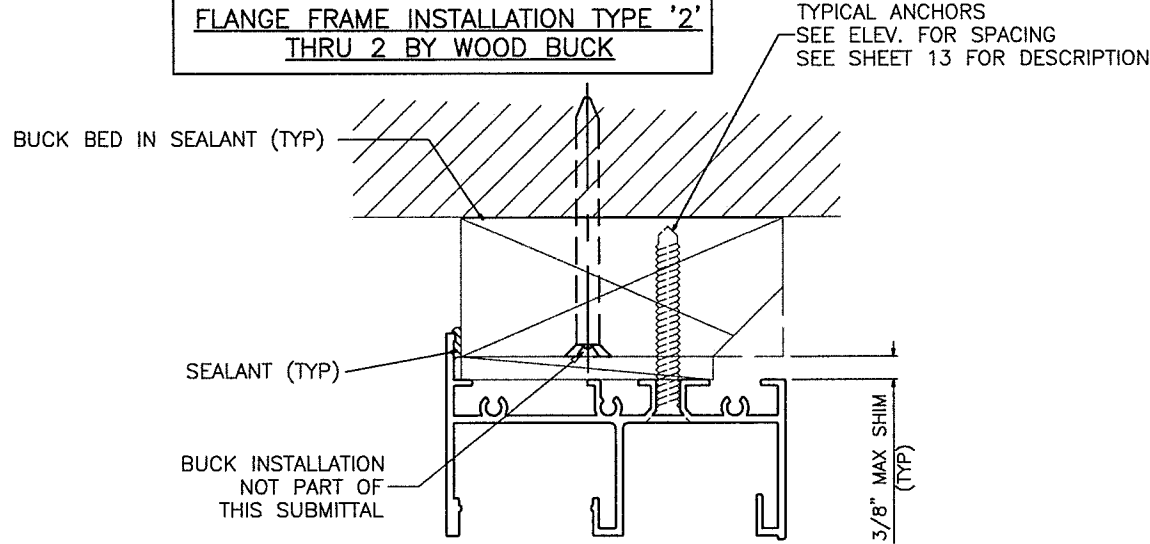


WOOD BUCKS NOT BY WINDOOR CORP., MUST SUSTAIN LOADS IMPOSED BY GLAZING SYSTEM AND TRANSFER THEM TO THE BUILDING STRUCTURE.

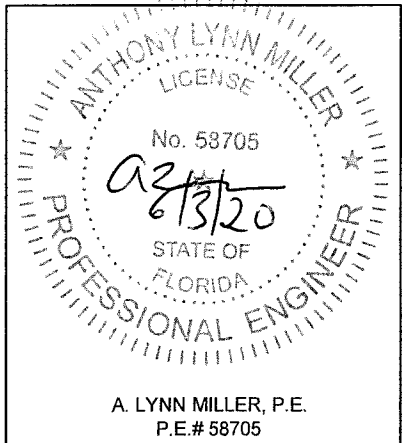


Optional Pre-Cast Sill

FLANGE FRAME INSTALLATION TYPE '2'
THRU 2 BY WOOD BUCK

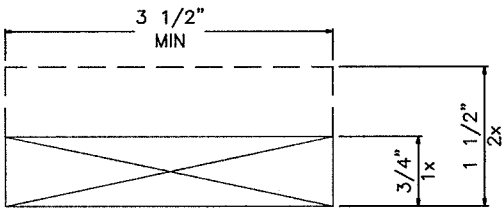
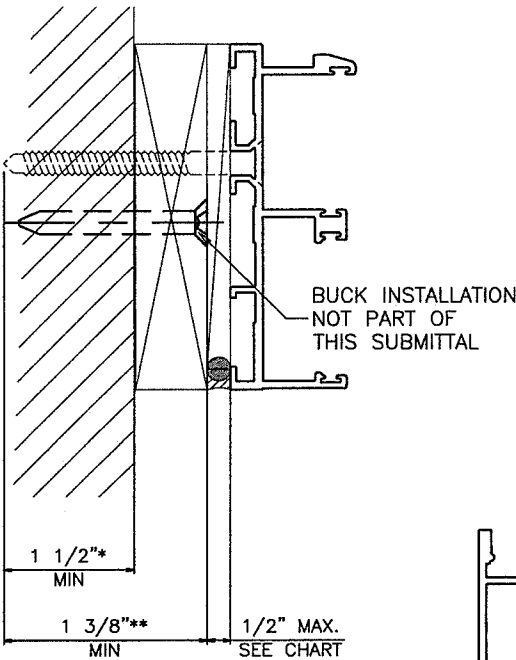
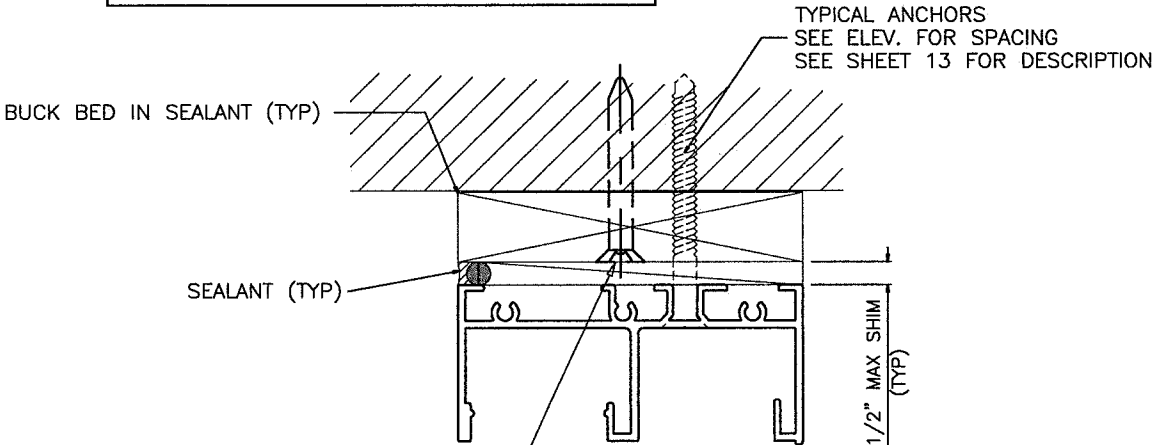


PREPARED BY A. LYNN MILLER 1070 TECHNOLOGY DRIVE N. VENICE, FL 34275 (941) 480-1600		REGISTRATION #29296		Date 05/29/20		Rev. A	
J ROSOWSKI		By		No. 375LMNOA-1		DWG	
FLANGE INSTALLATION		11 OF 18		Sheet		NTS	
HR375 "ESTATE"		Scale		Title		Series	

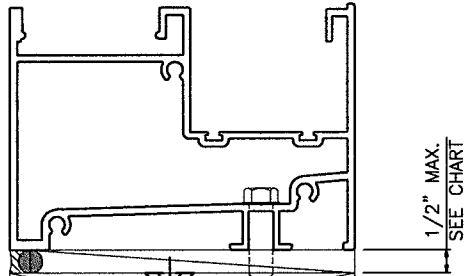


INSTALLATION CONDITIONS EQUAL LEG FRAME

EQUAL LEG INSTALLATION TYPE '1'
THRU 1 OR 2 BY WOOD BUCK



1 x 4 (OR 2 x 4) PRESSURE TREATED
WOOD BUCK (TYP)



1 BY WOOD BUCK
OR 2 BY WOOD BUCK

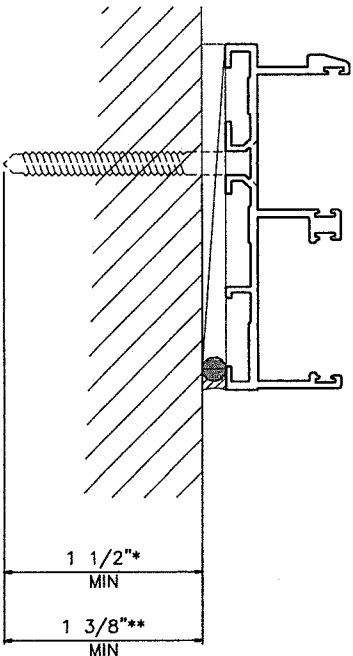
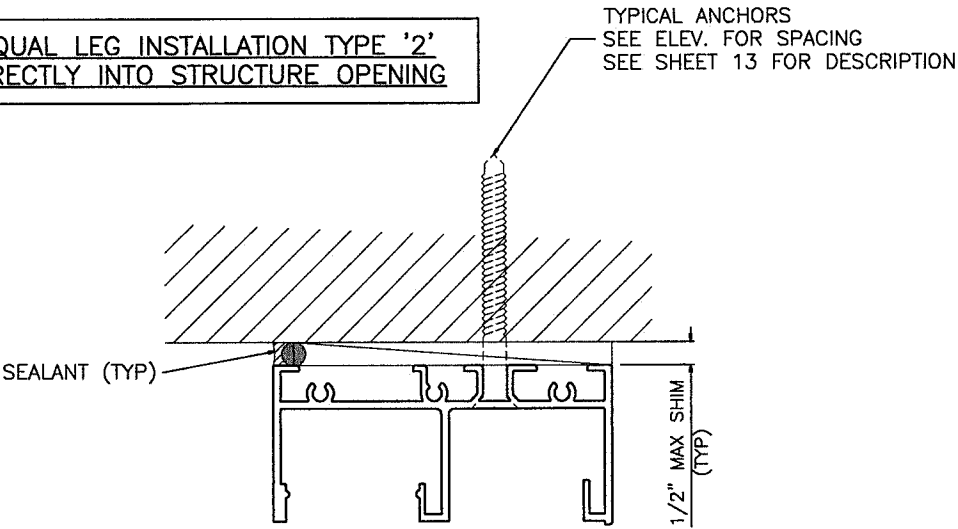
WOOD STRUCTURES,
CONCRETE OR MASONRY

BUCK INSTALLATION
NOT PART OF
THIS SUBMITTAL

*1 1/2" EMBEDMENT IN CONCRETE OR MASONRY
**1 3/8" EMBEDMENT INTO WOOD

WOOD BUCKS NOT BY WINDOOR CORP., MUST SUSTAIN
LOADS IMPOSED BY GLAZING SYSTEM AND TRANSFER
THEM TO THE BUILDING STRUCTURE.

EQUAL LEG INSTALLATION TYPE '2'
DIRECTLY INTO STRUCTURE OPENING



*1 1/2" EMBEDMENT IN CONCRETE OR MASONRY
**1 3/8" EMBEDMENT INTO WOOD

WOOD STRUCTURES,
CONCRETE OR MASONRY

PRODUCT REVISED
as complying with the Florida
Building Code
NOA-No. 20-0610.12
Expiration Date 06/10/2024
By Ishag I. Chank
Miami-Dade Product Control

WINDOOR®
INCORPORATED
104 TRIPLE DIAMOND BLVD.
N. VENICE, FL 34275
(407) 481-8400

PREPARED BY A. LYNN MILLER
1070 TECHNOLOGY DRIVE
N. VENICE, FL 34275
(941) 480-1600

REGISTRATION #29296

375 ALUM. HORIZONTAL ROLLER WDW. - LMI

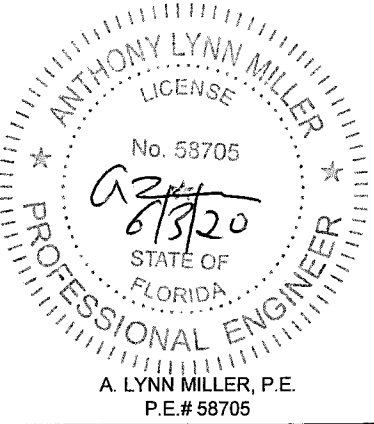
05/29/20

J ROSOWSKI

375LMNOA-1

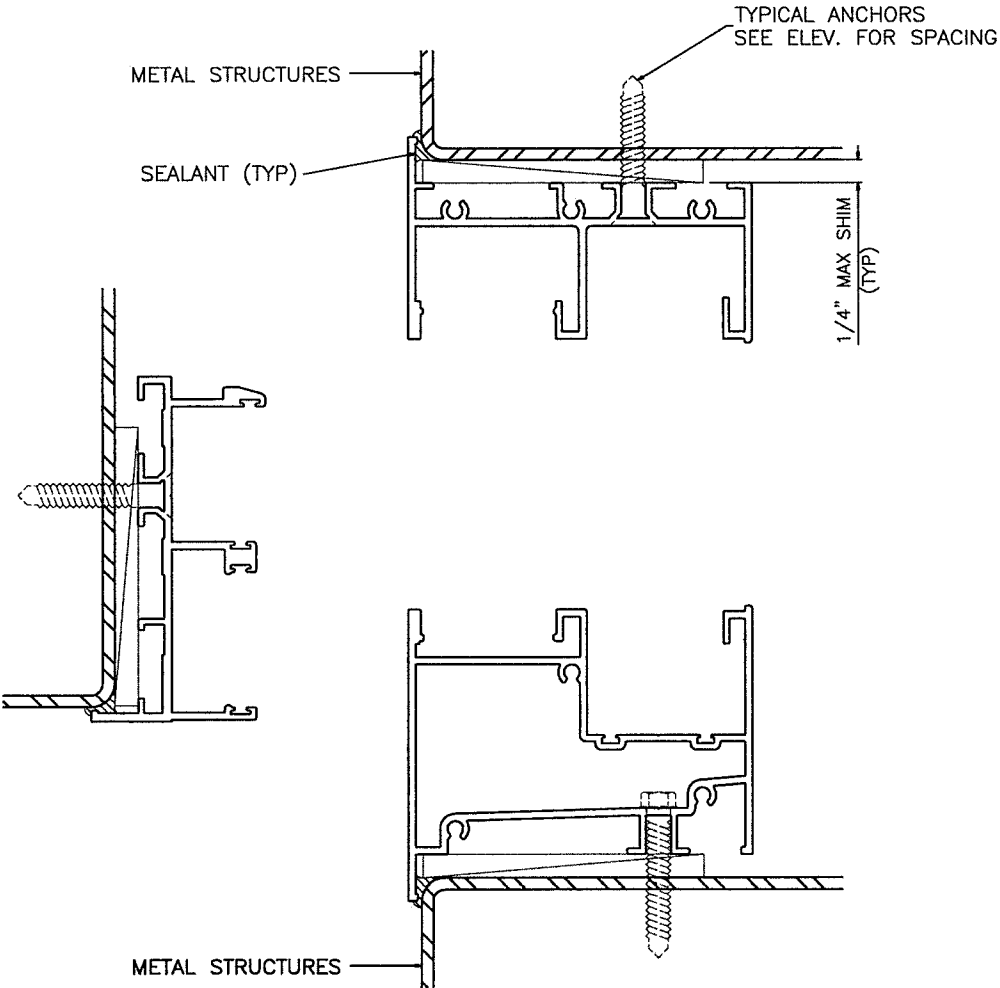
12 OF 18

HR375 "ESTATE"

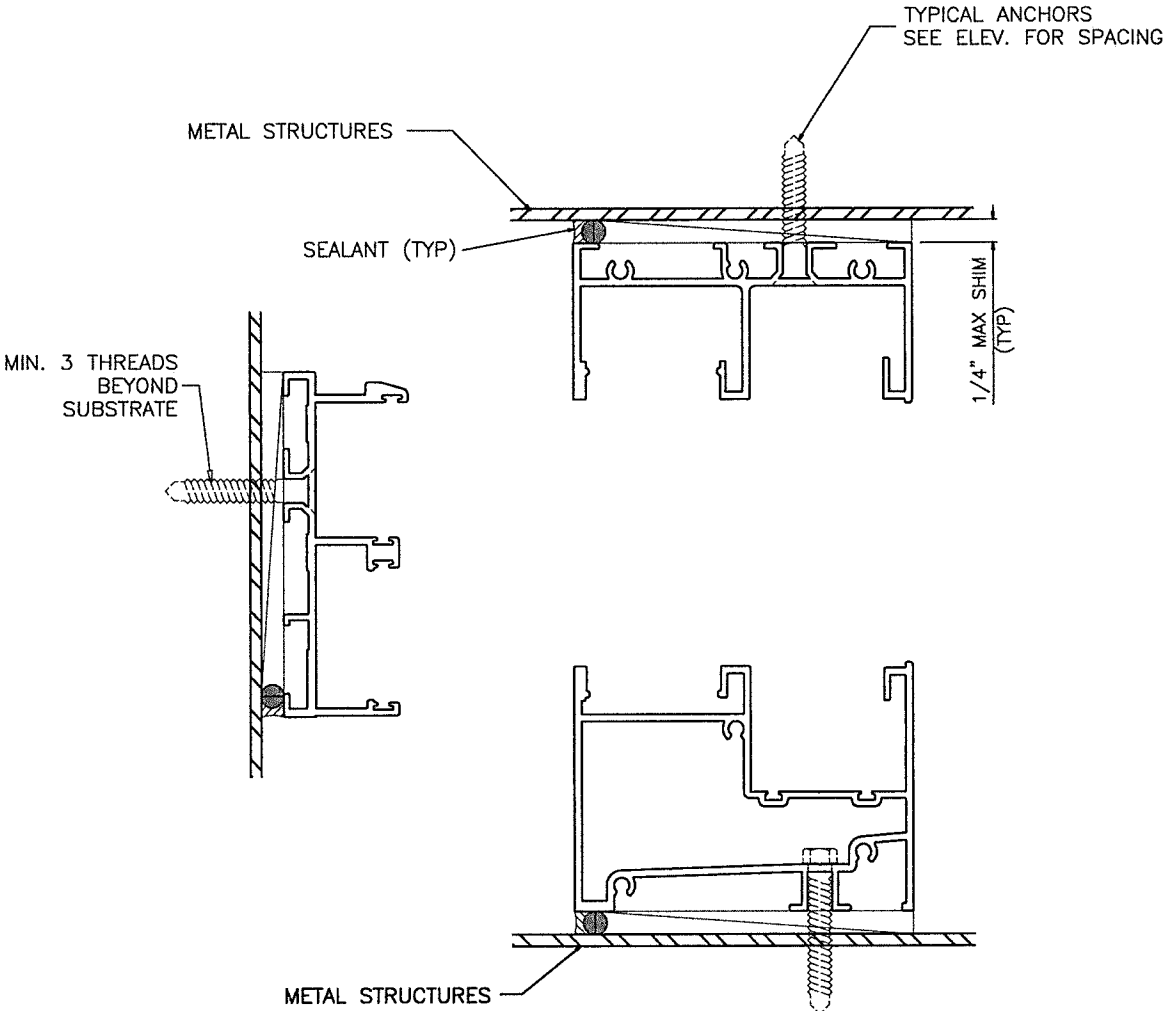


INSTALLATION CONDITIONS METAL STRUCTURES

FLANGE FRAME INSTALLATION



EQUAL LEG FRAME INSTALLATION



TYPICAL ANCHORS: SEE ELEV. FOR SPACING

1/4" DIA. ULTRACON BY 'ELCO' (Fu=177 KSI, Fy=155 KSI)

1/4" DIA. HILTI KWIK-CON II (Fu=163 KSI, Fy=157 KSI)

INTO 2BY WOOD BUCKS OR WOOD STRUCTURES
1-1/2" MIN. PENETRATION INTO WOOD

THRU 1BY BUCKS INTO CONC. OR MASONRY
1-1/4" MIN. EMBED INTO CONCRETE (HEAD/SILL)
1-1/4" MIN. EMBED INTO CONC. OR MASONRY (JAMBS)

DIRECTLY INTO CONC. OR MASONRY
1-1/2" MIN. EMBED INTO CONCRETE (HEAD/SILL)
1-1/2" MIN. EMBED INTO CONC. OR MASONRY (JAMBS)

1/4" DIA. TEKS OR SELF DRILLING SCREWS (GRADE 5 CRS)
INTO MIAMI-DADE COUNTY APPROVED MULLIONS (MIN. THK. = .090")
INTO METAL STRUCTURES
STEEL : 12 GA. MIN. (Fy = 36 KSI MIN.)
ALUMINUM : 1/8" THK. MIN. (6063-T5 MIN.)
(STEEL IN CONTACT WITH ALUMINUM TO BE PLATED OR PAINTED)

1/4" DIA. ULTRACON+ BY 'DEWALT' (Fu=164 KSI, Fy=148 KSI)
(NOT APPLICABLE FOR SHIM THICKNESSES OVER 1/4".)

INTO 2BY WOOD BUCKS OR WOOD STRUCTURES
1-3/8" MIN. PENETRATION INTO WOOD
THRU 1BY BUCKS INTO CONC. OR MASONRY
1" MIN. EMBED INTO CONCRETE (HEAD/SILL)
1-1/4" MIN. EMBED INTO CONC. OR MASONRY (JAMBS)
DIRECTLY INTO CONC. OR MASONRY
1" MIN. EMBED INTO CONCRETE (HEAD/SILL)
1-1/4" MIN. EMBED INTO CONC. OR MASONRY (JAMBS)

TYPICAL EDGE DISTANCE

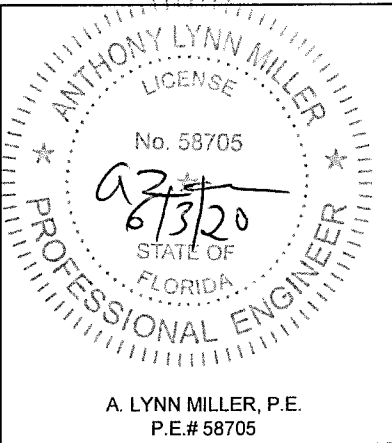
INTO CONCRETE AND MASONRY = 2-1/2" MIN.
INTO WOOD STRUCTURE = 1" MIN.
INTO METAL STRUCTURE = 3/4" MIN.

WOOD AT HEAD, SILL OR JAMBS SG = 0.55 MIN.
CONCRETE AT HEAD, SILL OR JAMBS f'c = 3000 PSI MIN.
C-90 FILLED BLOCK AT JAMBS f'm = 2000 PSI MIN.

PRODUCT REVISED
as complying with the Florida
Building Code
NOA-No. 20-0610.12
Expiration Date 06/10/2024
By Ishag I. Chande
Miami-Dade Product Control

Revision: ADDED ANCHOR TYPE - JR - 5/29/20

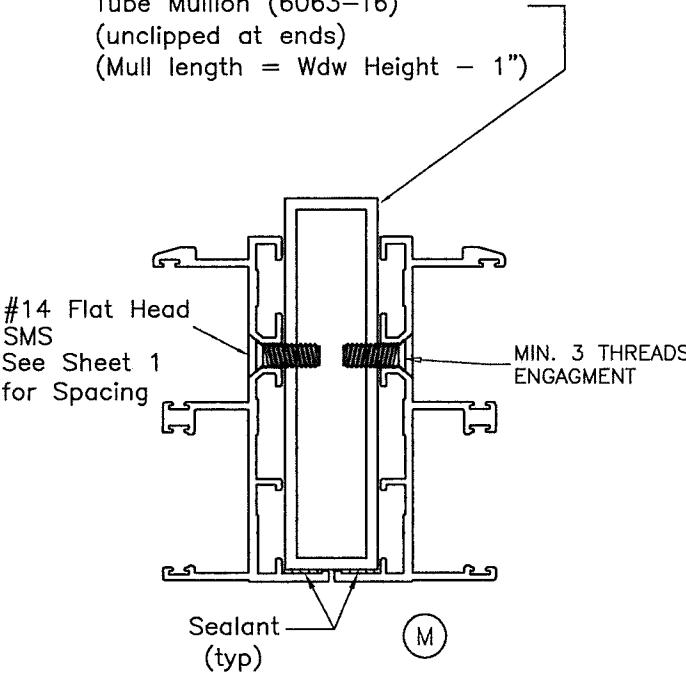
WinDoor® INCORPORATED 104 TRIPLE DIAMOND BLVD. N. VENICE, FL 34275 (407) 481-8400		REGISTRATION #29296		PREPARED BY A. LYNN MILLER 1070 TECHNOLOGY DRIVE N. VENICE, FL 34275 (941) 480-1600	
375 ALUM. HORIZONTAL ROLLER WDW. - LMI		Date	05/29/20		
INSTALLATION INTO METAL		Drawn By	J ROSOWSKI		
Series	Desc.	Sheet		DWG No.	Rev.
HR375 "ESTATE"	NTS	13 OF 18		375LMNOA-1	A



MULLION PERFORMANCE

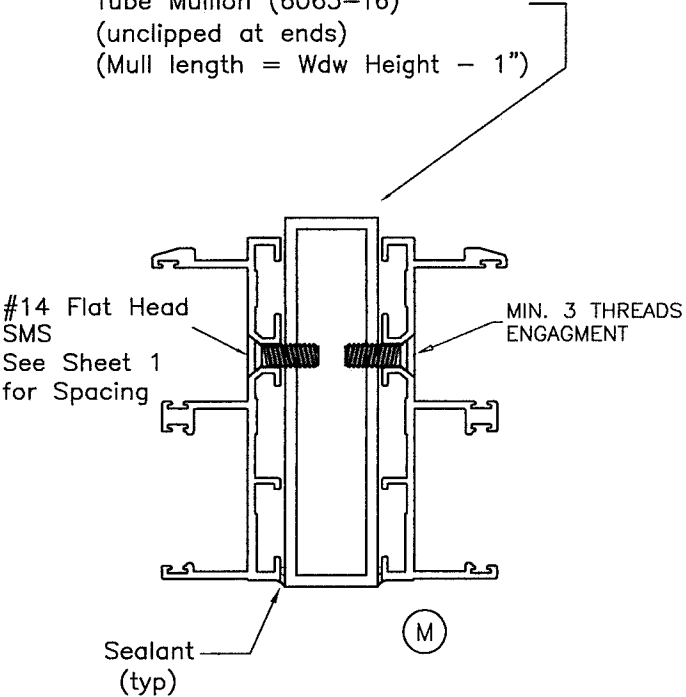
MULLION AT FLANGE WINDOWS

1" x 4" x 1/8" thk. Aluminum
Tube Mullion (6063-T6)
(unclipped at ends)
(Mull length = Wdw Height - 1")

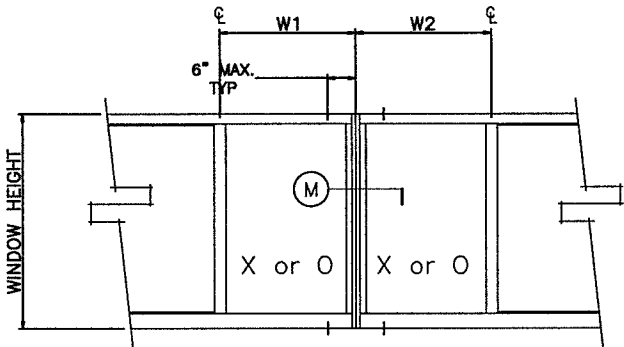


MULLION AT FLANGE WINDOWS

1" x 4" x 1/8" thk. Aluminum
Tube Mullion (6063-T6)
(unclipped at ends)
(Mull length = Wdw Height - 1")



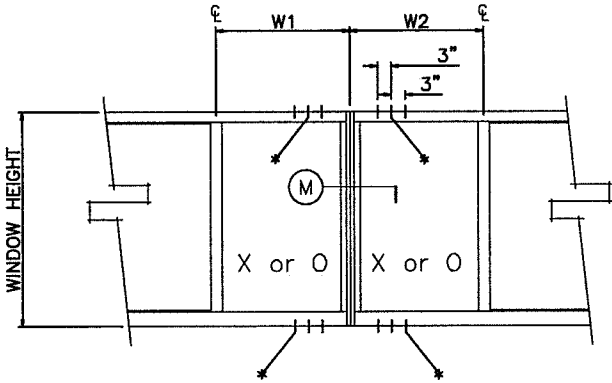
STANDARD INSTALLATION



MULTIPLE OPENING
(2 OR MORE WINDOWS)
w/ 1 SCREW ON EACH SIDE OF MULLION

TRIBUTARY WIDTH = $\frac{W1 + W2}{2}$

HIGH LOAD INSTALLATION



MULTIPLE OPENING
(2 OR MORE WINDOWS)
w/ 2 OR 3 SCREWS ON EACH SIDE OF MULLION
(* = ADDITIONAL HOLES TO BE DRILLED BY
INSTALLER)

MULLION DESIGN LOAD CAPACITY - PSF		
TRIBUTARY WIDTH	WINDOW HEIGHT	EXT.(+) INT.(-)
24"	54"	150.0
28"		150.0
30"		150.0
32"		150.0
36"		120.0
39"		120.0
40"		120.0
42"		120.0
44"		120.0
46"		120.0
48"		120.0
52"		120.0
24"	60"	150.0
28"		150.0
30"		150.0
32"		120.0
36"		120.0
39"		120.0
40"		120.0
42"		120.0
44"		120.0
46"		120.0
24"	66"	150.0
28"		120.0
30"		120.0
32"		120.0
36"		120.0
39"		120.0
40"		120.0
42"		120.0

MULLION DESIGN LOAD CAPACITY - PSF		
TRIBUTARY WIDTH	WINDOW HEIGHT	EXT.(+) INT.(-)
24"	72"	150.0
28"		120.0
30"		120.0
32"		120.0
36"		120.0
39"		120.0
24"	76"	120.0
28"		120.0
30"		120.0
32"		120.0
36"		120.0
37"		120.0

All values shown are Design PSF
(Pounds per Square Foot)

MULLION DESIGN LOAD CAPACITY - PSF		
TRIBUTARY WIDTH	WINDOW HEIGHT	EXT.(+) INT.(-)
18"	38-3/8"	150.0
26-1/2"		150.0
37"		150.0
44"		150.0
56"		120.0
71"		120.0
18"	50-5/8"	150.0
26-1/2"		150.0
37"		120.0
44"		120.0
55"		120.0
18"	63"	150.0
26-1/2"		150.0
37"		120.0
44"		120.0
18"	72"	150.0
26-1/2"		120.0
37"		120.0
39"		120.0
18"	76"	150.0
26-1/2"		120.0
37"		120.0

NOTE:
VALUES FROM CHARTS MAY
BE INTERPOLATED BETWEEN SIZES

ALL VALUES SHOWN ARE DESIGN PSF
VALUES FOR EXT.(+) LOADS SHOWN ARE FOR
SILL WITH WATERBAR ADAPTER.
FOR WINDOWS WITHOUT WATERBAR ADAPTER
LIMIT EXT.(+) LOADS TO 80.0 PSF

PRODUCT REVISED
as complying with the Florida
Building Code
NOA-No. 20-0610.12
Expiration Date 06/10/2024
By Ishag I. Chande
Miami-Dade Product Control

WINDOOR®

INCORPORATED

104 TRIPLE DIAMOND BLVD.
N. VENICE, FL 34275
(407) 481-8400

375 ALUM. HORIZONTAL ROLLER WDW. - LMI

MULLION DP 1

HR375 "ESTATE"

Prepared by A. LYNN MILLER
1070 TECHNOLOGY DRIVE
N. VENICE, FL 34275
(941) 480-1600

REGISTRATION #29296

05/29/20

J ROSOWSKI

375LMNOA-1

14 OF 18

NTS

Scale

Sheet

Rev.

A

ANTHONY LYNN MILLER

LICENSE

No. 58705

9/2/20

STATE OF FLORIDA

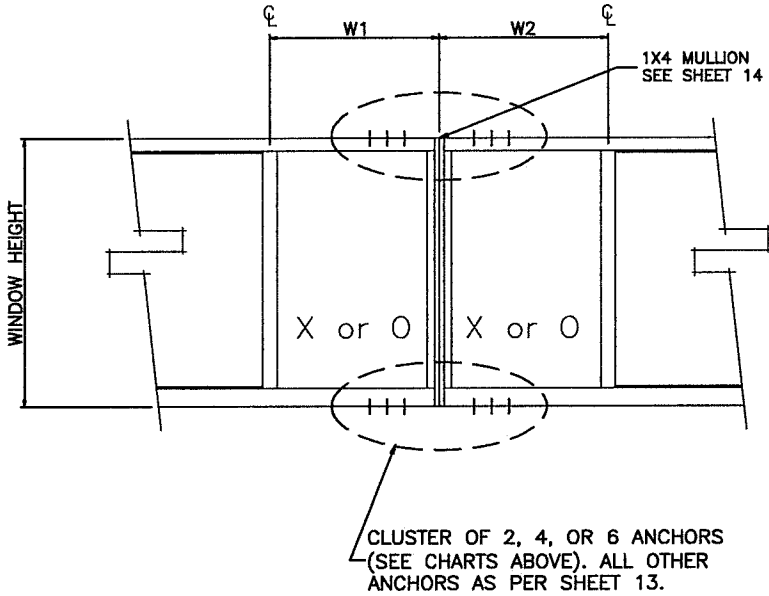
PROFESSIONAL ENGINEER

A. LYNN MILLER, P.E.
P.E.# 58705

PERFORMANCE VALUES OF UNCLIPPED MULLION ANCHORS EXT.(+) & INT.(-)										
		1/4" SHIM SPACE			3/8" SHIM SPACE			1/2" SHIM SPACE		
TRIBUTARY WIDTH	WINDOW HEIGHT	CLUSTER OF 2	CLUSTER OF 4	CLUSTER OF 6	CLUSTER OF 2	CLUSTER OF 4	CLUSTER OF 6	CLUSTER OF 2	CLUSTER OF 4	CLUSTER OF 6
24"	54"	107.6	150.0	150.0	89.3	150.0	150.0	69.3	138.7	150.0
28"		92.2	150.0	150.0	76.6	150.0	150.0	59.4	118.9	150.0
30"		86.0	150.0	150.0	71.5	142.9	150.0	55.5	110.9	150.0
32"		80.7	150.0	150.0	67.0	134.0	150.0	52.0	104.0	150.0
36"		71.7	143.4	150.0	59.6	119.1	150.0	46.2	92.4	138.7
48"		53.8	107.6	150.0	44.7	89.3	134.0	34.7	69.3	104.0
52"		49.6	99.3	148.9	41.2	82.5	123.7	32.0	64.0	96.0
24"	60"	96.8	150.0	150.0	80.4	150.0	150.0	62.4	124.8	150.0
28"		83.0	150.0	150.0	68.9	137.8	150.0	53.5	107.0	150.0
30"		77.4	150.0	150.0	64.3	128.6	150.0	49.1	99.8	149.8
32"		72.6	145.2	150.0	60.3	120.6	150.0	46.8	93.6	140.4
36"		64.5	129.1	150.0	53.6	107.2	150.0	41.6	83.2	124.8
48"		58.1	116.2	150.0	48.2	96.5	144.7	37.4	74.9	112.3
52"		52.8	105.6	150.0	43.9	87.7	131.6	34.0	68.1	102.1
24"	66"	88.0	150.0	150.0	73.1	146.2	150.0	56.7	113.5	150.0
28"		75.4	150.0	150.0	62.6	125.3	150.0	48.6	97.2	145.9
30"		70.4	140.8	150.0	58.5	116.9	150.0	45.4	90.8	136.1
32"		66.0	132.0	150.0	54.8	109.6	150.0	42.5	85.1	127.6
36"		58.7	117.3	150.0	48.7	97.5	146.2	37.8	75.6	113.5
48"		52.8	105.6	150.0	43.9	87.7	131.6	34.0	68.1	102.1
24"	72"	80.7	150.0	150.0	67.0	134.0	150.0	52.0	104.0	150.0
28"		69.1	138.3	150.0	57.4	114.9	150.0	44.6	89.1	133.7
30"		64.5	129.1	150.0	53.6	107.2	150.0	41.6	83.2	124.8
32"		60.5	121.0	150.0	50.3	100.5	150.0	39.0	78.0	117.0
36"		53.8	107.6	150.0	44.7	89.3	134.0	34.7	69.3	104.0
48"		49.6	99.3	148.9	41.2	82.5	123.7	32.0	64.0	96.0
24"	76"	76.4	150.0	150.0	63.5	126.9	150.0	49.3	98.5	147.8
28"		65.5	131.0	150.0	54.4	108.8	150.0	42.2	84.5	126.7
30"		61.1	122.3	150.0	50.8	101.6	150.0	39.4	78.8	118.2
32"		57.3	114.6	150.0	47.6	95.2	142.8	36.8	73.9	110.8
36"		50.9	101.9	150.0	42.3	84.6	126.9	32.8	65.7	98.5

All values shown are Design PSF (Pounds per Square Foot)

TRIBUTARY WIDTH = $\frac{W1 + W2}{2}$



NOTE:
VALUES FROM CHARTS MAY
BE INTERPOLATED BETWEEN SIZES
ALL VALUES SHOWN ARE DESIGN PSF
VALUES FOR EXT.(+) LOADS SHOWN ARE FOR
SILL WITH WATERBAR ADAPTER.
FOR WINDOWS WITHOUT WATERBAR ADAPTER
LIMIT EXT.(+) LOADS TO 80.0 PSF

PERFORMANCE VALUES OF UNCLIPPED MULLION ANCHORS EXT.(+) & INT.(-)										
		1/4" SHIM SPACE			3/8" SHIM SPACE			1/2" SHIM SPACE		
TRIBUTARY WIDTH	WINDOW HEIGHT	CLUSTER OF 2	CLUSTER OF 4	CLUSTER OF 6	CLUSTER OF 2	CLUSTER OF 4	CLUSTER OF 6	CLUSTER OF 2	CLUSTER OF 4	CLUSTER OF 6
18"	38-3/8"	150.0	150.0	150.0	150.0	150.0	150.0	130.1	150.0	150.0
26-1/2"		137.1	150.0	150.0	113.8	150.0	150.0	88.4	150.0	150.0
37"		98.2	150.0	150.0	81.5	150.0	150.0	63.3	126.6	150.0
44"		82.6	150.0	150.0	68.6	137.1	150.0	53.2	106.4	150.0
56"		64.9	129.7	150.0	53.9	107.7	150.0	41.8	83.6	125.4
71"		51.2	102.3	150.0	42.5	85.0	127.5	33.0	66.0	98.9
18"	50-5/8"	150.0	150.0	150.0	127.1	150.0	150.0	98.6	150.0	150.0
26-1/2"		103.9	150.0	150.0	86.3	150.0	150.0	67.0	134.0	150.0
37"		74.4	148.8	150.0	61.8	123.6	150.0	48.0	95.9	143.9
44"		62.6	125.2	150.0	52.0	104.0	150.0	40.3	80.7	121.0
18"	63"	122.9	150.0	150.0	102.1	150.0	150.0	79.2	150.0	150.0
26-1/2"		83.5	150.0	150.0	69.3	138.7	150.0	53.8	107.6	150.0
37"		59.8	119.6	150.0	49.7	99.3	149.0	38.5	77.1	115.6
44"		50.3	100.6	150.0	41.8	83.5	125.3	32.4	64.8	97.2
18"	72"	107.6	150.0	150.0	89.3	150.0	150.0	69.3	138.7	150.0
26-1/2"		73.1	146.1	150.0	60.7	121.4	150.0	47.1	94.2	141.3
37"		52.3	104.6	150.0	43.5	86.9	130.4	33.7	67.5	101.2
18"	76"	101.9	150.0	150.0	84.6	150.0	150.0	65.7	131.4	150.0
26-1/2"		69.2	138.4	150.0	57.5	115.0	150.0	44.6	89.2	133.8
37"		49.6	99.1	148.7	41.2	82.3	123.5	32.0	63.9	95.9

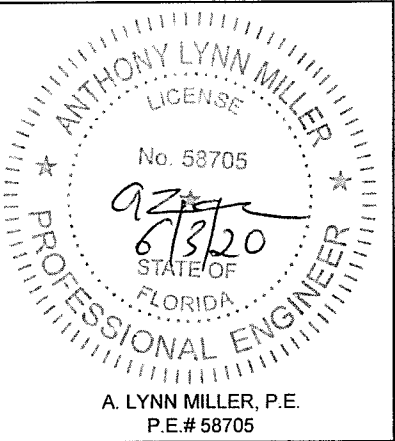
PRODUCT REVISED
as complying with the Florida
Building Code
NOA-No. 20-0610.12

Expiration Date 06/10/2024

By *Ishaq I. Chandra*
Miami-Dade Product Control

MULLION ANCHORS
ADJACENT TO MULLIONS AT HEAD & SILL
ALL OTHER WINDOW ANCHORS
AS PER SHEETS 11 THRU 14

PREPARED BY A. LYNN MILLER 1070 TECHNOLOGY DRIVE N. VENICE, FL 34275 (941) 480-1600		REGISTRATION #29296		05/29/20		J ROSOWSKI		375LMNOA-1		A	
104 TRIPLE DIAMOND BLVD. N. VENICE, FL 34275 (407) 481-8400		375 ALUM. HORIZONTAL ROLLER WDW. - LMI		Date		Drawn		No.		Rev.	
WINDOOR® INCORPORATED		MULLION DP 2		15 OF 18		NTS		DWC		Sheet	
HR375 "ESTATE"		Scale		15 OF 18		NTS		15 OF 18		Sheet	
375 ALUM. HORIZONTAL ROLLER WDW. - LMI		MULLION DP 2		15 OF 18		NTS		15 OF 18		Sheet	
HR375 "ESTATE"		Scale		15 OF 18		NTS		15 OF 18		Sheet	



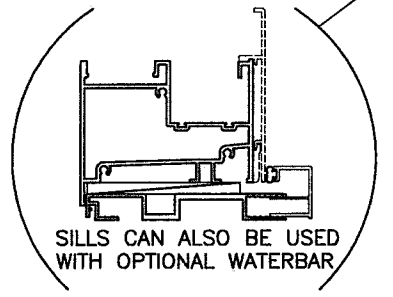
PERFORMANCE VALUES OF ALUMINUM BUCK INSTALLATION ANCHORS EXT.(+) & INT.(-)				
WINDOW DIMS.		ANCHORS AT 16" O.C.		ANCHORS AT 8" O.C.
WIDTH	HEIGHT	WOOD/BLOCK	CONC.	WOOD/BLOCK
36"	36"	150.0	150.0	150.0
48"		150.0	150.0	150.0
56"		124.6	150.0	150.0
60"		112.8	150.0	150.0
64"		128.7	150.0	150.0
72"		109.6	150.0	150.0
80"		114.6	150.0	150.0
84"		107.6	150.0	150.0
88"		101.5	144.0	150.0
96"		106.3	150.0	150.0
108"		92.1	130.7	150.0
112"		100.8	143.0	150.0
117"		95.7	135.8	150.0
126"		98.7	140.0	150.0
144"		94.0	133.3	150.0
36"	48"	150.0	150.0	150.0
48"		148.0	150.0	150.0
56"		111.0	150.0	150.0
60"		98.7	140.0	150.0
64"		111.0	150.0	150.0
72"		92.5	131.3	150.0
80"		95.1	135.0	150.0
84"		88.8	126.0	148.0
88"		83.3	118.1	150.0
96"		86.3	122.5	148.0
108"		74.0	105.0	137.4
112"		80.7	114.5	141.3
117"		76.4	108.4	143.2
126"		78.4	111.2	139.3
144"		74.0	105.0	133.2
36"	54"	131.6	150.0	150.0
48"		118.4	150.0	150.0
56"		108.9	150.0	150.0
60"		95.7	135.8	150.0
64"		106.7	150.0	150.0
72"		87.7	124.4	150.0
80"		89.4	126.8	148.9
84"		83.1	117.9	138.5
88"		77.6	110.2	142.3
96"		80.1	113.6	137.3
108"		68.2	96.8	126.7
112"		74.3	105.4	130.0
117"		70.2	99.6	131.6
126"		71.8	101.8	127.6
144"		67.5	95.7	121.4
36"	60"	112.8	150.0	150.0
48"		98.7	140.0	150.0
56"		95.1	135.0	150.0
60"		94.7	134.4	150.0
64"		94.7	134.4	150.0
72"		84.6	120.0	150.0
80"		85.2	121.0	142.1
84"		78.9	112.0	131.6
88"		73.5	104.3	134.7
96"		75.3	106.9	129.2
108"		63.8	90.5	118.4
112"		69.3	98.3	121.3
117"		65.3	92.7	122.5
126"		66.6	94.5	118.4

PERFORMANCE VALUES OF ALUMINUM BUCK INSTALLATION ANCHORS EXT.(+) & INT.(-)				
WINDOW DIMS.		ANCHORS AT 16" O.C.		ANCHORS AT 8" O.C.
WIDTH	HEIGHT	WOOD/BLOCK	CONC.	WOOD/BLOCK
36"	66"	123.3	150.0	150.0
48"		105.7	150.0	150.0
56"		100.2	142.1	150.0
60"		94.7	134.4	150.0
64"		97.9	139.0	150.0
72"		82.8	117.5	149.0
80"		82.4	117.0	137.4
84"		76.0	107.8	126.6
88"		70.5	100.0	129.2
96"		71.8	101.8	123.0
108"		60.3	85.5	111.9
112"		65.4	92.8	114.4
117"		61.5	87.3	115.3
126"		62.5	88.7	111.1
36"	72"	109.6	150.0	150.0
48"		92.5	131.3	150.0
56"		86.5	122.7	150.0
60"		84.6	120.0	150.0
64"		83.2	118.1	149.8
72"		82.2	116.7	148.0
80"		80.7	114.5	134.5
84"		74.0	105.0	123.3
88"		68.3	96.9	125.2
96"		69.1	98.0	118.4
108"		57.6	81.7	106.9
112"		62.3	88.4	109.1
117"		58.5	83.0	109.6
126"		58.5	83.0	109.6
36"	76"	102.1	144.8	150.0
48"		85.4	121.2	150.0
56"		79.3	112.5	142.7
60"		77.2	109.6	139.0
64"		75.7	107.4	136.2
72"		74.0	105.0	133.2
80"		73.8	104.7	132.8
84"		73.2	103.8	121.9
88"		67.3	95.5	123.4
96"		67.7	96.0	116.0
108"		56.1	79.6	104.2
112"		56.1	79.6	104.2
117"		56.1	79.6	104.2
126"		56.1	79.6	104.2

All values shown are Design PSF (Pounds per Square Foot)

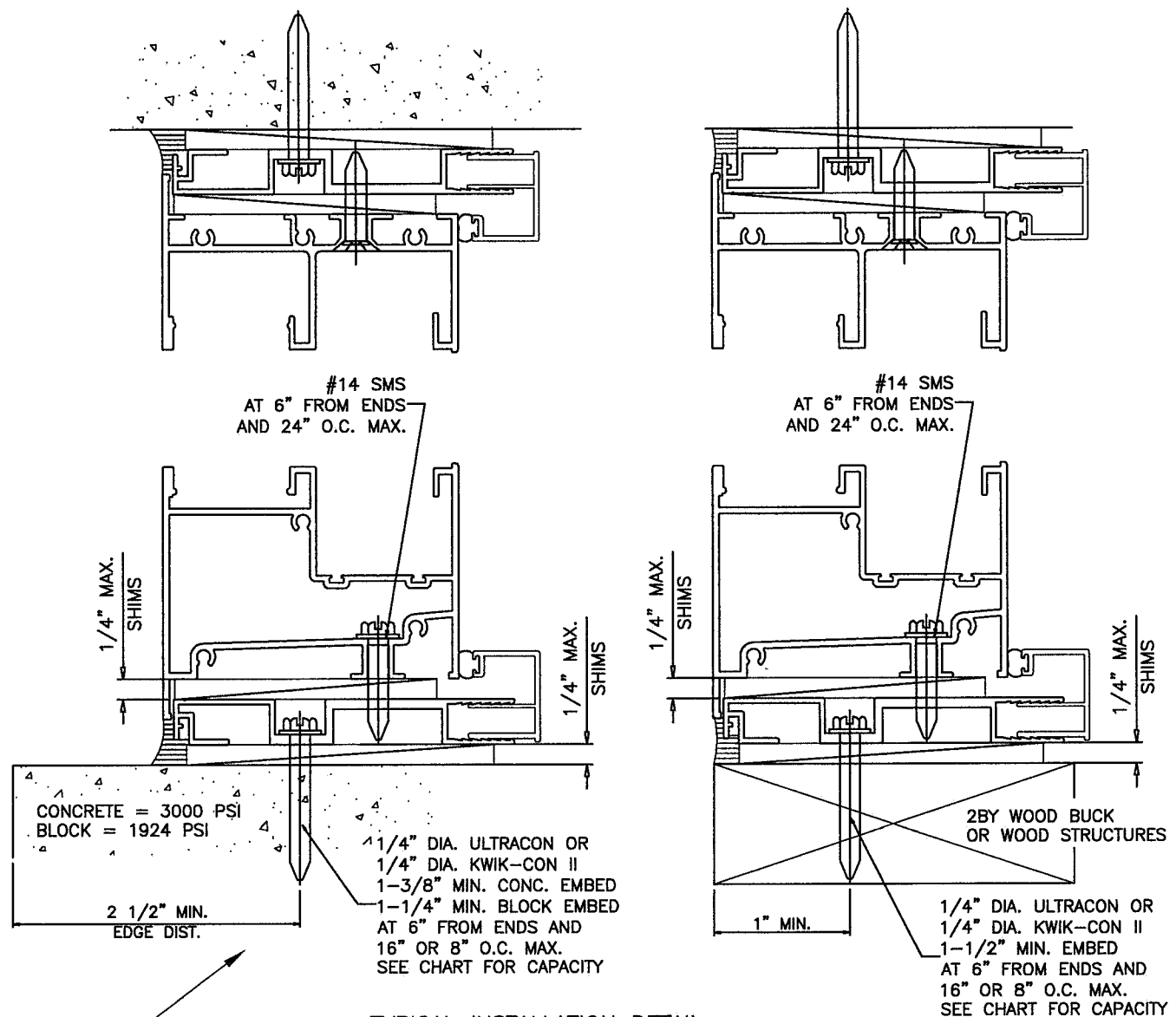
NOTE:
VALUES FROM CHARTS MAY
BE INTERPOLATED BETWEEN SIZES

ALL VALUES SHOWN ARE DESIGN PSF
VALUES FOR EXT.(+) LOADS SHOWN ARE FOR
SILL WITH WATERBAR ADAPTER.
FOR WINDOWS WITHOUT WATERBAR ADAPTER
LIMIT EXT.(+) LOADS TO 80.0 PSF

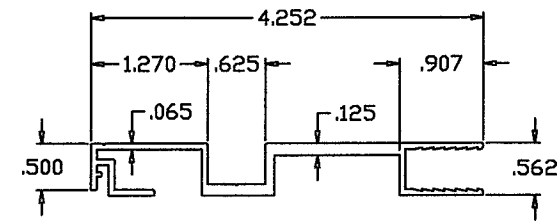


ALUMINUM BUCK FRAMING DETAILS

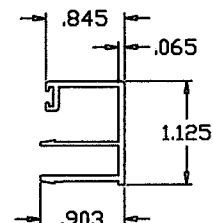
REFER TO SHEETS 5 & 8 FOR WINDOW CAPACITIES
USE LOWER APPLICABLE VALUES.



TYPICAL INSTALLATION DETAIL
ON ALL FOUR SIDES/USING ALUMINUM BUCK SYSTEM



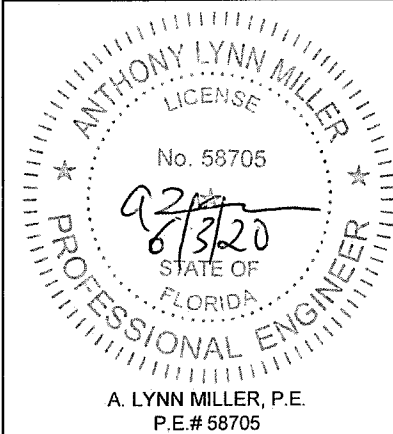
ALUMINUM BUCK
6063-T6



OPTIONAL COVER
6063-T6

PRODUCT REVISED
as complying with the Florida
Building Code
NOA-No. 20-0610.12
Expiration Date 06/10/2024
By Ishag I. Chande
Miami-Dade Product Control

PREPARED BY A. LYNN MILLER 1070 TECHNOLOGY DRIVE N. VENICE, FL 34275 (941) 480-1600		REGISTRATION #29296		Date	05/29/20
375 ALUM. HORIZONTAL ROLLER WDW. - LMI		J ROSOWSKI		Drawn By	
ALUM BUCK DP 1		375LMNOA-1		DWG No.	
HR375 "ESTATE"		16 OF 18		Sheet	
NTS		Scale		Scale	
Title		Series		Series	

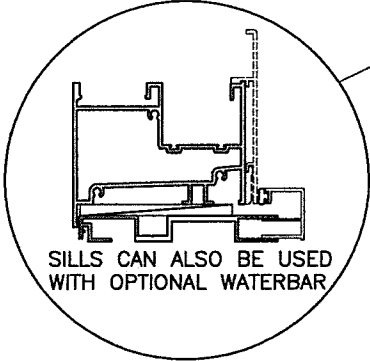


PERFORMANCE VALUES OF ALUMINUM BUCK INSTALLATION ANCHORS EXT.(+) & INT.(-)					
WINDOW DIMS.		ANCHORS AT 16" O.C.		ANCHORS AT 8" O.C.	
WIDTH	HEIGHT	WOOD/BLOCK	CONC.	WOOD/BLOCK	CONC.
26-1/2"	38-3/8"	150.0	150.0	150.0	150.0
53-1/8"		130.9	150.0	150.0	150.0
79-11/16"		110.2	150.0	150.0	150.0
106-1/4"		89.3	126.7	150.0	150.0
111"		96.8	137.3	150.0	150.0
119-1/4"		88.8	126.0	150.0	150.0
159-3/8"	50-5/8"	87.2	123.7	150.0	150.0
26-1/2"		150.0	150.0	150.0	150.0
53-1/8"		121.1	150.0	150.0	150.0
79-11/16"		92.9	131.8	150.0	150.0
106-1/4"		72.8	103.3	135.2	150.0
111"		78.6	111.5	137.6	150.0
119-1/4"	63"	71.7	101.7	134.4	150.0
159-3/8"		69.1	98.0	125.6	150.0
26-1/2"		150.0	150.0	150.0	150.0
53-1/8"		110.1	150.0	150.0	150.0
79-11/16"		84.2	119.5	140.4	150.0
106-1/4"		63.4	89.9	117.7	150.0
111"	72"	68.1	96.6	119.1	150.0
119-1/4"		61.7	87.5	115.7	150.0
26-1/2"		136.9	150.0	150.0	150.0
53-1/8"		88.3	125.3	150.0	150.0
79-11/16"		81.3	115.4	135.5	150.0
106-1/4"		59.0	83.7	109.6	150.0
111"	76"	63.1	89.6	110.5	150.0
26-1/2"		128.2	150.0	150.0	150.0
53-1/8"		81.1	115.1	146.1	150.0
79-11/16"		73.8	104.7	132.8	150.0
106-1/4"		57.5	81.6	106.8	150.0
111"		61.5	87.2	107.6	150.0

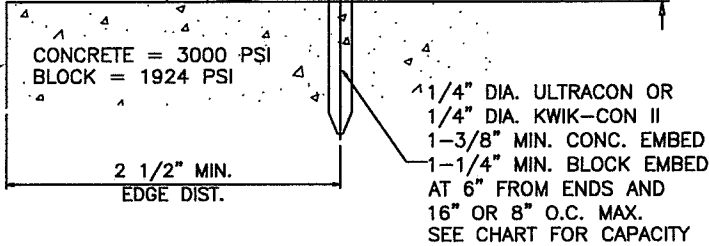
All values shown are Design PSF (Pounds per Square Foot)

NOTE:
VALUES FROM CHARTS MAY
BE INTERPOLATED BETWEEN SIZES

ALL VALUES SHOWN ARE DESIGN PSF
VALUES FOR EXT.(+) LOADS SHOWN ARE FOR
SILL WITH WATERBAR ADAPTER.
FOR WINDOWS WITHOUT WATERBAR ADAPTER
LIMIT EXT.(+) LOADS TO 80.0 PSF



SILLS CAN ALSO BE USED
WITH OPTIONAL WATERBAR



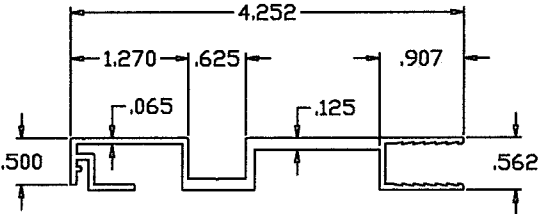
CONCRETE = 3000 PSI
BLOCK = 1924 PSI

2 1/2" MIN.
EDGE DIST.

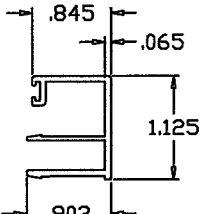
1/4" DIA. ULTRACON OR
1/4" DIA. KWIK-CON II
1-3/8" MIN. CONC. EMBED
1-1/4" MIN. BLOCK EMBED
AT 6" FROM ENDS AND
16" OR 8" O.C. MAX.
SEE CHART FOR CAPACITY

TYPICAL INSTALLATION DETAIL
ON ALL FOUR SIDES/USING ALUMINUM BUCK SYSTEM

PRODUCT REVISED
as complying with the Florida
Building Code
NOA-No. 20-0610.12
Expiration Date 06/10/2024
By Ishag I. Chank
Miami-Dade Product Control



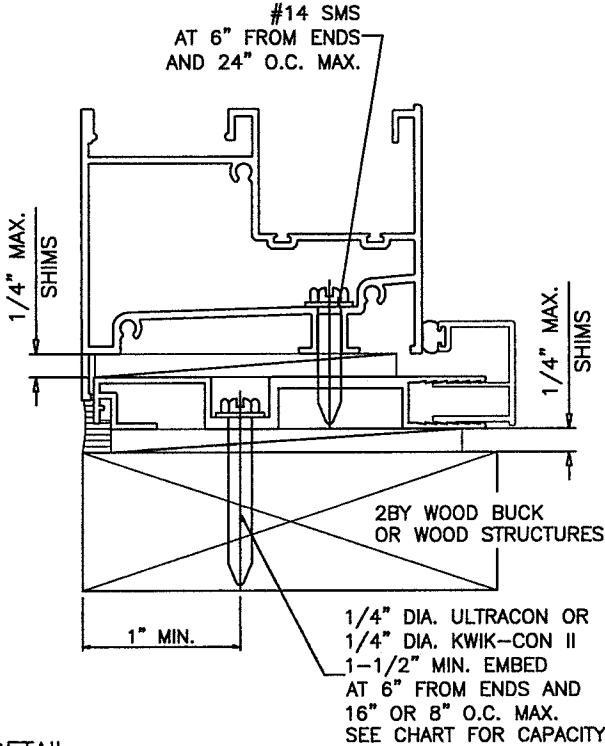
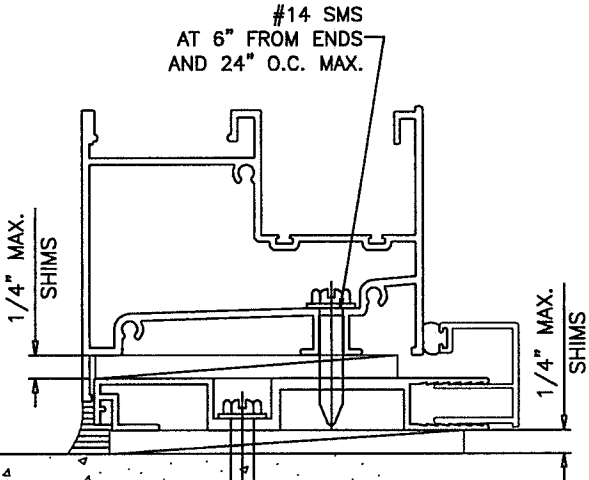
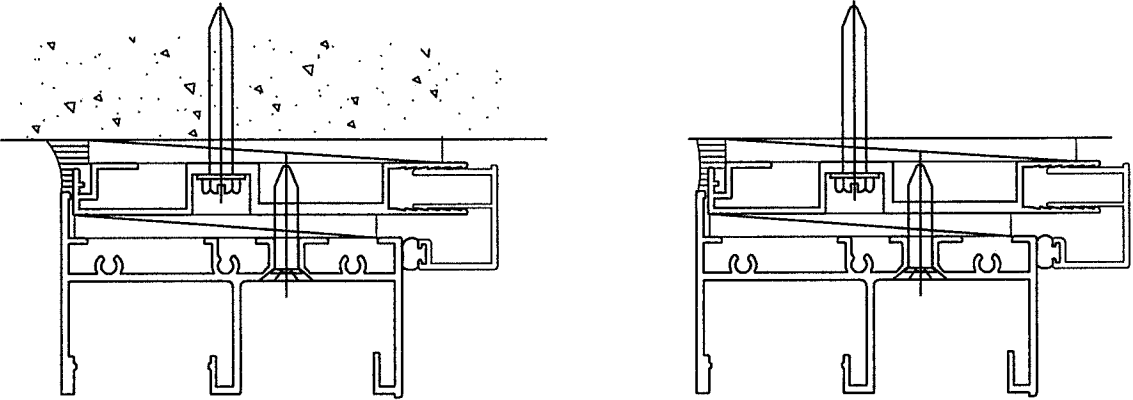
ALUMINUM BUCK
6063-T6



OPTIONAL COVER
6063-T6

ALUMINUM BUCK FRAMING DETAILS

REFER TO SHEETS 5 & 8 FOR WINDOW CAPACITIES
USE LOWER APPLICABLE VALUES.



Revision:

PREPARED BY A. LYNN MILLER
1070 TECHNOLOGY DRIVE
N. VENICE, FL 34275
(941) 480-1600

REGISTRATION #29296

Date 05/29/20

By J ROSOWSKI

DWG No. 375LMNOA-1

Sheet 17 OF 18

NTS

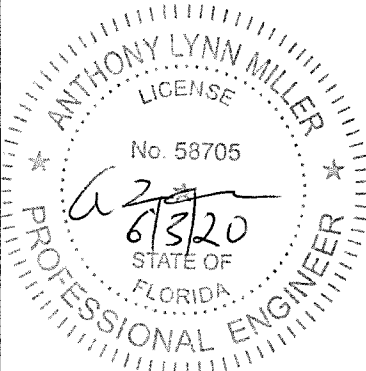
Scale

HR375 "ESTATE"

WinDoor®
INCORPORATED
104 TRIPLE DIAMOND BLVD.
N. VENICE, FL 34275
(407) 481-8400

375 ALUM. HORIZONTAL ROLLER WDW. - LMI

ALUM BUCK DP 2



A. LYNN MILLER, P.E.
P.E.# 58705

PERFORMANCE VALUES OF ALUMINUM BUCK ANCHORS AT MULLION JOINTS EXT.(+) & INT.(-)							
TRIBUTARY WIDTH	WINDOW HEIGHT	ANCHORS INTO WOOD OR HOLLOW BLOCK			ANCHORS INTO CONCRETE		
		CLUSTER OF 2	CLUSTER OF 4	CLUSTER OF 6	CLUSTER OF 2	CLUSTER OF 4	CLUSTER OF 6
24"	54"	65.8	131.6	150.0	93.3	150.0	150.0
28"		56.4	112.8	150.0	80.0	150.0	150.0
32"		49.3	98.7	148.0	70.0	140.0	150.0
36"		43.9	87.7	131.6	62.2	124.4	150.0
39"		40.5	81.0	121.4	57.4	114.9	150.0
40"		39.5	78.9	118.4	56.0	112.0	150.0
42"		37.6	75.2	112.8	53.3	106.7	150.0
44"		35.9	71.8	107.6	50.9	101.8	150.0
46"		34.3	68.6	103.0	48.7	97.4	146.1
48"		32.9	65.8	98.7	46.7	93.3	140.0
52"		30.4	60.7	91.1	43.1	86.2	129.2
24"	60"	59.2	118.4	150.0	84.0	150.0	150.0
28"		50.7	101.5	150.0	72.0	144.0	150.0
32"		44.4	88.8	133.2	63.0	126.0	150.0
36"		39.5	78.9	118.4	56.0	112.0	150.0
39"		36.4	72.9	109.3	51.7	103.4	150.0
40"		35.5	71.0	106.6	50.4	100.8	150.0
42"		33.8	67.7	101.5	48.0	96.0	144.0
44"		32.3	64.6	96.9	45.8	91.6	137.5
46"		30.9	61.8	92.7	43.8	87.7	131.5
24"	66"	53.8	107.6	150.0	76.4	150.0	150.0
28"		46.1	92.3	138.4	65.5	130.9	150.0
32"		40.4	80.7	121.1	57.3	114.5	150.0
36"		35.9	71.8	107.6	50.9	101.8	150.0
39"		33.1	66.2	99.4	47.0	94.0	141.0
40"		32.3	64.6	96.9	45.8	91.6	137.5
42"		30.8	61.5	92.3	43.6	87.3	130.9
24"	72"	49.3	98.7	148.0	70.0	140.0	150.0
28"		42.3	84.6	126.9	60.0	120.0	150.0
32"		37.0	74.0	111.0	52.5	105.0	150.0
36"		32.9	65.8	98.7	46.7	93.3	140.0
39"		30.4	60.7	91.1	43.1	86.2	129.2
24"	76"	46.7	93.5	140.2	66.3	132.6	150.0
28"		40.1	80.1	120.2	56.8	113.7	150.0
32"		35.1	70.1	105.2	49.7	99.5	149.2
36"		31.2	62.3	93.5	44.2	88.4	132.6

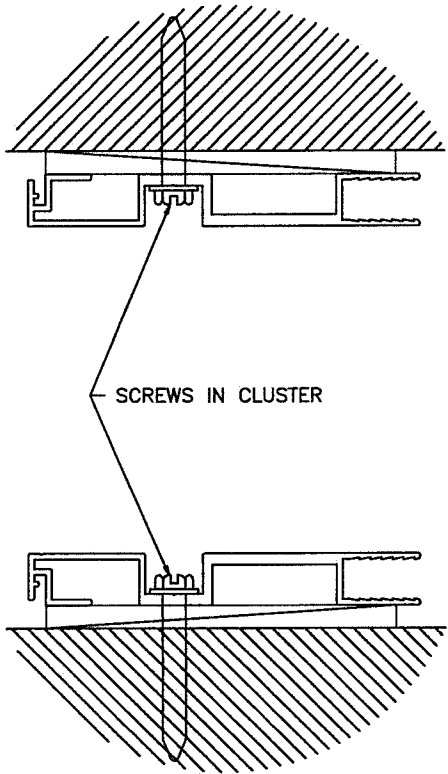
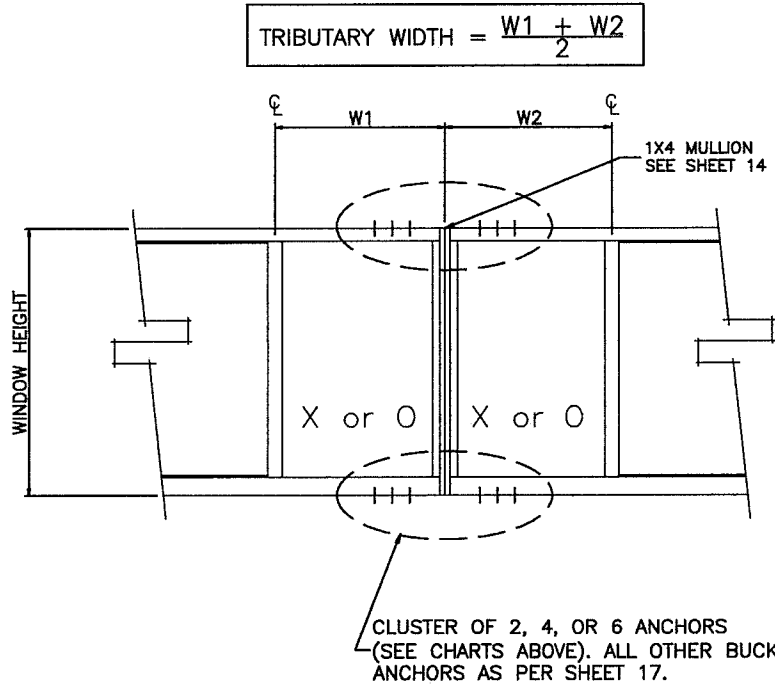
All values shown are Design PSF (Pounds per Square Foot)

NOTE:
ALUMINUM BUCKS ARE SUPPLIED WITH
CLUSTER OF 2 (1 SCREW HOLE PER SIDE) STANDARD.
EXTRA HOLES MUST BE FIELD DRILLED IF REQUIRED.

ALL VALUES SHOWN ARE DESIGN PSF
VALUES FOR EXT.(+) LOADS SHOWN ARE FOR
SILL WITH WATERBAR ADAPTER.
FOR WINDOWS WITHOUT WATERBAR ADAPTER
LIMIT EXT.(+) LOADS TO 80.0 PSF

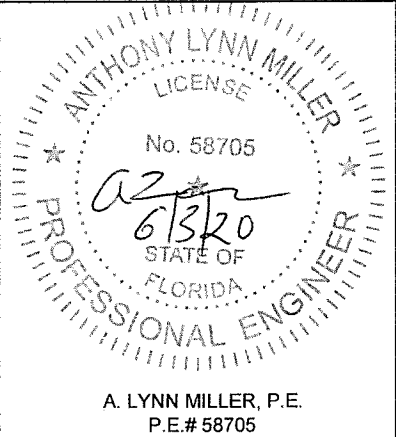
VALUES FROM CHARTS MAY
BE INTERPOLATED BETWEEN SIZES

PERFORMANCE VALUES OF ALUMINUM BUCK ANCHORS AT MULLION JOINTS EXT.(+) & INT.(-)							
TRIBUTARY WIDTH	WINDOW HEIGHT	ANCHORS INTO WOOD OR HOLLOW BLOCK			ANCHORS INTO CONCRETE		
		CLUSTER OF 2	CLUSTER OF 4	CLUSTER OF 6	CLUSTER OF 2	CLUSTER OF 4	CLUSTER OF 6
18"	38-3/8"	123.4	150.0	150.0	150.0	150.0	150.0
26-1/2'		83.8	150.0	150.0	118.9	150.0	150.0
37"		60.0	120.1	150.0	85.2	150.0	150.0
44"		50.5	101.0	150.0	71.6	143.3	150.0
56"		39.7	79.3	119.0	56.3	112.6	150.0
71"		31.3	62.6	93.9	44.4	88.8	150.0
18"	50-5/8"	93.6	150.0	150.0	132.7	150.0	150.0
26-1/2'		63.5	127.1	150.0	90.2	150.0	150.0
37"		45.5	91.0	136.5	64.6	129.2	150.0
44"		38.3	76.5	114.8	54.3	108.6	150.0
18"	63"	75.2	150.0	150.0	106.7	150.0	150.0
26-1/2'		51.1	102.1	150.0	72.5	144.9	150.0
37"		36.6	73.1	109.7	51.9	103.8	150.0
44"	72"	30.8	61.5	92.3	43.6	87.3	130.9
18"		65.8	131.6	150.0	93.3	150.0	150.0
26-1/2'		44.7	89.4	134.0	63.4	126.8	150.0
37"	76"	32.0	64.0	96.0	45.4	90.8	136.2
18"		62.3	124.6	150.0	88.4	150.0	150.0
26-1/2'		42.3	84.7	127.0	60.1	120.1	150.0
37"		30.3	60.6	90.9	43.0	86.0	129.0



PRODUCT REVISED
as complying with the Florida
Building Code
NOA-No. 20-0610.12
Expiration Date 06/10/2024
By Ishag I. Chande
Miami-Dade Product Control

PREPARED BY A. LYNN MILLER 1070 TECHNOLOGY DRIVE N. VENICE, FL 34275 (941) 480-1600	REGISTRATION #29296	Date 05/29/20	By J ROSOWSKI	Rev A
				No 375LMNOA-1
WINDOOR® INCORPORATED 104 TRIPLE DIAMOND BLVD. N. VENICE, FL 34275 (407) 481-8400	375 ALUM. HORIZONTAL ROLLER WDW. - LMI	Scale NTS	Sheet 18 OF 18	Desc. HR375 "ESTATE"
				Series ALUM BUCK DP 3



ALUMINUM BUCK ANCHORS
ADJACENT TO MULLIONS AT HEAD & SILL
ALL OTHER ALUMINUM BUCK ANCHORS
AS PER SHEET 16

A. LYNN MILLER, P.E.
P.E.# 58705