



DEPARTMENT OF REGULATORY AND ECONOMIC RESOURCES (RER)
BOARD AND CODE ADMINISTRATION DIVISION

NOTICE OF ACCEPTANCE (NOA)

MIAMI-DADE COUNTY
PRODUCT CONTROL SECTION

11805 SW 26 Street, Room 208
Miami, Florida 33175-2474
T (786) 315-2590 F (786) 315-2599

www.miamidade.gov/economy

Air Balance Inc. a division of Mestek, Inc.
450 Riverside Drive
Wyalusing, PA 18853

SCOPE: This NOA is being issued under the applicable rules and regulations governing the use of construction materials. The documentation submitted has been reviewed and accepted by Miami-Dade County RER-Product Control Section to be used in Miami-Dade County and other areas where allowed by the Authority Having Jurisdiction (AHJ).

This NOA shall not be valid after the expiration date stated below. The Miami-Dade County Product Control Section (In Miami-Dade County) and/ or the AHJ (in areas other than Miami-Dade County) reserve the right to have this product or material tested for quality assurance purposes. If this product or material fails to perform in the accepted manner, the manufacturer will incur the expense of such testing and the AHJ may immediately revoke, modify, or suspend the use of such product or material within their jurisdiction. RER reserves the right to revoke this acceptance if it is determined by Miami-Dade County Product Control Section that this product or material fails to meet the requirements of the applicable building code.

This product is approved as described herein and has been designed to comply with the Florida Building Code, including the High Velocity Hurricane Zone.

DESCRIPTION: Model A220 4" Aluminum Louver System

APPROVAL DOCUMENT: Drawing No. **1262**, titled "Model A220, 4" Louver System", sheets 1 through 7 of 7, dated 11/18/2003, with revision **C1** dated 07/05/2017, prepared by W. W. Schaefer Engineering & Consulting, P.A., signed and sealed by Warren. W. Schaefer, P.E., bearing the Miami-Dade County Product Control revision stamp with the Notice of Acceptance number and expiration date by the Miami-Dade County Product Control Section.

MISSILE IMPACT RATING: Large and Small Missile Impact Resistant

LABELING: Each unit shall bear a permanent label with the manufacturer's name or logo, city, state, model/ series, and following statement: "Miami-Dade County Product Control Approved", unless otherwise noted herein.

RENEWAL of this NOA shall be considered after a renewal application has been filed and there has been no change in the applicable building code negatively affecting the performance of this product.

TERMINATION of this NOA will occur after the expiration date or if there has been a revision or change in the materials, use, and/ or manufacture of the product or process. Misuse of this NOA as an endorsement of any product, for sales, advertising or any other purposes shall automatically terminate this NOA. Failure to comply with any section of this NOA shall be cause for termination and removal of NOA.

ADVERTISEMENT: The NOA number preceded by the words Miami-Dade County, Florida, and followed by the expiration date may be displayed in advertising literature. If any portion of the NOA is displayed, then it shall be done in its entirety.

INSPECTION: A copy of this entire NOA shall be provided to the user by the manufacturer or its distributors and shall be available for inspection at the job site at the request of the Building Official.

This NOA **revises NOA # 18-0321.02** and consists of this page 1 and evidence pages E-1, E-2 and E-3, as well as approval document mentioned above.

The submitted documentation was reviewed by **Carlos M. Utrera, P.E.**



NOA No. 20-0622.21
Expiration Date: July 27, 2023
Approval Date: August 27, 2020
Page 1

NOTICE OF ACCEPTANCE: EVIDENCE SUBMITTED

1. EVIDENCE SUBMITTED UNDER PREVIOUS NOAs

A. DRAWINGS “Submitted under NOA # 11-1117-16”

1. Drawing No. 1262, titled “Model A220, 4” Louver System, sheets 1 through 7 of 7, dated 11/18/2003, with revision A2 dated 11/08/2011, prepared by W. W. Schaefer Engineering & Consulting, P.A., signed and sealed by Warren W. Schaefer, P.E.

B. TESTS “Submitted under NOA # 08-1030.04”

1. Test reports on: 1) Uniform Static Air Pressure Test, Loading per FBC TAS 202-94
2) Large Missile Impact Test per FBC, TAS 201-94
3) Cyclic Wind Pressure Loading per FBC, TAS 203-94
along with marked-up drawings and installation diagram, of “A-220 4” Aluminum Louver”, prepared by Hurricane Test Laboratory, Inc., Report No. 0198-0811-08, dated 09/17/2008, signed and sealed by Vinu J. Abraham, P.E.
“Submitted under NOA No. 03-0514.13”
2. Test reports on: 1) Uniform Static Air Pressure Test, Loading per FBC TAS 202-94
2) Large Missile Impact Test per FBC, TAS 201-94
3) Cyclic Wind Pressure Loading per FBC, TAS 203-94
along with marked-up drawings and installation diagram, of “A.U.I. EA-22 Architectural & Non-Architectural Fixed Louver”, prepared by Hurricane Test Laboratory, Inc., Report No. 0199-0518-99 and 0199-0615-99, dated 12/06/1999, signed and sealed by Vinu J. Abraham, P.E.

C. CALCULATIONS “Submitted under NOA # 13-0422-12”

1. Wood anchors calculations prepared by W.W. Schaefer Engineering & Consulting, P.A., dated 04/10/2013, signed and sealed by Warren W. Schaefer, P.E.
“Submitted under NOA # 08-1030.04”
2. Revision calculations prepared by W.W. Schaefer Engineering & Consulting, P.A., dated 04/17/2008, signed and sealed by Warren W. Schaefer, P.E.

D. QUALITY ASSURANCE

1. Miami-Dade Department of Regulatory and Economic Resources (RER)

E. MATERIAL CERTIFICATIONS

1. None.

F. STATEMENTS “Submitted under NOA # 14-0423-27”

1. Statement letter of code conformance to 2010 and 5th (2014) FBC issued by W. W. Schaefer Engineering & Consulting, P.A., dated 04/10/2014, signed and sealed by Warren W. Schaefer, P.E.
“Submitted under NOA # 13-0422-12”
2. No financial interest letter issued by W. W. Schaefer Engineering & Consulting, P.A., dated 04/10/2013, signed and sealed by Warren W. Schaefer, P.E.



Carlos M. Utrera, P.E.
Product Control Examiner
NOA No. 20-0622.21
Expiration Date: July 27, 2023
Approval Date: August 27, 2020

NOTICE OF ACCEPTANCE: EVIDENCE SUBMITTED

2. EVIDENCE SUBMITTED UNDER NOA # 17-0713.12

A. DRAWINGS

1. Drawing No. **1262**, titled "Model A220, 4" Louver System, sheets 1 through 7 of 7, dated 11/18/2003, with revision **C1** dated 07/05/2017, prepared by W. W. Schaefer Engineering & Consulting, P.A., signed and sealed by Warren W. Schaefer, P.E.

B. TESTS

1. None.

C. CALCULATIONS

1. None.

D. QUALITY ASSURANCE

1. Miami-Dade Department of Regulatory and Economic Resources (RER)

E. MATERIAL CERTIFICATIONS

1. None.

F. STATEMENTS

1. Statement letter of code conformance to the 5th Edition (2014) and 6th Edition (2017) FBC issued by W. W. Schaefer Engineering & Consulting, P.A., dated 07/05/2017, signed and sealed by Warren W. Schaefer, P.E.
2. Company name change request letter issued by W.W. Schaefer Engineering & Consulting, P.A., dated 07/05/2017, signed by Warren W. Schaefer, P.E.



Carlos M. Utrera, P.E.
Product Control Examiner
NOA No. 20-0622.21
Expiration Date: July 27, 2023
Approval Date: August 27, 2020

NOTICE OF ACCEPTANCE: EVIDENCE SUBMITTED

3. NEW EVIDENCE SUBMITTED

A. DRAWINGS

1. None.

B. TESTS

1. None.

C. CALCULATIONS

1. None.

D. QUALITY ASSURANCE

1. Miami-Dade Department of Regulatory and Economic Resources (RER)

E. MATERIAL CERTIFICATIONS

1. None.

F. STATEMENTS

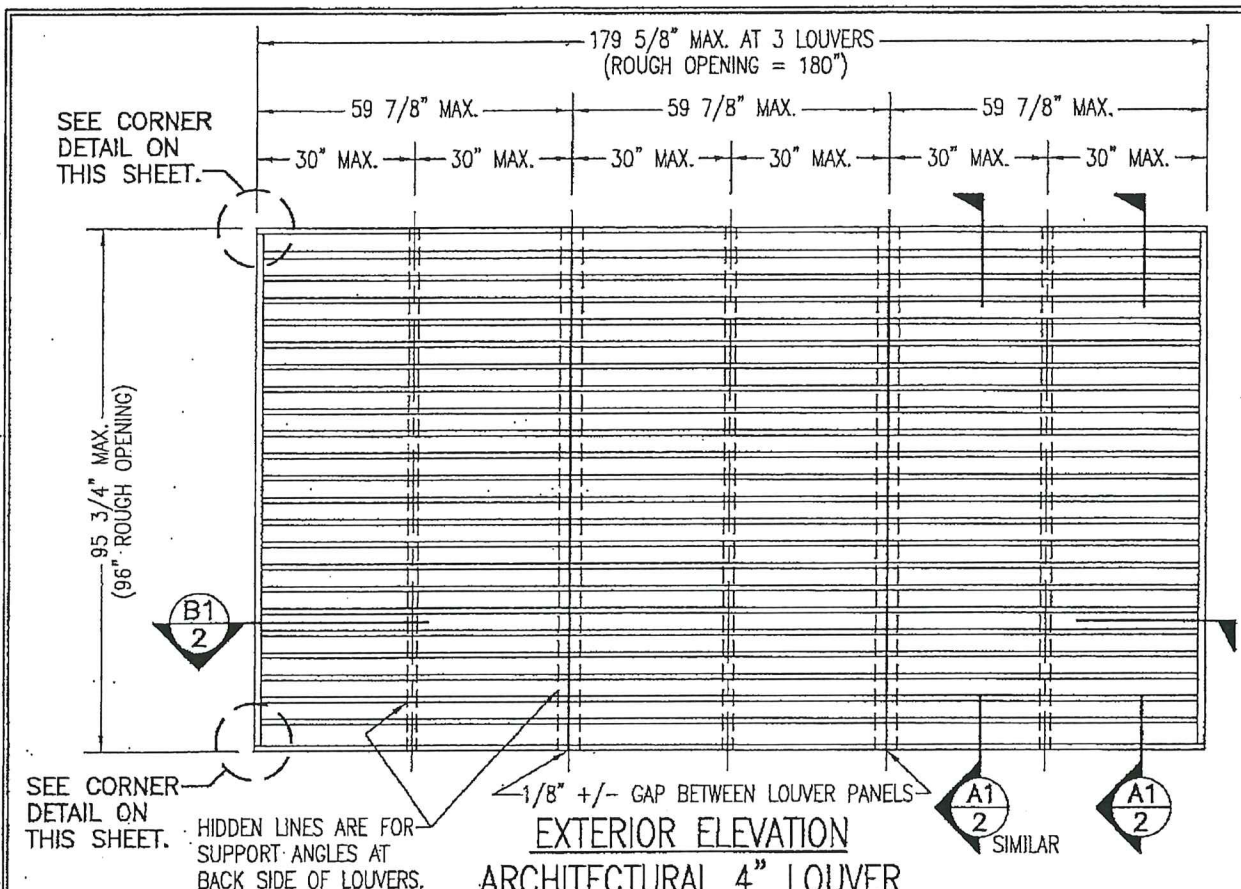
1. Statement letter of code conformance to the 6th Edition (2017) and 7th Edition (2020) FBC issued by W. W. Schaefer Engineering & Consulting, P.A., dated 06/30/2020, signed and sealed by Warren W. Schaefer, P.E.

“Submitted under NOA # 18-0321-02”

2. No financial interest letter issued by W. W. Schaefer Engineering & Consulting, P.A., dated 02/27/2018, signed and sealed by Warren W. Schaefer, P.E.



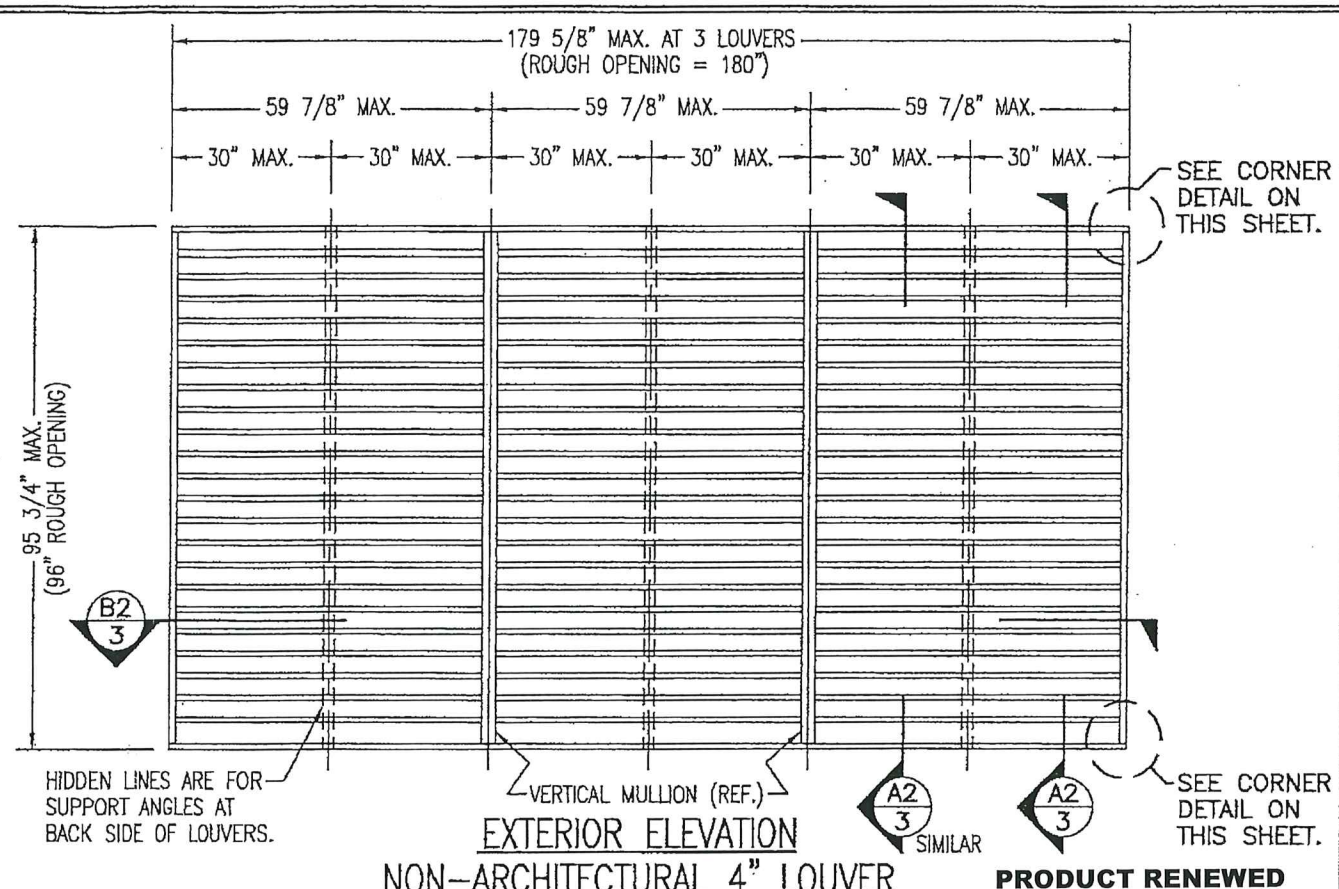
Carlos M. Utrera, P.E.
Product Control Examiner
NOA No. 20-0622.21
Expiration Date: July 27, 2023
Approval Date: August 27, 2020



ARCHITECTURAL 4" LOUVER

SCALE: 3/8"=1'-0"

NOTE: THIS LOUVER SYSTEM MAY CONSIST OF AN UNLIMITED NUMBER OF SECTIONS PROVIDING EACH SECTION DOES NOT EXCEED 59 7/8" X 95 3/4" IN SIZE.



NON-ARCHITECTURAL 4" LOUVER

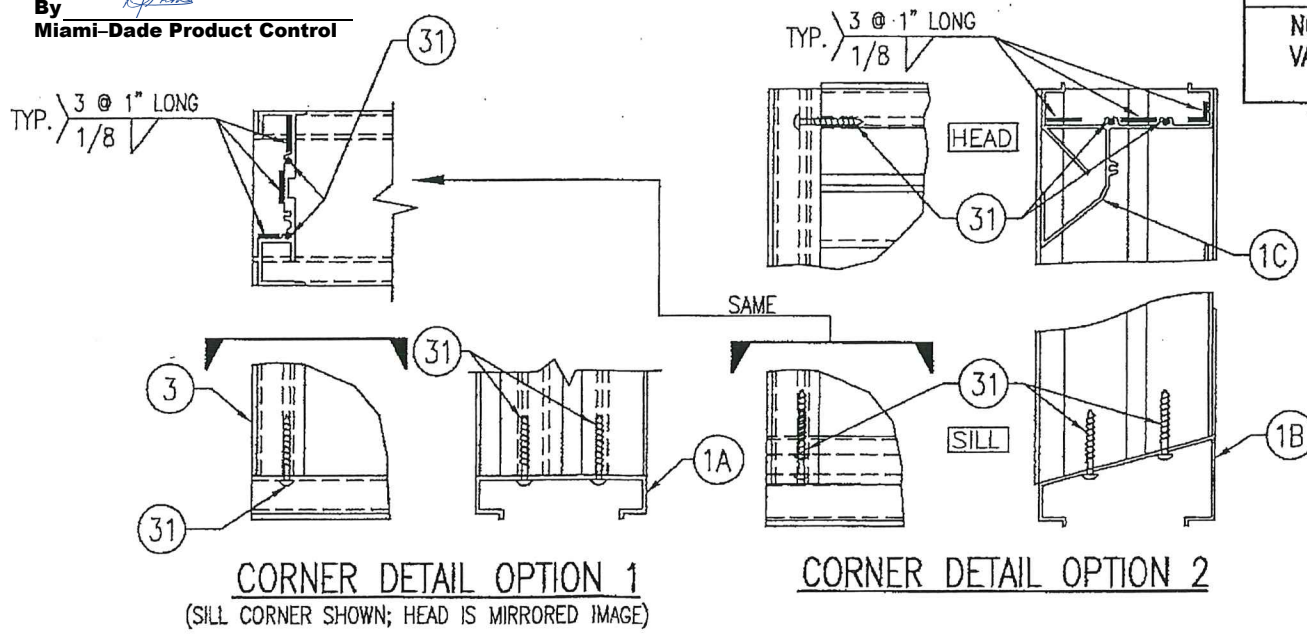
SCALE: 3/8"=1'-0"

NOTE: THIS LOUVER SYSTEM MAY CONSIST OF AN UNLIMITED NUMBER OF SECTIONS PROVIDING EACH SECTION DOES NOT EXCEED 59 7/8" X 95 3/4" IN SIZE.

GENERAL NOTES:

1. THESE LOUVER SYSTEMS HAVE BEEN TESTED, ANALYZED & APPROVED FOR DESIGN PRESSURES NOT TO EXCEED THOSE SHOWN IN THE "ALLOWABLE DESIGN PRESSURE TABLE(S)".
2. OPENINGS MUST BE PROPERLY DESIGNED & CONSTRUCTED TO TRANSFER WIND LOADS TO THE STRUCTURE.
3. ALL HARDWARE & FASTENERS SHALL BE IN ACCORDANCE WITH THESE DRAWINGS & SHALL NOT VARY UNLESS SPECIFICALLY MENTIONED ON THE DRAWINGS. SPECIFIED ANCHOR EMBED TO BASE MATERIAL SHALL BE BEYOND WALL FINISH OR STUCCO.
4. THE DETAILS & SPECIFICATIONS SHOWN HEREIN REPRESENT THE PRODUCTS TESTED & PROPOSED FOR IMPACT, CYCLIC & UNIFORM STATIC AIR PRESSURE TESTING IN CONFORMANCE WITH THE FLORIDA BUILDING CODE PROTOCOLS TAS-201, 202 & 203 FOR LARGE MISSILE IMPACT LOUVERS.
5. THESE LOUVER SYSTEMS HAVE BEEN DESIGNED IN ACCORDANCE WITH AND MEET THE REQUIREMENTS OF THE FLORIDA BUILDING CODE (FBC) INCLUDING HIGH VELOCITY HURRICANE ZONES (HVHZ).
6. ALL ANCHORS SECURING LOUVER FRAME TO PRESSURE TREATED BUCKS OR WOOD FRAMING SHALL BE CAPABLE OF RESISTING CORROSION CAUSED BY THE PRESSURE TREATING CHEMICALS IN THE WOOD.
7. DETERMINE THE POSITIVE & NEGATIVE DESIGN LOADS TO USE WHEN REFERENCING THESE DOCUMENTS IN ACCORDANCE WITH THE GOVERNING CODE AND GOVERNING WIND VELOCITY. FOR WIND LOAD CALCULATIONS IN ACCORDANCE WITH THE FLORIDA BUILDING CODE, A DIRECTIONALITY FACTOR OF $K_d = 0.85$ MAY BE APPLIED PER THE ASCE 7 STANDARD.
8. NO INCREASE IN ALLOWABLE STRESS HAS BEEN USED IN THE CERTIFICATION OF THIS PRODUCT. WIND LOAD DURATION FACTOR $C_d = 1.6$ WAS USED FOR WOOD SCREW ANALYSIS ONLY.
9. MATERIALS, INCLUDING BUT NOT LIMITED TO STEEL SCREWS, THAT COME INTO CONTACT WITH OTHER DISSIMILAR MATERIALS SHALL MEET THE REQUIREMENTS OF FLORIDA BUILDING CODE CHAPTER 20.
10. MAXIMUM ALLOWABLE INDIVIDUAL PANEL SIZE = 59 7/8" X 95 3/4".
11. MAXIMUM ASSEMBLY SIZE = UNLIMITED WIDTH; UP TO 95 3/4" HEIGHT.
12. ASSEMBLIES/SECTIONS MAY BE STACKED VERTICALLY PROVIDING A STRUCTURAL SUPPORT IS DESIGNED & INSTALLED BY OTHERS TO SUPPORT ALL LOADS TRANSFERRED FROM THE LOUVER ASSEMBLY.
13. MAXIMUM UNSUPPORTED BLADE LENGTH SHALL NOT EXCEED 30"
14. ALL FASTENERS SHALL BE PLATED STEEL OR 304 STAINLESS STEEL.
15. SPECIFIED SUBSTRATES REQUIREMENTS:
CONCRETE: MIN. 3000 PSI
MASONRY: MIN. C90 CMU
WOOD: MIN. GRADE 2; $G = 0.55$
STEEL: MIN. 1/8" THICK A36 (36 KSI)
16. THIS SYSTEM HAS NOT BEEN TESTED FOR WATER INFILTRATION RESISTANCE & IS NOT A WATER RESISTANT SYSTEM.

PRODUCT REVISED
as complying with the Florida Building Code
NOA-No. 20-0622.21
Expiration Date 07/27/2023
By *[Signature]*
Miami-Dade Product Control



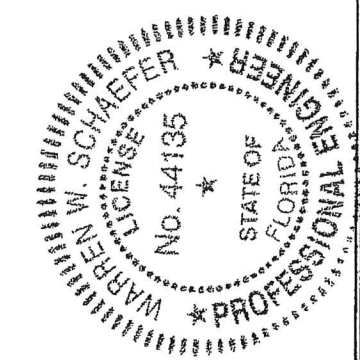
CORNER DETAIL OPTION 1
(SILL CORNER SHOWN; HEAD IS MIRRORRED IMAGE)

CORNER DETAIL OPTION 2

PRODUCT RENEWED
as complying with the Florida Building Code
NOA-No. 18-0321.02
Expiration Date 07/27/2023
By *[Signature]*
Miami-Dade Product Control

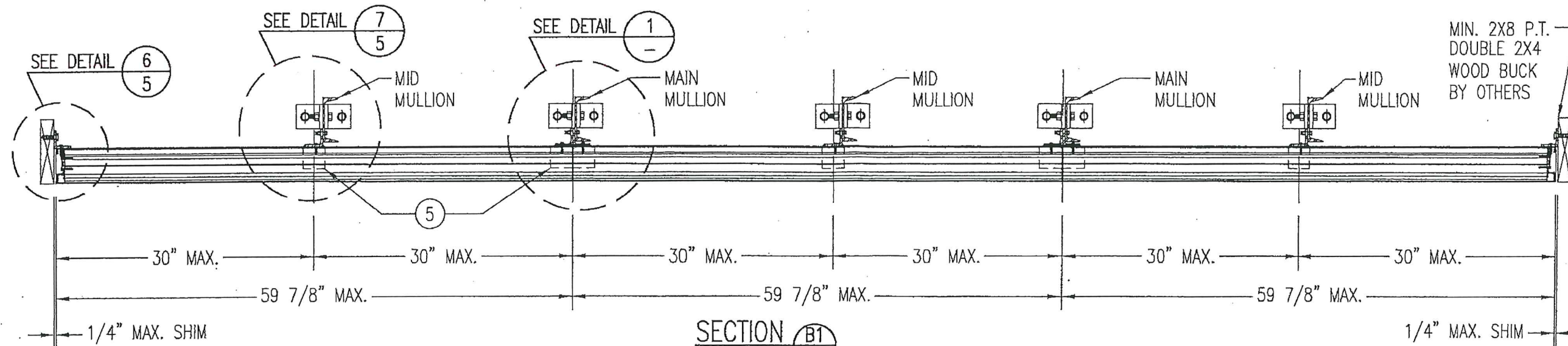
MAX. ALLOWABLE DESIGN WIND PRESSURE	
POSITIVE	NEGATIVE
150 PSF	150 PSF

NOTE: SEE LOAD TABLE ON SHEET 7 FOR VARIATIONS OF PRESSURES WITH RESPECT TO PANEL WIDTH & CLIP SPACING.

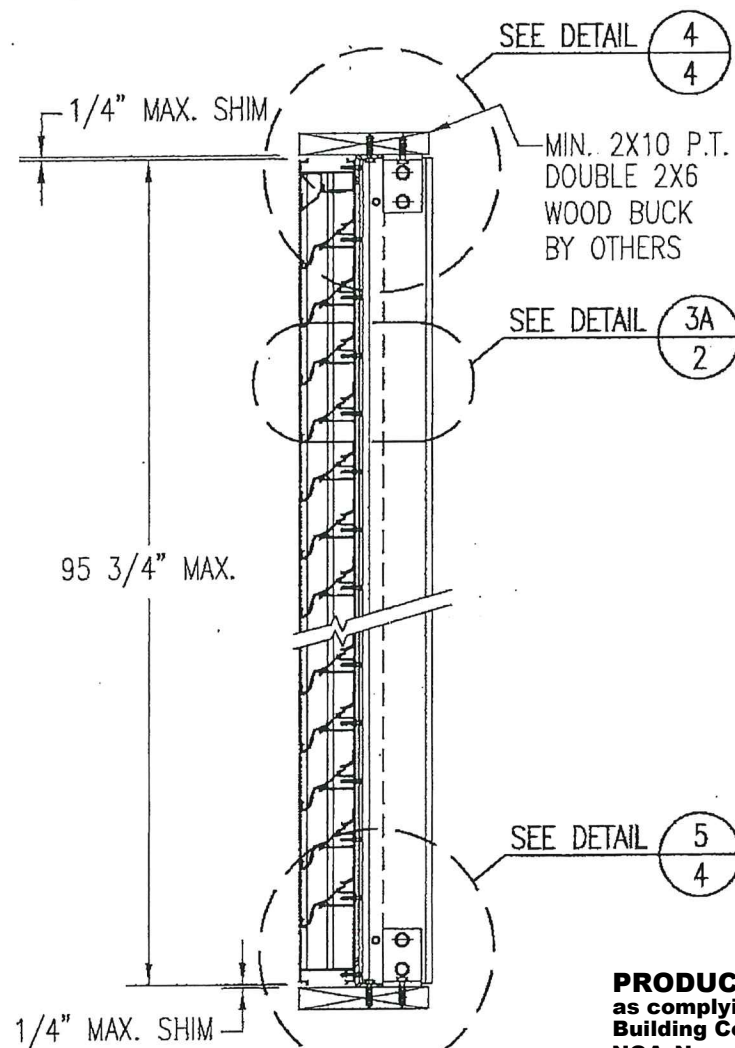


THESE DRAWINGS ARE APPLICABLE ONLY TO THE PRODUCT SPECIFIED. THEY MAY NOT BE USED FOR THE ASSEMBLY AND/OR INSTALLATION OF ANY OTHER PRODUCT NOR MAY THEY BE USED FOR RATIONAL AND/OR LOCAL APPROVAL OF ANY PRODUCT NOT PRODUCED BY THE MANUFACTURER STATED ON THESE DRAWINGS.

DRAWN BY: K.P.S.		CHECKED BY: W.W.S.	
PLOT: 1=32		DATE: 11/18/03	
NO.	REVISION DESCRIPTION	DATE	BY
A1	UPDATE FOR CODE COMPLIANCE	04/17/08	W.R.M.
B1	UPDATE TO CURRENT STANDARDS	11/08/11	W.R.M.
C1	CHANGE MANUFACTURER NAME	07/05/17	W.W.S.
MANUFACTURER: AIR BALANCE INC., INC. A DIVISION OF MESTEK, INC. 450 RIVERSIDE DRIVE WYALUSING, PA 18853 570-746-1888			
CONSULTANTS: W. W. SCHAEFER ENGINEERING & CONSULTING, P.A. (CA 6809) 7480 150TH COURT NORTH PALM BEACH GARDENS, FL 33418 PHONE: 561-744-3424			
DRAWING TITLE: MODEL A220 4" LOUVER SYSTEM			
CERTIFICATION: JUL 05 2017		WARREN W. SCHAEFER, P.E. P.E. NO. 44135	
DRAWING NO. 1262		REV. C	
SHEET NO. 1		OF 7	

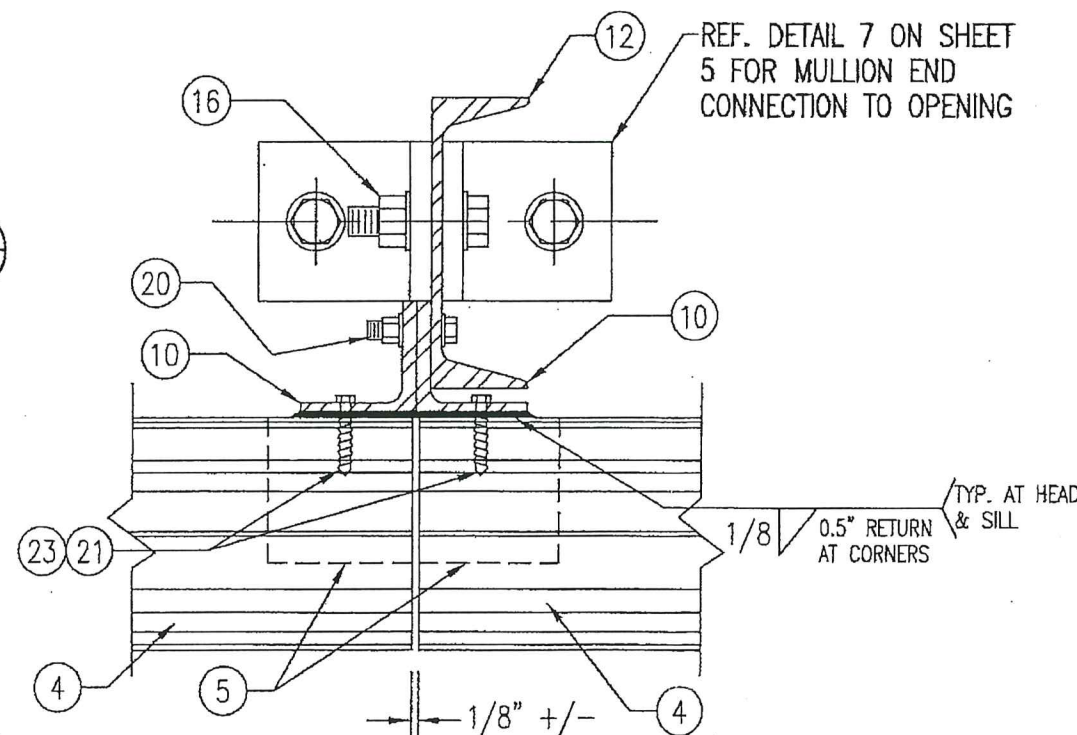


SECTION **B1**
SCALE: 1"=1'-0"
ARCHITECTURAL LOUVER

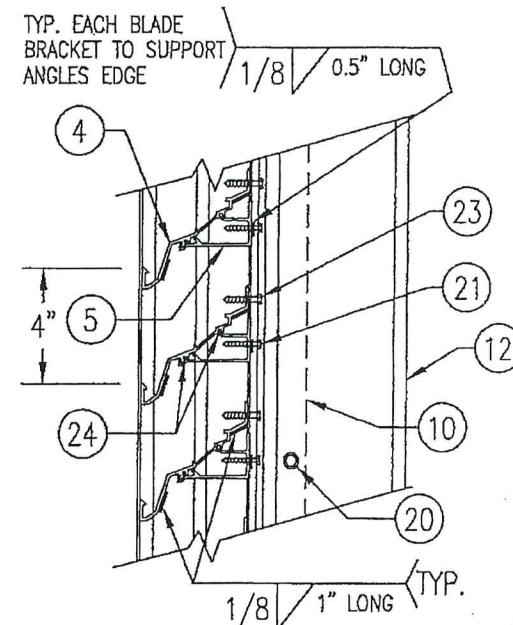


SECTION **A1**
SCALE: 1"=1'-0"
ARCHITECTURAL LOUVER

PRODUCT REVISED
as complying with the Florida
Building Code
NOA-No. 20-0622.21
Expiration Date 07/27/2023
By [Signature]
Miami-Dade Product Control



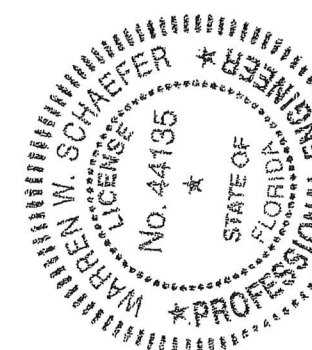
DETAIL **1**
SCALE: 1/3 FULL
ARCHITECTURAL LOUVER



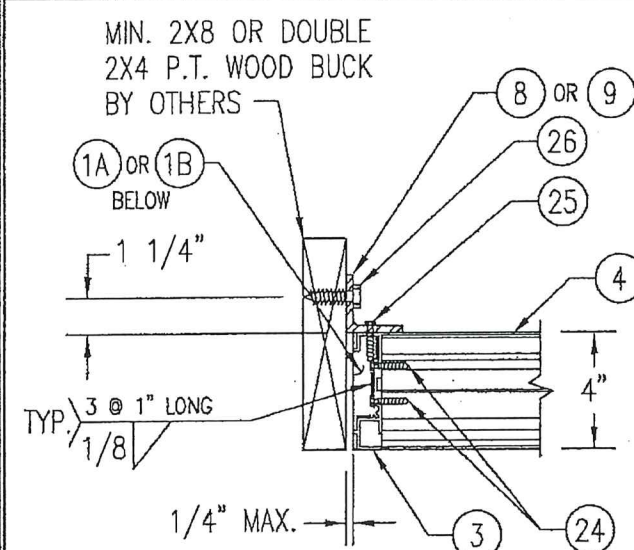
DETAIL **3A**
SCALE: 2"=1'-0"
TYP. AT ALL MULLIONS THIS SHEET

PRODUCT RENEWED
as complying with the Florida
Building Code
NOA-No. 18-0321.02
Expiration Date 07/27/2023
By [Signature]
Miami-Dade Product Control

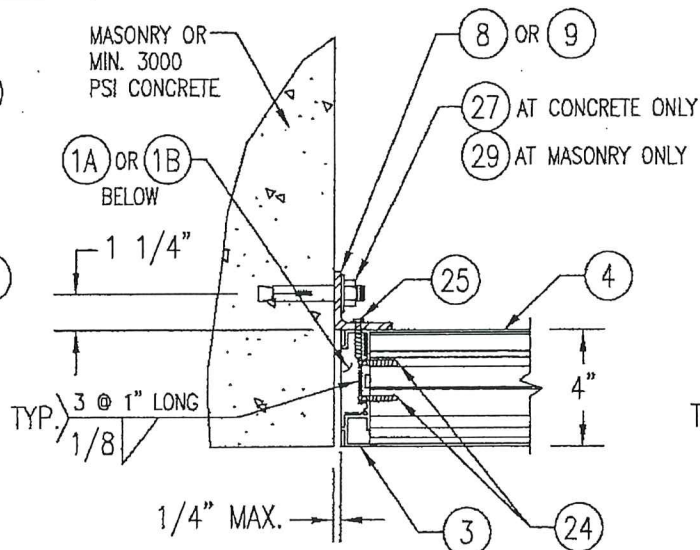
PRODUCT REVISED
as complying with the Florida
Building Code
NOA-No. 17-0713.12
Expiration Date 07/27/2018
By [Signature]
Miami-Dade Product Control



DRAWN BY: K.P.S.		CHECKED BY: W.W.S.	
PLOT: 1=12		DATE: 11/18/03	
NO.	REVISION	DATE	DESCRIPTION
DRAWING TITLE: MODEL A220 4" LOUVER SYSTEM			
MANUFACTURER: AIR BALANCE INC., A DIVISION OF MESTEK, INC. 450 RIVERSIDE DRIVE WYALUSING, PA 18853 570-746-1888			
CONSULTANTS: W. W. SCHAEFER ENGINEERING & CONSULTING, P.A. (CA 6809) 7480 150TH COURT NORTH PALM BEACH GARDENS, FL 33418 PHONE 561-744-3424			
CERTIFICATION: JUL 05 2017			
DRAWING NO. 1262 REV. C			
SHEET NO. 2 OF 7			

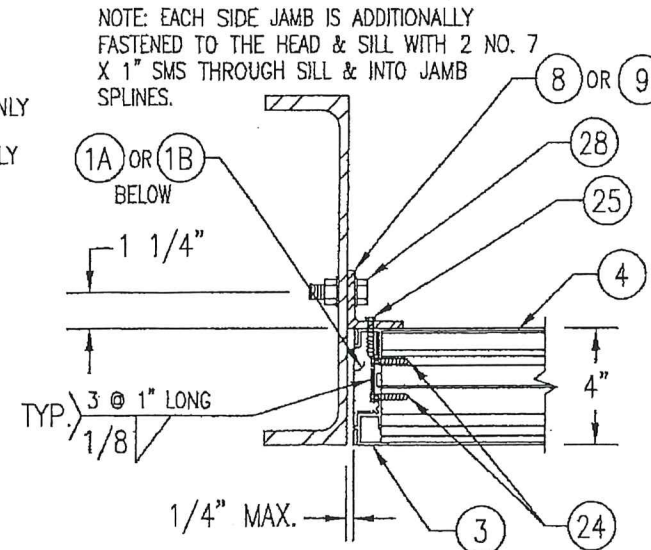


WOOD FRAMED OPENING

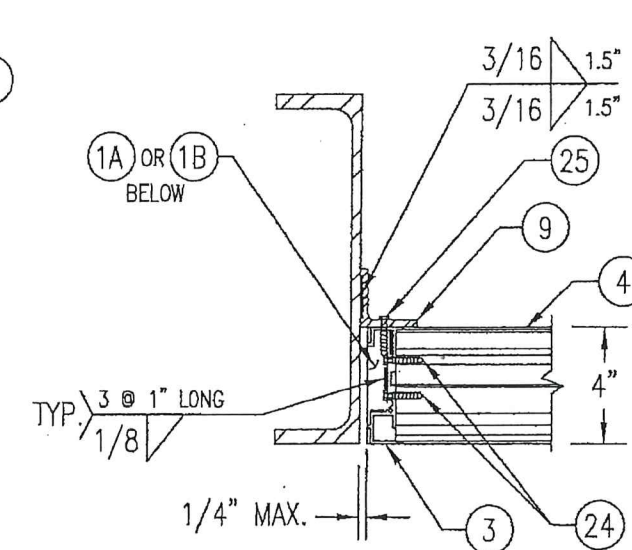


CONCRETE/MASONRY OPENING

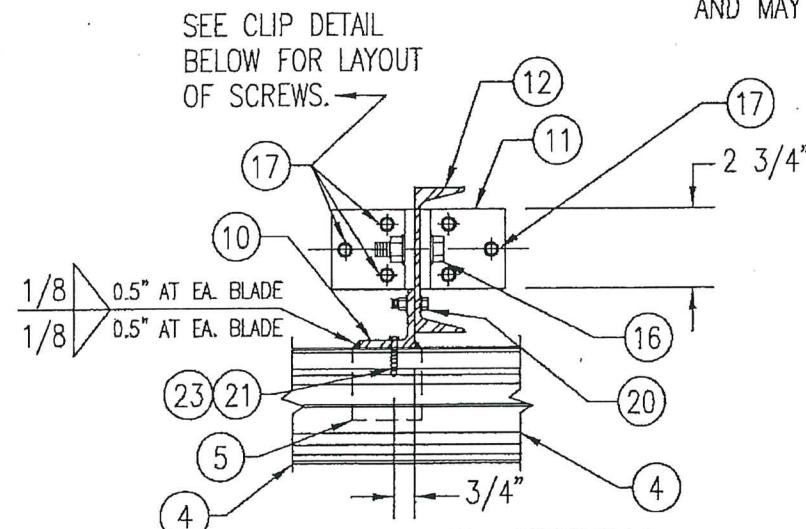
(MASONRY ACCEPTABLE AT SIDES ONLY AND MAY NOT BE USED AT HEAD OR SILL)



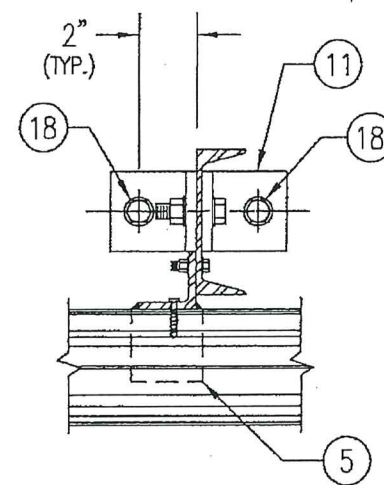
STEEL FRAME OPENING (BOLTED)



STEEL FRAME OPENING (WELDED)

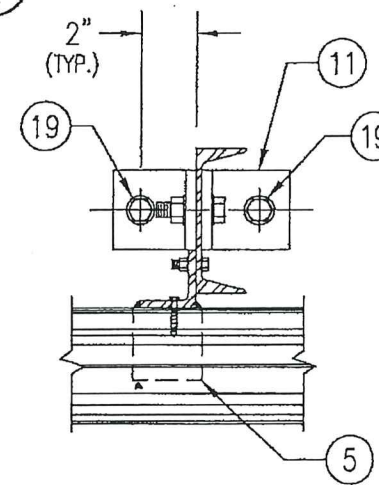


WOOD FRAMED OPENING

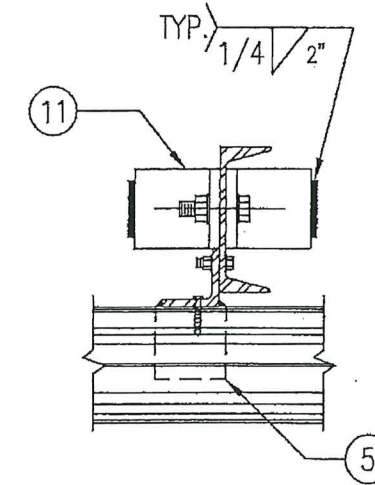


CONCRETE SILL & HEAD

SEE "WOOD OPENING" FOR DETAIL NOT SHOWN (MASONRY ACCEPTABLE AT SIDES ONLY AND MAY NOT BE USED AT HEAD OR SILL)

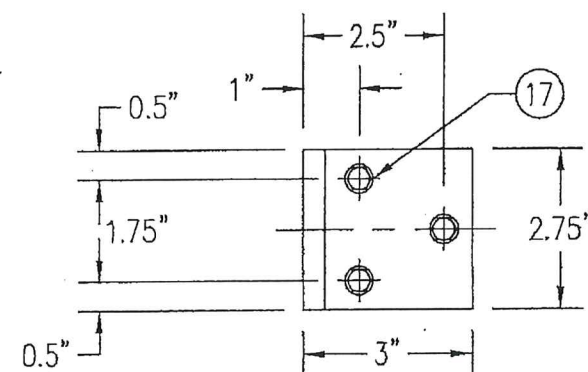


STEEL FRAME OPENING (BOLTED)



STEEL FRAME OPENING (WELDED)

SEE "WOOD OPENING" FOR DETAIL NOT SHOWN



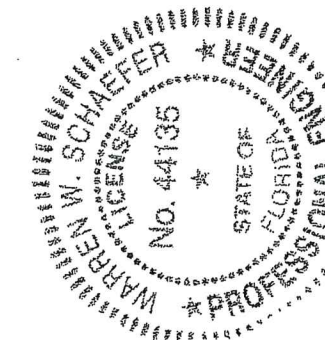
MULLION CLIP DETAIL @ WOOD INSTALLATION

MASONRY MAY ONLY BE USED AT SIDES OF LOUVER PANELS & MAY NOT BE USED AT THE HEAD OR SILL.

PRODUCT REVISED
as complying with the Florida Building Code
NOA-No. 20-0622.21
Expiration Date 07/27/2023
By *[Signature]*
Miami-Dade Product Control

PRODUCT RENEWED
as complying with the Florida Building Code
NOA-No. 18-0321.02
Expiration Date 07/27/2023
By *[Signature]*
Miami-Dade Product Control

PRODUCT REVISED
as complying with the Florida Building Code
NOA-No. 17-0713.12
Expiration Date 07/27/2018
By *[Signature]*
Miami-Dade Product Control



DRAWN BY: K.P.S.		CHECKED BY: W.W.S.	
PLOT: 1-6		DATE: 11/18/03	
DATE	BY	REVISION DESCRIPTION	NO.
DRAWING TITLE: MODEL A220 4" LOUVER SYSTEM			
CONSULTANTS: W. W. SCHAEFER ENGINEERING & CONSULTING, P.A. (CA 6809)		MANUFACTURER: AIR BALANCE INC., A DIVISION OF MESTEK, INC.	
7480 130TH COURT NORTH, PALM BEACH GARDENS, FL 33418		450 RIVERSIDE DRIVE, WYALUSING, PA 18853	
PHONE: 561-744-3424		570-746-1888	
CERTIFICATION: JUL 05 2017		WARREN W. SCHAEFER, P.E. NO. 44135	
DRAWING NO. 1262		REV. C	
SHEET NO. 5		OF 7	

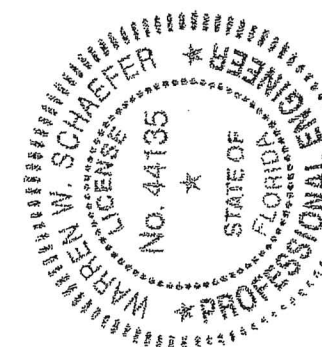
[illegible]

PANEL WIDTH (INCHES)	CLIP SPACING (INCHES)	ALLOWABLE PRESSURE WITH MID SPAN MULLION (PSF)	ALLOWABLE PRESSURE WITHOUT MID SPAN MULLION (PSF)
16	8	150	150
	12	150	150
	16	150	140
	20	150	105
	24	150	70
20	8	150	150
	12	150	140
	16	150	112
	20	150	84
	24	150	56
24	8	150	140
	12	150	117
	16	150	93
	20	150	70
	24	125	47
28	8	150	82
	12	150	68
	16	150	54
	20	150	41
	24	107	27
30	8	150	62
	12	150	52
	16	150	41
	20	140	31
	24	93	—
36	8	150	—
	12	150	—
	16	150	—
	20	125	—
	24	83	—
42	8	150	—
	12	150	—
	16	142	—
	20	107	—
	24	71	—
48	8	150	—
	12	150	—
	16	125	—
	20	93	—
	24	62	—
54	8	150	—
	12	138	—
	16	111	—
	20	83	—
	24	55	—
60	8	150	—
	12	125	—
	16	100	—
	20	75	—
	24	50	—

NO.	DESCRIPTION	NOTES/SPECIFICATIONS
PARTS/EXTRUSIONS		
1A	STANDARD HEADER & SILL JAMB	6063-T5 ALUMINUM
1B	OPTIONAL SLOPED SILL	6063-T5 ALUMINUM
1C	OPTIONAL 1-PIECE HEADER	6063-T5 ALUMINUM
2	PARTIAL BLADE & HEAD	6063-T5 ALUMINUM
3	SIDE JAMB	6063-T5 ALUMINUM
4	LOUVER BLADE	6063-T5 ALUMINUM
5	BLADE SUPPORT BRACKET (2 1/2" LONG)	6063-T5 ALUMINUM
6	MULLION CAP	6063-T5 ALUMINUM; FULL LENGTH OF MULLION JAMBS
7	SILL ANGLE	6063-T5 ALUMINUM; FULL WIDTH OF PANEL
8	L2X2X1/4 JAMB CONNECTION ANGLE 2" LONG	6063-T5 ALUMINUM; WITHIN 4" OF JAMB ENDS & SPACED PER LOAD TABLE ON SHT. 2
9	L2X2X1/4 OPTIONAL JAMB CONNECTION ANGLE 2" LONG	A36 STEEL; WITHIN 4" OF JAMB ENDS & SPACED PER LOAD TABLE ON SHT. 2
10	L2X2X1/4 CONTINUOUS MULLION CONNECTION ANGLE	6063-T5 ALUMINUM; FULL LENGTH OF CHANNEL MULLION
11	L4X3X3/8 MULLION END CONNECTION ANGLE 2 3/4" LONG	A36 STEEL; 2 PER MULLION END
12	C5X6.7 MULLION	A36 STEEL; FULL HEIGHT OF PANELS
13	PARTIAL BLADE REINFORCEMENT PLATE (2 1/2" LONG)	6063-T5 ALUMINUM
14	PARTIAL BLADE REINFORCEMENT ANGLE (2 1/2" LONG)	6063-T5 ALUMINUM
15	OPEN	
FASTENERS		
16	1/2" X 2" A307 HEX HEAD PLATED STEEL OR S/STL BOLT	WITH FLAT WASHERS, LOCK WASHER & NUT; 2 PER MULLION END
17	NO. 14 S.S. SMS SCREWS	3 PER MULLION END CLIP WITH MIN. 1 1/2" WOOD EMBED
18	5/8" X 2 1/4" SLEEVE ANCHOR WITH FLAT WASHER	USA KINGPIN ANCHOR; 1 PER CHANNEL END CONNECTION ANGLE INTO CONCRETE ONLY
19	1/2" X 2" A307 HEX HEAD PLATED STEEL OR S/STL BOLT	WITH FLAT WASHERS, LOCK WASHER & NUT; 1 PER CHANNEL END CONNECTION ANGLE INTO STEEL FRAME
20	5/16-18 UNC X 1 1/2" HEX HEAD STEEL OR S/STL BOLT	WITH FLAT WASHER, LOCK WASHER & NUT; WITHIN 4" OF MULLION ENDS & MAX. 8" O.C.
21	NO. 8 X 3/4" SMS SCREW	1 AT EACH LOUVER BLADE SUPPORT BRACKET AT ARCHITECTURAL MAIN MULLIONS & ALL MID-SPAN MULLIONS
22	NO. 14 X 1 1/4" HILTI TEK SCREW	WITHIN 3/4" OF MULLION ENDS & MAX. 4" O.C. INTO FRAME
23	NO. 14 X 1" SMS SCREW	1 AT EACH LOUVER BLADE AT ALL ARCHITECTURAL MAIN MULLIONS & ALL MID-SPAN MULLIONS
24	NO. 7 X 1" SMS SCREW	2 PER EACH LOUVER BLADE END THROUGH JAMB & INTO BLADE SPLINES
25	NO. 14 X 1 1/4" HILTI TEK SCREW	2 PER EACH HEAD, SILL & SIDE JAMB CONNECTION ANGLE
26	1/2" X 2" LAG SCREW WITH FLAT WASHER	1 PER EACH HEAD, SILL & SIDE JAMB CONNECTION ANGLE INTO WOOD FRAME
27	5/8" X 2 1/4" SLEEVE ANCHOR WITH FLAT WASHER	USA KINGPIN ANCHOR; 1 PER EACH HEAD, SILL & SIDE JAMB CONNECTION ANGLE INTO CONCRETE ONLY
28	1/2" X 2" HEX HEAD A307 PLATED STEEL OR S/STL BOLT	WITH FLAT WASHERS, LOCK WASHER & NUT; 1 PER EA. JAMB CONNECTION ANGLE INTO STEEL FRAME
29	3/8" X 1 7/8" SLEEVE ANCHOR WITH FLAT WASHER	RED HEAD DYNABOLT WITH MIN 1 1/2" BLOCK/CONCRETE EMBED (1 PER FRAME SUPPORT CLIP)
30	NO. 8 X 1/2" SMS SCREW	WITHIN 2" OF MULLION ENDS & MAX. 12" O.C. (MULLION CAP. TO MULLION)
31	NO. 7 X 1" SMS SCREWS	2 PER FRAME CORNER THROUGH SILL/HEAD FRAME & INTO JAMB SPLINES

1. WHEN THE PANEL WIDTH IS 30" OR LESS, NO MID SPAN MULLION IS REQUIRED PROVIDING COMPLIANCE WITH THE TABLE.
2. ALL PRESSURES IN THIS TABLE ARE FOR BOTH POSITIVE & NEGATIVE WIND PRESSURE.

By 
Miami-Dade Product Control



DRAWING NO. 1262		REV. C	
SHEET NO. 7 OF 7			
CERTIFICATION <div style="border: 1px solid black; padding: 5px; display: inline-block;"> JUL 05 2017 </div>		WARREN W. SCHAEFER, P.E. P.E. NO. 44135	
DRAWING TITLE MODEL A220 4" LOUVER SYSTEM			
CONSULTANTS W. W. SCHAEFER ENGINEERING & CONSULTING, P.A. (CA 6809) 7480 150TH COURT NORTH PALM BEACH GARDENS, FL 33418 PHONE: 561-744-3424		MANUFACTURER AIR BALANCE INC., A DIVISION OF MESTEK, INC. 450 RIVERSIDE DRIVE WYALUSING, PA 18853 570-746-1888	
NO.		REVISION DESCRIPTION	
BY		DATE	
PLOT:		T=1	
DRAWN BY:		K.P.S.	
CHECKED BY:		W.W.S.	
DATE:		11/18/03	