



DEPARTMENT OF REGULATORY AND ECONOMIC RESOURCES (RER)
BOARD AND CODE ADMINISTRATION DIVISION

NOTICE OF ACCEPTANCE (NOA)

MIAMI-DADE COUNTY
PRODUCT CONTROL SECTION

11805 SW 26 Street, Room 208
Miami, Florida 33175-2474
T (786) 315-2590 F (786) 315-2599

www.miamidade.gov/economy

Tischler und Sohn (USA) Ltd.
Six Suburban Avenue
Stamford, CT 06901

SCOPE:

This NOA is being issued under the applicable rules and regulations governing the use of construction materials. The documentation submitted has been reviewed and accepted by Miami-Dade County RER - Product Control Section to be used in Miami Dade County and other areas where allowed by the Authority Having Jurisdiction (AHJ).

This NOA shall not be valid after the expiration date stated below. The Miami-Dade County Product Control Section (In Miami Dade County) and/or the AHJ (in areas other than Miami Dade County) reserve the right to have this product or material tested for quality assurance purposes. If this product or material fails to perform in the accepted manner, the manufacturer will incur the expense of such testing and the AHJ may immediately revoke, modify, or suspend the use of such product or material within their jurisdiction. RER reserves the right to revoke this acceptance if it is determined by Miami-Dade County Product Control Section that this product or material fails to meet the requirements of the applicable building code.

This product is approved as described herein and has been designed to comply with the Florida Building Code, including the High Velocity Hurricane Zone.

DESCRIPTION: Series "Mahogany Impact" Outswing Wood Casement Window – L.M.I.

APPROVAL DOCUMENT: Drawing No. **1530**, titled "Out-swing Impact Wood Casement Window" sheets 1 through 10 of 10, dated 04/03/08, with revision **C1** dated 05/15/18, prepared by W. W. Schaefer Engineering & Consulting, P.A., signed and sealed by Warren W. Schaefer, P.E., bearing the Miami-Dade County Product Control Revision stamp with the Notice of Acceptance number and expiration date by the Miami-Dade County Product Control Section.

MISSILE IMPACT RATING: Large and Small Missile Impact Resistant.

LABELING: Each unit shall bear a permanent label with the manufacturer's name or logo, Wedel (Schleswig-Holstein), Germany, model/series, and following statement: "Miami-Dade County Product Control Approved", unless otherwise noted herein.

RENEWAL of this NOA shall be considered after a renewal application has been filed and there has been no change in the applicable building code negatively affecting the performance of this product.

TERMINATION of this NOA will occur after the expiration date or if there has been a revision or change in the materials, use, and/or manufacture of the product or process. Misuse of this NOA as an endorsement of any product, for sales, advertising or any other purposes shall automatically terminate this NOA. Failure to comply with any section of this NOA shall be cause for termination and removal of NOA.

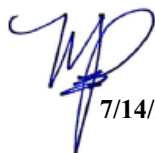
ADVERTISEMENT: The NOA number preceded by the words Miami-Dade County, Florida, and followed by the expiration date may be displayed in advertising literature. If any portion of the NOA is displayed, then it shall be done in its entirety.

INSPECTION: A copy of this entire NOA shall be provided to the user by the manufacturer or its distributors and shall be available for inspection at the job site at the request of the Building Official.

This NOA **revises NOA# 18-0531.08** and consists of this page 1 and evidence pages E-1, E-2 and E-3, as well as approval document mentioned above.

The submitted documentation was reviewed by **Manuel Perez, P.E.**




7/14/20

NOA No. 20-0623.02
Expiration Date: January 08, 2024
Approval Date: July 23, 2020
Page 1

NOTICE OF ACCEPTANCE: EVIDENCE SUBMITTED

1. EVIDENCE SUBMITTED UNDER PREVIOUS NOA's

A. DRAWINGS

1. Manufacturer's die drawings and sections.
(Submitted under NOA No. 08-0804.14)
2. Drawing No. **1530**, titled "Out-Swing Impact Wood Casement Window" sheets 1 through 10 of 10, dated 04/03/08, with revision **C1** dated 05/15/18, prepared by W. W. Schaefer Engineering & Consulting, P.A., signed and sealed by Warren W. Schaefer, P.E.
(Submitted under NOA No. 18-0531.08)

B. TESTS

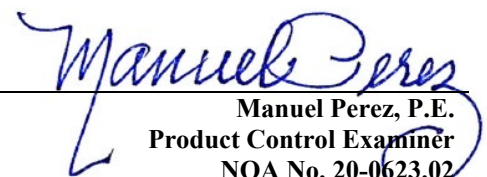
1. Test reports on: 1) Air Infiltration Test, per FBC, TAS 202-94
2) Uniform Static Air Pressure Test, Loading per FBC, TAS 202-94
3) Water Resistance Test, per FBC, TAS 202-94
4) Large Missile Impact Test per FBC, TAS 201-94
5) Cyclic Wind Pressure Loading per FBC, TAS 203-94
6) Forced Entry Test, per FBC 2411.3.2.1, and TAS 202-94
along with marked-up drawings and installation diagram of a wood fixed and operable wood casement windows, prepared by Architectural Testing, Inc., Test Report No. **ATI-77324.01-109-18**, dated 06/30/08, signed and sealed by Michael D. Stremmel, P.E.
(Submitted under NOA No. 08-0804.14)

C. CALCULATIONS

1. Anchor verification calculations and structural analysis, complying with **FBC 6th Edition (2017)**, dated 07/24/08 and updated on 05/14/18, prepared by W.W. Schaefer Engineering & Consulting, P.A., signed and sealed by Warren W. Schaefer, P.E.
(Submitted under NOA No. 18-0531.08)
2. Glazing complies with **ASTM E1300-04/09**.

D. QUALITY ASSURANCE

1. Miami-Dade Department of Regulatory and Economic Resources (RER)


Manuel Perez, P.E.
Product Control Examiner
NOA No. 20-0623.02
Expiration Date: January 08, 2024
Approval Date: July 23, 2020

Tischler und Sohn (USA) Ltd.

NOTICE OF ACCEPTANCE: EVIDENCE SUBMITTED

E. MATERIAL CERTIFICATIONS

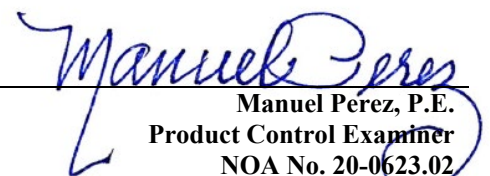
1. Notice of Acceptance No. **17-0712.03** issued to **Eastman Chemical Company (MA)** for their “**Saflex CP – Saflex and Saflex HP Composite Glass Interlayers with PET Core**” dated 09/07/17, expiring on 12/11/18.
2. Notice of Acceptance No. **17-0712.05** issued to **Eastman Chemical Company (MA)** for their “**Saflex Clear and Color Glass Interlayers**” dated 09/07/17, expiring on 05/21/21.

F. STATEMENTS

1. Statement letter of conformance, complying with **FBC 6th Edition (2017)**, dated May 15, 2018, issued by W.W. Schaefer Engineering & Consulting, P.A., signed and sealed by Warren W. Schaefer, P.E.
(Submitted under NOA No. 18-0531.08)
2. Statement letter of no financial interest, dated May 15, 2018, issued by W.W. Schaefer Engineering & Consulting, P.A., signed and sealed by Warren W. Schaefer, P.E.
(Submitted under NOA No. 18-0531.08)
3. Distributor Agreement between Tischler und Sohn (USA), Ltd., Connecticut, USA, and Tischler/ Cornelius Korn, G.m.b.H., Wedel (Schleswig–Holstein), Germany, dated 04/13/09, signed by Tim Carpenter and Wilhelm Korn, respectively.
(Submitted under NOA No. 11-1101.10)
4. Laboratory addendum letter for Test Report No. **ATI-77324.01-109-18**, issued by Architectural Testing, Inc., dated 11/20/08, signed and sealed by Michael D. Stremmel, P.E.
(Submitted under NOA No. 08-0804.14)
5. Laboratory compliance letters for Test Report No. **ATI-77324.01-109-18**, issued by Architectural Testing, Inc., dated 07/01/08, all signed and sealed by Michael D. Stremmel, P.E.
(Submitted under NOA No. 08-0804.14)

G. OTHERS

1. Notice of Acceptance No. **17-0803.28**, issued to Tischler und Sohn (USA) Ltd. for their Series “Mahogany Impact” Outswing Wood Casement Window – L.M.I., approved on 11/02/17 and expiring on 01/08/19.


Manuel Pérez, P.E.
Product Control Examiner
NOA No. 20-0623.02
Expiration Date: January 08, 2024
Approval Date: July 23, 2020

Tischler und Sohn (USA) Ltd.

NOTICE OF ACCEPTANCE: EVIDENCE SUBMITTED

2. NEW EVIDENCE SUBMITTED

A. DRAWINGS

1. None.

B. TESTS

1. None

C. CALCULATIONS

1. None.

D. QUALITY ASSURANCE

1. Miami-Dade Department of Regulatory and Economic Resources (RER)

E. MATERIAL CERTIFICATIONS

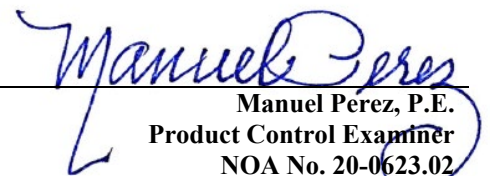
1. Notice of Acceptance No. **18-0301.06** issued to **Eastman Chemical Company (MA)** for their “**Saflex CP - Saflex and Saflex HP Composite Glass Interlayers with PET Core**” dated 05/17/18, expiring on 12/11/23.
2. Notice of Acceptance No. **17-0712.05** issued to **Eastman Chemical Company (MA)** for their “**Saflex Clear and Color Glass Interlayers**” dated 09/07/17, expiring on 05/21/21.

F. STATEMENTS

1. Statement letter of conformance, complying with **FBC 6th Edition (2017)** and **FBC 7th Edition (2020)** dated June 05, 2020, issued by W.W. Schaefer Engineering & Consulting, P.A., signed and sealed by Warren W. Schaefer, P.E.

G. OTHERS

1. Notice of Acceptance No. **17-0531.08**, issued to Tischler und Sohn (USA) Ltd. for their Series “Mahogany Impact” Outswing Wood Casement Window – L.M.I., approved on 07/26/18 and expiring on 01/08/24.


Manuel Perez, P.E.
Product Control Examiner
NOA No. 20-0623.02
Expiration Date: January 08, 2024
Approval Date: July 23, 2020

1. THIS PRODUCT HAS BEEN TESTED, ANALYZED & APPROVED FOR DESIGN PRESSURES NOT TO EXCEED THOSE SHOWN IN THE "ALLOWABLE DESIGN PRESSURE TABLE(S)".
2. OPENINGS, BUCKING & BUCKING FASTENERS MUST BE PROPERLY DESIGNED & INSTALLED TO TRANSFER WIND LOADS TO THE STRUCTURE.
3. ALL HARDWARE & FASTENERS SHALL BE IN ACCORDANCE WITH THESE DRAWINGS & SHALL NOT VARY UNLESS SPECIFICALLY MENTIONED ON THE DRAWINGS. SPECIFIED ANCHOR EMBED TO BASE MATERIAL SHALL BE BEYOND WALL FINISH OR STUCCO.
4. THE DETAILS & SPECIFICATIONS SHOWN HEREIN REPRESENT THE PRODUCTS TESTED & PROPOSED FOR CONFORMANCE WITH THE FLORIDA BUILDING CODE PROTOCOLS TAS-201, 202 & 203 FOR LARGE MISSILE IMPACT PRODUCTS.
5. THIS PRODUCT HAS BEEN DESIGNED IN ACCORDANCE WITH AND MEETS THE REQUIREMENTS OF THE FLORIDA BUILDING CODE (FBC) INCLUDING HIGH VELOCITY HURRICANE ZONES (HVHZ).
6. IMPACT SHUTTERS ARE NOT REQUIRED WITH THIS PRODUCT.
7. ALL ANCHORS SECURING PRODUCT FRAMES TO PRESSURE TREATED BUCKS OR WOOD FRAMING SHALL BE CAPABLE OF RESISTING CORROSION CAUSED BY THE PRESSURE TREATING CHEMICALS IN THE WOOD.
8. DETERMINE THE POSITIVE & NEGATIVE DESIGN LOADS TO USE WHEN REFERENCING THESE DOCUMENTS IN ACCORDANCE WITH THE GOVERNING CODE AND GOVERNING WIND VELOCITY. FOR WIND LOAD CALCULATIONS IN ACCORDANCE WITH THE FLORIDA BUILDING CODE, A DIRECTIONALITY FACTOR OF $K_d = 0.85$ MAY BE APPLIED PER THE ASCE-7 STANDARD.
9. NO INCREASE IN ALLOWABLE STRESS HAS BEEN USED IN THE CERTIFICATION OF THIS PRODUCT. WIND LOAD DURATION FACTOR $C_d = 1.6$ WAS USED FOR WOOD SCREW ANALYSIS ONLY.
10. MATERIALS, INCLUDING BUT NOT LIMITED TO STEEL SCREWS, THAT COME INTO CONTACT WITH OTHER DISSIMILAR MATERIALS SHALL MEET THE REQUIREMENTS OF FLORIDA BUILDING CODE.
11. ALL WOOD MEMBERS OF THIS PRODUCT THAT MAY POSSIBLY COME INTO CONTACT WITH MASONRY OR CONCRETE SUBSTRATES, ARE SUBJECT TO MOISTURE &/OR ARE SUBJECT TO THE OUTSIDE ENVIRONMENT SHALL BE OF AN APPROVED DURABLE SPECIES OR BE TREATED IN AN APPROVED METHOD WITH AN APPROVED PRESERVATIVE PER FBC REQUIREMENTS.

RECTANGULAR FRAME CORNERS: MORTISE & TENON CONSTRUCTION JOINED & GLUED WITH PONAL SUPER 3 WOOD GLUE OR EQUIVALENT.

ARCHED FRAME CORNERS: ARCHED FRAME BUTTED TO STRAIGHT FRAME, JOINED WITH ONE(1) NO.14 X 3" WOOD SCREW, & GLUED WITH PONAL SUPER 3 WOOD GLUE OR EQUIVALENT.

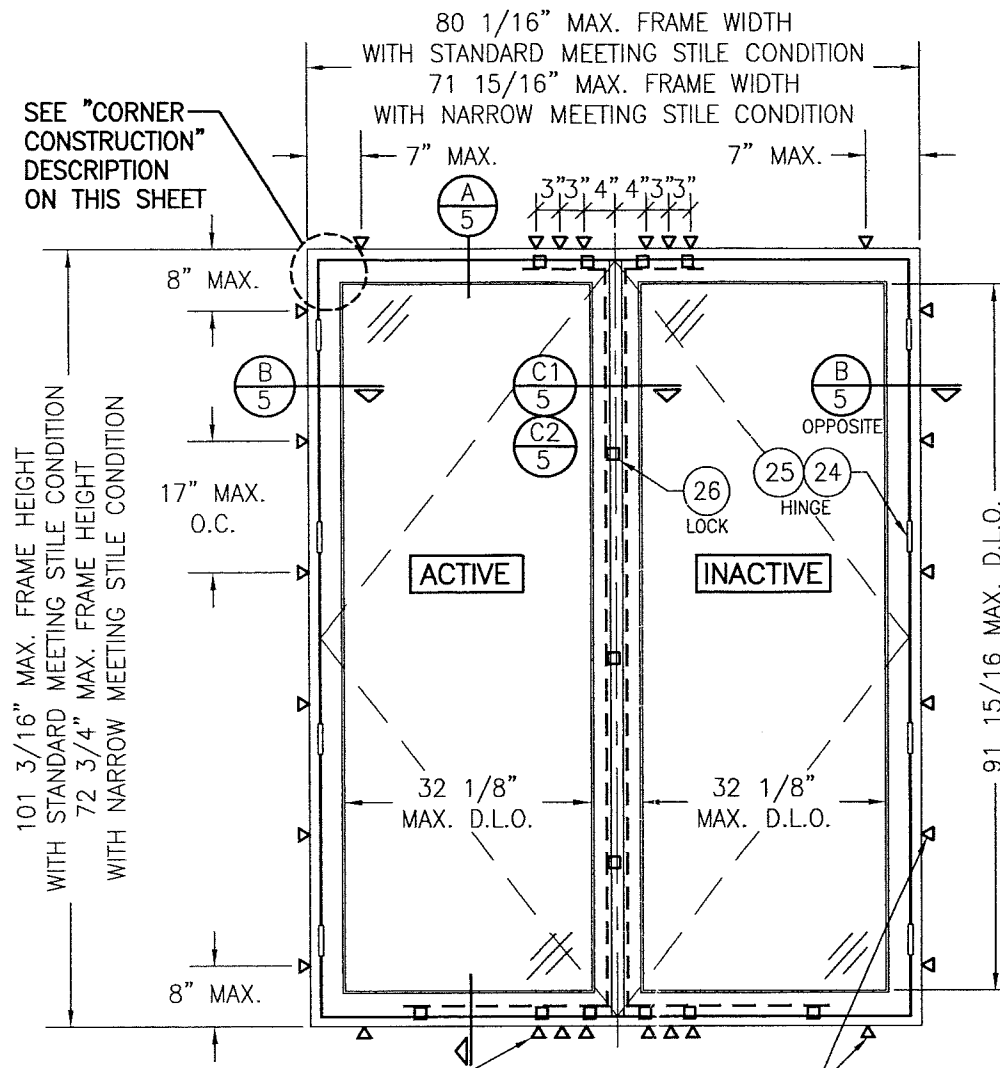
HALF ROUND FRAME CORNERS: FINGER JOINT CONSTRUCTION JOINED & GLUED WITH PONAL SUPER 3 WOOD GLUE OR EQUIVALENT.

RECTANGULAR SASH CORNERS: MORTISE & TENON CONSTRUCTION JOINED & GLUED WITH PONAL SUPER 3 WOOD GLUE OR EQUIVALENT.

ARCHED SASH CORNERS: ARCHED SASH BUTTED TO STRAIGHT SASH, JOINED WITH ONE(1) NO.14 X 3" WOOD SCREW, & GLUED WITH PONAL SUPER 3 WOOD GLUE OR EQUIVALENT.

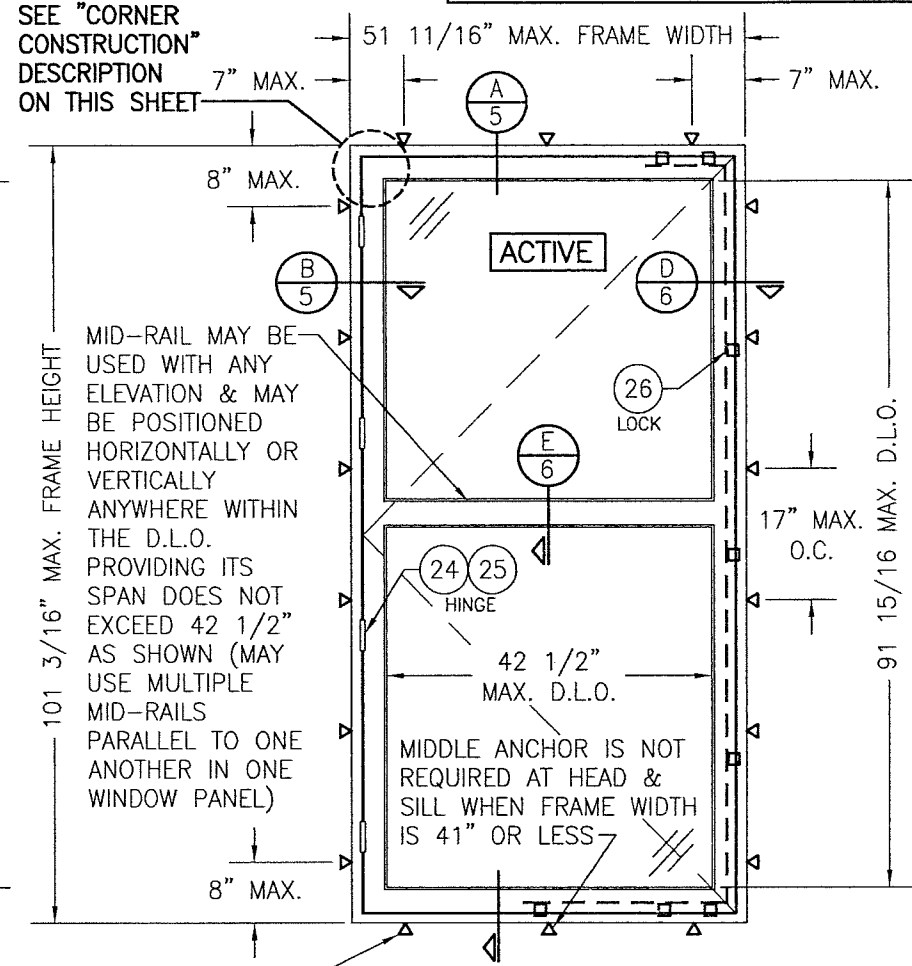
HALF ROUND SASH CORNERS: FINGER JOINT CONSTRUCTION JOINED & GLUED WITH PONAL SUPER 3 WOOD GLUE OR EQUIVALENT.

EXTERIOR ELEVATION;
DOUBLE RECTANGULAR CASEMENT WINDOWS
SCALE: 1/2" = 1'-0"



WS, — EXTERIOR ELEVATION:
SINGLE RECTANGULAR CASEMENT WINDOW
SCALE: $1/2" = 1'-0"$

PRODUCT REVISED
as complying with the Florida
Building Code
NOA-No. 20-0623.02
Expiration Date: 01/08/2024
By: Manuel Perez
Miami-Dade Product Control



ALLOWABLE DESIGN PRESSURE (SINGLE & DOUBLE WINDOWS)			
MAX. FRAME HEIGHT (IN.)	MAX. FRAME WIDTH (IN.)	ALLOWABLE PRESSURE	
		POSITIVE (PSF)	NEGATIVE (PSF)
SINGLE WINDOW			
101 3/16	51 11/16	(2) 70	(2) 70
77 3/16	37 3/16	70	(1) 85
DOUBLE WINDOW			
101 3/16	80 1/16	70	70
77 3/16	72"	70	(1) 85

(1) HIGHER PRESSURE OF -85 PSF IS ONLY APPLICABLE WHEN GLASS OPTION 2 & STANDARD SIZE MEETING STILES ARE USED

(2) WITH FULL SIZE SINGLE WINDOWS USING GLASS OPTION 4, ALLOWABLE PRESSURE MUST BE REDUCED TO +/-66 PSF. PRESSURE MAY BE INCREASED TO +/-70 PSF IF THE D.L.O. WIDTH IS DECREASED TO MAX. 39.5" OR THE D.L.O. HEIGHT IS DECREASED TO MAX. 87".

<p>SASH WIDTH & HEIGHT DIMENSIONS ARE APPROXIMATELY 3" LESS THAN THE FRAME WIDTH & HEIGHT</p>	
<p>LOCK STRIKE REQUIREMENTS (TOP OF PANEL)</p>	
SASH WIDTH	QUANTITY PER PANEL
RECTANGULAR PANEL	
OVER 24"	2
LESS THAN 24"	1
ARCH TOP PANEL	
OVER 28"	3
15" TO 28"	2
LESS THAN 15"	1
ROUND TOP PANEL	
OVER 32"	4
20" TO 32"	3
12" TO 20"	2
LESS THAN 12"	1

LOCK STRIKE REQUIREMENTS (LOCK SIDE OF PANEL)	
SASH HEIGHT	QUANTITY PER PANEL
ALL PANEL SHAPES	
OVER 77"	3
40" TO 77"	2
LESS THAN 40"	1

LOCK STRIKE REQUIREMENTS (BOTTOM OF PANEL)	
SASH WIDTH	QUANTITY PER PANEL
ALL PANEL SHAPES	
OVER 32"	3
24" TO 32"	2
LESS THAN 24"	1

HINGE REQUIREMENTS	
(1) SASH HEIGHT	QUANTITY PER PANEL
OVER 74"	4
47" TO 74"	3
LESS THAN 47"	2

(1) THE "SASH HEIGHT" IS CONSIDERED TO BE FULL SASH HEIGHT FOR RECTANGULAR UNITS OR DISTANCE FROM THE BASE OF SASH TO SASH STRINGLINE FOR SHAPED UNITS

PRODUCT REVISED
as complying with the Florida
Building Code
Acceptance No. 18-05
Expiration Date Jan. 8
By *Wmuel*

PRODUCT REVISED
as complying with the Florida
Building Code
Acceptance No. 18-0531.08
Expiration Date Jan. 8, 2024
By Wmmanuel Perez

DRAWING NO.		REV.	
1530		C	
SHEET NO.			
1 OF 10			

CERTIFICATION

MAY 15 2018

WARREN W. SCHAEFER, P.E.
P.E. NO. 44135

DRAWING TITLE

OUT-SWING IMPACT WOOD CASEMENT WINDOW

CONSULTANTS

W. W. SCHAEFER ENGINEERING & CONSULTING, P.A. (CA 6809)

7480 150TH COURT NORTH
PALM BEACH GARDENS, FL 33418
PHONE: 561-744-3424

MANUFACTURER

TISCHLER UND SOHN (USA) LTD.
SIX SUBURBAN AVENUE
STAMFORD, CONNECTICUT
203-674-0600

NO.	REVISION	DESCRIPTION	BY	DATE
A1	UPDATE TO CURRENT STANDARDS		W.R.M.	10/25/11
B1	UPDATE GLASS DESCRIPTION		W.R.M.	09/04/13
C1	UPDATE TO CURRENT STANDARDS		W.W.S.	05/15/18

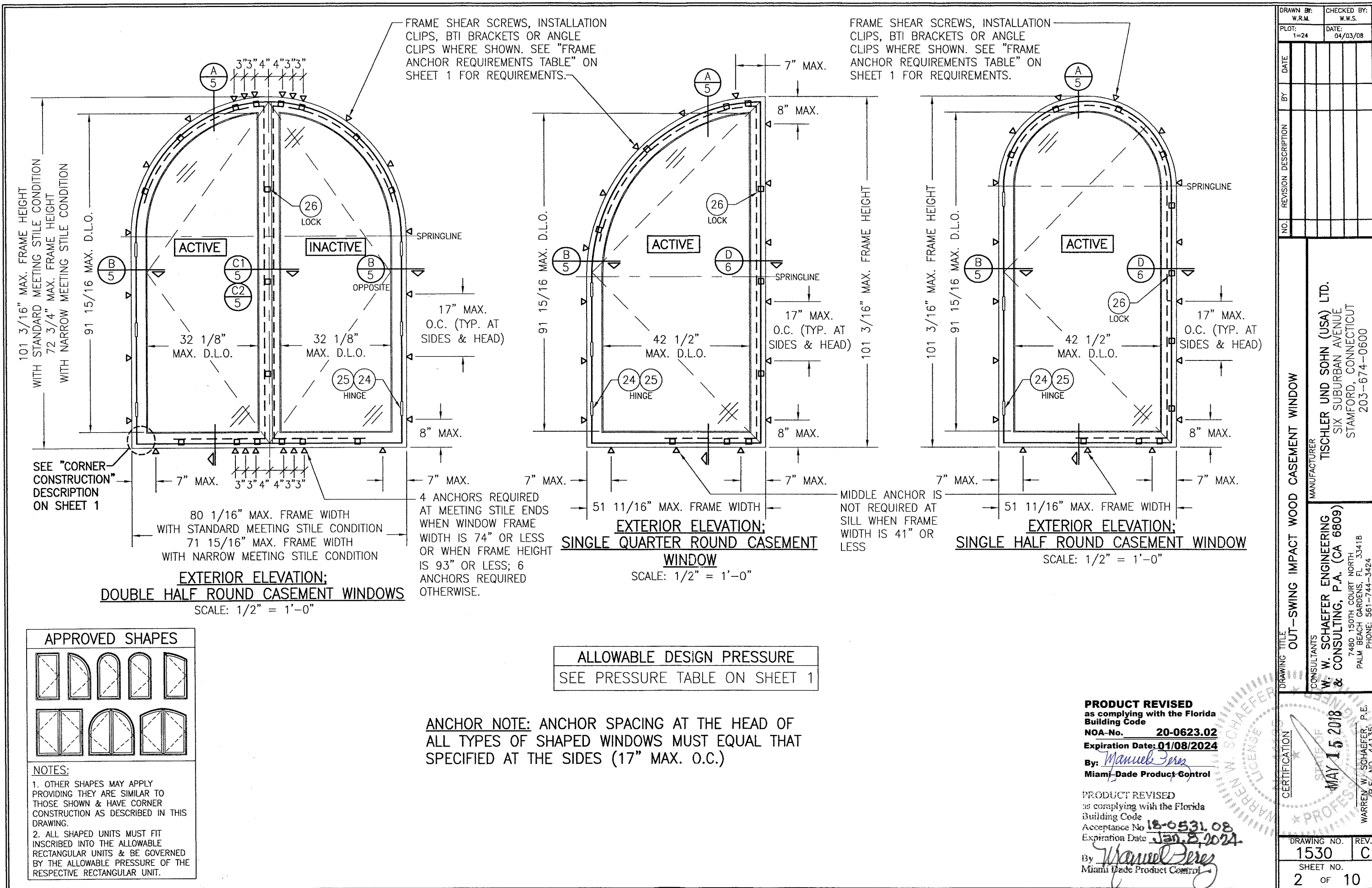
PLOT: 1=24

CHECKED BY: W.W.S.

DATE: 04/03/08

DRAWN BY: W.R.M.

CHECKED BY: W.W.S.



APPROVED SHAPES

NOTES:

1. OTHER SHAPES MAY APPLY PROVIDING THEY ARE SIMILAR TO THOSE SHOWN & HAVE CORNER CONSTRUCTION AS DESCRIBED IN THIS DRAWING.

2. ALL SHAPED UNITS MUST FIT INSCRIBED INTO THE ALLOWABLE RECTANGULAR UNITS & BE GOVERNED BY THE ALLOWABLE PRESSURE OF THE RESPECTIVE RECTANGULAR UNIT.

ALLOWABLE DESIGN PRESSURE
SEE PRESSURE TABLE ON SHEET 1

ANCHOR NOTE: ANCHOR SPACING AT THE HEAD OF ALL TYPES OF SHAPED WINDOWS MUST EQUAL THAT SPECIFIED AT THE SIDES (17" MAX. O.C.)

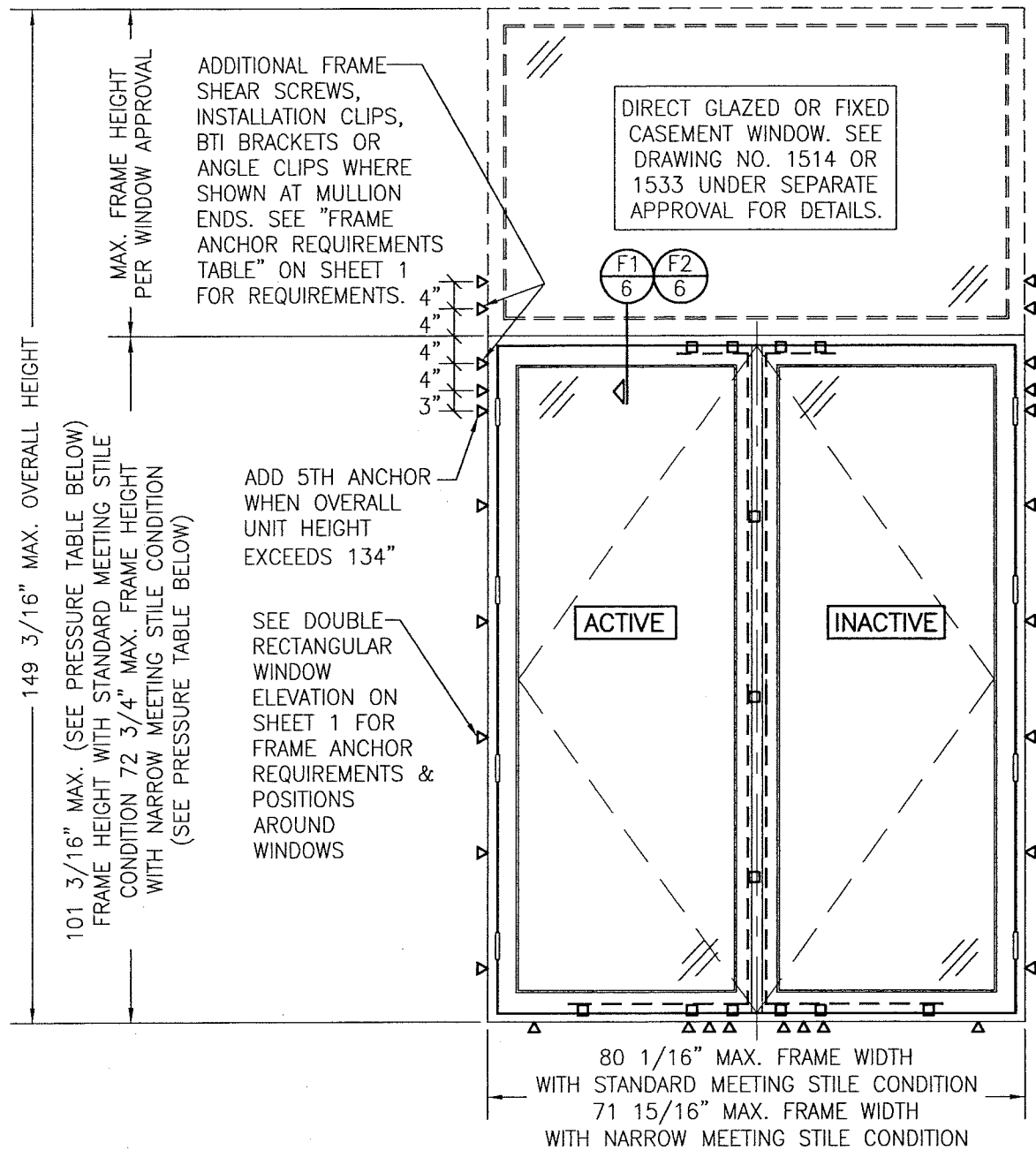
PRODUCT REVISED
as complying with the Florida Building Code
NOA-No. **20-0623.02**
Expiration Date: **01/08/2024**

By: *Manuel Perez*
Miami-Dade Product Control

PRODUCT REVISED
as complying with the Florida Building Code
Acceptance No. **18-0531.08**
Expiration Date: **Jan 2, 2024**

By: *Manuel Perez*
Miami-Dade Product Control

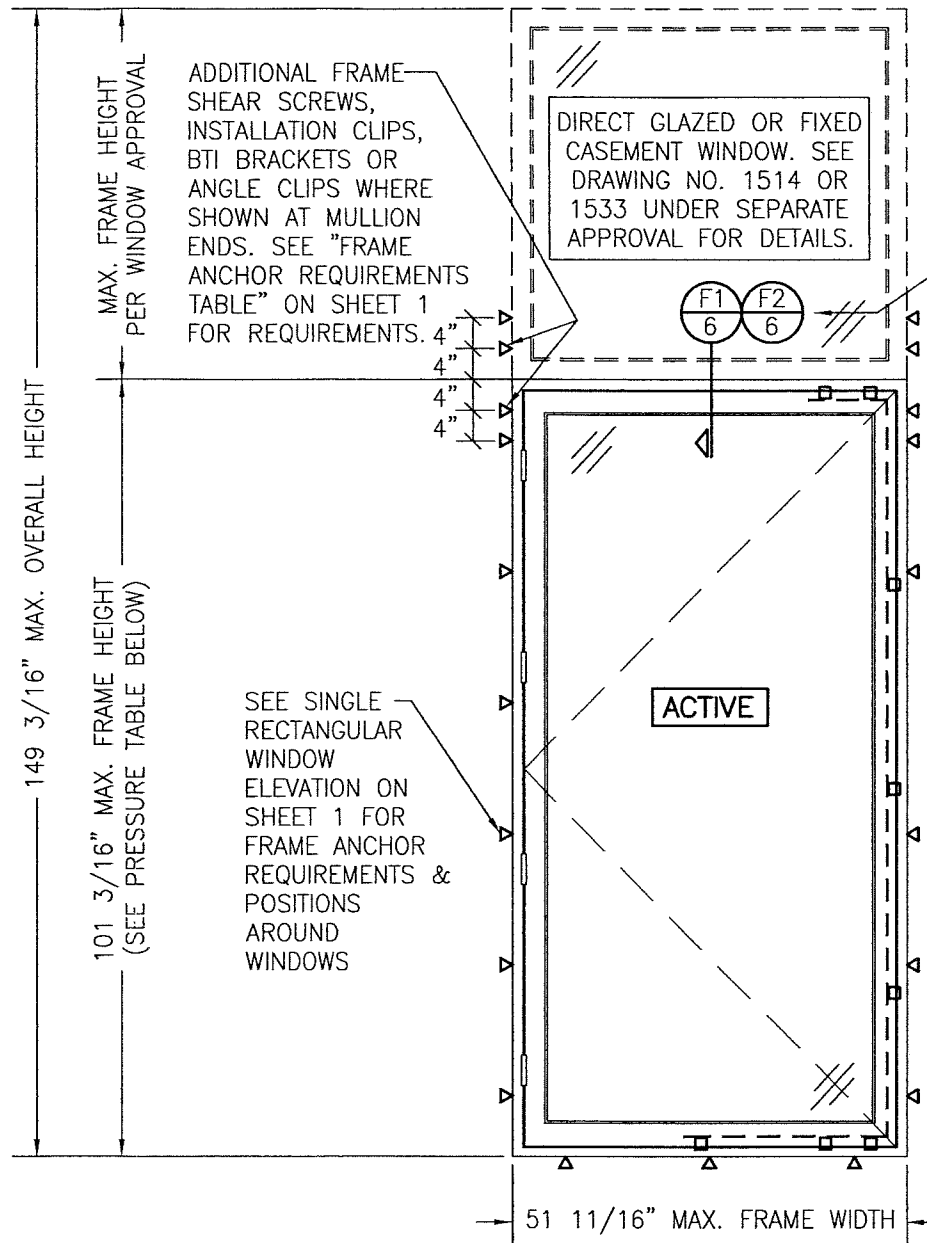
DRAWN BY: W.R.M.		CHECKED BY: W.W.S.	
PLOT: 1=24		DATE: 04/03/08	
DATE	BY	REVISION DESCRIPTION	NO.
DRAWING TITLE OUT-SWING IMPACT WOOD CASEMENT WINDOW			
CONSULTANTS W. W. SCHAEFER ENGINEERING & CONSULTING, P.A. (CA 6809) 7480 150TH COURT NORTH PALM BEACH GARDENS, FL 33418 PHONE: 561-744-3424		MANUFACTURER TISCHLER UND SOHN (USA) LTD. SIX SUBURBAN AVENUE STAMFORD, CONNECTICUT 203-674-0600	
CERTIFICATION MAY 15 2018 WARREN W. SCHAEFER, P.E. P.E. NO. 44135		DRAWING NO. 1530	
REV. C		SHEET NO. 2 OF 10	



**EXTERIOR ELEVATION:
DOUBLE CASEMENT WINDOWS WITH TRANSOM**

SCALE: 1/2" = 1'-0"
(SEE DOUBLE RECTANGULAR WINDOW ELEVATION ON SHEET 1 FOR WINDOW DETAIL NOT SHOWN)

ALLOWABLE DESIGN PRESSURE (DOUBLE WINDOW TRANSOM UNIT)			
MAX. BOTTOM WINDOW FRAME HEIGHT (IN.)	MAX. FRAME WIDTH (IN.)	ALLOWABLE PRESSURE	
		POSITIVE (PSF)	NEGATIVE (PSF)
101 3/16	80 1/16	70	70
77 3/16	72"	70	(1) 85
(1) HIGHER PRESSURE OF -85 PSF IS ONLY APPLICABLE WHEN GLASS OPTION 2 & STANDARD SIZE MEETING STILES ARE USED			



**EXTERIOR ELEVATION:
SINGLE CASEMENT WINDOW WITH TRANSOM**

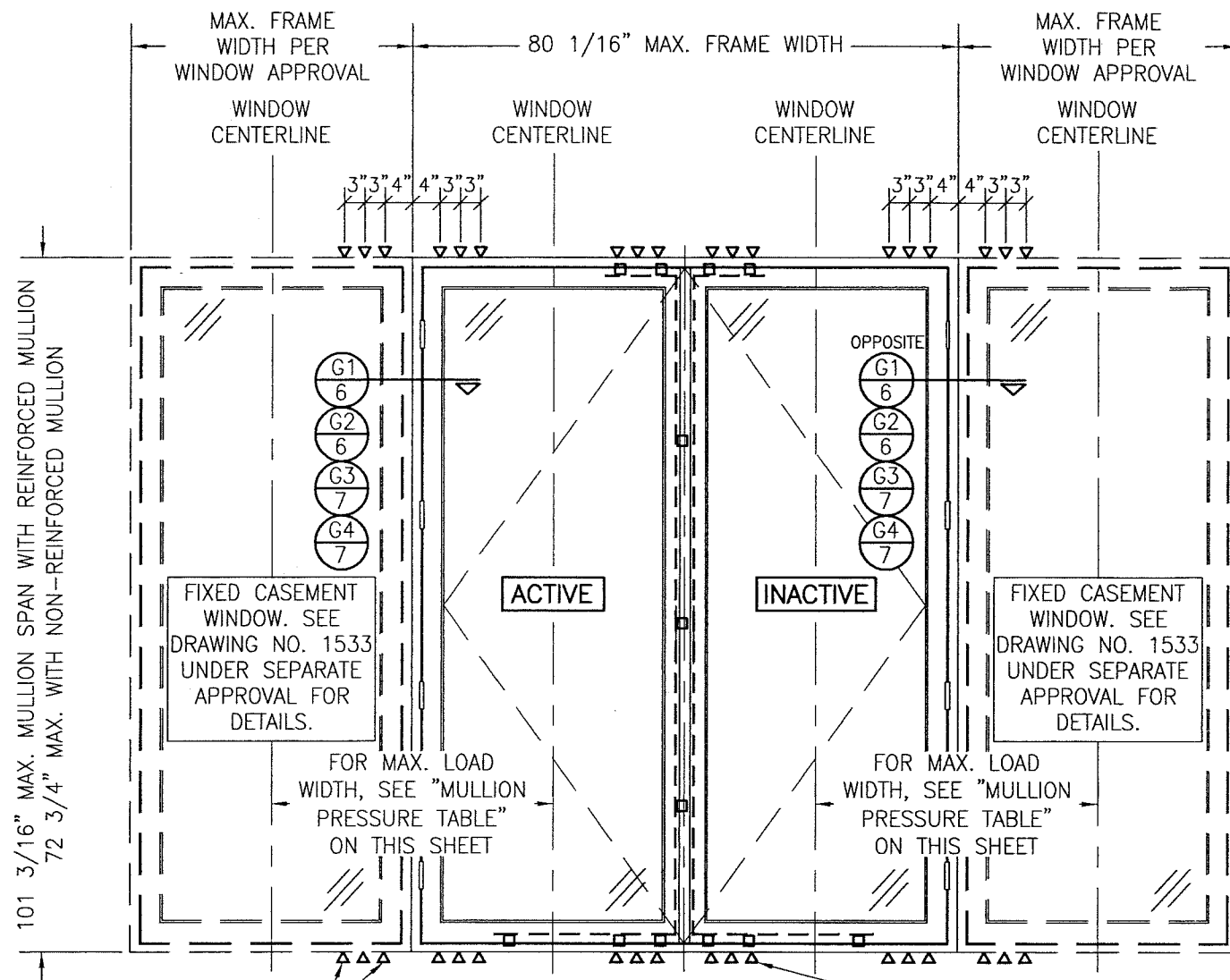
SCALE: 1/2" = 1'-0"
(SEE SINGLE RECTANGULAR WINDOW ELEVATION ON SHEET 1 FOR WINDOW DETAIL NOT SHOWN)

ALLOWABLE DESIGN PRESSURE (SINGLE WINDOW TRANSOM UNIT)			
MAX. BOTTOM WINDOW FRAME HEIGHT (IN.)	MAX. FRAME WIDTH (IN.)	ALLOWABLE PRESSURE	
		POSITIVE (PSF)	NEGATIVE (PSF)
101 3/16	51 11/16	70	70
77 3/16	37 3/16	70	(1) 85
(1) HIGHER PRESSURE OF -85 PSF IS ONLY APPLICABLE WHEN GLASS OPTION 2 & STANDARD SIZE MEETING STILES ARE USED			

PRODUCT REVISED
as complying with the Florida Building Code
NOA-No. **20-0623.02**
Expiration Date: **01/08/2024**
By: *Manuel Torres*
Miami-Dade Product Control

PRODUCT REVISED
as complying with the Florida Building Code
Acceptance No. **18-0521.08**
Expiration Date: **Jan. 2, 2024**
By: *Manuel Torres*
Miami-Dade Product Control

DRAWN BY: W.R.M.		CHECKED BY: W.W.S.	
PLOT: 1=24		DATE: 04/03/08	
NO.	REVISION	DESCRIPTION	DATE
DRAWING TITLE OUT-SWING IMPACT WOOD CASEMENT WINDOW			
CONSULTANTS W. W. SCHAEFER ENGINEERING & CONSULTING, P.A. (CA 6809)		MANUFACTURER TISCHLER UND SOHN (USA) LTD. SIX SUBURBAN AVENUE STAMFORD, CONNECTICUT 06307-674-0600	
7480 150TH COURT NORTH PALM BEACH GARDENS, FL 33418 PHONE: 561-744-3424		P.E. WARREN W. SCHAEFER P.E. NO. 44135	
CERTIFICATION STATE OF FLORIDA No. 44135 MAY 15 2018		DRAWING NO. 1530	
		REV. C	
		SHEET NO. 3 OF 10	



ADDITIONAL FRAME SHEAR SCREWS, INSTALLATION CLIPS, BTI BRACKETS OR ANGLE CLIPS WHERE SHOWN AT MULLION ENDS. SEE "FRAME ANCHOR REQUIREMENTS TABLE" ON SHEET 1 FOR REQUIREMENTS. (SEE MULLION PRESSURE TABLE FOR REQUIRED QUANTITY OF ANCHORS AT MULLION ENDS)

EXTERIOR ELEVATION: MULTIPLE CASEMENT/FIXED WINDOWS

SCALE: 1/2" = 1'-0"

OXO UNIT IS SHOWN. ALL OTHER FIXED/OPERABLE COMBINATIONS ALSO APPLY WITH THE MULLION CONDITIONS SHOWN.

MULTIPLE UNIT NOTES:

1. FOR ALL DETAIL NOT SHOWN, INDIVIDUAL WINDOW ELEVATIONS.
2. THERE IS NO LIMIT ON THE NUMBER OF WINDOWS THAT MAY BE COMBINED IN ONE DIRECTION INTO ONE OPENING PROVIDING THE OPENING IS DESIGNED TO SUPPORT ALL LOADS TRANSFERRED FROM THE WINDOWS & THEIR MULLIONS.
3. ANY COMBINATION OF FIXED/OPERABLE WINDOWS IN ONE OPENING SHALL APPLY.
4. SHAPED WINDOWS ALSO APPLY TO SIDE MULLING (WHEN APPLICABLE) UNDER THE SAME RESTRICTIONS SHOWN.
5. MULLIONS MAY BE A 1-PIECE SECTION OR JAMB TO JAMB. SEE SECTIONS G1 THROUGH G4 FOR DETAIL.

SEE INDIVIDUAL WINDOW ELEVATIONS FOR FRAME ANCHOR REQUIREMENTS & POSITIONS AROUND WINDOWS

MULLION ALLOWABLE DESIGN PRESSURE

MAXIMUM MULLION SPAN (IN.)	MAXIMUM LOAD WIDTH (IN.)	ALLOWABLE PRESSURE (+/- PSF)					
		NON-REINFORCED		REINFORCED			
		4 OR 6 END ANCHORS		4 END ANCHORS		6 END ANCHORS	
		POS.	NEG.	POS.	NEG.	POS.	NEG.
101	52	N/A	N/A	46.5	46.5	53.8	53.8
	49	N/A	N/A	49.3	49.3	57.1	57.1
	43	N/A	N/A	56.2	56.2	65.1	65.1
	37	N/A	N/A	65.3	65.3	70.0	75.2
	31	N/A	N/A	70.0	78.0	70.0	85.0
	25	N/A	N/A	70.0	85.0	70.0	85.0
96	52	N/A	N/A	48.9	48.9	56.7	56.7
	49	N/A	N/A	51.9	51.9	60.1	60.1
	43	N/A	N/A	59.2	59.2	68.5	68.5
	37	N/A	N/A	68.8	68.8	70.0	79.6
	31	N/A	N/A	70.0	82.1	70.0	85.0
84	52	N/A	N/A	55.9	55.9	64.7	64.7
	49	N/A	N/A	59.3	59.3	68.7	68.7
	43	N/A	N/A	67.6	67.6	70.0	78.3
	37	N/A	N/A	70.0	78.6	70.0	85.0
	31	N/A	N/A	70.0	85.0	70.0	85.0
77	52	N/A	N/A	61.0	61.0	70.0	70.6
	49	N/A	N/A	64.7	64.7	70.0	75.0
	43	N/A	N/A	70.0	73.8	70.0	85.0
	37	N/A	N/A	70.0	85.0	70.0	85.0
72 3/4	52	54.7	54.7	64.6	64.6	70.0	74.8
	49	56.7	56.7	68.5	68.5	70.0	79.3
	43	62.0	62.0	70.0	78.1	70.0	85.0
	37	70.0	70.0	70.0	85.0	70.0	85.0
	31	70.0	80.7	70.0	85.0	70.0	85.0
	25	70.0	85.0	70.0	85.0	70.0	85.0
67	52	66.9	66.9	70.0	70.1	70.0	81.2
	49	69.0	69.0	70.0	74.4	70.0	85.0
	43	70.0	74.9	70.0	84.8	70.0	85.0
	37	70.0	83.7	70.0	85.0	70.0	85.0
	31	70.0	85.0	70.0	85.0	70.0	85.0
61	52	70.0	77.0	70.0	77.0	70.0	85.0
	49	70.0	81.7	70.0	81.7	70.0	85.0
	43	70.0	85.0	70.0	85.0	70.0	85.0
55	52	70.0	85.0	70.0	85.0	70.0	85.0

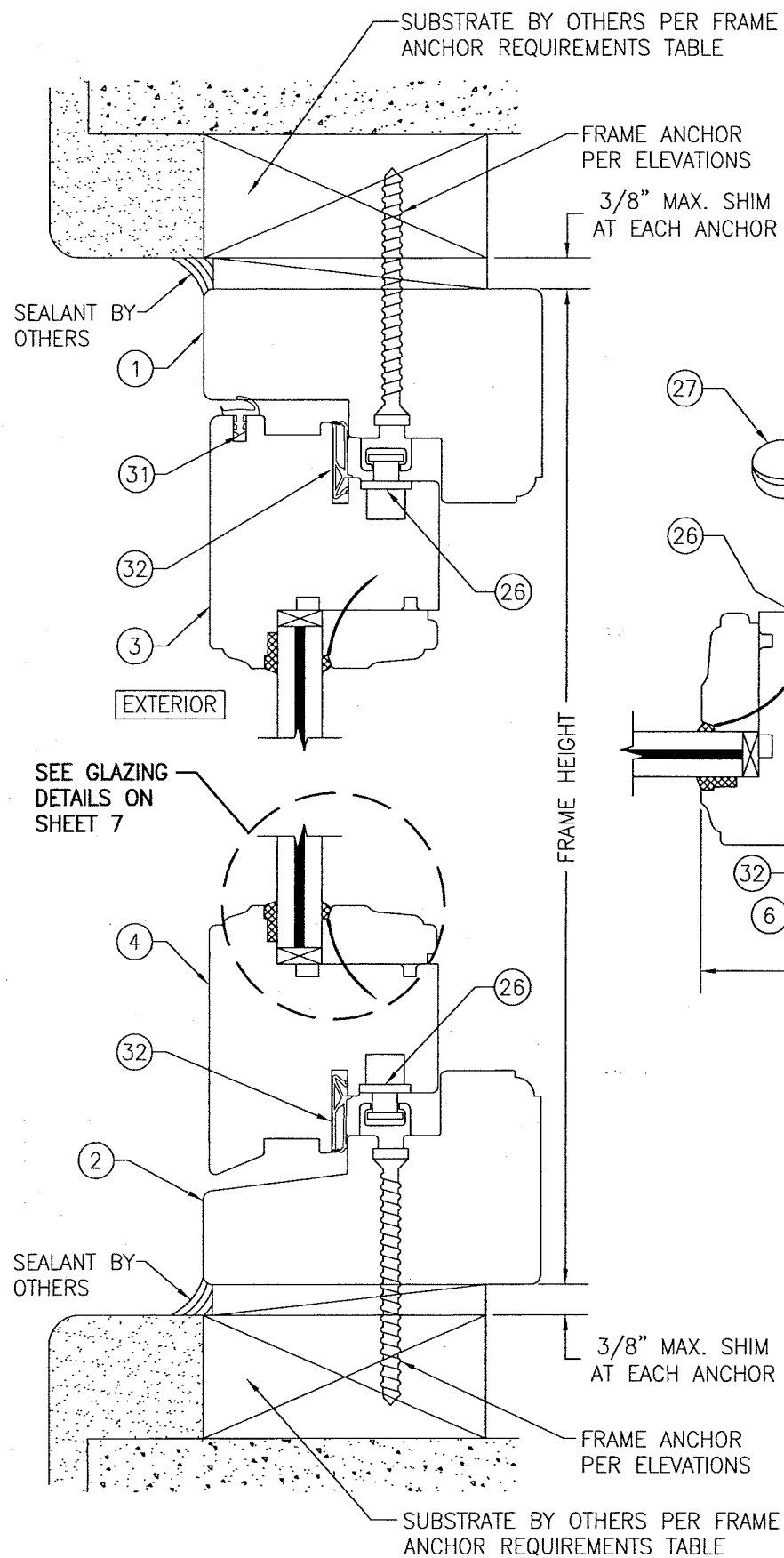
NOTES:

1. LOAD WIDTH IS THE DISTANCE BETWEEN WINDOW CENTERLINES.
2. ALLOWABLE UNIT PRESSURE SHALL BE THE LESSER OF THE PRESSURES SHOWN IN THIS TABLE & THOSE SPECIFIED FOR THE INDIVIDUAL WINDOW.
3. "N/A" DESIGNATES A SIZE NOT APPLICABLE TO THAT REINFORCEMENT CONDITION.
4. SIZE VALUES IN TABLE ARE +/-1/2"

PRODUCT REVISED
as complying with the Florida
Building Code
NOA-No. **20-0623.02**
Expiration Date: **01/08/2024**
By: *Manuel Perez*
Miami-Dade Product Control

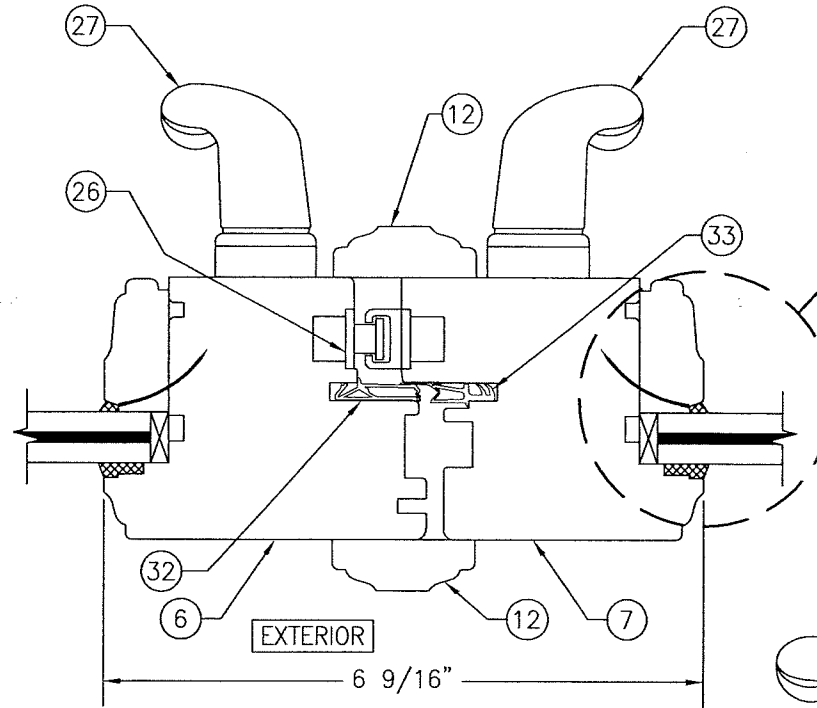
PRODUCT REVISED
as complying with the Florida
Building Code
Acceptance No. **18-0531.08**
Expiration Date: **Jan. 8, 2024**
By: *Manuel Perez*
Miami-Dade Product Control

DRAWN BY: W.R.M.		CHECKED BY: W.W.S.	
PLOT: 1=24		DATE: 04/03/08	
DATE	BY	REVISION DESCRIPTION	NO.
DRAWING TITLE OUT-SWING IMPACT WOOD CASEMENT WINDOW			
CONSULTANTS W. W. SCHAEFER ENGINEERING & CONSULTING, P.A. (CA 6809)		MANUFACTURER TISCHLER UND SOHN (USA) LTD. SIX SUBURBAN AVENUE STAMFORD, CONNECTICUT 203-674-0600	
7480 150TH COURT NORTH PALM BEACH GARDENS, FL 33418 PHONE: 561-744-3424			
CERTIFICATION No. 4410	MAY 15 2018		
DRAWING NO. 1530		REV. C	
SHEET NO. 4		OF 10	

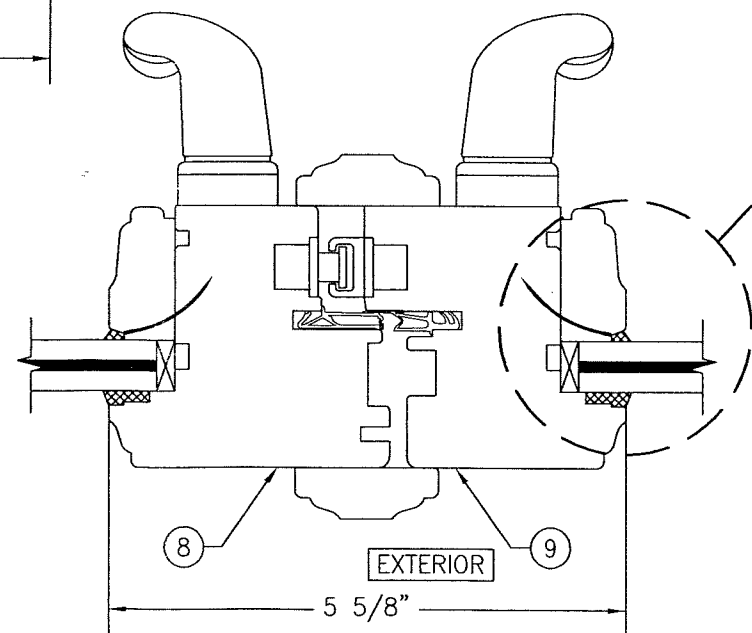


SECTION A
SCALE: 1/2 FULL

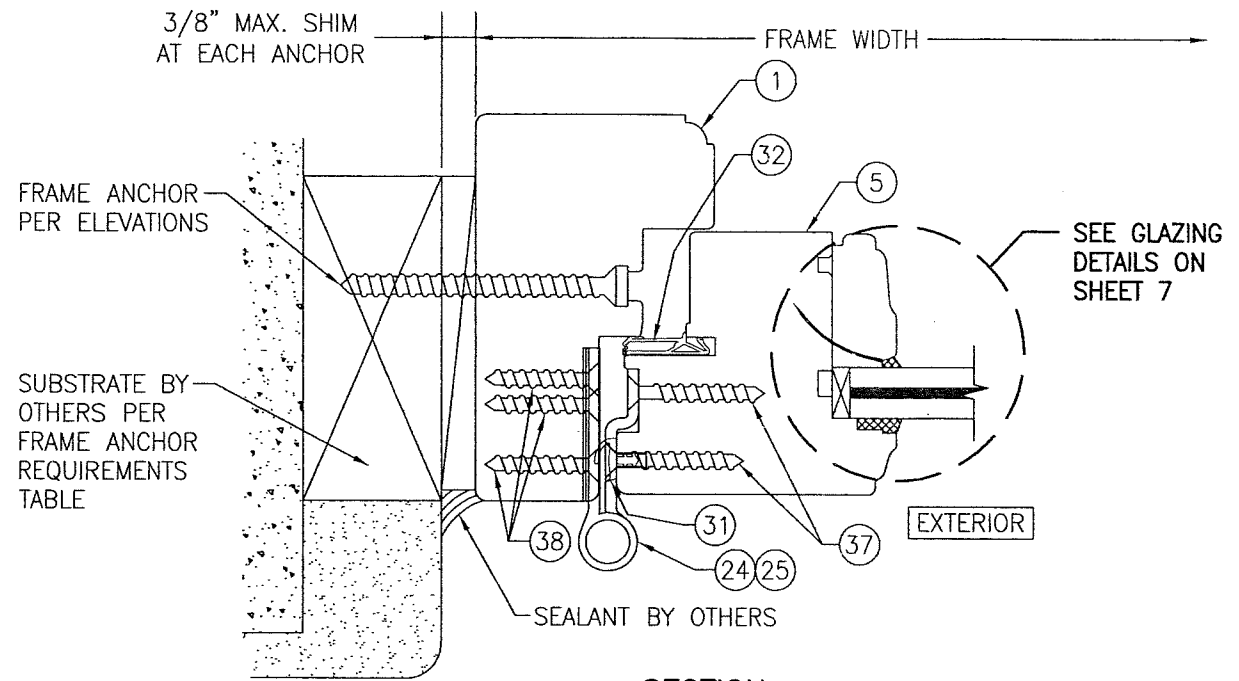
FRAME SHEAR SCREW INSTALLATION SHOWN. SEE OPTIONAL DETAILS FOR OTHER INSTALLATION CONDITIONS.



SECTION C1
SCALE: 1/2 FULL
(STANDARD MEETING STILE CONDITION)



SECTION C2
SCALE: 1/2 FULL
(NARROW MEETING STILE CONDITION)
(FOR DETAIL NOT SHOWN, SEE SECTION C1/5)

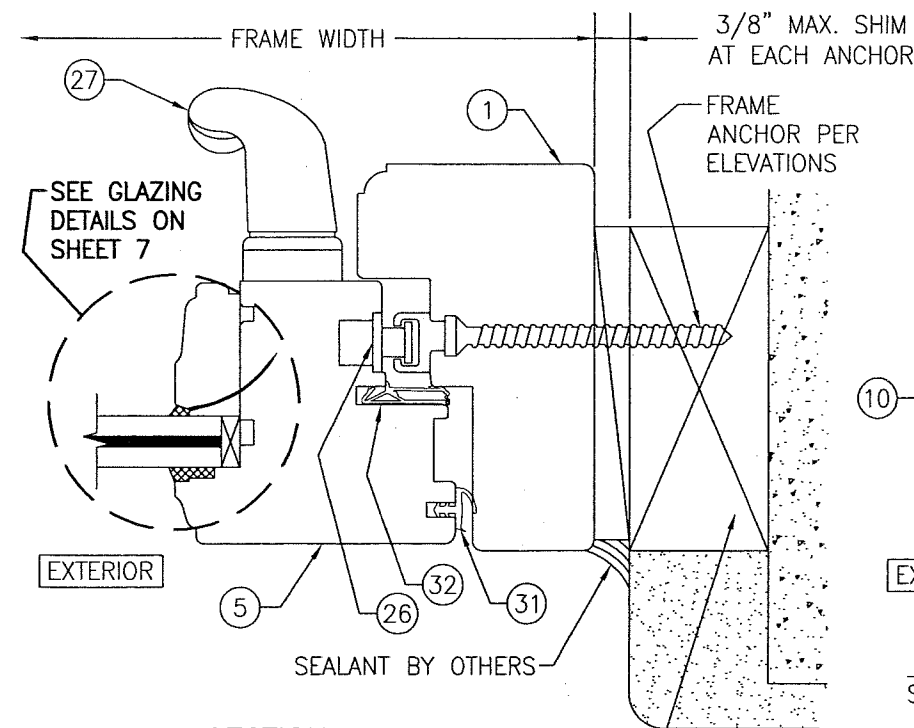


SECTION B
SCALE: 1/2 FULL
FRAME SHEAR SCREW INSTALLATION SHOWN. SEE OPTIONAL DETAILS FOR OTHER INSTALLATION CONDITIONS. (MORTISED BUTT HINGE CONDITIONS SHOWN, SURFACE MOUNT BUTT HINGE CONDITIONS ALSO APPLY)

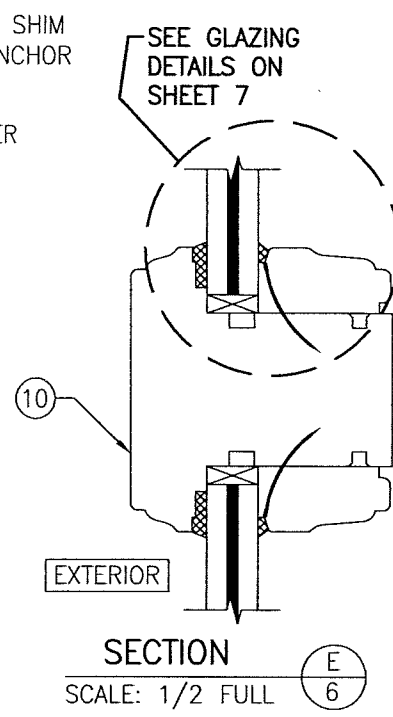
PRODUCT REVISED
as complying with the Florida Building Code
NOA-No. **20-0623.02**
Expiration Date: **01/08/2024**
By: *Manuel Bern*
Miami-Dade Product Control

PRODUCT REVISED
as complying with the Florida Building Code
Acceptance No. **18-0531.08**
Expiration Date: **12-8-2024**
By: *Manuel Bern*
Miami-Dade Product Control

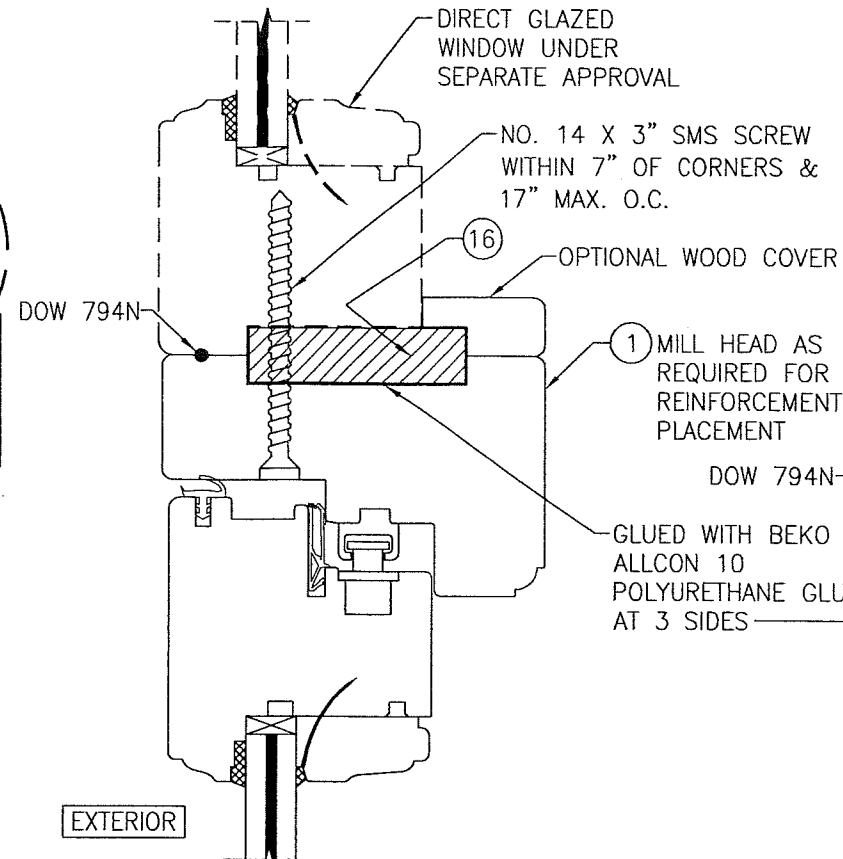
DRAWN BY: W.R.M.		CHECKED BY: W.W.S.		
PLOT: 1-2		DATE: 04/03/08		
NO.	REVISION	DESCRIPTION	BY	DATE
DRAWING TITLE OUT-SWING IMPACT WOOD CASEMENT WINDOW				
CONSULTANTS W. W. SCHAEFER ENGINEERING & CONSULTING, P.A. (CA 6809) 7480 150TH COURT NORTH PALM BEACH GARDENS, FL 33418 PHONE: 561-744-3424		MANUFACTURER TISCHLER UND SOHN (USA) LTD. SIX SUBURBAN AVENUE STAMFORD, CONNECTICUT 203-674-0600		
CERTIFICATION MAY 15 2018 WARREN W. SCHAEFER, P.E. P.E. NO. 44135				
DRAWING NO. 1530		REV. C		
SHEET NO. 5 OF 10				



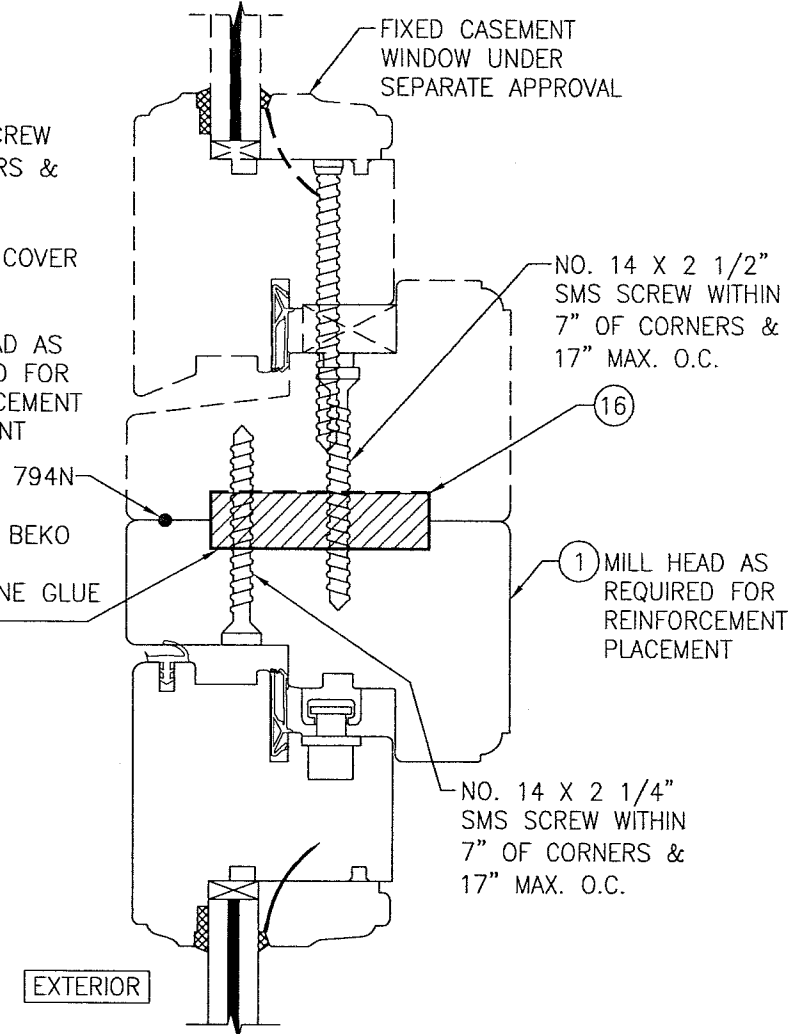
SECTION D
SCALE: 1/2 FULL
FRAME SHEAR SCREW INSTALLATION SHOWN. SEE OPTIONAL DETAILS FOR OTHER INSTALLATION CONDITIONS.



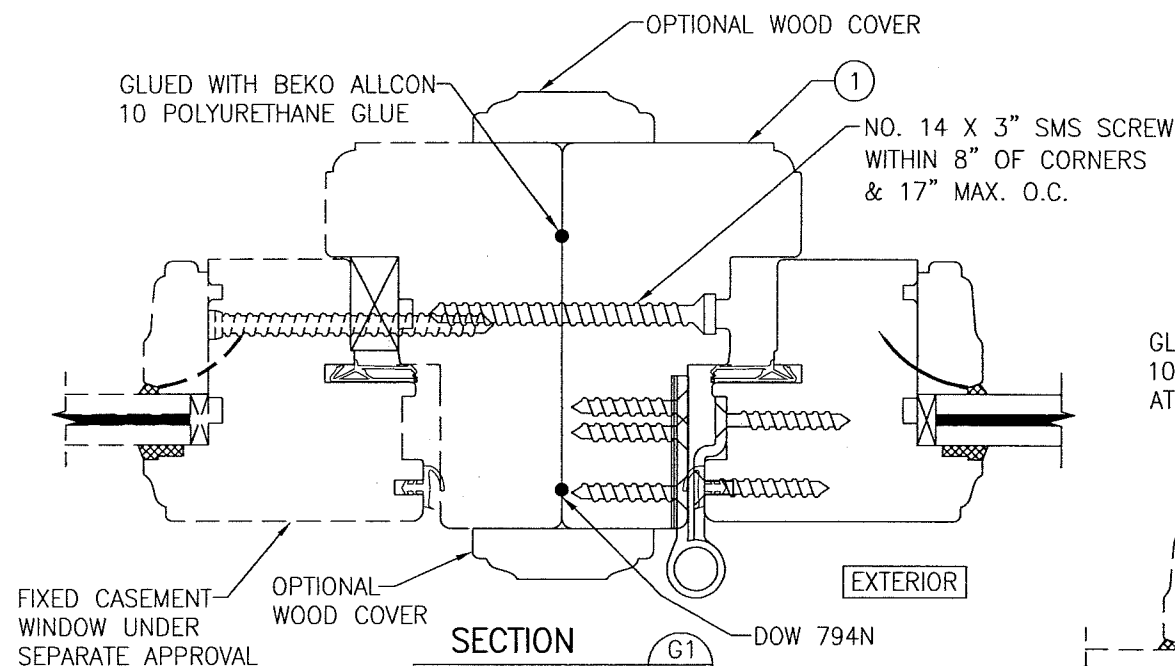
SECTION E
SCALE: 1/2 FULL



SECTION F1
SCALE: 1/2 FULL
(FOR DETAIL NOT SHOWN, SEE OTHER SECTIONS)

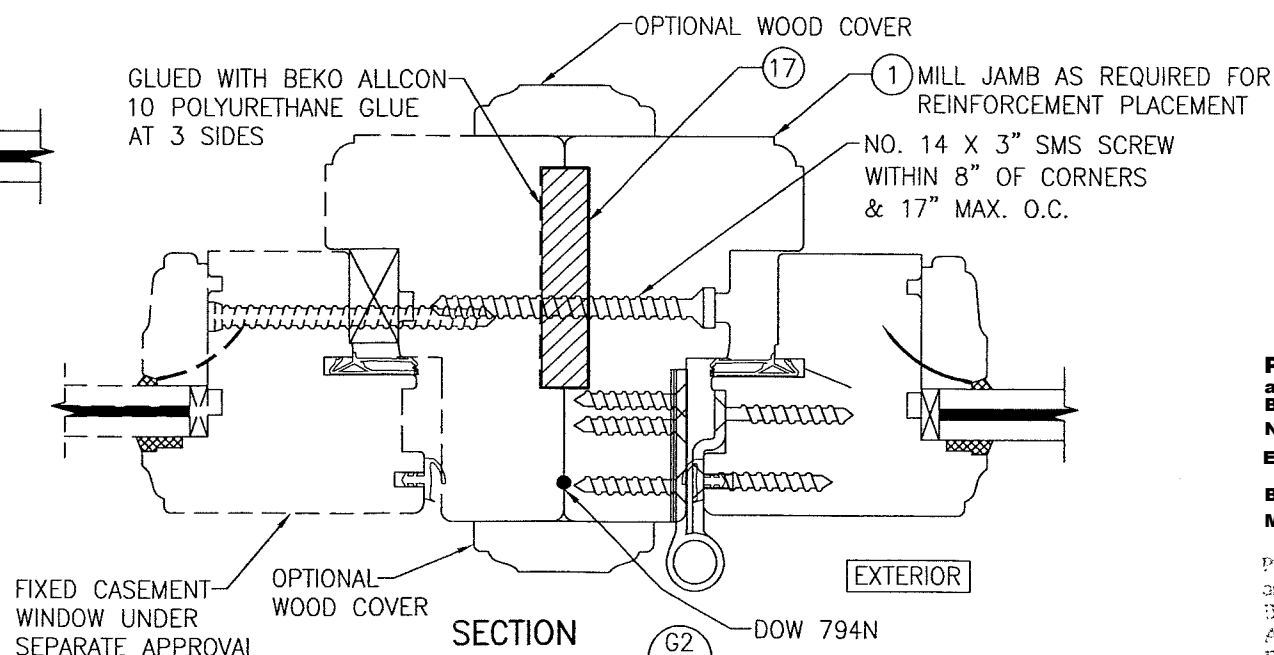


SECTION F2
SCALE: 1/2 FULL
(FOR DETAIL NOT SHOWN, SEE OTHER SECTIONS)



SECTION G1
SCALE: 1/2 FULL
(NON-REINFORCED MULLION)
(FOR DETAIL NOT SHOWN, SEE OTHER SECTIONS)

MULLION SECTION NOTE
(APPLICABLE TO SECTIONS G1-G4)
SECTIONS SHOW FIXED MULLION TO OPERABLE. OPERABLE TO OPERABLE IS JOINED THE SAME.

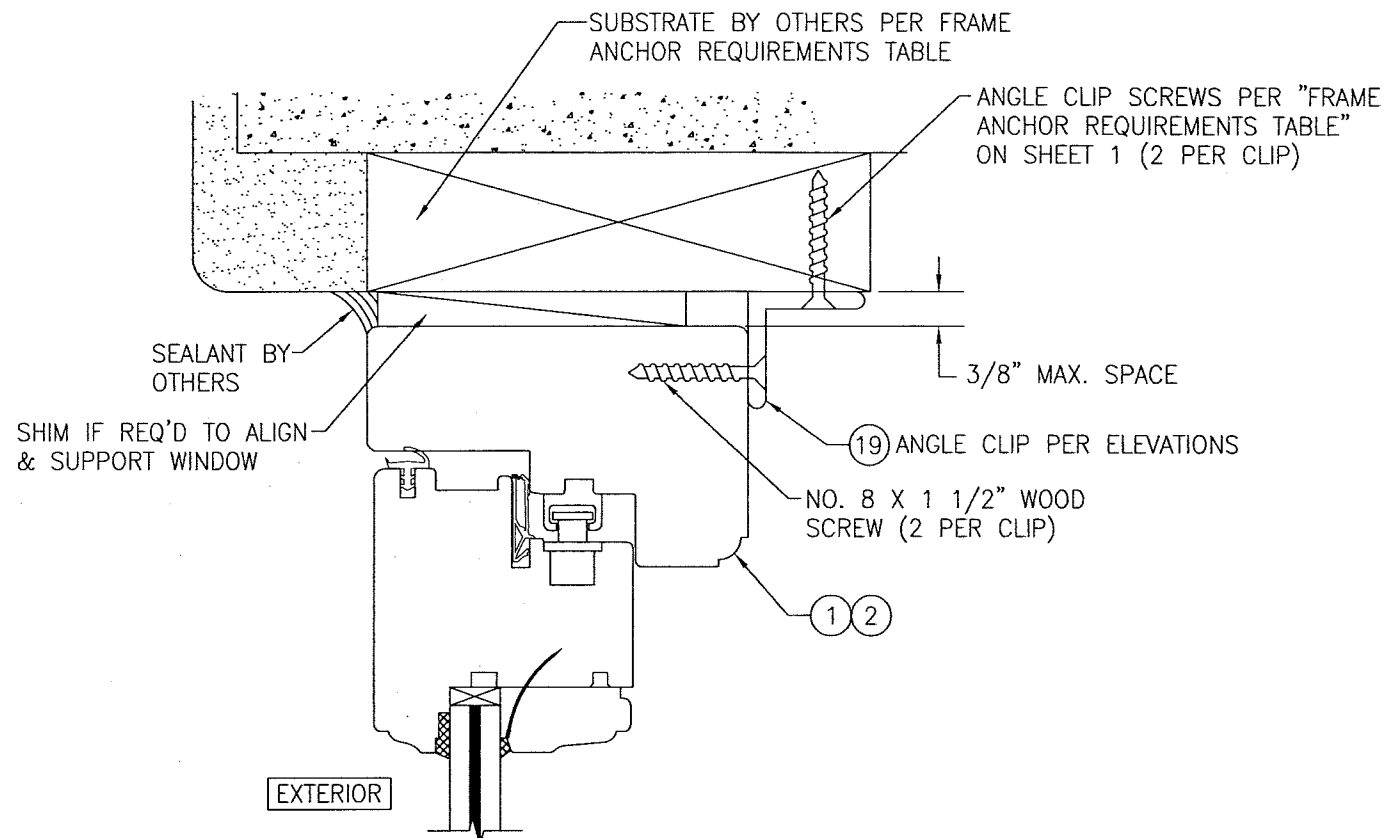


SECTION G2
SCALE: 1/2 FULL
(REINFORCED MULLION)
(FOR DETAIL NOT SHOWN, SEE OTHER SECTIONS)

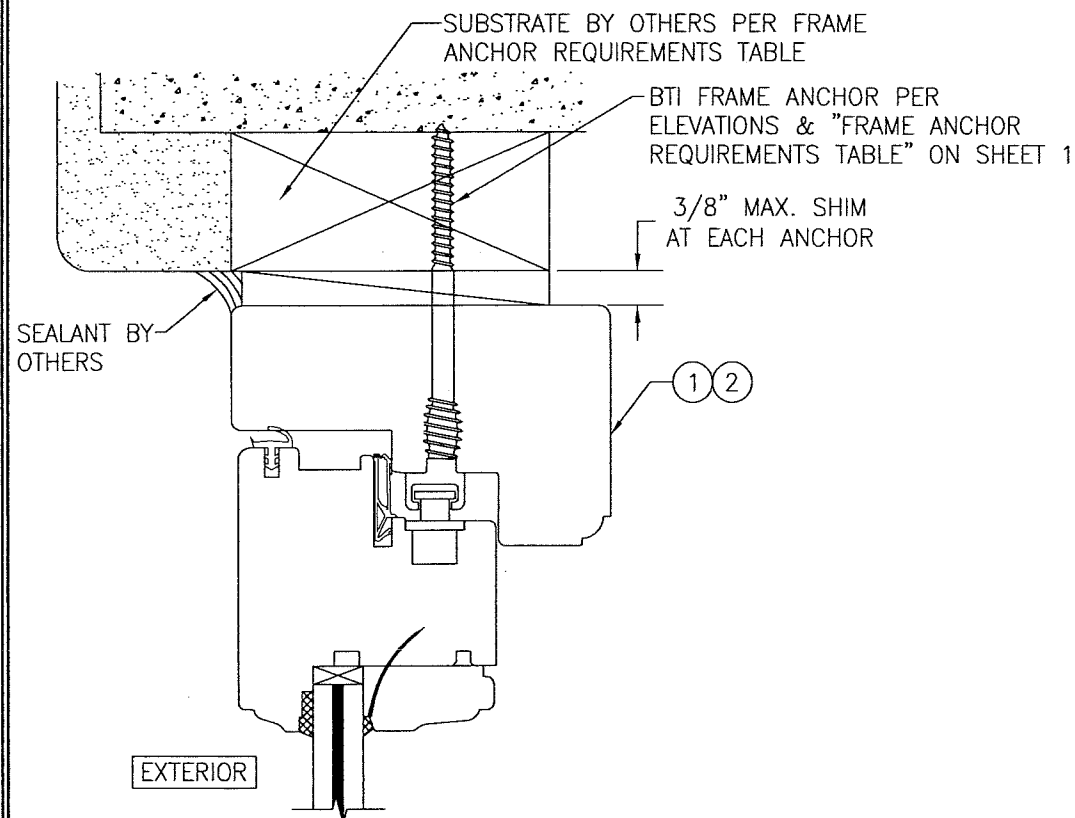
PRODUCT REVISED
as complying with the Florida Building Code
NOA-No. **20-0623.02**
Expiration Date: **01/08/2024**
By: *Manuel Fern*
Miami-Dade Product Control

PRODUCT REVISED
as complying with the Florida Building Code
Acceptance No. **18-0531.08**
Expiration Date: **Jan 8, 2024**
By: *Manuel Fern*
Miami-Dade Product Control

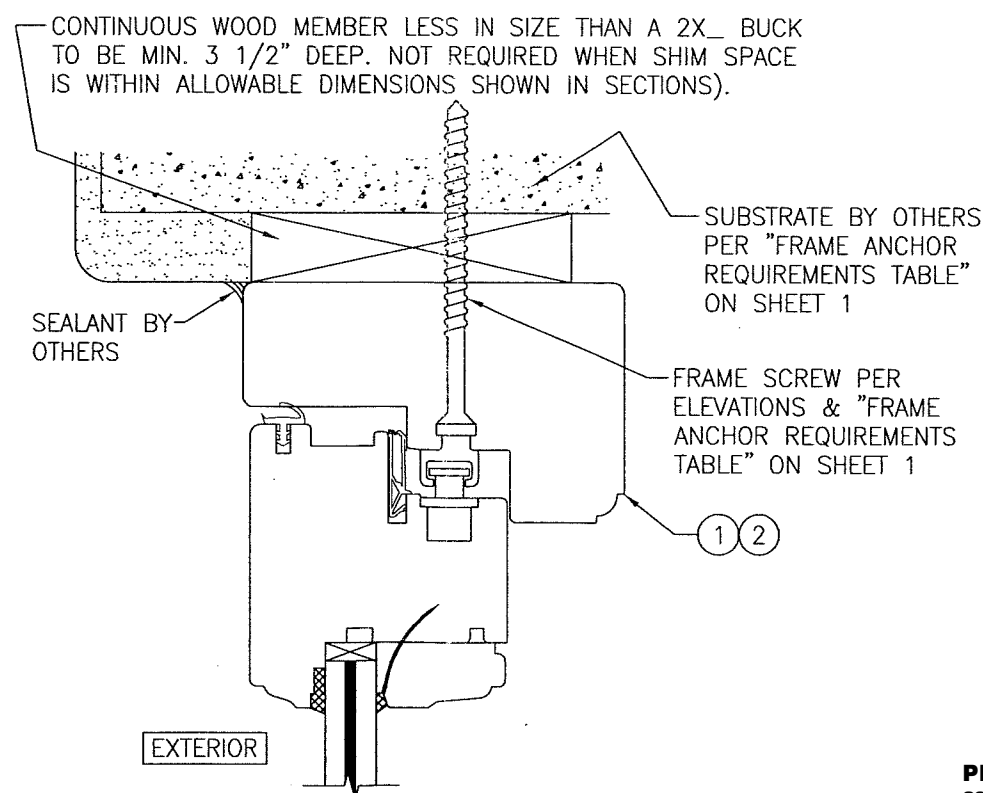
DRAWN BY: W.R.M.		CHECKED BY: W.W.S.	
PLOT: 1-2		DATE: 04/03/08	
NO.	REVISION DESCRIPTION	DATE	BY
DRAWING TITLE OUT-SWING IMPACT WOOD CASEMENT WINDOW			
CONSULTANTS W. W. SCHAEFER ENGINEERING & CONSULTING, P.A. (CA 6809)		MANUFACTURER TISCHLER UND SOHN (USA) LTD. SIX SUBURBAN AVENUE STAMFORD, CONNECTICUT 06307-674-0600	
7480 150TH COURT NORTH PALM BEACH GARDENS, FL 33418 PHONE: 561-744-3424		CERTIFICATION MAY 15 2018 WARREN W. SCHAEFER, P.E. P.E. NO. 44135	
DRAWING NO. 1530		REV. C	
SHEET NO. 6		OF 10	



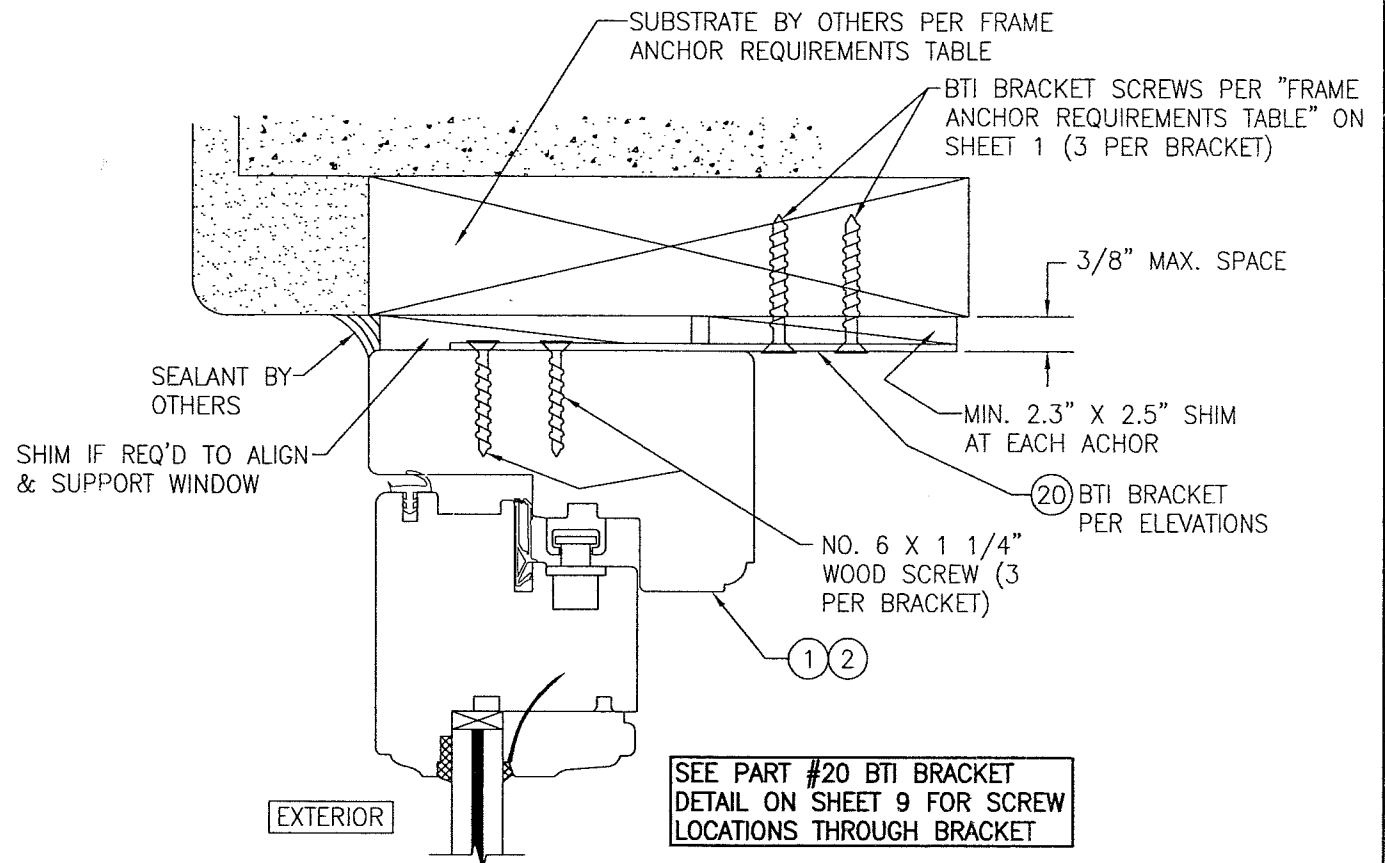
OPTIONAL INSTALLATION ANGLE CLIP DETAIL
(HEAD SECTION SHOWN, SILL & SIDES ARE INSTALLED THE SAME)
(FOR DETAIL NOT SHOWN, SEE OTHER SECTIONS)



OPTIONAL BTI SCREW DETAIL
(HEAD SECTION SHOWN, SILL & SIDES ARE INSTALLED THE SAME)
(FOR DETAIL NOT SHOWN, SEE OTHER SECTIONS)



**OPTIONAL DIRECT MOUNT DETAIL
TO SUBSTRATE WITH SPACER**
(HEAD SECTION SHOWN, SILL & SIDES ARE INSTALLED THE SAME)
(FOR DETAIL NOT SHOWN, SEE OTHER SECTIONS)



OPTIONAL INSTALLATION BTI BRACKET DETAIL
(HEAD SECTION SHOWN, SILL & SIDES ARE INSTALLED THE SAME)
(FOR DETAIL NOT SHOWN, SEE OTHER SECTIONS)

PRODUCT REVISED
as complying with the Florida
Building Code
NOA-No. **20-0623.02**
Expiration Date: **01/08/2024**
By: *Manuel Perez*
Miami-Dade Product Control

PRODUCT REVISED
as complying with the Florida
Building Code
Acceptance No. **18-0531.08**
Expiration Date: **01/08/2024**
By: *Manuel Perez*
Miami-Dade Product Control

DRAWN BY: W.R.M.	CHECKED BY: W.W.S.
PLOT: 1=2	DATE: 04/03/08
DATE	BY
REVISION DESCRIPTION	NO.
DRAWING TITLE OUT-SWING IMPACT WOOD CASEMENT WINDOW	
CONSULTANTS W. W. SCHAEFER ENGINEERING & CONSULTING, P.A. (CA 6809) 7480 150TH COURT NORTH PALM BEACH GARDENS, FL 33418 PHONE: 561-744-3424	
MANUFACTURER TISCHLER UND SOHN (USA) LTD. SIX SUBURBAN AVENUE STAMFORD, CONNECTICUT 203-674-0600	
CERTIFICATION MAY 15 2018 WARREN W. SCHAEFER, P.E. P.E. NO. 44135	
DRAWING NO. 1530	REV. C
SHEET NO. 8 OF 10	

