



DEPARTMENT OF REGULATORY AND ECONOMIC RESOURCES (RER)
BOARD AND CODE ADMINISTRATION DIVISION

NOTICE OF ACCEPTANCE (NOA)

MIAMI-DADE COUNTY
PRODUCT CONTROL SECTION

11805 SW 26 Street, Room 208
Miami, Florida 33175-2474
T (786) 315-2590 F (786) 315-2599

www.miamidade.gov/building

Tischler und Sohn (USA) Ltd.

Six Suburban Avenue

Stamford, CT 06901

SCOPE:

This NOA is being issued under the applicable rules and regulations governing the use of construction materials. The documentation submitted has been reviewed and accepted by Miami-Dade County RER - Product Control Section to be used in Miami Dade County and other areas where allowed by the Authority Having Jurisdiction (AHJ).

This NOA shall not be valid after the expiration date stated below. The Miami-Dade County Product Control Section (In Miami Dade County) and/or the AHJ (in areas other than Miami Dade County) reserve the right to have this product or material tested for quality assurance purposes. If this product or material fails to perform in the accepted manner, the manufacturer will incur the expense of such testing and the AHJ may immediately revoke, modify, or suspend the use of such product or material within their jurisdiction. RER reserves the right to revoke this acceptance if it is determined by Miami-Dade County Product Control Section that this product or material fails to meet the requirements of the applicable building code.

This product is approved as described herein and has been designed to comply with the Florida Building Code, including the High Velocity Hurricane Zone.

DESCRIPTION: Series "Mahogany Impact Inswing Casement" Wood Fixed Window – L.M.I.

APPROVAL DOCUMENT: Drawing No. **1534**, titled "In-swing Impact Wood Fixed Casement Window" sheets 1 through 7 of 7, dated 04/03/08, with revision **C1** dated 05/15/18, prepared by W. W. Schaefer Engineering & Consulting, P.A., signed and sealed by Warren W. Schaefer, P.E., bearing the Miami-Dade County Product Control Revision stamp with the Notice of Acceptance number and expiration date by the Miami-Dade County Product Control Section.

MISSILE IMPACT RATING: Large and Small Missile Impact Resistant.

LABELING: Each unit shall bear a permanent label with the manufacturer's name or logo, Wedel (Schleswig-Holstein), Germany, model/series, and following statement: "Miami-Dade County Product Control Approved", unless otherwise noted herein.

RENEWAL of this NOA shall be considered after a renewal application has been filed and there has been no change in the applicable building code negatively affecting the performance of this product.

TERMINATION of this NOA will occur after the expiration date or if there has been a revision or change in the materials, use, and/or manufacture of the product or process. Misuse of this NOA as an endorsement of any product, for sales, advertising or any other purposes shall automatically terminate this NOA. Failure to comply with any section of this NOA shall be cause for termination and removal of NOA.

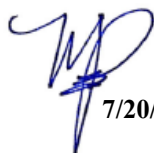
ADVERTISEMENT: The NOA number preceded by the words Miami-Dade County, Florida, and followed by the expiration date may be displayed in advertising literature. If any portion of the NOA is displayed, then it shall be done in its entirety.

INSPECTION: A copy of this entire NOA shall be provided to the user by the manufacturer or its distributors and shall be available for inspection at the job site at the request of the Building Official.

This NOA **revises NOA# 18-0531.05** and consists of this page 1 and evidence pages E-1, E-2 and E-3, as well as approval document mentioned above.

The submitted documentation was reviewed by **Manuel Perez, P.E.**




7/20/20

NOA No. 20-0623.05
Expiration Date: January 08, 2024
Approval Date: July 30, 2020
Page 1

NOTICE OF ACCEPTANCE: EVIDENCE SUBMITTED

1. EVIDENCE SUBMITTED UNDER PREVIOUS NOA's

A. DRAWINGS

1. Manufacturer's die drawings and sections.
(Submitted under NOA No. 08-0804.15)
2. Drawing No. **1534**, titled "In-Swing Impact Wood Fixed Casement Window" sheets 1 through 7 of 7, dated 04/03/08, with revision **C1** dated 05/15/18, prepared by W. W. Schaefer Engineering & Consulting, P.A., signed and sealed by Warren W. Schaefer, P.E.
(Submitted under NOA No. 18-0531.05)

B. TESTS

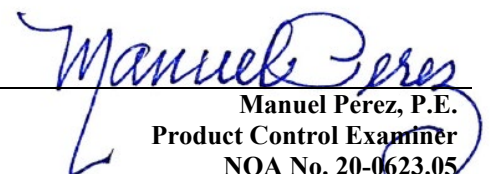
1. Test reports on: 1) Air Infiltration Test, per FBC, TAS 202-94
2) Uniform Static Air Pressure Test, Loading per FBC, TAS 202-94
3) Water Resistance Test, per FBC, TAS 202-94
4) Large Missile Impact Test per FBC, TAS 201-94
5) Cyclic Wind Pressure Loading per FBC, TAS 203-94
6) Forced Entry Test, per FBC 2411.3.2.1, and TAS 202-94
along with marked-up drawings and installation diagram of wood fixed and operable wood casement windows, prepared by Architectural Testing, Inc., Test Report No. **ATI-77324.01-109-18**, dated 06/30/08, signed and sealed by Michael D. Stremmel, P.E.
(Submitted under NOA No. 08-0804.15)

C. CALCULATIONS

1. Anchor verification calculations and structural analysis, complying with **FBC 6th Edition (2017)**, dated 07/28/08 and updated on 05/14/18, prepared by W.W. Schaefer Engineering & Consulting, P.A., signed and sealed by Warren W. Schaefer, P.E.
(Submitted under NOA No. 18-0531.05)
2. Glazing complies with **ASTM E1300-09**.

D. QUALITY ASSURANCE

1. Miami-Dade Department of Regulatory and Economic Resources (RER)


Manuel Perez, P.E.
Product Control Examiner
NOA No. 20-0623.05
Expiration Date: January 08, 2024
Approval Date: July 30, 2020

Tischler und Sohn (USA) Ltd.

NOTICE OF ACCEPTANCE: EVIDENCE SUBMITTED

E. MATERIAL CERTIFICATIONS


1. Notice of Acceptance No. **17-0712.03** issued to **Eastman Chemical Company (MA)** for their “**Saflex CP – Saflex and Saflex HP Composite Glass Interlayers with PET Core**” dated 09/07/17, expiring on 12/11/18.
2. Notice of Acceptance No. **17-0712.05** issued to **Eastman Chemical Company (MA)** for their “**Saflex Clear and Color Glass Interlayers**” dated 09/07/17, expiring on 05/21/21.

F. STATEMENTS

1. Statement letter of conformance, complying with **FBC 6th Edition (2017)**, dated May 15, 2018, issued by W.W. Schaefer Engineering & Consulting, P.A., signed and sealed by Warren W. Schaefer, P.E.
(Submitted under NOA No. 18-0531.05)
2. Statement letter of no financial interest, dated May 15, 2018, issued by W.W. Schaefer Engineering & Consulting, P.A., signed and sealed by Warren W. Schaefer, P.E.
(Submitted under NOA No. 18-0531.05)
3. Distributor Agreement between Tischler und Sohn (USA), Ltd., Connecticut, USA, and Tischler/ Cornelius Korn, G.m.b.H., Wedel (Schleswig–Holstein), Germany, dated 04/13/09, signed by Tim Carpenter and Wilhelm Korn, respectively.
(Submitted under NOA No. 11-1101.08)
4. Laboratory compliance letter for Test Report No. **ATI-77324.01-109-18**, issued by Architectural Testing, Inc., dated 07/01/08, signed and sealed by Michael D. Stremmel, P.E.
(Submitted under NOA No. 08-0804.15)

G. OTHERS

1. Notice of Acceptance No. **17-0803.25**, issued to Tischler und Sohn (USA) Ltd. for their Series “Mahogany Impact Inswing Casement” Wood Fixed Window – L.M.I., approved on 11/02/17 and expiring on 01/08/19.


Manuel Pérez, P.E.
Product Control Examiner
NOA No. 20-0623.05
Expiration Date: January 08, 2024
Approval Date: July 30, 2020

NOTICE OF ACCEPTANCE: EVIDENCE SUBMITTED

2. NEW EVIDENCE SUBMITTED

A. DRAWINGS

1. None.

B. TESTS

1. None

C. CALCULATIONS

1. None.

D. QUALITY ASSURANCE

1. Miami-Dade Department of Regulatory and Economic Resources (RER)

E. MATERIAL CERTIFICATIONS


1. Notice of Acceptance No. **18-0301.06** issued to **Eastman Chemical Company (MA)** for their “**Saflex CP - Saflex and Saflex HP Composite Glass Interlayers with PET Core**” dated 05/17/18, expiring on 12/11/23.
2. Notice of Acceptance No. **17-0712.05** issued to **Eastman Chemical Company (MA)** for their “**Saflex Clear and Color Glass Interlayers**” dated 09/07/17, expiring on 05/21/21.

F. STATEMENTS

1. Statement letter of conformance, complying with **FBC 6th Edition (2017)** and **FBC 7th Edition (2020)** dated June 05, 2020, issued by W.W. Schaefer Engineering & Consulting, P.A., signed and sealed by Warren W. Schaefer, P.E.

G. OTHERS

1. Notice of Acceptance No. **18-0531.05**, issued to Tischler und Sohn (USA) Ltd. for their Series “Mahogany Impact Inswing Casement” Wood Fixed Window – L.M.I., approved on 07/26/18 and expiring on 01/08/24.


Manuel Perez, P.E.
Product Control Examiner
NOA No. 20-0623.05
Expiration Date: January 08, 2024
Approval Date: July 30, 2020

GENERAL NOTES:

1. THIS PRODUCT HAS BEEN TESTED, ANALYZED & APPROVED FOR DESIGN PRESSURES NOT TO EXCEED THOSE SHOWN IN THE "ALLOWABLE DESIGN PRESSURE TABLE(S)".
2. OPENINGS, BUCKING & BUCKING FASTENERS MUST BE PROPERLY DESIGNED & INSTALLED TO TRANSFER WIND LOADS TO THE STRUCTURE.
3. ALL HARDWARE & FASTENERS SHALL BE IN ACCORDANCE WITH THESE DRAWINGS & SHALL NOT VARY UNLESS SPECIFICALLY MENTIONED ON THE DRAWINGS. SPECIFIED ANCHOR EMBED TO BASE MATERIAL SHALL BE BEYOND WALL FINISH OR STUCCO.
4. THE DETAILS & SPECIFICATIONS SHOWN HEREIN REPRESENT THE PRODUCTS TESTED & PROPOSED FOR CONFORMANCE WITH THE FLORIDA BUILDING CODE PROTOCOLS TAS-201, 202 & 203 FOR LARGE MISSILE IMPACT PRODUCTS.
5. THIS PRODUCT HAS BEEN DESIGNED IN ACCORDANCE WITH AND MEETS THE REQUIREMENTS OF THE FLORIDA BUILDING CODE (FBC) INCLUDING HIGH VELOCITY HURRICANE ZONES (HVHZ).
6. IMPACT SHUTTERS ARE NOT REQUIRED WITH THIS PRODUCT.
7. ALL ANCHORS SECURING PRODUCT FRAMES TO PRESSURE TREATED BUCKS OR WOOD FRAMING SHALL BE CAPABLE OF RESISTING CORROSION CAUSED BY THE PRESSURE TREATING CHEMICALS IN THE WOOD.
8. DETERMINE THE POSITIVE & NEGATIVE DESIGN LOADS TO USE WHEN REFERENCING THESE DOCUMENTS IN ACCORDANCE WITH THE GOVERNING CODE AND GOVERNING WIND VELOCITY. FOR WIND LOAD CALCULATIONS IN ACCORDANCE WITH THE FLORIDA BUILDING CODE, A DIRECTIONALITY FACTOR OF $K_d = 0.85$ MAY BE APPLIED PER THE ASCE-7 STANDARD.
9. NO INCREASE IN ALLOWABLE STRESS HAS BEEN USED IN THE CERTIFICATION OF THIS PRODUCT. WIND LOAD DURATION FACTOR $C_d = 1.6$ WAS USED FOR WOOD SCREW ANALYSIS ONLY.
10. MATERIALS, INCLUDING BUT NOT LIMITED TO STEEL SCREWS, THAT COME INTO CONTACT WITH OTHER DISSIMILAR MATERIALS SHALL MEET THE REQUIREMENTS OF FLORIDA BUILDING CODE.
11. ALL WOOD MEMBERS OF THIS PRODUCT THAT MAY POSSIBLY COME INTO CONTACT WITH MASONRY OR CONCRETE SUBSTRATES, ARE SUBJECT TO MOISTURE &/OR ARE SUBJECT TO THE OUTSIDE ENVIRONMENT SHALL BE OF AN APPROVED DURABLE SPECIES OR BE TREATED IN AN APPROVED METHOD WITH AN APPROVED PRESERVATIVE PER FBC REQUIREMENTS.

CORNER CONSTRUCTION:

RECTANGULAR FRAME CORNERS: MORTISE & TENON CONSTRUCTION JOINED & GLUED WITH PONAL SUPER 3 WOOD GLUE OR EQUIVALENT.

ARCHED FRAME CORNERS: ARCHED FRAME BUTTED TO STRAIGHT FRAME, JOINED WITH ONE(1) NO.14 X 3" WOOD SCREW, & GLUED WITH PONAL SUPER 3 WOOD GLUE OR EQUIVALENT.

HALF ROUND FRAME CORNERS: FINGER JOINT CONSTRUCTION JOINED & GLUED WITH PONAL SUPER 3 WOOD GLUE OR EQUIVALENT.

RECTANGULAR SASH CORNERS: MORTISE & TENON CONSTRUCTION JOINED & GLUED WITH PONAL SUPER 3 WOOD GLUE OR EQUIVALENT.

ARCHED SASH CORNERS: ARCHED SASH BUTTED TO STRAIGHT SASH, JOINED WITH ONE(1) NO.14 X 3" WOOD SCREW, & GLUED WITH PONAL SUPER 3 WOOD GLUE OR EQUIVALENT.

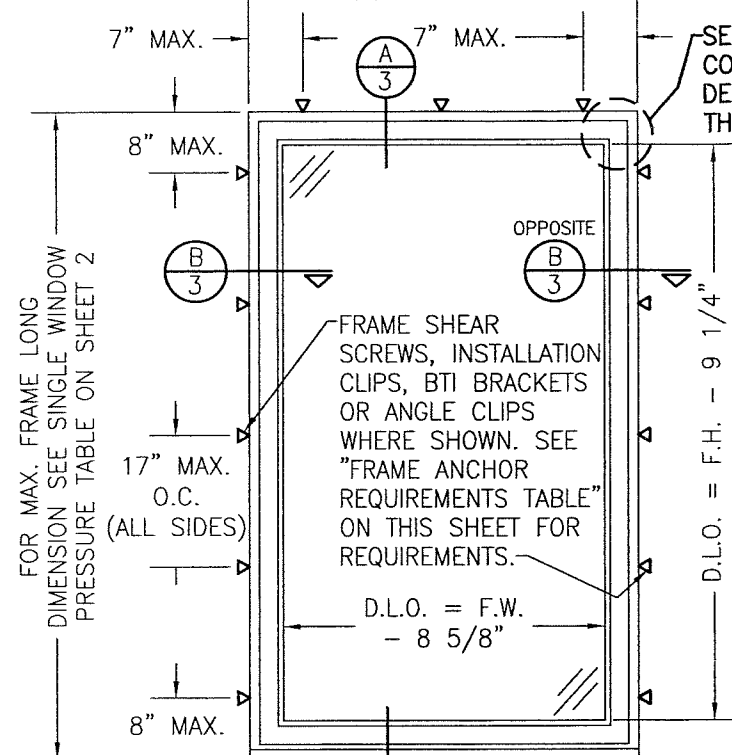
HALF ROUND SASH CORNERS: FINGER JOINT CONSTRUCTION JOINED & GLUED WITH PONAL SUPER 3 WOOD GLUE OR EQUIVALENT.

FRAME ANCHOR REQUIREMENTS TABLE

OPENING TYPE (SUBSTRATE)	FRAME/CLIP/BACKET TO OPENING FASTENER TYPE	MINIMUM EMBED	MINIMUM EDGE DIST.
FRAME SCREWS			
MIN. 2X4 WOOD FRAME OR BUCK (MIN. GR. 3 & G=0.55)	NO. 14 SMS/WOOD SCREW OR 1/4" BTI SCREW	1 1/4"	3/4"
MIN. 18 GA. 33 KSI METAL STUD MIN. 1/8" THK A36 STEEL	(2)1/4-14 SELF TAP/DRILLING SCREW	FULL	1/2"
MIN. 1/8" THK 6063-T5 ALUM.	(2)1/4-14 SELF TAP/DRILLING SCREW	FULL	1/2"
C-90 CMU/2500 PSI CONCRETE	(1) 1/4" CONCRETE SCREW	1 1/4"	2"
INSTALLATION CLIP SCREWS			
MIN. 2X6 WOOD FRAME OR BUCK (MIN. GR. 3 & G=0.55)	NO. 12 X 1 1/2" SMS	1 3/8"	3/4"
MIN. 18 GA. 33 KSI METAL STUD MIN. 1/8" THK A36 STEEL	(2)12-14 SELF TAP/DRILLING SCREW	FULL	1/2"
MIN. 1/8" THK 6063-T5 ALUM.	(2)12-14 SELF TAP/DRILLING SCREW	FULL	1/2"
C-90 CMU/2500 PSI CONCRETE	(1) 1/4" CONCRETE SCREW	1 1/4"	2"
BTI BRACKET & ANGLE CLIP SCREWS			
MIN. 2X6 WOOD FRAME OR BUCK (MIN. GR. 3 & G=0.55)	NO. 8 X 1 1/2" SMS	1 1/8"	3/4"
MIN. 18 GA. 33 KSI METAL STUD MIN. 1/8" THK A36 STEEL	(2) 8-18 SELF TAP/DRILLING SCREW	FULL	1/2"
MIN. 1/8" THK 6063-T5 ALUM.	(2) 8-18 SELF TAP/DRILLING SCREW	FULL	1/2"

- (1) CONCRETE SCREWS SHALL BE ELCO ULTRACONS, ELCO CRETE-FLEX OR HILTI KWIK-CON II (HARDENED STEEL OR S.S.).
- (2) ALL SELF TAP/DRILLING SCREWS SHALL BE MIN. GR. 5

FOR MAX. FRAME
SHORT DIMENSION SEE
SINGLE WINDOW PRESSURE
TABLE ON SHEET 2



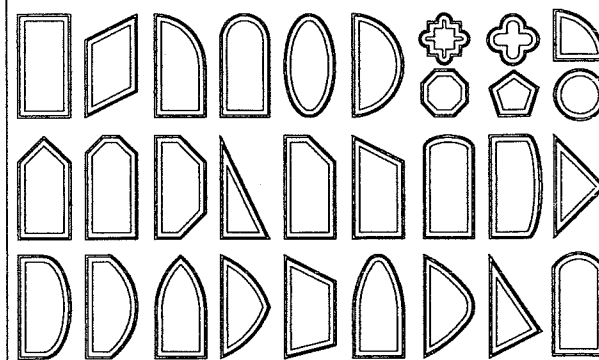
INTERIOR ELEVATION: SINGLE FIXED WINDOW

SCALE: 1/2" = 1'-0"

LONG DIMENSION OF WINDOW MAY BE HORIZONTAL OR
VERTICAL (HEIGHT & WIDTH MAY BE INTERCHANGED).

RECTANGULAR WINDOWS SHOWN. ANCHORING OF
SHAPED WINDOWS IS THE SAME WITH REQUIRED
ANCHOR SPACING ALONG THE FRAME
CIRCUMFERENCE BEING THE SAME AS SPECIFIED
FOR A STRAIGHT FRAME.

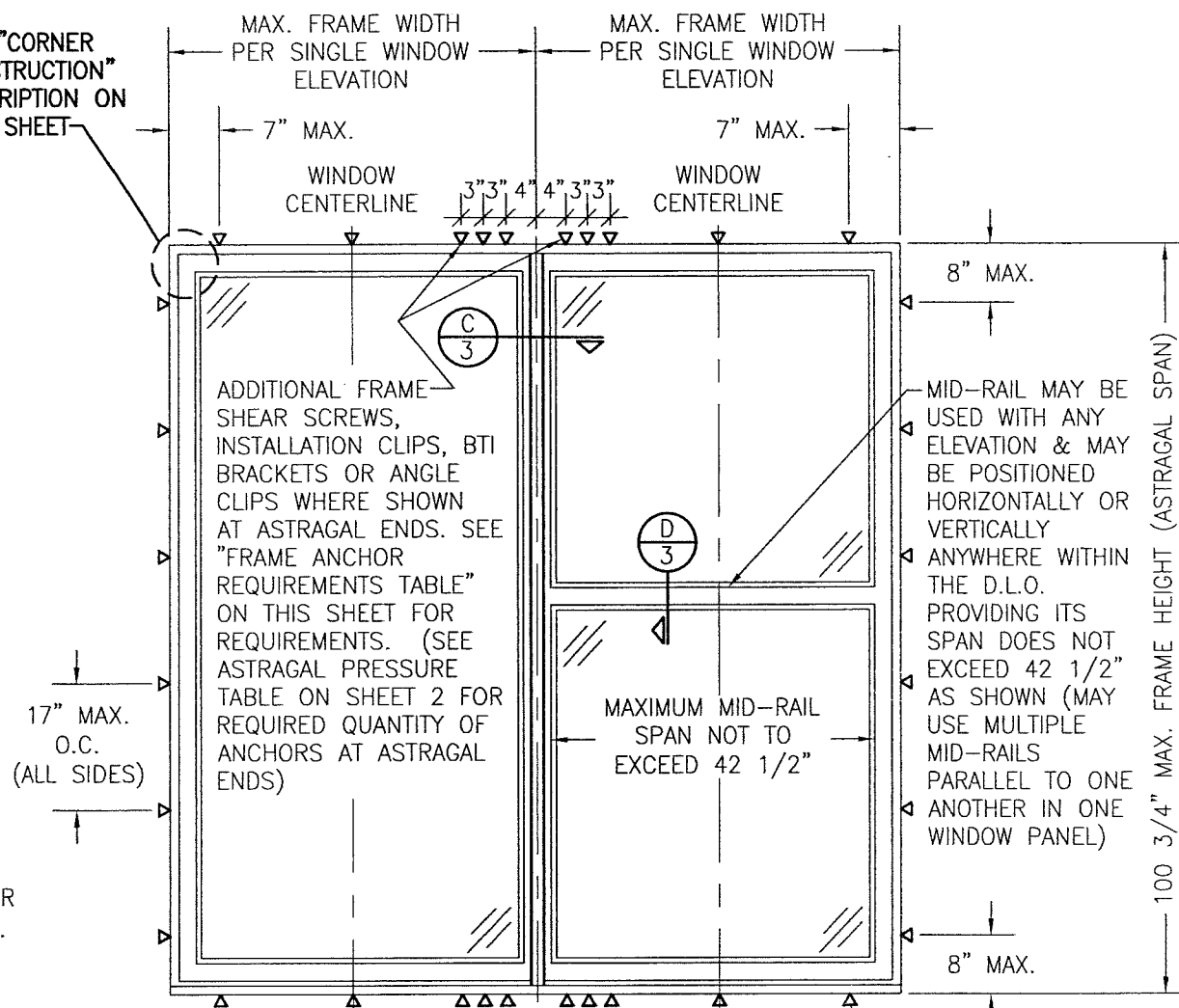
APPROVED SHAPES



NOTES:

1. OTHER SHAPES MAY APPLY PROVIDING THEY ARE SIMILAR TO THOSE SHOWN & HAVE CORNER CONSTRUCTION AS DESCRIBED IN THIS DRAWING.
2. ALL SHAPED UNITS MUST FIT INSCRIBED INTO THE ALLOWABLE RECTANGULAR UNITS & BE GOVERNED BY THE ALLOWABLE PRESSURE OF THE RESPECTIVE RECTANGULAR UNIT.
3. THE SHAPES SHOWN APPLY TO SINGLE WINDOWS AND THE WINDOWS ON EITHER SIDE OF A FIXED ASTRAGAL.

THESE DRAWINGS ARE APPLICABLE ONLY TO THE PRODUCT SPECIFIED. THEY MAY NOT BE USED FOR THE ASSEMBLY AND/OR INSTALLATION OF ANY OTHER PRODUCT NOR MAY THEY BE USED FOR RATIONAL AND/OR LOCAL APPROVAL OF ANY PRODUCT NOT PRODUCED BY THE MANUFACTURER STATED ON THESE DRAWINGS.



INTERIOR ELEVATION: DOUBLE FIXED WINDOW WITH FIXED ASTRAGAL

SCALE: 1/2" = 1'-0"

SEE SINGLE WINDOW ELEVATION FOR WINDOW DETAIL NOT SHOWN

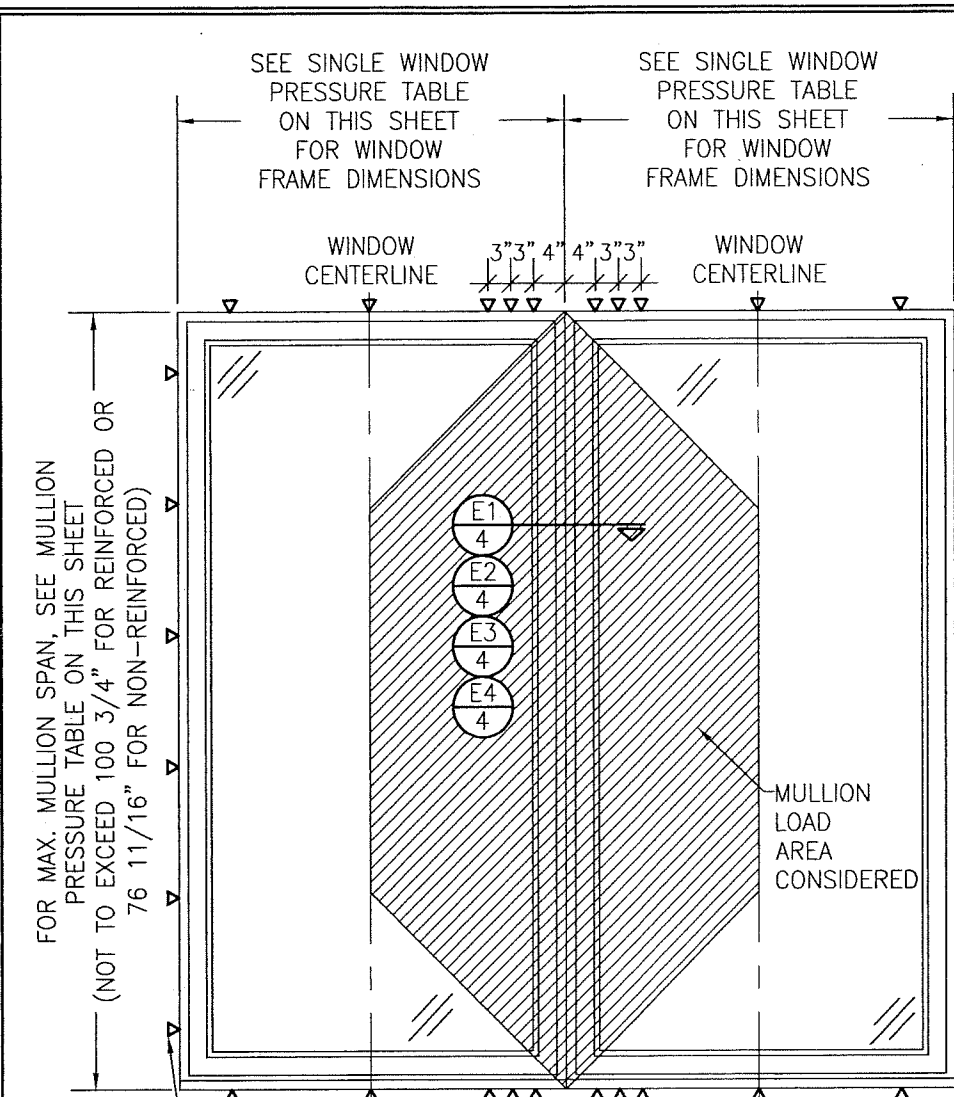
ALLOWABLE DESIGN PRESSURE
(ALL CONDITIONS)

SEE LOAD TABLES ON SHEET 2

PRODUCT REVISED
as complying with the Florida
Building Code
NOA-No. **20-0623.05**
Expiration Date: **01/08/2024**
By: *Manuel Perez*
Miami Dade Product Control

PRODUCT REVISED
as complying with the Florida
Building Code
Acceptance No. **18-0531.05**
Expiration Date: **Jan. 8, 2024**
By: *Manuel Perez*
Miami Dade Product Control

DRAWING BY: W.R.M.		CHECKED BY: W.W.S.		
PLOT: 1=24		DATE: 04/03/08		
NO.	REVISION	DESCRIPTION	BY	DATE
A1	UPDATE TO CURRENT STANDARDS		W.R.M.	10/25/11
B1	UPDATE GLASS DESCRIPTION		W.R.M.	09/04/13
C1	UPDATE TO CURRENT STANDARDS		W.W.S.	05/15/18
DRAWING TITLE IN-SWING IMPACT WOOD FIXED CASEMENT WINDOW				
MANUFACTURER TISCHLER UND SOHN (USA) LTD. SIX SUBURBAN AVENUE STAMFORD, CONNECTICUT 203-674-0600				
CONSULTANTS W. W. SCHAEFER ENGINEERING & CONSULTING, P.A. (CA 6809) 7480 150TH COURT NORTH PALM BEACH GARDENS, FL 33418 PHONE: 561-744-3424				
CERTIFICATION MAY 15 2018 WARREN W. SCHAEFER, P.E.				
DRAWING NO. 1534		REV. C		
SHEET NO. 1 OF 7				



SEE SINGLE WINDOW ELEVATION FOR FRAME ANCHOR REQUIREMENTS & POSITIONS AROUND WINDOWS

**EXTERIOR ELEVATION:
MULTIPLE FIXED WINDOWS**

SCALE: 1/2" = 1'-0"

(RECTANGULAR WINDOWS SHOWN, SHAPED WINDOWS ALSO APPLY)

MULTIPLE UNIT NOTES:

1. FOR ALL DETAIL NOT SHOWN, SEE SINGLE WINDOW ELEVATIONS.
2. MULLION MAY BE HORIZONTAL OR VERTICAL PROVIDING UNIT SIZES ARE RESTRICTED AS SHOWN IN THIS ELEVATION.
3. IF VERTICALLY STACKED, THE MANUFACTURER SHALL INSURE THAT THE DEAD LOAD WEIGHT OF THE WINDOWS CAN NOT CAUSE UNDO FAILURE.
4. THERE IS NO LIMIT ON THE NUMBER OF WINDOWS THAT MAY BE COMBINED IN ONE DIRECTION INTO ONE OPENING PROVIDING THE OPENING IS DESIGNED TO SUPPORT ALL LOADS TRANSFERRED FROM THE WINDOWS & THEIR MULLIONS.
5. INDIVIDUAL WINDOW SIZES SHALL BE RESTRICTED AS SPECIFIED IN THE SINGLE WINDOW ELEVATIONS.

ALLOWABLE SINGLE WINDOW PRESSURE TABLE						
MAXIMUM FRAME LONG DIMENSION (IN.)	MAXIMUM FRAME SHORT DIMENSION (IN.)	ALLOWABLE PRESSURE (+/- PSF)				
		GLASS OPTIONS 1, 4 & 5	GLASS OPTION 2		GLASS OPTION 3	GLASS OPTION 6
			POS.	NEG.		
144	35	70.0	70.0	70.0	70.0	70.0
	27	70.0	70.0	85.0	70.0	70.0
132	39	70.0	70.0	70.0	70.0	70.0
	29	70.0	70.0	85.0	70.0	70.0
120	42	70.0	70.0	70.0	70.0	70.0
	32	70.0	70.0	85.0	70.0	70.0
108	47	70.0	70.0	70.0	69.0	70.0
	43	70.0	70.0	70.0	70.0	70.0
	36	70.0	70.0	85.0	70.0	70.0
	52	70.0	70.0	70.0	65.9	70.0
101	49	70.0	70.0	70.0	68.3	70.0
	43	70.0	70.0	70.0	70.0	70.0
	38	70.0	70.0	85.0	70.0	70.0
96	53	N/A	70.0	70.0	70.0	70.0
	40	70.0	70.0	85.0	70.0	70.0
84	61	N/A	70.0	70.0	70.0	70.0
	46	70.0	70.0	85.0	70.0	70.0
	66	N/A	70.0	70.0	70.0	70.0
77	51	70.0	70.0	85.0	70.0	70.0
	70	N/A	70.0	70.0	70.0	70.0
73	53	N/A	70.0	85.0	70.0	70.0
	72	N/A	70.0	85.0	70.0	70.0
67	58	N/A	70.0	85.0	70.0	70.0
63	62	N/A	70.0	85.0	70.0	70.0

1. SEE GLAZING DETAILS FOR GLASS OPTIONS.
2. "N/A" DESIGNATES A SIZE NOT APPLICABLE TO THAT GLASS OPTION.
3. WINDOW SIZES SHOWN ARE MAXIMUM SIZES. SMALLER SIZES SHALL APPLY TO LOADS EQUAL TO THE NEAREST LARGER SIZE SHOWN IN TABLE.
4. LONG DIMENSION MAY BE HORIZONTAL OR VERTICAL
5. DIMENSIONS SHOWN ARE +/- 1/2".

ASTRAGAL ALLOWABLE DESIGN PRESSURE					
MAXIMUM ASTRAGAL SPAN (IN.)	MAXIMUM LOAD WIDTH (IN.)	ALLOWABLE PRESSURE (+/- PSF)			
		4 END ANCHORS		6 END ANCHORS	
		POS.	NEG.	POS.	NEG.
101	72	52.2	52.2	53.6	N/A
	67	54.0	54.0	56.1	N/A
	61	56.8	56.8	59.7	N/A
	55	60.4	60.4	64.8	N/A
	49	65.1	65.1	70.0	71.0
	43	70.0	71.4	70.0	77.8
	37	70.0	80.0	70.0	85.0
	31	70.0	85.0	70.0	85.0
	72	56.5	56.5	60.7	60.7
	67	58.3	58.3	63.3	63.3
	61	61.1	61.1	66.6	66.6
	55	64.8	64.8	70.0	70.6
	49	69.7	69.7	70.0	75.9
	43	70.0	76.2	70.0	83.0
84	37	70.0	85.0	70.0	85.0
	72	70.0	70.6	70.0	77.0
	67	70.0	72.2	70.0	78.6
	61	70.0	74.8	70.0	81.5
	55	70.0	78.6	70.0	85.0
	49	70.0	83.7	70.0	85.0
	43	70.0	85.0	70.0	85.0
77	72	70.0	82.7	70.0	85.0
	67	70.0	83.8	70.0	85.0
	61	70.0	85.0	70.0	85.0
72 3/4	72	70.0	85.0	70.0	85.0

NOTES:

1. LOAD WIDTH IS THE DISTANCE BETWEEN WINDOW CENTERLINES.

2. ALLOWABLE UNIT PRESSURE SHALL BE THE LESSER OF THE PRESSURES SHOWN IN THIS TABLE & THOSE SPECIFIED FOR THE INDIVIDUAL WINDOW.

3. DIMENSIONS SHOWN ARE +/-1/2".

- NOTES:
1. LOAD WIDTH IS THE DISTANCE BETWEEN WINDOW CENTERLINES.
 2. ALLOWABLE UNIT PRESSURE SHALL BE THE LESSER OF THE PRESSURES SHOWN IN THIS TABLE & THOSE SPECIFIED FOR THE INDIVIDUAL WINDOW.
 3. DIMENSIONS SHOWN ARE +/- 1/2".

MULLION ALLOWABLE DESIGN PRESSURE							
MAXIMUM MULLION SPAN (IN.)	MAXIMUM LOAD WIDTH (IN.)	ALLOWABLE PRESSURE (+/- PSF)					
		NON-REINFORCED 4 OR 6 END ANCHORS		REINFORCED 4 END ANCHORS 6 END ANCHORS			
		POS.	NEG.	POS.	NEG.	POS.	NEG.
101	72	N/A	N/A	41.8	41.8	44.3	44.3
	67	N/A	N/A	43.3	43.3	46.3	46.3
	61	N/A	N/A	45.5	45.5	49.3	49.3
	55	N/A	N/A	48.4	48.4	53.5	53.5
	49	N/A	N/A	52.2	52.2	58.9	58.9
	43	N/A	N/A	57.3	57.3	65.8	65.8
	37	N/A	N/A	64.2	64.2	70.0	74.3
96	31	N/A	N/A	70.0	73.9	70.0	85.0
	25	N/A	N/A	70.0	85.0	70.0	85.0
	72	N/A	N/A	45.3	45.3	50.1	50.1
	67	N/A	N/A	46.8	46.8	52.3	52.3
	61	N/A	N/A	49.0	49.0	55.5	55.5
	55	N/A	N/A	52.0	52.0	59.9	59.9
	49	N/A	N/A	55.9	55.9	64.7	64.7
84	43	N/A	N/A	61.1	61.1	70.0	70.8
	37	N/A	N/A	68.3	68.3	70.0	79.1
	31	N/A	N/A	70.0	78.5	70.0	85.0
	25	N/A	N/A	70.0	85.0	70.0	85.0
	72	N/A	N/A	56.7	56.7	65.6	65.6
	67	N/A	N/A	57.9	57.9	67.0	67.0
	61	N/A	N/A	60.0	60.0	69.5	69.5
77	55	N/A	N/A	63.0	63.0	73.0	73.0
	49	N/A	N/A	67.2	67.2	70.0	77.8
	43	N/A	N/A	70.0	72.9	70.0	84.4
	37	N/A	N/A	70.0	80.8	70.0	85.0
	31	N/A	N/A	70.0	85.0	70.0	85.0
	72	N/A	N/A	66.3	66.3	70.0	76.8
	67	N/A	N/A	67.2	67.2	70.0	77.8
72 3/4	61	N/A	N/A	69.0	69.0	70.0	80.0
	55	N/A	N/A	70.0	71.9	70.0	83.3
	49	N/A	N/A	70.0	76.1	70.0	85.0
	43	N/A	N/A	70.0	82.1	70.0	85.0
	37	N/A	N/A	70.0	85.0	70.0	85.0
	72	48.6	48.6	70.0	74.0	70.0	85.0
	67	49.1	49.1	70.0	74.5	70.0	85.0
67	61	50.5	50.5	70.0	76.0	70.0	85.0
	55	52.9	52.9	70.0	78.7	70.0	85.0
	52	54.7	54.7	70.0	82.8	70.0	85.0
	49	56.7	56.7	70.0	85.0	70.0	85.0
	43	62.0	62.0	70.0	85.0	70.0	85.0
	37	70.0	70.0	70.0	85.0	70.0	85.0
	31	70.0	80.7	70.0	85.0	70.0	85.0
61	25	70.0	85.0	70.0	85.0	70.0	85.0
	67 OR GREATER	62.1	62.1	70.0	85.0	70.0	85.0
	61	63.1	63.1	70.0	85.0	70.0	85.0
	55	65.1	65.1	70.0	85.0	70.0	85.0
	52	66.9	66.9	70.0	85.0	70.0	85.0
	49	69.0	69.0	70.0	85.0	70.0	85.0
	43	70.0	74.9	70.0	85.0	70.0	85.0
55	37	70.0	83.7	70.0	85.0	70.0	85.0
	31	70.0	85.0	70.0	85.0	70.0	85.0
	55 OR GREATER	70.0	85.0	70.0	85.0	70.0	85.0

- NOTES:
1. LOAD WIDTH IS THE DISTANCE BETWEEN WINDOW CENTERLINES.
 2. ALLOWABLE UNIT PRESSURE SHALL BE THE LESSER OF THE PRESSURES SHOWN IN THIS TABLE & THOSE SPECIFIED FOR THE INDIVIDUAL WINDOW.
 3. "N/A" DESIGNATES A SIZE NOT APPLICABLE TO THAT REINFORCEMENT CONDITION.
 4. SIZE VALUES IN TABLE ARE +/- 1/2"

PRODUCT REVISED
as complying with the Florida
Building Code
NOA-No. **20-0623.05**
Expiration Date: **01/08/2024**
By: *Manuel Perez*
Miami-Dade Product Control

PRODUCT REVISED
as complying with the Florida
Building Code
Acceptance No. **18-0531.05**
Expiration Date: **12-8-2024**
By: *Manuel Perez*
Miami-Dade Product Control

DRAWN BY: W.R.M.	CHECKED BY: W.W.S.
PLOT: 1=24	DATE: 04/03/08
DATE	BY
REVISION	DESCRIPTION
NO.	
IN-SWING IMPACT WOOD FIXED CASEMENT WINDOW	
MANUFACTURER TISCHLER UND SOHN (USA) LTD. SIX SUBURBAN AVENUE STAMFORD, CONNECTICUT 203-674-0600	
CONSULTANTS W. W. SCHAEFER ENGINEERING & CONSULTING, P.A. (CA 6809) 7480 150TH COURT NORTH PALM BEACH GARDENS, FL 33418 PHONE: 561-744-3424	CERTIFICATION MAY 15 2018 WARREN W. SCHAEFER, P.E. P.E. NO. 144135
DRAWING NO. 1534	REV. C
SHEET NO. 2 OF 7	

SUBSTRATE BY OTHERS PER FRAME ANCHOR REQUIREMENTS TABLE

FRAME ANCHOR PER ELEVATIONS

3/8" MAX. SHIM AT EACH ANCHOR

SEALANT BY OTHERS

SUBSTRATE BY OTHERS PER FRAME ANCHOR REQUIREMENTS TABLE

SEALANT BY OTHERS

FRAME ANCHOR PER ELEVATIONS

3/8" MAX. SHIM AT EACH ANCHOR

FRAME WIDTH

SECTION B

SCALE: 1/2 FULL

FRAME SHEAR SCREW INSTALLATION SHOWN. SEE OPTIONAL DETAILS FOR OTHER INSTALLATION CONDITIONS.

EXTERIOR

SEE GLAZING DETAILS ON THIS SHEET

OPTIONAL SILICONE CAP BEAD (NON-STRUCTURAL)

SEE GLASS OPTIONS BELOW

DOW 895

EXTERIOR

1/2" MIN. BITE

SETTING BLOCK AS REQ'D (SHALL MEET MINIMUM REQUIREMENTS OF FBC)

I.G. GLAZING DETAIL

GLASS OPTIONS 4, 5 & 6

GLASS OPTION 4: 1 3/16" LAMINATED I.G. (3/16" AN./0.09" EASTMAN CHEMICAL CO. SAFLEX/3/16" AN./1/2" AIR SPACE/1/4 AN.)

GLASS OPTION 5: 1 3/16" LAMINATED I.G. (3/16" AN./0.09" EASTMAN CHEMICAL CO. SAFLEX/3/16" AN./1/2" AIR SPACE/1/4 TEMP.)

GLASS OPTION 6: 1 3/16" LAMINATED I.G. (3/16" H.S./0.075" EASTMAN CHEMICAL CO. SAFLEX CP/3/16" H.S./1/2" AIR SPACE/1/4 TEMP.)

NOTE: THE SINGLE PANE OF THE IG GLASS SHALL BE TEMPERED WHEN REQUIRED TO CONFORM WITH SECTION 2406 OF THE FLORIDA BUILDING CODE FOR USE OF GLASS IN HAZARDOUS LOCATIONS.

SEE GLAZING DETAILS ON THIS SHEET

EXTERIOR

SECTION D

SCALE: 1/2 FULL

SECTION A

SCALE: 1/2 FULL

FRAME SHEAR SCREW INSTALLATION SHOWN. SEE OPTIONAL DETAILS FOR OTHER INSTALLATION CONDITIONS.

EXTERIOR

SECTION C

SCALE: 1/2 FULL

OPTIONAL SILICONE CAP BEAD (NON-STRUCTURAL)

SEE GLASS OPTIONS BELOW

DOW 895

EXTERIOR

1/2" MIN. BITE

SETTING BLOCK AS REQ'D (SHALL MEET MINIMUM REQUIREMENTS OF FBC)

NON-I.G. GLAZING DETAIL
GLASS OPTIONS 1, 2 & 3

GLASS OPTION 1: 9/16" LAMINATED GLASS (1/4" AN./0.09" EASTMAN CHEMICAL CO. SAFLEX/1/4" AN.)

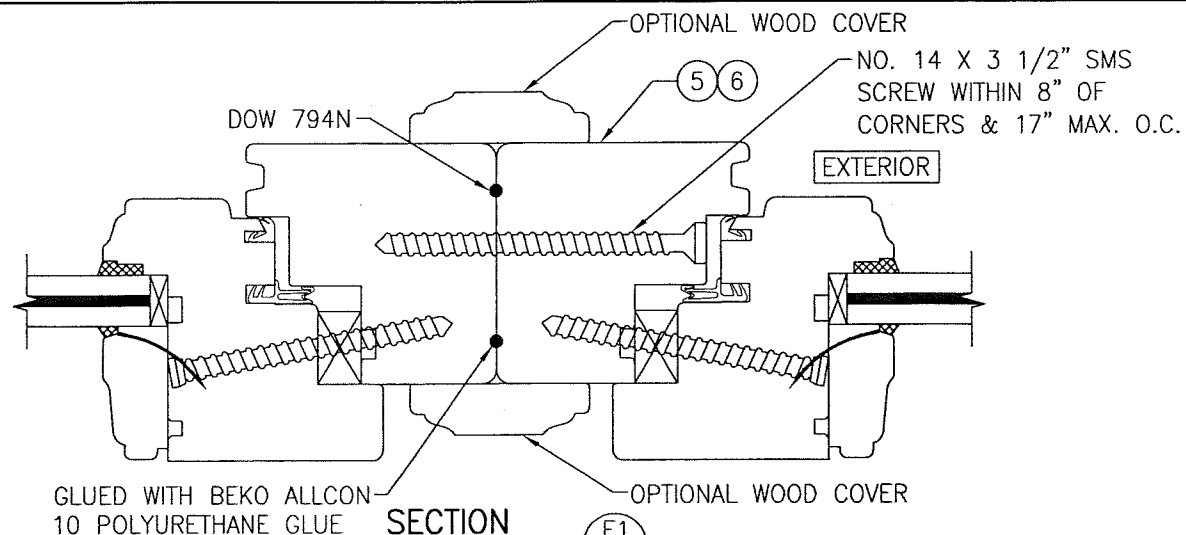
GLASS OPTION 2: 9/16" LAMINATED GLASS (1/4" H.S./0.075" EASTMAN CHEMICAL CO. SAFLEX CP/1/4" H.S.)

GLASS OPTION 3: 9/16" LAMINATED GLASS (1/4" AN./0.075" EASTMAN CHEMICAL CO. SAFLEX CP/1/4" AN.)

PRODUCT REVISED
as complying with the Florida Building Code
NOA-No. 20-0623.05
Expiration Date: 01/08/2024
By: Manuel Fern
Miami-Dade Product Control

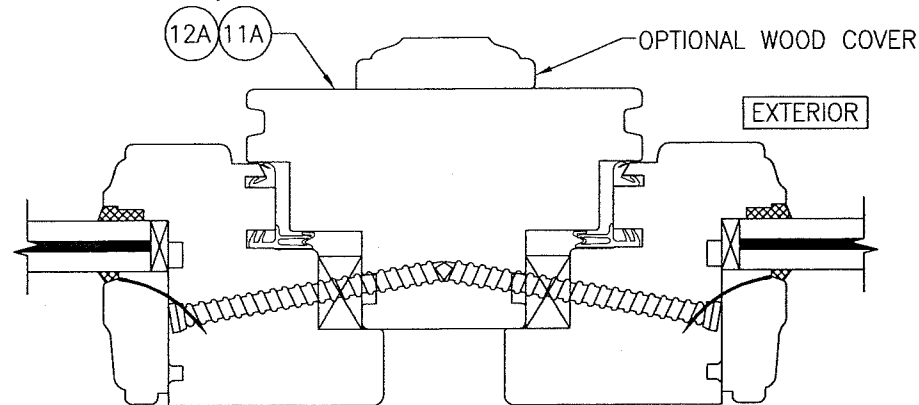
PRODUCT REVISED
as complying with the Florida Building Code
Acceptance No. 18-0531.05
Expiration Date: Jan. 8, 2024
By: Manuel Fern
Miami-Dade Product Control

DRAWN BY: W.R.M.	CHECKED BY: W.W.S.
PLOT: 1=2	DATE: 04/03/08
DATE	BY
REVISION DESCRIPTION	NO.
DRAWING TITLE IN-SWING IMPACT WOOD FIXED CASEMENT WINDOW	
MANUFACTURER TISCHLER UND SOHN (USA) LTD. SIX SUBURBAN AVENUE STAMFORD, CONNECTICUT 06350-674-0600	
CONSULTANTS W. W. SCHAEFER ENGINEERING & CONSULTING, P.A. (CA 6809) 7480 150TH COURT NORTH PALM BEACH GARDENS, FL 33418 PHONE: 561-744-3424	
CERTIFICATION MAY 15 2018 WARREN W. SCHAEFER, P.E. P.E. NO. 44135	DRAWING NO. 1534
REV. C	SHEET NO. 3 OF 7



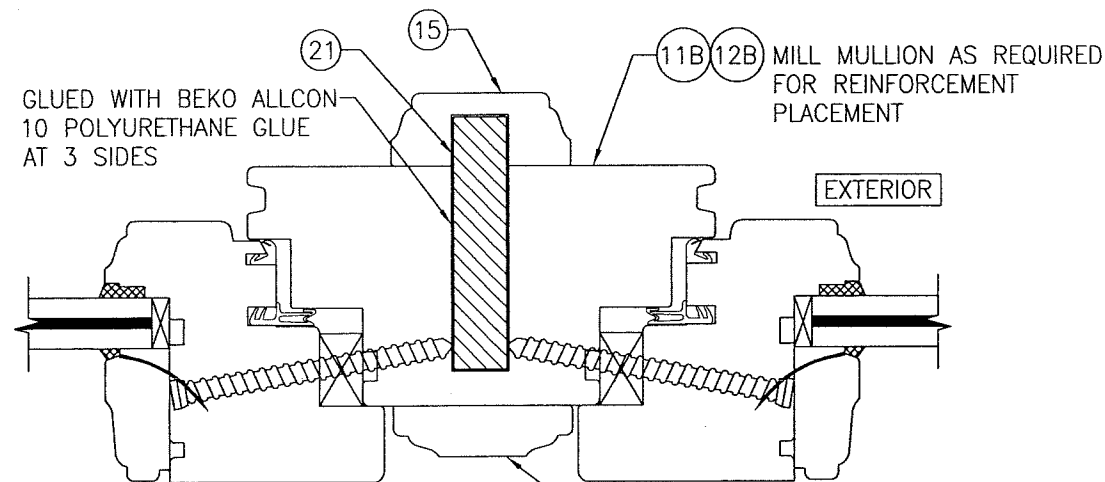
SECTION E1
SCALE: 1/2 FULL
4

(NON-REINFORCED MULLION)
(FOR DETAIL NOT SHOWN, SEE OTHER SECTIONS)



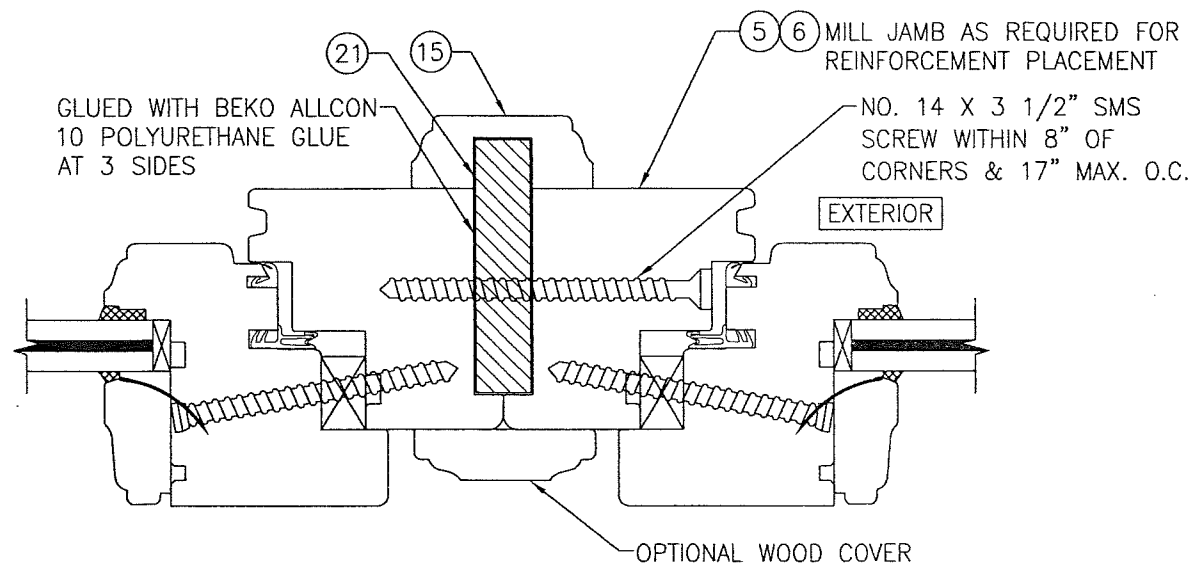
SECTION E3
SCALE: 1/2 FULL
4

(NON-REINFORCED MULLION)
(FOR DETAIL NOT SHOWN, SEE OTHER SECTIONS)



SECTION E4
SCALE: 1/2 FULL
4

(REINFORCED MULLION)
(FOR DETAIL NOT SHOWN, SEE OTHER SECTIONS)

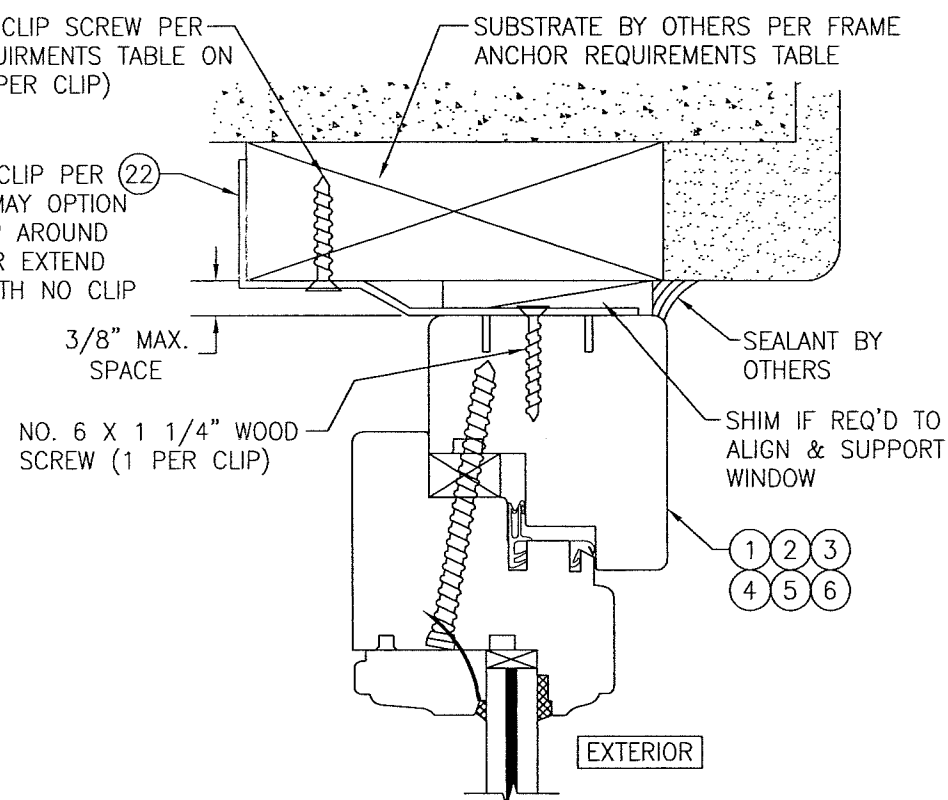


SECTION E2
SCALE: 1/2 FULL
4

(REINFORCED MULLION)
(FOR DETAIL NOT SHOWN, SEE OTHER SECTIONS)

INSTALLATION CLIP SCREW PER ANCHOR REQUIREMENTS TABLE ON SHEET 1 (1 PER CLIP)

INSTALLATION CLIP PER ELEVATIONS (MAY OPTION TO BEND CLIP AROUND SUBSTRATE OR EXTEND SUBSTRATE WITH NO CLIP BEND)



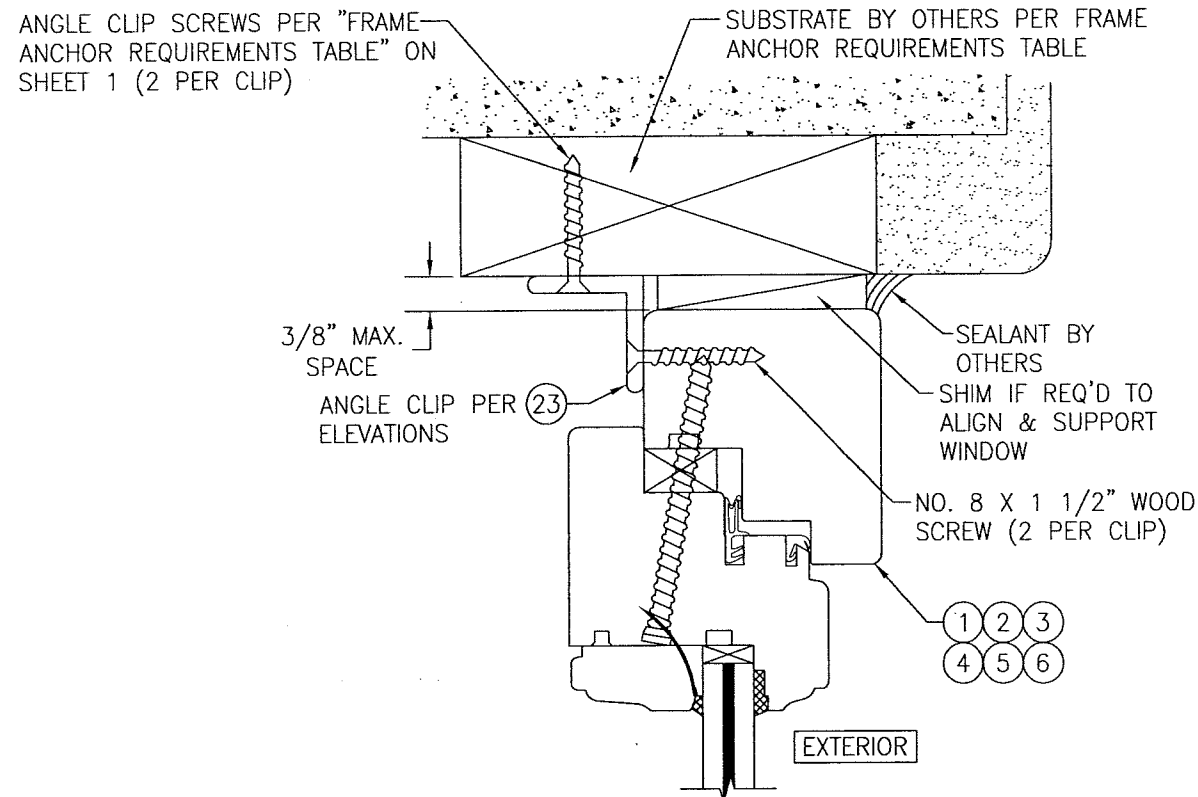
OPTIONAL INSTALLATION CLIP DETAIL

(HEAD SECTION SHOWN, SILL & SIDES ARE INSTALLED THE SAME)
(FOR DETAIL NOT SHOWN, SEE OTHER SECTIONS)

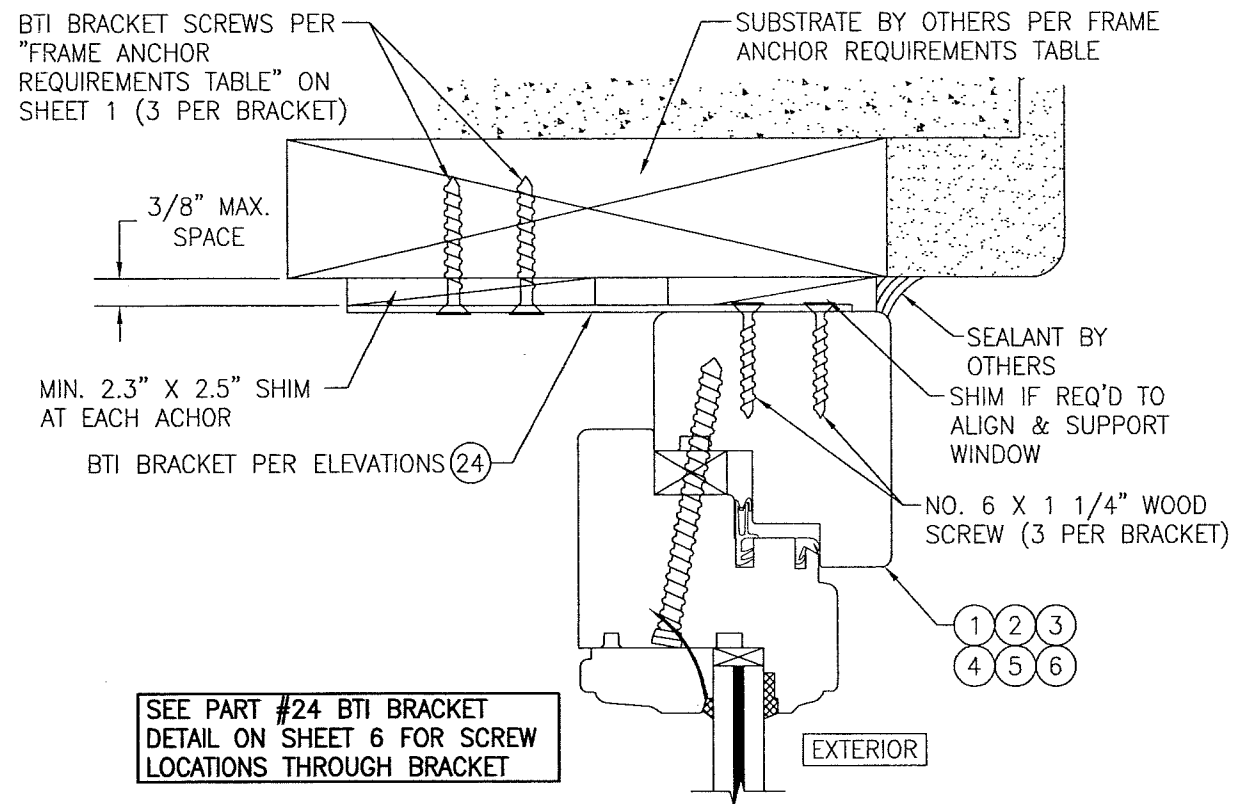
PRODUCT REVISED
as complying with the Florida
Building Code
NOA-No. 20-0623.05
Expiration Date: 01/08/2024
By: *Manuel Perez*
Miami-Dade Product Control

PRODUCT REVISED
as complying with the Florida
Building Code
Acceptance No. 12-0531.05
Expiration Date: Jan. 8, 2024
By: *Manuel Perez*
Miami-Dade Product Control

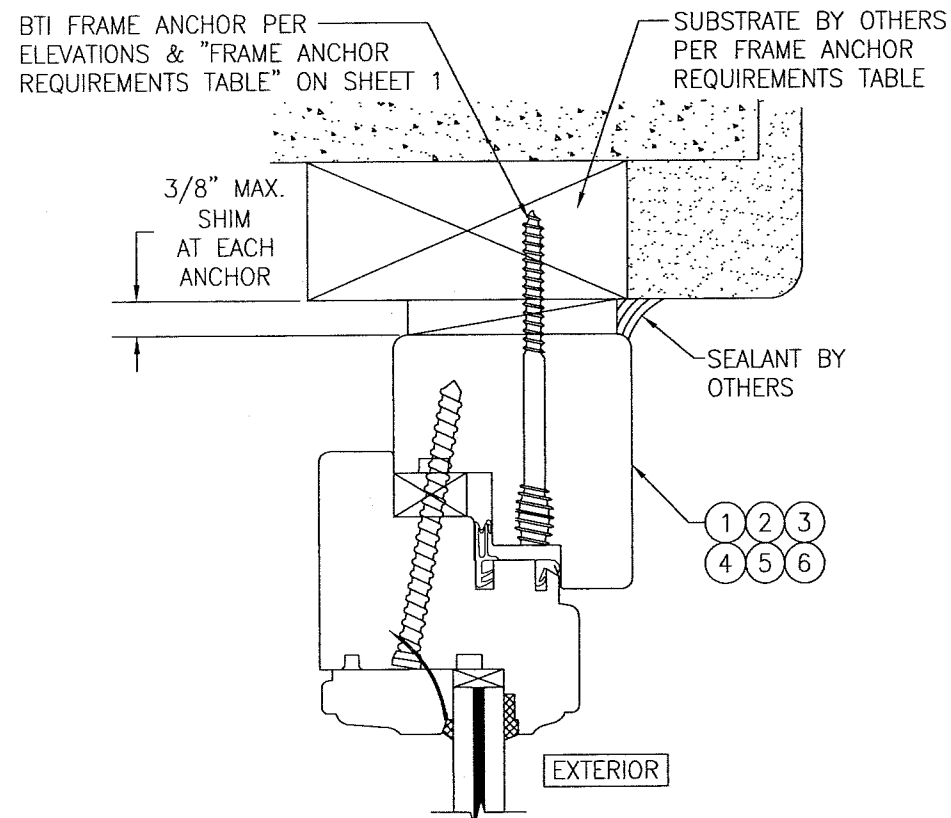
DRAWN BY: W.R.M.		CHECKED BY: W.W.S.	
PLOT: 1=2		DATE: 04/03/08	
NO.	REVISION	DESCRIPTION	DATE
DRAWING TITLE: IN-SWING IMPACT WOOD FIXED CASEMENT WINDOW			
CONSULTANTS		MANUFACTURER	
W. W. SCHAEFER ENGINEERING & CONSULTING, P.A. (CA 6809)		TISCHLER UND SOHN (USA) LTD. SIX SUBURBAN AVENUE STAMFORD, CONNECTICUT 203-674-0600	
7480 150TH COURT NORTH PALM BEACH GARDENS, FL 33418 PHONE: 561-744-3424			
CERTIFICATION			
MAY 15 2018			
WARREN W. SCHAEFER, P.E. P.E. NO. 44135			
DRAWING NO. 1534		REV. C	
SHEET NO. 4 OF 7			



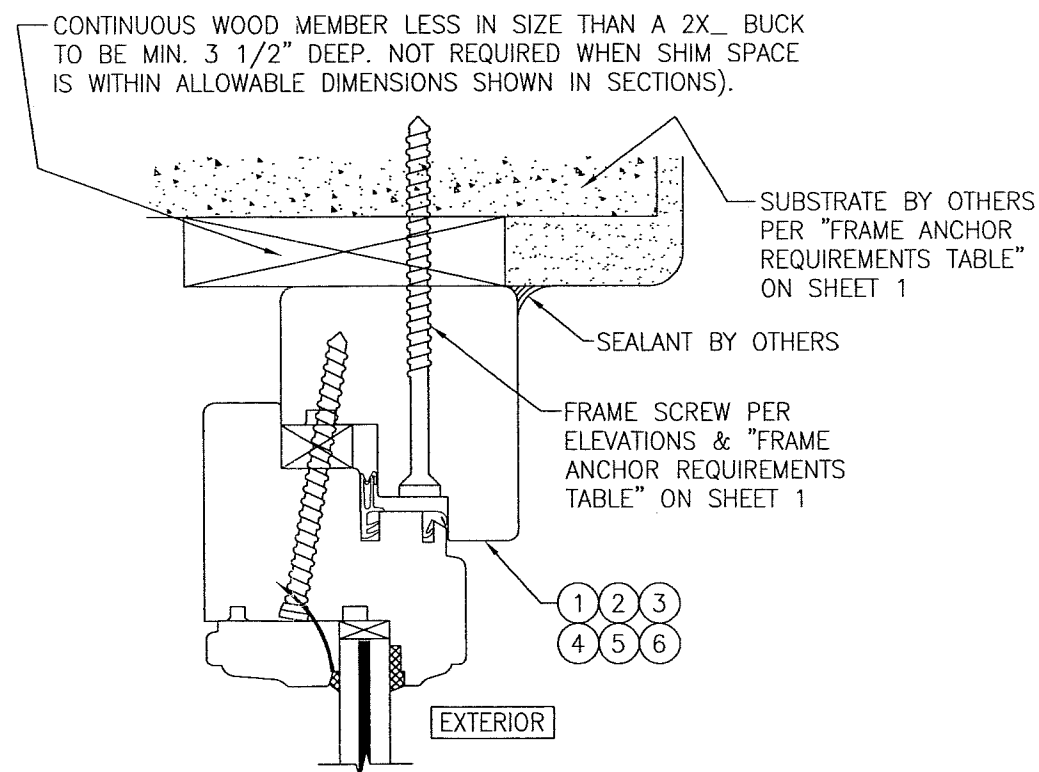
OPTIONAL INSTALLATION ANGLE CLIP DETAIL
(HEAD SECTION SHOWN, SILL & SIDES ARE INSTALLED THE SAME)
(FOR DETAIL NOT SHOWN, SEE OTHER SECTIONS)



OPTIONAL INSTALLATION BTI BRACKET DETAIL
(HEAD SECTION SHOWN, SILL & SIDES ARE INSTALLED THE SAME)
(FOR DETAIL NOT SHOWN, SEE OTHER SECTIONS)



OPTIONAL BTI SCREW DETAIL
(HEAD SECTION SHOWN, SILL & SIDES ARE INSTALLED THE SAME)
(FOR DETAIL NOT SHOWN, SEE OTHER SECTIONS)

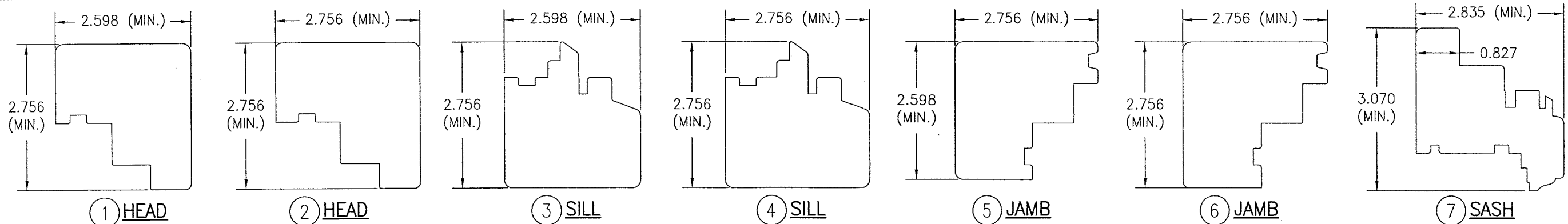


OPTIONAL DIRECT MOUNT DETAIL TO SUBSTRATE WITH SPACER
(HEAD SECTION SHOWN, SILL & SIDES ARE INSTALLED THE SAME)
(FOR DETAIL NOT SHOWN, SEE OTHER SECTIONS)

PRODUCT REVISED
as complying with the Florida
Building Code
NOA-No. **20-0623.05**
Expiration Date: **01/08/2024**
By: *Manuel Perez*
Miami-Dade Product Control

PRODUCT REVISED
as complying with the Florida
Building Code
Acceptance No. **18-0521.05**
Expiration Date: **Jan. 8, 2024**
By: *Manuel Perez*
Miami-Dade Product Control

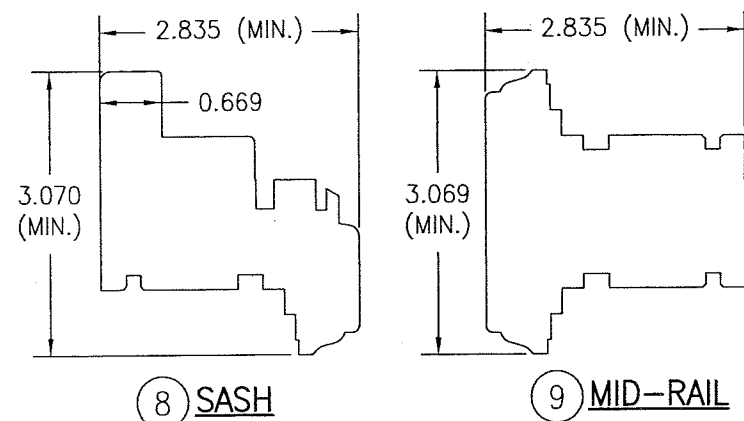
DRAWN BY: W.R.M.		CHECKED BY: W.W.S.	
PLOT: 1=2		DATE: 04/03/08	
DATE	BY	REVISION DESCRIPTION	NO.
DRAWING TITLE IN-SWING IMPACT WOOD FIXED CASEMENT WINDOW			
CONSULTANTS W. W. SCHAEFER ENGINEERING & CONSULTING, P.A. (CA 6809) 7480 150TH COURT NORTH PALM BEACH GARDENS, FL 33418 PHONE: 561-744-3424		MANUFACTURER TISCHLER UND SOHN (USA) LTD. SIX SUBURBAN AVENUE STAMFORD, CONNECTICUT 203-674-0600	
CERTIFICATION MAY 15 2018 WARREN W. SCHAEFER, P.E. P.E. NO. 44135		DRAWING NO. 1534 REV. C	
SHEET NO. 5		OF 7	



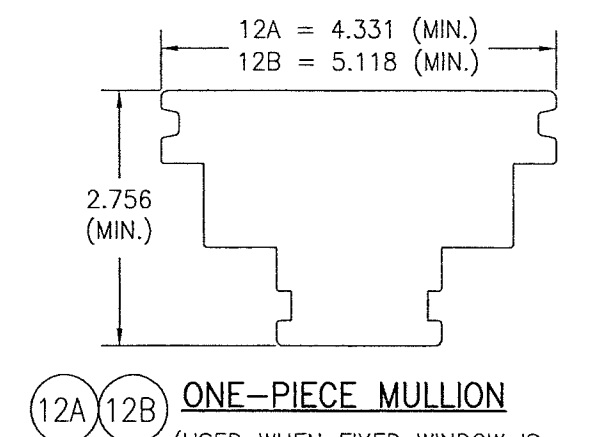
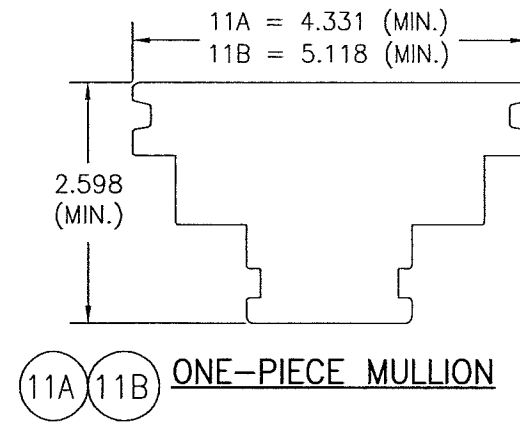
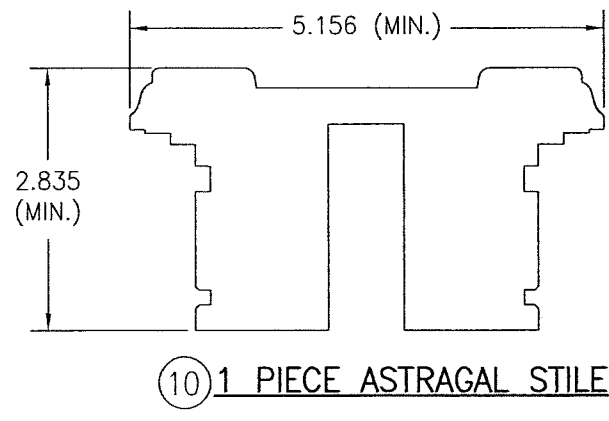
(USED WHEN FIXED WINDOW IS COMBINED WITH CONCEALED HINGE CASEMENT WINDOW)

(USED WHEN FIXED WINDOW IS COMBINED WITH CONCEALED HINGE CASEMENT WINDOW)

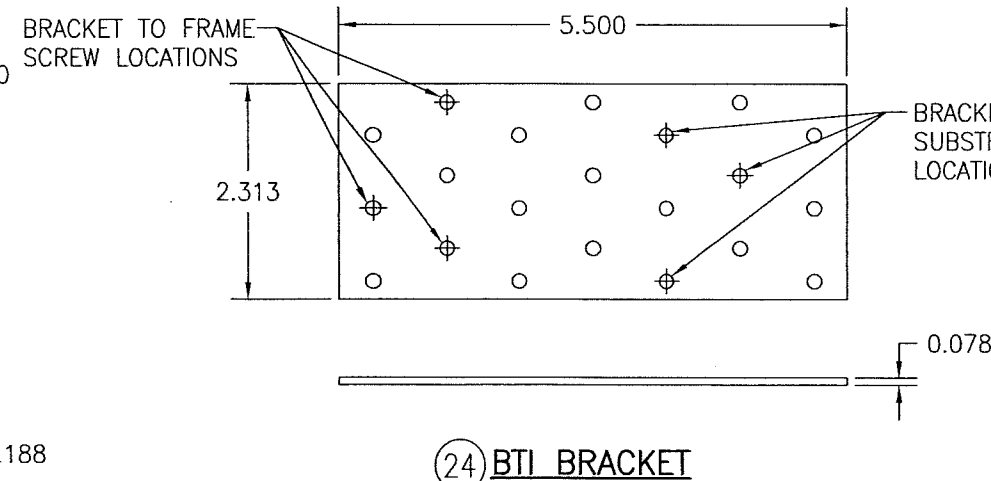
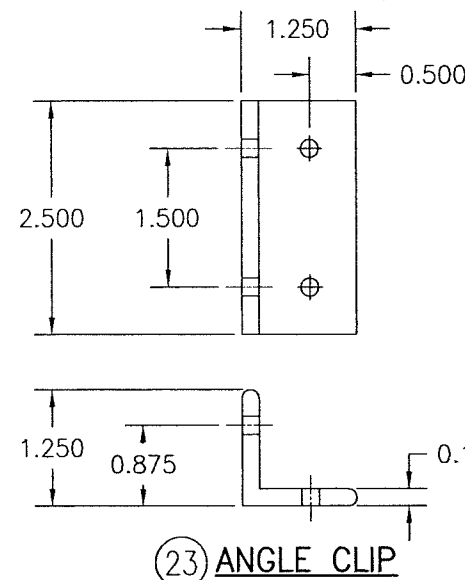
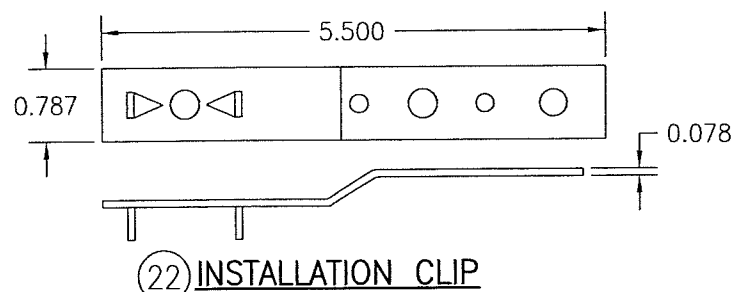
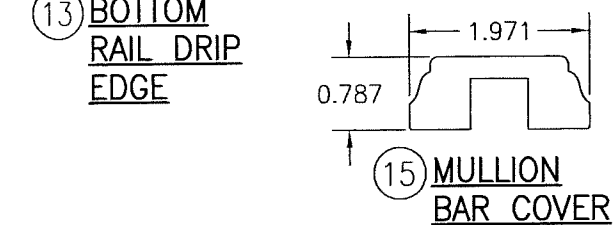
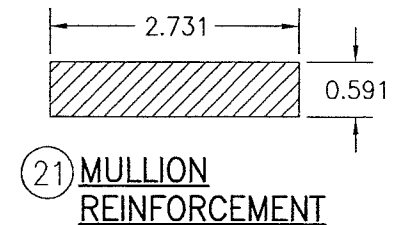
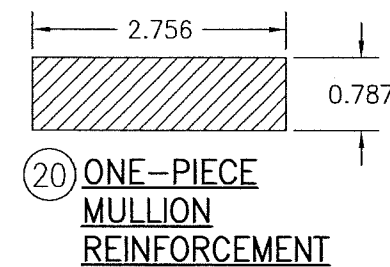
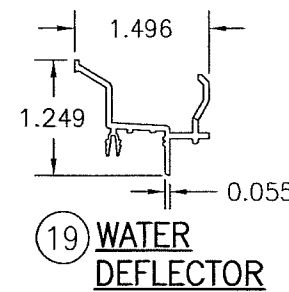
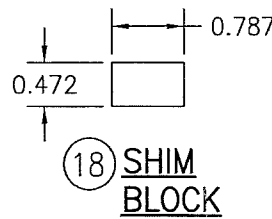
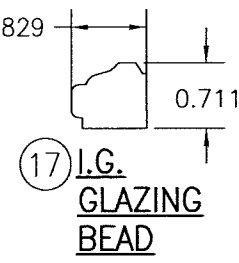
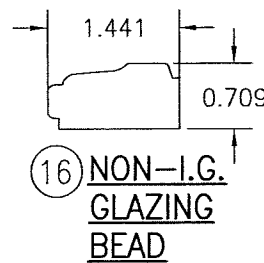
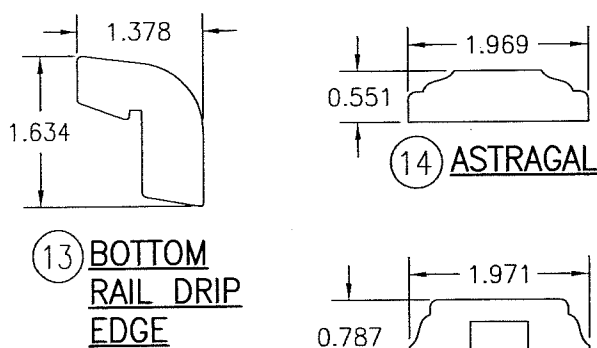
(USED WHEN FIXED WINDOW IS COMBINED WITH CONCEALED HINGE CASEMENT WINDOW)



(USED WHEN FIXED WINDOW IS COMBINED WITH CONCEALED HINGE CASEMENT WINDOW)



(USED WHEN FIXED WINDOW IS COMBINED WITH CONCEALED HINGE CASEMENT WINDOW)



PRODUCT REVISED
as complying with the Florida Building Code
NOA-No. **20-0623.05**
Expiration Date: **01/08/2024**
By: *Manuel Perez*
Miami-Dade Product Control

PRODUCT REVISED
as complying with the Florida Building Code
Acceptance No. **18-0531.05**
Expiration Date: **Jan. 8, 2024**
By: *Manuel Perez*
Miami-Dade Product Control

DRAWN BY: W.R.M.		CHECKED BY: W.W.S.	
PLOT: 1=2		DATE: 04/03/08	
DATE	BY	REVISION	DESCRIPTION
DRAWING TITLE IN-SWING IMPACT WOOD FIXED CASEMENT WINDOW			
CONSULTANTS W. W. SCHAEFER ENGINEERING & CONSULTING, P.A. (CA 6809) 7480 150TH COURT NORTH PALM BEACH GARDENS, FL 33418 PHONE: 561-744-3424		MANUFACTURER TISCHLER UND SOHN (USA) LTD. SIX SUBURBAN AVENUE STAMFORD, CONNECTICUT 203-674-0600	
CERTIFICATION STATE OF FLORIDA PROFESSIONAL SEAL No. 44135 MAY 15 2018	DRAWING NO. 1534 SHEET NO. 6 OF 7		

