



DEPARTMENT OF REGULATORY AND ECONOMIC RESOURCES (RER)
BOARD AND CODE ADMINISTRATION DIVISION

NOTICE OF ACCEPTANCE (NOA)

MIAMI-DADE COUNTY
PRODUCT CONTROL SECTION

11805 SW 26 Street, Room 208
Miami, Florida 33175-2474
T (786) 315-2590 F (786) 315-2599

www.miamidade.gov/building

Tischler und Sohn (USA) Ltd.

Six Suburban Avenue

Stamford, CT 06901

SCOPE:

This NOA is being issued under the applicable rules and regulations governing the use of construction materials. The documentation submitted has been reviewed and accepted by Miami-Dade County RER - Product Control Section to be used in Miami Dade County and other areas where allowed by the Authority Having Jurisdiction (AHJ).

This NOA shall not be valid after the expiration date stated below. The Miami-Dade County Product Control Section (In Miami Dade County) and/or the AHJ (in areas other than Miami Dade County) reserve the right to have this product or material tested for quality assurance purposes. If this product or material fails to perform in the accepted manner, the manufacturer will incur the expense of such testing and the AHJ may immediately revoke, modify, or suspend the use of such product or material within their jurisdiction. RER reserves the right to revoke this acceptance if it is determined by Miami-Dade County Product Control Section that this product or material fails to meet the requirements of the applicable building code.

This product is approved as described herein and has been designed to comply with the Florida Building Code, including the High Velocity Hurricane Zone.

DESCRIPTION: Series "Weight & Chain System" Wood Single & Double Hung Window – L.M.I.

APPROVAL DOCUMENT: Drawing No. **1828**, titled "Single & Double Hung Weight & Chain System Impact Window" sheets 1 through 9 of 9, dated 07/02/12, with revision **A1** dated 07/21/17, prepared by W. W. Schaefer Engineering & Consulting, P.A., signed and sealed by Warren W. Schaefer, P.E., bearing the Miami-Dade County Product Control Revision stamp with the Notice of Acceptance number and expiration date by the Miami-Dade County Product Control Section.

MISSILE IMPACT RATING: Large and Small Missile Impact Resistant.

LABELING: Each unit shall bear a permanent label with the manufacturer's name or logo, Wedel (Schleswig-Holstein), Germany, model/series, and following statement: "Miami-Dade County Product Control Approved", unless otherwise noted herein.

RENEWAL of this NOA shall be considered after a renewal application has been filed and there has been no change in the applicable building code negatively affecting the performance of this product.

TERMINATION of this NOA will occur after the expiration date or if there has been a revision or change in the materials, use, and/or manufacture of the product or process. Misuse of this NOA as an endorsement of any product, for sales, advertising or any other purposes shall automatically terminate this NOA. Failure to comply with any section of this NOA shall be cause for termination and removal of NOA.

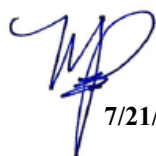
ADVERTISEMENT: The NOA number preceded by the words Miami-Dade County, Florida, and followed by the expiration date may be displayed in advertising literature. If any portion of the NOA is displayed, then it shall be done in its entirety.

INSPECTION: A copy of this entire NOA shall be provided to the user by the manufacturer or its distributors and shall be available for inspection at the job site at the request of the Building Official.

This NOA **revises NOA# 17-0807.23** and consists of this page 1 and evidence pages E-1, E-2 and E-3, as well as approval document mentioned above.

The submitted documentation was reviewed by **Manuel Perez, P.E.**




7/21/20

NOA No. 20-0623.07
Expiration Date: June 13, 2023
Approval Date: July 30, 2020
Page 1

NOTICE OF ACCEPTANCE: EVIDENCE SUBMITTED

1. EVIDENCE SUBMITTED UNDER PREVIOUS NOA's

A. DRAWINGS

1. Manufacturer's die drawings and sections.
(Submitted under NOA No. 13-0304.08)
2. Drawing No. **1828**, titled "Single & Double Hung Weight & Chain System Impact Window", sheets 1 through 9 of 9, dated 07/02/12, with revision **A1** dated 07/21/17, prepared by W. W. Schaefer Engineering & Consulting, P.A., signed and sealed by Warren W. Schaefer, P.E.
(Submitted under NOA No. 17-0807.23)

B. TESTS

1. Test reports on: 1) Air Infiltration Test, per FBC, TAS 202-94
2) Uniform Static Air Pressure Test, Loading per FBC, TAS 202-94
3) Water Resistance Test, per FBC, TAS 202-94
4) Large Missile Impact Test per FBC, TAS 201-94
5) Cyclic Wind Pressure Loading per FBC, TAS 203-94
6) Forced Entry Test, per FBC 2411.3.2.1, and TAS 202-94
along with marked-up drawings and installation diagram of a wood double & single hung window with weight & chain system, prepared by Architectural Testing, Inc., Test Report No. **ATI-C261.01-109-18**, dated 11/20/12, signed and sealed by Michael D. Stremmel, P.E.
(Submitted under NOA No. 13-0304.08)

C. CALCULATIONS

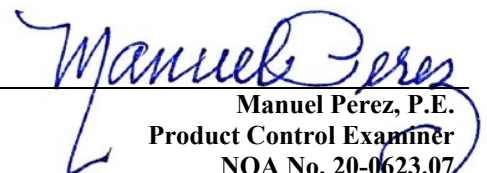
1. Anchor verification calculations and structural analysis, complying with **FBC 6th Edition (2017)**, dated 09/25/12 and updated on 07/20/17, prepared by W.W. Schaefer Engineering & Consulting, P.A., signed and sealed by Warren W. Schaefer, P.E.
(Submitted under NOA No. 17-0807.23)
2. Glazing complies with **ASTM E1300-09**.

D. QUALITY ASSURANCE

1. Miami-Dade Department of Regulatory and Economic Resources (RER)

E. MATERIAL CERTIFICATIONS

1. Notice of Acceptance No. **17-0712.03** issued to **Eastman Chemical Company (MA)** for their "**Saflex CP – Saflex and Saflex HP Composite Glass Interlayers with PET Core**" dated 09/07/17, expiring on 12/11/18.


Manuel Perez, P.E.
Product Control Examiner
NOA No. 20-0623.07
Expiration Date: June 13, 2023
Approval Date: July 30, 2020

Tischler und Sohn (USA) Ltd.


NOTICE OF ACCEPTANCE: EVIDENCE SUBMITTED

F. STATEMENTS

1. Statement letter of conformance, complying with **FBC 5th Edition (2014)** and with **FBC 6th Edition (2017)**, dated July 20, 2017, issued by W.W. Schaefer Engineering & Consulting, P.A., signed and sealed by Warren W. Schaefer, P.E.
(Submitted under NOA No. 17-0807.23)
2. Statement letter of no financial interest and independence, dated July 20, 2017, issued by W. W. Schaefer Engineering & Consulting, P.A., signed and sealed by Warren W. Schaefer, P.E.
(Submitted under NOA No. 17-0807.23)
3. Laboratory compliance letter for Test Report No. **ATI-C261.01-109-18**, issued by Architectural Testing, Inc., dated 11/20/12, signed and sealed by Michael Stremmel, P.E.
(Submitted under NOA No. 13-0304.08)
4. Distributor Agreement between Tischler und Sohn (USA), Ltd., Connecticut, USA, and Tischler/ Cornelius Korn, G.m.b.H., Wedel (Schleswig-Holstein), Germany, dated 04/13/09, signed by Tim Carpenter and Wilhelm Korn, respectively.
(Submitted under NOA No. 13-0304.08)

G. OTHERS

1. Notice of Acceptance No. **14-0428.17**, issued to Tischler und Sohn (USA) Ltd. for their Series "Weight & Chain System" Single & Double Hung Wood Window – L.M.I., approved on 07/03/14 and expiring on 06/13/18.


Manuel Perez, P.E.
Product Control Examiner
NOA No. 20-0623.07
Expiration Date: June 13, 2023
Approval Date: July 30, 2020

Tischler und Sohn (USA) Ltd.

NOTICE OF ACCEPTANCE: EVIDENCE SUBMITTED

2. NEW EVIDENCE SUBMITTED

A. DRAWINGS

1. None.

B. TESTS

1. None

C. CALCULATIONS

1. None

D. QUALITY ASSURANCE

1. Miami-Dade Department of Regulatory and Economic Resources (RER)

E. MATERIAL CERTIFICATIONS


1. Notice of Acceptance No. **18-0301.06** issued to **Eastman Chemical Company (MA)** for their “**Saflex CP - Saflex and Saflex HP Composite Glass Interlayers with PET Core**” dated 05/17/18, expiring on 12/11/23.

F. STATEMENTS

1. Statement letter of conformance, complying with **FBC 6th Edition (2017)** and **FBC 7th Edition (2020)** dated June 05, 2020, issued by W.W. Schaefer Engineering & Consulting, P.A., signed and sealed by Warren W. Schaefer, P.E.

G. OTHERS

1. Notice of Acceptance No. **17-0807.23**, issued to Tischler und Sohn (USA) Ltd. for their Series “**Weight & Chain System**” Single & Double Hung Wood Window – L.M.I., approved on 11/02/17 and expiring on 06/13/23.


Manuel Perez, P.E.
Product Control Examiner
NOA No. 20-0623.07
Expiration Date: June 13, 2023
Approval Date: July 30, 2020

GENERAL NOTES:

1. THIS PRODUCT HAS BEEN TESTED, ANALYZED & APPROVED FOR DESIGN PRESSURES NOT TO EXCEED THOSE SHOWN IN THE "ALLOWABLE DESIGN PRESSURE TABLE(S)".
2. OPENINGS, BUCKING & BUCKING FASTENERS MUST BE PROPERLY DESIGNED & INSTALLED TO TRANSFER WIND LOADS TO THE STRUCTURE.
3. ALL HARDWARE & FASTENERS SHALL BE IN ACCORDANCE WITH THESE DRAWINGS & SHALL NOT VARY UNLESS SPECIFICALLY MENTIONED ON THE DRAWINGS. SPECIFIED ANCHOR EMBED TO BASE MATERIAL SHALL BE BEYOND WALL FINISH OR STUCCO.
4. THE DETAILS & SPECIFICATIONS SHOWN HEREIN REPRESENT THE PRODUCTS TESTED & PROPOSED FOR CONFORMANCE WITH THE FLORIDA BUILDING CODE PROTOCOLS TAS-201, 202 & 203 FOR LARGE MISSILE IMPACT PRODUCTS.
5. THIS PRODUCT HAS BEEN DESIGNED IN ACCORDANCE WITH AND MEETS THE REQUIREMENTS OF THE FLORIDA BUILDING CODE (FBC) INCLUDING HIGH VELOCITY HURRICANE ZONES (HVHZ).
6. IMPACT SHUTTERS ARE NOT REQUIRED WITH THIS PRODUCT.
7. ALL ANCHORS SECURING PRODUCT FRAMES TO PRESSURE TREATED BUCKS OR WOOD FRAMING SHALL BE CAPABLE OF RESISTING CORROSION CAUSED BY THE PRESSURE TREATING CHEMICALS IN THE WOOD.
8. DETERMINE THE POSITIVE & NEGATIVE DESIGN LOADS TO USE WHEN REFERENCING THESE DOCUMENTS IN ACCORDANCE WITH THE GOVERNING CODE AND GOVERNING WIND VELOCITY. FOR WIND LOAD CALCULATIONS IN ACCORDANCE WITH THE FLORIDA BUILDING CODE, A DIRECTIONALITY FACTOR OF $K_d = 0.85$ MAY BE APPLIED PER THE ASCE-7 STANDARD.
9. NO INCREASE IN ALLOWABLE STRESS HAS BEEN USED IN THE CERTIFICATION OF THIS PRODUCT. WIND LOAD DURATION FACTOR $C_d = 1.6$ WAS USED FOR WOOD SCREW ANALYSIS ONLY.
10. MATERIALS, INCLUDING BUT NOT LIMITED TO STEEL SCREWS, THAT COME INTO CONTACT WITH OTHER DISSIMILAR MATERIALS SHALL MEET THE REQUIREMENTS OF FLORIDA BUILDING CODE.
11. ALL WOOD MEMBERS OF THIS PRODUCT THAT MAY POSSIBLY COME INTO CONTACT WITH MASONRY OR CONCRETE SUBSTRATES, ARE SUBJECT TO MOISTURE &/OR ARE SUBJECT TO THE OUTSIDE ENVIRONMENT SHALL BE OF AN APPROVED DURABLE SPECIES OR BE TREATED IN AN APPROVED METHOD WITH AN APPROVED PRESERVATIVE PER FBC REQUIREMENTS.

OPENING TYPE (SUBSTRATE)	FRAME/CLIP/BRAKET TO OPENING FASTENER TYPE	MINIMUM EMBED	MINIMUM EDGE DIST.
FRAME SCREWS			
MIN. 2X4 WOOD FRAME OR BUCK (MIN. GR. 3 & G=0.55)	NO. 14 SMS/WOOD SCREW OR 1/4" BTI SCREW	1 1/4"	3/4"
MIN. 16 GA. 33 KSI METAL STUD	1/4" GR. 5 SELF TAP/DRILLING SCREW	FULL	1/2"
MIN. 1/8" THK A36 STEEL	1/4" GR. 5 SELF TAP/DRILLING SCREW	FULL	1/2"
MIN. 1/8" THK 6063-T5 ALUM.	1/4" GR. 5 SELF TAP/DRILLING SCREW	FULL	1/2"
(3) C-90 CMU	(1) 1/4" CONCRETE SCREW	1 1/4"	2"
2500 PSI CONCRETE	(1) 1/4" CONCRETE SCREW	1 3/4"	2"

(2) MIN. 2X_ WOOD FRAME OR BUCK (MIN. GR. 3 & G=0.55)	NO. 12 SMS OR WOOD SCREW	1 3/8"	3/4"
MIN. 16 GA. 33 KSI METAL STUD	NO. 12 GR. 5 SELF TAP/DRILL SCREW	FULL	1/2"
MIN. 1/8" THK A36 STEEL	NO. 12 GR. 5 SELF TAP/DRILL SCREW	FULL	1/2"
MIN. 1/8" THK 6063-T5 ALUM.	NO. 12 GR. 5 SELF TAP/DRILL SCREW	FULL	1/2"
(3) C-90 CMU	(1) 1/4" CONCRETE SCREW	1 1/4"	2"
2500 PSI CONCRETE	(1) 1/4" CONCRETE SCREW	1 3/4"	2"

(2) MIN. 2X__ WOOD FRAME OR BUCK (MIN. GR. 3 & G=0.55)	NO. 8 SMS OR WOOD SCREW	1 3/8"	3/4"
MIN. 18 GA. 33 KSI METAL STUD	NO. 8 GR. 5 SELF TAP/DRILL SCREW	FULL	1/2"
MIN. 1/8" THK A36 STEEL	NO. 8 GR. 5 SELF TAP/DRILL SCREW	FULL	1/2"
MIN. 1/8" THK 6063-T5 ALUM.	NO. 8 GR. 5 SELF TAP/DRILL SCREW	FULL	1/2"

MIN. 2X4 WOOD FRAME OR BUCK (MIN. GR. 3 & G=0.55)	NO. 8 SMS OR WOOD SCREW	1 5/16"	1/2"
MIN. 1/8" THK A36 STEEL	NO. 8 GR. 5 SELF TAP/DRILL SCREW	FULL	1/2"
MIN. 1/8" THK 6063-T5 ALUM.	NO. 8 GR. 5 SELF TAP/DRILL SCREW	FULL	1/2"

- (1) CONCRETE SCREWS SHALL BE ELCO ULTRACONS (C.S.), ELCO CRETE-FLEX (S.S.) OR HILTI KWIK-CON II (C.S OR S.S.).
- (2) 2X_ BUCKS SHALL BE OF A MINIMUM DEPTH REQUIRED TO MEET ANCHOR EDGE DISTANCE REQUIREMENTS
- (3) CMU IS NOT APPLICABLE AT HEAD OR SILL.

SASH LOCK QUANTITY REQUIREMENTS	
FRAME WIDTH	QUANTITY PER SASH
OVER 41"	2
41" & LESS	1

PRODUCT REVISED
as complying with the Florida
Building Code
NOA-No. 20-0623.07
Expiration Date: 06/13/2023
By: Manuel Perez
Miami-Dade Product Control

INSTALLATION CLIP SPACING:
11 1/2" MAX. O.C. WHEN
WINDOW FRAME WIDTH IS
GREATER THAN 54";
15" MAX. O.C. WHEN
WINDOW FRAME WIDTH IS
54" OR LESS.

BTI BRCKET SPACING:
15" MAX. O.C. FOR ALL
WINDOW SIZES

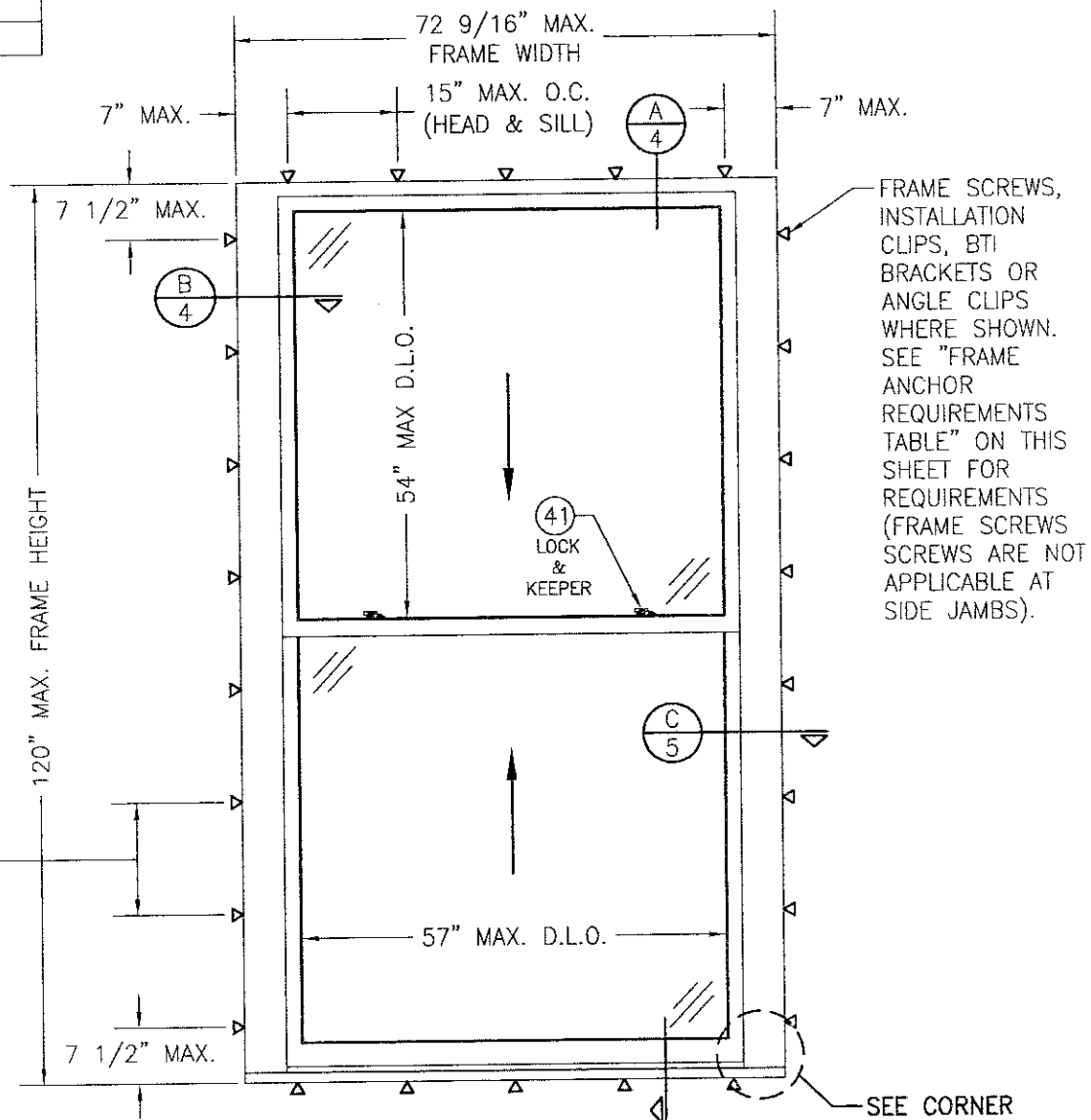
ANGLE CLIP SPACING:
14" MAX. O.C. WHEN
WINDOW FRAME WIDTH IS
GREATER THAN 69";
15" MAX. O.C. WHEN
WINDOW FRAME WIDTH IS
69" OR LESS.

FRAME CORNERS: SQUARE CUT, BUTTED AND JOINED WITH THREE(3) NO. 10 X 2" WOOD SCREWS THROUGH THE HORIZONTAL MEMBERS INTO THE VERTICAL MEMBERS & GLUED WITH OTTOSEAL M360 WOOD GLUE OR EQUIVALENT.

MULLION ENDS: SQUARE CUT, BUTTED AND JOINED WITH TWO(2) NO. 10 X 2" WOOD SCREWS THROUGH THE HORIZONTAL MEMBERS INTO THE VERTICAL MEMBERS & GLUED WITH OTTOSEAL M360 WOOD GLUE OR EQUIVALENT.

SASH CORNERS: SQUARE CUT, BUTTED AND JOINED WITH FOUR(4) 5/16" ϕ X 1 1/2" WOOD DOWELS & GLUED WITH PONA SUPER 3 WOOD GLUE OR EQUIVALENT.

THESE DRAWINGS ARE APPLICABLE ONLY TO THE PRODUCT SPECIFIED. THEY MAY NOT BE USED FOR THE ASSEMBLY AND/OR INSTALLATION OF ANY OTHER PRODUCT NOR MAY THEY BE USED FOR NATIONAL AND/OR LOCAL APPROVAL OF ANY PRODUCT NOT PRODUCED BY THE MANUFACTURER STATED ON THESE DRAWINGS.



-SEE CORNER
CONSTRUCTION
DESCRIPTIONS
ON THIS SHEET

SCALE: 1/2" = 1'-0"

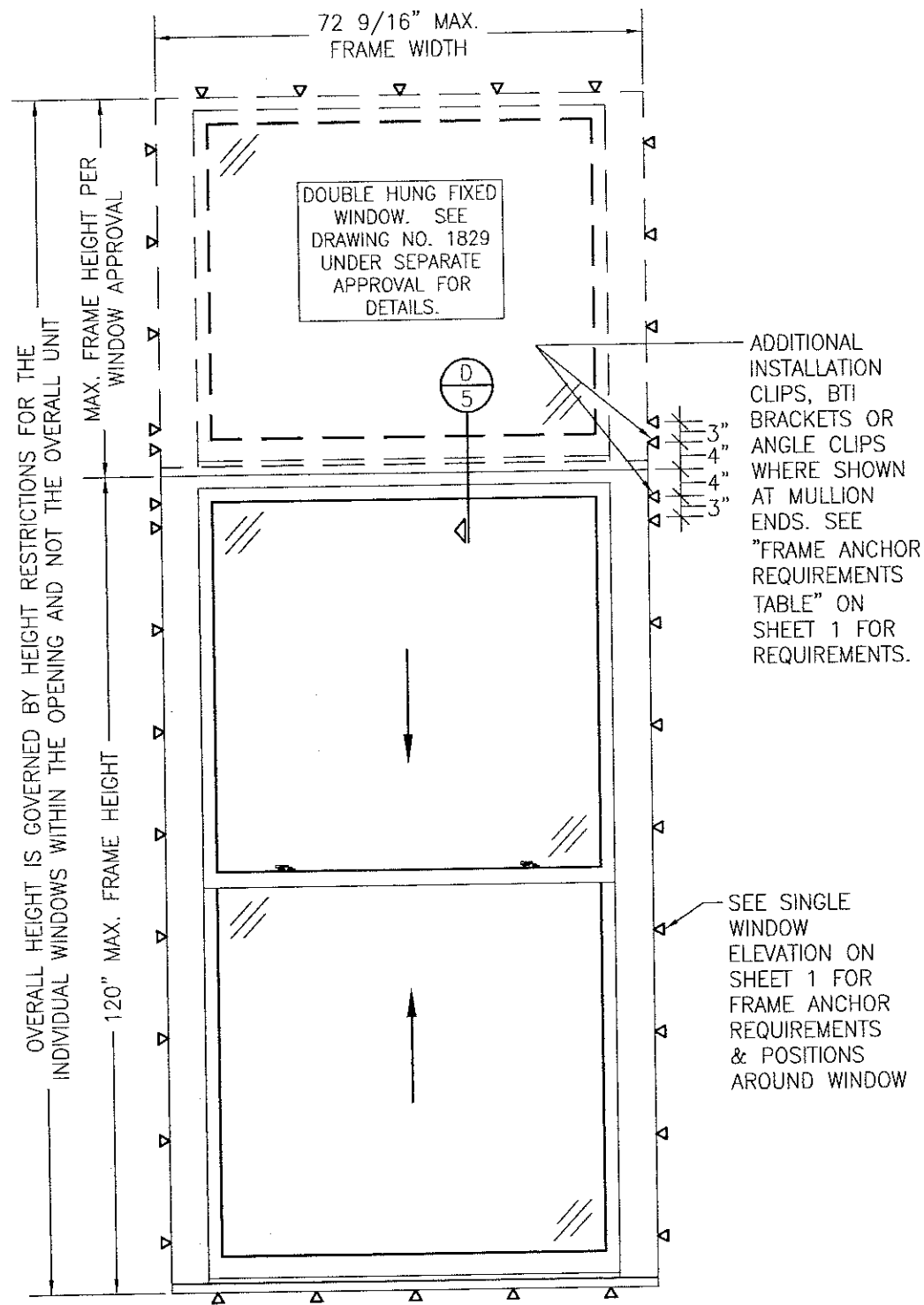
(DOUBLE HUNG WINDOW SHOWN. SINGLE HUNG IS IDENTICAL EXCEPT THE TOP SASH IS FIXED. FOR SINGLE HUNG FIXED SASH DETAIL, SEE "ALTERNATE SECTION B" ON SHEET 4)

[illegible]

+/-70 PSF

PRODUCT REVISED
as complying with the Florida
Building Code
Acceptance No. 17-0807
Expiration Date June 13
By Manuel Perez
Miami Dade Product Control

DRAWING NO. 1828						REV A	
SHEET NO. 1 OF 9							
CERTIFICATION							JUL 21 2017
							WARREN W. SCHAEFER, P.E.
DRAWING TITLE SINGLE & DOUBLE HUNG WEIGHT & CHAIN SYSTEM IMPACT WINDOW							DRAWN BY: W.R.M. PLOT: 1=24
CONSULTANTS W. W. SCHAEFER ENGINEERING & CONSULTING, P.A. (CA 6809)							CHECKED BY: W.W.S. DATE: 07/02/12
MANUFACTURER TISCHLER UND SOHN (USA) LTD. SIX SUBURBAN AVENUE STAMFORD, CONNECTICUT 203-674-0600							
7480 150TH COURT NORTH PALM BEACH GARDENS, FL 33418 PHONE: 561-744-3424							



**EXTERIOR ELEVATION:
SINGLE WINDOW WITH TRANSOM**

SCALE: 1/2" = 1'-0"

(DOUBLE HUNG WINDOW SHOWN. SINGLE HUNG WINDOW ALSO APPLIES)
(FOR DETAIL NOT SHOWN, SEE SINGLE WINDOW ELEVATION ON SHEET 1)

ADDITIONAL
INSTALLATION
CLIPS, BTI
BRACKETS OR
ANGLE CLIPS
WHERE SHOWN
AT MULLION
ENDS. SEE
"FRAME ANCHOR
REQUIREMENTS
TABLE" ON
SHEET 1 FOR
REQUIREMENTS.

SEE SINGLE
WINDOW
ELEVATION ON
SHEET 1 FOR
FRAME ANCHOR
REQUIREMENTS
& POSITIONS
AROUND WINDOW

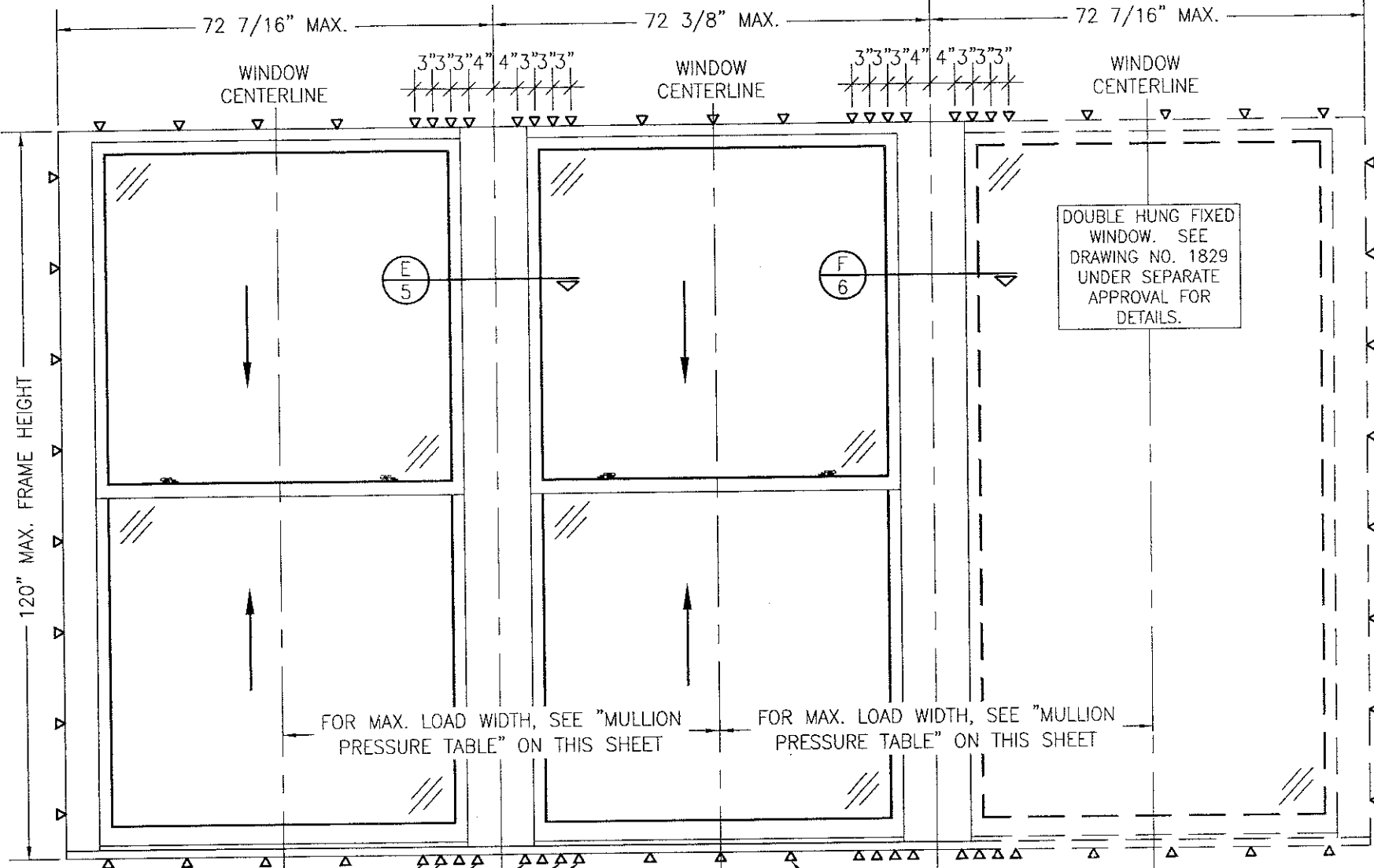
PRODUCT REVISED
as complying with the Florida
Building Code
NOA-No. **20-0623.07**
Expiration Date: **06/13/2023**
By: *Manuel Perez*
Miami-Dade Product Control

PRODUCT REVISED
as complying with the Florida
Building Code
Acceptance No. **17-0807.23**
Expiration Date: **June 13, 2023**
By: *Manuel Perez*
Miami-Dade Product Control



DRAWN BY: W.R.M.		CHECKED BY: W.W.S.	
PLOT: 1-24		DATE: 07/02/12	
NO.	REVISION DESCRIPTION	BY	DATE
DRAWING TITLE: SINGLE & DOUBLE HUNG WEIGHT & CHAIN SYSTEM IMPACT WINDOW		MANUFACTURER: TISCHLER UND SOHN (USA) LTD. SIX SUBURBAN AVENUE STAMFORD, CONNECTICUT 203-674-0600	
CONSULTANTS: W. W. SCHAEFER ENGINEERING & CONSULTING, P.A. (CA 6809) 7480 150TH COURT NORTH PALM BEACH GARDENS, FL 33418 PHONE: 561-744-3424		CERTIFICATION JUL 21 2017 WARREN W. SCHAEFER, P.E. P.E. NO. 44135	
DRAWING NO. 1828	REV. A	SHEET NO. 2 OF 9	

VERTICAL MULLION END ANCHOR QUANTITIES					
MAX. WINDOW FRAME HEIGHT (IN.)	MAX. LOAD WIDTH (IN.)	INSTALLATION METHOD & ANCHOR QUANTITIES			
		FRAME SCREWS	INSTALLATION CLIPS	ANGLE CLIPS	BTI BRACKETS
120	72 1/2	8	8	6	4
	48	6	4	4	4
	34	4	4	4	4
108	72 1/2	8	6	6	4
	54	6	6	4	4
	48	6	4	4	4
96	72 1/2	8	6	6	4
	66	6	6	6	4
	60	6	4	4	4
84	72 1/2	6	6	6	4
	66	6	4	4	4
	49	4	4	4	4
72	72 1/2	6	4	4	4
	58	4	4	4	4
66	72 1/2	6	4	4	4
	63	4	4	4	4
60	72 1/2	6	4	4	4
	69	4	4	4	4
57	72 1/2	4	4	4	4



ADDITIONAL FRAME SHEAR SCREWS, INSTALLATION CLIPS, BTI BRACKETS OR ANGLE CLIPS WHERE SHOWN AT MULLION ENDS. SEE "FRAME ANCHOR REQUIREMENTS TABLE" ON SHEET 1 FOR REQUIREMENTS. NOTE: ANCHOR QUANTITY AT MULLION ENDS MAY VARY WITH UNIT SIZE. SEE "ANCHOR QUANTITY" TABLE ON THIS SHEET FOR QUANTITY OF ANCHORS REQUIRED.

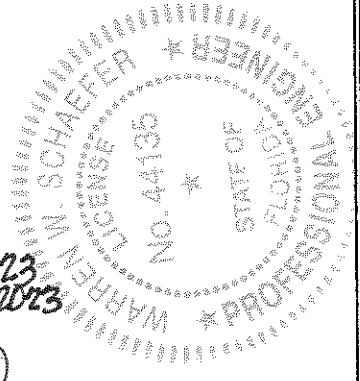
EXTERIOR ELEVATION:
MULTIPLE OPERABLE/FIXED WINDOW
SCALE: 1/2" = 1'-0"
(DOUBLE HUNG WINDOWS SHOWN. SINGLE HUNG WINDOWS ALSO APPLY)

SEE SINGLE WINDOW ELEVATION ON SHEET 1 FOR FRAME ANCHOR REQUIREMENTS & POSITIONS AROUND WINDOW

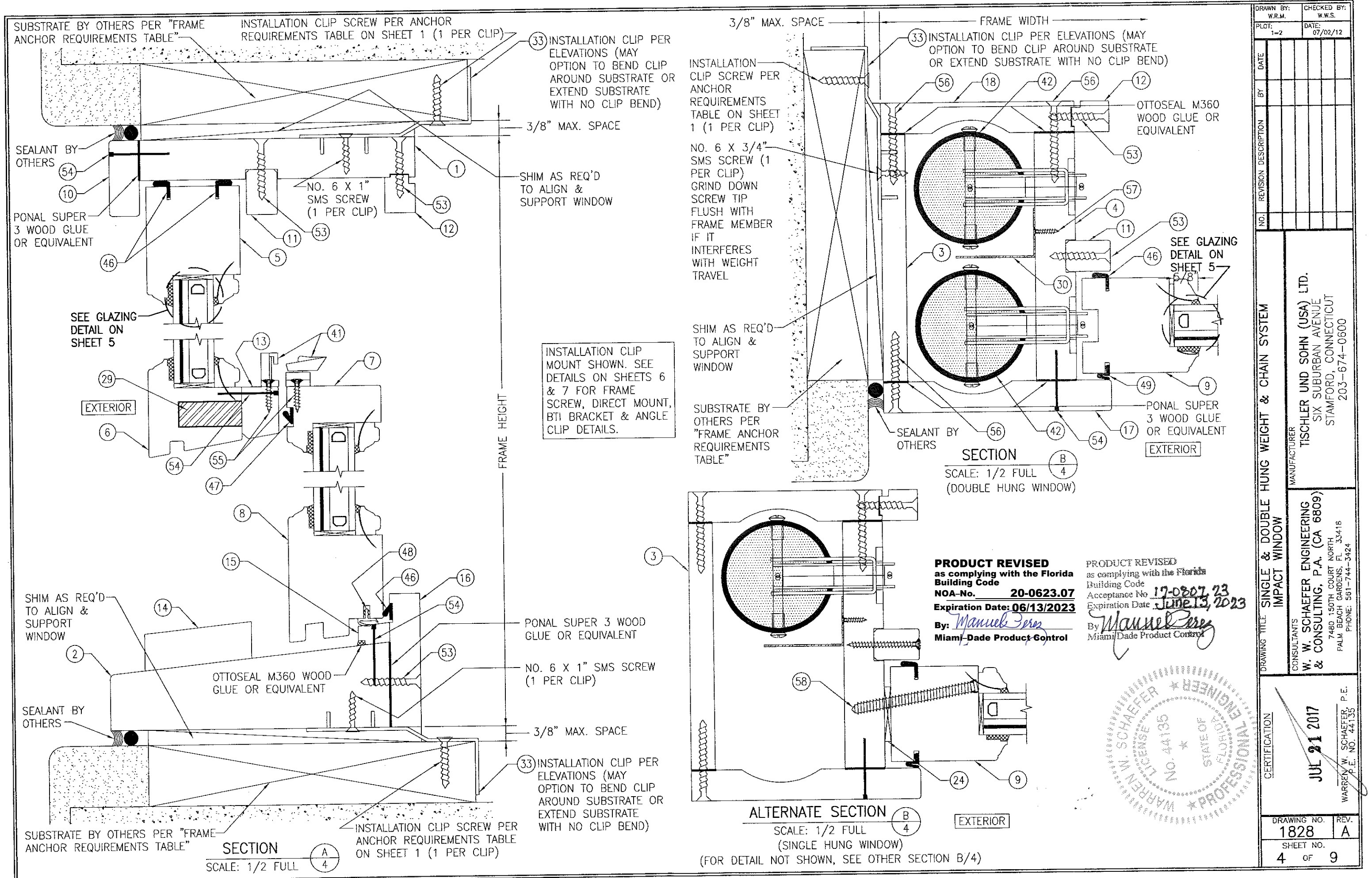
- MULTIPLE SIDE-BY-SIDE UNIT NOTES:**
1. FOR ALL DETAIL NOT SHOWN, SEE INDIVIDUAL WINDOW ELEVATION.
 2. THERE IS NO LIMIT ON THE NUMBER OF WINDOWS THAT MAY BE COMBINED HORIZONTALLY IN ONE DIRECTION INTO ONE OPENING PROVIDING THE OPENING IS DESIGNED TO SUPPORT ALL LOADS TRANSFERRED FROM THE WINDOWS & THEIR MULLIONS.
 3. ANY COMBINATION OF FIXED/OPERABLE WINDOWS IN ONE OPENING SHALL APPLY.

PRODUCT REVISED
as complying with the Florida
Building Code
NOA-No. 20-0623.07
Expiration Date: 06/13/2023
By: Manuel Perez
Miami-Dade Product Control

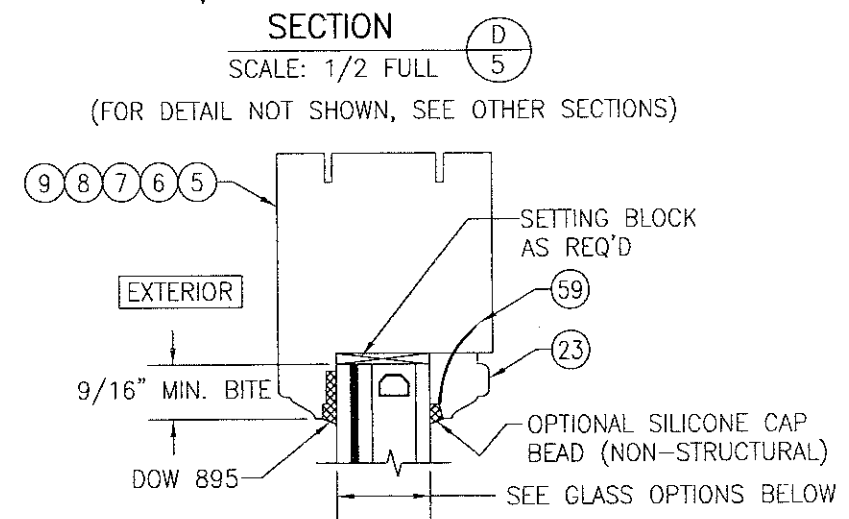
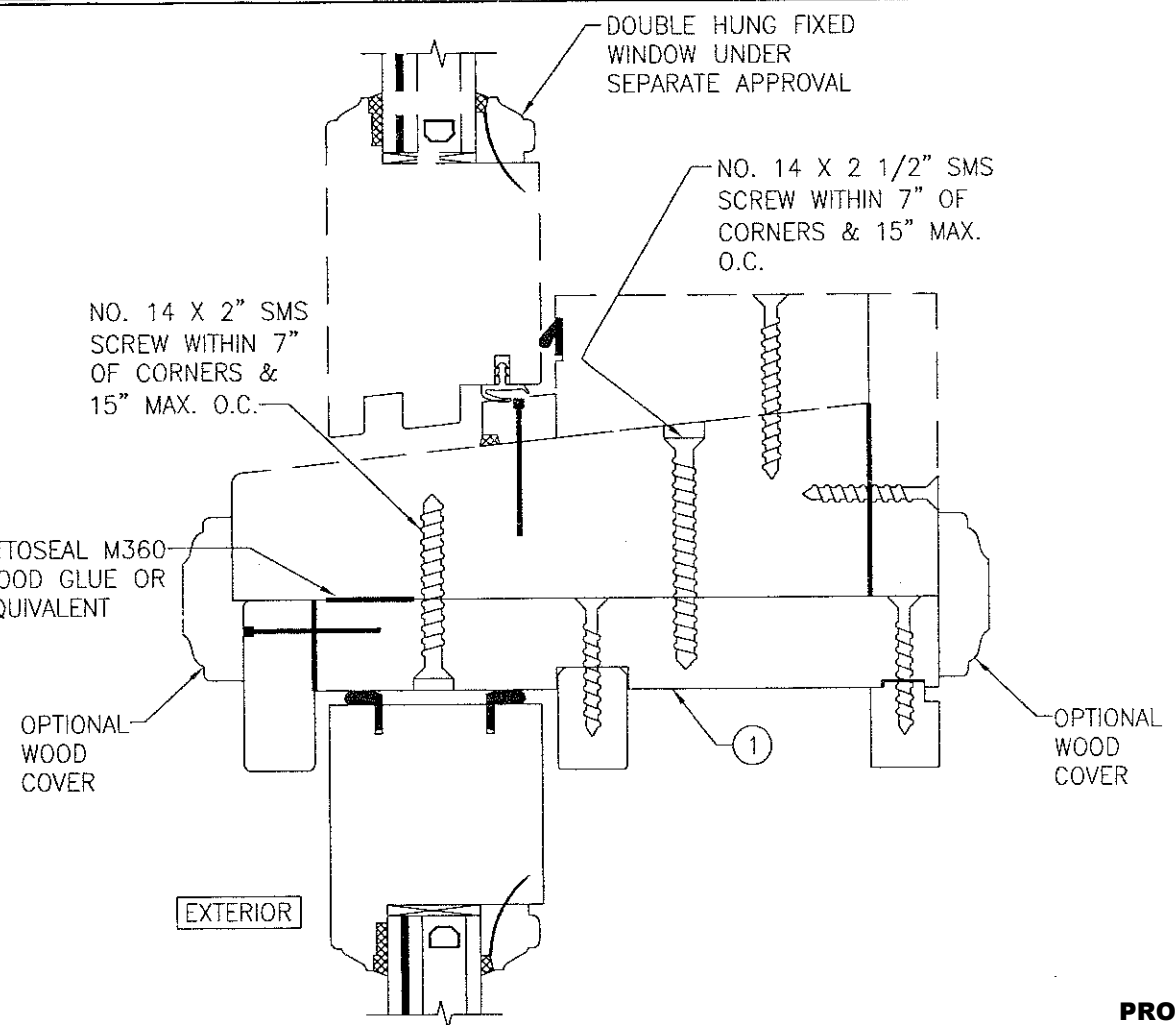
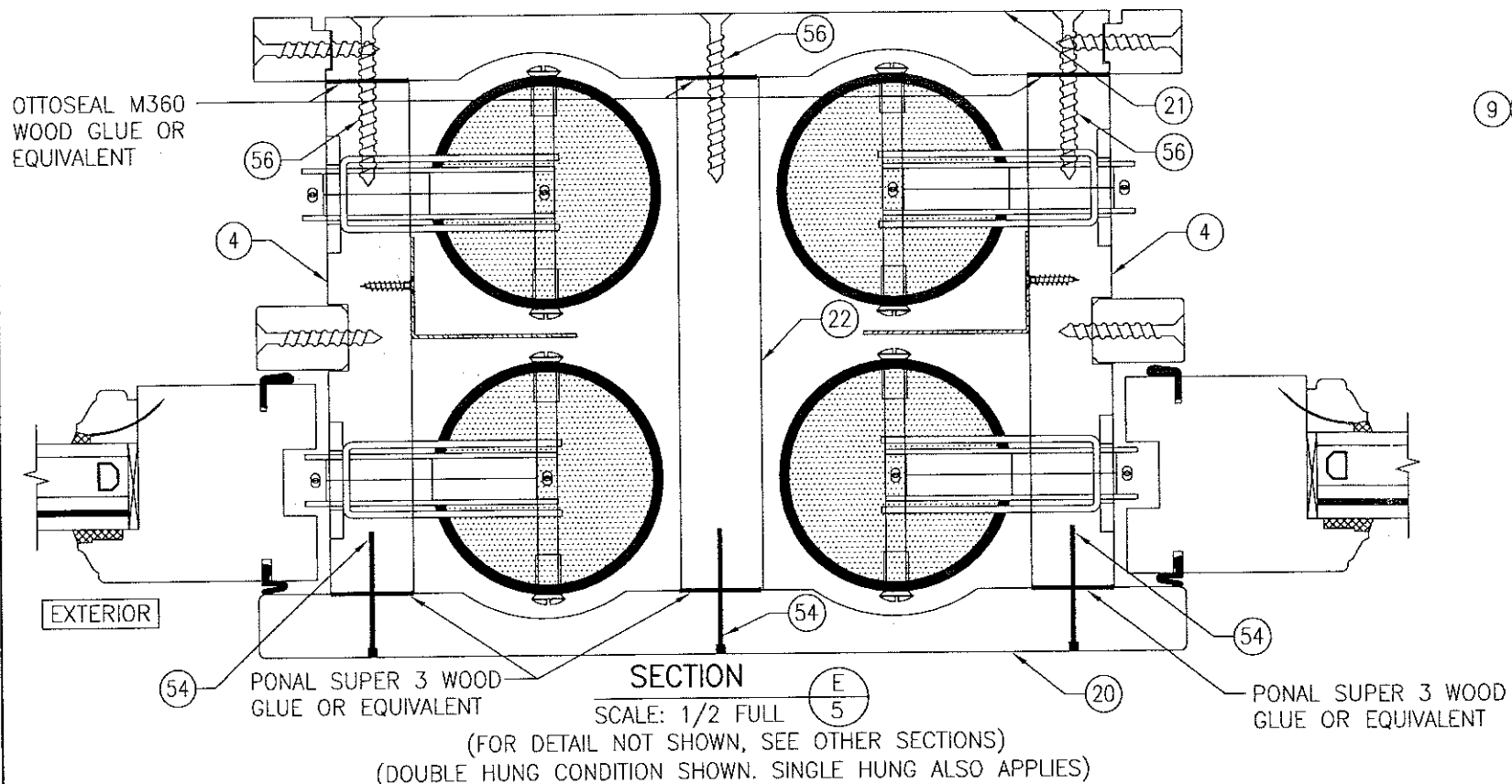
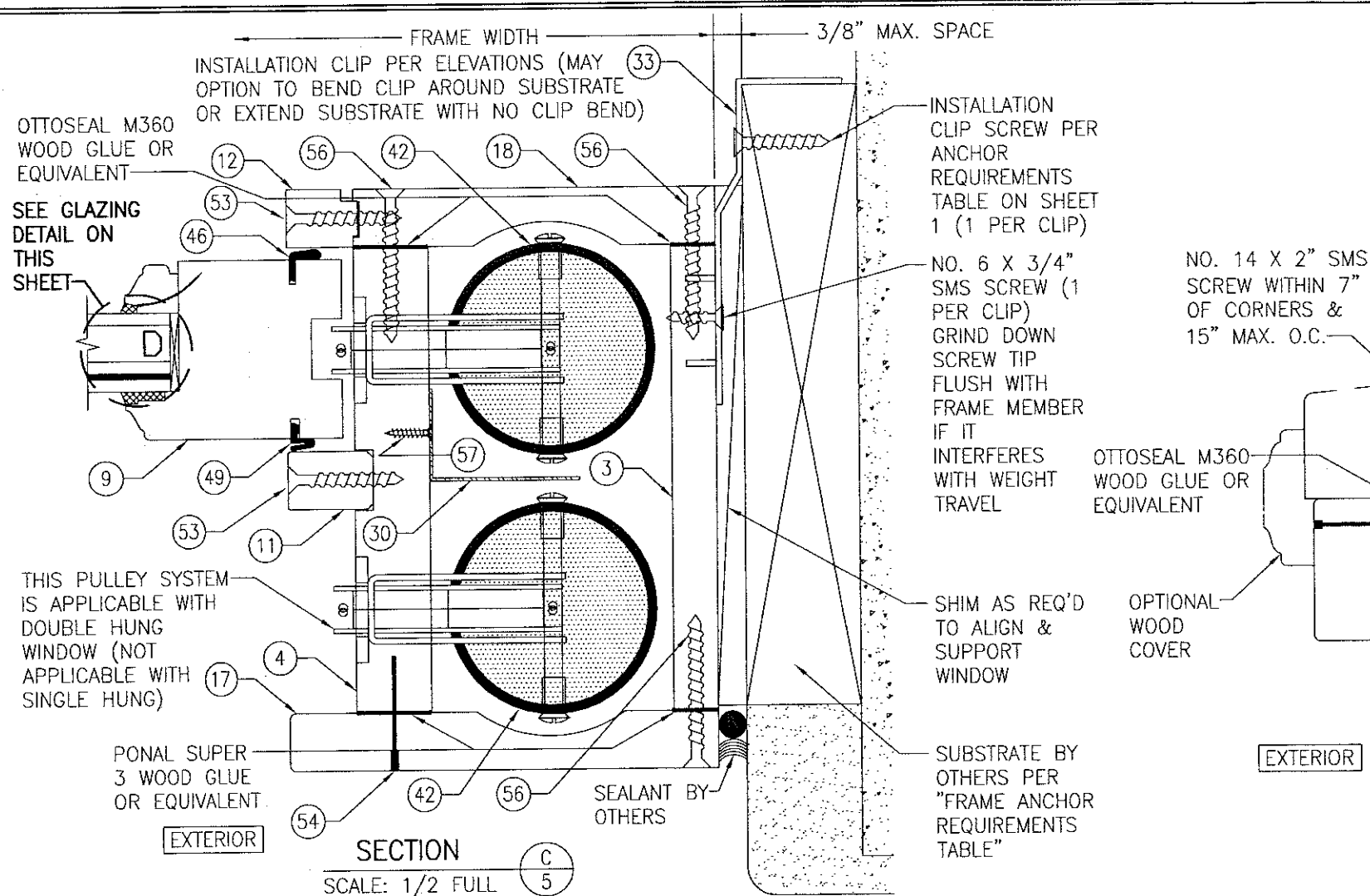
PRODUCT REVISED
as complying with the Florida
Building Code
Acceptance No. 17-0807-23
Expiration Date: June 13, 2023
By: Manuel Perez
Miami-Dade Product Control



DRAWN BY: W.R.M.	CHECKED BY: W.W.S.
PLOT: 1=24	DATE: 07/02/12
DATE	BY
REVISION DESCRIPTION	
NO.	
DRAWING TITLE: SINGLE & DOUBLE HUNG WEIGHT & CHAIN SYSTEM IMPACT WINDOW	MANUFACTURER: TISCHLER UND SOHN (USA) LTD. SIX SUBURBAN AVENUE STAMFORD, CONNECTICUT 203-674-0600
CONSULTANTS: W. W. SCHAEFER ENGINEERING & CONSULTING, P.A. (CA 6809) 7480 150TH COURT NORTH PALM BEACH GARDENS, FL 33418 PHONE: 561-744-3424	WARREN W. SCHAEFER, P.E. P.E. NO. 44135
CERTIFICATION: JUL 21 2017	DRAWING NO. 1828 SHEET NO. 3 OF 9



DRAWN BY:	W.R.M.	CHECKED BY:	W.W.S.
PLOT:	1-2	DATE:	07/02/12
DATE		BY	
REVISION	DESCRIPTION		
NO.			
DRAWING TITLE: SINGLE & DOUBLE HUNG WEIGHT & CHAIN SYSTEM IMPACT WINDOW			
CONSULTANTS: TISCHLER UND SOHN (USA) LTD. SIX SUBURBAN AVENUE STAMFORD, CONNECTICUT 203-674-0600			
MANUFACTURER: W. W. SCHAEFER ENGINEERING & CONSULTING, P.A. (CA 6809) 7480 150TH COURT NORTH PALM BEACH GARDENS, FL 33418 PHONE: 561-744-3424			
CERTIFICATION	JUL 21 2017 WARREN W. SCHAEFER P.E. NO. 44135		
DRAWING NO.	1828	REV.	A
SHEET NO.	4	OF	9



TYPICAL GLAZING DETAIL

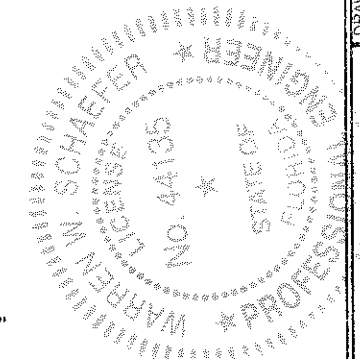
GLASS OPTION 1: 1 1/8" LAMINATED I.G. (3/16" AN./0.075" EASTMAN CHEM. CO. SAFLEX CP/3/16" AN. EXTERIOR; 1/2" AIR SPACE/3/16" AN. INTERIOR)

GLASS OPTION 2: 1 1/8" LAMINATED I.G. (3/16" AN./0.075" EASTMAN CHEM. CO. SAFLEX CP/3/16" AN. EXTERIOR; 1/2" AIR SPACE/3/16" TEMP. INTERIOR)

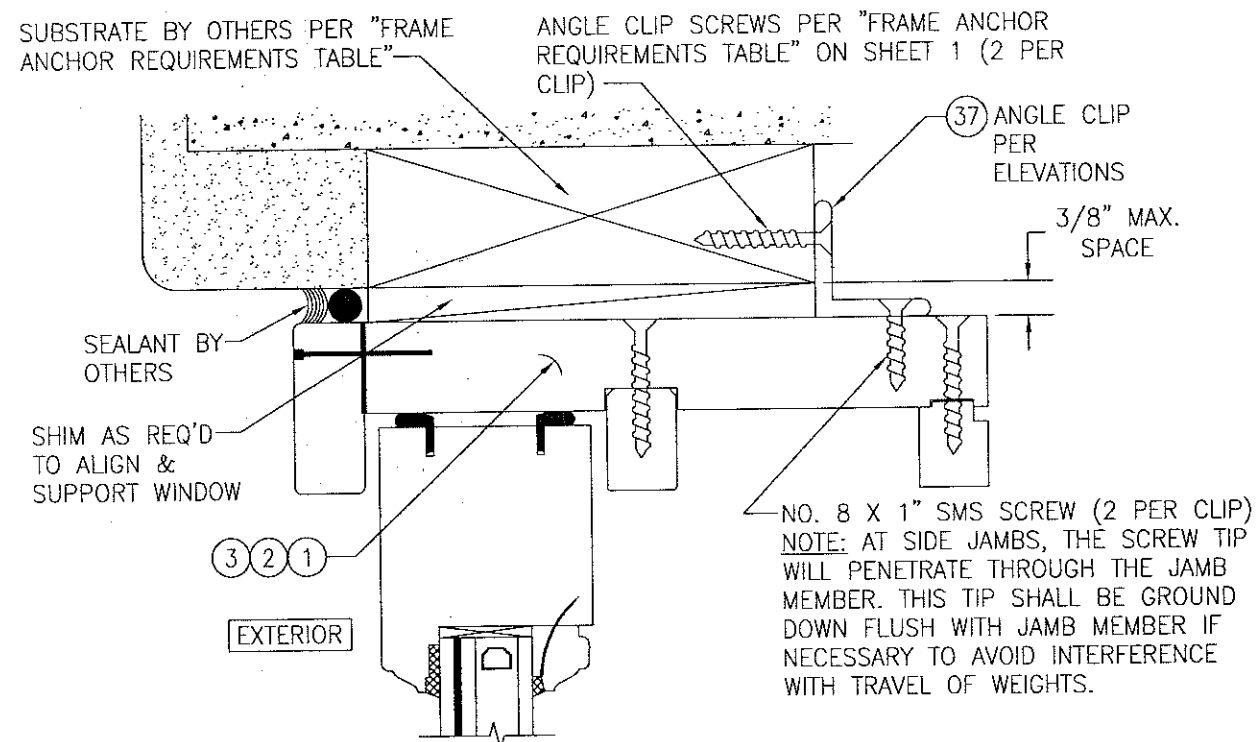
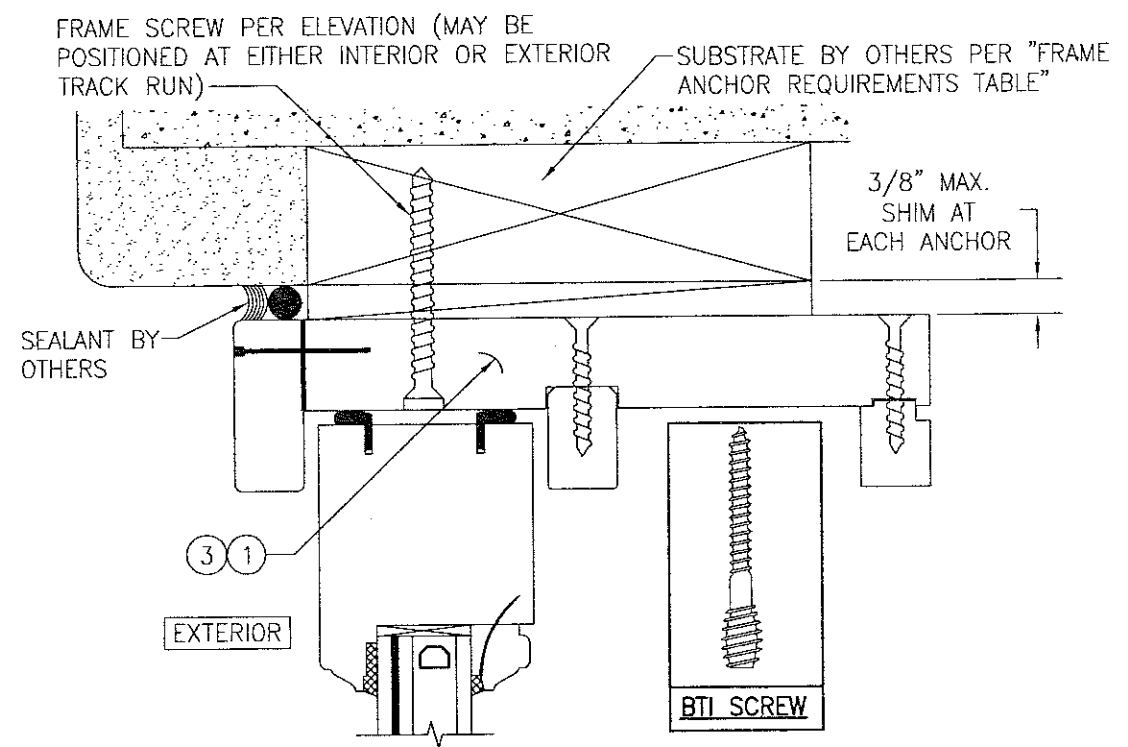
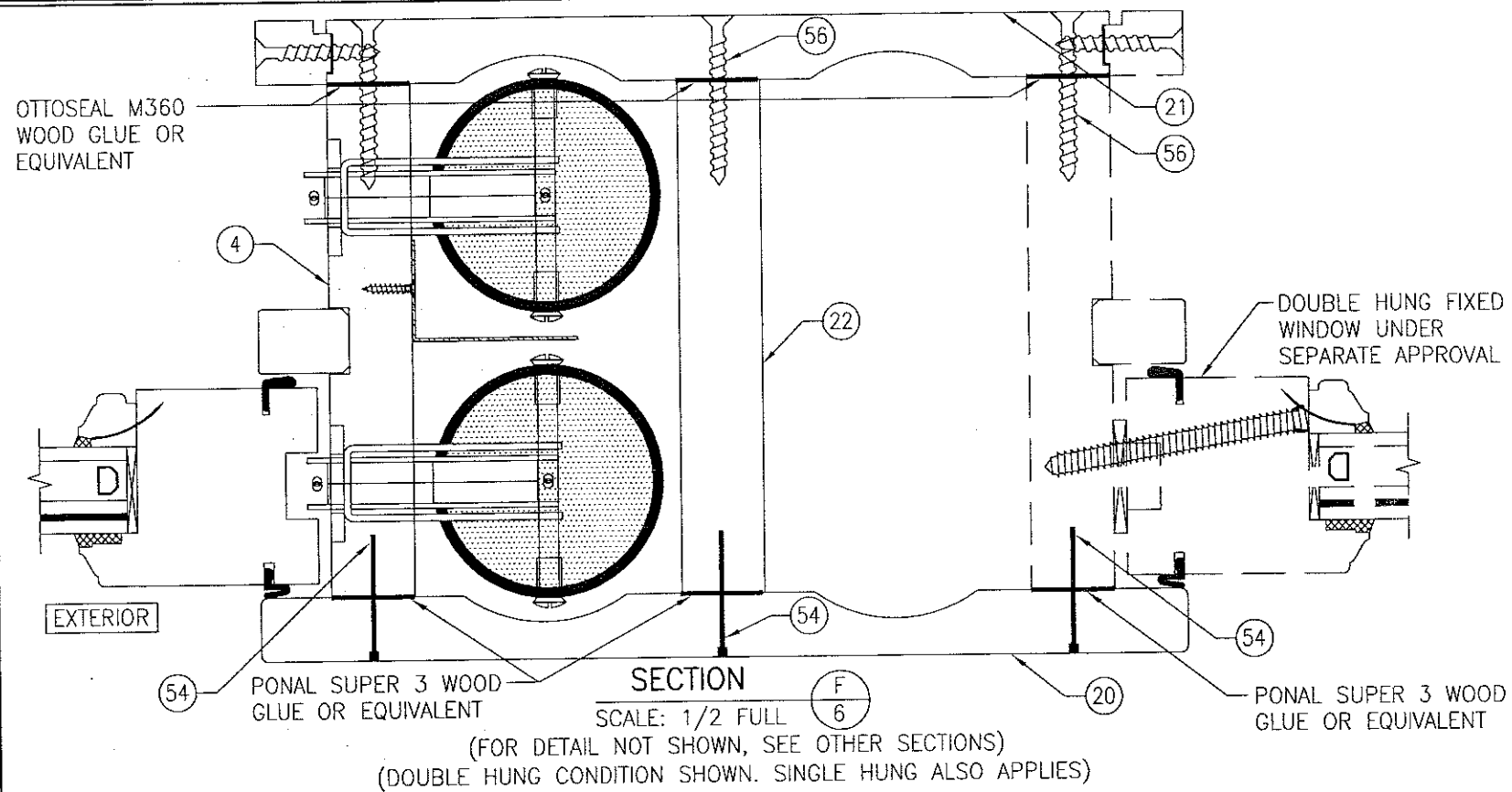
GLASS OPTION 3: 1 1/8" LAMINATED I.G. (3/16" HT. ST./0.075" EASTMAN CHEM. CO. SAFLEX CP/3/16" HT. ST. EXTERIOR; 1/2" AIR SPACE/3/16" TEMP. INTERIOR)

PRODUCT REVISED
 as complying with the Florida Building Code
 NOA-No. **20-0623.07**
 Expiration Date: **06/13/2023**
 By: *Manuel Ferraz*
 Miami-Dade Product Control

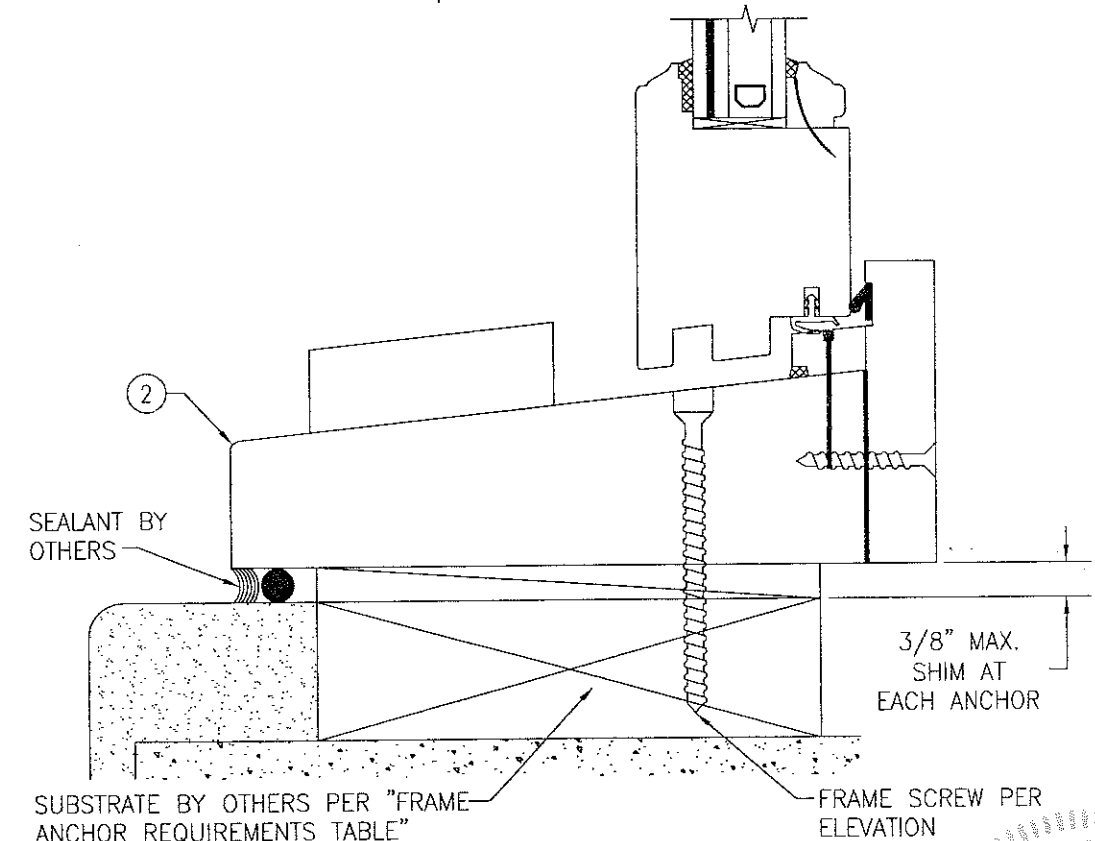
PRODUCT REVISED
 as complying with the Florida Building Code
 Acceptance No. **17-0807.23**
 Expiration Date: **June 13, 2023**
 By: *Manuel Ferraz*
 Miami-Dade Product Control



DRAWN BY: W.R.M.	CHECKED BY: W.W.S.
PLOT: 1=2	DATE: 07/02/12
DATE	BY
REVISION DESCRIPTION	NO.
DRAWING TITLE: SINGLE & DOUBLE HUNG WEIGHT & CHAIN SYSTEM IMPACT WINDOW	
MANUFACTURER: TISCHLER UND SOHN (USA) LTD. SIX SUBURBAN AVENUE STAMFORD, CONNECTICUT 06307-6744-0600	
CONSULTANTS: W. W. SCHAEFER ENGINEERING & CONSULTING, P.A. (CA 6809) 7480 150TH COURT NORTH PALM BEACH GARDENS, FL 33418 PHONE: 561-744-3424	
CERTIFICATION	JUL 21 2017
DRAWING NO. 1828	REV. A
SHEET NO. 5 OF 9	



OPTIONAL ANGLE CLIP INSTALLATION DETAIL
(HEAD SECTION SHOWN, SILL & SIDES ARE INSTALLED THE SAME)
(FOR DETAIL NOT SHOWN, SEE OTHER SECTIONS)

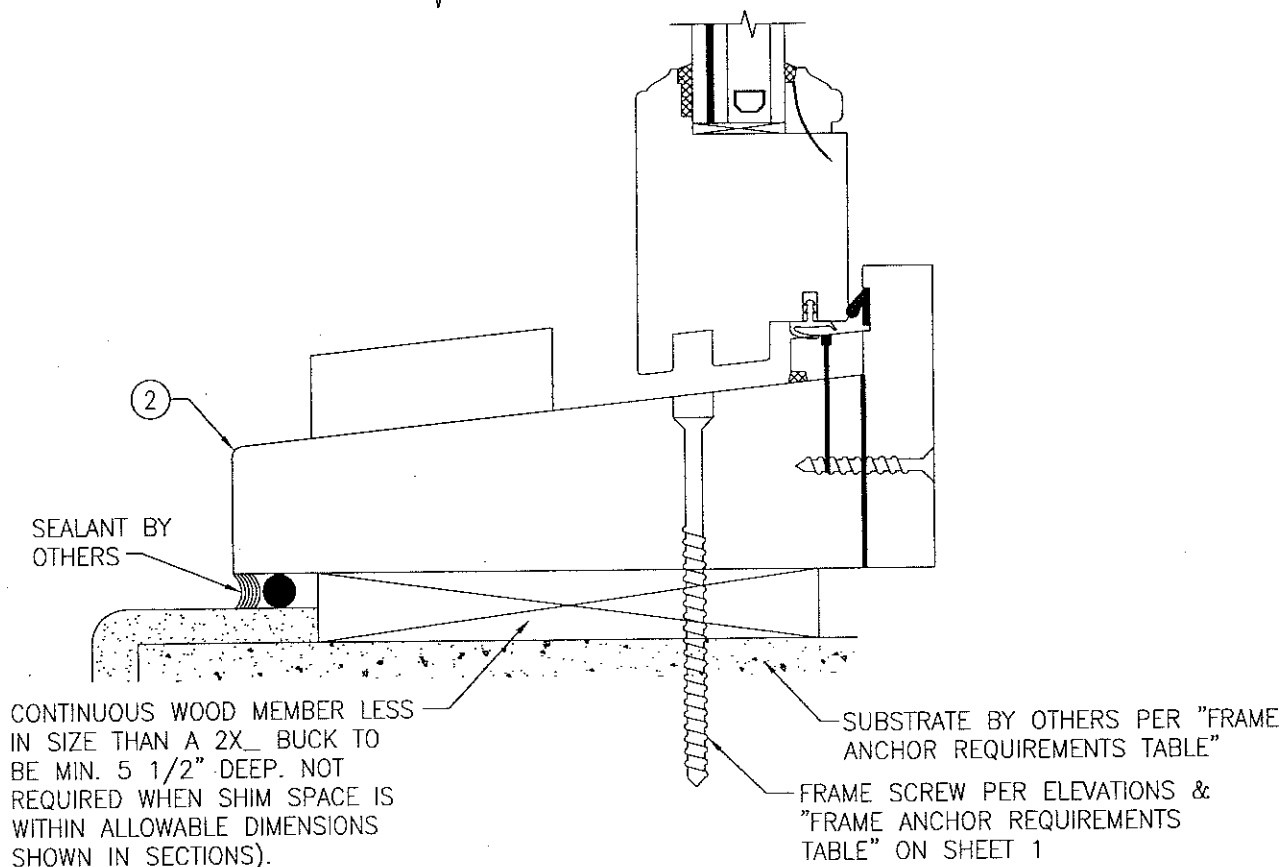
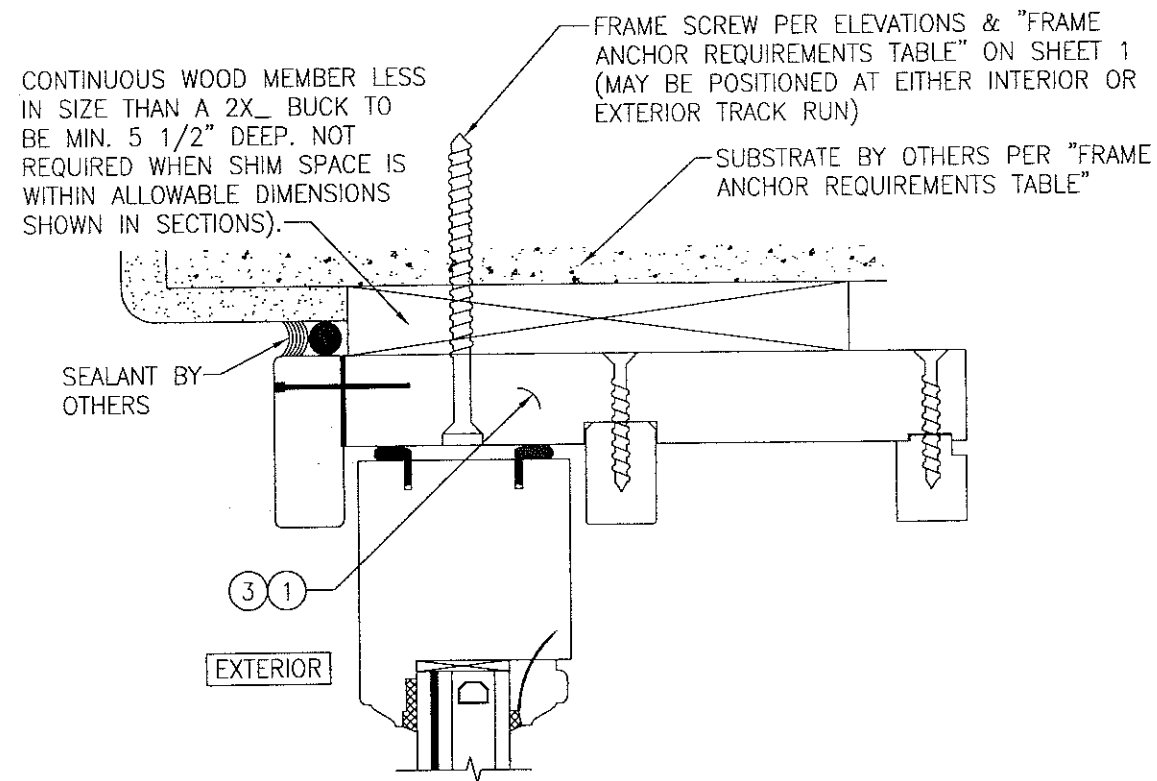


OPTIONAL FRAME SCREW INSTALLATION DETAIL
(FRAME SCREW IS NOT APPLICABLE AT JAMBS)
(FOR DETAIL NOT SHOWN, SEE OTHER SECTIONS)
(WOOD SCREW SHOWN; BTI SCREW ALSO APPLIES)

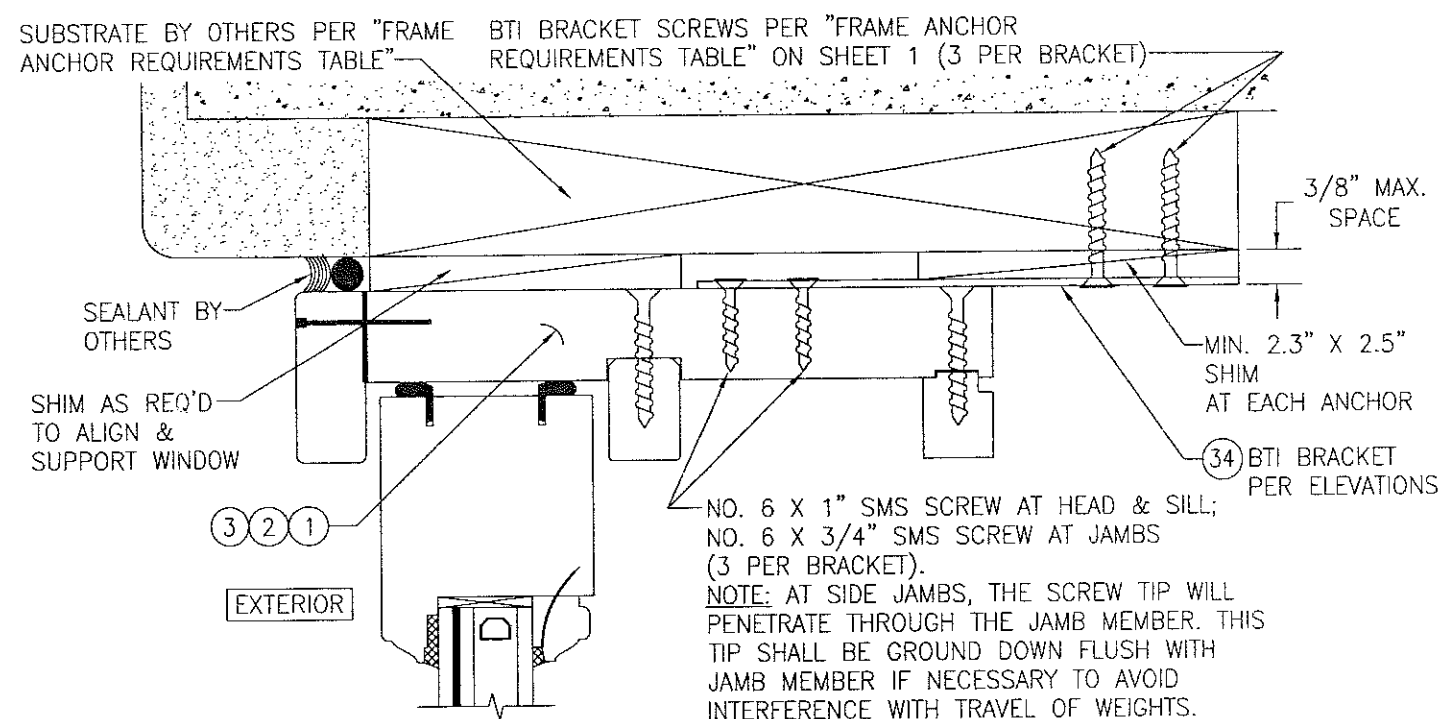
PRODUCT REVISED
as complying with the Florida Building Code
NOA-No. **20-0623.07**
Expiration Date: **06/13/2023**
By: *Manuel Perez*
Miami-Dade Product Control

PRODUCT REVISED
as complying with the Florida Building Code
Acceptance No. **17-0802.23**
Expiration Date: **June 13, 2023**
By: *Manuel Perez*
Miami-Dade Product Control

DRAWN BY: W.R.M.		CHECKED BY: W.W.S.	
PLOT: 1=2		DATE: 07/02/12	
DATE	BY	REVISION DESCRIPTION	NO.
DRAWING TITLE: SINGLE & DOUBLE HUNG WEIGHT & CHAIN SYSTEM IMPACT WINDOW			
CONSULTANTS:		MANUFACTURER:	
W. W. SCHAEFER ENGINEERING & CONSULTING, P.A. (CA 6809)		TISCHLER UND SOHN (USA) LTD.	
7480 150TH COURT NORTH PALM BEACH GARDENS, FL 33418 PHONE: 561-744-3424		SIX SUBURBAN AVENUE STAMFORD, CONNECTICUT 203-674-0600	
JUL 21 2017		P.E. NO. 44135	
DRAWING NO. 1828		REV. A	
SHEET NO. 6		OF 9	



**OPTIONAL DIRECT MOUNT DETAIL
TO SUBSTRATE WITH SPACER**
(FRAME SCREW IS NOT APPLICABLE AT JAMBS)
(FOR DETAIL NOT SHOWN, SEE OTHER SECTIONS)



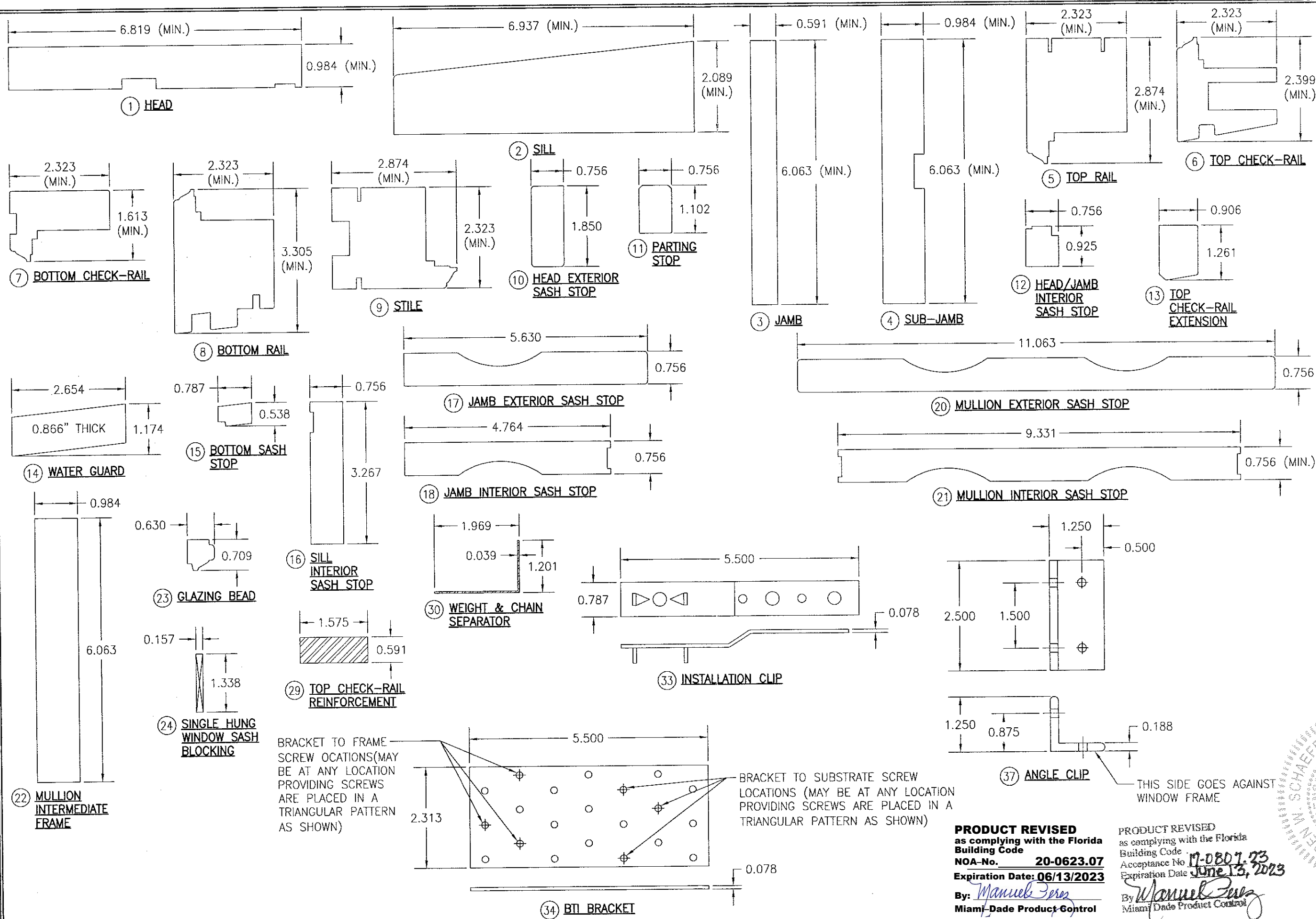
OPTIONAL BTI BRACKET INSTALLATION DETAIL
(HEAD SECTION SHOWN, SILL & SIDES ARE INSTALLED THE SAME)
(FOR DETAIL NOT SHOWN, SEE OTHER SECTIONS)

SEE PART #34 BTI BRACKET
DETAIL ON SHEET 8 FOR SCREW
LOCATIONS THROUGH BRACKET

PRODUCT REVISED
as complying with the Florida
Building Code
NOA-No. **20-0623.07**
Expiration Date: **06/13/2023**
By: *Manuel Perez*
Miami-Dade Product Control

PRODUCT REVISED
as complying with the Florida
Building Code
Acceptance No. **17-0807.23**
Expiration Date: **June 13, 2023**
By: *Manuel Perez*
Miami-Dade Product Control

DRAWN BY: W.R.M.		CHECKED BY: W.W.S.	
PLOT: 1=2		DATE: 07/02/12	
DATE	BY	REVISION DESCRIPTION	NO.
DRAWING TITLE: SINGLE & DOUBLE HUNG WEIGHT & CHAIN SYSTEM IMPACT WINDOW			
CONSULTANTS: W. W. SCHAEFER ENGINEERING & CONSULTING, P.A. (CA 6809) 7480 150TH COURT NORTH PALM BEACH GARDENS, FL 33418 PHONE: 561-744-3424		MANUFACTURER: TISCHLER UND SOHN (USA) LTD. SIX SUBURBAN AVENUE STAMFORD, CONNECTICUT 203-674-0600	
CERTIFICATION: JUL 21 2017 WARREN W. SCHAEFER, P.E. P.E. NO. 44135		DRAWING NO. 1828 REV. A SHEET NO. 7 OF 9	



DRAWN BY: W.R.M.		CHECKED BY: W.W.S.	
PLOT: 1=2		DATE: 07/02/12	
DATE	BY	REVISION DESCRIPTION	NO.
DRAWING TITLE: SINGLE & DOUBLE HUNG WEIGHT & CHAIN SYSTEM IMPACT WINDOW			
CONSULTANTS: W. W. SCHAEFER ENGINEERING & CONSULTING, P.A. (CA 6809)		MANUFACTURER: TISCHLER UND SOHN (USA) LTD.	
7480 150TH COURT NORTH PALM BEACH GARDENS, FL 33418 PHONE: 561-744-3424		SIX SUBURBAN AVENUE STAMFORD, CONNECTICUT 203-674-0600	
JUL 21 2017		P.E. W. W. SCHAEFER	
CERTIFICATION NO. 144135		DRAWING NO. 1828	
REV. A		SHEET NO. 8 OF 9	

PRODUCT REVISED
as complying with the Florida
Building Code
NOA-No. 20-0623.07
Expiration Date: 06/13/2023
By: Manuel Perez
Miami-Dade Product Control

PRODUCT REVISED
as complying with the Florida
Building Code
Acceptance No. 17-0807.73
Expiration Date: June 13, 2023
By: Manuel Perez
Miami-Dade Product Control

THIS SIDE GOES AGAINST
WINDOW FRAME

