



MIAMI-DADE COUNTY
PRODUCT CONTROL SECTION

11805 SW 26 Street, Room 208
Miami, Florida 33175-2474
T (786) 315-2590 F (786) 315-2599

www.miamidade.gov/economy

DEPARTMENT OF REGULATORY AND ECONOMIC RESOURCES (RER)
BOARD AND CODE ADMINISTRATION DIVISION

NOTICE OF ACCEPTANCE (NOA)

Tischler Und Sohn (USA) Ltd.

**Six Suburban Avenue
Stamford, Ct. 06901**

SCOPE:

This NOA is being issued under the applicable rules and regulations governing the use of construction materials. The documentation submitted has been reviewed and accepted by Miami-Dade County RER -Product Control Section to be used in Miami Dade County and other areas where allowed by the Authority Having Jurisdiction (AHJ).

This NOA shall not be valid after the expiration date stated below. The Miami-Dade County Product Control Section (In Miami Dade County) and/or the AHJ (in areas other than Miami Dade County) reserve the right to have this product or material tested for quality assurance purposes. If this product or material fails to perform in the accepted manner, the manufacturer will incur the expense of such testing and the AHJ may immediately revoke, modify, or suspend the use of such product or material within their jurisdiction. RER reserves the right to revoke this acceptance, if it is determined by Miami-Dade County Product Control Section that this product or material fails to meet the requirements of the applicable building code.

This product is approved as described herein and has been designed to comply with the Florida Building Code, including the High Velocity Hurricane Zone.

DESCRIPTION: Tischler series Inswing glazed Wood Doors-L.M. Impact

APPROVAL DOCUMENT: Drawing No. **1601 REV C**, titled "In-Swing Impact Wood Doors", sheets 1 through 19 of 19, dated 10/08/08 and last revised on May 15, 2018, prepared by W.W. Schaefer Engineering & Consulting, P.A., signed and sealed by Warren Schaefer, P.E., bearing the Miami-Dade County Product Control Revision stamp with the Notice of Acceptance number and expiration date by the Miami-Dade County Product Control Section.

MISSILE IMPACT RATING: Large Missile Impact Resistant

Limitations:

1. MDF material: Medite Exterior MDF panel EN 622 Type MDF-H2
2. See sheets **10** thru **13** for reinforcements, see glass & partial raised panel options on sheet **17**.
3. Lower design pressure shall control when doors mulled w/ Tischler's transom (under separate approval) see sheet **8**.
4. CMU to conform to ASTM-C 90 and min 2000 psi net compressive masonry strength.

LABELING: Each unit shall bear a permanent label with the manufacturer's name or logo, Wedel (Schleswig-Holstein), Germany and series and following statement: "Miami-Dade County Product Control Approved", unless otherwise noted herein.

RENEWAL of this NOA shall be considered after a renewal application has been filed and there has been no change in the applicable building code negatively affecting the performance of this product.

TERMINATION of this NOA will occur after the expiration date or if there has been a revision or change in the materials, use, and/or manufacture of the product or process. Misuse of this NOA as an endorsement of any product, for sales, advertising or any other purposes shall automatically terminate this NOA. Failure to comply with any section of this NOA shall be cause for termination and removal of NOA.

ADVERTISEMENT: The NOA number preceded by the words Miami-Dade County, Florida, and followed by the expiration date may be displayed in advertising literature. If any portion of the NOA is displayed, then it shall be done in its entirety.

INSPECTION: A copy of this entire NOA shall be provided to the user by the manufacturer or its distributors and shall be available for inspection at the job site at the request of the Building Official.

This NOA **revises NOA # 18-0531.10** and consists of this page 1 and evidence pages E-1, E-2, E-3 and E-4 as well as approval document mentioned above.

The submitted documentation was reviewed by **Ishaq I. Chanda, P.E.**



Ishaq I. Chanda

NOA No. 20-0623.10
Expiration Date: May 27, 2024
Approval Date: August 13, 2020
Page 1

NOTICE OF ACCEPTANCE: EVIDENCE SUBMITTED

1. Evidence submitted under previous approvals

A. DRAWINGS

1. Manufacturer's parts drawings and sections (submitted under files below)
2. Drawing No. **1601 REV B**, titled "In-Swing Impact Wood Doors", sheets 1 through 19 of 19, dated 10/08/08 and last revised on OCT 27, 2011, prepared by W.W. Schaefer Engineering & Consulting, P.A., signed and sealed by Warren Schaefer, P.E.

(Note: The revision consists of updating glass interlayer and angle clip masonry screw)

B. TESTS (submitted under files #14-0303.06/ #11-1101.13 / #09-0212.05)

1. Test reports on:
 - 1) Air Infiltration Test, per FBC, TAS 202-94
 - 2) Uniform Static Air Pressure Test, Loading per FBC TAS 202-94
 - 3) Water Resistance Test, per FBC, TAS 202-94
 - 4) Large Missile Impact Test per FBC, TAS 201-94
 - 5) Cyclic Wind Pressure Loading per FBC, TAS 203-94
 - 6) Forced Entry Test, per FBC 2411 3.2.1, TAS 202-94

Along with installation diagram of Single & Double Outswing /Inswing, Tilt/Turn Mahogany Wood French doors w/wo Sidelite & Transom, w/ MDF & wood Veneered Panels and different shapes top, prepared by Architectural Testing, Test Report(s) No. **ATI 77326.01-109-18**, dated 02/03/09 and **ATI 77327.01-109-18**, dated 02/202/09, both signed and sealed by Michael D. Stremmel, P.E.

2. Additional test report: ATI 77324.01-109.18 (specimen A3-1 & A3-7) issued by Architectural Testing per TAS 201, 202 and 203-94.

C. CALCULATIONS

1. Anchor calculations and structural analysis complying w/ FBC 2014 dated 02/20/2014, prepared by W.W. Schaefer Engineering & Consulting, P.A., signed & sealed by Warren Schaefer, P.E.
2. Glazing complies with ASTM E-1300-02 &-04.

D. QUALITY ASSURANCE

1. Miami Dade Department of Regulatory and Economic Resources (RER).

E. MATERIAL CERTIFICATIONS

1. Notice of Acceptance No. **12-1231.08** issued to Eastman Chemical Co (MA) former Solutia, Inc., for "**Saflex CP: Saflex & Saflex HP Composite Glass Interlayer w/ PET**", expiring on 12/11/2018.
2. Notice of Acceptance No. **12-1231.10** issued to Eastman Chemical Co (MA) former Solutia Inc. for "**Saflex Clear or colored interlayer**", expiring on 05/21/16.
3. Test report No. ATI-86006.01-106-18 (Rev 2) dated 12/12/08 and ATI-86006.02-106-18 02/05/09 for "Durability of Wood-Based Composite Lumber and panels" per ASTM ASTM D-1761 and ASTM D-4761, issued by Architectural Testing Lab (submitted under **11-1101.13/ #09-0212.05**).

F. STATEMENTS

1. Statement letters of conformance to FBC **5th** Edition (2014), dated MAR 27, 2014 and e-mail dated APR 17, 2014, prepared by W. W. Schafer Engineering & Consulting, P.A. signed and sealed by Warren W. Schafer, P.E.

Ishaq I. Chanda

Ishaq I. Chanda, P.E.
Product Control Unit Supervisor
NOA No. 20-0623.10
Expiration Date: May 27, 2024
Approval Date: August 13, 2020

NOTICE OF ACCEPTANCE: EVIDENCE SUBMITTED

F. STATEMENTS (continue)

2. Statement letters of conformance to FBC 2010, dated OCT 28, 2011 and “No financial interest dated OCT 24, 2011, prepared by W. W. Schafer Engineering & Consulting, P. A., signed and sealed by Warren W. Schafer, P.E. (submitted under #11-1101.13)
3. E-mail statement dated 03/31/09, issued by Michael D. Stremmel, P.E. of Architectural testing in reference to low sill, water infiltration test (submitted under #11-1101.13 / #09-0212.05).

G. OTHER

1. This NOA **revises & renews NOA # 11-1101.13**, expiring 05/27/14.
2. Test proposal # **07-3533** dated Oct 22, 2007, approved by BCCO.
3. Distribution agreement between Tishler Und Sohn (USA) and Tishler/Cornelius Korn GmbH, Germany, signed by Tim Carpenter & Wilhem Korn, respectively.
4. Tishler’s current Fixed Casement windows NOA(s) w/ Drawing references No. **1514** or **1533**.

2. Evidence submitted under previous approval

A. DRAWINGS

1. None.

B. TESTS

1. None

C. CALCULATIONS

1. None

D. QUALITY ASSURANCE

1. Miami Dade Department of Regulatory and Economic Resources (RER).

E. MATERIAL CERTIFICATIONS

1. Notice of Acceptance No. **15-1201.11** issued to Eastman Chemical Co (MA) former Solutia Inc. for “**Saflex Clear or colored interlayer**”, expiring on 05/21/21.

F. STATEMENTS

1. Statement letters of conformance to FBC 2017(**6th** Edition) and still complies with FBC 2014 (5th Edition), dated JUL 20,2017, prepared by W. W. Schafer Engineering & Consulting, P. A., signed and sealed by Warren W. Schafer, P.E.

G. OTHER

1. This NOA **revises NOA # 14-0303.06**, expiring 05/27/2019.
2. E-mail request dated 10/12/17 for correction of Tischler Und Sohn manufacturing location in Germany, signed by Stefan Precht, VP project management.

Ishaq I. Chanda

Ishaq I. Chanda, P.E.
Product Control Unit Supervisor
NOA No. 20-0623.10
Expiration Date: May 27, 2024
Approval Date: August 13, 2020

NOTICE OF ACCEPTANCE: EVIDENCE SUBMITTED

3. Evidence submitted under previous submittal

A. DRAWINGS

1. Drawing No. **1601 REV C**, titled “In-Swing Impact Wood Doors”, sheets 1 through 19 of 19, dated 10/08/08 and last revised on May 15, 2018, prepared by W.W. Schaefer Engineering & Consulting, P.A., signed and sealed by Warren Schaefer, P.E.

B. TESTS

1. None

C. CALCULATIONS

1. Anchor calculations and structural analysis complying w/ FBC 2017(6th Edition) dated May 15, 2018, prepared by W.W. Schaefer Engineering & Consulting, P.A., signed & sealed by Warren Schaefer, P.E.

D. QUALITY ASSURANCE

1. Miami Dade Department of Regulatory and Economic Resources (RER).

E. MATERIAL CERTIFICATIONS

1. Notice of Acceptance No. **15-1201.11** issued to Eastman Chemical Co (MA) former Solutia Inc. for “**Saflex Clear or colored interlayer**”, expiring on 05/21/21.

F. STATEMENTS

1. Statement letters of conformance to FBC 2017(6th Edition) and still complies with FBC 2017 (6th Edition), dated May 15, 2018, prepared by W. W. Schafer Engineering & Consulting, P. A., signed and sealed by Warren W. Schafer, P.E.
2. Statement letter dated May 11, 2018, issued by Tishler Und Sohn, Ltd, requesting Renewal, signed by Timothy K. Carpenter, company’s president.

G. OTHER

1. This NOA **revises & renews NOA # 17-0803.31**, expiring 05/27/2024.
2. Distribution agreement between Tishler Und Sohn (USA) and Tishler/Cornelius Korn GmbH, Germany, signed by Tim Carpenter & Wilhem Korn, respectively.
3. E-mail request dated 10/12/17 for correction of Tischler Und Sohn manufacturing location in Germany, signed by Stefan Precht, VP project management.

4. New Evidence submitted

A. DRAWINGS

1. None.

B. TESTS

1. None

C. CALCULATIONS

1. None.

Ishaq I. Chanda

Ishaq I. Chanda, P.E.
Product Control Unit Supervisor
NOA No. 20-0623.10
Expiration Date: May 27, 2024
Approval Date: August 13, 2020

NOTICE OF ACCEPTANCE: EVIDENCE SUBMITTED

4. New Evidence submitted (continue):

D. QUALITY ASSURANCE

1. Miami Dade Department of Regulatory and Economic Resources (RER).

E. MATERIAL CERTIFICATIONS

1. None.

F. STATEMENTS

2. Statement letters of conformance to FBC 2020 (**7th** Edition), dated June 05, 2020, prepared by W. W. Schafer Engineering & Consulting, P. A., signed and sealed by Warren W. Schafer, P.E.

G. OTHER

1. This NOA revises **NOA # 18-0531.10**, for FBC 2020 update.

Ishaq I. Chanda

Ishaq I. Chanda, P.E.
Product Control Unit Supervisor
NOA No. 20-0623.10
Expiration Date: May 27, 2024
Approval Date: August 13, 2020

LOCK STRIKE REQUIREMENTS (TOP OF PANEL)	
PANEL WIDTH	QUANTITY PER PANEL
RECTANGULAR PANEL	
ALL WIDTHS	2
ARCH & ROUND TOP PANEL	
OVER 32"	3
28" TO 32"	2

(1) LOCK STRIKE REQUIREMENTS (BOTTOM OF PANEL)	
PANEL WIDTH	QUANTITY PER PANEL
ALL PANEL SHAPES	
ALL WIDTHS	2
(1) WHEN ADA SILL IS USED WITH DOUBLE DOORS, ONLY THE KVV LOCK SYSTEM MAY BE USED. WHEN ADA SILL IS USED WITH A SINGLE DOOR, BOTH THE KVV & SIEGENIA LOCK SYSTEMS APPLY BUT DO NOT REQUIRE SILL STRIKES.	

LOCK STRIKE REQUIREMENTS (LOCK SIDE OF PANEL)	
(1) PANEL HEIGHT	QUANTITY PER PANEL
ALL PANEL SHAPES	
OVER 96"	4
76" TO 96"	3
(1) THE "PANEL HEIGHT" IS CONSIDERED TO BE FULL PANEL HEIGHT FOR RECTANGULAR UNITS OR DISTANCE FROM THE BASE OF PANEL TO PANEL SRINGLINE FOR SHAPED UNITS	

(1) LOCK STRIKE REQUIREMENTS (HINGE SIDE OF TILT-TURN DOORS)	
(2) PANEL HEIGHT	QUANTITY PER PANEL
ALL PANEL SHAPES	
ALL HEIGHTS	3
(1) WHEN DOOR IS TILT-TURN, ONLY 2 HINGES ARE USED COMBINED WITH LOCK POINTS. WHEN DOOR IS SWING ONLY, ONLY HINGES EXIST.	
(2) THE "PANEL HEIGHT" IS CONSIDERED TO BE FULL PANEL HEIGHT FOR RECTANGULAR UNITS OR DISTANCE FROM THE BASE OF PANEL TO PANEL SRINGLINE FOR SHAPED UNITS	

HINGE REQUIREMENTS	
(1) PANEL HEIGHT	QUANTITY PER PANEL
POT HINGES	
OVER 99"	5
76" TO 99"	4
SCREWED-IN HINGES	
OVER 99"	5
76" TO 99"	4
(1) THE "PANEL HEIGHT" IS CONSIDERED TO BE FULL PANEL HEIGHT FOR RECTANGULAR UNITS OR DISTANCE FROM THE BASE OF PANEL TO PANEL SRINGLINE FOR SHAPED UNITS	

HINGE REQUIREMENTS (TILT-TURN DOORS)	
2 PER DOOR (ALL SIZES OF ALL DOORS)	

THESE DRAWINGS ARE APPLICABLE ONLY TO THE PRODUCT SPECIFIED. THEY MAY NOT BE USED FOR THE ASSEMBLY AND/OR INSTALLATION OF ANY OTHER PRODUCT NOR MAY THEY BE USED FOR RATIONAL AND/OR LOCAL APPROVAL OF ANY PRODUCT NOT PRODUCED BY THE MANUFACTURER STATED ON THESE DRAWINGS.

GENERAL NOTES:

1. THIS PRODUCT HAS BEEN TESTED, ANALYZED & APPROVED FOR DESIGN PRESSURES NOT TO EXCEED THOSE SHOWN IN THE "ALLOWABLE DESIGN PRESSURE TABLE(S)".
2. OPENINGS, BUCKING & BUCKING FASTENERS MUST BE PROPERLY DESIGNED & INSTALLED TO TRANSFER WIND LOADS TO THE STRUCTURE.
3. ALL HARDWARE & FASTENERS SHALL BE IN ACCORDANCE WITH THESE DRAWINGS & SHALL NOT VARY UNLESS SPECIFICALLY MENTIONED ON THE DRAWINGS. SPECIFIED ANCHOR EMBED TO BASE MATERIAL SHALL BE BEYOND WALL FINISH OR STUCCO.
4. THE DETAILS & SPECIFICATIONS SHOWN HEREIN REPRESENT THE PRODUCTS TESTED & PROPOSED FOR CONFORMANCE WITH THE FLORIDA BUILDING CODE PROTOCOLS TAS-201, 202 & 203 FOR LARGE MISSILE IMPACT PRODUCTS.
5. THIS PRODUCT HAS BEEN DESIGNED IN ACCORDANCE WITH AND MEETS THE REQUIREMENTS OF THE FLORIDA BUILDING CODE (FBC) INCLUDING HIGH VELOCITY HURRICANE ZONES (HVHZ).
6. IMPACT SHUTTERS ARE NOT REQUIRED WITH THIS PRODUCT.
7. ALL ANCHORS SECURING PRODUCT FRAMES TO PRESSURE TREATED BUCKS OR WOOD FRAMING SHALL BE CAPABLE OF RESISTING CORROSION CAUSED BY THE PRESSURE TREATING CHEMICALS IN THE WOOD.
8. DETERMINE THE POSITIVE & NEGATIVE DESIGN LOADS TO USE WHEN REFERENCING THESE DOCUMENTS IN ACCORDANCE WITH THE GOVERNING CODE AND GOVERNING WIND VELOCITY. FOR WIND LOAD CALCULATIONS IN ACCORDANCE WITH THE FLORIDA BUILDING CODE, A DIRECTIONALITY FACTOR OF $K_d = 0.85$ MAY BE APPLIED PER THE ASCE-7 STANDARD.
9. NO INCREASE IN ALLOWABLE STRESS HAS BEEN USED IN THE CERTIFICATION OF THIS PRODUCT. WIND LOAD DURATION FACTOR $C_d = 1.6$ WAS USED FOR WOOD SCREW ANALYSIS ONLY.
10. MATERIALS, INCLUDING BUT NOT LIMITED TO STEEL SCREWS, THAT COME INTO CONTACT WITH OTHER DISSIMILAR MATERIALS SHALL MEET THE REQUIREMENTS OF FLORIDA BUILDING CODE.
11. ALL WOOD MEMBERS OF THIS PRODUCT THAT MAY POSSIBLY COME INTO CONTACT WITH MASONRY OR CONCRETE SUBSTRATES, ARE SUBJECT TO MOISTURE &/OR ARE SUBJECT TO THE OUTSIDE ENVIRONMENT SHALL BE OF AN APPROVED DURABLE SPECIES OR BE TREATED IN AN APPROVED METHOD WITH AN APPROVED PRESERVATIVE PER FBC REQUIREMENTS.

FRAME ANCHOR REQUIREMENTS TABLE

OPENING TYPE (SUBSTRATE)	FRAME/SILL/CLIP/BACKET TO OPENING FASTENER TYPE	MINIMUM EMBED	MINIMUM EDGE DIST.
FRAME/SILL SCREWS			
MIN. 2X4 WOOD FRAME OR BUCK (MIN. GR. 3 & $G=0.55$)	NO. 14 SMS/WOOD SCREW OR 1/4" BTI SCREW	1 1/4"	3/4"
MIN. 18 GA. 33 KSI METAL STUD	(2) 1/4-14 SELF TAP/DRILLING SCREW	FULL	1/2"
MIN. 1/8" THK A36 STEEL	(2) 1/4-14 SELF TAP/DRILLING SCREW	FULL	1/2"
MIN. 1/8" THK 6063-T5 ALUM.	(2) 1/4-14 SELF TAP/DRILLING SCREW	FULL	1/2"
C-90 CMU/2500 PSI CONCRETE	(1) 1/4" CONCRETE SCREW	1 1/4"	2"
INSTALLATION CLIP SCREWS			
MIN. 2X6 WOOD FRAME OR BUCK (MIN. GR. 3 & $G=0.55$)	NO. 12 X 1 1/2" SMS	1 3/8"	3/4"
MIN. 18 GA. 33 KSI METAL STUD	(2) 12-14 SELF TAP/DRILLING SCREW	FULL	1/2"
MIN. 1/8" THK A36 STEEL	(2) 12-14 SELF TAP/DRILLING SCREW	FULL	1/2"
MIN. 1/8" THK 6063-T5 ALUM.	(2) 12-14 SELF TAP/DRILLING SCREW	FULL	1/2"
C-90 CMU/2500 PSI CONCRETE	(1) 1/4" CONCRETE SCREW	1 1/4"	2"
BTI BRACKET SCREWS			
MIN. 2X6 WOOD FRAME OR BUCK (MIN. GR. 3 & $G=0.55$)	NO. 8 X 1 1/2" SMS	1 3/8"	3/4"
MIN. 18 GA. 33 KSI METAL STUD	(2) 8-18 SELF TAP/DRILLING SCREW	FULL	1/2"
MIN. 1/8" THK A36 STEEL	(2) 8-18 SELF TAP/DRILLING SCREW	FULL	1/2"
MIN. 1/8" THK 6063-T5 ALUM.	(2) 8-18 SELF TAP/DRILLING SCREW	FULL	1/2"
ANGLE CLIP SCREWS			
MIN. 2X6 WOOD FRAME OR BUCK (MIN. GR. 3 & $G=0.55$)	NO. 8 X 1 1/2" SMS	1 3/8"	3/4"
MIN. 18 GA. 33 KSI METAL STUD	(2) 8-18 SELF TAP/DRILLING SCREW	FULL	1/2"
MIN. 1/8" THK A36 STEEL	(2) 8-18 SELF TAP/DRILLING SCREW	FULL	1/2"
MIN. 1/8" THK 6063-T5 ALUM.	(2) 8-18 SELF TAP/DRILLING SCREW	FULL	1/2"
C-90 CMU/2500 PSI CONCRETE	(1) 1/4" CONCRETE SCREW	1 1/4"	2"
(1) CONCRETE SCREWS SHALL BE ELCO ULTRACONS, ELCO CRETE-FLEX OR HILTI KWIK-CON II (HARDENED STEEL OR S.S.).			
(2) ALL SELF TAP/DRILLING SCREWS SHALL BE MIN. GR. 5			

PANEL WIDTH DIMENSIONS ARE APPROXIMATELY 3" LESS THAN THE FRAME WIDTH & PANEL HEIGHT DIMENSIONS ARE APPROXIMATELY 1 3/4" LESS THAN THE FRAME HEIGHT

ALLOWABLE DESIGN PRESSURE (SINGLE & DOUBLE OPERABLE DOORS)

MAX. FRAME WIDTH (IN.)	MAX. FRAME HEIGHT (IN.)	ALLOWABLE PRESSURE	
		POSITIVE (PSF)	NEGATIVE (PSF)
SINGLE DOOR			
51 1/8	120	(2) 70	(2) 70
41 1/4	99	70	(1) 85
DOUBLE DOOR			
79 1/16	120	70	70
79 1/16	99	70	(1) (3) 85

- (1) HIGHER PRESSURE OF -85 PSF IS ONLY APPLICABLE WHEN GLASS OPTIONS 2 & 5 ARE USED & WITH STANDARD SILL (USE OF ADA SILL IS NOT APPLICABLE TO UNITS WITH PRESSURE EXCEEDING +/-70 PSF).
- (2) WITH FULL SIZE SINGLE DOORS USING GLASS OPTION 4, ALLOWABLE PRESSURE MUST BE REDUCED TO +/-65 PSF. PRESSURE MAY BE INCREASED TO +/-70 PSF IF THE D.L.O. WIDTH IS DECREASED TO MAX. 38.5" OR THE D.L.O. HEIGHT IS DECREASED TO MAX. 98".
- (3) HIGHER PRESSURE OF -85 PSF IS ONLY APPLICABLE WITH DOUBLE DOORS WHEN THE DOUBLE DOOR MEETING STILES ARE BAR REINFORCED (REF. SECTIONS).

PRODUCT REVISED as complying with the Florida Building Code
NOA-No. 20-0623.10

Expiration Date 05/27/2024

By Ishag I. Chank
Miami-Dade Product Control

PRODUCT REVISED as complying with the Florida Building Code
Acceptance No. 18-0531.10
Expiration Date MAY 27, 2024
Ishag I. Chank
Miami-Dade Product Control

CORNER CONSTRUCTION:

RECTANGULAR FRAME CORNERS: MORTISE & TENON CONSTRUCTION JOINED & GLUED WITH PONAL SUPER 3 WOOD GLUE OR EQUIVALENT.

ARCHED FRAME CORNERS: ARCHED FRAME BUTTED TO STRAIGHT FRAME, JOINED WITH ONE(1) NO.14 X 3" WOOD SCREW, & GLUED WITH PONAL SUPER 3 WOOD GLUE OR EQUIVALENT.

HALF ROUND FRAME CORNERS: FINGER JOINT CONSTRUCTION JOINED & GLUED WITH PONAL SUPER 3 WOOD GLUE OR EQUIVALENT.

RECTANGULAR PANEL CORNERS:

OPTION 1 (USED WITH STILE & RAIL CONDITIONS WHERE MEMBERS ARE 4.250" OR LESS IN OVERALL HEIGHT): MORTISE & TENON CONSTRUCTION JOINED & GLUED WITH PONAL SUPER 3 WOOD GLUE OR EQUIVALENT.

OPTION 2 (USED WITH STILE & RAIL CONDITIONS WHERE MEMBERS ARE GREATER THAN 4.250" IN OVERALL HEIGHT): MEMBERS ARE SQUARE CUT, BUTTED, JOINED WITH FIVE(5) #5/16 X 2" WOOD DOWELS, & GLUED WITH PONAL SUPER 3 WOOD GLUE OR EQUIVALENT.

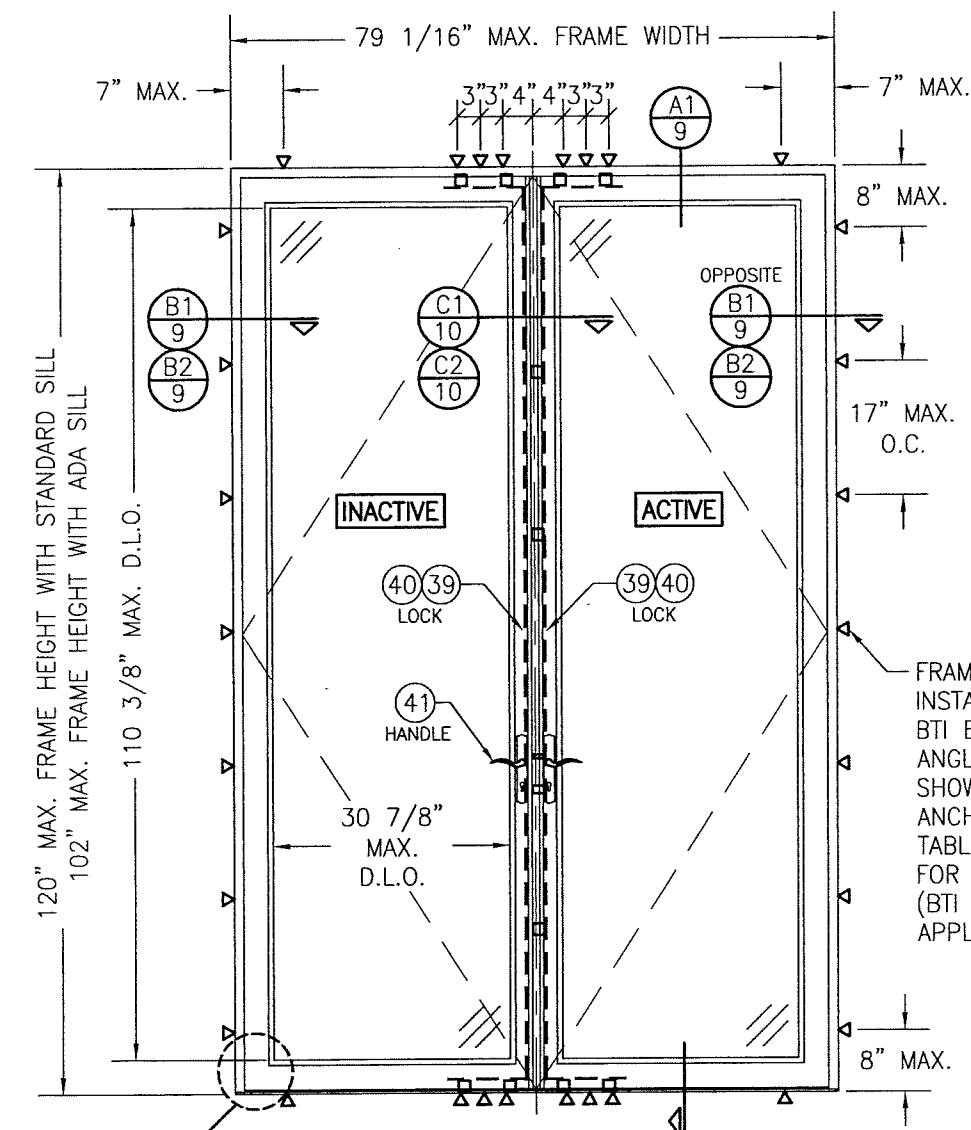
ARCHED PANEL CORNERS: ARCHED RAIL BUTTED TO STRAIGHT STILE, JOINED WITH ONE(1) NO.14 X 3" WOOD SCREW, & GLUED WITH PONAL SUPER 3 WOOD GLUE OR EQUIVALENT.

HALF ROUND PANEL CORNERS: FINGER JOINT CONSTRUCTION JOINED & GLUED WITH PONAL SUPER 3 WOOD GLUE OR EQUIVALENT.

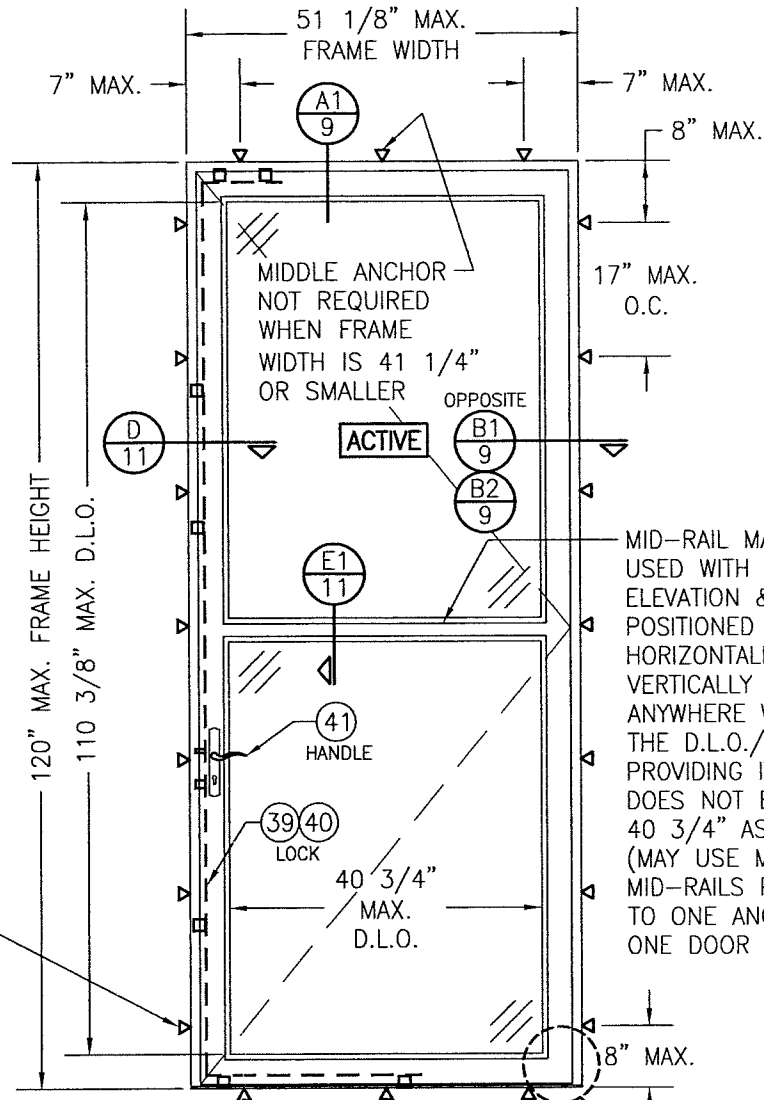
SILL CORNERS:

ALL SILL CONDITIONS: SILL IS BUTTED TO THE JAMBS & JOINED WITH THREE(3) NO.6 X 2" WOOD SCREWS & SEALED WITH SEALANT.

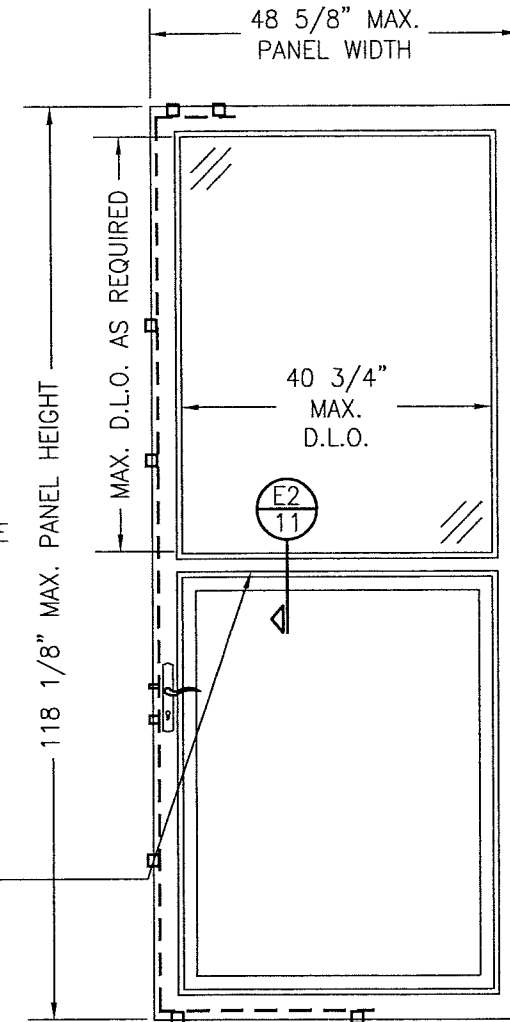
DRAWN BY: W.R.M.		CHECKED BY: W.W.S.	
PLOT: 1-24		DATE: 10/08/08	
DATE	BY	W.R.M.	W.W.S.
10/25/11			
02/20/14			
05/15/18			
REVISION	DESCRIPTION	STANDARDS	STANDARDS
A1	UPDATE TO CURRENT		
B1	UPDATE TO CURRENT		
C1	UPDATE TO CURRENT		
TISCHLER UND SOHN (USA) LTD. SIX SUBURBAN AVENUE STAMFORD, CONNECTICUT 06901 203-674-0600			
W. W. SCHAEFER ENGINEERING & CONSULTING, P.A. (CA 6809) 7480 150TH COURT NORTH PALM BEACH GARDENS, FL 33418 PHONE: 561-744-3424			
WARREN W. SCHAEFER, P.E. P.E. NO. 44135			
DRAWING NO. 1601		REV. C	
SHEET NO. 1 OF 19			



INTERIOR ELEVATION;
DOUBLE RECTANGULAR DOOR
(TURN ONLY CONDITION)
SCALE: 1/2" = 1'-0"



INTERIOR ELEVATION;
SINGLE RECTANGULAR DOOR
(TURN ONLY CONDITION)
SCALE: 1/2" = 1'-0"



INTERIOR ELEVATION;
PARTIAL RAISED PANEL
SCALE: 1/2" = 1'-0"
(SEE SINGLE DOOR ELEVATIONS FOR DOOR
DETAIL AND INSTALLATION NOT SHOWN)

ALLOWABLE DESIGN PRESSURE
SEE PRESSURE TABLE ON SHEET 1

DUE TO HINGE CONDITION VARIATIONS,
HINGES ARE NOT SHOWN IN ELEVATIONS.
SEE SECTIONS & HINGE TABLES FOR
HINGE REQUIREMENTS

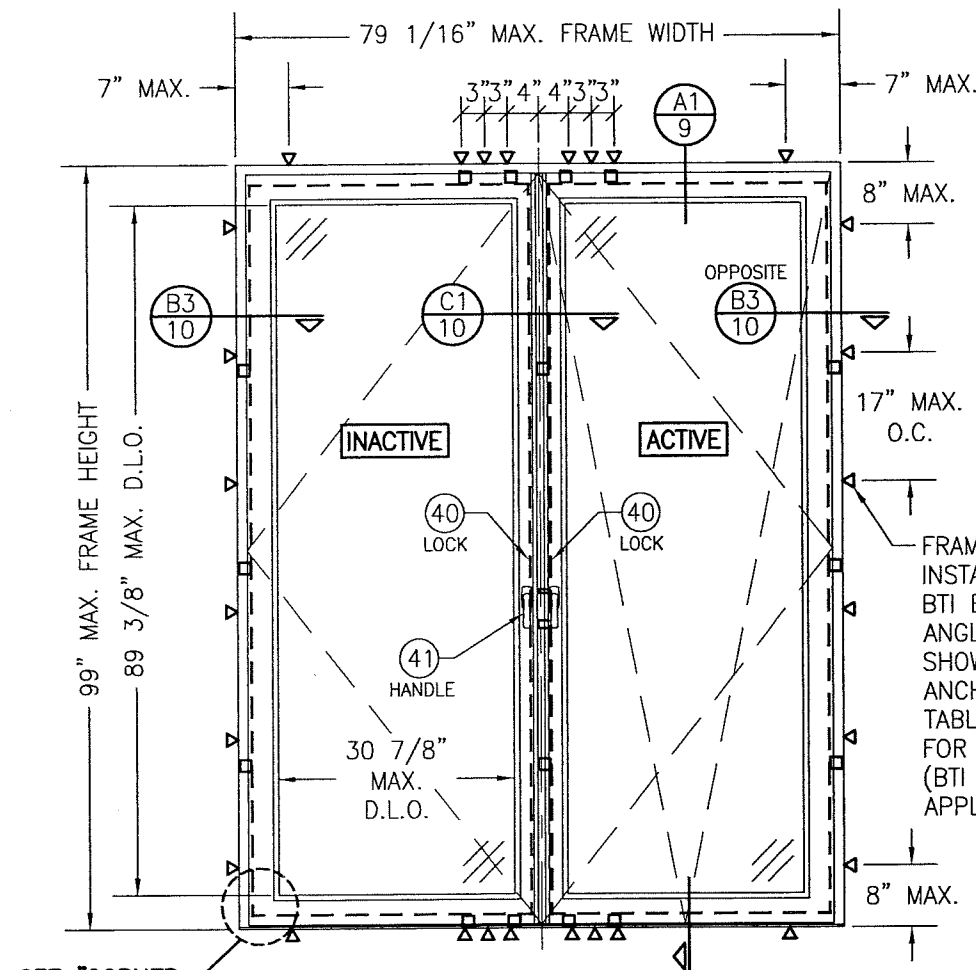
PRODUCT REVISED
as complying with the Florida
Building Code
NOA-No. 20-0623.10
Expiration Date 05/27/2024
By Ishag I. Chande
Miami-Dade Product Control

PRODUCT REVISED
As complying with the Florida
Building Code
Acceptance No. 18-0531.10
Expiration Date 5/27/24
By Ishag I. Chande
Miami-Dade Product Control

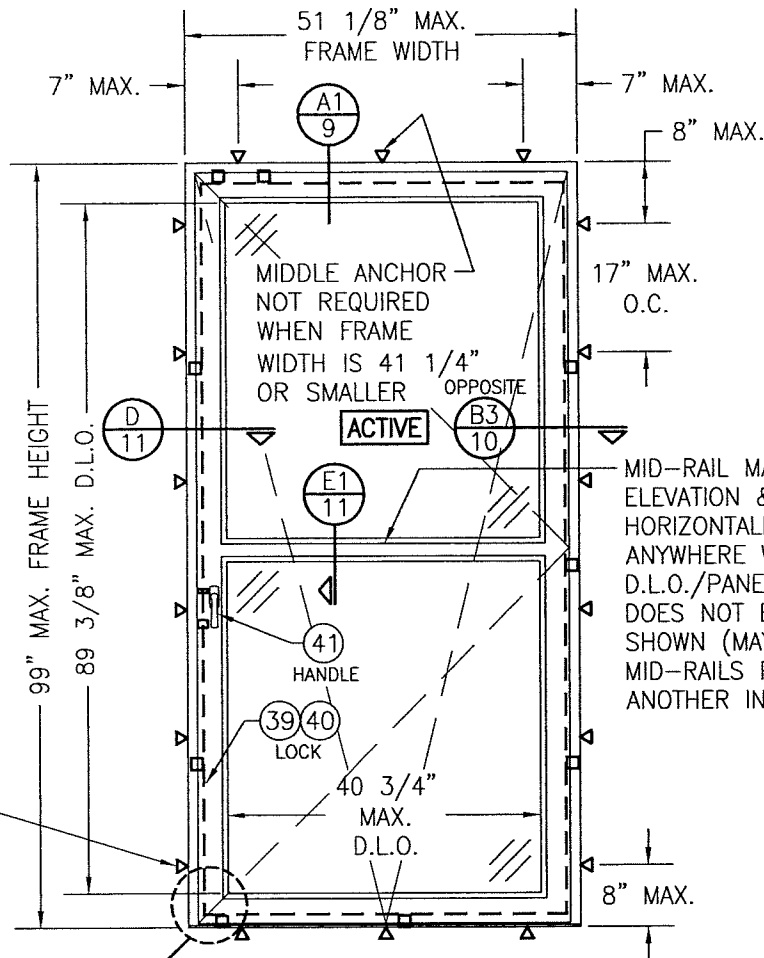
PANEL NOTES:

1. SINGLE RAISED PANEL CONDITION SHOWN, MORE THAN ONE RAISED PANEL MAY EXIST IN A SINGLE DOOR PANEL WHEN MULTIPLE MID-RAILS ARE USED.
2. PANEL ONLY IS SHOWN. FOR INSTALLATION INTO FRAME, SEE OTHER ELEVATIONS.
3. THESE PANEL CONDITIONS APPLY WITH BOTH OPERABLE & FIXED PANEL DOORS
4. RECTANGULAR CONDITION SHOWN, SHAPED CONDITIONS ALSO APPLY.
5. BOTH TURN ONLY & TILT & TURN CONDITIONS APPLY.

DRAWN BY: W.R.M.		CHECKED BY: W.W.S.	
PLOT: 1=24		DATE: 10/08/08	
DATE	BY	REVISION DESCRIPTION	NO.
<p>DRAWING TITLE IN-SWING IMPACT WOOD DOORS</p> <p>MANUFACTURER TISCHLER UND SOHN (USA) LTD. SIX SUBURBAN AVENUE STAMFORD, CONNECTICUT 06901 203-674-0600</p> <p>CONSULTANTS W. W. SCHAEFER ENGINEERING & CONSULTING, P.A. (CA 6809) 7480 150TH COURT NORTH PALM BEACH GARDENS, FL 33418 PHONE: 561-744-3424</p>			
CERTIFICATION	<p>MAY 15 2018</p> <p>WARREN W. SCHAEFER, P.E. P.E. NO. 44135</p>		
DRAWING NO.	REV.		
1601	C		
SHEET NO.			
2 OF 19			



INTERIOR ELEVATION:
DOUBLE RECTANGULAR DOOR
(TURN & TILT CONDITION)
SCALE: 1/2" = 1'-0"



INTERIOR ELEVATION:
SINGLE RECTANGULAR DOOR
(TURN & TILT CONDITION)
SCALE: 1/2" = 1'-0"

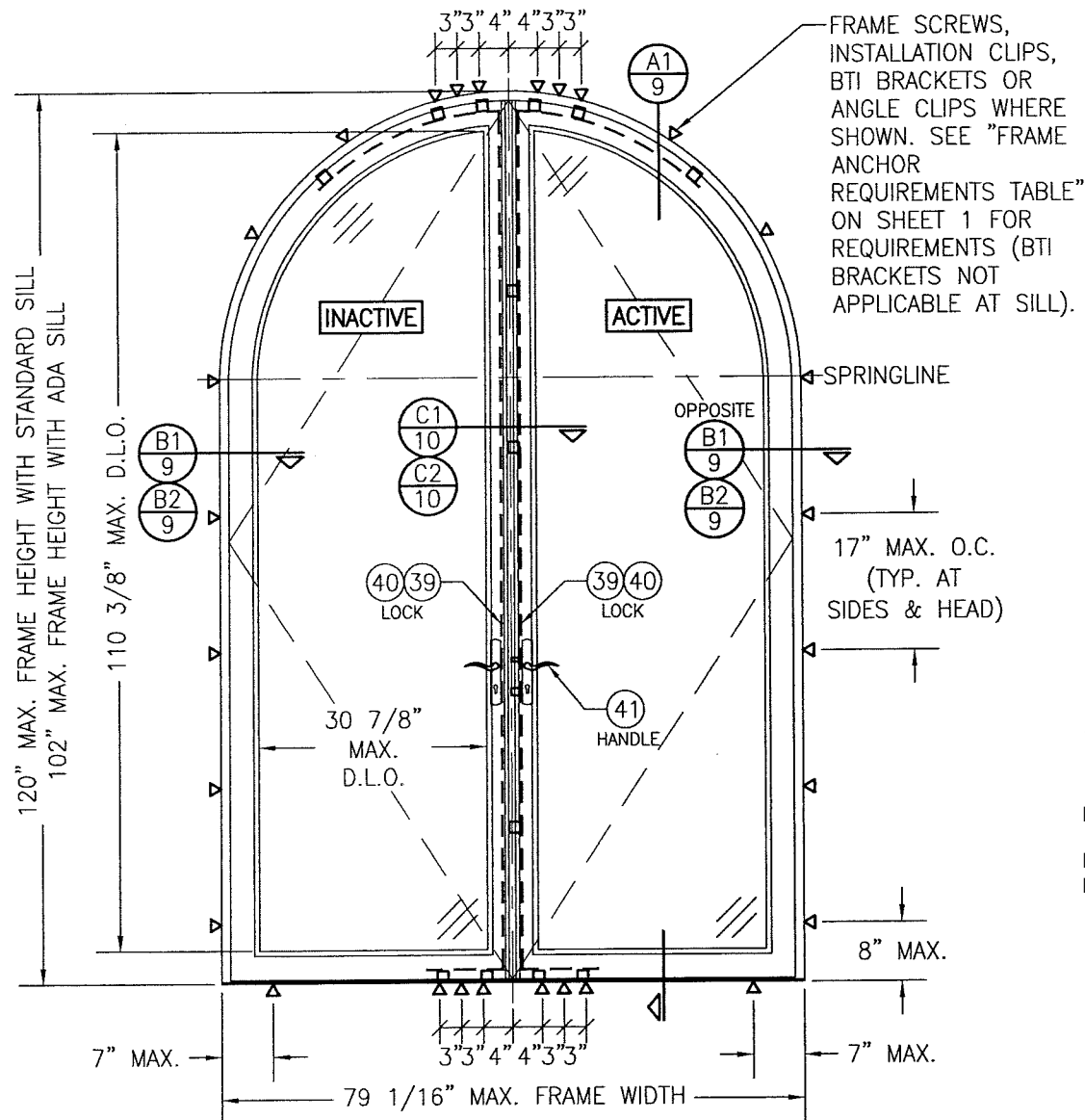
PRODUCT REVISED
as complying with the Florida
Building Code
NOA-No. 20-0623.10
Expiration Date 05/27/2024
By *Ishag I. Chande*
Miami-Dade Product Control

PRODUCT REVISED
as complying with the Florida
Building Code
Acceptance No. 18-0531.10
Expiration Date 5/27/24
Ishag I. Chande
Miami-Dade Product Control

ALLOWABLE DESIGN PRESSURE
SEE PRESSURE TABLE ON SHEET 1

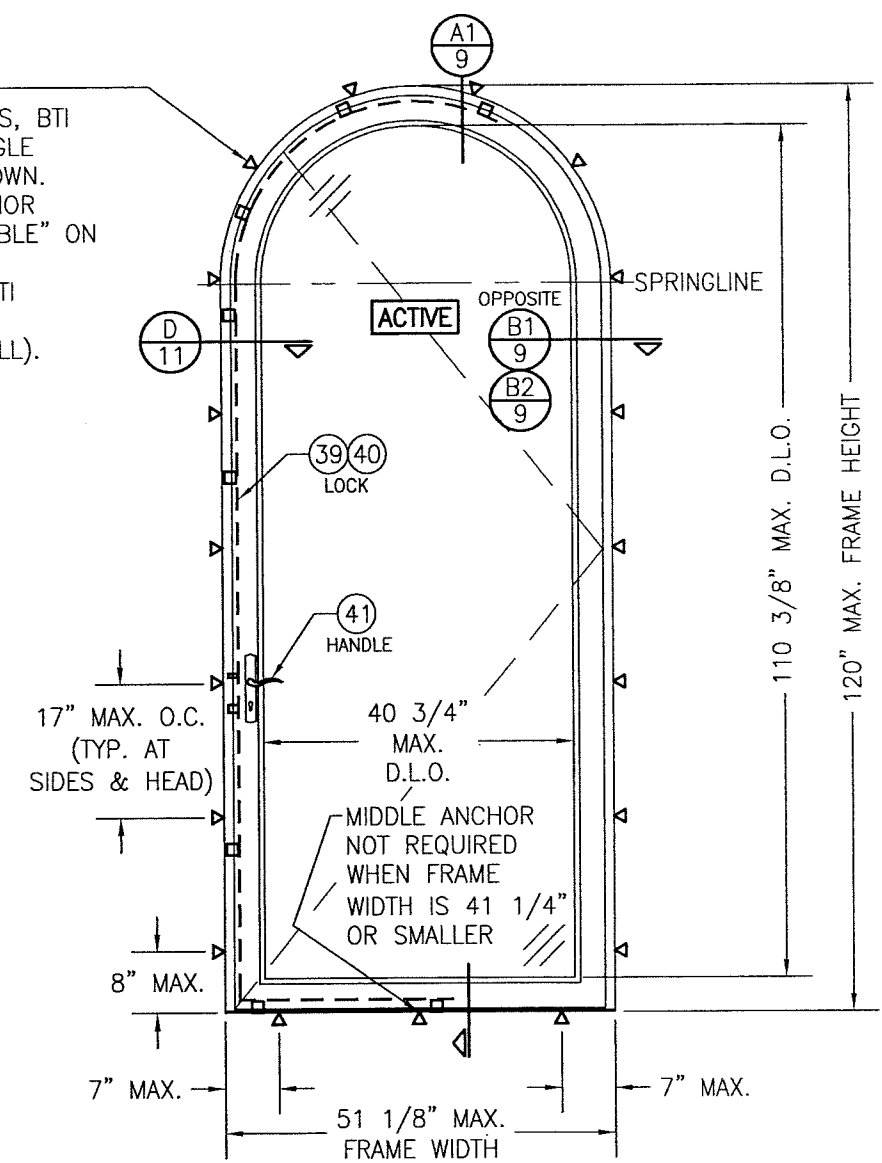
DUE TO HINGE CONDITION VARIATIONS,
HINGES ARE NOT SHOWN IN ELEVATIONS,
SEE SECTIONS & HINGE TABLES FOR
HINGE REQUIREMENTS

DRAWN BY: W.R.M.	CHECKED BY: W.W.S.
PLOT: 1=24	DATE: 10/08/08
DATE	BY
REVISION DESCRIPTION	NO.
<p>DRAWING TITLE IN-SWING IMPACT WOOD DOORS</p> <p>CONSULTANTS W. W. SCHAEFER ENGINEERING & CONSULTING, P.A. (CA 6809) 7480 150TH COURT NORTH PALM BEACH GARDENS, FL 33418 PHONE: 561-744-3424</p> <p>MANUFACTURER TISCHLER UND SOHN (USA) LTD. SIX SUBURBAN AVENUE STAMFORD, CONNECTICUT 06901 203-674-0600</p>	
CERTIFICATION	<p>MAY 15 2018</p> <p>WARREN W. SCHAEFER, P.E. P.E. NO. 44135</p>
DRAWING NO. 1601	REV. C
SHEET NO. 3	OF 19



**INTERIOR ELEVATION:
DOUBLE HALF ROUND DOOR
(TURN ONLY CONDITION)**
SCALE: 1/2" = 1'-0"

FRAME SCREWS,
INSTALLATION CLIPS, BTI
BRACKETS OR ANGLE
CLIPS WHERE SHOWN.
SEE "FRAME ANCHOR
REQUIREMENTS TABLE" ON
SHEET 1 FOR
REQUIREMENTS (BTI
BRACKETS NOT
APPLICABLE AT SILL).

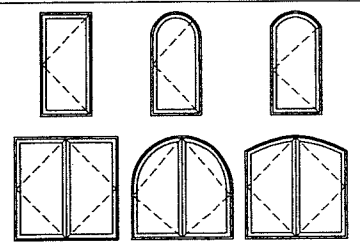


**INTERIOR ELEVATION:
SINGLE HALF ROUND DOOR
(TURN ONLY CONDITION)**
SCALE: 1/2" = 1'-0"

PRODUCT REVISED
as complying with the Florida
Building Code
Acceptance No. 18-0531.10
Expiration Date 5/27/24
By Ishag I. Chande
Miami-Dade Product Control

PRODUCT REVISED
as complying with the Florida
Building Code
NOA-No. 20-0623.10
Expiration Date 05/27/2024
By Ishag I. Chande
Miami-Dade Product Control

**APPROVED SHAPED
(OPERABLE DOORS)**



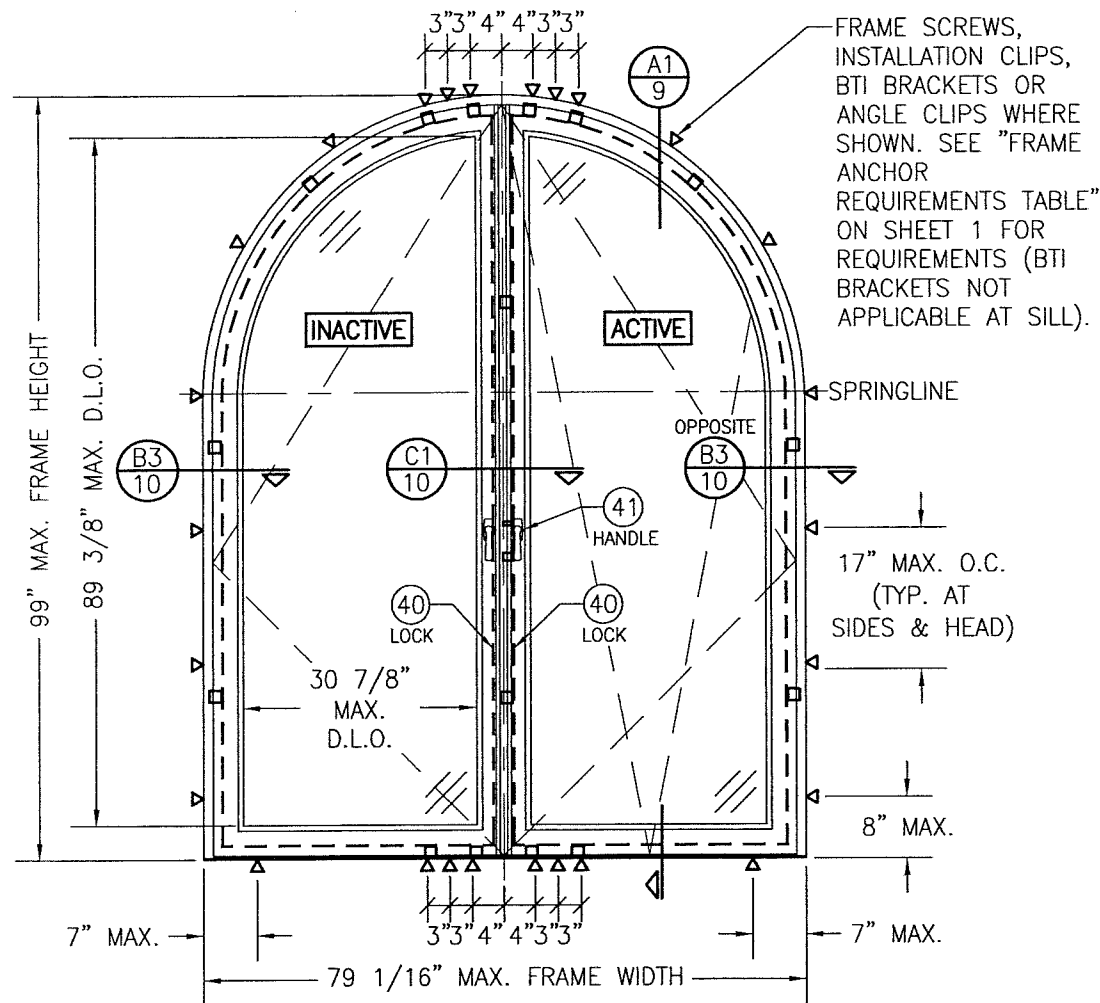
NOTES:
1. OTHER SHAPES MAY APPLY
PROVIDING THEY ARE SIMILAR TO
THOSE SHOWN & HAVE CORNER
CONSTRUCTION AS DESCRIBED IN THIS
DRAWING.
2. ALL SHAPED UNITS MUST FIT
INSCRIBED INTO THE ALLOWABLE
RECTANGULAR UNITS & BE GOVERNED
BY THE ALLOWABLE PRESSURE OF THE
RESPECTIVE RECTANGULAR UNIT.

ALLOWABLE DESIGN PRESSURE
SEE PRESSURE TABLE ON SHEET 1

DUE TO HINGE CONDITION VARIATIONS,
HINGES ARE NOT SHOWN IN ELEVATIONS,
SEE SECTIONS & HINGE TABLES FOR
HINGE REQUIREMENTS

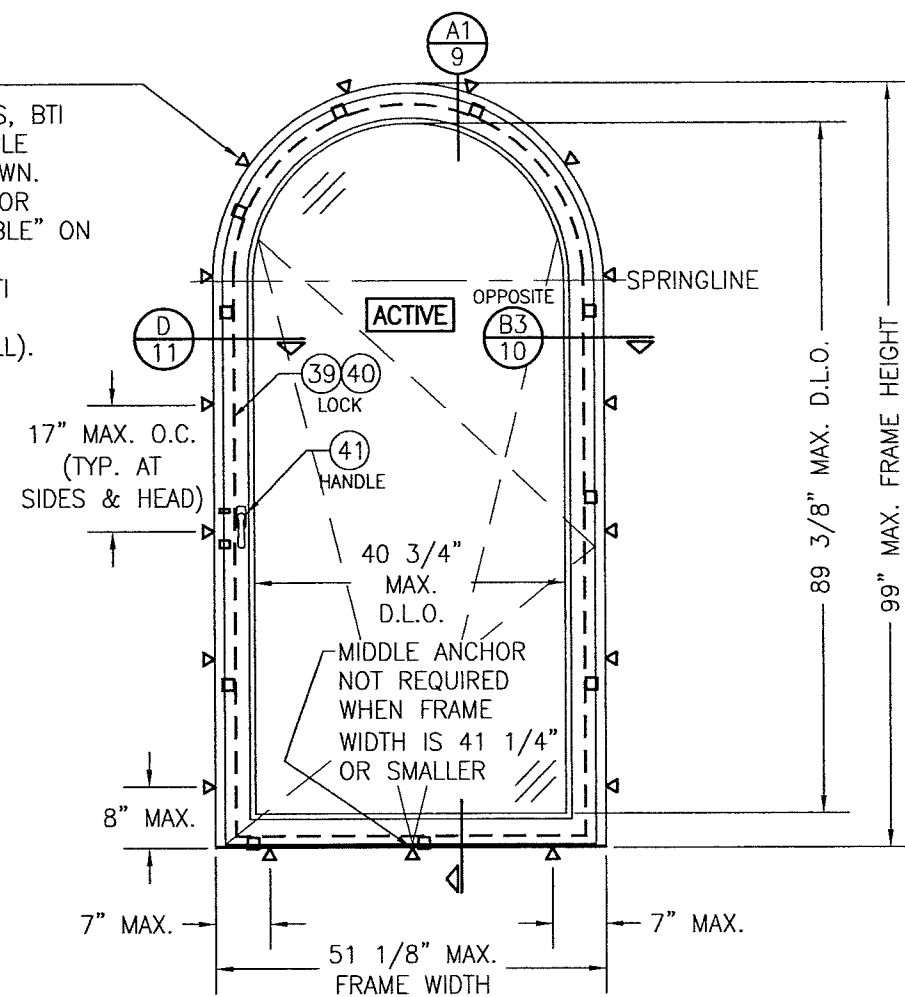
ANCHOR NOTE: ANCHOR SPACING AT THE HEAD OF
ALL TYPES OF SHAPED DOORS MUST EQUAL THAT
SPECIFIED AT THE SIDES (17" MAX. O.C.)

DRAWN BY: W.R.M.		CHECKED BY: W.W.S.	
PLOT: 1=24		DATE: 10/08/08	
DATE	BY	REVISION DESCRIPTION	NO.
<p>DRAWING TITLE IN-SWING IMPACT WOOD DOORS</p> <p>CONSULTANTS W. W. SCHAEFER ENGINEERING & CONSULTING, P.A. (CA 6809) 7480 150TH COURT NORTH PALM BEACH GARDENS, FL 33418 PHONE: 561-744-3424</p> <p>MANUFACTURER TISCHLER UND SOHN (USA) LTD. SIX SUBURBAN AVENUE STAMFORD, CONNECTICUT 06901 203-674-0600</p>			
<p>CERTIFICATION MAY 15 2018 WARREN W. SCHAEFER, P.E. P.E. NO. 44135</p>		<p>DRAWING NO. 1601</p> <p>REV. C</p> <p>SHEET NO. 4 OF 19</p>	



**INTERIOR ELEVATION;
DOUBLE HALF ROUND DOOR
(TURN & TILT CONDITION)**
SCALE: 1/2" = 1'-0"

FRAME SCREWS,
INSTALLATION CLIPS, BTI
BRACKETS OR ANGLE
CLIPS WHERE SHOWN.
SEE "FRAME ANCHOR
REQUIREMENTS TABLE" ON
SHEET 1 FOR
REQUIREMENTS (BTI
BRACKETS NOT
APPLICABLE AT SILL).



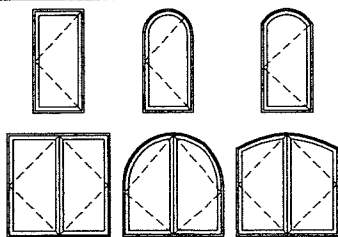
**INTERIOR ELEVATION;
SINGLE HALF ROUND DOOR
(TURN & TILT CONDITION)**
SCALE: 1/2" = 1'-0"

PRODUCT REVISED
as complying with the Florida
Building Code
NOA-No. 20-0623.10

Expiration Date 05/27/2024

By *Ishag I. Chande*
Miami-Dade Product Control

**APPROVED SHAPED
(OPERABLE DOORS)**



NOTES:

1. OTHER SHAPES MAY APPLY PROVIDING THEY ARE SIMILAR TO THOSE SHOWN & HAVE CORNER CONSTRUCTION AS DESCRIBED IN THIS DRAWING.
2. ALL SHAPED UNITS MUST FIT INSCRIBED INTO THE ALLOWABLE RECTANGULAR UNITS & BE GOVERNED BY THE ALLOWABLE PRESSURE OF THE RESPECTIVE RECTANGULAR UNIT.

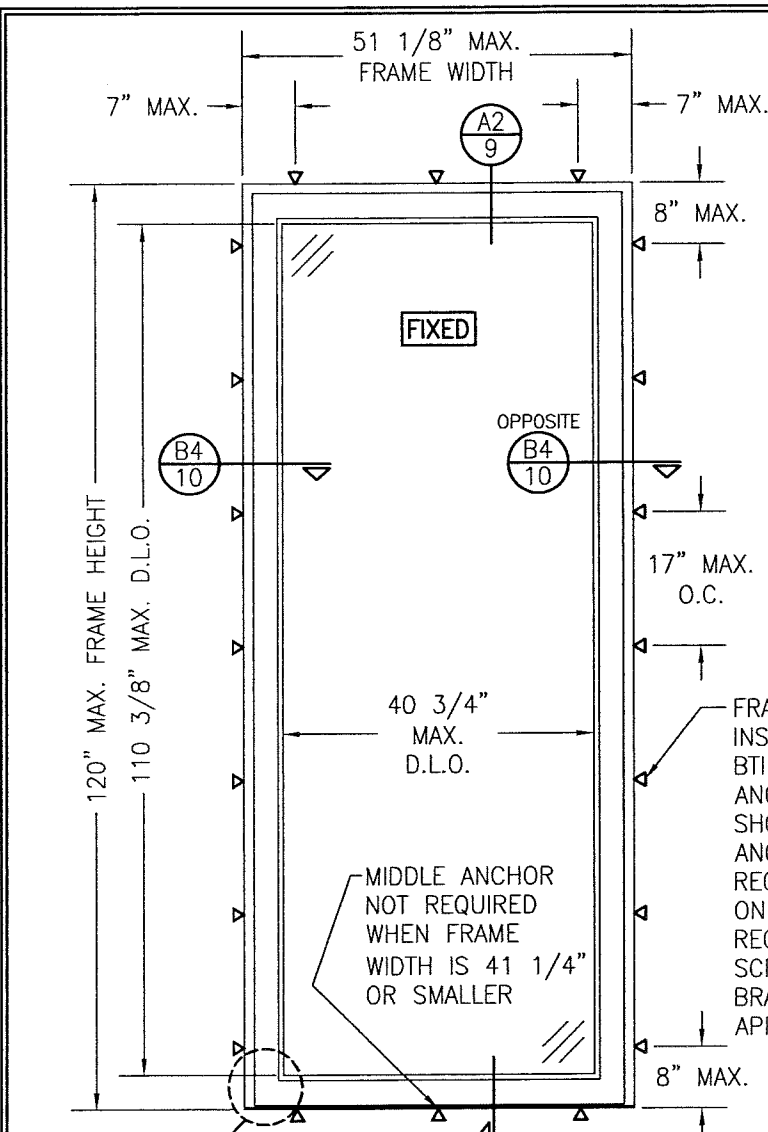
ALLOWABLE DESIGN PRESSURE
SEE PRESSURE TABLE ON SHEET 1

DUE TO HINGE CONDITION VARIATIONS,
HINGES ARE NOT SHOWN IN ELEVATIONS,
SEE SECTIONS & HINGE TABLES FOR
HINGE REQUIREMENTS

ANCHOR NOTE: ANCHOR SPACING AT THE HEAD OF
ALL TYPES OF SHAPED DOORS MUST EQUAL THAT
SPECIFIED AT THE SIDES (17" MAX. O.C.)

PRODUCT REVISED
as complying with the Florida
Building Code
Acceptance No. 18-0531.10
Expiration Date 5/27/24
By *Ishag I. Chande*
Miami-Dade Product Control

DRAWN BY: W.R.M.		CHECKED BY: W.W.S.	
PLOT: 1=24		DATE: 10/08/08	
DATE	BY	REVISION	DESCRIPTION
NO.			
<p>DRAWING TITLE IN-SWING IMPACT WOOD DOORS</p> <p>MANUFACTURER TISCHLER UND SOHN (USA) LTD. SIX SUBURBAN AVENUE STAMFORD, CONNECTICUT 06901 203-674-0600</p> <p>CONSULTANTS W. W. SCHAEFER ENGINEERING & CONSULTING, P.A. (CA 6809) 7480 150TH COURT NORTH PALM BEACH GARDENS, FL 33418 PHONE: 561-744-3424</p>			
<p>CERTIFICATION MAY 15 2018 WARREN W. SCHAEFER, P.E. P.E. NO. 44135</p>		<p>DRAWING NO. 1601</p> <p>SHEET NO. 5 OF 19</p>	



SEE "CORNER CONSTRUCTION" DESCRIPTION ON SHEET 1

**INTERIOR ELEVATION:
SINGLE FIXED PANEL**

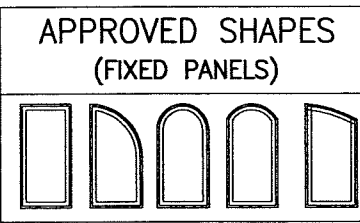
SCALE: 1/2" = 1'-0"

(RECTANGULAR FIXED DOOR SHOWN, SHAPED DOORS ALSO APPLY. SEE "APPROVED SHAPES" TABLE ON THIS SHEET)

ALLOWABLE DESIGN PRESSURE (SINGLE FIXED PANELS)			
MAX. FRAME WIDTH (IN.)	MAX. FRAME HEIGHT (IN.)	ALLOWABLE PRESSURE	
		POSITIVE (PSF)	NEGATIVE (PSF)
51 11/16	120	(2) 70	(2) 70
51 11/16	99	70	(1) 85

(1) HIGHER PRESSURE OF -85 PSF IS ONLY APPLICABLE WHEN GLASS OPTIONS 2 & 5 ARE USED.

(2) WITH FULL SIZE FIXED DOORS USING GLASS OPTION 4, ALLOWABLE PRESSURE MUST BE REDUCED TO +/-65 PSF. PRESSURE MAY BE INCREASED TO +/-70 PSF IF THE D.L.O. WIDTH IS DECREASED TO MAX. 38.5" OR THE D.L.O. HEIGHT IS DECREASED TO MAX. 98".



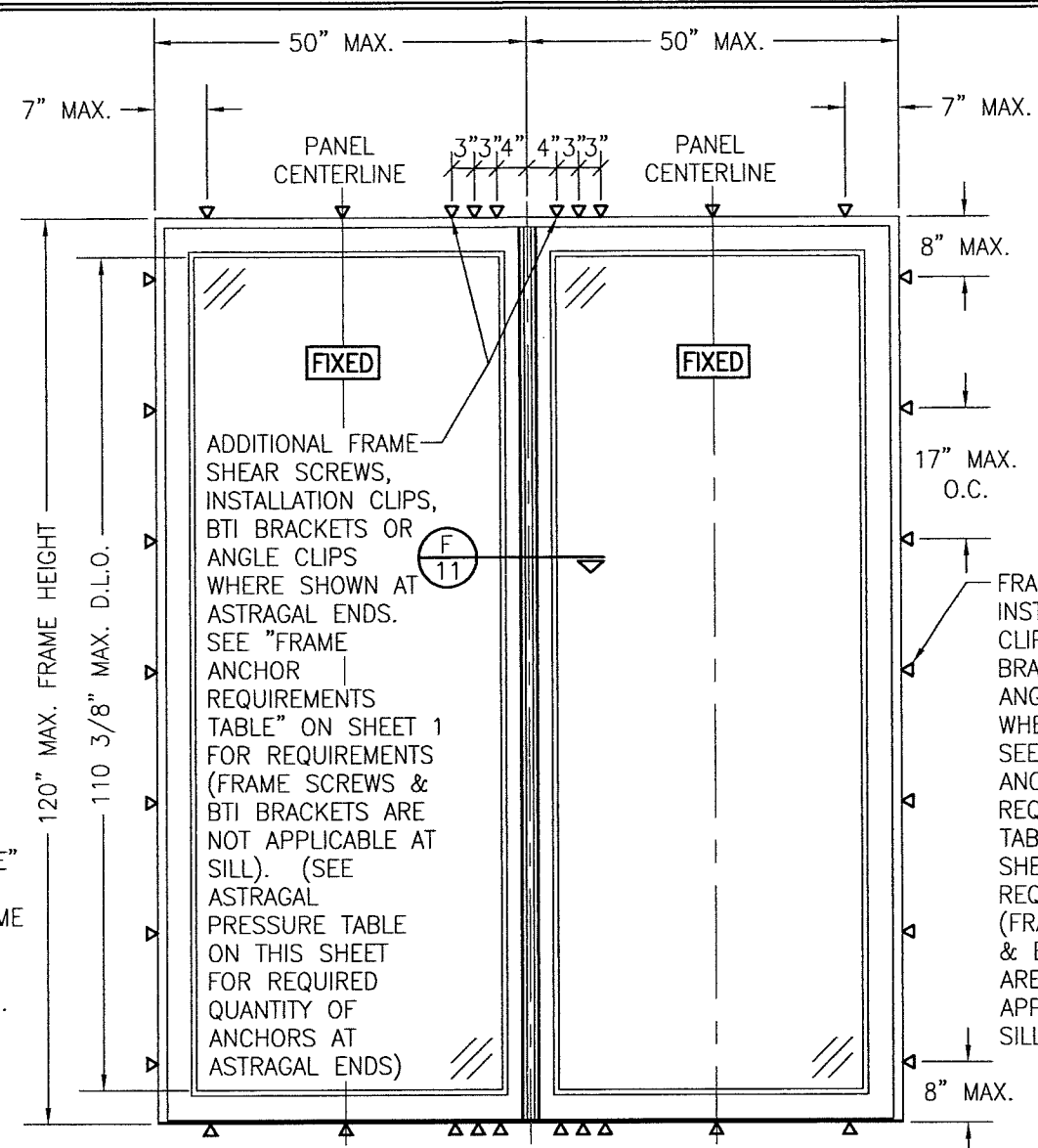
**APPROVED SHAPES
(FIXED PANELS)**

NOTES:

1. OTHER SHAPES MAY APPLY PROVIDING THEY ARE SIMILAR TO THOSE SHOWN & HAVE CORNER CONSTRUCTION AS DESCRIBED IN THIS DRAWING.

2. ALL SHAPED UNITS MUST FIT INSCRIBED INTO THE ALLOWABLE RECTANGULAR UNITS & BE GOVERNED BY THE ALLOWABLE PRESSURE OF THE RESPECTIVE RECTANGULAR UNIT.

3. THE SHAPES SHOWN APPLY TO SINGLE FIXED PANELS AND THE PANELS ON EITHER SIDE OF A FIXED ASTRAGAL.



FOR MAX. LOAD WIDTH, SEE ASTRAGAL PRESSURE TABLE ON THIS SHEET

**INTERIOR ELEVATION:
DOUBLE FIXED PANEL WITH FIXED ASTRAGAL**

SCALE: 1/2" = 1'-0"

SEE SINGLE FIXED PANEL ELEVATION FOR DETAIL NOT SHOWN

ANCHOR NOTE: ANCHOR SPACING AT THE HEAD OF ALL TYPES OF SHAPED PANEL DOORS MUST EQUAL THAT SPECIFIED AT THE SIDES (17" MAX. O.C.)

PRODUCT REVISED
as complying with the Florida Building Code
NOA-No. 20-0623.10
Expiration Date 05/27/2024
By Ishag I. Chande
Miami-Dade Product Control

FIXED ASTRAGAL ALLOWABLE DESIGN PRESSURE					
MAXIMUM ASTRAGAL SPAN (IN.)	MAXIMUM LOAD WIDTH (IN.)	ALLOWABLE PRESSURE (PSF)			
		4 END ANCHORS		6 END ANCHORS	
		POS.	NEG.	POS.	NEG.
120	50	51.4	51.4	70.0	70.0
	48	53.5	53.5	70.0	70.0
	44	58.4	58.4	70.0	70.0
	40	64.2	64.2	70.0	70.0
	36	70.0	70.0	70.0	70.0
	32	70.0	70.0	70.0	70.0
	28	70.0	70.0	70.0	70.0
108	50	57.1	57.1	70.0	70.0
	48	59.5	59.5	70.0	70.0
	44	64.9	64.9	70.0	70.0
	40	70.0	70.0	70.0	70.0
	36	70.0	70.0	70.0	70.0
99	50	62.3	62.3	70.0	85.0
	48	64.9	64.9	70.0	85.0
	44	70.0	70.8	70.0	85.0
	40	70.0	77.9	70.0	85.0
	36	70.0	85.0	70.0	85.0
96	50	64.2	64.2	70.0	85.0
	48	66.9	66.9	70.0	85.0
	44	70.0	73.0	70.0	85.0
	40	70.0	80.3	70.0	85.0
84	37	70.0	85.0	70.0	85.0
	50	70.0	73.4	70.0	85.0
	48	70.0	76.5	70.0	85.0
80	44	70.0	83.4	70.0	85.0
	43	70.0	85.0	70.0	85.0
	50	70.0	77.1	70.0	85.0
	48	70.0	80.3	70.0	85.0
	45	70.0	85.0	70.0	85.0

NOTES:

1. LOAD WIDTH IS THE DISTANCE BETWEEN PANEL CENTERLINES.

2. ALLOWABLE UNIT PRESSURE SHALL BE THE LESSER OF THE PRESSURES SHOWN IN THIS TABLE & THOSE SPECIFIED FOR THE INDIVIDUAL FIXED PANEL.

3. SIZE VALUES IN TABLE ARE +/-1/4"

PRODUCT REVISED
as complying with the Florida Building Code
Acceptance No. 18-0531.10
Expiration Date 5/27/24
By Ishag I. Chande
Miami-Dade Product Control

DRAWN BY: W.R.M.
PLOT: 1=24

CHECKED BY: W.W.S.
DATE: 10/08/08

DATE					
BY					
REVISION DESCRIPTION					
NO.					

DRAWING TITLE
IN-SWING IMPACT WOOD DOORS

MANUFACTURER
TISCHLER UND SOHN (USA) LTD.
SIX SUBURBAN AVENUE
STAMFORD, CONNECTICUT 06901
203-674-0600

CONSULTANTS
W. W. SCHAEFER ENGINEERING & CONSULTING, P.A. (CA 6809)
7480 150TH COURT NORTH
PALM BEACH GARDENS, FL 33418
PHONE: 561-744-3424

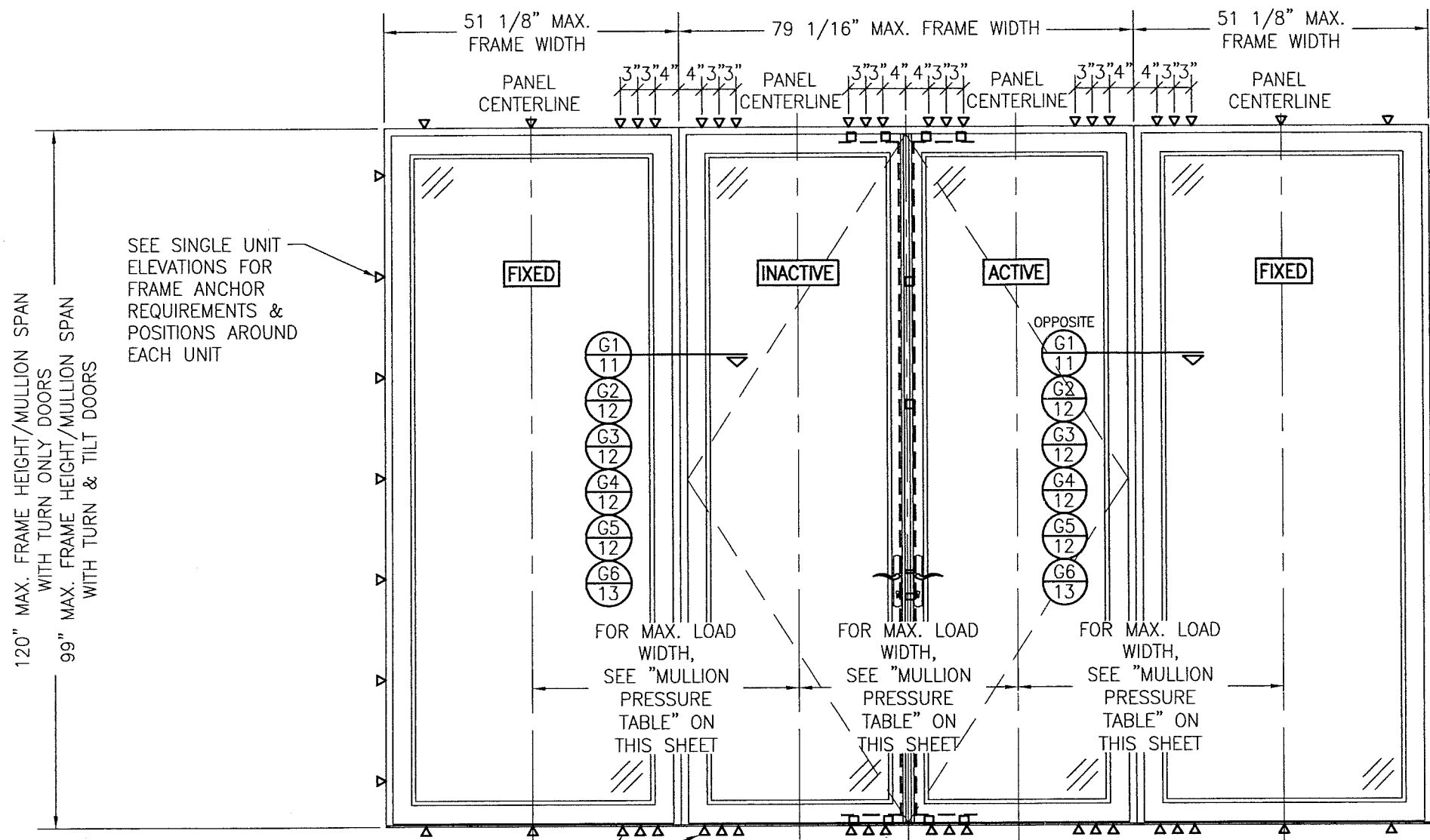
CERTIFICATION
MAY 15 2018

WARREN W. SCHAEFER, P.E.
P.E. NO. 44135

DRAWING NO.
1601

REV.
C

SHEET NO.
6 OF 19



**INTERIOR ELEVATION:
DOUBLE DOORS WITH FIXED PANELS**

SCALE: 1/2" = 1'-0"
(RECTANGULAR DOORS SHOWN, SHAPED DOORS ALSO APPLY. SEE
"APPROVED SHAPED" TABLE ON SHEETS 4 & 5)

MULTIPLE UNIT NOTES:

1. FOR ALL DETAIL NOT SHOWN, SEE INDIVIDUAL UNIT ELEVATIONS.
2. THERE IS NO LIMIT ON THE NUMBER OF DOORS THAT MAY BE COMBINED IN ONE DIRECTION INTO ONE OPENING PROVIDING THE OPENING IS DESIGNED TO SUPPORT ALL LOADS TRANSFERRED FROM THE DOORS & THEIR MULLIONS.
3. OXO UNIT IS SHOWN. ALL OTHER FIXED/OPERABLE COMBINATIONS ALSO APPLY WITH THE MULLION CONDITIONS SHOWN.
4. INDIVIDUAL DOOR/FIXED PANEL SIZES SHALL BE RESTRICTED AS SPECIFIED IN THE SINGLE UNIT ELEVATIONS.
5. BOTH TURN ONLY & TILT & TURN CONDITIONS APPLY.

MULLION ALLOWABLE DESIGN PRESSURE			
MAXIMUM MULLION SPAN (IN.)	MAXIMUM LOAD WIDTH (IN.)	ALLOWABLE PRESSURE (PSF)	
		POS.	NEG.
120	52	53.8	53.8
	48	58.3	58.3
	44	63.6	63.6
	40	70.0	70.0
	36	70.0	70.0
	32	70.0	70.0
108	52	59.8	59.8
	48	64.8	64.8
	44	70.0	70.0
	40	70.0	70.0
99	52	70.0	75.2
	48	70.0	81.5
	46	70.0	85.0
96	52	70.0	77.5
	48	70.0	84.0
84	44	70.0	85.0
	52	70.0	85.0

NOTES:
1. LOAD WIDTH IS THE DISTANCE BETWEEN PANEL CENTERLINES.
2. ALLOWABLE UNIT PRESSURE SHALL BE THE LESSER OF THE PRESSURES SHOWN IN THIS TABLE & THOSE SPECIFIED FOR THE INDIVIDUAL DOOR/FIXED PANEL.
3. SIZE VALUES IN TABLE ARE +/- 1/4"

PRODUCT REVISED
as complying with the Florida
Building Code
NOA-No. 20-0623.10
Expiration Date 05/27/2024
By Ishag I. Chandra
Miami-Dade Product Control

PRODUCT REVISED
as complying with the Florida
Building Code
NOA-No. 18-0631.10
Expiration Date 5/27/24
Ishag I. Chandra
Miami-Dade Product Control

DRAWN BY: W.R.M.
PLOT: 1=24
DATE: 10/08/08

CHECKED BY: W.W.S.
DATE: 10/08/08

NO.	REVISION DESCRIPTION	DATE	BY

IN-SWING IMPACT WOOD DOORS

MANUFACTURER
TISCHLER UND SOHN (USA) LTD.
SIX SUBURBAN AVENUE
STAMFORD, CONNECTICUT 06901
203-674-0600

CONSULTANTS
W. W. SCHAEFER ENGINEERING & CONSULTING, P.A. (CA 6809)
7480 150TH COURT NORTH
PALM BEACH GARDENS, FL 33418
PHONE: 561-744-3424

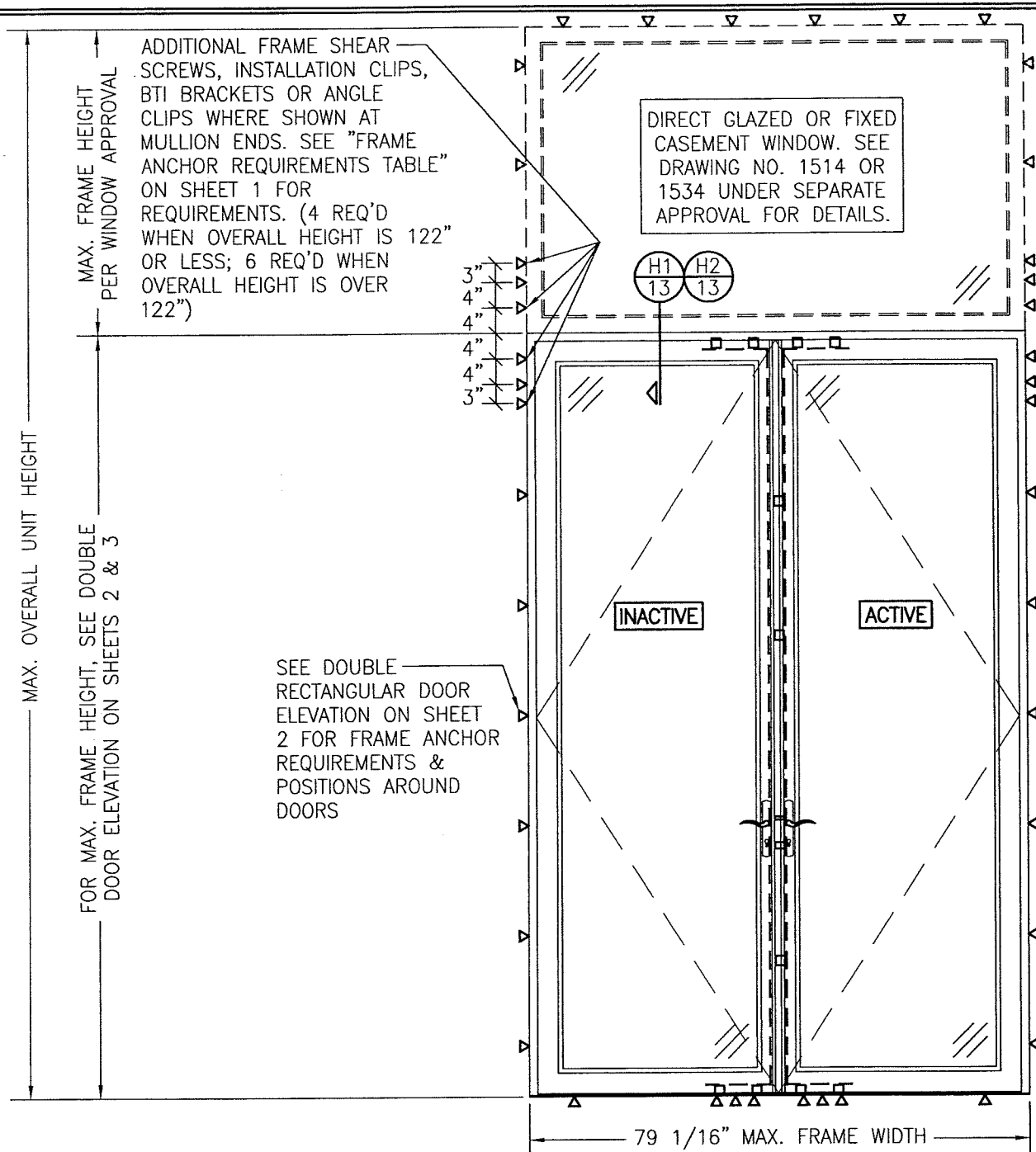
CERTIFICATION
No. 44135

MAY 15 2018

WARREN W. SCHAEFER, P.E.
P.E. NO. 44135

DRAWING NO. 1601

SHEET NO. 7 OF 19



INTERIOR ELEVATION; DOUBLE DOORS WITH
TRANSOM

SCALE: 1/2" = 1'-0"
(SEE DOUBLE RECTANGULAR DOOR ELEVATIONS ON
SHEETS 2 & 3 FOR DOOR DETAIL NOT SHOWN)

PRODUCT REVISED
as complying with the Florida
Building Code
NOA-No. 20-0623.10

Expiration Date 05/27/2024

By Ishag I. Chande
Miami-Dade Product Control

ALLOWABLE DESIGN PRESSURE
(DOUBLE DOOR TRANSOM UNIT)

MAX. FRAME WIDTH (IN.)	MAX. OVERALL UNIT HEIGHT (IN.)	(2) ALLOWABLE PRESSURE	
		POSITIVE (PSF)	NEGATIVE (PSF)
79 1/16	168	70	70
79 1/16	138	70	(1) 85

(1) HIGHER PRESSURE OF -85 PSF IS ONLY
APPLICABLE WHEN GLASS OPTIONS 2 & 5
ARE USED.

(2) LESSER OF THE PRESSURES IN THIS
TABLE & THOSE FOR THE INDIVIDUAL DOORS
SHALL CONTROL.

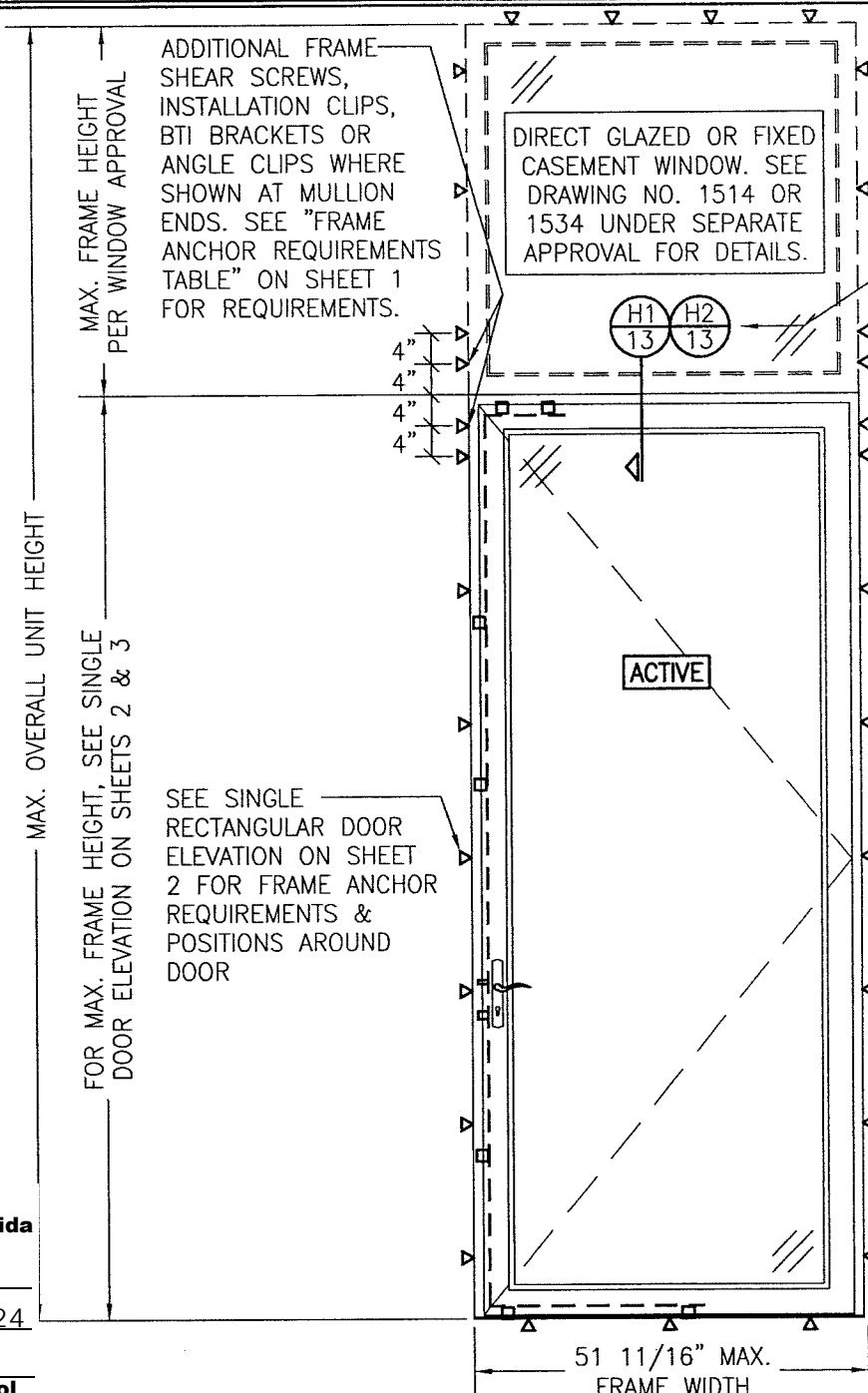
ALLOWABLE DESIGN PRESSURE
(SINGLE DOOR TRANSOM UNIT)

MAX. FRAME WIDTH (IN.)	MAX. OVERALL UNIT HEIGHT (IN.)	(2) ALLOWABLE PRESSURE	
		POSITIVE (PSF)	NEGATIVE (PSF)
51 11/16	168	70	70
41 1/4	168	70	(1) 85

(1) HIGHER PRESSURE OF -85 PSF IS ONLY
APPLICABLE WHEN GLASS OPTIONS 2 & 5
ARE USED.

(2) LESSER OF THE PRESSURES IN THIS
TABLE & THOSE FOR THE INDIVIDUAL DOORS
SHALL CONTROL.

PRODUCT REVISED
as complying with the Florida
Building Code
Acceptance No. 18-0531.10
Expiration Date 5/27/24
By Ishag I. Chande
Miami-Dade Product Control



INTERIOR ELEVATION; SINGLE DOOR WITH
TRANSOM

SCALE: 1/2" = 1'-0"
(SEE SINGLE RECTANGULAR DOOR ELEVATIONS ON
SHEETS 2 & 3 FOR DOOR DETAIL NOT SHOWN)

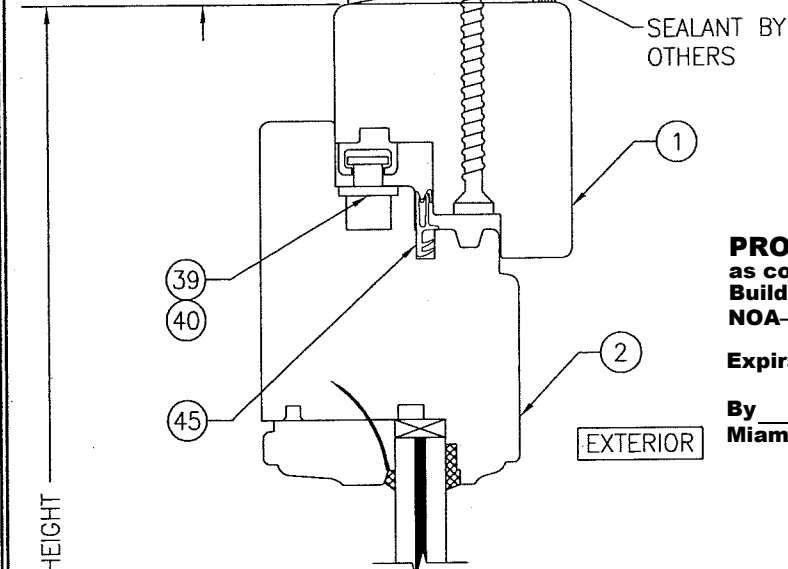
NOTE: MULLION
REINFORCEMENT
IS OPTIONAL WITH
THIS SINGLE
DOOR WITH
TRANSOM
ELEVATION & IS
NOT REQUIRED

DRAWN BY: W.R.M.		CHECKED BY: W.S.	
PLOT: 1-24		DATE: 10/08/08	
NO.	REVISION	DESCRIPTION	DATE
DRAWING TITLE IN-SWING IMPACT WOOD DOORS			
CONSULTANTS W. W. SCHAEFER ENGINEERING & CONSULTING, P.A. (CA 6809)		MANUFACTURER TISCHLER UND SOHN (USA) LTD. SIX SUBURBAN AVENUE STAMFORD, CONNECTICUT 06901 203-674-0600	
7480 150TH COURT NORTH PALM BEACH GARDENS, FL 33418 PHONE: 561-744-3424			
CERTIFICATION MAY 15 2018			
DRAWING NO. 1601		REV. C	
SHEET NO. 8		OF 19	

SUBSTRATE BY OTHERS
PER FRAME ANCHOR
REQUIREMENTS TABLE

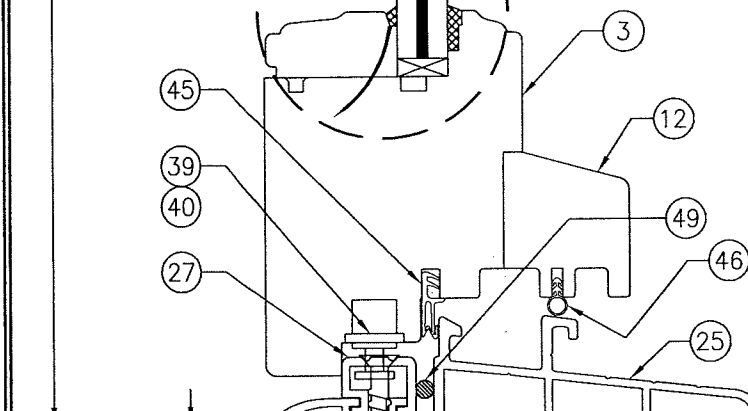
FRAME SCREW
PER ELEVATIONS

3/8" MAX.
SHIM AT EACH
ANCHOR



FRAME HEIGHT

SEE GLAZING
DETAILS ON
SHEET 17



3/8" MAX.
SHIM
OR GROUT

FRAME/SILL SCREW
PER ELEVATION

SUBSTRATE BY OTHERS
PER "FRAME ANCHOR
REQUIREMENTS TABLE"

SECTION A1
SCALE: 1/2 FULL 9

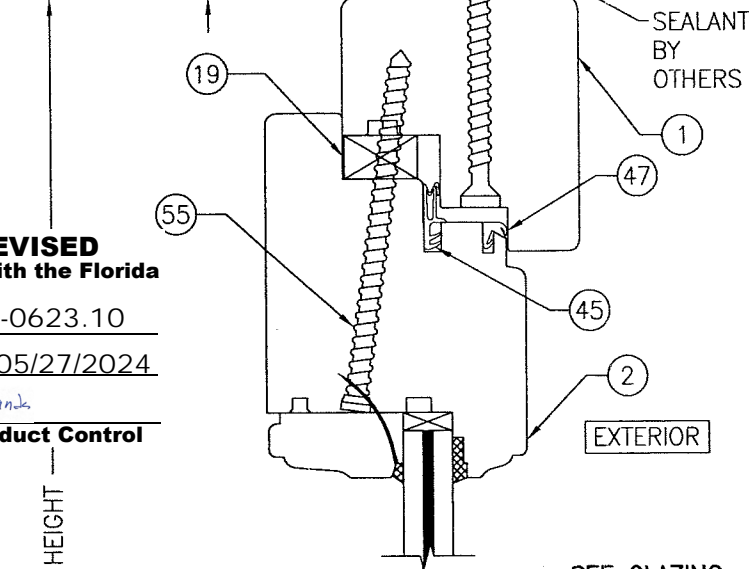
FRAME SCREW INSTALLATION & STANDARD SILL CONDITION
SHOWN. SEE OPTIONAL DETAILS FOR OTHER INSTALLATION &
SILL CONDITIONS.

PRODUCT REVISED
as complying with the Florida
Building Code
NOA-No. 20-0623.10
Expiration Date 05/27/2024
By Ishag I. Chande
Miami-Dade Product Control

SUBSTRATE BY OTHERS
PER FRAME ANCHOR
REQUIREMENTS TABLE

FRAME SCREW
PER ELEVATIONS

3/8" MAX.
SHIM AT EACH
ANCHOR

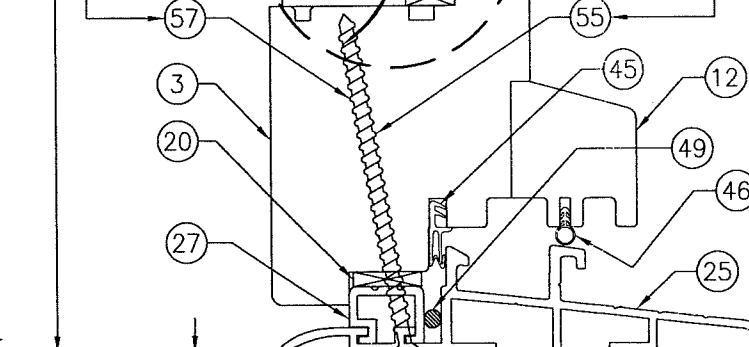


FRAME HEIGHT

(USED WHEN
NO SUB-SILL
IS USED)

SEE GLAZING
DETAILS ON
SHEET 17

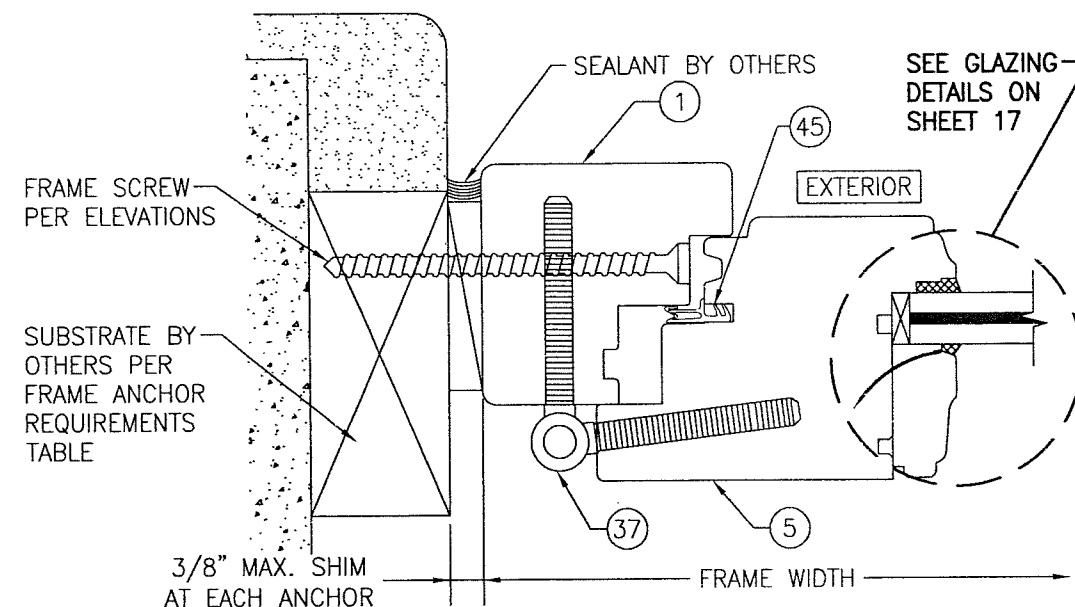
(USED WHEN
SUB-SILL IS
UNDER SILL)



3/8" MAX.
SHIM
OR GROUT

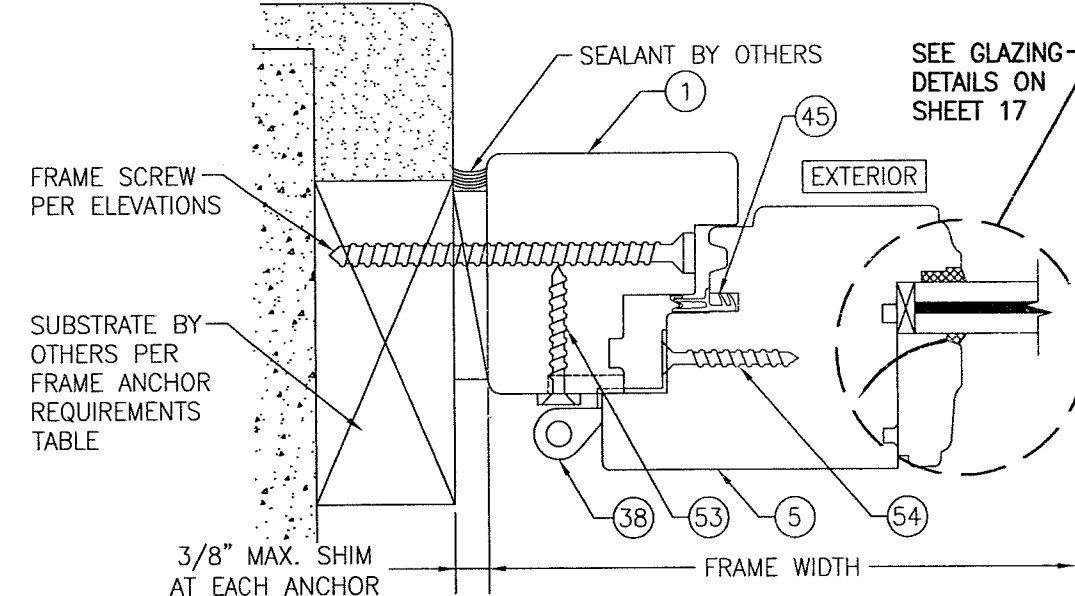
SUBSTRATE BY OTHERS
PER "FRAME ANCHOR
REQUIREMENTS TABLE"
(FOR SILL INSTALLATION
NOT SHOWN, SEE
ANGLE CLIP &
INSTALLATION CLIP SILL
DETAILS ON SHEETS 15
& 16.

SECTION A2
SCALE: 1/2 FULL 9



SECTION B1
SCALE: 1/2 FULL 9

(SCREWED IN HINGE CONDITION)
FRAME SHEAR SCREW INSTALLATION SHOWN. SEE
OPTIONAL DETAILS FOR OTHER INSTALLATION CONDITIONS.

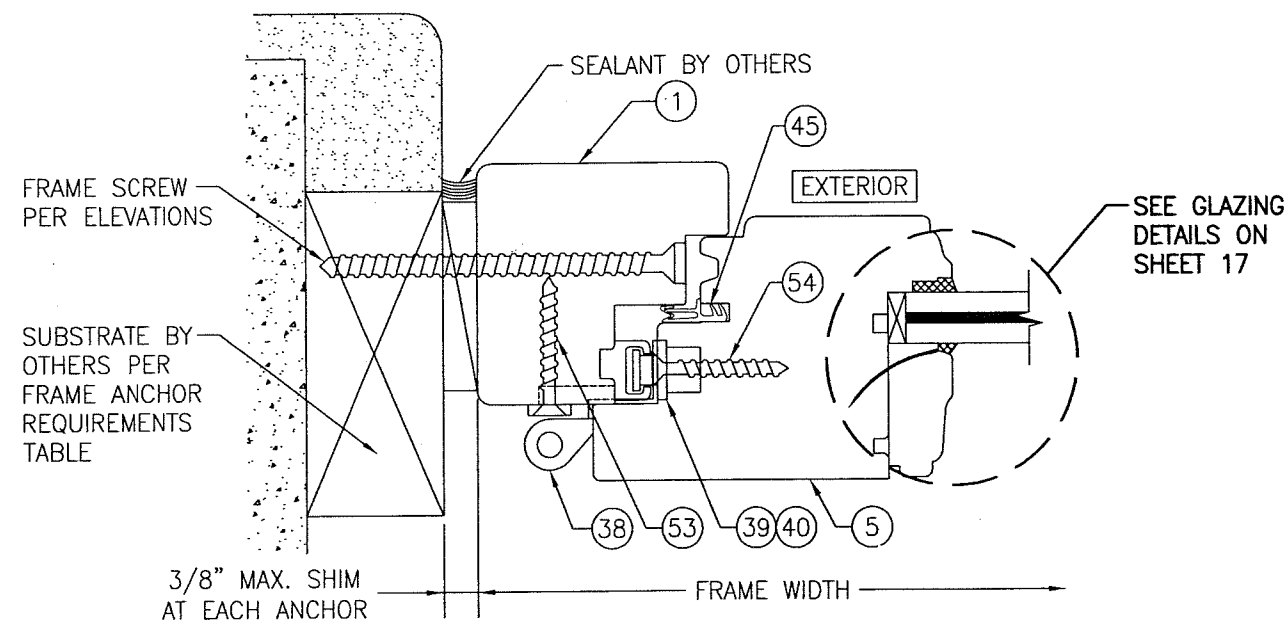


SECTION B2
SCALE: 1/2 FULL 9

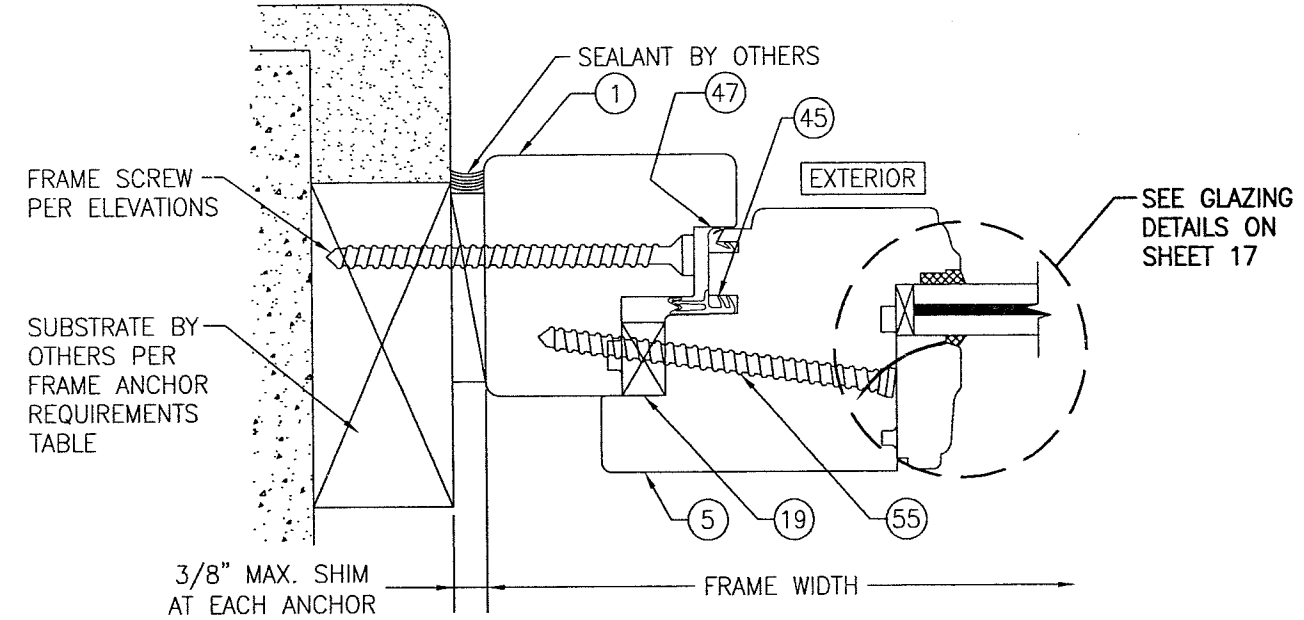
(POT HINGE; TURN ONLY CONDITION)
FRAME SHEAR SCREW INSTALLATION SHOWN. SEE
OPTIONAL DETAILS FOR OTHER INSTALLATION CONDITIONS.

PRODUCT REVISED
as complying with the Florida
Building Code
Acceptance No. 18-0531.10
Expiration Date 5/27/24
By Ishag I. Chande
Miami-Dade Product Control

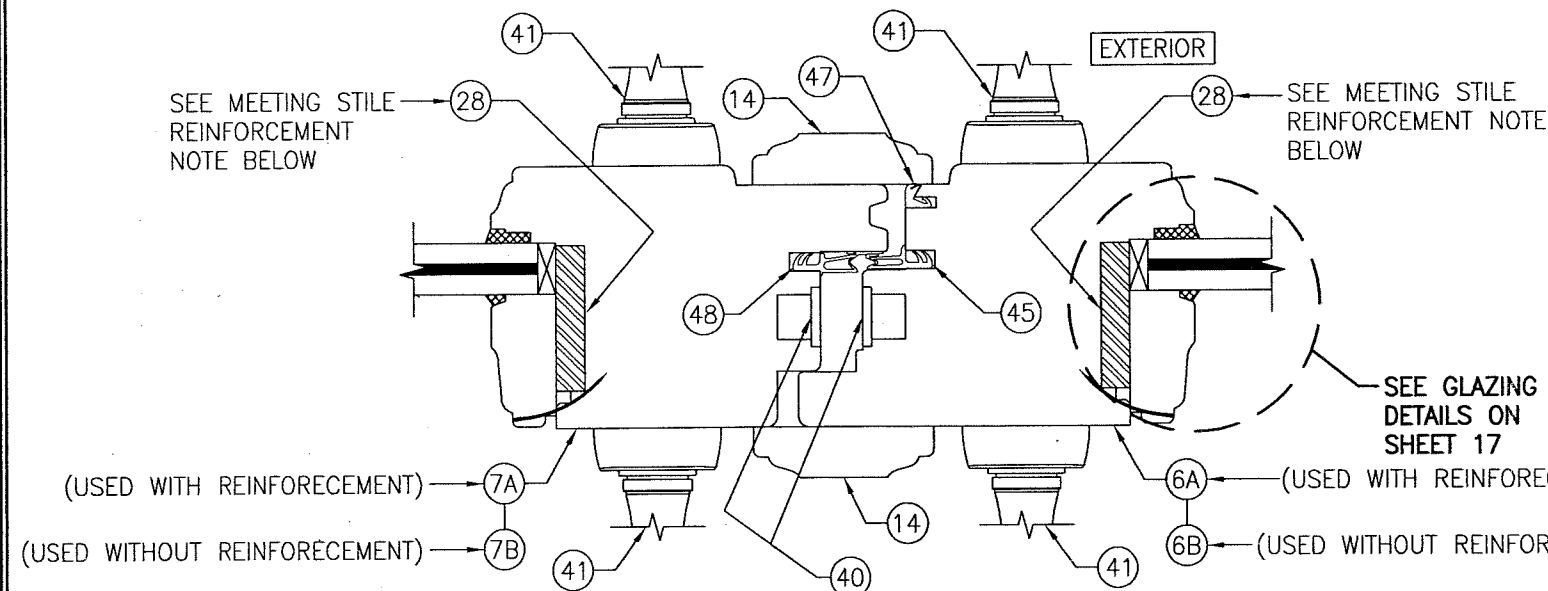
DRAWN BY: W.R.M.	CHECKED BY: W.W.S.
PLOT: 1=2	DATE: 10/08/08
DATE	BY
REVISION DESCRIPTION	
NO.	
DRAWING TITLE IN-SWING IMPACT WOOD DOORS	
MANUFACTURER TISCHLER UND SOHN (USA) LTD. SIX SUBURBAN AVENUE STAMFORD, CONNECTICUT 06901 203-674-0600	
CONSULTANTS W. W. SCHAEFER ENGINEERING & CONSULTING, P.A. (CA 6809) 7480 150TH COURT NORTH PALM BEACH GARDENS, FL 33418 PHONE: 561-744-3424	
CERTIFICATION MAY 15 2018 WARREN W. SCHAEFER, P.E. P.E. NO. 44135	
DRAWING NO. 1601	REV. C
SHEET NO. 9 OF 19	



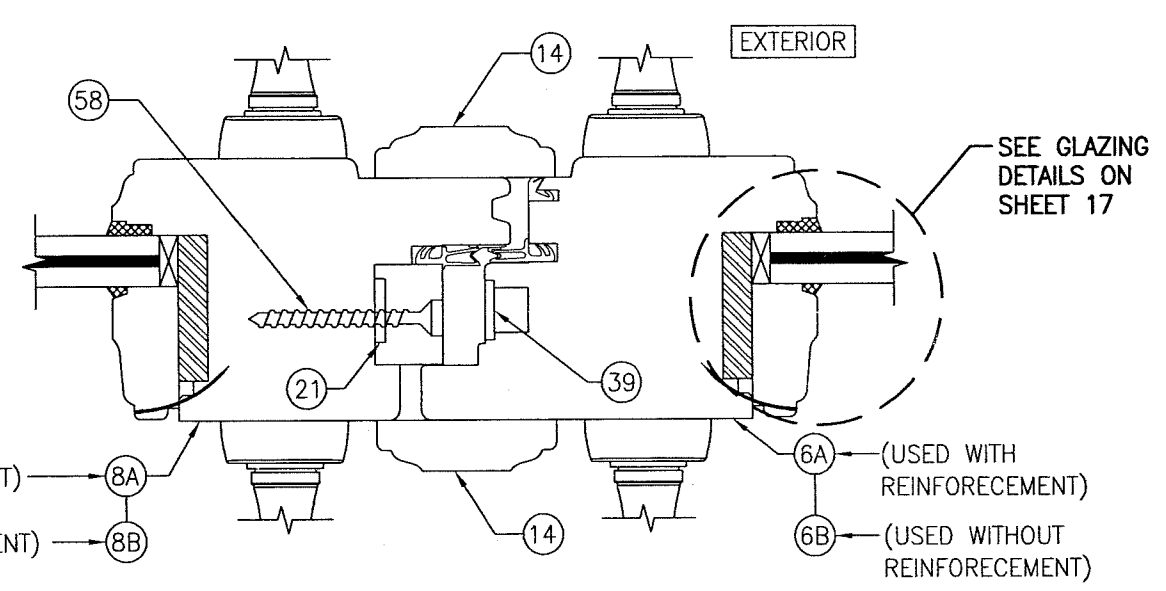
SECTION B3
SCALE: 1/2 FULL
(POT HINGE; TILT CONDITION)
FRAME SHEAR SCREW INSTALLATION SHOWN. SEE
OPTIONAL DETAILS FOR OTHER INSTALLATION CONDITIONS.



SECTION B4
SCALE: 1/2 FULL
FRAME SHEAR SCREW INSTALLATION SHOWN. SEE
OPTIONAL DETAILS FOR OTHER INSTALLATION CONDITIONS.



SECTION C1
SCALE: 1/2 FULL
MEETING STILE CONDITION WITH SIEGENIA MULTI-POINT LOCK SYSTEM



SECTION C2
SCALE: 1/2 FULL
MEETING STILE CONDITION WITH Kfv MULTI-POINT LOCK SYSTEM
(FOR DETAIL NOT SHOWN, SEE SECTION C1/10)

MEETING STILE REINFORCEMENT NOTE:

REINFORCEMENT IS REQUIRED WHEN ANY ONE OF THE FOLLOWING DOOR CONDITIONS EXISTS.

1. WHEN FRAME HEIGHT IS OVER 99".
2. WHEN ADA SILL IS USED (ALL APPLICABLE FRAME HEIGHTS).
3. WHEN JOB REQUIRED DESIGN PRESSURE IS OVER +/-70 PSF.

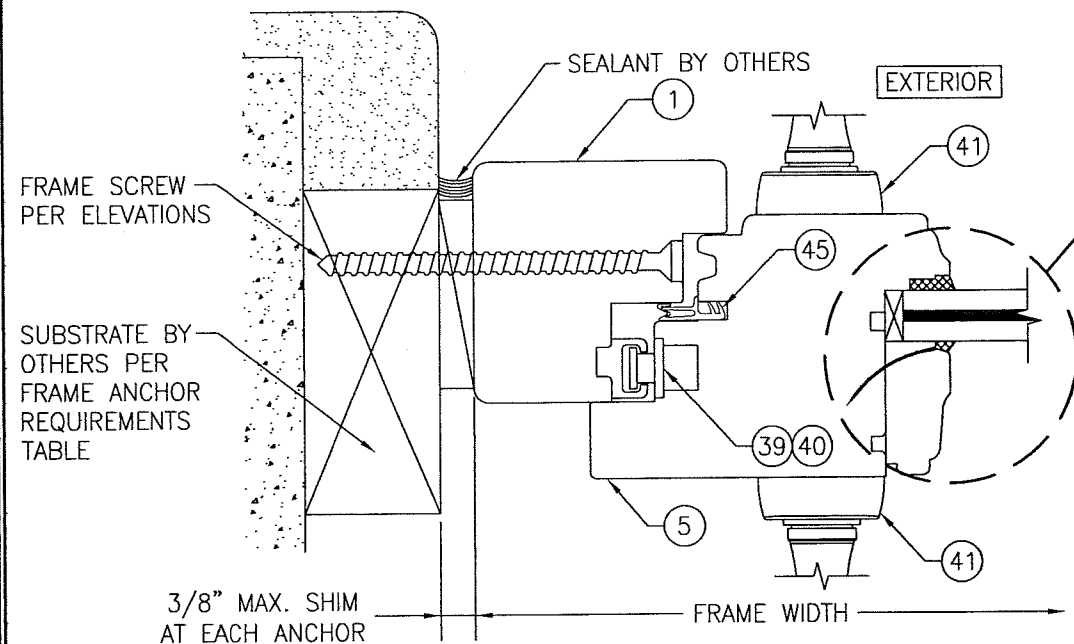
PRODUCT REVISED
as complying with the Florida
Building Code
NOA-No. 20-0623.10

Expiration Date 05/27/2024

By Ishag I. Chank
Miami-Dade Product Control

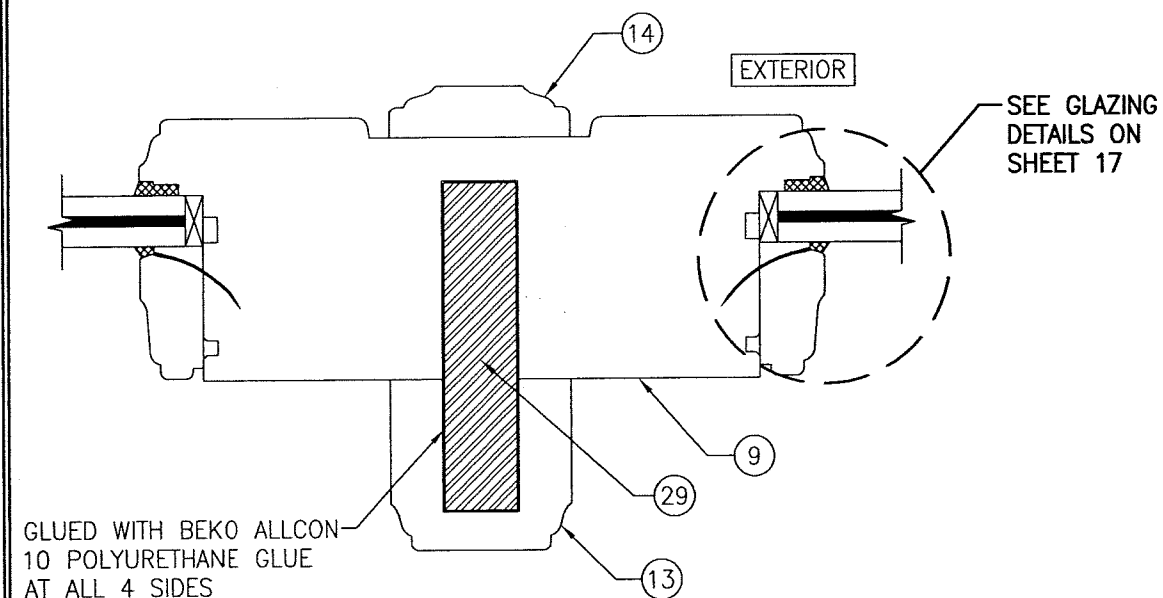
PRODUCT REVISED
as complying with the Florida
Building Code
Acceptance No. 18-0531.10
Expiration Date 5/27/24
By Ishag I. Chank
Miami-Dade Product Control

DRAWN BY: W.R.M.		CHECKED BY: W.W.S.	
PLOT: 1=2		DATE: 10/08/08	
NO.	REVISION	DESCRIPTION	DATE
DRAWING TITLE IN-SWING IMPACT WOOD DOORS			
MANUFACTURER TISCHLER UND SOHN (USA) LTD. SIX SUBURBAN AVENUE STAMFORD, CONNECTICUT 06901 203-674-0600			
CONSULTANTS W. W. SCHAEFER ENGINEERING & CONSULTING, P.A. (CA 6809) 7480 150TH COURT NORTH PALM BEACH GARDENS, FL 33418 PHONE: 561-744-3424			
CERTIFICATION MAY 15 2018 WARREN W. SCHAEFER, P.E. P.E. NO. 44135			
DRAWING NO. 1601		REV. C	
SHEET NO. 10 OF 19			

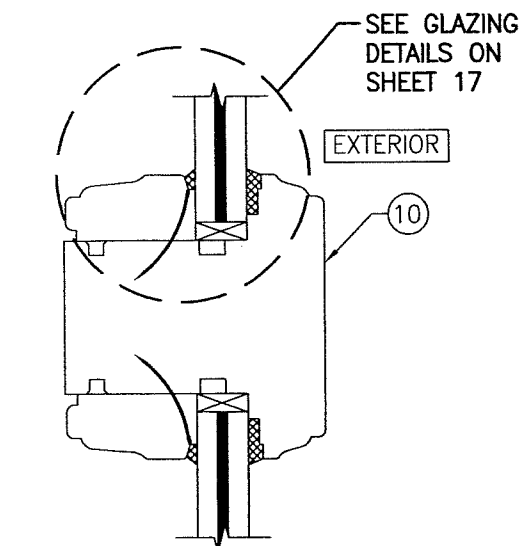


SECTION D
SCALE: 1/2 FULL 11

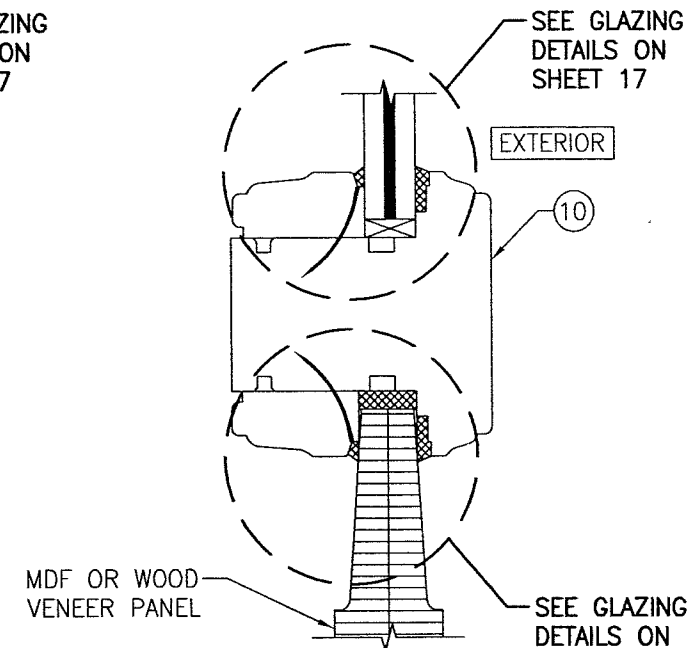
FRAME SCREW INSTALLATION SHOWN. SEE OPTIONAL DETAILS FOR OTHER INSTALLATION CONDITIONS.



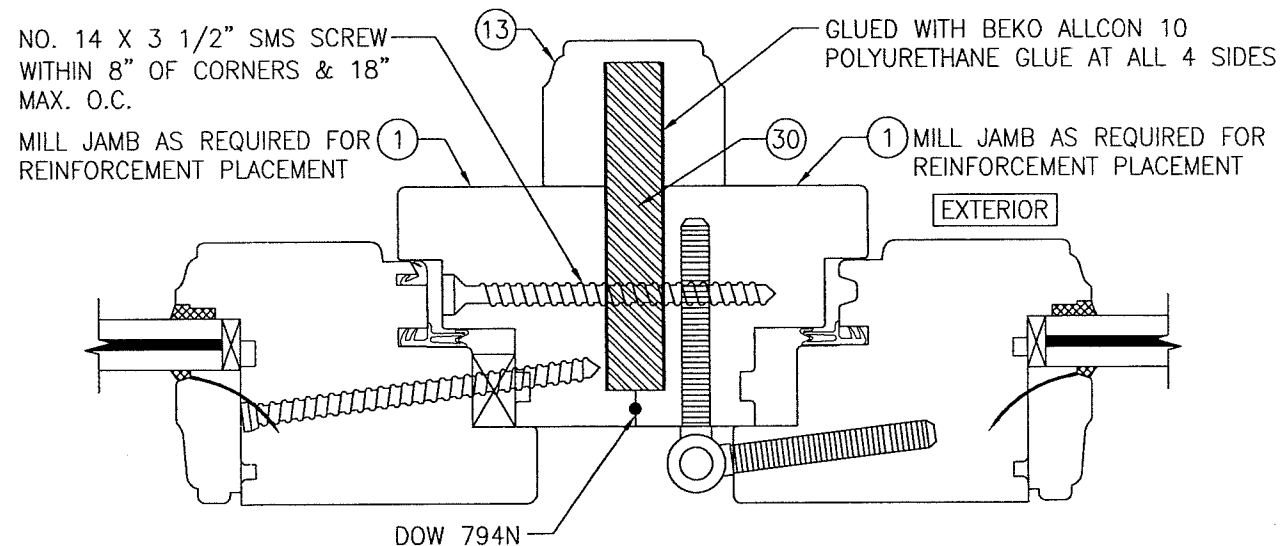
SECTION F
SCALE: 1/2 FULL 11



SECTION E1
SCALE: 1/2 FULL 11



SECTION E2
SCALE: 1/2 FULL 11



SECTION G1
SCALE: 1/2 FULL 11

SCREWED IN HINGE CONDITION SHOWN, POT HINGE CONDITION ALSO APPLIES (FOR DETAIL NOT SHOWN, SEE OTHER SECTIONS)

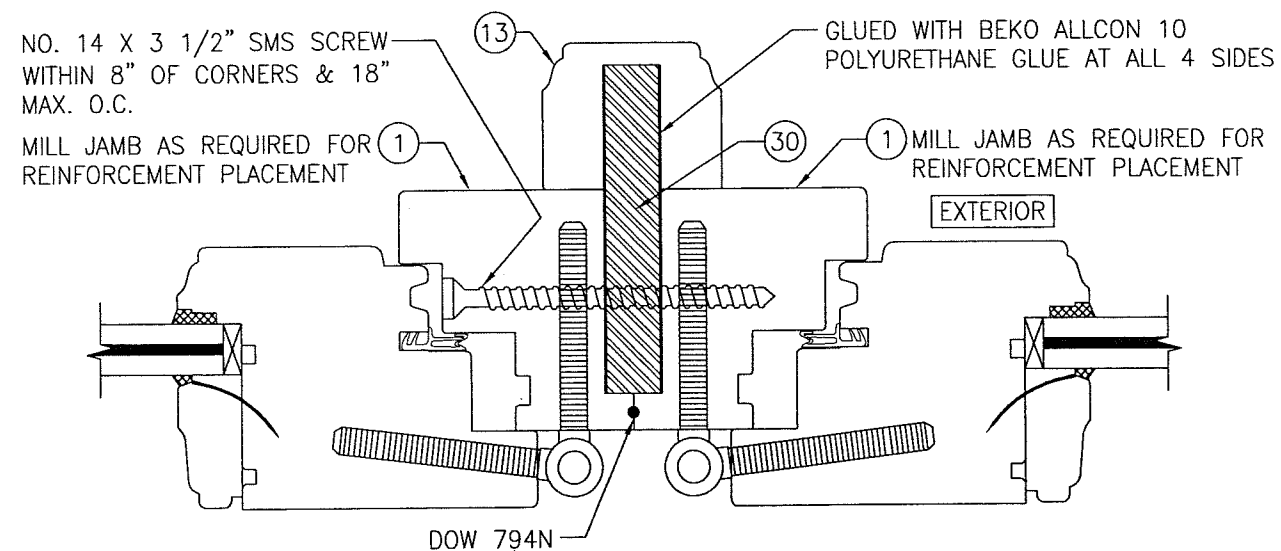
PRODUCT REVISED
as complying with the Florida
Building Code
NOA-No. 20-0623.10

Expiration Date 05/27/2024

By *Ishag I. Chande*
Miami-Dade Product Control

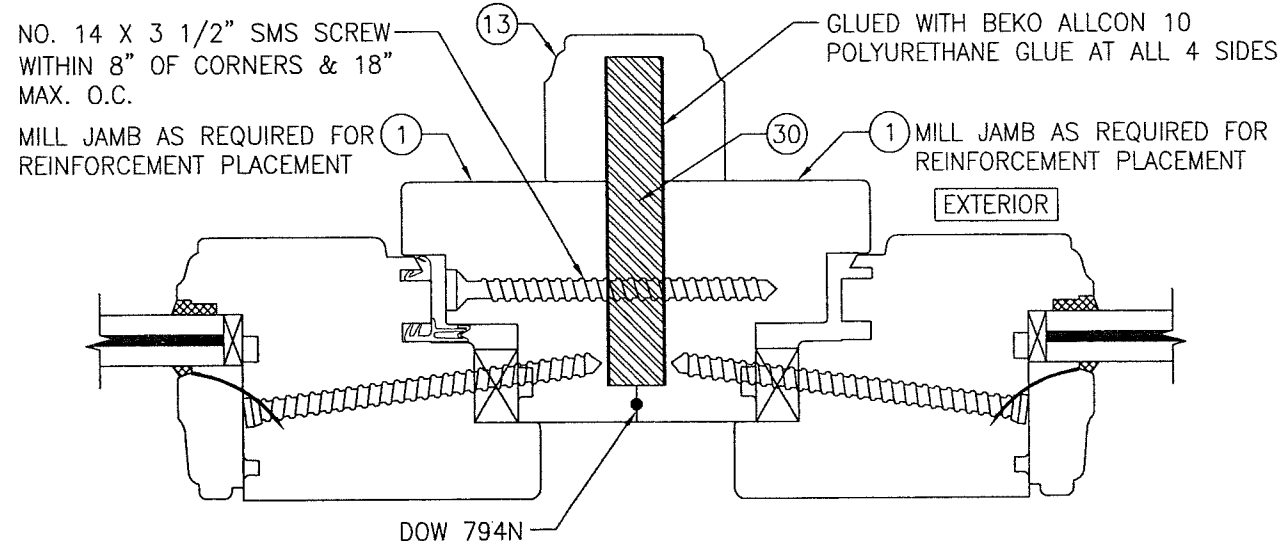
PRODUCT REVISED
as complying with the Florida
Building Code
Acceptance No. *16-0531.10*
Expiration Date *5/27/24*
Ishag I. Chande
Miami-Dade Product Control

DRAWN BY: W.R.M.	CHECKED BY: W.W.S.
PLOT: 1=2	DATE: 10/08/08
DATE	BY
REVISION DESCRIPTION	NO.
DRAWING TITLE IN-SWING IMPACT WOOD DOORS	
CONSULTANTS W. W. SCHAEFER ENGINEERING & CONSULTING, P.A. (CA 6809)	MANUFACTURER TISCHLER UND SOHN (USA) LTD. SIX SUBURBAN AVENUE STAMFORD, CONNECTICUT 06901 203-674-0600
CERTIFICATION MAY 15 2018	WARRREN W. SCHAEFER, P.E. P.E. NO. 44135
DRAWING NO. 1601	REV. C
SHEET NO. 11	OF 19



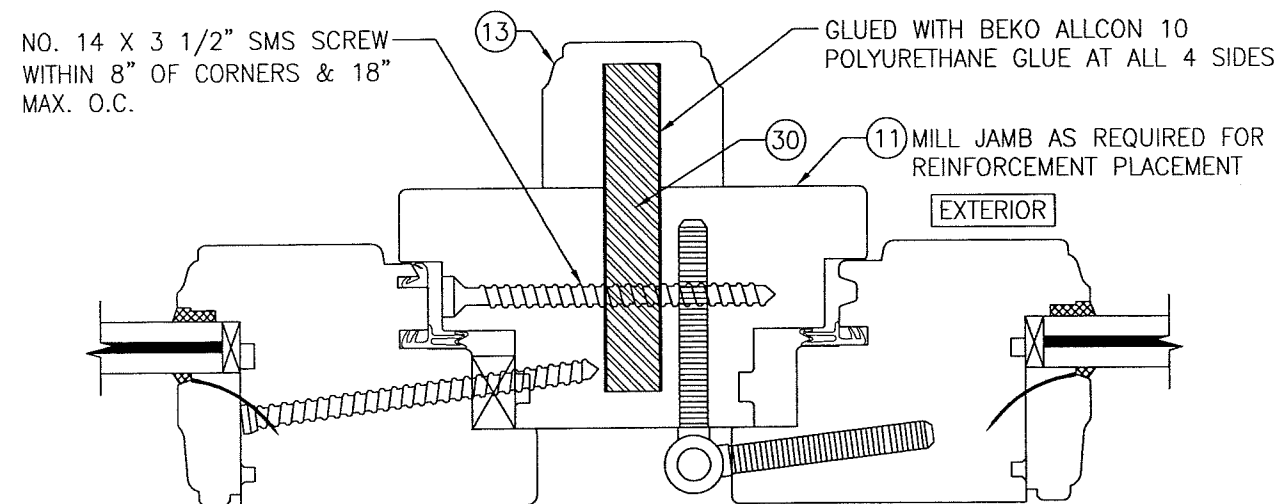
SECTION **G2**
SCALE: 1/2 FULL **12**

SCREWED IN HINGE CONDITION SHOWN, POT HINGE CONDITION ALSO APPLIES
(FOR DETAIL NOT SHOWN, SEE OTHER SECTIONS)



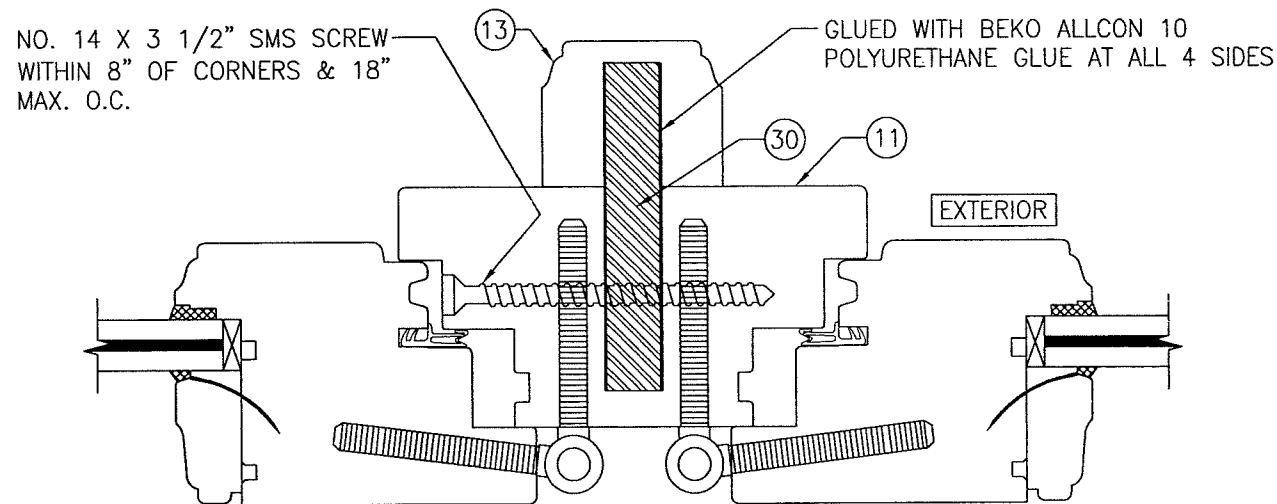
SECTION **G3**
SCALE: 1/2 FULL **12**

(FOR DETAIL NOT SHOWN, SEE OTHER SECTIONS)



SECTION **G4**
SCALE: 1/2 FULL **12**

SCREWED IN HINGE CONDITION SHOWN, POT HINGE CONDITION ALSO APPLIES
(FOR DETAIL NOT SHOWN, SEE OTHER SECTIONS)



SECTION **G5**
SCALE: 1/2 FULL **12**

SCREWED IN HINGE CONDITION SHOWN, POT HINGE CONDITION ALSO APPLIES
(FOR DETAIL NOT SHOWN, SEE OTHER SECTIONS)

PRODUCT REVISED
as complying with the Florida
Building Code
NOA-No. 20-0623.10

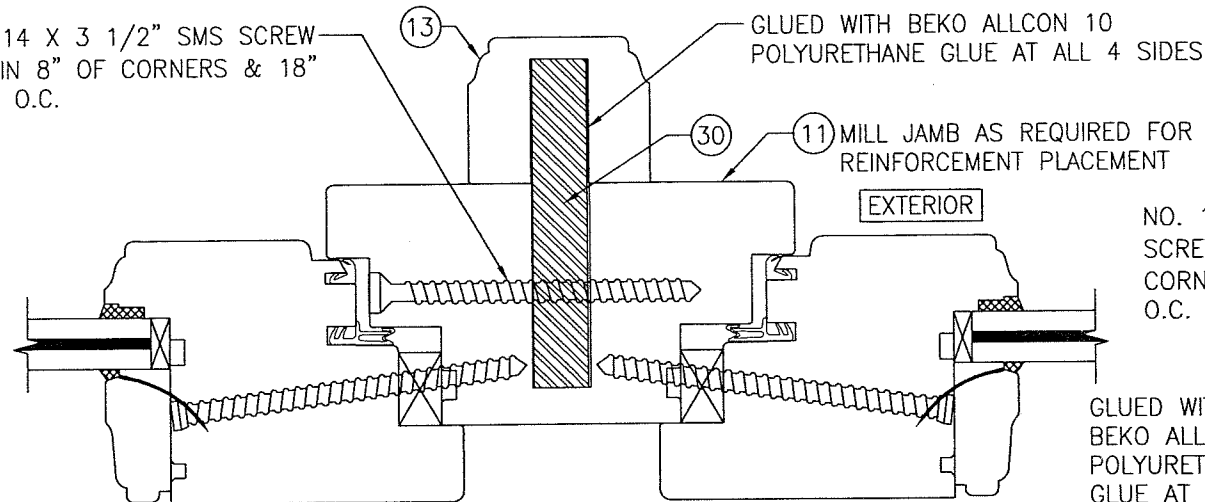
Expiration Date 05/27/2024

By Iskay I. Chank
Miami-Dade Product Control

PRODUCT REVISED
as complying with the Florida
Building Code
Acceptance No. 18-0531-10
Expiration Date 5/27/24
By Iskay I. Chank
Miami-Dade Product Control

DRAWN BY: W.R.M.		CHECKED BY: W.W.S.	
PLOT: 1=2		DATE: 10/08/08	
DATE	BY	REVISION	DESCRIPTION
DRAWING TITLE IN-SWING IMPACT WOOD DOORS			
CONSULTANTS W. W. SCHAEFER ENGINEERING & CONSULTING, P.A. (CA 6809) 7480 150TH COURT NORTH PALM BEACH GARDENS, FL 33418 PHONE: 561-744-3424		MANUFACTURER TISCHLER UND SOHN (USA) LTD. SIX SUBURBAN AVENUE STAMFORD, CONNECTICUT 06901 203-674-0600	
CERTIFICATION MAY 15 2018 WARREN W. SCHAEFER, P.E. P.E. NO. 44135		DRAWING NO. 1601 REV. C SHEET NO. 12 OF 19	

NO. 14 X 3 1/2" SMS SCREW
WITHIN 8" OF CORNERS & 18"
MAX. O.C.



SECTION

SCALE: 1/2 FULL

(G6
13)

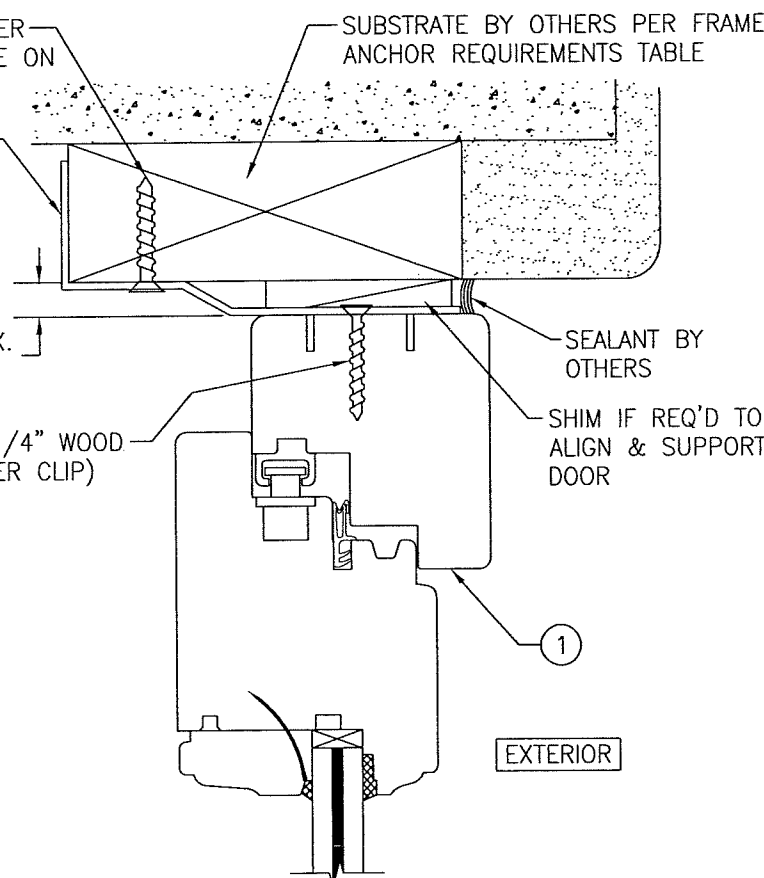
(FOR DETAIL NOT SHOWN, SEE OTHER SECTIONS)

INSTALLATION CLIP SCREW PER
ANCHOR REQUIREMENTS TABLE ON
SHEET 1 (1 PER CLIP)

INSTALLATION CLIP PER
ELEVATIONS (MAY
OPTION TO BEND CLIP
AROUND SUBSTRATE OR
EXTEND SUBSTRATE
WITH NO CLIP BEND)

3/8" MAX.
SPACE

NO. 6 X 1 1/4" WOOD
SCREW (1 PER CLIP)



OPTIONAL INSTALLATION CLIP DETAIL

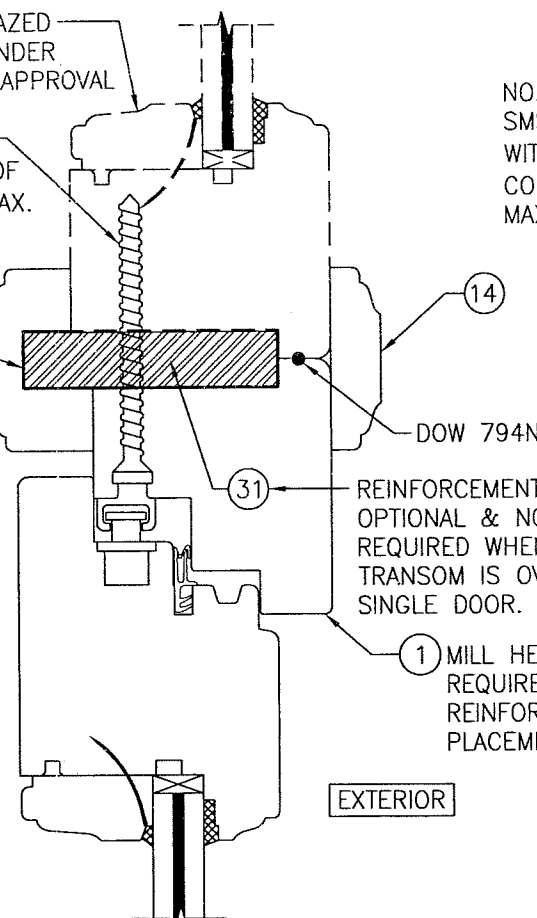
(HEAD SECTION SHOWN, SIDES ARE INSTALLED THE SAME)
(FOR DETAIL NOT SHOWN, SEE OTHER SECTIONS)

DIRECT GLAZED
WINDOW UNDER
SEPARATE APPROVAL

NO. 14 X 3" SMS
SCREW WITHIN 7" OF
CORNERS & 18" MAX.
O.C.

GLUED WITH
BEKO ALLCON 10
POLYURETHANE
GLUE AT ALL 4
SIDES

MILL MULLION
BAR COVER AS
REQUIRED FOR
REINFORCEMENT
PLACEMENT



SECTION

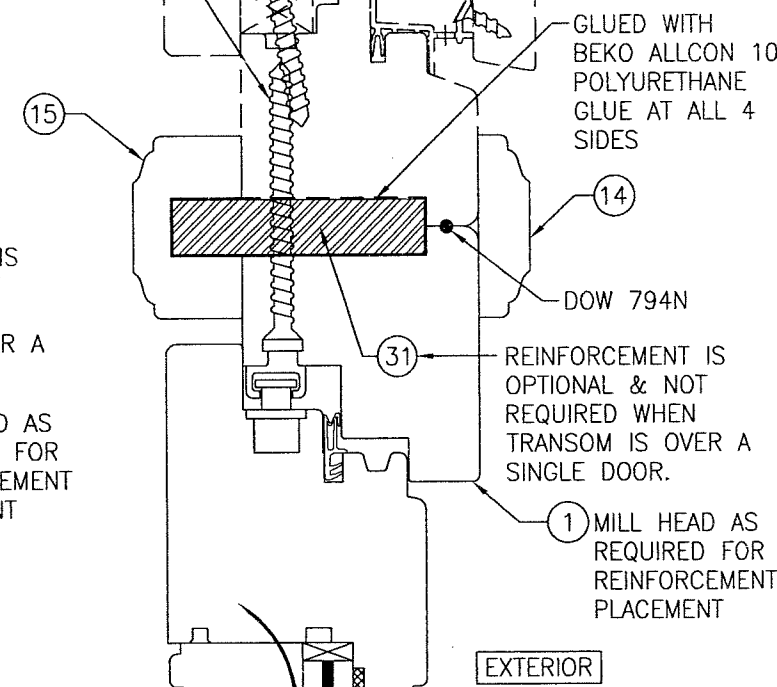
SCALE: 1/2 FULL

(H1
13)

(FOR DETAIL NOT SHOWN, SEE OTHER SECTIONS)
(OPERABLE DOOR CONDITION SHOW, FIXED PANEL DOOR
IS MULLED THE SAME)

FIXED CASEMENT
WINDOW UNDER
SEPARATE APPROVAL

NO. 14 X 3"
SMS SCREW
WITHIN 7" OF
CORNERS & 18"
MAX. O.C.



SECTION

SCALE: 1/2 FULL

(H2
13)

(FOR DETAIL NOT SHOWN, SEE OTHER SECTIONS)
(OPERABLE DOOR CONDITION SHOW, FIXED PANEL DOOR
IS MULLED THE SAME)

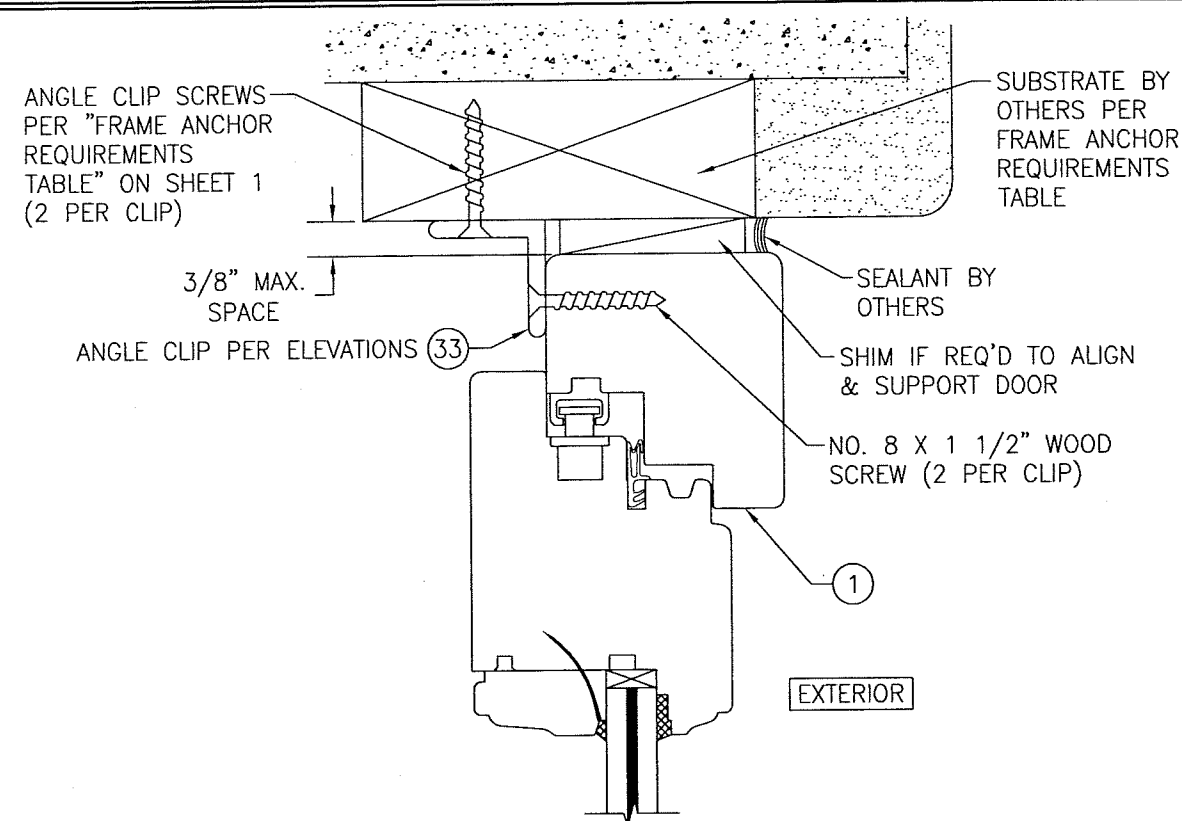
PRODUCT REVISED
as complying with the Florida
Building Code
NOA-No. 20-0623.10

Expiration Date 05/27/2024

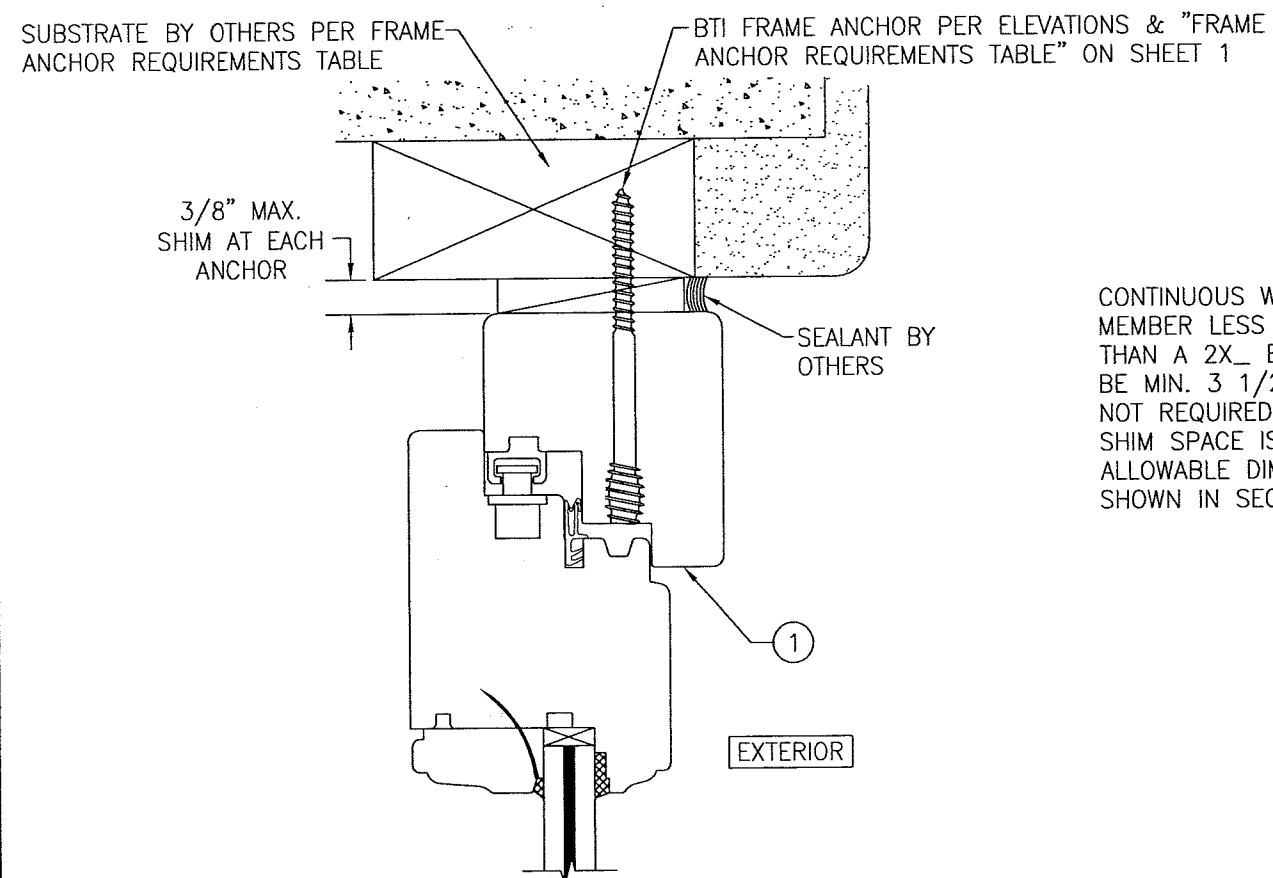
By *Ismael L. Chanik*
Miami-Dade Product Control

PRODUCT REVISED
as complying with the Florida
Building Code
Acceptance No. 18-0531.10
Expiration Date 5/27/24
By *Ismael L. Chanik*
Miami-Dade Product Control

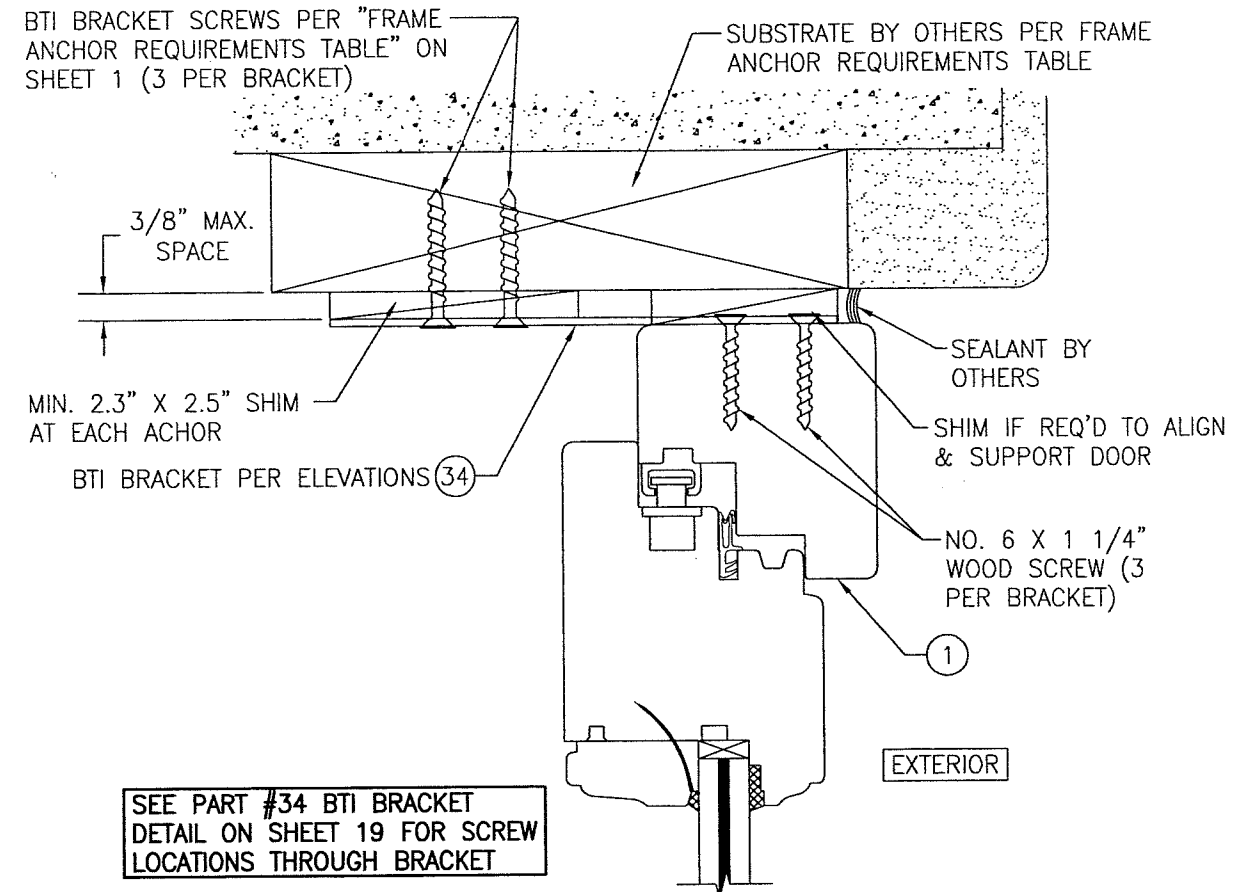
DRAWN BY: W.R.M.	CHECKED BY: W.W.S.
PLOT: 1=2	DATE: 10/08/08
DATE	BY
REVISION DESCRIPTION	NO.
IN-SWING IMPACT WOOD DOORS MANUFACTURER TISCHLER UND SOHN (USA) LTD. SIX SUBURBAN AVENUE STAMFORD, CONNECTICUT 06901 203-674-0600	
CONSULTANTS W. W. SCHAEFER ENGINEERING & CONSULTING, P.A. (CA 6809) 7480 150TH COURT NORTH PALM BEACH GARDENS, FL 33418 PHONE: 561-744-3424	
CERTIFICATION MAY 15 2018 WARREN W. SCHAEFER, P.E. P.E. NO. 44135	
DRAWING NO. 1601	REV. C
SHEET NO. 13 OF 19	



OPTIONAL INSTALLATION ANGLE CLIP DETAIL
(HEAD SECTION SHOWN, SIDES ARE INSTALLED THE SAME)
(FOR DETAIL NOT SHOWN, SEE OTHER SECTIONS)

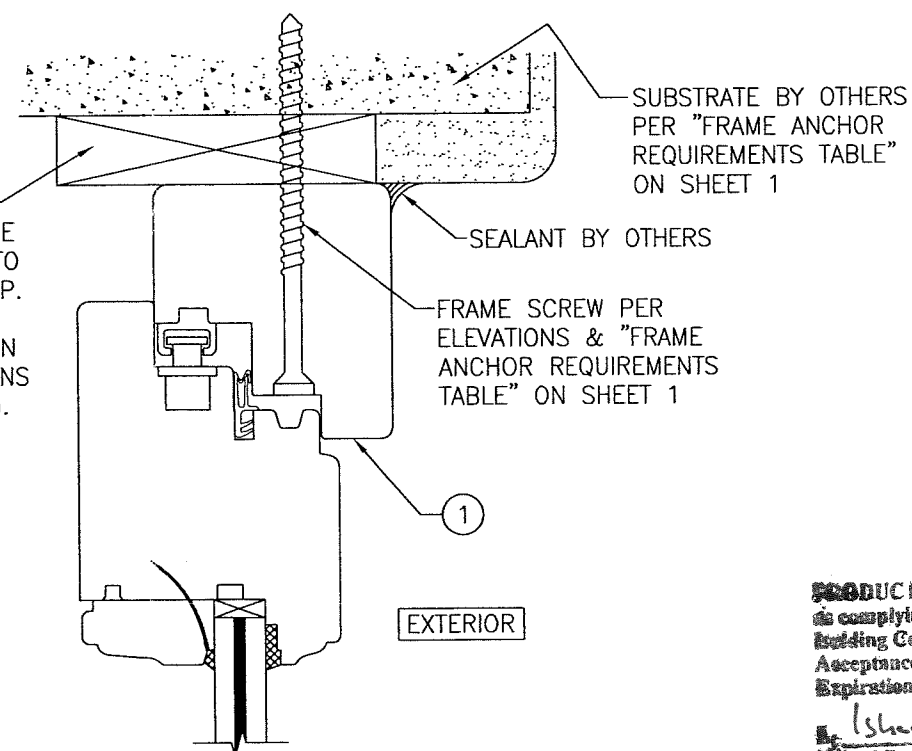


OPTIONAL BTI SCREW DETAIL
(HEAD SECTION SHOWN, SIDES ARE INSTALLED THE SAME)
(FOR DETAIL NOT SHOWN, SEE OTHER SECTIONS)



SEE PART #34 BTI BRACKET DETAIL ON SHEET 19 FOR SCREW LOCATIONS THROUGH BRACKET

OPTIONAL INSTALLATION BTI BRACKET DETAIL
(HEAD SECTION SHOWN, SIDES ARE INSTALLED THE SAME)
(FOR DETAIL NOT SHOWN, SEE OTHER SECTIONS)

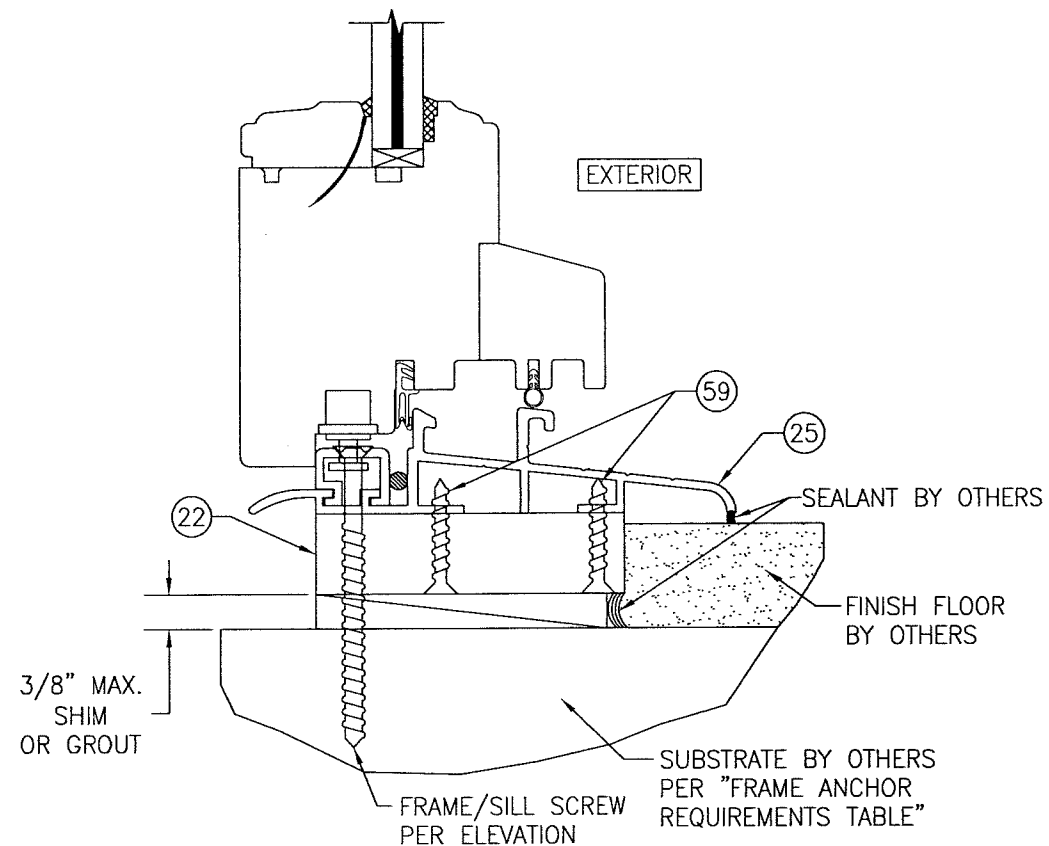


OPTIONAL DIRECT MOUNT DETAIL TO SUBSTRATE WITH SPACER
(HEAD SECTION SHOWN, SIDES ARE INSTALLED THE SAME)
(FOR DETAIL NOT SHOWN, SEE OTHER SECTIONS)

PRODUCT REVISED
as complying with the Florida
Building Code
NOA-No. 20-0623.10
Expiration Date 05/27/2024
By Ishag I. Chandra
Miami-Dade Product Control

PRODUCT REVISED
as complying with the Florida
Building Code
Acceptance No. 18-0531.10
Expiration Date 5/27/24
By Ishag I. Chandra
Miami-Dade Product Control

DRAWN BY: W.R.M.		CHECKED BY: W.W.S.	
PLOT: 1=2		DATE: 10/08/08	
DATE	BY	REVISION DESCRIPTION	NO.
DRAWING TITLE IN-SWING IMPACT WOOD DOORS			
CONSULTANTS W. W. SCHAEFER ENGINEERING & CONSULTING, P.A. (CA 6809)		MANUFACTURER TISCHLER UND SOHN (USA) LTD. SIX SUBURBAN AVENUE STAMFORD, CONNECTICUT 06901 203-674-0600	
7480 150TH COURT NORTH PALM BEACH GARDENS, FL 33418 PHONE: 561-744-3424			
CERTIFICATION MAY 15 2018		P.E. WARREN W. SCHAEFER P.E. NO. 44135	
DRAWING NO. 1601		REV. C	
SHEET NO. 14		OF 19	



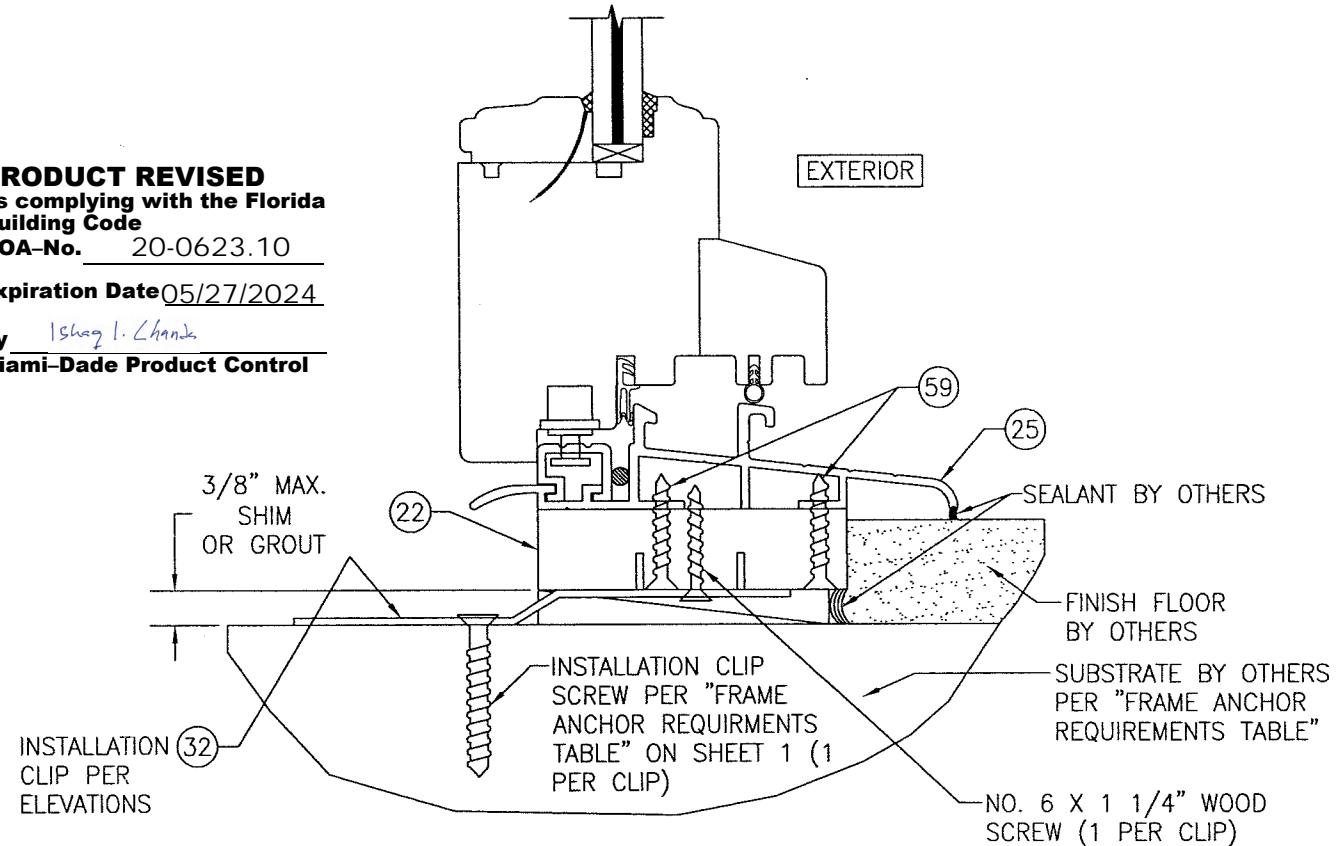
SILL DETAIL (STANDARD SILL INSTALLED WITH FRAME/SILL SCREW & SUB-SILL)

(OPERABLE DOOR CONDITION SHOWN, FIXED PANEL DOORS ARE INSTALLED THE SAME)
(FOR DETAIL NOT SHOWN, SEE OTHER SECTIONS)

PRODUCT REVISED
as complying with the Florida
Building Code
NOA-No. 20-0623.10

Expiration Date 05/27/2024

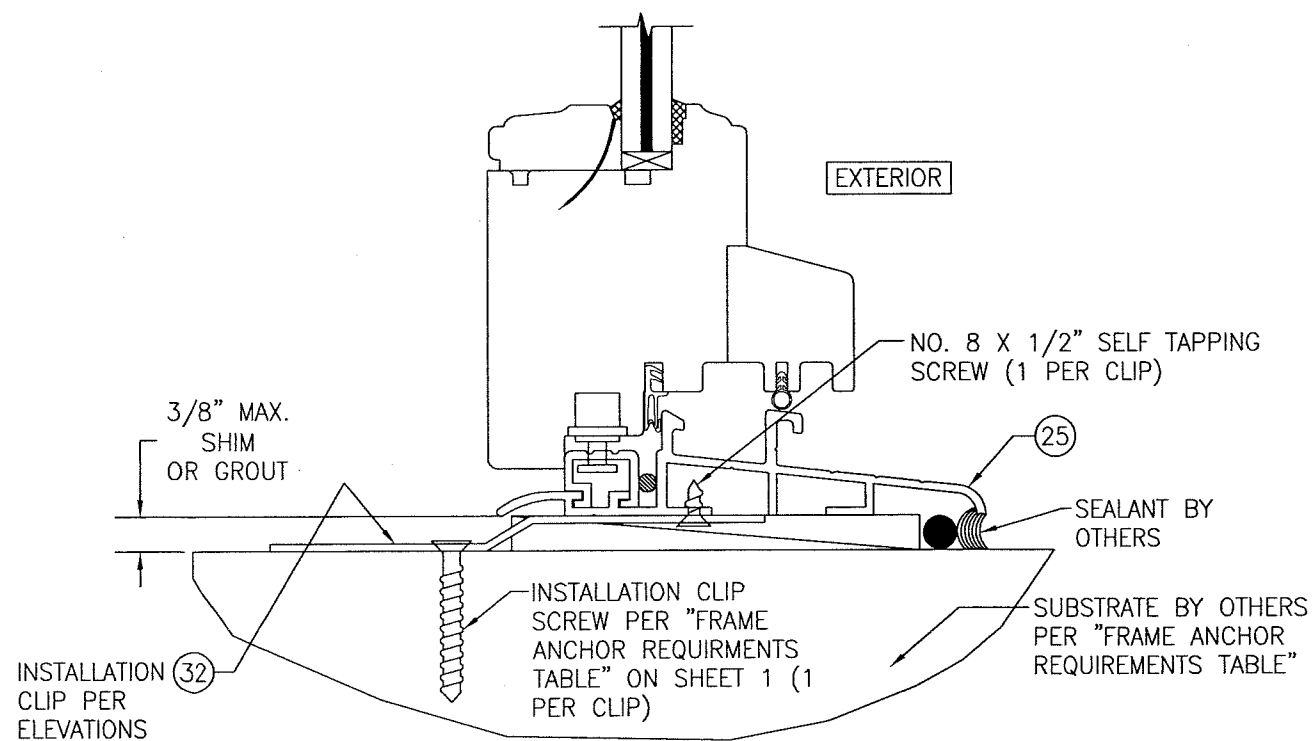
By Ishag I. Chande
Miami-Dade Product Control



SILL DETAIL (STANDARD SILL INSTALLED WITH INSTALLATION CLIP & SUB-SILL)

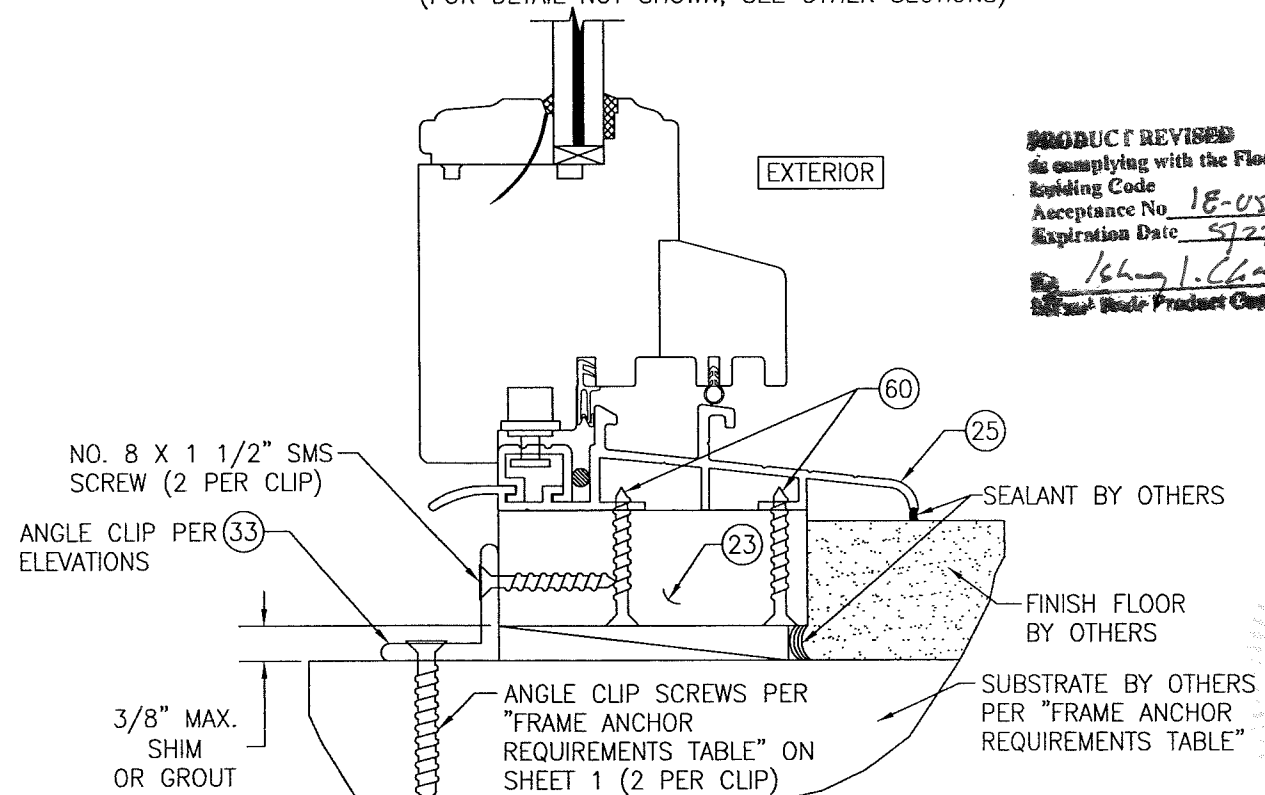
(OPERABLE DOOR CONDITION SHOWN, FIXED PANEL DOORS ARE INSTALLED THE SAME)
(FOR DETAIL NOT SHOWN, SEE OTHER SECTIONS)

PRODUCT REVISED
as complying with the Florida
Building Code
Acceptance No. 18-0531.10
Expiration Date 07/27/24
By Ishag I. Chande
Miami-Dade Product Control



SILL DETAIL (STANDARD SILL INSTALLED WITH INSTALLATION CLIP & NO SUB-SILL)

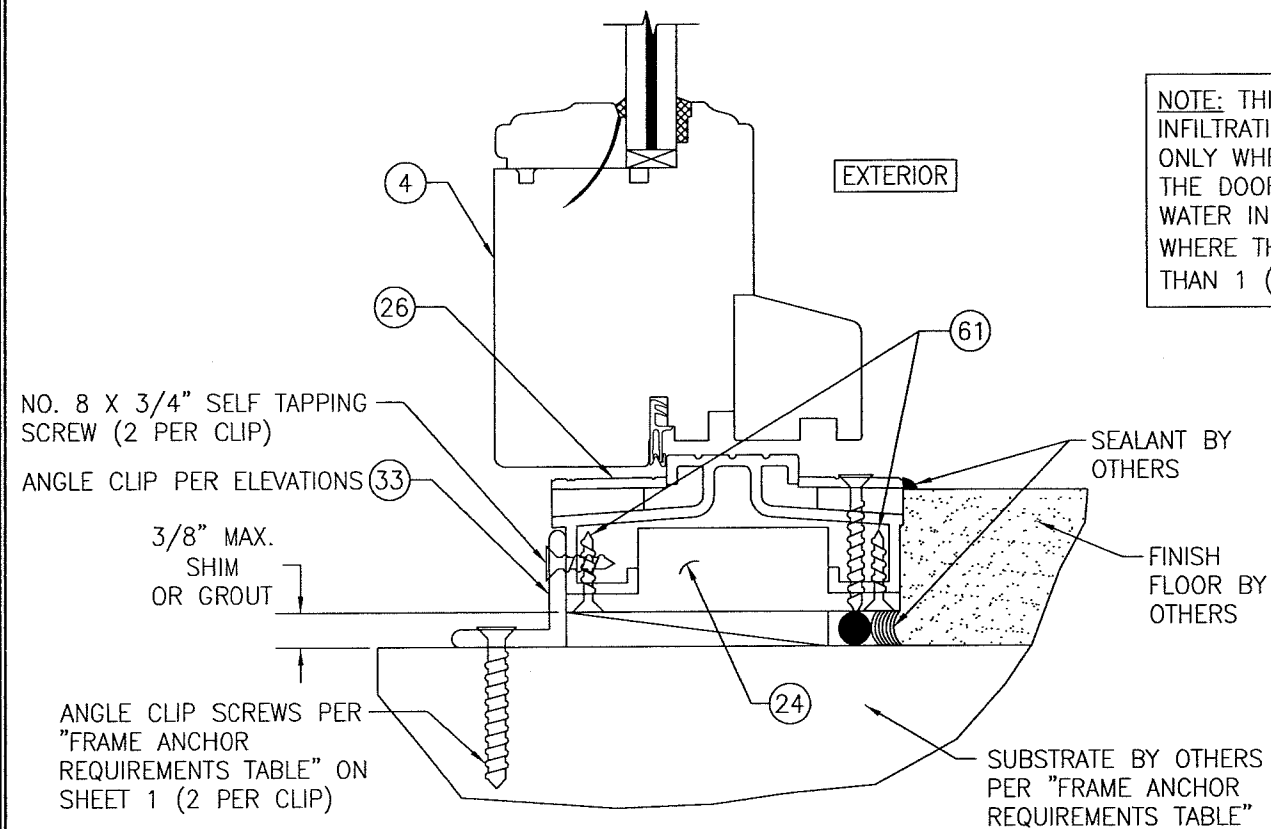
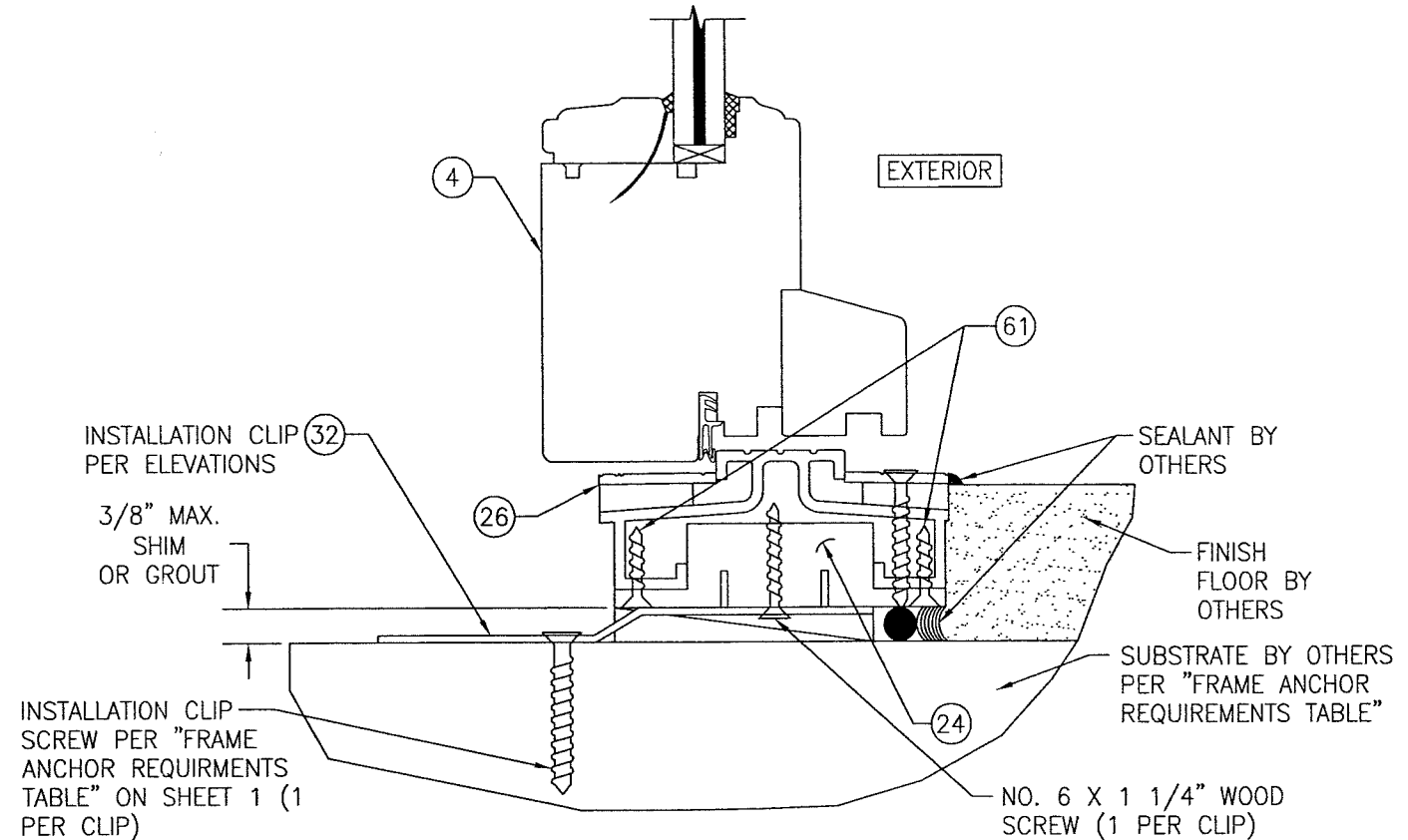
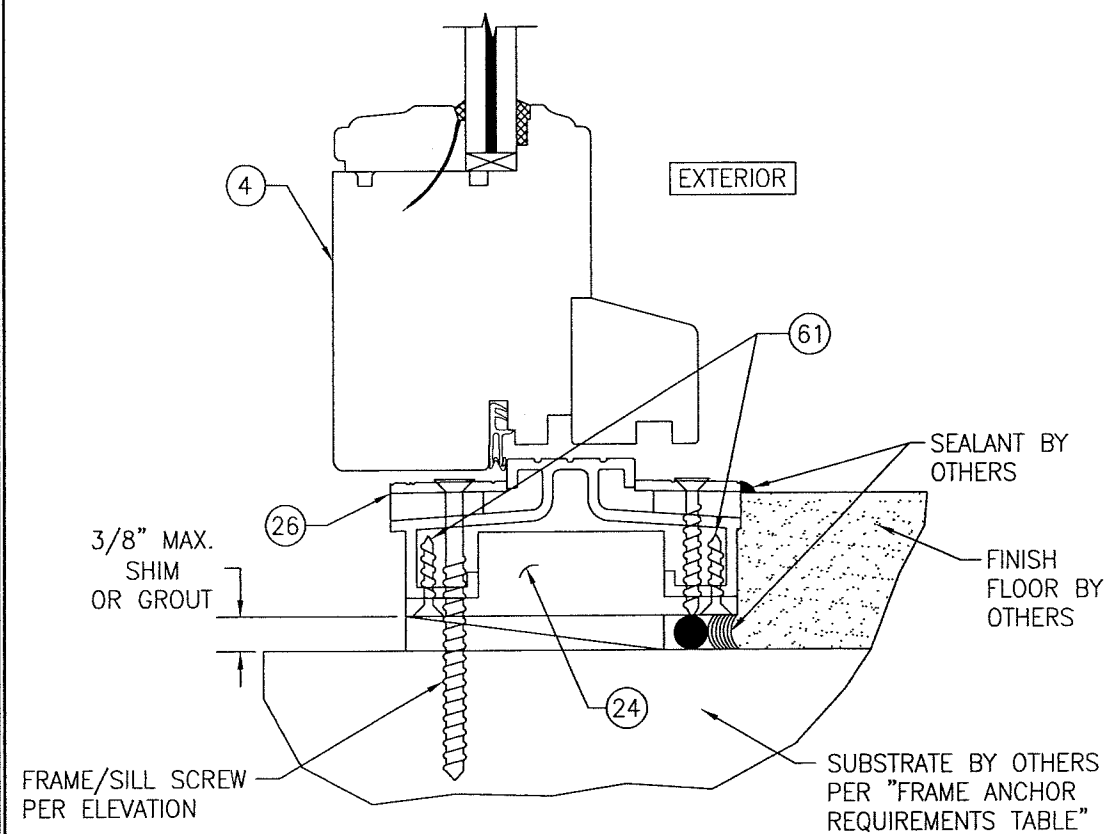
(OPERABLE DOOR CONDITION SHOWN, FIXED PANEL DOORS ARE INSTALLED THE SAME)
(FOR DETAIL NOT SHOWN, SEE OTHER SECTIONS)



SILL DETAIL (STANDARD SILL INSTALLED WITH ANGLE CLIP)

(OPERABLE DOOR CONDITION SHOWN, FIXED PANEL DOORS ARE INSTALLED THE SAME)
(FOR DETAIL NOT SHOWN, SEE OTHER SECTIONS)

DRAWN BY: W.R.M.	CHECKED BY: W.W.S.
PLOT: 1=2	DATE: 10/08/08
DATE	BY
REVISION DESCRIPTION	NO.
DRAWING TITLE IN-SWING IMPACT WOOD DOORS	
MANUFACTURER TISCHLER UND SOHN (USA) LTD. SIX SUBURBAN AVENUE STAMFORD, CONNECTICUT 06901 203-674-0600	
CONSULTANTS W. W. SCHAEFER ENGINEERING & CONSULTING, P.A. (CA 6809) 7480 150TH COURT NORTH PALM BEACH GARDENS, FL 33418 PHONE: 561-744-3424	
CERTIFICATION MAY 15 2018 WARREN W. SCHAEFER, P.E. P.E. NO. 44135	
DRAWING NO. 1601	REV. C
SHEET NO. 15 OF 19	



NOTE: THIS ADA SILL WAS NOT TESTED FOR WATER INFILTRATION RESISTANCE & THEREFORE IS ACCEPTABLE ONLY WHEN INSTALLED IN NONHABITABLE AREAS WHERE THE DOOR ASSEMBLY & AREA ARE DESIGNATED TO ACCEPT WATER INFILTRATION OR IF INSTALLED BELOW AN OVERHANG WHERE THE OVERHANG (OH) RATIO IS EQUAL TO OR MORE THAN 1 (OH RATIO = OH LENGTH/OH HEIGHT).

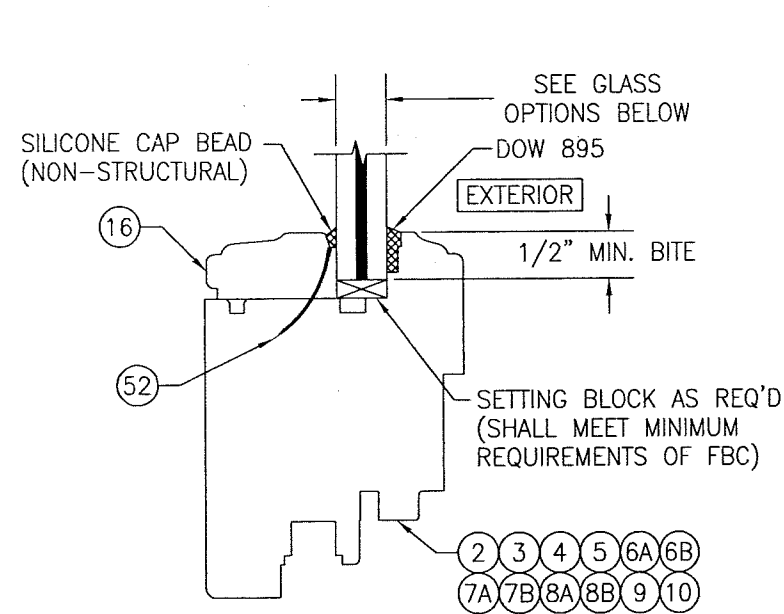
PRODUCT REVISED
as complying with the Florida
Building Code
NOA-No. 20-0623.10

Expiration Date05/27/2024

By Ishag I. Lhanda
Miami-Dade Product Control

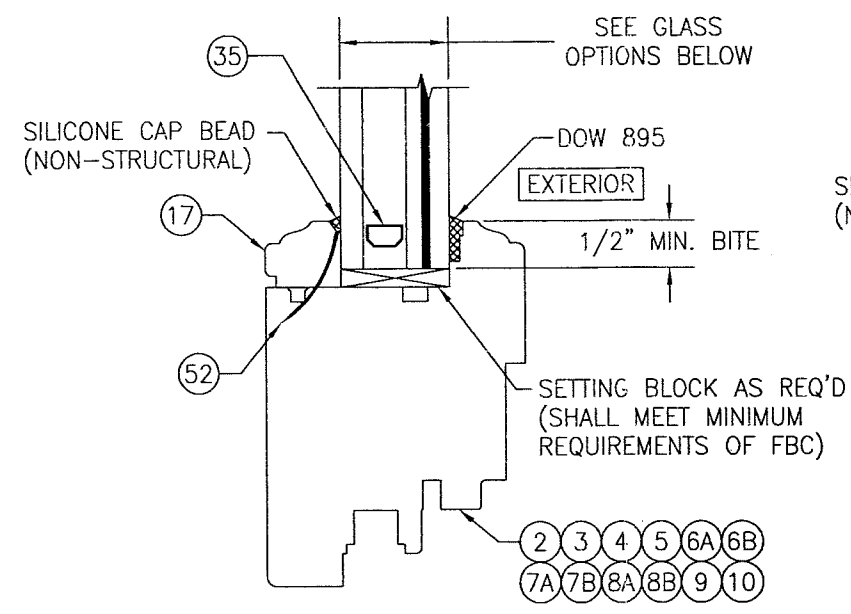
PRODUCT REVISED
is complying with the Florida
Building Code
Acceptance No. 18-0531-10
Expiration Date 5/27/24
Shugl. Univ.
State Seal Product Control

[illegible]



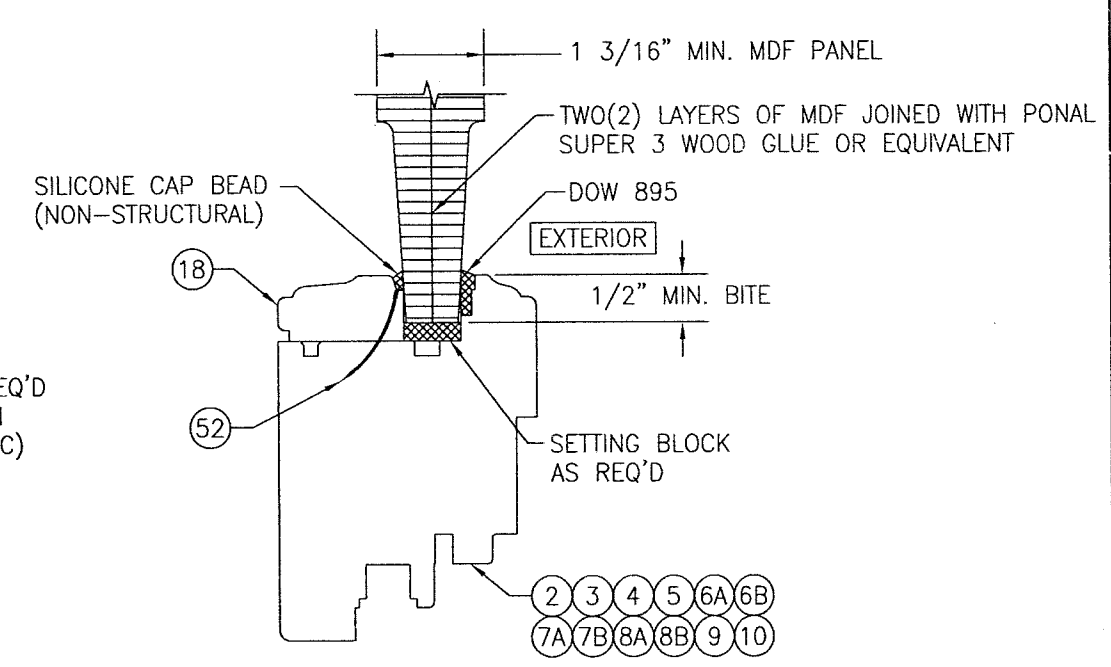
NON-I.G. GLAZING DETAIL
GLASS OPTIONS 1, 2 & 3

GLASS OPTION 1: 9/16" LAMINATED GLASS (1/4" AN./0.09" EASTMAN CHEM. CO. SAFLEX/1/4" AN.)
GLASS OPTION 2: 9/16" LAMINATED GLASS (1/4" H.S./0.075" EASTMAN CHEM. CO. SAFLEX CP/1/4" H.S.)
GLASS OPTION 3: 9/16" LAMINATED GLASS (1/4" AN./0.075" EASTMAN CHEM. CO. SAFLEX CP/1/4" AN.)

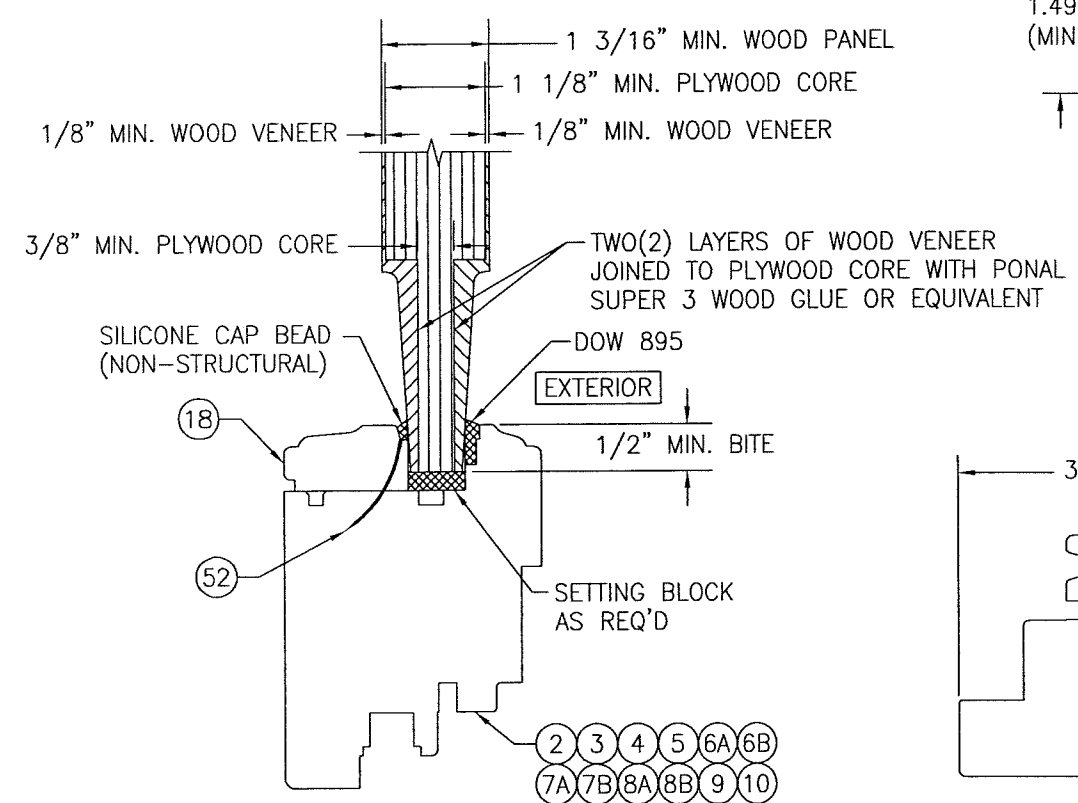


I.G. GLAZING DETAIL
GLASS OPTIONS 4, & 5

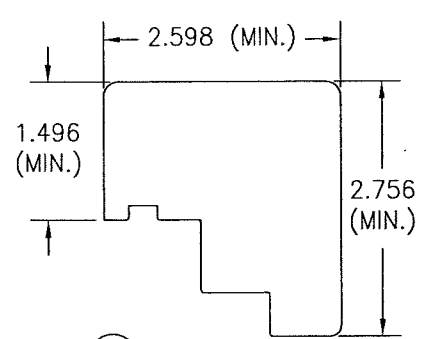
GLASS OPTION 4: 1 3/16" LAMINATED I.G. (3/16" AN./0.09" EASTMAN CHEM. CO. SAFLEX/3/16" AN./1/2" AIR SPACE/1/4 TEMP.)
GLASS OPTION 5: 1 3/16" LAMINATED I.G. (3/16" H.S./0.075" EASTMAN CHEM. CO. SAFLEX CP/3/16" H.S./1/2" AIR SPACE/1/4 TEMP.)



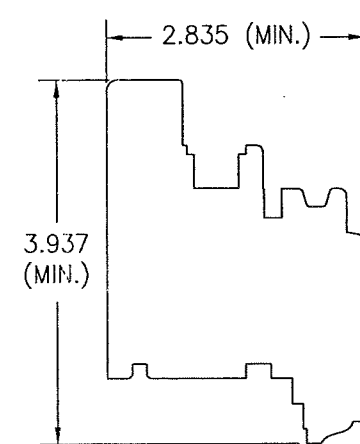
MDF PANEL GLAZING DETAIL



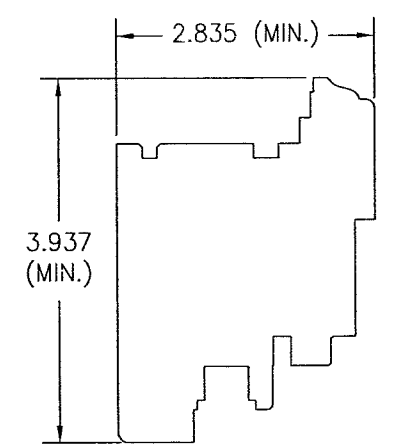
WOOD VENEER PANEL GLAZING DETAIL



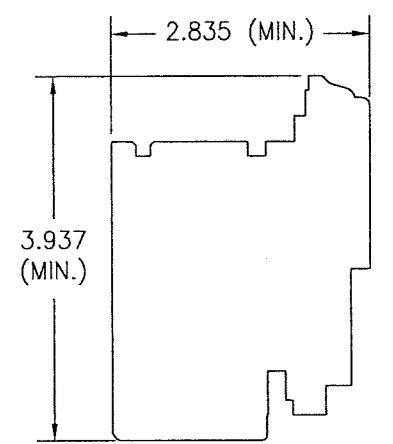
1 HEAD/JAMB



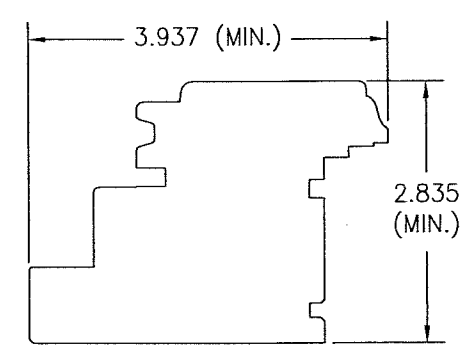
2 TOP RAIL



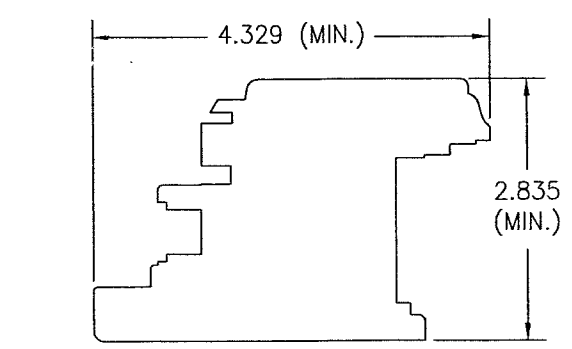
3 STANDARD BOTTOM RAIL



4 BOTTOM RAIL (USED WITH ADA THRESHOLD)



5 STILE

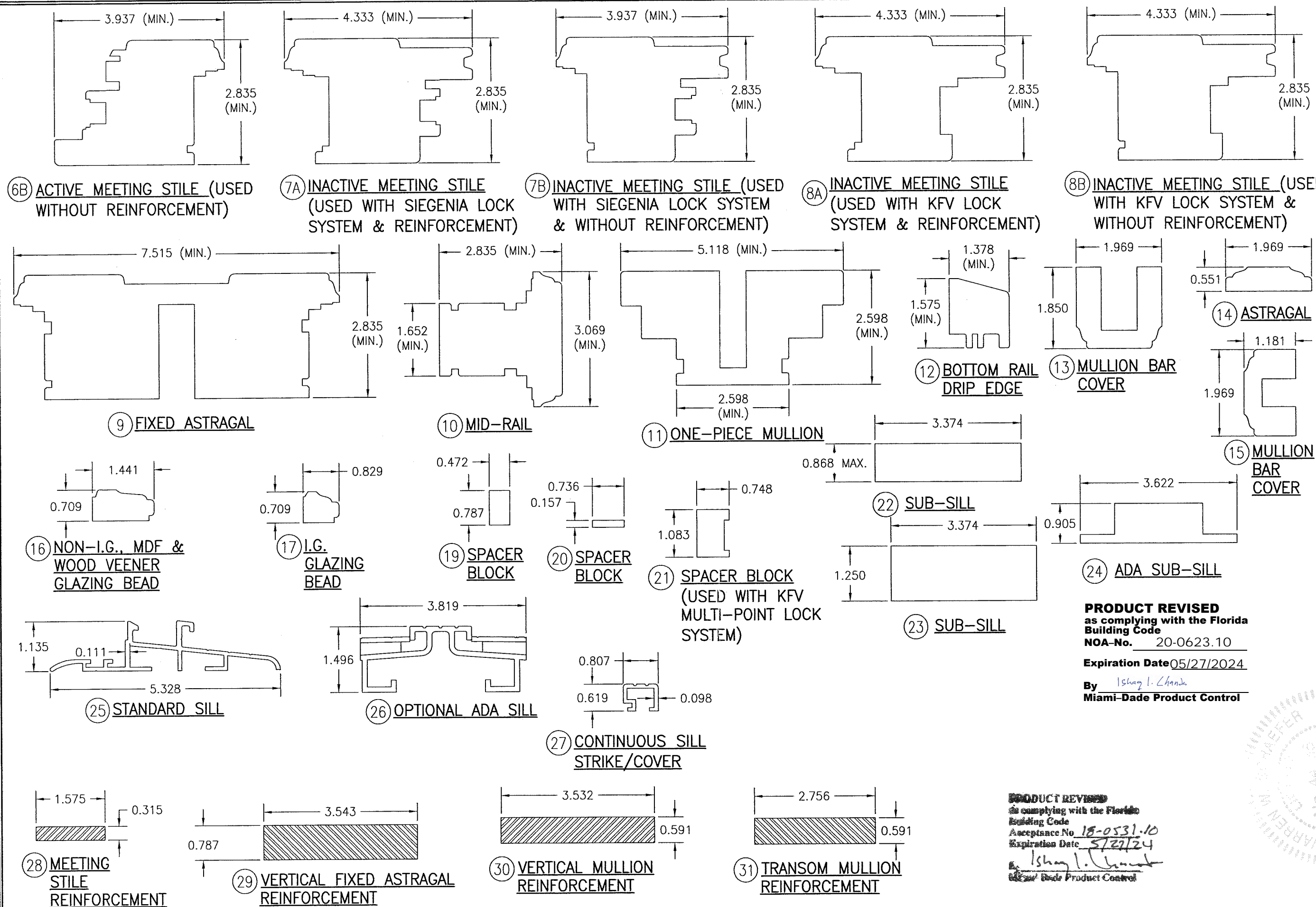


6A ACTIVE MEETING STILE (USED WITH REINFORCEMENT)

PRODUCT REVISED
as complying with the Florida Building Code
NOA-No. 20-0623.10
Expiration Date 05/27/2024
By *Isang I. Chanda*
Miami-Dade Product Control

PRODUCT REVISED
as complying with the Florida Building Code
Acceptance No. *18-0531.10*
Expiration Date *5/27/24*
By *Isang I. Chanda*
Miami-Dade Product Control

DRAWN BY: W.R.M.		CHECKED BY: W.W.S.	
PLOT: 1=2		DATE: 10/08/08	
NO.	REVISION	DESCRIPTION	DATE
<p>DRAWING TITLE IN-SWING IMPACT WOOD DOORS</p> <p>MANUFACTURER TISCHLER UND SOHN (USA) LTD. SIX SUBURBAN AVENUE STAMFORD, CONNECTICUT 06901 203-674-0600</p> <p>CONSULTANTS W. W. SCHAEFER ENGINEERING & CONSULTING, P.A. (CA 6809) 7480 150TH COURT NORTH, J3418 PALM BEACH GARDENS, FL 33418 PHONE: 561-744-3424</p> <p>CERTIFICATION MAY 15 2018 WARREN W. SCHAEFER, P.E. P.E. NO. 44135</p>			
DRAWING NO. 1601		REV. C	
SHEET NO. 17 OF 19			



PRODUCT REVISED
as complying with the Florida
Building Code
NOA-No. 20-0623.10
Expiration Date 05/27/2024
By Ishag I. Chande
Miami-Dade Product Control

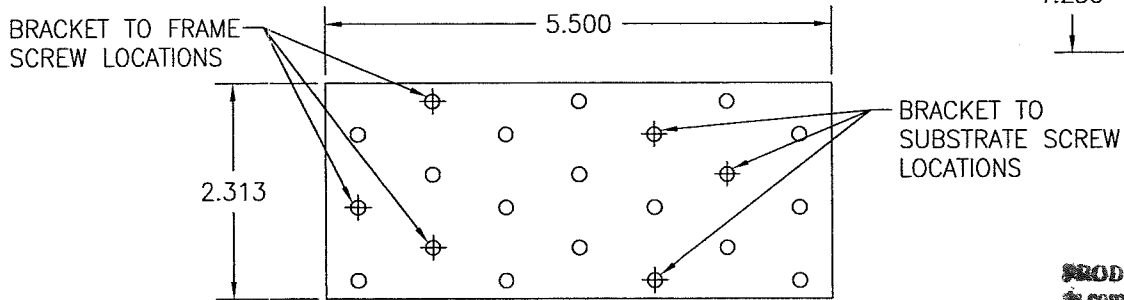
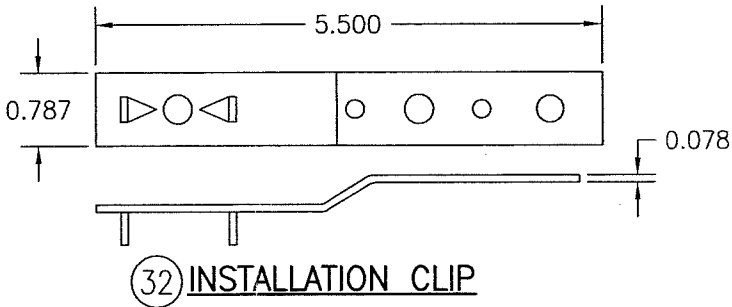
PRODUCT REVISED
as complying with the Florida
Building Code
Acceptance No. 18-0531.10
Expiration Date 5/27/24
By Ishag I. Chande
Miami-Dade Product Control

DRAWN BY: W.R.M.	CHECKED BY: W.W.S.
PLOT: 1=2	DATE: 10/08/08
DATE	BY
REVISION	DESCRIPTION
NO.	
DRAWING TITLE IN-SWING IMPACT WOOD GLAZED PANEL DOORS	
MANUFACTURER TISCHLER UND SOHN (USA) LTD. SIX SUBURBAN AVENUE STAMFORD, CONNECTICUT 06901 203-674-0600	
CONSULTANTS W. W. SCHAEFER ENGINEERING & CONSULTING, P.A. (CA 6809) 7480 150TH COURT NORTH PALM BEACH GARDENS, FL 33418 PHONE: 561-744-3424	
CERTIFICATION MAY 15 2018 WARREN W. SCHAEFER, P.E. P.E. NO. 44135	
DRAWING NO. 1601	REV. C
SHEET NO. 18 OF 19	

ITEM #	ITEM DESCRIPTION	MANUFACTURER/NOTES
PARTS		
1	HEAD/JAMB	MAHOGANY
2	TOP RAIL	MAHOGANY
3	STANDARD BOTTOM RAIL	MAHOGANY
4	BOTTOM RAIL (USED WITH ADA THRESHOLD)	MAHOGANY
5	STILE	MAHOGANY
6A	ACTIVE MEETING STILE (USED WITH REINFORCEMENT)	MAHOGANY
6B	ACTIVE MEETING STILE (USED WITHOUT REINFORCEMENT)	MAHOGANY
7A	INACTIVE MEETING STILE (USED WITH SIEGENIA LOCK SYSTEM & REINFORCEMENT)	MAHOGANY
7B	INACTIVE MEETING STILE (USED WITH SIEGENIA LOCK SYSTEM & WITHOUT REINFORCEMENT)	MAHOGANY
8A	INACTIVE MEETING STILE (USED WITH KJV LOCK SYSTEM & REINFORCEMENT)	MAHOGANY
8B	INACTIVE MEETING STILE (USED WITH KJV LOCK SYSTEM & WITHOUT REINFORCEMENT)	MAHOGANY
9	FIXED ASTRAGAL	MAHOGANY
10	MID-RAIL	MAHOGANY
11	ONE-PIECE MULLION	MAHOGANY
12	BOTTOM RAIL DRIP EDGE	MAHOGANY
13	MULLION BAR COVER	MAHOGANY
14	ASTRAGAL	MAHOGANY
15	MULLION BAR COVER	MAHOGANY
16	NON-I.G., MDF & WOOD VEENER GLAZING BEAD	MAHOGANY
17	I.G. GLAZING BEAD	MAHOGANY
19	SPACER BLOCK	MAHOGANY
20	SPACER BLOCK	MAHOGANY
21	SPACER BLOCK (USED WITH KJV MULTI-POINT LOCK SYSTEM)	MAHOGANY
22	SUB-SILL	MAHOGANY
23	SUB-SILL	MAHOGANY
24	ADA SUB-SILL	MAHOGANY
25	STANDARD SILL	BRONZE
26	OPTIONAL ADA SILL	BRONZE
27	CONTINUOUS SILL STRIKE/COVER	BRONZE
28	MEETING STILE REINFORCEMENT	34 KSI STAINLESS STEEL OR A36 STEEL
29	VERTICAL FIXED ASTRAGAL REINFORCEMENT	34 KSI STAINLESS STEEL OR A36 STEEL
30	VERTICAL MULLION REINFORCEMENT	34 KSI STAINLESS STEEL OR A36 STEEL
31	TRANSOM MULLION REINFORCEMENT	34 KSI STAINLESS STEEL OR A36 STEEL
32	INSTALLATION CLIP	GALVANIZED 54 KSI STEEL
33	ANGLE CLIP	6061-T6 ALUMINUM
34	BTI BRACKET	GALVANIZED 54 KSI STEEL
35	I.G. SPACER	ALUMINUM
HARDWARE		
37	SCREWED IN HINGE	74mm X 16mm GENIATEC GMBH; FE 74WF 120mm X 16mm GENIATEC GMBH; TUE120WF 85mm X 20mm SIMONS BAKA; C1-20 130mm X 15mm ANUBA; 515 SM 130mm X 18mm ANUBA; 518 SM
38	POT HINGE	BY: SIEGENIA AUBI KG TYPE: SI
39	MULTI-POINT LOCK SYSTEM	BY: KJV: STRAIGHT SHOOT
40	MULTI-POINT LOCK SYSTEM	BY: SIEGENIA AUBI KG TYPE: MUSHROOM

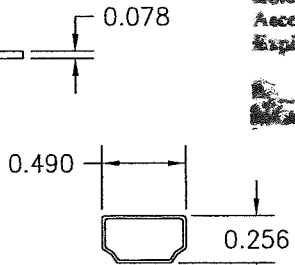
ITEM #	ITEM DESCRIPTION	MANUFACTURER/NOTES
41	HANDLE	AS REQUIRED TO OPERATE LOCK SYSTEM
SEALS & SEALANTS		
45	WEATHERSTRIP	THERMOPLASTIC ELASTOMER; BY: DEVENTER
46	WEATHERSTRIP	THERMOPLASTIC ELASTOMER; BY: DEVENTER
47	WEATHERSTRIP	THERMOPLASTIC ELASTOMER; BY: DEVENTER
48	WEATHERSTRIP	THERMOPLASTIC ELASTOMER; BY: DEVENTER
49	WEATHERSTRIP	THERMOPLASTIC ELASTOMER; BY: WEGNER
FASTENERS		
52	0.06" X 1.26" S.S. CURVED NAIL	4" FROM CORNERS & 12" MAX. O.C.
53	0.18" X 1.57" WOOD SCREW	3 PER HINGE INTO STILE
54	0.18" X 1.57" WOOD SCREW	4 PER HINGE INTO JAMB
55	0.30" X 3.94" BAUTEC WOOD SCREW	WITHIN 8" OF ENDS & 18" MAX. O.C.
57	0.24" X 3.74" WOOD SCREW	WITHIN 8" OF ENDS & 18" MAX. O.C.
58	0.18" X 2" WOOD SCREW	WITHIN 6" OF ENDS & 17" MAX. O.C.
59	0.136" X 1.26" SELF TAPPING SCREW	WITHIN 4" OF ENDS & 13 3/4" MAX. O.C.
60	0.136" X 1.50" SELF TAPPING SCREW	WITHIN 4" OF ENDS & 13 3/4" MAX. O.C.
61	0.11" X 0.87" SELF TAPPING SCREW	WITHIN 4" OF ENDS & 13 3/4" MAX. O.C.

NOTE: WOOD USED IN TESTING WAS SIPO MAHOGANY WITH A SPECIFIC GRAVITY OF $G = 0.62$ AND A MODULUS OF ELASTICITY OF $E = 1,6000,000$ PSI. OTHER WOOD SPECIES APPLICABLE FOR USE WITH THIS PRODUCT ARE THOSE WITH A SPECIFIC GRAVITY OF 0.62 AND MODULUS OF ELASTICITY OF 1,600,000 PSI OR GREATER. ALL WOOD IS MINIMUM GRADE 2 MILLED BY TISCHLER UND SOHN TO SELECT.



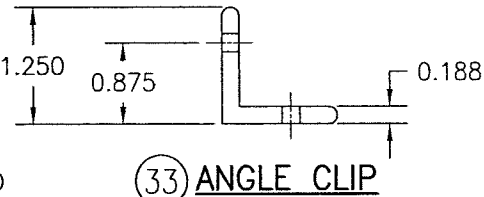
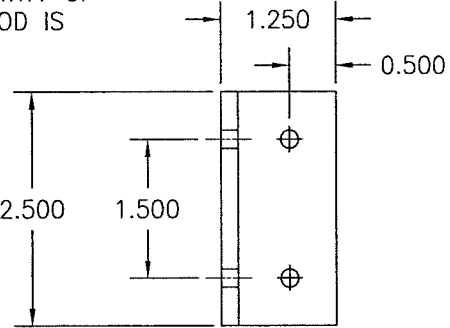
PRODUCT REVISED
as complying with the Florida
Building Code
NOA-No. 20-0623.10
Expiration Date 05/27/2024
By Ishag I. Chande
Miami-Dade Product Control

34 BTI BRACKET



WALL THICKNESS = 0.016

35 I.G. GLASS SPACER



33 ANGLE CLIP

PRODUCT REVISED
as complying with the Florida
Building Code
Acceptance No. 18-0531.10
Expiration Date 5/27/24
Ishag I. Chande
Miami-Dade Product Control

DRAWN BY: W.R.M.	CHECKED BY: W.W.S.
PLOT: 1=2	DATE: 10/08/08
DATE	BY
REVISION	DESCRIPTION
NO.	
DRAWING TITLE IN-SWING IMPACT WOOD DOORS	
MANUFACTURER TISCHLER UND SOHN (USA) LTD. SIX SUBURBAN AVENUE STAMFORD, CONNECTICUT 06901 203-674-0600	
CONSULTANTS W. W. SCHAEFER ENGINEERING & CONSULTING, P.A. (CA 6809) 7480 150TH COURT NORTH PALM BEACH GARDENS, FL 33418 PHONE: 561-744-3424	
CERTIFICATION MAY 15 2018	WARREN W. SCHAEFER, P.E. P.E. NO. 44135
DRAWING NO. 1601	REV. C
SHEET NO. 19 OF 19	