



DEPARTMENT OF REGULATORY AND ECONOMIC RESOURCES (RER)  
BOARD AND CODE ADMINISTRATION DIVISION

## NOTICE OF ACCEPTANCE (NOA)

**Tischler Und Sohn (USA) Ltd.**

**Six Suburban Avenue  
Stamford, Ct. 06901**

### SCOPE:

This NOA is being issued under the applicable rules and regulations governing the use of construction materials. The documentation submitted has been reviewed and accepted by Miami-Dade County RER -Product Control Section to be used in Miami Dade County and other areas where allowed by the Authority Having Jurisdiction (AHJ).

This NOA shall not be valid after the expiration date stated below. The Miami-Dade County Product Control Section (In Miami Dade County) and/or the AHJ (in areas other than Miami Dade County) reserve the right to have this product or material tested for quality assurance purposes. If this product or material fails to perform in the accepted manner, the manufacturer will incur the expense of such testing and the AHJ may immediately revoke, modify, or suspend the use of such product or material within their jurisdiction. RER reserves the right to revoke this acceptance, if it is determined by Miami-Dade County Product Control Section that this product or material fails to meet the requirements of the applicable building code.

This product is approved as described herein and has been designed to comply with the Florida Building Code, including the High Velocity Hurricane Zone.

### DESCRIPTION: Tischler series Outswing glazed Wood Doors-L.M. Impact

**APPROVAL DOCUMENT:** Drawing No. **1600 REV C**, titled "Out-Swing Impact Wood Doors", sheets 1 through 17 of 17, dated 10/08/08 and last revised on May 15, 2018, prepared by W.W. Schaefer Engineering & Consulting, P.A., signed and sealed by Warren Schaefer, P.E., bearing the Miami-Dade County Product Control Revision stamp with the Notice of Acceptance number and expiration date by the Miami-Dade County Product Control Section.

### MISSILE IMPACT RATING: Large Missile Impact Resistant

#### Limitations:

1. MDF material: Medite Exterior MDF panel EN 622 Type MDF-H2
2. See sheets **8** thru **11** for reinforcements, see glass & partial raised panel options on sheets **2** & **11**.
3. Lower design pressure shall control when doors mulled w/ Tischler's transom (under separate approval) see sheet **6**.
4. CMU to conform to ASTM-C 90 and min 2000 psi net compressive masonry strength.

**LABELING:** Each unit shall bear a permanent label with the manufacturer's name or logo, Wedel (Schleswig-Holstein), Germany and series and following statement: "Miami-Dade County Product Control Approved", unless otherwise noted herein.

**RENEWAL** of this NOA shall be considered after a renewal application has been filed and there has been no change in the applicable building code negatively affecting the performance of this product.

**TERMINATION** of this NOA will occur after the expiration date or if there has been a revision or change in the materials, use, and/or manufacture of the product or process. Misuse of this NOA as an endorsement of any product, for sales, advertising or any other purposes shall automatically terminate this NOA. Failure to comply with any section of this NOA shall be cause for termination and removal of NOA.

**ADVERTISEMENT:** The NOA number preceded by the words Miami-Dade County, Florida, and followed by the expiration date may be displayed in advertising literature. If any portion of the NOA is displayed, then it shall be done in its entirety.

**INSPECTION:** A copy of this entire NOA shall be provided to the user by the manufacturer or its distributors and shall be available for inspection at the job site at the request of the Building Official.

This NOA **revises NOA # 18-0531.09** and consists of this page 1 and evidence pages E-1, E-2 & E-3, as well as approval document mentioned above.

The submitted documentation was reviewed by **Ishaq I. Chanda, P.E.**



*Ishaq I. Chanda*

NOA No. 20-0623.12  
Expiration Date: May 27, 2024  
Approval Date: August 20, 2020  
Page 1

**NOTICE OF ACCEPTANCE: EVIDENCE SUBMITTED**

**1. Evidence submitted under previous approvals**

**A. DRAWINGS**

1. Manufacturer's parts drawings and sections (see below)
2. Drawing No. **1600 REV B**, titled "Out-Swing Impact Wood Doors", sheets 1 through 17 of 17, dated 10/08/08 and last revised on FEB 20, 2014, prepared by W.W. Schaefer Engineering & Consulting, P.A., signed and sealed by Warren Schaefer, P.E.

(Note: The revision consists of updating glass interlayer and angle clip masonry screw)

**B. TESTS (submitted under files #14-0303.05/#11-1101.12 / #09-0212.04)**

1. Test reports on: 1) Air Infiltration Test, per FBC, TAS 202-94  
2) Uniform Static Air Pressure Test, Loading per FBC TAS 202-94  
3) Water Resistance Test, per FBC, TAS 202-94  
4) Large Missile Impact Test per FBC, TAS 201-94  
5) Cyclic Wind Pressure Loading per FBC, TAS 203-94  
6) Forced Entry Test, per FBC 2411 3.2.1, TAS 202-94

Along with installation diagram of Single & Double Outswing /Inswing, Tilt/Turn Mahogany Wood French doors w/wo Sidelite & Transom, w/ MDF & wood Veneered Panels and different shapes top, prepared by Architectural Testing, Test Report(s) No. **ATI 77326.01-109-18**, dated 02/03/09 and **ATI 77327.01-109-18**, dated 02/20/09, both signed and sealed by Michael D. Stremmel, P.E.

2. Additional test report: ATI 77324.01-109.18 (specimen A3-1 & A3-7) issued by Architectural Testing per TAS 201, 202 and 203-94.

**C. CALCULATIONS**

1. Anchor calculations and structural analysis complying w/ FBC 2014 dated 02/20/2014, prepared by W.W. Schaefer Engineering & Consulting, P.A., signed & sealed by Warren Schaefer, P.E.
2. Glazing complies with ASTM E-1300-02 &-04

**D. QUALITY ASSURANCE**

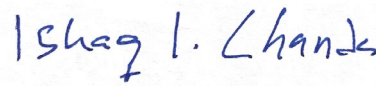
1. Miami Dade Department of Regulatory and Economic Resources (RER).

**E. MATERIAL CERTIFICATIONS**

1. Notice of Acceptance No. **12-1231.08** issued to Eastman Chemical Co (MA) former Solutia, Inc., for "**Saflex CP: Saflex & Saflex HP Composite Glass Interlayer w/ PET**", expiring on 12/11/2018.
2. Notice of Acceptance No. **12-1231.10** issued to Eastman Chemical Co (MA) former Solutia Inc. for "**Saflex Clear or colored interlayer**", expiring on 05/21/16.
3. Test report No. ATI-86006.01-106-18 (Rev 2) dated 12/12/08 and ATI-86006.02-106-18 02/05/09 for "Durability of Wood-Based Composite Lumber and panels" per ASTM ASTM D-1761 and ASTM D-4761, issued by Architectural Testing Lab (submitted under **11-1101.12 / #09-0212.04**).

**F. STATEMENTS**

1. Statement letters of conformance to FBC **5th** Edition (2014), dated MAR 27, 2014 and e-mail dated APR 17, 2014, prepared by W. W. Schafer Engineering & Consulting, P. A., signed and sealed by Warren W. Schafer, P.E.
2. Statement letters of conformance to FBC 2010, dated OCT 28, 2011 and "No financial interest dated OCT 24, 2011, prepared by W. W. Schafer Engineering & Consulting, P. A., signed and sealed by Warren W. Schafer, P.E. (submitted under **#11-1101.12**)
3. E-mail statement dated 03/31/09, issued by Michael D. Stremmel, P.E. of Architectural testing in reference to low sill, water infiltration test (submitted under **11-1101.12 / #09-0212.04**)

  
\_\_\_\_\_  
**Ishaq I. Chanda, P.E.**  
**Product Control Unit Supervisor**  
**NOA No. 20-0623.09**  
**Expiration Date: May 27, 2024**  
**Approval Date: August 20, 2020**

**NOTICE OF ACCEPTANCE: EVIDENCE SUBMITTED**

**G. OTHER**

1. This NOA **revises & renews NOA # 11-1101.12**, expiring 05/27/14.
2. Test proposal # **07-3533** dated Oct 22, 2007, approved by BCCO.
3. Distribution agreement between Tischler Und Sohn (USA) and Tischler/Cornelius Korn GmbH, Germany, signed by Tim Carpenter & Wilhem Korn, respectively.
4. Tischler's current Fixed Casement windows NOA(s) w/ Drawing references No. **1514** or **1533**.

**2. Evidence submitted under previous approvals**

**A. DRAWINGS**

1. None.

**B. TESTS**

1. None

**C. CALCULATIONS**

1. None

**D. QUALITY ASSURANCE**

1. Miami Dade Department of Regulatory and Economic Resources (RER).

**E. MATERIAL CERTIFICATIONS**

1. Notice of Acceptance No. **15-1201.11** issued to Eastman Chemical Co (MA) former Solutia Inc. for "Saflex Clear or colored interlayer", expiring on 05/21/21.

**F. STATEMENTS**

1. Statement letters of conformance to FBC 2017(**6th** Edition) and still complies with FBC 2014 (5<sup>th</sup> Edition), dated JUL 20,2017, prepared by W. W. Schafer Engineering & Consulting, P. A., signed and sealed by Warren W. Schafer, P.E.

**G. OTHER**

1. This NOA **revises NOA # 14-0303.05**, expiring 05/27/2019.
2. E-mail request dated 10/12/17 for correction of Tischler Und Sohn manufacturing location in Germany, signed by Stefan Perchet, VP project management.

**3. Evidence submitted under previous approvals**

**A. DRAWINGS**

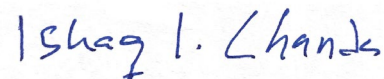
1. Drawing No.**1600 REV C**, titled "Out-Swing Impact Wood Doors", sheets 1 through 17 of 17, dated 10/08/08 and last revised on May 15, 2018, prepared by W.W. Schaefer Engineering & Consulting, P.A., signed and sealed by Warren Schaefer, P.E.

**B. TESTS**

1. None

**C. CALCULATIONS**

1. Anchor calculations and structural analysis complying w/ FBC 2017(6<sup>th</sup> Edition) dated May 15, 2018, prepared by W.W. Schaefer Engineering & Consulting, P.A., signed & sealed by Warren Schaefer, P.E.



**Ishaq I. Chanda, P.E.**  
**Product Control Unit Supervisor**  
**NOA No. 20-0623.09**  
**Expiration Date: May 27, 2024**  
**Approval Date: August 20, 2020**

**NOTICE OF ACCEPTANCE: EVIDENCE SUBMITTED**

**D. QUALITY ASSURANCE**

1. Miami Dade Department of Regulatory and Economic Resources (RER).

**E. MATERIAL CERTIFICATIONS**

1. Notice of Acceptance No. **15-1201.11** issued to Eastman Chemical Co (MA) former Solutia Inc. for “**Saflex Clear or colored interlayer**”, expiring on 05/21/21.

**F. STATEMENTS**

1. Statement letters of conformance to FBC 2017(**6th** Edition) and still complies with FBC 2017 (6<sup>th</sup> Edition), dated May 15, 2018, prepared by W. W. Schafer Engineering & Consulting, P. A., signed and sealed by Warren W. Schafer, P.E.
2. Statement letter dated May 11, 2018, issued by Tishler Und Sohn, Ltd, requesting Renewal, signed by Timothy K. Carpenter, company’s president.

**G. OTHER**

1. This NOA **revises & renews NOA # 17-0803.30**, expiring 05/27/2024.
2. Distribution agreement between Tishler Und Sohn (USA) and Tishler/Cornelius Korn GmbH, Germany, signed by Tim Carpenter & Wilhem Korn, respectively.
3. E-mail request dated 10/12/17 for correction of Tischler Und Sohn manufacturing location in Germany, signed by Stefan Perchet, VP project management.

**4. New Evidence submitted**

**A. DRAWINGS**

1. None.

**B. TESTS**

1. None

**C. CALCULATIONS**

1. None

**D. QUALITY ASSURANCE**

1. Miami Dade Department of Regulatory and Economic Resources (RER).

**E. MATERIAL CERTIFICATIONS**

1. Notice of Acceptance No. **15-1201.11** issued to Eastman Chemical Co (MA) former Solutia Inc. for “**Saflex Clear or colored interlayer**”, expiring on 05/21/21.

**F. STATEMENTS**

1. Statement letters of conformance to FBC 2020 (**7th** Edition) dated 06/05/20, prepared by W. W. Schafer Engineering & Consulting, P. A., signed and sealed by Warren W. Schafer, P.E.

**G. OTHER**

1. This NOA **revises NOA # 18-0531.09**, for FBC 2020 updates.

*Ishaq I. Chanda*

---

**Ishaq I. Chanda, P.E.**  
**Product Control Unit Supervisor**  
**NOA No. 20-0623.09**  
**Expiration Date: May 27, 2024**  
**Approval Date: August 20, 2020**



**GENERAL NOTES:**

1. THIS PRODUCT HAS BEEN TESTED, ANALYZED & APPROVED FOR DESIGN PRESSURES NOT TO EXCEED THOSE SHOWN IN THE "ALLOWABLE DESIGN PRESSURE TABLE(S)".

2. OPENINGS, BUCKING & BUCKING FASTENERS MUST BE PROPERLY DESIGNED & INSTALLED TO TRANSFER WIND LOADS TO THE STRUCTURE.

3. ALL HARDWARE & FASTENERS SHALL BE IN ACCORDANCE WITH THESE DRAWINGS & SHALL NOT VARY UNLESS SPECIFICALLY MENTIONED ON THE DRAWINGS. SPECIFIED ANCHOR EMBED TO BASE MATERIAL SHALL BE BEYOND WALL FINISH OR STUCCO.

4. THE DETAILS & SPECIFICATIONS SHOWN HEREIN REPRESENT THE PRODUCTS TESTED & PROPOSED FOR CONFORMANCE WITH THE FLORIDA BUILDING CODE PROTOCOLS TAS-201, 202 & 203 FOR LARGE MISSILE IMPACT PRODUCTS.

5. THIS PRODUCT HAS BEEN DESIGNED IN ACCORDANCE WITH AND MEETS THE REQUIREMENTS OF THE FLORIDA BUILDING CODE (FBC) INCLUDING HIGH VELOCITY HURRICANE ZONES (HVHZ).

6. IMPACT SHUTTERS ARE NOT REQUIRED WITH THIS PRODUCT.

7. ALL ANCHORS SECURING PRODUCT FRAMES TO PRESSURE TREATED BUCKS OR WOOD FRAMING SHALL BE CAPABLE OF RESISTING CORROSION CAUSED BY THE PRESSURE TREATING CHEMICALS IN THE WOOD.

8. DETERMINE THE POSITIVE & NEGATIVE DESIGN LOADS TO USE WHEN REFERENCING THESE DOCUMENTS IN ACCORDANCE WITH THE GOVERNING CODE AND GOVERNING WIND VELOCITY. FOR WIND LOAD CALCULATIONS IN ACCORDANCE WITH THE FLORIDA BUILDING CODE, A DIRECTIONALITY FACTOR OF  $K_d = 0.85$  MAY BE APPLIED PER THE ASCE-7 STANDARD.

9. NO INCREASE IN ALLOWABLE STRESS HAS BEEN USED IN THE CERTIFICATION OF THIS PRODUCT. WIND LOAD DURATION FACTOR  $C_d = 1.6$  WAS USED FOR WOOD SCREW ANALYSIS ONLY.

10. MATERIALS, INCLUDING BUT NOT LIMITED TO STEEL SCREWS, THAT COME INTO CONTACT WITH OTHER DISSIMILAR MATERIALS SHALL MEET THE REQUIREMENTS OF FLORIDA BUILDING CODE.

11. ALL WOOD MEMBERS OF THIS PRODUCT THAT MAY POSSIBLY COME INTO CONTACT WITH MASONRY OR CONCRETE SUBSTRATES, ARE SUBJECT TO MOISTURE &/OR ARE SUBJECT TO THE OUTSIDE ENVIRONMENT SHALL BE OF AN APPROVED DURABLE SPECIES OR BE TREATED IN AN APPROVED METHOD WITH AN APPROVED PRESERVATIVE PER FBC REQUIREMENTS.

LOCK STRIKE REQUIREMENTS (TOP OF PANEL)	
PANEL WIDTH	QUANTITY PER PANEL
RECTANGULAR PANEL	
ALL WIDTHS	2
ARCH & ROUND TOP PANEL	
OVER 32"	3
28" TO 32"	2

(1) LOCK STRIKE REQUIREMENTS (BOTTOM OF PANEL)	
PANEL WIDTH	QUANTITY PER PANEL
ALL PANEL SHAPES	
ALL WIDTHS	2
(1) WHEN ADA SILL IS USED WITH DOUBLE DOORS, ONLY THE KJV LOCK SYSTEM MAY BE USED. WHEN ADA SILL IS USED WITH A SINGLE DOOR, BOTH THE KJV & SIEGENIA LOCK SYSTEMS APPLY BUT DO NOT REQUIRE SILL STRIKES.	

LOCK STRIKE REQUIREMENTS (LOCK SIDE OF PANEL)	
(1) PANEL HEIGHT	QUANTITY PER PANEL
ALL PANEL SHAPES	
OVER 96"	4
76" TO 96"	3
(1) THE "PANEL HEIGHT" IS CONSIDERED TO BE FULL PANEL HEIGHT FOR RECTANGULAR UNITS OR DISTANCE FROM THE BASE OF PANEL TO PANEL SRINGLINE FOR SHAPED UNITS	

THESE DRAWINGS ARE APPLICABLE ONLY TO THE PRODUCT SPECIFIED. THEY MAY NOT BE USED FOR THE ASSEMBLY AND/OR INSTALLATION OF ANY OTHER PRODUCT NOR MAY THEY BE USED FOR RATIONAL AND/OR LOCAL APPROVAL OF ANY PRODUCT NOT PRODUCED BY THE MANUFACTURER STATED ON THESE DRAWINGS.

HINGE REQUIREMENTS	
(1) PANEL HEIGHT	QUANTITY PER PANEL
OVER 99"	5
76" TO 99"	4
(1) THE "PANEL HEIGHT" IS CONSIDERED TO BE FULL PANEL HEIGHT FOR RECTANGULAR UNITS OR DISTANCE FROM THE BASE OF PANEL TO PANEL SRINGLINE FOR SHAPED UNITS	

DRAWN BY: W.R.M.		CHECKED BY: W.W.S.	
PLOT: 1=24		DATE: 10/08/08	
DATE	10/25/11	DATE	02/20/14
BY	W.R.M.	BY	W.W.S.
REVISION	DESCRIPTION	REVISION	DESCRIPTION
A1	UPDATE TO CURRENT STANDARDS	B1	UPDATE TO CURRENT STANDARDS
C1	UPDATE TO CURRENT STANDARDS		

FRAME ANCHOR REQUIREMENTS TABLE			
OPENING TYPE (SUBSTRATE)	FRAME/SILL/CLIP/BACKET TO OPENING FASTENER TYPE	MINIMUM EMBED	MINIMUM EDGE DIST.
FRAME/SILL SCREWS			
MIN. 2X4 WOOD FRAME OR BUCK (MIN. GR. 3 & G=0.55)	NO. 14 SMS/WOOD SCREW OR 1/4" BTI SCREW	1 1/4"	3/4"
MIN. 18 GA. 33 KSI METAL STUD	(2) 1/4-14 SELF TAP/DRILLING SCREW	FULL	1/2"
MIN. 1/8" THK A36 STEEL	(2) 1/4-14 SELF TAP/DRILLING SCREW	FULL	1/2"
MIN. 1/8" THK 6063-T5 ALUM.	(2) 1/4-14 SELF TAP/DRILLING SCREW	FULL	1/2"
C-90 CMU/2500 PSI CONCRETE	(1) 1/4" CONCRETE SCREW	1 1/4"	2"
INSTALLATION CLIP SCREWS			
MIN. 2X6 WOOD FRAME OR BUCK (MIN. GR. 3 & G=0.55)	NO. 12 X 1 1/2" SMS	1 3/8"	3/4"
MIN. 18 GA. 33 KSI METAL STUD	(2) 12-14 SELF TAP/DRILLING SCREW	FULL	1/2"
MIN. 1/8" THK A36 STEEL	(2) 12-14 SELF TAP/DRILLING SCREW	FULL	1/2"
MIN. 1/8" THK 6063-T5 ALUM.	(2) 12-14 SELF TAP/DRILLING SCREW	FULL	1/2"
C-90 CMU/2500 PSI CONCRETE	(1) 1/4" CONCRETE SCREW	1 1/4"	2"
BTI BRACKET SCREWS			
MIN. 2X6 WOOD FRAME OR BUCK (MIN. GR. 3 & G=0.55)	NO. 8 X 1 1/2" SMS	1 3/8"	3/4"
MIN. 18 GA. 33 KSI METAL STUD	(2) 8-18 SELF TAP/DRILLING SCREW	FULL	1/2"
MIN. 1/8" THK A36 STEEL	(2) 8-18 SELF TAP/DRILLING SCREW	FULL	1/2"
MIN. 1/8" THK 6063-T5 ALUM.	(2) 8-18 SELF TAP/DRILLING SCREW	FULL	1/2"
ANGLE CLIP SCREWS			
MIN. 2X6 WOOD FRAME OR BUCK (MIN. GR. 3 & G=0.55)	NO. 8 X 1 1/2" SMS	1 3/8"	3/4"
MIN. 18 GA. 33 KSI METAL STUD	(2) 8-18 SELF TAP/DRILLING SCREW	FULL	1/2"
MIN. 1/8" THK A36 STEEL	(2) 8-18 SELF TAP/DRILLING SCREW	FULL	1/2"
MIN. 1/8" THK 6063-T5 ALUM.	(2) 8-18 SELF TAP/DRILLING SCREW	FULL	1/2"
C-90 CMU/2500 PSI CONCRETE	(1) 1/4" CONCRETE SCREW	1 1/4"	2"
(1) CONCRETE SCREWS SHALL BE ELCO ULTRACONS, ELCO CRETE-FLEX OR HILTI KWIK-CON II (HARDENED STEEL OR S.S.).			
(2) ALL SELF TAP/DRILLING SCREWS SHALL BE MIN. GR. 5			

PANEL WIDTH DIMENSIONS ARE APPROXIMATELY 3" LESS THAN THE FRAME WIDTH & PANEL HEIGHT WIDTH DIMENSIONS ARE APPROXIMATELY 1 3/4" LESS THAN THE FRAME HEIGHT

ALLOWABLE DESIGN PRESSURE (SINGLE & DOUBLE OPERABLE DOORS)			
MAX. FRAME WIDTH (IN.)	MAX. FRAME HEIGHT (IN.)	ALLOWABLE PRESSURE	
		POSITIVE (PSF)	NEGATIVE (PSF)
SINGLE DOOR			
51 11/16	120	(2) 70	(2) 70
41 1/2	99	70	(1) 85
DOUBLE DOOR			
80 1/16	120	70	70
80 1/16	99	70	(1) (3) 85
(1) HIGHER PRESSURE OF -85 PSF IS ONLY APPLICABLE WHEN GLASS OPTIONS 2 & 5 ARE USED & WITH STANDARD OR OPTIONAL SILL (USE OF ADA SILL IS NOT APPLICABLE TO UNITS WITH PRESSURE EXCEEDING +/-70 PSF).			
(2) WITH FULL SIZE SINGLE DOORS USING GLASS OPTION 4, ALLOWABLE PRESSURE MUST BE REDUCED TO +/-65 PSF. PRESSURE MAY BE INCREASED TO +/-70 PSF IF THE D.L.O. WIDTH IS DECREASED TO MAX. 38.5" OR THE D.L.O. HEIGHT IS DECREASED TO MAX. 98".			
(3) HIGHER PRESSURE OF -85 PSF IS ONLY APPLICABLE WITH DOUBLE DOORS WHEN THE DOUBLE DOOR MEETING STILES ARE BAR REINFORCED (REF. SECTIONS).			

**CORNER CONSTRUCTION:**

**RECTANGULAR FRAME CORNERS:** MORTISE & TENON CONSTRUCTION JOINED & GLUED WITH PONAL SUPER 3 WOOD GLUE OR EQUIVALENT.

**ARCHED FRAME CORNERS:** ARCHED FRAME BUTTED TO STRAIGHT FRAME, JOINED WITH ONE(1) NO.14 X 3" WOOD SCREW, & GLUED WITH PONAL SUPER 3 WOOD GLUE OR EQUIVALENT.

**HALF ROUND FRAME CORNERS:** FINGER JOINT CONSTRUCTION JOINED & GLUED WITH PONAL SUPER 3 WOOD GLUE OR EQUIVALENT.

**RECTANGULAR PANEL CORNERS:**

**OPTION 1** (USED WITH STILE & RAIL CONDITIONS WHERE MEMBERS ARE 4.250" OR LESS IN OVERALL HEIGHT): MORTISE & TENON CONSTRUCTION JOINED & GLUED WITH PONAL SUPER 3 WOOD GLUE OR EQUIVALENT.

**OPTION 2** (USED WITH STILE & RAIL CONDITIONS WHERE MEMBERS ARE GREATER THAN 4.250" IN OVERALL HEIGHT): MEMBERS ARE SQUARE CUT, BUTTED, JOINED WITH FIVE(5) #5/16 X 2" WOOD DOWELS, & GLUED WITH PONAL SUPER 3 WOOD GLUE OR EQUIVALENT.

**ARCHED PANEL CORNERS:** ARCHED RAIL BUTTED TO STRAIGHT STILE, JOINED WITH ONE(1) NO.14 X 3" WOOD SCREW, & GLUED WITH PONAL SUPER 3 WOOD GLUE OR EQUIVALENT.

**HALF ROUND PANEL CORNERS:** FINGER JOINT CONSTRUCTION JOINED & GLUED WITH PONAL SUPER 3 WOOD GLUE OR EQUIVALENT.

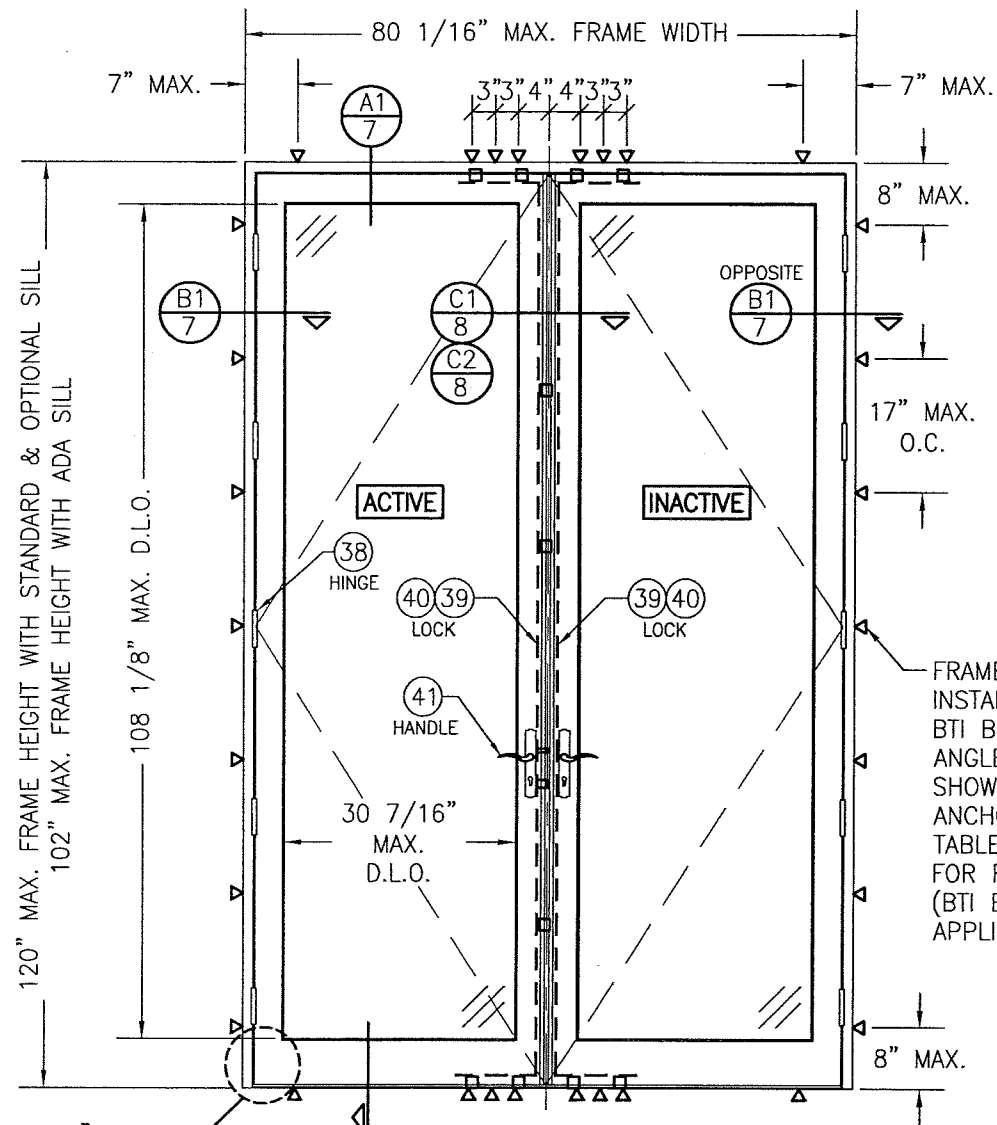
**SILL CORNERS:**

ALL SILL CONDITIONS: SILL IS BUTTED TO THE JAMBS & JOINED WITH THREE(3) NO.6 X 2" WOOD SCREWS & SEALED WITH SEALANT.

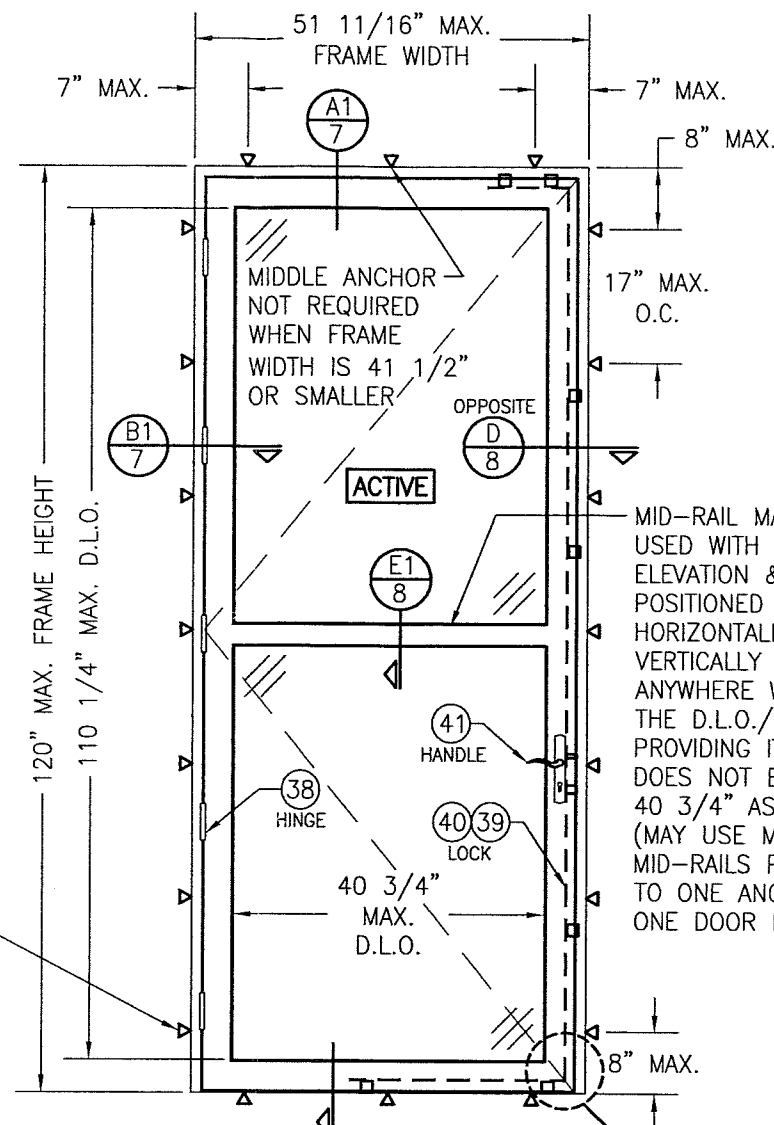
**PRODUCT REVISED**  
as complying with the Florida Building Code  
NOA-No. 20-0623.12  
Expiration Date 05/27/2024  
By Isaac L. Chan  
Miami-Dade Product Control

**PRODUCT REVISED**  
as complying with the Florida Building Code  
Acceptance No. 18-0531-09  
Expiration Date 5/27/2024  
By Isaac L. Chan  
Miami-Dade Product Control

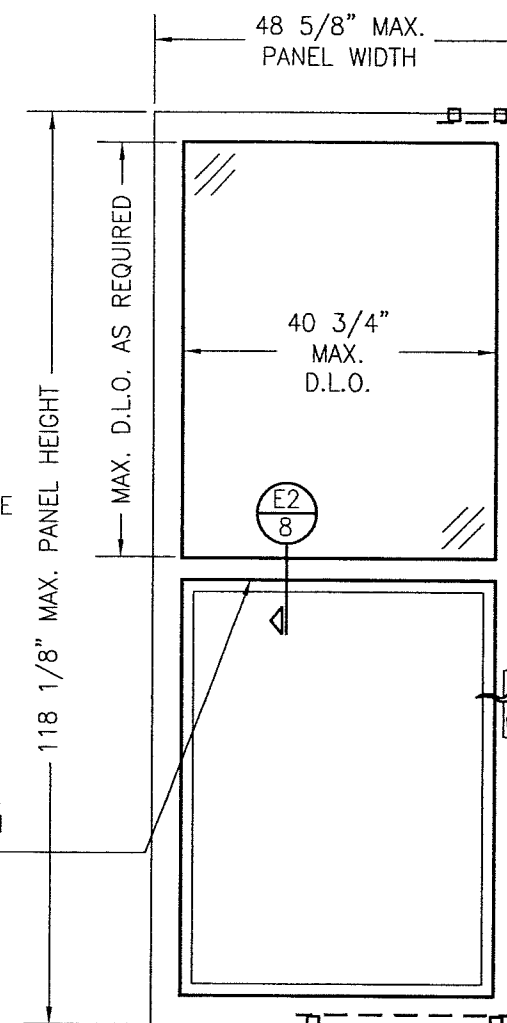
DRAWING TITLE	OUT-SWING IMPACT WOOD DOORS		MANUFACTURER	TISCHLER UND SOHN (USA) LTD. SIX SUBURBAN AVENUE STAMFORD, CONNECTICUT 06901 203-674-0600	
	CONSULTANTS			W. SCHAEFER ENGINEERING & CONSULTING, P.A. (CA 6809) 7480 150TH COURT NORTH PALM BEACH GARDENS, FL 33418 PHONE: 561-744-3424	
CERTIFICATION	MAY 15 2018		DRAWING NO.	REV.	
	WARREN W. SCHAEFER, P.E. P.E. NO. 44135			C	
SHEET NO.		1		OF 17	



**EXTERIOR ELEVATION:  
DOUBLE RECTANGULAR DOOR**  
SCALE: 1/2" = 1'-0"



**EXTERIOR ELEVATION:  
SINGLE RECTANGULAR DOOR**  
SCALE: 1/2" = 1'-0"



**EXTERIOR ELEVATION:  
PARTIAL RAISED PANEL**  
SCALE: 1/2" = 1'-0"  
(SEE SINGLE DOOR ELEVATIONS FOR DOOR  
DETAIL AND INSTALLATION NOT SHOWN)

**PRODUCT REVISED**  
as complying with the Florida  
Building Code  
NOA-No. 20-0623.12  
Expiration Date 05/27/2024  
By *Ishag I. Chande*  
Miami-Dade Product Control

**ALLOWABLE DESIGN PRESSURE**  
SEE PRESSURE TABLE ON SHEET 1

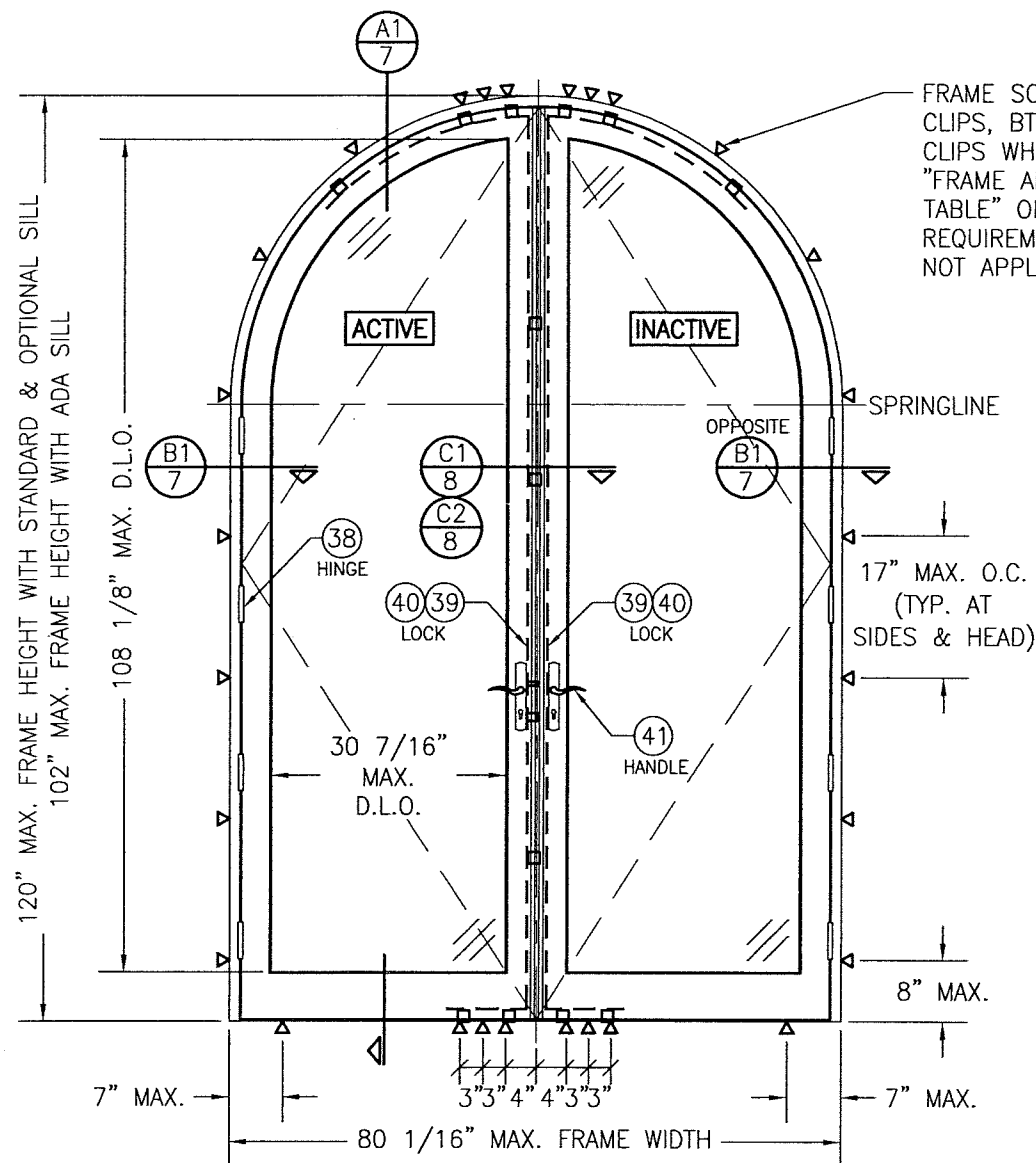
**PRODUCT REVISED**  
as complying with the Florida  
Building Code  
Acceptance No. 18-0131-09  
Expiration Date 5/27/24  
By *Ishag I. Chande*  
Miami-Dade Product Control

**PANEL NOTES:**

1. SINGLE RAISED PANEL CONDITION SHOWN, MORE THAN ONE RAISED PANEL MAY EXIST IN A SINGLE DOOR PANEL WHEN MULTIPLE MID-RAILS ARE USED.
2. PANEL ONLY IS SHOWN. FOR INSTALLATION INTO FRAME, SEE OTHER ELEVATIONS.
3. THESE PANEL CONDITIONS APPLY WITH BOTH OPERABLE & FIXED PANEL DOORS
4. RECTANGULAR CONDITION SHOWN, SHAPED CONDITIONS ALSO APPLY.

DRAWN BY: W.R.M.		CHECKED BY: W.W.S.	
PLOT: 1=24		DATE: 10/08/08	
DATE	BY	REVISION DESCRIPTION	NO.
<p><b>DRAWING TITLE</b> OUT-SWING IMPACT WOOD DOORS</p> <p><b>MANUFACTURER</b> TISCHLER UND SOHN (USA) LTD. SIX SUBURBAN AVENUE STAMFORD, CONNECTICUT 06901 203-674-0600</p> <p><b>CONSULTANTS</b> W. W. SCHAEFER ENGINEERING &amp; CONSULTING, P.A. (CA 6809) 7480 150TH COURT NORTH PALM BEACH GARDENS, FL 33418 PHONE: 561-744-3424</p>			
<p><b>CERTIFICATION</b></p> <p>MAY 15 2018</p> <p>WARREN W. SCHAEFER, P.E. P.E. NO. 44135</p>		<p><b>DRAWING NO.</b> 1600</p> <p><b>REV.</b> C</p> <p><b>SHEET NO.</b> 2 OF 17</p>	





EXTERIOR ELEVATION;  
DOUBLE HALF ROUND DOOR

SCALE: 1/2" = 1'-0"

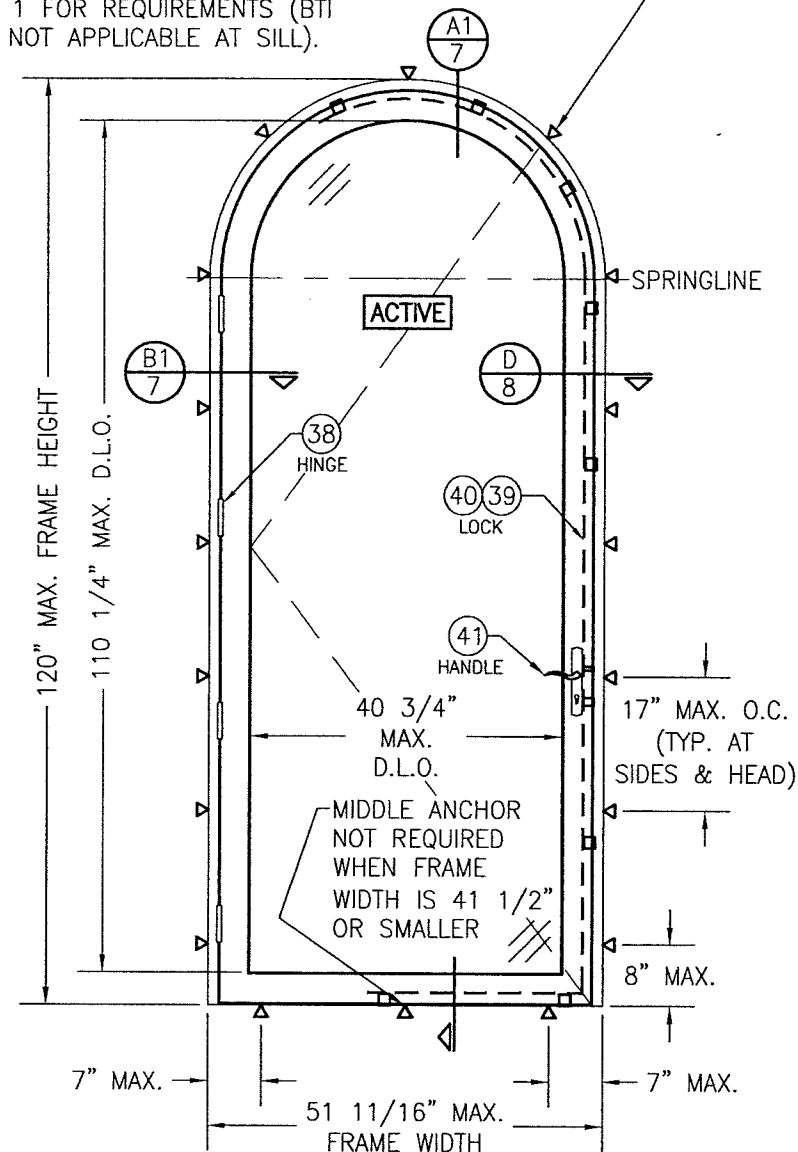
FRAME SCREWS, INSTALLATION CLIPS, BTI BRACKETS OR ANGLE CLIPS WHERE SHOWN. SEE "FRAME ANCHOR REQUIREMENTS TABLE" ON SHEET 1 FOR REQUIREMENTS (BTI BRACKETS NOT APPLICABLE AT SILL).

**PRODUCT REVISED**  
as complying with the Florida  
Building Code  
NOA-No. 20-0623.12

Expiration Date 05/27/2024

By *Ishag I. Chande*  
Miami-Dade Product Control

FRAME SCREWS, INSTALLATION CLIPS, BTI BRACKETS OR ANGLE CLIPS WHERE SHOWN. SEE "FRAME ANCHOR REQUIREMENTS TABLE" ON SHEET 1 FOR REQUIREMENTS (BTI BRACKETS NOT APPLICABLE AT SILL).

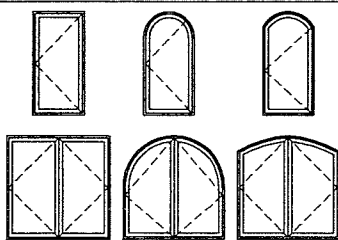


EXTERIOR ELEVATION;  
SINGLE HALF ROUND DOOR

SCALE: 1/2" = 1'-0"

**PRODUCT REVISED**  
as complying with the Florida  
Building Code  
Acceptance No. 18-0531.09  
Expiration Date 5/27/24  
By *Ishag I. Chande*  
Miami-Dade Product Control

APPROVED SHAPES  
(OPERABLE DOORS)



NOTES:

1. OTHER SHAPES MAY APPLY PROVIDING THEY ARE SIMILAR TO THOSE SHOWN & HAVE CORNER CONSTRUCTION AS DESCRIBED IN THIS DRAWING.
2. ALL SHAPED UNITS MUST FIT INSCRIBED INTO THE ALLOWABLE RECTANGULAR UNITS & BE GOVERNED BY THE ALLOWABLE PRESSURE OF THE RESPECTIVE RECTANGULAR UNIT.

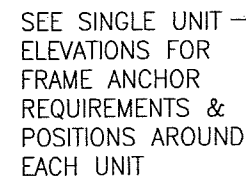
ALLOWABLE DESIGN PRESSURE  
SEE PRESSURE TABLE ON SHEET 1

ANCHOR NOTE: ANCHOR SPACING AT THE HEAD OF ALL TYPES OF SHAPED DOORS MUST EQUAL THAT SPECIFIED AT THE SIDES (17" MAX. O.C.)

DRAWN BY: W.R.M.		CHECKED BY: W.W.S.	
PLOT: 1=24		DATE: 10/08/08	
NO.	REVISION DESCRIPTION	BY	DATE
<p>DRAWING TITLE: OUT-SWING IMPACT WOOD DOORS</p> <p>MANUFACTURER: TISCHLER UND SOHN (USA) LTD. SIX SUBURBAN AVENUE STAMFORD, CONNECTICUT 06901 203-674-0600</p> <p>CONSULTANTS: W. W. SCHAEFER ENGINEERING &amp; CONSULTING, P.A. (CA 6809) 7480 150TH COURT NORTH PALM BEACH GARDENS, FL 33418 PHONE: 561-744-3424</p> <p>CERTIFICATION: MAY 15 2018 WARREN W. SCHAEFER, P.E. P.E. NO. 44135</p> <p>DRAWING NO. 1600 SHEET NO. 3 OF 17</p>			







➤ ADDITIONAL FRAME SCREWS, INSTALLATION CLIPS, BTI BRACKETS OR ANGLE CLIPS WHERE SHOWN AT MULLION ENDS. SEE "FRAME ANCHOR REQUIREMENTS TABLE" ON SHEET 1 FOR REQUIREMENTS (BTI BRACKETS NOT APPLICABLE AT SILL).

1. FOR ALL DETAIL NOT SHOWN, SEE INDIVIDUAL UNIT ELEVATIONS.
2. THERE IS NO LIMIT ON THE NUMBER OF DOORS THAT MAY BE COMBINED IN ONE DIRECTION INTO ONE OPENING PROVIDING THE OPENING IS DESIGNED TO SUPPORT ALL LOADS TRANSFERRED FROM THE DOORS & THEIR MULLIONS.
3. OXXO UNIT IS SHOWN. ALL OTHER FIXED/OPERABLE COMBINATIONS ALSO APPLY WITH THE MULLION CONDITIONS SHOWN.
4. INDIVIDUAL DOOR/FIXED PANEL SIZES SHALL BE RESTRICTED AS SPECIFIED IN THE SINGLE UNIT ELEVATIONS.

SCALE: 1/2" = 1'-0"

(RECTANGULAR DOORS SHOWN, SHAPED DOORS ALSO APPLY. SEE  
"APPROVED SHAPED" TABLE ON SHEETS 3 & 4)

**PRODUCT REVISED**  
as complying with the Florida  
Building Code  
NOA-No. 20-0623.12

**Expiration Date**05/27/2024

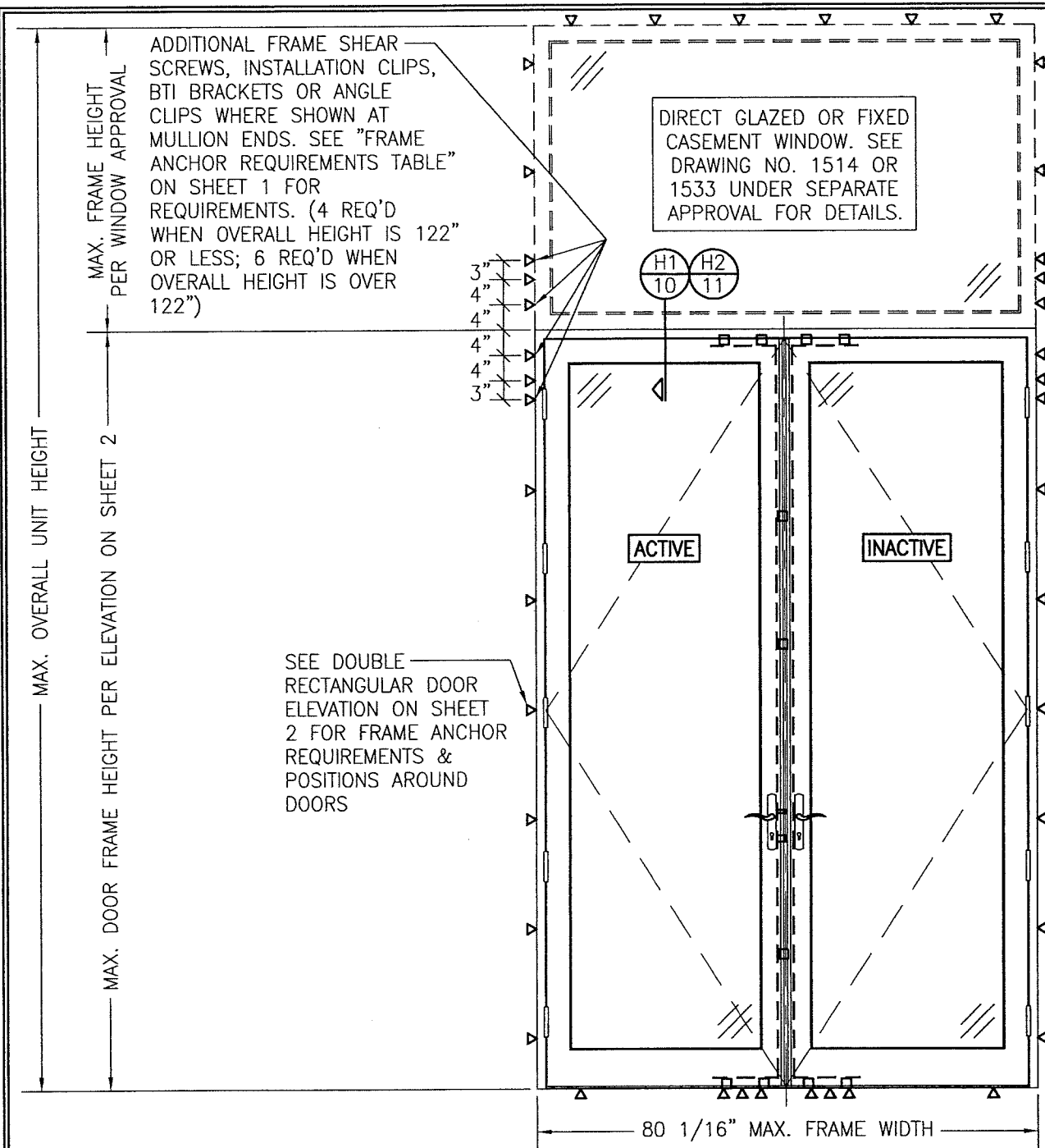
By Ishaq I. Chank  
Miami-Dade Product Control

NOTES:

1. LOAD WIDTH IS THE DISTANCE BETWEEN PANEL CENTERLINES.
2. ALLOWABLE UNIT PRESSURE SHALL BE THE LESSER OF THE PRESSURES SHOWN IN THIS TABLE & THOSE SPECIFIED FOR THE INDIVIDUAL DOOR/FIXED PANEL.
3. SIZE VALUES IN TABLE ARE  $\pm 1/4"$

**PRODUCT REVIEWED**  
As complying with the Florida  
Building Code  
Acceptance No 18-0531.09  
Expiration Date 5/27/24  
By Isang I. L. Lander  
Mr. Paul Product Control

[illegible]



EXTERIOR ELEVATION: DOUBLE DOORS  
WITH TRANSOM

SCALE: 1/2" = 1'-0"  
(SEE DOUBLE RECTANGULAR DOOR ELEVATION ON SHEET 2 FOR DOOR DETAIL NOT SHOWN)

**PRODUCT REVISED**  
as complying with the Florida  
Building Code  
NOA-No. 20-0623.12

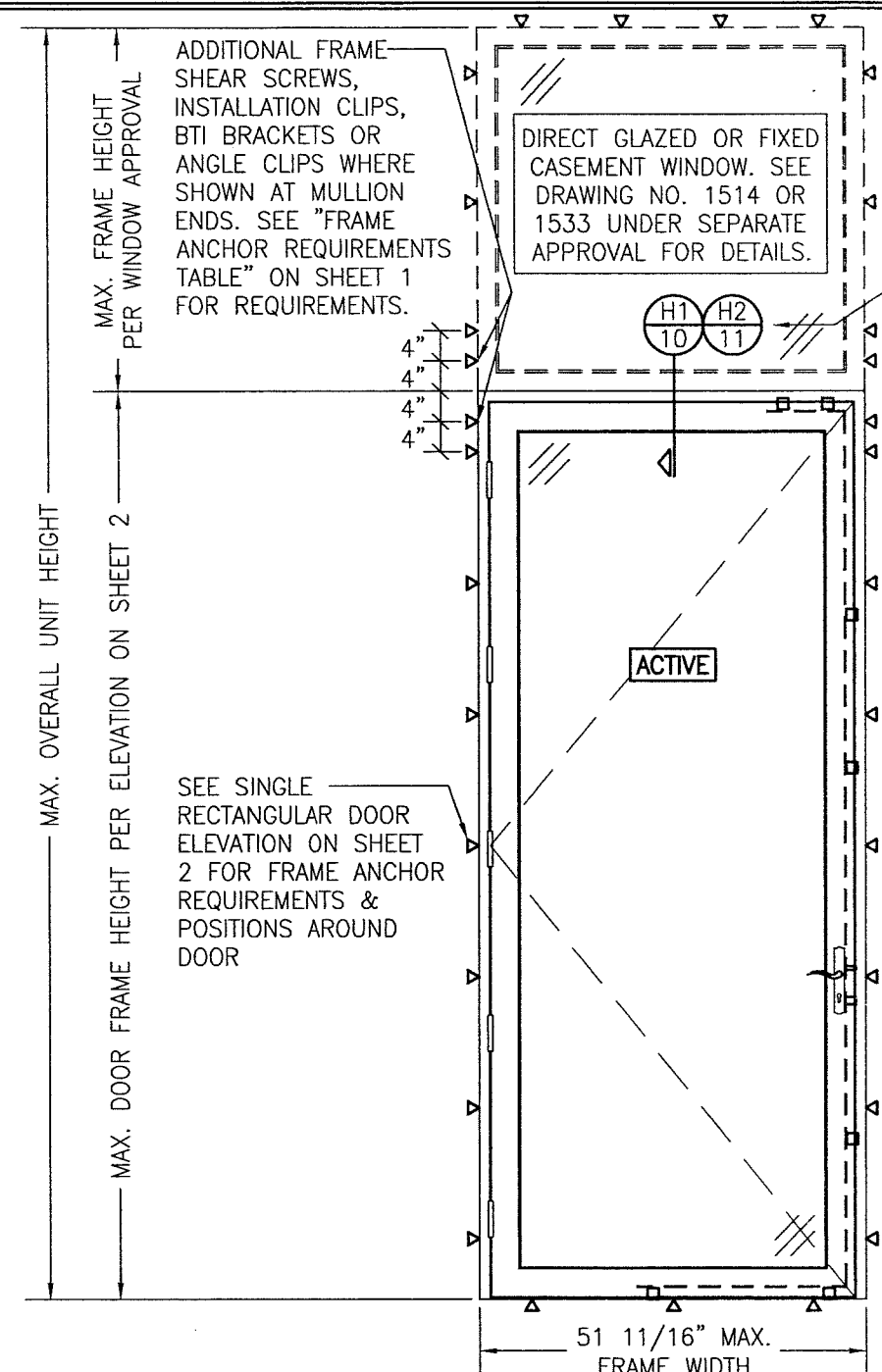
Expiration Date 05/27/2024

By *Isaac L. Chande*  
Miami-Dade Product Control

ALLOWABLE DESIGN PRESSURE  
(SINGLE DOOR TRANSOM UNIT)

MAX. FRAME WIDTH (IN.)	MAX. OVERALL UNIT HEIGHT (IN.)	(2) ALLOWABLE PRESSURE	
		POSITIVE (PSF)	NEGATIVE (PSF)
51 11/16	168	70	70
41 1/2	168	70	(1) 85

(1) HIGHER PRESSURE OF -85 PSF IS ONLY APPLICABLE WHEN GLASS OPTIONS 2 & 5 ARE USED (USE OF ADA SILL IS NOT APPLICABLE TO UNITS WITH PRESSURE EXCEEDING +/-70 PSF).  
(2) LESSER OF THE PRESSURES IN THIS TABLE & THOSE FOR THE INDIVIDUAL DOORS SHALL CONTROL.



EXTERIOR ELEVATION: SINGLE DOOR WITH  
TRANSOM

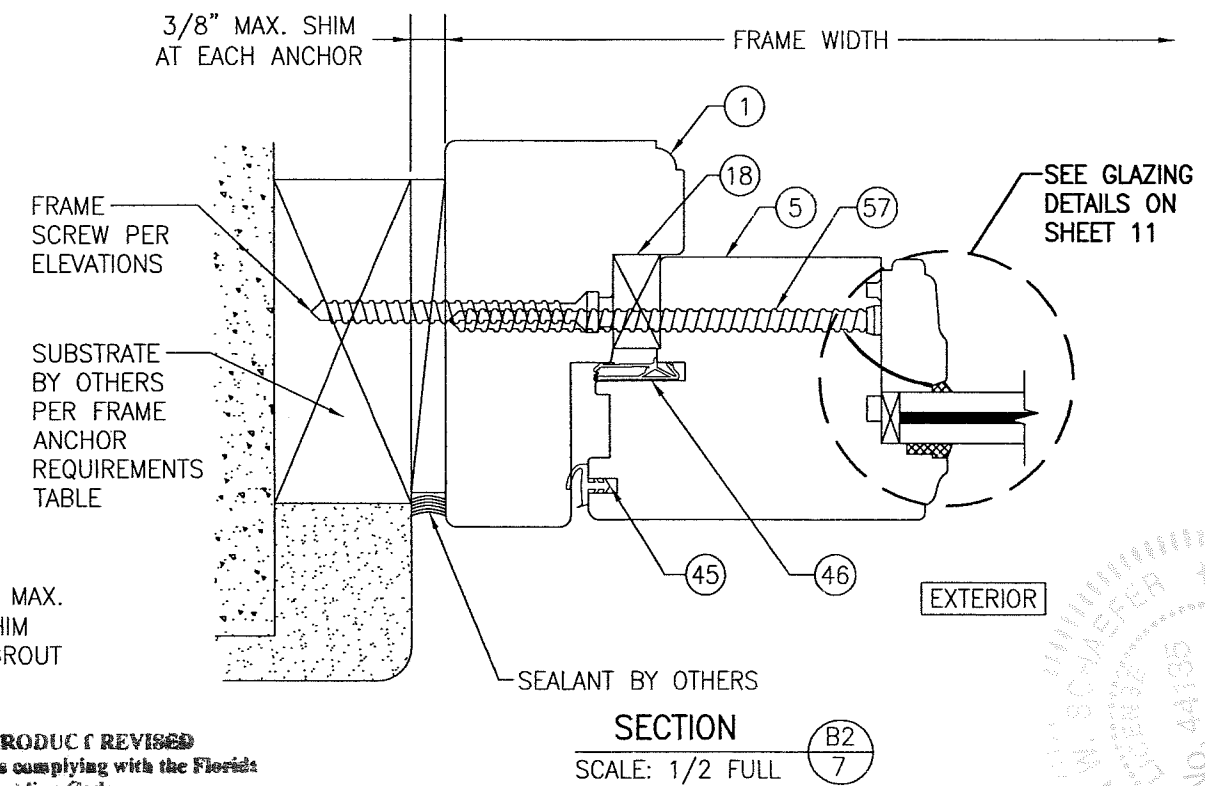
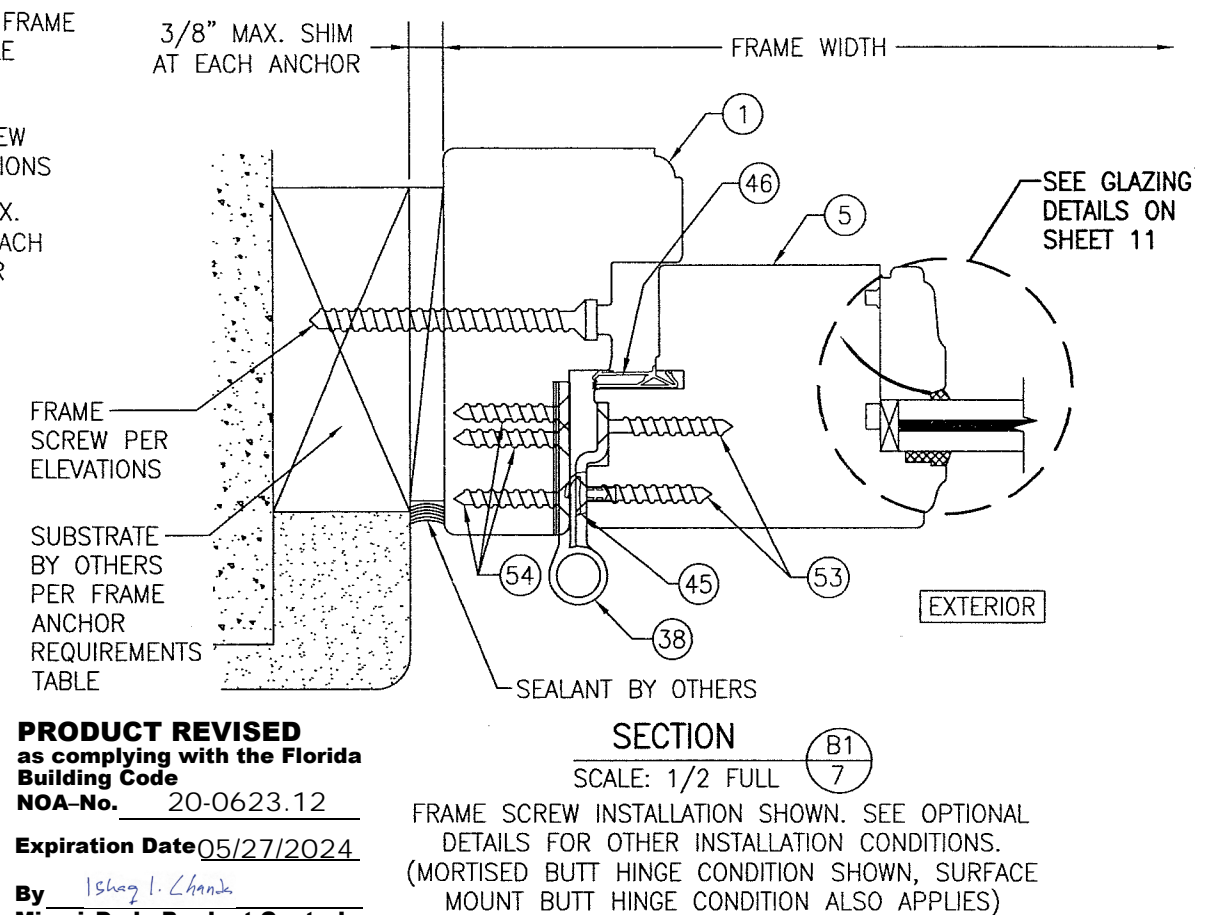
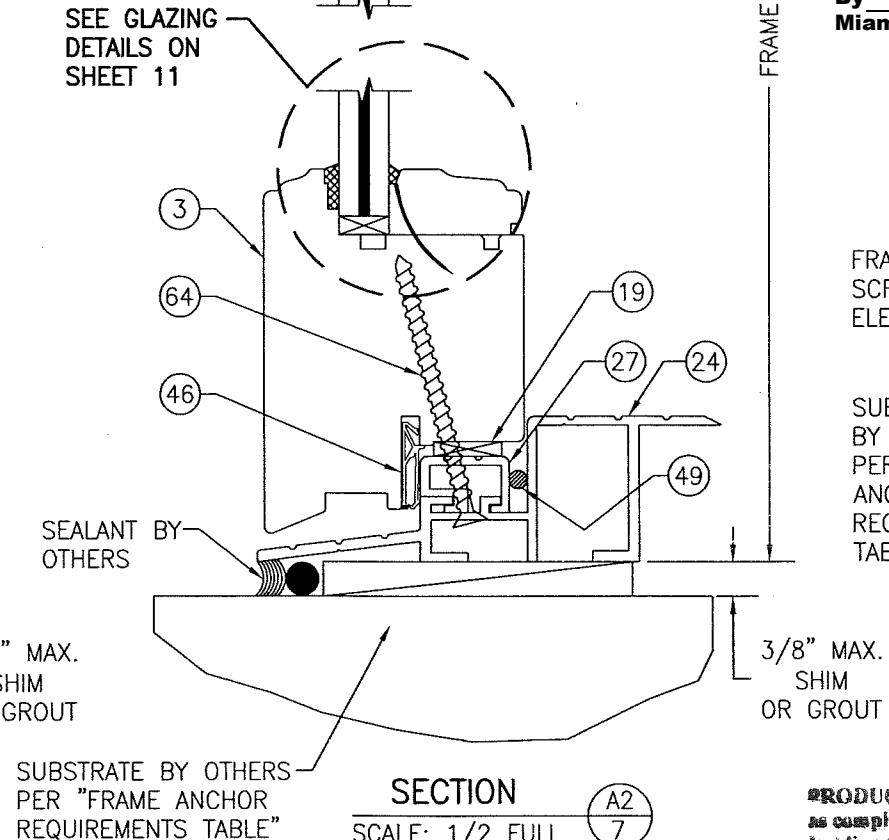
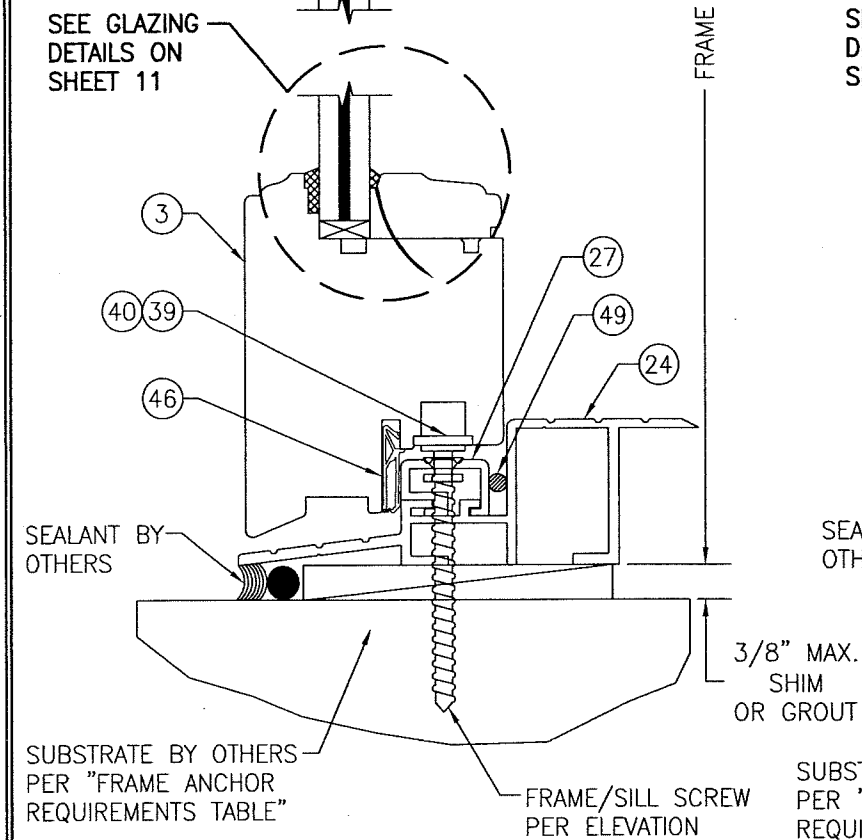
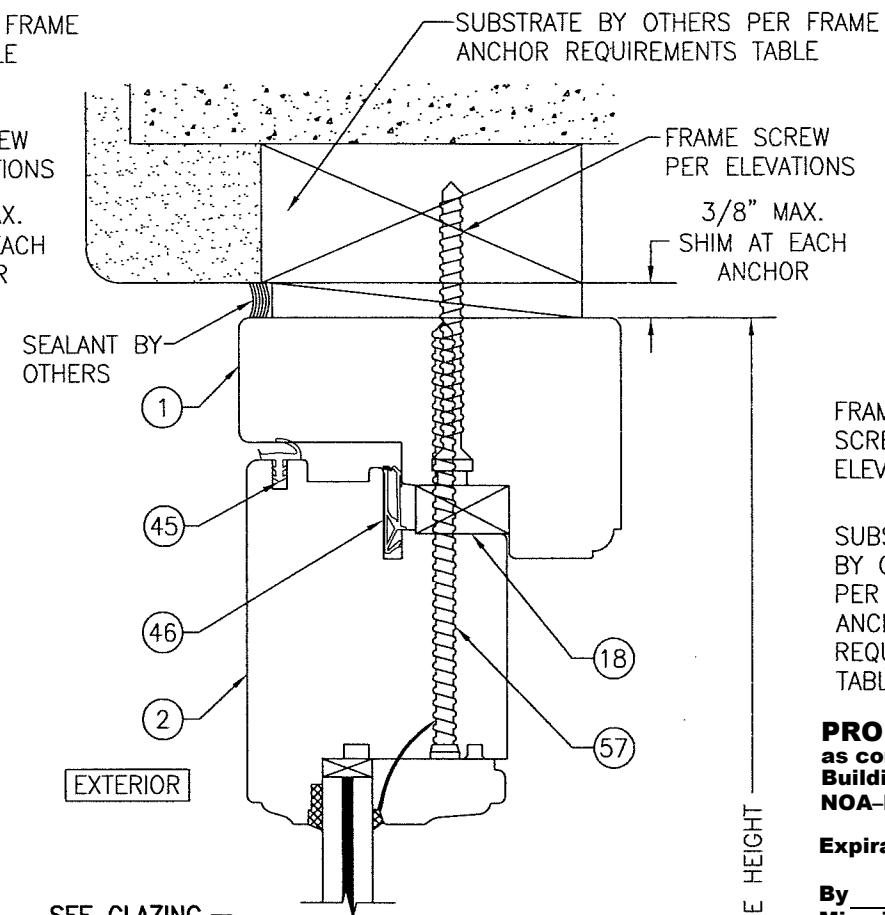
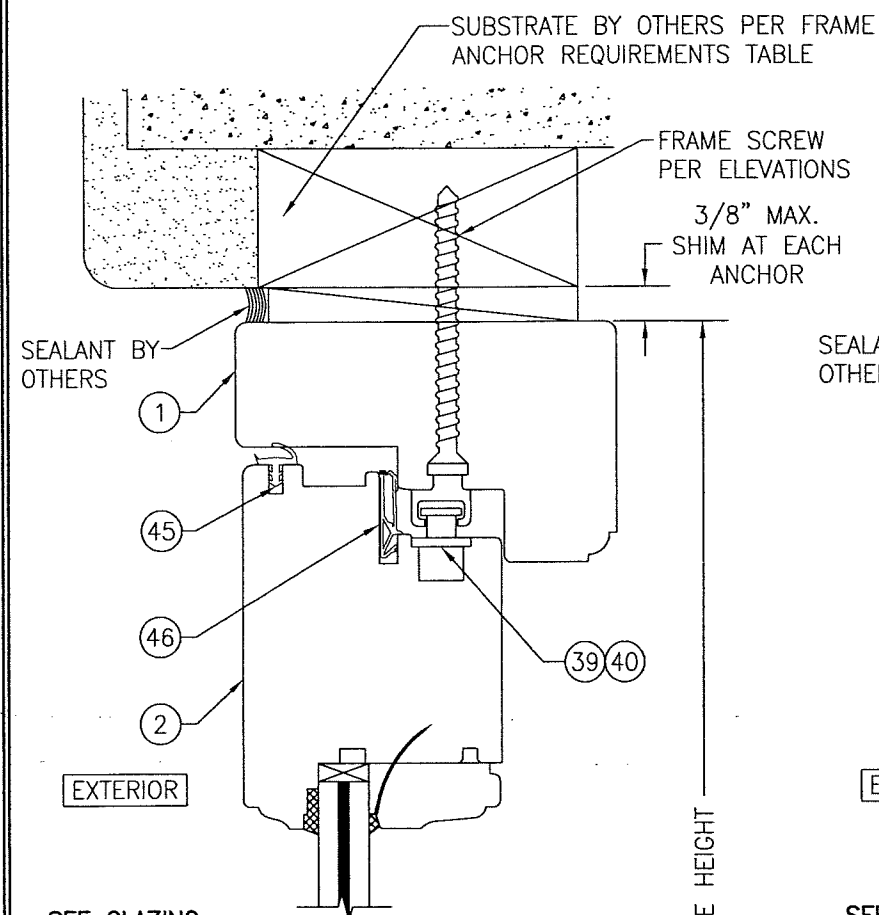
SCALE: 1/2" = 1'-0"  
(SEE SINGLE RECTANGULAR DOOR ELEVATION ON SHEET 2 FOR DOOR DETAIL NOT SHOWN)

**PRODUCT REVISED**  
as complying with the Florida  
Building Code  
Acceptance No. 18-0531.09  
Expiration Date 5/27/24  
By *Isaac L. Chande*  
Miami-Dade Product Control

NOTE: MULLION  
REINFORCEMENT  
IS OPTIONAL WITH  
THIS SINGLE  
DOOR WITH  
TRANSOM  
ELEVATION & IS  
NOT REQUIRED

DRAWN BY: W.R.M.		CHECKED BY: W.W.S.	
PLOT: 1-24		DATE: 10/08/08	
NO.	REVISION DESCRIPTION	BY	DATE
DRAWING TITLE OUT-SWING IMPACT WOOD DOORS			
CONSULTANTS W. SCHAEFER ENGINEERING & CONSULTING, P.A. (CA 6809)		MANUFACTURER TISCHLER UND SOHN (USA) LTD. SIX SUBURBAN AVENUE STAMFORD, CONNECTICUT 06901 203-674-0600	
7480 150TH COURT NORTH PALM BEACH GARDENS, FL 33418 PHONE: 561-744-3424			
CERTIFICATION MAY 15 2018		WARREN W. SCHAEFER P.E. P.E. NO. 44135	
DRAWING NO. 1600		REV. C	
SHEET NO. 6		OF 17	



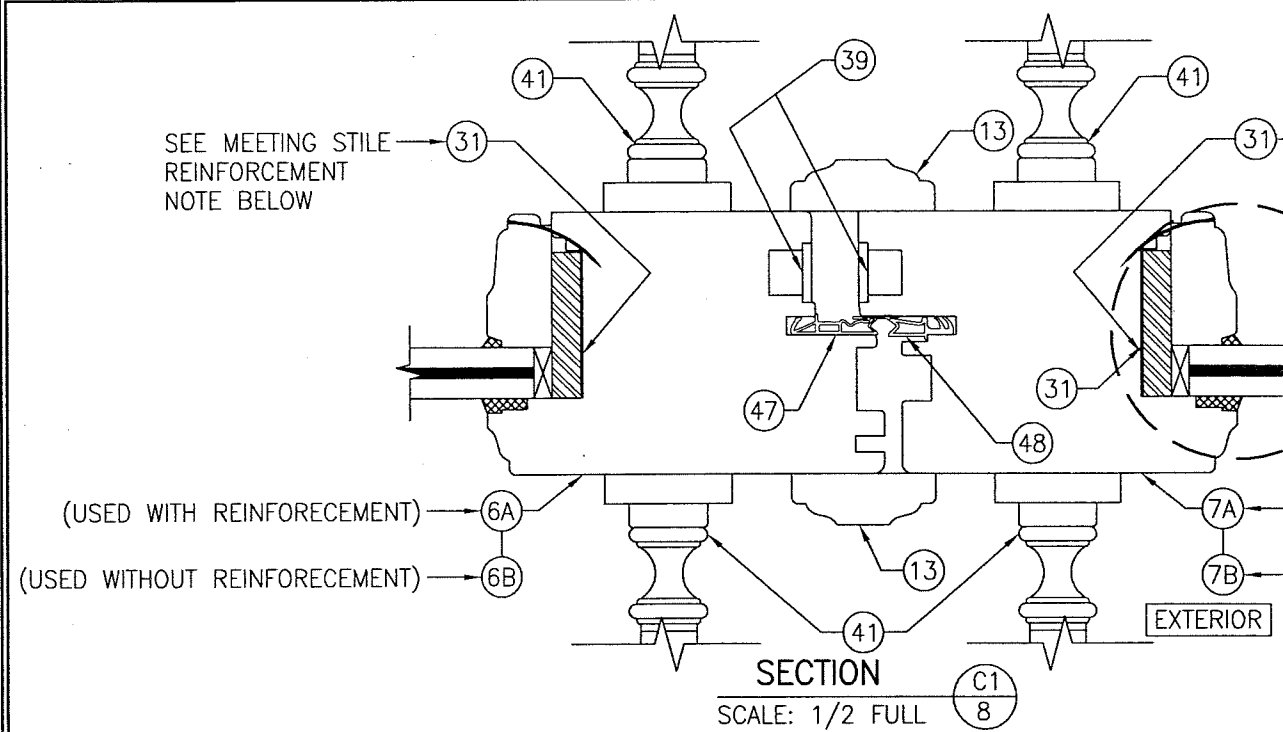


**PRODUCT REVISED**  
as complying with the Florida  
Building Code  
NOA-No. 20-0623.12  
Expiration Date 05/27/2024  
By Ishaq I. Chande  
Miami-Dade Product Control

**PRODUCT REVISED**  
as complying with the Florida  
Building Code  
Acceptance No 18-0531-09  
Expiration Date 5/27/24  
16-hg-1-Chanda  
Product Control

DRAWING NO. <b>1600</b>	REV. <b>C</b>	CERTIFICATION <div style="border: 1px solid black; padding: 5px; text-align: center;"> <b>MAY 15 2018</b> </div>	DRAWING TITLE <b>OUT-SWING IMPACT WOOD DOORS</b>	
			CONSULTANTS <b>W. W. SCHAEFER ENGINEERING &amp; CONSULTING, P.A. (CA 6809)</b> 7480 150TH COURT NORTH PALM BEACH GARDENS, FL 33418 PHONE: 561-744-3424	
MANUFACTURER <b>TISCHLER UND SOHN (USA) LTD.</b> SIX SUBURBAN AVENUE STAMFORD, CONNECTICUT 06901 203-674-0600			NO. REVISION DESCRIPTION BY DATE	DRAWN BY: W.W.S. CHECKED BY: W.W.S. DATE: 10/08/08
SHEET NO. <b>7</b> OF <b>17</b>				



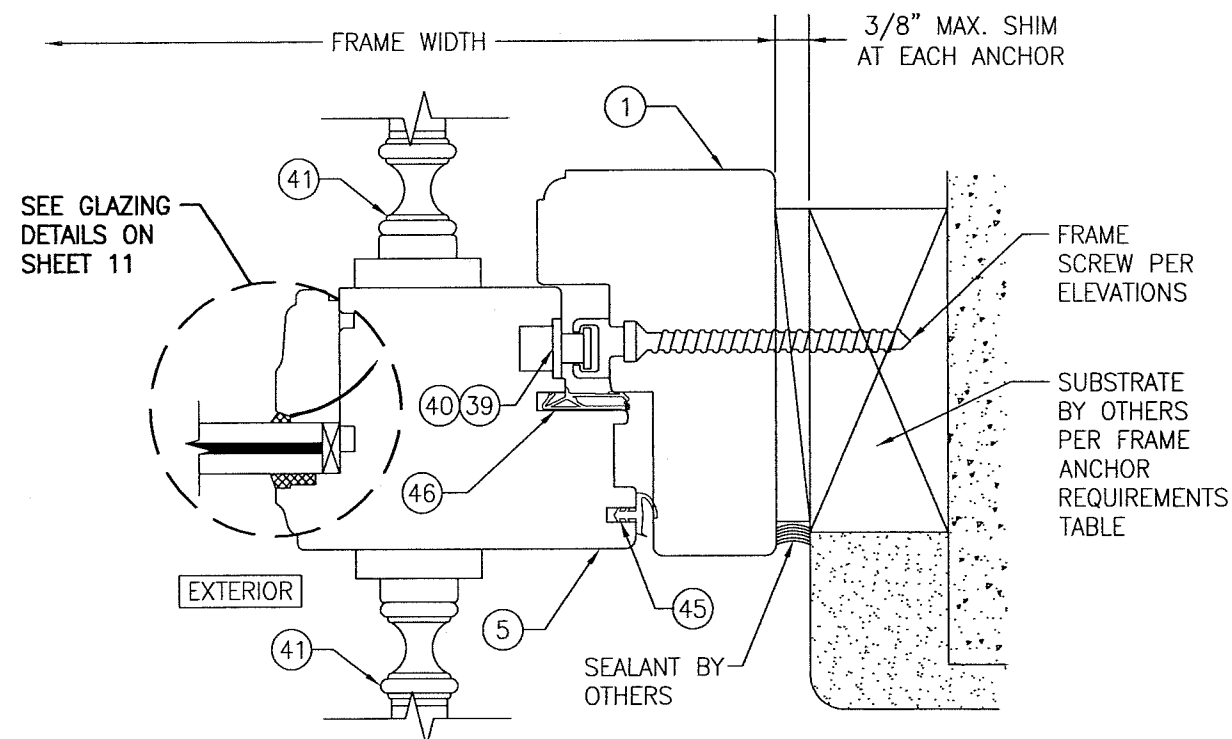


MEETING STILE CONDITION WITH SIEGENIA MULTI-POINT LOCK SYSTEM

**MEETING STILE REINFORCEMENT NOTE:**

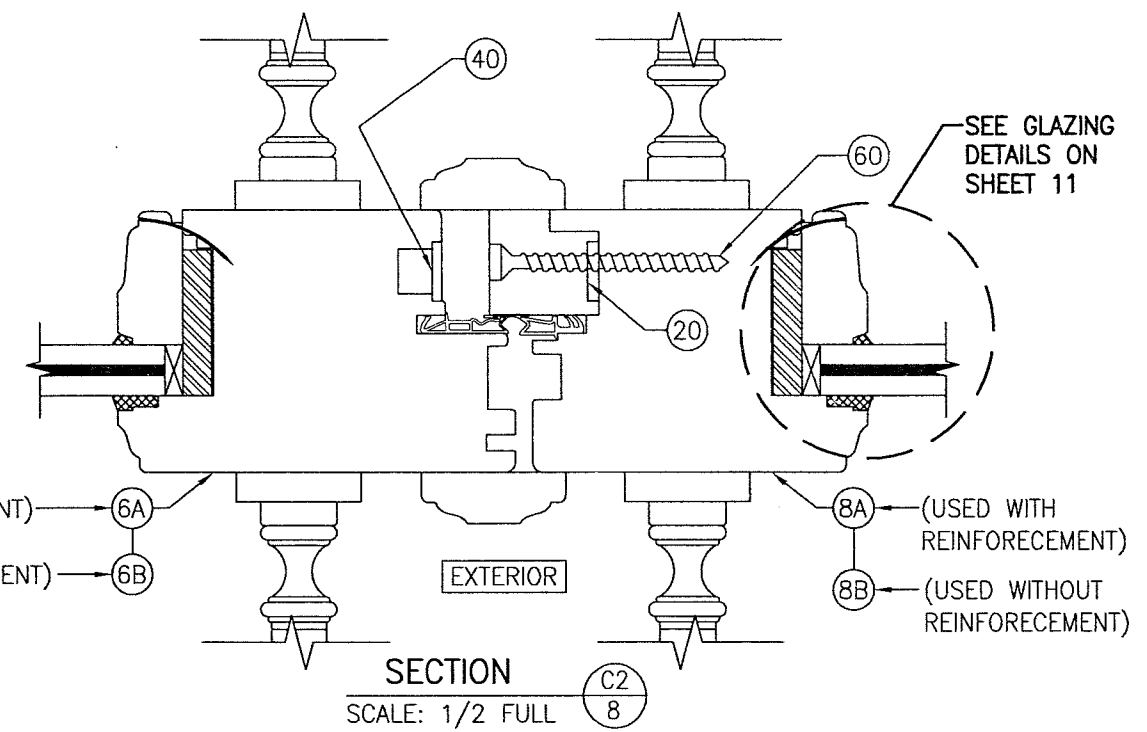
REINFORCEMENT IS REQUIRED WHEN ANY ONE OF THE FOLLOWING DOOR CONDITIONS EXISTS.

1. WHEN FRAME HEIGHT IS OVER 99".
2. WHEN ADA SILL IS USED (ALL APPLICABLE FRAME HEIGHTS).
3. WHEN JOB REQUIRED DESIGN PRESSURE IS OVER +/-70 PSF.

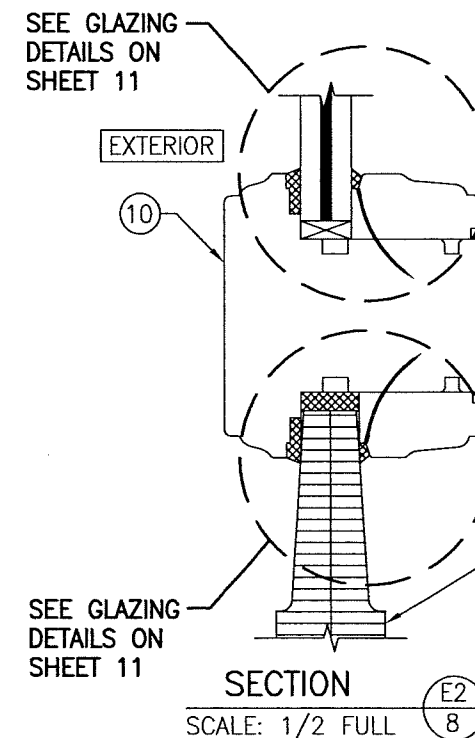
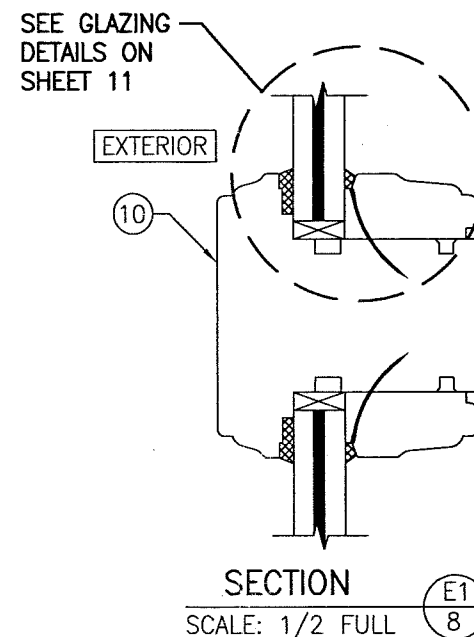


SECTION D  
SCALE: 1/2 FULL

FRAME SCREW INSTALLATION SHOWN. SEE OPTIONAL DETAILS FOR OTHER INSTALLATION CONDITIONS.



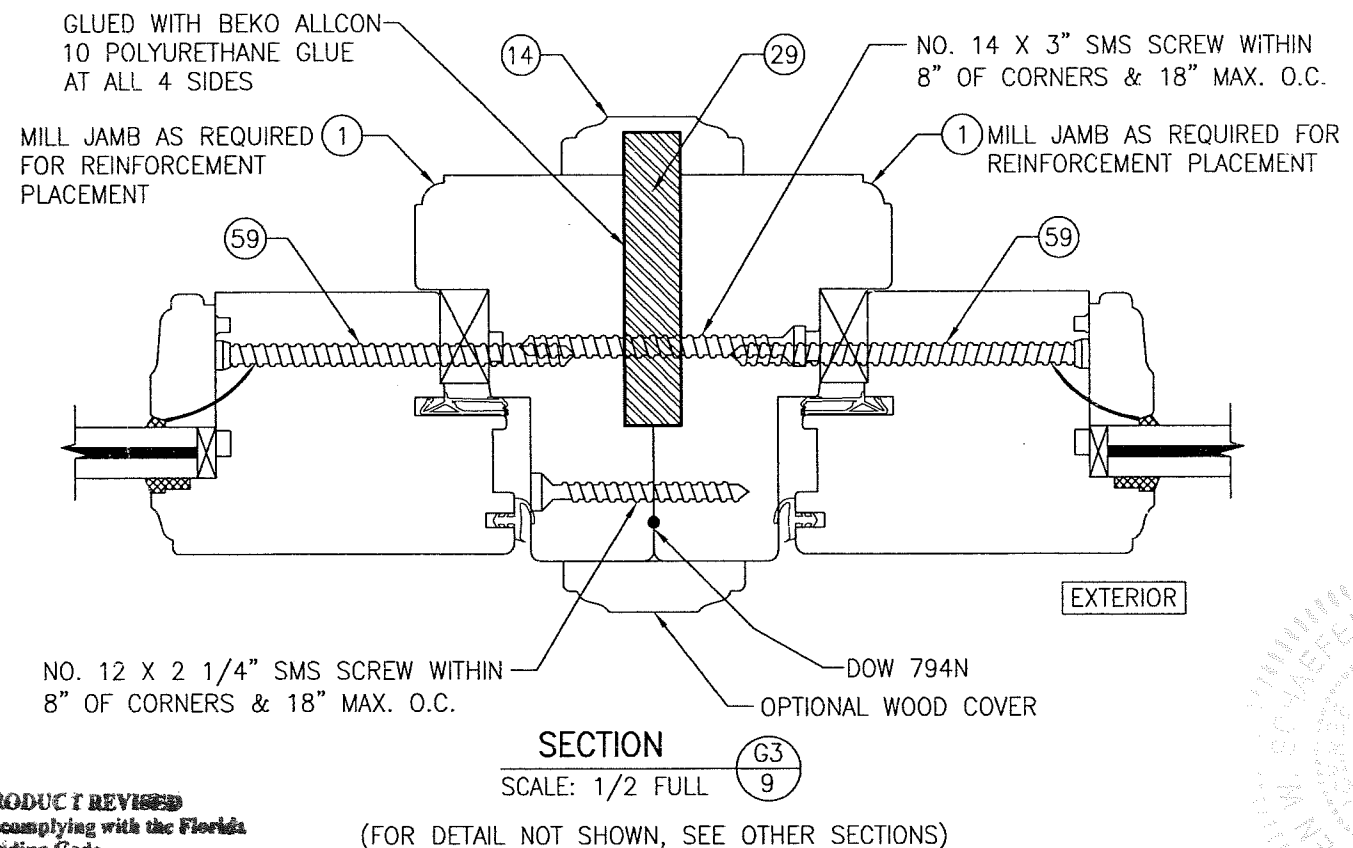
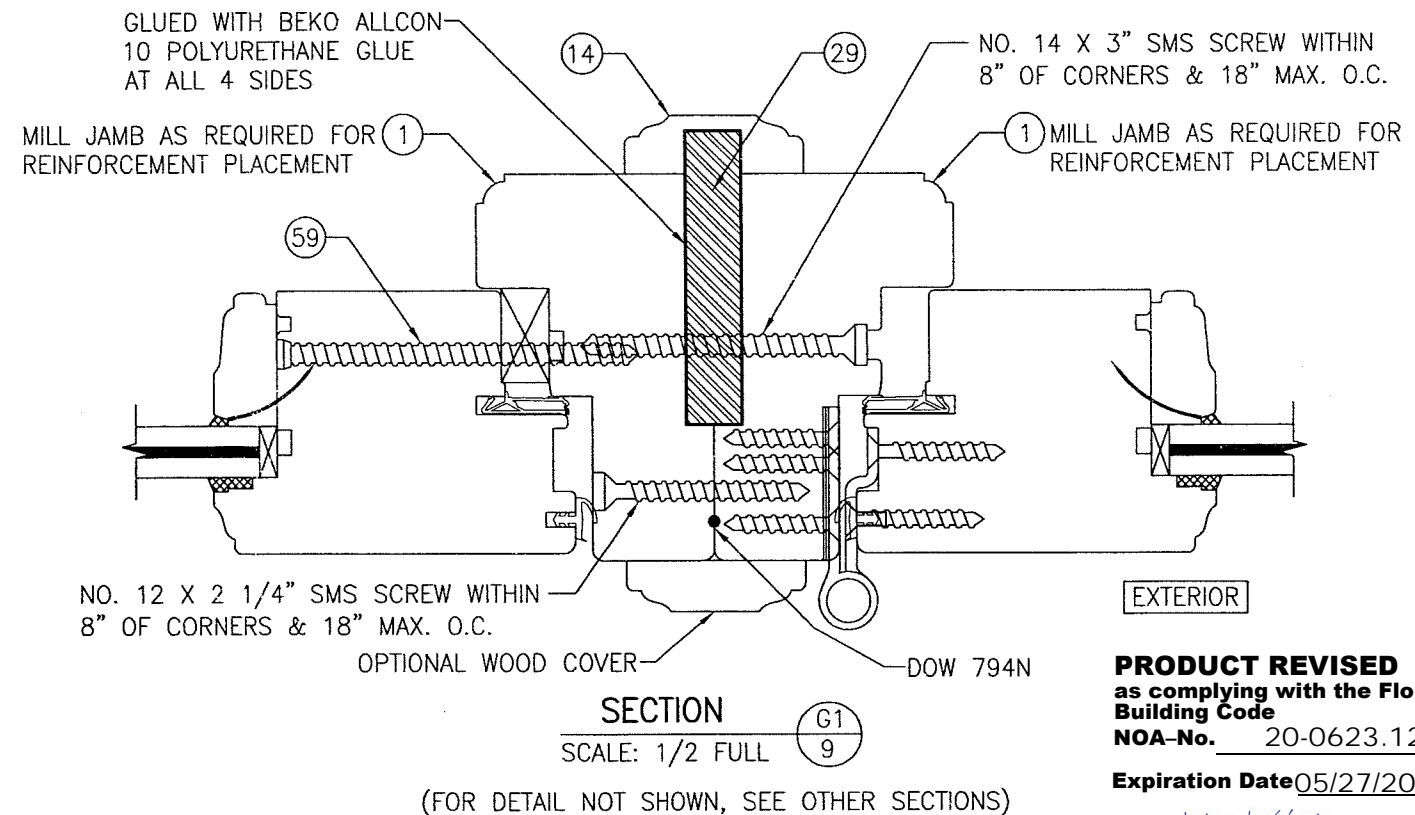
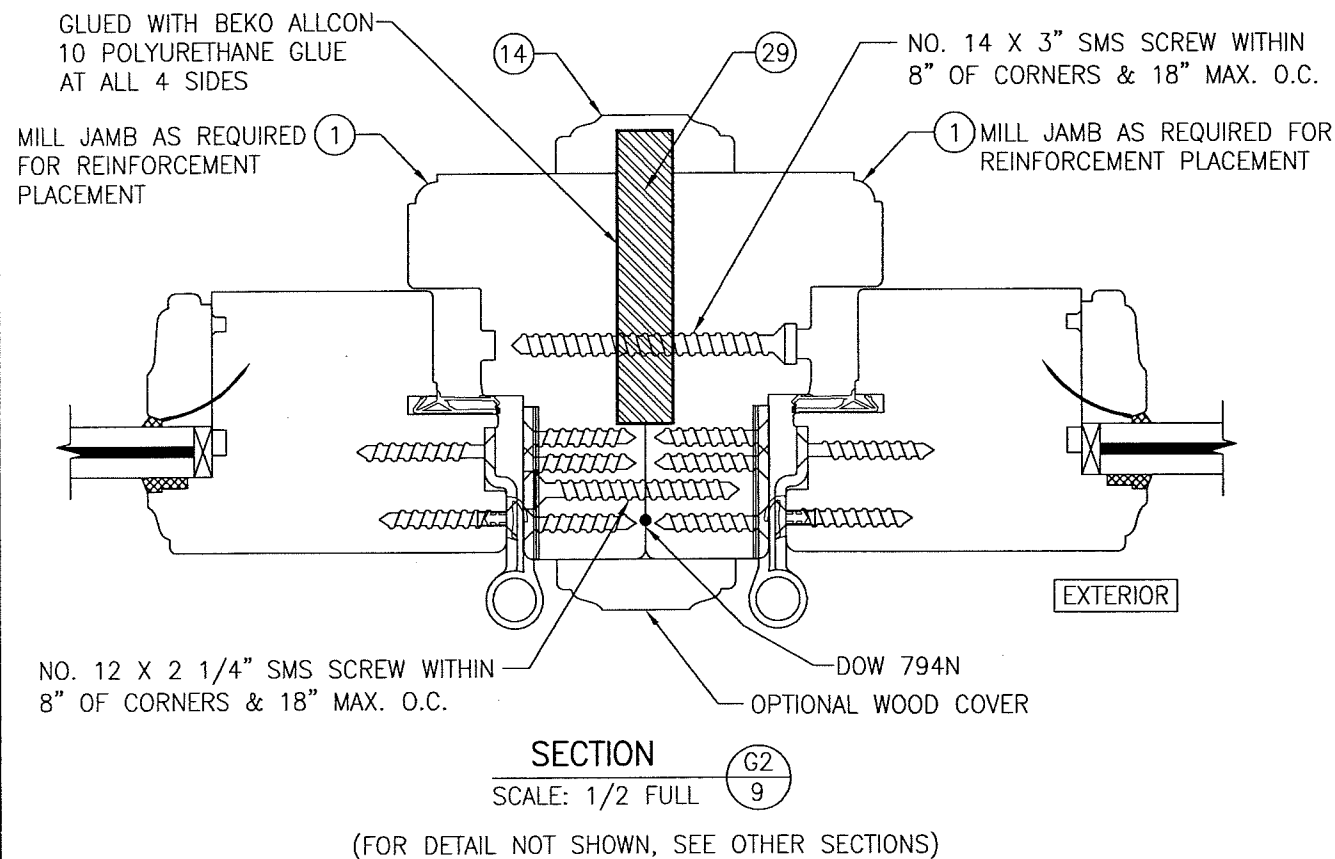
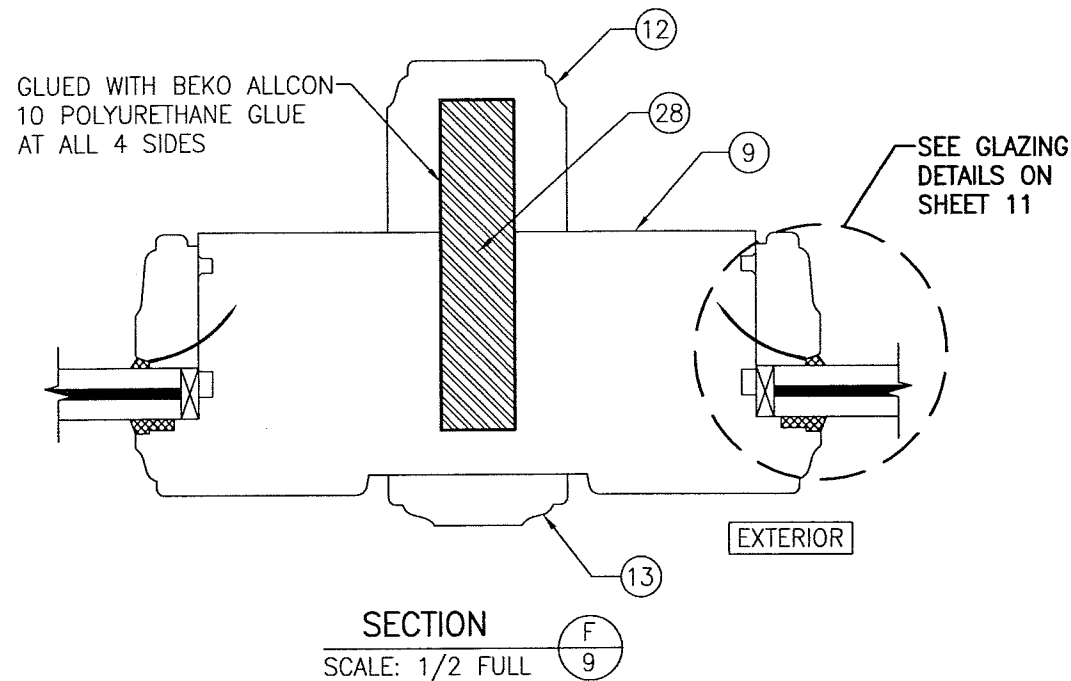
MEETING STILE CONDITION WITH KJV MULTI-POINT LOCK SYSTEM  
(FOR DETAIL NOT SHOWN, SEE SECTION C1/7)



**PRODUCT REVISED**  
as complying with the Florida  
Building Code  
NOA-No. 20-0623.12  
Expiration Date 05/27/2024  
By Ishag I. Chande  
Miami-Dade Product Control

**PRODUCT REVISED**  
as complying with the Florida  
Building Code  
Acceptance No. 18-0531.09  
Expiration Date 07/27/24  
By Ishag I. Chande  
Miami-Dade Product Control

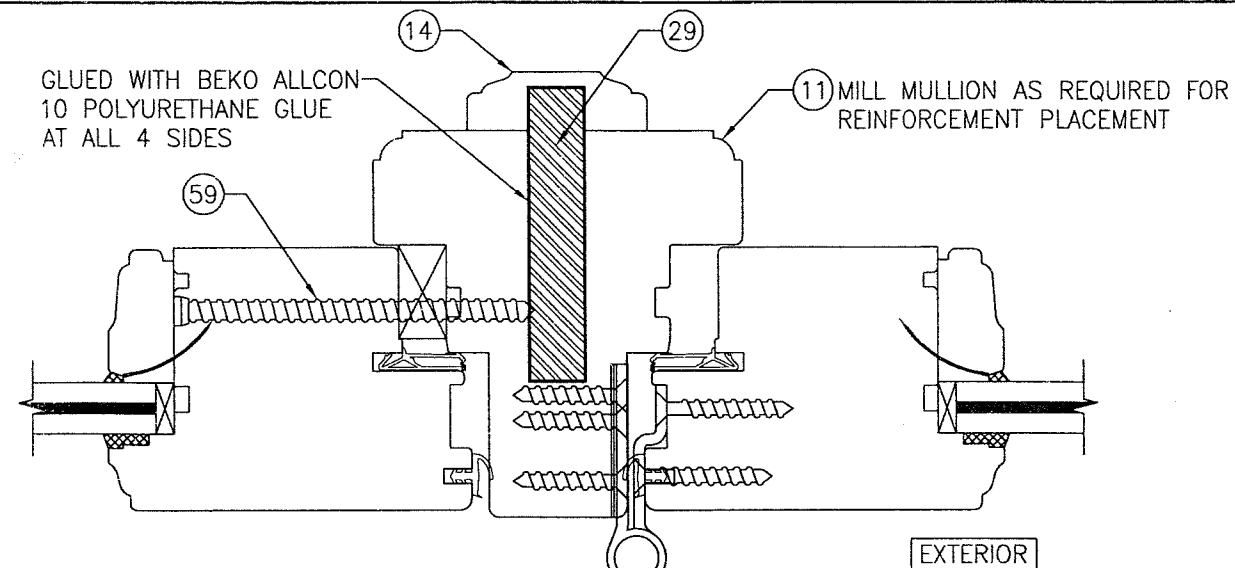
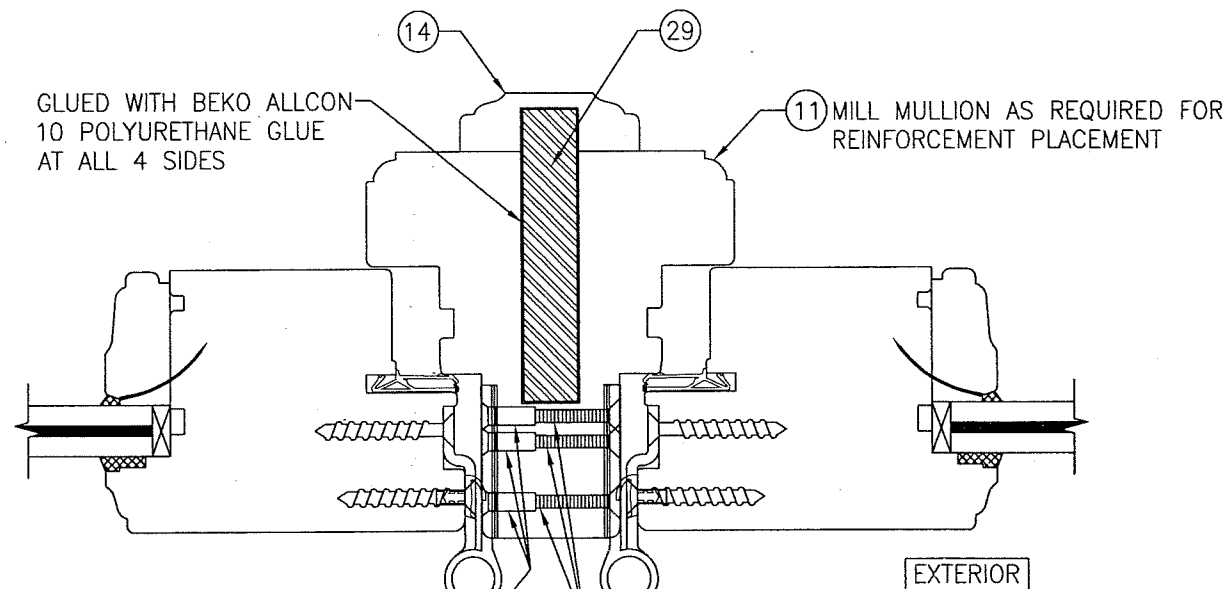
DRAWN BY: W.R.M.	CHECKED BY: W.W.S.
PLOT: 1=2	DATE: 10/08/08
NO.	DATE
BY	DATE
REVISION	DESCRIPTION
NO.	DESCRIPTION
DRAWING TITLE OUT-SWING IMPACT WOOD DOORS	
CONSULTANTS W. W. SCHAEFER ENGINEERING & CONSULTING, P.A. (CA 6809)	
MANUFACTURER TISCHLER UND SOHN (USA) LTD. SIX SUBURBAN AVENUE STAMFORD, CONNECTICUT 06901 203-674-0600	
7480 150TH COURT NORTH PALM BEACH GARDENS, FL 33418 PHONE: 561-744-3424	
CERTIFICATION MAY 15 2018	P.E. WARREN W. SCHAEFER P.E. NO. 44135
DRAWING NO. 1600	REV. C
SHEET NO. 8	OF 17



**PRODUCT REVISED**  
 as complying with the Florida  
 Building Code  
 Acceptance No. 18-0531.09  
 Expiration Date 5/27/24  
 By Ishag I. Chande  
 Miami-Dade Product Control

**PRODUCT REVISED**  
 as complying with the Florida  
 Building Code  
 NOA-No. 20-0623.12  
 Expiration Date 05/27/2024  
 By Ishag I. Chande  
 Miami-Dade Product Control

DRAWN BY: W.R.M.		CHECKED BY: W.W.S.	
PLOT: 1=2		DATE: 10/08/08	
NO.	DATE	BY	REVISION DESCRIPTION
DRAWING TITLE: <b>OUT-SWING IMPACT WOOD DOORS</b>			
CONSULTANTS		MANUFACTURER	
W. SCHAEFER ENGINEERING & CONSULTING, P.A. (CA 6809)		TISCHLER UND SOHN (USA) LTD.	
7480 150TH COURT NORTH PALM BEACH GARDENS, FL 33418 PHONE: 561-744-3424		SIX SUBURBAN AVENUE STAMFORD, CONNECTICUT 06901 203-674-0600	
CERTIFICATION		REV. C	
MAY 15 2018		DRAWING NO. 1600	
WARREN W. SCHAEFER, P.E. P.E. NO. 44135		SHEET NO. 9 OF 17	

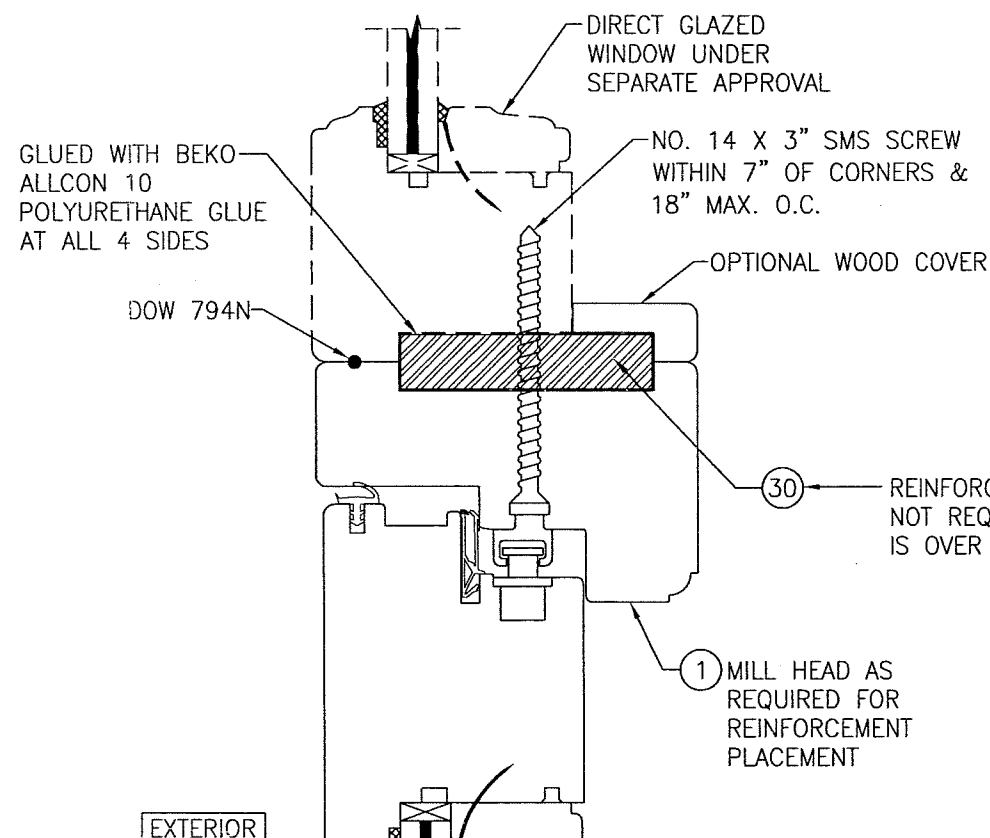
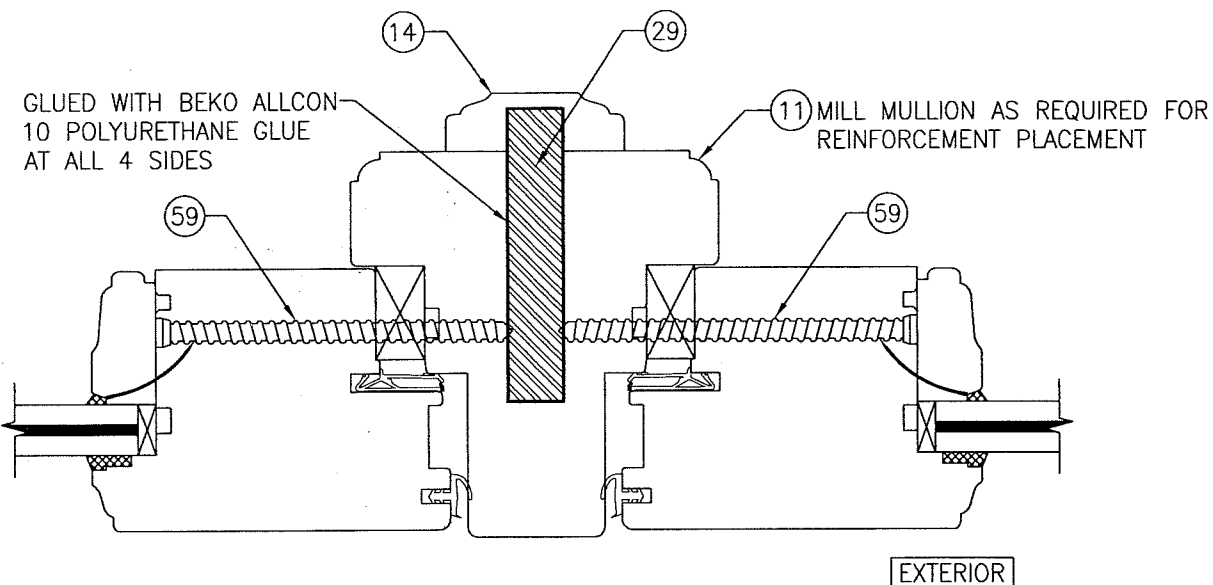


SECTION G5  
SCALE: 1/2 FULL

(FOR DETAIL NOT SHOWN, SEE OTHER SECTIONS)

**PRODUCT REVISED**  
as complying with the Florida  
Building Code  
NOA-No. 20-0623.12  
Expiration Date 05/27/2024

By Ishag I. Chande  
Miami-Dade Product Control

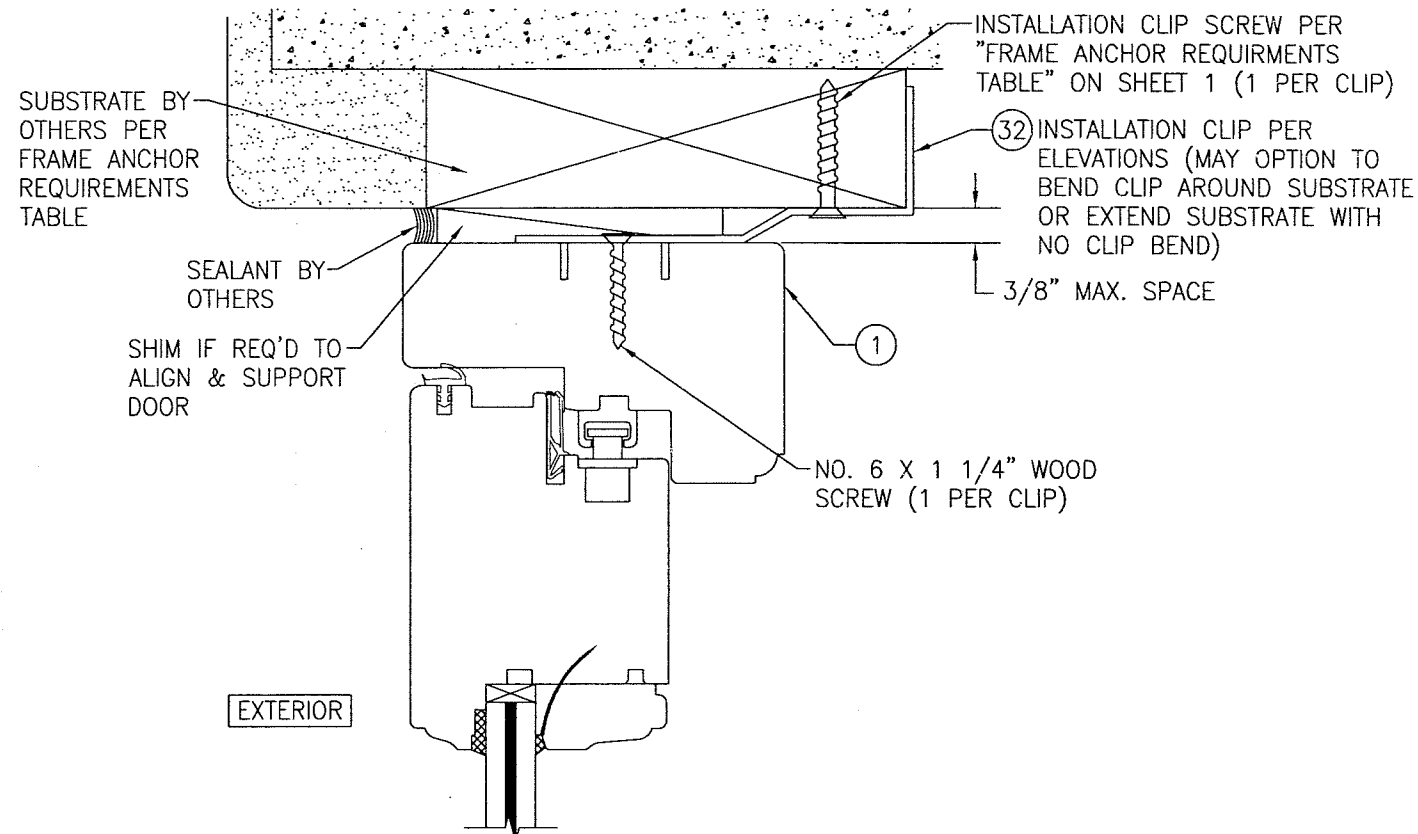


**PRODUCT REVISED**  
as complying with the Florida  
Building Code  
Acceptance No. 18-0531-09  
Expiration Date 5/27/24  
By Ishag I. Chande  
Miami-Dade Product Control

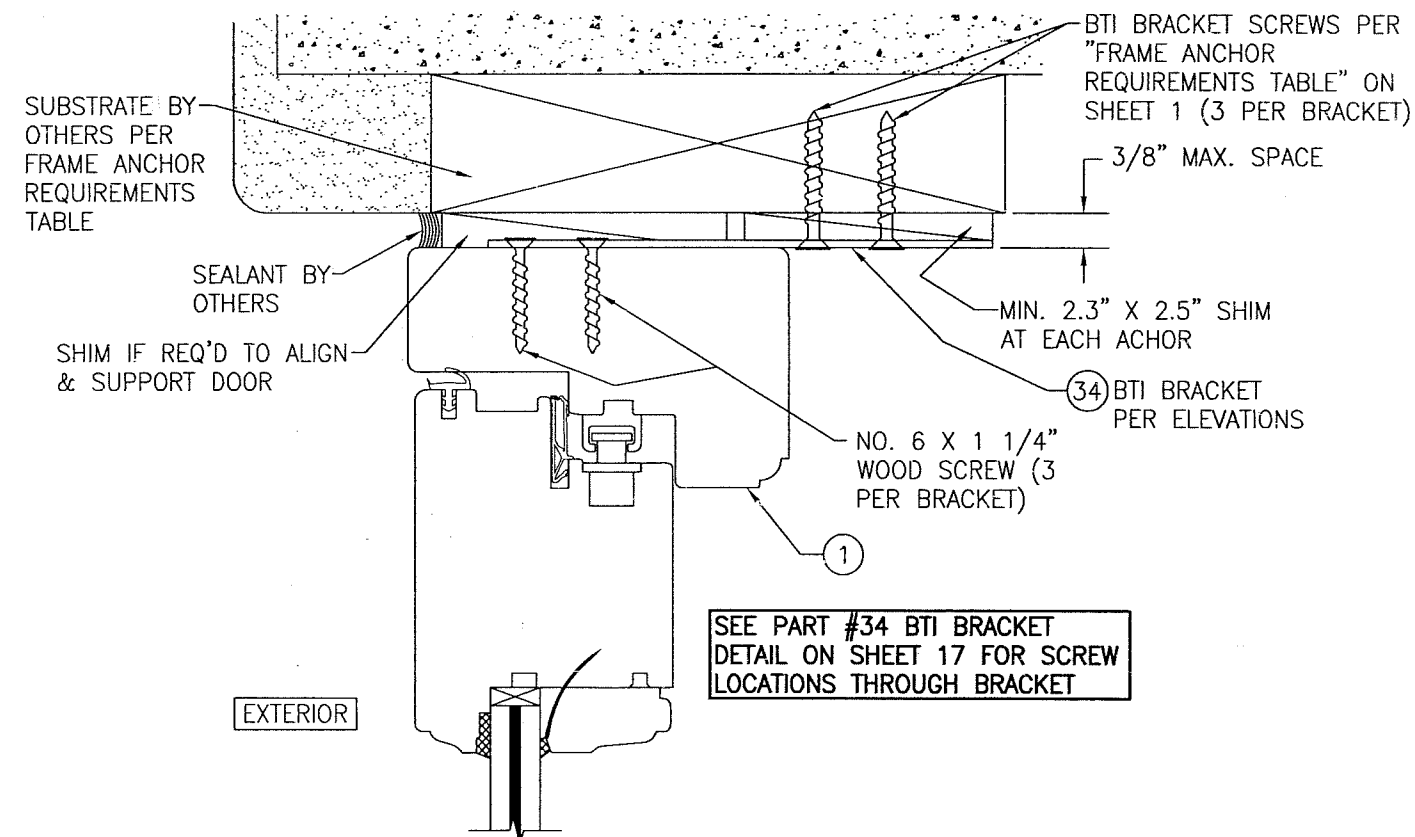
DRAWN BY: W.R.M.	CHECKED BY: W.W.S.
PLOT: 1=2	DATE: 10/08/08
NO.	REVISION DESCRIPTION
DATE	BY
DRAWING TITLE OUT-SWING IMPACT WOOD DOORS	
CONSULTANTS W. W. SCHAEFER ENGINEERING & CONSULTING, P.A. (CA 6809)	MANUFACTURER TISCHLER UND SOHN (USA) LTD. SIX SUBURBAN AVENUE STAMFORD, CONNECTICUT 06901 203-674-0600
7480 150TH COURT NORTH PALM BEACH GARDENS, FL 33418 PHONE: 561-744-3424	
CERTIFICATION MAY 15 2018 WARREN W. SCHAEFER, P.E. P.E. NO. 44133	
DRAWING NO. 1600	REV. C
SHEET NO. 10	OF 17





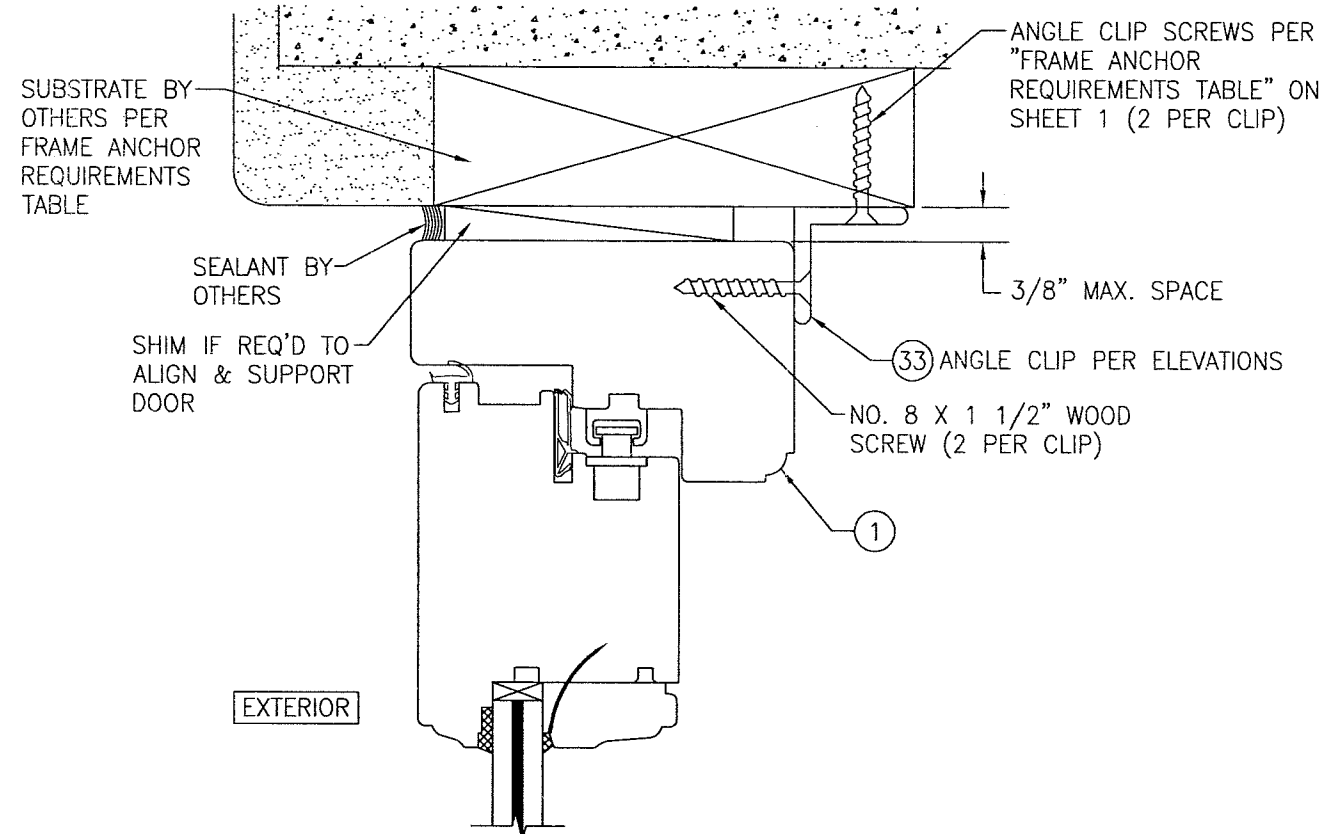


**OPTIONAL INSTALLATION CLIP DETAIL**  
(HEAD SECTION SHOWN, SIDES ARE INSTALLED THE SAME)  
(FOR DETAIL NOT SHOWN, SEE OTHER SECTIONS)

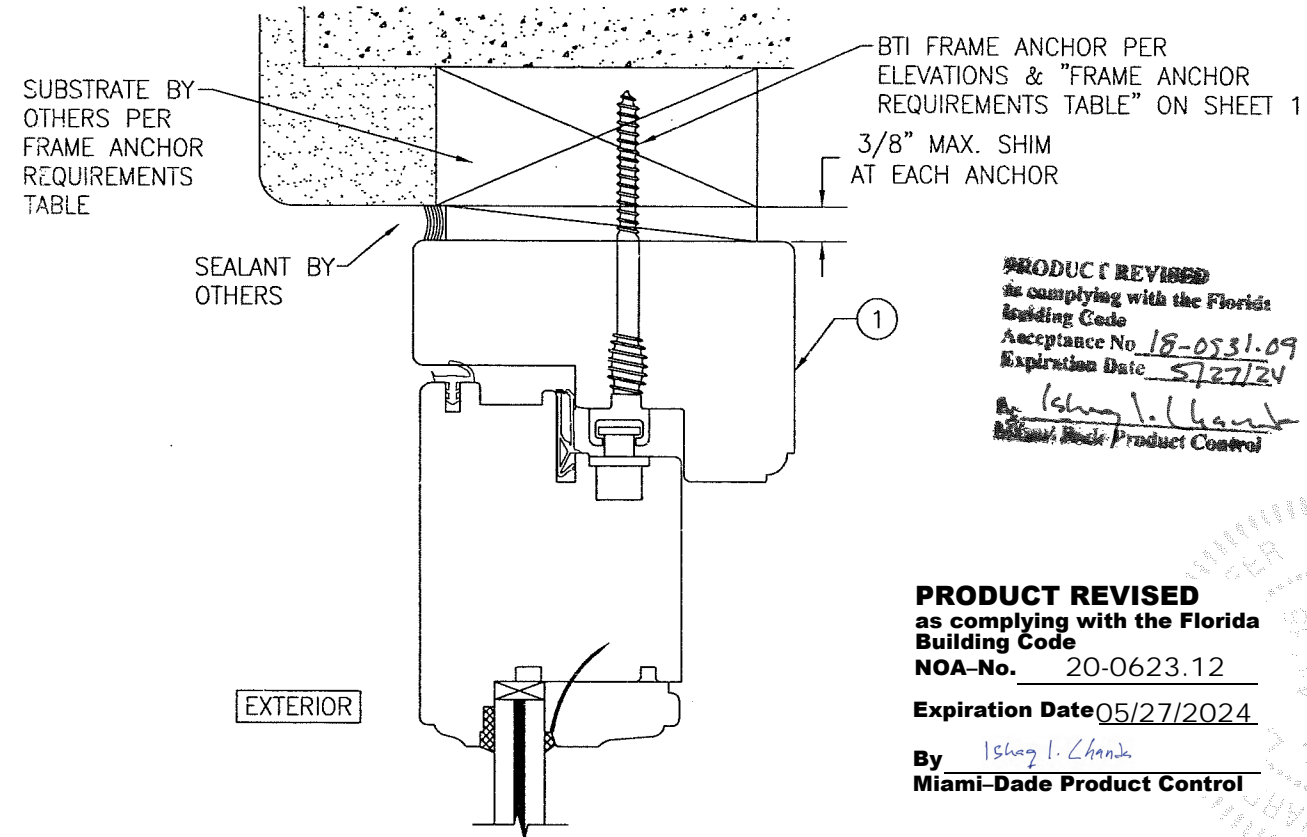


**OPTIONAL INSTALLATION BTI BRACKET DETAIL**  
(HEAD SECTION SHOWN, SIDES ARE INSTALLED THE SAME)  
(FOR DETAIL NOT SHOWN, SEE OTHER SECTIONS)

SEE PART #34 BTI BRACKET  
DETAIL ON SHEET 17 FOR SCREW  
LOCATIONS THROUGH BRACKET



**OPTIONAL INSTALLATION ANGLE CLIP DETAIL**  
(HEAD SECTION SHOWN, SIDES ARE INSTALLED THE SAME)  
(FOR DETAIL NOT SHOWN, SEE OTHER SECTIONS)

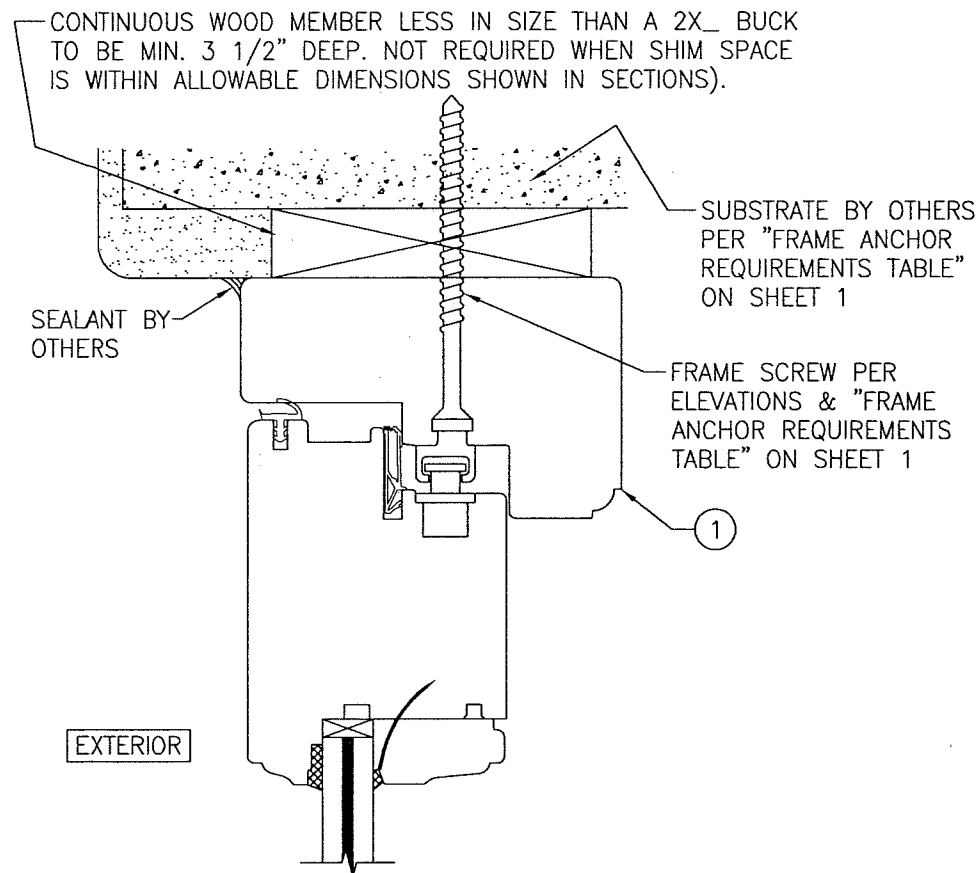


**OPTIONAL BTI SCREW DETAIL**  
(HEAD SECTION SHOWN, SIDES ARE INSTALLED THE SAME)  
(FOR DETAIL NOT SHOWN, SEE OTHER SECTIONS)

**PRODUCT REVISED**  
as complying with the Florida  
Building Code  
Acceptance No. 18-0531.09  
Expiration Date 5/27/24  
By: Ismael L. Chanda  
Miami-Dade Product Control

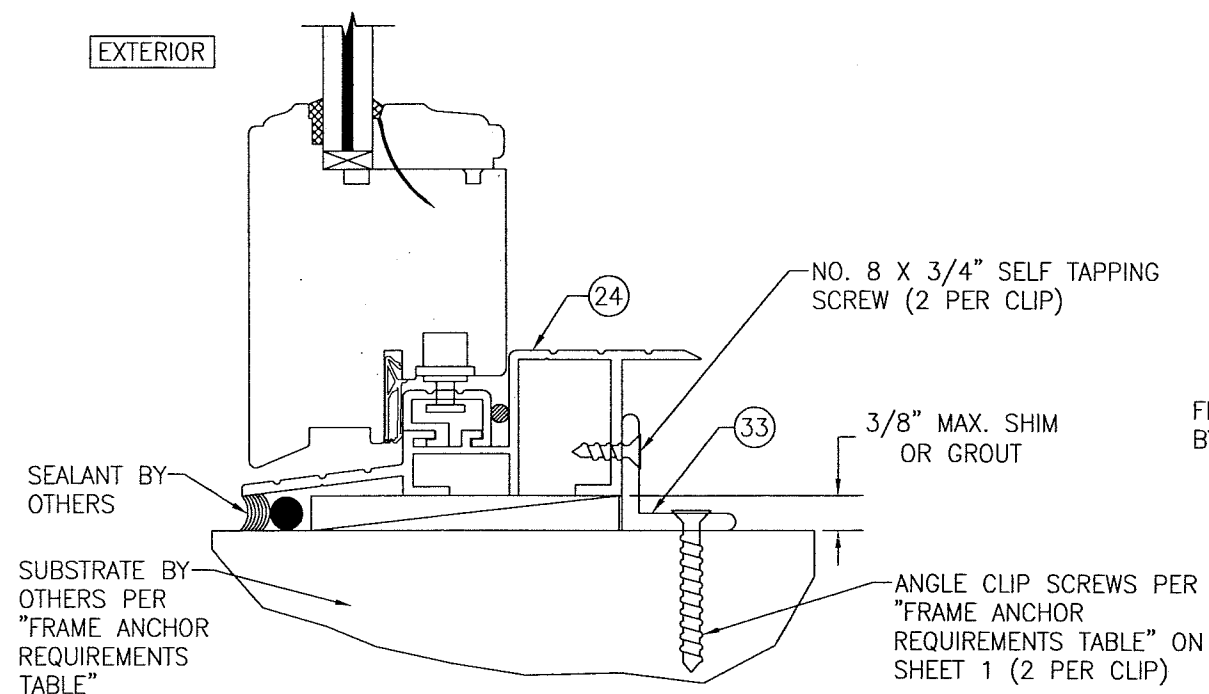
**PRODUCT REVISED**  
as complying with the Florida  
Building Code  
NOA-No. 20-0623.12  
Expiration Date 05/27/2024  
By: Ismael L. Chanda  
Miami-Dade Product Control

DRAWN BY: W.R.M.		CHECKED BY: W.W.S.	
PLOT: T-2		DATE: 10/08/08	
DATE	BY	REVISION DESCRIPTION	NO.
DRAWING TITLE: OUT-SWING IMPACT WOOD DOORS			
CONSULTANTS: W. W. SCHAEFER ENGINEERING & CONSULTING, P.A. (CA 6809)		MANUFACTURER: TISCHLER UND SOHN (USA) LTD. SIX SUBURBAN AVENUE STAMFORD, CONNECTICUT 06901 203-674-0600	
7480 156TH COURT NORTH PALM BEACH GARDENS, FL 33418 PHONE: 561-744-3424			
CERTIFICATION	MAY 15 2018		
	WARREN W. SCHAEFER, P.E. NO. 44135		
DRAWING NO. 1600	REV. C	SHEET NO. 12 OF 17	



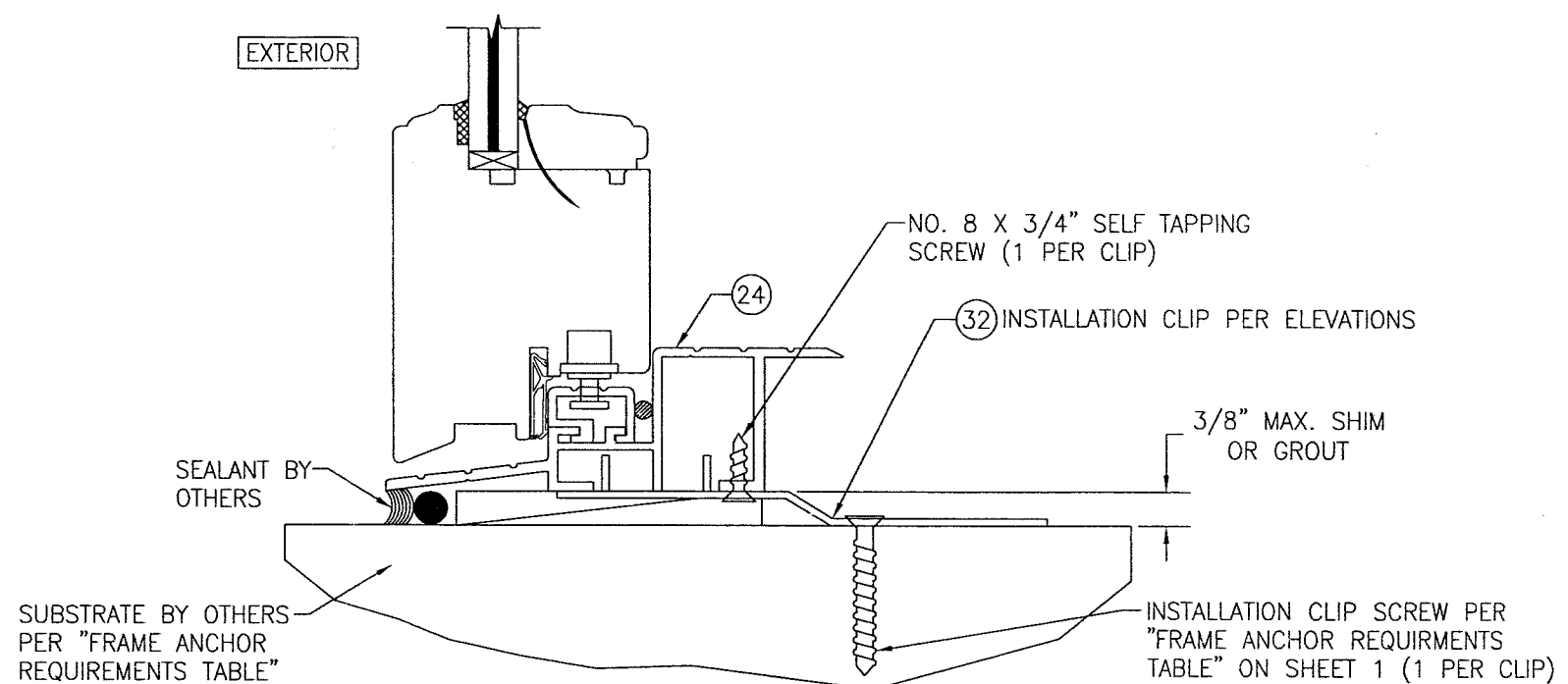
### OPTIONAL DIRECT MOUNT DETAIL TO SUBSTRATE WITH SPACER

(HEAD SECTION SHOWN, SIDES ARE INSTALLED THE SAME)  
(FOR DETAIL NOT SHOWN, SEE OTHER SECTIONS)



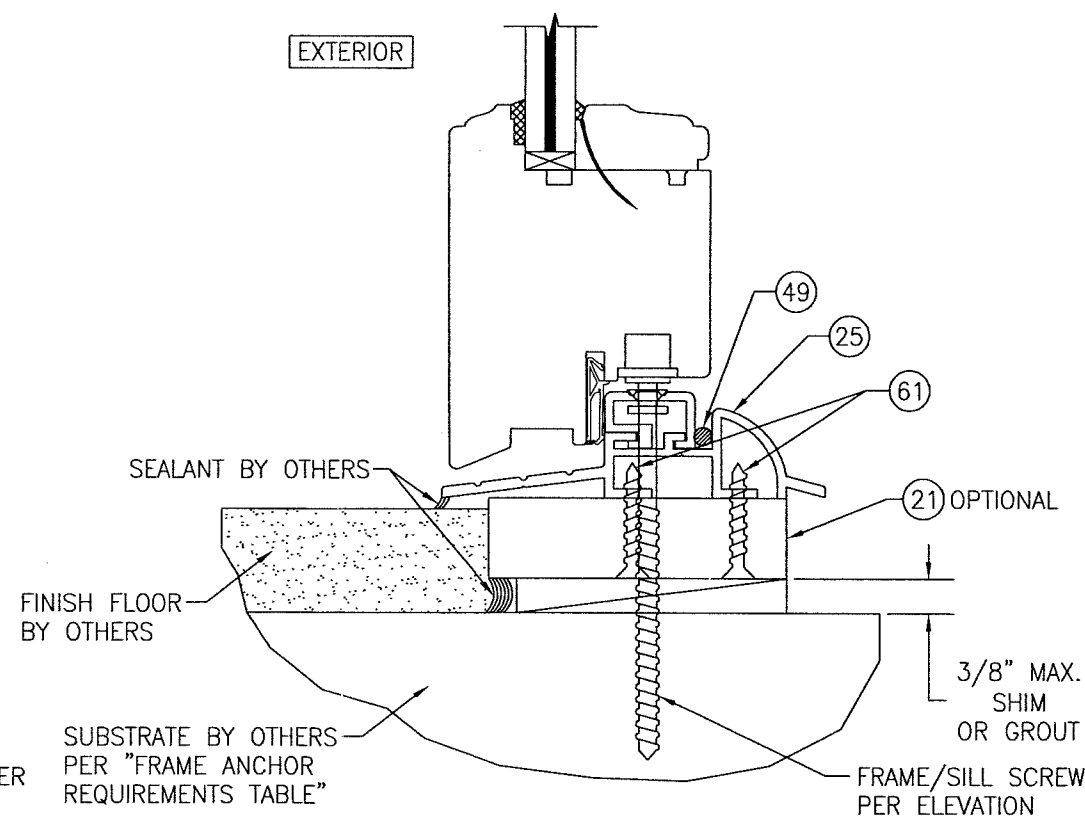
### SILL DETAIL (STANDARD SILL INSTALLED WITH ANGLE CLIP)

(OPERABLE DOOR CONDITION SHOWN, FIXED PANEL DOORS ARE INSTALLED THE SAME)  
(FOR DETAIL NOT SHOWN, SEE OTHER SECTIONS)



### SILL DETAIL (STANDARD SILL INSTALLED WITH INSTALLATION CLIP)

(OPERABLE DOOR CONDITION SHOWN, FIXED PANEL DOORS ARE INSTALLED THE SAME)  
(FOR DETAIL NOT SHOWN, SEE OTHER SECTIONS)



### SILL DETAIL (OPTIONAL SILL INSTALLED WITH FRAME/SILL SCREW)

(OPERABLE DOOR CONDITION SHOWN, FIXED PANEL DOORS ARE INSTALLED THE SAME)  
(FOR DETAIL NOT SHOWN, SEE OTHER SECTIONS)

**PRODUCT REVISED**  
as complying with the Florida  
Building Code  
Acceptance No. 18-0531.09  
Expiration Date 5/27/24  
By: Ishag I. Chandra  
Miami-Dade Product Control

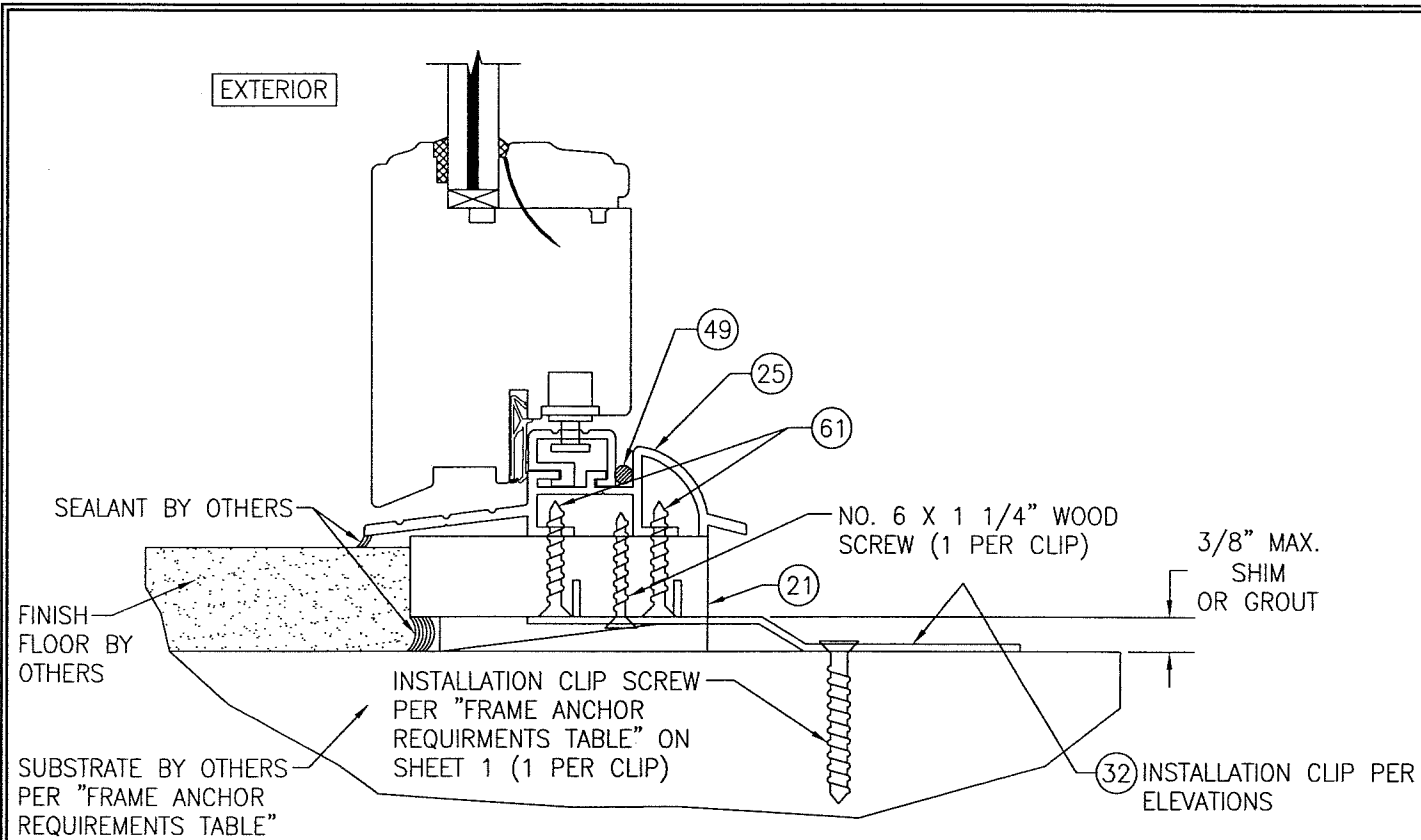
**PRODUCT REVISED**  
as complying with the Florida  
Building Code  
NOA-No. 20-0623.12

Expiration Date 05/27/2024

By: Ishag I. Chandra  
Miami-Dade Product Control

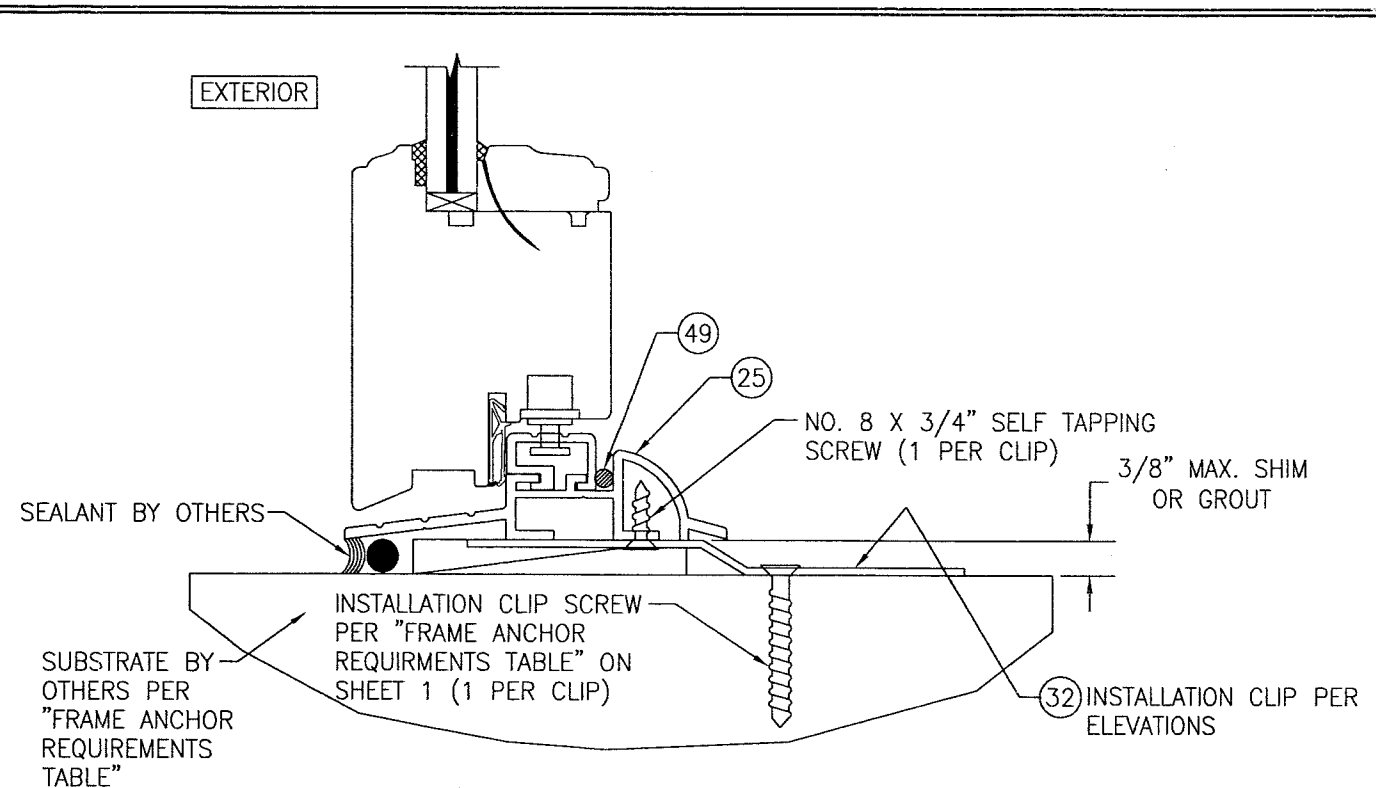
DRAWN BY: W.R.M.	CHECKED BY: W.W.S.
PLOT: 1=2	DATE: 10/08/08
DATE	
BY	
REVISION DESCRIPTION	
NO.	
DRAWING TITLE OUT-SWING IMPACT WOOD DOORS	
MANUFACTURER TISCHLER UND SOHN (USA) LTD. SIX SUBURBAN AVENUE STAMFORD, CONNECTICUT 06901 203-674-0600	CONSULTANTS W. W. SCHAEFER ENGINEERING & CONSULTING, P.A. (CA 6809) 7480 150TH COURT NORTH PALM BEACH GARDENS, FL 33418 PHONE: 561-744-3424
CERTIFICATION MAY 15 2018 WARREN W. SCHAEFER, P.E. P.E. NO. 44135	DRAWING NO. 1600 SHEET NO. 13 OF 17





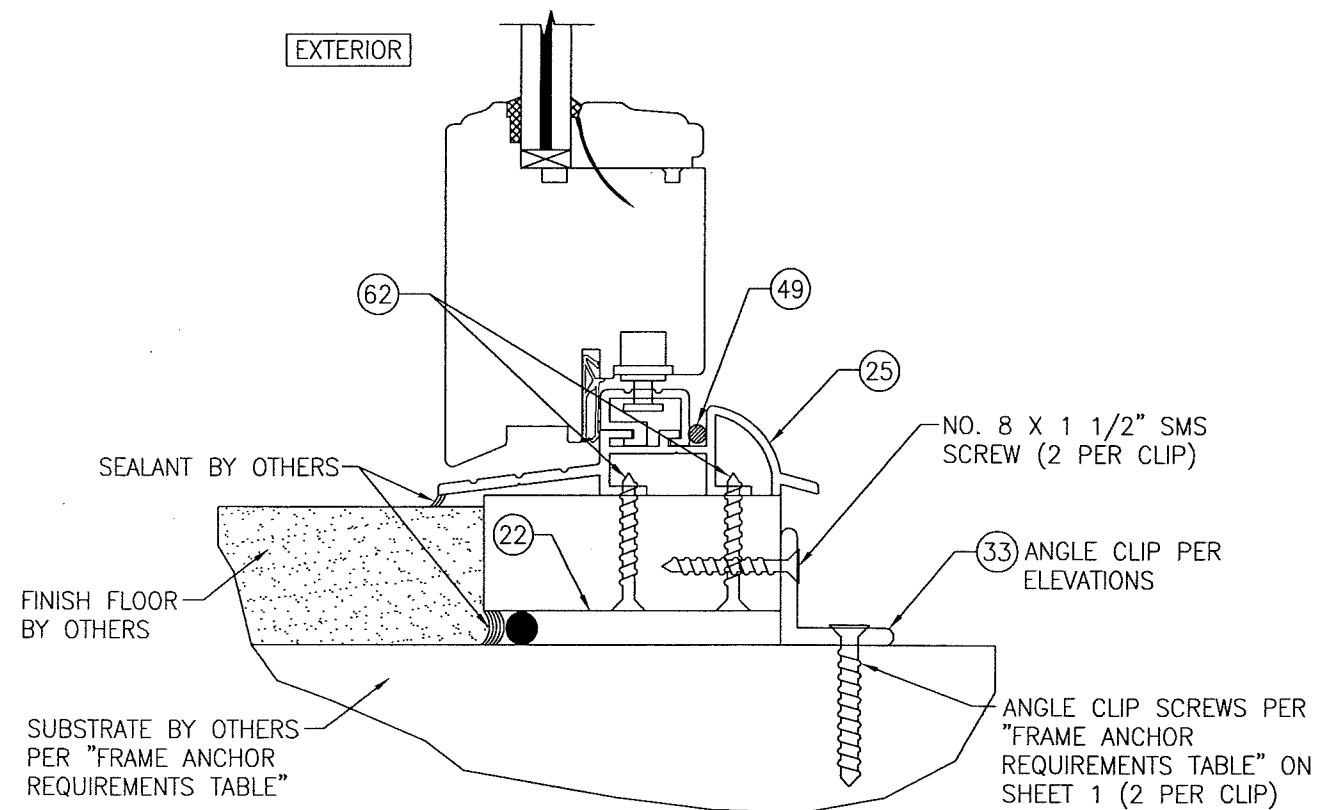
**SILL DETAIL (OPTIONAL SILL INSTALLED WITH  
INSTALLATION CLIP & SUB-SILL)**

(OPERABLE DOOR CONDITION SHOWN, FIXED PANEL DOORS ARE INSTALLED THE SAME)  
(FOR DETAIL NOT SHOWN, SEE OTHER SECTIONS)



**SILL DETAIL (OPTIONAL SILL INSTALLED WITH  
INSTALLATION CLIP & NO SUB-SILL)**

(OPERABLE DOOR CONDITION SHOWN, FIXED PANEL DOORS ARE INSTALLED THE SAME)  
(FOR DETAIL NOT SHOWN, SEE OTHER SECTIONS)



**SILL DETAIL (OPTIONAL SILL INSTALLED WITH ANGLE CLIP)**

(OPERABLE DOOR CONDITION SHOWN, FIXED PANEL DOORS ARE INSTALLED THE SAME)  
(FOR DETAIL NOT SHOWN, SEE OTHER SECTIONS)

**PRODUCT REVISED**  
as complying with the Florida  
Building Code  
NOA-No. 20-0623.12  
Expiration Date 05/27/2024  
By Ishay I. Chank  
Miami-Dade Product Control

**PRODUCT REVISED**  
as complying with the Florida  
Building Code  
Acceptance No. 18-0531.09  
Expiration Date 5/27/24  
By Ishay I. Chank  
Miami-Dade Product Control

DRAWN BY: W.R.M.		CHECKED BY: W.W.S.	
PLOT: 1=2		DATE: 10/08/08	
DATE	BY	REVISION DESCRIPTION	NO.
<p>DRAWING TITLE: <b>OUT-SWING IMPACT WOOD DOORS</b></p> <p>MANUFACTURER: <b>TISCHLER UND SOHN (USA) LTD.</b> SIX SUBURBAN AVENUE STAMFORD, CONNECTICUT 06901 203-674-0600</p> <p>CONSULTANTS: <b>W. W. SCHAEFER ENGINEERING &amp; CONSULTING, P.A. (CA 6809)</b> 7480 150TH COURT NORTH PALM BEACH GARDENS, FL 33418 PHONE: 561-744-3424</p> <p>CERTIFICATION: <b>MAY 15 2018</b> WARREN W. SCHAEFER, P.E. P.E. NO. 44135</p> <p>DRAWING NO. <b>1600</b> REV. <b>C</b> SHEET NO. <b>14</b> OF <b>17</b></p>			



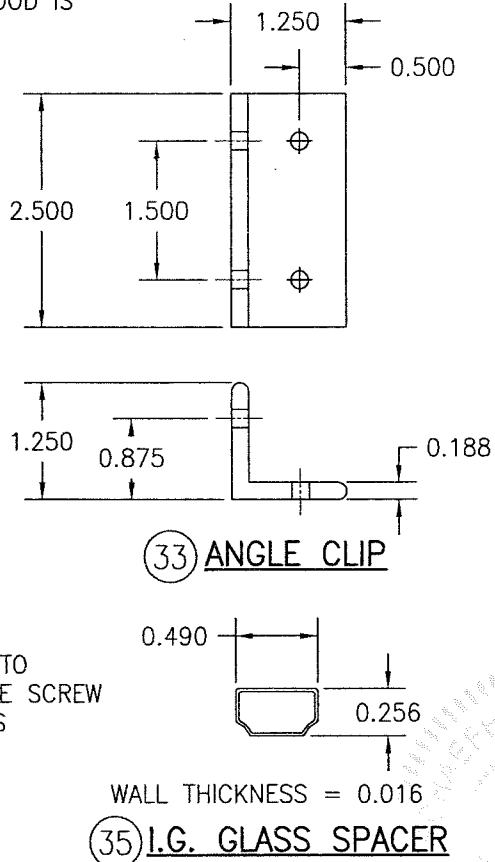
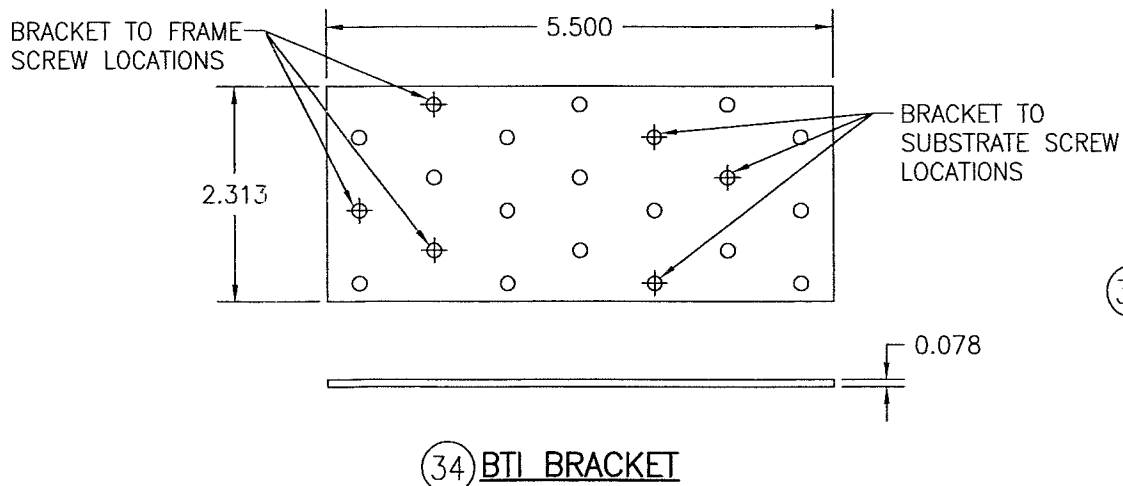
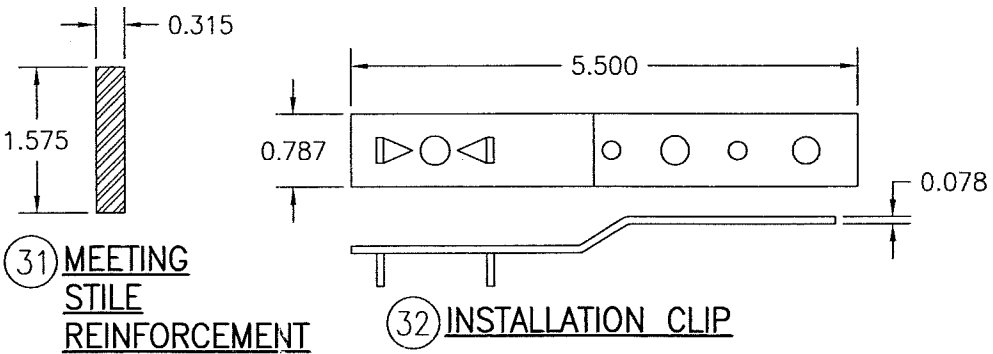




ITEM #	ITEM DESCRIPTION	MANUFACTURER/NOTES
PARTS		
1	HEAD/JAMB	MAHOGANY
2	TOP RAIL	MAHOGANY
3	STANDARD BOTTOM RAIL	MAHOGANY
4	BOTTOM RAIL (USED WITH ADA THRESHOLD)	MAHOGANY
5	STILE	MAHOGANY
6A	ACTIVE MEETING STILE (USED WITH REINFORCEMENT)	MAHOGANY
6B	ACTIVE MEETING STILE (USED WITHOUT REINFORCEMENT)	MAHOGANY
7A	INACTIVE MEETING STILE (USED WITH SIEGENIA LOCK SYSTEM & REINFORCEMENT)	MAHOGANY
7B	INACTIVE MEETING STILE (USED WITH SIEGENIA LOCK SYSTEM & WITHOUT REINFORCEMENT)	MAHOGANY
8A	INACTIVE MEETING STILE (USED WITH KJV LOCK SYSTEM & REINFORCEMENT)	MAHOGANY
8B	INACTIVE MEETING STILE (USED WITH KJV LOCK SYSTEM & WITHOUT REINFORCEMENT)	MAHOGANY
9	FIXED ASTRAGAL	MAHOGANY
10	MID-RAIL	MAHOGANY
11	ONE-PIECE MULLION	MAHOGANY
12	FIXED ASTRAGAL MULLION BAR COVER	MAHOGANY
13	ASTRAGAL	MAHOGANY
14	ONE-PIECE MULLION BAR COVER	MAHOGANY
15	NON-I.G., MDF & WOOD VEENER GLAZING BEAD	MAHOGANY
16	I.G. GLAZING BEAD	MAHOGANY
18	SPACER BLOCK	MAHOGANY
19	SPACER BLOCK	MAHOGANY
20	SPACER BLOCK (USED WITH KJV MULTI-POINT LOCK SYSTEM)	MAHOGANY
21	SUB-SILL	MAHOGANY
22	SUB-SILL	MAHOGANY
23	ADA SUB-SILL	MAHOGANY
24	STANDARD SILL	BRONZE
25	OPTIONAL SILL	BRONZE
26	OPTIONAL ADA SILL	BRONZE
27	CONTINUOUS SILL STRIKE/COVER	BRONZE
28	VERTICAL FIXED ASTRAGAL REINFORCEMENT	34 KSI STAINLESS STEEL OR A36 STEEL
29	VERTICAL MULLION REINFORCEMENT	34 KSI STAINLESS STEEL OR A36 STEEL
30	TRANSOM MULLION REINFORCEMENT	34 KSI STAINLESS STEEL OR A36 STEEL
31	MEETING STILE REINFORCEMENT	34 KSI STAINLESS STEEL OR A36 STEEL
32	INSTALLATION CLIP	GALVANIZED 54 KSI STEEL
33	ANGLE CLIP	6061-T6 ALUMINUM
34	BTI BRACKET	GALVANIZED 54 KSI STEEL
35	I.G. SPACER	ALUMINUM
HARDWARE		
38	BUTT HINGE	BY: GENIATEC GMBH
39	MULTI-POINT LOCK SYSTEM	BY: KJV: STRAIGHT SHOOT
40	MULTI-POINT LOCK SYSTEM	BY: SIEGENIA AUBI KG TYPE: MUSHROOM
41	HANDLE	AS REQUIRED TO OPERATE LOCK SYSTEM

ITEM #	ITEM DESCRIPTION	MANUFACTURER/NOTES
SEALS & SEALANTS		
45	WEATHERSTRIP	THERMOPLASTIC ELASTOMER; BY: DEVENTER
46	WEATHERSTRIP	THERMOPLASTIC ELASTOMER; BY: DEVENTER
47	WEATHERSTRIP	THERMOPLASTIC ELASTOMER; BY: DEVENTER
48	WEATHERSTRIP	THERMOPLASTIC ELASTOMER; BY: DEVENTER
49	WEATHERSTRIP	THERMOPLASTIC ELASTOMER; BY: WEGNER
FASTENERS		
52	0.06" X 1.26" S.S. CURVED NAIL	4" FROM CORNERS & 12" MAX. O.C.
53	0.16" X 1.57" WOOD SCREW	2 PER HINGE INTO STILE
54	0.16" X 1.18" WOOD SCREW	3 PER HINGE INTO JAMB
55	0.16" X 1 1/4" MACHINE SCREW	3 PER HINGE
56	0.16" THREADED INSERT	3 PER HINGE
57	0.30" X 4.72" BAUTEC WOOD SCREW	WITHIN 8" OF ENDS & 18" MAX. O.C.
59	NO. 14 X 4" BAUTEC WOOD SCREW	WITHIN 8" OF ENDS & 18" MAX. O.C.
60	0.18" X 2" WOOD SCREW	WITHIN 6" OF ENDS & 18" MAX. O.C.
61	0.136" X 1.26" SELF TAPPING SCREW	WITHIN 4" OF ENDS & 13 3/4" MAX. O.C.
62	0.136" X 1.50" SELF TAPPING SCREW	WITHIN 4" OF ENDS & 13 3/4" MAX. O.C.
63	0.11" X 0.87" SELF TAPPING SCREW	WITHIN 4" OF ENDS & 13 3/4" MAX. O.C.
64	0.24" X 3.15" WOOD SCREW	WITHIN 8" OF ENDS & 18" MAX. O.C.

NOTE: WOOD USED IN TESTING WAS SIPO MAHOGANY WITH A SPECIFIC GRAVITY OF  $G = 0.62$  AND A MODULUS OF ELASTICITY OF  $E = 1,6000,000$  PSI. OTHER WOOD SPECIES APPLICABLE FOR USE WITH THIS PRODUCT ARE THOSE WITH A SPECIFIC GRAVITY OF 0.62 AND MODULUS OF ELASTICITY OF 1,600,000 PSI OR GREATER. ALL WOOD IS MINIMUM GRADE 2 MILLED BY TISCHLER UND SOHN TO SELECT.



**PRODUCT REVISED**  
as complying with the Florida  
Building Code  
NOA-No. 20-0623.12  
Expiration Date 05/27/2024  
By Ismael I. Chank  
Miami-Dade Product Control

**PRODUCT REVISED**  
as complying with the Florida  
Building Code  
Acceptance No. 18-0531.09  
Expiration Date 5/27/24  
By Ismael I. Chank  
Miami-Dade Product Control

DRAWN BY: W.R.M.	CHECKED BY: W.W.S.
PLOT: 1-2	DATE: 10/08/08
DATE	BY
REVISION DESCRIPTION	NO.
DRAWING TITLE OUT-SWING IMPACT WOOD DOORS	
MANUFACTURER TISCHLER UND SOHN (USA) LTD. SIX SUBURBAN AVENUE STAMFORD, CONNECTICUT 06901 203-674-0600	
CONSULTANTS W. W. SCHAEFER ENGINEERING & CONSULTING, P.A. (CA 6809) 7480 150TH COURT NORTH PALM BEACH GARDENS, FL 33418 PHONE: 561-744-3424	
CERTIFICATION MAY 15 2018 WARREN W. SCHAEFER P.E. P.E. NO. 44135	DRAWING NO. 1600 REV. C SHEET NO. 17 OF 17