



DEPARTMENT OF REGULATORY AND ECONOMIC RESOURCES (RER)
BOARD AND CODE ADMINISTRATION DIVISION

MIAMI-DADE COUNTY
PRODUCT CONTROL SECTION
11805 SW 26 Street, Room 208
Miami, Florida 33175-2474
T (786) 315-2590 F (786) 315-2599

www.miamidade.gov/economy

NOTICE OF ACCEPTANCE (NOA)

Fidelity Manufacturing
1900 NE 25th Avenue
Ocala, Florida 34470

SCOPE:

This NOA is being issued under the applicable rules and regulations governing the use of construction materials. The documentation submitted has been reviewed and accepted by Miami-Dade County RER- Product Control Section to be used in Miami Dade County and other areas where allowed by the Authority Having Jurisdiction (AHJ).

This NOA shall not be valid after the expiration date stated below. The Miami-Dade County Product Control Section (In Miami Dade County) and/or the AHJ (in areas other than Miami Dade County) reserve the right to have this product or material tested for quality assurance purposes. If this product or material fails to perform in the accepted manner, the manufacturer will incur the expense of such testing and the AHJ may immediately revoke, modify, or suspend the use of such product or material within their jurisdiction. RER reserves the right to revoke this acceptance if it is determined by Miami-Dade County Product Control Section that this product or material fails to meet the requirements of the applicable building code.

This product is approved as described herein and has been designed to comply with the High Velocity Hurricane Zone of the Florida Building Code.

DESCRIPTION: Aluminum Enclosures

APPROVAL DOCUMENT: Drawing No. WO#47148, titled "Fidelity Standard Enclosure", sheets 1 through 10 of 10, prepared by Fidelity Manufacturing, last revision #04, dated 06/08/2022, signed and sealed by C. Glenn Pugh, P.E., on 06/09/2022, bearing the Miami-Dade County Product Control Approval stamp with the Notice of Acceptance number and the approval date by the Miami-Dade County Product Control Section.

MISSILE IMPACT RATING: Large and Small Missile Impact Resistant

LABELING: Each unit shall bear a permanent label with the manufacturer's name or logo, City and State and the following statement: "Miami-Dade County Product Control Approved", unless otherwise noted herein.

RENEWAL of this NOA shall be considered after a renewal application has been filed and there has been no change in the applicable building code negatively affecting the performance of this product.

TERMINATION of this NOA will occur after the expiration date or if there has been a revision or change in the materials, use, and/or manufacture of the product or process. Misuse of this NOA as an endorsement of any product, for sales, advertising or any other purposes shall automatically terminate this NOA. Failure to comply with any section of this NOA shall be cause for termination and removal of NOA.

ADVERTISEMENT: The NOA number preceded by the words Miami-Dade County, Florida, and followed by the expiration date may be displayed in advertising literature. If any portion of the NOA is displayed, then it shall be done in its entirety.

INSPECTION: A copy of this entire NOA shall be provided to the user by the manufacturer or its distributors and shall be available for inspection at the job site at the request of the Building Official.

This NOA consists of this page 1, evidence submitted page E-1 as well as approval document mentioned above. The submitted documentation was reviewed by **Helmy A. Makar, P.E., M.S.**

Helmy A. Makar
06/23/2022



NOA No. 20-0630.01
Expiration Date: 06/23/2027
Approval Date: 06/23/2022
Page 1

Fidelity Manufacturing

NOTICE OF ACCEPTANCE: EVIDENCE SUBMITTED

A. DRAWINGS

1. Drawing No. WO#47148, titled " Fidelity Standard Enclosure ", sheets 1 through 10 of 10, prepared by Fidelity Manufacturing, last revision #04, dated 06/08/2022, signed and sealed by C. Glenn Pugh, P.E., on 06/09/2022.

B. TESTS

1. Test reports on 1) Uniform Static Air Pressure Test, per FBC TAS 202-94
2) Large Missile Impact Test per FBC, TAS 201-94, 3) Cyclic Wind Pressure per FBC, TAS 203-94 along with marked-up drawings of **Wall Panel Assembly**, prepared by NTA, Test Report No. **FIDM031720-51(R0)**, dated 03/10/2022, signed and sealed by Douglas Berger, P.E., on 03/10/2022.
2. Test reports on 1) Uniform Static Air Pressure Test, per FBC TAS 202-94
2) Large Missile Impact Test per FBC, TAS 201-94, 3) Cyclic Wind Pressure per FBC, TAS 203-94 along with marked-up drawings of **Roof Panel Assembly**, prepared by NTA, Test Report No. **FIDM031720-59(R1)**, dated 03/10/2022, signed and sealed by Douglas Berger, P.E., on 03/10/2022.
3. Test reports on 1) Uniform Static Air Pressure Test, per FBC TAS 202-94
2) Large Missile Impact Test per FBC, TAS 201-94, 3) Cyclic Wind Pressure per FBC, TAS 203-94 along with marked-up drawings of **Door Assembly**, prepared by NTA, Test Report No. **FIDM031720-56(R0)**, dated 03/10/2022, signed and sealed by Douglas Berger, P.E., on 03/10/2022.

C. CALCULATIONS

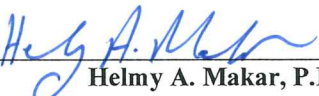
1. Structural Calculation titled Fidelity Manufacturing Work Order #47148, 24 pages, dated 03/17/2022, prepared by C. Glenn Pugh, P.E., signed and sealed by C. Glenn Pugh, P.E., on 03/17/2022.

D. QUALITY ASSURANCE

1. By Miami-Dade County Department of Regulatory and Economic Resources.

E. MATERIAL CERTIFICATIONS

1. None.



Helmy A. Makar, P.E., M.S.
Product Control Section Supervisor
NOA No. 20-0630.01
Expiration Date: 06/23/2027
Approval Date: 06/23/2022

DRAWINGS PREPARED FOR:
MIAMI-DADE COUNTY- NOTICE OF ACCEPTANCE (NOA) REVIEW
FIDELITY STANDARD ENCLOSURE



1900 NE 25TH AVE, OCALA, FL 34470
PHONE (352) 414-4700 FAX (352) 414-4642

DRAWING PACKAGE

Sheet Number	Sheet Title
1	COVER SHEET
2	GENERAL NOTES AND BOM
3	ENCLOSURE VIEW
4	SIDE WALL FRAME
5	END WALL AND SUPPORT WALL FRAME
6	ROOF VIEW
7	TYPICAL SKIN AND ROOF PANEL LAYOUT
8	TYPICAL WALL ASSEMBLY DETAIL
9	TYPICAL ROOF ASSEMBLY DETAIL
10	TYPICAL DOOR ASSEMBLY DETAIL

REVISIONS:

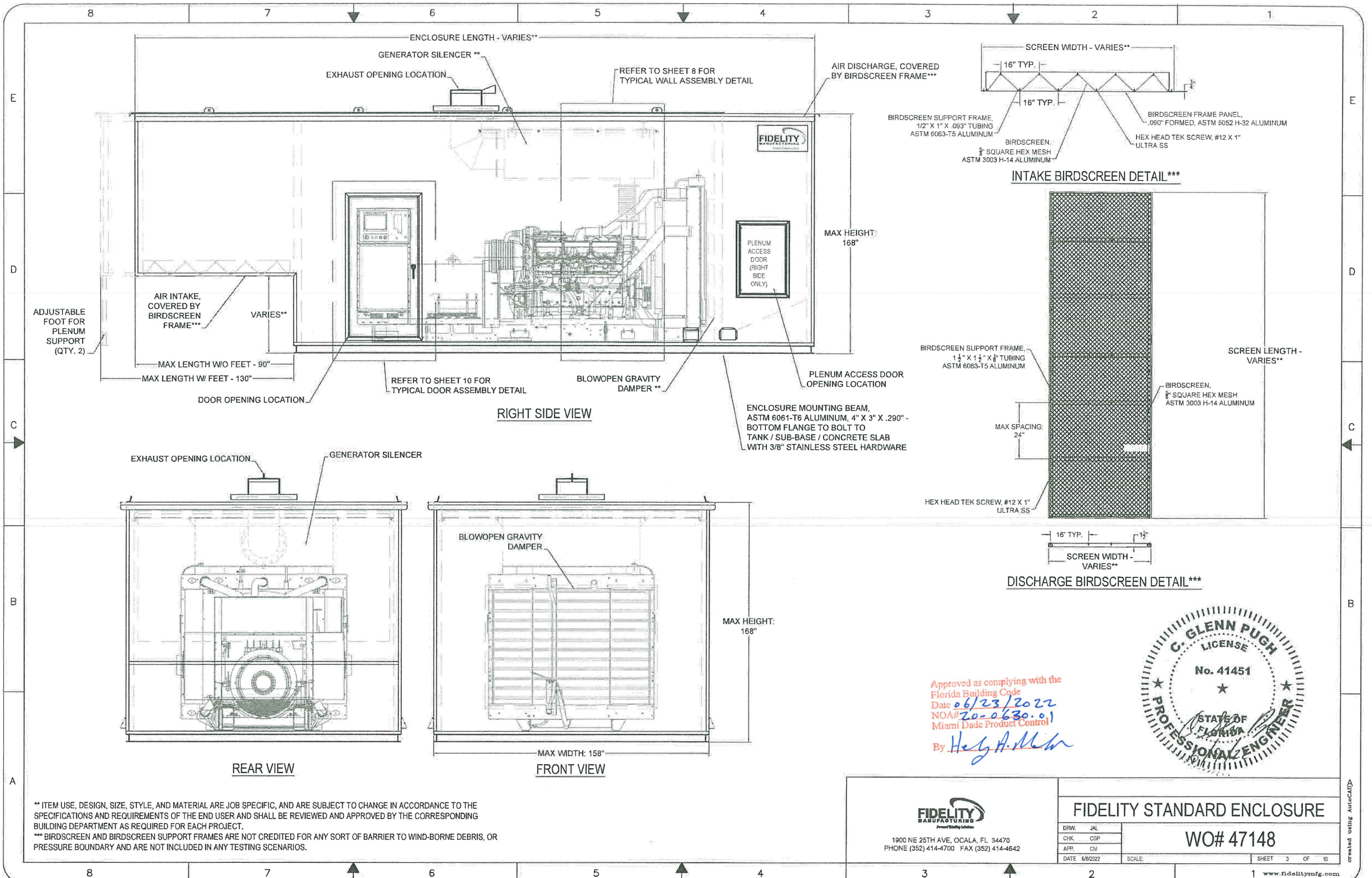
REVISION LEVEL	REVISION DESCRIPTION	SHEET OF CHANGE(S)	ENGINEER	DATE
00	INITIAL RELEASE, REFERENCE FIDELITY W.O. 47148		JAL	12/29/2020
01	REVISED NOTE REGARDING BIRDSCREEN FRAMING; ADDED NOTE REGARDING STANDARD DOOR HINGE		JAL	5/24/2021
02	REVISED DOOR FRAMING DESIGN		JAL	6/15/2021
03	REVISED TO INCORPORATE REVIEWER COMMENTS AND FINAL TEST REPORTS		CGP	03/17/2022
04	REVISED NOTES #2 IN DESIGN NOTES & #6 IN GENERAL NOTES ON SHEET 2 OF 10		BML	06/08/2022

Approved as complying with the
Florida Building Code
Date 06/23/2022
NOA# 20-0630.01
Miami Dade Product Control

By H. G. Pugh



	8	7	6	5	4	3	2	1
	BILL OF MATERIALS		DESIGN NOTES:					
E	#	PART DESCRIPTION	MATERIAL	<div>1. THIS SYSTEM HAS BEEN DESIGNED AND SHALL BE FABRICATED IN ACCORDANCE WITH THE STRUCTURAL PROVISIONS OF THE FLORIDA BUILDING CODE SEVENTH EDITION (2020, WITH 2021 SUPPLEMENT).</div> <div>2. SPECIFIC SUBSYSTEMS OF THE ENCLOSURE ARE TESTED PER TAS 201/202/203. REFERENCE THE FOLLOWING: ICC-NTA FINAL REPORT FIDM031720-59 (R1) - ROOF PANEL ASSEMBLY ICC-NTA FINAL REPORT FIDM031720-51 (R0) - WALL PANEL ASSEMBLY ICC-NTA FINAL REPORT FIDM031720-56 (R0) - DOOR ASSEMBLY</div> <div>3. LOADING FOLLOWS THE GUIDELINES OF ASCE 7-16, WITH FOLLOWING PARAMETERS<ul style="list-style-type: none">ROOF PANEL DESIGN PRESSURE = 42 PSFWALL PANEL DESIGN PRESSURE = 42 PSFDOOR ASSEMBLY DESIGN PRESSURE = 42 PSF</div> <div>GENERAL NOTES</div> <div>1. THE ENCLOSURE SHOWN ON THESE DRAWINGS REPRESENT A GENERIC ENCLOSURE TO SHOW OVERALL LIMITATIONS ON DIMENSIONS AND GENERAL ARRANGEMENT OF A TYPICAL ENCLOSURE. ALL ENCLOSURES, MANUFACTURED BY FIDELITY MANUFACTURING OCALA FL, ARE PROVIDED TO HOUSE THE ENGINE/GENERATOR AND ACCESSORIES.</div> <div>2. ACTUAL ENCLOSURES ARE DETAILED AND FABRICATED TO MEET SPECIFIC CUSTOMER REQUIREMENTS AND DIMENSIONS WILL VARY. **</div> <div>3. ALL ENCLOSURES FABRICATED BY FIDELITY MANUFACTURING FOLLOW FIDELITY'S QUALITY MANUAL.</div> <div>4. THE ANCHORAGE OF THE ENCLOSURES DEPENDS ON THE CUSTOMER REQUIREMENTS AND INSTALLATION LOCATION. ENCLOSURES ARE TYPICALLY MOUNTED ON TOP OF FIDELITY SUPPLIED FUEL TANKS, FIDELITY SUPPLIED STRUCTURAL SUB-BASE FRAMES, OR BOLTED DIRECTLY TO A CONCRETE SLAB. THE ANCHORAGE OF THE ENCLOSURES ARE OUTSIDE THE SCOPE OF THIS NOA AND SHALL BE REVIEWED AND APPROVED BY THE CORRESPONDING BUILDING DEPARTMENT</div> <div>5. FIDELITY MANUFACTURING DOES NOT DESIGN CONCRETE SUPPORT PADS FOR ENCLOSURES, TANKS, OR SUB-BASE SUPPORT.</div> <div>6. THE ALUMINUM ENCLOSURE SHALL CONFORM TO THE DETAILS SHOWN ON THESE DRAWINGS. ALL OTHER CONNECTIONS AND DETAILS NOT ILLUSTRATED IN THIS DOCUMENT SHALL NOT BE ALLOWED.</div> <div>7. ALL MATERIAL IS OUTLINED IN THE BILL-OF-MATERIALS INCLUDED WITH THESE DRAWINGS.</div> <div>8. ENGINEER SEAL AFFIXED HERETO VALIDATES STRUCTURAL DESIGN AS SHOWN ONLY.</div> <div>9. THE ROLE OF FIDELITY MANUFACTURING'S ENGINEER IS THAT OF SPECIALTY ENGINEER AND NOT THE ENGINEER OF RECORD. CONSEQUENTLY, THE ARCHITECT/ENGINEER OF RECORD SHALL BE RESPONSIBLE FOR THE INTEGRITY OF ALL SUPPORTING SURFACES TO THIS DESIGN WHICH SHALL BE COORDINATED BY THE PERMITTING CONTRACTOR.</div> <div>10. ALL DIMENSIONS SHOWN HEREIN REPRESENT UNITS IN INCHES, UNLESS OTHERWISE NOTED.</div> <div>11. FIDELITY MANUFACTURING, LLC. CLAIMS PROPRIETARY RIGHT IN THE MATERIAL DISCLOSED HEREON. THESE DRAWINGS MAY NOT BE REPRODUCED OR USED TO MANUFACTURE ANYTHING SHOWN HEREON WITHOUT PERMISSION FROM FIDELITY MANUFACTURING, LLC.</div>				
	1	ALUM. TUBING 4" X 4" X 1/8"	ALUMINUM, ASTM 6061-T6					
	2	ALUM. TUBING 4" X 4" X 1/4"	ALUMINUM, ASTM 6061-T6					
	3	ALUM. TUBING 2" X 4" X 1/8"	ALUMINUM, ASTM 6061-T6					
	4	ALUM. TUBING 2" X 4" X 1/4"	ALUMINUM, ASTM 6061-T6					
	5	ALUM. TUBING 2" X 3" X 1/8"	ALUMINUM, ASTM 6061-T6					
	6	ALUM. TUBING 2" X 2" X 1/8"	ALUMINUM, ASTM 6061-T6					
	7	ALUM. TUBING 2" X 2" X 3/16"	ALUMINUM, ASTM 6061-T6					
D	8	ALUM. TUBING 2" X 2" X 1/4"	ALUMINUM, ASTM 6061-T6					
	9	ALUM. TUBING 1-1/2" X 1-1/2" X 1/8"	ALUMINUM, ASTM 6063-T5					
	10	ALUM. TUBING 1/2" X 1" X .093"	ALUMINUM, ASTM 6063-T5					
	11	ALUM. I-BEAM 4" X 3" X .290"	ALUMINUM, ASTM 6061-T6					
	12	ALUM. I-BEAM 4" X 4" X .313"	ALUMINUM, ASTM 6061-T6					
	13	ALUM. STRUCT. ANGLE 2" X 2" X 3/8", .125" RAD.	ALUMINUM, ASTM 6061-T6					
	14	ALUM. TRIM ANGLE 1-1/2" X 1-1/2" X 1/8"	ALUMINUM, ASTM 6063-T5					
	15	ALUM. TRIM EXTRUSION "J" 4" X 3" X 1/8"	ALUMINUM, ASTM 6063-T5					
C	16	ALUM. TRIM EXTRUSION "Z" 1-1/2" X 2-5/8" X 1-1/2", .125" THK.	ALUMINUM, ASTM 6063-T5					
	17	.090" FORMED BIRDSCREEN FRAME, MILL FINISH	ALUMINUM, ASTM 5052-H32					
	18	.080" BIRDSCREEN, 5/8" SQUARE HEX MESH, MILL FINISH	ALUMINUM, ASTM 3003-H14					
	19	GENERATOR EXHAUST SILENCER **	CARBON STEEL, ASTM A-36**					
	20	5/8"-11 HEX BOLT, GRADE 8 **	STEEL, ZINC-COATED**					
	21	5/8" FLAT WASHER **	STEEL, ZINC-COATED**					
	22	5/8" LOCK WASHER **	STEEL, ZINC-COATED**					
	23	5/8"-11 HEX NUT, GRADE 8 **	STEEL, ZINC-COATED**					
B	24	1/2"-13 HEX BOLT, GRADE 5	STEEL, ZINC-COATED					
	25	1/2" FLAT WASHER	STEEL, ZINC-COATED					
	26	1/2" LOCK WASHER	STEEL, ZINC-COATED					
	27	1/2"-13 HEX NUT, GRADE 5	STEEL, ZINC-COATED					
	28	3/8"-16 CARRIAGE BOLT	18-8 STAINLESS STEEL					
	29	3/8" FLAT WASHER	18-8 STAINLESS STEEL					
	30	3/8"-16 HEX NYLON LOCK NUT	18-8 STAINLESS STEEL					
	31	.080" ENCLOSURE SKIN PANEL, PAINTED	ALUMINUM, ASTM 5052-H32					
A	32	.090" ROOF SKIN PANEL, MILL FINISH	ALUMINUM, ASTM 5052-H32					
	33	1/4" ALUMINUM PLATE	ALUMINUM, ASTM 6061-T6					
	34	HEX HEAD TEK SCREW, #12 X 1"	18-8 STAINLESS STEEL					
	35	DOOR HARDWARE, HINGE, PIANO, 3", 1/8" PIN **	18-8 STAINLESS STEEL**					
	36	DOOR HARDWARE, HANDLE, PADLOCKABLE **	316 STAINLESS STEEL**					
	37	DOOR HARDWARE, LATCH, PADDLE, CENTER CASE **	STEEL, ZINC-COATED**					
	38	DOOR HARDWARE, HANDLE, SPOON, CENTER CASE **	STEEL, ZINC-COATED**					
	39	DOOR HARDWARE, LOCK ROD **	STEEL, ZINC-COATED**					
	40	DOOR HARDWARE, SLIDE BOLT W/ CASE **	STEEL, ZINC-COATED**					
	41	DOOR HARDWARE, GAS SHOCK, 5-1/2" STROKE, 30 LBS **	-					
	42	DOOR HARDWARE, BRACKET, GAS SHOCK **	ALUMINUM, ASTM 6061-T6 **					
	43	DOOR HARDWARE, 3/8" BULB DOOR SEAL, BLACK **	EPDM **					
	44	1" WIDE ADHESIVE TAPE	3M VHB-CV62F, OR OTHER APPROVED EQUAL					
	45	BLOWOPEN GRAVITY DAMPER**	ALUMINUM, ASTM 5052-H32**					
** ITEM USE, DESIGN, SIZE, STYLE, AND MATERIAL ARE JOB SPECIFIC, AND ARE SUBJECT TO CHANGE IN ACCORDANCE TO THE SPECIFICATIONS AND REQUIREMENTS OF THE END USER AND SHALL BE REVIEWED AND APPROVED BY THE CORRESPONDING BUILDING DEPARTMENT AS REQUIRED FOR EACH PROJECT.				<div>Approved as complying with the Florida Building Code Date 06/23/2022 NOA# 26-0630-01 Miami Dade Product Control By <i>Heidi A. M...</i></div> <div><div>FIDELITY MANUFACTURING <small>Power Building Solutions</small></div><div>1900 NE 25TH AVE, OCALA, FL 34470 PHONE (352) 414-4700 FAX (352) 414-4642</div></div> <div><div>FIDELITY STANDARD ENCLOSURE</div><div>WO# 47148</div><div><div>DRW. JAL</div><div>CHK. CGP</div><div>APP. CM</div><div>DATE 6/8/2022</div></div><div><div>SCALE:</div><div>SHEET 2 OF 10</div></div><div>www.fidelitymfg.com</div></div>				



** ITEM USE, DESIGN, SIZE, STYLE, AND MATERIAL ARE JOB SPECIFIC, AND ARE SUBJECT TO CHANGE IN ACCORDANCE TO THE SPECIFICATIONS AND REQUIREMENTS OF THE END USER AND SHALL BE REVIEWED AND APPROVED BY THE CORRESPONDING BUILDING DEPARTMENT AS REQUIRED FOR EACH PROJECT.

*** BIRDSCREEN AND BIRDSCREEN SUPPORT FRAMES ARE NOT CREDITED FOR ANY SORT OF BARRIER TO WIND-BORNE DEBRIS, OR PRESSURE BOUNDARY AND ARE NOT INCLUDED IN ANY TESTING SCENARIOS.

Approved as complying with the
Florida Building Code
Date 06/23/2022
NOA# 20-0630.01
Miami Dade Product Control
By Hedy A. Miller



1900 NE 25TH AVE, OCALA, FL 34470
PHONE (352) 414-4700 FAX (352) 414-4642

FIDELITY STANDARD ENCLOSURE

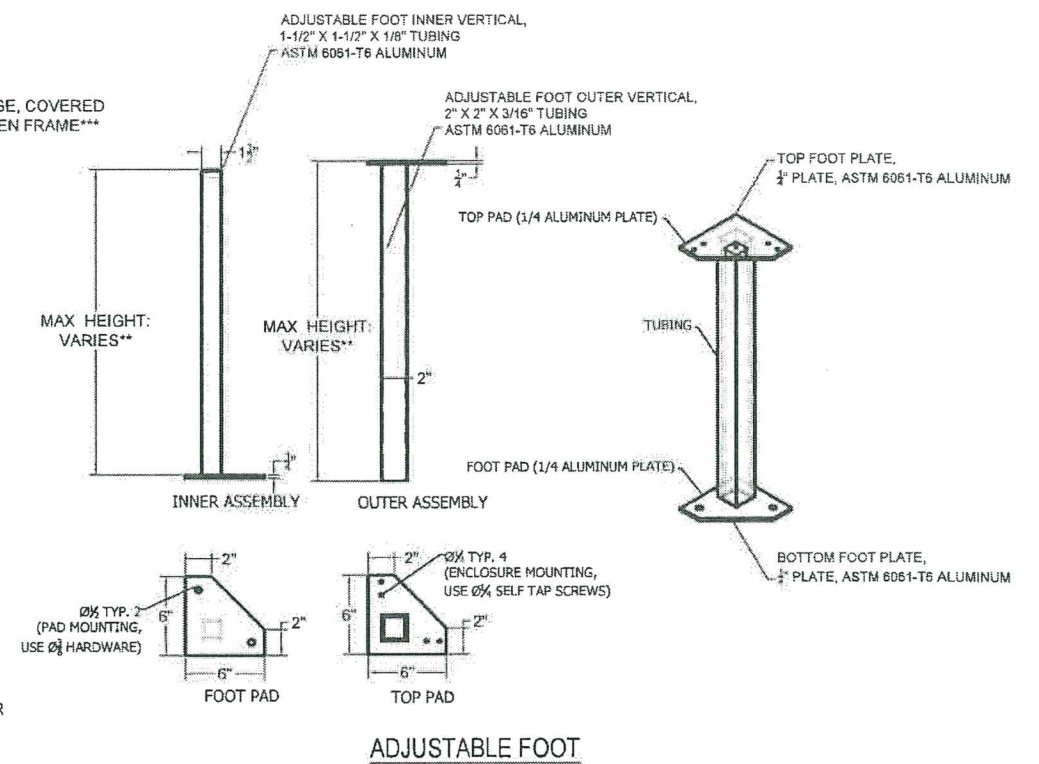
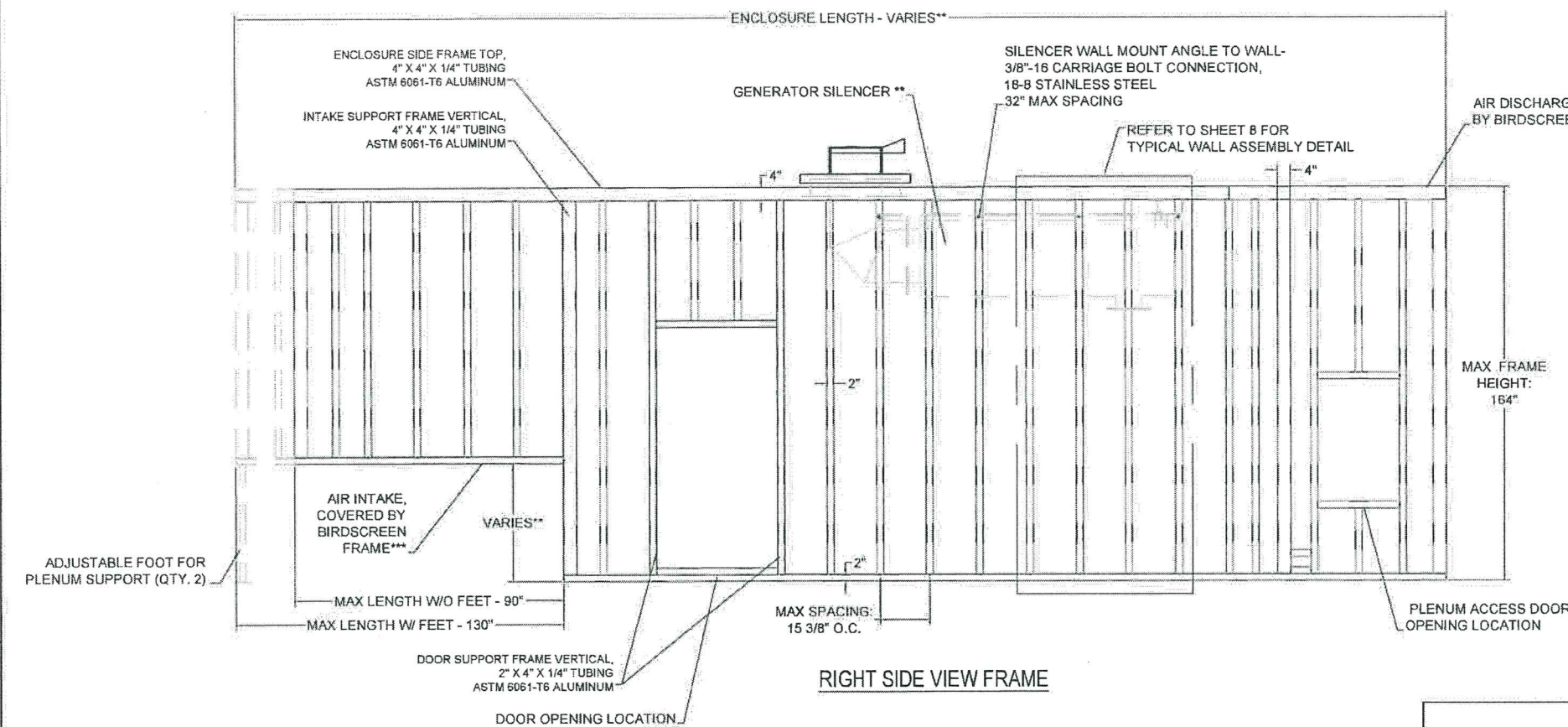
WO# 47148

DRW.	JAL	SHEET 3 OF 10
CHK.	CGP	
APP.	CM	
DATE	6/8/2022	
SCALE:		

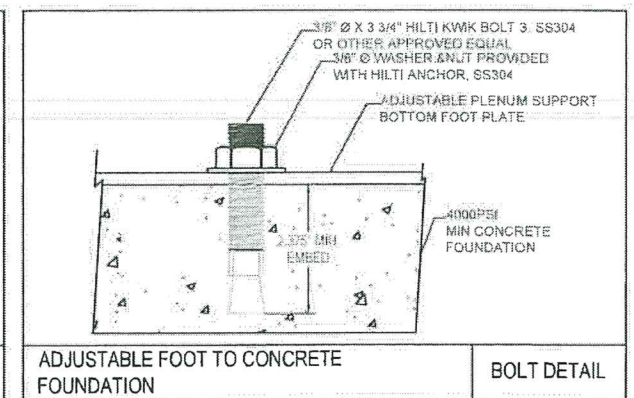
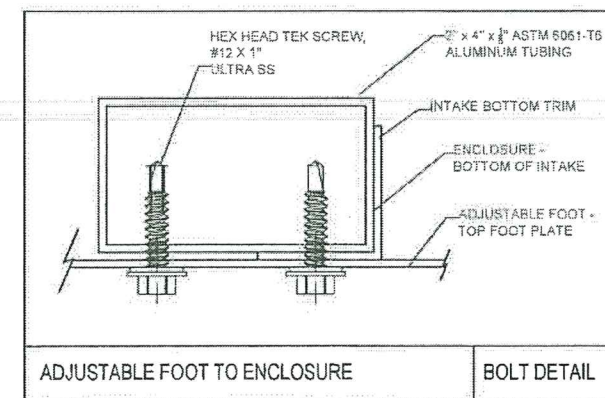
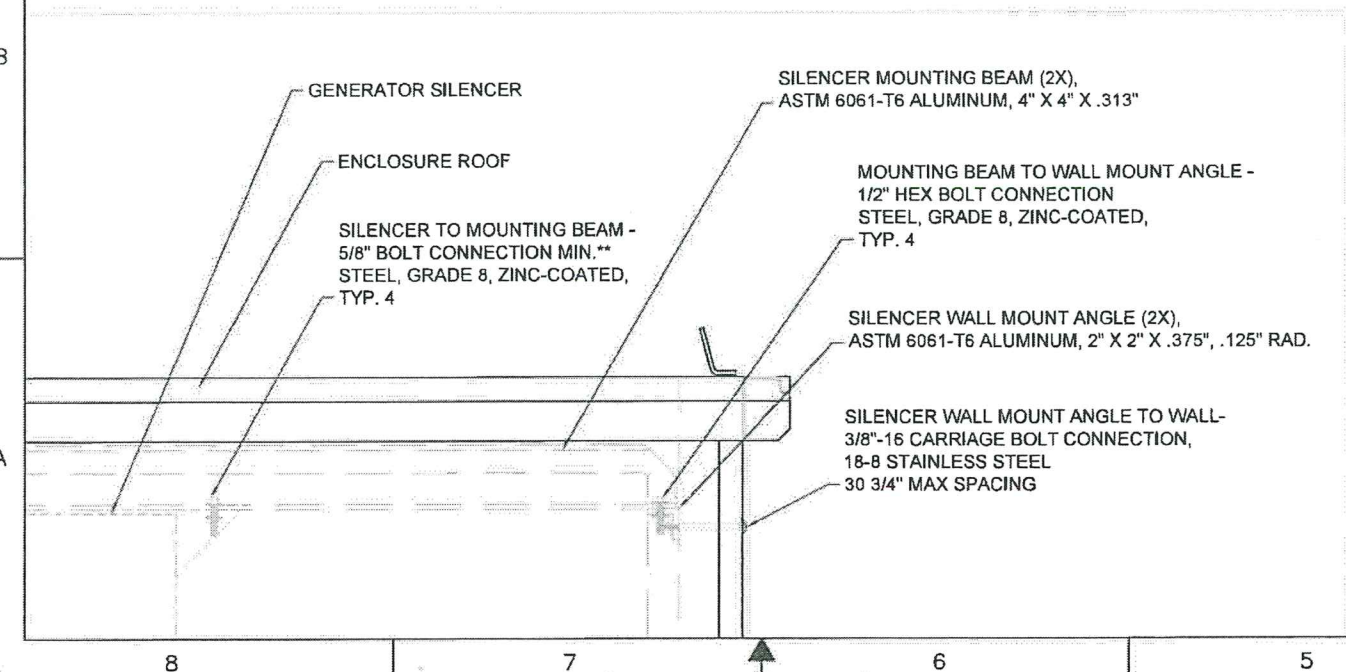
created using AutoCAD

*** ITEM USE, DESIGN, SIZE, STYLE, AND MATERIAL ARE JOB SPECIFIC, AND ARE SUBJECT TO CHANGE IN ACCORDANCE TO THE SPECIFICATIONS AND REQUIREMENTS OF THE END USER AND SHALL BE REVIEWED AND APPROVED BY THE CORRESPONDING BUILDING DEPARTMENT AS REQUIRED FOR EACH PROJECT..

*** BIRDSCREEN AND BIRDSCREEN SUPPORT FRAMES ARE NOT CREDITED FOR ANY SORT OF BARRIER TO WIND-BORNE DEBRIS, OR PRESSURE BOUNDARY AND ARE NOT INCLUDED IN ANY TESTING SCENARIOS.



GENERATOR SILENCER MOUNTING



Approved as complying with the
Florida Building Code
Date 06/23/2022
NOA# 20-0630-01
Miami Dade Product Control
By H. G. A. McW



1900 NE 25TH AVE, OCALA, FL 34470
PHONE (352) 414-4700 FAX (352) 414-4542

FIDELITY STANDARD ENCLOSURE

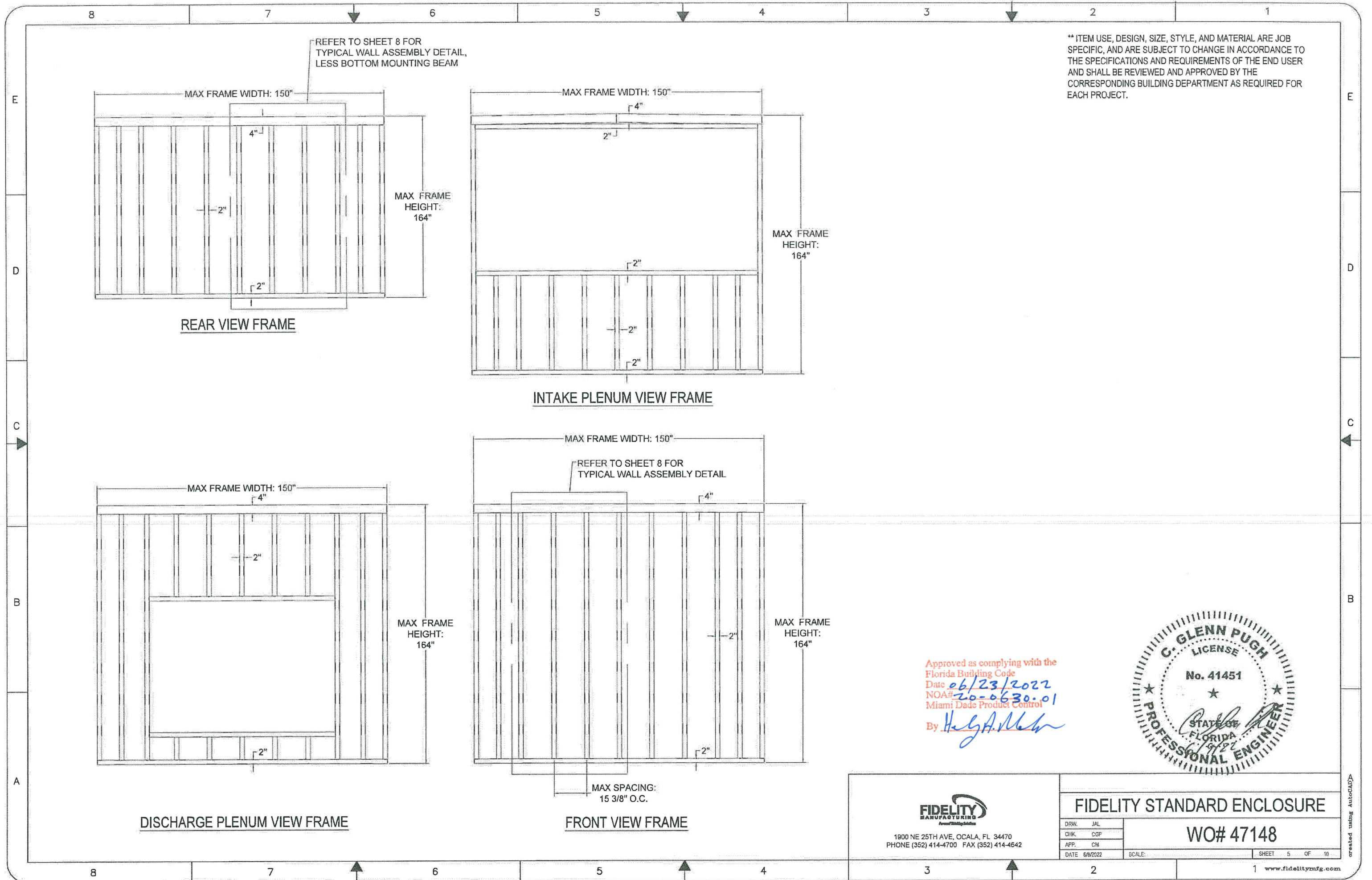
WO# 47148

DRW.	JAL
CHK.	CGP
APP.	CM
DATE	6/5/2022

SCALE:

SHEET 4 OF 10


Created using AutoCAD



** ITEM USE, DESIGN, SIZE, STYLE, AND MATERIAL ARE JOB SPECIFIC, AND ARE SUBJECT TO CHANGE IN ACCORDANCE TO THE SPECIFICATIONS AND REQUIREMENTS OF THE END USER AND SHALL BE REVIEWED AND APPROVED BY THE CORRESPONDING BUILDING DEPARTMENT AS REQUIRED FOR EACH PROJECT.

Approved as complying with the
Florida Building Code
Date 06/23/2022
NOA# 20-0630-01
Miami Dade Product Control
By H. G. A. Nelson

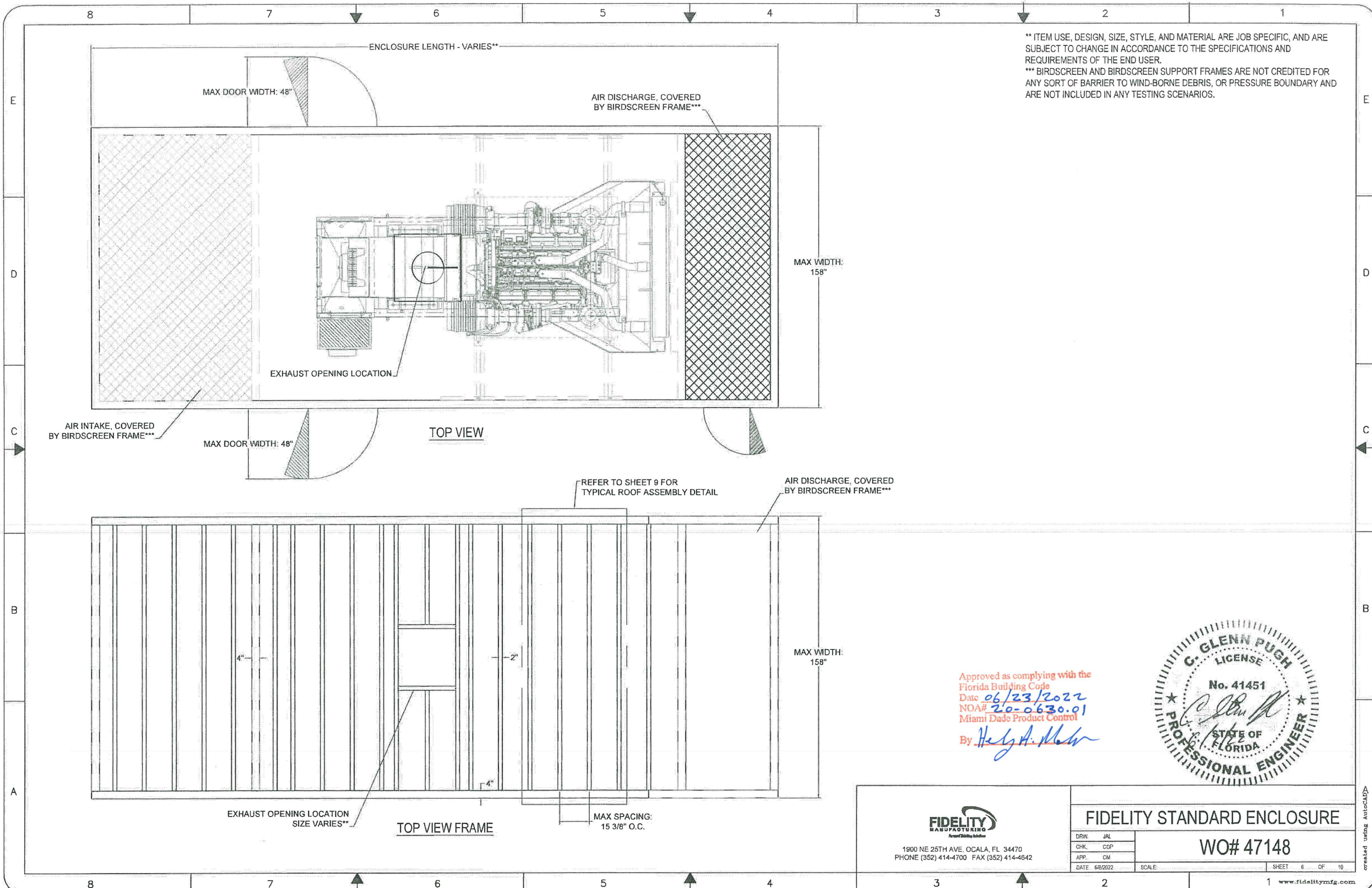




1900 NE 25TH AVE, OCALA, FL 34470
PHONE (352) 414-4700 FAX (352) 414-4642

FIDELITY STANDARD ENCLOSURE	
WO# 47148	
DRW. JAL	SHEET 5 OF 10
CHK. CGP	
APP. CM	
DATE 6/6/2022	
SCALE:	1 www.fidelitymfg.com

created using AutoCAD



** ITEM USE, DESIGN, SIZE, STYLE, AND MATERIAL ARE JOB SPECIFIC, AND ARE SUBJECT TO CHANGE IN ACCORDANCE TO THE SPECIFICATIONS AND REQUIREMENTS OF THE END USER.
*** BIRDSCREEN AND BIRDSCREEN SUPPORT FRAMES ARE NOT CREDITED FOR ANY SORT OF BARRIER TO WIND-BORNE DEBRIS, OR PRESSURE BOUNDARY AND ARE NOT INCLUDED IN ANY TESTING SCENARIOS.

Approved as complying with the
Florida Building Code
Date 06/23/2022
NOA# 20-0630.01
Miami Dade Product Control
By Hely A. Melin



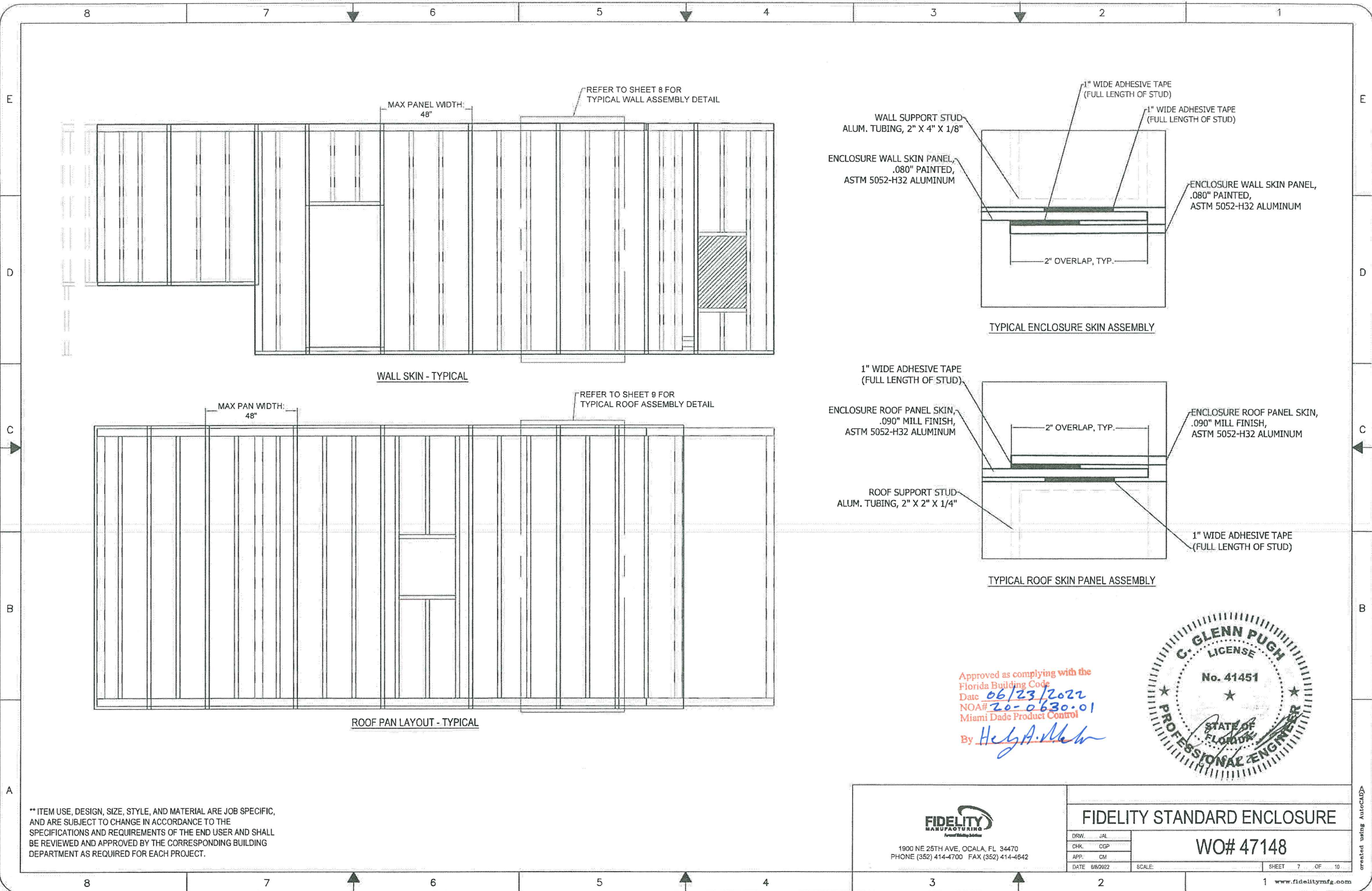
1900 NE 25TH AVE, OCALA, FL 34470
PHONE (352) 414-4700 FAX (352) 414-4642

FIDELITY STANDARD ENCLOSURE

WO# 47148

DRW.	JAL	SCALE:	SHEET 6 OF 10
CHK.	CGP		
APP.	CM		
DATE	6/8/2022		

created using AutoCAD



** ITEM USE, DESIGN, SIZE, STYLE, AND MATERIAL ARE JOB SPECIFIC, AND ARE SUBJECT TO CHANGE IN ACCORDANCE TO THE SPECIFICATIONS AND REQUIREMENTS OF THE END USER AND SHALL BE REVIEWED AND APPROVED BY THE CORRESPONDING BUILDING DEPARTMENT AS REQUIRED FOR EACH PROJECT.

Approved as complying with the
Florida Building Code
Date 06/23/2022
NOA# 20-0630-01
Miami Dade Product Control
By Hegh A. Mahr

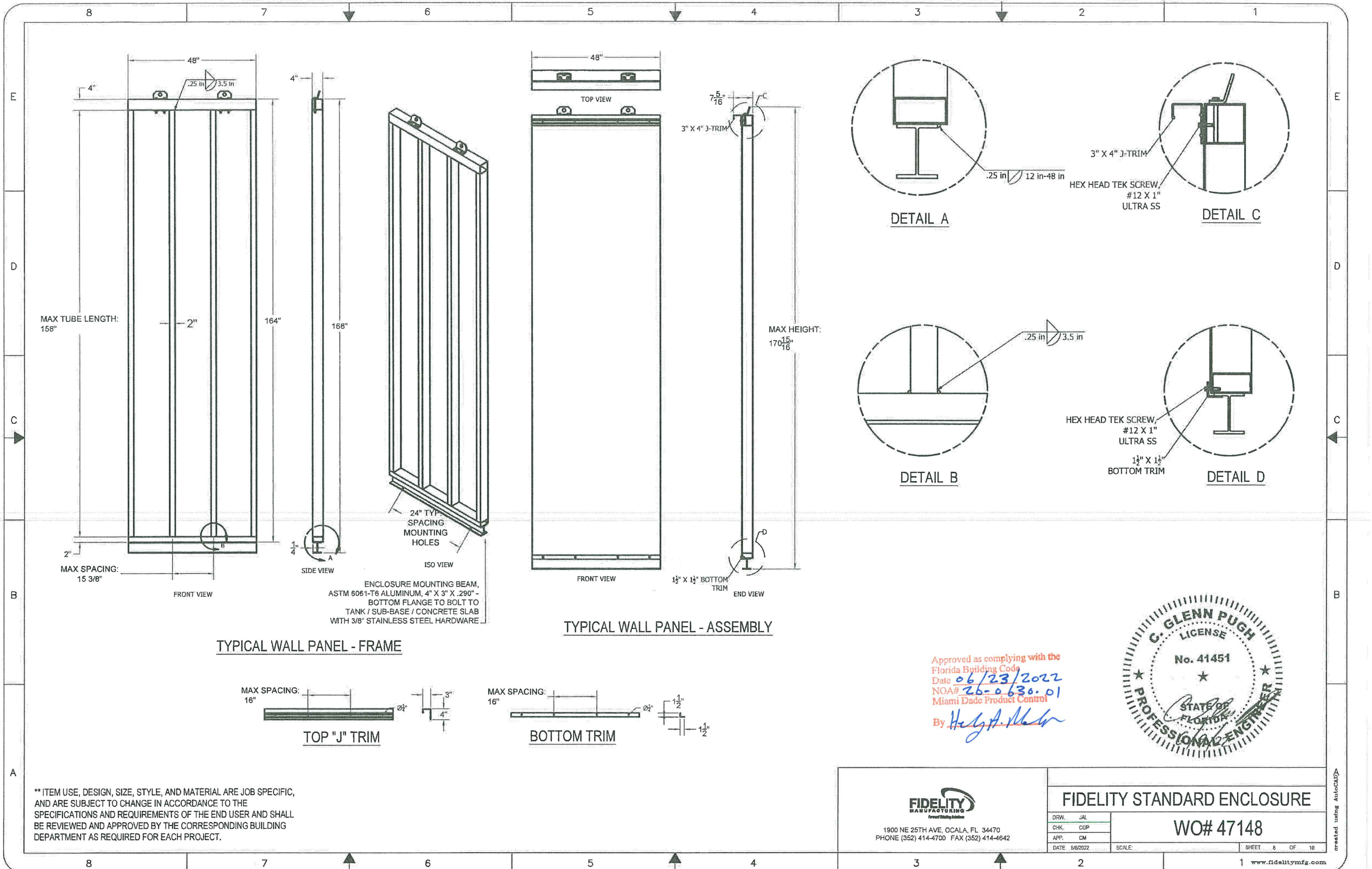


1900 NE 25TH AVE, OCALA, FL 34470
PHONE (352) 414-4700 FAX (352) 414-4642

FIDELITY STANDARD ENCLOSURE

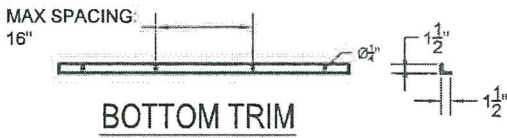
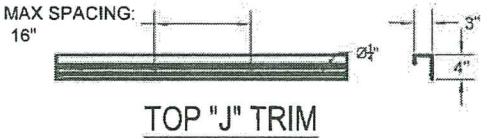
WO# 47148

DRW.	JAL	SCALE:	SHEET 7 OF 10
CHK.	CGP		
APP.	CM		
DATE	6/8/2022		



TYPICAL WALL PANEL - ASSEMBLY

TYPICAL WALL PANEL - FRAME



** ITEM USE, DESIGN, SIZE, STYLE, AND MATERIAL ARE JOB SPECIFIC, AND ARE SUBJECT TO CHANGE IN ACCORDANCE TO THE SPECIFICATIONS AND REQUIREMENTS OF THE END USER AND SHALL BE REVIEWED AND APPROVED BY THE CORRESPONDING BUILDING DEPARTMENT AS REQUIRED FOR EACH PROJECT.

Approved as complying with the
Florida Building Code
Date 06/23/2022
NOA# 26-0630.01
Miami Dade Product Control
By *Heidi A. Nelson*



1900 NE 25TH AVE, OCALA, FL 34470
PHONE (352) 414-4700 FAX (352) 414-4642

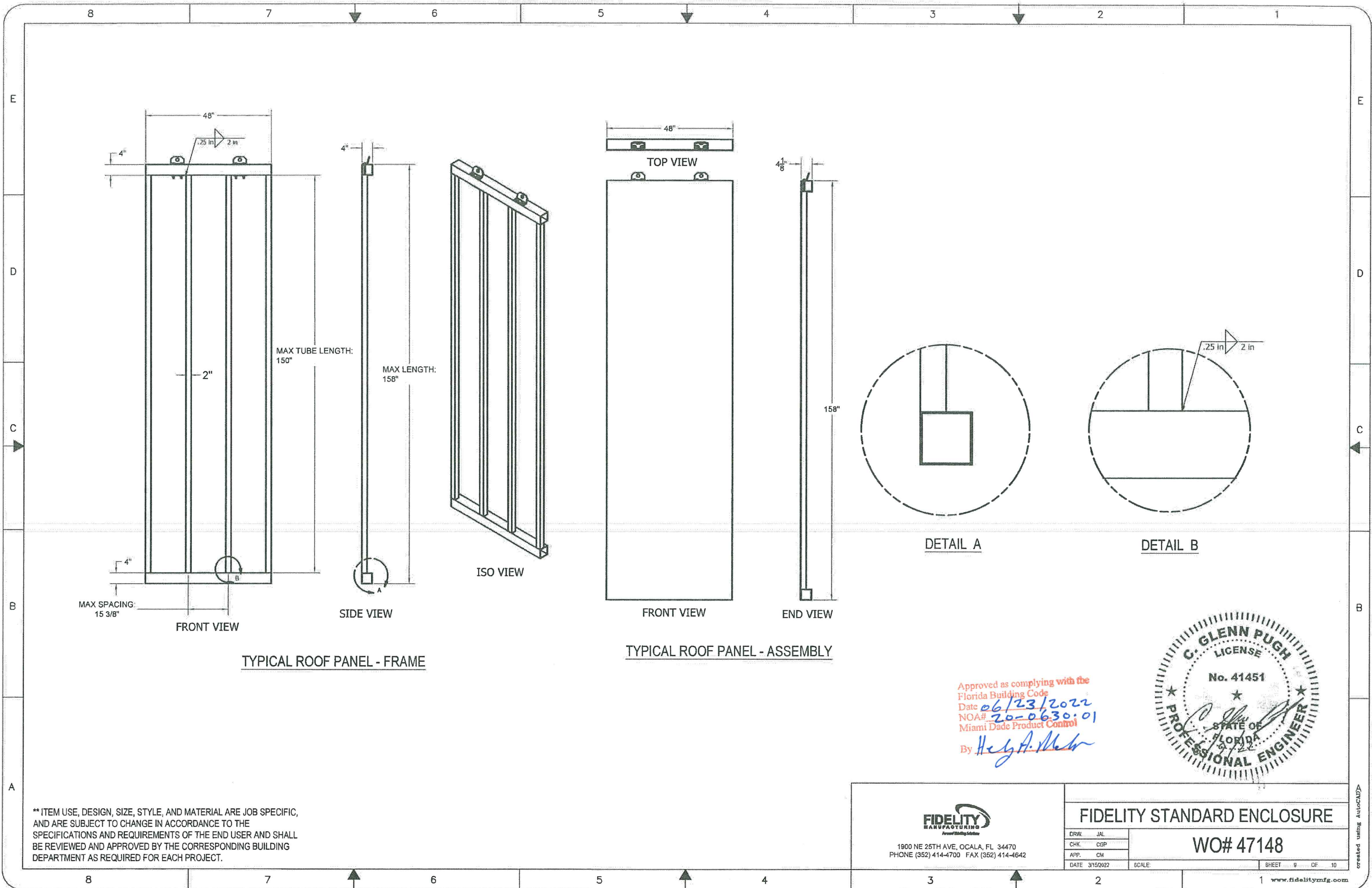
FIDELITY STANDARD ENCLOSURE

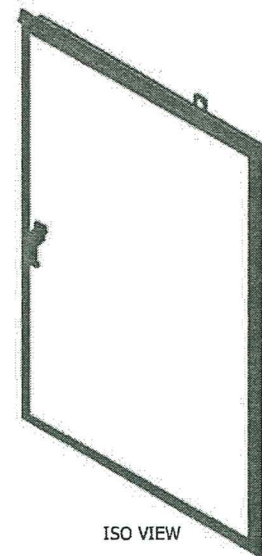
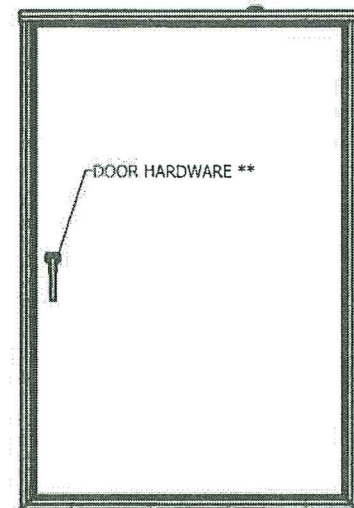
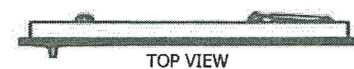
WO# 47148

DRW.	JAL
CHK.	CGP
APP.	CM
DATE	6/6/2022

SCALE:

SHEET 8 OF 10



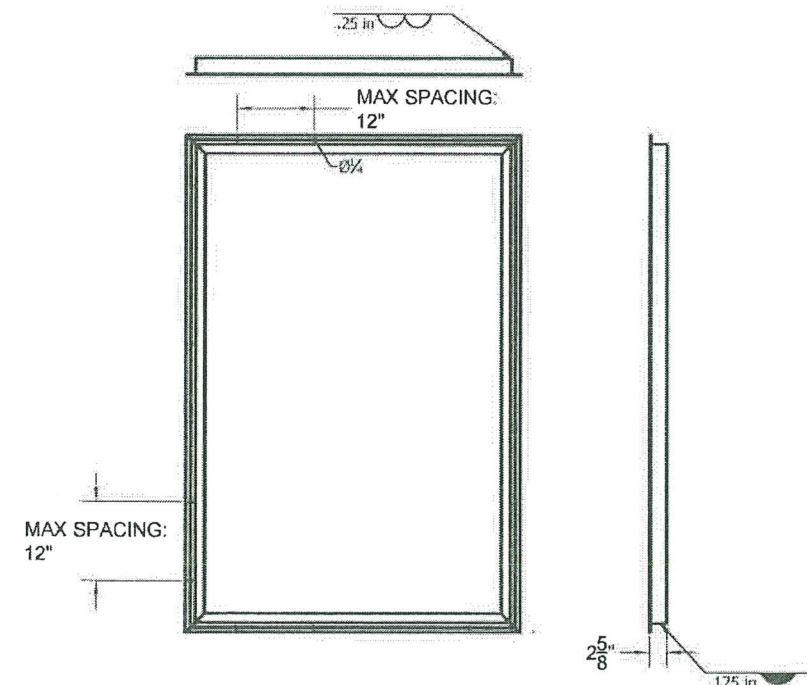


HINGE, PIANO, 3", 1/8" PIN, 18-8 STAINLESS STEEL **

FRONT VIEW

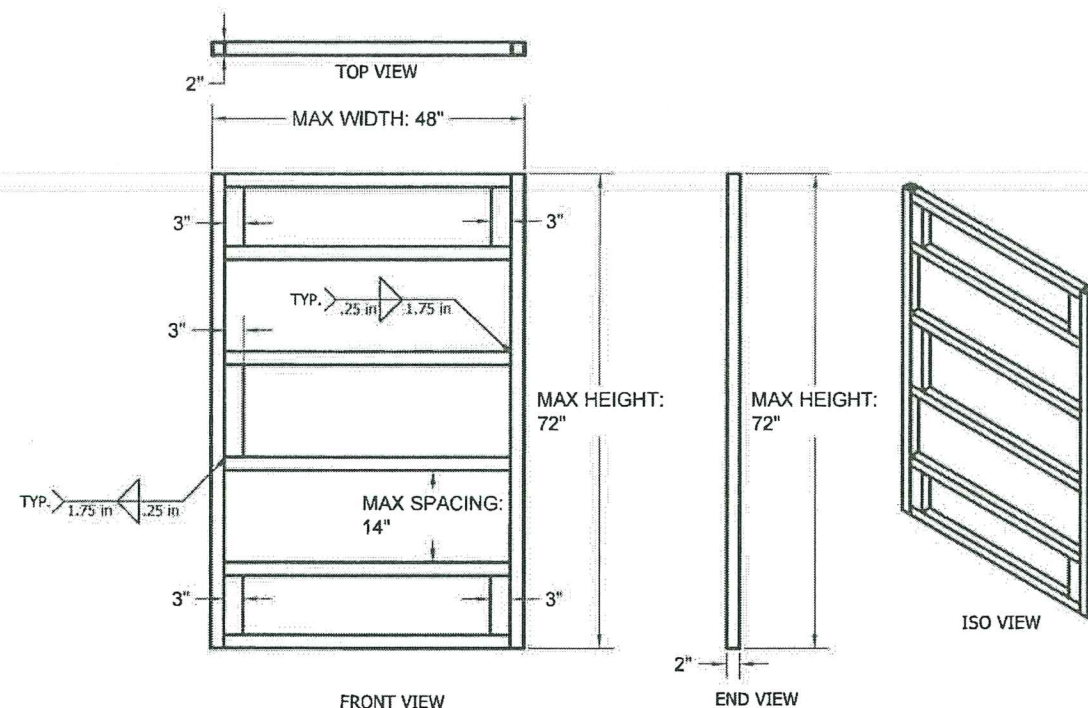
END VIEW

TYPICAL DOOR PANEL - ASSEMBLY



FRONT VIEW

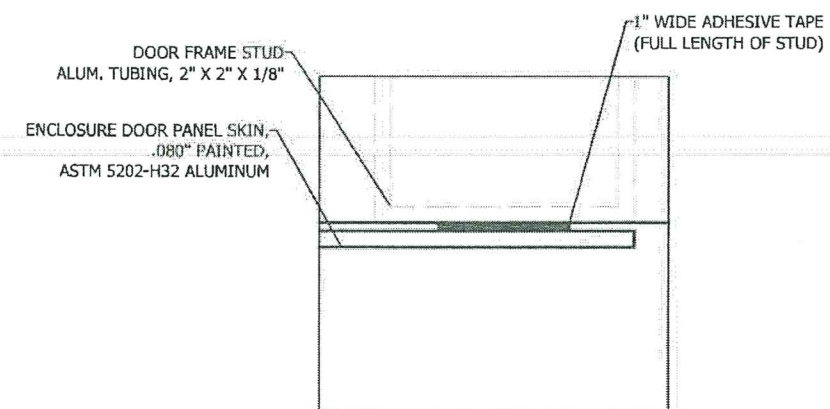
TYPICAL DOOR SEAL TRIM



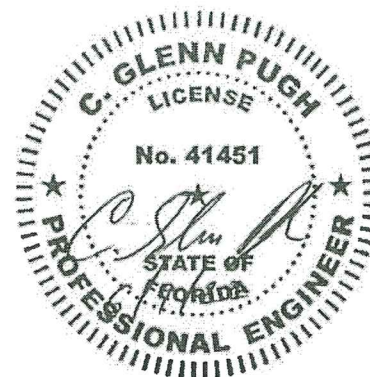
FRONT VIEW

END VIEW

TYPICAL DOOR PANEL - FRAME



TYPICAL DOOR SKIN ASSEMBLY



** ITEM USE, DESIGN, SIZE, STYLE, AND MATERIAL ARE JOB SPECIFIC, AND ARE SUBJECT TO CHANGE IN ACCORDANCE TO THE SPECIFICATIONS AND REQUIREMENTS OF THE END USER AND SHALL BE REVIEWED AND APPROVED BY THE CORRESPONDING BUILDING DEPARTMENT AS REQUIRED FOR EACH PROJECT.



1900 NE 25TH AVE, OCALA, FL 34470
PHONE (352) 414-4700 FAX (352) 414-4642

FIDELITY STANDARD ENCLOSURE

WO# 47148

DRW. JAL
CHK. CGP
APP. CM
DATE 3/15/2022

SCALE:

SHEET 10 OF 10

1 www.fidelitymfg.com

created using AutoCAD